

Broward County Traffic Incident Management Team

TIM Meeting Minutes July 2011



Meeting Date: July 6, 2011

Meeting Time: 1:30 PM – 3:30 PM

Location: Broward Emergency Operations Center
201 NW 84th Ave.
Plantation, FL 33324

Attendees: Listing Attached

Distributed Documents:

- Agenda

Review Action Items/Previous Meeting Minutes – Mike McGee, AECOM

FHP Fog/Smoke Plan: Captain Fast, FHP Troop L Commander, held a second meeting regarding fog/smoke procedures on April 13, 2011 at their headquarters in Davie. The purpose was to improve traffic incident management for these events. DBI Services (I-75 and US 27 Asset Management Contractors) plays an active role in supporting the roadway closures, traffic diversion, and maintenance of traffic. FDOT and the TIM Team Managers are awaiting the final procedural report.

Fire Hydrant Study: Chief John Quitoni of Deerfield Beach Fire Rescue requested a copy of the Fire Hydrant Study Plan. An email was sent on 5/05/11.

NAVTEQ Presentation: Have NAVTEQ present at next Broward meeting about obtaining information from responder agencies. The presentation will be scheduled for 9/2011 meeting.

Introductions / Agency Reports

Introductions were conducted followed by agency reports which include any new updates from various agencies about apparatus, staff, new buildings, new programs, etc.

Updates

Upcoming Traffic Events – Mike McGee, AECOM

No events were discussed.

I595 Express – Melanie Sexton, I595 Express LLC

Long-term Closures:

The designated U-turns for both directions of S.R. 84 at 136th Avenue are closed through late fall 2011.

The designated U-turns for both directions of S.R. 84 at Hiatus Road are closed through late fall 2011.

The designated U-turns for both directions of S.R. 84 at Pine Island Road are closed through late fall 2011.

To receive the weekly traffic advisory for the I-595 project, please email Melanie Sexton at: ms Sexton@corrado.com

I595 Express Operations – Catherine Werner, Roy Jorgensen Services

	Disabled Vehicles	Abandoned Vehicle	Crashes	Debris	Road Work	Misc.	Total Incidents
Jan	686	62	114	56	62	340	1,320
Feb	625	60	112	68	68	283	1,216
Mar	689	70	138	95	71	372	1,435

Broward County Traffic Incident Management Team

TIM Meeting Minutes July 2011



Apr	651	64	108	81	48	268	1,220
May	697	70	107	78	64	241	1,257
Jun	666	71	146	83	41	232	1,239
PTD Total	4,014	397	725	461	354	1,736	7,687
PTD Avg	669	66	121	77	59	289	1,281

FDOT Construction Report – Mike McGee, AECOM

Location: I-75/Alligator between mile marker 25 near the Broward County Toll Plaza and mile marker 100 near the Collier County Toll Plaza

All lanes of I-75 will remain open. Initial work will be to install underground conduit in the median or shoulder areas. Motorists should be alert for slow moving vehicles entering and exiting I-75 travel lanes throughout the work zone. This project includes installation of nine new overhead dynamic message sign (DMS) boards, modification of five existing DMS boards to upgrade the communication technology, installation of six new Roadway Weather Information System stations, installation of 14 new vehicle and speed detector sites and installation of three additional closed circuit traffic monitoring cameras. This equipment will provide real time traffic and weather condition to FDOT's Traffic Management Centers (TMC) in Fort Lauderdale and Fort Myers. Also, Traffic Operators at both TMCs will be able to post traffic warning messages on any of these DMS boards.

Project start date: 1/3/11 Project estimated completion: October 2011

For more information on construction related projects visit,
<http://www.dot.state.fl.us/publicinformationoffice/construc/constmap/d4.shtm>

Road Ranger Program – Guy Francese, FDOT

No new changes to the Road Ranger Program. A Road Ranger vehicle involved accident will be discussed later in the meeting under the Post Incident Analysis section.

Rapid Incident Scene Clearance (RISC) Program – Guy Francese, FDOT

RISC Activation #15 occurred on 6/22/11 on I-95 N/B at Commercial Blvd. The incident involved an overturned tractor trailer. This incident will be discussed under the Post Incident Analysis section.

Severe Incident Response Vehicle (SIRV) Program – Guy Francese, FDOT

The current contract has been extended until September 30th, 2011. The new five year contract is set to begin October 1st, 2011 and will include Palm Beach and Broward counties. The process of interviewing for SIRV Operators for Palm Beach has begun. There will be new trucks added to the fleet.

TIM Team Outreach – Mike McGee, AECOM

Pompano Beach Fire Rescue - Training Commander Ted Martin

- June 14-16, 2011
- 9 presentations over three days
- 113 personnel received training

Pembroke Pines is re-scheduling due to changes in available training hours for new FY

If your agency has not had TIM outreach training, contact Mike McGee 954-847-2634

Southeast Florida Regional Transportation Operations Committee (SEFRTOC) – Mike McGee, AECOM

Background:

The South East Florida Regional TMC Operations Committee (SEFRTOC) was formed in 2003 by the South Florida Regional ITS Coalition, an organization that brings together municipal, county, regional and state agencies to ensure compatible implementation and operation of Intelligent Transportation Systems (ITS) throughout the region.

Last Meeting: June 15, 2011

Discussion on standardizing Dynamic Message Signs (DMS) between D1, D4, D6, and Florida's Turnpike Enterprise (FTE). Example: D1 uses exit numbers in rural areas. Discussion of center to center issues with SunGuide.

Chemical Suicide Update – Mike McGee, AECOM

Of 72 chemical suicides in US in 2008, at least 80% have resulted in injuries to emergency responders and other citizens despite suicide victims placing notes or signs to give warning. In 2010, there were 36 suicides. Through June 2011, there have been 27.

Presentations

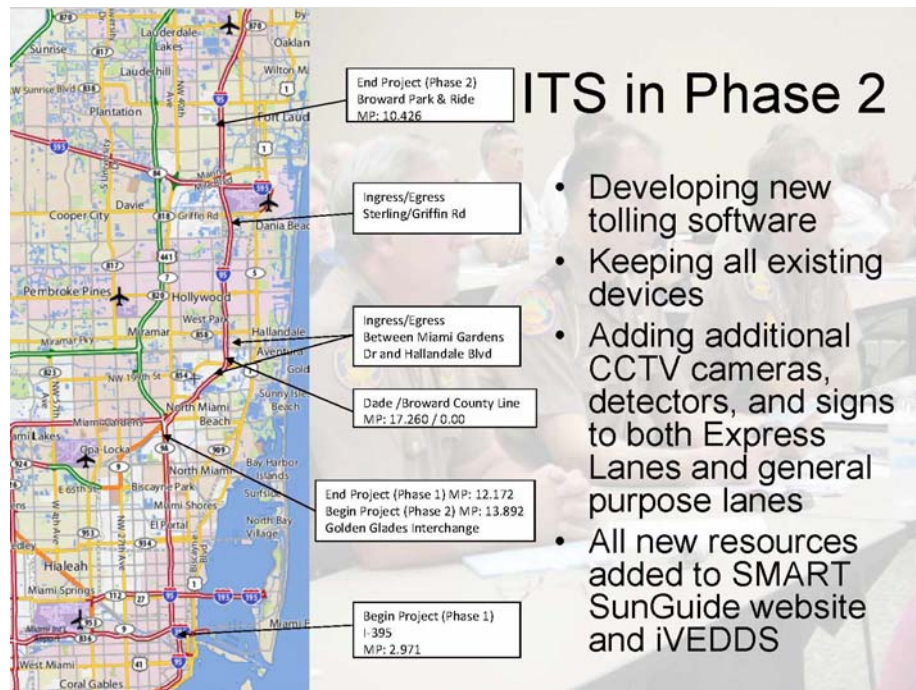
I-95 Express Lanes Phase II – Dong Chen, FDOT

Dong Chen of FDOT discussed what express lanes are and the purpose behind the project. One benefit discussed was the increase to the speed of traffic during peak hours. Another benefit has been that surveys report that 72% of motorists believe that the express lanes are more reliable than general purpose lanes. 57% wanted the 95 Express expansions to occur.

Scope of Phase II includes Ives Dairy interchange improvements and Express Lanes extended to Davie Rd.

Impacts of Phase II include

- Ives Dairy construction: Feb 2012 – Nov 2012
- Express Lanes construction: Oct 2011 - 2014
- During construction the HOV lanes will become general use lanes.
- Lane and ramp closures will occur
- Additional Road Rangers for Express Lanes
- Project schedule and construction bulletins will be available on www.95Express.com



Construction Phase II:

- Detailed presentation made by construction team at September TIM meeting.
 - Joint Broward/Miami-Dade TIM Meeting September 7, 2011 1001 NW 111th Ave Blvd. Miami, FL 33172
- What are issues of interest to TIM members?

For questions or more information, contact:

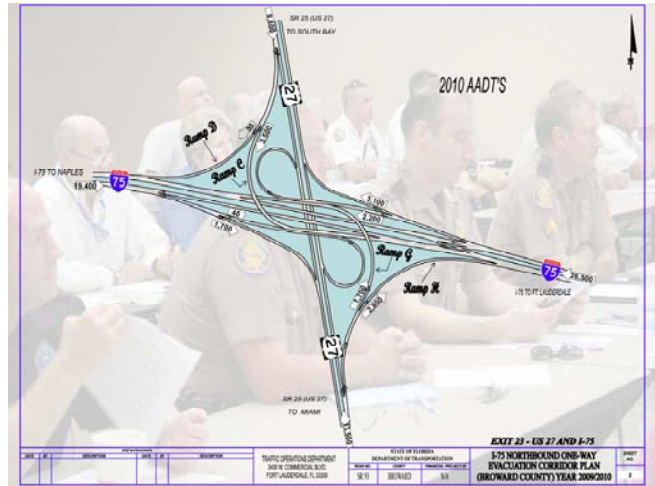
Dong Chen
FDOT District Four ITS Program Manager
Dong.Chen@dot.state.fl.us
954-847-2785

I-75/US 27 Interchange Maintenance of Traffic (MOT) Plan – Bill Wang, FDOT

Bill Wang of FDOT discussed the plan for I-75 and US 27 when an emergency evacuation occurs. The current plan to evacuate I-75 going west is still being worked on.

The following concerns were documented:

- For crashes involving injuries along westbound I-75, west of US 27. How can the injured be transported to the nearest hospital, which would be located east of US 27? Is there an eastbound emergency route for this situation?
- If the evacuation is coming from the south (Miami Dade County), what would be the impact to the projected volumes? Would we still neglect the northbound US 27 traffic to go west on I-75?
- If the plan is implemented and vehicles are actually sent west on I-75, how can we keep traffic moving once traffic coming from District 4 merges with the already saturated traffic from District 1?
- Is there enough response time after the decision for evacuation has been made?
- The AADT volumes presented only showed the typical everyday traffic. There is a program that simulates traffic conditions during an actual emergency evacuation. Please run the program and show what the projected volumes would be during an emergency evacuation to properly access whether northbound and southbound US 27 have any significant impact at the US 27/I-75 interchange.



FHWA TIM Self Assessment – Guy Francese, FDOT

- Has been redesigned (2008/2009) to reduce subjectivity
- 34/30/34 questions, reorganized and recategorized
- TIM Team scored tactical section
- Some categories have non-scored supplemental questions to help FHWA gauge TIM practices

Post Incident Analysis Reports – Mike McGee, AECOM

RISC #15: June 22, 2011 4:45 a.m. I-95 NB at Commercial Blvd Tractor Trailer Crash

On Wednesday, June 22, 2011 at 0443 hours, a tractor trailer (containerized box) was northbound on Interstate 95, approaching Commercial Boulevard when the truck began swerving. The driver claimed that another vehicle cut him off, but it is believed the driver may have fallen asleep. The driver overcorrected and lost control of the truck, which hit the median barrier wall and overturned on its side blocking two inside lanes. The container did not fall off the trailer and there was no cargo spillage. There was a fuel spill (approximately 25 gallons) and some minor damage to the road asphalt and median barrier wall. FHP contacted TMC to activate RISC at 0451. TMC contacted Westway Towing at 0501 and three RISC-certified trucks were enroute at 0515. Wreckers 960 (60t) and 975 (75t) and MOT truck 955 all arrived in 32 minutes. Notice to proceed given at 0542. The tractor trailer was moved to the ramp at 0653, all lanes except the inside lane (diesel spill) reopened at 0705. SWS Environmental arrived at 0730 to remediate the spill. All lanes opened at 0724.

Road Ranger Vehicle Crash: June 17, 2011 I-95 SB before Hallandale Beach Blvd.

Mike briefly explained to the TIM team that a Road Ranger vehicle was on the left shoulder on I-95 SB before Hallandale Beach Blvd, servicing a vehicle when a motorist lost control, swerved to the left and crashed into the right rear of the Road Ranger tow truck. The Road Ranger had proper maintenance of traffic (MOT) deployed. The Road Ranger also had the truck tires pointing toward the median wall. The motorist crashed through the cones and severely damaged the front of his car as well as the right rear panel and boom of the Road Ranger vehicle. The Road Ranger was not injured as a result of the crash.

Broward County Traffic Incident Management Team

TIM Meeting Minutes July 2011



Training Safety Tip: Cone Placement – Advanced Warning – Mike McGee, AECOM

FDOT Design Standards for Design, Construction, Maintenance and Utility Operations on the State Highway System – January 2004 – Topic No. 625-010-003

Index 600 page 7 “Dropoff Notes” in work zones Note 4 sections A & B. Warning device spacing shall be as follows:

On Taper

- Maximum spacing between cones or tubular markers shall be 25’.

On Alignments

- Maximum spacing between cones or tubular markers shall be 25’.

Open Discussion – All

No other topics discussed.

Action Items

- A Superior Towing and Oakland Park Fire Rescue requested to have TIM Outreach training.

Meeting Attendees

Bruno	Maggie	I595 Express LLC
Campbell	Nicole	BSO
Carris	Scott	Pembroke Pines Police Department
Combs	Billy	NAVTEQ
Dickson	Thomas	SIRV
Fimbel	Richard	DBI Services
Francese	Guy	FDOT - D4
Gannon	Ana	Florida DEP
Gartner	Terry	FDOT MCCO
George	Karl	Davie Fire Rescue
Hilbert	Jim	Florida’s Turnpike
Jennings Jr.	Jim	Emerald Towing
Kleynhans	Gerald	DBI Services
Loscalzo	Sean	A Superior Towing
Margoles	Glenn	Broward EOC
McGee	Michael	AECOM
McGlynn	Nicole	AECOM
McInnis	Scott	Sal’s Towing
Mirones	Alex	Florida’s Turnpike
Murphy	Bob	AECOM
Nielsen	Nate	Miramar Police Department
North	Fred	BSO Fire Rescue
Quitoni	John	Deerfield Beach Fire Rescue
Ramos	Maggie	Sunshine Towing
Schulze	Rick	AECOM – SIRV
Serrano	Joan	BSO
Sexton	Melanie	The Corradino Group
Snyder	Joe	FDOT District Six
Soles	Gilbert	FDOT District Four
Spear	Chris	West Way Towing
Washburn	Mike	Florida’s Turnpike
Werner	Catherine	Roy Jorgensen Associates, Inc. (I-595 Express)
Williams	Xavier	SMART SunGuide RTMC