



Weekly Performance Measures Report Broward County



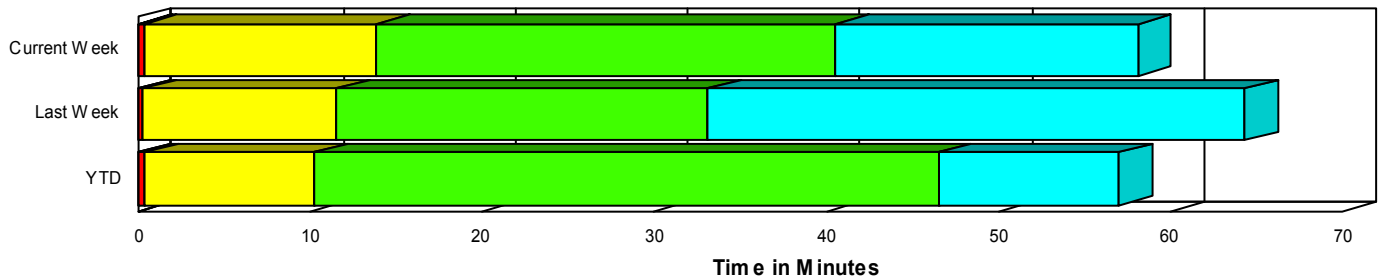
Created on:
January 05, 2009
8:58 am

Period From Dec 28, 2008 to Jan 3, 2009

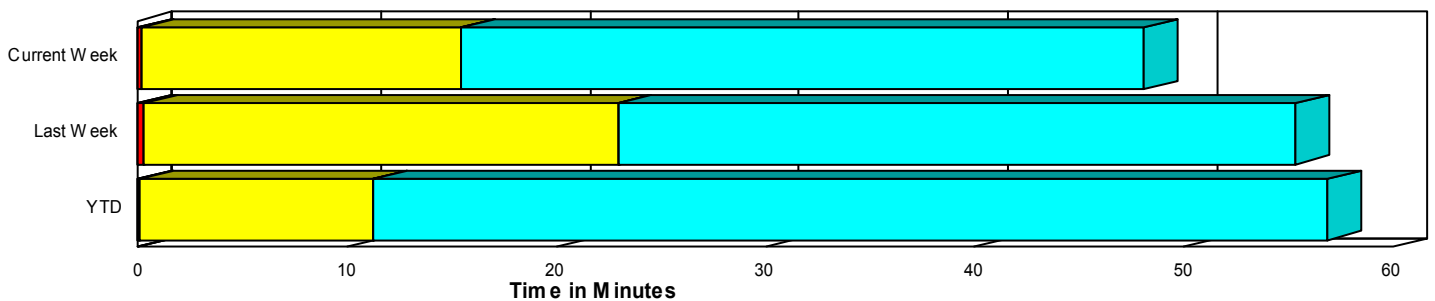
Performance Measures Summary

	Traffic Events (No Lanes Blocked)			Incidents (Lanes Blocked)		
	<u>This Week</u>	<u>Last Week</u>	<u>YTD</u>	<u>This Week</u>	<u>Last Week</u>	<u>YTD</u>
Number of Events	1,278	1,258	499	40	38	11
TMC Detection (min.)	0.00	0.00	0.00	0.02	0.00	0.00
TMC Verification (min.)	0.11	0.27	0.07	0.33	0.31	0.40
TMC Response (min.)	15.63	23.29	11.33	14.21	11.45	10.47
RR Dispatch Time (min.)	9.84	17.26	5.98	1.45	2.90	2.48
RR Response Time (min.)	5.96	5.00	4.36	12.70	8.60	7.99
Roadway Clearance (min.)				37.38	36.46	39.18
Event Clearance (min.)	48.26	55.66	56.96	54.96	67.63	49.70
# of Events w/ RR/SIRV	642	631	228	19	20	7
RR/SIRV Responses	642	631	228	19	20	7
RR/SIRV Activities	522	544	202	45	41	17

Incident Clearance TimeLine



Traffic Event (Non-Lane Blockage) Time-Line



<ul style="list-style-type: none"> Avg. TMC Detection Time Avg. Time from TMC Detection to TMC Verification Avg. Time from TMC Verification to TMC Response 	<ul style="list-style-type: none"> Avg. Time from TMC Response to Roadway Clearance* Avg. Time from Roadway Clearance to Incident/Event Clearance**
--	--

* Roadway clearance equals all travel lanes open

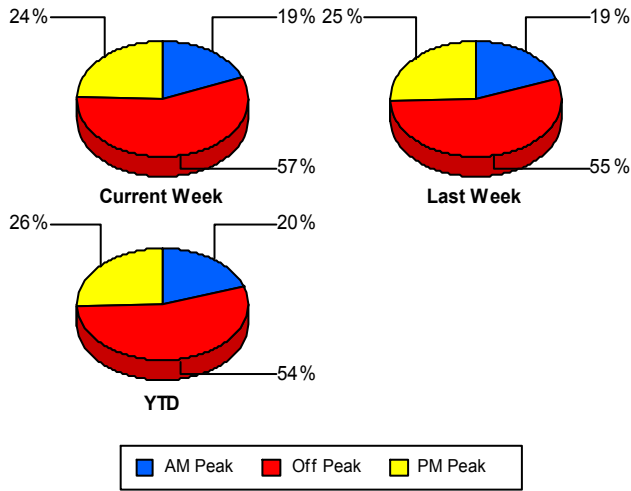
** Incident clearance equals time when last responder has left the scene

Performance Measures by Peak Period

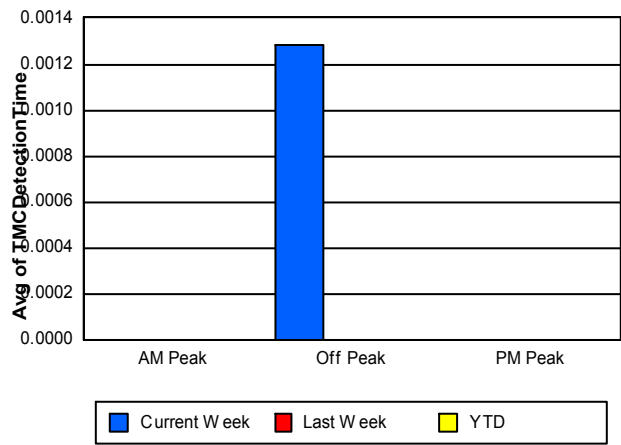
Note: AM peak period is defined as 6am to 10am and PM peak period is defined as 3pm to 7pm.

	AM Peak			Off Peak			PM Peak		
	<u>Current Week</u>	<u>Last Week</u>	<u>YTD</u>	<u>Current Week</u>	<u>Last Week</u>	<u>YTD</u>	<u>Current Week</u>	<u>Last Week</u>	<u>YTD</u>
Number of Events	244	251	101	753	718	277	321	327	132
Number of Incidents	5	3	3	25	30	7	10	5	1
TMC Detection (min.)	0.00	0.00	0.00	0.00	0.00	0.00	0.00	0.00	0.00
TMC Verification (min.)	0.08	0.11	0.06	0.12	0.22	0.06	0.15	0.50	0.14
TMC Response (min.)	16.53	12.50	5.34	21.97	41.64	19.37	6.38	9.54	6.86
RR Dispatch Time (min.)	9.27	7.59	1.71	13.30	32.07	13.22	4.78	4.58	1.19
RR Response Time (min.)	5.22	3.75	3.57	7.26	6.69	3.94	5.59	4.47	5.79
Event Clearance (min.)	36.47	28.46	36.31	50.50	76.84	65.66	52.78	31.41	53.92
Roadway Clearance (min.)	22.96	31.63	15.59	36.37	39.22	39.02	47.10	22.78	111.07
Incident Clearance (min.)	33.72	108.12	23.39	53.81	62.05	51.63	68.43	76.78	115.08
# of Events w/ RR/SIRV	165	181	62	287	270	89	209	200	84
RR/SIRV Responses	165	181	62	287	270	89	209	200	84
RR/SIRV Activities	144	164	56	234	227	87	189	194	76

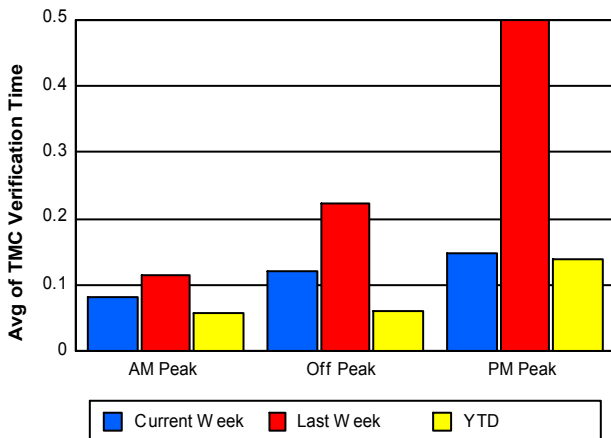
Number of Events / Peak Period



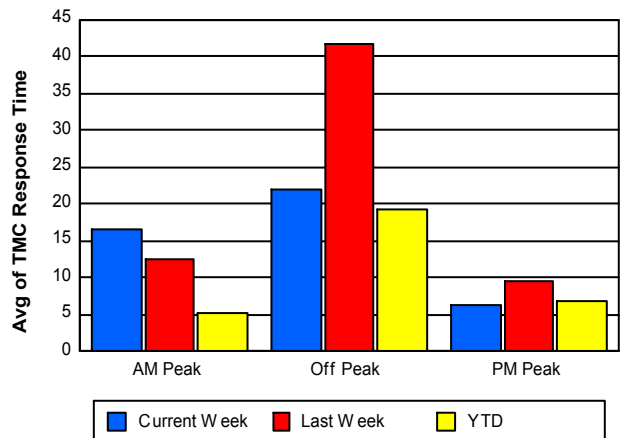
TMC Detection Time



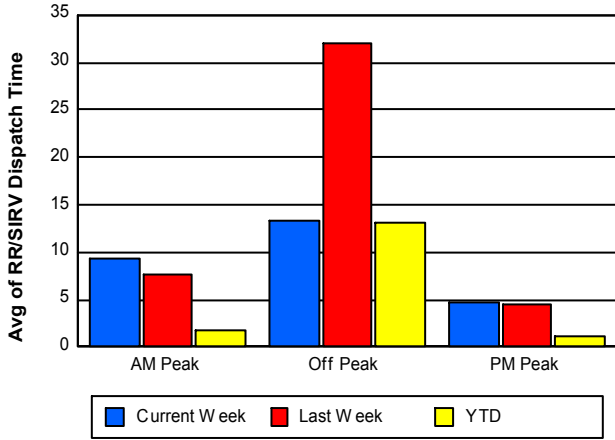
TMC Verification Time



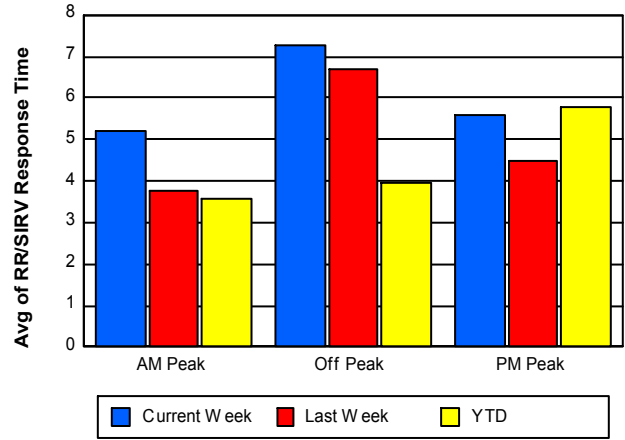
TMC Response Time



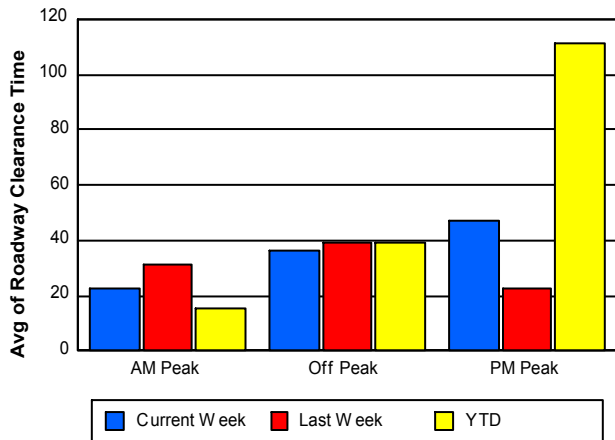
Road Ranger / SIRV Dispatch Time



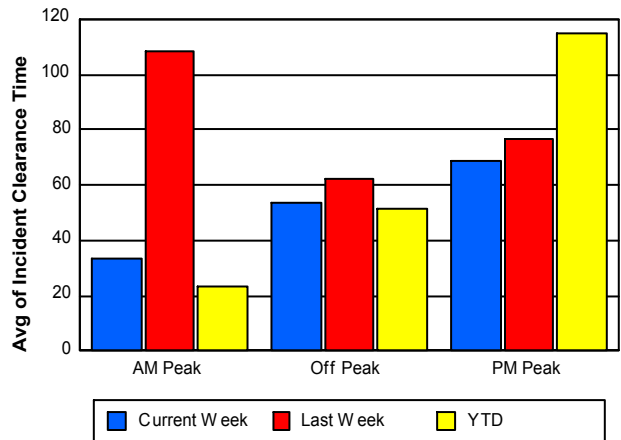
Road Ranger / SIRV Response Time



Roadway Clearance Time (2A)



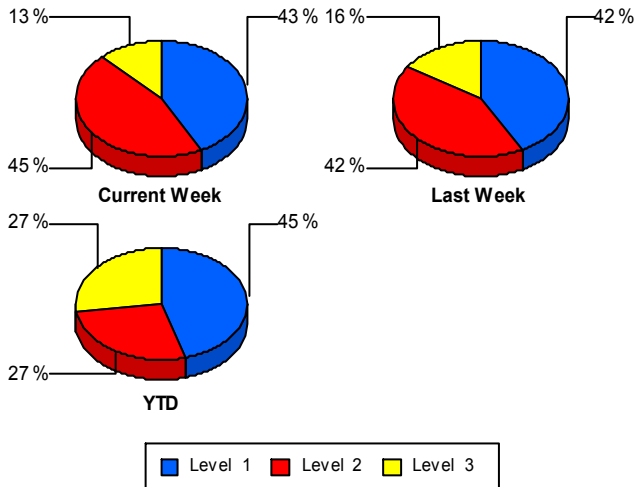
Incident Clearance Time (3B)



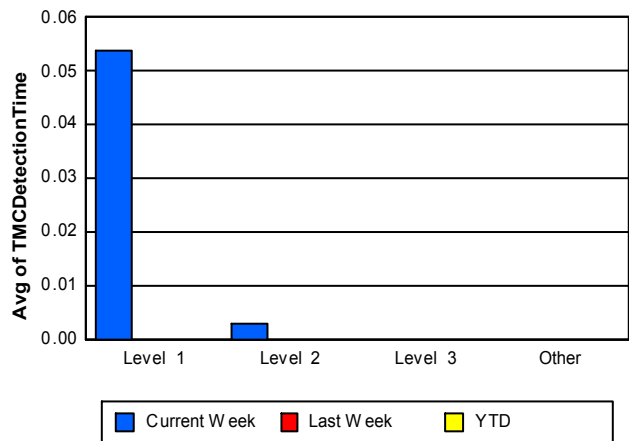
Performance Measures by Severity

	Level 1			Level 2			Level 3			Other		
	<u>This Week</u>	<u>Last Week</u>	<u>YTD</u>	<u>This Week</u>	<u>Last Week</u>	<u>YTD</u>	<u>This Week</u>	<u>Last Week</u>	<u>YTD</u>	<u>This Week</u>	<u>Last Week</u>	<u>YTD</u>
Number of Events	17	16	5	18	16	3	5	6	3	1,278	1,258	499
Number of Incidents	17	16	5	18	16	3	5	6	3	0	0	0
TMC Detection (min.)	0.05	0.00	0.00	0.00	0.00	0.00	0.00	0.00	0.00	0.00	0.00	0.00
TMC Verification (min.)	0.05	0.35	0.00	0.60	0.39	0.94	0.33	0.00	0.54	0.11	0.27	0.07
TMC Response (min.)	16.68	5.06	0.18	7.75	5.99	6.82	19.71	41.58	29.56	15.63	23.29	11.33
RR Dispatch Time (min.)	0.85	1.95	0.16	1.04	1.98	2.01	4.29	5.71	6.43	9.84	17.26	5.98
RR Resp. Time (min.)	15.79	3.10	0.02	6.71	4.01	4.81	15.42	34.28	23.13	5.96	5.00	4.36
Event Clearance (min.)	34.91	56.04	22.47	71.57	77.76	84.58	63.31	71.51	60.20	48.26	55.66	56.96
Roadway Clear. (min.)	15.94	13.90	14.84	52.52	47.07	61.87	55.79	68.34	57.05			
Incident Clearance (min.)	34.91	56.04	22.47	71.57	77.76	84.58	63.31	71.51	60.20			
# of Events w/ RR/SIRV	10	9	3	6	6	2	3	5	2	642	631	228
RR/SIRV Responses	10	9	3	6	6	2	3	5	2	642	631	228
RR/SIRV Activities	20	17	7	19	18	5	6	6	5	522	544	202

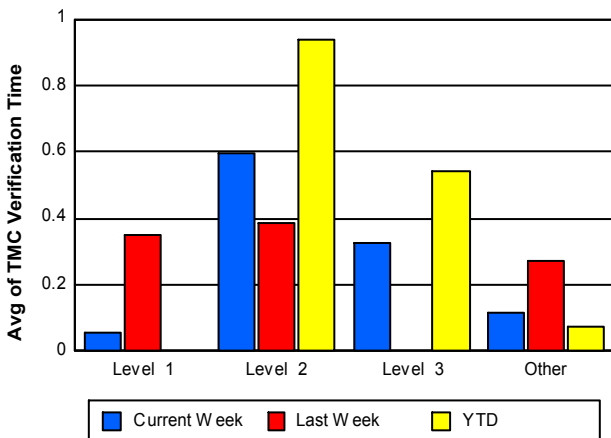
Number of Events / Severity



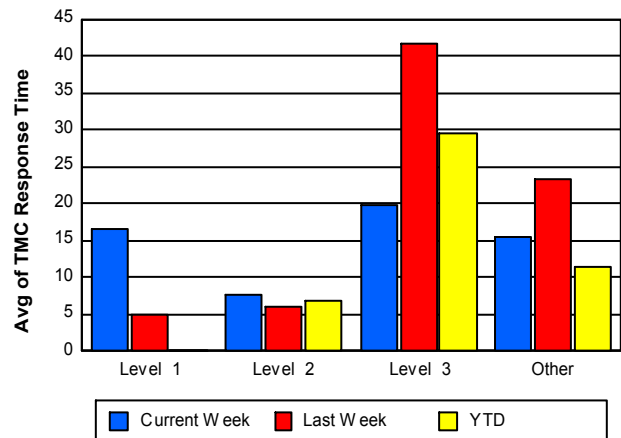
TMC Detection Time



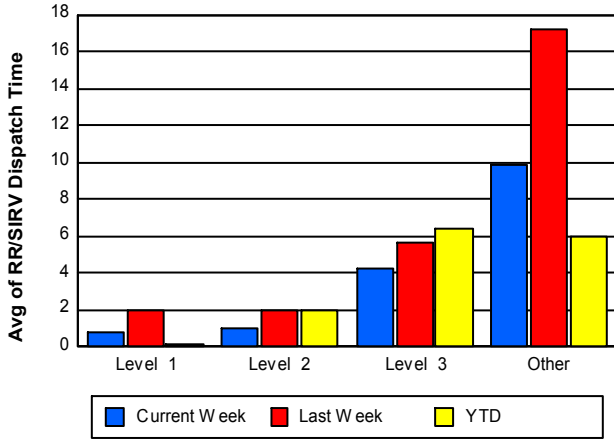
TMC Verification Time



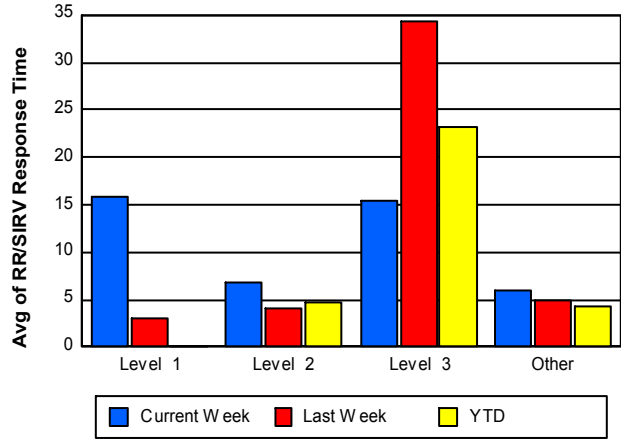
TMC Response Time



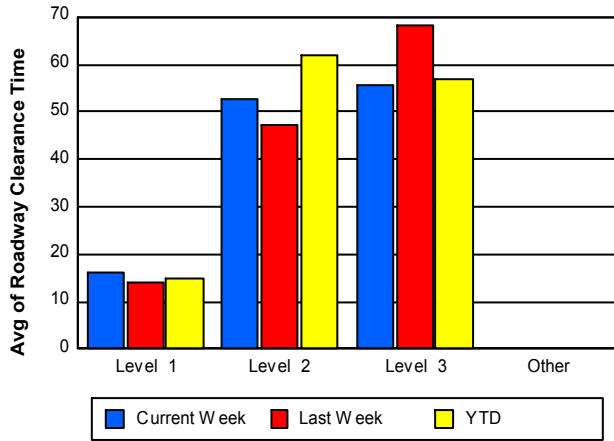
Road Ranger / SIRV Dispatch Time



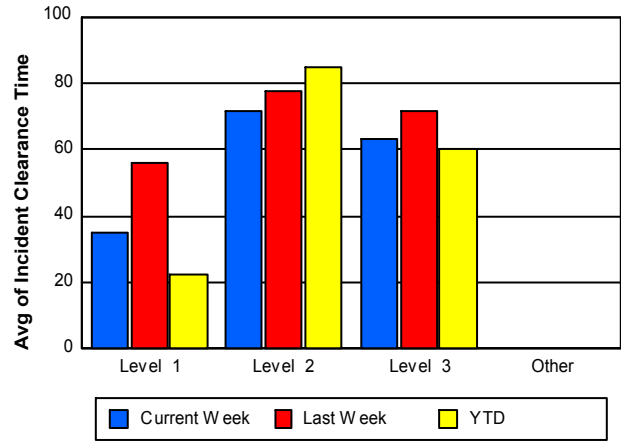
Road Ranger / SIRV Response Time



Roadway Clearance Time (2A)



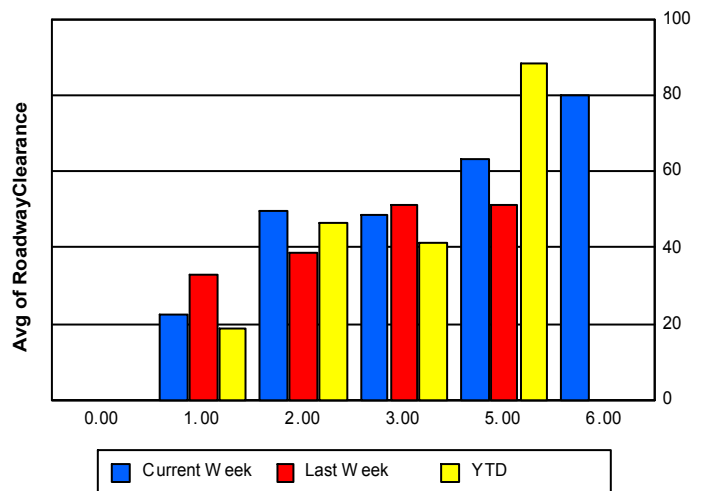
Incident Clearance Time (3B)



Roadway Clearance by Maximum Number of Lanes Blocked

	Current Week	Last Week	YTD
0			
1	22.60	32.77	18.60
2	49.77	38.78	46.35
3	48.52	51.27	41.35
5	62.98	51.25	88.45
6	79.97	0.00	0.00

Roadway Clearance Time(2A)



Performance Measures by Roadway

595

	<u>Current Week</u>	<u>Last Week</u>	<u>YTD</u>
Number of Events	181	149	61
Number of Incidents	4	5	2
TMC Detection (min.)	0.00	0.00	0.00
TMC Verification (min.)	0.11	0.11	0.06
TMC Response (min.)	5.08	50.55	8.26
RR Dispatch Time (min.)	10.26	37.02	1.12
RR Resp. Time (min.)	4.36	5.75	7.29
Event Clearance (min.)	31.11	58.35	41.79
Roadway Clear. (min.)	36.76	54.27	41.35
Incident Clearance (min.)	45.99	66.51	45.52
# of Events w/ RR/SIRV	87	78	26
RR/SIRV Responses	87	78	26
RR/SIRV Activities	72	73	25

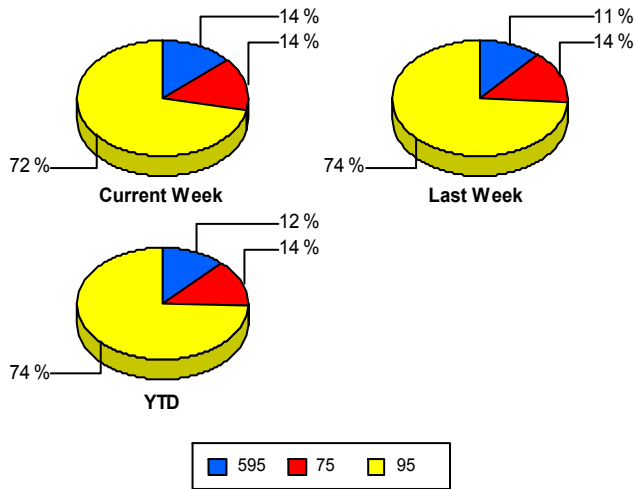
75

	<u>Current Week</u>	<u>Last Week</u>	<u>YTD</u>
Number of Events	188	187	71
Number of Incidents	0	2	0
TMC Detection (min.)	0.00	0.00	0.00
TMC Verification (min.)	0.17	0.53	0.21
TMC Response (min.)	27.15	30.16	3.31
RR Dispatch Time (min.)	15.60	22.51	0.53
RR Resp. Time (min.)	7.58	5.05	2.89
Event Clearance (min.)	42.53	58.85	23.80
Roadway Clear. (min.)		35.92	
Incident Clearance (min.)		148.55	
# of Events w/ RR/SIRV	127	118	43
RR/SIRV Responses	127	118	43
RR/SIRV Activities	101	116	36

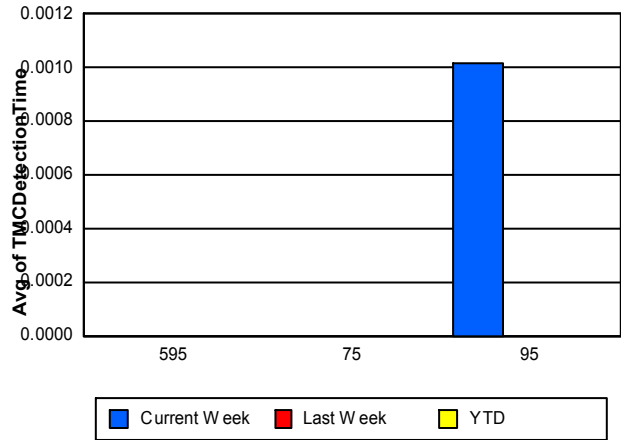
95

	<u>Current Week</u>	<u>Last Week</u>	<u>YTD</u>
Number of Events	949	960	378
Number of Incidents	36	31	9
TMC Detection (min.)	0.00	0.00	0.00
TMC Verification (min.)	0.11	0.24	0.06
TMC Response (min.)	14.24	15.80	13.63
RR Dispatch Time (min.)	7.76	11.87	8.01
RR Resp. Time (min.)	6.15	5.04	4.50
Event Clearance (min.)	52.94	55.09	65.43
Roadway Clear. (min.)	37.45	33.62	38.70
Incident Clearance (min.)	55.95	62.59	50.63
# of Events w/ RR/SIRV	447	455	166
RR/SIRV Responses	447	455	166
RR/SIRV Activities	394	396	158

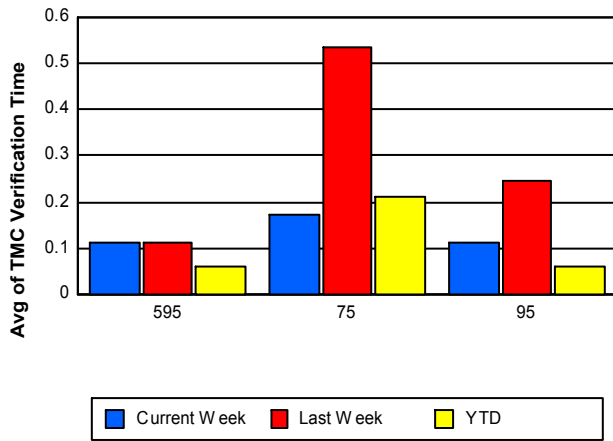
Number of Events / Roadway



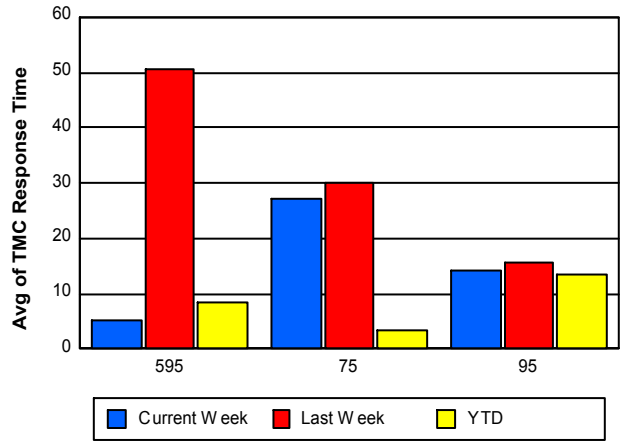
TMC Detection Time



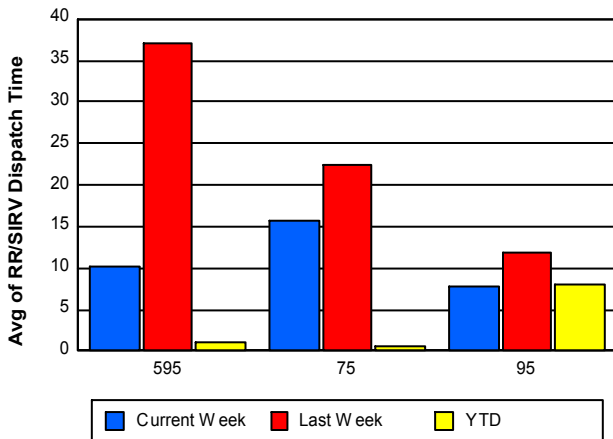
TMC Verification Time



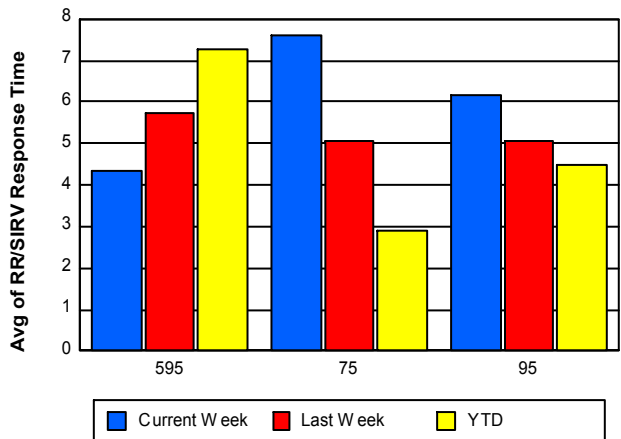
TMC Response Time



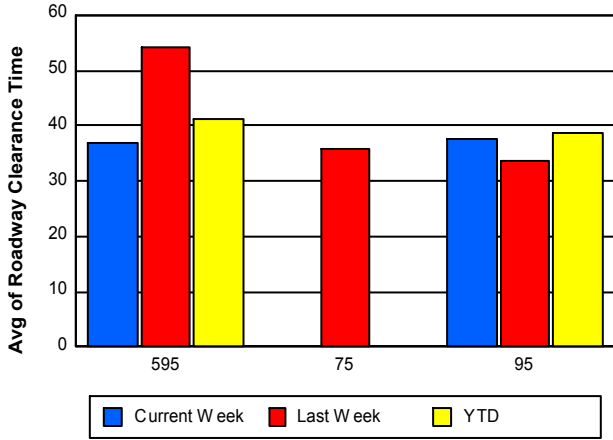
Road Ranger / SIRV Dispatch Time



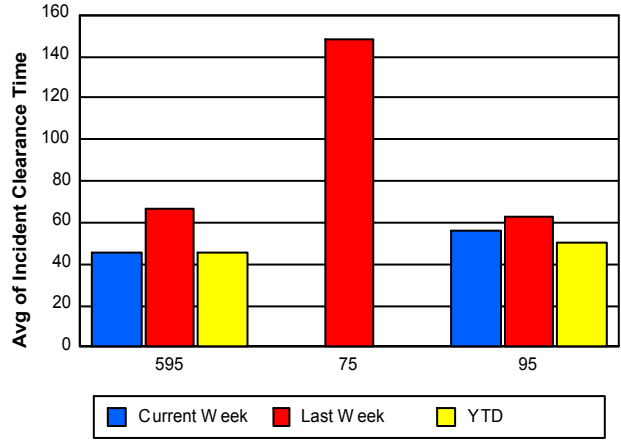
Road Ranger / SIRV Response Time



Roadway Clearance Time (2A)



Incident Clearance Time (3B)



Performance Measures by Event Type

Abandoned Vehicle

	<u>Current Week</u>	<u>Last Week</u>	<u>YTD</u>
Number of Events	138	145	63
Number of Incidents	0	0	0
TMC Detection (min.)	0.00	0.00	0.00
TMC Verification (min.)	0.00	0.18	0.00
TMC Response (min.)	57.23	125.46	19.28
RR Dispatch Time (min.)	63.18	126.20	13.77
RR Response Time (min.)	9.16	10.55	5.51
Event Clearance (min.)	283.29	319.42	303.27
Roadway Clearance (min.)			
Incident Clearance (min.)			
# of Events w/ RR/SIRV	79	81	36
RR/SIRV Assists	79	81	36
RR/SIRV Activities	81	80	40

Accident

	<u>Current Week</u>	<u>Last Week</u>	<u>YTD</u>
Number of Events	47	65	18
Number of Incidents	26	27	11
TMC Detection (min.)	0.00	0.00	0.00
TMC Verification (min.)	0.45	0.44	0.27
TMC Response (min.)	6.55	6.53	9.31
RR Dispatch Time (min.)	1.21	1.46	2.17
RR Response Time (min.)	5.32	5.16	7.00
Event Clearance (min.)	56.50	57.44	55.86
Roadway Clearance (min.)	42.96	32.77	39.18
Incident Clearance (min.)	60.77	71.82	49.70
# of Events w/ RR/SIRV	26	39	9
RR/SIRV Assists	26	39	9
RR/SIRV Activities	50	60	18

Congestion

	<u>Current Week</u>	<u>YTD</u>
Number of Events	1	1
Number of Incidents	0	0
TMC Detection (min.)	0.00	0.00
TMC Verification (min.)	0.00	0.00
TMC Response (min.)		
RR Dispatch Time (min.)		
RR Response Time (min.)		
Event Clearance (min.)	64.30	64.30
Roadway Clearance (min.)		
Incident Clearance (min.)		
# of Events w/ RR/SIRV	0	0
RR/SIRV Assists	0	0
RR/SIRV Activities	0	0

Debris on Roadway

	<u>Current Week</u>	<u>Last Week</u>	<u>YTD</u>
Number of Events	16	19	9
Number of Incidents	0	0	0
TMC Detection (min.)	0.00	0.00	0.00
TMC Verification (min.)	2.80	3.30	1.67
TMC Response (min.)	8.10	3.81	8.69
RR Dispatch Time (min.)	0.79	0.31	1.23
RR Response Time (min.)	7.28	3.54	7.35
Event Clearance (min.)	9.44	8.17	10.86
Roadway Clearance (min.)			
Incident Clearance (min.)			
# of Events w/ RR/SIRV	14	16	7
RR/SIRV Assists	14	16	7
RR/SIRV Activities	14	17	8

Disabled Vehicle

	<u>Current Week</u>	<u>Last Week</u>	<u>YTD</u>
Number of Events	634	649	238
Number of Incidents	11	3	0
TMC Detection (min.)	0.00	0.00	0.00
TMC Verification (min.)	0.14	0.34	0.09
TMC Response (min.)	8.31	4.75	9.68
RR Dispatch Time (min.)	2.69	0.96	5.52
RR Response Time (min.)	5.57	3.85	3.95
Event Clearance (min.)	29.09	27.31	30.81
Roadway Clearance (min.)	21.96	16.79	
Incident Clearance (min.)	41.22	23.49	
# of Events w/ RR/SIRV	408	406	147
RR/SIRV Assists	408	406	147
RR/SIRV Activities	402	409	148

Emergency Vehicles

	<u>Current Week</u>	<u>Last Week</u>	<u>YTD</u>
Number of Events	2	1	1
Number of Incidents	1	1	0
TMC Detection (min.)	0.00	0.00	0.00
TMC Verification (min.)	0.00	0.00	0.00
TMC Response (min.)	0.00	0.00	
RR Dispatch Time (min.)	0.00	0.00	
RR Response Time (min.)	0.00	0.00	
Event Clearance (min.)	84.73	49.55	66.53
Roadway Clearance (min.)	79.97	43.03	
Incident Clearance (min.)	102.93	49.55	
# of Events w/ RR/SIRV	1	1	0
RR/SIRV Assists	1	1	0
RR/SIRV Activities	1	3	0

Other

	<u>Current Week</u>	<u>Last Week</u>	<u>YTD</u>
Number of Events	470	392	176
Number of Incidents	0	0	0
TMC Detection (min.)	0.00	0.00	0.00
TMC Verification (min.)	0.00	0.05	0.00
TMC Response (min.)	9.82	18.98	5.05
RR Dispatch Time (min.)	1.61	2.59	1.29
RR Response Time (min.)	8.78	9.98	4.70
Event Clearance (min.)	6.53	9.23	6.96
Roadway Clearance (min.)			
Incident Clearance (min.)			
# of Events w/ RR/SIRV	131	104	36
RR/SIRV Assists	131	104	36
RR/SIRV Activities	15	14	5

Police Activity

	<u>Current Week</u>	<u>Last Week</u>	<u>YTD</u>
Number of Events	7	19	3
Number of Incidents	1	6	0
TMC Detection (min.)	0.00	0.00	0.00
TMC Verification (min.)	0.00	0.00	0.00
TMC Response (min.)	0.13	51.82	
RR Dispatch Time (min.)	0.08	1.62	
RR Response Time (min.)	0.05	49.37	
Event Clearance (min.)	22.37	46.14	22.20
Roadway Clearance (min.)	18.78	59.22	
Incident Clearance (min.)	20.90	76.20	
# of Events w/ RR/SIRV	1	2	0
RR/SIRV Assists	1	2	0
RR/SIRV Activities	2	1	0

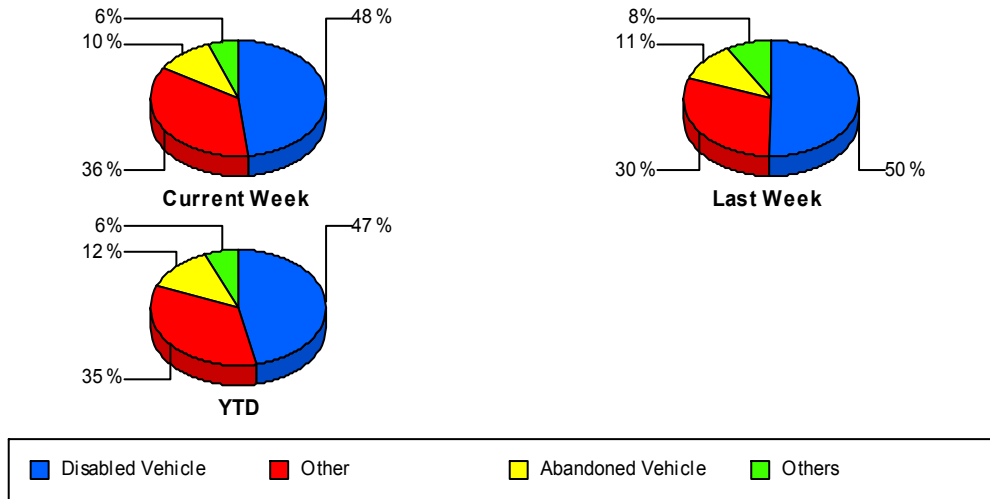
Vehicle Fire

	<u>Current Week</u>	<u>Last Week</u>
Number of Events	1	1
Number of Incidents	1	1
TMC Detection (min.)	0.00	0.00
TMC Verification (min.)	3.00	0.00
TMC Response (min.)	2.97	
RR Dispatch Time (min.)	0.55	
RR Response Time (min.)	2.42	
Event Clearance (min.)	40.78	53.40
Roadway Clearance (min.)	37.93	51.85
Incident Clearance (min.)	40.78	53.40
# of Events w/ RR/SIRV	1	0
RR/SIRV Assists	1	0
RR/SIRV Activities	2	0

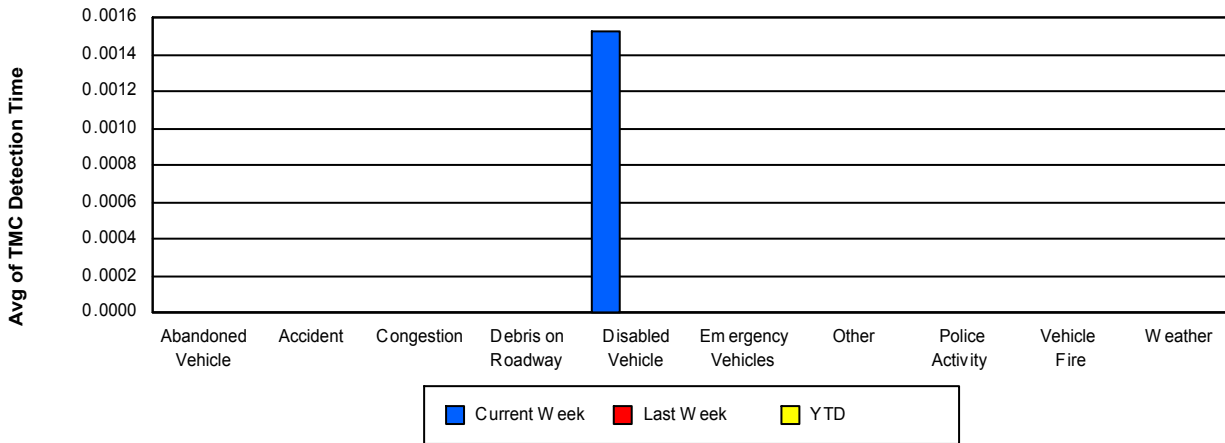
Weather

	<u>Current Week</u>	<u>Last Week</u>
Number of Events	1	1
Number of Incidents	0	0
TMC Detection (min.)	0.00	0.00
TMC Verification (min.)	0.00	0.00
TMC Response (min.)		
RR Dispatch Time (min.)		
RR Response Time (min.)		
Event Clearance (min.)	18.68	2.40
Roadway Clearance (min.)		
Incident Clearance (min.)		
# of Events w/ RR/SIRV	0	0
RR/SIRV Assists	0	0
RR/SIRV Activities	0	0

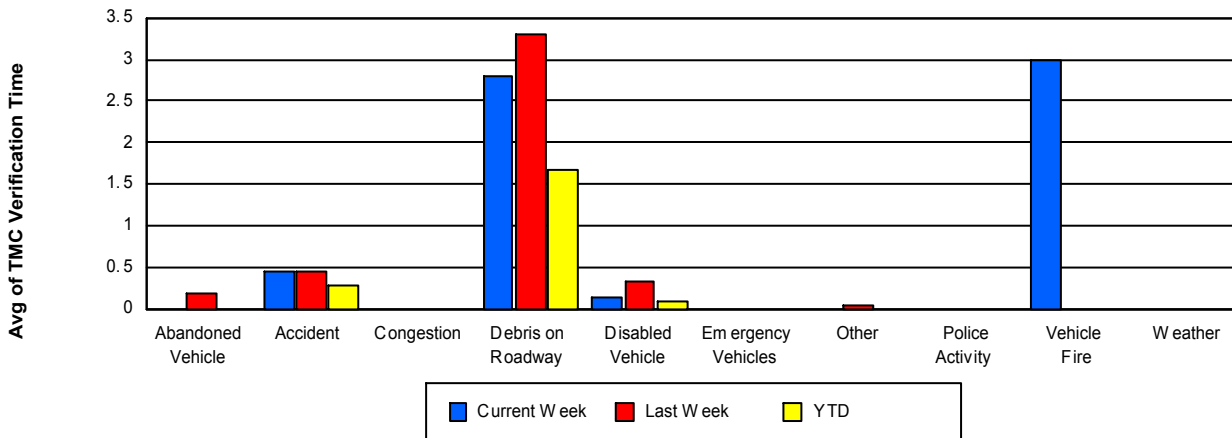
Number of Events / Event Type



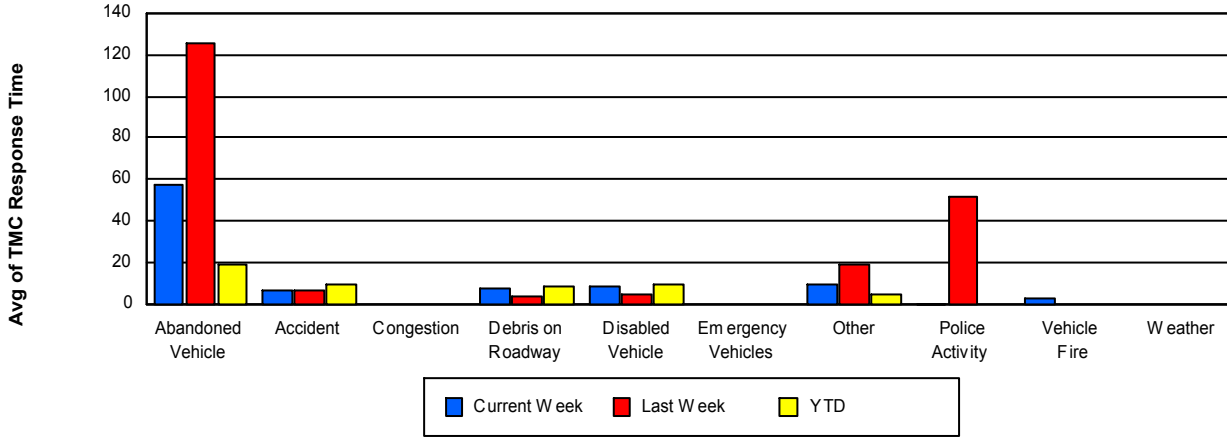
TMC Detection Time



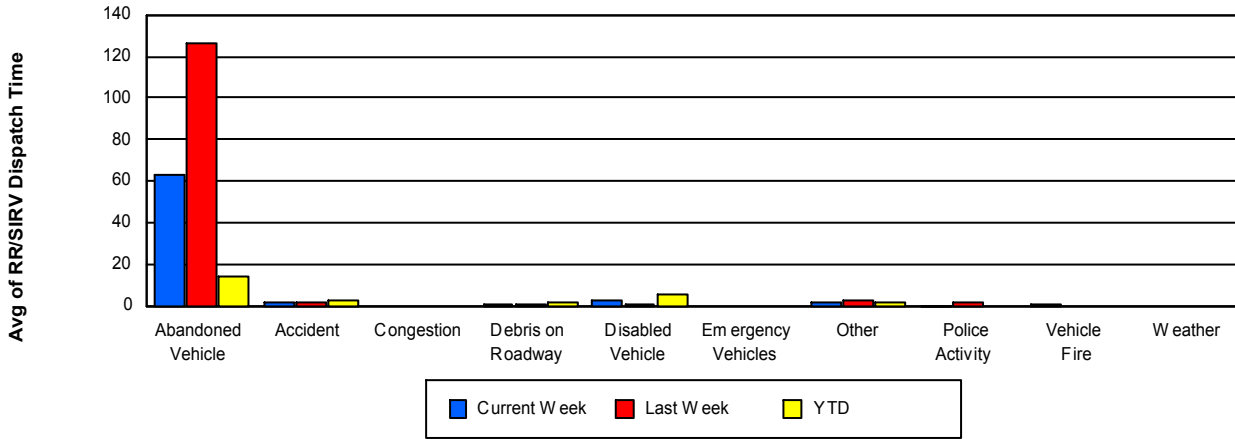
TMC Verification Time



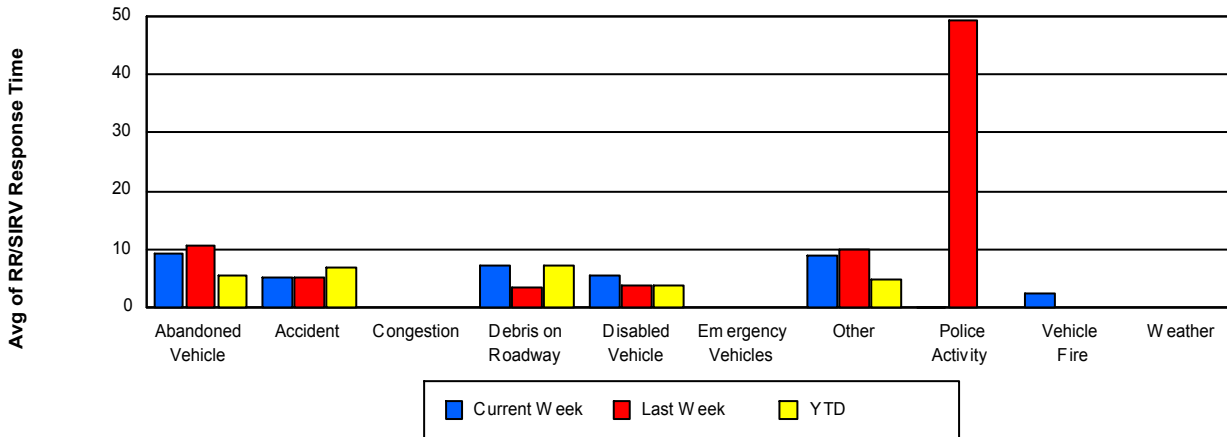
TMC Response Time



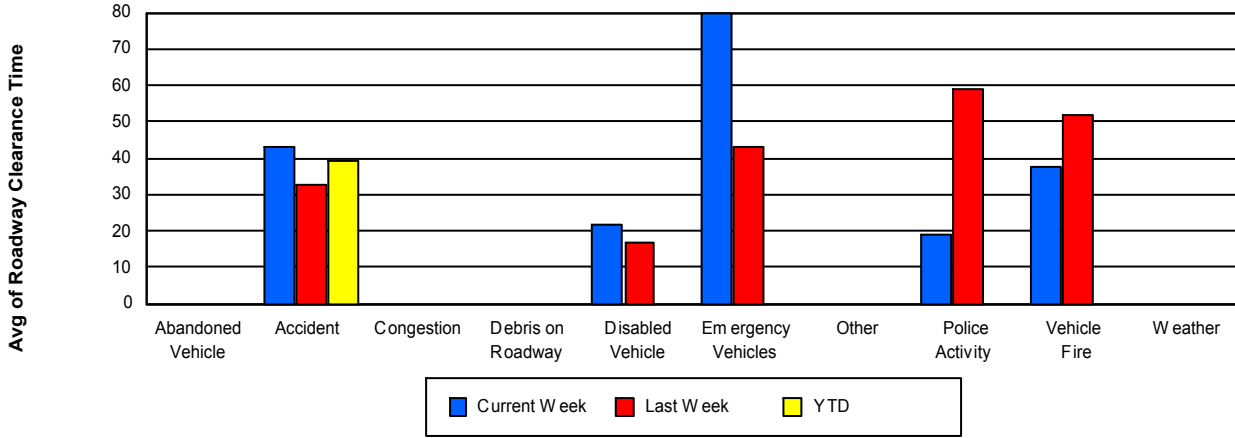
Road Ranger / SIRV Dispatch Time



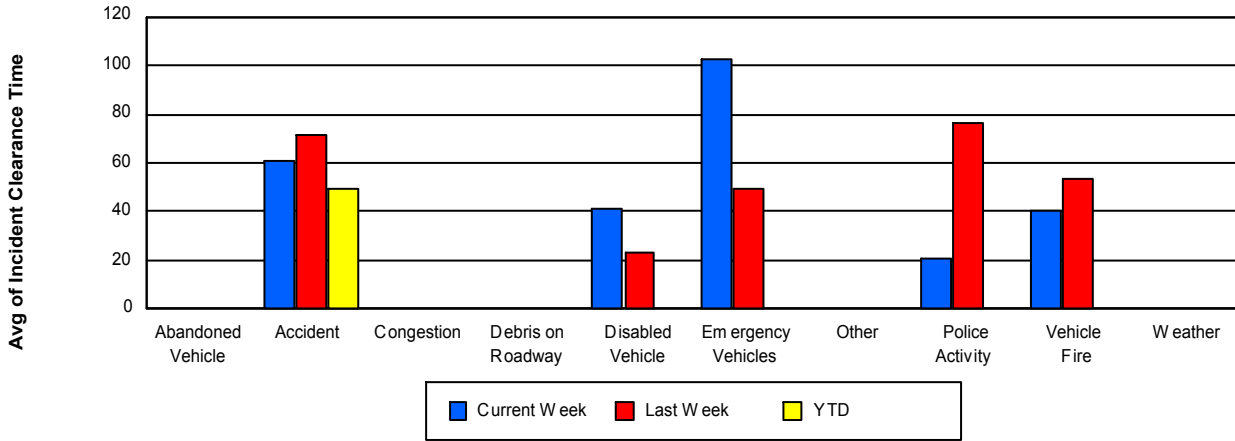
Road Ranger / SIRV Response Time



Roadway Clearance Time (2A)



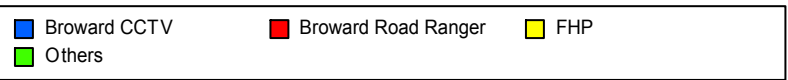
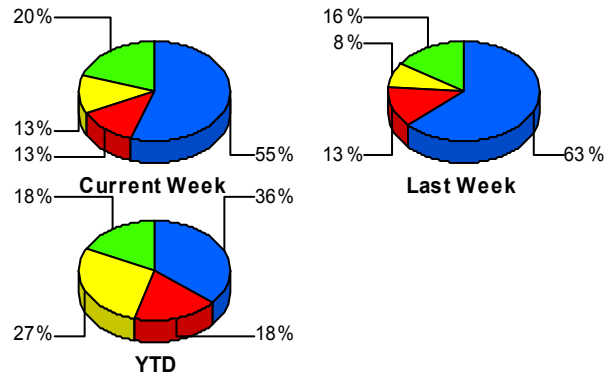
Incident Clearance Time (3B)



Incident Detection Methods

	Current Week	Last Week	YTD
Broward CCTV	22	24	4
Broward Road Ranger	5	5	2
Broward VideoWall	3	2	1
BSO	1	1	0
District 4	0	1	0
FHP	5	3	3
SmarTraveler (511)	0	1	0
VisioPaD Detection	4	1	1
Total	40	38	11

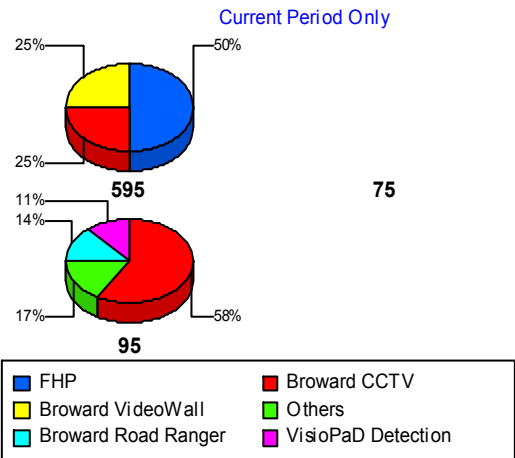
Total Incidents by Detection Method



Incident Detection Methods by Roadway

		Current Week	Last Week	YTD
595	Broward CCTV	1	2	0
	Broward Road Ranger	0	2	0
	Broward VideoWall	1	0	0
	FHP	2	1	2
	Total	4	5	2
75	BSO	0	1	0
	FHP	0	1	0
	Total	0	2	0
95	Broward CCTV	21	22	4
	Broward Road Ranger	5	3	2
	Broward VideoWall	2	2	1
	BSO	1	0	0
	District 4	0	1	0
	FHP	3	1	1
	SmarTraveler (511)	0	1	0

Total Events by Roadway and Detection Method

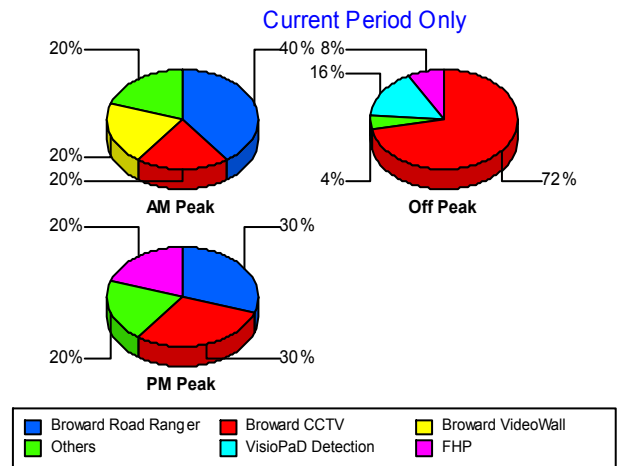


		Current Week	Last Week	YTD
95	VisioPaD Detection	4	1	1
	Total	36	31	9
Total		40	38	11

Incident Detection Methods by Peak Period

		Current Week	Last Week	YTD
AM Peak	Broward CCTV	1	1	0
	Broward Road Ranger	2	1	2
	Broward VideoWall	1	0	1
	FHP	1	1	0
	Total	5	3	3
Off Peak	Broward CCTV	18	21	4
	Broward Road Ranger	0	2	0
	Broward VideoWall	1	1	0
	BSO	0	1	0
	District 4	0	1	0
	FHP	2	2	2
	SmarTraveler (511)	0	1	0
	VisioPaD Detection	4	1	1
	Total	25	30	7
	PM Peak	Broward CCTV	3	2
Broward Road Ranger		3	2	0
Broward VideoWall		1	1	0
BSO		1	0	0
FHP		2	0	1
Total		10	5	1
Total		40	38	11

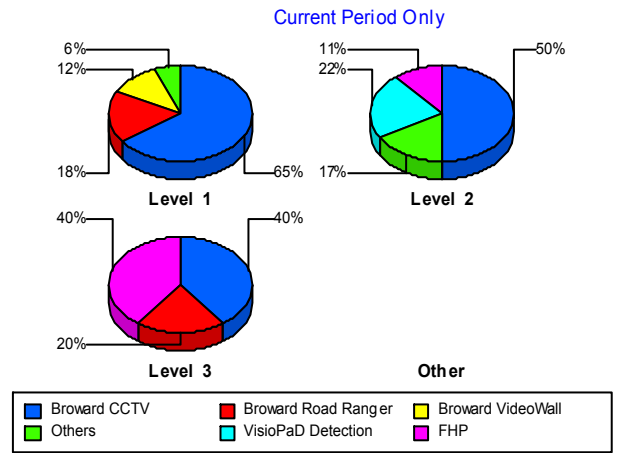
Total Events by Peak Period and Detection Method



Incident Detection Methods by Severity

		Current Week	Last Week	YTD
Level 1	Broward CCTV	11	10	2
	Broward Road Ranger	3	3	2
	Broward VideoWall	2	1	1
	FHP	1	1	0
	SmarTraveler (511)	0	1	0
	Total	17	16	5
Level 2	Broward CCTV	9	10	1
	Broward Road Ranger	1	2	0
	Broward VideoWall	1	1	0
	BSO	1	1	0
	District 4	0	1	0
	FHP	2	1	1
	VisioPaD Detection	4	0	1
	Total	18	16	3
Level 3	Broward CCTV	2	4	1
	Broward Road Ranger	1	0	0
	FHP	2	1	2
	VisioPaD Detection	0	1	0
	Total	5	6	3
Total	40	38	11	

Total Events by Severity and Detection Method



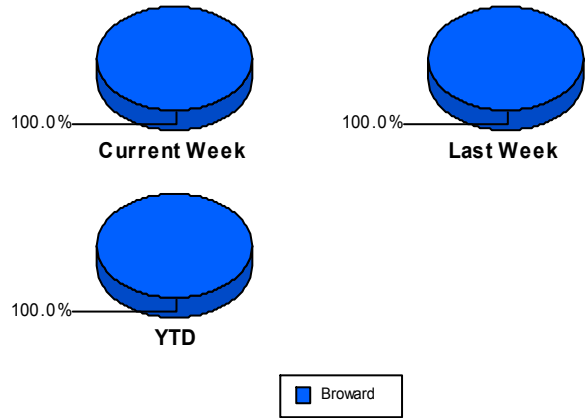
Road Ranger / SIRV Performance Measures

Road Ranger / SIRV Performance By County

Values presented are:
 - Total Events with a RR/SIRV Response
 - Total RR/SIRV Responses,
 - Total Activities Performed

	Current We	Last Week	YTD
Broward	532	552	201
	567	594	219
	588	611	226

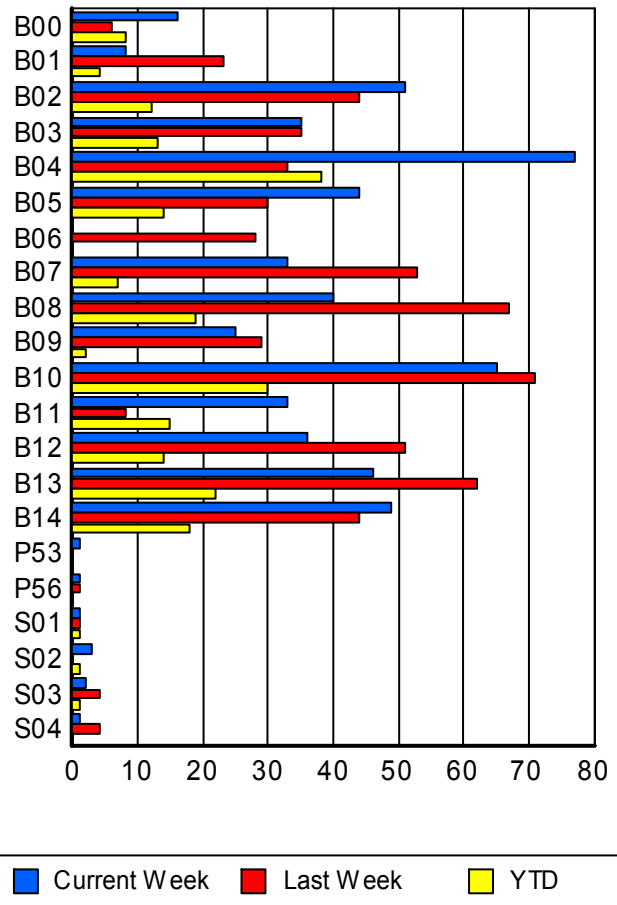
RR/SIRV Responses per County



Road Ranger / SIRV Performance By Truck

	Current We	Last Week	YTD
B00	15	6	8
	16	6	8
	18	6	8
B01	8	23	4
	8	23	4
	8	23	4
B02	51	43	12
	51	44	12
	55	46	12
B03	35	35	13
	35	35	13
	39	35	16
B04	77	33	38
	77	33	38
	78	35	38
B05	43	30	13
	44	30	14
	44	34	14
B06	0	28	0
	0	28	0
	0	28	0
B07	33	53	7
	33	53	7
	33	55	7
B08	39	67	18
	40	67	19
	41	69	20

**RR/SIRV
Responses per
Truck**



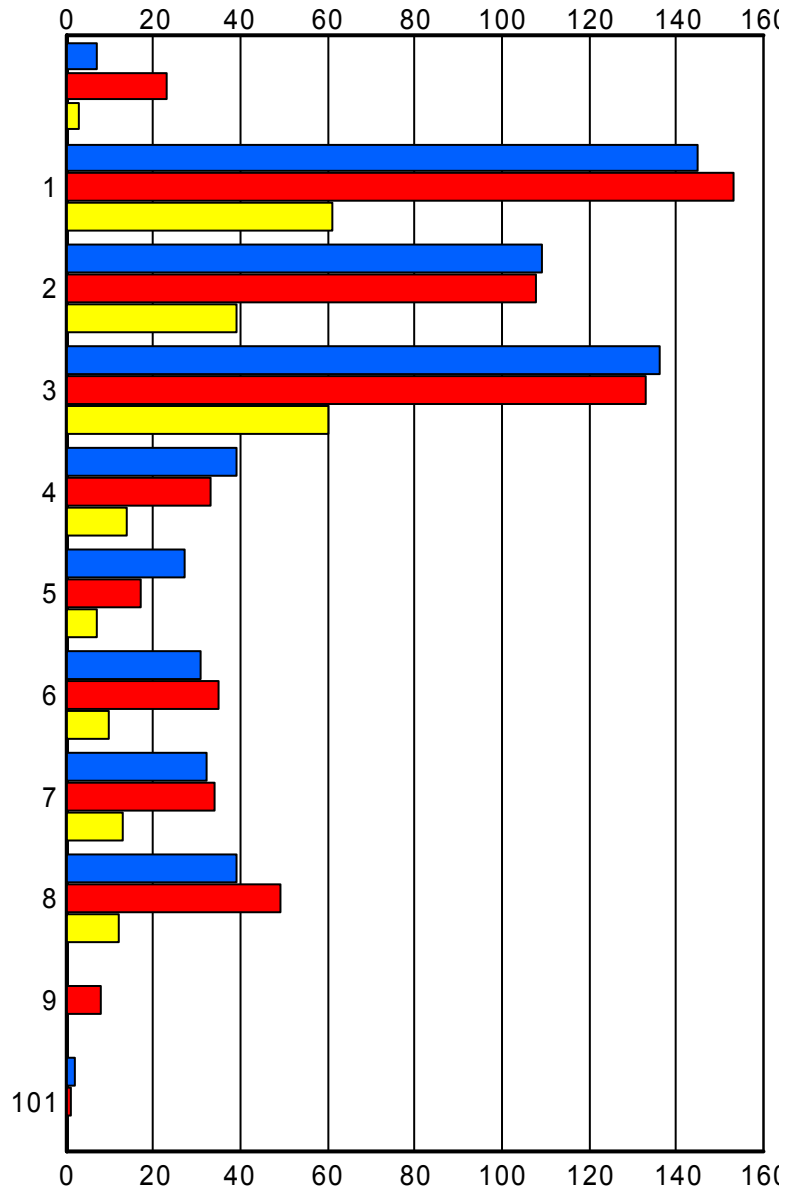
	Current We	Last Week	YTD
B09	25	29	2
	25	29	2
	26	29	2
B10	65	67	30
	65	71	30
	65	72	30
B11	32	8	14
	33	8	15
	36	8	16
B12	35	51	13
	36	51	14
	37	54	15
B13	45	61	22
	46	62	22
	47	63	23
B14	49	44	18
	49	44	18
	50	44	18
P53	1	0	0
	1	0	0
	1	0	0
P56	1	1	0
	1	1	0
	1	1	0
S01	1	1	1
	1	1	1
	1	1	1
S02	3	0	1
	3	0	1
	4	0	1
S03	2	4	1
	2	4	1
	3	4	1
S04	1	4	0
	1	4	0
	1	4	0

Road Ranger / SIRV Performance By Beat

	Current We	Last Week	YTD
	6	23	2
	7	23	3
	9	24	3
1	132 145 150	141 153 155	56 61 63
2	106 109 113	104 108 109	37 39 40
3	134 136 142	125 133 137	58 60 61
4	38 39 40	33 33 36	13 14 15
5	26 27 27	17 17 17	7 7 7
6	31 31 32	35 35 40	10 10 11
7	32 32 34	34 34 35	13 13 14
8	39 39 39	49 49 49	12 12 12
9	0 0 0	8 8 8	0 0 0
101	2 2 2	1 1 1	0 0 0

Values presented are:
 - Total Events with a RR/SIRV Response
 - Total RR/SIRV Responses,
 - Total Activities Performed

RR/SIRV Responses per Beat

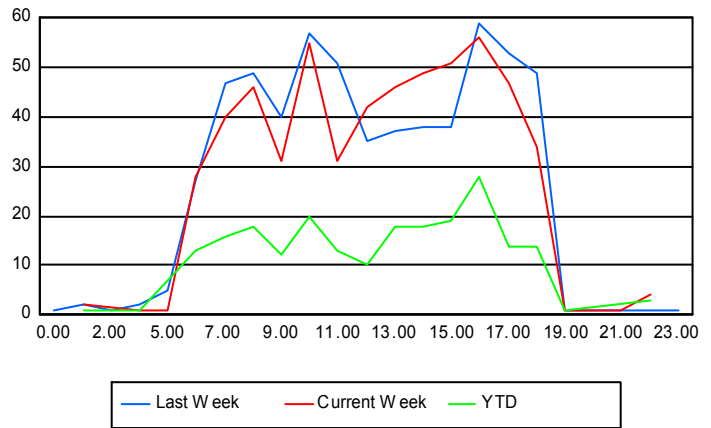


Road Ranger / SIRV Performance By Time of Day

Values presented are:
 - Total Events with a RR/SIRV Response
 - Total RR/SIRV Responses,
 - Total Activities Performed

	Current We	Last Week	YTD
12AM-1AM	0 0 0	1 1 1	0 0 0
1AM-2AM	2 2 2	2 2 2	1 1 1
2AM-3AM	0 0 0	1 1 1	0 0 0
4AM-5AM	1 1 1	2 2 2	1 1 1
5AM-6AM	1 1 1	5 5 5	0 0 0
6AM-7AM	26 28 28	26 27 27	11 13 13
7AM-8AM	37 40 41	45 47 48	15 16 16
8AM-9AM	44 46 49	49 49 52	17 18 18
9AM-10AM	30 31 33	39 40 44	12 12 13
10AM-11AM	54 55 57	46 57 59	19 20 22
11AM-12PM	27 31 31	44 51 51	10 13 13
12PM-1PM	41 42 43	35 35 35	9 10 10
1PM-2PM	44 46 48	36 37 37	16 18 18

Number of Responses / Hour of the Day



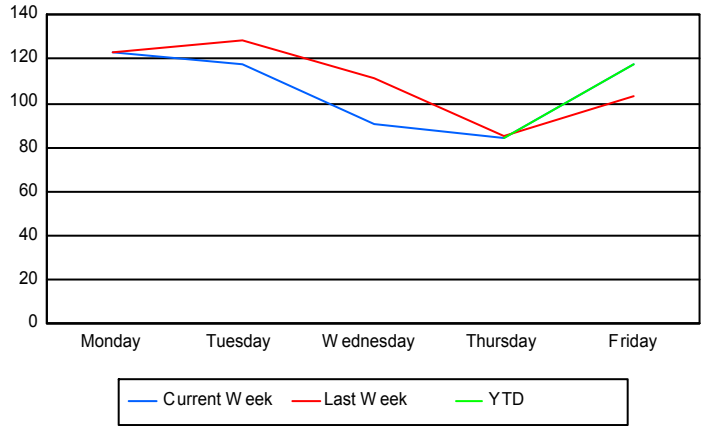
	Current We	Last Week	YTD
2PM-3PM	48	36	17
	49	38	18
	51	38	19
3PM-4PM	47	32	19
	51	38	19
	54	39	20
4PM-5PM	50	52	24
	56	59	28
	60	62	29
5PM-6PM	44	52	14
	47	53	14
	48	55	15
6PM-7PM	30	46	13
	34	49	14
	34	50	14
7PM-8PM	1	1	1
	1	1	1
	1	1	1
8PM-9PM	1	0	0
	1	0	0
	1	0	0
9PM-10PM	1	1	0
	1	1	0
	1	1	0
10PM-11PM	3	0	2
	4	0	3
	4	0	3
11PM-12AM	0	1	0
	0	1	0
	0	1	0

Road Ranger / SIRV Performance By Day of Week

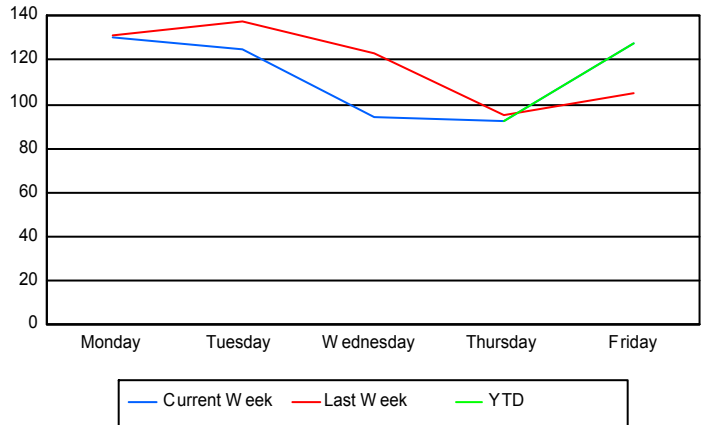
Values presented are:
 - Total Events with a RR/SIRV Response
 - Total RR/SIRV Responses,
 - Total Activities Performed

	Current We	Last Week	YTD
Monday	121	125	0
	128	133	0
	134	134	0
Tuesday	118	129	0
	125	138	0
	130	141	0
Wednesday	91	111	0
	94	123	0
	97	133	0
Thursday	84	85	83
	92	95	91
	94	95	93
Friday	118	103	118
	128	105	128
	133	108	133

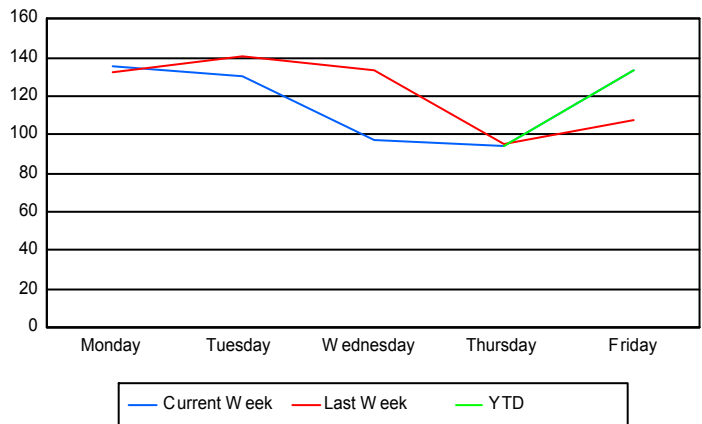
Avg # of events with a RR/SIRV Response per Day of the Week



Avg # of RR/SIRV Responses per Day of the Week



Avg # of RR/SIRV Activities Performed per Day of the Week



Road Ranger/ SIRV Responses per Time of Day and Day of Week

