



Weekly Performance Measures Report Broward County



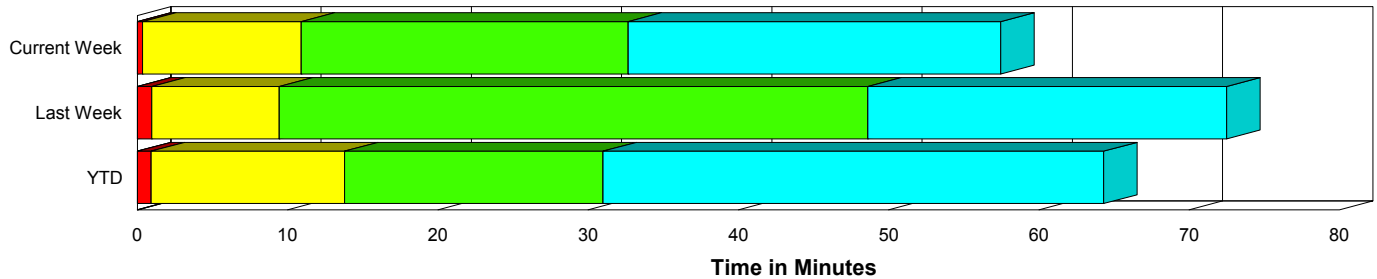
Period From Dec 27, 2009 to Jan 2, 2010

Created on:
January 04, 2010
8:44 am

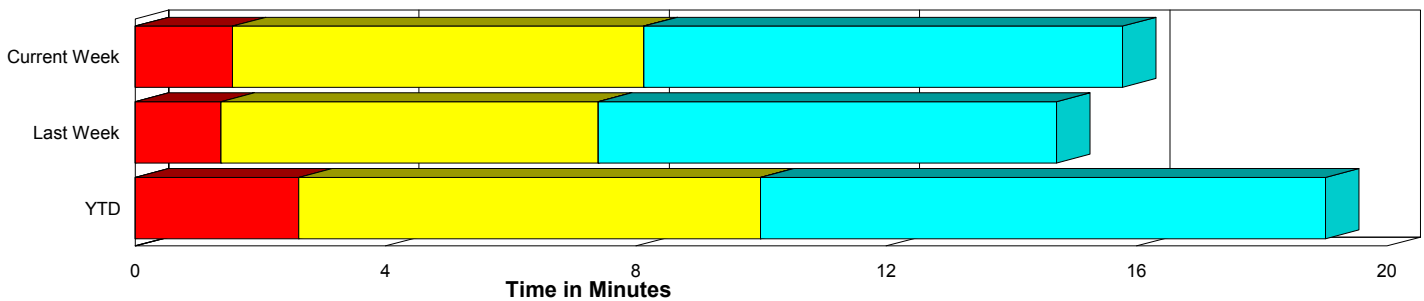
Performance Measures Summary

	Traffic Events (No Lanes Blocked)			Incidents (Lanes Blocked)		
	<u>This Week</u>	<u>Last Week</u>	<u>YTD</u>	<u>This Week</u>	<u>Last Week</u>	<u>YTD</u>
Number of Events	1,025	1,081	209	42	30	12
TMC Detection (min.)	0.00	0.00	0.00	0.00	0.00	0.00
TMC Verification (min.)	1.55	1.37	2.62	0.35	0.96	0.92
TMC Response (min.)	9.19	8.25	11.34	10.93	9.49	13.79
RR Dispatch Time (min.)	1.14	1.52	1.51	2.16	1.34	2.54
RR Response Time (min.)	8.21	6.82	9.93	8.77	8.13	11.24
Roadway Clearance (min.)				31.41	47.25	30.99
Event Clearance (min.)	16.84	15.58	20.37	56.22	71.00	64.32
# of Events w/ RR/SIRV	825	834	181	40	30	12
RR/SIRV Responses	825	834	181	40	30	12
RR/SIRV Activities	654	677	151	74	49	16

Incident Clearance Time-Line



Traffic Event (Non-Lane Blockage) Time-Line



■ Avg. TMC Detection Time	■ Avg. Time from TMC Response to Roadway Clearance*
■ Avg. Time from TMC Detection to TMC Verification	■ Avg. Time from Roadway Clearance to Incident/Event Clearance**
■ Avg. Time from TMC Verification to TMC Response	

* Roadway clearance equals all travel lanes open

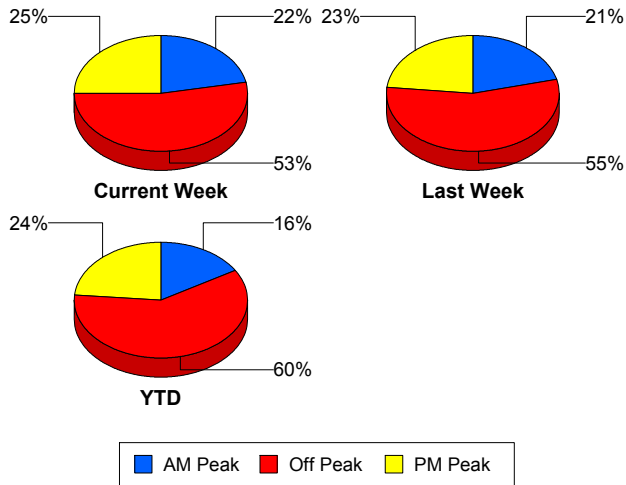
** Incident clearance equals time when last responder has left the scene

Performance Measures by Peak Period

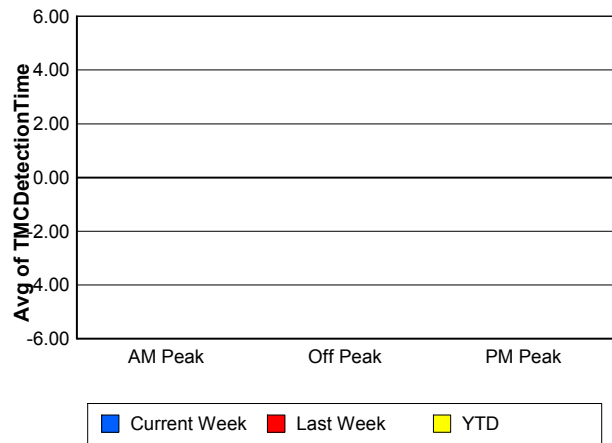
Note: AM peak period is defined as 6am to 10am and PM peak period is defined as 3pm to 7pm.

	AM Peak			Off Peak			PM Peak		
	<u>Current Week</u>	<u>Last Week</u>	<u>YTD</u>	<u>Current Week</u>	<u>Last Week</u>	<u>YTD</u>	<u>Current Week</u>	<u>Last Week</u>	<u>YTD</u>
Number of Events	233	236	36	567	616	133	267	259	52
Number of Incidents	7	1	1	22	23	7	13	6	4
TMC Detection (min.)	0.00	0.00	0.00	0.00	0.00	0.00	0.00	0.00	0.00
TMC Verification (min.)	0.73	0.88	2.49	1.69	1.12	2.55	1.80	2.39	2.48
TMC Response (min.)	6.59	6.41	7.17	10.23	8.50	12.57	9.79	9.66	11.70
RR Dispatch Time (min.)	0.80	0.95	0.78	1.27	1.71	1.32	1.36	1.60	2.93
RR Response Time (min.)	6.00	5.68	6.61	9.17	6.79	11.47	8.36	8.16	8.47
Event Clearance (min.)	13.83	12.62	14.90	19.93	17.79	25.73	19.08	19.43	20.57
Roadway Clearance (min.)	20.30	9.33	23.48	35.31	53.50	35.10	30.79	29.58	25.70
Incident Clearance (min.)	29.63	13.97	62.18	57.44	73.10	63.52	68.48	72.44	66.26
# of Events w/ RR/SIRV	196	196	29	459	463	123	210	205	41
RR/SIRV Responses	196	196	29	459	463	123	210	205	41
RR/SIRV Activities	161	161	24	378	395	103	189	170	40

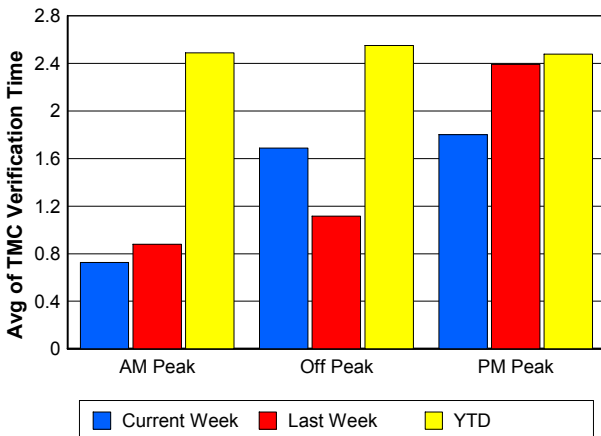
Number of Events / Peak Period



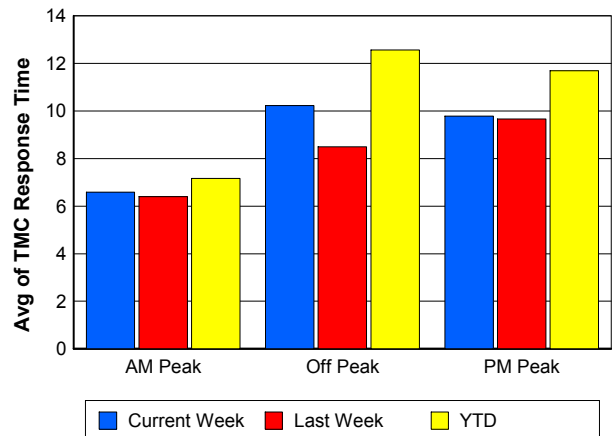
TMC Detection Time



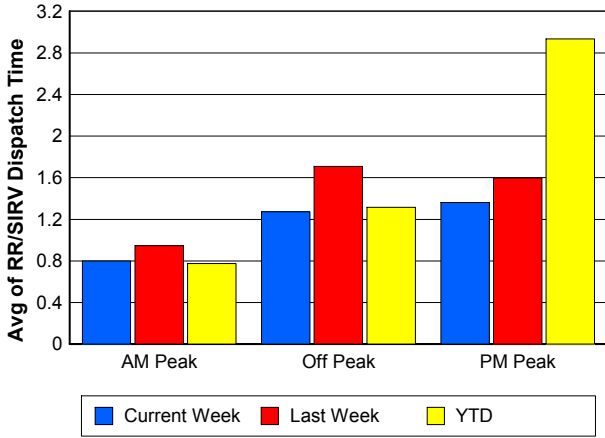
TMC Verification Time



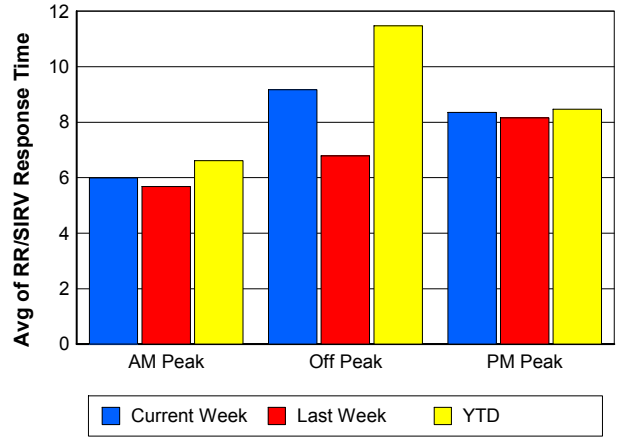
TMC Response Time



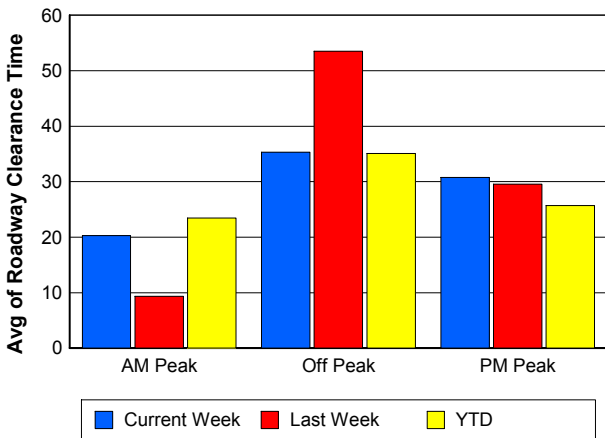
Road Ranger / SIRV Dispatch Time



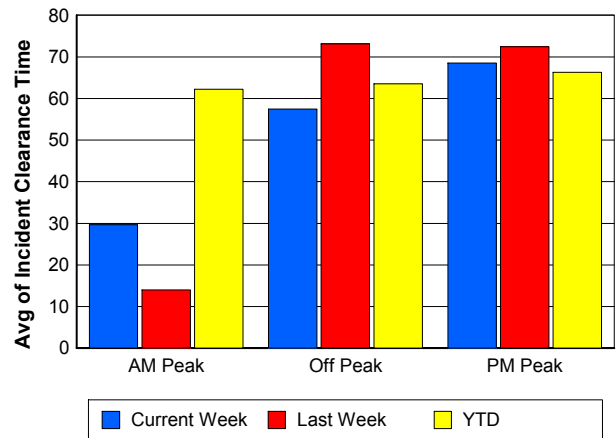
Road Ranger / SIRV Response Time



Roadway Clearance Time (2A)



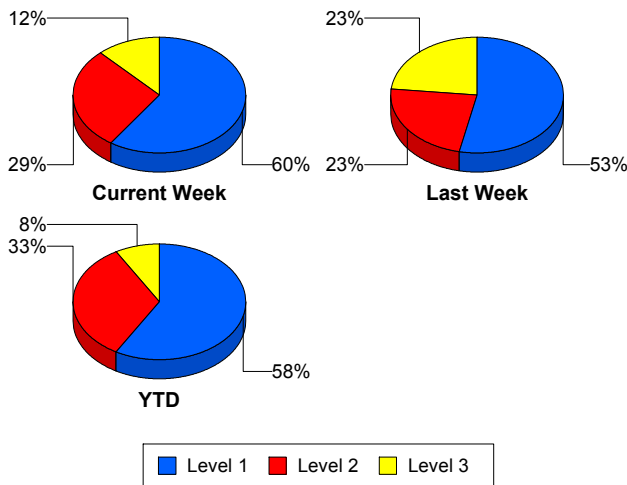
Incident Clearance Time (3B)



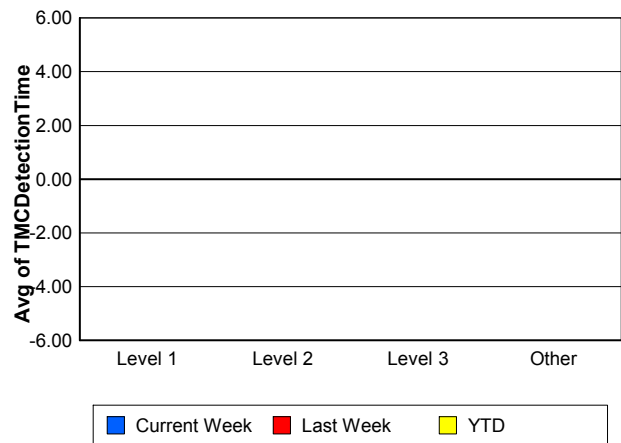
Performance Measures by Severity

	Level 1			Level 2			Level 3			Other		
	<u>This Week</u>	<u>Last Week</u>	<u>YTD</u>	<u>This Week</u>	<u>Last Week</u>	<u>YTD</u>	<u>This Week</u>	<u>Last Week</u>	<u>YTD</u>	<u>This Week</u>	<u>Last Week</u>	<u>YTD</u>
Number of Events	25	16	7	12	7	4	5	7	1	1,025	1,081	209
Number of Incidents	25	16	7	12	7	4	5	7	1	0	0	0
TMC Detection (min.)	0.00	0.00	0.00	0.00	0.00	0.00	0.00	0.00	0.00	0.00	0.00	0.00
TMC Verification (min.)	0.23	0.42	0.33	0.71	2.22	2.00	0.14	0.95	0.68	1.55	1.37	2.62
TMC Response (min.)	9.37	8.15	16.49	8.14	9.21	9.95	24.80	12.65	10.22	9.19	8.25	11.34
RR Dispatch Time (min.)	2.32	0.76	3.80	1.71	1.84	0.85	2.46	2.15	0.53	1.14	1.52	1.51
RR Resp. Time (min.)	7.04	7.38	12.70	6.43	7.37	9.10	22.35	10.50	9.68	8.21	6.82	9.93
Event Clearance (min.)	47.69	43.16	59.96	73.58	62.43	72.47	57.22	143.19	62.22	16.84	15.58	20.37
Roadway Clear. (min.)	14.52	13.99	16.48	58.48	50.44	49.32	50.90	120.07	59.30			
Incident Clearance (min.)	47.69	43.16	59.96	73.58	62.43	72.47	57.22	143.19	62.22			
# of Events w/ RR/SIRV	23	16	7	12	7	4	5	7	1	825	834	181
RR/SIRV Responses	23	16	7	12	7	4	5	7	1	825	834	181
RR/SIRV Activities	35	20	7	28	14	7	11	15	2	654	677	151

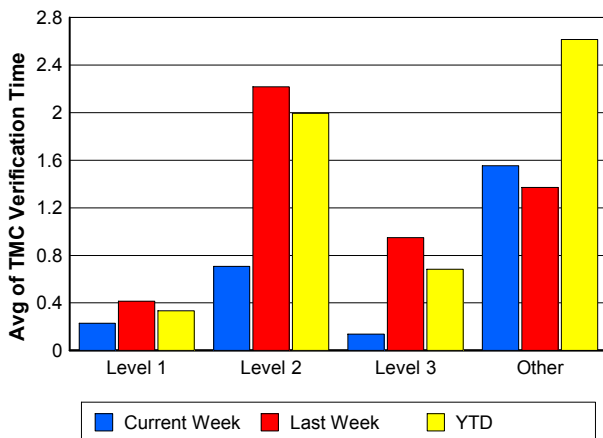
Number of Events / Severity



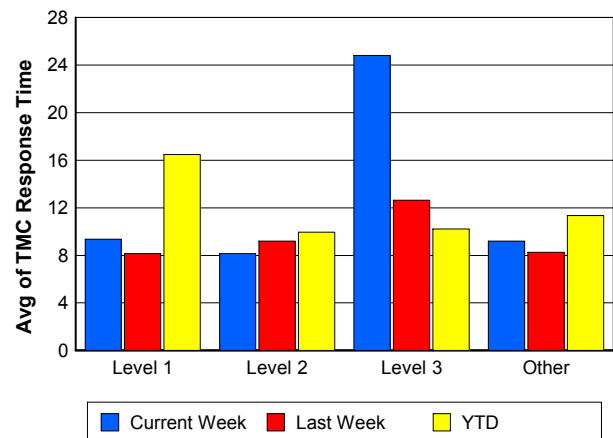
TMC Detection Time



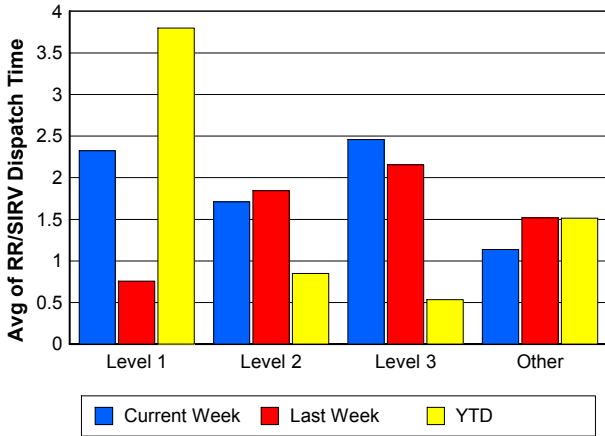
TMC Verification Time



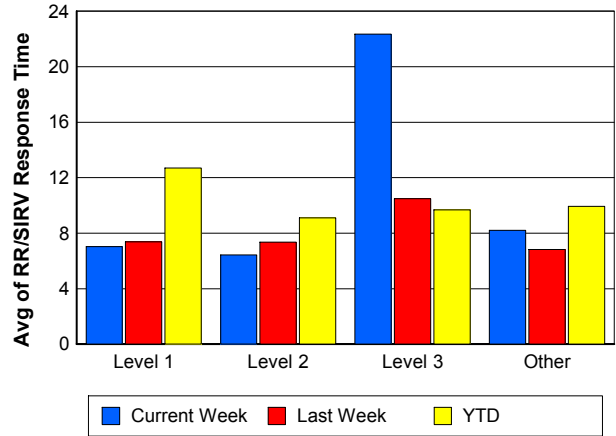
TMC Response Time



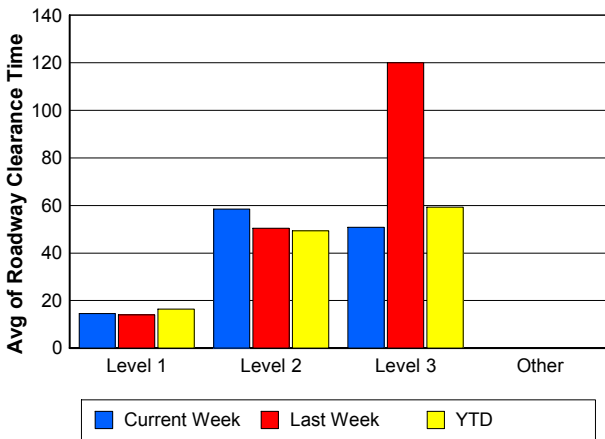
Road Ranger / SIRV Dispatch Time



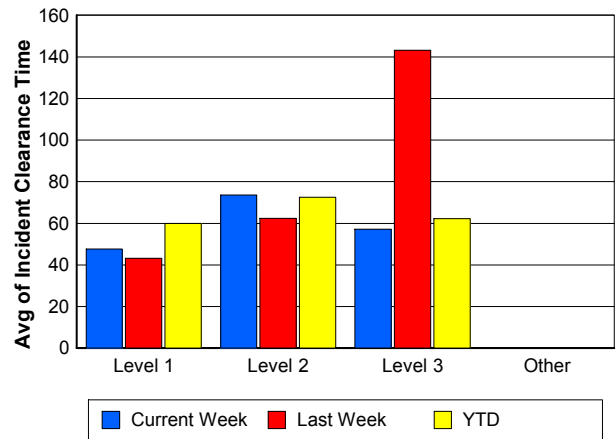
Road Ranger / SIRV Response Time



Roadway Clearance Time (2A)



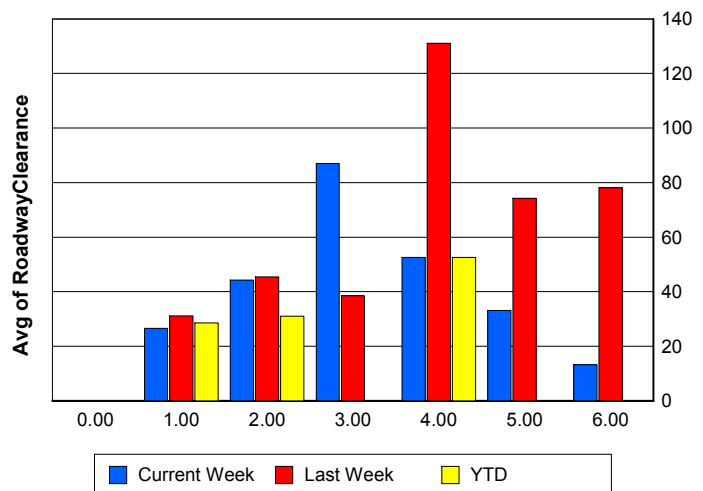
Incident Clearance Time (3B)



Roadway Clearance by Maximum Number of Lanes Blocked

	Current Week	Last Week	YTD
0			
1	26.58	31.16	28.59
2	44.21	45.46	30.99
3	86.97	38.55	0.00
4	52.62	131.01	52.62
5	33.12	74.20	0.00
6	13.20	78.07	0.00

Roadway Clearance Time (2A)



Performance Measures by Roadway

595

	<u>Current Week</u>	<u>Last Week</u>	<u>YTD</u>
Number of Events	48	40	8
Number of Incidents	5	0	0
TMC Detection (min.)	0.00	0.00	0.00
TMC Verification (min.)	1.90	0.51	0.00
TMC Response (min.)	15.04	13.14	0.00
RR Dispatch Time (min.)	2.02	2.71	0.47
RR Resp. Time (min.)	12.60	9.80	0.00
Event Clearance (min.)	21.48	17.97	15.19
Roadway Clear. (min.)	57.34		
Incident Clearance (min.)	59.98		
# of Events w/ RR/SIRV	38	32	6
RR/SIRV Responses	38	32	6
RR/SIRV Activities	34	19	3

75

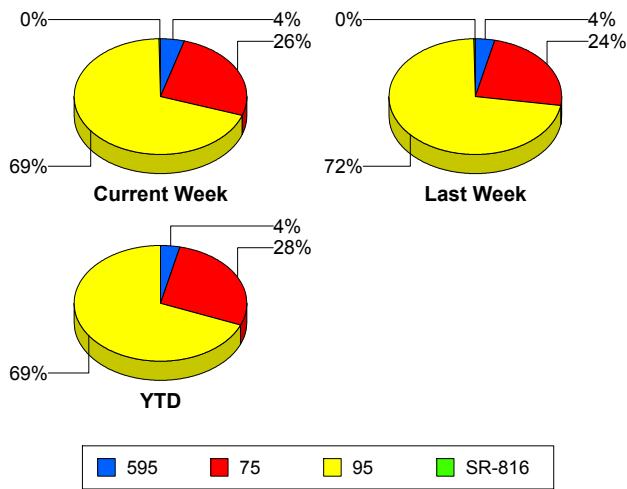
	<u>Current Week</u>	<u>Last Week</u>	<u>YTD</u>
Number of Events	276	265	61
Number of Incidents	5	4	1
TMC Detection (min.)	0.00	0.00	0.00
TMC Verification (min.)	2.92	2.32	4.69
TMC Response (min.)	13.11	10.69	15.10
RR Dispatch Time (min.)	1.52	2.01	2.53
RR Resp. Time (min.)	11.82	8.78	12.30
Event Clearance (min.)	21.67	20.98	23.58
Roadway Clear. (min.)	38.89	93.00	7.82
Incident Clearance (min.)	100.42	116.71	86.92
# of Events w/ RR/SIRV	220	195	54
RR/SIRV Responses	220	195	54
RR/SIRV Activities	194	172	44

95

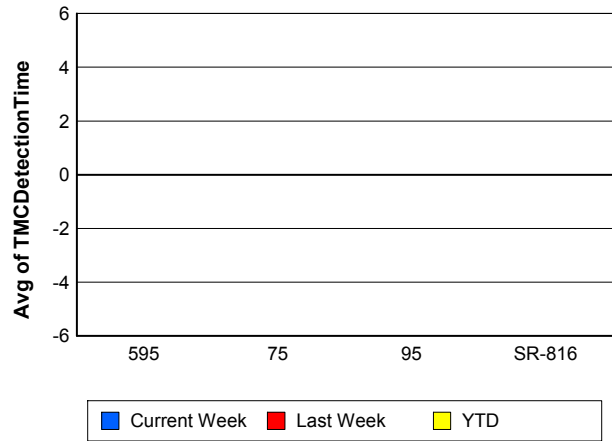
	<u>Current Week</u>	<u>Last Week</u>	<u>YTD</u>
Number of Events	740	804	152
Number of Incidents	30	26	11
TMC Detection (min.)	0.00	0.00	0.00
TMC Verification (min.)	0.96	1.09	1.79
TMC Response (min.)	7.62	7.36	10.46
RR Dispatch Time (min.)	1.02	1.30	1.24
RR Resp. Time (min.)	6.72	6.15	9.40
Event Clearance (min.)	16.99	15.77	22.82
Roadway Clear. (min.)	27.22	40.21	33.10
Incident Clearance (min.)	51.26	63.97	62.27
# of Events w/ RR/SIRV	604	637	133
RR/SIRV Responses	604	637	133
RR/SIRV Activities	496	535	120

	<u>Current Week</u>	<u>Last Week</u>
Number of Events	3	2
Number of Incidents	2	0
TMC Detection (min.)	0.00	0.00
TMC Verification (min.)	0.00	0.00
TMC Response (min.)	0.00	0.00
RR Dispatch Time (min.)	0.00	0.00
RR Resp. Time (min.)	0.00	0.00
Event Clearance (min.)	11.93	4.41
Roadway Clear. (min.)	10.72	
Incident Clearance (min.)	10.65	
# of Events w/ RR/SIRV	3	0
RR/SIRV Responses	3	0
RR/SIRV Activities	4	0

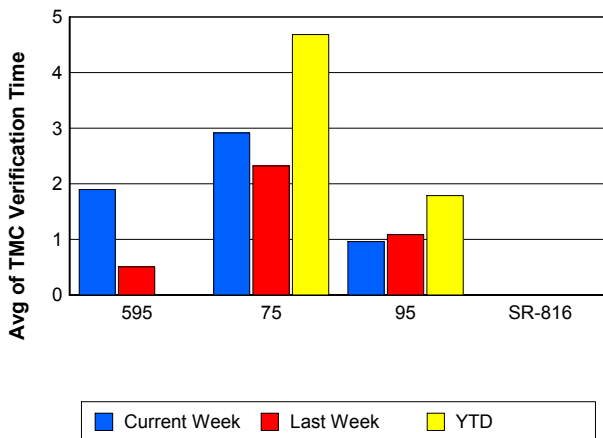
Number of Events / Roadway



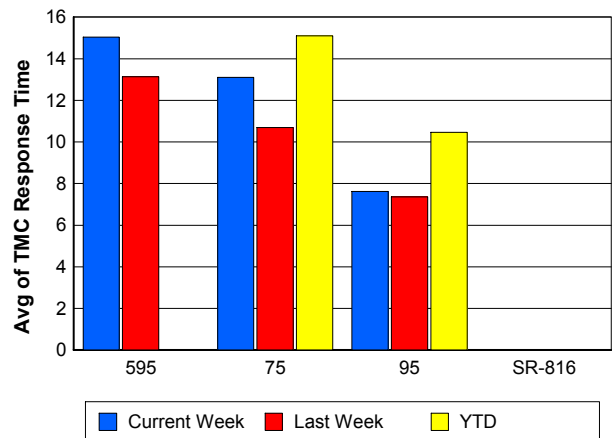
TMC Detection Time



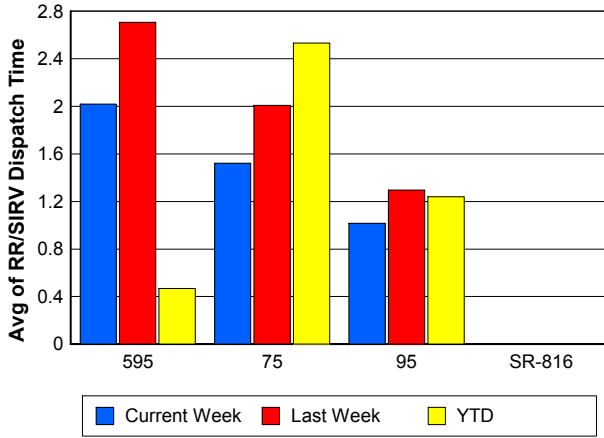
TMC Verification Time



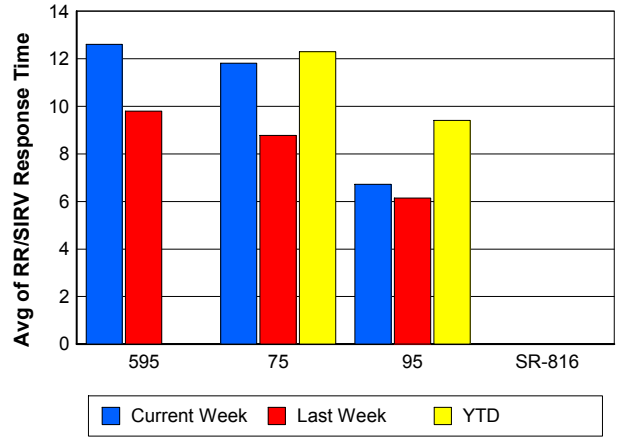
TMC Response Time



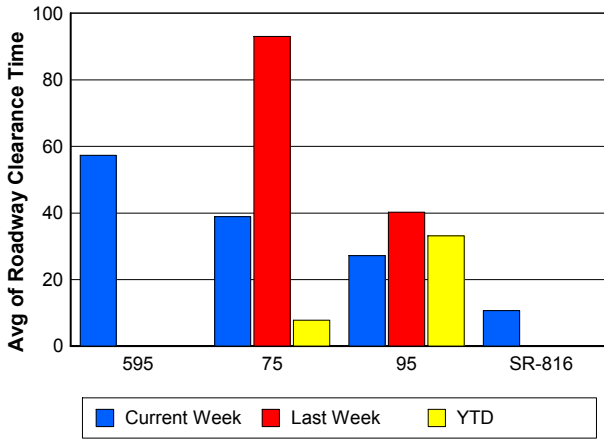
Road Ranger / SIRV Dispatch Time



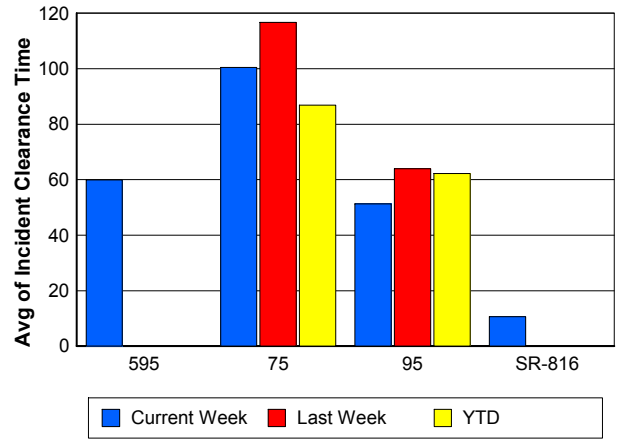
Road Ranger / SIRV Response Time



Roadway Clearance Time (2A)



Incident Clearance Time (3B)



Performance Measures by Event Type

Accident

	<u>Current Week</u>	<u>Last Week</u>	<u>YTD</u>
Number of Events	66	43	20
Number of Incidents	30	21	10
TMC Detection (min.)	0.00	0.00	0.00
TMC Verification (min.)	0.52	1.67	1.38
TMC Response (min.)	11.72	7.96	11.61
RR Dispatch Time (min.)	1.72	1.15	1.71
RR Response Time (min.)	9.98	6.80	9.90
Event Clearance (min.)	56.10	58.29	54.73
Roadway Clearance (min.)	38.75	55.69	32.65
Incident Clearance (min.)	69.32	80.59	67.86
# of Events w/ RR/SIRV	66	42	20
RR/SIRV Assists	66	42	20
RR/SIRV Activities	99	61	27

Debris on Roadway

	<u>Current Week</u>	<u>Last Week</u>	<u>YTD</u>
Number of Events	22	30	9
Number of Incidents	0	0	0
TMC Detection (min.)	0.00	0.00	0.00
TMC Verification (min.)	6.11	8.92	4.23
TMC Response (min.)	9.86	13.48	8.72
RR Dispatch Time (min.)	1.14	2.18	0.53
RR Response Time (min.)	8.70	11.35	8.29
Event Clearance (min.)	13.78	14.81	12.97
Roadway Clearance (min.)			
Incident Clearance (min.)			
# of Events w/ RR/SIRV	22	29	9
RR/SIRV Assists	22	29	9
RR/SIRV Activities	25	32	10

Disabled Vehicle

	<u>Current Week</u>	<u>Last Week</u>	<u>YTD</u>
Number of Events	603	634	128
Number of Incidents	7	5	1
TMC Detection (min.)	0.00	0.00	0.00
TMC Verification (min.)	2.32	1.84	3.58
TMC Response (min.)	9.11	8.18	11.90
RR Dispatch Time (min.)	1.06	1.46	1.61
RR Response Time (min.)	8.14	6.76	10.31
Event Clearance (min.)	20.63	19.27	23.94
Roadway Clearance (min.)	10.40	8.48	21.98
Incident Clearance (min.)	21.32	14.13	31.08
# of Events w/ RR/SIRV	589	616	125
RR/SIRV Assists	589	616	125
RR/SIRV Activities	572	597	121

Emergency Vehicles

	<u>Current Week</u>	<u>Last Week</u>
Number of Events	2	2
Number of Incidents	2	1
TMC Detection (min.)	0.00	0.00
TMC Verification (min.)	0.00	0.00
TMC Response (min.)	3.57	15.91
RR Dispatch Time (min.)	3.45	0.44
RR Response Time (min.)	0.12	15.47
Event Clearance (min.)	15.70	62.83
Roadway Clearance (min.)	12.17	111.53
Incident Clearance (min.)	15.70	117.67
# of Events w/ RR/SIRV	1	2
RR/SIRV Assists	1	2
RR/SIRV Activities	2	2

Other

	<u>Current Week</u>	<u>Last Week</u>	<u>YTD</u>
Number of Events	369	393	61
Number of Incidents	1	0	0
TMC Detection (min.)	0.00	0.00	0.00
TMC Verification (min.)	0.08	0.00	0.51
TMC Response (min.)	7.36	5.93	10.56
RR Dispatch Time (min.)	1.38	1.61	1.75
RR Response Time (min.)	6.48	4.79	9.87
Event Clearance (min.)	8.16	8.53	11.01
Roadway Clearance (min.)	3.07		
Incident Clearance (min.)	3.27		
# of Events w/ RR/SIRV	182	167	36
RR/SIRV Assists	182	167	36
RR/SIRV Activities	24	27	6

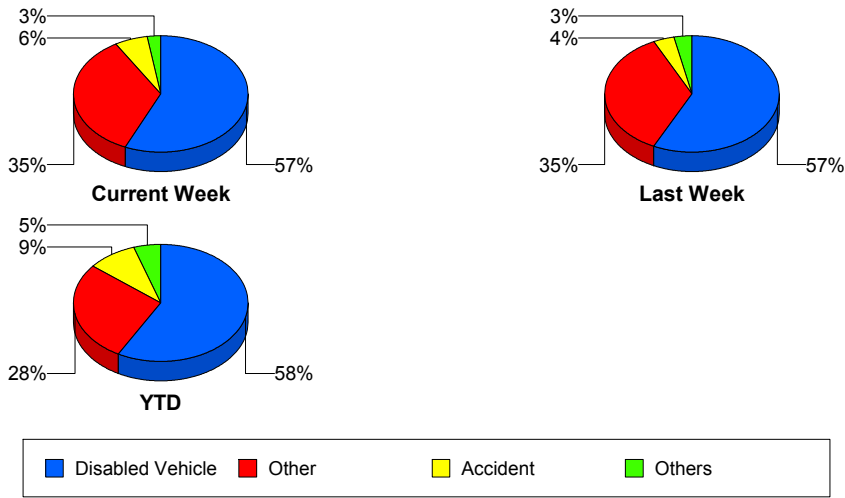
Police Activity

	<u>Current Week</u>	<u>Last Week</u>	<u>YTD</u>
Number of Events	1	4	1
Number of Incidents	1	1	1
TMC Detection (min.)	0.00	0.00	0.00
TMC Verification (min.)	1.60	0.00	1.60
TMC Response (min.)	4.67	6.48	4.67
RR Dispatch Time (min.)	0.53	0.63	0.53
RR Response Time (min.)	4.13	5.85	4.13
Event Clearance (min.)	62.18	16.88	62.18
Roadway Clearance (min.)	23.48	22.62	23.48
Incident Clearance (min.)	62.18	29.62	62.18
# of Events w/ RR/SIRV	1	3	1
RR/SIRV Assists	1	3	1
RR/SIRV Activities	1	3	1

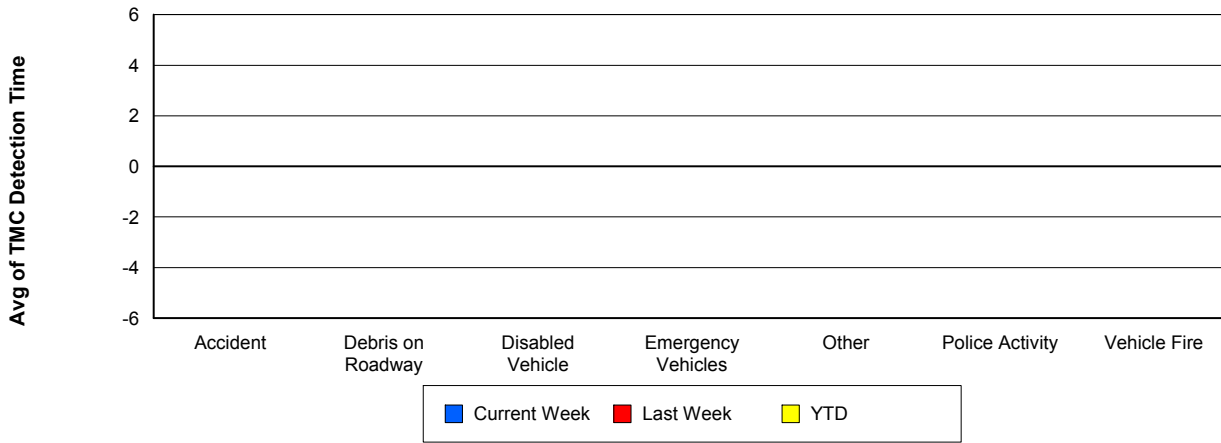
Vehicle Fire

	<u>Current Week</u>	<u>Last Week</u>	<u>YTD</u>
Number of Events	2	2	1
Number of Incidents	1	2	0
TMC Detection (min.)	0.00	0.00	0.00
TMC Verification (min.)	0.63	2.53	1.27
TMC Response (min.)	10.29	8.51	12.60
RR Dispatch Time (min.)	3.10	6.13	1.15
RR Response Time (min.)	7.19	2.37	11.45
Event Clearance (min.)	26.88	109.81	18.23
Roadway Clearance (min.)	33.12	35.66	
Incident Clearance (min.)	35.53	109.81	
# of Events w/ RR/SIRV	2	2	1
RR/SIRV Assists	2	2	1
RR/SIRV Activities	4	3	1

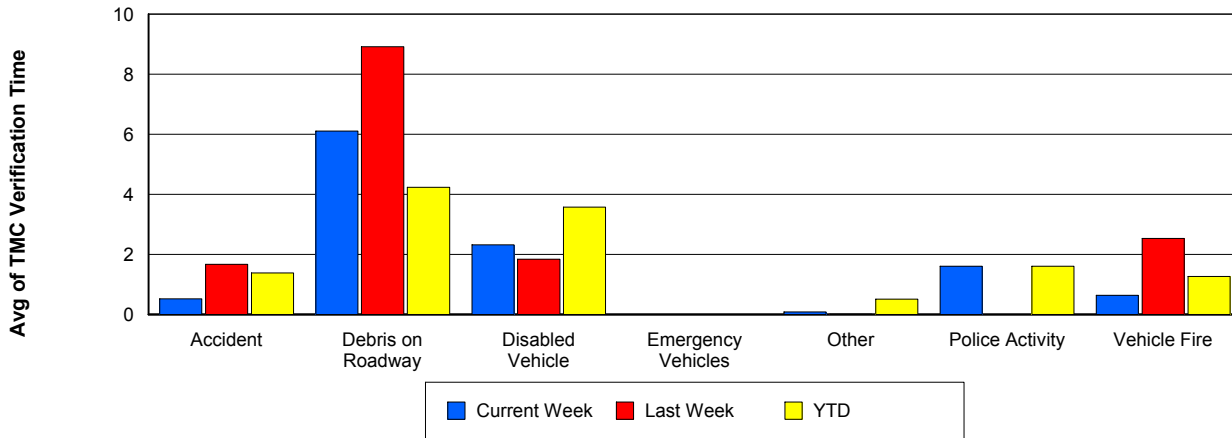
Number of Events / Event Type



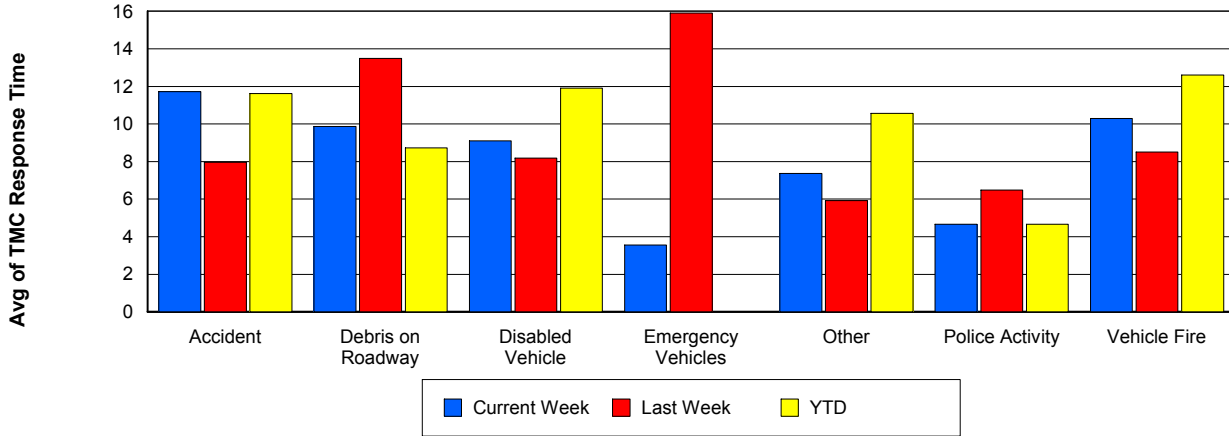
TMC Detection Time



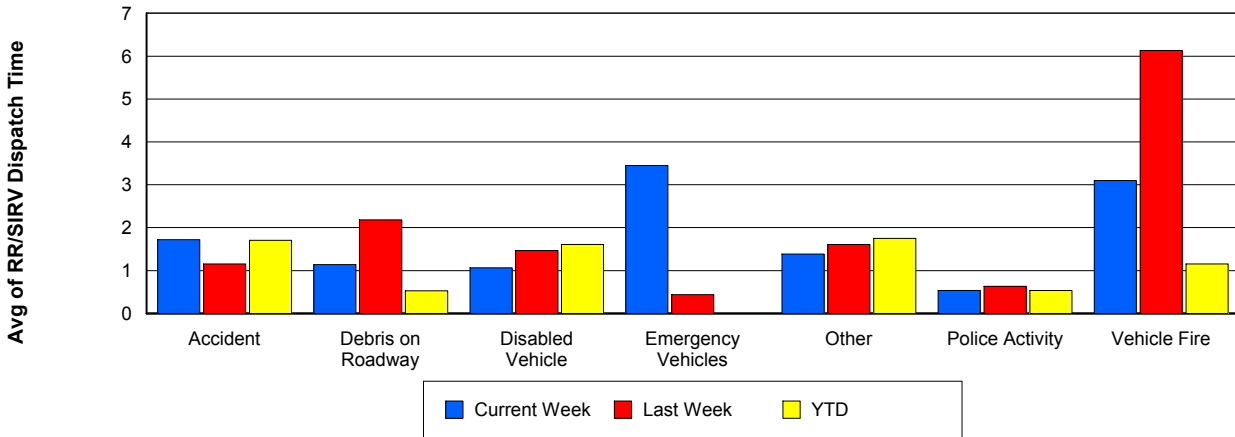
TMC Verification Time



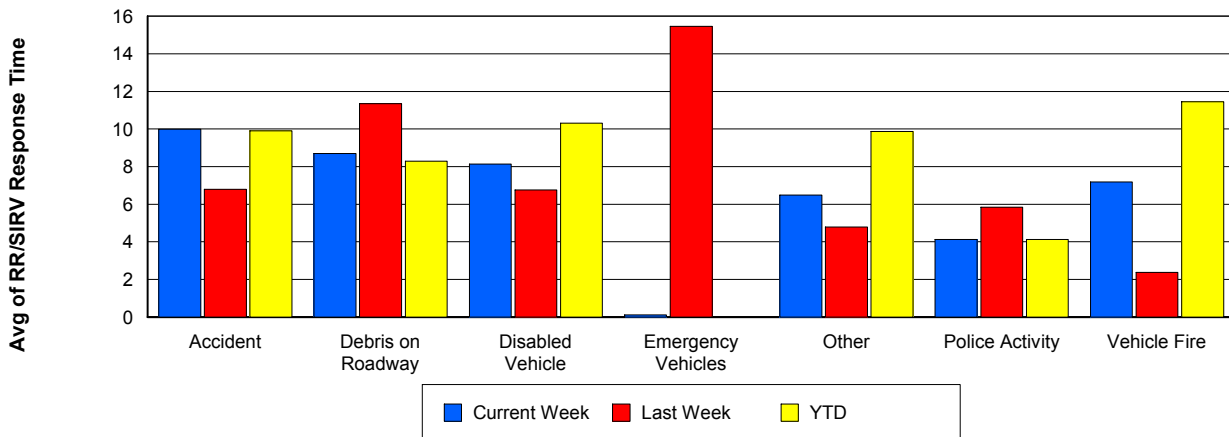
TMC Response Time



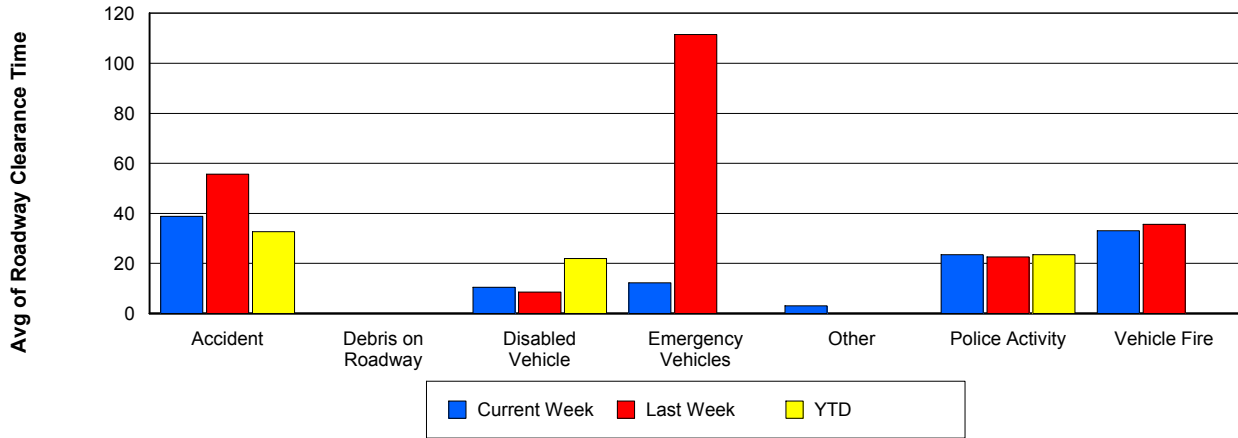
Road Ranger / SIRV Dispatch Time



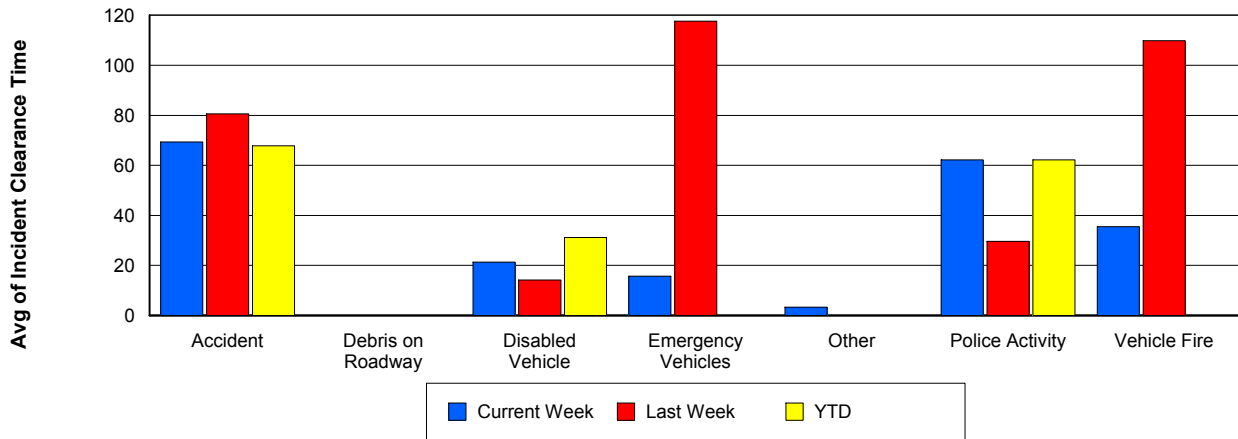
Road Ranger / SIRV Response Time



Roadway Clearance Time (2A)



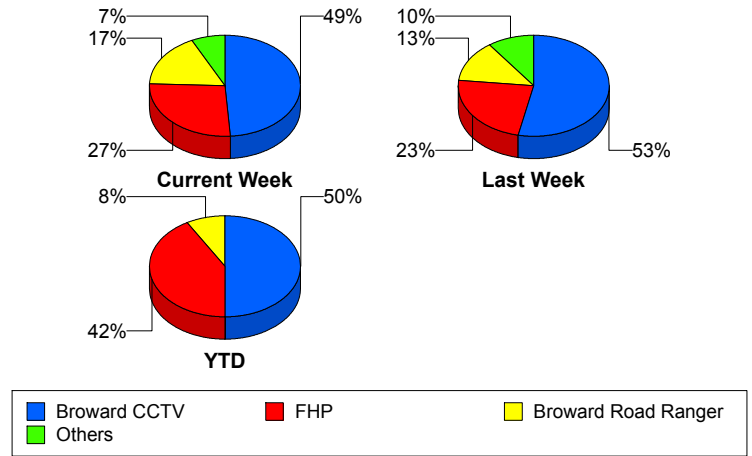
Incident Clearance Time (3B)



Incident Detection Methods

	Current Week	Last Week	YTD
Broward CCTV	20	16	6
Broward Road Ranger	7	4	1
Broward VideoWall	1	0	0
District 4	1	0	0
FHP	11	7	5
Other	1	1	0
SIRV	0	1	0
VisioPaD Detection	0	1	0
Total	41	30	12

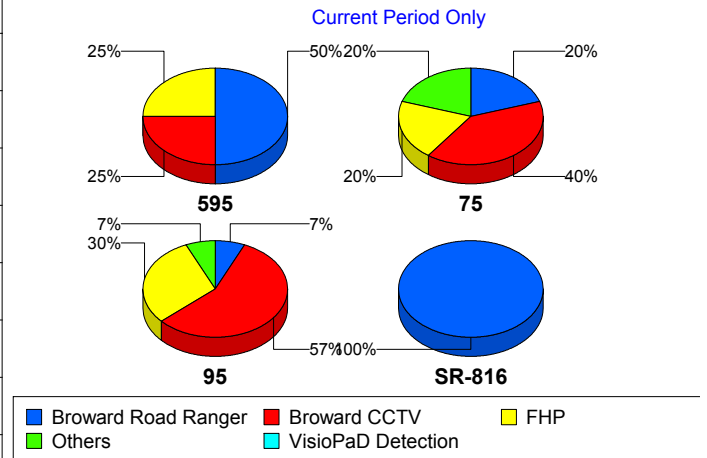
Total Incidents by Detection Method



Incident Detection Methods by Roadway

		Current Week	Last Week	YTD
595	Broward CCTV	1	0	0
	Broward Road Ranger	2	0	0
	FHP	1	0	0
	Total	4	0	0
75	Broward CCTV	2	1	0
	Broward Road Ranger	1	0	0
	FHP	1	1	1
	Other	1	1	0
	VisioPaD Detection	0	1	0
	Total	5	4	1
95	Broward CCTV	17	15	6
	Broward Road Ranger	2	4	1
	Broward VideoWall	1	0	0
	District 4	1	0	0
	FHP	9	6	4

Total Events by Roadway and Detection Method

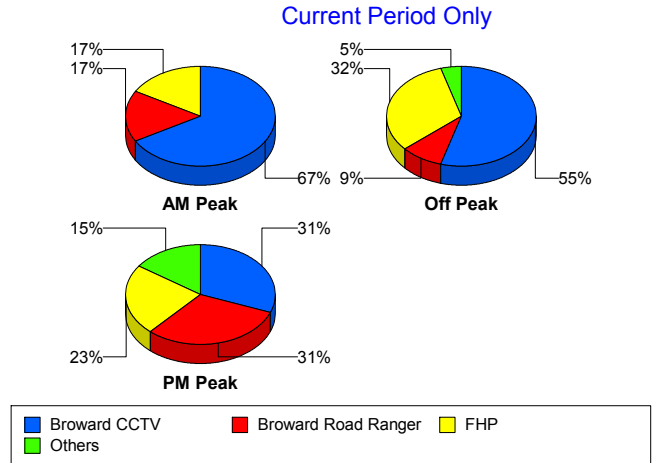


		Current Week	Last Week	YTD
95	SIRV	0	1	0
	Total	30	26	11
SR-816	Broward Road Ranger	2	0	0
	Total	2	0	0
Total		41	30	12

Incident Detection Methods by Peak Period

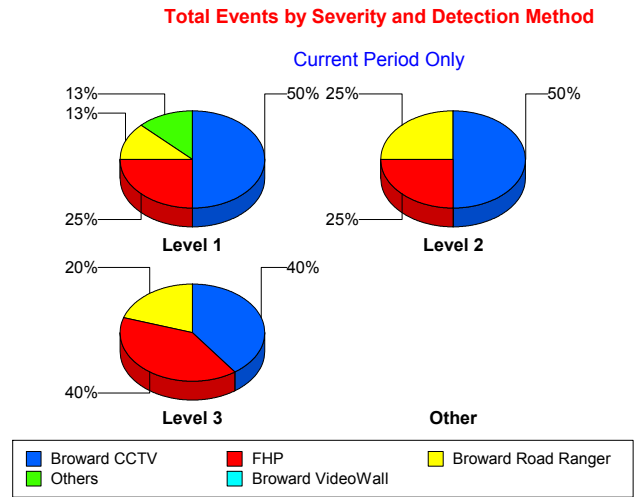
		Current Week	Last Week	YTD
AM Peak	Broward CCTV	4	0	0
	Broward Road Ranger	1	0	0
	FHP	1	1	1
	Total	6	1	1
Off Peak	Broward CCTV	12	11	4
	Broward Road Ranger	2	4	0
	District 4	1	0	0
	FHP	7	5	3
	Other	0	1	0
	SIRV	0	1	0
	VisioPaD Detection	0	1	0
	Total	22	23	7
PM Peak	Broward CCTV	4	5	2
	Broward Road Ranger	4	0	1
	Broward VideoWall	1	0	0
	FHP	3	1	1
	Other	1	0	0
	Total	13	6	4
Total		41	30	12

Total Events by Peak Period and Detection Method



Incident Detection Methods by Severity

		Current Week	Last Week	YTD
Level 1	Broward CCTV	12	10	5
	Broward Road Ranger	3	3	0
	Broward VideoWall	1	0	0
	District 4	1	0	0
	FHP	6	2	2
	Other	1	1	0
	Total	24	16	7
Level 2	Broward CCTV	6	2	1
	Broward Road Ranger	3	1	1
	FHP	3	2	2
	SIRV	0	1	0
	VisioPaD Detection	0	1	0
	Total	12	7	4
Level 3	Broward CCTV	2	4	0
	Broward Road Ranger	1	0	0
	FHP	2	3	1
	Total	5	7	1
Total	41	30	12	



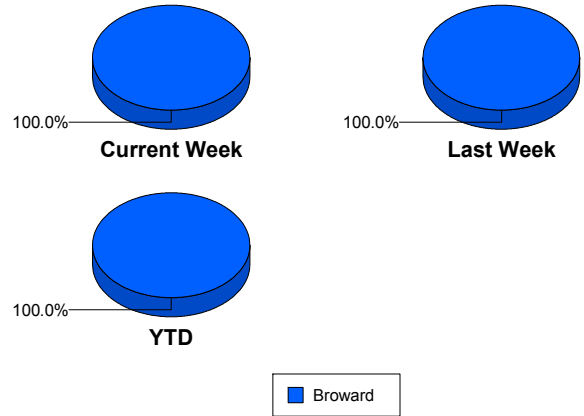
Road Ranger / SIRV Performance Measures

Road Ranger / SIRV Performance By County

Values presented are:
 - Total Events with a RR/SIRV Response
 - Total RR/SIRV Responses,
 - Total Activities Performed

	Current We	Last Week	YTD
Broward	791	812	183
	847	840	197
	887	874	206

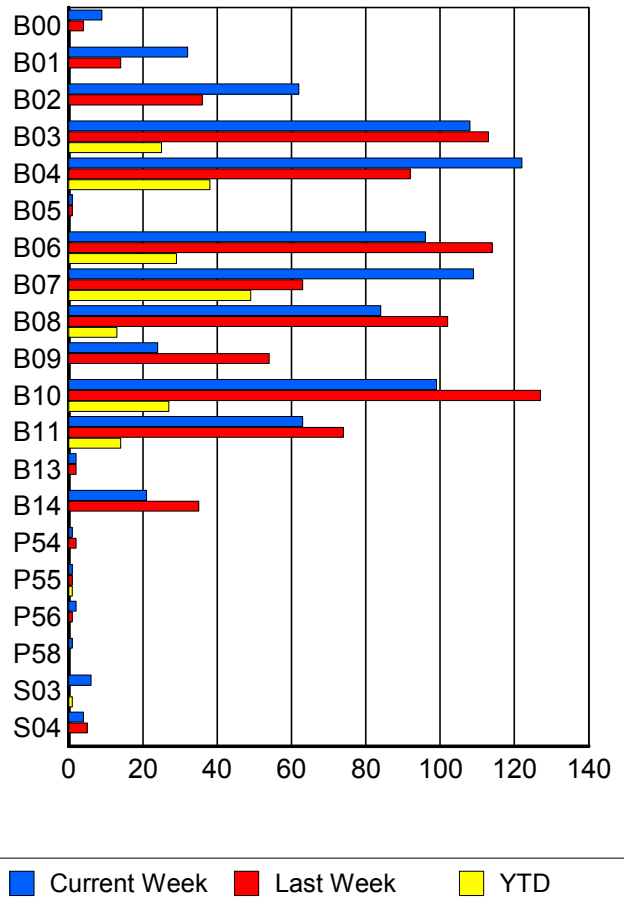
RR/SIRV Responses per County



Road Ranger / SIRV Performance By Truck

	Current We	Last Week	YTD
B00	9	4	0
	9	4	0
	9	4	0
B01	32	14	0
	32	14	0
	35	15	0
B02	61	35	0
	62	36	0
	65	36	0
B03	107	113	25
	108	113	25
	115	117	26
B04	121	92	37
	122	92	38
	125	98	38
B05	1	1	0
	1	1	0
	1	1	0
B06	95	112	29
	96	114	29
	100	122	32
B07	106	63	47
	109	63	49
	116	65	52
B08	83	102	13
	84	102	13
	86	107	14

RR/SIRV Responses per Truck



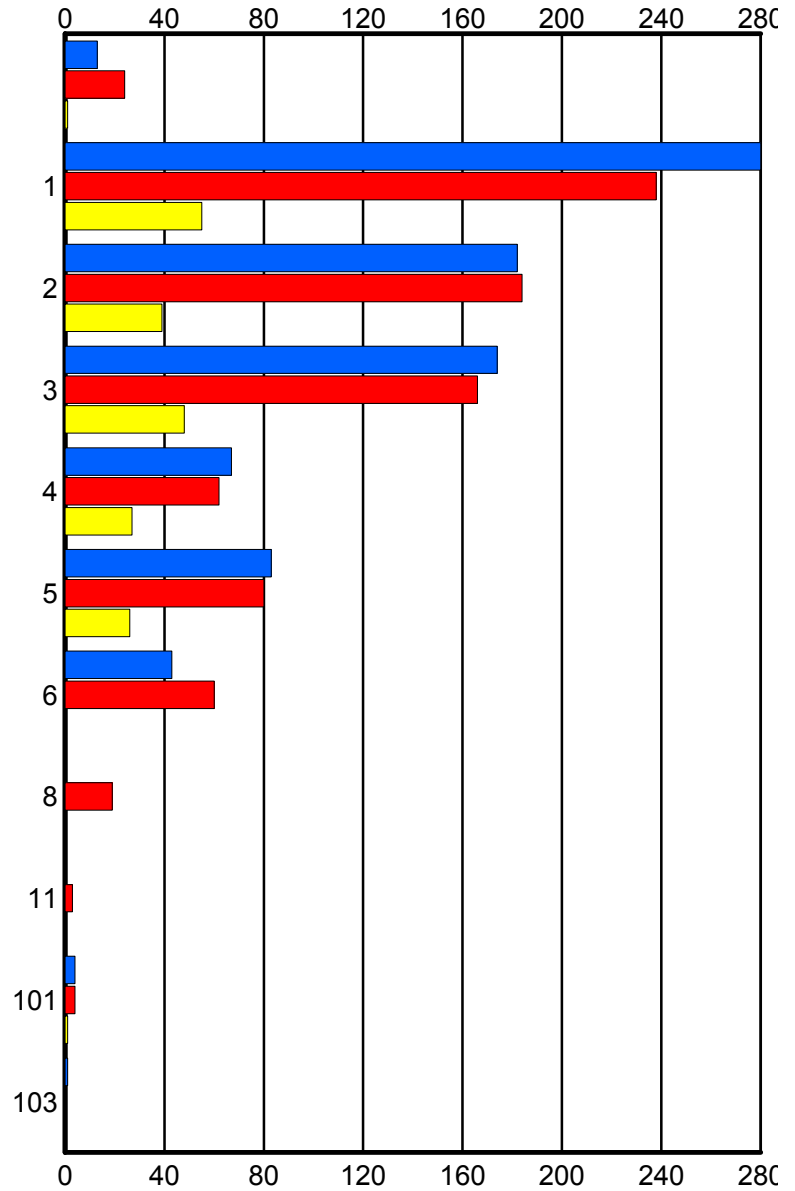
	Current We	Last Week	YTD
B09	23	54	0
	24	54	0
	24	57	0
B10	98	127	26
	99	127	27
	102	131	28
B11	62	74	14
	63	74	14
	68	74	14
B13	2	2	0
	2	2	0
	2	2	0
B14	21	34	0
	21	35	0
	22	36	0
P54	1	2	0
	1	2	0
	1	2	0
P55	1	1	1
	1	1	1
	1	1	1
P56	2	1	0
	2	1	0
	2	1	0
P58	1	0	0
	1	0	0
	1	0	0
S03	6	0	1
	6	0	1
	8	0	1
S04	4	5	0
	4	5	0
	4	5	0

Road Ranger / SIRV Performance By Beat

	Current We	Last Week	YTD
	13	23	1
	13	24	1
	15	24	1
1	269	236	53
	280	238	55
	297	245	60
2	177	180	39
	182	184	39
	187	193	40
3	170	165	46
	174	166	48
	181	173	49
4	64	62	25
	67	62	27
	71	65	27
5	81	80	25
	83	80	26
	87	82	28
6	43	59	0
	43	60	0
	44	65	0
8	0	19	0
	0	19	0
	0	20	0
11	0	3	0
	0	3	0
	0	3	0
101	4	4	1
	4	4	1
	4	4	1
103	1	0	0
	1	0	0
	1	0	0

Values presented are:
 - Total Events with a RR/SIRV Response
 - Total RR/SIRV Responses,
 - Total Activities Performed

RR/SIRV Responses per Beat



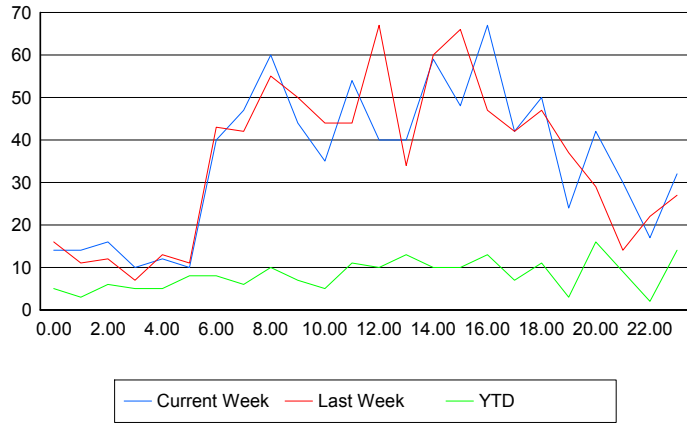
■ Current Week
 ■ Last Week
 ■ YTD

Road Ranger / SIRV Performance By Time of Day

Values presented are:
 - Total Events with a RR/SIRV Response
 - Total RR/SIRV Responses,
 - Total Activities Performed

	Current We	Last Week	YTD
12AM-1AM	14 14 14	14 16 17	5 5 5
1AM-2AM	14 14 17	11 11 11	3 3 5
2AM-3AM	15 16 16	10 12 17	5 6 6
3AM-4AM	10 10 11	7 7 7	5 5 6
4AM-5AM	11 12 12	12 13 15	5 5 5
5AM-6AM	8 10 10	9 11 12	6 8 8
6AM-7AM	38 40 42	42 43 45	8 8 8
7AM-8AM	45 47 51	42 42 44	5 6 6
8AM-9AM	57 60 62	55 55 57	10 10 10
9AM-10AM	42 44 45	49 50 50	7 7 7
10AM-11AM	35 35 35	41 44 44	5 5 5
11AM-12PM	45 54 59	41 44 45	10 11 11
12PM-1PM	37 40 43	63 67 71	9 10 10

Number of Responses / Hour of the Day



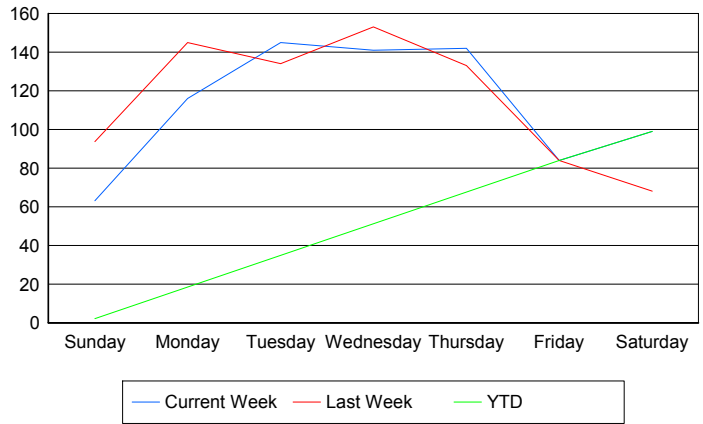
	Current We	Last Week	YTD
1PM-2PM	37	32	12
	40	34	13
	40	36	13
2PM-3PM	57	56	10
	59	60	10
	61	63	10
3PM-4PM	46	65	10
	48	66	10
	49	68	11
4PM-5PM	59	47	13
	67	47	13
	75	47	16
5PM-6PM	42	42	7
	42	42	7
	43	42	8
6PM-7PM	46	47	10
	50	47	11
	52	48	12
7PM-8PM	23	37	3
	24	37	3
	26	39	3
8PM-9PM	37	28	13
	42	29	16
	44	29	16
9PM-10PM	26	14	8
	30	14	9
	30	15	9
10PM-11PM	17	22	2
	17	22	2
	18	24	2
11PM-12AM	30	26	12
	32	27	14
	32	28	14

Road Ranger / SIRV Performance By Day of Week

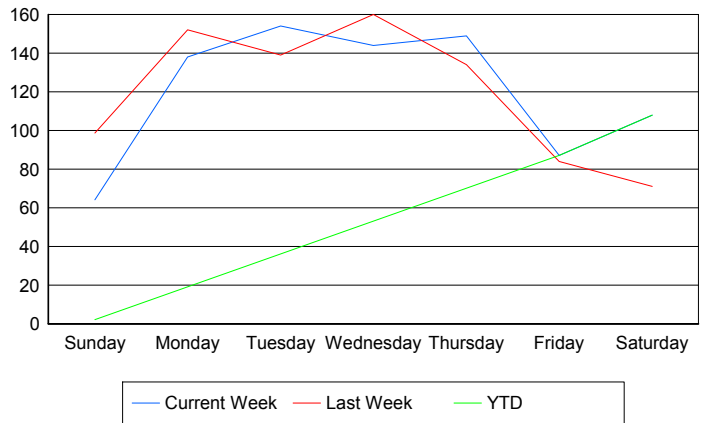
Values presented are: - Total Events with a RR/SIRV Response - Total RR/SIRV Responses, - Total Activities Performed

	Current We	Last Week	YTD
Sunday	66 67 69	95 100 103	2 2 2
Monday	116 138 146	145 152 156	0 0 0
Tuesday	145 154 163	134 139 149	0 0 0
Wednesday	141 144 146	153 160 166	0 0 0
Thursday	142 149 159	133 134 138	0 0 0
Friday	84 87 93	84 84 88	84 87 93
Saturday	99 108 111	68 71 74	99 108 111

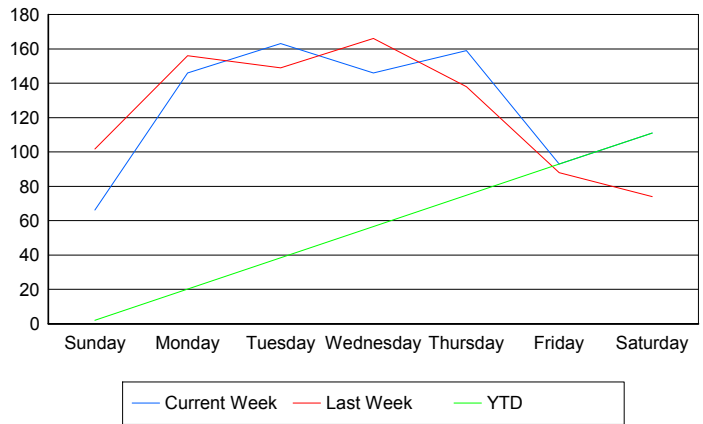
Avg # of events with a RR/SIRV Response per Day of the Week



Avg # of RR/SIRV Responses per Day of the Week



Avg # of RR/SIRV Activities Performed per Day of the Week



Road Ranger / SIRV Responses per Time of Day and Day of Week

