



# Weekly Performance Measures Report Broward County



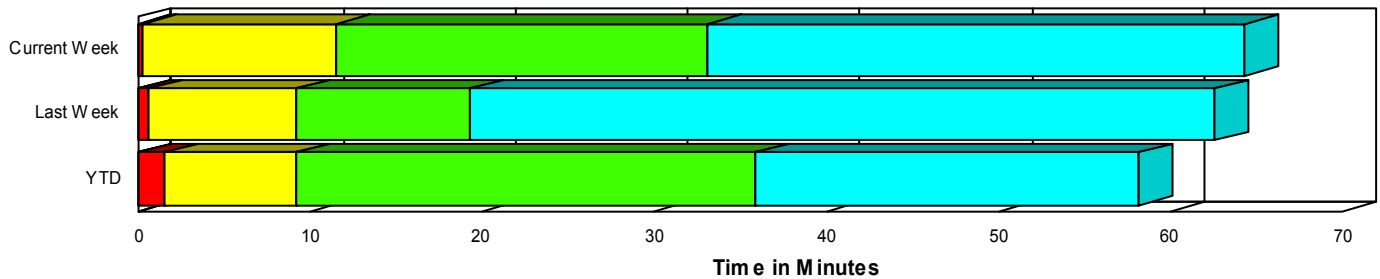
Period From Dec 21, 2008 to Dec 27, 2008

Created on:  
January 05, 2009  
8:50 am

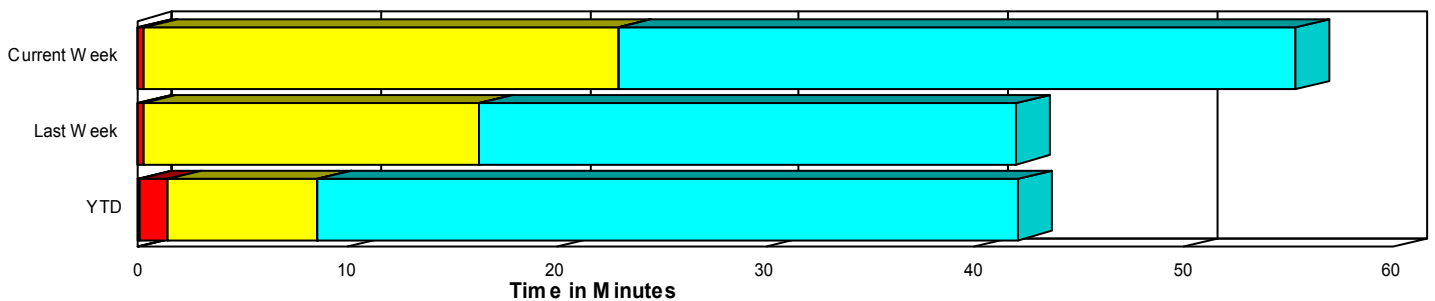
## Performance Measures Summary

	Traffic Events (No Lanes Blocked)			Incidents (Lanes Blocked)		
	<u>This Week</u>	<u>Last Week</u>	<u>YTD</u>	<u>This Week</u>	<u>Last Week</u>	<u>YTD</u>
Number of Events	1,258	1,357	54,435	38	38	2,380
TMC Detection (min.)	0.00	0.00	0.01	0.00	0.00	0.03
TMC Verification (min.)	0.27	0.22	1.40	0.31	0.65	1.49
TMC Response (min.)	23.29	16.55	9.09	11.45	9.38	9.33
RR Dispatch Time (min.)	17.26	8.70	3.32	2.90	3.61	2.47
RR Response Time (min.)	5.00	5.77	5.99	8.60	6.10	6.92
Roadway Clearance (min.)				36.46	22.64	35.26
Event Clearance (min.)	55.66	42.25	42.62	67.63	65.87	56.29
# of Events w/ RR/SIRV	631	768	42,779	20	31	2,161
RR/SIRV Responses	631	768	42,913	20	31	2,411
RR/SIRV Activities	544	639	40,417	41	57	4,210

### Incident Clearance TimeLine



### Traffic Event (Non-Lane Blockage) Time-Line



<span style="color: blue;">■</span> Avg. TMC Detection Time	<span style="color: green;">■</span> Avg. Time from TMC Response to Roadway Clearance*
<span style="color: red;">■</span> Avg. Time from TMC Detection to TMC Verification	<span style="color: cyan;">■</span> Avg. Time from Roadway Clearance to Incident/Event Clearance**
<span style="color: yellow;">■</span> Avg. Time from TMC Verification to TMC Response	

\* Roadway clearance equals all travel lanes open

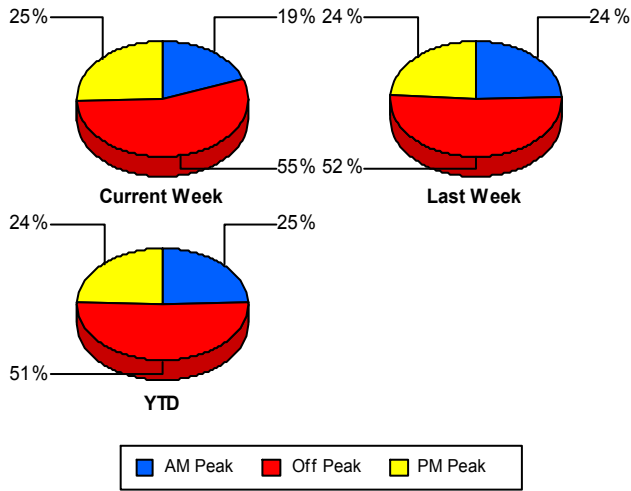
\*\* Incident clearance equals time when last responder has left the scene

## Performance Measures by Peak Period

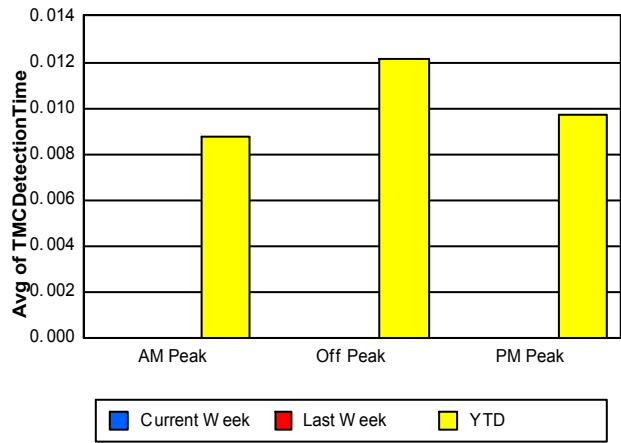
Note: AM peak period is defined as 6am to 10am and PM peak period is defined as 3pm to 7pm.

	AM Peak			Off Peak			PM Peak		
	<u>Current Week</u>	<u>Last Week</u>	<u>YTD</u>	<u>Current Week</u>	<u>Last Week</u>	<u>YTD</u>	<u>Current Week</u>	<u>Last Week</u>	<u>YTD</u>
Number of Events	251	340	13,992	718	722	29,061	327	333	13,762
Number of Incidents	3	6	567	30	15	1,237	5	17	576
TMC Detection (min.)	0.00	0.00	0.01	0.00	0.00	0.01	0.00	0.00	0.01
TMC Verification (min.)	0.11	0.32	0.82	0.22	0.21	1.70	0.50	0.18	1.39
TMC Response (min.)	12.50	13.37	8.09	41.64	20.97	10.65	9.54	13.37	7.30
RR Dispatch Time (min.)	7.59	6.09	2.61	32.07	10.58	4.33	4.58	8.27	1.97
RR Response Time (min.)	3.75	5.98	5.60	6.69	7.27	6.68	4.47	3.81	5.31
Event Clearance (min.)	28.46	32.80	36.68	76.84	50.62	48.81	31.41	36.47	37.97
Roadway Clearance (min.)	31.63	17.39	31.27	39.22	26.71	41.84	22.78	20.90	25.04
Incident Clearance (min.)	108.12	74.24	53.53	62.05	64.01	63.25	76.78	64.57	44.06
# of Events w/ RR/SIRV	181	250	11,928	270	317	21,644	200	232	11,368
RR/SIRV Responses	181	250	12,032	270	317	21,852	200	232	11,440
RR/SIRV Activities	164	218	11,955	227	257	21,310	194	221	11,362

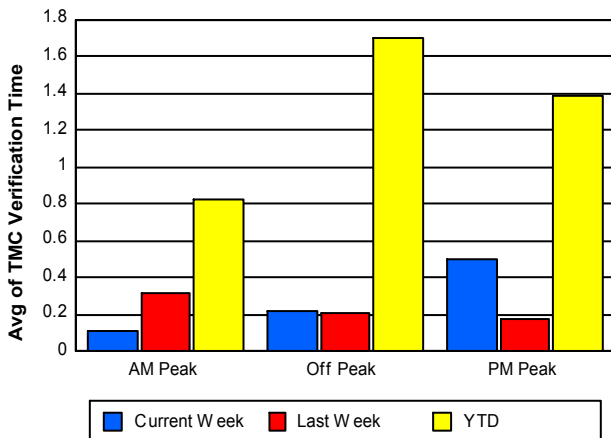
### Number of Events / Peak Period



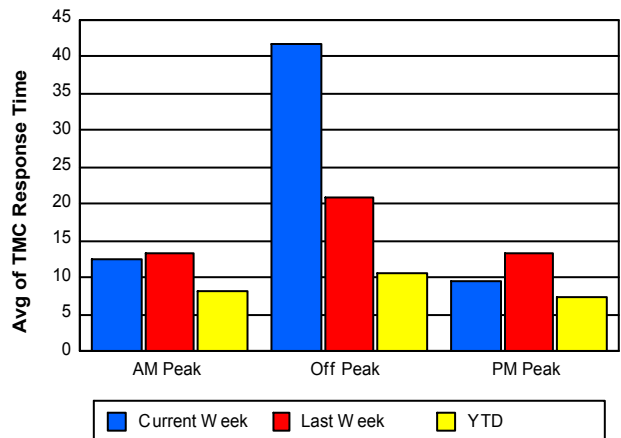
### TMC Detection Time



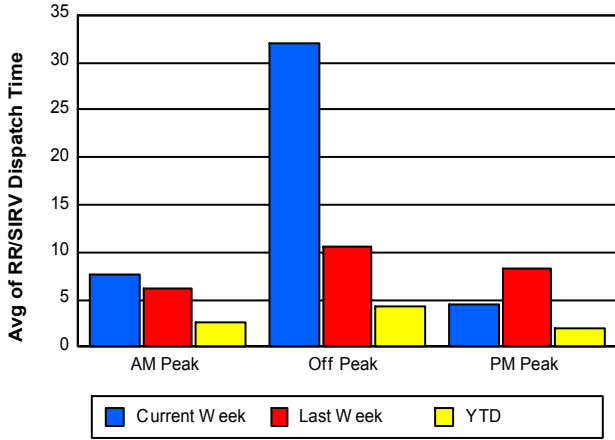
### TMC Verification Time



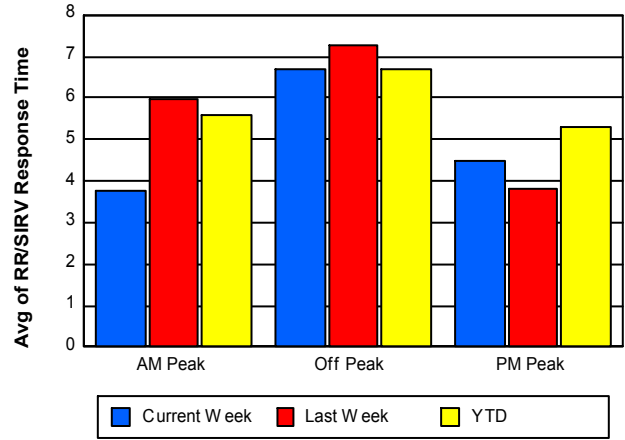
### TMC Response Time



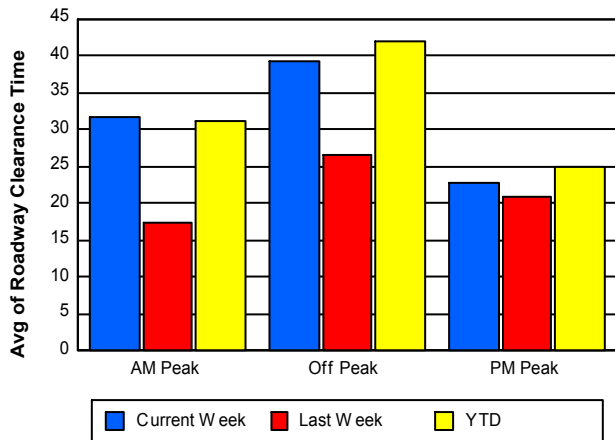
## Road Ranger / SIRV Dispatch Time



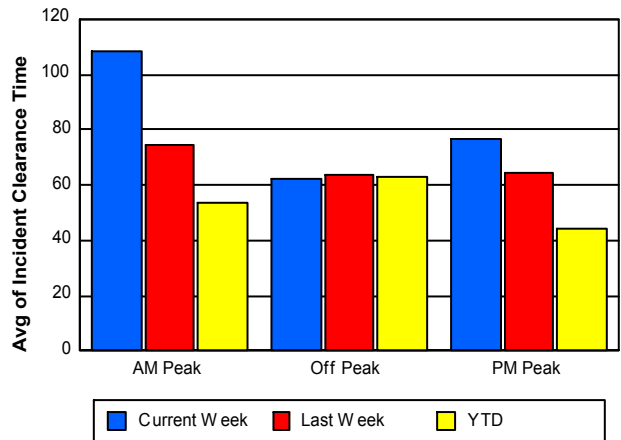
## Road Ranger / SIRV Response Time



## Roadway Clearance Time (2A)



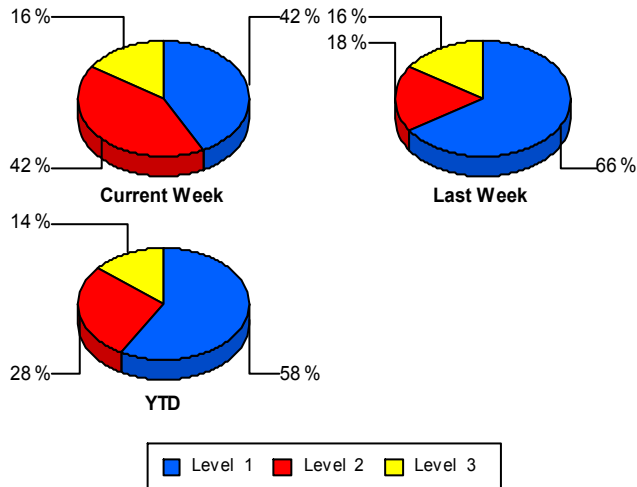
## Incident Clearance Time (3B)



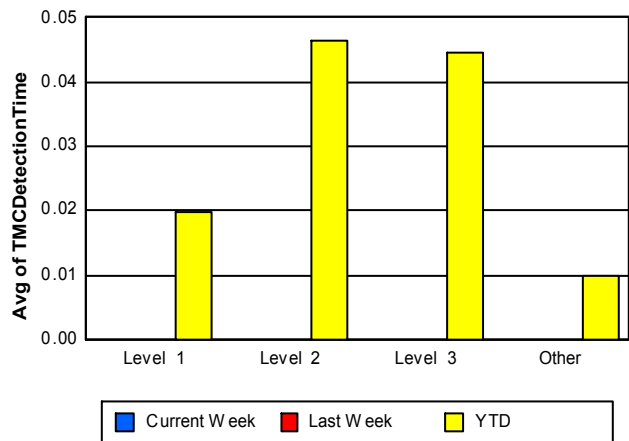
## Performance Measures by Severity

	Level 1			Level 2			Level 3			Other		
	<u>This Week</u>	<u>Last Week</u>	<u>YTD</u>	<u>This Week</u>	<u>Last Week</u>	<u>YTD</u>	<u>This Week</u>	<u>Last Week</u>	<u>YTD</u>	<u>This Week</u>	<u>Last Week</u>	<u>YTD</u>
Number of Events	16	25	1,380	16	7	665	6	6	335	1,258	1,357	54,435
Number of Incidents	16	25	1,380	16	7	665	6	6	335	0	0	0
TMC Detection (min.)	0.00	0.00	0.02	0.00	0.00	0.05	0.00	0.00	0.04	0.00	0.00	0.01
TMC Verification (min.)	0.35	0.61	0.90	0.39	1.27	2.22	0.00	0.13	2.46	0.27	0.22	1.40
TMC Response (min.)	5.06	10.16	7.81	5.99	9.42	10.94	41.58	3.87	12.36	23.29	16.55	9.09
RR Dispatch Time (min.)	1.95	3.32	2.22	1.98	4.85	2.48	5.71	3.81	3.48	17.26	8.70	3.32
RR Resp. Time (min.)	3.10	6.85	5.63	4.01	4.57	8.46	34.28	2.93	9.20	5.00	5.77	5.99
Event Clearance (min.)	56.04	59.07	41.85	77.76	101.70	67.06	71.51	52.42	94.39	55.66	42.25	42.62
Roadway Clear. (min.)	13.90	12.40	14.83	47.07	50.08	50.21	68.34	33.27	89.71			
Incident Clearance (min.)	56.04	59.07	41.85	77.76	101.70	67.06	71.51	52.42	94.39			
# of Events w/ RR/SIRV	9	21	1,256	6	4	597	5	6	308	631	768	42,779
RR/SIRV Responses	9	21	1,329	6	4	671	5	6	411	631	768	42,913
RR/SIRV Activities	17	33	2,082	18	13	1,297	6	11	831	544	639	40,417

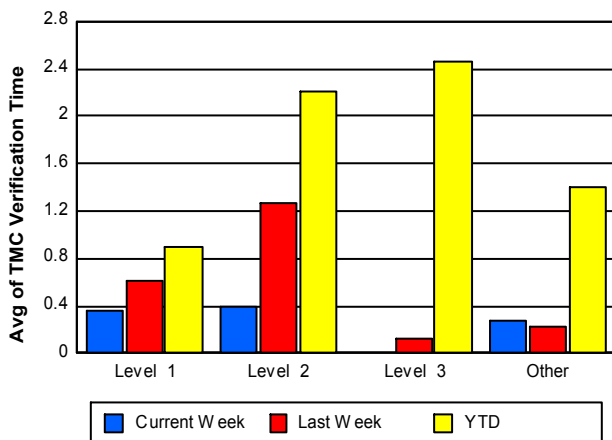
### Number of Events / Severity



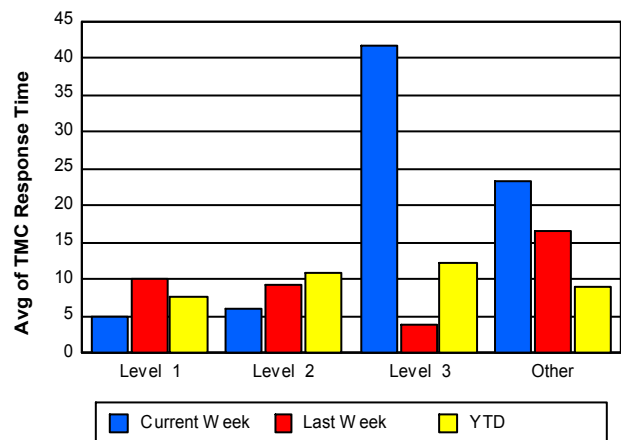
### TMC Detection Time



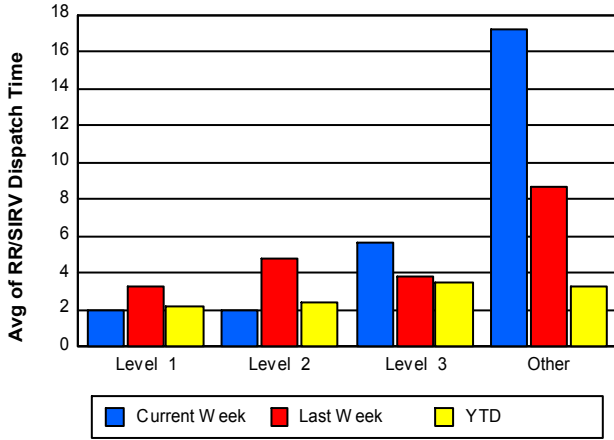
### TMC Verification Time



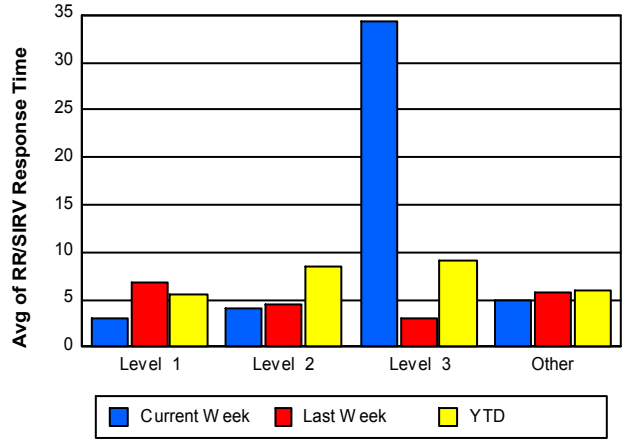
### TMC Response Time



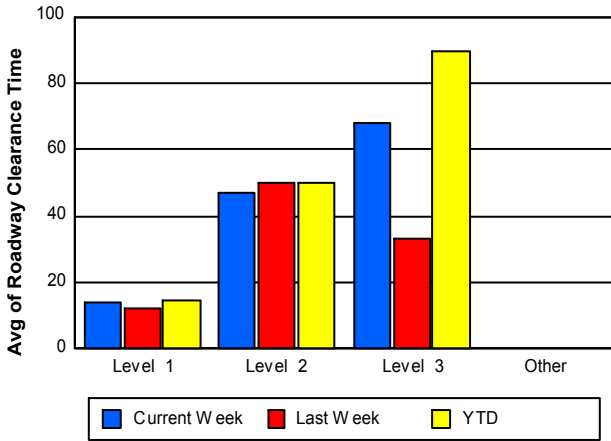
### Road Ranger / SIRV Dispatch Time



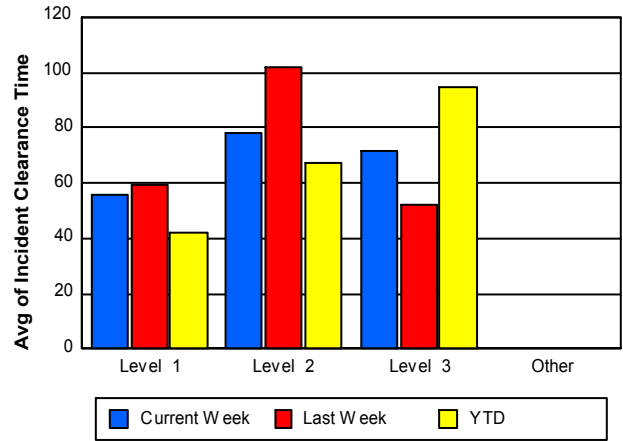
### Road Ranger / SIRV Response Time



### Roadway Clearance Time (2A)



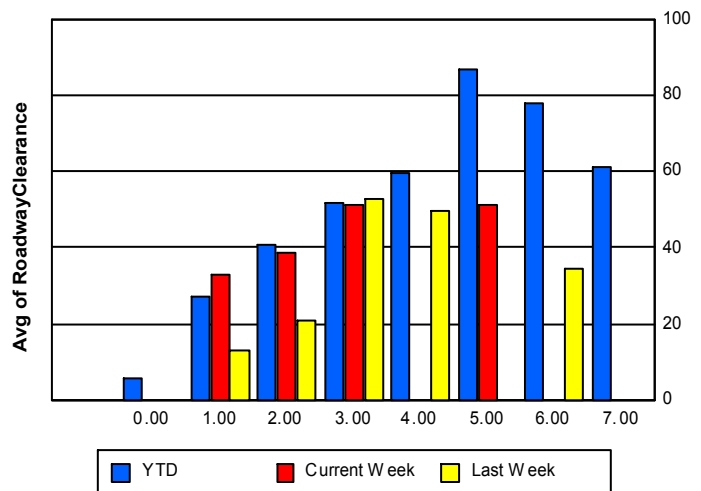
### Incident Clearance Time (3B)



### Roadway Clearance by Maximum Number of Lanes Blocked

	Current Week	Last Week	YTD
	0.00	0.00	
0			5.87
1	32.77	13.06	27.12
2	38.78	20.73	40.60
3	51.27	52.54	51.75
4	0.00	49.70	59.74
5	51.25	0.00	86.85
6	0.00	34.40	77.85

### Roadway Clearance Time(2A)



	Current Week	Last Week	YTD
7	0.00	0.00	60.95

## Performance Measures by Roadway

**595**

	<u>Current Week</u>	<u>Last Week</u>	<u>YTD</u>
Number of Events	149	195	8,518
Number of Incidents	5	9	415
TMC Detection (min.)	0.00	0.00	0.01
TMC Verification (min.)	0.11	0.38	1.62
TMC Response (min.)	50.55	15.90	9.70
RR Dispatch Time (min.)	37.02	8.48	3.67
RR Resp. Time (min.)	5.75	5.29	5.90
Event Clearance (min.)	58.35	36.47	41.68
Roadway Clear. (min.)	54.27	21.03	37.58
Incident Clearance (min.)	66.51	52.57	52.96
# of Events w/ RR/SIRV	78	125	6,950
RR/SIRV Responses	78	125	7,013
RR/SIRV Activities	73	110	7,095

**75**

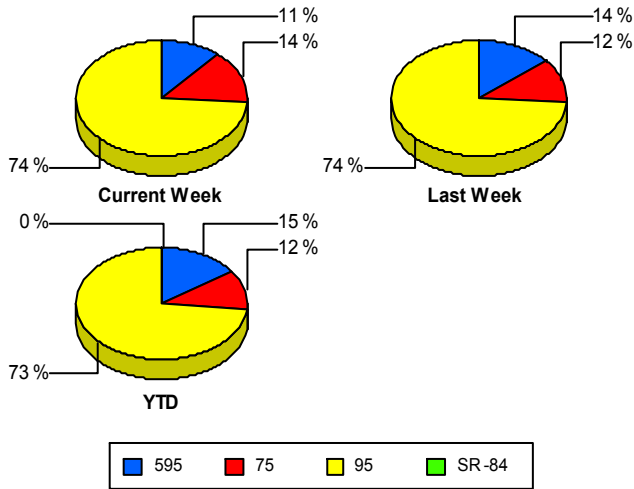
	<u>Current Week</u>	<u>Last Week</u>	<u>YTD</u>
Number of Events	187	168	6,688
Number of Incidents	2	3	147
TMC Detection (min.)	0.00	0.00	0.02
TMC Verification (min.)	0.53	0.19	4.55
TMC Response (min.)	30.16	6.42	6.39
RR Dispatch Time (min.)	22.51	0.75	2.51
RR Resp. Time (min.)	5.05	5.75	5.05
Event Clearance (min.)	58.85	67.93	47.58
Roadway Clear. (min.)	35.92	18.84	57.37
Incident Clearance (min.)	148.55	119.11	69.37
# of Events w/ RR/SIRV	118	123	6,196
RR/SIRV Responses	118	123	6,229
RR/SIRV Activities	116	113	6,613

**95**

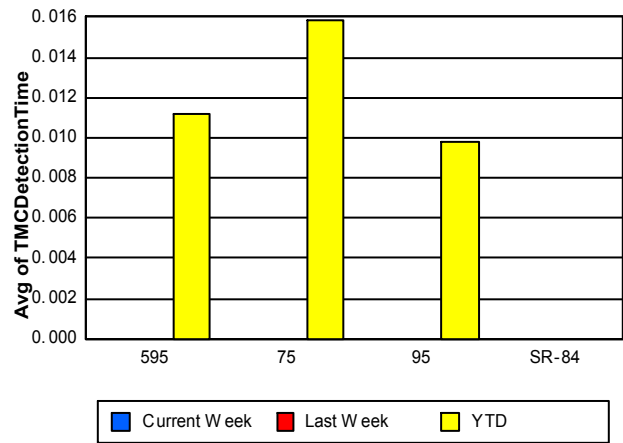
	<u>Current Week</u>	<u>Last Week</u>	<u>YTD</u>
Number of Events	960	1,032	41,608
Number of Incidents	31	26	1,818
TMC Detection (min.)	0.00	0.00	0.01
TMC Verification (min.)	0.24	0.21	0.86
TMC Response (min.)	15.80	18.64	9.57
RR Dispatch Time (min.)	11.87	10.24	3.34
RR Resp. Time (min.)	5.04	5.91	6.29
Event Clearance (min.)	55.09	40.04	42.80
Roadway Clear. (min.)	33.62	23.63	32.94
Incident Clearance (min.)	62.59	64.34	55.99
# of Events w/ RR/SIRV	455	551	31,794
RR/SIRV Responses	455	551	32,082
RR/SIRV Activities	396	473	30,919

	<u>YTD</u>
Number of Events	<b>1</b>
Number of Incidents	<b>0</b>
TMC Detection (min.)	<b>0.00</b>
TMC Verification (min.)	<b>0.47</b>
TMC Response (min.)	
RR Dispatch Time (min.)	
RR Resp. Time (min.)	
Event Clearance (min.)	<b>5.22</b>
Roadway Clear. (min.)	
Incident Clearance (min.)	
# of Events w/ RR/SIRV	<b>0</b>
RR/SIRV Responses	<b>0</b>
RR/SIRV Activities	<b>0</b>

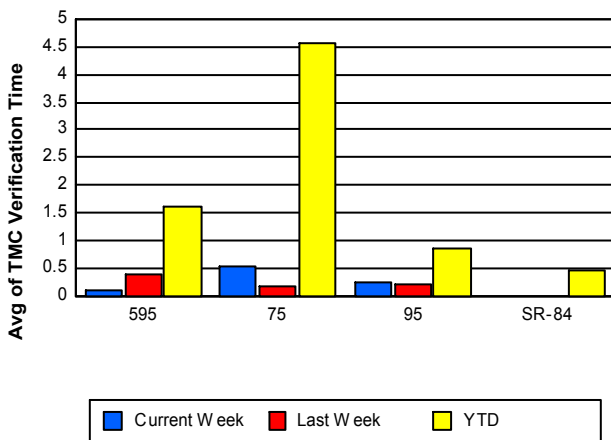
### Number of Events / Roadway



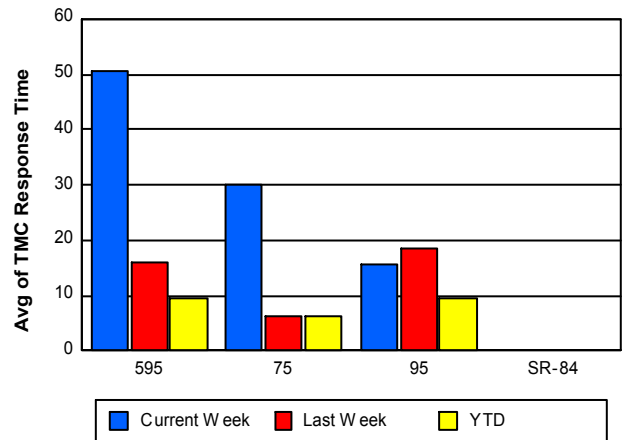
### TMC Detection Time



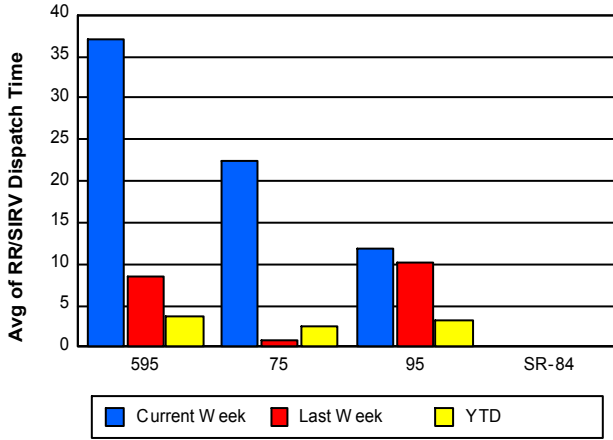
### TMC Verification Time



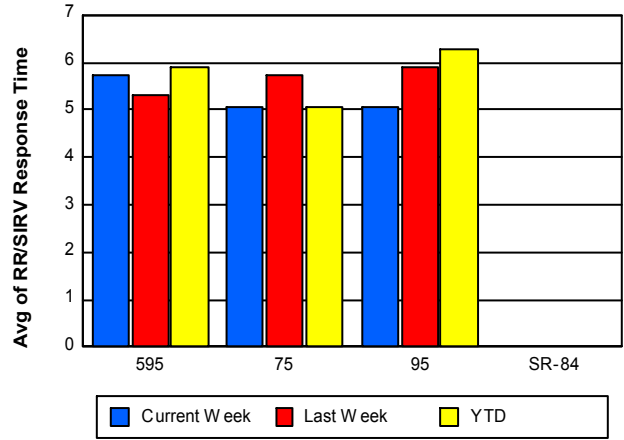
### TMC Response Time



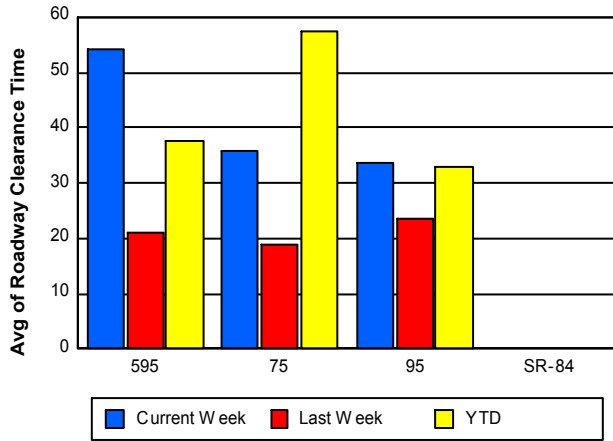
## Road Ranger / SIRV Dispatch Time



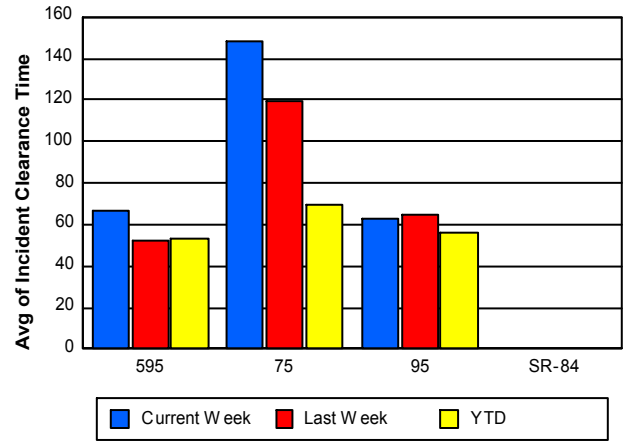
## Road Ranger / SIRV Response Time



## Roadway Clearance Time (2A)



## Incident Clearance Time (3B)



## Performance Measures by Event Type

### Abandoned Vehicle

	<u>Current Week</u>	<u>Last Week</u>	<u>YTD</u>
Number of Events	145	131	7,170
Number of Incidents	0	0	13
TMC Detection (min.)	0.00	0.00	0.02
TMC Verification (min.)	0.18	0.12	0.42
TMC Response (min.)	125.46	84.59	19.69
RR Dispatch Time (min.)	126.20	73.79	16.21
RR Response Time (min.)	10.55	10.80	6.12
Event Clearance (min.)	319.42	246.22	200.70
Roadway Clearance (min.)			39.46
Incident Clearance (min.)			236.85
# of Events w/ RR/SIRV	81	73	5,500
RR/SIRV Assists	81	73	5,507
RR/SIRV Activities	80	77	5,761

### Accident

	<u>Current Week</u>	<u>Last Week</u>	<u>YTD</u>
Number of Events	65	78	3,780
Number of Incidents	27	32	1,728
TMC Detection (min.)	0.00	0.00	0.03
TMC Verification (min.)	0.44	0.88	1.72
TMC Response (min.)	6.53	8.40	8.25
RR Dispatch Time (min.)	1.46	2.13	1.76
RR Response Time (min.)	5.16	6.47	6.54
Event Clearance (min.)	57.44	53.58	46.29
Roadway Clearance (min.)	32.77	25.04	35.71
Incident Clearance (min.)	71.82	75.13	60.14
# of Events w/ RR/SIRV	39	65	3,440
RR/SIRV Assists	39	65	3,667
RR/SIRV Activities	60	90	5,290

### Congestion

	<u>YTD</u>
Number of Events	26
Number of Incidents	1
TMC Detection (min.)	0.00
TMC Verification (min.)	0.00
TMC Response (min.)	
RR Dispatch Time (min.)	
RR Response Time (min.)	
Event Clearance (min.)	74.01
Roadway Clearance (min.)	8.22
Incident Clearance (min.)	98.70
# of Events w/ RR/SIRV	0
RR/SIRV Assists	0
RR/SIRV Activities	0

## Debris on Roadway

	<u>Current Week</u>	<u>Last Week</u>	<u>YTD</u>
Number of Events	19	22	1,817
Number of Incidents	0	0	31
TMC Detection (min.)	0.00	0.00	0.03
TMC Verification (min.)	3.30	1.88	5.27
TMC Response (min.)	3.81	2.35	7.74
RR Dispatch Time (min.)	0.31	0.46	1.06
RR Response Time (min.)	3.54	1.91	6.71
Event Clearance (min.)	8.17	5.30	12.10
Roadway Clearance (min.)			43.85
Incident Clearance (min.)			51.47
# of Events w/ RR/SIRV	16	21	1,749
RR/SIRV Assists	16	21	1,776
RR/SIRV Activities	17	21	1,864

## Disabled Vehicle

	<u>Current Week</u>	<u>Last Week</u>	<u>YTD</u>
Number of Events	649	667	31,403
Number of Incidents	3	4	373
TMC Detection (min.)	0.00	0.00	0.01
TMC Verification (min.)	0.34	0.27	1.84
TMC Response (min.)	4.75	6.27	7.13
RR Dispatch Time (min.)	0.96	1.51	1.43
RR Response Time (min.)	3.85	4.75	5.84
Event Clearance (min.)	27.31	26.95	21.06
Roadway Clearance (min.)	16.79	11.64	24.02
Incident Clearance (min.)	23.49	18.83	35.82
# of Events w/ RR/SIRV	406	441	28,908
RR/SIRV Assists	406	441	29,004
RR/SIRV Activities	409	460	30,177

## Emergency Vehicles

	<u>Current Week</u>	<u>Last Week</u>	<u>YTD</u>
Number of Events	1	2	66
Number of Incidents	1	1	60
TMC Detection (min.)	0.00	0.00	0.06
TMC Verification (min.)	0.00	0.00	0.32
TMC Response (min.)	0.00	4.75	7.08
RR Dispatch Time (min.)	0.00	4.68	2.42
RR Response Time (min.)	0.00	0.07	4.75
Event Clearance (min.)	49.55	7.47	38.13
Roadway Clearance (min.)	43.03	5.75	38.00
Incident Clearance (min.)	49.55	13.03	39.32
# of Events w/ RR/SIRV	1	1	51
RR/SIRV Assists	1	1	53
RR/SIRV Activities	3	1	84

## Other

	<u>Current Week</u>	<u>Last Week</u>	<u>YTD</u>
Number of Events	392	471	11,985
Number of Incidents	0	0	27
TMC Detection (min.)	0.00	0.00	0.00
TMC Verification (min.)	0.05	0.01	0.22
TMC Response (min.)	18.98	19.27	11.77
RR Dispatch Time (min.)	2.59	3.10	2.01
RR Response Time (min.)	9.98	9.83	8.74
Event Clearance (min.)	9.23	10.04	11.31
Roadway Clearance (min.)			21.46
Incident Clearance (min.)			29.90
# of Events w/ RR/SIRV	104	189	4,890
RR/SIRV Assists	104	189	4,895
RR/SIRV Activities	14	38	971

## Pedestrian

	<u>YTD</u>
Number of Events	41
Number of Incidents	0
TMC Detection (min.)	0.01
TMC Verification (min.)	1.34
TMC Response (min.)	2.56
RR Dispatch Time (min.)	0.37
RR Response Time (min.)	2.29
Event Clearance (min.)	10.68
Roadway Clearance (min.)	
Incident Clearance (min.)	
# of Events w/ RR/SIRV	37
RR/SIRV Assists	37
RR/SIRV Activities	39

## Police Activity

	<u>Current Week</u>	<u>Last Week</u>	<u>YTD</u>
Number of Events	19	13	232
Number of Incidents	6	0	100
TMC Detection (min.)	0.00	0.00	0.01
TMC Verification (min.)	0.00	0.00	1.01
TMC Response (min.)	51.82		11.05
RR Dispatch Time (min.)	1.62		3.21
RR Response Time (min.)	49.37		7.63
Event Clearance (min.)	46.14	28.59	39.55
Roadway Clearance (min.)	59.22		66.74
Incident Clearance (min.)	76.20		57.27
# of Events w/ RR/SIRV	2	0	112
RR/SIRV Assists	2	0	132
RR/SIRV Activities	1	0	171

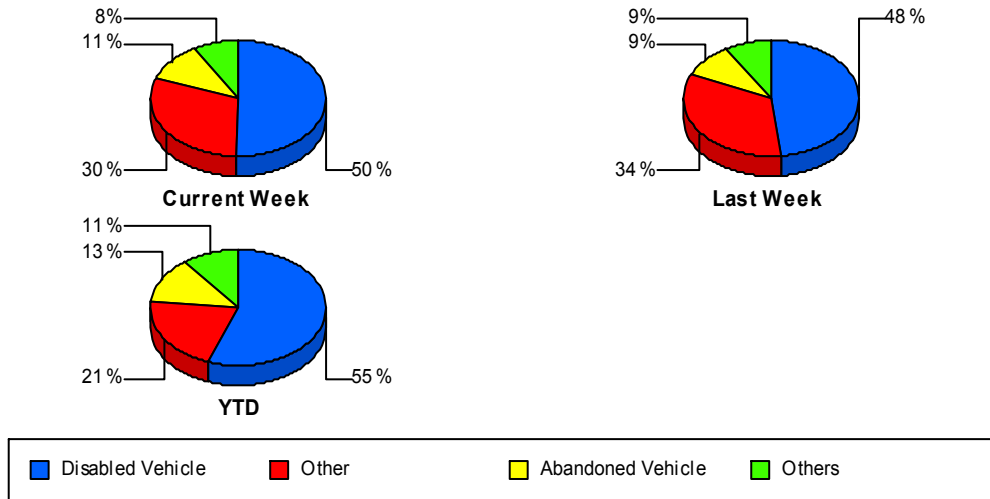
## Vehicle Fire

	<u>Current Week</u>	<u>Last Week</u>	<u>YTD</u>
Number of Events	1	3	62
Number of Incidents	1	1	46
TMC Detection (min.)	0.00	0.00	0.00
TMC Verification (min.)	0.00	0.00	0.69
TMC Response (min.)		0.73	9.22
RR Dispatch Time (min.)		0.08	2.42
RR Response Time (min.)		0.66	6.80
Event Clearance (min.)	53.40	49.59	59.77
Roadway Clearance (min.)	51.85	6.58	39.25
Incident Clearance (min.)	53.40	10.65	65.40
# of Events w/ RR/SIRV	0	2	51
RR/SIRV Assists	0	2	51
RR/SIRV Activities	0	2	89

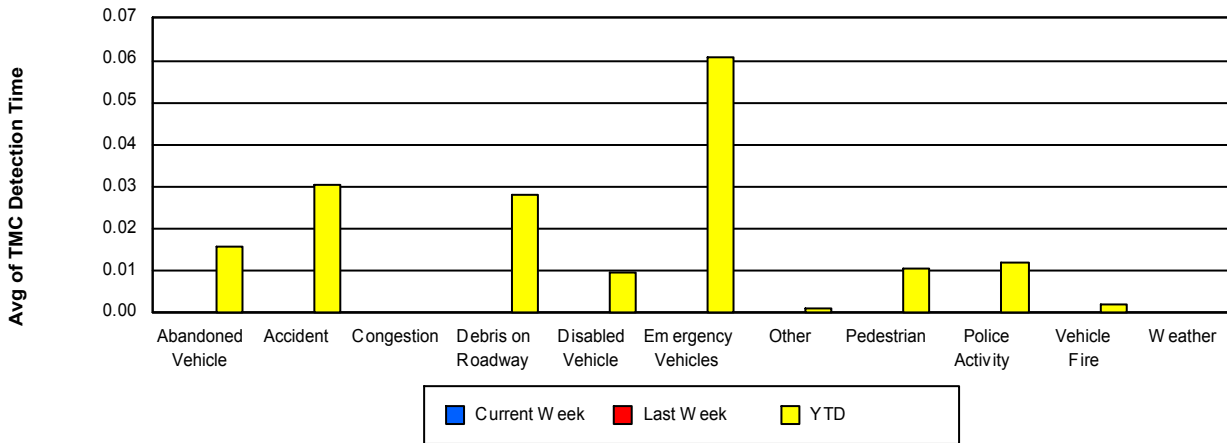
## Weather

	<u>Current Week</u>	<u>Last Week</u>	<u>YTD</u>
Number of Events	1	1	20
Number of Incidents	0	0	0
TMC Detection (min.)	0.00	0.00	0.00
TMC Verification (min.)	0.00	0.00	0.00
TMC Response (min.)			0.10
RR Dispatch Time (min.)		1.47	1.53
RR Response Time (min.)			0.00
Event Clearance (min.)	2.40	7.37	11.17
Roadway Clearance (min.)			
Incident Clearance (min.)			
# of Events w/ RR/SIRV	0	1	9
RR/SIRV Assists	0	1	9
RR/SIRV Activities	0	0	1

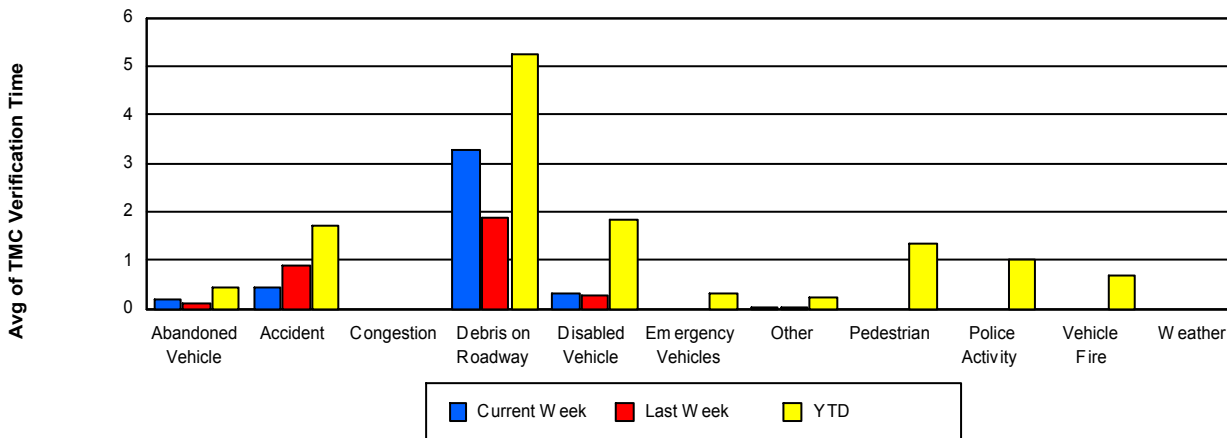
## Number of Events / Event Type



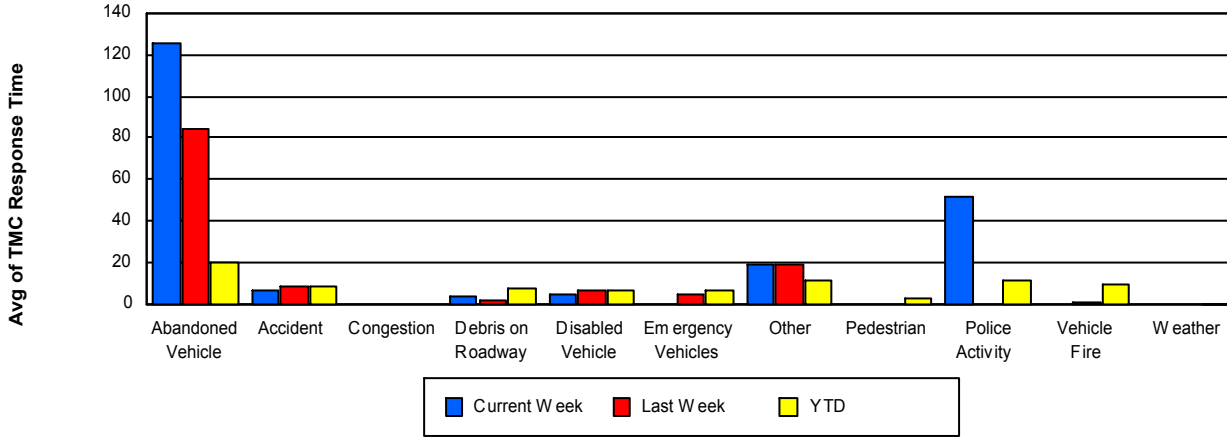
## TMC Detection Time



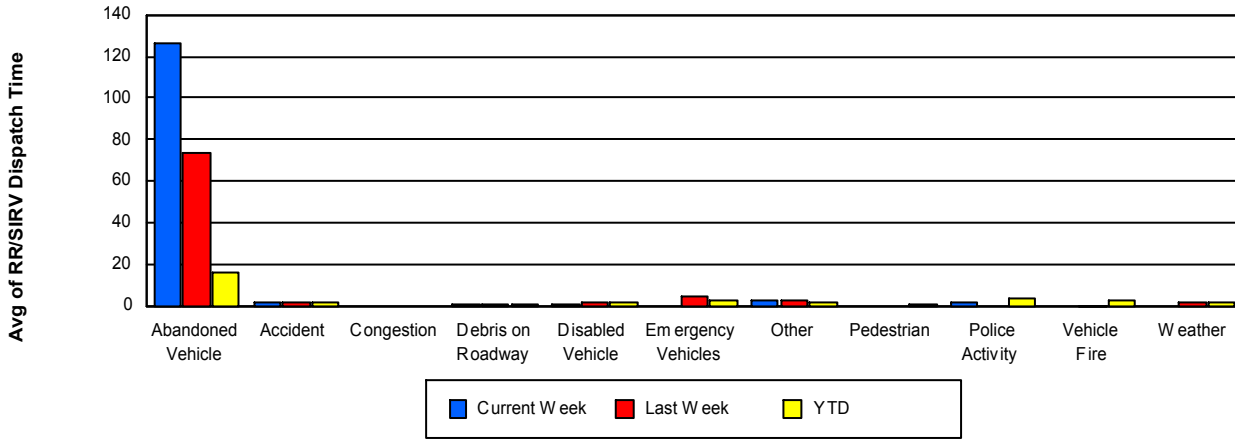
## TMC Verification Time



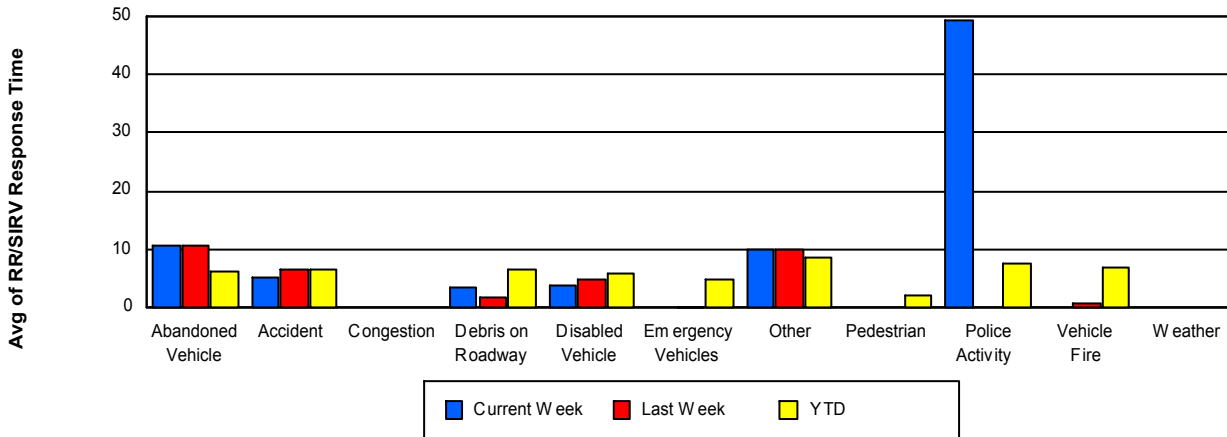
## TMC Response Time



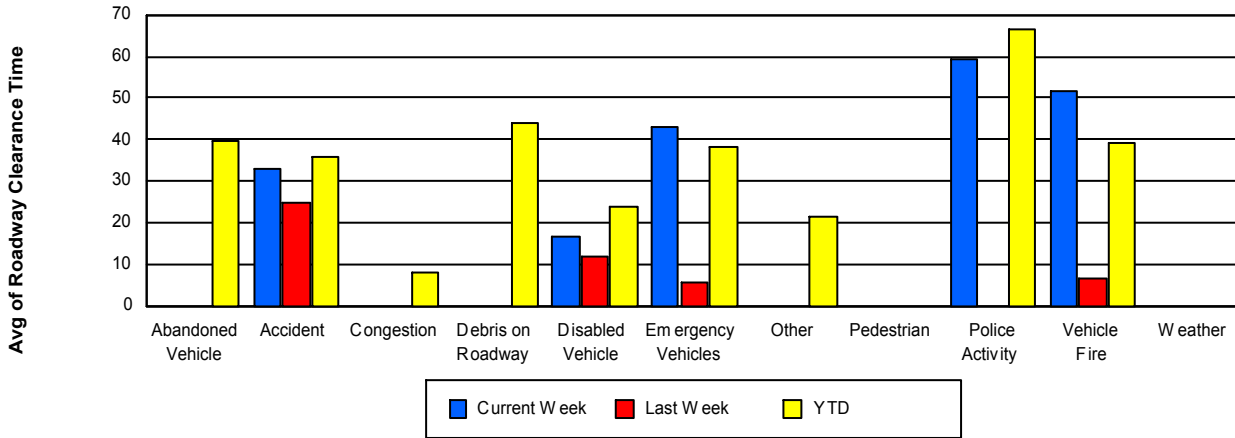
## Road Ranger / SIRV Dispatch Time



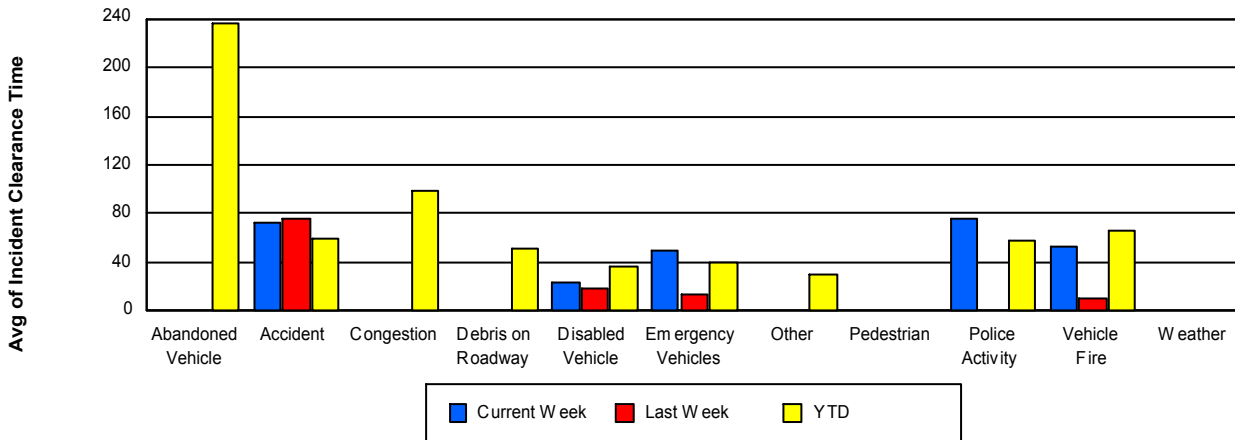
## Road Ranger / SIRV Response Time



## Roadway Clearance Time (2A)



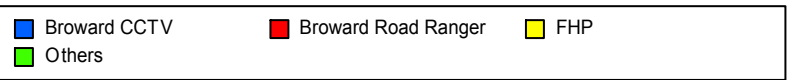
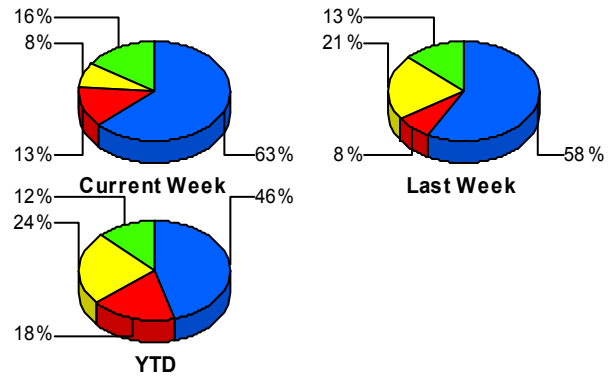
## Incident Clearance Time (3B)



## Incident Detection Methods

	Current Week	Last Week	YTD
Broward CCTV	<b>24</b>	<b>22</b>	<b>1,091</b>
Broward Road Ranger	<b>5</b>	<b>3</b>	<b>426</b>
Broward VideoWall	<b>2</b>	<b>0</b>	<b>61</b>
BSO	<b>1</b>	<b>1</b>	<b>23</b>
District 4	<b>1</b>	<b>0</b>	<b>61</b>
District 6	<b>0</b>	<b>1</b>	<b>7</b>
FDOT Maintenance	<b>0</b>	<b>0</b>	<b>2</b>
FHP	<b>3</b>	<b>8</b>	<b>566</b>
Fire	<b>0</b>	<b>0</b>	<b>6</b>
Florida's Turnpike	<b>0</b>	<b>0</b>	<b>9</b>
ITMS	<b>0</b>	<b>0</b>	<b>2</b>
Motorist	<b>0</b>	<b>0</b>	<b>18</b>
Other	<b>0</b>	<b>0</b>	<b>1</b>
Palm Beach Road Rang	<b>0</b>	<b>0</b>	<b>8</b>
PSAP	<b>0</b>	<b>0</b>	<b>3</b>
Road Watcher	<b>0</b>	<b>2</b>	<b>17</b>
SIRV	<b>0</b>	<b>0</b>	<b>8</b>
SmarTraveler (511)	<b>1</b>	<b>0</b>	<b>12</b>
VisioPaD Detection	<b>1</b>	<b>1</b>	<b>59</b>
<b>Total</b>	<b>38</b>	<b>38</b>	<b>2,380</b>

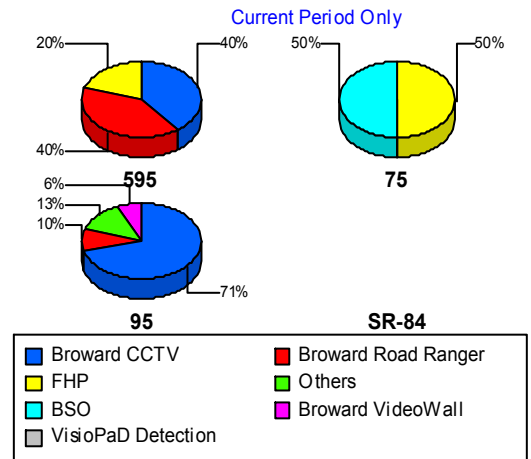
### Total Incidents by Detection Method



## Incident Detection Methods by Roadway

		Current Week	Last Week	YTD
595	Broward CCTV	2	6	161
	Broward Road Ranger	2	0	83
	Broward VideoWall	0	0	10
	BSO	0	0	10
	District 4	0	0	8
	FHP	1	2	117
	Florida's Turnpike	0	0	9
	Motorist	0	0	3
	Road Watcher	0	0	5
	SIRV	0	0	2
	SmarTraveler (511)	0	0	1
	VisioPaD Detection	0	1	6
	<b>Total</b>	<b>5</b>	<b>9</b>	<b>415</b>
75	Broward CCTV	0	1	6
	Broward Road Ranger	0	0	60
	BSO	1	1	8
	District 4	0	0	7
	District 6	0	1	3
	FHP	1	0	60
	Road Watcher	0	0	1
	SIRV	0	0	1
	SmarTraveler (511)	0	0	1
	<b>Total</b>	<b>2</b>	<b>3</b>	<b>147</b>
95	Broward CCTV	22	15	924
	Broward Road Ranger	3	3	283
	Broward VideoWall	2	0	51
	BSO	0	0	5
	District 4	1	0	46
	District 6	0	0	4
	FDOT Maintenance	0	0	2
	FHP	1	6	389

Total Events by Roadway and Detection Method

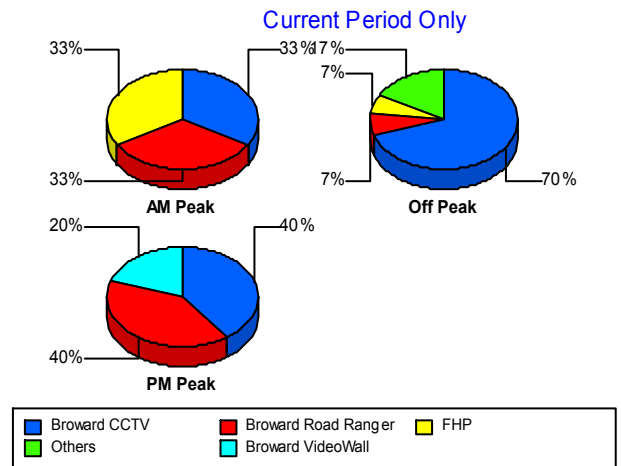


		Current Week	Last Week	YTD
95	Fire	0	0	6
	ITMS	0	0	2
	Motorist	0	0	15
	Other	0	0	1
	Palm Beach Road Rang	0	0	8
	PSAP	0	0	3
	Road Watcher	0	2	11
	SIRV	0	0	5
	SmarTraveler (511)	1	0	10
	VisioPaD Detection	1	0	53
	Total	31	26	1,818
Total	38	38	2,380	

### Incident Detection Methods by Peak Period

		Current Week	Last Week	YTD
AM Peak	Broward CCTV	1	4	257
	Broward Road Ranger	1	0	106
	Broward VideoWall	0	0	22
	BSO	0	1	7
	District 4	0	0	16
	FHP	1	1	128
	Fire	0	0	1
	Florida's Turnpike	0	0	3
	Motorist	0	0	3
	Palm Beach Road Rang	0	0	5
	PSAP	0	0	1
	Road Watcher	0	0	7
	SIRV	0	0	4
	SmarTraveler (511)	0	0	1
	VisioPaD Detection	0	0	6
	Total	3	6	567
	Off Peak	Broward CCTV	21	10

Total Events by Peak Period and Detection Method



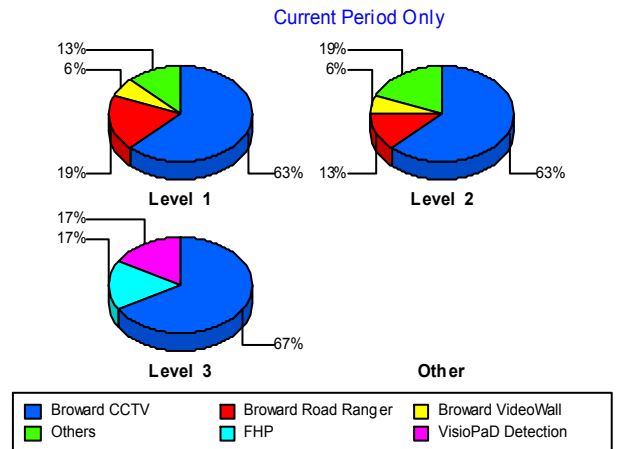
		Current Week	Last Week	YTD
Off Peak	Broward Road Ranger	2	1	195
	Broward VideoWall	1	0	26
	BSO	1	0	9
	District 4	1	0	31
	District 6	0	1	4
	FDOT Maintenance	0	0	2
	FHP	2	1	310
	Fire	0	0	4
	Florida's Turnpike	0	0	5
	ITMS	0	0	1
	Motorist	0	0	7
	Other	0	0	1
	Palm Beach Road Rang	0	0	3
	PSAP	0	0	2
	Road Watcher	0	1	4
	SIRV	0	0	2
	SmarTraveler (511)	1	0	2
	VisioPaD Detection	1	1	47
	Total	30	15	1,237
	PM Peak	Broward CCTV	2	8
Broward Road Ranger		2	2	125
Broward VideoWall		1	0	13
BSO		0	0	7
District 4		0	0	14
District 6		0	0	3
FHP		0	6	128
Fire		0	0	1
Florida's Turnpike		0	0	1
ITMS		0	0	1
Motorist		0	0	8
Road Watcher		0	1	6
SIRV		0	0	2

		Current Week	Last Week	YTD
PM Peak	SmarTraveler (511)	0	0	9
	VisioPaD Detection	0	0	6
	Total	5	17	576
Total		38	38	2,380

### Incident Detection Methods by Severity

		Current Week	Last Week	YTD	
Level 1	Broward CCTV	10	14	665	
	Broward Road Ranger	3	3	277	
	Broward VideoWall	1	0	38	
	BSO	0	1	5	
	District 4	0	0	35	
	District 6	0	0	5	
	FHP	1	5	272	
	Fire	0	0	3	
	Florida's Turnpike	0	0	2	
	ITMS	0	0	1	
	Motorist	0	0	9	
	Palm Beach Road Rang	0	0	6	
	PSAP	0	0	2	
	Road Watcher	0	1	14	
	SIRV	0	0	6	
	SmarTraveler (511)	1	0	9	
	VisioPaD Detection	0	1	31	
	Total	16	25	1,380	
	Level 2	Broward CCTV	10	4	307
		Broward Road Ranger	2	0	103
Broward VideoWall		1	0	15	
BSO		1	0	10	
District 4		1	0	13	
District 6		0	1	2	
FDOT Maintenance		0	0	1	

Total Events by Severity and Detection Method



		Current Week	Last Week	YTD
Level 2	FHP	1	1	175
	Fire	0	0	1
	ITMS	0	0	1
	Motorist	0	0	8
	Palm Beach Road Rang	0	0	1
	PSAP	0	0	1
	Road Watcher	0	1	2
	SIRV	0	0	1
	SmarTraveler (511)	0	0	2
	VisioPaD Detection	0	0	22
	Total	16	7	665
Level 3	Broward CCTV	4	4	119
	Broward Road Ranger	0	0	46
	Broward VideoWall	0	0	8
	BSO	0	0	8
	District 4	0	0	13
	FDOT Maintenance	0	0	1
	FHP	1	2	119
	Fire	0	0	2
	Florida's Turnpike	0	0	7
	Motorist	0	0	1
	Other	0	0	1
	Palm Beach Road Rang	0	0	1
	Road Watcher	0	0	1
	SIRV	0	0	1
	SmarTraveler (511)	0	0	1
	VisioPaD Detection	1	0	6
	Total	6	6	335
Total	38	38	2,380	

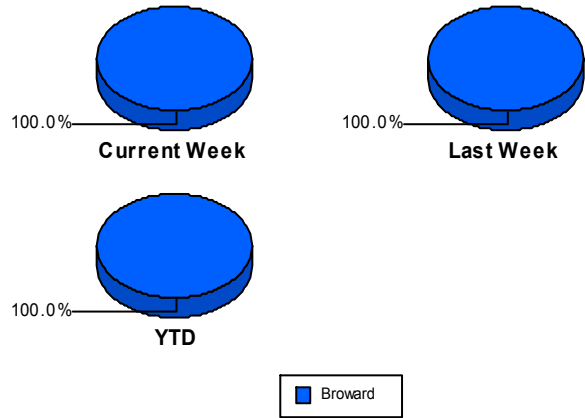
## Road Ranger / SIRV Performance Measures

### Road Ranger / SIRV Performance By County

Values presented are:  
 - Total Events with a RR/SIRV Response  
 - Total RR/SIRV Responses,  
 - Total Activities Performed

	Current We	Last Week	YTD
Broward	552	661	41,747
	594	711	44,703
	611	735	47,063

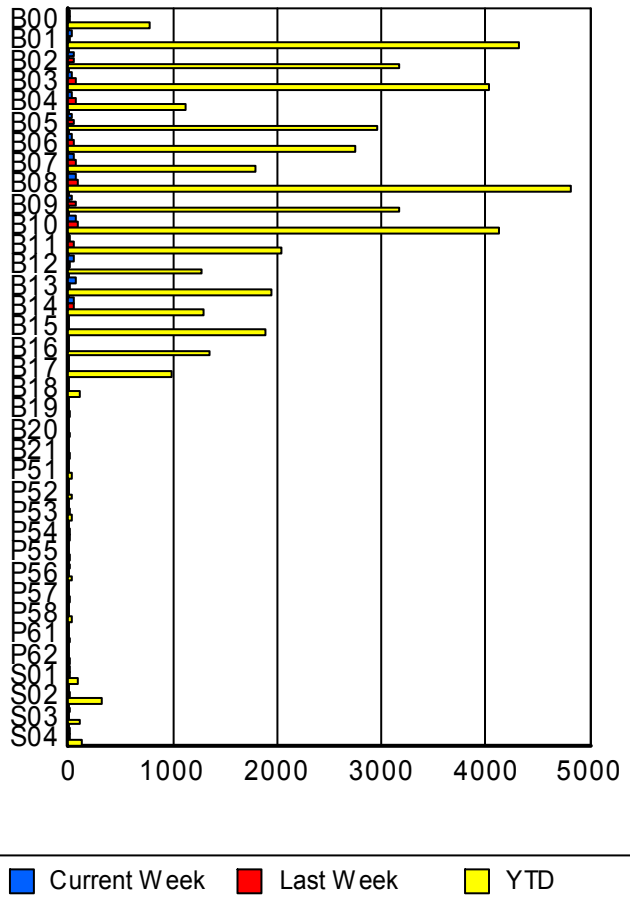
RR/SIRV Responses per County



### Road Ranger / SIRV Performance By Truck

	Current We	Last Week	YTD
B00	6	10	761
	6	10	774
	6	10	815
B01	23	15	4,254
	23	15	4,316
	23	15	4,548
B02	43	54	3,126
	44	55	3,172
	46	57	3,340
B03	35	59	3,991
	35	60	4,040
	35	62	4,275
B04	33	66	1,110
	33	67	1,122
	35	70	1,169
B05	30	42	2,927
	30	42	2,954
	34	45	3,148
B06	28	55	2,714
	28	57	2,745
	28	58	2,894
B07	53	65	1,761
	53	65	1,783
	55	68	1,846
B08	67	79	4,751
	67	80	4,825
	69	82	5,067

RR/SIRV Responses per Truck



	Current We	Last Week	YTD
B09	29	61	3,136
	29	62	3,172
	29	64	3,335
B10	67	80	4,070
	71	81	4,117
	72	81	4,335
B11	8	50	2,018
	8	54	2,043
	8	55	2,135
B12	51	8	1,249
	51	8	1,269
	54	8	1,335
B13	61	5	1,925
	62	5	1,949
	63	5	2,057
B14	44	38	1,280
	44	39	1,296
	44	42	1,336
B15	0	0	1,872
	0	0	1,883
	0	0	1,990
B16	0	0	1,332
	0	0	1,347
	0	0	1,414
B17	0	0	968
	0	0	981
	0	0	1,031
B18	0	0	97
	0	0	97
	0	0	101
B19	0	0	2
	0	0	2
	0	0	2
B20	0	0	2
	0	0	2
	0	0	2
B21	0	0	4
	0	0	4
	0	0	4
P51	0	0	36
	0	0	36
	0	0	38
P52	0	0	20
	0	0	20
	0	0	20

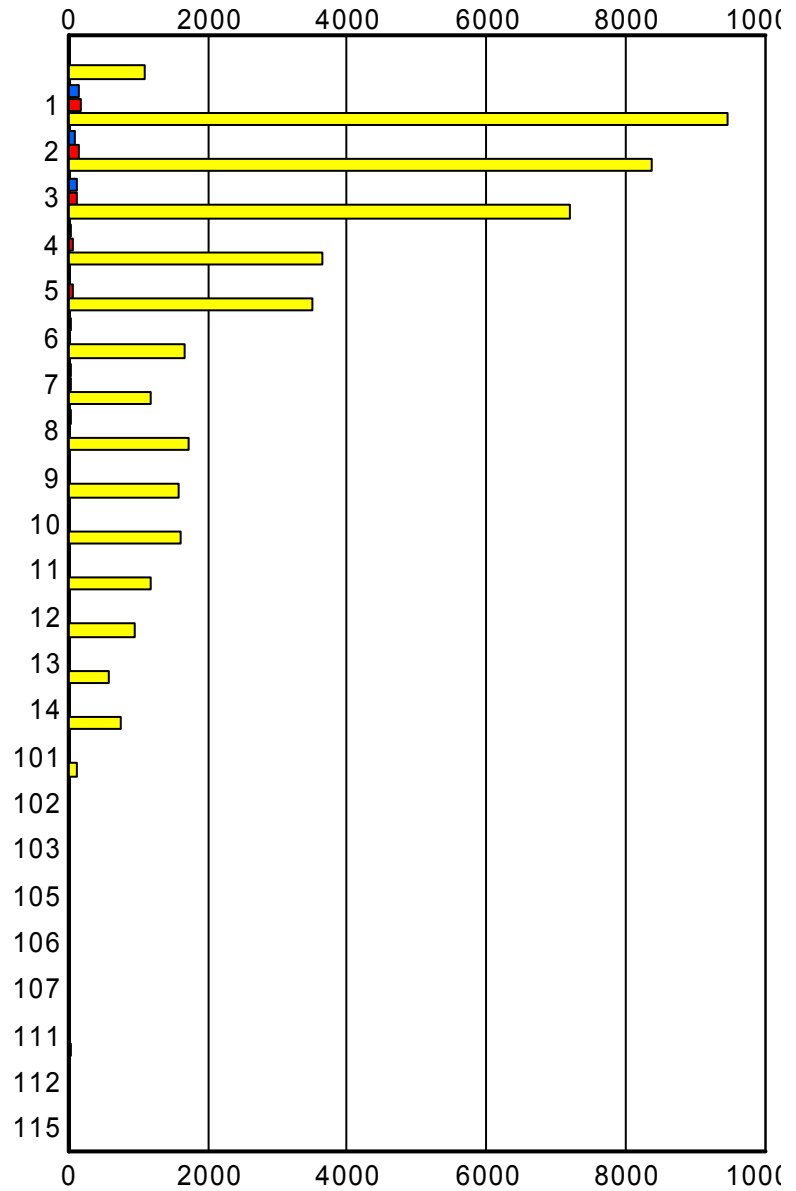
	Current We	Last Week	YTD
P53	0	1	23
	0	1	23
	0	1	26
P54	0	1	14
	0	1	14
	0	1	14
P55	0	0	19
	0	0	19
	0	0	20
P56	1	0	24
	1	0	25
	1	0	30
P57	0	0	11
	0	0	11
	0	0	11
P58	0	0	21
	0	0	21
	0	0	21
P61	0	0	1
	0	0	1
	0	0	1
P62	0	0	3
	0	0	3
	0	0	3
S01	1	1	78
	1	1	80
	1	1	88
S02	0	6	310
	0	6	314
	0	8	343
S03	4	0	113
	4	0	115
	4	0	127
S04	4	2	124
	4	2	128
	4	2	142

### Road Ranger / SIRV Performance By Beat

	Current We	Last Week	YTD
	23	13	1,023
	23	14	1,106
	24	16	1,183
1	141	187	9,051
	153	195	9,468
	155	198	9,934
2	104	145	8,135
	108	147	8,371
	109	153	8,799
3	125	126	6,989
	133	130	7,201
	137	138	7,558
4	33	76	3,581
	33	79	3,640
	36	81	3,811
5	17	69	3,435
	17	75	3,498
	17	77	3,652
6	35	22	1,652
	35	22	1,678
	40	23	1,764
7	34	27	1,168
	34	27	1,184
	35	27	1,239
8	49	20	1,709
	49	20	1,728
	49	20	1,817
9	8	0	1,548
	8	0	1,571
	8	0	1,693
10	0	0	1,588
	0	0	1,609
	0	0	1,723
11	0	0	1,185
	0	0	1,196
	0	0	1,286
12	0	0	942
	0	0	957
	0	0	1,026
13	0	0	578
	0	0	589
	0	0	622
14	0	0	735
	0	0	740
	0	0	778

Values presented are:  
 - Total Events with a RR/SIRV Response  
 - Total RR/SIRV Responses,  
 - Total Activities Performed

### RR/SIRV Responses per Beat



■ Current Week   
 ■ Last Week   
 ■ YTD

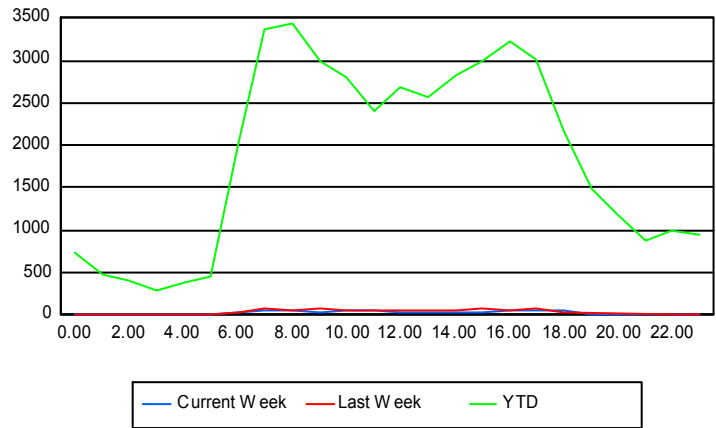
	Current We	Last Week	YTD
101	1	2	121
	1	2	121
	1	2	130
102	0	0	3
	0	0	4
	0	0	4
103	0	0	3
	0	0	3
	0	0	3
105	0	0	3
	0	0	3
	0	0	3
106	0	0	1
	0	0	1
	0	0	1
107	0	0	3
	0	0	3
	0	0	3
111	0	0	29
	0	0	29
	0	0	31
112	0	0	1
	0	0	1
	0	0	1
115	0	0	2
	0	0	2
	0	0	2

## Road Ranger / SIRV Performance By Time of Day

Values presented are: - Total Events with a RR/SIRV Response - Total RR/SIRV Responses, - Total Activities Performed
---

	Current We	Last Week	YTD
12AM-1AM	1	1	<b>704</b>
	1	1	<b>745</b>
	1	1	<b>800</b>
1AM-2AM	2	2	<b>456</b>
	2	2	<b>486</b>
	2	2	<b>518</b>
2AM-3AM	1	0	<b>357</b>
	1	0	<b>408</b>
	1	0	<b>439</b>
3AM-4AM	0	1	<b>256</b>
	0	1	<b>283</b>
	0	1	<b>305</b>
4AM-5AM	2	1	<b>332</b>
	2	1	<b>383</b>
	2	1	<b>414</b>
5AM-6AM	5	3	<b>369</b>
	5	4	<b>443</b>
	5	4	<b>470</b>
6AM-7AM	26	31	<b>1,868</b>
	27	32	<b>2,021</b>
	27	32	<b>2,093</b>
7AM-8AM	45	64	<b>3,159</b>
	47	70	<b>3,369</b>
	48	74	<b>3,528</b>
8AM-9AM	49	50	<b>3,174</b>
	49	53	<b>3,444</b>
	52	53	<b>3,626</b>
9AM-10AM	39	59	<b>2,816</b>
	40	65	<b>2,997</b>
	44	68	<b>3,146</b>
10AM-11AM	46	52	<b>2,625</b>
	57	54	<b>2,792</b>
	59	56	<b>2,936</b>
11AM-12PM	44	41	<b>2,229</b>
	51	42	<b>2,394</b>
	51	43	<b>2,509</b>
12PM-1PM	35	47	<b>2,521</b>
	35	48	<b>2,676</b>
	35	51	<b>2,799</b>

## Number of Responses / Hour of the Day



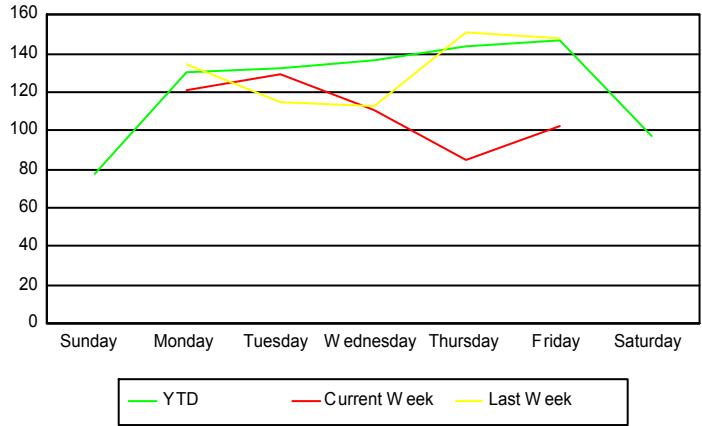
	Current We	Last Week	YTD
1PM-2PM	36	45	2,362
	37	51	2,558
	37	51	2,696
2PM-3PM	36	53	2,660
	38	55	2,836
	38	59	2,965
3PM-4PM	32	62	2,776
	38	65	2,984
	39	67	3,130
4PM-5PM	52	60	3,032
	59	62	3,218
	62	64	3,392
5PM-6PM	52	53	2,824
	53	66	3,017
	55	69	3,156
6PM-7PM	46	32	2,053
	49	35	2,174
	50	35	2,293
7PM-8PM	1	0	1,419
	1	0	1,482
	1	0	1,580
8PM-9PM	0	0	1,111
	0	0	1,184
	0	0	1,270
9PM-10PM	1	0	811
	1	0	872
	1	0	932
10PM-11PM	0	2	926
	0	2	984
	0	2	1,056
11PM-12AM	1	2	907
	1	2	953
	1	2	1,010

## Road Ranger / SIRV Performance By Day of Week

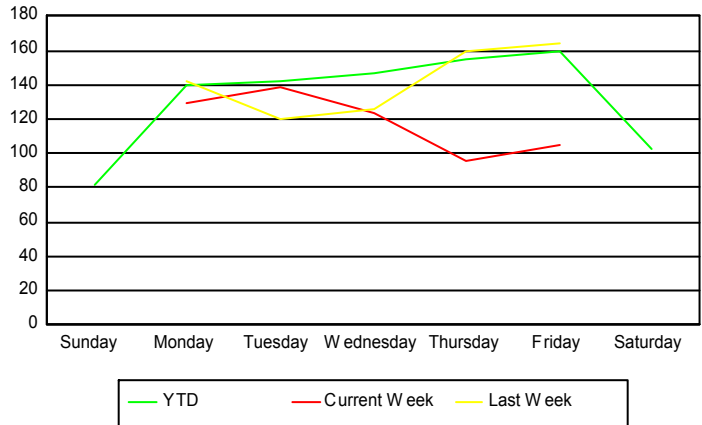
Values presented are:  
 - Total Events with a RR/SIRV Response  
 - Total RR/SIRV Responses,  
 - Total Activities Performed

	Current We	Last Week	YTD
Sunday	0 0 0	0 0 0	2,907 3,036 3,213
Monday	125 133 134	135 142 147	6,512 6,970 7,277
Tuesday	129 138 141	115 120 122	6,795 7,273 7,638
Wednesday	111 123 133	113 126 130	6,987 7,470 7,848
Thursday	85 95 95	151 159 166	7,331 7,912 8,328
Friday	103 105 108	148 164 170	7,535 8,151 8,611
Saturday	0 0 0	0 0 0	3,709 3,891 4,148

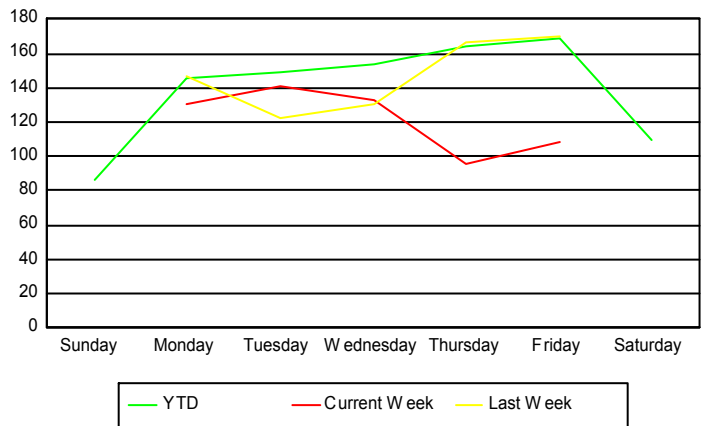
### Avg # of events with a RR/SIRV Response per Day of the Week



### Avg # of RR/SIRV Responses per Day of the Week



### Avg # of RR/SIRV Activities Performed per Day of the Week



### Road Ranger/ SIRV Responses per Time of Day and Day of Week

