



Weekly Performance Measures Report Broward County



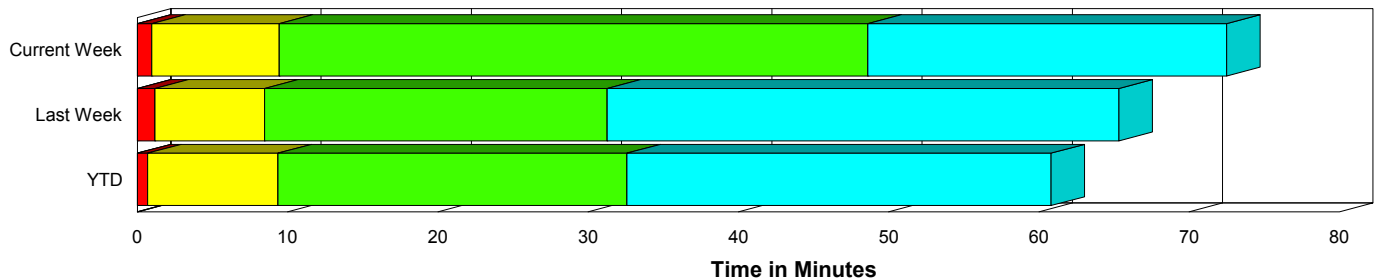
Created on:
December 28, 2009
8:37 am

Period From Dec 20, 2009 to Dec 26, 2009

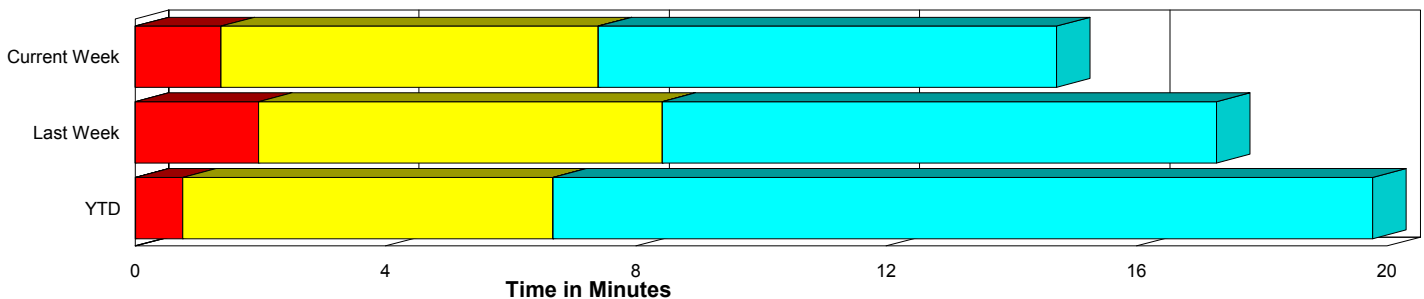
Performance Measures Summary

	Traffic Events (No Lanes Blocked)			Incidents (Lanes Blocked)		
	<u>This Week</u>	<u>Last Week</u>	<u>YTD</u>	<u>This Week</u>	<u>Last Week</u>	<u>YTD</u>
Number of Events	1,081	1,104	53,136	30	63	2,450
TMC Detection (min.)	0.00	0.00	0.01	0.00	0.01	0.01
TMC Verification (min.)	1.37	1.97	0.75	0.96	1.17	0.68
TMC Response (min.)	8.25	9.38	7.21	9.49	8.53	9.49
RR Dispatch Time (min.)	1.52	1.87	1.28	1.34	1.82	2.52
RR Response Time (min.)	6.82	7.58	6.08	8.13	6.71	7.16
Roadway Clearance (min.)				47.25	30.22	31.85
Event Clearance (min.)	15.58	18.24	20.31	71.00	63.80	59.67
# of Events w/ RR/SIRV	834	929	38,101	30	60	1,867
RR/SIRV Responses	834	929	38,101	30	60	1,867
RR/SIRV Activities	677	762	31,749	49	125	3,695

Incident Clearance Time-Line



Traffic Event (Non-Lane Blockage) Time-Line



■ Avg. TMC Detection Time	■ Avg. Time from TMC Response to Roadway Clearance*
■ Avg. Time from TMC Detection to TMC Verification	■ Avg. Time from Roadway Clearance to Incident/Event Clearance**
■ Avg. Time from TMC Verification to TMC Response	

* Roadway clearance equals all travel lanes open

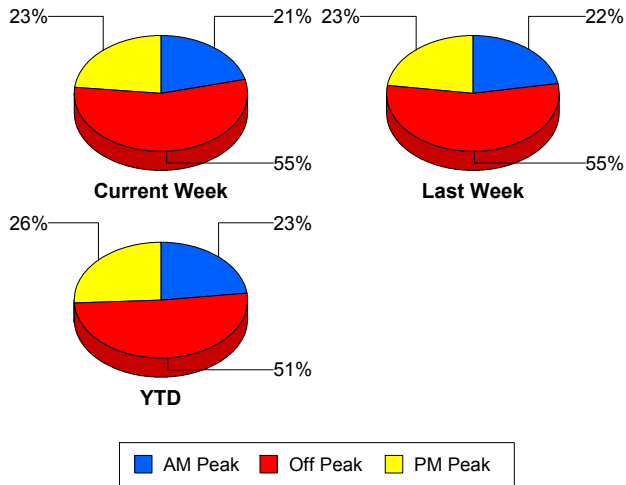
** Incident clearance equals time when last responder has left the scene

Performance Measures by Peak Period

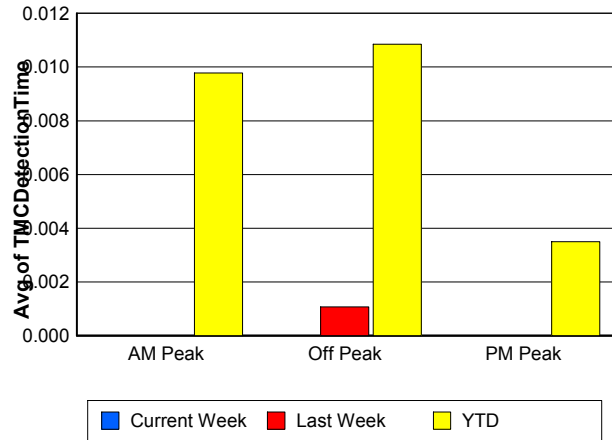
Note: AM peak period is defined as 6am to 10am and PM peak period is defined as 3pm to 7pm.

	AM Peak			Off Peak			PM Peak		
	<u>Current Week</u>	<u>Last Week</u>	<u>YTD</u>	<u>Current Week</u>	<u>Last Week</u>	<u>YTD</u>	<u>Current Week</u>	<u>Last Week</u>	<u>YTD</u>
Number of Events	236	260	12,876	616	641	28,409	259	266	14,301
Number of Incidents	1	14	566	23	32	1,195	6	17	689
TMC Detection (min.)	0.00	0.00	0.01	0.00	0.00	0.01	0.00	0.00	0.00
TMC Verification (min.)	0.88	1.51	0.57	1.12	1.86	0.74	2.39	2.51	0.94
TMC Response (min.)	6.41	10.38	6.73	8.50	9.14	8.12	9.66	8.76	6.72
RR Dispatch Time (min.)	0.95	1.58	0.96	1.71	1.92	1.76	1.60	2.05	1.03
RR Response Time (min.)	5.68	8.83	5.86	6.79	7.32	6.52	8.16	6.74	5.82
Event Clearance (min.)	12.62	19.88	20.25	17.79	19.89	23.82	19.43	23.44	20.12
Roadway Clearance (min.)	9.33	24.75	27.99	53.50	34.90	35.97	29.58	25.93	27.87
Incident Clearance (min.)	13.97	53.28	56.69	73.10	61.11	63.25	72.44	77.55	55.92
# of Events w/ RR/SIRV	196	236	10,603	463	524	18,026	205	229	11,339
RR/SIRV Responses	196	236	10,603	463	524	18,026	205	229	11,339
RR/SIRV Activities	161	204	9,656	395	461	15,500	170	222	10,288

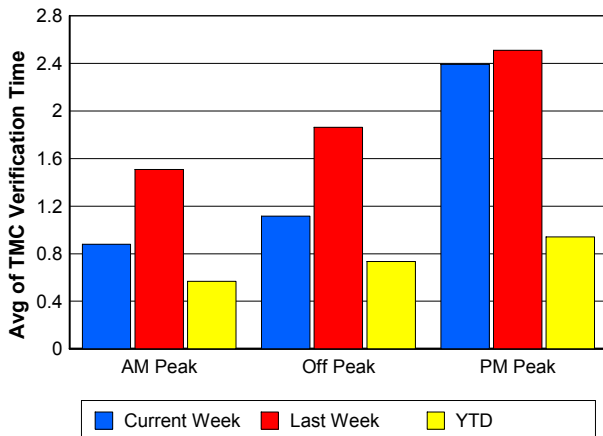
Number of Events / Peak Period



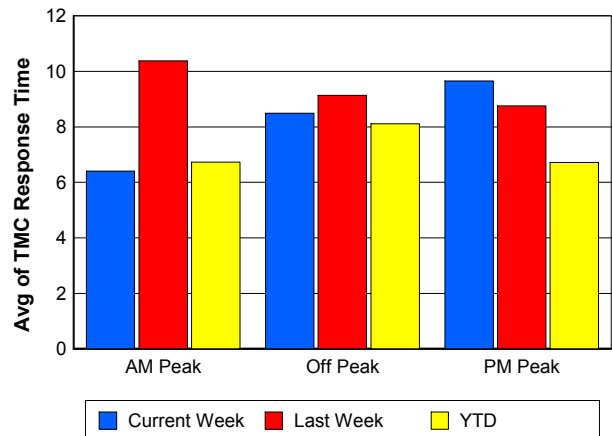
TMC Detection Time



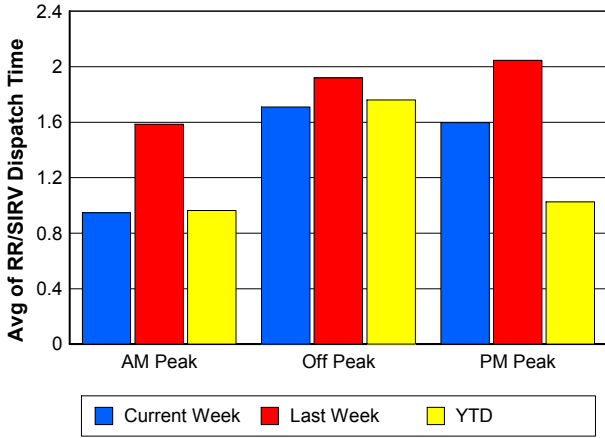
TMC Verification Time



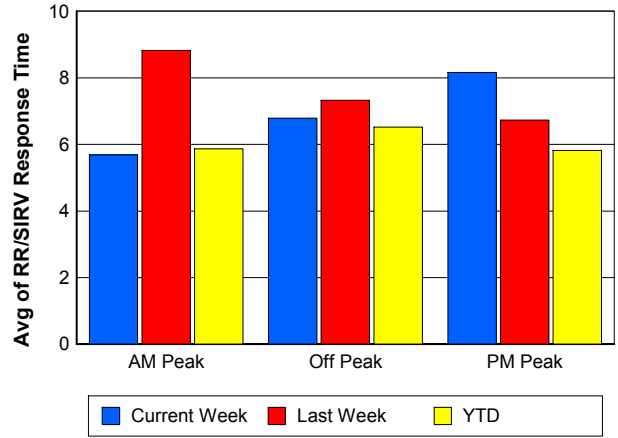
TMC Response Time



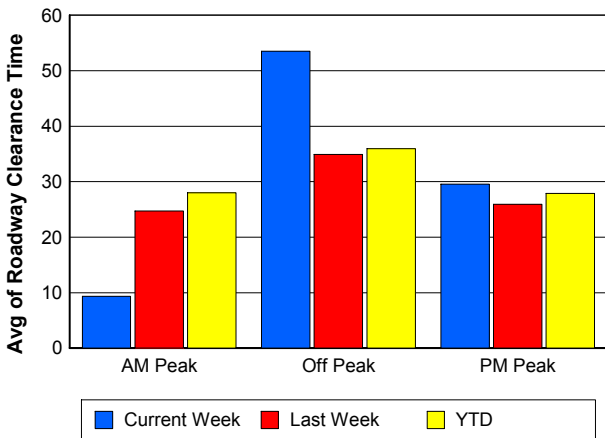
Road Ranger / SIRV Dispatch Time



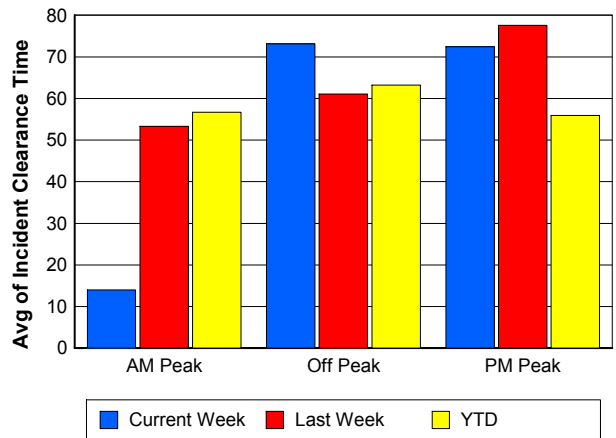
Road Ranger / SIRV Response Time



Roadway Clearance Time (2A)



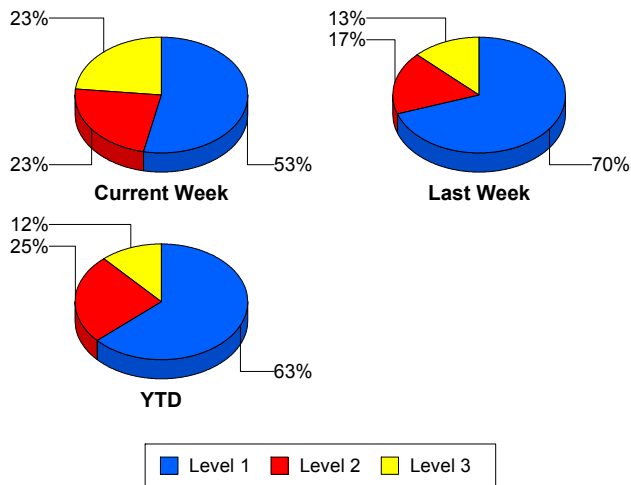
Incident Clearance Time (3B)



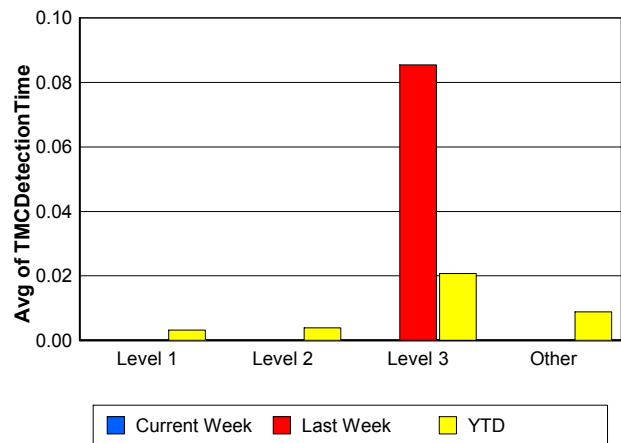
Performance Measures by Severity

	Level 1			Level 2			Level 3			Other		
	<u>This Week</u>	<u>Last Week</u>	<u>YTD</u>	<u>This Week</u>	<u>Last Week</u>	<u>YTD</u>	<u>This Week</u>	<u>Last Week</u>	<u>YTD</u>	<u>This Week</u>	<u>Last Week</u>	<u>YTD</u>
Number of Events	16	44	1,552	7	11	615	7	8	283	1,081	1,104	53,136
Number of Incidents	16	44	1,552	7	11	615	7	8	283	0	0	0
TMC Detection (min.)	0.00	0.00	0.00	0.00	0.00	0.00	0.00	0.09	0.02	0.00	0.00	0.01
TMC Verification (min.)	0.42	0.90	0.44	2.22	1.90	1.02	0.95	1.59	1.24	1.37	1.97	0.75
TMC Response (min.)	8.15	6.89	7.35	9.21	7.20	10.26	12.65	20.24	19.47	8.25	9.38	7.21
RR Dispatch Time (min.)	0.76	1.98	1.55	1.84	1.27	2.50	2.15	1.73	7.47	1.52	1.87	1.28
RR Resp. Time (min.)	7.38	4.90	5.88	7.37	5.94	7.97	10.50	18.51	12.51	6.82	7.58	6.08
Event Clearance (min.)	43.16	54.46	45.55	62.43	73.03	72.54	143.19	102.47	108.93	15.58	18.24	20.31
Roadway Clear. (min.)	13.99	14.25	14.27	50.44	46.87	49.00	120.07	95.21	90.95			
Incident Clearance (min.)	43.16	54.46	45.55	62.43	73.03	72.54	143.19	102.47	108.93			
# of Events w/ RR/SIRV	16	42	1,221	7	11	402	7	7	244	834	929	38,101
RR/SIRV Responses	16	42	1,221	7	11	402	7	7	244	834	929	38,101
RR/SIRV Activities	20	74	2,057	14	31	1,056	15	20	582	677	762	31,749

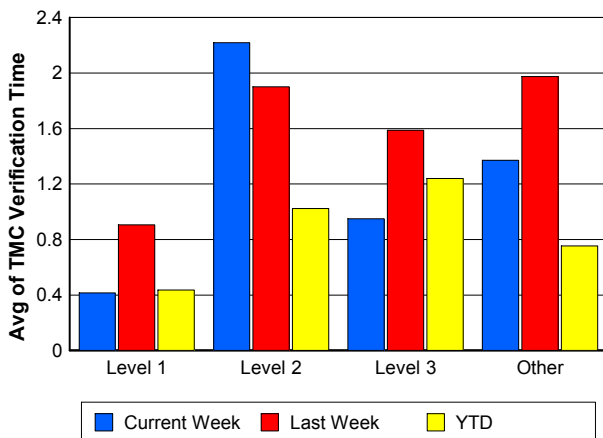
Number of Events / Severity



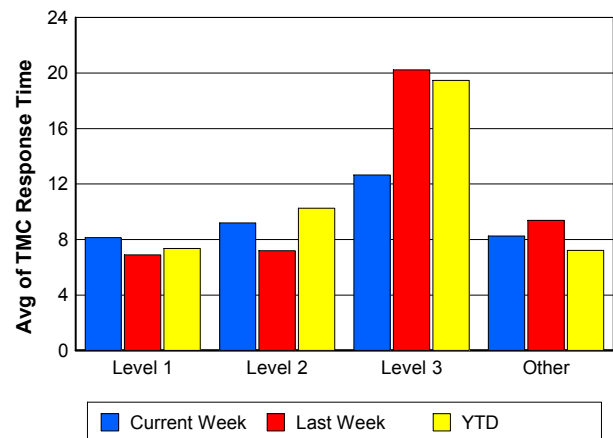
TMC Detection Time



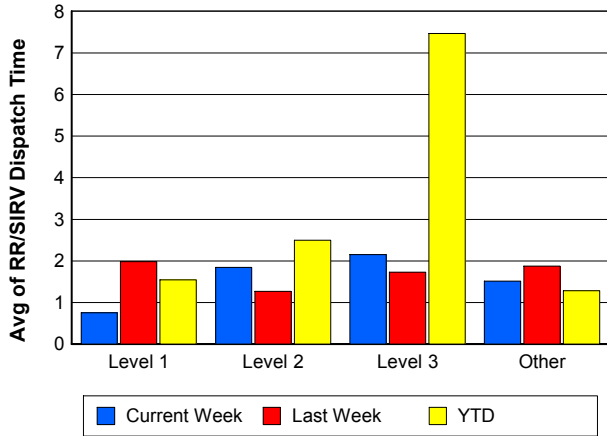
TMC Verification Time



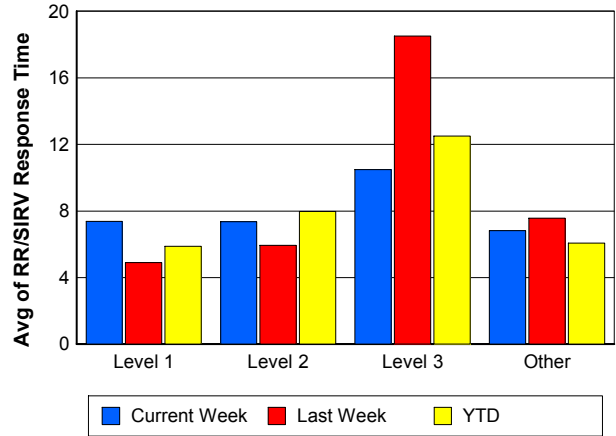
TMC Response Time



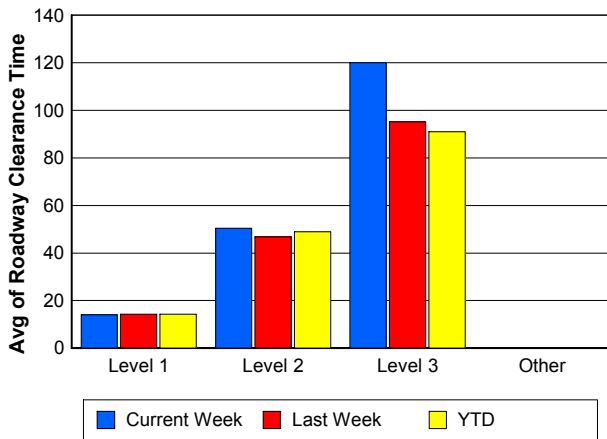
Road Ranger / SIRV Dispatch Time



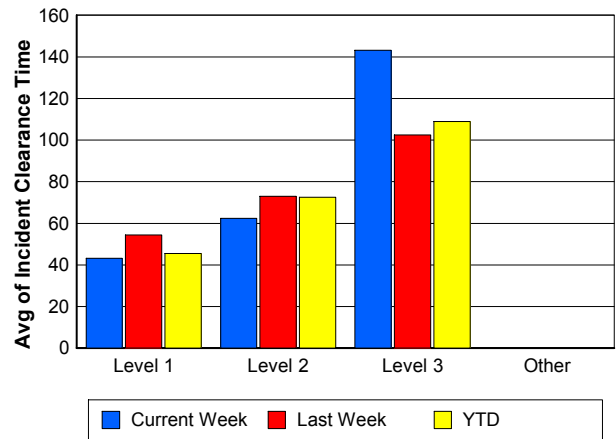
Road Ranger / SIRV Response Time



Roadway Clearance Time (2A)



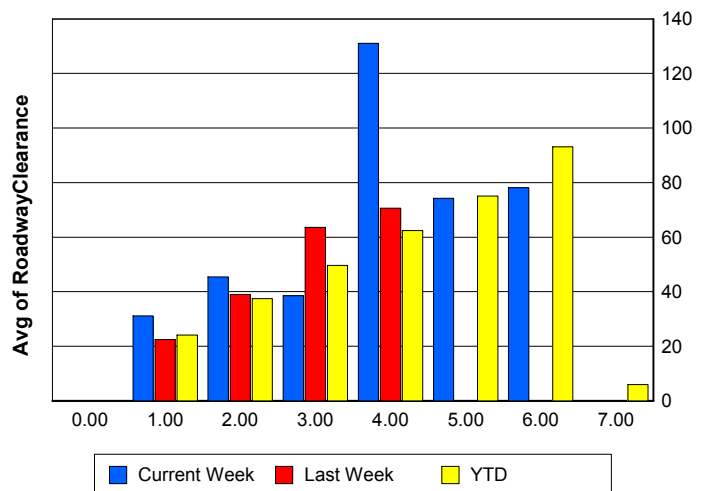
Incident Clearance Time (3B)



Roadway Clearance by Maximum Number of Lanes Blocked

	Current Week	Last Week	YTD
0			
1	31.16	22.41	24.08
2	45.46	39.01	37.43
3	38.55	63.64	49.60
4	131.01	70.62	62.43
5	74.20	0.00	75.09
6	78.07	0.00	93.13
7	0.00	0.00	5.97

Roadway Clearance Time (2A)



Performance Measures by Roadway

595

	<u>Current Week</u>	<u>Last Week</u>	<u>YTD</u>
Number of Events	40	55	4,945
Number of Incidents	0	3	295
TMC Detection (min.)	0.00	0.00	0.01
TMC Verification (min.)	0.51	2.50	0.87
TMC Response (min.)	13.14	11.20	7.24
RR Dispatch Time (min.)	2.71	2.20	1.34
RR Resp. Time (min.)	9.80	8.93	6.13
Event Clearance (min.)	17.97	19.48	21.25
Roadway Clear. (min.)		61.94	32.25
Incident Clearance (min.)		68.82	54.33
# of Events w/ RR/SIRV	32	43	3,465
RR/SIRV Responses	32	43	3,465
RR/SIRV Activities	19	36	3,104

75

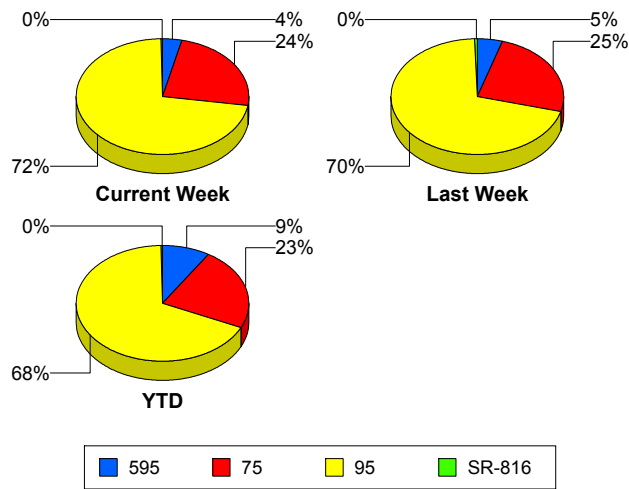
	<u>Current Week</u>	<u>Last Week</u>	<u>YTD</u>
Number of Events	265	286	12,752
Number of Incidents	4	13	229
TMC Detection (min.)	0.00	0.00	0.02
TMC Verification (min.)	2.32	2.03	1.08
TMC Response (min.)	10.69	10.50	8.66
RR Dispatch Time (min.)	2.01	1.77	1.41
RR Resp. Time (min.)	8.78	9.01	7.42
Event Clearance (min.)	20.98	19.88	23.66
Roadway Clear. (min.)	93.00	45.10	52.55
Incident Clearance (min.)	116.71	77.76	80.62
# of Events w/ RR/SIRV	195	227	8,915
RR/SIRV Responses	195	227	8,915
RR/SIRV Activities	172	199	7,606

95

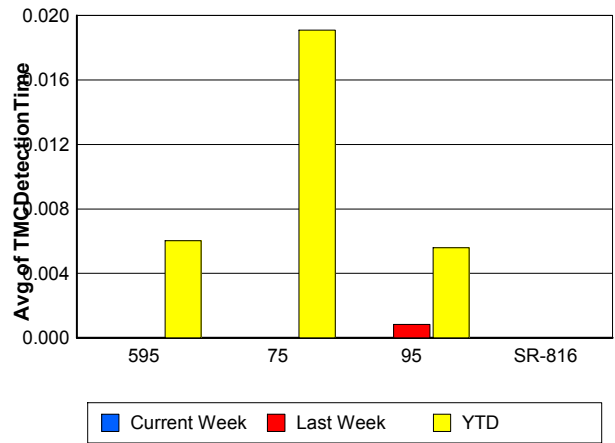
	<u>Current Week</u>	<u>Last Week</u>	<u>YTD</u>
Number of Events	804	821	37,793
Number of Incidents	26	43	1,861
TMC Detection (min.)	0.00	0.00	0.01
TMC Verification (min.)	1.09	1.87	0.63
TMC Response (min.)	7.36	8.90	6.96
RR Dispatch Time (min.)	1.30	1.89	1.32
RR Resp. Time (min.)	6.15	7.01	5.76
Event Clearance (min.)	15.77	21.07	21.62
Roadway Clear. (min.)	40.21	24.29	29.77
Incident Clearance (min.)	63.97	62.98	59.44
# of Events w/ RR/SIRV	637	716	27,501
RR/SIRV Responses	637	716	27,501
RR/SIRV Activities	535	649	24,636

	<u>Current Week</u>	<u>Last Week</u>	<u>YTD</u>
Number of Events	2	5	96
Number of Incidents	0	4	65
TMC Detection (min.)	0.00	0.00	0.00
TMC Verification (min.)	0.00	0.00	0.21
TMC Response (min.)		0.00	0.62
RR Dispatch Time (min.)		0.00	0.07
RR Resp. Time (min.)		0.00	0.57
Event Clearance (min.)	4.41	19.79	13.92
Roadway Clear. (min.)		21.86	16.56
Incident Clearance (min.)		23.58	16.63
# of Events w/ RR/SIRV	0	3	87
RR/SIRV Responses	0	3	87
RR/SIRV Activities	0	3	98

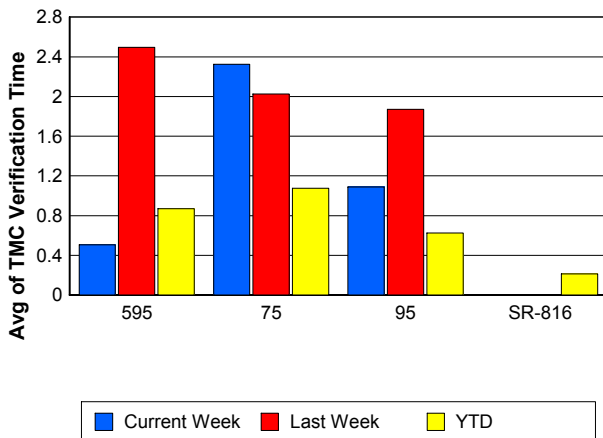
Number of Events / Roadway



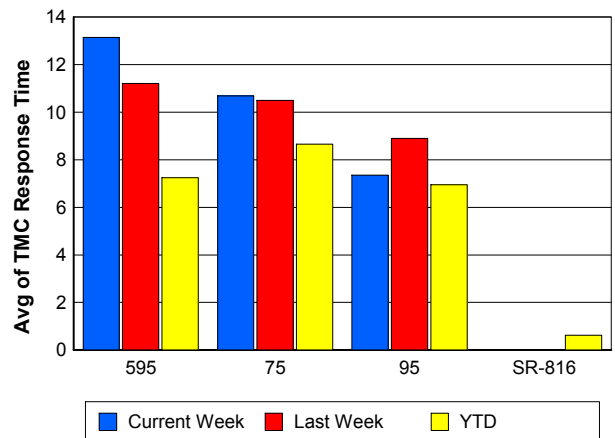
TMC Detection Time



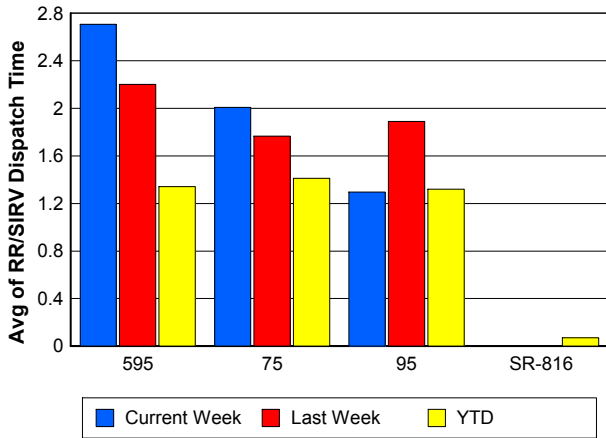
TMC Verification Time



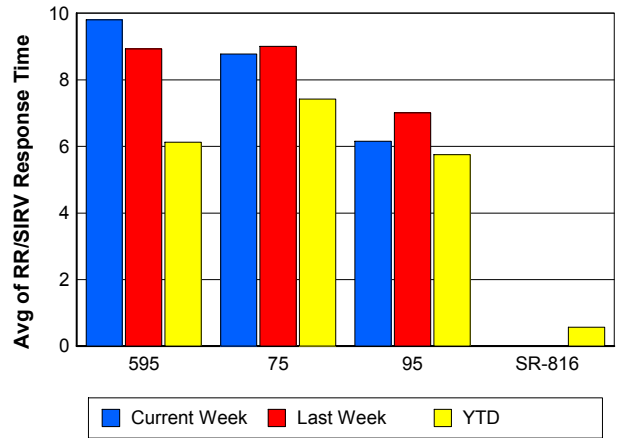
TMC Response Time



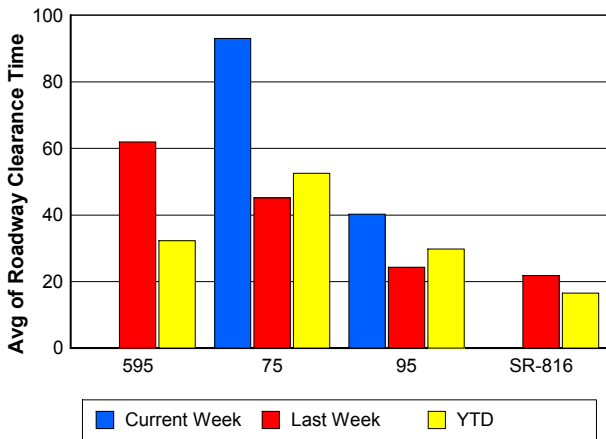
Road Ranger / SIRV Dispatch Time



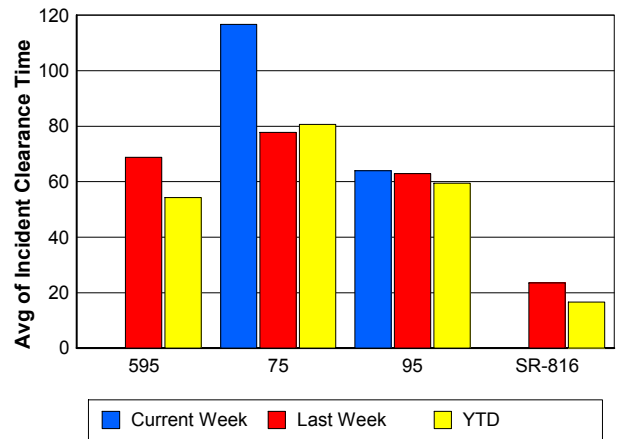
Road Ranger / SIRV Response Time



Roadway Clearance Time (2A)



Incident Clearance Time (3B)



Performance Measures by Event Type

Accident

	<u>Current Week</u>	<u>Last Week</u>	<u>YTD</u>
Number of Events	43	89	3,642
Number of Incidents	21	41	1,728
TMC Detection (min.)	0.00	0.00	0.01
TMC Verification (min.)	1.67	2.78	0.81
TMC Response (min.)	7.96	9.17	9.11
RR Dispatch Time (min.)	1.15	1.44	1.65
RR Response Time (min.)	6.80	7.91	7.53
Event Clearance (min.)	58.29	51.92	54.94
Roadway Clearance (min.)	55.69	29.70	33.36
Incident Clearance (min.)	80.59	76.08	67.62
# of Events w/ RR/SIRV	42	89	2,879
RR/SIRV Assists	42	89	2,879
RR/SIRV Activities	61	136	4,410

Debris on Roadway

	<u>Current Week</u>	<u>Last Week</u>	<u>YTD</u>
Number of Events	30	36	1,710
Number of Incidents	0	0	32
TMC Detection (min.)	0.00	0.00	0.07
TMC Verification (min.)	8.92	6.91	4.29
TMC Response (min.)	13.48	8.88	8.05
RR Dispatch Time (min.)	2.18	0.57	0.99
RR Response Time (min.)	11.35	8.31	7.09
Event Clearance (min.)	14.81	13.52	11.72
Roadway Clearance (min.)			25.98
Incident Clearance (min.)			31.88
# of Events w/ RR/SIRV	29	36	1,596
RR/SIRV Assists	29	36	1,596
RR/SIRV Activities	32	36	1,621

Disabled Vehicle

	<u>Current Week</u>	<u>Last Week</u>	<u>YTD</u>
Number of Events	634	708	32,367
Number of Incidents	5	15	425
TMC Detection (min.)	0.00	0.00	0.01
TMC Verification (min.)	1.84	2.43	0.92
TMC Response (min.)	8.18	9.17	7.01
RR Dispatch Time (min.)	1.46	1.88	1.17
RR Response Time (min.)	6.76	7.33	5.90
Event Clearance (min.)	19.27	21.28	24.66
Roadway Clearance (min.)	8.48	25.72	18.05
Incident Clearance (min.)	14.13	35.23	31.32
# of Events w/ RR/SIRV	616	685	27,328
RR/SIRV Assists	616	685	27,328
RR/SIRV Activities	597	680	27,551

Emergency Vehicles

	<u>Current Week</u>	<u>Last Week</u>	<u>YTD</u>
Number of Events	2	5	95
Number of Incidents	1	3	74
TMC Detection (min.)	0.00	0.00	0.00
TMC Verification (min.)	0.00	0.00	0.41
TMC Response (min.)	15.91	5.20	13.49
RR Dispatch Time (min.)	0.44	5.18	10.23
RR Response Time (min.)	15.47	0.02	4.72
Event Clearance (min.)	62.83	13.95	54.18
Roadway Clearance (min.)	111.53	12.88	56.92
Incident Clearance (min.)	117.67	15.88	62.55
# of Events w/ RR/SIRV	2	2	54
RR/SIRV Assists	2	2	54
RR/SIRV Activities	2	2	84

Other

	<u>Current Week</u>	<u>Last Week</u>	<u>YTD</u>
Number of Events	393	323	17,268
Number of Incidents	0	1	32
TMC Detection (min.)	0.00	0.00	0.01
TMC Verification (min.)	0.00	0.10	0.07
TMC Response (min.)	5.93	14.16	8.59
RR Dispatch Time (min.)	1.61	2.31	1.82
RR Response Time (min.)	4.79	9.70	6.58
Event Clearance (min.)	8.53	11.05	10.73
Roadway Clearance (min.)		41.52	33.80
Incident Clearance (min.)		96.27	40.36
# of Events w/ RR/SIRV	167	172	7,805
RR/SIRV Assists	167	172	7,805
RR/SIRV Activities	27	27	1,387

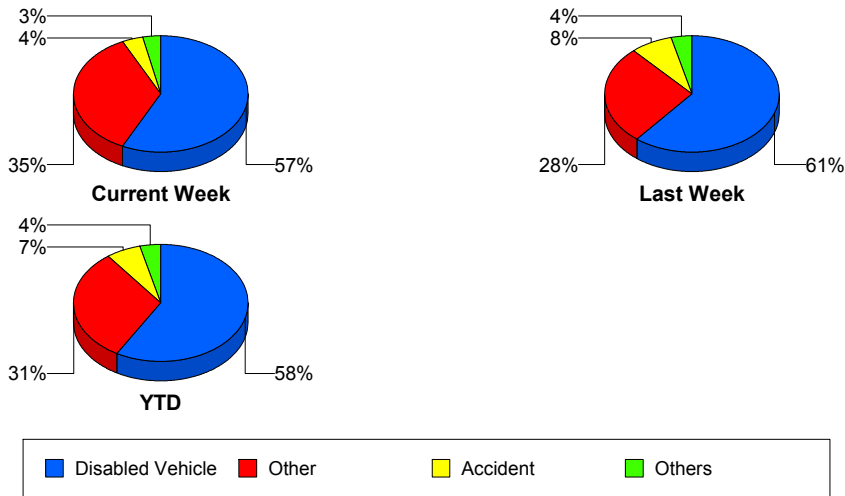
Police Activity

	<u>Current Week</u>	<u>Last Week</u>	<u>YTD</u>
Number of Events	4	4	214
Number of Incidents	1	3	75
TMC Detection (min.)	0.00	0.17	0.01
TMC Verification (min.)	0.00	2.09	0.38
TMC Response (min.)	6.48	6.93	12.23
RR Dispatch Time (min.)	0.63	0.72	3.47
RR Response Time (min.)	5.85	6.21	8.95
Event Clearance (min.)	16.88	76.62	34.67
Roadway Clearance (min.)	22.62	73.48	43.44
Incident Clearance (min.)	29.62	75.94	50.70
# of Events w/ RR/SIRV	3	3	86
RR/SIRV Assists	3	3	86
RR/SIRV Activities	3	4	102

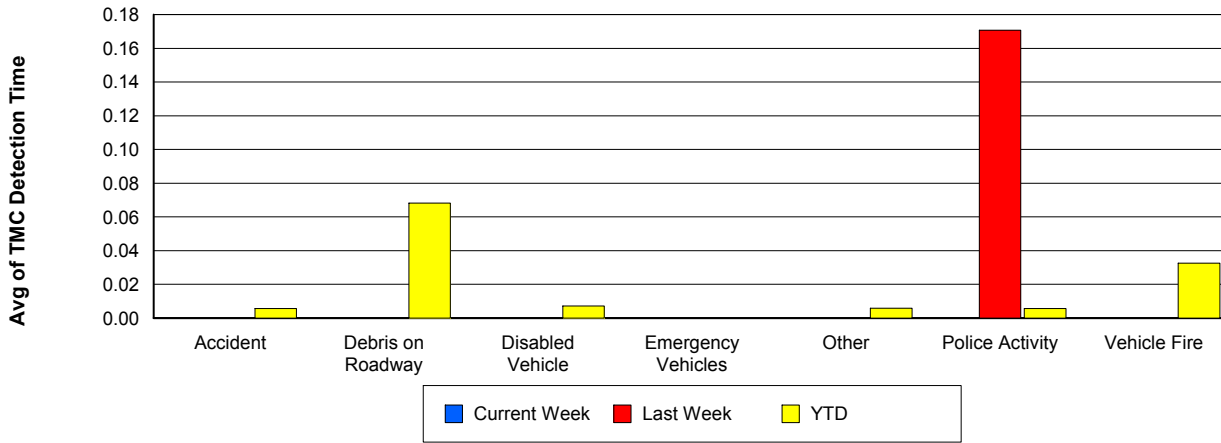
Vehicle Fire

	<u>Current Week</u>	<u>Last Week</u>	<u>YTD</u>
Number of Events	2	1	110
Number of Incidents	2	0	84
TMC Detection (min.)	0.00	0.00	0.03
TMC Verification (min.)	2.53	0.87	1.24
TMC Response (min.)	8.51	32.72	9.87
RR Dispatch Time (min.)	6.13	1.88	2.15
RR Response Time (min.)	2.37	30.83	8.05
Event Clearance (min.)	109.81	34.15	58.07
Roadway Clearance (min.)	35.66		39.58
Incident Clearance (min.)	109.81		63.35
# of Events w/ RR/SIRV	2	1	80
RR/SIRV Assists	2	1	80
RR/SIRV Activities	3	1	163

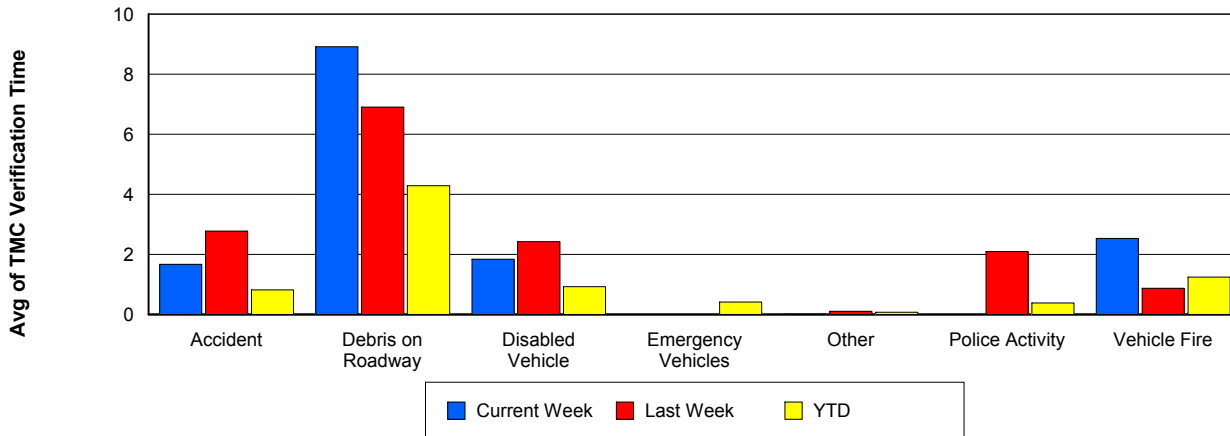
Number of Events / Event Type



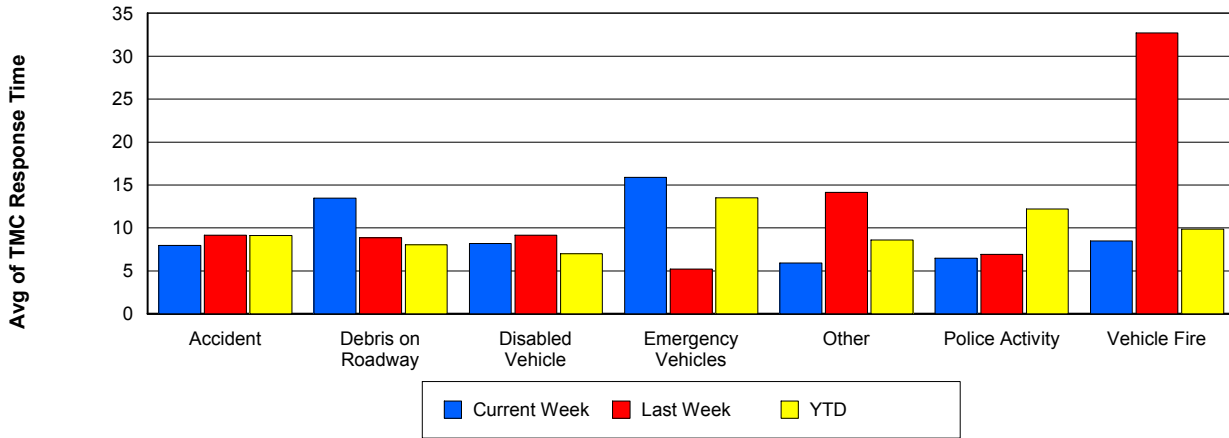
TMC Detection Time



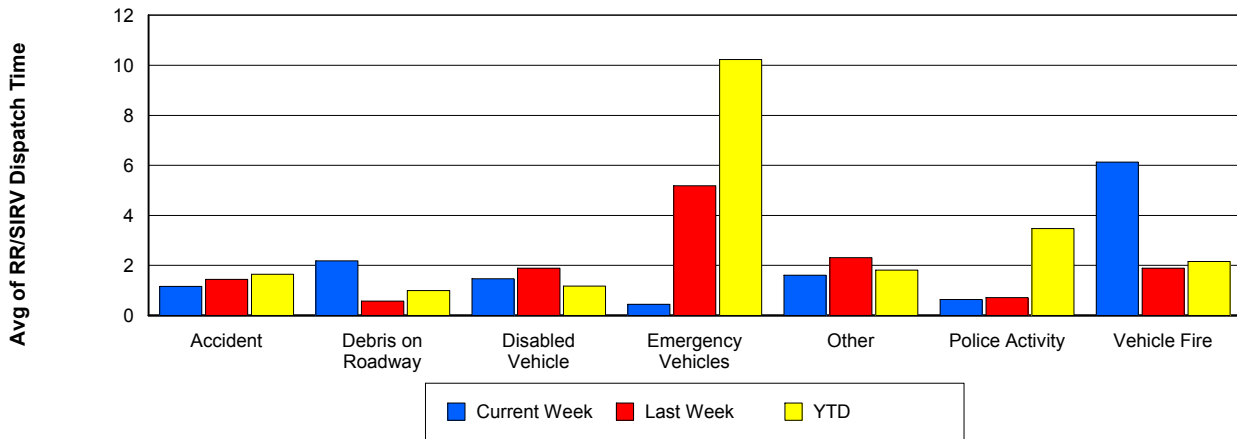
TMC Verification Time



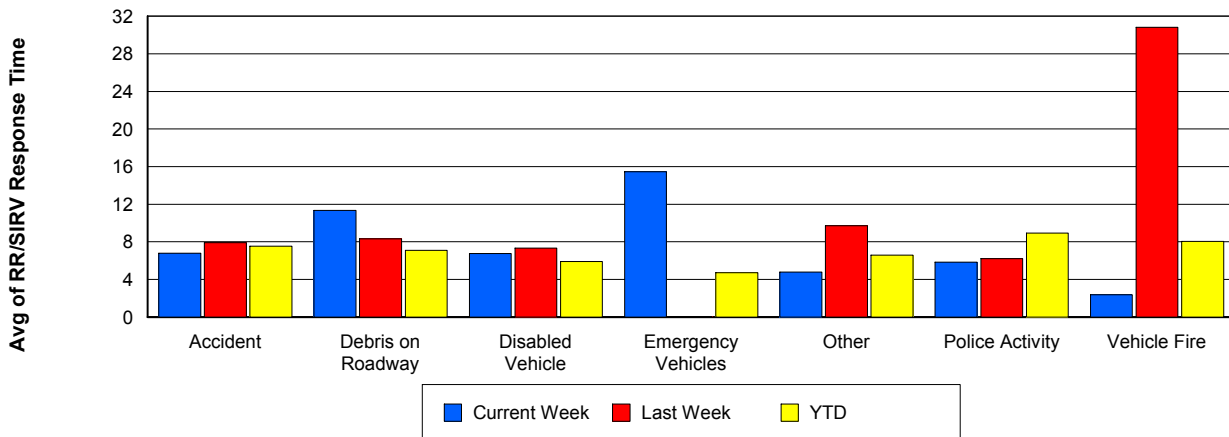
TMC Response Time



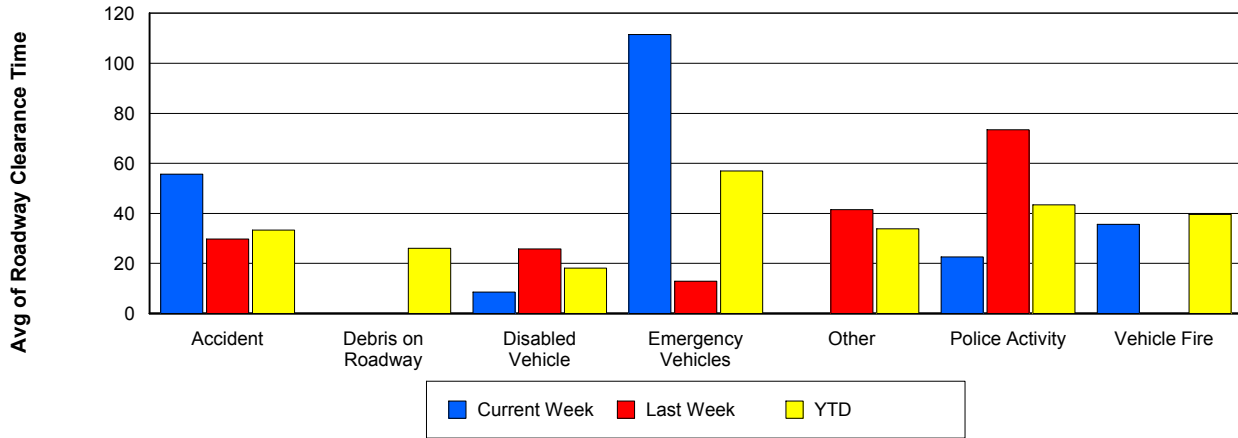
Road Ranger / SIRV Dispatch Time



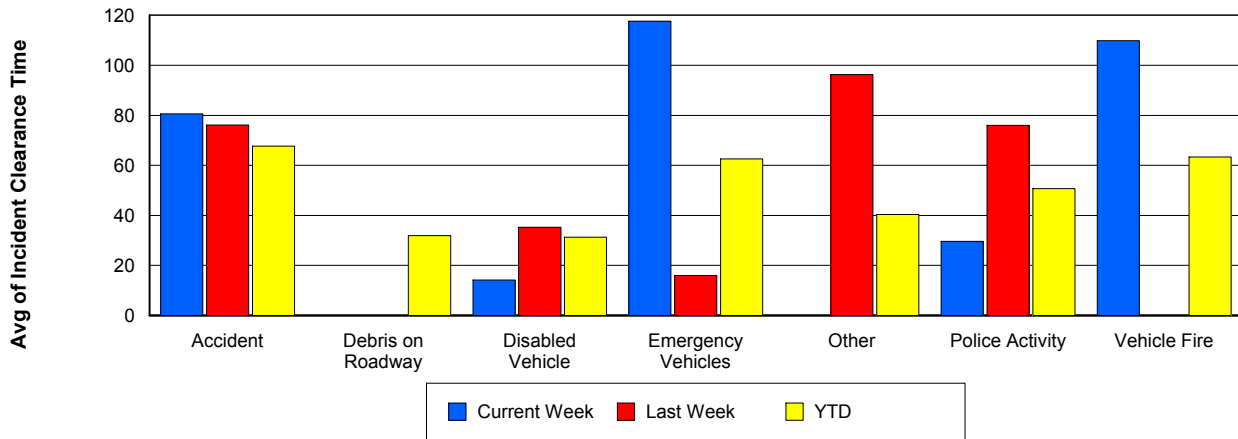
Road Ranger / SIRV Response Time



Roadway Clearance Time (2A)



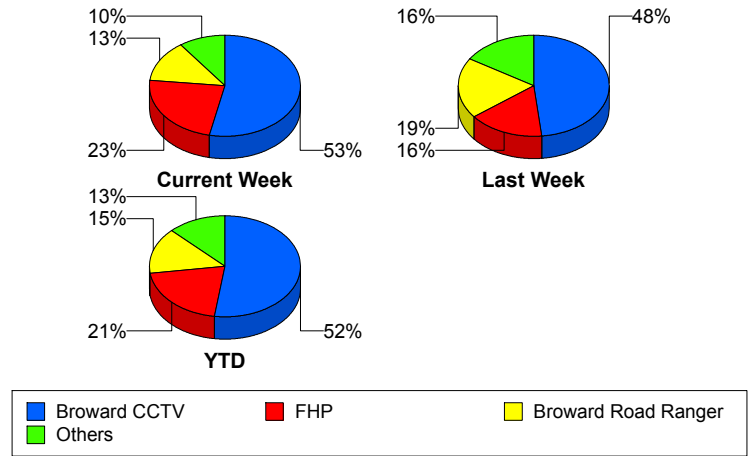
Incident Clearance Time (3B)



Incident Detection Methods

	Current Week	Last Week	YTD
Broward CCTV	16	30	1,273
Broward Road Ranger	4	12	358
Broward TMC	0	0	4
Broward VideoWall	0	2	68
BSO	0	2	54
District 4	0	4	58
District 6	0	0	3
FDOT Maintenance	0	0	7
FHP	7	10	502
Fire	0	0	4
Florida's Turnpike	0	0	6
ITMS	0	0	3
Local Police	0	0	1
Motorist	0	1	15
Other	1	0	2
Palm Beach Road Ran	0	0	9
Road Watcher	0	1	17
SIRV	1	0	13
SmarTraveler (511)	0	0	6
VisioPaD Detection	1	0	38
Total	30	62	2,441

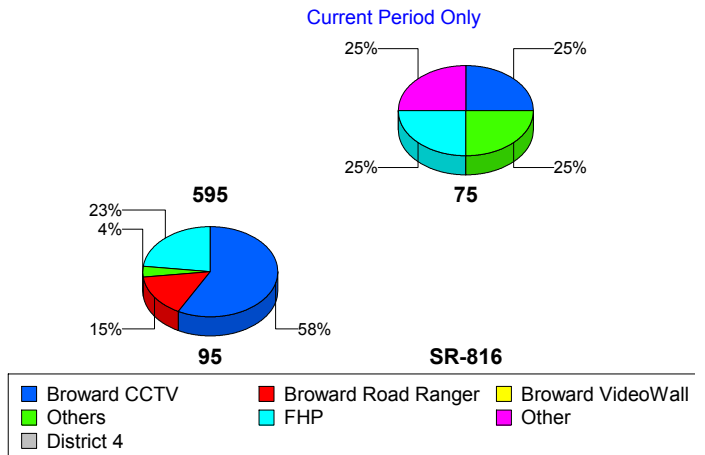
Total Incidents by Detection Method



Incident Detection Methods by Roadway

		Current Week	Last Week	YTD
595	Broward CCTV	0	1	139
	Broward Road Ranger	0	0	39
	Broward VideoWall	0	0	8
	BSO	0	0	9
	District 4	0	1	13
	FDOT Maintenance	0	0	2
	FHP	0	0	57
	Florida's Turnpike	0	0	6
	Motorist	0	0	3
	Road Watcher	0	0	4
	SIRV	0	0	1
	VisioPaD Detection	0	0	6
	Total	0	2	287
	75	Broward CCTV	1	5
Broward Road Ranger		0	2	27
Broward VideoWall		0	0	1
BSO		0	2	37
District 4		0	1	8
FHP		1	3	50
Local Police		0	0	1
Other		1	0	2
Road Watcher		0	0	3
VisioPaD Detection		1	0	6
Total		4	13	229
95	Broward CCTV	15	24	1,040
	Broward Road Ranger	4	7	230
	Broward TMC	0	0	4
	Broward VideoWall	0	2	59
	BSO	0	0	8
	District 4	0	1	35
	District 6	0	0	3

Total Events by Roadway and Detection Method

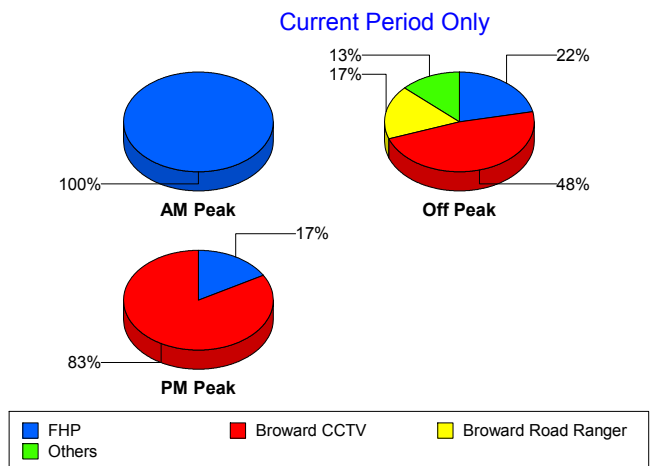


		Current Week	Last Week	YTD
95	FDOT Maintenance	0	0	5
	FHP	6	7	395
	Fire	0	0	4
	ITMS	0	0	3
	Motorist	0	1	12
	Palm Beach Road Ran	0	0	9
	Road Watcher	0	1	9
	SIRV	1	0	12
	SmarTraveler (511)	0	0	6
	VisioPaD Detection	0	0	26
	Total	26	43	1,860
SR-816	Broward Road Ranger	0	3	62
	District 4	0	1	2
	Road Watcher	0	0	1
	Total	0	4	65
Total	30	62	2,441	

Incident Detection Methods by Peak Period

		Current Week	Last Week	YTD
AM Peak	Broward CCTV	0	8	249
	Broward Road Ranger	0	1	113
	Broward TMC	0	0	1
	Broward VideoWall	0	2	25
	BSO	0	0	9
	District 4	0	1	21
	FDOT Maintenance	0	0	1
	FHP	1	2	124
	Florida's Turnpike	0	0	2
	Motorist	0	0	6
	Palm Beach Road Ran	0	0	2
	Road Watcher	0	0	6
	SIRV	0	0	1

Total Events by Peak Period and Detection Method



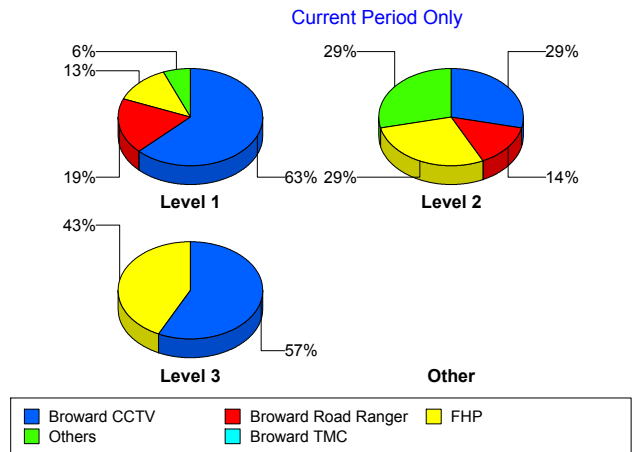
		Current Week	Last Week	YTD
AM Peak	SmarTraveler (511)	0	0	1
	VisioPaD Detection	0	0	2
	Total	1	14	563
Off Peak	Broward CCTV	11	16	683
	Broward Road Ranger	4	5	101
	Broward TMC	0	0	3
	Broward VideoWall	0	0	36
	BSO	0	2	35
	District 4	0	2	20
	District 6	0	0	2
	FDOT Maintenance	0	0	4
	FHP	5	4	240
	Fire	0	0	3
	Florida's Turnpike	0	0	3
	ITMS	0	0	3
	Local Police	0	0	1
	Motorist	0	1	6
	Other	1	0	1
	Palm Beach Road Ran	0	0	4
	Road Watcher	0	1	7
	SIRV	1	0	6
	SmarTraveler (511)	0	0	3
	VisioPaD Detection	1	0	30
Total	23	31	1,191	
PM Peak	Broward CCTV	5	6	341
	Broward Road Ranger	0	6	144
	Broward VideoWall	0	0	7
	BSO	0	0	10
	District 4	0	1	17
	District 6	0	0	1
	FDOT Maintenance	0	0	2
	FHP	1	4	138

		Current Week	Last Week	YTD
PM Peak	Fire	0	0	1
	Florida's Turnpike	0	0	1
	Motorist	0	0	3
	Other	0	0	1
	Palm Beach Road Ran	0	0	3
	Road Watcher	0	0	4
	SIRV	0	0	6
	SmarTraveler (511)	0	0	2
	VisioPaD Detection	0	0	6
	Total	6	17	687
Total	30	62	2,441	

Incident Detection Methods by Severity

		Current Week	Last Week	YTD
Level 1	Broward CCTV	10	23	809
	Broward Road Ranger	3	10	265
	Broward TMC	0	0	3
	Broward VideoWall	0	1	46
	BSO	0	1	12
	District 4	0	3	44
	District 6	0	0	2
	FDOT Maintenance	0	0	5
	FHP	2	5	291
	Fire	0	0	3
	ITMS	0	0	2
	Local Police	0	0	1
	Motorist	0	0	9
	Other	1	0	1
	Palm Beach Road Ran	0	0	6
	Road Watcher	0	0	10
	SIRV	0	0	11
	SmarTraveler (511)	0	0	4

Total Events by Severity and Detection Method



		Current Week	Last Week	YTD
Level 1	VisioPaD Detection	0	0	21
	Total	16	43	1,545
Level 2	Broward CCTV	2	3	331
	Broward Road Ranger	1	2	67
	Broward TMC	0	0	1
	Broward VideoWall	0	1	19
	BSO	0	0	12
	District 4	0	0	7
	FDOT Maintenance	0	0	1
	FHP	2	3	142
	Florida's Turnpike	0	0	4
	ITMS	0	0	1
	Motorist	0	1	6
	Other	0	0	1
	Palm Beach Road Ran	0	0	1
	Road Watcher	0	1	4
	SIRV	1	0	2
	SmarTraveler (511)	0	0	2
	VisioPaD Detection	1	0	14
	Total	7	11	615
	Level 3	Broward CCTV	4	4
Broward Road Ranger		0	0	26
Broward VideoWall		0	0	3
BSO		0	1	30
District 4		0	1	7
District 6		0	0	1
FDOT Maintenance		0	0	1
FHP		3	2	69
Fire		0	0	1
Florida's Turnpike		0	0	2
Palm Beach Road Ran		0	0	2
Road Watcher		0	0	3

		Current Week	Last Week	YTD
Level 3	VisioPaD Detection	0	0	3
	Total	7	8	281
Total		30	62	2,441

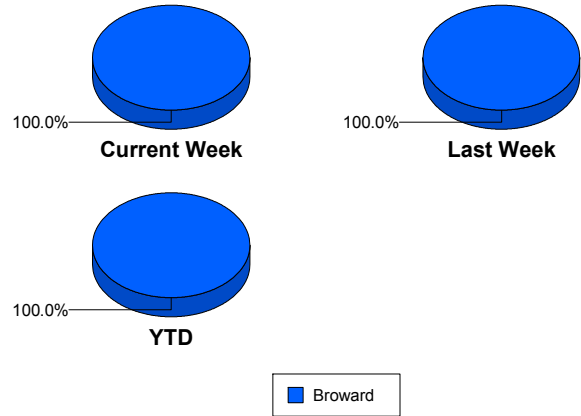
Road Ranger / SIRV Performance Measures

Road Ranger / SIRV Performance By County

Values presented are:
 - Total Events with a RR/SIRV Response
 - Total RR/SIRV Responses,
 - Total Activities Performed

	Current We	Last Week	YTD
Broward	812	983	38,182
	840	1,072	40,953
	874	1,100	42,619

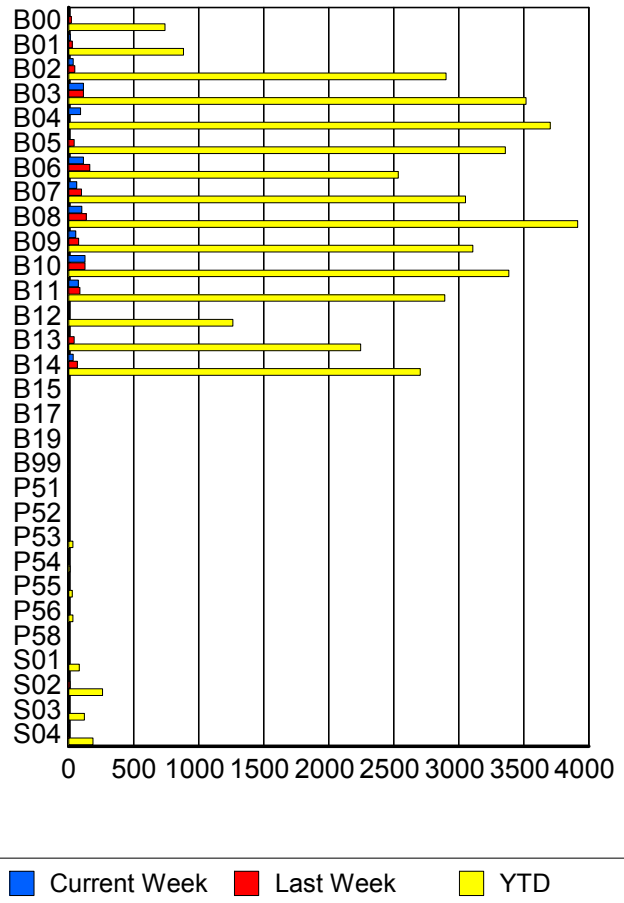
RR/SIRV Responses per County



Road Ranger / SIRV Performance By Truck

	Current We	Last Week	YTD
B00	4	21	725
	4	22	741
	4	23	779
B01	14	27	870
	14	27	883
	15	27	922
B02	35	46	2,874
	36	47	2,904
	36	47	3,011
B03	113	108	3,464
	113	114	3,517
	117	116	3,653
B04	92	0	3,667
	92	0	3,705
	98	0	3,862
B05	1	44	3,303
	1	44	3,359
	1	46	3,477
B06	112	162	2,502
	114	164	2,536
	122	171	2,633
B07	63	98	3,011
	63	98	3,052
	65	100	3,184
B08	102	132	3,865
	102	135	3,915
	107	138	4,061

RR/SIRV Responses per Truck



	Current We	Last Week	YTD
B09	54	75	3,062
	54	76	3,109
	57	78	3,229
B10	127	124	3,328
	127	127	3,386
	131	132	3,518
B11	74	87	2,852
	74	87	2,894
	74	90	2,977
B12	0	0	1,246
	0	0	1,264
	0	0	1,320
B13	2	41	2,219
	2	42	2,247
	2	42	2,326
B14	34	67	2,660
	35	67	2,705
	36	68	2,804
B15	0	0	6
	0	0	6
	0	0	6
B17	0	0	1
	0	0	1
	0	0	1
B19	0	0	1
	0	0	1
	0	0	1
B99	0	0	4
	0	0	4
	0	0	4
P51	0	0	1
	0	0	1
	0	0	1
P52	0	0	4
	0	0	4
	0	0	4
P53	0	1	33
	0	1	34
	0	1	41
P54	2	0	12
	2	0	12
	2	0	12
P55	1	0	29
	1	0	29
	1	0	33

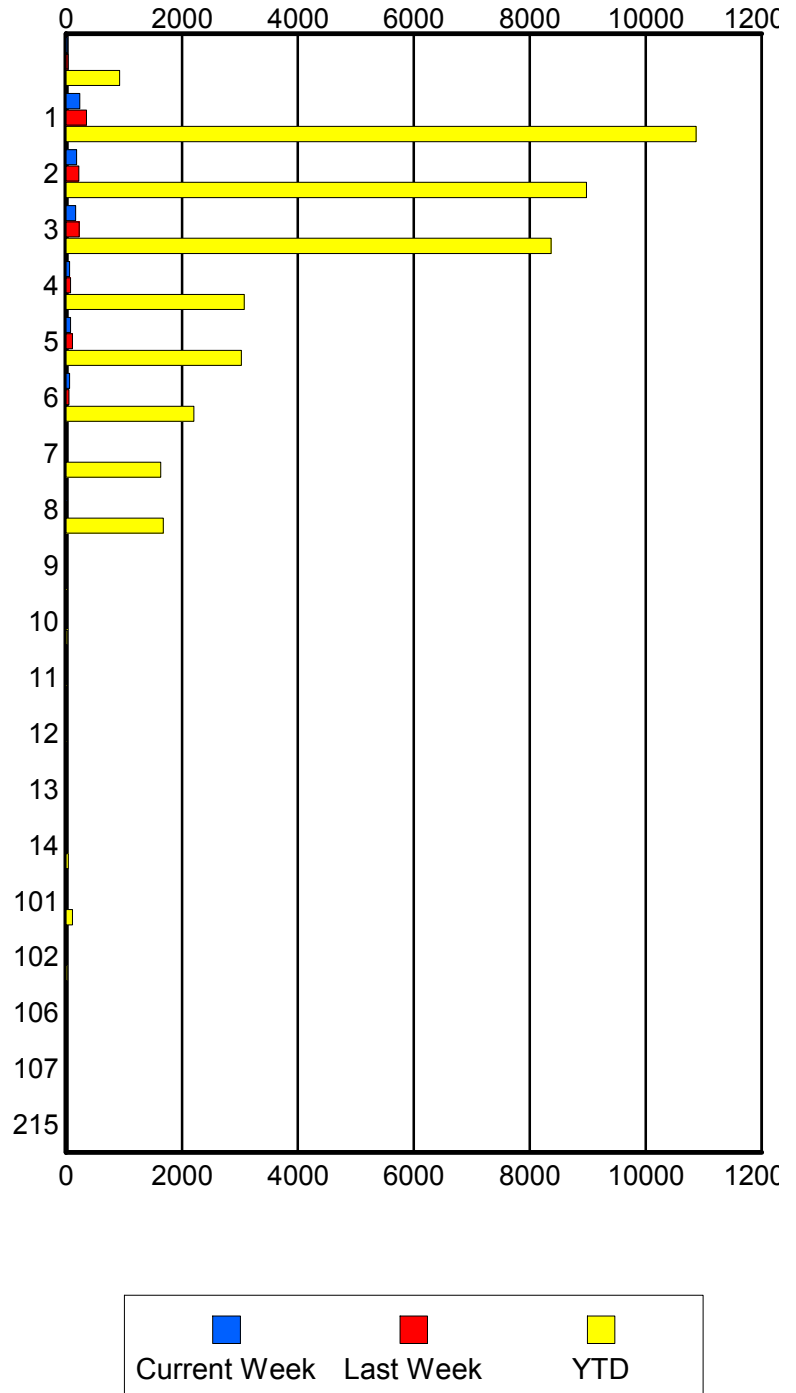
	Current We	Last Week	YTD
P56	1	0	33
	1	0	33
	1	0	34
P58	0	0	1
	0	0	1
	0	0	1
S01	0	1	79
	0	1	82
	0	1	94
S02	0	10	252
	0	11	261
	0	11	290
S03	0	5	120
	0	5	122
	0	5	138
S04	5	4	181
	5	4	187
	5	4	203

Road Ranger / SIRV Performance By Beat

	Current We	Last Week	YTD
	23	34	870
	24	35	927
	24	35	1,004
1	236	321	10,286
	238	351	10,871
	245	365	11,245
2	180	219	8,680
	184	222	8,980
	193	224	9,355
3	165	215	8,134
	166	224	8,367
	173	231	8,689
4	62	75	3,010
	62	76	3,072
	65	77	3,176
5	80	109	2,973
	80	112	3,023
	82	114	3,129
6	59	48	2,160
	60	48	2,203
	65	50	2,313
7	0	0	1,606
	0	0	1,631
	0	0	1,704
8	19	0	1,660
	19	0	1,680
	20	0	1,747
9	0	0	12
	0	0	14
	0	0	14
10	0	0	21
	0	0	22
	0	0	22
11	3	3	6
	3	3	6
	3	3	6
12	0	0	9
	0	0	9
	0	0	9
13	0	0	16
	0	0	16
	0	0	17
14	0	0	38
	0	0	38
	0	0	39

Values presented are:
 - Total Events with a RR/SIRV Response
 - Total RR/SIRV Responses,
 - Total Activities Performed

RR/SIRV Responses per Beat



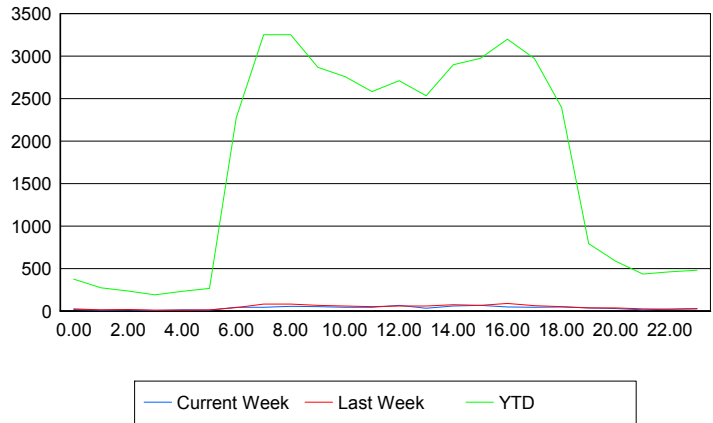
	Current We	Last Week	YTD
101	4	1	108
	4	1	110
	4	1	122
102	0	0	23
	0	0	23
	0	0	25
106	0	0	1
	0	0	1
	0	0	1
107	0	0	1
	0	0	1
	0	0	1
215	0	0	1
	0	0	1
	0	0	1

Road Ranger / SIRV Performance By Time of Day

Values presented are:
 - Total Events with a RR/SIRV Response
 - Total RR/SIRV Responses,
 - Total Activities Performed

	Current We	Last Week	YTD
12AM-1AM	14	23	359
	16	24	375
	17	24	402
1AM-2AM	11	15	268
	11	15	274
	11	15	285
2AM-3AM	10	15	221
	12	16	237
	17	16	249
3AM-4AM	7	9	182
	7	9	190
	7	9	199
4AM-5AM	12	8	211
	13	9	231
	15	9	242
5AM-6AM	9	12	218
	11	15	264
	12	15	280
6AM-7AM	42	36	2,084
	43	40	2,276
	45	40	2,346
7AM-8AM	42	77	3,030
	42	83	3,252
	44	86	3,367

Number of Responses / Hour of the Day



	Current We	Last Week	YTD
8AM-9AM	55	70	2,966
	55	81	3,251
	57	83	3,377
9AM-10AM	49	59	2,669
	50	66	2,868
	50	66	2,961
10AM-11AM	41	56	2,564
	44	60	2,761
	44	64	2,878
11AM-12PM	41	48	2,398
	44	53	2,581
	45	55	2,688
12PM-1PM	63	54	2,553
	67	60	2,712
	71	61	2,809
1PM-2PM	32	50	2,357
	34	57	2,532
	36	59	2,635
2PM-3PM	56	67	2,706
	60	72	2,898
	63	78	3,016
3PM-4PM	65	58	2,772
	66	66	2,973
	68	67	3,113
4PM-5PM	47	81	3,000
	47	89	3,199
	47	90	3,322
5PM-6PM	42	59	2,752
	42	62	2,968
	42	63	3,087
6PM-7PM	47	49	2,267
	47	52	2,396
	48	52	2,471
7PM-8PM	37	35	748
	37	37	793
	39	37	833
8PM-9PM	28	36	545
	29	38	585
	29	41	618
9PM-10PM	14	24	403
	14	24	434
	15	25	459
10PM-11PM	22	19	446
	22	21	463
	24	21	483

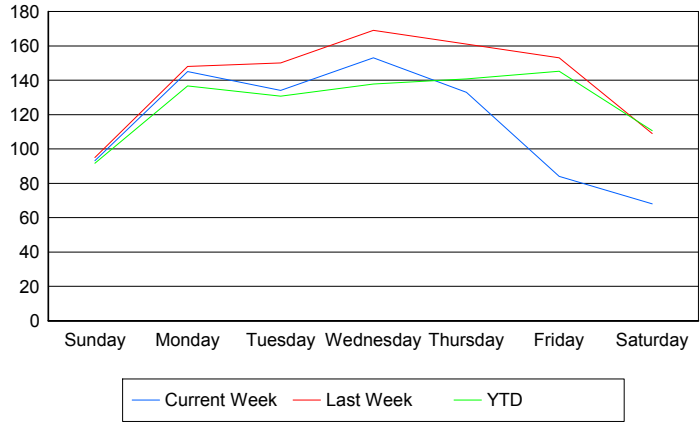
	Current We	Last Week	YTD
11PM-12AM	26	23	463
	27	23	480
	28	24	499

Road Ranger / SIRV Performance By Day of Week

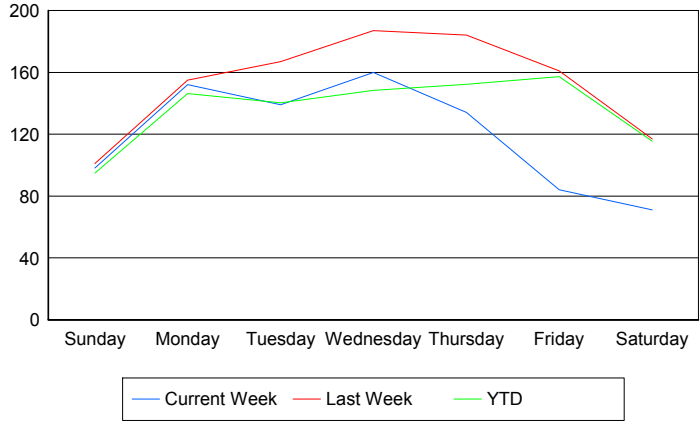
Values presented are:
 - Total Events with a RR/SIRV Response
 - Total RR/SIRV Responses,
 - Total Activities Performed

	Current We	Last Week	YTD
Sunday	95	95	1,479
	100	101	1,528
	103	104	1,594
Monday	145	148	6,845
	152	155	7,320
	156	158	7,543
Tuesday	134	150	6,516
	139	167	6,994
	149	174	7,237
Wednesday	153	169	6,850
	160	187	7,369
	166	194	7,699
Thursday	133	161	7,177
	134	184	7,752
	138	190	8,066
Friday	84	153	7,446
	84	161	8,048
	88	162	8,397
Saturday	68	109	1,894
	71	117	1,979
	74	118	2,083

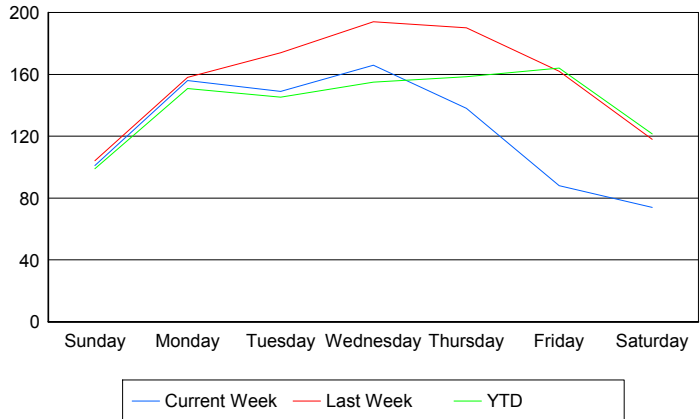
Avg # of events with a RR/SIRV Response per Day of the Week



Avg # of RR/SIRV Responses per Day of the Week



Avg # of RR/SIRV Activities Performed per Day of the Week



Road Ranger / SIRV Responses per Time of Day and Day of Week

