



# Weekly Performance Measures Report Broward County



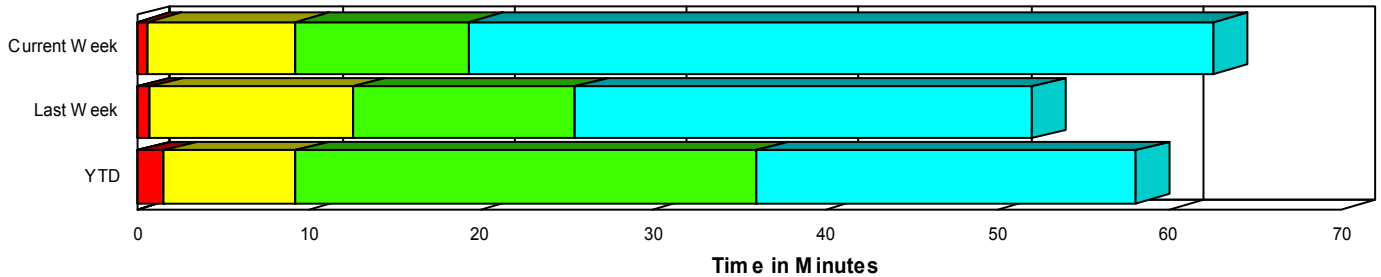
Period From Dec 14, 2008 to Dec 20, 2008

Created on:  
January 05, 2009  
8:28 am

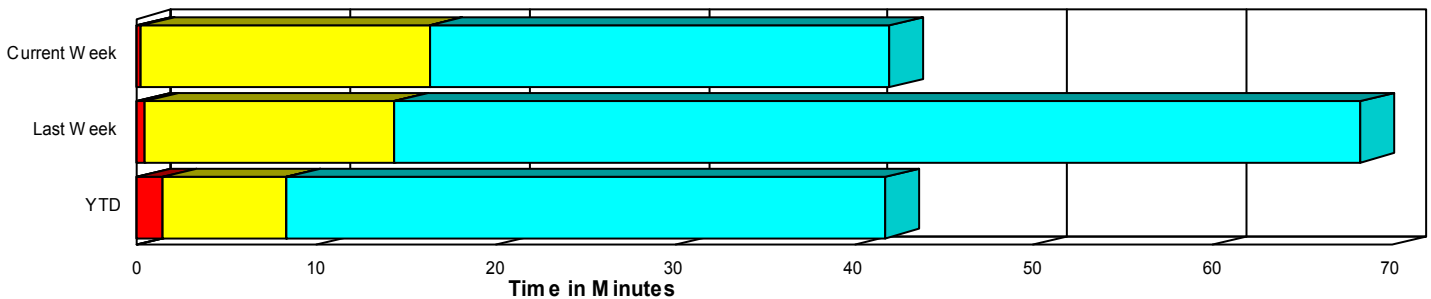
## Performance Measures Summary

	Traffic Events (No Lanes Blocked)			Incidents (Lanes Blocked)		
	<u>This Week</u>	<u>Last Week</u>	<u>YTD</u>	<u>This Week</u>	<u>Last Week</u>	<u>YTD</u>
Number of Events	1,357	1,344	53,177	38	37	2,342
TMC Detection (min.)	0.00	0.00	0.01	0.00	0.00	0.03
TMC Verification (min.)	0.22	0.44	1.43	0.65	0.76	1.51
TMC Response (min.)	16.55	14.93	8.89	9.38	12.80	9.31
RR Dispatch Time (min.)	8.70	7.23	3.12	3.61	3.50	2.46
RR Response Time (min.)	5.77	7.45	6.00	6.10	9.54	6.91
Roadway Clearance (min.)				22.64	28.83	35.24
Event Clearance (min.)	42.25	68.83	42.32	65.87	55.40	56.11
# of Events w/ RR/SIRV	768	774	42,148	31	29	2,141
RR/SIRV Responses	768	774	42,282	31	29	2,391
RR/SIRV Activities	639	602	39,873	57	63	4,169

### Incident Clearance TimeLine



### Traffic Event (Non-Lane Blockage) Time-Line



<span style="color: blue;">■</span> Avg. TMC Detection Time	<span style="color: green;">■</span> Avg. Time from TMC Response to Roadway Clearance*
<span style="color: red;">■</span> Avg. Time from TMC Detection to TMC Verification	<span style="color: cyan;">■</span> Avg. Time from Roadway Clearance to Incident/Event Clearance**
<span style="color: yellow;">■</span> Avg. Time from TMC Verification to TMC Response	

\* Roadway clearance equals all travel lanes open

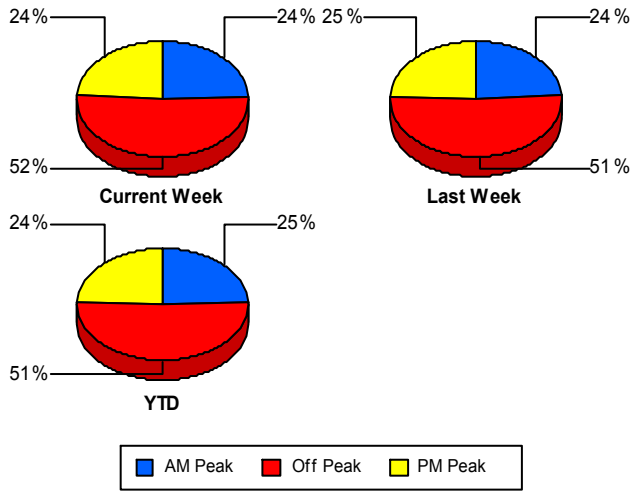
\*\* Incident clearance equals time when last responder has left the scene

## Performance Measures by Peak Period

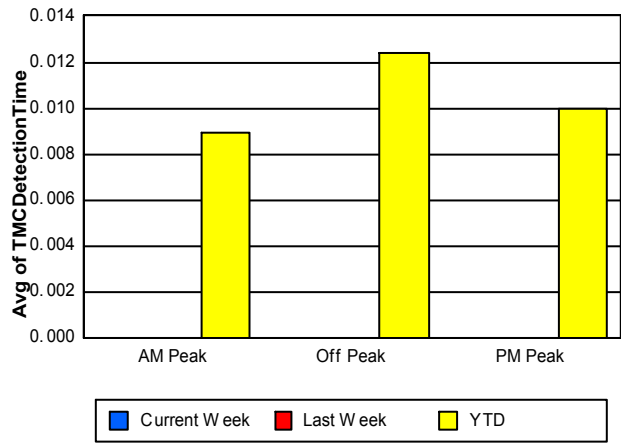
Note: AM peak period is defined as 6am to 10am and PM peak period is defined as 3pm to 7pm.

	AM Peak			Off Peak			PM Peak		
	<u>Current Week</u>	<u>Last Week</u>	<u>YTD</u>	<u>Current Week</u>	<u>Last Week</u>	<u>YTD</u>	<u>Current Week</u>	<u>Last Week</u>	<u>YTD</u>
Number of Events	340	332	13,741	722	706	28,343	333	343	13,435
Number of Incidents	6	13	564	15	12	1,207	17	12	571
TMC Detection (min.)	0.00	0.00	0.01	0.00	0.00	0.01	0.00	0.00	0.01
TMC Verification (min.)	0.32	0.77	0.83	0.21	0.22	1.74	0.18	0.60	1.41
TMC Response (min.)	13.37	7.22	8.02	20.97	23.90	10.31	13.37	12.07	7.26
RR Dispatch Time (min.)	6.09	0.80	2.53	10.58	13.51	3.99	8.27	4.45	1.93
RR Response Time (min.)	5.98	6.52	5.63	7.27	8.89	6.68	3.81	7.01	5.32
Event Clearance (min.)	32.80	88.84	36.83	50.62	63.84	48.10	36.47	58.27	38.13
Roadway Clearance (min.)	17.39	24.10	31.27	26.71	42.86	41.90	20.90	19.94	25.06
Incident Clearance (min.)	74.24	60.16	53.24	64.01	66.38	63.28	64.57	39.26	43.77
# of Events w/ RR/SIRV	250	240	11,747	317	331	21,374	232	232	11,168
RR/SIRV Responses	250	240	11,851	317	331	21,582	232	232	11,240
RR/SIRV Activities	218	222	11,791	257	245	21,083	221	198	11,168

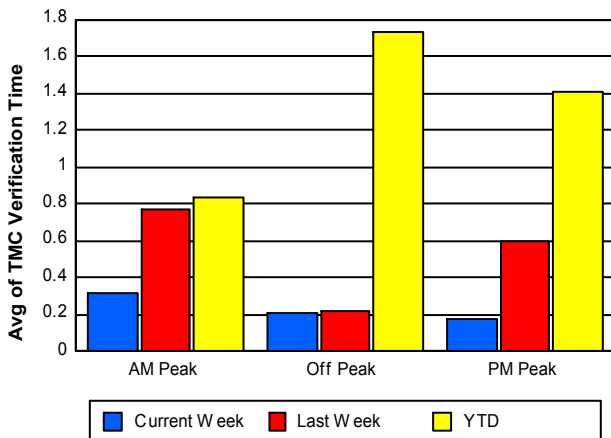
### Number of Events / Peak Period



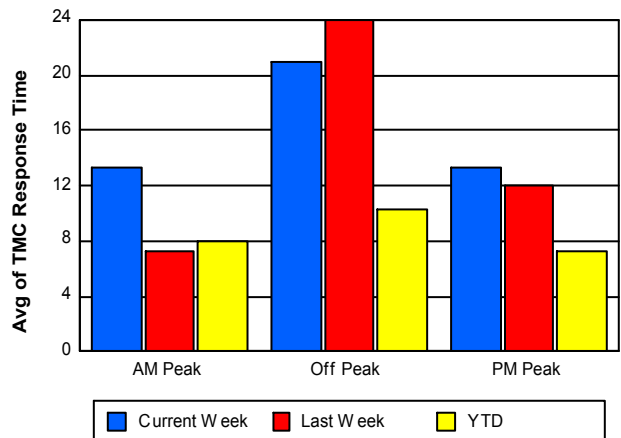
### TMC Detection Time



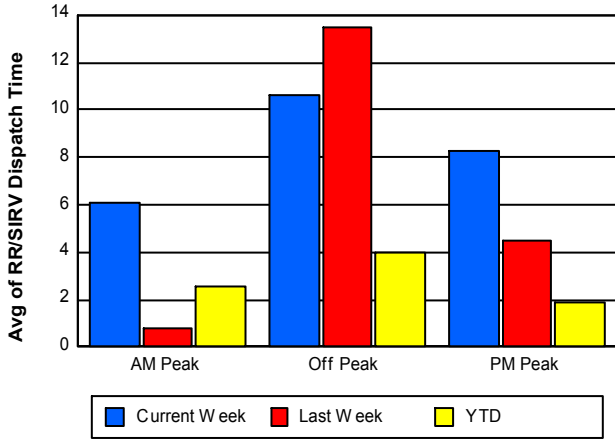
### TMC Verification Time



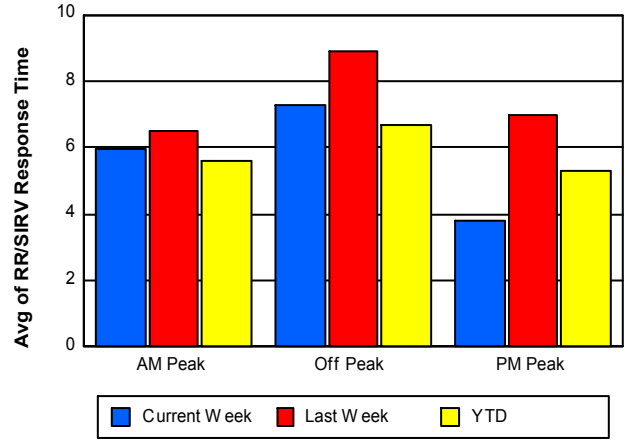
### TMC Response Time



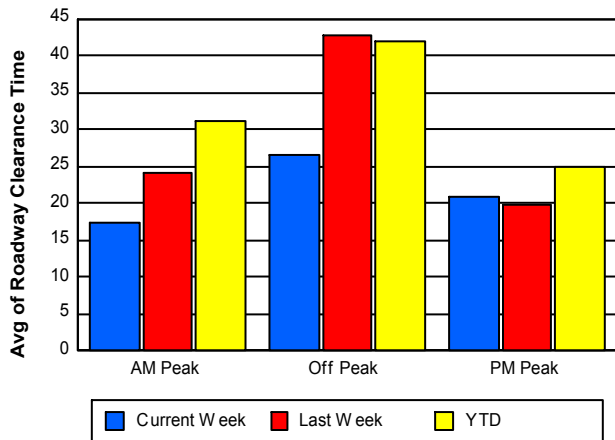
## Road Ranger / SIRV Dispatch Time



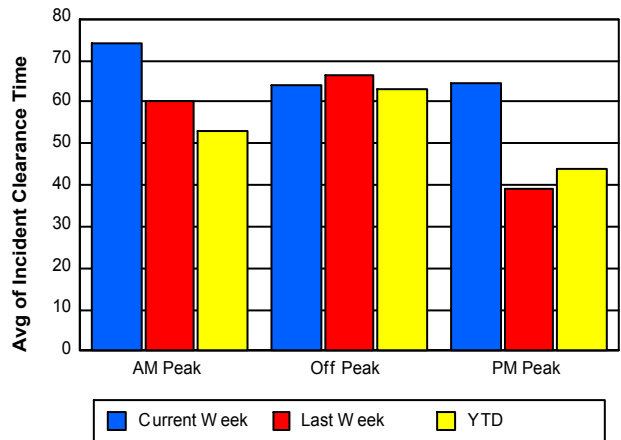
## Road Ranger / SIRV Response Time



## Roadway Clearance Time (2A)



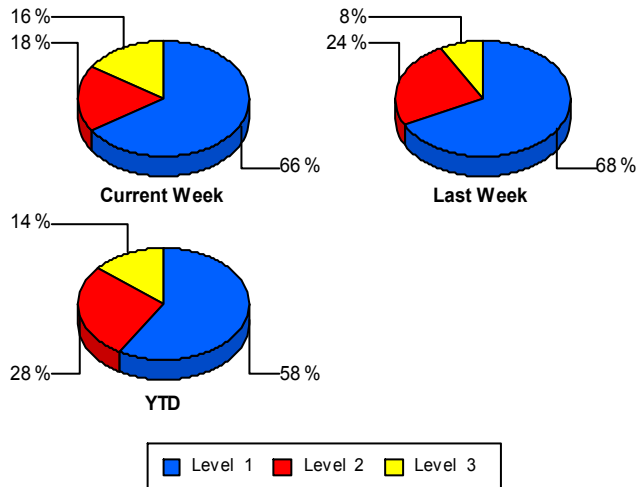
## Incident Clearance Time (3B)



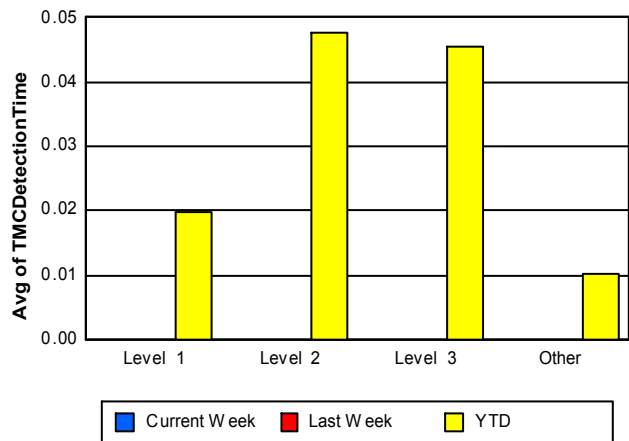
## Performance Measures by Severity

	Level 1			Level 2			Level 3			Other		
	<u>This Week</u>	<u>Last Week</u>	<u>YTD</u>	<u>This Week</u>	<u>Last Week</u>	<u>YTD</u>	<u>This Week</u>	<u>Last Week</u>	<u>YTD</u>	<u>This Week</u>	<u>Last Week</u>	<u>YTD</u>
Number of Events	25	25	1,364	7	9	649	6	3	329	1,357	1,344	53,177
Number of Incidents	25	25	1,364	7	9	649	6	3	329	0	0	0
TMC Detection (min.)	0.00	0.00	0.02	0.00	0.00	0.05	0.00	0.00	0.05	0.00	0.00	0.01
TMC Verification (min.)	0.61	1.02	0.91	1.27	0.12	2.26	0.13	0.47	2.51	0.22	0.44	1.43
TMC Response (min.)	10.16	8.51	7.83	9.42	24.72	10.99	3.87	10.87	12.06	16.55	14.93	8.89
RR Dispatch Time (min.)	3.32	2.03	2.22	4.85	6.68	2.48	3.81	7.08	3.44	8.70	7.23	3.12
RR Resp. Time (min.)	6.85	6.40	5.65	4.57	18.05	8.50	2.93	9.55	8.94	5.77	7.45	6.00
Event Clearance (min.)	59.07	51.87	41.68	101.70	67.77	66.79	52.42	47.62	94.81	42.25	68.83	42.32
Roadway Clear. (min.)	12.40	17.72	14.84	50.08	57.83	50.29	33.27	34.44	90.10			
Incident Clearance (min.)	59.07	51.87	41.68	101.70	67.77	66.79	52.42	47.62	94.81			
# of Events w/ RR/SIRV	21	20	1,247	4	7	591	6	2	303	768	774	42,148
RR/SIRV Responses	21	20	1,320	4	7	665	6	2	406	768	774	42,282
RR/SIRV Activities	33	44	2,065	13	18	1,279	11	1	825	639	602	39,873

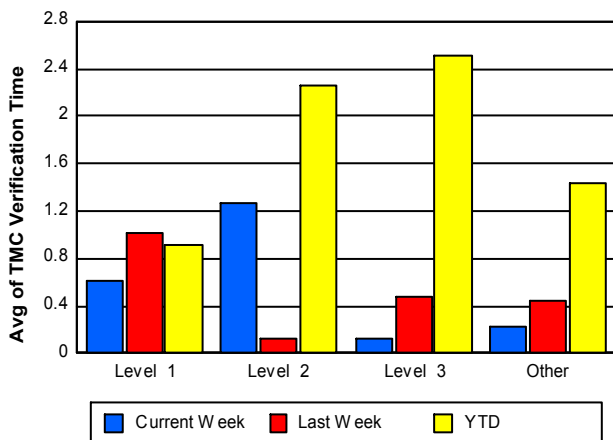
### Number of Events / Severity



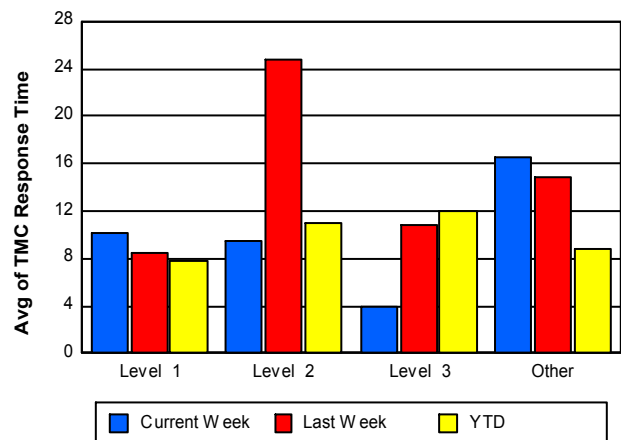
### TMC Detection Time



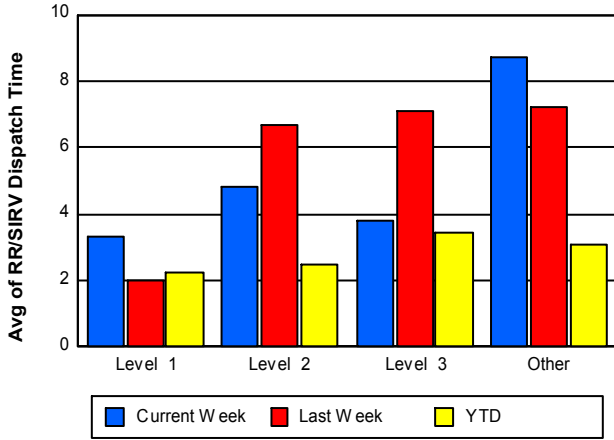
### TMC Verification Time



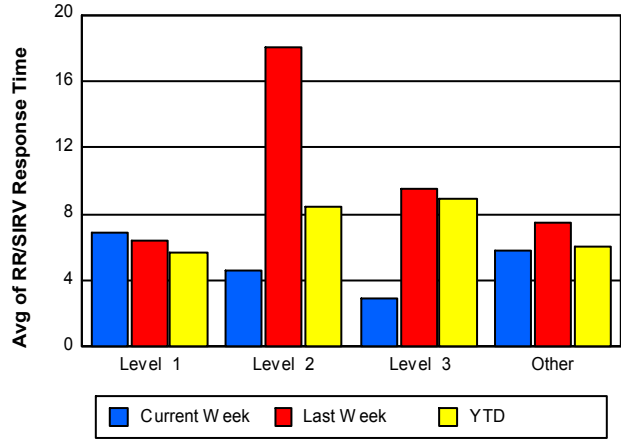
### TMC Response Time



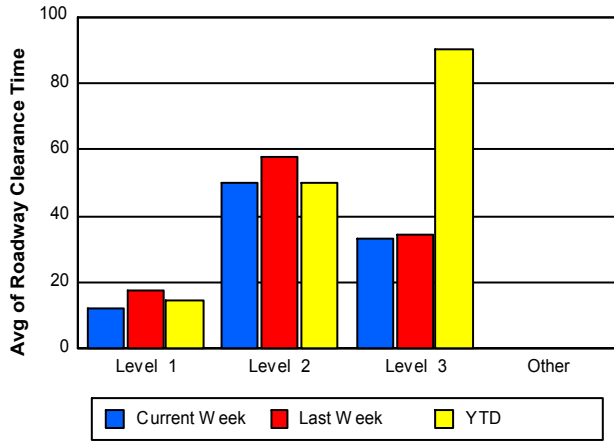
### Road Ranger / SIRV Dispatch Time



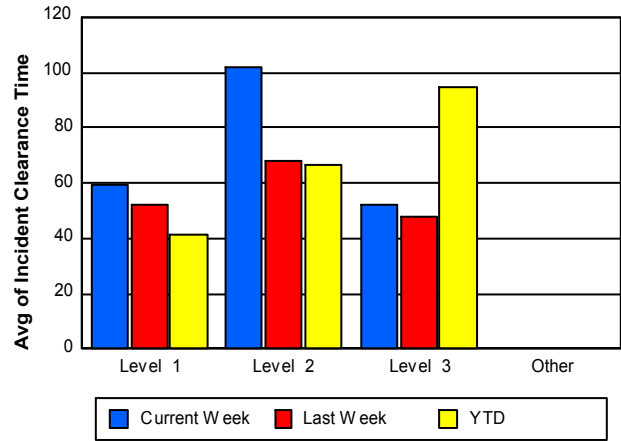
### Road Ranger / SIRV Response Time



### Roadway Clearance Time (2A)



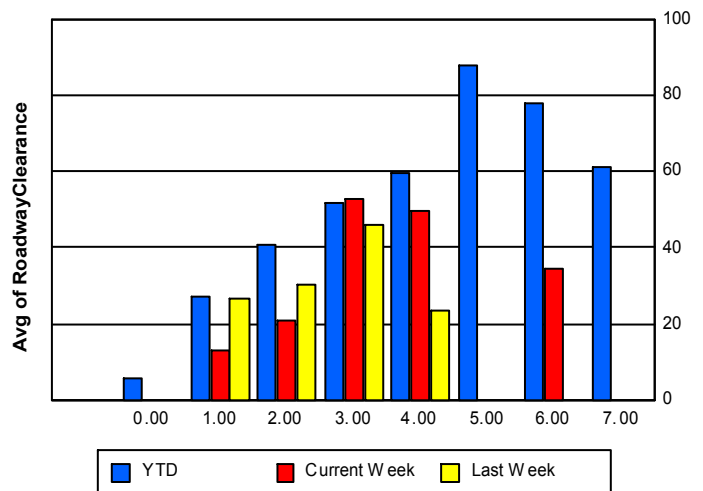
### Incident Clearance Time (3B)



### Roadway Clearance by Maximum Number of Lanes Blocked

	Current Week	Last Week	YTD
	0.00	0.00	
0			5.87
1	13.06	26.35	27.02
2	20.73	29.96	40.64
3	52.54	45.72	51.75
4	49.70	23.18	59.74
5	0.00	0.00	87.81
6	34.40	0.00	77.85

### Roadway Clearance Time(2A)



	Current Week	Last Week	YTD
7	0.00	0.00	60.95

## Performance Measures by Roadway

**595**

	<u>Current Week</u>	<u>Last Week</u>	<u>YTD</u>
Number of Events	195	188	8,369
Number of Incidents	9	5	410
TMC Detection (min.)	0.00	0.00	0.01
TMC Verification (min.)	0.38	1.00	1.65
TMC Response (min.)	15.90	8.22	9.27
RR Dispatch Time (min.)	8.48	2.64	3.30
RR Resp. Time (min.)	5.29	5.76	5.90
Event Clearance (min.)	36.47	45.37	41.38
Roadway Clear. (min.)	21.03	23.41	37.37
Incident Clearance (min.)	52.57	45.57	52.80
# of Events w/ RR/SIRV	125	123	6,872
RR/SIRV Responses	125	123	6,935
RR/SIRV Activities	110	109	7,022

**75**

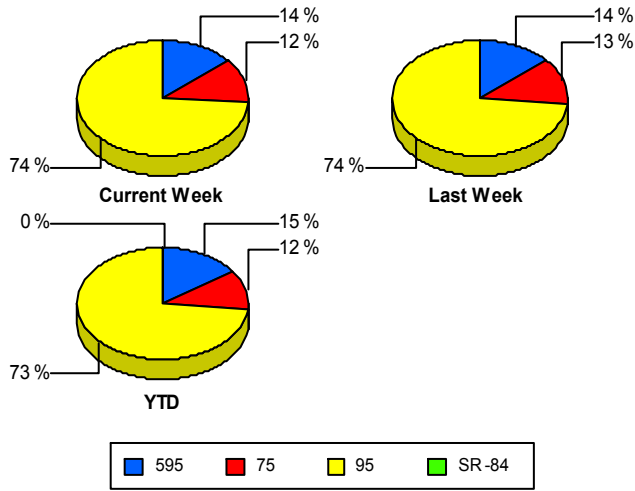
	<u>Current Week</u>	<u>Last Week</u>	<u>YTD</u>
Number of Events	168	176	6,501
Number of Incidents	3	2	145
TMC Detection (min.)	0.00	0.00	0.02
TMC Verification (min.)	0.19	0.54	4.66
TMC Response (min.)	6.42	6.59	5.97
RR Dispatch Time (min.)	0.75	1.16	2.12
RR Resp. Time (min.)	5.75	5.48	5.05
Event Clearance (min.)	67.93	63.61	47.26
Roadway Clear. (min.)	18.84	20.28	57.66
Incident Clearance (min.)	119.11	30.81	68.28
# of Events w/ RR/SIRV	123	118	6,078
RR/SIRV Responses	123	118	6,111
RR/SIRV Activities	113	105	6,497

**95**

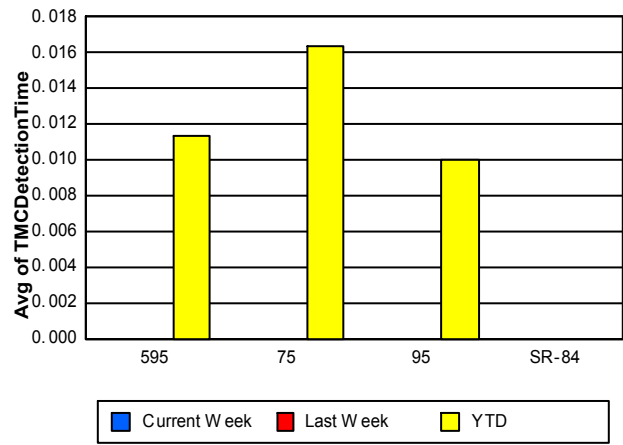
	<u>Current Week</u>	<u>Last Week</u>	<u>YTD</u>
Number of Events	1,032	1,017	40,648
Number of Incidents	26	30	1,787
TMC Detection (min.)	0.00	0.00	0.01
TMC Verification (min.)	0.21	0.33	0.88
TMC Response (min.)	18.64	18.51	9.48
RR Dispatch Time (min.)	10.24	9.32	3.22
RR Resp. Time (min.)	5.91	8.50	6.31
Event Clearance (min.)	40.04	73.58	42.51
Roadway Clear. (min.)	23.63	30.31	32.93
Incident Clearance (min.)	64.34	58.67	55.88
# of Events w/ RR/SIRV	551	562	31,339
RR/SIRV Responses	551	562	31,627
RR/SIRV Activities	473	451	30,523

	<u>YTD</u>
Number of Events	<b>1</b>
Number of Incidents	<b>0</b>
TMC Detection (min.)	<b>0.00</b>
TMC Verification (min.)	<b>0.47</b>
TMC Response (min.)	
RR Dispatch Time (min.)	
RR Resp. Time (min.)	
Event Clearance (min.)	<b>5.22</b>
Roadway Clear. (min.)	
Incident Clearance (min.)	
# of Events w/ RR/SIRV	<b>0</b>
RR/SIRV Responses	<b>0</b>
RR/SIRV Activities	<b>0</b>

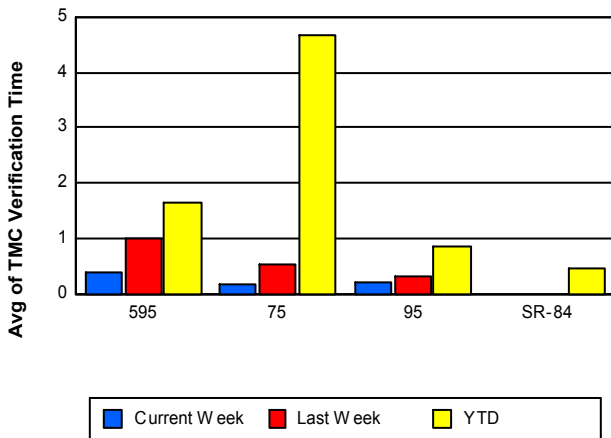
### Number of Events / Roadway



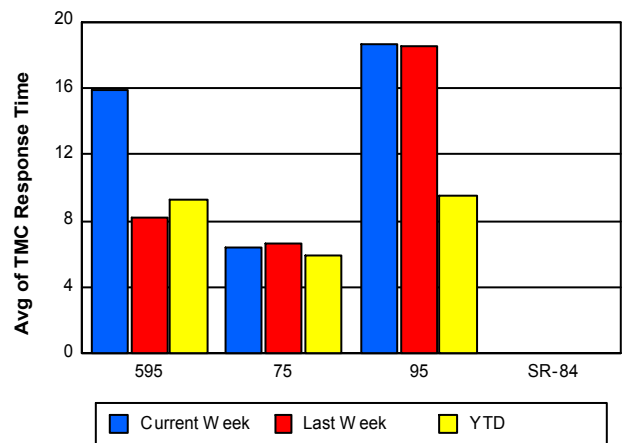
### TMC Detection Time



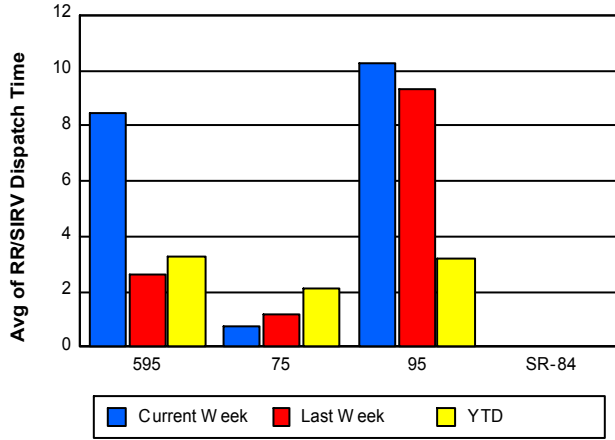
### TMC Verification Time



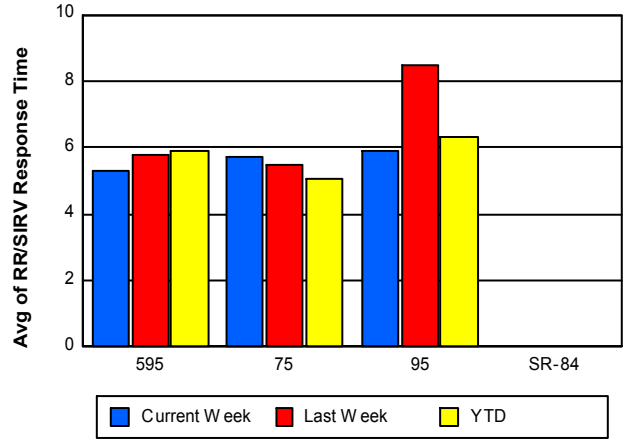
### TMC Response Time



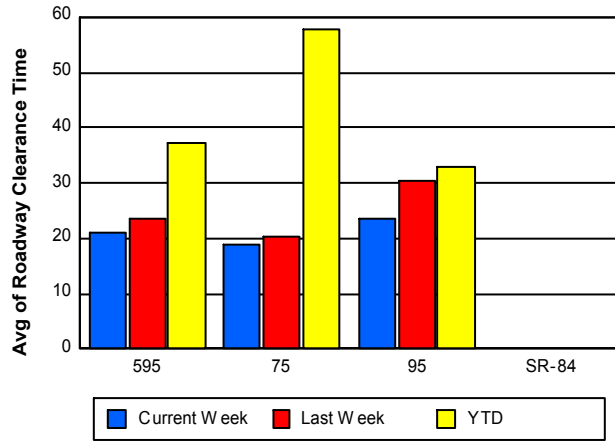
## Road Ranger / SIRV Dispatch Time



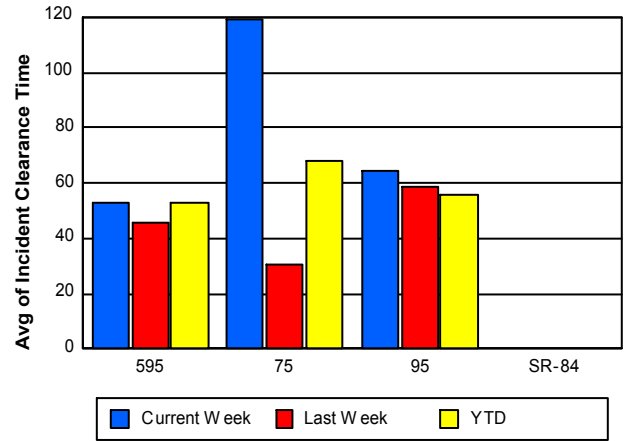
## Road Ranger / SIRV Response Time



## Roadway Clearance Time (2A)



## Incident Clearance Time (3B)



## Performance Measures by Event Type

### Abandoned Vehicle

	<u>Current Week</u>	<u>Last Week</u>	<u>YTD</u>
Number of Events	131	169	7,025
Number of Incidents	0	0	13
TMC Detection (min.)	0.00	0.00	0.02
TMC Verification (min.)	0.12	0.28	0.43
TMC Response (min.)	84.59	53.00	18.19
RR Dispatch Time (min.)	73.79	50.19	14.57
RR Response Time (min.)	10.80	11.97	6.06
Event Clearance (min.)	246.22	398.55	198.25
Roadway Clearance (min.)			39.46
Incident Clearance (min.)			236.85
# of Events w/ RR/SIRV	73	84	5,419
RR/SIRV Assists	73	84	5,426
RR/SIRV Activities	77	85	5,681

### Accident

	<u>Current Week</u>	<u>Last Week</u>	<u>YTD</u>
Number of Events	78	69	3,715
Number of Incidents	32	29	1,701
TMC Detection (min.)	0.00	0.00	0.03
TMC Verification (min.)	0.88	0.50	1.74
TMC Response (min.)	8.40	10.19	8.26
RR Dispatch Time (min.)	2.13	2.25	1.76
RR Response Time (min.)	6.47	8.12	6.56
Event Clearance (min.)	53.58	50.32	46.10
Roadway Clearance (min.)	25.04	30.54	35.75
Incident Clearance (min.)	75.13	61.03	59.95
# of Events w/ RR/SIRV	65	51	3,401
RR/SIRV Assists	65	51	3,628
RR/SIRV Activities	90	80	5,230

### Congestion

	<u>Last Week</u>	<u>YTD</u>
Number of Events	1	26
Number of Incidents	0	1
TMC Detection (min.)	0.00	0.00
TMC Verification (min.)	0.00	0.00
TMC Response (min.)		
RR Dispatch Time (min.)		
RR Response Time (min.)		
Event Clearance (min.)	3.77	74.01
Roadway Clearance (min.)		8.22
Incident Clearance (min.)		98.70
# of Events w/ RR/SIRV	0	0
RR/SIRV Assists	0	0
RR/SIRV Activities	0	0

## Debris on Roadway

	<u>Current Week</u>	<u>Last Week</u>	<u>YTD</u>
Number of Events	22	31	1,798
Number of Incidents	0	0	31
TMC Detection (min.)	0.00	0.00	0.03
TMC Verification (min.)	1.88	3.89	5.29
TMC Response (min.)	2.35	6.64	7.78
RR Dispatch Time (min.)	0.46	0.91	1.07
RR Response Time (min.)	1.91	5.71	6.74
Event Clearance (min.)	5.30	11.63	12.14
Roadway Clearance (min.)			43.85
Incident Clearance (min.)			51.47
# of Events w/ RR/SIRV	21	29	1,733
RR/SIRV Assists	21	29	1,760
RR/SIRV Activities	21	30	1,847

## Disabled Vehicle

	<u>Current Week</u>	<u>Last Week</u>	<u>YTD</u>
Number of Events	667	633	30,754
Number of Incidents	4	6	370
TMC Detection (min.)	0.00	0.00	0.01
TMC Verification (min.)	0.27	0.63	1.87
TMC Response (min.)	6.27	7.33	7.16
RR Dispatch Time (min.)	1.51	1.05	1.43
RR Response Time (min.)	4.75	6.46	5.87
Event Clearance (min.)	26.95	29.06	20.93
Roadway Clearance (min.)	11.64	15.43	24.08
Incident Clearance (min.)	18.83	27.35	35.92
# of Events w/ RR/SIRV	441	444	28,502
RR/SIRV Assists	441	444	28,598
RR/SIRV Activities	460	438	29,768

## Emergency Vehicles

	<u>Current Week</u>	<u>YTD</u>
Number of Events	2	65
Number of Incidents	1	59
TMC Detection (min.)	0.00	0.06
TMC Verification (min.)	0.00	0.33
TMC Response (min.)	4.75	7.23
RR Dispatch Time (min.)	4.68	2.47
RR Response Time (min.)	0.07	4.84
Event Clearance (min.)	7.47	37.95
Roadway Clearance (min.)	5.75	37.92
Incident Clearance (min.)	13.03	39.15
# of Events w/ RR/SIRV	1	50
RR/SIRV Assists	1	52
RR/SIRV Activities	1	81

## Other

	<u>Current Week</u>	<u>Last Week</u>	<u>YTD</u>
Number of Events	471	456	11,593
Number of Incidents	0	1	27
TMC Detection (min.)	0.00	0.00	0.00
TMC Verification (min.)	0.01	0.02	0.22
TMC Response (min.)	19.27	30.44	11.68
RR Dispatch Time (min.)	3.10	4.60	2.00
RR Response Time (min.)	9.83	10.89	8.72
Event Clearance (min.)	10.04	9.93	11.38
Roadway Clearance (min.)		52.28	21.46
Incident Clearance (min.)		54.18	29.90
# of Events w/ RR/SIRV	189	187	4,786
RR/SIRV Assists	189	187	4,791
RR/SIRV Activities	38	27	957

## Pedestrian

	<u>YTD</u>
Number of Events	41
Number of Incidents	0
TMC Detection (min.)	0.01
TMC Verification (min.)	1.34
TMC Response (min.)	2.56
RR Dispatch Time (min.)	0.37
RR Response Time (min.)	2.29
Event Clearance (min.)	10.68
Roadway Clearance (min.)	
Incident Clearance (min.)	
# of Events w/ RR/SIRV	37
RR/SIRV Assists	37
RR/SIRV Activities	39

## Police Activity

	<u>Current Week</u>	<u>Last Week</u>	<u>YTD</u>
Number of Events	13	14	213
Number of Incidents	0	1	94
TMC Detection (min.)	0.00	0.00	0.01
TMC Verification (min.)	0.00	0.00	1.10
TMC Response (min.)		0.00	10.63
RR Dispatch Time (min.)		2.47	3.24
RR Response Time (min.)		0.00	7.21
Event Clearance (min.)	28.59	24.57	38.96
Roadway Clearance (min.)		36.33	67.22
Incident Clearance (min.)		61.63	56.06
# of Events w/ RR/SIRV	0	3	110
RR/SIRV Assists	0	3	130
RR/SIRV Activities	0	1	170

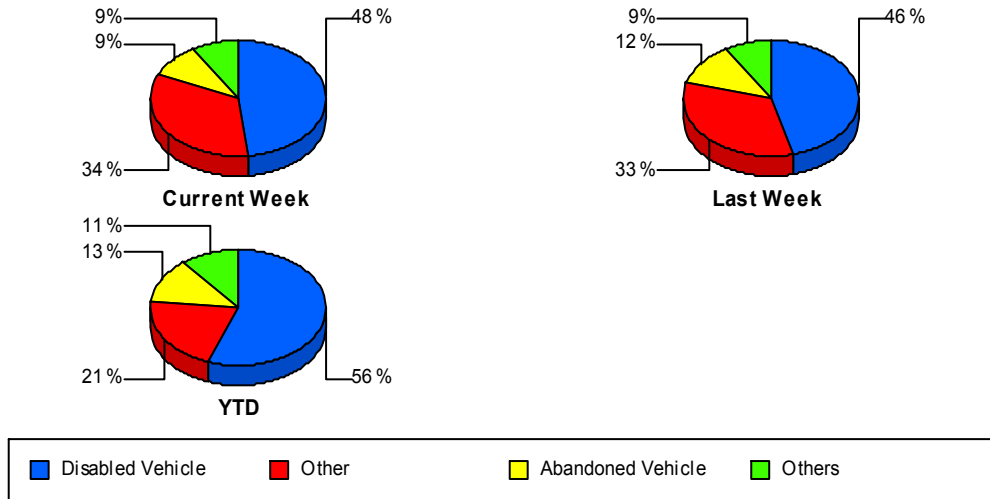
## Vehicle Fire

	<u>Current Week</u>	<u>YTD</u>
Number of Events	3	61
Number of Incidents	1	45
TMC Detection (min.)	0.00	0.00
TMC Verification (min.)	0.00	0.70
TMC Response (min.)	0.73	9.22
RR Dispatch Time (min.)	0.08	2.42
RR Response Time (min.)	0.66	6.80
Event Clearance (min.)	49.59	59.88
Roadway Clearance (min.)	6.58	38.97
Incident Clearance (min.)	10.65	65.66
# of Events w/ RR/SIRV	2	51
RR/SIRV Assists	2	51
RR/SIRV Activities	2	89

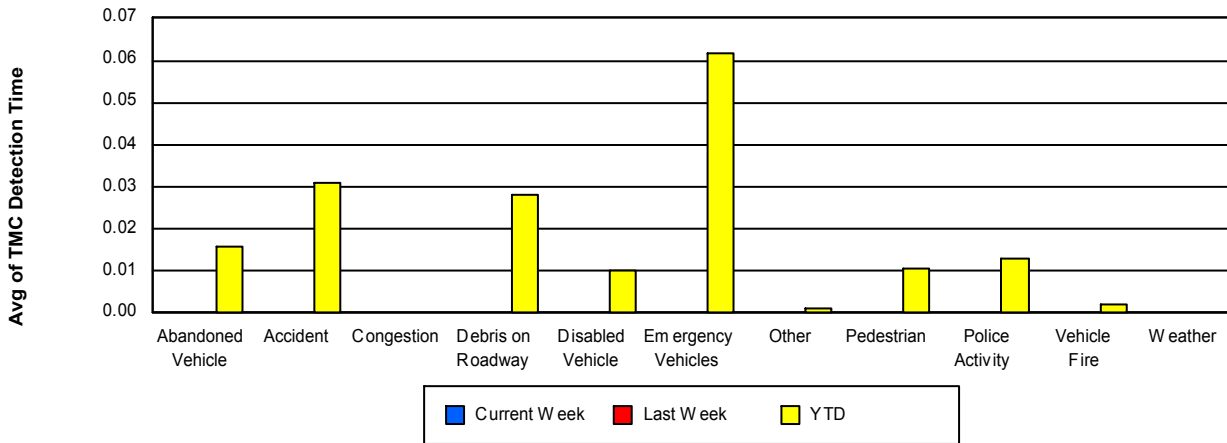
## Weather

	<u>Current Week</u>	<u>Last Week</u>	<u>YTD</u>
Number of Events	1	3	19
Number of Incidents	0	0	0
TMC Detection (min.)	0.00	0.00	0.00
TMC Verification (min.)	0.00	0.00	0.00
TMC Response (min.)			0.10
RR Dispatch Time (min.)	1.47	2.45	1.53
RR Response Time (min.)			0.00
Event Clearance (min.)	7.37	1.87	11.64
Roadway Clearance (min.)			
Incident Clearance (min.)			
# of Events w/ RR/SIRV	1	1	9
RR/SIRV Assists	1	1	9
RR/SIRV Activities	0	0	1

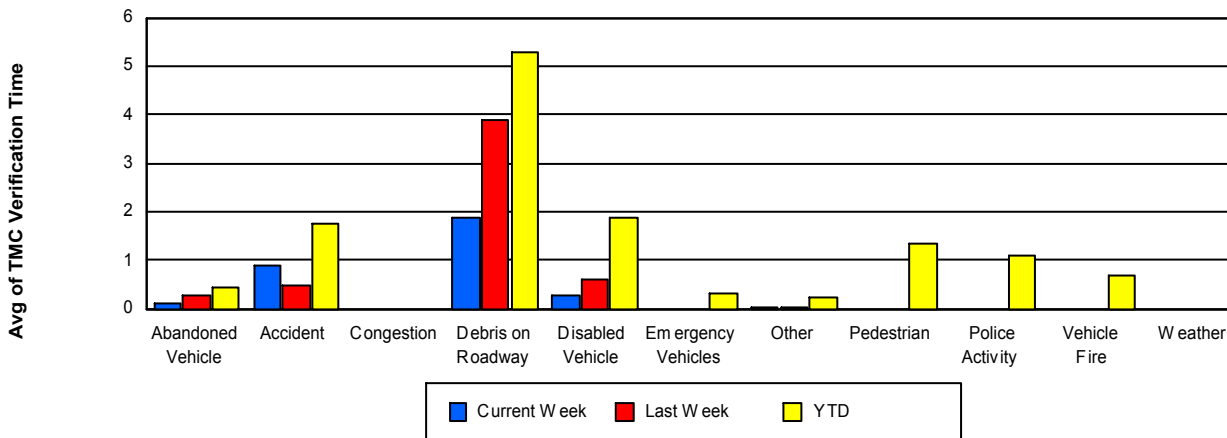
## Number of Events / Event Type



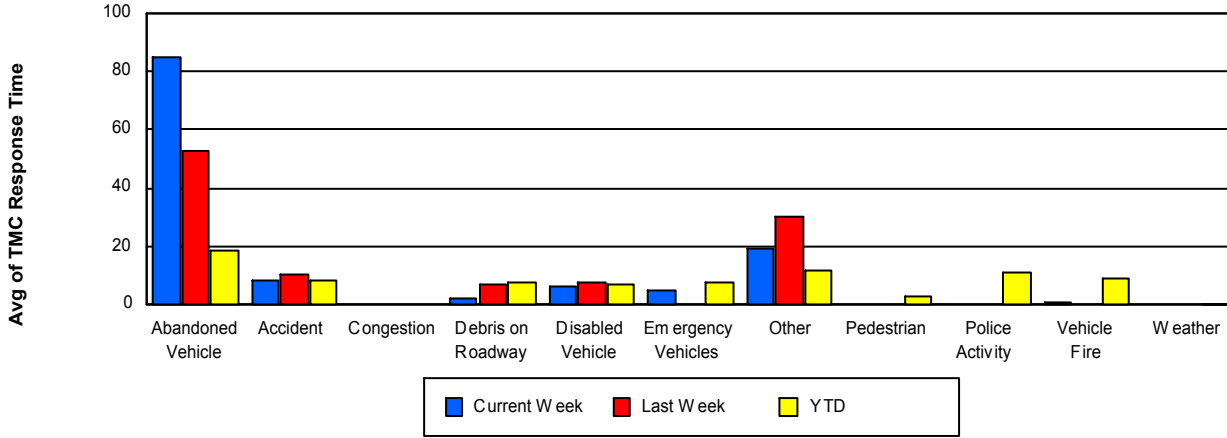
## TMC Detection Time



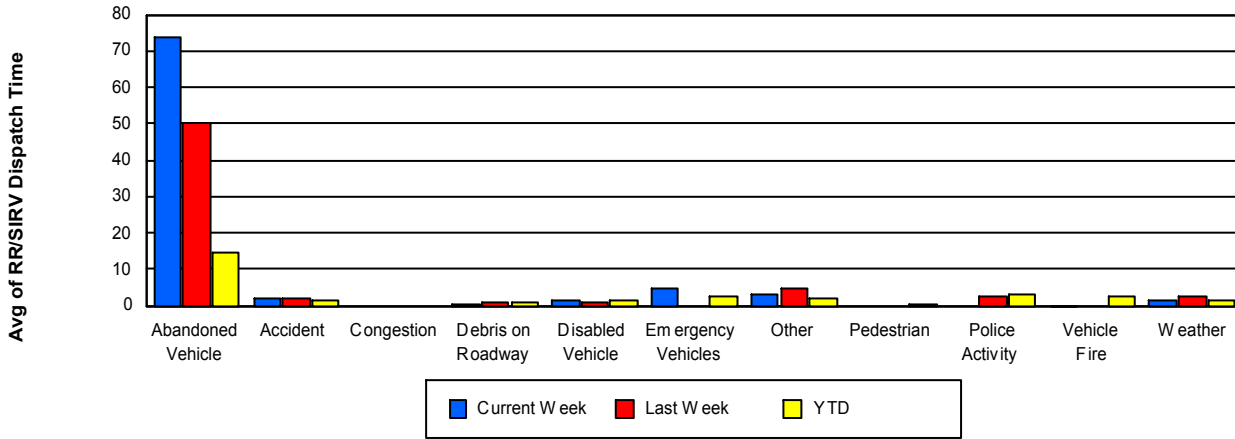
## TMC Verification Time



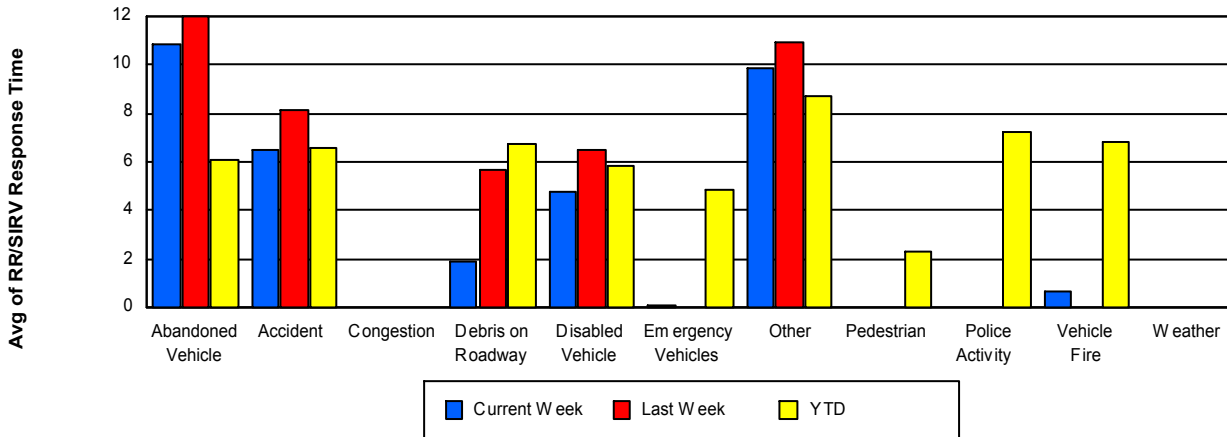
## TMC Response Time



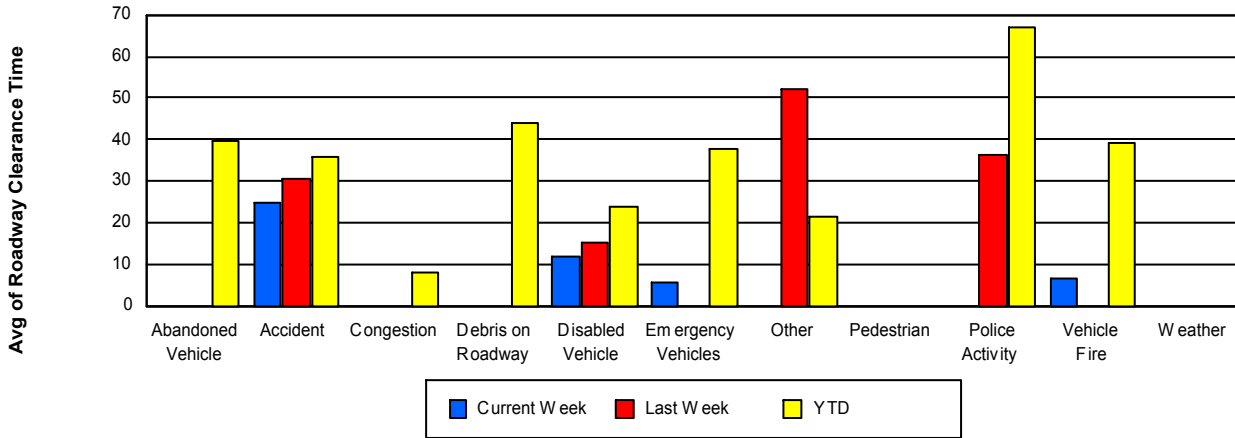
## Road Ranger / SIRV Dispatch Time



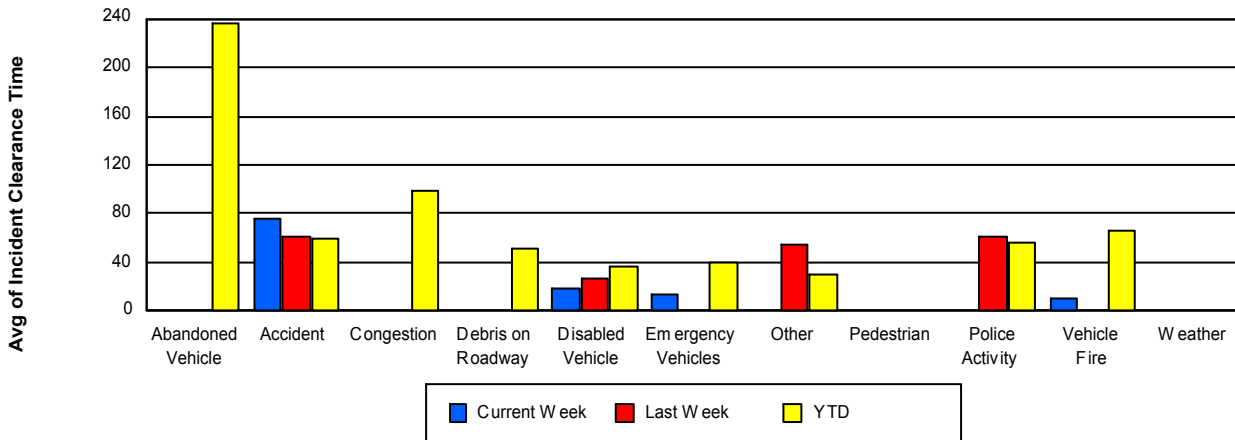
## Road Ranger / SIRV Response Time



## Roadway Clearance Time (2A)



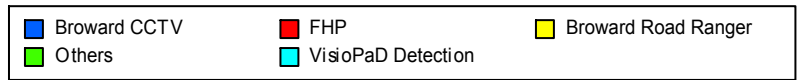
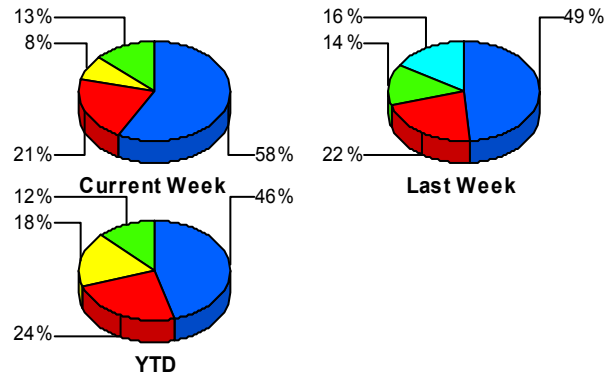
## Incident Clearance Time (3B)



## Incident Detection Methods

	Current Week	Last Week	YTD
Broward CCTV	22	18	1,067
Broward Road Ranger	3	2	421
Broward VideoWall	0	0	59
BSO	1	0	22
District 4	0	2	60
District 6	1	0	7
FDOT Maintenance	0	0	2
FHP	8	8	563
Fire	0	0	6
Florida's Turnpike	0	0	9
ITMS	0	0	2
Motorist	0	0	18
Other	0	0	1
Palm Beach Road Rang	0	0	8
PSAP	0	0	3
Road Watcher	2	1	17
SIRV	0	0	8
SmarTraveler (511)	0	0	11
VisioPaD Detection	1	6	58
<b>Total</b>	<b>38</b>	<b>37</b>	<b>2,342</b>

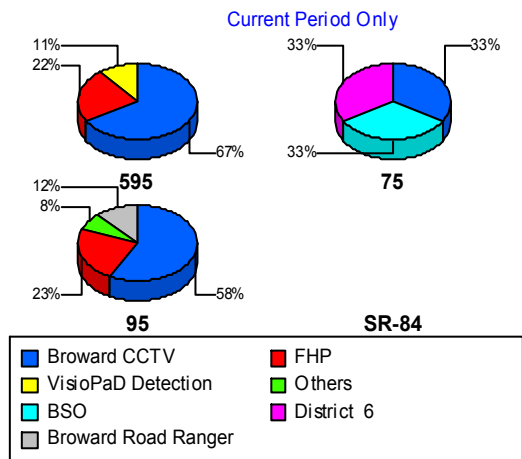
### Total Incidents by Detection Method



## Incident Detection Methods by Roadway

		Current Week	Last Week	YTD
595	Broward CCTV	6	5	159
	Broward Road Ranger	0	0	81
	Broward VideoWall	0	0	10
	BSO	0	0	10
	District 4	0	0	8
	FHP	2	0	116
	Florida's Turnpike	0	0	9
	Motorist	0	0	3
	Road Watcher	0	0	5
	SIRV	0	0	2
	SmarTraveler (511)	0	0	1
	VisioPaD Detection	1	0	6
	<b>Total</b>	<b>9</b>	<b>5</b>	<b>410</b>
75	Broward CCTV	1	0	6
	Broward Road Ranger	0	0	60
	BSO	1	0	7
	District 4	0	0	7
	District 6	1	0	3
	FHP	0	2	59
	Road Watcher	0	0	1
	SIRV	0	0	1
	SmarTraveler (511)	0	0	1
	<b>Total</b>	<b>3</b>	<b>2</b>	<b>145</b>
95	Broward CCTV	15	13	902
	Broward Road Ranger	3	2	280
	Broward VideoWall	0	0	49
	BSO	0	0	5
	District 4	0	2	45
	District 6	0	0	4
	FDOT Maintenance	0	0	2
	FHP	6	6	388

Total Events by Roadway and Detection Method

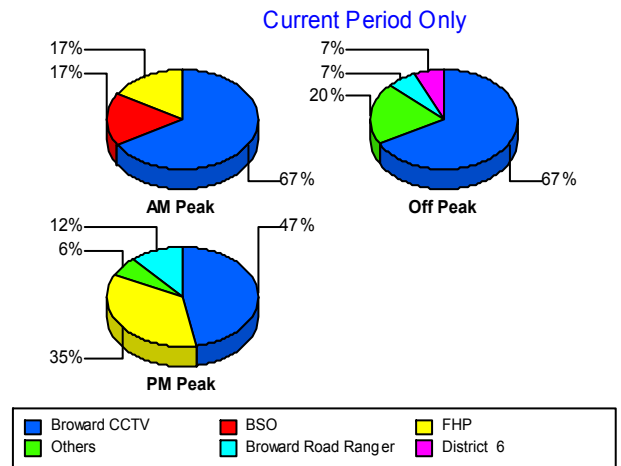


		Current Week	Last Week	YTD
95	Fire	0	0	6
	ITMS	0	0	2
	Motorist	0	0	15
	Other	0	0	1
	Palm Beach Road Rang	0	0	8
	PSAP	0	0	3
	Road Watcher	2	1	11
	SIRV	0	0	5
	SmarTraveler (511)	0	0	9
	VisioPaD Detection	0	6	52
	Total	26	30	1,787
Total	38	37	2,342	

### Incident Detection Methods by Peak Period

		Current Week	Last Week	YTD	
AM Peak	Broward CCTV	4	7	256	
	Broward Road Ranger	0	0	105	
	Broward VideoWall	0	0	22	
	BSO	1	0	7	
	District 4	0	2	16	
	FHP	1	3	127	
	Fire	0	0	1	
	Florida's Turnpike	0	0	3	
	Motorist	0	0	3	
	Palm Beach Road Rang	0	0	5	
	PSAP	0	0	1	
	Road Watcher	0	0	7	
	SIRV	0	0	4	
	SmarTraveler (511)	0	0	1	
	VisioPaD Detection	0	1	6	
	Total	6	13	564	
	Off Peak	Broward CCTV	10	7	561

Total Events by Peak Period and Detection Method



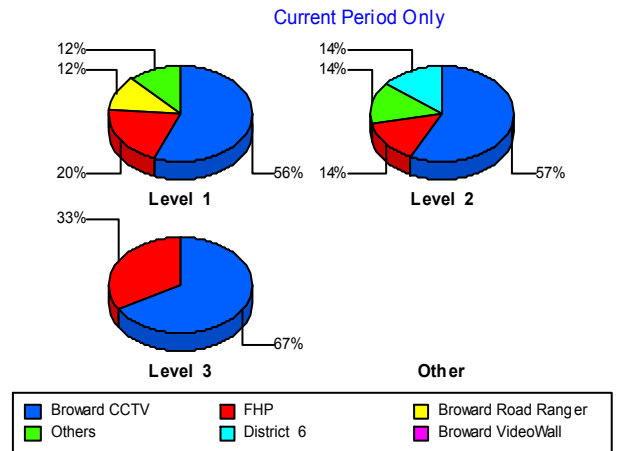
		Current Week	Last Week	YTD
Off Peak	Broward Road Ranger	1	0	193
	Broward VideoWall	0	0	25
	BSO	0	0	8
	District 4	0	0	30
	District 6	1	0	4
	FDOT Maintenance	0	0	2
	FHP	1	1	308
	Fire	0	0	4
	Florida's Turnpike	0	0	5
	ITMS	0	0	1
	Motorist	0	0	7
	Other	0	0	1
	Palm Beach Road Rang	0	0	3
	PSAP	0	0	2
	Road Watcher	1	0	4
	SIRV	0	0	2
	SmarTraveler (511)	0	0	1
	VisioPaD Detection	1	4	46
	Total	15	12	1,207
	PM Peak	Broward CCTV	8	4
Broward Road Ranger		2	2	123
Broward VideoWall		0	0	12
BSO		0	0	7
District 4		0	0	14
District 6		0	0	3
FHP		6	4	128
Fire		0	0	1
Florida's Turnpike		0	0	1
ITMS		0	0	1
Motorist		0	0	8
Road Watcher		1	1	6
SIRV		0	0	2

		Current Week	Last Week	YTD
PM Peak	SmarTraveler (511)	0	0	9
	VisioPaD Detection	0	1	6
	Total	17	12	571
Total		38	37	2,342

### Incident Detection Methods by Severity

		Current Week	Last Week	YTD	
Level 1	Broward CCTV	14	13	655	
	Broward Road Ranger	3	2	274	
	Broward VideoWall	0	0	37	
	BSO	1	0	5	
	District 4	0	2	35	
	District 6	0	0	5	
	FHP	5	4	271	
	Fire	0	0	3	
	Florida's Turnpike	0	0	2	
	ITMS	0	0	1	
	Motorist	0	0	9	
	Palm Beach Road Rang	0	0	6	
	PSAP	0	0	2	
	Road Watcher	1	1	14	
	SIRV	0	0	6	
	SmarTraveler (511)	0	0	8	
	VisioPaD Detection	1	3	31	
	Total	25	25	1,364	
	Level 2	Broward CCTV	4	4	297
		Broward Road Ranger	0	0	101
Broward VideoWall		0	0	14	
BSO		0	0	9	
District 4		0	0	12	
District 6		1	0	2	
FDOT Maintenance		0	0	1	

Total Events by Severity and Detection Method



		Current Week	Last Week	YTD
Level 2	FHP	1	3	174
	Fire	0	0	1
	ITMS	0	0	1
	Motorist	0	0	8
	Palm Beach Road Rang	0	0	1
	PSAP	0	0	1
	Road Watcher	1	0	2
	SIRV	0	0	1
	SmarTraveler (511)	0	0	2
	VisioPaD Detection	0	2	22
	Total	7	9	649
Level 3	Broward CCTV	4	1	115
	Broward Road Ranger	0	0	46
	Broward VideoWall	0	0	8
	BSO	0	0	8
	District 4	0	0	13
	FDOT Maintenance	0	0	1
	FHP	2	1	118
	Fire	0	0	2
	Florida's Turnpike	0	0	7
	Motorist	0	0	1
	Other	0	0	1
	Palm Beach Road Rang	0	0	1
	Road Watcher	0	0	1
	SIRV	0	0	1
	SmarTraveler (511)	0	0	1
	VisioPaD Detection	0	1	5
	Total	6	3	329
Total	38	37	2,342	

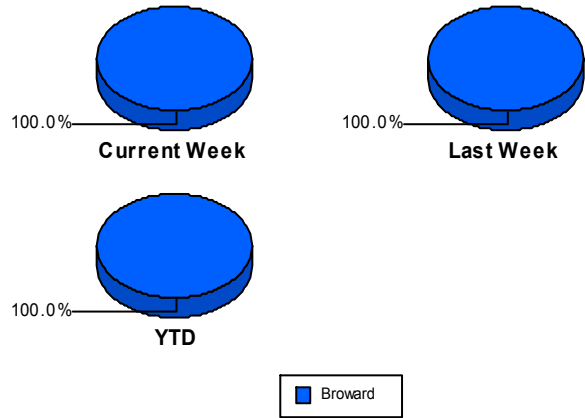
## Road Ranger / SIRV Performance Measures

### Road Ranger / SIRV Performance By County

Values presented are:  
 - Total Events with a RR/SIRV Response  
 - Total RR/SIRV Responses,  
 - Total Activities Performed

	Current We	Last Week	YTD
Broward	<b>661</b>	<b>615</b>	<b>41,195</b>
	<b>711</b>	<b>664</b>	<b>44,109</b>
	<b>735</b>	<b>698</b>	<b>46,452</b>

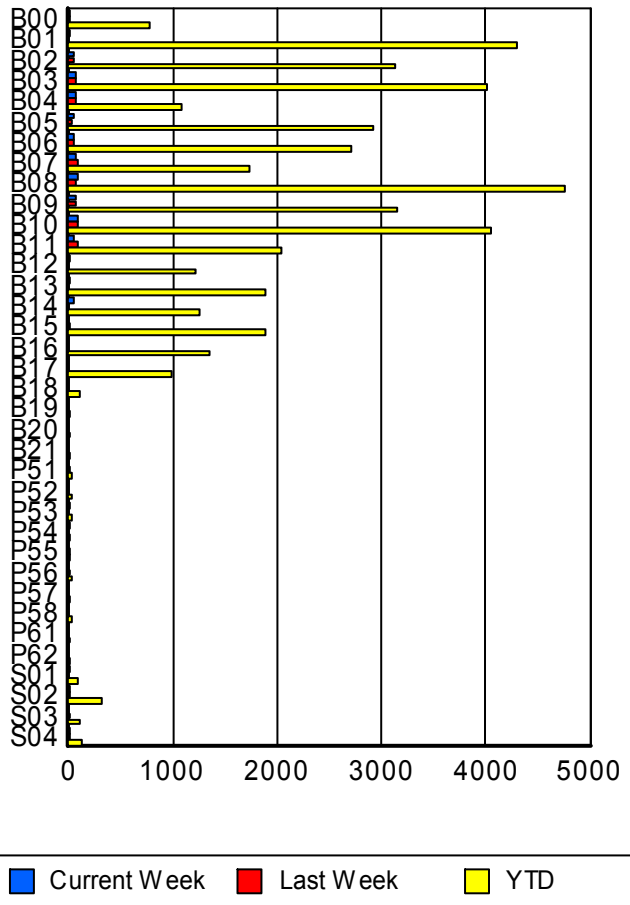
RR/SIRV Responses per County



### Road Ranger / SIRV Performance By Truck

	Current We	Last Week	YTD
B00	<b>10</b>	<b>14</b>	<b>755</b>
	<b>10</b>	<b>14</b>	<b>768</b>
	<b>10</b>	<b>16</b>	<b>809</b>
B01	<b>15</b>	<b>0</b>	<b>4,231</b>
	<b>15</b>	<b>0</b>	<b>4,293</b>
	<b>15</b>	<b>0</b>	<b>4,525</b>
B02	<b>54</b>	<b>52</b>	<b>3,083</b>
	<b>55</b>	<b>52</b>	<b>3,128</b>
	<b>57</b>	<b>52</b>	<b>3,294</b>
B03	<b>59</b>	<b>58</b>	<b>3,956</b>
	<b>60</b>	<b>59</b>	<b>4,005</b>
	<b>62</b>	<b>61</b>	<b>4,240</b>
B04	<b>66</b>	<b>72</b>	<b>1,077</b>
	<b>67</b>	<b>72</b>	<b>1,089</b>
	<b>70</b>	<b>79</b>	<b>1,134</b>
B05	<b>42</b>	<b>24</b>	<b>2,897</b>
	<b>42</b>	<b>24</b>	<b>2,924</b>
	<b>45</b>	<b>24</b>	<b>3,114</b>
B06	<b>55</b>	<b>51</b>	<b>2,686</b>
	<b>57</b>	<b>51</b>	<b>2,717</b>
	<b>58</b>	<b>54</b>	<b>2,866</b>
B07	<b>65</b>	<b>80</b>	<b>1,708</b>
	<b>65</b>	<b>81</b>	<b>1,730</b>
	<b>68</b>	<b>83</b>	<b>1,791</b>
B08	<b>79</b>	<b>57</b>	<b>4,684</b>
	<b>80</b>	<b>58</b>	<b>4,758</b>
	<b>82</b>	<b>61</b>	<b>4,998</b>

**RR/SIRV  
Responses per  
Truck**



	Current We	Last Week	YTD
B09	61	71	3,107
	62	73	3,143
	64	76	3,306
B10	80	83	4,003
	81	83	4,046
	81	87	4,263
B11	50	72	2,010
	54	77	2,035
	55	82	2,127
B12	8	0	1,198
	8	0	1,218
	8	0	1,281
B13	5	0	1,864
	5	0	1,887
	5	0	1,994
B14	38	0	1,236
	39	0	1,252
	42	0	1,292
B15	0	2	1,872
	0	2	1,883
	0	2	1,990
B16	0	0	1,332
	0	0	1,347
	0	0	1,414
B17	0	0	968
	0	0	981
	0	0	1,031
B18	0	0	97
	0	0	97
	0	0	101
B19	0	0	2
	0	0	2
	0	0	2
B20	0	0	2
	0	0	2
	0	0	2
B21	0	0	4
	0	0	4
	0	0	4
P51	0	1	36
	0	1	36
	0	1	38
P52	0	0	20
	0	0	20
	0	0	20

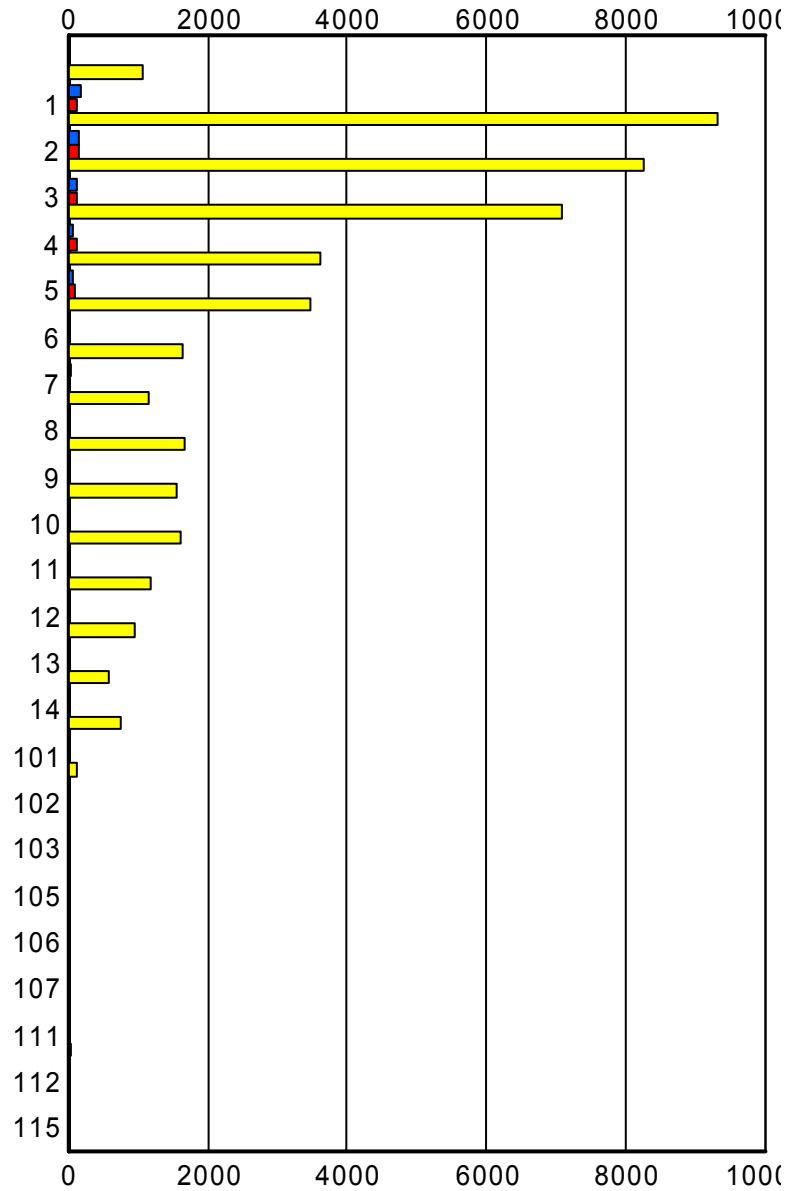
	Current We	Last Week	YTD
P53	1	0	23
	1	0	23
	1	0	26
P54	1	0	14
	1	0	14
	1	0	14
P55	0	3	19
	0	3	19
	0	3	20
P56	0	2	23
	0	2	24
	0	3	29
P57	0	0	11
	0	0	11
	0	0	11
P58	0	0	21
	0	0	21
	0	0	21
P61	0	0	1
	0	0	1
	0	0	1
P62	0	0	3
	0	0	3
	0	0	3
S01	1	0	77
	1	0	79
	1	0	87
S02	6	10	310
	6	10	314
	8	11	343
S03	0	1	109
	0	1	111
	0	2	123
S04	2	1	120
	2	1	124
	2	1	138

### Road Ranger / SIRV Performance By Beat

	Current We	Last Week	YTD
	13	24	1,000
	14	24	1,083
	16	26	1,159
1	187	129	8,910
	195	136	9,315
	198	144	9,779
2	145	154	8,031
	147	163	8,263
	153	168	8,690
3	126	108	6,864
	130	114	7,068
	138	122	7,421
4	76	128	3,548
	79	129	3,607
	81	133	3,775
5	69	83	3,418
	75	86	3,481
	77	90	3,635
6	22	6	1,617
	22	6	1,643
	23	8	1,724
7	27	0	1,134
	27	0	1,150
	27	0	1,204
8	20	0	1,660
	20	0	1,679
	20	0	1,768
9	0	0	1,540
	0	0	1,563
	0	0	1,685
10	0	0	1,588
	0	0	1,609
	0	0	1,723
11	0	0	1,185
	0	0	1,196
	0	0	1,286
12	0	0	942
	0	0	957
	0	0	1,026
13	0	0	578
	0	0	589
	0	0	622
14	0	0	735
	0	0	740
	0	0	778

Values presented are:  
 - Total Events with a RR/SIRV Response  
 - Total RR/SIRV Responses,  
 - Total Activities Performed

### RR/SIRV Responses per Beat



■ Current Week   
 ■ Last Week   
 ■ YTD

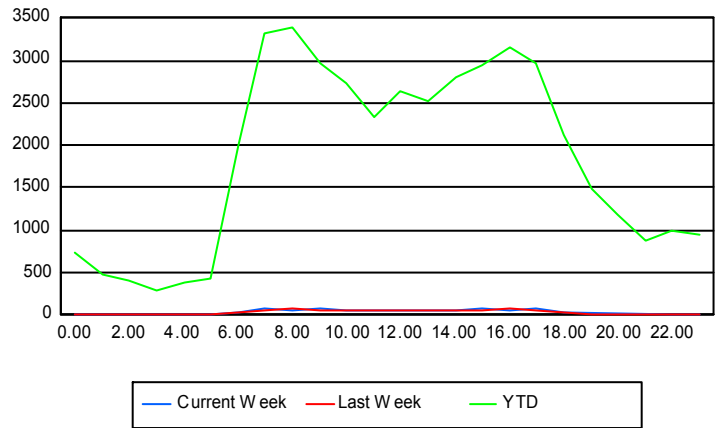
	Current We	Last Week	YTD
101	2	5	120
	2	5	120
	2	6	129
102	0	0	3
	0	0	4
	0	0	4
103	0	0	3
	0	0	3
	0	0	3
105	0	1	3
	0	1	3
	0	1	3
106	0	0	1
	0	0	1
	0	0	1
107	0	0	3
	0	0	3
	0	0	3
111	0	0	29
	0	0	29
	0	0	31
112	0	0	1
	0	0	1
	0	0	1
115	0	0	2
	0	0	2
	0	0	2

## Road Ranger / SIRV Performance By Time of Day

Values presented are:  
 - Total Events with a RR/SIRV Response  
 - Total RR/SIRV Responses,  
 - Total Activities Performed

	Current We	Last Week	YTD
12AM-1AM	1	2	703
	1	2	744
	1	2	799
1AM-2AM	2	0	454
	2	0	484
	2	0	516
2AM-3AM	0	0	356
	0	0	407
	0	0	438
3AM-4AM	1	2	256
	1	2	283
	1	2	305
4AM-5AM	1	2	330
	1	2	381
	1	2	412
5AM-6AM	3	4	364
	4	4	438
	4	4	465
6AM-7AM	31	30	1,842
	32	34	1,994
	32	34	2,066
7AM-8AM	64	58	3,114
	70	59	3,322
	74	60	3,480
8AM-9AM	50	58	3,125
	53	68	3,395
	53	75	3,574
9AM-10AM	59	55	2,777
	65	58	2,957
	68	62	3,102
10AM-11AM	52	59	2,579
	54	62	2,735
	56	64	2,877
11AM-12PM	41	40	2,185
	42	44	2,343
	43	44	2,458
12PM-1PM	47	37	2,486
	48	42	2,641
	51	42	2,764

## Number of Responses / Hour of the Day



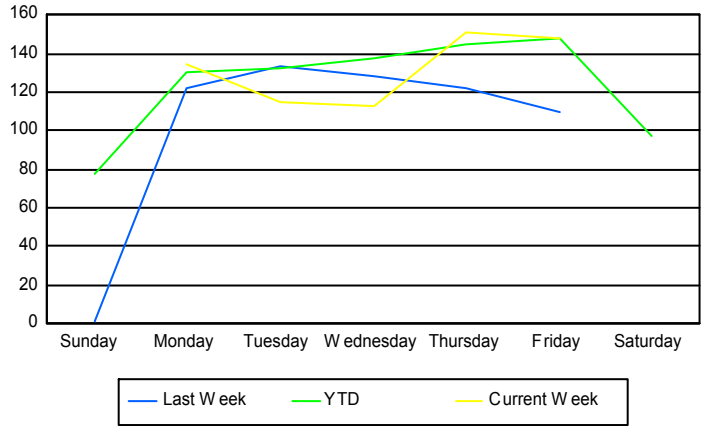
	Current We	Last Week	YTD
1PM-2PM	45	40	2,326
	51	44	2,521
	51	48	2,659
2PM-3PM	53	39	2,624
	55	46	2,798
	59	48	2,927
3PM-4PM	62	47	2,744
	65	47	2,946
	67	48	3,091
4PM-5PM	60	64	2,980
	62	67	3,159
	64	75	3,330
5PM-6PM	53	45	2,772
	66	49	2,964
	69	50	3,101
6PM-7PM	32	28	2,007
	35	29	2,125
	35	33	2,243
7PM-8PM	0	1	1,418
	0	1	1,481
	0	1	1,579
8PM-9PM	0	0	1,111
	0	0	1,184
	0	0	1,270
9PM-10PM	0	1	810
	0	1	871
	0	1	931
10PM-11PM	2	0	926
	2	0	984
	2	0	1,056
11PM-12AM	2	3	906
	2	3	952
	2	3	1,009

**Road Ranger / SIRV Performance By Day of Week**

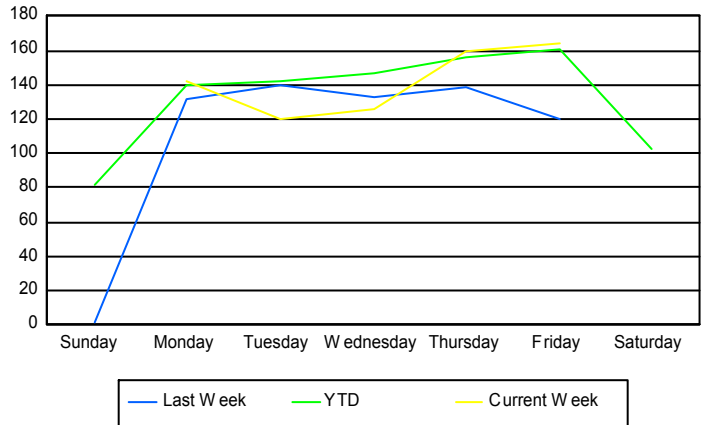
Values presented are: - Total Events with a RR/SIRV Response - Total RR/SIRV Responses, - Total Activities Performed
---

	Current We	Last Week	YTD
Sunday	0 0 0	1 1 1	2,907 3,036 3,213
Monday	135 142 147	121 131 139	6,387 6,837 7,143
Tuesday	115 120 122	134 140 149	6,666 7,135 7,497
Wednesday	113 126 130	128 133 138	6,876 7,347 7,715
Thursday	151 159 166	122 139 142	7,246 7,817 8,233
Friday	148 164 170	110 120 129	7,432 8,046 8,503
Saturday	0 0 0	0 0 0	3,709 3,891 4,148

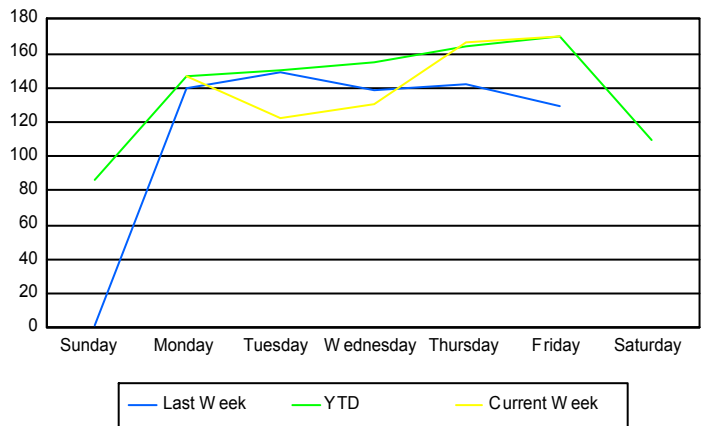
**Avg # of events with a RR/SIRV Response per Day of the Week**



**Avg # of RR/SIRV Responses per Day of the Week**



**Avg # of RR/SIRV Activities Performed per Day of the Week**



### Road Ranger/ SIRV Responses per Time of Day and Day of Week

