



# Weekly Performance Measures Report Broward County



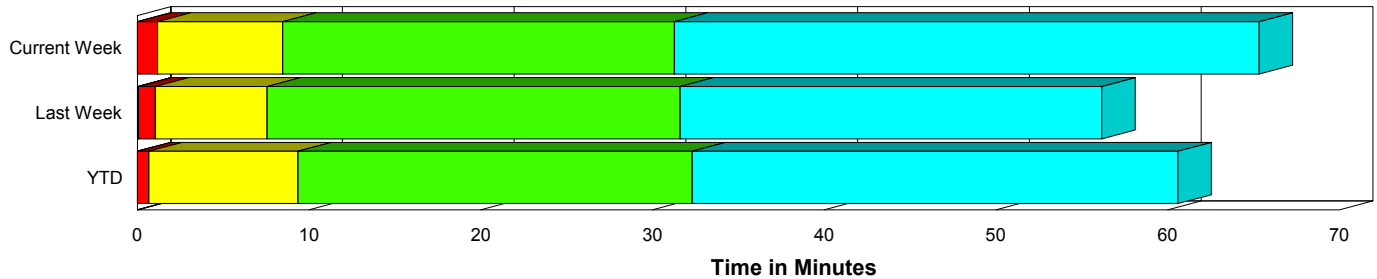
Created on:  
December 21, 2009  
8:44 am

Period From Dec 13, 2009 to Dec 19, 2009

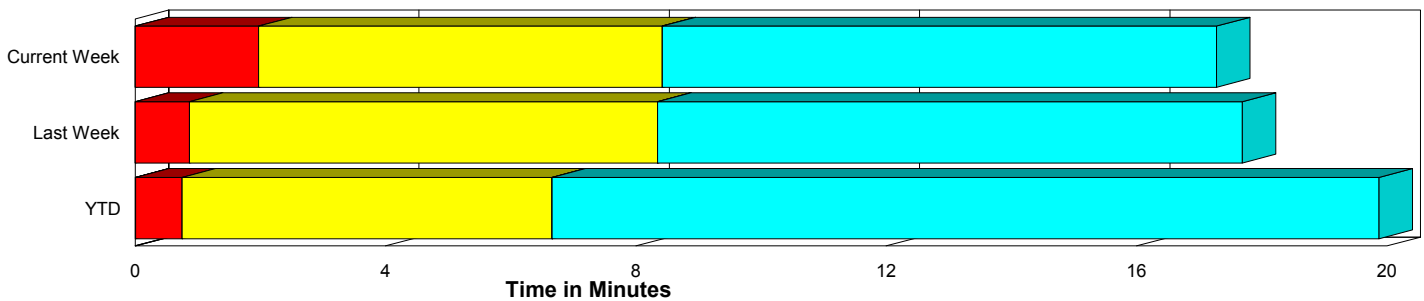
## Performance Measures Summary

	Traffic Events (No Lanes Blocked)			Incidents (Lanes Blocked)		
	<u>This Week</u>	<u>Last Week</u>	<u>YTD</u>	<u>This Week</u>	<u>Last Week</u>	<u>YTD</u>
Number of Events	1,104	1,234	52,055	63	50	2,420
TMC Detection (min.)	0.00	0.00	0.01	0.01	0.05	0.01
TMC Verification (min.)	1.97	0.87	0.74	1.17	0.99	0.67
TMC Response (min.)	9.38	8.93	7.18	8.53	7.61	9.49
RR Dispatch Time (min.)	1.87	2.47	1.28	1.82	1.11	2.54
RR Response Time (min.)	7.58	7.68	6.06	6.71	6.57	7.14
Roadway Clearance (min.)				30.22	30.58	31.66
Event Clearance (min.)	18.24	18.27	20.41	63.80	55.00	59.53
# of Events w/ RR/SIRV	929	996	37,267	60	47	1,837
RR/SIRV Responses	929	996	37,267	60	47	1,837
RR/SIRV Activities	762	775	31,072	125	91	3,646

### Incident Clearance Time-Line



### Traffic Event (Non-Lane Blockage) Time-Line



<span style="color: blue;">■</span> Avg. TMC Detection Time	<span style="color: green;">■</span> Avg. Time from TMC Response to Roadway Clearance*
<span style="color: red;">■</span> Avg. Time from TMC Detection to TMC Verification	<span style="color: cyan;">■</span> Avg. Time from Roadway Clearance to Incident/Event Clearance**
<span style="color: yellow;">■</span> Avg. Time from TMC Verification to TMC Response	

\* Roadway clearance equals all travel lanes open

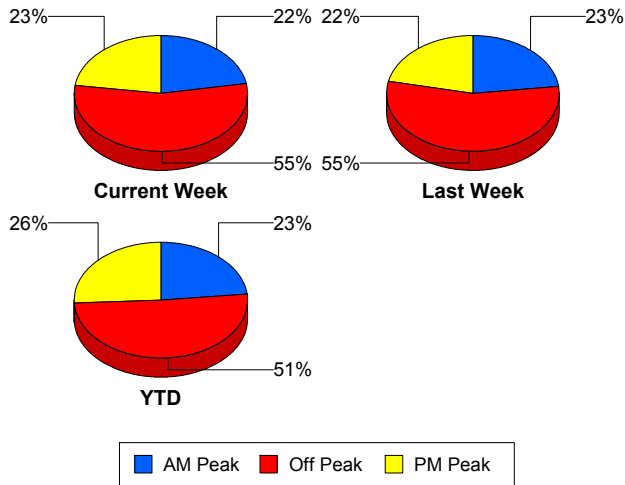
\*\* Incident clearance equals time when last responder has left the scene

## Performance Measures by Peak Period

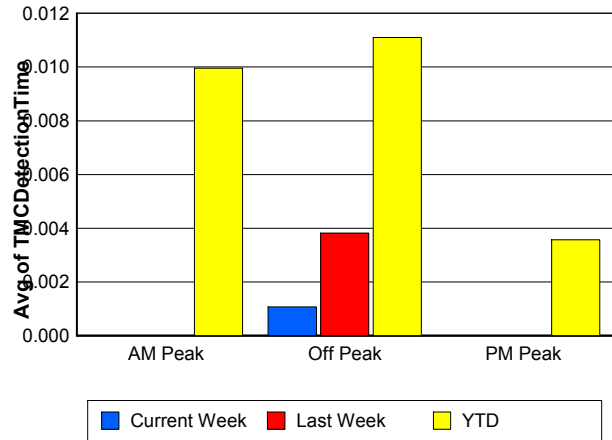
Note: AM peak period is defined as 6am to 10am and PM peak period is defined as 3pm to 7pm.

	AM Peak			Off Peak			PM Peak		
	<u>Current Week</u>	<u>Last Week</u>	<u>YTD</u>	<u>Current Week</u>	<u>Last Week</u>	<u>YTD</u>	<u>Current Week</u>	<u>Last Week</u>	<u>YTD</u>
Number of Events	260	297	12,640	641	708	27,793	266	279	14,042
Number of Incidents	14	9	565	32	21	1,172	17	20	683
TMC Detection (min.)	0.00	0.00	0.01	0.00	0.00	0.01	0.00	0.00	0.00
TMC Verification (min.)	1.51	0.53	0.56	1.86	1.09	0.73	2.51	0.68	0.92
TMC Response (min.)	10.38	8.55	6.74	9.14	8.91	8.11	8.76	9.02	6.66
RR Dispatch Time (min.)	1.58	1.11	0.96	1.92	3.55	1.76	2.05	1.09	1.02
RR Response Time (min.)	8.83	7.56	5.87	7.32	7.43	6.52	6.74	8.12	5.77
Event Clearance (min.)	19.88	16.05	20.40	19.89	20.36	23.95	23.44	21.91	20.13
Roadway Clearance (min.)	24.75	22.69	28.02	34.90	36.80	35.63	25.93	27.60	27.85
Incident Clearance (min.)	53.28	46.55	56.77	61.11	65.39	63.05	77.55	47.90	55.77
# of Events w/ RR/SIRV	236	253	10,407	524	560	17,563	229	230	11,134
RR/SIRV Responses	236	253	10,407	524	560	17,563	229	230	11,134
RR/SIRV Activities	204	205	9,495	461	454	15,105	222	207	10,118

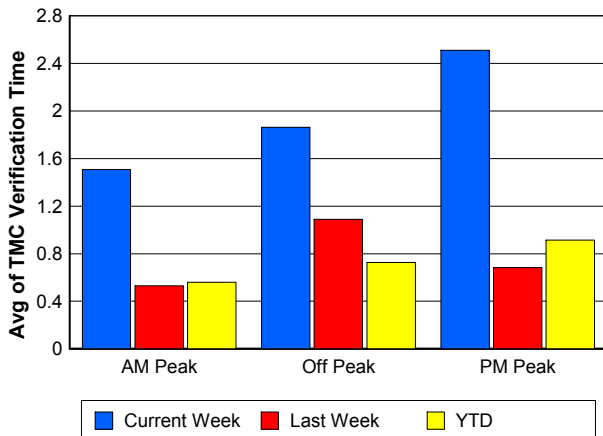
### Number of Events / Peak Period



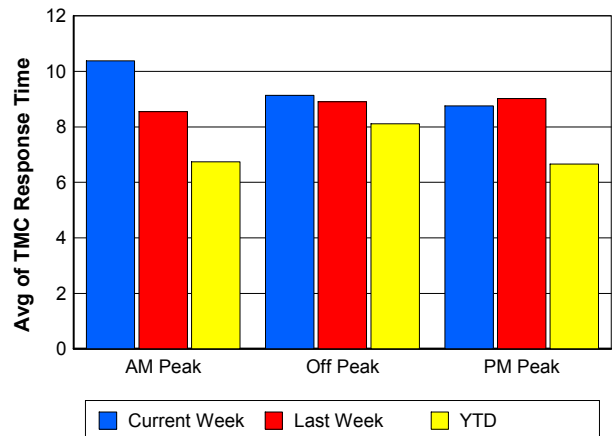
### TMC Detection Time



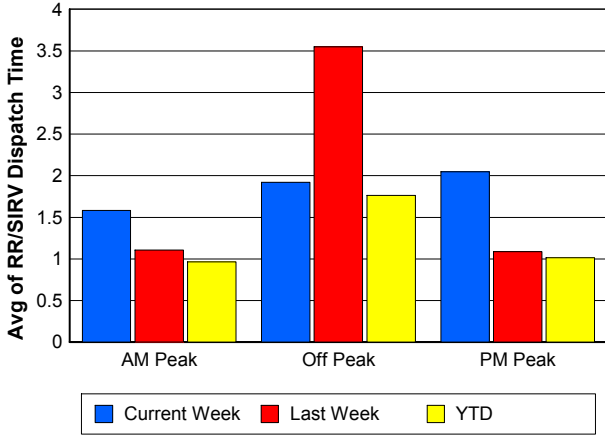
### TMC Verification Time



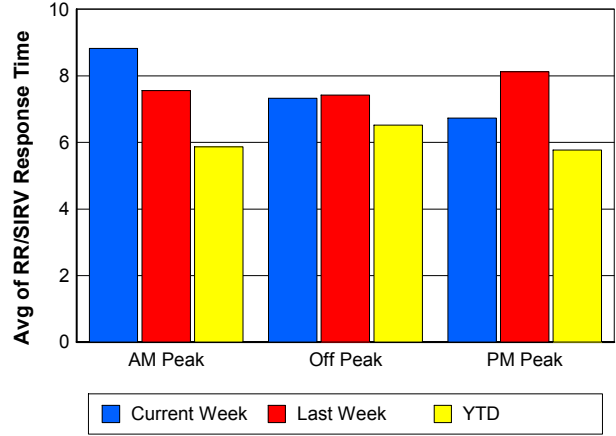
### TMC Response Time



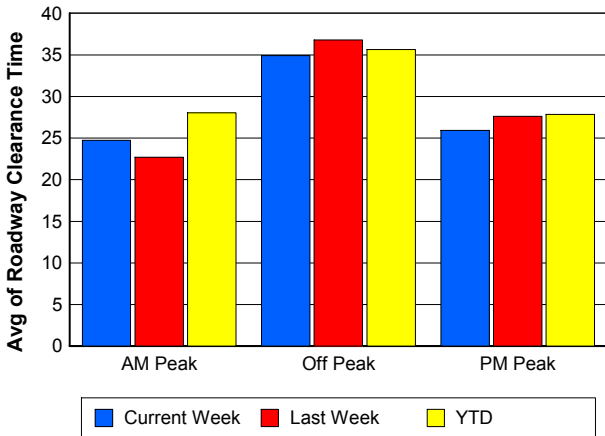
## Road Ranger / SIRV Dispatch Time



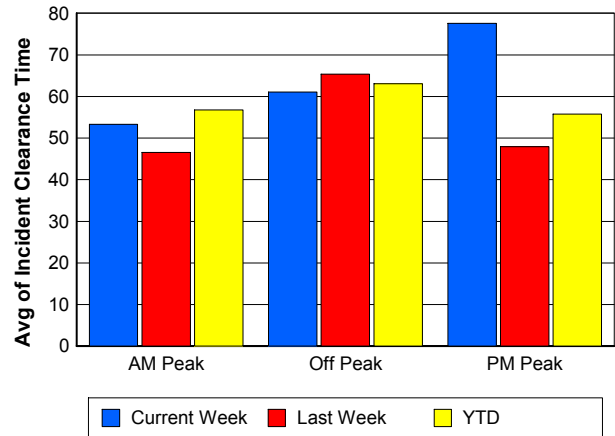
## Road Ranger / SIRV Response Time



## Roadway Clearance Time (2A)



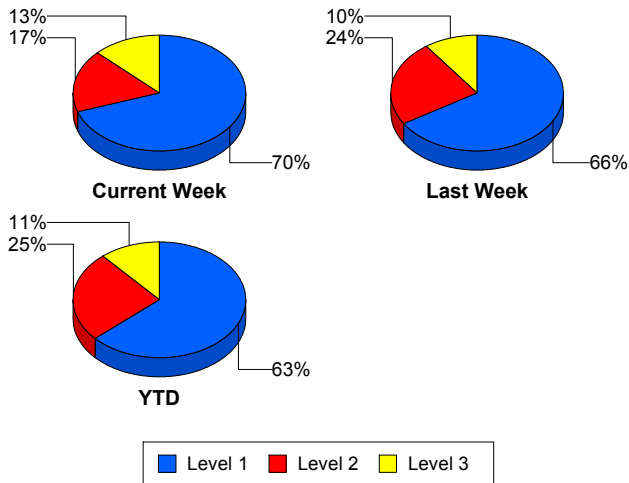
## Incident Clearance Time (3B)



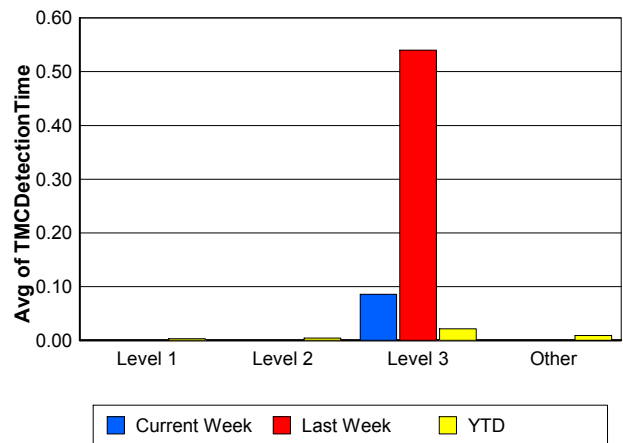
## Performance Measures by Severity

	Level 1			Level 2			Level 3			Other		
	<u>This Week</u>	<u>Last Week</u>	<u>YTD</u>	<u>This Week</u>	<u>Last Week</u>	<u>YTD</u>	<u>This Week</u>	<u>Last Week</u>	<u>YTD</u>	<u>This Week</u>	<u>Last Week</u>	<u>YTD</u>
Number of Events	44	33	1,536	11	12	608	8	5	276	1,104	1,234	52,055
Number of Incidents	44	33	1,536	11	12	608	8	5	276	0	0	0
TMC Detection (min.)	0.00	0.00	0.00	0.00	0.00	0.00	0.09	0.54	0.02	0.00	0.00	0.01
TMC Verification (min.)	0.90	0.59	0.44	1.90	1.00	1.01	1.59	3.66	1.25	1.97	0.87	0.74
TMC Response (min.)	6.89	5.11	7.34	7.20	14.03	10.28	20.24	8.02	19.69	9.38	8.93	7.18
RR Dispatch Time (min.)	1.98	0.79	1.56	1.27	1.73	2.51	1.73	1.70	7.62	1.87	2.47	1.28
RR Resp. Time (min.)	4.90	4.44	5.86	5.94	12.30	7.98	18.51	6.32	12.58	7.58	7.68	6.06
Event Clearance (min.)	54.46	43.22	45.57	73.03	61.28	72.66	102.47	117.69	108.06	18.24	18.27	20.41
Roadway Clear. (min.)	14.25	13.89	14.28	46.87	47.60	48.99	95.21	99.83	90.21			
Incident Clearance (min.)	54.46	43.22	45.57	73.03	61.28	72.66	102.47	117.69	108.06			
# of Events w/ RR/SIRV	42	31	1,205	11	11	395	7	5	237	929	996	37,267
RR/SIRV Responses	42	31	1,205	11	11	395	7	5	237	929	996	37,267
RR/SIRV Activities	74	53	2,037	31	21	1,042	20	17	567	762	775	31,072

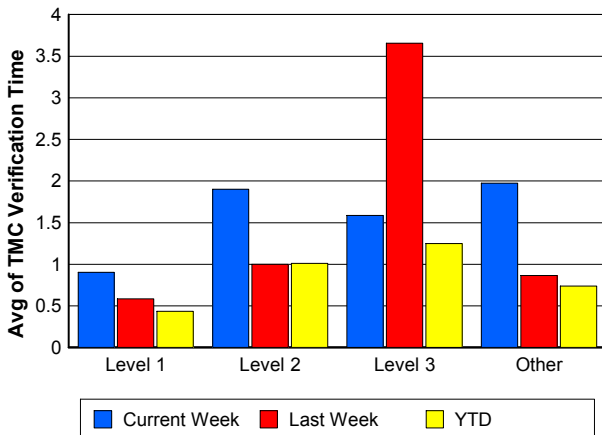
### Number of Events / Severity



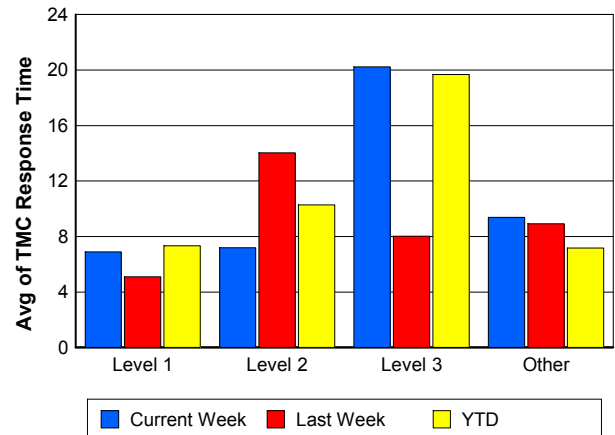
### TMC Detection Time



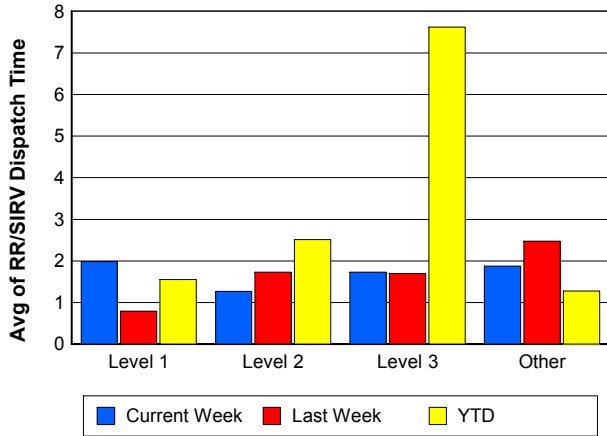
### TMC Verification Time



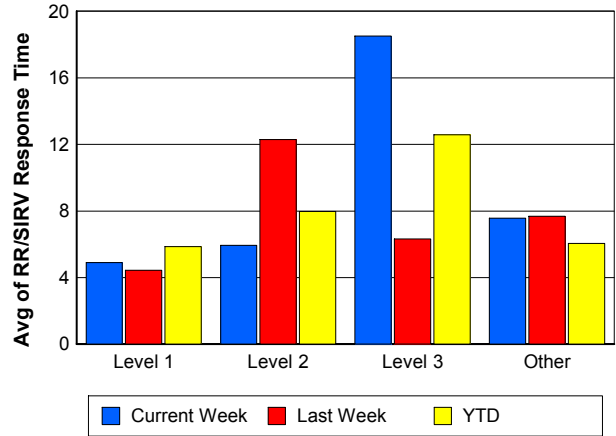
### TMC Response Time



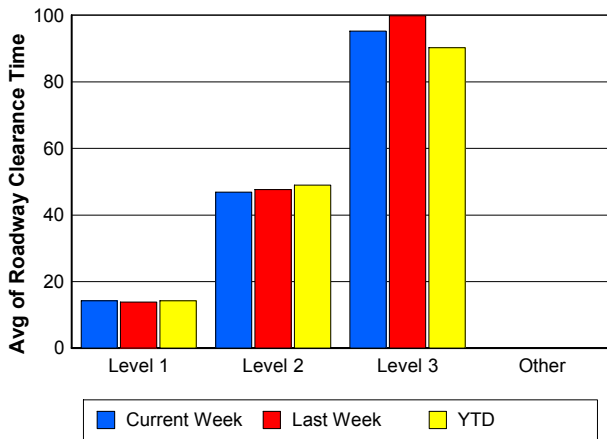
## Road Ranger / SIRV Dispatch Time



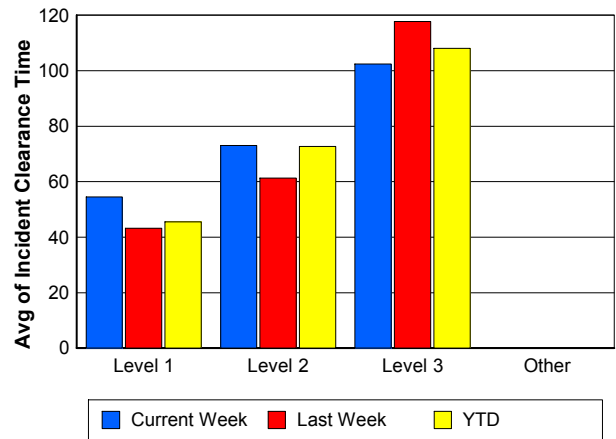
## Road Ranger / SIRV Response Time



## Roadway Clearance Time (2A)



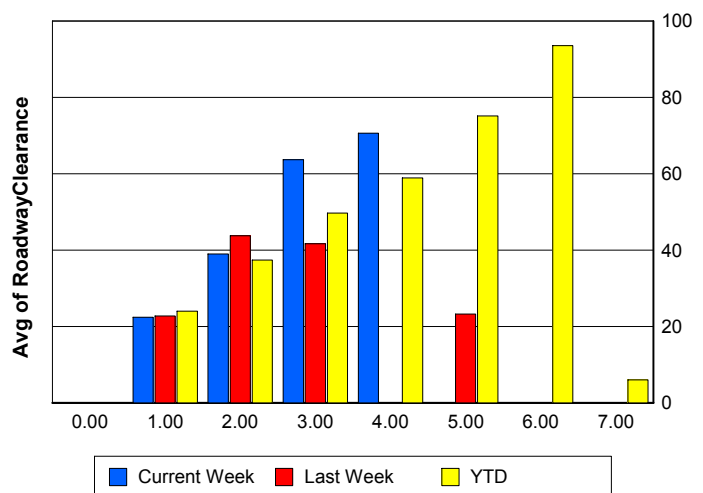
## Incident Clearance Time (3B)



## Roadway Clearance by Maximum Number of Lanes Blocked

	Current Week	Last Week	YTD
0			
1	22.41	22.75	24.00
2	39.01	43.78	37.35
3	63.64	41.61	49.66
4	70.62	0.00	58.88
5	0.00	23.20	75.13
6	0.00	0.00	93.54
7	0.00	0.00	5.97

## Roadway Clearance Time (2A)



## Performance Measures by Roadway

**595**

	<u>Current Week</u>	<u>Last Week</u>	<u>YTD</u>
Number of Events	55	42	4,905
Number of Incidents	3	2	295
TMC Detection (min.)	0.00	0.06	0.01
TMC Verification (min.)	2.50	1.20	0.87
TMC Response (min.)	11.20	13.21	7.21
RR Dispatch Time (min.)	2.20	15.76	1.33
RR Resp. Time (min.)	8.93	11.79	6.11
Event Clearance (min.)	19.48	29.24	21.27
Roadway Clear. (min.)	61.94	75.44	32.25
Incident Clearance (min.)	68.82	105.83	54.33
# of Events w/ RR/SIRV	43	30	3,433
RR/SIRV Responses	43	30	3,433
RR/SIRV Activities	36	20	3,085

**75**

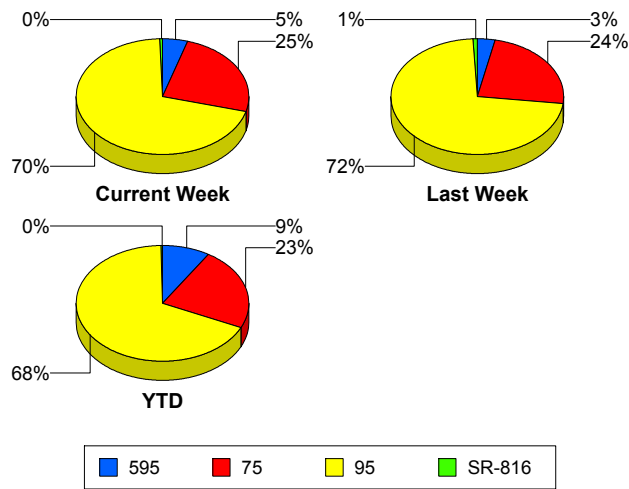
	<u>Current Week</u>	<u>Last Week</u>	<u>YTD</u>
Number of Events	286	303	12,487
Number of Incidents	13	2	225
TMC Detection (min.)	0.00	0.00	0.02
TMC Verification (min.)	2.03	1.57	1.05
TMC Response (min.)	10.50	9.99	8.61
RR Dispatch Time (min.)	1.77	4.52	1.40
RR Resp. Time (min.)	9.01	8.20	7.39
Event Clearance (min.)	19.88	19.44	23.71
Roadway Clear. (min.)	45.10	16.81	51.83
Incident Clearance (min.)	77.76	26.10	79.97
# of Events w/ RR/SIRV	227	232	8,720
RR/SIRV Responses	227	232	8,720
RR/SIRV Activities	199	198	7,434

**95**

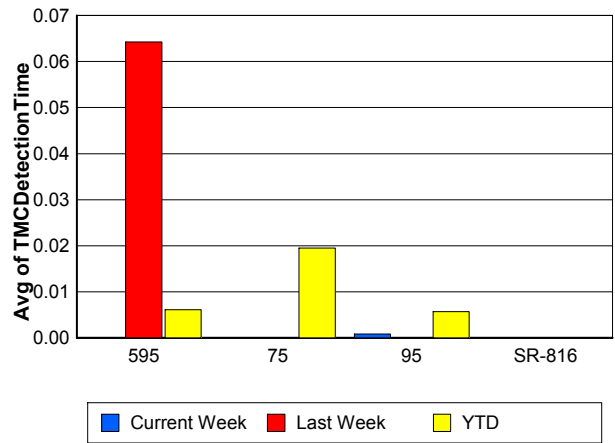
	<u>Current Week</u>	<u>Last Week</u>	<u>YTD</u>
Number of Events	821	930	36,989
Number of Incidents	43	39	1,835
TMC Detection (min.)	0.00	0.00	0.01
TMC Verification (min.)	1.87	0.64	0.61
TMC Response (min.)	8.90	8.47	6.95
RR Dispatch Time (min.)	1.89	1.28	1.32
RR Resp. Time (min.)	7.01	7.41	5.75
Event Clearance (min.)	21.07	19.35	21.75
Roadway Clear. (min.)	24.29	30.38	29.62
Incident Clearance (min.)	62.98	59.66	59.38
# of Events w/ RR/SIRV	716	774	26,864
RR/SIRV Responses	716	774	26,864
RR/SIRV Activities	649	640	24,101

	<u>Current Week</u>	<u>Last Week</u>	<u>YTD</u>
Number of Events	5	9	94
Number of Incidents	4	7	65
TMC Detection (min.)	0.00	0.00	0.00
TMC Verification (min.)	0.00	0.00	0.22
TMC Response (min.)	0.00	1.05	0.62
RR Dispatch Time (min.)	0.00	0.09	0.07
RR Resp. Time (min.)	0.00	0.96	0.57
Event Clearance (min.)	19.79	20.10	14.13
Roadway Clear. (min.)	21.86	22.77	16.56
Incident Clearance (min.)	23.58	22.78	16.63
# of Events w/ RR/SIRV	3	7	87
RR/SIRV Responses	3	7	87
RR/SIRV Activities	3	8	98

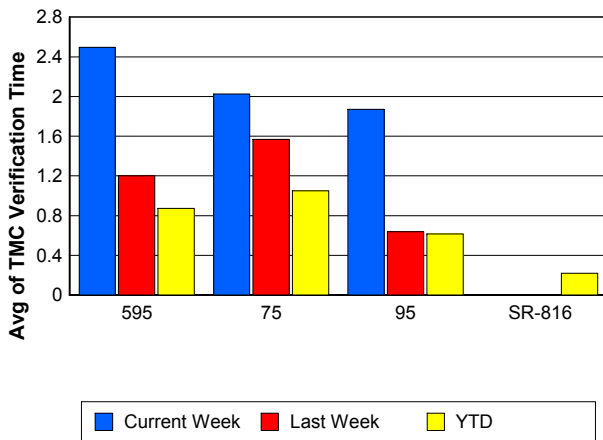
### Number of Events / Roadway



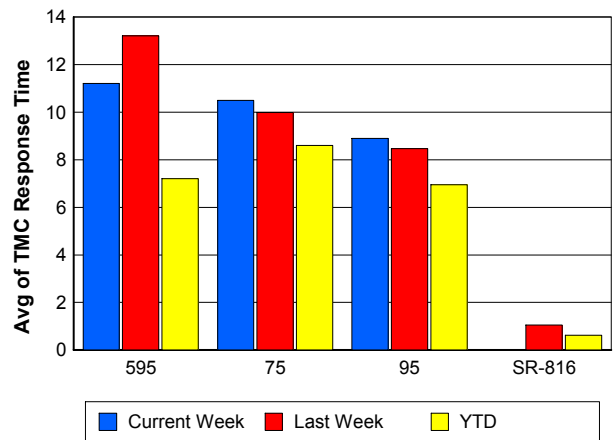
### TMC Detection Time



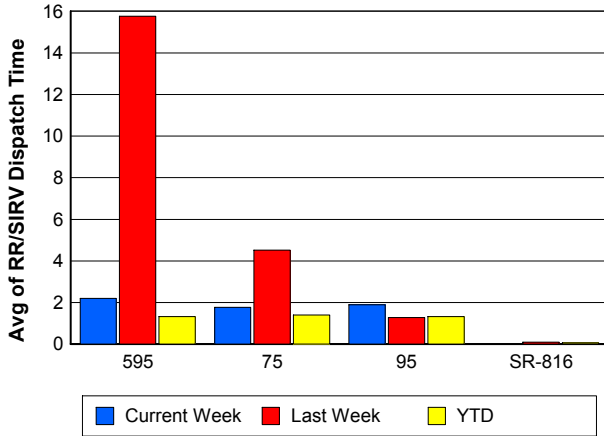
### TMC Verification Time



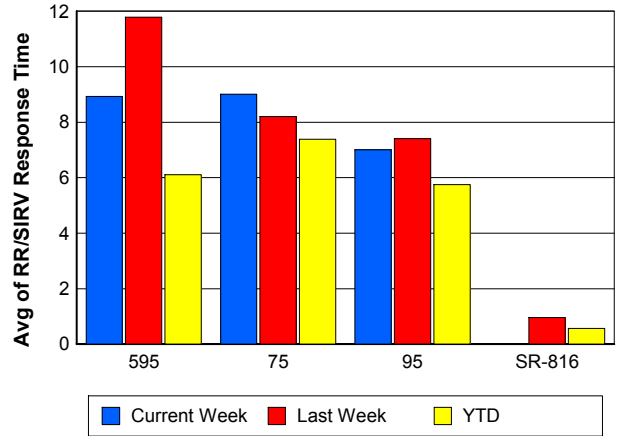
### TMC Response Time



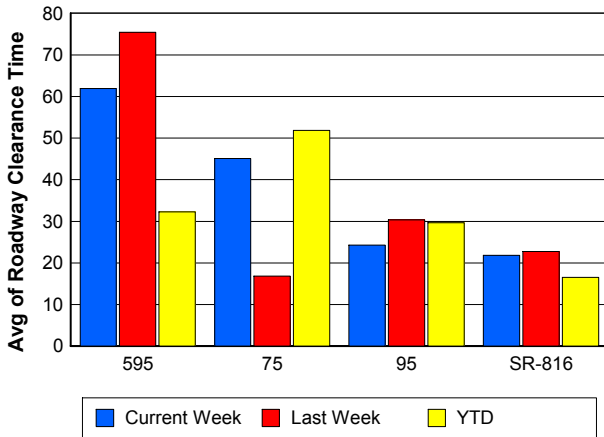
## Road Ranger / SIRV Dispatch Time



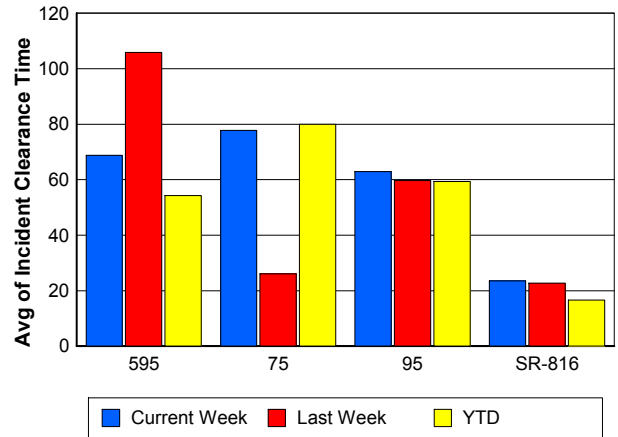
## Road Ranger / SIRV Response Time



## Roadway Clearance Time (2A)



## Incident Clearance Time (3B)



## Performance Measures by Event Type

### Accident

	<u>Current Week</u>	<u>Last Week</u>	<u>YTD</u>
Number of Events	89	70	3,599
Number of Incidents	41	29	1,707
TMC Detection (min.)	0.00	0.04	0.01
TMC Verification (min.)	2.78	1.53	0.80
TMC Response (min.)	9.17	9.10	9.13
RR Dispatch Time (min.)	1.44	1.46	1.66
RR Response Time (min.)	7.91	7.64	7.54
Event Clearance (min.)	51.92	56.35	54.90
Roadway Clearance (min.)	29.70	38.28	33.09
Incident Clearance (min.)	76.08	73.72	67.46
# of Events w/ RR/SIRV	89	69	2,837
RR/SIRV Assists	89	69	2,837
RR/SIRV Activities	136	112	4,349

### Debris on Roadway

	<u>Current Week</u>	<u>Last Week</u>	<u>YTD</u>
Number of Events	36	49	1,680
Number of Incidents	0	1	32
TMC Detection (min.)	0.00	0.00	0.07
TMC Verification (min.)	6.91	3.11	4.20
TMC Response (min.)	8.88	6.47	7.94
RR Dispatch Time (min.)	0.57	0.82	0.97
RR Response Time (min.)	8.31	5.74	7.00
Event Clearance (min.)	13.52	10.39	11.66
Roadway Clearance (min.)		37.63	25.98
Incident Clearance (min.)		42.73	31.88
# of Events w/ RR/SIRV	36	49	1,567
RR/SIRV Assists	36	49	1,567
RR/SIRV Activities	36	53	1,589

### Disabled Vehicle

	<u>Current Week</u>	<u>Last Week</u>	<u>YTD</u>
Number of Events	708	712	31,733
Number of Incidents	15	15	420
TMC Detection (min.)	0.00	0.00	0.01
TMC Verification (min.)	2.43	1.18	0.90
TMC Response (min.)	9.17	9.03	6.98
RR Dispatch Time (min.)	1.88	1.43	1.16
RR Response Time (min.)	7.33	7.82	5.88
Event Clearance (min.)	21.28	21.58	24.77
Roadway Clearance (min.)	25.72	16.60	18.17
Incident Clearance (min.)	35.23	28.71	31.53
# of Events w/ RR/SIRV	685	687	26,712
RR/SIRV Assists	685	687	26,712
RR/SIRV Activities	680	658	26,954

## Emergency Vehicles

	<u>Current Week</u>	<u>Last Week</u>	<u>YTD</u>
Number of Events	5	2	93
Number of Incidents	3	2	73
TMC Detection (min.)	0.00	0.00	0.00
TMC Verification (min.)	0.00	0.23	0.42
TMC Response (min.)	5.20		13.39
RR Dispatch Time (min.)	5.18		10.60
RR Response Time (min.)	0.02		4.24
Event Clearance (min.)	13.95	29.06	53.99
Roadway Clearance (min.)	12.88	32.03	56.17
Incident Clearance (min.)	15.88	29.06	61.79
# of Events w/ RR/SIRV	2	0	52
RR/SIRV Assists	2	0	52
RR/SIRV Activities	2	0	82

## Other

	<u>Current Week</u>	<u>Last Week</u>	<u>YTD</u>
Number of Events	323	442	16,875
Number of Incidents	1	0	32
TMC Detection (min.)	0.00	0.00	0.01
TMC Verification (min.)	0.10	0.06	0.08
TMC Response (min.)	14.16	9.64	8.64
RR Dispatch Time (min.)	2.31	6.00	1.82
RR Response Time (min.)	9.70	7.67	6.61
Event Clearance (min.)	11.05	11.91	10.79
Roadway Clearance (min.)	41.52		33.80
Incident Clearance (min.)	96.27		40.36
# of Events w/ RR/SIRV	172	231	7,638
RR/SIRV Assists	172	231	7,638
RR/SIRV Activities	27	35	1,360

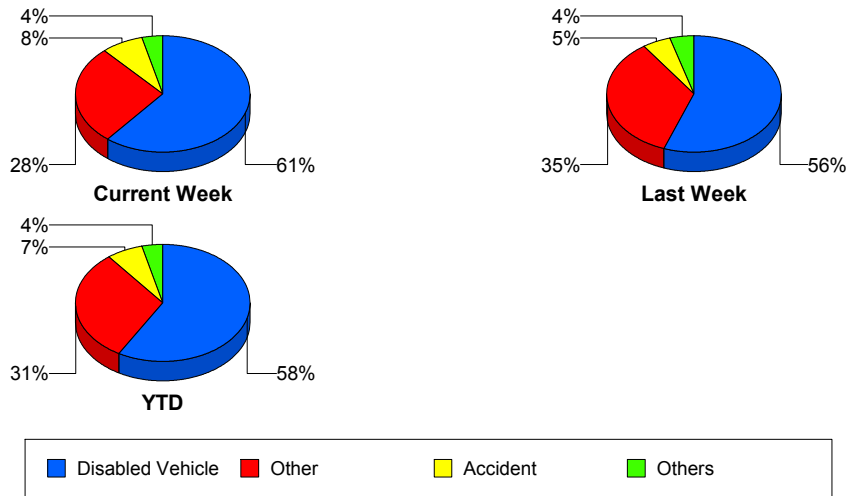
## Police Activity

	<u>Current Week</u>	<u>Last Week</u>	<u>YTD</u>
Number of Events	4	3	210
Number of Incidents	3	2	74
TMC Detection (min.)	0.17	0.00	0.01
TMC Verification (min.)	2.09	0.00	0.38
TMC Response (min.)	6.93	1.40	12.50
RR Dispatch Time (min.)	0.72	1.94	3.57
RR Response Time (min.)	6.21	0.05	9.10
Event Clearance (min.)	76.62	17.28	35.01
Roadway Clearance (min.)	73.48	19.62	43.72
Incident Clearance (min.)	75.94	20.13	50.98
# of Events w/ RR/SIRV	3	2	83
RR/SIRV Assists	3	2	83
RR/SIRV Activities	4	2	99

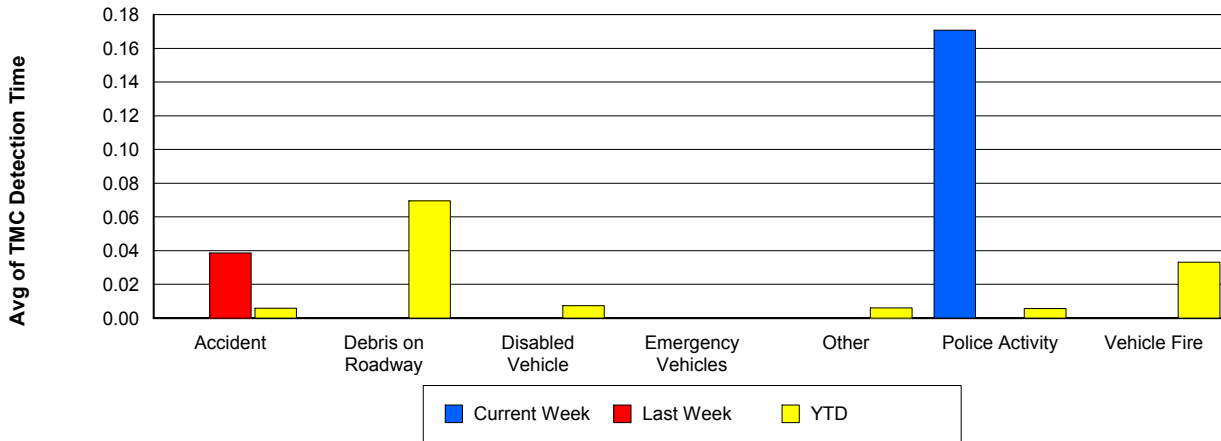
## Vehicle Fire

	<u>Current Week</u>	<u>Last Week</u>	<u>YTD</u>
Number of Events	1	2	108
Number of Incidents	0	1	82
TMC Detection (min.)	0.00	0.00	0.03
TMC Verification (min.)	0.87	0.00	1.22
TMC Response (min.)	32.72	3.67	9.91
RR Dispatch Time (min.)	1.88	1.32	2.05
RR Response Time (min.)	30.83	2.35	8.21
Event Clearance (min.)	34.15	34.52	57.10
Roadway Clearance (min.)		28.92	39.67
Incident Clearance (min.)		40.40	62.20
# of Events w/ RR/SIRV	1	2	78
RR/SIRV Assists	1	2	78
RR/SIRV Activities	1	3	160

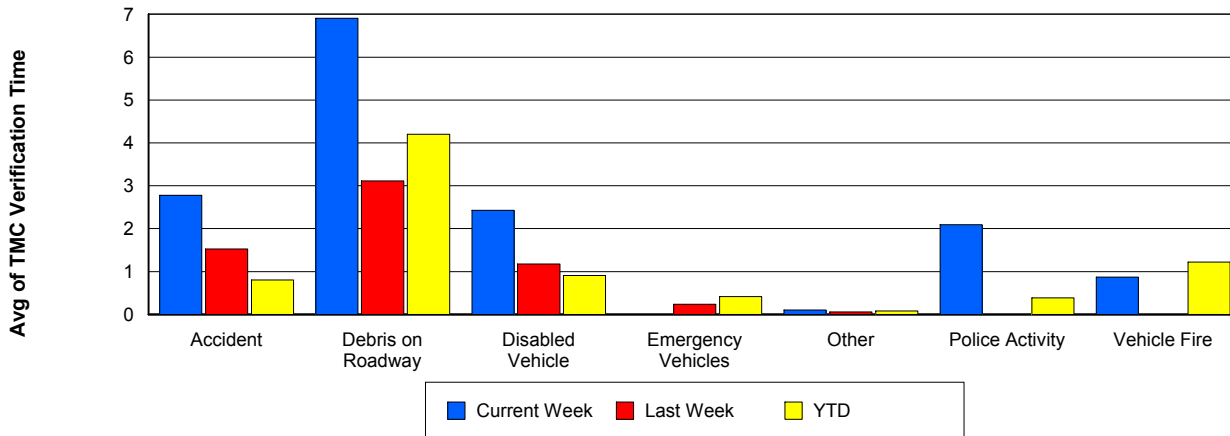
## Number of Events / Event Type



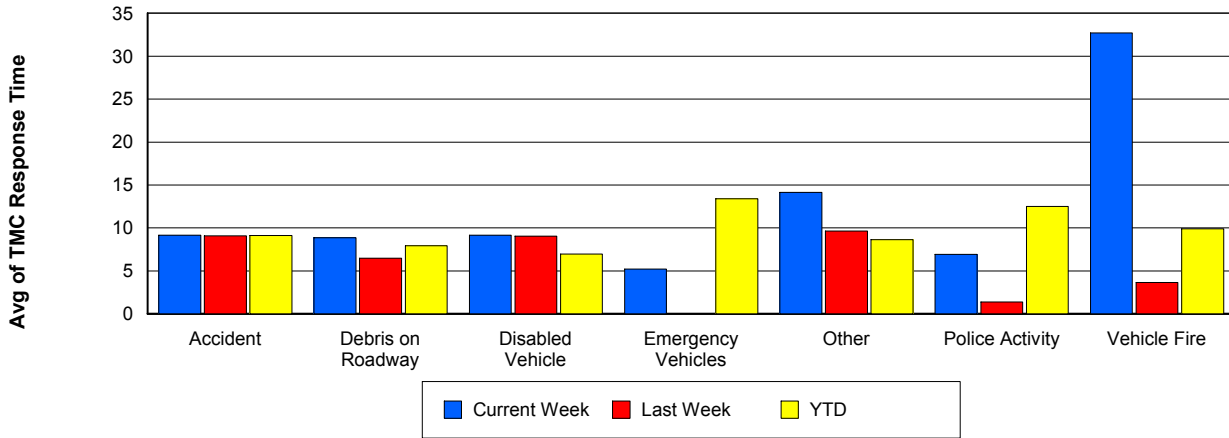
## TMC Detection Time



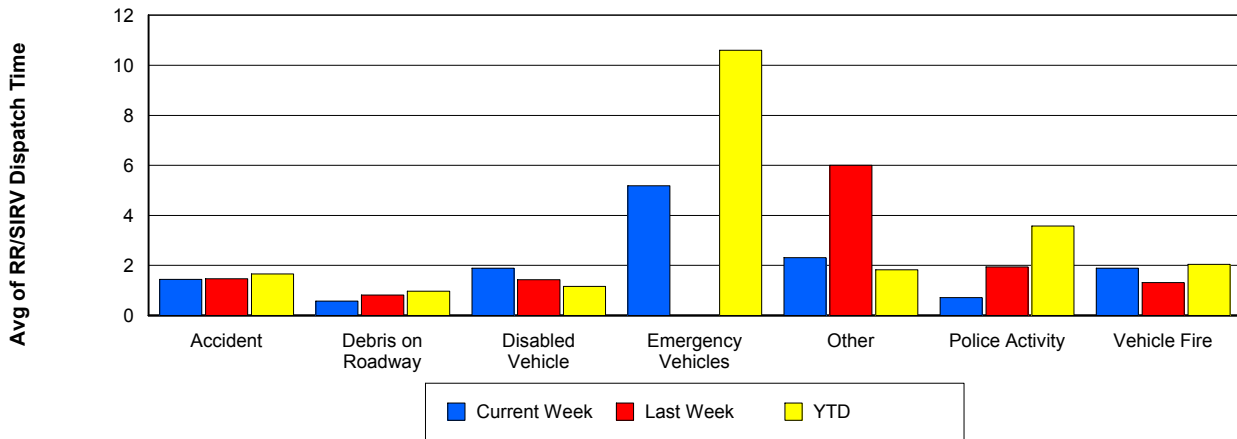
## TMC Verification Time



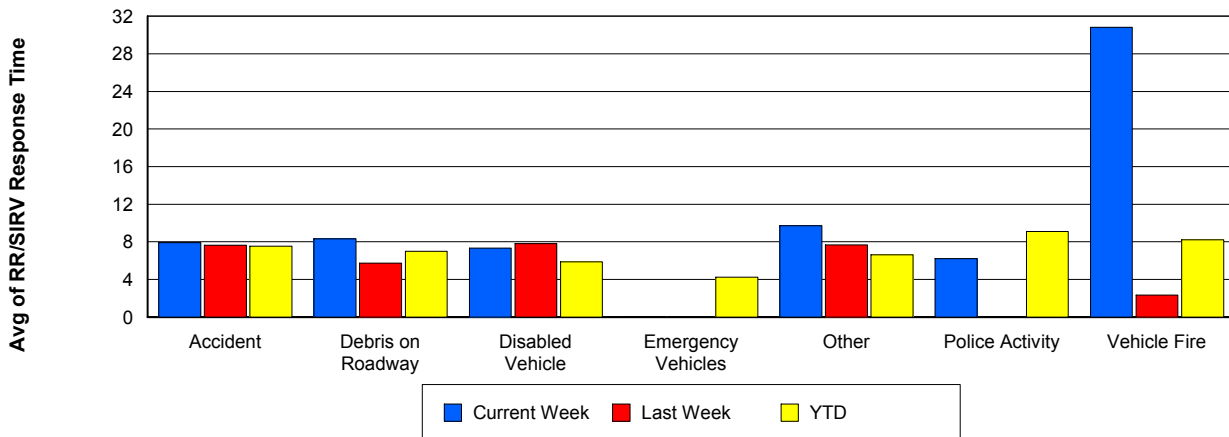
## TMC Response Time



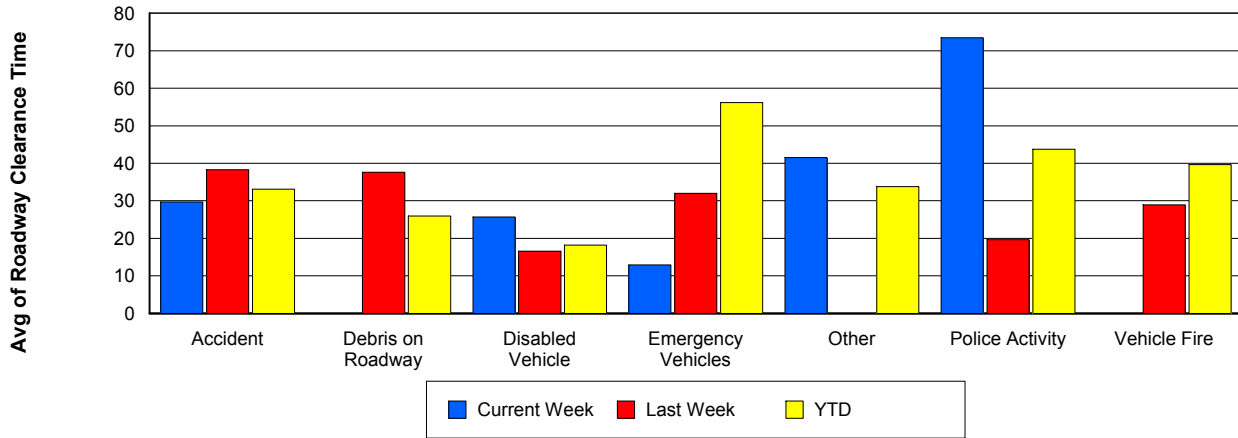
## Road Ranger / SIRV Dispatch Time



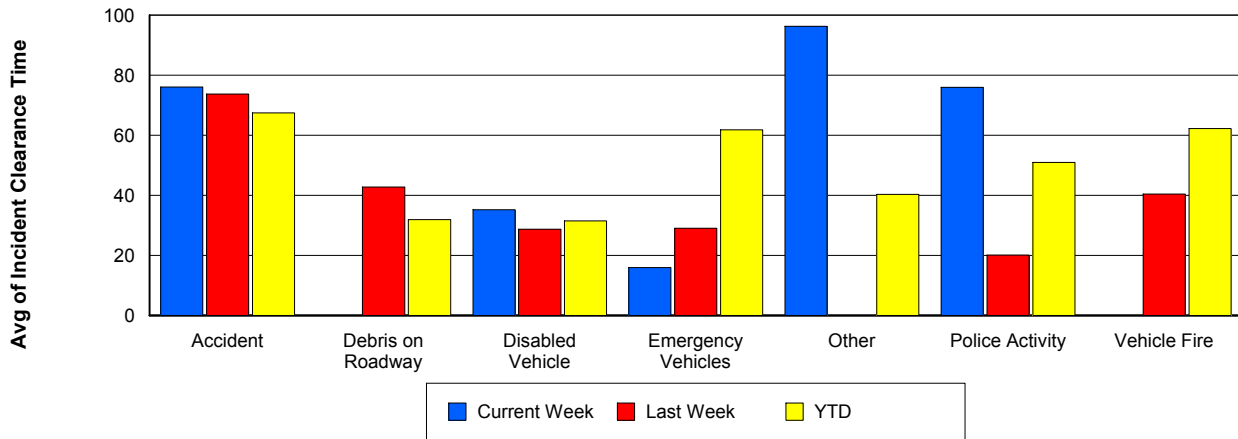
## Road Ranger / SIRV Response Time



## Roadway Clearance Time (2A)



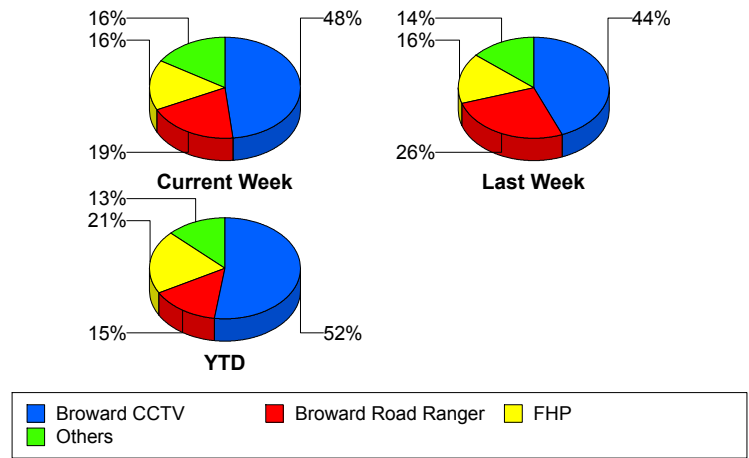
## Incident Clearance Time (3B)



## Incident Detection Methods

	Current Week	Last Week	YTD
Broward CCTV	30	22	1,257
Broward Road Ranger	12	13	354
Broward TMC	0	0	4
Broward VideoWall	2	1	68
BSO	2	3	54
District 4	4	1	58
District 6	0	0	3
FDOT Maintenance	0	0	7
FHP	10	8	495
Fire	0	0	4
Florida's Turnpike	0	0	6
ITMS	0	0	3
Local Police	0	0	1
Motorist	1	1	15
Other	0	0	1
Palm Beach Road Ran	0	0	9
Road Watcher	1	1	17
SIRV	0	0	12
SmarTraveler (511)	0	0	6
VisioPaD Detection	0	0	37
<b>Total</b>	<b>62</b>	<b>50</b>	<b>2,411</b>

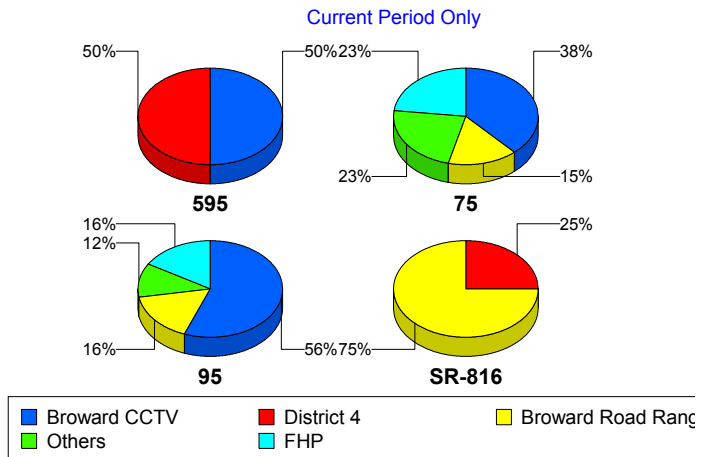
### Total Incidents by Detection Method



### Incident Detection Methods by Roadway

		Current Week	Last Week	YTD
595	Broward CCTV	1	0	139
	Broward Road Ranger	0	0	39
	Broward VideoWall	0	0	8
	BSO	0	2	9
	District 4	1	0	13
	FDOT Maintenance	0	0	2
	FHP	0	0	57
	Florida's Turnpike	0	0	6
	Motorist	0	0	3
	Road Watcher	0	0	4
	SIRV	0	0	1
	VisioPaD Detection	0	0	6
	Total	2	2	287
	75	Broward CCTV	5	1
Broward Road Ranger		2	0	27
Broward VideoWall		0	0	1
BSO		2	0	37
District 4		1	0	8
FHP		3	1	49
Local Police		0	0	1
Other		0	0	1
Road Watcher		0	0	3
VisioPaD Detection		0	0	5
Total		13	2	225
95	Broward CCTV	24	21	1,025
	Broward Road Ranger	7	7	226
	Broward TMC	0	0	4
	Broward VideoWall	2	1	59
	BSO	0	1	8
	District 4	1	1	35
	District 6	0	0	3

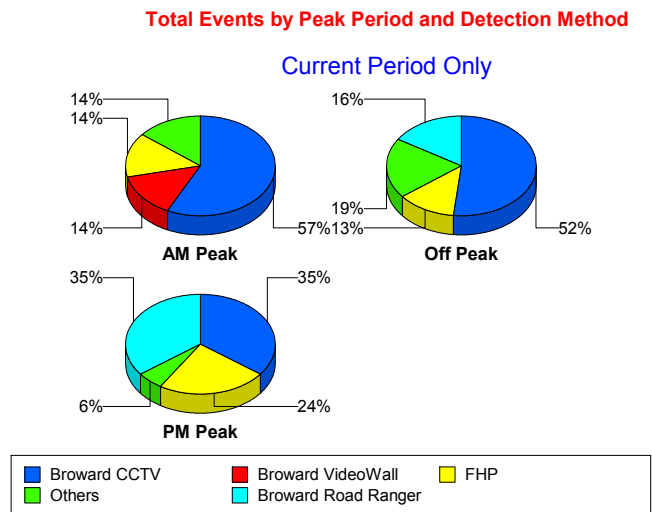
Total Events by Roadway and Detection Method



		Current Week	Last Week	YTD
95	FDOT Maintenance	0	0	5
	FHP	7	7	389
	Fire	0	0	4
	ITMS	0	0	3
	Motorist	1	1	12
	Palm Beach Road Ran	0	0	9
	Road Watcher	1	0	9
	SIRV	0	0	11
	SmarTraveler (511)	0	0	6
	VisioPaD Detection	0	0	26
	<b>Total</b>	<b>43</b>	<b>39</b>	<b>1,834</b>
SR-816	Broward Road Ranger	3	6	62
	District 4	1	0	2
	Road Watcher	0	1	1
	<b>Total</b>	<b>4</b>	<b>7</b>	<b>65</b>
<b>Total</b>	<b>62</b>	<b>50</b>	<b>2,411</b>	

### Incident Detection Methods by Peak Period

		Current Week	Last Week	YTD
AM Peak	Broward CCTV	8	2	249
	Broward Road Ranger	1	4	113
	Broward TMC	0	0	1
	Broward VideoWall	2	1	25
	BSO	0	0	9
	District 4	1	0	21
	FDOT Maintenance	0	0	1
	FHP	2	1	123
	Florida's Turnpike	0	0	2
	Motorist	0	0	6
	Palm Beach Road Ran	0	0	2
	Road Watcher	0	1	6
	SIRV	0	0	1

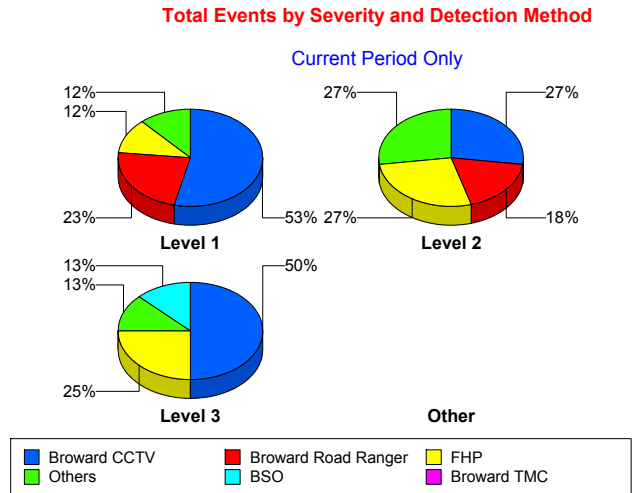


		Current Week	Last Week	YTD
AM Peak	SmarTraveler (511)	0	0	1
	VisioPaD Detection	0	0	2
	<b>Total</b>	<b>14</b>	<b>9</b>	<b>562</b>
Off Peak	Broward CCTV	16	10	672
	Broward Road Ranger	5	3	97
	Broward TMC	0	0	3
	Broward VideoWall	0	0	36
	BSO	2	2	35
	District 4	2	1	20
	District 6	0	0	2
	FDOT Maintenance	0	0	4
	FHP	4	4	235
	Fire	0	0	3
	Florida's Turnpike	0	0	3
	ITMS	0	0	3
	Local Police	0	0	1
	Motorist	1	1	6
	Palm Beach Road Ran	0	0	4
	Road Watcher	1	0	7
	SIRV	0	0	5
	SmarTraveler (511)	0	0	3
	VisioPaD Detection	0	0	29
	<b>Total</b>	<b>31</b>	<b>21</b>	<b>1,168</b>
PM Peak	Broward CCTV	6	10	336
	Broward Road Ranger	6	6	144
	Broward VideoWall	0	0	7
	BSO	0	1	10
	District 4	1	0	17
	District 6	0	0	1
	FDOT Maintenance	0	0	2
	FHP	4	3	137
	Fire	0	0	1

		Current Week	Last Week	YTD
PM Peak	Florida's Turnpike	0	0	1
	Motorist	0	0	3
	Other	0	0	1
	Palm Beach Road Ran	0	0	3
	Road Watcher	0	0	4
	SIRV	0	0	6
	SmarTraveler (511)	0	0	2
	VisioPaD Detection	0	0	6
	Total	17	20	681
Total	62	50	2,411	

### Incident Detection Methods by Severity

		Current Week	Last Week	YTD
Level 1	Broward CCTV	23	12	799
	Broward Road Ranger	10	11	262
	Broward TMC	0	0	3
	Broward VideoWall	1	1	46
	BSO	1	1	12
	District 4	3	1	44
	District 6	0	0	2
	FDOT Maintenance	0	0	5
	FHP	5	6	289
	Fire	0	0	3
	ITMS	0	0	2
	Local Police	0	0	1
	Motorist	0	0	9
	Palm Beach Road Ran	0	0	6
	Road Watcher	0	1	10
	SIRV	0	0	11
	SmarTraveler (511)	0	0	4
	VisioPaD Detection	0	0	21
	Total	43	33	1,529



		Current Week	Last Week	YTD
Level 2	Broward CCTV	3	7	329
	Broward Road Ranger	2	2	66
	Broward TMC	0	0	1
	Broward VideoWall	1	0	19
	BSO	0	1	12
	District 4	0	0	7
	FDOT Maintenance	0	0	1
	FHP	3	1	140
	Florida's Turnpike	0	0	4
	ITMS	0	0	1
	Motorist	1	1	6
	Other	0	0	1
	Palm Beach Road Ran	0	0	1
	Road Watcher	1	0	4
	SIRV	0	0	1
	SmarTraveler (511)	0	0	2
	VisioPaD Detection	0	0	13
	Total	11	12	608
	Level 3	Broward CCTV	4	3
Broward Road Ranger		0	0	26
Broward VideoWall		0	0	3
BSO		1	1	30
District 4		1	0	7
District 6		0	0	1
FDOT Maintenance		0	0	1
FHP		2	1	66
Fire		0	0	1
Florida's Turnpike		0	0	2
Palm Beach Road Ran		0	0	2
Road Watcher		0	0	3
VisioPaD Detection		0	0	3
Total		8	5	274

	Current Week	Last Week	YTD
Total	62	50	2,411

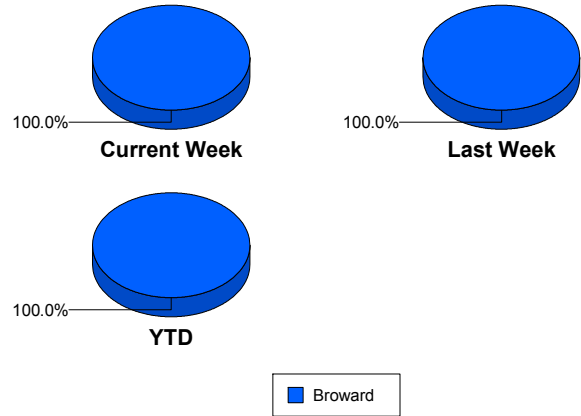
# Road Ranger / SIRV Performance Measures

## Road Ranger / SIRV Performance By County

Values presented are:  
 - Total Events with a RR/SIRV Response  
 - Total RR/SIRV Responses,  
 - Total Activities Performed

	Current We	Last Week	YTD
Broward	983	944	37,370
	1,072	1,009	40,115
	1,100	1,046	41,745

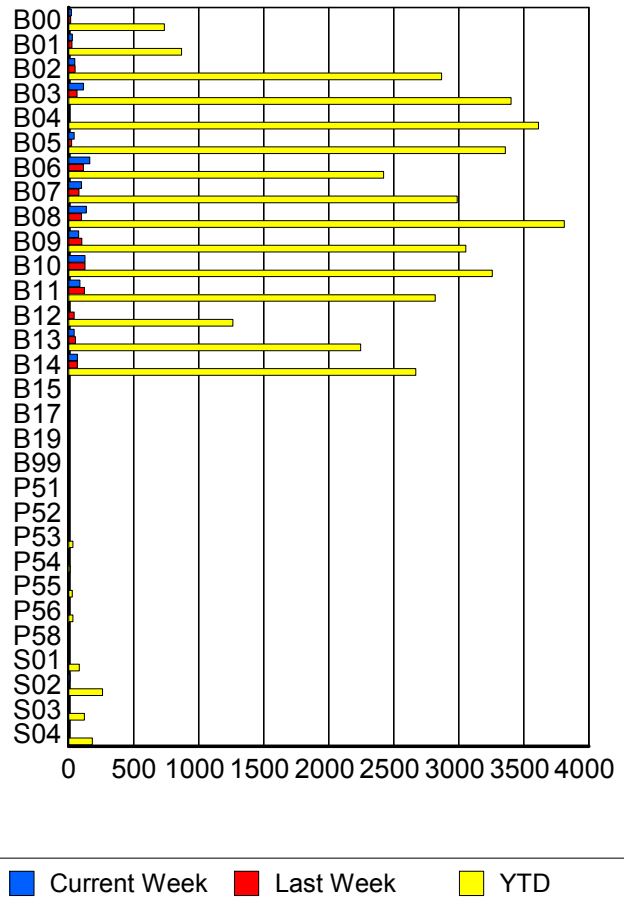
RR/SIRV Responses per County



## Road Ranger / SIRV Performance By Truck

	Current We	Last Week	YTD
B00	21	16	721
	22	17	737
	23	20	775
B01	27	26	856
	27	26	869
	27	26	907
B02	46	51	2,839
	47	51	2,868
	47	54	2,975
B03	108	64	3,351
	114	66	3,404
	116	68	3,536
B04	0	0	3,575
	0	0	3,613
	0	0	3,764
B05	44	24	3,302
	44	24	3,358
	46	25	3,476
B06	162	113	2,390
	164	114	2,422
	171	118	2,511
B07	98	78	2,948
	98	79	2,989
	100	83	3,119
B08	132	97	3,763
	135	100	3,813
	138	107	3,954

RR/SIRV Responses per Truck



	Current We	Last Week	YTD
B09	75	100	3,008
	76	102	3,055
	78	105	3,172
B10	124	124	3,201
	127	126	3,259
	132	129	3,387
B11	87	120	2,778
	87	122	2,820
	90	122	2,903
B12	0	42	1,246
	0	44	1,264
	0	46	1,320
B13	41	52	2,217
	42	53	2,245
	42	56	2,324
B14	67	67	2,626
	67	67	2,670
	68	68	2,768
B15	0	0	6
	0	0	6
	0	0	6
B17	0	0	1
	0	0	1
	0	0	1
B19	0	0	1
	0	0	1
	0	0	1
B99	0	0	4
	0	0	4
	0	0	4
P51	0	0	1
	0	0	1
	0	0	1
P52	0	0	4
	0	0	4
	0	0	4
P53	1	1	33
	1	1	34
	1	1	41
P54	0	1	10
	0	1	10
	0	1	10
P55	0	1	28
	0	1	28
	0	1	32

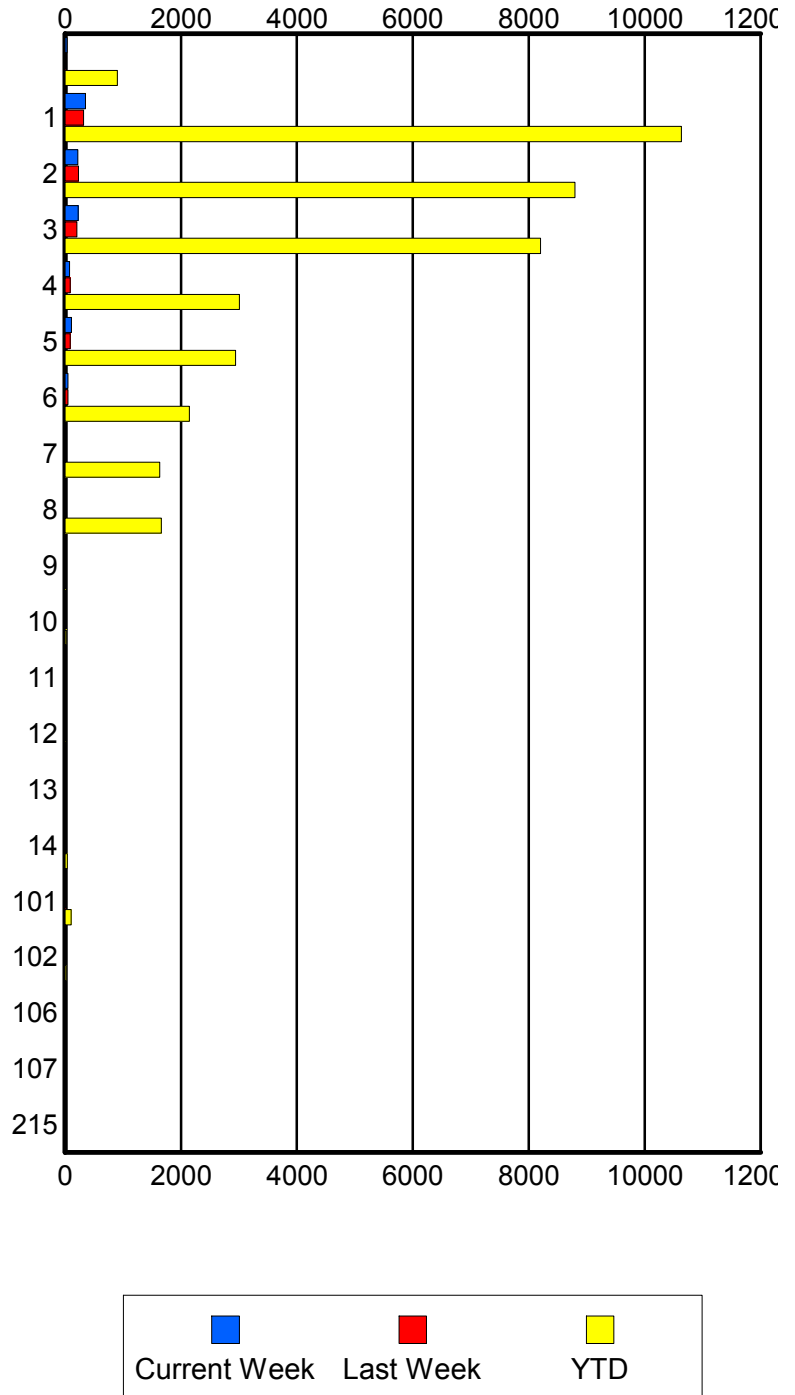
	Current We	Last Week	YTD
P56	0	2	32
	0	2	32
	0	2	33
P58	0	0	1
	0	0	1
	0	0	1
S01	1	3	79
	1	3	82
	1	3	94
S02	10	6	252
	11	6	261
	11	7	290
S03	5	1	120
	5	1	122
	5	1	138
S04	4	3	176
	4	3	182
	4	3	198

### Road Ranger / SIRV Performance By Beat

	Current We	Last Week	YTD
	34	15	847
	35	18	903
	35	19	980
1	321	302	10,050
	351	318	10,633
	365	327	11,000
2	219	223	8,500
	222	234	8,796
	224	244	9,162
3	215	198	7,969
	224	202	8,201
	231	212	8,516
4	75	87	2,948
	76	89	3,010
	77	93	3,111
5	109	85	2,893
	112	87	2,943
	114	90	3,047
6	48	53	2,101
	48	53	2,143
	50	53	2,248
7	0	0	1,606
	0	0	1,631
	0	0	1,704
8	0	0	1,641
	0	0	1,661
	0	0	1,727
9	0	0	12
	0	0	14
	0	0	14
10	0	3	21
	0	3	22
	0	3	22
11	3	0	3
	3	0	3
	3	0	3
12	0	0	9
	0	0	9
	0	0	9
13	0	0	16
	0	0	16
	0	0	17
14	0	0	38
	0	0	38
	0	0	39

Values presented are:  
 - Total Events with a RR/SIRV Response  
 - Total RR/SIRV Responses,  
 - Total Activities Performed

### RR/SIRV Responses per Beat



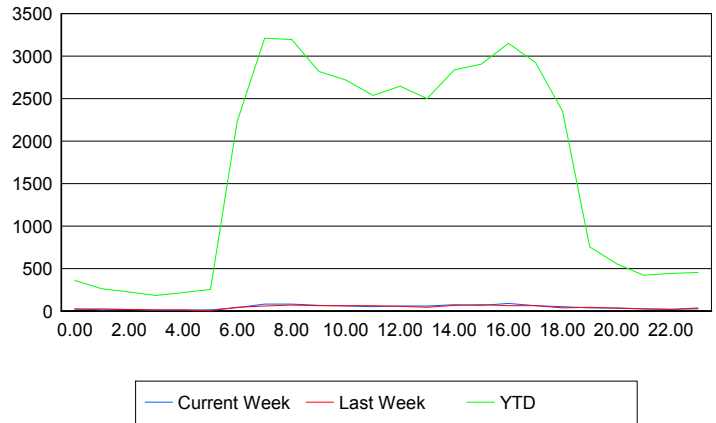
	Current We	Last Week	YTD
101	1	5	104
	1	5	106
	1	5	118
102	0	0	23
	0	0	23
	0	0	25
106	0	0	1
	0	0	1
	0	0	1
107	0	0	1
	0	0	1
	0	0	1
215	0	0	1
	0	0	1
	0	0	1

**Road Ranger / SIRV Performance By Time of Day**

Values presented are:  
 - Total Events with a RR/SIRV Response  
 - Total RR/SIRV Responses,  
 - Total Activities Performed

	Current We	Last Week	YTD
12AM-1AM	23	19	345
	24	21	359
	24	21	385
1AM-2AM	15	26	257
	15	26	263
	15	26	274
2AM-3AM	15	17	211
	16	17	225
	16	17	232
3AM-4AM	9	14	175
	9	15	183
	9	15	192
4AM-5AM	8	11	199
	9	13	218
	9	14	227
5AM-6AM	12	2	209
	15	2	253
	15	2	268
6AM-7AM	36	36	2,042
	40	43	2,233
	40	45	2,301
7AM-8AM	77	57	2,988
	83	60	3,210
	86	61	3,323

**Number of Responses / Hour of the Day**



	Current We	Last Week	YTD
8AM-9AM	70	68	2,911
	81	70	3,196
	83	72	3,320
9AM-10AM	59	57	2,620
	66	63	2,818
	66	66	2,911
10AM-11AM	56	59	2,523
	60	62	2,717
	64	62	2,834
11AM-12PM	48	52	2,357
	53	61	2,537
	55	64	2,643
12PM-1PM	54	56	2,490
	60	56	2,645
	61	57	2,738
1PM-2PM	50	44	2,325
	57	45	2,498
	59	46	2,599
2PM-3PM	67	55	2,650
	72	65	2,838
	78	67	2,953
3PM-4PM	58	64	2,707
	66	73	2,907
	67	85	3,045
4PM-5PM	81	61	2,953
	89	63	3,152
	90	66	3,275
5PM-6PM	59	62	2,710
	62	63	2,926
	63	64	3,045
6PM-7PM	49	36	2,220
	52	38	2,349
	52	40	2,423
7PM-8PM	35	40	711
	37	42	756
	37	42	794
8PM-9PM	36	31	517
	38	32	556
	41	32	589
9PM-10PM	24	25	389
	24	26	420
	25	29	444
10PM-11PM	19	17	424
	21	18	441
	21	18	459

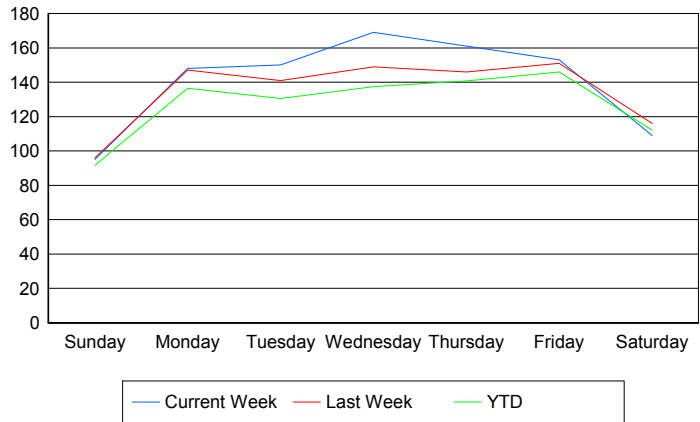
	Current We	Last Week	YTD
11PM-12AM	<b>23</b>	<b>35</b>	<b>437</b>
	<b>23</b>	<b>35</b>	<b>453</b>
	<b>24</b>	<b>35</b>	<b>471</b>

## Road Ranger / SIRV Performance By Day of Week

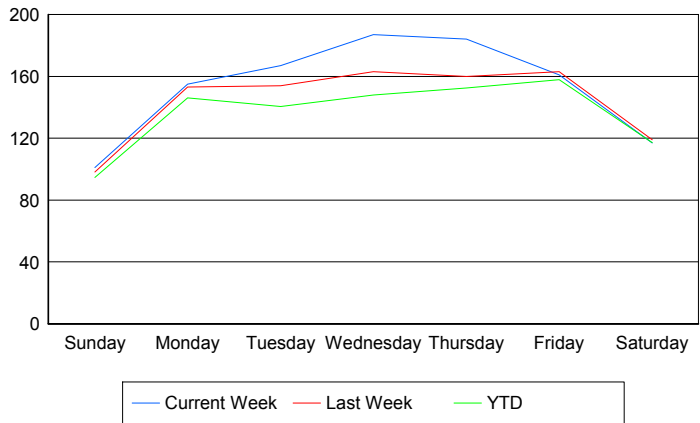
Values presented are:  
 - Total Events with a RR/SIRV Response  
 - Total RR/SIRV Responses,  
 - Total Activities Performed

	Current We	Last Week	YTD
Sunday	95	95	1,384
	101	97	1,428
	104	100	1,491
Monday	148	147	6,700
	155	153	7,168
	158	156	7,387
Tuesday	150	141	6,382
	167	154	6,855
	174	154	7,088
Wednesday	169	149	6,697
	187	163	7,209
	194	176	7,533
Thursday	161	146	7,044
	184	160	7,619
	190	168	7,928
Friday	153	151	7,362
	161	163	7,964
	162	169	8,309
Saturday	109	116	1,826
	117	119	1,908
	118	123	2,009

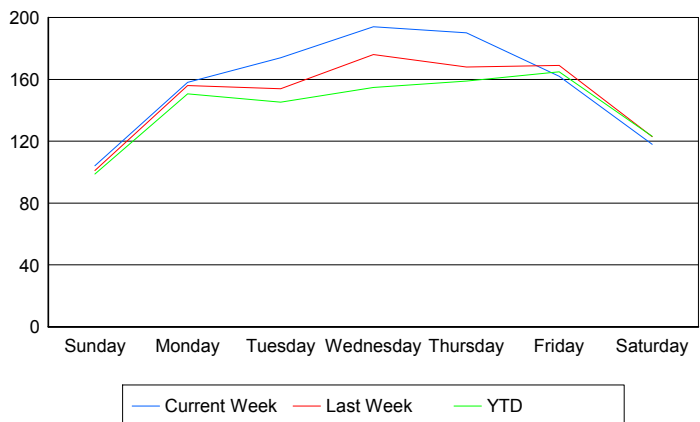
### Avg # of events with a RR/SIRV Response per Day of the Week



### Avg # of RR/SIRV Responses per Day of the Week



### Avg # of RR/SIRV Activities Performed per Day of the Week



### Road Ranger / SIRV Responses per Time of Day and Day of Week

