



# Weekly Performance Measures Report Broward County



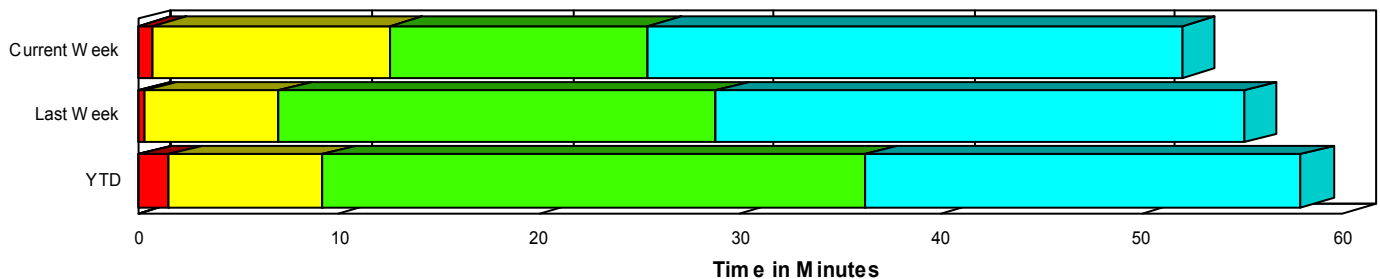
Created on:  
December 16, 2008  
5:43 pm

Period From Dec 7, 2008 to Dec 13, 2008

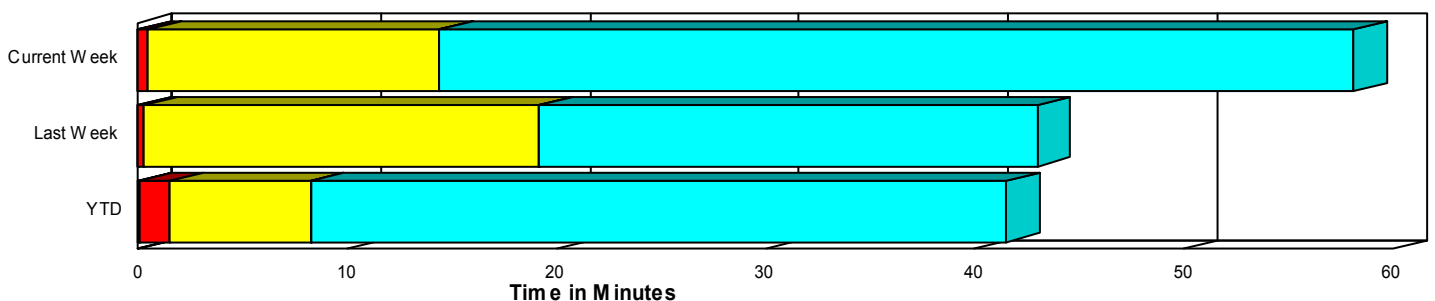
## Performance Measures Summary

	Traffic Events (No Lanes Blocked)			Incidents (Lanes Blocked)		
	<u>This Week</u>	<u>Last Week</u>	<u>YTD</u>	<u>This Week</u>	<u>Last Week</u>	<u>YTD</u>
Number of Events	1,344	1,178	51,820	37	50	2,304
TMC Detection (min.)	0.00	0.00	0.01	0.00	0.00	0.03
TMC Verification (min.)	0.44	0.23	1.46	0.76	0.29	1.52
TMC Response (min.)	14.93	19.41	8.77	12.80	7.10	9.31
RR Dispatch Time (min.)	7.23	8.93	3.01	3.50	2.29	2.45
RR Response Time (min.)	7.45	7.51	6.01	9.54	4.81	6.92
Roadway Clearance (min.)				28.83	31.52	35.44
Event Clearance (min.)	58.73	43.23	42.06	55.40	57.81	55.95
# of Events w/ RR/SIRV	774	680	41,380	29	30	2,110
RR/SIRV Responses	774	680	41,514	29	30	2,360
RR/SIRV Activities	602	512	39,234	63	65	4,112

### Incident Clearance TimeLine



### Traffic Event (Non-Lane Blockage) Time-Line



<span style="color: blue;">■</span> Avg. TMC Detection Time	<span style="color: green;">■</span> Avg. Time from TMC Response to Roadway Clearance*
<span style="color: red;">■</span> Avg. Time from TMC Detection to TMC Verification	<span style="color: cyan;">■</span> Avg. Time from Roadway Clearance to Incident/Event Clearance**
<span style="color: yellow;">■</span> Avg. Time from TMC Verification to TMC Response	

\* Roadway clearance equals all travel lanes open

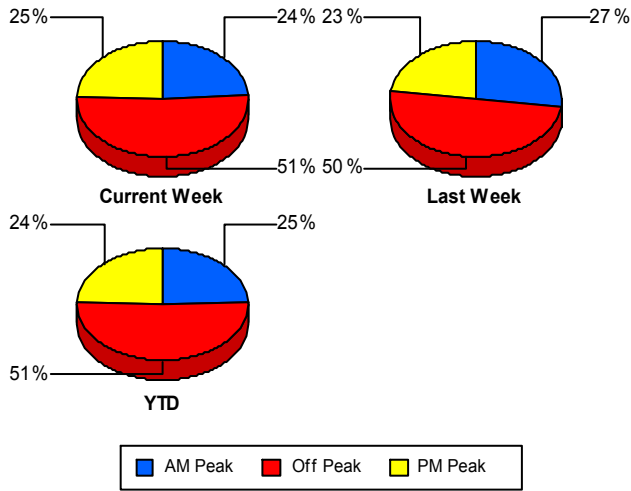
\*\* Incident clearance equals time when last responder has left the scene

## Performance Measures by Peak Period

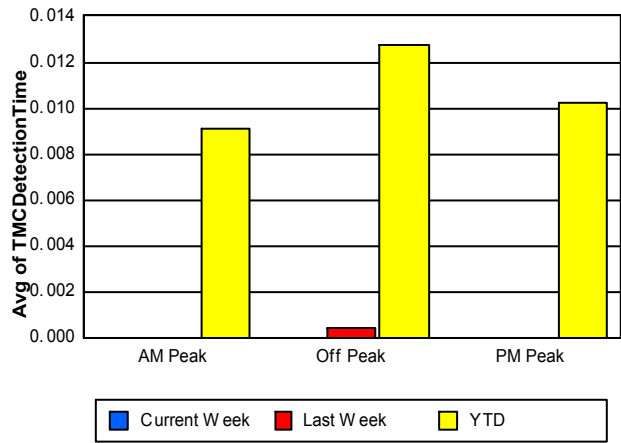
Note: AM peak period is defined as 6am to 10am and PM peak period is defined as 3pm to 7pm.

	AM Peak			Off Peak			PM Peak		
	Current Week	Last Week	YTD	Current Week	Last Week	YTD	Current Week	Last Week	YTD
Number of Events	332	331	13,401	706	617	27,621	343	280	13,102
Number of Incidents	13	14	558	12	21	1,192	12	15	554
TMC Detection (min.)	0.00	0.00	0.01	0.00	0.00	0.01	0.00	0.00	0.01
TMC Verification (min.)	0.77	0.13	0.85	0.22	0.19	1.78	0.60	0.44	1.44
TMC Response (min.)	7.22	7.12	7.92	23.90	27.18	10.17	12.07	23.24	7.14
RR Dispatch Time (min.)	0.80	0.76	2.46	13.51	13.13	3.89	4.45	12.50	1.80
RR Response Time (min.)	6.52	6.46	5.62	8.89	8.85	6.68	7.01	6.68	5.35
Event Clearance (min.)	47.96	32.77	35.92	63.84	51.03	48.03	58.27	41.01	38.17
Roadway Clearance (min.)	24.10	29.52	31.42	42.86	36.00	42.09	19.94	27.11	25.19
Incident Clearance (min.)	60.16	46.73	53.01	66.38	69.77	63.27	39.26	51.40	43.14
# of Events w/ RR/SIRV	240	247	11,497	331	262	21,057	232	201	10,936
RR/SIRV Responses	240	247	11,601	331	262	21,265	232	201	11,008
RR/SIRV Activities	222	205	11,573	245	206	20,826	198	166	10,947

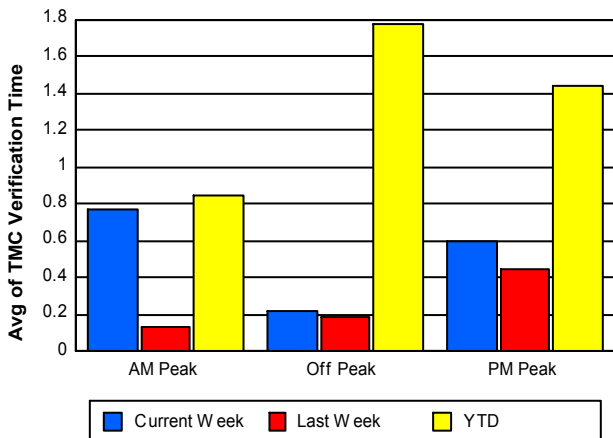
### Number of Events / Peak Period



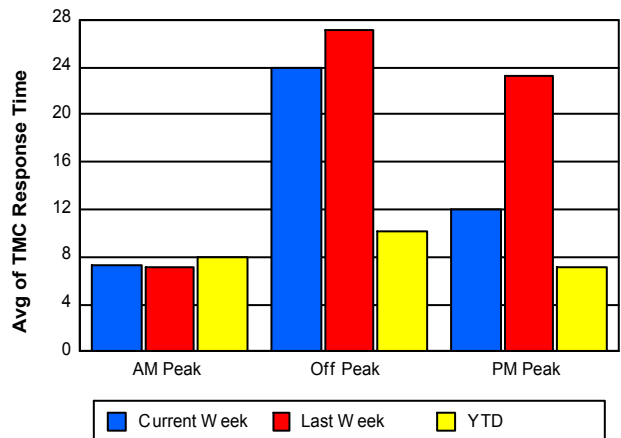
### TMC Detection Time



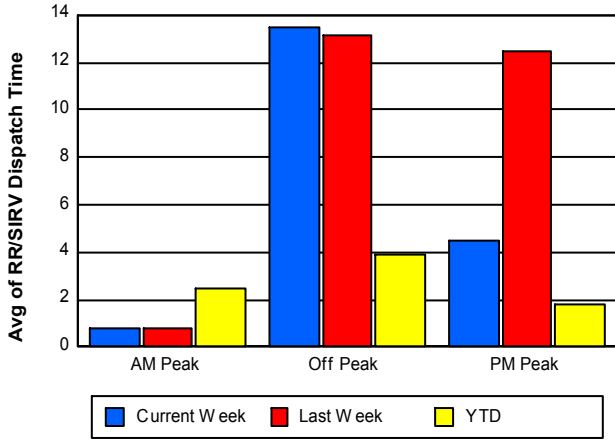
### TMC Verification Time



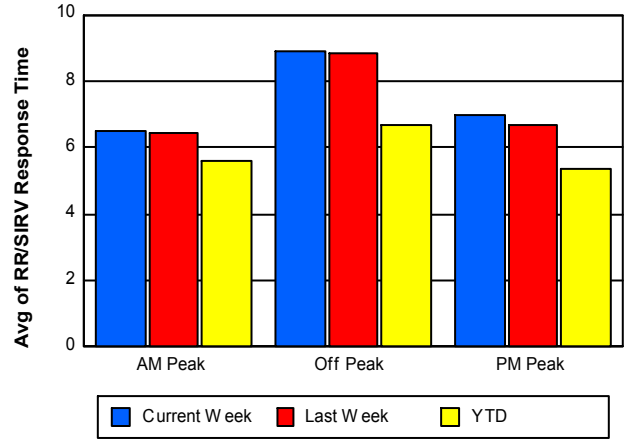
### TMC Response Time



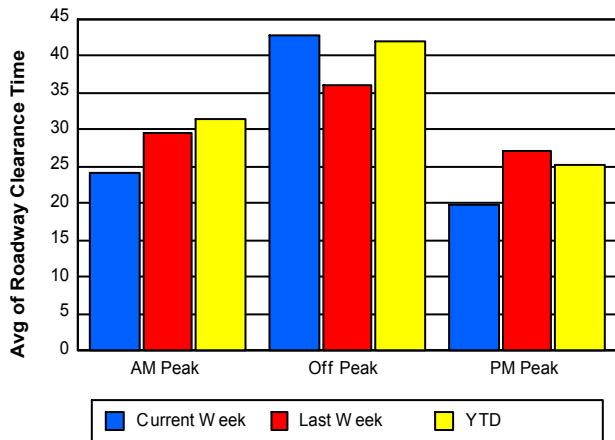
## Road Ranger / SIRV Dispatch Time



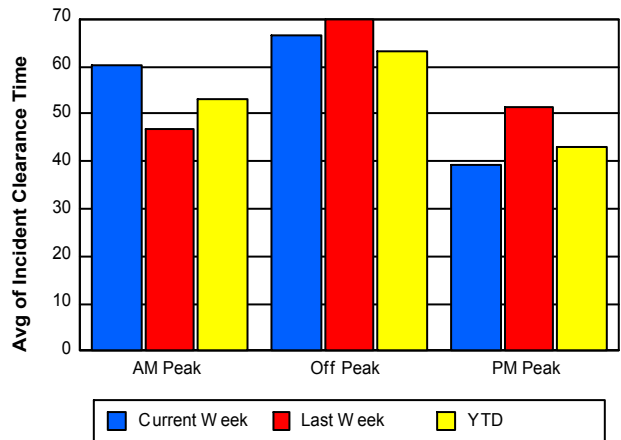
## Road Ranger / SIRV Response Time



## Roadway Clearance Time (2A)



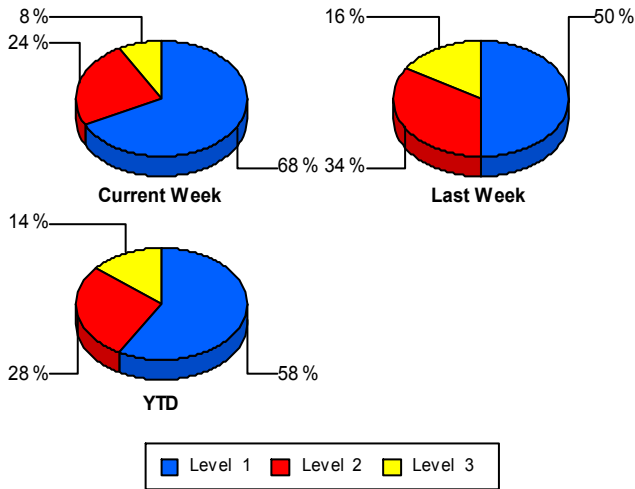
## Incident Clearance Time (3B)



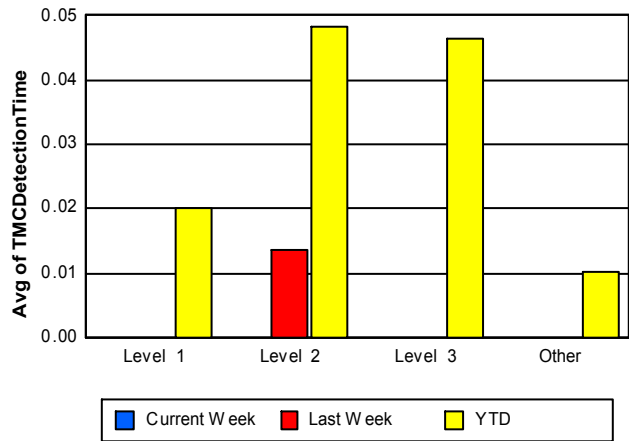
## Performance Measures by Severity

	Level 1			Level 2			Level 3			Other		
	<u>This Week</u>	<u>Last Week</u>	<u>YTD</u>	<u>This Week</u>	<u>Last Week</u>	<u>YTD</u>	<u>This Week</u>	<u>Last Week</u>	<u>YTD</u>	<u>This Week</u>	<u>Last Week</u>	<u>YTD</u>
Number of Events	25	25	1,339	9	17	642	3	8	323	1,344	1,178	51,820
Number of Incidents	25	25	1,339	9	17	642	3	8	323	0	0	0
TMC Detection (min.)	0.00	0.00	0.02	0.00	0.01	0.05	0.00	0.00	0.05	0.00	0.00	0.01
TMC Verification (min.)	1.02	0.36	0.92	0.12	0.15	2.27	0.47	0.39	2.55	0.44	0.23	1.46
TMC Response (min.)	8.51	4.96	7.79	24.72	8.57	11.00	10.87	9.85	12.15	14.93	19.41	8.77
RR Dispatch Time (min.)	2.03	1.08	2.20	6.68	1.45	2.47	7.08	5.30	3.44	7.23	8.93	3.01
RR Resp. Time (min.)	6.40	3.88	5.63	18.05	7.12	8.53	9.55	4.55	9.00	7.45	7.51	6.01
Event Clearance (min.)	51.87	45.63	41.35	67.77	81.20	66.41	47.62	46.17	95.59	58.73	43.23	42.06
Roadway Clear. (min.)	17.72	14.62	14.88	57.83	52.28	50.29	34.44	40.21	91.16			
Incident Clearance (min.)	51.87	45.63	41.35	67.77	81.20	66.41	47.62	46.17	95.59			
# of Events w/ RR/SIRV	20	15	1,226	7	7	587	2	8	297	774	680	41,380
RR/SIRV Responses	20	15	1,299	7	7	661	2	8	400	774	680	41,514
RR/SIRV Activities	44	22	2,032	18	21	1,266	1	22	814	602	512	39,234

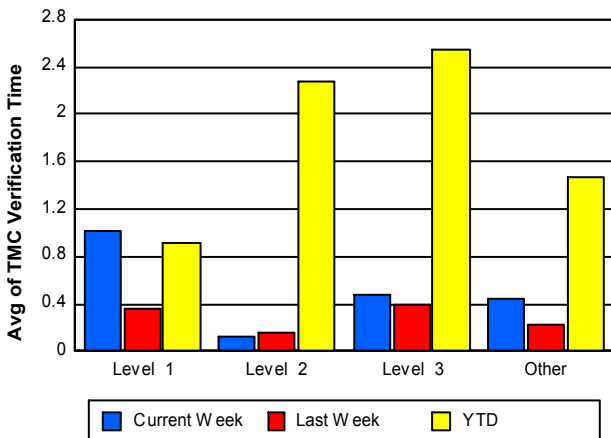
### Number of Events / Severity



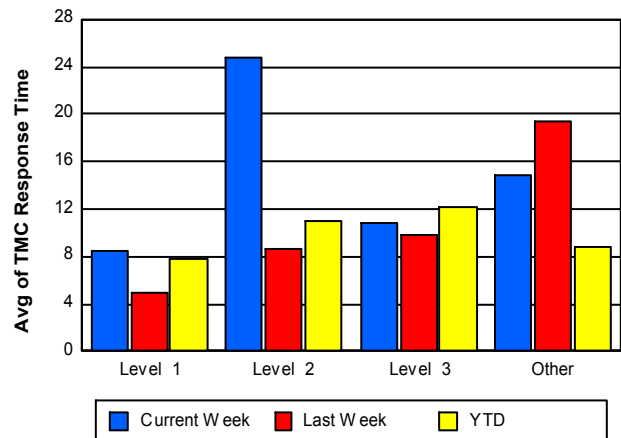
### TMC Detection Time



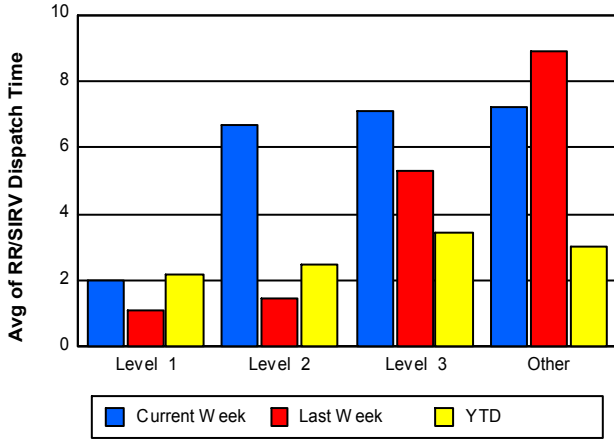
### TMC Verification Time



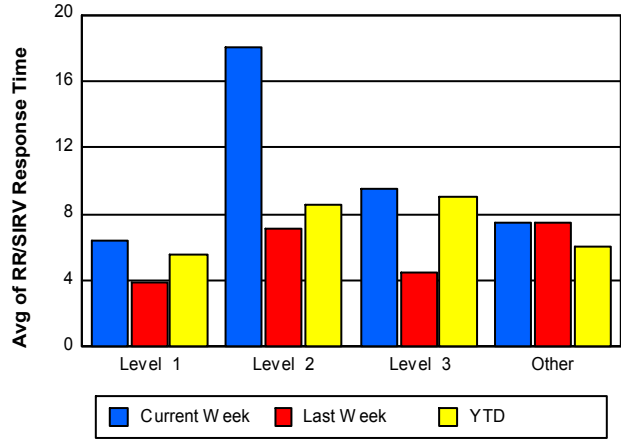
### TMC Response Time



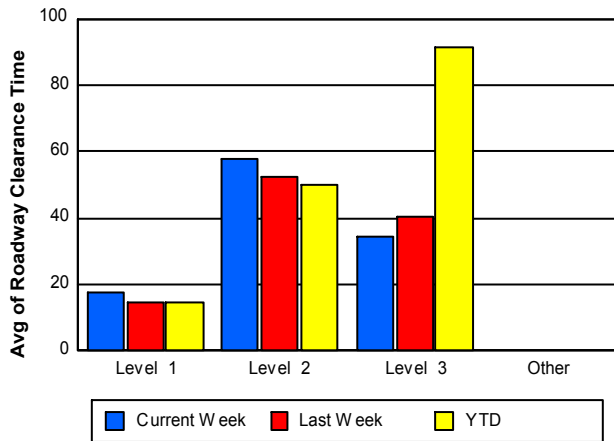
## Road Ranger / SIRV Dispatch Time



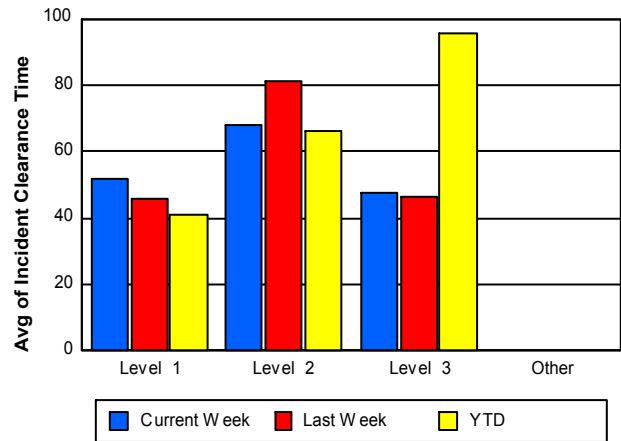
## Road Ranger / SIRV Response Time



## Roadway Clearance Time (2A)



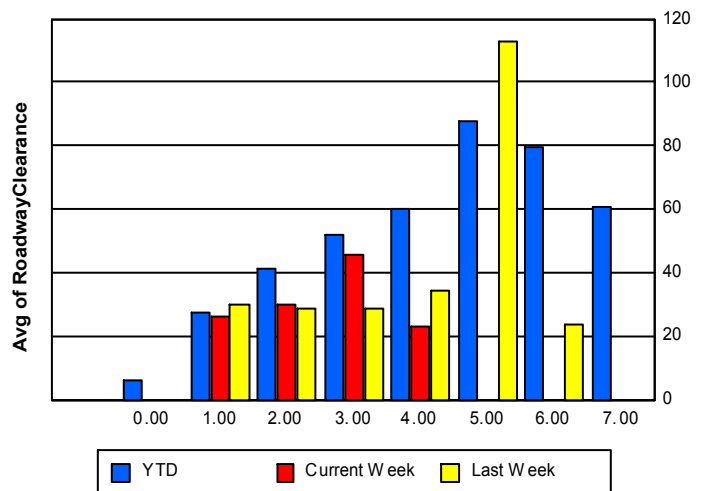
## Incident Clearance Time (3B)



## Roadway Clearance by Maximum Number of Lanes Blocked

	Current Week	Last Week	YTD
	0.00	0.00	
0			5.87
1	26.35	30.06	27.24
2	29.96	28.48	40.98
3	45.72	28.90	51.73
4	23.18	34.36	59.88
5	0.00	112.70	87.81
6	0.00	23.52	79.40

## Roadway Clearance Time(2A)



	Current Week	Last Week	YTD
7	0.00	0.00	60.95

## Performance Measures by Roadway

**595**

	<u>Current Week</u>	<u>Last Week</u>	<u>YTD</u>
Number of Events	188	188	8,174
Number of Incidents	5	13	401
TMC Detection (min.)	0.00	0.00	0.01
TMC Verification (min.)	1.00	0.33	1.68
TMC Response (min.)	8.22	16.81	9.17
RR Dispatch Time (min.)	2.64	10.09	3.21
RR Resp. Time (min.)	5.76	4.89	5.91
Event Clearance (min.)	45.37	39.48	41.50
Roadway Clear. (min.)	23.41	40.58	37.74
Incident Clearance (min.)	45.57	61.14	52.80
# of Events w/ RR/SIRV	123	104	6,747
RR/SIRV Responses	123	104	6,810
RR/SIRV Activities	109	97	6,912

**75**

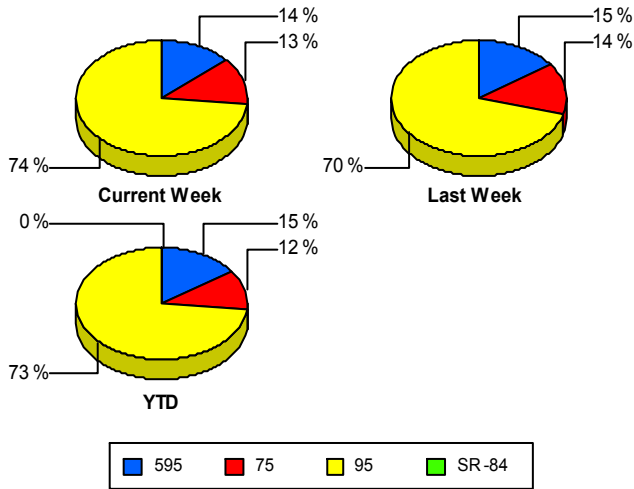
	<u>Current Week</u>	<u>Last Week</u>	<u>YTD</u>
Number of Events	176	178	6,333
Number of Incidents	2	5	142
TMC Detection (min.)	0.00	0.00	0.02
TMC Verification (min.)	0.54	0.26	4.78
TMC Response (min.)	6.59	12.56	5.96
RR Dispatch Time (min.)	1.16	3.88	2.15
RR Resp. Time (min.)	5.48	7.71	5.04
Event Clearance (min.)	63.61	40.56	46.71
Roadway Clear. (min.)	20.28	22.74	58.48
Incident Clearance (min.)	30.81	42.67	67.21
# of Events w/ RR/SIRV	118	126	5,955
RR/SIRV Responses	118	126	5,988
RR/SIRV Activities	105	104	6,384

**95**

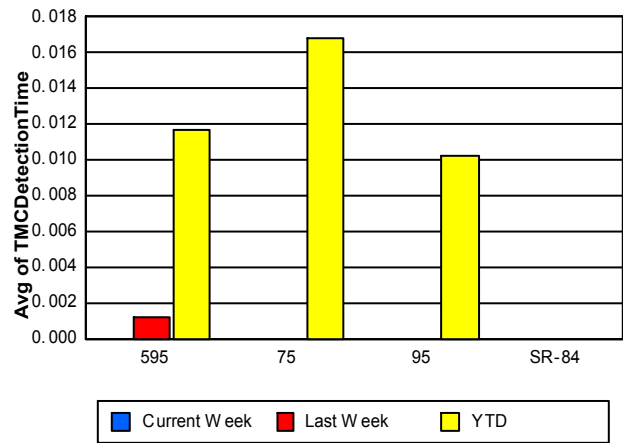
	<u>Current Week</u>	<u>Last Week</u>	<u>YTD</u>
Number of Events	1,017	862	39,616
Number of Incidents	30	32	1,761
TMC Detection (min.)	0.00	0.00	0.01
TMC Verification (min.)	0.33	0.21	0.89
TMC Response (min.)	18.51	20.88	9.34
RR Dispatch Time (min.)	9.32	9.59	3.10
RR Resp. Time (min.)	8.50	7.89	6.32
Event Clearance (min.)	60.23	45.44	42.23
Roadway Clear. (min.)	30.31	29.21	33.06
Incident Clearance (min.)	58.67	58.82	55.75
# of Events w/ RR/SIRV	562	480	30,788
RR/SIRV Responses	562	480	31,076
RR/SIRV Activities	451	376	30,050

	<u>YTD</u>
Number of Events	<b>1</b>
Number of Incidents	<b>0</b>
TMC Detection (min.)	<b>0.00</b>
TMC Verification (min.)	<b>0.47</b>
TMC Response (min.)	
RR Dispatch Time (min.)	
RR Resp. Time (min.)	
Event Clearance (min.)	<b>5.22</b>
Roadway Clear. (min.)	
Incident Clearance (min.)	
# of Events w/ RR/SIRV	<b>0</b>
RR/SIRV Responses	<b>0</b>
RR/SIRV Activities	<b>0</b>

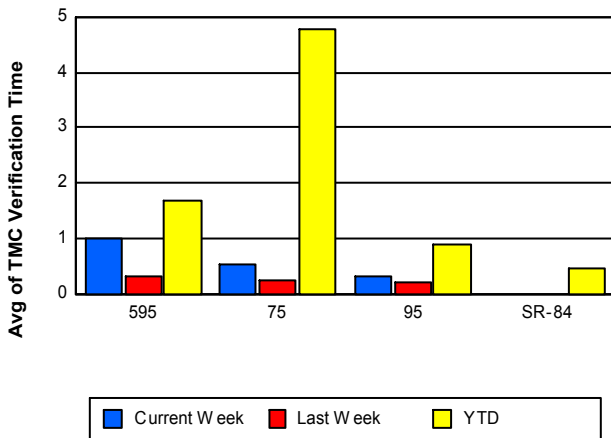
### Number of Events / Roadway



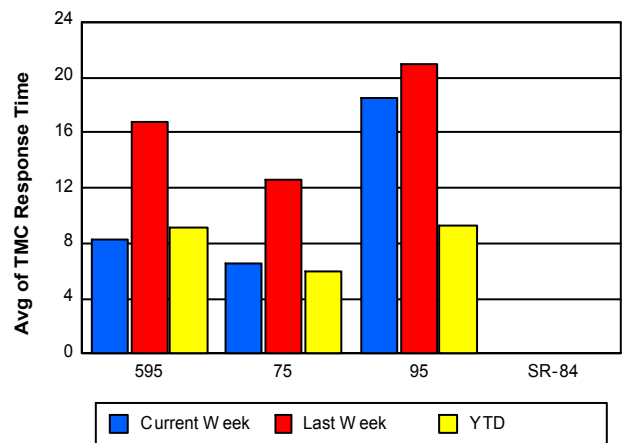
### TMC Detection Time



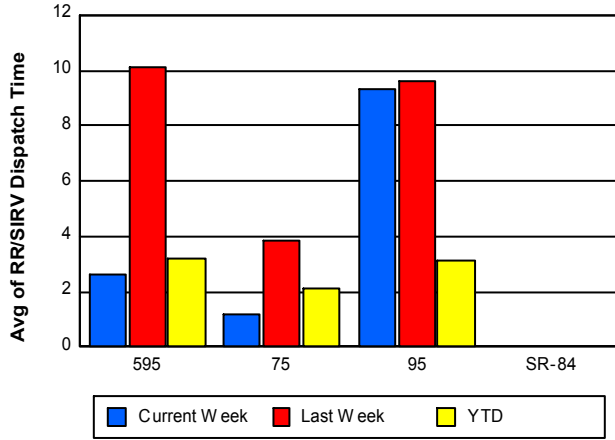
### TMC Verification Time



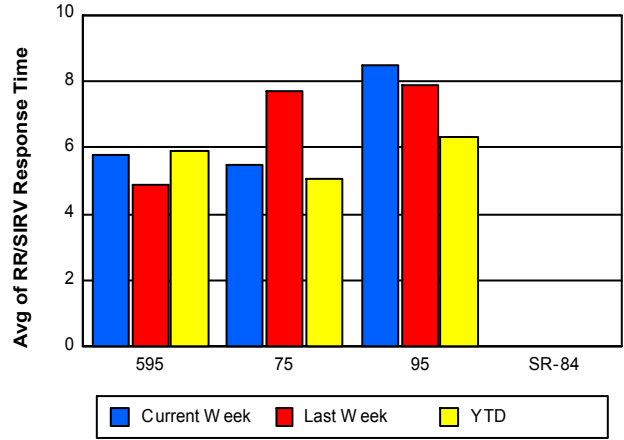
### TMC Response Time



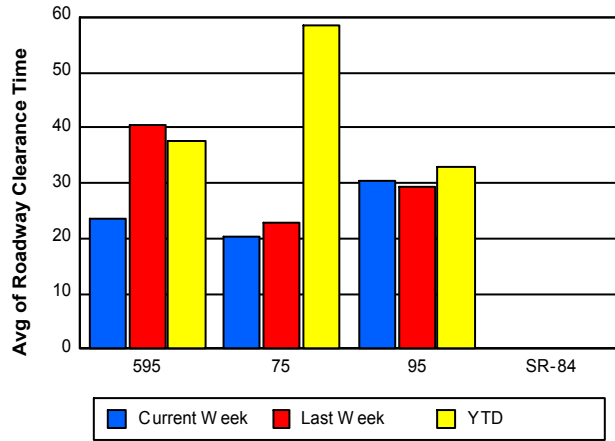
## Road Ranger / SIRV Dispatch Time



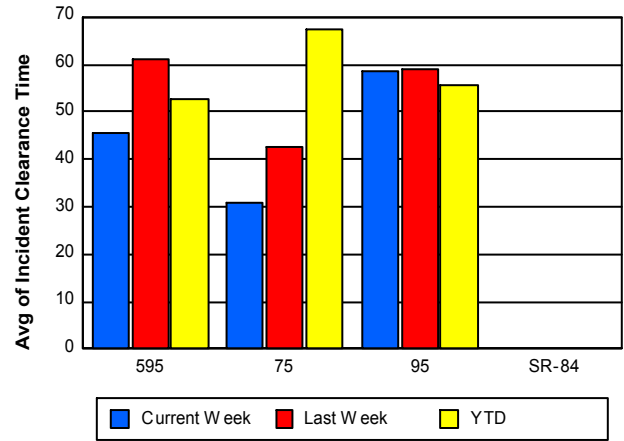
## Road Ranger / SIRV Response Time



## Roadway Clearance Time (2A)



## Incident Clearance Time (3B)



## Performance Measures by Event Type

### Abandoned Vehicle

	<u>Current Week</u>	<u>Last Week</u>	<u>YTD</u>
Number of Events	169	140	6,894
Number of Incidents	0	0	13
TMC Detection (min.)	0.00	0.00	0.02
TMC Verification (min.)	0.28	0.01	0.43
TMC Response (min.)	53.00	110.63	17.27
RR Dispatch Time (min.)	50.19	95.85	13.76
RR Response Time (min.)	11.97	14.79	5.99
Event Clearance (min.)	318.23	237.93	195.37
Roadway Clearance (min.)			39.46
Incident Clearance (min.)			236.85
# of Events w/ RR/SIRV	84	56	5,346
RR/SIRV Assists	84	56	5,353
RR/SIRV Activities	85	56	5,604

### Accident

	<u>Current Week</u>	<u>Last Week</u>	<u>YTD</u>
Number of Events	69	81	3,637
Number of Incidents	29	37	1,669
TMC Detection (min.)	0.00	0.00	0.03
TMC Verification (min.)	0.50	0.16	1.76
TMC Response (min.)	10.19	10.10	8.26
RR Dispatch Time (min.)	2.25	2.37	1.76
RR Response Time (min.)	8.12	7.80	6.56
Event Clearance (min.)	50.32	50.48	45.94
Roadway Clearance (min.)	30.54	30.40	35.96
Incident Clearance (min.)	61.03	59.03	59.66
# of Events w/ RR/SIRV	51	47	3,336
RR/SIRV Assists	51	47	3,563
RR/SIRV Activities	80	74	5,140

### Congestion

	<u>Current Week</u>	<u>YTD</u>
Number of Events	1	26
Number of Incidents	0	1
TMC Detection (min.)	0.00	0.00
TMC Verification (min.)	0.00	0.00
TMC Response (min.)		
RR Dispatch Time (min.)		
RR Response Time (min.)		
Event Clearance (min.)	3.77	74.01
Roadway Clearance (min.)		8.22
Incident Clearance (min.)		98.70
# of Events w/ RR/SIRV	0	0
RR/SIRV Assists	0	0
RR/SIRV Activities	0	0

## Debris on Roadway

	<u>Current Week</u>	<u>Last Week</u>	<u>YTD</u>
Number of Events	31	23	1,776
Number of Incidents	0	0	31
TMC Detection (min.)	0.00	0.00	0.03
TMC Verification (min.)	3.89	5.05	5.33
TMC Response (min.)	6.64	8.69	7.85
RR Dispatch Time (min.)	0.91	1.02	1.08
RR Response Time (min.)	5.71	7.65	6.80
Event Clearance (min.)	11.63	12.20	12.22
Roadway Clearance (min.)			43.85
Incident Clearance (min.)			51.47
# of Events w/ RR/SIRV	29	20	1,712
RR/SIRV Assists	29	20	1,739
RR/SIRV Activities	30	19	1,826

## Disabled Vehicle

	<u>Current Week</u>	<u>Last Week</u>	<u>YTD</u>
Number of Events	633	521	30,087
Number of Incidents	6	7	366
TMC Detection (min.)	0.00	0.00	0.01
TMC Verification (min.)	0.63	0.20	1.91
TMC Response (min.)	7.33	6.89	7.18
RR Dispatch Time (min.)	1.05	1.01	1.43
RR Response Time (min.)	6.46	5.89	5.89
Event Clearance (min.)	29.06	21.01	20.80
Roadway Clearance (min.)	15.43	21.39	24.22
Incident Clearance (min.)	27.35	33.08	36.11
# of Events w/ RR/SIRV	444	387	28,061
RR/SIRV Assists	444	387	28,157
RR/SIRV Activities	438	382	29,308

## Emergency Vehicles

	<u>YTD</u>
Number of Events	63
Number of Incidents	58
TMC Detection (min.)	0.06
TMC Verification (min.)	0.34
TMC Response (min.)	7.28
RR Dispatch Time (min.)	2.42
RR Response Time (min.)	4.94
Event Clearance (min.)	38.92
Roadway Clearance (min.)	38.47
Incident Clearance (min.)	39.60
# of Events w/ RR/SIRV	49
RR/SIRV Assists	51
RR/SIRV Activities	80

## Other

	<u>Current Week</u>	<u>Last Week</u>	<u>YTD</u>
Number of Events	456	440	11,122
Number of Incidents	1	2	27
TMC Detection (min.)	0.00	0.00	0.00
TMC Verification (min.)	0.02	0.13	0.23
TMC Response (min.)	30.44	11.50	11.36
RR Dispatch Time (min.)	4.60	1.16	1.96
RR Response Time (min.)	10.89	10.49	8.68
Event Clearance (min.)	9.93	9.80	11.44
Roadway Clearance (min.)	52.28	31.32	21.46
Incident Clearance (min.)	54.18	70.87	29.90
# of Events w/ RR/SIRV	187	192	4,597
RR/SIRV Assists	187	192	4,602
RR/SIRV Activities	27	34	919

## Pedestrian

	<u>YTD</u>
Number of Events	41
Number of Incidents	0
TMC Detection (min.)	0.01
TMC Verification (min.)	1.34
TMC Response (min.)	2.56
RR Dispatch Time (min.)	0.37
RR Response Time (min.)	2.29
Event Clearance (min.)	10.68
Roadway Clearance (min.)	
Incident Clearance (min.)	
# of Events w/ RR/SIRV	37
RR/SIRV Assists	37
RR/SIRV Activities	39

## Police Activity

	<u>Current Week</u>	<u>Last Week</u>	<u>YTD</u>
Number of Events	14	17	200
Number of Incidents	1	2	94
TMC Detection (min.)	0.00	0.00	0.01
TMC Verification (min.)	0.00	0.00	1.17
TMC Response (min.)	0.00	16.02	10.63
RR Dispatch Time (min.)	2.47	8.02	3.24
RR Response Time (min.)	0.00	4.47	7.21
Event Clearance (min.)	24.57	37.73	39.63
Roadway Clearance (min.)	36.33	84.22	67.22
Incident Clearance (min.)	61.63	87.33	56.06
# of Events w/ RR/SIRV	3	3	110
RR/SIRV Assists	3	3	130
RR/SIRV Activities	1	5	170

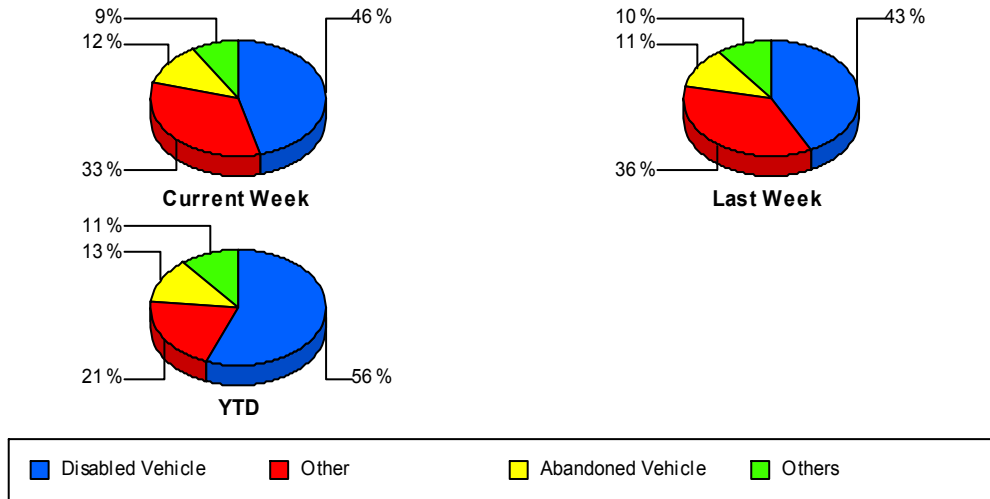
## Vehicle Fire

	<u>Last Week</u>	<u>YTD</u>
Number of Events	3	58
Number of Incidents	2	44
TMC Detection (min.)	0.00	0.00
TMC Verification (min.)	0.00	0.74
TMC Response (min.)	8.28	9.57
RR Dispatch Time (min.)	0.55	2.52
RR Response Time (min.)	7.73	7.05
Event Clearance (min.)	63.44	60.41
Roadway Clearance (min.)	35.08	39.71
Incident Clearance (min.)	79.20	66.91
# of Events w/ RR/SIRV	2	49
RR/SIRV Assists	2	49
RR/SIRV Activities	4	87

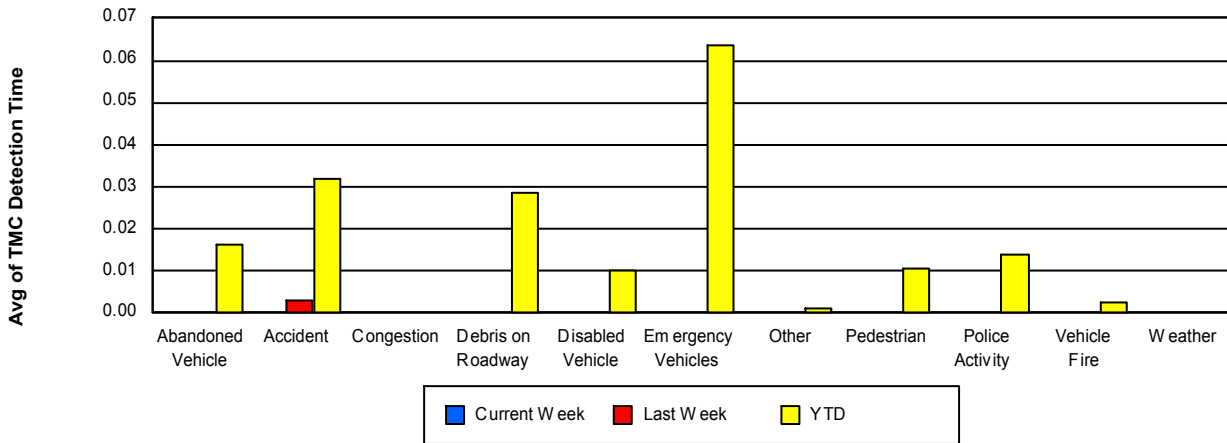
## Weather

	<u>Current Week</u>	<u>YTD</u>
Number of Events	3	18
Number of Incidents	0	0
TMC Detection (min.)	0.00	0.00
TMC Verification (min.)	0.00	0.00
TMC Response (min.)		0.10
RR Dispatch Time (min.)	2.45	1.54
RR Response Time (min.)		0.00
Event Clearance (min.)	1.87	11.87
Roadway Clearance (min.)		
Incident Clearance (min.)		
# of Events w/ RR/SIRV	1	8
RR/SIRV Assists	1	8
RR/SIRV Activities	0	1

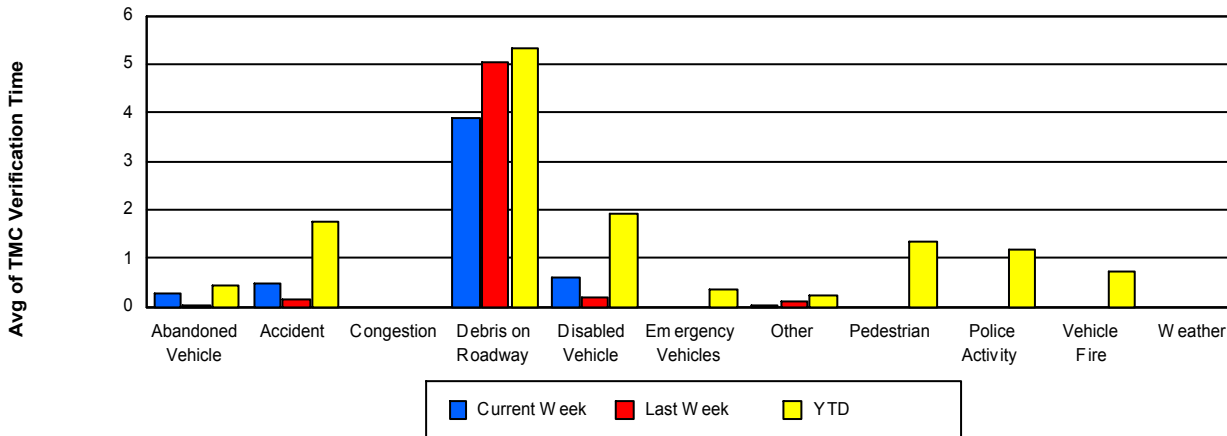
## Number of Events / Event Type



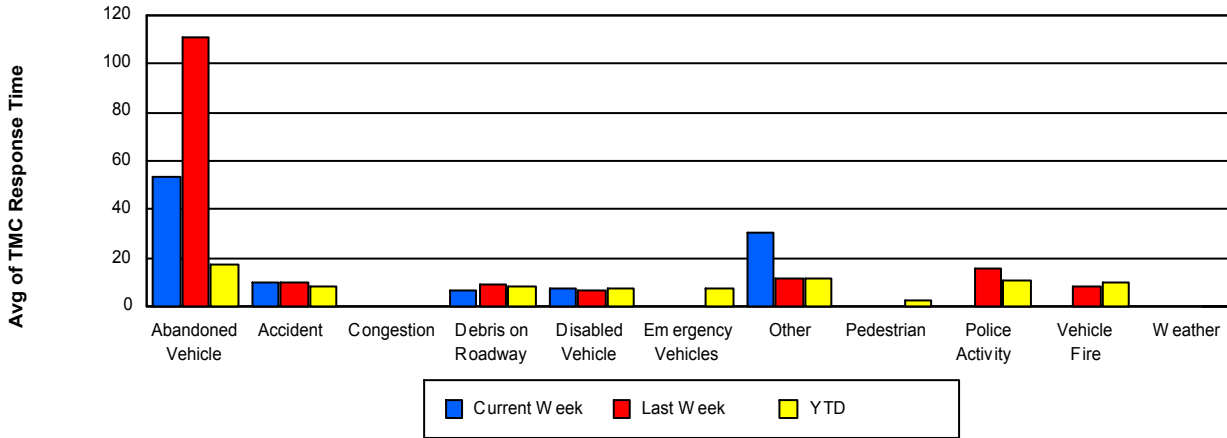
## TMC Detection Time



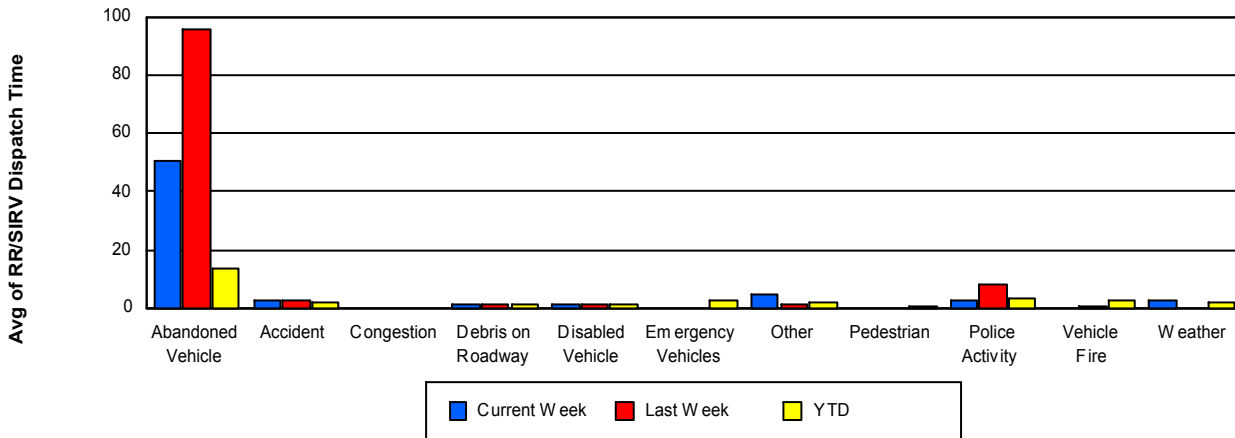
## TMC Verification Time



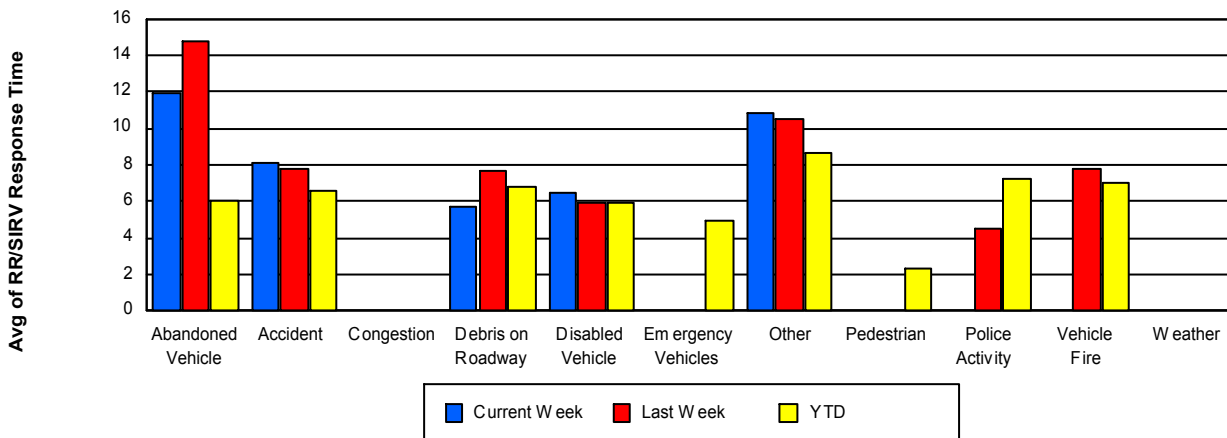
## TMC Response Time



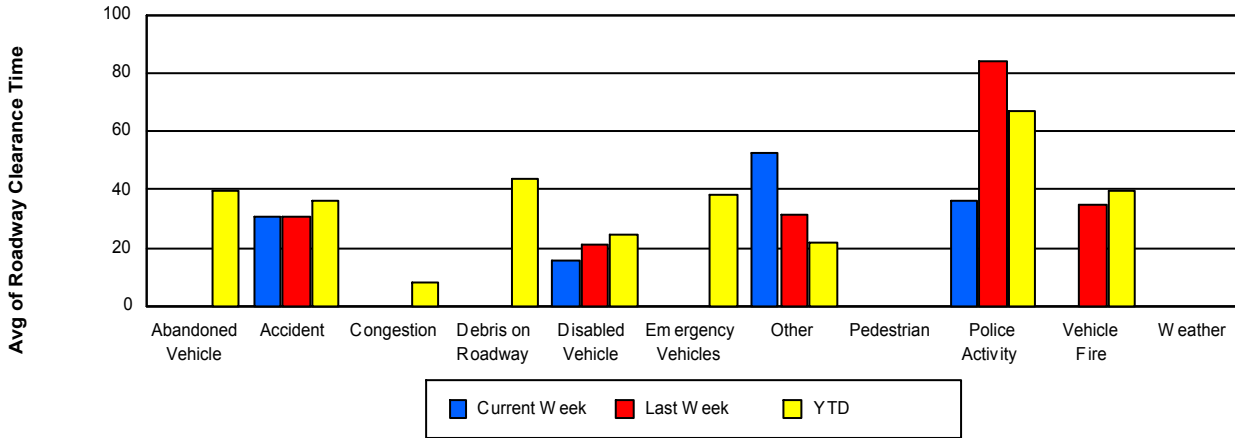
## Road Ranger / SIRV Dispatch Time



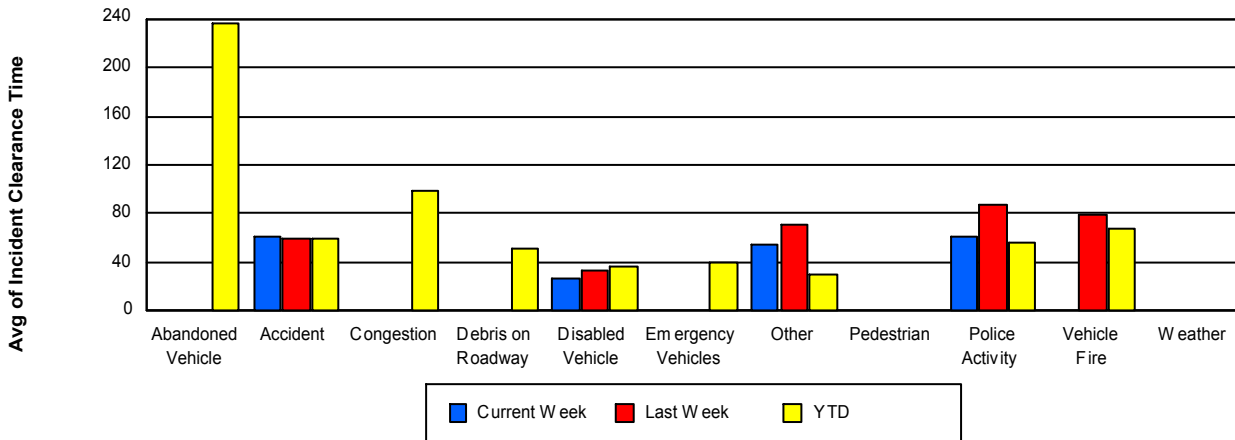
## Road Ranger / SIRV Response Time



## Roadway Clearance Time (2A)



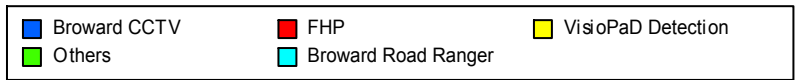
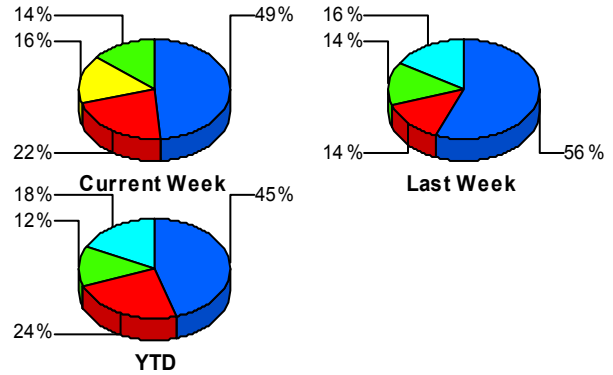
## Incident Clearance Time (3B)



## Incident Detection Methods

	Current Week	Last Week	YTD
Broward CCTV	18	28	1,045
Broward Road Ranger	2	8	418
Broward VideoWall	0	1	59
BSO	0	1	21
District 4	2	1	60
District 6	0	1	6
FDOT Maintenance	0	0	2
FHP	8	7	555
Fire	0	0	6
Florida's Turnpike	0	1	9
ITMS	0	0	2
Motorist	0	0	18
Other	0	0	1
Palm Beach Road Rang	0	0	8
PSAP	0	0	3
Road Watcher	1	0	15
SIRV	0	0	8
SmarTraveler (511)	0	0	11
VisioPaD Detection	6	2	57
<b>Total</b>	<b>37</b>	<b>50</b>	<b>2,304</b>

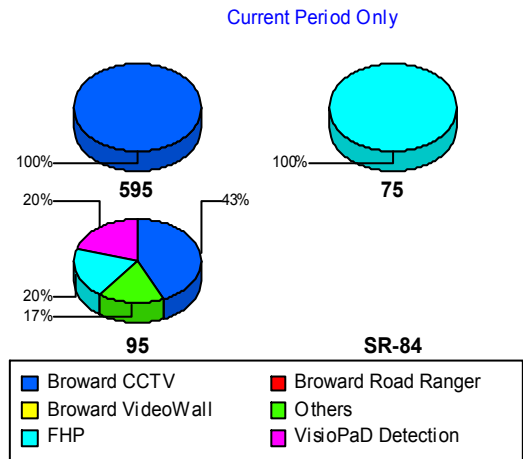
### Total Incidents by Detection Method



## Incident Detection Methods by Roadway

		Current Week	Last Week	YTD
595	Broward CCTV	5	8	153
	Broward Road Ranger	0	1	81
	Broward VideoWall	0	0	10
	BSO	0	0	10
	District 4	0	0	8
	FHP	0	3	114
	Florida's Turnpike	0	1	9
	Motorist	0	0	3
	Road Watcher	0	0	5
	SIRV	0	0	2
	SmarTraveler (511)	0	0	1
	VisioPaD Detection	0	0	5
	Total	5	13	401
	75	Broward CCTV	0	2
Broward Road Ranger		0	2	60
BSO		0	1	6
District 4		0	0	7
District 6		0	0	2
FHP		2	0	59
Road Watcher		0	0	1
SIRV		0	0	1
SmarTraveler (511)		0	0	1
Total		2	5	142
95	Broward CCTV	13	18	887
	Broward Road Ranger	2	5	277
	Broward VideoWall	0	1	49
	BSO	0	0	5
	District 4	2	1	45
	District 6	0	1	4
	FDOT Maintenance	0	0	2
	FHP	6	4	382

Total Events by Roadway and Detection Method

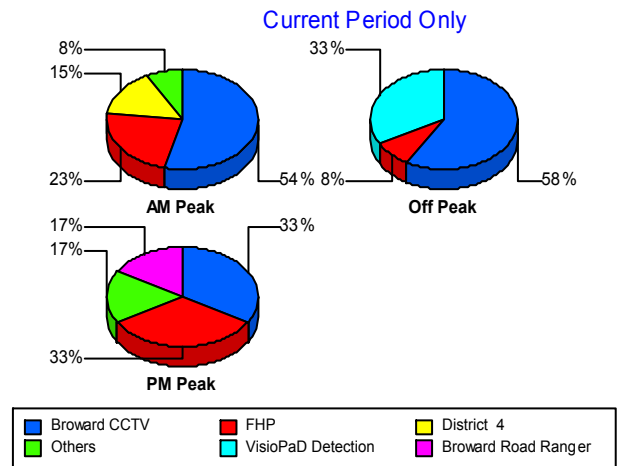


		Current Week	Last Week	YTD
95	Fire	0	0	6
	ITMS	0	0	2
	Motorist	0	0	15
	Other	0	0	1
	Palm Beach Road Rang	0	0	8
	PSAP	0	0	3
	Road Watcher	1	0	9
	SIRV	0	0	5
	SmarTraveler (511)	0	0	9
	VisioPaD Detection	6	2	52
	Total	30	32	1,761
Total	37	50	2,304	

### Incident Detection Methods by Peak Period

		Current Week	Last Week	YTD
AM Peak	Broward CCTV	7	9	252
	Broward Road Ranger	0	2	105
	Broward VideoWall	0	1	22
	BSO	0	0	6
	District 4	2	0	16
	FHP	3	2	126
	Fire	0	0	1
	Florida's Turnpike	0	0	3
	Motorist	0	0	3
	Palm Beach Road Rang	0	0	5
	PSAP	0	0	1
	Road Watcher	0	0	7
	SIRV	0	0	4
	SmarTraveler (511)	0	0	1
	VisioPaD Detection	1	0	6
	Total	13	14	558
Off Peak	Broward CCTV	7	13	551

Total Events by Peak Period and Detection Method



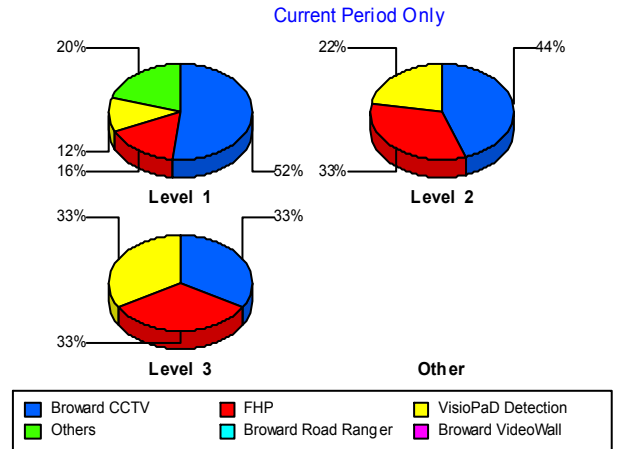
		Current Week	Last Week	YTD
Off Peak	Broward Road Ranger	0	1	192
	Broward VideoWall	0	0	25
	BSO	0	1	8
	District 4	0	1	30
	District 6	0	0	3
	FDOT Maintenance	0	0	2
	FHP	1	3	307
	Fire	0	0	4
	Florida's Turnpike	0	1	5
	ITMS	0	0	1
	Motorist	0	0	7
	Other	0	0	1
	Palm Beach Road Rang	0	0	3
	PSAP	0	0	2
	Road Watcher	0	0	3
	SIRV	0	0	2
	SmarTraveler (511)	0	0	1
	VisioPaD Detection	4	1	45
	Total	12	21	1,192
	PM Peak	Broward CCTV	4	6
Broward Road Ranger		2	5	121
Broward VideoWall		0	0	12
BSO		0	0	7
District 4		0	0	14
District 6		0	1	3
FHP		4	2	122
Fire		0	0	1
Florida's Turnpike		0	0	1
ITMS		0	0	1
Motorist		0	0	8
Road Watcher		1	0	5
SIRV		0	0	2

		Current Week	Last Week	YTD
PM Peak	SmarTraveler (511)	0	0	9
	VisioPaD Detection	1	1	6
	Total	12	15	554
Total		37	50	2,304

### Incident Detection Methods by Severity

		Current Week	Last Week	YTD	
Level 1	Broward CCTV	13	14	641	
	Broward Road Ranger	2	6	271	
	Broward VideoWall	0	0	37	
	BSO	0	0	4	
	District 4	2	1	35	
	District 6	0	1	5	
	FHP	4	3	266	
	Fire	0	0	3	
	Florida's Turnpike	0	0	2	
	ITMS	0	0	1	
	Motorist	0	0	9	
	Palm Beach Road Rang	0	0	6	
	PSAP	0	0	2	
	Road Watcher	1	0	13	
	SIRV	0	0	6	
	SmarTraveler (511)	0	0	8	
	VisioPaD Detection	3	0	30	
	Total	25	25	1,339	
	Level 2	Broward CCTV	4	10	293
		Broward Road Ranger	0	1	101
Broward VideoWall		0	1	14	
BSO		0	0	9	
District 4		0	0	12	
District 6		0	0	1	
FDOT Maintenance		0	0	1	

Total Events by Severity and Detection Method



		Current Week	Last Week	YTD
Level 2	FHP	3	3	173
	Fire	0	0	1
	ITMS	0	0	1
	Motorist	0	0	8
	Palm Beach Road Rang	0	0	1
	PSAP	0	0	1
	Road Watcher	0	0	1
	SIRV	0	0	1
	SmarTraveler (511)	0	0	2
	VisioPaD Detection	2	2	22
	Total	9	17	642
Level 3	Broward CCTV	1	4	111
	Broward Road Ranger	0	1	46
	Broward VideoWall	0	0	8
	BSO	0	1	8
	District 4	0	0	13
	FDOT Maintenance	0	0	1
	FHP	1	1	116
	Fire	0	0	2
	Florida's Turnpike	0	1	7
	Motorist	0	0	1
	Other	0	0	1
	Palm Beach Road Rang	0	0	1
	Road Watcher	0	0	1
	SIRV	0	0	1
	SmarTraveler (511)	0	0	1
	VisioPaD Detection	1	0	5
	Total	3	8	323
Total		37	50	2,304

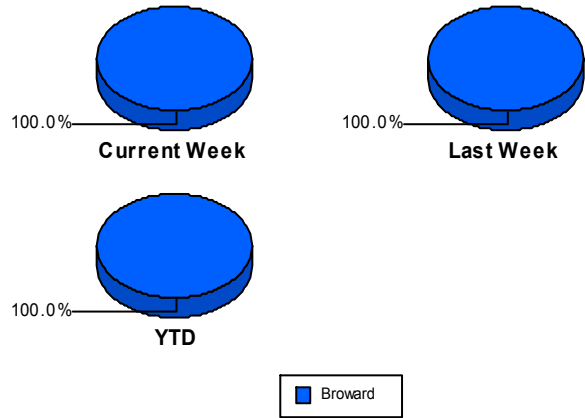
## Road Ranger / SIRV Performance Measures

### Road Ranger / SIRV Performance By County

Values presented are:  
 - Total Events with a RR/SIRV Response  
 - Total RR/SIRV Responses,  
 - Total Activities Performed

	Current We	Last Week	YTD
Broward	<b>615</b>	<b>547</b>	<b>40,534</b>
	<b>664</b>	<b>589</b>	<b>43,398</b>
	<b>698</b>	<b>603</b>	<b>45,717</b>

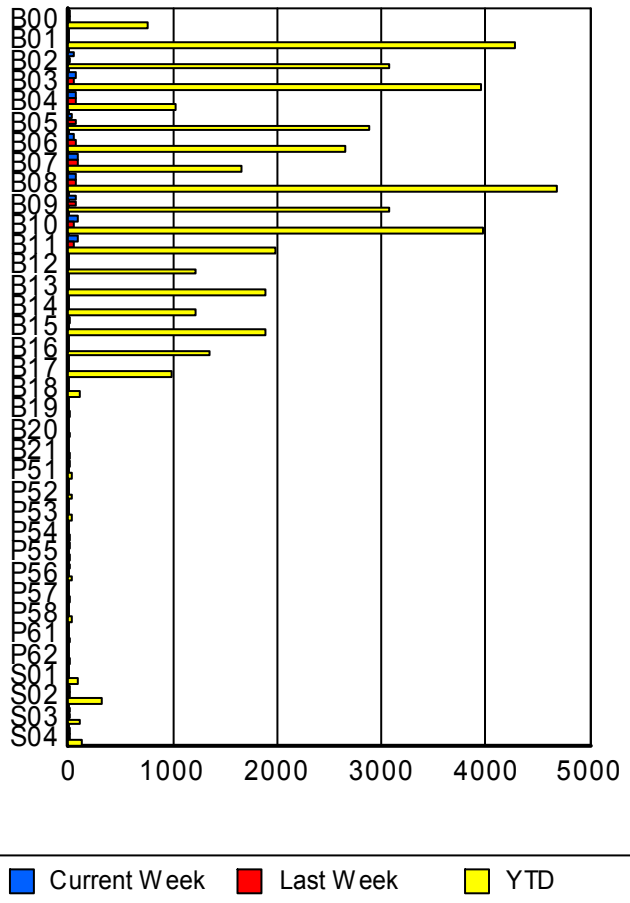
RR/SIRV Responses per County



### Road Ranger / SIRV Performance By Truck

	Current We	Last Week	YTD
B00	<b>14</b>	<b>5</b>	<b>745</b>
	<b>14</b>	<b>5</b>	<b>758</b>
	<b>16</b>	<b>6</b>	<b>799</b>
B01	<b>0</b>	<b>0</b>	<b>4,216</b>
	<b>0</b>	<b>0</b>	<b>4,278</b>
	<b>0</b>	<b>0</b>	<b>4,510</b>
B02	<b>52</b>	<b>18</b>	<b>3,029</b>
	<b>52</b>	<b>18</b>	<b>3,073</b>
	<b>52</b>	<b>20</b>	<b>3,237</b>
B03	<b>58</b>	<b>46</b>	<b>3,897</b>
	<b>59</b>	<b>47</b>	<b>3,945</b>
	<b>61</b>	<b>48</b>	<b>4,178</b>
B04	<b>72</b>	<b>60</b>	<b>1,011</b>
	<b>72</b>	<b>61</b>	<b>1,022</b>
	<b>79</b>	<b>64</b>	<b>1,064</b>
B05	<b>24</b>	<b>76</b>	<b>2,855</b>
	<b>24</b>	<b>76</b>	<b>2,882</b>
	<b>24</b>	<b>79</b>	<b>3,069</b>
B06	<b>51</b>	<b>59</b>	<b>2,631</b>
	<b>51</b>	<b>59</b>	<b>2,660</b>
	<b>54</b>	<b>61</b>	<b>2,808</b>
B07	<b>80</b>	<b>79</b>	<b>1,643</b>
	<b>81</b>	<b>81</b>	<b>1,665</b>
	<b>83</b>	<b>81</b>	<b>1,723</b>
B08	<b>57</b>	<b>71</b>	<b>4,605</b>
	<b>58</b>	<b>71</b>	<b>4,678</b>
	<b>61</b>	<b>71</b>	<b>4,916</b>

RR/SIRV Responses per Truck



	Current We	Last Week	YTD
B09	71	58	3,046
	73	59	3,081
	76	60	3,242
B10	83	43	3,923
	83	44	3,965
	87	44	4,182
B11	72	55	1,960
	77	56	1,981
	82	56	2,072
B12	0	0	1,190
	0	0	1,210
	0	0	1,273
B13	0	0	1,859
	0	0	1,882
	0	0	1,989
B14	0	0	1,198
	0	0	1,213
	0	0	1,250
B15	2	0	1,872
	2	0	1,883
	2	0	1,990
B16	0	0	1,332
	0	0	1,347
	0	0	1,414
B17	0	0	968
	0	0	981
	0	0	1,031
B18	0	0	97
	0	0	97
	0	0	101
B19	0	0	2
	0	0	2
	0	0	2
B20	0	0	2
	0	0	2
	0	0	2
B21	0	0	4
	0	0	4
	0	0	4
P51	1	0	36
	1	0	36
	1	0	38
P52	0	0	20
	0	0	20
	0	0	20

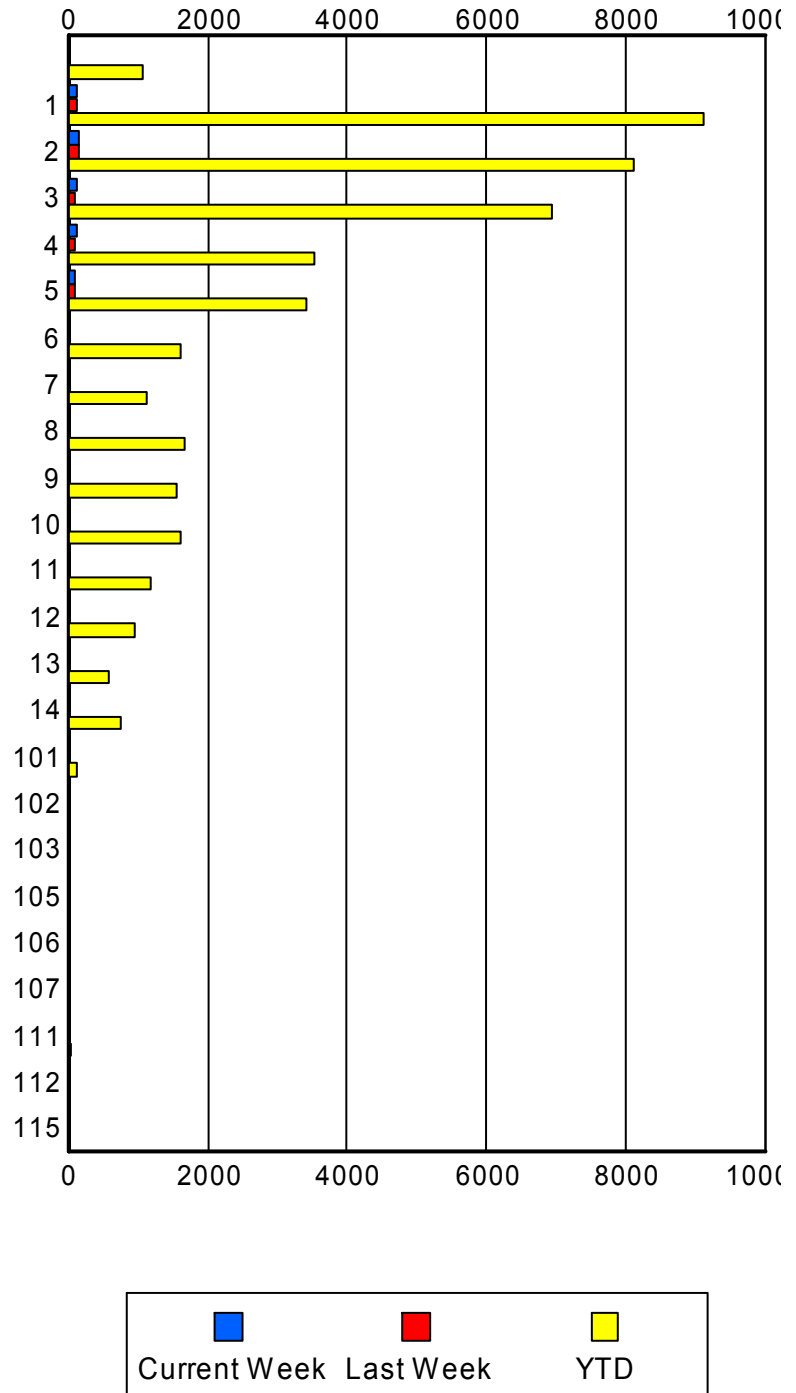
	Current We	Last Week	YTD
P53	0	0	22
	0	0	22
	0	0	25
P54	0	0	13
	0	0	13
	0	0	13
P55	3	0	19
	3	0	19
	3	0	20
P56	2	0	23
	2	0	24
	3	0	29
P57	0	0	11
	0	0	11
	0	0	11
P58	0	0	21
	0	0	21
	0	0	21
P61	0	0	1
	0	0	1
	0	0	1
P62	0	0	3
	0	0	3
	0	0	3
S01	0	0	76
	0	0	78
	0	0	86
S02	10	7	304
	10	8	308
	11	9	335
S03	1	1	109
	1	1	111
	2	1	123
S04	1	3	118
	1	3	122
	1	3	136

### Road Ranger / SIRV Performance By Beat

	Current We	Last Week	YTD
	24	12	987
	24	13	1,069
	26	14	1,143
1	129	121	8,723
	136	130	9,120
	144	131	9,581
2	154	150	7,886
	163	152	8,116
	168	154	8,537
3	108	87	6,738
	114	91	6,938
	122	94	7,283
4	128	98	3,472
	129	102	3,528
	133	104	3,694
5	83	98	3,349
	86	101	3,406
	90	106	3,558
6	6	0	1,595
	6	0	1,621
	8	0	1,701
7	0	0	1,107
	0	0	1,123
	0	0	1,177
8	0	0	1,640
	0	0	1,659
	0	0	1,748
9	0	0	1,540
	0	0	1,563
	0	0	1,685
10	0	0	1,588
	0	0	1,609
	0	0	1,723
11	0	0	1,185
	0	0	1,196
	0	0	1,286
12	0	0	942
	0	0	957
	0	0	1,026
13	0	0	578
	0	0	589
	0	0	622
14	0	0	735
	0	0	740
	0	0	778

Values presented are:  
 - Total Events with a RR/SIRV Response  
 - Total RR/SIRV Responses,  
 - Total Activities Performed

### RR/SIRV Responses per Beat



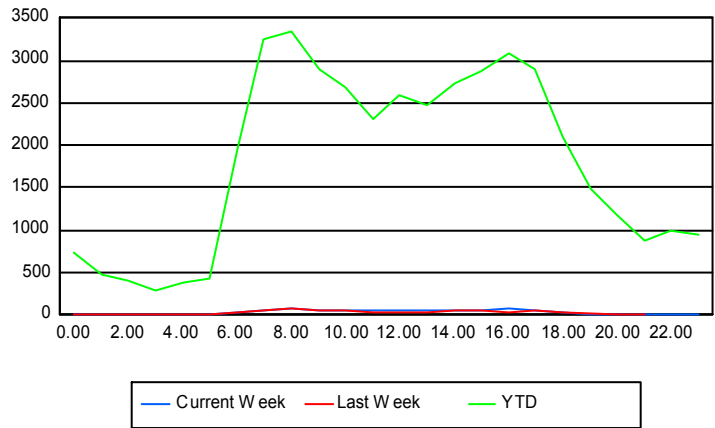
	Current We	Last Week	YTD
101	5	0	118
	5	0	118
	6	0	127
102	0	0	3
	0	0	4
	0	0	4
103	0	0	3
	0	0	3
	0	0	3
105	1	0	3
	1	0	3
	1	0	3
106	0	0	1
	0	0	1
	0	0	1
107	0	0	3
	0	0	3
	0	0	3
111	0	0	29
	0	0	29
	0	0	31
112	0	0	1
	0	0	1
	0	0	1
115	0	0	2
	0	0	2
	0	0	2

## Road Ranger / SIRV Performance By Time of Day

Values presented are:  
 - Total Events with a RR/SIRV Response  
 - Total RR/SIRV Responses,  
 - Total Activities Performed

	Current We	Last Week	YTD
12AM-1AM	2	2	702
	2	2	743
	2	2	798
1AM-2AM	0	1	452
	0	1	482
	0	1	514
2AM-3AM	0	0	356
	0	0	407
	0	0	438
3AM-4AM	2	0	255
	2	0	282
	2	0	304
4AM-5AM	2	1	329
	2	1	380
	2	1	411
5AM-6AM	4	6	361
	4	6	434
	4	6	461
6AM-7AM	30	32	1,811
	34	32	1,962
	34	32	2,034
7AM-8AM	58	42	3,050
	59	42	3,252
	60	43	3,406
8AM-9AM	58	69	3,075
	68	75	3,342
	75	76	3,521
9AM-10AM	55	54	2,718
	58	59	2,892
	62	60	3,034
10AM-11AM	59	37	2,527
	62	43	2,681
	64	47	2,821
11AM-12PM	40	37	2,144
	44	41	2,301
	44	42	2,415
12PM-1PM	37	29	2,439
	42	33	2,593
	42	33	2,713

## Number of Responses / Hour of the Day



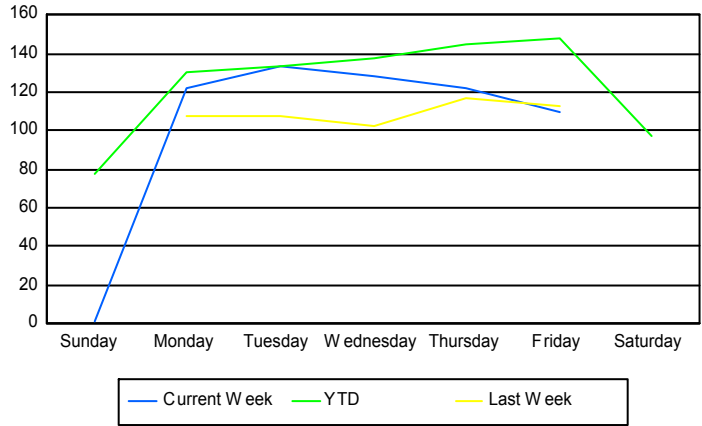
	Current We	Last Week	YTD
1PM-2PM	40	26	2,281
	44	29	2,470
	48	30	2,608
2PM-3PM	39	54	2,571
	46	55	2,743
	48	55	2,868
3PM-4PM	47	41	2,682
	47	46	2,881
	48	46	3,024
4PM-5PM	64	40	2,920
	67	41	3,097
	75	42	3,266
5PM-6PM	45	53	2,719
	49	58	2,898
	50	61	3,032
6PM-7PM	28	20	1,975
	29	22	2,090
	33	23	2,208
7PM-8PM	1	0	1,418
	1	0	1,481
	1	0	1,579
8PM-9PM	0	2	1,111
	0	2	1,184
	0	2	1,270
9PM-10PM	1	1	810
	1	1	871
	1	1	931
10PM-11PM	0	0	924
	0	0	982
	0	0	1,054
11PM-12AM	3	0	904
	3	0	950
	3	0	1,007

## Road Ranger / SIRV Performance By Day of Week

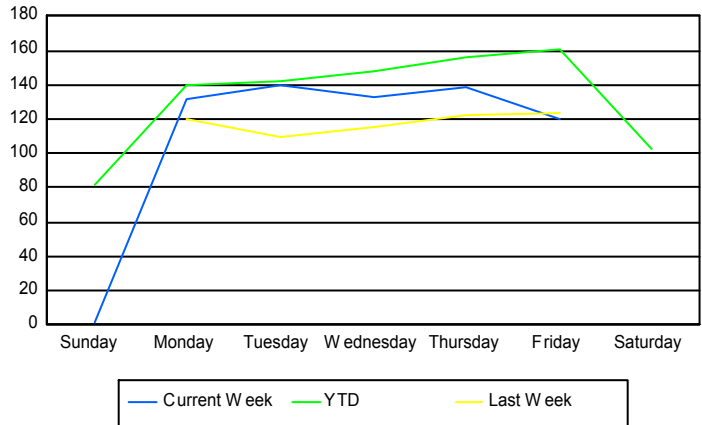
Values presented are:  
 - Total Events with a RR/SIRV Response  
 - Total RR/SIRV Responses,  
 - Total Activities Performed

	Current We	Last Week	YTD
Sunday	1	0	2,907
	1	0	3,036
	1	0	3,213
Monday	121	107	6,252
	131	119	6,695
	139	120	6,996
Tuesday	134	108	6,551
	140	110	7,015
	149	114	7,375
Wednesday	128	102	6,763
	133	115	7,221
	138	118	7,585
Thursday	122	117	7,095
	139	122	7,658
	142	122	8,067
Friday	110	113	7,284
	120	123	7,882
	129	129	8,333
Saturday	0	0	3,709
	0	0	3,891
	0	0	4,148

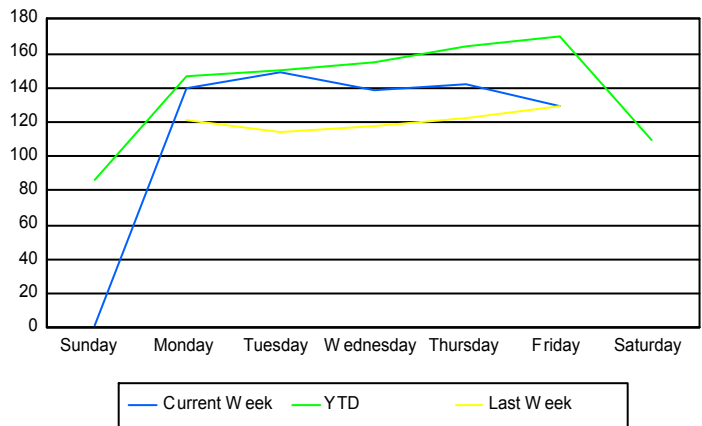
### Avg # of events with a RR/SIRV Response per Day of the Week



### Avg # of RR/SIRV Responses per Day of the Week



### Avg # of RR/SIRV Activities Performed per Day of the Week



### Road Ranger/ SIRV Responses per Time of Day and Day of Week

