



Weekly Performance Measures Report Broward County



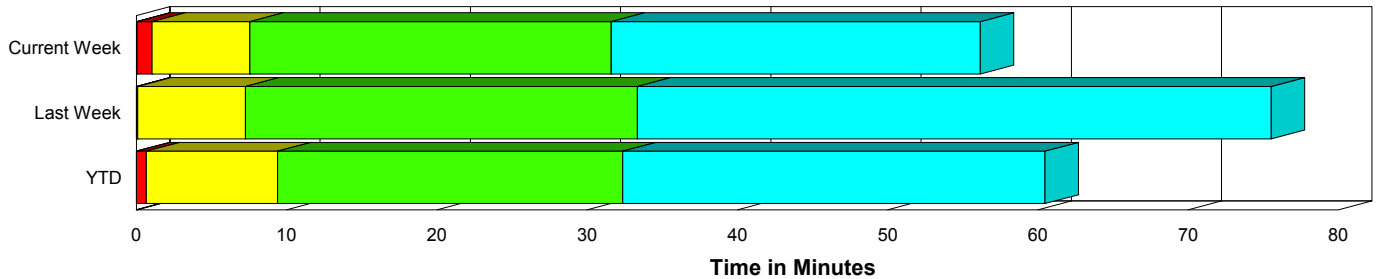
Created on:
December 14, 2009
8:24 am

Period From Dec 6, 2009 to Dec 12, 2009

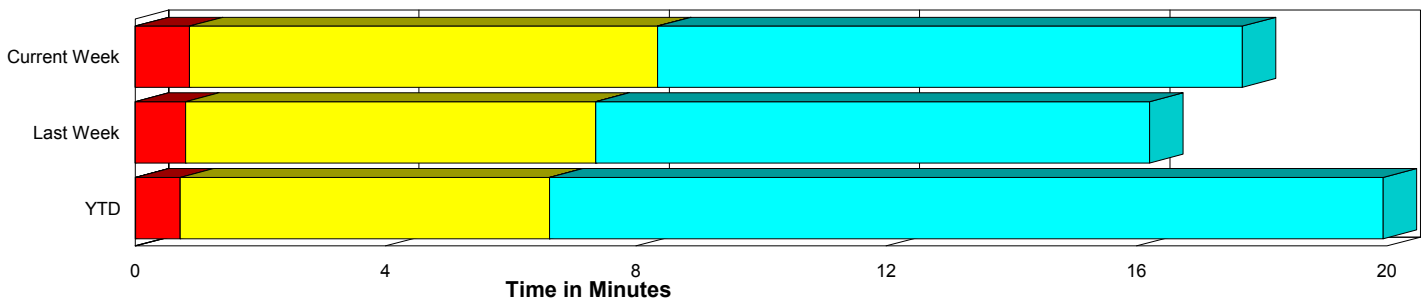
Performance Measures Summary

	Traffic Events (No Lanes Blocked)			Incidents (Lanes Blocked)		
	<u>This Week</u>	<u>Last Week</u>	<u>YTD</u>	<u>This Week</u>	<u>Last Week</u>	<u>YTD</u>
Number of Events	1,234	1,215	50,951	50	36	2,357
TMC Detection (min.)	0.00	0.00	0.01	0.05	0.00	0.01
TMC Verification (min.)	0.87	0.81	0.71	0.99	0.09	0.66
TMC Response (min.)	8.93	7.95	7.13	7.61	7.28	9.53
RR Dispatch Time (min.)	2.47	1.39	1.26	1.11	1.22	2.57
RR Response Time (min.)	7.68	6.65	6.02	6.57	6.17	7.16
Roadway Clearance (min.)				30.57	31.75	31.69
Event Clearance (min.)	18.27	16.81	20.45	55.00	71.22	59.41
# of Events w/ RR/SIRV	996	975	36,338	47	36	1,777
RR/SIRV Responses	996	975	36,338	47	36	1,777
RR/SIRV Activities	775	763	30,310	91	63	3,521

Incident Clearance Time-Line



Traffic Event (Non-Lane Blockage) Time-Line



■ Avg. TMC Detection Time	■ Avg. Time from TMC Response to Roadway Clearance*
■ Avg. Time from TMC Detection to TMC Verification	■ Avg. Time from Roadway Clearance to Incident/Event Clearance**
■ Avg. Time from TMC Verification to TMC Response	

* Roadway clearance equals all travel lanes open

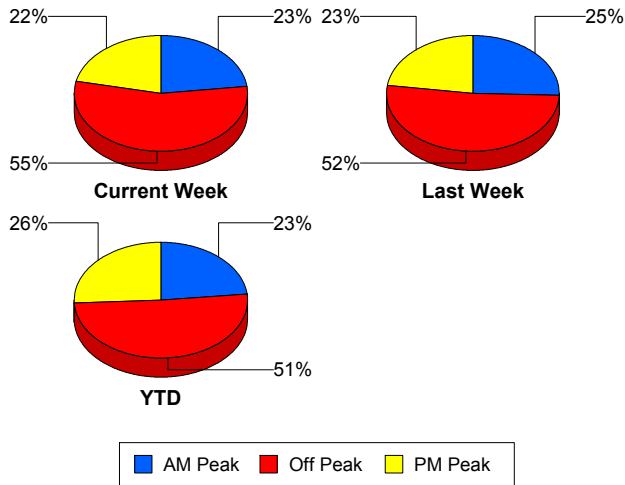
** Incident clearance equals time when last responder has left the scene

Performance Measures by Peak Period

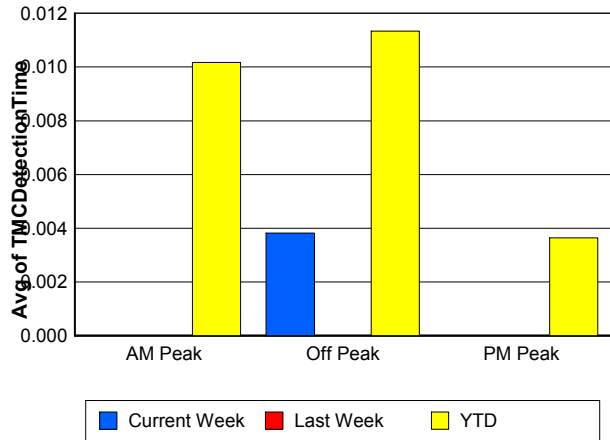
Note: AM peak period is defined as 6am to 10am and PM peak period is defined as 3pm to 7pm.

	AM Peak			Off Peak			PM Peak		
	<u>Current Week</u>	<u>Last Week</u>	<u>YTD</u>	<u>Current Week</u>	<u>Last Week</u>	<u>YTD</u>	<u>Current Week</u>	<u>Last Week</u>	<u>YTD</u>
Number of Events	297	318	12,380	708	648	27,152	279	285	13,776
Number of Incidents	9	11	551	21	16	1,140	20	9	666
TMC Detection (min.)	0.00	0.00	0.01	0.00	0.00	0.01	0.00	0.00	0.00
TMC Verification (min.)	0.53	0.25	0.54	1.09	0.85	0.70	0.68	1.25	0.89
TMC Response (min.)	8.55	7.61	6.66	8.91	8.18	8.08	9.02	7.67	6.61
RR Dispatch Time (min.)	1.11	0.92	0.95	3.55	1.66	1.76	1.09	1.32	0.99
RR Response Time (min.)	7.56	6.82	5.80	7.43	6.64	6.49	8.12	6.39	5.75
Event Clearance (min.)	16.05	16.66	20.41	20.36	19.25	24.05	21.91	18.28	20.06
Roadway Clearance (min.)	22.69	13.27	28.11	36.78	47.88	35.65	27.60	25.65	27.90
Incident Clearance (min.)	46.55	45.35	56.86	65.39	93.19	63.11	47.90	63.79	55.21
# of Events w/ RR/SIRV	253	260	10,171	560	517	17,039	230	234	10,905
RR/SIRV Responses	253	260	10,171	560	517	17,039	230	234	10,905
RR/SIRV Activities	205	193	9,291	454	433	14,644	207	200	9,896

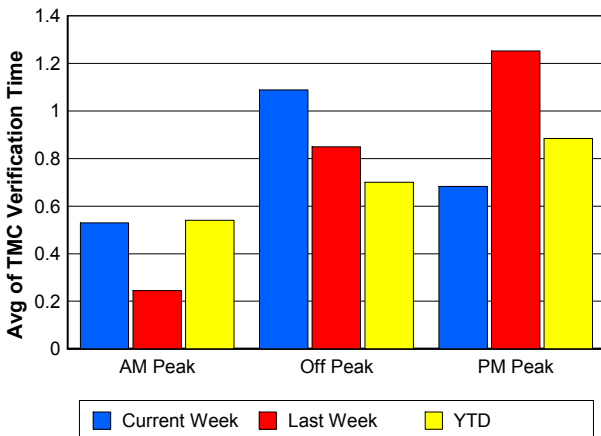
Number of Events / Peak Period



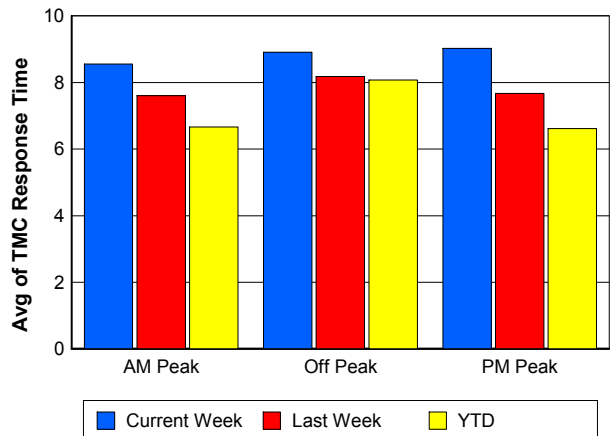
TMC Detection Time



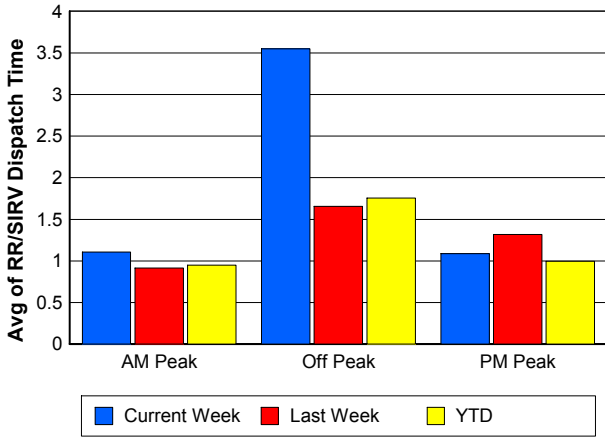
TMC Verification Time



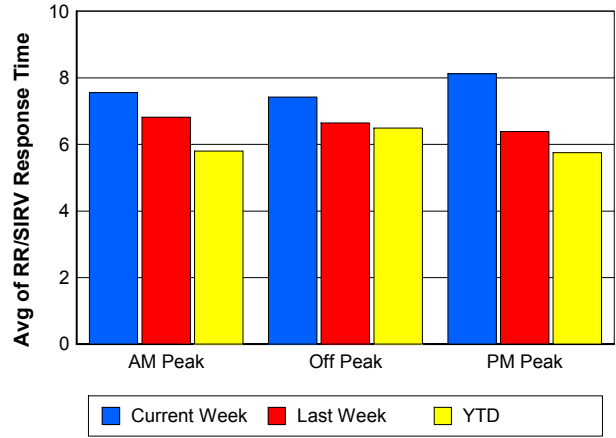
TMC Response Time



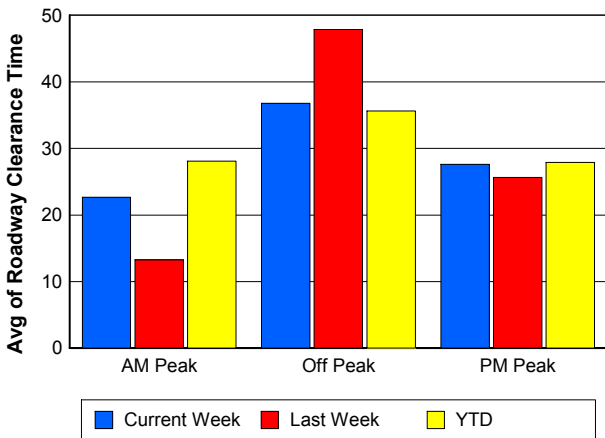
Road Ranger / SIRV Dispatch Time



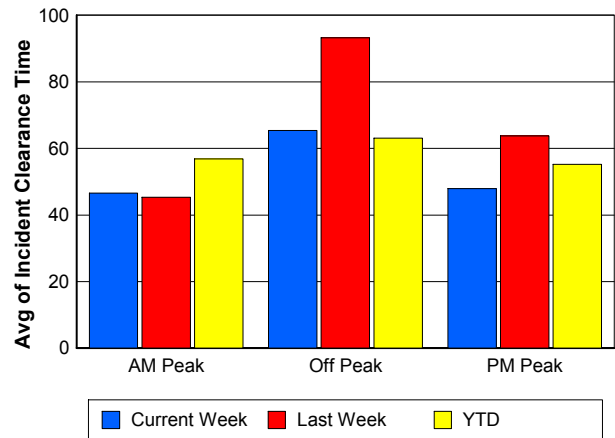
Road Ranger / SIRV Response Time



Roadway Clearance Time (2A)



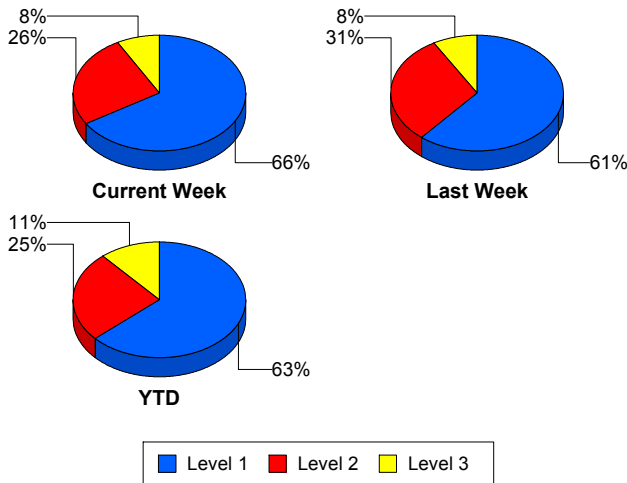
Incident Clearance Time (3B)



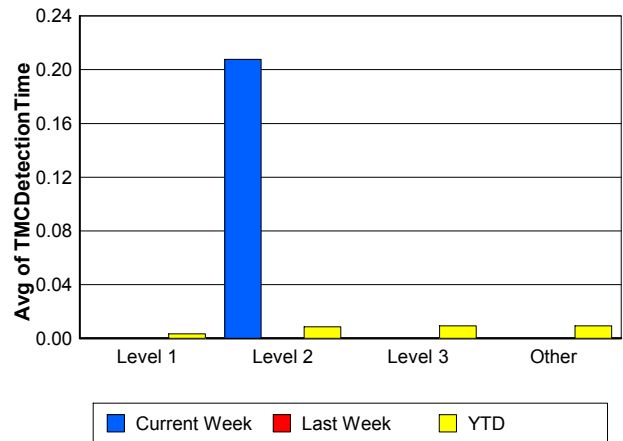
Performance Measures by Severity

	Level 1			Level 2			Level 3			Other		
	<u>This Week</u>	<u>Last Week</u>	<u>YTD</u>	<u>This Week</u>	<u>Last Week</u>	<u>YTD</u>	<u>This Week</u>	<u>Last Week</u>	<u>YTD</u>	<u>This Week</u>	<u>Last Week</u>	<u>YTD</u>
Number of Events	33	22	1,492	13	11	598	4	3	267	1,234	1,215	50,951
Number of Incidents	33	22	1,492	13	11	598	4	3	267	0	0	0
TMC Detection (min.)	0.00	0.00	0.00	0.21	0.00	0.01	0.00	0.00	0.01	0.00	0.00	0.01
TMC Verification (min.)	0.59	0.11	0.42	1.92	0.08	1.01	1.32	0.00	1.19	0.87	0.81	0.71
TMC Response (min.)	5.11	6.40	7.36	13.72	7.33	10.37	7.45	12.94	19.72	8.93	7.95	7.13
RR Dispatch Time (min.)	0.79	1.05	1.54	1.63	0.99	2.54	1.98	3.35	7.83	2.47	1.39	1.26
RR Resp. Time (min.)	4.44	5.56	5.89	12.08	6.34	8.04	5.47	9.59	12.39	7.68	6.65	6.02
Event Clearance (min.)	43.22	43.84	45.31	68.56	114.95	72.79	108.13	111.63	108.05	18.27	16.81	20.45
Roadway Clear. (min.)	13.89	10.19	14.28	50.82	54.43	49.09	102.42	106.67	90.06			
Incident Clearance (min.)	43.22	43.84	45.31	68.56	114.95	72.79	108.13	111.63	108.05			
# of Events w/ RR/SIRV	31	22	1,163	12	11	385	4	3	229	996	975	36,338
RR/SIRV Responses	31	22	1,163	12	11	385	4	3	229	996	975	36,338
RR/SIRV Activities	53	25	1,963	26	29	1,016	12	9	542	775	763	30,310

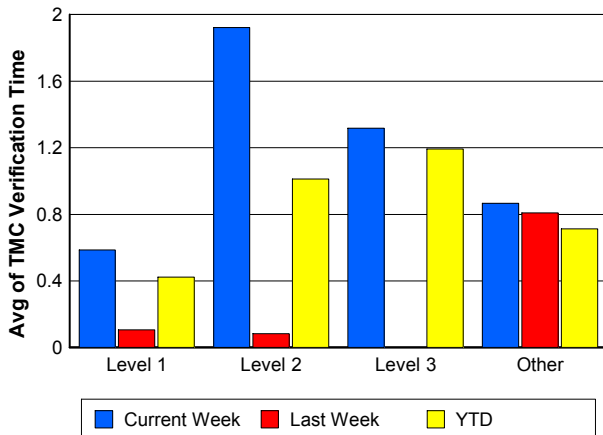
Number of Events / Severity



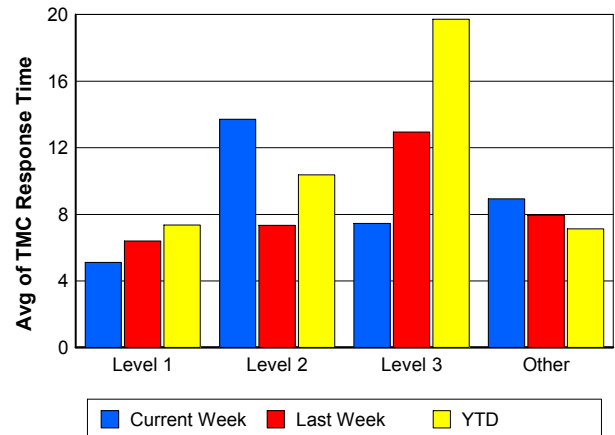
TMC Detection Time



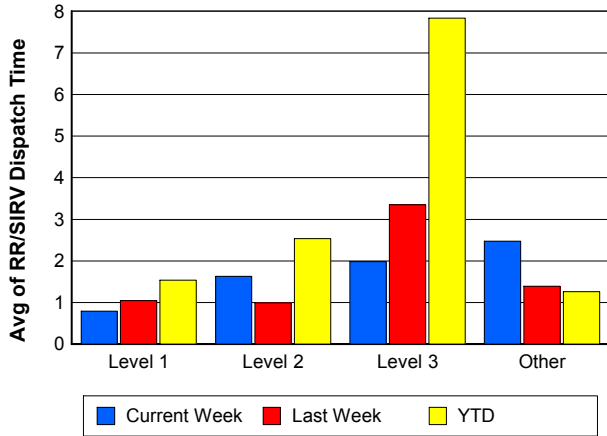
TMC Verification Time



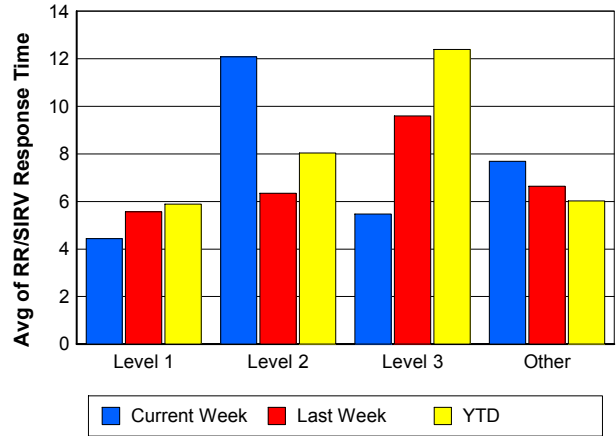
TMC Response Time



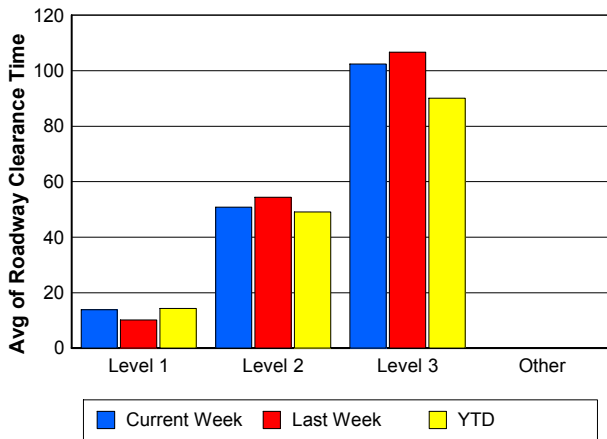
Road Ranger / SIRV Dispatch Time



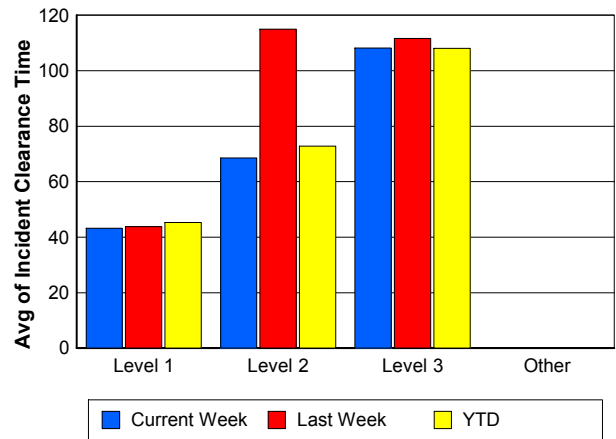
Road Ranger / SIRV Response Time



Roadway Clearance Time (2A)



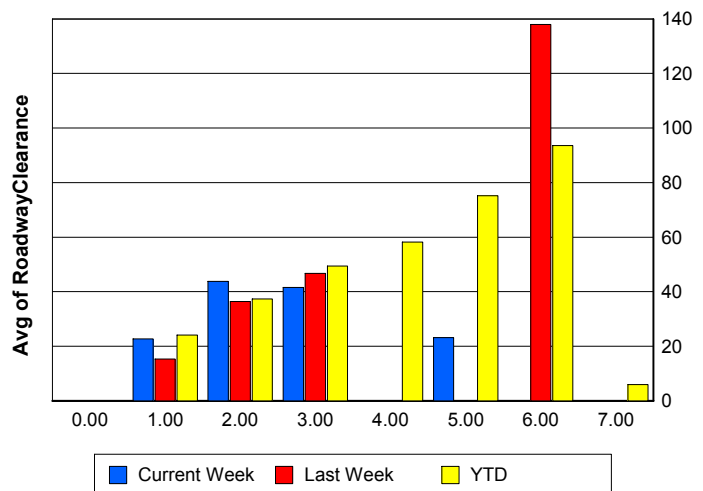
Incident Clearance Time (3B)



Roadway Clearance by Maximum Number of Lanes Blocked

	Current Week	Last Week	YTD
0			
1	22.75	15.30	24.05
2	43.76	36.36	37.32
3	41.61	46.76	49.36
4	0.00	0.00	58.24
5	23.20	0.00	75.13
6	0.00	137.97	93.54
7	0.00	0.00	5.97

Roadway Clearance Time (2A)



Performance Measures by Roadway

595

	<u>Current Week</u>	<u>Last Week</u>	<u>YTD</u>
Number of Events	42	50	4,850
Number of Incidents	2	2	292
TMC Detection (min.)	0.06	0.00	0.01
TMC Verification (min.)	1.20	0.39	0.85
TMC Response (min.)	13.21	14.51	7.17
RR Dispatch Time (min.)	15.76	2.59	1.32
RR Resp. Time (min.)	11.79	11.11	6.08
Event Clearance (min.)	29.24	16.03	21.29
Roadway Clear. (min.)	75.44	22.72	31.94
Incident Clearance (min.)	105.83	26.07	54.19
# of Events w/ RR/SIRV	30	34	3,390
RR/SIRV Responses	30	34	3,390
RR/SIRV Activities	20	21	3,049

75

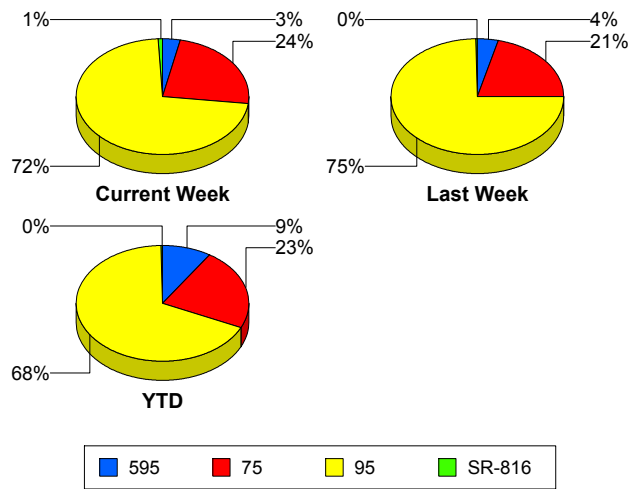
	<u>Current Week</u>	<u>Last Week</u>	<u>YTD</u>
Number of Events	303	263	12,201
Number of Incidents	2	1	212
TMC Detection (min.)	0.00	0.00	0.02
TMC Verification (min.)	1.57	1.91	1.03
TMC Response (min.)	9.99	7.53	8.55
RR Dispatch Time (min.)	4.52	0.98	1.39
RR Resp. Time (min.)	8.20	6.74	7.34
Event Clearance (min.)	19.44	18.52	23.80
Roadway Clear. (min.)	16.81	2.32	52.24
Incident Clearance (min.)	26.10	41.13	80.11
# of Events w/ RR/SIRV	232	205	8,493
RR/SIRV Responses	232	205	8,493
RR/SIRV Activities	198	161	7,235

95

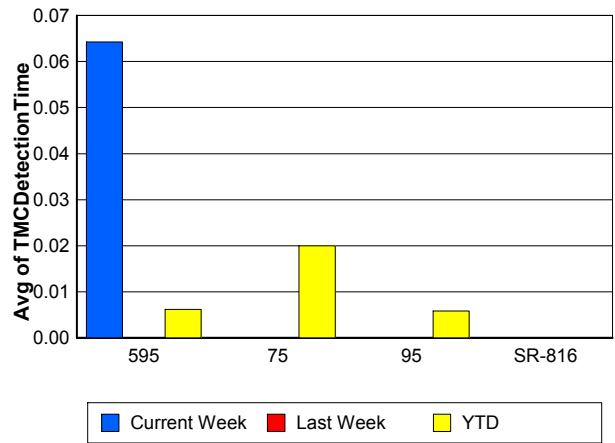
	<u>Current Week</u>	<u>Last Week</u>	<u>YTD</u>
Number of Events	930	936	36,168
Number of Incidents	39	31	1,792
TMC Detection (min.)	0.00	0.00	0.01
TMC Verification (min.)	0.64	0.50	0.59
TMC Response (min.)	8.47	7.86	6.89
RR Dispatch Time (min.)	1.28	1.45	1.31
RR Resp. Time (min.)	7.41	6.49	5.71
Event Clearance (min.)	19.35	18.48	21.76
Roadway Clear. (min.)	30.38	35.00	29.75
Incident Clearance (min.)	59.66	79.30	59.29
# of Events w/ RR/SIRV	774	770	26,148
RR/SIRV Responses	774	770	26,148
RR/SIRV Activities	640	642	23,452

	<u>Current Week</u>	<u>Last Week</u>	<u>YTD</u>
Number of Events	9	2	89
Number of Incidents	7	2	61
TMC Detection (min.)	0.00	0.00	0.00
TMC Verification (min.)	0.00	0.00	0.23
TMC Response (min.)	1.05	0.00	0.65
RR Dispatch Time (min.)	0.09	0.00	0.07
RR Resp. Time (min.)	0.96	0.00	0.59
Event Clearance (min.)	20.10	6.18	13.81
Roadway Clear. (min.)	22.77	5.12	16.21
Incident Clearance (min.)	22.78	6.18	16.18
# of Events w/ RR/SIRV	7	2	84
RR/SIRV Responses	7	2	84
RR/SIRV Activities	8	2	95

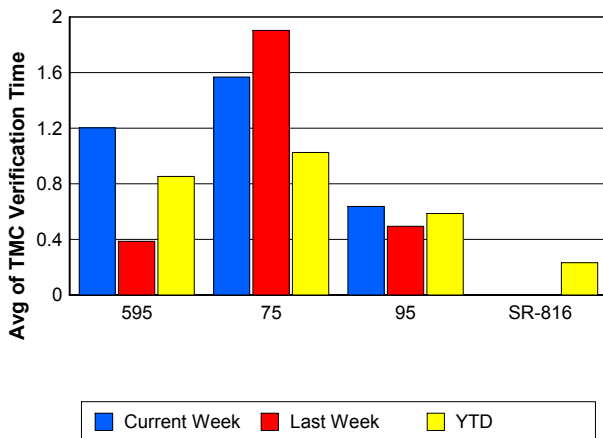
Number of Events / Roadway



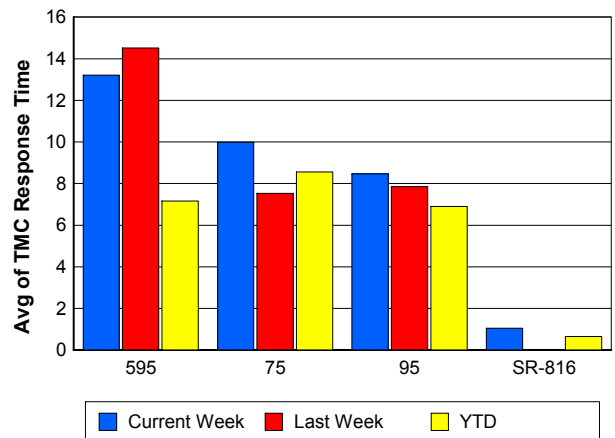
TMC Detection Time



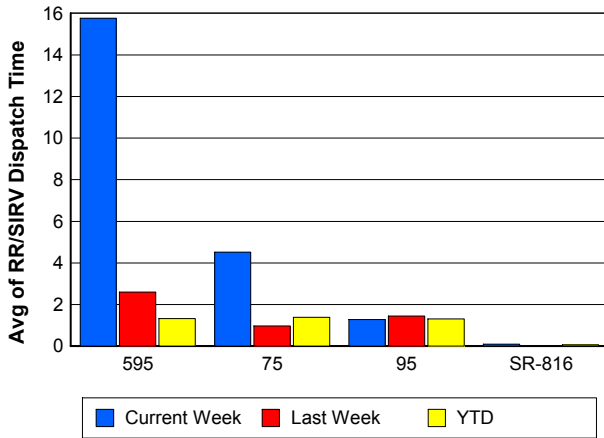
TMC Verification Time



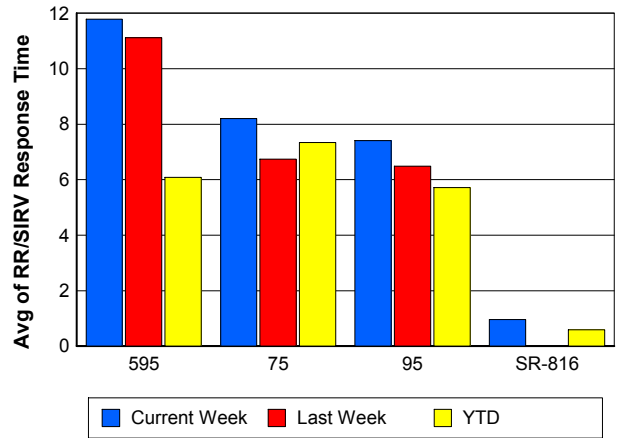
TMC Response Time



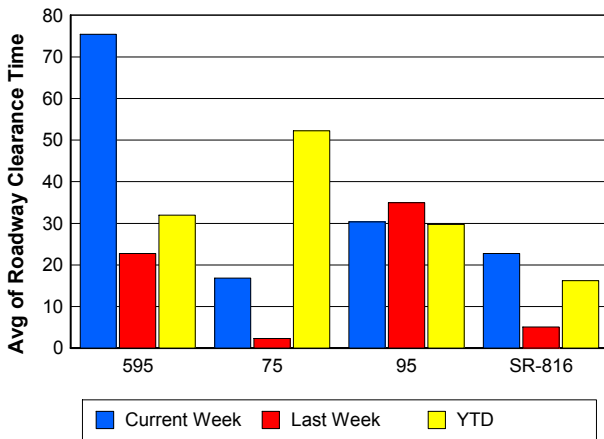
Road Ranger / SIRV Dispatch Time



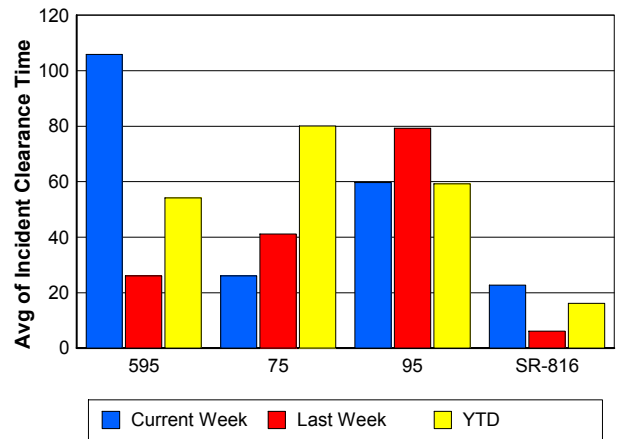
Road Ranger / SIRV Response Time



Roadway Clearance Time (2A)



Incident Clearance Time (3B)



Performance Measures by Event Type

Accident

	<u>Current Week</u>	<u>Last Week</u>	<u>YTD</u>
Number of Events	70	67	3,510
Number of Incidents	29	24	1,666
TMC Detection (min.)	0.04	0.00	0.01
TMC Verification (min.)	1.53	0.55	0.75
TMC Response (min.)	9.10	8.13	9.13
RR Dispatch Time (min.)	1.46	2.04	1.66
RR Response Time (min.)	7.64	6.14	7.53
Event Clearance (min.)	56.35	55.34	54.98
Roadway Clearance (min.)	38.27	41.75	33.17
Incident Clearance (min.)	73.72	96.82	67.24
# of Events w/ RR/SIRV	69	65	2,748
RR/SIRV Assists	69	65	2,748
RR/SIRV Activities	112	92	4,213

Debris on Roadway

	<u>Current Week</u>	<u>Last Week</u>	<u>YTD</u>
Number of Events	49	30	1,644
Number of Incidents	1	0	32
TMC Detection (min.)	0.00	0.00	0.07
TMC Verification (min.)	3.11	3.67	4.14
TMC Response (min.)	6.47	6.87	7.92
RR Dispatch Time (min.)	0.82	0.50	0.98
RR Response Time (min.)	5.74	6.37	6.97
Event Clearance (min.)	10.39	8.40	11.62
Roadway Clearance (min.)	37.63		25.98
Incident Clearance (min.)	42.73		31.88
# of Events w/ RR/SIRV	49	30	1,531
RR/SIRV Assists	49	30	1,531
RR/SIRV Activities	53	31	1,553

Disabled Vehicle

	<u>Current Week</u>	<u>Last Week</u>	<u>YTD</u>
Number of Events	712	699	31,025
Number of Incidents	15	11	405
TMC Detection (min.)	0.00	0.00	0.01
TMC Verification (min.)	1.18	1.18	0.87
TMC Response (min.)	9.03	7.84	6.92
RR Dispatch Time (min.)	1.43	1.35	1.14
RR Response Time (min.)	7.82	6.58	5.85
Event Clearance (min.)	21.58	21.43	24.85
Roadway Clearance (min.)	16.60	8.23	17.89
Incident Clearance (min.)	28.71	17.17	31.39
# of Events w/ RR/SIRV	687	678	26,027
RR/SIRV Assists	687	678	26,027
RR/SIRV Activities	658	669	26,274

Emergency Vehicles

	<u>Current Week</u>	<u>YTD</u>
Number of Events	2	88
Number of Incidents	2	70
TMC Detection (min.)	0.00	0.00
TMC Verification (min.)	0.23	0.44
TMC Response (min.)		13.77
RR Dispatch Time (min.)		10.82
RR Response Time (min.)		4.43
Event Clearance (min.)	29.06	56.27
Roadway Clearance (min.)	32.03	58.03
Incident Clearance (min.)	29.06	63.76
# of Events w/ RR/SIRV	0	50
RR/SIRV Assists	0	50
RR/SIRV Activities	0	80

Other

	<u>Current Week</u>	<u>Last Week</u>	<u>YTD</u>
Number of Events	442	446	16,552
Number of Incidents	0	0	31
TMC Detection (min.)	0.00	0.00	0.01
TMC Verification (min.)	0.06	0.02	0.08
TMC Response (min.)	9.64	11.61	8.54
RR Dispatch Time (min.)	6.00	1.43	1.81
RR Response Time (min.)	7.67	10.03	6.55
Event Clearance (min.)	11.91	8.54	10.78
Roadway Clearance (min.)			33.55
Incident Clearance (min.)			38.56
# of Events w/ RR/SIRV	231	234	7,466
RR/SIRV Assists	231	234	7,466
RR/SIRV Activities	35	27	1,333

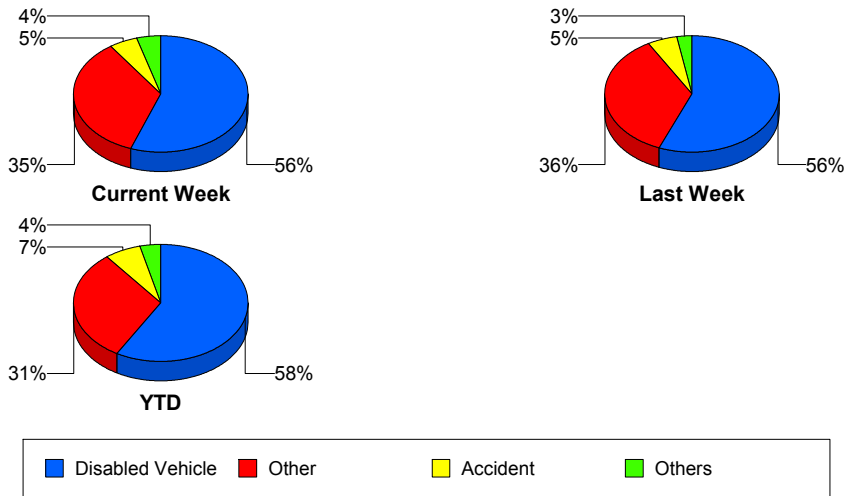
Police Activity

	<u>Current Week</u>	<u>Last Week</u>	<u>YTD</u>
Number of Events	3	6	206
Number of Incidents	2	1	71
TMC Detection (min.)	0.00	0.00	0.00
TMC Verification (min.)	0.00	0.37	0.35
TMC Response (min.)	1.40	0.86	12.78
RR Dispatch Time (min.)	1.94	0.84	3.68
RR Response Time (min.)	0.05	0.02	9.24
Event Clearance (min.)	17.28	36.78	34.20
Roadway Clearance (min.)	19.62	50.27	42.47
Incident Clearance (min.)	20.13	51.35	49.93
# of Events w/ RR/SIRV	2	2	80
RR/SIRV Assists	2	2	80
RR/SIRV Activities	2	5	95

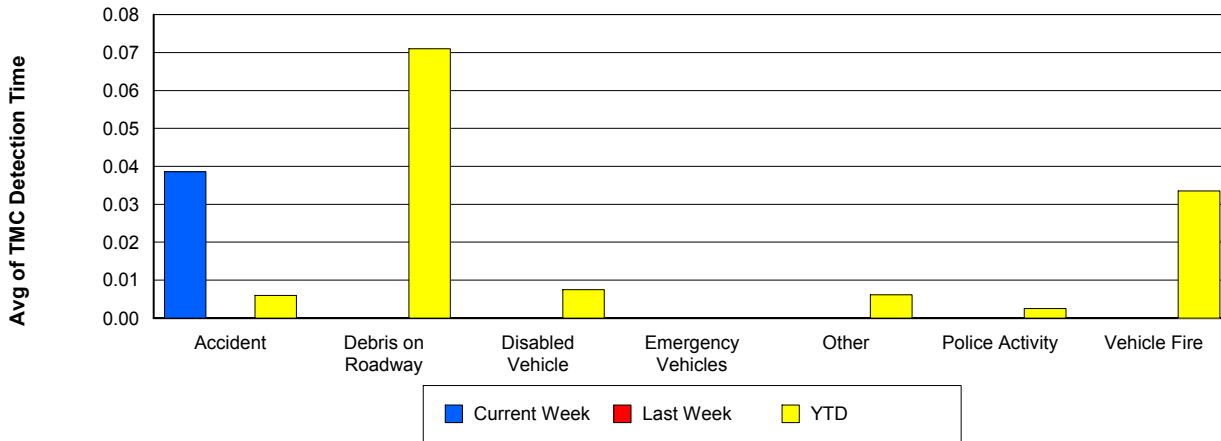
Vehicle Fire

	<u>Current Week</u>	<u>YTD</u>
Number of Events	2	107
Number of Incidents	1	82
TMC Detection (min.)	0.00	0.03
TMC Verification (min.)	0.00	1.22
TMC Response (min.)	3.67	9.58
RR Dispatch Time (min.)	1.32	2.05
RR Response Time (min.)	2.35	7.89
Event Clearance (min.)	34.52	57.32
Roadway Clearance (min.)	28.92	39.67
Incident Clearance (min.)	40.40	62.20
# of Events w/ RR/SIRV	2	77
RR/SIRV Assists	2	77
RR/SIRV Activities	3	159

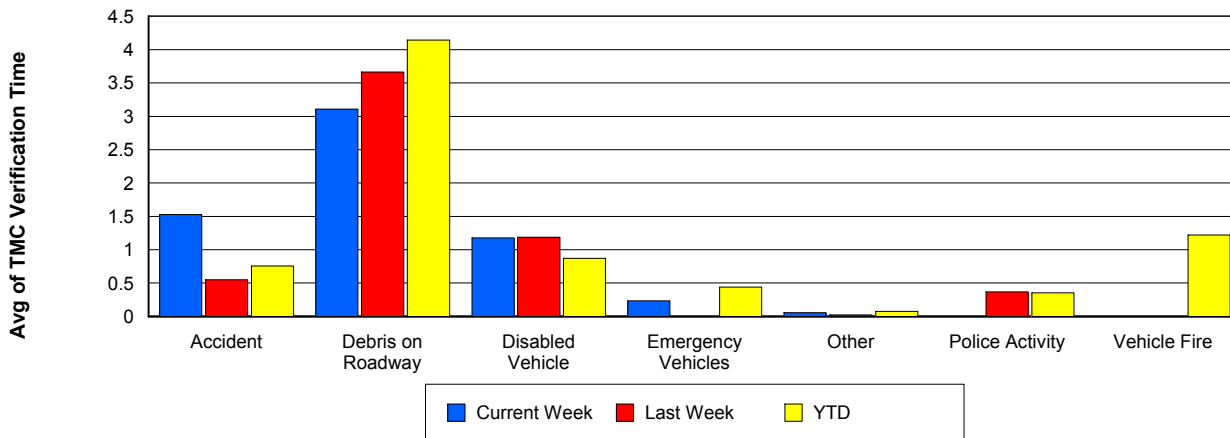
Number of Events / Event Type



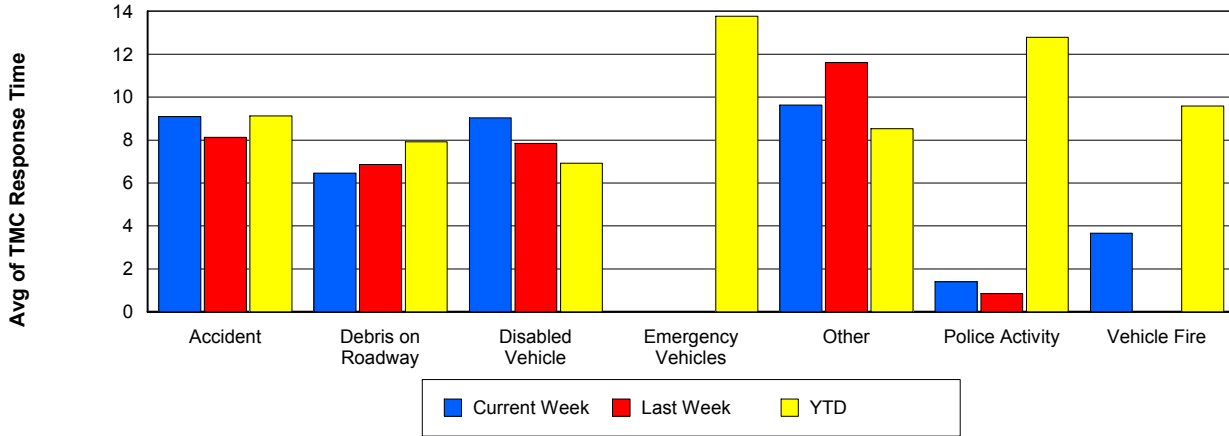
TMC Detection Time



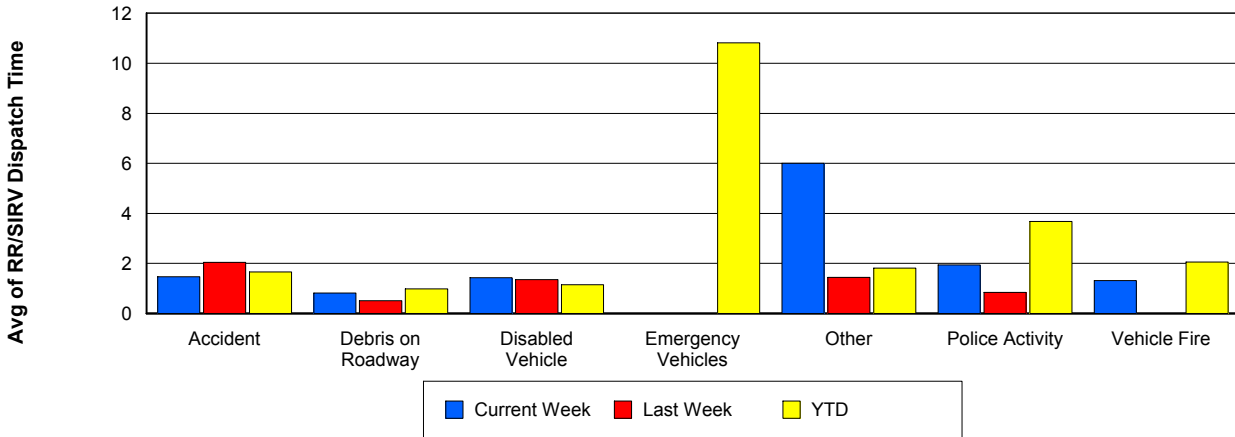
TMC Verification Time



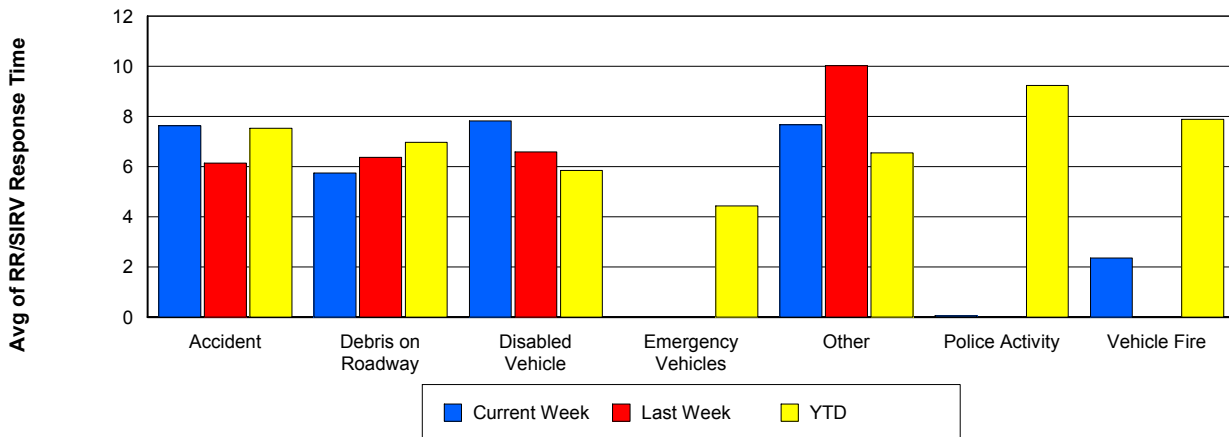
TMC Response Time



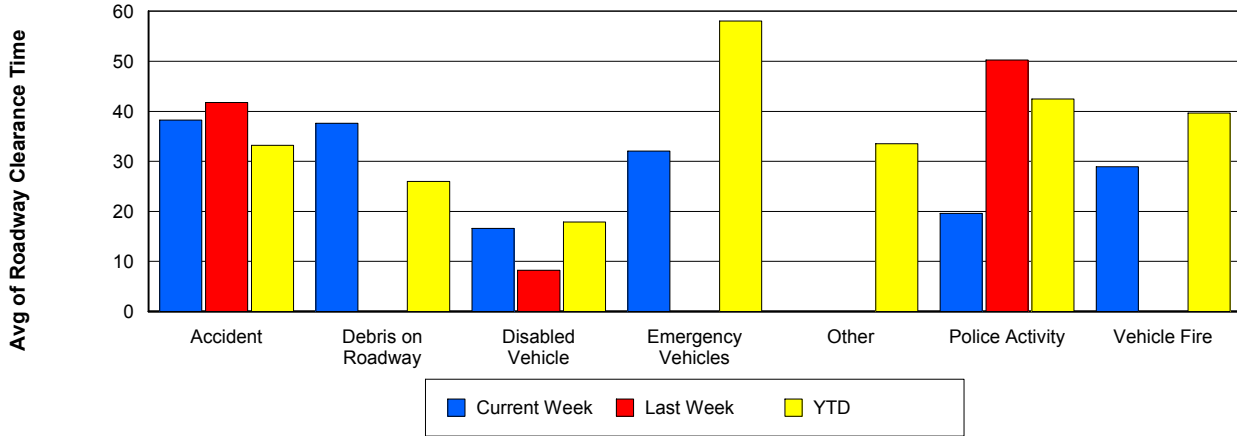
Road Ranger / SIRV Dispatch Time



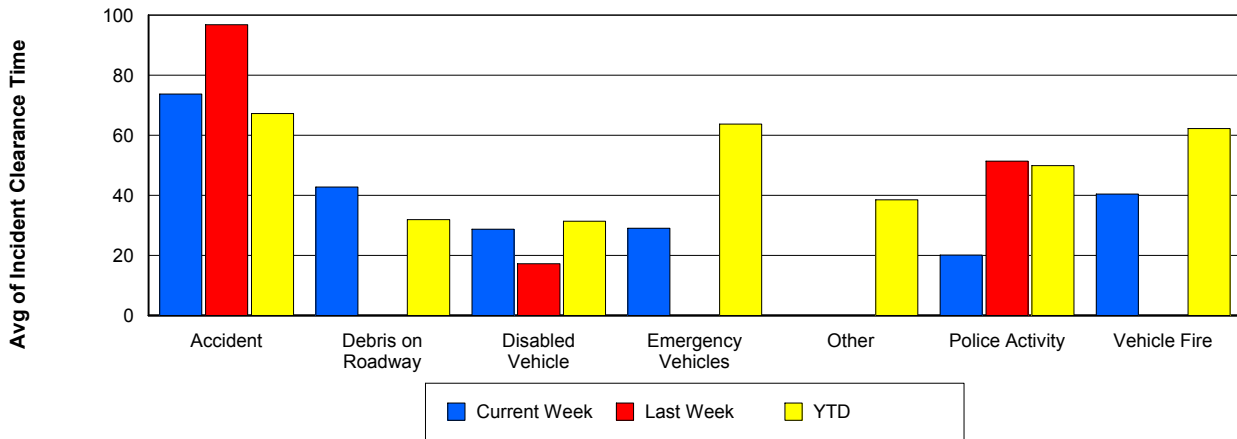
Road Ranger / SIRV Response Time



Roadway Clearance Time (2A)



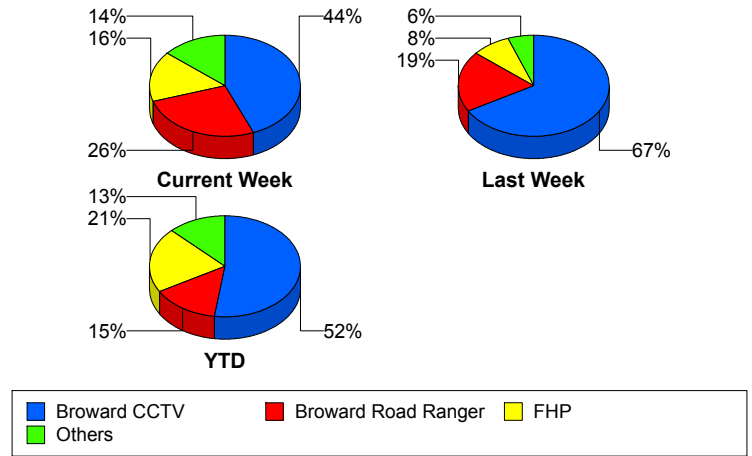
Incident Clearance Time (3B)



Incident Detection Methods

	Current Week	Last Week	YTD
Broward CCTV	22	24	1,227
Broward Road Ranger	13	7	342
Broward TMC	0	0	4
Broward VideoWall	1	0	66
BSO	3	0	52
District 4	1	2	54
District 6	0	0	3
FDOT Maintenance	0	0	7
FHP	8	3	485
Fire	0	0	4
Florida's Turnpike	0	0	6
ITMS	0	0	3
Local Police	0	0	1
Motorist	1	0	14
Other	0	0	1
Palm Beach Road Ran	0	0	9
Road Watcher	1	0	16
SIRV	0	0	12
SmarTraveler (511)	0	0	6
VisioPaD Detection	0	0	37
Total	50	36	2,349

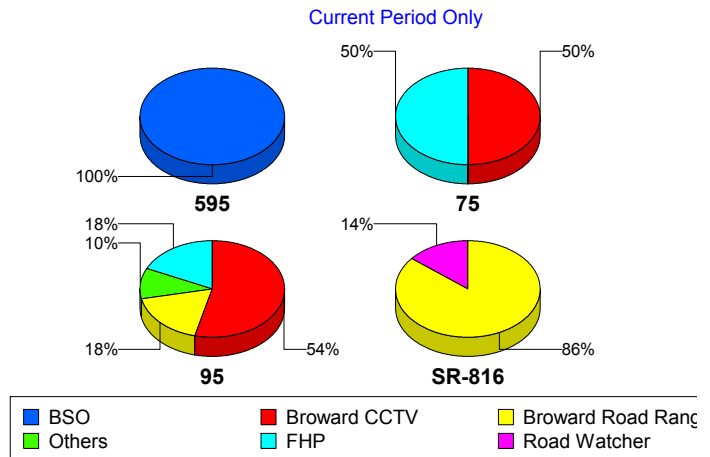
Total Incidents by Detection Method



Incident Detection Methods by Roadway

		Current Week	Last Week	YTD
595	Broward CCTV	0	2	138
	Broward Road Ranger	0	0	39
	Broward VideoWall	0	0	8
	BSO	2	0	9
	District 4	0	0	12
	FDOT Maintenance	0	0	2
	FHP	0	0	57
	Florida's Turnpike	0	0	6
	Motorist	0	0	3
	Road Watcher	0	0	4
	SIRV	0	0	1
	VisioPaD Detection	0	0	6
	Total	2	2	285
	75	Broward CCTV	1	1
Broward Road Ranger		0	0	25
Broward VideoWall		0	0	1
BSO		0	0	35
District 4		0	0	7
FHP		1	0	46
Local Police		0	0	1
Other		0	0	1
Road Watcher		0	0	3
VisioPaD Detection		0	0	5
Total		2	1	212
95	Broward CCTV	21	21	1,001
	Broward Road Ranger	7	5	219
	Broward TMC	0	0	4
	Broward VideoWall	1	0	57
	BSO	1	0	8
	District 4	1	2	34
	District 6	0	0	3

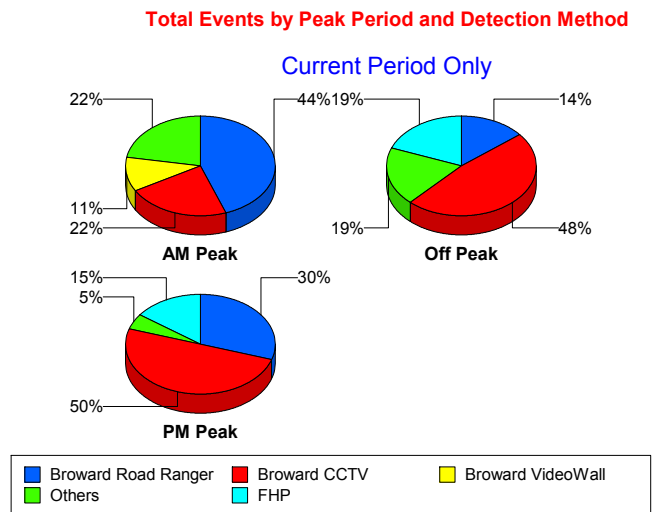
Total Events by Roadway and Detection Method



		Current Week	Last Week	YTD
95	FDOT Maintenance	0	0	5
	FHP	7	3	382
	Fire	0	0	4
	ITMS	0	0	3
	Motorist	1	0	11
	Palm Beach Road Ran	0	0	9
	Road Watcher	0	0	8
	SIRV	0	0	11
	SmarTraveler (511)	0	0	6
	VisioPaD Detection	0	0	26
	Total	39	31	1,791
SR-816	Broward Road Ranger	6	2	59
	District 4	0	0	1
	Road Watcher	1	0	1
	Total	7	2	61
Total	50	36	2,349	

Incident Detection Methods by Peak Period

		Current Week	Last Week	YTD
AM Peak	Broward CCTV	2	7	241
	Broward Road Ranger	4	3	112
	Broward TMC	0	0	1
	Broward VideoWall	1	0	23
	BSO	0	0	9
	District 4	0	1	20
	FDOT Maintenance	0	0	1
	FHP	1	0	121
	Florida's Turnpike	0	0	2
	Motorist	0	0	6
	Palm Beach Road Ran	0	0	2
	Road Watcher	1	0	6
	SIRV	0	0	1



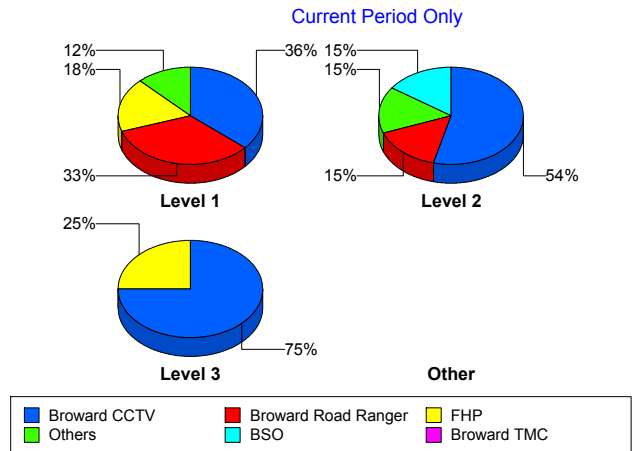
		Current Week	Last Week	YTD
AM Peak	SmarTraveler (511)	0	0	1
	VisioPaD Detection	0	0	2
	Total	9	11	548
Off Peak	Broward CCTV	10	12	656
	Broward Road Ranger	3	1	92
	Broward TMC	0	0	3
	Broward VideoWall	0	0	36
	BSO	2	0	33
	District 4	1	1	18
	District 6	0	0	2
	FDOT Maintenance	0	0	4
	FHP	4	2	231
	Fire	0	0	3
	Florida's Turnpike	0	0	3
	ITMS	0	0	3
	Local Police	0	0	1
	Motorist	1	0	5
	Palm Beach Road Ran	0	0	4
	Road Watcher	0	0	6
	SIRV	0	0	5
	SmarTraveler (511)	0	0	3
	VisioPaD Detection	0	0	29
	Total	21	16	1,137
PM Peak	Broward CCTV	10	5	330
	Broward Road Ranger	6	3	138
	Broward VideoWall	0	0	7
	BSO	1	0	10
	District 4	0	0	16
	District 6	0	0	1
	FDOT Maintenance	0	0	2
	FHP	3	1	133
	Fire	0	0	1

		Current Week	Last Week	YTD
PM Peak	Florida's Turnpike	0	0	1
	Motorist	0	0	3
	Other	0	0	1
	Palm Beach Road Ran	0	0	3
	Road Watcher	0	0	4
	SIRV	0	0	6
	SmarTraveler (511)	0	0	2
	VisioPaD Detection	0	0	6
	Total	20	9	664
Total	50	36	2,349	

Incident Detection Methods by Severity

		Current Week	Last Week	YTD
Level 1	Broward CCTV	12	15	776
	Broward Road Ranger	11	4	252
	Broward TMC	0	0	3
	Broward VideoWall	1	0	45
	BSO	1	0	11
	District 4	1	2	41
	District 6	0	0	2
	FDOT Maintenance	0	0	5
	FHP	6	1	284
	Fire	0	0	3
	ITMS	0	0	2
	Local Police	0	0	1
	Motorist	0	0	9
	Palm Beach Road Ran	0	0	6
	Road Watcher	1	0	10
	SIRV	0	0	11
	SmarTraveler (511)	0	0	4
	VisioPaD Detection	0	0	21
	Total	33	22	1,486

Total Events by Severity and Detection Method



		Current Week	Last Week	YTD
Level 2	Broward CCTV	7	6	326
	Broward Road Ranger	2	3	64
	Broward TMC	0	0	1
	Broward VideoWall	0	0	18
	BSO	2	0	13
	District 4	0	0	7
	FDOT Maintenance	0	0	1
	FHP	1	2	137
	Florida's Turnpike	0	0	4
	ITMS	0	0	1
	Motorist	1	0	5
	Other	0	0	1
	Palm Beach Road Ran	0	0	1
	Road Watcher	0	0	3
	SIRV	0	0	1
	SmarTraveler (511)	0	0	2
	VisioPaD Detection	0	0	13
	Total	13	11	598
	Level 3	Broward CCTV	3	3
Broward Road Ranger		0	0	26
Broward VideoWall		0	0	3
BSO		0	0	28
District 4		0	0	6
District 6		0	0	1
FDOT Maintenance		0	0	1
FHP		1	0	64
Fire		0	0	1
Florida's Turnpike		0	0	2
Palm Beach Road Ran		0	0	2
Road Watcher		0	0	3
VisioPaD Detection		0	0	3
Total		4	3	265

	Current Week	Last Week	YTD
Total	50	36	2,349

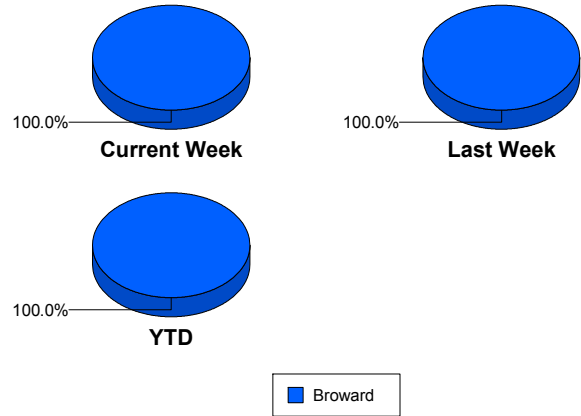
Road Ranger / SIRV Performance Measures

Road Ranger / SIRV Performance By County

Values presented are:
 - Total Events with a RR/SIRV Response
 - Total RR/SIRV Responses,
 - Total Activities Performed

	Current We	Last Week	YTD
Broward	944	885	36,387
	1,009	944	39,044
	1,046	976	40,645

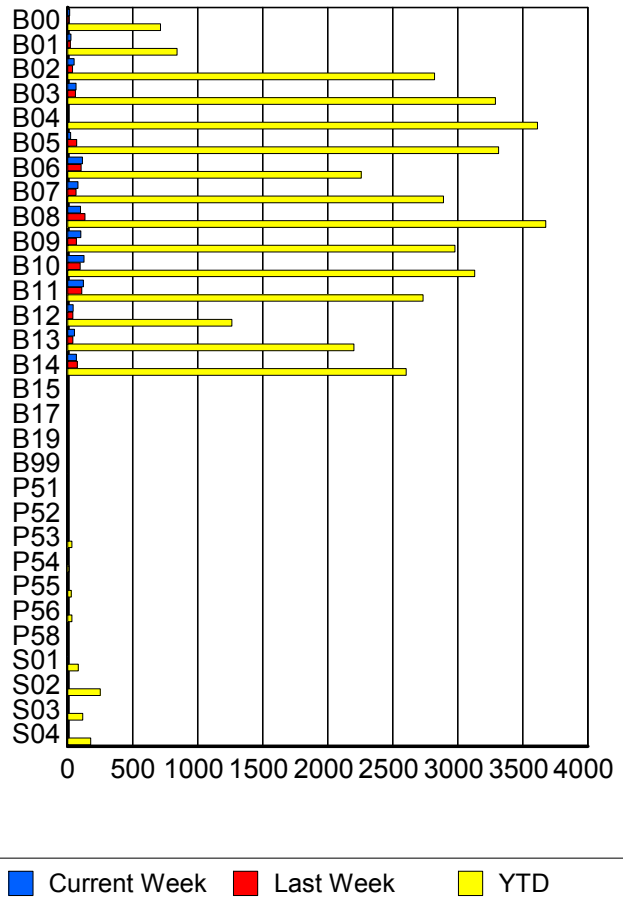
RR/SIRV Responses per County



Road Ranger / SIRV Performance By Truck

	Current We	Last Week	YTD
B00	16	11	700
	17	11	715
	20	11	752
B01	26	20	829
	26	21	842
	26	22	880
B02	51	37	2,793
	51	37	2,821
	54	37	2,928
B03	64	59	3,243
	66	61	3,290
	68	63	3,420
B04	0	1	3,575
	0	1	3,613
	0	1	3,764
B05	24	68	3,258
	24	70	3,314
	25	71	3,430
B06	113	103	2,228
	114	103	2,258
	118	111	2,340
B07	78	63	2,850
	79	64	2,891
	83	64	3,019
B08	97	131	3,631
	100	134	3,678
	107	137	3,816

**RR/SIRV
Responses per
Truck**



	Current We	Last Week	YTD
B09	100	65	2,933
	102	68	2,979
	105	72	3,094
B10	124	96	3,077
	126	97	3,132
	129	99	3,255
B11	120	106	2,691
	122	109	2,733
	122	112	2,813
B12	42	40	1,246
	44	40	1,264
	46	41	1,320
B13	52	40	2,176
	53	40	2,203
	56	40	2,282
B14	67	74	2,559
	67	74	2,603
	68	81	2,700
B15	0	0	6
	0	0	6
	0	0	6
B17	0	0	1
	0	0	1
	0	0	1
B19	0	0	1
	0	0	1
	0	0	1
B99	0	0	4
	0	0	4
	0	0	4
P51	0	0	1
	0	0	1
	0	0	1
P52	0	0	4
	0	0	4
	0	0	4
P53	1	1	32
	1	1	33
	1	1	40
P54	1	0	10
	1	0	10
	1	0	10
P55	1	0	28
	1	0	28
	1	0	32

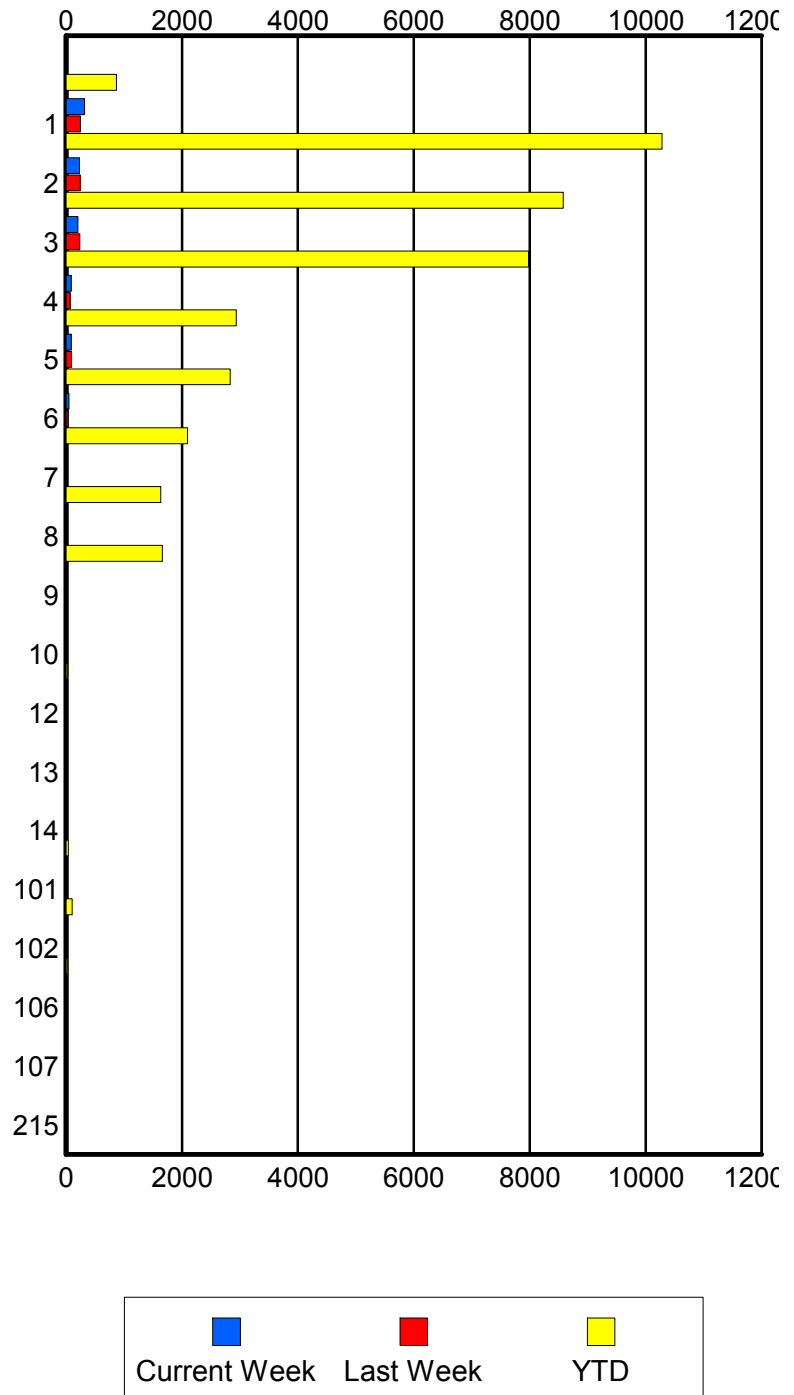
	Current We	Last Week	YTD
P56	2	0	32
	2	0	32
	2	0	33
P58	0	0	1
	0	0	1
	0	0	1
S01	3	1	78
	3	1	81
	3	1	93
S02	6	5	242
	6	6	250
	7	6	279
S03	1	1	115
	1	1	117
	1	1	133
S04	3	4	172
	3	5	178
	3	5	194

Road Ranger / SIRV Performance By Beat

	Current We	Last Week	YTD
	15	15	813
	18	18	868
	19	18	945
1	302	236	9,729
	318	248	10,282
	327	259	10,635
2	223	232	8,281
	234	240	8,574
	244	248	8,938
3	198	225	7,754
	202	235	7,977
	212	242	8,285
4	87	71	2,873
	89	73	2,934
	93	74	3,034
5	85	93	2,784
	87	93	2,831
	90	95	2,933
6	53	36	2,053
	53	36	2,095
	53	39	2,198
7	0	0	1,606
	0	0	1,631
	0	0	1,704
8	0	0	1,641
	0	0	1,661
	0	0	1,727
9	0	0	12
	0	0	14
	0	0	14
10	3	0	21
	3	0	22
	3	0	22
12	0	0	9
	0	0	9
	0	0	9
13	0	0	16
	0	0	16
	0	0	17
14	0	0	38
	0	0	38
	0	0	39
101	5	1	103
	5	1	105
	5	1	117

Values presented are:
 - Total Events with a RR/SIRV Response
 - Total RR/SIRV Responses,
 - Total Activities Performed

RR/SIRV Responses per Beat



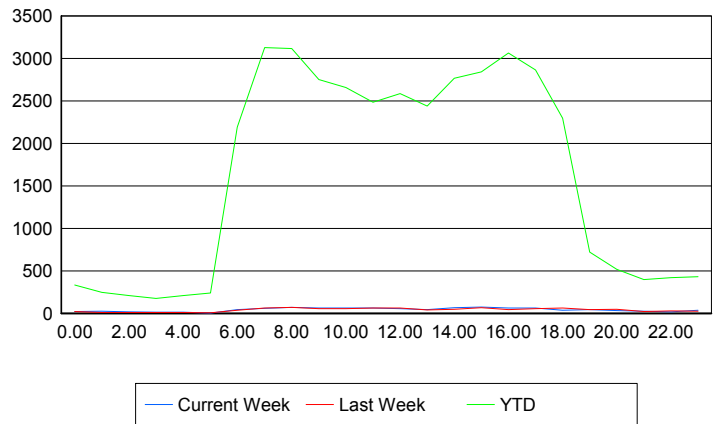
	Current We	Last Week	YTD
102	0	0	23
	0	0	23
	0	0	25
106	0	0	1
	0	0	1
	0	0	1
107	0	0	1
	0	0	1
	0	0	1
215	0	0	1
	0	0	1
	0	0	1

Road Ranger / SIRV Performance By Time of Day

Values presented are:
- Total Events with a RR/SIRV Response
- Total RR/SIRV Responses,
- Total Activities Performed

	Current We	Last Week	YTD
12AM-1AM	19	21	322
	21	21	335
	21	22	361
1AM-2AM	26	9	242
	26	9	248
	26	9	259
2AM-3AM	17	10	196
	17	10	209
	17	10	216
3AM-4AM	14	8	166
	15	8	174
	15	9	183
4AM-5AM	11	11	191
	13	11	209
	14	11	218
5AM-6AM	2	7	197
	2	7	238
	2	7	253
6AM-7AM	36	34	2,006
	43	35	2,193
	45	36	2,261
7AM-8AM	57	55	2,911
	60	62	3,127
	61	63	3,237
8AM-9AM	68	69	2,841
	70	71	3,115
	72	73	3,237

Number of Responses / Hour of the Day



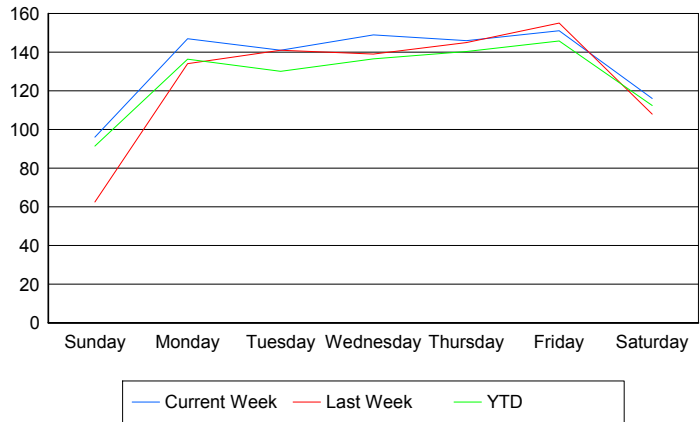
	Current We	Last Week	YTD
9AM-10AM	57	54	2,561
	63	56	2,752
	66	57	2,845
10AM-11AM	59	51	2,467
	62	56	2,657
	62	58	2,770
11AM-12PM	52	59	2,309
	61	63	2,484
	64	66	2,588
12PM-1PM	56	57	2,436
	56	62	2,585
	57	65	2,677
1PM-2PM	44	37	2,275
	45	39	2,441
	46	39	2,540
2PM-3PM	55	47	2,583
	65	48	2,766
	67	48	2,875
3PM-4PM	64	61	2,649
	73	65	2,841
	85	71	2,978
4PM-5PM	61	43	2,872
	63	44	3,063
	66	46	3,185
5PM-6PM	62	53	2,651
	63	54	2,864
	64	55	2,982
6PM-7PM	36	54	2,171
	38	61	2,297
	40	63	2,371
7PM-8PM	40	41	676
	42	43	719
	42	45	757
8PM-9PM	31	35	481
	32	48	518
	32	51	548
9PM-10PM	25	19	365
	26	21	396
	29	21	419
10PM-11PM	17	27	405
	18	27	420
	18	28	438
11PM-12AM	35	23	414
	35	23	430
	35	23	447

Road Ranger / SIRV Performance By Day of Week

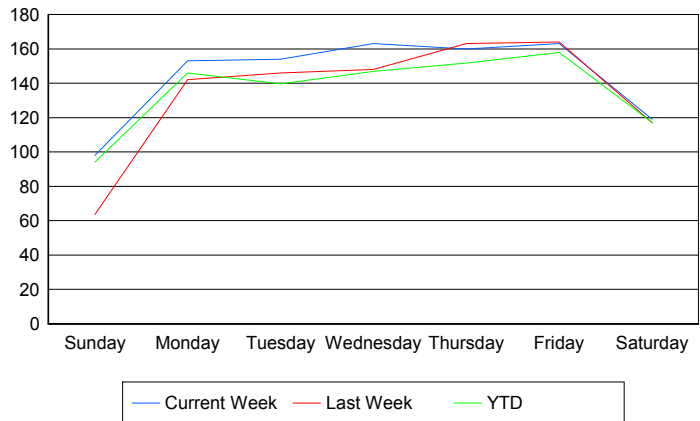
Values presented are:
 - Total Events with a RR/SIRV Response
 - Total RR/SIRV Responses,
 - Total Activities Performed

	Current We	Last Week	YTD
Sunday	95	63	1,289
	97	64	1,327
	100	65	1,387
Monday	147	134	6,552
	153	142	7,013
	156	148	7,229
Tuesday	141	141	6,232
	154	146	6,688
	154	150	6,914
Wednesday	149	139	6,528
	163	148	7,022
	176	151	7,339
Thursday	146	145	6,883
	160	163	7,435
	168	168	7,738
Friday	151	155	7,209
	163	164	7,803
	169	171	8,147
Saturday	116	108	1,717
	119	117	1,791
	123	123	1,891

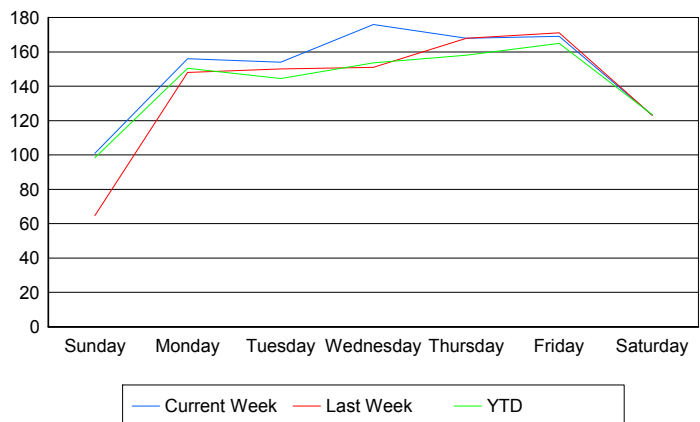
Avg # of events with a RR/SIRV Response per Day of the Week



Avg # of RR/SIRV Responses per Day of the Week



Avg # of RR/SIRV Activities Performed per Day of the Week



Road Ranger / SIRV Responses per Time of Day and Day of Week

