



Weekly Performance Measures Report Broward County



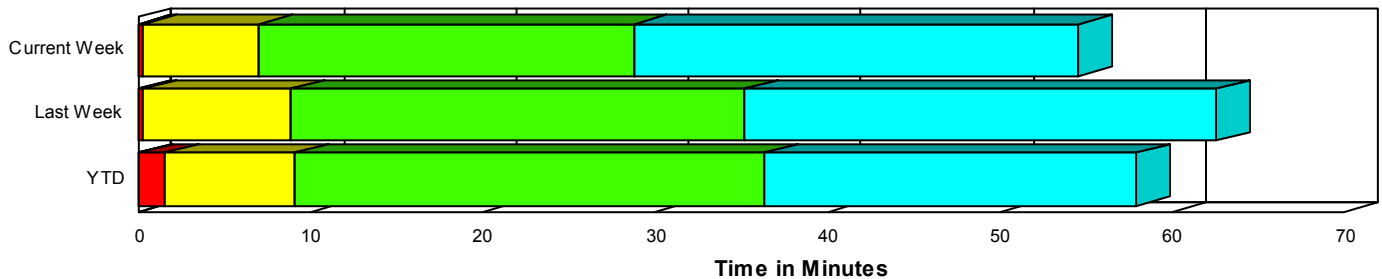
Created on:
December 08, 2008
8:32 am

Period From Nov 30, 2008 to Dec 6, 2008

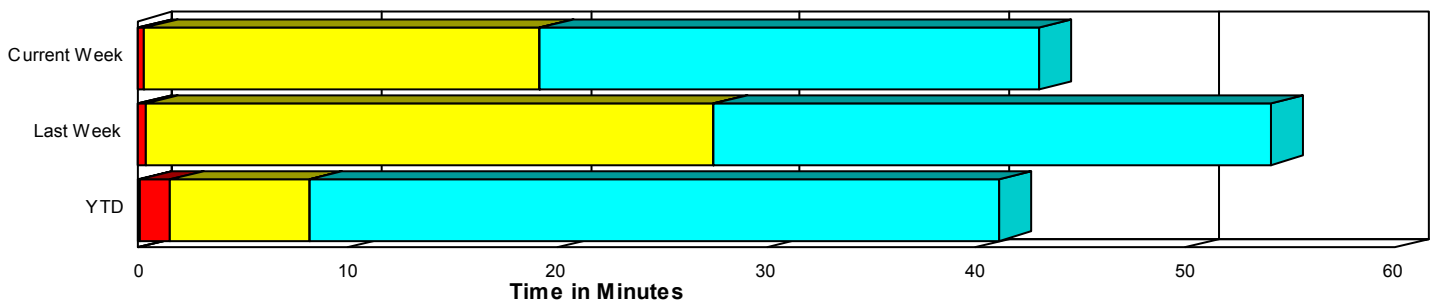
Performance Measures Summary

	Traffic Events (No Lanes Blocked)			Incidents (Lanes Blocked)		
	<u>This Week</u>	<u>Last Week</u>	<u>YTD</u>	<u>This Week</u>	<u>Last Week</u>	<u>YTD</u>
Number of Events	1,178	1,234	50,476	51	38	2,268
TMC Detection (min.)	0.00	0.00	0.01	0.00	0.00	0.03
TMC Verification (min.)	0.23	0.30	1.49	0.29	0.28	1.53
TMC Response (min.)	19.41	27.87	8.67	7.10	9.11	9.26
RR Dispatch Time (min.)	8.93	21.12	2.94	2.29	4.39	2.43
RR Response Time (min.)	7.51	6.56	5.99	4.81	6.06	6.89
Roadway Clearance (min.)				30.96	30.91	35.54
Event Clearance (min.)	43.23	54.45	41.61	56.72	58.25	55.93
# of Events w/ RR/SIRV	680	683	40,606	30	26	2,081
RR/SIRV Responses	680	683	40,740	30	26	2,331
RR/SIRV Activities	512	561	38,632	65	43	4,049

Incident Clearance TimeLine



Traffic Event (Non-Lane Blockage) Time-Line



■ Avg. TMC Detection Time	■ Avg. Time from TMC Response to Roadway Clearance*
■ Avg. Time from TMC Detection to TMC Verification	■ Avg. Time from Roadway Clearance to Incident/Event Clearance**
■ Avg. Time from TMC Verification to TMC Response	

* Roadway clearance equals all travel lanes open

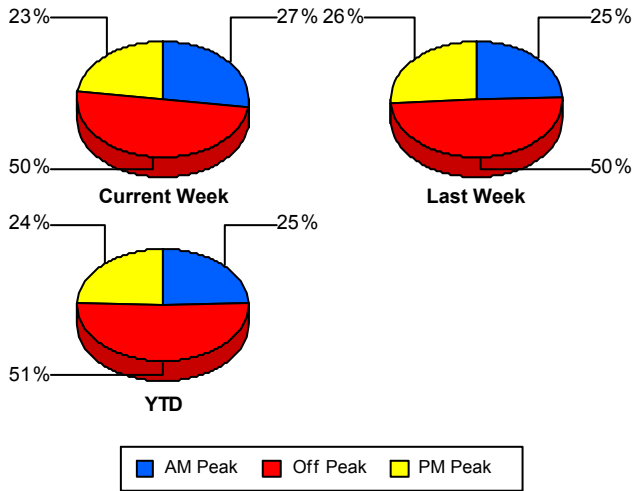
** Incident clearance equals time when last responder has left the scene

Performance Measures by Peak Period

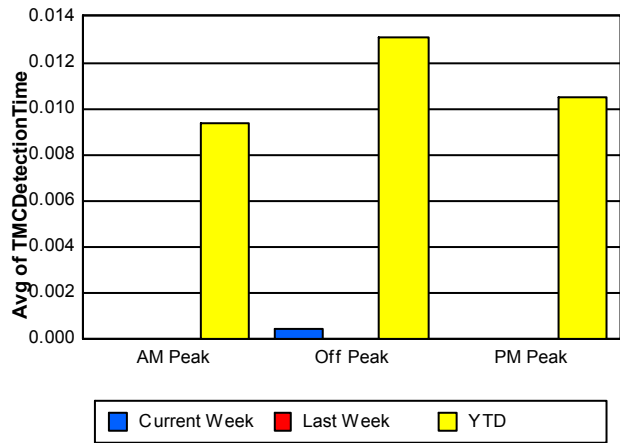
Note: AM peak period is defined as 6am to 10am and PM peak period is defined as 3pm to 7pm.

	AM Peak			Off Peak			PM Peak		
	Current Week	Last Week	YTD	Current Week	Last Week	YTD	Current Week	Last Week	YTD
Number of Events	332	314	13,070	617	630	26,915	280	328	12,759
Number of Incidents	15	11	546	21	23	1,180	15	4	542
TMC Detection (min.)	0.00	0.00	0.01	0.00	0.00	0.01	0.00	0.00	0.01
TMC Verification (min.)	0.13	0.49	0.85	0.19	0.25	1.82	0.44	0.21	1.47
TMC Response (min.)	7.12	8.22	7.94	27.18	59.72	10.01	23.24	10.26	7.05
RR Dispatch Time (min.)	0.76	12.93	2.49	13.13	39.88	3.74	12.50	4.46	1.74
RR Response Time (min.)	6.46	7.13	5.60	8.85	7.21	6.65	6.68	5.08	5.32
Event Clearance (min.)	32.68	35.84	35.61	51.03	64.45	47.62	41.00	53.47	37.63
Roadway Clearance (min.)	27.76	42.70	31.54	36.00	26.28	42.08	27.11	25.07	25.30
Incident Clearance (min.)	43.84	71.08	52.75	69.77	54.18	63.24	51.32	46.36	43.22
# of Events w/ RR/SIRV	247	231	11,257	262	266	20,726	201	212	10,704
RR/SIRV Responses	247	231	11,361	262	266	20,934	201	212	10,776
RR/SIRV Activities	205	214	11,351	206	206	20,581	166	184	10,749

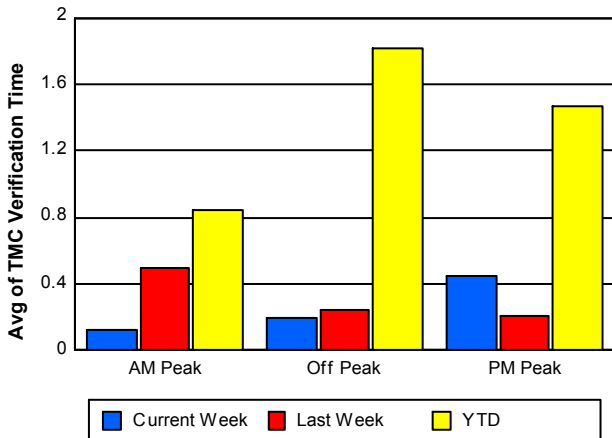
Number of Events / Peak Period



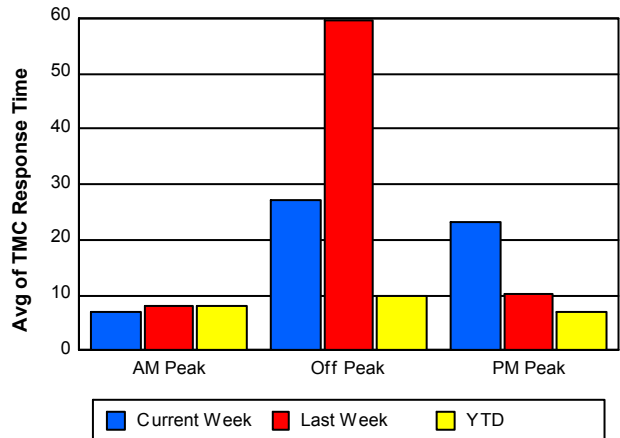
TMC Detection Time



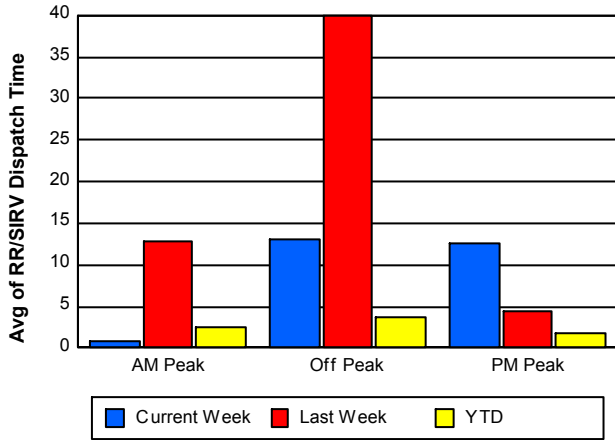
TMC Verification Time



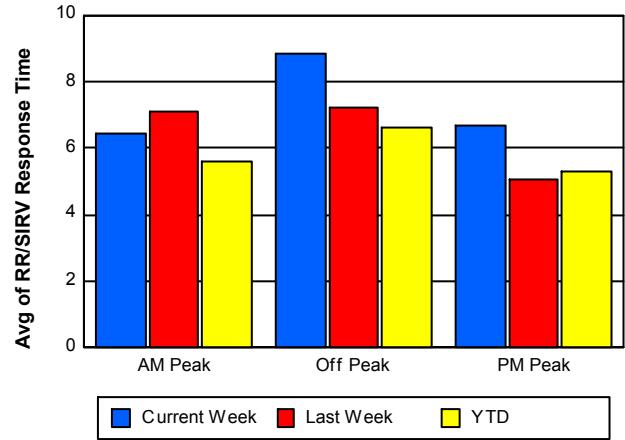
TMC Response Time



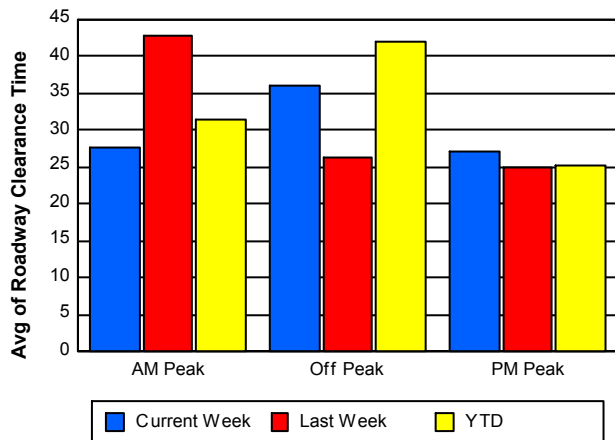
Road Ranger / SIRV Dispatch Time



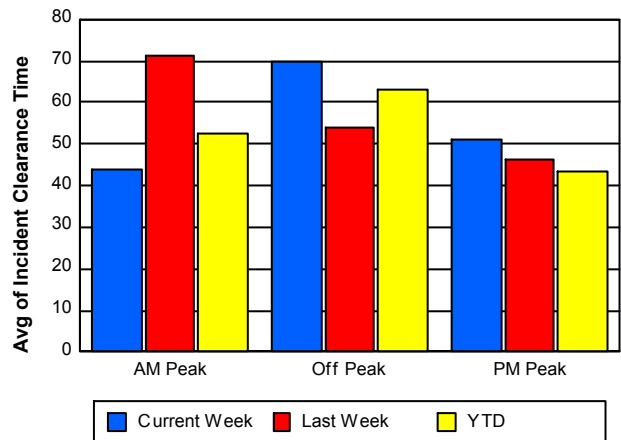
Road Ranger / SIRV Response Time



Roadway Clearance Time (2A)



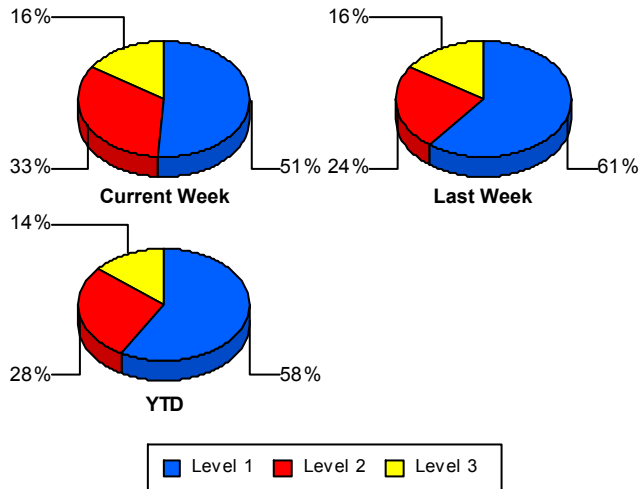
Incident Clearance Time (3B)



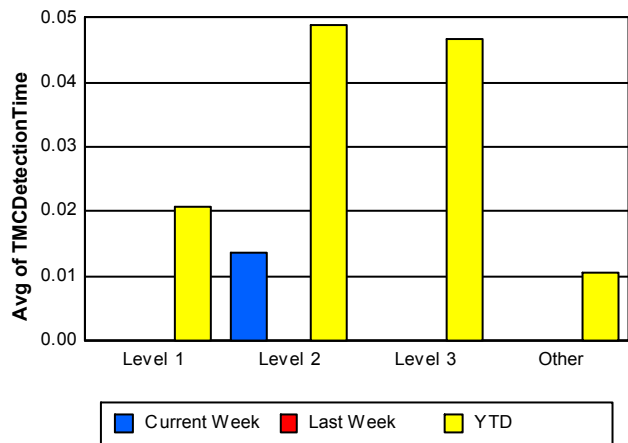
Performance Measures by Severity

	Level 1			Level 2			Level 3			Other		
	<u>This Week</u>	<u>Last Week</u>	<u>YTD</u>	<u>This Week</u>	<u>Last Week</u>	<u>YTD</u>	<u>This Week</u>	<u>Last Week</u>	<u>YTD</u>	<u>This Week</u>	<u>Last Week</u>	<u>YTD</u>
Number of Events	26	23	1,315	17	9	633	8	6	320	1,178	1,234	50,476
Number of Incidents	26	23	1,315	17	9	633	8	6	320	0	0	0
TMC Detection (min.)	0.00	0.00	0.02	0.01	0.00	0.05	0.00	0.00	0.05	0.00	0.00	0.01
TMC Verification (min.)	0.34	0.43	0.91	0.15	0.00	2.30	0.39	0.14	2.57	0.23	0.30	1.49
TMC Response (min.)	4.96	4.51	7.78	8.57	9.05	10.83	9.85	32.18	12.15	19.41	27.87	8.67
RR Dispatch Time (min.)	1.08	1.15	2.20	1.45	2.05	2.42	5.30	17.07	3.41	8.93	21.12	2.94
RR Resp. Time (min.)	3.88	3.32	5.62	7.12	7.92	8.41	4.55	17.27	9.00	7.51	6.56	5.99
Event Clearance (min.)	44.00	43.47	41.12	81.13	67.09	66.39	46.17	101.62	96.04	43.23	54.45	41.61
Roadway Clear. (min.)	14.18	11.80	14.82	52.28	46.77	50.18	40.21	80.36	91.69			
Incident Clearance (min.)	44.00	43.47	41.12	81.13	67.09	66.39	46.17	101.62	96.04			
# of Events w/ RR/SIRV	15	16	1,206	7	5	580	8	5	295	680	683	40,606
RR/SIRV Responses	15	16	1,279	7	5	654	8	5	398	680	683	40,740
RR/SIRV Activities	22	32	1,988	21	7	1,248	22	4	813	512	561	38,632

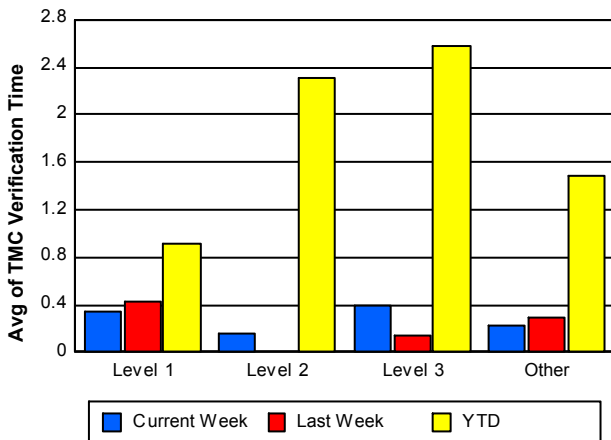
Number of Events / Severity



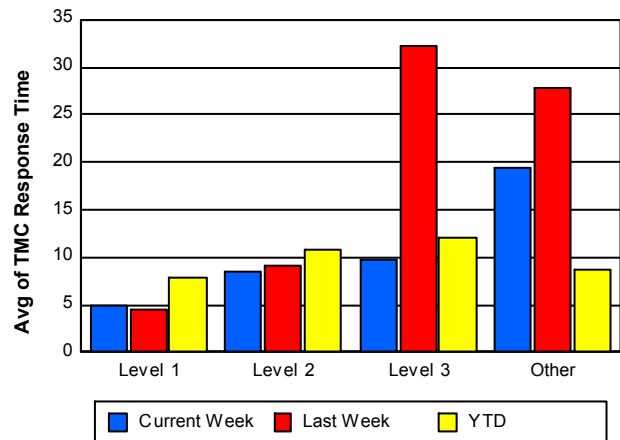
TMC Detection Time



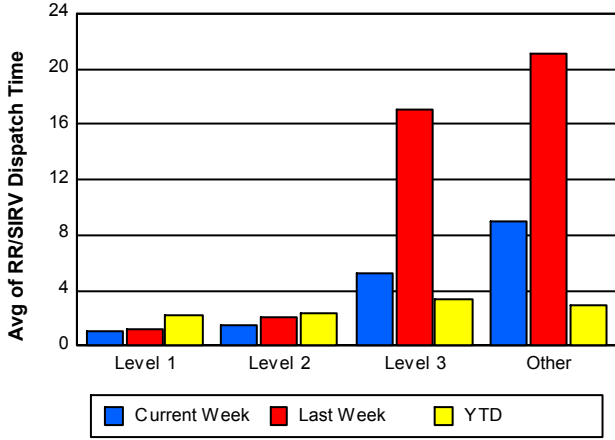
TMC Verification Time



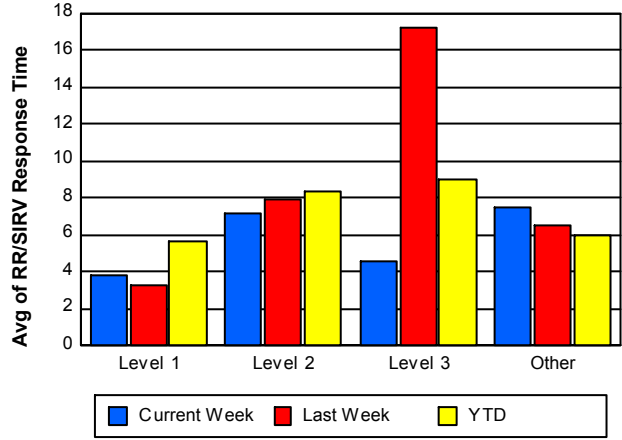
TMC Response Time



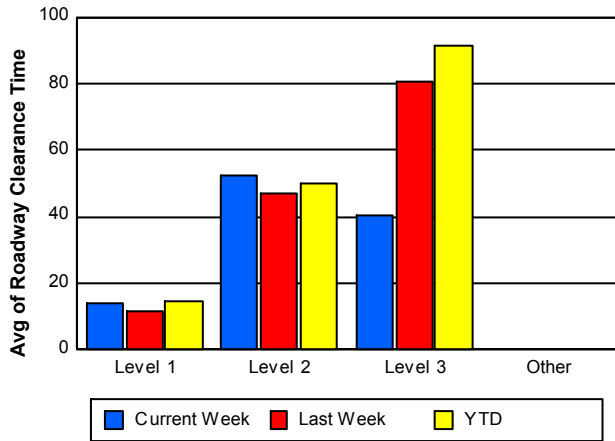
Road Ranger / SIRV Dispatch Time



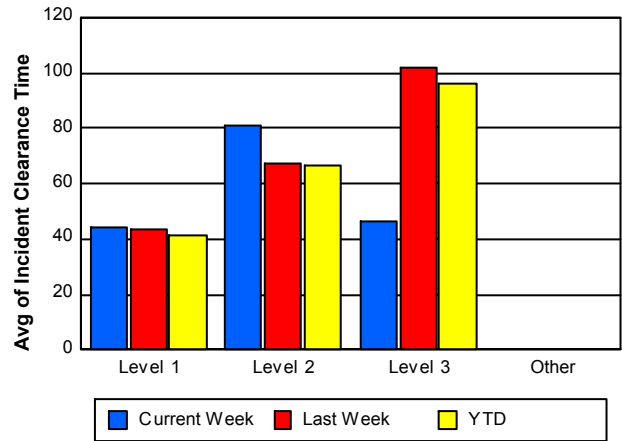
Road Ranger / SIRV Response Time



Roadway Clearance Time (2A)



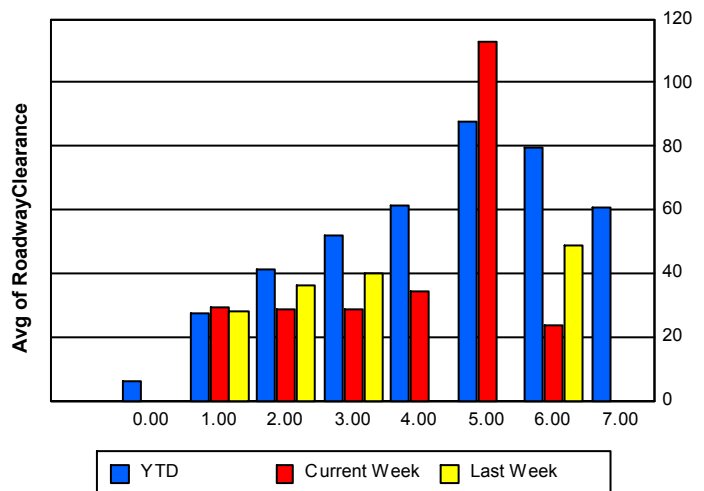
Incident Clearance Time (3B)



Roadway Clearance by Maximum Number of Lanes Blocked

	Current Week	Last Week	YTD
	0.00	0.00	
0			5.87
1	29.07	28.20	27.23
2	28.48	36.45	41.23
3	28.90	40.29	51.81
4	34.36	0.00	61.50
5	112.70	0.00	87.81
6	23.52	49.07	79.40

Roadway Clearance Time (2A)



	Current Week	Last Week	YTD
7	0.00	0.00	60.95

Performance Measures by Roadway

595

	<u>Current Week</u>	<u>Last Week</u>	<u>YTD</u>
Number of Events	188	165	7,986
Number of Incidents	13	4	396
TMC Detection (min.)	0.00	0.00	0.01
TMC Verification (min.)	0.33	0.73	1.69
TMC Response (min.)	16.81	16.43	9.19
RR Dispatch Time (min.)	10.09	8.27	3.22
RR Resp. Time (min.)	4.89	7.24	5.91
Event Clearance (min.)	39.48	42.66	41.41
Roadway Clear. (min.)	40.58	26.27	37.92
Incident Clearance (min.)	61.14	47.06	52.89
# of Events w/ RR/SIRV	104	95	6,624
RR/SIRV Responses	104	95	6,687
RR/SIRV Activities	97	87	6,803

75

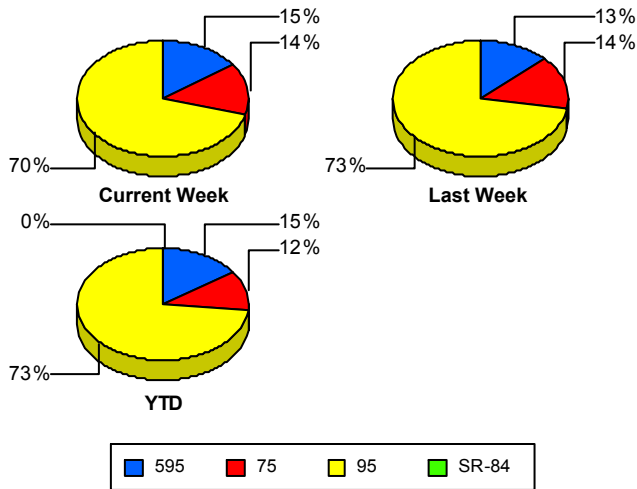
	<u>Current Week</u>	<u>Last Week</u>	<u>YTD</u>
Number of Events	178	184	6,157
Number of Incidents	5	5	140
TMC Detection (min.)	0.00	0.00	0.02
TMC Verification (min.)	0.26	0.32	4.90
TMC Response (min.)	12.56	6.80	5.95
RR Dispatch Time (min.)	3.88	1.60	2.17
RR Resp. Time (min.)	7.71	5.71	5.03
Event Clearance (min.)	40.56	44.95	46.23
Roadway Clear. (min.)	22.74	41.11	59.03
Incident Clearance (min.)	42.67	101.97	67.73
# of Events w/ RR/SIRV	126	122	5,837
RR/SIRV Responses	126	122	5,870
RR/SIRV Activities	104	118	6,279

95

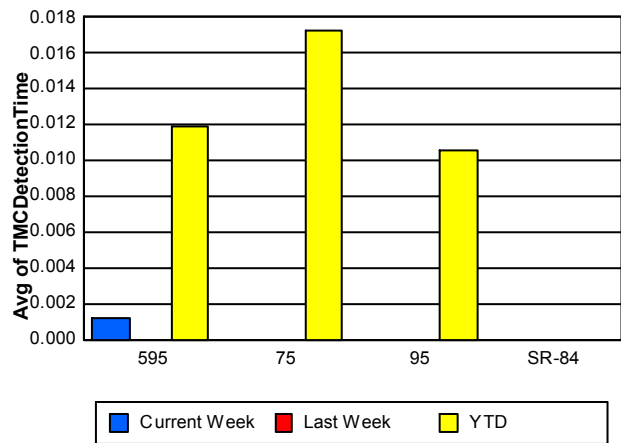
	<u>Current Week</u>	<u>Last Week</u>	<u>YTD</u>
Number of Events	863	923	38,600
Number of Incidents	33	29	1,732
TMC Detection (min.)	0.00	0.00	0.01
TMC Verification (min.)	0.21	0.22	0.91
TMC Response (min.)	20.88	35.31	9.20
RR Dispatch Time (min.)	9.59	27.56	2.98
RR Resp. Time (min.)	7.89	6.63	6.28
Event Clearance (min.)	45.39	58.60	41.76
Roadway Clear. (min.)	28.42	29.78	33.09
Incident Clearance (min.)	57.10	52.25	55.67
# of Events w/ RR/SIRV	480	492	30,226
RR/SIRV Responses	480	492	30,514
RR/SIRV Activities	376	399	29,599

	<u>YTD</u>
Number of Events	1
Number of Incidents	0
TMC Detection (min.)	0.00
TMC Verification (min.)	0.47
TMC Response (min.)	
RR Dispatch Time (min.)	
RR Resp. Time (min.)	
Event Clearance (min.)	5.22
Roadway Clear. (min.)	
Incident Clearance (min.)	
# of Events w/ RR/SIRV	0
RR/SIRV Responses	0
RR/SIRV Activities	0

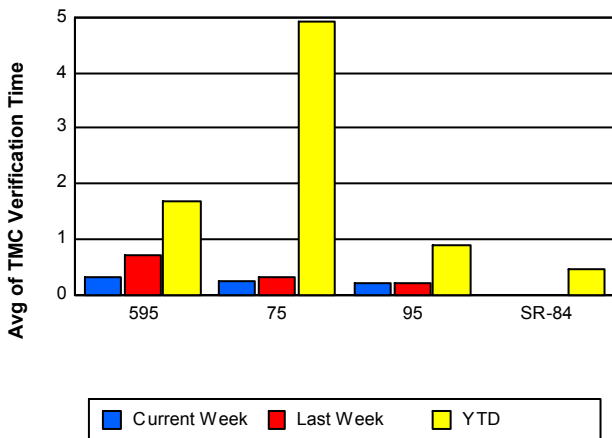
Number of Events / Roadway



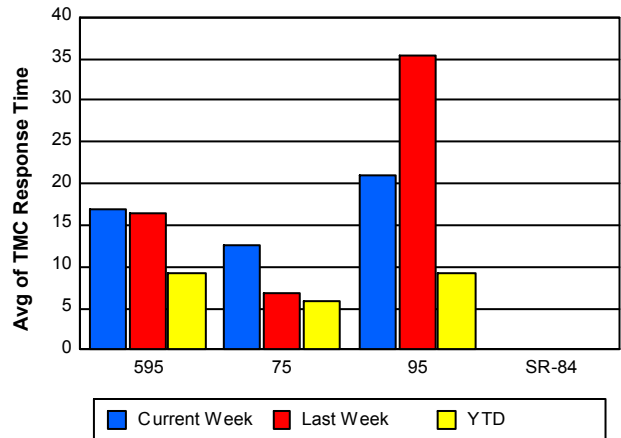
TMC Detection Time



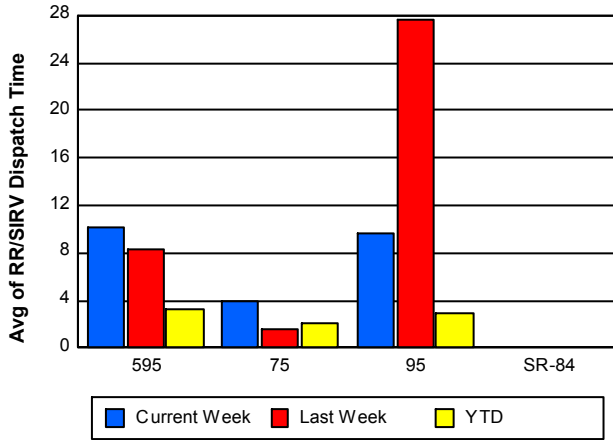
TMC Verification Time



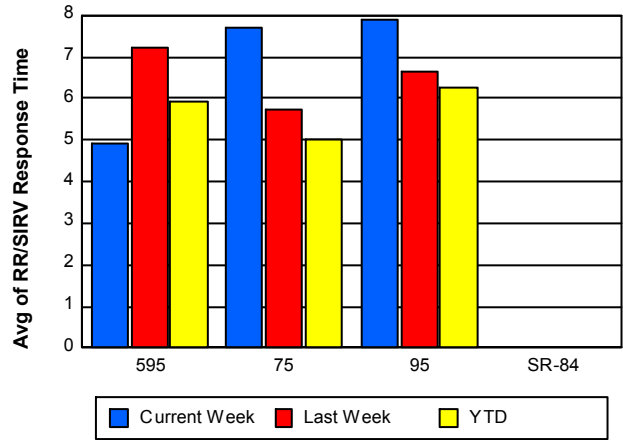
TMC Response Time



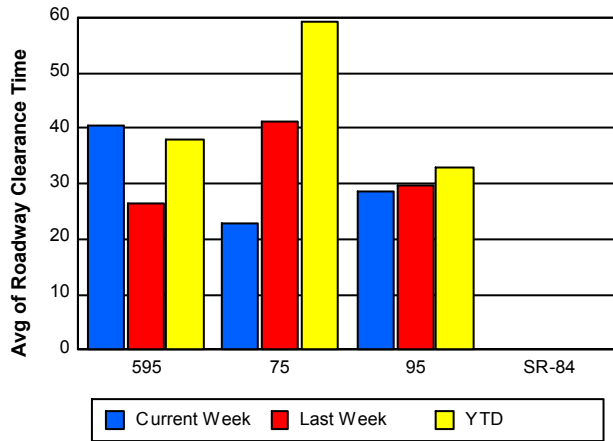
Road Ranger / SIRV Dispatch Time



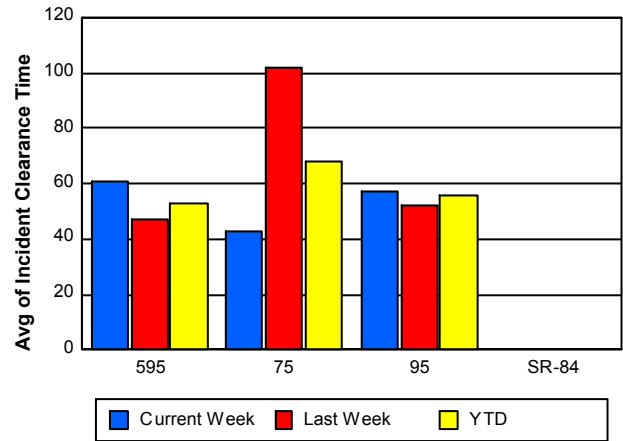
Road Ranger / SIRV Response Time



Roadway Clearance Time (2A)



Incident Clearance Time (3B)



Performance Measures by Event Type

Abandoned Vehicle

	<u>Current Week</u>	<u>Last Week</u>	<u>YTD</u>
Number of Events	140	145	6,725
Number of Incidents	0	0	13
TMC Detection (min.)	0.00	0.00	0.02
TMC Verification (min.)	0.01	0.17	0.44
TMC Response (min.)	110.63	114.13	16.72
RR Dispatch Time (min.)	95.85	132.53	13.18
RR Response Time (min.)	14.79	8.93	5.90
Event Clearance (min.)	237.93	304.59	192.28
Roadway Clearance (min.)			39.46
Incident Clearance (min.)			236.85
# of Events w/ RR/SIRV	56	92	5,262
RR/SIRV Assists	56	92	5,269
RR/SIRV Activities	56	98	5,519

Accident

	<u>Current Week</u>	<u>Last Week</u>	<u>YTD</u>
Number of Events	81	60	3,568
Number of Incidents	37	25	1,640
TMC Detection (min.)	0.00	0.00	0.03
TMC Verification (min.)	0.16	0.65	1.78
TMC Response (min.)	10.10	8.30	8.23
RR Dispatch Time (min.)	2.37	2.44	1.75
RR Response Time (min.)	7.80	6.82	6.54
Event Clearance (min.)	50.47	59.16	45.85
Roadway Clearance (min.)	30.40	36.57	36.06
Incident Clearance (min.)	59.00	71.19	59.63
# of Events w/ RR/SIRV	47	43	3,285
RR/SIRV Assists	47	43	3,512
RR/SIRV Activities	74	56	5,060

Congestion

	<u>Last Week</u>	<u>YTD</u>
Number of Events	4	25
Number of Incidents	0	1
TMC Detection (min.)	0.00	0.00
TMC Verification (min.)	0.00	0.00
TMC Response (min.)		
RR Dispatch Time (min.)		
RR Response Time (min.)		
Event Clearance (min.)	61.57	76.82
Roadway Clearance (min.)		8.22
Incident Clearance (min.)		98.70
# of Events w/ RR/SIRV	0	0
RR/SIRV Assists	0	0
RR/SIRV Activities	0	0

Debris on Roadway

	<u>Current Week</u>	<u>Last Week</u>	<u>YTD</u>
Number of Events	23	22	1,745
Number of Incidents	0	0	31
TMC Detection (min.)	0.00	0.00	0.03
TMC Verification (min.)	5.05	4.73	5.36
TMC Response (min.)	8.69	6.72	7.86
RR Dispatch Time (min.)	1.02	0.48	1.08
RR Response Time (min.)	7.65	6.23	6.81
Event Clearance (min.)	12.20	10.16	12.23
Roadway Clearance (min.)			43.85
Incident Clearance (min.)			51.47
# of Events w/ RR/SIRV	20	20	1,683
RR/SIRV Assists	20	20	1,710
RR/SIRV Activities	19	20	1,796

Disabled Vehicle

	<u>Current Week</u>	<u>Last Week</u>	<u>YTD</u>
Number of Events	521	565	29,454
Number of Incidents	7	6	360
TMC Detection (min.)	0.00	0.00	0.01
TMC Verification (min.)	0.20	0.37	1.94
TMC Response (min.)	6.89	8.56	7.17
RR Dispatch Time (min.)	1.01	3.16	1.44
RR Response Time (min.)	5.89	5.75	5.88
Event Clearance (min.)	21.01	27.54	20.62
Roadway Clearance (min.)	21.39	18.60	24.36
Incident Clearance (min.)	33.08	34.38	36.26
# of Events w/ RR/SIRV	387	387	27,617
RR/SIRV Assists	387	387	27,713
RR/SIRV Activities	382	393	28,870

Emergency Vehicles

	<u>YTD</u>
Number of Events	63
Number of Incidents	58
TMC Detection (min.)	0.06
TMC Verification (min.)	0.34
TMC Response (min.)	7.28
RR Dispatch Time (min.)	2.42
RR Response Time (min.)	4.94
Event Clearance (min.)	38.92
Roadway Clearance (min.)	38.47
Incident Clearance (min.)	39.60
# of Events w/ RR/SIRV	49
RR/SIRV Assists	51
RR/SIRV Activities	80

Other

	<u>Current Week</u>	<u>Last Week</u>	<u>YTD</u>
Number of Events	441	440	10,667
Number of Incidents	3	1	27
TMC Detection (min.)	0.00	0.00	0.00
TMC Verification (min.)	0.13	0.00	0.24
TMC Response (min.)	11.50	35.08	10.83
RR Dispatch Time (min.)	1.16	6.17	1.87
RR Response Time (min.)	10.49	7.53	8.61
Event Clearance (min.)	9.79	11.25	11.50
Roadway Clearance (min.)	21.93	3.67	19.65
Incident Clearance (min.)	48.37	4.65	28.02
# of Events w/ RR/SIRV	192	155	4,410
RR/SIRV Assists	192	155	4,415
RR/SIRV Activities	34	25	892

Pedestrian

	<u>YTD</u>
Number of Events	41
Number of Incidents	0
TMC Detection (min.)	0.01
TMC Verification (min.)	1.34
TMC Response (min.)	2.56
RR Dispatch Time (min.)	0.37
RR Response Time (min.)	2.29
Event Clearance (min.)	10.68
Roadway Clearance (min.)	
Incident Clearance (min.)	
# of Events w/ RR/SIRV	37
RR/SIRV Assists	37
RR/SIRV Activities	39

Police Activity

	<u>Current Week</u>	<u>Last Week</u>	<u>YTD</u>
Number of Events	17	19	186
Number of Incidents	2	4	93
TMC Detection (min.)	0.00	0.00	0.02
TMC Verification (min.)	0.00	0.00	1.26
TMC Response (min.)	16.02	40.55	10.74
RR Dispatch Time (min.)	8.02	21.87	3.26
RR Response Time (min.)	4.47	0.08	7.28
Event Clearance (min.)	37.73	16.22	40.77
Roadway Clearance (min.)	84.22	15.05	67.56
Incident Clearance (min.)	87.33	19.02	56.00
# of Events w/ RR/SIRV	3	2	107
RR/SIRV Assists	3	2	127
RR/SIRV Activities	5	1	169

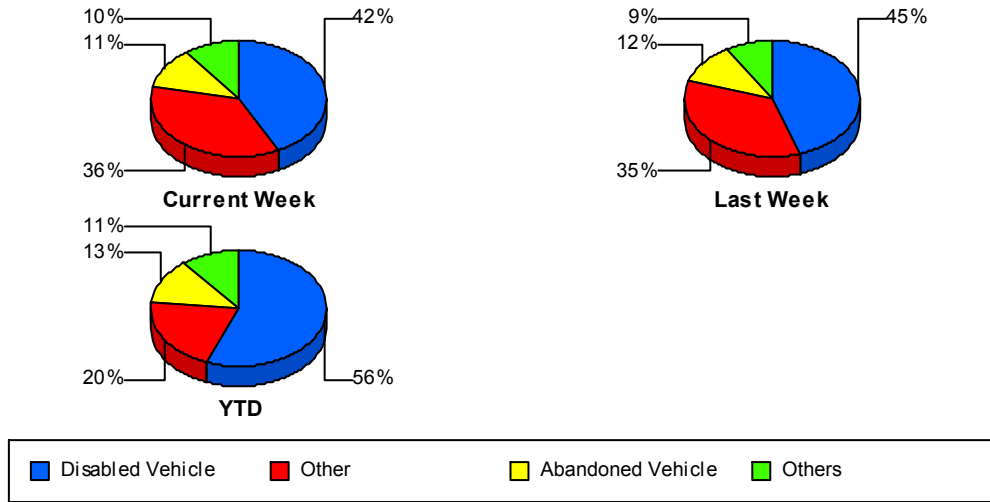
Vehicle Fire

	<u>Current Week</u>	<u>Last Week</u>	<u>YTD</u>
Number of Events	3	3	58
Number of Incidents	2	2	44
TMC Detection (min.)	0.00	0.00	0.00
TMC Verification (min.)	0.00	0.00	0.74
TMC Response (min.)	8.28	20.03	9.57
RR Dispatch Time (min.)	0.55	2.68	2.52
RR Response Time (min.)	7.73	17.36	7.05
Event Clearance (min.)	63.44	54.54	60.41
Roadway Clearance (min.)	35.08	42.39	39.71
Incident Clearance (min.)	79.20	73.27	66.91
# of Events w/ RR/SIRV	2	3	49
RR/SIRV Assists	2	3	49
RR/SIRV Activities	4	4	87

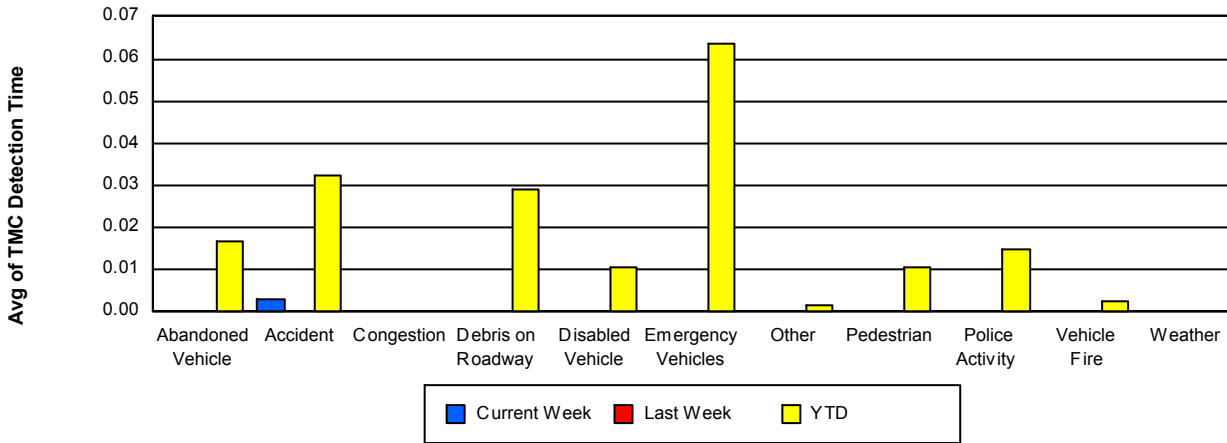
Weather

	<u>YTD</u>
Number of Events	15
Number of Incidents	0
TMC Detection (min.)	0.00
TMC Verification (min.)	0.00
TMC Response (min.)	0.10
RR Dispatch Time (min.)	1.41
RR Response Time (min.)	0.00
Event Clearance (min.)	13.87
Roadway Clearance (min.)	
Incident Clearance (min.)	
# of Events w/ RR/SIRV	7
RR/SIRV Assists	7
RR/SIRV Activities	1

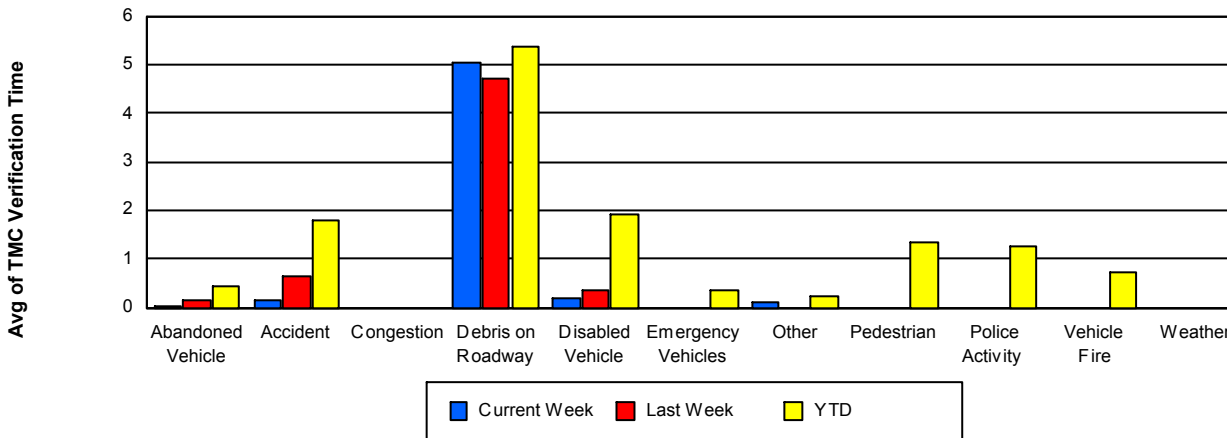
Number of Events / Event Type



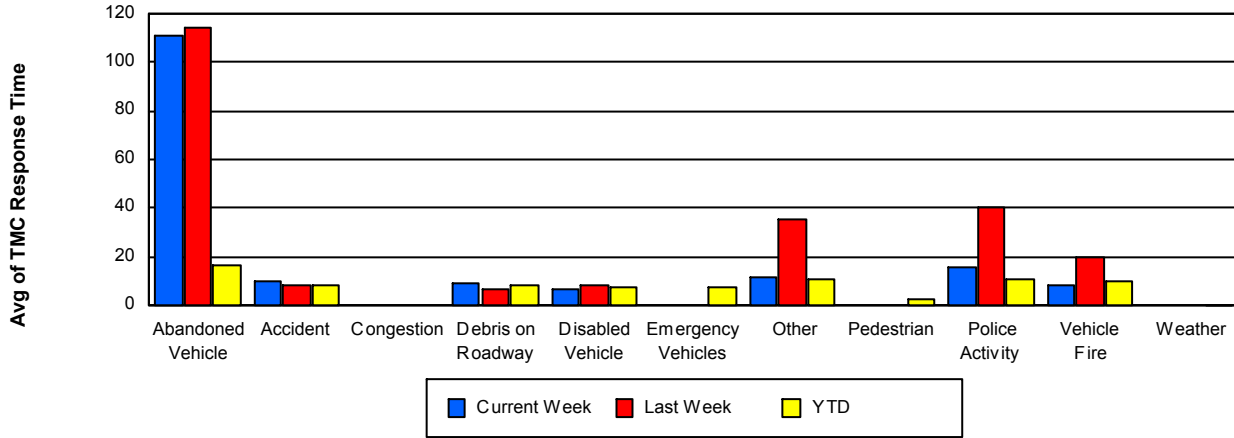
TMC Detection Time



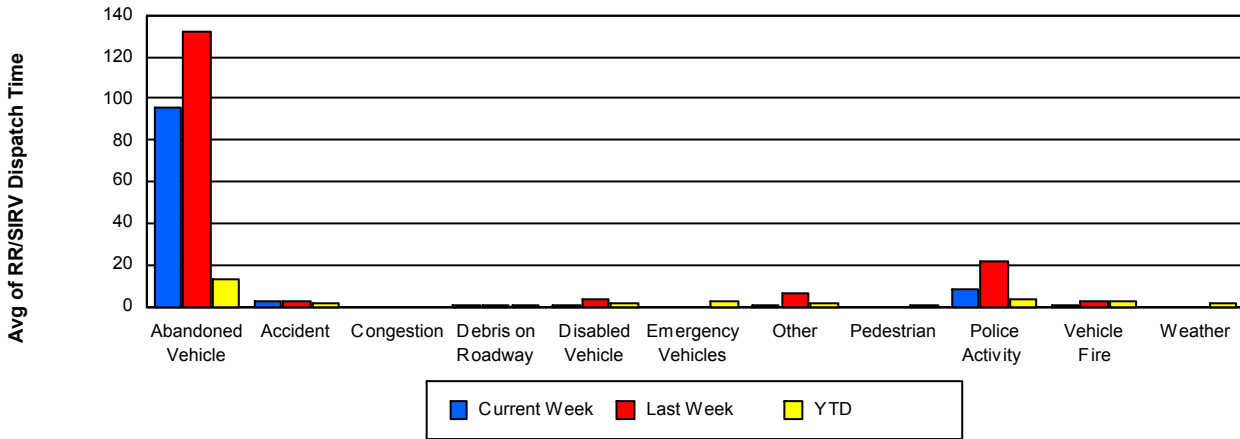
TMC Verification Time



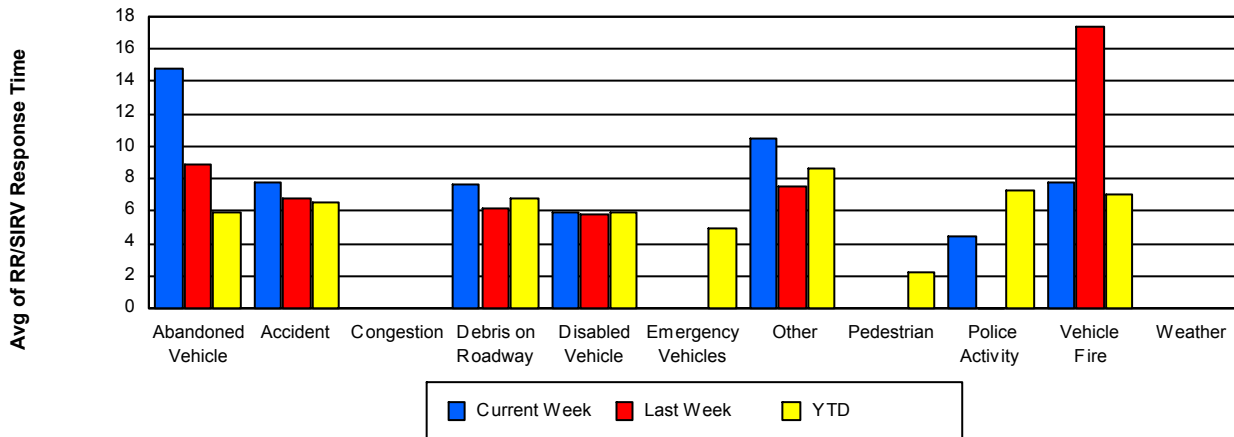
TMC Response Time



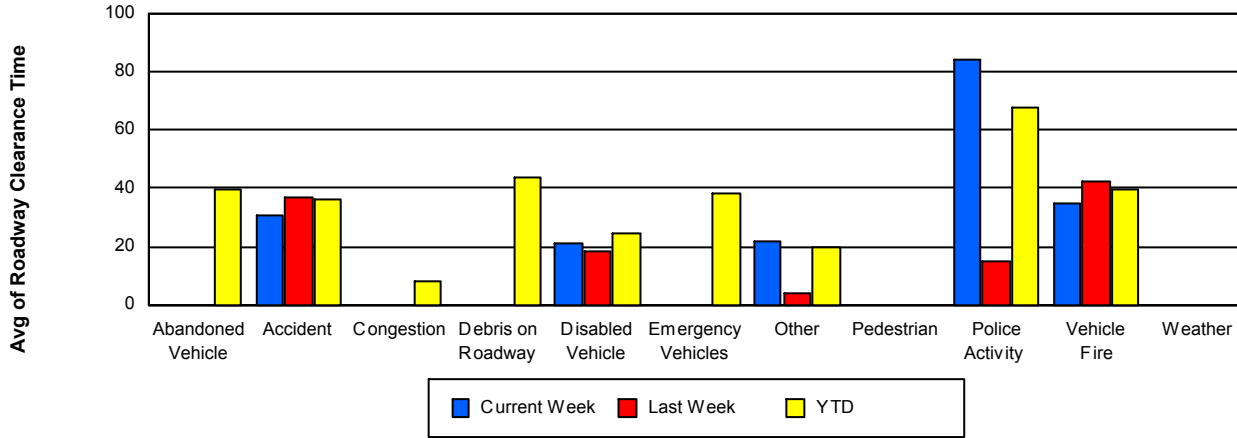
Road Ranger / SIRV Dispatch Time



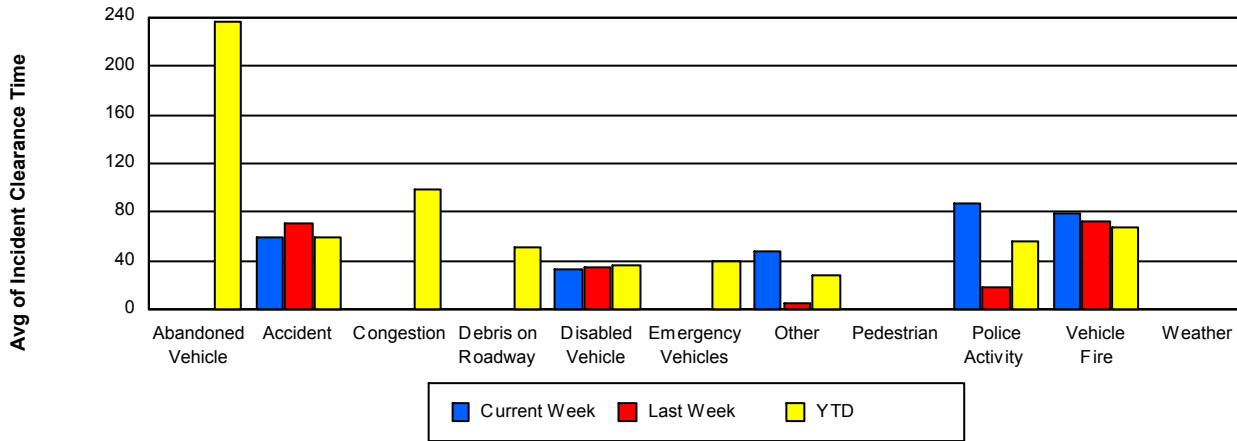
Road Ranger / SIRV Response Time



Roadway Clearance Time (2A)



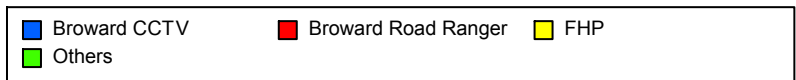
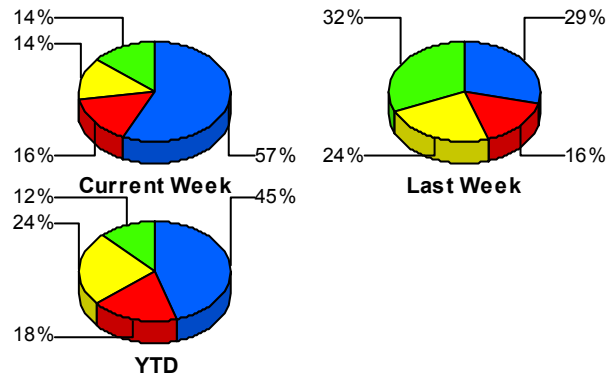
Incident Clearance Time (3B)



Incident Detection Methods

	Current Week	Last Week	YTD
Broward CCTV	29	11	1,028
Broward Road Ranger	8	6	416
Broward VideoWall	1	2	59
BSO	1	0	21
District 4	1	5	58
District 6	1	0	6
FDOT Maintenance	0	0	2
FHP	7	9	547
Fire	0	0	6
Florida's Turnpike	1	0	9
ITMS	0	0	2
Motorist	0	1	18
Other	0	0	1
Palm Beach Road Rang	0	0	8
PSAP	0	0	3
Road Watcher	0	0	14
SIRV	0	1	8
SmarTraveler (511)	0	1	11
VisioPaD Detection	2	2	51
Total	51	38	2,268

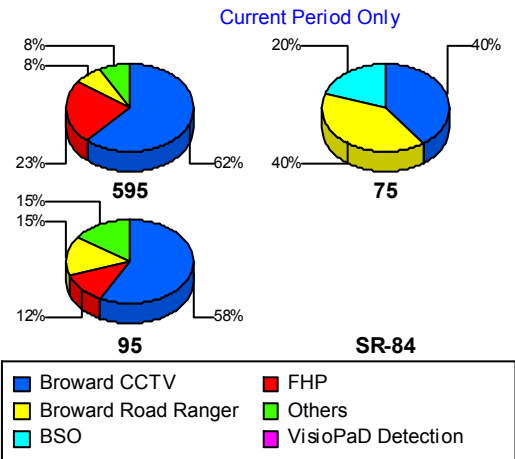
Total Incidents by Detection Method



Incident Detection Methods by Roadway

		Current Week	Last Week	YTD
595	Broward CCTV	8	2	148
	Broward Road Ranger	1	1	81
	Broward VideoWall	0	0	10
	BSO	0	0	10
	District 4	0	0	8
	FHP	3	0	114
	Florida's Turnpike	1	0	9
	Motorist	0	0	3
	Road Watcher	0	0	5
	SIRV	0	0	2
	SmarTraveler (511)	0	0	1
	VisioPaD Detection	0	1	5
	Total	13	4	396
75	Broward CCTV	2	2	5
	Broward Road Ranger	2	2	60
	BSO	1	0	6
	District 4	0	0	7
	District 6	0	0	2
	FHP	0	1	57
	Road Watcher	0	0	1
	SIRV	0	0	1
	SmarTraveler (511)	0	0	1
	Total	5	5	140
95	Broward CCTV	19	7	875
	Broward Road Ranger	5	3	275
	Broward VideoWall	1	2	49
	BSO	0	0	5
	District 4	1	5	43
	District 6	1	0	4
	FDOT Maintenance	0	0	2
	FHP	4	8	376

Total Events by Roadway and Detection Method

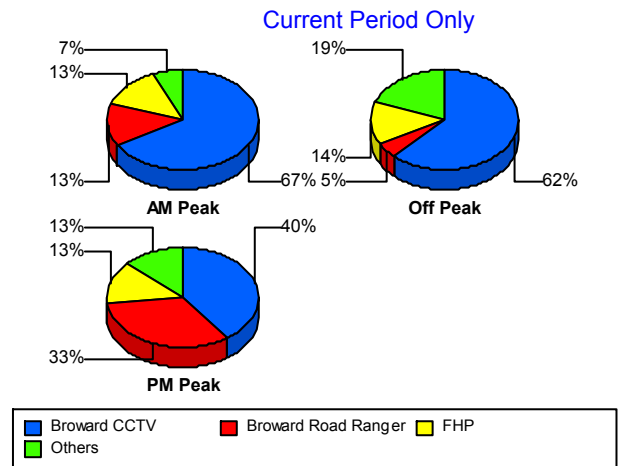


		Current Week	Last Week	YTD
95	Fire	0	0	6
	ITMS	0	0	2
	Motorist	0	1	15
	Other	0	0	1
	Palm Beach Road Rang	0	0	8
	PSAP	0	0	3
	Road Watcher	0	0	8
	SIRV	0	1	5
	SmarTraveler (511)	0	1	9
	VisioPaD Detection	2	1	46
	Total	33	29	1,732
Total	51	38	2,268	

Incident Detection Methods by Peak Period

		Current Week	Last Week	YTD
AM Peak	Broward CCTV	10	1	246
	Broward Road Ranger	2	1	105
	Broward VideoWall	1	2	22
	BSO	0	0	6
	District 4	0	1	14
	FHP	2	5	123
	Fire	0	0	1
	Florida's Turnpike	0	0	3
	Motorist	0	0	3
	Palm Beach Road Rang	0	0	5
	PSAP	0	0	1
	Road Watcher	0	0	7
	SIRV	0	1	4
	SmarTraveler (511)	0	0	1
	VisioPaD Detection	0	0	5
	Total	15	11	546
	Off Peak	Broward CCTV	13	10

Total Events by Peak Period and Detection Method



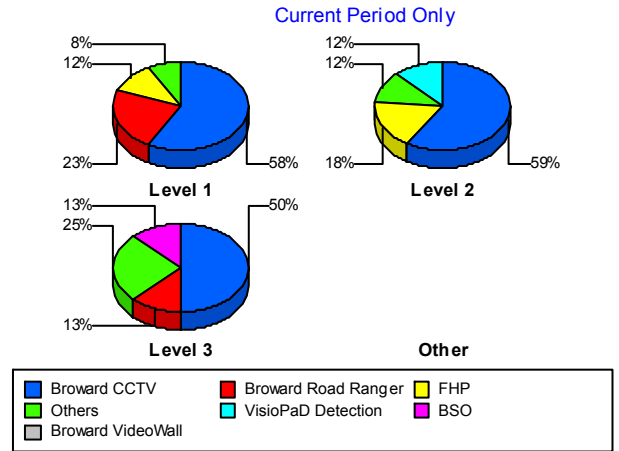
		Current Week	Last Week	YTD
Off Peak	Broward Road Ranger	1	2	192
	Broward VideoWall	0	0	25
	BSO	1	0	8
	District 4	1	4	30
	District 6	0	0	3
	FDOT Maintenance	0	0	2
	FHP	3	4	306
	Fire	0	0	4
	Florida's Turnpike	1	0	5
	ITMS	0	0	1
	Motorist	0	1	7
	Other	0	0	1
	Palm Beach Road Rang	0	0	3
	PSAP	0	0	2
	Road Watcher	0	0	3
	SIRV	0	0	2
	SmarTraveler (511)	0	0	1
	VisioPaD Detection	1	2	41
	Total	21	23	1,180
	PM Peak	Broward CCTV	6	0
Broward Road Ranger		5	3	119
Broward VideoWall		0	0	12
BSO		0	0	7
District 4		0	0	14
District 6		1	0	3
FHP		2	0	118
Fire		0	0	1
Florida's Turnpike		0	0	1
ITMS		0	0	1
Motorist		0	0	8
Road Watcher		0	0	4
SIRV		0	0	2

		Current Week	Last Week	YTD
PM Peak	SmarTraveler (511)	0	1	9
	VisioPaD Detection	1	0	5
	Total	15	4	542
Total		51	38	2,268

Incident Detection Methods by Severity

		Current Week	Last Week	YTD	
Level 1	Broward CCTV	15	4	629	
	Broward Road Ranger	6	5	269	
	Broward VideoWall	0	2	37	
	BSO	0	0	4	
	District 4	1	2	33	
	District 6	1	0	5	
	FHP	3	7	262	
	Fire	0	0	3	
	Florida's Turnpike	0	0	2	
	ITMS	0	0	1	
	Motorist	0	0	9	
	Palm Beach Road Rang	0	0	6	
	PSAP	0	0	2	
	Road Watcher	0	0	12	
	SIRV	0	1	6	
	SmarTraveler (511)	0	1	8	
	VisioPaD Detection	0	1	27	
	Total	26	23	1,315	
	Level 2	Broward CCTV	10	4	289
		Broward Road Ranger	1	1	101
Broward VideoWall		1	0	14	
BSO		0	0	9	
District 4		0	1	12	
District 6		0	0	1	
FDOT Maintenance		0	0	1	

Total Events by Severity and Detection Method



		Current Week	Last Week	YTD
Level 2	FHP	3	1	170
	Fire	0	0	1
	ITMS	0	0	1
	Motorist	0	1	8
	Palm Beach Road Rang	0	0	1
	PSAP	0	0	1
	Road Watcher	0	0	1
	SIRV	0	0	1
	SmarTraveler (511)	0	0	2
	VisioPaD Detection	2	1	20
	Total	17	9	633
Level 3	Broward CCTV	4	3	110
	Broward Road Ranger	1	0	46
	Broward VideoWall	0	0	8
	BSO	1	0	8
	District 4	0	2	13
	FDOT Maintenance	0	0	1
	FHP	1	1	115
	Fire	0	0	2
	Florida's Turnpike	1	0	7
	Motorist	0	0	1
	Other	0	0	1
	Palm Beach Road Rang	0	0	1
	Road Watcher	0	0	1
	SIRV	0	0	1
	SmarTraveler (511)	0	0	1
	VisioPaD Detection	0	0	4
	Total	8	6	320
Total	51	38	2,268	

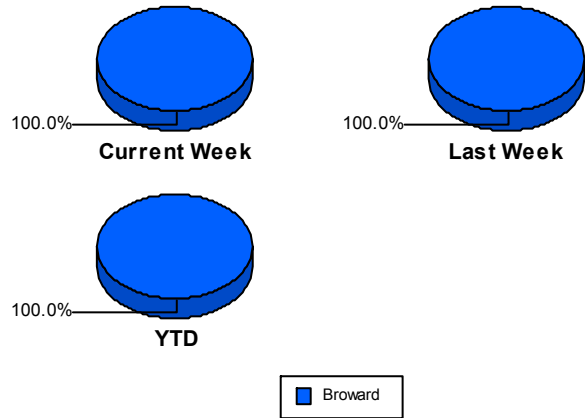
Road Ranger / SIRV Performance Measures

Road Ranger / SIRV Performance By County

Values presented are:
 - Total Events with a RR/SIRV Response
 - Total RR/SIRV Responses,
 - Total Activities Performed

	Current We	Last Week	YTD
Broward	547	585	39,919
	589	620	42,734
	603	641	45,019

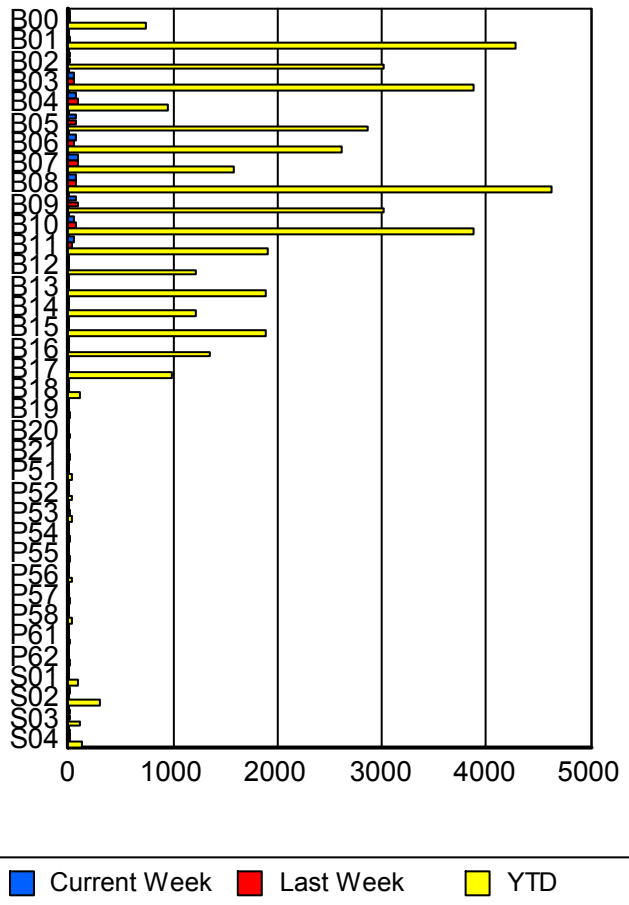
RR/SIRV Responses per County



Road Ranger / SIRV Performance By Truck

	Current We	Last Week	YTD
B00	5	5	731
	5	5	744
	6	5	783
B01	0	9	4,216
	0	9	4,278
	0	9	4,510
B02	18	7	2,977
	18	7	3,021
	20	7	3,185
B03	46	51	3,839
	47	51	3,886
	48	54	4,117
B04	60	93	939
	61	94	950
	64	99	985
B05	76	73	2,831
	76	74	2,858
	79	76	3,045
B06	59	47	2,580
	59	48	2,609
	61	48	2,754
B07	79	80	1,563
	81	80	1,584
	81	83	1,640
B08	71	71	4,548
	71	72	4,620
	71	75	4,855

RR/SIRV Responses per Truck



	Current We	Last Week	YTD
B09	58	87	2,975
	59	88	3,008
	60	89	3,166
B10	43	58	3,840
	44	60	3,882
	44	61	4,095
B11	55	26	1,888
	56	26	1,904
	56	29	1,990
B12	0	0	1,190
	0	0	1,210
	0	0	1,273
B13	0	0	1,859
	0	0	1,882
	0	0	1,989
B14	0	0	1,198
	0	0	1,213
	0	0	1,250
B15	0	0	1,870
	0	0	1,881
	0	0	1,988
B16	0	0	1,332
	0	0	1,347
	0	0	1,414
B17	0	0	968
	0	0	981
	0	0	1,031
B18	0	0	97
	0	0	97
	0	0	101
B19	0	0	2
	0	0	2
	0	0	2
B20	0	0	2
	0	0	2
	0	0	2
B21	0	0	4
	0	0	4
	0	0	4
P51	0	0	35
	0	0	35
	0	0	37
P52	0	0	20
	0	0	20
	0	0	20

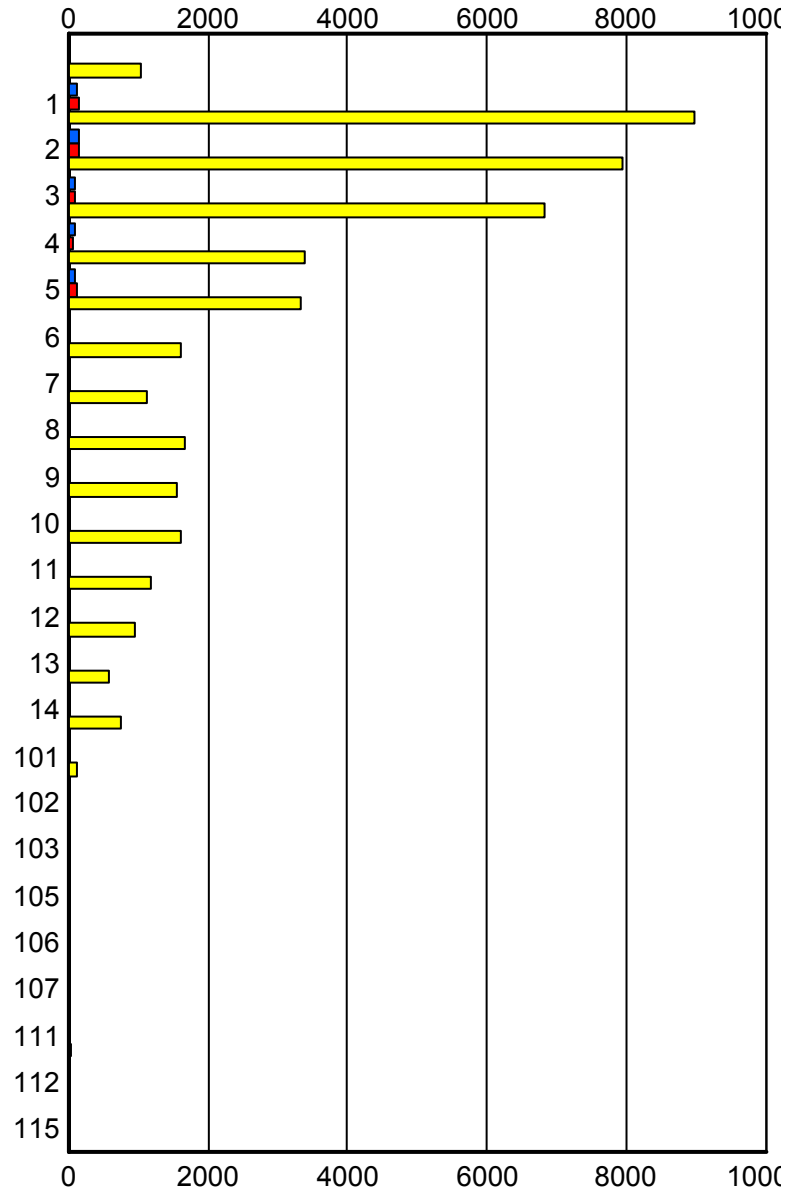
	Current We	Last Week	YTD
P53	0	1	22
	0	1	22
	0	1	25
P54	0	0	13
	0	0	13
	0	0	13
P55	0	0	16
	0	0	16
	0	0	17
P56	0	0	21
	0	0	22
	0	0	26
P57	0	0	11
	0	0	11
	0	0	11
P58	0	0	21
	0	0	21
	0	0	21
P61	0	0	1
	0	0	1
	0	0	1
P62	0	0	3
	0	0	3
	0	0	3
S01	0	0	76
	0	0	78
	0	0	86
S02	7	0	294
	8	0	298
	9	0	324
S03	1	1	108
	1	1	110
	1	1	121
S04	3	4	117
	3	4	121
	3	4	135

Road Ranger / SIRV Performance By Beat

	Current We	Last Week	YTD
	12	5	963
	13	5	1,045
	14	5	1,117
1	121	160	8,594
	130	166	8,984
	131	173	9,437
2	150	137	7,732
	152	140	7,953
	154	145	8,369
3	87	95	6,630
	91	96	6,824
	94	100	7,161
4	98	71	3,344
	102	72	3,399
	104	74	3,561
5	98	112	3,266
	101	117	3,320
	106	119	3,468
6	0	0	1,589
	0	0	1,615
	0	0	1,693
7	0	12	1,107
	0	12	1,123
	0	13	1,177
8	0	0	1,640
	0	0	1,659
	0	0	1,748
9	0	0	1,540
	0	0	1,563
	0	0	1,685
10	0	10	1,588
	0	11	1,609
	0	11	1,723
11	0	0	1,185
	0	0	1,196
	0	0	1,286
12	0	0	942
	0	0	957
	0	0	1,026
13	0	0	578
	0	0	589
	0	0	622
14	0	0	735
	0	0	740
	0	0	778

Values presented are:
 - Total Events with a RR/SIRV Response
 - Total RR/SIRV Responses,
 - Total Activities Performed

RR/SIRV Responses per Beat



■ Current Week
 ■ Last Week
 ■ YTD

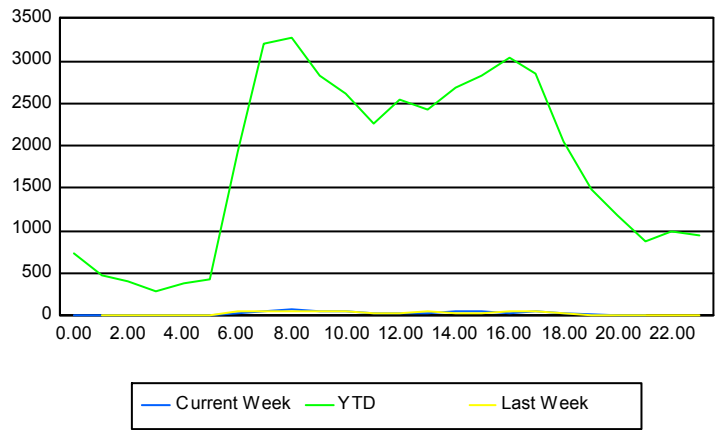
	Current We	Last Week	YTD
101	0	1	113
	0	1	113
	0	1	121
102	0	0	3
	0	0	4
	0	0	4
103	0	0	3
	0	0	3
	0	0	3
105	0	0	2
	0	0	2
	0	0	2
106	0	0	1
	0	0	1
	0	0	1
107	0	0	3
	0	0	3
	0	0	3
111	0	0	29
	0	0	29
	0	0	31
112	0	0	1
	0	0	1
	0	0	1
115	0	0	2
	0	0	2
	0	0	2

Road Ranger / SIRV Performance By Time of Day

Values presented are:
 - Total Events with a RR/SIRV Response
 - Total RR/SIRV Responses,
 - Total Activities Performed

	Current We	Last Week	YTD
12AM-1AM	2	0	700
	2	0	741
	2	0	796
1AM-2AM	1	2	452
	1	2	482
	1	2	514
2AM-3AM	0	1	356
	0	1	407
	0	1	438
3AM-4AM	0	0	253
	0	0	280
	0	0	302
4AM-5AM	1	0	327
	1	0	378
	1	0	409
5AM-6AM	6	2	357
	6	2	430
	6	2	457
6AM-7AM	32	37	1,781
	32	42	1,928
	32	43	2,000
7AM-8AM	42	53	2,992
	42	56	3,193
	43	57	3,346
8AM-9AM	69	54	3,017
	75	62	3,274
	76	67	3,446
9AM-10AM	54	53	2,663
	59	54	2,834
	60	54	2,972
10AM-11AM	37	44	2,468
	43	46	2,619
	47	47	2,757
11AM-12PM	37	38	2,104
	41	38	2,257
	42	38	2,371
12PM-1PM	29	31	2,402
	33	32	2,551
	33	33	2,671

Number of Responses / Hour of the Day



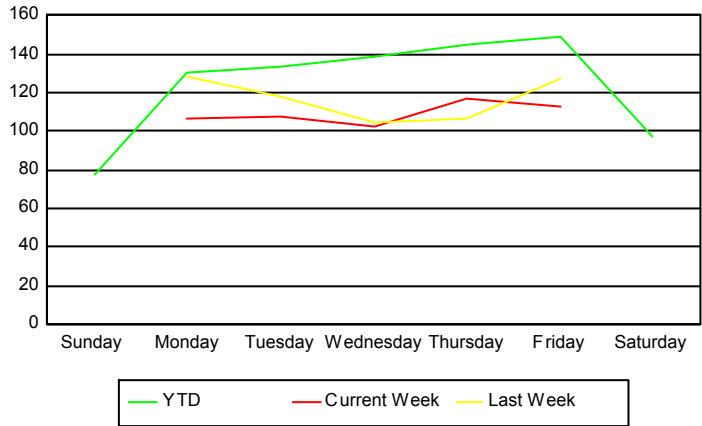
	Current We	Last Week	YTD
1PM-2PM	26	44	2,241
	29	44	2,426
	30	45	2,560
2PM-3PM	54	35	2,532
	55	39	2,697
	55	40	2,820
3PM-4PM	41	39	2,635
	46	41	2,834
	46	43	2,976
4PM-5PM	40	50	2,856
	41	52	3,030
	42	56	3,191
5PM-6PM	53	55	2,674
	58	60	2,849
	61	62	2,982
6PM-7PM	20	36	1,947
	22	37	2,061
	23	39	2,175
7PM-8PM	0	3	1,417
	0	3	1,480
	0	3	1,578
8PM-9PM	2	2	1,111
	2	2	1,184
	2	2	1,270
9PM-10PM	1	0	809
	1	0	870
	1	0	930
10PM-11PM	0	3	924
	0	4	982
	0	4	1,054
11PM-12AM	0	3	901
	0	3	947
	0	3	1,004

Road Ranger / SIRV Performance By Day of Week

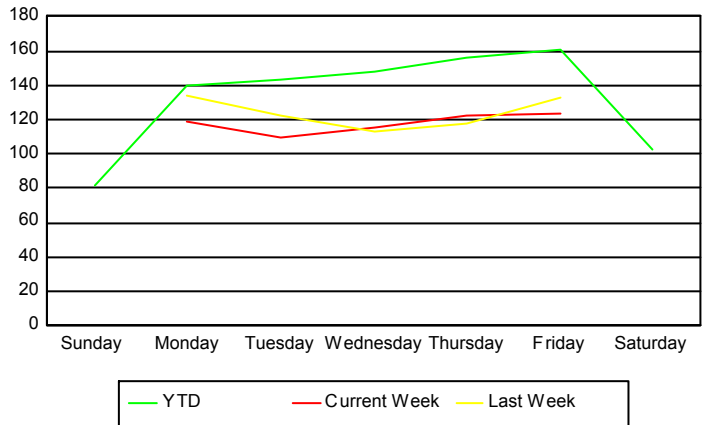
Values presented are:
 - Total Events with a RR/SIRV Response
 - Total RR/SIRV Responses,
 - Total Activities Performed

	Current We	Last Week	YTD
Sunday	0	0	2,906
	0	0	3,035
	0	0	3,212
Monday	107	129	6,131
	119	134	6,564
	120	136	6,857
Tuesday	108	118	6,417
	110	122	6,875
	114	126	7,226
Wednesday	102	105	6,635
	115	113	7,088
	118	118	7,447
Thursday	117	107	6,973
	122	118	7,519
	122	121	7,925
Friday	113	127	7,174
	123	133	7,762
	129	140	8,204
Saturday	0	0	3,709
	0	0	3,891
	0	0	4,148

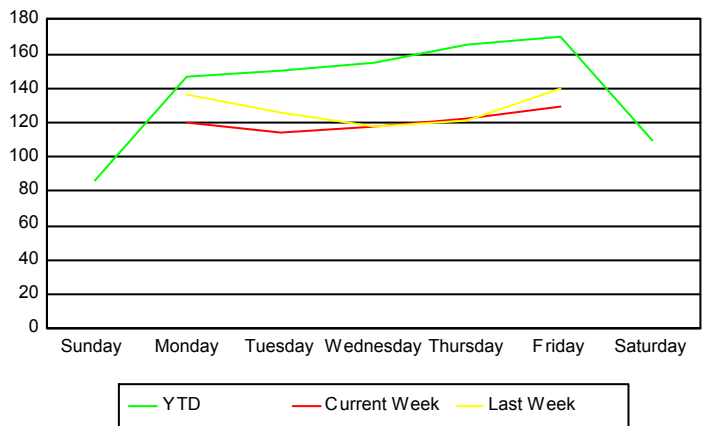
Avg # of events with a RR/SIRV Response per Day of the Week



Avg # of RR/SIRV Responses per Day of the Week



Avg # of RR/SIRV Activities Performed per Day of the Week



Road Ranger / SIRV Responses per Time of Day and Day of Week

