

Weekly Performance Measures Report Broward County



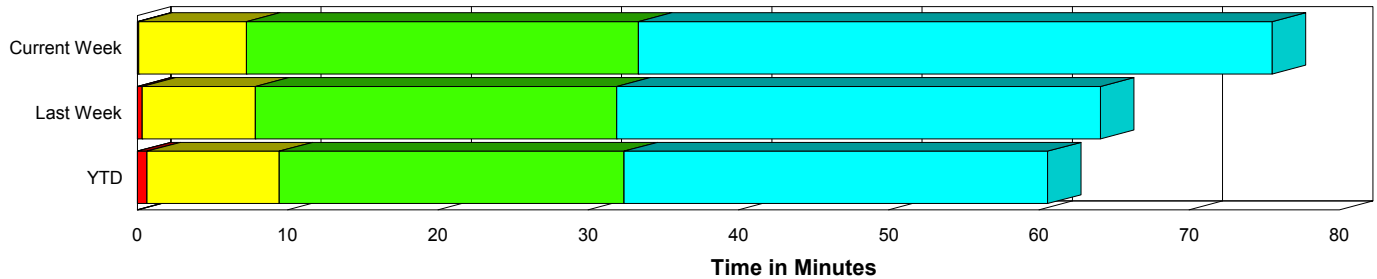
Created on:
December 07, 2009
8:31 am

Period From Nov 29, 2009 to Dec 5, 2009

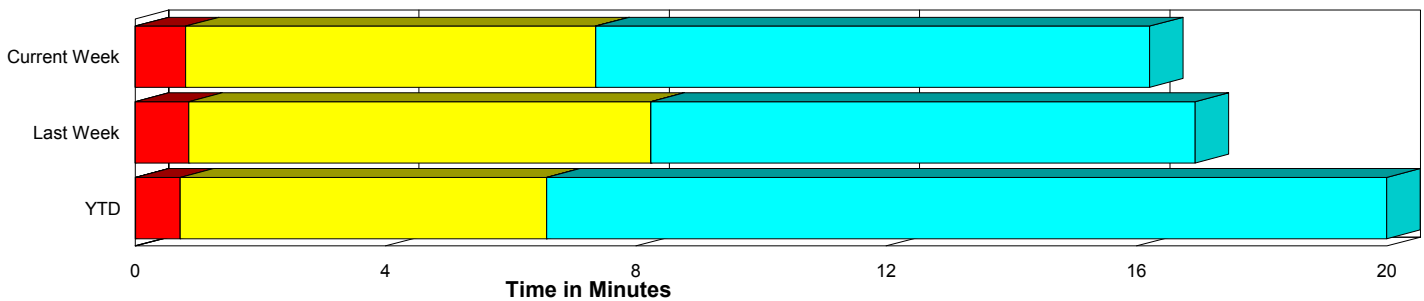
Performance Measures Summary

	Traffic Events (No Lanes Blocked)			Incidents (Lanes Blocked)		
	<u>This Week</u>	<u>Last Week</u>	<u>YTD</u>	<u>This Week</u>	<u>Last Week</u>	<u>YTD</u>
Number of Events	1,215	1,125	49,717	36	47	2,307
TMC Detection (min.)	0.00	0.00	0.01	0.00	0.01	0.00
TMC Verification (min.)	0.81	0.86	0.71	0.09	0.33	0.65
TMC Response (min.)	7.95	8.86	7.08	7.28	7.86	9.58
RR Dispatch Time (min.)	1.39	1.37	1.23	1.22	1.60	2.61
RR Response Time (min.)	6.65	7.61	5.98	6.17	6.33	7.18
Roadway Clearance (min.)				31.75	33.27	31.72
Event Clearance (min.)	16.81	17.55	20.51	71.22	65.46	59.51
# of Events w/ RR/SIRV	975	896	35,342	36	46	1,730
RR/SIRV Responses	975	896	35,342	36	46	1,730
RR/SIRV Activities	763	694	29,535	63	79	3,430

Incident Clearance Time-Line



Traffic Event (Non-Lane Blockage) Time-Line



<ul style="list-style-type: none"> Avg. TMC Detection Time Avg. Time from TMC Detection to TMC Verification Avg. Time from TMC Verification to TMC Response 	<ul style="list-style-type: none"> Avg. Time from TMC Response to Roadway Clearance* Avg. Time from Roadway Clearance to Incident/Event Clearance**
--	--

* Roadway clearance equals all travel lanes open

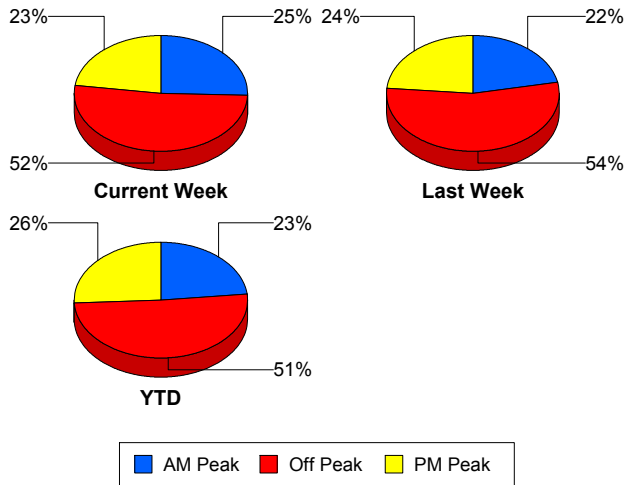
** Incident clearance equals time when last responder has left the scene

Performance Measures by Peak Period

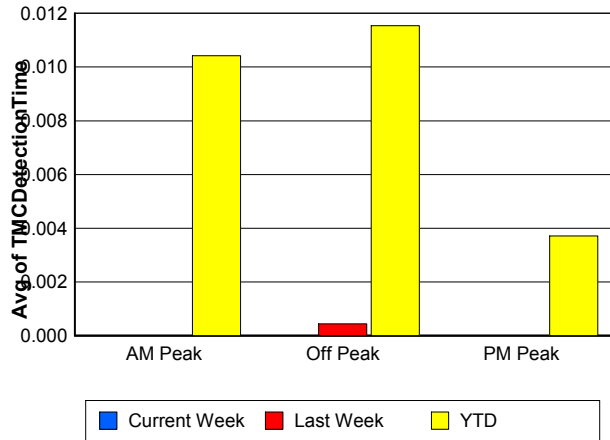
Note: AM peak period is defined as 6am to 10am and PM peak period is defined as 3pm to 7pm.

	AM Peak			Off Peak			PM Peak		
	<u>Current Week</u>	<u>Last Week</u>	<u>YTD</u>	<u>Current Week</u>	<u>Last Week</u>	<u>YTD</u>	<u>Current Week</u>	<u>Last Week</u>	<u>YTD</u>
Number of Events	318	256	12,083	648	638	26,444	285	278	13,497
Number of Incidents	11	9	542	16	21	1,119	9	17	646
TMC Detection (min.)	0.00	0.00	0.01	0.00	0.00	0.01	0.00	0.00	0.00
TMC Verification (min.)	0.25	0.41	0.54	0.85	0.65	0.69	1.25	1.66	0.89
TMC Response (min.)	7.61	6.63	6.62	8.18	9.01	8.05	7.67	10.27	6.56
RR Dispatch Time (min.)	0.92	0.86	0.95	1.66	1.43	1.70	1.32	1.75	0.99
RR Response Time (min.)	6.82	5.94	5.76	6.64	7.67	6.46	6.39	8.64	5.70
Event Clearance (min.)	16.66	16.22	20.52	19.25	19.40	24.15	18.28	22.66	20.03
Roadway Clearance (min.)	13.27	38.23	28.20	47.88	35.19	35.62	25.65	28.28	27.91
Incident Clearance (min.)	45.35	68.51	57.03	93.19	70.16	63.07	63.79	58.05	55.44
# of Events w/ RR/SIRV	260	208	9,918	517	507	16,479	234	227	10,675
RR/SIRV Responses	260	208	9,918	517	507	16,479	234	227	10,675
RR/SIRV Activities	193	173	9,086	433	416	14,190	200	184	9,689

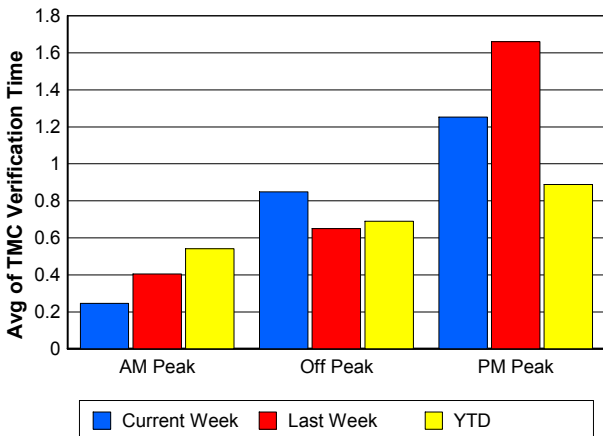
Number of Events / Peak Period



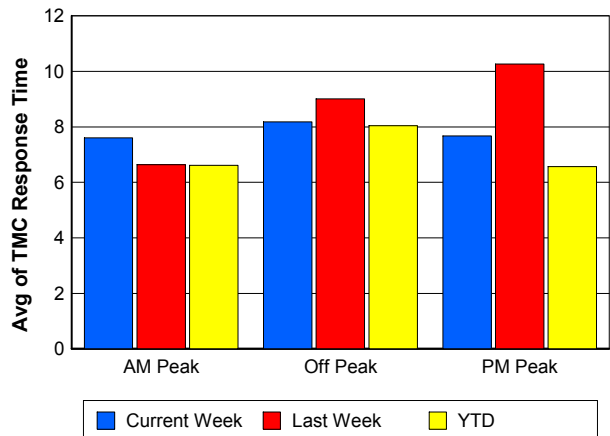
TMC Detection Time



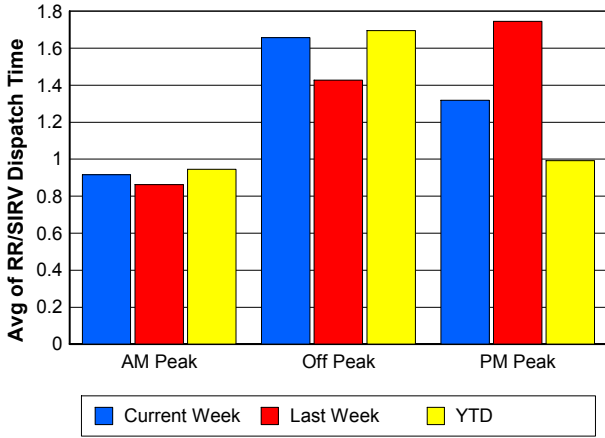
TMC Verification Time



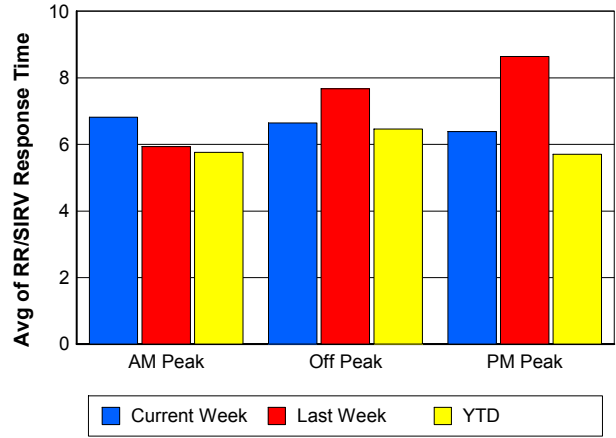
TMC Response Time



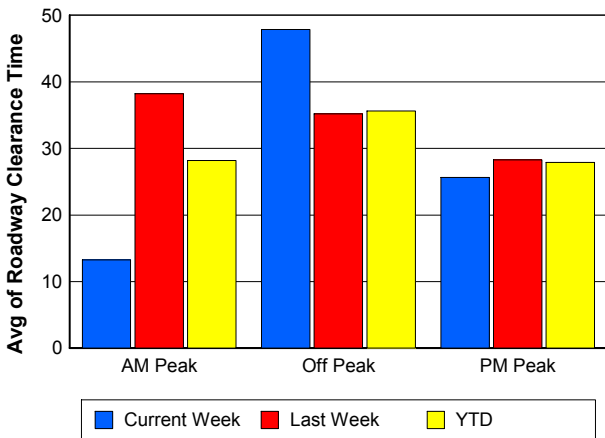
Road Ranger / SIRV Dispatch Time



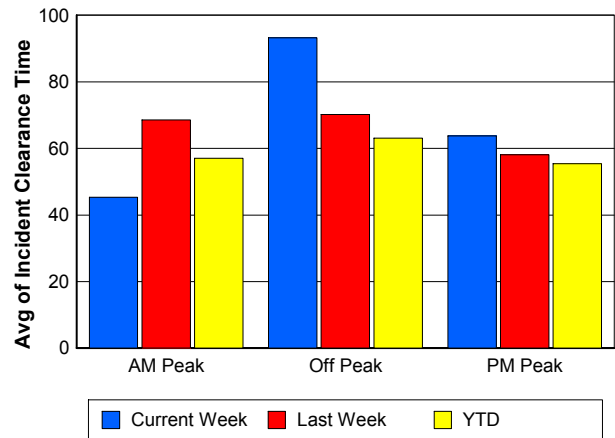
Road Ranger / SIRV Response Time



Roadway Clearance Time (2A)



Incident Clearance Time (3B)

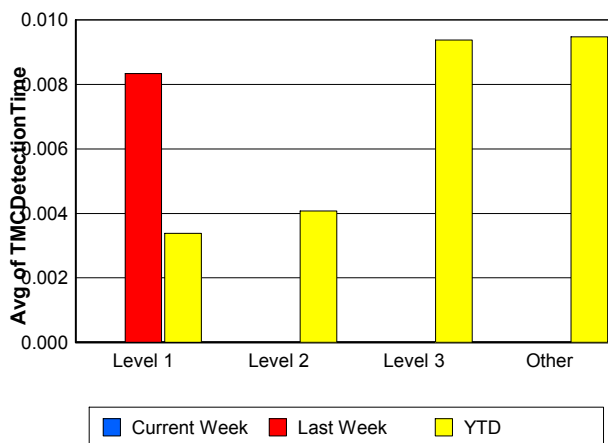
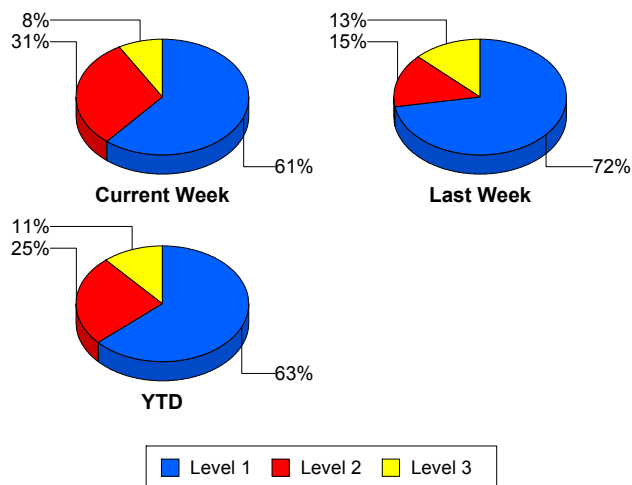


Performance Measures by Severity

	Level 1			Level 2			Level 3			Other		
	<u>This Week</u>	<u>Last Week</u>	<u>YTD</u>	<u>This Week</u>	<u>Last Week</u>	<u>YTD</u>	<u>This Week</u>	<u>Last Week</u>	<u>YTD</u>	<u>This Week</u>	<u>Last Week</u>	<u>YTD</u>
Number of Events	22	34	1,459	11	7	585	3	6	263	1,215	1,125	49,717
Number of Incidents	22	34	1,459	11	7	585	3	6	263	0	0	0
TMC Detection (min.)	0.00	0.01	0.00	0.00	0.00	0.00	0.00	0.00	0.01	0.00	0.00	0.01
TMC Verification (min.)	0.11	0.44	0.42	0.08	0.05	0.99	0.00	0.00	1.19	0.81	0.86	0.71
TMC Response (min.)	6.40	7.39	7.42	7.33	9.20	10.26	12.94	9.07	19.96	7.95	8.86	7.08
RR Dispatch Time (min.)	1.05	1.43	1.56	0.99	2.69	2.57	3.35	1.32	7.94	1.39	1.37	1.23
RR Resp. Time (min.)	5.56	5.97	5.93	6.34	6.51	7.91	9.59	8.47	12.53	6.65	7.61	5.98
Event Clearance (min.)	43.84	47.82	45.36	114.95	75.49	72.88	111.63	153.76	108.05	16.81	17.55	20.51
Roadway Clear. (min.)	10.19	14.52	14.29	54.43	48.15	49.05	106.67	122.21	89.87			
Incident Clearance (min.)	43.84	47.82	45.36	114.95	75.49	72.88	111.63	153.76	108.05			
# of Events w/ RR/SIRV	22	33	1,132	11	7	373	3	6	225	975	896	35,342
RR/SIRV Responses	22	33	1,132	11	7	373	3	6	225	975	896	35,342
RR/SIRV Activities	25	53	1,910	29	14	990	9	12	530	763	694	29,535

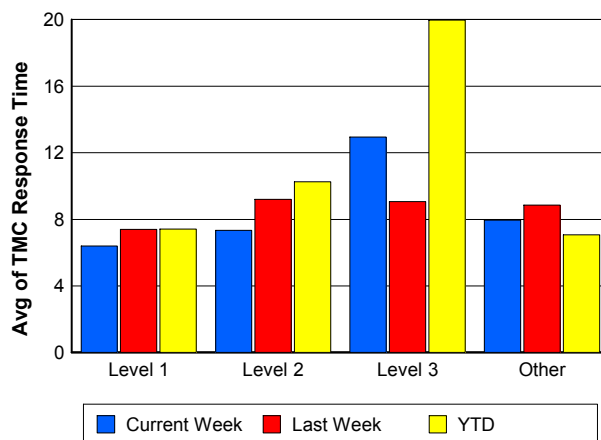
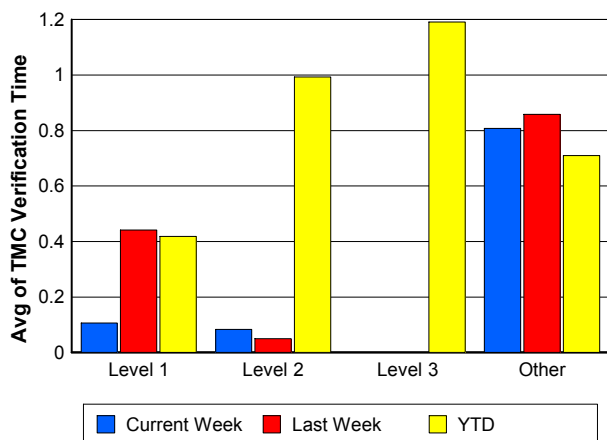
Number of Events / Severity

TMC Detection Time

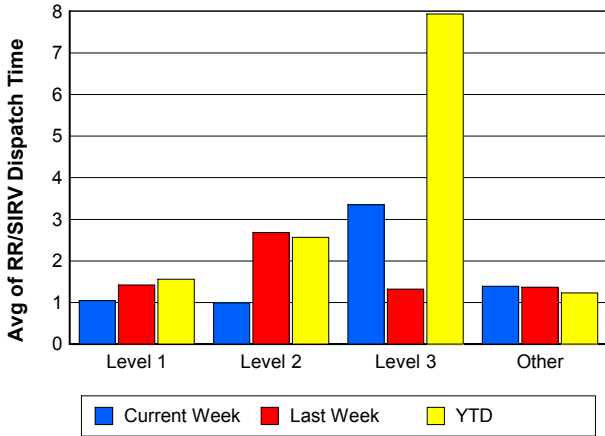


TMC Verification Time

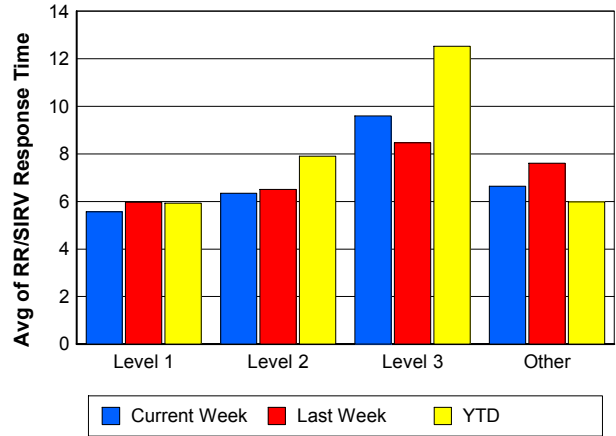
TMC Response Time



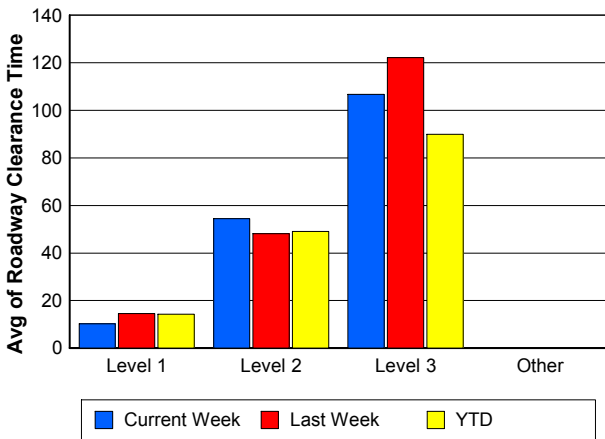
Road Ranger / SIRV Dispatch Time



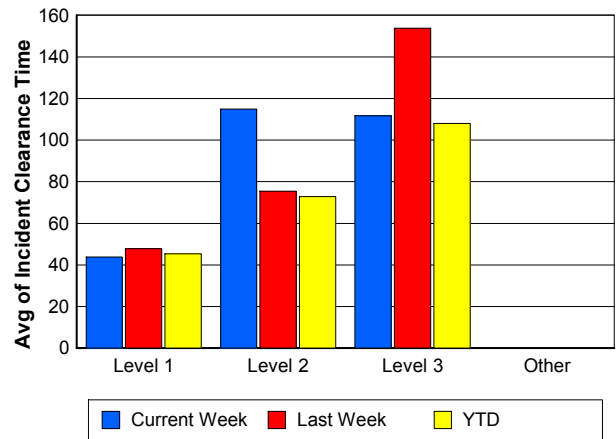
Road Ranger / SIRV Response Time



Roadway Clearance Time (2A)



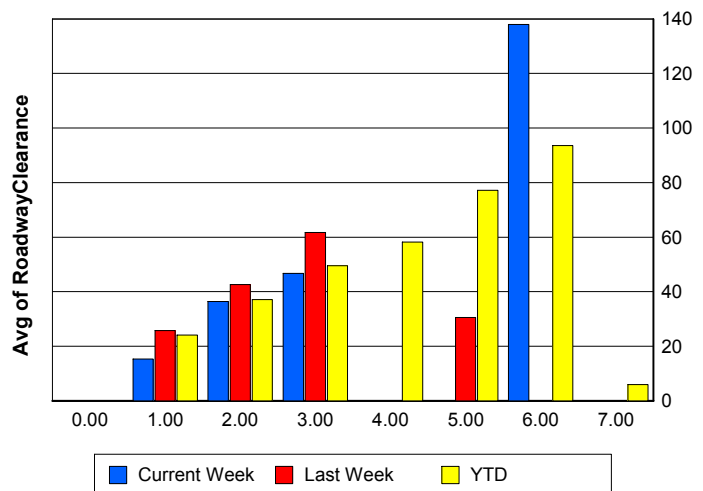
Incident Clearance Time (3B)



Roadway Clearance by Maximum Number of Lanes Blocked

	Current Week	Last Week	YTD
0			
1	15.30	25.74	24.08
2	36.36	42.67	37.14
3	46.76	61.70	49.53
4	0.00	0.00	58.24
5	0.00	30.58	77.20
6	137.97	0.00	93.54
7	0.00	0.00	5.97

Roadway Clearance Time (2A)



Performance Measures by Roadway

595

	<u>Current Week</u>	<u>Last Week</u>	<u>YTD</u>
Number of Events	50	33	4,808
Number of Incidents	2	1	290
TMC Detection (min.)	0.00	0.00	0.01
TMC Verification (min.)	0.39	0.68	0.85
TMC Response (min.)	14.51	12.39	7.13
RR Dispatch Time (min.)	2.59	2.43	1.19
RR Resp. Time (min.)	11.11	10.70	6.05
Event Clearance (min.)	16.03	18.59	21.23
Roadway Clear. (min.)	22.72	25.82	31.64
Incident Clearance (min.)	26.07	29.78	53.83
# of Events w/ RR/SIRV	34	25	3,360
RR/SIRV Responses	34	25	3,360
RR/SIRV Activities	21	16	3,029

75

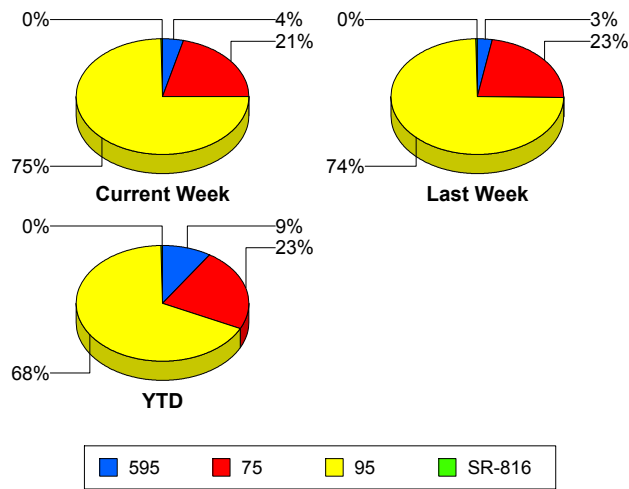
	<u>Current Week</u>	<u>Last Week</u>	<u>YTD</u>
Number of Events	263	264	11,898
Number of Incidents	1	6	210
TMC Detection (min.)	0.00	0.00	0.02
TMC Verification (min.)	1.91	1.50	1.01
TMC Response (min.)	7.53	10.82	8.51
RR Dispatch Time (min.)	0.98	1.52	1.30
RR Resp. Time (min.)	6.74	9.41	7.32
Event Clearance (min.)	18.52	21.73	23.91
Roadway Clear. (min.)	2.32	62.79	52.58
Incident Clearance (min.)	41.13	97.73	80.62
# of Events w/ RR/SIRV	205	204	8,261
RR/SIRV Responses	205	204	8,261
RR/SIRV Activities	161	179	7,037

95

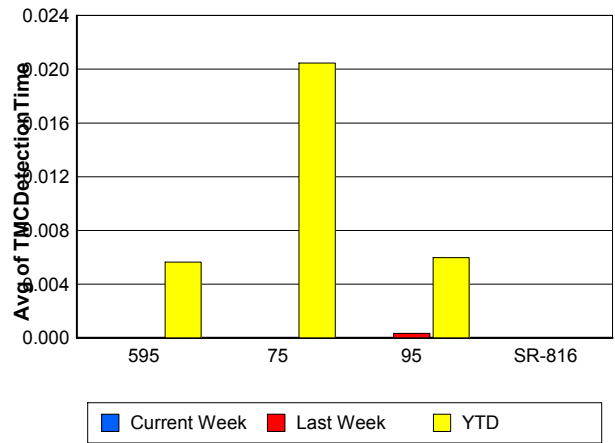
	<u>Current Week</u>	<u>Last Week</u>	<u>YTD</u>
Number of Events	936	873	35,238
Number of Incidents	31	38	1,753
TMC Detection (min.)	0.00	0.00	0.01
TMC Verification (min.)	0.50	0.65	0.59
TMC Response (min.)	7.86	8.15	6.85
RR Dispatch Time (min.)	1.45	1.31	1.31
RR Resp. Time (min.)	6.49	6.93	5.67
Event Clearance (min.)	18.48	18.82	21.83
Roadway Clear. (min.)	35.00	29.47	29.74
Incident Clearance (min.)	79.30	63.57	59.28
# of Events w/ RR/SIRV	770	711	25,374
RR/SIRV Responses	770	711	25,374
RR/SIRV Activities	642	576	22,812

	<u>Current Week</u>	<u>Last Week</u>	<u>YTD</u>
Number of Events	2	2	80
Number of Incidents	2	2	54
TMC Detection (min.)	0.00	0.00	0.00
TMC Verification (min.)	0.00	0.00	0.26
TMC Response (min.)	0.00	0.00	0.61
RR Dispatch Time (min.)	0.00	0.00	0.07
RR Resp. Time (min.)	0.00	0.00	0.55
Event Clearance (min.)	6.18	22.47	13.10
Roadway Clear. (min.)	5.12	20.67	15.36
Incident Clearance (min.)	6.18	22.47	15.32
# of Events w/ RR/SIRV	2	2	77
RR/SIRV Responses	2	2	77
RR/SIRV Activities	2	2	87

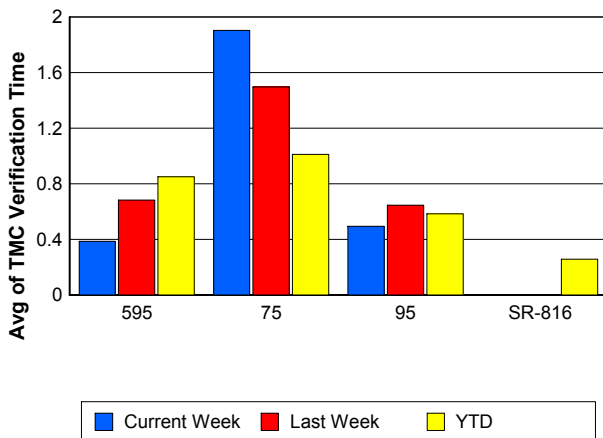
Number of Events / Roadway



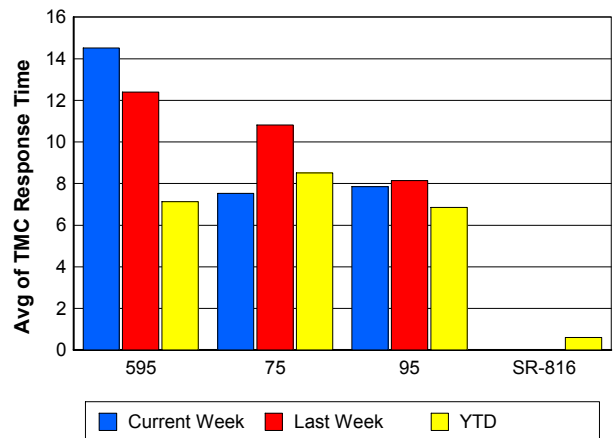
TMC Detection Time



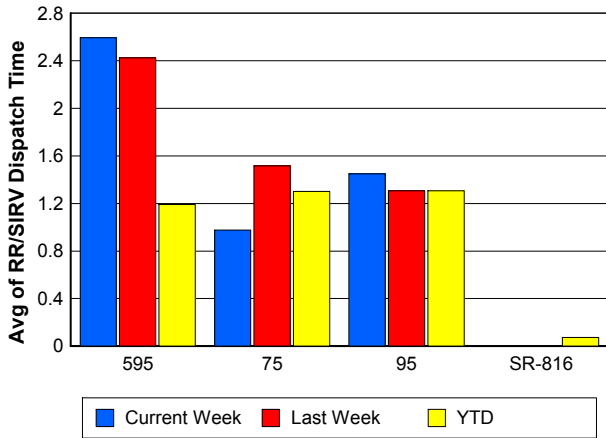
TMC Verification Time



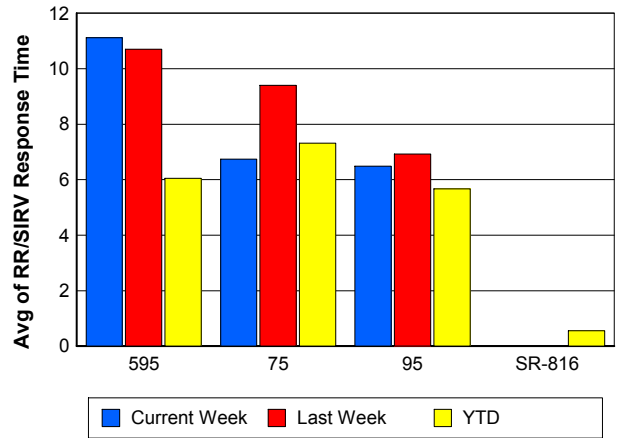
TMC Response Time



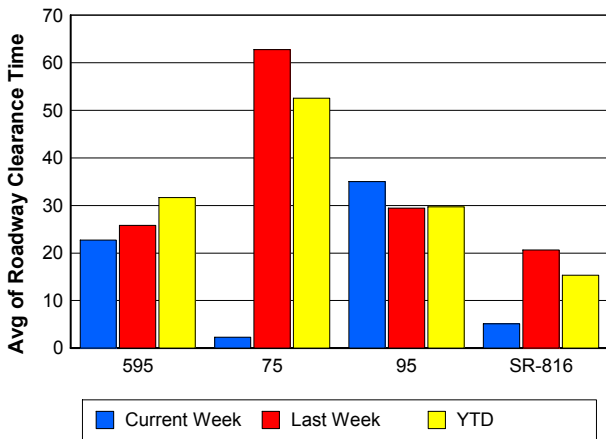
Road Ranger / SIRV Dispatch Time



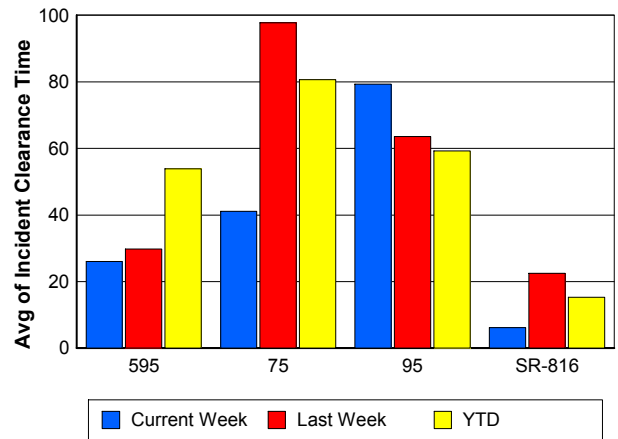
Road Ranger / SIRV Response Time



Roadway Clearance Time (2A)



Incident Clearance Time (3B)



Performance Measures by Event Type

Accident

	<u>Current Week</u>	<u>Last Week</u>	<u>YTD</u>
Number of Events	67	80	3,440
Number of Incidents	24	41	1,637
TMC Detection (min.)	0.00	0.00	0.01
TMC Verification (min.)	0.55	0.89	0.74
TMC Response (min.)	8.13	8.98	9.13
RR Dispatch Time (min.)	2.04	1.53	1.67
RR Response Time (min.)	6.14	7.43	7.52
Event Clearance (min.)	55.34	54.92	54.95
Roadway Clearance (min.)	41.75	31.46	33.08
Incident Clearance (min.)	96.82	68.03	67.13
# of Events w/ RR/SIRV	65	77	2,679
RR/SIRV Assists	65	77	2,679
RR/SIRV Activities	92	111	4,101

Debris on Roadway

	<u>Current Week</u>	<u>Last Week</u>	<u>YTD</u>
Number of Events	30	36	1,595
Number of Incidents	0	0	31
TMC Detection (min.)	0.00	0.00	0.07
TMC Verification (min.)	3.67	5.79	4.18
TMC Response (min.)	6.87	11.41	7.97
RR Dispatch Time (min.)	0.50	2.51	0.99
RR Response Time (min.)	6.37	8.84	7.01
Event Clearance (min.)	8.40	12.32	11.66
Roadway Clearance (min.)			25.60
Incident Clearance (min.)			31.53
# of Events w/ RR/SIRV	30	33	1,482
RR/SIRV Assists	30	33	1,482
RR/SIRV Activities	31	33	1,500

Disabled Vehicle

	<u>Current Week</u>	<u>Last Week</u>	<u>YTD</u>
Number of Events	699	622	30,313
Number of Incidents	11	2	390
TMC Detection (min.)	0.00	0.00	0.01
TMC Verification (min.)	1.18	1.12	0.86
TMC Response (min.)	7.84	8.67	6.87
RR Dispatch Time (min.)	1.35	1.35	1.13
RR Response Time (min.)	6.58	7.49	5.79
Event Clearance (min.)	21.43	21.85	24.92
Roadway Clearance (min.)	8.23	15.52	17.94
Incident Clearance (min.)	17.17	17.18	31.50
# of Events w/ RR/SIRV	678	610	25,340
RR/SIRV Assists	678	610	25,340
RR/SIRV Activities	669	595	25,616

Emergency Vehicles

	<u>Last Week</u>	<u>YTD</u>
Number of Events	1	86
Number of Incidents	1	68
TMC Detection (min.)	0.00	0.00
TMC Verification (min.)	0.00	0.45
TMC Response (min.)		13.77
RR Dispatch Time (min.)		10.82
RR Response Time (min.)		4.43
Event Clearance (min.)	11.13	56.90
Roadway Clearance (min.)	3.27	58.79
Incident Clearance (min.)	11.13	64.78
# of Events w/ RR/SIRV	0	50
RR/SIRV Assists	0	50
RR/SIRV Activities	0	80

Other

	<u>Current Week</u>	<u>Last Week</u>	<u>YTD</u>
Number of Events	446	429	16,110
Number of Incidents	0	0	31
TMC Detection (min.)	0.00	0.00	0.01
TMC Verification (min.)	0.02	0.02	0.08
TMC Response (min.)	11.61	8.36	8.51
RR Dispatch Time (min.)	1.43	1.25	1.68
RR Response Time (min.)	10.03	7.52	6.52
Event Clearance (min.)	8.54	9.65	10.75
Roadway Clearance (min.)			33.55
Incident Clearance (min.)			38.56
# of Events w/ RR/SIRV	234	218	7,235
RR/SIRV Assists	234	218	7,235
RR/SIRV Activities	27	31	1,298

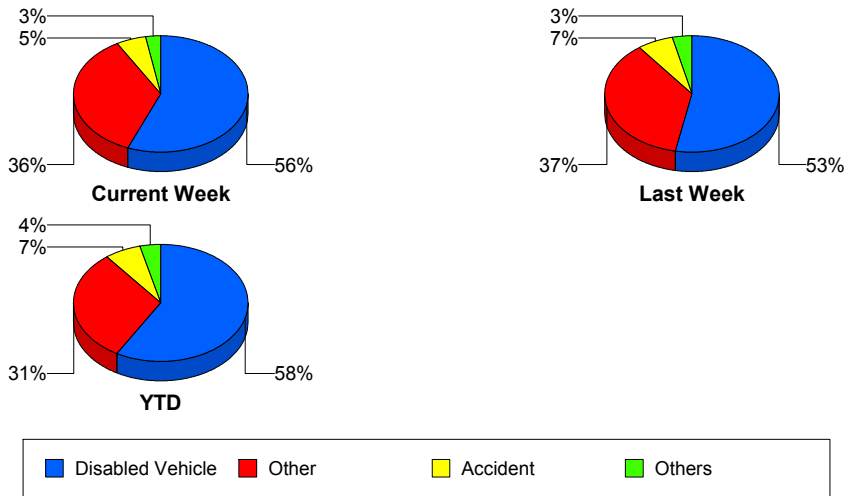
Police Activity

	<u>Current Week</u>	<u>Last Week</u>	<u>YTD</u>
Number of Events	6	4	203
Number of Incidents	1	3	69
TMC Detection (min.)	0.00	0.00	0.00
TMC Verification (min.)	0.37	0.35	0.36
TMC Response (min.)	0.86	0.00	12.97
RR Dispatch Time (min.)	0.84	1.35	3.72
RR Response Time (min.)	0.02	0.00	9.40
Event Clearance (min.)	36.78	61.67	34.45
Roadway Clearance (min.)	50.27	79.86	43.13
Incident Clearance (min.)	51.35	80.70	50.79
# of Events w/ RR/SIRV	2	4	78
RR/SIRV Assists	2	4	78
RR/SIRV Activities	5	3	93

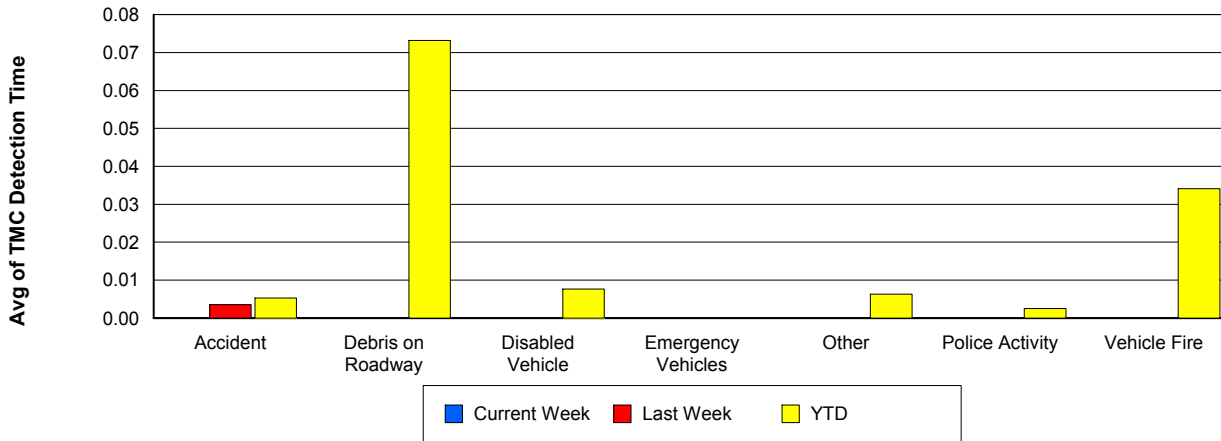
Vehicle Fire

	<u>YTD</u>
Number of Events	105
Number of Incidents	81
TMC Detection (min.)	0.03
TMC Verification (min.)	1.24
TMC Response (min.)	9.76
RR Dispatch Time (min.)	2.07
RR Response Time (min.)	8.05
Event Clearance (min.)	57.76
Roadway Clearance (min.)	39.81
Incident Clearance (min.)	62.48
# of Events w/ RR/SIRV	75
RR/SIRV Assists	75
RR/SIRV Activities	156

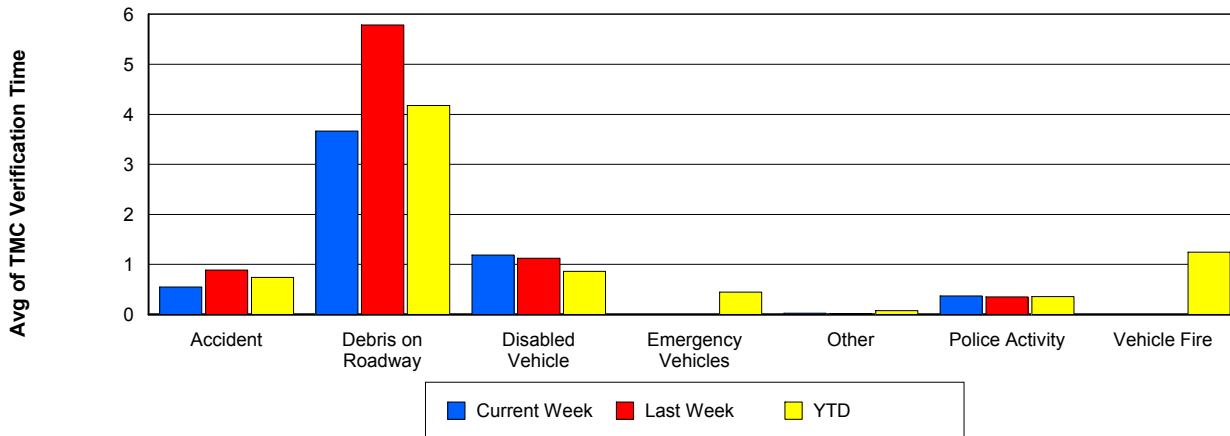
Number of Events / Event Type



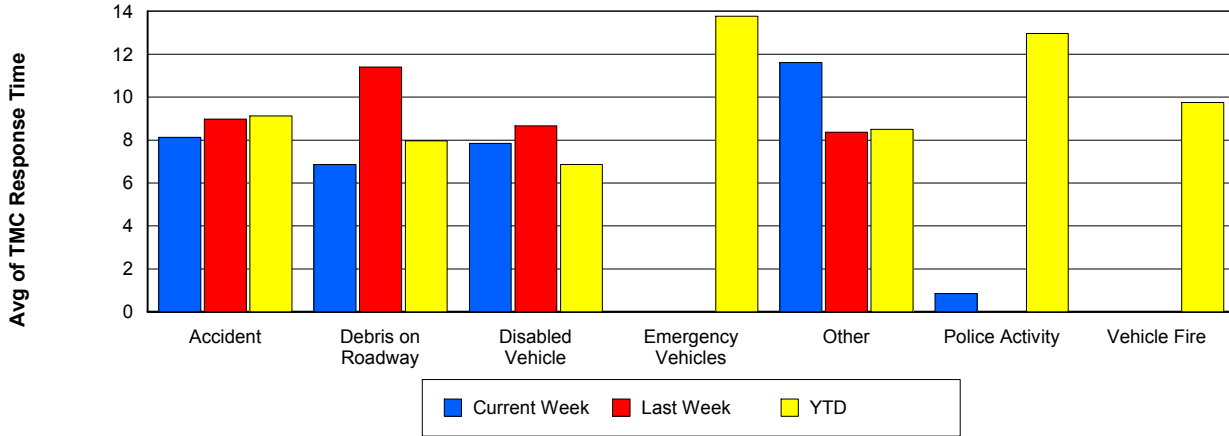
TMC Detection Time



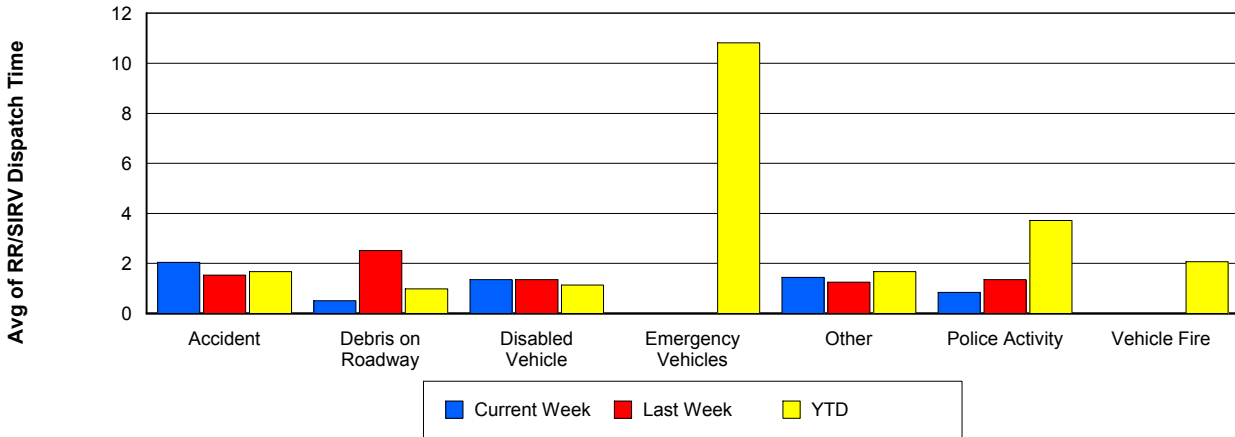
TMC Verification Time



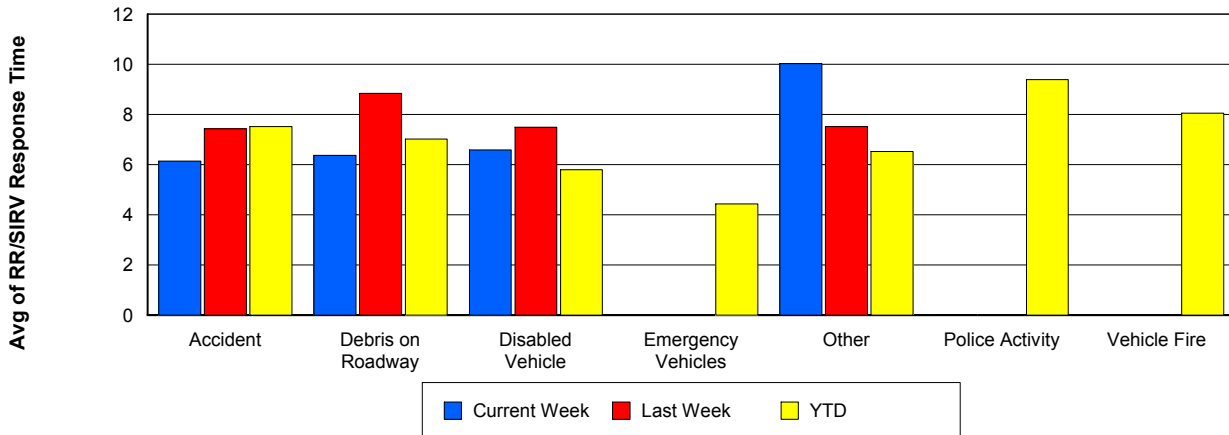
TMC Response Time



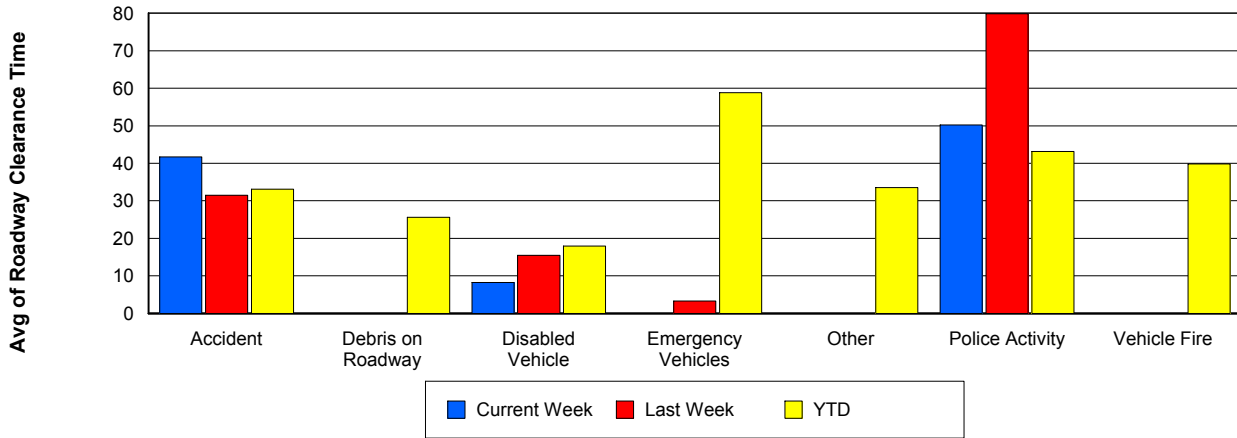
Road Ranger / SIRV Dispatch Time



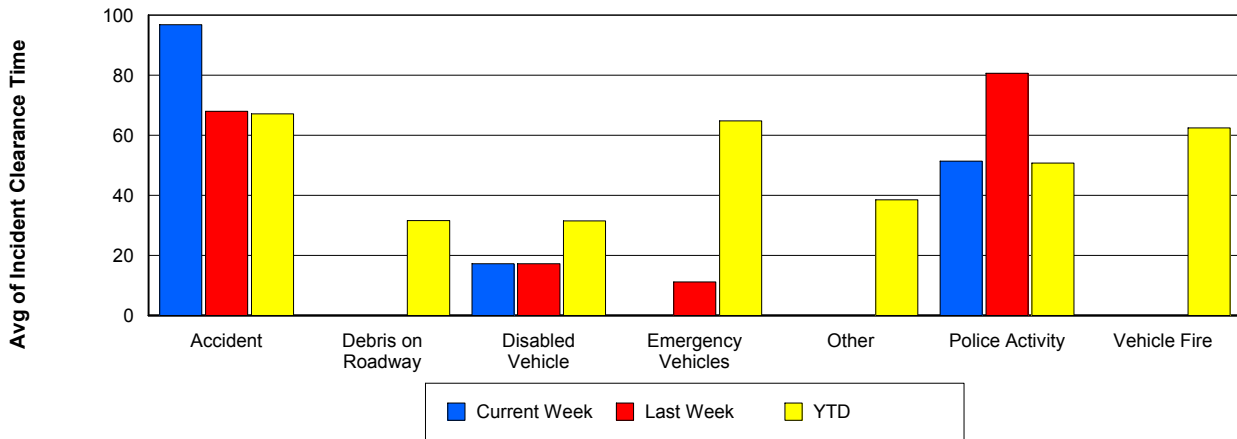
Road Ranger / SIRV Response Time



Roadway Clearance Time (2A)



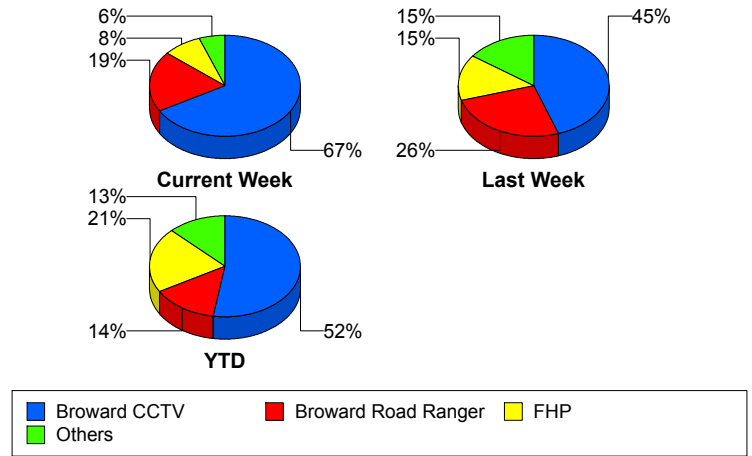
Incident Clearance Time (3B)



Incident Detection Methods

	Current Week	Last Week	YTD
Broward CCTV	24	21	1,205
Broward Road Ranger	7	12	329
Broward TMC	0	0	4
Broward VideoWall	0	3	65
BSO	0	0	49
District 4	2	1	53
District 6	0	0	3
FDOT Maintenance	0	0	7
FHP	3	7	477
Fire	0	0	4
Florida's Turnpike	0	0	6
ITMS	0	1	3
Local Police	0	1	1
Motorist	0	0	13
Other	0	0	1
Palm Beach Road Ran	0	1	9
Road Watcher	0	0	15
SIRV	0	0	12
SmarTraveler (511)	0	0	6
VisioPaD Detection	0	0	37
Total	36	47	2,299

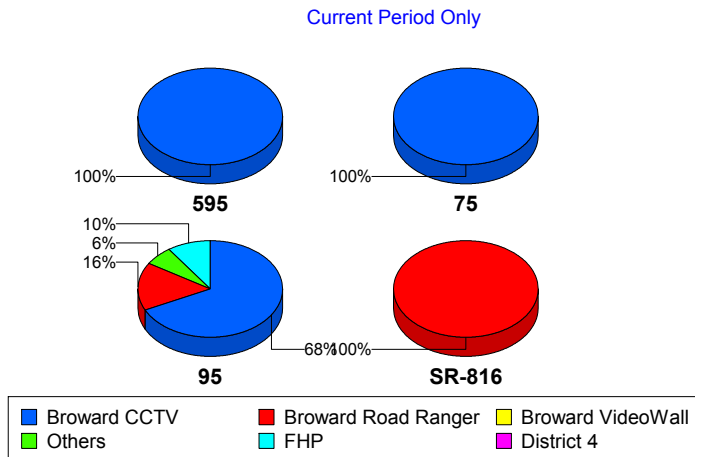
Total Incidents by Detection Method



Incident Detection Methods by Roadway

		Current Week	Last Week	YTD
595	Broward CCTV	2	0	138
	Broward Road Ranger	0	0	39
	Broward VideoWall	0	0	8
	BSO	0	0	7
	District 4	0	0	12
	FDOT Maintenance	0	0	2
	FHP	0	1	57
	Florida's Turnpike	0	0	6
	Motorist	0	0	3
	Road Watcher	0	0	4
	SIRV	0	0	1
	VisioPaD Detection	0	0	6
	Total	2	1	283
	75	Broward CCTV	1	2
Broward Road Ranger		0	2	25
Broward VideoWall		0	0	1
BSO		0	0	35
District 4		0	1	7
FHP		0	0	45
Local Police		0	1	1
Other		0	0	1
Road Watcher		0	0	3
VisioPaD Detection		0	0	5
Total		1	6	210
95	Broward CCTV	21	19	980
	Broward Road Ranger	5	8	212
	Broward TMC	0	0	4
	Broward VideoWall	0	3	56
	BSO	0	0	7
	District 4	2	0	33
	District 6	0	0	3

Total Events by Roadway and Detection Method

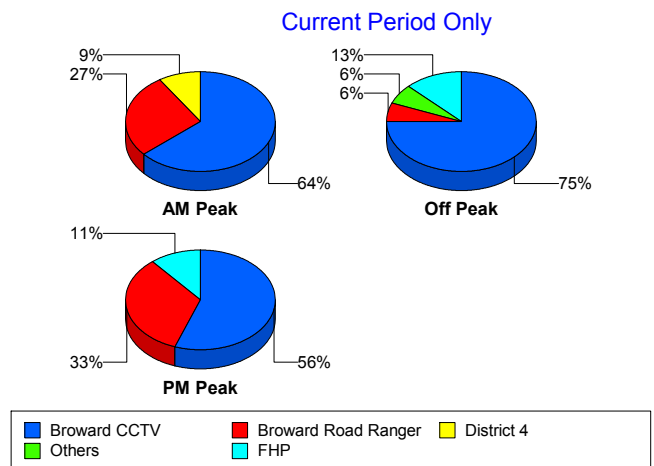


		Current Week	Last Week	YTD
95	FDOT Maintenance	0	0	5
	FHP	3	6	375
	Fire	0	0	4
	ITMS	0	1	3
	Motorist	0	0	10
	Palm Beach Road Ran	0	1	9
	Road Watcher	0	0	8
	SIRV	0	0	11
	SmarTraveler (511)	0	0	6
	VisioPaD Detection	0	0	26
	Total	31	38	1,752
SR-816	Broward Road Ranger	2	2	53
	District 4	0	0	1
	Total	2	2	54
Total		36	47	2,299

Incident Detection Methods by Peak Period

		Current Week	Last Week	YTD
AM Peak	Broward CCTV	7	2	239
	Broward Road Ranger	3	2	108
	Broward TMC	0	0	1
	Broward VideoWall	0	2	22
	BSO	0	0	9
	District 4	1	1	20
	FDOT Maintenance	0	0	1
	FHP	0	2	120
	Florida's Turnpike	0	0	2
	Motorist	0	0	6
	Palm Beach Road Ran	0	0	2
	Road Watcher	0	0	5
	SIRV	0	0	1
	SmarTraveler (511)	0	0	1

Total Events by Peak Period and Detection Method



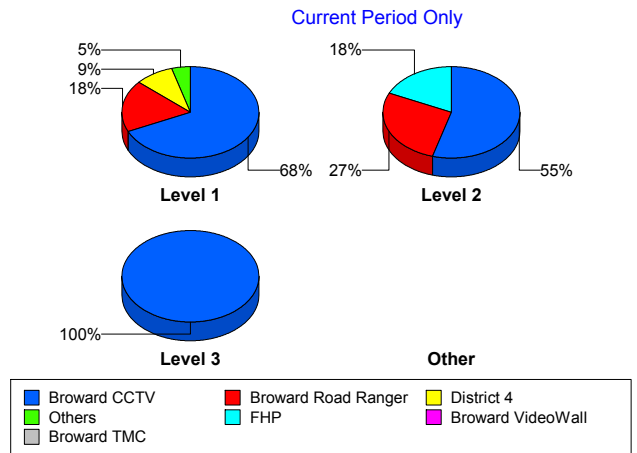
		Current Week	Last Week	YTD
AM Peak	VisioPaD Detection	0	0	2
	Total	11	9	539
Off Peak	Broward CCTV	12	11	646
	Broward Road Ranger	1	2	89
	Broward TMC	0	0	3
	Broward VideoWall	0	1	36
	BSO	0	0	31
	District 4	1	0	17
	District 6	0	0	2
	FDOT Maintenance	0	0	4
	FHP	2	4	227
	Fire	0	0	3
	Florida's Turnpike	0	0	3
	ITMS	0	1	3
	Local Police	0	1	1
	Motorist	0	0	4
	Palm Beach Road Ran	0	1	4
	Road Watcher	0	0	6
	SIRV	0	0	5
	SmarTraveler (511)	0	0	3
	VisioPaD Detection	0	0	29
	Total	16	21	1,116
PM Peak	Broward CCTV	5	8	320
	Broward Road Ranger	3	8	132
	Broward VideoWall	0	0	7
	BSO	0	0	9
	District 4	0	0	16
	District 6	0	0	1
	FDOT Maintenance	0	0	2
	FHP	1	1	130
	Fire	0	0	1
	Florida's Turnpike	0	0	1

		Current Week	Last Week	YTD
PM Peak	Motorist	0	0	3
	Other	0	0	1
	Palm Beach Road Ran	0	0	3
	Road Watcher	0	0	4
	SIRV	0	0	6
	SmarTraveler (511)	0	0	2
	VisioPaD Detection	0	0	6
	Total	9	17	644
Total	36	47	2,299	

Incident Detection Methods by Severity

		Current Week	Last Week	YTD
Level 1	Broward CCTV	15	11	764
	Broward Road Ranger	4	10	241
	Broward TMC	0	0	3
	Broward VideoWall	0	3	44
	BSO	0	0	10
	District 4	2	1	40
	District 6	0	0	2
	FDOT Maintenance	0	0	5
	FHP	1	6	278
	Fire	0	0	3
	ITMS	0	1	2
	Local Police	0	1	1
	Motorist	0	0	9
	Palm Beach Road Ran	0	1	6
	Road Watcher	0	0	9
	SIRV	0	0	11
	SmarTraveler (511)	0	0	4
	VisioPaD Detection	0	0	21
	Total	22	34	1,453
	Level 2	Broward CCTV	6	6

Total Events by Severity and Detection Method



		Current Week	Last Week	YTD
Level 2	Broward Road Ranger	3	0	62
	Broward TMC	0	0	1
	Broward VideoWall	0	0	18
	BSO	0	0	11
	District 4	0	0	7
	FDOT Maintenance	0	0	1
	FHP	2	1	136
	Florida's Turnpike	0	0	4
	ITMS	0	0	1
	Motorist	0	0	4
	Other	0	0	1
	Palm Beach Road Ran	0	0	1
	Road Watcher	0	0	3
	SIRV	0	0	1
	SmarTraveler (511)	0	0	2
	VisioPaD Detection	0	0	13
	Total	11	7	585
Level 3	Broward CCTV	3	4	122
	Broward Road Ranger	0	2	26
	Broward VideoWall	0	0	3
	BSO	0	0	28
	District 4	0	0	6
	District 6	0	0	1
	FDOT Maintenance	0	0	1
	FHP	0	0	63
	Fire	0	0	1
	Florida's Turnpike	0	0	2
	Palm Beach Road Ran	0	0	2
	Road Watcher	0	0	3
	VisioPaD Detection	0	0	3
	Total	3	6	261
Total	36	47	2,299	

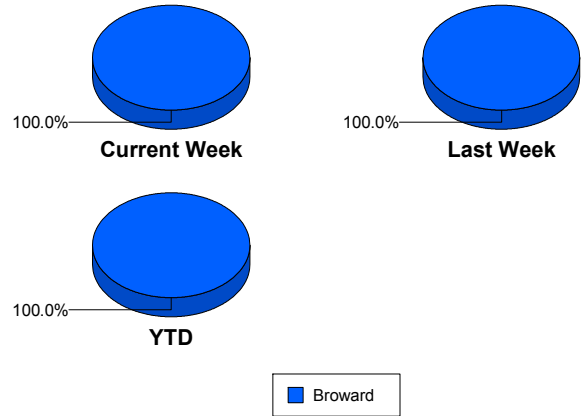
Road Ranger / SIRV Performance Measures

Road Ranger / SIRV Performance By County

Values presented are:
 - Total Events with a RR/SIRV Response
 - Total RR/SIRV Responses,
 - Total Activities Performed

	Current We	Last Week	YTD
Broward	885	837	35,443
	944	882	38,039
	976	923	39,599

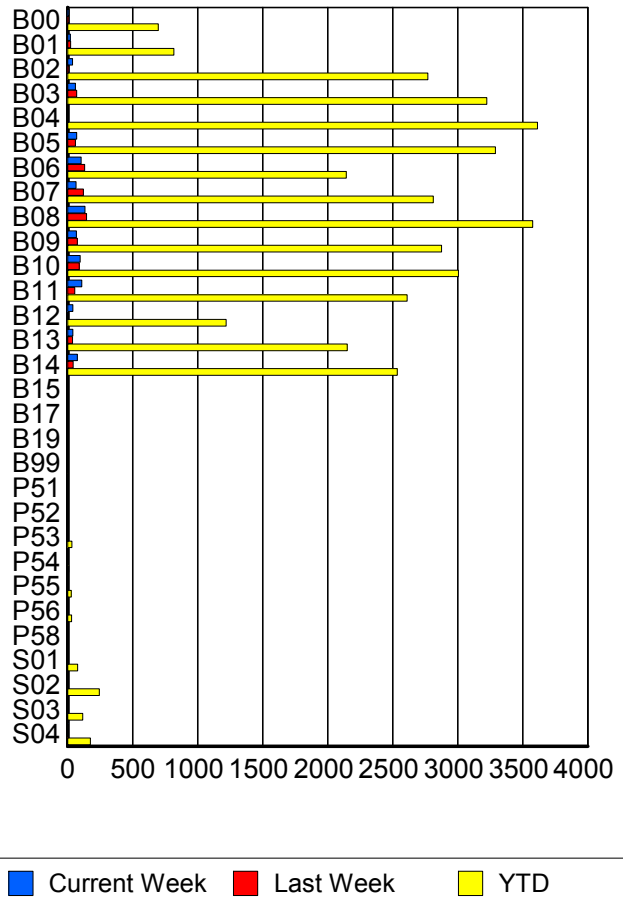
RR/SIRV Responses per County



Road Ranger / SIRV Performance By Truck

	Current We	Last Week	YTD
B00	11	11	684
	11	11	698
	11	13	732
B01	20	24	803
	21	24	816
	22	24	854
B02	37	11	2,742
	37	11	2,770
	37	13	2,874
B03	59	70	3,179
	61	70	3,224
	63	74	3,352
B04	1	0	3,575
	1	0	3,613
	1	0	3,764
B05	68	60	3,234
	70	60	3,290
	71	65	3,405
B06	103	130	2,115
	103	130	2,144
	111	133	2,222
B07	63	119	2,772
	64	122	2,812
	64	129	2,936
B08	131	145	3,534
	134	145	3,578
	137	150	3,709

RR/SIRV Responses per Truck



	Current We	Last Week	YTD
B09	65	73	2,833
	68	74	2,877
	72	77	2,989
B10	96	89	2,953
	97	90	3,006
	99	96	3,126
B11	106	53	2,571
	109	54	2,611
	112	56	2,691
B12	40	0	1,204
	40	0	1,220
	41	0	1,274
B13	40	38	2,124
	40	38	2,150
	40	38	2,226
B14	74	42	2,492
	74	43	2,536
	81	43	2,632
B15	0	0	6
	0	0	6
	0	0	6
B17	0	0	1
	0	0	1
	0	0	1
B19	0	0	1
	0	0	1
	0	0	1
B99	0	0	4
	0	0	4
	0	0	4
P51	0	0	1
	0	0	1
	0	0	1
P52	0	0	4
	0	0	4
	0	0	4
P53	1	1	31
	1	1	32
	1	2	39
P54	0	0	9
	0	0	9
	0	0	9
P55	0	1	27
	0	1	27
	0	1	31

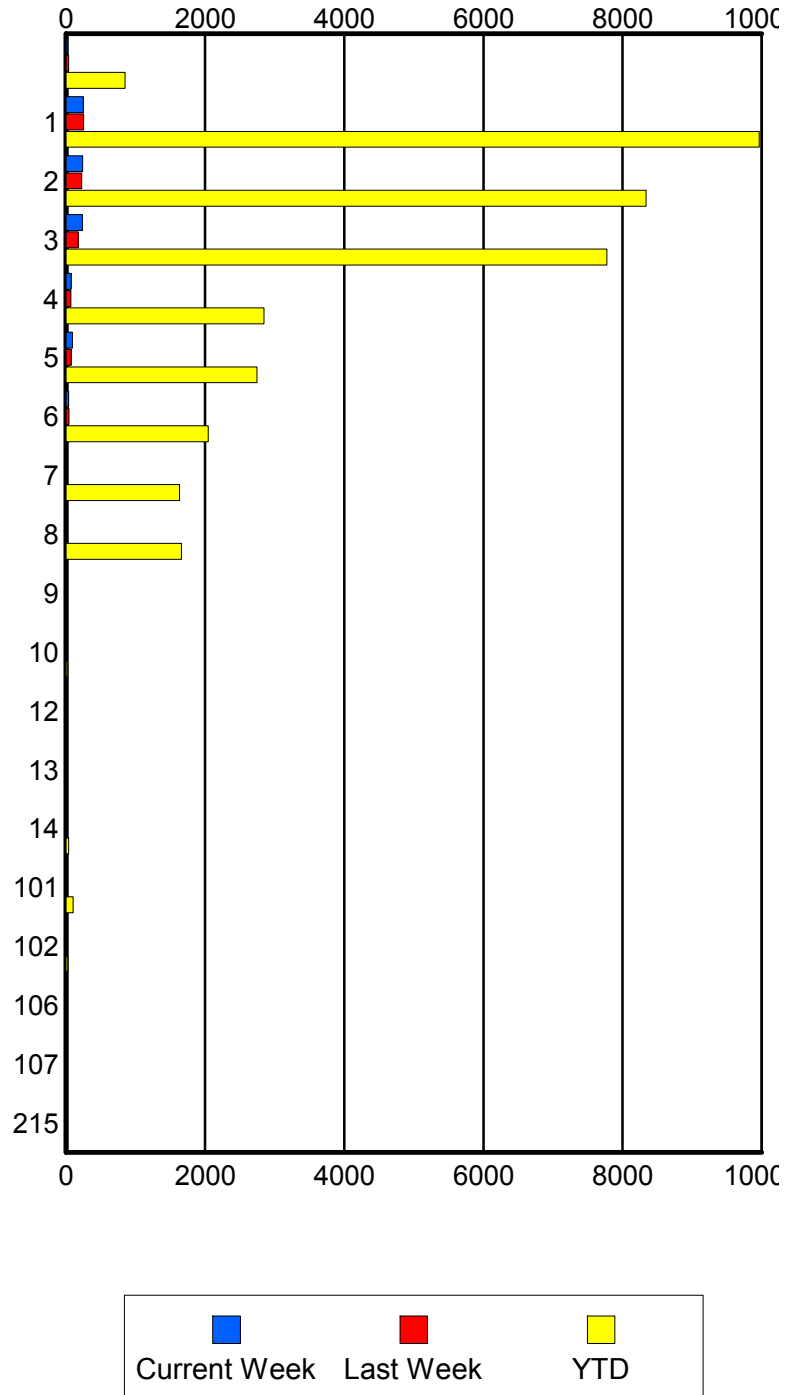
	Current We	Last Week	YTD
P56	0	2	30
	0	2	30
	0	2	31
P58	0	0	1
	0	0	1
	0	0	1
S01	1	1	75
	1	1	78
	1	1	90
S02	5	1	236
	6	1	244
	6	1	272
S03	1	1	114
	1	1	116
	1	1	132
S04	4	3	169
	5	3	175
	5	4	191

Road Ranger / SIRV Performance By Beat

	Current We	Last Week	YTD
	15	37	798
	18	37	850
	18	38	926
1	236	246	9,427
	248	252	9,964
	259	261	10,308
2	232	222	8,058
	240	226	8,340
	248	235	8,694
3	225	173	7,556
	235	176	7,775
	242	183	8,073
4	71	69	2,786
	73	69	2,845
	74	74	2,941
5	93	71	2,699
	93	72	2,744
	95	78	2,843
6	36	40	2,000
	36	43	2,042
	39	46	2,145
7	0	0	1,606
	0	0	1,631
	0	0	1,704
8	0	3	1,641
	0	3	1,661
	0	3	1,727
9	0	0	12
	0	0	14
	0	0	14
10	0	0	18
	0	0	19
	0	0	19
12	0	0	9
	0	0	9
	0	0	9
13	0	0	16
	0	0	16
	0	0	17
14	0	0	38
	0	0	38
	0	0	39
101	1	4	98
	1	4	100
	1	5	112

Values presented are:
 - Total Events with a RR/SIRV Response
 - Total RR/SIRV Responses,
 - Total Activities Performed

RR/SIRV Responses per Beat



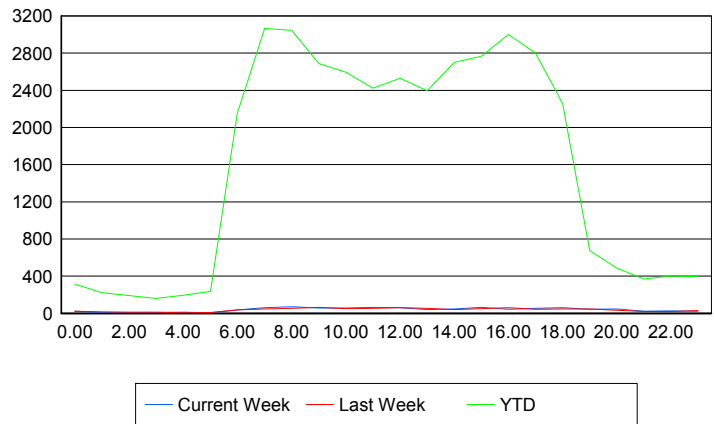
	Current We	Last Week	YTD
102	0	0	23
	0	0	23
	0	0	25
106	0	0	1
	0	0	1
	0	0	1
107	0	0	1
	0	0	1
	0	0	1
215	0	0	1
	0	0	1
	0	0	1

Road Ranger / SIRV Performance By Time of Day

Values presented are:
- Total Events with a RR/SIRV Response
- Total RR/SIRV Responses,
- Total Activities Performed

	Current We	Last Week	YTD
12AM-1AM	21	22	303
	21	22	314
	22	25	340
1AM-2AM	9	16	216
	9	17	222
	9	17	233
2AM-3AM	10	12	179
	10	12	192
	10	12	199
3AM-4AM	8	12	152
	8	12	159
	9	12	168
4AM-5AM	11	6	180
	11	6	196
	11	6	204
5AM-6AM	7	8	195
	7	8	236
	7	8	251
6AM-7AM	34	38	1,970
	35	38	2,150
	36	39	2,216
7AM-8AM	55	45	2,854
	62	46	3,067
	63	48	3,176
8AM-9AM	69	49	2,773
	71	53	3,045
	73	55	3,165

Number of Responses / Hour of the Day



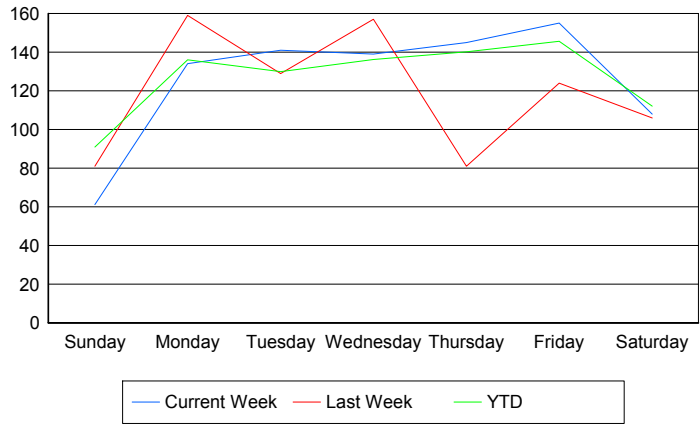
	Current We	Last Week	YTD
9AM-10AM	54	57	2,504
	56	65	2,689
	57	67	2,779
10AM-11AM	51	48	2,408
	56	51	2,595
	58	55	2,708
11AM-12PM	59	50	2,257
	63	52	2,423
	66	54	2,524
12PM-1PM	57	57	2,380
	62	59	2,529
	65	61	2,620
1PM-2PM	37	50	2,231
	39	53	2,396
	39	54	2,494
2PM-3PM	47	39	2,528
	48	40	2,701
	48	41	2,808
3PM-4PM	61	50	2,585
	65	51	2,768
	71	54	2,893
4PM-5PM	43	59	2,811
	44	62	3,000
	46	64	3,119
5PM-6PM	53	42	2,589
	54	44	2,801
	55	46	2,918
6PM-7PM	54	42	2,135
	61	46	2,259
	63	46	2,331
7PM-8PM	41	41	636
	43	46	677
	45	49	715
8PM-9PM	35	33	450
	48	33	486
	51	38	516
9PM-10PM	19	18	340
	21	19	370
	21	20	390
10PM-11PM	27	18	388
	27	18	402
	28	20	420
11PM-12AM	23	25	379
	23	29	395
	23	32	412

Road Ranger / SIRV Performance By Day of Week

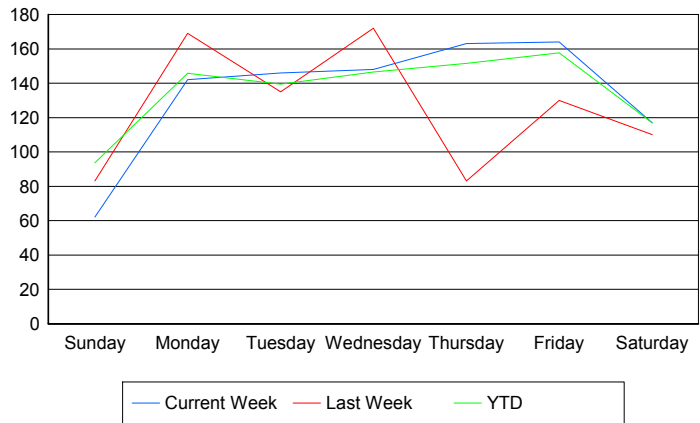
Values presented are:
 - Total Events with a RR/SIRV Response
 - Total RR/SIRV Responses,
 - Total Activities Performed

	Current We	Last Week	YTD
Sunday	63	81	1,194
	64	83	1,230
	65	84	1,287
Monday	134	159	6,405
	142	169	6,860
	148	178	7,073
Tuesday	141	129	6,091
	146	135	6,534
	150	142	6,760
Wednesday	139	157	6,379
	148	172	6,859
	151	182	7,163
Thursday	145	81	6,737
	163	83	7,275
	168	84	7,570
Friday	155	124	7,058
	164	130	7,640
	171	134	7,978
Saturday	108	106	1,601
	117	110	1,673
	123	119	1,768

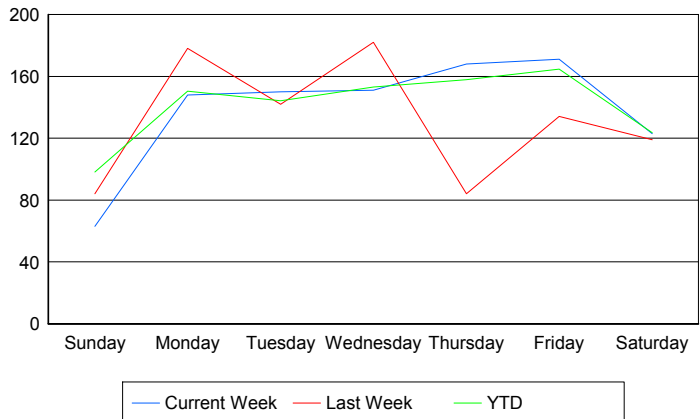
Avg # of events with a RR/SIRV Response per Day of the Week



Avg # of RR/SIRV Responses per Day of the Week



Avg # of RR/SIRV Activities Performed per Day of the Week



Road Ranger / SIRV Responses per Time of Day and Day of Week

