



Weekly Performance Measures Report Broward County



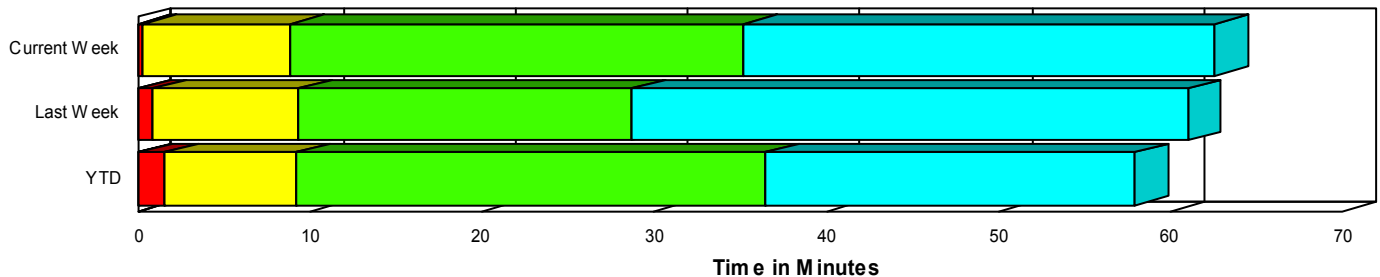
Period From Nov 23, 2008 to Nov 29, 2008

Created on:
December 01, 2008
9:11 am

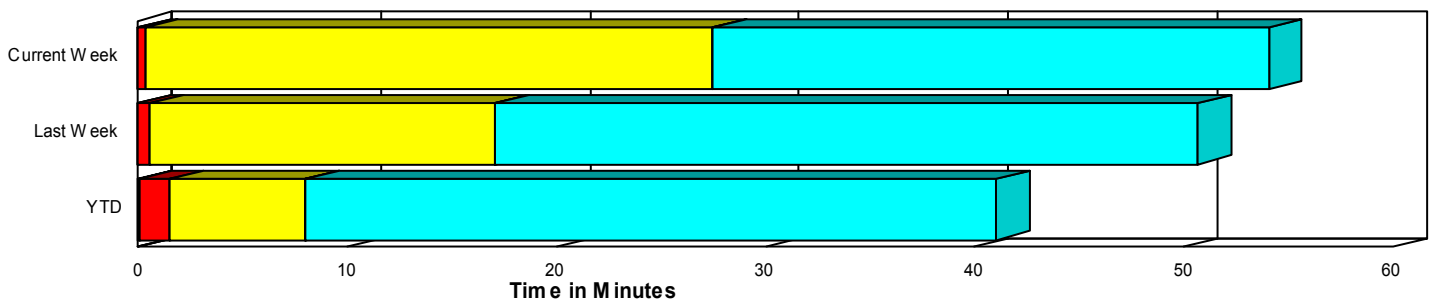
Performance Measures Summary

	Traffic Events (No Lanes Blocked)			Incidents (Lanes Blocked)		
	<u>This Week</u>	<u>Last Week</u>	<u>YTD</u>	<u>This Week</u>	<u>Last Week</u>	<u>YTD</u>
Number of Events	1,234	1,278	49,298	38	40	2,217
TMC Detection (min.)	0.00	0.00	0.01	0.00	0.00	0.03
TMC Verification (min.)	0.30	0.58	1.52	0.28	0.88	1.56
TMC Response (min.)	27.87	17.73	8.52	9.11	9.57	9.29
RR Dispatch Time (min.)	21.12	10.50	2.84	4.39	1.93	2.44
RR Response Time (min.)	6.56	7.51	5.96	6.06	7.75	6.92
Roadway Clearance (min.)				30.91	30.67	35.64
Event Clearance (min.)	54.45	51.33	41.57	58.25	62.34	55.91
# of Events w/ RR/SIRV	683	791	39,926	26	33	2,051
RR/SIRV Responses	683	791	40,060	26	33	2,301
RR/SIRV Activities	561	634	38,120	43	66	3,984

Incident Clearance TimeLine



Traffic Event (Non-Lane Blockage) Time-Line



■ Avg. TMC Detection Time	■ Avg. Time from TMC Response to Roadway Clearance*
■ Avg. Time from TMC Detection to TMC Verification	■ Avg. Time from Roadway Clearance to Incident/Event Clearance**
■ Avg. Time from TMC Verification to TMC Response	

* Roadway clearance equals all travel lanes open

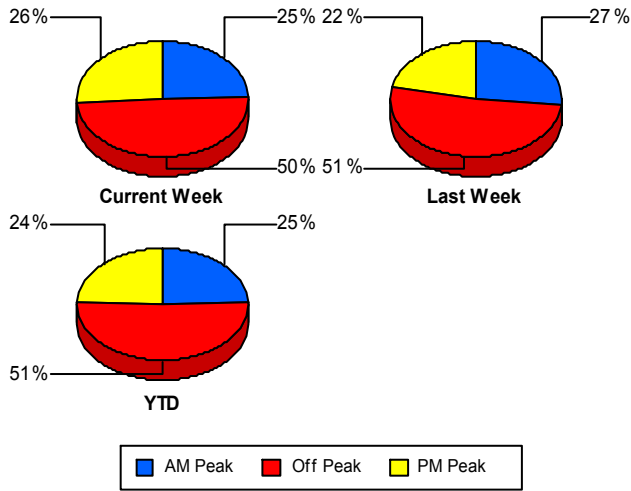
** Incident clearance equals time when last responder has left the scene

Performance Measures by Peak Period

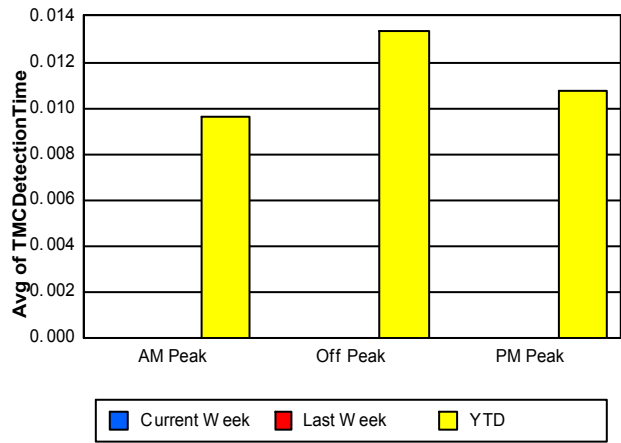
Note: AM peak period is defined as 6am to 10am and PM peak period is defined as 3pm to 7pm.

	AM Peak			Off Peak			PM Peak		
	<u>Current Week</u>	<u>Last Week</u>	<u>YTD</u>	<u>Current Week</u>	<u>Last Week</u>	<u>YTD</u>	<u>Current Week</u>	<u>Last Week</u>	<u>YTD</u>
Number of Events	314	352	12,738	630	675	26,298	328	291	12,479
Number of Incidents	11	12	531	23	16	1,159	4	12	527
TMC Detection (min.)	0.00	0.00	0.01	0.00	0.00	0.01	0.00	0.00	0.01
TMC Verification (min.)	0.49	0.58	0.87	0.25	0.54	1.86	0.21	0.71	1.49
TMC Response (min.)	8.22	21.39	7.95	59.72	19.90	9.83	10.26	7.46	6.79
RR Dispatch Time (min.)	12.93	10.68	2.53	39.88	15.50	3.63	4.46	1.02	1.54
RR Response Time (min.)	7.13	8.78	5.59	7.21	7.01	6.63	5.08	6.48	5.30
Event Clearance (min.)	35.84	59.64	35.69	64.45	54.06	47.54	53.47	36.47	37.56
Roadway Clearance (min.)	42.70	20.33	31.65	26.28	47.67	42.20	25.07	18.33	25.25
Incident Clearance (min.)	71.08	63.66	53.01	54.18	67.25	63.12	46.36	54.46	42.99
# of Events w/ RR/SIRV	231	277	11,010	266	335	20,464	212	212	10,503
RR/SIRV Responses	231	277	11,114	266	335	20,672	212	212	10,575
RR/SIRV Activities	214	248	11,146	206	269	20,375	184	183	10,583

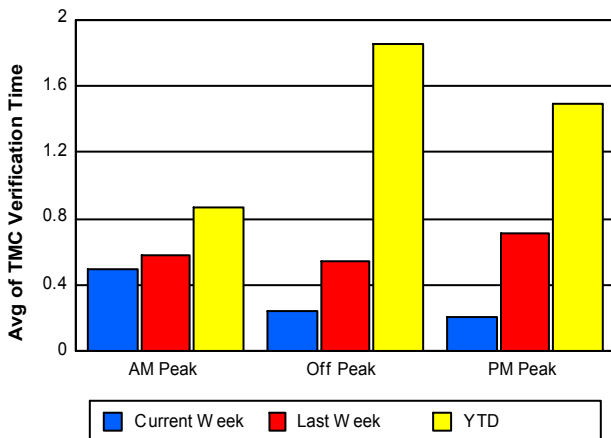
Number of Events / Peak Period



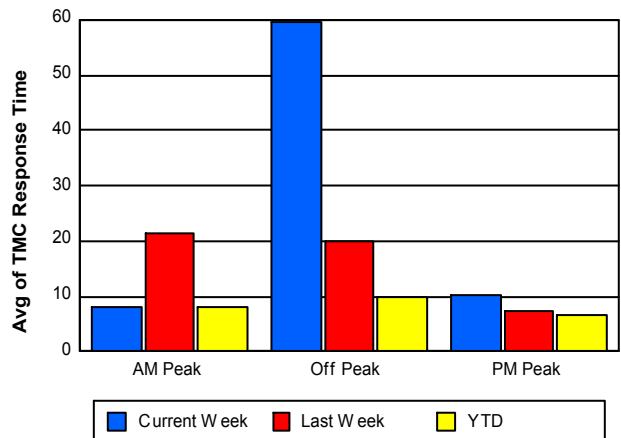
TMC Detection Time



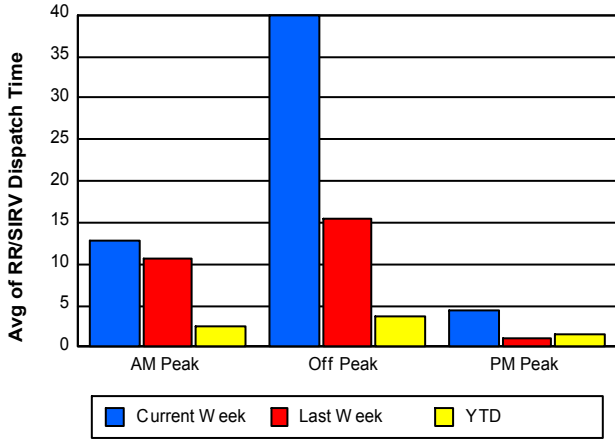
TMC Verification Time



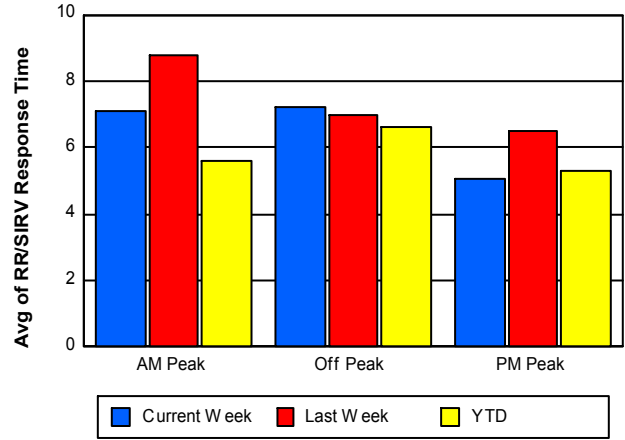
TMC Response Time



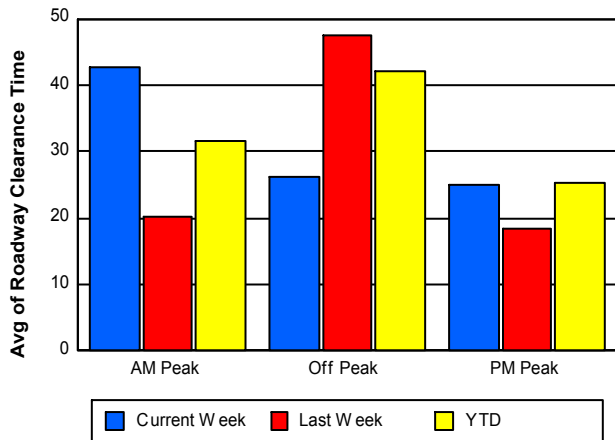
Road Ranger / SIRV Dispatch Time



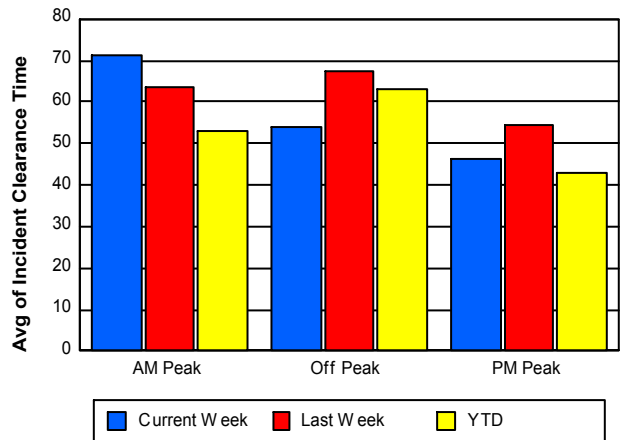
Road Ranger / SIRV Response Time



Roadway Clearance Time (2A)



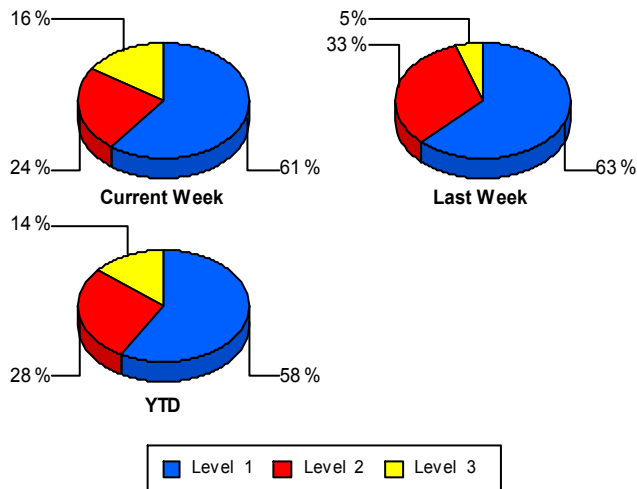
Incident Clearance Time (3B)



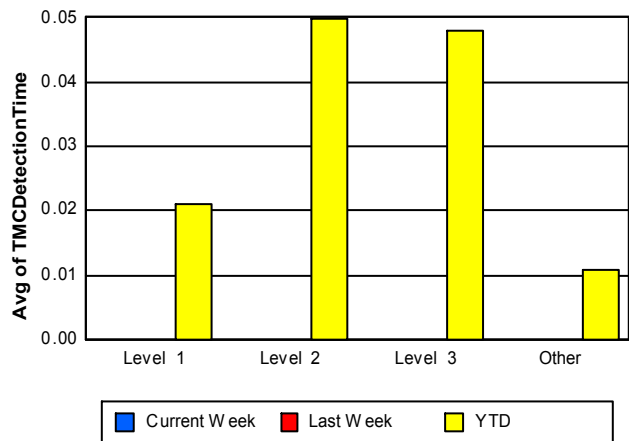
Performance Measures by Severity

	Level 1			Level 2			Level 3			Other		
	<u>This Week</u>	<u>Last Week</u>	<u>YTD</u>	<u>This Week</u>	<u>Last Week</u>	<u>YTD</u>	<u>This Week</u>	<u>Last Week</u>	<u>YTD</u>	<u>This Week</u>	<u>Last Week</u>	<u>YTD</u>
Number of Events	23	25	1,289	9	13	616	6	2	312	1,234	1,278	49,298
Number of Incidents	23	25	1,289	9	13	616	6	2	312	0	0	0
TMC Detection (min.)	0.00	0.00	0.02	0.00	0.00	0.05	0.00	0.00	0.05	0.00	0.00	0.01
TMC Verification (min.)	0.43	0.66	0.92	0.00	1.44	2.36	0.14	0.00	2.63	0.30	0.58	1.52
TMC Response (min.)	4.51	7.75	7.82	9.05	11.25	10.86	32.18	30.85	12.22	27.87	17.73	8.52
RR Dispatch Time (min.)	1.15	1.70	2.22	2.05	2.14	2.43	17.07	4.87	3.36	21.12	10.50	2.84
RR Resp. Time (min.)	3.32	6.23	5.64	7.92	9.11	8.43	17.27	25.98	9.13	6.56	7.51	5.96
Event Clearance (min.)	43.47	56.59	41.07	67.09	60.92	65.99	101.62	143.37	97.32	54.45	51.33	41.57
Roadway Clear. (min.)	11.80	13.83	14.83	46.77	46.11	50.13	80.36	140.82	93.01			
Incident Clearance (min.)	43.47	56.59	41.07	67.09	60.92	65.99	101.62	143.37	97.32			
# of Events w/ RR/SIRV	16	22	1,191	5	10	573	5	1	287	683	791	39,926
RR/SIRV Responses	16	22	1,264	5	10	647	5	1	390	683	791	40,060
RR/SIRV Activities	32	37	1,966	7	27	1,227	4	2	791	561	634	38,120

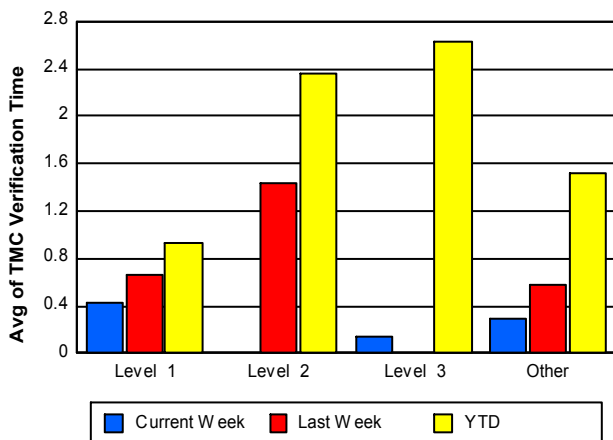
Number of Events / Severity



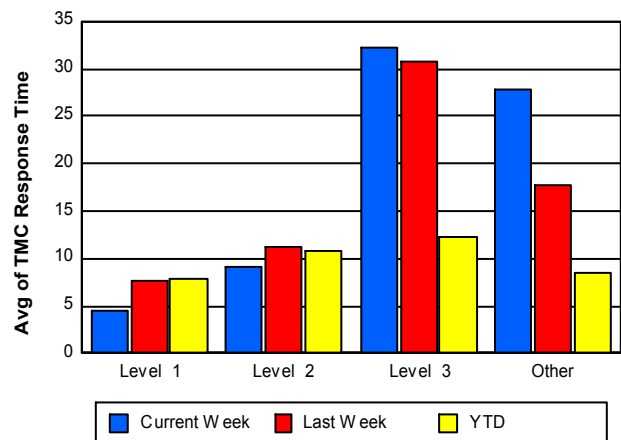
TMC Detection Time



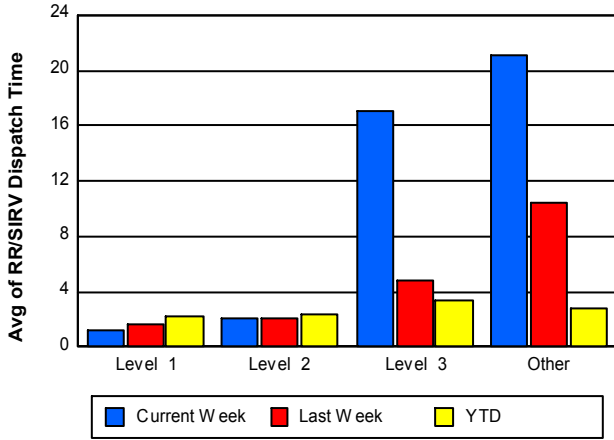
TMC Verification Time



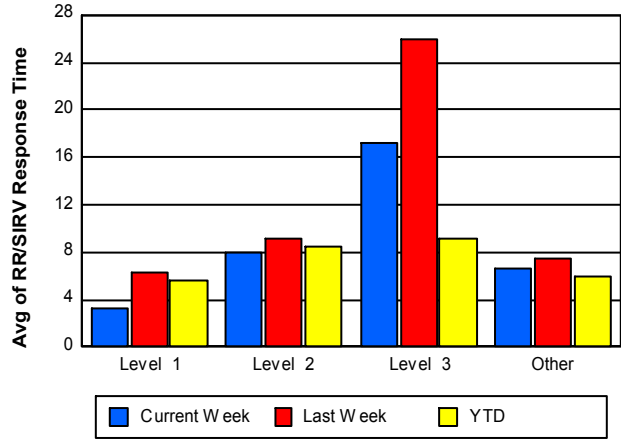
TMC Response Time



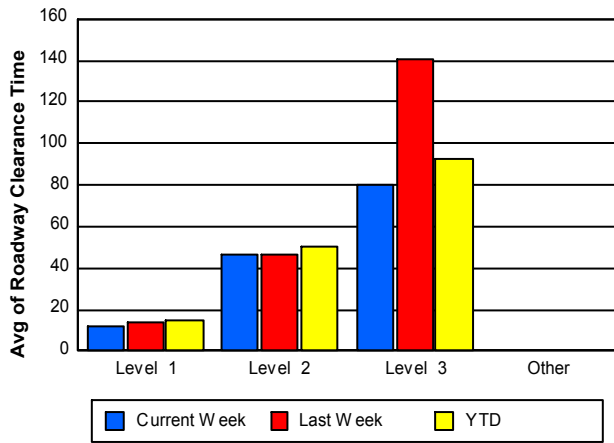
Road Ranger / SIRV Dispatch Time



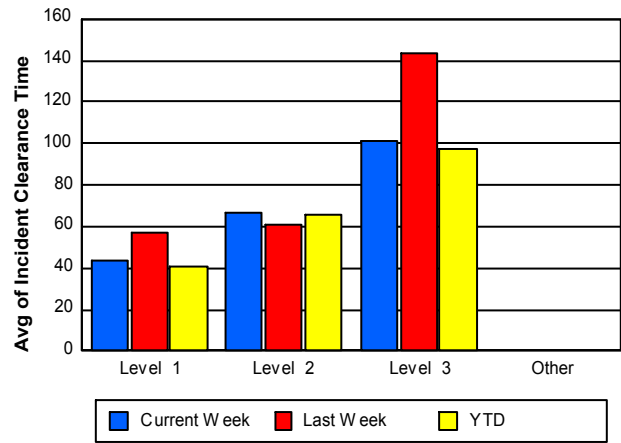
Road Ranger / SIRV Response Time



Roadway Clearance Time (2A)



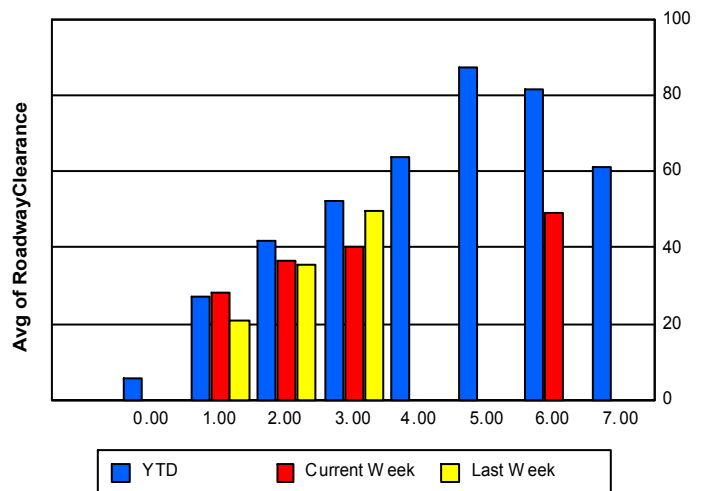
Incident Clearance Time (3B)



Roadway Clearance by Maximum Number of Lanes Blocked

	Current Week	Last Week	YTD
	0.00	0.00	
0			5.87
1	28.20	20.73	27.19
2	36.45	35.68	41.53
3	40.29	49.75	52.32
4	0.00	0.00	63.65
5	0.00	0.00	87.12
6	49.07	0.00	81.47

Roadway Clearance Time(2A)



	Current Week	Last Week	YTD
7	0.00	0.00	60.95

Performance Measures by Roadway

595

	<u>Current Week</u>	<u>Last Week</u>	<u>YTD</u>
Number of Events	165	203	7,798
Number of Incidents	4	7	383
TMC Detection (min.)	0.00	0.00	0.01
TMC Verification (min.)	0.73	1.01	1.73
TMC Response (min.)	16.43	26.08	9.08
RR Dispatch Time (min.)	8.27	15.33	3.11
RR Resp. Time (min.)	7.24	7.53	5.92
Event Clearance (min.)	42.66	37.56	41.45
Roadway Clear. (min.)	26.27	59.47	37.83
Incident Clearance (min.)	47.06	112.67	52.61
# of Events w/ RR/SIRV	95	135	6,520
RR/SIRV Responses	95	135	6,583
RR/SIRV Activities	87	124	6,706

75

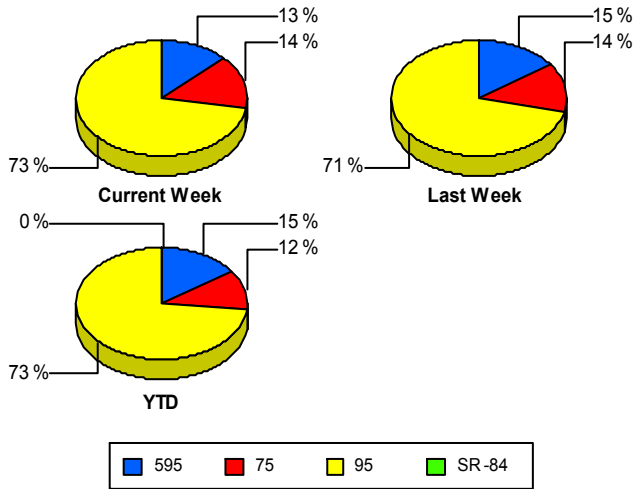
	<u>Current Week</u>	<u>Last Week</u>	<u>YTD</u>
Number of Events	184	179	5,979
Number of Incidents	5	2	135
TMC Detection (min.)	0.00	0.00	0.02
TMC Verification (min.)	0.32	1.23	5.04
TMC Response (min.)	6.80	10.90	5.84
RR Dispatch Time (min.)	1.60	1.13	2.13
RR Resp. Time (min.)	5.71	10.03	4.99
Event Clearance (min.)	44.95	54.11	46.40
Roadway Clear. (min.)	41.11	32.49	60.37
Incident Clearance (min.)	101.97	31.78	68.66
# of Events w/ RR/SIRV	122	125	5,711
RR/SIRV Responses	122	125	5,744
RR/SIRV Activities	118	114	6,175

95

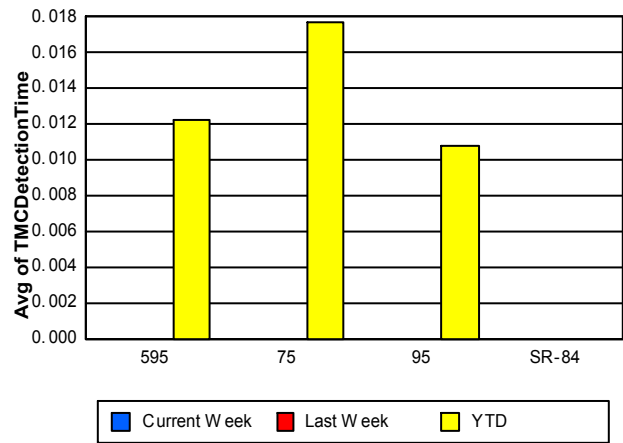
	<u>Current Week</u>	<u>Last Week</u>	<u>YTD</u>
Number of Events	923	936	37,737
Number of Incidents	29	31	1,699
TMC Detection (min.)	0.00	0.00	0.01
TMC Verification (min.)	0.22	0.38	0.93
TMC Response (min.)	35.31	16.63	9.04
RR Dispatch Time (min.)	27.56	10.91	2.88
RR Resp. Time (min.)	6.63	6.86	6.26
Event Clearance (min.)	58.60	54.26	41.68
Roadway Clear. (min.)	29.78	24.04	33.18
Incident Clearance (min.)	52.25	52.94	55.65
# of Events w/ RR/SIRV	492	564	29,746
RR/SIRV Responses	492	564	30,034
RR/SIRV Activities	399	462	29,223

	<u>YTD</u>
Number of Events	1
Number of Incidents	0
TMC Detection (min.)	0.00
TMC Verification (min.)	0.47
TMC Response (min.)	
RR Dispatch Time (min.)	
RR Resp. Time (min.)	
Event Clearance (min.)	5.22
Roadway Clear. (min.)	
Incident Clearance (min.)	
# of Events w/ RR/SIRV	0
RR/SIRV Responses	0
RR/SIRV Activities	0

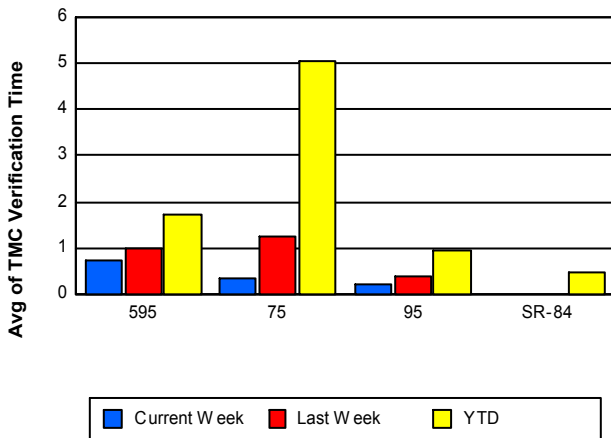
Number of Events / Roadway



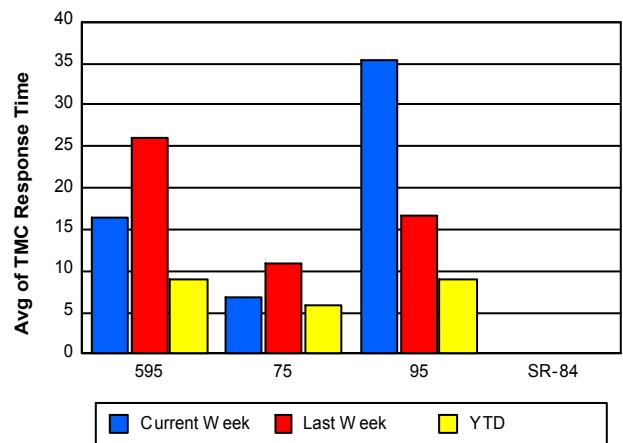
TMC Detection Time



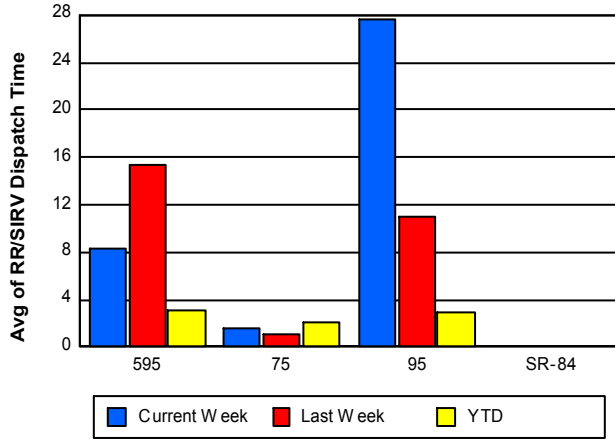
TMC Verification Time



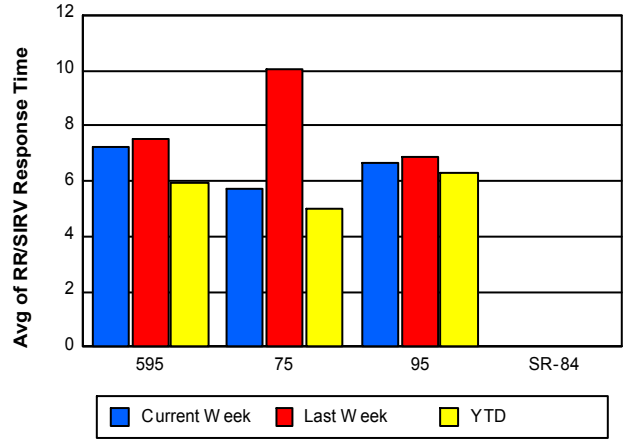
TMC Response Time



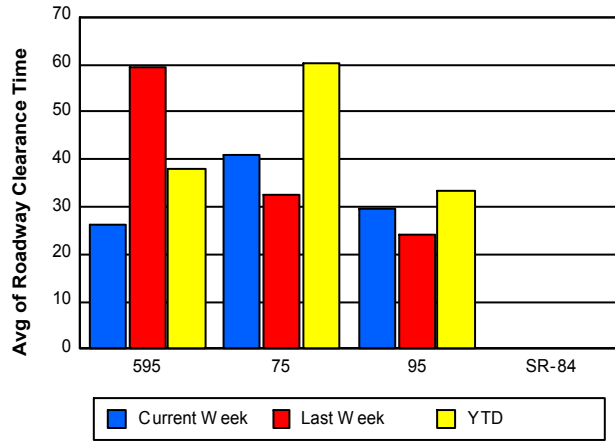
Road Ranger / SIRV Dispatch Time



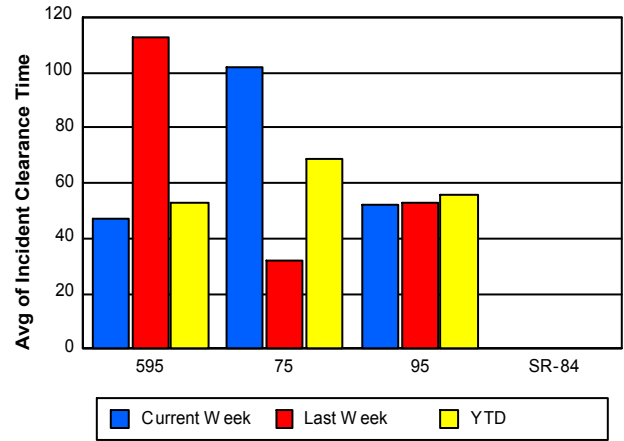
Road Ranger / SIRV Response Time



Roadway Clearance Time (2A)



Incident Clearance Time (3B)



Performance Measures by Event Type

Abandoned Vehicle

	<u>Current Week</u>	<u>Last Week</u>	<u>YTD</u>
Number of Events	145	140	6,585
Number of Incidents	0	0	13
TMC Detection (min.)	0.00	0.00	0.02
TMC Verification (min.)	0.17	0.00	0.44
TMC Response (min.)	114.13	80.56	15.71
RR Dispatch Time (min.)	132.53	92.91	12.29
RR Response Time (min.)	8.93	9.85	5.81
Event Clearance (min.)	304.59	294.70	191.31
Roadway Clearance (min.)			39.46
Incident Clearance (min.)			236.85
# of Events w/ RR/SIRV	92	81	5,206
RR/SIRV Assists	92	81	5,213
RR/SIRV Activities	98	86	5,463

Accident

	<u>Current Week</u>	<u>Last Week</u>	<u>YTD</u>
Number of Events	60	92	3,487
Number of Incidents	25	31	1,603
TMC Detection (min.)	0.00	0.00	0.03
TMC Verification (min.)	0.65	0.39	1.82
TMC Response (min.)	8.30	9.47	8.21
RR Dispatch Time (min.)	2.44	1.13	1.74
RR Response Time (min.)	6.82	8.40	6.52
Event Clearance (min.)	59.16	52.92	45.74
Roadway Clearance (min.)	36.57	32.19	36.19
Incident Clearance (min.)	71.19	69.39	59.65
# of Events w/ RR/SIRV	43	68	3,238
RR/SIRV Assists	43	68	3,465
RR/SIRV Activities	56	95	4,986

Congestion

	<u>Current Week</u>	<u>YTD</u>
Number of Events	4	25
Number of Incidents	0	1
TMC Detection (min.)	0.00	0.00
TMC Verification (min.)	0.00	0.00
TMC Response (min.)		
RR Dispatch Time (min.)		
RR Response Time (min.)		
Event Clearance (min.)	61.57	76.82
Roadway Clearance (min.)		8.22
Incident Clearance (min.)		98.70
# of Events w/ RR/SIRV	0	0
RR/SIRV Assists	0	0
RR/SIRV Activities	0	0

Debris on Roadway

	<u>Current Week</u>	<u>Last Week</u>	<u>YTD</u>
Number of Events	22	27	1,722
Number of Incidents	0	0	31
TMC Detection (min.)	0.00	0.00	0.03
TMC Verification (min.)	4.73	6.79	5.36
TMC Response (min.)	6.72	9.80	7.85
RR Dispatch Time (min.)	0.48	1.03	1.08
RR Response Time (min.)	6.23	8.76	6.80
Event Clearance (min.)	10.16	15.46	12.23
Roadway Clearance (min.)			43.85
Incident Clearance (min.)			51.47
# of Events w/ RR/SIRV	20	26	1,663
RR/SIRV Assists	20	26	1,690
RR/SIRV Activities	20	32	1,777

Disabled Vehicle

	<u>Current Week</u>	<u>Last Week</u>	<u>YTD</u>
Number of Events	565	557	28,933
Number of Incidents	6	4	353
TMC Detection (min.)	0.00	0.00	0.01
TMC Verification (min.)	0.37	0.93	1.97
TMC Response (min.)	8.56	7.80	7.18
RR Dispatch Time (min.)	3.16	1.04	1.44
RR Response Time (min.)	5.75	6.79	5.88
Event Clearance (min.)	27.54	26.93	20.61
Roadway Clearance (min.)	18.60	21.07	24.42
Incident Clearance (min.)	34.38	31.91	36.32
# of Events w/ RR/SIRV	387	459	27,230
RR/SIRV Assists	387	459	27,326
RR/SIRV Activities	393	445	28,488

Emergency Vehicles

	<u>YTD</u>
Number of Events	63
Number of Incidents	58
TMC Detection (min.)	0.06
TMC Verification (min.)	0.34
TMC Response (min.)	7.28
RR Dispatch Time (min.)	2.42
RR Response Time (min.)	4.94
Event Clearance (min.)	38.92
Roadway Clearance (min.)	38.47
Incident Clearance (min.)	39.60
# of Events w/ RR/SIRV	49
RR/SIRV Assists	51
RR/SIRV Activities	80

Other

	<u>Current Week</u>	<u>Last Week</u>	<u>YTD</u>
Number of Events	440	482	10,226
Number of Incidents	1	1	24
TMC Detection (min.)	0.00	0.00	0.00
TMC Verification (min.)	0.00	0.00	0.25
TMC Response (min.)	35.08	8.91	10.80
RR Dispatch Time (min.)	6.17	1.37	1.89
RR Response Time (min.)	7.53	8.16	8.54
Event Clearance (min.)	11.25	12.31	11.57
Roadway Clearance (min.)	3.67	44.82	19.36
Incident Clearance (min.)	4.65	18.68	25.47
# of Events w/ RR/SIRV	155	180	4,218
RR/SIRV Assists	155	180	4,223
RR/SIRV Activities	25	28	858

Pedestrian

	<u>YTD</u>
Number of Events	41
Number of Incidents	0
TMC Detection (min.)	0.01
TMC Verification (min.)	1.34
TMC Response (min.)	2.56
RR Dispatch Time (min.)	0.37
RR Response Time (min.)	2.29
Event Clearance (min.)	10.68
Roadway Clearance (min.)	
Incident Clearance (min.)	
# of Events w/ RR/SIRV	37
RR/SIRV Assists	37
RR/SIRV Activities	39

Police Activity

	<u>Current Week</u>	<u>Last Week</u>	<u>YTD</u>
Number of Events	19	9	169
Number of Incidents	4	3	91
TMC Detection (min.)	0.00	0.00	0.02
TMC Verification (min.)	0.00	2.03	1.38
TMC Response (min.)	40.55	18.52	10.63
RR Dispatch Time (min.)	21.87	2.82	3.12
RR Response Time (min.)	0.08	15.70	7.34
Event Clearance (min.)	16.22	38.55	41.07
Roadway Clearance (min.)	15.05	24.72	67.19
Incident Clearance (min.)	19.02	51.59	55.31
# of Events w/ RR/SIRV	2	3	104
RR/SIRV Assists	2	3	124
RR/SIRV Activities	1	6	164

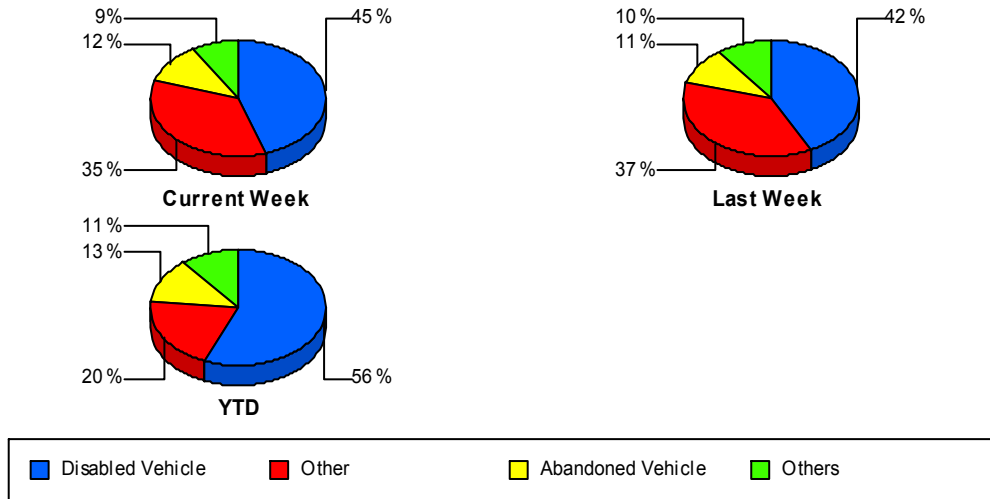
Vehicle Fire

	<u>Current Week</u>	<u>Last Week</u>	<u>YTD</u>
Number of Events	3	3	55
Number of Incidents	2	1	42
TMC Detection (min.)	0.00	0.00	0.00
TMC Verification (min.)	0.00	5.17	0.78
TMC Response (min.)	20.03	10.28	9.62
RR Dispatch Time (min.)	2.68	1.13	2.60
RR Response Time (min.)	17.36	9.14	7.02
Event Clearance (min.)	54.54	57.98	60.25
Roadway Clearance (min.)	42.39	25.38	39.93
Incident Clearance (min.)	73.27	41.40	66.33
# of Events w/ RR/SIRV	3	2	47
RR/SIRV Assists	3	2	47
RR/SIRV Activities	4	4	83

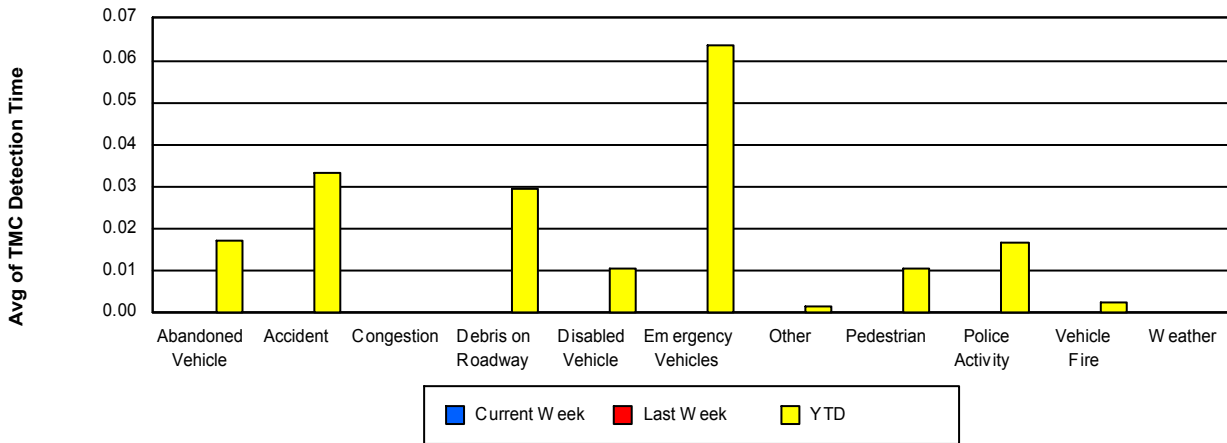
Weather

	<u>Last Week</u>	<u>YTD</u>
Number of Events	3	15
Number of Incidents	0	0
TMC Detection (min.)	0.00	0.00
TMC Verification (min.)	0.00	0.00
TMC Response (min.)		0.10
RR Dispatch Time (min.)		1.41
RR Response Time (min.)		0.00
Event Clearance (min.)	5.52	13.87
Roadway Clearance (min.)		
Incident Clearance (min.)		
# of Events w/ RR/SIRV	0	7
RR/SIRV Assists	0	7
RR/SIRV Activities	0	1

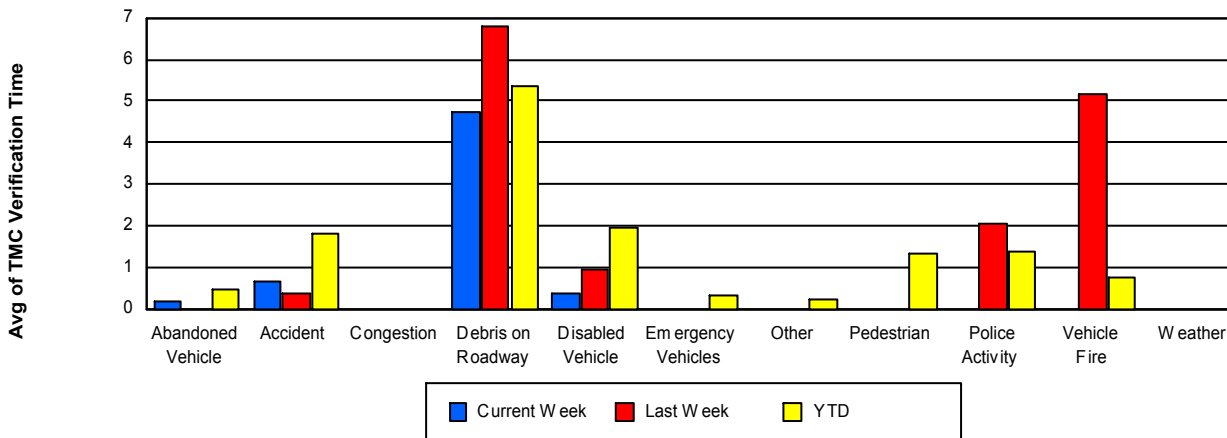
Number of Events / Event Type



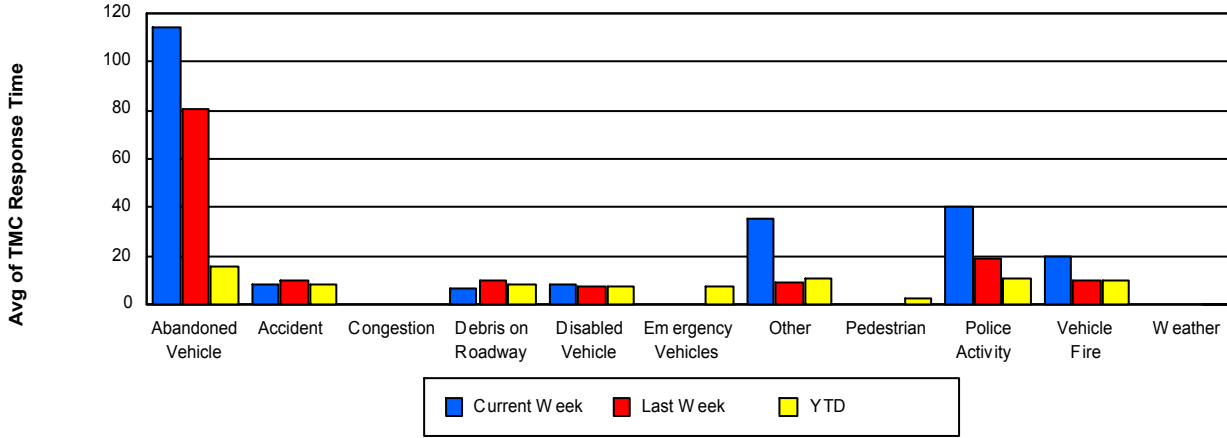
TMC Detection Time



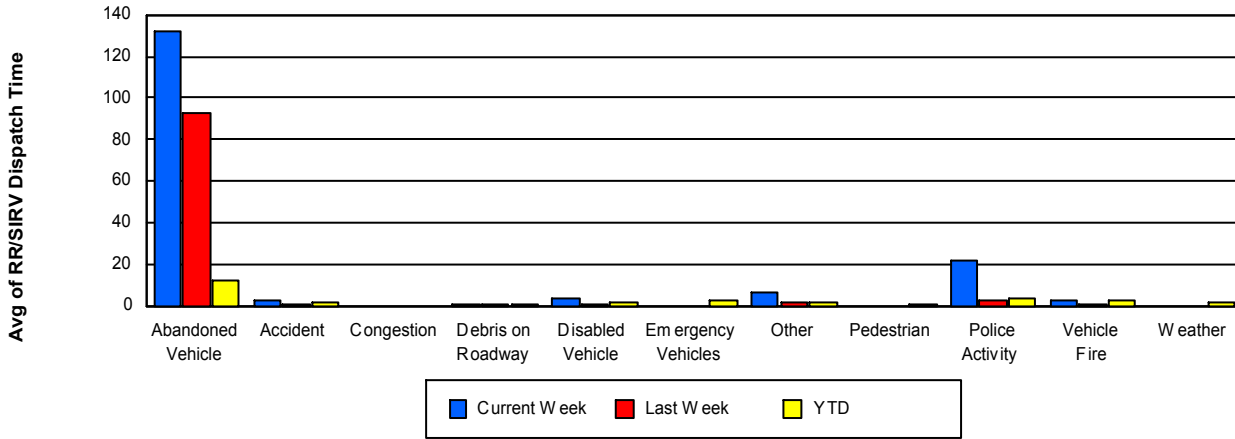
TMC Verification Time



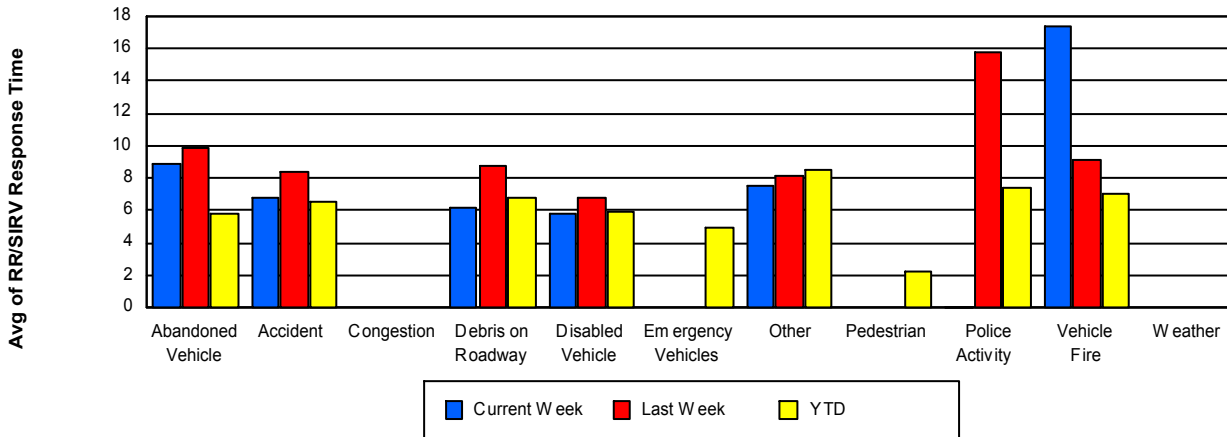
TMC Response Time



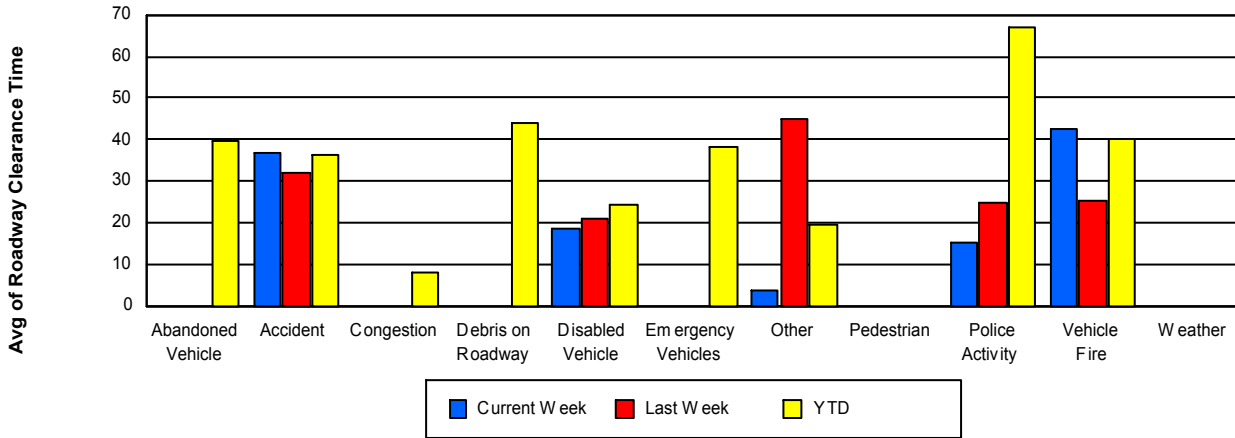
Road Ranger / SIRV Dispatch Time



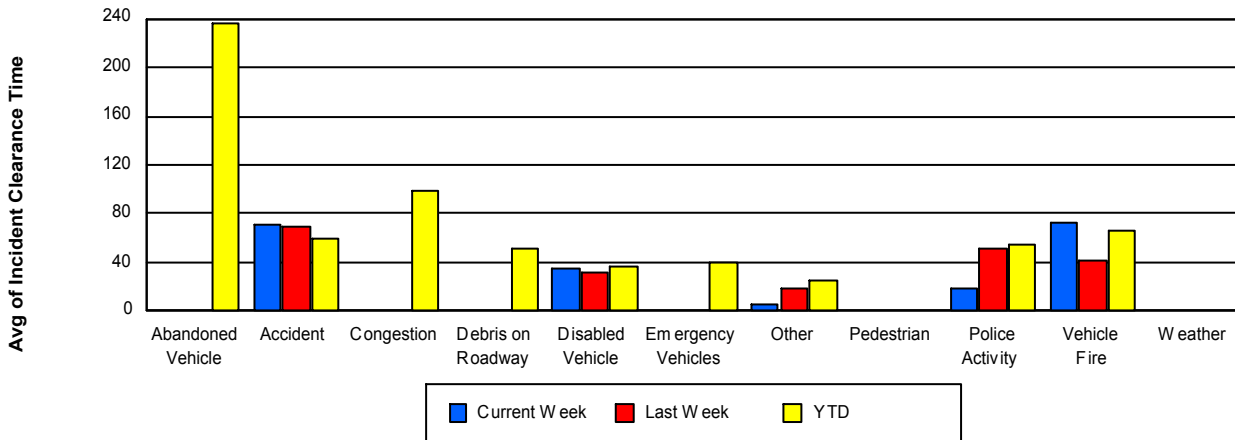
Road Ranger / SIRV Response Time



Roadway Clearance Time (2A)



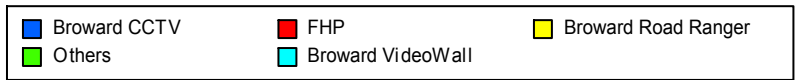
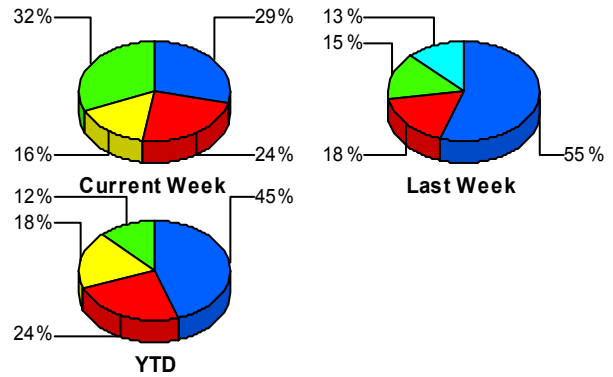
Incident Clearance Time (3B)



Incident Detection Methods

	Current Week	Last Week	YTD
Broward CCTV	11	22	999
Broward Road Ranger	6	4	408
Broward VideoWall	2	5	58
BSO	0	0	20
District 4	5	1	57
District 6	0	0	5
FDOT Maintenance	0	0	2
FHP	9	7	540
Fire	0	0	6
Florida's Turnpike	0	0	8
ITMS	0	0	2
Motorist	1	0	18
Other	0	0	1
Palm Beach Road Rang	0	0	8
PSAP	0	0	3
Road Watcher	0	0	14
SIRV	1	0	8
SmarTraveler (511)	1	0	11
VisioPaD Detection	2	1	49
Total	38	40	2,217

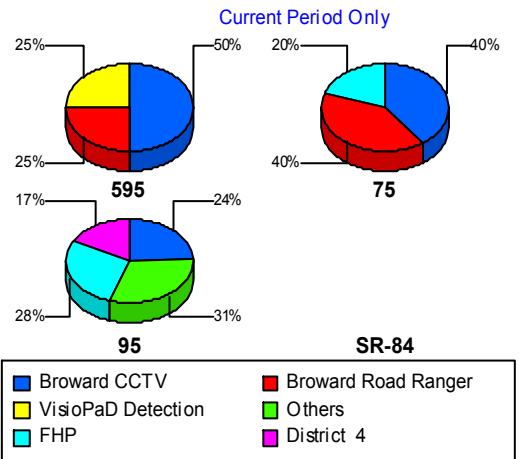
Total Incidents by Detection Method



Incident Detection Methods by Roadway

		Current Week	Last Week	YTD
595	Broward CCTV	2	2	140
	Broward Road Ranger	1	0	80
	Broward VideoWall	0	3	10
	BSO	0	0	10
	District 4	0	0	8
	FHP	0	2	111
	Florida's Turnpike	0	0	8
	Motorist	0	0	3
	Road Watcher	0	0	5
	SIRV	0	0	2
	SmarTraveler (511)	0	0	1
	VisioPaD Detection	1	0	5
	Total	4	7	383
75	Broward CCTV	2	1	3
	Broward Road Ranger	2	0	58
	BSO	0	0	5
	District 4	0	0	7
	District 6	0	0	2
	FHP	1	1	57
	Road Watcher	0	0	1
	SIRV	0	0	1
	SmarTraveler (511)	0	0	1
	Total	5	2	135
95	Broward CCTV	7	19	856
	Broward Road Ranger	3	4	270
	Broward VideoWall	2	2	48
	BSO	0	0	5
	District 4	5	1	42
	District 6	0	0	3
	FDOT Maintenance	0	0	2
	FHP	8	4	372

Total Events by Roadway and Detection Method

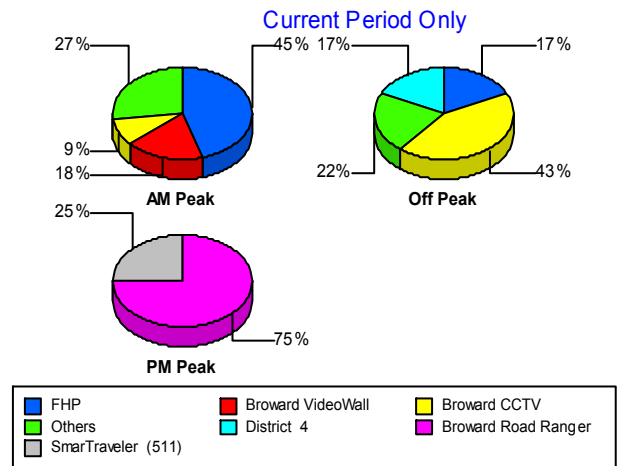


		Current Week	Last Week	YTD
95	Fire	0	0	6
	ITMS	0	0	2
	Motorist	1	0	15
	Other	0	0	1
	Palm Beach Road Rang	0	0	8
	PSAP	0	0	3
	Road Watcher	0	0	8
	SIRV	1	0	5
	SmarTraveler (511)	1	0	9
	VisioPaD Detection	1	1	44
	Total	29	31	1,699
Total	38	40	2,217	

Incident Detection Methods by Peak Period

		Current Week	Last Week	YTD
AM Peak	Broward CCTV	1	8	236
	Broward Road Ranger	1	0	103
	Broward VideoWall	2	0	21
	BSO	0	0	6
	District 4	1	1	14
	FHP	5	3	121
	Fire	0	0	1
	Florida's Turnpike	0	0	3
	Motorist	0	0	3
	Palm Beach Road Rang	0	0	5
	PSAP	0	0	1
	Road Watcher	0	0	7
	SIRV	1	0	4
	SmarTraveler (511)	0	0	1
	VisioPaD Detection	0	0	5
	Total	11	12	531
	Off Peak	Broward CCTV	10	10

Total Events by Peak Period and Detection Method



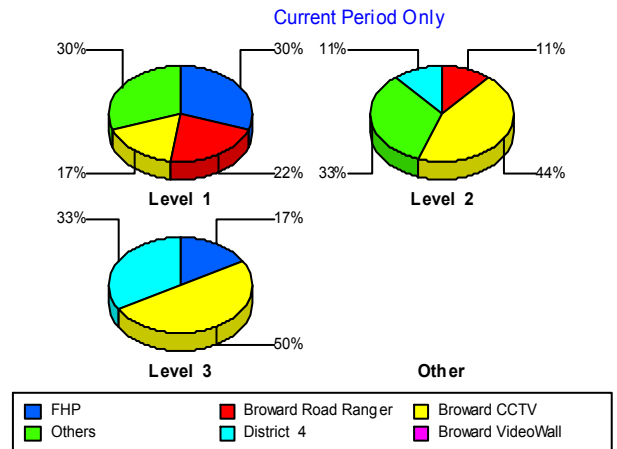
		Current Week	Last Week	YTD
Off Peak	Broward Road Ranger	2	2	191
	Broward VideoWall	0	2	25
	BSO	0	0	7
	District 4	4	0	29
	District 6	0	0	3
	FDOT Maintenance	0	0	2
	FHP	4	1	303
	Fire	0	0	4
	Florida's Turnpike	0	0	4
	ITMS	0	0	1
	Motorist	1	0	7
	Other	0	0	1
	Palm Beach Road Rang	0	0	3
	PSAP	0	0	2
	Road Watcher	0	0	3
	SIRV	0	0	2
	SmarTraveler (511)	0	0	1
	VisioPaD Detection	2	1	40
	Total	23	16	1,159
	PM Peak	Broward CCTV	0	4
Broward Road Ranger		3	2	114
Broward VideoWall		0	3	12
BSO		0	0	7
District 4		0	0	14
District 6		0	0	2
FHP		0	3	116
Fire		0	0	1
Florida's Turnpike		0	0	1
ITMS		0	0	1
Motorist		0	0	8
Road Watcher		0	0	4
SIRV		0	0	2

		Current Week	Last Week	YTD
PM Peak	SmarTraveler (511)	1	0	9
	VisioPaD Detection	0	0	4
	Total	4	12	527
Total		38	40	2,217

Incident Detection Methods by Severity

		Current Week	Last Week	YTD	
Level 1	Broward CCTV	4	13	614	
	Broward Road Ranger	5	2	263	
	Broward VideoWall	2	3	37	
	BSO	0	0	4	
	District 4	2	1	32	
	District 6	0	0	4	
	FHP	7	5	259	
	Fire	0	0	3	
	Florida's Turnpike	0	0	2	
	ITMS	0	0	1	
	Motorist	0	0	9	
	Palm Beach Road Rang	0	0	6	
	PSAP	0	0	2	
	Road Watcher	0	0	12	
	SIRV	1	0	6	
	SmarTraveler (511)	1	0	8	
	VisioPaD Detection	1	1	27	
	Total	23	25	1,289	
	Level 2	Broward CCTV	4	7	279
		Broward Road Ranger	1	2	100
Broward VideoWall		0	2	13	
BSO		0	0	9	
District 4		1	0	12	
District 6		0	0	1	
FDOT Maintenance		0	0	1	

Total Events by Severity and Detection Method



		Current Week	Last Week	YTD
Level 2	FHP	1	2	167
	Fire	0	0	1
	ITMS	0	0	1
	Motorist	1	0	8
	Palm Beach Road Rang	0	0	1
	PSAP	0	0	1
	Road Watcher	0	0	1
	SIRV	0	0	1
	SmarTraveler (511)	0	0	2
	VisioPaD Detection	1	0	18
	Total	9	13	616
Level 3	Broward CCTV	3	2	106
	Broward Road Ranger	0	0	45
	Broward VideoWall	0	0	8
	BSO	0	0	7
	District 4	2	0	13
	FDOT Maintenance	0	0	1
	FHP	1	0	114
	Fire	0	0	2
	Florida's Turnpike	0	0	6
	Motorist	0	0	1
	Other	0	0	1
	Palm Beach Road Rang	0	0	1
	Road Watcher	0	0	1
	SIRV	0	0	1
	SmarTraveler (511)	0	0	1
	VisioPaD Detection	0	0	4
	Total	6	2	312
Total		38	40	2,217

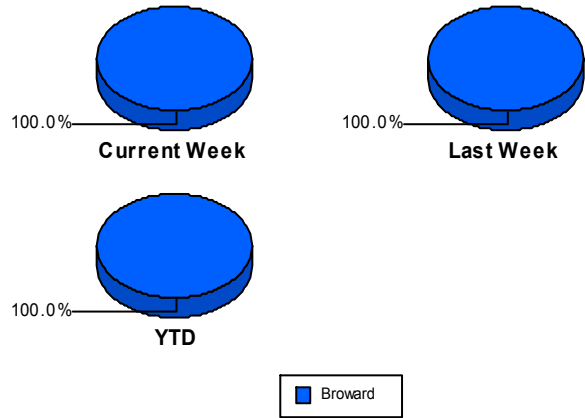
Road Ranger / SIRV Performance Measures

Road Ranger / SIRV Performance By County

Values presented are:
 - Total Events with a RR/SIRV Response
 - Total RR/SIRV Responses,
 - Total Activities Performed

	Current We	Last Week	YTD
Broward	585	662	39,372
	620	713	42,145
	641	737	44,416

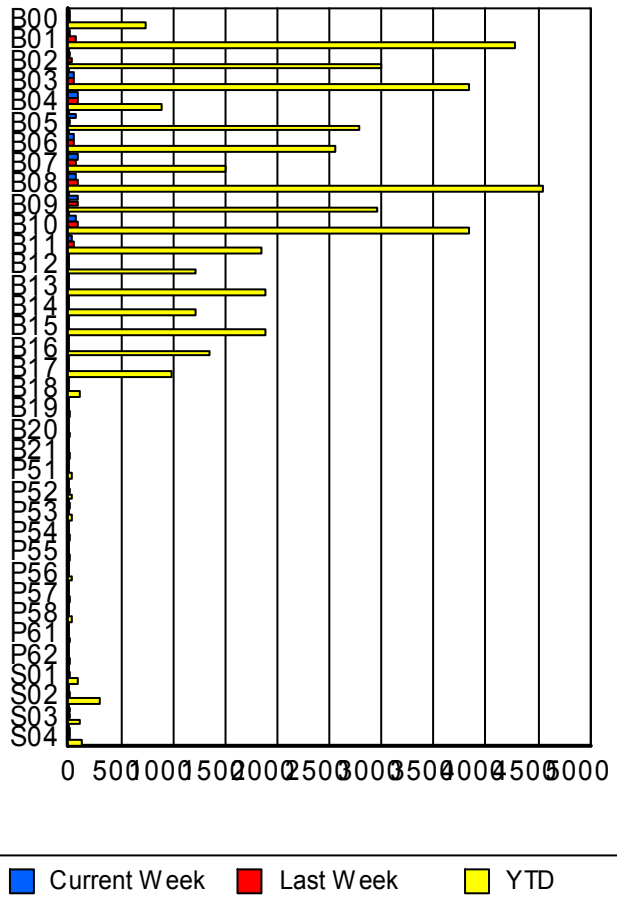
RR/SIRV Responses per County



Road Ranger / SIRV Performance By Truck

	Current We	Last Week	YTD
B00	5	11	726
	5	11	739
	5	12	777
B01	9	75	4,216
	9	76	4,278
	9	78	4,510
B02	7	29	2,959
	7	30	3,003
	7	32	3,165
B03	51	52	3,793
	51	53	3,839
	54	55	4,069
B04	93	96	879
	94	96	889
	99	98	921
B05	73	2	2,755
	74	2	2,782
	76	2	2,966
B06	47	53	2,521
	48	54	2,550
	48	54	2,693
B07	80	71	1,484
	80	71	1,503
	83	76	1,559
B08	71	86	4,477
	72	88	4,549
	75	91	4,784

RR/SIRV Responses per Truck



	Current We	Last Week	YTD
B09	87 88 89	79 82 83	2,917 2,949 3,106
B10	58 60 61	86 86 90	3,797 3,838 4,051
B11	26 26 29	46 46 48	1,833 1,848 1,934
B12	0 0 0	0 0 0	1,190 1,210 1,273
B13	0 0 0	0 0 0	1,859 1,882 1,989
B14	0 0 0	0 0 0	1,198 1,213 1,250
B15	0 0 0	0 0 0	1,870 1,881 1,988
B16	0 0 0	0 0 0	1,332 1,347 1,414
B17	0 0 0	0 0 0	968 981 1,031
B18	0 0 0	0 0 0	97 97 101
B19	0 0 0	0 0 0	2 2 2
B20	0 0 0	0 0 0	2 2 2
B21	0 0 0	0 0 0	4 4 4
P51	0 0 0	0 0 0	35 35 37
P52	0 0 0	1 1 1	20 20 20

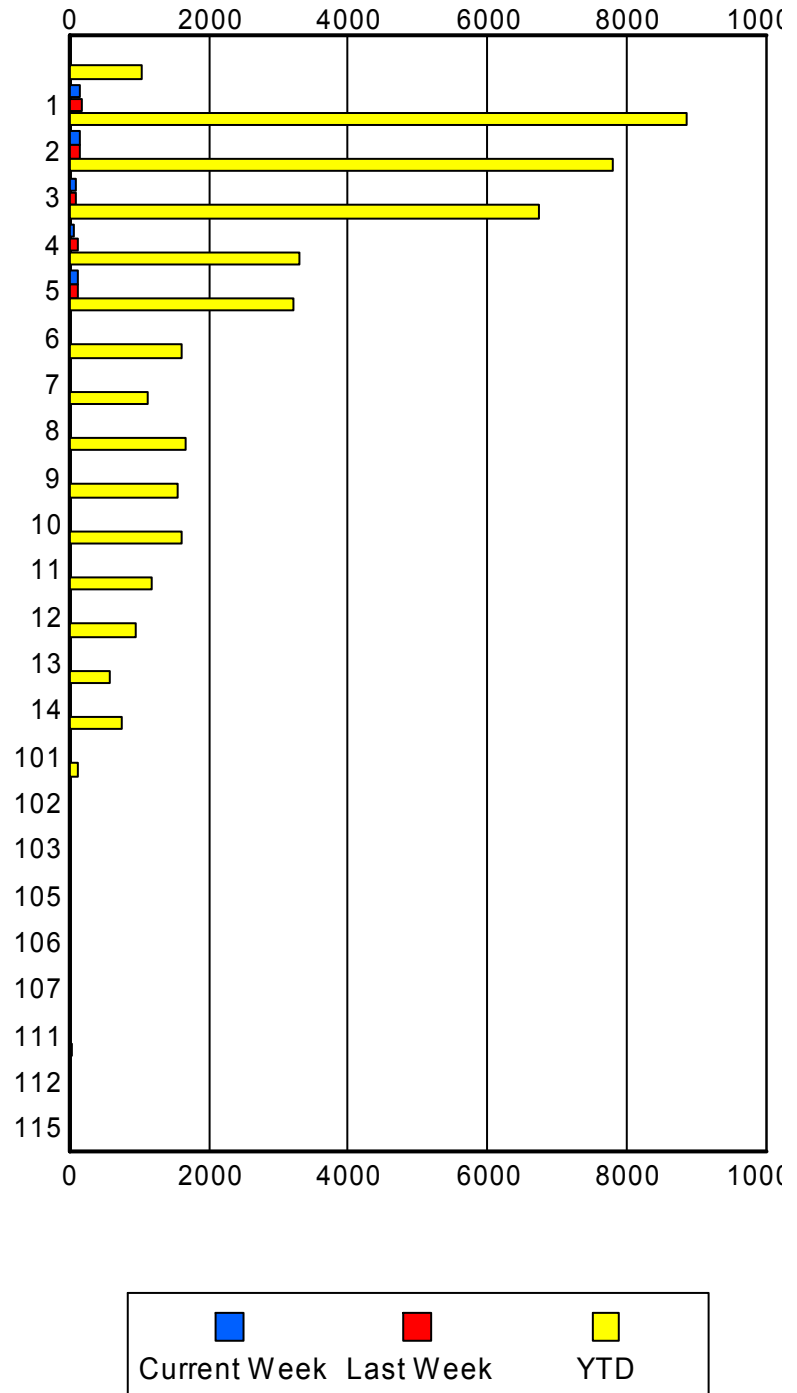
	Current We	Last Week	YTD
P53	1	0	22
	1	0	22
	1	0	25
P54	0	0	13
	0	0	13
	0	0	13
P55	0	0	16
	0	0	16
	0	0	17
P56	0	0	21
	0	0	22
	0	0	26
P57	0	0	11
	0	0	11
	0	0	11
P58	0	0	21
	0	0	21
	0	0	21
P61	0	0	1
	0	0	1
	0	0	1
P62	0	0	3
	0	0	3
	0	0	3
S01	0	2	76
	0	3	78
	0	3	86
S02	0	5	287
	0	5	290
	0	5	315
S03	1	5	107
	1	5	109
	1	5	120
S04	4	4	114
	4	4	118
	4	4	132

Road Ranger / SIRV Performance By Beat

	Current We	Last Week	YTD
	5	15	951
	5	19	1,032
	5	19	1,103
1	160	166	8,473
	166	176	8,854
	173	179	9,306
2	137	150	7,582
	140	157	7,801
	145	163	8,215
3	95	103	6,543
	96	104	6,733
	100	107	7,067
4	71	119	3,246
	72	119	3,297
	74	127	3,457
5	112	112	3,168
	117	115	3,219
	119	119	3,362
6	0	0	1,589
	0	0	1,615
	0	0	1,693
7	12	0	1,107
	12	0	1,123
	13	0	1,177
8	0	0	1,640
	0	0	1,659
	0	0	1,748
9	0	0	1,540
	0	0	1,563
	0	0	1,685
10	10	22	1,588
	11	22	1,609
	11	22	1,723
11	0	0	1,185
	0	0	1,196
	0	0	1,286
12	0	0	942
	0	0	957
	0	0	1,026
13	0	0	578
	0	0	589
	0	0	622
14	0	0	735
	0	0	740
	0	0	778

Values presented are:
 - Total Events with a RR/SIRV Response
 - Total RR/SIRV Responses,
 - Total Activities Performed

RR/SIRV Responses per Beat



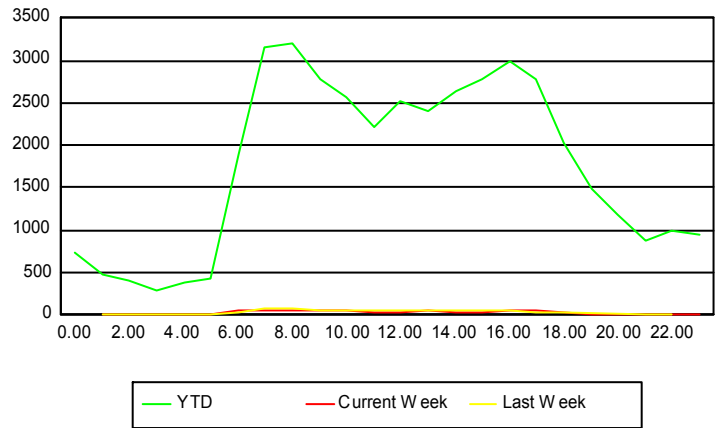
	Current We	Last Week	YTD
101	1 1 1	1 1 1	113 113 121
102	0 0 0	0 0 0	3 4 4
103	0 0 0	0 0 0	3 3 3
105	0 0 0	0 0 0	2 2 2
106	0 0 0	0 0 0	1 1 1
107	0 0 0	0 0 0	3 3 3
111	0 0 0	0 0 0	29 29 31
112	0 0 0	0 0 0	1 1 1
115	0 0 0	0 0 0	2 2 2

Road Ranger / SIRV Performance By Time of Day

Values presented are:
 - Total Events with a RR/SIRV Response
 - Total RR/SIRV Responses,
 - Total Activities Performed

	Current We	Last Week	YTD
12AM-1AM	0 0 0	0 0 0	698 739 794
1AM-2AM	2 2 2	1 1 1	451 481 513
2AM-3AM	1 1 1	1 2 2	356 407 438
3AM-4AM	0 0 0	1 1 1	253 280 302
4AM-5AM	0 0 0	0 0 0	326 377 408
5AM-6AM	2 2 2	2 2 3	351 424 451
6AM-7AM	37 42 43	34 34 34	1,749 1,896 1,968
7AM-8AM	53 56 57	74 81 82	2,950 3,151 3,303
8AM-9AM	54 62 67	69 74 74	2,948 3,199 3,370
9AM-10AM	53 54 54	59 61 65	2,609 2,775 2,912
10AM-11AM	44 46 47	53 60 64	2,431 2,576 2,710
11AM-12PM	38 38 38	43 46 47	2,067 2,216 2,329
12PM-1PM	31 32 33	55 58 59	2,373 2,518 2,638

Number of Responses / Hour of the Day



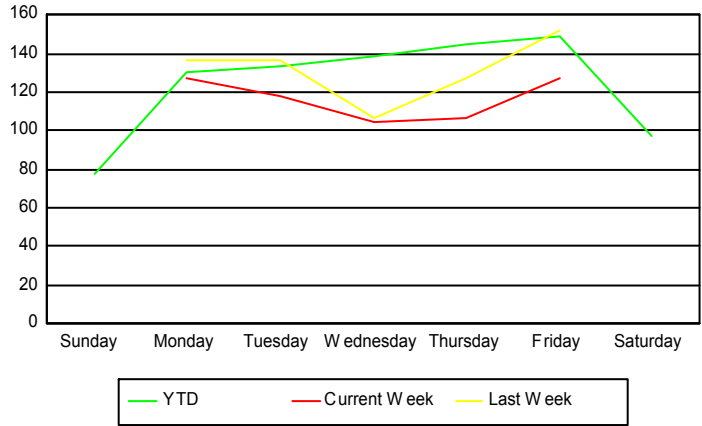
	Current We	Last Week	YTD
1PM-2PM	44	45	2,215
	44	49	2,397
	45	51	2,530
2PM-3PM	35	56	2,478
	39	57	2,642
	40	60	2,765
3PM-4PM	39	38	2,594
	41	46	2,788
	43	48	2,930
4PM-5PM	50	56	2,816
	52	62	2,989
	56	63	3,149
5PM-6PM	55	35	2,621
	60	36	2,791
	62	36	2,921
6PM-7PM	36	38	1,927
	37	41	2,039
	39	45	2,152
7PM-8PM	3	0	1,417
	3	0	1,480
	3	0	1,578
8PM-9PM	2	0	1,109
	2	0	1,182
	2	0	1,268
9PM-10PM	0	1	808
	0	1	869
	0	1	929
10PM-11PM	3	1	924
	4	1	982
	4	1	1,054
11PM-12AM	3	0	901
	3	0	947
	3	0	1,004

Road Ranger / SIRV Performance By Day of Week

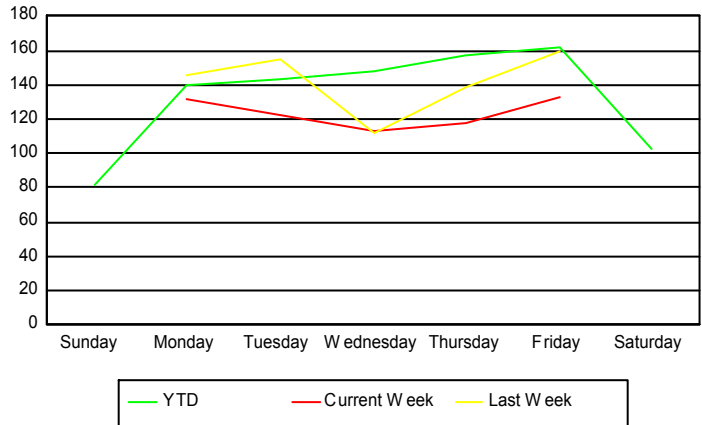
Values presented are:
 - Total Events with a RR/SIRV Response
 - Total RR/SIRV Responses,
 - Total Activities Performed

	Current We	Last Week	YTD
Sunday	0 0 0	0 0 0	2,906 3,035 3,212
Monday	129 134 136	139 148 153	6,024 6,445 6,737
Tuesday	118 122 126	137 155 161	6,309 6,765 7,112
Wednesday	105 113 118	107 112 114	6,533 6,973 7,329
Thursday	107 118 121	127 138 143	6,856 7,397 7,803
Friday	127 133 140	152 160 166	7,061 7,639 8,075
Saturday	0 0 0	0 0 0	3,709 3,891 4,148

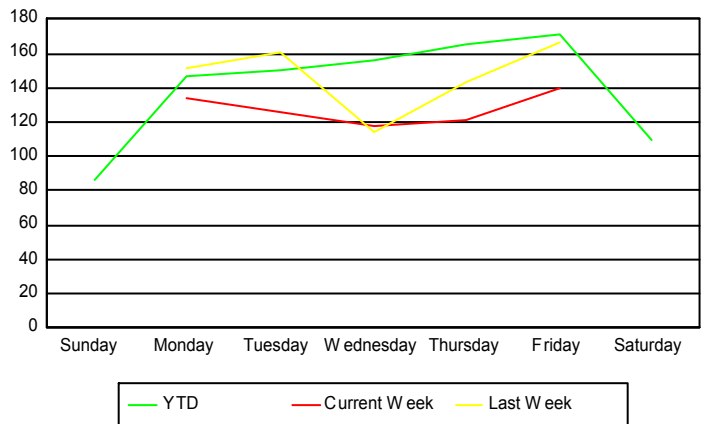
Avg # of events with a RR/SIRV Response per Day of the Week



Avg # of RR/SIRV Responses per Day of the Week



Avg # of RR/SIRV Activities Performed per Day of the Week



Road Ranger/ SIRV Responses per Time of Day and Day of Week

