



Weekly Performance Measures Report Broward County



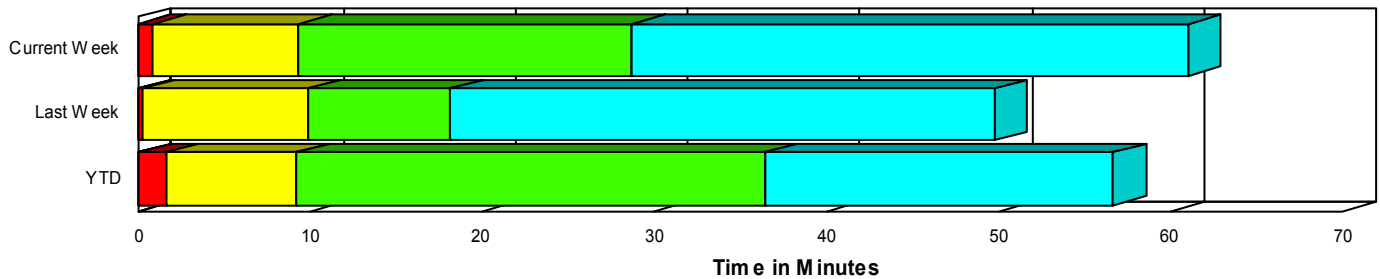
Period From Nov 16, 2008 to Nov 22, 2008

Created on:
November 24, 2008
8:23 am

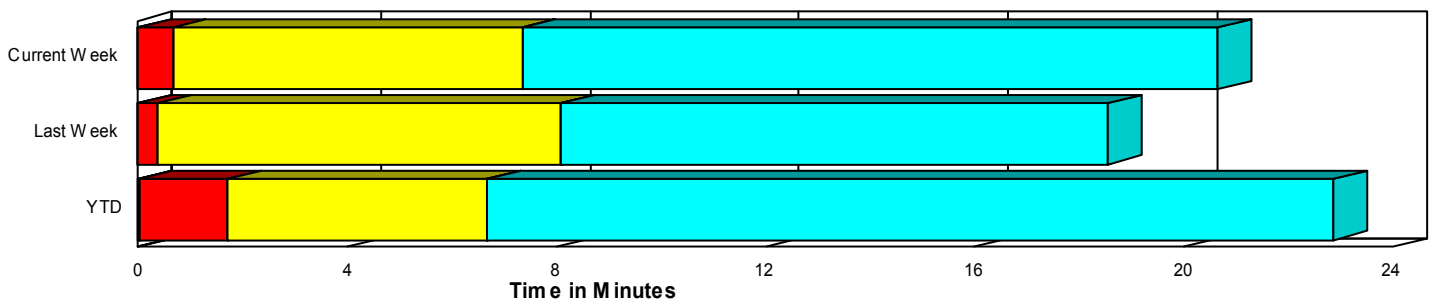
Performance Measures Summary

	Traffic Events (No Lanes Blocked)			Incidents (Lanes Blocked)		
	<u>This Week</u>	<u>Last Week</u>	<u>YTD</u>	<u>This Week</u>	<u>Last Week</u>	<u>YTD</u>
Number of Events	1,135	1,037	42,514	40	40	2,166
TMC Detection (min.)	0.00	0.00	0.01	0.00	0.00	0.03
TMC Verification (min.)	0.65	0.38	1.69	0.88	0.24	1.58
TMC Response (min.)	8.11	8.55	7.25	9.57	9.79	9.29
RR Dispatch Time (min.)	1.09	1.99	1.44	1.93	3.18	2.41
RR Response Time (min.)	7.15	6.34	5.99	7.75	7.08	6.92
Roadway Clearance (min.)				30.67	22.76	35.71
Event Clearance (min.)	21.43	19.01	23.47	62.34	54.37	54.75
# of Events w/ RR/SIRV	710	630	34,833	33	31	2,014
RR/SIRV Responses	710	630	34,967	33	31	2,264
RR/SIRV Activities	548	484	32,920	66	59	3,925

Incident Clearance TimeLine



Traffic Event (Non-Lane Blockage) Time-Line



■ Avg. TMC Detection Time	■ Avg. Time from TMC Response to Roadway Clearance*
■ Avg. Time from TMC Detection to TMC Verification	■ Avg. Time from Roadway Clearance to Incident/Event Clearance**
■ Avg. Time from TMC Verification to TMC Response	

* Roadway clearance equals all travel lanes open

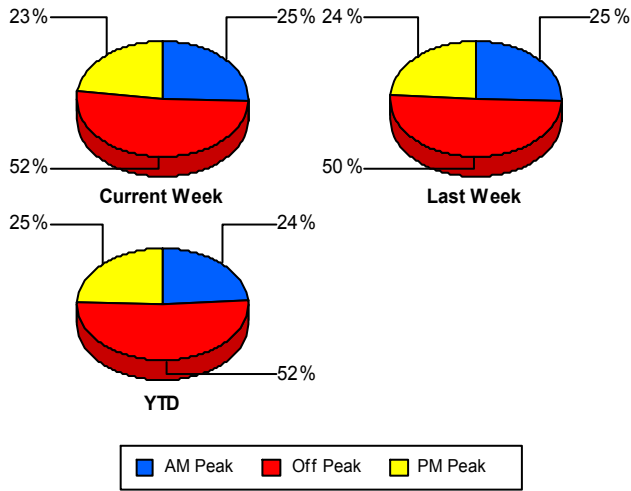
** Incident clearance equals time when last responder has left the scene

Performance Measures by Peak Period

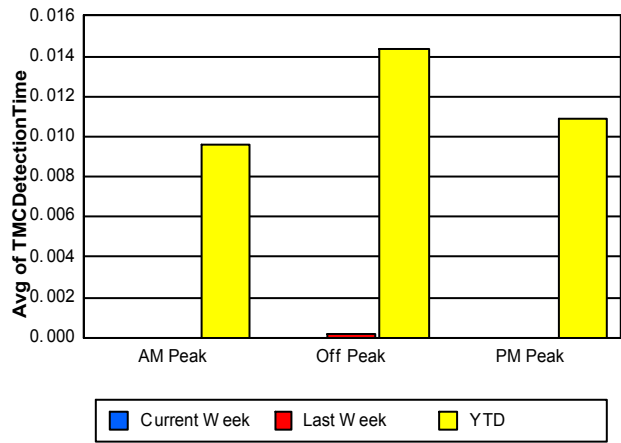
Note: AM peak period is defined as 6am to 10am and PM peak period is defined as 3pm to 7pm.

	AM Peak			Off Peak			PM Peak		
	<u>Current Week</u>	<u>Last Week</u>	<u>YTD</u>	<u>Current Week</u>	<u>Last Week</u>	<u>YTD</u>	<u>Current Week</u>	<u>Last Week</u>	<u>YTD</u>
Number of Events	297	273	10,571	609	543	23,073	269	261	11,036
Number of Incidents	12	21	517	16	11	1,127	12	8	522
TMC Detection (min.)	0.00	0.00	0.01	0.00	0.00	0.01	0.00	0.00	0.01
TMC Verification (min.)	0.68	0.67	1.01	0.60	0.25	2.03	0.77	0.31	1.63
TMC Response (min.)	8.37	7.27	6.26	8.32	10.26	8.40	7.77	8.16	6.51
RR Dispatch Time (min.)	0.84	1.25	1.04	1.38	3.29	1.87	1.08	1.26	1.19
RR Response Time (min.)	7.67	6.12	5.33	7.07	6.08	6.75	6.73	7.10	5.43
Event Clearance (min.)	25.78	21.94	22.26	20.61	21.27	27.54	24.58	16.68	22.25
Roadway Clearance (min.)	20.33	17.00	31.54	47.67	29.38	42.45	18.33	28.77	25.29
Incident Clearance (min.)	63.66	61.09	52.80	67.25	51.04	61.16	54.46	41.30	42.86
# of Events w/ RR/SIRV	235	221	9,166	310	257	18,279	198	183	9,402
RR/SIRV Responses	235	221	9,270	310	257	18,487	198	183	9,474
RR/SIRV Activities	204	199	9,256	241	194	18,127	169	150	9,462

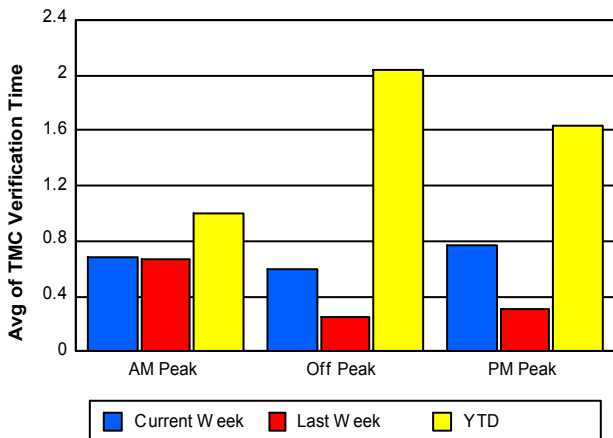
Number of Events / Peak Period



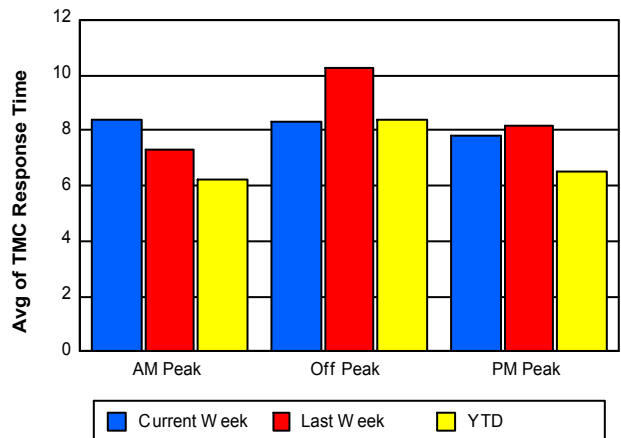
TMC Detection Time



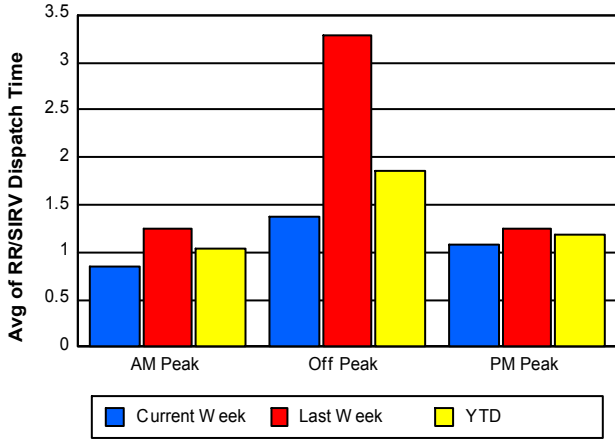
TMC Verification Time



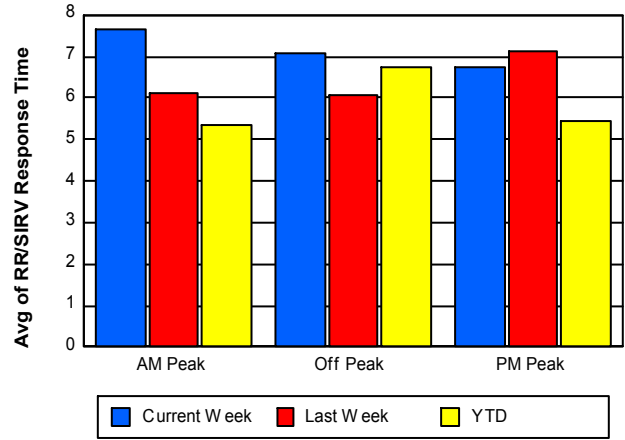
TMC Response Time



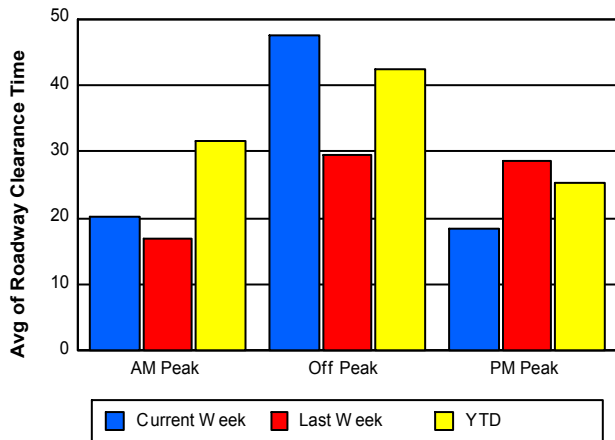
Road Ranger / SIRV Dispatch Time



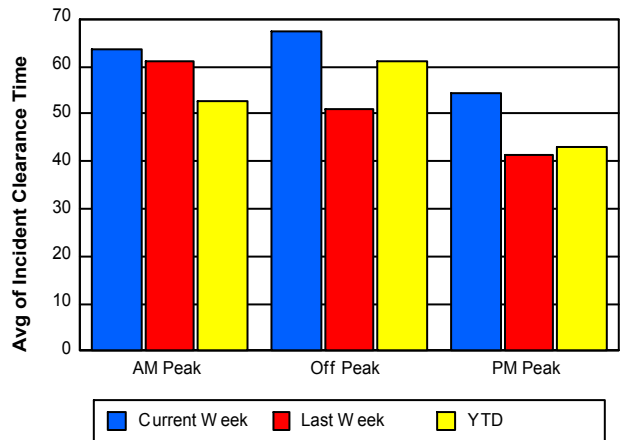
Road Ranger / SIRV Response Time



Roadway Clearance Time (2A)



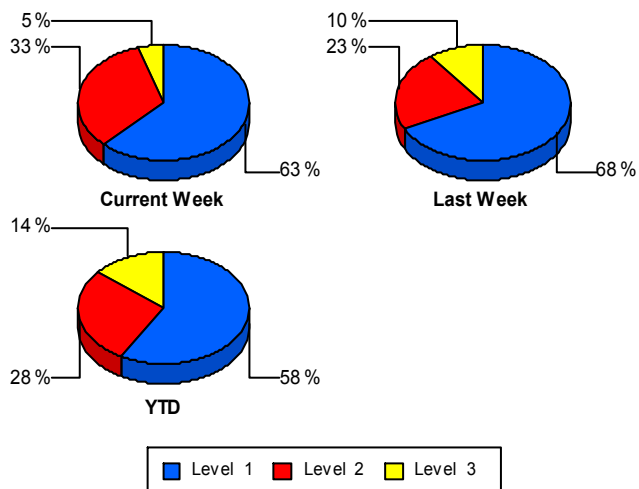
Incident Clearance Time (3B)



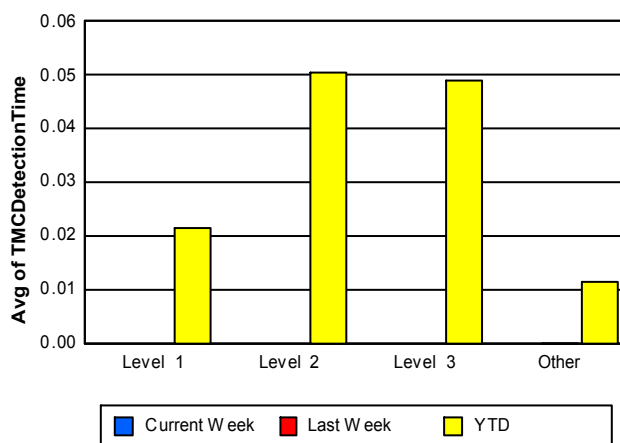
Performance Measures by Severity

	Level 1			Level 2			Level 3			Other		
	<u>This Week</u>	<u>Last Week</u>	<u>YTD</u>	<u>This Week</u>	<u>Last Week</u>	<u>YTD</u>	<u>This Week</u>	<u>Last Week</u>	<u>YTD</u>	<u>This Week</u>	<u>Last Week</u>	<u>YTD</u>
Number of Events	25	27	1,256	13	9	605	2	4	305	1,135	1,037	42,514
Number of Incidents	25	27	1,256	13	9	605	2	4	305	0	0	0
TMC Detection (min.)	0.00	0.00	0.02	0.00	0.00	0.05	0.00	0.00	0.05	0.00	0.00	0.01
TMC Verification (min.)	0.66	0.35	0.92	1.44	0.00	2.40	0.00	0.00	2.68	0.65	0.38	1.69
TMC Response (min.)	7.75	9.84	7.85	11.25	12.26	10.85	30.85	3.03	12.04	8.11	8.55	7.25
RR Dispatch Time (min.)	1.70	2.69	2.23	2.14	2.86	2.43	4.87	7.39	3.13	1.09	1.99	1.44
RR Resp. Time (min.)	6.23	7.15	5.66	9.11	8.95	8.41	25.98	1.60	9.07	7.15	6.34	5.99
Event Clearance (min.)	56.59	54.87	38.94	60.92	58.51	65.99	143.37	41.65	97.53	21.43	19.01	23.47
Roadway Clear. (min.)	13.83	14.58	14.90	46.11	48.42	50.18	140.82	20.18	92.67			
Incident Clearance (min.)	56.59	54.87	38.94	60.92	58.51	65.99	143.37	41.65	97.53			
# of Events w/ RR/SIRV	22	22	1,167	10	6	566	1	3	281	710	630	34,833
RR/SIRV Responses	22	22	1,240	10	6	640	1	3	384	710	630	34,967
RR/SIRV Activities	37	42	1,921	27	12	1,218	2	5	786	548	484	32,920

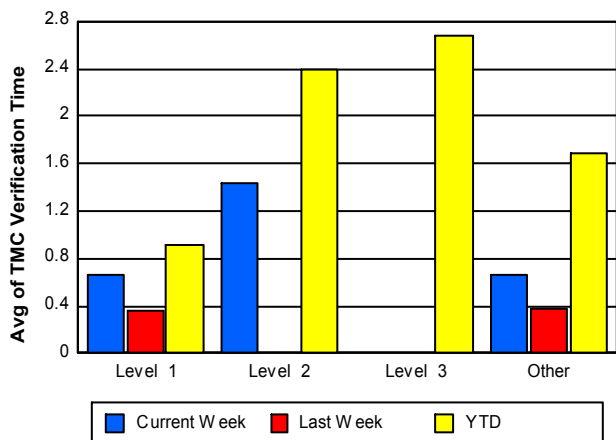
Number of Events / Severity



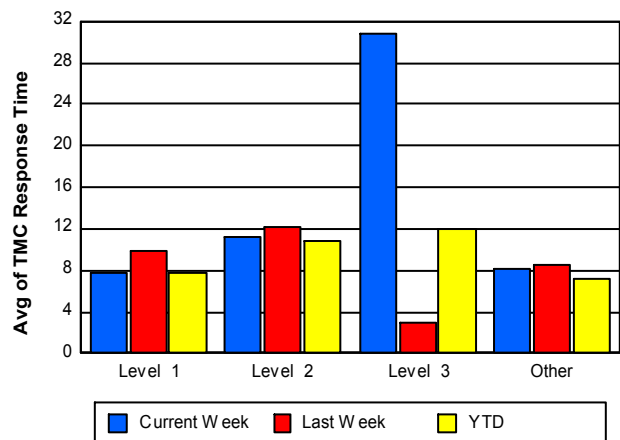
TMC Detection Time



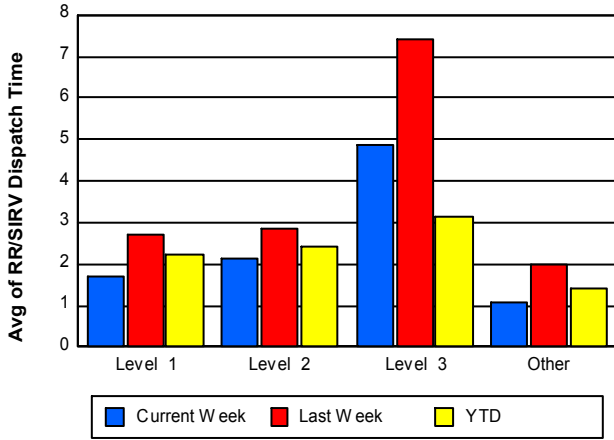
TMC Verification Time



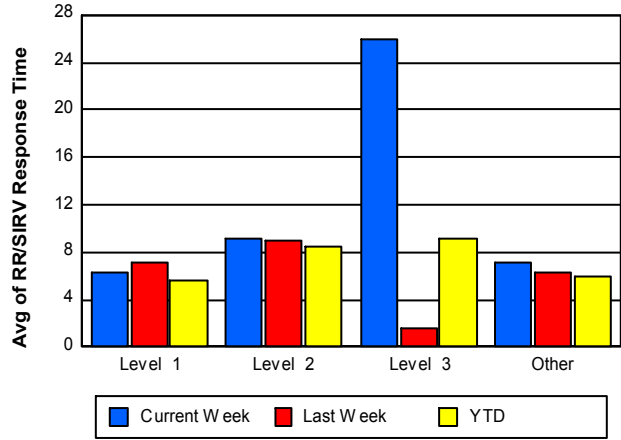
TMC Response Time



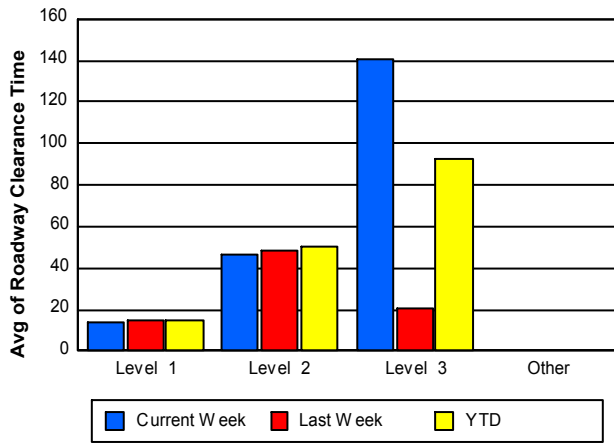
Road Ranger / SIRV Dispatch Time



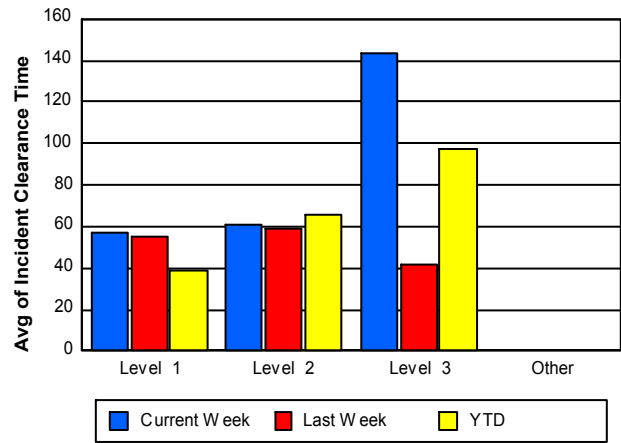
Road Ranger / SIRV Response Time



Roadway Clearance Time (2A)



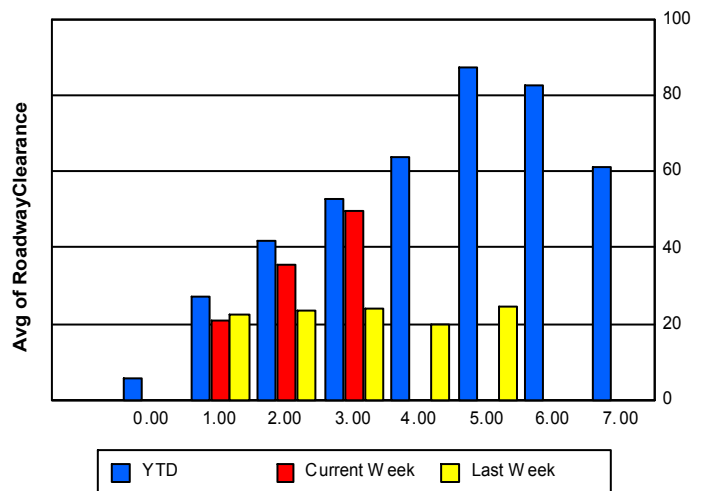
Incident Clearance Time (3B)



Roadway Clearance by Maximum Number of Lanes Blocked

	Current Week	Last Week	YTD
	0.00	0.00	
0			5.87
1	20.73	22.56	27.05
2	35.68	23.46	41.61
3	49.75	24.02	52.63
4	0.00	19.95	63.65
5	0.00	24.57	87.12
6	0.00	0.00	82.72

Roadway Clearance Time(2A)



	Current Week	Last Week	YTD
7	0.00	0.00	60.95

Performance Measures by Roadway

595

	<u>Current Week</u>	<u>Last Week</u>	<u>YTD</u>
Number of Events	182	144	6,861
Number of Incidents	7	7	379
TMC Detection (min.)	0.00	0.00	0.01
TMC Verification (min.)	1.12	0.69	1.89
TMC Response (min.)	8.68	8.01	7.77
RR Dispatch Time (min.)	0.91	1.04	1.92
RR Resp. Time (min.)	7.84	7.02	5.89
Event Clearance (min.)	22.64	21.07	25.33
Roadway Clear. (min.)	59.47	13.30	37.95
Incident Clearance (min.)	112.67	39.14	52.67
# of Events w/ RR/SIRV	121	91	5,793
RR/SIRV Responses	121	91	5,856
RR/SIRV Activities	109	75	5,943

75

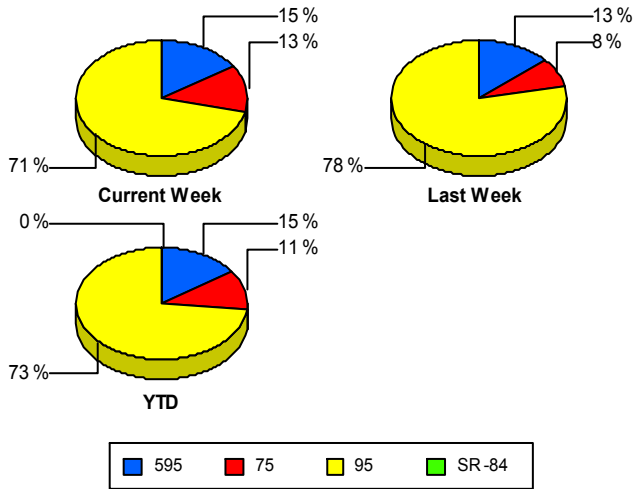
	<u>Current Week</u>	<u>Last Week</u>	<u>YTD</u>
Number of Events	155	88	5,036
Number of Incidents	2	3	130
TMC Detection (min.)	0.00	0.00	0.02
TMC Verification (min.)	1.42	1.41	5.78
TMC Response (min.)	10.22	3.11	6.29
RR Dispatch Time (min.)	1.00	0.66	0.91
RR Resp. Time (min.)	9.55	2.72	5.42
Event Clearance (min.)	32.67	18.85	26.24
Roadway Clear. (min.)	32.49	18.91	61.11
Incident Clearance (min.)	31.78	53.73	67.38
# of Events w/ RR/SIRV	110	74	4,943
RR/SIRV Responses	110	74	4,976
RR/SIRV Activities	97	73	5,388

95

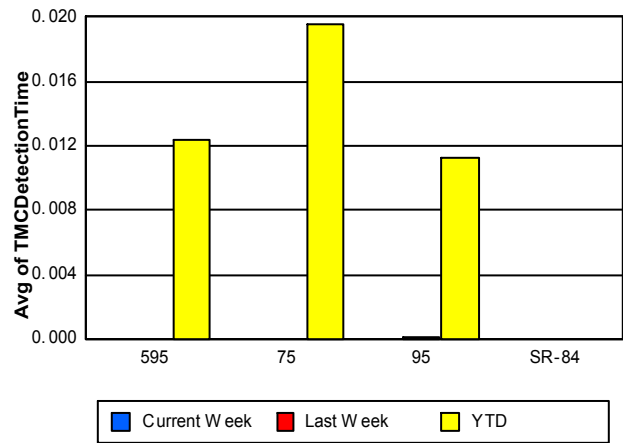
	<u>Current Week</u>	<u>Last Week</u>	<u>YTD</u>
Number of Events	838	845	32,782
Number of Incidents	31	30	1,657
TMC Detection (min.)	0.00	0.00	0.01
TMC Verification (min.)	0.42	0.21	1.02
TMC Response (min.)	7.55	9.85	7.52
RR Dispatch Time (min.)	1.21	2.43	1.50
RR Resp. Time (min.)	6.41	7.01	6.23
Event Clearance (min.)	21.05	20.35	24.72
Roadway Clear. (min.)	24.04	25.35	33.20
Incident Clearance (min.)	52.94	57.98	54.24
# of Events w/ RR/SIRV	512	496	26,111
RR/SIRV Responses	512	496	26,399
RR/SIRV Activities	408	395	25,514

	<u>YTD</u>
Number of Events	1
Number of Incidents	0
TMC Detection (min.)	0.00
TMC Verification (min.)	0.47
TMC Response (min.)	
RR Dispatch Time (min.)	
RR Resp. Time (min.)	
Event Clearance (min.)	5.22
Roadway Clear. (min.)	
Incident Clearance (min.)	
# of Events w/ RR/SIRV	0
RR/SIRV Responses	0
RR/SIRV Activities	0

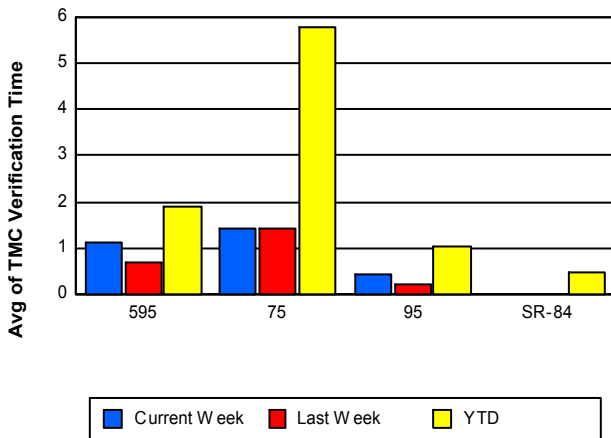
Number of Events / Roadway



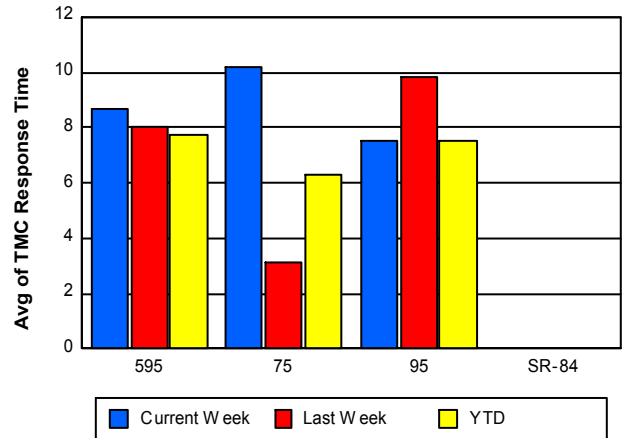
TMC Detection Time



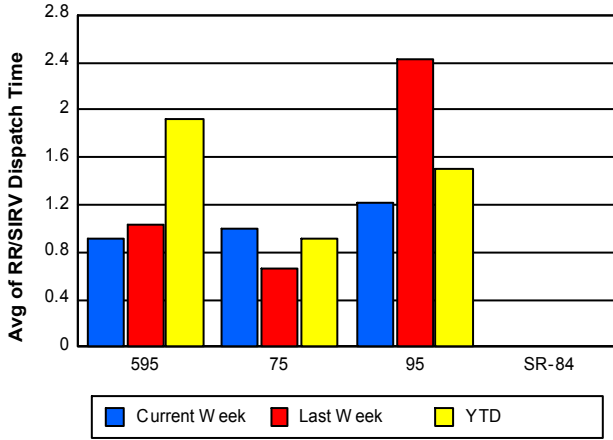
TMC Verification Time



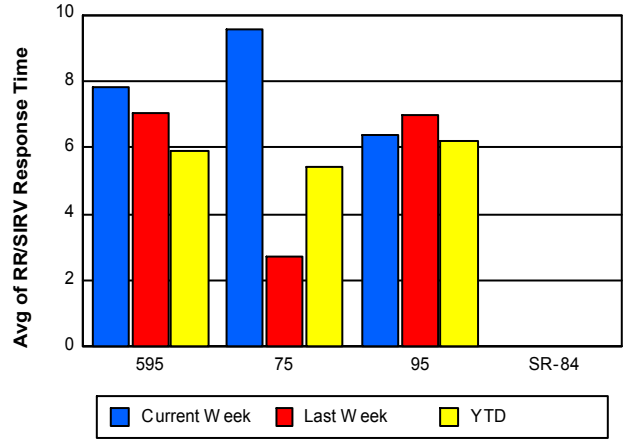
TMC Response Time



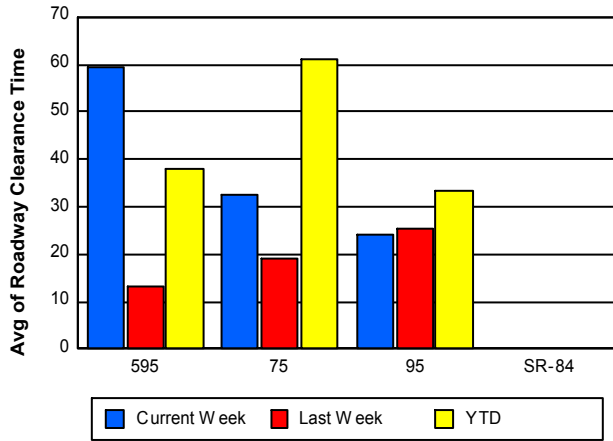
Road Ranger / SIRV Dispatch Time



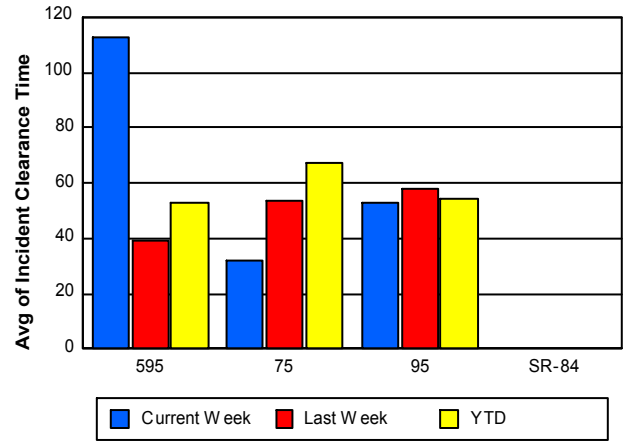
Road Ranger / SIRV Response Time



Roadway Clearance Time (2A)



Incident Clearance Time (3B)



Performance Measures by Event Type

Abandoned Vehicle

	<u>YTD</u>
Number of Events	910
Number of Incidents	1
TMC Detection (min.)	0.06
TMC Verification (min.)	0.32
TMC Response (min.)	7.63
RR Dispatch Time (min.)	2.06
RR Response Time (min.)	6.10
Event Clearance (min.)	252.40
Roadway Clearance (min.)	21.48
Incident Clearance (min.)	26.25
# of Events w/ RR/SIRV	700
RR/SIRV Assists	707
RR/SIRV Activities	711

Accident

	<u>Current Week</u>	<u>Last Week</u>	<u>YTD</u>
Number of Events	92	70	3,427
Number of Incidents	31	27	1,578
TMC Detection (min.)	0.00	0.00	0.03
TMC Verification (min.)	0.39	1.00	1.84
TMC Response (min.)	9.47	8.38	8.21
RR Dispatch Time (min.)	1.13	2.05	1.73
RR Response Time (min.)	8.40	6.67	6.51
Event Clearance (min.)	52.92	50.33	45.51
Roadway Clearance (min.)	32.19	19.47	36.18
Incident Clearance (min.)	69.39	62.82	59.47
# of Events w/ RR/SIRV	68	51	3,195
RR/SIRV Assists	68	51	3,422
RR/SIRV Activities	95	77	4,930

Congestion

	<u>YTD</u>
Number of Events	2
Number of Incidents	0
TMC Detection (min.)	0.00
TMC Verification (min.)	0.00
TMC Response (min.)	
RR Dispatch Time (min.)	
RR Response Time (min.)	
Event Clearance (min.)	105.74
Roadway Clearance (min.)	
Incident Clearance (min.)	
# of Events w/ RR/SIRV	0
RR/SIRV Assists	0
RR/SIRV Activities	0

Debris on Roadway

	<u>Current Week</u>	<u>Last Week</u>	<u>YTD</u>
Number of Events	27	19	1,700
Number of Incidents	0	0	31
TMC Detection (min.)	0.00	0.00	0.03
TMC Verification (min.)	6.79	1.48	5.37
TMC Response (min.)	9.80	5.12	7.87
RR Dispatch Time (min.)	1.03	0.61	1.09
RR Response Time (min.)	8.76	4.51	6.81
Event Clearance (min.)	15.46	8.58	12.26
Roadway Clearance (min.)			43.85
Incident Clearance (min.)			51.47
# of Events w/ RR/SIRV	26	18	1,643
RR/SIRV Assists	26	18	1,670
RR/SIRV Activities	32	18	1,757

Disabled Vehicle

	<u>Current Week</u>	<u>Last Week</u>	<u>YTD</u>
Number of Events	557	564	28,368
Number of Incidents	4	7	347
TMC Detection (min.)	0.00	0.00	0.01
TMC Verification (min.)	0.93	0.52	2.00
TMC Response (min.)	7.80	8.80	7.16
RR Dispatch Time (min.)	1.04	2.35	1.42
RR Response Time (min.)	6.79	6.36	5.88
Event Clearance (min.)	26.93	24.40	20.48
Roadway Clearance (min.)	21.07	37.27	24.52
Incident Clearance (min.)	31.91	44.37	36.35
# of Events w/ RR/SIRV	459	443	26,843
RR/SIRV Assists	459	443	26,939
RR/SIRV Activities	445	418	28,095

Emergency Vehicles

	<u>Last Week</u>	<u>YTD</u>
Number of Events	4	63
Number of Incidents	4	58
TMC Detection (min.)	0.00	0.06
TMC Verification (min.)	0.00	0.34
TMC Response (min.)	2.39	7.28
RR Dispatch Time (min.)	1.96	2.42
RR Response Time (min.)	0.44	4.94
Event Clearance (min.)	18.35	38.92
Roadway Clearance (min.)	11.89	38.47
Incident Clearance (min.)	18.35	39.60
# of Events w/ RR/SIRV	3	49
RR/SIRV Assists	3	51
RR/SIRV Activities	7	80

Other

	<u>Current Week</u>	<u>Last Week</u>	<u>YTD</u>
Number of Events	482	407	9,786
Number of Incidents	1	0	23
TMC Detection (min.)	0.00	0.00	0.00
TMC Verification (min.)	0.00	0.01	0.26
TMC Response (min.)	8.91	9.94	10.04
RR Dispatch Time (min.)	1.37	1.31	1.76
RR Response Time (min.)	8.16	8.66	8.58
Event Clearance (min.)	12.31	9.78	11.59
Roadway Clearance (min.)	44.82		20.04
Incident Clearance (min.)	18.68		26.38
# of Events w/ RR/SIRV	180	143	4,063
RR/SIRV Assists	180	143	4,068
RR/SIRV Activities	28	20	833

Pedestrian

	<u>YTD</u>
Number of Events	41
Number of Incidents	0
TMC Detection (min.)	0.01
TMC Verification (min.)	1.34
TMC Response (min.)	2.56
RR Dispatch Time (min.)	0.37
RR Response Time (min.)	2.29
Event Clearance (min.)	10.68
Roadway Clearance (min.)	
Incident Clearance (min.)	
# of Events w/ RR/SIRV	37
RR/SIRV Assists	37
RR/SIRV Activities	39

Police Activity

	<u>Current Week</u>	<u>Last Week</u>	<u>YTD</u>
Number of Events	9	6	150
Number of Incidents	3	0	87
TMC Detection (min.)	0.00	0.00	0.02
TMC Verification (min.)	2.03	0.02	1.56
TMC Response (min.)	18.52		10.31
RR Dispatch Time (min.)	2.82		2.75
RR Response Time (min.)	15.70		7.42
Event Clearance (min.)	38.55	38.84	44.22
Roadway Clearance (min.)	24.72		69.59
Incident Clearance (min.)	51.59		56.98
# of Events w/ RR/SIRV	3	0	102
RR/SIRV Assists	3	0	122
RR/SIRV Activities	6	0	163

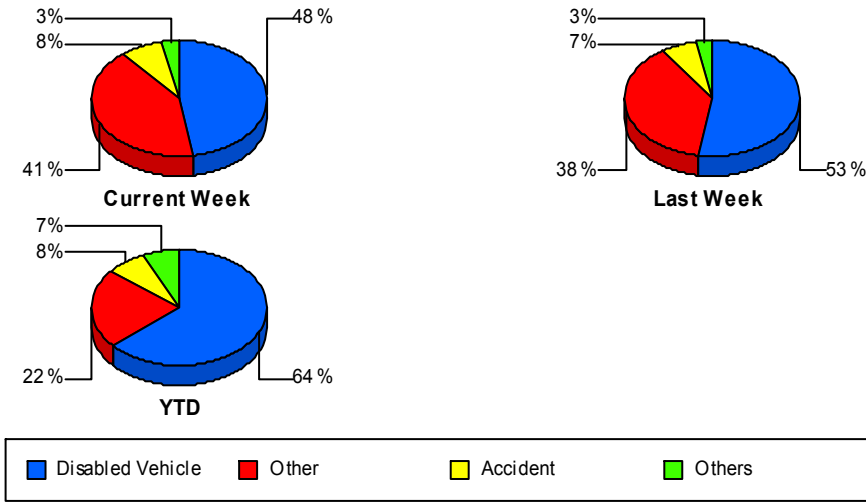
Vehicle Fire

	<u>Current Week</u>	<u>Last Week</u>	<u>YTD</u>
Number of Events	3	4	52
Number of Incidents	1	2	40
TMC Detection (min.)	0.00	0.00	0.00
TMC Verification (min.)	5.17	0.17	0.82
TMC Response (min.)	10.28	17.40	8.91
RR Dispatch Time (min.)	1.13	0.50	2.60
RR Response Time (min.)	9.14	16.90	6.31
Event Clearance (min.)	57.98	30.81	60.58
Roadway Clearance (min.)	25.38	38.08	39.81
Incident Clearance (min.)	41.40	47.26	65.98
# of Events w/ RR/SIRV	2	1	44
RR/SIRV Assists	2	1	44
RR/SIRV Activities	4	1	79

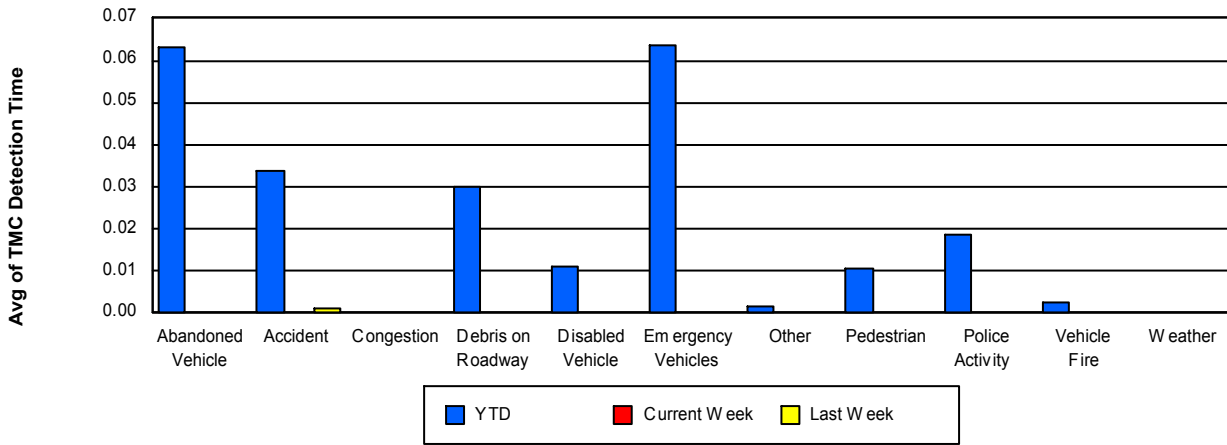
Weather

	<u>YTD</u>
Number of Events	1
Number of Incidents	0
TMC Detection (min.)	0.00
TMC Verification (min.)	0.00
TMC Response (min.)	
RR Dispatch Time (min.)	
RR Response Time (min.)	
Event Clearance (min.)	1.25
Roadway Clearance (min.)	
Incident Clearance (min.)	
# of Events w/ RR/SIRV	0
RR/SIRV Assists	0
RR/SIRV Activities	0

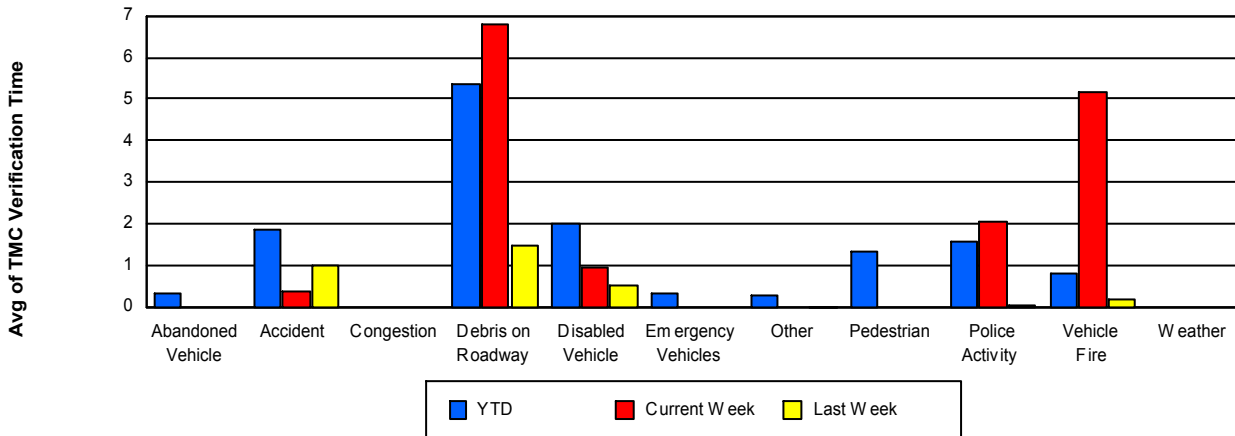
Number of Events / Event Type



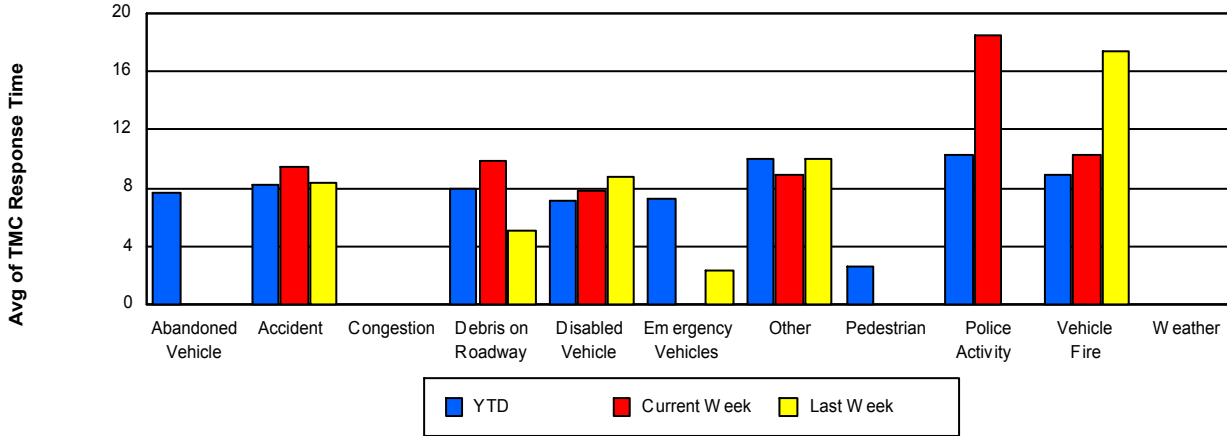
TMC Detection Time



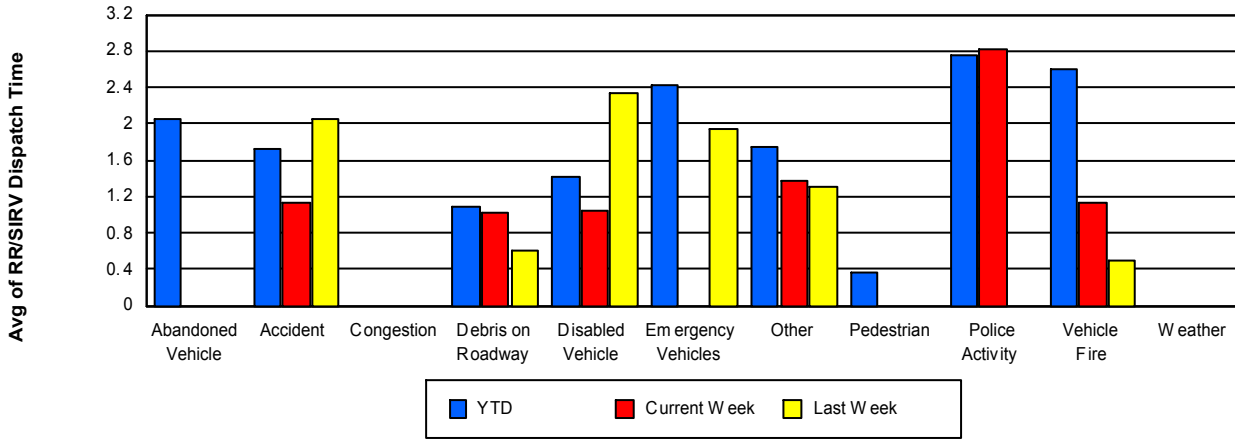
TMC Verification Time



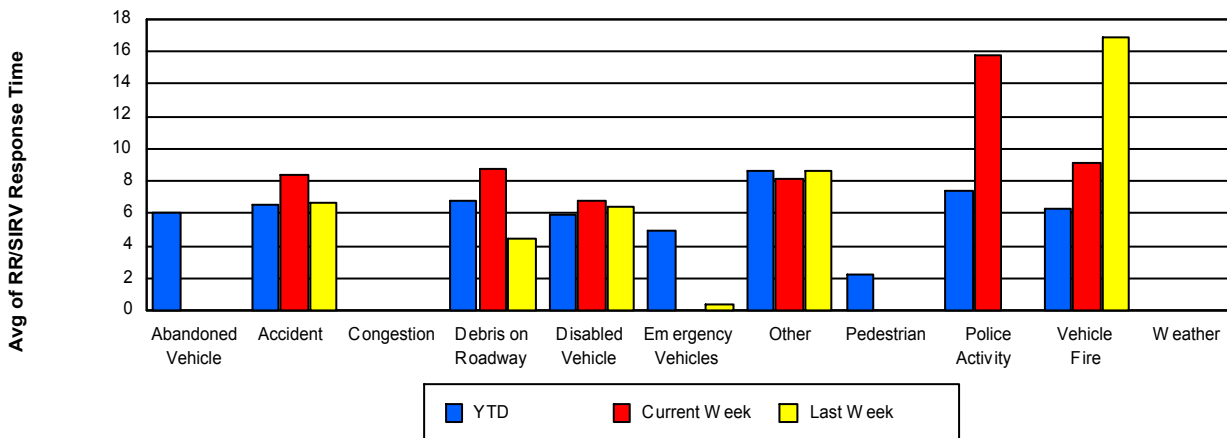
TMC Response Time



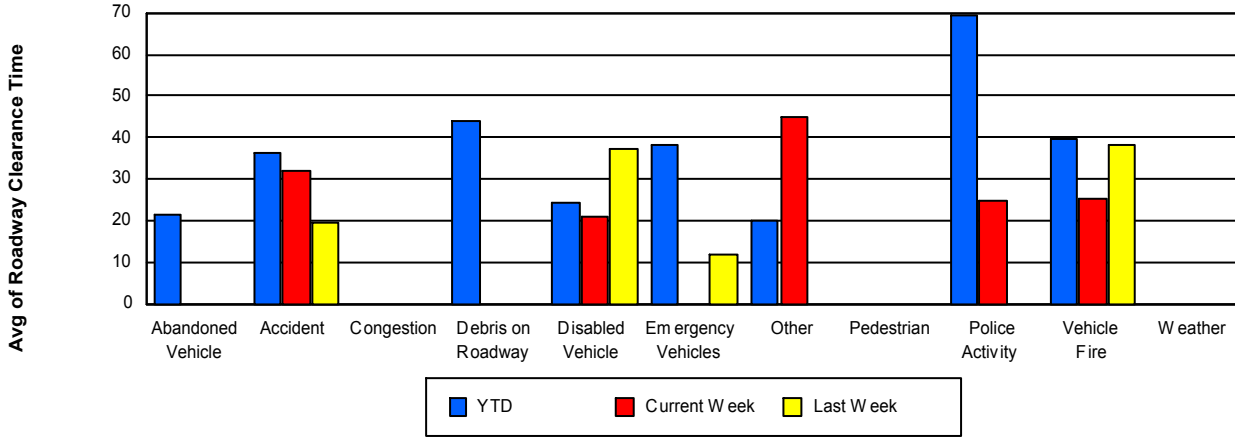
Road Ranger / SIRV Dispatch Time



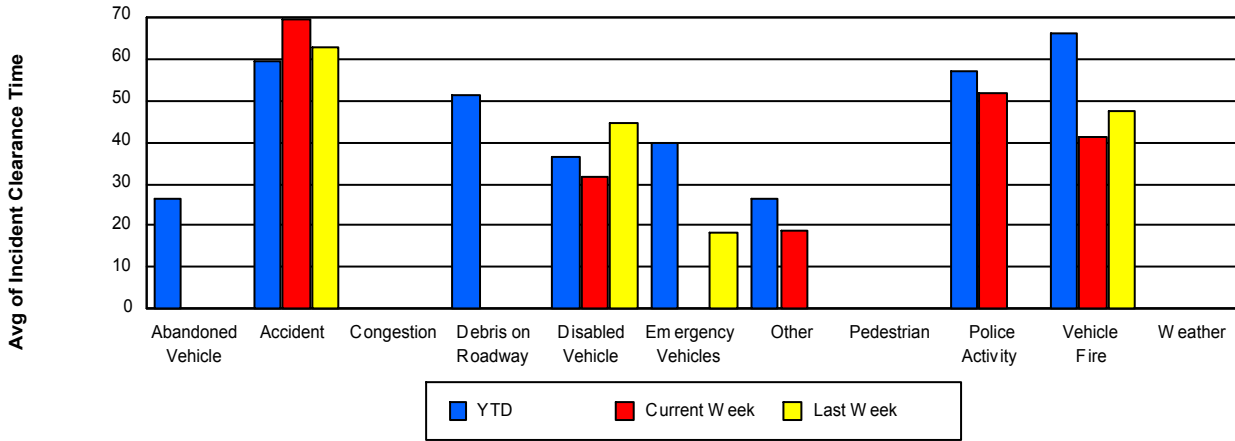
Road Ranger / SIRV Response Time



Roadway Clearance Time (2A)



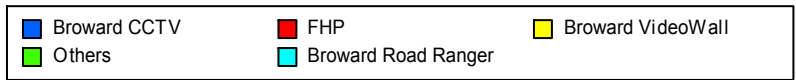
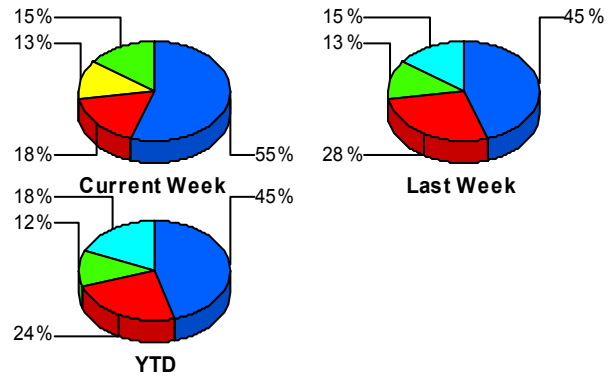
Incident Clearance Time (3B)



Incident Detection Methods

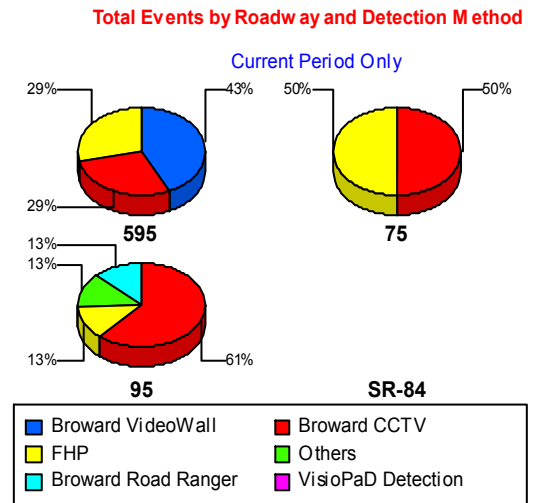
	Current Week	Last Week	YTD
Broward CCTV	22	18	985
Broward Road Ranger	4	6	399
Broward VideoWall	5	4	56
BSO	0	0	19
District 4	1	0	52
District 6	0	0	4
FDOT Maintenance	0	0	2
FHP	7	11	526
Fire	0	0	6
Florida's Turnpike	0	0	8
ITMS	0	0	2
Motorist	0	0	17
Other	0	0	1
Palm Beach Road Rang	0	0	8
PSAP	0	0	3
Road Watcher	0	0	14
SIRV	0	0	7
SmarTraveler (511)	0	0	10
VisioPaD Detection	1	1	47
Total	40	40	2,166

Total Incidents by Detection Method



Incident Detection Methods by Roadway

		Current Week	Last Week	YTD
595	Broward CCTV	2	2	138
	Broward Road Ranger	0	2	79
	Broward VideoWall	3	1	10
	BSO	0	0	10
	District 4	0	0	8
	FHP	2	2	111
	Florida's Turnpike	0	0	8
	Motorist	0	0	3
	Road Watcher	0	0	5
	SIRV	0	0	2
	SmarTraveler (511)	0	0	1
	VisioPaD Detection	0	0	4
	Total	7	7	379
	75	Broward CCTV	1	0
Broward Road Ranger		0	1	56
BSO		0	0	5
District 4		0	0	7
District 6		0	0	2
FHP		1	2	56
Road Watcher		0	0	1
SIRV		0	0	1
SmarTraveler (511)		0	0	1
Total		2	3	130
95		Broward CCTV	19	16
	Broward Road Ranger	4	3	264
	Broward VideoWall	2	3	46
	BSO	0	0	4
	District 4	1	0	37
	District 6	0	0	2
	FDOT Maintenance	0	0	2
	FHP	4	7	359

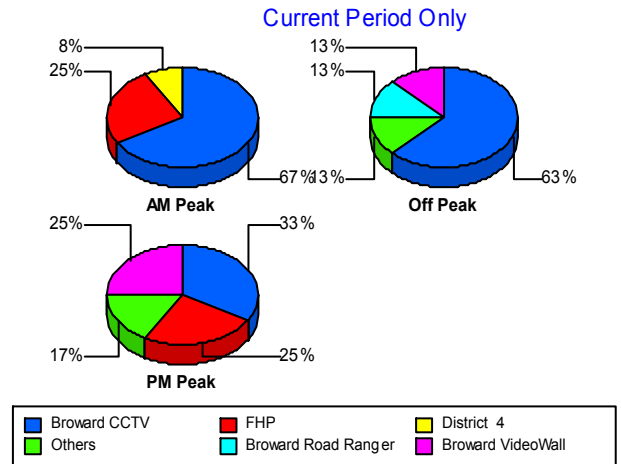


		Current Week	Last Week	YTD
95	Fire	0	0	6
	ITMS	0	0	2
	Motorist	0	0	14
	Other	0	0	1
	Palm Beach Road Rang	0	0	8
	PSAP	0	0	3
	Road Watcher	0	0	8
	SIRV	0	0	4
	SmarTraveler (511)	0	0	8
	VisioPaD Detection	1	1	43
	Total	31	30	1,657
Total	40	40	2,166	

Incident Detection Methods by Peak Period

		Current Week	Last Week	YTD
AM Peak	Broward CCTV	8	8	233
	Broward Road Ranger	0	4	102
	Broward VideoWall	0	2	19
	BSO	0	0	5
	District 4	1	0	13
	FHP	3	7	116
	Fire	0	0	1
	Florida's Turnpike	0	0	3
	Motorist	0	0	3
	Palm Beach Road Rang	0	0	5
	PSAP	0	0	1
	Road Watcher	0	0	7
	SIRV	0	0	3
	SmarTraveler (511)	0	0	1
	VisioPaD Detection	0	0	5
	Total	12	21	517
	Off Peak	Broward CCTV	10	6

Total Events by Peak Period and Detection Method



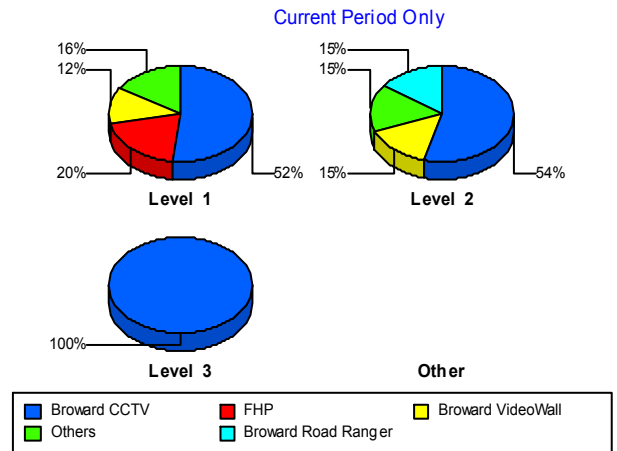
		Current Week	Last Week	YTD
Off Peak	Broward Road Ranger	2	0	186
	Broward VideoWall	2	1	25
	BSO	0	0	7
	District 4	0	0	25
	District 6	0	0	3
	FDOT Maintenance	0	0	2
	FHP	1	3	294
	Fire	0	0	4
	Florida's Turnpike	0	0	4
	ITMS	0	0	1
	Motorist	0	0	6
	Other	0	0	1
	Palm Beach Road Rang	0	0	3
	PSAP	0	0	2
	Road Watcher	0	0	3
	SIRV	0	0	2
	SmarTraveler (511)	0	0	1
	VisioPaD Detection	1	1	38
	Total	16	11	1,127
	PM Peak	Broward CCTV	4	4
Broward Road Ranger		2	2	111
Broward VideoWall		3	1	12
BSO		0	0	7
District 4		0	0	14
District 6		0	0	1
FHP		3	1	116
Fire		0	0	1
Florida's Turnpike		0	0	1
ITMS		0	0	1
Motorist		0	0	8
Road Watcher		0	0	4
SIRV		0	0	2

		Current Week	Last Week	YTD
PM Peak	SmarTraveler (511)	0	0	8
	VisioPaD Detection	0	0	4
	Total	12	8	522
Total		40	40	2,166

Incident Detection Methods by Severity

		Current Week	Last Week	YTD	
Level 1	Broward CCTV	13	14	607	
	Broward Road Ranger	2	4	256	
	Broward VideoWall	3	1	35	
	BSO	0	0	3	
	District 4	1	0	30	
	District 6	0	0	3	
	FHP	5	7	249	
	Fire	0	0	3	
	Florida's Turnpike	0	0	2	
	ITMS	0	0	1	
	Motorist	0	0	9	
	Palm Beach Road Rang	0	0	6	
	PSAP	0	0	2	
	Road Watcher	0	0	12	
	SIRV	0	0	5	
	SmarTraveler (511)	0	0	7	
	VisioPaD Detection	1	1	26	
	Total	25	27	1,256	
	Level 2	Broward CCTV	7	4	275
		Broward Road Ranger	2	1	99
Broward VideoWall		2	2	13	
BSO		0	0	9	
District 4		0	0	11	
District 6		0	0	1	
FDOT Maintenance		0	0	1	

Total Events by Severity and Detection Method



		Current Week	Last Week	YTD
Level 2	FHP	2	2	164
	Fire	0	0	1
	ITMS	0	0	1
	Motorist	0	0	7
	Palm Beach Road Rang	0	0	1
	PSAP	0	0	1
	Road Watcher	0	0	1
	SIRV	0	0	1
	SmarTraveler (511)	0	0	2
	VisioPaD Detection	0	0	17
	Total	13	9	605
Level 3	Broward CCTV	2	0	103
	Broward Road Ranger	0	1	44
	Broward VideoWall	0	1	8
	BSO	0	0	7
	District 4	0	0	11
	FDOT Maintenance	0	0	1
	FHP	0	2	113
	Fire	0	0	2
	Florida's Turnpike	0	0	6
	Motorist	0	0	1
	Other	0	0	1
	Palm Beach Road Rang	0	0	1
	Road Watcher	0	0	1
	SIRV	0	0	1
	SmarTraveler (511)	0	0	1
	VisioPaD Detection	0	0	4
Total	2	4	305	
Total	40	40	2,166	

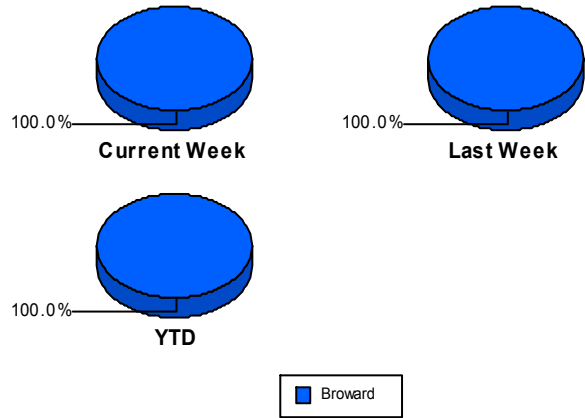
Road Ranger / SIRV Performance Measures

Road Ranger / SIRV Performance By County

Values presented are:
 - Total Events with a RR/SIRV Response
 - Total RR/SIRV Responses,
 - Total Activities Performed

	Current We	Last Week	YTD
Broward	662	606	38,787
	713	654	41,525
	737	675	43,775

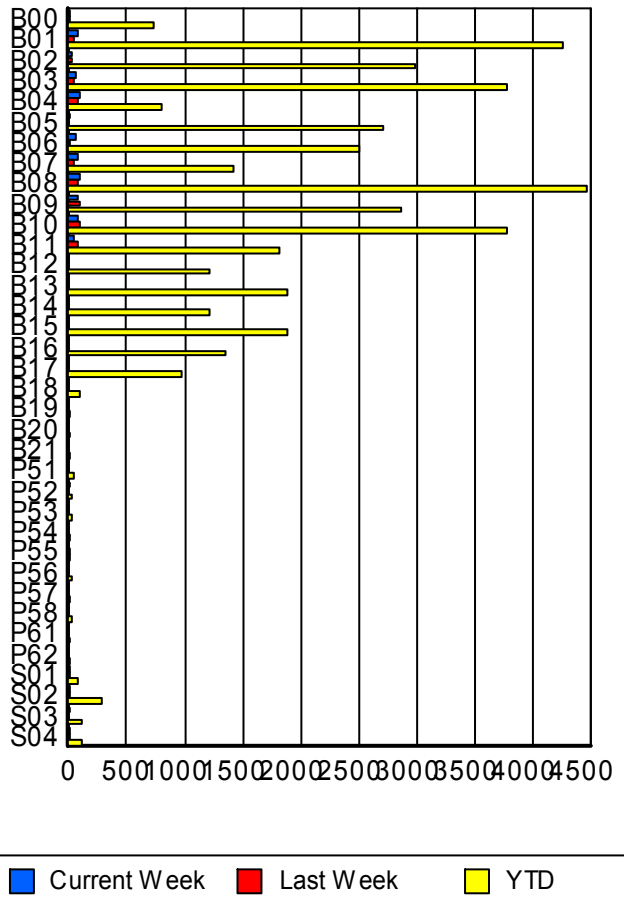
RR/SIRV Responses per County



Road Ranger / SIRV Performance By Truck

	Current We	Last Week	YTD
B00	11	14	721
	11	15	734
	12	17	772
B01	75	49	4,207
	76	49	4,269
	78	50	4,501
B02	29	30	2,952
	30	30	2,996
	32	30	3,158
B03	52	47	3,742
	53	47	3,788
	55	48	4,015
B04	96	80	786
	96	82	795
	98	84	822
B05	2	0	2,682
	2	0	2,708
	2	0	2,890
B06	53	10	2,474
	54	10	2,502
	54	11	2,645
B07	71	47	1,404
	71	50	1,423
	76	53	1,476
B08	86	86	4,406
	88	86	4,477
	91	87	4,709

RR/SIRV Responses per Truck



	Current We	Last Week	YTD
B09	79	89	2,830
	82	89	2,861
	83	93	3,017
B10	86	103	3,739
	86	103	3,778
	90	105	3,990
B11	46	81	1,807
	46	83	1,822
	48	85	1,905
B12	0	0	1,190
	0	0	1,210
	0	0	1,273
B13	0	0	1,859
	0	0	1,882
	0	0	1,989
B14	0	0	1,198
	0	0	1,213
	0	0	1,250
B15	0	0	1,870
	0	0	1,881
	0	0	1,988
B16	0	0	1,332
	0	0	1,347
	0	0	1,414
B17	0	0	968
	0	0	981
	0	0	1,031
B18	0	0	97
	0	0	97
	0	0	101
B19	0	0	2
	0	0	2
	0	0	2
B20	0	0	2
	0	0	2
	0	0	2
B21	0	0	4
	0	0	4
	0	0	4
P51	0	0	35
	0	0	35
	0	0	37
P52	1	0	20
	1	0	20
	1	0	20

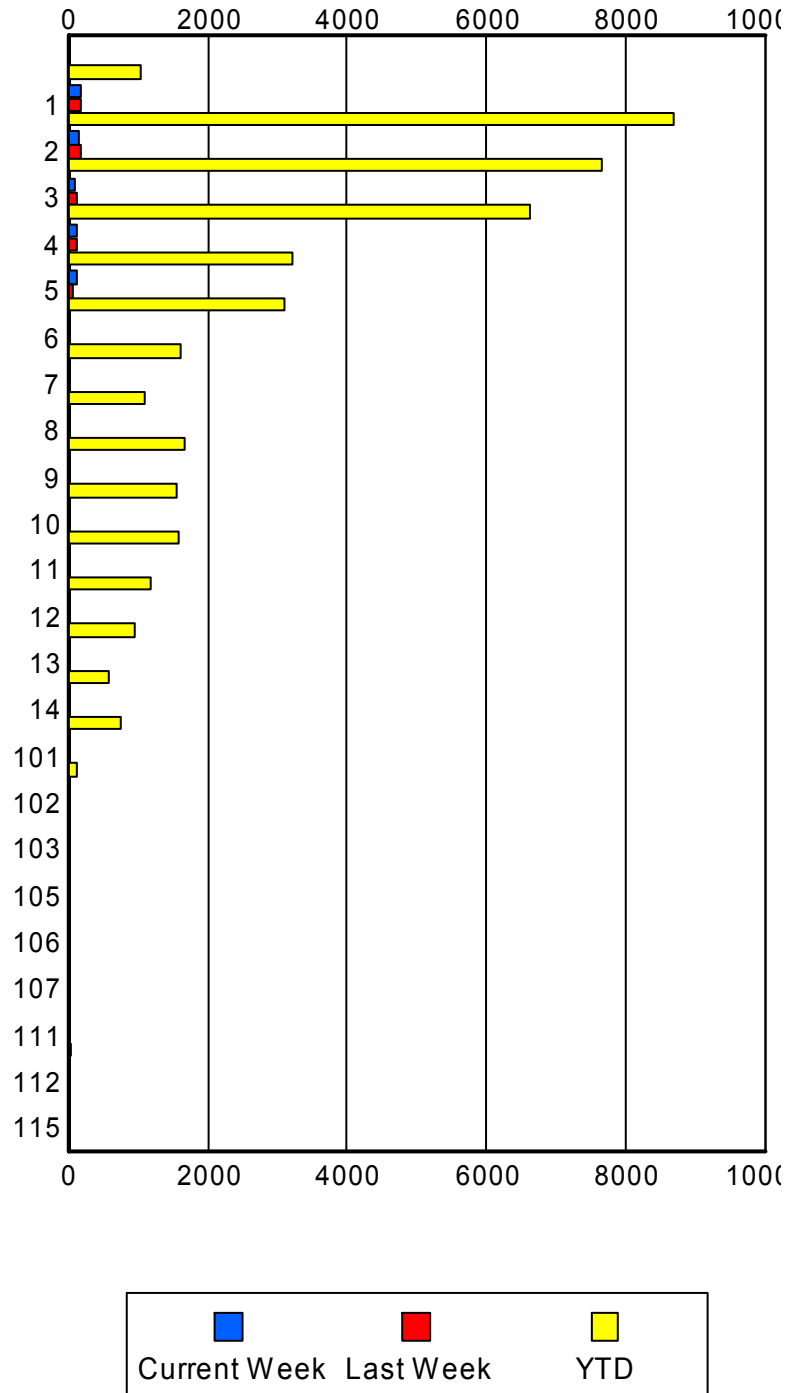
	Current We	Last Week	YTD
P53	0	0	21
	0	0	21
	0	0	24
P54	0	0	13
	0	0	13
	0	0	13
P55	0	1	16
	0	1	16
	0	1	17
P56	0	0	21
	0	0	22
	0	0	26
P57	0	0	11
	0	0	11
	0	0	11
P58	0	0	21
	0	0	21
	0	0	21
P61	0	0	1
	0	0	1
	0	0	1
P62	0	0	3
	0	0	3
	0	0	3
S01	2	1	76
	3	1	78
	3	1	86
S02	5	7	287
	5	7	290
	5	9	315
S03	5	0	106
	5	0	108
	5	0	119
S04	4	1	110
	4	1	114
	4	1	128

Road Ranger / SIRV Performance By Beat

	Current We	Last Week	YTD
	15	9	946
	19	9	1,027
	19	11	1,098
1	166	162	8,313
	176	174	8,688
	179	177	9,133
2	150	165	7,445
	157	169	7,661
	163	172	8,070
3	103	118	6,448
	104	122	6,637
	107	130	6,967
4	119	112	3,175
	119	115	3,225
	127	120	3,383
5	112	62	3,056
	115	64	3,102
	119	64	3,243
6	0	0	1,589
	0	0	1,615
	0	0	1,693
7	0	0	1,095
	0	0	1,111
	0	0	1,164
8	0	0	1,640
	0	0	1,659
	0	0	1,748
9	0	0	1,540
	0	0	1,563
	0	0	1,685
10	22	0	1,578
	22	0	1,598
	22	0	1,712
11	0	0	1,185
	0	0	1,196
	0	0	1,286
12	0	0	942
	0	0	957
	0	0	1,026
13	0	0	578
	0	0	589
	0	0	622
14	0	0	735
	0	0	740
	0	0	778

Values presented are:
 - Total Events with a RR/SIRV Response
 - Total RR/SIRV Responses,
 - Total Activities Performed

RR/SIRV Responses per Beat



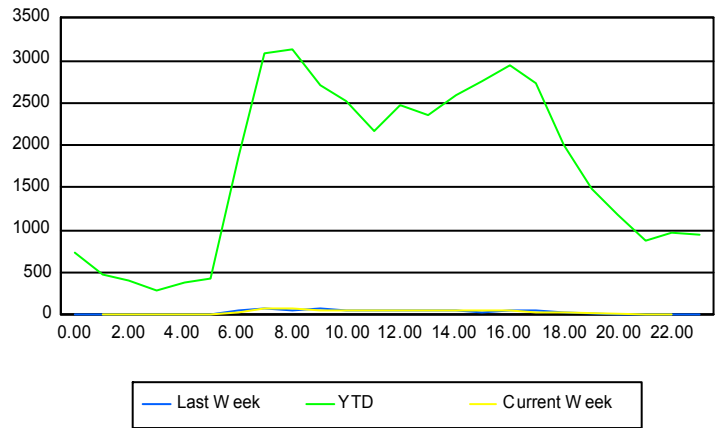
	Current We	Last Week	YTD
101	1 1 1	1 1 1	112 112 120
102	0 0 0	0 0 0	3 4 4
103	0 0 0	0 0 0	3 3 3
105	0 0 0	0 0 0	2 2 2
106	0 0 0	0 0 0	1 1 1
107	0 0 0	0 0 0	3 3 3
111	0 0 0	0 0 0	29 29 31
112	0 0 0	0 0 0	1 1 1
115	0 0 0	0 0 0	2 2 2

Road Ranger / SIRV Performance By Time of Day

Values presented are:
 - Total Events with a RR/SIRV Response
 - Total RR/SIRV Responses,
 - Total Activities Performed

	Current We	Last Week	YTD
12AM-1AM	0 0 0	1 1 1	698 739 794
1AM-2AM	1 1 1	0 0 0	449 479 511
2AM-3AM	1 2 2	1 1 1	355 406 437
3AM-4AM	1 1 1	0 0 0	253 280 302
4AM-5AM	0 0 0	0 0 0	326 377 408
5AM-6AM	2 2 3	6 8 9	349 422 449
6AM-7AM	34 34 34	47 53 56	1,712 1,854 1,925
7AM-8AM	74 81 82	66 75 75	2,897 3,095 3,246
8AM-9AM	69 74 74	38 43 50	2,894 3,137 3,303
9AM-10AM	59 61 65	62 68 69	2,556 2,721 2,858
10AM-11AM	53 60 64	42 44 45	2,387 2,530 2,663
11AM-12PM	43 46 47	41 42 42	2,029 2,178 2,291
12PM-1PM	55 58 59	44 46 46	2,342 2,486 2,605

Number of Responses / Hour of the Day



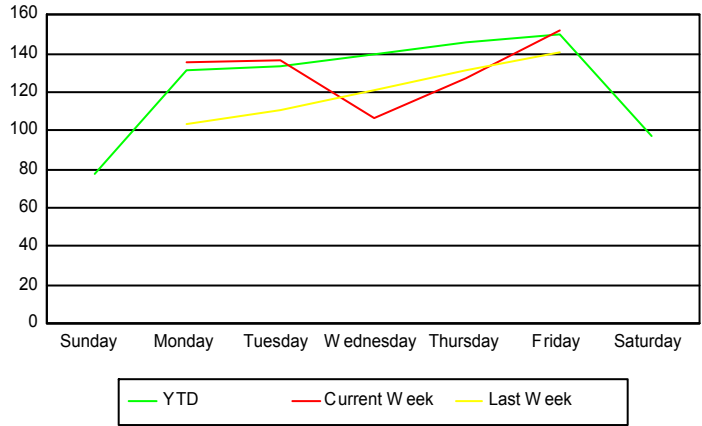
	Current We	Last Week	YTD
1PM-2PM	45	41	2,171
	49	44	2,353
	51	46	2,485
2PM-3PM	56	46	2,443
	57	46	2,603
	60	46	2,725
3PM-4PM	38	32	2,555
	46	32	2,747
	48	32	2,887
4PM-5PM	56	57	2,766
	62	62	2,937
	63	64	3,093
5PM-6PM	35	45	2,566
	36	50	2,731
	36	53	2,859
6PM-7PM	38	33	1,891
	41	34	2,002
	45	34	2,113
7PM-8PM	0	0	1,414
	0	0	1,477
	0	0	1,575
8PM-9PM	0	2	1,107
	0	2	1,180
	0	2	1,266
9PM-10PM	1	1	808
	1	2	869
	1	3	929
10PM-11PM	1	0	921
	1	0	978
	1	0	1,050
11PM-12AM	0	1	898
	0	1	944
	0	1	1,001

Road Ranger / SIRV Performance By Day of Week

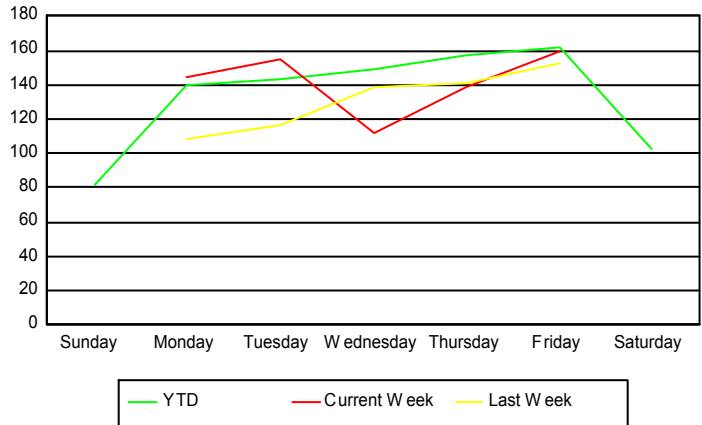
Values presented are:
 - Total Events with a RR/SIRV Response
 - Total RR/SIRV Responses,
 - Total Activities Performed

	Current We	Last Week	YTD
Sunday	0 0 0	0 0 0	2,906 3,035 3,212
Monday	139 148 153	102 106 108	5,895 6,311 6,601
Tuesday	137 155 161	111 117 119	6,191 6,643 6,986
Wednesday	107 112 114	121 138 146	6,428 6,860 7,211
Thursday	127 138 143	131 141 144	6,749 7,279 7,682
Friday	152 160 166	141 152 158	6,934 7,506 7,935
Saturday	0 0 0	0 0 0	3,709 3,891 4,148

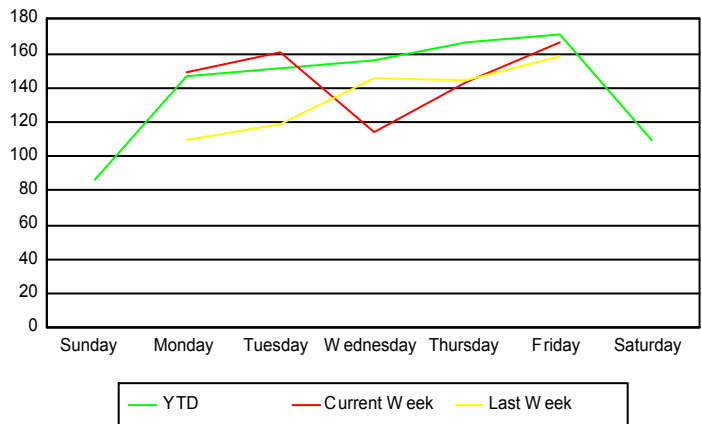
Avg # of events with a RR/SIRV Response per Day of the Week



Avg # of RR/SIRV Responses per Day of the Week



Avg # of RR/SIRV Activities Performed per Day of the Week



Road Ranger/ SIRV Responses per Time of Day and Day of Week

