



Weekly Performance Measures Report Broward County



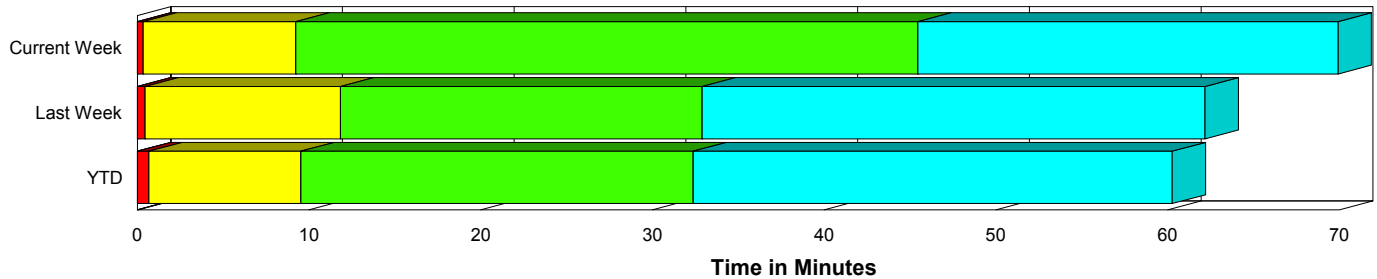
Period From Nov 15, 2009 to Nov 21, 2009

Created on:
November 23, 2009
10:56 am

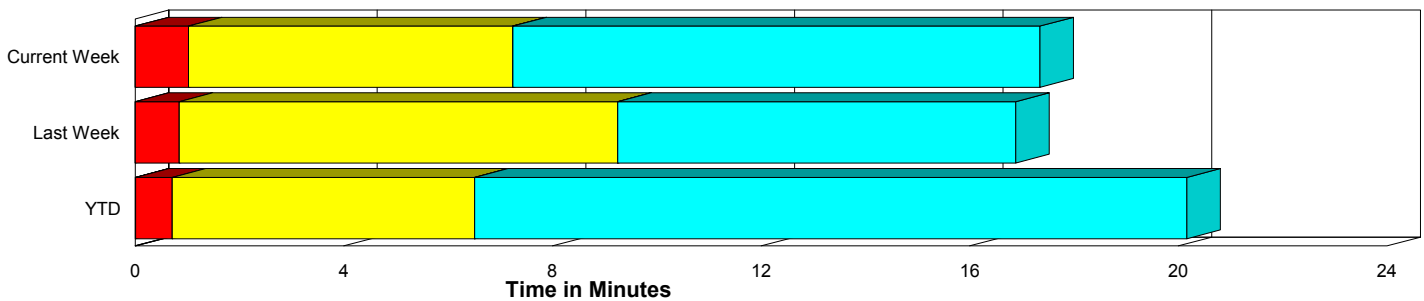
Performance Measures Summary

	Traffic Events (No Lanes Blocked)			Incidents (Lanes Blocked)		
	<u>This Week</u>	<u>Last Week</u>	<u>YTD</u>	<u>This Week</u>	<u>Last Week</u>	<u>YTD</u>
Number of Events	1,202	1,391	47,377	59	47	2,224
TMC Detection (min.)	0.00	0.00	0.01	0.00	0.00	0.00
TMC Verification (min.)	1.02	0.85	0.70	0.33	0.46	0.67
TMC Response (min.)	7.85	9.73	7.01	9.25	11.82	9.68
RR Dispatch Time (min.)	1.45	1.36	1.22	5.36	2.65	2.67
RR Response Time (min.)	6.35	8.62	5.92	6.08	9.20	7.22
Roadway Clearance (min.)				54.76	32.39	31.69
Event Clearance (min.)	17.96	17.36	20.67	78.94	61.67	59.19
# of Events w/ RR/SIRV	985	1,096	33,471	57	47	1,648
RR/SIRV Responses	985	1,096	33,471	57	47	1,648
RR/SIRV Activities	783	786	28,078	112	81	3,288

Incident Clearance Time-Line



Traffic Event (Non-Lane Blockage) Time-Line



■ Avg. TMC Detection Time	■ Avg. Time from TMC Response to Roadway Clearance*
■ Avg. Time from TMC Detection to TMC Verification	■ Avg. Time from Roadway Clearance to Incident/Event Clearance**
■ Avg. Time from TMC Verification to TMC Response	

* Roadway clearance equals all travel lanes open

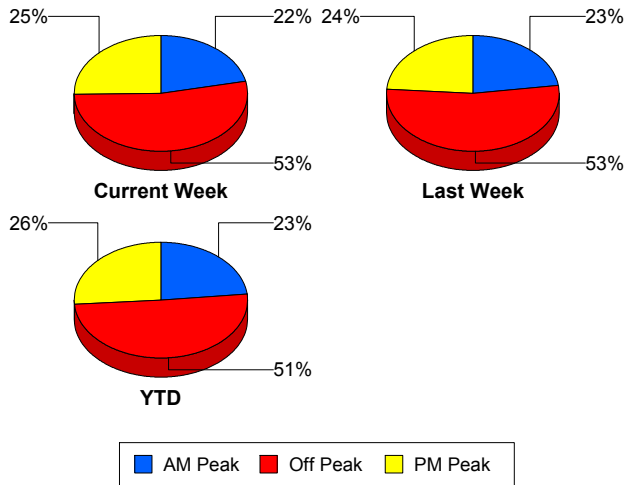
** Incident clearance equals time when last responder has left the scene

Performance Measures by Peak Period

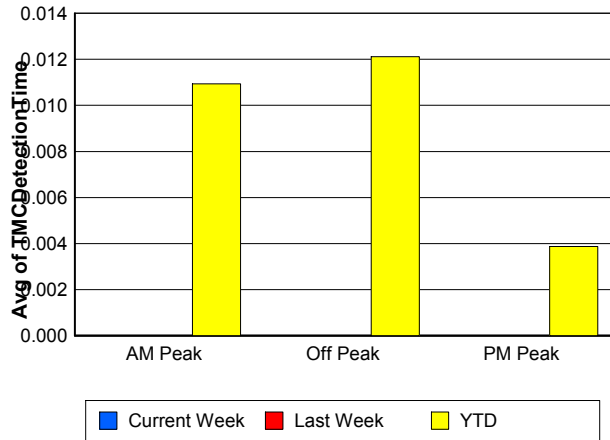
Note: AM peak period is defined as 6am to 10am and PM peak period is defined as 3pm to 7pm.

	AM Peak			Off Peak			PM Peak		
	<u>Current Week</u>	<u>Last Week</u>	<u>YTD</u>	<u>Current Week</u>	<u>Last Week</u>	<u>YTD</u>	<u>Current Week</u>	<u>Last Week</u>	<u>YTD</u>
Number of Events	273	329	11,509	669	767	25,158	319	342	12,934
Number of Incidents	13	8	522	31	18	1,082	15	21	620
TMC Detection (min.)	0.00	0.00	0.01	0.00	0.00	0.01	0.00	0.00	0.00
TMC Verification (min.)	0.60	0.30	0.55	1.18	0.84	0.69	0.92	1.33	0.86
TMC Response (min.)	6.98	9.04	6.60	9.30	10.49	8.01	6.14	9.36	6.47
RR Dispatch Time (min.)	0.94	0.86	0.95	2.13	1.73	1.71	1.35	1.30	0.97
RR Response Time (min.)	6.19	8.26	5.73	7.21	9.05	6.42	4.78	8.26	5.63
Event Clearance (min.)	19.26	15.47	20.72	21.68	19.37	24.40	20.34	20.76	20.01
Roadway Clearance (min.)	52.81	31.63	28.34	32.98	47.90	35.45	101.47	19.39	27.93
Incident Clearance (min.)	78.29	51.63	57.08	61.73	76.67	62.48	115.08	52.63	55.25
# of Events w/ RR/SIRV	230	281	9,450	537	584	15,455	275	278	10,214
RR/SIRV Responses	230	281	9,450	537	584	15,455	275	278	10,214
RR/SIRV Activities	195	207	8,720	451	440	13,341	249	220	9,305

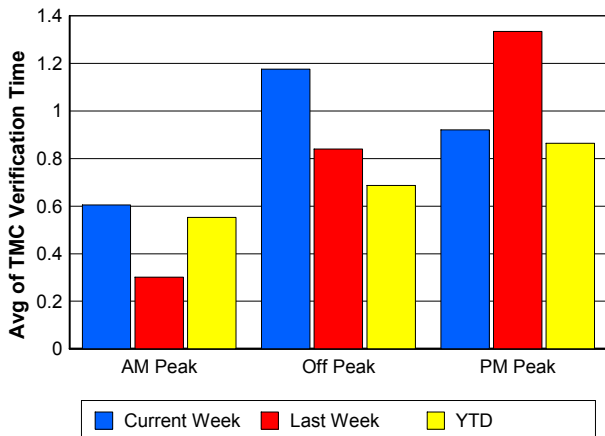
Number of Events / Peak Period



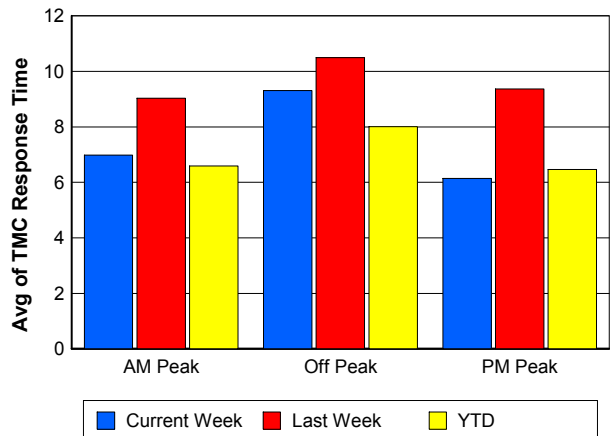
TMC Detection Time



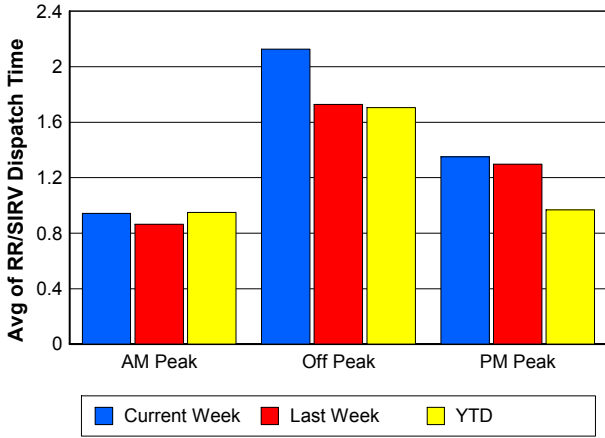
TMC Verification Time



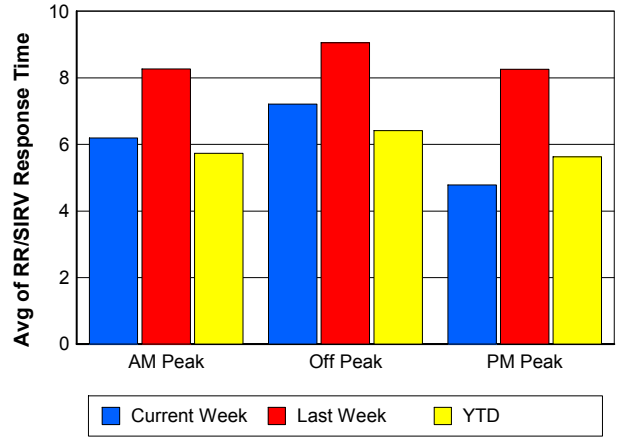
TMC Response Time



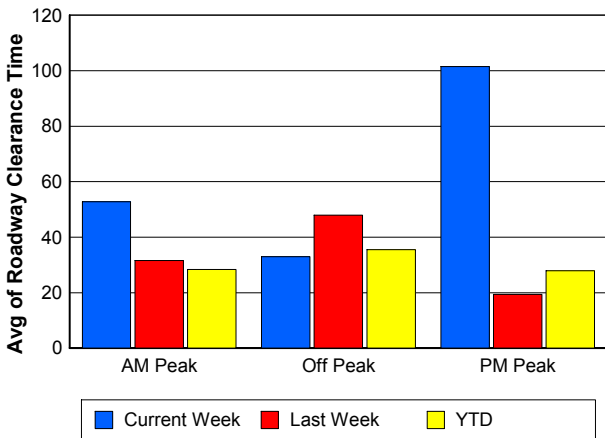
Road Ranger / SIRV Dispatch Time



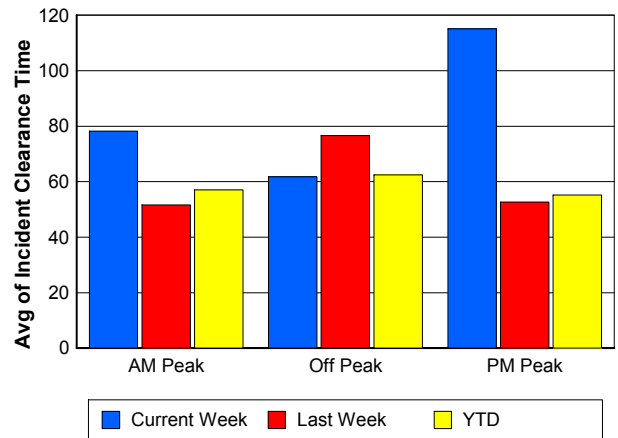
Road Ranger / SIRV Response Time



Roadway Clearance Time (2A)



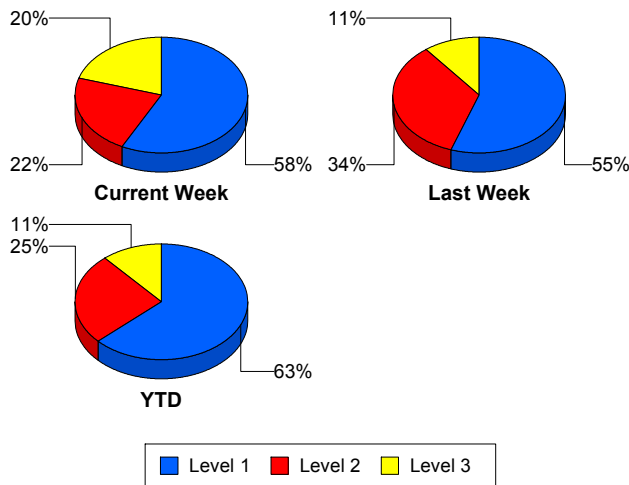
Incident Clearance Time (3B)



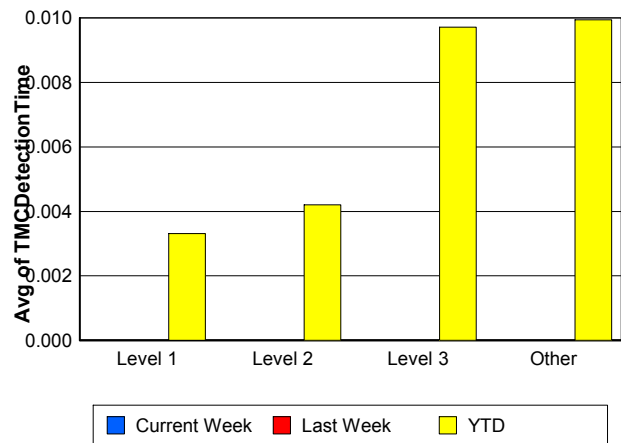
Performance Measures by Severity

	Level 1			Level 2			Level 3			Other		
	<u>This Week</u>	<u>Last Week</u>	<u>YTD</u>	<u>This Week</u>	<u>Last Week</u>	<u>YTD</u>	<u>This Week</u>	<u>Last Week</u>	<u>YTD</u>	<u>This Week</u>	<u>Last Week</u>	<u>YTD</u>
Number of Events	34	26	1,403	13	16	567	12	5	254	1,202	1,391	47,377
Number of Incidents	34	26	1,403	13	16	567	12	5	254	0	0	0
TMC Detection (min.)	0.00	0.00	0.00	0.00	0.00	0.00	0.00	0.00	0.01	0.00	0.00	0.01
TMC Verification (min.)	0.37	0.15	0.42	0.07	1.02	1.02	0.52	0.28	1.23	1.02	0.85	0.70
TMC Response (min.)	7.41	8.08	7.44	9.08	18.92	10.37	17.35	7.77	20.35	7.85	9.73	7.01
RR Dispatch Time (min.)	2.29	1.77	1.58	1.39	4.39	2.62	20.96	1.63	8.18	1.45	1.36	1.22
RR Resp. Time (min.)	5.12	6.40	5.94	7.69	14.53	7.99	7.52	6.15	12.68	6.35	8.62	5.92
Event Clearance (min.)	46.11	42.14	45.32	65.14	80.57	72.03	186.92	102.75	106.93	17.96	17.36	20.67
Roadway Clear. (min.)	15.13	13.61	14.34	46.47	45.56	48.96	176.04	87.93	88.91			
Incident Clearance (min.)	46.11	42.14	45.32	65.14	80.57	72.03	186.92	102.75	106.93			
# of Events w/ RR/SIRV	34	26	1,077	13	16	355	10	5	216	985	1,096	33,471
RR/SIRV Responses	34	26	1,077	13	16	355	10	5	216	985	1,096	33,471
RR/SIRV Activities	56	38	1,832	37	28	947	19	15	509	783	786	28,078

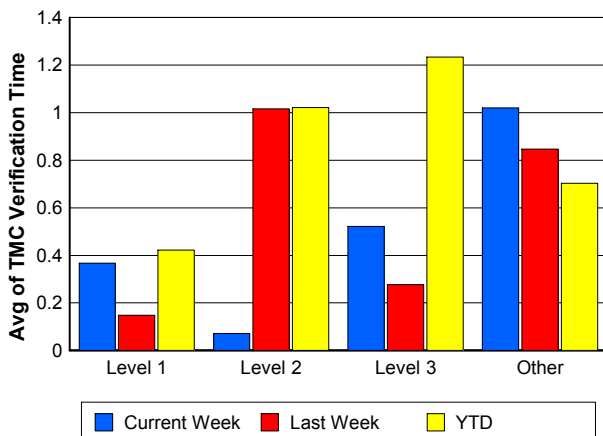
Number of Events / Severity



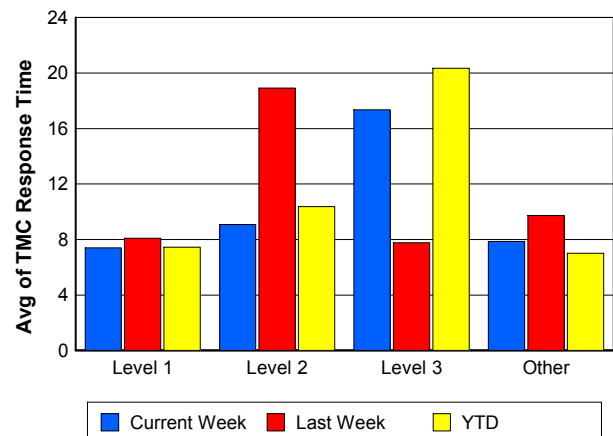
TMC Detection Time



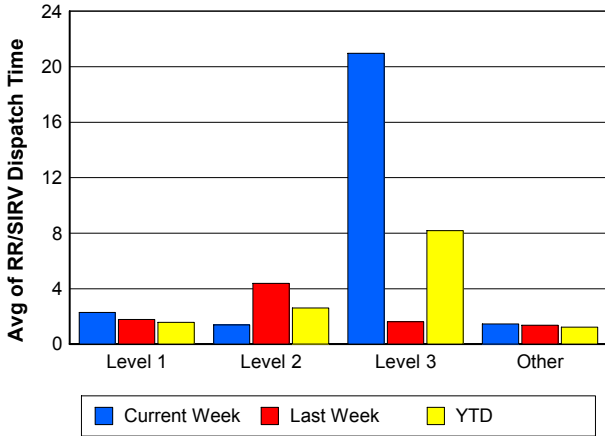
TMC Verification Time



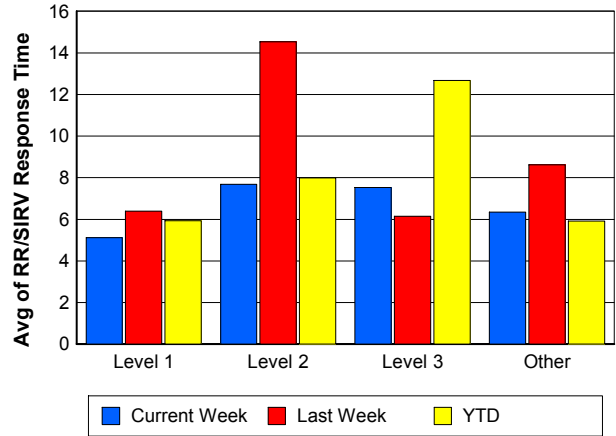
TMC Response Time



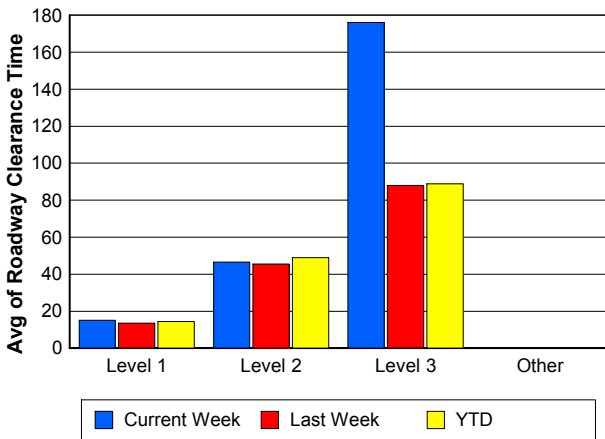
Road Ranger / SIRV Dispatch Time



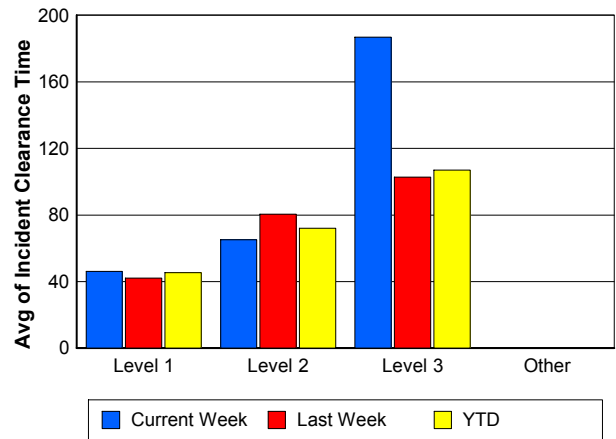
Road Ranger / SIRV Response Time



Roadway Clearance Time (2A)



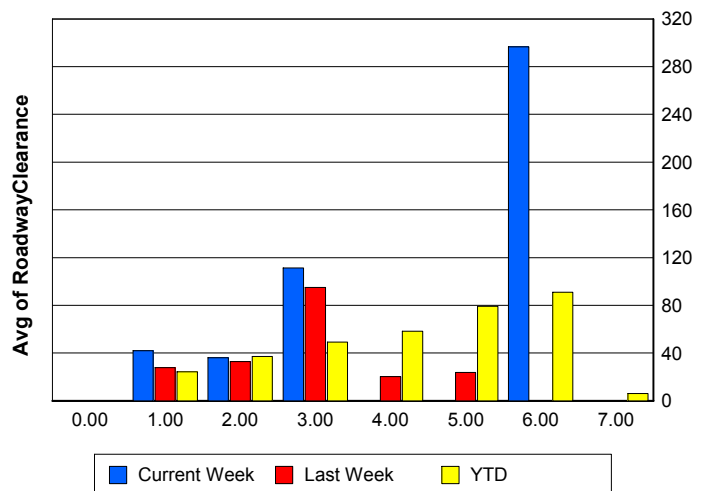
Incident Clearance Time (3B)



Roadway Clearance by Maximum Number of Lanes Blocked

	Current Week	Last Week	YTD
0			
1	41.95	27.68	24.17
2	36.09	32.76	37.05
3	111.22	95.09	49.26
4	0.00	20.25	58.24
5	0.00	23.77	79.15
6	296.52	0.00	91.00
7	0.00	0.00	5.97

Roadway Clearance Time (2A)



Performance Measures by Roadway

595

	<u>Current Week</u>	<u>Last Week</u>	<u>YTD</u>
Number of Events	43	43	4,725
Number of Incidents	2	2	287
TMC Detection (min.)	0.00	0.00	0.01
TMC Verification (min.)	0.42	1.13	0.86
TMC Response (min.)	13.22	13.64	7.06
RR Dispatch Time (min.)	0.93	1.39	1.17
RR Resp. Time (min.)	12.39	12.34	5.99
Event Clearance (min.)	16.59	19.01	21.30
Roadway Clear. (min.)	47.30	30.47	31.72
Incident Clearance (min.)	51.50	38.75	54.11
# of Events w/ RR/SIRV	33	30	3,301
RR/SIRV Responses	33	30	3,301
RR/SIRV Activities	28	22	2,992

75

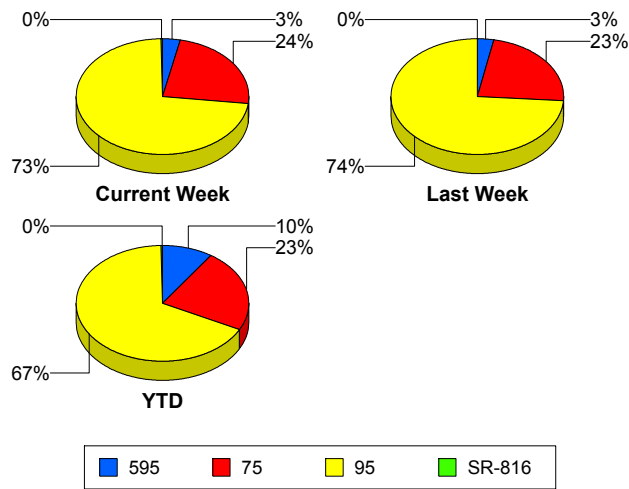
	<u>Current Week</u>	<u>Last Week</u>	<u>YTD</u>
Number of Events	297	333	11,371
Number of Incidents	5	3	203
TMC Detection (min.)	0.00	0.00	0.02
TMC Verification (min.)	1.77	1.44	0.98
TMC Response (min.)	10.06	11.89	8.48
RR Dispatch Time (min.)	1.75	1.26	1.31
RR Resp. Time (min.)	8.25	10.97	7.28
Event Clearance (min.)	21.71	18.32	24.09
Roadway Clear. (min.)	31.23	117.12	52.53
Incident Clearance (min.)	76.52	125.47	80.31
# of Events w/ RR/SIRV	241	260	7,852
RR/SIRV Responses	241	260	7,852
RR/SIRV Activities	203	204	6,697

95

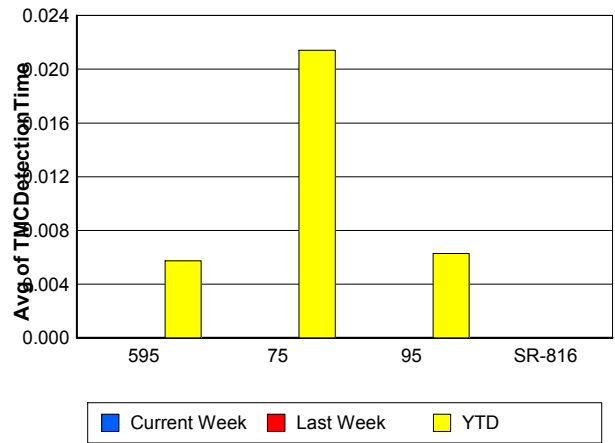
	<u>Current Week</u>	<u>Last Week</u>	<u>YTD</u>
Number of Events	916	1,060	33,429
Number of Incidents	48	40	1,684
TMC Detection (min.)	0.00	0.00	0.01
TMC Verification (min.)	0.76	0.63	0.59
TMC Response (min.)	7.15	9.11	6.78
RR Dispatch Time (min.)	1.68	1.46	1.30
RR Resp. Time (min.)	5.55	7.83	5.61
Event Clearance (min.)	20.76	18.96	22.00
Roadway Clear. (min.)	60.89	26.84	29.65
Incident Clearance (min.)	85.76	60.21	58.81
# of Events w/ RR/SIRV	763	851	23,893
RR/SIRV Responses	763	851	23,893
RR/SIRV Activities	659	639	21,594

	<u>Current Week</u>	<u>Last Week</u>	<u>YTD</u>
Number of Events	5	2	76
Number of Incidents	4	2	50
TMC Detection (min.)	0.00	0.00	0.00
TMC Verification (min.)	1.67	0.00	0.27
TMC Response (min.)	1.66	0.00	0.64
RR Dispatch Time (min.)	0.14	0.00	0.08
RR Resp. Time (min.)	1.53	0.00	0.58
Event Clearance (min.)	13.85	17.99	13.04
Roadway Clear. (min.)	14.38	18.26	15.56
Incident Clearance (min.)	13.87	17.99	15.40
# of Events w/ RR/SIRV	5	2	73
RR/SIRV Responses	5	2	73
RR/SIRV Activities	5	2	83

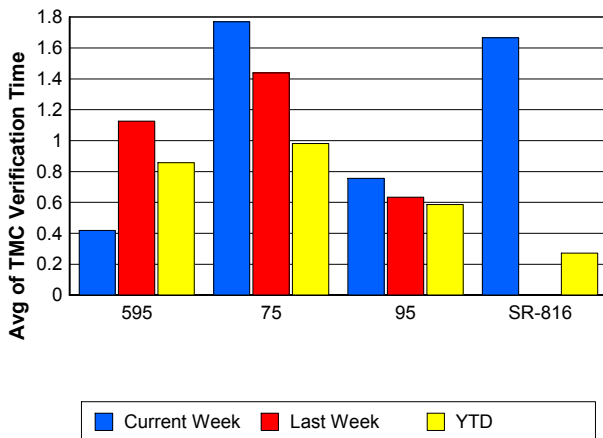
Number of Events / Roadway



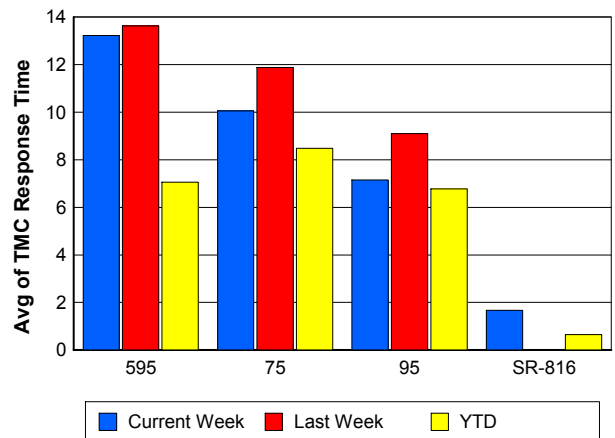
TMC Detection Time



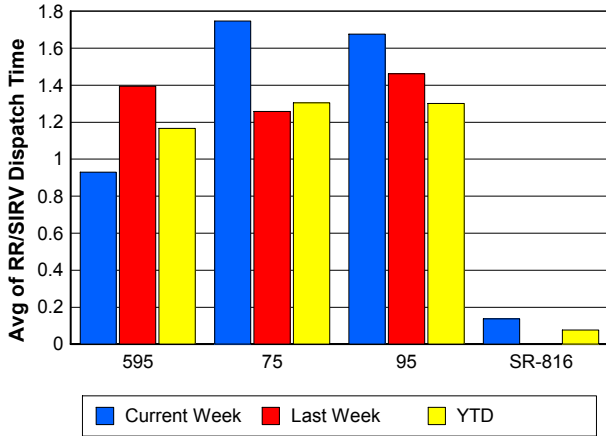
TMC Verification Time



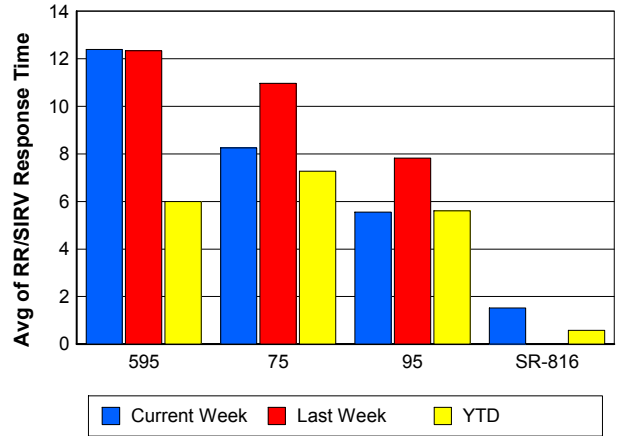
TMC Response Time



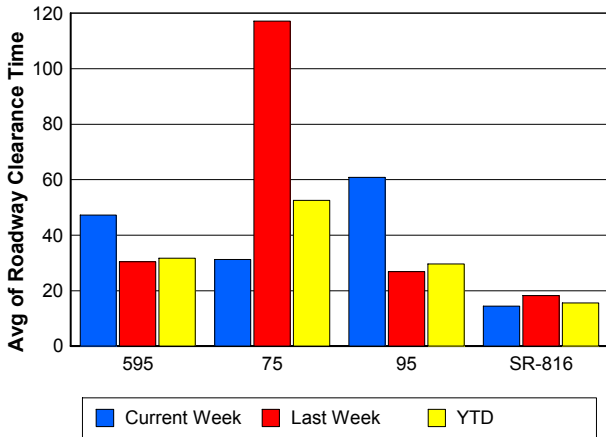
Road Ranger / SIRV Dispatch Time



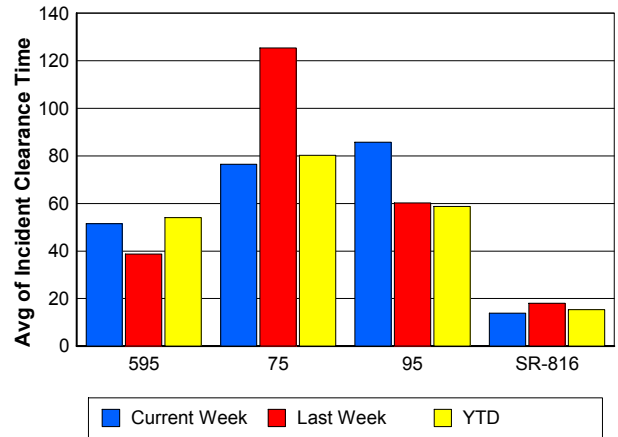
Road Ranger / SIRV Response Time



Roadway Clearance Time (2A)



Incident Clearance Time (3B)



Performance Measures by Event Type

Accident

	<u>Current Week</u>	<u>Last Week</u>	<u>YTD</u>
Number of Events	68	58	3,293
Number of Incidents	37	29	1,572
TMC Detection (min.)	0.00	0.00	0.01
TMC Verification (min.)	0.38	0.29	0.74
TMC Response (min.)	8.23	12.43	9.16
RR Dispatch Time (min.)	1.78	2.25	1.66
RR Response Time (min.)	6.48	10.18	7.56
Event Clearance (min.)	51.67	66.12	54.94
Roadway Clearance (min.)	34.43	40.10	32.99
Incident Clearance (min.)	67.87	79.66	66.65
# of Events w/ RR/SIRV	68	57	2,537
RR/SIRV Assists	68	57	2,537
RR/SIRV Activities	103	82	3,898

Debris on Roadway

	<u>Current Week</u>	<u>Last Week</u>	<u>YTD</u>
Number of Events	43	42	1,529
Number of Incidents	2	0	31
TMC Detection (min.)	0.00	0.00	0.08
TMC Verification (min.)	4.37	5.44	4.15
TMC Response (min.)	8.66	9.48	7.91
RR Dispatch Time (min.)	0.94	0.87	0.96
RR Response Time (min.)	7.68	8.76	6.98
Event Clearance (min.)	11.38	11.61	11.71
Roadway Clearance (min.)	36.86		25.60
Incident Clearance (min.)	39.73		31.53
# of Events w/ RR/SIRV	41	36	1,419
RR/SIRV Assists	41	36	1,419
RR/SIRV Activities	43	32	1,436

Disabled Vehicle

	<u>Current Week</u>	<u>Last Week</u>	<u>YTD</u>
Number of Events	709	754	28,992
Number of Incidents	7	14	377
TMC Detection (min.)	0.00	0.00	0.01
TMC Verification (min.)	1.42	1.08	0.85
TMC Response (min.)	7.49	9.73	6.80
RR Dispatch Time (min.)	1.38	1.32	1.12
RR Response Time (min.)	6.10	8.63	5.73
Event Clearance (min.)	22.09	22.39	25.07
Roadway Clearance (min.)	11.76	19.23	18.23
Incident Clearance (min.)	23.80	26.98	31.99
# of Events w/ RR/SIRV	692	734	24,052
RR/SIRV Assists	692	734	24,052
RR/SIRV Activities	690	702	24,352

Emergency Vehicles

	<u>Current Week</u>	<u>Last Week</u>	<u>YTD</u>
Number of Events	10	1	85
Number of Incidents	9	1	67
TMC Detection (min.)	0.00	0.00	0.00
TMC Verification (min.)	0.00	0.00	0.45
TMC Response (min.)	19.62	10.85	13.77
RR Dispatch Time (min.)	25.61	9.22	10.82
RR Response Time (min.)	6.22	1.63	4.43
Event Clearance (min.)	130.00	31.20	57.44
Roadway Clearance (min.)	140.69	28.73	59.62
Incident Clearance (min.)	142.80	31.20	65.58
# of Events w/ RR/SIRV	8	1	50
RR/SIRV Assists	8	1	50
RR/SIRV Activities	10	1	80

Other

	<u>Current Week</u>	<u>Last Week</u>	<u>YTD</u>
Number of Events	420	564	15,235
Number of Incidents	0	0	31
TMC Detection (min.)	0.00	0.00	0.01
TMC Verification (min.)	0.04	0.19	0.08
TMC Response (min.)	13.76	5.22	8.44
RR Dispatch Time (min.)	1.78	1.49	1.70
RR Response Time (min.)	9.21	4.18	6.42
Event Clearance (min.)	10.91	9.06	10.84
Roadway Clearance (min.)			33.55
Incident Clearance (min.)			38.56
# of Events w/ RR/SIRV	223	299	6,783
RR/SIRV Assists	223	299	6,783
RR/SIRV Activities	33	32	1,240

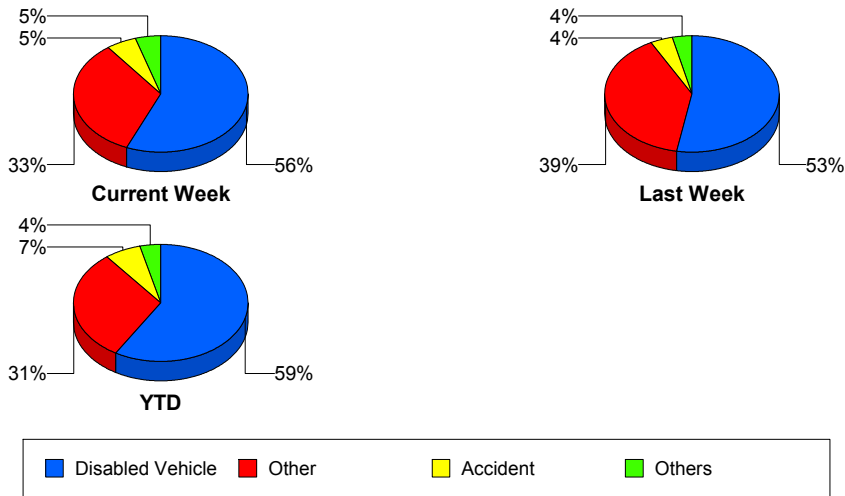
Police Activity

	<u>Current Week</u>	<u>Last Week</u>	<u>YTD</u>
Number of Events	6	6	193
Number of Incidents	2	2	65
TMC Detection (min.)	0.00	0.00	0.00
TMC Verification (min.)	2.21	0.42	0.36
TMC Response (min.)	9.85	32.42	13.88
RR Dispatch Time (min.)	2.63	3.14	3.93
RR Response Time (min.)	8.22	29.51	10.08
Event Clearance (min.)	88.74	39.14	33.82
Roadway Clearance (min.)	235.62	19.15	41.32
Incident Clearance (min.)	236.52	23.11	49.40
# of Events w/ RR/SIRV	5	4	72
RR/SIRV Assists	5	4	72
RR/SIRV Activities	7	3	85

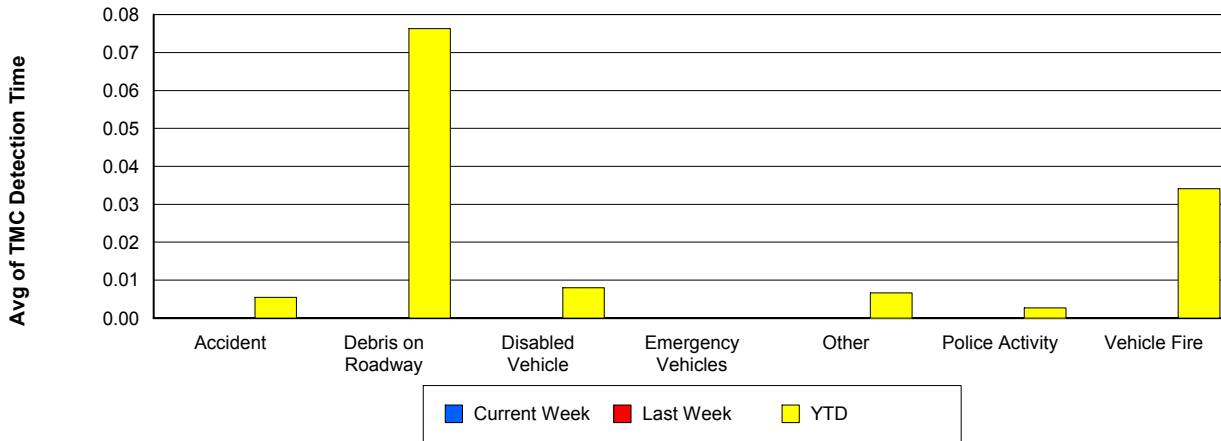
Vehicle Fire

	<u>Current Week</u>	<u>Last Week</u>	<u>YTD</u>
Number of Events	2	3	105
Number of Incidents	2	1	81
TMC Detection (min.)	0.00	0.00	0.03
TMC Verification (min.)	0.28	7.38	1.24
TMC Response (min.)	1.51	14.31	9.76
RR Dispatch Time (min.)	0.58	2.89	2.07
RR Response Time (min.)	0.92	11.42	8.05
Event Clearance (min.)	71.11	65.01	57.76
Roadway Clearance (min.)	31.82	23.30	39.81
Incident Clearance (min.)	71.11	133.12	62.48
# of Events w/ RR/SIRV	2	3	75
RR/SIRV Assists	2	3	75
RR/SIRV Activities	6	4	156

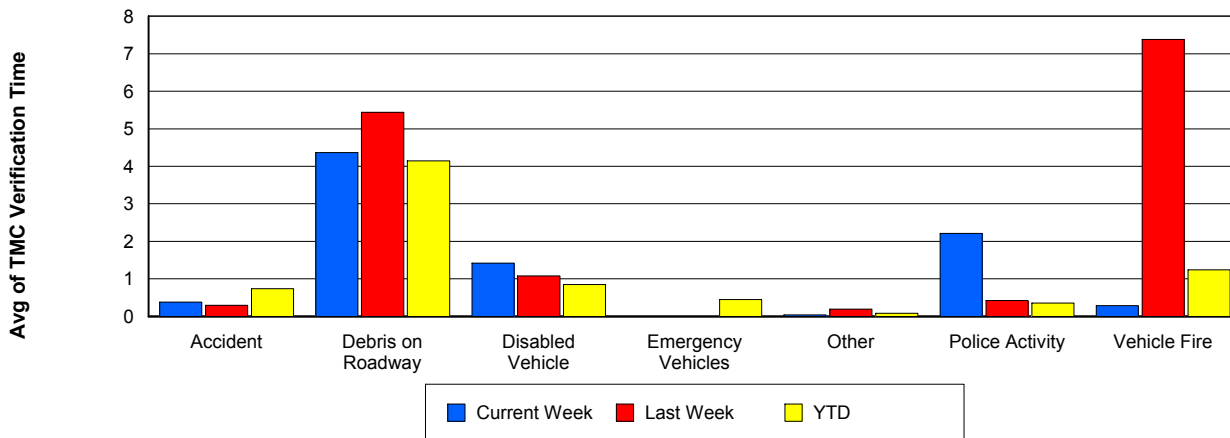
Number of Events / Event Type



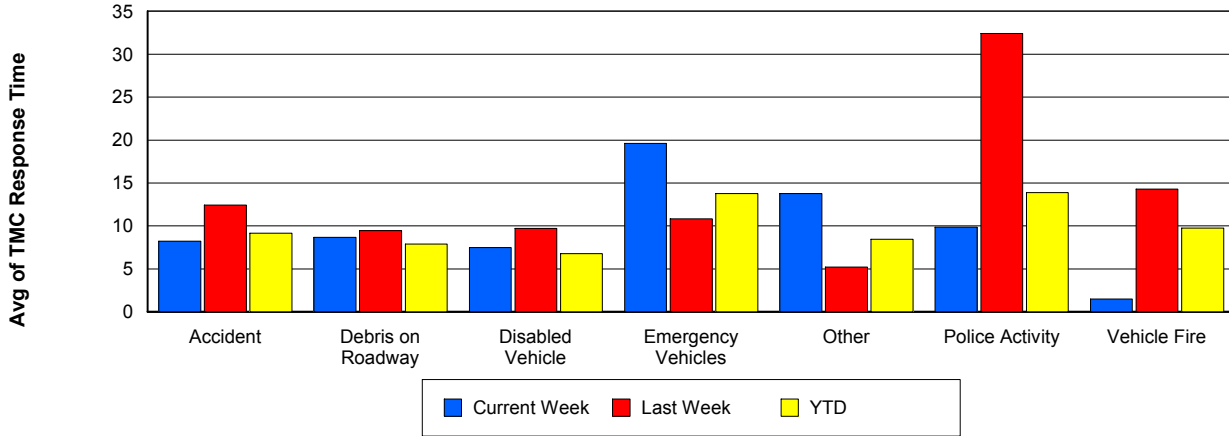
TMC Detection Time



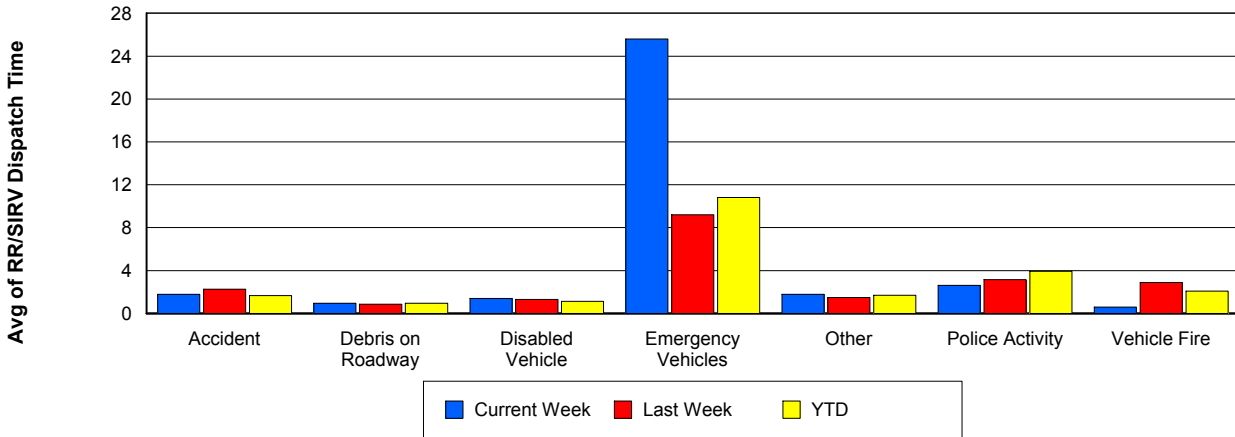
TMC Verification Time



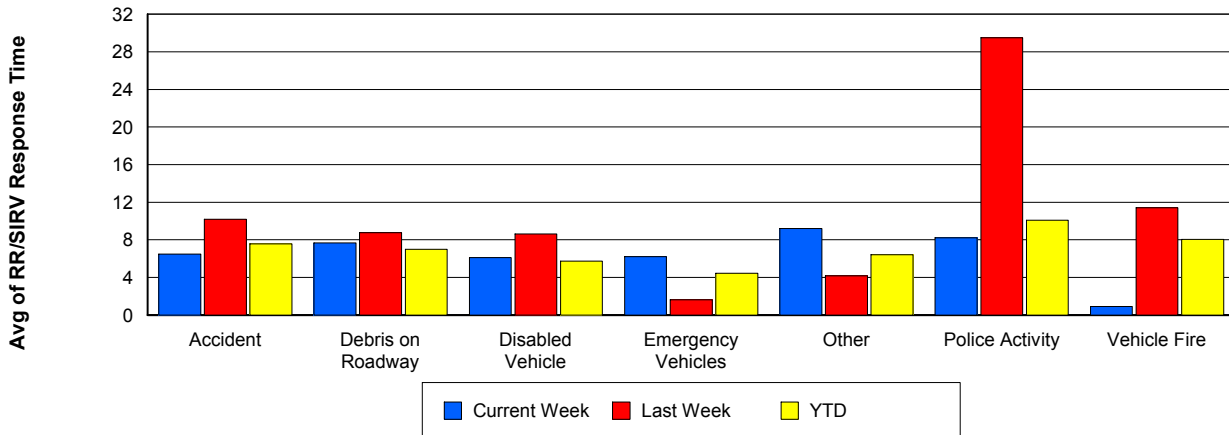
TMC Response Time



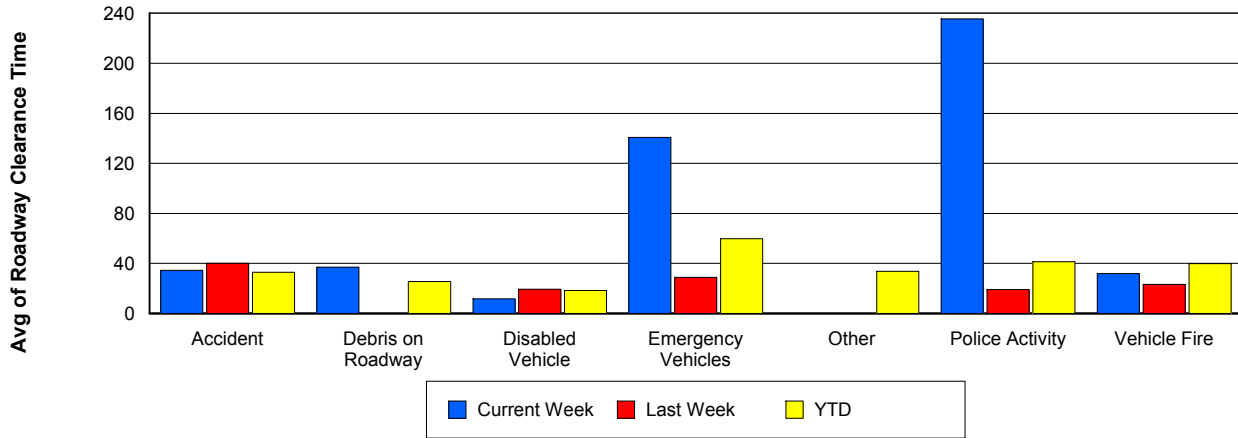
Road Ranger / SIRV Dispatch Time



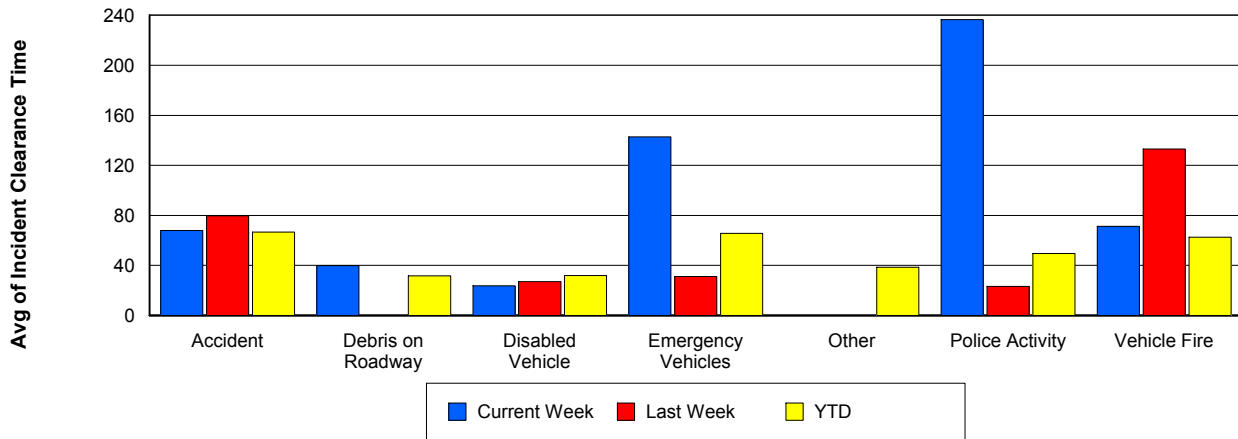
Road Ranger / SIRV Response Time



Roadway Clearance Time (2A)



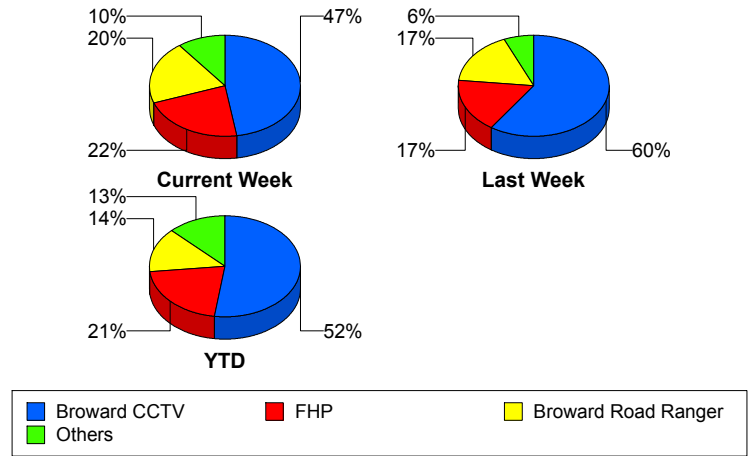
Incident Clearance Time (3B)



Incident Detection Methods

	Current Week	Last Week	YTD
Broward CCTV	28	28	1,160
Broward Road Ranger	12	8	310
Broward TMC	0	0	4
Broward VideoWall	2	0	62
BSO	2	0	49
District 4	0	0	50
District 6	0	0	3
FDOT Maintenance	1	0	7
FHP	13	8	467
Fire	0	0	4
Florida's Turnpike	0	0	6
ITMS	0	0	2
Motorist	0	2	13
Other	0	0	1
Palm Beach Road Ran	0	1	8
Road Watcher	1	0	15
SIRV	0	0	12
SmarTraveler (511)	0	0	6
VisioPaD Detection	0	0	37
Total	59	47	2,216

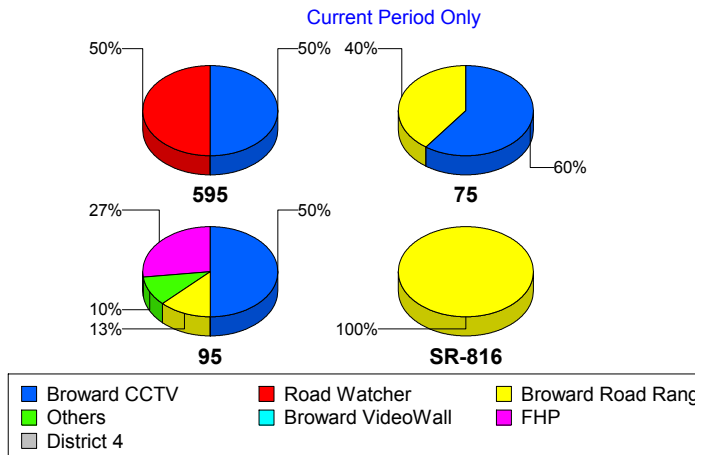
Total Incidents by Detection Method



Incident Detection Methods by Roadway

		Current Week	Last Week	YTD
595	Broward CCTV	1	1	136
	Broward Road Ranger	0	1	39
	Broward VideoWall	0	0	8
	BSO	0	0	7
	District 4	0	0	12
	FDOT Maintenance	0	0	2
	FHP	0	0	56
	Florida's Turnpike	0	0	6
	Motorist	0	0	3
	Road Watcher	1	0	4
	SIRV	0	0	1
	VisioPaD Detection	0	0	6
	Total	2	2	280
	75	Broward CCTV	3	2
Broward Road Ranger		2	0	23
Broward VideoWall		0	0	1
BSO		0	0	35
District 4		0	0	6
FHP		0	1	45
Other		0	0	1
Road Watcher		0	0	3
VisioPaD Detection		0	0	5
Total		5	3	203
95	Broward CCTV	24	25	940
	Broward Road Ranger	6	5	199
	Broward TMC	0	0	4
	Broward VideoWall	2	0	53
	BSO	2	0	7
	District 4	0	0	31
	District 6	0	0	3
	FDOT Maintenance	1	0	5

Total Events by Roadway and Detection Method

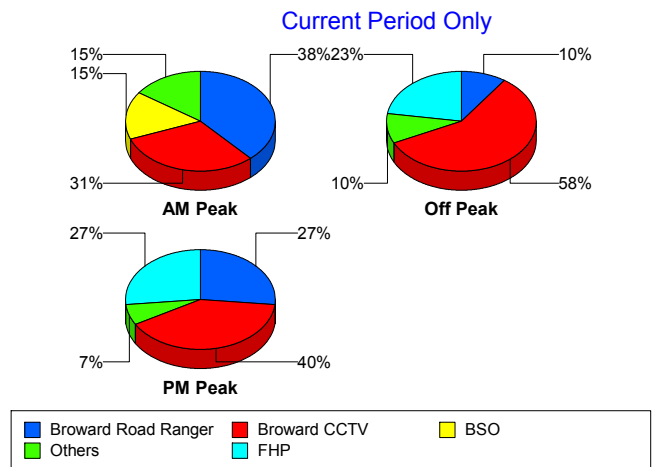


		Current Week	Last Week	YTD
95	FHP	13	7	366
	Fire	0	0	4
	ITMS	0	0	2
	Motorist	0	2	10
	Palm Beach Road Ran	0	1	8
	Road Watcher	0	0	8
	SIRV	0	0	11
	SmarTraveler (511)	0	0	6
	VisioPaD Detection	0	0	26
	Total	48	40	1,683
	SR-816	Broward Road Ranger	4	2
District 4		0	0	1
Total		4	2	50
Total		59	47	2,216

Incident Detection Methods by Peak Period

		Current Week	Last Week	YTD
AM Peak	Broward CCTV	4	6	230
	Broward Road Ranger	5	0	103
	Broward TMC	0	0	1
	Broward VideoWall	0	0	20
	BSO	2	0	9
	District 4	0	0	18
	FDOT Maintenance	0	0	1
	FHP	2	2	118
	Florida's Turnpike	0	0	2
	Motorist	0	0	6
	Palm Beach Road Ran	0	0	2
	Road Watcher	0	0	5
	SIRV	0	0	1
	SmarTraveler (511)	0	0	1
	VisioPaD Detection	0	0	2

Total Events by Peak Period and Detection Method

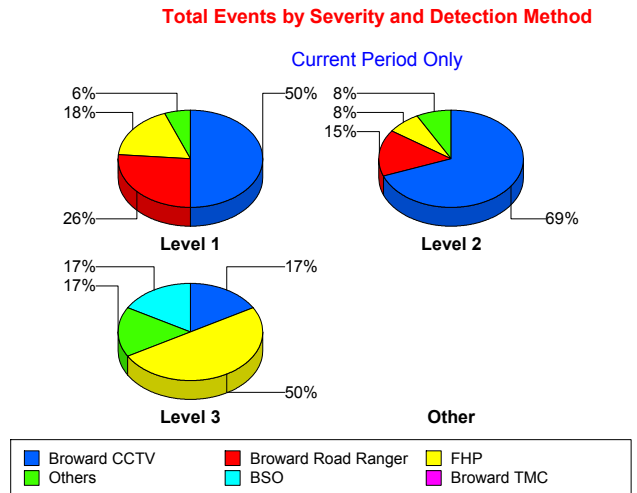


		Current Week	Last Week	YTD
AM Peak	Total	13	8	519
Off Peak	Broward CCTV	18	12	623
	Broward Road Ranger	3	1	86
	Broward TMC	0	0	3
	Broward VideoWall	2	0	35
	BSO	0	0	31
	District 4	0	0	16
	District 6	0	0	2
	FDOT Maintenance	1	0	4
	FHP	7	5	221
	Fire	0	0	3
	Florida's Turnpike	0	0	3
	ITMS	0	0	2
	Motorist	0	0	4
	Palm Beach Road Ran	0	0	3
	Road Watcher	0	0	6
	SIRV	0	0	5
	SmarTraveler (511)	0	0	3
	VisioPaD Detection	0	0	29
	Total	31	18	1,079
	PM Peak	Broward CCTV	6	10
Broward Road Ranger		4	7	121
Broward VideoWall		0	0	7
BSO		0	0	9
District 4		0	0	16
District 6		0	0	1
FDOT Maintenance		0	0	2
FHP		4	1	128
Fire		0	0	1
Florida's Turnpike		0	0	1
Motorist		0	2	3
Other		0	0	1

		Current Week	Last Week	YTD
PM Peak	Palm Beach Road Ran	0	1	3
	Road Watcher	1	0	4
	SIRV	0	0	6
	SmarTraveler (511)	0	0	2
	VisioPaD Detection	0	0	6
	Total	15	21	618
Total		59	47	2,216

Incident Detection Methods by Severity

		Current Week	Last Week	YTD	
Level 1	Broward CCTV	17	16	738	
	Broward Road Ranger	9	5	227	
	Broward TMC	0	0	3	
	Broward VideoWall	2	0	41	
	BSO	0	0	10	
	District 4	0	0	37	
	District 6	0	0	2	
	FDOT Maintenance	0	0	5	
	FHP	6	4	271	
	Fire	0	0	3	
	ITMS	0	0	1	
	Motorist	0	1	9	
	Palm Beach Road Ran	0	0	5	
	Road Watcher	0	0	9	
	SIRV	0	0	11	
	SmarTraveler (511)	0	0	4	
	VisioPaD Detection	0	0	21	
	Total	34	26	1,397	
	Level 2	Broward CCTV	9	9	307
		Broward Road Ranger	2	3	59
Broward TMC		0	0	1	
Broward VideoWall		0	0	18	



		Current Week	Last Week	YTD
Level 2	BSO	0	0	11
	District 4	0	0	7
	FDOT Maintenance	0	0	1
	FHP	1	2	133
	Florida's Turnpike	0	0	4
	ITMS	0	0	1
	Motorist	0	1	4
	Other	0	0	1
	Palm Beach Road Ran	0	1	1
	Road Watcher	1	0	3
	SIRV	0	0	1
	SmarTraveler (511)	0	0	2
	VisioPaD Detection	0	0	13
	Total	13	16	567
Level 3	Broward CCTV	2	3	115
	Broward Road Ranger	1	0	24
	Broward VideoWall	0	0	3
	BSO	2	0	28
	District 4	0	0	6
	District 6	0	0	1
	FDOT Maintenance	1	0	1
	FHP	6	2	63
	Fire	0	0	1
	Florida's Turnpike	0	0	2
	Palm Beach Road Ran	0	0	2
	Road Watcher	0	0	3
	VisioPaD Detection	0	0	3
	Total	12	5	252
Total	59	47	2,216	

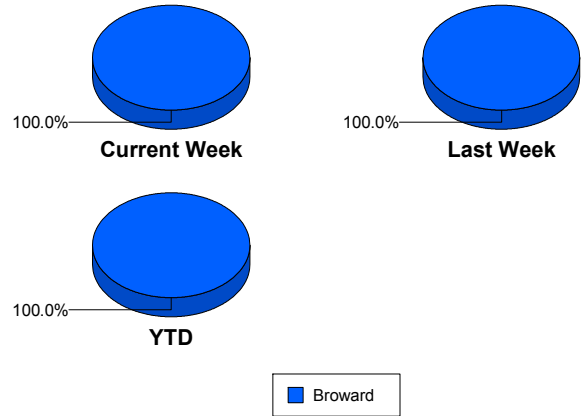
Road Ranger / SIRV Performance Measures

Road Ranger / SIRV Performance By County

Values presented are:
 - Total Events with a RR/SIRV Response
 - Total RR/SIRV Responses,
 - Total Activities Performed

	Current We	Last Week	YTD
Broward	950	957	33,721
	1,015	1,014	36,216
	1,073	1,053	37,700

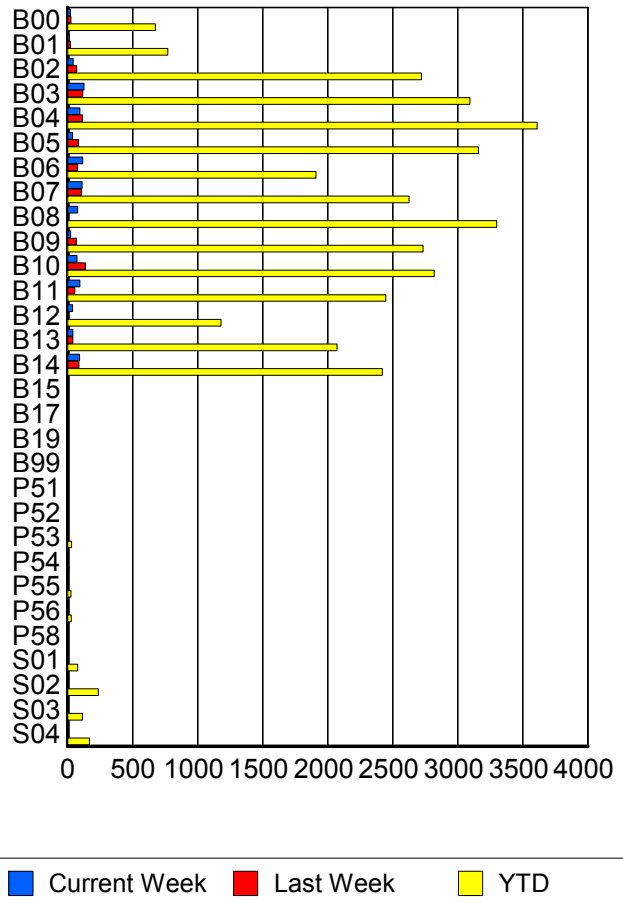
RR/SIRV Responses per County



Road Ranger / SIRV Performance By Truck

	Current We	Last Week	YTD
B00	21	26	662
	21	26	676
	23	27	708
B01	13	21	759
	13	21	771
	14	21	808
B02	42	69	2,694
	43	69	2,722
	43	69	2,824
B03	127	113	3,050
	127	116	3,093
	135	123	3,215
B04	94	115	3,574
	94	115	3,612
	97	119	3,763
B05	37	83	3,106
	37	83	3,160
	40	84	3,269
B06	114	75	1,882
	116	77	1,911
	124	80	1,978
B07	111	104	2,590
	112	106	2,626
	119	111	2,743
B08	76	0	3,258
	76	0	3,299
	82	0	3,422

RR/SIRV Responses per Truck



	Current We	Last Week	YTD
B09	23	66	2,695
	23	67	2,735
	26	69	2,840
B10	72	132	2,768
	72	137	2,819
	77	144	2,931
B11	93	54	2,412
	94	54	2,448
	95	57	2,523
B12	37	0	1,164
	38	0	1,180
	42	0	1,233
B13	39	40	2,046
	40	41	2,072
	43	43	2,148
B14	89	86	2,376
	92	88	2,419
	95	90	2,508
B15	0	0	6
	0	0	6
	0	0	6
B17	0	0	1
	0	0	1
	0	0	1
B19	0	0	1
	0	0	1
	0	0	1
B99	0	0	4
	0	0	4
	0	0	4
P51	0	0	1
	0	0	1
	0	0	1
P52	0	0	4
	0	0	4
	0	0	4
P53	0	0	29
	0	0	30
	0	0	36
P54	1	0	9
	1	0	9
	1	0	9
P55	0	2	26
	0	2	26
	0	2	30

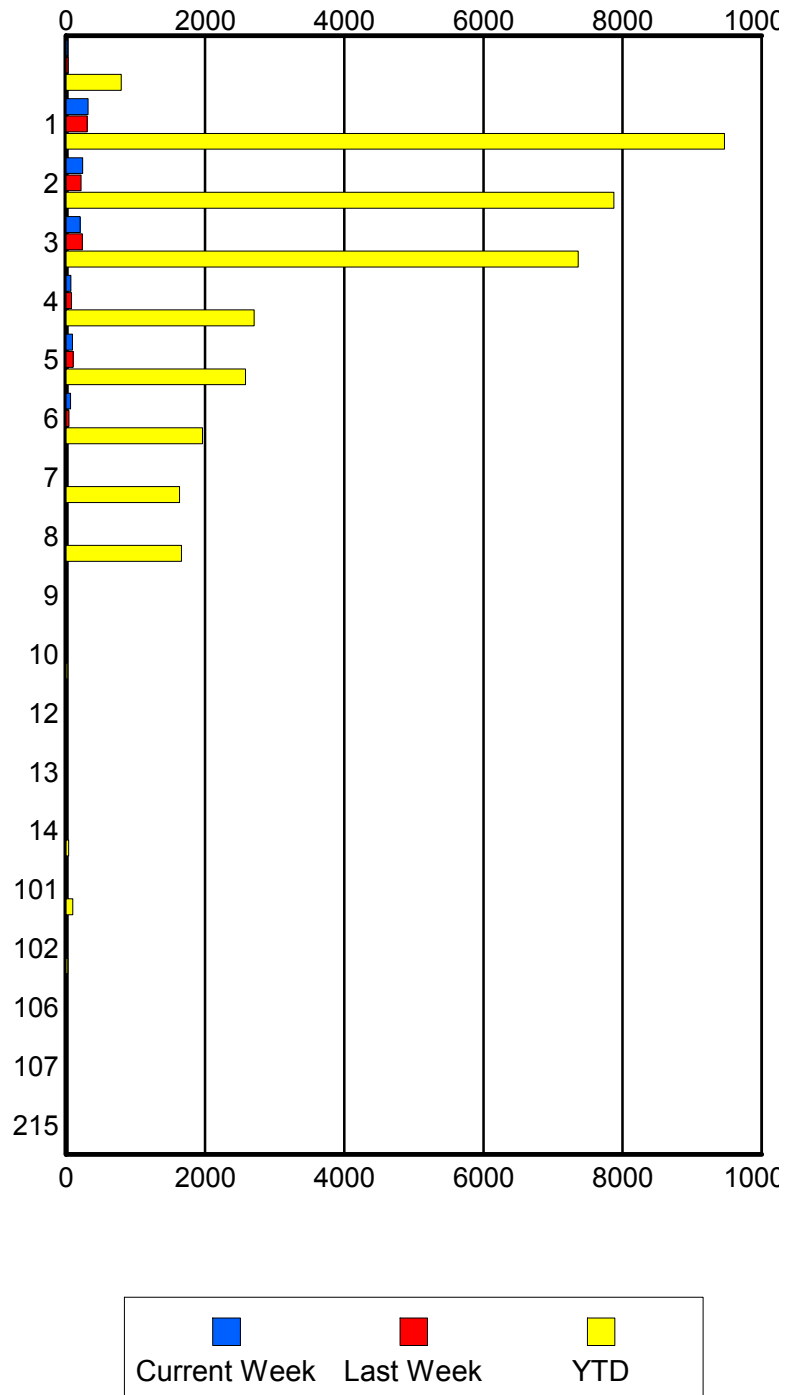
	Current We	Last Week	YTD
P56	0	3	28
	0	3	28
	0	3	29
P58	0	0	1
	0	0	1
	0	0	1
S01	2	0	73
	2	0	76
	2	0	88
S02	8	5	230
	8	5	237
	9	6	265
S03	3	0	112
	3	0	114
	3	0	130
S04	3	4	162
	3	4	167
	3	5	182

Road Ranger / SIRV Performance By Beat

	Current We	Last Week	YTD
	20	27	746
	22	28	795
	23	30	870
1	303	292	8,945
	318	301	9,464
	337	312	9,788
2	233	209	7,604
	241	218	7,874
	256	223	8,211
3	202	227	7,158
	204	234	7,364
	213	246	7,648
4	67	78	2,646
	69	79	2,703
	73	84	2,793
5	92	98	2,535
	93	103	2,579
	99	106	2,670
6	67	43	1,924
	67	44	1,963
	71	45	2,060
7	0	0	1,606
	0	0	1,631
	0	0	1,704
8	0	0	1,638
	0	0	1,658
	0	0	1,724
9	0	0	12
	0	0	14
	0	0	14
10	0	0	18
	0	0	19
	0	0	19
12	0	0	9
	0	0	9
	0	0	9
13	0	2	16
	0	2	16
	0	2	17
14	0	0	38
	0	0	38
	0	0	39
101	1	5	93
	1	5	95
	1	5	106

Values presented are:
 - Total Events with a RR/SIRV Response
 - Total RR/SIRV Responses,
 - Total Activities Performed

RR/SIRV Responses per Beat



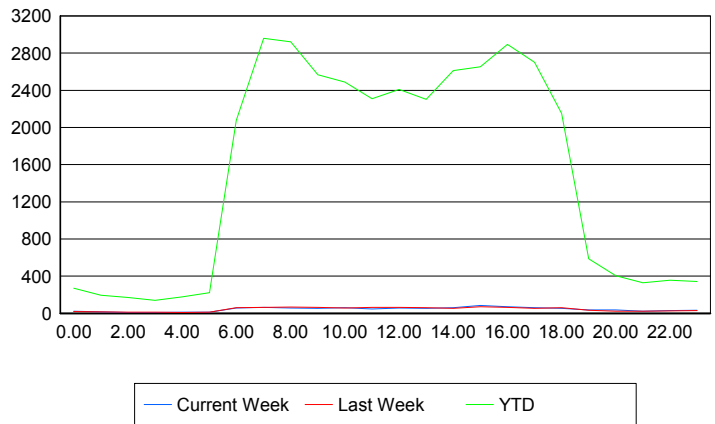
	Current We	Last Week	YTD
102	0	0	23
	0	0	23
	0	0	25
106	0	0	1
	0	0	1
	0	0	1
107	0	0	1
	0	0	1
	0	0	1
215	0	0	1
	0	0	1
	0	0	1

Road Ranger / SIRV Performance By Time of Day

Values presented are:
 - Total Events with a RR/SIRV Response
 - Total RR/SIRV Responses,
 - Total Activities Performed

	Current We	Last Week	YTD
12AM-1AM	21	16	260
	21	19	271
	23	27	293
1AM-2AM	16	17	191
	16	17	196
	17	17	207
2AM-3AM	10	10	157
	10	11	170
	11	11	177
3AM-4AM	9	11	132
	9	12	139
	10	13	147
4AM-5AM	12	9	163
	12	9	179
	15	9	187
5AM-6AM	12	11	180
	12	11	221
	13	11	236
6AM-7AM	52	54	1,898
	58	61	2,077
	59	65	2,141
7AM-8AM	58	64	2,754
	63	64	2,959
	67	64	3,065
8AM-9AM	52	65	2,655
	58	67	2,921
	59	67	3,037

Number of Responses / Hour of the Day



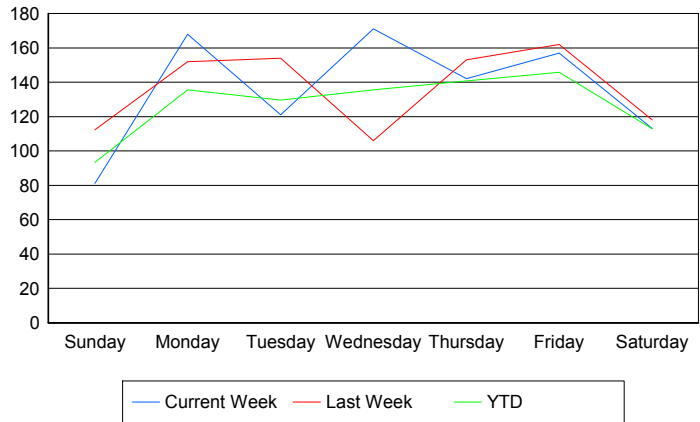
	Current We	Last Week	YTD
9AM-10AM	47	59	2,393
	52	65	2,568
	60	66	2,655
10AM-11AM	59	56	2,309
	59	58	2,488
	65	60	2,595
11AM-12PM	44	58	2,148
	48	63	2,308
	48	66	2,404
12PM-1PM	56	57	2,266
	57	63	2,408
	58	65	2,494
1PM-2PM	46	56	2,144
	53	59	2,304
	56	64	2,401
2PM-3PM	59	46	2,442
	59	52	2,613
	62	52	2,719
3PM-4PM	78	71	2,474
	84	71	2,652
	92	76	2,768
4PM-5PM	66	63	2,709
	71	64	2,894
	73	65	3,009
5PM-6PM	53	52	2,494
	61	53	2,703
	63	55	2,817
6PM-7PM	52	51	2,039
	55	60	2,152
	58	61	2,222
7PM-8PM	36	30	554
	37	32	588
	39	33	621
8PM-9PM	35	23	382
	37	24	405
	39	24	427
9PM-10PM	17	24	303
	22	24	330
	22	25	349
10PM-11PM	28	24	343
	29	25	357
	32	26	372
11PM-12AM	32	30	331
	32	30	343
	32	31	357

Road Ranger / SIRV Performance By Day of Week

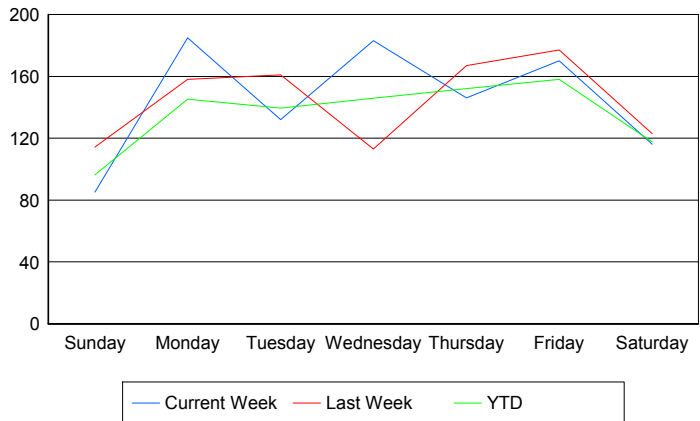
Values presented are:
 - Total Events with a RR/SIRV Response
 - Total RR/SIRV Responses,
 - Total Activities Performed

	Current We	Last Week	YTD
Sunday	79	113	1,050
	83	115	1,083
	91	121	1,138
Monday	168	152	6,112
	185	158	6,549
	189	164	6,747
Tuesday	121	154	5,821
	132	161	6,253
	140	165	6,468
Wednesday	171	106	6,083
	183	113	6,539
	196	116	6,830
Thursday	142	153	6,511
	146	167	7,029
	151	174	7,318
Friday	157	162	6,779
	170	177	7,346
	178	184	7,673
Saturday	113	118	1,387
	116	123	1,446
	128	129	1,526

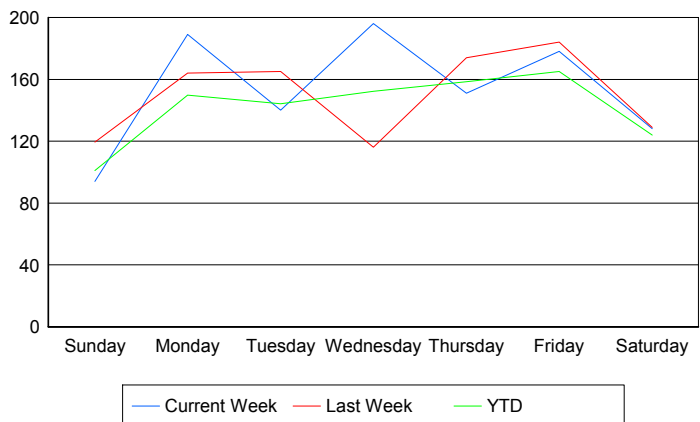
Avg # of events with a RR/SIRV Response per Day of the Week



Avg # of RR/SIRV Responses per Day of the Week



Avg # of RR/SIRV Activities Performed per Day of the Week



Road Ranger / SIRV Responses per Time of Day and Day of Week

