



# Weekly Performance Measures Report Broward County



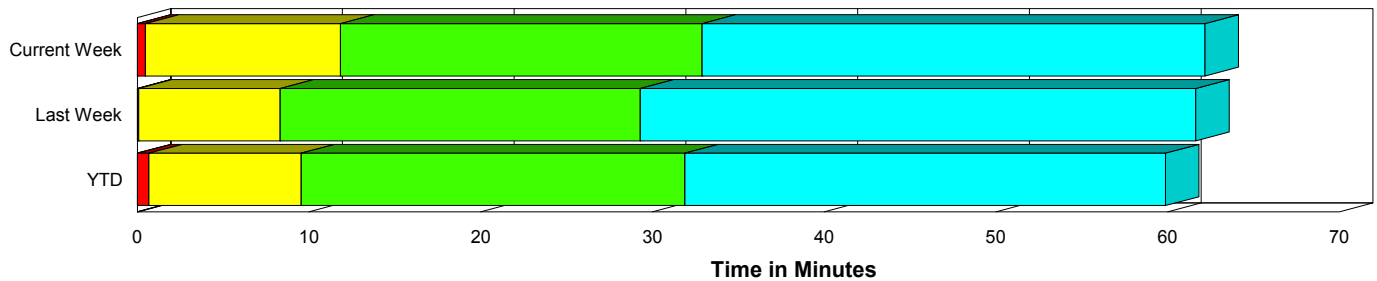
Period From Nov 8, 2009 to Nov 14, 2009

Created on:  
November 16, 2009  
8:41 am

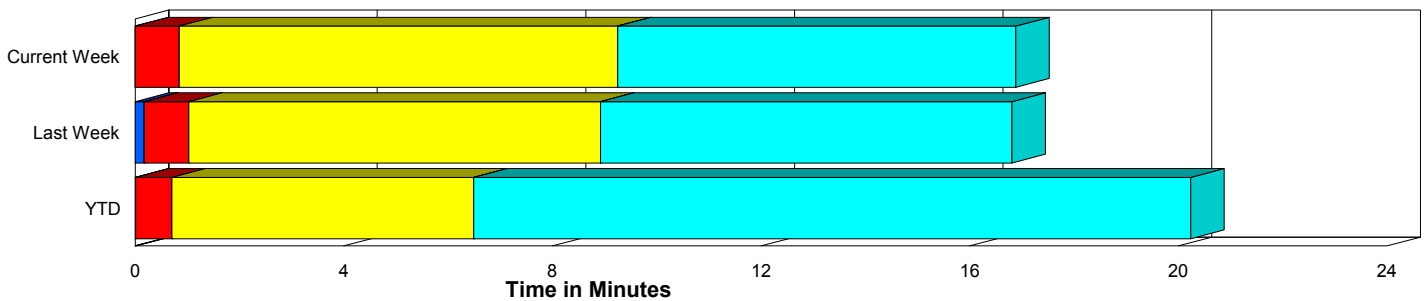
## Performance Measures Summary

	Traffic Events (No Lanes Blocked)			Incidents (Lanes Blocked)		
	<u>This Week</u>	<u>Last Week</u>	<u>YTD</u>	<u>This Week</u>	<u>Last Week</u>	<u>YTD</u>
Number of Events	1,391	1,352	46,175	47	48	2,165
TMC Detection (min.)	0.00	0.17	0.01	0.00	0.00	0.00
TMC Verification (min.)	0.85	0.86	0.70	0.48	0.07	0.68
TMC Response (min.)	9.73	9.12	6.99	11.82	8.33	9.69
RR Dispatch Time (min.)	1.36	1.07	1.21	2.65	1.52	2.57
RR Response Time (min.)	8.62	7.96	5.91	9.20	6.84	7.26
Roadway Clearance (min.)				32.39	27.24	31.06
Event Clearance (min.)	17.36	17.18	20.74	61.67	59.55	58.65
# of Events w/ RR/SIRV	1,096	1,086	32,486	47	46	1,591
RR/SIRV Responses	1,096	1,086	32,486	47	46	1,591
RR/SIRV Activities	786	783	27,295	81	81	3,176

### Incident Clearance Time-Line



### Traffic Event (Non-Lane Blockage) Time-Line



<span style="color: blue;">■</span> Avg. TMC Detection Time	<span style="color: green;">■</span> Avg. Time from TMC Response to Roadway Clearance*
<span style="color: red;">■</span> Avg. Time from TMC Detection to TMC Verification	<span style="color: cyan;">■</span> Avg. Time from Roadway Clearance to Incident/Event Clearance**
<span style="color: yellow;">■</span> Avg. Time from TMC Verification to TMC Response	

\* Roadway clearance equals all travel lanes open

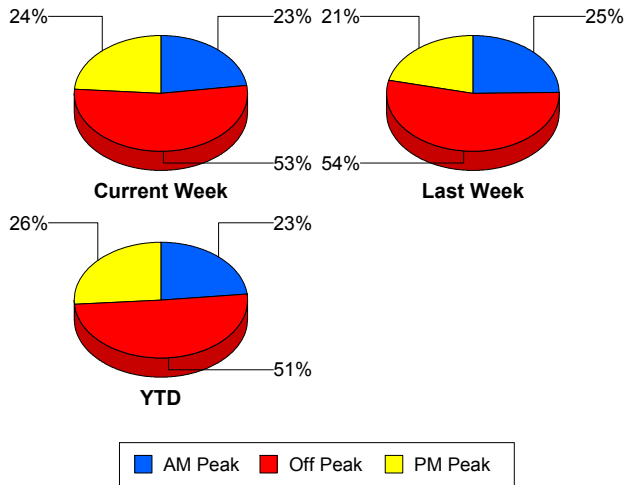
\*\* Incident clearance equals time when last responder has left the scene

## Performance Measures by Peak Period

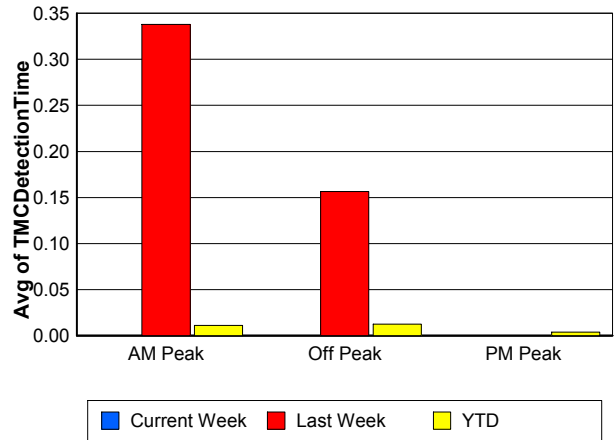
Note: AM peak period is defined as 6am to 10am and PM peak period is defined as 3pm to 7pm.

	AM Peak			Off Peak			PM Peak		
	<u>Current Week</u>	<u>Last Week</u>	<u>YTD</u>	<u>Current Week</u>	<u>Last Week</u>	<u>YTD</u>	<u>Current Week</u>	<u>Last Week</u>	<u>YTD</u>
Number of Events	329	348	11,236	767	753	24,489	342	299	12,615
Number of Incidents	8	14	509	18	23	1,051	21	11	605
TMC Detection (min.)	0.00	0.34	0.01	0.00	0.16	0.01	0.00	0.00	0.00
TMC Verification (min.)	0.30	0.78	0.55	0.84	0.87	0.67	1.33	0.78	0.86
TMC Response (min.)	9.04	9.03	6.59	10.49	9.50	7.97	9.36	8.24	6.47
RR Dispatch Time (min.)	0.86	0.52	0.95	1.73	1.29	1.69	1.30	1.26	0.96
RR Response Time (min.)	8.26	8.23	5.72	9.05	8.11	6.39	8.26	7.11	5.65
Event Clearance (min.)	15.47	19.88	20.75	19.37	17.94	24.47	20.76	18.92	20.00
Roadway Clearance (min.)	31.63	21.59	27.71	47.90	34.80	35.53	19.39	18.62	26.11
Incident Clearance (min.)	51.63	70.39	56.54	76.67	62.56	62.50	52.63	39.49	53.76
# of Events w/ RR/SIRV	281	287	9,220	584	593	14,918	278	252	9,939
RR/SIRV Responses	281	287	9,220	584	593	14,918	278	252	9,939
RR/SIRV Activities	207	238	8,525	440	421	12,890	220	205	9,056

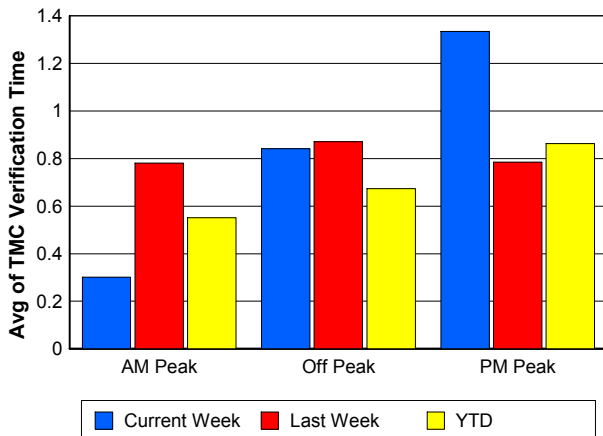
### Number of Events / Peak Period



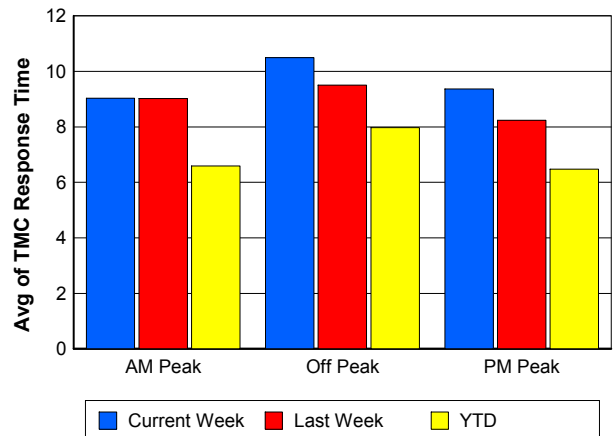
### TMC Detection Time



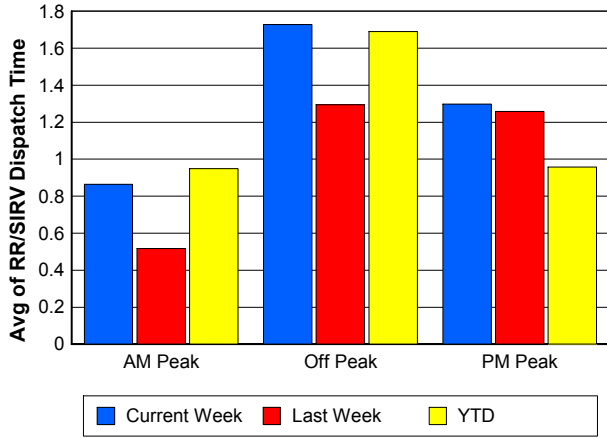
### TMC Verification Time



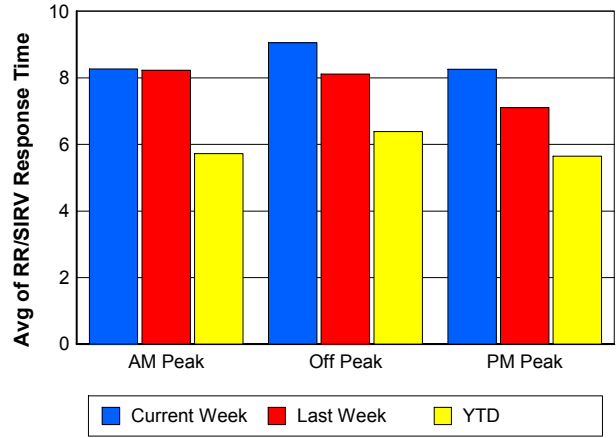
### TMC Response Time



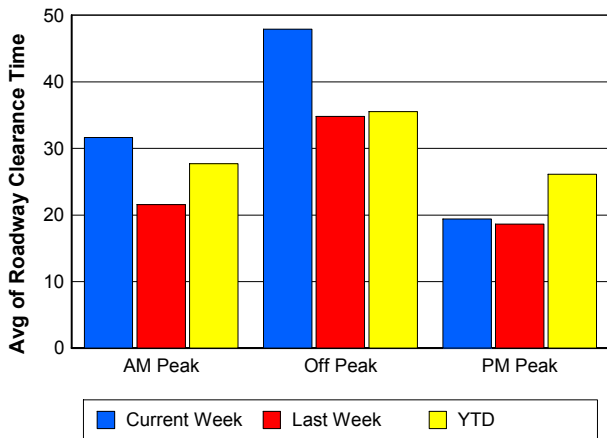
## Road Ranger / SIRV Dispatch Time



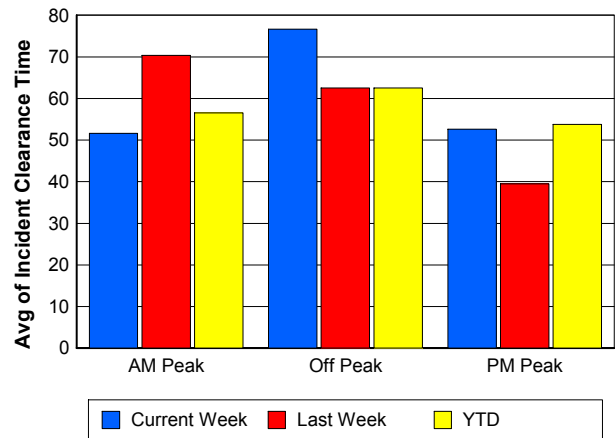
## Road Ranger / SIRV Response Time



## Roadway Clearance Time (2A)



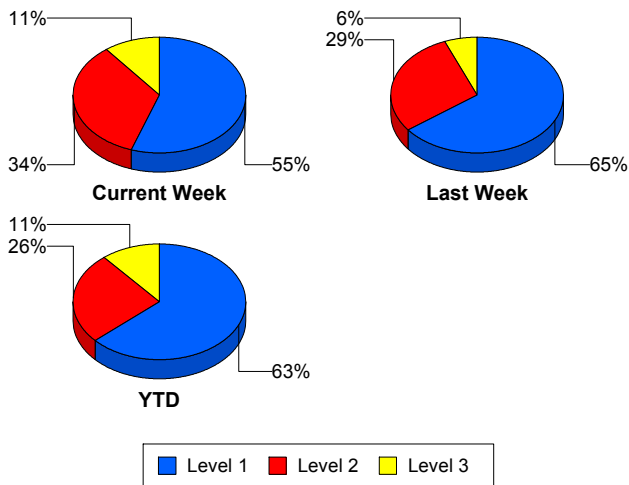
## Incident Clearance Time (3B)



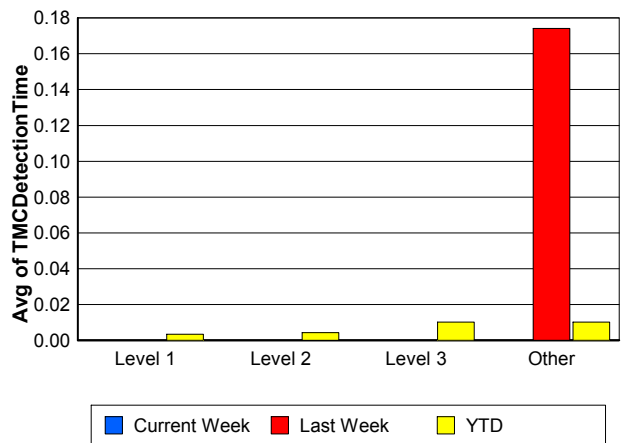
## Performance Measures by Severity

	Level 1			Level 2			Level 3			Other		
	<u>This Week</u>	<u>Last Week</u>	<u>YTD</u>	<u>This Week</u>	<u>Last Week</u>	<u>YTD</u>	<u>This Week</u>	<u>Last Week</u>	<u>YTD</u>	<u>This Week</u>	<u>Last Week</u>	<u>YTD</u>
Number of Events	26	31	1,369	16	14	554	5	3	242	1,391	1,352	46,175
Number of Incidents	26	31	1,369	16	14	554	5	3	242	0	0	0
TMC Detection (min.)	0.00	0.00	0.00	0.00	0.00	0.00	0.00	0.00	0.01	0.00	0.17	0.01
TMC Verification (min.)	0.19	0.12	0.43	1.02	0.00	1.04	0.28	0.00	1.27	0.85	0.86	0.70
TMC Response (min.)	8.08	7.79	7.44	18.92	9.96	10.42	7.77	4.32	20.48	9.73	9.12	6.99
RR Dispatch Time (min.)	1.77	1.23	1.55	4.39	2.28	2.66	1.63	0.52	7.56	1.36	1.07	1.21
RR Resp. Time (min.)	6.40	6.63	5.96	14.53	7.68	8.00	6.15	3.81	12.90	8.62	7.96	5.91
Event Clearance (min.)	42.14	49.39	45.30	80.57	73.50	72.20	102.75	99.49	102.96	17.36	17.18	20.74
Roadway Clear. (min.)	13.61	13.66	14.33	45.56	44.65	49.02	87.93	86.30	84.59			
Incident Clearance (min.)	42.14	49.39	45.30	80.57	73.50	72.20	102.75	99.49	102.96			
# of Events w/ RR/SIRV	26	30	1,043	16	14	342	5	2	206	1,096	1,086	32,486
RR/SIRV Responses	26	30	1,043	16	14	342	5	2	206	1,096	1,086	32,486
RR/SIRV Activities	38	42	1,776	28	35	910	15	4	490	786	783	27,295

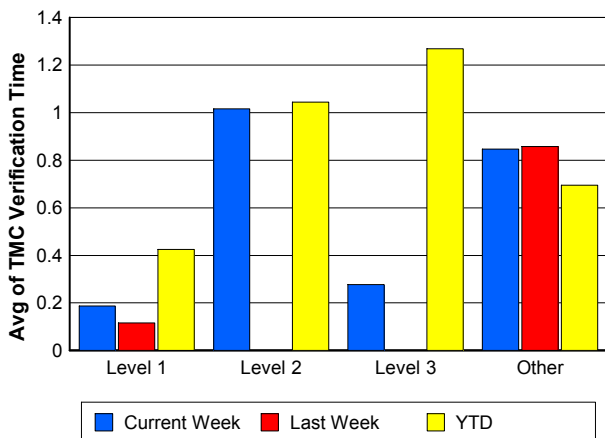
### Number of Events / Severity



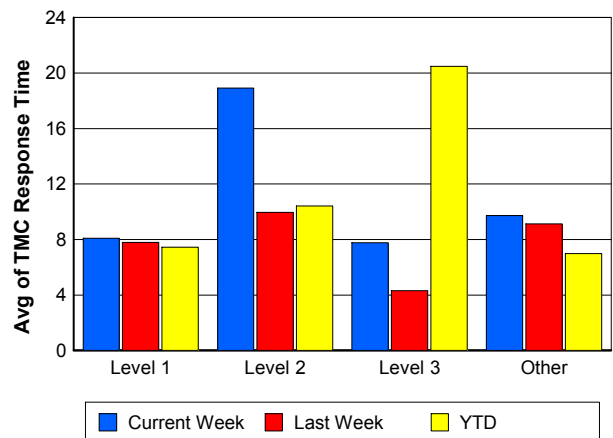
### TMC Detection Time



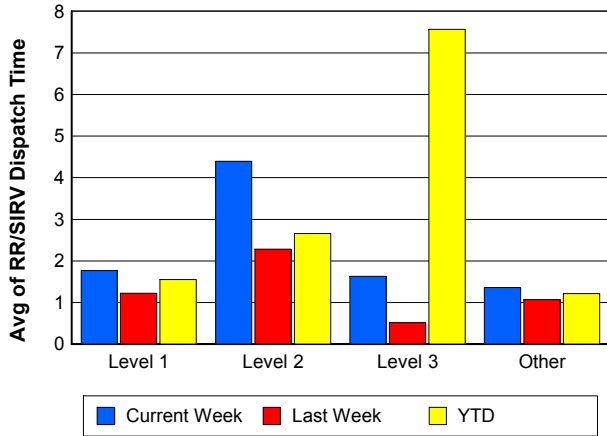
### TMC Verification Time



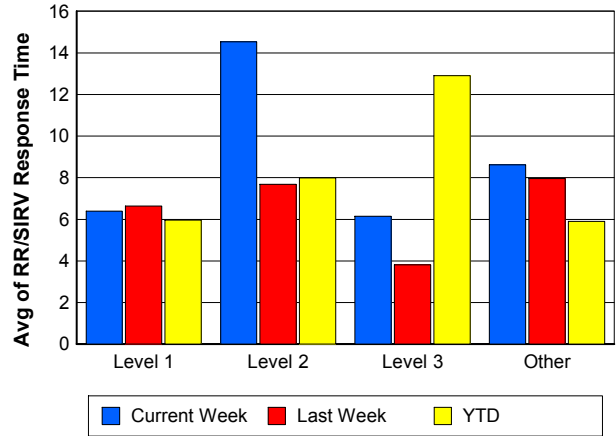
### TMC Response Time



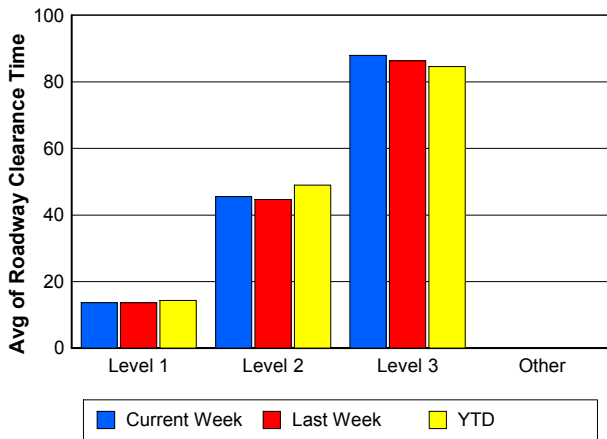
## Road Ranger / SIRV Dispatch Time



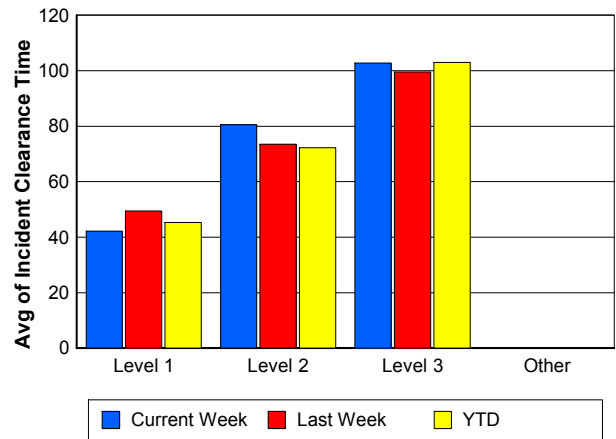
## Road Ranger / SIRV Response Time



## Roadway Clearance Time (2A)



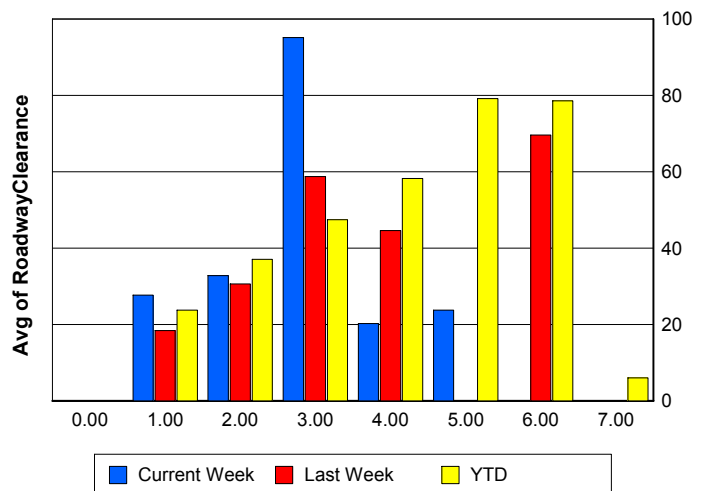
## Incident Clearance Time (3B)



## Roadway Clearance by Maximum Number of Lanes Blocked

	Current Week	Last Week	YTD
0			
1	27.68	18.35	23.71
2	32.76	30.62	37.09
3	95.09	58.70	47.40
4	20.25	44.58	58.24
5	23.77	0.00	79.15
6	0.00	69.62	78.54
7	0.00	0.00	5.97

## Roadway Clearance Time (2A)



## Performance Measures by Roadway

**595**

	<u>Current Week</u>	<u>Last Week</u>	<u>YTD</u>
Number of Events	43	36	4,682
Number of Incidents	2	2	285
TMC Detection (min.)	0.00	0.00	0.01
TMC Verification (min.)	1.13	0.45	0.86
TMC Response (min.)	13.64	12.19	7.01
RR Dispatch Time (min.)	1.39	1.63	1.17
RR Resp. Time (min.)	12.34	10.31	5.94
Event Clearance (min.)	19.01	15.63	21.34
Roadway Clear. (min.)	30.47	28.56	31.62
Incident Clearance (min.)	38.75	51.13	54.12
# of Events w/ RR/SIRV	30	25	3,268
RR/SIRV Responses	30	25	3,268
RR/SIRV Activities	22	17	2,964

**75**

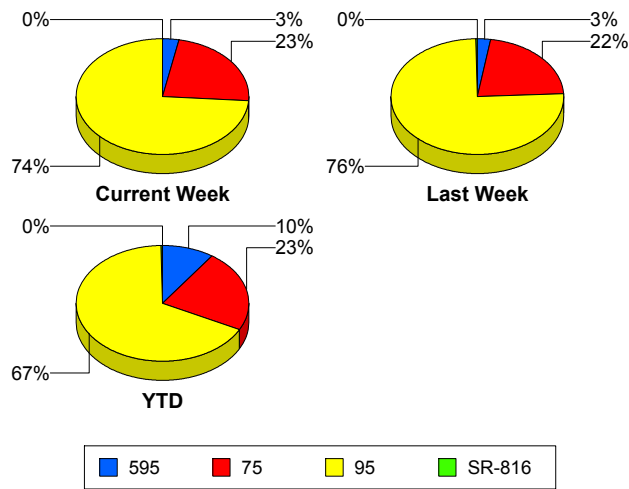
	<u>Current Week</u>	<u>Last Week</u>	<u>YTD</u>
Number of Events	333	304	11,074
Number of Incidents	3	1	198
TMC Detection (min.)	0.00	0.77	0.02
TMC Verification (min.)	1.44	2.14	0.96
TMC Response (min.)	11.89	9.78	8.43
RR Dispatch Time (min.)	1.26	0.37	1.29
RR Resp. Time (min.)	10.97	8.32	7.25
Event Clearance (min.)	18.32	17.46	24.15
Roadway Clear. (min.)	117.12	33.70	53.07
Incident Clearance (min.)	125.47	92.95	80.41
# of Events w/ RR/SIRV	260	237	7,611
RR/SIRV Responses	260	237	7,611
RR/SIRV Activities	204	175	6,494

**95**

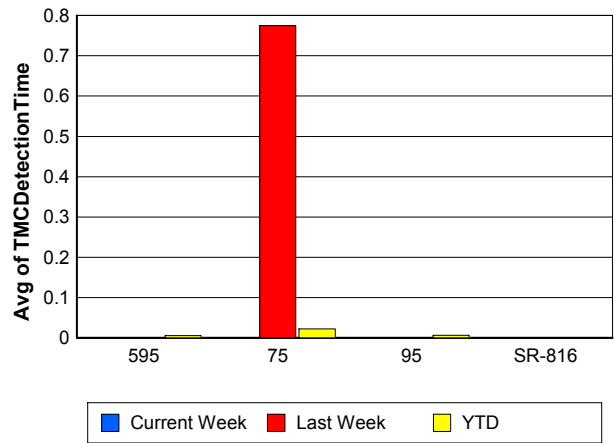
	<u>Current Week</u>	<u>Last Week</u>	<u>YTD</u>
Number of Events	1,060	1,058	32,513
Number of Incidents	40	43	1,636
TMC Detection (min.)	0.00	0.00	0.01
TMC Verification (min.)	0.64	0.47	0.58
TMC Response (min.)	9.11	8.84	6.77
RR Dispatch Time (min.)	1.46	1.27	1.29
RR Resp. Time (min.)	7.83	7.76	5.61
Event Clearance (min.)	18.96	19.07	22.04
Roadway Clear. (min.)	26.84	27.38	28.73
Incident Clearance (min.)	60.21	61.01	58.02
# of Events w/ RR/SIRV	851	868	23,130
RR/SIRV Responses	851	868	23,130
RR/SIRV Activities	639	670	20,935

	<u>Current Week</u>	<u>Last Week</u>	<u>YTD</u>
Number of Events	2	2	71
Number of Incidents	2	2	46
TMC Detection (min.)	0.00	0.00	0.00
TMC Verification (min.)	0.00	0.00	0.17
TMC Response (min.)	0.00	0.00	0.57
RR Dispatch Time (min.)	0.00	0.00	0.07
RR Resp. Time (min.)	0.00	0.00	0.51
Event Clearance (min.)	17.99	20.06	12.98
Roadway Clear. (min.)	18.26	19.67	15.66
Incident Clearance (min.)	17.99	20.06	15.53
# of Events w/ RR/SIRV	2	2	68
RR/SIRV Responses	2	2	68
RR/SIRV Activities	2	2	78

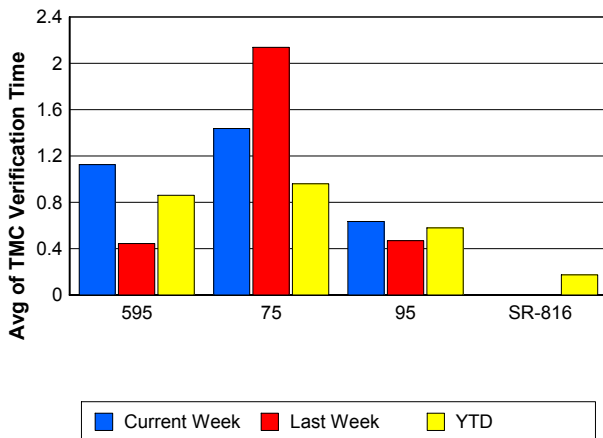
### Number of Events / Roadway



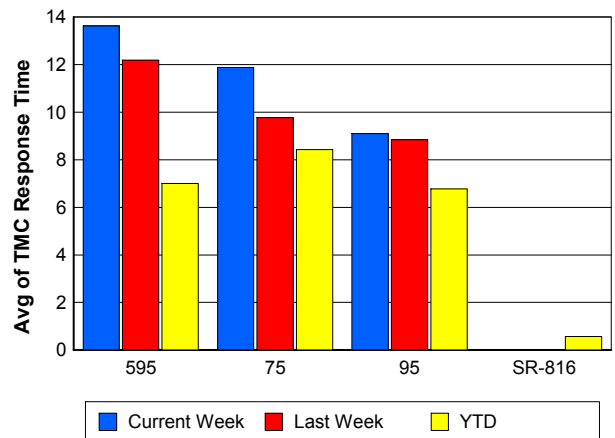
### TMC Detection Time



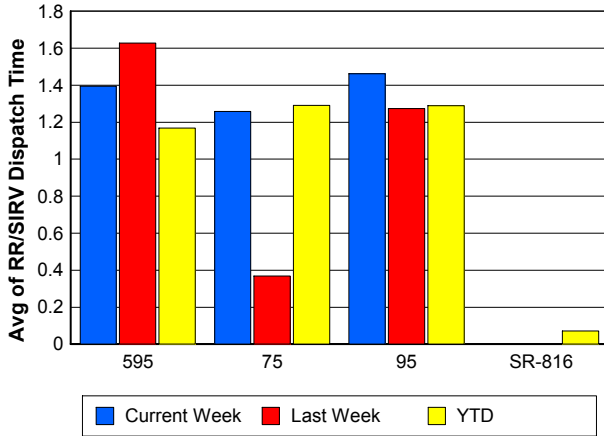
### TMC Verification Time



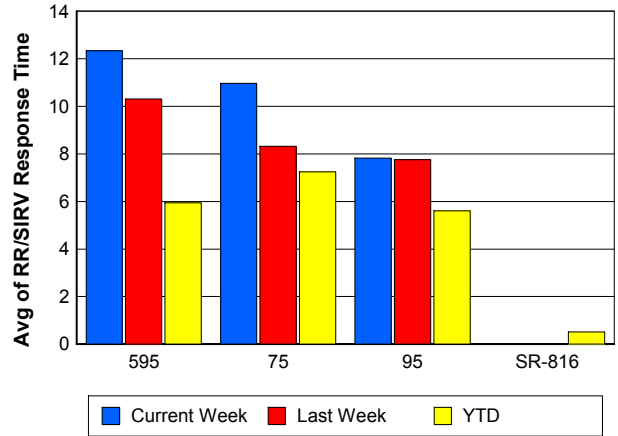
### TMC Response Time



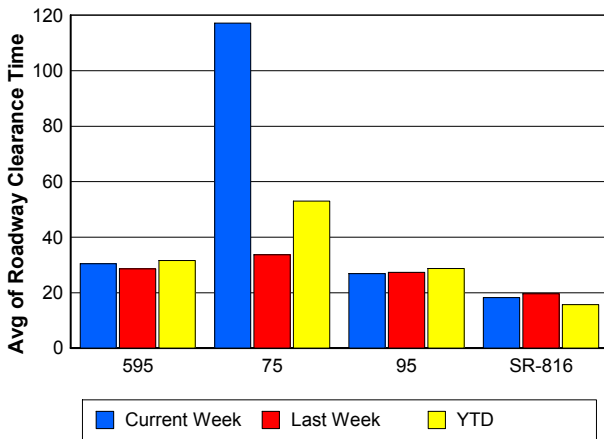
## Road Ranger / SIRV Dispatch Time



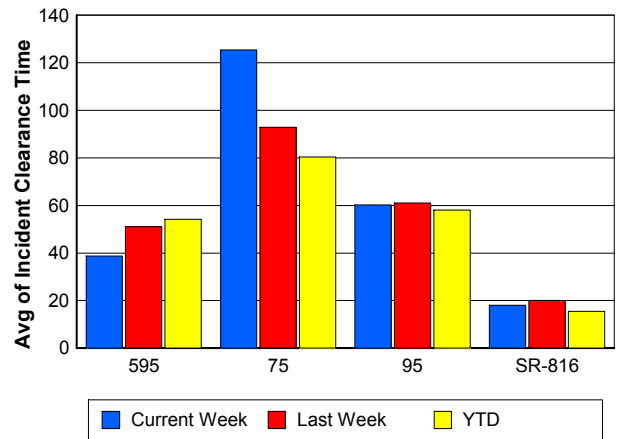
## Road Ranger / SIRV Response Time



## Roadway Clearance Time (2A)



## Incident Clearance Time (3B)



## Performance Measures by Event Type

### Accident

	<u>Current Week</u>	<u>Last Week</u>	<u>YTD</u>
Number of Events	58	83	3,225
Number of Incidents	29	32	1,535
TMC Detection (min.)	0.00	0.00	0.01
TMC Verification (min.)	0.29	0.81	0.75
TMC Response (min.)	12.43	10.18	9.19
RR Dispatch Time (min.)	2.25	1.57	1.66
RR Response Time (min.)	10.18	8.57	7.59
Event Clearance (min.)	66.12	52.56	55.01
Roadway Clearance (min.)	40.10	31.55	32.95
Incident Clearance (min.)	79.66	74.39	66.62
# of Events w/ RR/SIRV	57	81	2,469
RR/SIRV Assists	57	81	2,469
RR/SIRV Activities	82	108	3,795

### Debris on Roadway

	<u>Current Week</u>	<u>Last Week</u>	<u>YTD</u>
Number of Events	42	28	1,486
Number of Incidents	0	0	29
TMC Detection (min.)	0.00	0.00	0.08
TMC Verification (min.)	5.44	3.93	4.14
TMC Response (min.)	9.48	9.10	7.89
RR Dispatch Time (min.)	0.87	0.87	0.96
RR Response Time (min.)	8.76	8.45	6.96
Event Clearance (min.)	11.61	13.56	11.72
Roadway Clearance (min.)			24.83
Incident Clearance (min.)			30.97
# of Events w/ RR/SIRV	36	28	1,378
RR/SIRV Assists	36	28	1,378
RR/SIRV Activities	32	28	1,393

### Disabled Vehicle

	<u>Current Week</u>	<u>Last Week</u>	<u>YTD</u>
Number of Events	754	720	28,283
Number of Incidents	14	10	370
TMC Detection (min.)	0.00	0.24	0.01
TMC Verification (min.)	1.08	1.28	0.83
TMC Response (min.)	9.73	8.84	6.78
RR Dispatch Time (min.)	1.32	0.97	1.12
RR Response Time (min.)	8.63	7.66	5.72
Event Clearance (min.)	22.39	21.52	25.15
Roadway Clearance (min.)	19.23	11.28	18.35
Incident Clearance (min.)	26.98	23.24	32.14
# of Events w/ RR/SIRV	734	702	23,360
RR/SIRV Assists	734	702	23,360
RR/SIRV Activities	702	687	23,662

## Emergency Vehicles

	<u>Current Week</u>	<u>Last Week</u>	<u>YTD</u>
Number of Events	1	2	75
Number of Incidents	1	1	58
TMC Detection (min.)	0.00	0.00	0.00
TMC Verification (min.)	0.00	0.00	0.51
TMC Response (min.)	10.85		12.82
RR Dispatch Time (min.)	9.22	0.60	8.00
RR Response Time (min.)	1.63		4.14
Event Clearance (min.)	31.20	20.77	47.76
Roadway Clearance (min.)	28.73	23.65	47.04
Incident Clearance (min.)	31.20	29.57	53.60
# of Events w/ RR/SIRV	1	1	42
RR/SIRV Assists	1	1	42
RR/SIRV Activities	1	0	70

## Other

	<u>Current Week</u>	<u>Last Week</u>	<u>YTD</u>
Number of Events	564	557	14,815
Number of Incidents	0	0	31
TMC Detection (min.)	0.00	0.11	0.01
TMC Verification (min.)	0.19	0.12	0.08
TMC Response (min.)	5.22	11.72	8.29
RR Dispatch Time (min.)	1.49	1.24	1.70
RR Response Time (min.)	4.18	11.12	6.34
Event Clearance (min.)	9.06	9.91	10.84
Roadway Clearance (min.)			33.55
Incident Clearance (min.)			38.56
# of Events w/ RR/SIRV	299	312	6,560
RR/SIRV Assists	299	312	6,560
RR/SIRV Activities	32	32	1,207

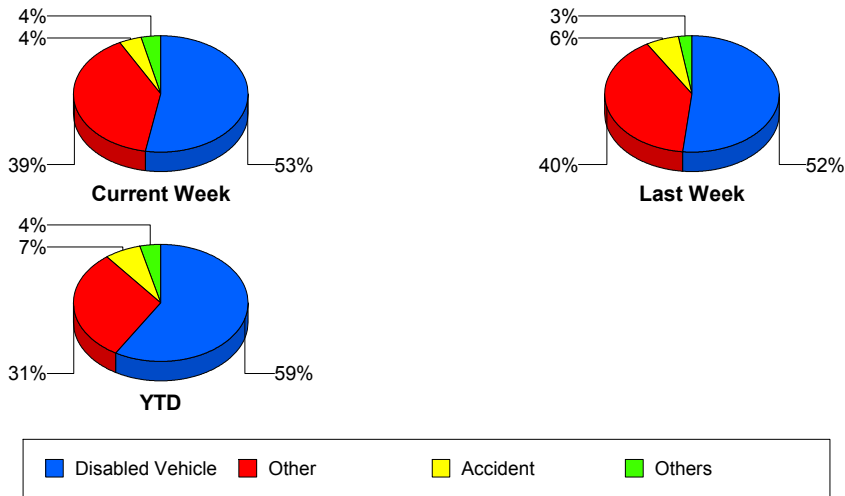
## Police Activity

	<u>Current Week</u>	<u>Last Week</u>	<u>YTD</u>
Number of Events	6	4	187
Number of Incidents	2	3	63
TMC Detection (min.)	0.00	0.00	0.00
TMC Verification (min.)	0.42	0.00	0.30
TMC Response (min.)	32.42	12.83	14.20
RR Dispatch Time (min.)	3.14	4.09	4.03
RR Response Time (min.)	29.51	9.00	10.23
Event Clearance (min.)	39.14	22.62	32.05
Roadway Clearance (min.)	19.15	13.17	35.15
Incident Clearance (min.)	23.11	18.72	43.46
# of Events w/ RR/SIRV	4	2	67
RR/SIRV Assists	4	2	67
RR/SIRV Activities	3	1	78

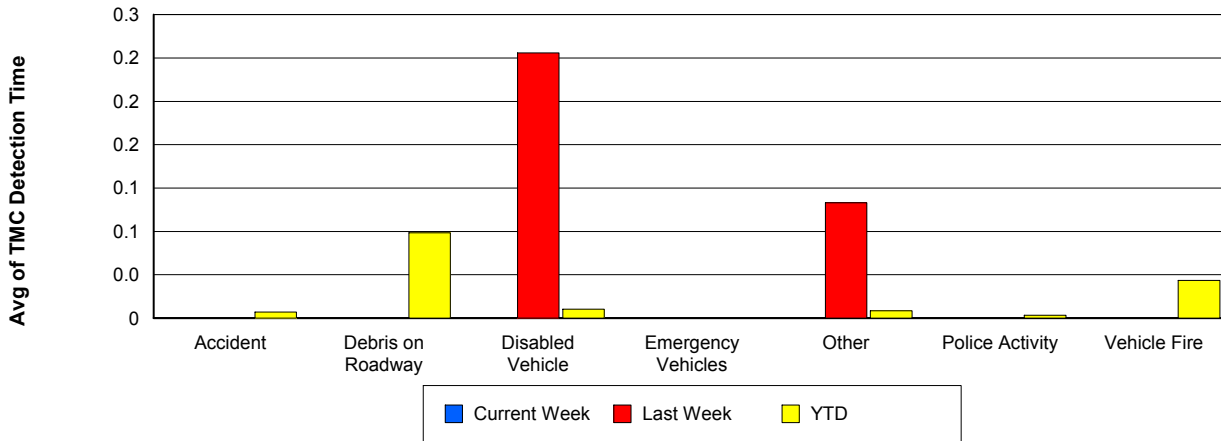
## Vehicle Fire

	<u>Current Week</u>	<u>Last Week</u>	<u>YTD</u>
Number of Events	3	2	103
Number of Incidents	1	2	79
TMC Detection (min.)	0.00	0.00	0.03
TMC Verification (min.)	7.38	0.00	1.26
TMC Response (min.)	14.31	4.32	10.00
RR Dispatch Time (min.)	2.89	0.52	2.11
RR Response Time (min.)	11.42	3.81	8.26
Event Clearance (min.)	65.01	80.03	57.50
Roadway Clearance (min.)	23.30	60.90	40.01
Incident Clearance (min.)	133.12	80.03	62.25
# of Events w/ RR/SIRV	3	2	73
RR/SIRV Assists	3	2	73
RR/SIRV Activities	4	6	150

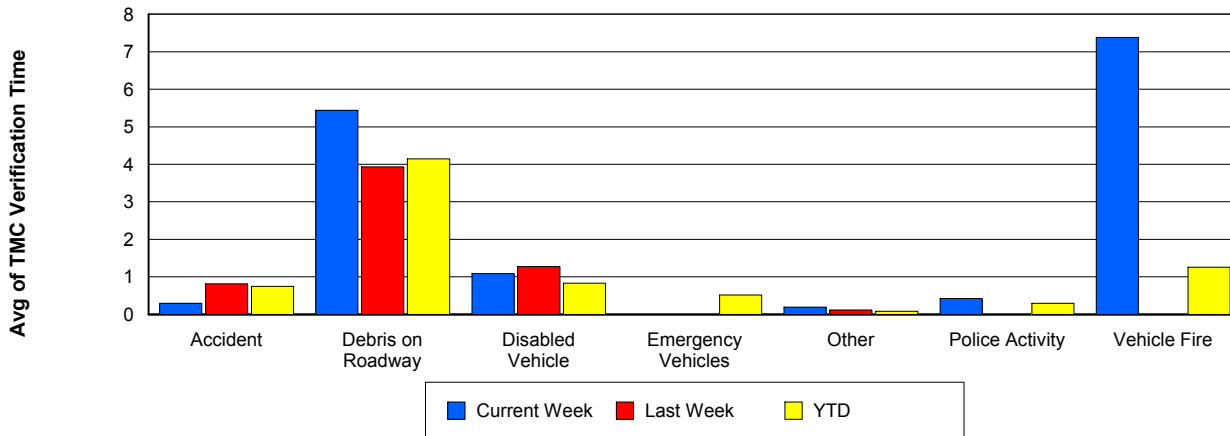
## Number of Events / Event Type



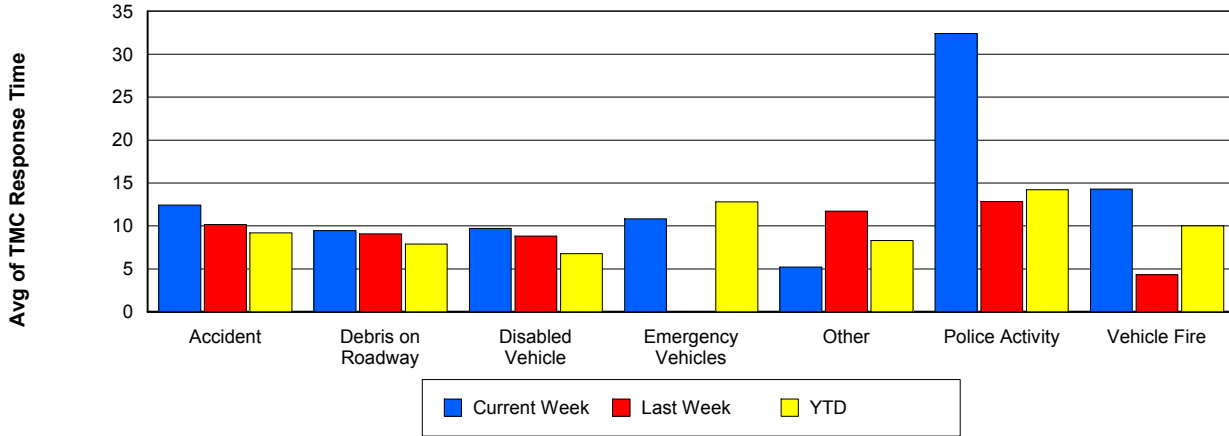
## TMC Detection Time



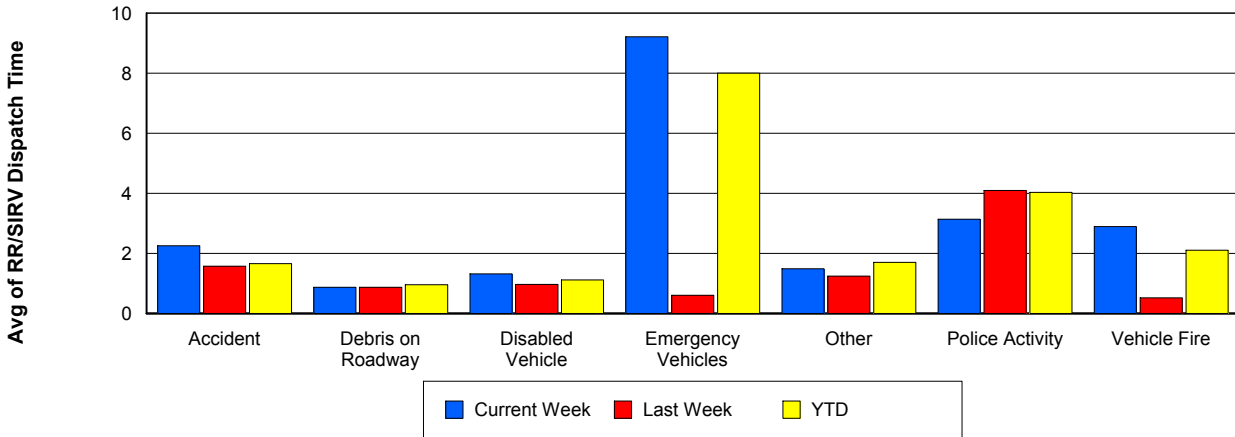
## TMC Verification Time



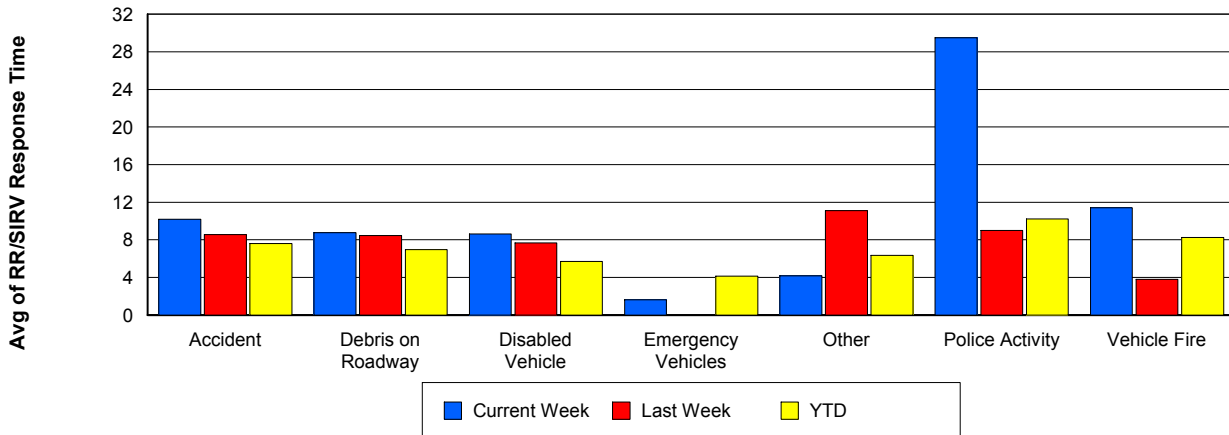
## TMC Response Time



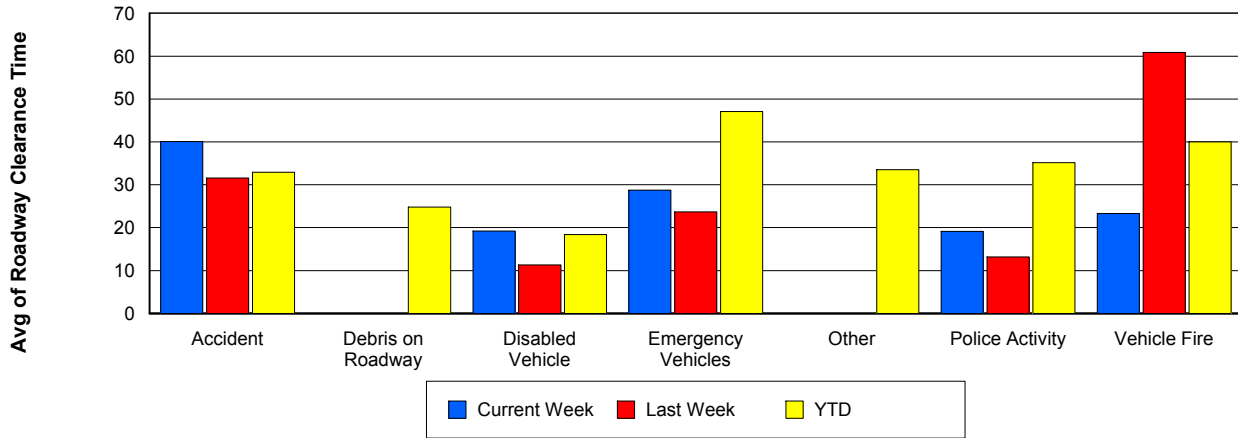
## Road Ranger / SIRV Dispatch Time



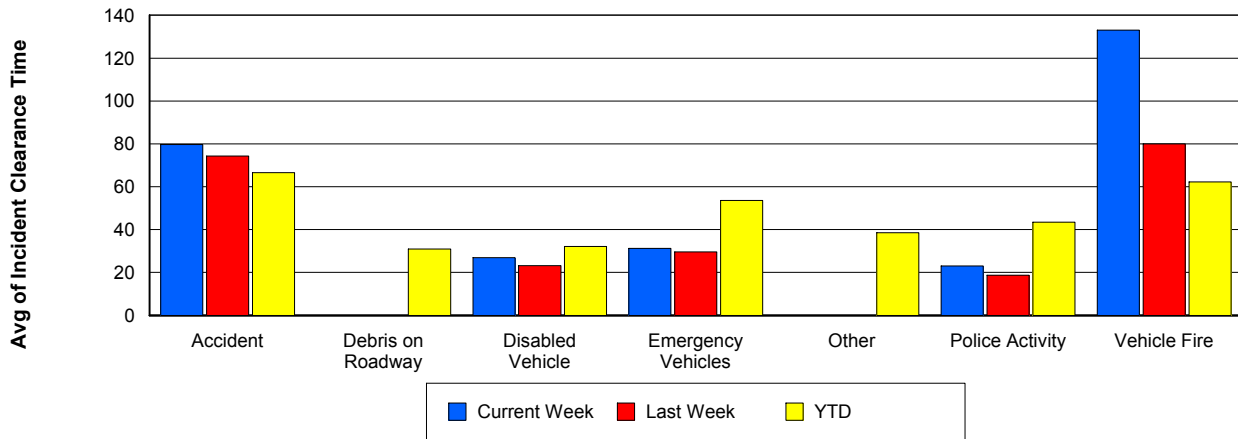
## Road Ranger / SIRV Response Time



## Roadway Clearance Time (2A)



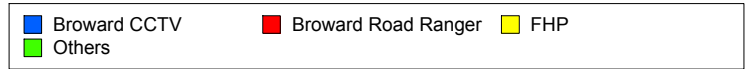
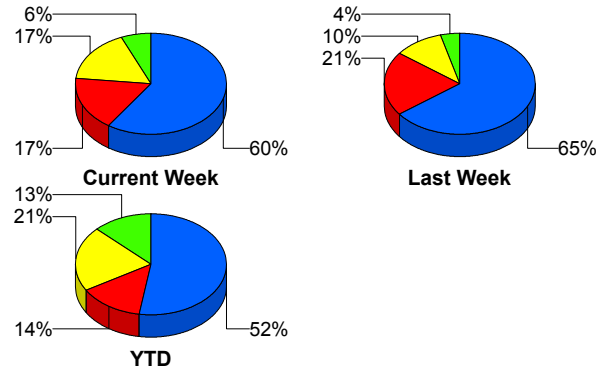
## Incident Clearance Time (3B)



## Incident Detection Methods

	Current Week	Last Week	YTD
Broward CCTV	<b>28</b>	<b>31</b>	<b>1,132</b>
Broward Road Ranger	<b>8</b>	<b>10</b>	<b>298</b>
Broward TMC	<b>0</b>	<b>0</b>	<b>4</b>
Broward VideoWall	<b>0</b>	<b>0</b>	<b>60</b>
BSO	<b>0</b>	<b>0</b>	<b>47</b>
District 4	<b>0</b>	<b>0</b>	<b>50</b>
District 6	<b>0</b>	<b>0</b>	<b>3</b>
FDOT Maintenance	<b>0</b>	<b>0</b>	<b>6</b>
FHP	<b>8</b>	<b>5</b>	<b>454</b>
Fire	<b>0</b>	<b>0</b>	<b>4</b>
Florida's Turnpike	<b>0</b>	<b>0</b>	<b>6</b>
ITMS	<b>0</b>	<b>0</b>	<b>2</b>
Motorist	<b>2</b>	<b>0</b>	<b>13</b>
Other	<b>0</b>	<b>0</b>	<b>1</b>
Palm Beach Road Ran	<b>1</b>	<b>2</b>	<b>8</b>
Road Watcher	<b>0</b>	<b>0</b>	<b>14</b>
SIRV	<b>0</b>	<b>0</b>	<b>12</b>
SmarTraveler (511)	<b>0</b>	<b>0</b>	<b>6</b>
VisioPaD Detection	<b>0</b>	<b>0</b>	<b>37</b>
<b>Total</b>	<b>47</b>	<b>48</b>	<b>2,157</b>

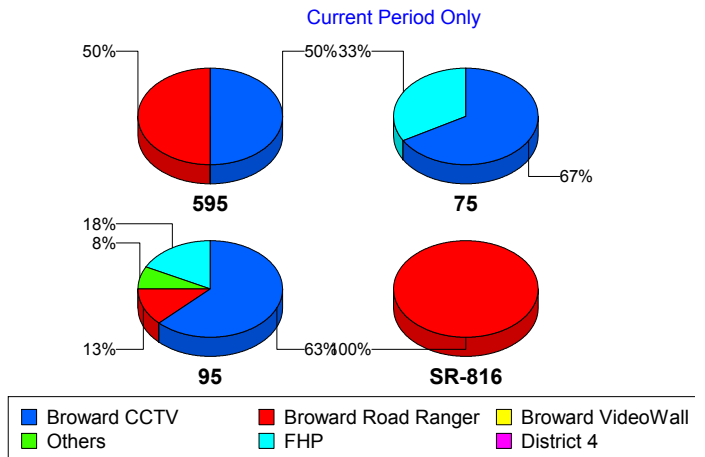
### Total Incidents by Detection Method



## Incident Detection Methods by Roadway

		Current Week	Last Week	YTD
595	Broward CCTV	1	1	135
	Broward Road Ranger	1	0	39
	Broward VideoWall	0	0	8
	BSO	0	0	7
	District 4	0	0	12
	FDOT Maintenance	0	0	2
	FHP	0	1	56
	Florida's Turnpike	0	0	6
	Motorist	0	0	3
	Road Watcher	0	0	3
	SIRV	0	0	1
	VisioPaD Detection	0	0	6
	Total	2	2	278
	75	Broward CCTV	2	1
Broward Road Ranger		0	0	21
Broward VideoWall		0	0	1
BSO		0	0	35
District 4		0	0	6
FHP		1	0	45
Other		0	0	1
Road Watcher		0	0	3
VisioPaD Detection		0	0	5
Total		3	1	198
95	Broward CCTV	25	29	916
	Broward Road Ranger	5	8	193
	Broward TMC	0	0	4
	Broward VideoWall	0	0	51
	BSO	0	0	5
	District 4	0	0	31
	District 6	0	0	3
	FDOT Maintenance	0	0	4

Total Events by Roadway and Detection Method

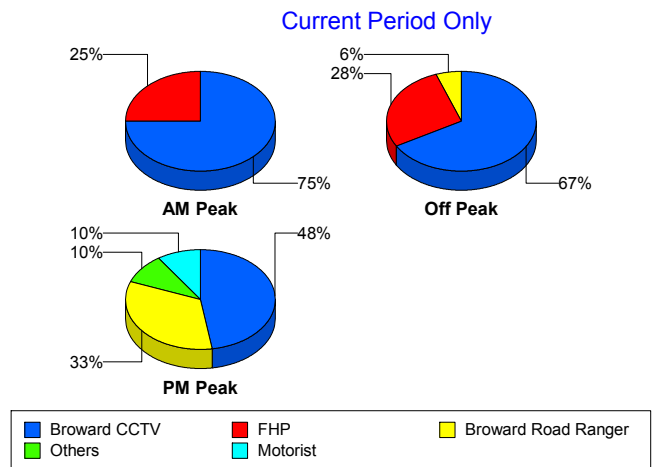


		Current Week	Last Week	YTD
95	FHP	7	4	353
	Fire	0	0	4
	ITMS	0	0	2
	Motorist	2	0	10
	Palm Beach Road Ran	1	2	8
	Road Watcher	0	0	8
	SIRV	0	0	11
	SmarTraveler (511)	0	0	6
	VisioPaD Detection	0	0	26
	Total	40	43	1,635
SR-816	Broward Road Ranger	2	2	45
	District 4	0	0	1
	Total	2	2	46
Total		47	48	2,157

### Incident Detection Methods by Peak Period

		Current Week	Last Week	YTD
AM Peak	Broward CCTV	6	6	226
	Broward Road Ranger	0	4	98
	Broward TMC	0	0	1
	Broward VideoWall	0	0	20
	BSO	0	0	7
	District 4	0	0	18
	FDOT Maintenance	0	0	1
	FHP	2	4	116
	Florida's Turnpike	0	0	2
	Motorist	0	0	6
	Palm Beach Road Ran	0	0	2
	Road Watcher	0	0	5
	SIRV	0	0	1
	SmarTraveler (511)	0	0	1
	VisioPaD Detection	0	0	2

### Total Events by Peak Period and Detection Method



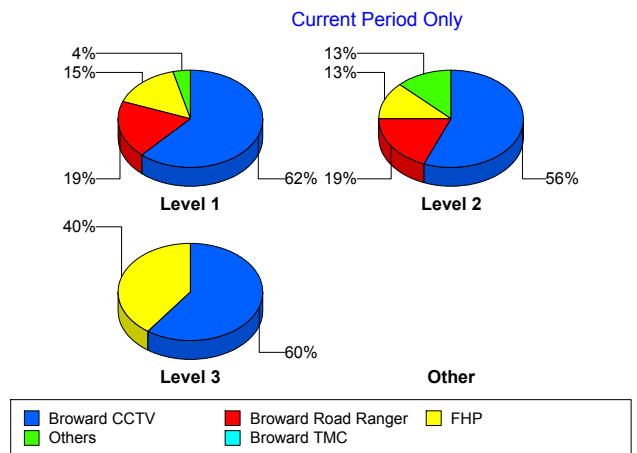
		Current Week	Last Week	YTD
AM Peak	Total	8	14	506
Off Peak	Broward CCTV	12	17	605
	Broward Road Ranger	1	4	83
	Broward TMC	0	0	3
	Broward VideoWall	0	0	33
	BSO	0	0	31
	District 4	0	0	16
	District 6	0	0	2
	FDOT Maintenance	0	0	3
	FHP	5	0	214
	Fire	0	0	3
	Florida's Turnpike	0	0	3
	ITMS	0	0	2
	Motorist	0	0	4
	Palm Beach Road Ran	0	2	3
	Road Watcher	0	0	6
	SIRV	0	0	5
	SmarTraveler (511)	0	0	3
	VisioPaD Detection	0	0	29
	Total	18	23	1,048
	PM Peak	Broward CCTV	10	8
Broward Road Ranger		7	2	117
Broward VideoWall		0	0	7
BSO		0	0	9
District 4		0	0	16
District 6		0	0	1
FDOT Maintenance		0	0	2
FHP		1	1	124
Fire		0	0	1
Florida's Turnpike		0	0	1
Motorist		2	0	3
Other		0	0	1

		Current Week	Last Week	YTD
PM Peak	Palm Beach Road Ran	1	0	3
	Road Watcher	0	0	3
	SIRV	0	0	6
	SmarTraveler (511)	0	0	2
	VisioPaD Detection	0	0	6
	Total	21	11	603
Total		47	48	2,157

### Incident Detection Methods by Severity

		Current Week	Last Week	YTD	
Level 1	Broward CCTV	16	18	721	
	Broward Road Ranger	5	7	218	
	Broward TMC	0	0	3	
	Broward VideoWall	0	0	39	
	BSO	0	0	10	
	District 4	0	0	37	
	District 6	0	0	2	
	FDOT Maintenance	0	0	5	
	FHP	4	5	265	
	Fire	0	0	3	
	ITMS	0	0	1	
	Motorist	1	0	9	
	Palm Beach Road Ran	0	1	5	
	Road Watcher	0	0	9	
	SIRV	0	0	11	
	SmarTraveler (511)	0	0	4	
	VisioPaD Detection	0	0	21	
	Total	26	31	1,363	
	Level 2	Broward CCTV	9	11	298
		Broward Road Ranger	3	3	57
Broward TMC		0	0	1	
Broward VideoWall		0	0	18	

Total Events by Severity and Detection Method



		Current Week	Last Week	YTD
Level 2	BSO	0	0	11
	District 4	0	0	7
	FDOT Maintenance	0	0	1
	FHP	2	0	132
	Florida's Turnpike	0	0	4
	ITMS	0	0	1
	Motorist	1	0	4
	Other	0	0	1
	Palm Beach Road Ran	1	0	1
	Road Watcher	0	0	2
	SIRV	0	0	1
	SmarTraveler (511)	0	0	2
	VisioPaD Detection	0	0	13
	Total	16	14	554
Level 3	Broward CCTV	3	2	113
	Broward Road Ranger	0	0	23
	Broward VideoWall	0	0	3
	BSO	0	0	26
	District 4	0	0	6
	District 6	0	0	1
	FHP	2	0	57
	Fire	0	0	1
	Florida's Turnpike	0	0	2
	Palm Beach Road Ran	0	1	2
	Road Watcher	0	0	3
	VisioPaD Detection	0	0	3
	Total	5	3	240
Total	47	48	2,157	

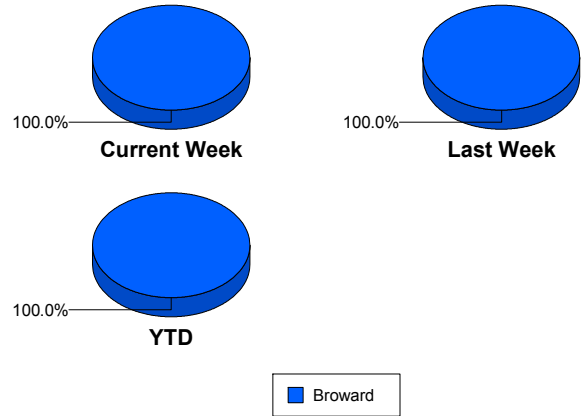
# Road Ranger / SIRV Performance Measures

## Road Ranger / SIRV Performance By County

Values presented are:  
 - Total Events with a RR/SIRV Response  
 - Total RR/SIRV Responses,  
 - Total Activities Performed

	Current We	Last Week	YTD
Broward	<b>957</b>	<b>964</b>	<b>32,771</b>
	<b>1,014</b>	<b>1,028</b>	<b>35,202</b>
	<b>1,053</b>	<b>1,057</b>	<b>36,627</b>

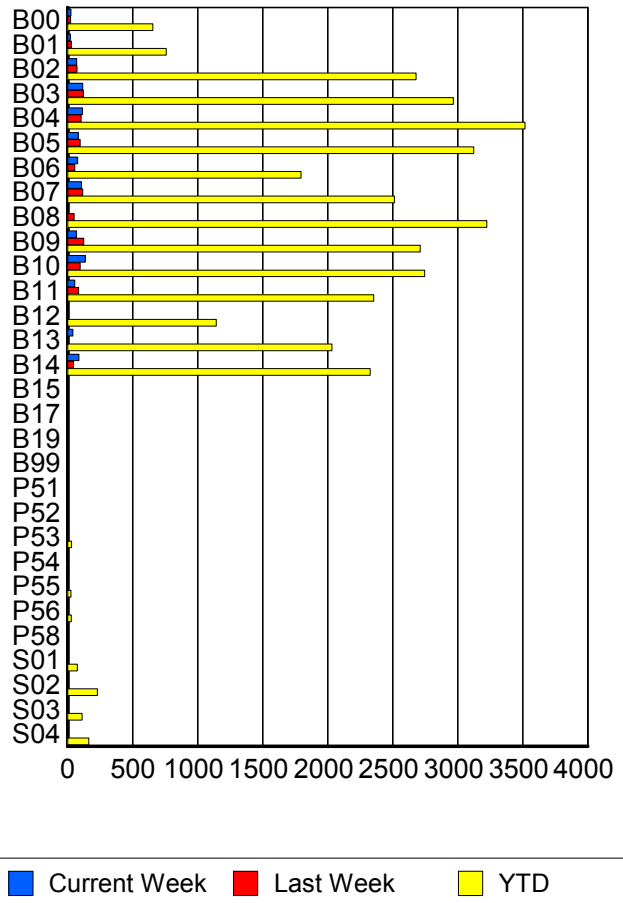
RR/SIRV Responses per County



## Road Ranger / SIRV Performance By Truck

	Current We	Last Week	YTD
B00	26	23	641
	26	23	655
	27	23	685
B01	21	28	746
	21	28	758
	21	29	794
B02	69	73	2,652
	69	73	2,679
	69	74	2,781
B03	113	119	2,923
	116	120	2,966
	123	122	3,080
B04	115	103	3,480
	115	104	3,518
	119	110	3,666
B05	83	95	3,069
	83	96	3,123
	84	100	3,229
B06	75	55	1,768
	77	55	1,795
	80	57	1,854
B07	104	116	2,479
	106	116	2,514
	111	119	2,624
B08	0	50	3,182
	0	50	3,223
	0	51	3,340

**RR/SIRV  
Responses per  
Truck**



	Current We	Last Week	YTD
B09	66 67 69	124 124 127	2,672 2,712 2,814
B10	132 137 144	94 96 97	2,696 2,747 2,854
B11	54 54 57	84 84 86	2,319 2,354 2,428
B12	0 0 0	0 0 0	1,127 1,142 1,191
B13	40 41 43	0 0 0	2,007 2,032 2,105
B14	86 88 90	46 46 48	2,287 2,327 2,413
B15	0 0 0	0 0 0	6 6 6
B17	0 0 0	0 0 0	1 1 1
B19	0 0 0	0 0 0	1 1 1
B99	0 0 0	0 0 0	4 4 4
P51	0 0 0	0 0 0	1 1 1
P52	0 0 0	0 0 0	4 4 4
P53	0 0 0	1 1 1	29 30 36
P54	0 0 0	0 0 0	8 8 8
P55	2 2 2	0 0 0	26 26 30

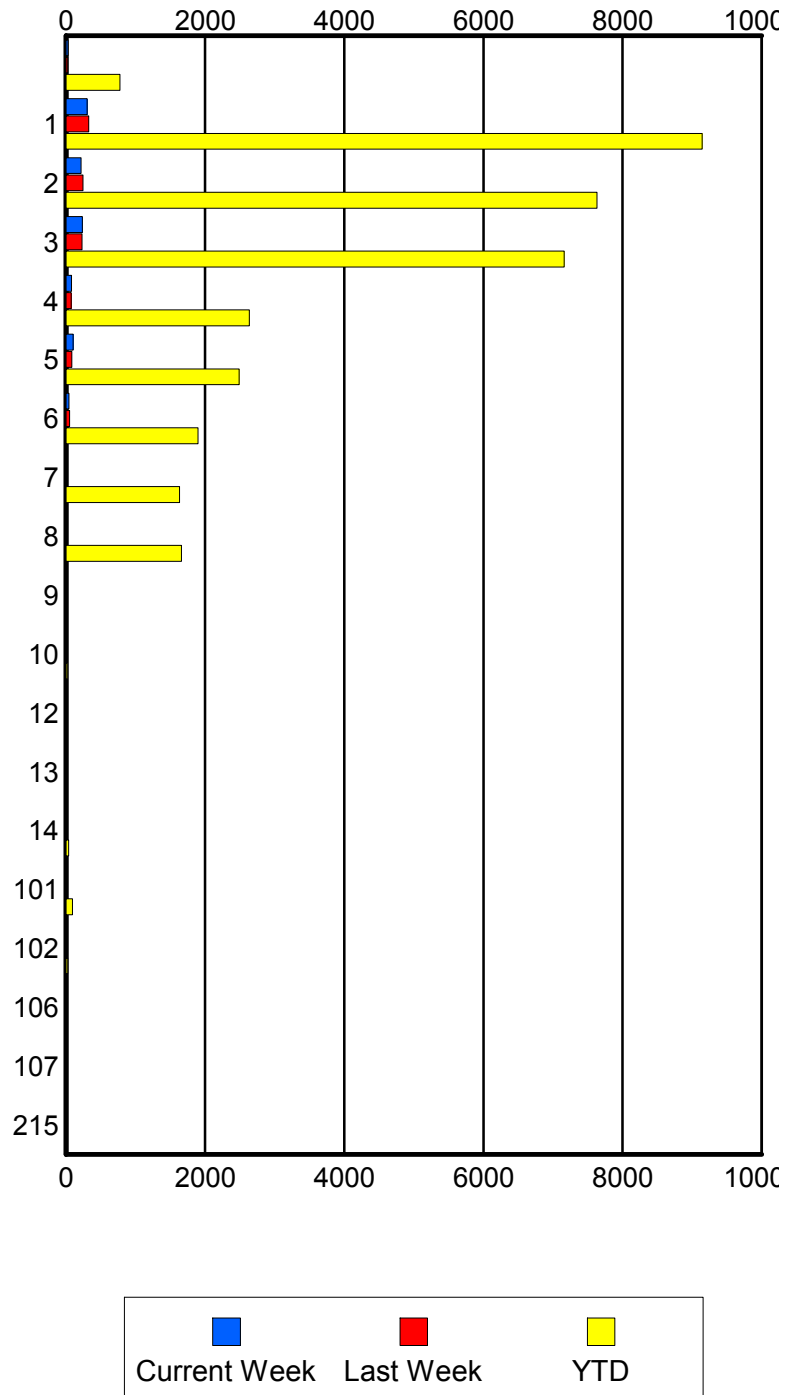
	Current We	Last Week	YTD
P56	3	2	28
	3	2	28
	3	2	29
P58	0	0	1
	0	0	1
	0	0	1
S01	0	1	71
	0	1	74
	0	1	86
S02	5	2	222
	5	2	229
	6	2	256
S03	0	3	109
	0	3	111
	0	4	127
S04	4	4	159
	4	4	164
	5	4	179

### Road Ranger / SIRV Performance By Beat

	Current We	Last Week	YTD
	27	22	726
	28	22	773
	30	23	847
1	292	304	8,642
	301	325	9,146
	312	333	9,451
2	209	241	7,371
	218	244	7,633
	223	250	7,955
3	227	227	6,956
	234	230	7,160
	246	240	7,435
4	78	71	2,579
	79	72	2,634
	84	73	2,720
5	98	82	2,443
	103	83	2,486
	106	84	2,571
6	43	48	1,857
	44	49	1,896
	45	51	1,989
7	0	0	1,606
	0	0	1,631
	0	0	1,704
8	0	0	1,638
	0	0	1,658
	0	0	1,724
9	0	0	12
	0	0	14
	0	0	14
10	0	0	18
	0	0	19
	0	0	19
12	0	0	9
	0	0	9
	0	0	9
13	2	0	16
	2	0	16
	2	0	17
14	0	0	38
	0	0	38
	0	0	39
101	5	3	92
	5	3	94
	5	3	105

Values presented are:  
 - Total Events with a RR/SIRV Response  
 - Total RR/SIRV Responses,  
 - Total Activities Performed

### RR/SIRV Responses per Beat



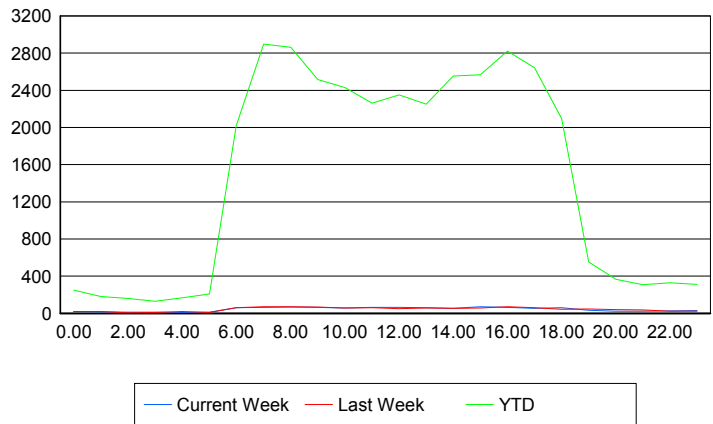
	Current We	Last Week	YTD
102	0	0	23
	0	0	23
	0	0	25
106	0	0	1
	0	0	1
	0	0	1
107	0	0	1
	0	0	1
	0	0	1
215	0	0	1
	0	0	1
	0	0	1

**Road Ranger / SIRV Performance By Time of Day**

Values presented are:  
 - Total Events with a RR/SIRV Response  
 - Total RR/SIRV Responses,  
 - Total Activities Performed

	Current We	Last Week	YTD
12AM-1AM	16	19	239
	19	20	250
	27	20	270
1AM-2AM	17	18	175
	17	20	180
	17	20	190
2AM-3AM	10	6	147
	11	6	160
	11	6	166
3AM-4AM	11	9	123
	12	9	130
	13	9	137
4AM-5AM	9	19	151
	9	20	167
	9	20	172
5AM-6AM	11	8	168
	11	8	209
	11	8	223
6AM-7AM	54	54	1,846
	61	62	2,019
	65	62	2,082
7AM-8AM	64	67	2,696
	64	71	2,896
	64	73	2,998
8AM-9AM	65	63	2,603
	67	71	2,863
	67	74	2,978

**Number of Responses / Hour of the Day**



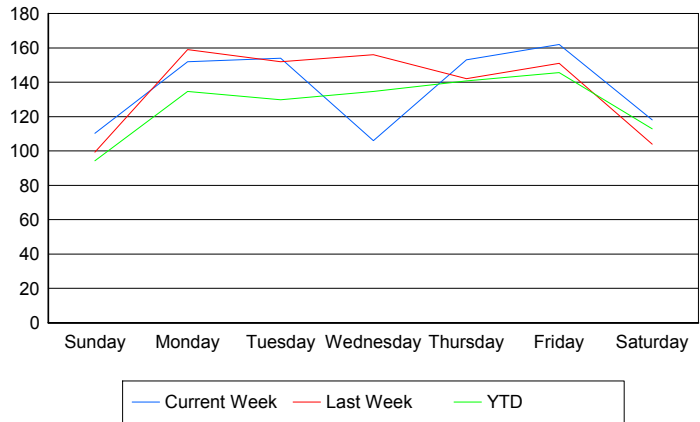
	Current We	Last Week	YTD
9AM-10AM	59	62	2,346
	65	66	2,516
	66	70	2,595
10AM-11AM	56	54	2,250
	58	57	2,429
	60	59	2,530
11AM-12PM	58	56	2,104
	63	60	2,260
	66	62	2,356
12PM-1PM	57	49	2,210
	63	50	2,351
	65	50	2,436
1PM-2PM	56	55	2,098
	59	58	2,251
	64	59	2,345
2PM-3PM	46	47	2,383
	52	52	2,554
	52	52	2,657
3PM-4PM	71	53	2,396
	71	56	2,568
	76	57	2,676
4PM-5PM	63	67	2,643
	64	72	2,823
	65	76	2,936
5PM-6PM	52	58	2,441
	53	59	2,642
	55	62	2,754
6PM-7PM	51	43	1,987
	60	44	2,097
	61	44	2,164
7PM-8PM	30	45	518
	32	47	551
	33	50	582
8PM-9PM	23	38	347
	24	40	368
	24	40	388
9PM-10PM	24	30	286
	24	36	308
	25	39	327
10PM-11PM	24	22	315
	25	22	328
	26	23	340
11PM-12AM	30	22	299
	30	22	311
	31	22	325

## Road Ranger / SIRV Performance By Day of Week

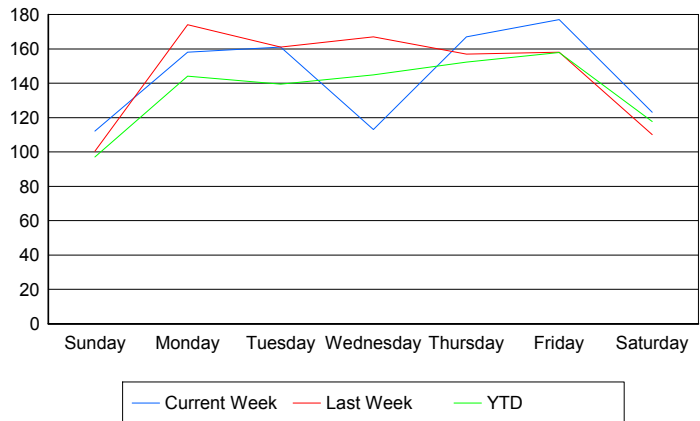
Values presented are:  
 - Total Events with a RR/SIRV Response  
 - Total RR/SIRV Responses,  
 - Total Activities Performed

	Current We	Last Week	YTD
Sunday	113	100	971
	115	101	1,000
	121	104	1,047
Monday	152	159	5,944
	158	174	6,364
	164	180	6,558
Tuesday	154	152	5,700
	161	161	6,121
	165	163	6,328
Wednesday	106	156	5,912
	113	167	6,356
	116	174	6,634
Thursday	153	142	6,369
	167	157	6,883
	174	161	7,167
Friday	162	151	6,622
	177	158	7,176
	184	159	7,495
Saturday	118	104	1,274
	123	110	1,330
	129	116	1,398

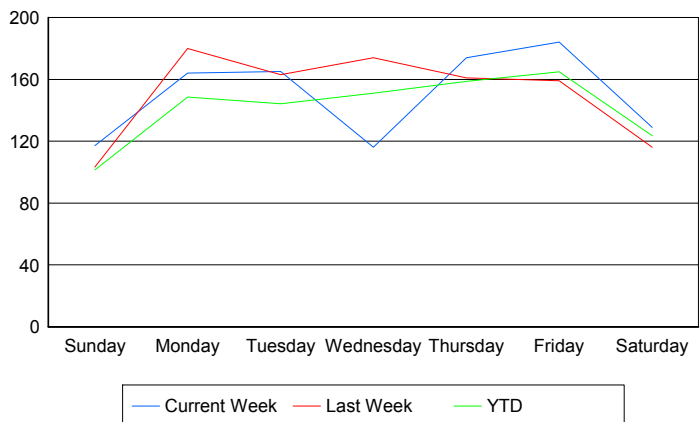
### Avg # of events with a RR/SIRV Response per Day of the Week



### Avg # of RR/SIRV Responses per Day of the Week



### Avg # of RR/SIRV Activities Performed per Day of the Week



### Road Ranger / SIRV Responses per Time of Day and Day of Week

