



Weekly Performance Measures Report Broward County



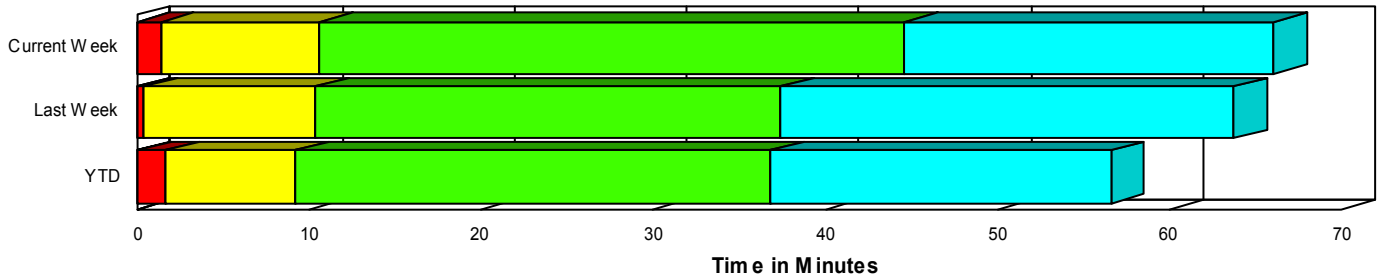
Created on:
November 10, 2008
9:03 am

Period From Nov 2, 2008 to Nov 8, 2008

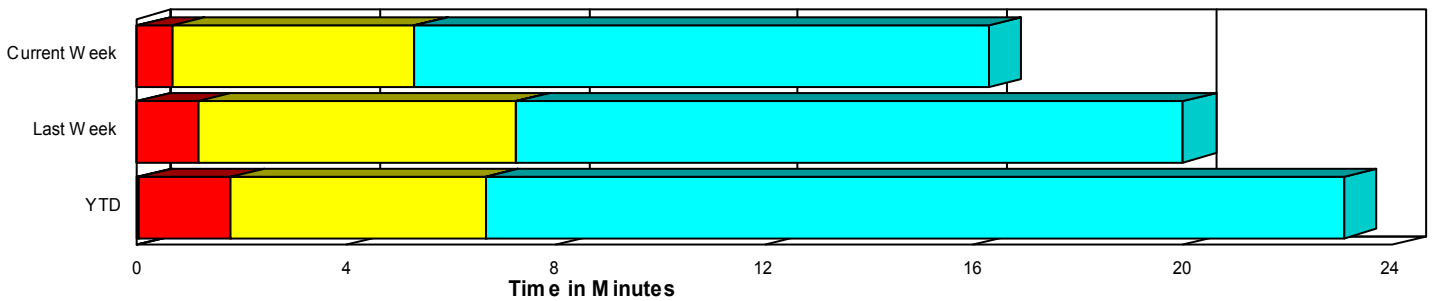
Performance Measures Summary

	Traffic Events (No Lanes Blocked)			Incidents (Lanes Blocked)		
	<u>This Week</u>	<u>Last Week</u>	<u>YTD</u>	<u>This Week</u>	<u>Last Week</u>	<u>YTD</u>
Number of Events	970	989	40,342	37	33	2,086
TMC Detection (min.)	0.00	0.00	0.01	0.00	0.00	0.03
TMC Verification (min.)	0.65	1.16	1.76	1.40	0.40	1.62
TMC Response (min.)	6.05	8.45	7.21	11.22	10.54	9.28
RR Dispatch Time (min.)	1.15	1.16	1.43	1.45	3.25	2.41
RR Response Time (min.)	5.39	7.40	5.97	9.74	7.24	6.91
Roadway Clearance (min.)				40.94	34.28	36.05
Event Clearance (min.)	17.04	21.21	23.64	62.43	60.58	54.62
# of Events w/ RR/SIRV	578	624	33,493	27	26	1,950
RR/SIRV Responses	578	624	33,627	27	26	2,200
RR/SIRV Activities	469	518	31,888	62	66	3,800

Incident Clearance TimeLine



Traffic Event (Non-Lane Blockage) Time-Line



■ Avg. TMC Detection Time	■ Avg. Time from TMC Response to Roadway Clearance*
■ Avg. Time from TMC Detection to TMC Verification	■ Avg. Time from Roadway Clearance to Incident/Event Clearance**
■ Avg. Time from TMC Verification to TMC Response	

* Roadway clearance equals all travel lanes open

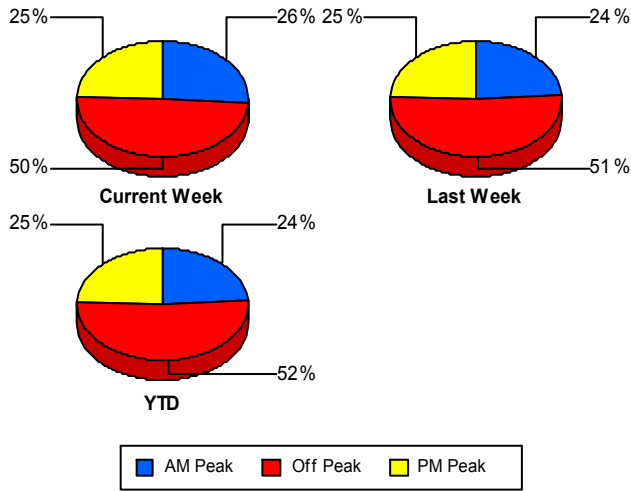
** Incident clearance equals time when last responder has left the scene

Performance Measures by Peak Period

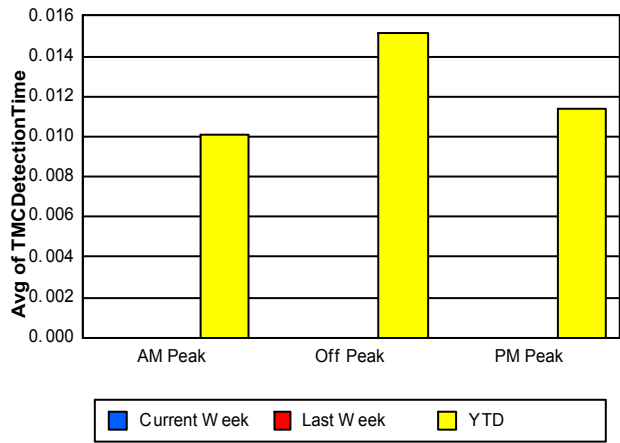
Note: AM peak period is defined as 6am to 10am and PM peak period is defined as 3pm to 7pm.

	AM Peak			Off Peak			PM Peak		
	<u>Current Week</u>	<u>Last Week</u>	<u>YTD</u>	<u>Current Week</u>	<u>Last Week</u>	<u>YTD</u>	<u>Current Week</u>	<u>Last Week</u>	<u>YTD</u>
Number of Events	259	246	10,001	499	523	21,921	249	253	10,506
Number of Incidents	9	6	484	17	17	1,100	11	10	502
TMC Detection (min.)	0.00	0.00	0.01	0.00	0.00	0.02	0.00	0.00	0.01
TMC Verification (min.)	0.78	1.12	1.02	0.66	1.17	2.11	0.63	1.06	1.68
TMC Response (min.)	7.45	10.24	6.18	6.16	9.26	8.38	5.31	5.76	6.45
RR Dispatch Time (min.)	0.77	1.40	1.04	1.78	1.48	1.86	0.79	0.74	1.19
RR Response Time (min.)	6.69	8.79	5.25	5.48	7.93	6.75	4.65	5.15	5.38
Event Clearance (min.)	16.05	21.88	22.16	19.57	25.25	27.89	19.74	17.33	22.33
Roadway Clearance (min.)	25.77	36.91	32.45	57.90	39.98	42.50	27.13	23.02	25.40
Incident Clearance (min.)	32.30	67.02	52.17	90.05	67.91	61.17	44.39	44.25	42.60
# of Events w/ RR/SIRV	196	206	8,710	234	256	17,712	175	188	9,021
RR/SIRV Responses	196	206	8,814	234	256	17,920	175	188	9,093
RR/SIRV Activities	181	196	8,853	183	217	17,692	167	171	9,143

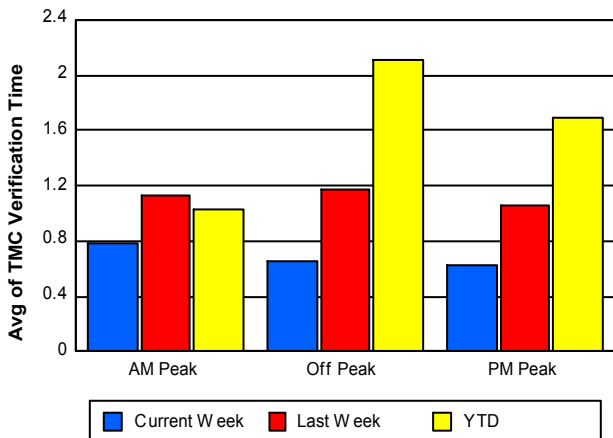
Number of Events / Peak Period



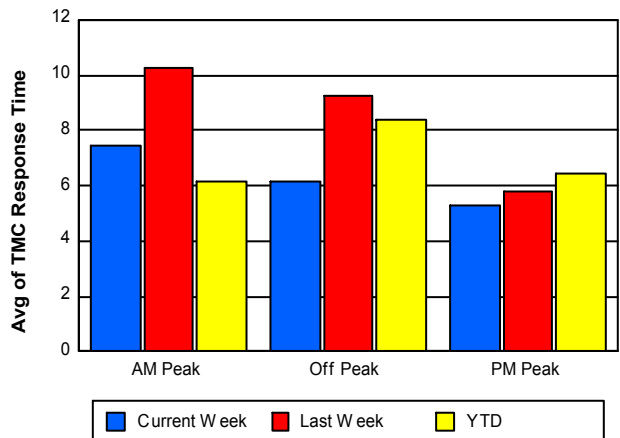
TMC Detection Time



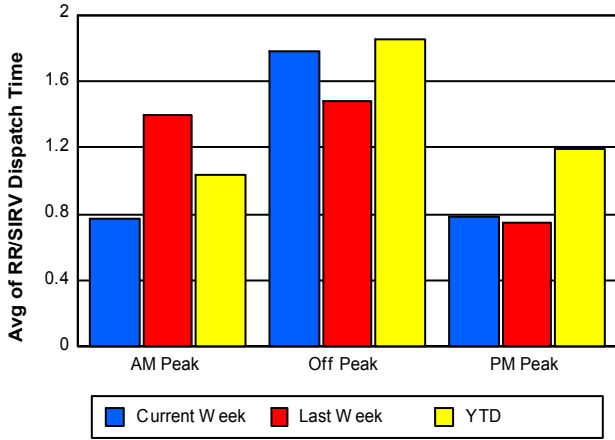
TMC Verification Time



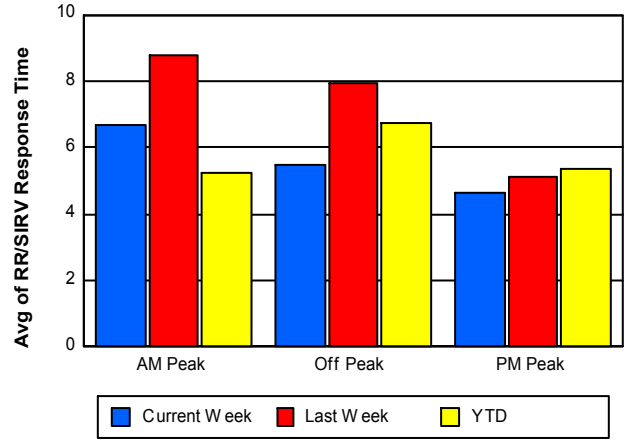
TMC Response Time



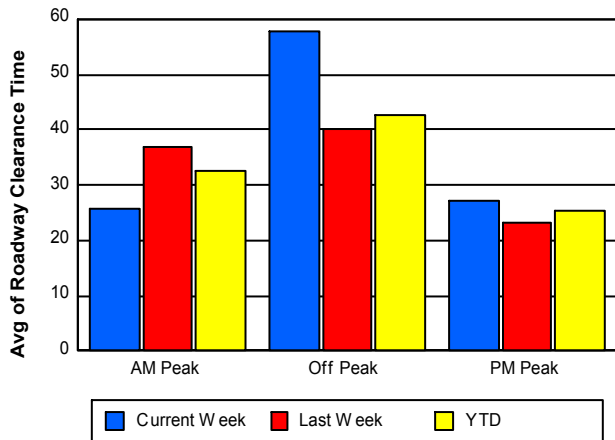
Road Ranger / SIRV Dispatch Time



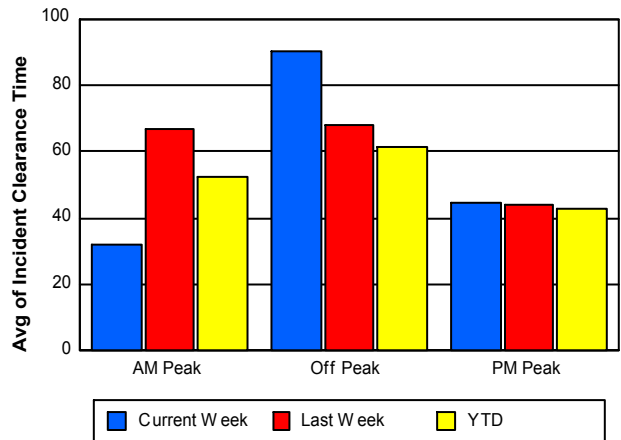
Road Ranger / SIRV Response Time



Roadway Clearance Time (2A)



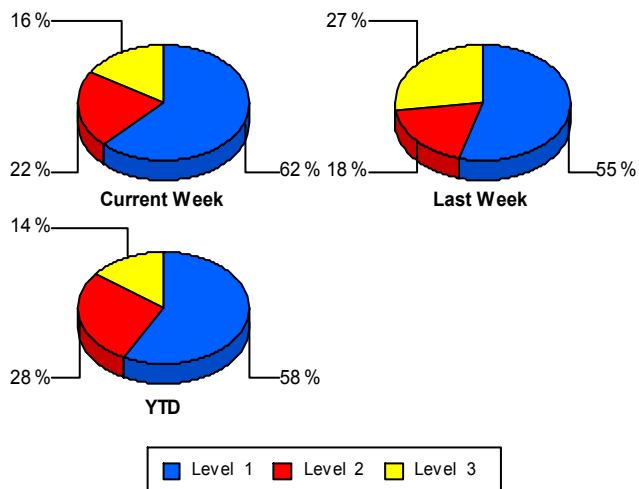
Incident Clearance Time (3B)



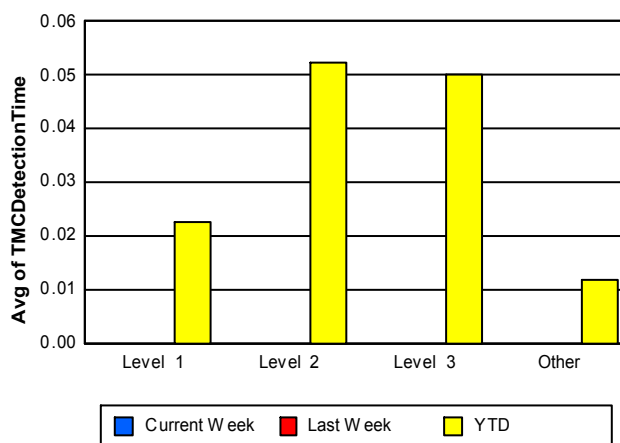
Performance Measures by Severity

	Level 1			Level 2			Level 3			Other		
	<u>This Week</u>	<u>Last Week</u>	<u>YTD</u>	<u>This Week</u>	<u>Last Week</u>	<u>YTD</u>	<u>This Week</u>	<u>Last Week</u>	<u>YTD</u>	<u>This Week</u>	<u>Last Week</u>	<u>YTD</u>
Number of Events	23	18	1,204	8	6	583	6	9	299	970	989	40,342
Number of Incidents	23	18	1,204	8	6	583	6	9	299	0	0	0
TMC Detection (min.)	0.00	0.00	0.02	0.00	0.00	0.05	0.00	0.00	0.05	0.00	0.00	0.01
TMC Verification (min.)	1.03	0.39	0.94	1.78	1.05	2.45	2.31	0.00	2.74	0.65	1.16	1.76
TMC Response (min.)	6.30	5.58	7.81	6.92	13.16	10.83	27.23	19.95	12.04	6.05	8.45	7.21
RR Dispatch Time (min.)	1.02	1.30	2.24	0.45	7.18	2.43	3.32	4.35	3.08	1.15	1.16	1.43
RR Resp. Time (min.)	5.24	4.27	5.62	6.47	5.98	8.39	23.91	15.19	9.07	5.39	7.40	5.97
Event Clearance (min.)	43.09	30.90	38.21	71.99	116.45	66.22	123.82	82.69	97.97	17.04	21.21	23.64
Roadway Clear. (min.)	15.68	13.41	14.93	62.46	39.43	50.30	109.05	72.58	93.32			
Incident Clearance (min.)	43.09	30.90	38.21	71.99	116.45	66.22	123.82	82.69	97.97			
# of Events w/ RR/SIRV	17	14	1,123	4	5	550	6	7	277	578	624	33,493
RR/SIRV Responses	17	14	1,196	4	5	624	6	7	380	578	624	33,627
RR/SIRV Activities	37	39	1,842	14	11	1,179	11	16	779	469	518	31,888

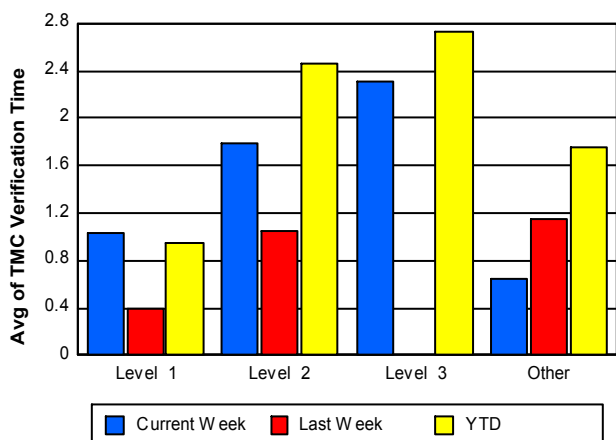
Number of Events / Severity



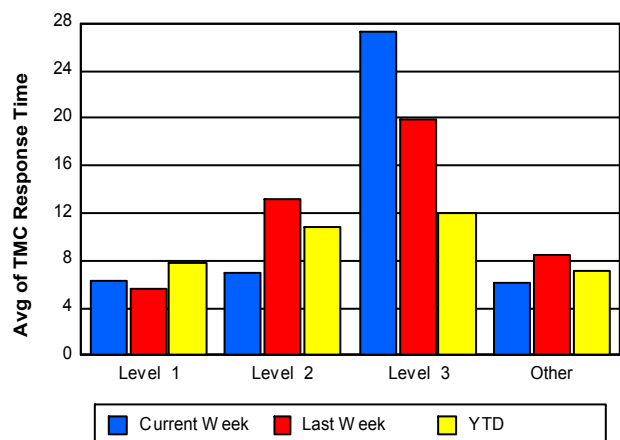
TMC Detection Time



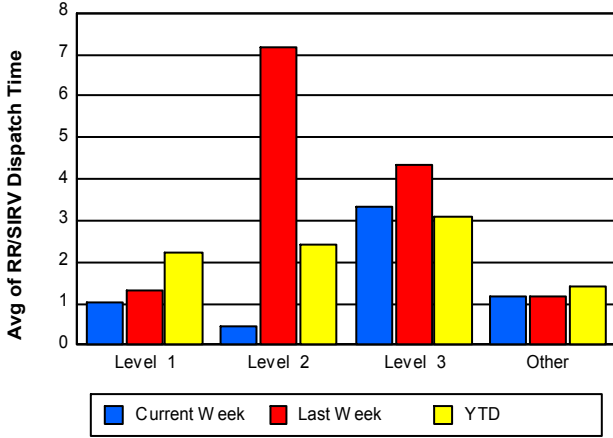
TMC Verification Time



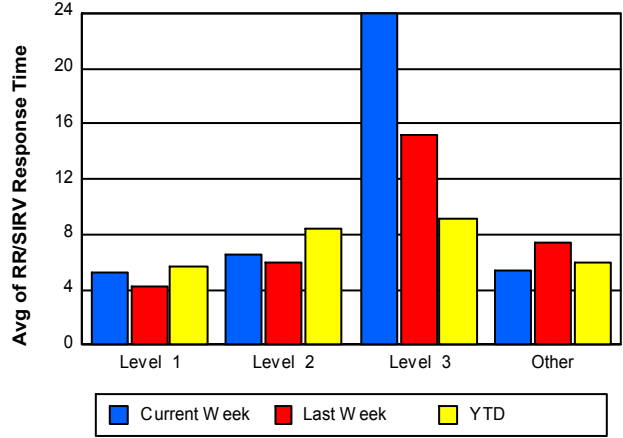
TMC Response Time



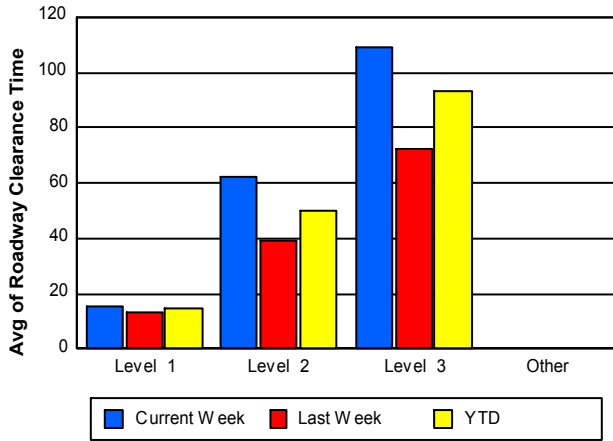
Road Ranger / SIRV Dispatch Time



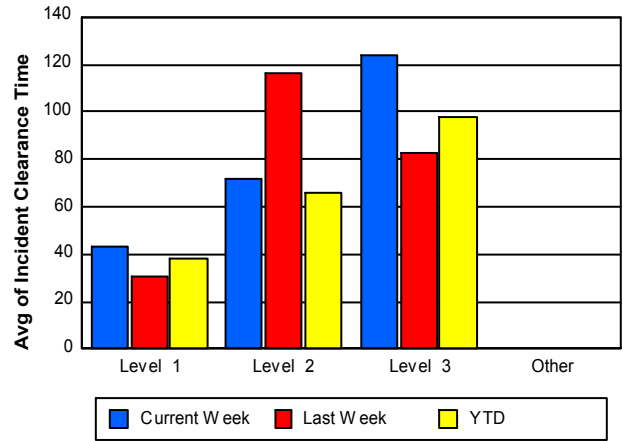
Road Ranger / SIRV Response Time



Roadway Clearance Time (2A)



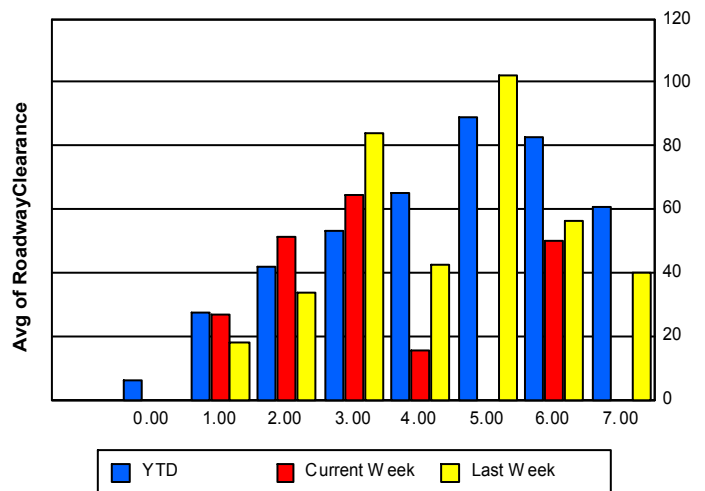
Incident Clearance Time (3B)



Roadway Clearance by Maximum Number of Lanes Blocked

	Current Week	Last Week	YTD
	0.00	0.00	
0			5.87
1	26.91	17.94	27.24
2	51.56	33.62	42.11
3	64.28	83.64	52.99
4	15.50	42.72	65.09
5	0.00	102.37	88.91
6	50.02	56.37	82.72

Roadway Clearance Time(2A)



	Current Week	Last Week	YTD
7	0.00	40.03	60.95

Performance Measures by Roadway

595

	<u>Current Week</u>	<u>Last Week</u>	<u>YTD</u>
Number of Events	134	129	6,535
Number of Incidents	6	5	365
TMC Detection (min.)	0.00	0.00	0.01
TMC Verification (min.)	1.21	0.73	1.94
TMC Response (min.)	6.32	7.44	7.75
RR Dispatch Time (min.)	0.98	0.91	1.95
RR Resp. Time (min.)	5.39	6.60	5.84
Event Clearance (min.)	17.15	18.20	25.50
Roadway Clear. (min.)	41.16	14.71	38.01
Incident Clearance (min.)	46.88	18.89	51.78
# of Events w/ RR/SIRV	75	82	5,581
RR/SIRV Responses	75	82	5,644
RR/SIRV Activities	79	75	5,759

75

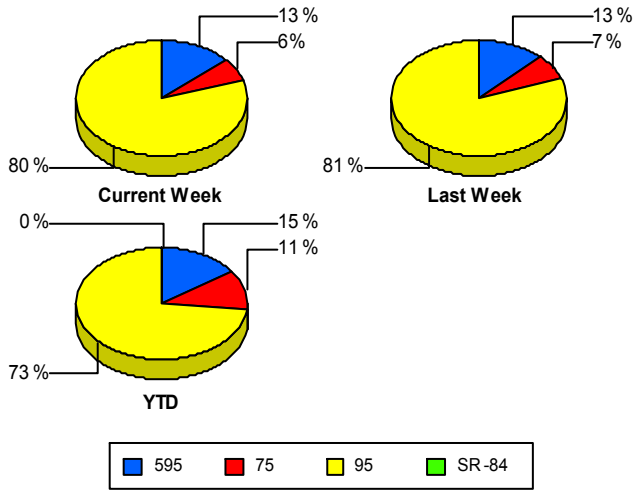
	<u>Current Week</u>	<u>Last Week</u>	<u>YTD</u>
Number of Events	64	70	4,793
Number of Incidents	3	0	125
TMC Detection (min.)	0.00	0.00	0.02
TMC Verification (min.)	2.63	6.40	6.00
TMC Response (min.)	2.76	6.39	6.26
RR Dispatch Time (min.)	0.09	0.52	0.91
RR Resp. Time (min.)	2.68	5.87	5.38
Event Clearance (min.)	16.48	23.42	26.17
Roadway Clear. (min.)	12.68		62.59
Incident Clearance (min.)	26.37		68.27
# of Events w/ RR/SIRV	64	70	4,759
RR/SIRV Responses	64	70	4,792
RR/SIRV Activities	66	78	5,218

95

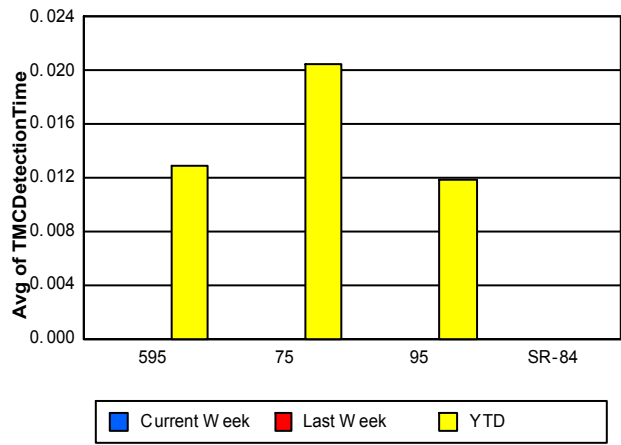
	<u>Current Week</u>	<u>Last Week</u>	<u>YTD</u>
Number of Events	809	823	31,099
Number of Incidents	28	28	1,596
TMC Detection (min.)	0.00	0.00	0.01
TMC Verification (min.)	0.44	0.75	1.06
TMC Response (min.)	7.00	9.18	7.48
RR Dispatch Time (min.)	1.34	1.40	1.49
RR Resp. Time (min.)	6.22	7.84	6.21
Event Clearance (min.)	19.14	23.07	24.94
Roadway Clear. (min.)	43.92	37.78	33.53
Incident Clearance (min.)	69.62	68.02	54.19
# of Events w/ RR/SIRV	466	498	25,103
RR/SIRV Responses	466	498	25,391
RR/SIRV Activities	386	431	24,711

	<u>YTD</u>
Number of Events	1
Number of Incidents	0
TMC Detection (min.)	0.00
TMC Verification (min.)	0.47
TMC Response (min.)	
RR Dispatch Time (min.)	
RR Resp. Time (min.)	
Event Clearance (min.)	5.22
Roadway Clear. (min.)	
Incident Clearance (min.)	
# of Events w/ RR/SIRV	0
RR/SIRV Responses	0
RR/SIRV Activities	0

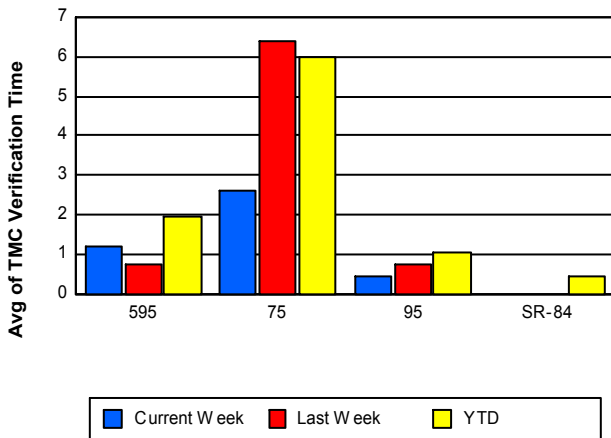
Number of Events / Roadway



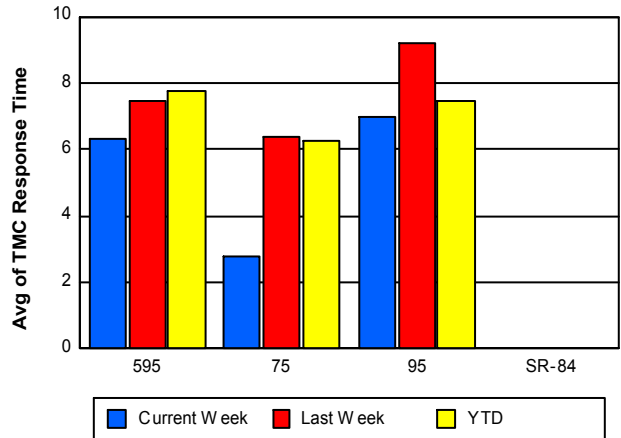
TMC Detection Time



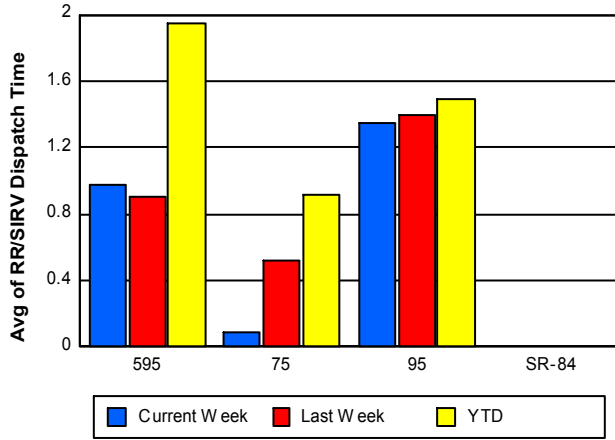
TMC Verification Time



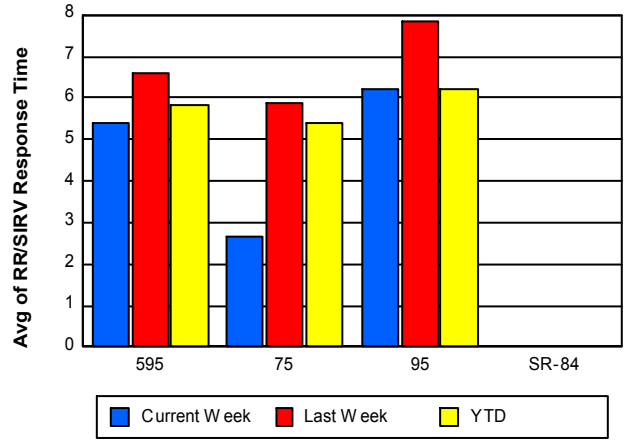
TMC Response Time



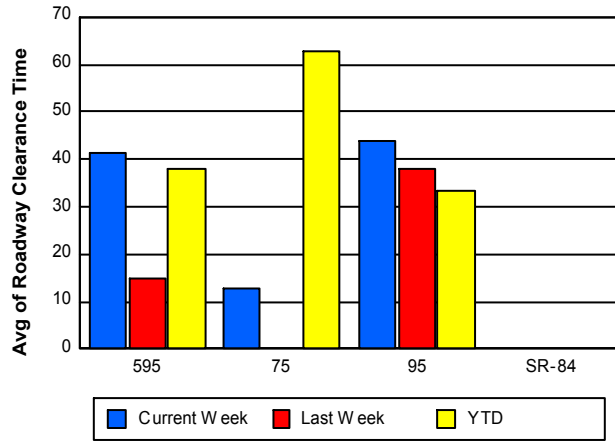
Road Ranger / SIRV Dispatch Time



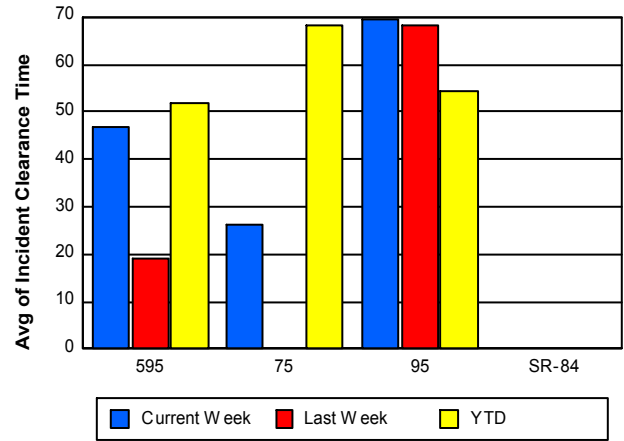
Road Ranger / SIRV Response Time



Roadway Clearance Time (2A)



Incident Clearance Time (3B)



Performance Measures by Event Type

Abandoned Vehicle

	<u>YTD</u>
Number of Events	910
Number of Incidents	1
TMC Detection (min.)	0.06
TMC Verification (min.)	0.32
TMC Response (min.)	7.63
RR Dispatch Time (min.)	2.06
RR Response Time (min.)	6.10
Event Clearance (min.)	252.40
Roadway Clearance (min.)	21.48
Incident Clearance (min.)	26.25
# of Events w/ RR/SIRV	700
RR/SIRV Assists	707
RR/SIRV Activities	711

Accident

	<u>Current Week</u>	<u>Last Week</u>	<u>YTD</u>
Number of Events	66	66	3,265
Number of Incidents	24	23	1,520
TMC Detection (min.)	0.00	0.00	0.04
TMC Verification (min.)	0.66	0.62	1.90
TMC Response (min.)	9.67	9.88	8.18
RR Dispatch Time (min.)	1.05	1.43	1.74
RR Response Time (min.)	8.61	8.46	6.47
Event Clearance (min.)	46.37	49.77	45.20
Roadway Clearance (min.)	48.90	34.89	36.56
Incident Clearance (min.)	72.28	66.38	59.20
# of Events w/ RR/SIRV	44	53	3,076
RR/SIRV Assists	44	53	3,303
RR/SIRV Activities	76	96	4,758

Congestion

	<u>YTD</u>
Number of Events	2
Number of Incidents	0
TMC Detection (min.)	0.00
TMC Verification (min.)	0.00
TMC Response (min.)	
RR Dispatch Time (min.)	
RR Response Time (min.)	
Event Clearance (min.)	105.74
Roadway Clearance (min.)	
Incident Clearance (min.)	
# of Events w/ RR/SIRV	0
RR/SIRV Assists	0
RR/SIRV Activities	0

Debris on Roadway

	<u>Current Week</u>	<u>Last Week</u>	<u>YTD</u>
Number of Events	24	37	1,654
Number of Incidents	0	1	31
TMC Detection (min.)	0.00	0.00	0.03
TMC Verification (min.)	6.95	10.12	5.39
TMC Response (min.)	10.36	14.58	7.87
RR Dispatch Time (min.)	0.75	1.48	1.09
RR Response Time (min.)	9.61	13.05	6.80
Event Clearance (min.)	14.21	14.98	12.25
Roadway Clearance (min.)		9.60	43.85
Incident Clearance (min.)		11.97	51.47
# of Events w/ RR/SIRV	21	30	1,599
RR/SIRV Assists	21	30	1,626
RR/SIRV Activities	23	32	1,707

Disabled Vehicle

	<u>Current Week</u>	<u>Last Week</u>	<u>YTD</u>
Number of Events	533	570	27,247
Number of Incidents	10	4	336
TMC Detection (min.)	0.00	0.00	0.01
TMC Verification (min.)	0.81	1.29	2.05
TMC Response (min.)	5.48	7.85	7.12
RR Dispatch Time (min.)	0.69	1.17	1.41
RR Response Time (min.)	4.84	6.82	5.86
Event Clearance (min.)	21.25	26.09	20.26
Roadway Clearance (min.)	15.84	20.67	24.30
Incident Clearance (min.)	36.56	23.15	36.24
# of Events w/ RR/SIRV	410	444	25,941
RR/SIRV Assists	410	444	26,037
RR/SIRV Activities	410	435	27,232

Emergency Vehicles

	<u>YTD</u>
Number of Events	59
Number of Incidents	54
TMC Detection (min.)	0.07
TMC Verification (min.)	0.36
TMC Response (min.)	7.61
RR Dispatch Time (min.)	2.45
RR Response Time (min.)	5.24
Event Clearance (min.)	40.31
Roadway Clearance (min.)	40.44
Incident Clearance (min.)	41.17
# of Events w/ RR/SIRV	46
RR/SIRV Assists	48
RR/SIRV Activities	73

Other

	<u>Current Week</u>	<u>Last Week</u>	<u>YTD</u>
Number of Events	370	336	8,897
Number of Incidents	0	0	22
TMC Detection (min.)	0.00	0.00	0.00
TMC Verification (min.)	0.03	0.01	0.28
TMC Response (min.)	12.11	10.14	10.09
RR Dispatch Time (min.)	2.87	1.17	1.79
RR Response Time (min.)	11.07	9.01	8.59
Event Clearance (min.)	10.06	10.64	11.63
Roadway Clearance (min.)			18.92
Incident Clearance (min.)			26.73
# of Events w/ RR/SIRV	122	118	3,740
RR/SIRV Assists	122	118	3,745
RR/SIRV Activities	12	15	785

Pedestrian

	<u>YTD</u>
Number of Events	41
Number of Incidents	0
TMC Detection (min.)	0.01
TMC Verification (min.)	1.34
TMC Response (min.)	2.56
RR Dispatch Time (min.)	0.37
RR Response Time (min.)	2.29
Event Clearance (min.)	10.68
Roadway Clearance (min.)	
Incident Clearance (min.)	
# of Events w/ RR/SIRV	37
RR/SIRV Assists	37
RR/SIRV Activities	39

Police Activity

	<u>Current Week</u>	<u>Last Week</u>	<u>YTD</u>
Number of Events	9	8	135
Number of Incidents	2	3	84
TMC Detection (min.)	0.00	0.00	0.02
TMC Verification (min.)	2.94	0.42	1.60
TMC Response (min.)	6.61	13.33	10.04
RR Dispatch Time (min.)	0.15	4.61	2.75
RR Response Time (min.)	6.46	8.72	7.15
Event Clearance (min.)	20.81	48.39	44.84
Roadway Clearance (min.)	19.39	62.84	71.19
Incident Clearance (min.)	26.72	65.88	57.17
# of Events w/ RR/SIRV	4	2	99
RR/SIRV Assists	4	2	119
RR/SIRV Activities	6	4	157

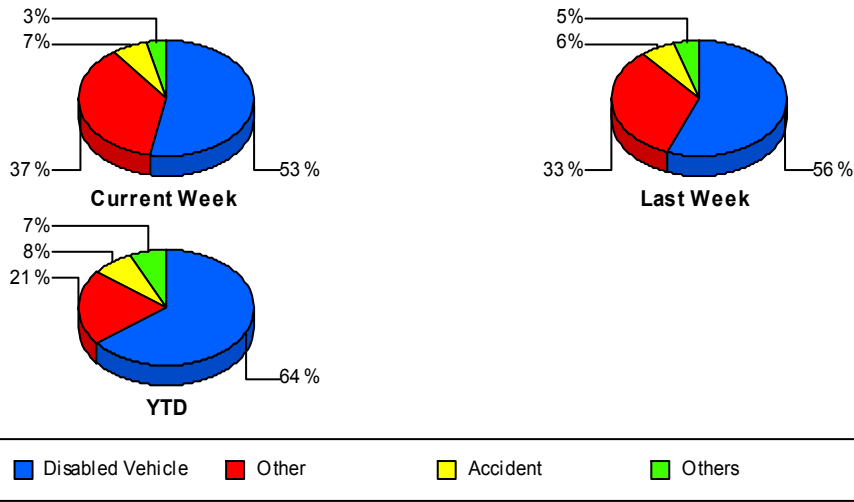
Vehicle Fire

	<u>Current Week</u>	<u>Last Week</u>	<u>YTD</u>
Number of Events	2	2	45
Number of Incidents	1	2	37
TMC Detection (min.)	0.00	0.00	0.00
TMC Verification (min.)	0.00	0.00	0.59
TMC Response (min.)	48.87	20.90	8.64
RR Dispatch Time (min.)	5.57	20.82	2.72
RR Response Time (min.)	43.30	0.08	5.92
Event Clearance (min.)	85.59	85.09	63.39
Roadway Clearance (min.)	143.78	24.01	40.29
Incident Clearance (min.)	156.10	85.09	67.66
# of Events w/ RR/SIRV	1	1	41
RR/SIRV Assists	1	1	41
RR/SIRV Activities	1	1	74

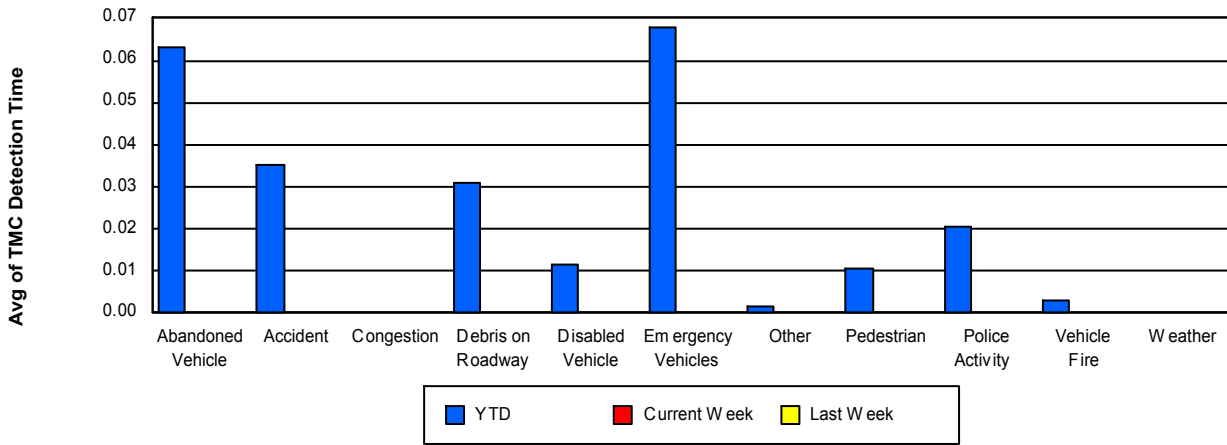
Weather

	<u>YTD</u>
Number of Events	1
Number of Incidents	0
TMC Detection (min.)	0.00
TMC Verification (min.)	0.00
TMC Response (min.)	
RR Dispatch Time (min.)	
RR Response Time (min.)	
Event Clearance (min.)	1.25
Roadway Clearance (min.)	
Incident Clearance (min.)	
# of Events w/ RR/SIRV	0
RR/SIRV Assists	0
RR/SIRV Activities	0

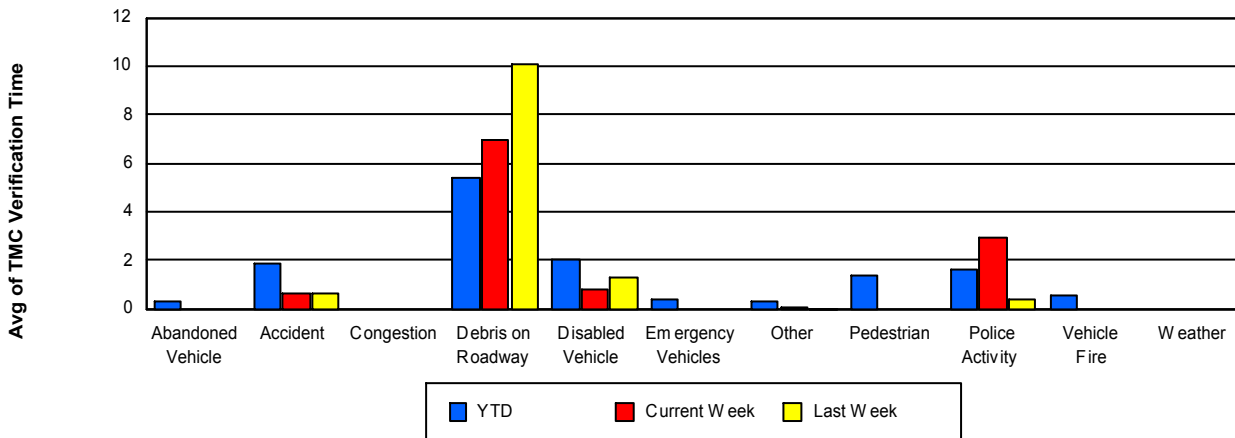
Number of Events / Event Type



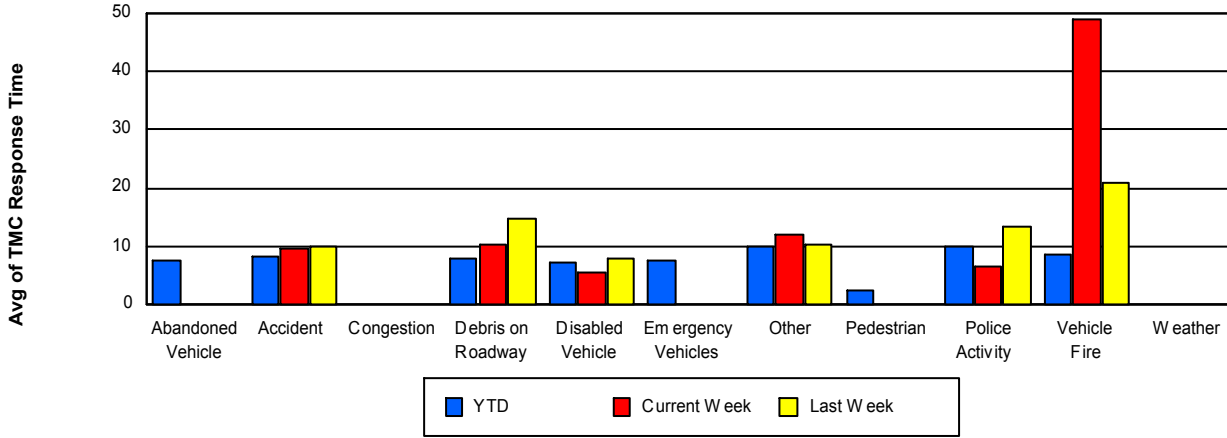
TMC Detection Time



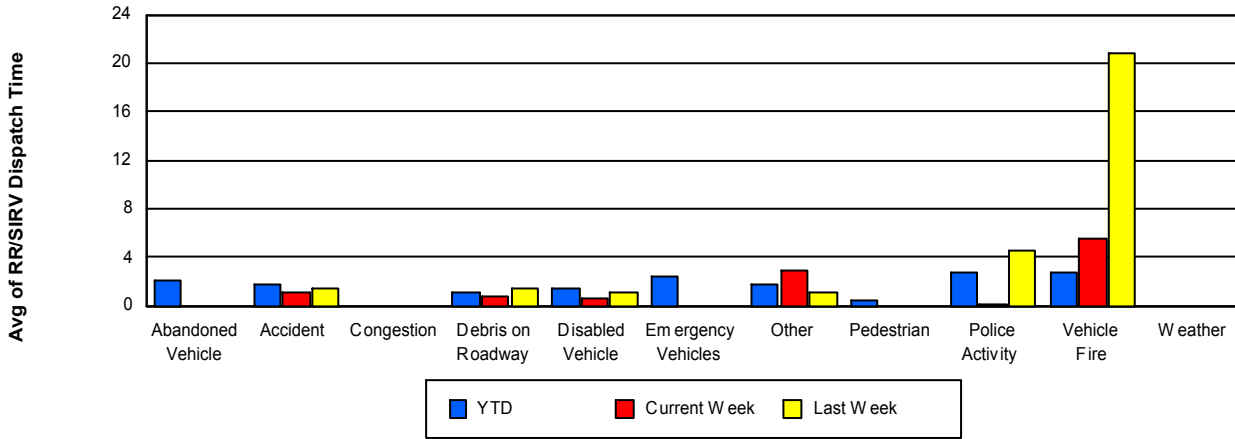
TMC Verification Time



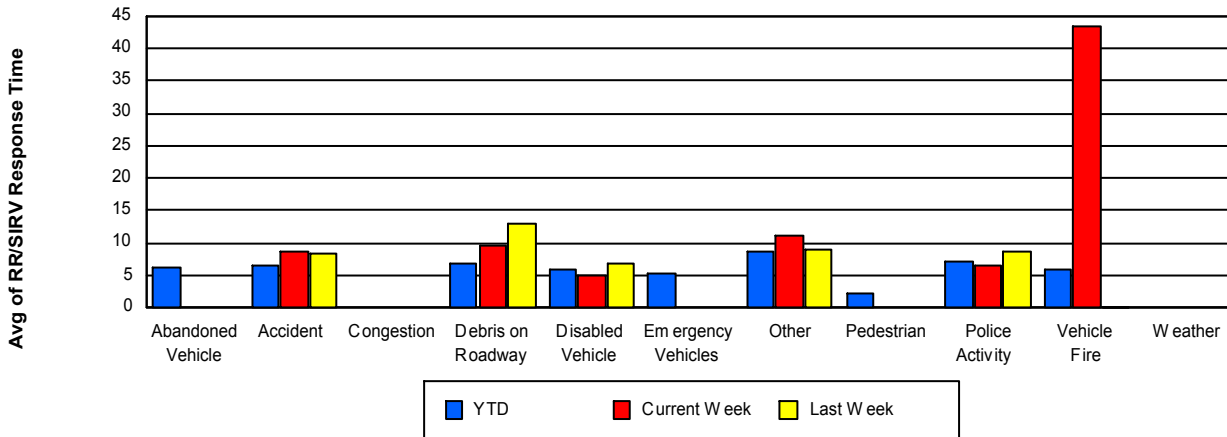
TMC Response Time



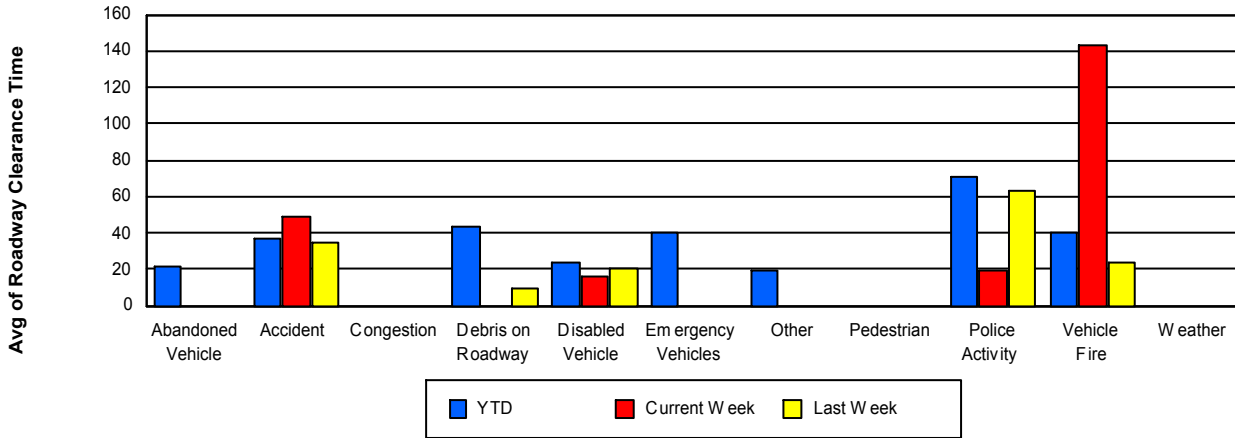
Road Ranger / SIRV Dispatch Time



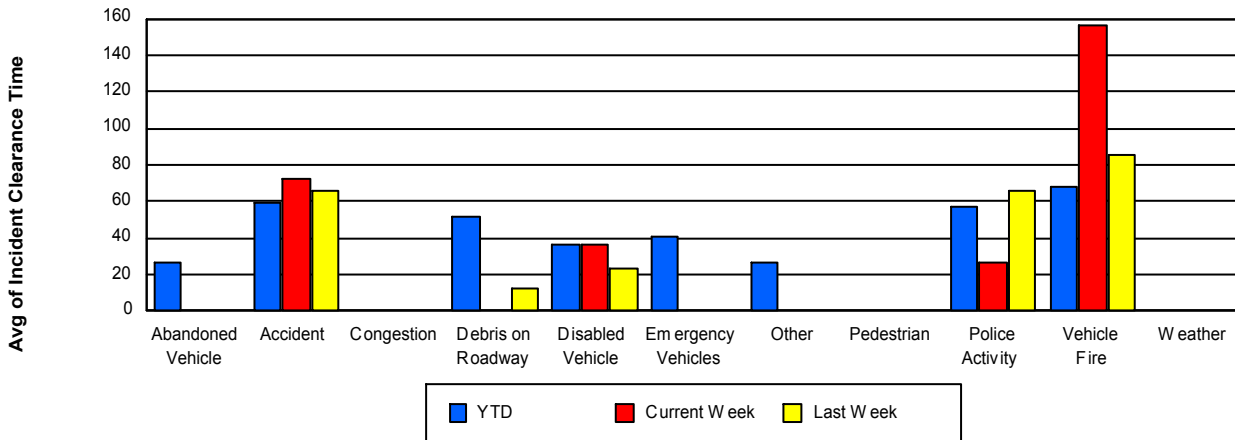
Road Ranger / SIRV Response Time



Roadway Clearance Time (2A)



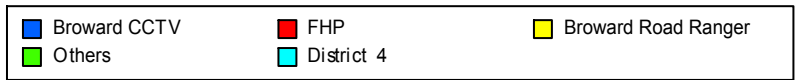
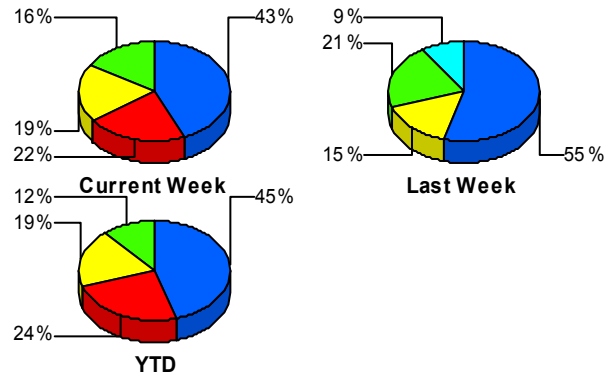
Incident Clearance Time (3B)



Incident Detection Methods

	Current Week	Last Week	YTD
Broward CCTV	16	18	945
Broward Road Ranger	7	5	389
Broward VideoWall	2	1	47
BSO	2	0	19
District 4	1	3	51
District 6	0	0	4
FDOT Maintenance	0	0	2
FHP	8	3	508
Fire	0	0	6
Florida's Turnpike	0	0	8
ITMS	0	0	2
Motorist	0	0	17
Other	0	0	1
Palm Beach Road Rang	0	0	8
PSAP	0	0	3
Road Watcher	0	0	14
SIRV	0	0	7
SmarTraveler (511)	0	1	10
VisioPaD Detection	1	2	45
Total	37	33	2,086

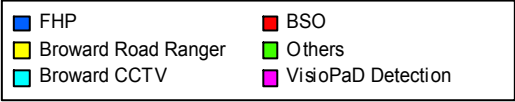
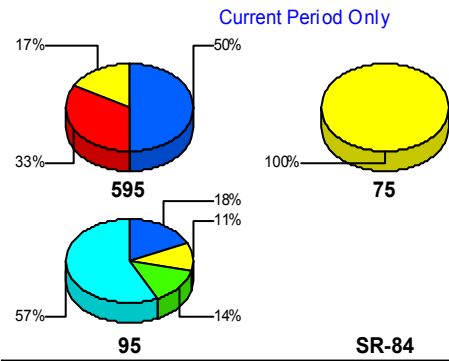
Total Incidents by Detection Method



Incident Detection Methods by Roadway

		Current Week	Last Week	YTD
595	Broward CCTV	0	2	134
	Broward Road Ranger	1	1	77
	Broward VideoWall	0	1	6
	BSO	2	0	10
	District 4	0	0	8
	FHP	3	1	107
	Florida's Turnpike	0	0	8
	Motorist	0	0	3
	Road Watcher	0	0	5
	SIRV	0	0	2
	SmarTraveler (511)	0	0	1
	VisioPaD Detection	0	0	4
	Total	6	5	365
75	Broward Road Ranger	3	0	55
	BSO	0	0	5
	District 4	0	0	7
	District 6	0	0	2
	FHP	0	0	53
	Road Watcher	0	0	1
	SIRV	0	0	1
	SmarTraveler (511)	0	0	1
	Total	3	0	125
95	Broward CCTV	16	16	811
	Broward Road Ranger	3	4	257
	Broward VideoWall	2	0	41
	BSO	0	0	4
	District 4	1	3	36
	District 6	0	0	2
	FDOT Maintenance	0	0	2
	FHP	5	2	348
	Fire	0	0	6

Total Events by Roadway and Detection Method

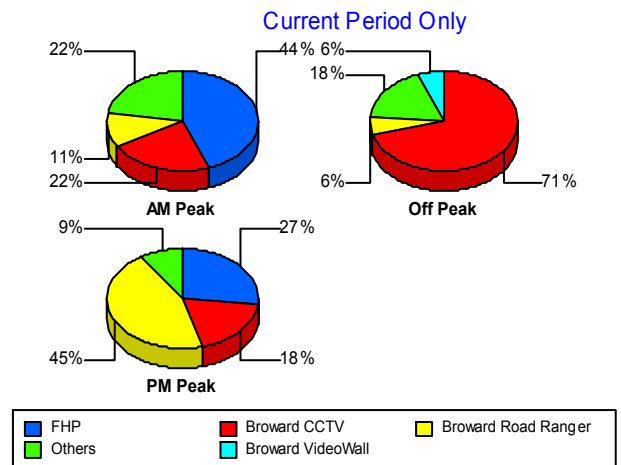


		Current Week	Last Week	YTD
95	ITMS	0	0	2
	Motorist	0	0	14
	Other	0	0	1
	Palm Beach Road Rang	0	0	8
	PSAP	0	0	3
	Road Watcher	0	0	8
	SIRV	0	0	4
	SmarTraveler (511)	0	1	8
	VisioPaD Detection	1	2	41
	Total	28	28	1,596
Total	37	33	2,086	

Incident Detection Methods by Peak Period

		Current Week	Last Week	YTD
AM Peak	Broward CCTV	2	3	217
	Broward Road Ranger	1	2	98
	Broward VideoWall	1	0	17
	BSO	1	0	5
	District 4	0	1	12
	FHP	4	0	106
	Fire	0	0	1
	Florida's Turnpike	0	0	3
	Motorist	0	0	3
	Palm Beach Road Rang	0	0	5
	PSAP	0	0	1
	Road Watcher	0	0	7
	SIRV	0	0	3
	SmarTraveler (511)	0	0	1
	VisioPaD Detection	0	0	5
	Total	9	6	484
	Off Peak	Broward CCTV	12	8
Broward Road Ranger		1	2	184

Total Events by Peak Period and Detection Method



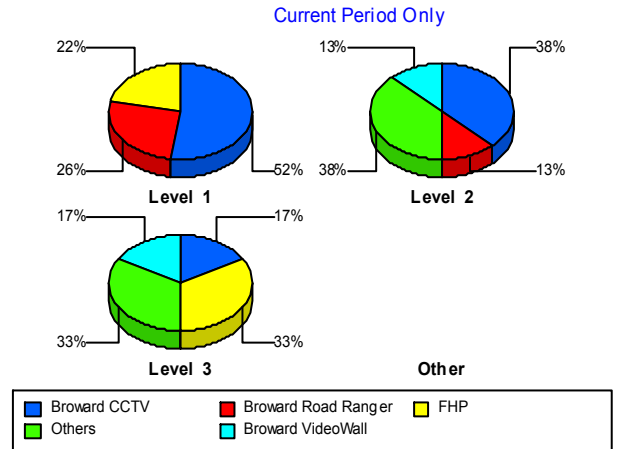
		Current Week	Last Week	YTD
Off Peak	Broward VideoWall	1	1	22
	BSO	0	0	7
	District 4	1	2	25
	District 6	0	0	3
	FDOT Maintenance	0	0	2
	FHP	1	2	290
	Fire	0	0	4
	Florida's Turnpike	0	0	4
	ITMS	0	0	1
	Motorist	0	0	6
	Other	0	0	1
	Palm Beach Road Rang	0	0	3
	PSAP	0	0	2
	Road Watcher	0	0	3
	SIRV	0	0	2
	SmarTraveler (511)	0	0	1
	VisioPaD Detection	1	2	36
	Total	17	17	1,100
	PM Peak	Broward CCTV	2	7
Broward Road Ranger		5	1	107
Broward VideoWall		0	0	8
BSO		1	0	7
District 4		0	0	14
District 6		0	0	1
FHP		3	1	112
Fire		0	0	1
Florida's Turnpike		0	0	1
ITMS		0	0	1
Motorist		0	0	8
Road Watcher		0	0	4
SIRV		0	0	2
SmarTraveler (511)		0	1	8

		Current Week	Last Week	YTD
PM Peak	VisioPaD Detection	0	0	4
	Total	11	10	502
Total		37	33	2,086

Incident Detection Methods by Severity

		Current Week	Last Week	YTD
Level 1	Broward CCTV	12	9	580
	Broward Road Ranger	6	4	250
	Broward VideoWall	0	0	31
	BSO	0	0	3
	District 4	0	0	29
	District 6	0	0	3
	FHP	5	3	237
	Fire	0	0	3
	Florida's Turnpike	0	0	2
	ITMS	0	0	1
	Motorist	0	0	9
	Palm Beach Road Rang	0	0	6
	PSAP	0	0	2
	Road Watcher	0	0	12
	SIRV	0	0	5
	SmarTraveler (511)	0	1	7
	VisioPaD Detection	0	1	24
	Total	23	18	1,204
	Level 2	Broward CCTV	3	2
Broward Road Ranger		1	0	96
Broward VideoWall		1	0	9
BSO		1	0	9
District 4		1	3	11
District 6		0	0	1
FDOT Maintenance		0	0	1
FHP		1	0	160

Total Events by Severity and Detection Method



		Current Week	Last Week	YTD
Level 2	Fire	0	0	1
	ITMS	0	0	1
	Motorist	0	0	7
	Palm Beach Road Rang	0	0	1
	PSAP	0	0	1
	Road Watcher	0	0	1
	SIRV	0	0	1
	SmarTraveler (511)	0	0	2
	VisioPaD Detection	0	1	17
	Total	8	6	583
Level 3	Broward CCTV	1	7	101
	Broward Road Ranger	0	1	43
	Broward VideoWall	1	1	7
	BSO	1	0	7
	District 4	0	0	11
	FDOT Maintenance	0	0	1
	FHP	2	0	111
	Fire	0	0	2
	Florida's Turnpike	0	0	6
	Motorist	0	0	1
	Other	0	0	1
	Palm Beach Road Rang	0	0	1
	Road Watcher	0	0	1
	SIRV	0	0	1
	SmarTraveler (511)	0	0	1
	VisioPaD Detection	1	0	4
	Total	6	9	299
Total	37	33	2,086	

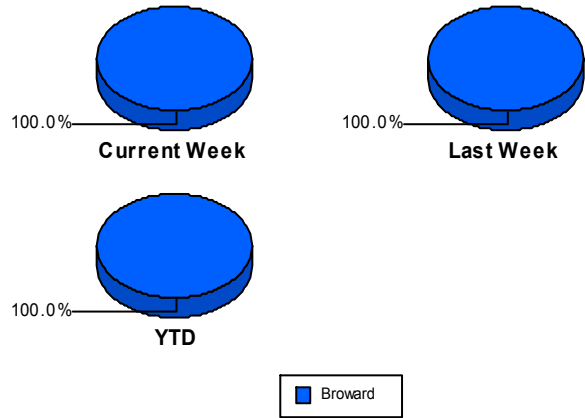
Road Ranger / SIRV Performance Measures

Road Ranger / SIRV Performance By County

Values presented are:
 - Total Events with a RR/SIRV Response
 - Total RR/SIRV Responses,
 - Total Activities Performed

	Current We	Last Week	YTD
Broward	580	625	37,519
	627	681	40,158
	646	713	42,363

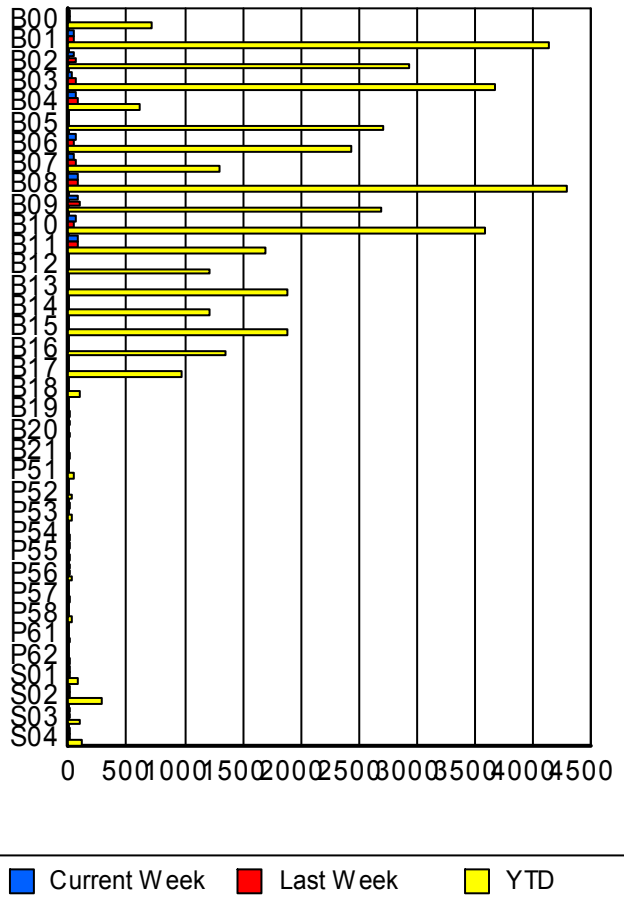
RR/SIRV Responses per County



Road Ranger / SIRV Performance By Truck

	Current We	Last Week	YTD
B00	12	12	696
	12	13	708
	12	15	743
B01	42	41	4,083
	42	41	4,144
	45	42	4,373
B02	43	57	2,893
	44	60	2,936
	45	63	3,096
B03	33	60	3,643
	33	61	3,688
	33	63	3,912
B04	69	83	610
	69	85	617
	71	86	640
B05	0	0	2,680
	0	0	2,706
	0	0	2,888
B06	65	40	2,411
	66	41	2,438
	69	45	2,580
B07	52	68	1,286
	52	69	1,302
	53	73	1,347
B08	78	82	4,234
	80	84	4,303
	83	87	4,531

**RR/SIRV
Responses per
Truck**



	Current We	Last Week	YTD
B09	72	90	2,662
	73	92	2,690
	75	94	2,841
B10	59	47	3,550
	59	47	3,589
	61	52	3,795
B11	79	71	1,680
	79	71	1,693
	80	71	1,772
B12	0	0	1,190
	0	0	1,210
	0	0	1,273
B13	0	0	1,859
	0	0	1,882
	0	0	1,989
B14	0	0	1,198
	0	0	1,213
	0	0	1,250
B15	0	0	1,870
	0	0	1,881
	0	0	1,988
B16	0	0	1,332
	0	0	1,347
	0	0	1,414
B17	0	0	968
	0	0	981
	0	0	1,031
B18	0	0	97
	0	0	97
	0	0	101
B19	0	0	2
	0	0	2
	0	0	2
B20	1	0	2
	1	0	2
	1	0	2
B21	0	0	4
	0	0	4
	0	0	4
P51	0	0	35
	0	0	35
	0	0	37
P52	0	0	19
	0	0	19
	0	0	19

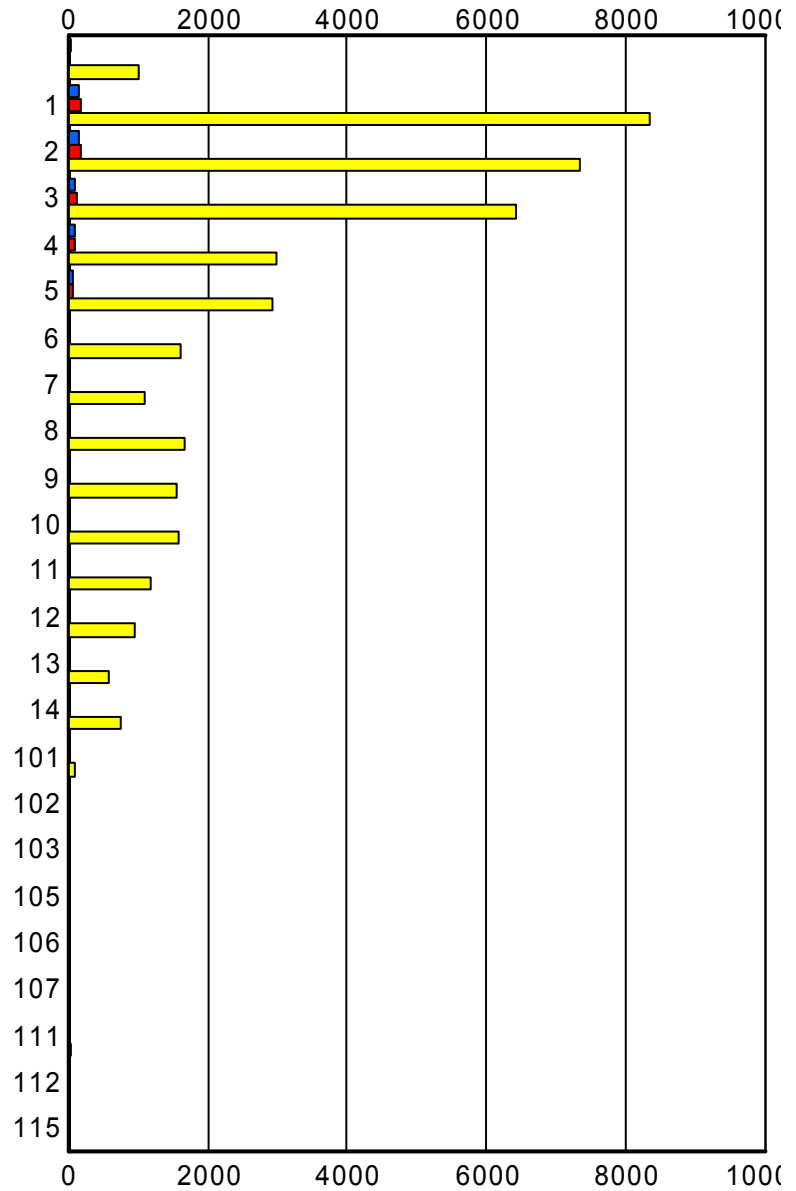
	Current We	Last Week	YTD
P53	1	0	21
	1	0	21
	1	0	24
P54	0	0	13
	0	0	13
	0	0	13
P55	1	0	15
	1	0	15
	1	0	16
P56	1	1	21
	1	1	22
	1	1	26
P57	0	0	11
	0	0	11
	0	0	11
P58	0	0	21
	0	0	21
	0	0	21
P61	0	0	1
	0	0	1
	0	0	1
P62	0	0	3
	0	0	3
	0	0	3
S01	2	1	73
	2	1	74
	2	1	82
S02	6	8	275
	7	8	278
	8	9	301
S03	1	2	101
	1	2	103
	1	3	114
S04	4	5	105
	4	5	109
	4	8	123

Road Ranger / SIRV Performance By Beat

	Current We	Last Week	YTD
	27	24	922
	28	24	999
	31	29	1,068
1	159	178	7,985
	167	185	8,338
	173	191	8,777
2	155	162	7,130
	160	175	7,335
	167	185	7,735
3	93	114	6,227
	96	118	6,411
	96	121	6,730
4	94	97	2,944
	95	102	2,991
	97	103	3,136
5	76	75	2,882
	78	76	2,923
	79	83	3,060
6	0	0	1,589
	0	0	1,615
	0	0	1,693
7	0	0	1,095
	0	0	1,111
	0	0	1,164
8	0	0	1,640
	0	0	1,659
	0	0	1,748
9	0	0	1,540
	0	0	1,563
	0	0	1,685
10	0	0	1,556
	0	0	1,576
	0	0	1,690
11	0	0	1,185
	0	0	1,196
	0	0	1,286
12	0	0	942
	0	0	957
	0	0	1,026
13	0	0	578
	0	0	589
	0	0	622
14	0	0	735
	0	0	740
	0	0	778

Values presented are:
 - Total Events with a RR/SIRV Response
 - Total RR/SIRV Responses,
 - Total Activities Performed

RR/SIRV Responses per Beat



■ Current Week
 ■ Last Week
 ■ YTD

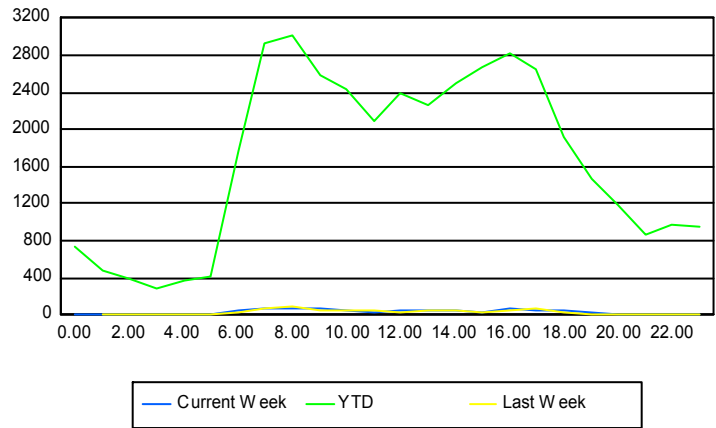
	Current We	Last Week	YTD
101	2	1	110
	2	1	110
	2	1	118
102	0	0	3
	0	0	4
	0	0	4
103	1	0	3
	1	0	3
	1	0	3
105	0	0	2
	0	0	2
	0	0	2
106	0	0	1
	0	0	1
	0	0	1
107	0	0	3
	0	0	3
	0	0	3
111	0	0	29
	0	0	29
	0	0	31
112	0	0	1
	0	0	1
	0	0	1
115	0	0	2
	0	0	2
	0	0	2

Road Ranger / SIRV Performance By Time of Day

Values presented are:
 - Total Events with a RR/SIRV Response
 - Total RR/SIRV Responses,
 - Total Activities Performed

	Current We	Last Week	YTD
12AM-1AM	1	0	697
	1	0	738
	1	0	793
1AM-2AM	1	1	448
	1	1	478
	1	4	510
2AM-3AM	2	0	353
	2	0	403
	3	0	434
3AM-4AM	0	0	252
	0	0	279
	0	0	301
4AM-5AM	0	2	326
	0	4	377
	0	4	408
5AM-6AM	1	2	341
	1	2	412
	1	2	437
6AM-7AM	34	27	1,631
	38	30	1,767
	40	30	1,835
7AM-8AM	54	68	2,757
	61	76	2,939
	62	79	3,089
8AM-9AM	56	78	2,787
	60	85	3,020
	60	90	3,179
9AM-10AM	62	49	2,435
	65	51	2,592
	66	55	2,724
10AM-11AM	41	46	2,292
	45	46	2,426
	45	46	2,554
11AM-12PM	35	50	1,945
	36	56	2,090
	39	58	2,202
12PM-1PM	38	33	2,243
	40	33	2,382
	40	37	2,500

Number of Responses / Hour of the Day



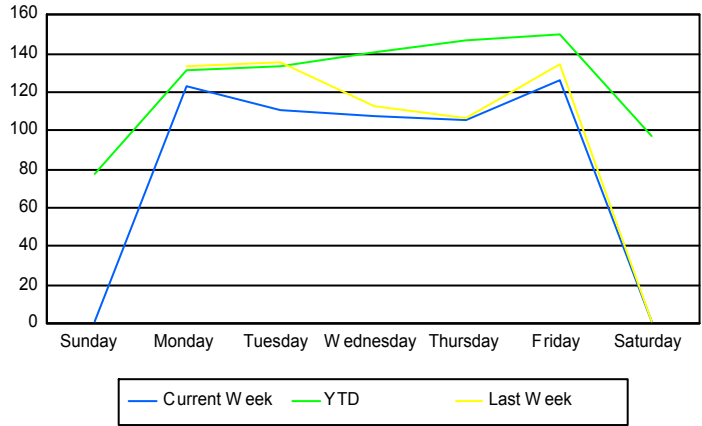
	Current We	Last Week	YTD
1PM-2PM	36	33	2,085
	38	39	2,260
	43	40	2,388
2PM-3PM	41	48	2,341
	42	54	2,500
	44	57	2,619
3PM-4PM	32	31	2,485
	33	31	2,669
	33	31	2,807
4PM-5PM	64	48	2,653
	66	59	2,813
	68	63	2,966
5PM-6PM	43	71	2,486
	46	75	2,645
	47	76	2,770
6PM-7PM	36	33	1,820
	49	34	1,927
	50	36	2,034
7PM-8PM	0	1	1,414
	0	1	1,477
	0	1	1,575
8PM-9PM	1	1	1,105
	1	1	1,178
	1	1	1,264
9PM-10PM	0	1	806
	0	1	866
	0	1	925
10PM-11PM	0	1	920
	0	1	977
	0	1	1,049
11PM-12AM	2	1	897
	2	1	943
	2	1	1,000

Road Ranger / SIRV Performance By Day of Week

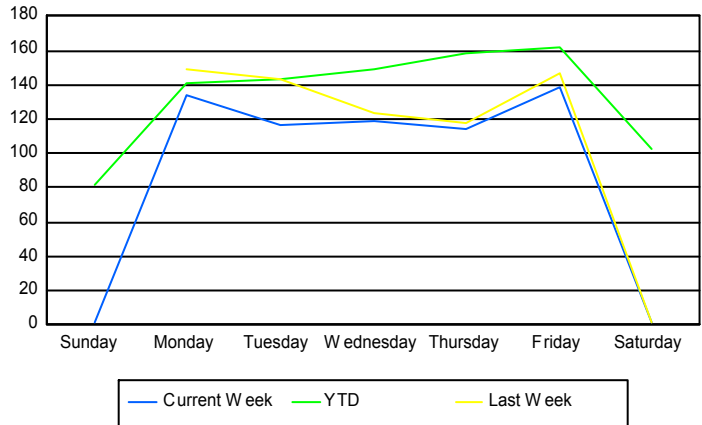
Values presented are:
 - Total Events with a RR/SIRV Response
 - Total RR/SIRV Responses,
 - Total Activities Performed

	Current We	Last Week	YTD
Sunday	1	0	2,906
	1	0	3,035
	2	0	3,212
Monday	127	134	5,654
	138	149	6,057
	140	159	6,340
Tuesday	111	136	5,943
	116	143	6,371
	120	149	6,706
Wednesday	108	113	6,200
	119	123	6,610
	124	126	6,951
Thursday	106	107	6,491
	114	118	7,000
	116	123	7,395
Friday	126	135	6,641
	138	147	7,194
	143	155	7,611
Saturday	1	1	3,709
	1	1	3,891
	1	1	4,148

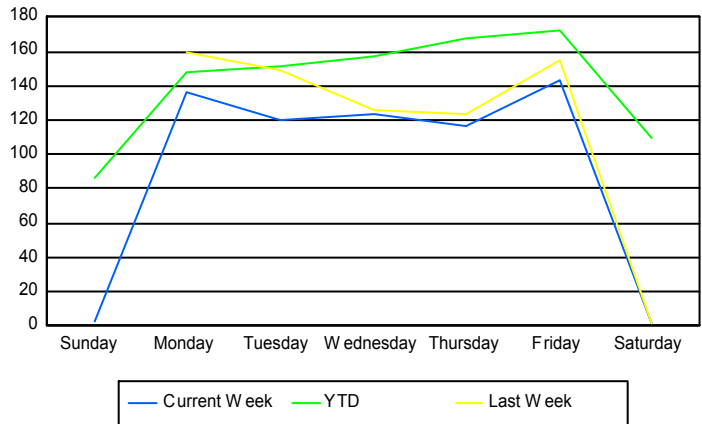
Avg # of events with a RR/SIRV Response per Day of the Week



Avg # of RR/SIRV Responses per Day of the Week



Avg # of RR/SIRV Activities Performed per Day of the Week



Road Ranger/ SIRV Responses per Time of Day and Day of Week

