



# Weekly Performance Measures Report Broward County



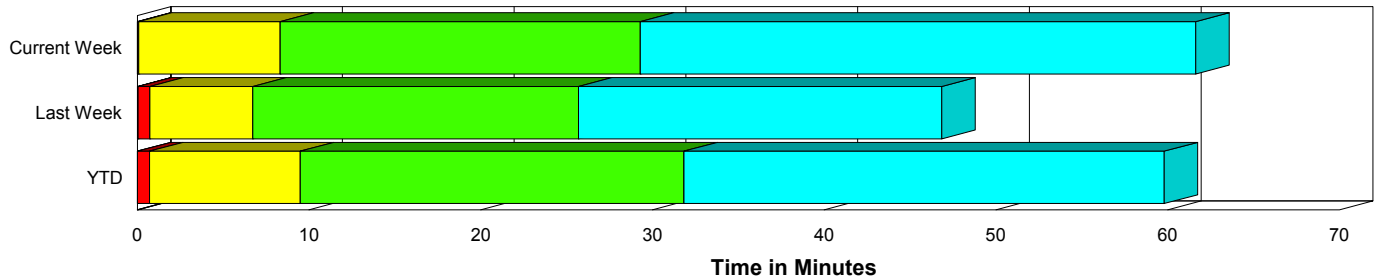
Created on:  
November 09, 2009  
8:43 am

Period From Nov 1, 2009 to Nov 7, 2009

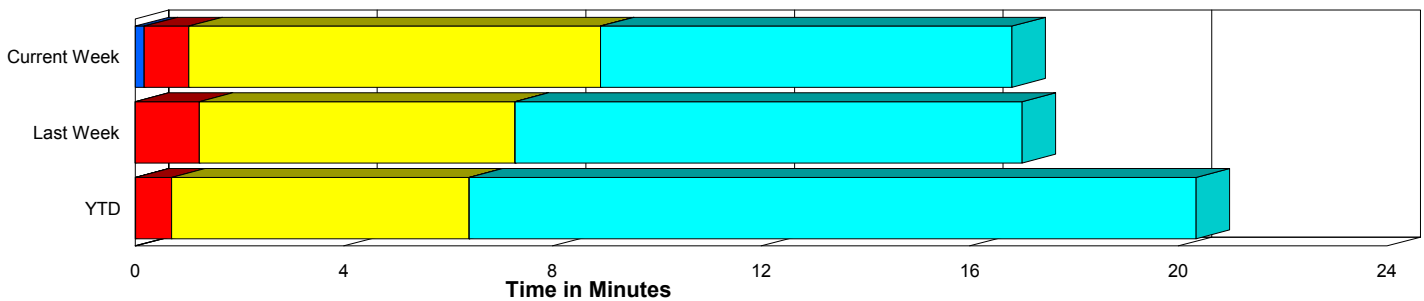
## Performance Measures Summary

	Traffic Events (No Lanes Blocked)			Incidents (Lanes Blocked)		
	<u>This Week</u>	<u>Last Week</u>	<u>YTD</u>	<u>This Week</u>	<u>Last Week</u>	<u>YTD</u>
Number of Events	1,352	1,209	44,783	48	50	2,119
TMC Detection (min.)	0.17	0.00	0.01	0.00	0.04	0.00
TMC Verification (min.)	0.86	1.23	0.69	0.07	0.68	0.71
TMC Response (min.)	9.12	7.87	6.90	8.33	6.71	9.66
RR Dispatch Time (min.)	1.07	1.46	1.21	1.52	1.59	2.58
RR Response Time (min.)	7.96	6.77	5.82	6.84	5.29	7.22
Roadway Clearance (min.)				27.24	24.52	31.01
Event Clearance (min.)	17.18	17.59	20.85	59.55	45.69	58.59
# of Events w/ RR/SIRV	1,086	1,014	31,389	46	50	1,545
RR/SIRV Responses	1,086	1,014	31,389	46	50	1,545
RR/SIRV Activities	783	829	26,508	81	93	3,096

### Incident Clearance Time-Line



### Traffic Event (Non-Lane Blockage) Time-Line



<span style="color: blue;">■</span> Avg. TMC Detection Time	<span style="color: green;">■</span> Avg. Time from TMC Response to Roadway Clearance*
<span style="color: red;">■</span> Avg. Time from TMC Detection to TMC Verification	<span style="color: cyan;">■</span> Avg. Time from Roadway Clearance to Incident/Event Clearance**
<span style="color: yellow;">■</span> Avg. Time from TMC Verification to TMC Response	

\* Roadway clearance equals all travel lanes open

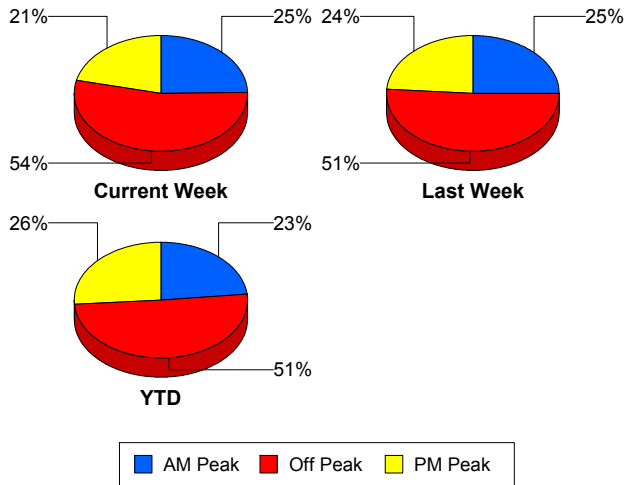
\*\* Incident clearance equals time when last responder has left the scene

## Performance Measures by Peak Period

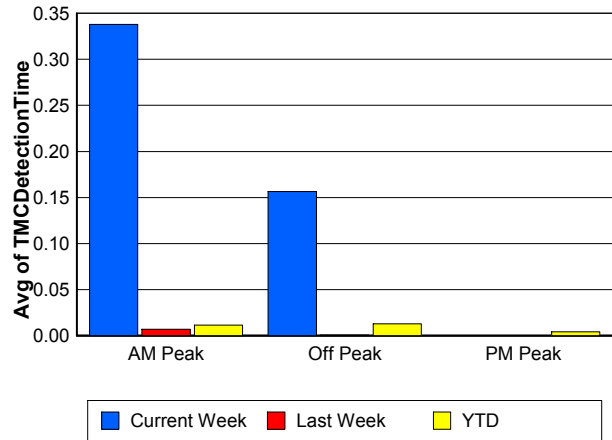
Note: AM peak period is defined as 6am to 10am and PM peak period is defined as 3pm to 7pm.

	AM Peak			Off Peak			PM Peak		
	<u>Current Week</u>	<u>Last Week</u>	<u>YTD</u>	<u>Current Week</u>	<u>Last Week</u>	<u>YTD</u>	<u>Current Week</u>	<u>Last Week</u>	<u>YTD</u>
Number of Events	348	315	10,907	753	643	23,722	299	301	12,273
Number of Incidents	14	17	501	23	17	1,034	11	16	584
TMC Detection (min.)	0.34	0.01	0.01	0.16	0.00	0.01	0.00	0.00	0.00
TMC Verification (min.)	0.78	0.58	0.56	0.87	1.24	0.67	0.78	1.79	0.85
TMC Response (min.)	9.03	8.74	6.52	9.50	7.31	7.88	8.24	7.84	6.40
RR Dispatch Time (min.)	0.52	0.87	0.95	1.29	1.64	1.69	1.26	1.72	0.95
RR Response Time (min.)	8.23	7.97	5.66	8.11	6.02	6.29	7.11	6.70	5.58
Event Clearance (min.)	19.88	17.66	20.91	17.94	18.51	24.64	18.92	20.24	19.98
Roadway Clearance (min.)	21.59	18.39	27.65	34.80	37.40	35.28	18.62	17.35	26.35
Incident Clearance (min.)	70.39	29.56	56.61	62.56	59.64	62.25	39.49	48.00	53.80
# of Events w/ RR/SIRV	287	271	8,939	593	526	14,334	252	267	9,661
RR/SIRV Responses	287	271	8,939	593	526	14,334	252	267	9,661
RR/SIRV Activities	238	229	8,318	421	450	12,450	205	243	8,836

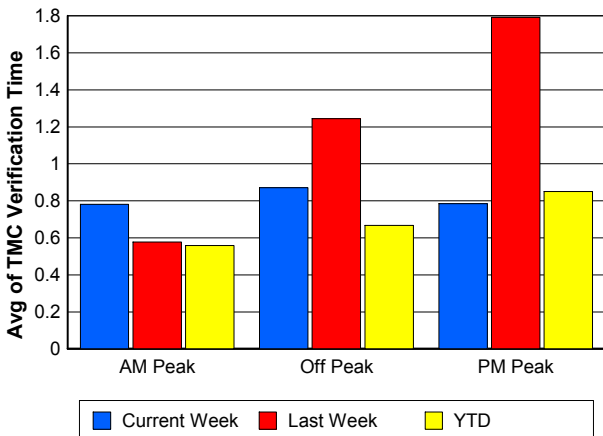
### Number of Events / Peak Period



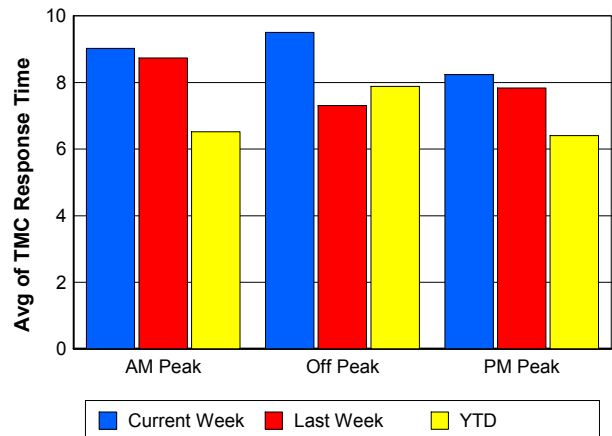
### TMC Detection Time



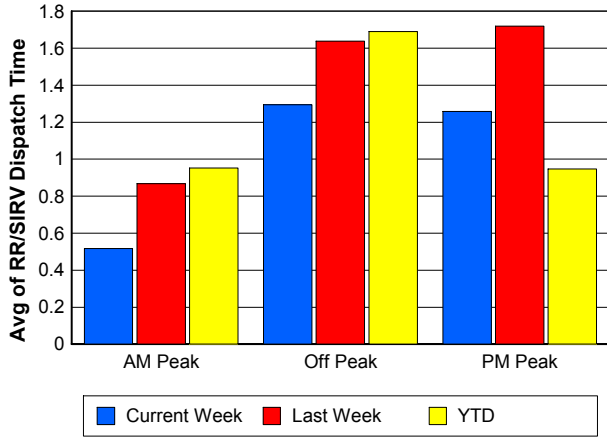
### TMC Verification Time



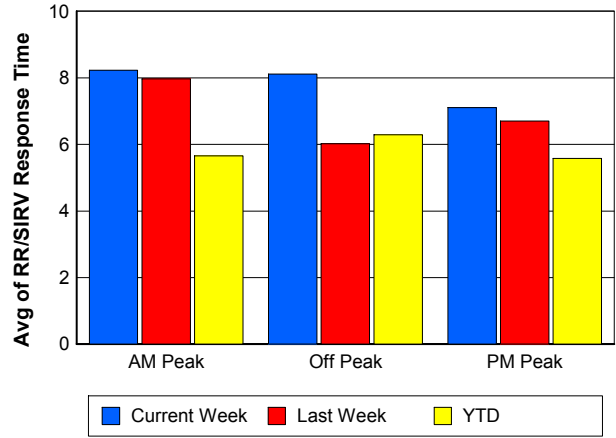
### TMC Response Time



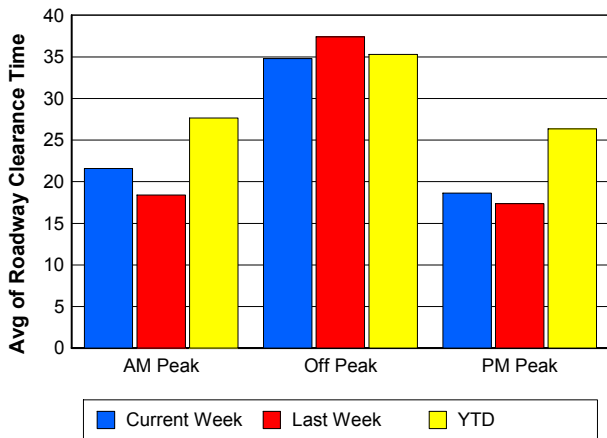
## Road Ranger / SIRV Dispatch Time



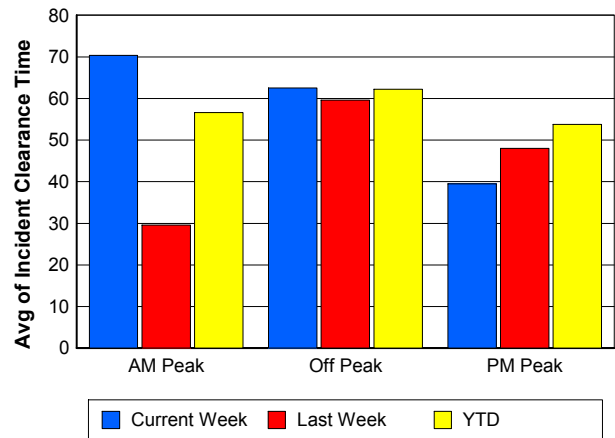
## Road Ranger / SIRV Response Time



## Roadway Clearance Time (2A)



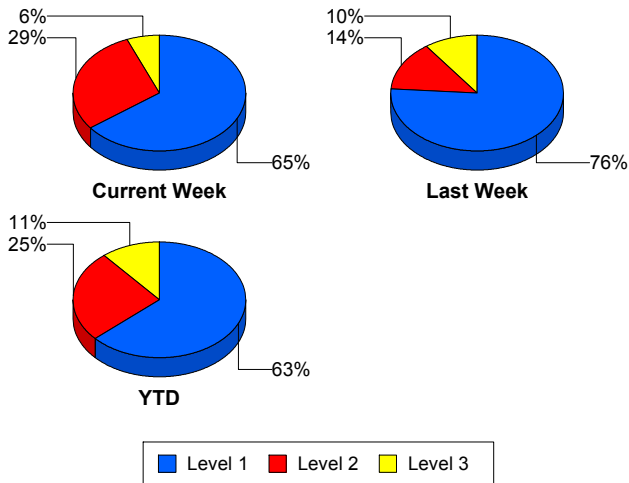
## Incident Clearance Time (3B)



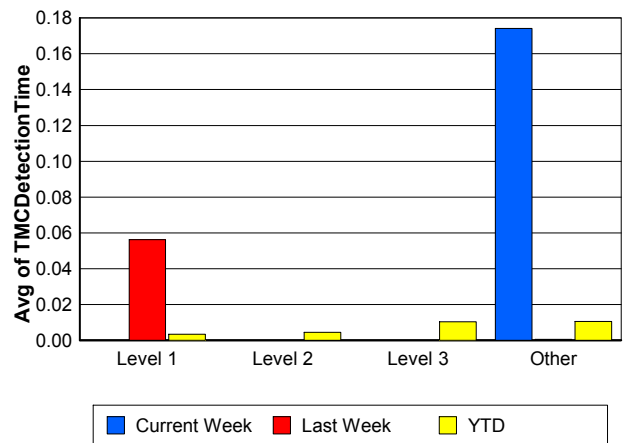
## Performance Measures by Severity

	Level 1			Level 2			Level 3			Other		
	<u>This Week</u>	<u>Last Week</u>	<u>YTD</u>	<u>This Week</u>	<u>Last Week</u>	<u>YTD</u>	<u>This Week</u>	<u>Last Week</u>	<u>YTD</u>	<u>This Week</u>	<u>Last Week</u>	<u>YTD</u>
Number of Events	31	38	1,344	14	7	538	3	5	237	1,352	1,209	44,783
Number of Incidents	31	38	1,344	14	7	538	3	5	237	0	0	0
TMC Detection (min.)	0.00	0.06	0.00	0.00	0.00	0.00	0.00	0.00	0.01	0.17	0.00	0.01
TMC Verification (min.)	0.12	0.24	0.47	0.00	1.85	1.05	0.00	2.43	1.29	0.86	1.23	0.69
TMC Response (min.)	7.79	6.64	7.47	9.96	5.55	10.00	4.32	8.88	20.84	9.12	7.87	6.90
RR Dispatch Time (min.)	1.23	1.39	1.57	2.28	2.46	2.58	0.52	1.91	7.71	1.07	1.46	1.21
RR Resp. Time (min.)	6.63	5.50	5.98	7.68	3.09	7.67	3.81	6.97	13.09	7.96	6.77	5.82
Event Clearance (min.)	49.39	37.83	45.38	73.50	55.21	71.95	99.49	92.08	102.96	17.18	17.59	20.85
Roadway Clear. (min.)	13.66	12.88	14.33	44.65	47.04	49.12	86.30	81.46	84.52			
Incident Clearance (min.)	49.39	37.83	45.38	73.50	55.21	71.95	99.49	92.08	102.96			
# of Events w/ RR/SIRV	30	38	1,018	14	7	326	2	5	201	1,086	1,014	31,389
RR/SIRV Responses	30	38	1,018	14	7	326	2	5	201	1,086	1,014	31,389
RR/SIRV Activities	42	56	1,739	35	14	882	4	23	475	783	829	26,508

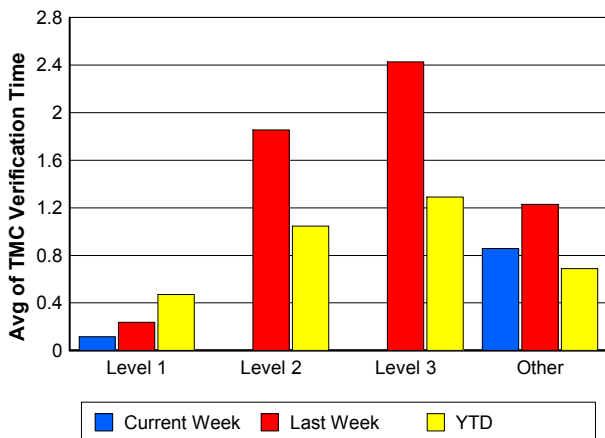
### Number of Events / Severity



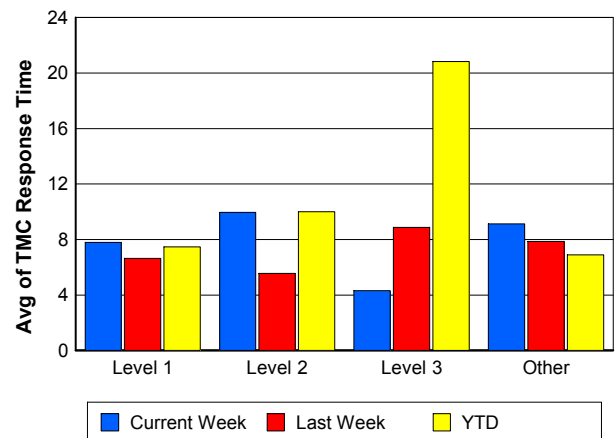
### TMC Detection Time



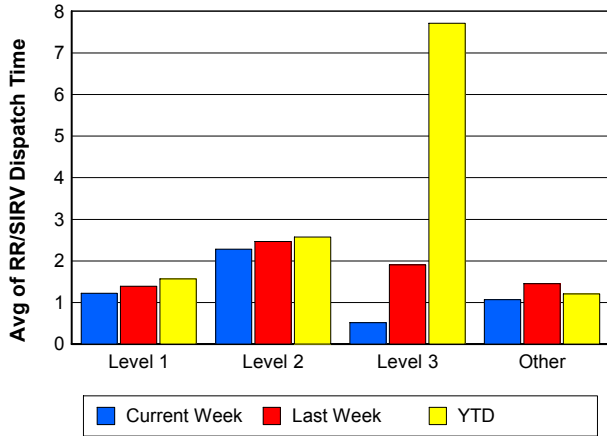
### TMC Verification Time



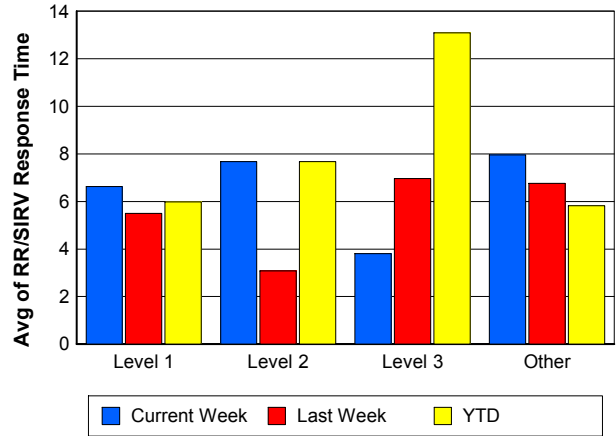
### TMC Response Time



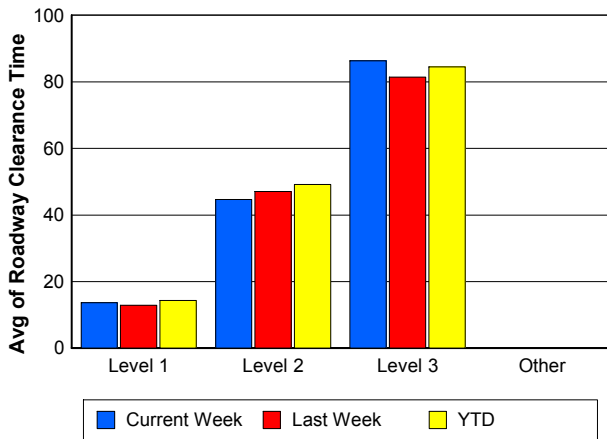
## Road Ranger / SIRV Dispatch Time



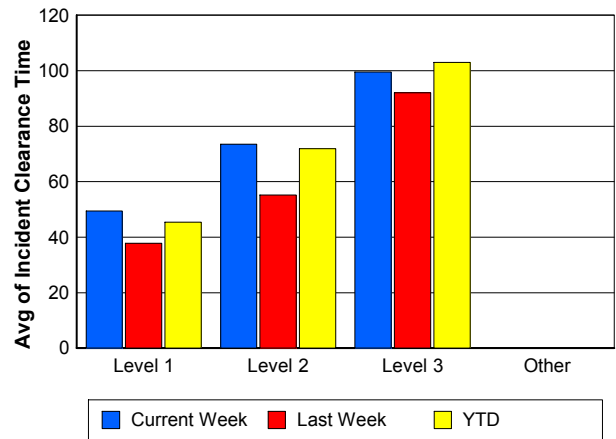
## Road Ranger / SIRV Response Time



## Roadway Clearance Time (2A)



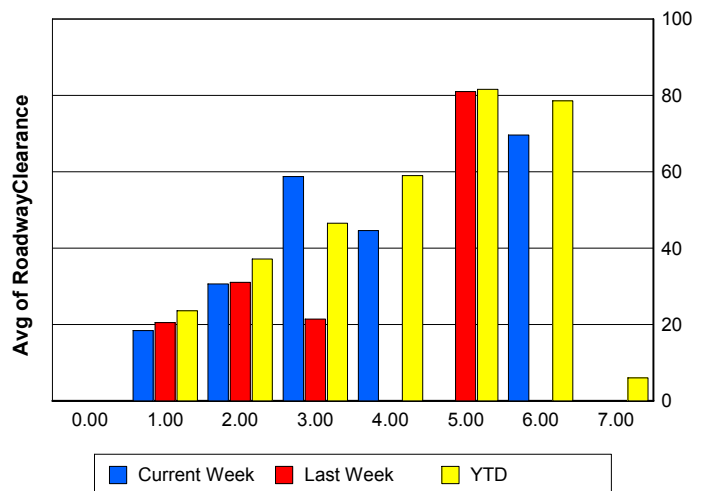
## Incident Clearance Time (3B)



## Roadway Clearance by Maximum Number of Lanes Blocked

	Current Week	Last Week	YTD
0			
1	18.35	20.48	23.58
2	30.62	31.04	37.14
3	58.70	21.39	46.53
4	44.58	0.00	58.95
5	0.00	81.00	81.56
6	69.62	0.00	78.54
7	0.00	0.00	5.97

## Roadway Clearance Time (2A)



## Performance Measures by Roadway

**595**

	<u>Current Week</u>	<u>Last Week</u>	<u>YTD</u>
Number of Events	36	47	4,639
Number of Incidents	2	5	283
TMC Detection (min.)	0.00	0.00	0.01
TMC Verification (min.)	0.45	2.40	0.86
TMC Response (min.)	12.19	15.39	6.96
RR Dispatch Time (min.)	1.63	2.50	1.17
RR Resp. Time (min.)	10.31	12.23	5.89
Event Clearance (min.)	15.63	23.60	21.36
Roadway Clear. (min.)	28.56	48.88	31.62
Incident Clearance (min.)	51.13	58.26	54.23
# of Events w/ RR/SIRV	25	31	3,238
RR/SIRV Responses	25	31	3,238
RR/SIRV Activities	17	32	2,942

**75**

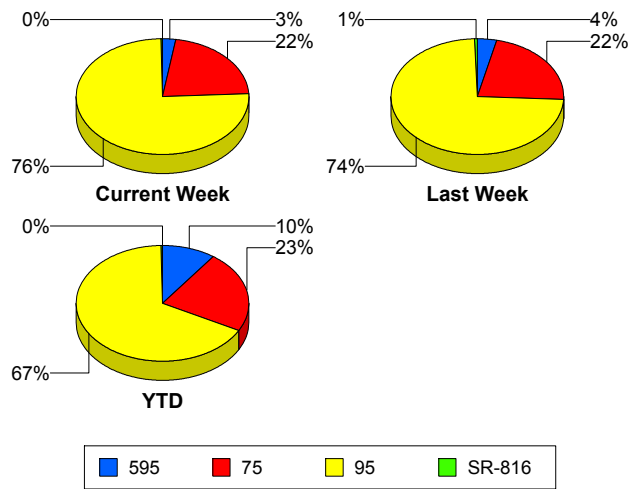
	<u>Current Week</u>	<u>Last Week</u>	<u>YTD</u>
Number of Events	304	277	10,741
Number of Incidents	1	2	195
TMC Detection (min.)	0.77	0.00	0.02
TMC Verification (min.)	2.14	2.55	0.94
TMC Response (min.)	9.78	9.11	8.32
RR Dispatch Time (min.)	0.37	2.60	1.29
RR Resp. Time (min.)	8.32	7.62	7.13
Event Clearance (min.)	17.46	20.58	24.33
Roadway Clear. (min.)	33.70	89.73	52.08
Incident Clearance (min.)	92.95	104.22	79.72
# of Events w/ RR/SIRV	237	240	7,351
RR/SIRV Responses	237	240	7,351
RR/SIRV Activities	175	203	6,290

**95**

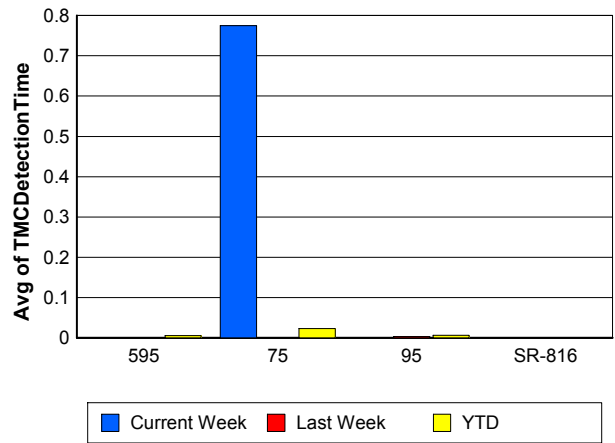
	<u>Current Week</u>	<u>Last Week</u>	<u>YTD</u>
Number of Events	1,058	928	31,453
Number of Incidents	43	39	1,597
TMC Detection (min.)	0.00	0.00	0.01
TMC Verification (min.)	0.47	0.76	0.58
TMC Response (min.)	8.84	7.23	6.70
RR Dispatch Time (min.)	1.27	1.09	1.28
RR Resp. Time (min.)	7.76	6.29	5.53
Event Clearance (min.)	19.07	17.91	22.14
Roadway Clear. (min.)	27.38	18.85	28.76
Incident Clearance (min.)	61.01	44.04	57.97
# of Events w/ RR/SIRV	868	786	22,279
RR/SIRV Responses	868	786	22,279
RR/SIRV Activities	670	680	20,296

	<u>Current Week</u>	<u>Last Week</u>	<u>YTD</u>
Number of Events	2	7	69
Number of Incidents	2	4	44
TMC Detection (min.)	0.00	0.00	0.00
TMC Verification (min.)	0.00	0.00	0.18
TMC Response (min.)	0.00	0.00	0.58
RR Dispatch Time (min.)	0.00	0.00	0.07
RR Resp. Time (min.)	0.00	0.00	0.53
Event Clearance (min.)	20.06	18.46	12.83
Roadway Clear. (min.)	19.67	16.77	15.54
Incident Clearance (min.)	20.06	16.71	15.42
# of Events w/ RR/SIRV	2	7	66
RR/SIRV Responses	2	7	66
RR/SIRV Activities	2	7	76

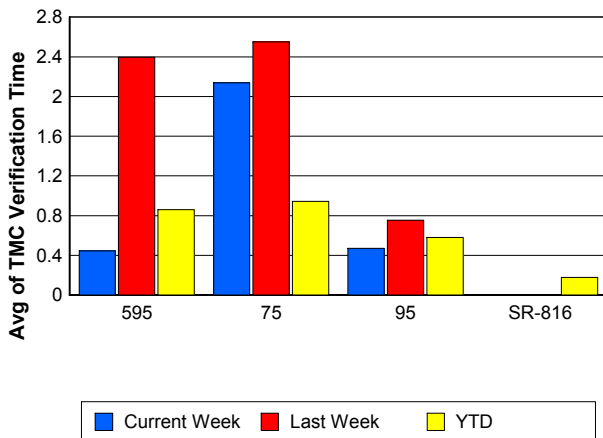
### Number of Events / Roadway



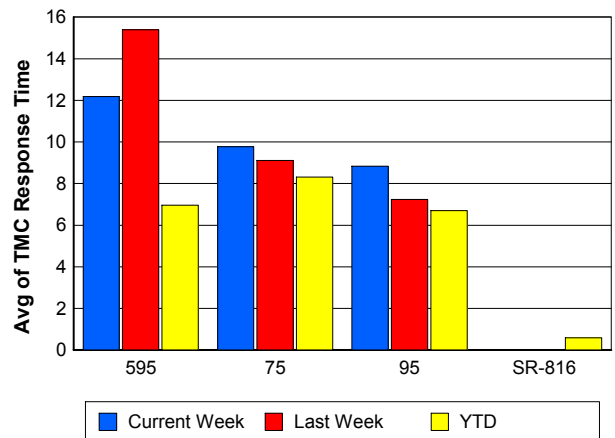
### TMC Detection Time



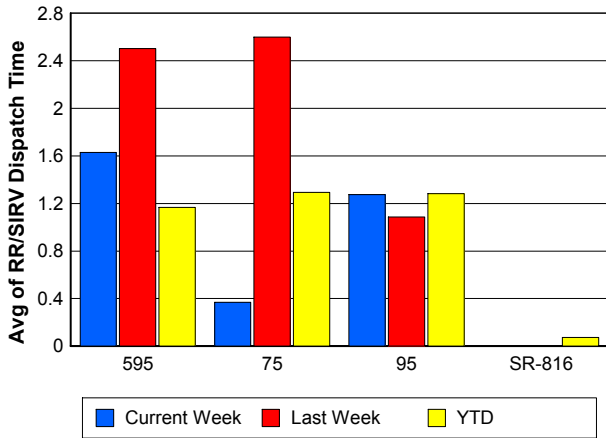
### TMC Verification Time



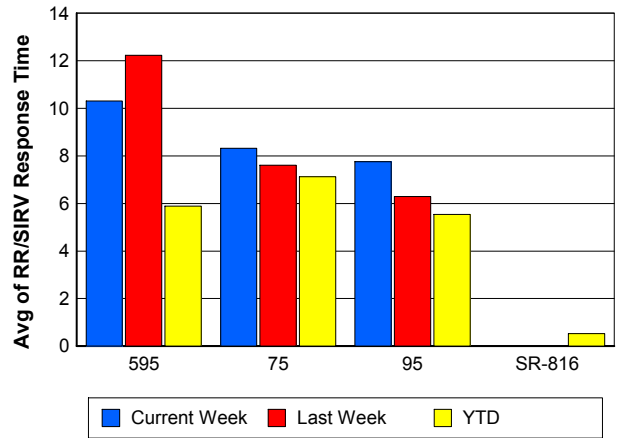
### TMC Response Time



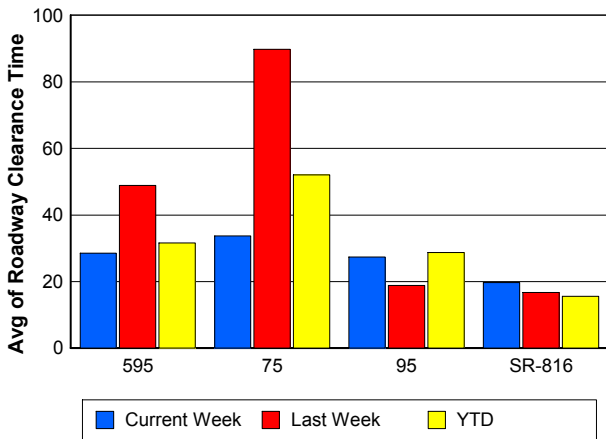
## Road Ranger / SIRV Dispatch Time



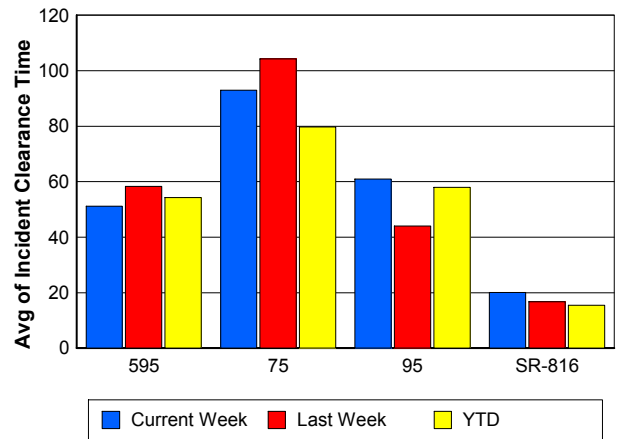
## Road Ranger / SIRV Response Time



## Roadway Clearance Time (2A)



## Incident Clearance Time (3B)



## Performance Measures by Event Type

### Accident

	<u>Current Week</u>	<u>Last Week</u>	<u>YTD</u>
Number of Events	83	67	3,167
Number of Incidents	32	29	1,506
TMC Detection (min.)	0.00	0.00	0.01
TMC Verification (min.)	0.81	0.64	0.75
TMC Response (min.)	10.18	8.98	9.11
RR Dispatch Time (min.)	1.57	1.71	1.64
RR Response Time (min.)	8.57	7.27	7.53
Event Clearance (min.)	52.56	50.27	54.81
Roadway Clearance (min.)	31.55	30.80	32.82
Incident Clearance (min.)	74.39	59.95	66.37
# of Events w/ RR/SIRV	81	67	2,412
RR/SIRV Assists	81	67	2,412
RR/SIRV Activities	108	106	3,713

### Debris on Roadway

	<u>Current Week</u>	<u>Last Week</u>	<u>YTD</u>
Number of Events	28	51	1,444
Number of Incidents	0	2	30
TMC Detection (min.)	0.00	0.00	0.08
TMC Verification (min.)	3.93	5.49	4.10
TMC Response (min.)	9.10	9.85	7.85
RR Dispatch Time (min.)	0.87	2.40	0.96
RR Response Time (min.)	8.45	7.40	6.92
Event Clearance (min.)	13.56	14.08	11.72
Roadway Clearance (min.)		16.12	24.02
Incident Clearance (min.)		25.79	31.95
# of Events w/ RR/SIRV	28	49	1,342
RR/SIRV Assists	28	49	1,342
RR/SIRV Activities	28	54	1,361

### Disabled Vehicle

	<u>Current Week</u>	<u>Last Week</u>	<u>YTD</u>
Number of Events	720	773	27,529
Number of Incidents	10	14	356
TMC Detection (min.)	0.24	0.00	0.01
TMC Verification (min.)	1.28	1.52	0.83
TMC Response (min.)	8.84	7.66	6.69
RR Dispatch Time (min.)	0.97	1.23	1.11
RR Response Time (min.)	7.66	6.68	5.63
Event Clearance (min.)	21.52	20.25	25.22
Roadway Clearance (min.)	11.28	6.59	18.32
Incident Clearance (min.)	23.24	19.88	32.35
# of Events w/ RR/SIRV	702	751	22,626
RR/SIRV Assists	702	751	22,626
RR/SIRV Activities	687	721	22,960

## Emergency Vehicles

	<u>Current Week</u>	<u>Last Week</u>	<u>YTD</u>
Number of Events	2	2	74
Number of Incidents	1	2	57
TMC Detection (min.)	0.00	0.00	0.00
TMC Verification (min.)	0.00	0.00	0.52
TMC Response (min.)		3.03	12.87
RR Dispatch Time (min.)	0.60	0.88	7.97
RR Response Time (min.)		2.16	4.21
Event Clearance (min.)	20.77	12.04	47.99
Roadway Clearance (min.)	23.65	10.92	47.36
Incident Clearance (min.)	29.57	12.04	53.99
# of Events w/ RR/SIRV	1	2	41
RR/SIRV Assists	1	2	41
RR/SIRV Activities	0	4	69

## Other

	<u>Current Week</u>	<u>Last Week</u>	<u>YTD</u>
Number of Events	557	360	14,251
Number of Incidents	0	2	31
TMC Detection (min.)	0.11	0.00	0.01
TMC Verification (min.)	0.12	0.06	0.08
TMC Response (min.)	11.72	5.90	8.38
RR Dispatch Time (min.)	1.24	2.04	1.71
RR Response Time (min.)	11.12	4.96	6.40
Event Clearance (min.)	9.91	10.37	10.91
Roadway Clearance (min.)		86.48	33.55
Incident Clearance (min.)		88.82	38.56
# of Events w/ RR/SIRV	312	191	6,261
RR/SIRV Assists	312	191	6,261
RR/SIRV Activities	32	35	1,175

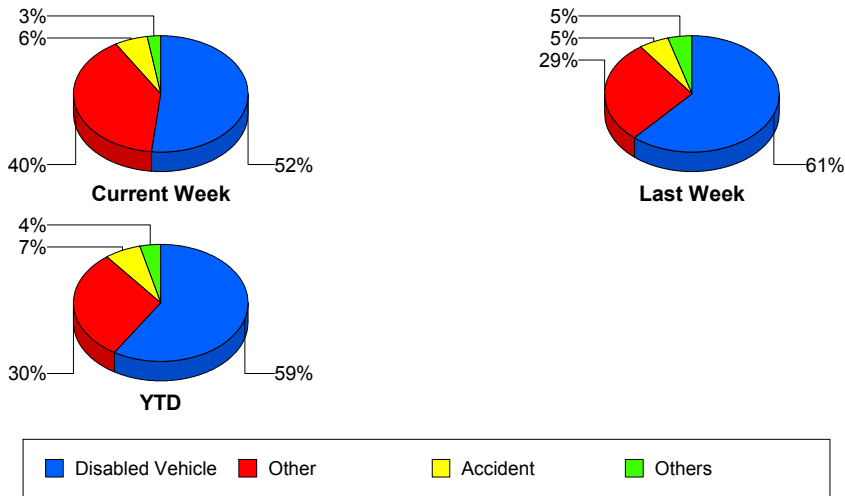
## Police Activity

	<u>Current Week</u>	<u>Last Week</u>	<u>YTD</u>
Number of Events	4	4	181
Number of Incidents	3	1	61
TMC Detection (min.)	0.00	0.00	0.00
TMC Verification (min.)	0.00	0.32	0.29
TMC Response (min.)	12.83	7.45	13.06
RR Dispatch Time (min.)	4.09	4.87	4.09
RR Response Time (min.)	9.00	6.67	9.02
Event Clearance (min.)	22.62	10.27	31.82
Roadway Clearance (min.)	13.17	13.87	35.68
Incident Clearance (min.)	18.72	13.93	44.13
# of Events w/ RR/SIRV	2	2	63
RR/SIRV Assists	2	2	63
RR/SIRV Activities	1	1	75

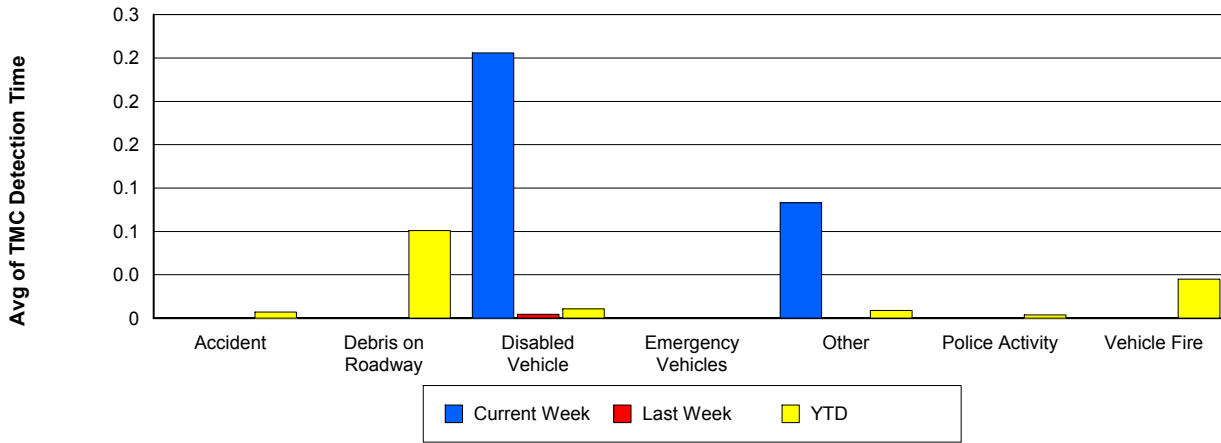
## Vehicle Fire

	<u>Current Week</u>	<u>YTD</u>
Number of Events	2	100
Number of Incidents	2	78
TMC Detection (min.)	0.00	0.04
TMC Verification (min.)	0.00	1.08
TMC Response (min.)	4.32	9.80
RR Dispatch Time (min.)	0.52	2.08
RR Response Time (min.)	3.81	8.11
Event Clearance (min.)	80.03	57.27
Roadway Clearance (min.)	60.90	40.22
Incident Clearance (min.)	80.03	61.33
# of Events w/ RR/SIRV	2	70
RR/SIRV Assists	2	70
RR/SIRV Activities	6	146

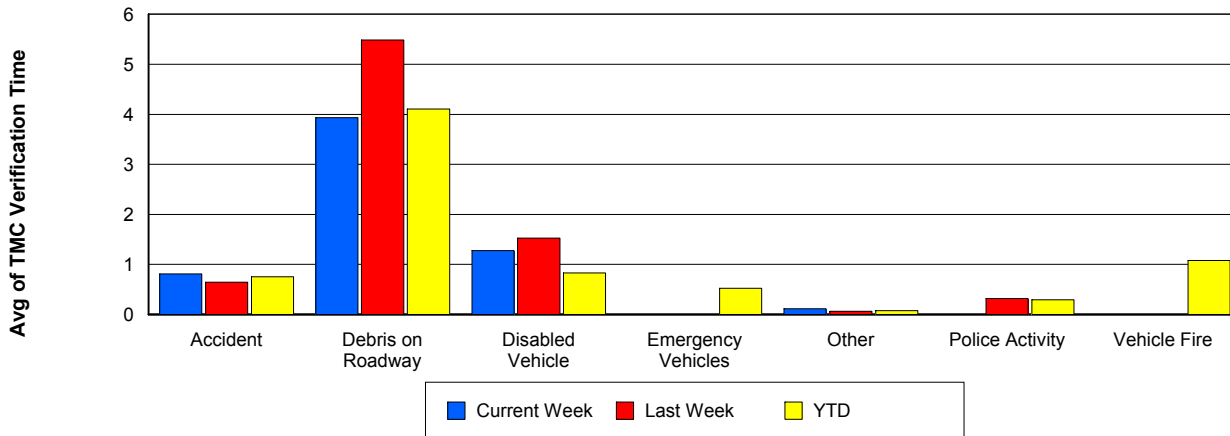
## Number of Events / Event Type



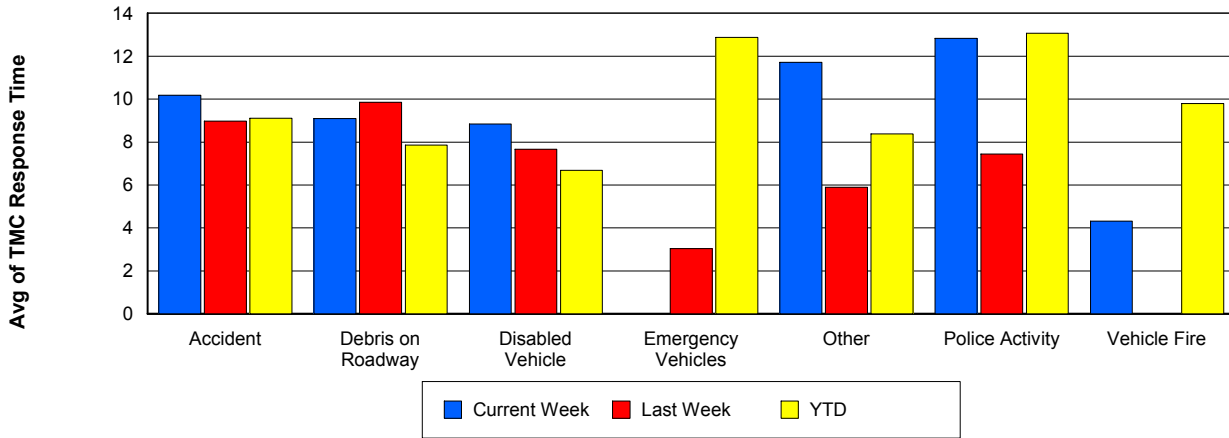
## TMC Detection Time



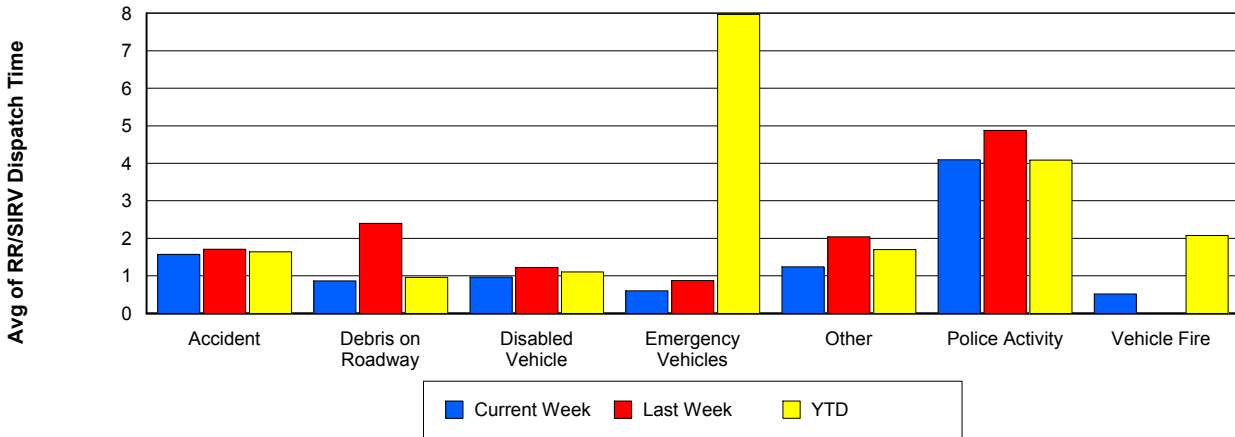
## TMC Verification Time



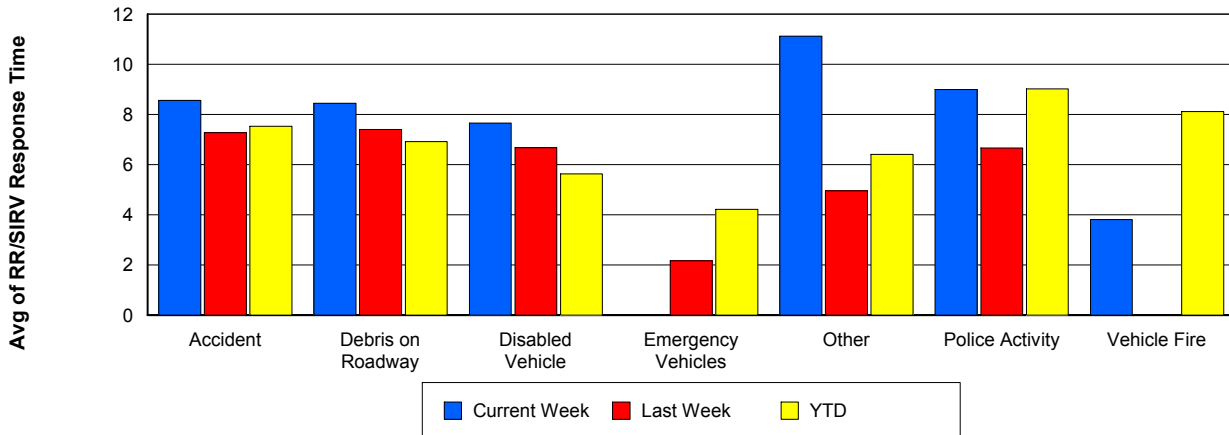
## TMC Response Time



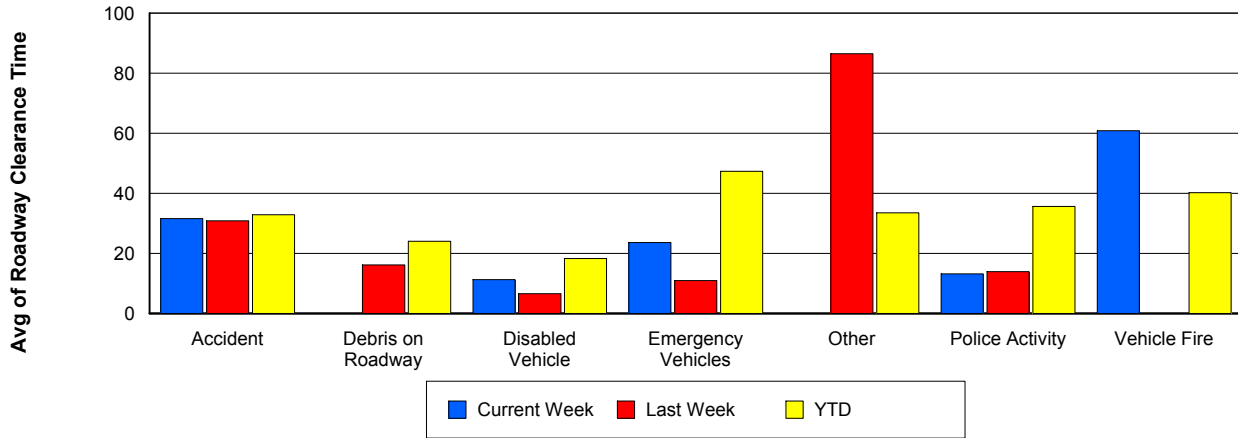
## Road Ranger / SIRV Dispatch Time



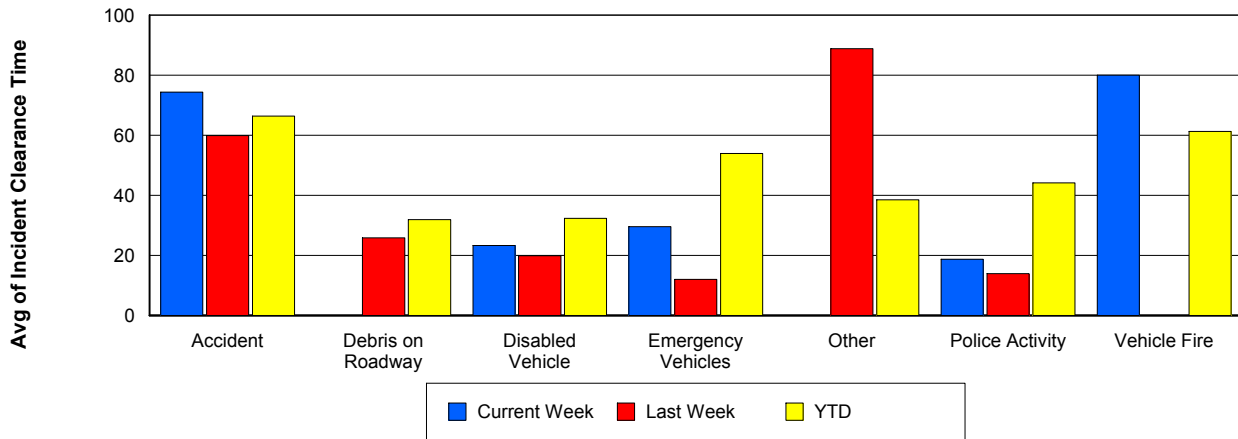
## Road Ranger / SIRV Response Time



## Roadway Clearance Time (2A)



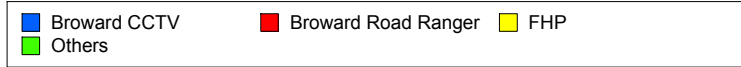
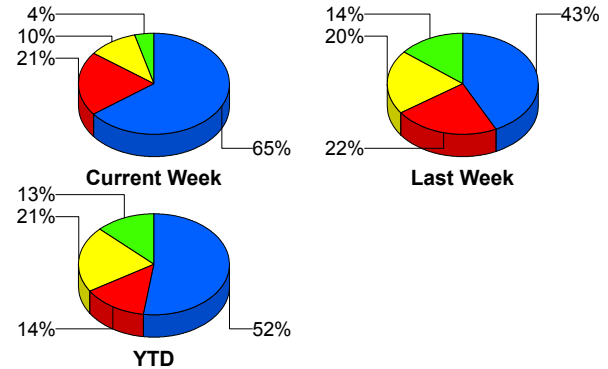
## Incident Clearance Time (3B)



## Incident Detection Methods

	Current Week	Last Week	YTD
Broward CCTV	31	21	1,104
Broward Road Ranger	10	11	290
Broward TMC	0	0	4
Broward VideoWall	0	1	60
BSO	0	3	47
District 4	0	1	50
District 6	0	1	3
FDOT Maintenance	0	1	6
FHP	5	10	447
Fire	0	0	4
Florida's Turnpike	0	0	6
ITMS	0	0	2
Motorist	0	0	11
Other	0	0	1
Palm Beach Road Ran	2	0	7
Road Watcher	0	0	14
SIRV	0	0	12
SmarTraveler (511)	0	0	6
VisioPaD Detection	0	0	37
<b>Total</b>	<b>48</b>	<b>49</b>	<b>2,111</b>

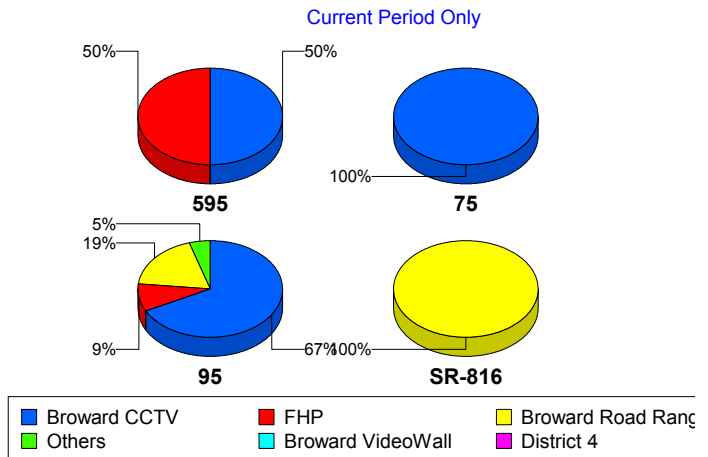
### Total Incidents by Detection Method



## Incident Detection Methods by Roadway

		Current Week	Last Week	YTD
595	Broward CCTV	1	2	134
	Broward Road Ranger	0	0	38
	Broward VideoWall	0	0	8
	BSO	0	2	7
	District 4	0	0	12
	FDOT Maintenance	0	0	2
	FHP	1	0	56
	Florida's Turnpike	0	0	6
	Motorist	0	0	3
	Road Watcher	0	0	3
	SIRV	0	0	1
	VisioPaD Detection	0	0	6
	Total	2	4	276
	75	Broward CCTV	1	1
Broward Road Ranger		0	0	21
Broward VideoWall		0	0	1
BSO		0	1	35
District 4		0	0	6
FHP		0	0	44
Other		0	0	1
Road Watcher		0	0	3
VisioPaD Detection		0	0	5
Total		1	2	195
95	Broward CCTV	29	18	891
	Broward Road Ranger	8	7	188
	Broward TMC	0	0	4
	Broward VideoWall	0	1	51
	BSO	0	0	5
	District 4	0	1	31
	District 6	0	1	3
	FDOT Maintenance	0	1	4

Total Events by Roadway and Detection Method

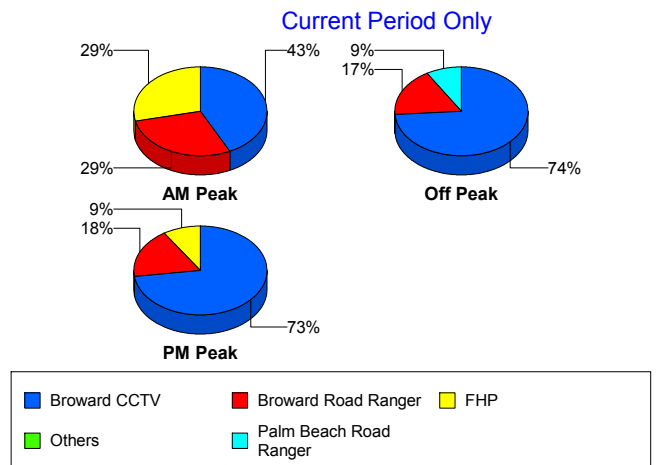


		Current Week	Last Week	YTD
95	FHP	4	10	347
	Fire	0	0	4
	ITMS	0	0	2
	Motorist	0	0	8
	Palm Beach Road Ran	2	0	7
	Road Watcher	0	0	8
	SIRV	0	0	11
	SmarTraveler (511)	0	0	6
	VisioPaD Detection	0	0	26
	Total	43	39	1,596
SR-816	Broward Road Ranger	2	4	43
	District 4	0	0	1
	Total	2	4	44
Total		48	49	2,111

### Incident Detection Methods by Peak Period

		Current Week	Last Week	YTD
AM Peak	Broward CCTV	6	7	220
	Broward Road Ranger	4	7	98
	Broward TMC	0	0	1
	Broward VideoWall	0	0	20
	BSO	0	0	7
	District 4	0	0	18
	FDOT Maintenance	0	1	1
	FHP	4	2	114
	Florida's Turnpike	0	0	2
	Motorist	0	0	6
	Palm Beach Road Ran	0	0	2
	Road Watcher	0	0	5
	SIRV	0	0	1
	SmarTraveler (511)	0	0	1
	VisioPaD Detection	0	0	2

Total Events by Peak Period and Detection Method

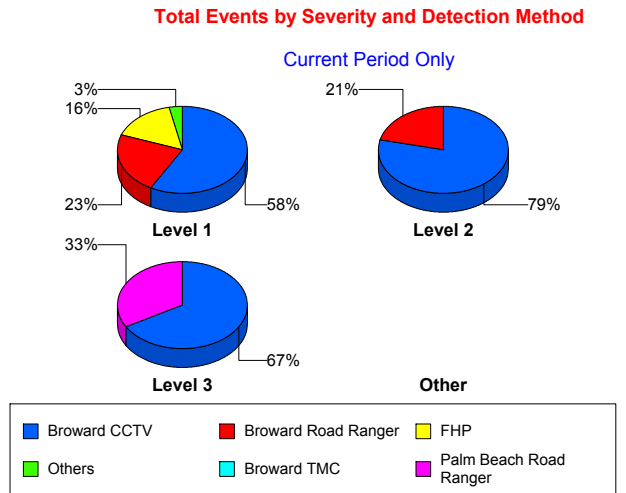


		Current Week	Last Week	YTD
AM Peak	Total	14	17	498
Off Peak	Broward CCTV	17	7	593
	Broward Road Ranger	4	2	82
	Broward TMC	0	0	3
	Broward VideoWall	0	1	33
	BSO	0	3	31
	District 4	0	0	16
	District 6	0	1	2
	FDOT Maintenance	0	0	3
	FHP	0	3	210
	Fire	0	0	3
	Florida's Turnpike	0	0	3
	ITMS	0	0	2
	Motorist	0	0	4
	Palm Beach Road Ran	2	0	3
	Road Watcher	0	0	6
	SIRV	0	0	5
	SmarTraveler (511)	0	0	3
	VisioPaD Detection	0	0	29
	Total	23	17	1,031
	PM Peak	Broward CCTV	8	7
Broward Road Ranger		2	2	110
Broward VideoWall		0	0	7
BSO		0	0	9
District 4		0	1	16
District 6		0	0	1
FDOT Maintenance		0	0	2
FHP		1	5	123
Fire		0	0	1
Florida's Turnpike		0	0	1
Motorist		0	0	1
Other		0	0	1

		Current Week	Last Week	YTD
PM Peak	Palm Beach Road Ran	0	0	2
	Road Watcher	0	0	3
	SIRV	0	0	6
	SmarTraveler (511)	0	0	2
	VisioPaD Detection	0	0	6
	Total	11	15	582
Total		48	49	2,111

### Incident Detection Methods by Severity

		Current Week	Last Week	YTD	
Level 1	Broward CCTV	18	17	705	
	Broward Road Ranger	7	10	213	
	Broward TMC	0	0	3	
	Broward VideoWall	0	1	39	
	BSO	0	0	10	
	District 4	0	1	37	
	District 6	0	1	2	
	FDOT Maintenance	0	1	5	
	FHP	5	7	262	
	Fire	0	0	3	
	ITMS	0	0	1	
	Motorist	0	0	8	
	Palm Beach Road Ran	1	0	5	
	Road Watcher	0	0	9	
	SIRV	0	0	11	
	SmarTraveler (511)	0	0	4	
	VisioPaD Detection	0	0	21	
	Total	31	38	1,338	
	Level 2	Broward CCTV	11	3	289
		Broward Road Ranger	3	1	54
Broward TMC		0	0	1	
Broward VideoWall		0	0	18	



		Current Week	Last Week	YTD
Level 2	BSO	0	1	11
	District 4	0	0	7
	FDOT Maintenance	0	0	1
	FHP	0	2	130
	Florida's Turnpike	0	0	4
	ITMS	0	0	1
	Motorist	0	0	3
	Other	0	0	1
	Road Watcher	0	0	2
	SIRV	0	0	1
	SmarTraveler (511)	0	0	2
	VisioPaD Detection	0	0	13
	Total	14	7	538
	Level 3	Broward CCTV	2	1
Broward Road Ranger		0	0	23
Broward VideoWall		0	0	3
BSO		0	2	26
District 4		0	0	6
District 6		0	0	1
FHP		0	1	55
Fire		0	0	1
Florida's Turnpike		0	0	2
Palm Beach Road Ran		1	0	2
Road Watcher		0	0	3
VisioPaD Detection		0	0	3
Total		3	4	235
<b>Total</b>		<b>48</b>	<b>49</b>	<b>2,111</b>

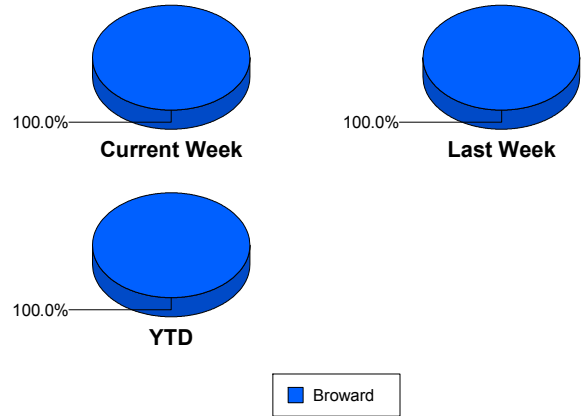
# Road Ranger / SIRV Performance Measures

## Road Ranger / SIRV Performance By County

RR/SIRV Responses per County

Values presented are: - Total Events with a RR/SIRV Response - Total RR/SIRV Responses, - Total Activities Performed
---

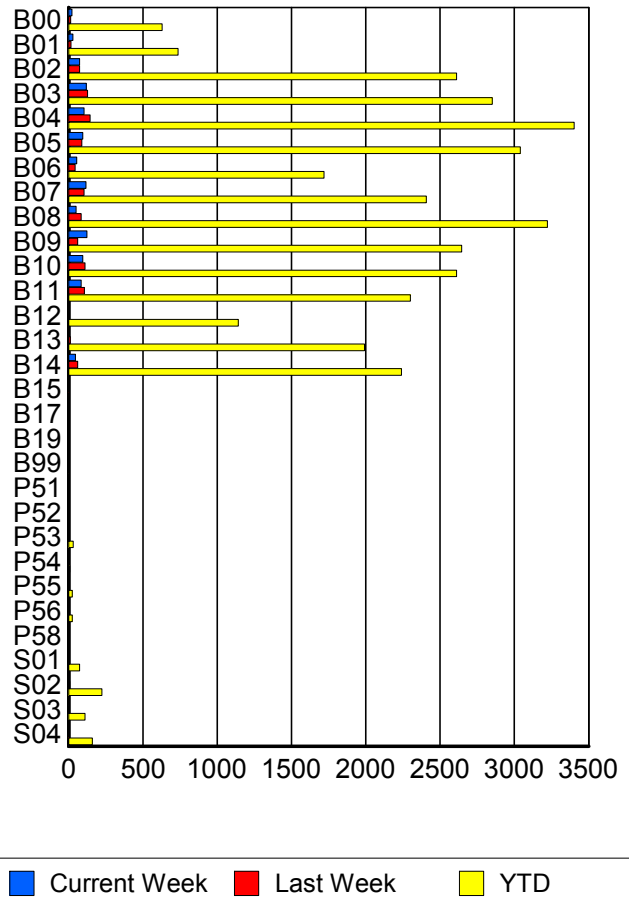
	Current We	Last Week	YTD
Broward	<b>964</b>	<b>998</b>	<b>31,814</b>
	<b>1,028</b>	<b>1,066</b>	<b>34,192</b>
	<b>1,057</b>	<b>1,100</b>	<b>35,574</b>



## Road Ranger / SIRV Performance By Truck

	Current We	Last Week	YTD
B00	<b>23</b>	<b>13</b>	<b>615</b>
	<b>23</b>	<b>13</b>	<b>629</b>
	<b>23</b>	<b>14</b>	<b>658</b>
B01	<b>28</b>	<b>17</b>	<b>725</b>
	<b>28</b>	<b>17</b>	<b>737</b>
	<b>29</b>	<b>17</b>	<b>773</b>
B02	<b>73</b>	<b>73</b>	<b>2,583</b>
	<b>73</b>	<b>74</b>	<b>2,610</b>
	<b>74</b>	<b>75</b>	<b>2,712</b>
B03	<b>119</b>	<b>126</b>	<b>2,810</b>
	<b>120</b>	<b>128</b>	<b>2,850</b>
	<b>122</b>	<b>132</b>	<b>2,957</b>
B04	<b>103</b>	<b>142</b>	<b>3,365</b>
	<b>104</b>	<b>144</b>	<b>3,403</b>
	<b>110</b>	<b>146</b>	<b>3,547</b>
B05	<b>95</b>	<b>90</b>	<b>2,986</b>
	<b>96</b>	<b>90</b>	<b>3,040</b>
	<b>100</b>	<b>94</b>	<b>3,145</b>
B06	<b>55</b>	<b>44</b>	<b>1,693</b>
	<b>55</b>	<b>44</b>	<b>1,718</b>
	<b>57</b>	<b>46</b>	<b>1,774</b>
B07	<b>116</b>	<b>104</b>	<b>2,375</b>
	<b>116</b>	<b>104</b>	<b>2,408</b>
	<b>119</b>	<b>108</b>	<b>2,513</b>
B08	<b>50</b>	<b>85</b>	<b>3,182</b>
	<b>50</b>	<b>85</b>	<b>3,223</b>
	<b>51</b>	<b>85</b>	<b>3,340</b>

**RR/SIRV Responses per Truck**



	Current We	Last Week	YTD
B09	124	61	2,606
	124	62	2,645
	127	65	2,745
B10	94	107	2,564
	96	110	2,610
	97	115	2,710
B11	84	102	2,265
	84	105	2,300
	86	107	2,371
B12	0	0	1,127
	0	0	1,142
	0	0	1,191
B13	0	11	1,967
	0	11	1,991
	0	11	2,062
B14	46	57	2,201
	46	60	2,239
	48	62	2,323
B15	0	4	6
	0	4	6
	0	4	6
B17	0	0	1
	0	0	1
	0	0	1
B19	0	0	1
	0	0	1
	0	0	1
B99	0	0	4
	0	0	4
	0	0	4
P51	0	0	1
	0	0	1
	0	0	1
P52	0	0	4
	0	0	4
	0	0	4
P53	1	1	29
	1	1	30
	1	1	36
P54	0	1	8
	0	1	8
	0	1	8
P55	0	0	24
	0	0	24
	0	0	28

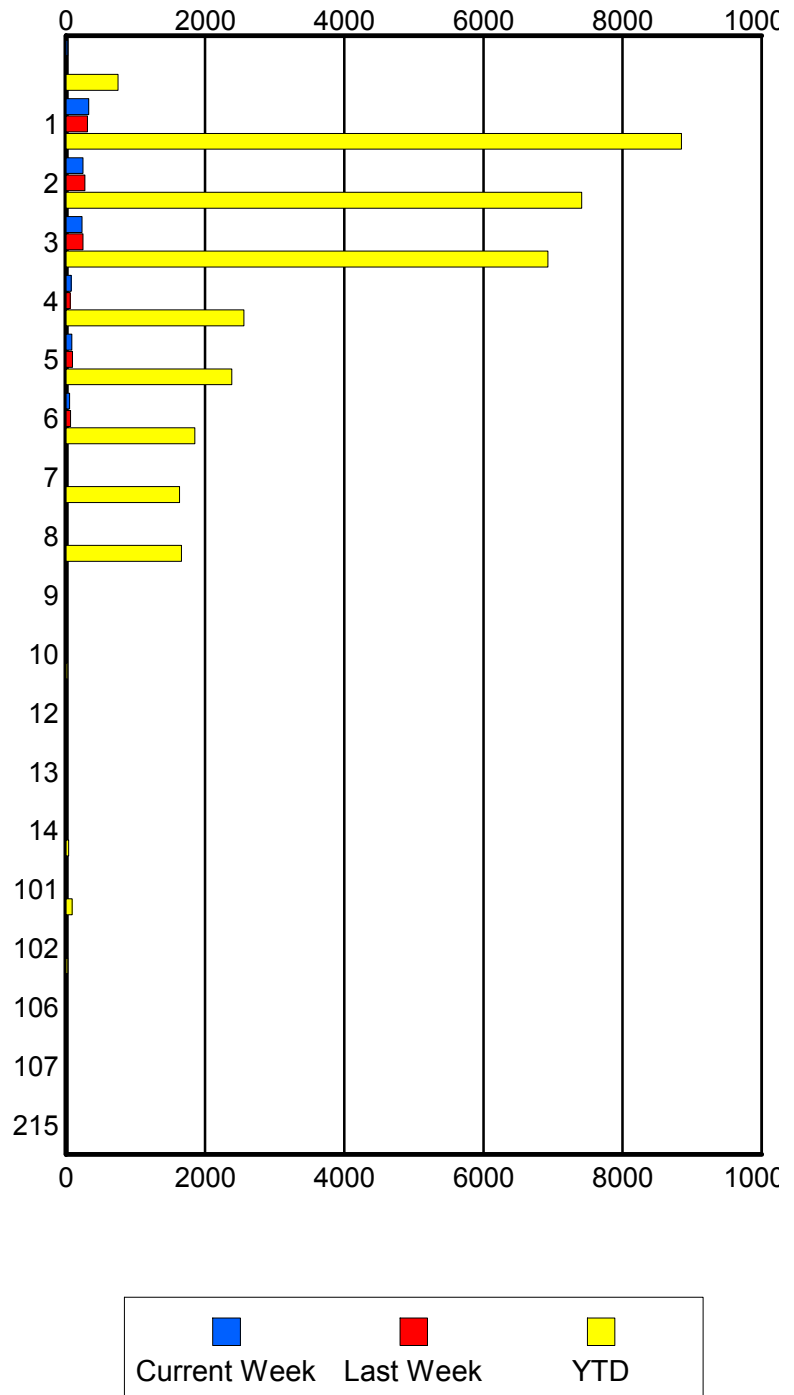
	Current We	Last Week	YTD
P56	2	0	25
	2	0	25
	2	0	26
P58	0	0	1
	0	0	1
	0	0	1
S01	1	1	71
	1	1	74
	1	1	86
S02	2	8	217
	2	8	224
	2	9	250
S03	3	1	109
	3	1	111
	4	3	127
S04	4	3	155
	4	3	160
	4	4	174

### Road Ranger / SIRV Performance By Beat

	Current We	Last Week	YTD
	22	14	699
	22	15	745
	23	19	817
1	304	293	8,350
	325	308	8,845
	333	316	9,139
2	241	261	7,162
	244	272	7,415
	250	278	7,732
3	227	238	6,729
	230	245	6,926
	240	252	7,189
4	71	58	2,501
	72	59	2,555
	73	63	2,636
5	82	94	2,345
	83	94	2,383
	84	97	2,465
6	48	65	1,814
	49	65	1,852
	51	67	1,944
7	0	6	1,606
	0	6	1,631
	0	6	1,704
8	0	0	1,638
	0	0	1,658
	0	0	1,724
9	0	0	12
	0	0	14
	0	0	14
10	0	0	18
	0	0	19
	0	0	19
12	0	0	9
	0	0	9
	0	0	9
13	0	0	14
	0	0	14
	0	0	15
14	0	0	38
	0	0	38
	0	0	39
101	3	2	87
	3	2	89
	3	2	100

Values presented are:  
 - Total Events with a RR/SIRV Response  
 - Total RR/SIRV Responses,  
 - Total Activities Performed

### RR/SIRV Responses per Beat



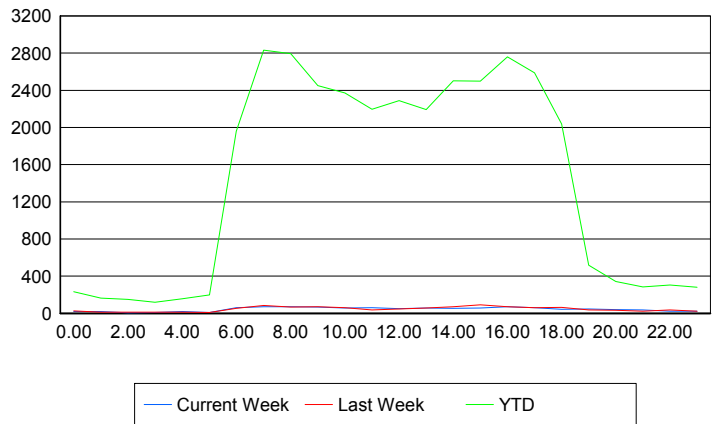
	Current We	Last Week	YTD
102	0	0	23
	0	0	23
	0	0	25
106	0	0	1
	0	0	1
	0	0	1
107	0	0	1
	0	0	1
	0	0	1
215	0	0	1
	0	0	1
	0	0	1

### Road Ranger / SIRV Performance By Time of Day

Values presented are:  
 - Total Events with a RR/SIRV Response  
 - Total RR/SIRV Responses,  
 - Total Activities Performed

	Current We	Last Week	YTD
12AM-1AM	19	27	223
	20	27	231
	20	27	243
1AM-2AM	18	12	158
	20	14	163
	20	18	173
2AM-3AM	6	14	137
	6	14	149
	6	14	155
3AM-4AM	9	10	112
	9	11	118
	9	11	124
4AM-5AM	19	12	142
	20	12	158
	20	12	163
5AM-6AM	8	7	157
	8	8	198
	8	10	212
6AM-7AM	54	48	1,792
	62	52	1,958
	62	54	2,017
7AM-8AM	67	78	2,632
	71	84	2,832
	73	89	2,934
8AM-9AM	63	67	2,538
	71	69	2,796
	74	69	2,911

### Number of Responses / Hour of the Day



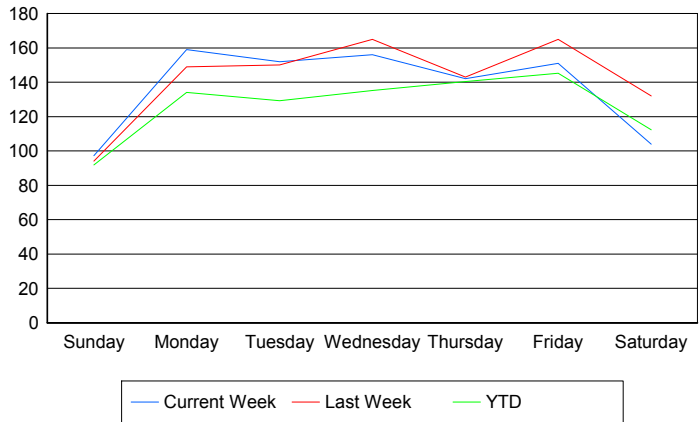
	Current We	Last Week	YTD
9AM-10AM	62	64	2,287
	66	70	2,451
	70	70	2,529
10AM-11AM	54	53	2,194
	57	59	2,371
	59	61	2,470
11AM-12PM	56	34	2,046
	60	35	2,197
	62	38	2,290
12PM-1PM	49	47	2,153
	50	48	2,288
	50	50	2,371
1PM-2PM	55	58	2,042
	58	58	2,192
	59	58	2,281
2PM-3PM	47	63	2,337
	52	72	2,502
	52	73	2,605
3PM-4PM	53	83	2,325
	56	91	2,497
	57	92	2,600
4PM-5PM	67	65	2,580
	72	70	2,759
	76	72	2,871
5PM-6PM	58	54	2,389
	59	59	2,589
	62	61	2,699
6PM-7PM	43	58	1,936
	44	63	2,037
	44	66	2,103
7PM-8PM	45	32	488
	47	35	519
	50	40	549
8PM-9PM	38	33	324
	40	33	344
	40	33	364
9PM-10PM	30	23	262
	36	24	284
	39	24	302
10PM-11PM	22	34	291
	22	35	303
	23	35	314
11PM-12AM	22	22	269
	22	23	281
	22	23	294

**Road Ranger / SIRV Performance By Day of Week**

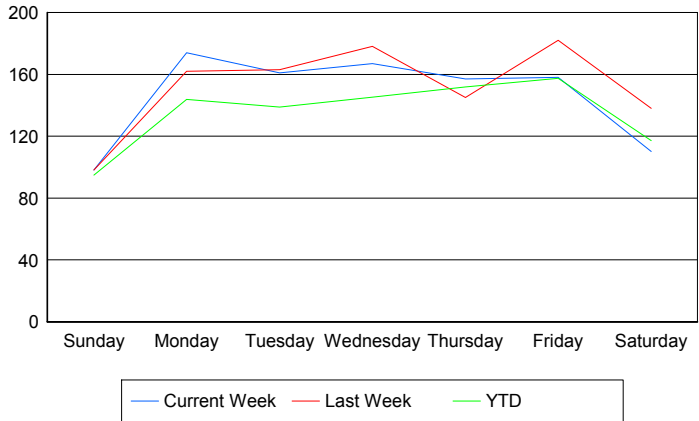
Values presented are: - Total Events with a RR/SIRV Response - Total RR/SIRV Responses, - Total Activities Performed
---

	Current We	Last Week	YTD
Sunday	100	94	858
	101	98	885
	104	103	926
Monday	159	149	5,792
	174	162	6,206
	180	165	6,394
Tuesday	152	150	5,546
	161	163	5,960
	163	168	6,163
Wednesday	156	165	5,806
	167	178	6,243
	174	182	6,518
Thursday	142	143	6,216
	157	145	6,716
	161	151	6,993
Friday	151	165	6,460
	158	182	6,999
	159	184	7,311
Saturday	104	132	1,156
	110	138	1,207
	116	147	1,269

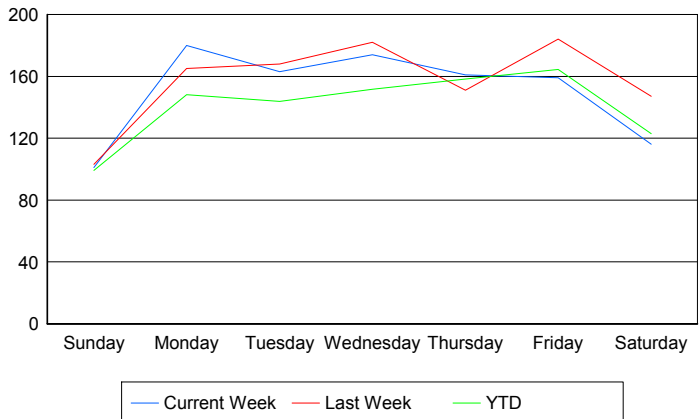
**Avg # of events with a RR/SIRV Response per Day of the Week**



**Avg # of RR/SIRV Responses per Day of the Week**



**Avg # of RR/SIRV Activities Performed per Day of the Week**



### Road Ranger / SIRV Responses per Time of Day and Day of Week

