



Weekly Performance Measures Report Broward County



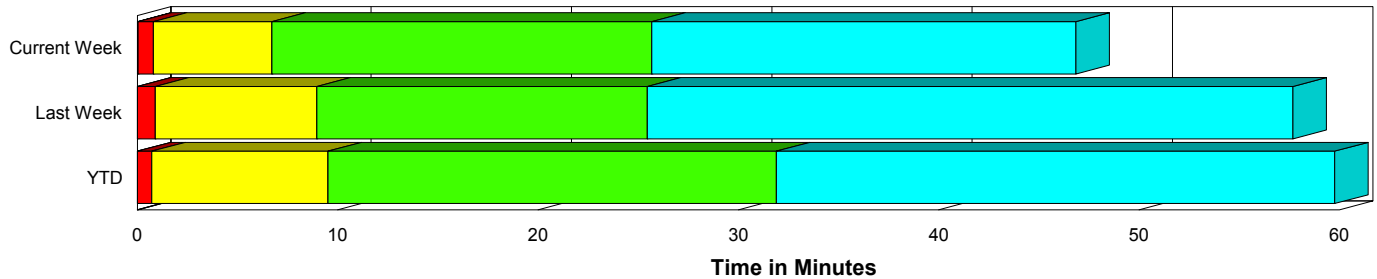
Created on:
November 02, 2009
10:39 am

Period From Oct 25, 2009 to Oct 31, 2009

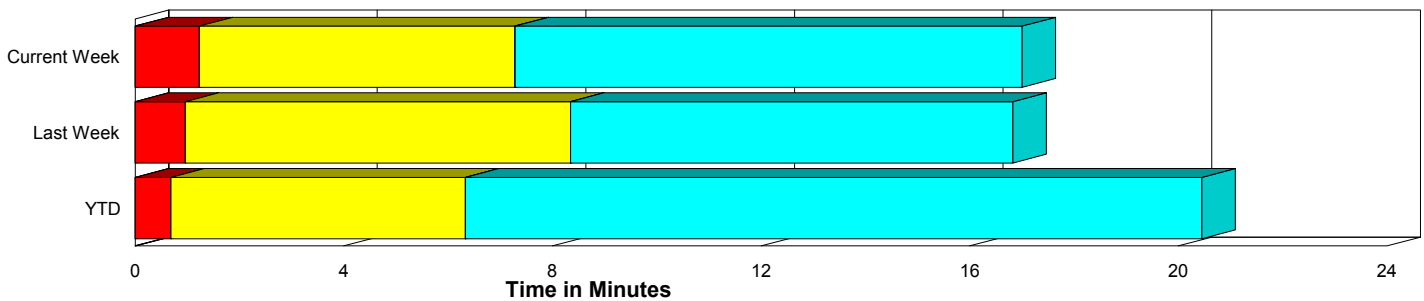
Performance Measures Summary

	Traffic Events (No Lanes Blocked)			Incidents (Lanes Blocked)		
	<u>This Week</u>	<u>Last Week</u>	<u>YTD</u>	<u>This Week</u>	<u>Last Week</u>	<u>YTD</u>
Number of Events	1,209	1,252	43,431	50	50	2,071
TMC Detection (min.)	0.00	0.00	0.01	0.04	0.00	0.00
TMC Verification (min.)	1.23	0.96	0.68	0.76	0.90	0.73
TMC Response (min.)	7.87	8.96	6.83	6.71	9.04	9.70
RR Dispatch Time (min.)	1.46	1.38	1.21	1.59	0.85	2.61
RR Response Time (min.)	6.77	7.62	5.76	5.29	8.19	7.23
Roadway Clearance (min.)				24.52	24.11	31.10
Event Clearance (min.)	17.59	17.44	20.96	45.69	56.33	58.57
# of Events w/ RR/SIRV	1,014	1,030	30,303	50	47	1,499
RR/SIRV Responses	1,014	1,030	30,303	50	47	1,499
RR/SIRV Activities	829	823	25,725	93	74	3,015

Incident Clearance Time-Line



Traffic Event (Non-Lane Blockage) Time-Line



■ Avg. TMC Detection Time	■ Avg. Time from TMC Response to Roadway Clearance*
■ Avg. Time from TMC Detection to TMC Verification	■ Avg. Time from Roadway Clearance to Incident/Event Clearance**
■ Avg. Time from TMC Verification to TMC Response	

* Roadway clearance equals all travel lanes open

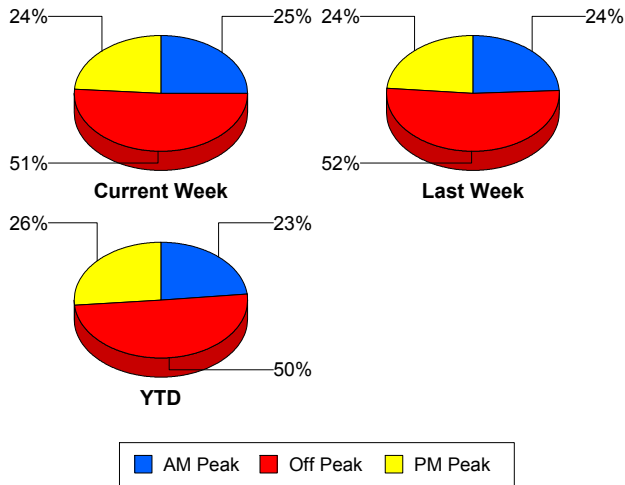
** Incident clearance equals time when last responder has left the scene

Performance Measures by Peak Period

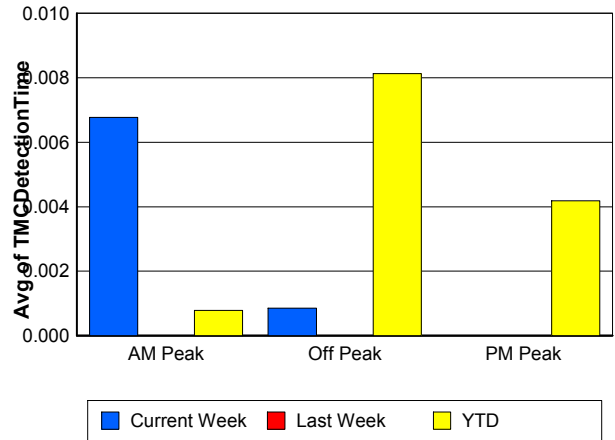
Note: AM peak period is defined as 6am to 10am and PM peak period is defined as 3pm to 7pm.

	AM Peak			Off Peak			PM Peak		
	<u>Current Week</u>	<u>Last Week</u>	<u>YTD</u>	<u>Current Week</u>	<u>Last Week</u>	<u>YTD</u>	<u>Current Week</u>	<u>Last Week</u>	<u>YTD</u>
Number of Events	315	313	10,559	643	683	22,969	301	306	11,974
Number of Incidents	17	17	487	17	22	1,011	16	11	573
TMC Detection (min.)	0.01	0.00	0.00	0.00	0.00	0.01	0.00	0.00	0.00
TMC Verification (min.)	0.58	0.70	0.55	1.25	1.27	0.66	1.80	0.53	0.85
TMC Response (min.)	8.74	7.50	6.45	7.31	10.32	7.82	7.84	7.43	6.36
RR Dispatch Time (min.)	0.87	0.94	0.97	1.64	1.64	1.71	1.72	1.17	0.94
RR Response Time (min.)	7.97	6.73	5.58	6.02	8.68	6.23	6.70	6.30	5.55
Event Clearance (min.)	17.66	18.12	20.95	18.51	19.81	24.86	20.24	17.82	20.01
Roadway Clearance (min.)	18.39	26.07	27.82	37.40	27.13	35.29	17.35	15.06	26.50
Incident Clearance (min.)	29.56	69.30	56.22	59.64	59.11	62.25	48.00	30.75	54.08
# of Events w/ RR/SIRV	271	263	8,652	526	552	13,741	267	262	9,409
RR/SIRV Responses	271	263	8,652	526	552	13,741	267	262	9,409
RR/SIRV Activities	229	204	8,080	450	475	12,029	243	218	8,631

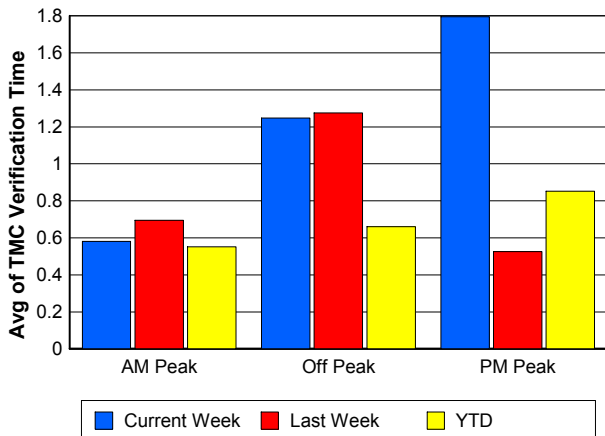
Number of Events / Peak Period



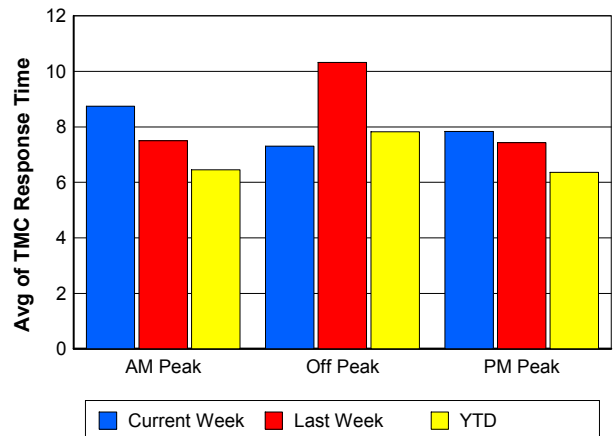
TMC Detection Time



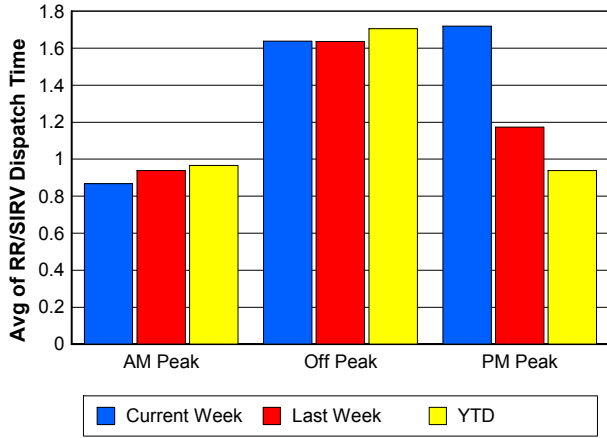
TMC Verification Time



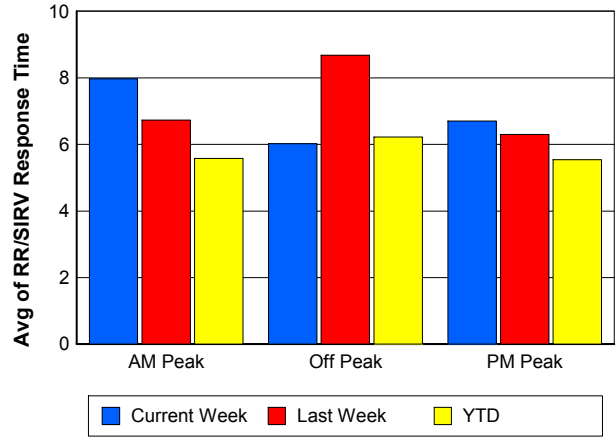
TMC Response Time



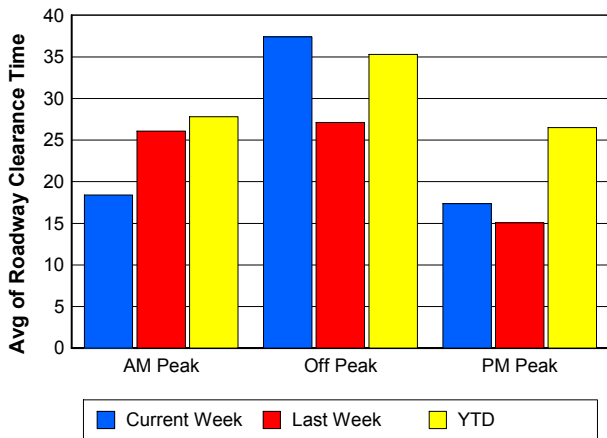
Road Ranger / SIRV Dispatch Time



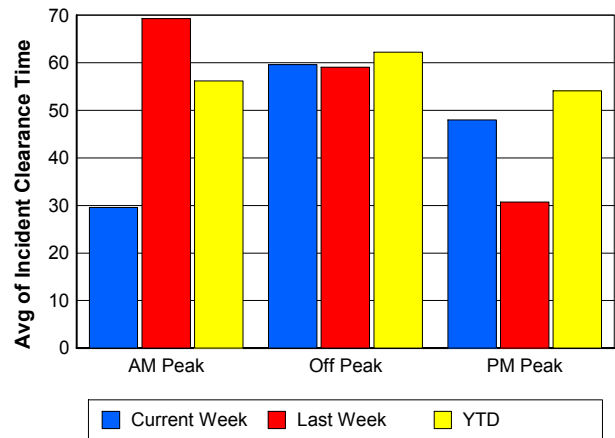
Road Ranger / SIRV Response Time



Roadway Clearance Time (2A)



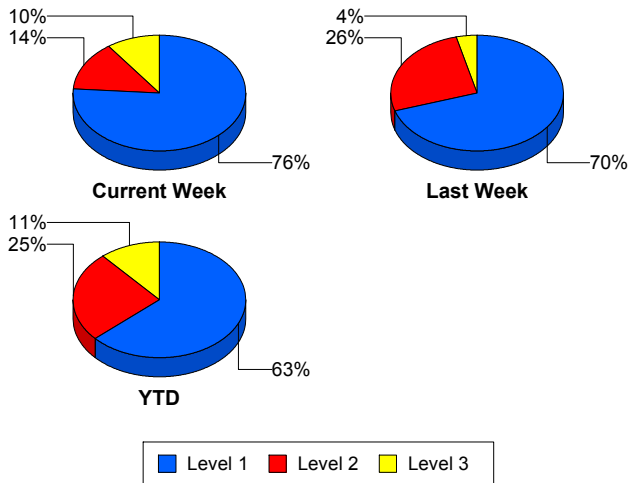
Incident Clearance Time (3B)



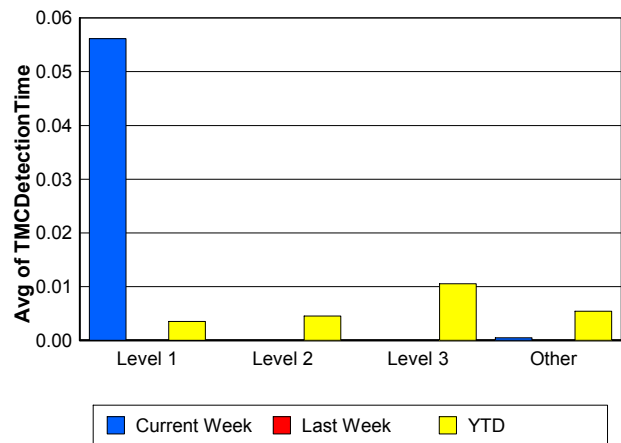
Performance Measures by Severity

	Level 1			Level 2			Level 3			Other		
	<u>This Week</u>	<u>Last Week</u>	<u>YTD</u>	<u>This Week</u>	<u>Last Week</u>	<u>YTD</u>	<u>This Week</u>	<u>Last Week</u>	<u>YTD</u>	<u>This Week</u>	<u>Last Week</u>	<u>YTD</u>
Number of Events	38	35	1,313	7	13	524	5	2	234	1,209	1,252	43,431
Number of Incidents	38	35	1,313	7	13	524	5	2	234	0	0	0
TMC Detection (min.)	0.06	0.00	0.00	0.00	0.00	0.00	0.00	0.00	0.01	0.00	0.00	0.01
TMC Verification (min.)	0.29	0.80	0.48	1.97	1.28	1.07	2.66	0.00	1.31	1.23	0.96	0.68
TMC Response (min.)	6.64	8.58	7.47	5.55	9.94	10.00	8.88	11.97	21.02	7.87	8.96	6.83
RR Dispatch Time (min.)	1.39	0.71	1.58	2.46	1.17	2.59	1.91	0.93	7.78	1.46	1.38	1.21
RR Resp. Time (min.)	5.50	7.86	5.96	3.09	8.77	7.67	6.97	11.03	13.19	6.77	7.62	5.76
Event Clearance (min.)	37.83	45.35	45.28	55.21	89.93	71.91	92.08	30.03	103.01	17.59	17.44	20.96
Roadway Clear. (min.)	12.88	13.59	14.34	47.04	52.19	49.24	81.46	25.72	84.50			
Incident Clearance (min.)	37.83	45.35	45.28	55.21	89.93	71.91	92.08	30.03	103.01			
# of Events w/ RR/SIRV	38	33	988	7	13	312	5	1	199	1,014	1,030	30,303
RR/SIRV Responses	38	33	988	7	13	312	5	1	199	1,014	1,030	30,303
RR/SIRV Activities	56	45	1,697	14	26	847	23	3	471	829	823	25,725

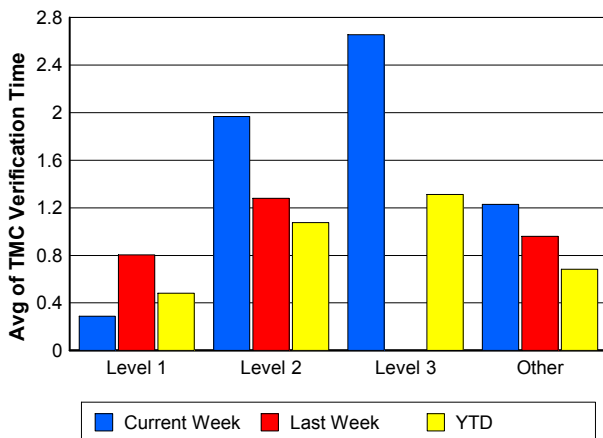
Number of Events / Severity



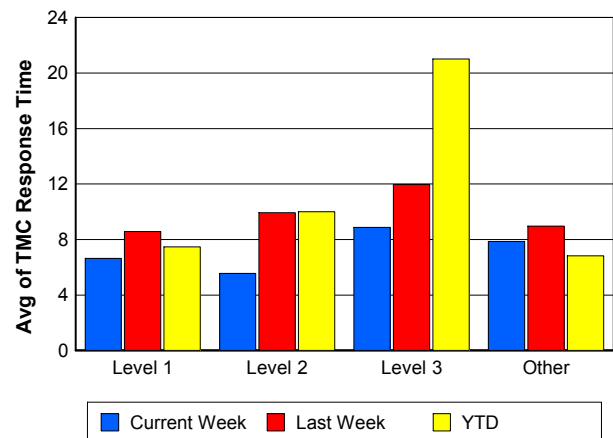
TMC Detection Time



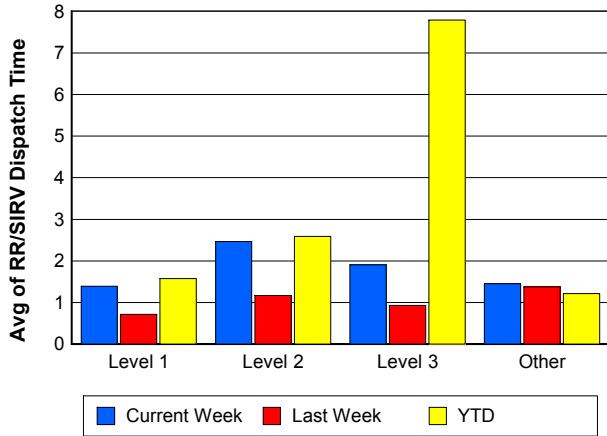
TMC Verification Time



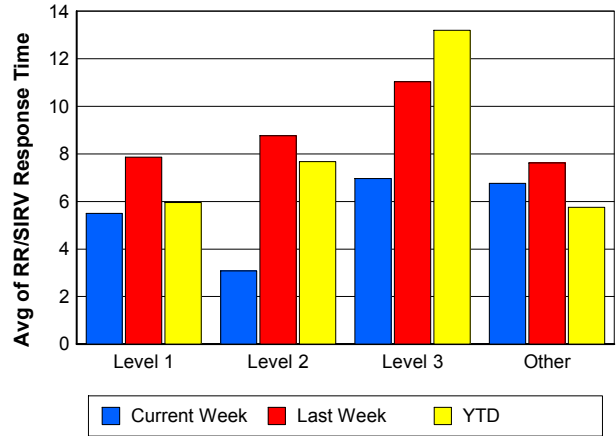
TMC Response Time



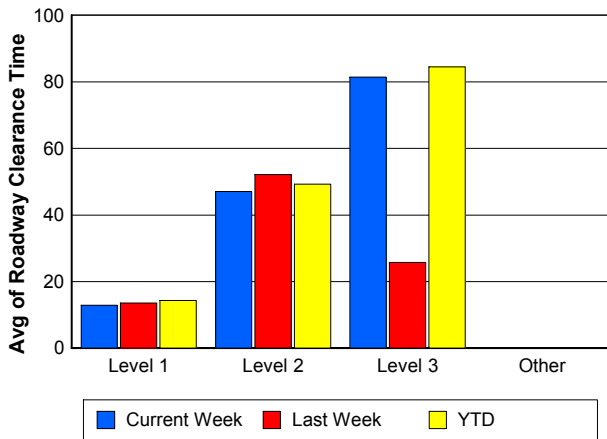
Road Ranger / SIRV Dispatch Time



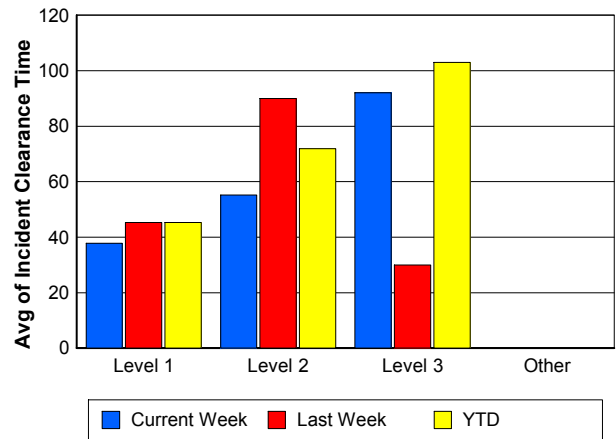
Road Ranger / SIRV Response Time



Roadway Clearance Time (2A)



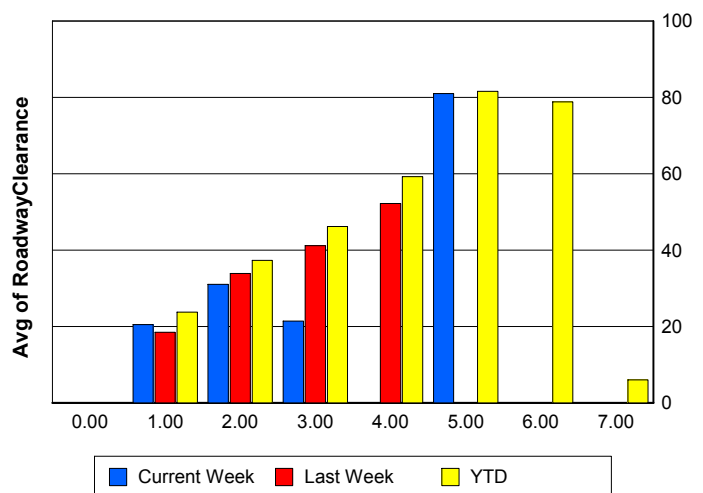
Incident Clearance Time (3B)



Roadway Clearance by Maximum Number of Lanes Blocked

	Current Week	Last Week	YTD
0			
1	20.48	18.46	23.70
2	31.04	33.89	37.29
3	21.39	41.16	46.15
4	0.00	52.17	59.22
5	81.00	0.00	81.56
6	0.00	0.00	78.82
7	0.00	0.00	5.97

Roadway Clearance Time (2A)



Performance Measures by Roadway

595

	<u>Current Week</u>	<u>Last Week</u>	<u>YTD</u>
Number of Events	47	46	4,603
Number of Incidents	5	2	281
TMC Detection (min.)	0.00	0.00	0.01
TMC Verification (min.)	2.40	2.30	0.86
TMC Response (min.)	15.39	14.66	6.93
RR Dispatch Time (min.)	2.50	1.38	1.16
RR Resp. Time (min.)	12.23	13.48	5.87
Event Clearance (min.)	23.60	17.06	21.41
Roadway Clear. (min.)	48.88	10.20	31.65
Incident Clearance (min.)	58.26	14.01	54.26
# of Events w/ RR/SIRV	31	34	3,213
RR/SIRV Responses	31	34	3,213
RR/SIRV Activities	32	24	2,925

75

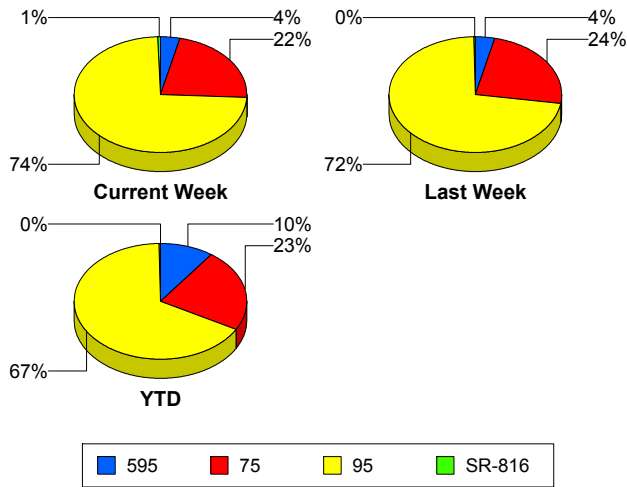
	<u>Current Week</u>	<u>Last Week</u>	<u>YTD</u>
Number of Events	277	311	10,437
Number of Incidents	2	4	194
TMC Detection (min.)	0.00	0.00	0.00
TMC Verification (min.)	2.55	1.75	0.91
TMC Response (min.)	9.11	11.10	8.27
RR Dispatch Time (min.)	2.60	1.75	1.32
RR Resp. Time (min.)	7.62	9.31	7.09
Event Clearance (min.)	20.58	19.98	24.53
Roadway Clear. (min.)	89.73	22.62	52.18
Incident Clearance (min.)	104.22	38.62	79.65
# of Events w/ RR/SIRV	240	248	7,114
RR/SIRV Responses	240	248	7,114
RR/SIRV Activities	203	196	6,115

95

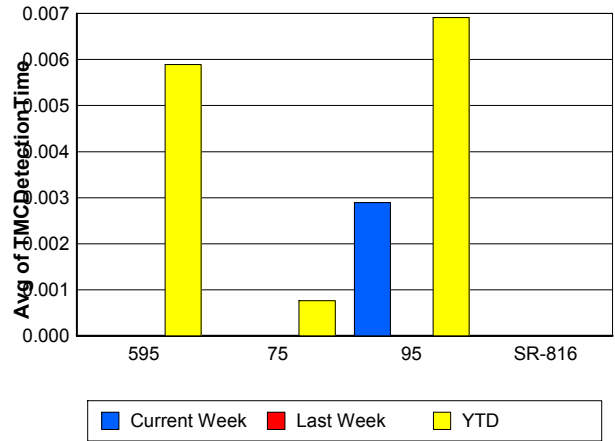
	<u>Current Week</u>	<u>Last Week</u>	<u>YTD</u>
Number of Events	928	940	30,395
Number of Incidents	39	41	1,554
TMC Detection (min.)	0.00	0.00	0.01
TMC Verification (min.)	0.76	0.64	0.58
TMC Response (min.)	7.23	8.17	6.62
RR Dispatch Time (min.)	1.09	1.23	1.28
RR Resp. Time (min.)	6.29	6.98	5.46
Event Clearance (min.)	17.91	18.75	22.25
Roadway Clear. (min.)	18.85	26.20	28.80
Incident Clearance (min.)	44.04	63.74	57.88
# of Events w/ RR/SIRV	786	790	21,411
RR/SIRV Responses	786	790	21,411
RR/SIRV Activities	680	672	19,626

	<u>Current Week</u>	<u>Last Week</u>	<u>YTD</u>
Number of Events	7	5	67
Number of Incidents	4	3	42
TMC Detection (min.)	0.00	0.00	0.00
TMC Verification (min.)	0.00	0.00	0.18
TMC Response (min.)	0.00	0.00	0.60
RR Dispatch Time (min.)	0.00	0.28	0.08
RR Resp. Time (min.)	0.00	0.00	0.55
Event Clearance (min.)	18.46	5.56	12.62
Roadway Clear. (min.)	16.77	6.83	15.34
Incident Clearance (min.)	16.71	6.94	15.20
# of Events w/ RR/SIRV	7	5	64
RR/SIRV Responses	7	5	64
RR/SIRV Activities	7	5	74

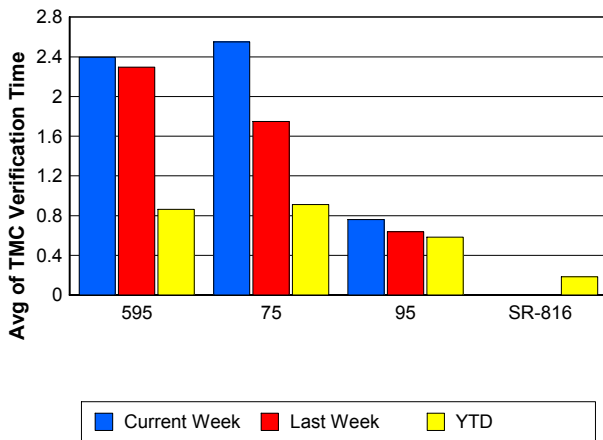
Number of Events / Roadway



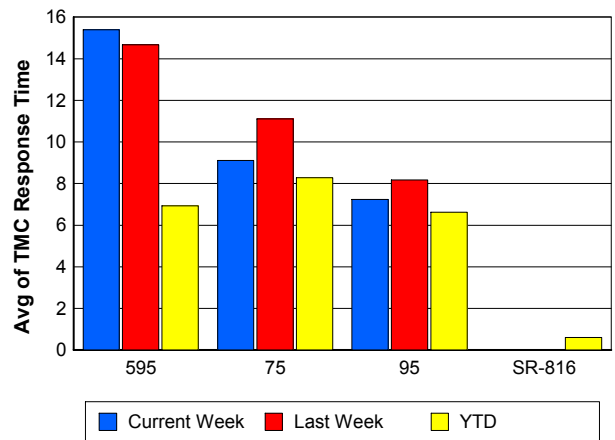
TMC Detection Time



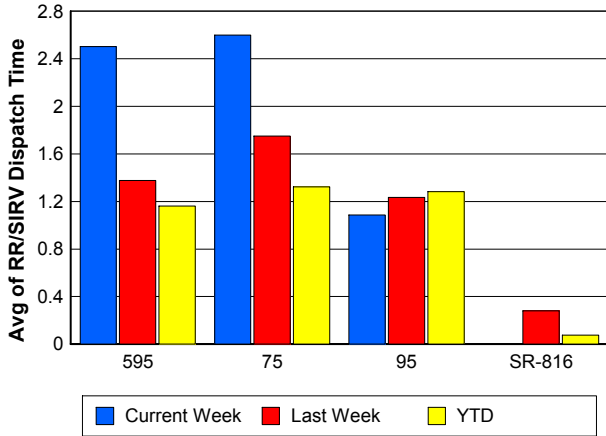
TMC Verification Time



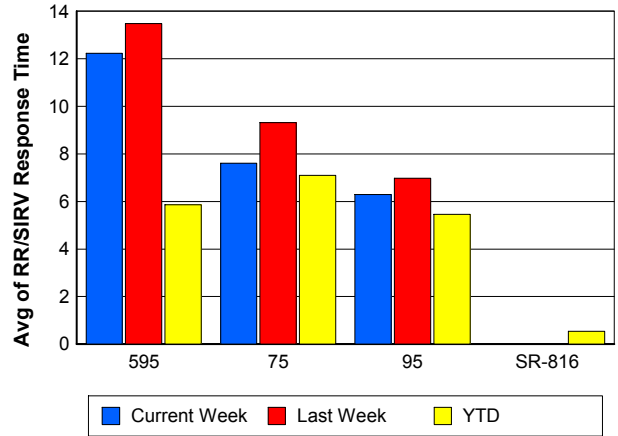
TMC Response Time



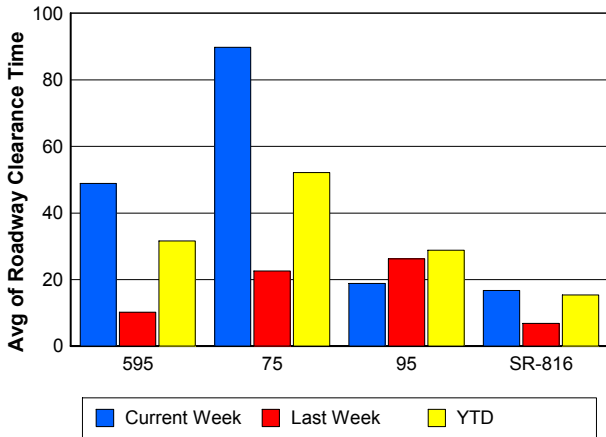
Road Ranger / SIRV Dispatch Time



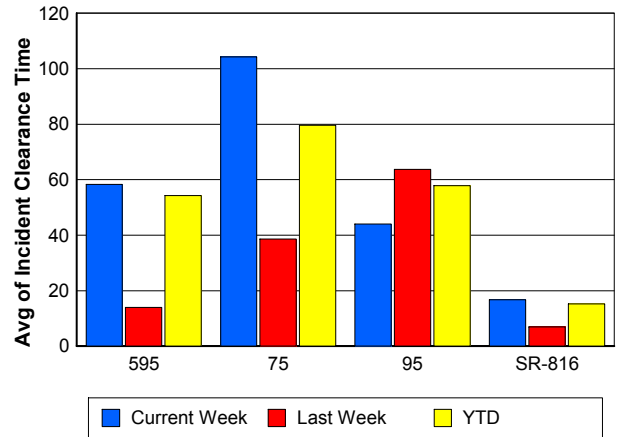
Road Ranger / SIRV Response Time



Roadway Clearance Time (2A)



Incident Clearance Time (3B)



Performance Measures by Event Type

Accident

	<u>Current Week</u>	<u>Last Week</u>	<u>YTD</u>
Number of Events	67	83	3,084
Number of Incidents	29	29	1,474
TMC Detection (min.)	0.00	0.00	0.01
TMC Verification (min.)	0.69	1.40	0.75
TMC Response (min.)	8.98	11.59	9.07
RR Dispatch Time (min.)	1.71	1.12	1.65
RR Response Time (min.)	7.27	10.44	7.49
Event Clearance (min.)	50.27	57.83	54.87
Roadway Clearance (min.)	30.80	28.63	32.84
Incident Clearance (min.)	59.95	77.16	66.19
# of Events w/ RR/SIRV	67	82	2,331
RR/SIRV Assists	67	82	2,331
RR/SIRV Activities	106	101	3,605

Debris on Roadway

	<u>Current Week</u>	<u>Last Week</u>	<u>YTD</u>
Number of Events	51	46	1,416
Number of Incidents	2	1	30
TMC Detection (min.)	0.00	0.00	0.08
TMC Verification (min.)	5.49	4.90	4.11
TMC Response (min.)	9.85	8.24	7.83
RR Dispatch Time (min.)	2.40	2.07	0.96
RR Response Time (min.)	7.40	5.99	6.89
Event Clearance (min.)	14.08	11.05	11.68
Roadway Clearance (min.)	16.12	15.13	24.02
Incident Clearance (min.)	25.79	18.90	31.95
# of Events w/ RR/SIRV	49	43	1,314
RR/SIRV Assists	49	43	1,314
RR/SIRV Activities	54	36	1,333

Disabled Vehicle

	<u>Current Week</u>	<u>Last Week</u>	<u>YTD</u>
Number of Events	773	738	26,809
Number of Incidents	14	14	346
TMC Detection (min.)	0.00	0.00	0.00
TMC Verification (min.)	1.52	1.22	0.82
TMC Response (min.)	7.66	8.78	6.62
RR Dispatch Time (min.)	1.23	1.39	1.11
RR Response Time (min.)	6.68	7.45	5.57
Event Clearance (min.)	20.25	20.80	25.32
Roadway Clearance (min.)	6.59	18.17	18.52
Incident Clearance (min.)	19.88	30.64	32.61
# of Events w/ RR/SIRV	751	724	21,924
RR/SIRV Assists	751	724	21,924
RR/SIRV Activities	721	714	22,273

Emergency Vehicles

	<u>Current Week</u>	<u>Last Week</u>	<u>YTD</u>
Number of Events	2	3	72
Number of Incidents	2	2	56
TMC Detection (min.)	0.00	0.00	0.00
TMC Verification (min.)	0.00	0.00	0.54
TMC Response (min.)	3.03	20.70	12.87
RR Dispatch Time (min.)	0.88	0.82	8.16
RR Response Time (min.)	2.16	19.88	4.21
Event Clearance (min.)	12.04	22.04	48.74
Roadway Clearance (min.)	10.92	16.59	47.79
Incident Clearance (min.)	12.04	17.79	54.43
# of Events w/ RR/SIRV	2	1	40
RR/SIRV Assists	2	1	40
RR/SIRV Activities	4	3	69

Other

	<u>Current Week</u>	<u>Last Week</u>	<u>YTD</u>
Number of Events	360	426	13,694
Number of Incidents	2	2	31
TMC Detection (min.)	0.00	0.00	0.00
TMC Verification (min.)	0.06	0.03	0.07
TMC Response (min.)	5.90	7.41	8.28
RR Dispatch Time (min.)	2.04	1.18	1.73
RR Response Time (min.)	4.96	6.61	6.27
Event Clearance (min.)	10.37	9.05	10.95
Roadway Clearance (min.)	86.48	22.47	33.55
Incident Clearance (min.)	88.82	25.01	38.56
# of Events w/ RR/SIRV	191	223	5,949
RR/SIRV Assists	191	223	5,949
RR/SIRV Activities	35	40	1,143

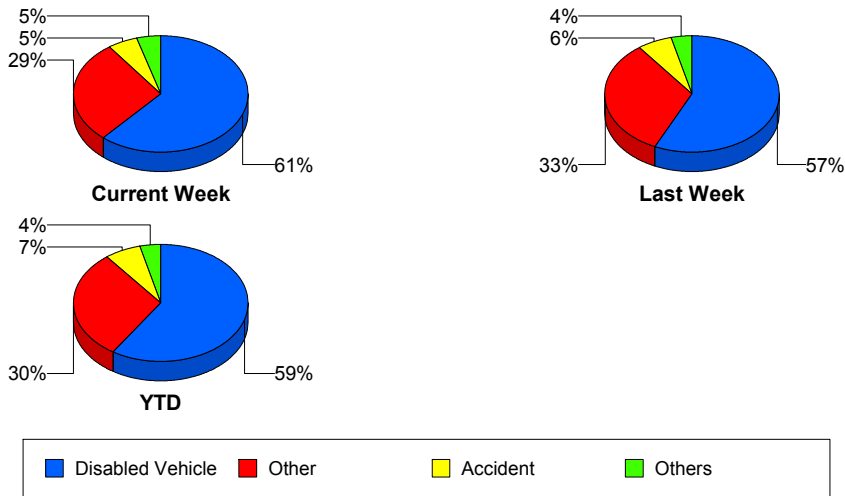
Police Activity

	<u>Current Week</u>	<u>Last Week</u>	<u>YTD</u>
Number of Events	4	2	177
Number of Incidents	1	1	58
TMC Detection (min.)	0.00	0.00	0.00
TMC Verification (min.)	0.32	0.00	0.30
TMC Response (min.)	7.45		13.07
RR Dispatch Time (min.)	4.87	0.83	4.09
RR Response Time (min.)	6.67		9.02
Event Clearance (min.)	10.27	5.47	32.03
Roadway Clearance (min.)	13.87	1.60	36.84
Incident Clearance (min.)	13.93	2.73	45.45
# of Events w/ RR/SIRV	2	1	61
RR/SIRV Assists	2	1	61
RR/SIRV Activities	1	0	74

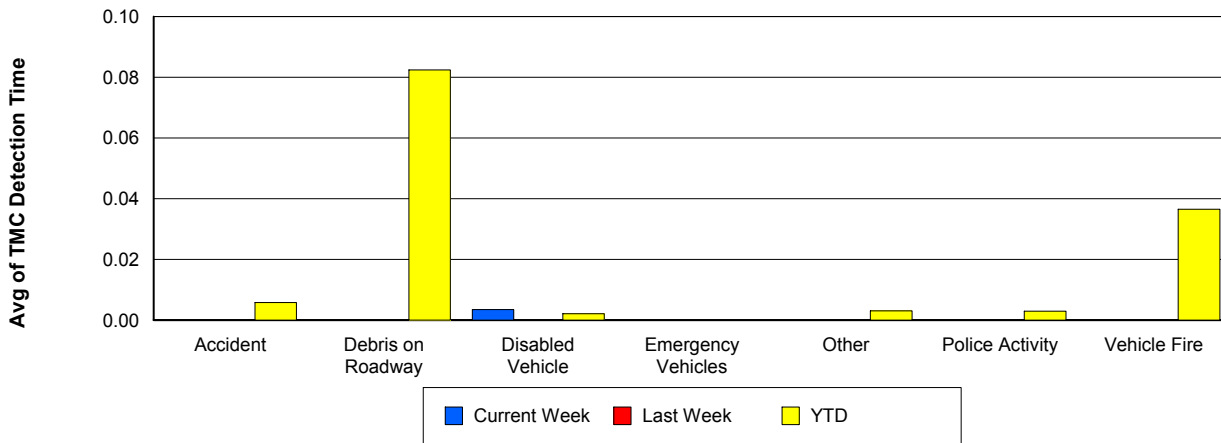
Vehicle Fire

	<u>Last Week</u>	<u>YTD</u>
Number of Events	1	98
Number of Incidents	1	76
TMC Detection (min.)	0.00	0.04
TMC Verification (min.)	1.42	1.10
TMC Response (min.)	19.42	9.98
RR Dispatch Time (min.)	0.75	2.12
RR Response Time (min.)	18.67	8.25
Event Clearance (min.)	42.83	56.80
Roadway Clearance (min.)	26.18	39.68
Incident Clearance (min.)	42.83	60.84
# of Events w/ RR/SIRV	1	68
RR/SIRV Assists	1	68
RR/SIRV Activities	1	140

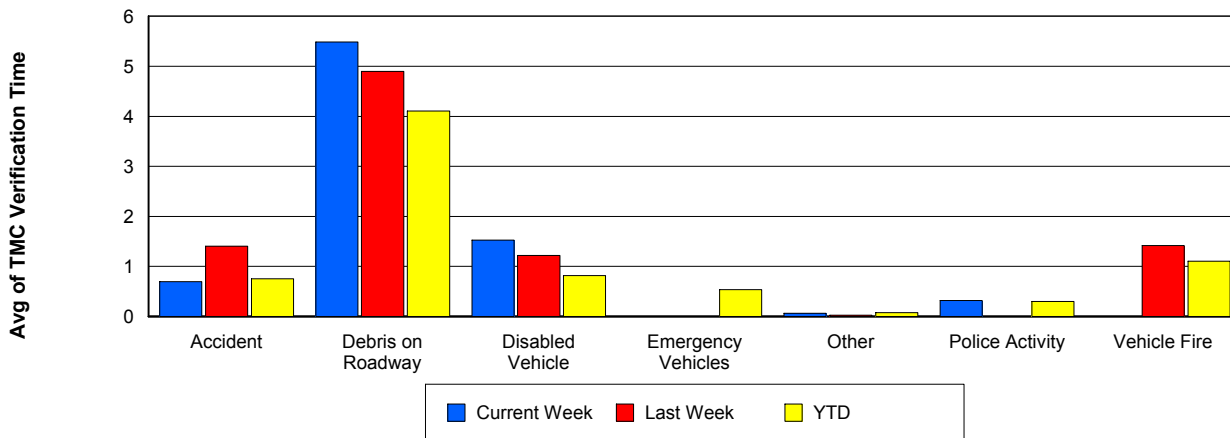
Number of Events / Event Type



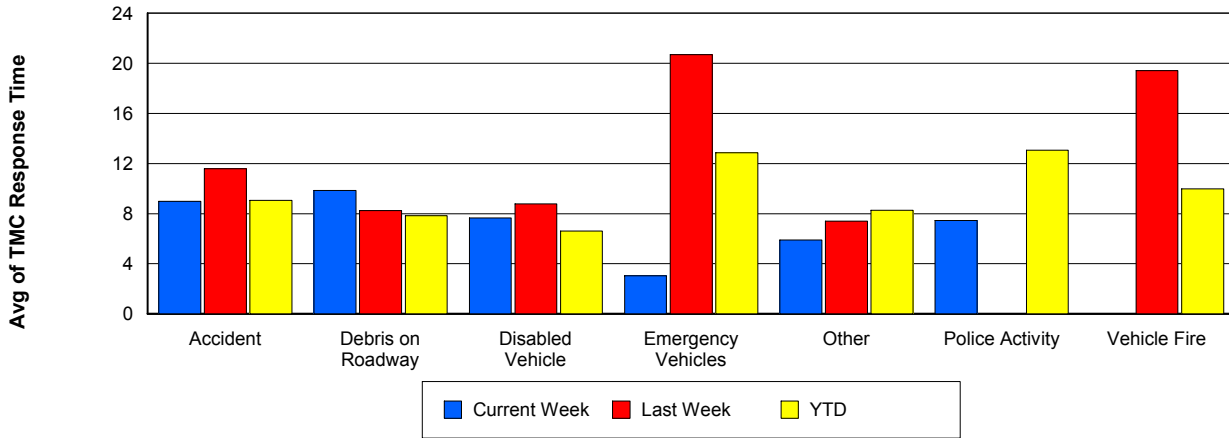
TMC Detection Time



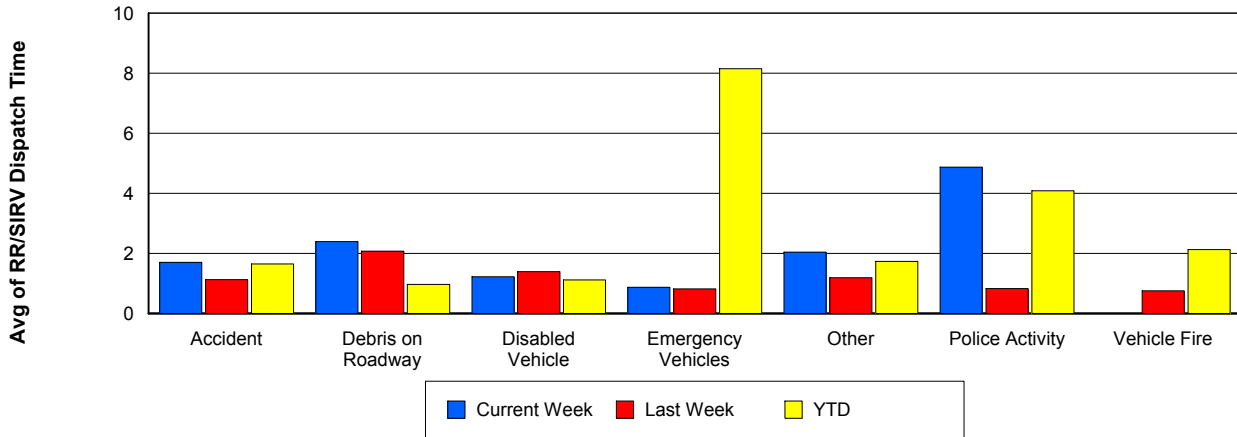
TMC Verification Time



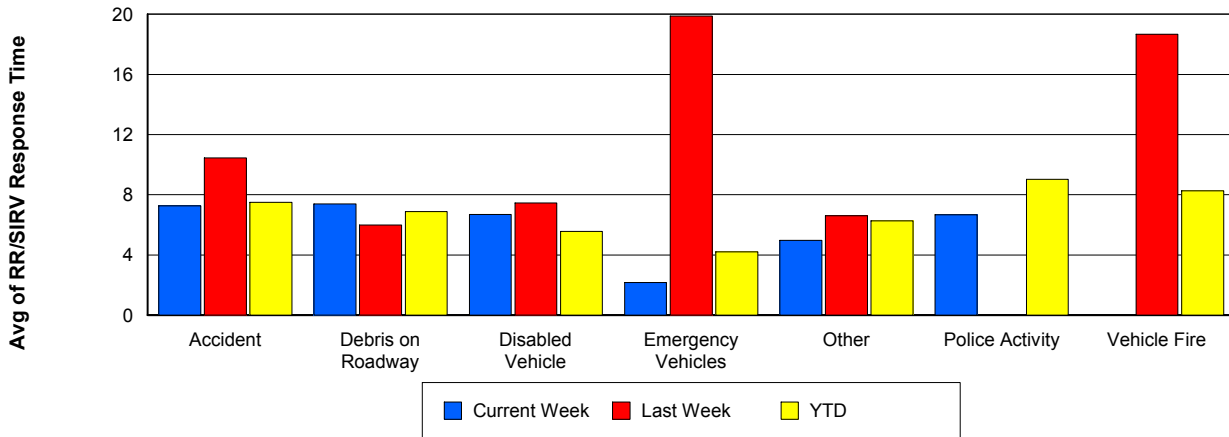
TMC Response Time



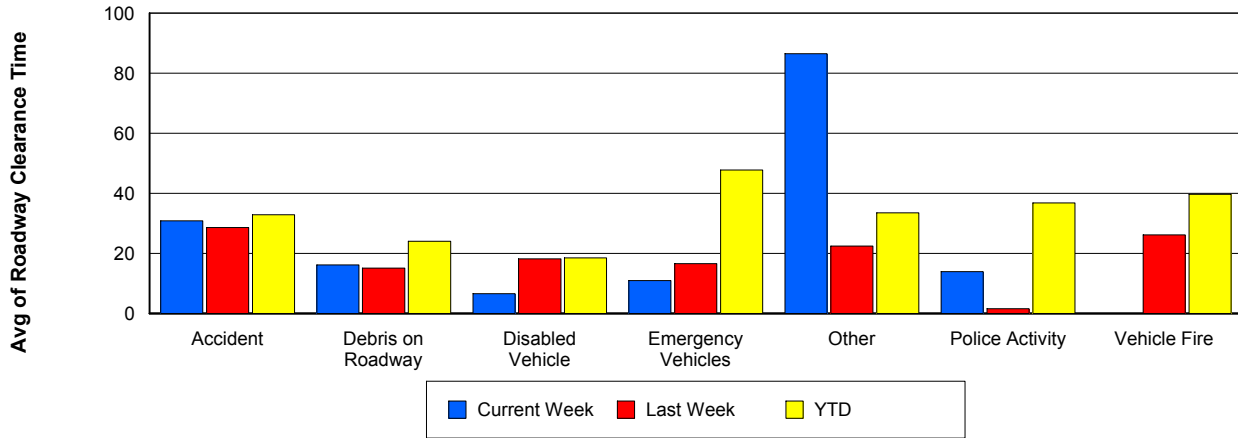
Road Ranger / SIRV Dispatch Time



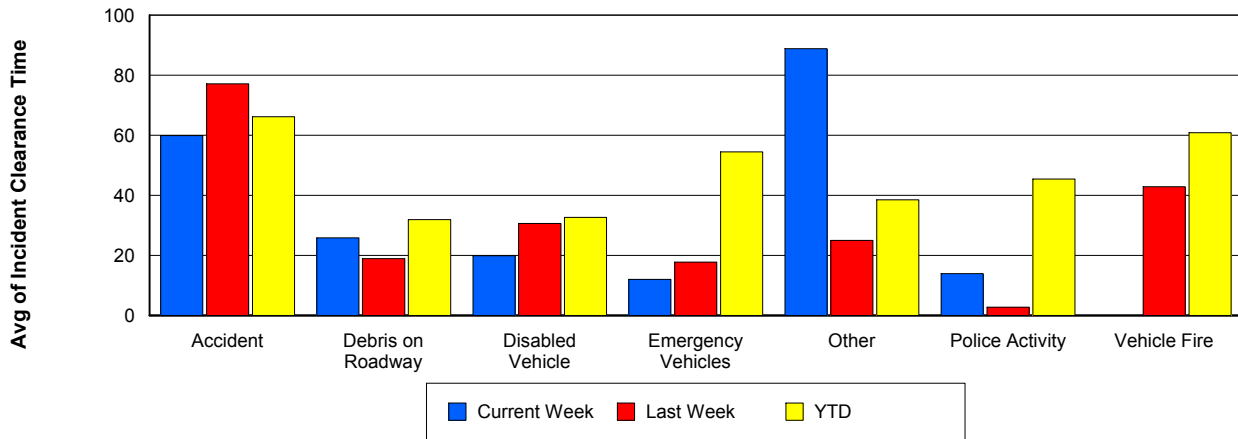
Road Ranger / SIRV Response Time



Roadway Clearance Time (2A)



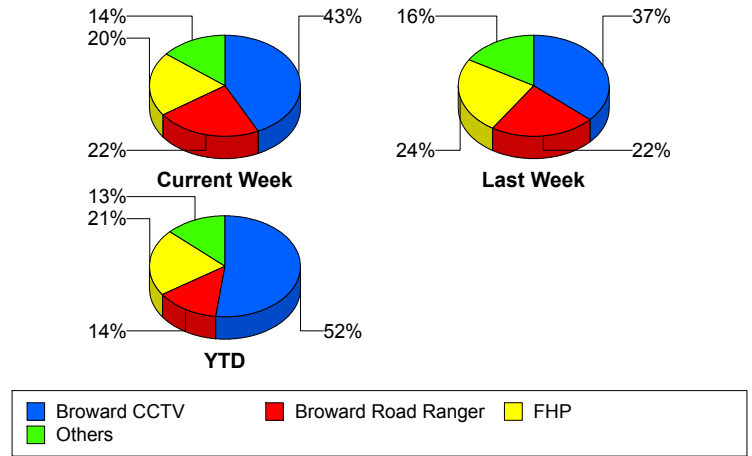
Incident Clearance Time (3B)



Incident Detection Methods

	Current Week	Last Week	YTD
Broward CCTV	21	18	1,073
Broward Road Ranger	11	11	280
Broward TMC	0	1	4
Broward VideoWall	1	1	60
BSO	3	2	47
District 4	1	0	50
District 6	1	0	3
FDOT Maintenance	1	0	6
FHP	10	12	442
Fire	0	1	4
Florida's Turnpike	0	0	6
ITMS	0	0	2
Motorist	0	1	11
Other	0	0	1
Palm Beach Road Ran	0	1	5
Road Watcher	0	0	14
SIRV	0	0	12
SmarTraveler (511)	0	0	6
VisioPaD Detection	0	1	37
Total	49	49	2,063

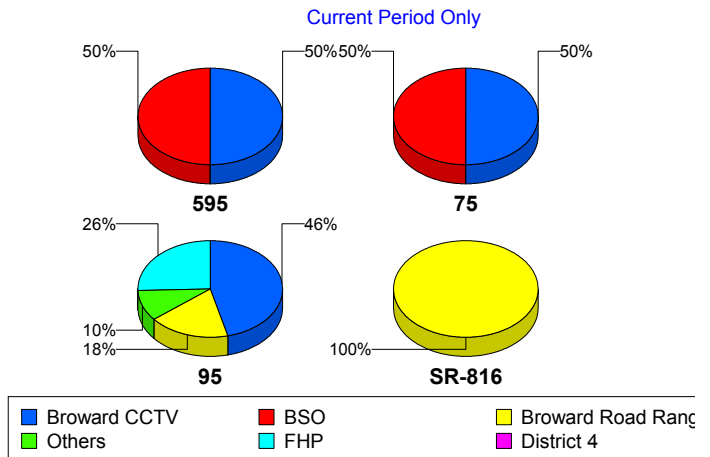
Total Incidents by Detection Method



Incident Detection Methods by Roadway

		Current Week	Last Week	YTD
595	Broward CCTV	2	0	133
	Broward Road Ranger	0	0	38
	Broward VideoWall	0	0	8
	BSO	2	0	7
	District 4	0	0	12
	FDOT Maintenance	0	0	2
	FHP	0	1	55
	Florida's Turnpike	0	0	6
	Motorist	0	0	3
	Road Watcher	0	0	3
	SIRV	0	0	1
	VisioPaD Detection	0	0	6
	Total	4	1	274
	75	Broward CCTV	1	0
Broward Road Ranger		0	2	21
Broward VideoWall		0	0	1
BSO		1	2	35
District 4		0	0	6
FHP		0	0	44
Other		0	0	1
Road Watcher		0	0	3
VisioPaD Detection		0	0	5
Total		2	4	194
95	Broward CCTV	18	18	862
	Broward Road Ranger	7	6	180
	Broward TMC	0	1	4
	Broward VideoWall	1	1	51
	BSO	0	0	5
	District 4	1	0	31
	District 6	1	0	3
	FDOT Maintenance	1	0	4

Total Events by Roadway and Detection Method

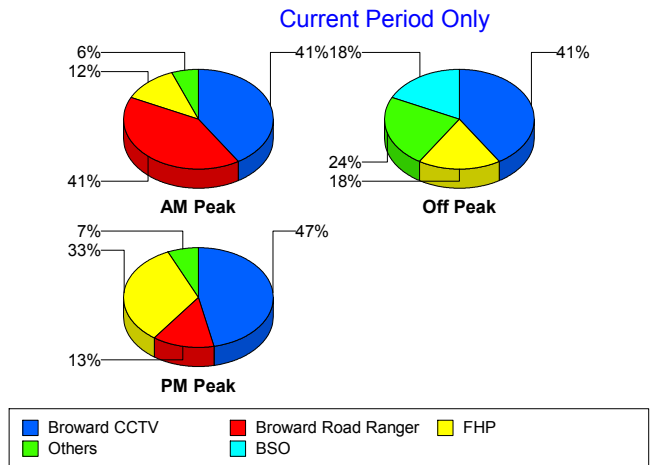


		Current Week	Last Week	YTD
95	FHP	10	11	343
	Fire	0	1	4
	ITMS	0	0	2
	Motorist	0	1	8
	Palm Beach Road Ran	0	1	5
	Road Watcher	0	0	8
	SIRV	0	0	11
	SmarTraveler (511)	0	0	6
	VisioPaD Detection	0	1	26
	Total	39	41	1,553
SR-816	Broward Road Ranger	4	3	41
	District 4	0	0	1
	Total	4	3	42
Total		49	49	2,063

Incident Detection Methods by Peak Period

		Current Week	Last Week	YTD
AM Peak	Broward CCTV	7	6	214
	Broward Road Ranger	7	5	94
	Broward TMC	0	0	1
	Broward VideoWall	0	0	20
	BSO	0	0	7
	District 4	0	0	18
	FDOT Maintenance	1	0	1
	FHP	2	6	110
	Florida's Turnpike	0	0	2
	Motorist	0	0	6
	Palm Beach Road Ran	0	0	2
	Road Watcher	0	0	5
	SIRV	0	0	1
	SmarTraveler (511)	0	0	1
	VisioPaD Detection	0	0	2

Total Events by Peak Period and Detection Method

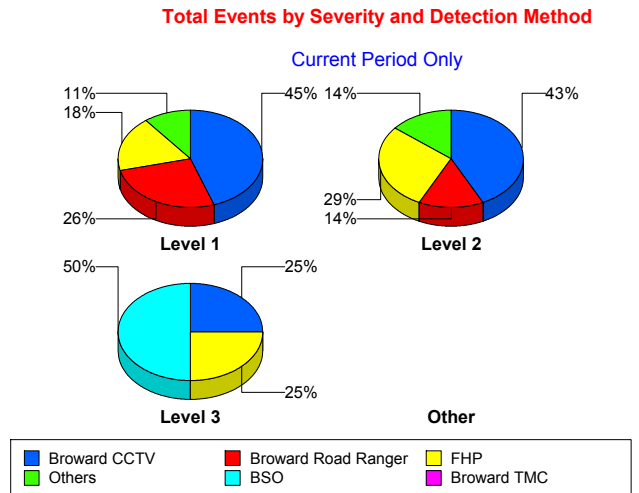


		Current Week	Last Week	YTD
AM Peak	Total	17	17	484
Off Peak	Broward CCTV	7	6	576
	Broward Road Ranger	2	4	78
	Broward TMC	0	1	3
	Broward VideoWall	1	1	33
	BSO	3	1	31
	District 4	0	0	16
	District 6	1	0	2
	FDOT Maintenance	0	0	3
	FHP	3	5	210
	Fire	0	1	3
	Florida's Turnpike	0	0	3
	ITMS	0	0	2
	Motorist	0	1	4
	Palm Beach Road Ran	0	0	1
	Road Watcher	0	0	6
	SIRV	0	0	5
	SmarTraveler (511)	0	0	3
	VisioPaD Detection	0	1	29
	Total	17	21	1,008
PM Peak	Broward CCTV	7	6	283
	Broward Road Ranger	2	2	108
	Broward VideoWall	0	0	7
	BSO	0	1	9
	District 4	1	0	16
	District 6	0	0	1
	FDOT Maintenance	0	0	2
	FHP	5	1	122
	Fire	0	0	1
	Florida's Turnpike	0	0	1
	Motorist	0	0	1
	Other	0	0	1

		Current Week	Last Week	YTD
PM Peak	Palm Beach Road Ran	0	1	2
	Road Watcher	0	0	3
	SIRV	0	0	6
	SmarTraveler (511)	0	0	2
	VisioPaD Detection	0	0	6
	Total	15	11	571
Total		49	49	2,063

Incident Detection Methods by Severity

		Current Week	Last Week	YTD	
Level 1	Broward CCTV	17	10	687	
	Broward Road Ranger	10	11	206	
	Broward TMC	0	1	3	
	Broward VideoWall	1	1	39	
	BSO	0	0	10	
	District 4	1	0	37	
	District 6	1	0	2	
	FDOT Maintenance	1	0	5	
	FHP	7	7	257	
	Fire	0	1	3	
	ITMS	0	0	1	
	Motorist	0	1	8	
	Palm Beach Road Ran	0	1	4	
	Road Watcher	0	0	9	
	SIRV	0	0	11	
	SmarTraveler (511)	0	0	4	
	VisioPaD Detection	0	1	21	
	Total	38	34	1,307	
	Level 2	Broward CCTV	3	8	278
		Broward Road Ranger	1	0	51
Broward TMC		0	0	1	
Broward VideoWall		0	0	18	



		Current Week	Last Week	YTD
Level 2	BSO	1	0	11
	District 4	0	0	7
	FDOT Maintenance	0	0	1
	FHP	2	5	130
	Florida's Turnpike	0	0	4
	ITMS	0	0	1
	Motorist	0	0	3
	Other	0	0	1
	Road Watcher	0	0	2
	SIRV	0	0	1
	SmarTraveler (511)	0	0	2
	VisioPaD Detection	0	0	13
	Total	7	13	524
Level 3	Broward CCTV	1	0	108
	Broward Road Ranger	0	0	23
	Broward VideoWall	0	0	3
	BSO	2	2	26
	District 4	0	0	6
	District 6	0	0	1
	FHP	1	0	55
	Fire	0	0	1
	Florida's Turnpike	0	0	2
	Palm Beach Road Ran	0	0	1
	Road Watcher	0	0	3
	VisioPaD Detection	0	0	3
	Total	4	2	232
Total		49	49	2,063

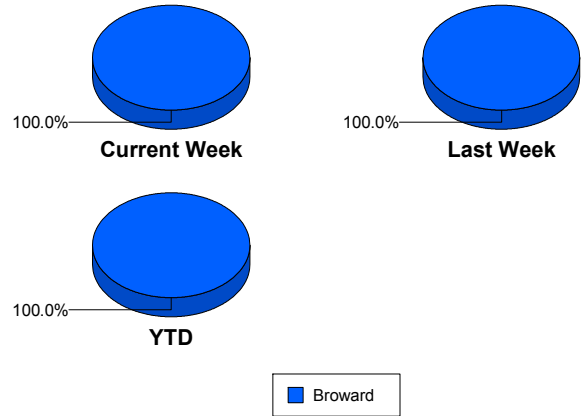
Road Ranger / SIRV Performance Measures

Road Ranger / SIRV Performance By County

Values presented are:
 - Total Events with a RR/SIRV Response
 - Total RR/SIRV Responses,
 - Total Activities Performed

	Current We	Last Week	YTD
Broward	998	961	30,850
	1,066	1,019	33,165
	1,100	1,056	34,517

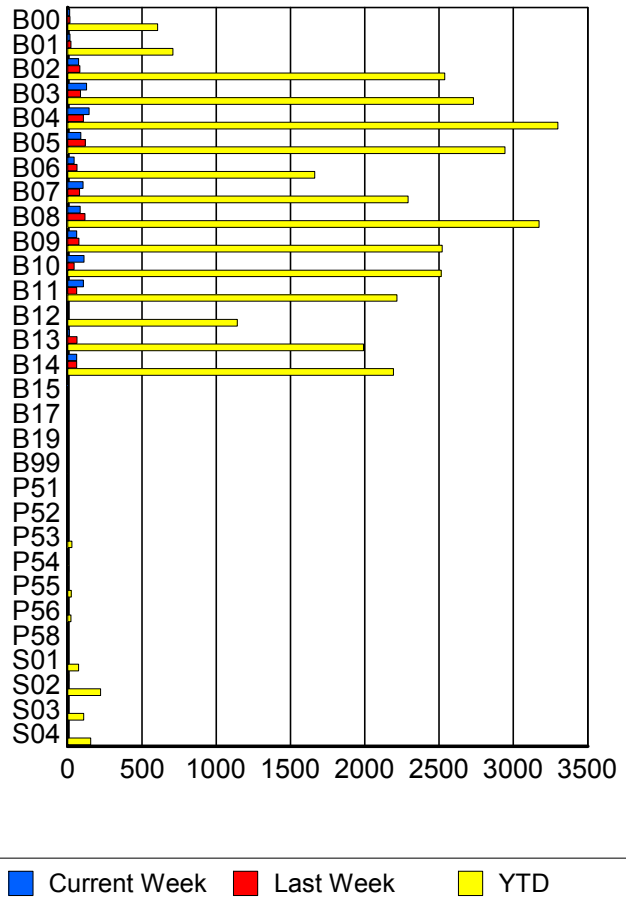
RR/SIRV Responses per County



Road Ranger / SIRV Performance By Truck

	Current We	Last Week	YTD
B00	13	17	592
	13	17	606
	14	17	635
B01	17	23	697
	17	23	709
	17	23	744
B02	73	79	2,510
	74	83	2,537
	75	85	2,638
B03	126	86	2,691
	128	87	2,730
	132	91	2,835
B04	142	104	3,262
	144	105	3,299
	146	110	3,437
B05	90	118	2,891
	90	119	2,944
	94	122	3,045
B06	44	63	1,638
	44	64	1,663
	46	66	1,717
B07	104	81	2,259
	104	81	2,292
	108	85	2,394
B08	85	115	3,132
	85	117	3,173
	85	125	3,289

RR/SIRV Responses per Truck



	Current We	Last Week	YTD
B09	61	76	2,482
	62	76	2,521
	65	78	2,618
B10	107	44	2,470
	110	45	2,514
	115	46	2,613
B11	102	62	2,181
	105	62	2,216
	107	62	2,285
B12	0	0	1,127
	0	0	1,142
	0	0	1,191
B13	11	63	1,967
	11	63	1,991
	11	64	2,062
B14	57	61	2,155
	60	61	2,193
	62	63	2,275
B15	4	0	6
	4	0	6
	4	0	6
B17	0	1	1
	0	1	1
	0	1	1
B19	0	0	1
	0	0	1
	0	0	1
B99	0	0	4
	0	0	4
	0	0	4
P51	0	0	1
	0	0	1
	0	0	1
P52	0	2	4
	0	2	4
	0	2	4
P53	1	5	28
	1	5	29
	1	8	35
P54	1	0	8
	1	0	8
	1	0	8
P55	0	0	24
	0	0	24
	0	0	28

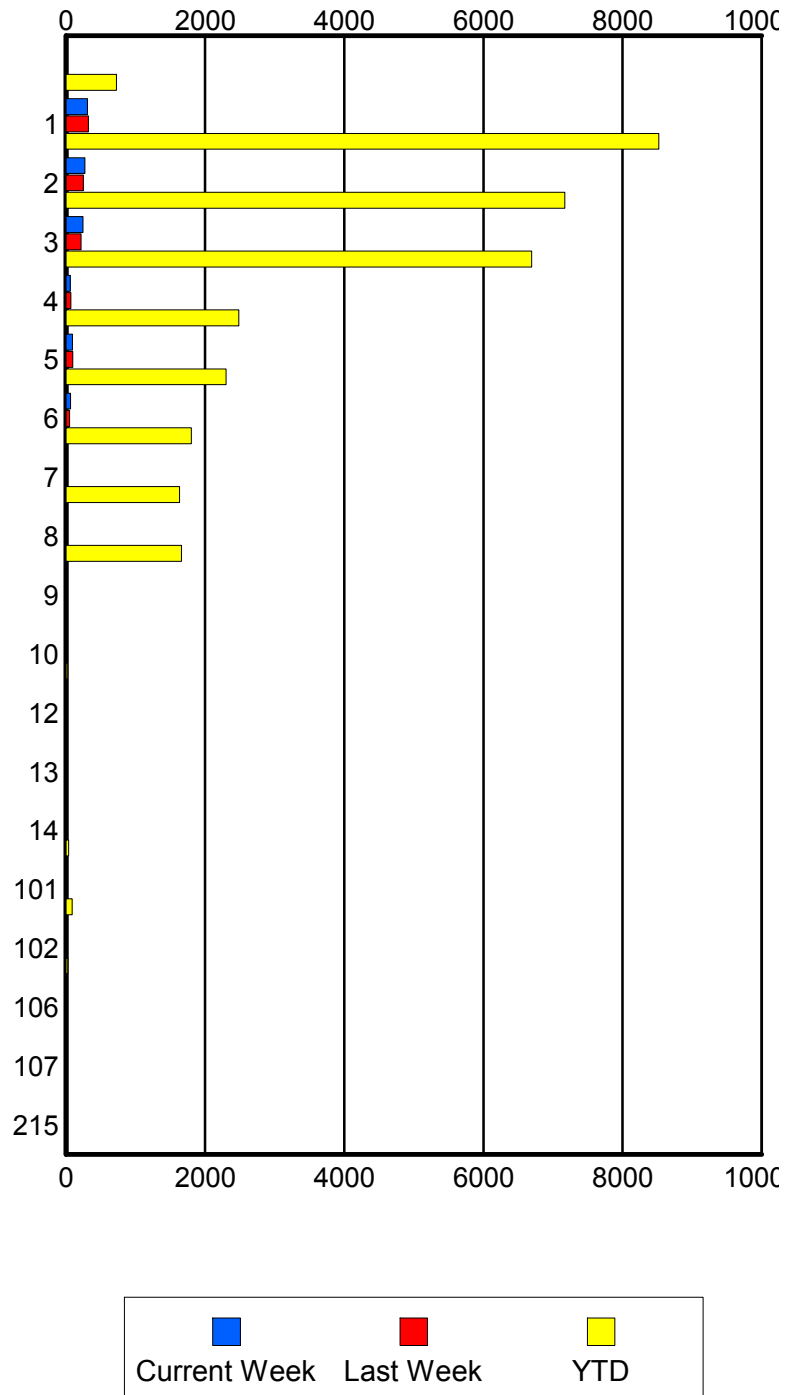
	Current We	Last Week	YTD
P56	0	1	23
	0	1	23
	0	1	24
P58	0	0	1
	0	0	1
	0	0	1
S01	1	0	70
	1	0	73
	1	0	85
S02	8	3	215
	8	3	222
	9	3	248
S03	1	3	106
	1	3	108
	3	3	123
S04	3	1	151
	3	1	156
	4	1	170

Road Ranger / SIRV Performance By Beat

	Current We	Last Week	YTD
	14	13	677
	15	13	723
	19	14	794
1	293	308	8,046
	308	322	8,520
	316	333	8,806
2	261	237	6,921
	272	247	7,171
	278	258	7,482
3	238	212	6,502
	245	215	6,696
	252	223	6,949
4	58	69	2,430
	59	69	2,483
	63	71	2,563
5	94	95	2,263
	94	96	2,300
	97	97	2,381
6	65	48	1,766
	65	49	1,803
	67	49	1,893
7	6	0	1,606
	6	0	1,631
	6	0	1,704
8	0	0	1,638
	0	0	1,658
	0	0	1,724
9	0	0	12
	0	0	14
	0	0	14
10	0	0	18
	0	0	19
	0	0	19
12	0	0	9
	0	0	9
	0	0	9
13	0	0	14
	0	0	14
	0	0	15
14	0	0	38
	0	0	38
	0	0	39
101	2	7	84
	2	8	86
	2	11	97

Values presented are:
 - Total Events with a RR/SIRV Response
 - Total RR/SIRV Responses,
 - Total Activities Performed

RR/SIRV Responses per Beat



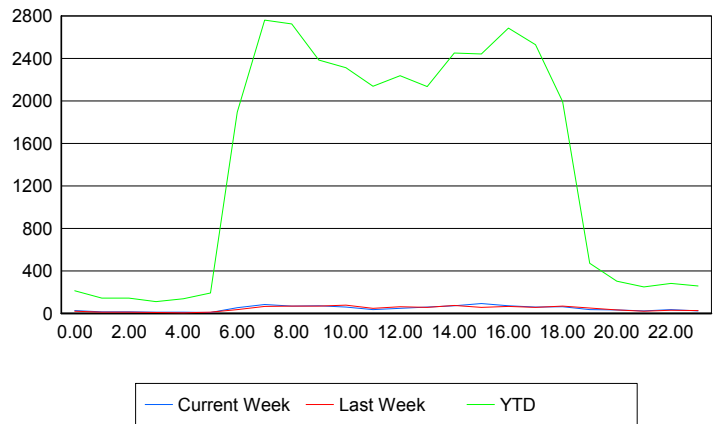
	Current We	Last Week	YTD
102	0	0	23
	0	0	23
	0	0	25
106	0	0	1
	0	0	1
	0	0	1
107	0	0	1
	0	0	1
	0	0	1
215	0	0	1
	0	0	1
	0	0	1

Road Ranger / SIRV Performance By Time of Day

Values presented are:
- Total Events with a RR/SIRV Response
- Total RR/SIRV Responses,
- Total Activities Performed

	Current We	Last Week	YTD
12AM-1AM	27	19	204
	27	20	211
	27	21	223
1AM-2AM	12	10	140
	14	10	143
	18	10	153
2AM-3AM	14	11	131
	14	12	143
	14	12	149
3AM-4AM	10	6	103
	11	7	109
	11	7	115
4AM-5AM	12	4	123
	12	4	138
	12	4	143
5AM-6AM	7	11	149
	8	12	190
	10	13	204
6AM-7AM	48	34	1,738
	52	34	1,896
	54	35	1,955
7AM-8AM	78	59	2,565
	84	65	2,761
	89	66	2,861
8AM-9AM	67	64	2,475
	69	69	2,725
	69	69	2,837

Number of Responses / Hour of the Day



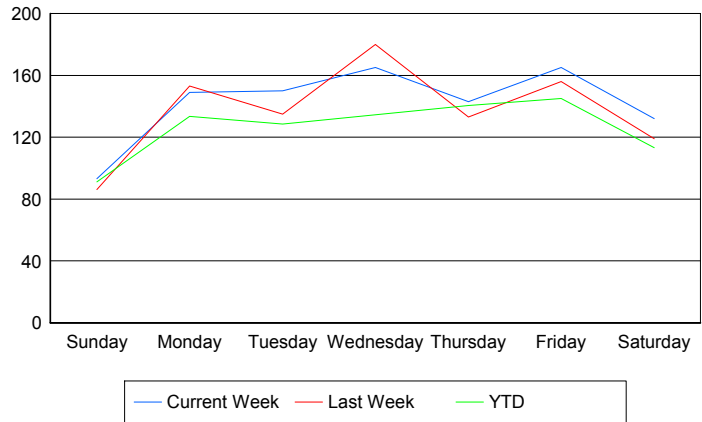
	Current We	Last Week	YTD
9AM-10AM	64	63	2,225
	70	69	2,385
	70	70	2,459
10AM-11AM	53	72	2,140
	59	77	2,314
	61	79	2,411
11AM-12PM	34	44	1,990
	35	48	2,137
	38	49	2,228
12PM-1PM	47	57	2,104
	48	61	2,238
	50	68	2,321
1PM-2PM	58	53	1,987
	58	56	2,134
	58	59	2,222
2PM-3PM	63	69	2,290
	72	73	2,450
	73	74	2,553
3PM-4PM	83	56	2,272
	91	56	2,441
	92	59	2,543
4PM-5PM	65	60	2,513
	70	66	2,687
	72	70	2,795
5PM-6PM	54	53	2,331
	59	55	2,530
	61	56	2,637
6PM-7PM	58	68	1,893
	63	69	1,993
	66	73	2,059
7PM-8PM	32	47	443
	35	50	472
	40	54	499
8PM-9PM	33	30	286
	33	32	304
	33	34	324
9PM-10PM	23	20	232
	24	21	248
	24	21	263
10PM-11PM	34	27	269
	35	28	281
	35	28	291
11PM-12AM	22	24	247
	23	25	259
	23	25	272

Road Ranger / SIRV Performance By Day of Week

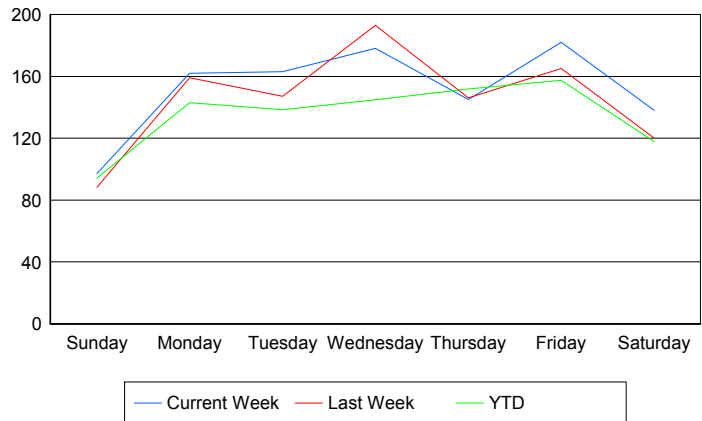
Values presented are:
 - Total Events with a RR/SIRV Response
 - Total RR/SIRV Responses,
 - Total Activities Performed

	Current We	Last Week	YTD
Sunday	94	87	758
	98	89	784
	103	92	822
Monday	149	153	5,633
	162	159	6,032
	165	165	6,214
Tuesday	150	135	5,394
	163	147	5,799
	168	151	6,000
Wednesday	165	180	5,650
	178	193	6,076
	182	200	6,344
Thursday	143	133	6,074
	145	146	6,560
	151	151	6,832
Friday	165	156	6,309
	182	165	6,841
	184	174	7,152
Saturday	132	119	1,052
	138	120	1,097
	147	123	1,153

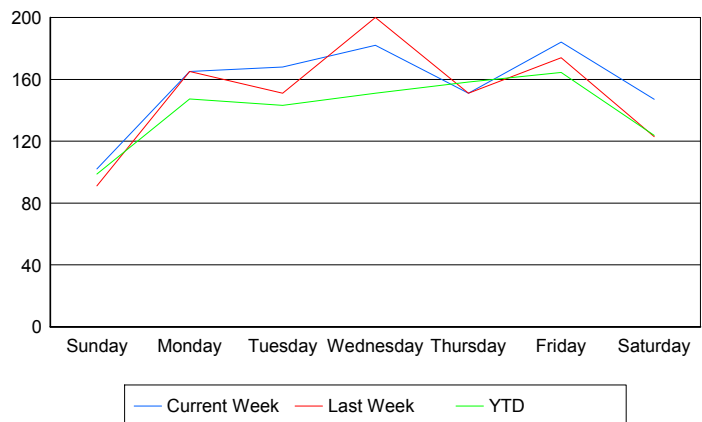
Avg # of events with a RR/SIRV Response per Day of the Week



Avg # of RR/SIRV Responses per Day of the Week



Avg # of RR/SIRV Activities Performed per Day of the Week



Road Ranger / SIRV Responses per Time of Day and Day of Week

