



Weekly Performance Measures Report Broward County



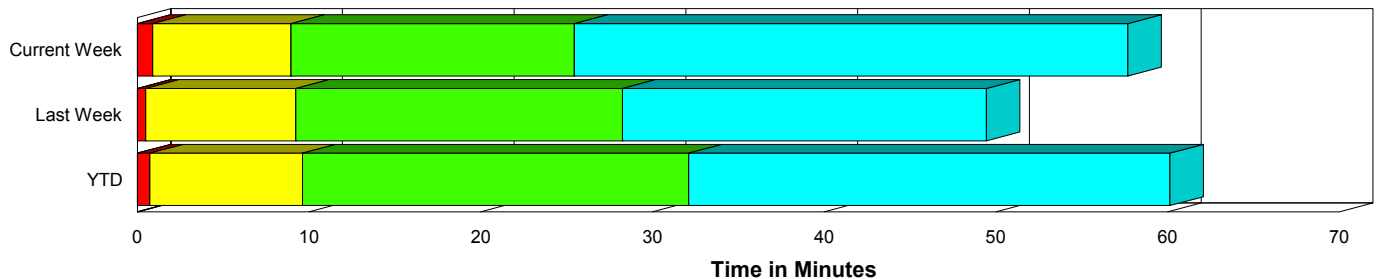
Created on:
October 26, 2009
8:45 am

Period From Oct 18, 2009 to Oct 24, 2009

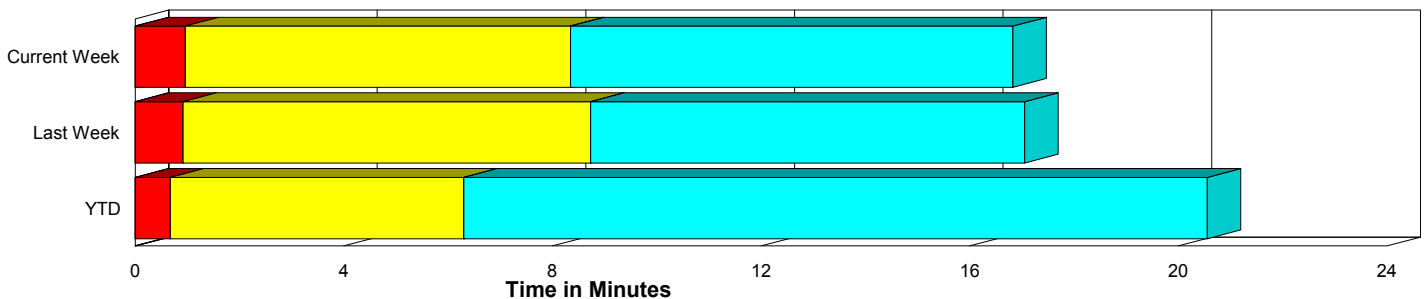
Performance Measures Summary

	Traffic Events (No Lanes Blocked)			Incidents (Lanes Blocked)		
	<u>This Week</u>	<u>Last Week</u>	<u>YTD</u>	<u>This Week</u>	<u>Last Week</u>	<u>YTD</u>
Number of Events	1,252	1,273	42,222	50	64	2,021
TMC Detection (min.)	0.00	0.00	0.01	0.00	0.00	0.00
TMC Verification (min.)	0.96	0.92	0.67	0.90	0.50	0.72
TMC Response (min.)	8.96	9.20	6.80	9.04	9.25	9.80
RR Dispatch Time (min.)	1.38	1.23	1.20	0.85	1.57	2.65
RR Response Time (min.)	7.62	8.14	5.72	8.19	7.69	7.30
Roadway Clearance (min.)				24.11	27.24	31.26
Event Clearance (min.)	17.44	17.52	21.06	56.33	48.42	58.89
# of Events w/ RR/SIRV	1,030	1,050	29,289	47	61	1,449
RR/SIRV Responses	1,030	1,050	29,289	47	61	1,449
RR/SIRV Activities	823	828	24,896	74	126	2,922

Incident Clearance Time-Line



Traffic Event (Non-Lane Blockage) Time-Line



■ Avg. TMC Detection Time	■ Avg. Time from TMC Response to Roadway Clearance*
■ Avg. Time from TMC Detection to TMC Verification	■ Avg. Time from Roadway Clearance to Incident/Event Clearance**
■ Avg. Time from TMC Verification to TMC Response	

* Roadway clearance equals all travel lanes open

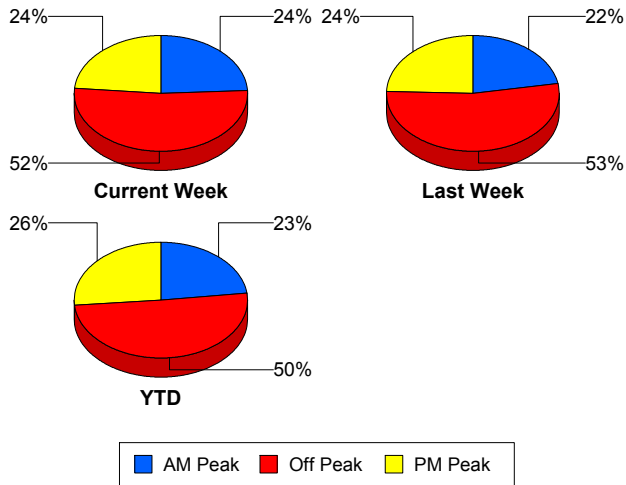
** Incident clearance equals time when last responder has left the scene

Performance Measures by Peak Period

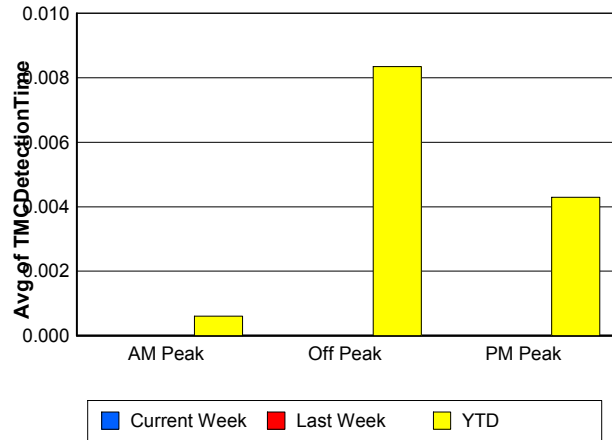
Note: AM peak period is defined as 6am to 10am and PM peak period is defined as 3pm to 7pm.

	AM Peak			Off Peak			PM Peak		
	<u>Current Week</u>	<u>Last Week</u>	<u>YTD</u>	<u>Current Week</u>	<u>Last Week</u>	<u>YTD</u>	<u>Current Week</u>	<u>Last Week</u>	<u>YTD</u>
Number of Events	313	298	10,244	683	713	22,326	306	326	11,673
Number of Incidents	17	14	470	22	28	994	11	22	557
TMC Detection (min.)	0.00	0.00	0.00	0.00	0.00	0.01	0.00	0.00	0.00
TMC Verification (min.)	0.70	0.60	0.55	1.27	0.87	0.64	0.53	1.24	0.83
TMC Response (min.)	7.50	9.55	6.38	10.32	10.04	7.84	7.43	7.31	6.31
RR Dispatch Time (min.)	0.94	0.91	0.97	1.64	1.55	1.71	1.17	0.96	0.92
RR Response Time (min.)	6.73	8.76	5.51	8.68	8.64	6.23	6.30	6.51	5.51
Event Clearance (min.)	18.12	17.71	21.05	19.81	19.99	25.04	17.82	18.02	20.00
Roadway Clearance (min.)	26.07	31.12	28.16	27.13	30.02	35.25	15.06	21.21	26.76
Incident Clearance (min.)	69.30	50.40	57.18	59.11	47.53	62.29	30.75	48.28	54.25
# of Events w/ RR/SIRV	263	254	8,381	552	572	13,215	262	285	9,142
RR/SIRV Responses	263	254	8,381	552	572	13,215	262	285	9,142
RR/SIRV Activities	204	228	7,851	475	469	11,579	218	257	8,388

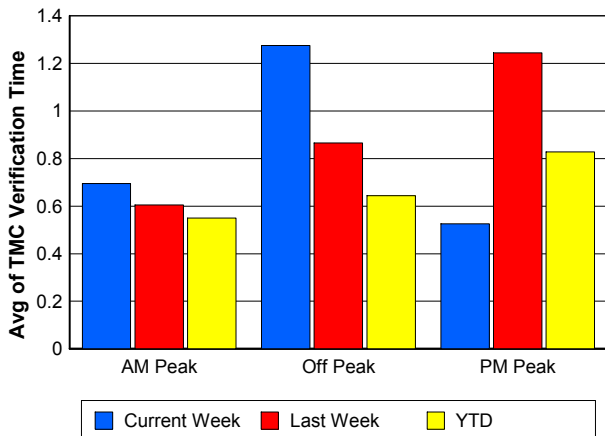
Number of Events / Peak Period



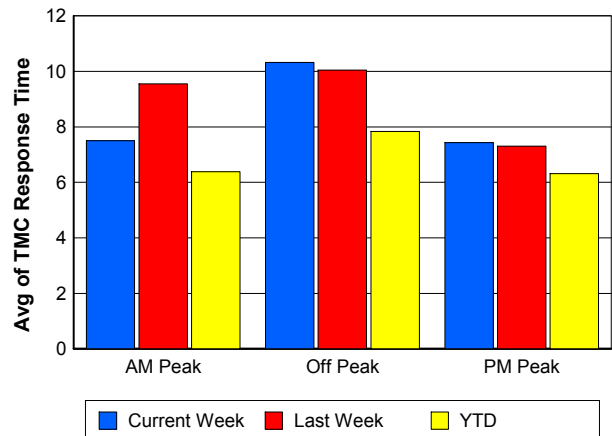
TMC Detection Time



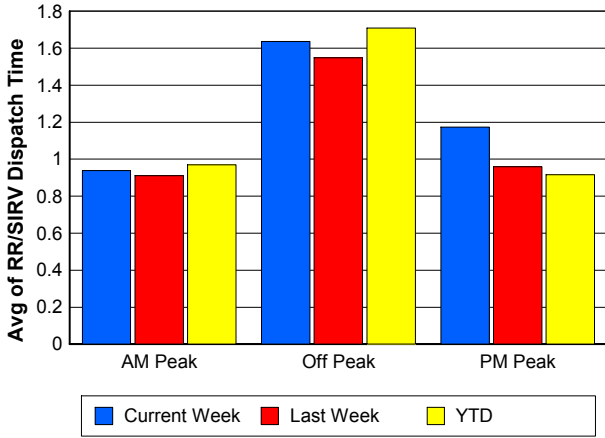
TMC Verification Time



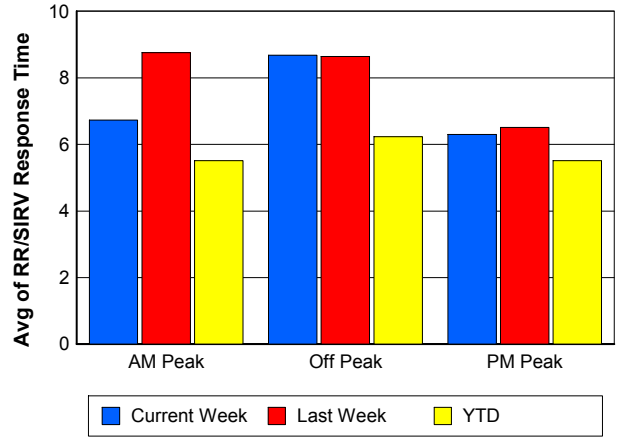
TMC Response Time



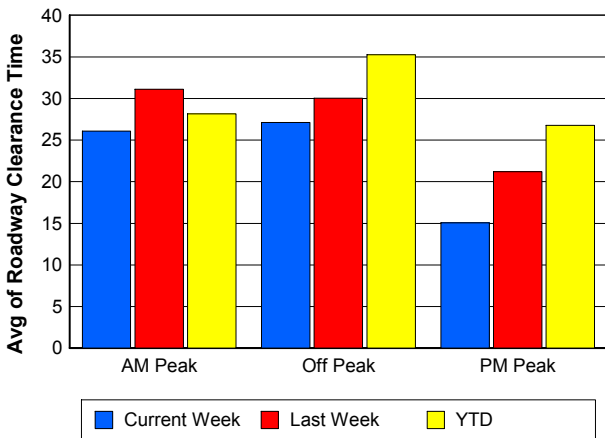
Road Ranger / SIRV Dispatch Time



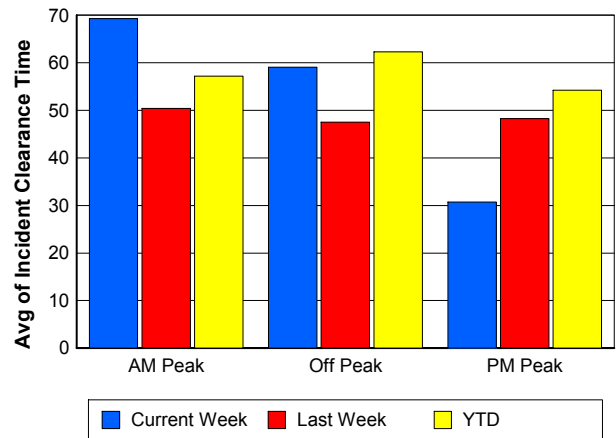
Road Ranger / SIRV Response Time



Roadway Clearance Time (2A)



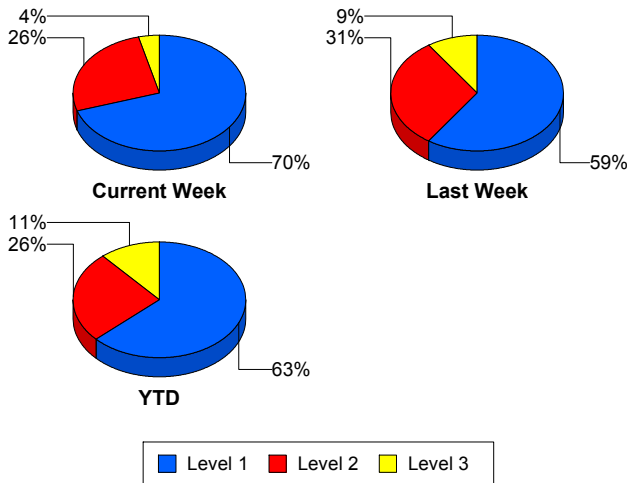
Incident Clearance Time (3B)



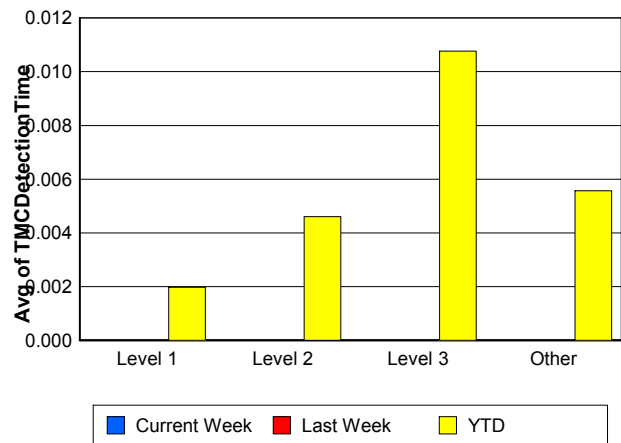
Performance Measures by Severity

	Level 1			Level 2			Level 3			Other		
	<u>This Week</u>	<u>Last Week</u>	<u>YTD</u>	<u>This Week</u>	<u>Last Week</u>	<u>YTD</u>	<u>This Week</u>	<u>Last Week</u>	<u>YTD</u>	<u>This Week</u>	<u>Last Week</u>	<u>YTD</u>
Number of Events	35	38	1,275	13	20	517	2	6	229	1,252	1,273	42,222
Number of Incidents	35	38	1,275	13	20	517	2	6	229	0	0	0
TMC Detection (min.)	0.00	0.00	0.00	0.00	0.00	0.00	0.00	0.00	0.01	0.00	0.00	0.01
TMC Verification (min.)	0.80	0.21	0.49	1.28	1.15	1.06	0.00	0.18	1.28	0.96	0.92	0.67
TMC Response (min.)	8.58	9.44	7.50	9.94	9.78	10.11	11.97	5.85	21.37	8.96	9.20	6.80
RR Dispatch Time (min.)	0.71	1.79	1.59	1.17	1.47	2.59	0.93	0.34	7.94	1.38	1.23	1.20
RR Resp. Time (min.)	7.86	7.64	5.98	8.77	8.31	7.78	11.03	5.51	13.37	7.62	8.14	5.72
Event Clearance (min.)	45.35	37.48	45.50	89.93	63.34	72.13	30.03	67.94	103.25	17.44	17.52	21.06
Roadway Clear. (min.)	13.59	15.33	14.39	52.19	45.24	49.27	25.72	42.65	84.56			
Incident Clearance (min.)	45.35	37.48	45.50	89.93	63.34	72.13	30.03	67.94	103.25			
# of Events w/ RR/SIRV	33	36	950	13	20	305	1	5	194	1,030	1,050	29,289
RR/SIRV Responses	33	36	950	13	20	305	1	5	194	1,030	1,050	29,289
RR/SIRV Activities	45	59	1,641	26	54	833	3	13	448	823	828	24,896

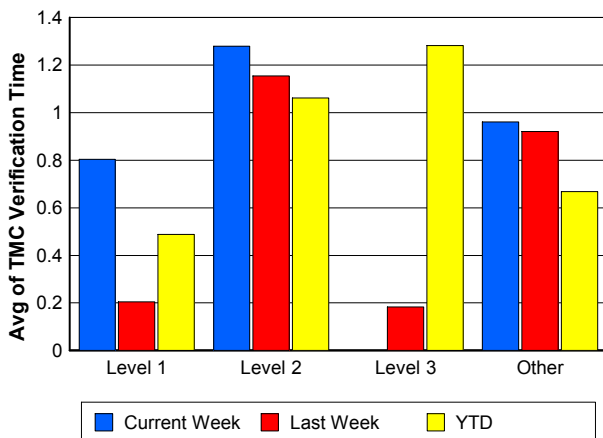
Number of Events / Severity



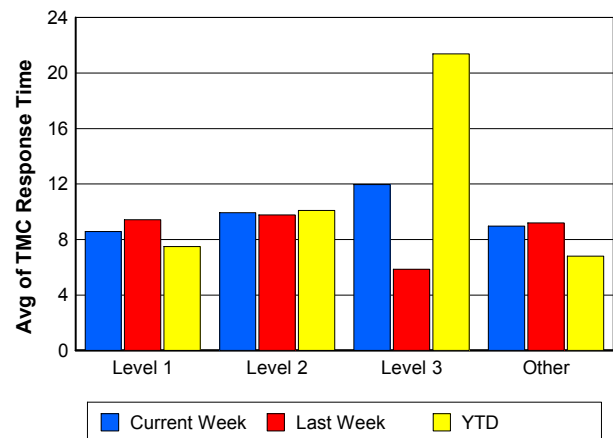
TMC Detection Time



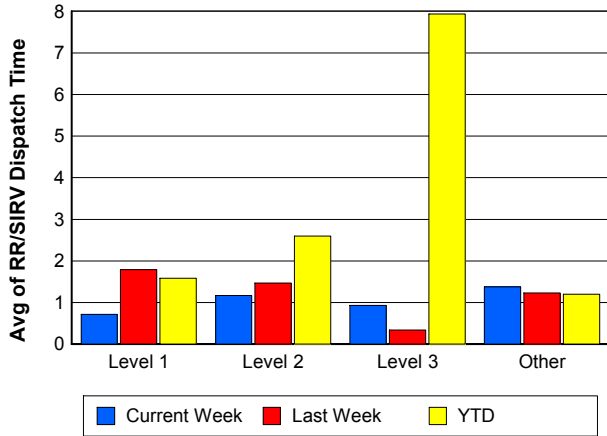
TMC Verification Time



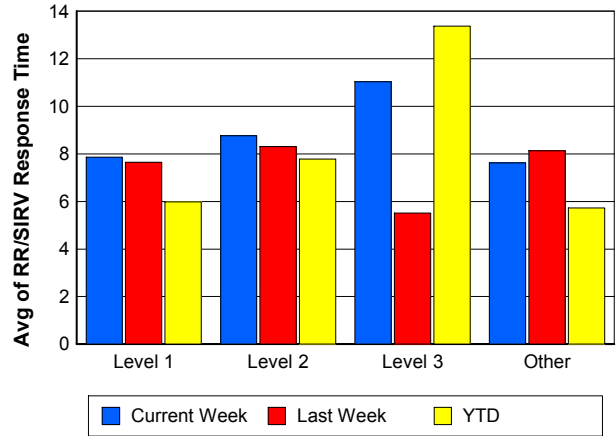
TMC Response Time



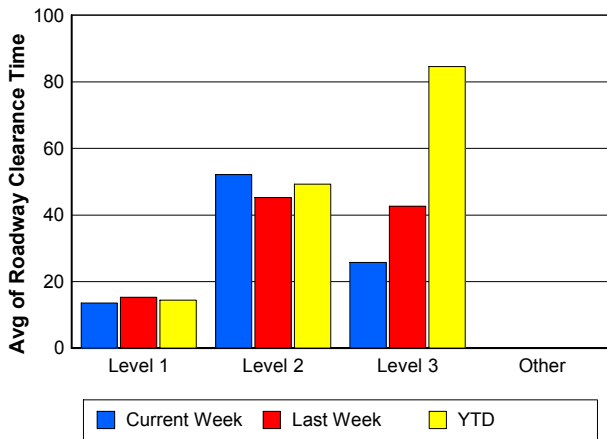
Road Ranger / SIRV Dispatch Time



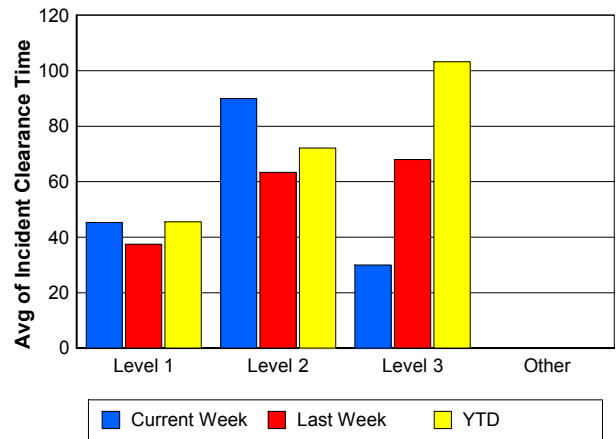
Road Ranger / SIRV Response Time



Roadway Clearance Time (2A)



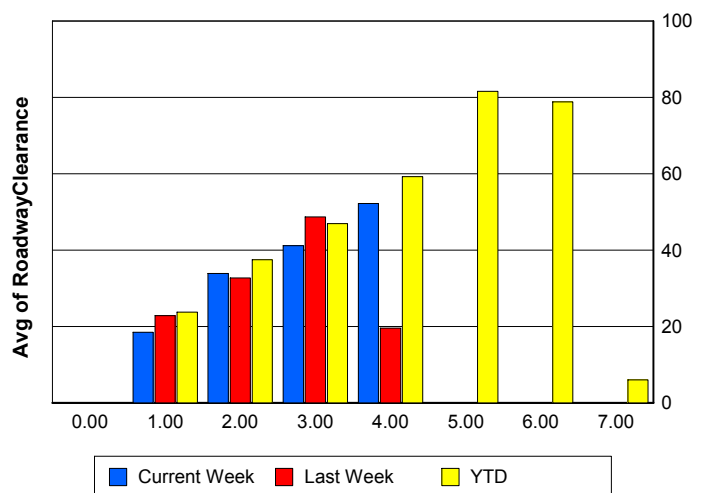
Incident Clearance Time (3B)



Roadway Clearance by Maximum Number of Lanes Blocked

	Current Week	Last Week	YTD
0			
1	18.46	22.86	23.78
2	33.89	32.70	37.46
3	41.16	48.68	46.95
4	52.17	19.57	59.22
5	0.00	0.00	81.58
6	0.00	0.00	78.82
7	0.00	0.00	5.97

Roadway Clearance Time (2A)



Performance Measures by Roadway

595

	<u>Current Week</u>	<u>Last Week</u>	<u>YTD</u>
Number of Events	46	41	4,556
Number of Incidents	2	4	276
TMC Detection (min.)	0.00	0.00	0.01
TMC Verification (min.)	2.30	2.56	0.85
TMC Response (min.)	14.66	14.82	6.86
RR Dispatch Time (min.)	1.38	0.77	1.15
RR Resp. Time (min.)	13.48	14.41	5.82
Event Clearance (min.)	17.06	17.99	21.39
Roadway Clear. (min.)	10.20	36.22	31.33
Incident Clearance (min.)	14.01	48.55	54.18
# of Events w/ RR/SIRV	34	26	3,182
RR/SIRV Responses	34	26	3,182
RR/SIRV Activities	24	17	2,893

75

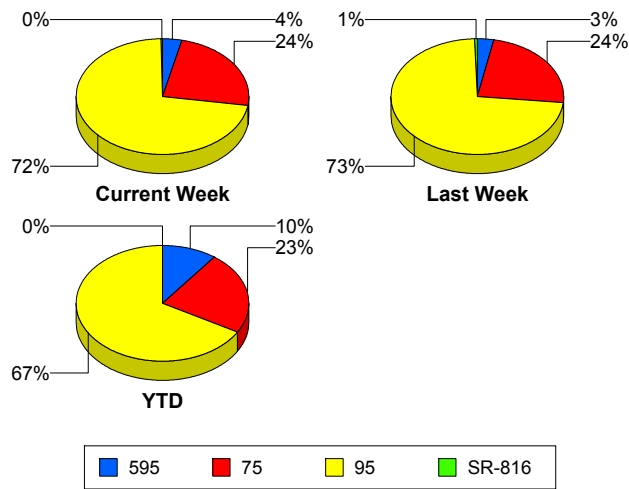
	<u>Current Week</u>	<u>Last Week</u>	<u>YTD</u>
Number of Events	311	316	10,160
Number of Incidents	4	7	192
TMC Detection (min.)	0.00	0.00	0.00
TMC Verification (min.)	1.75	0.86	0.87
TMC Response (min.)	11.10	10.84	8.25
RR Dispatch Time (min.)	1.75	1.23	1.28
RR Resp. Time (min.)	9.31	9.89	7.08
Event Clearance (min.)	19.98	17.24	24.64
Roadway Clear. (min.)	22.62	32.77	51.78
Incident Clearance (min.)	38.62	59.90	79.39
# of Events w/ RR/SIRV	248	245	6,874
RR/SIRV Responses	248	245	6,874
RR/SIRV Activities	196	192	5,912

95

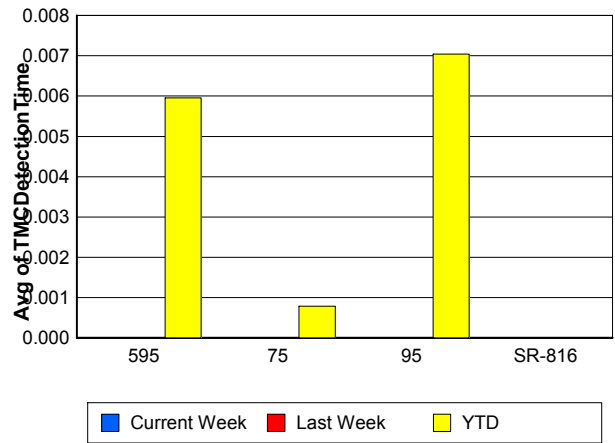
	<u>Current Week</u>	<u>Last Week</u>	<u>YTD</u>
Number of Events	940	972	29,467
Number of Incidents	41	47	1,515
TMC Detection (min.)	0.00	0.00	0.01
TMC Verification (min.)	0.64	0.85	0.58
TMC Response (min.)	8.17	8.68	6.60
RR Dispatch Time (min.)	1.23	1.28	1.29
RR Resp. Time (min.)	6.98	7.52	5.43
Event Clearance (min.)	18.75	19.58	22.38
Roadway Clear. (min.)	26.20	26.15	29.05
Incident Clearance (min.)	63.74	49.91	58.24
# of Events w/ RR/SIRV	790	832	20,625
RR/SIRV Responses	790	832	20,625
RR/SIRV Activities	672	735	18,946

	<u>Current Week</u>	<u>Last Week</u>	<u>YTD</u>
Number of Events	5	8	60
Number of Incidents	3	6	38
TMC Detection (min.)	0.00	0.00	0.00
TMC Verification (min.)	0.00	0.06	0.20
TMC Response (min.)	0.00	3.27	0.68
RR Dispatch Time (min.)	0.28	0.29	0.09
RR Resp. Time (min.)	0.00	2.98	0.62
Event Clearance (min.)	5.56	22.86	11.94
Roadway Clear. (min.)	6.83	23.32	15.19
Incident Clearance (min.)	6.94	23.20	15.04
# of Events w/ RR/SIRV	5	8	57
RR/SIRV Responses	5	8	57
RR/SIRV Activities	5	10	67

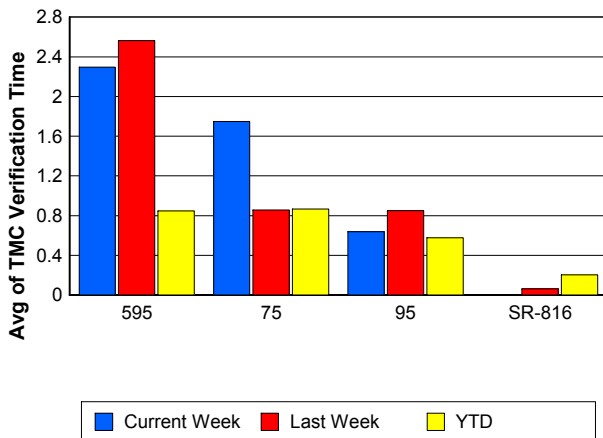
Number of Events / Roadway



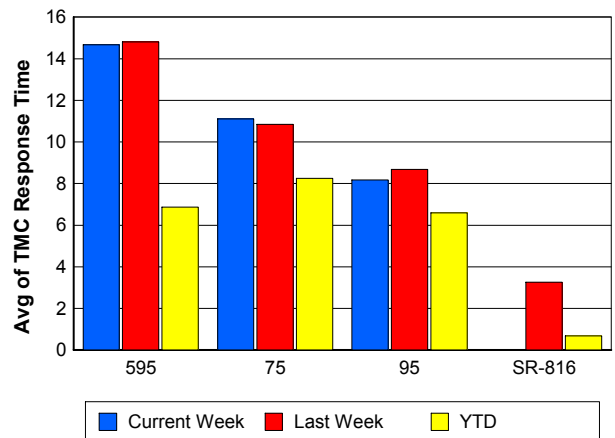
TMC Detection Time



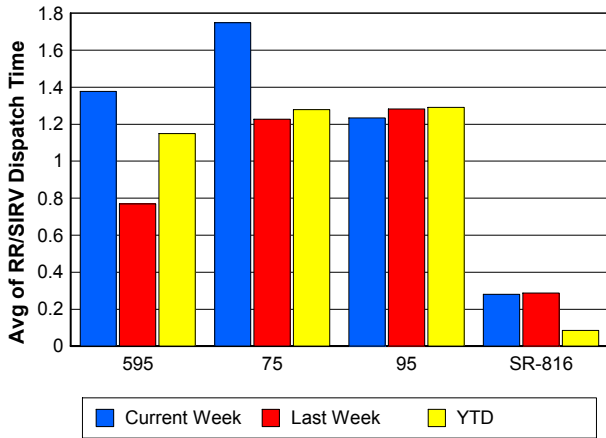
TMC Verification Time



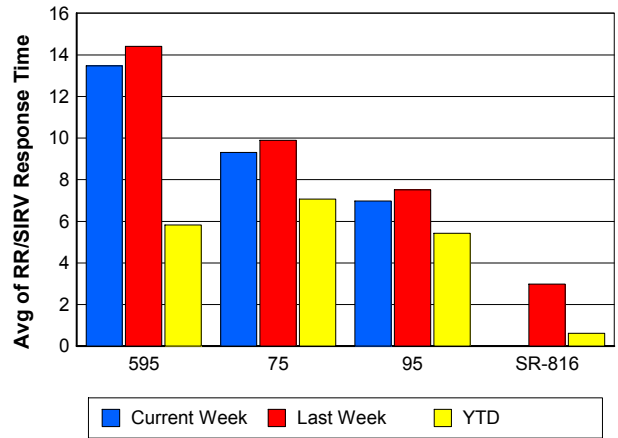
TMC Response Time



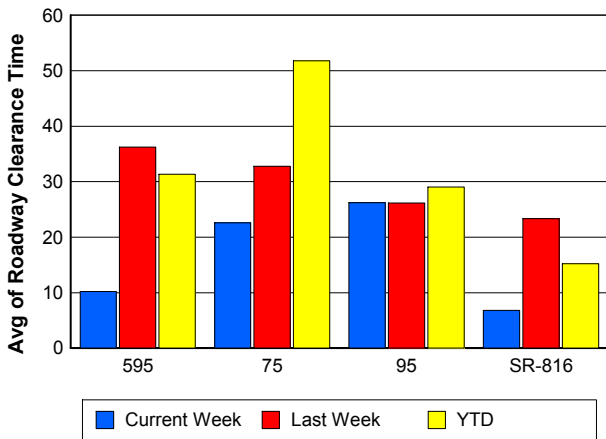
Road Ranger / SIRV Dispatch Time



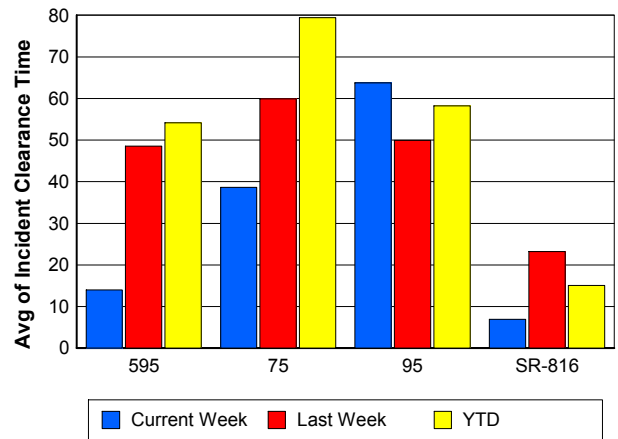
Road Ranger / SIRV Response Time



Roadway Clearance Time (2A)



Incident Clearance Time (3B)



Performance Measures by Event Type

Accident

	<u>Current Week</u>	<u>Last Week</u>	<u>YTD</u>
Number of Events	83	79	3,017
Number of Incidents	29	45	1,445
TMC Detection (min.)	0.00	0.00	0.01
TMC Verification (min.)	1.40	0.58	0.75
TMC Response (min.)	11.59	8.27	9.07
RR Dispatch Time (min.)	1.12	0.97	1.65
RR Response Time (min.)	10.44	7.31	7.50
Event Clearance (min.)	57.83	47.11	54.97
Roadway Clearance (min.)	28.63	30.59	32.88
Incident Clearance (min.)	77.16	56.96	66.32
# of Events w/ RR/SIRV	82	79	2,264
RR/SIRV Assists	82	79	2,264
RR/SIRV Activities	101	139	3,499

Debris on Roadway

	<u>Current Week</u>	<u>Last Week</u>	<u>YTD</u>
Number of Events	46	36	1,365
Number of Incidents	1	0	28
TMC Detection (min.)	0.00	0.00	0.09
TMC Verification (min.)	4.90	8.56	4.05
TMC Response (min.)	8.24	12.15	7.74
RR Dispatch Time (min.)	2.07	0.46	0.91
RR Response Time (min.)	5.99	11.76	6.87
Event Clearance (min.)	11.05	13.69	11.59
Roadway Clearance (min.)	15.13		24.58
Incident Clearance (min.)	18.90		32.39
# of Events w/ RR/SIRV	43	34	1,265
RR/SIRV Assists	43	34	1,265
RR/SIRV Activities	36	34	1,279

Disabled Vehicle

	<u>Current Week</u>	<u>Last Week</u>	<u>YTD</u>
Number of Events	738	763	26,036
Number of Incidents	14	11	332
TMC Detection (min.)	0.00	0.00	0.00
TMC Verification (min.)	1.22	0.98	0.79
TMC Response (min.)	8.78	9.25	6.59
RR Dispatch Time (min.)	1.39	1.23	1.11
RR Response Time (min.)	7.45	8.10	5.53
Event Clearance (min.)	20.80	21.75	25.47
Roadway Clearance (min.)	18.17	21.93	19.03
Incident Clearance (min.)	30.64	29.88	33.15
# of Events w/ RR/SIRV	724	745	21,173
RR/SIRV Assists	724	745	21,173
RR/SIRV Activities	714	731	21,552

Emergency Vehicles

	<u>Current Week</u>	<u>Last Week</u>	<u>YTD</u>
Number of Events	3	4	70
Number of Incidents	2	4	54
TMC Detection (min.)	0.00	0.00	0.00
TMC Verification (min.)	0.00	0.00	0.55
TMC Response (min.)	20.70	8.75	13.45
RR Dispatch Time (min.)	0.82	0.45	8.54
RR Response Time (min.)	19.88	8.30	4.33
Event Clearance (min.)	22.04	23.14	49.79
Roadway Clearance (min.)	16.59	11.70	49.15
Incident Clearance (min.)	17.79	23.14	56.00
# of Events w/ RR/SIRV	1	1	38
RR/SIRV Assists	1	1	38
RR/SIRV Activities	3	2	65

Other

	<u>Current Week</u>	<u>Last Week</u>	<u>YTD</u>
Number of Events	426	447	13,334
Number of Incidents	2	0	29
TMC Detection (min.)	0.00	0.00	0.00
TMC Verification (min.)	0.03	0.25	0.08
TMC Response (min.)	7.41	8.23	8.35
RR Dispatch Time (min.)	1.18	1.50	1.72
RR Response Time (min.)	6.61	7.38	6.31
Event Clearance (min.)	9.05	9.72	10.97
Roadway Clearance (min.)	22.47		29.90
Incident Clearance (min.)	25.01		35.09
# of Events w/ RR/SIRV	223	245	5,758
RR/SIRV Assists	223	245	5,758
RR/SIRV Activities	40	35	1,108

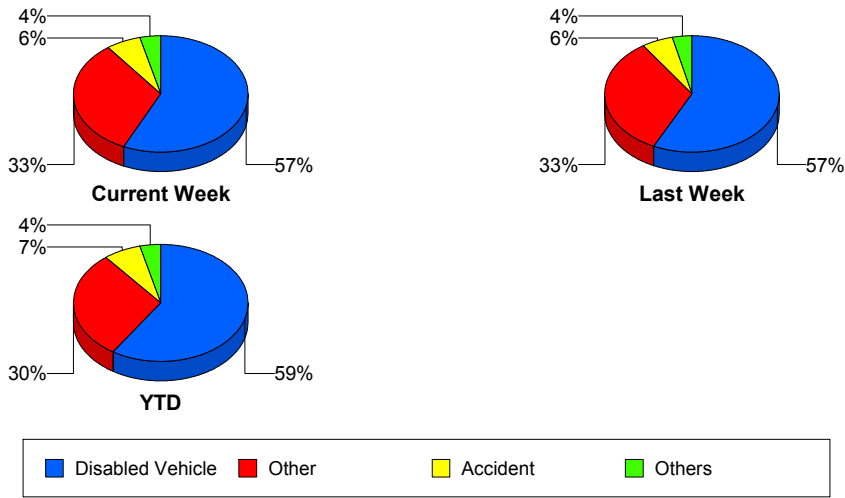
Police Activity

	<u>Current Week</u>	<u>Last Week</u>	<u>YTD</u>
Number of Events	2	5	173
Number of Incidents	1	4	57
TMC Detection (min.)	0.00	0.00	0.00
TMC Verification (min.)	0.00	0.00	0.30
TMC Response (min.)		8.28	13.19
RR Dispatch Time (min.)	0.83	2.49	4.06
RR Response Time (min.)		5.79	9.07
Event Clearance (min.)	5.47	23.12	32.53
Roadway Clearance (min.)	1.60	19.56	37.25
Incident Clearance (min.)	2.73	28.52	46.00
# of Events w/ RR/SIRV	1	4	59
RR/SIRV Assists	1	4	59
RR/SIRV Activities	0	10	73

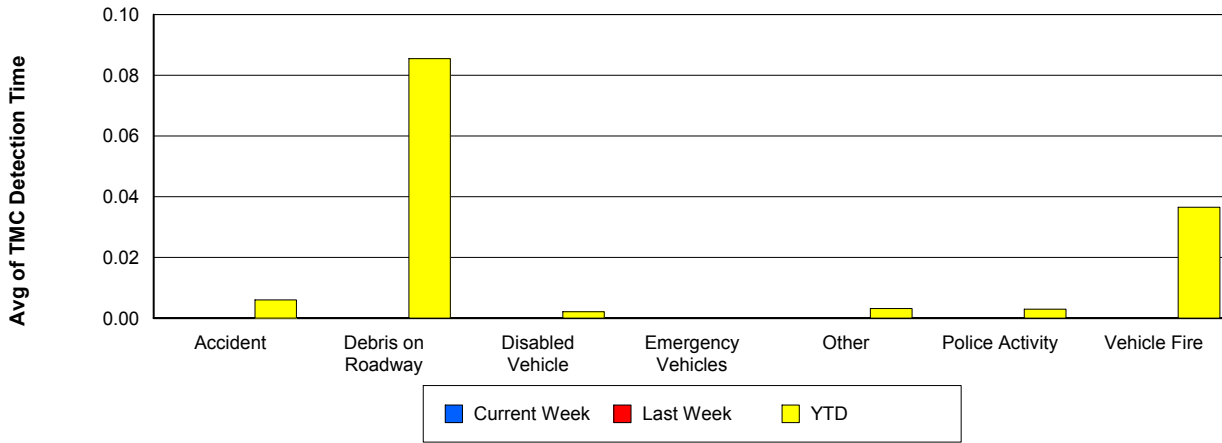
Vehicle Fire

	<u>Current Week</u>	<u>Last Week</u>	<u>YTD</u>
Number of Events	1	2	98
Number of Incidents	1	0	76
TMC Detection (min.)	0.00	0.00	0.04
TMC Verification (min.)	1.42	1.32	1.10
TMC Response (min.)	19.42	6.48	9.98
RR Dispatch Time (min.)	0.75	1.64	2.12
RR Response Time (min.)	18.67	4.84	8.25
Event Clearance (min.)	42.83	17.37	56.80
Roadway Clearance (min.)	26.18		39.68
Incident Clearance (min.)	42.83		60.84
# of Events w/ RR/SIRV	1	2	68
RR/SIRV Assists	1	2	68
RR/SIRV Activities	1	2	140

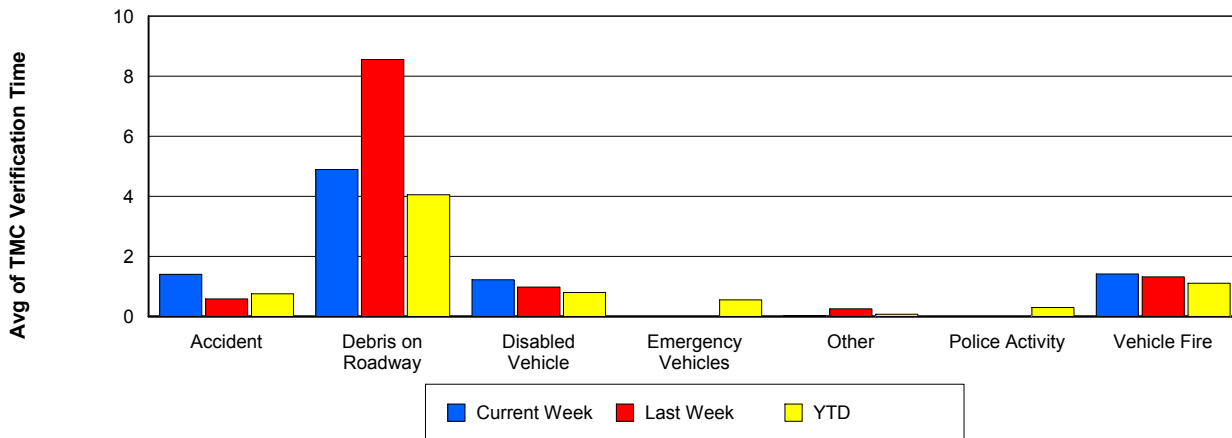
Number of Events / Event Type



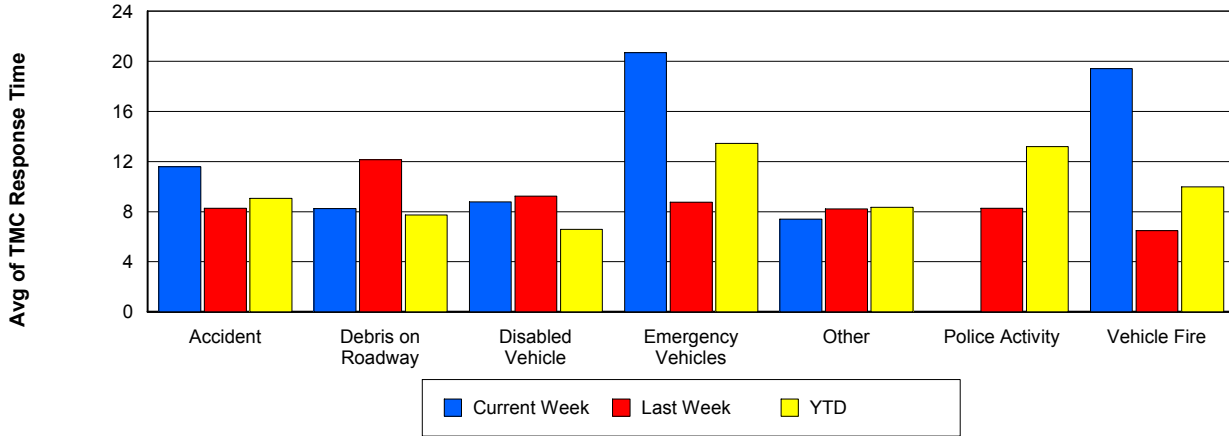
TMC Detection Time



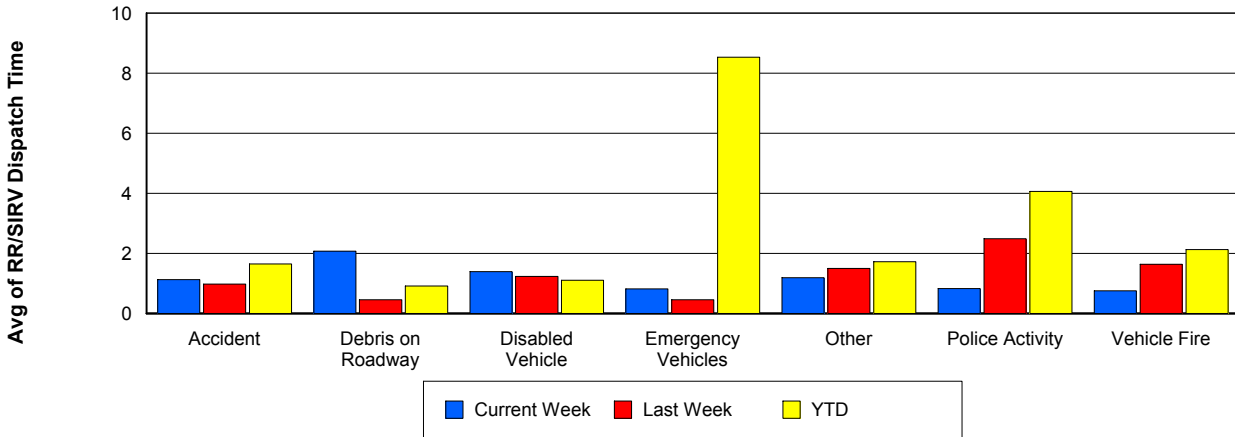
TMC Verification Time



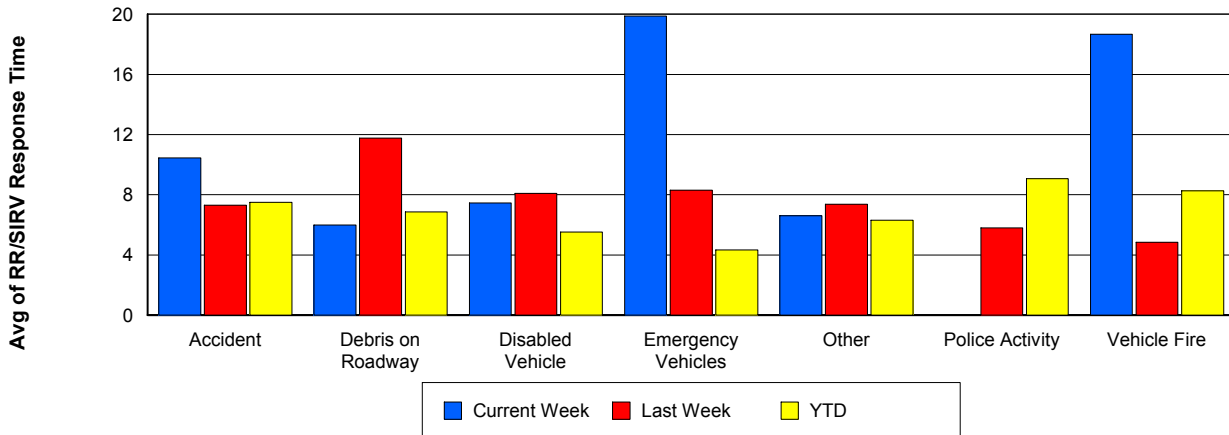
TMC Response Time



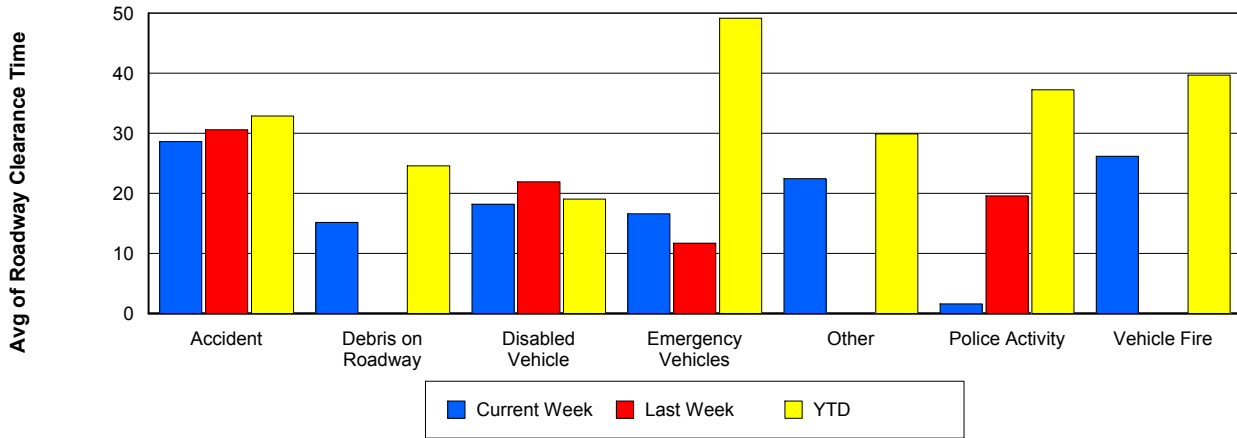
Road Ranger / SIRV Dispatch Time



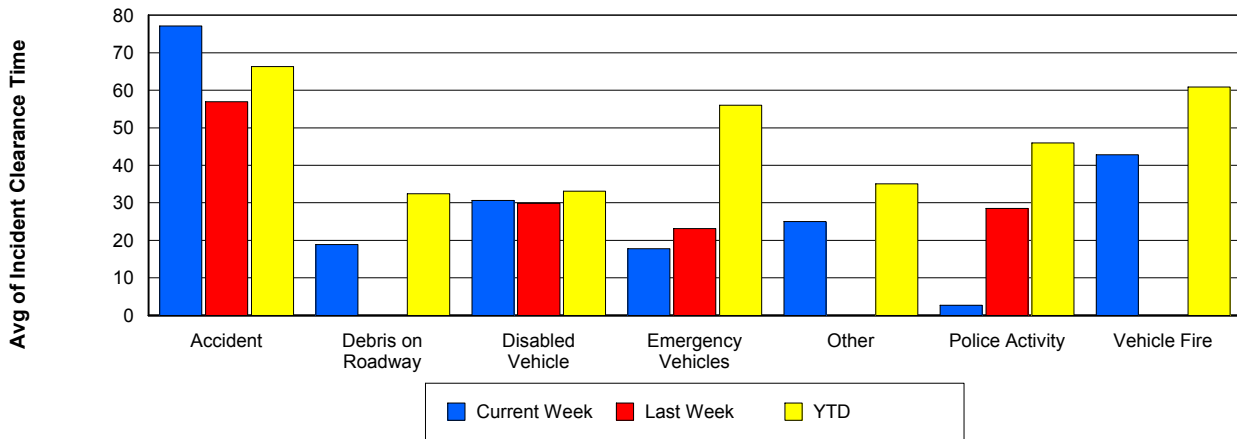
Road Ranger / SIRV Response Time



Roadway Clearance Time (2A)



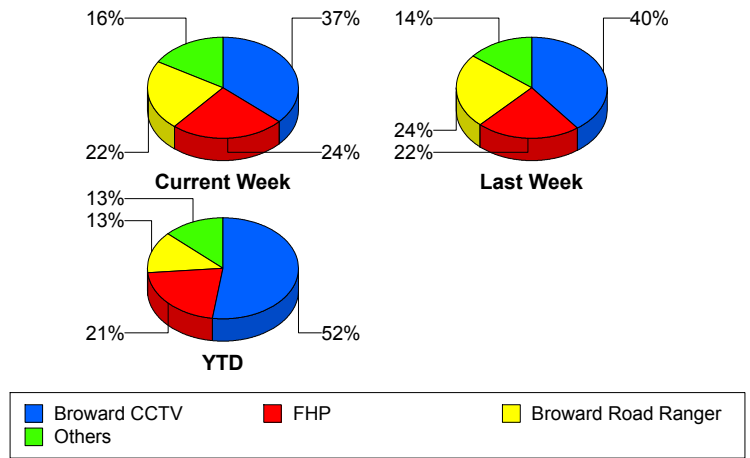
Incident Clearance Time (3B)



Incident Detection Methods

	Current Week	Last Week	YTD
Broward CCTV	18	25	1,052
Broward Road Ranger	11	15	269
Broward TMC	1	0	4
Broward VideoWall	1	1	59
BSO	2	1	44
District 4	0	2	49
District 6	0	1	2
FDOT Maintenance	0	1	5
FHP	12	14	432
Fire	1	0	4
Florida's Turnpike	0	0	6
ITMS	0	0	2
Motorist	1	2	11
Other	0	0	1
Palm Beach Road Ran	1	0	5
Road Watcher	0	1	14
SIRV	0	0	12
SmarTraveler (511)	0	0	6
VisioPaD Detection	1	0	37
Total	49	63	2,014

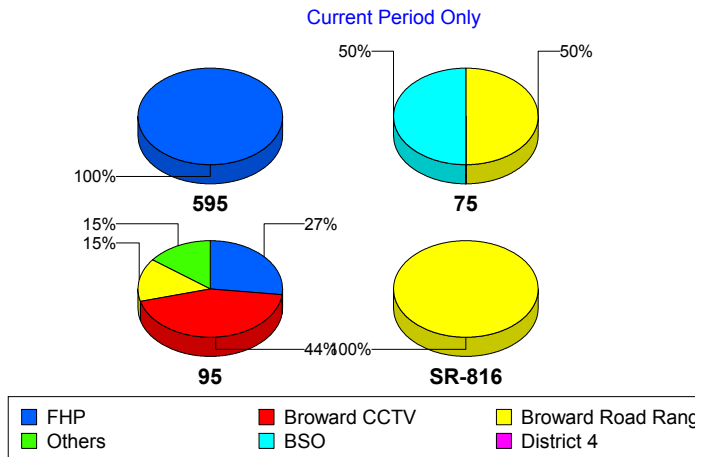
Total Incidents by Detection Method



Incident Detection Methods by Roadway

		Current Week	Last Week	YTD
595	Broward CCTV	0	0	131
	Broward Road Ranger	0	1	38
	Broward VideoWall	0	0	8
	BSO	0	0	5
	District 4	0	0	12
	FDOT Maintenance	0	0	2
	FHP	1	1	55
	Florida's Turnpike	0	0	6
	Motorist	0	1	3
	Road Watcher	0	0	3
	SIRV	0	0	1
	VisioPaD Detection	0	0	6
	Total	1	3	270
	75	Broward CCTV	0	4
Broward Road Ranger		2	0	21
Broward VideoWall		0	0	1
BSO		2	1	34
District 4		0	0	6
FHP		0	1	44
Other		0	0	1
Road Watcher		0	1	3
VisioPaD Detection		0	0	5
Total		4	7	192
95	Broward CCTV	18	21	844
	Broward Road Ranger	6	8	173
	Broward TMC	1	0	4
	Broward VideoWall	1	1	50
	BSO	0	0	5
	District 4	0	2	30
	District 6	0	1	2
	FDOT Maintenance	0	1	3

Total Events by Roadway and Detection Method

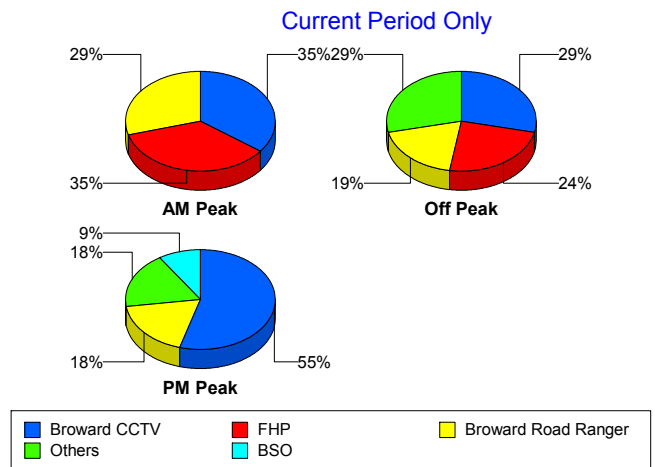


		Current Week	Last Week	YTD
95	FHP	11	12	333
	Fire	1	0	4
	ITMS	0	0	2
	Motorist	1	1	8
	Palm Beach Road Ran	1	0	5
	Road Watcher	0	0	8
	SIRV	0	0	11
	SmarTraveler (511)	0	0	6
	VisioPaD Detection	1	0	26
	Total	41	47	1,514
	SR-816	Broward Road Ranger	3	6
District 4		0	0	1
Total		3	6	38
Total		49	63	2,014

Incident Detection Methods by Peak Period

		Current Week	Last Week	YTD
AM Peak	Broward CCTV	6	5	207
	Broward Road Ranger	5	3	87
	Broward TMC	0	0	1
	Broward VideoWall	0	0	20
	BSO	0	1	7
	District 4	0	0	18
	FHP	6	3	108
	Florida's Turnpike	0	0	2
	Motorist	0	1	6
	Palm Beach Road Ran	0	0	2
	Road Watcher	0	1	5
	SIRV	0	0	1
	SmarTraveler (511)	0	0	1
	VisioPaD Detection	0	0	2
	Total	17	14	467

Total Events by Peak Period and Detection Method

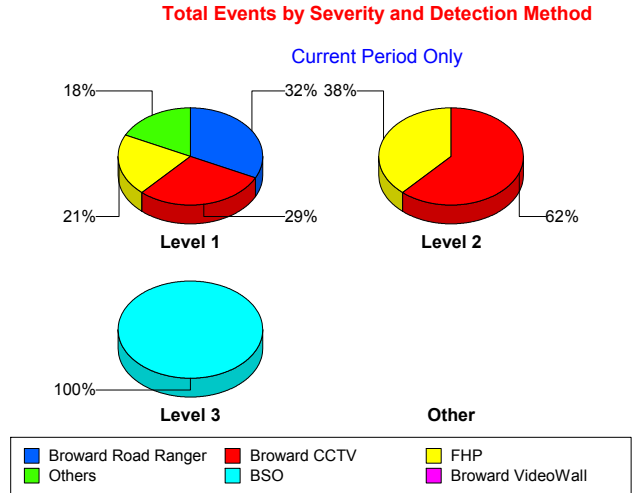


		Current Week	Last Week	YTD
Off Peak	Broward CCTV	6	12	569
	Broward Road Ranger	4	4	76
	Broward TMC	1	0	3
	Broward VideoWall	1	1	32
	BSO	1	0	28
	District 4	0	2	16
	District 6	0	1	1
	FDOT Maintenance	0	1	3
	FHP	5	6	207
	Fire	1	0	3
	Florida's Turnpike	0	0	3
	ITMS	0	0	2
	Motorist	1	0	4
	Palm Beach Road Ran	0	0	1
	Road Watcher	0	0	6
	SIRV	0	0	5
	SmarTraveler (511)	0	0	3
	VisioPaD Detection	1	0	29
	Total	21	27	991
PM Peak	Broward CCTV	6	8	276
	Broward Road Ranger	2	8	106
	Broward VideoWall	0	0	7
	BSO	1	0	9
	District 4	0	0	15
	District 6	0	0	1
	FDOT Maintenance	0	0	2
	FHP	1	5	117
	Fire	0	0	1
	Florida's Turnpike	0	0	1
	Motorist	0	1	1
	Other	0	0	1
	Palm Beach Road Ran	1	0	2

		Current Week	Last Week	YTD
PM Peak	Road Watcher	0	0	3
	SIRV	0	0	6
	SmarTraveler (511)	0	0	2
	VisioPaD Detection	0	0	6
	Total	11	22	556
Total		49	63	2,014

Incident Detection Methods by Severity

		Current Week	Last Week	YTD	
Level 1	Broward CCTV	10	15	670	
	Broward Road Ranger	11	10	196	
	Broward TMC	1	0	3	
	Broward VideoWall	1	0	38	
	BSO	0	0	10	
	District 4	0	1	36	
	District 6	0	1	1	
	FDOT Maintenance	0	1	4	
	FHP	7	8	250	
	Fire	1	0	3	
	ITMS	0	0	1	
	Motorist	1	1	8	
	Palm Beach Road Ran	1	0	4	
	Road Watcher	0	0	9	
	SIRV	0	0	11	
	SmarTraveler (511)	0	0	4	
	VisioPaD Detection	1	0	21	
	Total	34	37	1,269	
	Level 2	Broward CCTV	8	8	275
		Broward Road Ranger	0	3	50
Broward TMC		0	0	1	
Broward VideoWall		0	1	18	
BSO		0	0	10	



		Current Week	Last Week	YTD
Level 2	District 4	0	1	7
	FDOT Maintenance	0	0	1
	FHP	5	6	128
	Florida's Turnpike	0	0	4
	ITMS	0	0	1
	Motorist	0	1	3
	Other	0	0	1
	Road Watcher	0	0	2
	SIRV	0	0	1
	SmarTraveler (511)	0	0	2
	VisioPaD Detection	0	0	13
	Total	13	20	517
Level 3	Broward CCTV	0	2	107
	Broward Road Ranger	0	2	23
	Broward VideoWall	0	0	3
	BSO	2	1	24
	District 4	0	0	6
	District 6	0	0	1
	FHP	0	0	54
	Fire	0	0	1
	Florida's Turnpike	0	0	2
	Palm Beach Road Ran	0	0	1
	Road Watcher	0	1	3
	VisioPaD Detection	0	0	3
	Total	2	6	228
Total		49	63	2,014

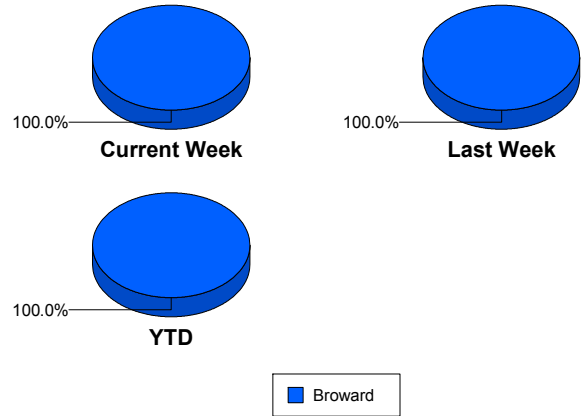
Road Ranger / SIRV Performance Measures

Road Ranger / SIRV Performance By County

Values presented are:
 - Total Events with a RR/SIRV Response
 - Total RR/SIRV Responses,
 - Total Activities Performed

	Current We	Last Week	YTD
Broward	961	1,004	29,852
	1,019	1,096	32,099
	1,056	1,151	33,417

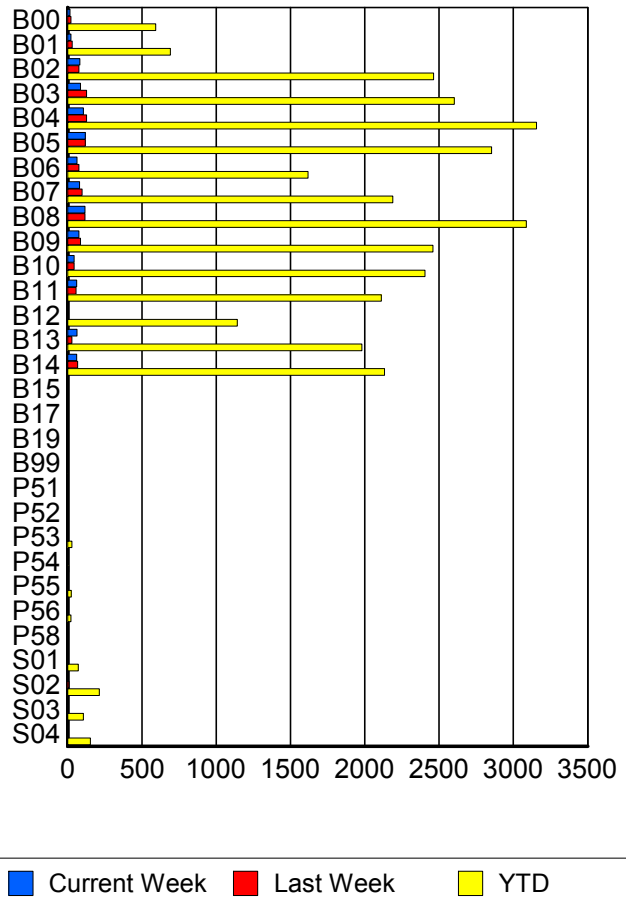
RR/SIRV Responses per County



Road Ranger / SIRV Performance By Truck

	Current We	Last Week	YTD
B00	17	21	579
	17	22	593
	17	25	621
B01	23	31	680
	23	31	692
	23	31	727
B02	79	73	2,437
	83	75	2,463
	85	78	2,563
B03	86	126	2,565
	87	127	2,602
	91	131	2,703
B04	104	125	3,120
	105	128	3,155
	110	132	3,291
B05	118	115	2,801
	119	119	2,854
	122	122	2,951
B06	63	77	1,594
	64	77	1,619
	66	81	1,671
B07	81	96	2,155
	81	98	2,188
	85	104	2,286
B08	115	115	3,047
	117	117	3,088
	125	124	3,204

RR/SIRV Responses per Truck



	Current We	Last Week	YTD
B09	76	85	2,421
	76	86	2,459
	78	89	2,553
B10	44	43	2,363
	45	43	2,404
	46	44	2,498
B11	62	56	2,079
	62	57	2,111
	62	60	2,178
B12	0	0	1,127
	0	0	1,142
	0	0	1,191
B13	63	28	1,956
	63	28	1,980
	64	30	2,051
B14	61	64	2,098
	61	67	2,133
	63	72	2,213
B15	0	0	2
	0	0	2
	0	0	2
B17	1	0	1
	1	0	1
	1	0	1
B19	0	0	1
	0	0	1
	0	0	1
B99	0	0	4
	0	0	4
	0	0	4
P51	0	0	1
	0	0	1
	0	0	1
P52	2	0	4
	2	0	4
	2	0	4
P53	5	2	27
	5	2	28
	8	3	34
P54	0	0	7
	0	0	7
	0	0	7
P55	0	4	24
	0	4	24
	0	4	28

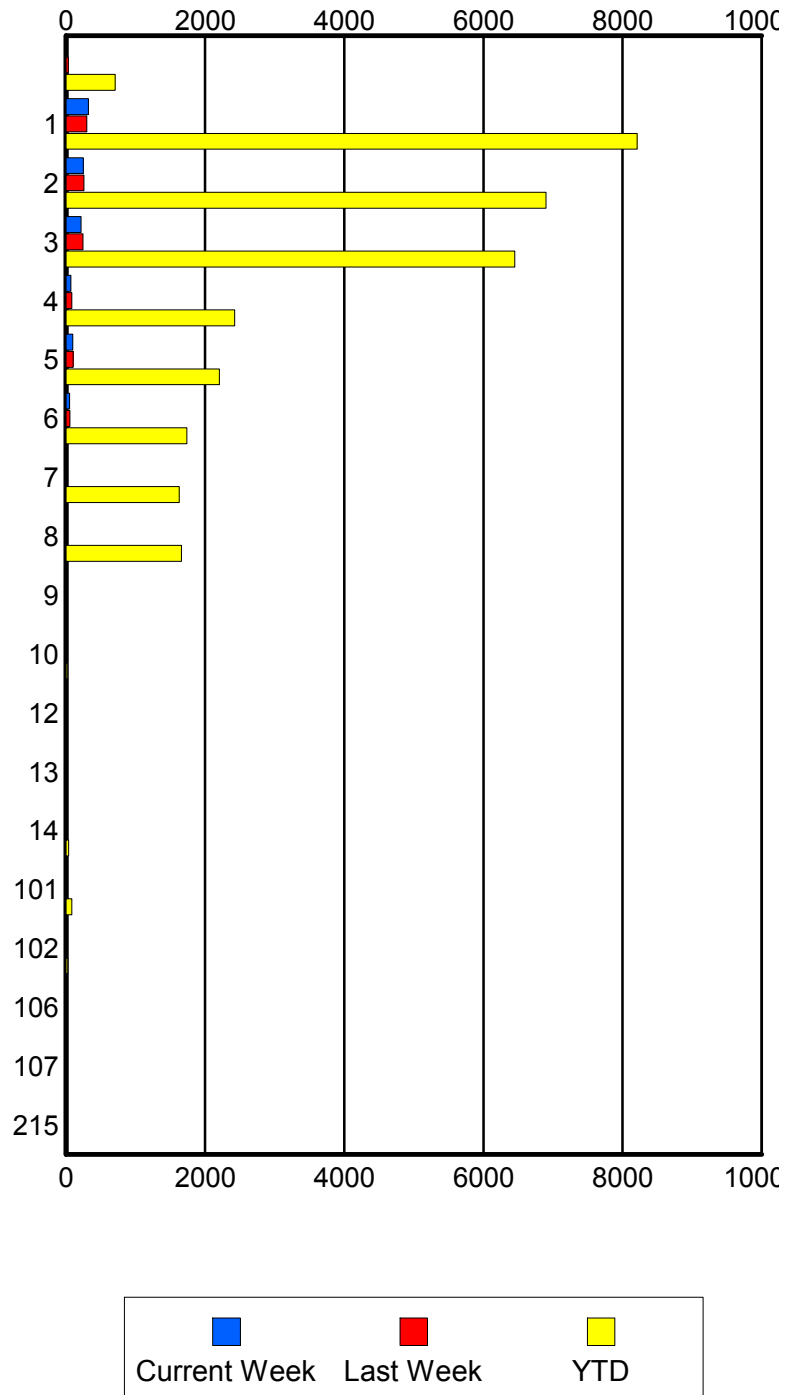
	Current We	Last Week	YTD
P56	1	0	23
	1	0	23
	1	0	24
P58	0	0	1
	0	0	1
	0	0	1
S01	0	2	69
	0	2	72
	0	3	84
S02	3	9	207
	3	9	214
	3	13	239
S03	3	3	105
	3	3	107
	3	3	120
S04	1	1	148
	1	1	153
	1	2	166

Road Ranger / SIRV Performance By Beat

	Current We	Last Week	YTD
	13	33	663
	13	33	708
	14	40	775
1	308	287	7,753
	322	300	8,212
	333	314	8,490
2	237	235	6,660
	247	257	6,899
	258	274	7,204
3	212	234	6,264
	215	244	6,451
	223	252	6,697
4	69	82	2,372
	69	84	2,424
	71	85	2,500
5	95	101	2,169
	96	102	2,206
	97	103	2,284
6	48	53	1,701
	49	55	1,738
	49	58	1,826
7	0	0	1,600
	0	0	1,625
	0	0	1,698
8	0	5	1,638
	0	5	1,658
	0	8	1,724
9	0	0	12
	0	0	14
	0	0	14
10	0	0	18
	0	0	19
	0	0	19
12	0	0	9
	0	0	9
	0	0	9
13	0	0	14
	0	0	14
	0	0	15
14	0	10	38
	0	10	38
	0	10	39
101	7	6	82
	8	6	84
	11	7	95

Values presented are:
 - Total Events with a RR/SIRV Response
 - Total RR/SIRV Responses,
 - Total Activities Performed

RR/SIRV Responses per Beat



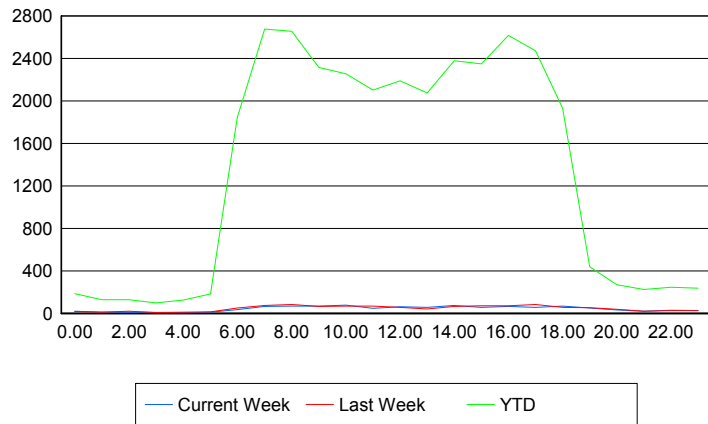
	Current We	Last Week	YTD
102	0	0	23
	0	0	23
	0	0	25
106	0	0	1
	0	0	1
	0	0	1
107	0	0	1
	0	0	1
	0	0	1
215	0	0	1
	0	0	1
	0	0	1

Road Ranger / SIRV Performance By Time of Day

Values presented are:
- Total Events with a RR/SIRV Response
- Total RR/SIRV Responses,
- Total Activities Performed

	Current We	Last Week	YTD
12AM-1AM	19	17	177
	20	18	184
	21	19	196
1AM-2AM	10	10	128
	10	10	129
	10	10	135
2AM-3AM	11	19	117
	12	19	129
	12	19	135
3AM-4AM	6	9	93
	7	9	98
	7	11	104
4AM-5AM	4	11	111
	4	12	126
	4	14	131
5AM-6AM	11	8	142
	12	13	182
	13	15	194
6AM-7AM	34	46	1,690
	34	50	1,844
	35	53	1,901
7AM-8AM	59	68	2,487
	65	73	2,677
	66	74	2,772
8AM-9AM	64	70	2,408
	69	83	2,656
	69	88	2,768

Number of Responses / Hour of the Day



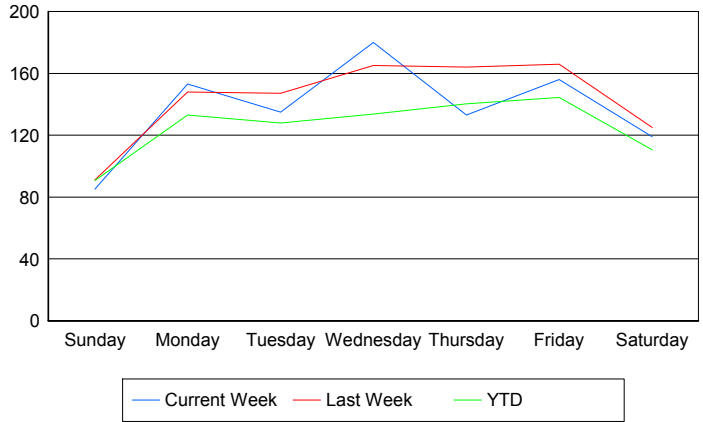
	Current We	Last Week	YTD
9AM-10AM	63	60	2,161
	69	66	2,315
	70	66	2,389
10AM-11AM	72	64	2,087
	77	68	2,255
	79	69	2,350
11AM-12PM	44	55	1,956
	48	68	2,102
	49	73	2,190
12PM-1PM	57	53	2,057
	61	57	2,190
	68	57	2,271
1PM-2PM	53	39	1,929
	56	41	2,076
	59	41	2,164
2PM-3PM	69	60	2,227
	73	66	2,378
	74	69	2,480
3PM-4PM	56	65	2,189
	56	72	2,350
	59	75	2,451
4PM-5PM	60	66	2,448
	66	70	2,617
	70	75	2,723
5PM-6PM	53	73	2,277
	55	82	2,471
	56	94	2,576
6PM-7PM	68	55	1,835
	69	57	1,930
	73	57	1,993
7PM-8PM	47	48	411
	50	52	437
	54	57	459
8PM-9PM	30	35	253
	32	37	271
	34	42	291
9PM-10PM	20	21	209
	21	21	224
	21	21	239
10PM-11PM	27	26	235
	28	26	246
	28	26	256
11PM-12AM	24	26	225
	25	26	236
	25	26	249

Road Ranger / SIRV Performance By Day of Week

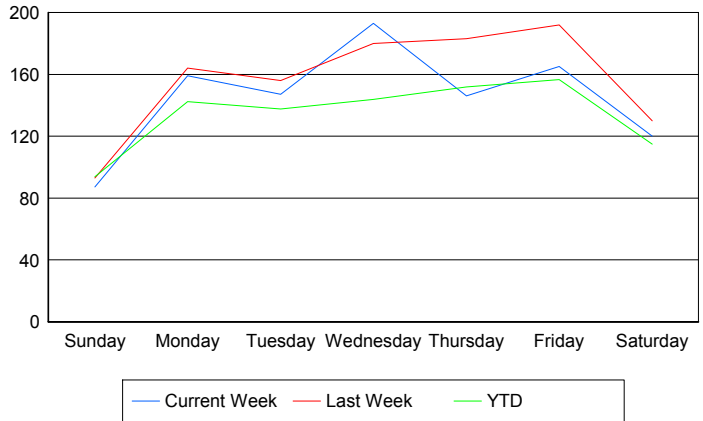
Values presented are:
 - Total Events with a RR/SIRV Response
 - Total RR/SIRV Responses,
 - Total Activities Performed

	Current We	Last Week	YTD
Sunday	87	89	664
	89	91	686
	92	94	719
Monday	153	148	5,484
	159	164	5,870
	165	168	6,049
Tuesday	135	147	5,244
	147	156	5,636
	151	167	5,832
Wednesday	180	165	5,485
	193	180	5,898
	200	186	6,162
Thursday	133	164	5,931
	146	183	6,415
	151	199	6,681
Friday	156	166	6,144
	165	192	6,659
	174	203	6,968
Saturday	119	125	920
	120	130	959
	123	134	1,006

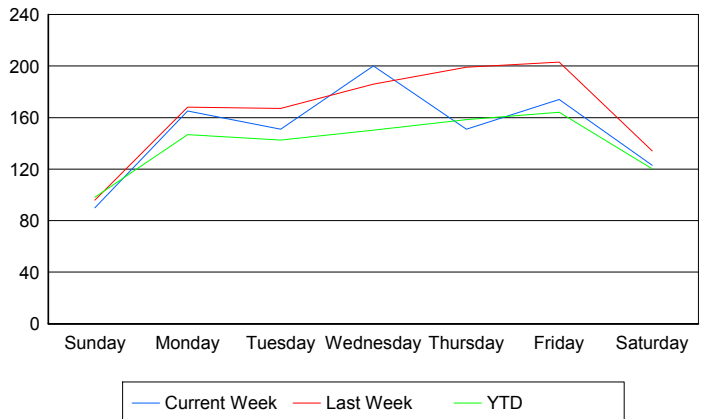
Avg # of events with a RR/SIRV Response per Day of the Week



Avg # of RR/SIRV Responses per Day of the Week



Avg # of RR/SIRV Activities Performed per Day of the Week



Road Ranger / SIRV Responses per Time of Day and Day of Week

