



Weekly Performance Measures Report Broward County



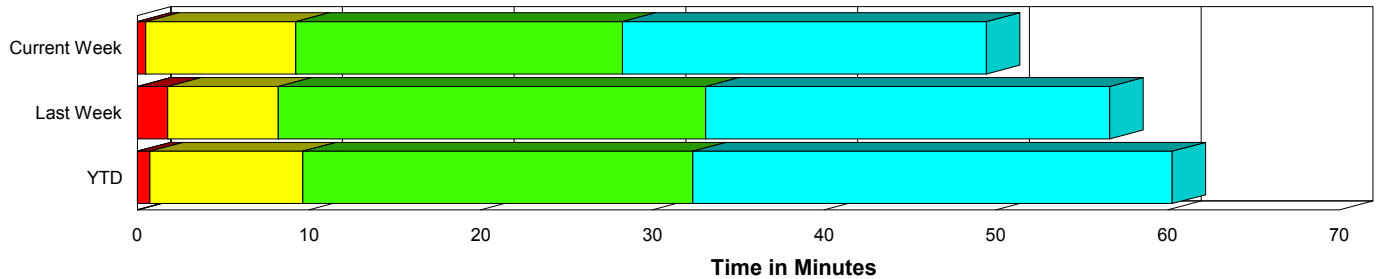
Created on:
October 18, 2009
9:08 pm

Period From Oct 11, 2009 to Oct 17, 2009

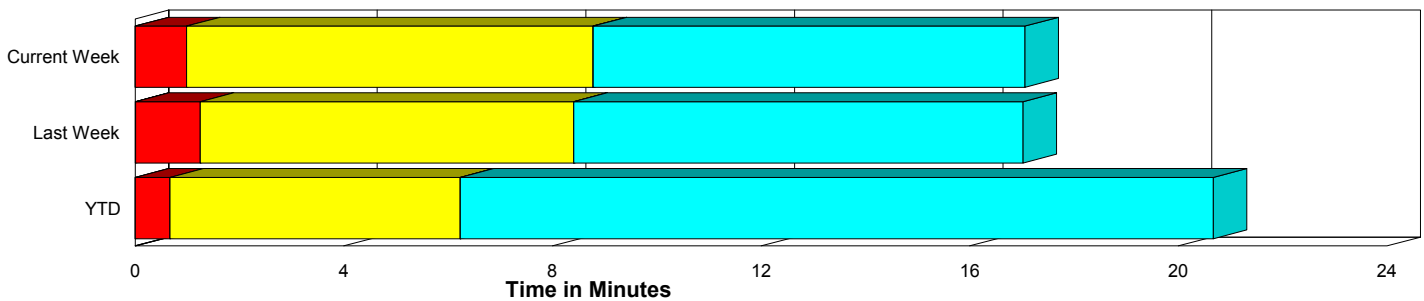
Performance Measures Summary

	Traffic Events (No Lanes Blocked)			Incidents (Lanes Blocked)		
	<u>This Week</u>	<u>Last Week</u>	<u>YTD</u>	<u>This Week</u>	<u>Last Week</u>	<u>YTD</u>
Number of Events	1,274	1,320	40,971	64	38	1,971
TMC Detection (min.)	0.00	0.01	0.01	0.00	0.00	0.00
TMC Verification (min.)	0.98	1.24	0.66	0.50	1.77	0.72
TMC Response (min.)	9.29	9.14	6.73	9.25	8.47	9.83
RR Dispatch Time (min.)	1.31	1.53	1.20	1.57	1.92	2.71
RR Response Time (min.)	8.13	7.76	5.66	7.69	6.57	7.27
Roadway Clearance (min.)				27.24	30.51	31.44
Event Clearance (min.)	17.57	17.77	21.17	48.42	54.04	58.95
# of Events w/ RR/SIRV	1,051	1,082	28,260	61	34	1,402
RR/SIRV Responses	1,051	1,082	28,260	61	34	1,402
RR/SIRV Activities	829	859	24,074	126	69	2,848

Incident Clearance Time-Line



Traffic Event (Non-Lane Blockage) Time-Line



<ul style="list-style-type: none"> Avg. TMC Detection Time Avg. Time from TMC Detection to TMC Verification Avg. Time from TMC Verification to TMC Response 	<ul style="list-style-type: none"> Avg. Time from TMC Response to Roadway Clearance* Avg. Time from Roadway Clearance to Incident/Event Clearance**
--	--

* Roadway clearance equals all travel lanes open

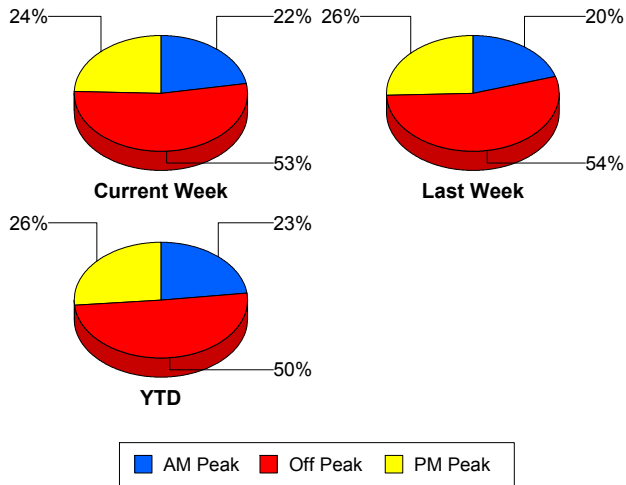
** Incident clearance equals time when last responder has left the scene

Performance Measures by Peak Period

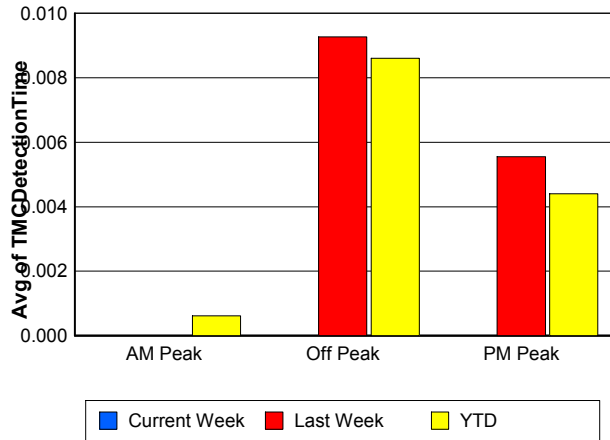
Note: AM peak period is defined as 6am to 10am and PM peak period is defined as 3pm to 7pm.

	AM Peak			Off Peak			PM Peak		
	<u>Current Week</u>	<u>Last Week</u>	<u>YTD</u>	<u>Current Week</u>	<u>Last Week</u>	<u>YTD</u>	<u>Current Week</u>	<u>Last Week</u>	<u>YTD</u>
Number of Events	298	276	9,931	714	734	21,644	326	348	11,367
Number of Incidents	14	9	453	28	23	972	22	6	546
TMC Detection (min.)	0.00	0.00	0.00	0.00	0.01	0.01	0.00	0.01	0.00
TMC Verification (min.)	0.60	1.10	0.55	0.98	1.22	0.63	1.24	1.45	0.84
TMC Response (min.)	9.55	9.01	6.35	10.22	9.62	7.74	7.31	8.28	6.28
RR Dispatch Time (min.)	0.91	1.00	0.97	1.69	1.69	1.72	0.96	1.66	0.91
RR Response Time (min.)	8.76	8.25	5.48	8.62	8.02	6.13	6.51	6.76	5.49
Event Clearance (min.)	17.71	15.76	21.14	20.08	19.68	25.21	18.02	19.29	20.06
Roadway Clearance (min.)	31.12	31.48	28.24	30.02	32.32	35.43	21.21	22.12	27.00
Incident Clearance (min.)	50.40	57.70	56.73	47.53	54.85	62.36	48.28	45.44	54.73
# of Events w/ RR/SIRV	254	230	8,118	573	600	12,664	285	286	8,880
RR/SIRV Responses	254	230	8,118	573	600	12,664	285	286	8,880
RR/SIRV Activities	228	189	7,647	470	482	11,105	257	257	8,170

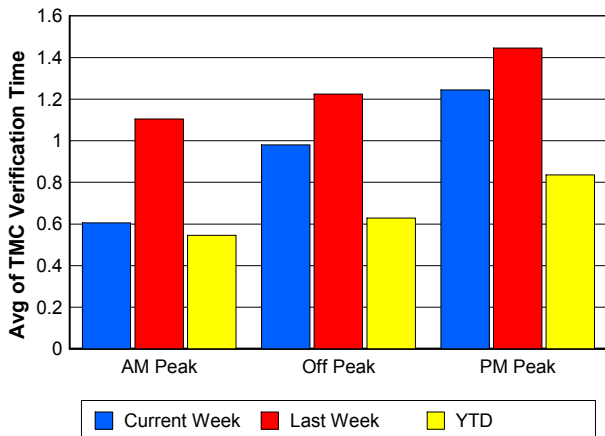
Number of Events / Peak Period



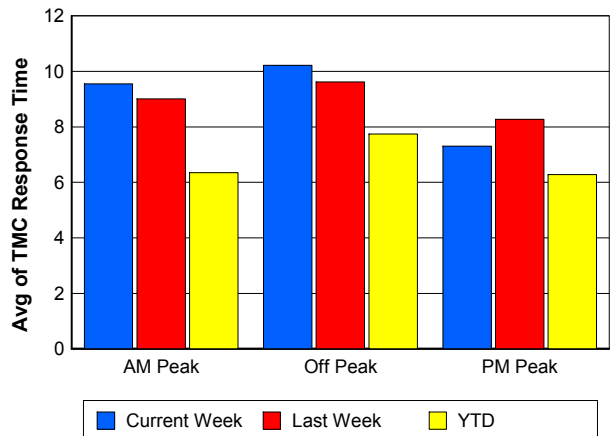
TMC Detection Time



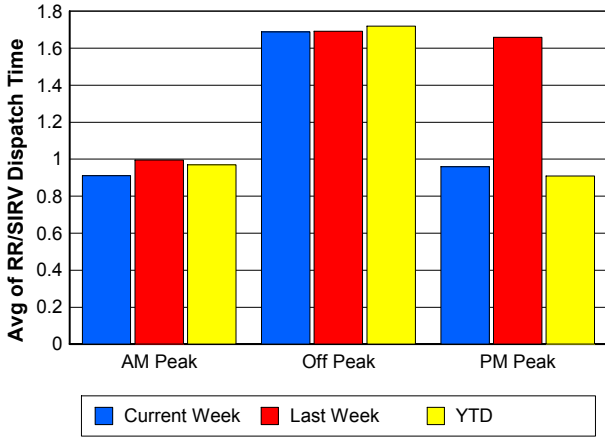
TMC Verification Time



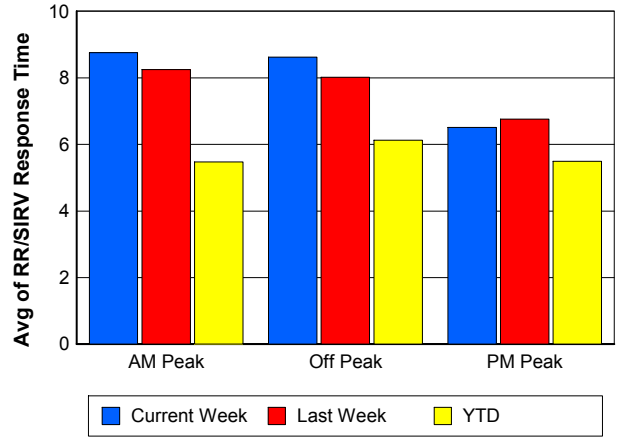
TMC Response Time



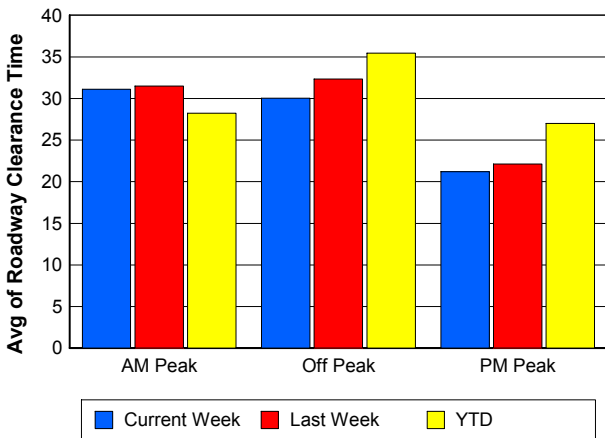
Road Ranger / SIRV Dispatch Time



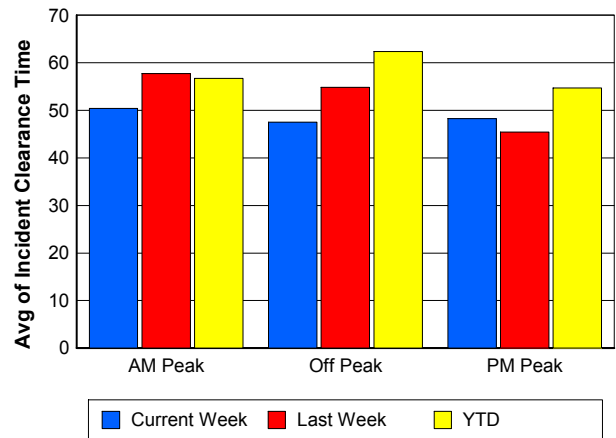
Road Ranger / SIRV Response Time



Roadway Clearance Time (2A)



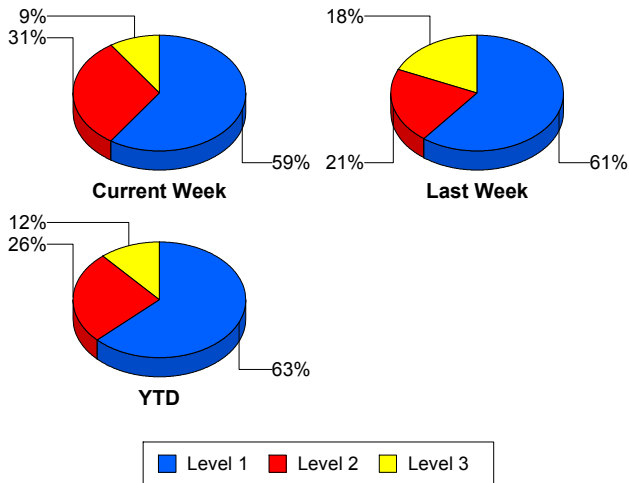
Incident Clearance Time (3B)



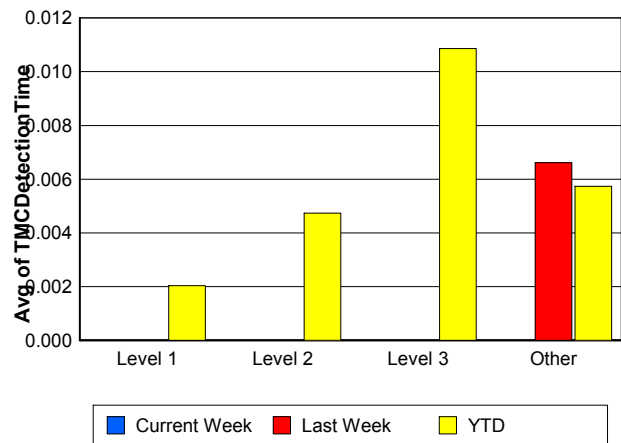
Performance Measures by Severity

	Level 1			Level 2			Level 3			Other		
	<u>This Week</u>	<u>Last Week</u>	<u>YTD</u>	<u>This Week</u>	<u>Last Week</u>	<u>YTD</u>	<u>This Week</u>	<u>Last Week</u>	<u>YTD</u>	<u>This Week</u>	<u>Last Week</u>	<u>YTD</u>
Number of Events	38	23	1,240	20	8	504	6	7	227	1,274	1,320	40,971
Number of Incidents	38	23	1,240	20	8	504	6	7	227	0	0	0
TMC Detection (min.)	0.00	0.00	0.00	0.00	0.00	0.00	0.00	0.00	0.01	0.00	0.01	0.01
TMC Verification (min.)	0.21	0.92	0.48	1.15	5.31	1.06	0.18	0.52	1.29	0.98	1.24	0.66
TMC Response (min.)	9.44	6.87	7.46	9.78	14.17	10.11	5.85	5.96	21.43	9.29	9.14	6.73
RR Dispatch Time (min.)	1.79	1.25	1.62	1.47	4.31	2.66	0.34	0.92	7.97	1.31	1.53	1.20
RR Resp. Time (min.)	7.64	5.67	5.91	8.31	9.86	7.74	5.51	5.04	13.39	8.13	7.76	5.66
Event Clearance (min.)	37.48	42.89	45.51	63.34	61.11	71.67	67.94	82.57	103.89	17.57	17.77	21.17
Roadway Clear. (min.)	15.33	16.01	14.41	45.24	53.61	49.20	42.65	51.76	85.08			
Incident Clearance (min.)	37.48	42.89	45.51	63.34	61.11	71.67	67.94	82.57	103.89			
# of Events w/ RR/SIRV	36	20	917	20	8	292	5	6	193	1,051	1,082	28,260
RR/SIRV Responses	36	20	917	20	8	292	5	6	193	1,051	1,082	28,260
RR/SIRV Activities	59	35	1,596	54	18	807	13	16	445	829	859	24,074

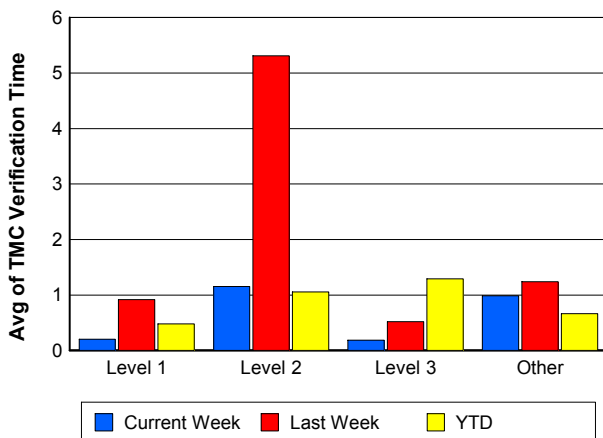
Number of Events / Severity



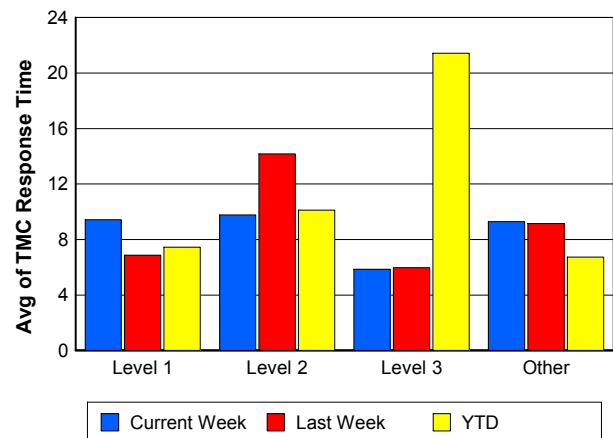
TMC Detection Time



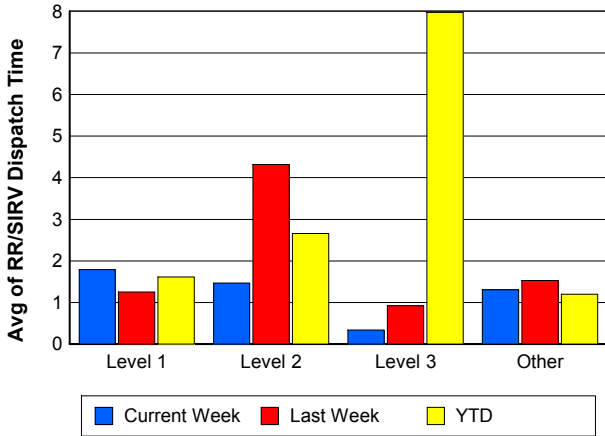
TMC Verification Time



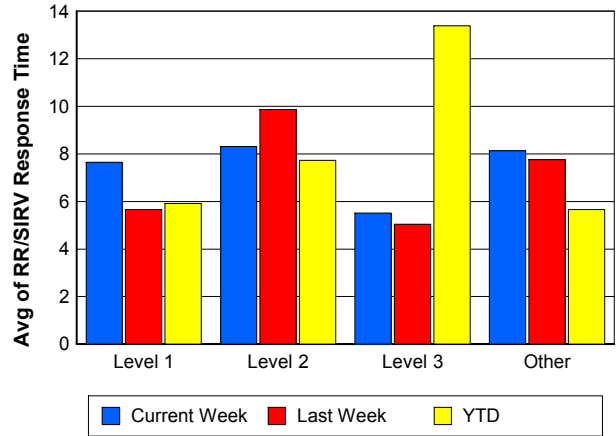
TMC Response Time



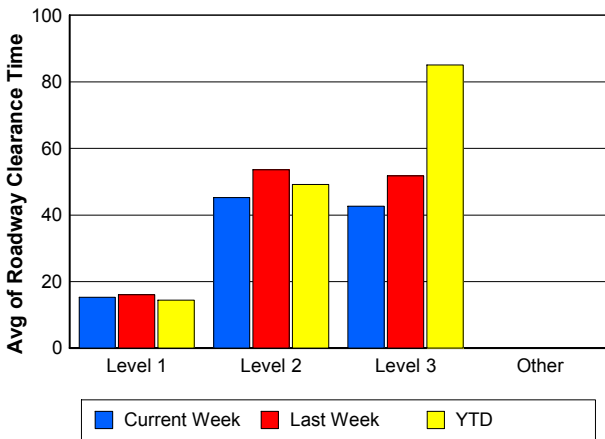
Road Ranger / SIRV Dispatch Time



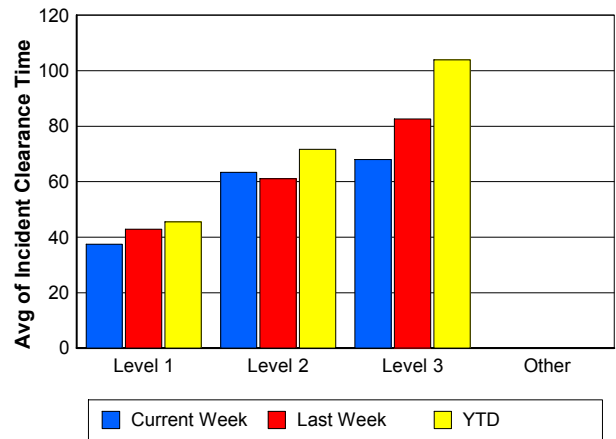
Road Ranger / SIRV Response Time



Roadway Clearance Time (2A)



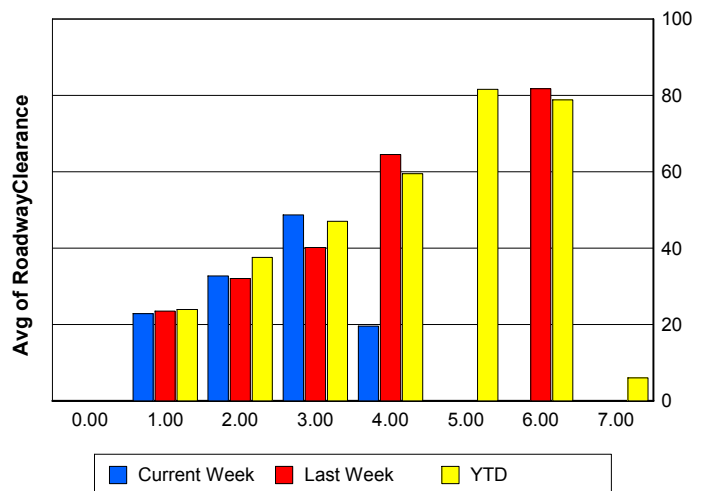
Incident Clearance Time (3B)



Roadway Clearance by Maximum Number of Lanes Blocked

	Current Week	Last Week	YTD
0			
1	22.86	23.46	23.93
2	32.70	32.06	37.54
3	48.68	40.17	47.03
4	19.57	64.49	59.50
5	0.00	0.00	81.58
6	0.00	81.75	78.82
7	0.00	0.00	5.97

Roadway Clearance Time (2A)



Performance Measures by Roadway

595

	<u>Current Week</u>	<u>Last Week</u>	<u>YTD</u>
Number of Events	41	35	4,510
Number of Incidents	4	4	274
TMC Detection (min.)	0.00	0.02	0.01
TMC Verification (min.)	2.56	2.97	0.83
TMC Response (min.)	14.82	16.06	6.79
RR Dispatch Time (min.)	0.77	1.40	1.15
RR Resp. Time (min.)	14.41	14.58	5.75
Event Clearance (min.)	17.99	21.44	21.43
Roadway Clear. (min.)	36.22	32.25	31.49
Incident Clearance (min.)	48.55	48.08	54.48
# of Events w/ RR/SIRV	26	27	3,148
RR/SIRV Responses	26	27	3,148
RR/SIRV Activities	17	19	2,869

75

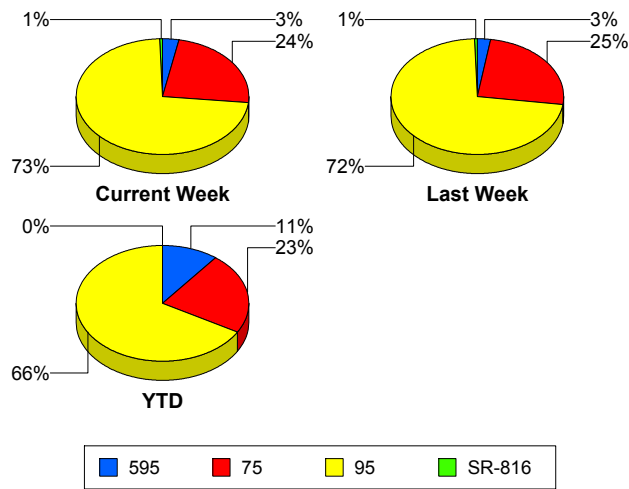
	<u>Current Week</u>	<u>Last Week</u>	<u>YTD</u>
Number of Events	316	333	9,849
Number of Incidents	7	8	188
TMC Detection (min.)	0.00	0.01	0.00
TMC Verification (min.)	0.86	1.65	0.84
TMC Response (min.)	10.84	9.09	8.15
RR Dispatch Time (min.)	1.23	2.00	1.26
RR Resp. Time (min.)	9.89	7.37	7.00
Event Clearance (min.)	17.24	20.18	24.79
Roadway Clear. (min.)	32.77	47.99	52.40
Incident Clearance (min.)	59.90	65.69	80.26
# of Events w/ RR/SIRV	245	270	6,626
RR/SIRV Responses	245	270	6,626
RR/SIRV Activities	192	240	5,716

95

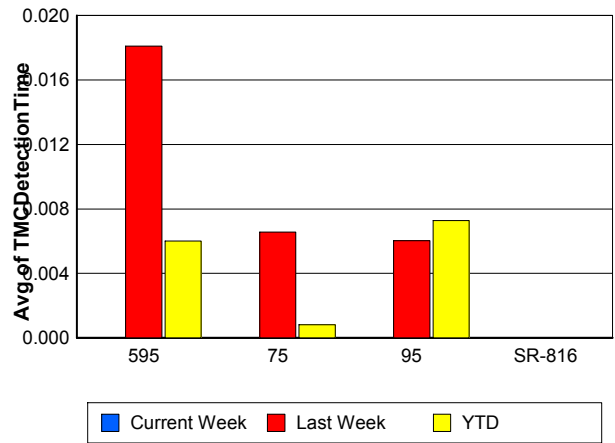
	<u>Current Week</u>	<u>Last Week</u>	<u>YTD</u>
Number of Events	973	981	28,528
Number of Incidents	47	25	1,474
TMC Detection (min.)	0.00	0.01	0.01
TMC Verification (min.)	0.93	1.08	0.58
TMC Response (min.)	8.80	9.05	6.54
RR Dispatch Time (min.)	1.38	1.41	1.30
RR Resp. Time (min.)	7.51	7.74	5.37
Event Clearance (min.)	19.65	18.29	22.50
Roadway Clear. (min.)	26.15	24.01	29.13
Incident Clearance (min.)	49.91	51.57	58.09
# of Events w/ RR/SIRV	833	811	19,836
RR/SIRV Responses	833	811	19,836
RR/SIRV Activities	736	661	18,275

	<u>Current Week</u>	<u>Last Week</u>	<u>YTD</u>
Number of Events	8	9	55
Number of Incidents	6	1	35
TMC Detection (min.)	0.00	0.00	0.00
TMC Verification (min.)	0.06	0.00	0.22
TMC Response (min.)	3.27	0.00	0.73
RR Dispatch Time (min.)	0.29	0.00	0.07
RR Resp. Time (min.)	2.98	0.00	0.66
Event Clearance (min.)	22.86	10.18	12.51
Roadway Clear. (min.)	23.32	46.32	15.91
Incident Clearance (min.)	23.20	46.28	15.74
# of Events w/ RR/SIRV	8	8	52
RR/SIRV Responses	8	8	52
RR/SIRV Activities	10	8	62

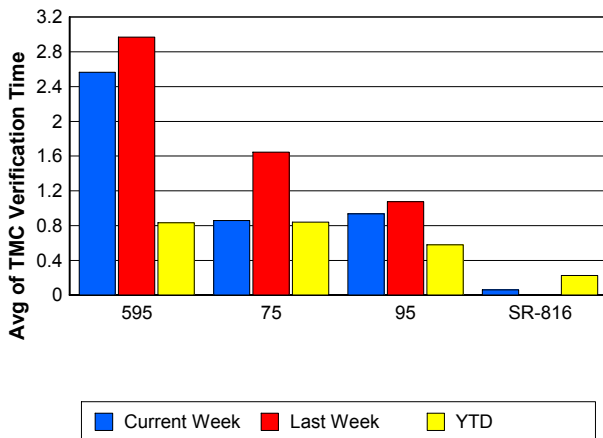
Number of Events / Roadway



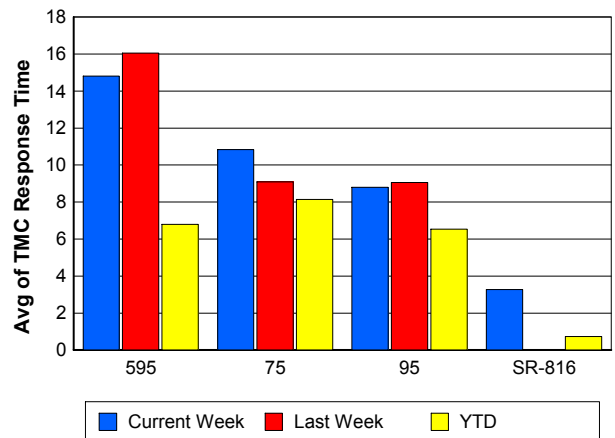
TMC Detection Time



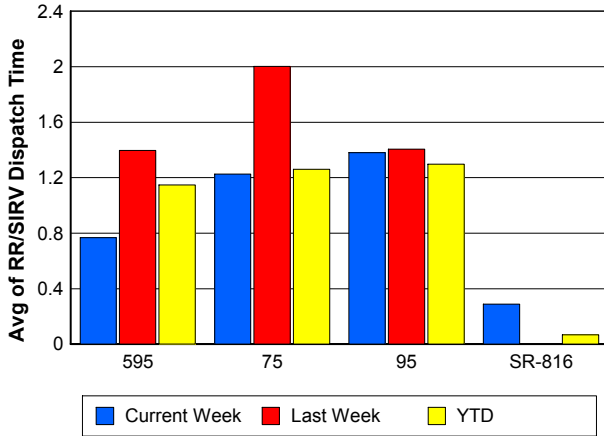
TMC Verification Time



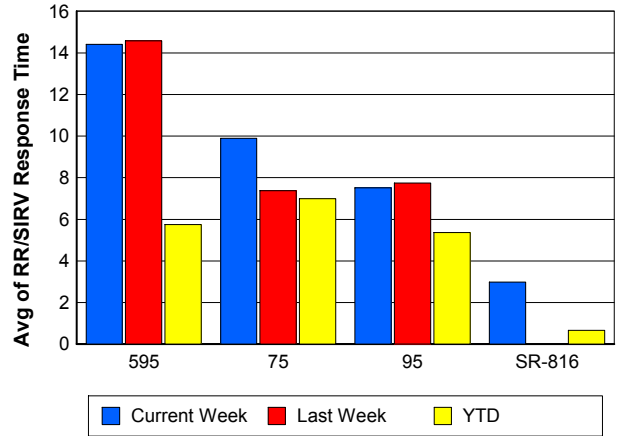
TMC Response Time



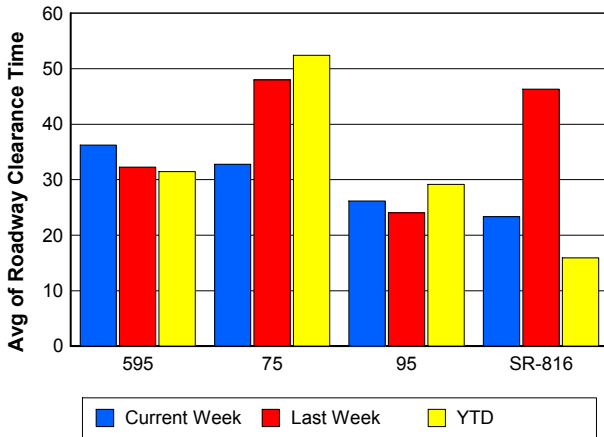
Road Ranger / SIRV Dispatch Time



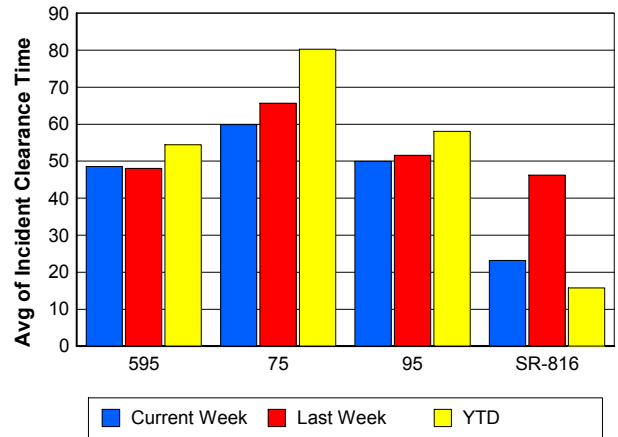
Road Ranger / SIRV Response Time



Roadway Clearance Time (2A)



Incident Clearance Time (3B)



Performance Measures by Event Type

Accident

	<u>Current Week</u>	<u>Last Week</u>	<u>YTD</u>
Number of Events	79	60	2,934
Number of Incidents	45	28	1,416
TMC Detection (min.)	0.00	0.00	0.01
TMC Verification (min.)	0.58	0.63	0.74
TMC Response (min.)	8.27	9.17	8.98
RR Dispatch Time (min.)	0.97	2.32	1.67
RR Response Time (min.)	7.31	6.85	7.39
Event Clearance (min.)	47.11	48.79	54.89
Roadway Clearance (min.)	30.59	34.25	32.97
Incident Clearance (min.)	56.96	63.41	66.10
# of Events w/ RR/SIRV	79	58	2,182
RR/SIRV Assists	79	58	2,182
RR/SIRV Activities	139	85	3,398

Debris on Roadway

	<u>Current Week</u>	<u>Last Week</u>	<u>YTD</u>
Number of Events	36	65	1,319
Number of Incidents	0	1	27
TMC Detection (min.)	0.00	0.00	0.09
TMC Verification (min.)	8.56	7.06	4.03
TMC Response (min.)	12.15	10.13	7.73
RR Dispatch Time (min.)	0.46	0.81	0.87
RR Response Time (min.)	11.76	9.40	6.90
Event Clearance (min.)	13.69	12.09	11.61
Roadway Clearance (min.)		51.50	24.93
Incident Clearance (min.)		53.17	32.89
# of Events w/ RR/SIRV	34	61	1,222
RR/SIRV Assists	34	61	1,222
RR/SIRV Activities	34	58	1,243

Disabled Vehicle

	<u>Current Week</u>	<u>Last Week</u>	<u>YTD</u>
Number of Events	764	761	25,299
Number of Incidents	11	6	318
TMC Detection (min.)	0.00	0.00	0.00
TMC Verification (min.)	1.09	1.53	0.79
TMC Response (min.)	9.36	9.06	6.52
RR Dispatch Time (min.)	1.34	1.63	1.10
RR Response Time (min.)	8.09	7.65	5.46
Event Clearance (min.)	21.83	21.85	25.61
Roadway Clearance (min.)	21.93	16.51	19.06
Incident Clearance (min.)	29.88	23.45	33.26
# of Events w/ RR/SIRV	746	738	20,450
RR/SIRV Assists	746	738	20,450
RR/SIRV Activities	732	740	20,839

Emergency Vehicles

	<u>Current Week</u>	<u>YTD</u>
Number of Events	4	67
Number of Incidents	4	52
TMC Detection (min.)	0.00	0.00
TMC Verification (min.)	0.00	0.58
TMC Response (min.)	8.75	13.23
RR Dispatch Time (min.)	0.45	8.75
RR Response Time (min.)	8.30	3.86
Event Clearance (min.)	23.14	51.04
Roadway Clearance (min.)	11.70	50.40
Incident Clearance (min.)	23.14	57.47
# of Events w/ RR/SIRV	1	37
RR/SIRV Assists	1	37
RR/SIRV Activities	2	62

Other

	<u>Current Week</u>	<u>Last Week</u>	<u>YTD</u>
Number of Events	447	465	12,908
Number of Incidents	0	0	27
TMC Detection (min.)	0.00	0.01	0.00
TMC Verification (min.)	0.25	0.11	0.08
TMC Response (min.)	8.23	8.57	8.39
RR Dispatch Time (min.)	1.50	1.29	1.74
RR Response Time (min.)	7.38	7.52	6.30
Event Clearance (min.)	9.72	10.76	11.03
Roadway Clearance (min.)			30.45
Incident Clearance (min.)			35.84
# of Events w/ RR/SIRV	245	254	5,535
RR/SIRV Assists	245	254	5,535
RR/SIRV Activities	35	40	1,068

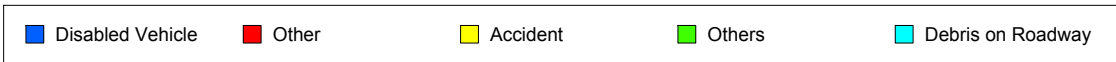
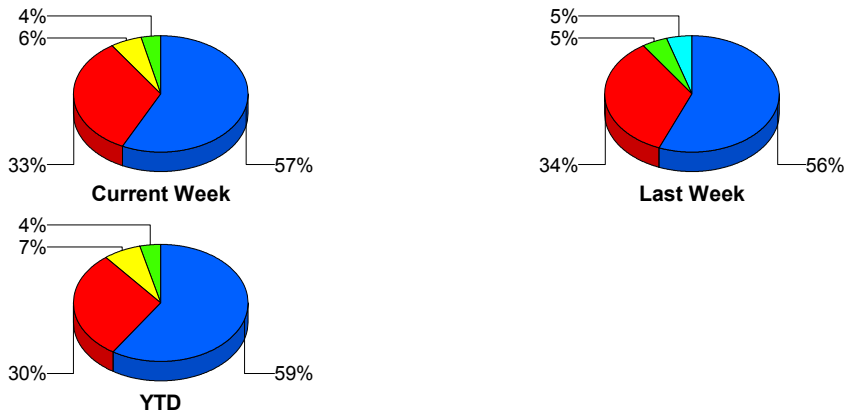
Police Activity

	<u>Current Week</u>	<u>Last Week</u>	<u>YTD</u>
Number of Events	5	2	171
Number of Incidents	4	2	56
TMC Detection (min.)	0.00	0.00	0.00
TMC Verification (min.)	0.00	0.00	0.30
TMC Response (min.)	8.28		13.19
RR Dispatch Time (min.)	2.49		4.11
RR Response Time (min.)	5.79		9.07
Event Clearance (min.)	23.12	19.46	32.85
Roadway Clearance (min.)	19.56	17.03	37.88
Incident Clearance (min.)	28.52	19.46	46.77
# of Events w/ RR/SIRV	4	0	58
RR/SIRV Assists	4	0	58
RR/SIRV Activities	10	0	73

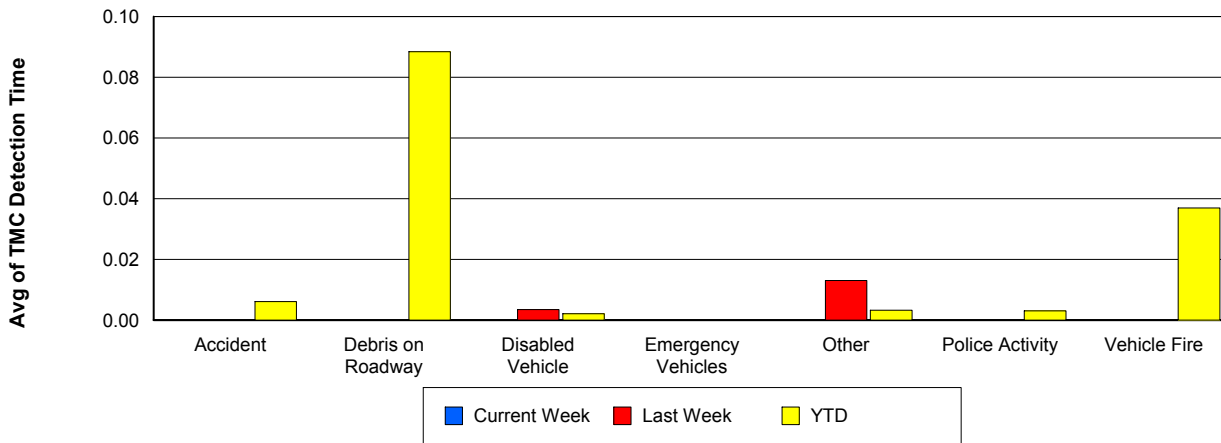
Vehicle Fire

	<u>Current Week</u>	<u>Last Week</u>	<u>YTD</u>
Number of Events	2	2	97
Number of Incidents	0	1	75
TMC Detection (min.)	0.00	0.00	0.04
TMC Verification (min.)	1.32	0.23	1.10
TMC Response (min.)	6.48	14.82	9.82
RR Dispatch Time (min.)	1.64	0.66	2.14
RR Response Time (min.)	4.84	14.16	8.08
Event Clearance (min.)	17.37	46.41	56.94
Roadway Clearance (min.)		15.78	39.86
Incident Clearance (min.)		45.07	61.08
# of Events w/ RR/SIRV	2	2	67
RR/SIRV Assists	2	2	67
RR/SIRV Activities	2	2	139

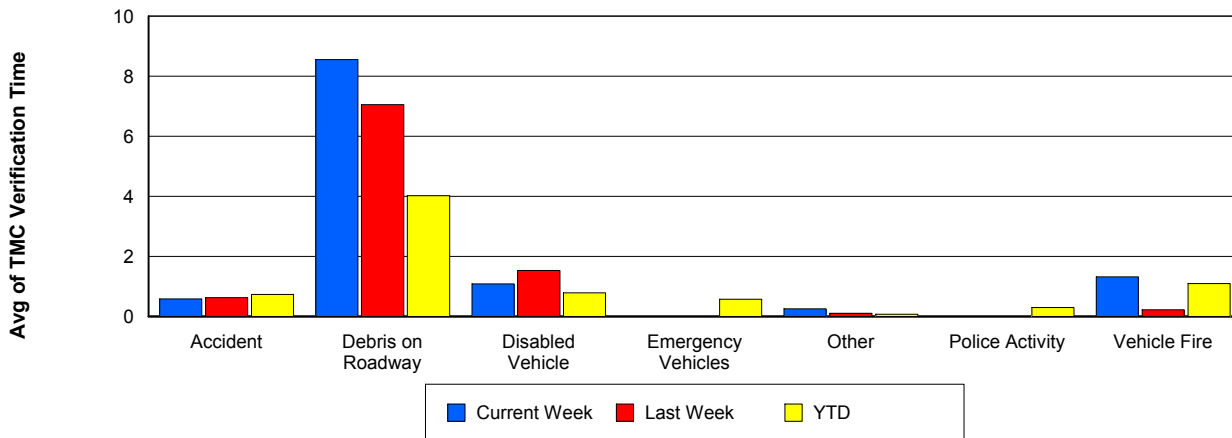
Number of Events / Event Type



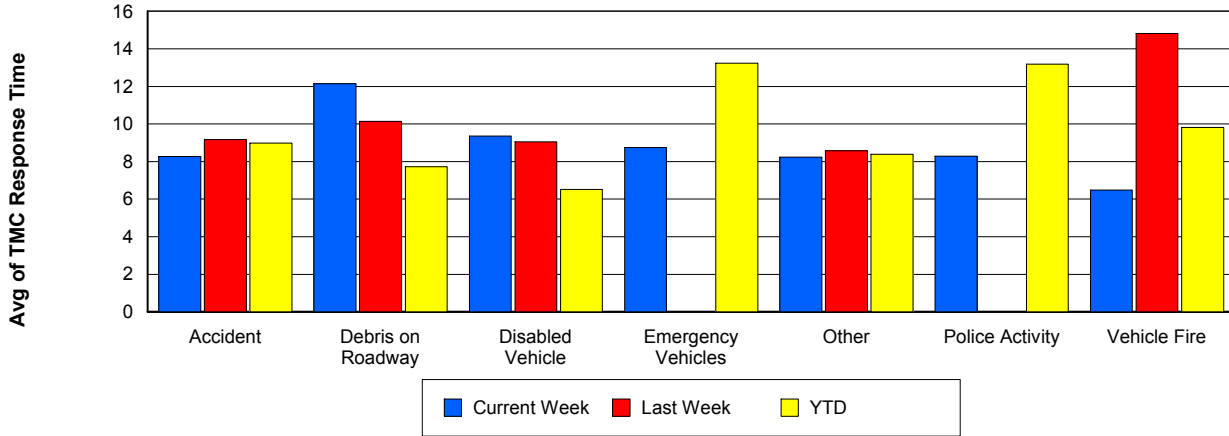
TMC Detection Time



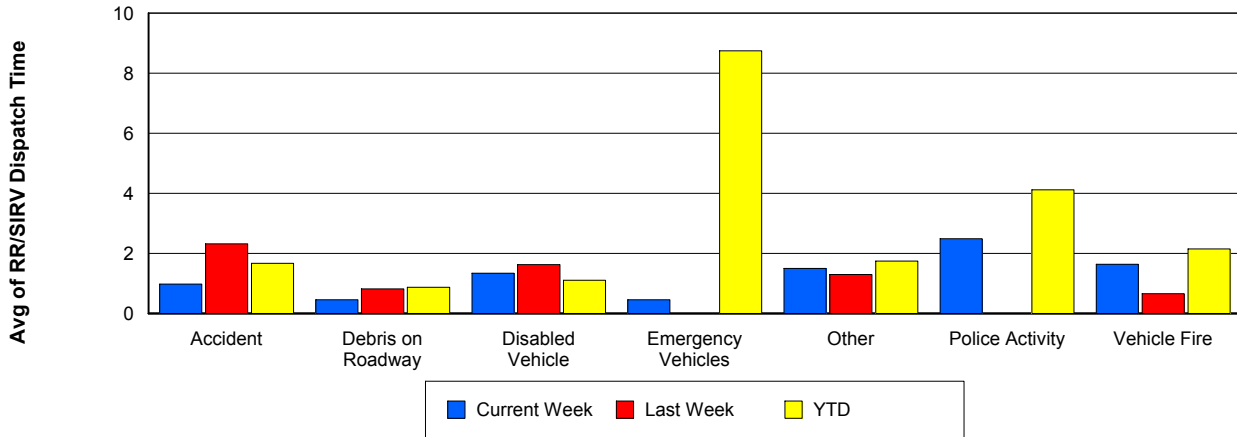
TMC Verification Time



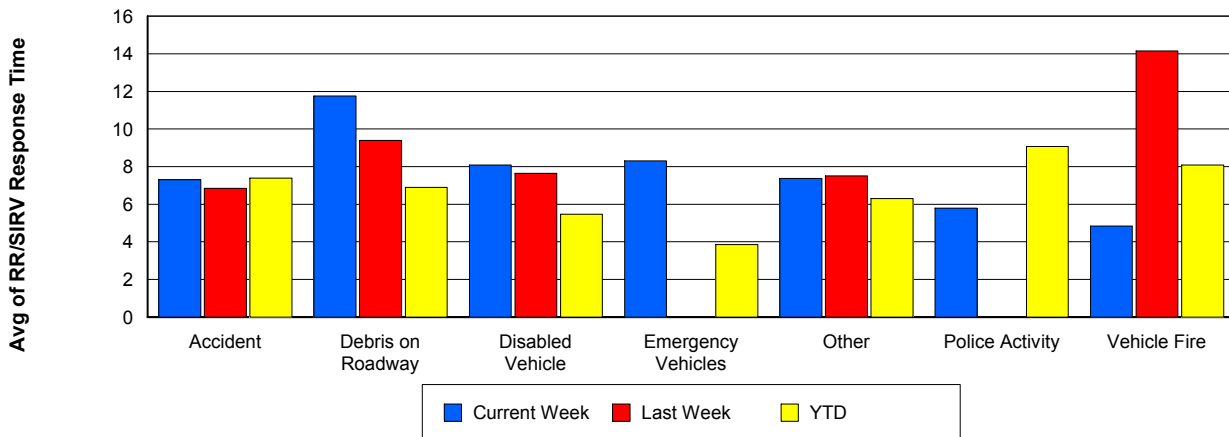
TMC Response Time



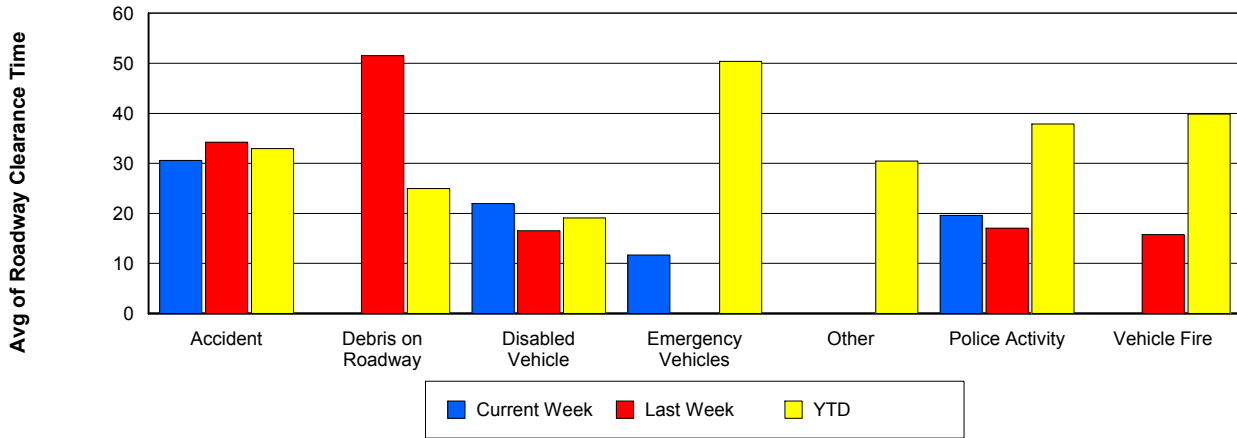
Road Ranger / SIRV Dispatch Time



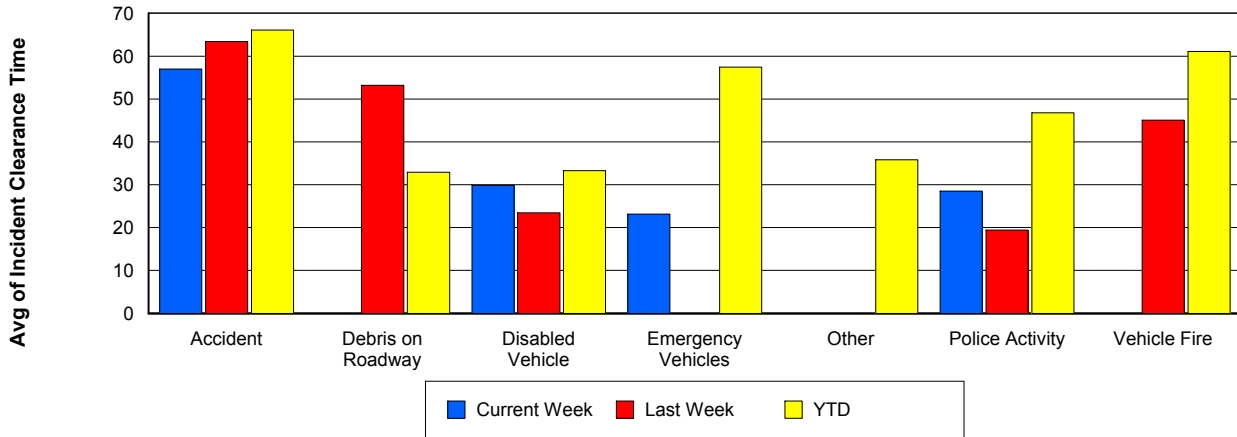
Road Ranger / SIRV Response Time



Roadway Clearance Time (2A)



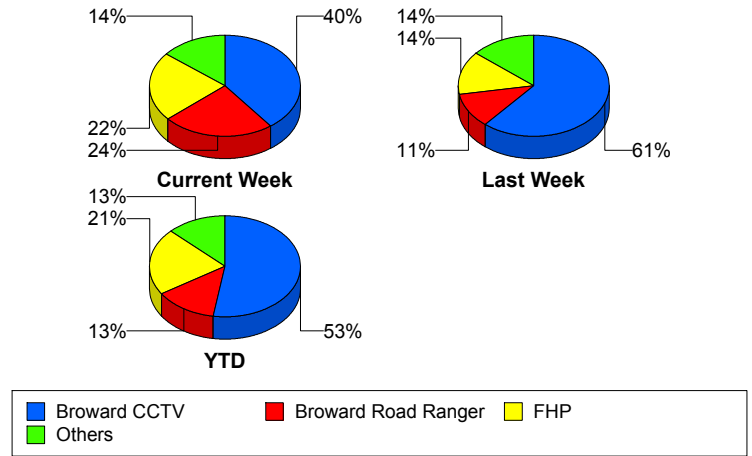
Incident Clearance Time (3B)



Incident Detection Methods

	Current Week	Last Week	YTD
Broward CCTV	25	22	1,034
Broward Road Ranger	15	4	258
Broward TMC	0	1	3
Broward VideoWall	1	0	58
BSO	1	2	42
District 4	2	1	49
District 6	1	0	2
FDOT Maintenance	1	0	5
FHP	14	5	420
Fire	0	0	3
Florida's Turnpike	0	0	6
ITMS	0	0	2
Motorist	2	0	10
Other	0	0	1
Palm Beach Road Ran	0	0	4
Road Watcher	1	0	14
SIRV	0	0	12
SmarTraveler (511)	0	0	6
VisioPaD Detection	0	1	36
Total	63	36	1,965

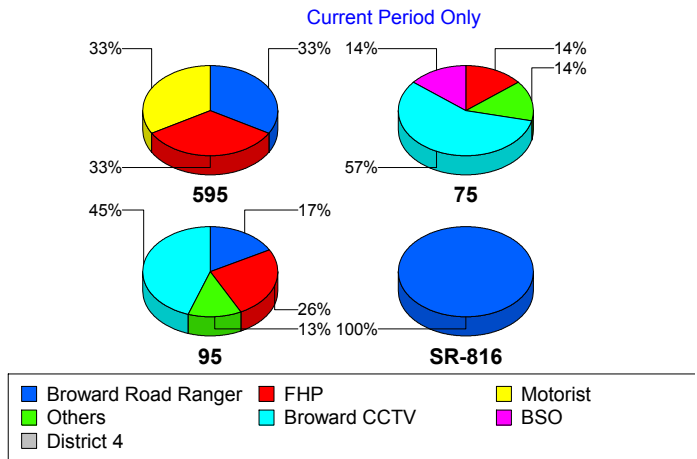
Total Incidents by Detection Method



Incident Detection Methods by Roadway

		Current Week	Last Week	YTD
595	Broward CCTV	0	1	131
	Broward Road Ranger	1	0	38
	Broward VideoWall	0	0	8
	BSO	0	1	5
	District 4	0	0	12
	FDOT Maintenance	0	0	2
	FHP	1	0	54
	Florida's Turnpike	0	0	6
	Motorist	1	0	3
	Road Watcher	0	0	3
	SIRV	0	0	1
	VisioPaD Detection	0	0	6
	Total	3	2	269
	75	Broward CCTV	4	4
Broward Road Ranger		0	1	19
Broward VideoWall		0	0	1
BSO		1	1	32
District 4		0	1	6
FHP		1	1	44
Other		0	0	1
Road Watcher		1	0	3
VisioPaD Detection		0	0	5
Total		7	8	188
95	Broward CCTV	21	17	826
	Broward Road Ranger	8	2	167
	Broward TMC	0	1	3
	Broward VideoWall	1	0	49
	BSO	0	0	5
	District 4	2	0	30
	District 6	1	0	2
	FDOT Maintenance	1	0	3

Total Events by Roadway and Detection Method

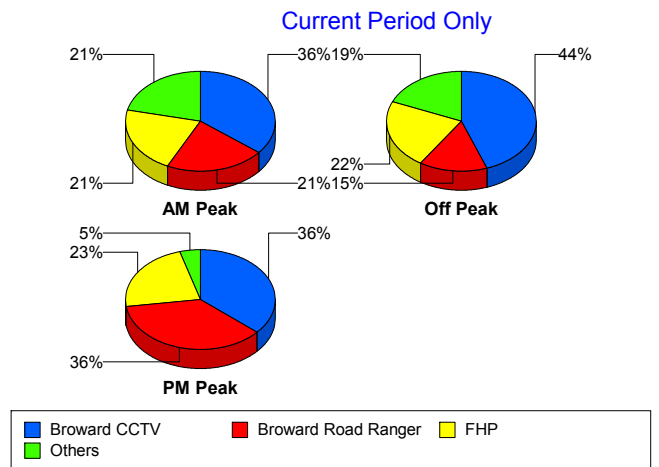


		Current Week	Last Week	YTD
95	FHP	12	4	322
	Fire	0	0	3
	ITMS	0	0	2
	Motorist	1	0	7
	Palm Beach Road Ran	0	0	4
	Road Watcher	0	0	8
	SIRV	0	0	11
	SmarTraveler (511)	0	0	6
	VisioPaD Detection	0	1	25
	Total	47	25	1,473
SR-816	Broward Road Ranger	6	1	34
	District 4	0	0	1
	Total	6	1	35
Total		63	36	1,965

Incident Detection Methods by Peak Period

		Current Week	Last Week	YTD
AM Peak	Broward CCTV	5	6	201
	Broward Road Ranger	3	1	82
	Broward TMC	0	0	1
	Broward VideoWall	0	0	20
	BSO	1	0	7
	District 4	0	1	18
	FHP	3	0	102
	Florida's Turnpike	0	0	2
	Motorist	1	0	6
	Palm Beach Road Ran	0	0	2
	Road Watcher	1	0	5
	SIRV	0	0	1
	SmarTraveler (511)	0	0	1
	VisioPaD Detection	0	0	2
	Total	14	8	450

Total Events by Peak Period and Detection Method

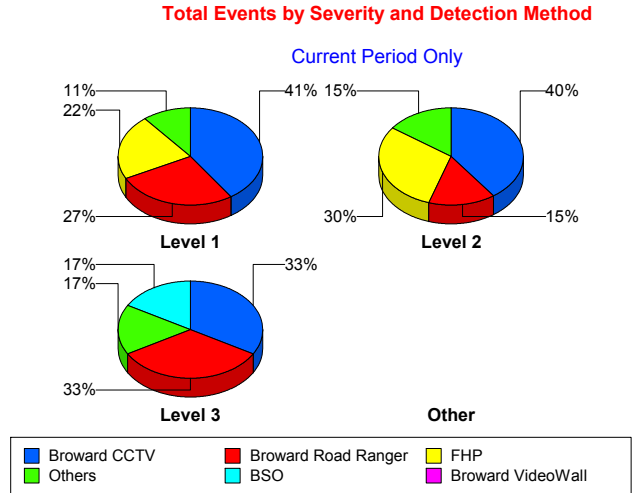


		Current Week	Last Week	YTD
Off Peak	Broward CCTV	12	13	563
	Broward Road Ranger	4	2	72
	Broward TMC	0	1	2
	Broward VideoWall	1	0	31
	BSO	0	0	27
	District 4	2	0	16
	District 6	1	0	1
	FDOT Maintenance	1	0	3
	FHP	6	5	202
	Fire	0	0	2
	Florida's Turnpike	0	0	3
	ITMS	0	0	2
	Motorist	0	0	3
	Palm Beach Road Ran	0	0	1
	Road Watcher	0	0	6
	SIRV	0	0	5
	SmarTraveler (511)	0	0	3
	VisioPaD Detection	0	1	28
	Total	27	22	970
PM Peak	Broward CCTV	8	3	270
	Broward Road Ranger	8	1	104
	Broward VideoWall	0	0	7
	BSO	0	2	8
	District 4	0	0	15
	District 6	0	0	1
	FDOT Maintenance	0	0	2
	FHP	5	0	116
	Fire	0	0	1
	Florida's Turnpike	0	0	1
	Motorist	1	0	1
	Other	0	0	1
	Palm Beach Road Ran	0	0	1

		Current Week	Last Week	YTD
PM Peak	Road Watcher	0	0	3
	SIRV	0	0	6
	SmarTraveler (511)	0	0	2
	VisioPaD Detection	0	0	6
	Total	22	6	545
Total		63	36	1,965

Incident Detection Methods by Severity

		Current Week	Last Week	YTD	
Level 1	Broward CCTV	15	16	660	
	Broward Road Ranger	10	1	185	
	Broward TMC	0	1	2	
	Broward VideoWall	0	0	37	
	BSO	0	0	10	
	District 4	1	0	36	
	District 6	1	0	1	
	FDOT Maintenance	1	0	4	
	FHP	8	3	243	
	Fire	0	0	2	
	ITMS	0	0	1	
	Motorist	1	0	7	
	Palm Beach Road Ran	0	0	3	
	Road Watcher	0	0	9	
	SIRV	0	0	11	
	SmarTraveler (511)	0	0	4	
	VisioPaD Detection	0	0	20	
	Total	37	21	1,235	
	Level 2	Broward CCTV	8	4	267
		Broward Road Ranger	3	1	50
Broward TMC		0	0	1	
Broward VideoWall		1	0	18	
BSO		0	0	10	



		Current Week	Last Week	YTD
Level 2	District 4	1	1	7
	FDOT Maintenance	0	0	1
	FHP	6	1	123
	Florida's Turnpike	0	0	4
	ITMS	0	0	1
	Motorist	1	0	3
	Other	0	0	1
	Road Watcher	0	0	2
	SIRV	0	0	1
	SmarTraveler (511)	0	0	2
	VisioPaD Detection	0	1	13
	Total	20	8	504
Level 3	Broward CCTV	2	2	107
	Broward Road Ranger	2	2	23
	Broward VideoWall	0	0	3
	BSO	1	2	22
	District 4	0	0	6
	District 6	0	0	1
	FHP	0	1	54
	Fire	0	0	1
	Florida's Turnpike	0	0	2
	Palm Beach Road Ran	0	0	1
	Road Watcher	1	0	3
	VisioPaD Detection	0	0	3
	Total	6	7	226
Total		63	36	1,965

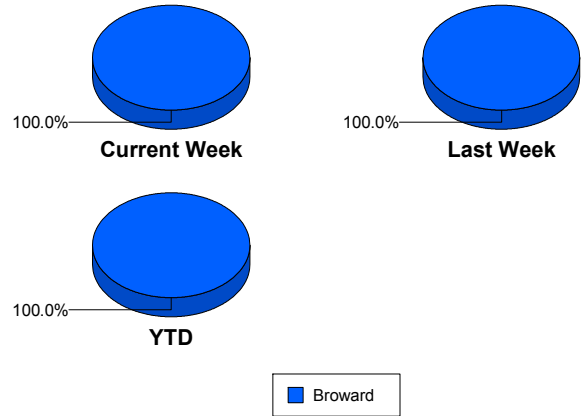
Road Ranger / SIRV Performance Measures

Road Ranger / SIRV Performance By County

Values presented are:
 - Total Events with a RR/SIRV Response
 - Total RR/SIRV Responses,
 - Total Activities Performed

	Current We	Last Week	YTD
Broward	1,004	1,022	28,891
	1,096	1,088	31,085
	1,151	1,134	32,361

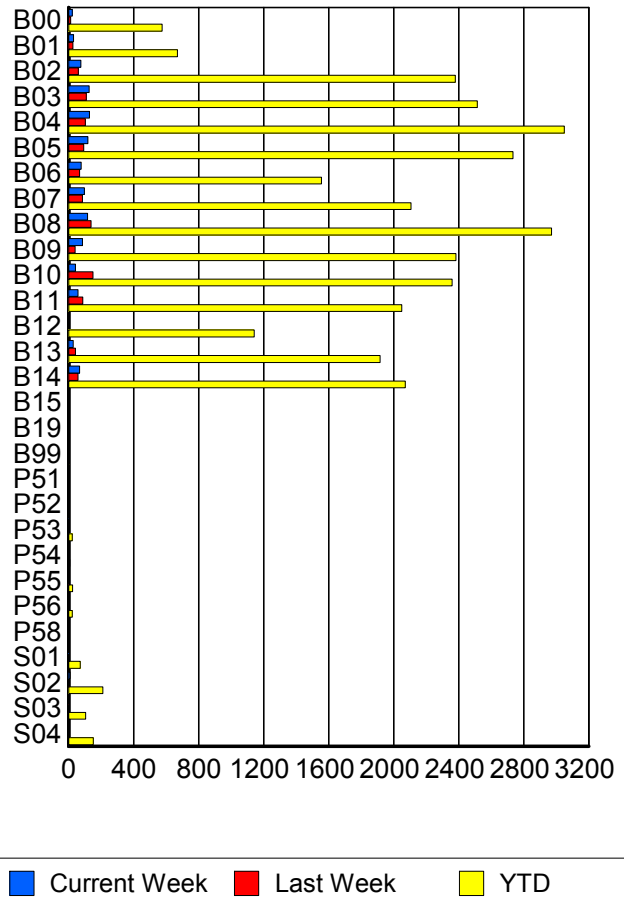
RR/SIRV Responses per County



Road Ranger / SIRV Performance By Truck

	Current We	Last Week	YTD
B00	21	12	562
	22	12	576
	25	14	604
B01	31	26	657
	31	26	669
	31	26	704
B02	73	60	2,358
	75	60	2,380
	78	60	2,478
B03	126	107	2,479
	127	108	2,515
	131	115	2,612
B04	125	103	3,016
	128	103	3,050
	132	106	3,181
B05	115	93	2,683
	119	93	2,735
	122	98	2,829
B06	77	66	1,531
	77	67	1,555
	81	69	1,605
B07	96	83	2,074
	98	86	2,107
	104	91	2,201
B08	115	136	2,932
	117	138	2,971
	124	140	3,079

RR/SIRV Responses per Truck



	Current We	Last Week	YTD
B09	85	40	2,345
	86	40	2,383
	89	41	2,475
B10	43	147	2,319
	43	149	2,359
	44	158	2,452
B11	56	87	2,017
	57	87	2,049
	60	89	2,116
B12	0	2	1,127
	0	2	1,142
	0	2	1,191
B13	28	42	1,893
	28	43	1,917
	30	46	1,987
B14	64	55	2,037
	67	57	2,072
	72	60	2,150
B15	0	0	2
	0	0	2
	0	0	2
B19	0	1	1
	0	1	1
	0	1	1
B99	0	0	4
	0	0	4
	0	0	4
P51	0	0	1
	0	0	1
	0	0	1
P52	0	0	2
	0	0	2
	0	0	2
P53	2	2	22
	2	2	23
	3	2	26
P54	0	0	7
	0	0	7
	0	0	7
P55	4	2	24
	4	2	24
	4	2	28
P56	0	0	22
	0	0	22
	0	0	23

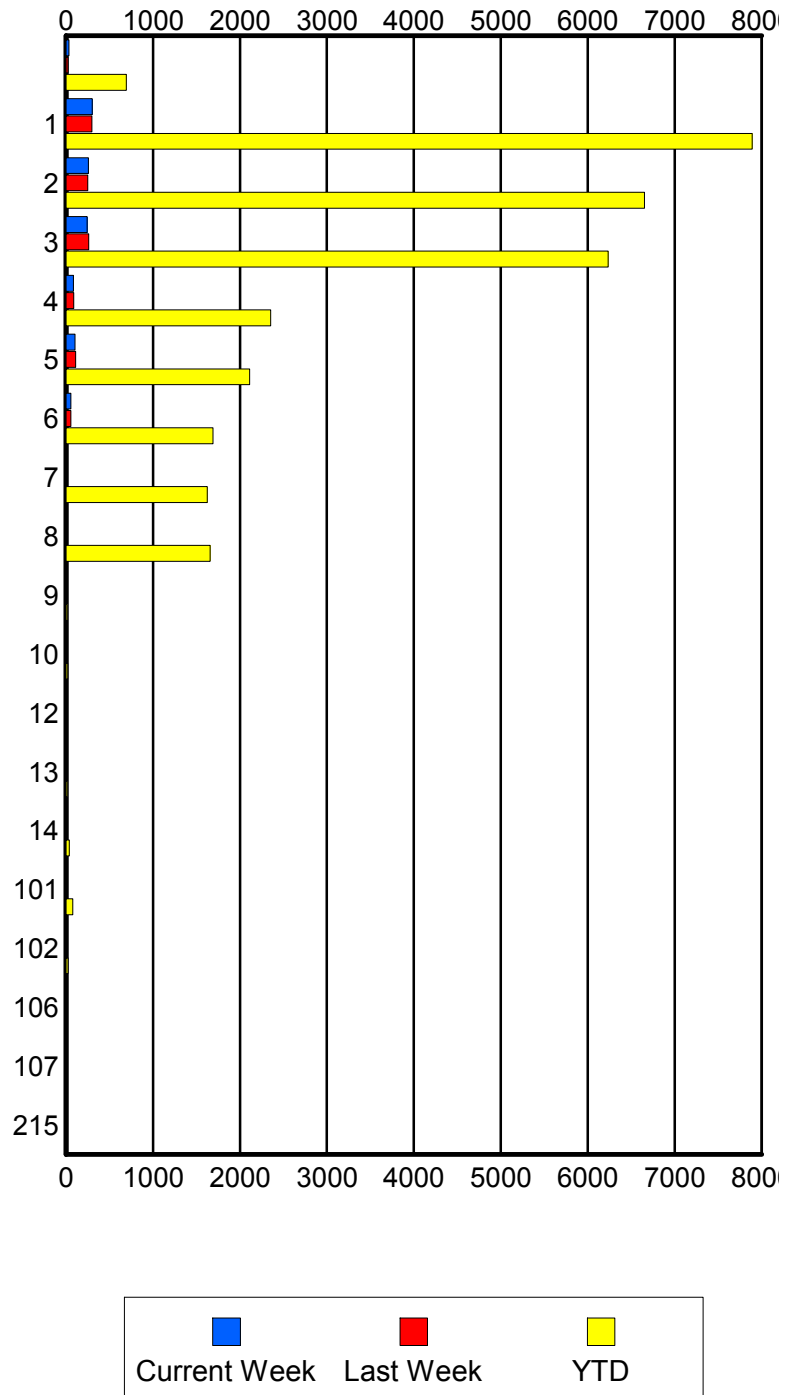
	Current We	Last Week	YTD
P58	0	0	1
	0	0	1
	0	0	1
S01	2	0	69
	2	0	72
	3	0	84
S02	9	5	204
	9	5	211
	13	7	236
S03	3	3	102
	3	3	104
	3	3	117
S04	1	4	147
	1	4	152
	2	4	165

Road Ranger / SIRV Performance By Beat

	Current We	Last Week	YTD
	33	21	650
	33	21	695
	40	23	761
1	287	287	7,445
	300	296	7,890
	314	302	8,157
2	235	245	6,423
	257	250	6,652
	274	262	6,946
3	234	248	6,052
	244	259	6,236
	252	270	6,474
4	82	85	2,303
	84	87	2,355
	85	89	2,429
5	101	108	2,074
	102	110	2,110
	103	116	2,187
6	53	54	1,653
	55	56	1,689
	58	63	1,777
7	0	0	1,600
	0	0	1,625
	0	0	1,698
8	5	0	1,638
	5	0	1,658
	8	0	1,724
9	0	0	12
	0	0	14
	0	0	14
10	0	5	18
	0	5	19
	0	5	19
12	0	0	9
	0	0	9
	0	0	9
13	0	0	14
	0	0	14
	0	0	15
14	10	0	38
	10	0	38
	10	0	39
101	6	4	75
	6	4	76
	7	4	84

Values presented are:
 - Total Events with a RR/SIRV Response
 - Total RR/SIRV Responses,
 - Total Activities Performed

RR/SIRV Responses per Beat



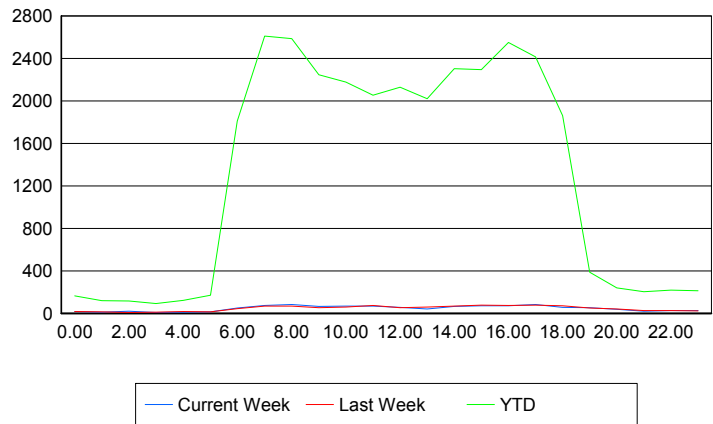
	Current We	Last Week	YTD
102	0	0	23
	0	0	23
	0	0	25
106	0	0	1
	0	0	1
	0	0	1
107	0	0	1
	0	0	1
	0	0	1
215	0	0	1
	0	0	1
	0	0	1

Road Ranger / SIRV Performance By Time of Day

Values presented are:
- Total Events with a RR/SIRV Response
- Total RR/SIRV Responses,
- Total Activities Performed

	Current We	Last Week	YTD
12AM-1AM	17	16	158
	18	16	164
	19	16	175
1AM-2AM	10	13	118
	10	13	119
	10	14	125
2AM-3AM	19	8	106
	19	8	117
	19	8	123
3AM-4AM	9	12	87
	9	12	91
	11	14	97
4AM-5AM	11	14	107
	12	16	122
	14	16	127
5AM-6AM	8	14	131
	13	15	170
	15	15	181
6AM-7AM	46	40	1,656
	50	43	1,810
	53	43	1,866
7AM-8AM	68	64	2,428
	73	67	2,612
	74	69	2,706
8AM-9AM	70	64	2,344
	83	69	2,587
	88	74	2,699

Number of Responses / Hour of the Day



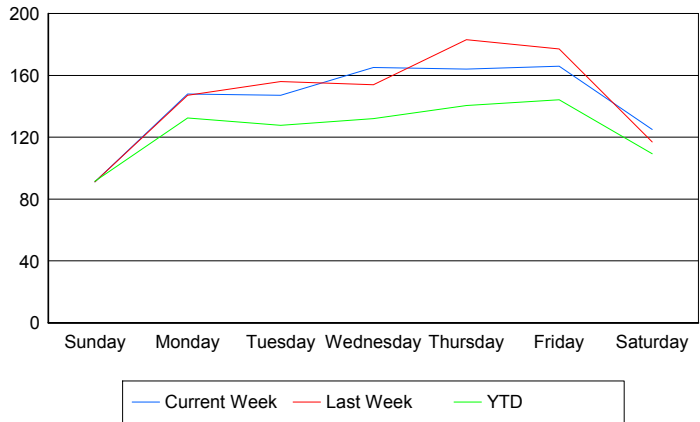
	Current We	Last Week	YTD
9AM-10AM	60	52	2,098
	66	52	2,246
	66	52	2,319
10AM-11AM	64	55	2,015
	68	60	2,178
	69	62	2,271
11AM-12PM	55	70	1,912
	68	75	2,054
	73	78	2,141
12PM-1PM	53	50	2,000
	57	53	2,129
	57	54	2,203
1PM-2PM	39	54	1,876
	41	58	2,020
	41	58	2,105
2PM-3PM	60	62	2,158
	66	67	2,305
	69	71	2,406
3PM-4PM	65	72	2,133
	72	76	2,294
	75	85	2,392
4PM-5PM	66	71	2,388
	70	75	2,551
	75	76	2,653
5PM-6PM	73	71	2,224
	82	77	2,416
	94	80	2,520
6PM-7PM	55	68	1,767
	57	70	1,861
	57	72	1,920
7PM-8PM	48	45	364
	52	50	387
	57	53	405
8PM-9PM	35	36	223
	37	40	239
	42	41	257
9PM-10PM	21	22	189
	21	25	203
	21	27	218
10PM-11PM	26	26	208
	26	27	218
	26	30	228
11PM-12AM	26	23	201
	26	24	211
	26	26	224

Road Ranger / SIRV Performance By Day of Week

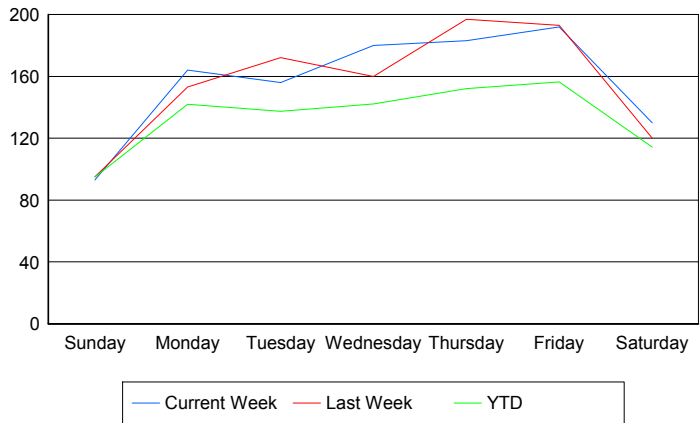
Values presented are:
 - Total Events with a RR/SIRV Response
 - Total RR/SIRV Responses,
 - Total Activities Performed

	Current We	Last Week	YTD
Sunday	89	90	577
	91	94	597
	94	97	627
Monday	148	146	5,331
	164	152	5,711
	168	155	5,884
Tuesday	147	156	5,109
	156	172	5,489
	167	174	5,681
Wednesday	165	154	5,305
	180	160	5,705
	186	164	5,962
Thursday	164	183	5,798
	183	197	6,269
	199	209	6,530
Friday	166	177	5,988
	192	193	6,494
	203	206	6,794
Saturday	125	117	801
	130	120	839
	134	129	883

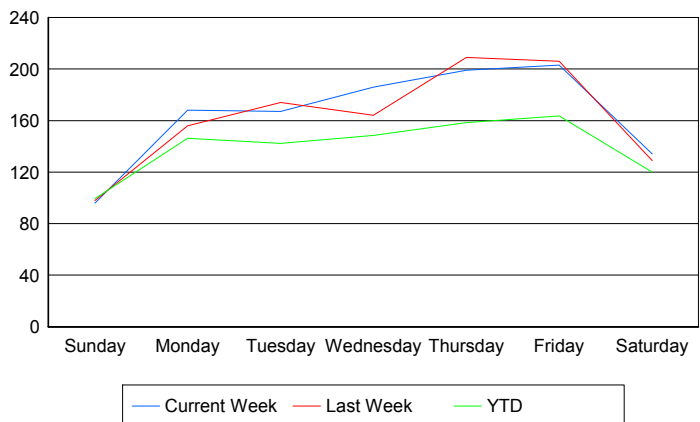
Avg # of events with a RR/SIRV Response per Day of the Week



Avg # of RR/SIRV Responses per Day of the Week



Avg # of RR/SIRV Activities Performed per Day of the Week



Road Ranger / SIRV Responses per Time of Day and Day of Week

