



Weekly Performance Measures Report Broward County



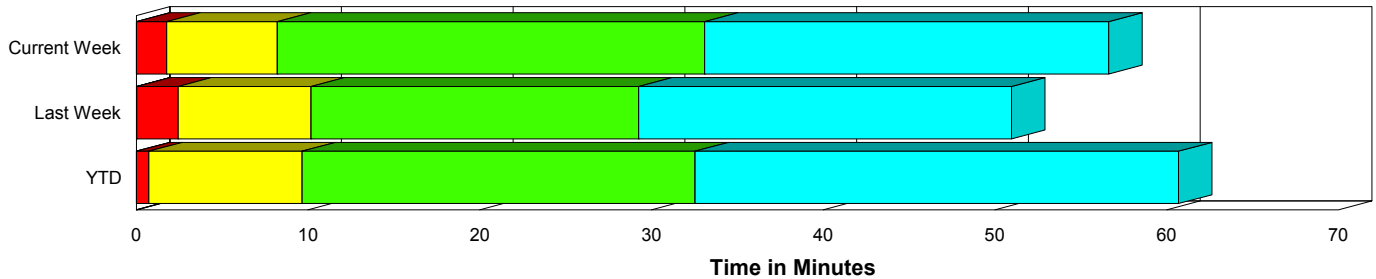
Created on:
October 12, 2009
9:52 am

Period From Oct 4, 2009 to Oct 10, 2009

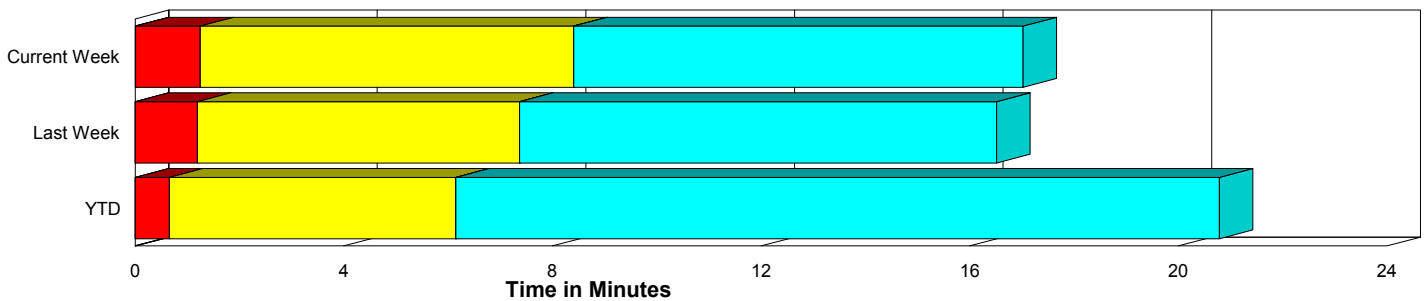
Performance Measures Summary

	Traffic Events (No Lanes Blocked)			Incidents (Lanes Blocked)		
	<u>This Week</u>	<u>Last Week</u>	<u>YTD</u>	<u>This Week</u>	<u>Last Week</u>	<u>YTD</u>
Number of Events	1,320	1,273	39,697	38	50	1,907
TMC Detection (min.)	0.01	0.00	0.01	0.00	0.03	0.00
TMC Verification (min.)	1.24	1.19	0.65	1.77	2.40	0.73
TMC Response (min.)	9.14	8.03	6.64	8.47	10.19	9.86
RR Dispatch Time (min.)	1.53	1.17	1.20	1.92	1.51	2.76
RR Response Time (min.)	7.76	7.02	5.57	6.57	8.64	7.25
Roadway Clearance (min.)				30.51	28.56	31.59
Event Clearance (min.)	17.77	17.18	21.29	54.04	50.17	59.30
# of Events w/ RR/SIRV	1,082	1,064	27,209	34	49	1,341
RR/SIRV Responses	1,082	1,064	27,209	34	49	1,341
RR/SIRV Activities	859	853	23,245	69	89	2,722

Incident Clearance Time-Line



Traffic Event (Non-Lane Blockage) Time-Line



■ Avg. TMC Detection Time	■ Avg. Time from TMC Response to Roadway Clearance*
■ Avg. Time from TMC Detection to TMC Verification	■ Avg. Time from Roadway Clearance to Incident/Event Clearance**
■ Avg. Time from TMC Verification to TMC Response	

* Roadway clearance equals all travel lanes open

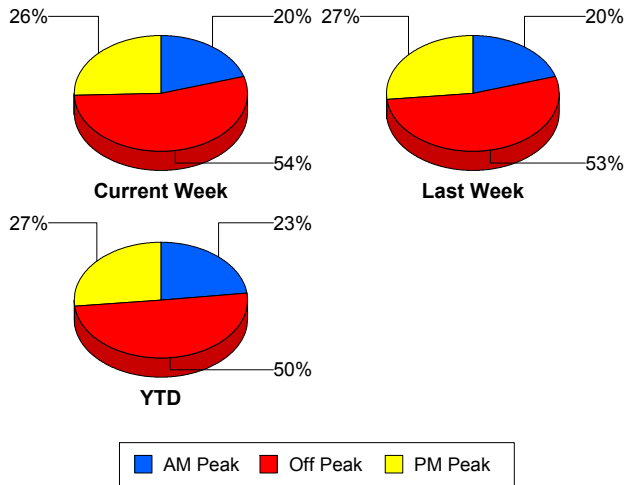
** Incident clearance equals time when last responder has left the scene

Performance Measures by Peak Period

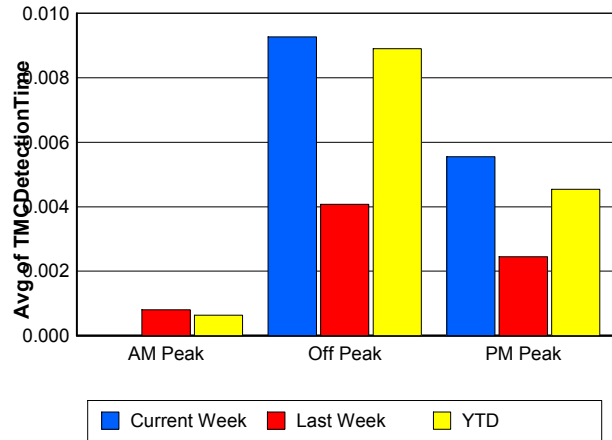
Note: AM peak period is defined as 6am to 10am and PM peak period is defined as 3pm to 7pm.

	AM Peak			Off Peak			PM Peak		
	<u>Current Week</u>	<u>Last Week</u>	<u>YTD</u>	<u>Current Week</u>	<u>Last Week</u>	<u>YTD</u>	<u>Current Week</u>	<u>Last Week</u>	<u>YTD</u>
Number of Events	276	269	9,633	734	700	20,930	348	354	11,041
Number of Incidents	9	8	439	23	25	944	6	17	524
TMC Detection (min.)	0.00	0.00	0.00	0.01	0.00	0.01	0.01	0.00	0.00
TMC Verification (min.)	1.10	0.35	0.54	1.22	1.36	0.62	1.45	1.67	0.82
TMC Response (min.)	9.01	7.83	6.25	9.62	8.25	7.63	8.28	8.21	6.25
RR Dispatch Time (min.)	1.00	0.96	0.97	1.69	1.37	1.72	1.66	0.99	0.91
RR Response Time (min.)	8.25	6.94	5.38	8.02	7.09	6.02	6.76	7.26	5.46
Event Clearance (min.)	15.76	20.20	21.25	19.68	18.65	25.38	19.29	16.62	20.12
Roadway Clearance (min.)	31.48	30.16	28.15	32.32	28.96	35.59	22.12	27.21	27.24
Incident Clearance (min.)	57.70	35.16	56.93	54.85	55.93	62.81	45.44	48.76	55.00
# of Events w/ RR/SIRV	230	234	7,864	600	584	12,091	286	295	8,595
RR/SIRV Responses	230	234	7,864	600	584	12,091	286	295	8,595
RR/SIRV Activities	189	193	7,419	482	487	10,635	257	262	7,913

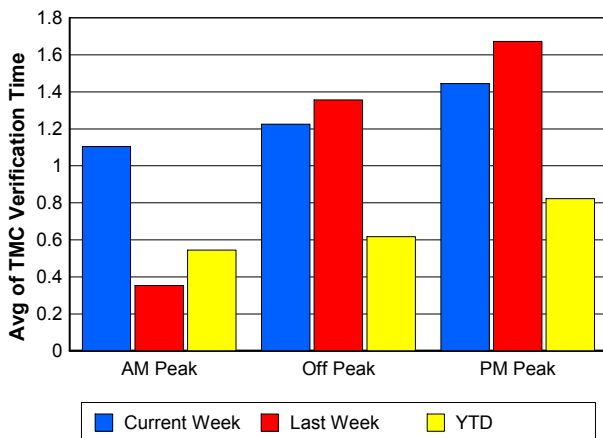
Number of Events / Peak Period



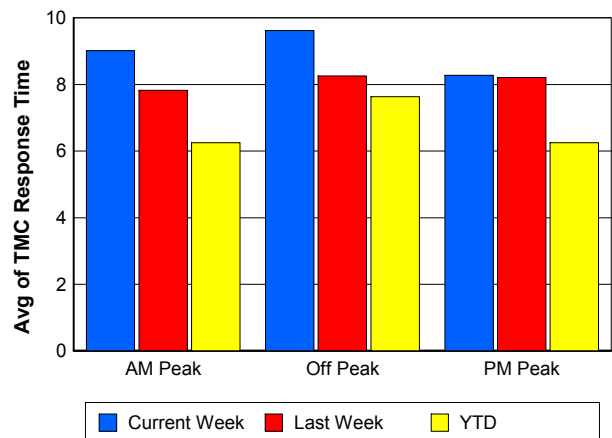
TMC Detection Time



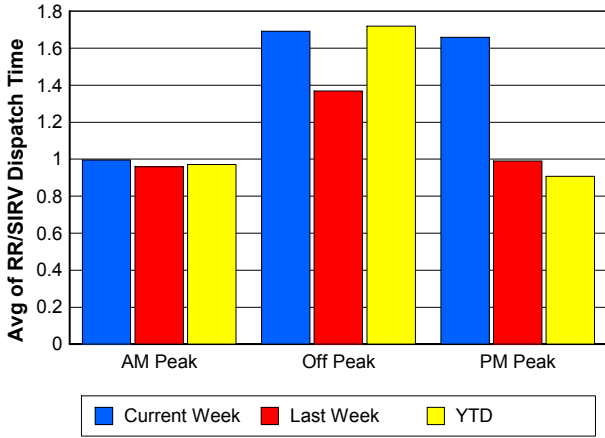
TMC Verification Time



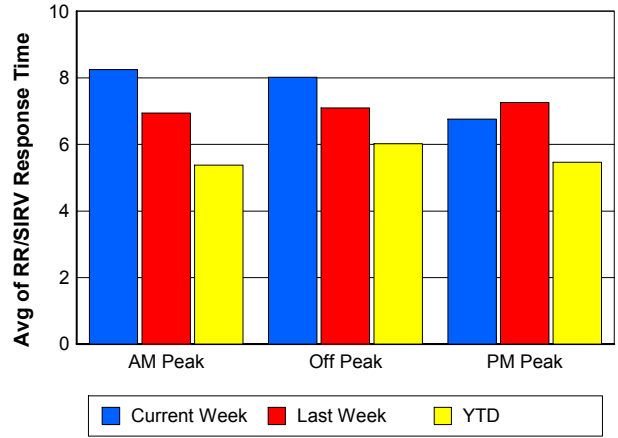
TMC Response Time



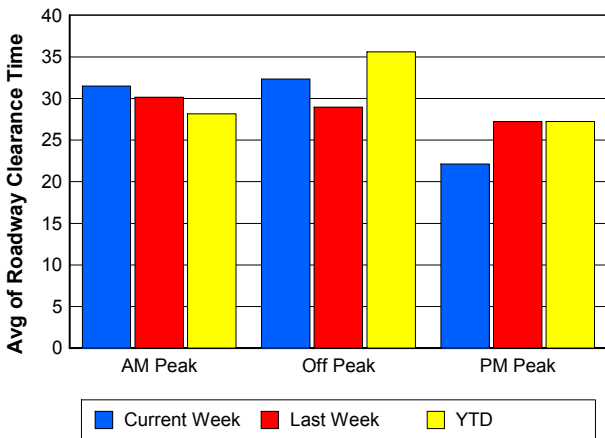
Road Ranger / SIRV Dispatch Time



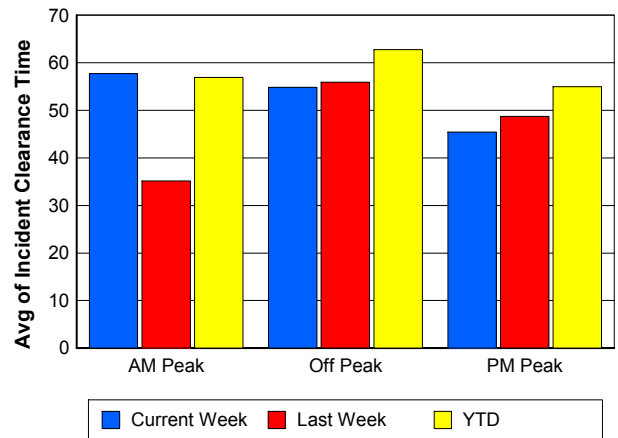
Road Ranger / SIRV Response Time



Roadway Clearance Time (2A)



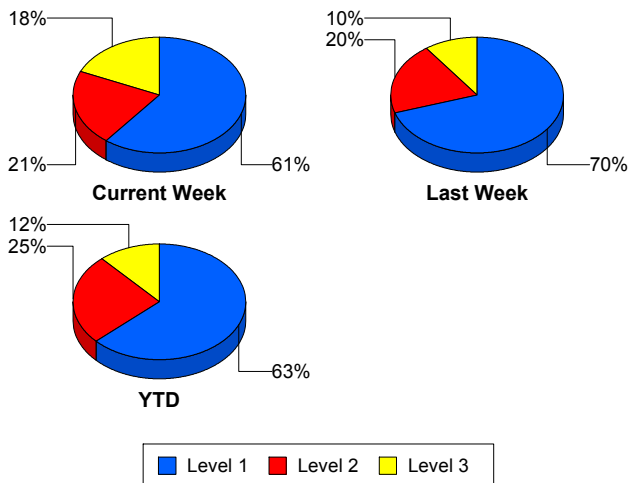
Incident Clearance Time (3B)



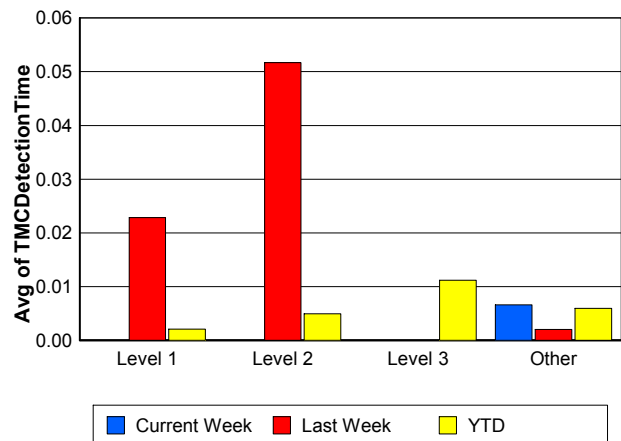
Performance Measures by Severity

	Level 1			Level 2			Level 3			Other		
	<u>This Week</u>	<u>Last Week</u>	<u>YTD</u>	<u>This Week</u>	<u>Last Week</u>	<u>YTD</u>	<u>This Week</u>	<u>Last Week</u>	<u>YTD</u>	<u>This Week</u>	<u>Last Week</u>	<u>YTD</u>
Number of Events	23	35	1,202	8	10	484	7	5	221	1,320	1,273	39,697
Number of Incidents	23	35	1,202	8	10	484	7	5	221	0	0	0
TMC Detection (min.)	0.00	0.02	0.00	0.00	0.05	0.00	0.00	0.00	0.01	0.01	0.00	0.01
TMC Verification (min.)	0.92	3.02	0.49	5.31	0.50	1.05	0.52	1.88	1.32	1.24	1.19	0.65
TMC Response (min.)	6.87	9.77	7.37	14.17	13.00	10.14	5.96	7.90	21.89	9.14	8.03	6.64
RR Dispatch Time (min.)	1.25	1.48	1.61	4.31	1.18	2.74	0.92	2.30	8.18	1.53	1.17	1.20
RR Resp. Time (min.)	5.67	8.25	5.84	9.86	11.74	7.69	5.04	5.60	13.62	7.76	7.02	5.57
Event Clearance (min.)	42.89	37.50	45.76	61.11	70.88	72.02	82.57	97.47	104.87	17.77	17.18	21.29
Roadway Clear. (min.)	16.01	16.21	14.38	53.61	56.20	49.36	51.76	59.72	86.23			
Incident Clearance (min.)	42.89	37.50	45.76	61.11	70.88	72.02	82.57	97.47	104.87			
# of Events w/ RR/SIRV	20	34	881	8	10	272	6	5	188	1,082	1,064	27,209
RR/SIRV Responses	20	34	881	8	10	272	6	5	188	1,082	1,064	27,209
RR/SIRV Activities	35	57	1,537	18	20	753	16	12	432	859	853	23,245

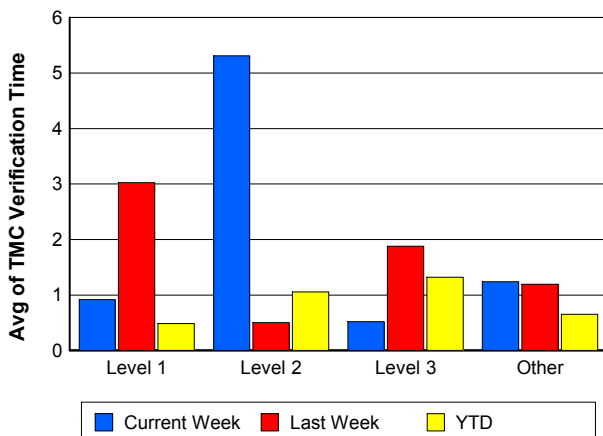
Number of Events / Severity



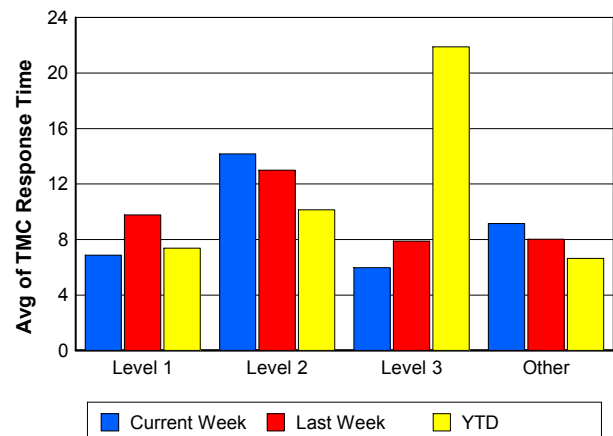
TMC Detection Time



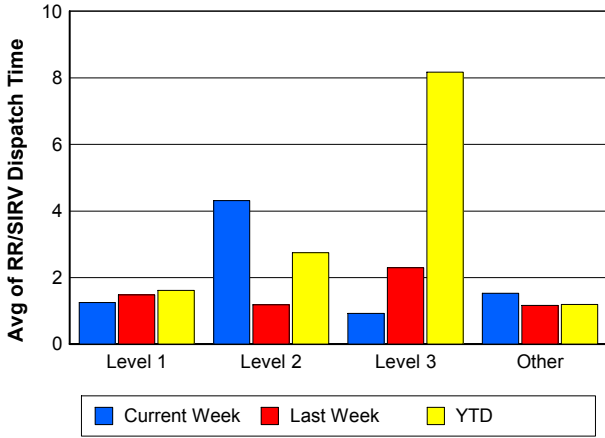
TMC Verification Time



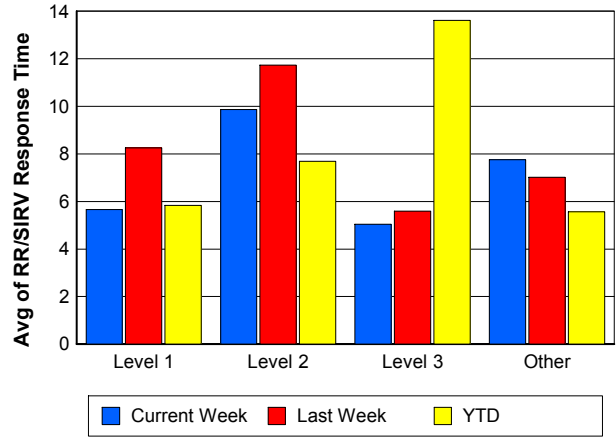
TMC Response Time



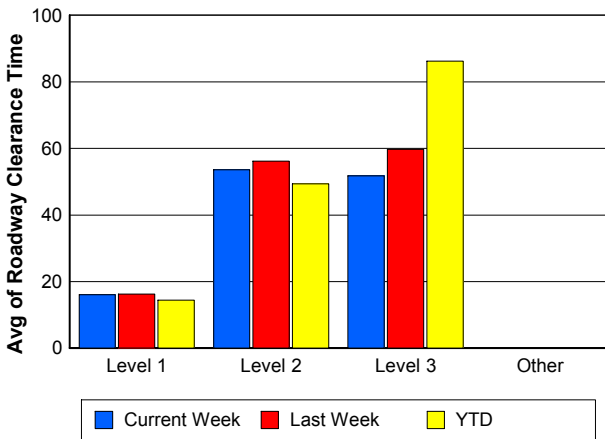
Road Ranger / SIRV Dispatch Time



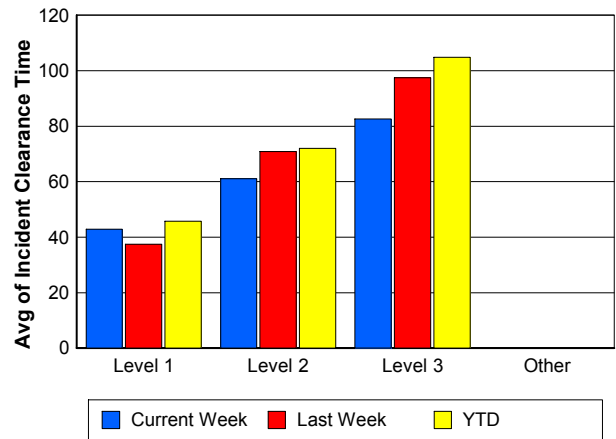
Road Ranger / SIRV Response Time



Roadway Clearance Time (2A)



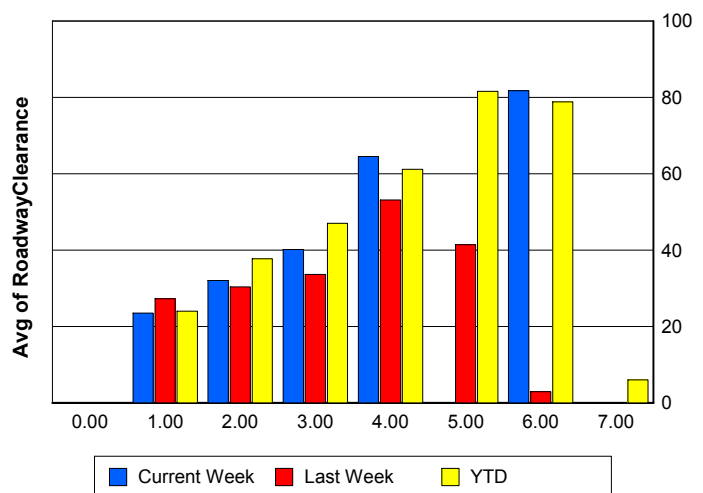
Incident Clearance Time (3B)



Roadway Clearance by Maximum Number of Lanes Blocked

	Current Week	Last Week	YTD
0			
1	23.46	27.23	23.97
2	32.06	30.39	37.71
3	40.17	33.60	46.97
4	64.49	53.12	61.12
5	0.00	41.37	81.58
6	81.75	2.93	78.82
7	0.00	0.00	5.97

Roadway Clearance Time (2A)



Performance Measures by Roadway

595

	<u>Current Week</u>	<u>Last Week</u>	<u>YTD</u>
Number of Events	35	48	4,469
Number of Incidents	4	2	270
TMC Detection (min.)	0.02	0.00	0.01
TMC Verification (min.)	2.97	1.51	0.82
TMC Response (min.)	16.06	15.83	6.75
RR Dispatch Time (min.)	1.40	2.96	1.15
RR Resp. Time (min.)	14.58	14.23	5.70
Event Clearance (min.)	21.44	25.73	21.46
Roadway Clear. (min.)	32.25	36.37	31.42
Incident Clearance (min.)	48.08	59.22	54.56
# of Events w/ RR/SIRV	27	39	3,122
RR/SIRV Responses	27	39	3,122
RR/SIRV Activities	19	29	2,852

75

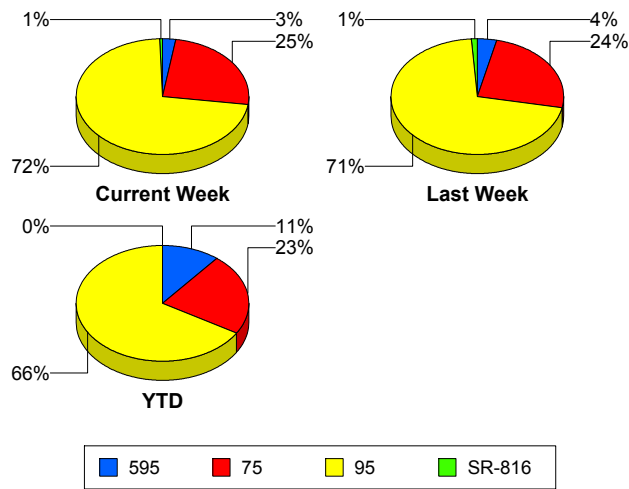
	<u>Current Week</u>	<u>Last Week</u>	<u>YTD</u>
Number of Events	333	323	9,533
Number of Incidents	8	5	181
TMC Detection (min.)	0.01	0.00	0.00
TMC Verification (min.)	1.65	2.07	0.84
TMC Response (min.)	9.09	10.69	8.05
RR Dispatch Time (min.)	2.00	1.45	1.26
RR Resp. Time (min.)	7.37	9.27	6.89
Event Clearance (min.)	20.18	21.23	25.04
Roadway Clear. (min.)	47.99	39.08	53.16
Incident Clearance (min.)	65.69	80.01	81.05
# of Events w/ RR/SIRV	270	275	6,381
RR/SIRV Responses	270	275	6,381
RR/SIRV Activities	240	225	5,524

95

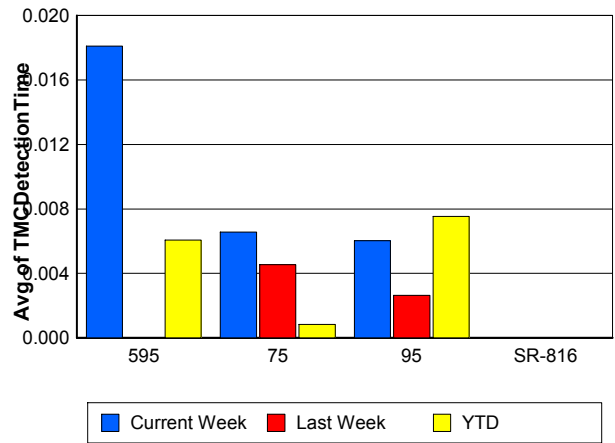
	<u>Current Week</u>	<u>Last Week</u>	<u>YTD</u>
Number of Events	981	938	27,555
Number of Incidents	25	34	1,427
TMC Detection (min.)	0.01	0.00	0.01
TMC Verification (min.)	1.08	0.95	0.57
TMC Response (min.)	9.05	7.15	6.45
RR Dispatch Time (min.)	1.41	1.02	1.29
RR Resp. Time (min.)	7.74	6.23	5.28
Event Clearance (min.)	18.29	17.13	22.61
Roadway Clear. (min.)	24.01	28.21	29.23
Incident Clearance (min.)	51.57	52.74	58.36
# of Events w/ RR/SIRV	811	785	19,003
RR/SIRV Responses	811	785	19,003
RR/SIRV Activities	661	669	17,539

	<u>Current Week</u>	<u>Last Week</u>	<u>YTD</u>
Number of Events	9	14	47
Number of Incidents	1	9	29
TMC Detection (min.)	0.00	0.00	0.00
TMC Verification (min.)	0.00	0.84	0.25
TMC Response (min.)	0.00	0.84	0.27
RR Dispatch Time (min.)	0.00	0.08	0.03
RR Resp. Time (min.)	0.00	0.76	0.24
Event Clearance (min.)	10.18	15.74	10.75
Roadway Clear. (min.)	46.32	22.28	14.38
Incident Clearance (min.)	46.28	21.89	14.19
# of Events w/ RR/SIRV	8	14	44
RR/SIRV Responses	8	14	44
RR/SIRV Activities	8	19	52

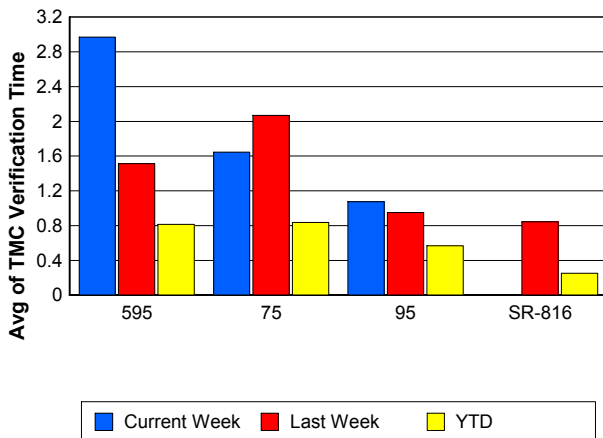
Number of Events / Roadway



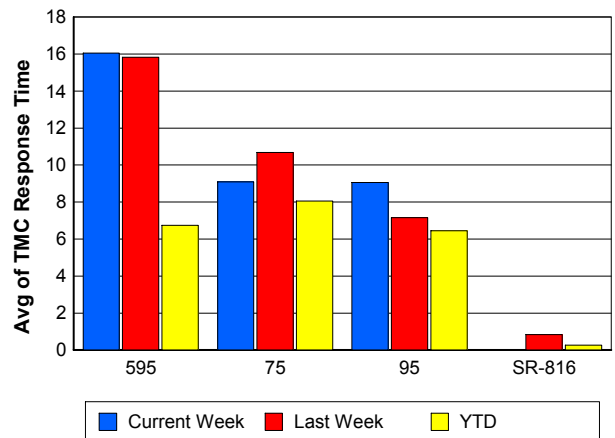
TMC Detection Time



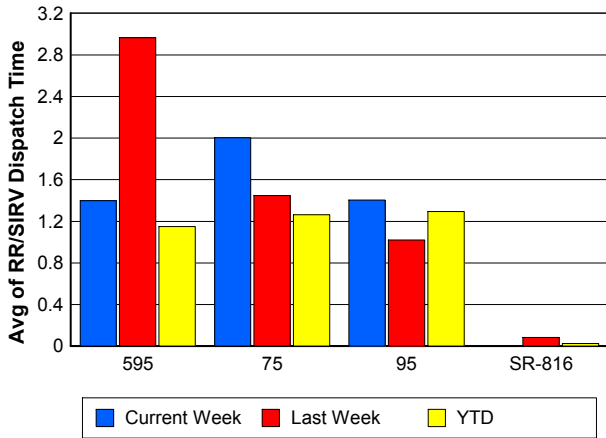
TMC Verification Time



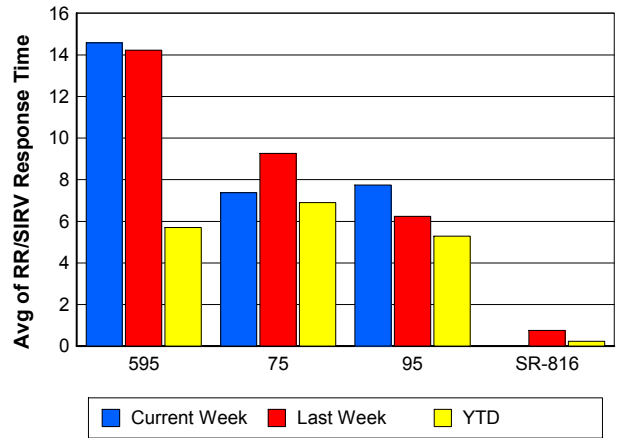
TMC Response Time



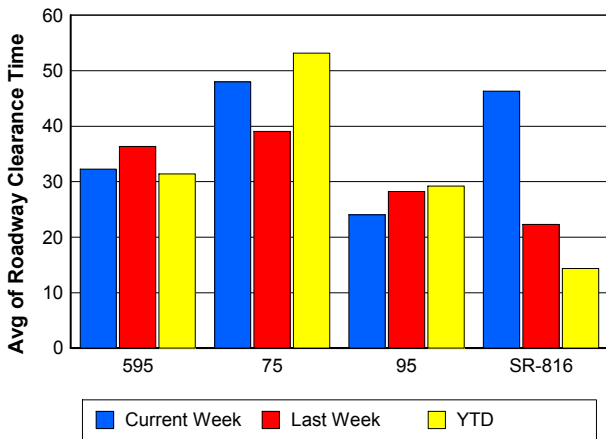
Road Ranger / SIRV Dispatch Time



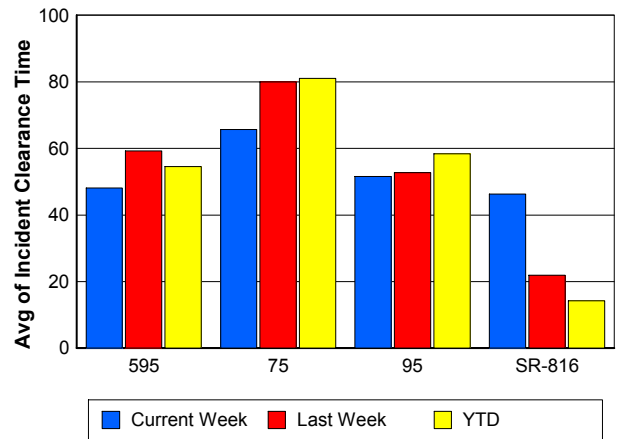
Road Ranger / SIRV Response Time



Roadway Clearance Time (2A)



Incident Clearance Time (3B)



Performance Measures by Event Type

Accident

	<u>Current Week</u>	<u>Last Week</u>	<u>YTD</u>
Number of Events	60	74	2,855
Number of Incidents	28	26	1,371
TMC Detection (min.)	0.00	0.00	0.01
TMC Verification (min.)	0.63	1.13	0.74
TMC Response (min.)	9.17	11.21	9.01
RR Dispatch Time (min.)	2.32	1.10	1.69
RR Response Time (min.)	6.85	10.07	7.39
Event Clearance (min.)	48.79	46.23	55.11
Roadway Clearance (min.)	34.25	33.76	33.05
Incident Clearance (min.)	63.41	65.57	66.40
# of Events w/ RR/SIRV	58	71	2,103
RR/SIRV Assists	58	71	2,103
RR/SIRV Activities	85	105	3,259

Debris on Roadway

	<u>Current Week</u>	<u>Last Week</u>	<u>YTD</u>
Number of Events	65	43	1,283
Number of Incidents	1	2	27
TMC Detection (min.)	0.00	0.00	0.09
TMC Verification (min.)	7.06	5.67	3.90
TMC Response (min.)	10.13	9.34	7.60
RR Dispatch Time (min.)	0.81	1.69	0.88
RR Response Time (min.)	9.40	7.88	6.75
Event Clearance (min.)	12.09	14.82	11.55
Roadway Clearance (min.)	51.50	1.76	24.93
Incident Clearance (min.)	53.17	50.49	32.89
# of Events w/ RR/SIRV	61	42	1,188
RR/SIRV Assists	61	42	1,188
RR/SIRV Activities	58	37	1,209

Disabled Vehicle

	<u>Current Week</u>	<u>Last Week</u>	<u>YTD</u>
Number of Events	761	779	24,535
Number of Incidents	6	17	307
TMC Detection (min.)	0.00	0.00	0.00
TMC Verification (min.)	1.53	1.60	0.78
TMC Response (min.)	9.06	7.71	6.41
RR Dispatch Time (min.)	1.63	1.10	1.09
RR Response Time (min.)	7.65	6.71	5.37
Event Clearance (min.)	21.85	20.86	25.73
Roadway Clearance (min.)	16.51	25.47	18.96
Incident Clearance (min.)	23.45	30.16	33.38
# of Events w/ RR/SIRV	738	767	19,704
RR/SIRV Assists	738	767	19,704
RR/SIRV Activities	740	757	20,107

Emergency Vehicles

	<u>YTD</u>
Number of Events	63
Number of Incidents	48
TMC Detection (min.)	0.00
TMC Verification (min.)	0.61
TMC Response (min.)	13.37
RR Dispatch Time (min.)	8.98
RR Response Time (min.)	3.72
Event Clearance (min.)	52.81
Roadway Clearance (min.)	53.63
Incident Clearance (min.)	60.33
# of Events w/ RR/SIRV	36
RR/SIRV Assists	36
RR/SIRV Activities	60

Other

	<u>Current Week</u>	<u>Last Week</u>	<u>YTD</u>
Number of Events	465	416	12,461
Number of Incidents	0	0	27
TMC Detection (min.)	0.01	0.01	0.00
TMC Verification (min.)	0.11	0.17	0.07
TMC Response (min.)	8.57	10.53	8.40
RR Dispatch Time (min.)	1.29	1.41	1.75
RR Response Time (min.)	7.52	9.06	6.26
Event Clearance (min.)	10.76	9.13	11.08
Roadway Clearance (min.)			30.45
Incident Clearance (min.)			35.84
# of Events w/ RR/SIRV	254	223	5,290
RR/SIRV Assists	254	223	5,290
RR/SIRV Activities	40	32	1,033

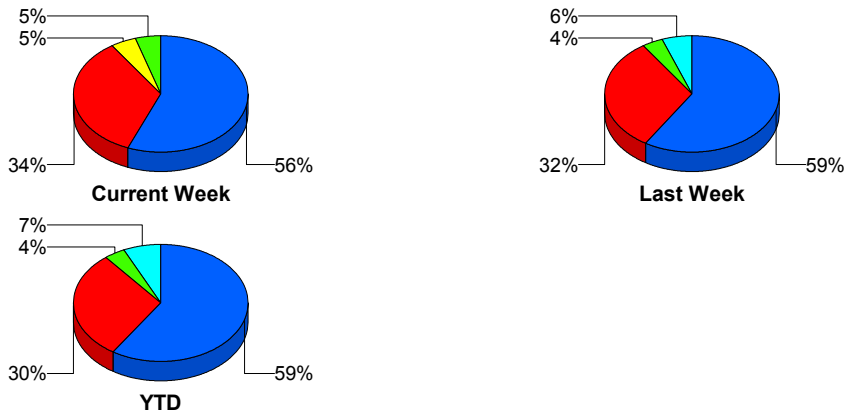
Police Activity

	<u>Current Week</u>	<u>Last Week</u>	<u>YTD</u>
Number of Events	2	4	166
Number of Incidents	2	2	52
TMC Detection (min.)	0.00	0.13	0.00
TMC Verification (min.)	0.00	0.17	0.31
TMC Response (min.)		13.90	13.66
RR Dispatch Time (min.)		0.48	4.24
RR Response Time (min.)		13.61	9.39
Event Clearance (min.)	19.46	25.42	33.14
Roadway Clearance (min.)	17.03	27.73	39.29
Incident Clearance (min.)	19.46	29.80	48.18
# of Events w/ RR/SIRV	0	3	54
RR/SIRV Assists	0	3	54
RR/SIRV Activities	0	2	63

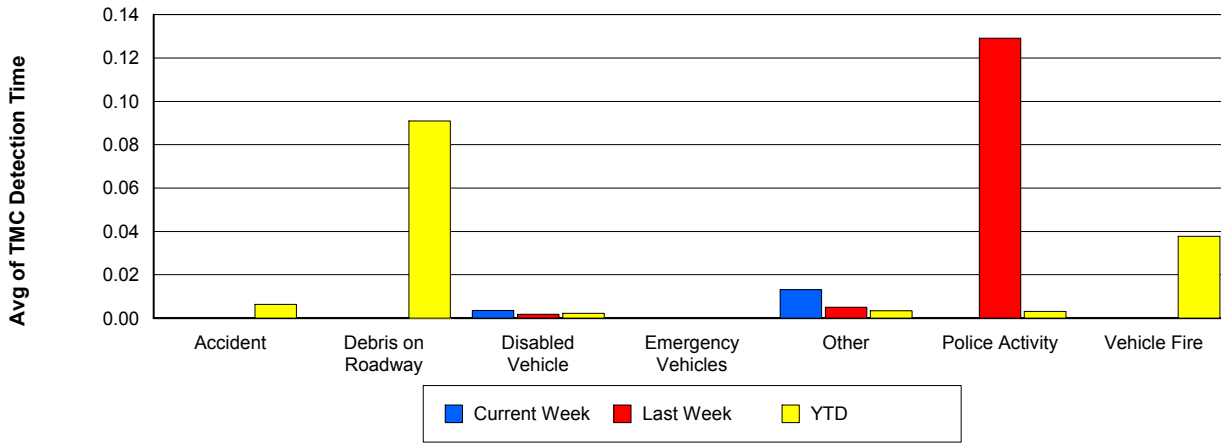
Vehicle Fire

	<u>Current Week</u>	<u>Last Week</u>	<u>YTD</u>
Number of Events	2	4	95
Number of Incidents	1	3	75
TMC Detection (min.)	0.00	0.00	0.04
TMC Verification (min.)	0.23	0.36	1.09
TMC Response (min.)	14.82	4.25	9.93
RR Dispatch Time (min.)	0.66	0.80	2.16
RR Response Time (min.)	14.16	3.45	8.19
Event Clearance (min.)	46.41	36.32	57.79
Roadway Clearance (min.)	15.78	19.37	39.86
Incident Clearance (min.)	45.07	43.48	61.08
# of Events w/ RR/SIRV	2	4	65
RR/SIRV Assists	2	4	65
RR/SIRV Activities	2	7	137

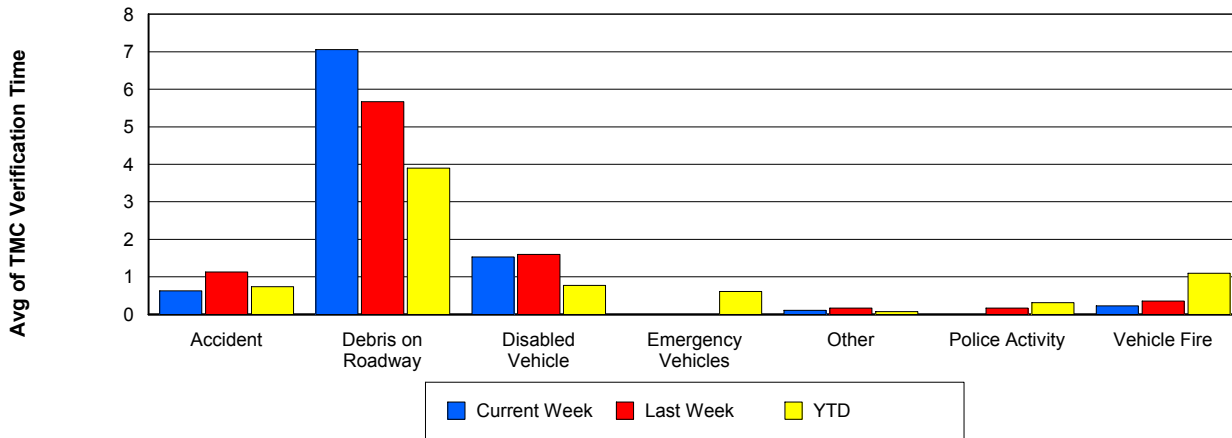
Number of Events / Event Type



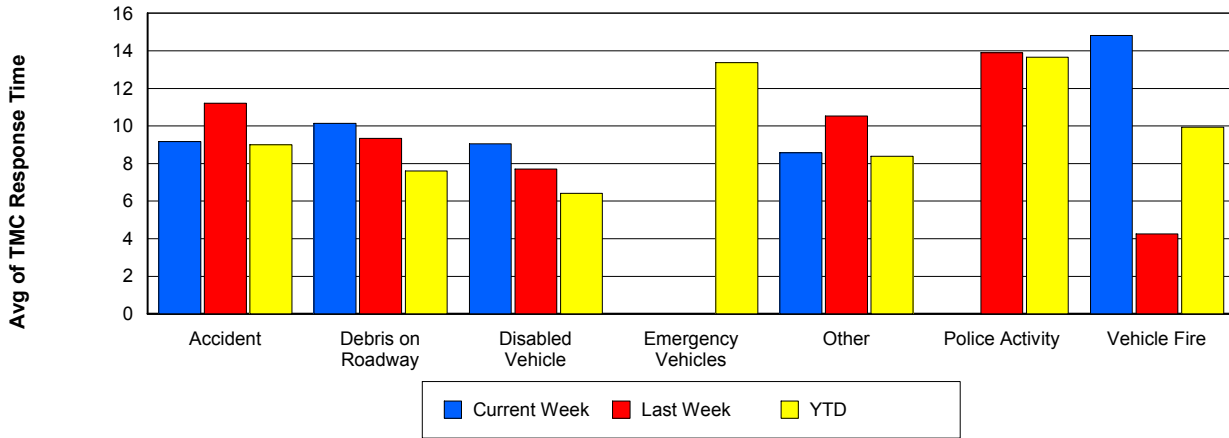
TMC Detection Time



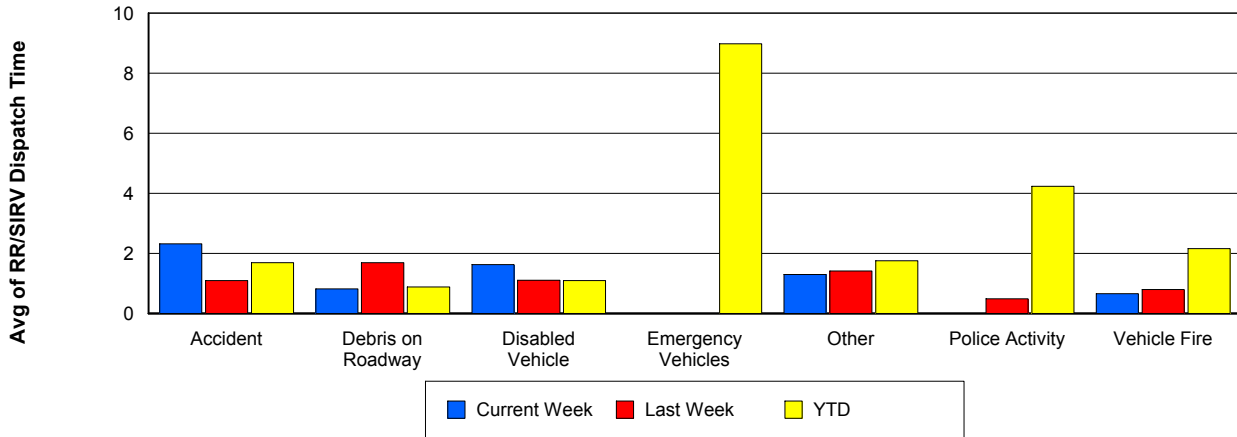
TMC Verification Time



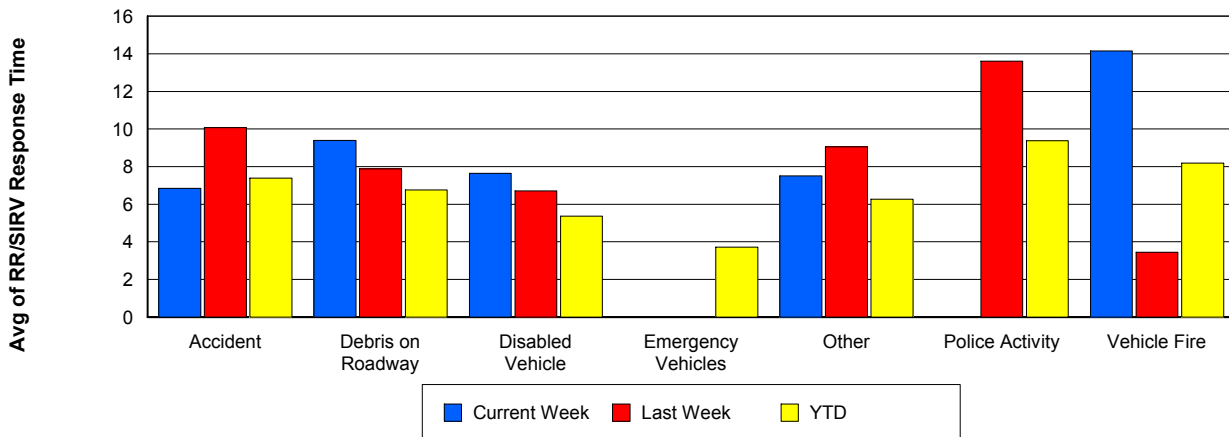
TMC Response Time



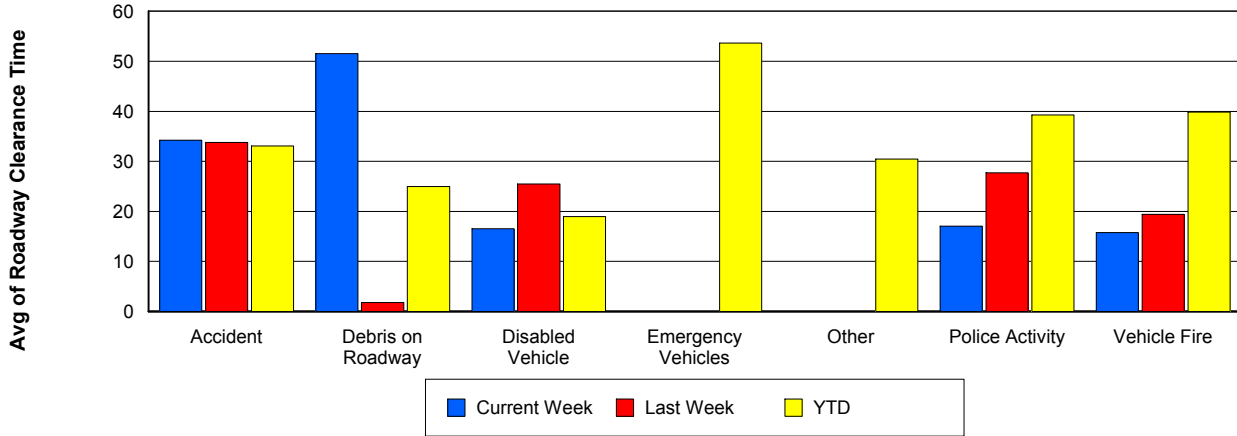
Road Ranger / SIRV Dispatch Time



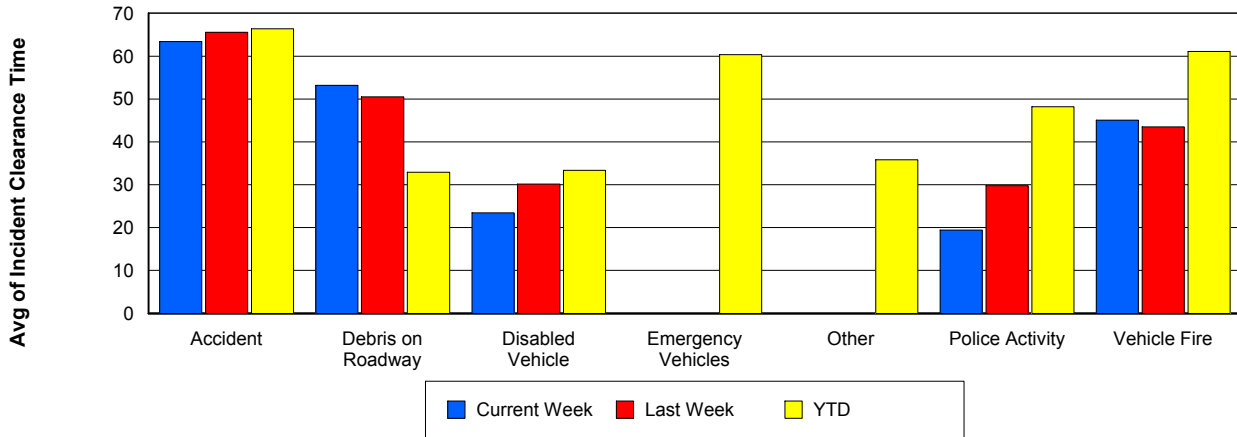
Road Ranger / SIRV Response Time



Roadway Clearance Time (2A)



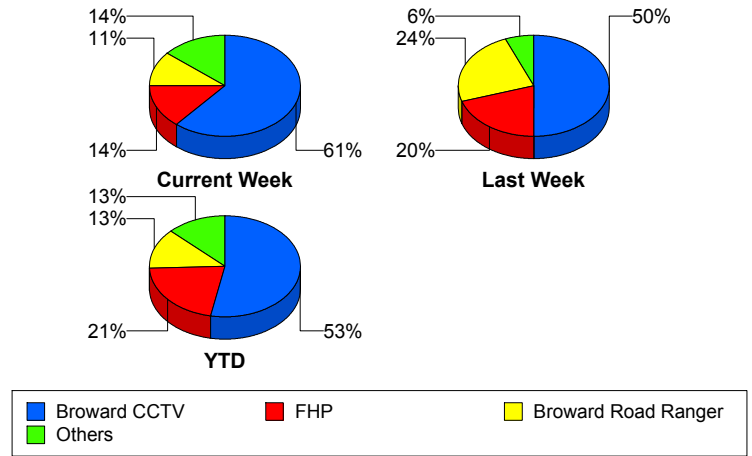
Incident Clearance Time (3B)



Incident Detection Methods

	Current Week	Last Week	YTD
Broward CCTV	22	25	1,009
Broward Road Ranger	4	12	243
Broward TMC	1	0	3
Broward VideoWall	0	0	57
BSO	2	0	41
District 4	1	1	47
District 6	0	0	1
FDOT Maintenance	0	0	4
FHP	5	10	406
Fire	0	0	3
Florida's Turnpike	0	0	6
ITMS	0	0	2
Motorist	0	0	8
Other	0	0	1
Palm Beach Road Ran	0	0	4
Road Watcher	0	0	13
SIRV	0	0	12
SmarTraveler (511)	0	0	6
VisioPaD Detection	1	2	36
Total	36	50	1,902

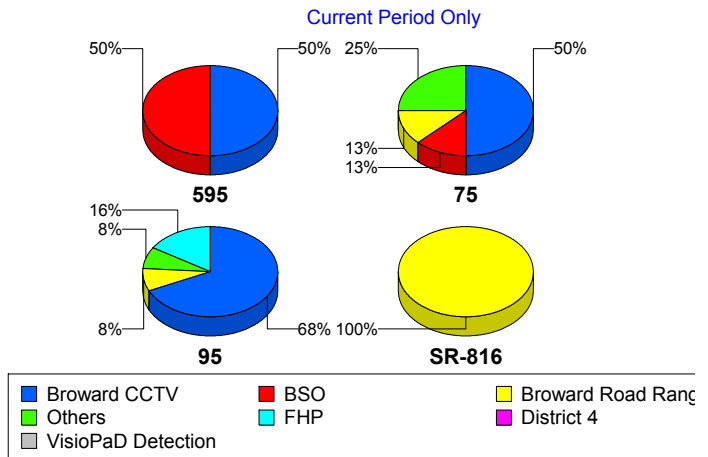
Total Incidents by Detection Method



Incident Detection Methods by Roadway

		Current Week	Last Week	YTD
595	Broward CCTV	1	1	131
	Broward Road Ranger	0	0	37
	Broward VideoWall	0	0	8
	BSO	1	0	5
	District 4	0	0	12
	FDOT Maintenance	0	0	2
	FHP	0	1	53
	Florida's Turnpike	0	0	6
	Motorist	0	0	2
	Road Watcher	0	0	3
	SIRV	0	0	1
	VisioPaD Detection	0	0	6
	Total	2	2	266
	75	Broward CCTV	4	3
Broward Road Ranger		1	0	19
Broward VideoWall		0	0	1
BSO		1	0	31
District 4		1	0	6
FHP		1	2	43
Other		0	0	1
Road Watcher		0	0	2
VisioPaD Detection		0	0	5
Total		8	5	181
95	Broward CCTV	17	21	805
	Broward Road Ranger	2	4	159
	Broward TMC	1	0	3
	Broward VideoWall	0	0	48
	BSO	0	0	5
	District 4	0	0	28
	District 6	0	0	1
	FDOT Maintenance	0	0	2

Total Events by Roadway and Detection Method

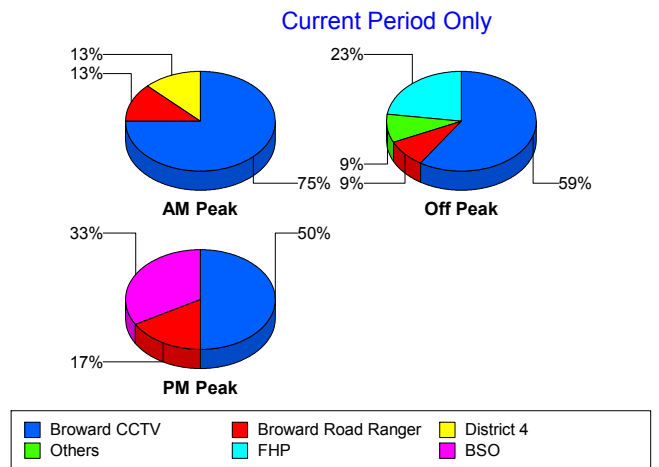


		Current Week	Last Week	YTD
95	FHP	4	7	310
	Fire	0	0	3
	ITMS	0	0	2
	Motorist	0	0	6
	Palm Beach Road Ran	0	0	4
	Road Watcher	0	0	8
	SIRV	0	0	11
	SmarTraveler (511)	0	0	6
	VisioPaD Detection	1	2	25
	Total	25	34	1,426
SR-816	Broward Road Ranger	1	8	28
	District 4	0	1	1
	Total	1	9	29
Total		36	50	1,902

Incident Detection Methods by Peak Period

		Current Week	Last Week	YTD
AM Peak	Broward CCTV	6	2	196
	Broward Road Ranger	1	5	79
	Broward TMC	0	0	1
	Broward VideoWall	0	0	20
	BSO	0	0	6
	District 4	1	1	18
	FHP	0	0	99
	Florida's Turnpike	0	0	2
	Motorist	0	0	5
	Palm Beach Road Ran	0	0	2
	Road Watcher	0	0	4
	SIRV	0	0	1
	SmarTraveler (511)	0	0	1
	VisioPaD Detection	0	0	2
	Total	8	8	436

Total Events by Peak Period and Detection Method



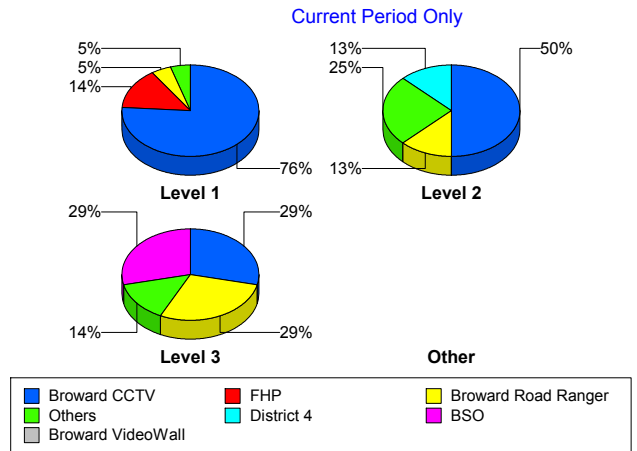
		Current Week	Last Week	YTD
Off Peak	Broward CCTV	13	17	551
	Broward Road Ranger	2	1	68
	Broward TMC	1	0	2
	Broward VideoWall	0	0	30
	BSO	0	0	27
	District 4	0	0	14
	FDOT Maintenance	0	0	2
	FHP	5	5	196
	Fire	0	0	2
	Florida's Turnpike	0	0	3
	ITMS	0	0	2
	Motorist	0	0	3
	Palm Beach Road Ran	0	0	1
	Road Watcher	0	0	6
	SIRV	0	0	5
	SmarTraveler (511)	0	0	3
	VisioPaD Detection	1	2	28
	Total	22	25	943
	PM Peak	Broward CCTV	3	6
Broward Road Ranger		1	6	96
Broward VideoWall		0	0	7
BSO		2	0	8
District 4		0	0	15
District 6		0	0	1
FDOT Maintenance		0	0	2
FHP		0	5	111
Fire		0	0	1
Florida's Turnpike		0	0	1
Other		0	0	1
Palm Beach Road Ran		0	0	1
Road Watcher		0	0	3
SIRV		0	0	6

		Current Week	Last Week	YTD
PM Peak	SmarTraveler (511)	0	0	2
	VisioPaD Detection	0	0	6
	Total	6	17	523
Total		36	50	1,902

Incident Detection Methods by Severity

		Current Week	Last Week	YTD
Level 1	Broward CCTV	16	17	645
	Broward Road Ranger	1	9	175
	Broward TMC	1	0	2
	Broward VideoWall	0	0	37
	BSO	0	0	10
	District 4	0	1	35
	FDOT Maintenance	0	0	3
	FHP	3	7	235
	Fire	0	0	2
	ITMS	0	0	1
	Motorist	0	0	6
	Palm Beach Road Ran	0	0	3
	Road Watcher	0	0	9
	SIRV	0	0	11
	SmarTraveler (511)	0	0	4
	VisioPaD Detection	0	1	20
	Total	21	35	1,198
Level 2	Broward CCTV	4	6	259
	Broward Road Ranger	1	1	47
	Broward TMC	0	0	1
	Broward VideoWall	0	0	17
	BSO	0	0	10
	District 4	1	0	6
	FDOT Maintenance	0	0	1
	FHP	1	2	117

Total Events by Severity and Detection Method



		Current Week	Last Week	YTD
Level 2	Florida's Turnpike	0	0	4
	ITMS	0	0	1
	Motorist	0	0	2
	Other	0	0	1
	Road Watcher	0	0	2
	SIRV	0	0	1
	SmarTraveler (511)	0	0	2
	VisioPaD Detection	1	1	13
	Total	8	10	484
Level 3	Broward CCTV	2	2	105
	Broward Road Ranger	2	2	21
	Broward VideoWall	0	0	3
	BSO	2	0	21
	District 4	0	0	6
	District 6	0	0	1
	FHP	1	1	54
	Fire	0	0	1
	Florida's Turnpike	0	0	2
	Palm Beach Road Ran	0	0	1
	Road Watcher	0	0	2
	VisioPaD Detection	0	0	3
	Total	7	5	220
Total	36	50	1,902	

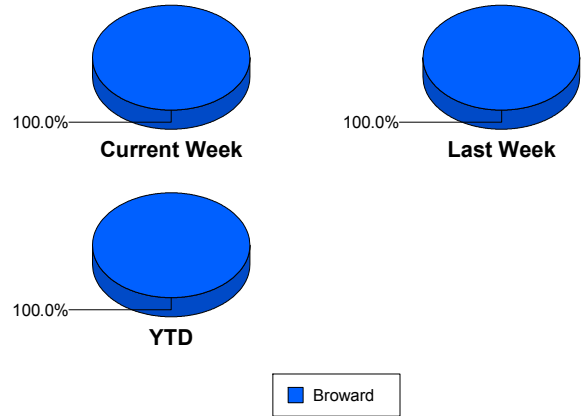
Road Ranger / SIRV Performance Measures

Road Ranger / SIRV Performance By County

Values presented are:
 - Total Events with a RR/SIRV Response
 - Total RR/SIRV Responses,
 - Total Activities Performed

	Current We	Last Week	YTD
Broward	1,022	1,017	27,887
	1,088	1,072	29,993
	1,134	1,117	31,210

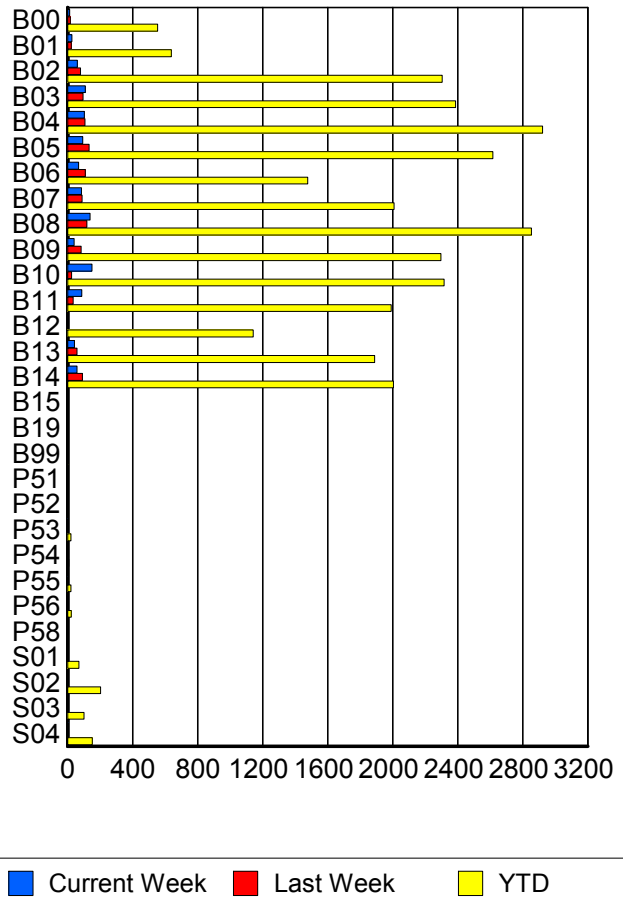
RR/SIRV Responses per County



Road Ranger / SIRV Performance By Truck

	Current We	Last Week	YTD
B00	12	17	541
	12	17	554
	14	18	579
B01	26	21	626
	26	22	638
	26	22	673
B02	60	78	2,285
	60	79	2,305
	60	85	2,400
B03	107	95	2,353
	108	95	2,388
	115	99	2,481
B04	103	106	2,891
	103	107	2,922
	106	115	3,049
B05	93	131	2,568
	93	133	2,616
	98	139	2,707
B06	66	108	1,454
	67	108	1,478
	69	111	1,524
B07	83	88	1,978
	86	90	2,009
	91	93	2,097
B08	136	117	2,817
	138	118	2,854
	140	120	2,955

RR/SIRV Responses per Truck



	Current We	Last Week	YTD
B09	40	83	2,260
	40	84	2,297
	41	90	2,386
B10	147	24	2,276
	149	25	2,316
	158	25	2,408
B11	87	33	1,961
	87	34	1,992
	89	36	2,056
B12	2	1	1,127
	2	1	1,142
	2	1	1,191
B13	42	58	1,865
	43	58	1,889
	46	60	1,957
B14	55	91	1,973
	57	91	2,005
	60	93	2,078
B15	0	0	2
	0	0	2
	0	0	2
B19	1	0	1
	1	0	1
	1	0	1
B99	0	0	4
	0	0	4
	0	0	4
P51	0	0	1
	0	0	1
	0	0	1
P52	0	0	2
	0	0	2
	0	0	2
P53	2	0	20
	2	0	21
	2	0	23
P54	0	1	7
	0	1	7
	0	1	7
P55	2	0	20
	2	0	20
	2	0	24
P56	0	1	22
	0	1	22
	0	1	23

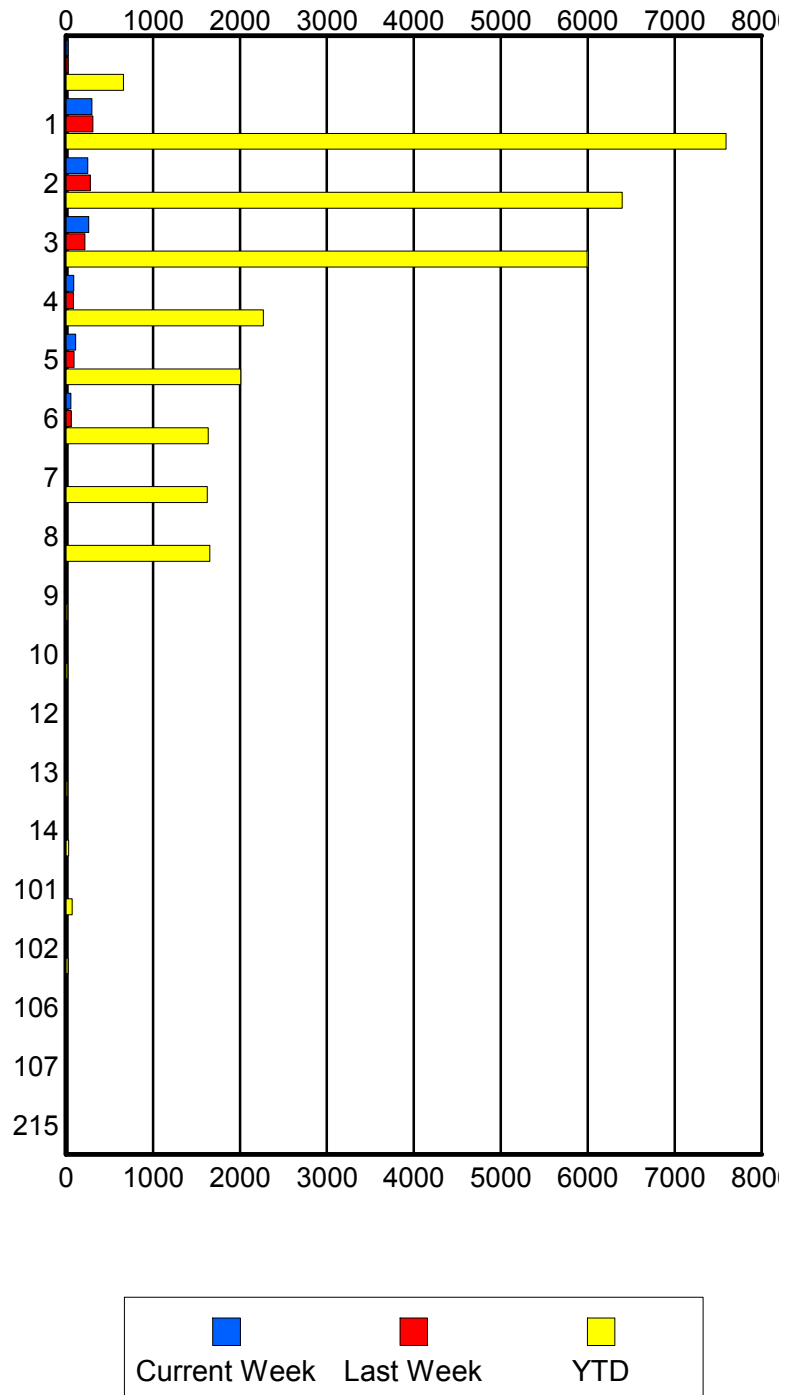
	Current We	Last Week	YTD
P58	0	0	1
	0	0	1
	0	0	1
S01	0	1	67
	0	1	70
	0	1	81
S02	5	4	195
	5	4	202
	7	4	223
S03	3	1	99
	3	1	101
	3	1	114
S04	4	2	146
	4	2	151
	4	2	163

Road Ranger / SIRV Performance By Beat

	Current We	Last Week	YTD
	21	23	617
	21	24	662
	23	24	721
1	287	298	7,158
	296	309	7,590
	302	326	7,843
2	245	277	6,188
	250	279	6,395
	262	289	6,672
3	248	211	5,818
	259	215	5,992
	270	221	6,222
4	85	84	2,221
	87	86	2,271
	89	89	2,344
5	108	92	1,973
	110	94	2,008
	116	100	2,084
6	54	57	1,600
	56	58	1,634
	63	60	1,719
7	0	0	1,600
	0	0	1,625
	0	0	1,698
8	0	0	1,633
	0	0	1,653
	0	0	1,716
9	0	0	12
	0	0	14
	0	0	14
10	5	0	18
	5	0	19
	5	0	19
12	0	0	9
	0	0	9
	0	0	9
13	0	0	14
	0	0	14
	0	0	15
14	0	5	28
	0	5	28
	0	6	29
101	4	2	69
	4	2	70
	4	2	77

Values presented are:
 - Total Events with a RR/SIRV Response
 - Total RR/SIRV Responses,
 - Total Activities Performed

RR/SIRV Responses per Beat



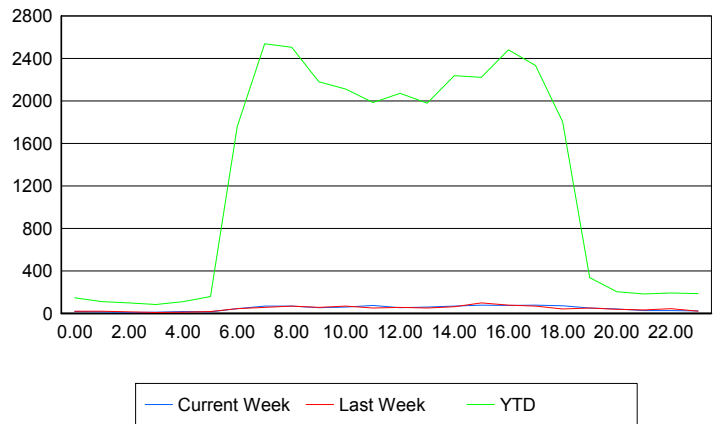
	Current We	Last Week	YTD
102	0	0	23
	0	0	23
	0	0	25
106	0	0	1
	0	0	1
	0	0	1
107	0	0	1
	0	0	1
	0	0	1
215	0	0	1
	0	0	1
	0	0	1

Road Ranger / SIRV Performance By Time of Day

Values presented are:
- Total Events with a RR/SIRV Response
- Total RR/SIRV Responses,
- Total Activities Performed

	Current We	Last Week	YTD
12AM-1AM	16	19	141
	16	19	146
	16	19	156
1AM-2AM	13	19	108
	13	19	109
	14	22	115
2AM-3AM	8	15	87
	8	15	98
	8	15	104
3AM-4AM	12	7	78
	12	8	82
	14	10	86
4AM-5AM	14	11	96
	16	12	110
	16	13	113
5AM-6AM	14	9	123
	15	16	157
	15	18	166
6AM-7AM	40	44	1,610
	43	45	1,760
	43	47	1,813
7AM-8AM	64	54	2,360
	67	57	2,539
	69	60	2,632
8AM-9AM	64	63	2,274
	69	68	2,505
	74	71	2,611

Number of Responses / Hour of the Day



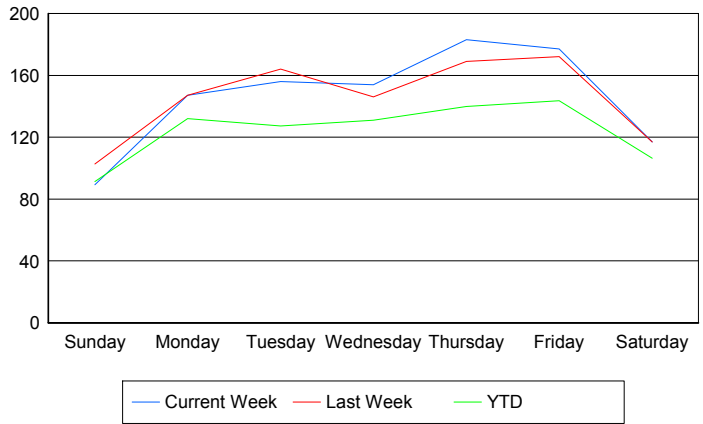
	Current We	Last Week	YTD
9AM-10AM	52	53	2,038
	52	55	2,180
	52	59	2,253
10AM-11AM	55	64	1,951
	60	69	2,110
	62	71	2,202
11AM-12PM	70	49	1,857
	75	51	1,986
	78	51	2,068
12PM-1PM	50	52	1,947
	53	56	2,072
	54	56	2,146
1PM-2PM	54	51	1,837
	58	51	1,979
	58	51	2,064
2PM-3PM	62	60	2,098
	67	62	2,239
	71	62	2,337
3PM-4PM	72	96	2,068
	76	99	2,222
	85	107	2,317
4PM-5PM	71	69	2,322
	75	76	2,481
	76	78	2,578
5PM-6PM	71	65	2,151
	77	67	2,334
	80	69	2,426
6PM-7PM	68	42	1,712
	70	42	1,804
	72	43	1,863
7PM-8PM	45	47	316
	50	51	335
	53	54	348
8PM-9PM	36	35	188
	40	37	202
	41	39	215
9PM-10PM	22	30	168
	25	31	182
	27	34	197
10PM-11PM	26	44	182
	27	45	192
	30	47	202
11PM-12AM	23	19	175
	24	21	185
	26	21	198

Road Ranger / SIRV Performance By Day of Week

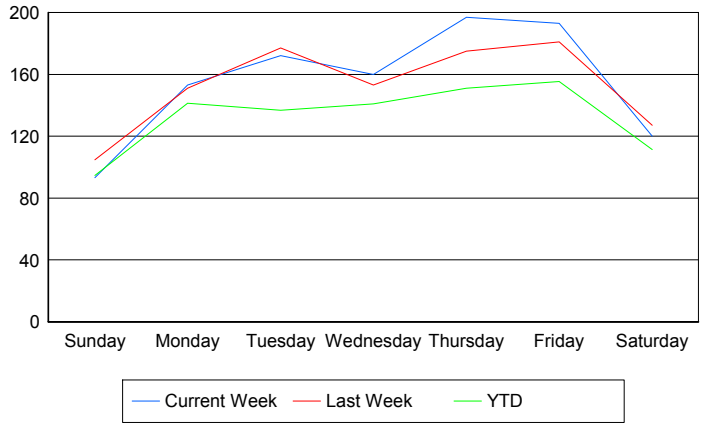
Values presented are: - Total Events with a RR/SIRV Response - Total RR/SIRV Responses, - Total Activities Performed

	Current We	Last Week	YTD
Sunday	90 94 97	105 107 115	488 506 533
Monday	146 152 155	148 152 156	5,183 5,547 5,716
Tuesday	156 172 174	164 177 183	4,962 5,333 5,514
Wednesday	154 160 164	146 153 164	5,140 5,525 5,776
Thursday	183 197 209	169 175 181	5,634 6,086 6,331
Friday	177 193 206	172 181 186	5,822 6,302 6,591
Saturday	117 120 129	117 127 132	676 709 749

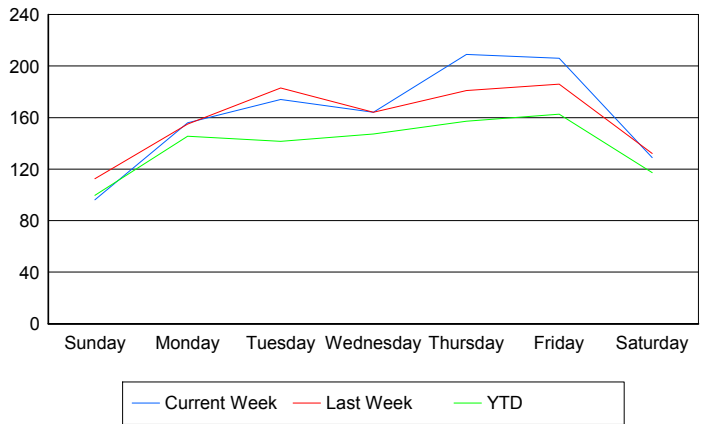
Avg # of events with a RR/SIRV Response per Day of the Week



Avg # of RR/SIRV Responses per Day of the Week



Avg # of RR/SIRV Activities Performed per Day of the Week



Road Ranger / SIRV Responses per Time of Day and Day of Week

