

Weekly Performance Measures Report Broward County



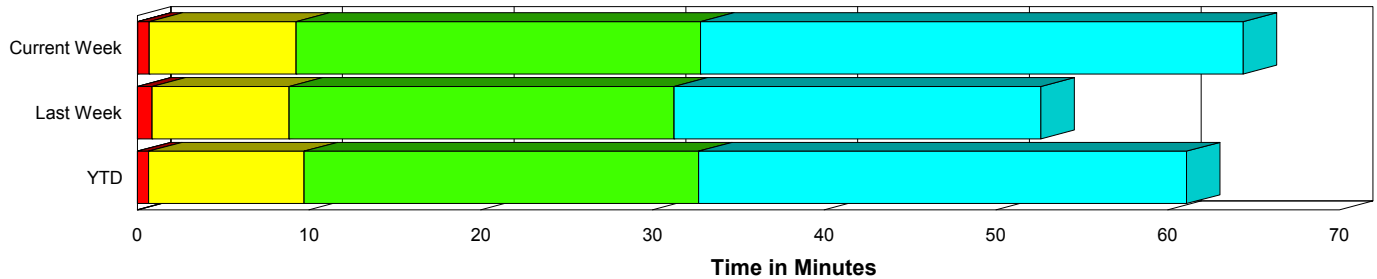
Created on:
September 27, 2009
10:56 pm

Period From Sep 20, 2009 to Sep 26, 2009

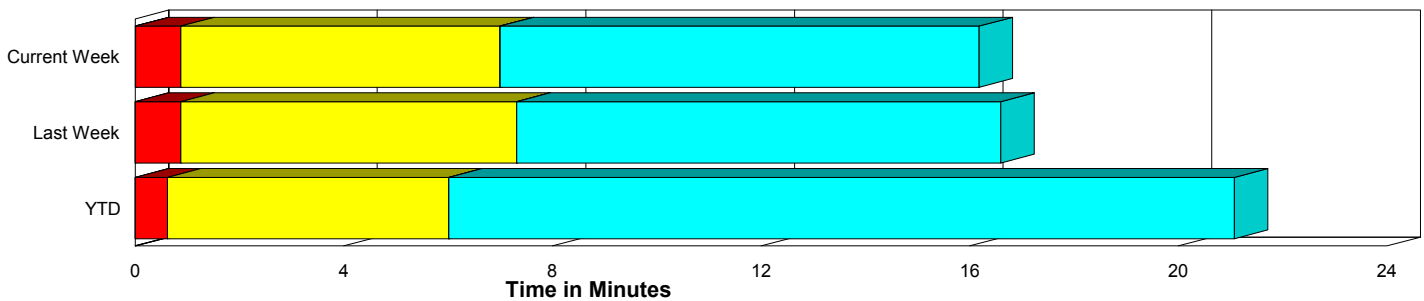
Performance Measures Summary

	Traffic Events (No Lanes Blocked)			Incidents (Lanes Blocked)		
	<u>This Week</u>	<u>Last Week</u>	<u>YTD</u>	<u>This Week</u>	<u>Last Week</u>	<u>YTD</u>
Number of Events	1,309	1,202	37,104	53	50	1,819
TMC Detection (min.)	0.01	0.00	0.01	0.02	0.00	0.00
TMC Verification (min.)	0.87	0.87	0.61	0.67	0.86	0.66
TMC Response (min.)	7.39	7.71	6.48	9.24	8.86	9.88
RR Dispatch Time (min.)	1.17	1.20	1.18	1.17	2.08	2.83
RR Response Time (min.)	6.46	6.58	5.43	8.07	6.78	7.21
Roadway Clearance (min.)				32.59	30.97	31.69
Event Clearance (min.)	16.58	16.99	21.55	64.18	52.22	59.67
# of Events w/ RR/SIRV	1,114	1,030	25,063	52	49	1,258
RR/SIRV Responses	1,114	1,030	25,063	52	49	1,258
RR/SIRV Activities	888	875	21,533	109	105	2,564

Incident Clearance Time-Line



Traffic Event (Non-Lane Blockage) Time-Line



■ Avg. TMC Detection Time	■ Avg. Time from TMC Response to Roadway Clearance*
■ Avg. Time from TMC Detection to TMC Verification	■ Avg. Time from Roadway Clearance to Incident/Event Clearance**
■ Avg. Time from TMC Verification to TMC Response	

* Roadway clearance equals all travel lanes open

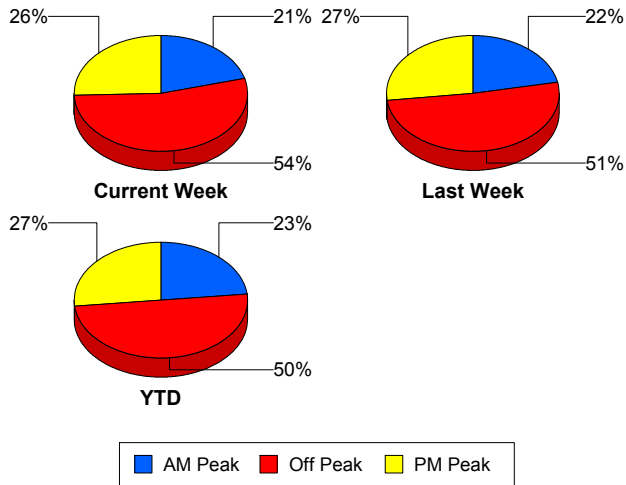
** Incident clearance equals time when last responder has left the scene

Performance Measures by Peak Period

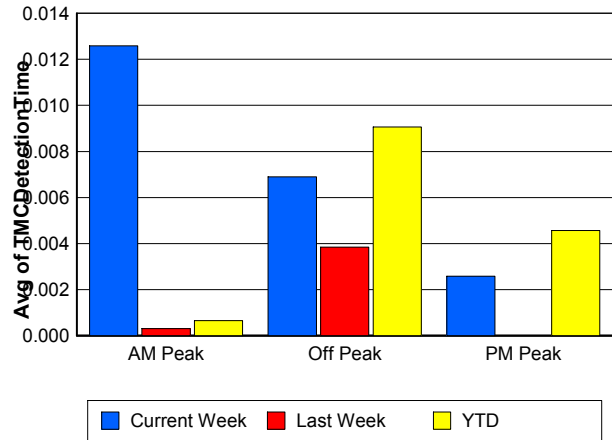
Note: AM peak period is defined as 6am to 10am and PM peak period is defined as 3pm to 7pm.

	AM Peak			Off Peak			PM Peak		
	<u>Current Week</u>	<u>Last Week</u>	<u>YTD</u>	<u>Current Week</u>	<u>Last Week</u>	<u>YTD</u>	<u>Current Week</u>	<u>Last Week</u>	<u>YTD</u>
Number of Events	282	276	9,088	732	637	19,496	348	339	10,339
Number of Incidents	16	18	422	22	24	896	15	8	501
TMC Detection (min.)	0.01	0.00	0.00	0.01	0.00	0.01	0.00	0.00	0.00
TMC Verification (min.)	0.70	0.49	0.53	0.90	0.99	0.57	0.91	0.97	0.77
TMC Response (min.)	6.86	6.68	6.13	8.29	7.93	7.50	6.48	8.33	6.11
RR Dispatch Time (min.)	0.69	0.93	0.97	1.29	1.25	1.74	1.30	1.46	0.88
RR Response Time (min.)	6.29	5.91	5.25	7.26	6.73	5.87	5.40	6.86	5.35
Event Clearance (min.)	17.95	18.76	21.44	18.23	17.68	25.84	19.25	19.46	20.27
Roadway Clearance (min.)	23.37	20.66	28.04	33.88	36.87	35.86	40.52	36.44	27.30
Incident Clearance (min.)	72.46	40.65	57.33	58.78	65.34	63.20	63.27	38.86	55.32
# of Events w/ RR/SIRV	242	245	7,400	611	531	10,907	313	303	8,014
RR/SIRV Responses	242	245	7,400	611	531	10,907	313	303	8,014
RR/SIRV Activities	207	218	7,037	510	489	9,666	280	273	7,394

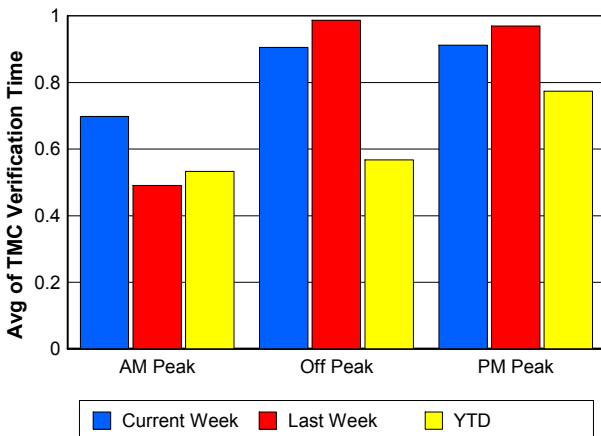
Number of Events / Peak Period



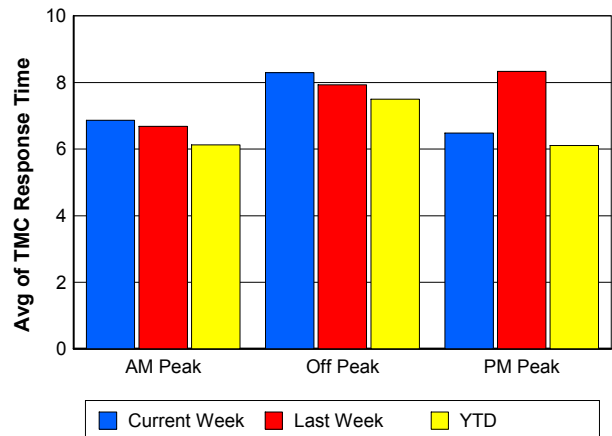
TMC Detection Time



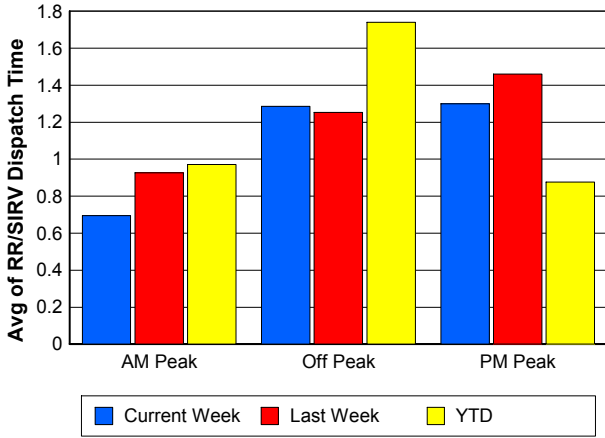
TMC Verification Time



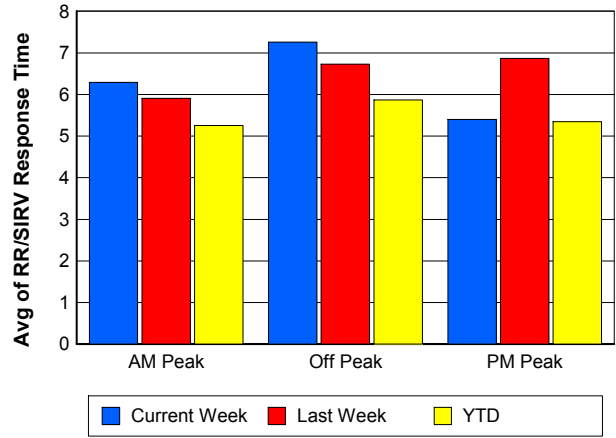
TMC Response Time



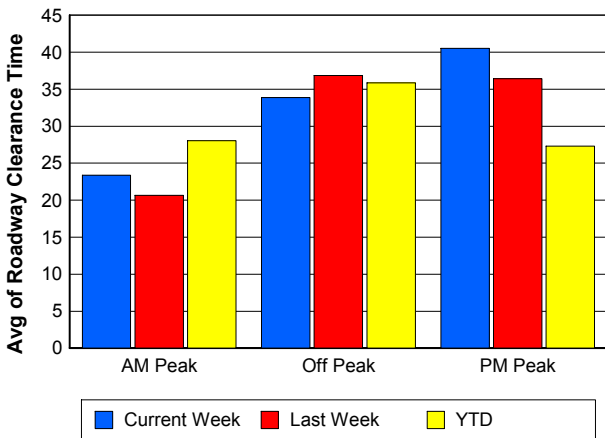
Road Ranger / SIRV Dispatch Time



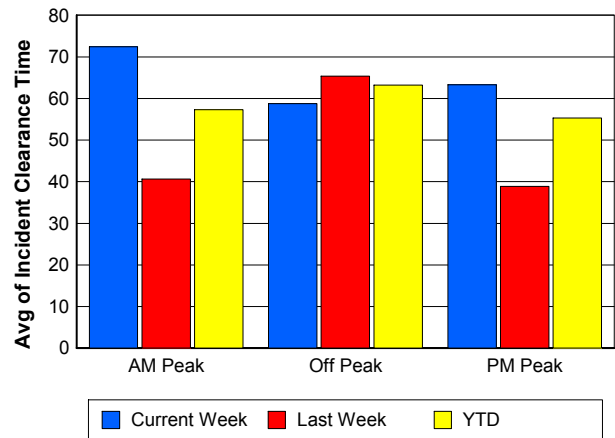
Road Ranger / SIRV Response Time



Roadway Clearance Time (2A)



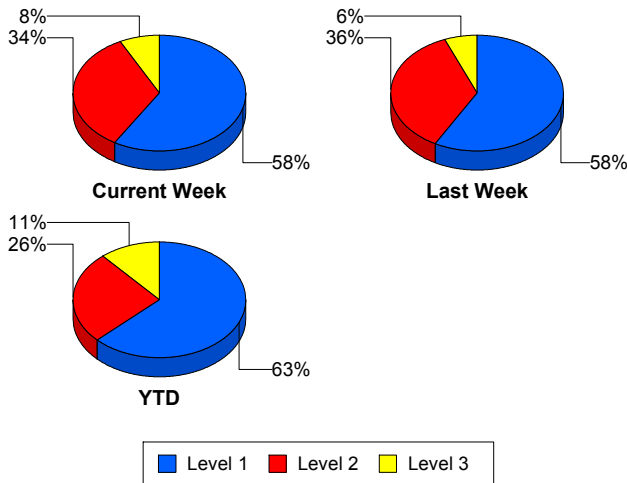
Incident Clearance Time (3B)



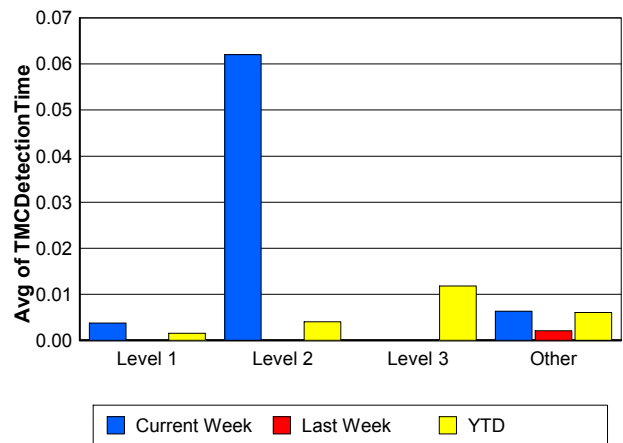
Performance Measures by Severity

	Level 1			Level 2			Level 3			Other		
	<u>This Week</u>	<u>Last Week</u>	<u>YTD</u>	<u>This Week</u>	<u>Last Week</u>	<u>YTD</u>	<u>This Week</u>	<u>Last Week</u>	<u>YTD</u>	<u>This Week</u>	<u>Last Week</u>	<u>YTD</u>
Number of Events	31	29	1,144	18	18	466	4	3	209	1,309	1,202	37,104
Number of Incidents	31	29	1,144	18	18	466	4	3	209	0	0	0
TMC Detection (min.)	0.00	0.00	0.00	0.06	0.00	0.00	0.00	0.00	0.01	0.01	0.00	0.01
TMC Verification (min.)	0.05	0.02	0.40	1.89	1.92	0.99	0.02	2.64	1.34	0.87	0.87	0.61
TMC Response (min.)	9.97	7.26	7.29	9.23	11.50	9.91	1.81	7.90	22.95	7.39	7.71	6.48
RR Dispatch Time (min.)	0.99	1.25	1.63	1.54	3.45	2.76	0.71	1.48	8.59	1.17	1.20	1.18
RR Resp. Time (min.)	8.97	6.01	5.74	7.68	8.04	7.48	1.10	6.42	14.21	6.46	6.58	5.43
Event Clearance (min.)	54.64	42.84	46.07	77.46	61.45	72.23	78.31	87.48	105.79	16.58	16.99	21.55
Roadway Clear. (min.)	14.94	16.24	14.29	53.87	46.98	49.14	73.55	77.27	88.02			
Incident Clearance (min.)	54.64	42.84	46.07	77.46	61.45	72.23	78.31	87.48	105.79			
# of Events w/ RR/SIRV	31	28	827	18	18	254	3	3	177	1,114	1,030	25,063
RR/SIRV Responses	31	28	827	18	18	254	3	3	177	1,114	1,030	25,063
RR/SIRV Activities	54	45	1,445	50	44	715	5	16	404	888	875	21,533

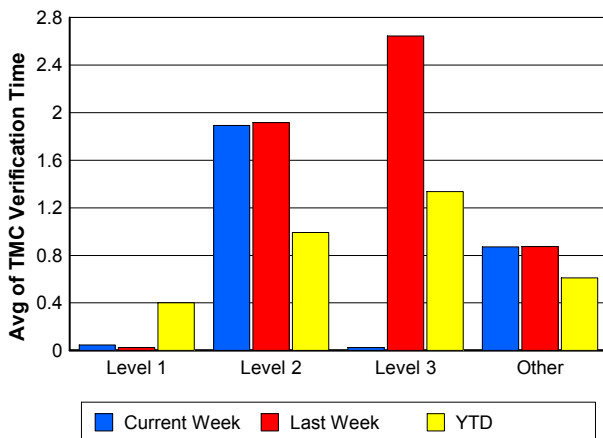
Number of Events / Severity



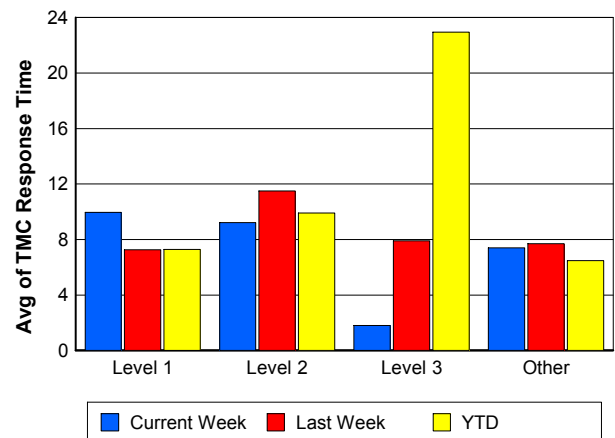
TMC Detection Time



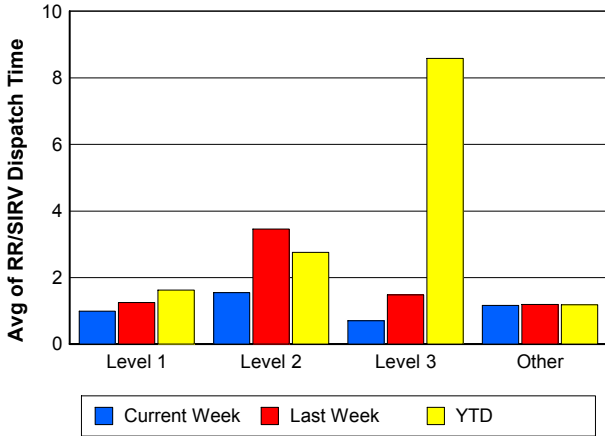
TMC Verification Time



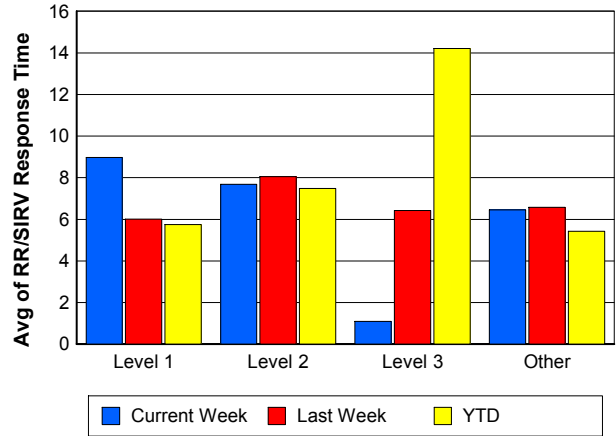
TMC Response Time



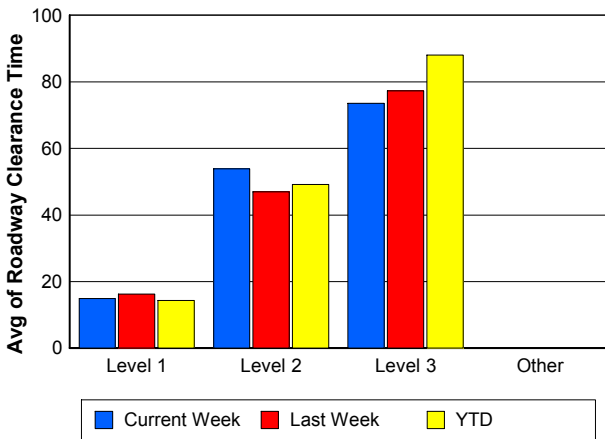
Road Ranger / SIRV Dispatch Time



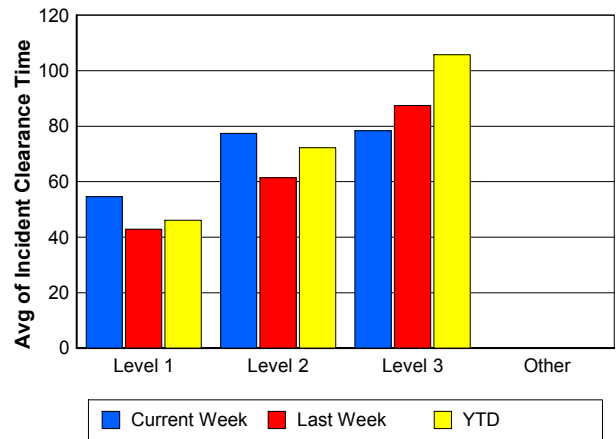
Road Ranger / SIRV Response Time



Roadway Clearance Time (2A)



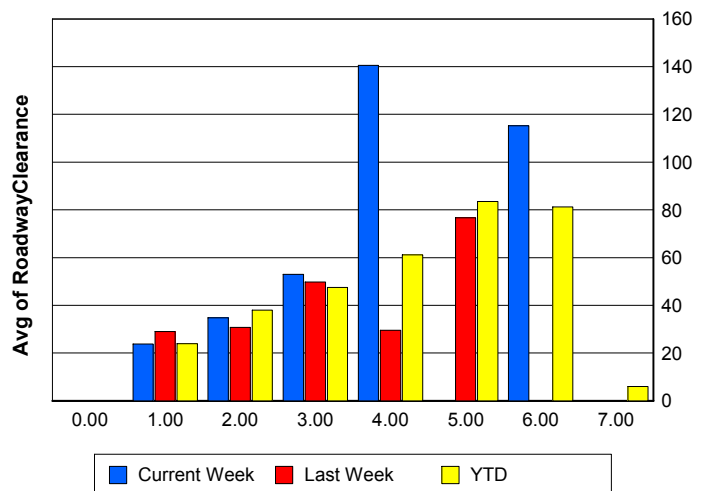
Incident Clearance Time (3B)



Roadway Clearance by Maximum Number of Lanes Blocked

	Current Week	Last Week	YTD
0			
1	23.76	29.04	23.88
2	34.74	30.73	37.96
3	52.93	49.77	47.50
4	140.60	29.61	61.15
5	0.00	76.67	83.50
6	115.27	0.00	81.25
7	0.00	0.00	5.97

Roadway Clearance Time (2A)



Performance Measures by Roadway

595

	<u>Current Week</u>	<u>Last Week</u>	<u>YTD</u>
Number of Events	54	47	4,386
Number of Incidents	0	1	264
TMC Detection (min.)	0.03	0.00	0.01
TMC Verification (min.)	1.32	1.30	0.79
TMC Response (min.)	11.15	7.22	6.60
RR Dispatch Time (min.)	1.93	1.39	1.13
RR Resp. Time (min.)	8.42	6.10	5.56
Event Clearance (min.)	19.60	20.63	21.41
Roadway Clear. (min.)		130.53	31.37
Incident Clearance (min.)		135.55	54.63
# of Events w/ RR/SIRV	44	41	3,056
RR/SIRV Responses	44	41	3,056
RR/SIRV Activities	24	37	2,804

75

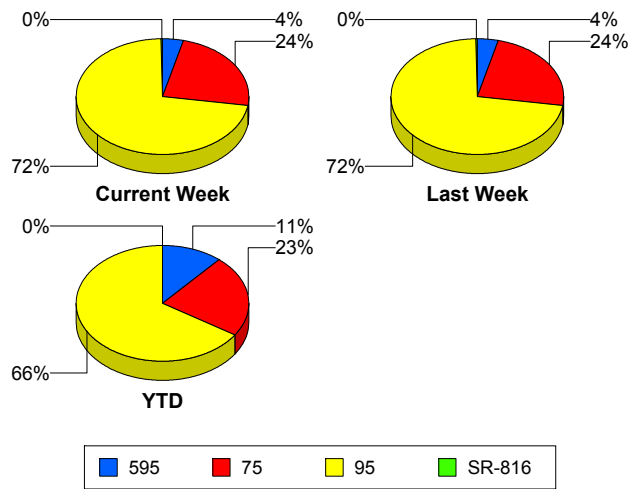
	<u>Current Week</u>	<u>Last Week</u>	<u>YTD</u>
Number of Events	321	296	8,877
Number of Incidents	7	6	168
TMC Detection (min.)	0.01	0.00	0.00
TMC Verification (min.)	1.88	0.97	0.76
TMC Response (min.)	9.08	9.52	7.88
RR Dispatch Time (min.)	1.10	1.36	1.22
RR Resp. Time (min.)	8.14	8.22	6.76
Event Clearance (min.)	18.95	20.97	25.36
Roadway Clear. (min.)	23.13	35.51	53.83
Incident Clearance (min.)	58.87	72.57	81.81
# of Events w/ RR/SIRV	261	252	5,836
RR/SIRV Responses	261	252	5,836
RR/SIRV Activities	215	224	5,059

95

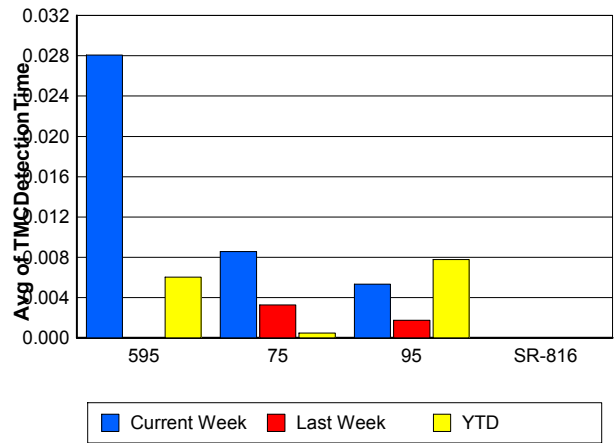
	<u>Current Week</u>	<u>Last Week</u>	<u>YTD</u>
Number of Events	982	904	25,636
Number of Incidents	41	40	1,368
TMC Detection (min.)	0.01	0.00	0.01
TMC Verification (min.)	0.52	0.82	0.53
TMC Response (min.)	6.95	7.29	6.31
RR Dispatch Time (min.)	1.15	1.20	1.30
RR Resp. Time (min.)	6.06	6.13	5.14
Event Clearance (min.)	18.24	17.47	22.97
Roadway Clear. (min.)	37.12	28.58	29.35
Incident Clearance (min.)	71.85	49.44	58.62
# of Events w/ RR/SIRV	856	782	17,407
RR/SIRV Responses	856	782	17,407
RR/SIRV Activities	752	714	16,209

	<u>Current Week</u>	<u>Last Week</u>	<u>YTD</u>
Number of Events	5	5	24
Number of Incidents	5	3	19
TMC Detection (min.)	0.00	0.00	0.00
TMC Verification (min.)	0.00	0.00	0.00
TMC Response (min.)	0.00	0.00	0.00
RR Dispatch Time (min.)	0.00	0.00	0.00
RR Resp. Time (min.)	0.00	0.00	0.00
Event Clearance (min.)	8.69	13.56	8.06
Roadway Clear. (min.)	8.69	20.61	8.95
Incident Clearance (min.)	8.69	20.73	8.85
# of Events w/ RR/SIRV	5	4	22
RR/SIRV Responses	5	4	22
RR/SIRV Activities	6	5	25

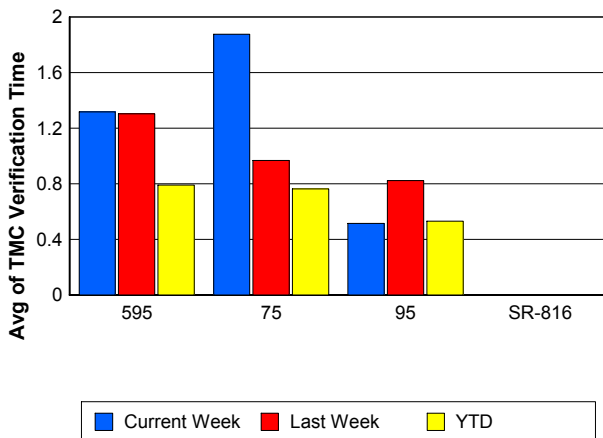
Number of Events / Roadway



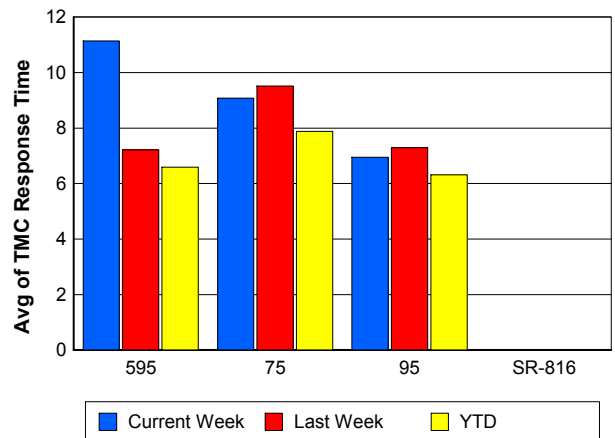
TMC Detection Time



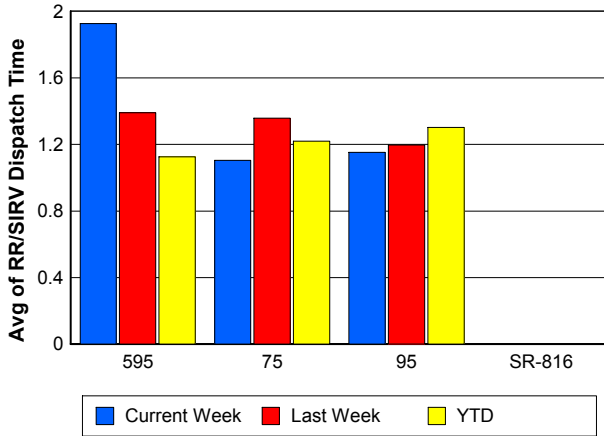
TMC Verification Time



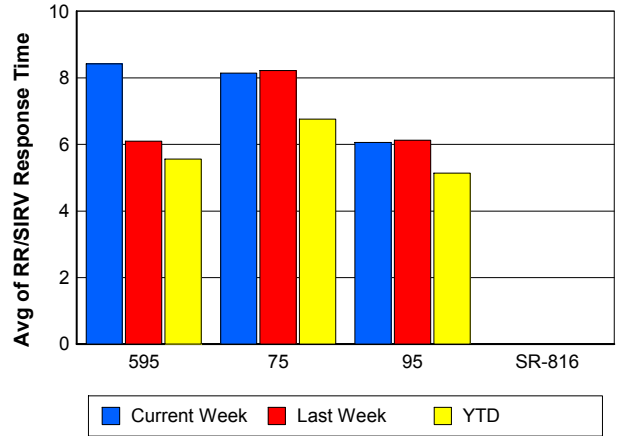
TMC Response Time



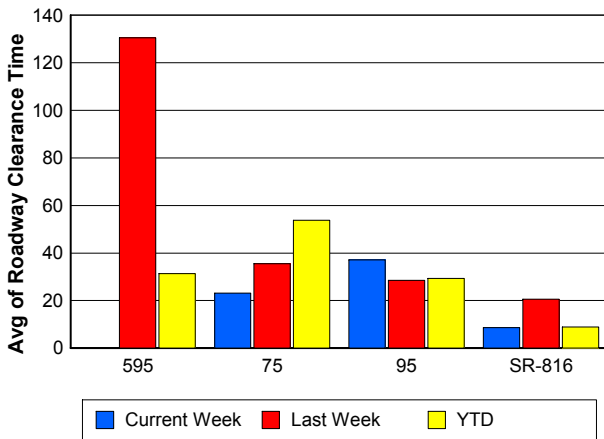
Road Ranger / SIRV Dispatch Time



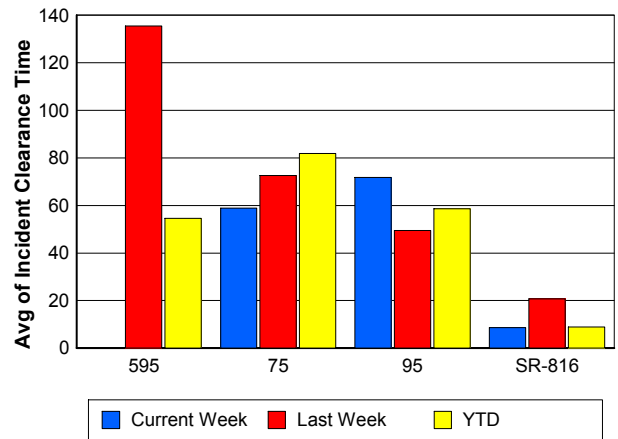
Road Ranger / SIRV Response Time



Roadway Clearance Time (2A)



Incident Clearance Time (3B)



Performance Measures by Event Type

Accident

	<u>Current Week</u>	<u>Last Week</u>	<u>YTD</u>
Number of Events	70	87	2,721
Number of Incidents	34	39	1,317
TMC Detection (min.)	0.00	0.00	0.01
TMC Verification (min.)	0.50	0.91	0.73
TMC Response (min.)	9.16	11.04	8.93
RR Dispatch Time (min.)	0.93	2.41	1.69
RR Response Time (min.)	8.23	8.60	7.32
Event Clearance (min.)	60.26	55.19	55.49
Roadway Clearance (min.)	33.80	30.98	33.01
Incident Clearance (min.)	79.36	56.88	66.48
# of Events w/ RR/SIRV	68	86	1,974
RR/SIRV Assists	68	86	1,974
RR/SIRV Activities	110	143	3,069

Debris on Roadway

	<u>Current Week</u>	<u>Last Week</u>	<u>YTD</u>
Number of Events	50	46	1,175
Number of Incidents	1	1	24
TMC Detection (min.)	0.00	0.00	0.10
TMC Verification (min.)	2.45	1.47	3.66
TMC Response (min.)	6.02	7.22	7.40
RR Dispatch Time (min.)	0.64	0.58	0.85
RR Response Time (min.)	5.39	6.65	6.57
Event Clearance (min.)	10.61	10.19	11.41
Roadway Clearance (min.)	74.57	49.77	25.76
Incident Clearance (min.)	74.47	55.33	30.58
# of Events w/ RR/SIRV	49	46	1,085
RR/SIRV Assists	49	46	1,085
RR/SIRV Activities	52	45	1,114

Disabled Vehicle

	<u>Current Week</u>	<u>Last Week</u>	<u>YTD</u>
Number of Events	799	741	22,995
Number of Incidents	14	6	284
TMC Detection (min.)	0.00	0.00	0.00
TMC Verification (min.)	1.19	1.25	0.72
TMC Response (min.)	7.66	7.57	6.26
RR Dispatch Time (min.)	1.15	1.11	1.07
RR Response Time (min.)	6.67	6.48	5.23
Event Clearance (min.)	19.28	19.77	26.02
Roadway Clearance (min.)	21.45	20.62	18.62
Incident Clearance (min.)	29.62	22.39	33.78
# of Events w/ RR/SIRV	778	728	18,199
RR/SIRV Assists	778	728	18,199
RR/SIRV Activities	785	734	18,610

Emergency Vehicles

	<u>Current Week</u>	<u>Last Week</u>	<u>YTD</u>
Number of Events	3	2	63
Number of Incidents	3	1	48
TMC Detection (min.)	0.00	0.00	0.00
TMC Verification (min.)	0.00	0.00	0.61
TMC Response (min.)	0.66	15.53	13.37
RR Dispatch Time (min.)	0.60	14.62	8.98
RR Response Time (min.)	0.06	0.92	3.72
Event Clearance (min.)	54.94	66.22	52.81
Roadway Clearance (min.)	53.21	41.12	53.63
Incident Clearance (min.)	54.94	47.70	60.33
# of Events w/ RR/SIRV	2	1	36
RR/SIRV Assists	2	1	36
RR/SIRV Activities	4	1	60

Other

	<u>Current Week</u>	<u>Last Week</u>	<u>YTD</u>
Number of Events	433	360	11,580
Number of Incidents	0	0	27
TMC Detection (min.)	0.02	0.00	0.00
TMC Verification (min.)	0.16	0.06	0.07
TMC Response (min.)	3.73	5.63	8.31
RR Dispatch Time (min.)	1.39	1.29	1.79
RR Response Time (min.)	3.22	4.87	6.11
Event Clearance (min.)	10.76	7.49	11.16
Roadway Clearance (min.)			30.45
Incident Clearance (min.)			35.84
# of Events w/ RR/SIRV	263	207	4,813
RR/SIRV Assists	263	207	4,813
RR/SIRV Activities	40	43	961

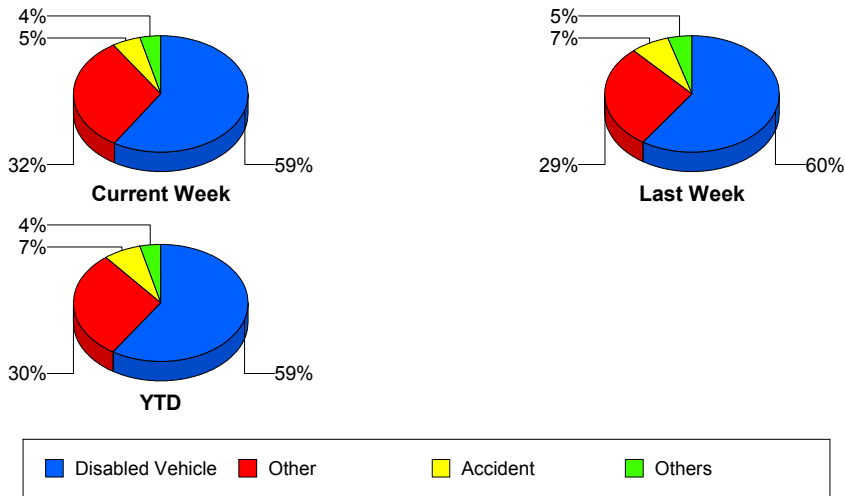
Police Activity

	<u>Last Week</u>	<u>YTD</u>
Number of Events	6	160
Number of Incidents	0	48
TMC Detection (min.)	0.00	0.00
TMC Verification (min.)	0.00	0.32
TMC Response (min.)	1.80	13.64
RR Dispatch Time (min.)	0.50	4.46
RR Response Time (min.)	1.73	9.17
Event Clearance (min.)	8.92	33.50
Roadway Clearance (min.)		40.70
Incident Clearance (min.)		50.14
# of Events w/ RR/SIRV	2	51
RR/SIRV Assists	2	51
RR/SIRV Activities	1	61

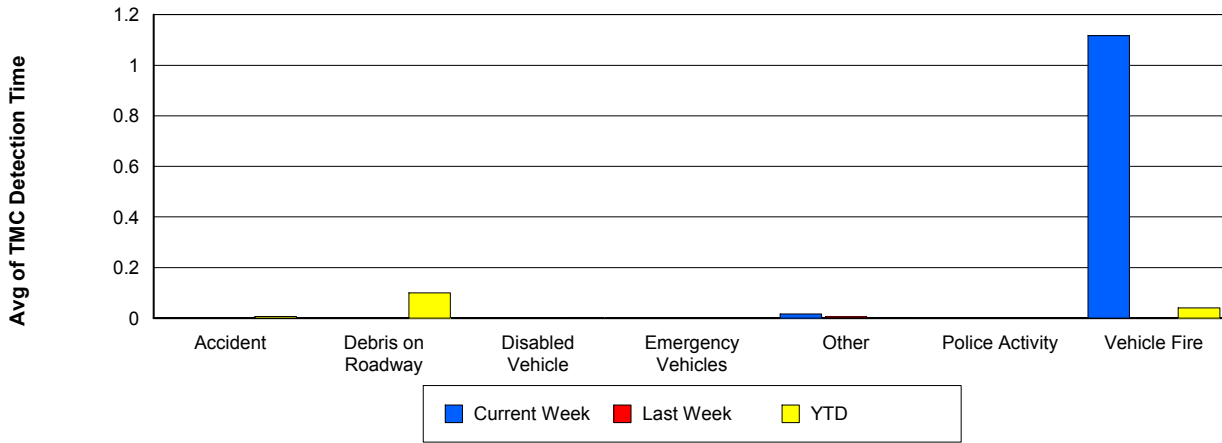
Vehicle Fire

	<u>Current Week</u>	<u>Last Week</u>	<u>YTD</u>
Number of Events	1	3	89
Number of Incidents	1	3	71
TMC Detection (min.)	1.12	0.00	0.04
TMC Verification (min.)	1.12	0.03	1.14
TMC Response (min.)	6.88	3.26	10.18
RR Dispatch Time (min.)	0.45	1.41	2.30
RR Response Time (min.)	6.43	1.85	8.33
Event Clearance (min.)	49.28	51.73	59.02
Roadway Clearance (min.)	43.28	41.84	41.06
Incident Clearance (min.)	49.28	51.73	62.06
# of Events w/ RR/SIRV	1	3	59
RR/SIRV Assists	1	3	59
RR/SIRV Activities	2	7	128

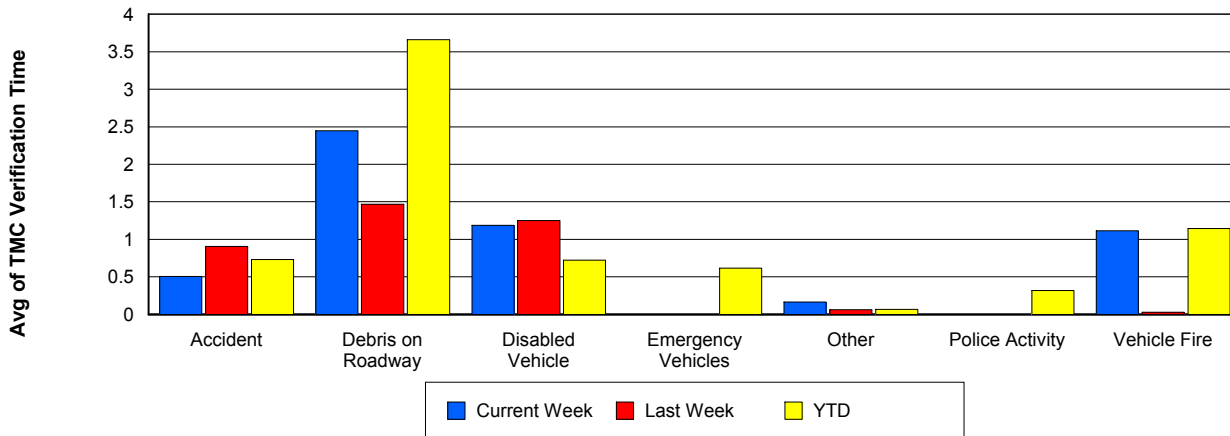
Number of Events / Event Type



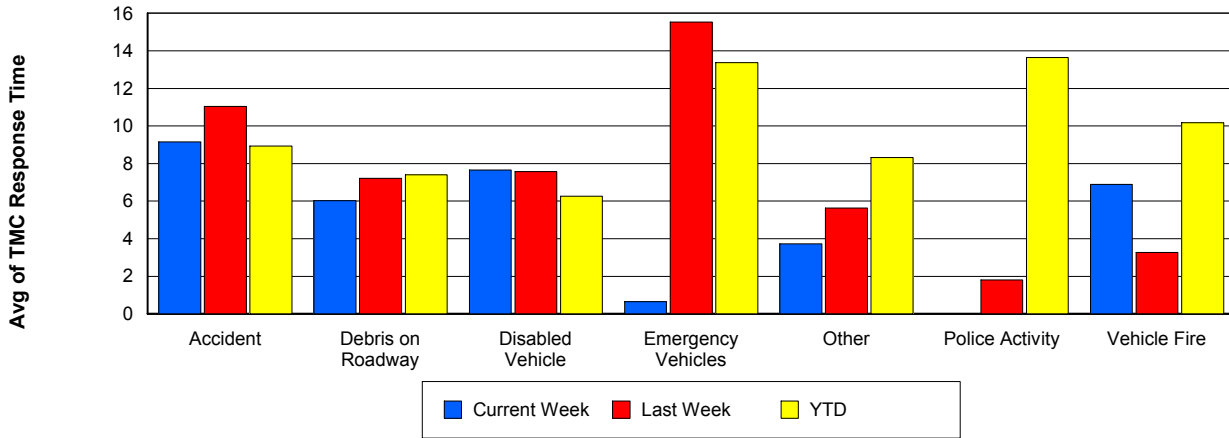
TMC Detection Time



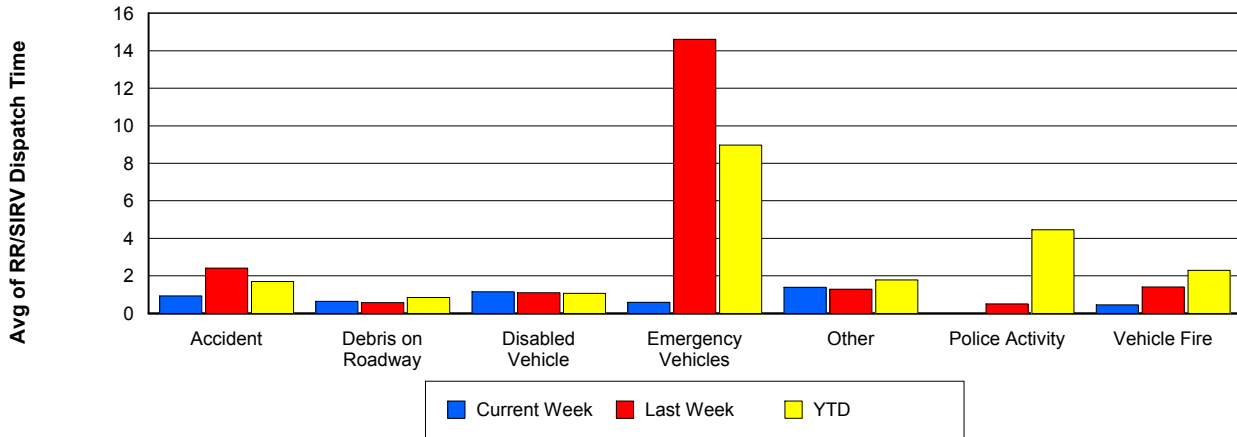
TMC Verification Time



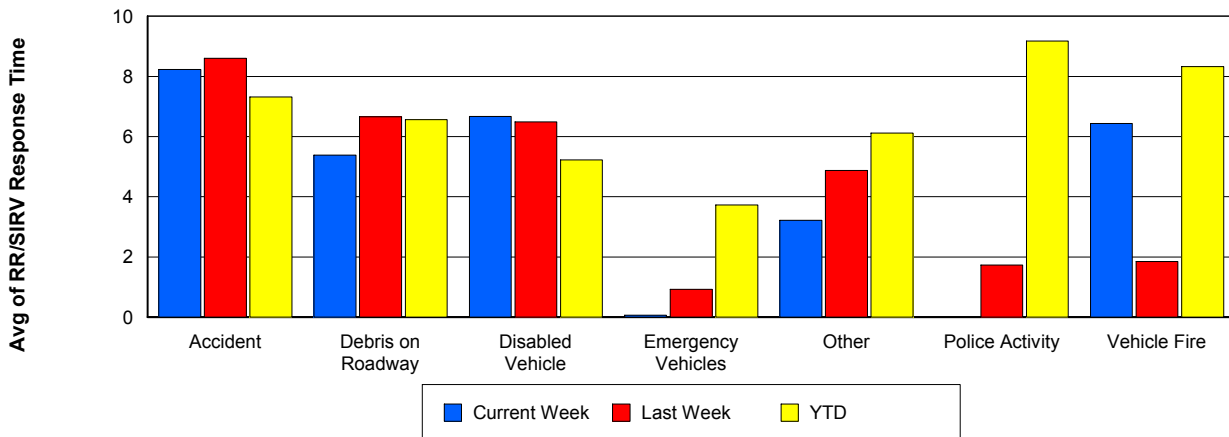
TMC Response Time



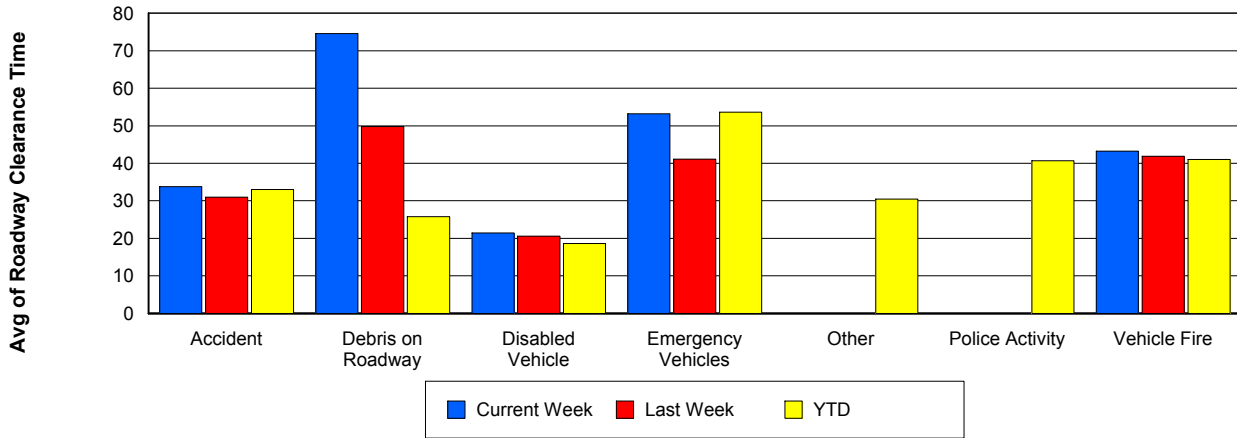
Road Ranger / SIRV Dispatch Time



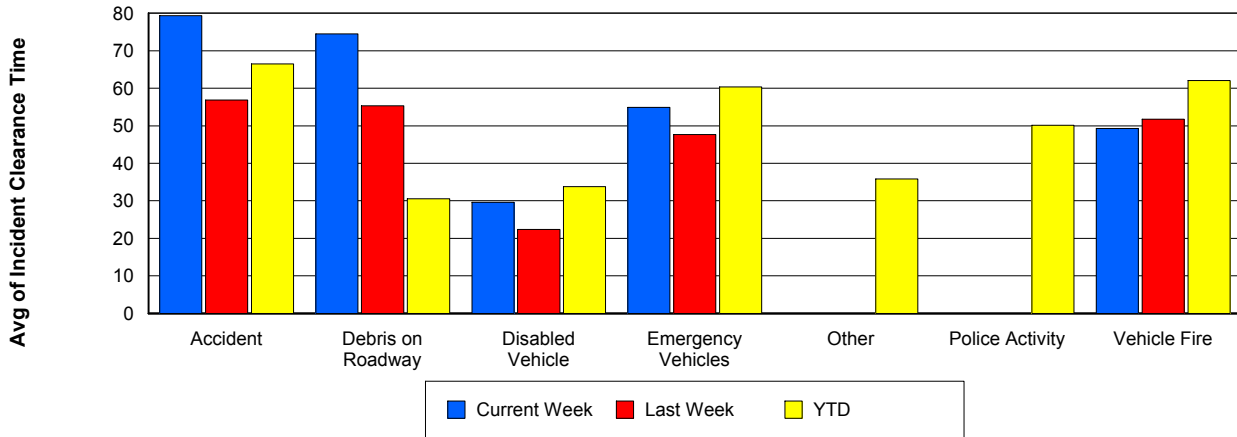
Road Ranger / SIRV Response Time



Roadway Clearance Time (2A)



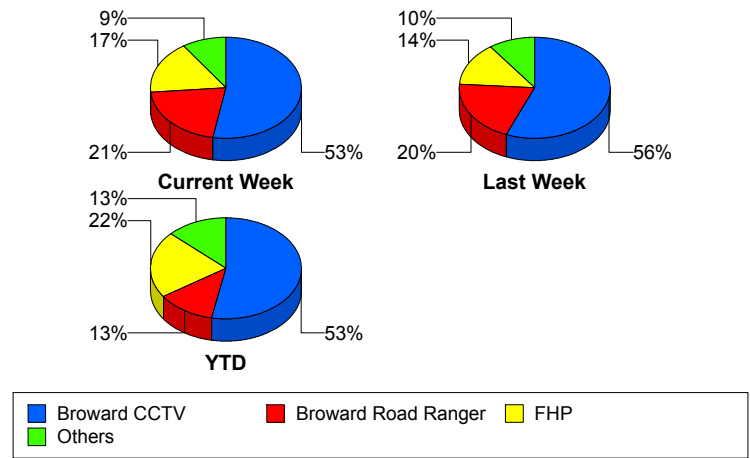
Incident Clearance Time (3B)



Incident Detection Methods

	Current Week	Last Week	YTD
Broward CCTV	28	28	962
Broward Road Ranger	11	10	227
Broward TMC	0	1	2
Broward VideoWall	0	1	57
BSO	0	1	39
District 4	1	0	45
District 6	0	0	1
FDOT Maintenance	0	0	4
FHP	9	7	391
Fire	0	0	3
Florida's Turnpike	0	0	6
ITMS	0	0	2
Motorist	0	0	8
Other	0	0	1
Palm Beach Road Ran	0	1	4
Road Watcher	1	0	13
SIRV	2	0	12
SmarTraveler (511)	0	0	6
VisioPaD Detection	1	1	33
Total	53	50	1,816

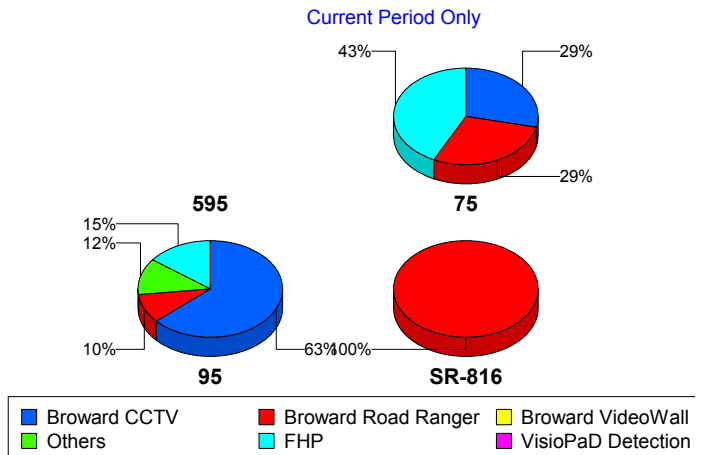
Total Incidents by Detection Method



Incident Detection Methods by Roadway

		Current Week	Last Week	YTD
595	Broward CCTV	0	0	129
	Broward Road Ranger	0	0	37
	Broward VideoWall	0	0	8
	BSO	0	0	4
	District 4	0	0	12
	FDOT Maintenance	0	0	2
	FHP	0	1	52
	Florida's Turnpike	0	0	6
	Motorist	0	0	2
	Road Watcher	0	0	3
	SIRV	0	0	1
	VisioPaD Detection	0	0	6
	Total	0	1	262
	75	Broward CCTV	2	3
Broward Road Ranger		2	0	18
Broward VideoWall		0	0	1
BSO		0	1	30
District 4		0	0	5
FHP		3	1	40
Other		0	0	1
Road Watcher		0	0	2
VisioPaD Detection		0	1	5
Total		7	6	168
95	Broward CCTV	26	25	767
	Broward Road Ranger	4	7	153
	Broward TMC	0	1	2
	Broward VideoWall	0	1	48
	BSO	0	0	5
	District 4	1	0	28
	District 6	0	0	1
	FDOT Maintenance	0	0	2

Total Events by Roadway and Detection Method

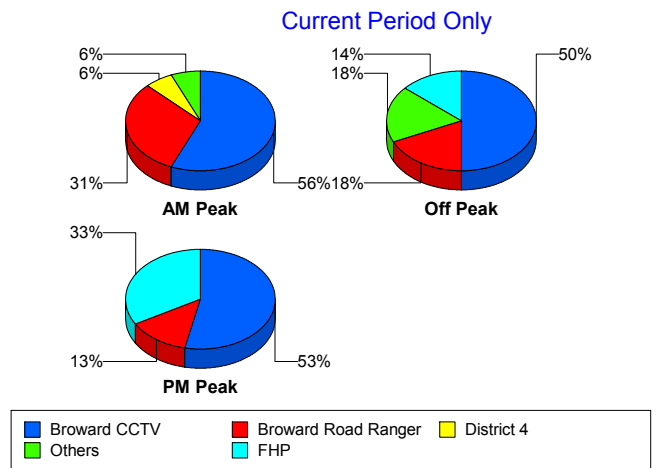


		Current Week	Last Week	YTD
95	FHP	6	5	299
	Fire	0	0	3
	ITMS	0	0	2
	Motorist	0	0	6
	Palm Beach Road Ran	0	1	4
	Road Watcher	1	0	8
	SIRV	2	0	11
	SmarTraveler (511)	0	0	6
	VisioPaD Detection	1	0	22
	Total	41	40	1,367
SR-816	Broward Road Ranger	5	3	19
	Total	5	3	19
Total		53	50	1,816

Incident Detection Methods by Peak Period

		Current Week	Last Week	YTD
AM Peak	Broward CCTV	9	10	188
	Broward Road Ranger	5	4	73
	Broward TMC	0	1	1
	Broward VideoWall	0	0	20
	BSO	0	1	6
	District 4	1	0	16
	FHP	1	1	99
	Florida's Turnpike	0	0	2
	Motorist	0	0	5
	Palm Beach Road Ran	0	1	2
	Road Watcher	0	0	4
	SIRV	0	0	1
	SmarTraveler (511)	0	0	1
	VisioPaD Detection	0	0	2
	Total	16	18	420
Off Peak	Broward CCTV	11	15	521

Total Events by Peak Period and Detection Method

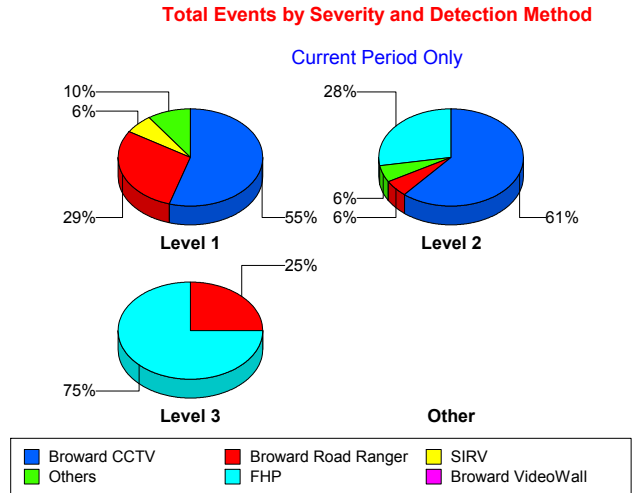


		Current Week	Last Week	YTD
Off Peak	Broward Road Ranger	4	3	65
	Broward TMC	0	0	1
	Broward VideoWall	0	1	30
	BSO	0	0	27
	District 4	0	0	14
	FDOT Maintenance	0	0	2
	FHP	3	4	186
	Fire	0	0	2
	Florida's Turnpike	0	0	3
	ITMS	0	0	2
	Motorist	0	0	3
	Palm Beach Road Ran	0	0	1
	Road Watcher	1	0	6
	SIRV	2	0	5
	SmarTraveler (511)	0	0	3
	VisioPaD Detection	1	1	25
	Total	22	24	896
PM Peak	Broward CCTV	8	3	253
	Broward Road Ranger	2	3	89
	Broward VideoWall	0	0	7
	BSO	0	0	6
	District 4	0	0	15
	District 6	0	0	1
	FDOT Maintenance	0	0	2
	FHP	5	2	106
	Fire	0	0	1
	Florida's Turnpike	0	0	1
	Other	0	0	1
	Palm Beach Road Ran	0	0	1
	Road Watcher	0	0	3
	SIRV	0	0	6
	SmarTraveler (511)	0	0	2

		Current Week	Last Week	YTD
PM Peak	VisioPaD Detection	0	0	6
	Total	15	8	500
Total		53	50	1,816

Incident Detection Methods by Severity

		Current Week	Last Week	YTD
Level 1	Broward CCTV	17	16	612
	Broward Road Ranger	9	7	165
	Broward TMC	0	1	1
	Broward VideoWall	0	0	37
	BSO	0	0	10
	District 4	1	0	34
	FDOT Maintenance	0	0	3
	FHP	1	4	225
	Fire	0	0	2
	ITMS	0	0	1
	Motorist	0	0	6
	Palm Beach Road Ran	0	1	3
	Road Watcher	0	0	9
	SIRV	2	0	11
	SmarTraveler (511)	0	0	4
	VisioPaD Detection	1	0	19
	Total	31	29	1,142
Level 2	Broward CCTV	11	11	249
	Broward Road Ranger	1	3	45
	Broward TMC	0	0	1
	Broward VideoWall	0	1	17
	BSO	0	1	10
	District 4	0	0	5
	FDOT Maintenance	0	0	1
	FHP	5	2	114
	Florida's Turnpike	0	0	4



		Current Week	Last Week	YTD
Level 2	ITMS	0	0	1
	Motorist	0	0	2
	Other	0	0	1
	Road Watcher	1	0	2
	SIRV	0	0	1
	SmarTraveler (511)	0	0	2
	VisioPaD Detection	0	0	11
	Total	18	18	466
Level 3	Broward CCTV	0	1	101
	Broward Road Ranger	1	0	17
	Broward VideoWall	0	0	3
	BSO	0	0	19
	District 4	0	0	6
	District 6	0	0	1
	FHP	3	1	52
	Fire	0	0	1
	Florida's Turnpike	0	0	2
	Palm Beach Road Ran	0	0	1
	Road Watcher	0	0	2
	VisioPaD Detection	0	1	3
	Total	4	3	208
	Total	53	50	1,816

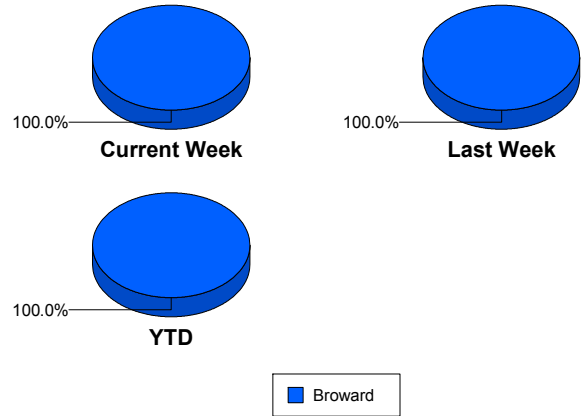
Road Ranger / SIRV Performance Measures

Road Ranger / SIRV Performance By County

Values presented are:
 - Total Events with a RR/SIRV Response
 - Total RR/SIRV Responses,
 - Total Activities Performed

	Current We	Last Week	YTD
Broward	1,068	1,007	25,848
	1,146	1,084	27,837
	1,189	1,143	28,959

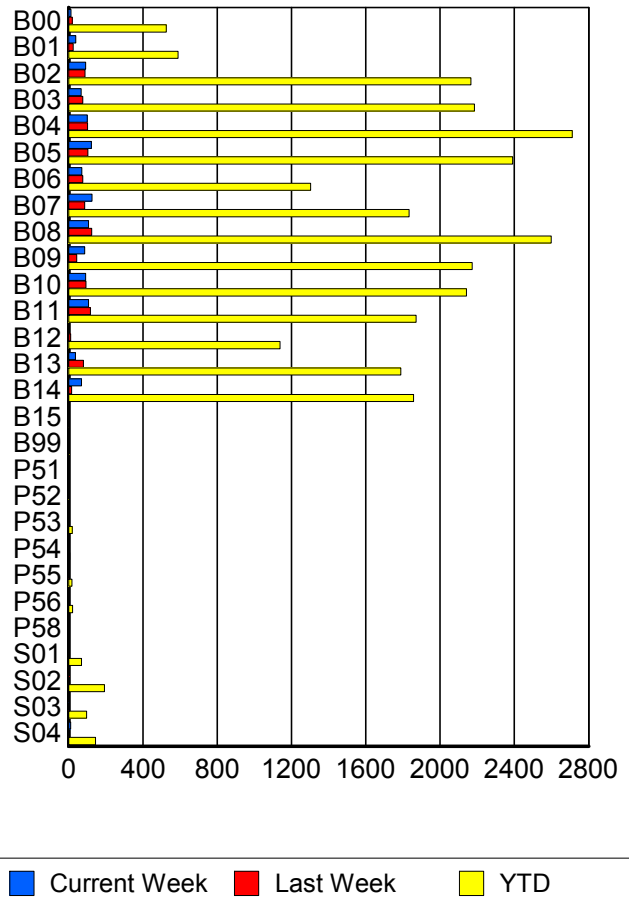
RR/SIRV Responses per County



Road Ranger / SIRV Performance By Truck

	Current We	Last Week	YTD
B00	11	20	512
	12	20	525
	14	21	547
B01	38	25	579
	38	25	590
	41	27	625
B02	92	89	2,147
	92	89	2,166
	92	92	2,255
B03	66	75	2,151
	67	77	2,185
	73	85	2,267
B04	100	99	2,682
	101	102	2,712
	105	104	2,828
B05	120	99	2,344
	122	103	2,390
	128	109	2,470
B06	72	76	1,280
	72	76	1,303
	73	79	1,344
B07	125	87	1,807
	126	87	1,833
	130	90	1,913
B08	104	124	2,564
	107	125	2,598
	107	130	2,695

**RR/SIRV
Responses per
Truck**



	Current We	Last Week	YTD
B09	82	41	2,137
	86	43	2,173
	90	45	2,255
B10	89	93	2,105
	91	94	2,142
	92	103	2,225
B11	107	116	1,841
	108	117	1,871
	111	119	1,931
B12	0	11	1,124
	0	11	1,139
	0	12	1,188
B13	37	80	1,765
	37	80	1,788
	38	86	1,851
B14	69	16	1,827
	69	17	1,857
	71	19	1,925
B15	0	0	2
	0	0	2
	0	0	2
B99	0	0	4
	0	0	4
	0	0	4
P51	0	0	1
	0	0	1
	0	0	1
P52	0	0	2
	0	0	2
	0	0	2
P53	0	2	18
	0	2	19
	0	2	21
P54	0	1	6
	0	1	6
	0	1	6
P55	0	2	18
	0	2	18
	0	4	22
P56	0	1	21
	0	1	21
	0	1	22
P58	0	0	1
	0	0	1
	0	0	1

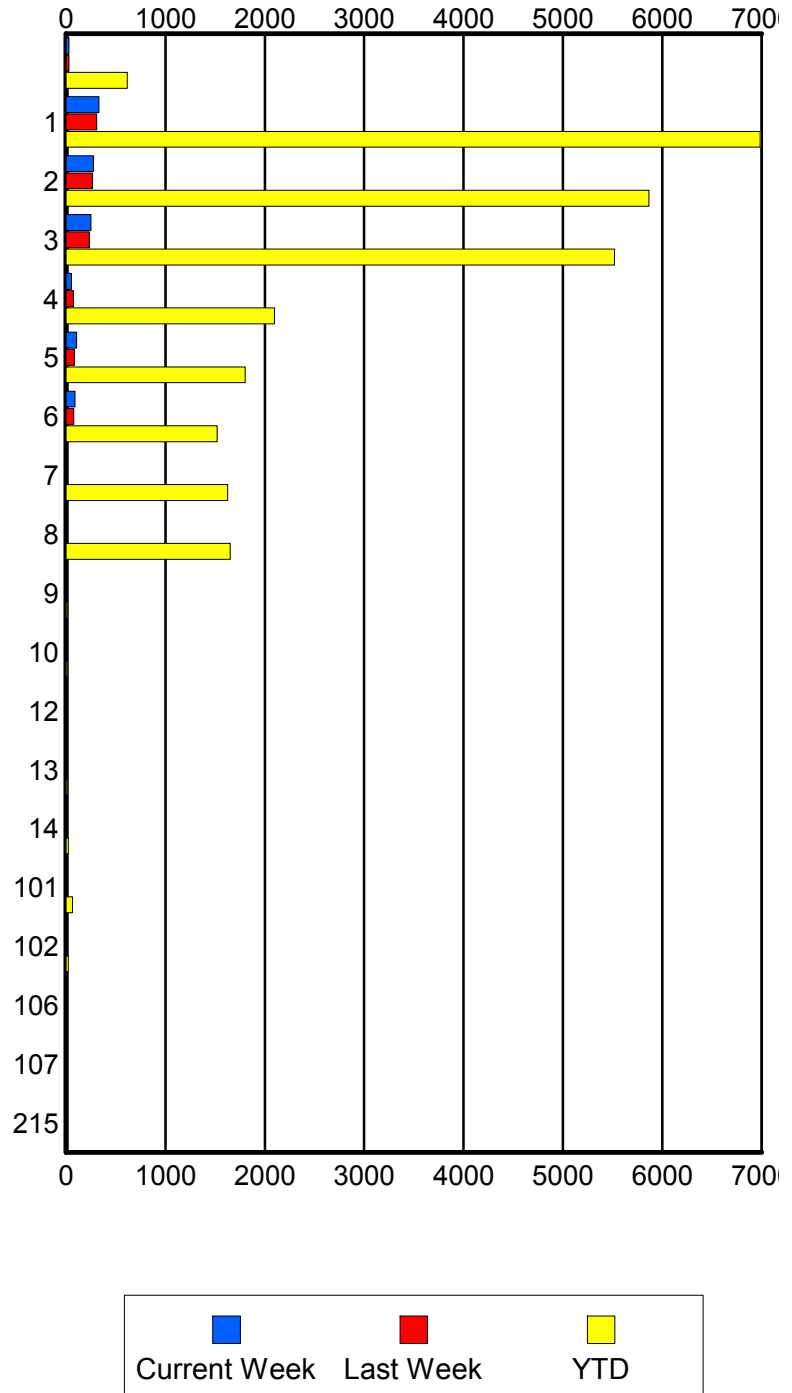
	Current We	Last Week	YTD
S01	0	1	66
	0	1	69
	0	1	80
S02	5	5	186
	5	5	193
	8	6	212
S03	2	3	95
	2	3	97
	3	4	110
S04	11	3	140
	11	3	145
	13	3	157

Road Ranger / SIRV Performance By Beat

	Current We	Last Week	YTD
	28	28	573
	28	29	617
	34	31	674
1	309	289	6,573
	332	310	6,985
	347	320	7,215
2	264	263	5,666
	277	268	5,866
	289	284	6,121
3	244	224	5,359
	249	234	5,518
	254	247	5,731
4	51	74	2,052
	54	75	2,098
	54	79	2,166
5	103	82	1,773
	105	84	1,804
	108	90	1,868
6	91	78	1,489
	91	78	1,520
	93	84	1,596
7	0	0	1,600
	0	0	1,625
	0	0	1,698
8	0	0	1,633
	0	0	1,653
	0	0	1,716
9	0	0	12
	0	0	14
	0	0	14
10	0	0	13
	0	0	14
	0	0	14
12	0	0	9
	0	0	9
	0	0	9
13	0	0	14
	0	0	14
	0	0	15
14	10	0	23
	10	0	23
	10	0	23
101	0	6	63
	0	6	64
	0	8	71

Values presented are:
 - Total Events with a RR/SIRV Response
 - Total RR/SIRV Responses,
 - Total Activities Performed

RR/SIRV Responses per Beat



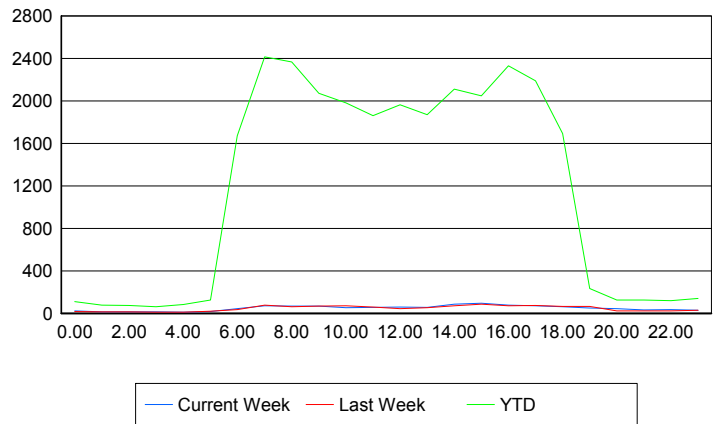
	Current We	Last Week	YTD
102	0	0	23
	0	0	23
	0	0	25
106	0	0	1
	0	0	1
	0	0	1
107	0	0	1
	0	0	1
	0	0	1
215	0	0	1
	0	0	1
	0	0	1

Road Ranger / SIRV Performance By Time of Day

Values presented are:
- Total Events with a RR/SIRV Response
- Total RR/SIRV Responses,
- Total Activities Performed

	Current We	Last Week	YTD
12AM-1AM	21	16	106
	22	17	111
	22	19	121
1AM-2AM	15	15	76
	15	15	77
	15	15	79
2AM-3AM	13	12	64
	14	14	75
	14	17	81
3AM-4AM	13	12	59
	13	12	62
	13	12	62
4AM-5AM	9	12	71
	10	12	82
	10	13	84
5AM-6AM	13	10	100
	16	20	126
	16	22	133
6AM-7AM	42	32	1,526
	44	35	1,672
	45	36	1,723
7AM-8AM	64	66	2,242
	70	76	2,415
	73	77	2,503
8AM-9AM	65	54	2,147
	69	62	2,368
	69	66	2,466

Number of Responses / Hour of the Day



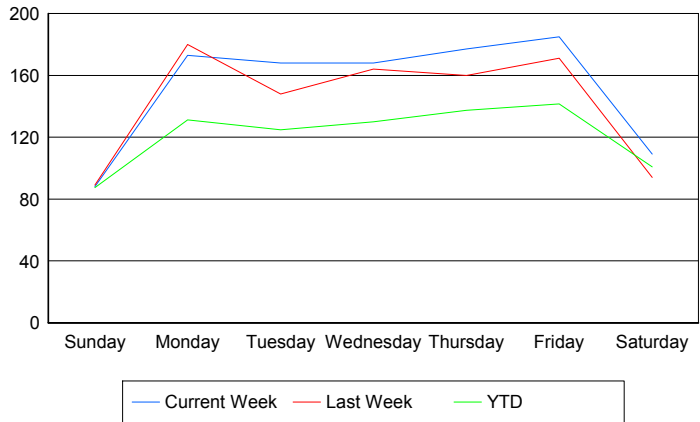
	Current We	Last Week	YTD
9AM-10AM	63	66	1,933
	67	69	2,073
	67	69	2,142
10AM-11AM	48	67	1,832
	52	71	1,981
	53	73	2,069
11AM-12PM	53	52	1,738
	57	58	1,860
	58	59	1,939
12PM-1PM	52	40	1,845
	58	44	1,963
	59	45	2,036
1PM-2PM	53	52	1,732
	56	53	1,870
	57	59	1,955
2PM-3PM	81	65	1,976
	86	70	2,110
	94	75	2,204
3PM-4PM	84	80	1,900
	95	87	2,047
	99	88	2,125
4PM-5PM	73	65	2,182
	78	70	2,331
	85	73	2,424
5PM-6PM	63	70	2,015
	70	73	2,190
	76	77	2,277
6PM-7PM	60	64	1,602
	62	65	1,692
	63	67	1,748
7PM-8PM	50	65	224
	51	66	234
	52	69	241
8PM-9PM	41	20	117
	45	22	125
	48	28	135
9PM-10PM	30	23	116
	33	23	126
	35	28	136
10PM-11PM	34	22	112
	34	22	120
	36	25	125
11PM-12AM	28	27	133
	29	28	140
	30	31	151

Road Ranger / SIRV Performance By Day of Week

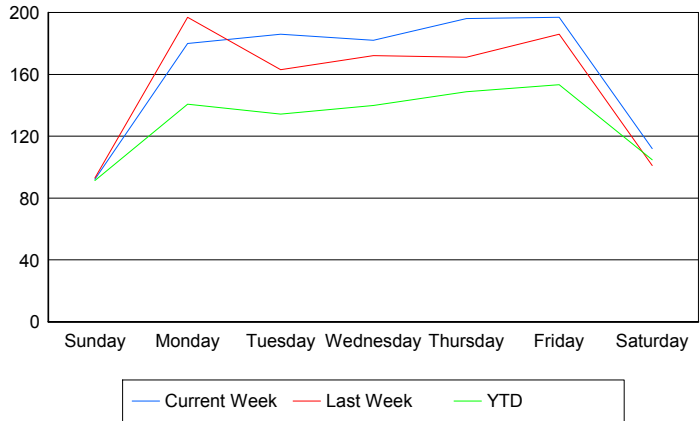
Values presented are:
 - Total Events with a RR/SIRV Response
 - Total RR/SIRV Responses,
 - Total Activities Performed

	Current We	Last Week	YTD
Sunday	89 93 94	90 94 103	293 305 321
Monday	173 180 184	180 197 207	4,889 5,243 5,405
Tuesday	168 186 194	148 163 169	4,642 4,984 5,157
Wednesday	168 182 194	164 172 185	4,840 5,212 5,448
Thursday	177 196 199	160 171 181	5,282 5,714 5,941
Friday	185 197 208	171 186 191	5,473 5,929 6,199
Saturday	109 112 116	94 101 107	442 462 488

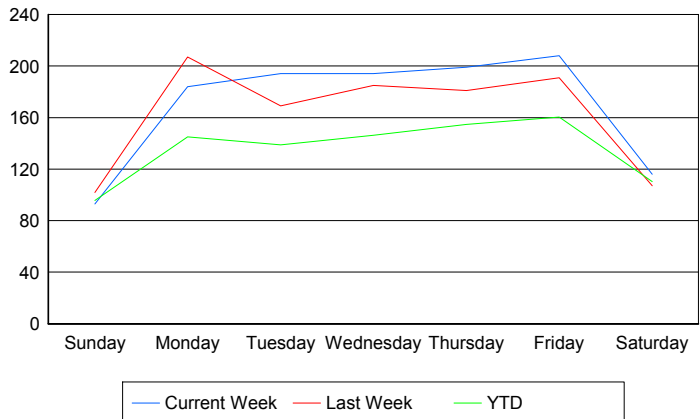
Avg # of events with a RR/SIRV Response per Day of the Week



Avg # of RR/SIRV Responses per Day of the Week



Avg # of RR/SIRV Activities Performed per Day of the Week



Road Ranger / SIRV Responses per Time of Day and Day of Week

