



# Weekly Performance Measures Report Broward County



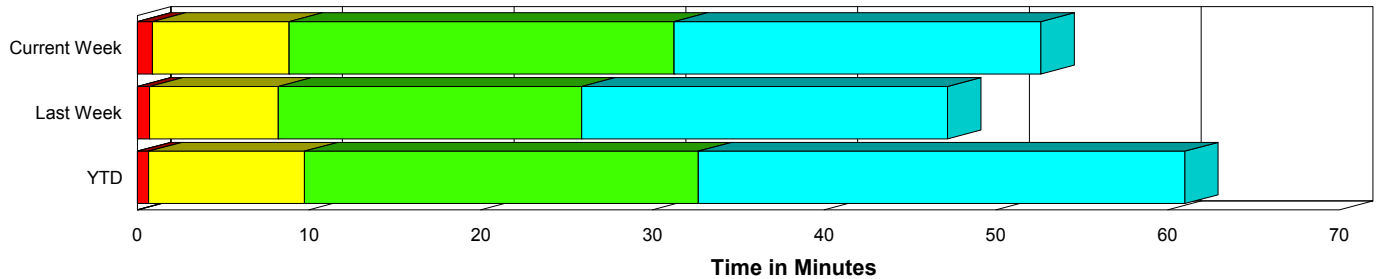
Created on:  
September 20, 2009  
1:27 pm

Period From Sep 13, 2009 to Sep 19, 2009

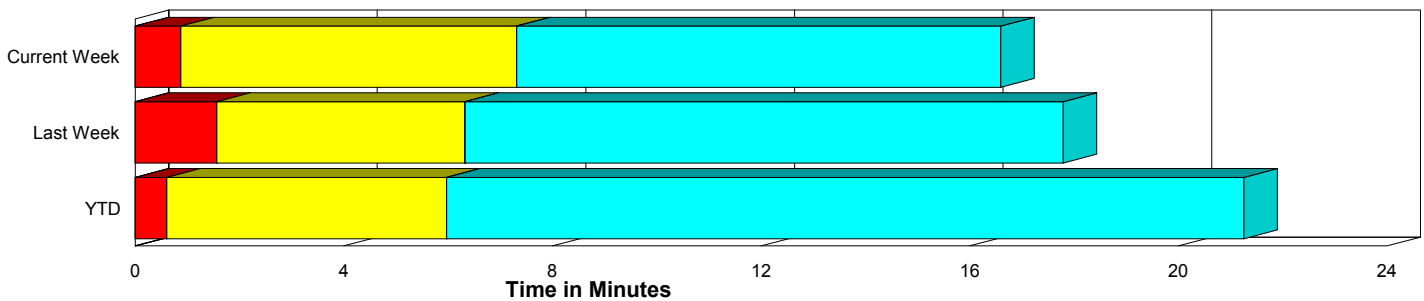
## Performance Measures Summary

	Traffic Events (No Lanes Blocked)			Incidents (Lanes Blocked)		
	<u>This Week</u>	<u>Last Week</u>	<u>YTD</u>	<u>This Week</u>	<u>Last Week</u>	<u>YTD</u>
Number of Events	1,202	961	35,795	50	65	1,766
TMC Detection (min.)	0.00	0.00	0.01	0.00	0.00	0.00
TMC Verification (min.)	0.87	1.57	0.60	0.88	0.71	0.66
TMC Response (min.)	7.71	6.83	6.44	8.86	8.18	9.91
RR Dispatch Time (min.)	1.20	1.04	1.18	2.08	1.71	2.90
RR Response Time (min.)	6.58	5.93	5.38	6.78	6.44	7.17
Roadway Clearance (min.)				30.97	25.45	31.66
Event Clearance (min.)	16.99	18.29	21.74	52.22	46.73	59.53
# of Events w/ RR/SIRV	1,030	856	23,949	49	64	1,206
RR/SIRV Responses	1,030	856	23,949	49	64	1,206
RR/SIRV Activities	875	766	20,645	105	125	2,455

### Incident Clearance Time-Line



### Traffic Event (Non-Lane Blockage) Time-Line



<span style="color: blue;">■</span> Avg. TMC Detection Time	<span style="color: green;">■</span> Avg. Time from TMC Response to Roadway Clearance*
<span style="color: red;">■</span> Avg. Time from TMC Detection to TMC Verification	<span style="color: cyan;">■</span> Avg. Time from Roadway Clearance to Incident/Event Clearance**
<span style="color: yellow;">■</span> Avg. Time from TMC Verification to TMC Response	

\* Roadway clearance equals all travel lanes open

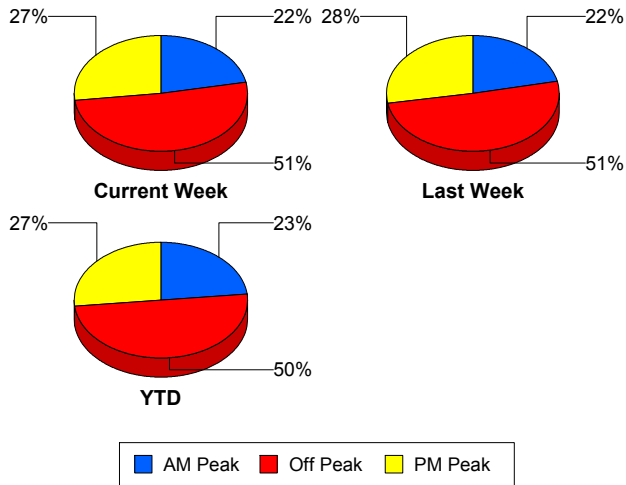
\*\* Incident clearance equals time when last responder has left the scene

## Performance Measures by Peak Period

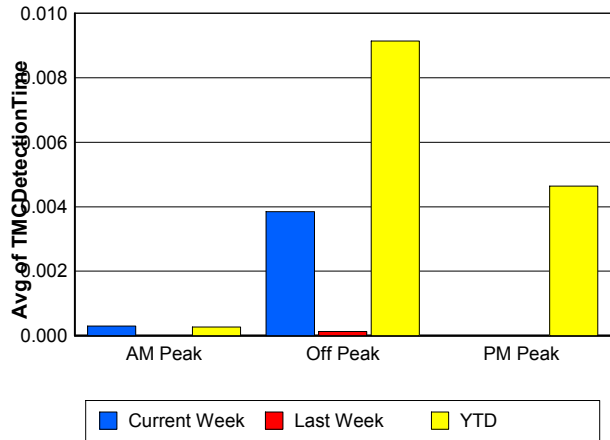
Note: AM peak period is defined as 6am to 10am and PM peak period is defined as 3pm to 7pm.

	AM Peak			Off Peak			PM Peak		
	<u>Current Week</u>	<u>Last Week</u>	<u>YTD</u>	<u>Current Week</u>	<u>Last Week</u>	<u>YTD</u>	<u>Current Week</u>	<u>Last Week</u>	<u>YTD</u>
Number of Events	276	221	8,806	637	519	18,764	339	286	9,991
Number of Incidents	18	24	406	24	28	874	8	13	486
TMC Detection (min.)	0.00	0.00	0.00	0.00	0.00	0.01	0.00	0.00	0.00
TMC Verification (min.)	0.49	1.83	0.53	0.99	1.70	0.55	0.97	0.93	0.77
TMC Response (min.)	6.68	7.12	6.11	7.93	7.59	7.46	8.33	5.67	6.09
RR Dispatch Time (min.)	0.93	0.82	0.98	1.25	1.34	1.77	1.46	0.84	0.86
RR Response Time (min.)	5.91	6.37	5.22	6.73	6.35	5.79	6.86	5.02	5.35
Event Clearance (min.)	18.76	22.58	21.55	17.68	20.25	26.13	19.46	17.90	20.30
Roadway Clearance (min.)	20.66	22.42	28.23	36.87	27.05	35.91	36.44	27.61	26.90
Incident Clearance (min.)	40.65	45.18	56.73	65.34	52.07	63.31	38.86	38.11	55.08
# of Events w/ RR/SIRV	245	201	7,158	531	459	10,296	303	260	7,701
RR/SIRV Responses	245	201	7,158	531	459	10,296	303	260	7,701
RR/SIRV Activities	218	199	6,830	489	447	9,156	273	245	7,114

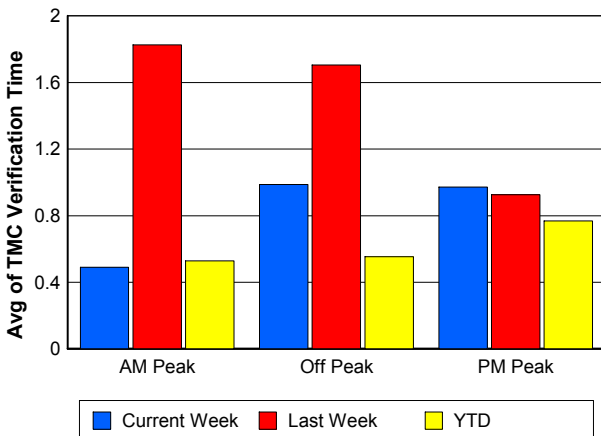
### Number of Events / Peak Period



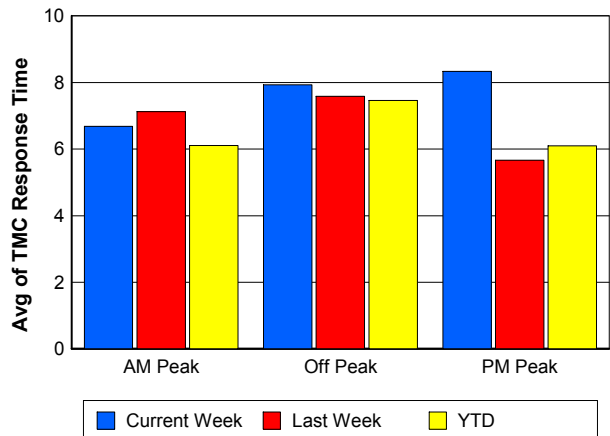
### TMC Detection Time



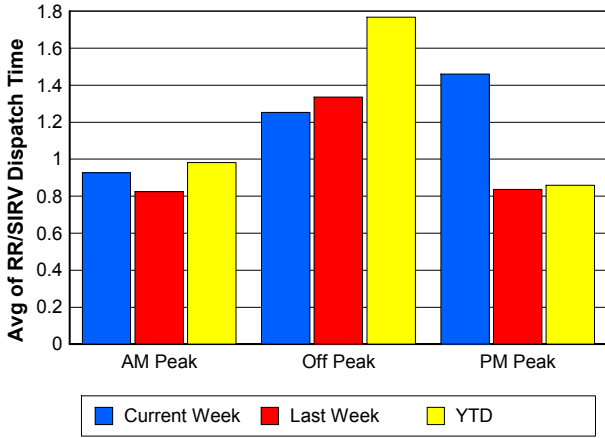
### TMC Verification Time



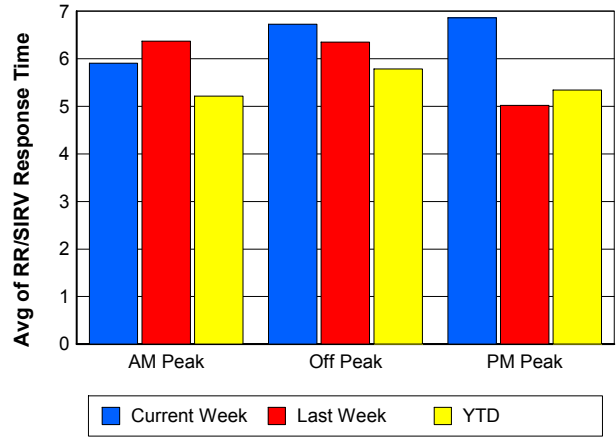
### TMC Response Time



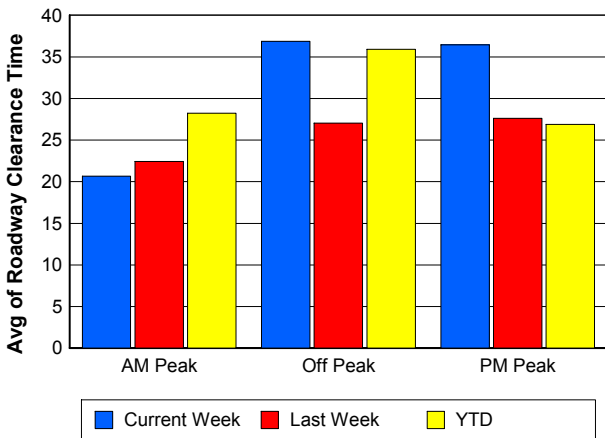
## Road Ranger / SIRV Dispatch Time



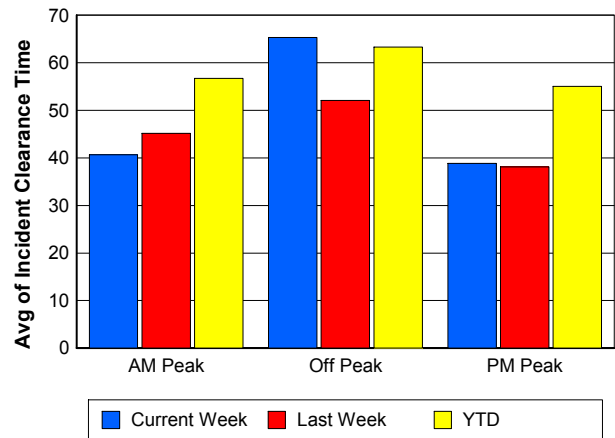
## Road Ranger / SIRV Response Time



## Roadway Clearance Time (2A)



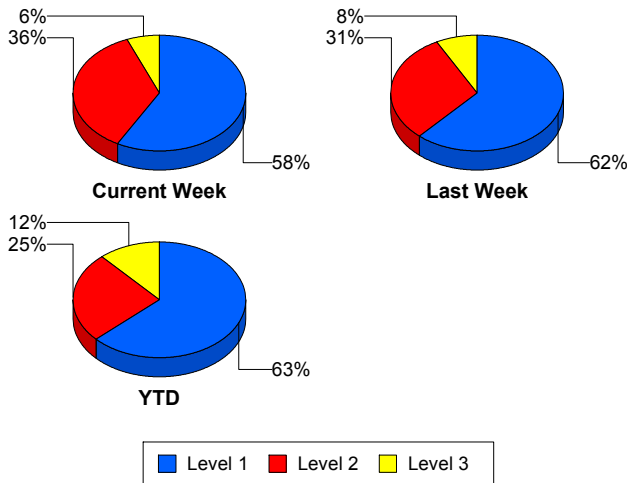
## Incident Clearance Time (3B)



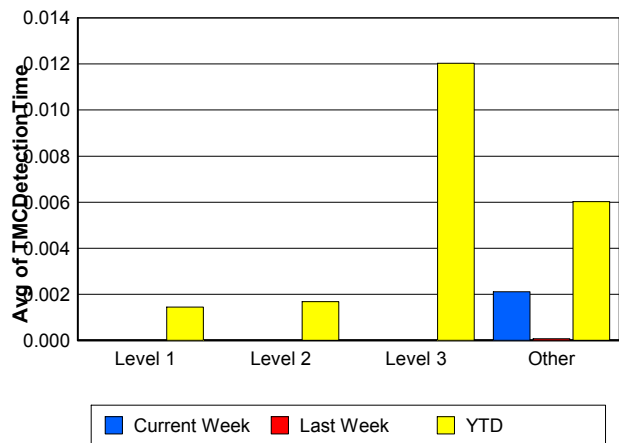
## Performance Measures by Severity

	Level 1			Level 2			Level 3			Other		
	<u>This Week</u>	<u>Last Week</u>	<u>YTD</u>	<u>This Week</u>	<u>Last Week</u>	<u>YTD</u>	<u>This Week</u>	<u>Last Week</u>	<u>YTD</u>	<u>This Week</u>	<u>Last Week</u>	<u>YTD</u>
Number of Events	29	40	1,113	18	20	448	3	5	205	1,202	961	35,795
Number of Incidents	29	40	1,113	18	20	448	3	5	205	0	0	0
TMC Detection (min.)	0.00	0.00	0.00	0.00	0.00	0.00	0.00	0.00	0.01	0.00	0.00	0.01
TMC Verification (min.)	0.02	0.66	0.41	1.96	1.00	0.96	2.64	0.00	1.36	0.87	1.57	0.60
TMC Response (min.)	7.26	7.18	7.18	11.50	10.98	9.96	7.90	4.56	23.37	7.71	6.83	6.44
RR Dispatch Time (min.)	1.25	1.90	1.65	3.45	1.44	2.85	1.48	1.37	8.72	1.20	1.04	1.18
RR Resp. Time (min.)	6.01	5.25	5.61	8.04	9.54	7.46	6.42	3.18	14.47	6.58	5.93	5.38
Event Clearance (min.)	42.84	33.93	45.83	61.45	71.43	72.02	87.48	50.37	106.33	16.99	18.29	21.74
Roadway Clear. (min.)	16.24	13.77	14.28	46.98	48.49	48.95	77.27	26.79	88.31			
Incident Clearance (min.)	42.84	33.93	45.83	61.45	71.43	72.02	87.48	50.37	106.33			
# of Events w/ RR/SIRV	28	39	796	18	20	236	3	5	174	1,030	856	23,949
RR/SIRV Responses	28	39	796	18	20	236	3	5	174	1,030	856	23,949
RR/SIRV Activities	45	62	1,391	44	53	665	16	10	399	875	766	20,645

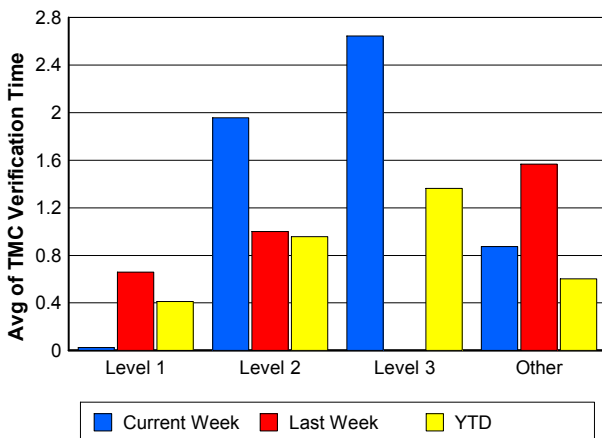
### Number of Events / Severity



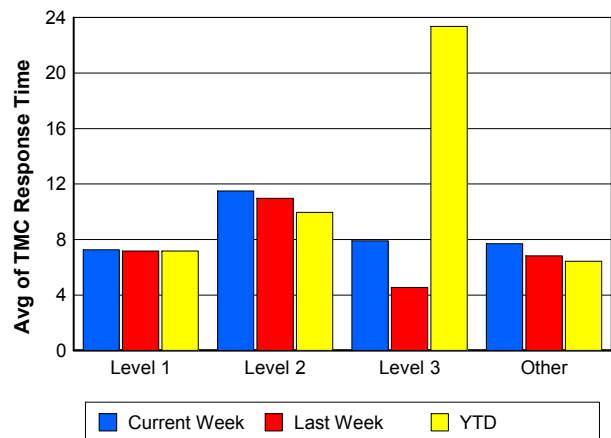
### TMC Detection Time



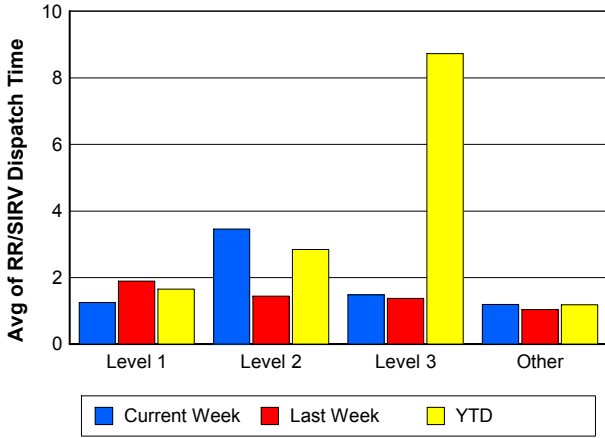
### TMC Verification Time



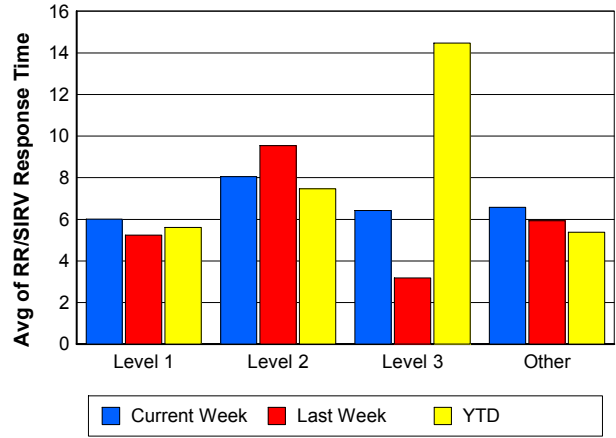
### TMC Response Time



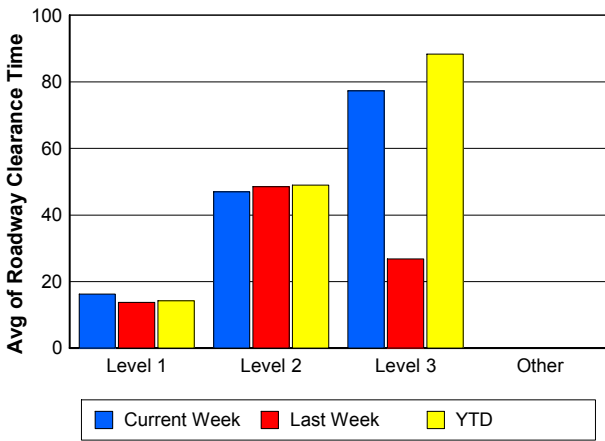
## Road Ranger / SIRV Dispatch Time



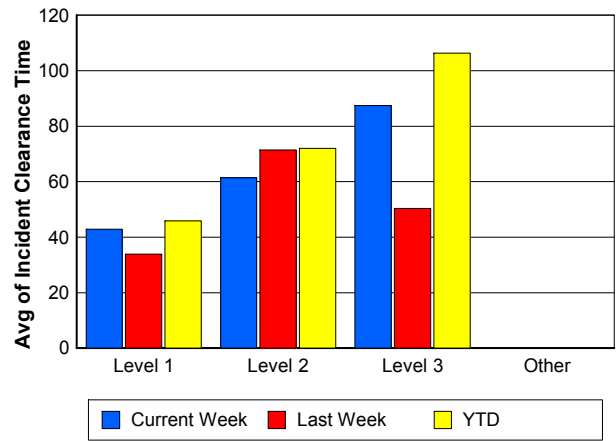
## Road Ranger / SIRV Response Time



## Roadway Clearance Time (2A)



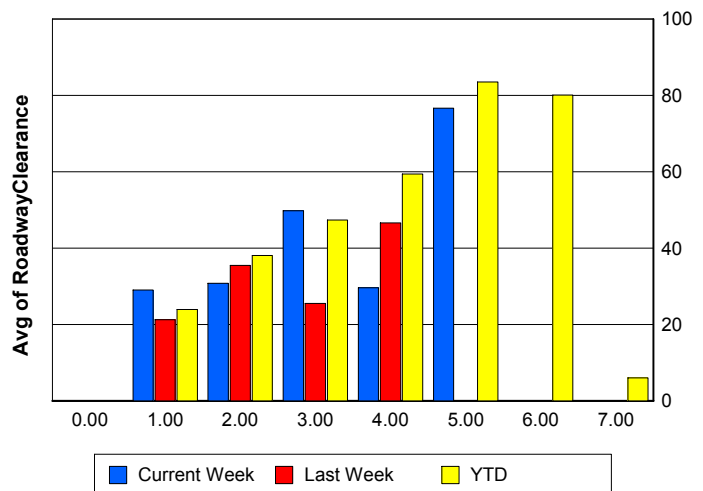
## Incident Clearance Time (3B)



## Roadway Clearance by Maximum Number of Lanes Blocked

	Current Week	Last Week	YTD
0			
1	29.04	21.25	23.88
2	30.73	35.44	38.06
3	49.77	25.46	47.34
4	29.61	46.57	59.39
5	76.67	0.00	83.50
6	0.00	0.00	80.08
7	0.00	0.00	5.97

## Roadway Clearance Time (2A)



## Performance Measures by Roadway

**595**

	<u>Current Week</u>	<u>Last Week</u>	<u>YTD</u>
Number of Events	47	34	4,332
Number of Incidents	1	3	264
TMC Detection (min.)	0.00	0.00	0.01
TMC Verification (min.)	1.30	2.80	0.78
TMC Response (min.)	7.22	16.07	6.55
RR Dispatch Time (min.)	1.39	1.20	1.11
RR Resp. Time (min.)	6.10	15.16	5.53
Event Clearance (min.)	20.63	25.94	21.44
Roadway Clear. (min.)	130.53	76.05	31.37
Incident Clearance (min.)	135.55	88.72	54.63
# of Events w/ RR/SIRV	41	26	3,012
RR/SIRV Responses	41	26	3,012
RR/SIRV Activities	37	28	2,780

**75**

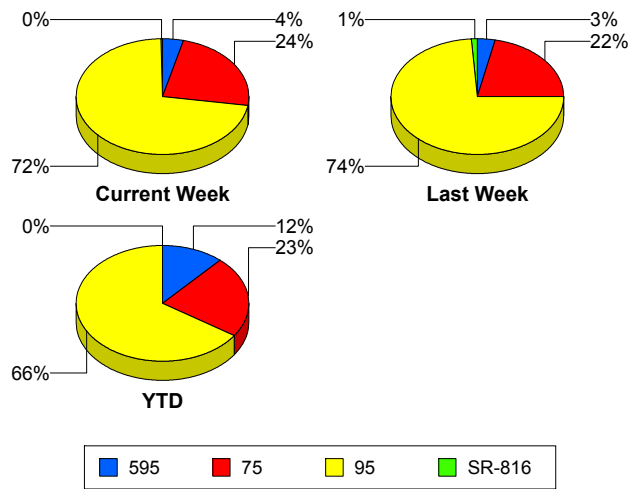
	<u>Current Week</u>	<u>Last Week</u>	<u>YTD</u>
Number of Events	296	223	8,556
Number of Incidents	6	3	161
TMC Detection (min.)	0.00	0.00	0.00
TMC Verification (min.)	0.97	1.64	0.72
TMC Response (min.)	9.52	7.37	7.83
RR Dispatch Time (min.)	1.36	1.39	1.22
RR Resp. Time (min.)	8.22	5.97	6.70
Event Clearance (min.)	20.97	19.78	25.60
Roadway Clear. (min.)	35.51	25.42	55.16
Incident Clearance (min.)	72.57	37.51	82.81
# of Events w/ RR/SIRV	252	202	5,575
RR/SIRV Responses	252	202	5,575
RR/SIRV Activities	224	196	4,844

**95**

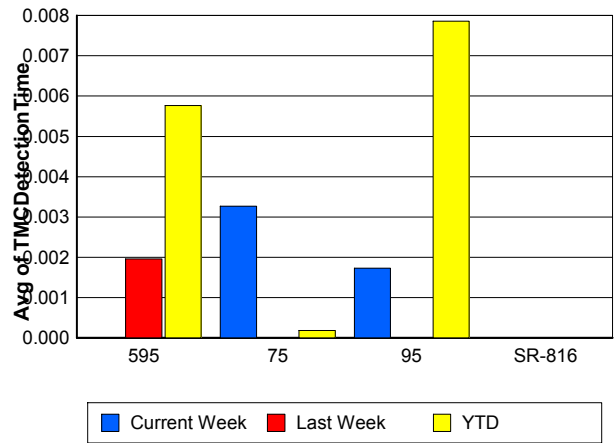
	<u>Current Week</u>	<u>Last Week</u>	<u>YTD</u>
Number of Events	904	758	24,654
Number of Incidents	40	50	1,327
TMC Detection (min.)	0.00	0.00	0.01
TMC Verification (min.)	0.82	1.44	0.53
TMC Response (min.)	7.29	6.63	6.28
RR Dispatch Time (min.)	1.20	1.01	1.31
RR Resp. Time (min.)	6.13	5.78	5.09
Event Clearance (min.)	17.47	20.14	23.16
Roadway Clear. (min.)	28.58	25.89	29.11
Incident Clearance (min.)	49.44	52.10	58.21
# of Events w/ RR/SIRV	782	681	16,551
RR/SIRV Responses	782	681	16,551
RR/SIRV Activities	714	655	15,457

	<u>Current Week</u>	<u>Last Week</u>	<u>YTD</u>
Number of Events	5	11	19
Number of Incidents	3	9	14
TMC Detection (min.)	0.00	0.00	0.00
TMC Verification (min.)	0.00	0.00	0.00
TMC Response (min.)	0.00	0.00	0.00
RR Dispatch Time (min.)	0.00	0.00	0.00
RR Resp. Time (min.)	0.00	0.00	0.00
Event Clearance (min.)	13.56	5.41	7.90
Roadway Clear. (min.)	20.61	6.19	9.04
Incident Clearance (min.)	20.73	5.98	8.91
# of Events w/ RR/SIRV	4	11	17
RR/SIRV Responses	4	11	17
RR/SIRV Activities	5	12	19

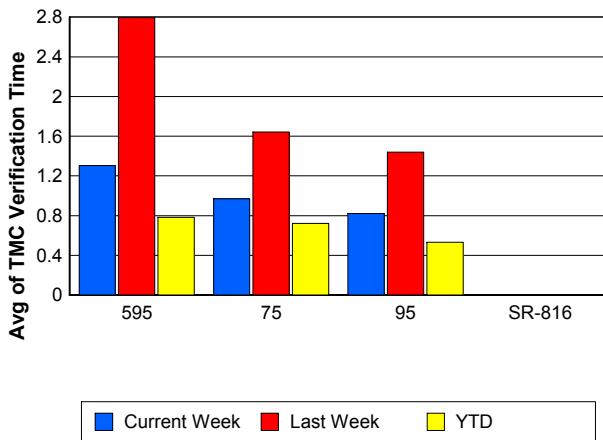
### Number of Events / Roadway



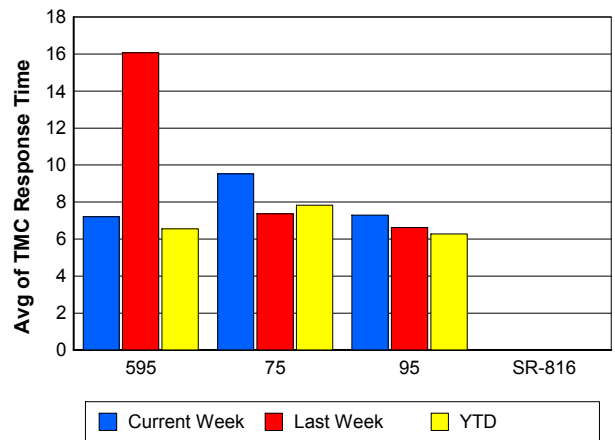
### TMC Detection Time



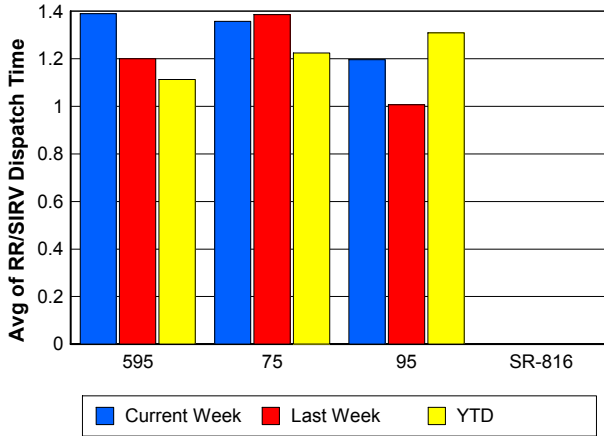
### TMC Verification Time



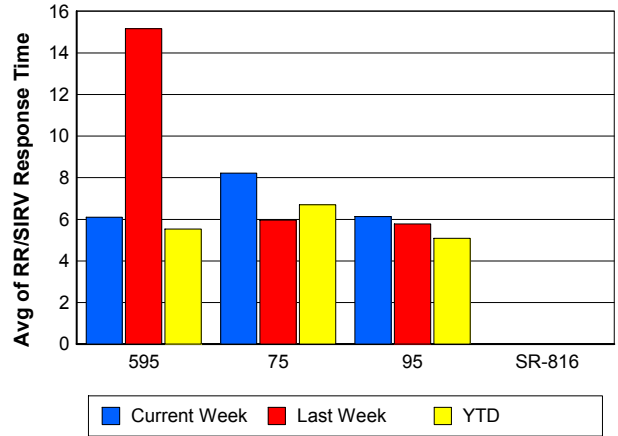
### TMC Response Time



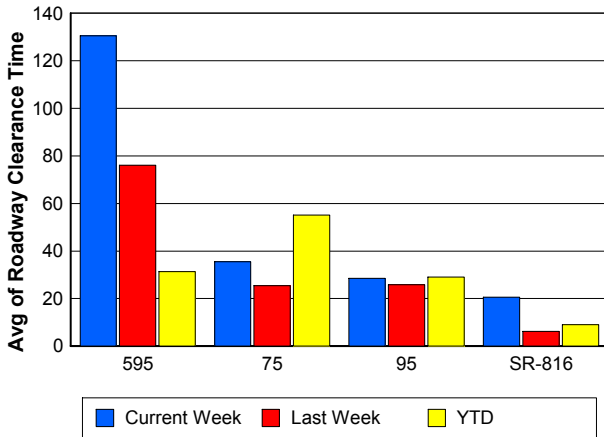
## Road Ranger / SIRV Dispatch Time



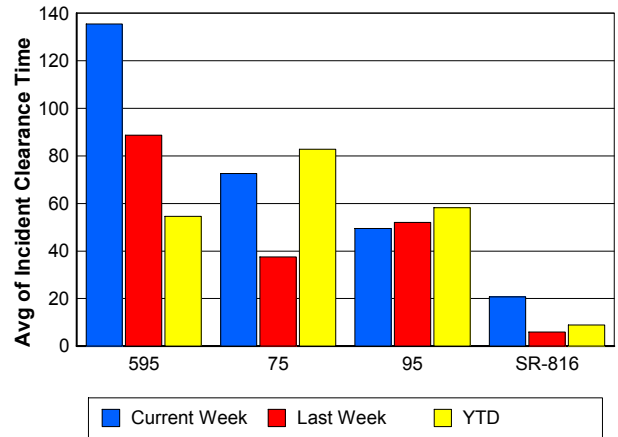
## Road Ranger / SIRV Response Time



## Roadway Clearance Time (2A)



## Incident Clearance Time (3B)



## Performance Measures by Event Type

### Accident

	<u>Current Week</u>	<u>Last Week</u>	<u>YTD</u>
Number of Events	87	98	2,651
Number of Incidents	39	45	1,283
TMC Detection (min.)	0.00	0.00	0.01
TMC Verification (min.)	0.91	0.84	0.74
TMC Response (min.)	11.04	12.26	8.92
RR Dispatch Time (min.)	2.41	2.23	1.72
RR Response Time (min.)	8.60	9.96	7.28
Event Clearance (min.)	55.19	53.11	55.36
Roadway Clearance (min.)	30.98	28.23	32.99
Incident Clearance (min.)	56.88	57.11	66.14
# of Events w/ RR/SIRV	86	96	1,906
RR/SIRV Assists	86	96	1,906
RR/SIRV Activities	143	150	2,959

### Debris on Roadway

	<u>Current Week</u>	<u>Last Week</u>	<u>YTD</u>
Number of Events	46	45	1,125
Number of Incidents	1	0	23
TMC Detection (min.)	0.00	0.00	0.10
TMC Verification (min.)	1.47	6.22	3.72
TMC Response (min.)	7.22	8.60	7.46
RR Dispatch Time (min.)	0.58	1.01	0.86
RR Response Time (min.)	6.65	7.68	6.62
Event Clearance (min.)	10.19	11.35	11.44
Roadway Clearance (min.)	49.77		23.63
Incident Clearance (min.)	55.33		28.68
# of Events w/ RR/SIRV	46	44	1,036
RR/SIRV Assists	46	44	1,036
RR/SIRV Activities	45	43	1,062

### Disabled Vehicle

	<u>Current Week</u>	<u>Last Week</u>	<u>YTD</u>
Number of Events	741	661	22,196
Number of Incidents	6	15	270
TMC Detection (min.)	0.00	0.00	0.00
TMC Verification (min.)	1.25	1.73	0.71
TMC Response (min.)	7.57	6.16	6.20
RR Dispatch Time (min.)	1.11	0.89	1.07
RR Response Time (min.)	6.48	5.37	5.16
Event Clearance (min.)	19.77	18.79	26.27
Roadway Clearance (min.)	20.62	11.52	18.48
Incident Clearance (min.)	22.39	14.87	34.00
# of Events w/ RR/SIRV	728	653	17,421
RR/SIRV Assists	728	653	17,421
RR/SIRV Activities	734	661	17,825

## Emergency Vehicles

	<u>Current Week</u>	<u>Last Week</u>	<u>YTD</u>
Number of Events	2	2	60
Number of Incidents	1	2	45
TMC Detection (min.)	0.00	0.00	0.00
TMC Verification (min.)	0.00	0.00	0.65
TMC Response (min.)	15.53	6.77	14.22
RR Dispatch Time (min.)	14.62	4.48	9.47
RR Response Time (min.)	0.92	2.28	3.97
Event Clearance (min.)	66.22	62.02	52.70
Roadway Clearance (min.)	41.12	61.59	53.66
Incident Clearance (min.)	47.70	62.02	60.69
# of Events w/ RR/SIRV	1	2	34
RR/SIRV Assists	1	2	34
RR/SIRV Activities	1	4	56

## Other

	<u>Current Week</u>	<u>Last Week</u>	<u>YTD</u>
Number of Events	360	210	11,147
Number of Incidents	0	1	27
TMC Detection (min.)	0.00	0.00	0.00
TMC Verification (min.)	0.06	0.16	0.06
TMC Response (min.)	5.63	5.26	8.52
RR Dispatch Time (min.)	1.29	1.21	1.82
RR Response Time (min.)	4.87	4.82	6.24
Event Clearance (min.)	7.49	9.71	11.18
Roadway Clearance (min.)		0.28	30.45
Incident Clearance (min.)		1.32	35.84
# of Events w/ RR/SIRV	207	119	4,550
RR/SIRV Assists	207	119	4,550
RR/SIRV Activities	43	21	921

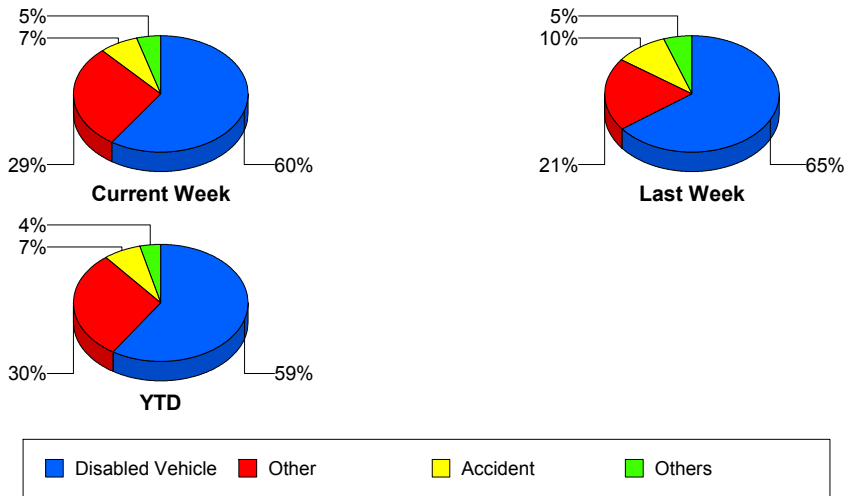
## Police Activity

	<u>Current Week</u>	<u>Last Week</u>	<u>YTD</u>
Number of Events	6	5	160
Number of Incidents	0	0	48
TMC Detection (min.)	0.00	0.00	0.00
TMC Verification (min.)	0.00	0.00	0.32
TMC Response (min.)	1.80	1.00	13.64
RR Dispatch Time (min.)	0.50	0.97	4.46
RR Response Time (min.)	1.73	0.03	9.17
Event Clearance (min.)	8.92	35.49	33.50
Roadway Clearance (min.)			40.70
Incident Clearance (min.)			50.14
# of Events w/ RR/SIRV	2	1	51
RR/SIRV Assists	2	1	51
RR/SIRV Activities	1	4	61

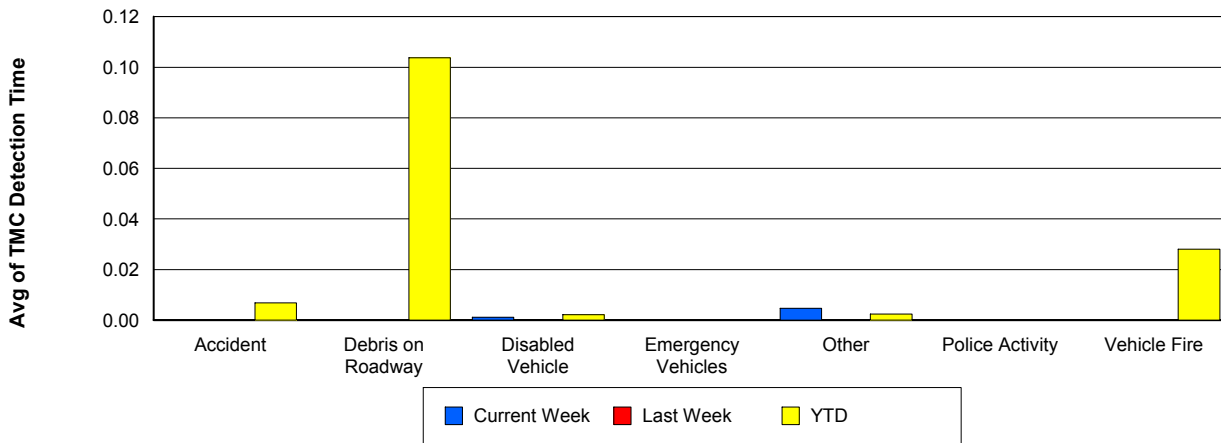
## Vehicle Fire

	<u>Current Week</u>	<u>Last Week</u>	<u>YTD</u>
Number of Events	3	2	88
Number of Incidents	3	2	70
TMC Detection (min.)	0.00	0.00	0.03
TMC Verification (min.)	0.03	0.00	1.15
TMC Response (min.)	3.26	0.00	10.24
RR Dispatch Time (min.)	1.41	0.00	2.33
RR Response Time (min.)	1.85	0.00	8.36
Event Clearance (min.)	51.73	59.58	59.13
Roadway Clearance (min.)	41.84	43.87	41.03
Incident Clearance (min.)	51.73	59.58	62.25
# of Events w/ RR/SIRV	3	2	58
RR/SIRV Assists	3	2	58
RR/SIRV Activities	7	6	126

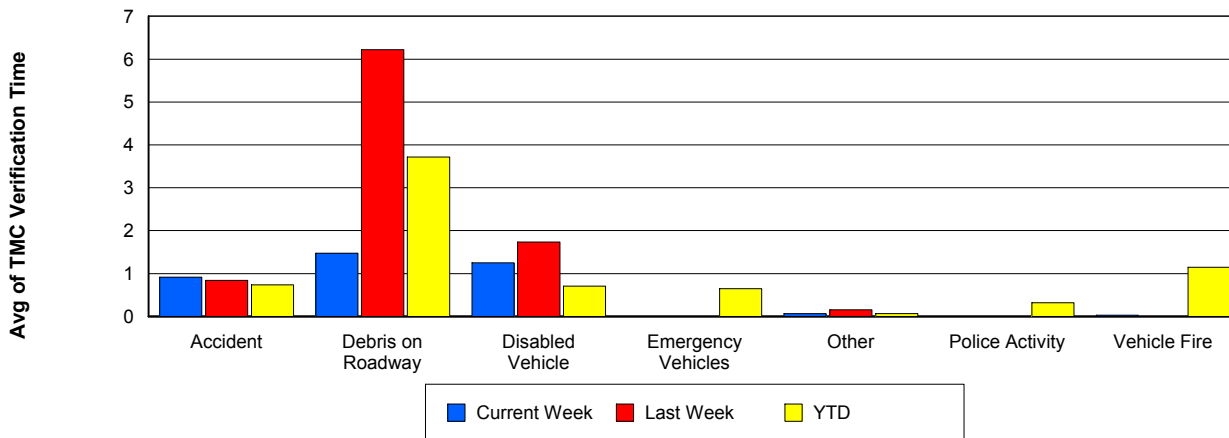
## Number of Events / Event Type



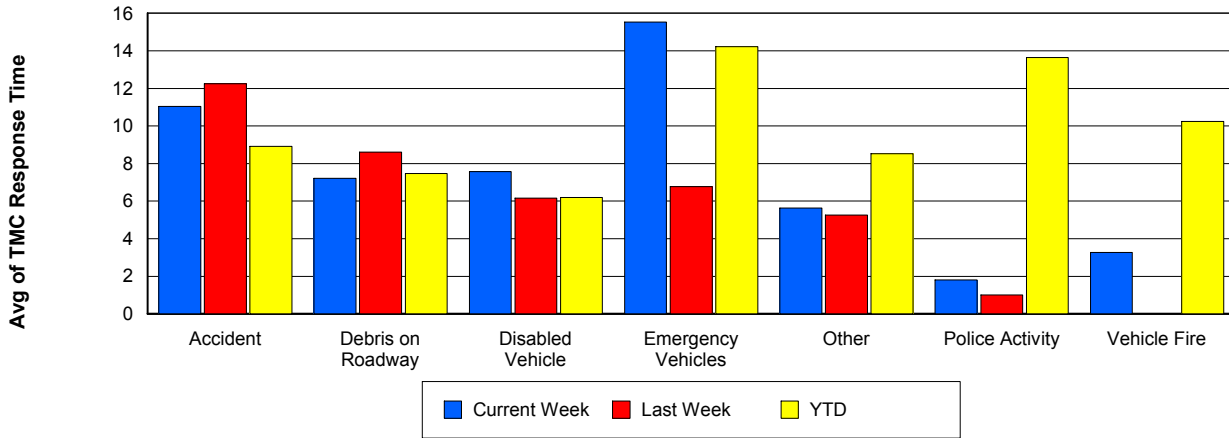
## TMC Detection Time



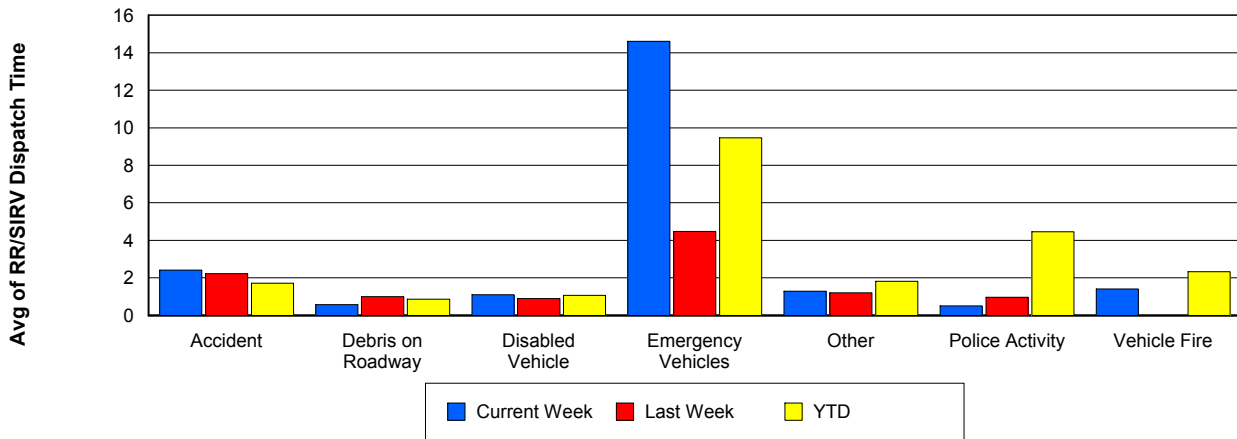
## TMC Verification Time



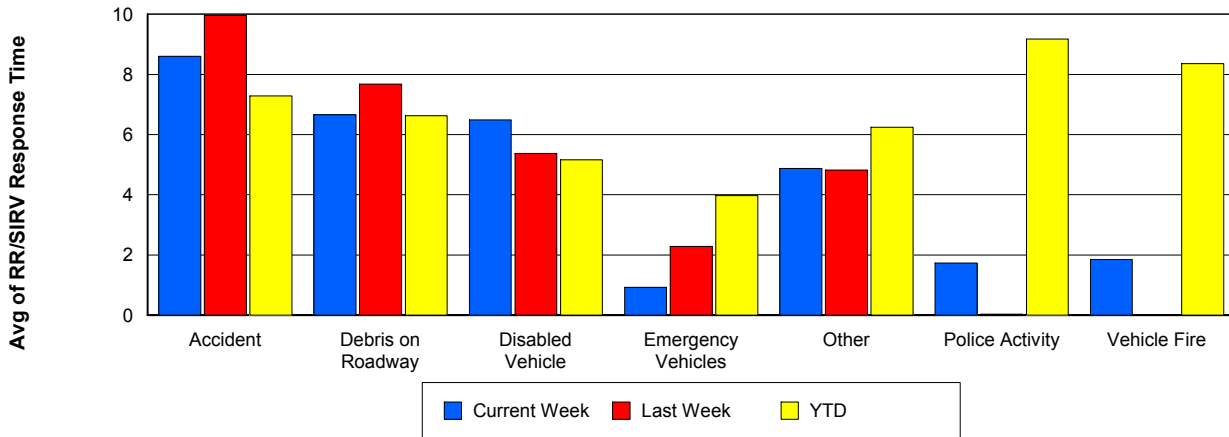
## TMC Response Time



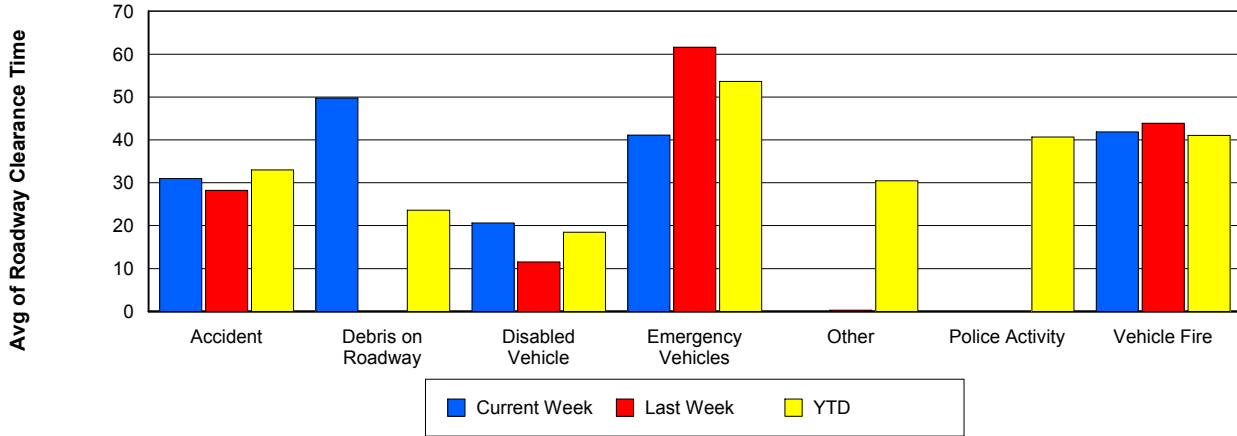
## Road Ranger / SIRV Dispatch Time



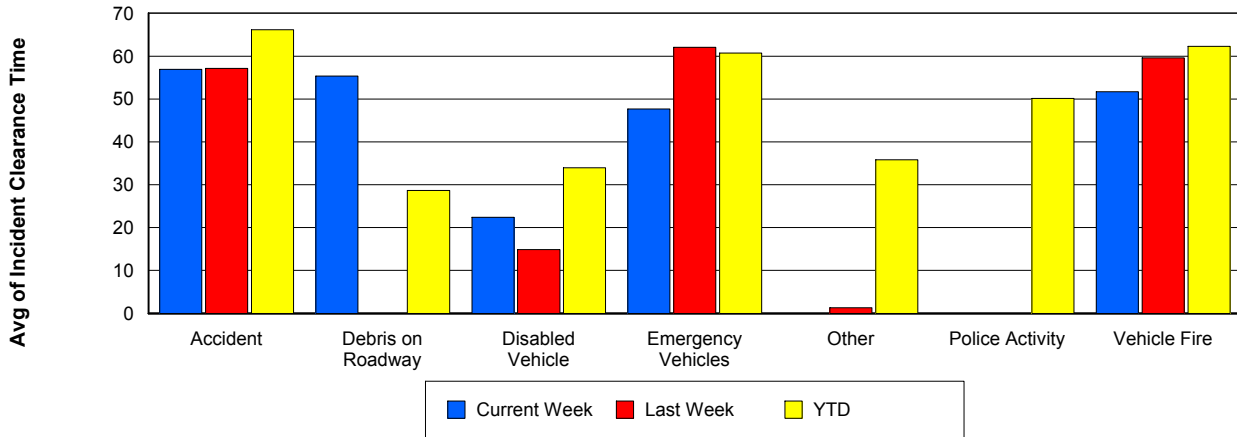
## Road Ranger / SIRV Response Time



## Roadway Clearance Time (2A)



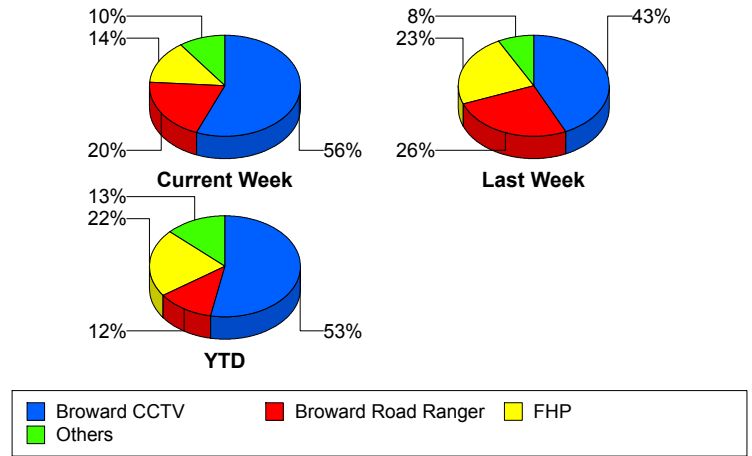
## Incident Clearance Time (3B)



## Incident Detection Methods

	Current Week	Last Week	YTD
Broward CCTV	28	28	934
Broward Road Ranger	10	17	216
Broward TMC	1	0	2
Broward VideoWall	1	1	57
BSO	1	0	39
District 4	0	2	44
District 6	0	0	1
FDOT Maintenance	0	0	4
FHP	7	15	382
Fire	0	0	3
Florida's Turnpike	0	0	6
ITMS	0	0	2
Motorist	0	0	8
Other	0	0	1
Palm Beach Road Ran	1	0	4
Road Watcher	0	0	12
SIRV	0	0	10
SmarTraveler (511)	0	0	6
VisioPaD Detection	1	2	32
<b>Total</b>	<b>50</b>	<b>65</b>	<b>1,763</b>

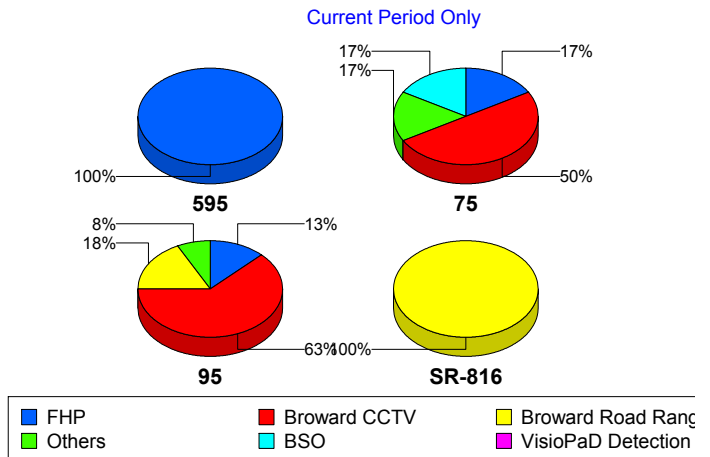
### Total Incidents by Detection Method



### Incident Detection Methods by Roadway

		Current Week	Last Week	YTD
595	Broward CCTV	0	3	129
	Broward Road Ranger	0	0	37
	Broward VideoWall	0	0	8
	BSO	0	0	4
	District 4	0	0	12
	FDOT Maintenance	0	0	2
	FHP	1	0	52
	Florida's Turnpike	0	0	6
	Motorist	0	0	2
	Road Watcher	0	0	3
	SIRV	0	0	1
	VisioPaD Detection	0	0	6
	Total	1	3	262
	75	Broward CCTV	3	1
Broward Road Ranger		0	1	16
Broward VideoWall		0	0	1
BSO		1	0	30
District 4		0	0	5
FHP		1	1	37
Other		0	0	1
Road Watcher		0	0	2
VisioPaD Detection		1	0	5
Total		6	3	161
95	Broward CCTV	25	24	741
	Broward Road Ranger	7	7	149
	Broward TMC	1	0	2
	Broward VideoWall	1	1	48
	BSO	0	0	5
	District 4	0	2	27
	District 6	0	0	1
	FDOT Maintenance	0	0	2

Total Events by Roadway and Detection Method

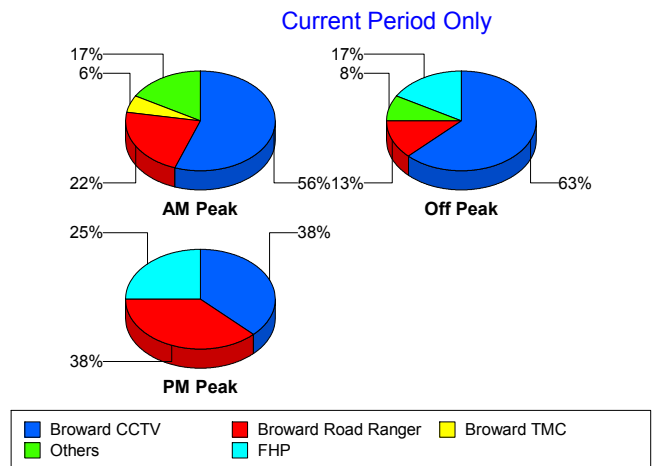


		Current Week	Last Week	YTD
95	FHP	5	14	293
	Fire	0	0	3
	ITMS	0	0	2
	Motorist	0	0	6
	Palm Beach Road Ran	1	0	4
	Road Watcher	0	0	7
	SIRV	0	0	9
	SmarTraveler (511)	0	0	6
	VisioPaD Detection	0	2	21
	Total	40	50	1,326
SR-816	Broward Road Ranger	3	9	14
	Total	3	9	14
Total		50	65	1,763

### Incident Detection Methods by Peak Period

		Current Week	Last Week	YTD
AM Peak	Broward CCTV	10	5	179
	Broward Road Ranger	4	8	68
	Broward TMC	1	0	1
	Broward VideoWall	0	1	20
	BSO	1	0	6
	District 4	0	2	15
	FHP	1	8	98
	Florida's Turnpike	0	0	2
	Motorist	0	0	5
	Palm Beach Road Ran	1	0	2
	Road Watcher	0	0	4
	SIRV	0	0	1
	SmarTraveler (511)	0	0	1
	VisioPaD Detection	0	0	2
Total	18	24	404	
Off Peak	Broward CCTV	15	18	510

### Total Events by Peak Period and Detection Method

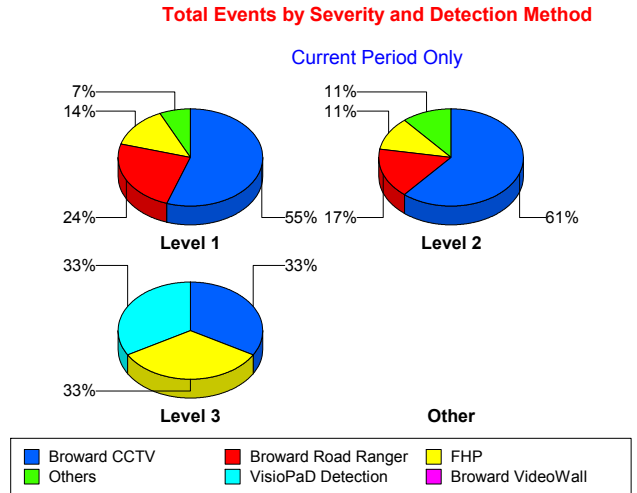


		Current Week	Last Week	YTD
Off Peak	Broward Road Ranger	3	4	61
	Broward TMC	0	0	1
	Broward VideoWall	1	0	30
	BSO	0	0	27
	District 4	0	0	14
	FDOT Maintenance	0	0	2
	FHP	4	4	183
	Fire	0	0	2
	Florida's Turnpike	0	0	3
	ITMS	0	0	2
	Motorist	0	0	3
	Palm Beach Road Ran	0	0	1
	Road Watcher	0	0	5
	SIRV	0	0	3
	SmarTraveler (511)	0	0	3
	VisioPaD Detection	1	2	24
	<b>Total</b>	<b>24</b>	<b>28</b>	<b>874</b>
PM Peak	Broward CCTV	3	5	245
	Broward Road Ranger	3	5	87
	Broward VideoWall	0	0	7
	BSO	0	0	6
	District 4	0	0	15
	District 6	0	0	1
	FDOT Maintenance	0	0	2
	FHP	2	3	101
	Fire	0	0	1
	Florida's Turnpike	0	0	1
	Other	0	0	1
	Palm Beach Road Ran	0	0	1
	Road Watcher	0	0	3
	SIRV	0	0	6
	SmarTraveler (511)	0	0	2

		Current Week	Last Week	YTD
PM Peak	VisioPaD Detection	0	0	6
	Total	8	13	485
Total		50	65	1,763

### Incident Detection Methods by Severity

		Current Week	Last Week	YTD
Level 1	Broward CCTV	16	13	595
	Broward Road Ranger	7	14	156
	Broward TMC	1	0	1
	Broward VideoWall	0	1	37
	BSO	0	0	10
	District 4	0	2	33
	FDOT Maintenance	0	0	3
	FHP	4	8	224
	Fire	0	0	2
	ITMS	0	0	1
	Motorist	0	0	6
	Palm Beach Road Ran	1	0	3
	Road Watcher	0	0	9
	SIRV	0	0	9
	SmarTraveler (511)	0	0	4
	VisioPaD Detection	0	2	18
	Total	29	40	1,111
Level 2	Broward CCTV	11	12	238
	Broward Road Ranger	3	2	44
	Broward TMC	0	0	1
	Broward VideoWall	1	0	17
	BSO	1	0	10
	District 4	0	0	5
	FDOT Maintenance	0	0	1
	FHP	2	6	109
	Florida's Turnpike	0	0	4



		Current Week	Last Week	YTD
Level 2	ITMS	0	0	1
	Motorist	0	0	2
	Other	0	0	1
	Road Watcher	0	0	1
	SIRV	0	0	1
	SmarTraveler (511)	0	0	2
	VisioPaD Detection	0	0	11
	<b>Total</b>	<b>18</b>	<b>20</b>	<b>448</b>
Level 3	Broward CCTV	1	3	101
	Broward Road Ranger	0	1	16
	Broward VideoWall	0	0	3
	BSO	0	0	19
	District 4	0	0	6
	District 6	0	0	1
	FHP	1	1	49
	Fire	0	0	1
	Florida's Turnpike	0	0	2
	Palm Beach Road Ran	0	0	1
	Road Watcher	0	0	2
	VisioPaD Detection	1	0	3
	<b>Total</b>	<b>3</b>	<b>5</b>	<b>204</b>
	<b>Total</b>	<b>50</b>	<b>65</b>	<b>1,763</b>

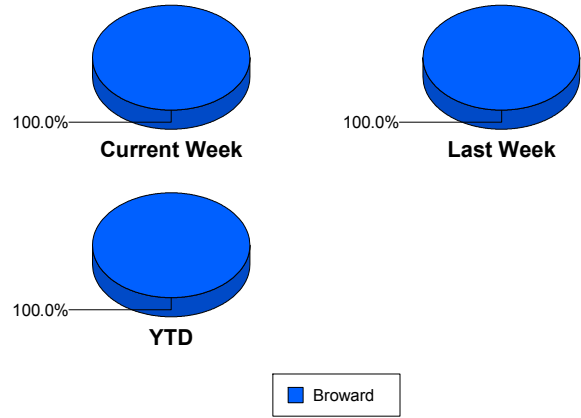
# Road Ranger / SIRV Performance Measures

## Road Ranger / SIRV Performance By County

Values presented are:  
 - Total Events with a RR/SIRV Response  
 - Total RR/SIRV Responses,  
 - Total Activities Performed

	Current We	Last Week	YTD
Broward	<b>1,007</b>	<b>955</b>	<b>24,780</b>
	<b>1,084</b>	<b>1,045</b>	<b>26,691</b>
	<b>1,143</b>	<b>1,085</b>	<b>27,770</b>

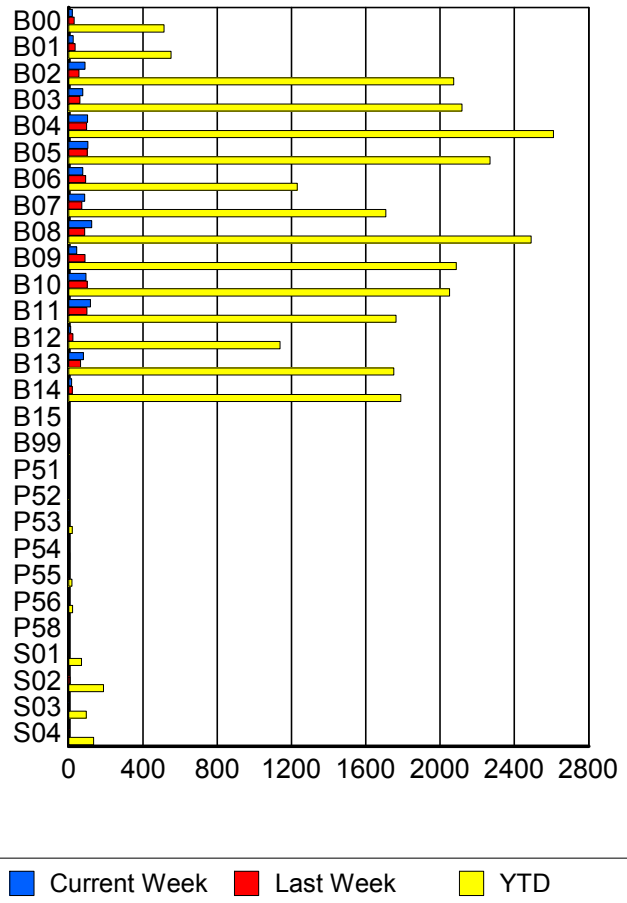
RR/SIRV Responses per County



## Road Ranger / SIRV Performance By Truck

	Current We	Last Week	YTD
B00	20	28	501
	20	30	513
	21	31	533
B01	25	34	541
	25	35	552
	27	35	584
B02	89	53	2,055
	89	55	2,074
	92	57	2,163
B03	75	60	2,085
	77	60	2,118
	85	65	2,194
B04	99	93	2,582
	102	97	2,611
	104	101	2,723
B05	99	98	2,224
	103	100	2,268
	109	100	2,342
B06	76	89	1,208
	76	91	1,231
	79	96	1,271
B07	87	70	1,682
	87	71	1,707
	90	76	1,783
B08	124	86	2,460
	125	87	2,491
	130	89	2,588

RR/SIRV Responses per Truck



	Current We	Last Week	YTD
B09	41	87	2,055
	43	88	2,087
	45	90	2,165
B10	93	97	2,016
	94	101	2,051
	103	105	2,133
B11	116	98	1,734
	117	99	1,763
	119	100	1,820
B12	11	22	1,124
	11	23	1,139
	12	24	1,188
B13	80	63	1,728
	80	64	1,751
	86	69	1,813
B14	16	19	1,758
	17	19	1,788
	19	19	1,854
B15	0	0	2
	0	0	2
	0	0	2
B99	0	0	4
	0	0	4
	0	0	4
P51	0	0	1
	0	0	1
	0	0	1
P52	0	0	2
	0	0	2
	0	0	2
P53	2	0	18
	2	0	19
	2	0	21
P54	1	2	6
	1	2	6
	1	2	6
P55	2	3	18
	2	3	18
	4	3	22
P56	1	0	21
	1	0	21
	1	0	22
P58	0	0	1
	0	0	1
	0	0	1

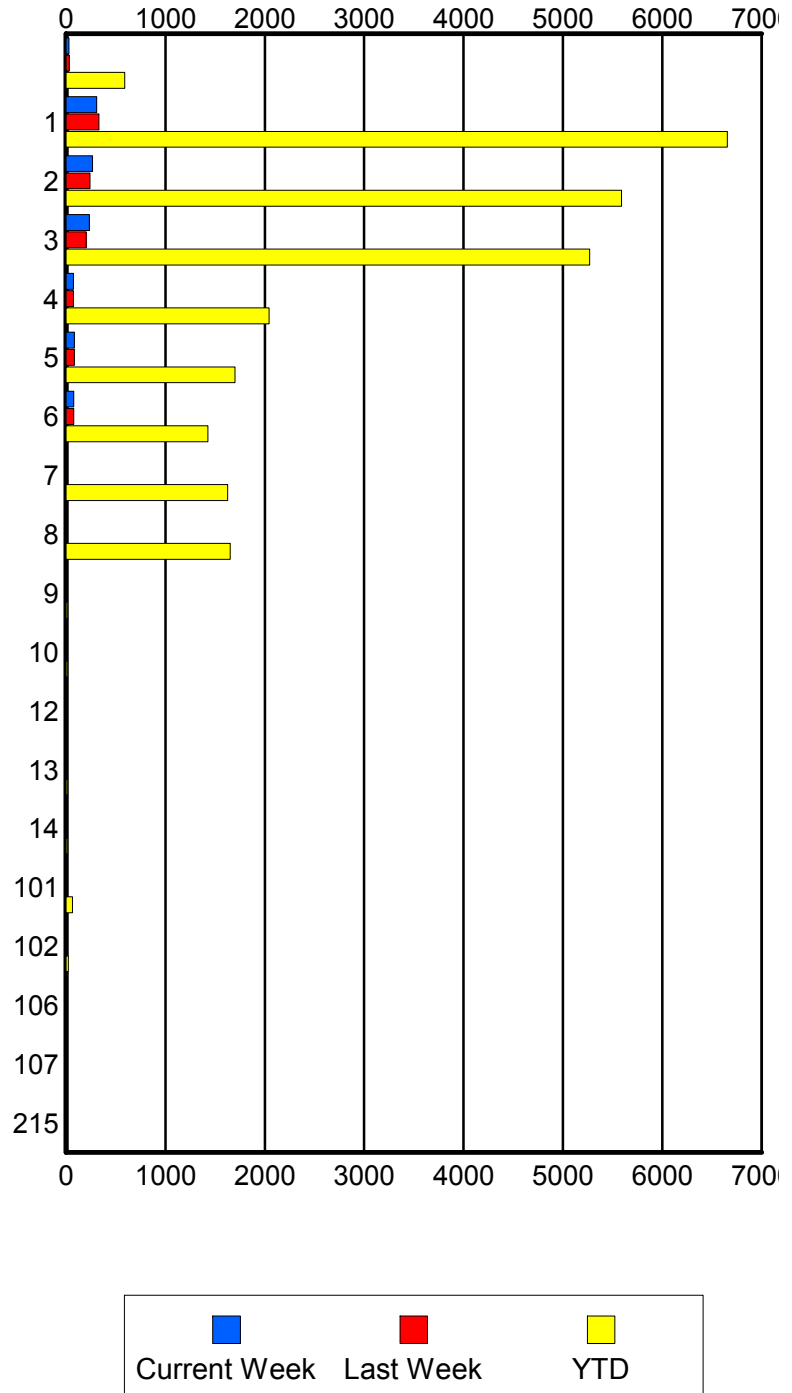
	Current We	Last Week	YTD
S01	1	3	66
	1	3	69
	1	5	80
S02	5	8	181
	5	8	188
	6	8	204
S03	3	5	93
	3	5	95
	4	6	107
S04	3	4	129
	3	4	134
	3	4	144

### Road Ranger / SIRV Performance By Beat

	Current We	Last Week	YTD
	28	32	545
	29	34	589
	31	37	640
1	289	296	6,264
	310	330	6,653
	320	338	6,868
2	263	235	5,402
	268	241	5,589
	284	254	5,832
3	224	194	5,115
	234	202	5,269
	247	211	5,477
4	74	72	2,001
	75	73	2,044
	79	74	2,112
5	82	82	1,670
	84	83	1,699
	90	88	1,760
6	78	75	1,398
	78	77	1,429
	84	78	1,503
7	0	0	1,600
	0	0	1,625
	0	0	1,698
8	0	0	1,633
	0	0	1,653
	0	0	1,716
9	0	0	12
	0	0	14
	0	0	14
10	0	0	13
	0	0	14
	0	0	14
12	0	0	9
	0	0	9
	0	0	9
13	0	0	14
	0	0	14
	0	0	15
14	0	0	13
	0	0	13
	0	0	13
101	6	5	63
	6	5	64
	8	5	71

Values presented are:  
 - Total Events with a RR/SIRV Response  
 - Total RR/SIRV Responses,  
 - Total Activities Performed

### RR/SIRV Responses per Beat



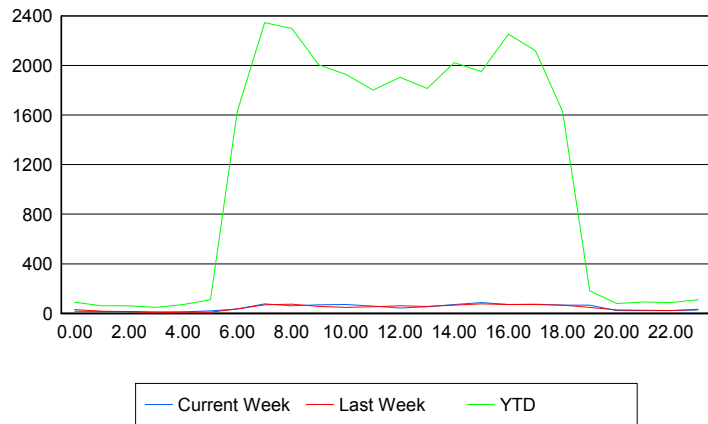
	Current We	Last Week	YTD
102	0	0	23
	0	0	23
	0	0	25
106	0	0	1
	0	0	1
	0	0	1
107	0	0	1
	0	0	1
	0	0	1
215	0	0	1
	0	0	1
	0	0	1

### Road Ranger / SIRV Performance By Time of Day

*Values presented are:*  
- Total Events with a RR/SIRV Response  
- Total RR/SIRV Responses,  
- Total Activities Performed

	Current We	Last Week	YTD
12AM-1AM	16	28	85
	17	30	89
	19	33	99
1AM-2AM	15	17	61
	15	17	62
	15	18	64
2AM-3AM	12	13	51
	14	15	61
	17	18	67
3AM-4AM	12	5	46
	12	5	49
	12	5	49
4AM-5AM	12	8	62
	12	8	72
	13	8	74
5AM-6AM	10	7	87
	20	10	110
	22	11	117
6AM-7AM	32	32	1,484
	35	36	1,628
	36	38	1,678
7AM-8AM	66	60	2,178
	76	68	2,345
	77	70	2,430
8AM-9AM	54	61	2,082
	62	73	2,299
	66	78	2,397

### Number of Responses / Hour of the Day



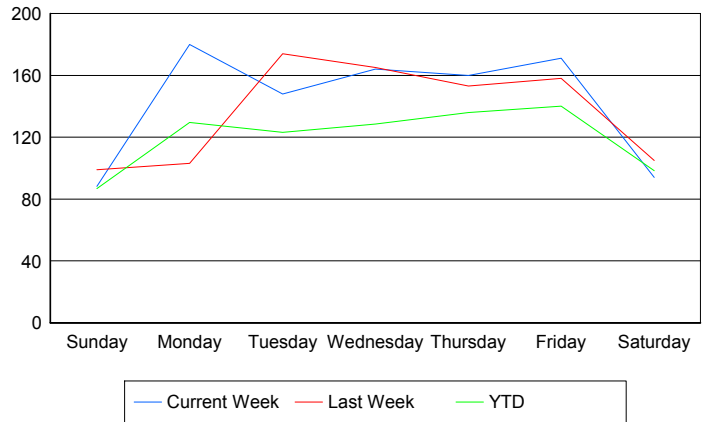
	Current We	Last Week	YTD
9AM-10AM	66	52	1,870
	69	55	2,006
	69	58	2,075
10AM-11AM	67	43	1,784
	71	49	1,929
	73	51	2,016
11AM-12PM	52	47	1,685
	58	53	1,803
	59	56	1,881
12PM-1PM	40	56	1,793
	44	62	1,905
	45	63	1,977
1PM-2PM	52	50	1,679
	53	56	1,814
	59	56	1,898
2PM-3PM	65	58	1,895
	70	65	2,024
	75	66	2,110
3PM-4PM	80	70	1,816
	87	77	1,952
	88	80	2,026
4PM-5PM	65	69	2,109
	70	72	2,253
	73	73	2,339
5PM-6PM	70	67	1,952
	73	70	2,120
	77	70	2,201
6PM-7PM	64	63	1,542
	65	67	1,630
	67	70	1,685
7PM-8PM	65	47	174
	66	49	183
	69	50	189
8PM-9PM	20	27	76
	22	27	80
	28	27	87
9PM-10PM	23	23	86
	23	26	93
	28	26	101
10PM-11PM	22	20	78
	22	22	86
	25	22	89
11PM-12AM	27	32	105
	28	33	111
	31	38	121

## Road Ranger / SIRV Performance By Day of Week

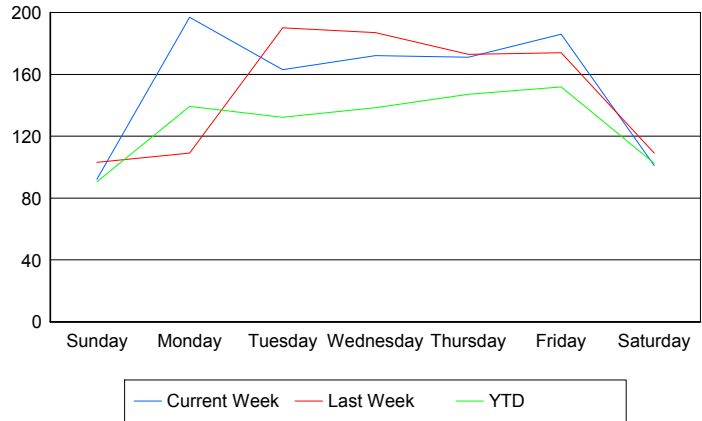
Values presented are:  
 - Total Events with a RR/SIRV Response  
 - Total RR/SIRV Responses,  
 - Total Activities Performed

	Current We	Last Week	YTD
Sunday	90 94 103	99 103 107	204 212 227
Monday	180 197 207	103 109 111	4,716 5,063 5,221
Tuesday	148 163 169	174 190 198	4,474 4,798 4,963
Wednesday	164 172 185	165 187 190	4,672 5,030 5,254
Thursday	160 171 181	153 173 182	5,105 5,518 5,742
Friday	171 186 191	158 174 181	5,288 5,732 5,991
Saturday	94 101 107	105 109 116	333 350 372

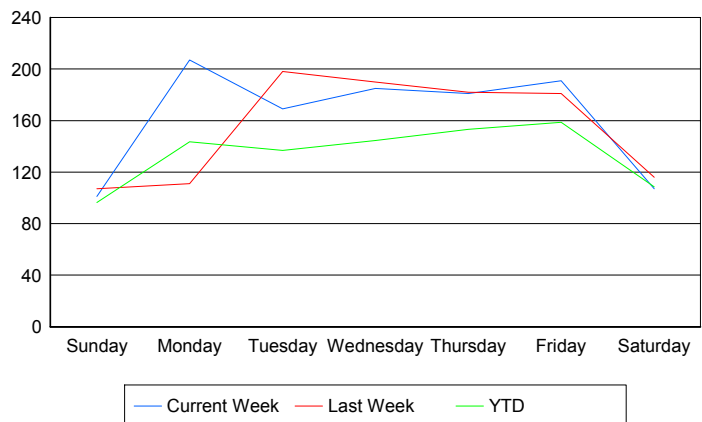
### Avg # of events with a RR/SIRV Response per Day of the Week



### Avg # of RR/SIRV Responses per Day of the Week



### Avg # of RR/SIRV Activities Performed per Day of the Week



Road Ranger / SIRV Responses per Time of Day and Day of Week

