



# Weekly Performance Measures Report Broward County



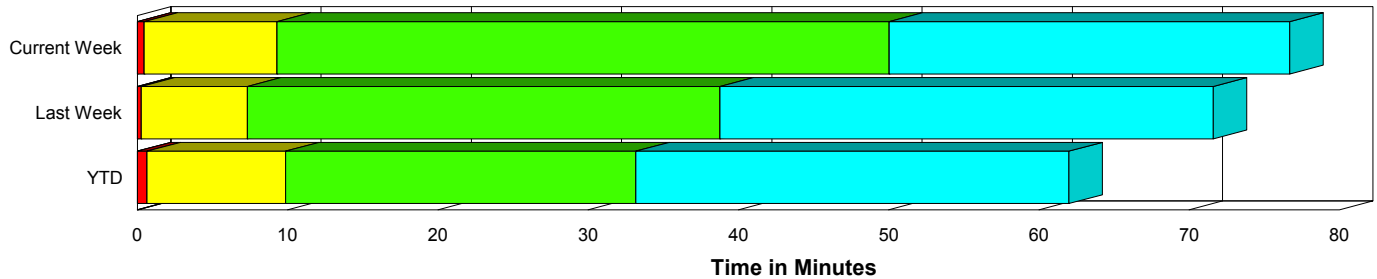
Created on:  
September 07, 2009  
5:51 pm

Period From Aug 30, 2009 to Sep 5, 2009

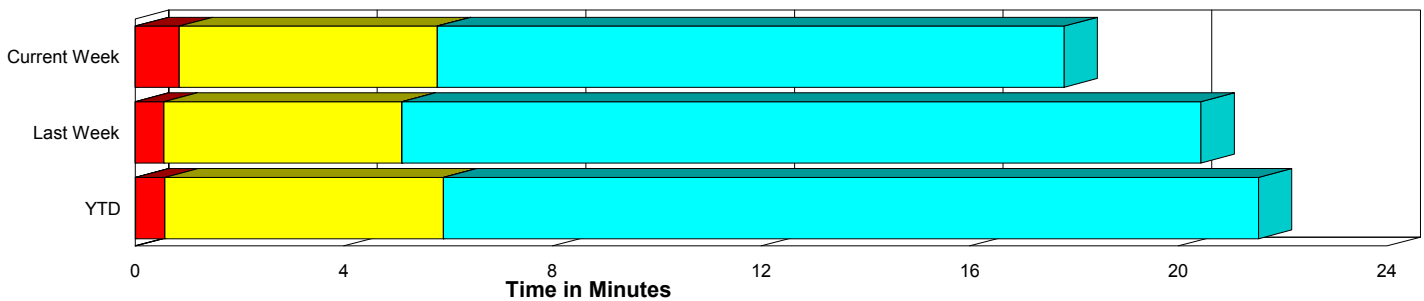
## Performance Measures Summary

	Traffic Events (No Lanes Blocked)			Incidents (Lanes Blocked)		
	<u>This Week</u>	<u>Last Week</u>	<u>YTD</u>	<u>This Week</u>	<u>Last Week</u>	<u>YTD</u>
Number of Events	883	813	33,629	46	46	1,649
TMC Detection (min.)	0.00	0.00	0.01	0.00	0.01	0.00
TMC Verification (min.)	0.85	0.55	0.57	0.45	0.26	0.65
TMC Response (min.)	6.08	5.44	6.37	9.33	7.54	10.08
RR Dispatch Time (min.)	1.03	0.75	1.19	1.66	1.48	3.01
RR Response Time (min.)	5.15	4.86	5.31	7.68	6.12	7.24
Roadway Clearance (min.)				47.24	31.35	31.92
Event Clearance (min.)	18.09	20.76	22.00	73.89	64.17	60.27
# of Events w/ RR/SIRV	753	559	22,060	43	24	1,092
RR/SIRV Responses	753	559	22,060	43	24	1,092
RR/SIRV Activities	705	525	19,001	78	52	2,224

### Incident Clearance Time-Line



### Traffic Event (Non-Lane Blockage) Time-Line



<span style="color: blue;">■</span> Avg. TMC Detection Time	<span style="color: green;">■</span> Avg. Time from TMC Response to Roadway Clearance*
<span style="color: red;">■</span> Avg. Time from TMC Detection to TMC Verification	<span style="color: cyan;">■</span> Avg. Time from Roadway Clearance to Incident/Event Clearance**
<span style="color: yellow;">■</span> Avg. Time from TMC Verification to TMC Response	

\* Roadway clearance equals all travel lanes open

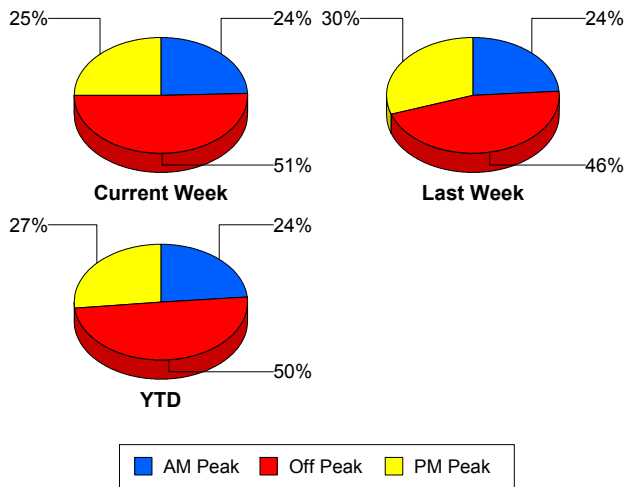
\*\* Incident clearance equals time when last responder has left the scene

## Performance Measures by Peak Period

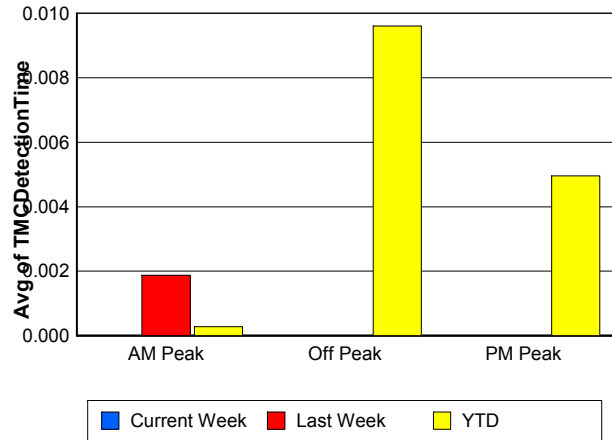
Note: AM peak period is defined as 6am to 10am and PM peak period is defined as 3pm to 7pm.

	AM Peak			Off Peak			PM Peak		
	<u>Current Week</u>	<u>Last Week</u>	<u>YTD</u>	<u>Current Week</u>	<u>Last Week</u>	<u>YTD</u>	<u>Current Week</u>	<u>Last Week</u>	<u>YTD</u>
Number of Events	227	205	8,309	471	395	17,604	231	259	9,365
Number of Incidents	12	11	364	26	21	820	8	14	465
TMC Detection (min.)	0.00	0.00	0.00	0.00	0.00	0.01	0.00	0.00	0.00
TMC Verification (min.)	0.30	0.54	0.49	1.28	0.56	0.51	0.42	0.49	0.76
TMC Response (min.)	5.55	5.68	6.06	7.48	4.91	7.43	4.70	6.03	6.02
RR Dispatch Time (min.)	0.96	0.83	0.99	1.35	0.92	1.82	0.61	0.60	0.84
RR Response Time (min.)	4.79	5.01	5.16	6.17	4.23	5.71	4.14	5.51	5.30
Event Clearance (min.)	22.26	24.70	21.62	20.90	24.03	26.61	19.39	20.35	20.41
Roadway Clearance (min.)	101.44	48.40	28.98	27.87	29.30	36.19	28.87	21.02	26.71
Incident Clearance (min.)	125.09	87.25	58.29	53.71	61.15	63.67	62.69	50.56	55.83
# of Events w/ RR/SIRV	202	161	6,712	396	219	9,303	198	203	7,137
RR/SIRV Responses	202	161	6,712	396	219	9,303	198	203	7,137
RR/SIRV Activities	205	168	6,413	377	204	8,217	201	205	6,595

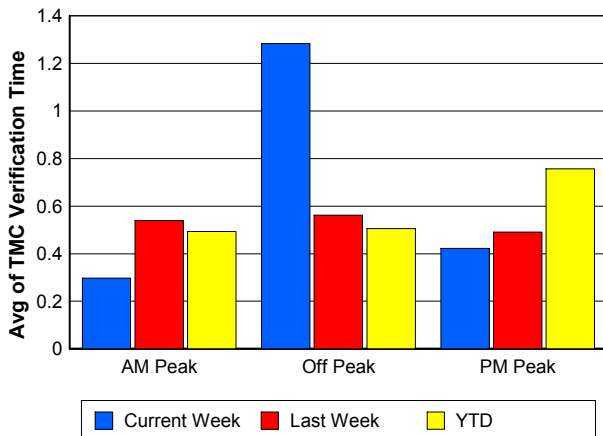
### Number of Events / Peak Period



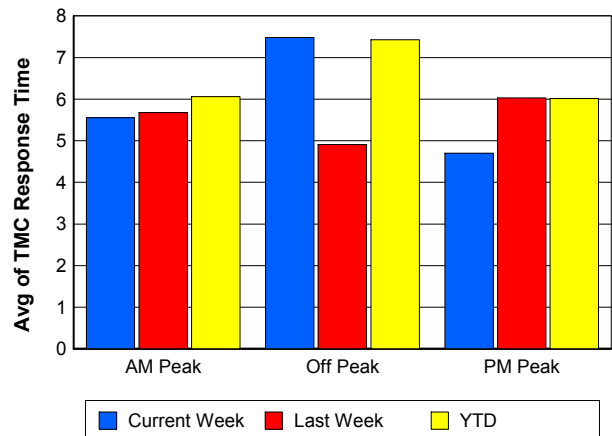
### TMC Detection Time



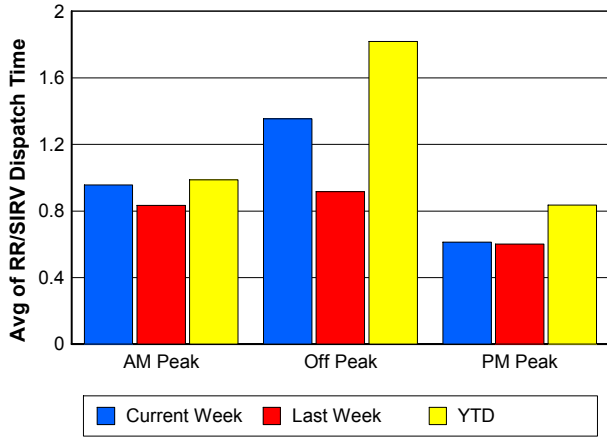
### TMC Verification Time



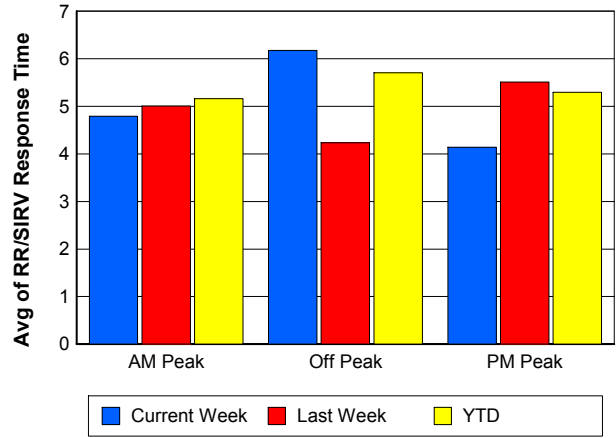
### TMC Response Time



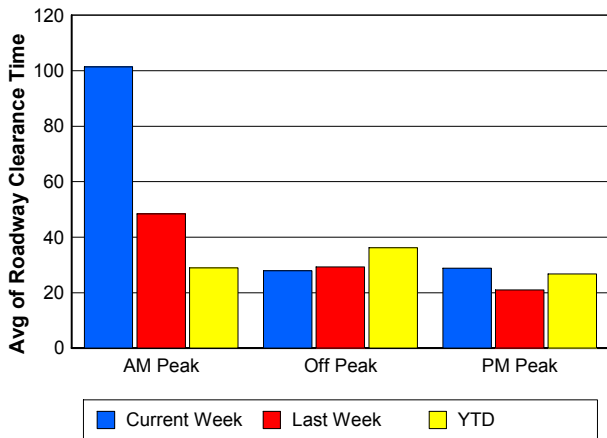
## Road Ranger / SIRV Dispatch Time



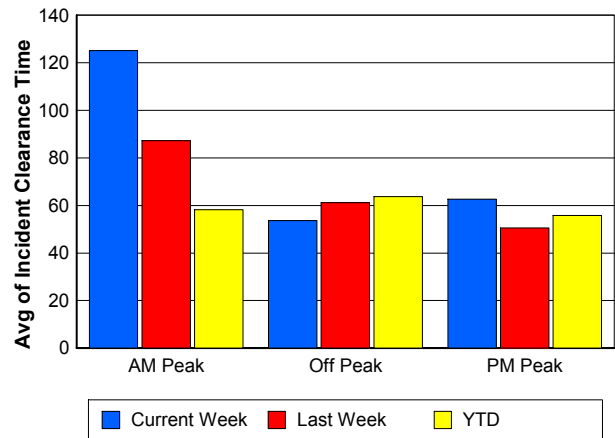
## Road Ranger / SIRV Response Time



## Roadway Clearance Time (2A)



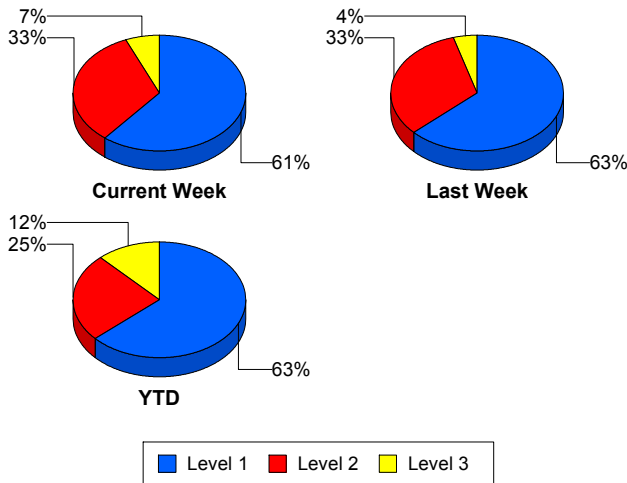
## Incident Clearance Time (3B)



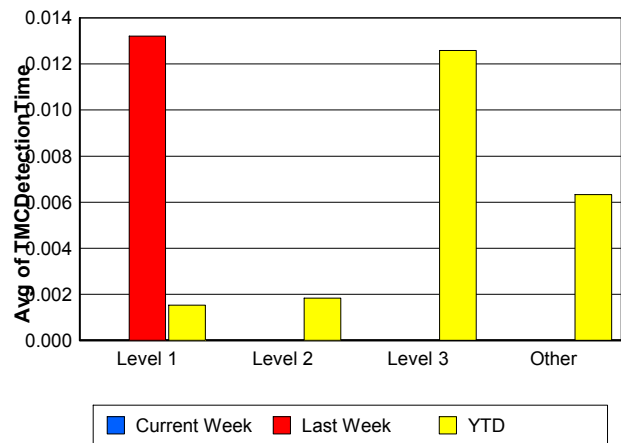
## Performance Measures by Severity

	Level 1			Level 2			Level 3			Other		
	<u>This Week</u>	<u>Last Week</u>	<u>YTD</u>	<u>This Week</u>	<u>Last Week</u>	<u>YTD</u>	<u>This Week</u>	<u>Last Week</u>	<u>YTD</u>	<u>This Week</u>	<u>Last Week</u>	<u>YTD</u>
Number of Events	28	29	1,044	15	15	409	3	2	196	883	813	33,629
Number of Incidents	28	29	1,044	15	15	409	3	2	196	0	0	0
TMC Detection (min.)	0.00	0.01	0.00	0.00	0.00	0.00	0.00	0.00	0.01	0.00	0.00	0.01
TMC Verification (min.)	0.21	0.25	0.41	0.92	0.26	0.91	0.34	0.38	1.38	0.85	0.55	0.57
TMC Response (min.)	9.48	5.02	7.17	4.97	7.72	9.71	28.44	22.03	24.51	6.08	5.44	6.37
RR Dispatch Time (min.)	2.01	1.37	1.65	0.29	1.74	2.94	5.02	1.37	9.13	1.03	0.75	1.19
RR Resp. Time (min.)	7.48	3.78	5.61	4.68	5.98	7.20	23.43	20.66	15.13	5.15	4.86	5.31
Event Clearance (min.)	44.96	52.38	46.38	69.28	72.59	72.53	366.93	171.97	108.39	18.09	20.76	22.00
Roadway Clear. (min.)	14.43	15.86	14.24	51.10	44.72	49.03	334.15	155.63	90.43			
Incident Clearance (min.)	44.96	52.38	46.38	69.28	72.59	72.53	366.93	171.97	108.39			
# of Events w/ RR/SIRV	26	15	729	14	7	198	3	2	165	753	559	22,060
RR/SIRV Responses	26	15	729	14	7	198	3	2	165	753	559	22,060
RR/SIRV Activities	38	24	1,284	28	20	568	12	8	372	705	525	19,001

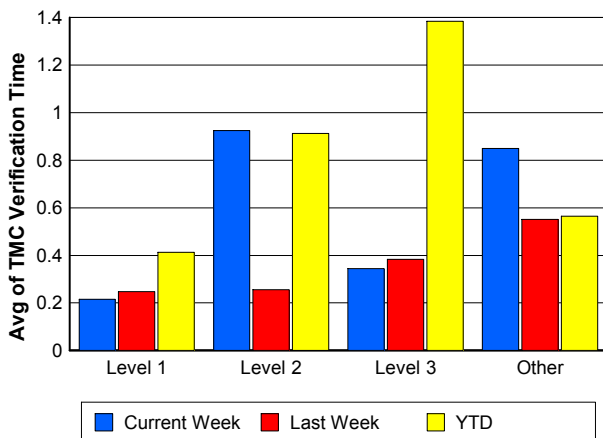
### Number of Events / Severity



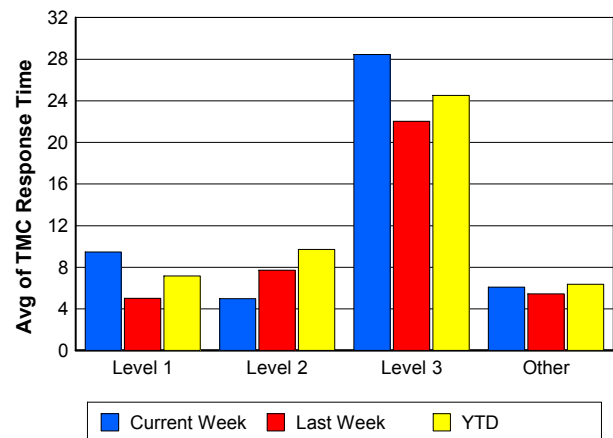
### TMC Detection Time



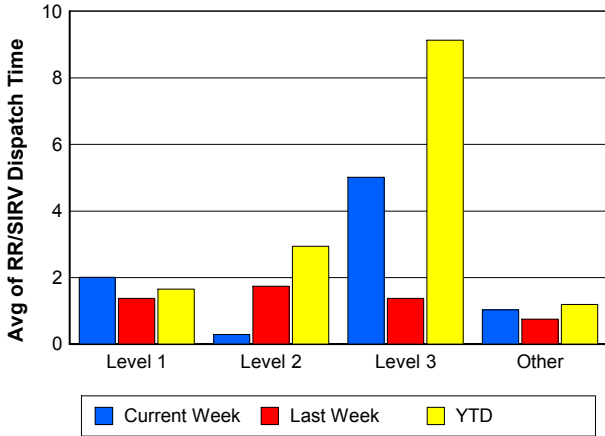
### TMC Verification Time



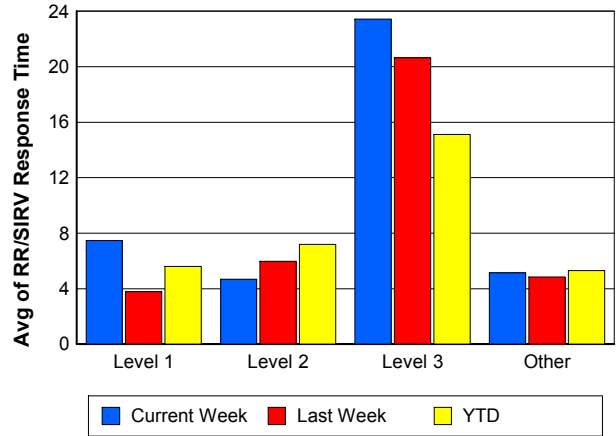
### TMC Response Time



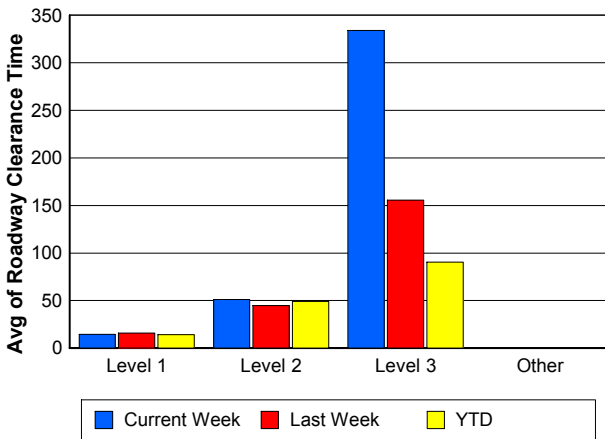
## Road Ranger / SIRV Dispatch Time



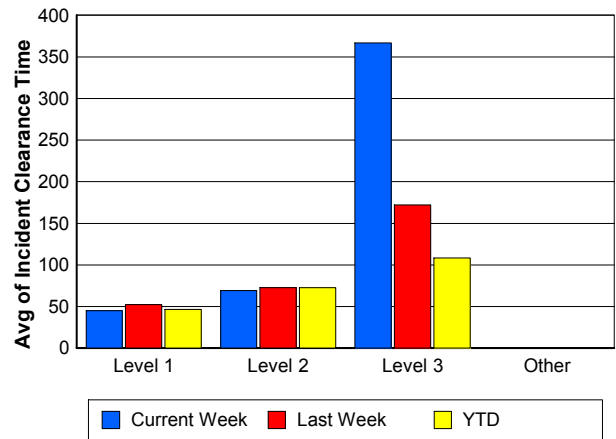
## Road Ranger / SIRV Response Time



## Roadway Clearance Time (2A)



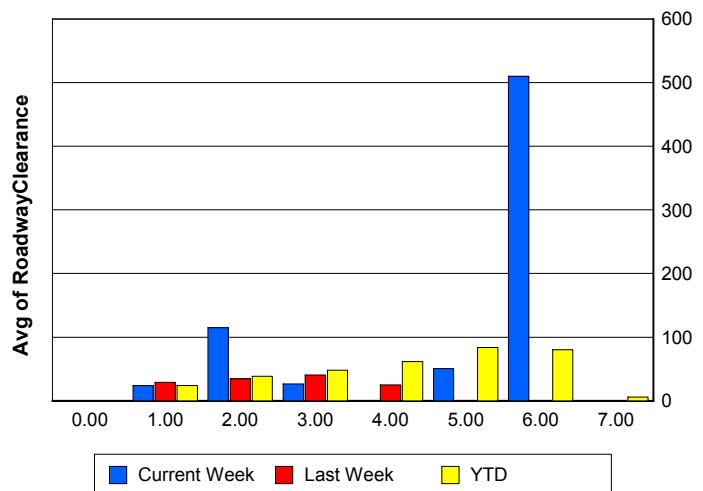
## Incident Clearance Time (3B)



## Roadway Clearance by Maximum Number of Lanes Blocked

	Current Week	Last Week	YTD
0			
1	23.85	28.97	23.85
2	114.94	34.55	38.44
3	26.56	40.58	47.82
4	0.00	25.15	61.84
5	50.55	0.00	83.84
6	510.12	0.00	80.08
7	0.00	0.00	5.97

## Roadway Clearance Time (2A)



## Performance Measures by Roadway

**595**

	<u>Current Week</u>	<u>Last Week</u>	<u>YTD</u>
Number of Events	30	31	4,251
Number of Incidents	2	2	260
TMC Detection (min.)	0.00	0.00	0.01
TMC Verification (min.)	2.02	1.55	0.76
TMC Response (min.)	11.96	7.43	6.47
RR Dispatch Time (min.)	2.38	0.65	1.11
RR Resp. Time (min.)	9.70	7.00	5.45
Event Clearance (min.)	26.11	18.02	21.41
Roadway Clear. (min.)	27.97	15.97	30.47
Incident Clearance (min.)	149.37	27.54	53.92
# of Events w/ RR/SIRV	26	22	2,945
RR/SIRV Responses	26	22	2,945
RR/SIRV Activities	25	22	2,715

**75**

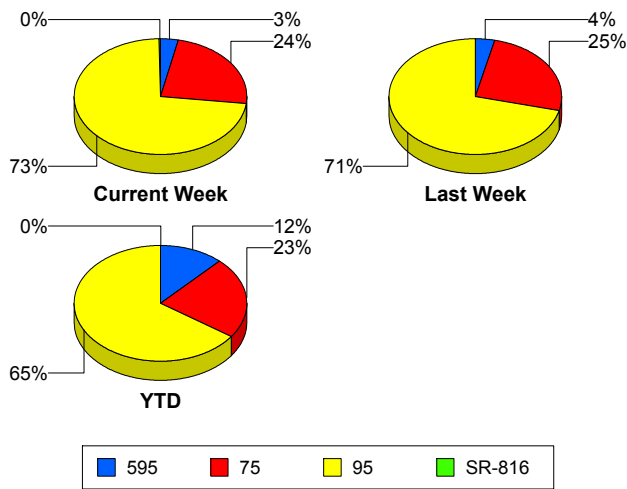
	<u>Current Week</u>	<u>Last Week</u>	<u>YTD</u>
Number of Events	220	216	8,037
Number of Incidents	3	8	152
TMC Detection (min.)	0.00	0.00	0.00
TMC Verification (min.)	1.27	0.59	0.69
TMC Response (min.)	8.77	6.25	7.76
RR Dispatch Time (min.)	1.25	0.77	1.21
RR Resp. Time (min.)	7.53	5.54	6.66
Event Clearance (min.)	21.80	25.23	25.93
Roadway Clear. (min.)	28.28	57.47	56.53
Incident Clearance (min.)	46.69	108.62	84.10
# of Events w/ RR/SIRV	167	134	5,121
RR/SIRV Responses	167	134	5,121
RR/SIRV Activities	166	139	4,424

**95**

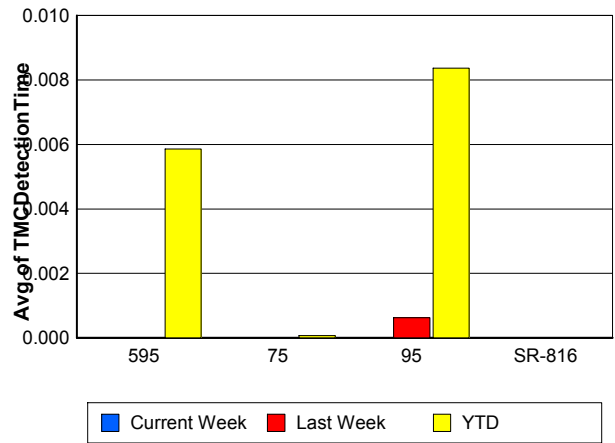
	<u>Current Week</u>	<u>Last Week</u>	<u>YTD</u>
Number of Events	676	612	22,987
Number of Incidents	39	36	1,235
TMC Detection (min.)	0.00	0.00	0.01
TMC Verification (min.)	0.64	0.46	0.49
TMC Response (min.)	5.36	5.20	6.22
RR Dispatch Time (min.)	0.96	0.80	1.33
RR Resp. Time (min.)	4.51	4.61	5.01
Event Clearance (min.)	20.37	22.58	23.48
Roadway Clear. (min.)	51.87	26.40	29.25
Incident Clearance (min.)	75.68	56.32	58.76
# of Events w/ RR/SIRV	601	427	15,084
RR/SIRV Responses	601	427	15,084
RR/SIRV Activities	590	416	14,084

	<u>Current Week</u>	<u>YTD</u>
Number of Events	3	3
Number of Incidents	2	2
TMC Detection (min.)	0.00	0.00
TMC Verification (min.)	0.00	0.00
TMC Response (min.)	0.00	0.00
RR Dispatch Time (min.)	0.00	0.00
RR Resp. Time (min.)	0.00	0.00
Event Clearance (min.)	7.57	7.57
Roadway Clear. (min.)	4.53	4.53
Incident Clearance (min.)	4.39	4.39
# of Events w/ RR/SIRV	2	2
RR/SIRV Responses	2	2
RR/SIRV Activities	2	2

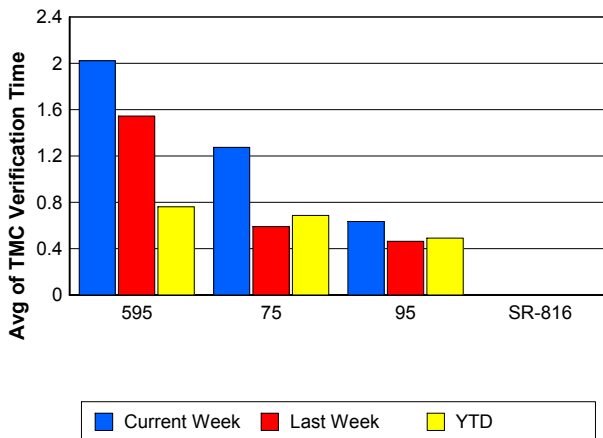
### Number of Events / Roadway



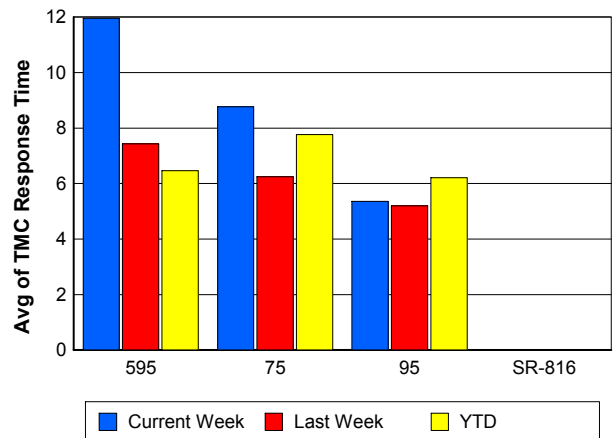
### TMC Detection Time



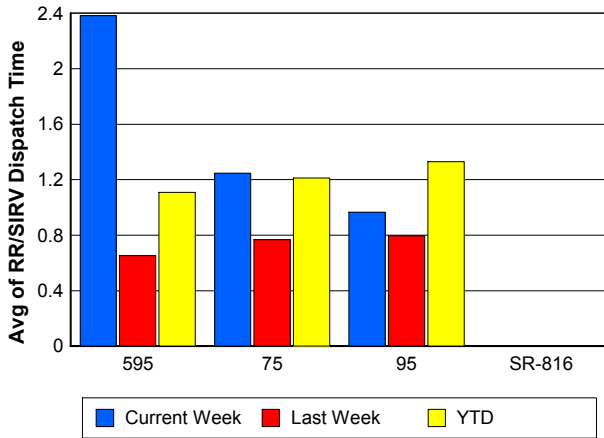
### TMC Verification Time



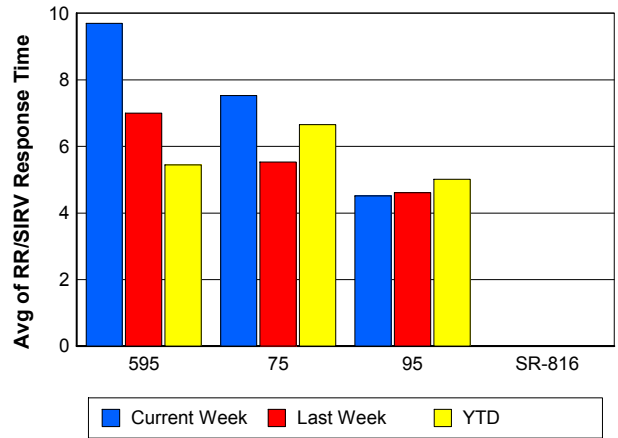
### TMC Response Time



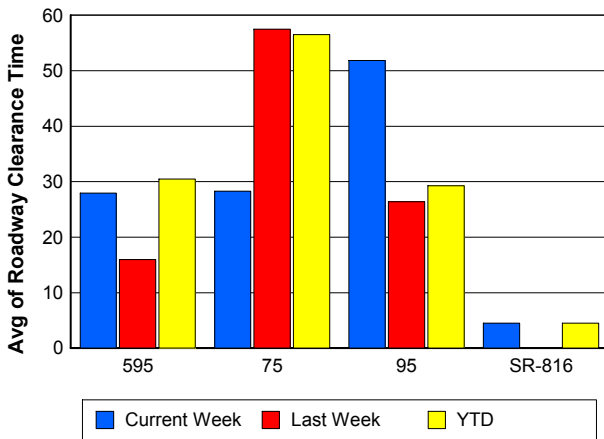
## Road Ranger / SIRV Dispatch Time



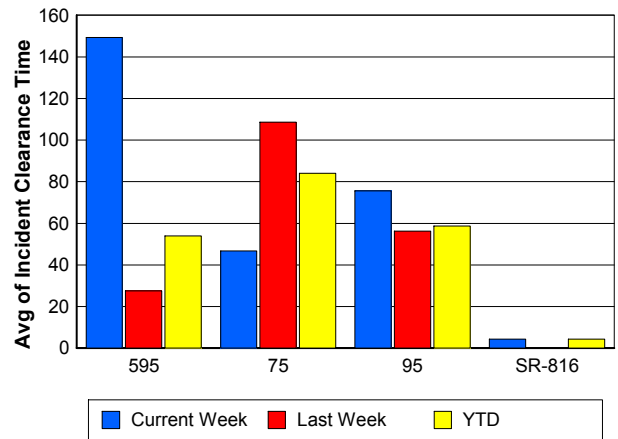
## Road Ranger / SIRV Response Time



## Roadway Clearance Time (2A)



## Incident Clearance Time (3B)



## Performance Measures by Event Type

### Accident

	<u>Current Week</u>	<u>Last Week</u>	<u>YTD</u>
Number of Events	78	68	2,464
Number of Incidents	36	38	1,197
TMC Detection (min.)	0.00	0.01	0.01
TMC Verification (min.)	0.74	0.38	0.73
TMC Response (min.)	9.04	7.84	8.63
RR Dispatch Time (min.)	2.02	1.10	1.66
RR Response Time (min.)	7.08	6.72	7.08
Event Clearance (min.)	56.71	62.30	55.46
Roadway Clearance (min.)	45.07	33.25	33.23
Incident Clearance (min.)	74.96	72.42	66.80
# of Events w/ RR/SIRV	75	41	1,723
RR/SIRV Assists	75	41	1,723
RR/SIRV Activities	109	67	2,665

### Debris on Roadway

	<u>Current Week</u>	<u>Last Week</u>	<u>YTD</u>
Number of Events	40	35	1,034
Number of Incidents	0	0	22
TMC Detection (min.)	0.00	0.00	0.11
TMC Verification (min.)	4.19	3.35	3.70
TMC Response (min.)	7.58	6.35	7.42
RR Dispatch Time (min.)	0.45	0.93	0.87
RR Response Time (min.)	7.18	5.45	6.57
Event Clearance (min.)	10.10	10.25	11.50
Roadway Clearance (min.)			22.45
Incident Clearance (min.)			27.46
# of Events w/ RR/SIRV	40	34	946
RR/SIRV Assists	40	34	946
RR/SIRV Activities	41	33	974

### Disabled Vehicle

	<u>Current Week</u>	<u>Last Week</u>	<u>YTD</u>
Number of Events	602	569	20,791
Number of Incidents	7	4	249
TMC Detection (min.)	0.00	0.00	0.00
TMC Verification (min.)	0.88	0.53	0.66
TMC Response (min.)	5.98	5.21	6.14
RR Dispatch Time (min.)	0.96	0.56	1.07
RR Response Time (min.)	5.07	4.68	5.09
Event Clearance (min.)	20.56	22.68	26.74
Roadway Clearance (min.)	12.49	14.56	18.84
Incident Clearance (min.)	22.46	17.70	35.43
# of Events w/ RR/SIRV	558	443	16,037
RR/SIRV Assists	558	443	16,037
RR/SIRV Activities	588	460	16,427

## Emergency Vehicles

	<u>Current Week</u>	<u>Last Week</u>	<u>YTD</u>
Number of Events	3	6	56
Number of Incidents	2	1	42
TMC Detection (min.)	0.00	0.00	0.00
TMC Verification (min.)	0.04	0.00	0.69
TMC Response (min.)	4.27		14.72
RR Dispatch Time (min.)	4.07		9.63
RR Response Time (min.)	0.19		4.21
Event Clearance (min.)	198.53	15.26	51.88
Roadway Clearance (min.)	229.67	6.35	53.58
Incident Clearance (min.)	269.41	6.68	60.93
# of Events w/ RR/SIRV	2	0	31
RR/SIRV Assists	2	0	31
RR/SIRV Activities	6	0	51

## Other

	<u>Current Week</u>	<u>Last Week</u>	<u>YTD</u>
Number of Events	202	174	10,577
Number of Incidents	1	0	26
TMC Detection (min.)	0.00	0.00	0.00
TMC Verification (min.)	0.09	0.08	0.06
TMC Response (min.)	4.63	7.48	8.75
RR Dispatch Time (min.)	1.14	2.05	1.86
RR Response Time (min.)	4.10	5.92	6.34
Event Clearance (min.)	7.62	11.98	11.33
Roadway Clearance (min.)	3.77		31.61
Incident Clearance (min.)	4.45		37.17
# of Events w/ RR/SIRV	117	62	4,224
RR/SIRV Assists	117	62	4,224
RR/SIRV Activities	36	13	857

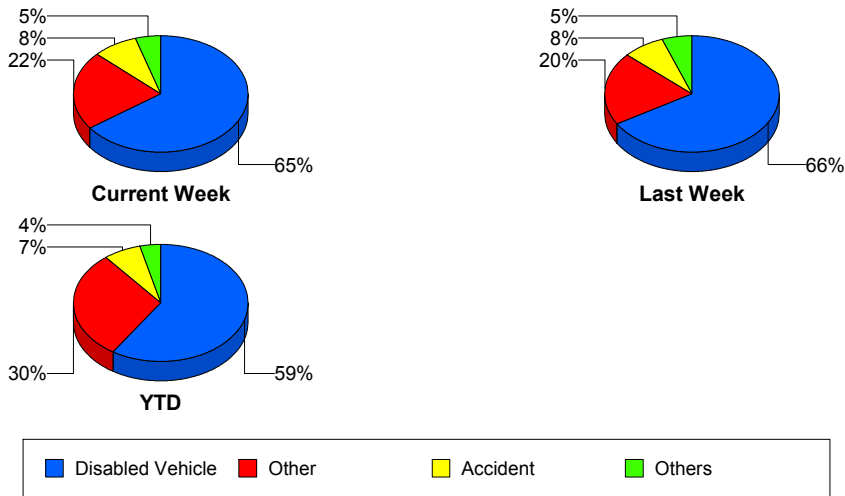
## Police Activity

	<u>Last Week</u>	<u>YTD</u>
Number of Events	5	149
Number of Incidents	2	48
TMC Detection (min.)	0.00	0.00
TMC Verification (min.)	0.00	0.34
TMC Response (min.)		14.29
RR Dispatch Time (min.)	3.65	4.69
RR Response Time (min.)		9.61
Event Clearance (min.)	12.14	34.43
Roadway Clearance (min.)	24.67	40.70
Incident Clearance (min.)	27.56	50.14
# of Events w/ RR/SIRV	1	48
RR/SIRV Assists	1	48
RR/SIRV Activities	0	56

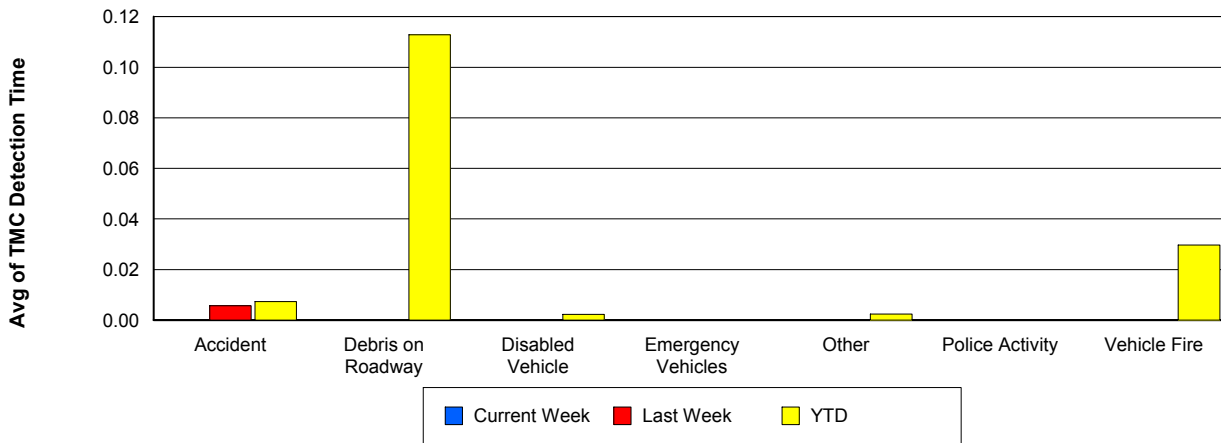
## Vehicle Fire

	<u>Last Week</u>	<u>YTD</u>
Number of Events	1	83
Number of Incidents	1	65
TMC Detection (min.)	0.00	0.03
TMC Verification (min.)	0.00	1.21
TMC Response (min.)	0.00	11.12
RR Dispatch Time (min.)	0.00	2.47
RR Response Time (min.)	0.00	9.13
Event Clearance (min.)	67.30	59.39
Roadway Clearance (min.)	64.42	40.91
Incident Clearance (min.)	67.30	62.82
# of Events w/ RR/SIRV	1	53
RR/SIRV Assists	1	53
RR/SIRV Activities	3	113

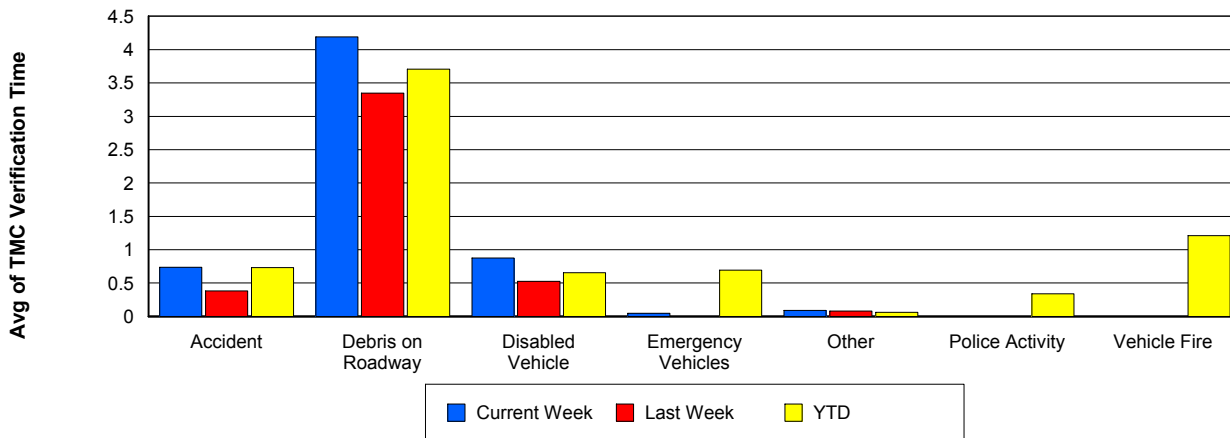
## Number of Events / Event Type



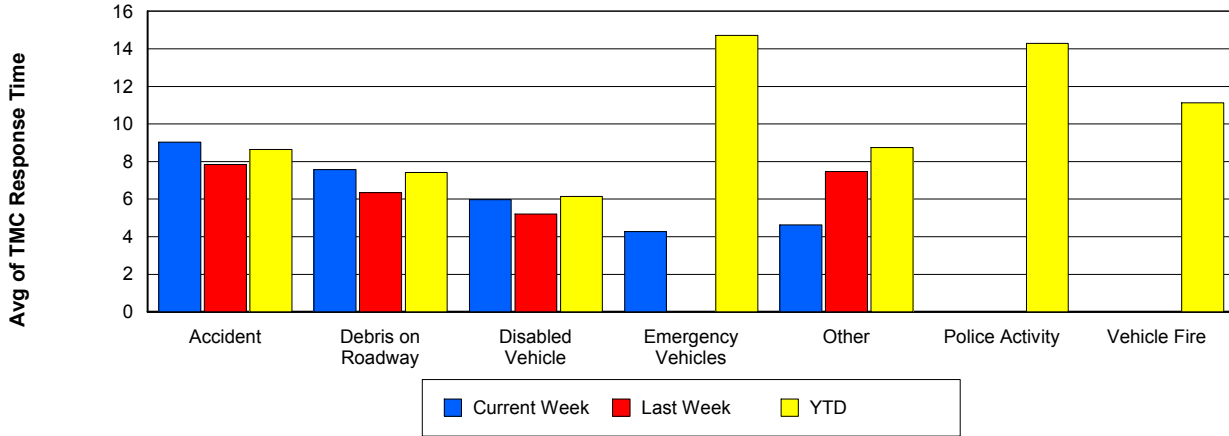
## TMC Detection Time



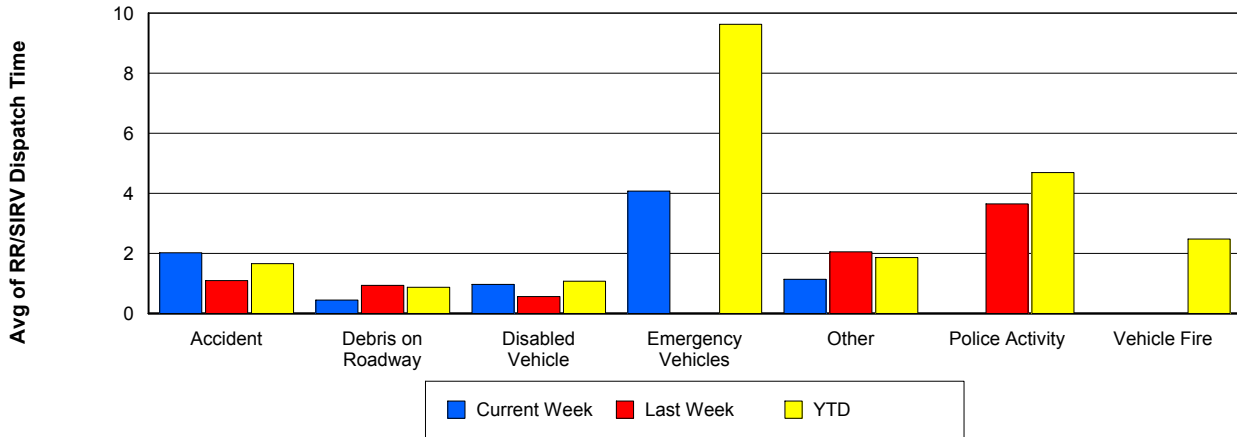
## TMC Verification Time



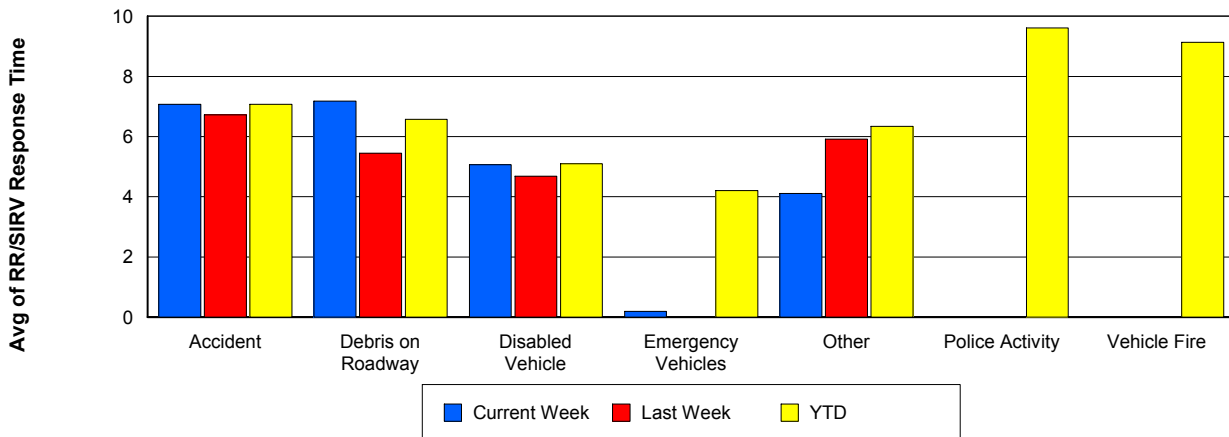
## TMC Response Time



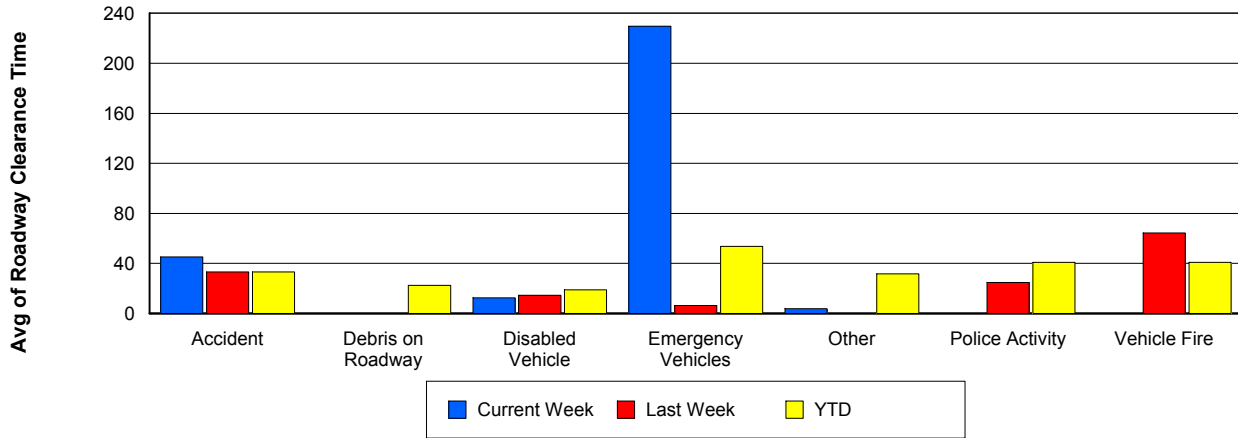
## Road Ranger / SIRV Dispatch Time



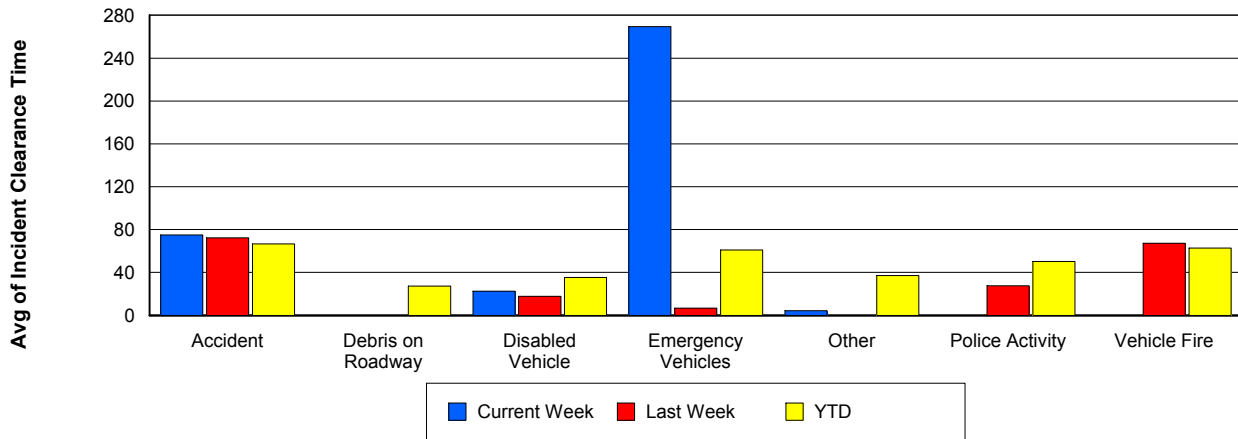
## Road Ranger / SIRV Response Time



## Roadway Clearance Time (2A)



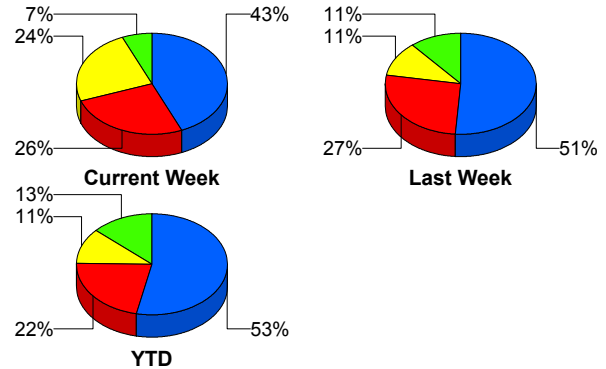
## Incident Clearance Time (3B)



## Incident Detection Methods

	Current Week	Last Week	YTD
Broward CCTV	20	23	878
Broward Road Ranger	11	5	189
Broward VideoWall	1	1	55
BSO	1	1	38
District 4	0	0	42
District 6	0	0	1
FDOT Maintenance	0	0	4
FHP	12	12	360
Fire	1	0	3
Florida's Turnpike	0	0	6
ITMS	0	0	2
Motorist	0	0	8
Other	0	0	1
Palm Beach Road Ran	0	0	2
Road Watcher	0	0	12
SIRV	0	0	10
SmarTraveler (511)	0	0	6
VisioPaD Detection	0	3	29
<b>Total</b>	<b>46</b>	<b>45</b>	<b>1,646</b>

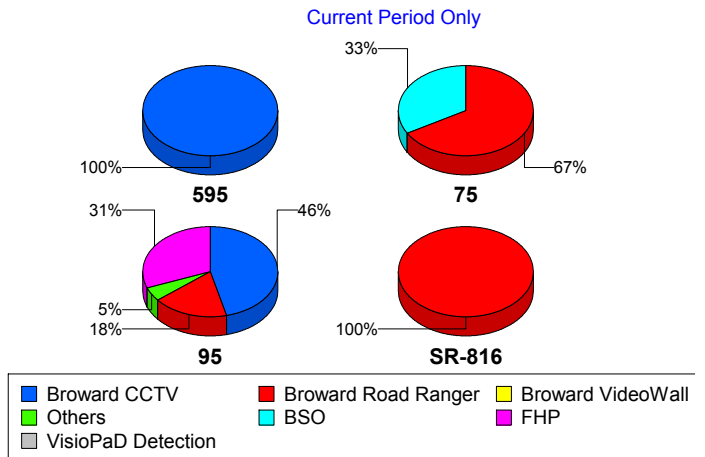
### Total Incidents by Detection Method



## Incident Detection Methods by Roadway

		Current Week	Last Week	YTD
595	Broward CCTV	2	0	126
	Broward Road Ranger	0	0	37
	Broward VideoWall	0	0	8
	BSO	0	0	4
	District 4	0	0	12
	FDOT Maintenance	0	0	2
	FHP	0	1	51
	Florida's Turnpike	0	0	6
	Motorist	0	0	2
	Road Watcher	0	0	3
	SIRV	0	0	1
	VisioPaD Detection	0	0	6
	Total	2	1	258
	75	Broward CCTV	0	2
Broward Road Ranger		2	0	15
Broward VideoWall		0	0	1
BSO		1	0	29
District 4		0	0	5
FHP		0	6	35
Other		0	0	1
Road Watcher		0	0	2
VisioPaD Detection		0	0	4
Total		3	8	152
95	Broward CCTV	18	21	692
	Broward Road Ranger	7	5	135
	Broward VideoWall	1	1	46
	BSO	0	1	5
	District 4	0	0	25
	District 6	0	0	1
	FDOT Maintenance	0	0	2
	FHP	12	5	274

Total Events by Roadway and Detection Method

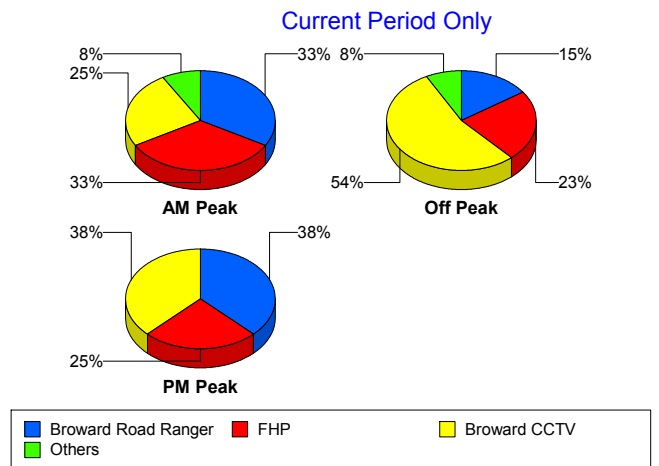


		Current Week	Last Week	YTD
95	Fire	1	0	3
	ITMS	0	0	2
	Motorist	0	0	6
	Palm Beach Road Ran	0	0	2
	Road Watcher	0	0	7
	SIRV	0	0	9
	SmarTraveler (511)	0	0	6
	VisioPaD Detection	0	3	19
	Total	39	36	1,234
SR-816	Broward Road Ranger	2	0	2
	Total	2	0	2
Total		46	45	1,646

### Incident Detection Methods by Peak Period

		Current Week	Last Week	YTD
AM Peak	Broward CCTV	3	3	164
	Broward Road Ranger	4	0	56
	Broward VideoWall	1	0	19
	BSO	0	0	5
	District 4	0	0	13
	FHP	4	6	89
	Florida's Turnpike	0	0	2
	Motorist	0	0	5
	Palm Beach Road Ran	0	0	1
	Road Watcher	0	0	4
	SIRV	0	0	1
	SmarTraveler (511)	0	0	1
	VisioPaD Detection	0	1	2
	Total	12	10	362
Off Peak	Broward CCTV	14	13	477
	Broward Road Ranger	4	1	54
	Broward VideoWall	0	0	29

### Total Events by Peak Period and Detection Method

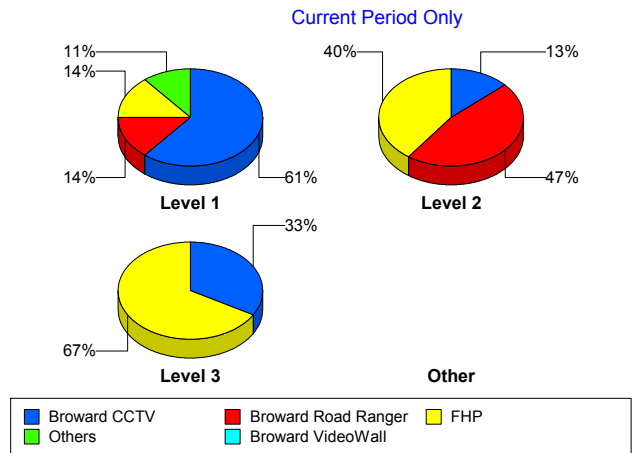


		Current Week	Last Week	YTD
Off Peak	BSO	1	0	27
	District 4	0	0	14
	FDOT Maintenance	0	0	2
	FHP	6	5	175
	Fire	1	0	2
	Florida's Turnpike	0	0	3
	ITMS	0	0	2
	Motorist	0	0	3
	Road Watcher	0	0	5
	SIRV	0	0	3
	SmarTraveler (511)	0	0	3
	VisioPaD Detection	0	2	21
	Total	26	21	820
	PM Peak	Broward CCTV	3	7
Broward Road Ranger		3	4	79
Broward VideoWall		0	1	7
BSO		0	1	6
District 4		0	0	15
District 6		0	0	1
FDOT Maintenance		0	0	2
FHP		2	1	96
Fire		0	0	1
Florida's Turnpike		0	0	1
Other		0	0	1
Palm Beach Road Ran		0	0	1
Road Watcher		0	0	3
SIRV		0	0	6
SmarTraveler (511)		0	0	2
VisioPaD Detection		0	0	6
Total		8	14	464
Total	46	45	1,646	

## Incident Detection Methods by Severity

		Current Week	Last Week	YTD
Level 1	Broward CCTV	17	13	566
	Broward Road Ranger	4	4	135
	Broward VideoWall	1	1	36
	BSO	1	1	10
	District 4	0	0	31
	FDOT Maintenance	0	0	3
	FHP	4	7	212
	Fire	1	0	2
	ITMS	0	0	1
	Motorist	0	0	6
	Palm Beach Road Ran	0	0	2
	Road Watcher	0	0	9
	SIRV	0	0	9
	SmarTraveler (511)	0	0	4
	VisioPaD Detection	0	2	16
	<b>Total</b>	<b>28</b>	<b>28</b>	<b>1,042</b>
Level 2	Broward CCTV	2	10	215
	Broward Road Ranger	7	1	39
	Broward VideoWall	0	0	16
	BSO	0	0	9
	District 4	0	0	5
	FDOT Maintenance	0	0	1
	FHP	6	3	101
	Florida's Turnpike	0	0	4
	ITMS	0	0	1
	Motorist	0	0	2
	Other	0	0	1
	Road Watcher	0	0	1
	SIRV	0	0	1
	SmarTraveler (511)	0	0	2
	VisioPaD Detection	0	1	11

**Total Events by Severity and Detection Method**



		Current Week	Last Week	YTD
Level 2	Total	15	15	409
Level 3	Broward CCTV	1	0	97
	Broward Road Ranger	0	0	15
	Broward VideoWall	0	0	3
	BSO	0	0	19
	District 4	0	0	6
	District 6	0	0	1
	FHP	2	2	47
	Fire	0	0	1
	Florida's Turnpike	0	0	2
	Road Watcher	0	0	2
	VisioPaD Detection	0	0	2
	Total	3	2	195
Total		46	45	1,646

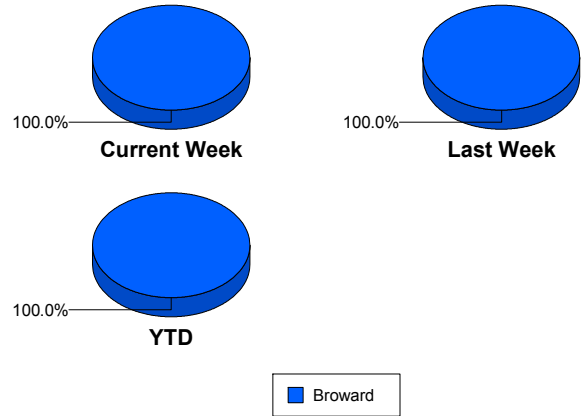
# Road Ranger / SIRV Performance Measures

## Road Ranger / SIRV Performance By County

Values presented are:  
 - Total Events with a RR/SIRV Response  
 - Total RR/SIRV Responses,  
 - Total Activities Performed

	Current We	Last Week	YTD
Broward	822	641	22,812
	886	684	24,569
	917	708	25,536

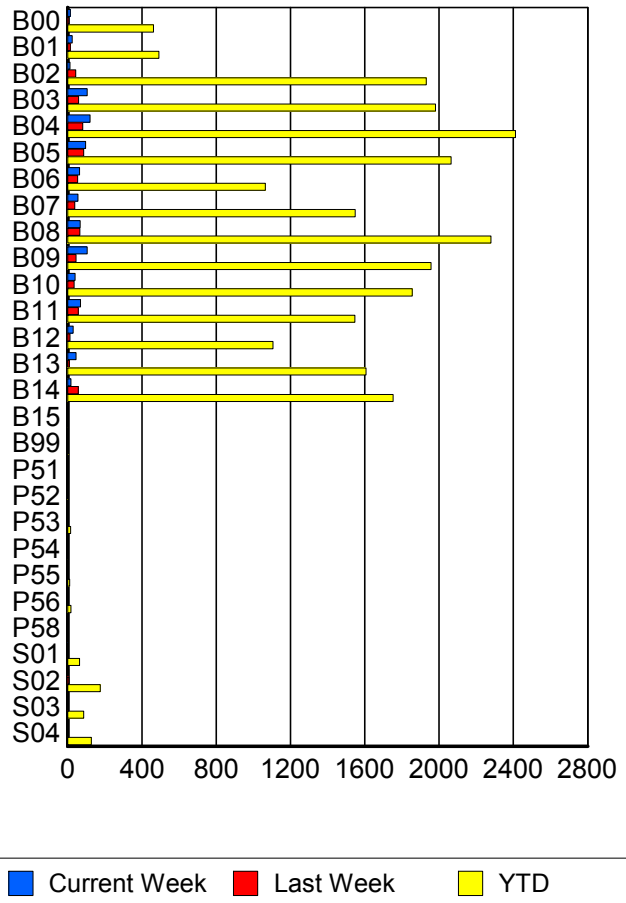
RR/SIRV Responses per County



## Road Ranger / SIRV Performance By Truck

	Current We	Last Week	YTD
B00	14	8	453
	15	8	463
	15	8	481
B01	23	14	482
	24	14	492
	25	15	522
B02	12	43	1,913
	12	44	1,930
	12	47	2,014
B03	104	59	1,950
	105	59	1,981
	109	59	2,044
B04	119	82	2,390
	121	82	2,412
	123	83	2,518
B05	96	85	2,027
	97	87	2,065
	104	90	2,133
B06	64	53	1,043
	65	54	1,064
	66	55	1,096
B07	56	38	1,525
	56	39	1,549
	58	42	1,617
B08	65	65	2,250
	67	66	2,279
	70	69	2,369

RR/SIRV Responses per Truck



	Current We	Last Week	YTD
B09	104	45	1,927
	105	45	1,956
	110	45	2,030
B10	40	34	1,826
	41	35	1,856
	41	36	1,925
B11	70	58	1,520
	70	58	1,547
	73	60	1,601
B12	29	13	1,091
	30	13	1,105
	30	15	1,152
B13	44	10	1,585
	45	10	1,607
	46	10	1,658
B14	17	55	1,723
	18	57	1,752
	19	61	1,816
B15	0	0	2
	0	0	2
	0	0	2
B99	0	0	4
	0	0	4
	0	0	4
P51	0	0	1
	0	0	1
	0	0	1
P52	0	0	2
	0	0	2
	0	0	2
P53	0	0	15
	0	0	16
	0	0	18
P54	0	0	2
	0	0	2
	0	0	2
P55	0	0	11
	0	0	11
	0	0	13
P56	0	0	18
	0	0	18
	0	0	19
P58	0	0	1
	0	0	1
	0	0	1

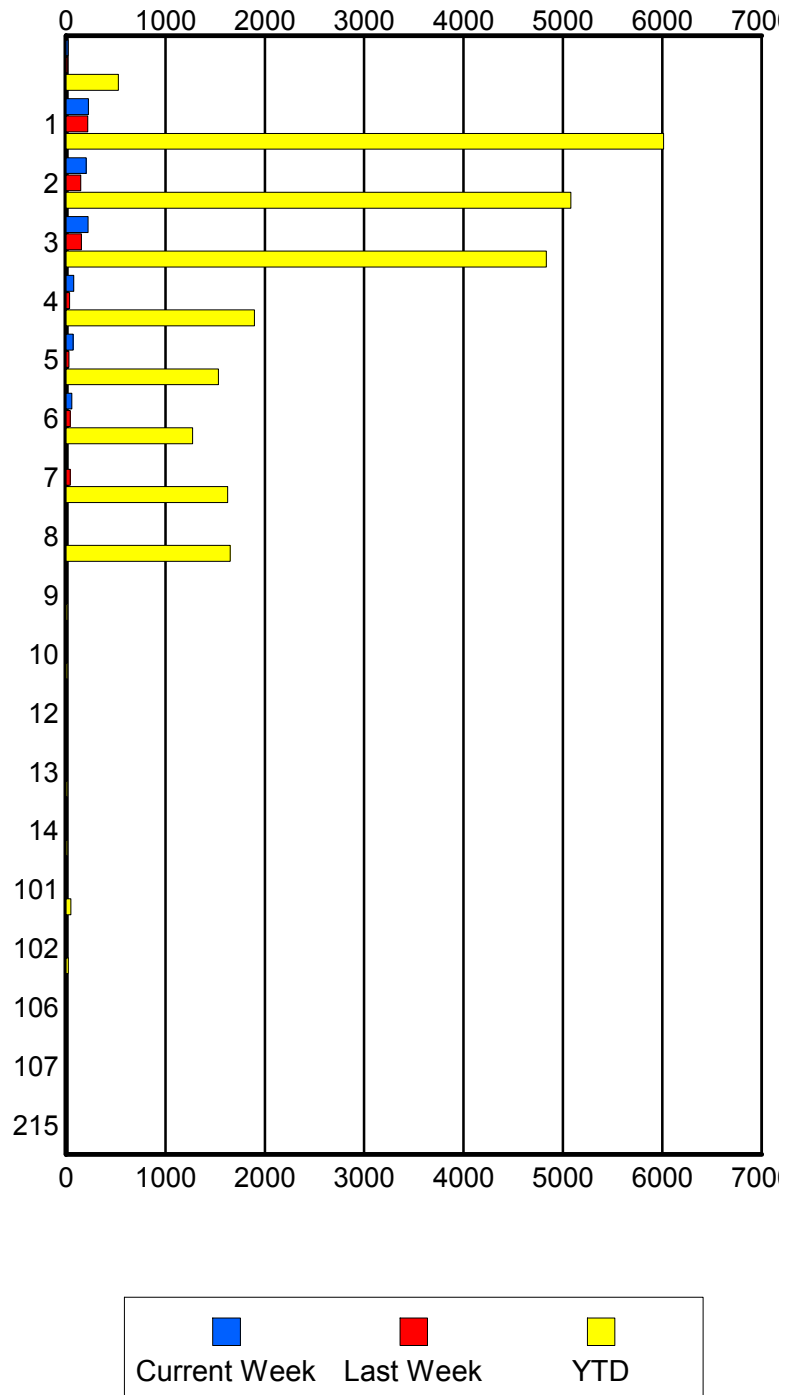
	Current We	Last Week	YTD
S01	3	3	62
	3	3	65
	4	3	74
S02	5	6	168
	6	7	175
	6	7	190
S03	5	2	85
	5	2	87
	5	2	97
S04	1	1	122
	1	1	127
	1	1	137

### Road Ranger / SIRV Performance By Beat

	Current We	Last Week	YTD
	16	10	485
	20	14	526
	21	14	572
1	209	207	5,679
	224	218	6,013
	231	227	6,210
2	199	143	4,904
	202	147	5,080
	211	152	5,294
3	214	149	4,697
	222	153	4,833
	227	157	5,019
4	77	36	1,855
	78	37	1,896
	84	39	1,959
5	71	31	1,506
	71	31	1,532
	73	32	1,582
6	56	42	1,245
	57	43	1,274
	58	46	1,341
7	7	41	1,600
	8	41	1,625
	8	41	1,698
8	4	0	1,633
	4	0	1,653
	4	0	1,716
9	0	0	12
	0	0	14
	0	0	14
10	0	0	13
	0	0	14
	0	0	14
12	0	0	9
	0	0	9
	0	0	9
13	0	0	14
	0	0	14
	0	0	15
14	0	0	13
	0	0	13
	0	0	13
101	0	0	46
	0	0	47
	0	0	52

Values presented are:  
 - Total Events with a RR/SIRV Response  
 - Total RR/SIRV Responses,  
 - Total Activities Performed

### RR/SIRV Responses per Beat



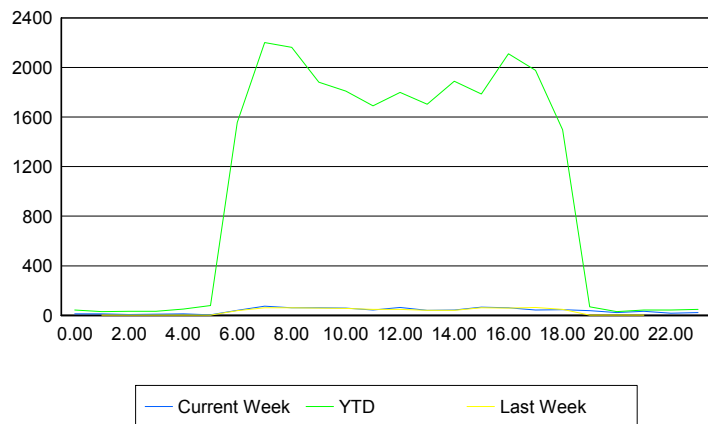
	Current We	Last Week	YTD
102	0	0	23
	0	0	23
	0	0	25
106	0	0	1
	0	0	1
	0	0	1
107	0	0	1
	0	0	1
	0	0	1
215	0	0	1
	0	0	1
	0	0	1

### Road Ranger / SIRV Performance By Time of Day

*Values presented are:*  
- Total Events with a RR/SIRV Response  
- Total RR/SIRV Responses,  
- Total Activities Performed

	Current We	Last Week	YTD
12AM-1AM	12	0	41
	12	0	42
	15	0	47
1AM-2AM	11	1	29
	11	2	30
	12	2	31
2AM-3AM	6	0	26
	7	0	32
	7	0	32
3AM-4AM	8	1	29
	9	1	32
	9	1	32
4AM-5AM	12	0	41
	12	0	51
	12	0	52
5AM-6AM	4	2	70
	5	2	80
	5	2	84
6AM-7AM	36	37	1,420
	40	37	1,557
	42	39	1,604
7AM-8AM	68	59	2,052
	73	60	2,201
	75	60	2,283
8AM-9AM	53	48	1,966
	61	60	2,163
	63	61	2,252

### Number of Responses / Hour of the Day



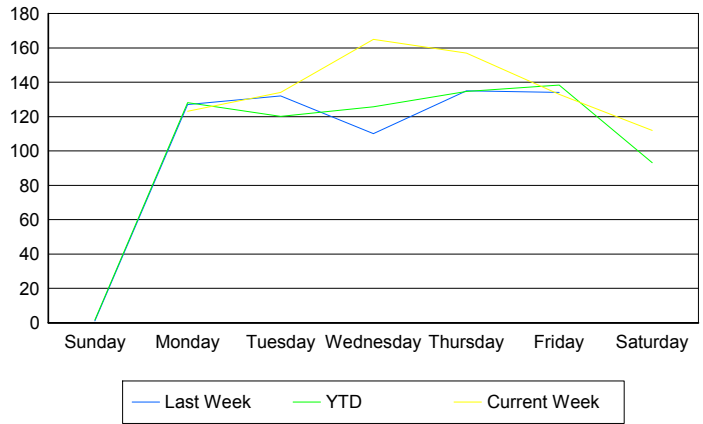
	Current We	Last Week	YTD
9AM-10AM	56	53	1,752
	61	57	1,882
	63	60	1,948
10AM-11AM	58	55	1,674
	59	55	1,809
	63	56	1,892
11AM-12PM	41	45	1,586
	42	48	1,692
	42	53	1,766
12PM-1PM	56	44	1,697
	63	49	1,799
	65	51	1,869
1PM-2PM	37	40	1,576
	41	40	1,704
	41	40	1,782
2PM-3PM	40	39	1,772
	42	40	1,889
	43	43	1,969
3PM-4PM	62	56	1,665
	66	60	1,787
	68	62	1,857
4PM-5PM	58	56	1,975
	61	59	2,111
	65	62	2,193
5PM-6PM	41	56	1,814
	43	63	1,976
	44	63	2,053
6PM-7PM	39	46	1,415
	46	48	1,498
	46	50	1,548
7PM-8PM	36	2	62
	38	2	68
	38	2	70
8PM-9PM	20	0	29
	22	0	31
	23	0	32
9PM-10PM	28	1	40
	32	1	44
	35	1	47
10PM-11PM	17	0	36
	17	0	42
	17	0	42
11PM-12AM	23	0	45
	23	0	49
	24	0	51

**Road Ranger / SIRV Performance By Day of Week**

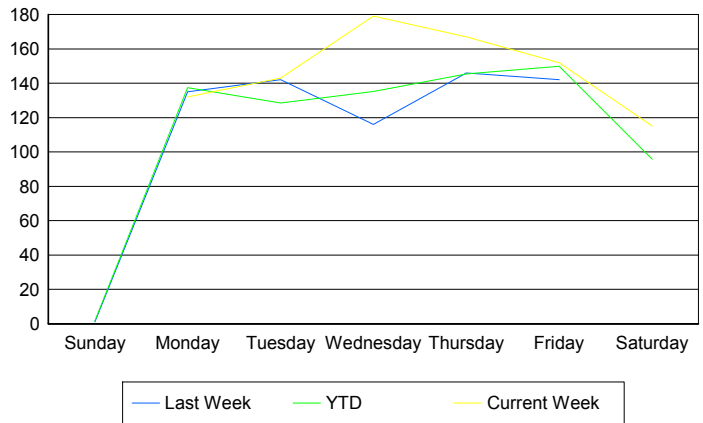
Values presented are: - Total Events with a RR/SIRV Response - Total RR/SIRV Responses, - Total Activities Performed
---

	Current We	Last Week	YTD
Sunday	0 0 0	1 1 1	15 15 17
Monday	121 130 132	129 137 138	4,432 4,756 4,902
Tuesday	134 143 145	132 142 147	4,152 4,445 4,596
Wednesday	165 179 187	110 116 119	4,343 4,671 4,879
Thursday	157 167 170	135 146 153	4,791 5,174 5,378
Friday	133 152 162	134 142 150	4,958 5,371 5,618
Saturday	112 115 121	0 0 0	131 137 146

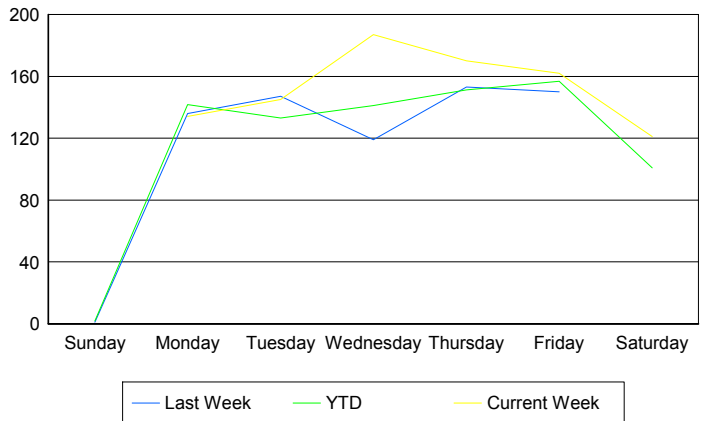
**Avg # of events with a RR/SIRV Response per Day of the Week**



**Avg # of RR/SIRV Responses per Day of the Week**



**Avg # of RR/SIRV Activities Performed per Day of the Week**



### Road Ranger / SIRV Responses per Time of Day and Day of Week

