



Weekly Performance Measures Report Broward County



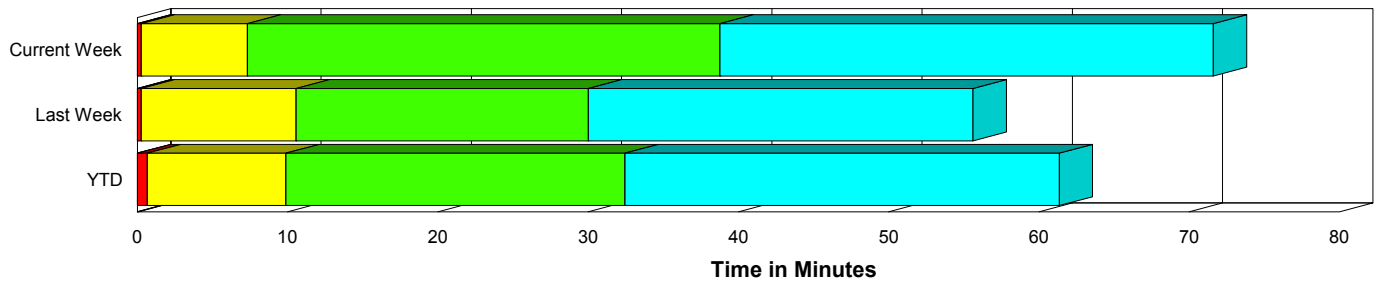
Created on:
August 31, 2009
2:51 pm

Period From Aug 23, 2009 to Aug 29, 2009

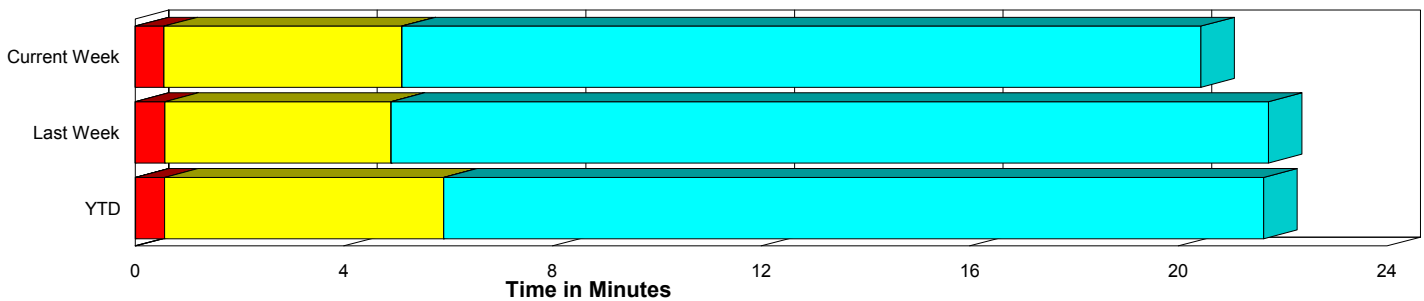
Performance Measures Summary

	Traffic Events (No Lanes Blocked)			Incidents (Lanes Blocked)		
	<u>This Week</u>	<u>Last Week</u>	<u>YTD</u>	<u>This Week</u>	<u>Last Week</u>	<u>YTD</u>
Number of Events	813	878	32,746	46	40	1,603
TMC Detection (min.)	0.00	0.00	0.01	0.01	0.00	0.00
TMC Verification (min.)	0.55	0.57	0.56	0.26	0.27	0.66
TMC Response (min.)	5.44	5.16	6.38	7.54	10.44	10.11
RR Dispatch Time (min.)	0.75	0.77	1.19	1.48	2.91	3.07
RR Response Time (min.)	4.86	4.53	5.31	6.12	7.27	7.22
Roadway Clearance (min.)				31.35	24.55	31.49
Event Clearance (min.)	20.76	21.98	22.11	64.17	50.14	59.88
# of Events w/ RR/SIRV	559	647	21,307	24	27	1,049
RR/SIRV Responses	559	647	21,307	24	27	1,049
RR/SIRV Activities	525	596	18,296	52	57	2,146

Incident Clearance Time-Line



Traffic Event (Non-Lane Blockage) Time-Line



■ Avg. TMC Detection Time	■ Avg. Time from TMC Response to Roadway Clearance*
■ Avg. Time from TMC Detection to TMC Verification	■ Avg. Time from Roadway Clearance to Incident/Event Clearance**
■ Avg. Time from TMC Verification to TMC Response	

* Roadway clearance equals all travel lanes open

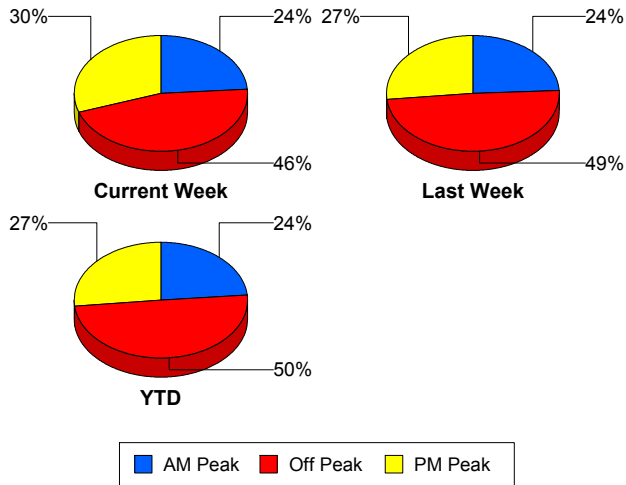
** Incident clearance equals time when last responder has left the scene

Performance Measures by Peak Period

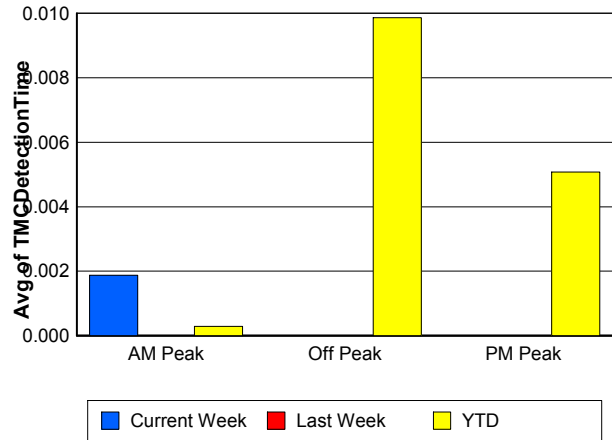
Note: AM peak period is defined as 6am to 10am and PM peak period is defined as 3pm to 7pm.

	AM Peak			Off Peak			PM Peak		
	<u>Current Week</u>	<u>Last Week</u>	<u>YTD</u>	<u>Current Week</u>	<u>Last Week</u>	<u>YTD</u>	<u>Current Week</u>	<u>Last Week</u>	<u>YTD</u>
Number of Events	205	223	8,082	395	450	17,133	259	245	9,134
Number of Incidents	11	4	352	21	25	794	14	11	457
TMC Detection (min.)	0.00	0.00	0.00	0.00	0.00	0.01	0.00	0.00	0.01
TMC Verification (min.)	0.54	0.32	0.50	0.56	0.49	0.48	0.49	0.90	0.77
TMC Response (min.)	5.68	4.47	6.07	4.91	6.27	7.42	6.03	4.94	6.06
RR Dispatch Time (min.)	0.83	0.77	0.99	0.92	1.14	1.84	0.60	0.54	0.84
RR Response Time (min.)	5.01	3.83	5.17	4.23	5.23	5.68	5.51	4.54	5.33
Event Clearance (min.)	24.70	19.36	21.60	24.03	27.82	26.77	20.35	18.15	20.43
Roadway Clearance (min.)	48.40	11.79	26.51	29.30	27.67	36.46	21.02	22.10	26.67
Incident Clearance (min.)	87.25	25.77	56.01	61.15	59.76	64.00	50.56	38.01	55.71
# of Events w/ RR/SIRV	161	187	6,510	219	278	8,907	203	209	6,939
RR/SIRV Responses	161	187	6,510	219	278	8,907	203	209	6,939
RR/SIRV Activities	168	175	6,208	204	266	7,840	205	212	6,394

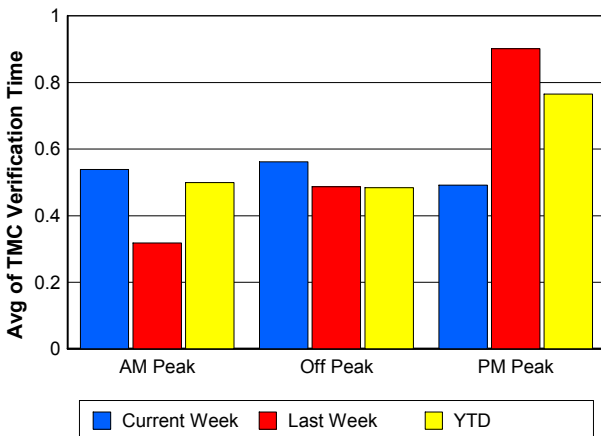
Number of Events / Peak Period



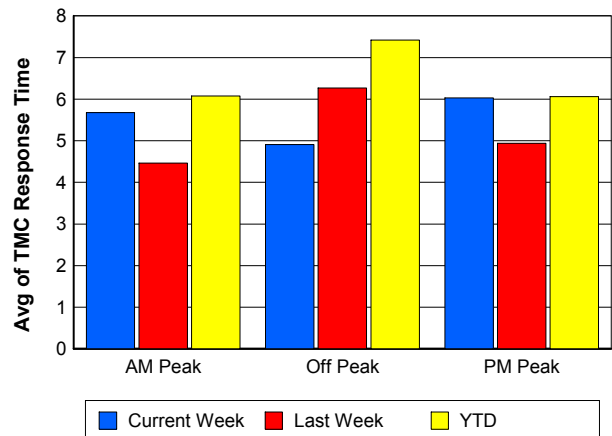
TMC Detection Time



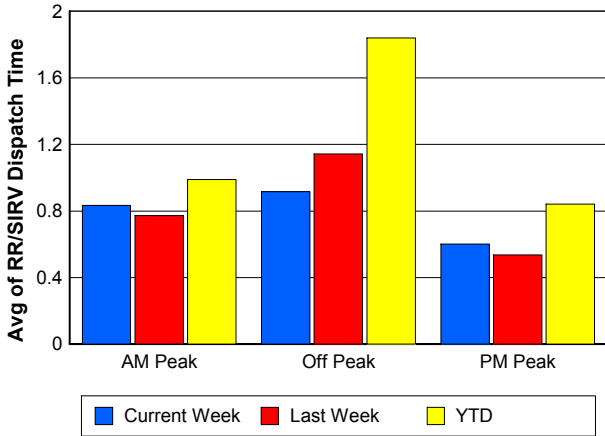
TMC Verification Time



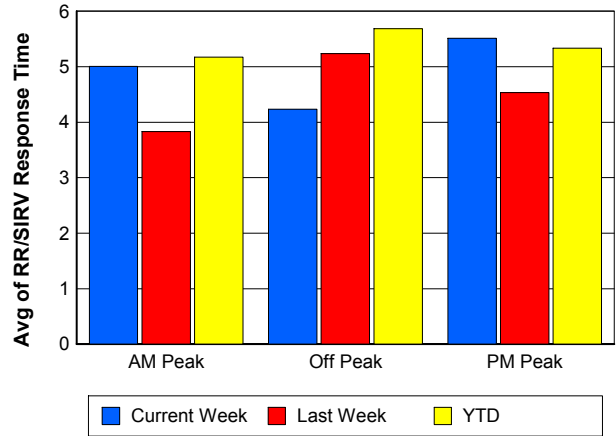
TMC Response Time



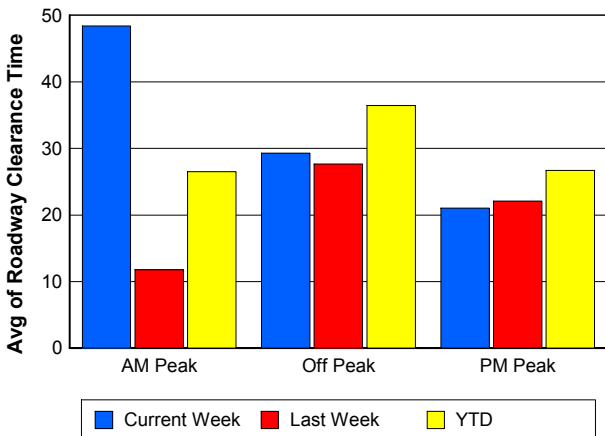
Road Ranger / SIRV Dispatch Time



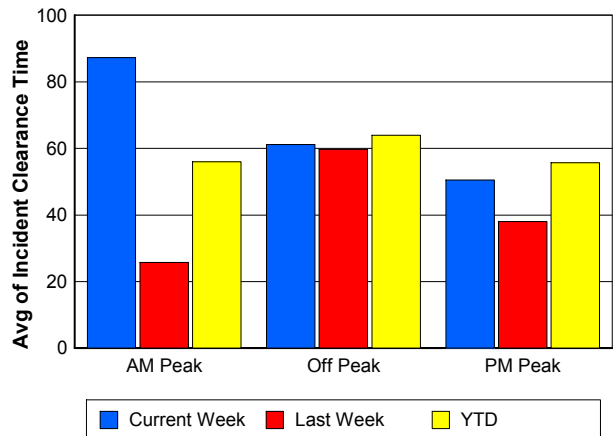
Road Ranger / SIRV Response Time



Roadway Clearance Time (2A)



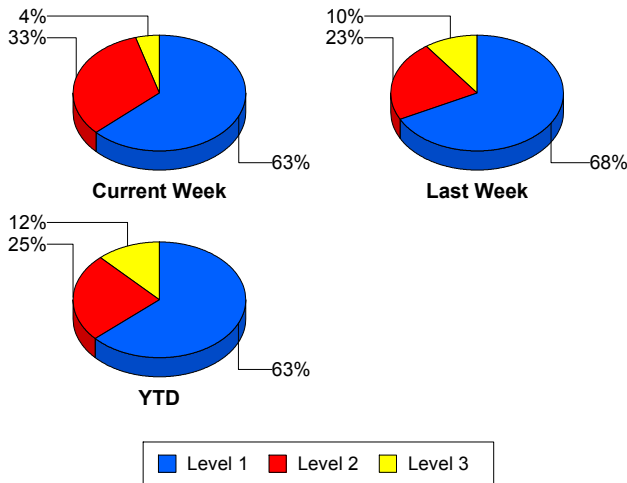
Incident Clearance Time (3B)



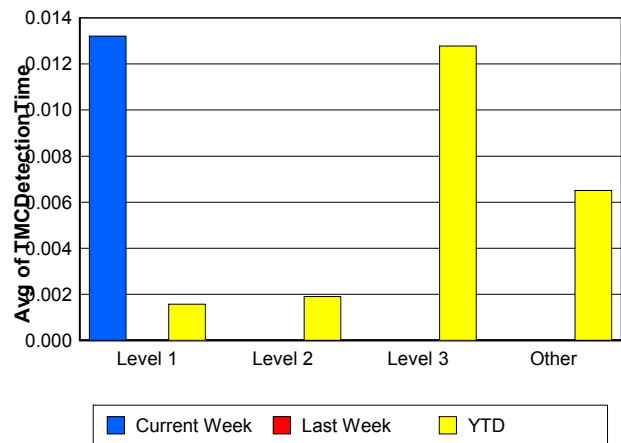
Performance Measures by Severity

	Level 1			Level 2			Level 3			Other		
	<u>This Week</u>	<u>Last Week</u>	<u>YTD</u>	<u>This Week</u>	<u>Last Week</u>	<u>YTD</u>	<u>This Week</u>	<u>Last Week</u>	<u>YTD</u>	<u>This Week</u>	<u>Last Week</u>	<u>YTD</u>
Number of Events	29	27	1,016	15	9	394	2	4	193	813	878	32,746
Number of Incidents	29	27	1,016	15	9	394	2	4	193	0	0	0
TMC Detection (min.)	0.01	0.00	0.00	0.00	0.00	0.00	0.00	0.00	0.01	0.00	0.00	0.01
TMC Verification (min.)	0.25	0.35	0.42	0.26	0.14	0.91	0.38	0.00	1.40	0.55	0.57	0.56
TMC Response (min.)	5.02	6.52	7.09	7.72	8.72	10.08	22.03	23.80	24.42	5.44	5.16	6.38
RR Dispatch Time (min.)	1.37	1.64	1.64	1.74	1.98	3.14	1.37	9.72	9.21	0.75	0.77	1.19
RR Resp. Time (min.)	3.78	5.07	5.54	5.98	6.75	7.39	20.66	14.08	14.95	4.86	4.53	5.31
Event Clearance (min.)	52.38	45.17	46.42	72.59	63.37	72.66	171.97	52.65	104.37	20.76	21.98	22.11
Roadway Clear. (min.)	15.86	14.40	14.23	44.72	49.12	48.95	155.63	37.80	86.65			
Incident Clearance (min.)	52.38	45.17	46.42	72.59	63.37	72.66	171.97	52.65	104.37			
# of Events w/ RR/SIRV	15	17	703	7	6	184	2	4	162	559	647	21,307
RR/SIRV Responses	15	17	703	7	6	184	2	4	162	559	647	21,307
RR/SIRV Activities	24	28	1,246	20	21	540	8	8	360	525	596	18,296

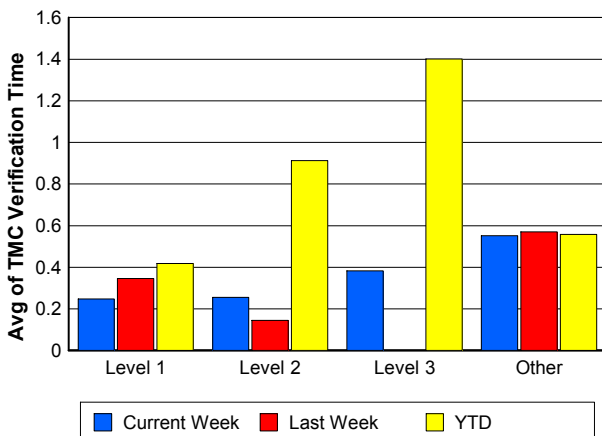
Number of Events / Severity



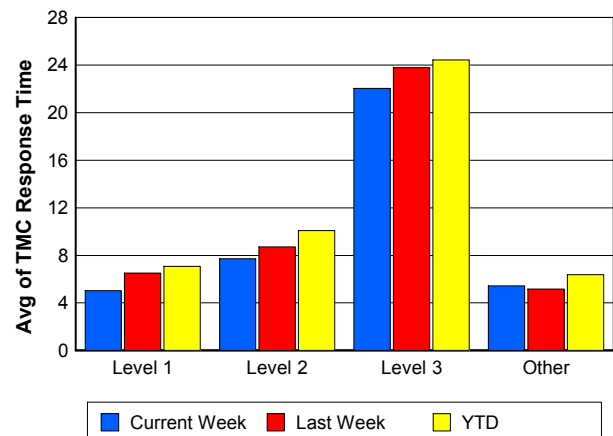
TMC Detection Time



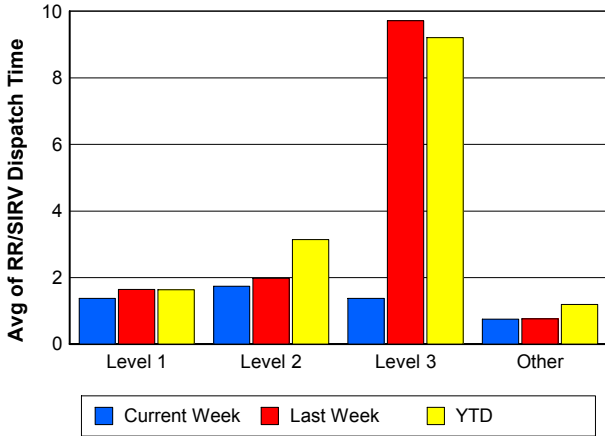
TMC Verification Time



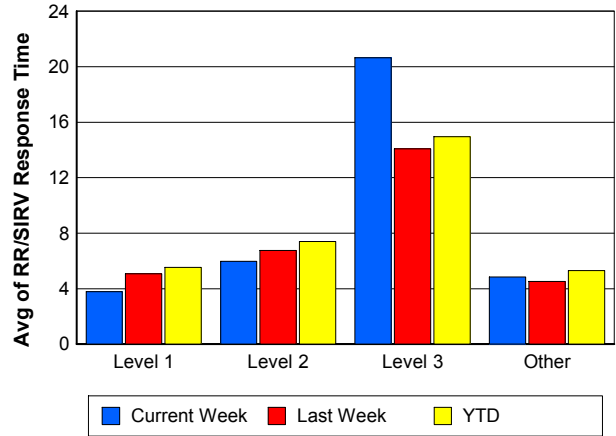
TMC Response Time



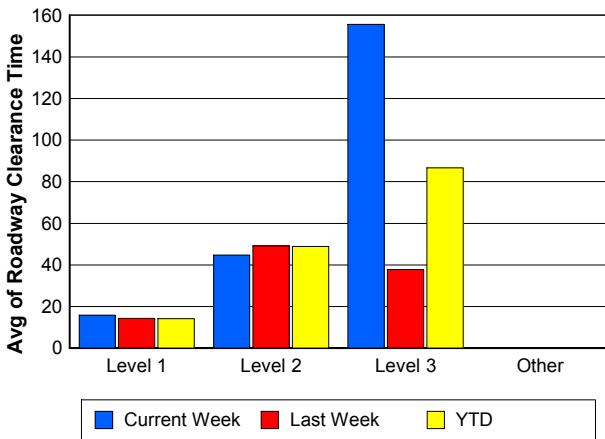
Road Ranger / SIRV Dispatch Time



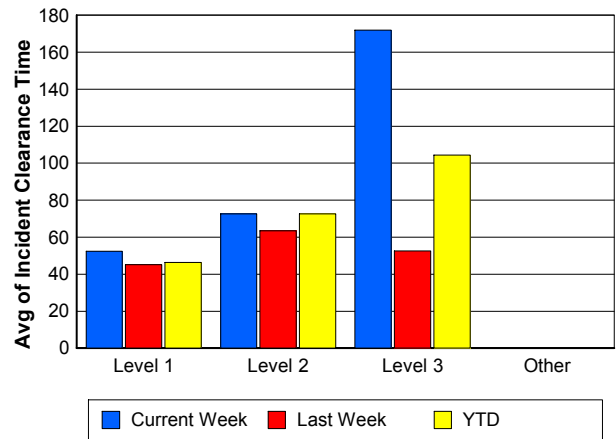
Road Ranger / SIRV Response Time



Roadway Clearance Time (2A)



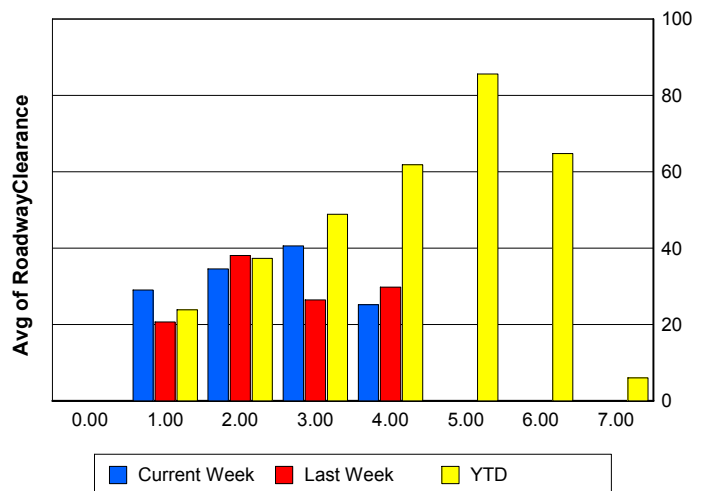
Incident Clearance Time (3B)



Roadway Clearance by Maximum Number of Lanes Blocked

	Current Week	Last Week	YTD
0			
1	28.97	20.61	23.85
2	34.55	38.04	37.27
3	40.58	26.44	48.83
4	25.15	29.75	61.84
5	0.00	0.00	85.59
6	0.00	0.00	64.72
7	0.00	0.00	5.97

Roadway Clearance Time (2A)



Performance Measures by Roadway

595

	<u>Current Week</u>	<u>Last Week</u>	<u>YTD</u>
Number of Events	31	40	4,221
Number of Incidents	2	4	258
TMC Detection (min.)	0.00	0.00	0.01
TMC Verification (min.)	1.55	0.33	0.75
TMC Response (min.)	7.43	9.03	6.42
RR Dispatch Time (min.)	0.65	0.84	1.10
RR Resp. Time (min.)	7.00	8.23	5.41
Event Clearance (min.)	18.02	17.89	21.38
Roadway Clear. (min.)	15.97	24.78	30.49
Incident Clearance (min.)	27.54	30.82	53.18
# of Events w/ RR/SIRV	22	32	2,919
RR/SIRV Responses	22	32	2,919
RR/SIRV Activities	22	27	2,690

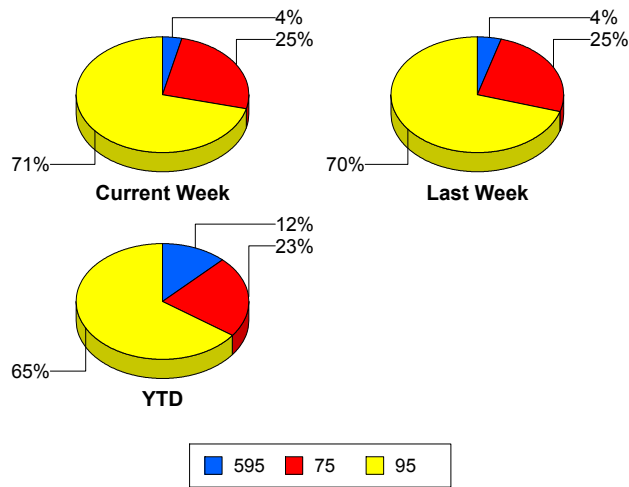
75

	<u>Current Week</u>	<u>Last Week</u>	<u>YTD</u>
Number of Events	216	233	7,817
Number of Incidents	8	4	149
TMC Detection (min.)	0.00	0.00	0.00
TMC Verification (min.)	0.59	0.50	0.67
TMC Response (min.)	6.25	5.29	7.73
RR Dispatch Time (min.)	0.77	0.80	1.21
RR Resp. Time (min.)	5.54	4.52	6.63
Event Clearance (min.)	25.23	23.10	26.05
Roadway Clear. (min.)	57.47	55.61	57.10
Incident Clearance (min.)	108.62	66.32	84.86
# of Events w/ RR/SIRV	134	164	4,954
RR/SIRV Responses	134	164	4,954
RR/SIRV Activities	139	156	4,258

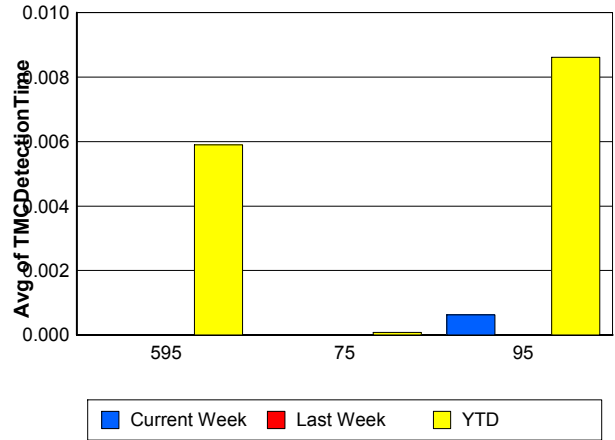
95

	<u>Current Week</u>	<u>Last Week</u>	<u>YTD</u>
Number of Events	612	645	22,311
Number of Incidents	36	32	1,196
TMC Detection (min.)	0.00	0.00	0.01
TMC Verification (min.)	0.46	0.59	0.49
TMC Response (min.)	5.20	5.16	6.25
RR Dispatch Time (min.)	0.80	0.87	1.34
RR Resp. Time (min.)	4.61	4.46	5.03
Event Clearance (min.)	22.58	23.54	23.58
Roadway Clear. (min.)	26.40	20.64	28.51
Incident Clearance (min.)	56.32	50.54	58.20
# of Events w/ RR/SIRV	427	478	14,483
RR/SIRV Responses	427	478	14,483
RR/SIRV Activities	416	470	13,494

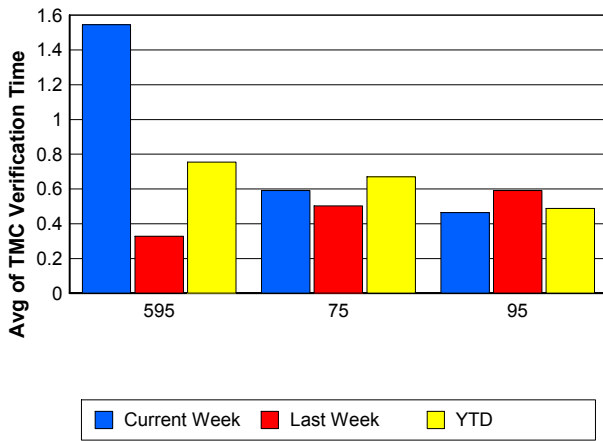
Number of Events / Roadway



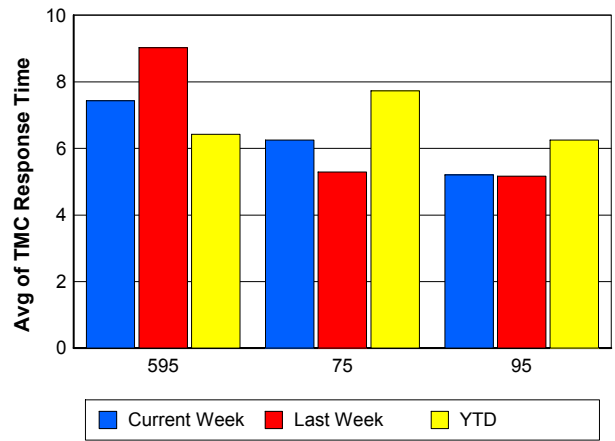
TMC Detection Time



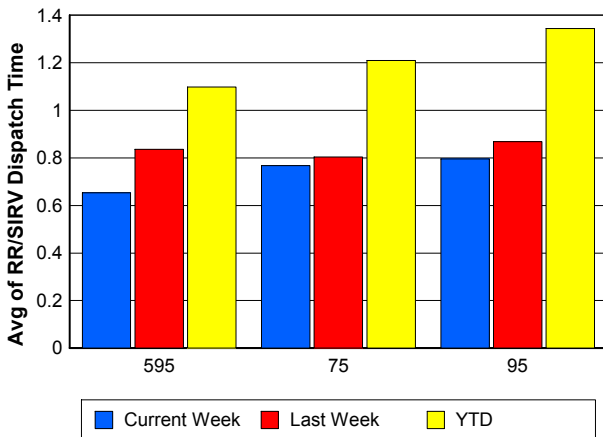
TMC Verification Time



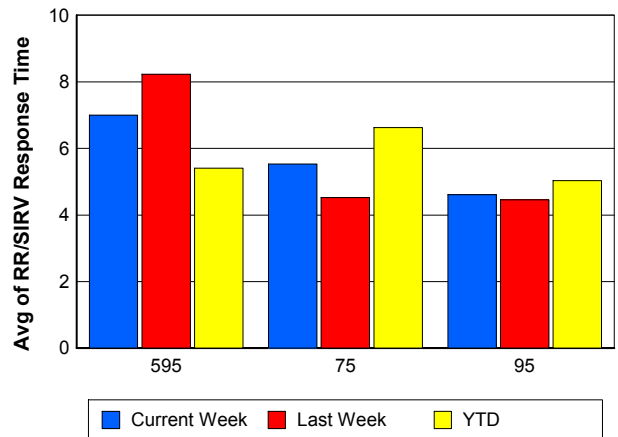
TMC Response Time



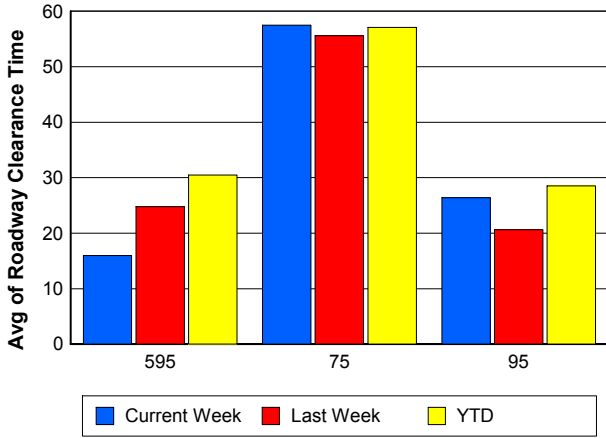
Road Ranger / SIRV Dispatch Time



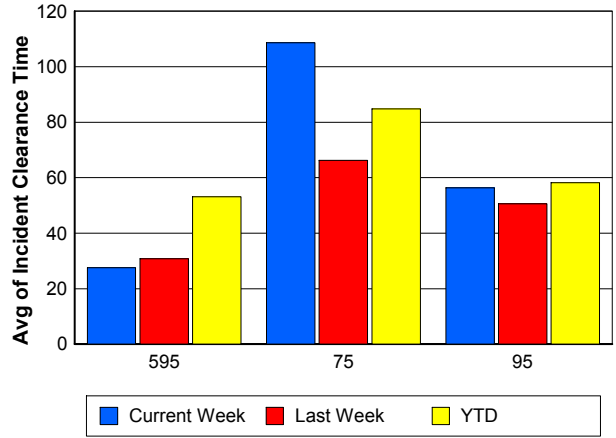
Road Ranger / SIRV Response Time



Roadway Clearance Time (2A)



Incident Clearance Time (3B)



Performance Measures by Event Type

Accident

	<u>Current Week</u>	<u>Last Week</u>	<u>YTD</u>
Number of Events	68	60	2,386
Number of Incidents	38	27	1,161
TMC Detection (min.)	0.01	0.00	0.01
TMC Verification (min.)	0.38	1.02	0.73
TMC Response (min.)	7.84	10.73	8.62
RR Dispatch Time (min.)	1.10	1.68	1.64
RR Response Time (min.)	6.72	8.93	7.08
Event Clearance (min.)	62.30	48.38	55.42
Roadway Clearance (min.)	33.25	25.88	32.86
Incident Clearance (min.)	72.42	57.67	66.55
# of Events w/ RR/SIRV	41	34	1,648
RR/SIRV Assists	41	34	1,648
RR/SIRV Activities	67	56	2,556

Debris on Roadway

	<u>Current Week</u>	<u>Last Week</u>	<u>YTD</u>
Number of Events	35	28	994
Number of Incidents	0	1	22
TMC Detection (min.)	0.00	0.00	0.12
TMC Verification (min.)	3.35	0.33	3.68
TMC Response (min.)	6.35	4.42	7.42
RR Dispatch Time (min.)	0.93	0.26	0.89
RR Response Time (min.)	5.45	4.17	6.55
Event Clearance (min.)	10.25	8.08	11.56
Roadway Clearance (min.)		1.37	22.45
Incident Clearance (min.)		16.67	27.46
# of Events w/ RR/SIRV	34	24	906
RR/SIRV Assists	34	24	906
RR/SIRV Activities	33	23	933

Disabled Vehicle

	<u>Current Week</u>	<u>Last Week</u>	<u>YTD</u>
Number of Events	569	628	20,189
Number of Incidents	4	6	242
TMC Detection (min.)	0.00	0.00	0.00
TMC Verification (min.)	0.53	0.65	0.65
TMC Response (min.)	5.21	5.04	6.14
RR Dispatch Time (min.)	0.56	0.68	1.08
RR Response Time (min.)	4.68	4.41	5.10
Event Clearance (min.)	22.68	25.59	26.92
Roadway Clearance (min.)	14.56	12.89	19.03
Incident Clearance (min.)	17.70	21.29	35.80
# of Events w/ RR/SIRV	443	516	15,479
RR/SIRV Assists	443	516	15,479
RR/SIRV Activities	460	533	15,839

Emergency Vehicles

	<u>Current Week</u>	<u>Last Week</u>	<u>YTD</u>
Number of Events	6	3	53
Number of Incidents	1	3	40
TMC Detection (min.)	0.00	0.00	0.00
TMC Verification (min.)	0.00	0.00	0.73
TMC Response (min.)		24.67	15.56
RR Dispatch Time (min.)		11.39	10.01
RR Response Time (min.)		0.08	4.53
Event Clearance (min.)	15.26	30.53	43.58
Roadway Clearance (min.)	6.35	19.39	44.77
Incident Clearance (min.)	6.68	30.53	50.51
# of Events w/ RR/SIRV	0	3	29
RR/SIRV Assists	0	3	29
RR/SIRV Activities	0	2	45

Other

	<u>Current Week</u>	<u>Last Week</u>	<u>YTD</u>
Number of Events	174	192	10,375
Number of Incidents	0	1	25
TMC Detection (min.)	0.00	0.00	0.00
TMC Verification (min.)	0.08	0.17	0.06
TMC Response (min.)	7.48	4.52	8.93
RR Dispatch Time (min.)	2.05	1.25	1.88
RR Response Time (min.)	5.92	3.95	6.45
Event Clearance (min.)	11.98	9.41	11.41
Roadway Clearance (min.)		35.52	32.72
Incident Clearance (min.)		65.68	38.48
# of Events w/ RR/SIRV	62	91	4,107
RR/SIRV Assists	62	91	4,107
RR/SIRV Activities	13	28	821

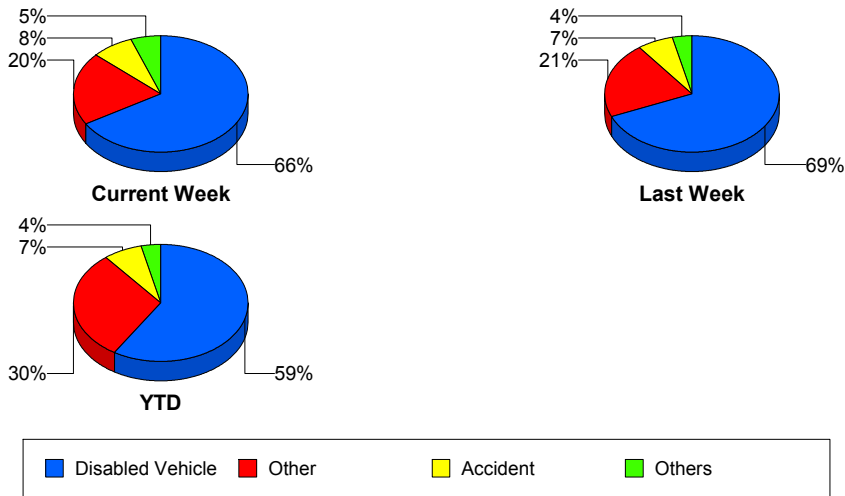
Police Activity

	<u>Current Week</u>	<u>Last Week</u>	<u>YTD</u>
Number of Events	5	1	149
Number of Incidents	2	0	48
TMC Detection (min.)	0.00	0.00	0.00
TMC Verification (min.)	0.00	0.00	0.34
TMC Response (min.)		4.20	14.29
RR Dispatch Time (min.)	3.65	1.13	4.69
RR Response Time (min.)		3.07	9.61
Event Clearance (min.)	12.14	8.30	34.43
Roadway Clearance (min.)	24.67		40.70
Incident Clearance (min.)	27.56		50.14
# of Events w/ RR/SIRV	1	1	48
RR/SIRV Assists	1	1	48
RR/SIRV Activities	0	1	56

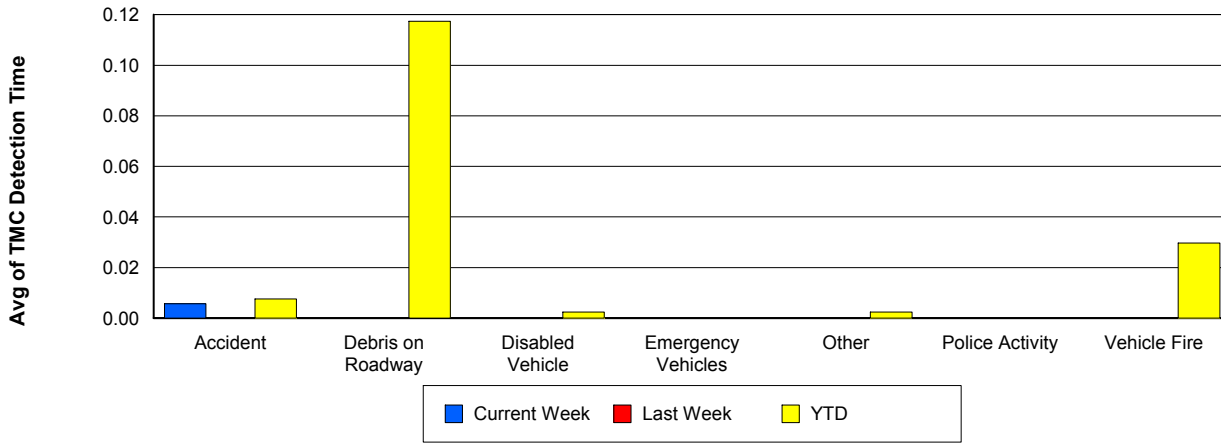
Vehicle Fire

	<u>Current Week</u>	<u>Last Week</u>	<u>YTD</u>
Number of Events	1	2	83
Number of Incidents	1	2	65
TMC Detection (min.)	0.00	0.00	0.03
TMC Verification (min.)	0.00	0.22	1.21
TMC Response (min.)	0.00	12.20	11.12
RR Dispatch Time (min.)	0.00	3.51	2.47
RR Response Time (min.)	0.00	8.69	9.13
Event Clearance (min.)	67.30	77.10	59.39
Roadway Clearance (min.)	64.42	55.50	40.91
Incident Clearance (min.)	67.30	77.10	62.82
# of Events w/ RR/SIRV	1	2	53
RR/SIRV Assists	1	2	53
RR/SIRV Activities	3	7	113

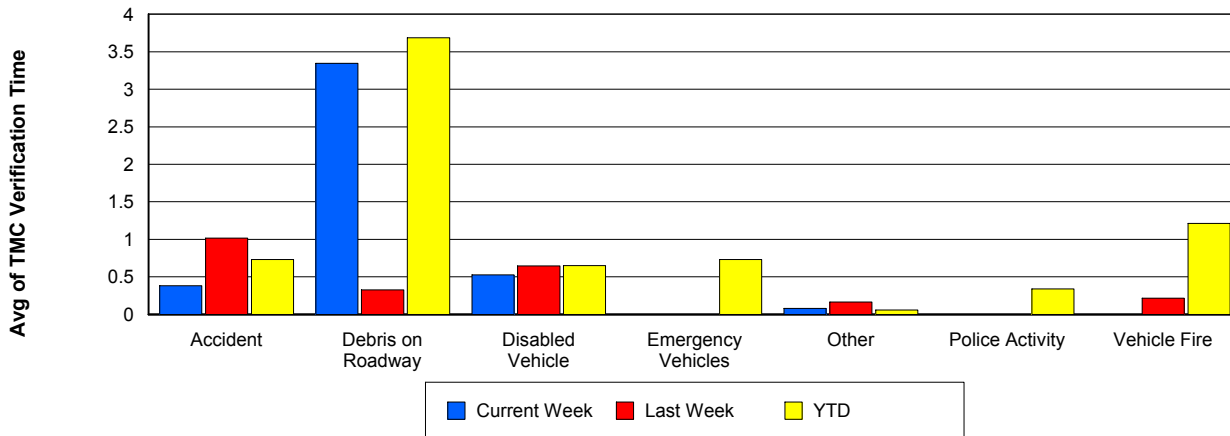
Number of Events / Event Type



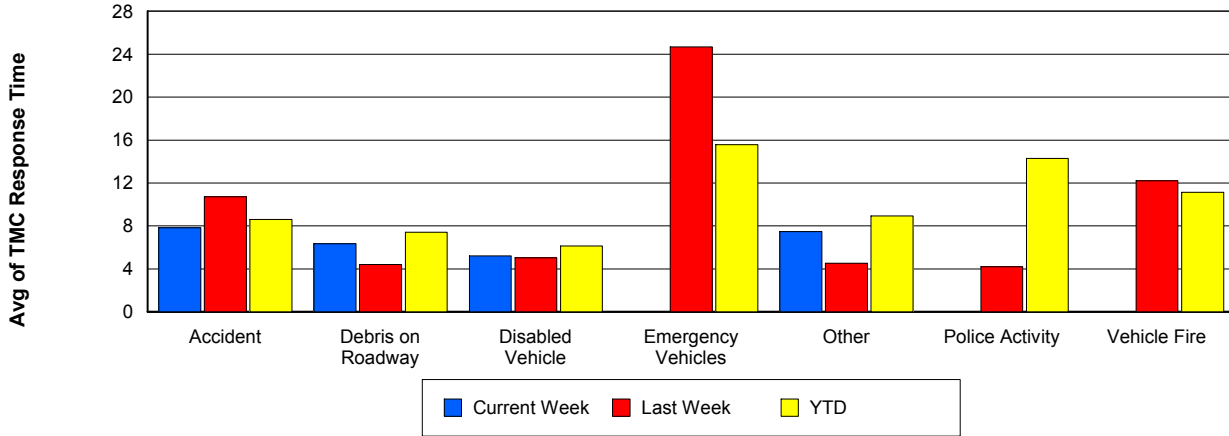
TMC Detection Time



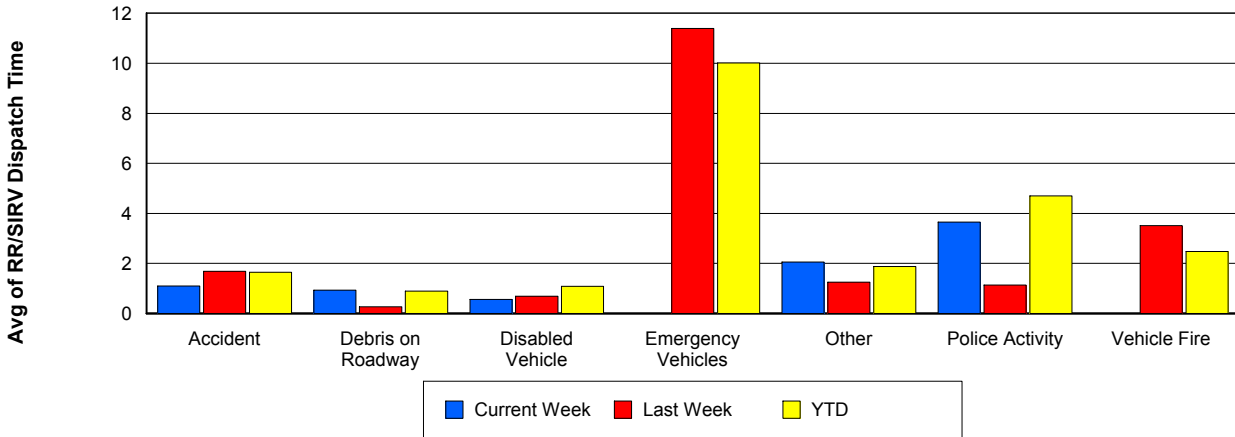
TMC Verification Time



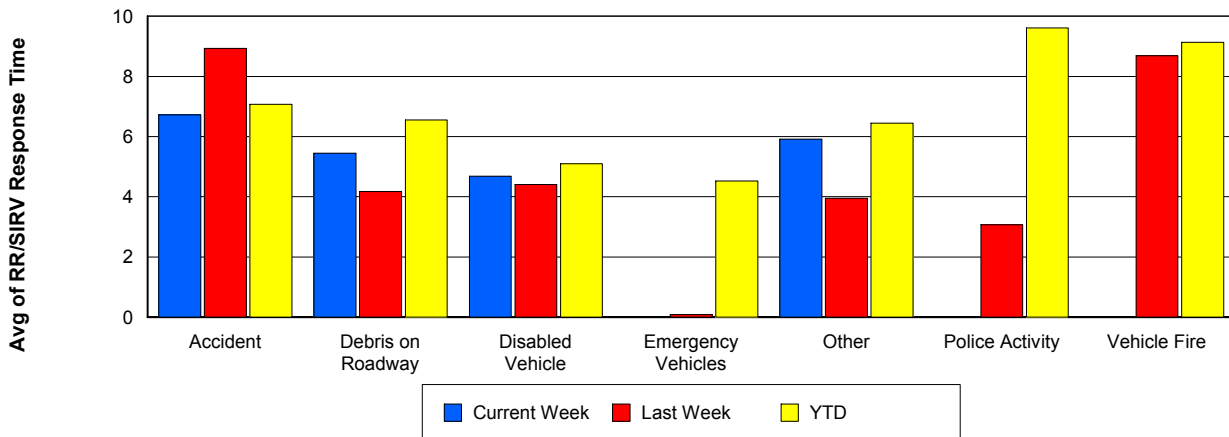
TMC Response Time



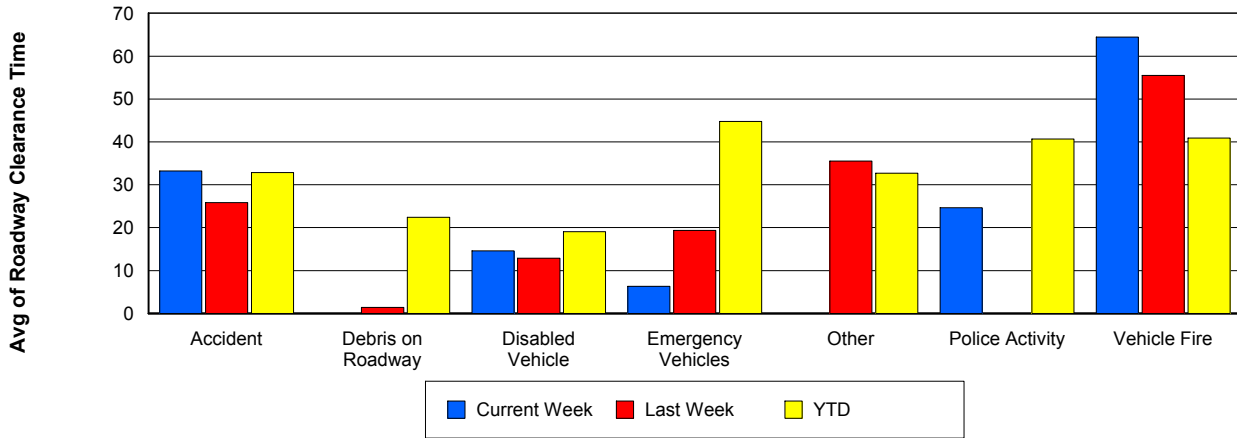
Road Ranger / SIRV Dispatch Time



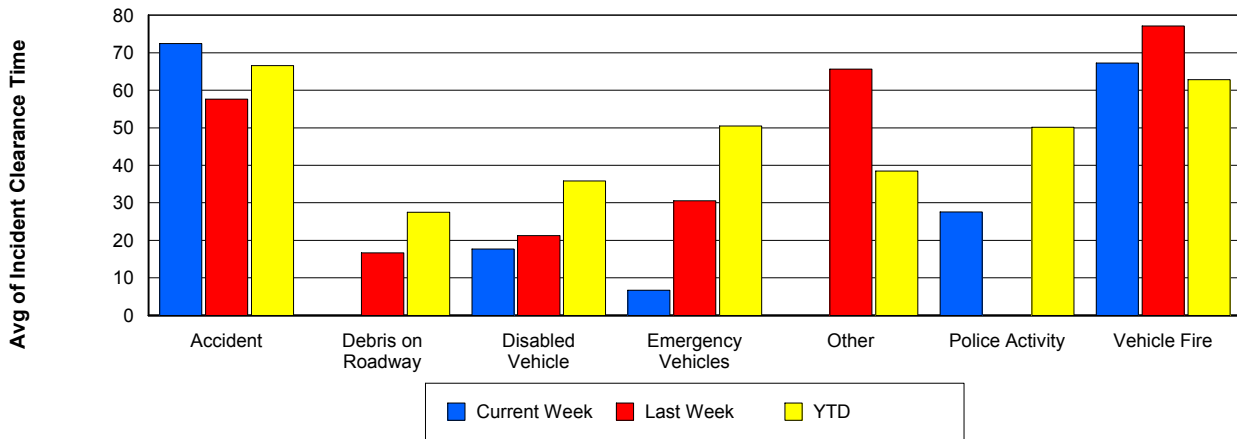
Road Ranger / SIRV Response Time



Roadway Clearance Time (2A)



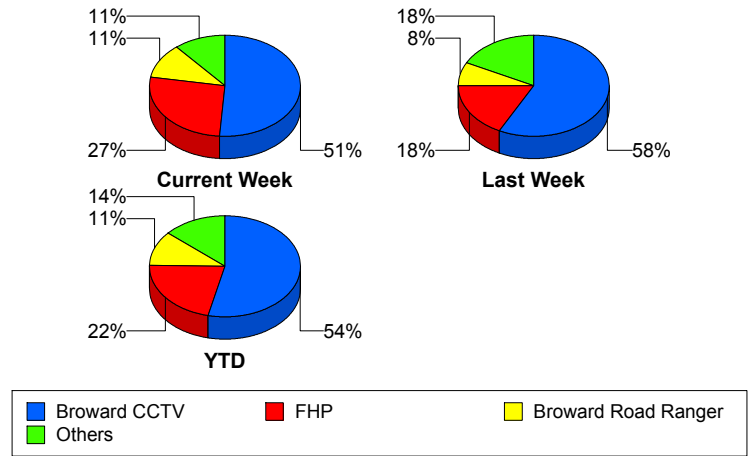
Incident Clearance Time (3B)



Incident Detection Methods

	Current Week	Last Week	YTD
Broward CCTV	23	23	858
Broward Road Ranger	5	3	178
Broward VideoWall	1	1	54
BSO	1	3	37
District 4	0	0	42
District 6	0	0	1
FDOT Maintenance	0	0	4
FHP	12	7	348
Fire	0	0	2
Florida's Turnpike	0	0	6
ITMS	0	1	2
Motorist	0	0	8
Other	0	0	1
Palm Beach Road Ran	0	0	2
Road Watcher	0	0	12
SIRV	0	0	10
SmarTraveler (511)	0	0	6
VisioPaD Detection	3	2	29
Total	45	40	1,600

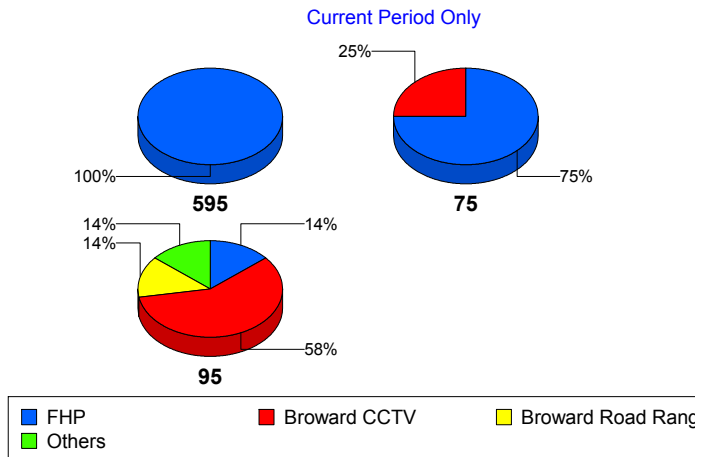
Total Incidents by Detection Method



Incident Detection Methods by Roadway

		Current Week	Last Week	YTD
595	Broward CCTV	0	3	124
	Broward Road Ranger	0	0	37
	Broward VideoWall	0	0	8
	BSO	0	0	4
	District 4	0	0	12
	FDOT Maintenance	0	0	2
	FHP	1	0	51
	Florida's Turnpike	0	0	6
	Motorist	0	0	2
	Road Watcher	0	0	3
	SIRV	0	0	1
	VisioPaD Detection	0	1	6
	Total	1	4	256
	75	Broward CCTV	2	1
Broward Road Ranger		0	0	13
Broward VideoWall		0	0	1
BSO		0	2	28
District 4		0	0	5
FHP		6	0	35
Other		0	0	1
Road Watcher		0	0	2
VisioPaD Detection		0	1	4
Total		8	4	149
95	Broward CCTV	21	19	674
	Broward Road Ranger	5	3	128
	Broward VideoWall	1	1	45
	BSO	1	1	5
	District 4	0	0	25
	District 6	0	0	1
	FDOT Maintenance	0	0	2
	FHP	5	7	262

Total Events by Roadway and Detection Method

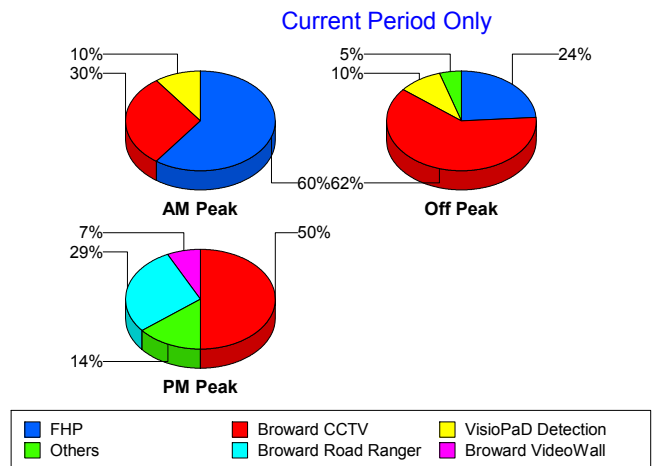


		Current Week	Last Week	YTD
95	Fire	0	0	2
	ITMS	0	1	2
	Motorist	0	0	6
	Palm Beach Road Ran	0	0	2
	Road Watcher	0	0	7
	SIRV	0	0	9
	SmarTraveler (511)	0	0	6
	VisioPaD Detection	3	0	19
	Total	36	32	1,195
Total	45	40	1,600	

Incident Detection Methods by Peak Period

		Current Week	Last Week	YTD
AM Peak	Broward CCTV	3	3	161
	Broward Road Ranger	0	0	52
	Broward VideoWall	0	1	18
	BSO	0	0	5
	District 4	0	0	13
	FHP	6	0	85
	Florida's Turnpike	0	0	2
	Motorist	0	0	5
	Palm Beach Road Ran	0	0	1
	Road Watcher	0	0	4
	SIRV	0	0	1
	SmarTraveler (511)	0	0	1
	VisioPaD Detection	1	0	2
	Total	10	4	350
	Off Peak	Broward CCTV	13	16
Broward Road Ranger		1	0	50
Broward VideoWall		0	0	29
BSO		0	3	26
District 4		0	0	14

Total Events by Peak Period and Detection Method

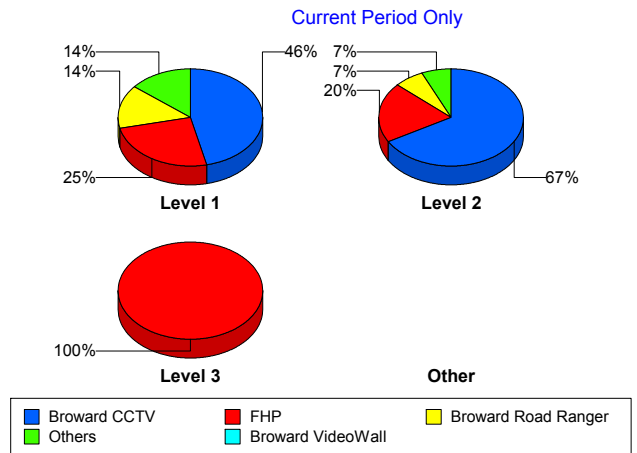


		Current Week	Last Week	YTD
Off Peak	FDOT Maintenance	0	0	2
	FHP	5	4	169
	Fire	0	0	1
	Florida's Turnpike	0	0	3
	ITMS	0	1	2
	Motorist	0	0	3
	Road Watcher	0	0	5
	SIRV	0	0	3
	SmarTraveler (511)	0	0	3
	VisioPaD Detection	2	1	21
	Total	21	25	794
PM Peak	Broward CCTV	7	4	234
	Broward Road Ranger	4	3	76
	Broward VideoWall	1	0	7
	BSO	1	0	6
	District 4	0	0	15
	District 6	0	0	1
	FDOT Maintenance	0	0	2
	FHP	1	3	94
	Fire	0	0	1
	Florida's Turnpike	0	0	1
	Other	0	0	1
	Palm Beach Road Ran	0	0	1
	Road Watcher	0	0	3
	SIRV	0	0	6
	SmarTraveler (511)	0	0	2
	VisioPaD Detection	0	1	6
	Total	14	11	456
Total	45	40	1,600	

Incident Detection Methods by Severity

		Current Week	Last Week	YTD
Level 1	Broward CCTV	13	16	549
	Broward Road Ranger	4	2	131
	Broward VideoWall	1	1	35
	BSO	1	0	9
	District 4	0	0	31
	FDOT Maintenance	0	0	3
	FHP	7	6	208
	Fire	0	0	1
	ITMS	0	1	1
	Motorist	0	0	6
	Palm Beach Road Ran	0	0	2
	Road Watcher	0	0	9
	SIRV	0	0	9
	SmarTraveler (511)	0	0	4
	VisioPaD Detection	2	1	16
	Total	28	27	1,014
Level 2	Broward CCTV	10	4	213
	Broward Road Ranger	1	1	32
	Broward VideoWall	0	0	16
	BSO	0	2	9
	District 4	0	0	5
	FDOT Maintenance	0	0	1
	FHP	3	1	95
	Florida's Turnpike	0	0	4
	ITMS	0	0	1
	Motorist	0	0	2
	Other	0	0	1
	Road Watcher	0	0	1
	SIRV	0	0	1
	SmarTraveler (511)	0	0	2
	VisioPaD Detection	1	1	11

Total Events by Severity and Detection Method



		Current Week	Last Week	YTD
Level 2	Total	15	9	394
Level 3	Broward CCTV	0	3	96
	Broward Road Ranger	0	0	15
	Broward VideoWall	0	0	3
	BSO	0	1	19
	District 4	0	0	6
	District 6	0	0	1
	FHP	2	0	45
	Fire	0	0	1
	Florida's Turnpike	0	0	2
	Road Watcher	0	0	2
	VisioPaD Detection	0	0	2
	Total	2	4	192
Total		45	40	1,600

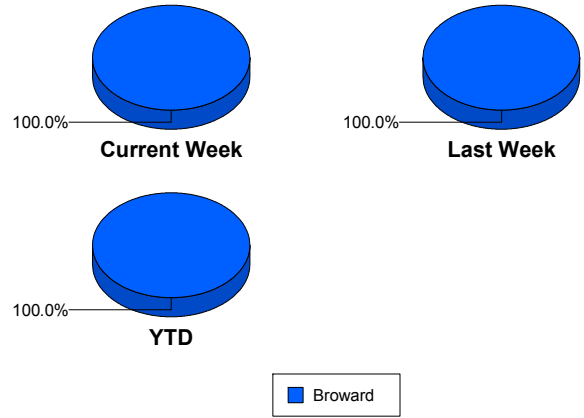
Road Ranger / SIRV Performance Measures

Road Ranger / SIRV Performance By County

RR/SIRV Responses per County

Values presented are: - Total Events with a RR/SIRV Response - Total RR/SIRV Responses, - Total Activities Performed

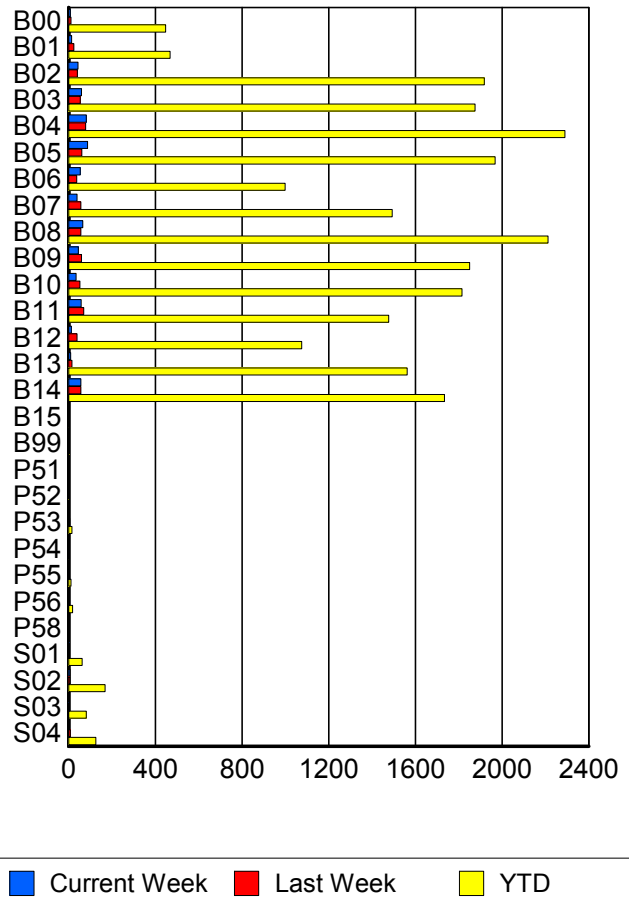
	Current We	Last Week	YTD
Broward	641	680	21,990
	684	731	23,683
	708	762	24,619



Road Ranger / SIRV Performance By Truck

	Current We	Last Week	YTD
B00	8	11	439
	8	11	448
	8	12	466
B01	14	22	459
	14	24	468
	15	27	497
B02	43	39	1,901
	44	40	1,918
	47	43	2,002
B03	59	54	1,846
	59	54	1,876
	59	55	1,935
B04	82	78	2,271
	82	79	2,291
	83	82	2,395
B05	85	58	1,931
	87	61	1,968
	90	61	2,029
B06	53	36	979
	54	37	999
	55	38	1,030
B07	38	57	1,469
	39	57	1,493
	42	59	1,559
B08	65	56	2,185
	66	56	2,212
	69	58	2,299

**RR/SIRV
Responses per
Truck**



	Current We	Last Week	YTD
B09	45	59	1,823
	45	60	1,851
	45	63	1,920
B10	34	52	1,786
	35	52	1,815
	36	54	1,884
B11	58	69	1,450
	58	70	1,477
	60	70	1,528
B12	13	39	1,062
	13	39	1,075
	15	43	1,122
B13	10	15	1,541
	10	15	1,562
	10	16	1,612
B14	55	55	1,706
	57	56	1,734
	61	58	1,797
B15	0	0	2
	0	0	2
	0	0	2
B99	0	0	4
	0	0	4
	0	0	4
P51	0	0	1
	0	0	1
	0	0	1
P52	0	0	2
	0	0	2
	0	0	2
P53	0	4	15
	0	5	16
	0	7	18
P54	0	0	2
	0	0	2
	0	0	2
P55	0	0	11
	0	0	11
	0	0	13
P56	0	0	18
	0	0	18
	0	0	19
P58	0	0	1
	0	0	1
	0	0	1

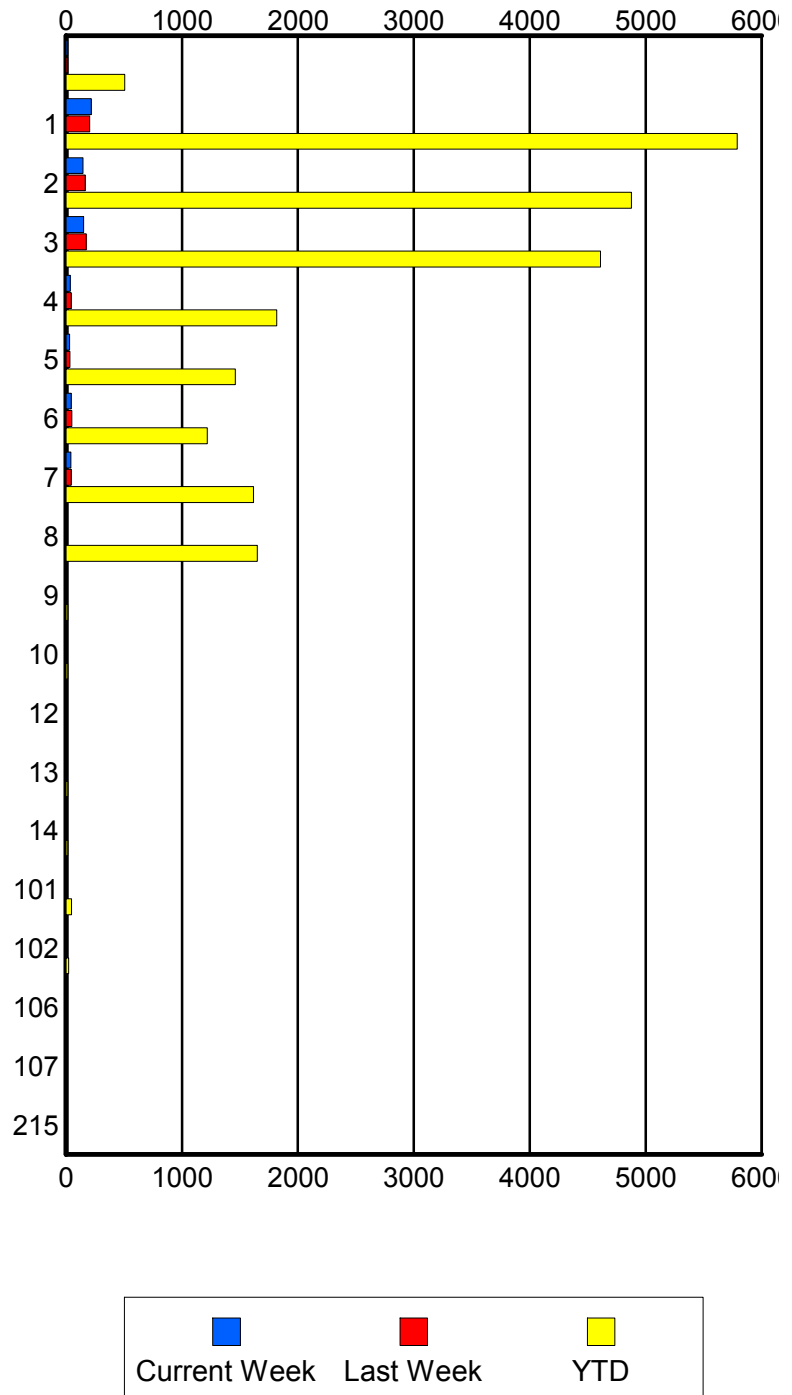
	Current We	Last Week	YTD
S01	3	1	59
	3	1	62
	3	1	70
S02	6	6	163
	7	6	169
	7	7	184
S03	2	0	80
	2	0	82
	2	0	92
S04	1	7	121
	1	8	126
	1	8	136

Road Ranger / SIRV Performance By Beat

	Current We	Last Week	YTD
	10	14	469
	14	15	506
	14	16	551
1	207	194	5,470
	218	204	5,789
	227	213	5,979
2	143	161	4,705
	147	166	4,878
	152	175	5,083
3	149	167	4,483
	153	173	4,611
	157	180	4,792
4	36	43	1,778
	37	44	1,818
	39	46	1,875
5	31	32	1,435
	31	32	1,461
	32	32	1,509
6	42	47	1,189
	43	49	1,217
	46	50	1,283
7	41	43	1,593
	41	43	1,617
	41	43	1,690
8	0	0	1,629
	0	0	1,649
	0	0	1,712
9	0	0	12
	0	0	14
	0	0	14
10	0	0	13
	0	0	14
	0	0	14
12	0	0	9
	0	0	9
	0	0	9
13	0	0	14
	0	0	14
	0	0	15
14	0	0	13
	0	0	13
	0	0	13
101	0	4	46
	0	5	47
	0	7	52

Values presented are:
 - Total Events with a RR/SIRV Response
 - Total RR/SIRV Responses,
 - Total Activities Performed

RR/SIRV Responses per Beat



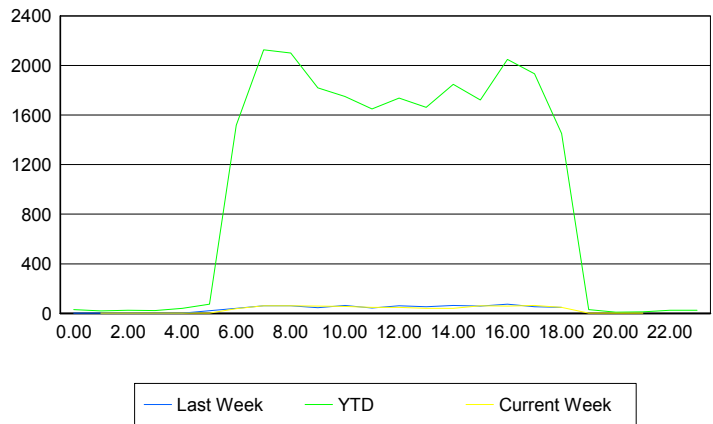
	Current We	Last Week	YTD
102	0	0	23
	0	0	23
	0	0	25
106	0	0	1
	0	0	1
	0	0	1
107	0	0	1
	0	0	1
	0	0	1
215	0	0	1
	0	0	1
	0	0	1

Road Ranger / SIRV Performance By Time of Day

Values presented are:
- Total Events with a RR/SIRV Response
- Total RR/SIRV Responses,
- Total Activities Performed

	Current We	Last Week	YTD
12AM-1AM	0	1	29
	0	1	30
	0	1	32
1AM-2AM	1	0	18
	2	0	19
	2	0	19
2AM-3AM	0	0	20
	0	0	25
	0	0	25
3AM-4AM	1	1	21
	1	1	23
	1	1	23
4AM-5AM	0	1	29
	0	1	39
	0	1	40
5AM-6AM	2	0	66
	2	0	75
	2	0	79
6AM-7AM	37	36	1,384
	37	40	1,517
	39	40	1,562
7AM-8AM	59	58	1,984
	60	60	2,128
	60	66	2,208
8AM-9AM	48	56	1,913
	60	62	2,102
	61	65	2,189

Number of Responses / Hour of the Day



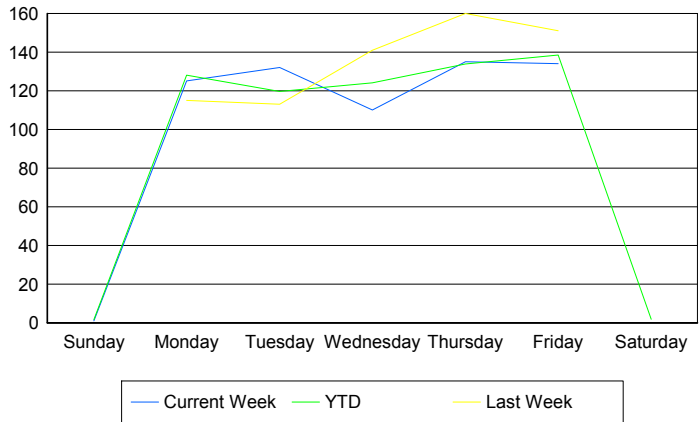
	Current We	Last Week	YTD
9AM-10AM	53	45	1,696
	57	46	1,821
	60	47	1,885
10AM-11AM	55	59	1,616
	55	64	1,750
	56	66	1,829
11AM-12PM	45	40	1,545
	48	44	1,650
	53	47	1,724
12PM-1PM	44	54	1,641
	49	61	1,736
	51	61	1,804
1PM-2PM	40	50	1,539
	40	52	1,663
	40	54	1,741
2PM-3PM	39	59	1,732
	40	64	1,847
	43	67	1,926
3PM-4PM	56	55	1,603
	60	59	1,721
	62	61	1,789
4PM-5PM	56	71	1,917
	59	73	2,050
	62	76	2,128
5PM-6PM	56	49	1,773
	63	54	1,933
	63	56	2,009
6PM-7PM	46	45	1,376
	48	49	1,452
	50	53	1,502
7PM-8PM	2	0	26
	2	0	30
	2	0	32
8PM-9PM	0	0	9
	0	0	9
	0	0	9
9PM-10PM	1	0	12
	1	0	12
	1	0	12
10PM-11PM	0	0	19
	0	0	25
	0	0	25
11PM-12AM	0	0	22
	0	0	26
	0	0	27

Road Ranger / SIRV Performance By Day of Week

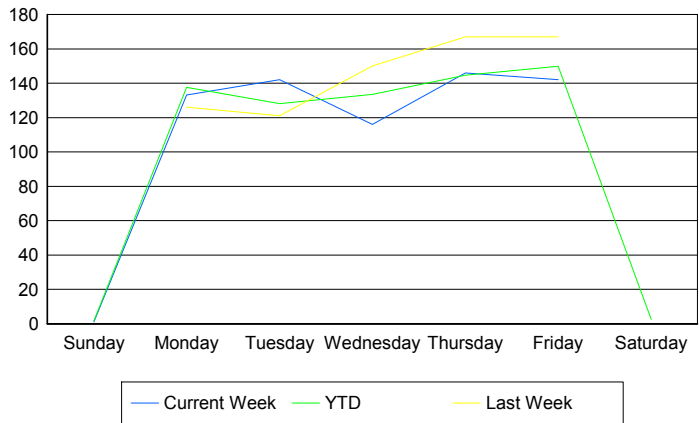
Values presented are: - Total Events with a RR/SIRV Response - Total RR/SIRV Responses, - Total Activities Performed

	Current We	Last Week	YTD
Sunday	1 1 1	0 0 0	15 15 17
Monday	129 137 138	115 126 129	4,311 4,626 4,770
Tuesday	132 142 147	113 121 130	4,018 4,302 4,451
Wednesday	110 116 119	141 150 155	4,178 4,492 4,692
Thursday	135 146 153	160 167 172	4,634 5,007 5,208
Friday	134 142 150	151 167 176	4,825 5,219 5,456
Saturday	0 0 0	0 0 0	19 22 25

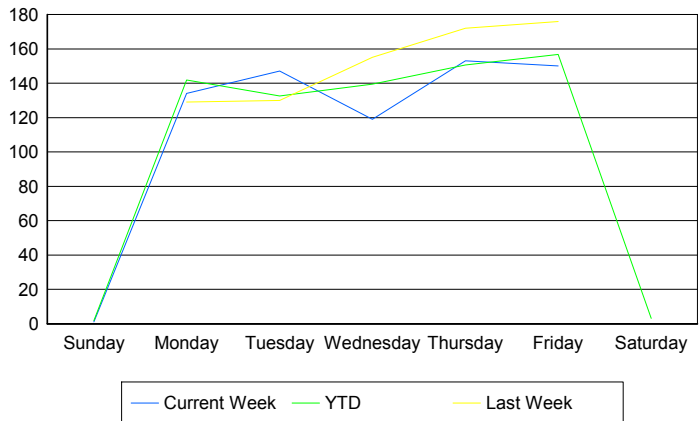
Avg # of events with a RR/SIRV Response per Day of the Week



Avg # of RR/SIRV Responses per Day of the Week



Avg # of RR/SIRV Activities Performed per Day of the Week



Road Ranger / SIRV Responses per Time of Day and Day of Week

