



# Weekly Performance Measures Report Broward County



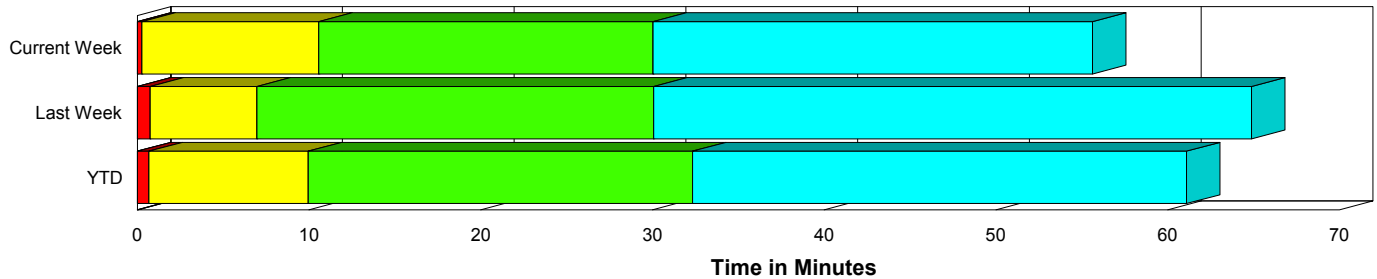
Period From Aug 16, 2009 to Aug 22, 2009

Created on:  
August 23, 2009  
1:39 pm

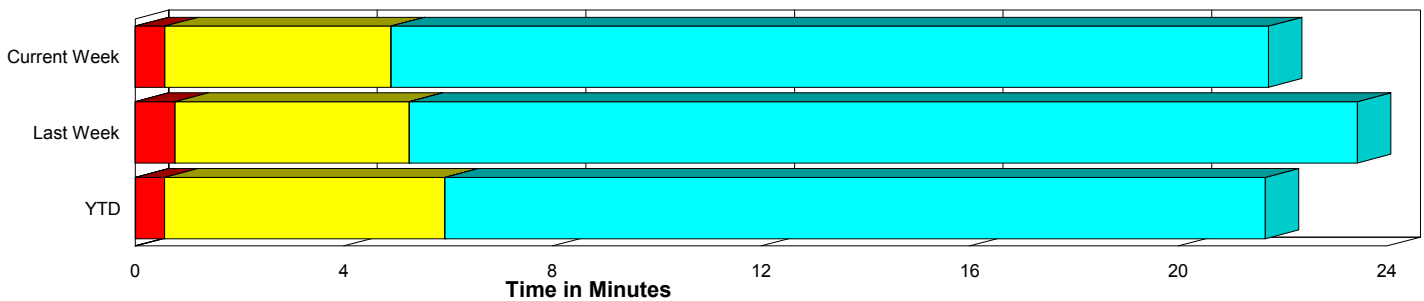
## Performance Measures Summary

	Traffic Events (No Lanes Blocked)			Incidents (Lanes Blocked)		
	<u>This Week</u>	<u>Last Week</u>	<u>YTD</u>	<u>This Week</u>	<u>Last Week</u>	<u>YTD</u>
Number of Events	878	762	31,933	40	43	1,557
TMC Detection (min.)	0.00	0.00	0.01	0.00	0.00	0.00
TMC Verification (min.)	0.57	0.77	0.56	0.27	0.76	0.67
TMC Response (min.)	5.16	5.68	6.41	10.44	7.33	10.16
RR Dispatch Time (min.)	0.77	0.87	1.21	2.91	2.08	3.11
RR Response Time (min.)	4.53	4.92	5.33	7.27	5.77	7.25
Roadway Clearance (min.)				24.55	27.64	31.49
Event Clearance (min.)	21.98	23.86	22.14	50.14	62.44	59.75
# of Events w/ RR/SIRV	647	535	20,748	27	27	1,025
RR/SIRV Responses	647	535	20,748	27	27	1,025
RR/SIRV Activities	596	515	17,771	57	62	2,094

### Incident Clearance Time-Line



### Traffic Event (Non-Lane Blockage) Time-Line



<span style="color: blue;">■</span> Avg. TMC Detection Time	<span style="color: green;">■</span> Avg. Time from TMC Response to Roadway Clearance*
<span style="color: red;">■</span> Avg. Time from TMC Detection to TMC Verification	<span style="color: cyan;">■</span> Avg. Time from Roadway Clearance to Incident/Event Clearance**
<span style="color: yellow;">■</span> Avg. Time from TMC Verification to TMC Response	

\* Roadway clearance equals all travel lanes open

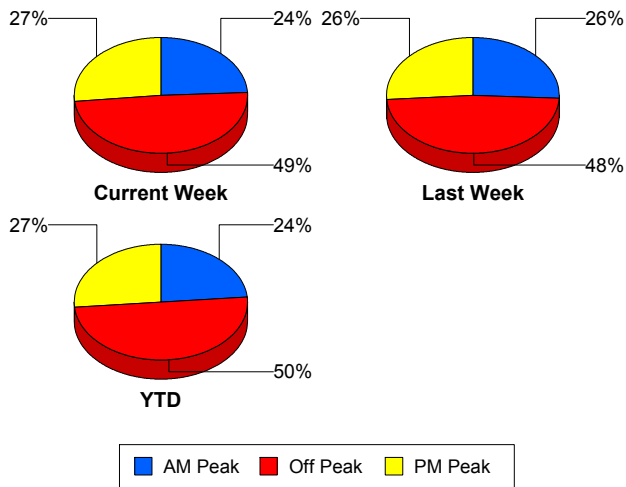
\*\* Incident clearance equals time when last responder has left the scene

## Performance Measures by Peak Period

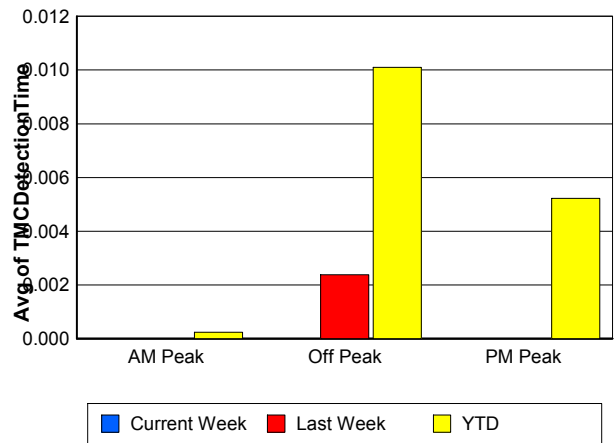
Note: AM peak period is defined as 6am to 10am and PM peak period is defined as 3pm to 7pm.

	AM Peak			Off Peak			PM Peak		
	Current Week	Last Week	YTD	Current Week	Last Week	YTD	Current Week	Last Week	YTD
Number of Events	223	208	7,877	450	386	16,738	245	211	8,875
Number of Incidents	4	7	341	25	24	773	11	12	443
TMC Detection (min.)	0.00	0.00	0.00	0.00	0.00	0.01	0.00	0.00	0.01
TMC Verification (min.)	0.32	0.93	0.50	0.49	0.55	0.48	0.90	1.00	0.77
TMC Response (min.)	4.47	5.40	6.09	6.27	6.24	7.49	4.94	5.61	6.06
RR Dispatch Time (min.)	0.77	0.70	0.99	1.14	1.33	1.86	0.54	0.68	0.85
RR Response Time (min.)	3.83	4.81	5.18	5.23	5.11	5.72	4.54	4.95	5.33
Event Clearance (min.)	19.36	19.53	21.52	27.82	30.78	26.83	18.15	23.32	20.43
Roadway Clearance (min.)	11.79	22.21	25.81	27.67	31.37	36.65	22.10	23.33	26.85
Incident Clearance (min.)	25.77	54.99	55.00	59.76	72.02	64.08	38.01	47.62	55.88
# of Events w/ RR/SIRV	187	182	6,349	278	208	8,688	209	172	6,736
RR/SIRV Responses	187	182	6,349	278	208	8,688	209	172	6,736
RR/SIRV Activities	175	186	6,040	266	217	7,636	212	174	6,189

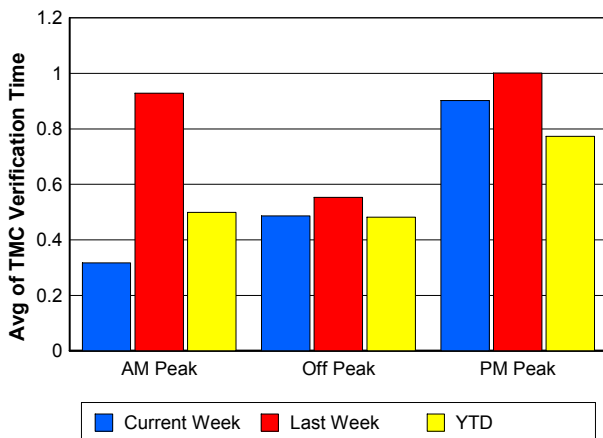
### Number of Events / Peak Period



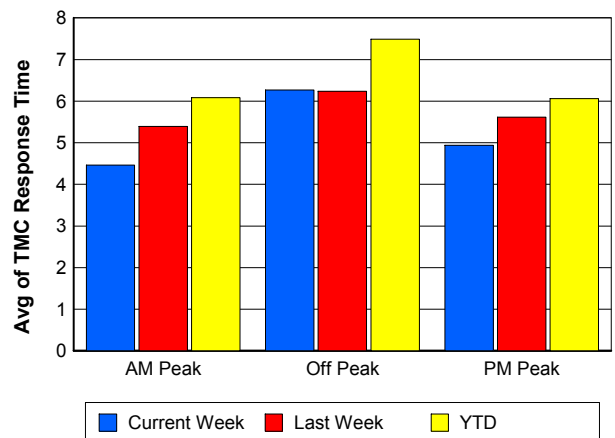
### TMC Detection Time



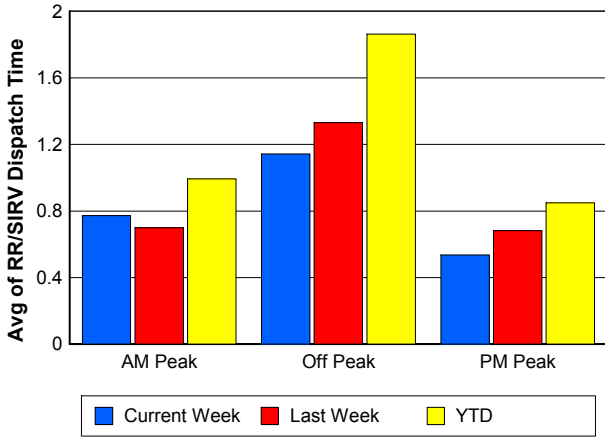
### TMC Verification Time



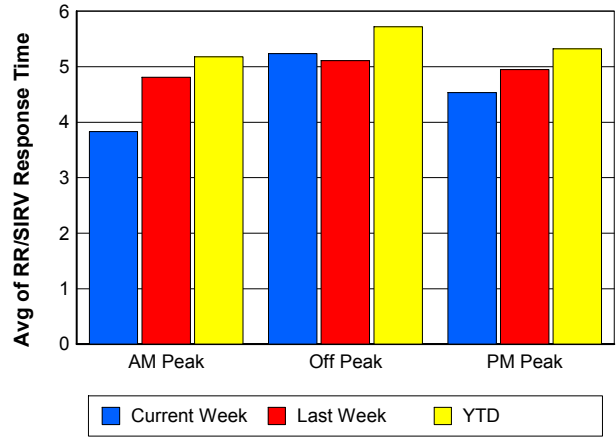
### TMC Response Time



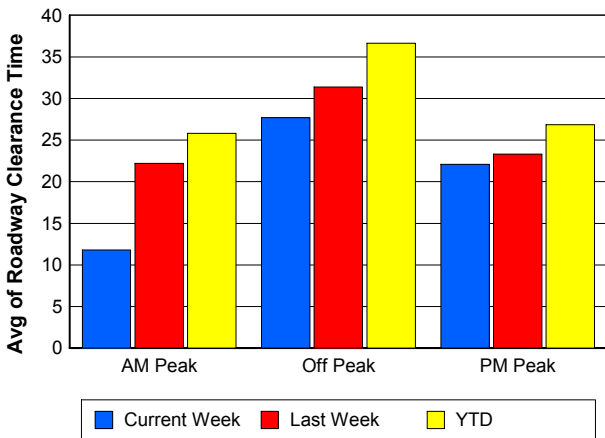
## Road Ranger / SIRV Dispatch Time



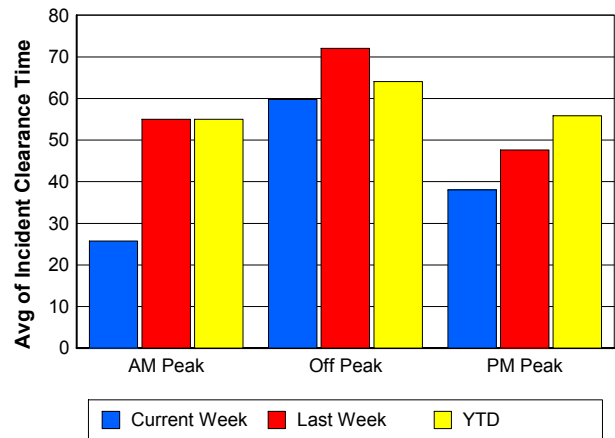
## Road Ranger / SIRV Response Time



## Roadway Clearance Time (2A)



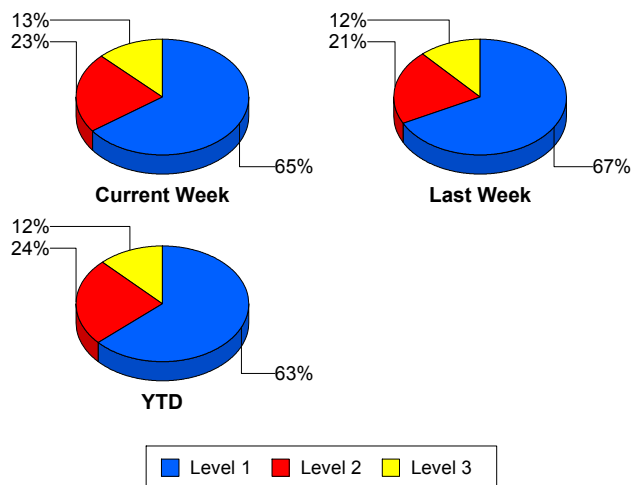
## Incident Clearance Time (3B)



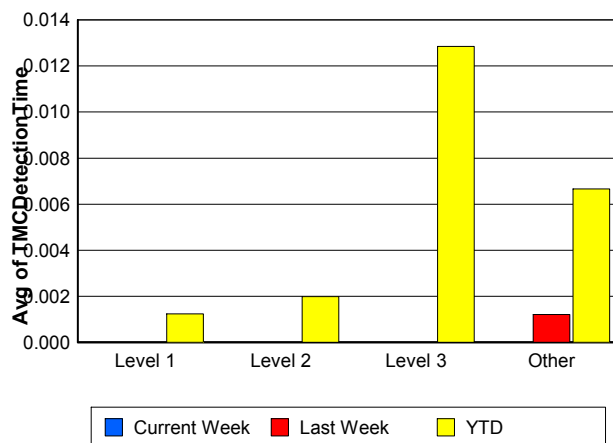
## Performance Measures by Severity

	Level 1			Level 2			Level 3			Other		
	<u>This Week</u>	<u>Last Week</u>	<u>YTD</u>	<u>This Week</u>	<u>Last Week</u>	<u>YTD</u>	<u>This Week</u>	<u>Last Week</u>	<u>YTD</u>	<u>This Week</u>	<u>Last Week</u>	<u>YTD</u>
Number of Events	26	29	986	9	9	379	5	5	192	878	762	31,933
Number of Incidents	26	29	986	9	9	379	5	5	192	0	0	0
TMC Detection (min.)	0.00	0.00	0.00	0.00	0.00	0.00	0.00	0.00	0.01	0.00	0.00	0.01
TMC Verification (min.)	0.36	0.35	0.42	0.14	2.49	0.94	0.00	0.00	1.40	0.57	0.77	0.56
TMC Response (min.)	6.52	6.21	7.12	8.72	10.18	10.17	23.80	10.19	24.46	5.16	5.68	6.41
RR Dispatch Time (min.)	1.64	1.58	1.64	1.98	2.33	3.19	9.72	3.82	9.30	0.77	0.87	1.21
RR Resp. Time (min.)	5.07	4.62	5.57	6.75	7.85	7.45	14.08	9.40	14.87	4.53	4.92	5.33
Event Clearance (min.)	43.04	48.28	46.19	63.37	77.78	72.66	61.80	116.93	103.64	21.98	23.86	22.14
Roadway Clear. (min.)	13.84	14.35	14.17	49.12	42.42	49.12	36.02	78.09	85.63			
Incident Clearance (min.)	43.04	48.28	46.19	63.37	77.78	72.66	61.80	116.93	103.64			
# of Events w/ RR/SIRV	17	19	688	6	3	177	4	5	160	647	535	20,748
RR/SIRV Responses	17	19	688	6	3	177	4	5	160	647	535	20,748
RR/SIRV Activities	28	41	1,222	21	9	520	8	12	352	596	515	17,771

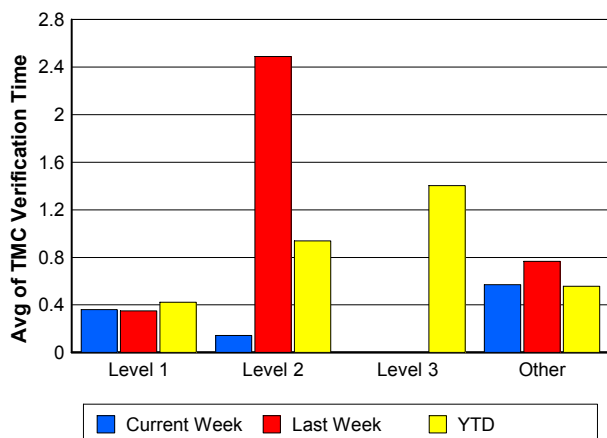
### Number of Events / Severity



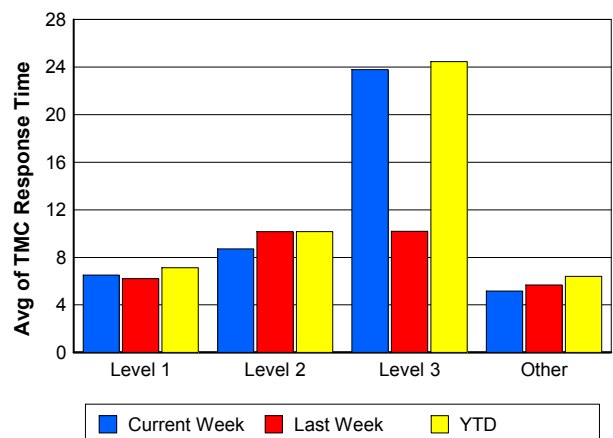
### TMC Detection Time



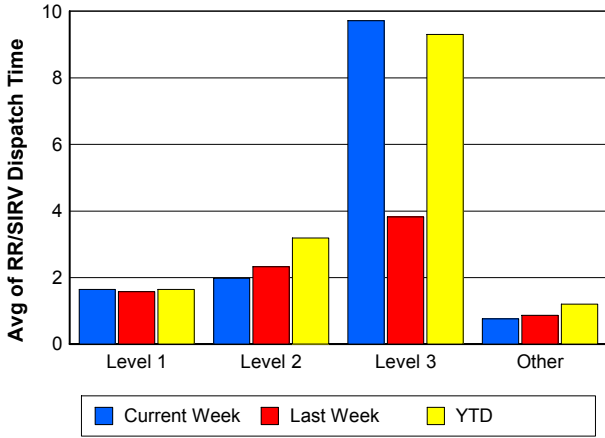
### TMC Verification Time



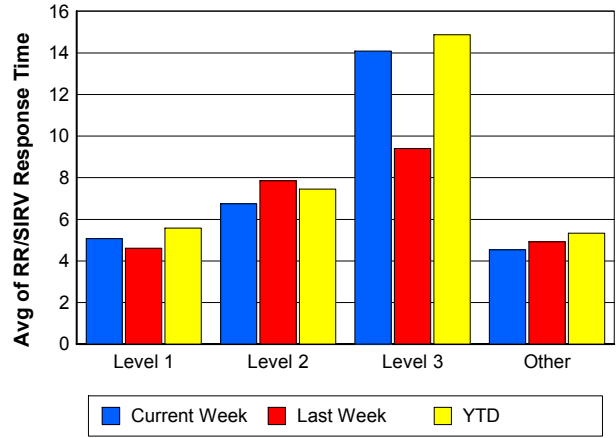
### TMC Response Time



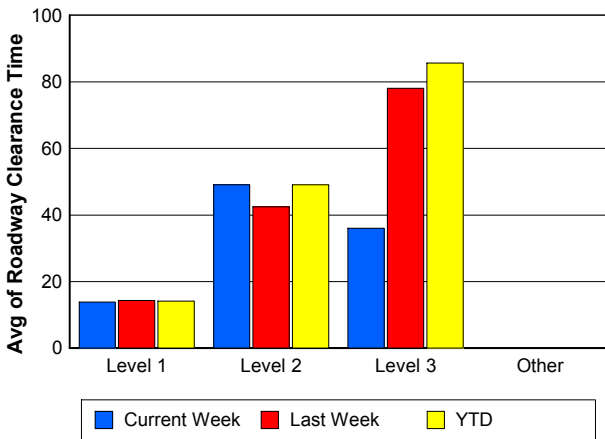
## Road Ranger / SIRV Dispatch Time



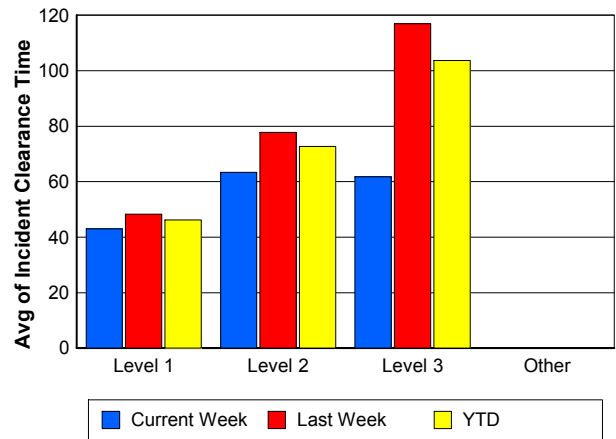
## Road Ranger / SIRV Response Time



## Roadway Clearance Time (2A)



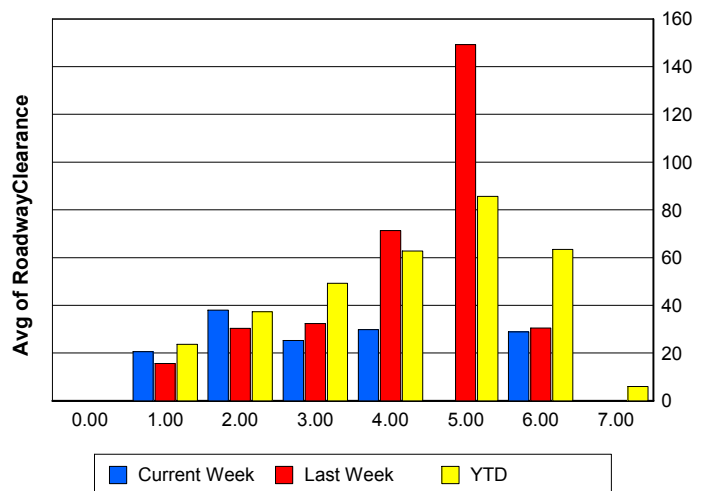
## Incident Clearance Time (3B)



## Roadway Clearance by Maximum Number of Lanes Blocked

	Current Week	Last Week	YTD
0			
1	20.61	15.66	23.70
2	38.04	30.30	37.37
3	25.22	32.38	49.19
4	29.75	71.37	62.78
5	0.00	149.23	85.59
6	28.88	30.43	63.49
7	0.00	0.00	5.97

## Roadway Clearance Time (2A)



## Performance Measures by Roadway

**595**

	<u>Current Week</u>	<u>Last Week</u>	<u>YTD</u>
Number of Events	40	42	4,190
Number of Incidents	4	1	256
TMC Detection (min.)	0.00	0.00	0.01
TMC Verification (min.)	0.33	1.13	0.75
TMC Response (min.)	9.03	5.98	6.41
RR Dispatch Time (min.)	0.84	1.01	1.10
RR Resp. Time (min.)	8.23	4.95	5.40
Event Clearance (min.)	17.89	20.14	21.40
Roadway Clear. (min.)	24.78	22.47	30.60
Incident Clearance (min.)	30.82	126.45	53.38
# of Events w/ RR/SIRV	32	30	2,897
RR/SIRV Responses	32	30	2,897
RR/SIRV Activities	27	29	2,668

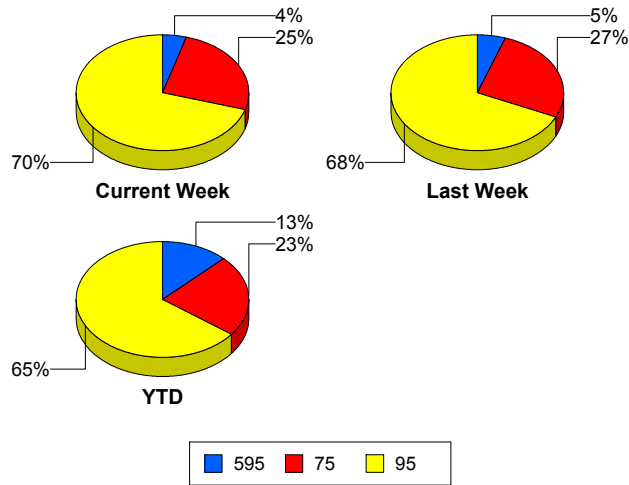
**75**

	<u>Current Week</u>	<u>Last Week</u>	<u>YTD</u>
Number of Events	233	216	7,601
Number of Incidents	4	3	141
TMC Detection (min.)	0.00	0.00	0.00
TMC Verification (min.)	0.50	0.40	0.67
TMC Response (min.)	5.29	4.19	7.77
RR Dispatch Time (min.)	0.80	0.79	1.22
RR Resp. Time (min.)	4.52	3.48	6.66
Event Clearance (min.)	23.10	24.81	26.07
Roadway Clear. (min.)	55.61	49.72	57.08
Incident Clearance (min.)	66.32	61.73	83.51
# of Events w/ RR/SIRV	164	142	4,820
RR/SIRV Responses	164	142	4,820
RR/SIRV Activities	156	137	4,119

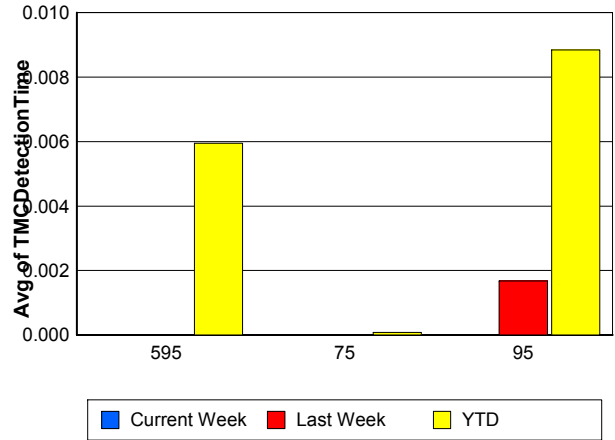
**95**

	<u>Current Week</u>	<u>Last Week</u>	<u>YTD</u>
Number of Events	645	547	21,699
Number of Incidents	32	39	1,160
TMC Detection (min.)	0.00	0.00	0.01
TMC Verification (min.)	0.59	0.89	0.49
TMC Response (min.)	5.16	6.31	6.29
RR Dispatch Time (min.)	0.87	0.97	1.36
RR Resp. Time (min.)	4.46	5.49	5.04
Event Clearance (min.)	23.54	26.80	23.60
Roadway Clear. (min.)	20.64	26.07	28.58
Incident Clearance (min.)	50.54	60.85	58.26
# of Events w/ RR/SIRV	478	390	14,056
RR/SIRV Responses	478	390	14,056
RR/SIRV Activities	470	411	13,078

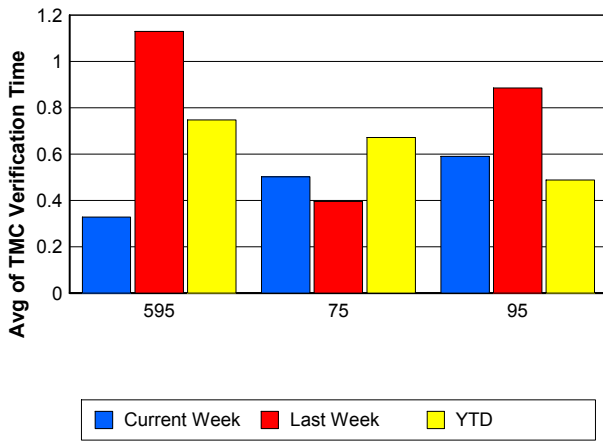
## Number of Events / Roadway



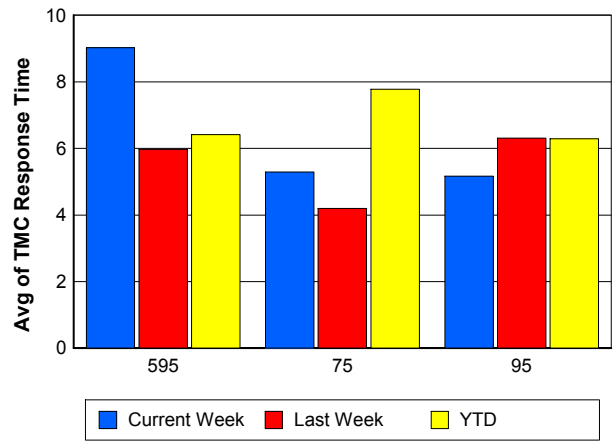
## TMC Detection Time



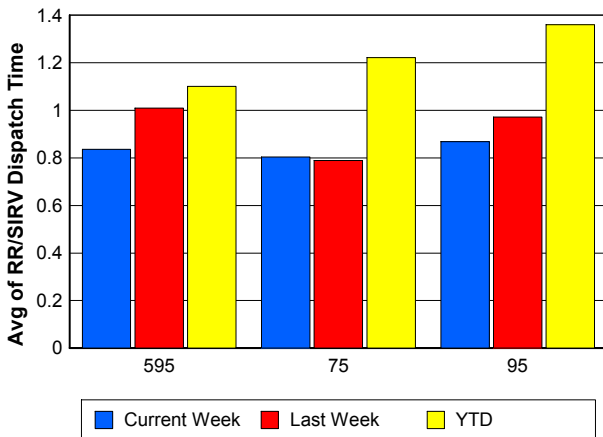
## TMC Verification Time



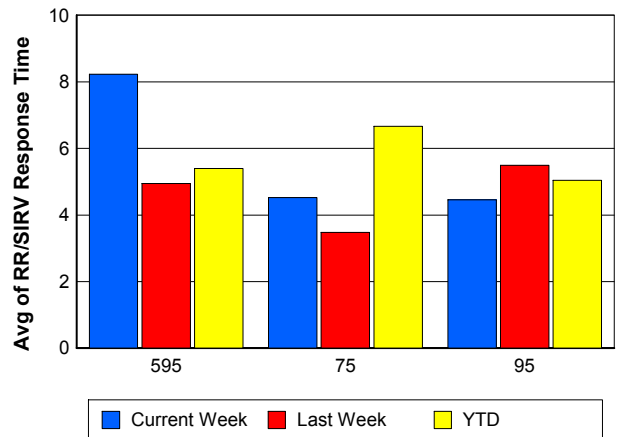
## TMC Response Time



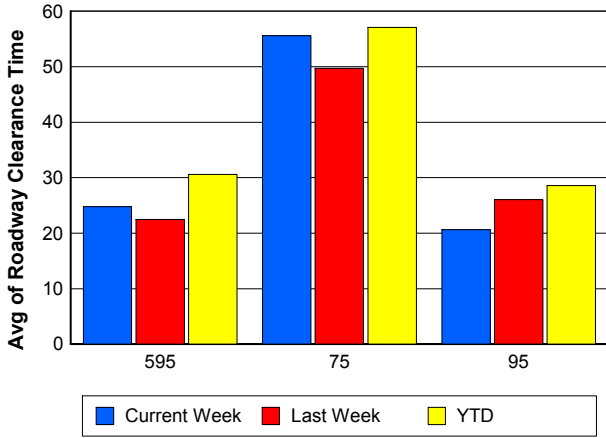
## Road Ranger / SIRV Dispatch Time



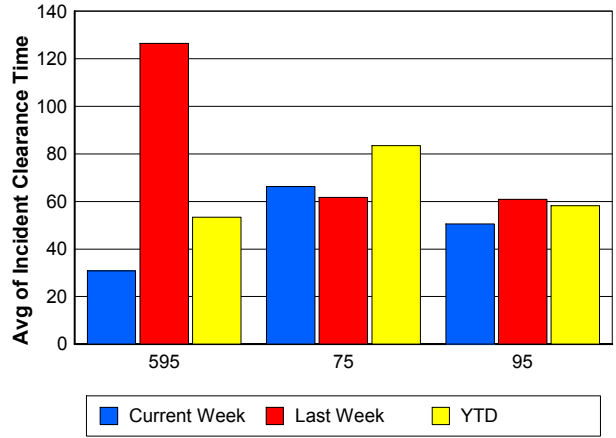
## Road Ranger / SIRV Response Time



## Roadway Clearance Time (2A)



## Incident Clearance Time (3B)



## Performance Measures by Event Type

### Accident

	<u>Current Week</u>	<u>Last Week</u>	<u>YTD</u>
Number of Events	60	57	2,318
Number of Incidents	27	32	1,123
TMC Detection (min.)	0.00	0.00	0.01
TMC Verification (min.)	1.02	0.63	0.74
TMC Response (min.)	10.73	6.54	8.64
RR Dispatch Time (min.)	1.68	1.51	1.66
RR Response Time (min.)	8.93	5.37	7.09
Event Clearance (min.)	48.38	70.96	55.22
Roadway Clearance (min.)	25.88	29.60	32.85
Incident Clearance (min.)	57.67	71.54	66.35
# of Events w/ RR/SIRV	34	41	1,607
RR/SIRV Assists	34	41	1,607
RR/SIRV Activities	56	74	2,489

### Debris on Roadway

	<u>Current Week</u>	<u>Last Week</u>	<u>YTD</u>
Number of Events	28	36	959
Number of Incidents	1	0	22
TMC Detection (min.)	0.00	0.00	0.12
TMC Verification (min.)	0.33	5.39	3.70
TMC Response (min.)	4.42	12.17	7.46
RR Dispatch Time (min.)	0.26	1.70	0.89
RR Response Time (min.)	4.17	10.42	6.59
Event Clearance (min.)	8.08	14.10	11.60
Roadway Clearance (min.)	1.37		22.45
Incident Clearance (min.)	16.67		27.46
# of Events w/ RR/SIRV	24	31	872
RR/SIRV Assists	24	31	872
RR/SIRV Activities	23	33	900

### Disabled Vehicle

	<u>Current Week</u>	<u>Last Week</u>	<u>YTD</u>
Number of Events	628	516	19,620
Number of Incidents	6	5	238
TMC Detection (min.)	0.00	0.00	0.00
TMC Verification (min.)	0.65	0.69	0.65
TMC Response (min.)	5.04	5.25	6.17
RR Dispatch Time (min.)	0.68	0.71	1.09
RR Response Time (min.)	4.41	4.58	5.11
Event Clearance (min.)	25.59	26.64	27.05
Roadway Clearance (min.)	12.89	9.42	19.10
Incident Clearance (min.)	21.29	22.01	36.11
# of Events w/ RR/SIRV	516	413	15,036
RR/SIRV Assists	516	413	15,036
RR/SIRV Activities	533	438	15,379

## Emergency Vehicles

	<u>Current Week</u>	<u>Last Week</u>	<u>YTD</u>
Number of Events	3	1	47
Number of Incidents	3	1	39
TMC Detection (min.)	0.00	0.00	0.00
TMC Verification (min.)	0.00	0.00	0.80
TMC Response (min.)	24.67	6.03	15.56
RR Dispatch Time (min.)	11.39	3.55	10.01
RR Response Time (min.)	0.08	2.48	4.53
Event Clearance (min.)	30.53	19.35	47.20
Roadway Clearance (min.)	19.39	15.98	45.76
Incident Clearance (min.)	30.53	19.35	51.63
# of Events w/ RR/SIRV	3	1	29
RR/SIRV Assists	3	1	29
RR/SIRV Activities	2	1	45

## Other

	<u>Current Week</u>	<u>Last Week</u>	<u>YTD</u>
Number of Events	192	183	10,201
Number of Incidents	1	0	25
TMC Detection (min.)	0.00	0.00	0.00
TMC Verification (min.)	0.17	0.06	0.06
TMC Response (min.)	4.52	5.22	8.96
RR Dispatch Time (min.)	1.25	1.46	1.88
RR Response Time (min.)	3.95	4.07	6.46
Event Clearance (min.)	9.41	11.59	11.40
Roadway Clearance (min.)	35.52		32.72
Incident Clearance (min.)	65.68		38.48
# of Events w/ RR/SIRV	91	71	4,045
RR/SIRV Assists	91	71	4,045
RR/SIRV Activities	28	24	808

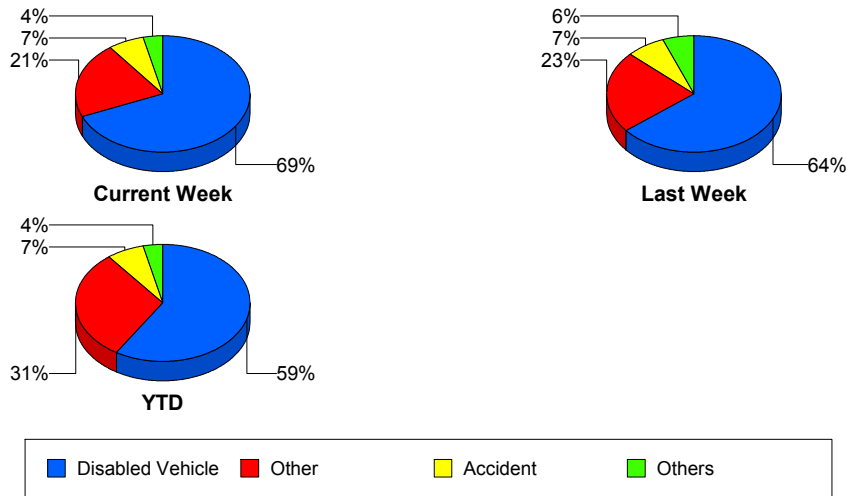
## Police Activity

	<u>Current Week</u>	<u>Last Week</u>	<u>YTD</u>
Number of Events	1	6	144
Number of Incidents	0	2	46
TMC Detection (min.)	0.00	0.00	0.00
TMC Verification (min.)	0.00	4.39	0.35
TMC Response (min.)	4.20	8.11	14.29
RR Dispatch Time (min.)	1.13	1.44	4.72
RR Response Time (min.)	3.07	6.67	9.61
Event Clearance (min.)	8.30	20.95	35.20
Roadway Clearance (min.)		42.32	41.40
Incident Clearance (min.)		43.83	51.12
# of Events w/ RR/SIRV	1	3	47
RR/SIRV Assists	1	3	47
RR/SIRV Activities	1	6	56

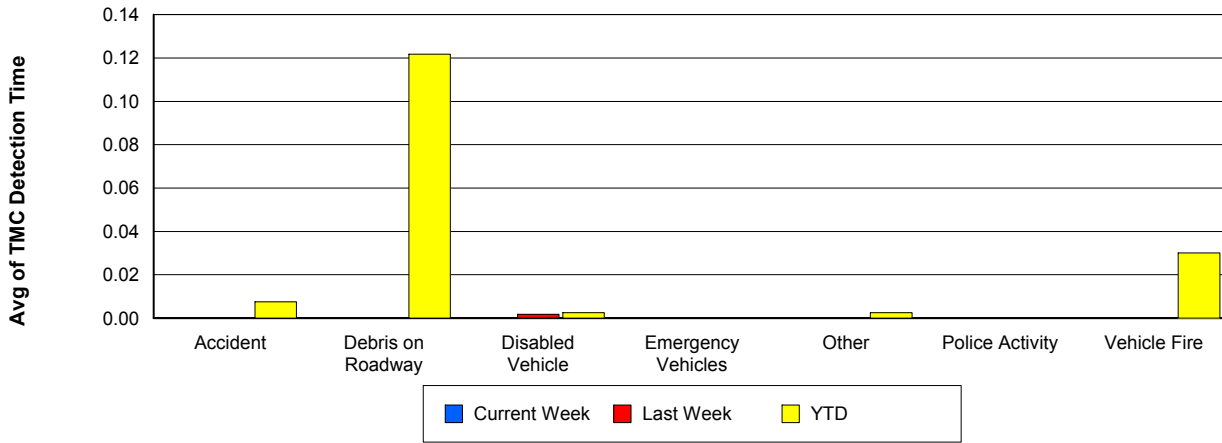
## Vehicle Fire

	<u>Current Week</u>	<u>Last Week</u>	<u>YTD</u>
Number of Events	2	4	82
Number of Incidents	2	3	64
TMC Detection (min.)	0.00	0.00	0.03
TMC Verification (min.)	0.22	0.30	1.23
TMC Response (min.)	12.20		11.37
RR Dispatch Time (min.)	3.51		2.52
RR Response Time (min.)	8.69		9.33
Event Clearance (min.)	77.10	70.06	59.30
Roadway Clearance (min.)	55.50	31.19	40.54
Incident Clearance (min.)	77.10	59.53	62.75
# of Events w/ RR/SIRV	2	0	52
RR/SIRV Assists	2	0	52
RR/SIRV Activities	7	0	110

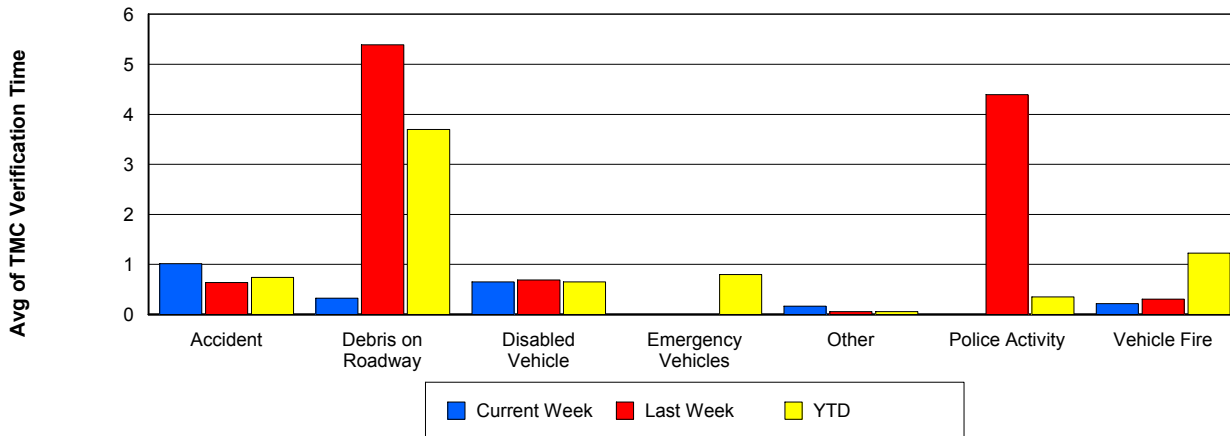
## Number of Events / Event Type



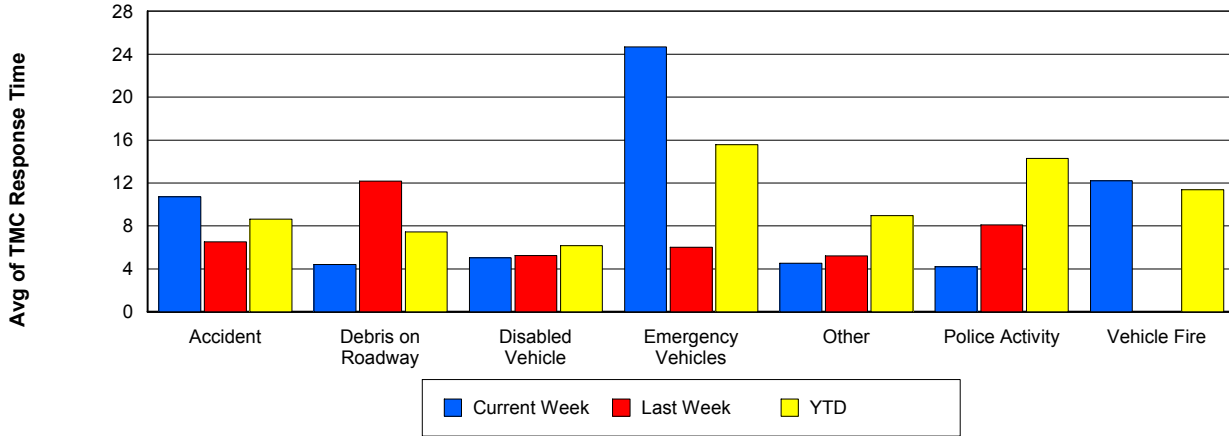
## TMC Detection Time



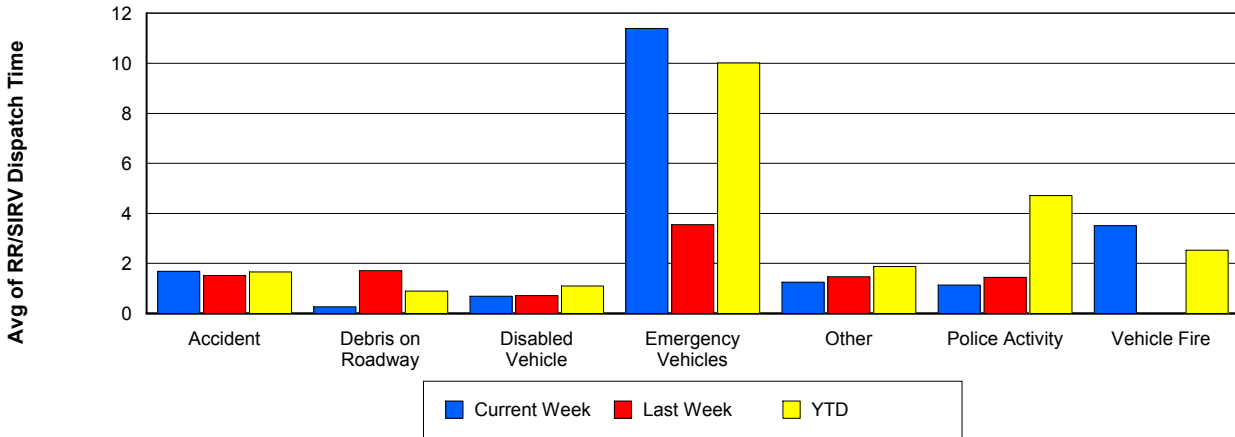
## TMC Verification Time



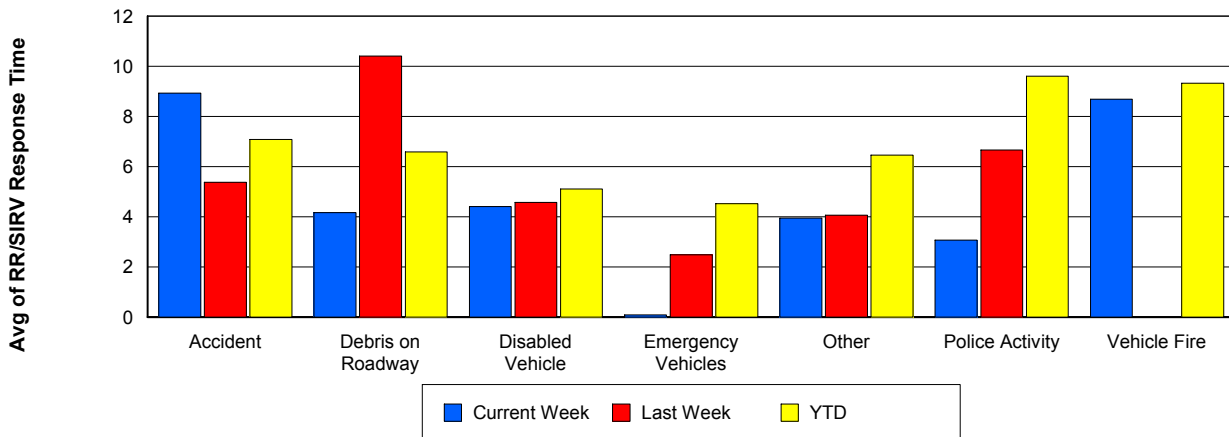
## TMC Response Time



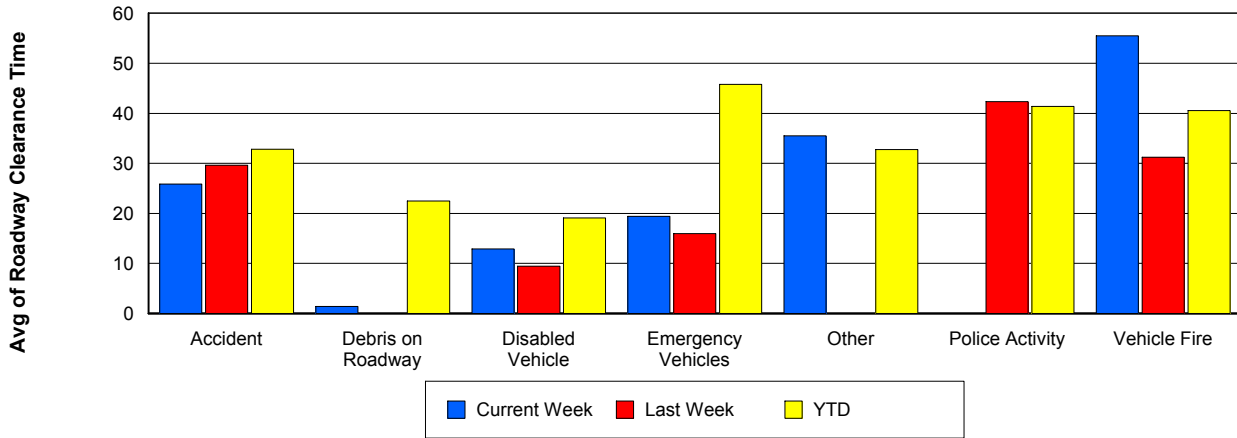
## Road Ranger / SIRV Dispatch Time



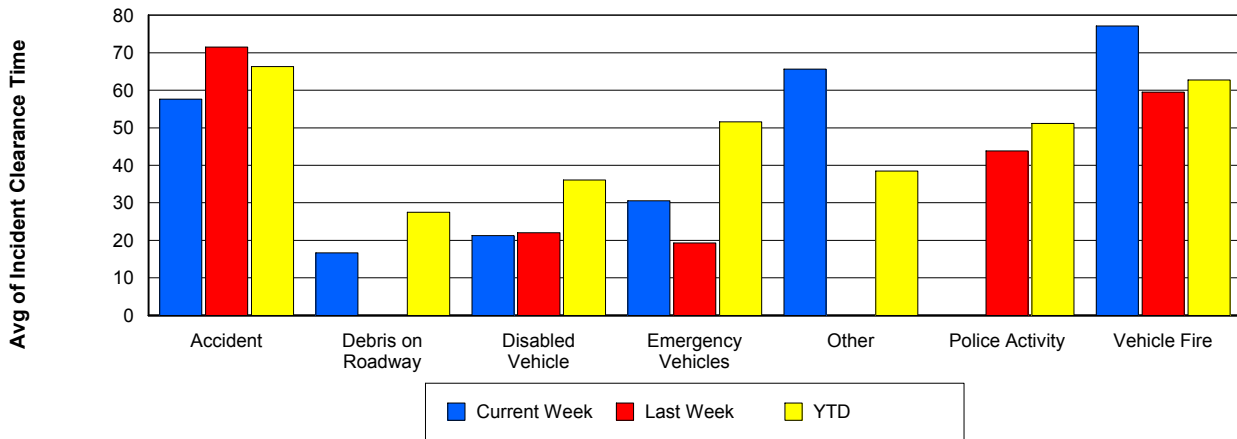
## Road Ranger / SIRV Response Time



## Roadway Clearance Time (2A)



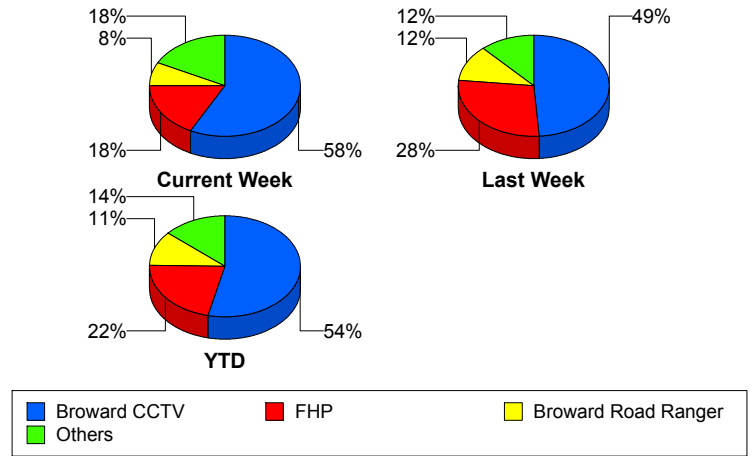
## Incident Clearance Time (3B)



## Incident Detection Methods

	Current Week	Last Week	YTD
Broward CCTV	23	21	835
Broward Road Ranger	3	5	173
Broward VideoWall	1	1	53
BSO	3	0	36
District 4	0	0	42
District 6	0	0	1
FDOT Maintenance	0	0	4
FHP	7	12	336
Fire	0	0	2
Florida's Turnpike	0	0	6
ITMS	1	0	2
Motorist	0	1	8
Other	0	0	1
Palm Beach Road Ran	0	0	2
Road Watcher	0	0	12
SIRV	0	0	10
SmarTraveler (511)	0	0	6
VisioPaD Detection	2	3	26
<b>Total</b>	<b>40</b>	<b>43</b>	<b>1,555</b>

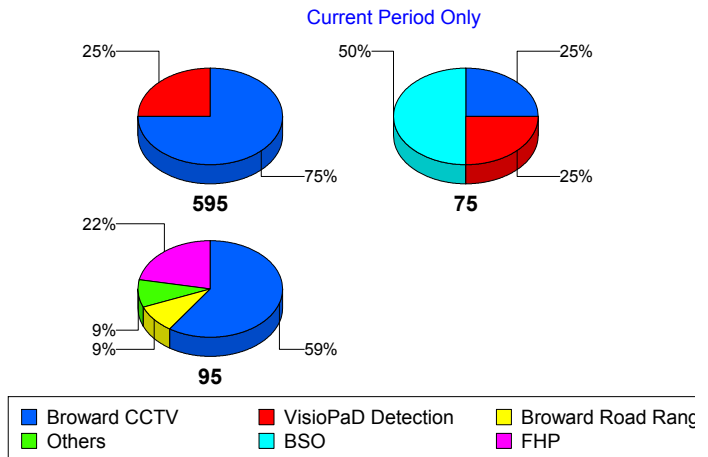
### Total Incidents by Detection Method



## Incident Detection Methods by Roadway

		Current Week	Last Week	YTD
595	Broward CCTV	3	0	124
	Broward Road Ranger	0	0	37
	Broward VideoWall	0	0	8
	BSO	0	0	4
	District 4	0	0	12
	FDOT Maintenance	0	0	2
	FHP	0	1	50
	Florida's Turnpike	0	0	6
	Motorist	0	0	2
	Road Watcher	0	0	3
	SIRV	0	0	1
	VisioPaD Detection	1	0	6
	Total	4	1	255
	75	Broward CCTV	1	1
Broward Road Ranger		0	1	13
Broward VideoWall		0	0	1
BSO		2	0	28
District 4		0	0	5
FHP		0	0	29
Other		0	0	1
Road Watcher		0	0	2
VisioPaD Detection		1	1	4
Total		4	3	141
95	Broward CCTV	19	20	653
	Broward Road Ranger	3	4	123
	Broward VideoWall	1	1	44
	BSO	1	0	4
	District 4	0	0	25
	District 6	0	0	1
	FDOT Maintenance	0	0	2
	FHP	7	11	257

**Total Events by Roadway and Detection Method**

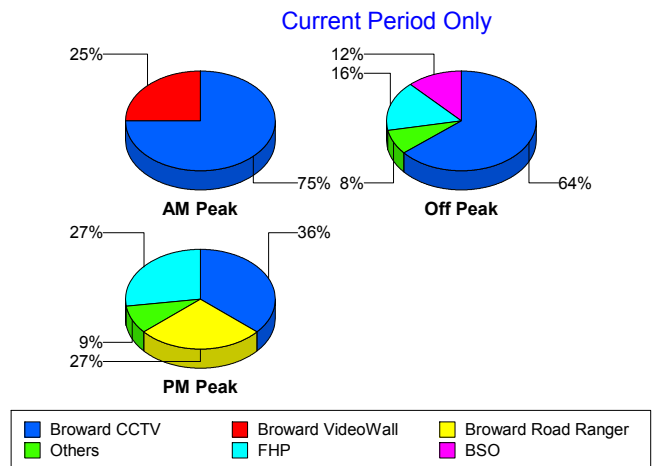


		Current Week	Last Week	YTD
95	Fire	0	0	2
	ITMS	1	0	2
	Motorist	0	1	6
	Palm Beach Road Ran	0	0	2
	Road Watcher	0	0	7
	SIRV	0	0	9
	SmarTraveler (511)	0	0	6
	VisioPaD Detection	0	2	16
	Total	32	39	1,159
Total		40	43	1,555

### Incident Detection Methods by Peak Period

		Current Week	Last Week	YTD
AM Peak	Broward CCTV	3	2	158
	Broward Road Ranger	0	1	52
	Broward VideoWall	1	1	18
	BSO	0	0	5
	District 4	0	0	13
	FHP	0	2	79
	Florida's Turnpike	0	0	2
	Motorist	0	1	5
	Palm Beach Road Ran	0	0	1
	Road Watcher	0	0	4
	SIRV	0	0	1
	SmarTraveler (511)	0	0	1
	VisioPaD Detection	0	0	1
	Total	4	7	340
	Off Peak	Broward CCTV	16	11
Broward Road Ranger		0	3	49
Broward VideoWall		0	0	29
BSO		3	0	26
District 4		0	0	14

Total Events by Peak Period and Detection Method

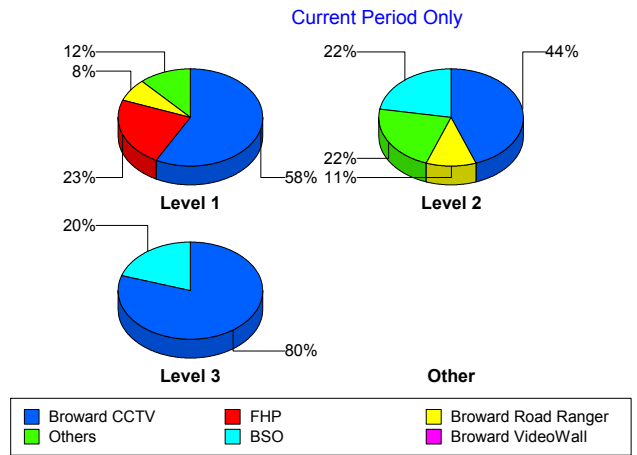


		Current Week	Last Week	YTD
Off Peak	FDOT Maintenance	0	0	2
	FHP	4	8	164
	Fire	0	0	1
	Florida's Turnpike	0	0	3
	ITMS	1	0	2
	Motorist	0	0	3
	Road Watcher	0	0	5
	SIRV	0	0	3
	SmarTraveler (511)	0	0	3
	VisioPaD Detection	1	2	19
	Total	25	24	773
PM Peak	Broward CCTV	4	8	227
	Broward Road Ranger	3	1	72
	Broward VideoWall	0	0	6
	BSO	0	0	5
	District 4	0	0	15
	District 6	0	0	1
	FDOT Maintenance	0	0	2
	FHP	3	2	93
	Fire	0	0	1
	Florida's Turnpike	0	0	1
	Other	0	0	1
	Palm Beach Road Ran	0	0	1
	Road Watcher	0	0	3
	SIRV	0	0	6
	SmarTraveler (511)	0	0	2
	VisioPaD Detection	1	1	6
	Total	11	12	442
Total	40	43	1,555	

## Incident Detection Methods by Severity

		Current Week	Last Week	YTD
Level 1	Broward CCTV	15	12	535
	Broward Road Ranger	2	4	127
	Broward VideoWall	1	1	34
	BSO	0	0	8
	District 4	0	0	31
	FDOT Maintenance	0	0	3
	FHP	6	10	201
	Fire	0	0	1
	ITMS	1	0	1
	Motorist	0	1	6
	Palm Beach Road Ran	0	0	2
	Road Watcher	0	0	9
	SIRV	0	0	9
	SmarTraveler (511)	0	0	4
	VisioPaD Detection	1	1	14
	<b>Total</b>	<b>26</b>	<b>29</b>	<b>985</b>
Level 2	Broward CCTV	4	5	203
	Broward Road Ranger	1	0	31
	Broward VideoWall	0	0	16
	BSO	2	0	9
	District 4	0	0	5
	FDOT Maintenance	0	0	1
	FHP	1	2	92
	Florida's Turnpike	0	0	4
	ITMS	0	0	1
	Motorist	0	0	2
	Other	0	0	1
	Road Watcher	0	0	1
	SIRV	0	0	1
	SmarTraveler (511)	0	0	2
	VisioPaD Detection	1	2	10

**Total Events by Severity and Detection Method**



		Current Week	Last Week	YTD
Level 2	Total	9	9	379
Level 3	Broward CCTV	4	4	97
	Broward Road Ranger	0	1	15
	Broward VideoWall	0	0	3
	BSO	1	0	19
	District 4	0	0	6
	District 6	0	0	1
	FHP	0	0	43
	Fire	0	0	1
	Florida's Turnpike	0	0	2
	Road Watcher	0	0	2
	VisioPaD Detection	0	0	2
	Total	5	5	191
Total		40	43	1,555

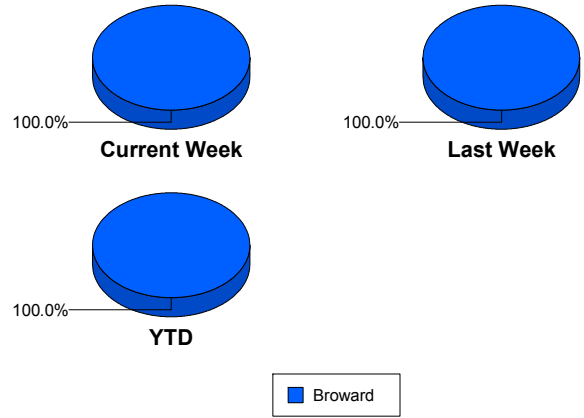
# Road Ranger / SIRV Performance Measures

## Road Ranger / SIRV Performance By County

Values presented are:  
 - Total Events with a RR/SIRV Response  
 - Total RR/SIRV Responses,  
 - Total Activities Performed

	Current We	Last Week	YTD
Broward	<b>680</b>	<b>607</b>	<b>21,349</b>
	<b>731</b>	<b>667</b>	<b>22,999</b>
	<b>762</b>	<b>692</b>	<b>23,911</b>

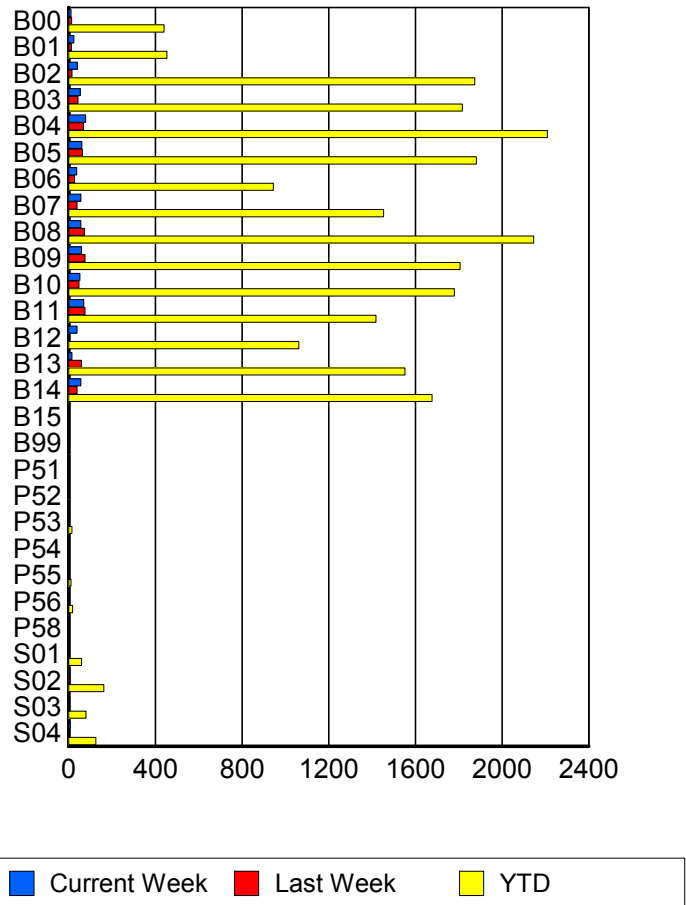
RR/SIRV Responses per County



## Road Ranger / SIRV Performance By Truck

	Current We	Last Week	YTD
B00	11	13	431
	11	14	440
	12	14	458
B01	22	12	445
	24	13	454
	27	13	482
B02	39	16	1,858
	40	16	1,874
	43	16	1,955
B03	54	43	1,787
	54	43	1,817
	55	46	1,876
B04	78	68	2,189
	79	68	2,209
	82	74	2,312
B05	58	62	1,846
	61	64	1,881
	61	65	1,939
B06	36	27	926
	37	27	945
	38	27	975
B07	57	39	1,431
	57	39	1,454
	59	40	1,517
B08	56	72	2,120
	56	73	2,146
	58	75	2,230

RR/SIRV Responses per Truck



	Current We	Last Week	YTD
B09	59	74	1,778
	60	75	1,806
	63	76	1,875
B10	52	46	1,752
	52	47	1,780
	54	50	1,848
B11	69	72	1,392
	70	76	1,419
	70	79	1,468
B12	39	0	1,049
	39	0	1,062
	43	0	1,107
B13	15	59	1,531
	15	59	1,552
	16	61	1,602
B14	55	39	1,651
	56	39	1,677
	58	40	1,736
B15	0	0	2
	0	0	2
	0	0	2
B99	0	0	4
	0	0	4
	0	0	4
P51	0	0	1
	0	0	1
	0	0	1
P52	0	0	2
	0	0	2
	0	0	2
P53	4	0	15
	5	0	16
	7	0	18
P54	0	1	2
	0	1	2
	0	1	2
P55	0	0	11
	0	0	11
	0	0	13
P56	0	0	18
	0	0	18
	0	0	19
P58	0	0	1
	0	0	1
	0	0	1

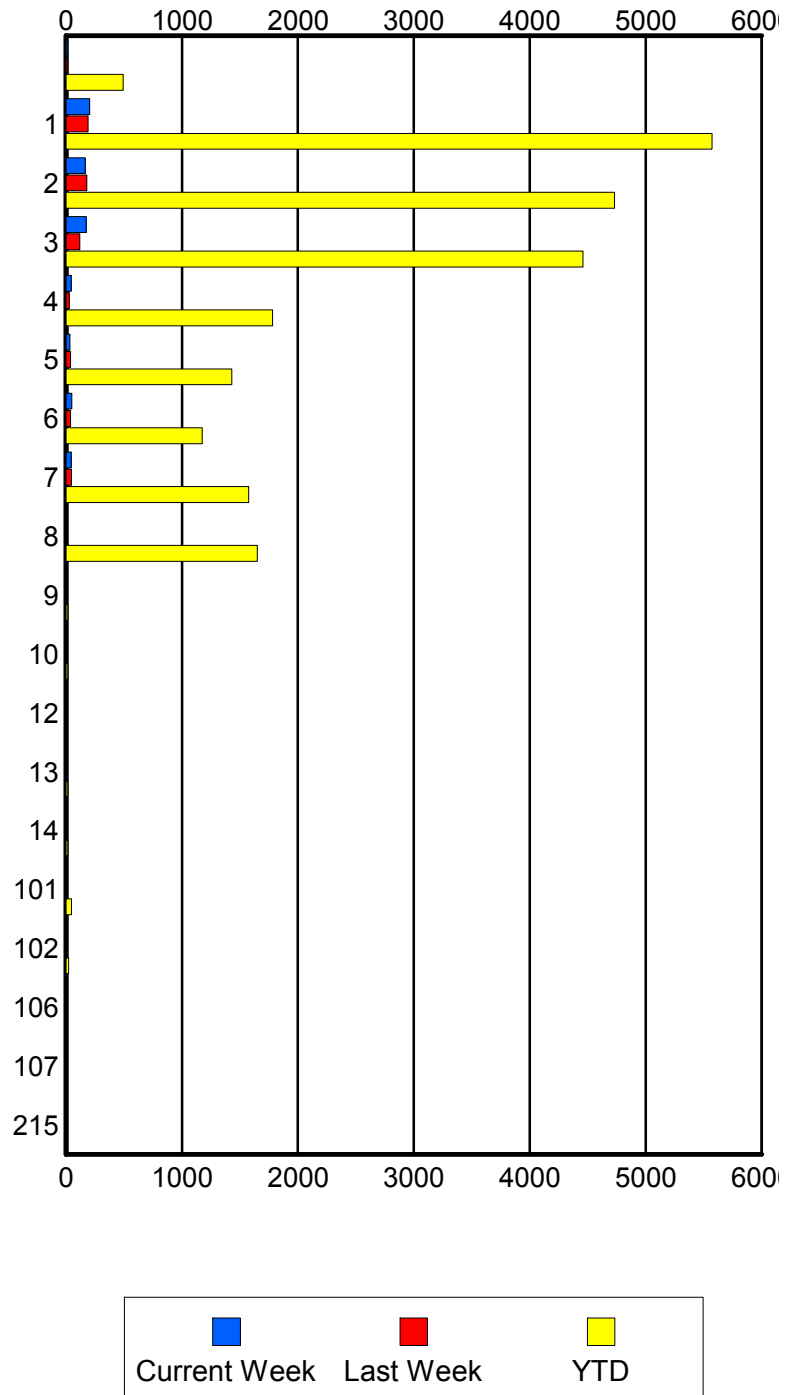
	Current We	Last Week	YTD
S01	1	0	56
	1	0	59
	1	0	67
S02	6	7	157
	6	7	162
	7	8	177
S03	0	1	78
	0	1	80
	0	1	90
S04	7	5	120
	8	5	125
	8	6	135

### Road Ranger / SIRV Performance By Beat

	Current We	Last Week	YTD
	14	15	459
	15	15	492
	16	17	537
1	194	179	5,263
	204	190	5,571
	213	195	5,752
2	161	170	4,562
	166	179	4,731
	175	189	4,931
3	167	114	4,334
	173	119	4,458
	180	123	4,635
4	43	28	1,742
	44	29	1,781
	46	29	1,836
5	32	37	1,404
	32	39	1,430
	32	39	1,477
6	47	37	1,147
	49	39	1,174
	50	42	1,237
7	43	48	1,552
	43	48	1,576
	43	49	1,649
8	0	8	1,629
	0	8	1,649
	0	8	1,712
9	0	0	12
	0	0	14
	0	0	14
10	0	0	13
	0	0	14
	0	0	14
12	0	0	9
	0	0	9
	0	0	9
13	0	0	14
	0	0	14
	0	0	15
14	0	0	13
	0	0	13
	0	0	13
101	4	1	46
	5	1	47
	7	1	52

Values presented are:  
 - Total Events with a RR/SIRV Response  
 - Total RR/SIRV Responses,  
 - Total Activities Performed

### RR/SIRV Responses per Beat



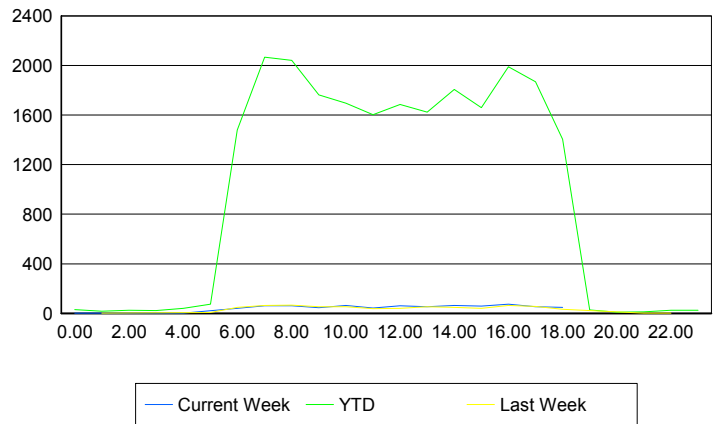
	Current We	Last Week	YTD
102	0	0	23
	0	0	23
	0	0	25
106	0	0	1
	0	0	1
	0	0	1
107	0	0	1
	0	0	1
	0	0	1
215	0	0	1
	0	0	1
	0	0	1

### Road Ranger / SIRV Performance By Time of Day

*Values presented are:*  
- Total Events with a RR/SIRV Response  
- Total RR/SIRV Responses,  
- Total Activities Performed

	Current We	Last Week	YTD
12AM-1AM	1	0	29
	1	0	30
	1	0	32
1AM-2AM	0	1	17
	0	1	17
	0	1	17
2AM-3AM	0	0	20
	0	0	25
	0	0	25
3AM-4AM	1	0	20
	1	0	22
	1	0	22
4AM-5AM	1	0	29
	1	0	39
	1	0	40
5AM-6AM	0	4	64
	0	6	73
	0	6	77
6AM-7AM	36	48	1,347
	40	49	1,480
	40	49	1,523
7AM-8AM	58	60	1,925
	60	64	2,068
	66	64	2,148
8AM-9AM	56	59	1,865
	62	66	2,042
	65	67	2,128

### Number of Responses / Hour of the Day



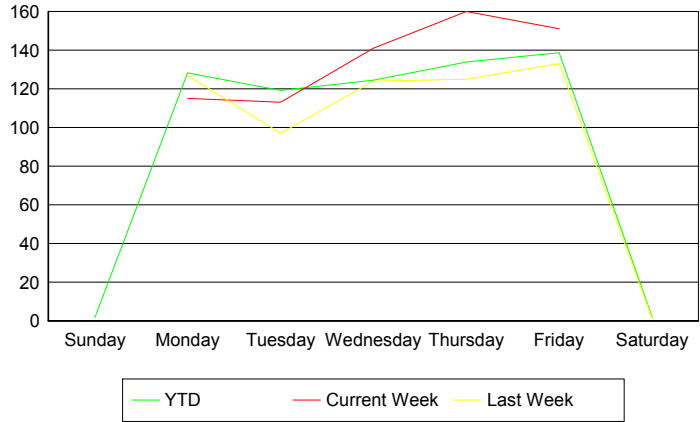
	Current We	Last Week	YTD
9AM-10AM	45	49	1,643
	46	53	1,764
	47	57	1,825
10AM-11AM	59	44	1,561
	64	54	1,695
	66	55	1,773
11AM-12PM	40	36	1,500
	44	38	1,602
	47	44	1,671
12PM-1PM	54	40	1,597
	61	41	1,687
	61	42	1,753
1PM-2PM	50	44	1,499
	52	52	1,623
	54	53	1,701
2PM-3PM	59	40	1,693
	64	47	1,807
	67	49	1,883
3PM-4PM	55	36	1,547
	59	41	1,661
	61	44	1,727
4PM-5PM	71	59	1,861
	73	64	1,991
	76	68	2,066
5PM-6PM	49	53	1,717
	54	56	1,870
	56	57	1,946
6PM-7PM	45	31	1,330
	49	32	1,404
	53	33	1,452
7PM-8PM	0	0	24
	0	0	28
	0	0	30
8PM-9PM	0	0	9
	0	0	9
	0	0	9
9PM-10PM	0	2	11
	0	2	11
	0	2	11
10PM-11PM	0	1	19
	0	1	25
	0	1	25
11PM-12AM	0	0	22
	0	0	26
	0	0	27

## Road Ranger / SIRV Performance By Day of Week

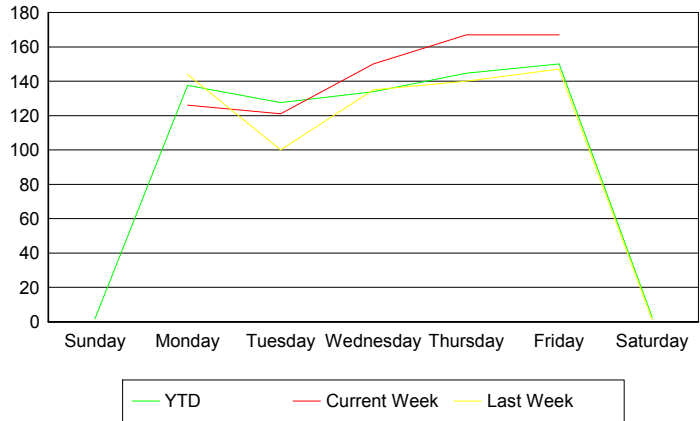
Values presented are:  
 - Total Events with a RR/SIRV Response  
 - Total RR/SIRV Responses,  
 - Total Activities Performed

	Current We	Last Week	YTD
Sunday	0 0 0	0 0 0	14 14 16
Monday	115 126 129	127 144 150	4,182 4,489 4,632
Tuesday	113 121 130	97 100 102	3,886 4,160 4,304
Wednesday	141 150 155	124 135 137	4,068 4,376 4,573
Thursday	160 167 172	125 140 145	4,499 4,861 5,055
Friday	151 167 176	133 147 157	4,691 5,077 5,306
Saturday	0 0 0	1 1 1	19 22 25

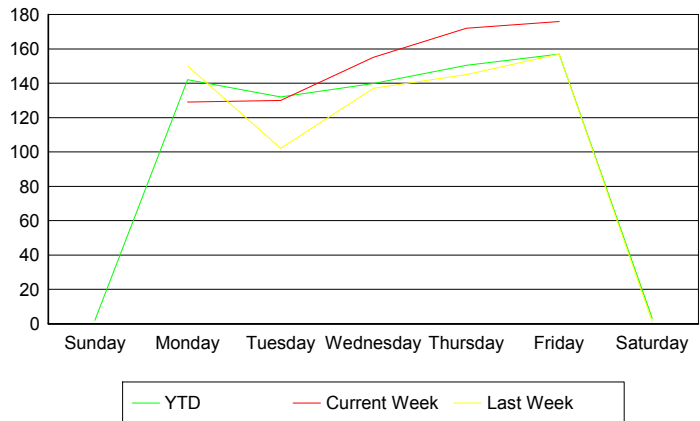
### Avg # of events with a RR/SIRV Response per Day of the Week



### Avg # of RR/SIRV Responses per Day of the Week



### Avg # of RR/SIRV Activities Performed per Day of the Week



### Road Ranger / SIRV Responses per Time of Day and Day of Week

