



Weekly Performance Measures Report Broward County



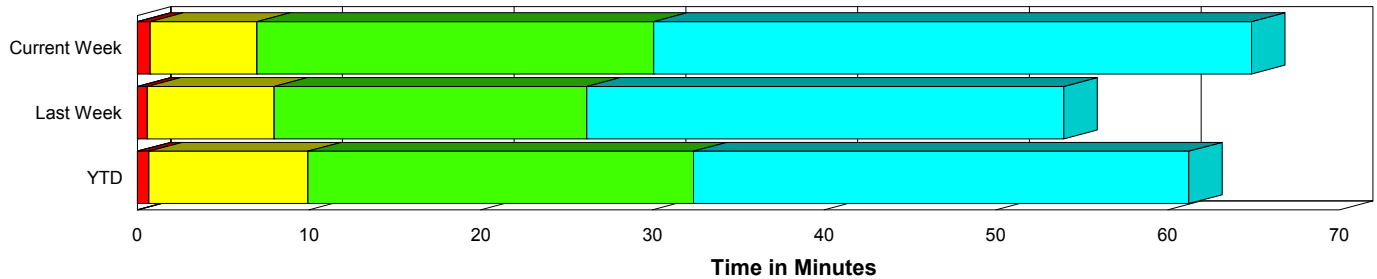
Created on:
August 16, 2009
4:17 pm

Period From Aug 9, 2009 to Aug 15, 2009

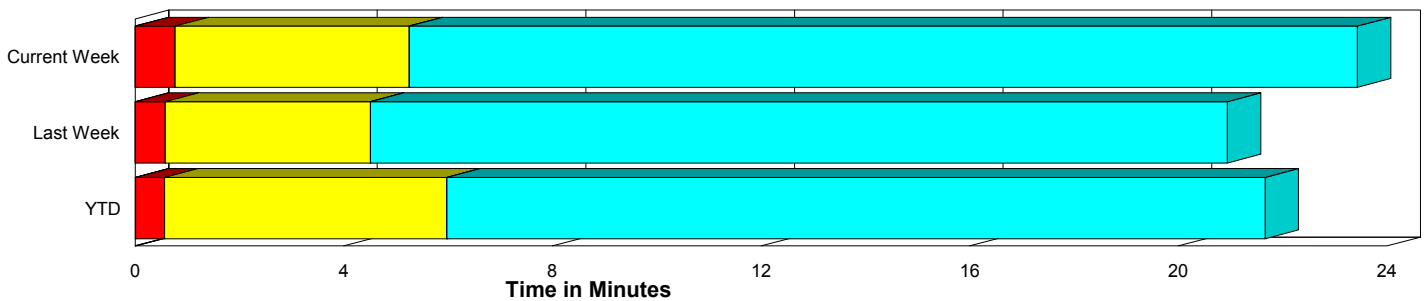
Performance Measures Summary

	Traffic Events (No Lanes Blocked)			Incidents (Lanes Blocked)		
	<u>This Week</u>	<u>Last Week</u>	<u>YTD</u>	<u>This Week</u>	<u>Last Week</u>	<u>YTD</u>
Number of Events	762	827	31,055	43	41	1,517
TMC Detection (min.)	0.00	0.00	0.01	0.00	0.00	0.00
TMC Verification (min.)	0.77	0.58	0.56	0.76	0.58	0.68
TMC Response (min.)	5.68	4.85	6.45	7.33	8.10	10.16
RR Dispatch Time (min.)	0.87	0.60	1.22	2.08	1.10	3.11
RR Response Time (min.)	4.92	4.34	5.36	5.77	7.07	7.25
Roadway Clearance (min.)				27.64	25.24	31.67
Event Clearance (min.)	23.86	21.27	22.15	62.44	53.02	60.00
# of Events w/ RR/SIRV	535	569	20,101	27	30	998
RR/SIRV Responses	535	569	20,101	27	30	998
RR/SIRV Activities	515	531	17,175	62	62	2,037

Incident Clearance Time-Line



Traffic Event (Non-Lane Blockage) Time-Line



■ Avg. TMC Detection Time	■ Avg. Time from TMC Response to Roadway Clearance*
■ Avg. Time from TMC Detection to TMC Verification	■ Avg. Time from Roadway Clearance to Incident/Event Clearance**
■ Avg. Time from TMC Verification to TMC Response	

* Roadway clearance equals all travel lanes open

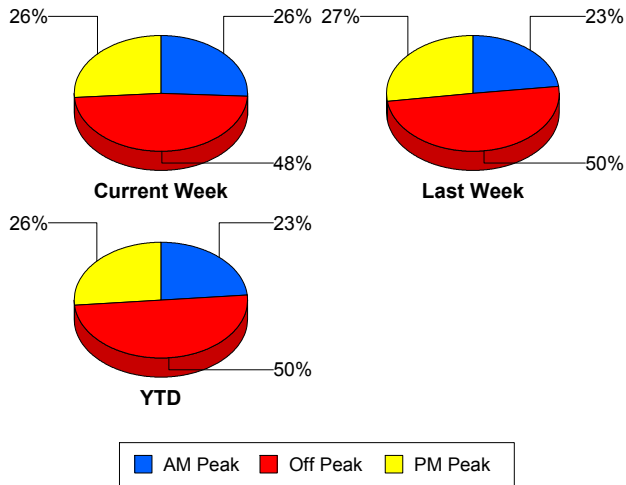
** Incident clearance equals time when last responder has left the scene

Performance Measures by Peak Period

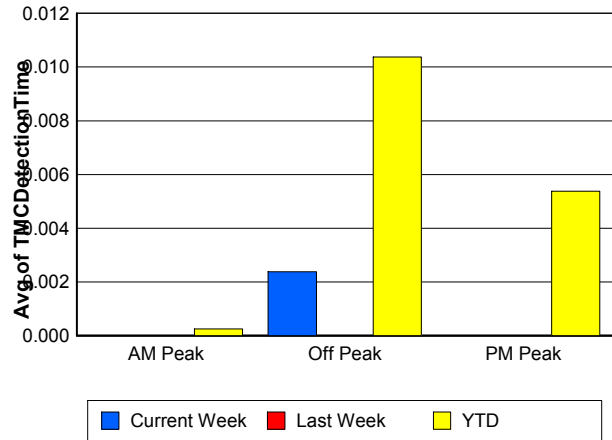
Note: AM peak period is defined as 6am to 10am and PM peak period is defined as 3pm to 7pm.

	AM Peak			Off Peak			PM Peak		
	<u>Current Week</u>	<u>Last Week</u>	<u>YTD</u>	<u>Current Week</u>	<u>Last Week</u>	<u>YTD</u>	<u>Current Week</u>	<u>Last Week</u>	<u>YTD</u>
Number of Events	208	200	7,654	386	432	16,288	211	236	8,630
Number of Incidents	7	10	337	24	18	748	12	13	432
TMC Detection (min.)	0.00	0.00	0.00	0.00	0.00	0.01	0.00	0.00	0.01
TMC Verification (min.)	0.93	0.31	0.50	0.55	0.42	0.48	1.00	1.11	0.77
TMC Response (min.)	5.40	4.61	6.13	6.24	5.59	7.53	5.61	4.67	6.10
RR Dispatch Time (min.)	0.70	0.55	1.00	1.33	0.78	1.89	0.68	0.51	0.86
RR Response Time (min.)	4.81	4.15	5.22	5.11	4.88	5.74	4.95	4.30	5.35
Event Clearance (min.)	19.53	21.53	21.59	30.78	25.77	26.81	23.32	18.34	20.50
Roadway Clearance (min.)	22.21	28.48	25.97	31.37	22.62	36.95	23.33	26.38	26.97
Incident Clearance (min.)	54.99	75.74	55.35	72.02	48.89	64.22	47.62	41.26	56.33
# of Events w/ RR/SIRV	182	162	6,162	208	241	8,410	172	196	6,527
RR/SIRV Responses	182	162	6,162	208	241	8,410	172	196	6,527
RR/SIRV Activities	186	166	5,865	217	230	7,370	174	197	5,977

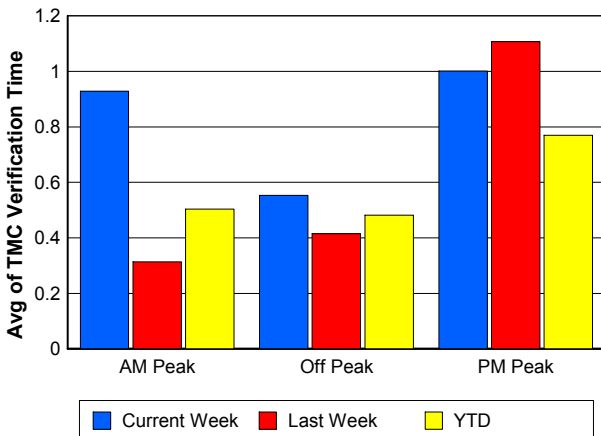
Number of Events / Peak Period



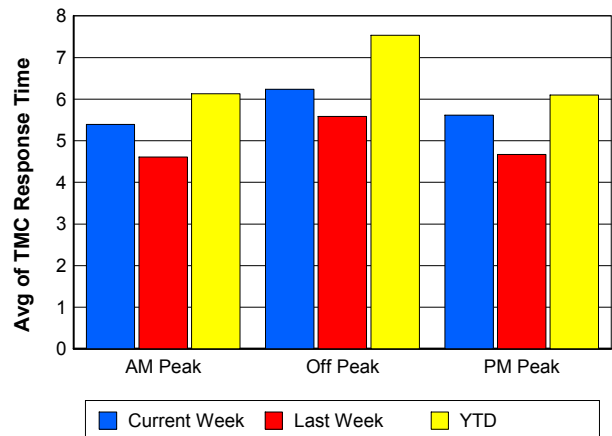
TMC Detection Time



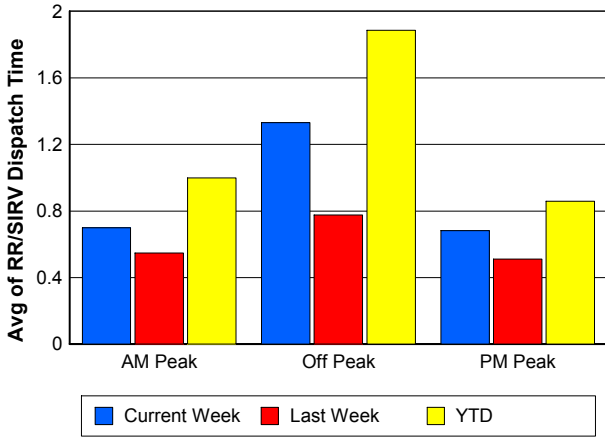
TMC Verification Time



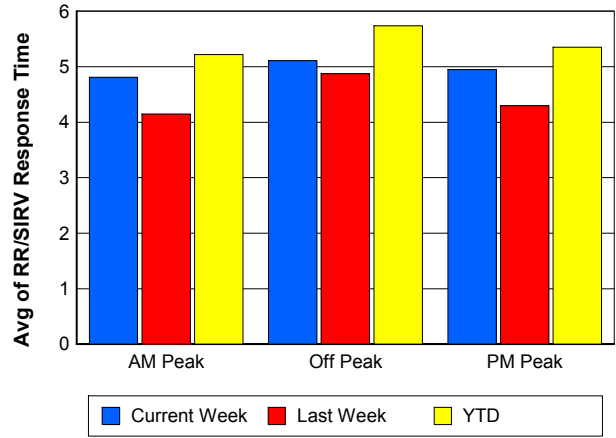
TMC Response Time



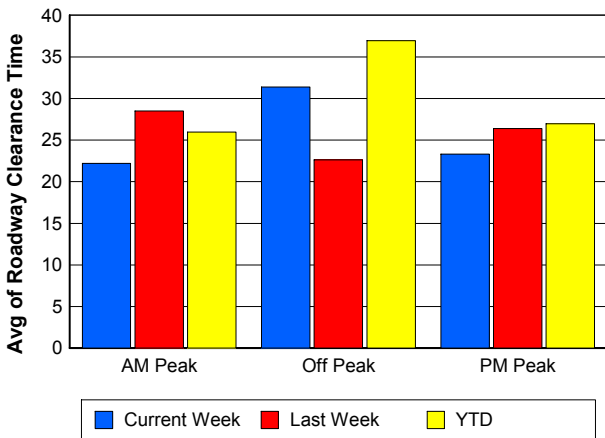
Road Ranger / SIRV Dispatch Time



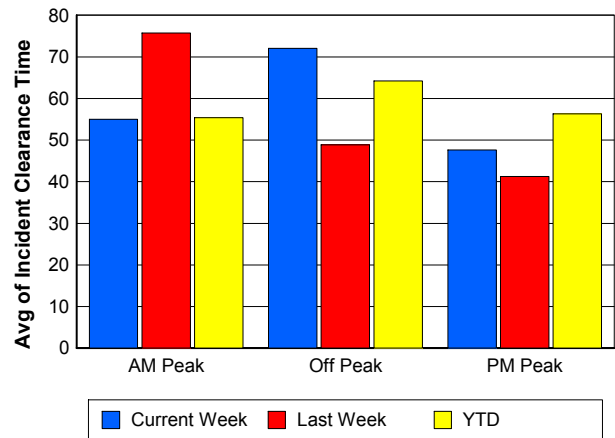
Road Ranger / SIRV Response Time



Roadway Clearance Time (2A)



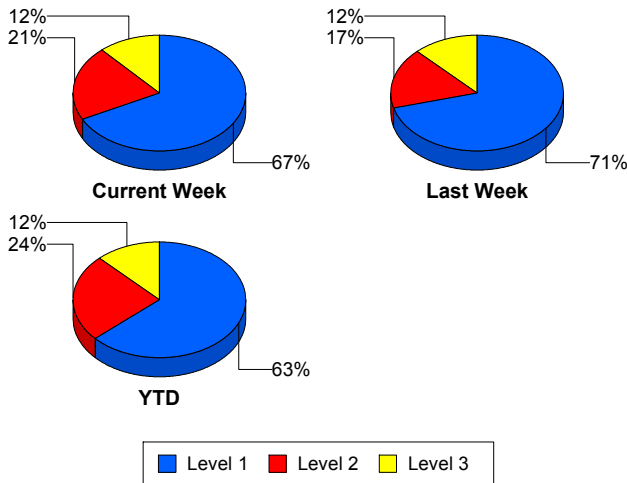
Incident Clearance Time (3B)



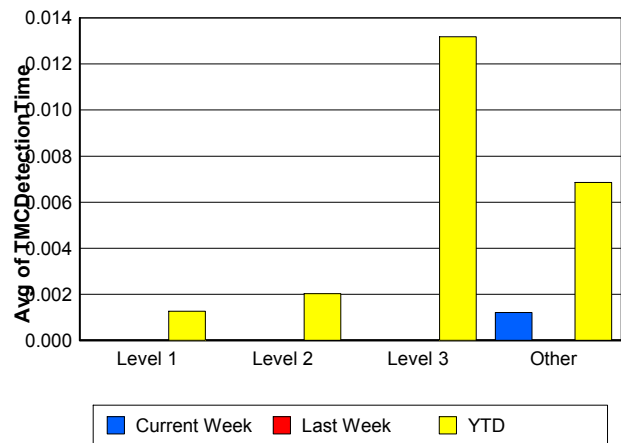
Performance Measures by Severity

	Level 1			Level 2			Level 3			Other		
	<u>This Week</u>	<u>Last Week</u>	<u>YTD</u>	<u>This Week</u>	<u>Last Week</u>	<u>YTD</u>	<u>This Week</u>	<u>Last Week</u>	<u>YTD</u>	<u>This Week</u>	<u>Last Week</u>	<u>YTD</u>
Number of Events	29	29	960	9	7	370	5	5	187	762	827	31,055
Number of Incidents	29	29	960	9	7	370	5	5	187	0	0	0
TMC Detection (min.)	0.00	0.00	0.00	0.00	0.00	0.00	0.00	0.00	0.01	0.00	0.00	0.01
TMC Verification (min.)	0.35	0.66	0.43	2.49	0.47	0.96	0.00	0.28	1.44	0.77	0.58	0.56
TMC Response (min.)	6.21	8.08	7.13	10.18	4.14	10.23	10.19	10.54	24.48	5.68	4.85	6.45
RR Dispatch Time (min.)	1.58	1.26	1.64	2.33	0.26	3.23	3.82	0.94	9.29	0.87	0.60	1.22
RR Resp. Time (min.)	4.62	6.92	5.58	7.85	3.88	7.47	9.40	9.60	14.89	4.92	4.34	5.36
Event Clearance (min.)	48.28	40.94	46.27	77.78	73.85	72.89	116.93	93.91	104.76	23.86	21.27	22.15
Roadway Clear. (min.)	14.35	15.93	14.18	42.42	46.33	49.12	78.09	49.74	86.95			
Incident Clearance (min.)	48.28	40.94	46.27	77.78	73.85	72.89	116.93	93.91	104.76			
# of Events w/ RR/SIRV	19	22	671	3	3	171	5	5	156	535	569	20,101
RR/SIRV Responses	19	22	671	3	3	171	5	5	156	535	569	20,101
RR/SIRV Activities	41	42	1,194	9	6	499	12	14	344	515	531	17,175

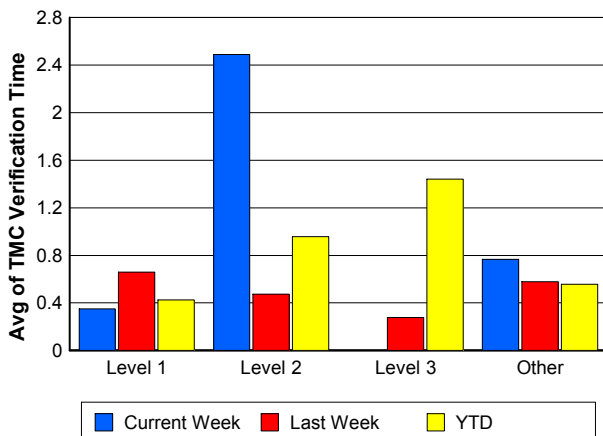
Number of Events / Severity



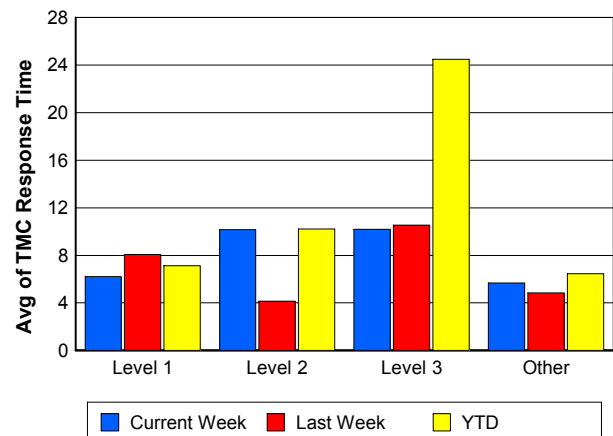
TMC Detection Time



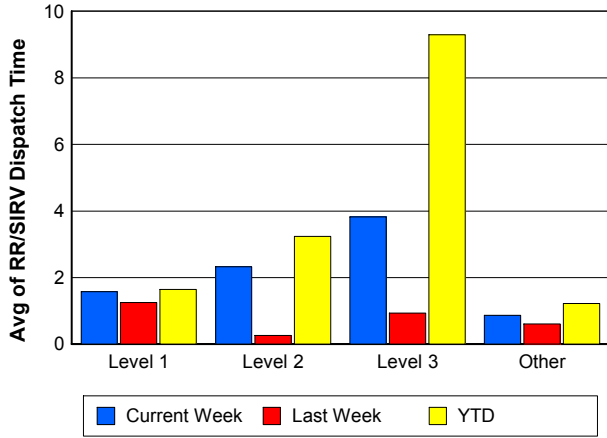
TMC Verification Time



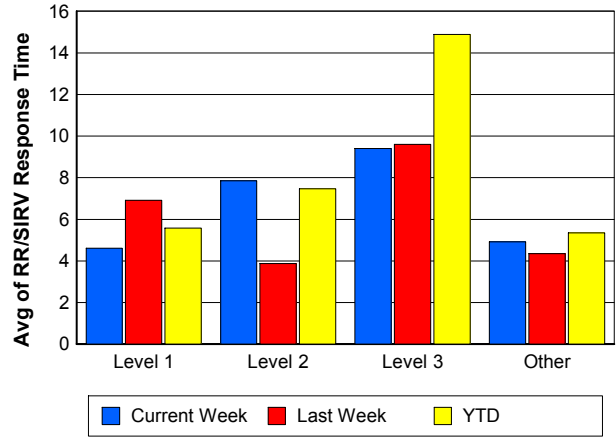
TMC Response Time



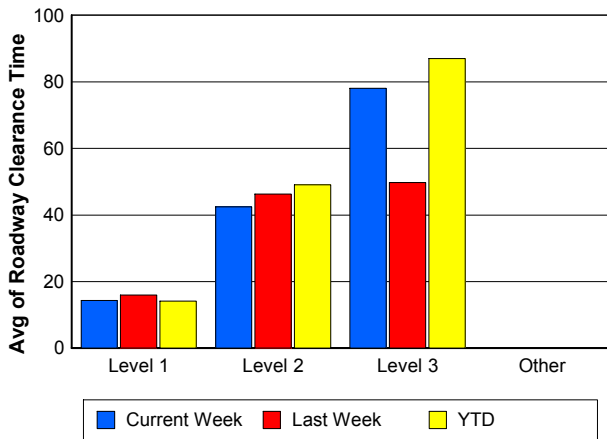
Road Ranger / SIRV Dispatch Time



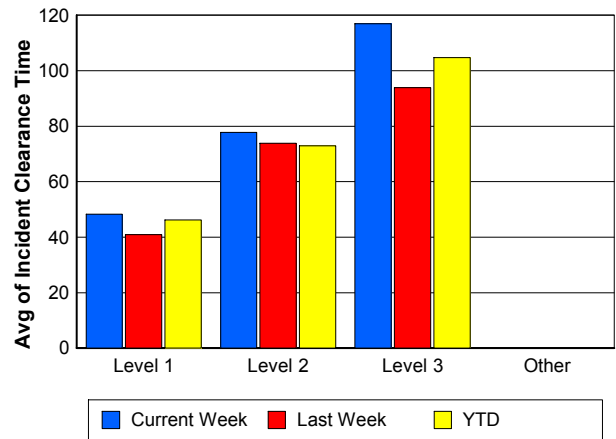
Road Ranger / SIRV Response Time



Roadway Clearance Time (2A)



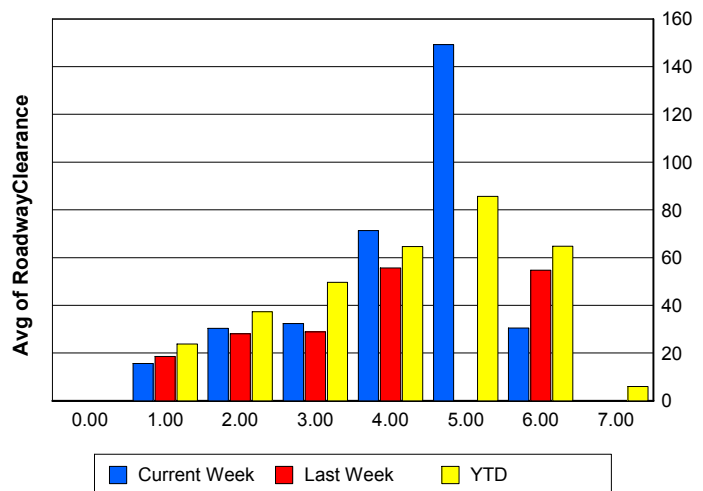
Incident Clearance Time (3B)



Roadway Clearance by Maximum Number of Lanes Blocked

	Current Week	Last Week	YTD
0			
1	15.66	18.54	23.79
2	30.30	28.08	37.36
3	32.38	28.89	49.59
4	71.37	55.63	64.56
5	149.23	0.00	85.59
6	30.43	54.71	64.72
7	0.00	0.00	5.97

Roadway Clearance Time (2A)



Performance Measures by Roadway

595

	<u>Current Week</u>	<u>Last Week</u>	<u>YTD</u>
Number of Events	42	31	4,150
Number of Incidents	1	2	252
TMC Detection (min.)	0.00	0.00	0.01
TMC Verification (min.)	1.13	1.66	0.75
TMC Response (min.)	5.98	3.42	6.39
RR Dispatch Time (min.)	1.01	0.28	1.10
RR Resp. Time (min.)	4.95	3.21	5.37
Event Clearance (min.)	20.14	15.99	21.44
Roadway Clear. (min.)	22.47	24.44	30.70
Incident Clearance (min.)	126.45	25.50	53.74
# of Events w/ RR/SIRV	30	22	2,865
RR/SIRV Responses	30	22	2,865
RR/SIRV Activities	29	23	2,641

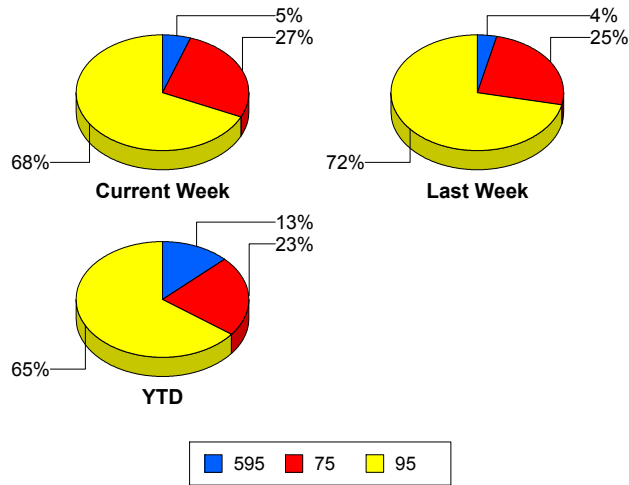
75

	<u>Current Week</u>	<u>Last Week</u>	<u>YTD</u>
Number of Events	216	216	7,368
Number of Incidents	3	6	137
TMC Detection (min.)	0.00	0.00	0.00
TMC Verification (min.)	0.40	0.95	0.68
TMC Response (min.)	4.19	5.91	7.87
RR Dispatch Time (min.)	0.79	0.80	1.24
RR Resp. Time (min.)	3.48	5.28	6.75
Event Clearance (min.)	24.81	24.47	26.17
Roadway Clear. (min.)	49.72	21.78	57.12
Incident Clearance (min.)	61.73	79.74	84.01
# of Events w/ RR/SIRV	142	142	4,656
RR/SIRV Responses	142	142	4,656
RR/SIRV Activities	137	146	3,963

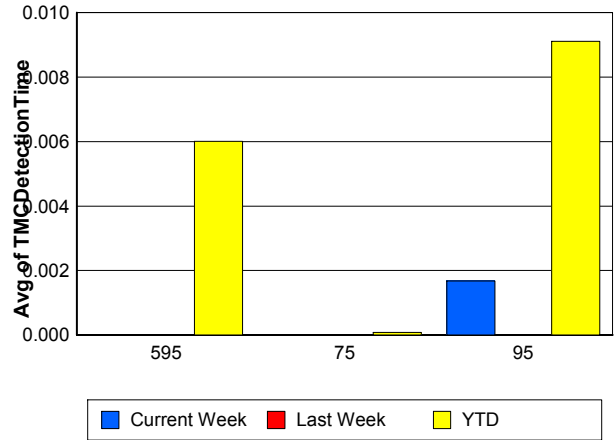
95

	<u>Current Week</u>	<u>Last Week</u>	<u>YTD</u>
Number of Events	547	621	21,054
Number of Incidents	39	33	1,128
TMC Detection (min.)	0.00	0.00	0.01
TMC Verification (min.)	0.89	0.40	0.49
TMC Response (min.)	6.31	4.82	6.33
RR Dispatch Time (min.)	0.97	0.59	1.38
RR Resp. Time (min.)	5.49	4.30	5.07
Event Clearance (min.)	26.80	22.52	23.61
Roadway Clear. (min.)	26.07	25.92	28.80
Incident Clearance (min.)	60.85	49.83	58.48
# of Events w/ RR/SIRV	390	435	13,578
RR/SIRV Responses	390	435	13,578
RR/SIRV Activities	411	424	12,608

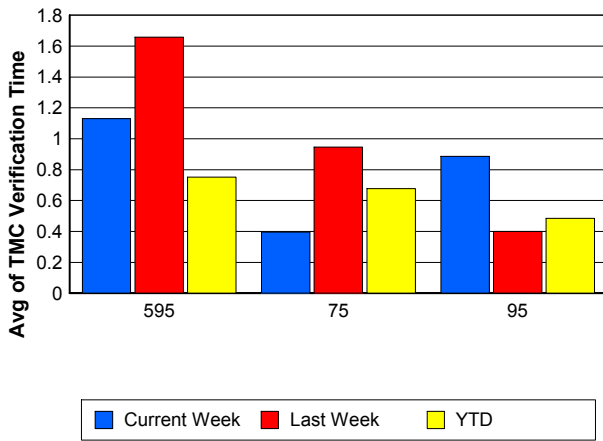
Number of Events / Roadway



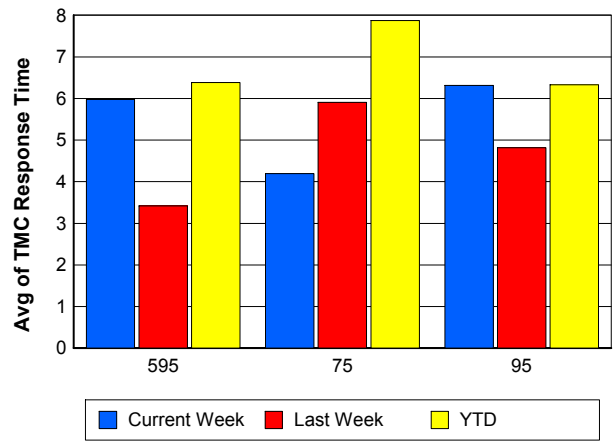
TMC Detection Time



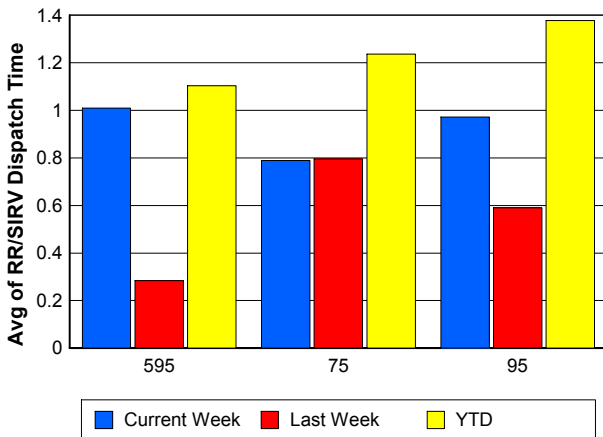
TMC Verification Time



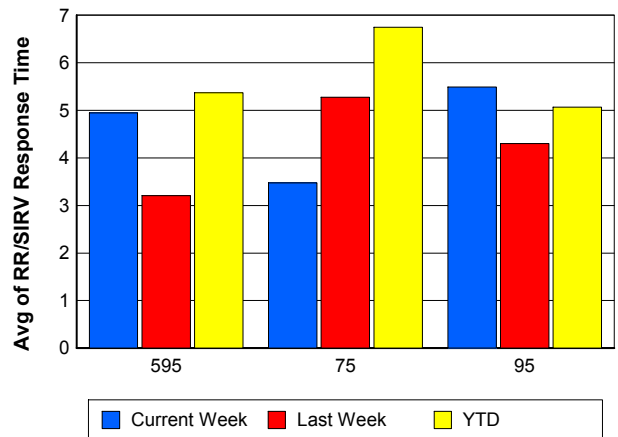
TMC Response Time



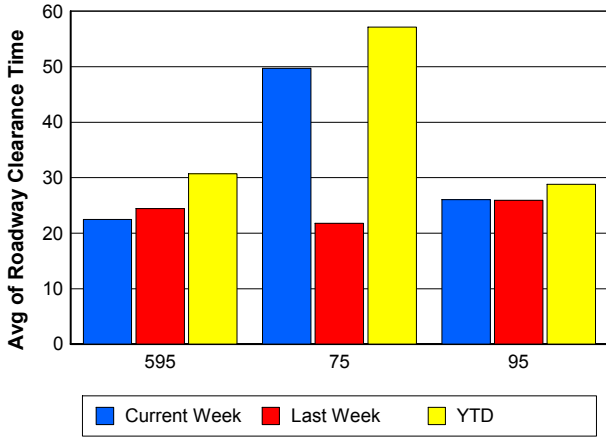
Road Ranger / SIRV Dispatch Time



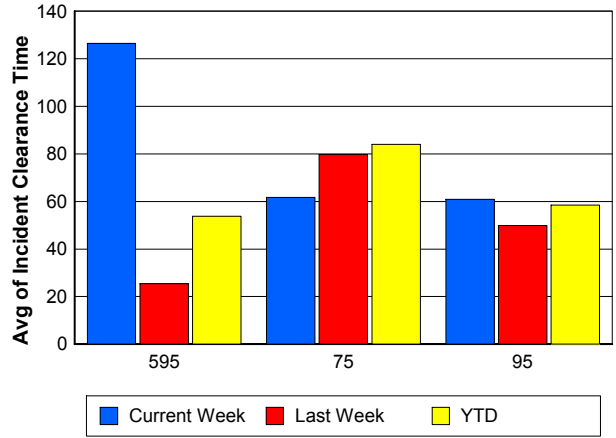
Road Ranger / SIRV Response Time



Roadway Clearance Time (2A)



Incident Clearance Time (3B)



Performance Measures by Event Type

Accident

	<u>Current Week</u>	<u>Last Week</u>	<u>YTD</u>
Number of Events	57	67	2,258
Number of Incidents	32	34	1,096
TMC Detection (min.)	0.00	0.00	0.01
TMC Verification (min.)	0.63	0.68	0.73
TMC Response (min.)	6.54	6.79	8.59
RR Dispatch Time (min.)	1.51	0.97	1.66
RR Response Time (min.)	5.37	5.92	7.05
Event Clearance (min.)	70.96	44.72	55.40
Roadway Clearance (min.)	29.60	26.16	33.02
Incident Clearance (min.)	71.54	58.59	66.56
# of Events w/ RR/SIRV	41	46	1,573
RR/SIRV Assists	41	46	1,573
RR/SIRV Activities	74	75	2,433

Debris on Roadway

	<u>Current Week</u>	<u>Last Week</u>	<u>YTD</u>
Number of Events	36	28	931
Number of Incidents	0	0	21
TMC Detection (min.)	0.00	0.00	0.13
TMC Verification (min.)	5.39	3.69	3.80
TMC Response (min.)	12.17	5.29	7.54
RR Dispatch Time (min.)	1.70	0.58	0.90
RR Response Time (min.)	10.42	4.72	6.66
Event Clearance (min.)	14.10	18.45	11.71
Roadway Clearance (min.)			23.45
Incident Clearance (min.)			27.98
# of Events w/ RR/SIRV	31	23	848
RR/SIRV Assists	31	23	848
RR/SIRV Activities	33	22	877

Disabled Vehicle

	<u>Current Week</u>	<u>Last Week</u>	<u>YTD</u>
Number of Events	516	567	18,992
Number of Incidents	5	4	232
TMC Detection (min.)	0.00	0.00	0.00
TMC Verification (min.)	0.69	0.62	0.65
TMC Response (min.)	5.25	4.97	6.21
RR Dispatch Time (min.)	0.71	0.53	1.11
RR Response Time (min.)	4.58	4.48	5.13
Event Clearance (min.)	26.64	25.15	27.09
Roadway Clearance (min.)	9.42	25.32	19.26
Incident Clearance (min.)	22.01	33.53	36.49
# of Events w/ RR/SIRV	413	453	14,520
RR/SIRV Assists	413	453	14,520
RR/SIRV Activities	438	467	14,846

Emergency Vehicles

	<u>Current Week</u>	<u>Last Week</u>	<u>YTD</u>
Number of Events	1	1	44
Number of Incidents	1	1	36
TMC Detection (min.)	0.00	0.00	0.00
TMC Verification (min.)	0.00	0.00	0.85
TMC Response (min.)	6.03		15.18
RR Dispatch Time (min.)	3.55		9.85
RR Response Time (min.)	2.48		4.71
Event Clearance (min.)	19.35	9.42	48.33
Roadway Clearance (min.)	15.98	7.33	47.96
Incident Clearance (min.)	19.35	9.42	53.39
# of Events w/ RR/SIRV	1	0	26
RR/SIRV Assists	1	0	26
RR/SIRV Activities	1	0	43

Other

	<u>Current Week</u>	<u>Last Week</u>	<u>YTD</u>
Number of Events	183	204	10,009
Number of Incidents	0	2	24
TMC Detection (min.)	0.00	0.00	0.00
TMC Verification (min.)	0.06	0.01	0.06
TMC Response (min.)	5.22	2.21	9.11
RR Dispatch Time (min.)	1.46	1.01	1.89
RR Response Time (min.)	4.07	1.55	6.54
Event Clearance (min.)	11.59	9.63	11.43
Roadway Clearance (min.)		18.37	32.61
Incident Clearance (min.)		19.10	37.34
# of Events w/ RR/SIRV	71	76	3,954
RR/SIRV Assists	71	76	3,954
RR/SIRV Activities	24	28	780

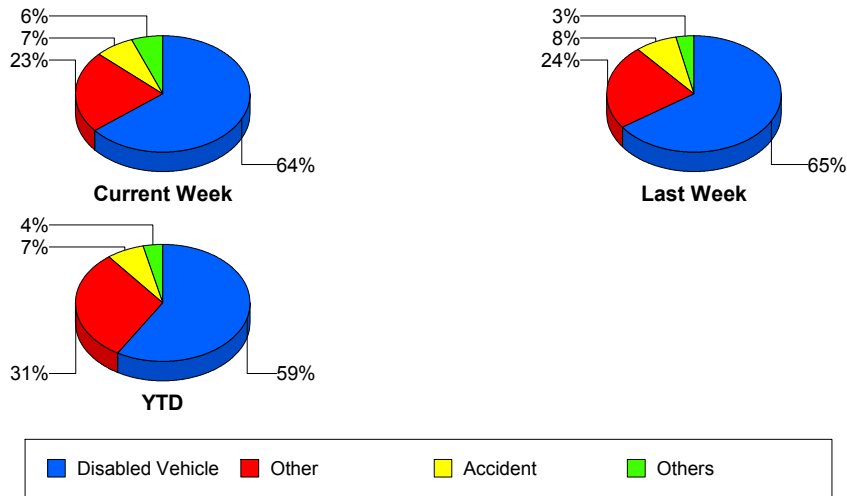
Police Activity

	<u>Current Week</u>	<u>YTD</u>
Number of Events	6	143
Number of Incidents	2	46
TMC Detection (min.)	0.00	0.00
TMC Verification (min.)	4.39	0.35
TMC Response (min.)	8.11	14.56
RR Dispatch Time (min.)	1.44	4.79
RR Response Time (min.)	6.67	9.79
Event Clearance (min.)	20.95	35.39
Roadway Clearance (min.)	42.32	41.40
Incident Clearance (min.)	43.83	51.12
# of Events w/ RR/SIRV	3	46
RR/SIRV Assists	3	46
RR/SIRV Activities	6	55

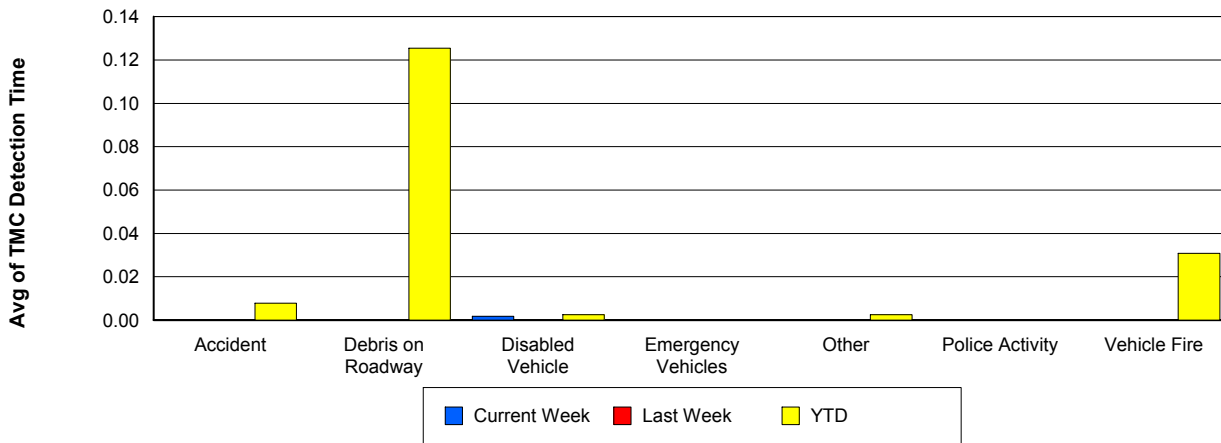
Vehicle Fire

	<u>Current Week</u>	<u>YTD</u>
Number of Events	4	80
Number of Incidents	3	62
TMC Detection (min.)	0.00	0.03
TMC Verification (min.)	0.30	1.25
TMC Response (min.)		11.33
RR Dispatch Time (min.)		2.48
RR Response Time (min.)		9.36
Event Clearance (min.)	70.06	58.84
Roadway Clearance (min.)	31.19	40.06
Incident Clearance (min.)	59.53	62.28
# of Events w/ RR/SIRV	0	50
RR/SIRV Assists	0	50
RR/SIRV Activities	0	103

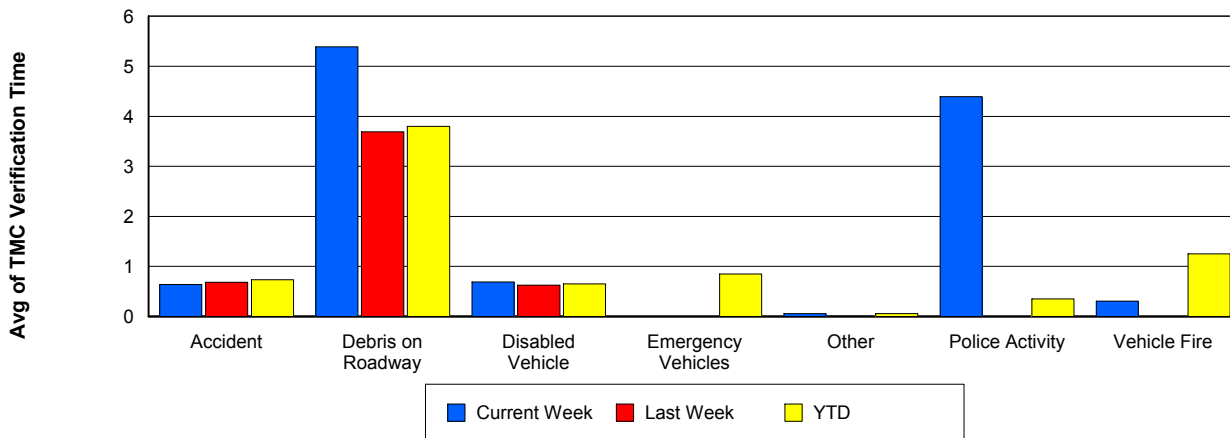
Number of Events / Event Type



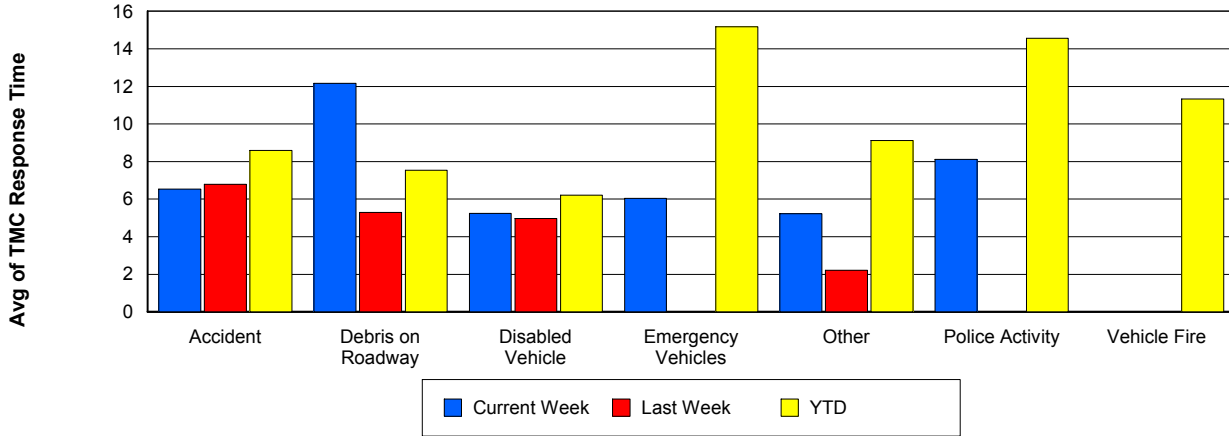
TMC Detection Time



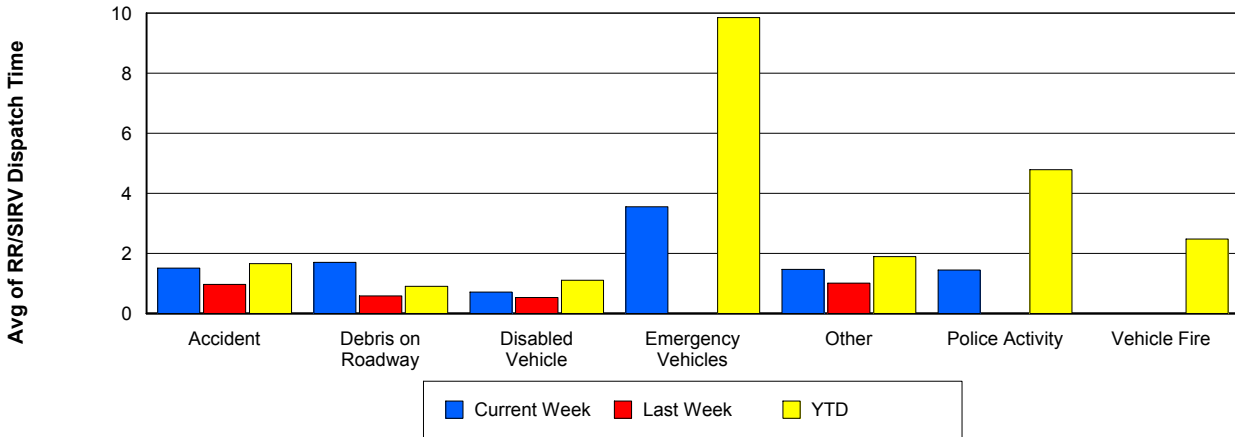
TMC Verification Time



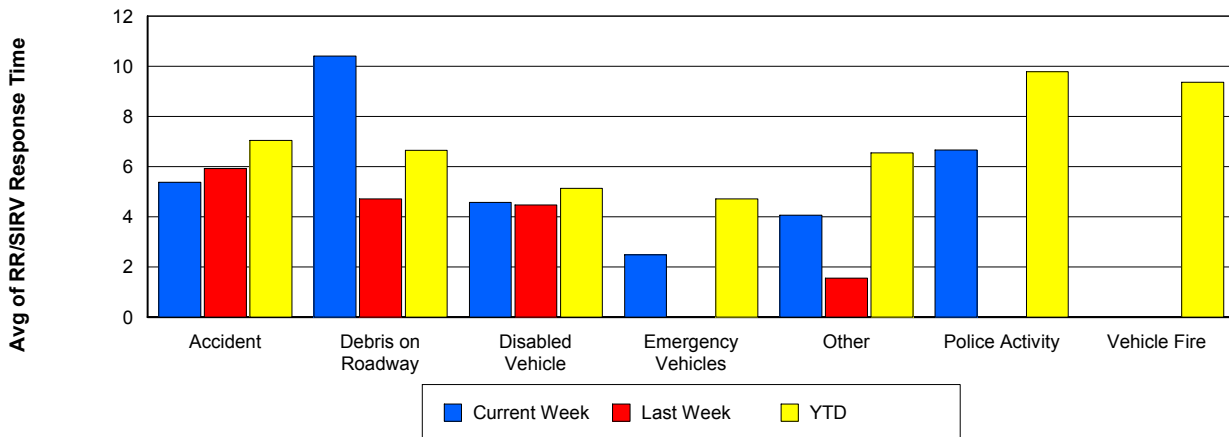
TMC Response Time



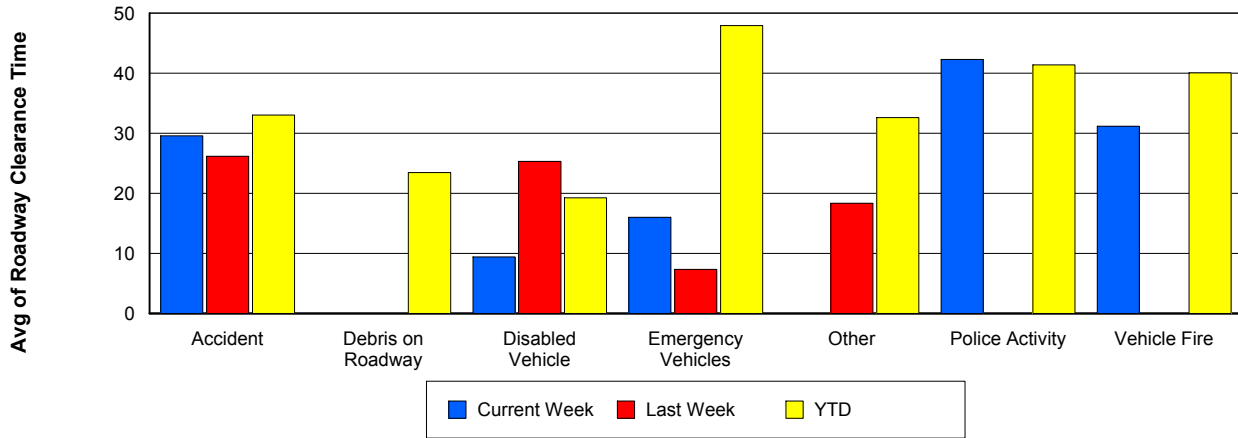
Road Ranger / SIRV Dispatch Time



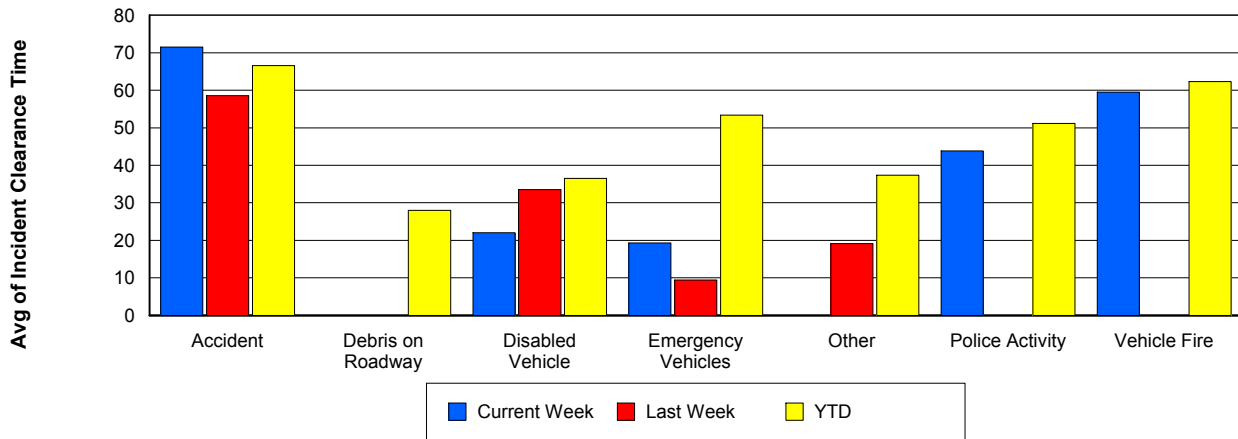
Road Ranger / SIRV Response Time



Roadway Clearance Time (2A)



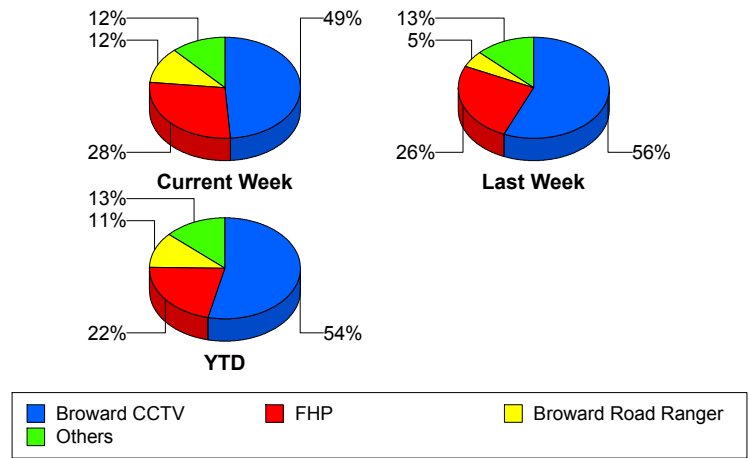
Incident Clearance Time (3B)



Incident Detection Methods

	Current Week	Last Week	YTD
Broward CCTV	21	22	812
Broward Road Ranger	5	2	170
Broward VideoWall	1	2	52
BSO	0	1	33
District 4	0	1	42
District 6	0	0	1
FDOT Maintenance	0	0	4
FHP	12	10	329
Fire	0	0	2
Florida's Turnpike	0	0	6
ITMS	0	0	1
Motorist	1	0	8
Other	0	0	1
Palm Beach Road Ran	0	0	2
Road Watcher	0	0	12
SIRV	0	1	10
SmarTraveler (511)	0	0	6
VisioPaD Detection	3	0	24
Total	43	39	1,515

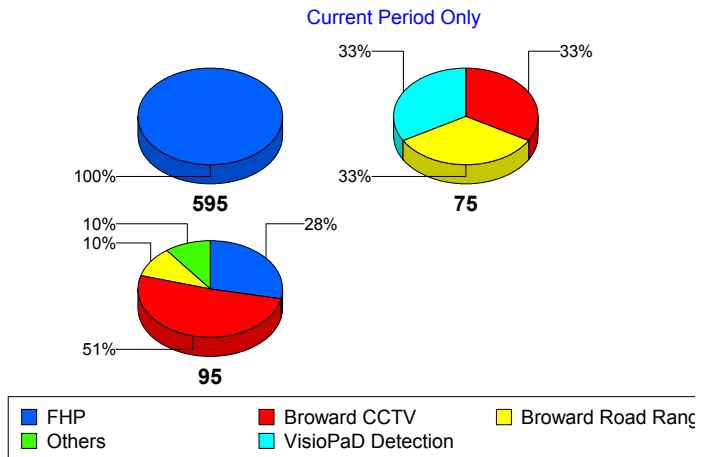
Total Incidents by Detection Method



Incident Detection Methods by Roadway

		Current Week	Last Week	YTD
595	Broward CCTV	0	0	121
	Broward Road Ranger	0	0	37
	Broward VideoWall	0	0	8
	BSO	0	1	4
	District 4	0	0	12
	FDOT Maintenance	0	0	2
	FHP	1	0	50
	Florida's Turnpike	0	0	6
	Motorist	0	0	2
	Road Watcher	0	0	3
	SIRV	0	0	1
	VisioPaD Detection	0	0	5
	Total	1	1	251
	75	Broward CCTV	1	3
Broward Road Ranger		1	0	13
Broward VideoWall		0	0	1
BSO		0	0	26
District 4		0	0	5
FHP		0	3	29
Other		0	0	1
Road Watcher		0	0	2
VisioPaD Detection		1	0	3
Total		3	6	137
95	Broward CCTV	20	19	634
	Broward Road Ranger	4	2	120
	Broward VideoWall	1	2	43
	BSO	0	0	3
	District 4	0	1	25
	District 6	0	0	1
	FDOT Maintenance	0	0	2
	FHP	11	7	250

Total Events by Roadway and Detection Method

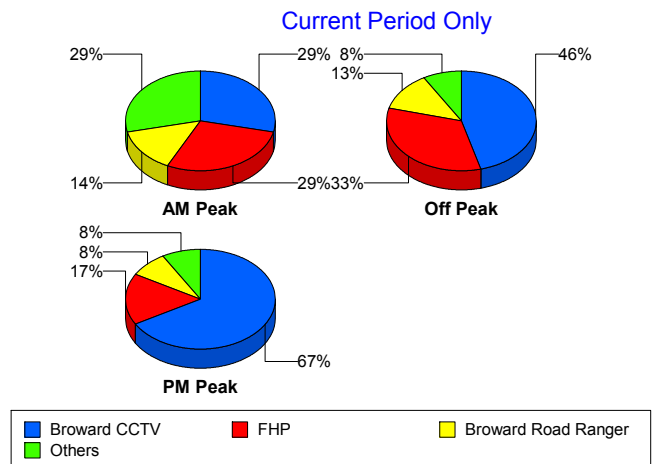


		Current Week	Last Week	YTD
95	Fire	0	0	2
	ITMS	0	0	1
	Motorist	1	0	6
	Palm Beach Road Ran	0	0	2
	Road Watcher	0	0	7
	SIRV	0	1	9
	SmarTraveler (511)	0	0	6
	VisioPaD Detection	2	0	16
	Total	39	32	1,127
Total		43	39	1,515

Incident Detection Methods by Peak Period

		Current Week	Last Week	YTD
AM Peak	Broward CCTV	2	8	155
	Broward Road Ranger	1	0	52
	Broward VideoWall	1	0	17
	BSO	0	0	5
	District 4	0	0	13
	FHP	2	1	79
	Florida's Turnpike	0	0	2
	Motorist	1	0	5
	Palm Beach Road Ran	0	0	1
	Road Watcher	0	0	4
	SIRV	0	0	1
	SmarTraveler (511)	0	0	1
	VisioPaD Detection	0	0	1
	Total	7	9	336
Off Peak	Broward CCTV	11	7	434
	Broward Road Ranger	3	1	49
	Broward VideoWall	0	2	29
	BSO	0	1	23
	District 4	0	1	14

Total Events by Peak Period and Detection Method

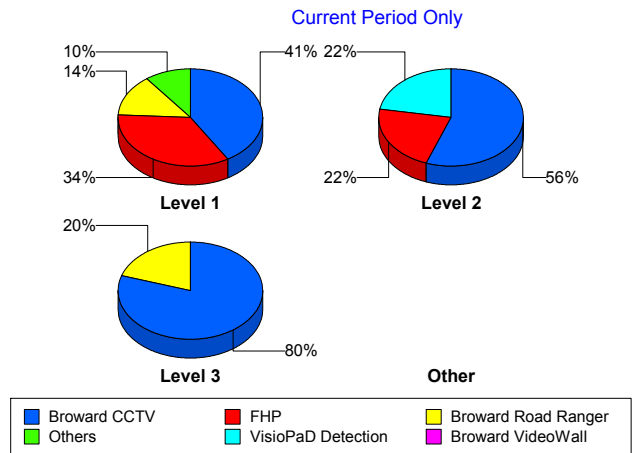


		Current Week	Last Week	YTD
Off Peak	FDOT Maintenance	0	0	2
	FHP	8	5	160
	Fire	0	0	1
	Florida's Turnpike	0	0	3
	ITMS	0	0	1
	Motorist	0	0	3
	Road Watcher	0	0	5
	SIRV	0	1	3
	SmarTraveler (511)	0	0	3
	VisioPaD Detection	2	0	18
	Total	24	18	748
PM Peak	Broward CCTV	8	7	223
	Broward Road Ranger	1	1	69
	Broward VideoWall	0	0	6
	BSO	0	0	5
	District 4	0	0	15
	District 6	0	0	1
	FDOT Maintenance	0	0	2
	FHP	2	4	90
	Fire	0	0	1
	Florida's Turnpike	0	0	1
	Other	0	0	1
	Palm Beach Road Ran	0	0	1
	Road Watcher	0	0	3
	SIRV	0	0	6
	SmarTraveler (511)	0	0	2
	VisioPaD Detection	1	0	5
	Total	12	12	431
Total	43	39	1,515	

Incident Detection Methods by Severity

		Current Week	Last Week	YTD
Level 1	Broward CCTV	12	17	520
	Broward Road Ranger	4	0	125
	Broward VideoWall	1	2	33
	BSO	0	1	8
	District 4	0	1	31
	FDOT Maintenance	0	0	3
	FHP	10	6	195
	Fire	0	0	1
	Motorist	1	0	6
	Palm Beach Road Ran	0	0	2
	Road Watcher	0	0	9
	SIRV	0	1	9
	SmarTraveler (511)	0	0	4
	VisioPaD Detection	1	0	13
	Total	29	28	959
Level 2	Broward CCTV	5	2	199
	Broward Road Ranger	0	2	30
	Broward VideoWall	0	0	16
	BSO	0	0	7
	District 4	0	0	5
	FDOT Maintenance	0	0	1
	FHP	2	3	91
	Florida's Turnpike	0	0	4
	ITMS	0	0	1
	Motorist	0	0	2
	Other	0	0	1
	Road Watcher	0	0	1
	SIRV	0	0	1
	SmarTraveler (511)	0	0	2
	VisioPaD Detection	2	0	9
Total	9	7	370	

Total Events by Severity and Detection Method



		Current Week	Last Week	YTD
Level 3	Broward CCTV	4	3	93
	Broward Road Ranger	1	0	15
	Broward VideoWall	0	0	3
	BSO	0	0	18
	District 4	0	0	6
	District 6	0	0	1
	FHP	0	1	43
	Fire	0	0	1
	Florida's Turnpike	0	0	2
	Road Watcher	0	0	2
	VisioPaD Detection	0	0	2
	Total	5	4	186
Total		43	39	1,515

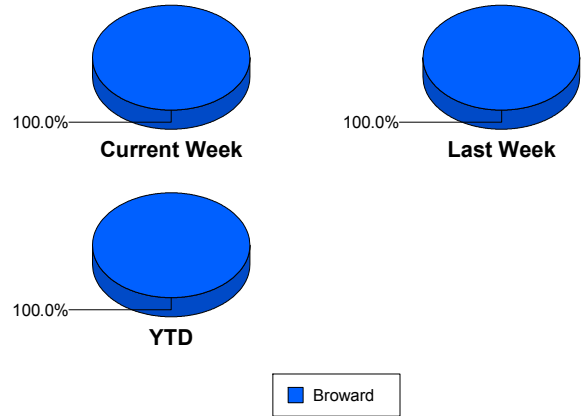
Road Ranger / SIRV Performance Measures

Road Ranger / SIRV Performance By County

RR/SIRV Responses per County

Values presented are: - Total Events with a RR/SIRV Response - Total RR/SIRV Responses, - Total Activities Performed

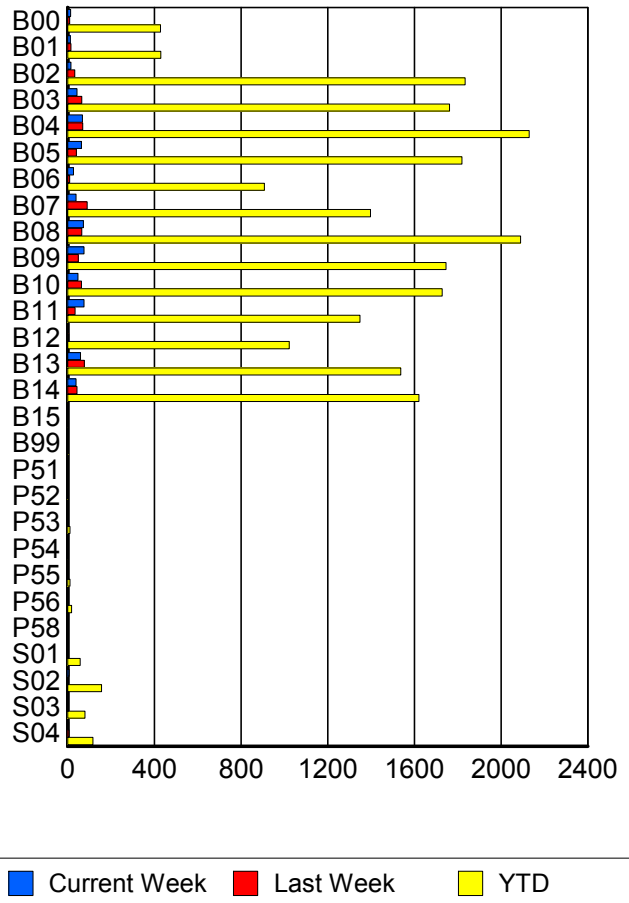
	Current We	Last Week	YTD
Broward	607	635	20,669
	667	686	22,268
	692	705	23,149



Road Ranger / SIRV Performance By Truck

	Current We	Last Week	YTD
B00	13	10	420
	14	10	429
	14	10	446
B01	12	16	423
	13	16	430
	13	18	455
B02	16	33	1,819
	16	33	1,834
	16	33	1,912
B03	43	63	1,733
	43	65	1,763
	46	65	1,821
B04	68	70	2,111
	68	70	2,130
	74	71	2,230
B05	62	40	1,788
	64	41	1,820
	65	43	1,878
B06	27	9	890
	27	10	908
	27	10	937
B07	39	89	1,374
	39	91	1,397
	40	95	1,458
B08	72	65	2,064
	73	65	2,090
	75	66	2,172

**RR/SIRV
Responses per
Truck**



	Current We	Last Week	YTD
B09	74	48	1,719
	75	49	1,746
	76	52	1,812
B10	46	64	1,700
	47	64	1,728
	50	66	1,794
B11	72	34	1,323
	76	35	1,349
	79	36	1,398
B12	0	5	1,010
	0	5	1,023
	0	5	1,064
B13	59	75	1,516
	59	77	1,537
	61	78	1,586
B14	39	43	1,596
	39	43	1,621
	40	45	1,678
B15	0	0	2
	0	0	2
	0	0	2
B99	0	0	4
	0	0	4
	0	0	4
P51	0	0	1
	0	0	1
	0	0	1
P52	0	0	2
	0	0	2
	0	0	2
P53	0	0	11
	0	0	11
	0	0	11
P54	1	0	2
	1	0	2
	1	0	2
P55	0	0	11
	0	0	11
	0	0	13
P56	0	1	18
	0	1	18
	0	1	19
P58	0	0	1
	0	0	1
	0	0	1

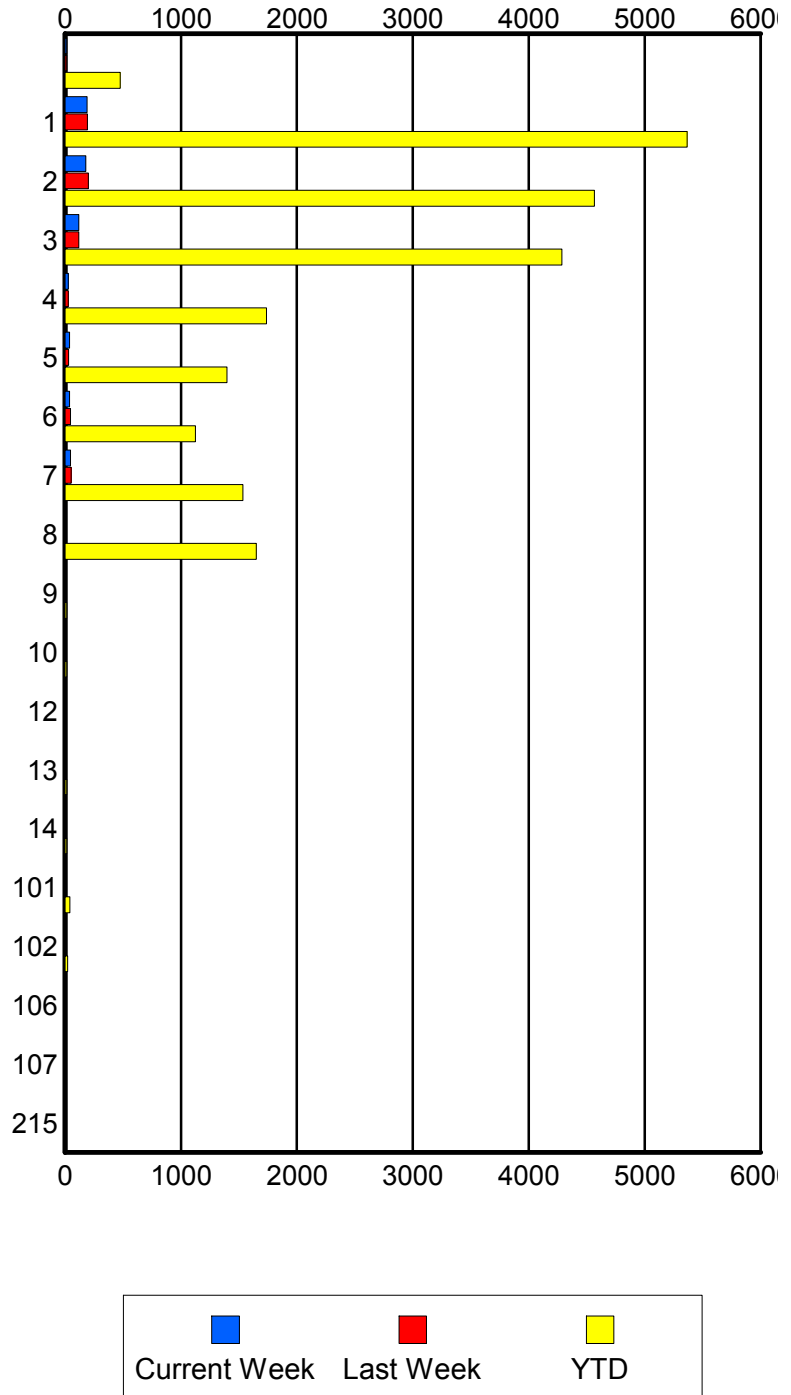
	Current We	Last Week	YTD
S01	0	1	55
	0	2	58
	0	2	66
S02	7	1	151
	7	1	156
	8	1	170
S03	1	1	78
	1	1	80
	1	1	90
S04	5	7	113
	5	7	117
	6	7	127

Road Ranger / SIRV Performance By Beat

	Current We	Last Week	YTD
	15	13	445
	15	14	477
	17	14	521
1	179	182	5,069
	190	194	5,367
	195	199	5,539
2	170	190	4,401
	179	201	4,565
	189	206	4,756
3	114	118	4,167
	119	119	4,285
	123	122	4,455
4	28	26	1,699
	29	27	1,737
	29	29	1,790
5	37	30	1,372
	39	30	1,398
	39	32	1,445
6	37	45	1,100
	39	47	1,125
	42	47	1,187
7	48	52	1,509
	48	53	1,533
	49	55	1,606
8	8	0	1,629
	8	0	1,649
	8	0	1,712
9	0	0	12
	0	0	14
	0	0	14
10	0	0	13
	0	0	14
	0	0	14
12	0	0	9
	0	0	9
	0	0	9
13	0	0	14
	0	0	14
	0	0	15
14	0	0	13
	0	0	13
	0	0	13
101	1	1	42
	1	1	42
	1	1	45

Values presented are:
 - Total Events with a RR/SIRV Response
 - Total RR/SIRV Responses,
 - Total Activities Performed

RR/SIRV Responses per Beat



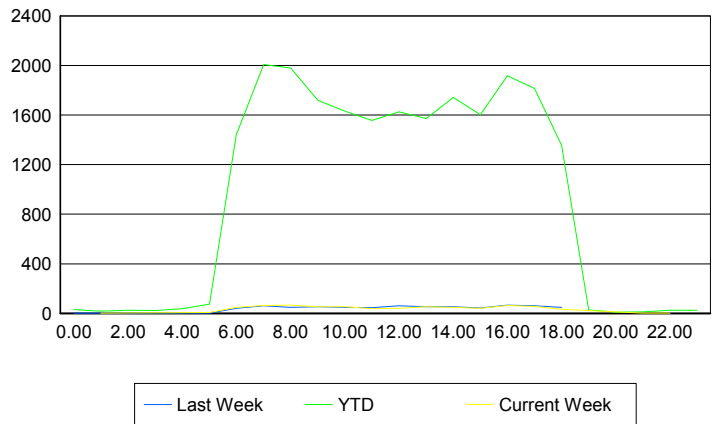
	Current We	Last Week	YTD
102	0	0	23
	0	0	23
	0	0	25
106	0	0	1
	0	0	1
	0	0	1
107	0	0	1
	0	0	1
	0	0	1
215	0	0	1
	0	0	1
	0	0	1

Road Ranger / SIRV Performance By Time of Day

Values presented are:
 - Total Events with a RR/SIRV Response
 - Total RR/SIRV Responses,
 - Total Activities Performed

	Current We	Last Week	YTD
12AM-1AM	0	2	28
	0	2	29
	0	2	31
1AM-2AM	1	0	17
	1	0	17
	1	0	17
2AM-3AM	0	0	20
	0	0	25
	0	0	25
3AM-4AM	0	0	19
	0	0	21
	0	0	21
4AM-5AM	0	0	28
	0	0	38
	0	0	39
5AM-6AM	4	1	64
	6	1	73
	6	1	77
6AM-7AM	48	40	1,311
	49	41	1,440
	49	42	1,483
7AM-8AM	60	57	1,867
	64	61	2,008
	64	63	2,082
8AM-9AM	59	45	1,809
	66	49	1,980
	67	51	2,063

Number of Responses / Hour of the Day



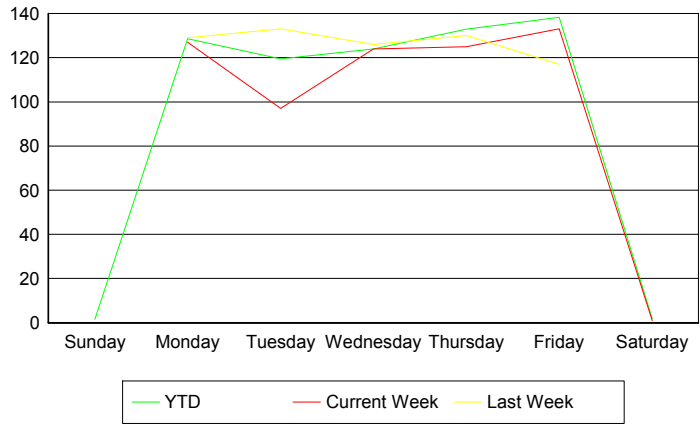
	Current We	Last Week	YTD
9AM-10AM	49	40	1,598
	53	52	1,718
	57	52	1,778
10AM-11AM	44	40	1,502
	54	48	1,631
	55	49	1,707
11AM-12PM	36	44	1,460
	38	46	1,558
	44	46	1,624
12PM-1PM	40	60	1,543
	41	60	1,626
	42	64	1,692
1PM-2PM	44	52	1,449
	52	54	1,571
	53	57	1,647
2PM-3PM	40	53	1,634
	47	54	1,743
	49	54	1,816
3PM-4PM	36	39	1,492
	41	43	1,602
	44	43	1,666
4PM-5PM	59	60	1,790
	64	66	1,918
	68	66	1,990
5PM-6PM	53	56	1,668
	56	61	1,816
	57	64	1,890
6PM-7PM	31	46	1,285
	32	48	1,355
	33	51	1,399
7PM-8PM	0	0	24
	0	0	28
	0	0	30
8PM-9PM	0	0	9
	0	0	9
	0	0	9
9PM-10PM	2	0	11
	2	0	11
	2	0	11
10PM-11PM	1	0	19
	1	0	25
	1	0	25
11PM-12AM	0	0	22
	0	0	26
	0	0	27

Road Ranger / SIRV Performance By Day of Week

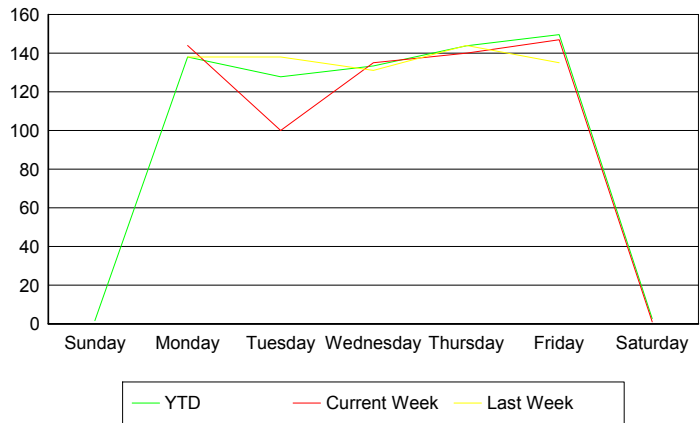
Values presented are:
 - Total Events with a RR/SIRV Response
 - Total RR/SIRV Responses,
 - Total Activities Performed

	Current We	Last Week	YTD
Sunday	0 0 0	0 0 0	14 14 16
Monday	127 144 150	129 138 141	4,067 4,363 4,503
Tuesday	97 100 102	133 138 145	3,773 4,039 4,174
Wednesday	124 135 137	126 131 136	3,927 4,226 4,418
Thursday	125 140 145	130 144 146	4,339 4,694 4,883
Friday	133 147 157	117 135 137	4,540 4,910 5,130
Saturday	1 1 1	0 0 0	19 22 25

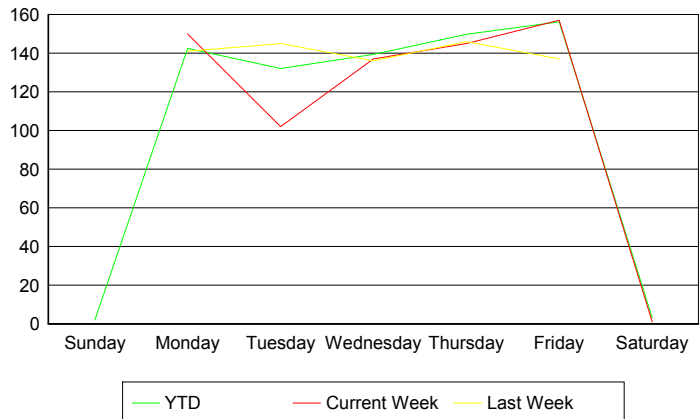
Avg # of events with a RR/SIRV Response per Day of the Week



Avg # of RR/SIRV Responses per Day of the Week



Avg # of RR/SIRV Activities Performed per Day of the Week



Road Ranger / SIRV Responses per Time of Day and Day of Week

