



# Weekly Performance Measures Report Broward County



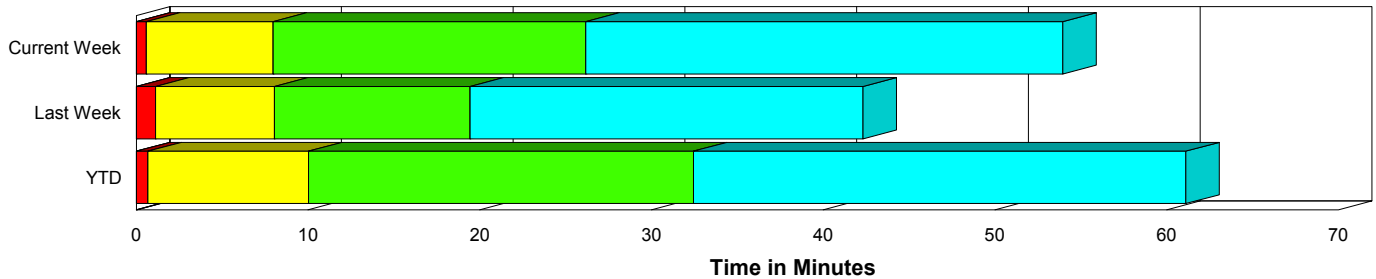
Created on:  
August 13, 2009  
9:38 am

Period From Aug 2, 2009 to Aug 8, 2009

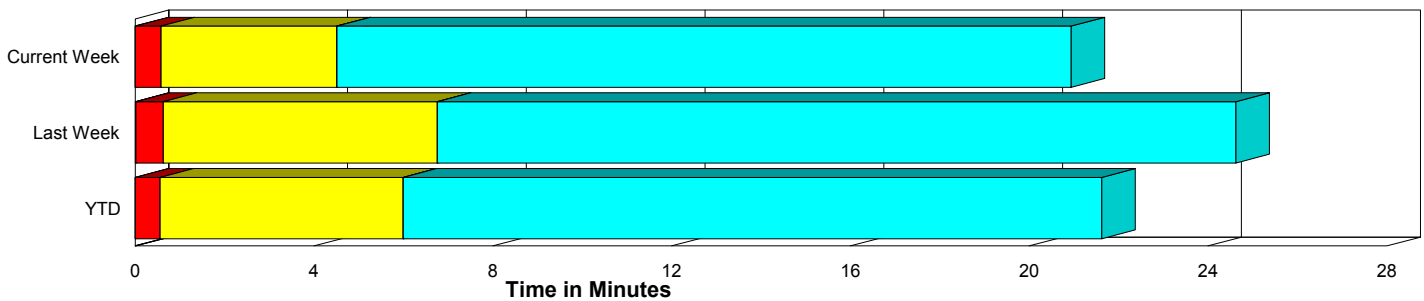
## Performance Measures Summary

	Traffic Events (No Lanes Blocked)			Incidents (Lanes Blocked)		
	<u>This Week</u>	<u>Last Week</u>	<u>YTD</u>	<u>This Week</u>	<u>Last Week</u>	<u>YTD</u>
Number of Events	827	844	30,293	41	42	1,474
TMC Detection (min.)	0.00	0.01	0.01	0.00	0.00	0.00
TMC Verification (min.)	0.58	0.62	0.55	0.58	1.12	0.68
TMC Response (min.)	4.85	7.16	6.48	8.10	8.04	10.23
RR Dispatch Time (min.)	0.60	1.15	1.23	1.10	1.37	3.14
RR Response Time (min.)	4.34	6.08	5.37	7.07	6.67	7.29
Roadway Clearance (min.)				25.24	21.33	31.79
Event Clearance (min.)	21.27	25.04	22.11	53.02	44.22	59.93
# of Events w/ RR/SIRV	569	573	19,566	30	30	971
RR/SIRV Responses	569	573	19,566	30	30	971
RR/SIRV Activities	531	506	16,660	62	58	1,975

### Incident Clearance Time-Line



### Traffic Event (Non-Lane Blockage) Time-Line



<span style="color: blue;">■</span> Avg. TMC Detection Time	<span style="color: green;">■</span> Avg. Time from TMC Response to Roadway Clearance*
<span style="color: red;">■</span> Avg. Time from TMC Detection to TMC Verification	<span style="color: cyan;">■</span> Avg. Time from Roadway Clearance to Incident/Event Clearance**
<span style="color: yellow;">■</span> Avg. Time from TMC Verification to TMC Response	

\* Roadway clearance equals all travel lanes open

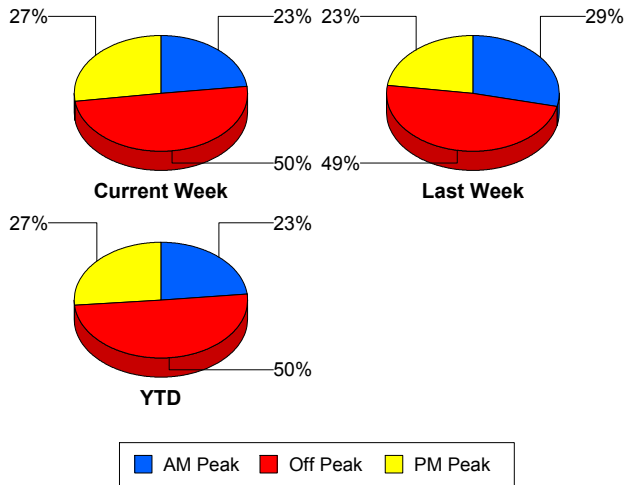
\*\* Incident clearance equals time when last responder has left the scene

## Performance Measures by Peak Period

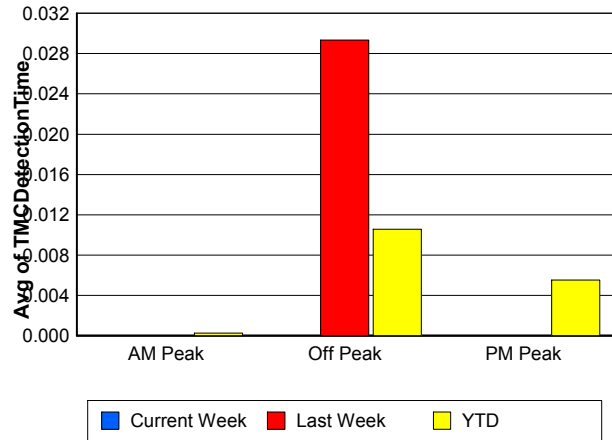
Note: AM peak period is defined as 6am to 10am and PM peak period is defined as 3pm to 7pm.

	AM Peak			Off Peak			PM Peak		
	<u>Current Week</u>	<u>Last Week</u>	<u>YTD</u>	<u>Current Week</u>	<u>Last Week</u>	<u>YTD</u>	<u>Current Week</u>	<u>Last Week</u>	<u>YTD</u>
Number of Events	200	253	7,446	432	431	15,902	236	202	8,419
Number of Incidents	10	11	330	18	18	724	13	13	420
TMC Detection (min.)	0.00	0.00	0.00	0.00	0.03	0.01	0.00	0.00	0.01
TMC Verification (min.)	0.31	0.60	0.49	0.42	0.58	0.48	1.11	0.82	0.76
TMC Response (min.)	4.61	7.13	6.16	5.59	8.91	7.57	4.67	5.09	6.11
RR Dispatch Time (min.)	0.55	0.82	1.01	0.78	1.77	1.90	0.51	0.74	0.86
RR Response Time (min.)	4.15	6.43	5.23	4.88	7.07	5.76	4.30	4.47	5.36
Event Clearance (min.)	21.53	25.91	21.64	25.77	29.65	26.71	18.34	18.10	20.43
Roadway Clearance (min.)	28.48	17.78	26.05	22.62	23.74	37.14	26.38	21.01	27.08
Incident Clearance (min.)	75.74	33.40	55.36	48.89	46.75	63.96	41.26	49.86	56.58
# of Events w/ RR/SIRV	162	215	5,980	241	228	8,202	196	160	6,355
RR/SIRV Responses	162	215	5,980	241	228	8,202	196	160	6,355
RR/SIRV Activities	166	195	5,679	230	210	7,153	197	159	5,803

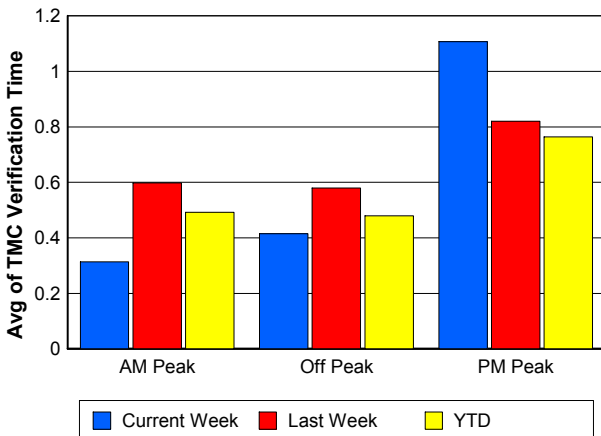
### Number of Events / Peak Period



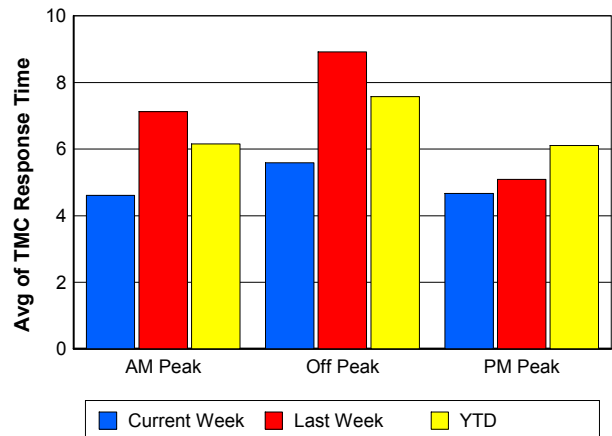
### TMC Detection Time



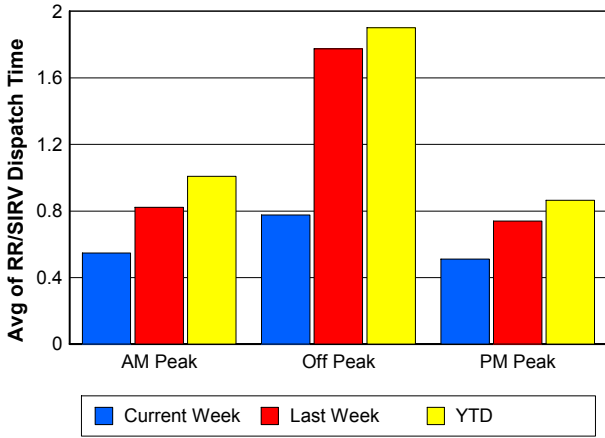
### TMC Verification Time



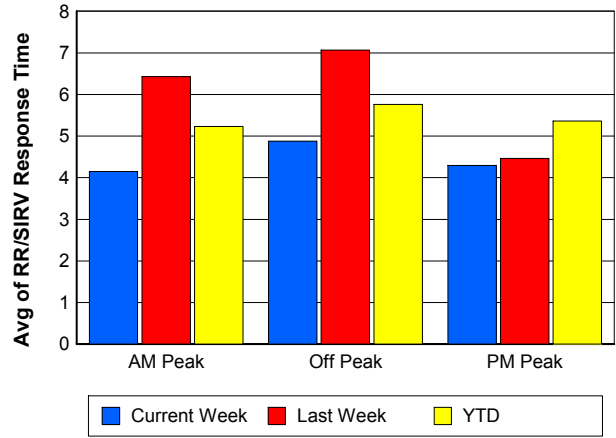
### TMC Response Time



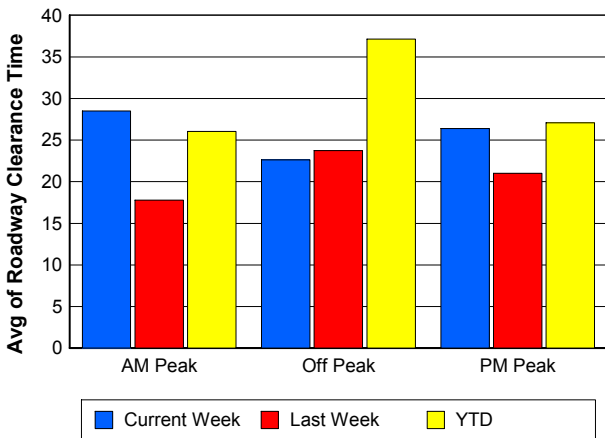
## Road Ranger / SIRV Dispatch Time



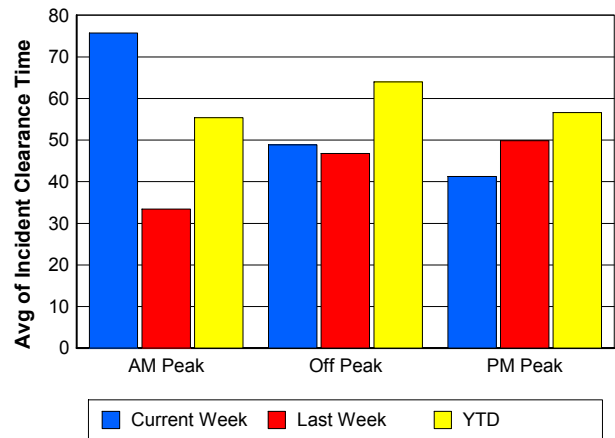
## Road Ranger / SIRV Response Time



## Roadway Clearance Time (2A)



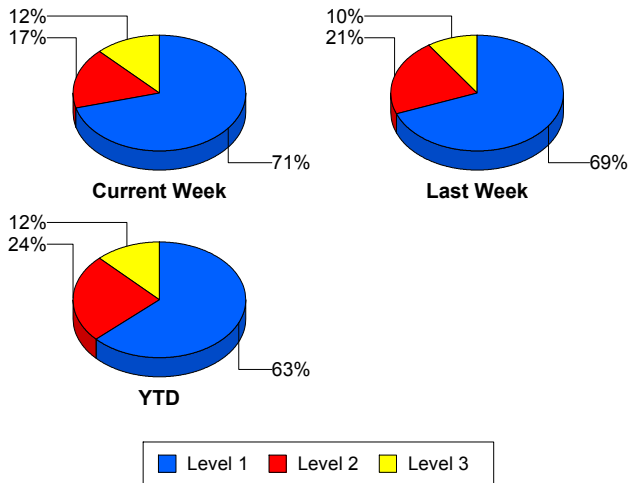
## Incident Clearance Time (3B)



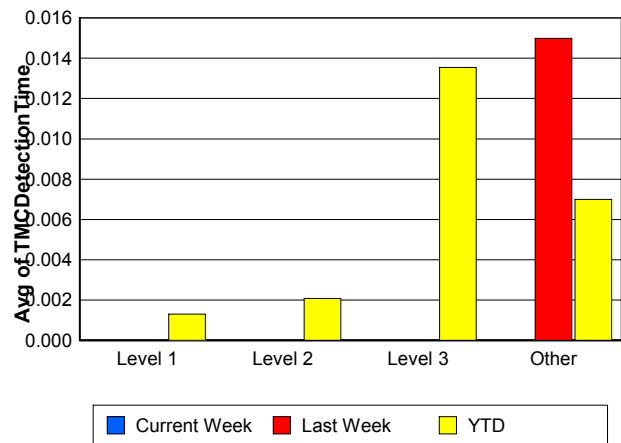
## Performance Measures by Severity

	Level 1			Level 2			Level 3			Other		
	<u>This Week</u>	<u>Last Week</u>	<u>YTD</u>	<u>This Week</u>	<u>Last Week</u>	<u>YTD</u>	<u>This Week</u>	<u>Last Week</u>	<u>YTD</u>	<u>This Week</u>	<u>Last Week</u>	<u>YTD</u>
Number of Events	29	29	931	7	9	361	5	4	182	827	844	30,293
Number of Incidents	29	29	931	7	9	361	5	4	182	0	0	0
TMC Detection (min.)	0.00	0.00	0.00	0.00	0.00	0.00	0.00	0.00	0.01	0.00	0.01	0.01
TMC Verification (min.)	0.66	0.23	0.43	0.47	3.92	0.92	0.28	1.22	1.48	0.58	0.62	0.55
TMC Response (min.)	8.08	4.97	7.16	4.14	11.24	10.23	10.54	23.14	24.91	4.85	7.16	6.48
RR Dispatch Time (min.)	1.26	1.13	1.65	0.26	2.14	3.25	0.94	1.51	9.48	0.60	1.15	1.23
RR Resp. Time (min.)	6.92	3.84	5.61	3.88	9.10	7.46	9.60	21.63	15.06	4.34	6.08	5.37
Event Clearance (min.)	40.94	37.28	46.21	73.85	68.35	72.77	93.91	40.15	104.42	21.27	25.04	22.11
Roadway Clear. (min.)	15.93	13.15	14.18	46.33	45.64	49.28	49.74	25.96	87.20			
Incident Clearance (min.)	40.94	37.28	46.21	73.85	68.35	72.77	93.91	40.15	104.42			
# of Events w/ RR/SIRV	22	21	652	3	6	168	5	3	151	569	573	19,566
RR/SIRV Responses	22	21	652	3	6	168	5	3	151	569	573	19,566
RR/SIRV Activities	42	40	1,153	6	15	490	14	3	332	531	506	16,660

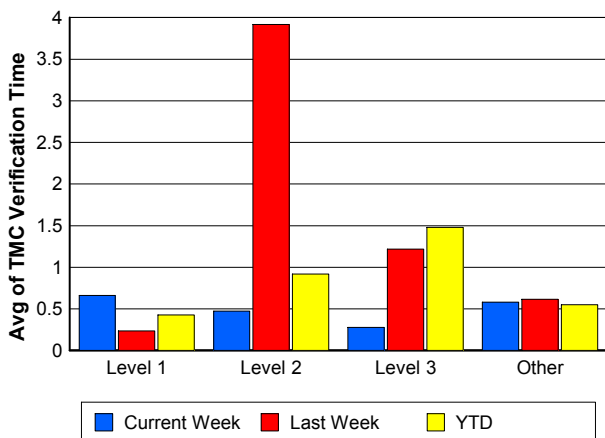
### Number of Events / Severity



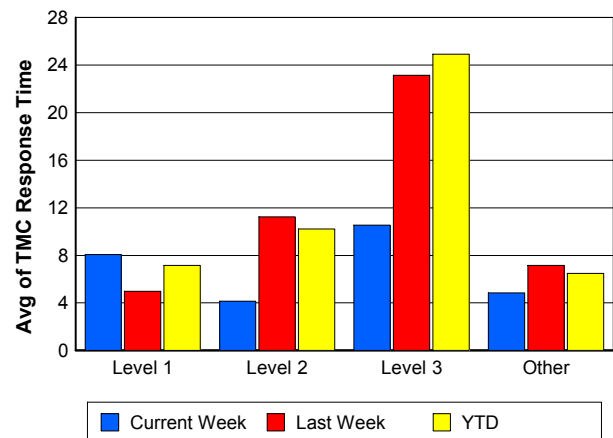
### TMC Detection Time



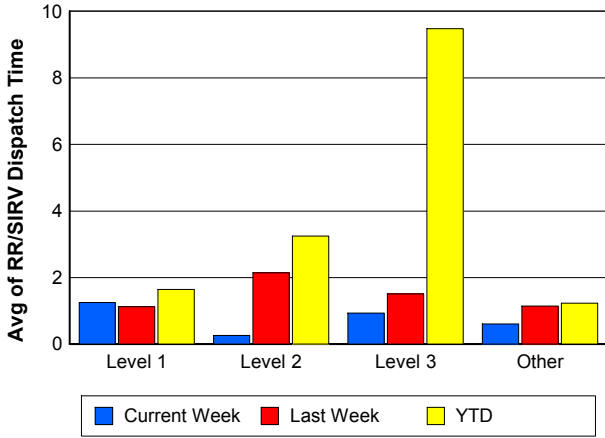
### TMC Verification Time



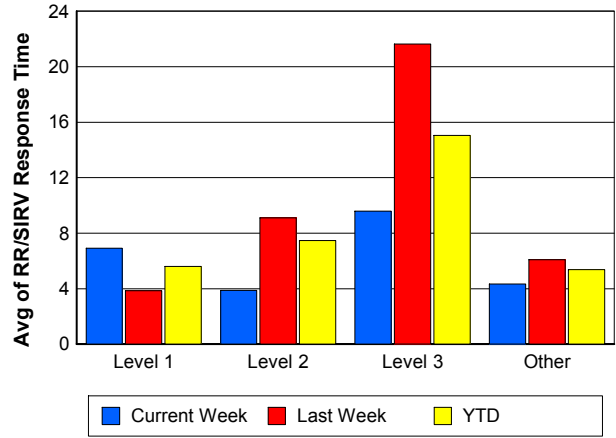
### TMC Response Time



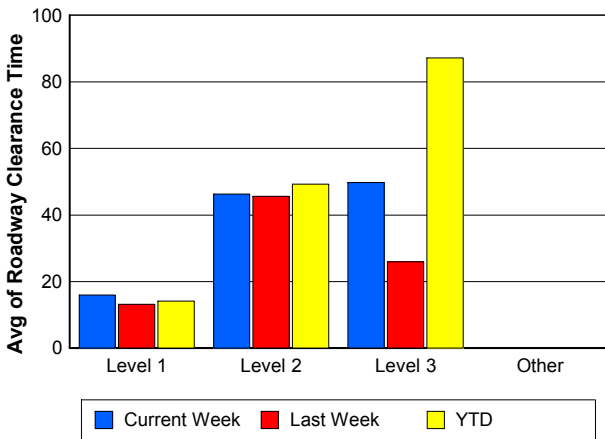
## Road Ranger / SIRV Dispatch Time



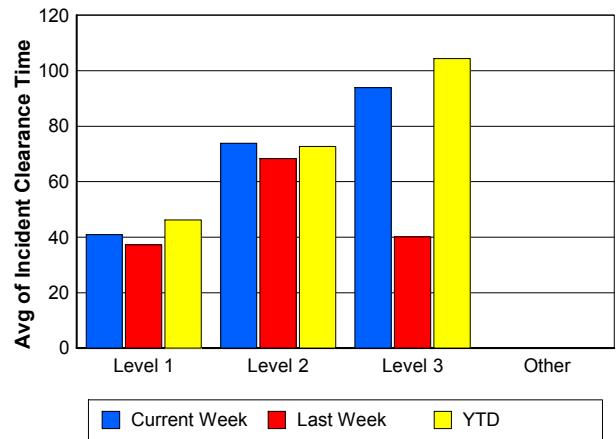
## Road Ranger / SIRV Response Time



## Roadway Clearance Time (2A)



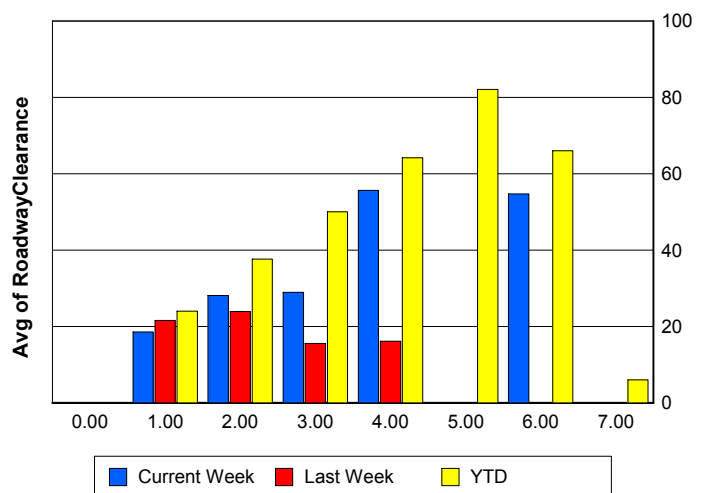
## Incident Clearance Time (3B)



## Roadway Clearance by Maximum Number of Lanes Blocked

	Current Week	Last Week	YTD
0			
1	18.54	21.58	23.99
2	28.08	23.93	37.64
3	28.89	15.54	50.04
4	55.63	16.15	64.17
5	0.00	0.00	82.05
6	54.71	0.00	65.99
7	0.00	0.00	5.97

## Roadway Clearance Time (2A)



## Performance Measures by Roadway

**595**

	<u>Current Week</u>	<u>Last Week</u>	<u>YTD</u>
Number of Events	31	28	4,108
Number of Incidents	2	1	251
TMC Detection (min.)	0.00	0.00	0.01
TMC Verification (min.)	1.66	0.37	0.75
TMC Response (min.)	3.42	10.98	6.39
RR Dispatch Time (min.)	0.28	1.15	1.11
RR Resp. Time (min.)	3.21	9.94	5.37
Event Clearance (min.)	15.99	21.90	21.45
Roadway Clear. (min.)	24.44	16.75	30.73
Incident Clearance (min.)	25.50	18.93	53.45
# of Events w/ RR/SIRV	22	16	2,835
RR/SIRV Responses	22	16	2,835
RR/SIRV Activities	23	10	2,612

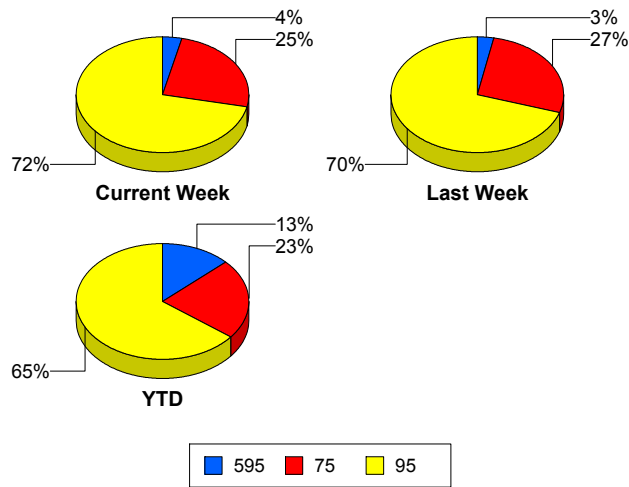
**75**

	<u>Current Week</u>	<u>Last Week</u>	<u>YTD</u>
Number of Events	216	239	7,152
Number of Incidents	6	4	134
TMC Detection (min.)	0.00	0.00	0.00
TMC Verification (min.)	0.95	0.73	0.69
TMC Response (min.)	5.91	8.68	8.00
RR Dispatch Time (min.)	0.80	0.89	1.25
RR Resp. Time (min.)	5.28	7.98	6.86
Event Clearance (min.)	24.47	32.79	26.21
Roadway Clear. (min.)	21.78	37.17	57.28
Incident Clearance (min.)	79.74	63.30	84.51
# of Events w/ RR/SIRV	142	146	4,514
RR/SIRV Responses	142	146	4,514
RR/SIRV Activities	146	128	3,826

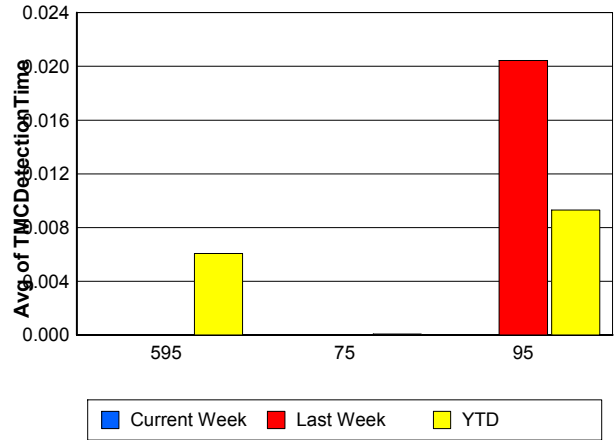
**95**

	<u>Current Week</u>	<u>Last Week</u>	<u>YTD</u>
Number of Events	621	619	20,507
Number of Incidents	33	37	1,089
TMC Detection (min.)	0.00	0.02	0.01
TMC Verification (min.)	0.40	0.62	0.47
TMC Response (min.)	4.82	6.65	6.33
RR Dispatch Time (min.)	0.59	1.25	1.39
RR Resp. Time (min.)	4.30	5.42	5.05
Event Clearance (min.)	22.52	23.49	23.52
Roadway Clear. (min.)	25.92	19.74	28.90
Incident Clearance (min.)	49.83	42.84	58.39
# of Events w/ RR/SIRV	435	441	13,188
RR/SIRV Responses	435	441	13,188
RR/SIRV Activities	424	426	12,197

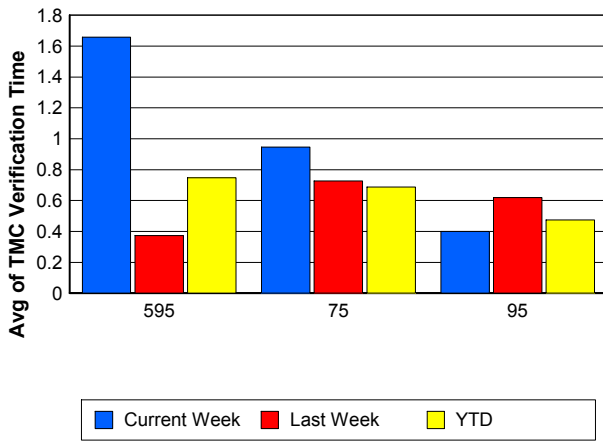
## Number of Events / Roadway



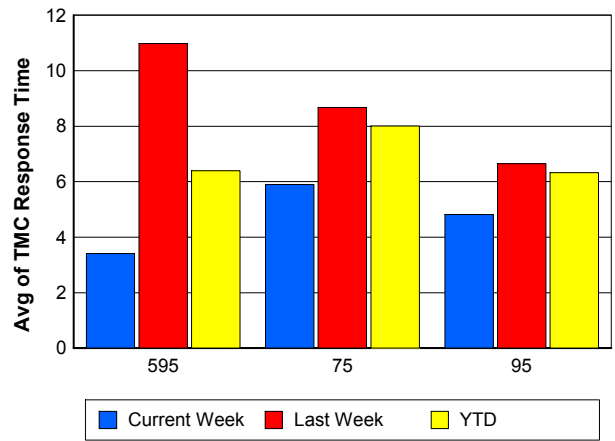
## TMC Detection Time



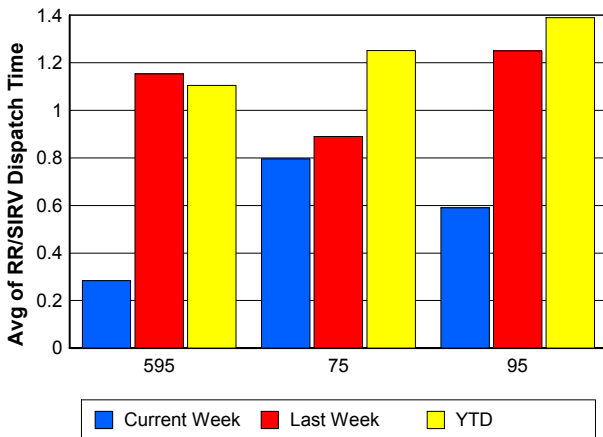
## TMC Verification Time



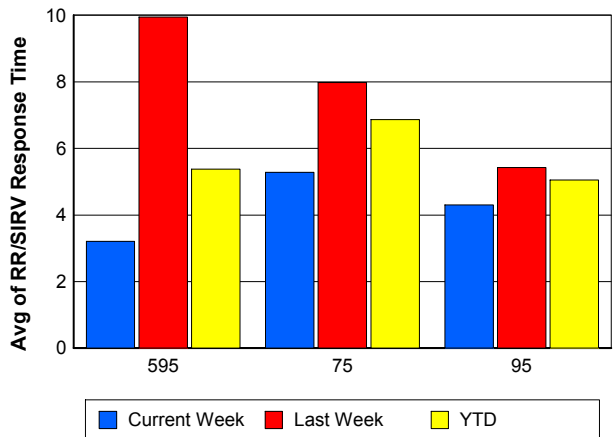
## TMC Response Time



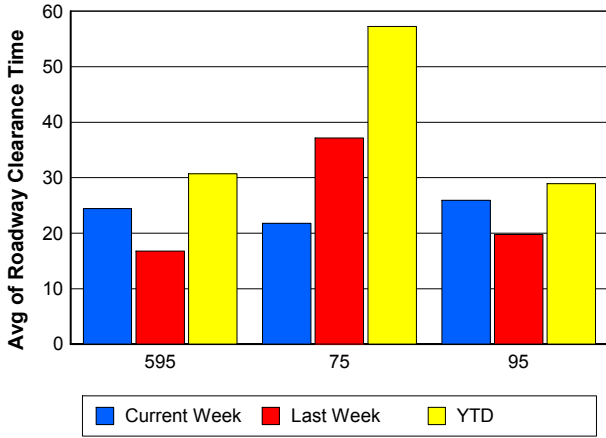
## Road Ranger / SIRV Dispatch Time



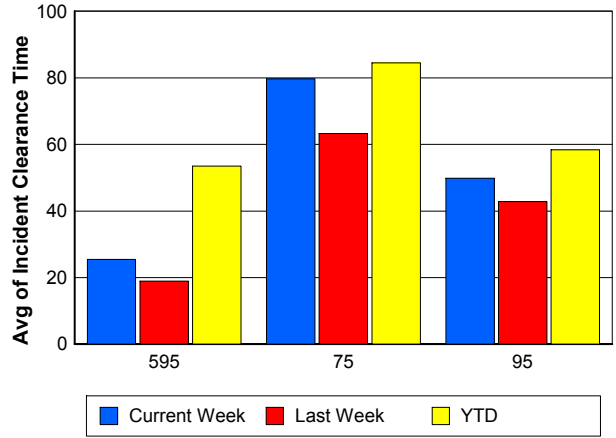
## Road Ranger / SIRV Response Time



## Roadway Clearance Time (2A)



## Incident Clearance Time (3B)



## Performance Measures by Event Type

### Accident

	<u>Current Week</u>	<u>Last Week</u>	<u>YTD</u>
Number of Events	67	67	2,201
Number of Incidents	34	29	1,064
TMC Detection (min.)	0.00	0.00	0.01
TMC Verification (min.)	0.68	0.53	0.73
TMC Response (min.)	6.79	7.21	8.65
RR Dispatch Time (min.)	0.97	1.04	1.66
RR Response Time (min.)	5.92	6.20	7.09
Event Clearance (min.)	44.72	44.76	54.99
Roadway Clearance (min.)	26.16	21.73	33.12
Incident Clearance (min.)	58.59	51.81	66.41
# of Events w/ RR/SIRV	46	46	1,532
RR/SIRV Assists	46	46	1,532
RR/SIRV Activities	75	67	2,359

### Debris on Roadway

	<u>Current Week</u>	<u>Last Week</u>	<u>YTD</u>
Number of Events	28	33	895
Number of Incidents	0	0	21
TMC Detection (min.)	0.00	0.00	0.13
TMC Verification (min.)	3.69	3.79	3.74
TMC Response (min.)	5.29	10.79	7.37
RR Dispatch Time (min.)	0.58	0.97	0.87
RR Response Time (min.)	4.72	9.86	6.51
Event Clearance (min.)	18.45	14.85	11.61
Roadway Clearance (min.)			23.45
Incident Clearance (min.)			27.98
# of Events w/ RR/SIRV	23	28	817
RR/SIRV Assists	23	28	817
RR/SIRV Activities	22	27	844

### Disabled Vehicle

	<u>Current Week</u>	<u>Last Week</u>	<u>YTD</u>
Number of Events	567	537	18,476
Number of Incidents	4	9	227
TMC Detection (min.)	0.00	0.02	0.00
TMC Verification (min.)	0.62	0.74	0.65
TMC Response (min.)	4.97	7.10	6.24
RR Dispatch Time (min.)	0.53	1.17	1.12
RR Response Time (min.)	4.48	5.94	5.15
Event Clearance (min.)	25.15	30.84	27.11
Roadway Clearance (min.)	25.32	14.43	19.48
Incident Clearance (min.)	33.53	21.10	36.81
# of Events w/ RR/SIRV	453	407	14,107
RR/SIRV Assists	453	407	14,107
RR/SIRV Activities	467	434	14,408

## Emergency Vehicles

	<u>Current Week</u>	<u>Last Week</u>	<u>YTD</u>
Number of Events	1	1	43
Number of Incidents	1	1	35
TMC Detection (min.)	0.00	0.00	0.00
TMC Verification (min.)	0.00	0.00	0.87
TMC Response (min.)		9.05	15.58
RR Dispatch Time (min.)		1.30	10.10
RR Response Time (min.)		7.75	4.81
Event Clearance (min.)	9.42	42.78	49.01
Roadway Clearance (min.)	7.33	42.88	48.87
Incident Clearance (min.)	9.42	42.78	54.36
# of Events w/ RR/SIRV	0	1	25
RR/SIRV Assists	0	1	25
RR/SIRV Activities	0	2	42

## Other

	<u>Current Week</u>	<u>Last Week</u>	<u>YTD</u>
Number of Events	204	241	9,826
Number of Incidents	2	0	24
TMC Detection (min.)	0.00	0.00	0.00
TMC Verification (min.)	0.01	0.01	0.06
TMC Response (min.)	2.21	3.46	9.24
RR Dispatch Time (min.)	1.01	1.23	1.90
RR Response Time (min.)	1.55	2.93	6.63
Event Clearance (min.)	9.63	11.24	11.43
Roadway Clearance (min.)	18.37		32.61
Incident Clearance (min.)	19.10		37.34
# of Events w/ RR/SIRV	76	115	3,883
RR/SIRV Assists	76	115	3,883
RR/SIRV Activities	28	27	756

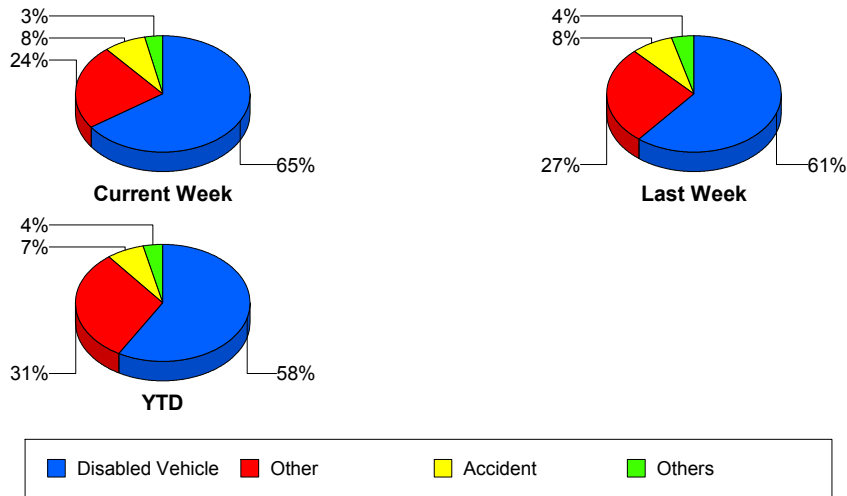
## Police Activity

	<u>Last Week</u>	<u>YTD</u>
Number of Events	1	137
Number of Incidents	1	44
TMC Detection (min.)	0.00	0.00
TMC Verification (min.)	0.00	0.20
TMC Response (min.)	47.63	15.13
RR Dispatch Time (min.)	3.45	5.03
RR Response Time (min.)	44.18	10.06
Event Clearance (min.)	69.15	36.02
Roadway Clearance (min.)	64.60	41.36
Incident Clearance (min.)	69.15	51.45
# of Events w/ RR/SIRV	1	43
RR/SIRV Assists	1	43
RR/SIRV Activities	1	49

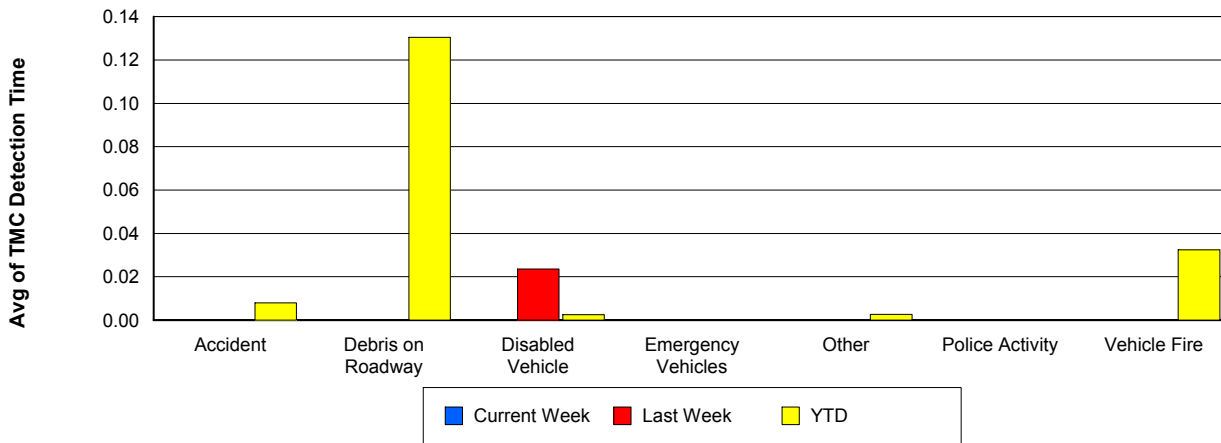
## Vehicle Fire

	<u>Last Week</u>	<u>YTD</u>
Number of Events	3	76
Number of Incidents	2	59
TMC Detection (min.)	0.00	0.03
TMC Verification (min.)	0.00	1.30
TMC Response (min.)	10.66	11.33
RR Dispatch Time (min.)	0.76	2.48
RR Response Time (min.)	9.89	9.36
Event Clearance (min.)	23.32	58.25
Roadway Clearance (min.)	14.19	40.51
Incident Clearance (min.)	26.42	62.42
# of Events w/ RR/SIRV	3	50
RR/SIRV Assists	3	50
RR/SIRV Activities	4	103

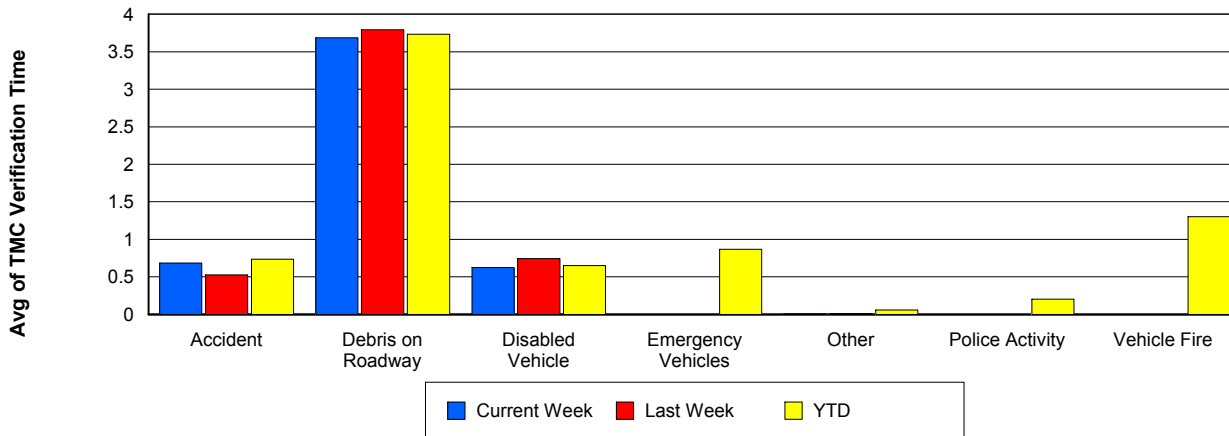
## Number of Events / Event Type



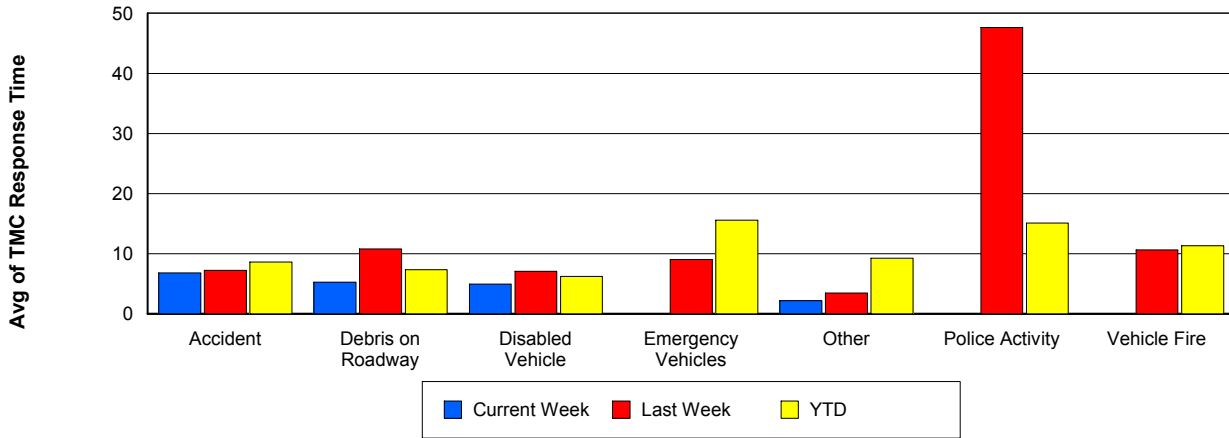
## TMC Detection Time



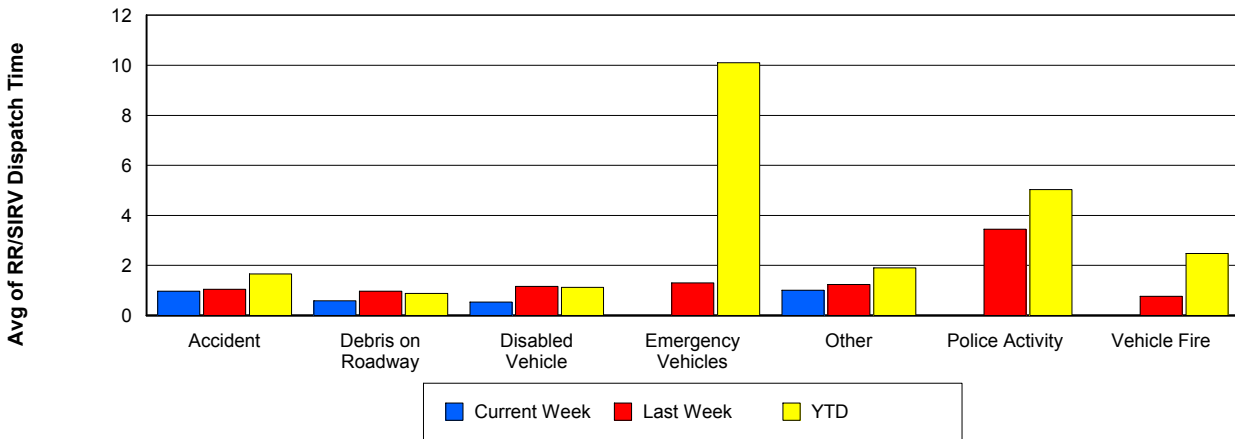
## TMC Verification Time



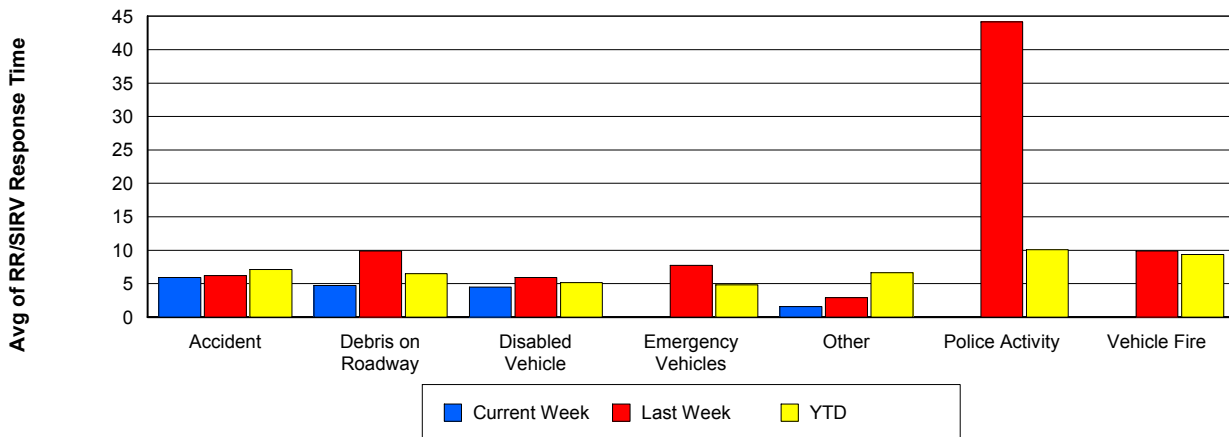
## TMC Response Time



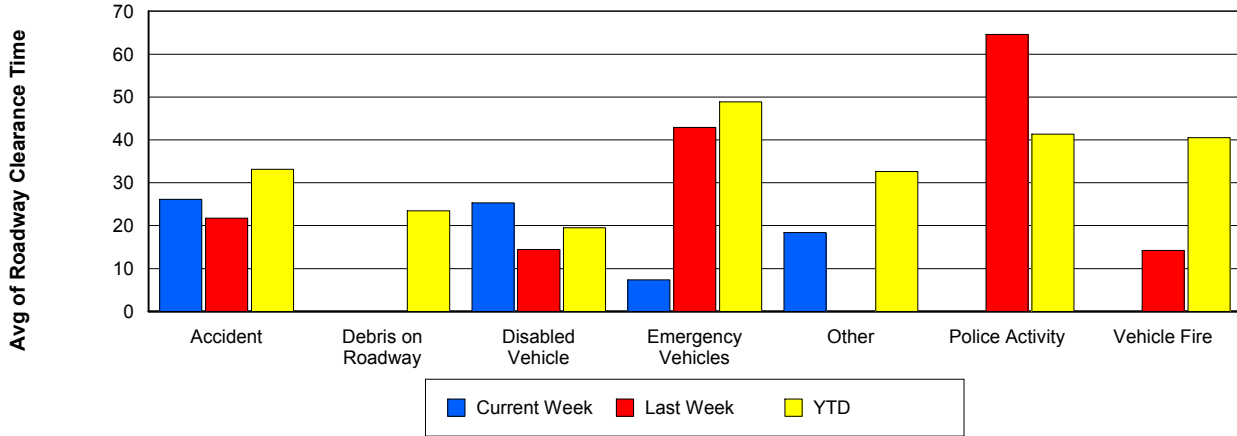
## Road Ranger / SIRV Dispatch Time



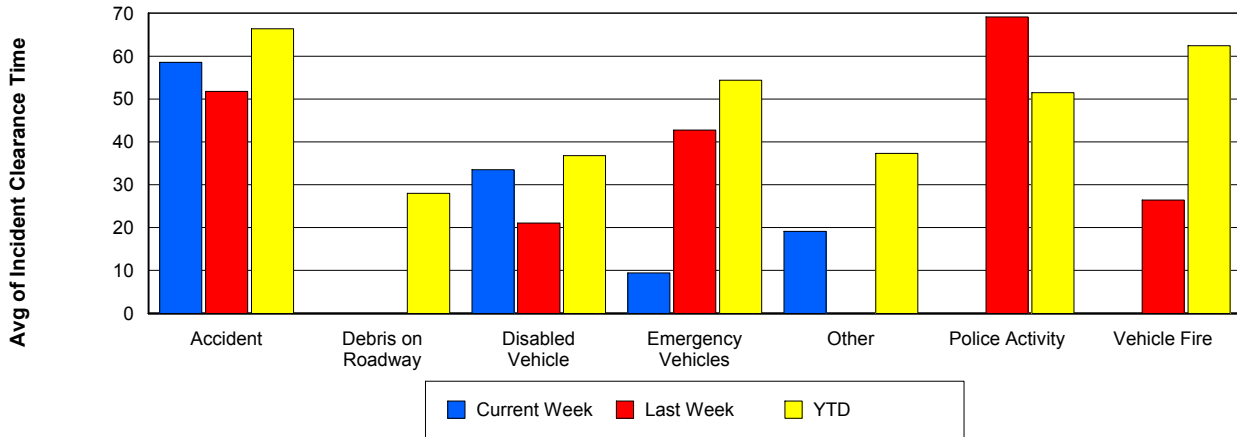
## Road Ranger / SIRV Response Time



## Roadway Clearance Time (2A)



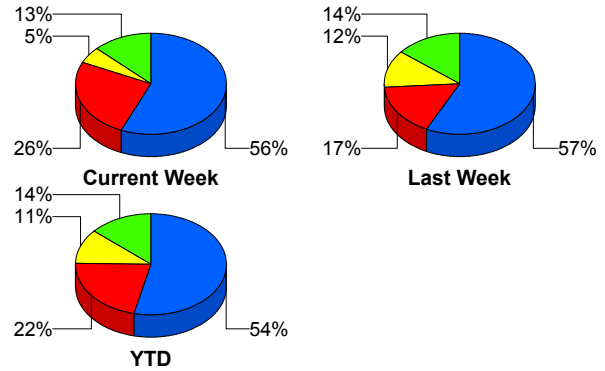
## Incident Clearance Time (3B)



## Incident Detection Methods

	Current Week	Last Week	YTD
Broward CCTV	22	24	791
Broward Road Ranger	2	5	165
Broward VideoWall	2	0	51
BSO	1	1	33
District 4	1	1	42
District 6	0	0	1
FDOT Maintenance	0	0	4
FHP	10	7	317
Fire	0	0	2
Florida's Turnpike	0	0	6
ITMS	0	0	1
Motorist	0	2	7
Other	0	0	1
Palm Beach Road Ran	0	0	2
Road Watcher	0	0	12
SIRV	1	2	10
SmarTraveler (511)	0	0	6
VisioPaD Detection	0	0	21
<b>Total</b>	<b>39</b>	<b>42</b>	<b>1,472</b>

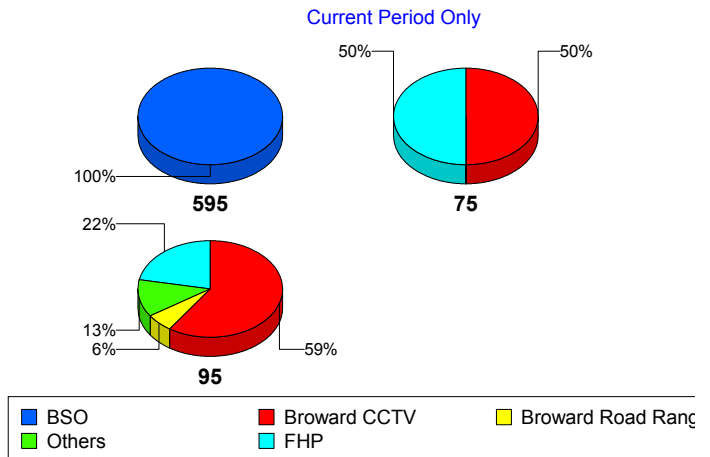
### Total Incidents by Detection Method



## Incident Detection Methods by Roadway

		Current Week	Last Week	YTD
595	Broward CCTV	0	0	121
	Broward Road Ranger	0	0	37
	Broward VideoWall	0	0	8
	BSO	1	0	4
	District 4	0	0	12
	FDOT Maintenance	0	0	2
	FHP	0	0	49
	Florida's Turnpike	0	0	6
	Motorist	0	0	2
	Road Watcher	0	0	3
	SIRV	0	1	1
	VisioPaD Detection	0	0	5
	Total	1	1	250
	75	Broward CCTV	3	2
Broward Road Ranger		0	0	12
Broward VideoWall		0	0	1
BSO		0	1	26
District 4		0	0	5
FHP		3	1	29
Other		0	0	1
Road Watcher		0	0	2
VisioPaD Detection		0	0	2
Total		6	4	134
95	Broward CCTV	19	22	614
	Broward Road Ranger	2	5	116
	Broward VideoWall	2	0	42
	BSO	0	0	3
	District 4	1	1	25
	District 6	0	0	1
	FDOT Maintenance	0	0	2
	FHP	7	6	239

Total Events by Roadway and Detection Method

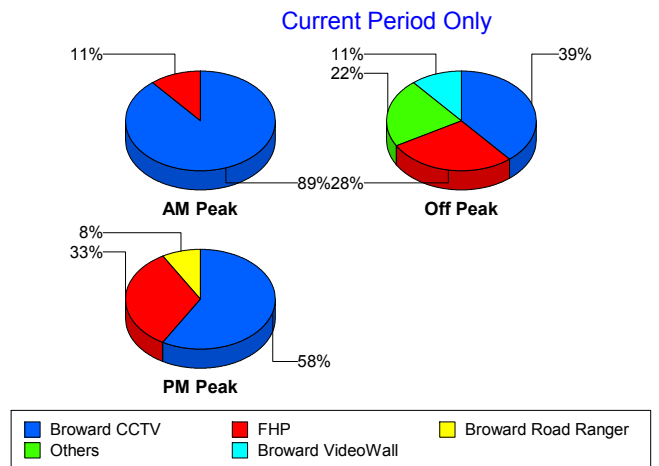


		Current Week	Last Week	YTD
95	Fire	0	0	2
	ITMS	0	0	1
	Motorist	0	2	5
	Palm Beach Road Ran	0	0	2
	Road Watcher	0	0	7
	SIRV	1	1	9
	SmarTraveler (511)	0	0	6
	VisioPaD Detection	0	0	14
	Total	32	37	1,088
Total	39	42	1,472	

### Incident Detection Methods by Peak Period

		Current Week	Last Week	YTD
AM Peak	Broward CCTV	8	7	153
	Broward Road Ranger	0	3	51
	Broward VideoWall	0	0	16
	BSO	0	0	5
	District 4	0	0	13
	FHP	1	1	77
	Florida's Turnpike	0	0	2
	Motorist	0	0	4
	Palm Beach Road Ran	0	0	1
	Road Watcher	0	0	4
	SIRV	0	0	1
	SmarTraveler (511)	0	0	1
	VisioPaD Detection	0	0	1
	Total	9	11	329
	Off Peak	Broward CCTV	7	9
Broward Road Ranger		1	2	46
Broward VideoWall		2	0	29
BSO		1	1	23
District 4		1	0	14

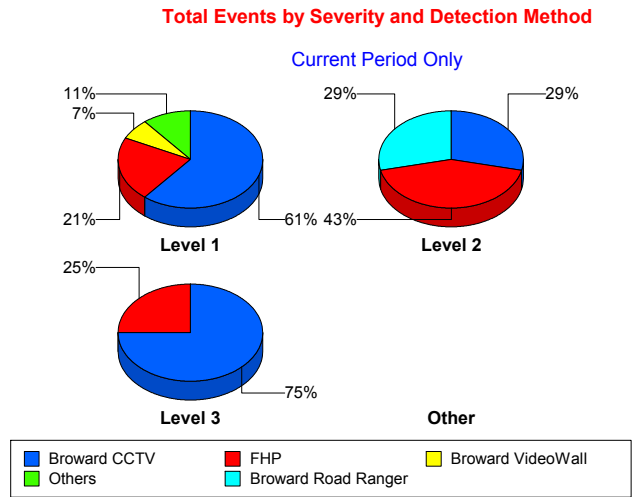
Total Events by Peak Period and Detection Method



		Current Week	Last Week	YTD
Off Peak	FDOT Maintenance	0	0	2
	FHP	5	4	152
	Fire	0	0	1
	Florida's Turnpike	0	0	3
	ITMS	0	0	1
	Motorist	0	2	3
	Road Watcher	0	0	5
	SIRV	1	0	3
	SmarTraveler (511)	0	0	3
	VisioPaD Detection	0	0	16
	Total	18	18	724
PM Peak	Broward CCTV	7	8	215
	Broward Road Ranger	1	0	68
	Broward VideoWall	0	0	6
	BSO	0	0	5
	District 4	0	1	15
	District 6	0	0	1
	FDOT Maintenance	0	0	2
	FHP	4	2	88
	Fire	0	0	1
	Florida's Turnpike	0	0	1
	Other	0	0	1
	Palm Beach Road Ran	0	0	1
	Road Watcher	0	0	3
	SIRV	0	2	6
	SmarTraveler (511)	0	0	2
	VisioPaD Detection	0	0	4
	Total	12	13	419
Total		39	42	1,472

## Incident Detection Methods by Severity

		Current Week	Last Week	YTD
Level 1	Broward CCTV	17	16	508
	Broward Road Ranger	0	5	121
	Broward VideoWall	2	0	32
	BSO	1	1	8
	District 4	1	1	31
	FDOT Maintenance	0	0	3
	FHP	6	3	185
	Fire	0	0	1
	Motorist	0	1	5
	Palm Beach Road Ran	0	0	2
	Road Watcher	0	0	9
	SIRV	1	2	9
	SmarTraveler (511)	0	0	4
	VisioPaD Detection	0	0	12
	<b>Total</b>	<b>28</b>	<b>29</b>	<b>930</b>
Level 2	Broward CCTV	2	6	194
	Broward Road Ranger	2	0	30
	Broward VideoWall	0	0	16
	BSO	0	0	7
	District 4	0	0	5
	FDOT Maintenance	0	0	1
	FHP	3	2	89
	Florida's Turnpike	0	0	4
	ITMS	0	0	1
	Motorist	0	1	2
	Other	0	0	1
	Road Watcher	0	0	1
	SIRV	0	0	1
	SmarTraveler (511)	0	0	2
	VisioPaD Detection	0	0	7
<b>Total</b>	<b>7</b>	<b>9</b>	<b>361</b>	



		Current Week	Last Week	YTD
Level 3	Broward CCTV	3	2	89
	Broward Road Ranger	0	0	14
	Broward VideoWall	0	0	3
	BSO	0	0	18
	District 4	0	0	6
	District 6	0	0	1
	FHP	1	2	43
	Fire	0	0	1
	Florida's Turnpike	0	0	2
	Road Watcher	0	0	2
	VisioPaD Detection	0	0	2
	Total	4	4	181
Total		39	42	1,472

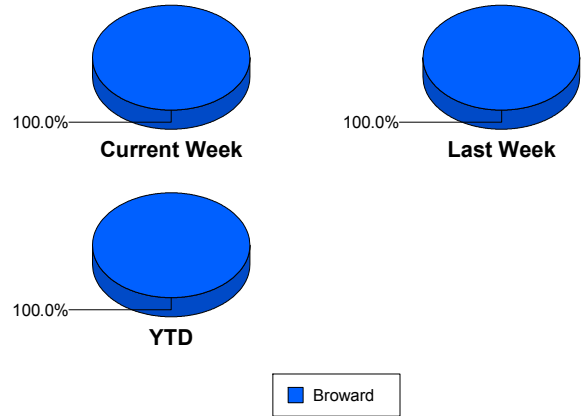
# Road Ranger / SIRV Performance Measures

## Road Ranger / SIRV Performance By County

Values presented are:  
 - Total Events with a RR/SIRV Response  
 - Total RR/SIRV Responses,  
 - Total Activities Performed

	Current We	Last Week	YTD
Broward	635	612	20,062
	686	660	21,601
	705	687	22,457

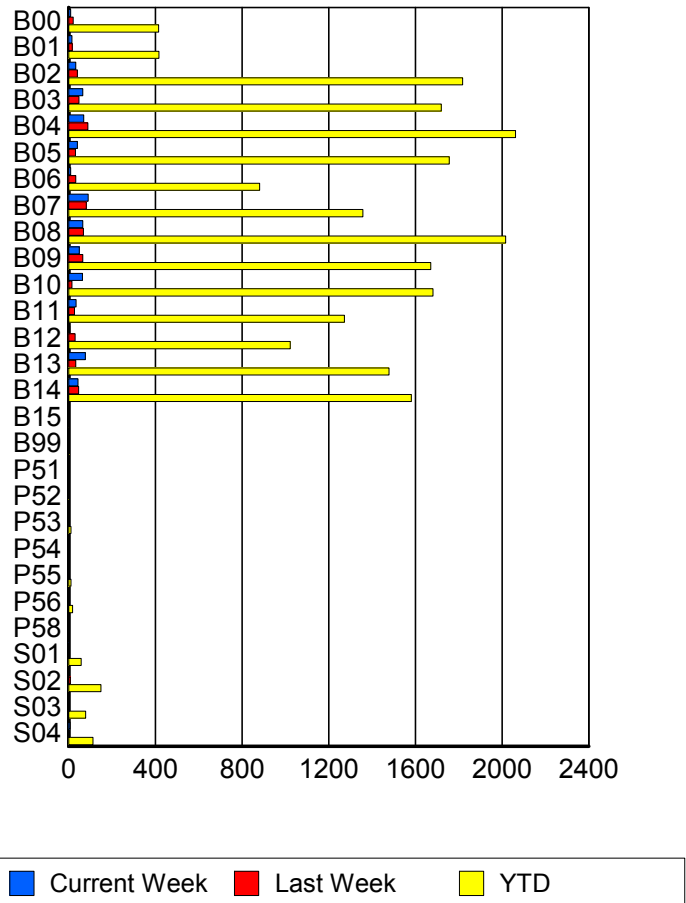
RR/SIRV Responses per County



## Road Ranger / SIRV Performance By Truck

	Current We	Last Week	YTD
B00	10	20	407
	10	21	415
	10	21	432
B01	16	17	411
	16	17	417
	18	17	442
B02	33	41	1,803
	33	41	1,818
	33	43	1,896
B03	63	46	1,690
	65	47	1,720
	65	51	1,775
B04	70	87	2,043
	70	89	2,062
	71	91	2,156
B05	40	31	1,726
	41	32	1,756
	43	33	1,813
B06	9	33	863
	10	33	881
	10	34	910
B07	89	80	1,335
	91	82	1,358
	95	87	1,418
B08	65	69	1,992
	65	69	2,017
	66	74	2,097

RR/SIRV Responses per Truck



	Current We	Last Week	YTD
B09	48	64	1,645
	49	65	1,671
	52	66	1,736
B10	64	16	1,654
	64	16	1,681
	66	16	1,744
B11	34	27	1,251
	35	27	1,273
	36	29	1,319
B12	5	30	1,010
	5	30	1,023
	5	31	1,064
B13	75	33	1,457
	77	33	1,478
	78	34	1,525
B14	43	45	1,557
	43	46	1,582
	45	47	1,638
B15	0	1	2
	0	1	2
	0	1	2
B99	0	0	4
	0	0	4
	0	0	4
P51	0	0	1
	0	0	1
	0	0	1
P52	0	0	2
	0	0	2
	0	0	2
P53	0	1	11
	0	1	11
	0	1	11
P54	0	0	1
	0	0	1
	0	0	1
P55	0	0	11
	0	0	11
	0	0	13
P56	1	0	18
	1	0	18
	1	0	19
P58	0	0	1
	0	0	1
	0	0	1

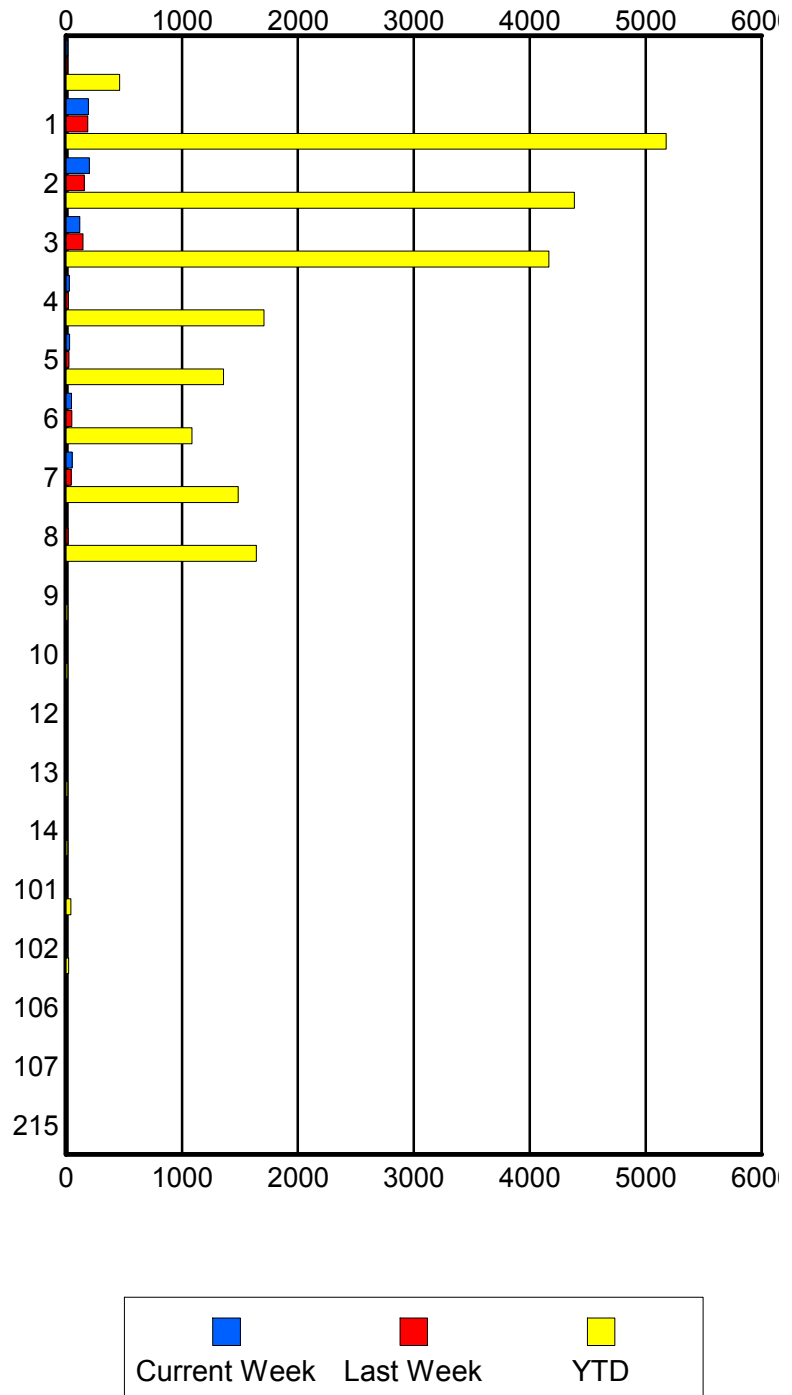
	Current We	Last Week	YTD
S01	1	0	55
	2	0	58
	2	0	66
S02	1	8	144
	1	8	149
	1	9	162
S03	1	1	77
	1	1	79
	1	1	89
S04	7	1	108
	7	1	112
	7	1	121

### Road Ranger / SIRV Performance By Beat

	Current We	Last Week	YTD
	13	12	430
	14	12	462
	14	13	504
1	182	179	4,890
	194	188	5,177
	199	194	5,344
2	190	152	4,231
	201	158	4,386
	206	165	4,567
3	118	141	4,053
	119	146	4,166
	122	152	4,332
4	26	20	1,671
	27	20	1,708
	29	20	1,761
5	30	25	1,335
	30	26	1,359
	32	27	1,406
6	45	47	1,063
	47	49	1,086
	47	52	1,145
7	52	43	1,461
	53	43	1,485
	55	46	1,557
8	0	17	1,621
	0	17	1,641
	0	17	1,704
9	0	0	12
	0	0	14
	0	0	14
10	0	0	13
	0	0	14
	0	0	14
12	0	0	9
	0	0	9
	0	0	9
13	0	0	14
	0	0	14
	0	0	15
14	0	0	13
	0	0	13
	0	0	13
101	1	1	41
	1	1	41
	1	1	44

Values presented are:  
 - Total Events with a RR/SIRV Response  
 - Total RR/SIRV Responses,  
 - Total Activities Performed

### RR/SIRV Responses per Beat



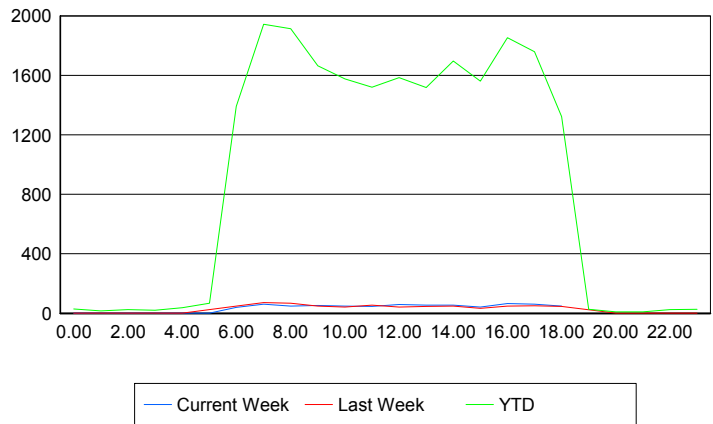
	Current We	Last Week	YTD
102	0	0	23
	0	0	23
	0	0	25
106	0	0	1
	0	0	1
	0	0	1
107	0	0	1
	0	0	1
	0	0	1
215	0	0	1
	0	0	1
	0	0	1

### Road Ranger / SIRV Performance By Time of Day

Values presented are:  
- Total Events with a RR/SIRV Response  
- Total RR/SIRV Responses,  
- Total Activities Performed

	Current We	Last Week	YTD
12AM-1AM	2	1	28
	2	1	29
	2	1	31
1AM-2AM	0	0	16
	0	0	16
	0	0	16
2AM-3AM	0	1	20
	0	1	25
	0	1	25
3AM-4AM	0	2	19
	0	2	21
	0	2	21
4AM-5AM	0	1	28
	0	1	38
	0	1	39
5AM-6AM	1	0	60
	1	0	67
	1	0	71
6AM-7AM	40	45	1,263
	41	49	1,391
	42	52	1,434
7AM-8AM	57	70	1,807
	61	72	1,944
	63	75	2,018
8AM-9AM	45	59	1,750
	49	68	1,914
	51	70	1,996

### Number of Responses / Hour of the Day



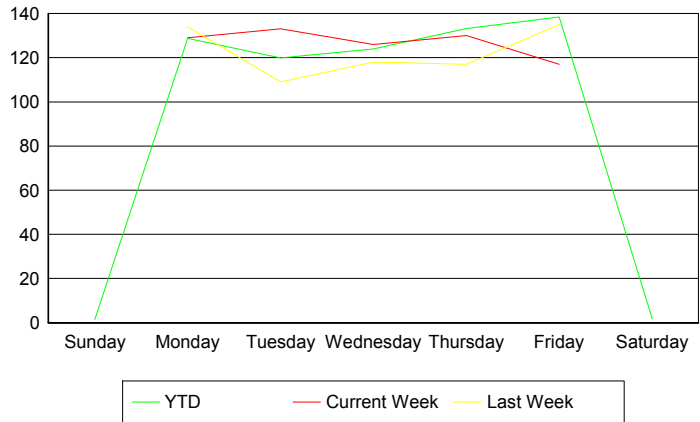
	Current We	Last Week	YTD
9AM-10AM	40	47	1,549
	52	49	1,665
	52	50	1,721
10AM-11AM	40	37	1,458
	48	42	1,577
	49	43	1,652
11AM-12PM	44	54	1,424
	46	56	1,520
	46	61	1,580
12PM-1PM	60	39	1,503
	60	43	1,585
	64	44	1,650
1PM-2PM	52	43	1,405
	54	47	1,519
	57	49	1,594
2PM-3PM	53	46	1,594
	54	48	1,696
	54	49	1,767
3PM-4PM	39	30	1,456
	43	34	1,561
	43	36	1,622
4PM-5PM	60	43	1,731
	66	49	1,854
	66	52	1,922
5PM-6PM	56	47	1,615
	61	50	1,760
	64	51	1,833
6PM-7PM	46	45	1,254
	48	46	1,323
	51	48	1,366
7PM-8PM	0	0	24
	0	0	28
	0	0	30
8PM-9PM	0	1	9
	0	1	9
	0	1	9
9PM-10PM	0	0	9
	0	0	9
	0	0	9
10PM-11PM	0	0	18
	0	0	24
	0	0	24
11PM-12AM	0	1	22
	0	1	26
	0	1	27

## Road Ranger / SIRV Performance By Day of Week

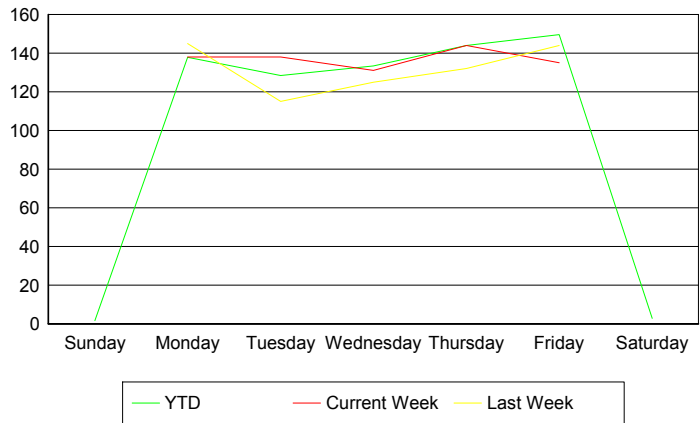
Values presented are:  
 - Total Events with a RR/SIRV Response  
 - Total RR/SIRV Responses,  
 - Total Activities Performed

	Current We	Last Week	YTD
Sunday	0 0 0	0 0 0	14 14 16
Monday	129 138 141	133 144 155	3,940 4,219 4,353
Tuesday	133 138 145	109 115 118	3,676 3,939 4,072
Wednesday	126 131 136	118 125 127	3,803 4,091 4,281
Thursday	130 144 146	117 132 138	4,214 4,554 4,738
Friday	117 135 137	135 144 149	4,407 4,763 4,973
Saturday	0 0 0	0 0 0	18 21 24

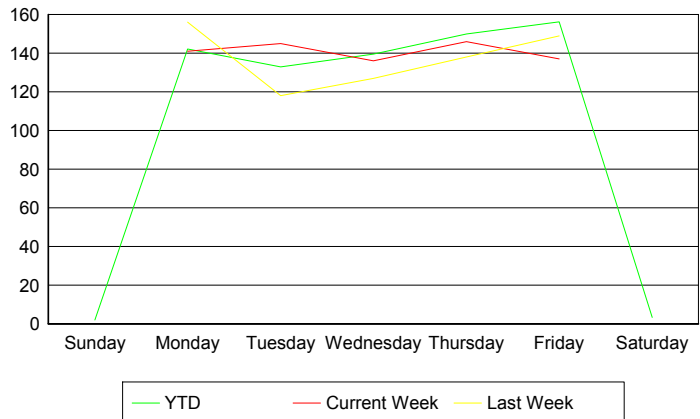
### Avg # of events with a RR/SIRV Response per Day of the Week



### Avg # of RR/SIRV Responses per Day of the Week



### Avg # of RR/SIRV Activities Performed per Day of the Week



### Road Ranger / SIRV Responses per Time of Day and Day of Week

