



Weekly Performance Measures Report Broward County



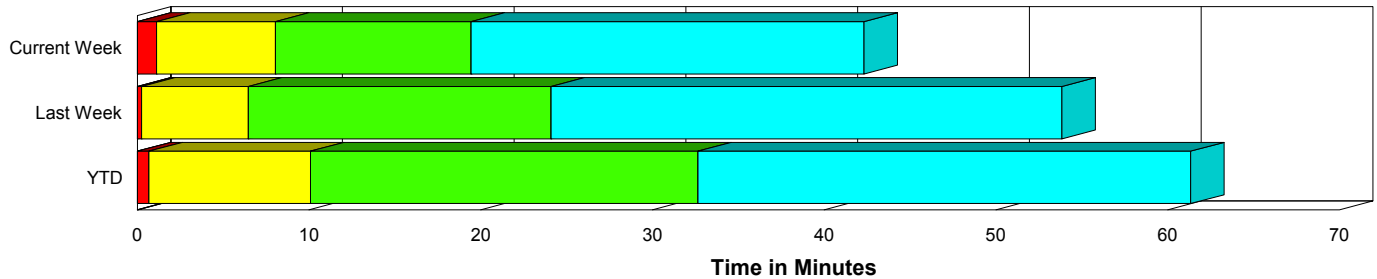
Created on:
August 03, 2009
8:55 am

Period From Jul 26, 2009 to Aug 1, 2009

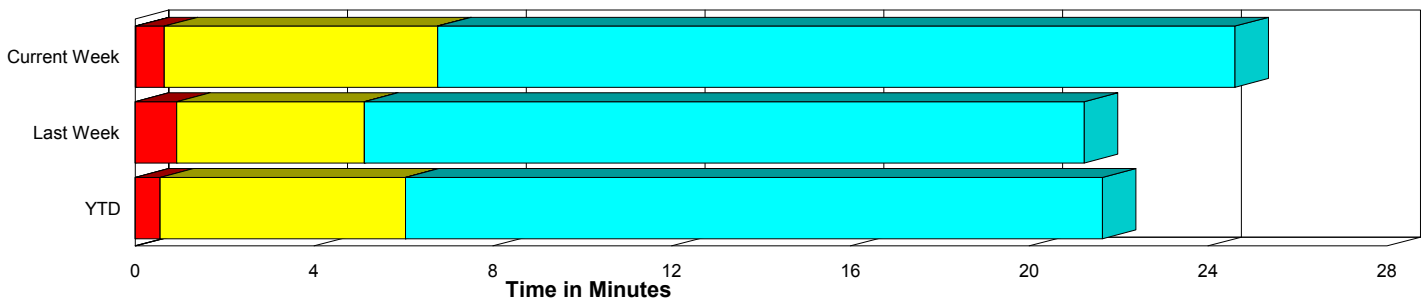
Performance Measures Summary

	Traffic Events (No Lanes Blocked)			Incidents (Lanes Blocked)		
	<u>This Week</u>	<u>Last Week</u>	<u>YTD</u>	<u>This Week</u>	<u>Last Week</u>	<u>YTD</u>
Number of Events	845	873	29,467	42	41	1,433
TMC Detection (min.)	0.01	0.00	0.01	0.00	0.00	0.00
TMC Verification (min.)	0.64	0.93	0.55	1.12	0.25	0.68
TMC Response (min.)	7.19	5.60	6.53	8.04	6.59	10.30
RR Dispatch Time (min.)	1.17	0.89	1.25	1.37	1.03	3.21
RR Response Time (min.)	6.08	4.83	5.40	6.67	5.68	7.29
Roadway Clearance (min.)				21.33	29.12	31.98
Event Clearance (min.)	25.04	21.71	22.13	44.22	58.86	60.12
# of Events w/ RR/SIRV	574	653	18,998	30	28	941
RR/SIRV Responses	574	653	18,998	30	28	941
RR/SIRV Activities	507	581	16,130	58	52	1,913

Incident Clearance Time-Line



Traffic Event (Non-Lane Blockage) Time-Line



■ Avg. TMC Detection Time	■ Avg. Time from TMC Response to Roadway Clearance*
■ Avg. Time from TMC Detection to TMC Verification	■ Avg. Time from Roadway Clearance to Incident/Event Clearance**
■ Avg. Time from TMC Verification to TMC Response	

* Roadway clearance equals all travel lanes open

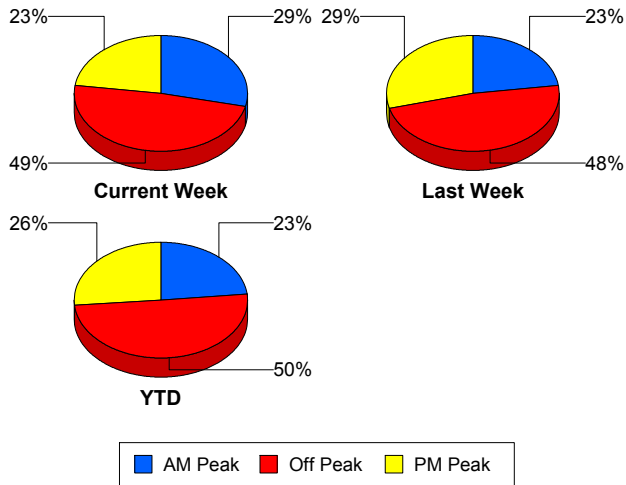
** Incident clearance equals time when last responder has left the scene

Performance Measures by Peak Period

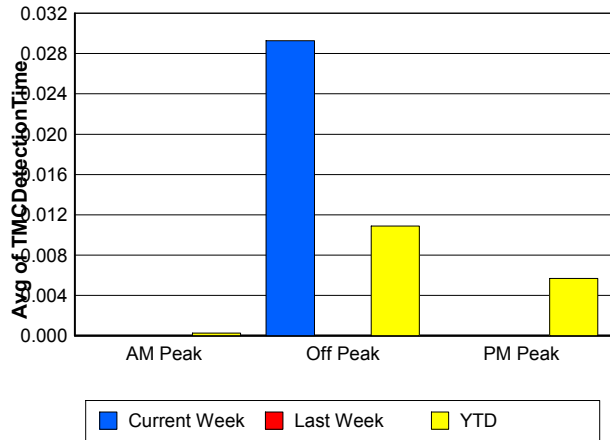
Note: AM peak period is defined as 6am to 10am and PM peak period is defined as 3pm to 7pm.

	AM Peak			Off Peak			PM Peak		
	<u>Current Week</u>	<u>Last Week</u>	<u>YTD</u>	<u>Current Week</u>	<u>Last Week</u>	<u>YTD</u>	<u>Current Week</u>	<u>Last Week</u>	<u>YTD</u>
Number of Events	253	208	7,246	432	440	15,471	202	266	8,183
Number of Incidents	11	6	320	18	21	706	13	14	407
TMC Detection (min.)	0.00	0.00	0.00	0.03	0.00	0.01	0.00	0.00	0.01
TMC Verification (min.)	0.60	0.77	0.50	0.62	1.12	0.48	0.82	0.63	0.75
TMC Response (min.)	7.13	5.27	6.20	8.97	7.27	7.64	5.09	4.15	6.16
RR Dispatch Time (min.)	0.82	0.75	1.02	1.82	1.09	1.94	0.74	0.78	0.87
RR Response Time (min.)	6.43	4.59	5.26	7.07	6.26	5.79	4.47	3.54	5.40
Event Clearance (min.)	25.91	22.22	21.65	29.63	25.70	26.74	18.10	20.42	20.49
Roadway Clearance (min.)	17.78	31.82	25.98	23.74	30.99	37.51	21.01	25.18	27.10
Incident Clearance (min.)	33.40	38.49	54.72	46.75	62.79	64.34	49.86	61.71	57.07
# of Events w/ RR/SIRV	215	174	5,818	229	273	7,962	160	234	6,159
RR/SIRV Responses	215	174	5,818	229	273	7,962	160	234	6,159
RR/SIRV Activities	195	174	5,513	211	234	6,924	159	225	5,606

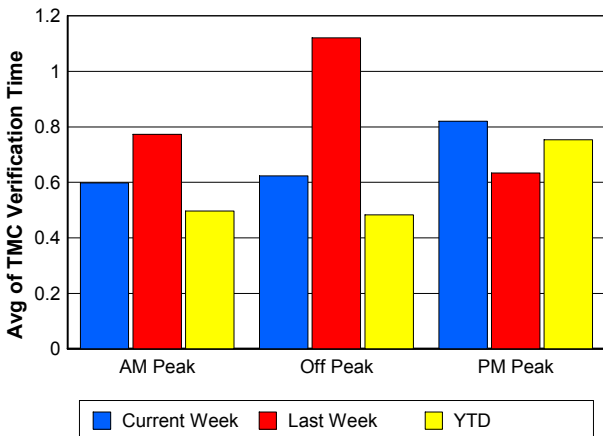
Number of Events / Peak Period



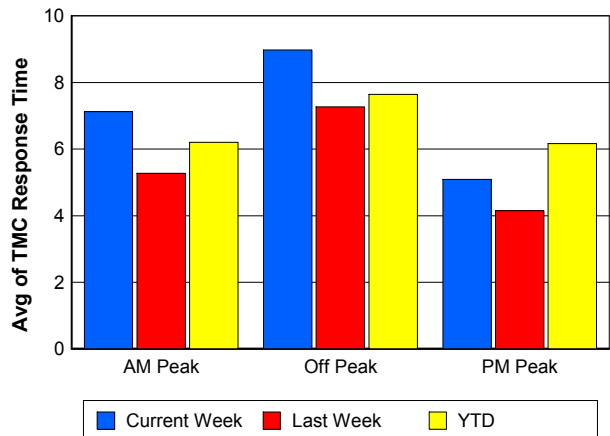
TMC Detection Time



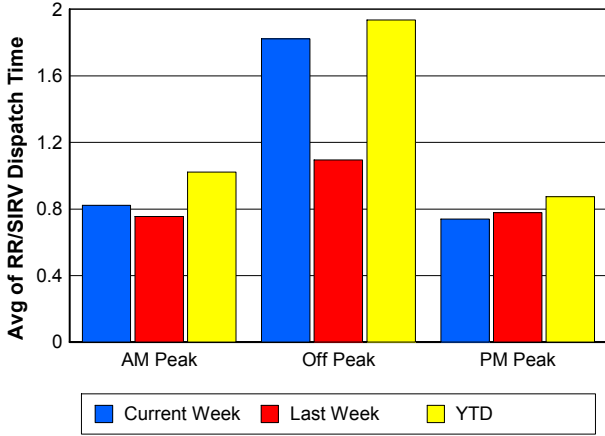
TMC Verification Time



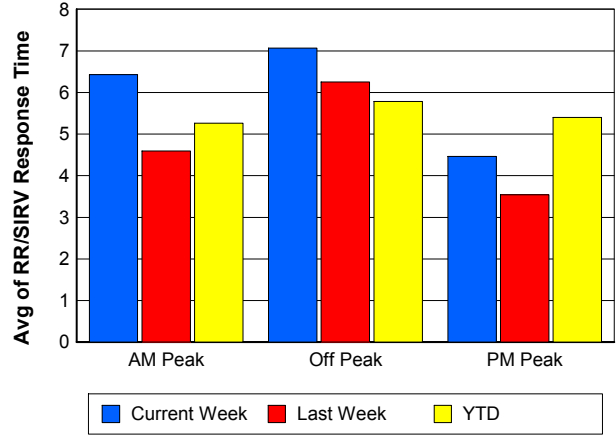
TMC Response Time



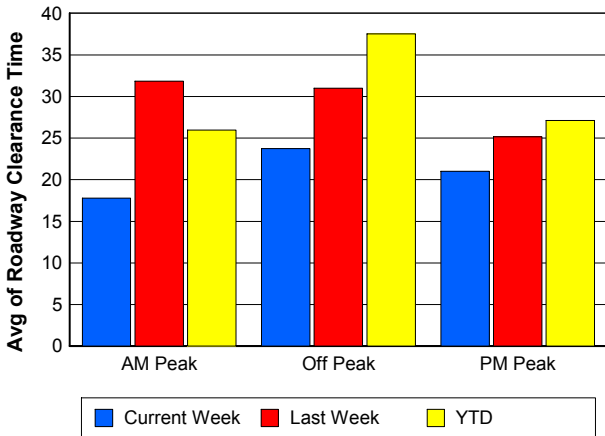
Road Ranger / SIRV Dispatch Time



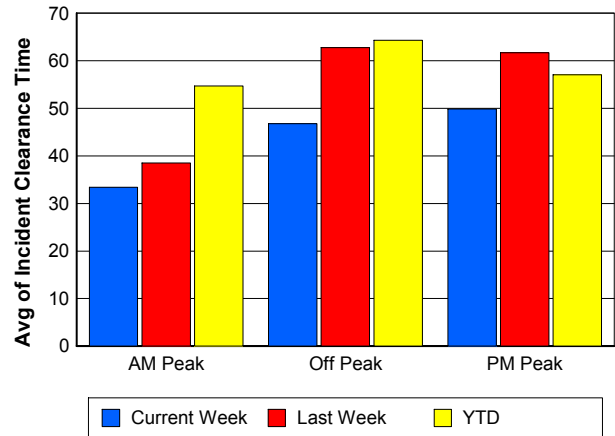
Road Ranger / SIRV Response Time



Roadway Clearance Time (2A)



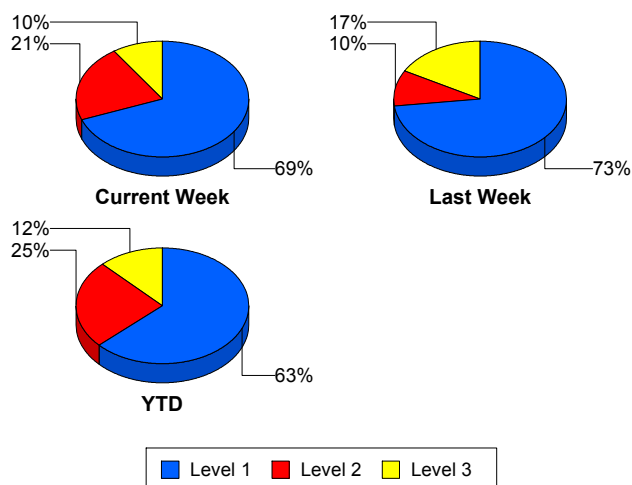
Incident Clearance Time (3B)



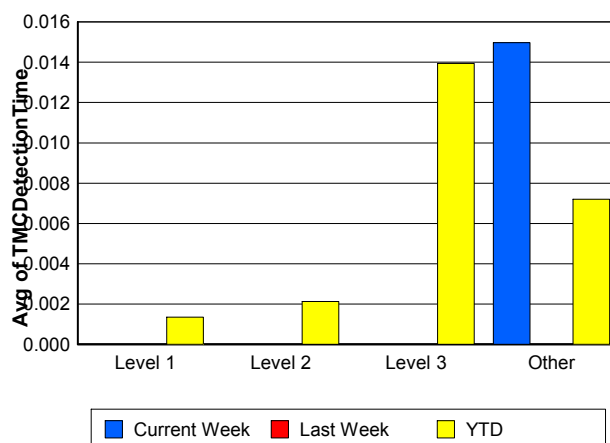
Performance Measures by Severity

	Level 1			Level 2			Level 3			Other		
	<u>This Week</u>	<u>Last Week</u>	<u>YTD</u>	<u>This Week</u>	<u>Last Week</u>	<u>YTD</u>	<u>This Week</u>	<u>Last Week</u>	<u>YTD</u>	<u>This Week</u>	<u>Last Week</u>	<u>YTD</u>
Number of Events	29	30	902	9	4	354	4	7	177	845	873	29,467
Number of Incidents	29	30	902	9	4	354	4	7	177	0	0	0
TMC Detection (min.)	0.00	0.00	0.00	0.00	0.00	0.00	0.00	0.00	0.01	0.01	0.00	0.01
TMC Verification (min.)	0.23	0.01	0.42	3.92	2.27	0.93	1.22	0.14	1.52	0.64	0.93	0.55
TMC Response (min.)	4.97	4.06	7.13	11.24	19.48	10.34	23.14	11.06	25.48	7.19	5.60	6.53
RR Dispatch Time (min.)	1.13	0.92	1.66	2.14	1.88	3.31	1.51	1.11	9.77	1.17	0.89	1.25
RR Resp. Time (min.)	3.84	3.16	5.57	9.10	17.61	7.53	21.63	10.50	15.27	6.08	4.83	5.40
Event Clearance (min.)	37.28	49.70	46.38	68.35	57.89	72.74	40.15	98.69	104.72	25.04	21.71	22.13
Roadway Clear. (min.)	13.15	15.30	14.12	45.64	53.48	49.34	25.96	74.45	88.26			
Incident Clearance (min.)	37.28	49.70	46.38	68.35	57.89	72.74	40.15	98.69	104.72			
# of Events w/ RR/SIRV	21	20	630	6	2	165	3	6	146	574	653	18,998
RR/SIRV Responses	21	20	630	6	2	165	3	6	146	574	653	18,998
RR/SIRV Activities	40	35	1,111	15	4	484	3	13	318	507	581	16,130

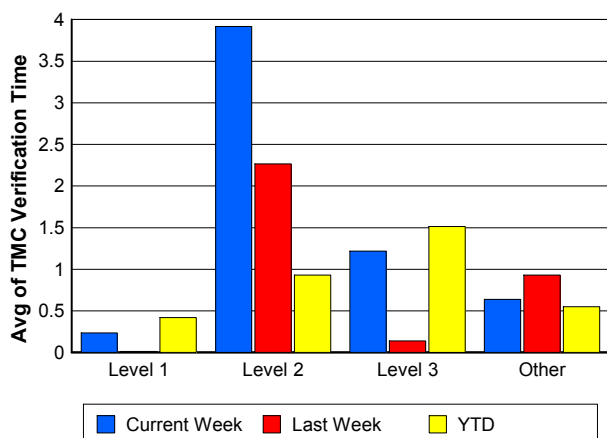
Number of Events / Severity



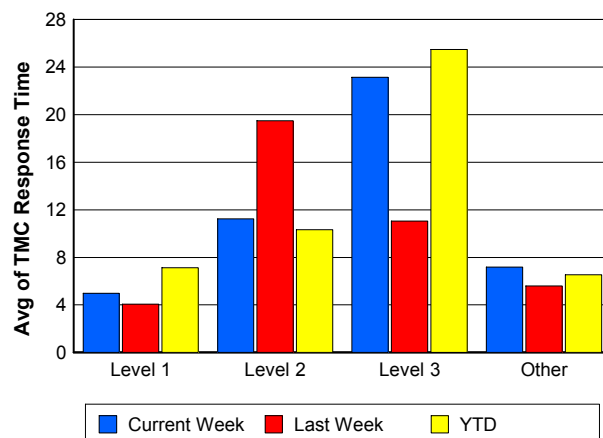
TMC Detection Time



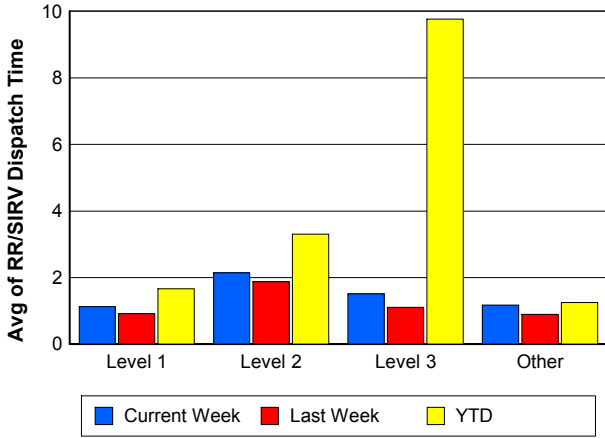
TMC Verification Time



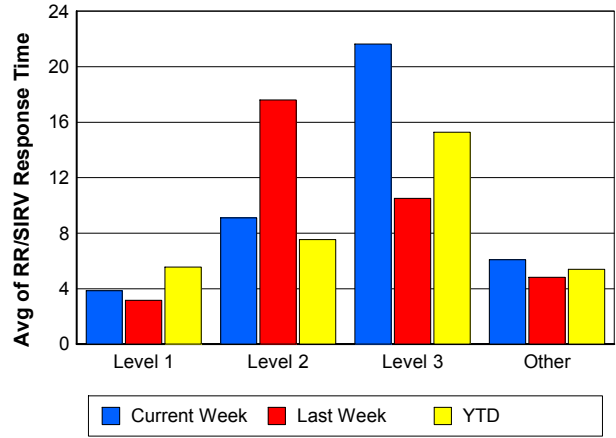
TMC Response Time



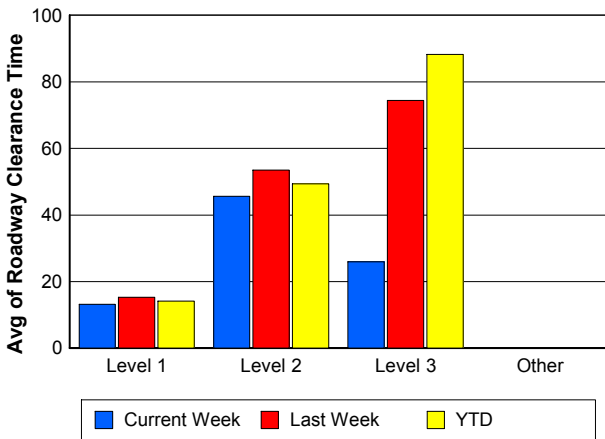
Road Ranger / SIRV Dispatch Time



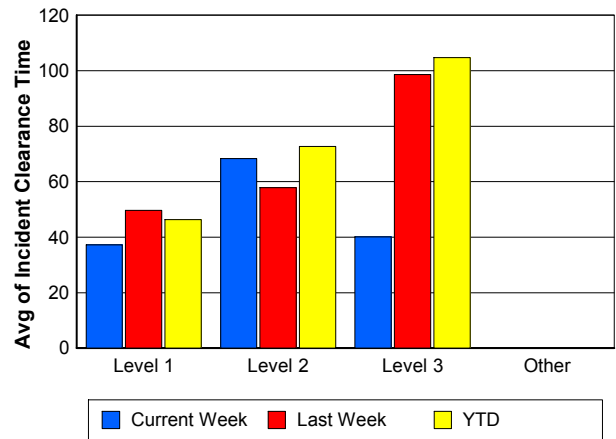
Road Ranger / SIRV Response Time



Roadway Clearance Time (2A)



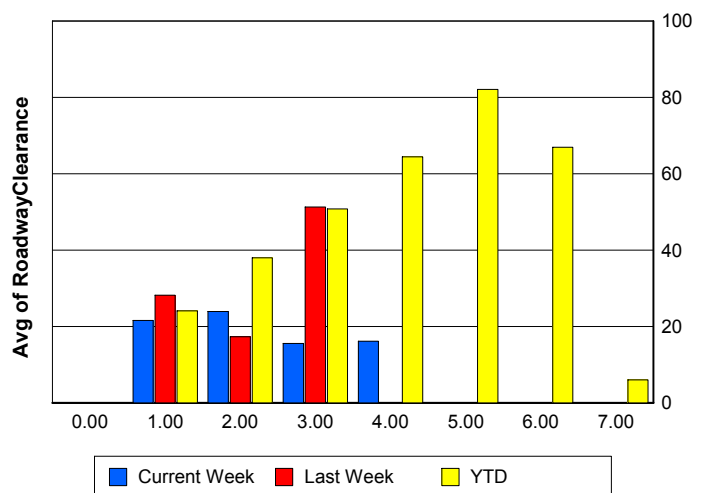
Incident Clearance Time (3B)



Roadway Clearance by Maximum Number of Lanes Blocked

	Current Week	Last Week	YTD
0			
1	21.58	28.15	24.11
2	23.93	17.34	38.00
3	15.54	51.30	50.78
4	16.15	0.00	64.43
5	0.00	0.00	82.05
6	0.00	0.00	66.89
7	0.00	0.00	5.97

Roadway Clearance Time (2A)



Performance Measures by Roadway

595

	<u>Current Week</u>	<u>Last Week</u>	<u>YTD</u>
Number of Events	28	145	4,077
Number of Incidents	1	7	249
TMC Detection (min.)	0.00	0.00	0.01
TMC Verification (min.)	0.37	1.89	0.74
TMC Response (min.)	10.98	6.72	6.42
RR Dispatch Time (min.)	1.15	1.04	1.11
RR Resp. Time (min.)	9.94	5.94	5.39
Event Clearance (min.)	21.90	21.96	21.49
Roadway Clear. (min.)	16.75	43.35	30.78
Incident Clearance (min.)	18.93	53.10	53.68
# of Events w/ RR/SIRV	16	111	2,813
RR/SIRV Responses	16	111	2,813
RR/SIRV Activities	10	105	2,589

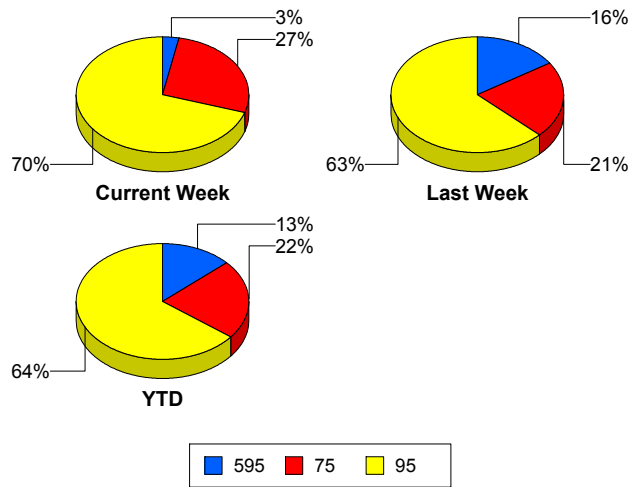
75

	<u>Current Week</u>	<u>Last Week</u>	<u>YTD</u>
Number of Events	239	195	6,936
Number of Incidents	4	2	128
TMC Detection (min.)	0.00	0.00	0.00
TMC Verification (min.)	0.73	1.10	0.68
TMC Response (min.)	8.68	7.71	8.08
RR Dispatch Time (min.)	0.89	0.90	1.27
RR Resp. Time (min.)	7.98	6.91	6.92
Event Clearance (min.)	32.79	26.46	26.26
Roadway Clear. (min.)	37.17	31.47	58.95
Incident Clearance (min.)	63.30	60.76	84.73
# of Events w/ RR/SIRV	146	148	4,372
RR/SIRV Responses	146	148	4,372
RR/SIRV Activities	128	136	3,680

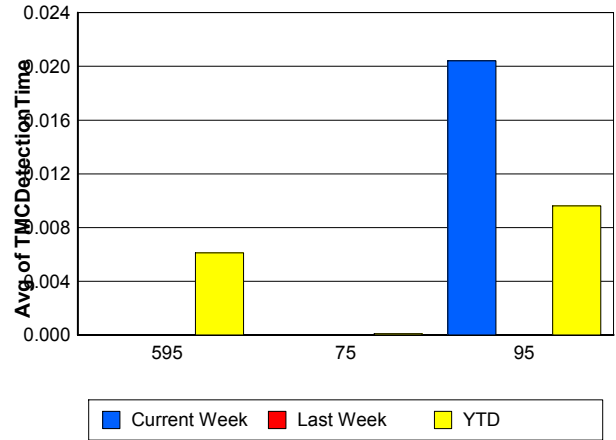
95

	<u>Current Week</u>	<u>Last Week</u>	<u>YTD</u>
Number of Events	620	574	19,887
Number of Incidents	37	32	1,056
TMC Detection (min.)	0.02	0.00	0.01
TMC Verification (min.)	0.65	0.58	0.48
TMC Response (min.)	6.69	4.61	6.39
RR Dispatch Time (min.)	1.28	0.86	1.42
RR Resp. Time (min.)	5.43	3.84	5.08
Event Clearance (min.)	23.49	22.68	23.55
Roadway Clear. (min.)	19.74	25.87	28.99
Incident Clearance (min.)	42.84	60.01	58.66
# of Events w/ RR/SIRV	442	422	12,754
RR/SIRV Responses	442	422	12,754
RR/SIRV Activities	427	392	11,774

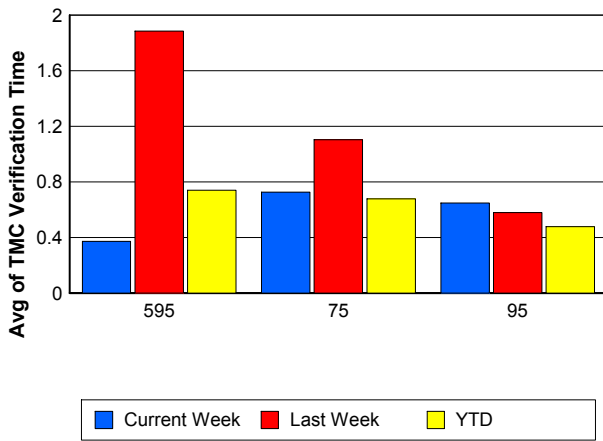
Number of Events / Roadway



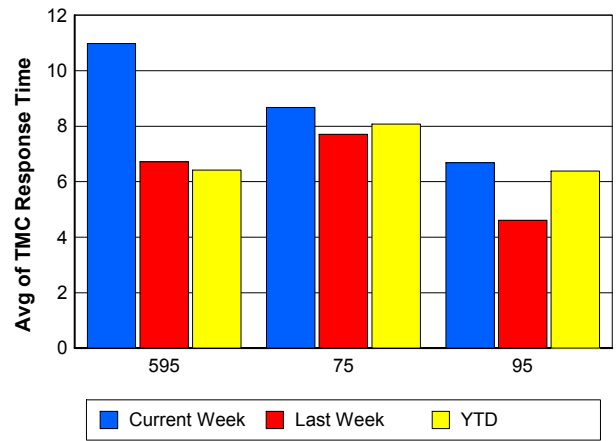
TMC Detection Time



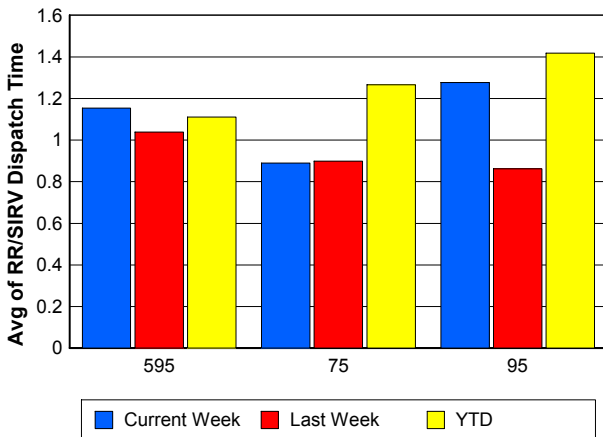
TMC Verification Time



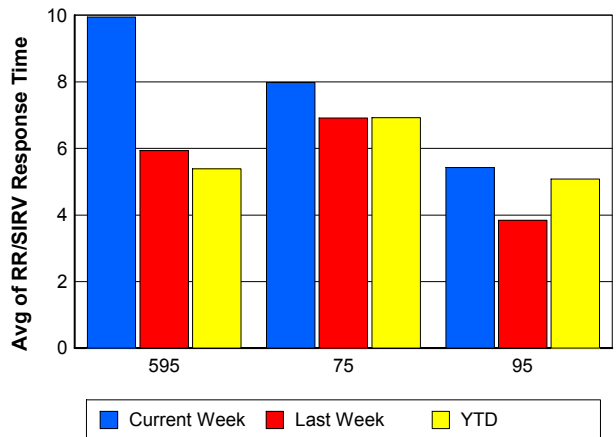
TMC Response Time



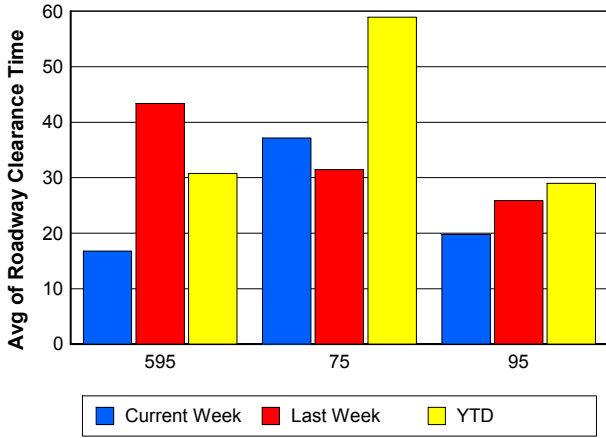
Road Ranger / SIRV Dispatch Time



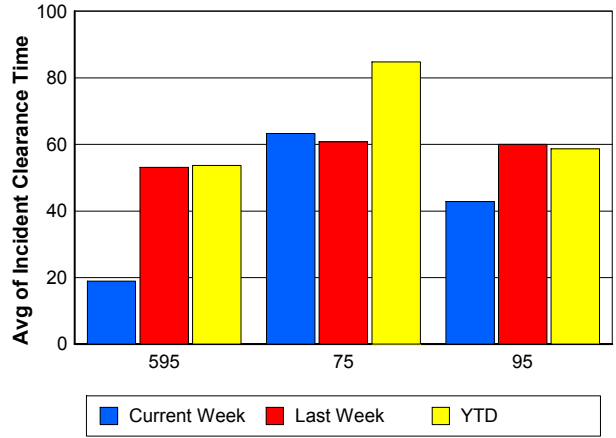
Road Ranger / SIRV Response Time



Roadway Clearance Time (2A)



Incident Clearance Time (3B)



Performance Measures by Event Type

Accident

	<u>Current Week</u>	<u>Last Week</u>	<u>YTD</u>
Number of Events	67	58	2,134
Number of Incidents	29	30	1,030
TMC Detection (min.)	0.00	0.00	0.01
TMC Verification (min.)	0.53	0.70	0.74
TMC Response (min.)	7.21	6.81	8.70
RR Dispatch Time (min.)	1.04	0.94	1.68
RR Response Time (min.)	6.20	5.96	7.13
Event Clearance (min.)	44.76	50.73	55.32
Roadway Clearance (min.)	21.73	24.77	33.35
Incident Clearance (min.)	51.81	61.19	66.67
# of Events w/ RR/SIRV	46	39	1,486
RR/SIRV Assists	46	39	1,486
RR/SIRV Activities	67	51	2,284

Debris on Roadway

	<u>Current Week</u>	<u>Last Week</u>	<u>YTD</u>
Number of Events	34	36	868
Number of Incidents	0	2	21
TMC Detection (min.)	0.00	0.00	0.13
TMC Verification (min.)	4.27	4.41	3.76
TMC Response (min.)	11.12	8.89	7.44
RR Dispatch Time (min.)	1.38	0.57	0.90
RR Response Time (min.)	9.75	8.36	6.56
Event Clearance (min.)	14.99	10.84	11.40
Roadway Clearance (min.)		24.05	23.45
Incident Clearance (min.)		29.11	27.98
# of Events w/ RR/SIRV	29	33	795
RR/SIRV Assists	29	33	795
RR/SIRV Activities	28	33	823

Disabled Vehicle

	<u>Current Week</u>	<u>Last Week</u>	<u>YTD</u>
Number of Events	537	588	17,909
Number of Incidents	9	4	223
TMC Detection (min.)	0.02	0.00	0.00
TMC Verification (min.)	0.74	0.93	0.65
TMC Response (min.)	7.10	5.31	6.28
RR Dispatch Time (min.)	1.17	0.82	1.14
RR Response Time (min.)	5.94	4.53	5.17
Event Clearance (min.)	30.84	26.17	27.17
Roadway Clearance (min.)	14.43	21.13	19.38
Incident Clearance (min.)	21.10	39.31	36.87
# of Events w/ RR/SIRV	407	488	13,654
RR/SIRV Assists	407	488	13,654
RR/SIRV Activities	434	504	13,941

Emergency Vehicles

	<u>Current Week</u>	<u>Last Week</u>	<u>YTD</u>
Number of Events	1	1	42
Number of Incidents	1	1	34
TMC Detection (min.)	0.00	0.00	0.00
TMC Verification (min.)	0.00	0.00	0.89
TMC Response (min.)	9.05		15.58
RR Dispatch Time (min.)	1.30		10.10
RR Response Time (min.)	7.75		4.81
Event Clearance (min.)	42.78	31.13	49.95
Roadway Clearance (min.)	42.88	20.77	50.09
Incident Clearance (min.)	42.78	31.13	55.68
# of Events w/ RR/SIRV	1	0	25
RR/SIRV Assists	1	0	25
RR/SIRV Activities	2	0	42

Other

	<u>Current Week</u>	<u>Last Week</u>	<u>YTD</u>
Number of Events	241	221	9,622
Number of Incidents	0	1	22
TMC Detection (min.)	0.00	0.00	0.00
TMC Verification (min.)	0.01	0.37	0.06
TMC Response (min.)	3.46	6.75	9.51
RR Dispatch Time (min.)	1.23	1.34	1.92
RR Response Time (min.)	2.93	5.71	6.82
Event Clearance (min.)	11.24	10.79	11.47
Roadway Clearance (min.)		250.43	33.90
Incident Clearance (min.)		261.20	39.00
# of Events w/ RR/SIRV	115	114	3,807
RR/SIRV Assists	115	114	3,807
RR/SIRV Activities	27	35	728

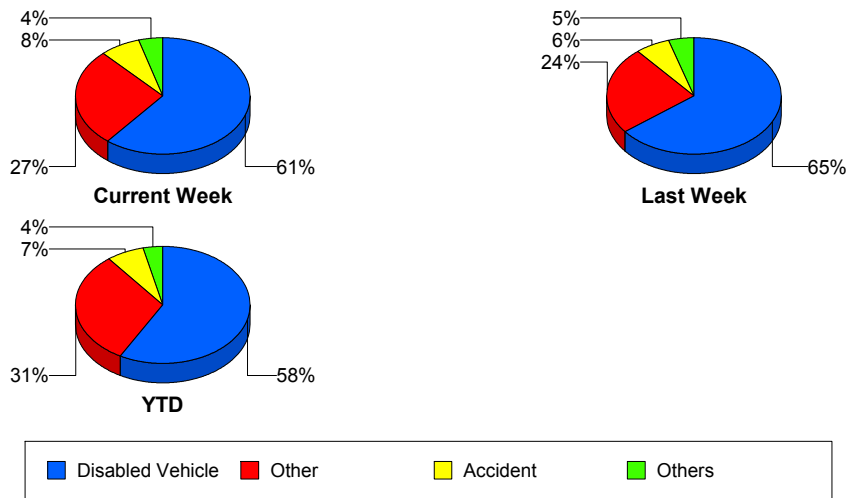
Police Activity

	<u>Current Week</u>	<u>Last Week</u>	<u>YTD</u>
Number of Events	1	2	137
Number of Incidents	1	0	44
TMC Detection (min.)	0.00	0.00	0.00
TMC Verification (min.)	0.00	0.00	0.20
TMC Response (min.)	47.63		15.13
RR Dispatch Time (min.)	3.45	1.79	5.03
RR Response Time (min.)	44.18		10.06
Event Clearance (min.)	69.15	16.56	36.02
Roadway Clearance (min.)	64.60		41.36
Incident Clearance (min.)	69.15		51.45
# of Events w/ RR/SIRV	1	2	43
RR/SIRV Assists	1	2	43
RR/SIRV Activities	1	0	49

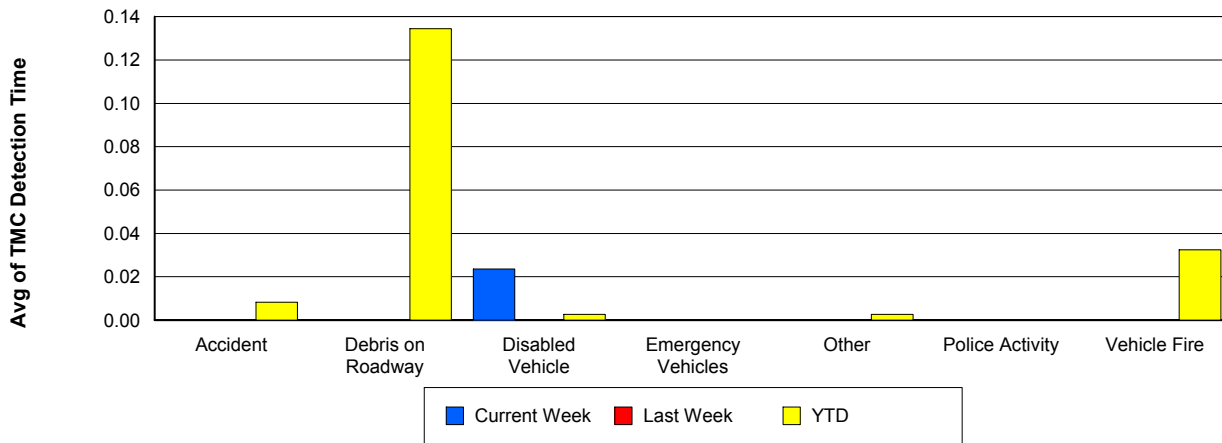
Vehicle Fire

	<u>Current Week</u>	<u>Last Week</u>	<u>YTD</u>
Number of Events	3	5	76
Number of Incidents	2	3	59
TMC Detection (min.)	0.00	0.00	0.03
TMC Verification (min.)	0.00	0.12	1.30
TMC Response (min.)	10.66	1.78	11.33
RR Dispatch Time (min.)	0.76	0.43	2.48
RR Response Time (min.)	9.89	1.35	9.36
Event Clearance (min.)	23.32	25.94	58.25
Roadway Clearance (min.)	14.19	15.76	40.51
Incident Clearance (min.)	26.42	23.32	62.42
# of Events w/ RR/SIRV	3	4	50
RR/SIRV Assists	3	4	50
RR/SIRV Activities	4	9	103

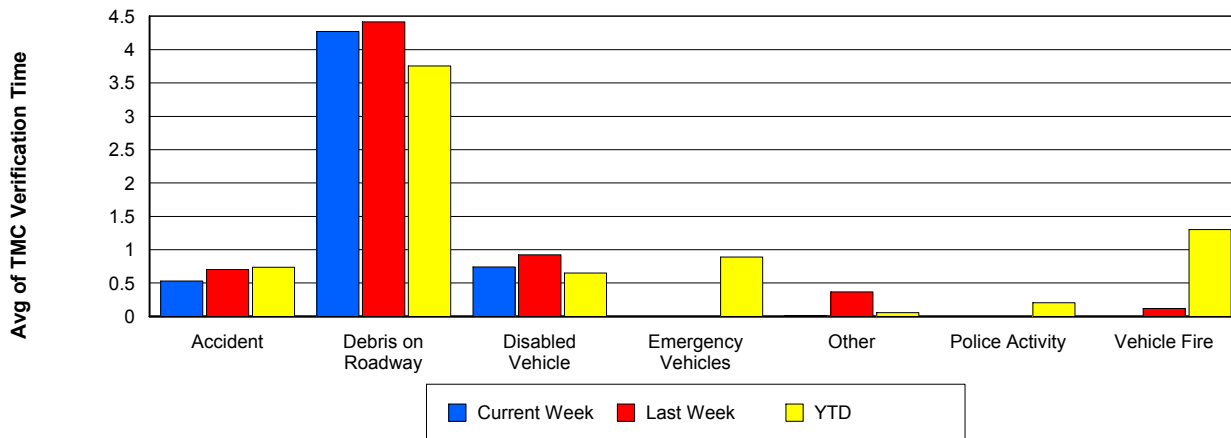
Number of Events / Event Type



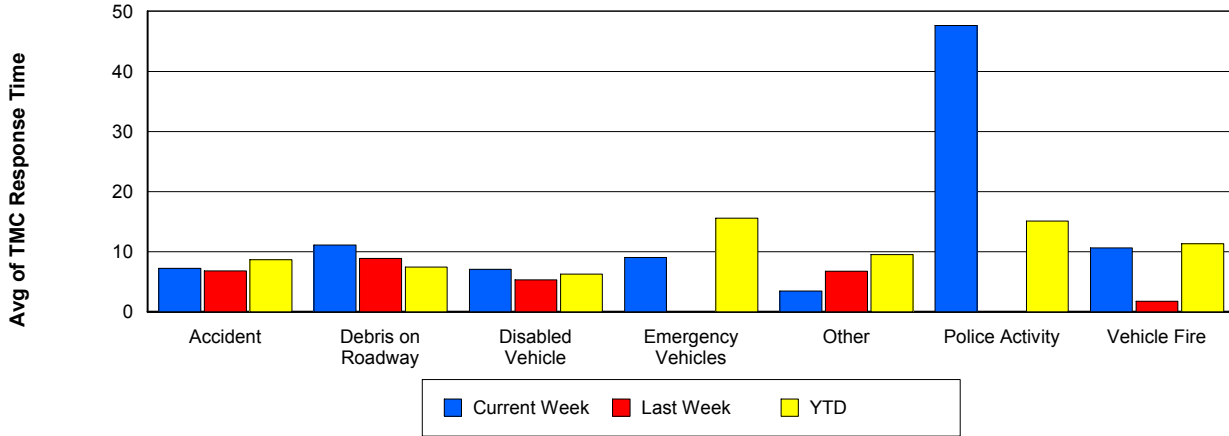
TMC Detection Time



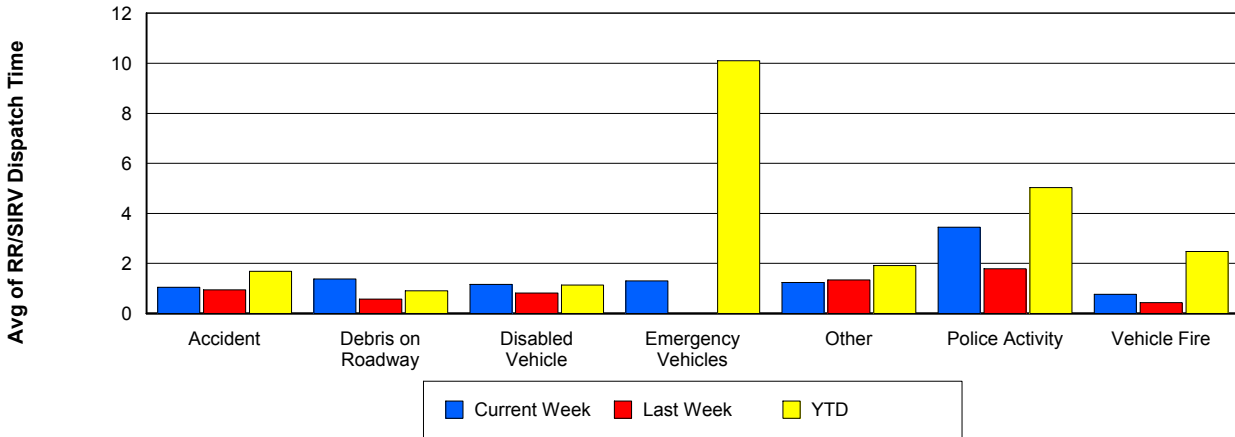
TMC Verification Time



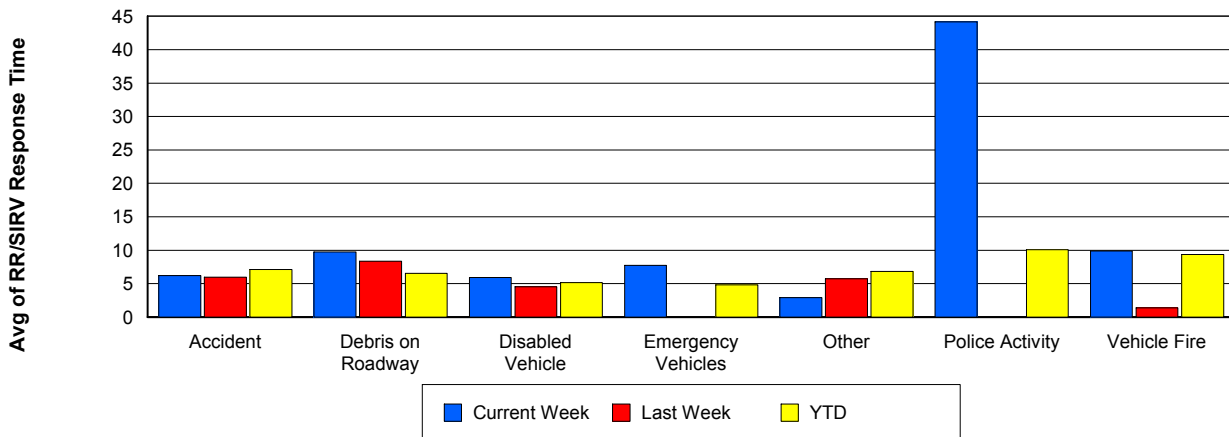
TMC Response Time



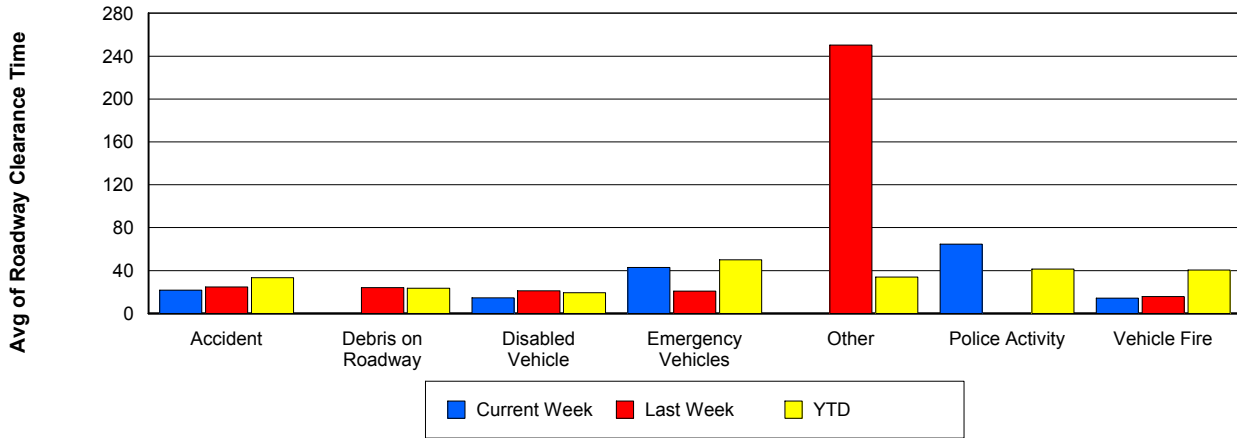
Road Ranger / SIRV Dispatch Time



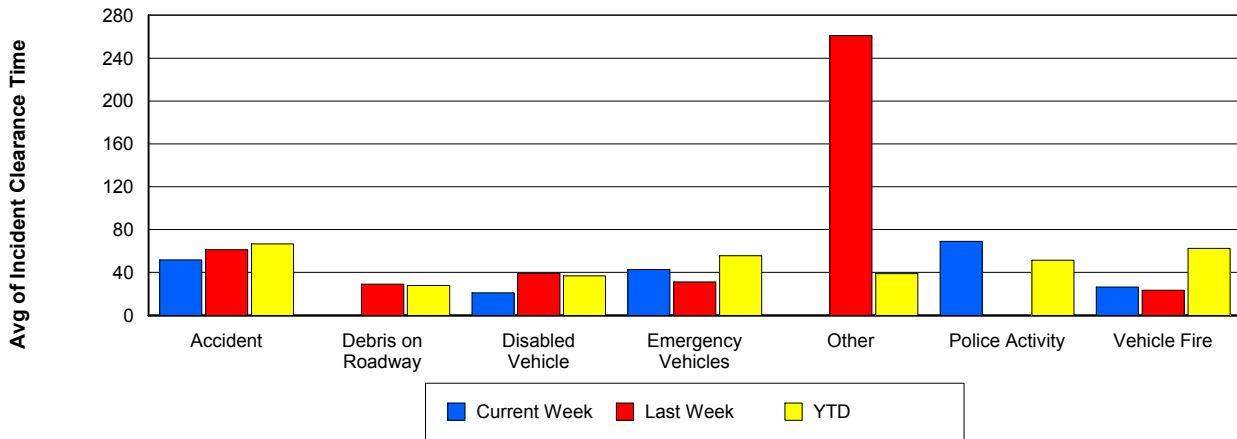
Road Ranger / SIRV Response Time



Roadway Clearance Time (2A)



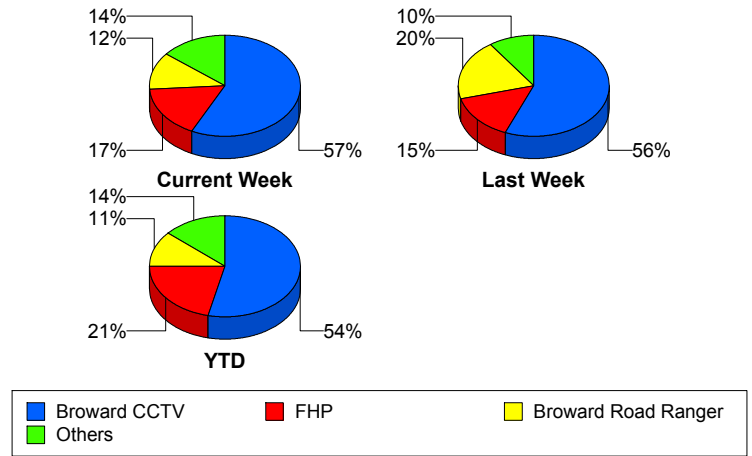
Incident Clearance Time (3B)



Incident Detection Methods

	Current Week	Last Week	YTD
Broward CCTV	24	23	769
Broward Road Ranger	5	8	163
Broward VideoWall	0	0	49
BSO	1	0	32
District 4	1	2	41
District 6	0	0	1
FDOT Maintenance	0	0	4
FHP	7	6	307
Fire	0	0	2
Florida's Turnpike	0	0	6
ITMS	0	0	1
Motorist	2	0	7
Other	0	0	1
Palm Beach Road Ran	0	0	2
Road Watcher	0	0	12
SIRV	2	0	9
SmarTraveler (511)	0	0	6
VisioPaD Detection	0	2	21
Total	42	41	1,433

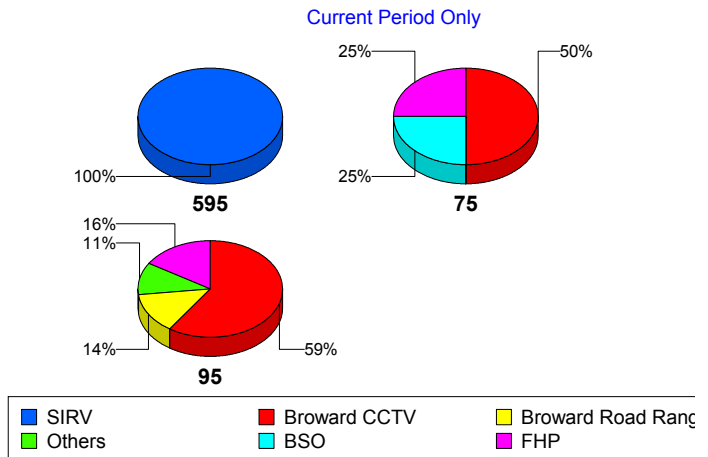
Total Incidents by Detection Method



Incident Detection Methods by Roadway

		Current Week	Last Week	YTD
595	Broward CCTV	0	4	121
	Broward Road Ranger	0	0	37
	Broward VideoWall	0	0	8
	BSO	0	0	3
	District 4	0	1	12
	FDOT Maintenance	0	0	2
	FHP	0	1	49
	Florida's Turnpike	0	0	6
	Motorist	0	0	2
	Road Watcher	0	0	3
	SIRV	1	0	1
	VisioPaD Detection	0	1	5
	Total	1	7	249
	75	Broward CCTV	2	1
Broward Road Ranger		0	0	12
Broward VideoWall		0	0	1
BSO		1	0	26
District 4		0	0	5
FHP		1	1	26
Other		0	0	1
Road Watcher		0	0	2
VisioPaD Detection		0	0	2
Total		4	2	128
95	Broward CCTV	22	18	595
	Broward Road Ranger	5	8	114
	Broward VideoWall	0	0	40
	BSO	0	0	3
	District 4	1	1	24
	District 6	0	0	1
	FDOT Maintenance	0	0	2
	FHP	6	4	232

Total Events by Roadway and Detection Method

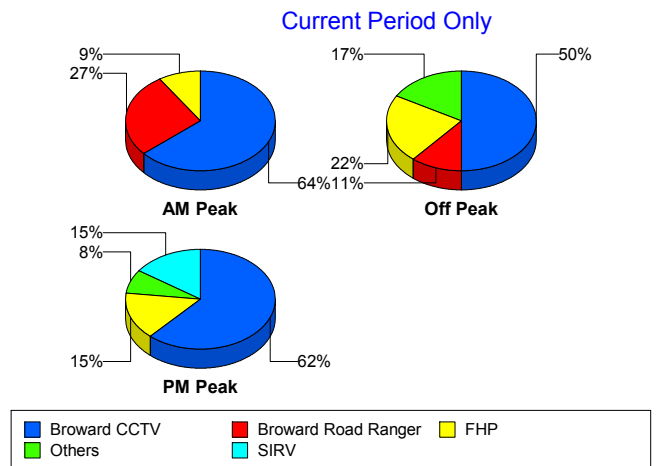


		Current Week	Last Week	YTD
95	Fire	0	0	2
	ITMS	0	0	1
	Motorist	2	0	5
	Palm Beach Road Ran	0	0	2
	Road Watcher	0	0	7
	SIRV	1	0	8
	SmarTraveler (511)	0	0	6
	VisioPaD Detection	0	1	14
	Total	37	32	1,056
Total		42	41	1,433

Incident Detection Methods by Peak Period

		Current Week	Last Week	YTD
AM Peak	Broward CCTV	7	3	145
	Broward Road Ranger	3	2	51
	Broward VideoWall	0	0	16
	BSO	0	0	5
	District 4	0	0	13
	FHP	1	1	76
	Florida's Turnpike	0	0	2
	Motorist	0	0	4
	Palm Beach Road Ran	0	0	1
	Road Watcher	0	0	4
	SIRV	0	0	1
	SmarTraveler (511)	0	0	1
	VisioPaD Detection	0	0	1
	Total	11	6	320
	Off Peak	Broward CCTV	9	13
Broward Road Ranger		2	3	45
Broward VideoWall		0	0	27
BSO		1	0	22
District 4		0	1	13

Total Events by Peak Period and Detection Method

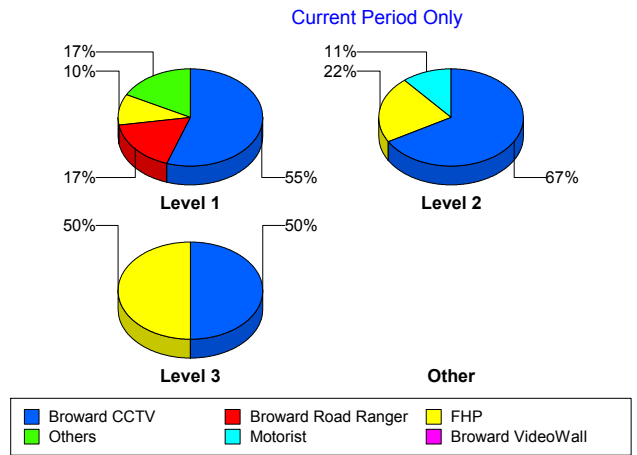


		Current Week	Last Week	YTD
Off Peak	FDOT Maintenance	0	0	2
	FHP	4	3	147
	Fire	0	0	1
	Florida's Turnpike	0	0	3
	ITMS	0	0	1
	Motorist	2	0	3
	Road Watcher	0	0	5
	SIRV	0	0	2
	SmarTraveler (511)	0	0	3
	VisioPaD Detection	0	1	16
	Total	18	21	706
PM Peak	Broward CCTV	8	7	208
	Broward Road Ranger	0	3	67
	Broward VideoWall	0	0	6
	BSO	0	0	5
	District 4	1	1	15
	District 6	0	0	1
	FDOT Maintenance	0	0	2
	FHP	2	2	84
	Fire	0	0	1
	Florida's Turnpike	0	0	1
	Other	0	0	1
	Palm Beach Road Ran	0	0	1
	Road Watcher	0	0	3
	SIRV	2	0	6
	SmarTraveler (511)	0	0	2
	VisioPaD Detection	0	1	4
	Total	13	14	407
Total	42	41	1,433	

Incident Detection Methods by Severity

		Current Week	Last Week	YTD
Level 1	Broward CCTV	16	20	491
	Broward Road Ranger	5	7	121
	Broward VideoWall	0	0	30
	BSO	1	0	7
	District 4	1	0	30
	FDOT Maintenance	0	0	3
	FHP	3	1	179
	Fire	0	0	1
	Motorist	1	0	5
	Palm Beach Road Ran	0	0	2
	Road Watcher	0	0	9
	SIRV	2	0	8
	SmarTraveler (511)	0	0	4
	VisioPaD Detection	0	2	12
	Total	29	30	902
Level 2	Broward CCTV	6	1	192
	Broward Road Ranger	0	0	28
	Broward VideoWall	0	0	16
	BSO	0	0	7
	District 4	0	0	5
	FDOT Maintenance	0	0	1
	FHP	2	3	86
	Florida's Turnpike	0	0	4
	ITMS	0	0	1
	Motorist	1	0	2
	Other	0	0	1
	Road Watcher	0	0	1
	SIRV	0	0	1
	SmarTraveler (511)	0	0	2
	VisioPaD Detection	0	0	7
Total	9	4	354	

Total Events by Severity and Detection Method



		Current Week	Last Week	YTD
Level 3	Broward CCTV	2	2	86
	Broward Road Ranger	0	1	14
	Broward VideoWall	0	0	3
	BSO	0	0	18
	District 4	0	2	6
	District 6	0	0	1
	FHP	2	2	42
	Fire	0	0	1
	Florida's Turnpike	0	0	2
	Road Watcher	0	0	2
	VisioPaD Detection	0	0	2
	Total	4	7	177
Total		42	41	1,433

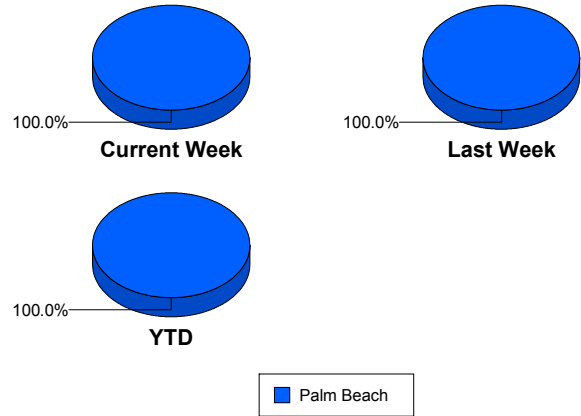
Road Ranger / SIRV Performance Measures

Road Ranger / SIRV Performance By County

RR/SIRV Responses per County

Values presented are:
 - Total Events with a RR/SIRV Response
 - Total RR/SIRV Responses,
 - Total Activities Performed

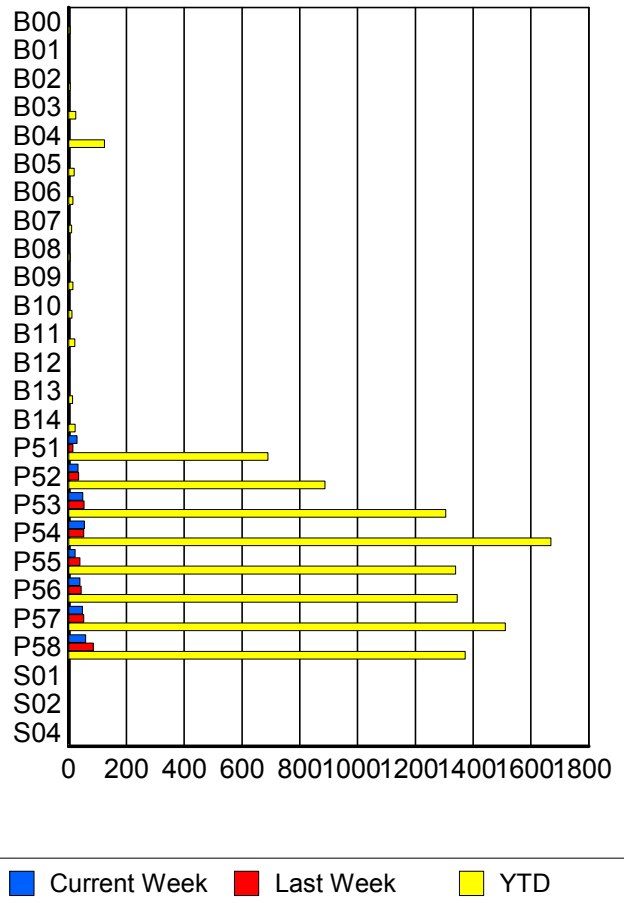
	Current We	Last Week	YTD
Palm Beach	323	377	10,062
	340	389	10,422
	360	417	11,131



Road Ranger / SIRV Performance By Truck

	Current We	Last Week	YTD
B00	1	1	5
	1	1	5
	1	1	5
B01	0	0	1
	0	0	1
	0	0	1
B02	0	0	6
	0	0	6
	0	0	6
B03	2	0	25
	2	0	25
	2	0	26
B04	1	3	123
	1	3	124
	1	5	145
B05	0	0	18
	0	0	19
	0	0	20
B06	0	3	15
	0	3	15
	0	3	15
B07	0	3	10
	0	3	10
	0	3	10
B08	0	1	5
	0	1	5
	0	1	5

**RR/SIRV
Responses per
Truck**



	Current We	Last Week	YTD
B09	0	1	15
	0	1	15
	0	1	15
B10	0	0	10
	0	0	11
	0	0	11
B11	0	0	21
	0	0	21
	0	0	22
B12	0	0	4
	0	0	4
	0	0	4
B13	0	2	14
	0	2	14
	0	2	15
B14	2	0	23
	2	0	23
	2	0	24
P51	29	14	680
	29	15	690
	29	15	722
P52	32	34	880
	32	35	887
	36	38	948
P53	49	53	1,289
	49	53	1,305
	49	54	1,383
P54	55	52	1,649
	55	52	1,669
	58	55	1,790
P55	23	39	1,328
	23	39	1,340
	29	41	1,435
P56	38	43	1,326
	39	44	1,345
	42	52	1,451
P57	47	51	1,496
	48	52	1,512
	52	54	1,618
P58	57	82	1,351
	59	85	1,372
	59	92	1,456
S01	0	0	1
	0	0	1
	0	0	1

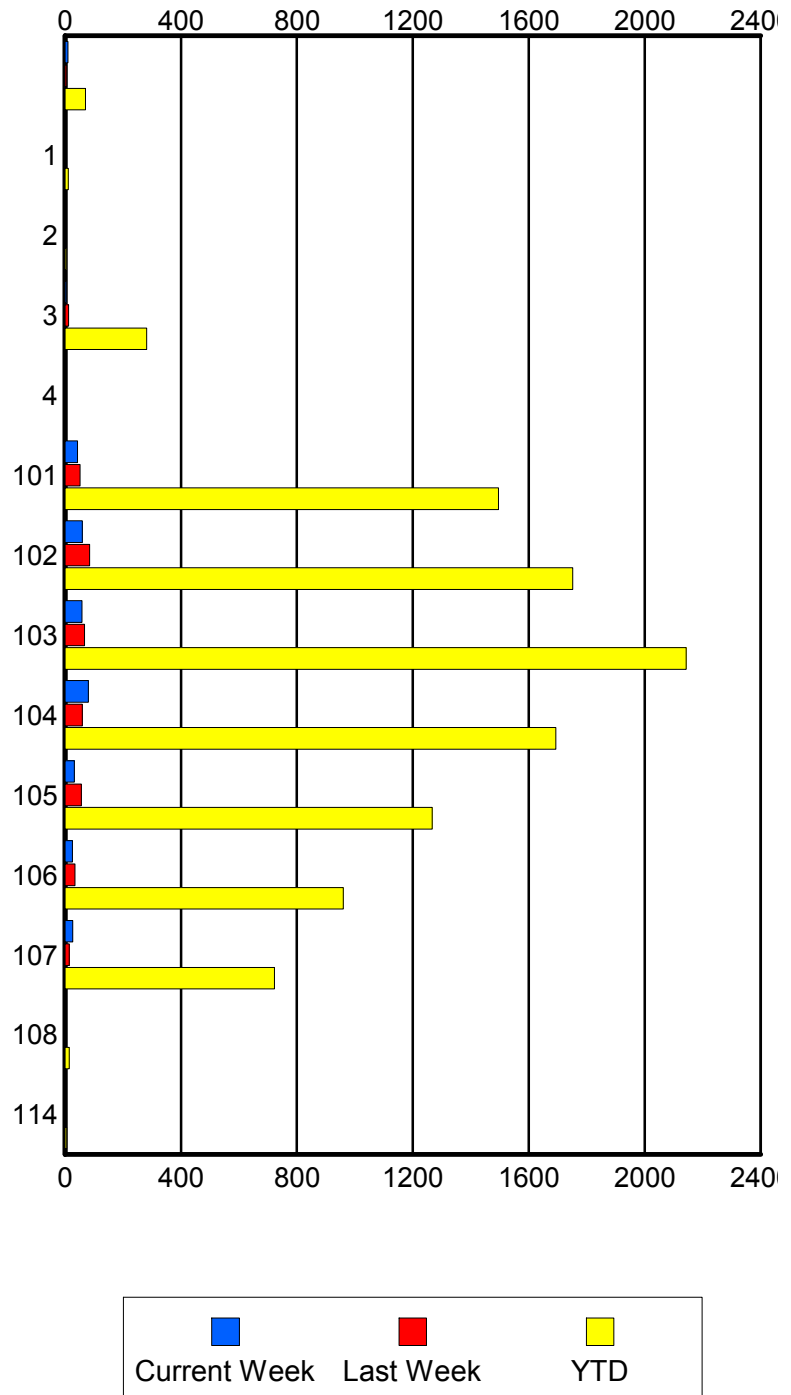
	Current We	Last Week	YTD
S02	0	0	1
	0	0	1
	0	0	1
S04	0	0	2
	0	0	2
	0	0	2

Road Ranger / SIRV Performance By Beat

	Current We	Last Week	YTD
	10	6	71
	10	6	71
	10	6	71
1	1	2	11
	1	2	11
	1	2	12
2	0	0	4
	0	0	4
	0	0	5
3	5	12	278
	5	12	282
	5	14	306
4	0	0	2
	0	0	2
	0	0	2
101	43	51	1,476
	43	52	1,495
	46	55	1,605
102	57	82	1,730
	59	85	1,752
	59	92	1,864
103	56	66	2,113
	58	67	2,143
	59	70	2,299
104	80	60	1,674
	80	60	1,693
	88	64	1,811
105	32	56	1,256
	32	56	1,267
	36	62	1,354
106	25	33	945
	25	34	960
	29	37	1,030
107	27	14	711
	27	15	722
	27	15	752
108	0	0	13
	0	0	14
	0	0	14
114	0	0	6
	0	0	6
	0	0	6

Values presented are:
 - Total Events with a RR/SIRV Response
 - Total RR/SIRV Responses,
 - Total Activities Performed

RR/SIRV Responses per Beat

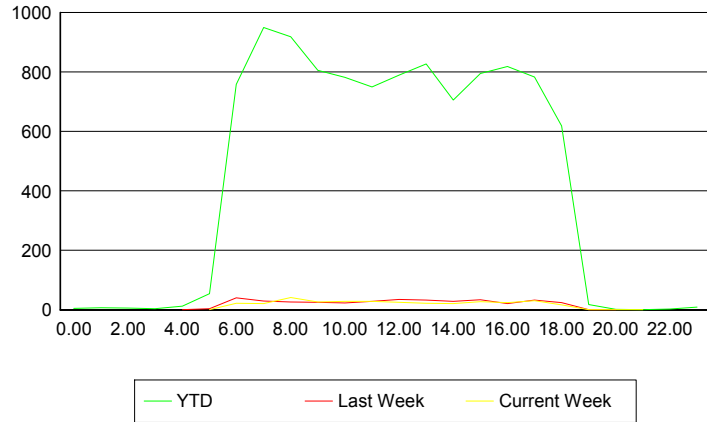


Road Ranger / SIRV Performance By Time of Day

Values presented are:
 - Total Events with a RR/SIRV Response
 - Total RR/SIRV Responses,
 - Total Activities Performed

	Current We	Last Week	YTD
12AM-1AM	0 0 0	0 0 0	5 5 5
1AM-2AM	0 0 0	0 0 0	5 7 7
2AM-3AM	0 0 0	0 0 0	6 6 7
3AM-4AM	0 0 0	0 0 0	4 4 4
4AM-5AM	0 0 0	1 1 1	9 12 13
5AM-6AM	1 1 1	3 4 5	50 54 57
6AM-7AM	21 22 26	39 40 40	728 758 798
7AM-8AM	20 21 22	29 30 31	907 949 1,017
8AM-9AM	41 42 44	25 26 27	883 918 988
9AM-10AM	24 26 27	24 25 30	780 806 885
10AM-11AM	26 29 31	22 23 23	751 782 827
11AM-12PM	28 29 30	27 29 36	724 750 813
12PM-1PM	24 25 28	34 35 37	760 789 843

Number of Responses / Hour of the Day



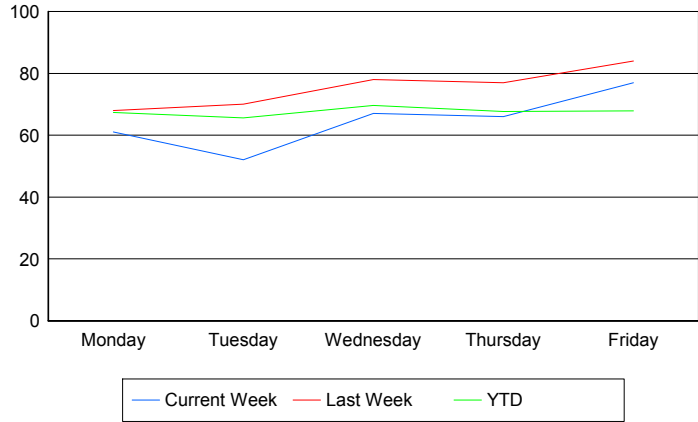
	Current We	Last Week	YTD
1PM-2PM	22	33	809
	22	33	827
	24	34	895
2PM-3PM	21	29	682
	21	29	706
	21	33	747
3PM-4PM	27	32	766
	28	34	795
	30	36	853
4PM-5PM	22	20	792
	24	21	819
	24	23	861
5PM-6PM	28	33	757
	31	33	783
	33	34	824
6PM-7PM	16	24	612
	17	24	619
	17	25	653
7PM-8PM	1	1	18
	1	1	18
	1	1	19
8PM-9PM	0	1	2
	0	1	2
	0	1	2
9PM-10PM	1	0	1
	1	0	1
	1	0	1
10PM-11PM	0	0	3
	0	0	3
	0	0	3
11PM-12AM	0	0	8
	0	0	9
	0	0	9

Road Ranger / SIRV Performance By Day of Week

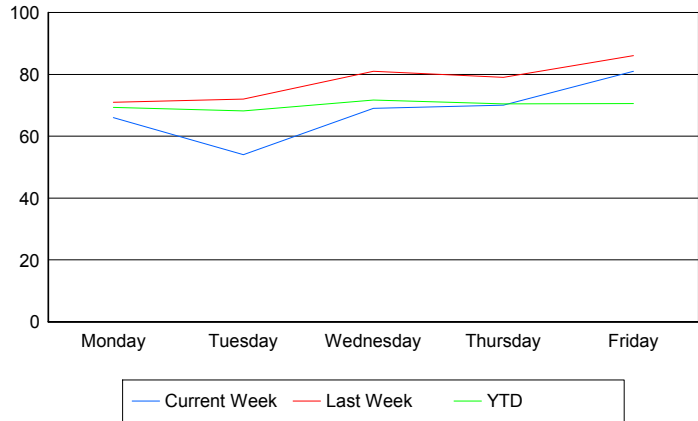
Values presented are:
 - Total Events with a RR/SIRV Response
 - Total RR/SIRV Responses,
 - Total Activities Performed

	Current We	Last Week	YTD
Monday	61	68	1,974
	66	71	2,030
	72	74	2,148
Tuesday	52	70	1,932
	54	72	2,005
	58	79	2,136
Wednesday	67	78	2,059
	69	81	2,123
	73	88	2,286
Thursday	66	77	2,041
	70	79	2,124
	74	83	2,277
Friday	77	84	2,060
	81	86	2,140
	83	93	2,284

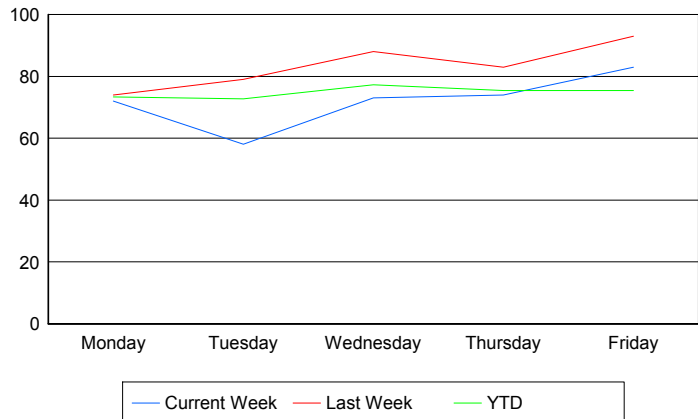
Avg # of events with a RR/SIRV Response per Day of the Week



Avg # of RR/SIRV Responses per Day of the Week



Avg # of RR/SIRV Activities Performed per Day of the Week



Road Ranger / SIRV Responses per Time of Day and Day of Week

