

Weekly Performance Measures Report Broward County



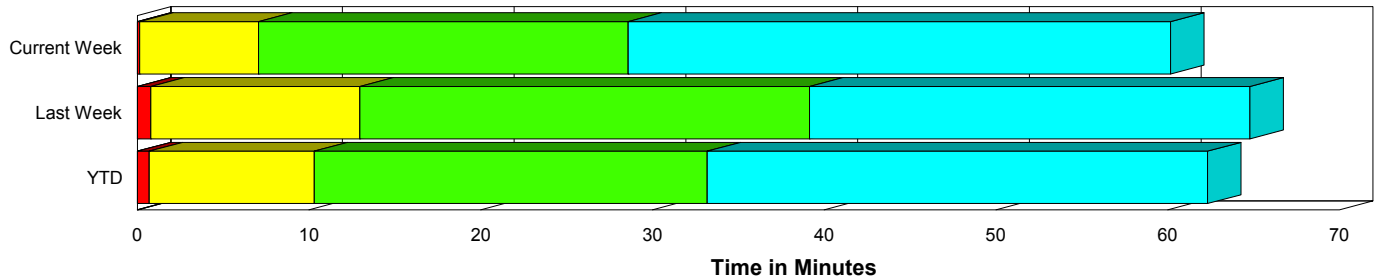
Created on:
July 13, 2009
9:06 am

Period From Jul 5, 2009 to Jul 11, 2009

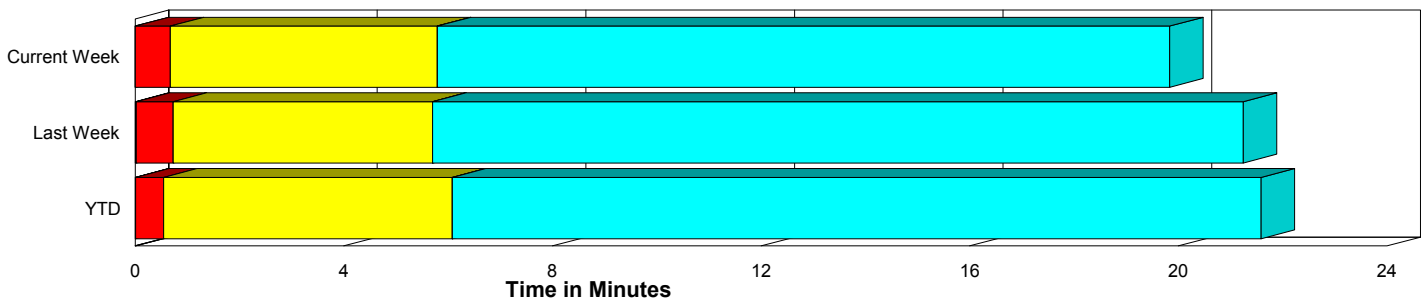
Performance Measures Summary

	Traffic Events (No Lanes Blocked)			Incidents (Lanes Blocked)		
	<u>This Week</u>	<u>Last Week</u>	<u>YTD</u>	<u>This Week</u>	<u>Last Week</u>	<u>YTD</u>
Number of Events	973	891	26,855	43	56	1,314
TMC Detection (min.)	0.00	0.02	0.01	0.00	0.00	0.00
TMC Verification (min.)	0.67	0.70	0.54	0.14	0.79	0.69
TMC Response (min.)	6.25	6.18	6.57	7.09	13.15	10.53
RR Dispatch Time (min.)	0.94	0.82	1.27	1.73	3.85	3.38
RR Response Time (min.)	5.46	5.43	5.41	5.46	9.55	7.36
Roadway Clearance (min.)				29.89	34.06	32.30
Event Clearance (min.)	20.30	21.74	22.09	61.47	59.11	60.83
# of Events w/ RR/SIRV	682	601	17,102	25	34	854
RR/SIRV Responses	682	601	17,102	25	34	854
RR/SIRV Activities	580	518	14,480	68	59	1,729

Incident Clearance Time-Line



Traffic Event (Non-Lane Blockage) Time-Line



■ Avg. TMC Detection Time	■ Avg. Time from TMC Response to Roadway Clearance*
■ Avg. Time from TMC Detection to TMC Verification	■ Avg. Time from Roadway Clearance to Incident/Event Clearance**
■ Avg. Time from TMC Verification to TMC Response	

* Roadway clearance equals all travel lanes open

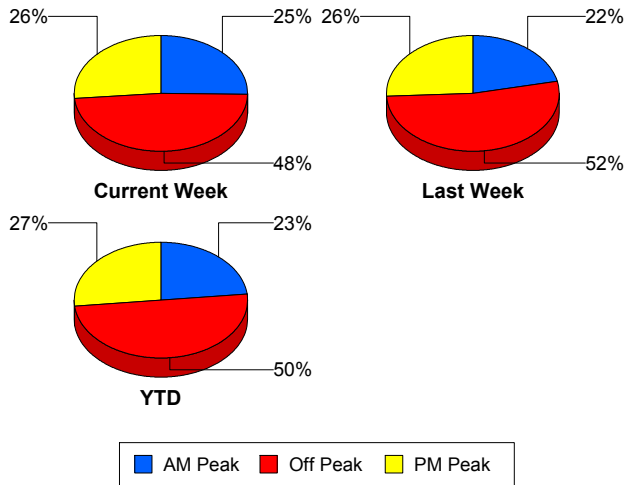
** Incident clearance equals time when last responder has left the scene

Performance Measures by Peak Period

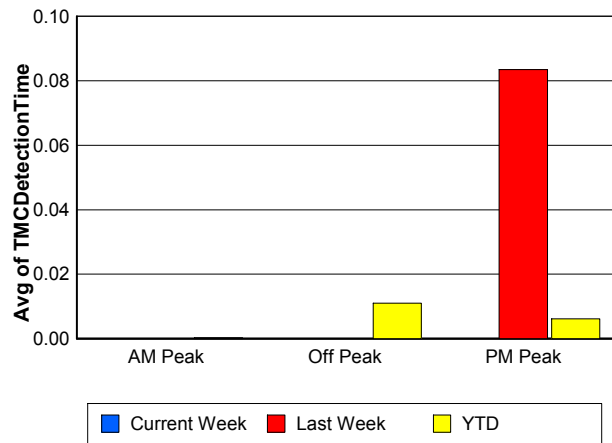
Note: AM peak period is defined as 6am to 10am and PM peak period is defined as 3pm to 7pm.

	AM Peak			Off Peak			PM Peak		
	<u>Current Week</u>	<u>Last Week</u>	<u>YTD</u>	<u>Current Week</u>	<u>Last Week</u>	<u>YTD</u>	<u>Current Week</u>	<u>Last Week</u>	<u>YTD</u>
Number of Events	256	206	6,554	492	495	14,132	268	246	7,483
Number of Incidents	7	10	294	23	33	652	13	13	368
TMC Detection (min.)	0.00	0.00	0.00	0.00	0.00	0.01	0.00	0.08	0.01
TMC Verification (min.)	0.69	0.40	0.48	0.55	0.45	0.47	0.80	1.49	0.75
TMC Response (min.)	5.53	6.43	6.23	7.26	6.23	7.67	5.86	7.23	6.27
RR Dispatch Time (min.)	0.79	0.93	1.05	1.10	1.05	1.97	0.99	0.91	0.88
RR Response Time (min.)	4.88	5.55	5.25	6.35	5.26	5.75	4.95	6.35	5.49
Event Clearance (min.)	20.50	21.73	21.57	23.74	26.14	26.75	20.38	21.41	20.53
Roadway Clearance (min.)	25.43	21.58	26.51	33.71	38.86	38.16	25.52	31.48	26.55
Incident Clearance (min.)	110.78	41.15	56.53	57.17	66.31	65.01	42.54	54.63	56.85
# of Events w/ RR/SIRV	210	170	5,230	269	277	7,155	228	188	5,571
RR/SIRV Responses	210	170	5,230	269	277	7,155	228	188	5,571
RR/SIRV Activities	196	159	4,963	246	241	6,206	206	177	5,040

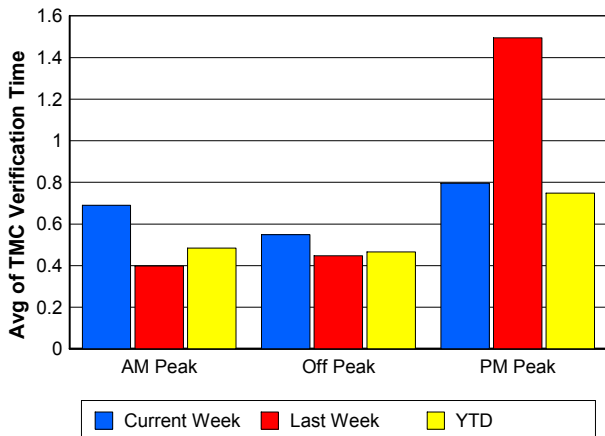
Number of Events / Peak Period



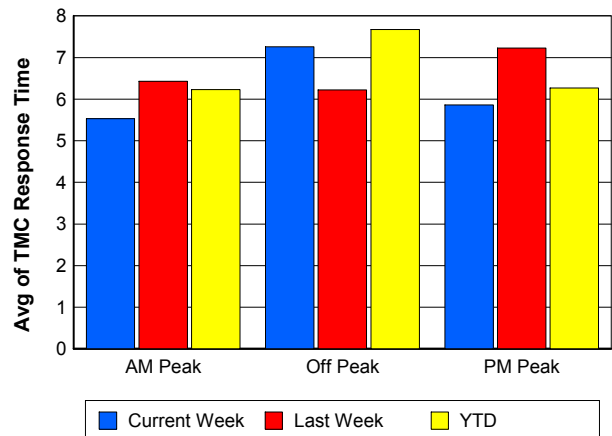
TMC Detection Time



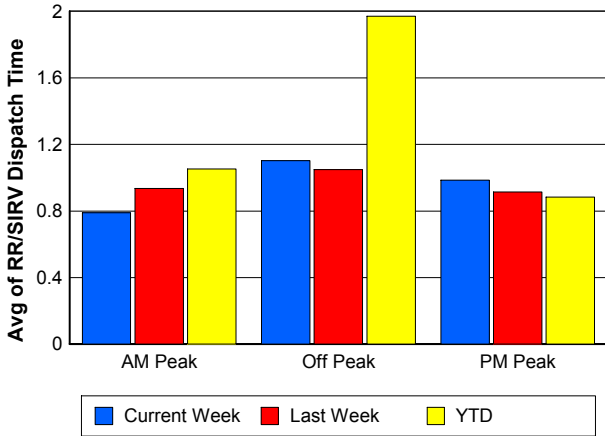
TMC Verification Time



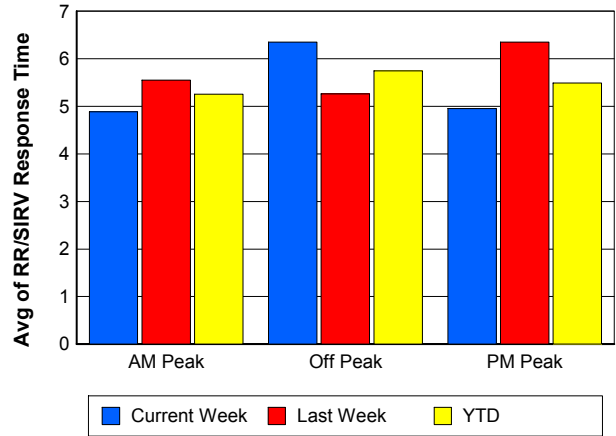
TMC Response Time



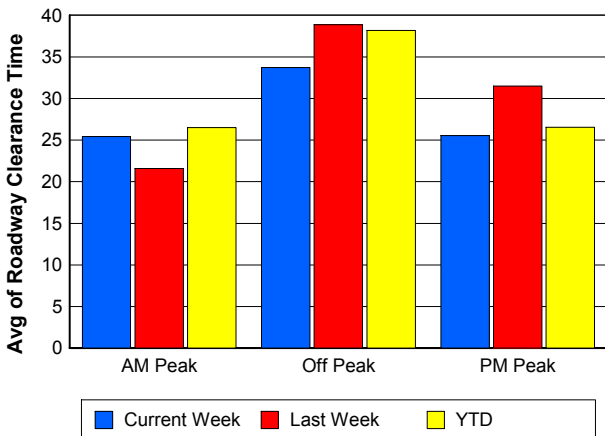
Road Ranger / SIRV Dispatch Time



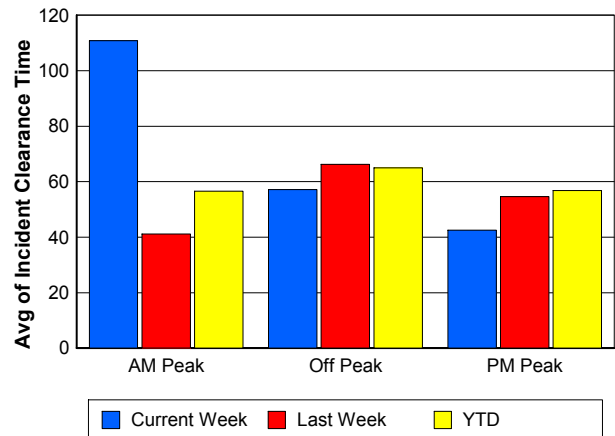
Road Ranger / SIRV Response Time



Roadway Clearance Time (2A)



Incident Clearance Time (3B)

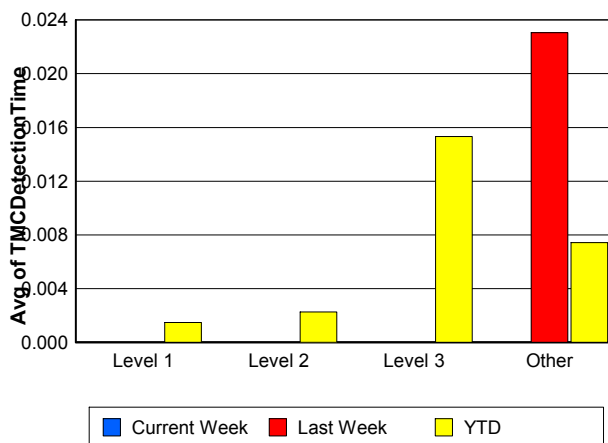
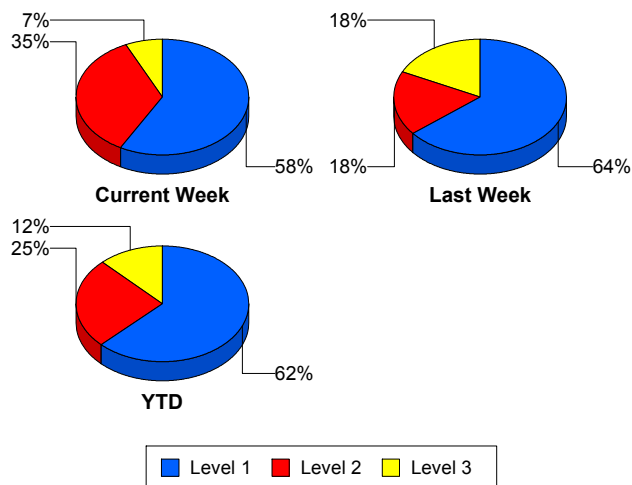


Performance Measures by Severity

	Level 1			Level 2			Level 3			Other		
	<u>This Week</u>	<u>Last Week</u>	<u>YTD</u>	<u>This Week</u>	<u>Last Week</u>	<u>YTD</u>	<u>This Week</u>	<u>Last Week</u>	<u>YTD</u>	<u>This Week</u>	<u>Last Week</u>	<u>YTD</u>
Number of Events	25	36	820	15	10	333	3	10	161	973	891	26,855
Number of Incidents	25	36	820	15	10	333	3	10	161	0	0	0
TMC Detection (min.)	0.00	0.00	0.00	0.00	0.00	0.00	0.00	0.00	0.02	0.00	0.02	0.01
TMC Verification (min.)	0.11	0.83	0.45	0.14	0.27	0.84	0.28	1.19	1.62	0.67	0.70	0.54
TMC Response (min.)	5.86	10.79	7.32	6.98	9.20	10.14	17.18	21.69	26.47	6.25	6.18	6.57
RR Dispatch Time (min.)	0.78	2.82	1.69	0.78	0.82	3.44	8.67	7.69	10.53	0.94	0.82	1.27
RR Resp. Time (min.)	5.11	7.81	5.73	6.20	8.38	7.25	6.36	15.34	15.38	5.46	5.43	5.41
Event Clearance (min.)	53.22	42.81	47.00	76.29	49.02	73.25	56.17	127.88	105.40	20.30	21.74	22.09
Roadway Clear. (min.)	14.34	12.04	14.13	52.29	44.42	49.55	47.44	102.97	89.16			
Incident Clearance (min.)	53.22	42.81	47.00	76.29	49.02	73.25	56.17	127.88	105.40			
# of Events w/ RR/SIRV	17	24	570	5	2	151	3	8	133	682	601	17,102
RR/SIRV Responses	17	24	570	5	2	151	3	8	133	682	601	17,102
RR/SIRV Activities	38	35	1,005	19	9	442	11	15	282	580	518	14,480

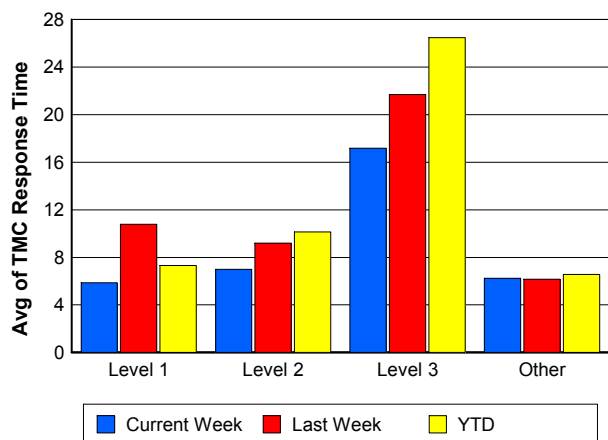
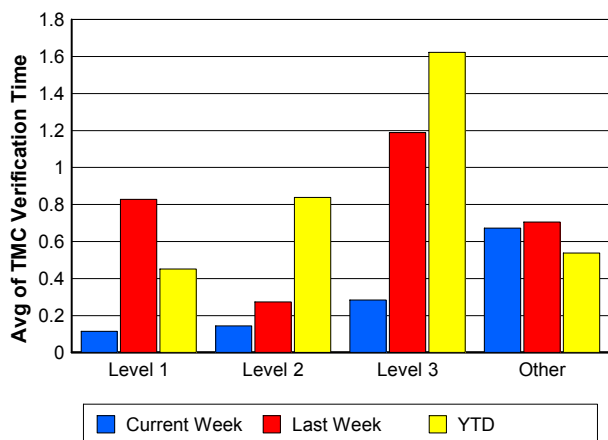
Number of Events / Severity

TMC Detection Time

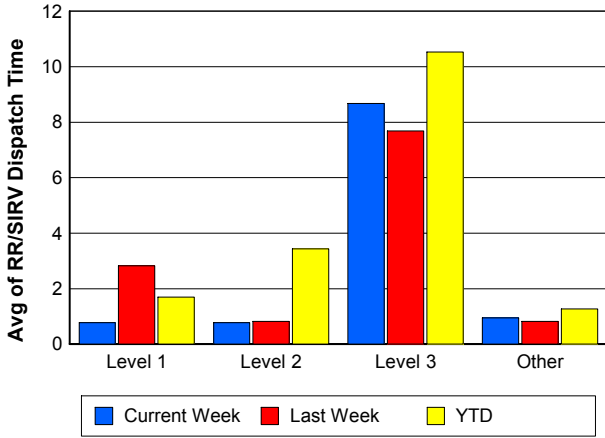


TMC Verification Time

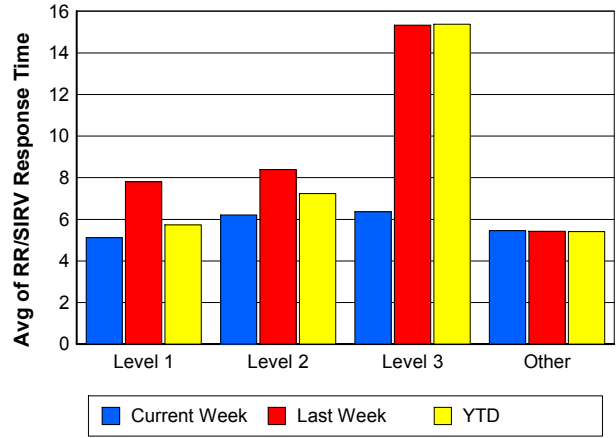
TMC Response Time



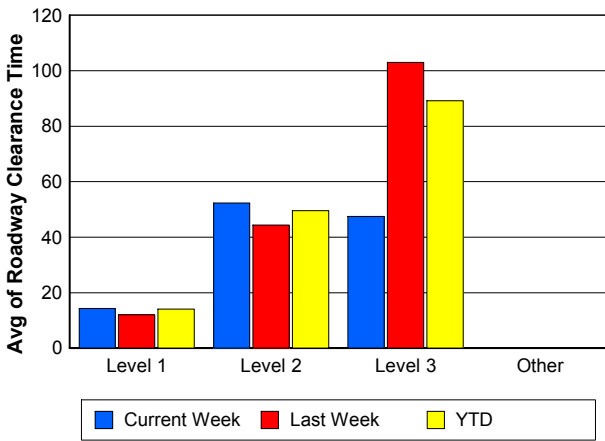
Road Ranger / SIRV Dispatch Time



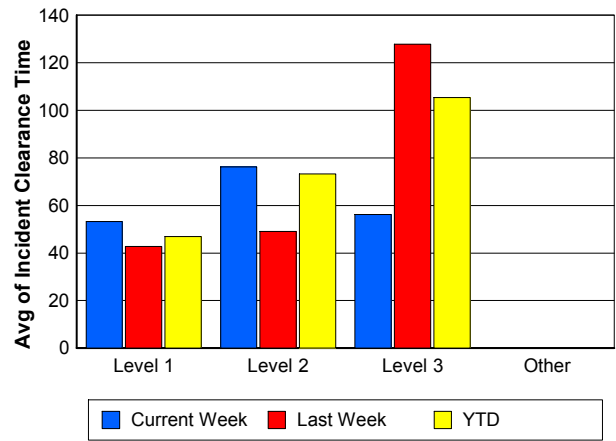
Road Ranger / SIRV Response Time



Roadway Clearance Time (2A)



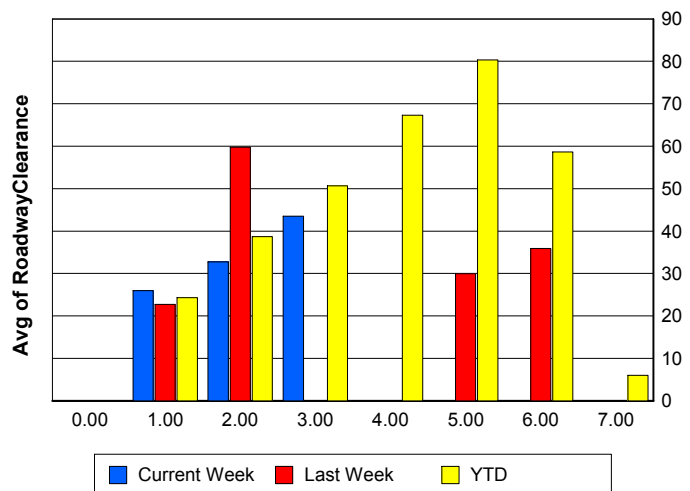
Incident Clearance Time (3B)



Roadway Clearance by Maximum Number of Lanes Blocked

	Current Week	Last Week	YTD
0			
1	25.94	22.75	24.31
2	32.74	59.81	38.70
3	43.54	0.00	50.69
4	0.00	0.00	67.28
5	0.00	29.93	80.35
6	0.00	35.90	58.64
7	0.00	0.00	5.97

Roadway Clearance Time (2A)



Performance Measures by Roadway

595

	<u>Current Week</u>	<u>Last Week</u>	<u>YTD</u>
Number of Events	137	108	3,783
Number of Incidents	9	6	235
TMC Detection (min.)	0.00	0.00	0.01
TMC Verification (min.)	1.07	1.20	0.70
TMC Response (min.)	6.63	9.38	6.38
RR Dispatch Time (min.)	1.13	1.67	1.12
RR Resp. Time (min.)	5.65	7.63	5.34
Event Clearance (min.)	23.28	25.93	21.60
Roadway Clear. (min.)	36.26	28.57	30.64
Incident Clearance (min.)	45.22	45.10	53.96
# of Events w/ RR/SIRV	102	76	2,592
RR/SIRV Responses	102	76	2,592
RR/SIRV Activities	104	73	2,392

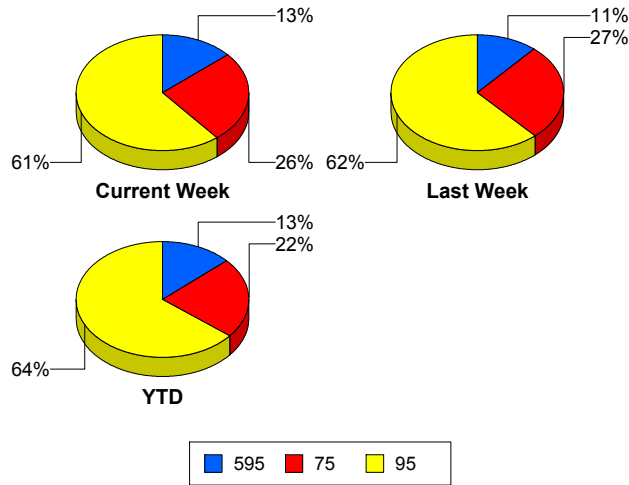
75

	<u>Current Week</u>	<u>Last Week</u>	<u>YTD</u>
Number of Events	260	254	6,287
Number of Incidents	3	7	115
TMC Detection (min.)	0.00	0.00	0.00
TMC Verification (min.)	0.24	0.76	0.67
TMC Response (min.)	5.46	7.74	8.07
RR Dispatch Time (min.)	0.84	0.94	1.24
RR Resp. Time (min.)	4.81	6.80	6.86
Event Clearance (min.)	21.07	23.09	26.08
Roadway Clear. (min.)	18.11	21.25	61.22
Incident Clearance (min.)	72.63	40.64	87.18
# of Events w/ RR/SIRV	168	156	3,919
RR/SIRV Responses	168	156	3,919
RR/SIRV Activities	135	133	3,275

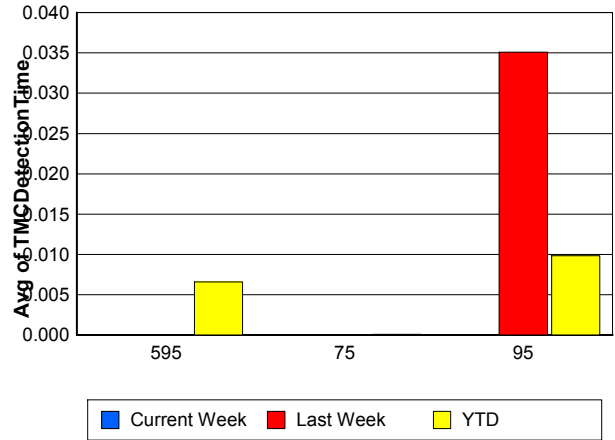
95

	<u>Current Week</u>	<u>Last Week</u>	<u>YTD</u>
Number of Events	619	585	18,099
Number of Incidents	31	43	964
TMC Detection (min.)	0.00	0.04	0.01
TMC Verification (min.)	0.73	0.60	0.47
TMC Response (min.)	6.48	5.64	6.48
RR Dispatch Time (min.)	0.99	0.86	1.47
RR Resp. Time (min.)	5.63	4.90	5.13
Event Clearance (min.)	22.17	23.96	23.61
Roadway Clear. (min.)	29.18	36.91	29.26
Incident Clearance (min.)	65.11	64.07	59.35
# of Events w/ RR/SIRV	437	403	11,445
RR/SIRV Responses	437	403	11,445
RR/SIRV Activities	409	371	10,542

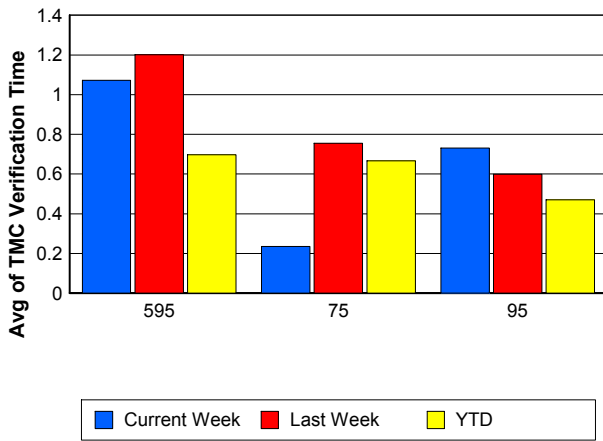
Number of Events / Roadway



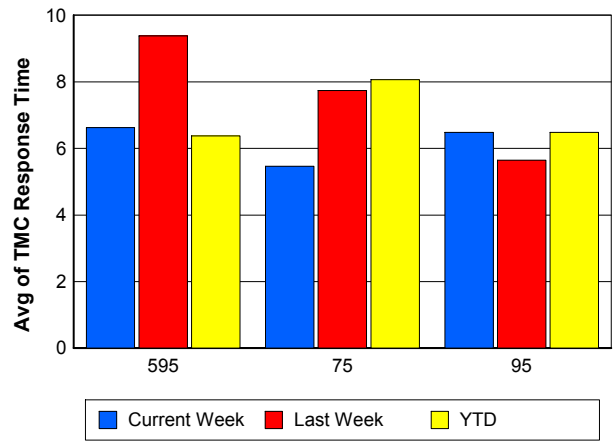
TMC Detection Time



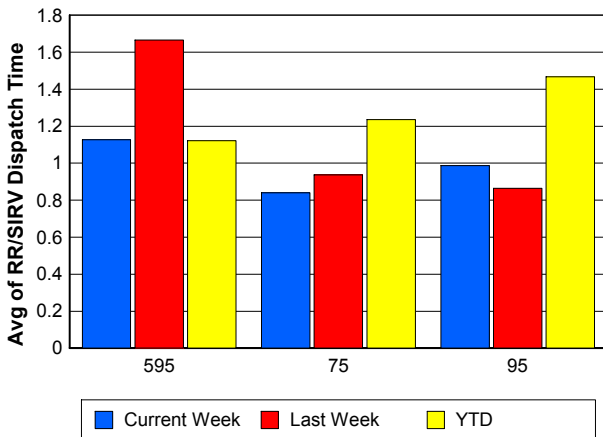
TMC Verification Time



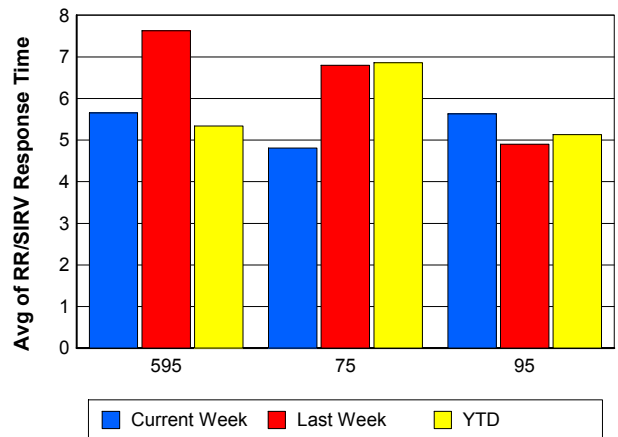
TMC Response Time



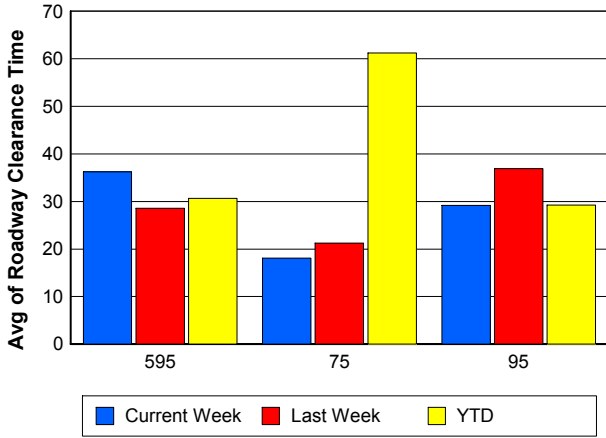
Road Ranger / SIRV Dispatch Time



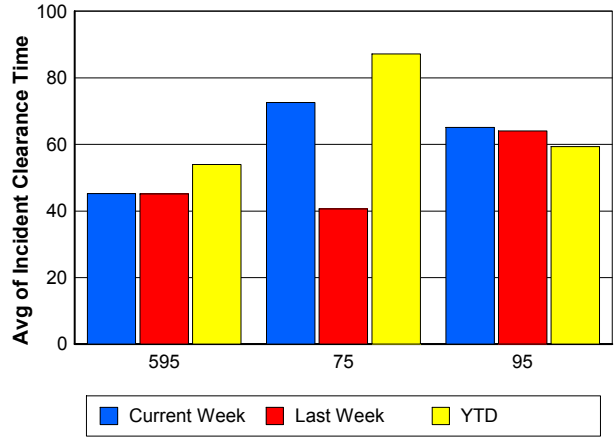
Road Ranger / SIRV Response Time



Roadway Clearance Time (2A)



Incident Clearance Time (3B)



Performance Measures by Event Type

Accident

	<u>Current Week</u>	<u>Last Week</u>	<u>YTD</u>
Number of Events	64	97	1,955
Number of Incidents	32	47	950
TMC Detection (min.)	0.00	0.00	0.01
TMC Verification (min.)	0.63	1.08	0.75
TMC Response (min.)	9.20	9.45	8.81
RR Dispatch Time (min.)	1.37	1.76	1.73
RR Response Time (min.)	7.88	7.91	7.20
Event Clearance (min.)	56.04	56.19	55.96
Roadway Clearance (min.)	28.84	34.90	33.78
Incident Clearance (min.)	64.60	63.30	67.29
# of Events w/ RR/SIRV	47	68	1,359
RR/SIRV Assists	47	68	1,359
RR/SIRV Activities	81	92	2,087

Debris on Roadway

	<u>Current Week</u>	<u>Last Week</u>	<u>YTD</u>
Number of Events	39	36	774
Number of Incidents	1	1	18
TMC Detection (min.)	0.00	0.57	0.15
TMC Verification (min.)	3.67	2.99	3.74
TMC Response (min.)	9.19	5.26	7.33
RR Dispatch Time (min.)	0.87	0.51	0.90
RR Response Time (min.)	8.38	4.80	6.45
Event Clearance (min.)	10.57	12.11	11.44
Roadway Clearance (min.)	4.98	42.68	24.61
Incident Clearance (min.)	6.72	46.68	28.90
# of Events w/ RR/SIRV	35	32	709
RR/SIRV Assists	35	32	709
RR/SIRV Activities	34	35	737

Disabled Vehicle

	<u>Current Week</u>	<u>Last Week</u>	<u>YTD</u>
Number of Events	603	551	16,223
Number of Incidents	5	3	201
TMC Detection (min.)	0.00	0.00	0.00
TMC Verification (min.)	0.72	0.83	0.64
TMC Response (min.)	5.87	6.05	6.30
RR Dispatch Time (min.)	0.76	0.83	1.17
RR Response Time (min.)	5.13	5.24	5.16
Event Clearance (min.)	24.74	24.26	27.16
Roadway Clearance (min.)	23.48	11.20	19.99
Incident Clearance (min.)	33.11	27.42	38.31
# of Events w/ RR/SIRV	479	435	12,274
RR/SIRV Assists	479	435	12,274
RR/SIRV Activities	492	428	12,524

Emergency Vehicles

	<u>Last Week</u>	<u>YTD</u>
Number of Events	3	40
Number of Incidents	3	32
TMC Detection (min.)	0.00	0.00
TMC Verification (min.)	0.00	0.93
TMC Response (min.)	16.88	15.87
RR Dispatch Time (min.)	1.60	10.47
RR Response Time (min.)	15.28	4.68
Event Clearance (min.)	7.44	50.60
Roadway Clearance (min.)	3.58	51.23
Incident Clearance (min.)	7.44	56.85
# of Events w/ RR/SIRV	1	24
RR/SIRV Assists	1	24
RR/SIRV Activities	1	40

Other

	<u>Current Week</u>	<u>Last Week</u>	<u>YTD</u>
Number of Events	303	257	8,878
Number of Incidents	1	0	21
TMC Detection (min.)	0.00	0.00	0.00
TMC Verification (min.)	0.10	0.01	0.05
TMC Response (min.)	5.57	9.72	10.36
RR Dispatch Time (min.)	1.50	1.19	1.91
RR Response Time (min.)	4.45	7.98	7.34
Event Clearance (min.)	10.15	12.46	11.46
Roadway Clearance (min.)	64.22		23.59
Incident Clearance (min.)	77.10		28.42
# of Events w/ RR/SIRV	143	98	3,436
RR/SIRV Assists	143	98	3,436
RR/SIRV Activities	37	21	625

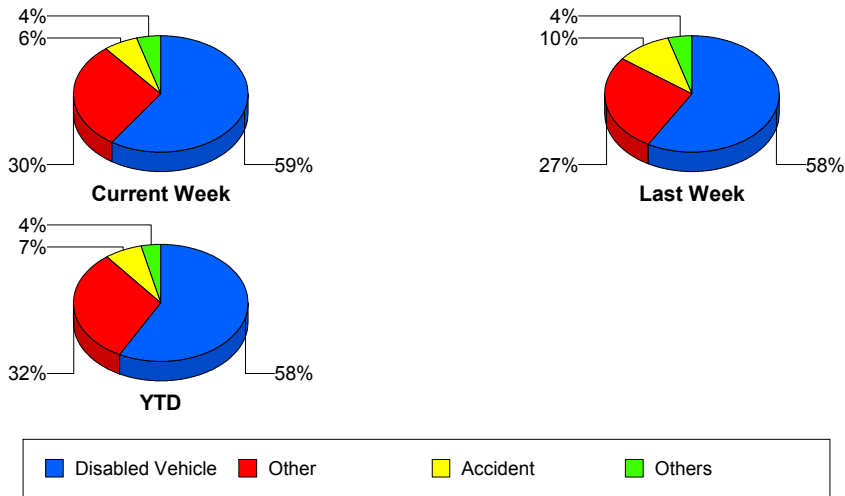
Police Activity

	<u>Last Week</u>	<u>YTD</u>
Number of Events	2	130
Number of Incidents	2	41
TMC Detection (min.)	0.00	0.00
TMC Verification (min.)	0.00	0.21
TMC Response (min.)		14.14
RR Dispatch Time (min.)		5.33
RR Response Time (min.)		9.03
Event Clearance (min.)	91.88	35.72
Roadway Clearance (min.)	90.06	40.00
Incident Clearance (min.)	91.88	50.03
# of Events w/ RR/SIRV	0	39
RR/SIRV Assists	0	39
RR/SIRV Activities	0	48

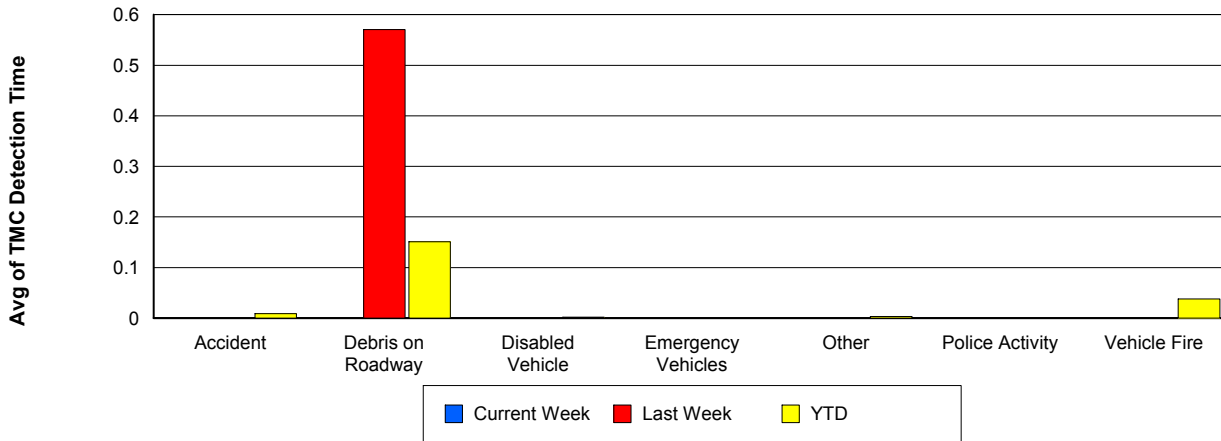
Vehicle Fire

	<u>Current Week</u>	<u>YTD</u>
Number of Events	6	65
Number of Incidents	4	51
TMC Detection (min.)	0.00	0.04
TMC Verification (min.)	0.22	1.51
TMC Response (min.)	2.52	11.62
RR Dispatch Time (min.)	1.07	2.67
RR Response Time (min.)	1.45	9.58
Event Clearance (min.)	61.86	61.35
Roadway Clearance (min.)	43.89	41.46
Incident Clearance (min.)	81.66	65.10
# of Events w/ RR/SIRV	2	40
RR/SIRV Assists	2	40
RR/SIRV Activities	3	79

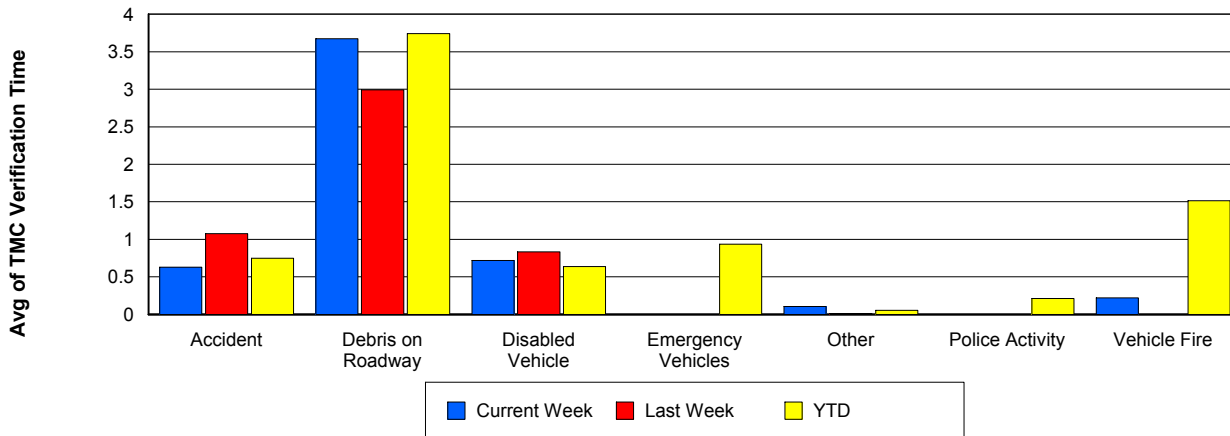
Number of Events / Event Type



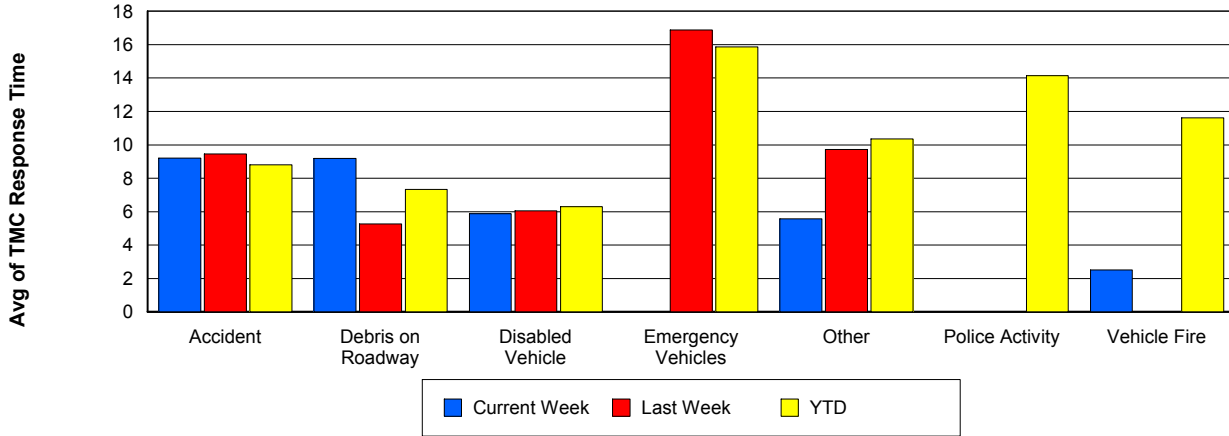
TMC Detection Time



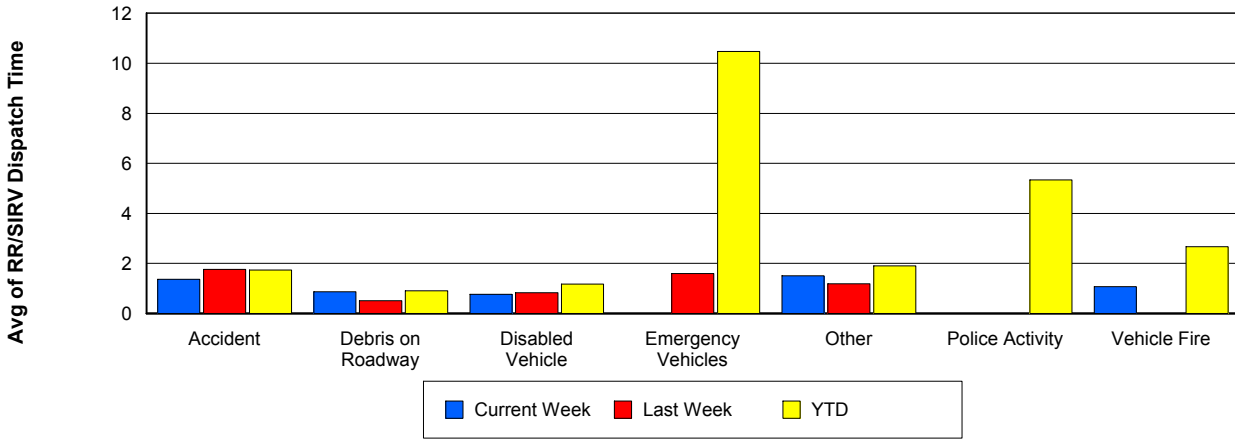
TMC Verification Time



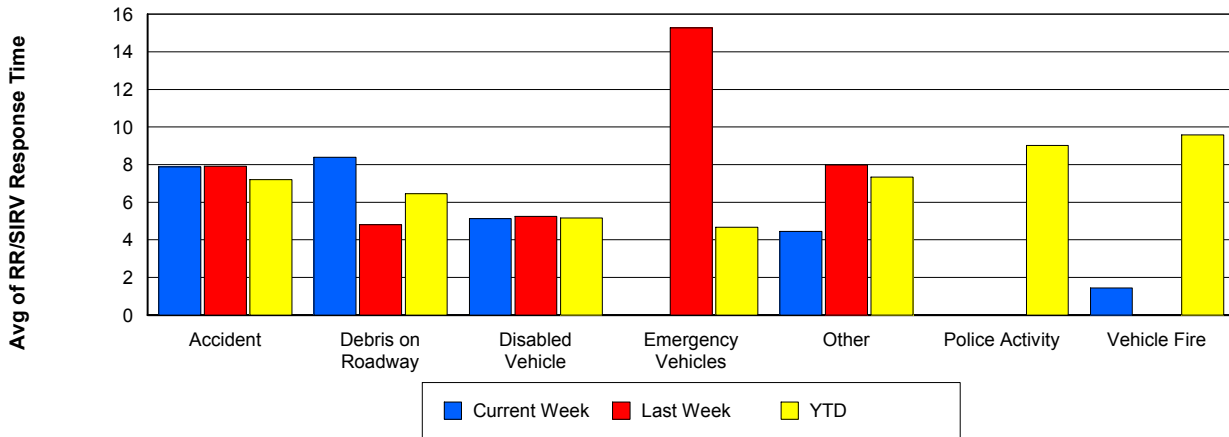
TMC Response Time



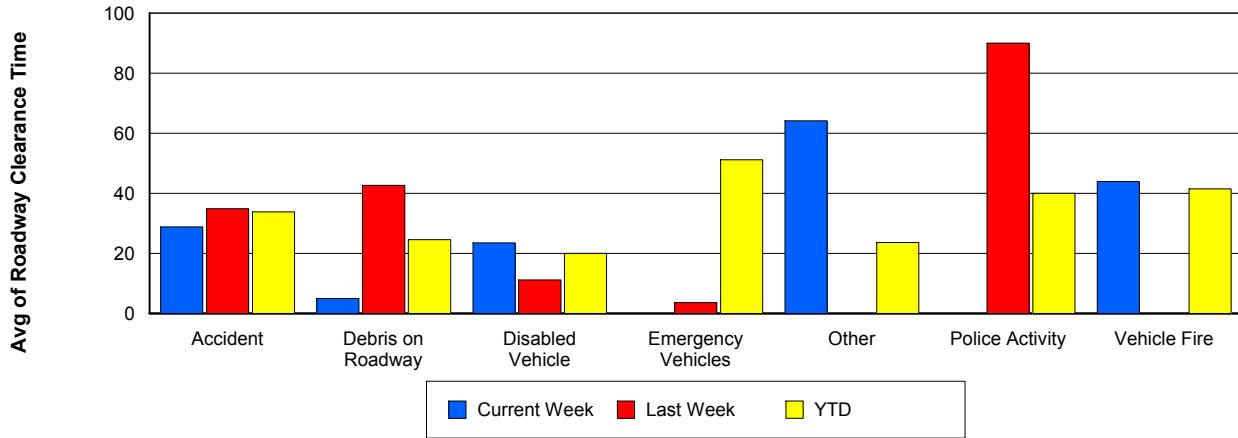
Road Ranger / SIRV Dispatch Time



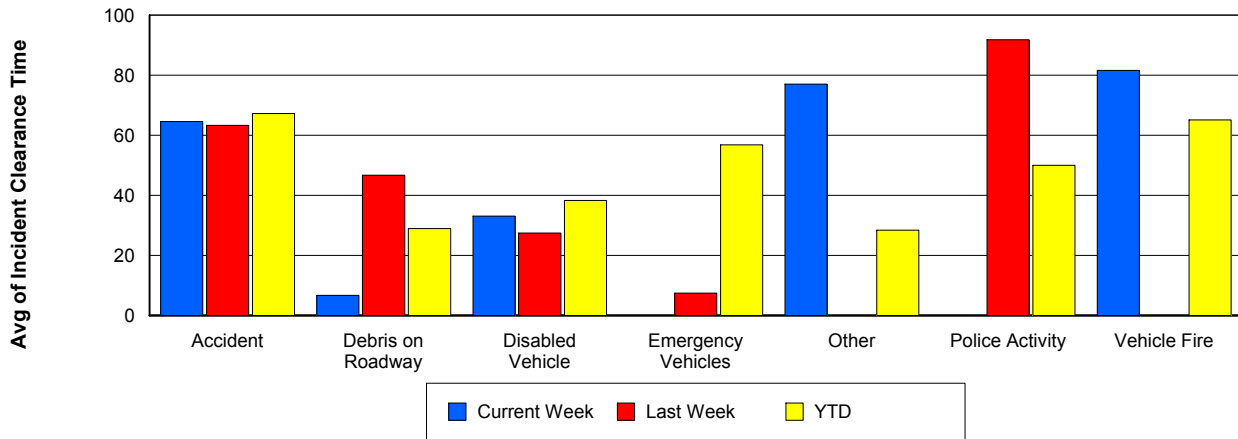
Road Ranger / SIRV Response Time



Roadway Clearance Time (2A)



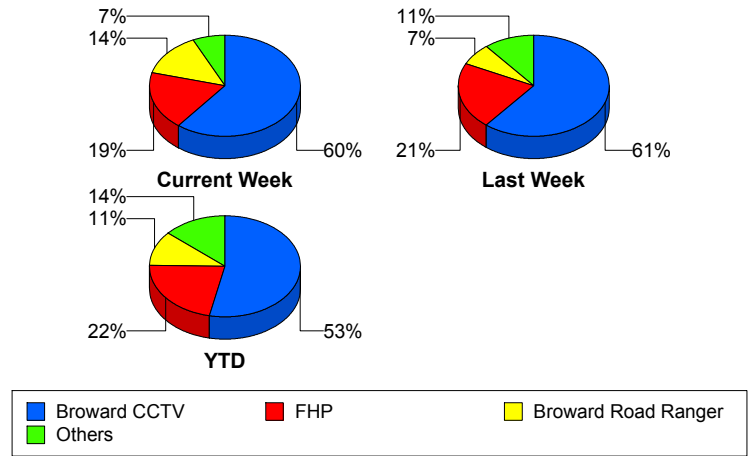
Incident Clearance Time (3B)



Incident Detection Methods

	Current Week	Last Week	YTD
Broward CCTV	26	34	701
Broward Road Ranger	6	4	145
Broward VideoWall	0	1	46
BSO	0	2	29
District 4	0	2	38
District 6	0	0	1
FDOT Maintenance	0	0	4
FHP	8	12	290
Fire	0	1	2
Florida's Turnpike	0	0	6
ITMS	0	0	1
Motorist	1	0	5
Other	0	0	1
Palm Beach Road Ran	0	0	2
Road Watcher	0	0	12
SIRV	1	0	6
SmarTraveler (511)	0	0	6
VisioPaD Detection	1	0	19
Total	43	56	1,314

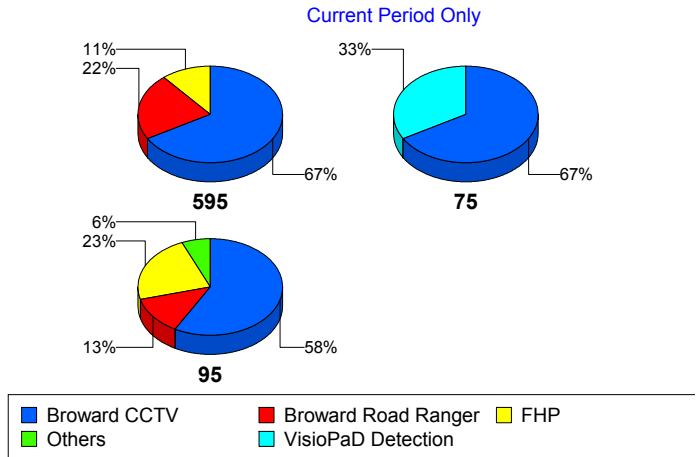
Total Incidents by Detection Method



Incident Detection Methods by Roadway

		Current Week	Last Week	YTD
595	Broward CCTV	6	4	113
	Broward Road Ranger	2	0	36
	Broward VideoWall	0	0	8
	BSO	0	1	3
	District 4	0	0	11
	FDOT Maintenance	0	0	2
	FHP	1	1	47
	Florida's Turnpike	0	0	6
	Motorist	0	0	2
	Road Watcher	0	0	3
	VisioPaD Detection	0	0	4
	Total	9	6	235
75	Broward CCTV	2	2	48
	Broward Road Ranger	0	1	11
	Broward VideoWall	0	0	1
	BSO	0	1	23
	District 4	0	2	5
	FHP	0	1	22
	Other	0	0	1
	Road Watcher	0	0	2
	VisioPaD Detection	1	0	2
	Total	3	7	115
95	Broward CCTV	18	28	540
	Broward Road Ranger	4	3	98
	Broward VideoWall	0	1	37
	BSO	0	0	3
	District 4	0	0	22
	District 6	0	0	1
	FDOT Maintenance	0	0	2
	FHP	7	10	221
	Fire	0	1	2

Total Events by Roadway and Detection Method

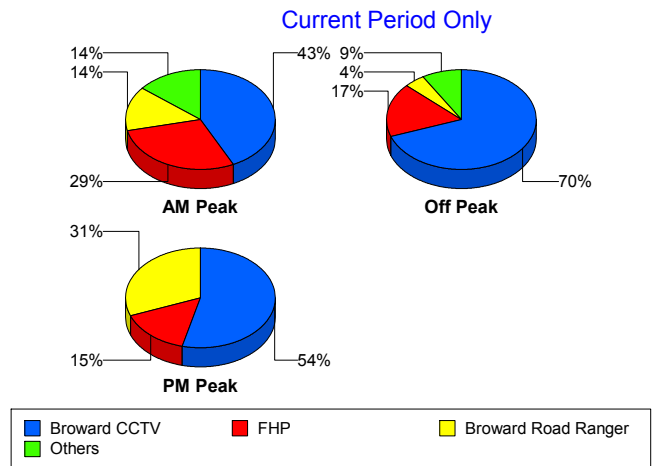


		Current Week	Last Week	YTD
95	ITMS	0	0	1
	Motorist	1	0	3
	Palm Beach Road Ran	0	0	2
	Road Watcher	0	0	7
	SIRV	1	0	6
	SmarTraveler (511)	0	0	6
	VisioPaD Detection	0	0	13
	Total	31	43	964
Total	43	56	1,314	

Incident Detection Methods by Peak Period

		Current Week	Last Week	YTD
AM Peak	Broward CCTV	3	7	130
	Broward Road Ranger	1	2	44
	Broward VideoWall	0	0	14
	BSO	0	0	5
	District 4	0	0	13
	FHP	2	1	74
	Florida's Turnpike	0	0	2
	Motorist	1	0	4
	Palm Beach Road Ran	0	0	1
	Road Watcher	0	0	4
	SIRV	0	0	1
	SmarTraveler (511)	0	0	1
	VisioPaD Detection	0	0	1
	Total	7	10	294
	Off Peak	Broward CCTV	16	21
Broward Road Ranger		1	0	40
Broward VideoWall		0	1	26
BSO		0	1	19
District 4		0	1	12
FDOT Maintenance		0	0	2

Total Events by Peak Period and Detection Method

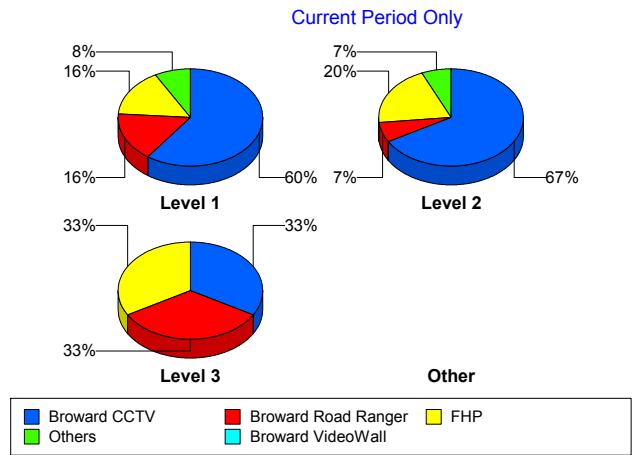


		Current Week	Last Week	YTD
Off Peak	FHP	4	8	137
	Fire	0	1	1
	Florida's Turnpike	0	0	3
	ITMS	0	0	1
	Motorist	0	0	1
	Road Watcher	0	0	5
	SIRV	1	0	2
	SmarTraveler (511)	0	0	3
	VisioPaD Detection	1	0	15
	Total	23	33	652
PM Peak	Broward CCTV	7	6	186
	Broward Road Ranger	4	2	61
	Broward VideoWall	0	0	6
	BSO	0	1	5
	District 4	0	1	13
	District 6	0	0	1
	FDOT Maintenance	0	0	2
	FHP	2	3	79
	Fire	0	0	1
	Florida's Turnpike	0	0	1
	Other	0	0	1
	Palm Beach Road Ran	0	0	1
	Road Watcher	0	0	3
	SIRV	0	0	3
	SmarTraveler (511)	0	0	2
	VisioPaD Detection	0	0	3
	Total	13	13	368
Total	43	56	1,314	

Incident Detection Methods by Severity

		Current Week	Last Week	YTD
Level 1	Broward CCTV	15	19	442
	Broward Road Ranger	4	4	106
	Broward VideoWall	0	1	27
	BSO	0	1	5
	District 4	0	1	29
	FDOT Maintenance	0	0	3
	FHP	4	9	172
	Fire	0	1	1
	Motorist	0	0	4
	Palm Beach Road Ran	0	0	2
	Road Watcher	0	0	9
	SIRV	1	0	6
	SmarTraveler (511)	0	0	4
	VisioPaD Detection	1	0	10
	Total	25	36	820
Level 2	Broward CCTV	10	9	180
	Broward Road Ranger	1	0	27
	Broward VideoWall	0	0	16
	BSO	0	0	7
	District 4	0	0	5
	FDOT Maintenance	0	0	1
	FHP	3	1	80
	Florida's Turnpike	0	0	4
	ITMS	0	0	1
	Motorist	1	0	1
	Other	0	0	1
	Road Watcher	0	0	1
	SmarTraveler (511)	0	0	2
	VisioPaD Detection	0	0	7
	Total	15	10	333
Level 3	Broward CCTV	1	6	79

Total Events by Severity and Detection Method



		Current Week	Last Week	YTD
Level 3	Broward Road Ranger	1	0	12
	Broward VideoWall	0	0	3
	BSO	0	1	17
	District 4	0	1	4
	District 6	0	0	1
	FHP	1	2	38
	Fire	0	0	1
	Florida's Turnpike	0	0	2
	Road Watcher	0	0	2
	VisioPaD Detection	0	0	2
	Total	3	10	161
Total	43	56	1,314	

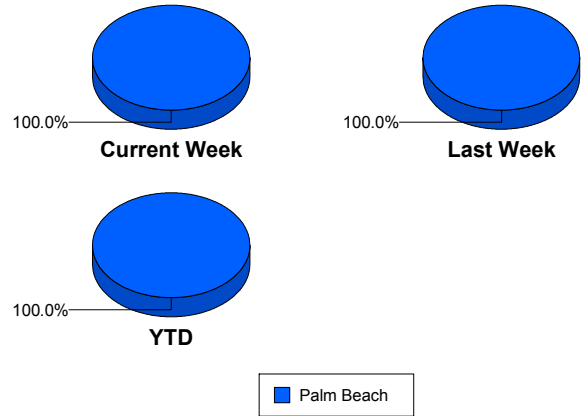
Road Ranger / SIRV Performance Measures

Road Ranger / SIRV Performance By County

RR/SIRV Responses per County

Values presented are: - Total Events with a RR/SIRV Response - Total RR/SIRV Responses, - Total Activities Performed

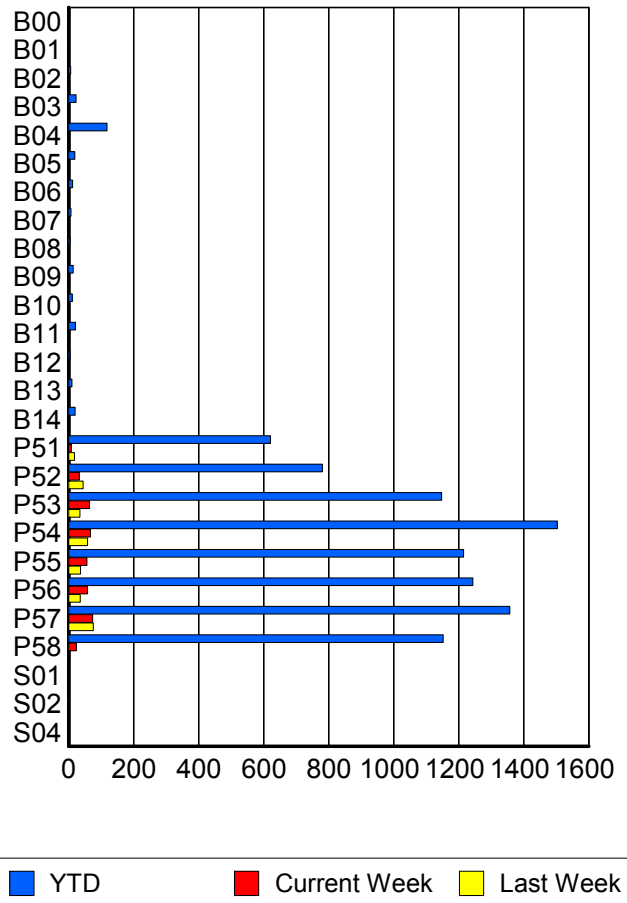
	Current We	Last Week	YTD
Palm Beach	372	301	8,987
	396	316	9,297
	428	339	9,921



Road Ranger / SIRV Performance By Truck

	Current We	Last Week	YTD
B00	0	0	3
	0	0	3
	0	0	3
B01	0	0	1
	0	0	1
	0	0	1
B02	2	0	6
	2	0	6
	2	0	6
B03	0	2	23
	0	2	23
	0	2	24
B04	3	3	117
	3	3	118
	5	4	137
B05	0	0	18
	0	0	19
	0	0	20
B06	0	0	12
	0	0	12
	0	0	12
B07	0	0	7
	0	0	7
	0	0	7
B08	1	0	4
	1	0	4
	1	0	4

**RR/SIRV
Responses per
Truck**



	Current We	Last Week	YTD
B09	0	0	14
	0	0	14
	0	0	14
B10	1	1	10
	1	2	11
	1	2	11
B11	3	0	21
	3	0	21
	3	0	22
B12	0	0	4
	0	0	4
	0	0	4
B13	1	0	10
	1	0	10
	1	0	11
B14	0	1	20
	0	1	20
	0	1	21
P51	6	18	613
	8	18	621
	8	20	651
P52	31	45	775
	33	45	781
	40	48	832
P53	61	34	1,131
	64	35	1,147
	68	39	1,221
P54	64	57	1,485
	67	58	1,503
	72	62	1,610
P55	55	37	1,205
	56	37	1,215
	61	41	1,298
P56	58	36	1,228
	58	36	1,244
	62	37	1,337
P57	71	74	1,343
	74	76	1,357
	78	80	1,452
P58	23	3	1,137
	24	3	1,152
	25	3	1,219
S01	1	0	1
	1	0	1
	1	0	1

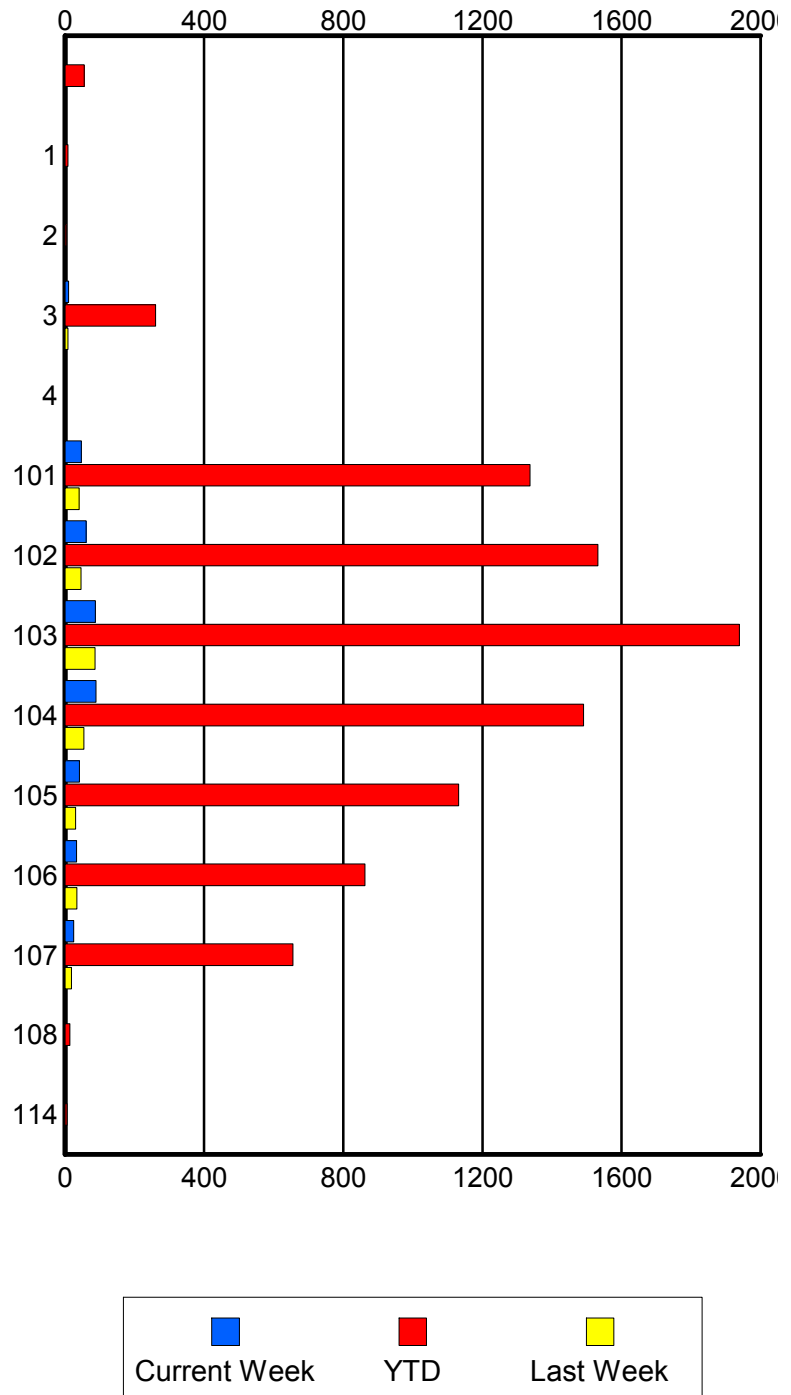
	Current We	Last Week	YTD
S02	0	0	1
	0	0	1
	0	0	1
S04	0	0	2
	0	0	2
	0	0	2

Road Ranger / SIRV Performance By Beat

	Current We	Last Week	YTD
	2	0	55
	2	0	55
	2	0	55
1	0	0	8
	0	0	8
	0	0	9
2	0	0	4
	0	0	4
	0	0	5
3	10	7	256
	10	8	260
	12	9	282
4	1	0	2
	1	0	2
	1	0	2
101	47	40	1,322
	47	40	1,337
	51	44	1,439
102	60	46	1,516
	61	46	1,532
	66	48	1,627
103	84	84	1,913
	87	86	1,939
	92	92	2,080
104	85	53	1,473
	89	54	1,491
	95	57	1,593
105	39	29	1,121
	41	30	1,132
	43	34	1,204
106	31	32	848
	33	34	862
	40	35	922
107	22	18	646
	25	18	655
	26	20	683
108	0	0	13
	0	0	14
	0	0	14
114	0	0	6
	0	0	6
	0	0	6

Values presented are:
 - Total Events with a RR/SIRV Response
 - Total RR/SIRV Responses,
 - Total Activities Performed

RR/SIRV Responses per Beat

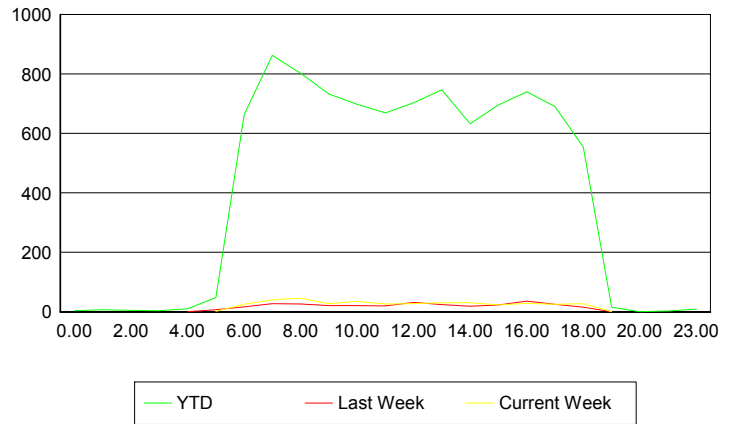


Road Ranger / SIRV Performance By Time of Day

Values presented are:
 - Total Events with a RR/SIRV Response
 - Total RR/SIRV Responses,
 - Total Activities Performed

	Current We	Last Week	YTD
12AM-1AM	0 0 0	0 0 0	4 4 4
1AM-2AM	0 0 0	0 0 0	5 7 7
2AM-3AM	0 0 0	0 0 0	5 5 6
3AM-4AM	0 0 0	0 0 0	4 4 4
4AM-5AM	0 0 0	1 1 1	7 10 11
5AM-6AM	2 2 2	6 7 7	45 48 50
6AM-7AM	24 25 28	16 17 17	638 664 698
7AM-8AM	36 40 43	27 27 31	824 863 925
8AM-9AM	40 46 51	25 26 27	770 802 862
9AM-10AM	27 27 30	20 21 24	709 732 801
10AM-11AM	34 35 39	20 21 23	675 698 739
11AM-12PM	24 26 28	18 20 21	646 669 722
12PM-1PM	25 28 28	31 32 35	678 703 751

Number of Responses / Hour of the Day



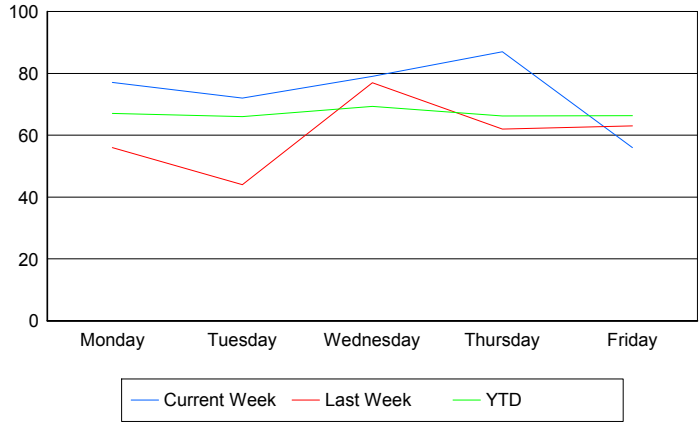
	Current We	Last Week	YTD
1PM-2PM	31	23	730
	31	24	746
	35	27	811
2PM-3PM	30	18	608
	31	19	632
	34	20	668
3PM-4PM	23	22	675
	23	23	696
	25	24	745
4PM-5PM	26	35	718
	29	36	740
	30	38	776
5PM-6PM	24	22	670
	25	25	691
	27	26	726
6PM-7PM	25	16	548
	27	16	554
	27	17	585
7PM-8PM	1	1	16
	1	1	16
	1	1	17
8PM-9PM	0	0	1
	0	0	1
	0	0	1
10PM-11PM	0	0	3
	0	0	3
	0	0	3
11PM-12AM	0	0	8
	0	0	9
	0	0	9

Road Ranger / SIRV Performance By Day of Week

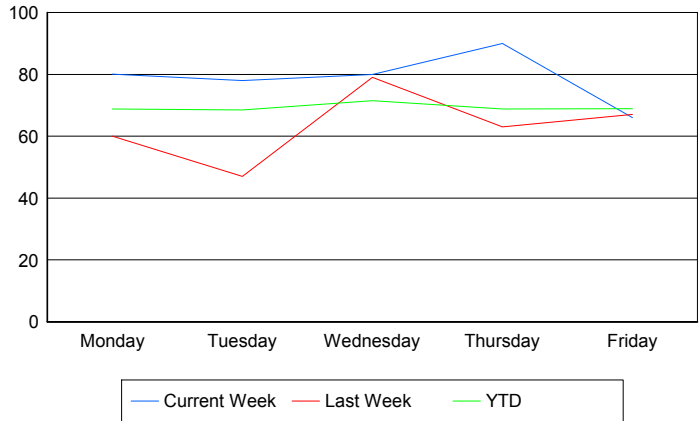
Values presented are: - Total Events with a RR/SIRV Response - Total RR/SIRV Responses, - Total Activities Performed

	Current We	Last Week	YTD
Monday	79	56	1,769
	82	60	1,813
	85	64	1,914
Tuesday	72	44	1,747
	78	47	1,812
	83	51	1,924
Wednesday	79	77	1,845
	80	79	1,902
	92	81	2,048
Thursday	87	62	1,808
	90	63	1,878
	99	71	2,021
Friday	56	63	1,822
	66	67	1,892
	69	72	2,014

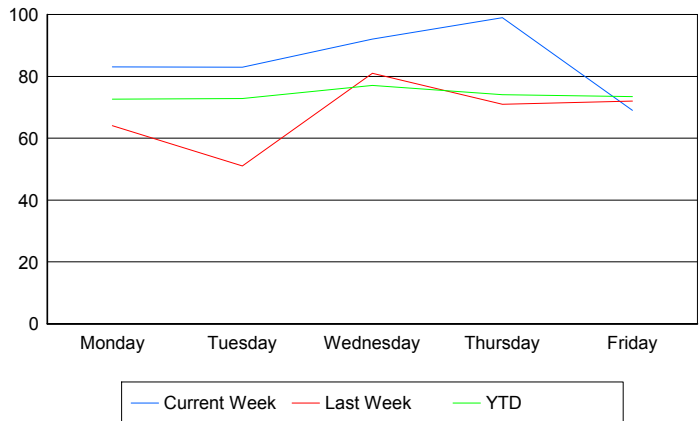
Avg # of events with a RR/SIRV Response per Day of the Week



Avg # of RR/SIRV Responses per Day of the Week



Avg # of RR/SIRV Activities Performed per Day of the Week



Road Ranger / SIRV Responses per Time of Day and Day of Week

