



# Weekly Performance Measures Report Broward County



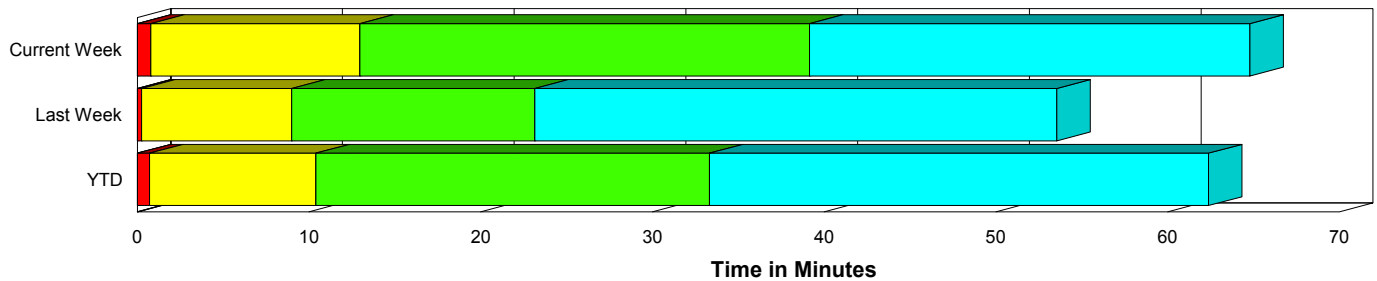
Created on:  
July 06, 2009  
9:18 am

Period From Jun 28, 2009 to Jul 4, 2009

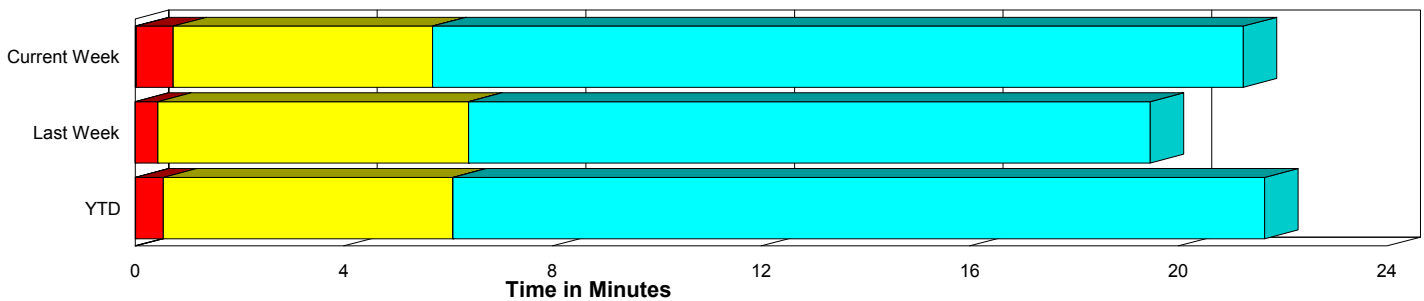
## Performance Measures Summary

	Traffic Events (No Lanes Blocked)			Incidents (Lanes Blocked)		
	<u>This Week</u>	<u>Last Week</u>	<u>YTD</u>	<u>This Week</u>	<u>Last Week</u>	<u>YTD</u>
Number of Events	891	1,010	25,882	56	65	1,271
TMC Detection (min.)	0.02	0.00	0.01	0.00	0.00	0.00
TMC Verification (min.)	0.70	0.44	0.53	0.79	0.26	0.71
TMC Response (min.)	6.18	6.74	6.58	13.15	9.05	10.63
RR Dispatch Time (min.)	0.82	1.55	1.28	3.85	1.38	3.43
RR Response Time (min.)	5.43	5.16	5.40	9.55	7.81	7.42
Roadway Clearance (min.)				34.06	22.72	32.38
Event Clearance (min.)	21.74	19.81	22.16	59.11	53.08	60.81
# of Events w/ RR/SIRV	601	689	16,420	34	37	829
RR/SIRV Responses	601	689	16,420	34	37	829
RR/SIRV Activities	518	588	13,900	59	72	1,661

### Incident Clearance Time-Line



### Traffic Event (Non-Lane Blockage) Time-Line



<span style="color: blue;">■</span> Avg. TMC Detection Time	<span style="color: green;">■</span> Avg. Time from TMC Response to Roadway Clearance*
<span style="color: red;">■</span> Avg. Time from TMC Detection to TMC Verification	<span style="color: cyan;">■</span> Avg. Time from Roadway Clearance to Incident/Event Clearance**
<span style="color: yellow;">■</span> Avg. Time from TMC Verification to TMC Response	

\* Roadway clearance equals all travel lanes open

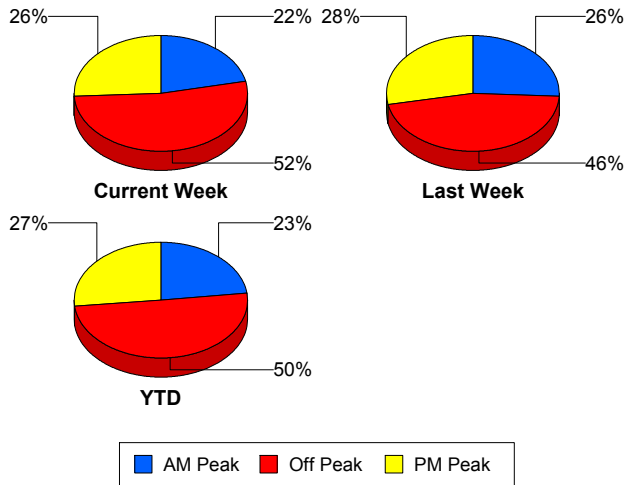
\*\* Incident clearance equals time when last responder has left the scene

## Performance Measures by Peak Period

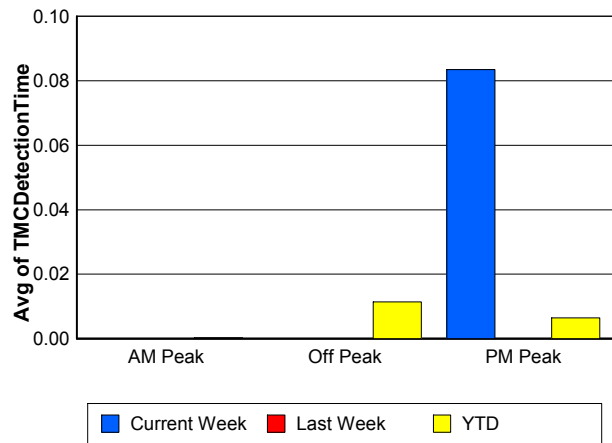
Note: AM peak period is defined as 6am to 10am and PM peak period is defined as 3pm to 7pm.

	AM Peak			Off Peak			PM Peak		
	<u>Current Week</u>	<u>Last Week</u>	<u>YTD</u>	<u>Current Week</u>	<u>Last Week</u>	<u>YTD</u>	<u>Current Week</u>	<u>Last Week</u>	<u>YTD</u>
Number of Events	206	277	6,298	495	497	13,640	246	301	7,215
Number of Incidents	10	15	287	33	30	629	13	20	355
TMC Detection (min.)	0.00	0.00	0.00	0.00	0.00	0.01	0.08	0.00	0.01
TMC Verification (min.)	0.40	0.33	0.48	0.45	0.25	0.46	1.49	0.81	0.75
TMC Response (min.)	6.43	8.66	6.26	6.23	6.27	7.69	7.23	5.81	6.29
RR Dispatch Time (min.)	0.93	3.01	1.06	1.05	0.89	2.00	0.91	0.76	0.88
RR Response Time (min.)	5.55	5.26	5.27	5.26	5.55	5.72	6.35	5.14	5.52
Event Clearance (min.)	21.73	24.89	21.61	26.14	22.22	26.86	21.41	18.23	20.53
Roadway Clearance (min.)	21.58	36.23	26.53	38.86	21.41	38.33	31.48	14.56	26.59
Incident Clearance (min.)	41.15	54.92	55.21	66.31	62.34	65.30	54.63	37.01	57.38
# of Events w/ RR/SIRV	170	236	5,020	277	261	6,886	188	229	5,343
RR/SIRV Responses	170	236	5,020	277	261	6,886	188	229	5,343
RR/SIRV Activities	159	221	4,767	241	217	5,960	177	222	4,834

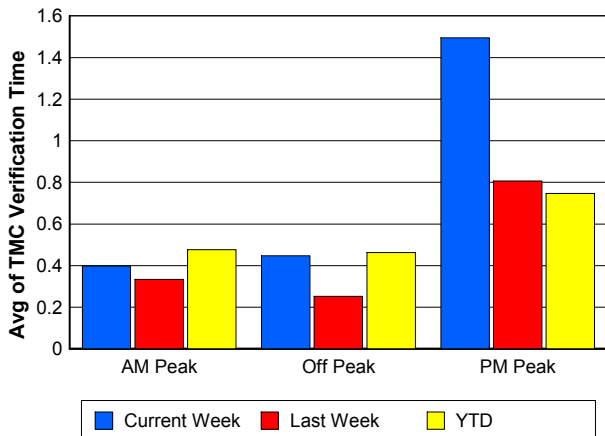
### Number of Events / Peak Period



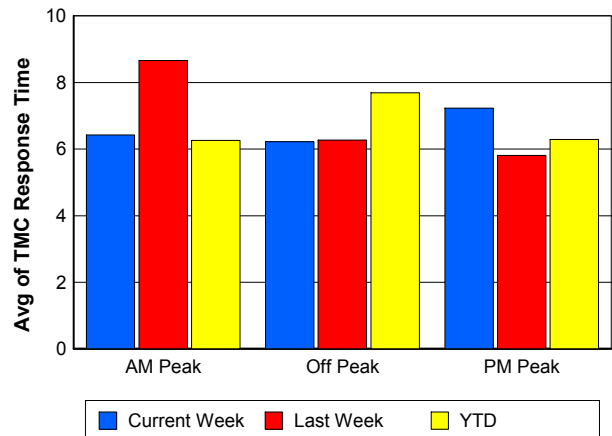
### TMC Detection Time



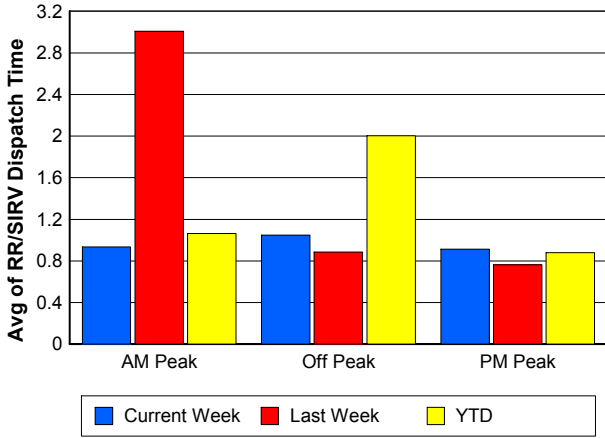
### TMC Verification Time



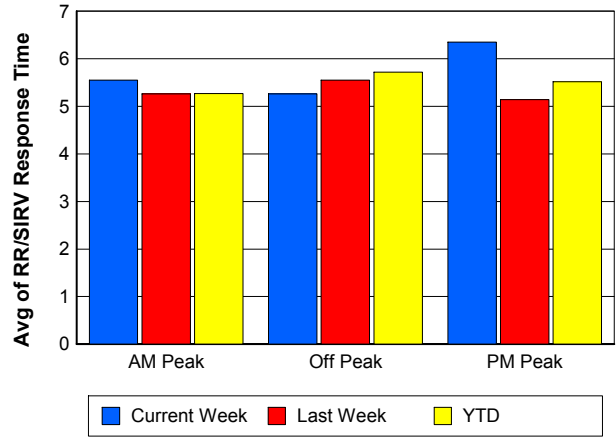
### TMC Response Time



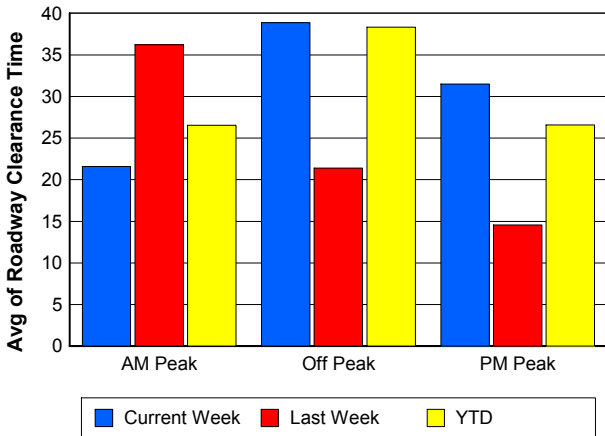
## Road Ranger / SIRV Dispatch Time



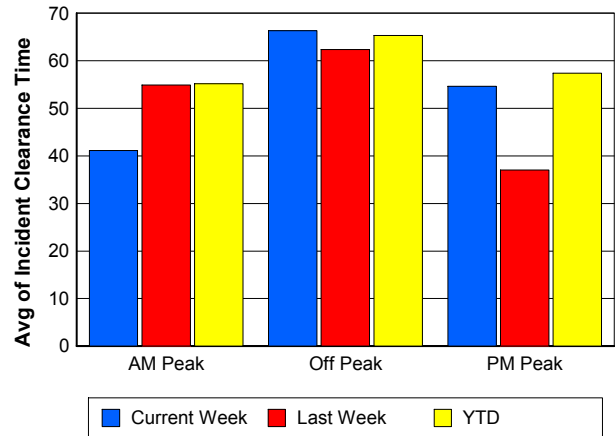
## Road Ranger / SIRV Response Time



## Roadway Clearance Time (2A)



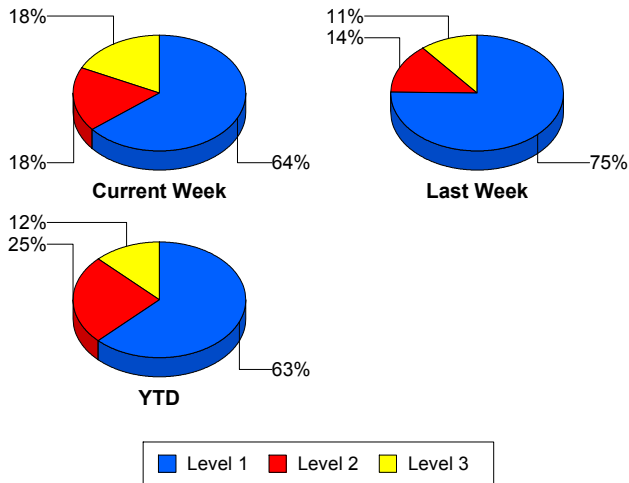
## Incident Clearance Time (3B)



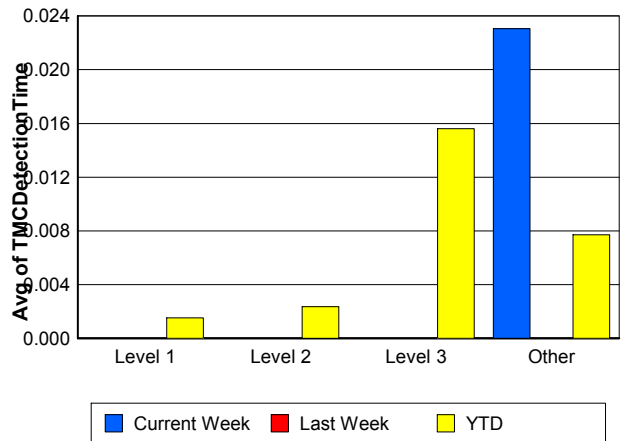
## Performance Measures by Severity

	Level 1			Level 2			Level 3			Other		
	<u>This Week</u>	<u>Last Week</u>	<u>YTD</u>	<u>This Week</u>	<u>Last Week</u>	<u>YTD</u>	<u>This Week</u>	<u>Last Week</u>	<u>YTD</u>	<u>This Week</u>	<u>Last Week</u>	<u>YTD</u>
Number of Events	36	49	795	10	9	318	10	7	158	891	1,010	25,882
Number of Incidents	36	49	795	10	9	318	10	7	158	0	0	0
TMC Detection (min.)	0.00	0.00	0.00	0.00	0.00	0.00	0.00	0.00	0.02	0.02	0.00	0.01
TMC Verification (min.)	0.83	0.19	0.46	0.27	0.67	0.87	1.19	0.21	1.65	0.70	0.44	0.53
TMC Response (min.)	10.79	7.89	7.36	9.20	8.44	10.25	21.69	15.72	26.64	6.18	6.74	6.58
RR Dispatch Time (min.)	2.82	1.17	1.72	0.82	0.49	3.53	7.69	2.85	10.57	0.82	1.55	1.28
RR Resp. Time (min.)	7.81	6.70	5.75	8.38	7.95	7.28	15.34	13.71	15.54	5.43	5.16	5.40
Event Clearance (min.)	42.81	43.23	46.80	49.02	77.61	73.10	127.88	89.10	106.34	21.74	19.81	22.16
Roadway Clear. (min.)	12.04	13.47	14.13	44.42	56.01	49.42	102.97	44.67	89.96			
Incident Clearance (min.)	42.81	43.23	46.80	49.02	77.61	73.10	127.88	89.10	106.34			
# of Events w/ RR/SIRV	24	28	553	2	3	146	8	6	130	601	689	16,420
RR/SIRV Responses	24	28	553	2	3	146	8	6	130	601	689	16,420
RR/SIRV Activities	35	49	967	9	12	423	15	11	271	518	588	13,900

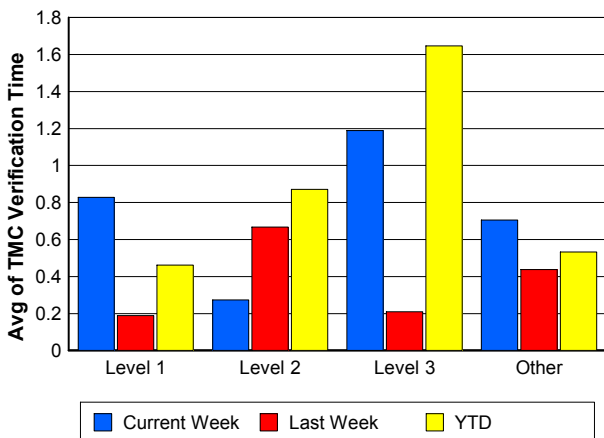
### Number of Events / Severity



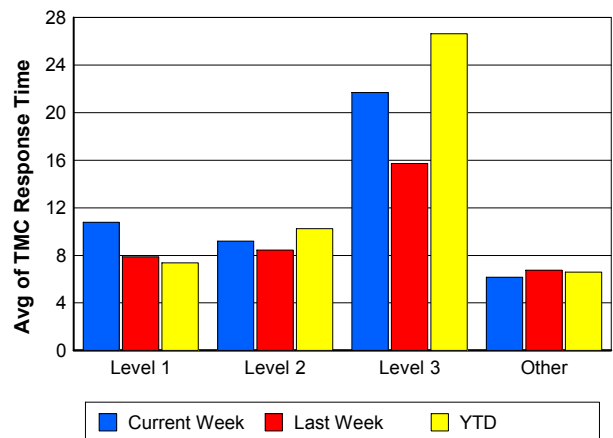
### TMC Detection Time



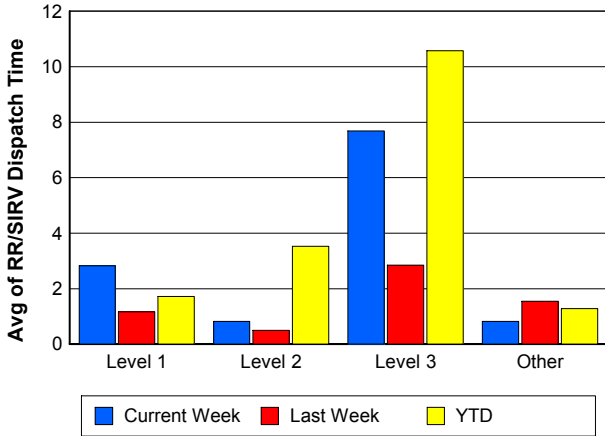
### TMC Verification Time



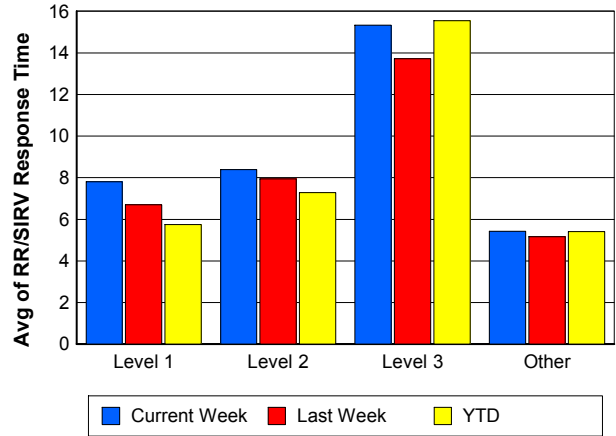
### TMC Response Time



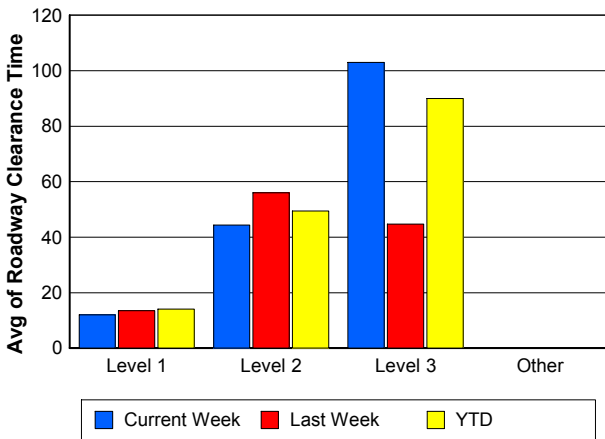
## Road Ranger / SIRV Dispatch Time



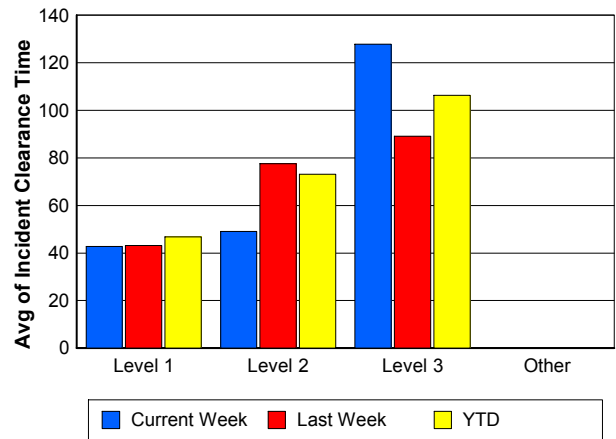
## Road Ranger / SIRV Response Time



## Roadway Clearance Time (2A)



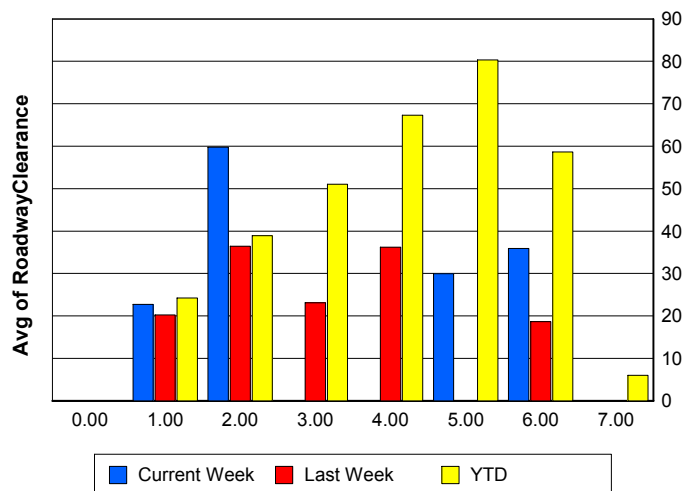
## Incident Clearance Time (3B)



## Roadway Clearance by Maximum Number of Lanes Blocked

	Current Week	Last Week	YTD
0			
1	22.75	20.25	24.25
2	59.81	36.43	38.92
3	0.00	23.09	51.06
4	0.00	36.20	67.28
5	29.93	0.00	80.35
6	35.90	18.67	58.64
7	0.00	0.00	5.97

## Roadway Clearance Time (2A)



## Performance Measures by Roadway

**595**

	<u>Current Week</u>	<u>Last Week</u>	<u>YTD</u>
Number of Events	108	149	3,646
Number of Incidents	6	12	226
TMC Detection (min.)	0.00	0.00	0.01
TMC Verification (min.)	1.20	0.56	0.68
TMC Response (min.)	9.38	4.86	6.37
RR Dispatch Time (min.)	1.67	0.69	1.12
RR Resp. Time (min.)	7.63	4.44	5.32
Event Clearance (min.)	25.93	17.53	21.54
Roadway Clear. (min.)	28.57	27.52	30.41
Incident Clearance (min.)	45.10	48.44	54.31
# of Events w/ RR/SIRV	76	104	2,490
RR/SIRV Responses	76	104	2,490
RR/SIRV Activities	73	96	2,288

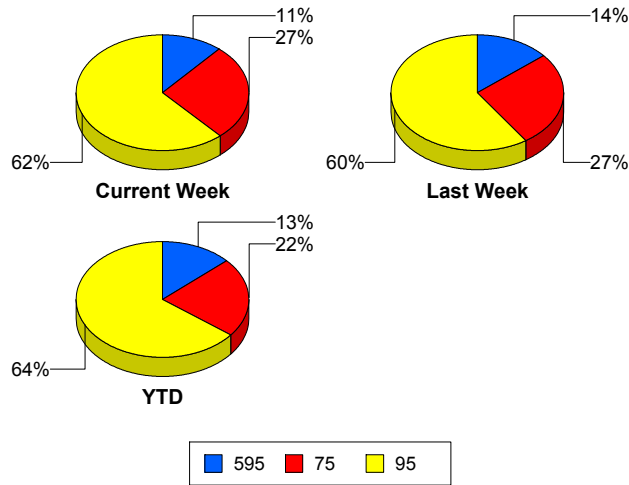
**75**

	<u>Current Week</u>	<u>Last Week</u>	<u>YTD</u>
Number of Events	254	286	6,027
Number of Incidents	7	7	112
TMC Detection (min.)	0.00	0.00	0.00
TMC Verification (min.)	0.76	0.53	0.69
TMC Response (min.)	7.74	7.28	8.18
RR Dispatch Time (min.)	0.94	0.99	1.25
RR Resp. Time (min.)	6.80	6.38	6.95
Event Clearance (min.)	23.09	24.35	26.29
Roadway Clear. (min.)	21.25	23.96	62.37
Incident Clearance (min.)	40.64	58.98	87.57
# of Events w/ RR/SIRV	156	171	3,751
RR/SIRV Responses	156	171	3,751
RR/SIRV Activities	133	138	3,140

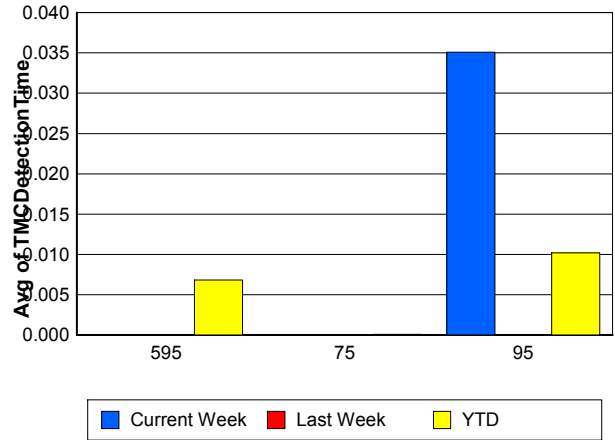
**95**

	<u>Current Week</u>	<u>Last Week</u>	<u>YTD</u>
Number of Events	585	640	17,480
Number of Incidents	43	46	933
TMC Detection (min.)	0.04	0.00	0.01
TMC Verification (min.)	0.60	0.35	0.46
TMC Response (min.)	5.64	7.22	6.48
RR Dispatch Time (min.)	0.86	1.94	1.49
RR Resp. Time (min.)	4.90	5.17	5.11
Event Clearance (min.)	23.96	21.64	23.66
Roadway Clear. (min.)	36.91	21.28	29.26
Incident Clearance (min.)	64.07	53.41	59.16
# of Events w/ RR/SIRV	403	451	11,008
RR/SIRV Responses	403	451	11,008
RR/SIRV Activities	371	426	10,133

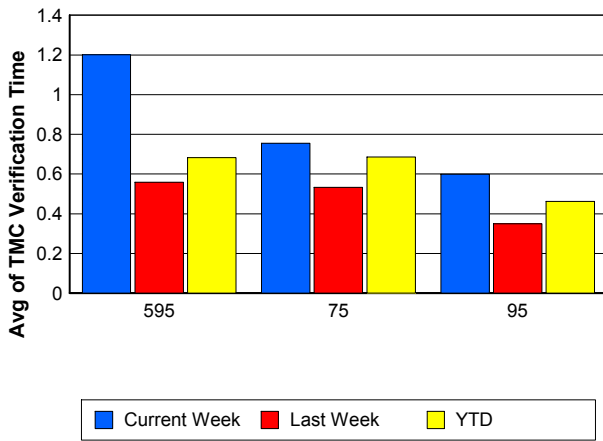
## Number of Events / Roadway



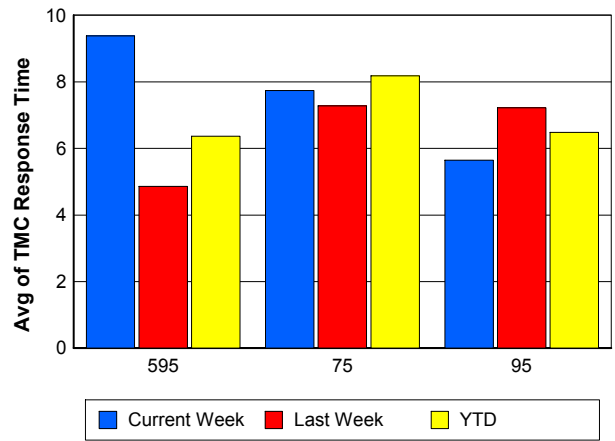
## TMC Detection Time



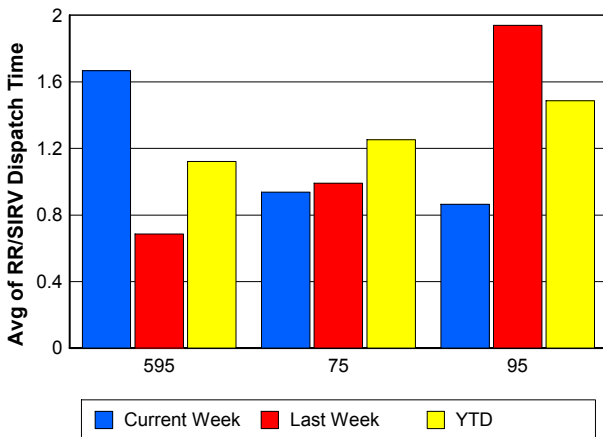
## TMC Verification Time



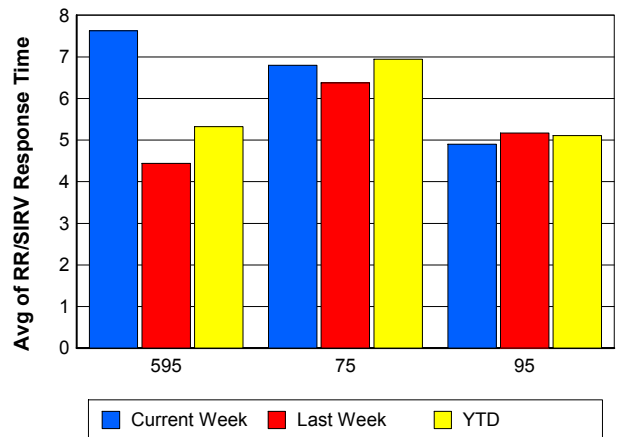
## TMC Response Time



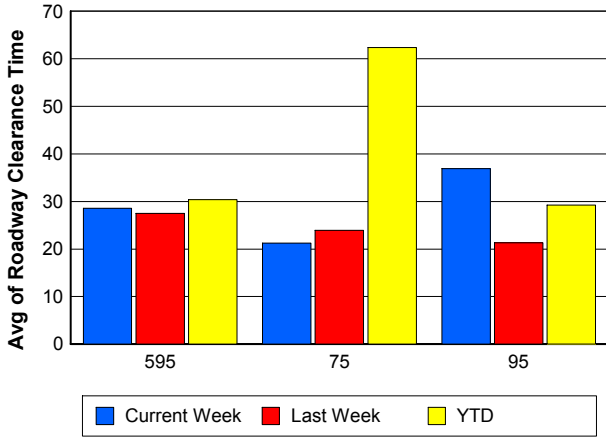
## Road Ranger / SIRV Dispatch Time



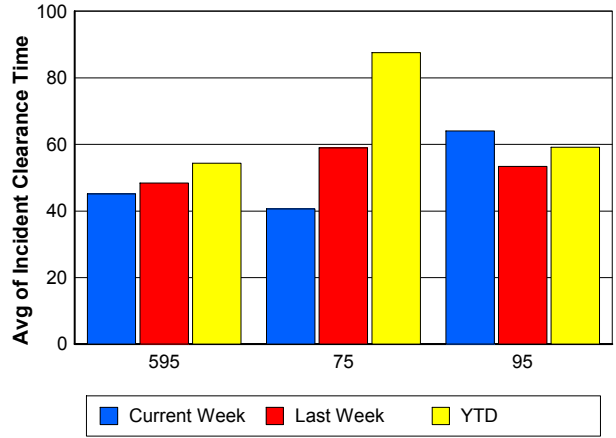
## Road Ranger / SIRV Response Time



## Roadway Clearance Time (2A)



## Incident Clearance Time (3B)



## Performance Measures by Event Type

### Accident

	<u>Current Week</u>	<u>Last Week</u>	<u>YTD</u>
Number of Events	97	86	1,891
Number of Incidents	47	54	918
TMC Detection (min.)	0.00	0.00	0.01
TMC Verification (min.)	1.08	0.60	0.75
TMC Response (min.)	9.45	9.91	8.80
RR Dispatch Time (min.)	1.76	1.71	1.74
RR Response Time (min.)	7.91	8.30	7.17
Event Clearance (min.)	56.19	49.48	55.95
Roadway Clearance (min.)	34.90	22.78	33.96
Incident Clearance (min.)	63.30	56.63	67.39
# of Events w/ RR/SIRV	68	53	1,312
RR/SIRV Assists	68	53	1,312
RR/SIRV Activities	92	82	2,006

### Debris on Roadway

	<u>Current Week</u>	<u>Last Week</u>	<u>YTD</u>
Number of Events	36	36	735
Number of Incidents	1	0	17
TMC Detection (min.)	0.57	0.00	0.16
TMC Verification (min.)	2.99	0.77	3.74
TMC Response (min.)	5.26	8.16	7.24
RR Dispatch Time (min.)	0.51	1.12	0.90
RR Response Time (min.)	4.80	7.04	6.36
Event Clearance (min.)	12.11	13.21	11.48
Roadway Clearance (min.)	42.68		25.77
Incident Clearance (min.)	46.68		30.20
# of Events w/ RR/SIRV	32	31	674
RR/SIRV Assists	32	31	674
RR/SIRV Activities	35	34	703

### Disabled Vehicle

	<u>Current Week</u>	<u>Last Week</u>	<u>YTD</u>
Number of Events	551	610	15,620
Number of Incidents	3	9	196
TMC Detection (min.)	0.00	0.00	0.00
TMC Verification (min.)	0.83	0.61	0.64
TMC Response (min.)	6.05	6.49	6.31
RR Dispatch Time (min.)	0.83	1.59	1.18
RR Response Time (min.)	5.24	4.88	5.16
Event Clearance (min.)	24.26	25.19	27.26
Roadway Clearance (min.)	11.20	22.26	19.91
Incident Clearance (min.)	27.42	35.10	38.44
# of Events w/ RR/SIRV	435	495	11,795
RR/SIRV Assists	435	495	11,795
RR/SIRV Activities	428	513	12,032

## Emergency Vehicles

	<u>Current Week</u>	<u>YTD</u>
Number of Events	3	40
Number of Incidents	3	32
TMC Detection (min.)	0.00	0.00
TMC Verification (min.)	0.00	0.93
TMC Response (min.)	16.88	15.87
RR Dispatch Time (min.)	1.60	10.47
RR Response Time (min.)	15.28	4.68
Event Clearance (min.)	7.44	50.60
Roadway Clearance (min.)	3.58	51.23
Incident Clearance (min.)	7.44	56.85
# of Events w/ RR/SIRV	1	24
RR/SIRV Assists	1	24
RR/SIRV Activities	1	40

## Other

	<u>Current Week</u>	<u>Last Week</u>	<u>YTD</u>
Number of Events	257	338	8,575
Number of Incidents	0	1	20
TMC Detection (min.)	0.00	0.00	0.00
TMC Verification (min.)	0.01	0.02	0.05
TMC Response (min.)	9.72	5.71	10.64
RR Dispatch Time (min.)	1.19	1.31	1.92
RR Response Time (min.)	7.98	4.98	7.51
Event Clearance (min.)	12.46	9.57	11.50
Roadway Clearance (min.)		21.50	21.56
Incident Clearance (min.)		23.25	25.99
# of Events w/ RR/SIRV	98	144	3,293
RR/SIRV Assists	98	144	3,293
RR/SIRV Activities	21	29	588

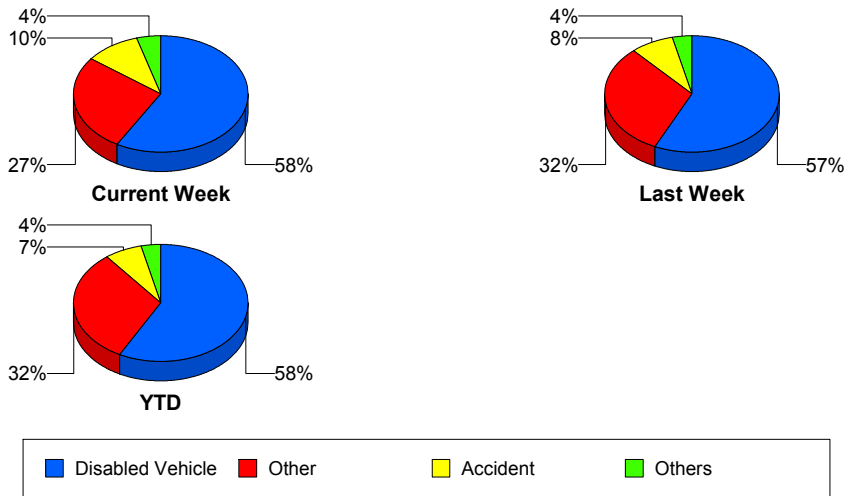
## Police Activity

	<u>Current Week</u>	<u>Last Week</u>	<u>YTD</u>
Number of Events	2	1	130
Number of Incidents	2	0	41
TMC Detection (min.)	0.00	0.00	0.00
TMC Verification (min.)	0.00	1.53	0.21
TMC Response (min.)		17.45	14.14
RR Dispatch Time (min.)		1.60	5.33
RR Response Time (min.)		15.85	9.03
Event Clearance (min.)	91.88	26.47	35.72
Roadway Clearance (min.)	90.06		40.00
Incident Clearance (min.)	91.88		50.03
# of Events w/ RR/SIRV	0	1	39
RR/SIRV Assists	0	1	39
RR/SIRV Activities	0	1	48

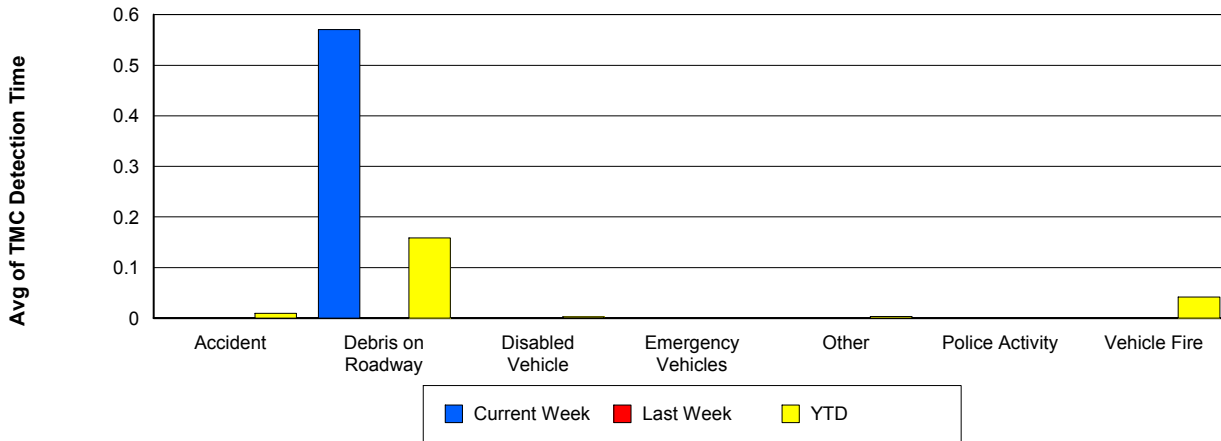
## Vehicle Fire

	<u>Last Week</u>	<u>YTD</u>
Number of Events	2	59
Number of Incidents	1	47
TMC Detection (min.)	0.00	0.04
TMC Verification (min.)	0.98	1.65
TMC Response (min.)		12.19
RR Dispatch Time (min.)	0.55	2.75
RR Response Time (min.)		10.09
Event Clearance (min.)	4.27	61.29
Roadway Clearance (min.)	25.07	41.25
Incident Clearance (min.)		63.66
# of Events w/ RR/SIRV	1	38
RR/SIRV Assists	1	38
RR/SIRV Activities	0	76

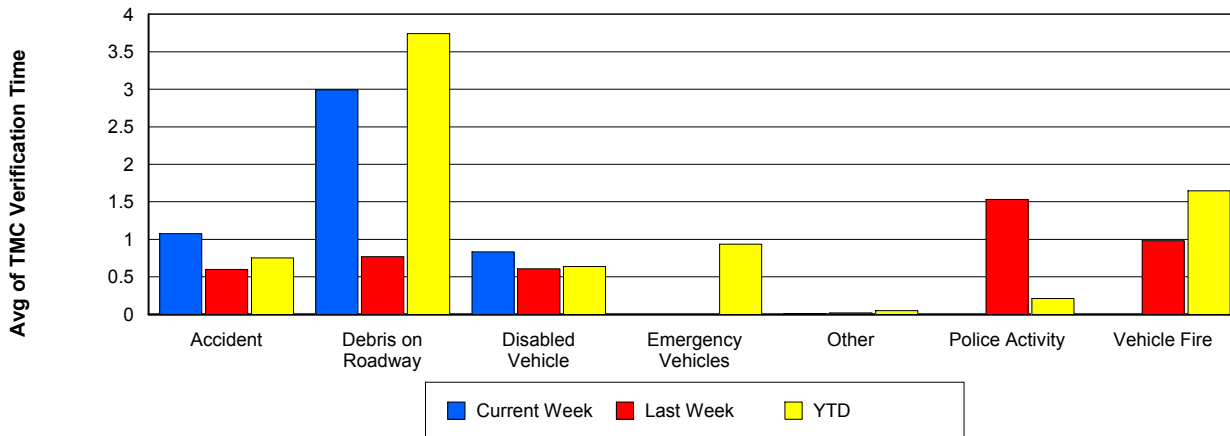
## Number of Events / Event Type



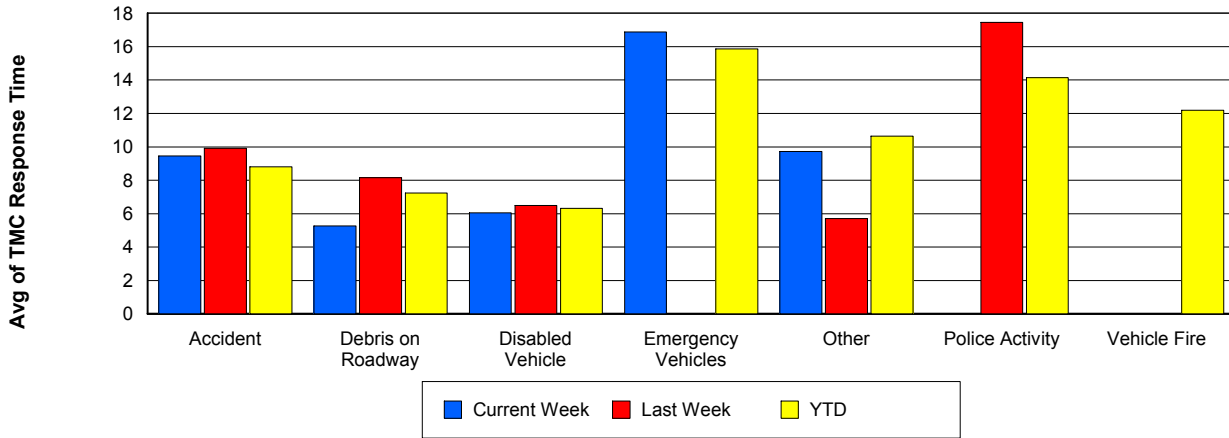
## TMC Detection Time



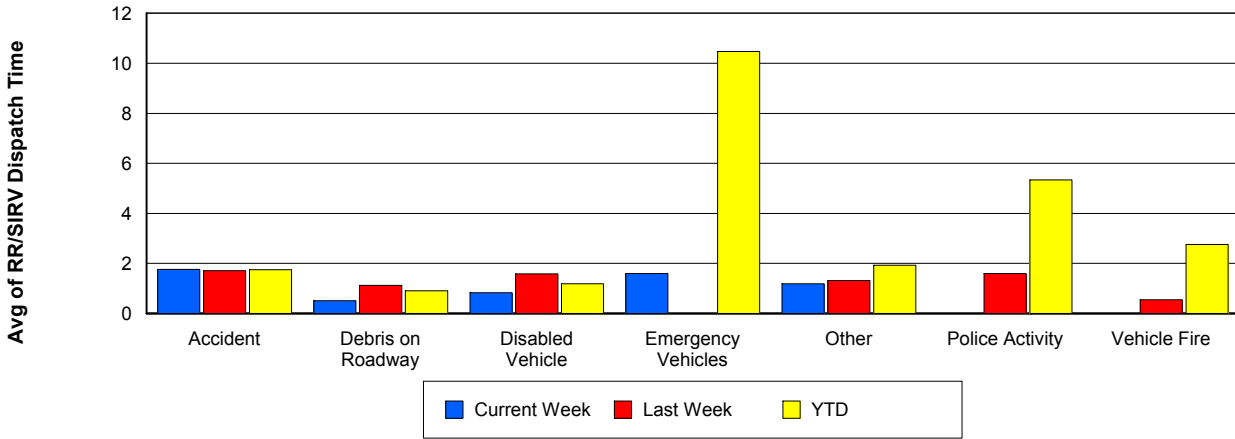
## TMC Verification Time



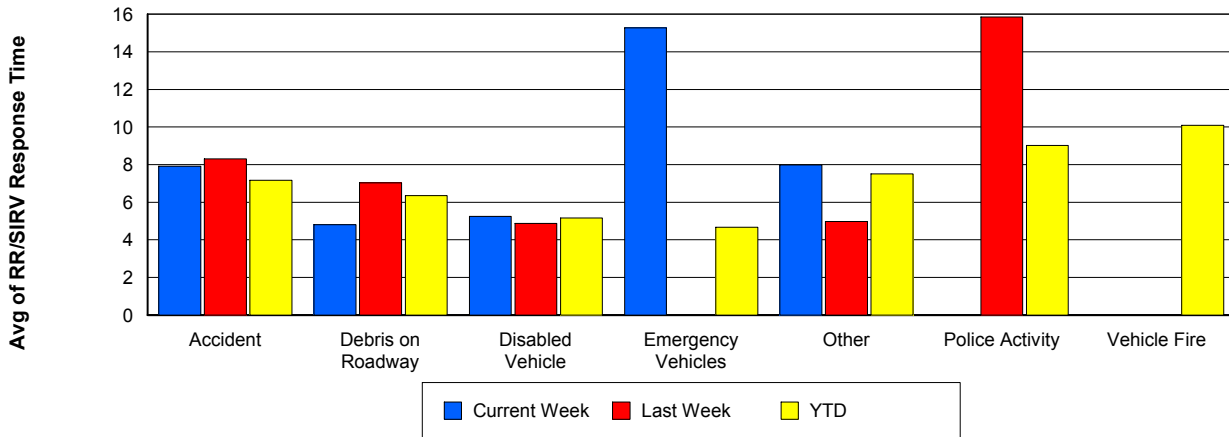
## TMC Response Time



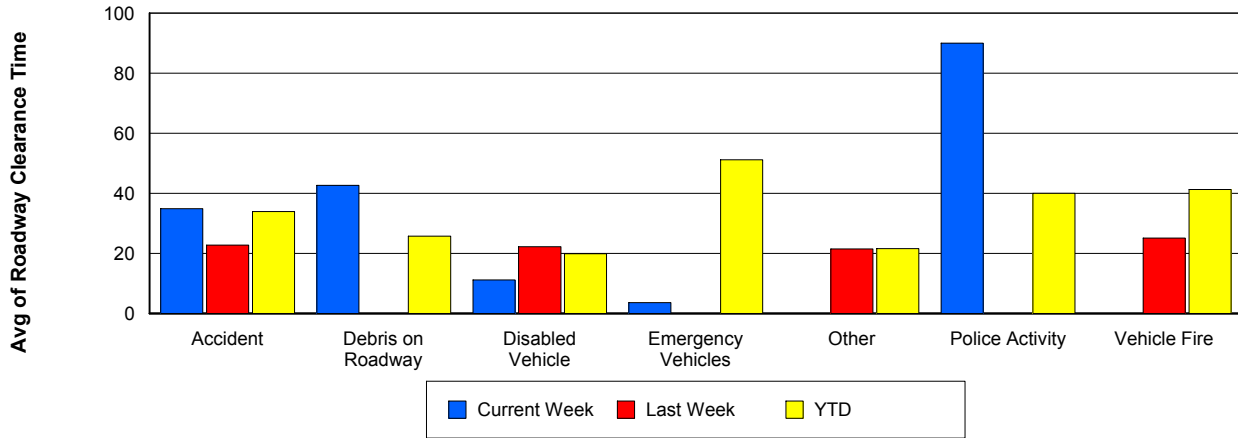
## Road Ranger / SIRV Dispatch Time



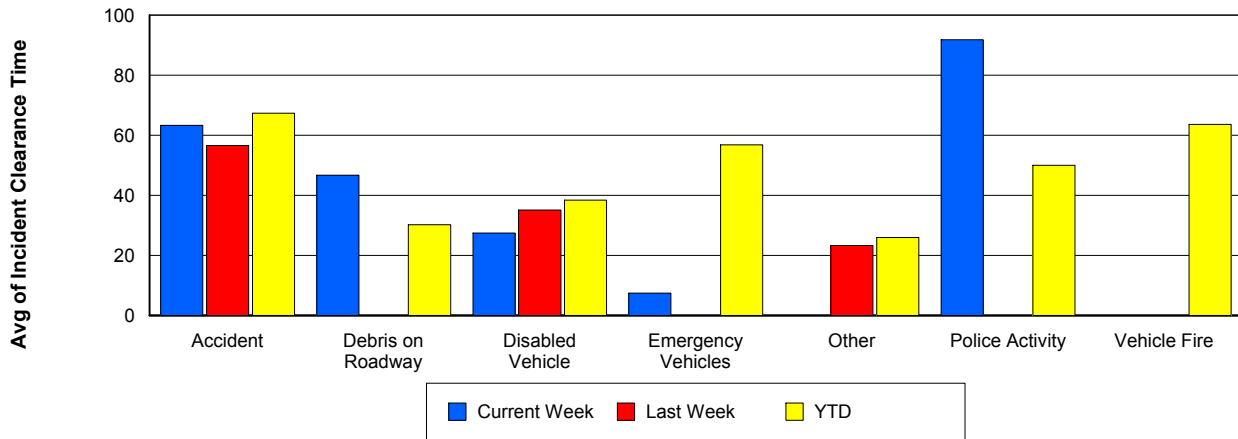
## Road Ranger / SIRV Response Time



## Roadway Clearance Time (2A)



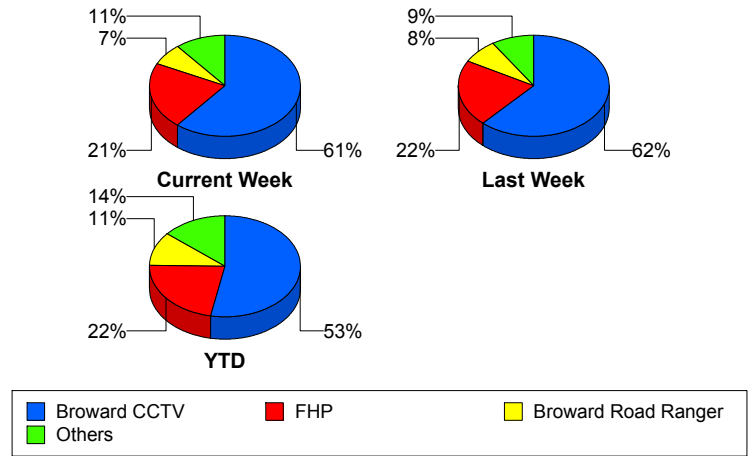
## Incident Clearance Time (3B)



## Incident Detection Methods

	Current Week	Last Week	YTD
Broward CCTV	<b>34</b>	<b>40</b>	<b>675</b>
Broward Road Ranger	<b>4</b>	<b>5</b>	<b>139</b>
Broward VideoWall	<b>1</b>	<b>1</b>	<b>46</b>
BSO	<b>2</b>	<b>1</b>	<b>29</b>
District 4	<b>2</b>	<b>2</b>	<b>38</b>
District 6	<b>0</b>	<b>0</b>	<b>1</b>
FDOT Maintenance	<b>0</b>	<b>1</b>	<b>4</b>
FHP	<b>12</b>	<b>14</b>	<b>282</b>
Fire	<b>1</b>	<b>0</b>	<b>2</b>
Florida's Turnpike	<b>0</b>	<b>0</b>	<b>6</b>
ITMS	<b>0</b>	<b>0</b>	<b>1</b>
Motorist	<b>0</b>	<b>0</b>	<b>4</b>
Other	<b>0</b>	<b>0</b>	<b>1</b>
Palm Beach Road Ran	<b>0</b>	<b>0</b>	<b>2</b>
Road Watcher	<b>0</b>	<b>1</b>	<b>12</b>
SIRV	<b>0</b>	<b>0</b>	<b>5</b>
SmarTraveler (511)	<b>0</b>	<b>0</b>	<b>6</b>
VisioPaD Detection	<b>0</b>	<b>0</b>	<b>18</b>
<b>Total</b>	<b>56</b>	<b>65</b>	<b>1,271</b>

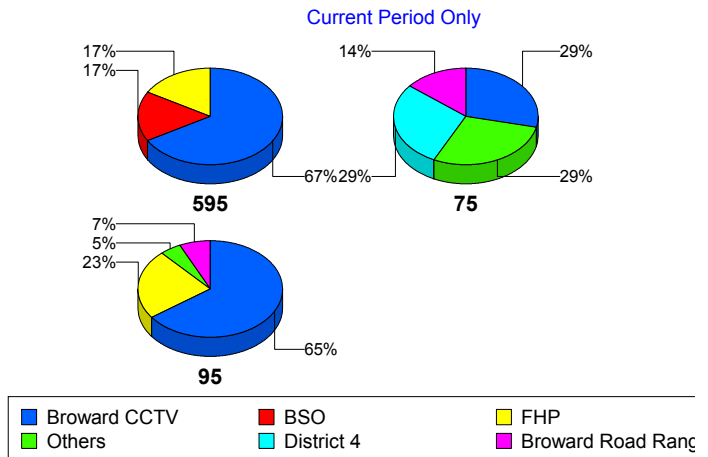
### Total Incidents by Detection Method



## Incident Detection Methods by Roadway

		Current Week	Last Week	YTD
595	Broward CCTV	4	7	107
	Broward Road Ranger	0	1	34
	Broward VideoWall	0	0	8
	BSO	1	0	3
	District 4	0	0	11
	FDOT Maintenance	0	0	2
	FHP	1	4	46
	Florida's Turnpike	0	0	6
	Motorist	0	0	2
	Road Watcher	0	0	3
	VisioPaD Detection	0	0	4
	Total	6	12	226
	75	Broward CCTV	2	5
Broward Road Ranger		1	1	11
Broward VideoWall		0	1	1
BSO		1	0	23
District 4		2	0	5
FHP		1	0	22
Other		0	0	1
Road Watcher		0	0	2
VisioPaD Detection		0	0	1
Total		7	7	112
95	Broward CCTV	28	28	522
	Broward Road Ranger	3	3	94
	Broward VideoWall	1	0	37
	BSO	0	1	3
	District 4	0	2	22
	District 6	0	0	1
	FDOT Maintenance	0	1	2
	FHP	10	10	214
	Fire	1	0	2

Total Events by Roadway and Detection Method

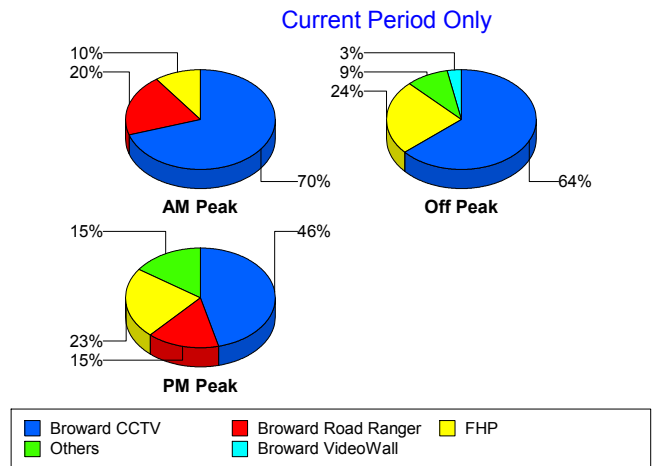


		Current Week	Last Week	YTD
95	ITMS	0	0	1
	Motorist	0	0	2
	Palm Beach Road Ran	0	0	2
	Road Watcher	0	1	7
	SIRV	0	0	5
	SmarTraveler (511)	0	0	6
	VisioPaD Detection	0	0	13
	<b>Total</b>	<b>43</b>	<b>46</b>	<b>933</b>
<b>Total</b>	<b>56</b>	<b>65</b>	<b>1,271</b>	

### Incident Detection Methods by Peak Period

		Current Week	Last Week	YTD
AM Peak	Broward CCTV	7	6	127
	Broward Road Ranger	2	2	43
	Broward VideoWall	0	0	14
	BSO	0	0	5
	District 4	0	1	13
	FHP	1	6	72
	Florida's Turnpike	0	0	2
	Motorist	0	0	3
	Palm Beach Road Ran	0	0	1
	Road Watcher	0	0	4
	SIRV	0	0	1
	SmarTraveler (511)	0	0	1
	VisioPaD Detection	0	0	1
	<b>Total</b>	<b>10</b>	<b>15</b>	<b>287</b>
	Off Peak	Broward CCTV	21	25
Broward Road Ranger		0	0	39
Broward VideoWall		1	0	26
BSO		1	0	19
District 4		1	1	12
FDOT Maintenance		0	0	2

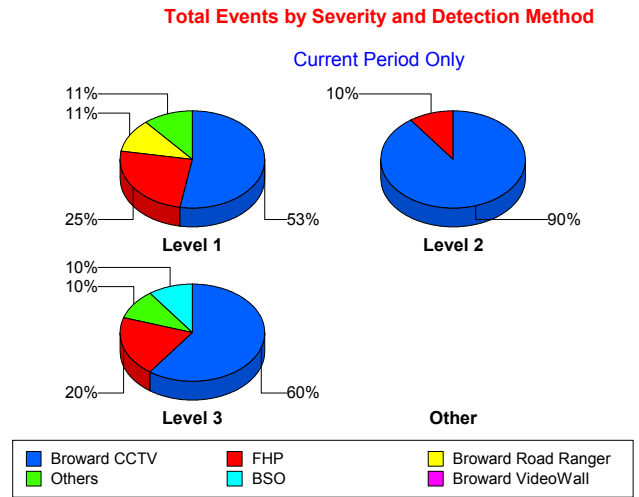
**Total Events by Peak Period and Detection Method**



		Current Week	Last Week	YTD
Off Peak	FHP	8	3	133
	Fire	1	0	1
	Florida's Turnpike	0	0	3
	ITMS	0	0	1
	Motorist	0	0	1
	Road Watcher	0	1	5
	SIRV	0	0	1
	SmarTraveler (511)	0	0	3
	VisioPaD Detection	0	0	14
	Total	33	30	629
PM Peak	Broward CCTV	6	9	179
	Broward Road Ranger	2	3	57
	Broward VideoWall	0	1	6
	BSO	1	1	5
	District 4	1	0	13
	District 6	0	0	1
	FDOT Maintenance	0	1	2
	FHP	3	5	77
	Fire	0	0	1
	Florida's Turnpike	0	0	1
	Other	0	0	1
	Palm Beach Road Ran	0	0	1
	Road Watcher	0	0	3
	SIRV	0	0	3
	SmarTraveler (511)	0	0	2
	VisioPaD Detection	0	0	3
	Total	13	20	355
Total	56	65	1,271	

## Incident Detection Methods by Severity

		Current Week	Last Week	YTD
Level 1	Broward CCTV	19	31	427
	Broward Road Ranger	4	3	102
	Broward VideoWall	1	1	27
	BSO	1	1	5
	District 4	1	2	29
	FDOT Maintenance	0	1	3
	FHP	9	9	168
	Fire	1	0	1
	Motorist	0	0	4
	Palm Beach Road Ran	0	0	2
	Road Watcher	0	1	9
	SIRV	0	0	5
	SmarTraveler (511)	0	0	4
	VisioPaD Detection	0	0	9
	<b>Total</b>	<b>36</b>	<b>49</b>	<b>795</b>
	Level 2	Broward CCTV	9	5
Broward Road Ranger		0	1	26
Broward VideoWall		0	0	16
BSO		0	0	7
District 4		0	0	5
FDOT Maintenance		0	0	1
FHP		1	3	77
Florida's Turnpike		0	0	4
ITMS		0	0	1
Other		0	0	1
Road Watcher		0	0	1
SmarTraveler (511)		0	0	2
VisioPaD Detection		0	0	7
<b>Total</b>		<b>10</b>	<b>9</b>	<b>318</b>
Level 3	Broward CCTV	6	4	78
	Broward Road Ranger	0	1	11



		Current Week	Last Week	YTD
Level 3	Broward VideoWall	0	0	3
	BSO	1	0	17
	District 4	1	0	4
	District 6	0	0	1
	FHP	2	2	37
	Fire	0	0	1
	Florida's Turnpike	0	0	2
	Road Watcher	0	0	2
	VisioPaD Detection	0	0	2
	Total	10	7	158
Total		56	65	1,271

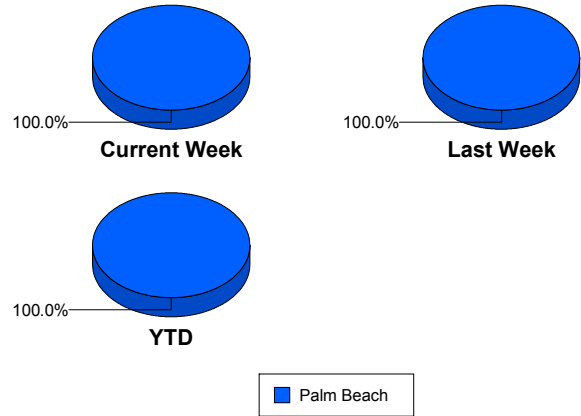
# Road Ranger / SIRV Performance Measures

## Road Ranger / SIRV Performance By County

Values presented are:  
 - Total Events with a RR/SIRV Response  
 - Total RR/SIRV Responses,  
 - Total Activities Performed

	Current We	Last Week	YTD
Palm Beach	<b>301</b>	<b>360</b>	<b>8,615</b>
	<b>316</b>	<b>373</b>	<b>8,901</b>
	<b>339</b>	<b>392</b>	<b>9,493</b>

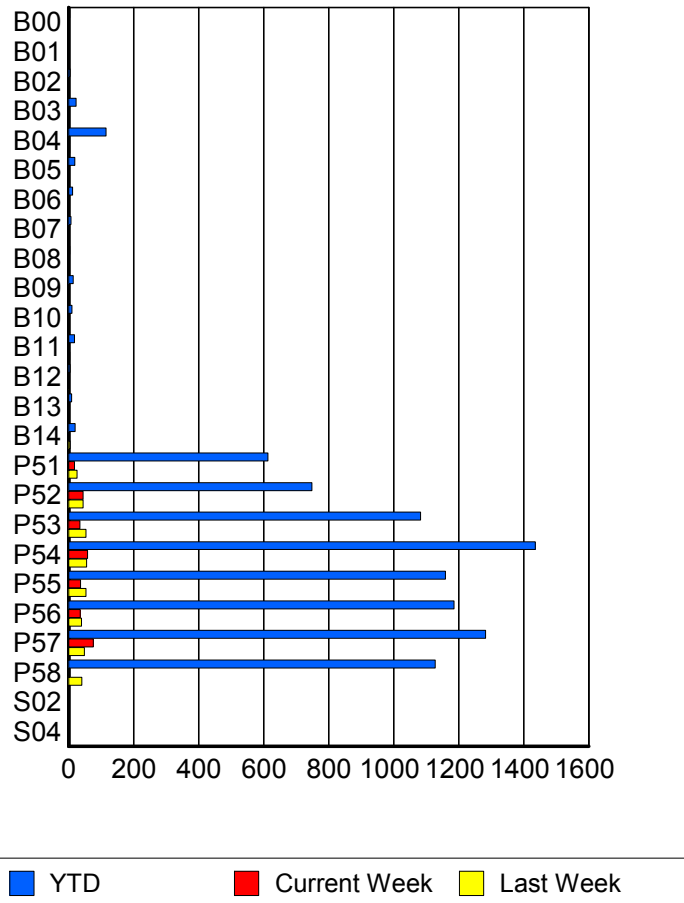
RR/SIRV Responses per County



## Road Ranger / SIRV Performance By Truck

	Current We	Last Week	YTD
B00	0	0	3
	0	0	3
	0	0	3
B01	0	0	1
	0	0	1
	0	0	1
B02	0	0	4
	0	0	4
	0	0	4
B03	2	0	23
	2	0	23
	2	0	24
B04	3	3	114
	3	3	115
	4	3	132
B05	0	0	18
	0	0	19
	0	0	20
B06	0	0	12
	0	0	12
	0	0	12
B07	0	0	7
	0	0	7
	0	0	7
B08	0	0	3
	0	0	3
	0	0	3

RR/SIRV Responses per Truck



	Current We	Last Week	YTD
B09	0	1	14
	0	1	14
	0	1	14
B10	1	0	9
	2	0	10
	2	0	10
B11	0	3	18
	0	3	18
	0	3	19
B12	0	1	4
	0	1	4
	0	1	4
B13	0	0	9
	0	0	9
	0	0	10
B14	1	4	20
	1	4	20
	1	4	21
P51	18	25	607
	18	26	613
	20	27	643
P52	45	45	744
	45	45	748
	48	45	792
P53	34	53	1,070
	35	53	1,083
	39	54	1,153
P54	57	55	1,421
	58	55	1,436
	62	60	1,538
P55	37	53	1,150
	37	53	1,159
	41	56	1,237
P56	36	37	1,170
	36	40	1,186
	37	43	1,275
P57	74	46	1,272
	76	48	1,283
	80	49	1,374
P58	3	41	1,114
	3	41	1,128
	3	46	1,194
S02	0	0	1
	0	0	1
	0	0	1

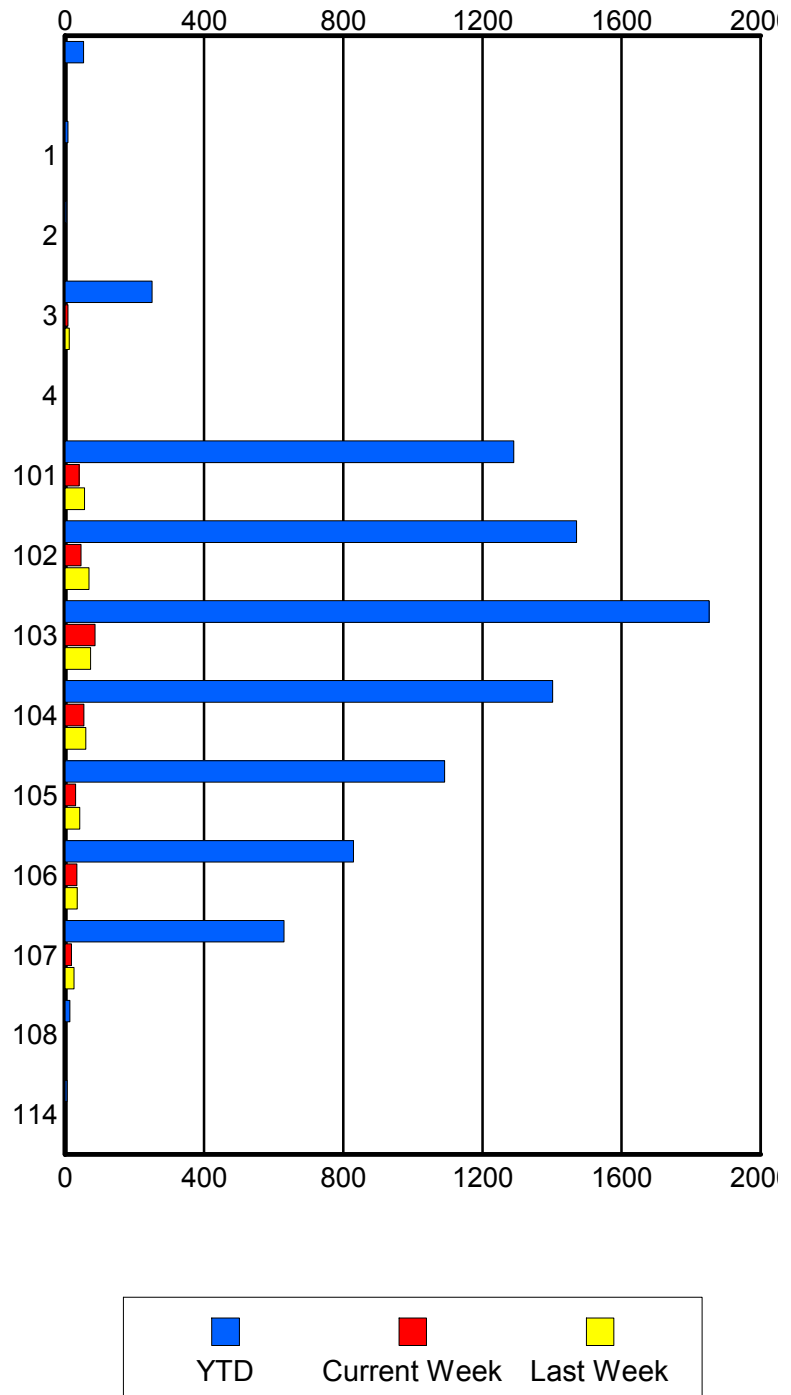
	Current We	Last Week	YTD
S04	0	0	2
	0	0	2
	0	0	2

### Road Ranger / SIRV Performance By Beat

	Current We	Last Week	YTD
	0	0	53
	0	0	53
	0	0	53
1	0	0	8
	0	0	8
	0	0	9
2	0	0	4
	0	0	4
	0	0	5
3	7	12	246
	8	12	250
	9	12	270
4	0	0	1
	0	0	1
	0	0	1
101	40	55	1,275
	40	56	1,290
	44	60	1,388
102	46	69	1,456
	46	69	1,471
	48	74	1,561
103	84	72	1,829
	86	73	1,852
	92	76	1,988
104	53	59	1,388
	54	60	1,402
	57	61	1,498
105	29	42	1,082
	30	42	1,091
	34	45	1,161
106	32	33	817
	34	35	829
	35	37	882
107	18	25	624
	18	26	630
	20	27	657
108	0	0	13
	0	0	14
	0	0	14
114	0	0	6
	0	0	6
	0	0	6

Values presented are:  
 - Total Events with a RR/SIRV Response  
 - Total RR/SIRV Responses,  
 - Total Activities Performed

### RR/SIRV Responses per Beat

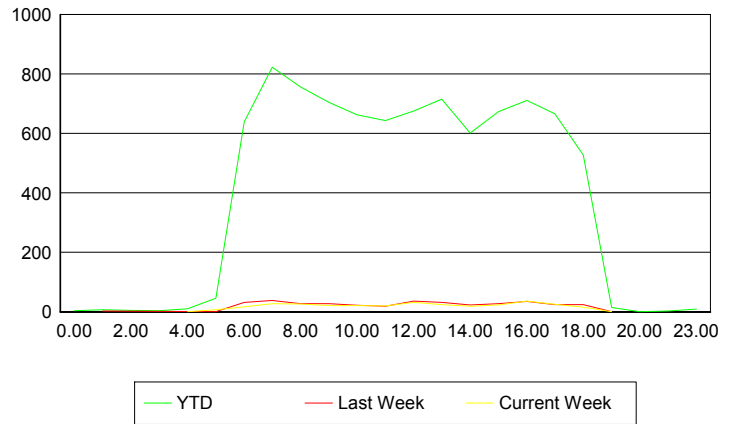


## Road Ranger / SIRV Performance By Time of Day

Values presented are:  
 - Total Events with a RR/SIRV Response  
 - Total RR/SIRV Responses,  
 - Total Activities Performed

	Current We	Last Week	YTD
12AM-1AM	0 0 0	0 0 0	4 4 4
1AM-2AM	0 0 0	1 3 3	5 7 7
2AM-3AM	0 0 0	0 0 0	5 5 6
3AM-4AM	0 0 0	0 0 0	4 4 4
4AM-5AM	1 1 1	0 0 0	7 10 11
5AM-6AM	6 7 7	1 1 2	43 46 48
6AM-7AM	16 17 17	32 32 32	614 639 670
7AM-8AM	27 27 31	34 38 40	788 823 882
8AM-9AM	25 26 27	28 28 28	730 756 811
9AM-10AM	20 21 24	26 27 29	682 705 771
10AM-11AM	20 21 23	20 22 24	641 663 700
11AM-12PM	18 20 21	18 19 19	622 643 694
12PM-1PM	31 32 35	35 36 41	653 675 723

## Number of Responses / Hour of the Day



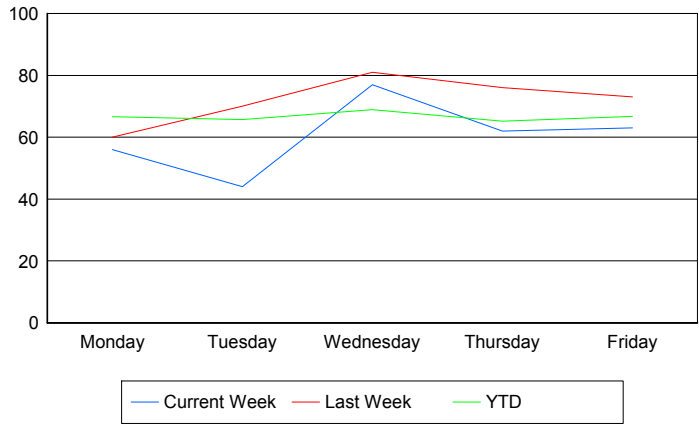
	Current We	Last Week	YTD
1PM-2PM	23	31	699
	24	32	715
	27	33	776
2PM-3PM	18	22	578
	19	23	601
	20	23	634
3PM-4PM	22	28	652
	23	28	673
	24	30	720
4PM-5PM	35	35	692
	36	35	711
	38	38	746
5PM-6PM	22	24	646
	25	24	666
	26	24	699
6PM-7PM	16	24	523
	16	24	527
	17	25	558
7PM-8PM	1	1	15
	1	1	15
	1	1	16
8PM-9PM	0	0	1
	0	0	1
	0	0	1
10PM-11PM	0	0	3
	0	0	3
	0	0	3
11PM-12AM	0	0	8
	0	0	9
	0	0	9

**Road Ranger / SIRV Performance By Day of Week**

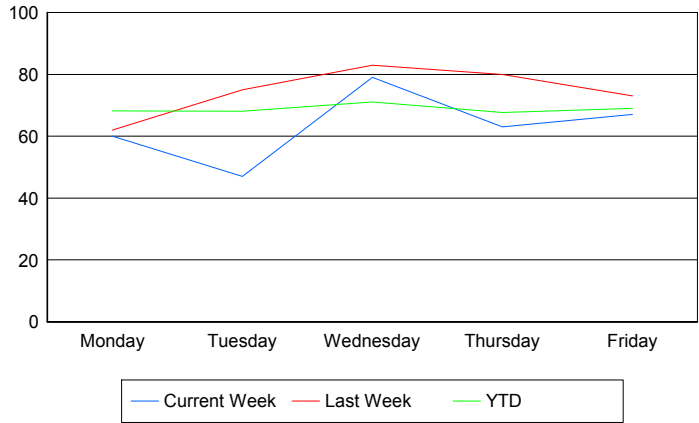
Values presented are: - Total Events with a RR/SIRV Response - Total RR/SIRV Responses, - Total Activities Performed
---

	Current We	Last Week	YTD
Monday	56	60	1,690
	60	62	1,731
	64	63	1,829
Tuesday	44	70	1,675
	47	75	1,734
	51	78	1,841
Wednesday	77	81	1,766
	79	83	1,822
	81	90	1,956
Thursday	62	76	1,721
	63	80	1,788
	71	87	1,922
Friday	63	73	1,766
	67	73	1,826
	72	74	1,945

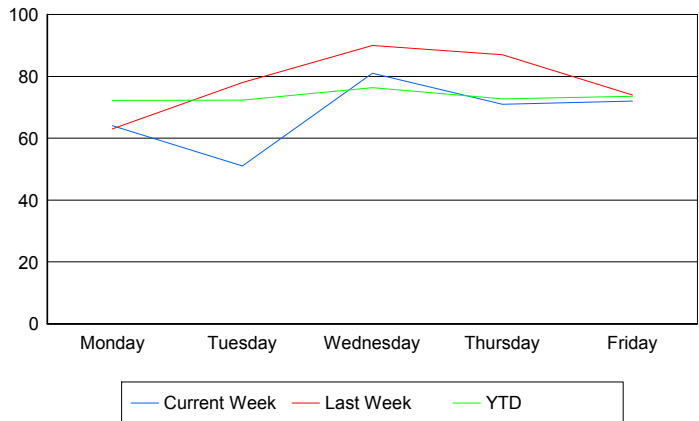
**Avg # of events with a RR/SIRV Response per Day of the Week**



**Avg # of RR/SIRV Responses per Day of the Week**



**Avg # of RR/SIRV Activities Performed per Day of the Week**



### Road Ranger / SIRV Responses per Time of Day and Day of Week

