



Weekly Performance Measures Report Broward County



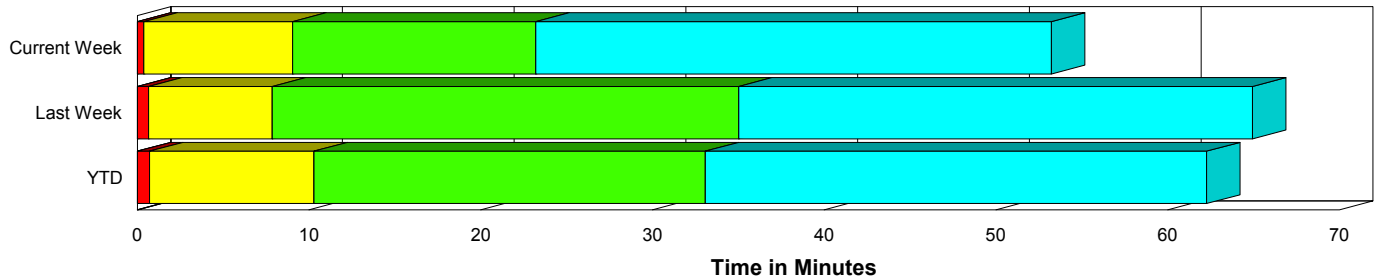
Created on:
June 29, 2009
4:54 pm

Period From Jun 21, 2009 to Jun 27, 2009

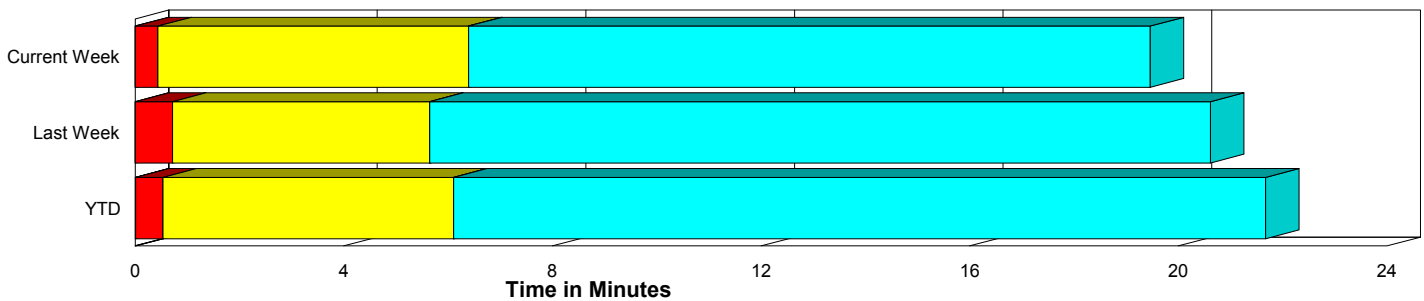
Performance Measures Summary

	Traffic Events (No Lanes Blocked)			Incidents (Lanes Blocked)		
	<u>This Week</u>	<u>Last Week</u>	<u>YTD</u>	<u>This Week</u>	<u>Last Week</u>	<u>YTD</u>
Number of Events	1,010	1,015	24,991	65	36	1,215
TMC Detection (min.)	0.00	0.00	0.01	0.00	0.01	0.00
TMC Verification (min.)	0.44	0.72	0.53	0.37	0.64	0.71
TMC Response (min.)	6.74	6.23	6.60	9.05	8.19	10.53
RR Dispatch Time (min.)	1.55	0.94	1.30	1.38	1.78	3.41
RR Response Time (min.)	5.16	5.41	5.40	7.81	6.60	7.33
Roadway Clearance (min.)				22.72	28.92	32.31
Event Clearance (min.)	19.81	21.20	22.17	52.75	58.76	60.86
# of Events w/ RR/SIRV	689	677	15,819	37	23	795
RR/SIRV Responses	689	677	15,819	37	23	795
RR/SIRV Activities	588	581	13,382	72	56	1,602

Incident Clearance Time-Line



Traffic Event (Non-Lane Blockage) Time-Line



■ Avg. TMC Detection Time	■ Avg. Time from TMC Response to Roadway Clearance*
■ Avg. Time from TMC Detection to TMC Verification	■ Avg. Time from Roadway Clearance to Incident/Event Clearance**
■ Avg. Time from TMC Verification to TMC Response	

* Roadway clearance equals all travel lanes open

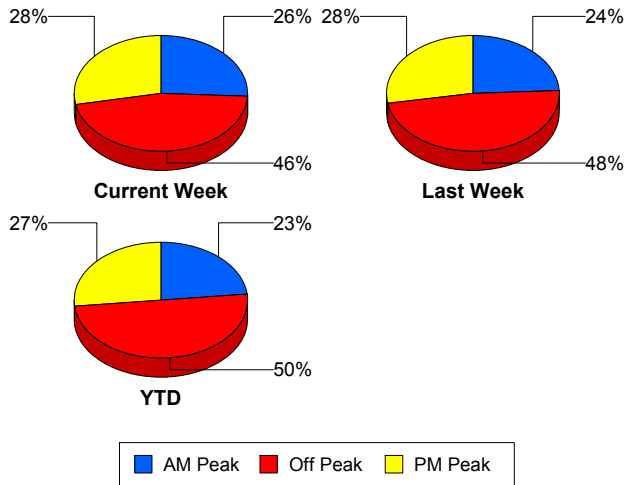
** Incident clearance equals time when last responder has left the scene

Performance Measures by Peak Period

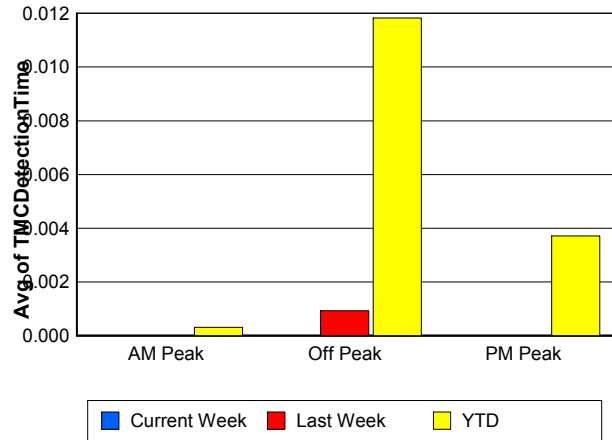
Note: AM peak period is defined as 6am to 10am and PM peak period is defined as 3pm to 7pm.

	AM Peak			Off Peak			PM Peak		
	<u>Current Week</u>	<u>Last Week</u>	<u>YTD</u>	<u>Current Week</u>	<u>Last Week</u>	<u>YTD</u>	<u>Current Week</u>	<u>Last Week</u>	<u>YTD</u>
Number of Events	277	255	6,092	497	503	13,145	301	293	6,969
Number of Incidents	15	10	277	30	14	596	20	12	342
TMC Detection (min.)	0.00	0.00	0.00	0.00	0.00	0.01	0.00	0.00	0.00
TMC Verification (min.)	0.33	0.43	0.48	0.26	0.62	0.46	0.83	1.13	0.72
TMC Response (min.)	8.66	5.29	6.25	6.27	6.47	7.75	5.81	7.04	6.25
RR Dispatch Time (min.)	3.01	0.87	1.07	0.89	1.05	2.04	0.76	0.96	0.88
RR Response Time (min.)	5.26	4.65	5.26	5.55	5.50	5.74	5.14	6.16	5.48
Event Clearance (min.)	24.89	21.86	21.61	22.22	23.49	26.89	18.27	21.30	20.51
Roadway Clearance (min.)	36.23	26.66	26.71	21.41	37.71	38.30	14.56	20.55	26.40
Incident Clearance (min.)	54.92	42.02	55.71	62.34	69.39	65.24	36.73	60.30	57.41
# of Events w/ RR/SIRV	236	203	4,850	261	278	6,609	229	219	5,155
RR/SIRV Responses	236	203	4,850	261	278	6,609	229	219	5,155
RR/SIRV Activities	221	202	4,608	217	233	5,719	222	202	4,657

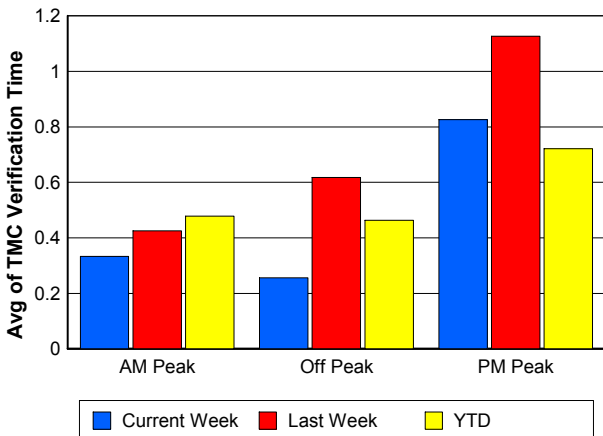
Number of Events / Peak Period



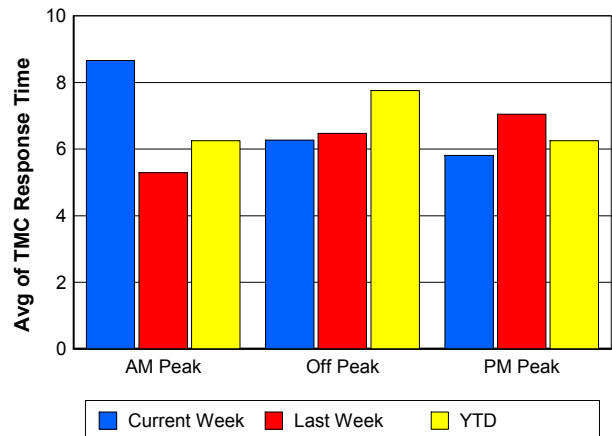
TMC Detection Time



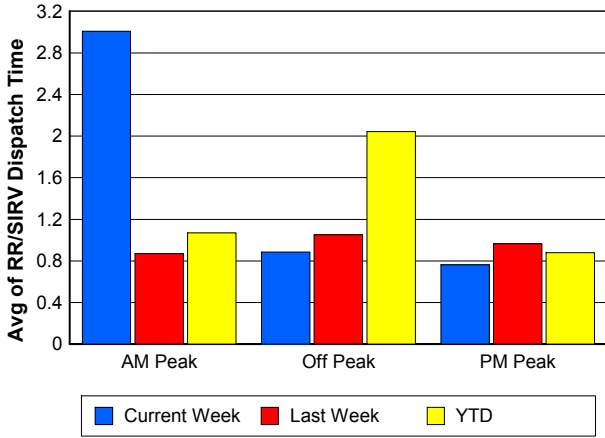
TMC Verification Time



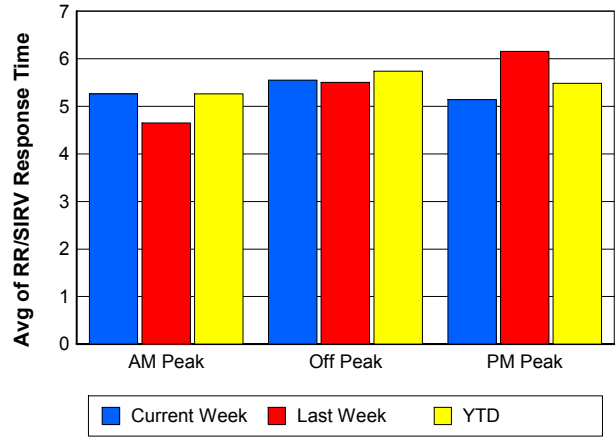
TMC Response Time



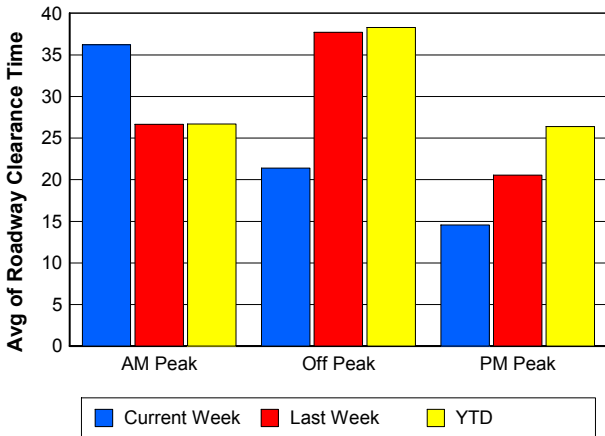
Road Ranger / SIRV Dispatch Time



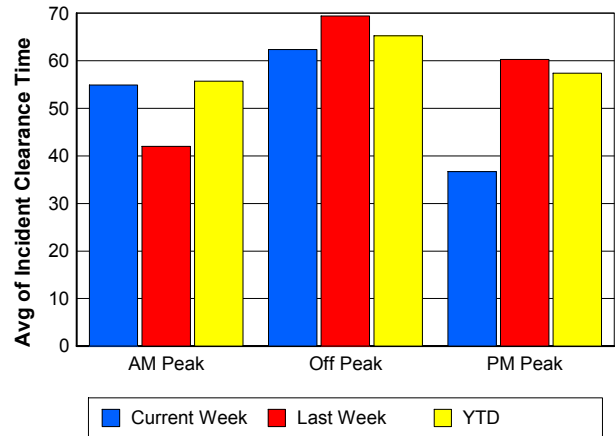
Road Ranger / SIRV Response Time



Roadway Clearance Time (2A)



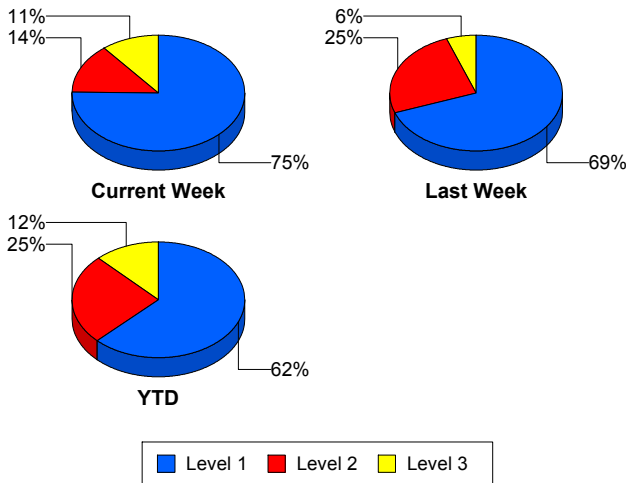
Incident Clearance Time (3B)



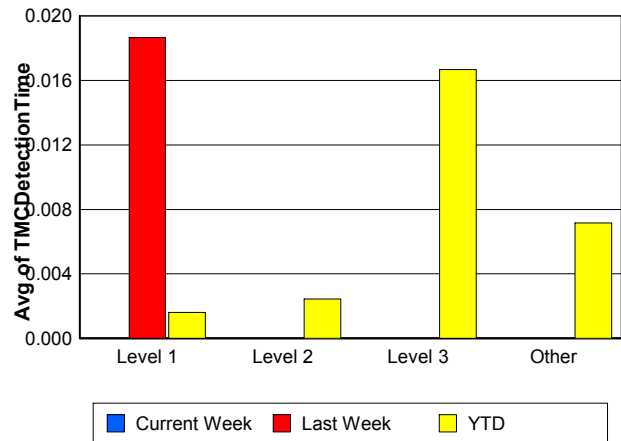
Performance Measures by Severity

	Level 1			Level 2			Level 3			Other		
	<u>This Week</u>	<u>Last Week</u>	<u>YTD</u>	<u>This Week</u>	<u>Last Week</u>	<u>YTD</u>	<u>This Week</u>	<u>Last Week</u>	<u>YTD</u>	<u>This Week</u>	<u>Last Week</u>	<u>YTD</u>
Number of Events	49	25	759	9	9	308	7	2	148	1,010	1,015	24,991
Number of Incidents	49	25	759	9	9	308	7	2	148	0	0	0
TMC Detection (min.)	0.00	0.02	0.00	0.00	0.00	0.00	0.00	0.00	0.02	0.00	0.00	0.01
TMC Verification (min.)	0.34	0.08	0.45	0.67	2.33	0.89	0.21	0.00	1.68	0.44	0.72	0.53
TMC Response (min.)	7.89	6.41	7.21	8.44	7.81	10.27	15.72	36.98	26.97	6.74	6.23	6.60
RR Dispatch Time (min.)	1.17	1.07	1.67	0.49	1.22	3.57	2.85	8.77	10.76	1.55	0.94	1.30
RR Resp. Time (min.)	6.70	5.35	5.66	7.95	6.59	7.27	13.71	25.50	15.55	5.16	5.41	5.40
Event Clearance (min.)	42.99	46.71	46.97	77.61	70.60	73.88	89.10	156.02	104.88	19.81	21.20	22.17
Roadway Clear. (min.)	13.47	14.47	14.23	56.01	44.13	49.59	44.67	141.14	89.08			
Incident Clearance (min.)	42.99	46.71	46.97	77.61	70.60	73.88	89.10	156.02	104.88			
# of Events w/ RR/SIRV	28	15	529	3	6	144	6	2	122	689	677	15,819
RR/SIRV Responses	28	15	529	3	6	144	6	2	122	689	677	15,819
RR/SIRV Activities	49	33	932	12	22	414	11	1	256	588	581	13,382

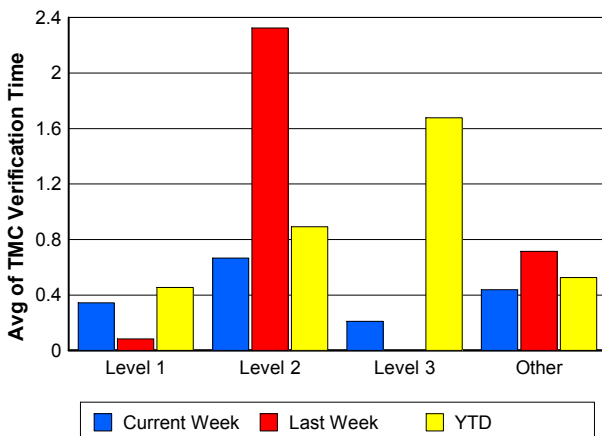
Number of Events / Severity



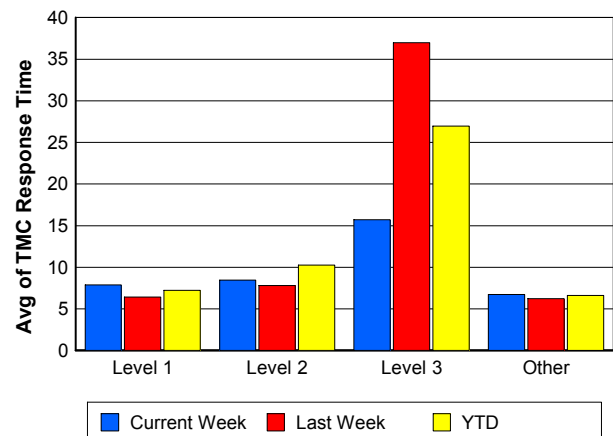
TMC Detection Time



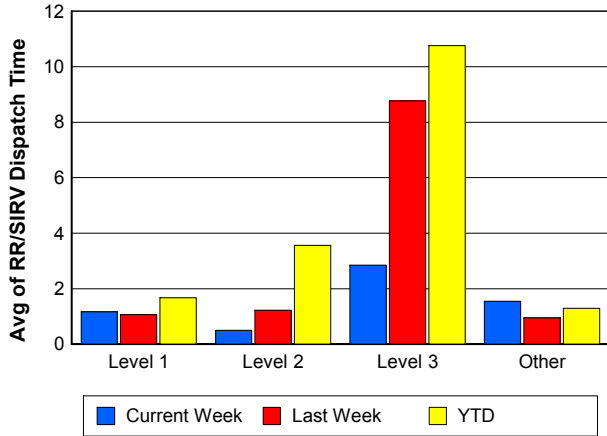
TMC Verification Time



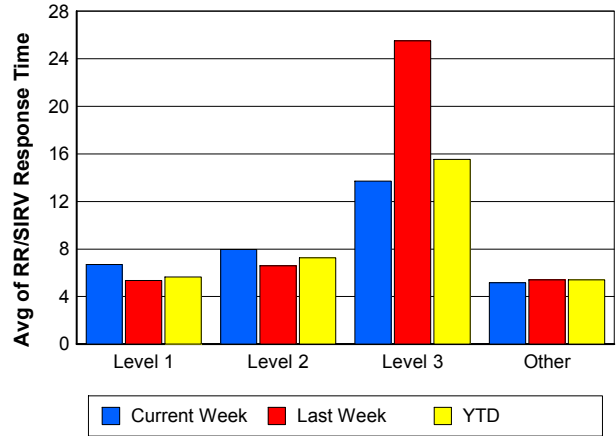
TMC Response Time



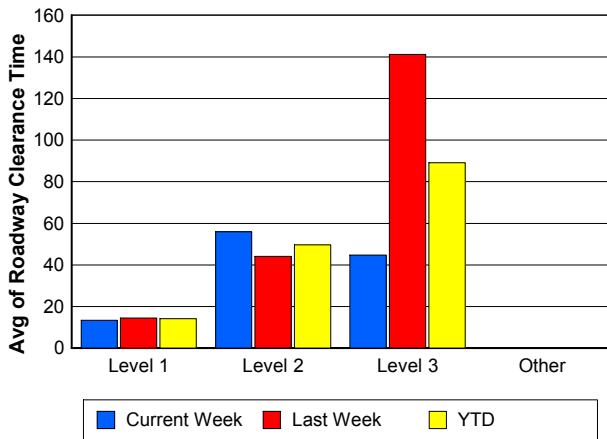
Road Ranger / SIRV Dispatch Time



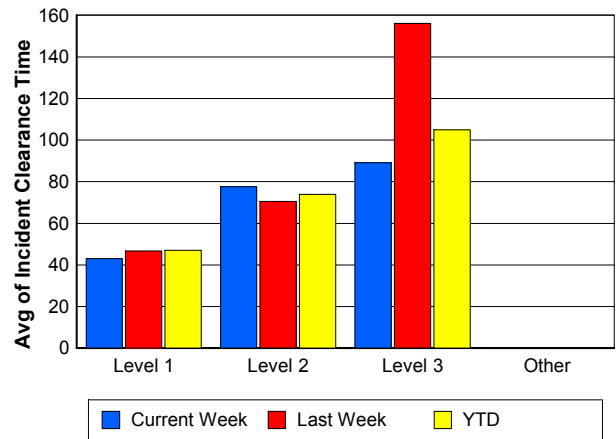
Road Ranger / SIRV Response Time



Roadway Clearance Time (2A)



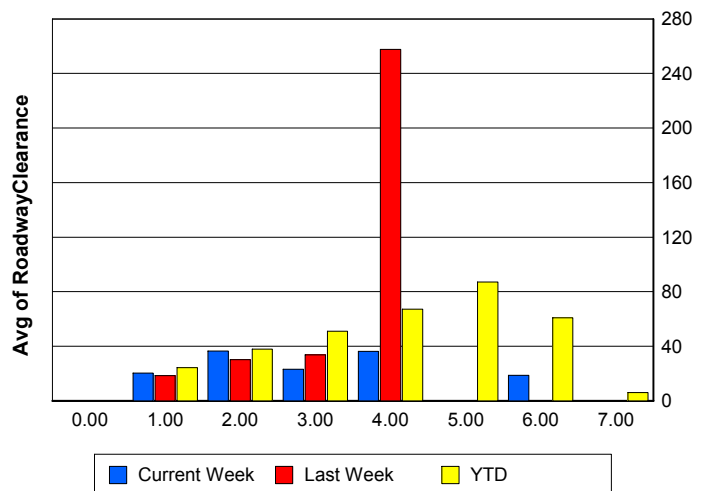
Incident Clearance Time (3B)



Roadway Clearance by Maximum Number of Lanes Blocked

	Current Week	Last Week	YTD
0			
1	20.25	18.37	24.32
2	36.43	30.21	37.80
3	23.09	33.58	51.06
4	36.20	257.77	67.28
5	0.00	0.00	87.07
6	18.67	0.00	60.80
7	0.00	0.00	5.97

Roadway Clearance Time (2A)



Performance Measures by Roadway

595

	<u>Current Week</u>	<u>Last Week</u>	<u>YTD</u>
Number of Events	149	125	3,538
Number of Incidents	12	1	220
TMC Detection (min.)	0.00	0.00	0.01
TMC Verification (min.)	0.56	0.64	0.67
TMC Response (min.)	4.86	3.60	6.27
RR Dispatch Time (min.)	0.69	0.74	1.10
RR Resp. Time (min.)	4.44	3.12	5.25
Event Clearance (min.)	17.53	14.98	21.41
Roadway Clear. (min.)	27.52	15.32	30.46
Incident Clearance (min.)	48.44	39.65	54.56
# of Events w/ RR/SIRV	104	88	2,414
RR/SIRV Responses	104	88	2,414
RR/SIRV Activities	96	80	2,215

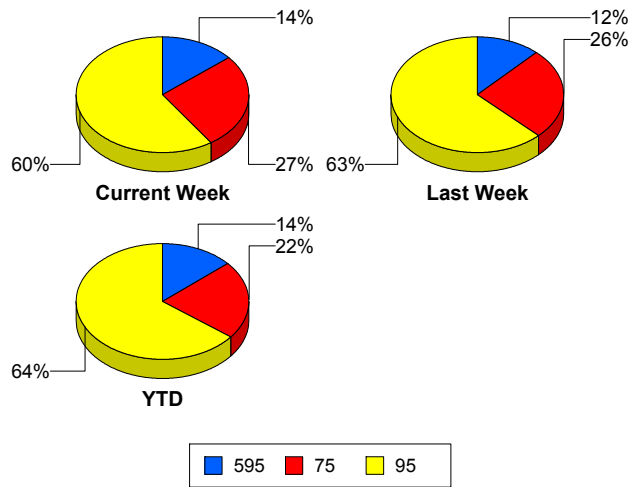
75

	<u>Current Week</u>	<u>Last Week</u>	<u>YTD</u>
Number of Events	286	269	5,773
Number of Incidents	7	6	105
TMC Detection (min.)	0.00	0.00	0.00
TMC Verification (min.)	0.53	0.79	0.68
TMC Response (min.)	7.28	8.22	8.20
RR Dispatch Time (min.)	0.99	1.04	1.27
RR Resp. Time (min.)	6.38	7.23	6.95
Event Clearance (min.)	24.35	25.18	26.43
Roadway Clear. (min.)	23.96	63.47	65.12
Incident Clearance (min.)	58.98	123.14	90.70
# of Events w/ RR/SIRV	171	172	3,595
RR/SIRV Responses	171	172	3,595
RR/SIRV Activities	138	143	3,007

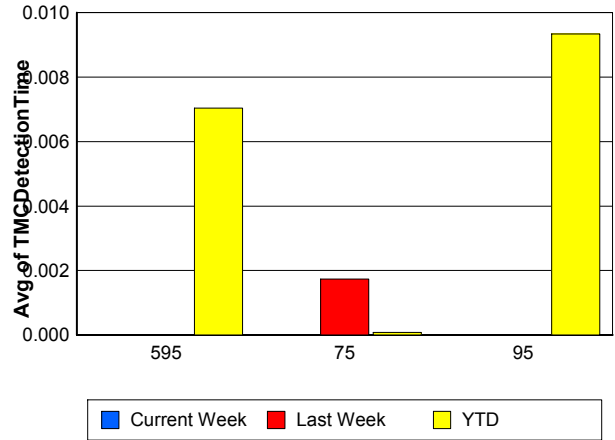
95

	<u>Current Week</u>	<u>Last Week</u>	<u>YTD</u>
Number of Events	640	657	16,895
Number of Incidents	46	29	890
TMC Detection (min.)	0.00	0.00	0.01
TMC Verification (min.)	0.36	0.70	0.46
TMC Response (min.)	7.22	6.17	6.52
RR Dispatch Time (min.)	1.94	0.99	1.51
RR Resp. Time (min.)	5.17	5.30	5.12
Event Clearance (min.)	21.66	22.81	23.65
Roadway Clear. (min.)	21.28	22.24	28.89
Incident Clearance (min.)	52.93	46.09	58.89
# of Events w/ RR/SIRV	451	440	10,605
RR/SIRV Responses	451	440	10,605
RR/SIRV Activities	426	414	9,762

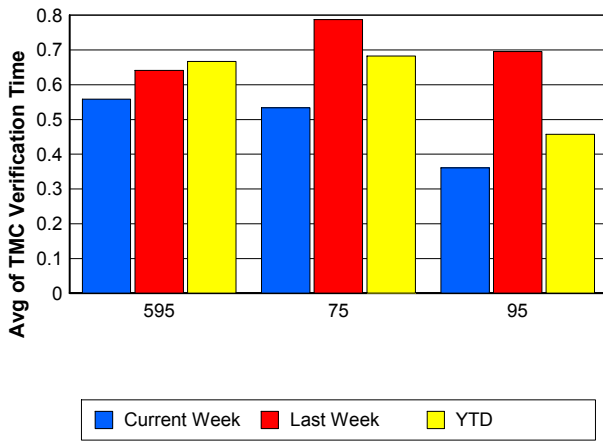
Number of Events / Roadway



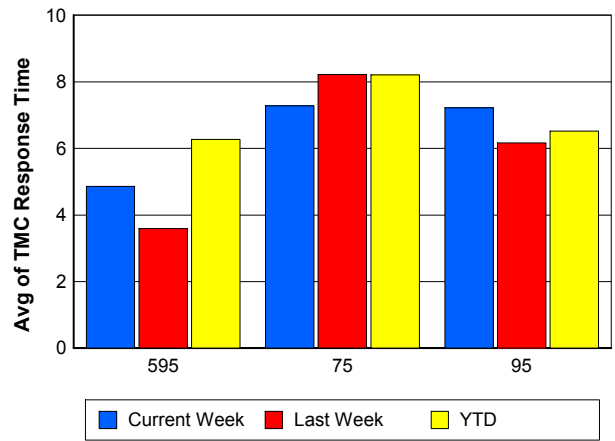
TMC Detection Time



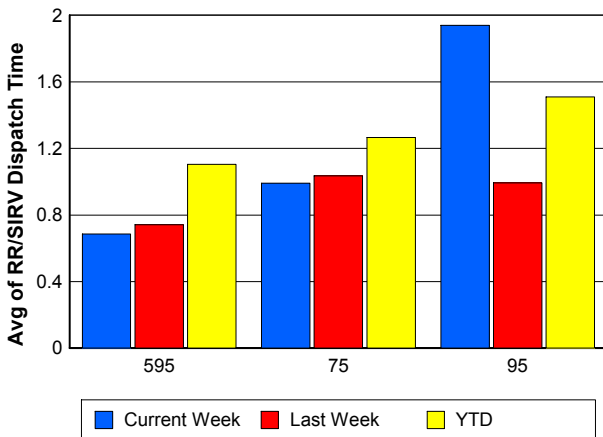
TMC Verification Time



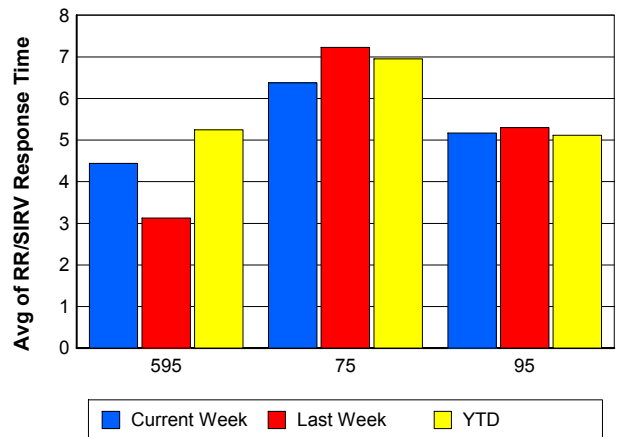
TMC Response Time



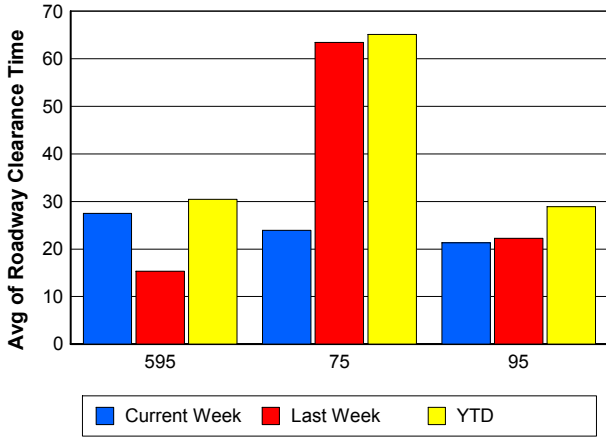
Road Ranger / SIRV Dispatch Time



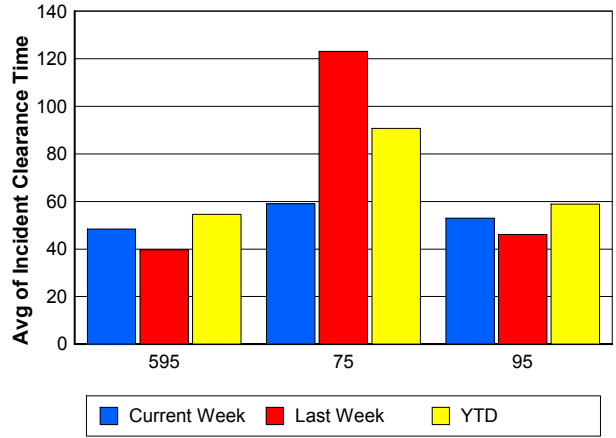
Road Ranger / SIRV Response Time



Roadway Clearance Time (2A)



Incident Clearance Time (3B)



Performance Measures by Event Type

Accident

	<u>Current Week</u>	<u>Last Week</u>	<u>YTD</u>
Number of Events	86	52	1,794
Number of Incidents	54	28	871
TMC Detection (min.)	0.00	0.01	0.01
TMC Verification (min.)	0.62	1.68	0.74
TMC Response (min.)	9.91	10.07	8.76
RR Dispatch Time (min.)	1.71	1.24	1.74
RR Response Time (min.)	8.30	8.95	7.14
Event Clearance (min.)	49.48	53.62	55.94
Roadway Clearance (min.)	22.78	31.00	33.91
Incident Clearance (min.)	56.63	67.75	67.61
# of Events w/ RR/SIRV	53	38	1,244
RR/SIRV Assists	53	38	1,244
RR/SIRV Activities	82	61	1,914

Debris on Roadway

	<u>Current Week</u>	<u>Last Week</u>	<u>YTD</u>
Number of Events	36	45	699
Number of Incidents	0	2	16
TMC Detection (min.)	0.00	0.00	0.14
TMC Verification (min.)	0.77	3.15	3.78
TMC Response (min.)	8.16	8.13	7.34
RR Dispatch Time (min.)	1.12	0.69	0.92
RR Response Time (min.)	7.04	7.46	6.43
Event Clearance (min.)	13.21	9.29	11.45
Roadway Clearance (min.)		12.27	24.71
Incident Clearance (min.)		11.62	29.17
# of Events w/ RR/SIRV	31	44	642
RR/SIRV Assists	31	44	642
RR/SIRV Activities	34	45	668

Disabled Vehicle

	<u>Current Week</u>	<u>Last Week</u>	<u>YTD</u>
Number of Events	610	636	15,069
Number of Incidents	9	4	193
TMC Detection (min.)	0.00	0.00	0.00
TMC Verification (min.)	0.61	0.79	0.63
TMC Response (min.)	6.49	5.96	6.32
RR Dispatch Time (min.)	1.59	0.89	1.20
RR Response Time (min.)	4.88	5.11	5.15
Event Clearance (min.)	25.19	26.46	27.37
Roadway Clearance (min.)	22.26	31.70	20.04
Incident Clearance (min.)	35.10	36.65	38.62
# of Events w/ RR/SIRV	495	494	11,360
RR/SIRV Assists	495	494	11,360
RR/SIRV Activities	513	511	11,604

Emergency Vehicles

	<u>YTD</u>
Number of Events	37
Number of Incidents	29
TMC Detection (min.)	0.00
TMC Verification (min.)	1.01
TMC Response (min.)	15.83
RR Dispatch Time (min.)	10.86
RR Response Time (min.)	4.17
Event Clearance (min.)	54.10
Roadway Clearance (min.)	56.16
Incident Clearance (min.)	61.97
# of Events w/ RR/SIRV	23
RR/SIRV Assists	23
RR/SIRV Activities	39

Other

	<u>Current Week</u>	<u>Last Week</u>	<u>YTD</u>
Number of Events	338	313	8,318
Number of Incidents	1	0	20
TMC Detection (min.)	0.00	0.00	0.00
TMC Verification (min.)	0.02	0.05	0.05
TMC Response (min.)	5.71	3.70	10.67
RR Dispatch Time (min.)	1.31	1.31	1.95
RR Response Time (min.)	4.98	3.22	7.49
Event Clearance (min.)	9.57	11.25	11.47
Roadway Clearance (min.)	21.50		21.56
Incident Clearance (min.)	23.25		25.99
# of Events w/ RR/SIRV	144	123	3,195
RR/SIRV Assists	144	123	3,195
RR/SIRV Activities	29	18	567

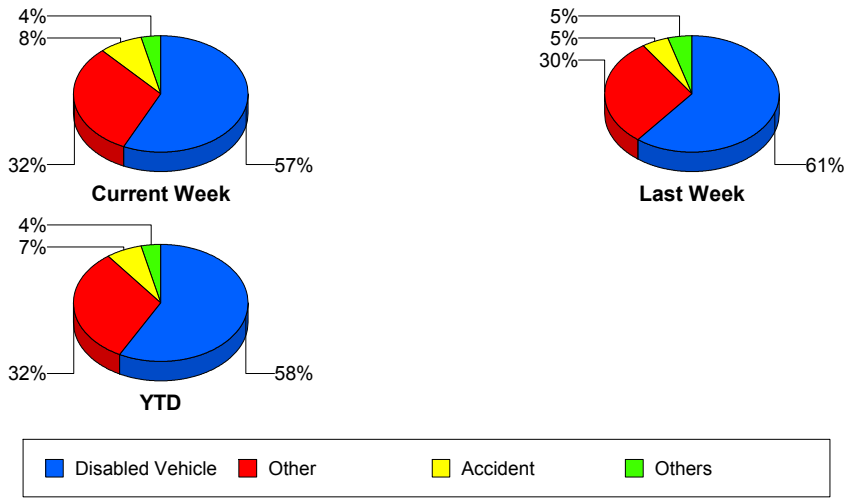
Police Activity

	<u>Current Week</u>	<u>Last Week</u>	<u>YTD</u>
Number of Events	1	2	128
Number of Incidents	0	1	39
TMC Detection (min.)	0.00	0.00	0.00
TMC Verification (min.)	1.53	0.00	0.21
TMC Response (min.)	17.45		14.14
RR Dispatch Time (min.)	1.60		5.33
RR Response Time (min.)	15.85		9.03
Event Clearance (min.)	26.47	11.09	34.84
Roadway Clearance (min.)		8.05	37.43
Incident Clearance (min.)		19.55	47.88
# of Events w/ RR/SIRV	1	0	39
RR/SIRV Assists	1	0	39
RR/SIRV Activities	1	0	48

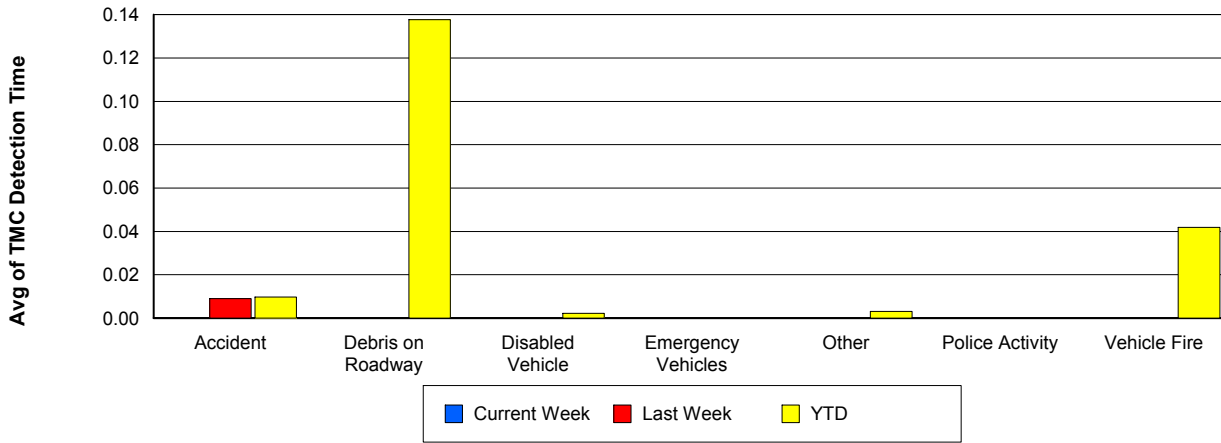
Vehicle Fire

	<u>Current Week</u>	<u>Last Week</u>	<u>YTD</u>
Number of Events	2	1	59
Number of Incidents	1	1	47
TMC Detection (min.)	0.00	0.00	0.04
TMC Verification (min.)	3.71	0.00	1.74
TMC Response (min.)		2.17	12.19
RR Dispatch Time (min.)	0.55	1.95	2.75
RR Response Time (min.)		0.22	10.09
Event Clearance (min.)	17.84	28.75	60.79
Roadway Clearance (min.)	25.07	13.80	41.25
Incident Clearance (min.)	31.42	28.75	62.98
# of Events w/ RR/SIRV	1	1	38
RR/SIRV Assists	1	1	38
RR/SIRV Activities	0	2	76

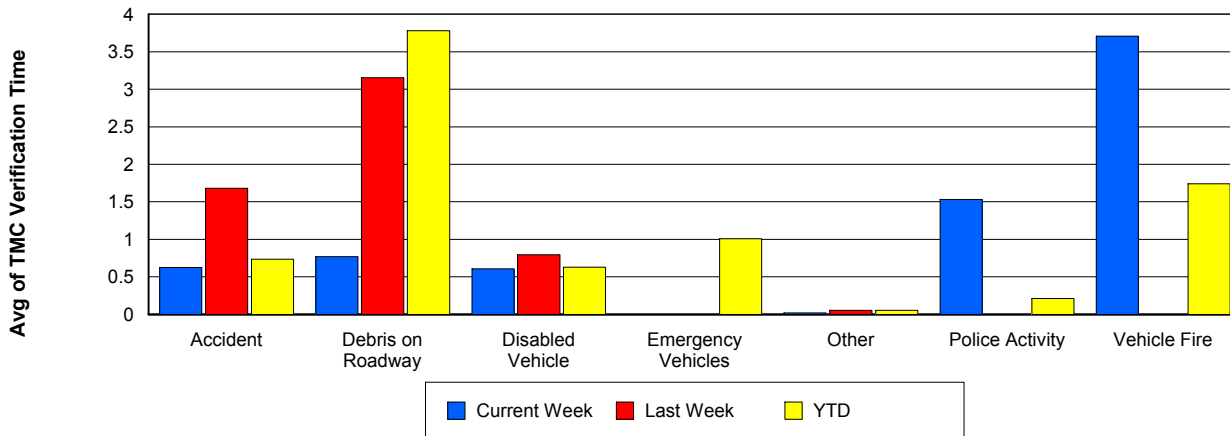
Number of Events / Event Type



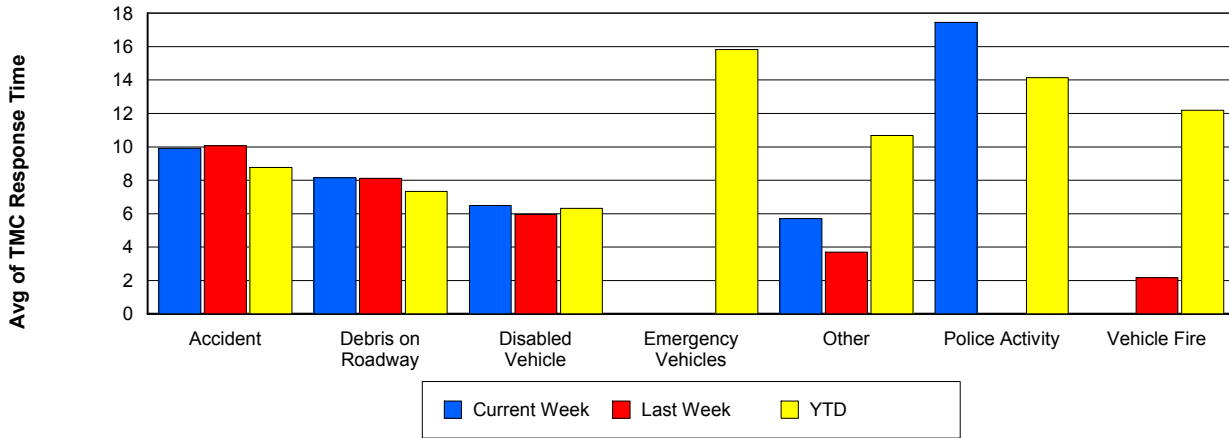
TMC Detection Time



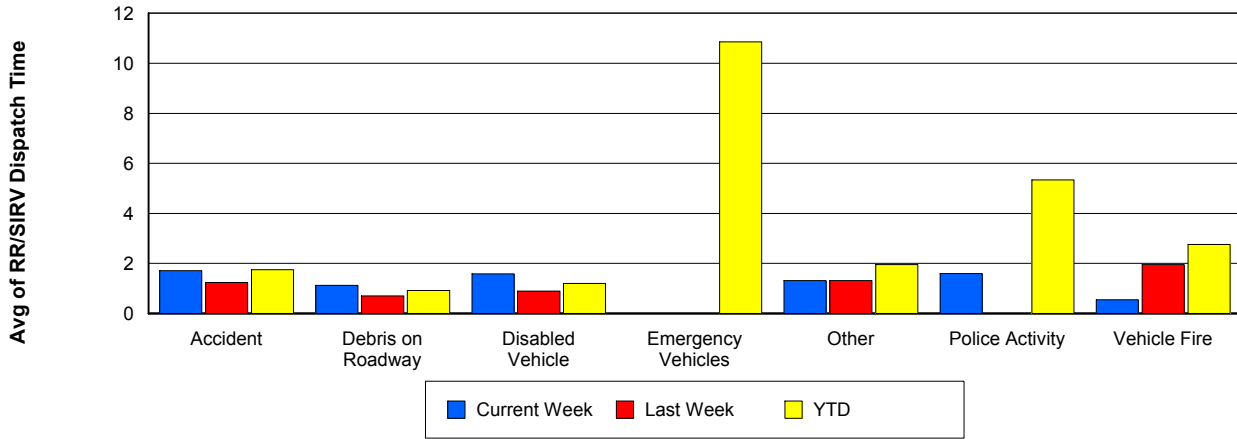
TMC Verification Time



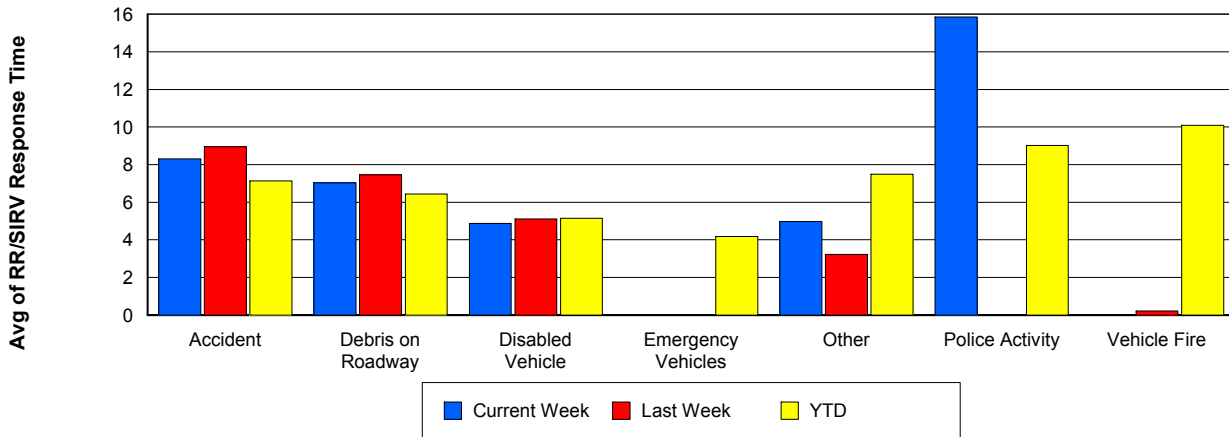
TMC Response Time



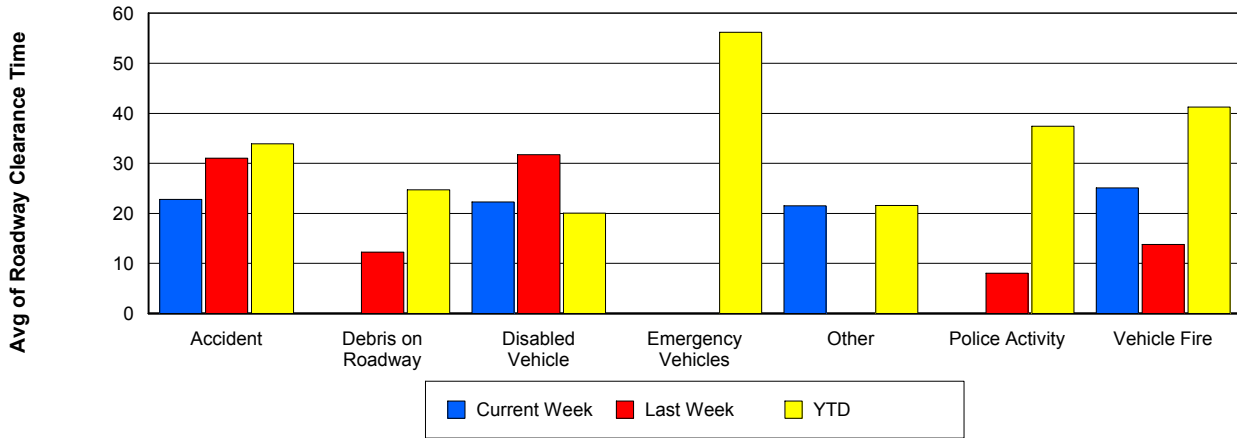
Road Ranger / SIRV Dispatch Time



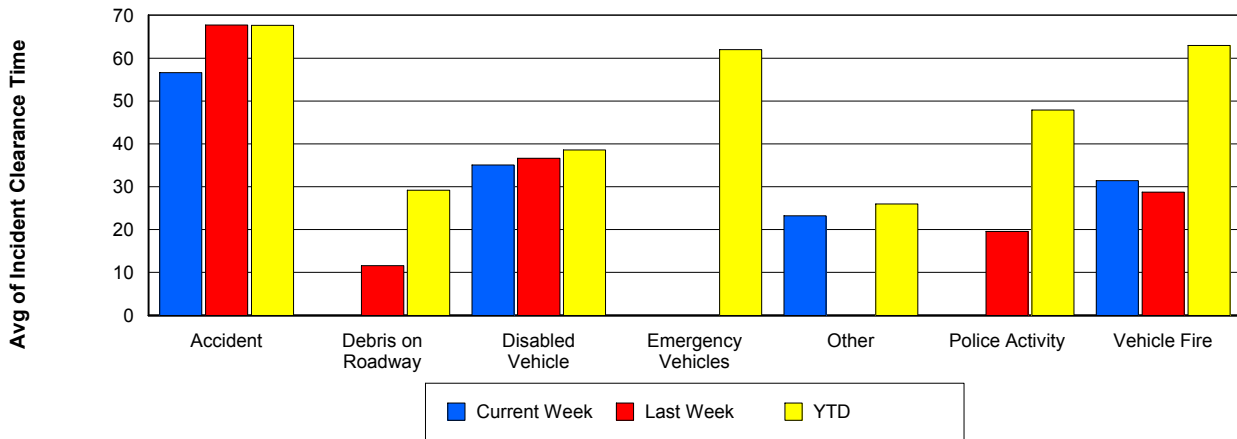
Road Ranger / SIRV Response Time



Roadway Clearance Time (2A)



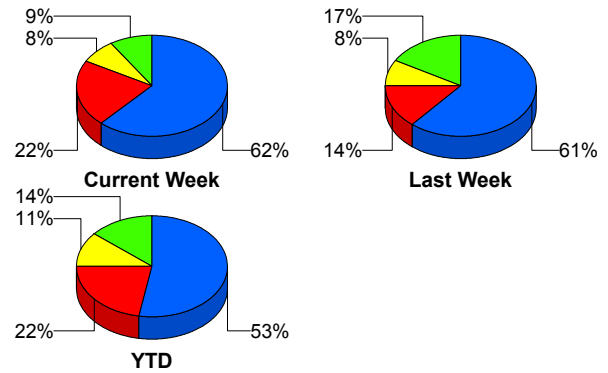
Incident Clearance Time (3B)



Incident Detection Methods

	Current Week	Last Week	YTD
Broward CCTV	40	22	641
Broward Road Ranger	5	3	135
Broward VideoWall	1	1	45
BSO	1	1	27
District 4	2	0	36
District 6	0	0	1
FDOT Maintenance	1	0	4
FHP	14	5	270
Fire	0	0	1
Florida's Turnpike	0	0	6
ITMS	0	0	1
Motorist	0	0	4
Other	0	0	1
Palm Beach Road Ran	0	0	2
Road Watcher	1	0	12
SIRV	0	1	5
SmarTraveler (511)	0	0	6
VisioPaD Detection	0	3	18
Total	65	36	1,215

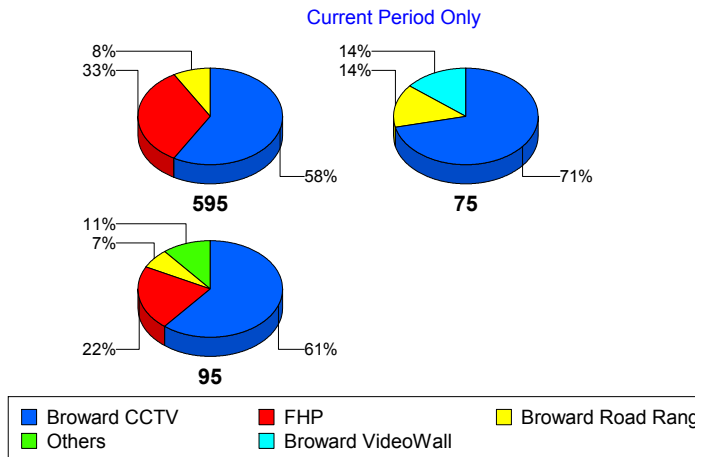
Total Incidents by Detection Method



Incident Detection Methods by Roadway

		Current Week	Last Week	YTD
595	Broward CCTV	7	0	103
	Broward Road Ranger	1	0	34
	Broward VideoWall	0	1	8
	BSO	0	0	2
	District 4	0	0	11
	FDOT Maintenance	0	0	2
	FHP	4	0	45
	Florida's Turnpike	0	0	6
	Motorist	0	0	2
	Road Watcher	0	0	3
	VisioPaD Detection	0	0	4
	Total	12	1	220
	75	Broward CCTV	5	3
Broward Road Ranger		1	1	10
Broward VideoWall		1	0	1
BSO		0	0	22
District 4		0	0	3
FHP		0	1	21
Other		0	0	1
Road Watcher		0	0	2
VisioPaD Detection		0	1	1
Total		7	6	105
95	Broward CCTV	28	19	494
	Broward Road Ranger	3	2	91
	Broward VideoWall	0	0	36
	BSO	1	1	3
	District 4	2	0	22
	District 6	0	0	1
	FDOT Maintenance	1	0	2
	FHP	10	4	204
	Fire	0	0	1

Total Events by Roadway and Detection Method

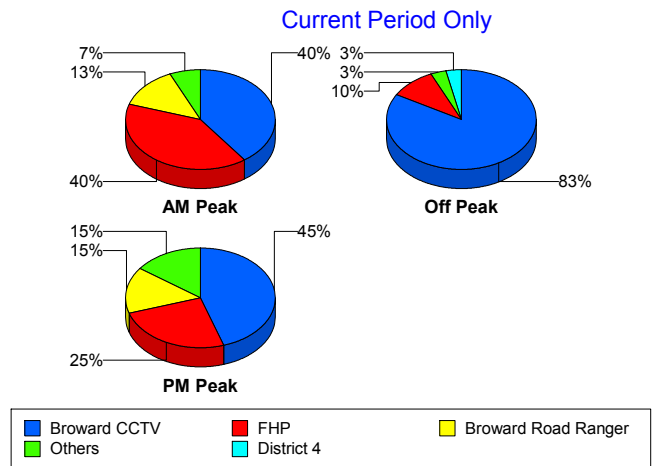


		Current Week	Last Week	YTD
95	ITMS	0	0	1
	Motorist	0	0	2
	Palm Beach Road Ran	0	0	2
	Road Watcher	1	0	7
	SIRV	0	1	5
	SmarTraveler (511)	0	0	6
	VisioPaD Detection	0	2	13
	Total	46	29	890
Total	65	36	1,215	

Incident Detection Methods by Peak Period

		Current Week	Last Week	YTD
AM Peak	Broward CCTV	6	7	120
	Broward Road Ranger	2	1	41
	Broward VideoWall	0	0	14
	BSO	0	0	5
	District 4	1	0	13
	FHP	6	1	71
	Florida's Turnpike	0	0	2
	Motorist	0	0	3
	Palm Beach Road Ran	0	0	1
	Road Watcher	0	0	4
	SIRV	0	0	1
	SmarTraveler (511)	0	0	1
	VisioPaD Detection	0	1	1
	Total	15	10	277
	Off Peak	Broward CCTV	25	12
Broward Road Ranger		0	0	39
Broward VideoWall		0	0	25
BSO		0	0	18
District 4		1	0	11
FDOT Maintenance		0	0	2

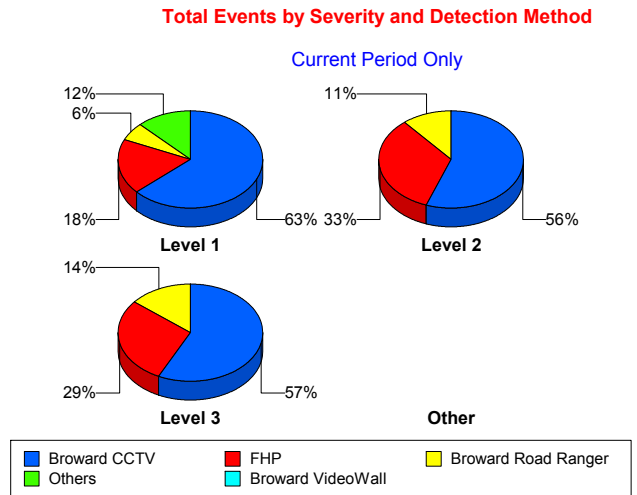
Total Events by Peak Period and Detection Method



		Current Week	Last Week	YTD
Off Peak	FHP	3	0	125
	Florida's Turnpike	0	0	3
	ITMS	0	0	1
	Motorist	0	0	1
	Road Watcher	1	0	5
	SIRV	0	1	1
	SmarTraveler (511)	0	0	3
	VisioPaD Detection	0	1	14
	Total	30	14	596
PM Peak	Broward CCTV	9	3	173
	Broward Road Ranger	3	2	55
	Broward VideoWall	1	1	6
	BSO	1	1	4
	District 4	0	0	12
	District 6	0	0	1
	FDOT Maintenance	1	0	2
	FHP	5	4	74
	Fire	0	0	1
	Florida's Turnpike	0	0	1
	Other	0	0	1
	Palm Beach Road Ran	0	0	1
	Road Watcher	0	0	3
	SIRV	0	0	3
	SmarTraveler (511)	0	0	2
	VisioPaD Detection	0	1	3
	Total	20	12	342
Total		65	36	1,215

Incident Detection Methods by Severity

		Current Week	Last Week	YTD
Level 1	Broward CCTV	31	18	408
	Broward Road Ranger	3	2	98
	Broward VideoWall	1	1	26
	BSO	1	1	4
	District 4	2	0	28
	FDOT Maintenance	1	0	3
	FHP	9	1	159
	Motorist	0	0	4
	Palm Beach Road Ran	0	0	2
	Road Watcher	1	0	9
	SIRV	0	1	5
	SmarTraveler (511)	0	0	4
	VisioPaD Detection	0	1	9
	Total	49	25	759
	Level 2	Broward CCTV	5	3
Broward Road Ranger		1	1	26
Broward VideoWall		0	0	16
BSO		0	0	7
District 4		0	0	5
FDOT Maintenance		0	0	1
FHP		3	4	76
Florida's Turnpike		0	0	4
ITMS		0	0	1
Other		0	0	1
Road Watcher		0	0	1
SmarTraveler (511)		0	0	2
VisioPaD Detection		0	1	7
Total		9	9	308
Level 3	Broward CCTV	4	1	72
	Broward Road Ranger	1	0	11
	Broward VideoWall	0	0	3



		Current Week	Last Week	YTD
Level 3	BSO	0	0	16
	District 4	0	0	3
	District 6	0	0	1
	FHP	2	0	35
	Fire	0	0	1
	Florida's Turnpike	0	0	2
	Road Watcher	0	0	2
	VisioPaD Detection	0	1	2
	Total	7	2	148
Total		65	36	1,215

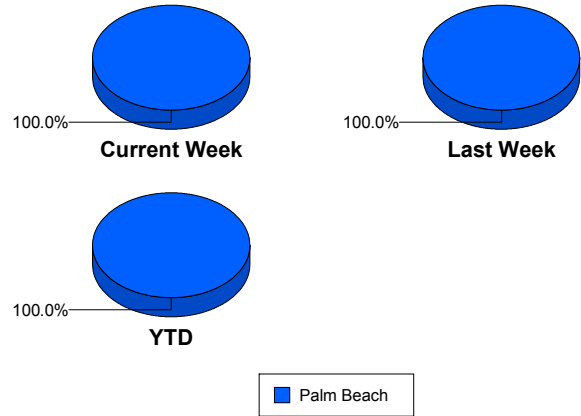
Road Ranger / SIRV Performance Measures

Road Ranger / SIRV Performance By County

Values presented are:
 - Total Events with a RR/SIRV Response
 - Total RR/SIRV Responses,
 - Total Activities Performed

	Current We	Last Week	YTD
Palm Beach	360	353	8,314
	373	367	8,585
	392	387	9,154

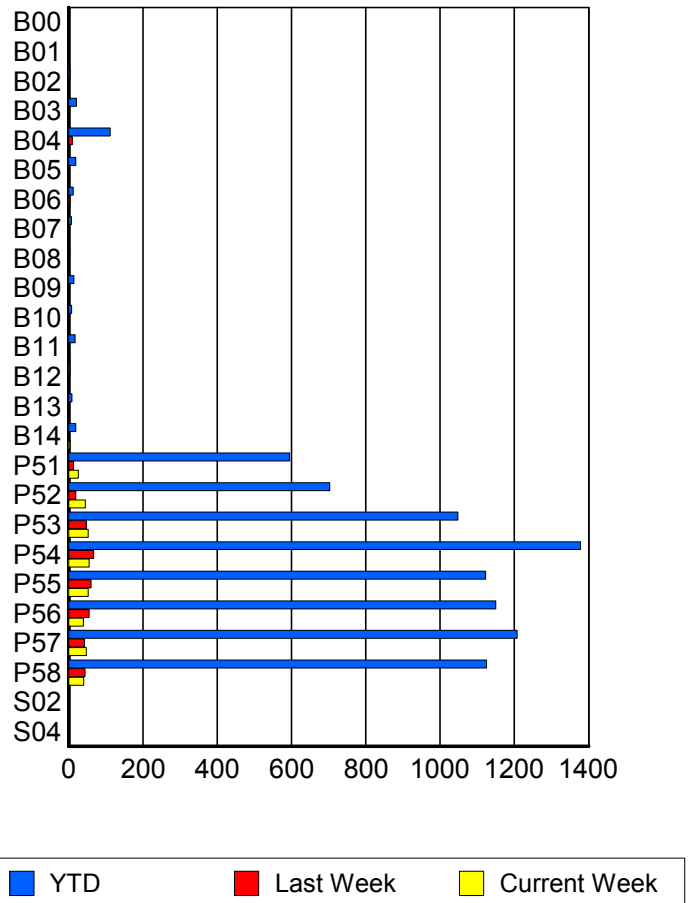
RR/SIRV Responses per County



Road Ranger / SIRV Performance By Truck

	Current We	Last Week	YTD
B00	0	0	3
	0	0	3
	0	0	3
B01	0	0	1
	0	0	1
	0	0	1
B02	0	0	4
	0	0	4
	0	0	4
B03	0	2	21
	0	2	21
	0	2	22
B04	3	10	111
	3	10	112
	3	11	128
B05	0	0	18
	0	0	19
	0	0	20
B06	0	4	12
	0	4	12
	0	4	12
B07	0	0	7
	0	0	7
	0	0	7
B08	0	0	3
	0	0	3
	0	0	3

RR/SIRV Responses per Truck



	Current We	Last Week	YTD
B09	1	1	14
	1	1	14
	1	1	14
B10	0	0	8
	0	0	8
	0	0	8
B11	3	1	18
	3	1	18
	3	1	19
B12	1	0	4
	1	0	4
	1	0	4
B13	0	1	9
	0	1	9
	0	1	10
B14	4	0	19
	4	0	19
	4	0	20
P51	25	13	589
	26	13	595
	27	14	623
P52	45	19	699
	45	19	703
	45	20	744
P53	53	48	1,036
	53	48	1,048
	54	49	1,114
P54	55	63	1,364
	55	67	1,378
	60	71	1,476
P55	53	60	1,113
	53	60	1,122
	56	67	1,196
P56	37	54	1,134
	40	55	1,150
	43	56	1,238
P57	46	42	1,198
	48	42	1,207
	49	44	1,294
P58	41	43	1,111
	41	44	1,125
	46	46	1,191
S02	0	0	1
	0	0	1
	0	0	1

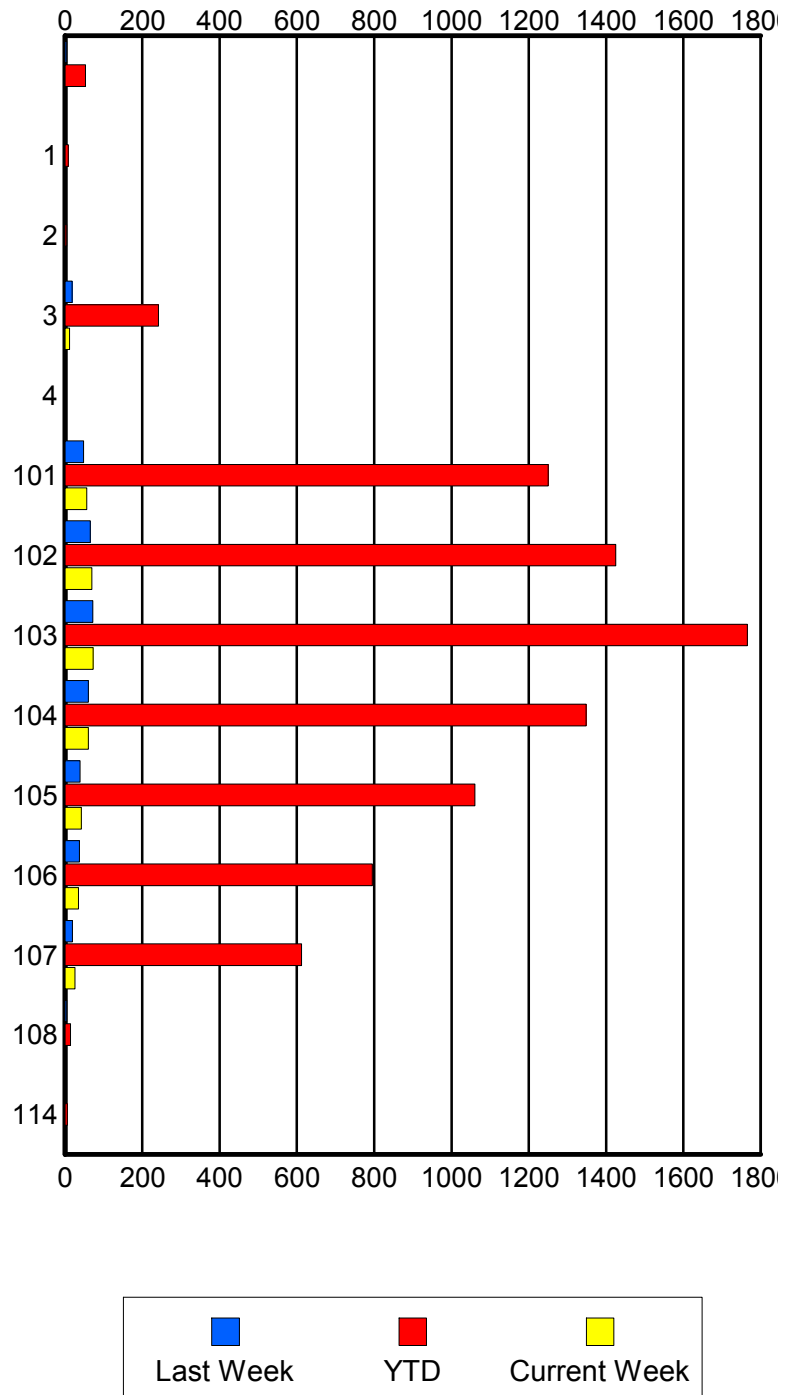
	Current We	Last Week	YTD
S04	0	0	2
	0	0	2
	0	0	2

Road Ranger / SIRV Performance By Beat

	Current We	Last Week	YTD
	0	4	53
	0	4	53
	0	4	53
1	0	0	8
	0	0	8
	0	0	9
2	0	1	4
	0	1	4
	0	1	5
3	12	17	239
	12	18	242
	12	19	261
4	0	0	1
	0	0	1
	0	0	1
101	55	48	1,235
	56	48	1,250
	60	50	1,344
102	69	64	1,410
	69	65	1,425
	74	71	1,513
103	72	71	1,745
	73	72	1,766
	76	76	1,896
104	59	56	1,335
	60	60	1,348
	61	63	1,441
105	42	39	1,053
	42	39	1,061
	45	42	1,127
106	33	37	785
	35	37	795
	37	37	847
107	25	19	606
	26	19	612
	27	20	637
108	0	4	13
	0	4	14
	0	4	14
114	0	0	6
	0	0	6
	0	0	6

Values presented are:
 - Total Events with a RR/SIRV Response
 - Total RR/SIRV Responses,
 - Total Activities Performed

RR/SIRV Responses per Beat

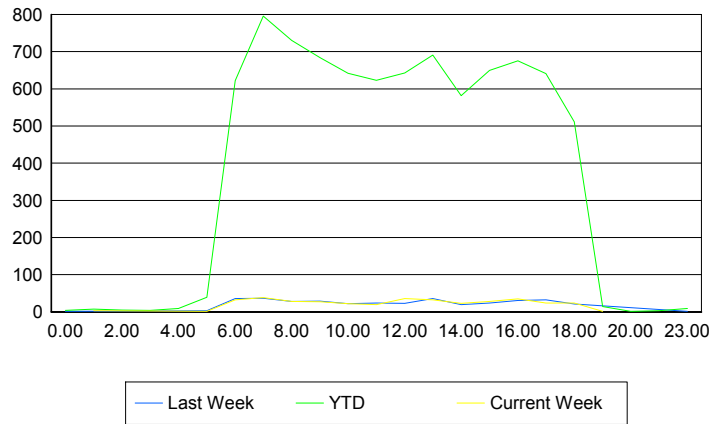


Road Ranger / SIRV Performance By Time of Day

Values presented are:
 - Total Events with a RR/SIRV Response
 - Total RR/SIRV Responses,
 - Total Activities Performed

	Current We	Last Week	YTD
12AM-1AM	0 0 0	1 1 1	4 4 4
1AM-2AM	1 3 3	0 0 0	5 7 7
2AM-3AM	0 0 0	0 0 0	5 5 6
3AM-4AM	0 0 0	0 0 0	4 4 4
4AM-5AM	0 0 0	0 0 0	6 9 10
5AM-6AM	1 1 2	3 3 4	37 39 41
6AM-7AM	32 32 32	35 36 38	598 622 653
7AM-8AM	34 38 40	35 37 40	761 796 851
8AM-9AM	28 28 28	27 28 30	705 730 784
9AM-10AM	26 27 29	28 29 32	662 684 747
10AM-11AM	20 22 24	21 22 23	621 642 677
11AM-12PM	18 19 19	23 24 24	604 623 673
12PM-1PM	35 36 41	21 23 23	622 643 688

Number of Responses / Hour of the Day



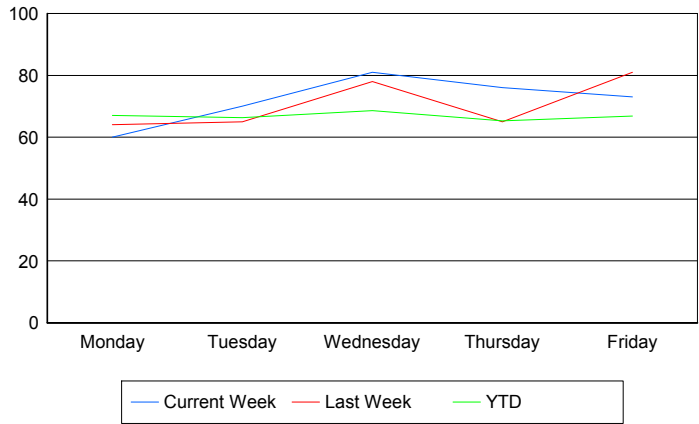
	Current We	Last Week	YTD
1PM-2PM	31	35	676
	32	36	691
	33	39	749
2PM-3PM	22	17	560
	23	19	582
	23	19	614
3PM-4PM	28	23	630
	28	24	650
	30	26	696
4PM-5PM	35	31	657
	35	31	675
	38	33	708
5PM-6PM	24	31	624
	24	32	641
	24	33	673
6PM-7PM	24	21	507
	24	21	511
	25	21	541
7PM-8PM	1	0	14
	1	0	14
	1	0	15
8PM-9PM	0	0	1
	0	0	1
	0	0	1
10PM-11PM	0	0	3
	0	0	3
	0	0	3
11PM-12AM	0	1	8
	0	1	9
	0	1	9

Road Ranger / SIRV Performance By Day of Week

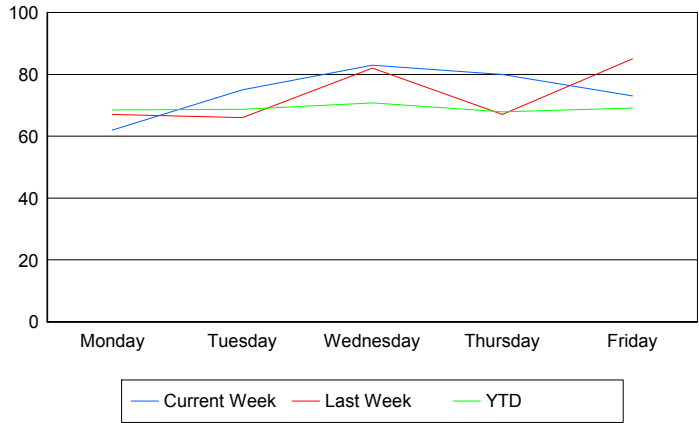
Values presented are:
 - Total Events with a RR/SIRV Response
 - Total RR/SIRV Responses,
 - Total Activities Performed

	Current We	Last Week	YTD
Monday	60	64	1,634
	62	67	1,671
	63	71	1,765
Tuesday	70	65	1,631
	75	66	1,687
	78	67	1,790
Wednesday	81	78	1,689
	83	82	1,743
	90	86	1,875
Thursday	76	65	1,659
	80	67	1,725
	87	72	1,851
Friday	73	81	1,703
	73	85	1,759
	74	91	1,873

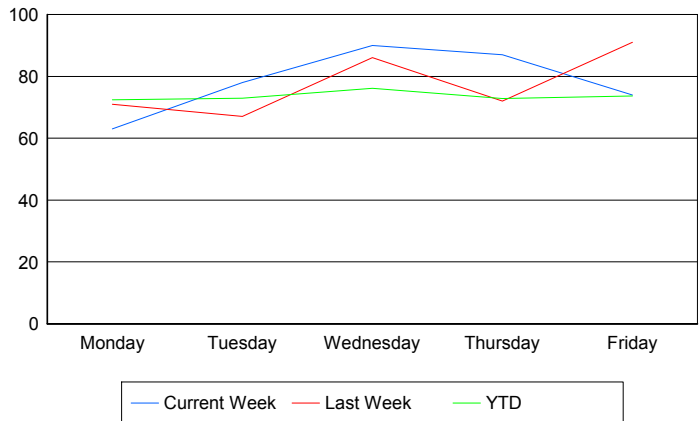
Avg # of events with a RR/SIRV Response per Day of the Week



Avg # of RR/SIRV Responses per Day of the Week



Avg # of RR/SIRV Activities Performed per Day of the Week



Road Ranger / SIRV Responses per Time of Day and Day of Week

