

Weekly Performance Measures Report Broward County



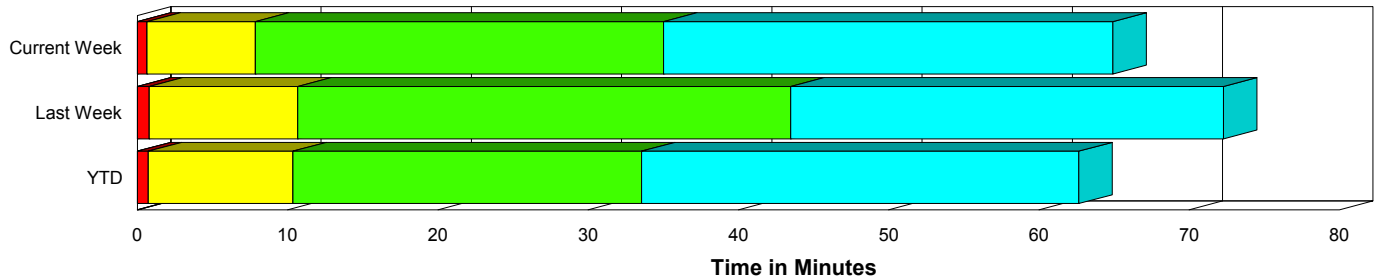
Created on:
June 22, 2009
8:44 am

Period From Jun 14, 2009 to Jun 20, 2009

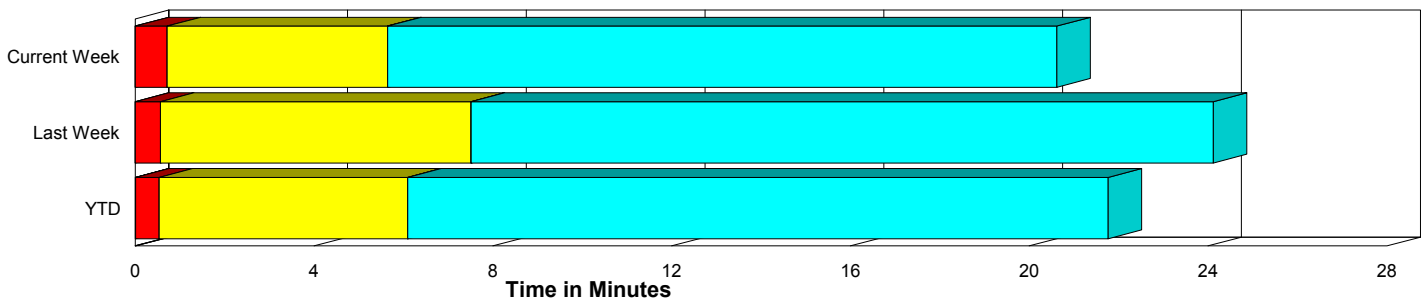
Performance Measures Summary

	Traffic Events (No Lanes Blocked)			Incidents (Lanes Blocked)		
	<u>This Week</u>	<u>Last Week</u>	<u>YTD</u>	<u>This Week</u>	<u>Last Week</u>	<u>YTD</u>
Number of Events	1,015	1,000	23,981	36	49	1,152
TMC Detection (min.)	0.00	0.00	0.01	0.01	0.00	0.00
TMC Verification (min.)	0.72	0.57	0.53	0.64	0.80	0.73
TMC Response (min.)	6.23	7.99	6.59	8.19	11.09	10.60
RR Dispatch Time (min.)	0.94	2.38	1.29	1.78	1.58	3.51
RR Response Time (min.)	5.41	5.41	5.41	6.60	9.51	7.31
Roadway Clearance (min.)				28.92	35.17	32.81
Event Clearance (min.)	21.20	24.59	22.27	58.76	63.96	61.24
# of Events w/ RR/SIRV	677	686	15,130	23	23	758
RR/SIRV Responses	677	686	15,130	23	23	758
RR/SIRV Activities	581	567	12,794	56	46	1,530

Incident Clearance Time-Line



Traffic Event (Non-Lane Blockage) Time-Line



■ Avg. TMC Detection Time	■ Avg. Time from TMC Response to Roadway Clearance*
■ Avg. Time from TMC Detection to TMC Verification	■ Avg. Time from Roadway Clearance to Incident/Event Clearance**
■ Avg. Time from TMC Verification to TMC Response	

* Roadway clearance equals all travel lanes open

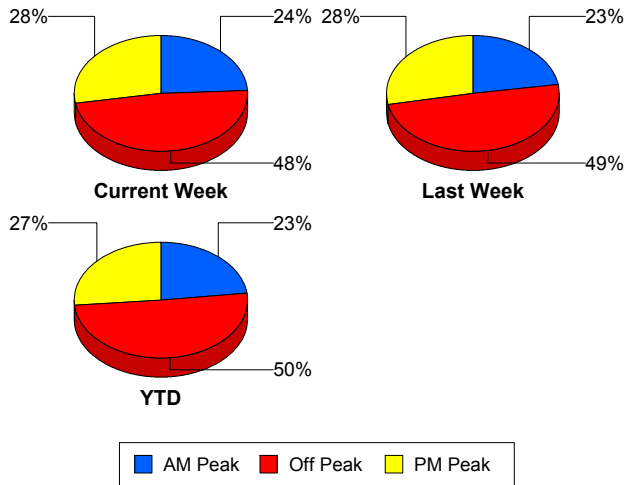
** Incident clearance equals time when last responder has left the scene

Performance Measures by Peak Period

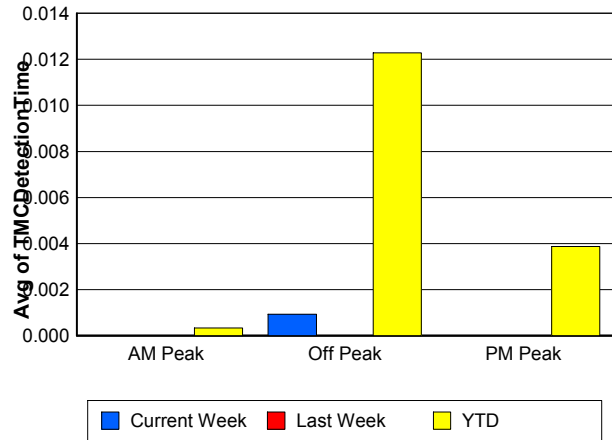
Note: AM peak period is defined as 6am to 10am and PM peak period is defined as 3pm to 7pm.

	AM Peak			Off Peak			PM Peak		
	<u>Current Week</u>	<u>Last Week</u>	<u>YTD</u>	<u>Current Week</u>	<u>Last Week</u>	<u>YTD</u>	<u>Current Week</u>	<u>Last Week</u>	<u>YTD</u>
Number of Events	255	237	5,815	503	517	12,650	293	295	6,668
Number of Incidents	10	7	262	14	33	568	12	9	322
TMC Detection (min.)	0.00	0.00	0.00	0.00	0.00	0.01	0.00	0.00	0.00
TMC Verification (min.)	0.43	1.09	0.49	0.62	0.29	0.47	1.13	0.69	0.72
TMC Response (min.)	5.29	5.79	6.13	6.47	11.26	7.81	7.04	6.23	6.27
RR Dispatch Time (min.)	0.87	0.77	0.97	1.05	4.55	2.09	0.96	0.96	0.88
RR Response Time (min.)	4.65	5.12	5.26	5.50	5.95	5.75	6.16	5.53	5.50
Event Clearance (min.)	21.86	22.64	21.45	23.49	28.71	27.07	21.30	25.48	20.61
Roadway Clearance (min.)	26.66	27.07	26.17	37.71	37.85	39.10	20.55	31.66	27.14
Incident Clearance (min.)	42.02	56.47	55.76	69.39	64.70	65.22	60.30	67.05	58.69
# of Events w/ RR/SIRV	203	191	4,614	278	285	6,348	219	233	4,926
RR/SIRV Responses	203	191	4,614	278	285	6,348	219	233	4,926
RR/SIRV Activities	202	168	4,387	233	253	5,502	202	192	4,435

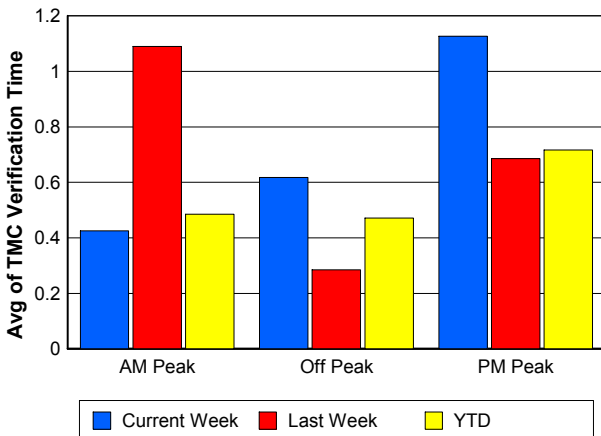
Number of Events / Peak Period



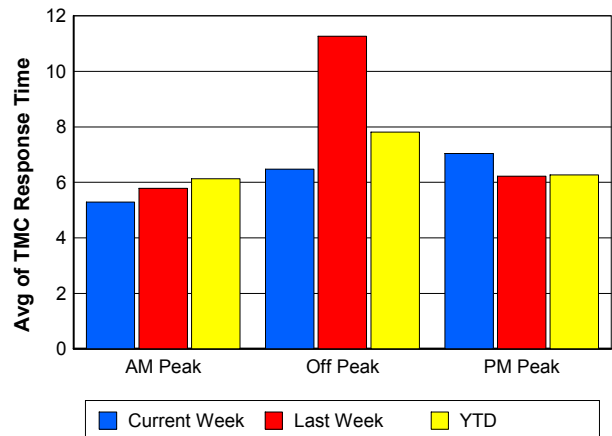
TMC Detection Time



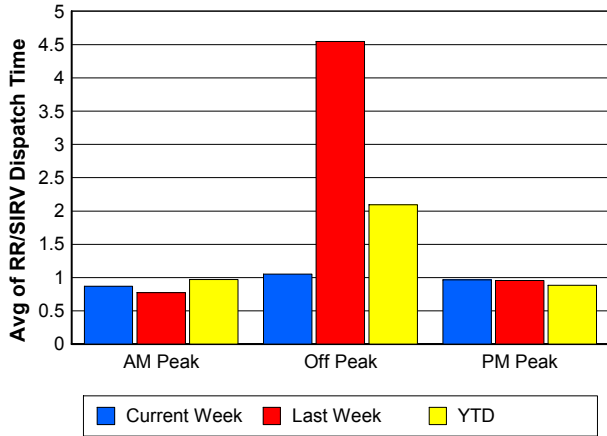
TMC Verification Time



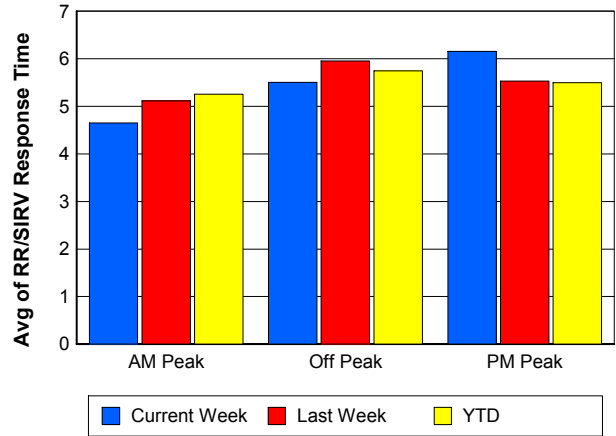
TMC Response Time



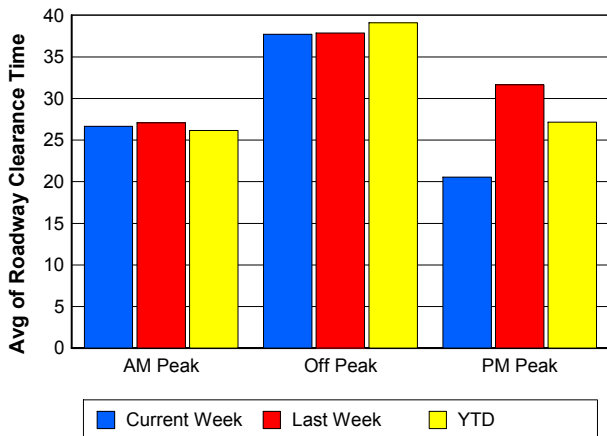
Road Ranger / SIRV Dispatch Time



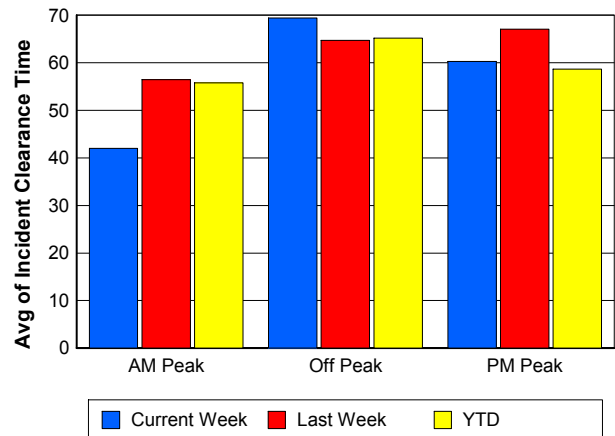
Road Ranger / SIRV Response Time



Roadway Clearance Time (2A)



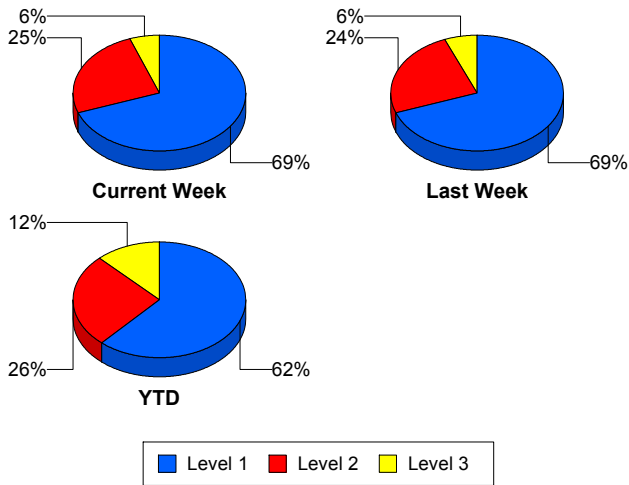
Incident Clearance Time (3B)



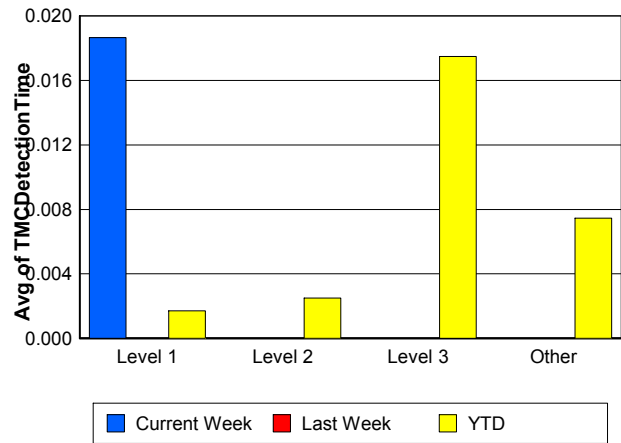
Performance Measures by Severity

	Level 1			Level 2			Level 3			Other		
	<u>This Week</u>	<u>Last Week</u>	<u>YTD</u>	<u>This Week</u>	<u>Last Week</u>	<u>YTD</u>	<u>This Week</u>	<u>Last Week</u>	<u>YTD</u>	<u>This Week</u>	<u>Last Week</u>	<u>YTD</u>
Number of Events	25	34	712	9	12	299	2	3	141	1,015	1,000	23,981
Number of Incidents	25	34	712	9	12	299	2	3	141	0	0	0
TMC Detection (min.)	0.02	0.00	0.00	0.00	0.00	0.00	0.00	0.00	0.02	0.00	0.00	0.01
TMC Verification (min.)	0.08	1.01	0.46	2.33	0.29	0.90	0.00	0.72	1.75	0.72	0.57	0.53
TMC Response (min.)	6.41	10.46	7.17	7.81	9.82	10.31	36.98	16.56	27.53	6.23	7.99	6.59
RR Dispatch Time (min.)	1.07	1.08	1.70	1.22	1.66	3.63	8.77	3.76	11.17	0.94	2.38	1.29
RR Resp. Time (min.)	5.35	9.39	5.60	6.59	8.16	7.25	25.50	12.80	15.65	5.41	5.41	5.41
Event Clearance (min.)	46.71	47.51	47.16	70.60	83.67	73.77	156.02	171.49	105.67	21.20	24.59	22.27
Roadway Clear. (min.)	14.47	15.48	14.27	44.13	57.22	49.39	141.14	170.16	91.28			
Incident Clearance (min.)	46.71	47.51	47.16	70.60	83.67	73.77	156.02	171.49	105.67			
# of Events w/ RR/SIRV	15	14	501	6	6	141	2	3	116	677	686	15,130
RR/SIRV Responses	15	14	501	6	6	141	2	3	116	677	686	15,130
RR/SIRV Activities	33	26	883	22	16	402	1	4	245	581	567	12,794

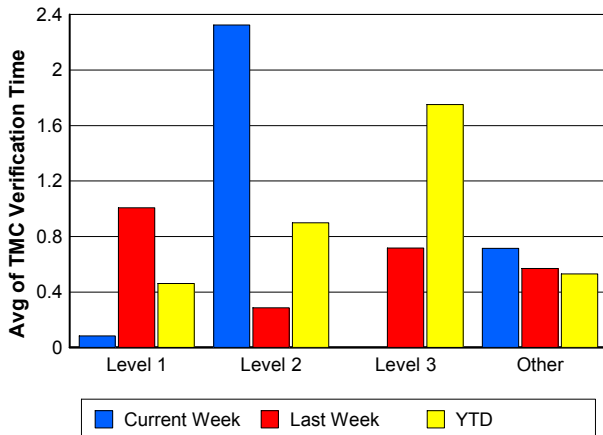
Number of Events / Severity



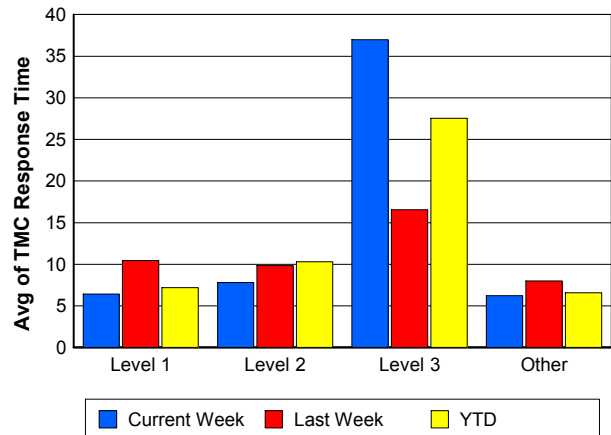
TMC Detection Time



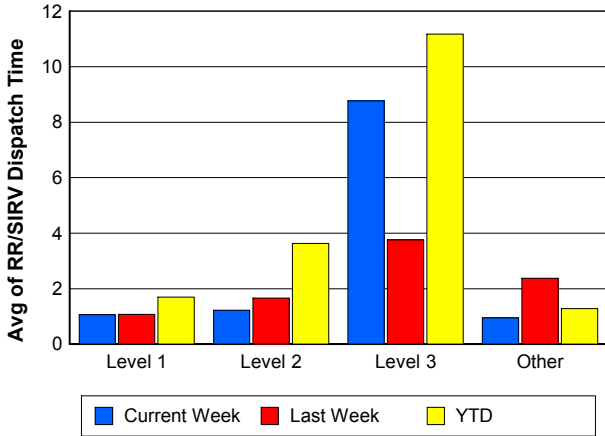
TMC Verification Time



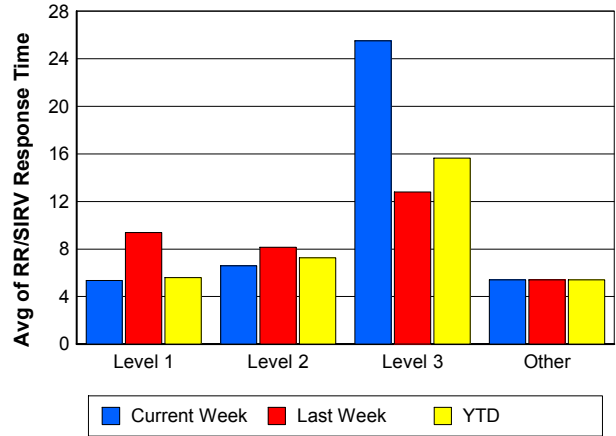
TMC Response Time



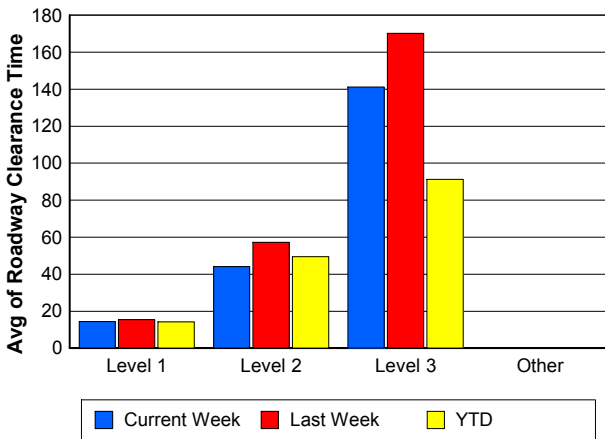
Road Ranger / SIRV Dispatch Time



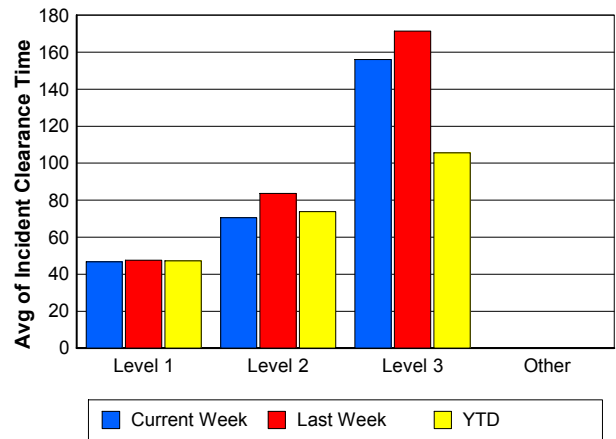
Road Ranger / SIRV Response Time



Roadway Clearance Time (2A)



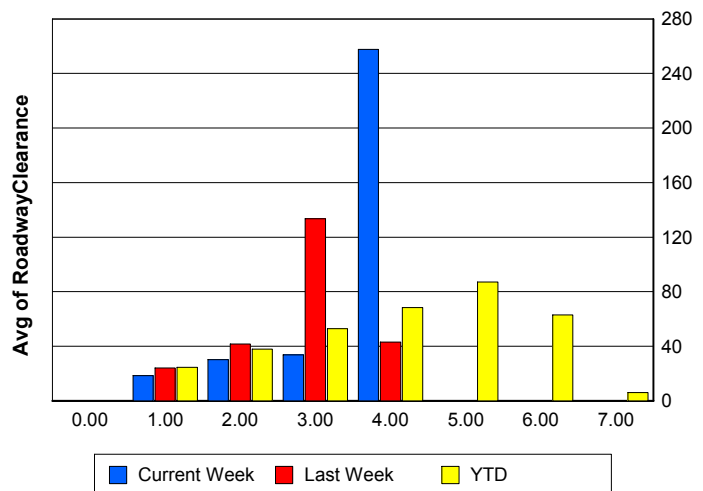
Incident Clearance Time (3B)



Roadway Clearance by Maximum Number of Lanes Blocked

	Current Week	Last Week	YTD
0			
1	18.37	24.14	24.58
2	30.21	41.62	37.84
3	33.58	133.41	52.88
4	257.77	43.15	68.29
5	0.00	0.00	87.07
6	0.00	0.00	62.91
7	0.00	0.00	5.97

Roadway Clearance Time (2A)



Performance Measures by Roadway

595

	<u>Current Week</u>	<u>Last Week</u>	<u>YTD</u>
Number of Events	125	133	3,389
Number of Incidents	1	6	208
TMC Detection (min.)	0.00	0.00	0.01
TMC Verification (min.)	0.64	0.78	0.67
TMC Response (min.)	3.60	5.71	6.33
RR Dispatch Time (min.)	0.74	1.19	1.12
RR Resp. Time (min.)	3.12	4.77	5.29
Event Clearance (min.)	14.98	23.92	21.58
Roadway Clear. (min.)	15.32	100.67	30.63
Incident Clearance (min.)	39.65	102.72	54.92
# of Events w/ RR/SIRV	88	96	2,310
RR/SIRV Responses	88	96	2,310
RR/SIRV Activities	80	82	2,119

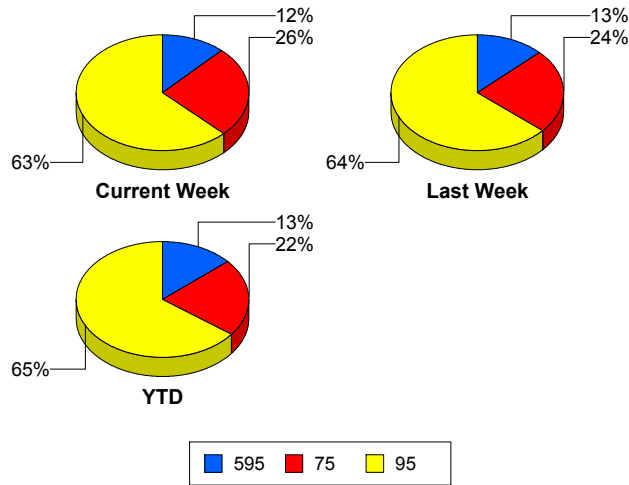
75

	<u>Current Week</u>	<u>Last Week</u>	<u>YTD</u>
Number of Events	269	248	5,487
Number of Incidents	6	4	98
TMC Detection (min.)	0.00	0.00	0.00
TMC Verification (min.)	0.79	0.74	0.69
TMC Response (min.)	8.22	9.32	8.25
RR Dispatch Time (min.)	1.04	1.17	1.28
RR Resp. Time (min.)	7.23	8.43	6.98
Event Clearance (min.)	25.18	35.43	26.54
Roadway Clear. (min.)	63.47	30.07	68.05
Incident Clearance (min.)	123.14	78.79	92.97
# of Events w/ RR/SIRV	172	162	3,424
RR/SIRV Responses	172	162	3,424
RR/SIRV Activities	143	116	2,869

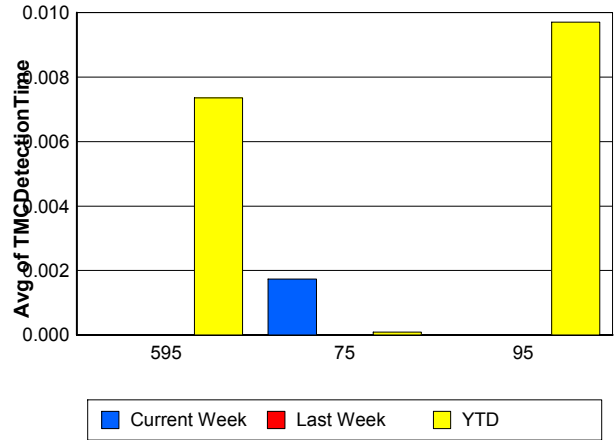
95

	<u>Current Week</u>	<u>Last Week</u>	<u>YTD</u>
Number of Events	657	668	16,257
Number of Incidents	29	39	846
TMC Detection (min.)	0.00	0.00	0.01
TMC Verification (min.)	0.70	0.48	0.46
TMC Response (min.)	6.17	8.25	6.49
RR Dispatch Time (min.)	0.99	3.02	1.49
RR Resp. Time (min.)	5.30	4.93	5.12
Event Clearance (min.)	22.81	23.59	23.73
Roadway Clear. (min.)	22.24	25.62	29.27
Incident Clearance (min.)	46.09	56.47	59.12
# of Events w/ RR/SIRV	440	451	10,154
RR/SIRV Responses	440	451	10,154
RR/SIRV Activities	414	415	9,336

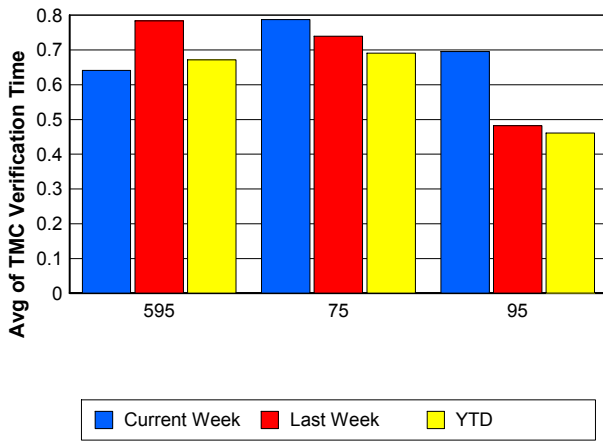
Number of Events / Roadway



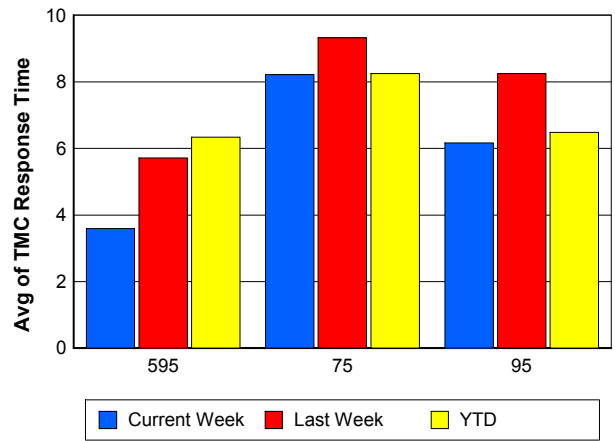
TMC Detection Time



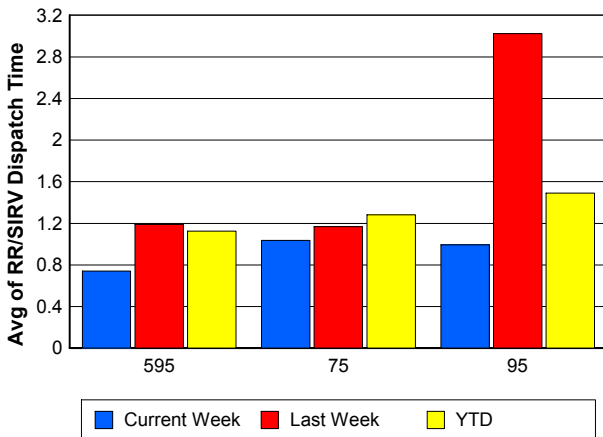
TMC Verification Time



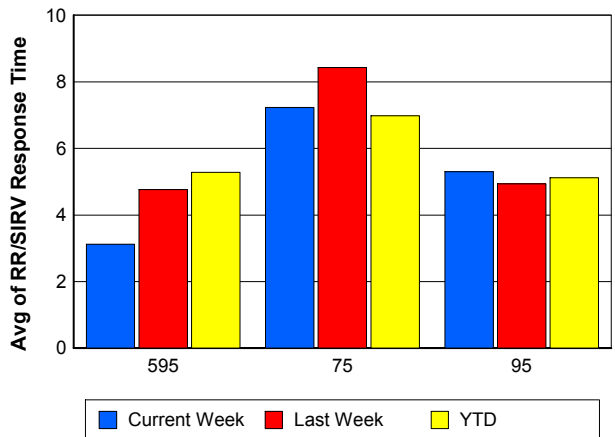
TMC Response Time



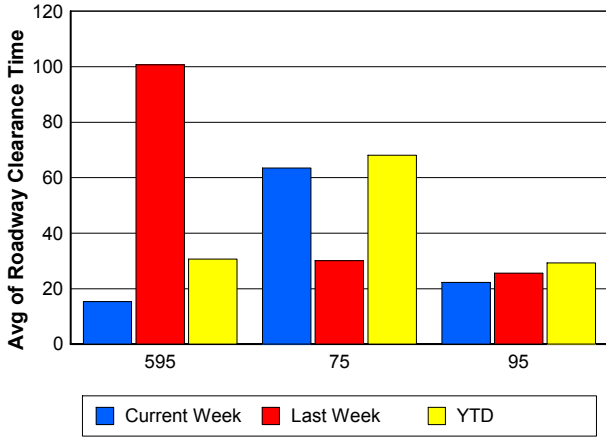
Road Ranger / SIRV Dispatch Time



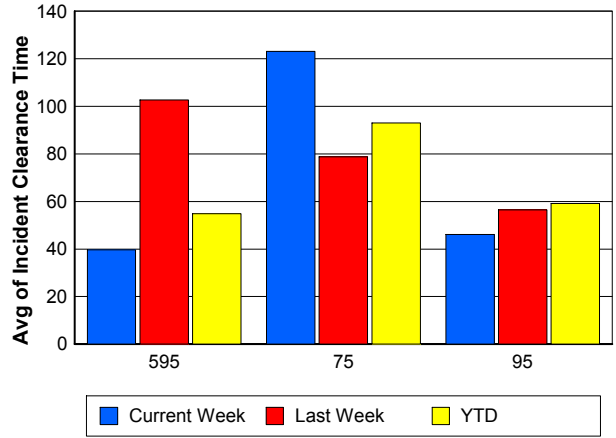
Road Ranger / SIRV Response Time



Roadway Clearance Time (2A)



Incident Clearance Time (3B)



Performance Measures by Event Type

Accident

	<u>Current Week</u>	<u>Last Week</u>	<u>YTD</u>
Number of Events	52	60	1,708
Number of Incidents	28	35	817
TMC Detection (min.)	0.01	0.00	0.01
TMC Verification (min.)	1.68	0.39	0.74
TMC Response (min.)	10.07	7.67	8.71
RR Dispatch Time (min.)	1.24	1.08	1.74
RR Response Time (min.)	8.95	6.59	7.08
Event Clearance (min.)	53.62	60.52	56.27
Roadway Clearance (min.)	31.00	43.30	34.64
Incident Clearance (min.)	67.75	80.09	68.33
# of Events w/ RR/SIRV	38	32	1,191
RR/SIRV Assists	38	32	1,191
RR/SIRV Activities	61	59	1,832

Debris on Roadway

	<u>Current Week</u>	<u>Last Week</u>	<u>YTD</u>
Number of Events	45	32	663
Number of Incidents	2	2	16
TMC Detection (min.)	0.00	0.00	0.15
TMC Verification (min.)	3.15	3.54	3.94
TMC Response (min.)	8.13	8.08	7.30
RR Dispatch Time (min.)	0.69	0.84	0.91
RR Response Time (min.)	7.46	7.57	6.40
Event Clearance (min.)	9.29	12.64	11.35
Roadway Clearance (min.)	12.27	4.14	24.71
Incident Clearance (min.)	11.62	10.31	29.17
# of Events w/ RR/SIRV	44	28	611
RR/SIRV Assists	44	28	611
RR/SIRV Activities	45	25	634

Disabled Vehicle

	<u>Current Week</u>	<u>Last Week</u>	<u>YTD</u>
Number of Events	636	609	14,459
Number of Incidents	4	5	184
TMC Detection (min.)	0.00	0.00	0.00
TMC Verification (min.)	0.79	0.77	0.63
TMC Response (min.)	5.96	8.19	6.32
RR Dispatch Time (min.)	0.89	2.87	1.18
RR Response Time (min.)	5.11	5.36	5.17
Event Clearance (min.)	26.46	32.89	27.46
Roadway Clearance (min.)	31.70	13.63	19.93
Incident Clearance (min.)	36.65	28.01	38.79
# of Events w/ RR/SIRV	494	488	10,865
RR/SIRV Assists	494	488	10,865
RR/SIRV Activities	511	500	11,091

Emergency Vehicles

	<u>Last Week</u>	<u>YTD</u>
Number of Events	1	37
Number of Incidents	1	29
TMC Detection (min.)	0.00	0.00
TMC Verification (min.)	0.00	1.01
TMC Response (min.)		15.83
RR Dispatch Time (min.)		10.86
RR Response Time (min.)		4.17
Event Clearance (min.)	22.22	54.10
Roadway Clearance (min.)	20.23	56.16
Incident Clearance (min.)	22.22	61.97
# of Events w/ RR/SIRV	0	23
RR/SIRV Assists	0	23
RR/SIRV Activities	0	39

Other

	<u>Current Week</u>	<u>Last Week</u>	<u>YTD</u>
Number of Events	313	339	7,982
Number of Incidents	0	3	21
TMC Detection (min.)	0.00	0.00	0.00
TMC Verification (min.)	0.05	0.01	0.05
TMC Response (min.)	3.70	8.39	10.93
RR Dispatch Time (min.)	1.31	1.30	1.98
RR Response Time (min.)	3.22	7.60	7.62
Event Clearance (min.)	11.25	10.28	11.56
Roadway Clearance (min.)		17.19	20.75
Incident Clearance (min.)		21.14	25.22
# of Events w/ RR/SIRV	123	154	3,051
RR/SIRV Assists	123	154	3,051
RR/SIRV Activities	18	21	538

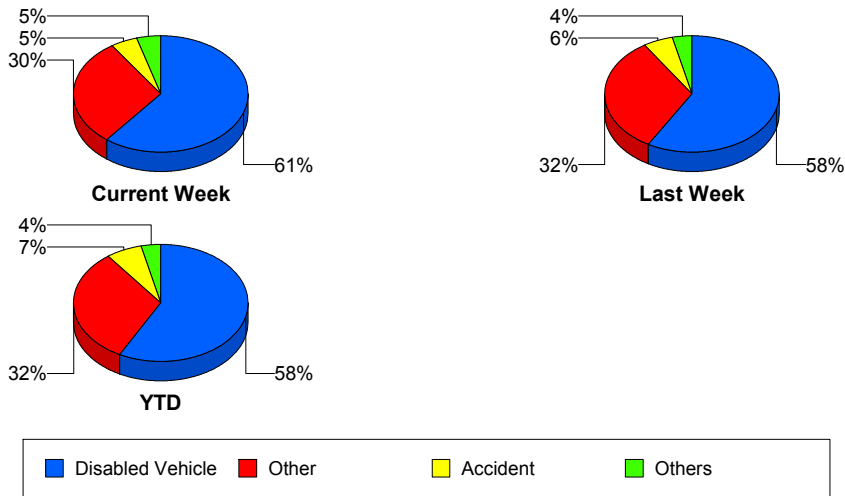
Police Activity

	<u>Current Week</u>	<u>Last Week</u>	<u>YTD</u>
Number of Events	2	2	127
Number of Incidents	1	1	39
TMC Detection (min.)	0.00	0.00	0.00
TMC Verification (min.)	0.00	1.08	0.20
TMC Response (min.)		9.58	14.04
RR Dispatch Time (min.)		2.92	5.43
RR Response Time (min.)		6.67	8.82
Event Clearance (min.)	11.09	17.27	34.91
Roadway Clearance (min.)	8.05	25.07	37.43
Incident Clearance (min.)	19.55	26.28	47.88
# of Events w/ RR/SIRV	0	2	38
RR/SIRV Assists	0	2	38
RR/SIRV Activities	0	3	47

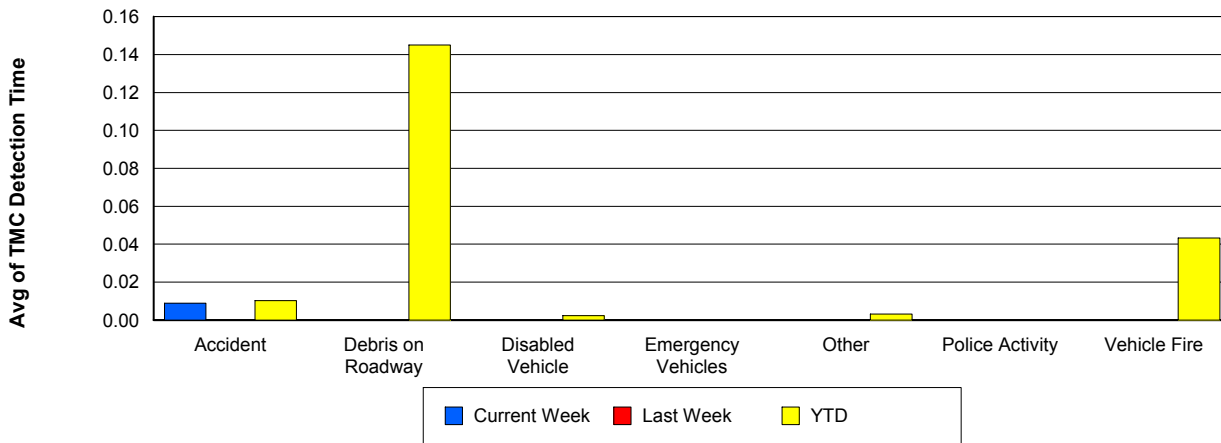
Vehicle Fire

	<u>Current Week</u>	<u>Last Week</u>	<u>YTD</u>
Number of Events	1	2	57
Number of Incidents	1	2	46
TMC Detection (min.)	0.00	0.00	0.04
TMC Verification (min.)	0.00	0.97	1.67
TMC Response (min.)	2.17	8.45	12.19
RR Dispatch Time (min.)	1.95	0.65	2.81
RR Response Time (min.)	0.22	7.80	10.09
Event Clearance (min.)	28.75	29.10	62.29
Roadway Clearance (min.)	13.80	17.31	41.60
Incident Clearance (min.)	28.75	29.10	63.66
# of Events w/ RR/SIRV	1	1	37
RR/SIRV Assists	1	1	37
RR/SIRV Activities	2	1	76

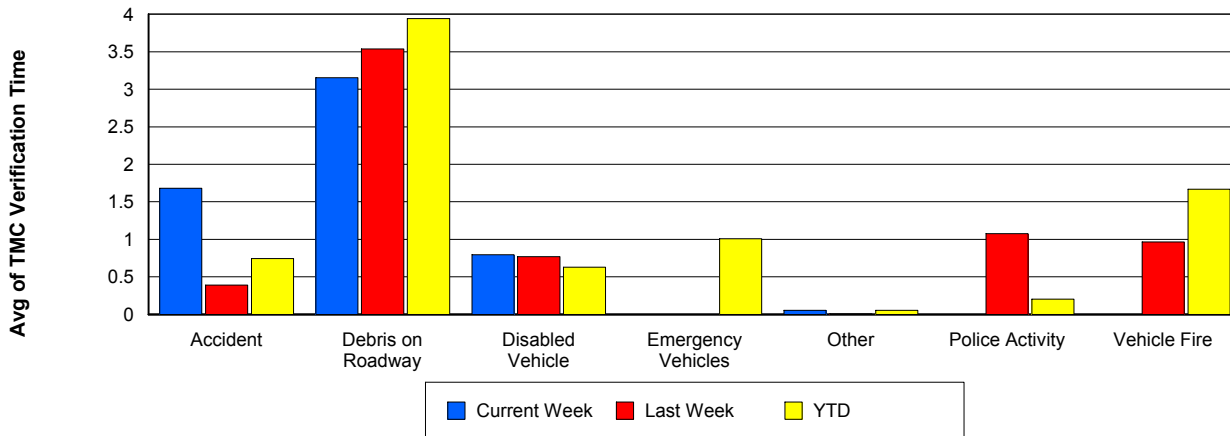
Number of Events / Event Type



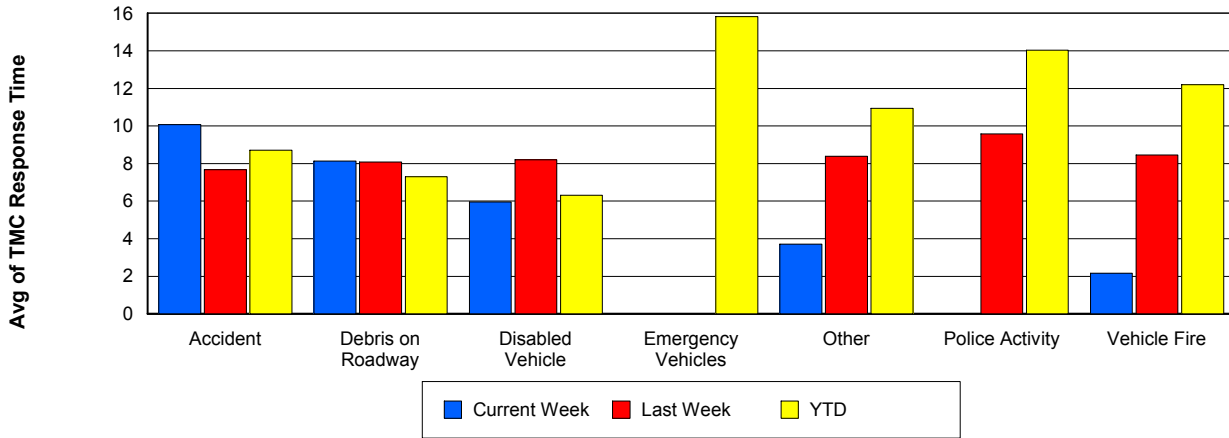
TMC Detection Time



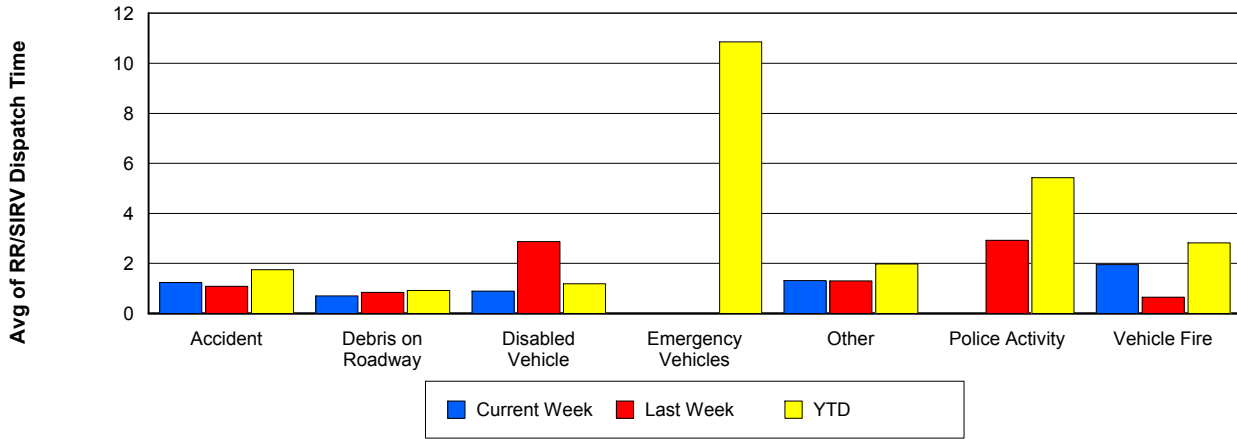
TMC Verification Time



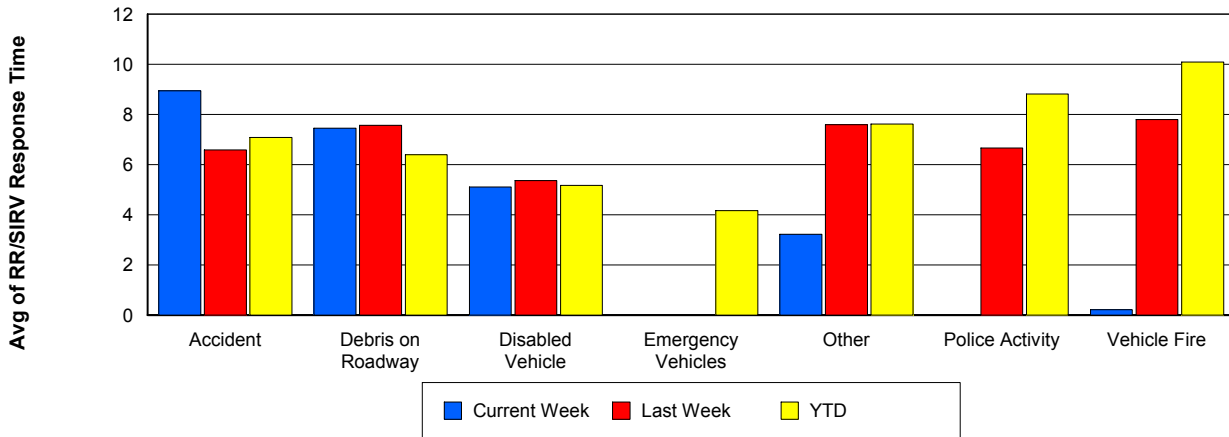
TMC Response Time



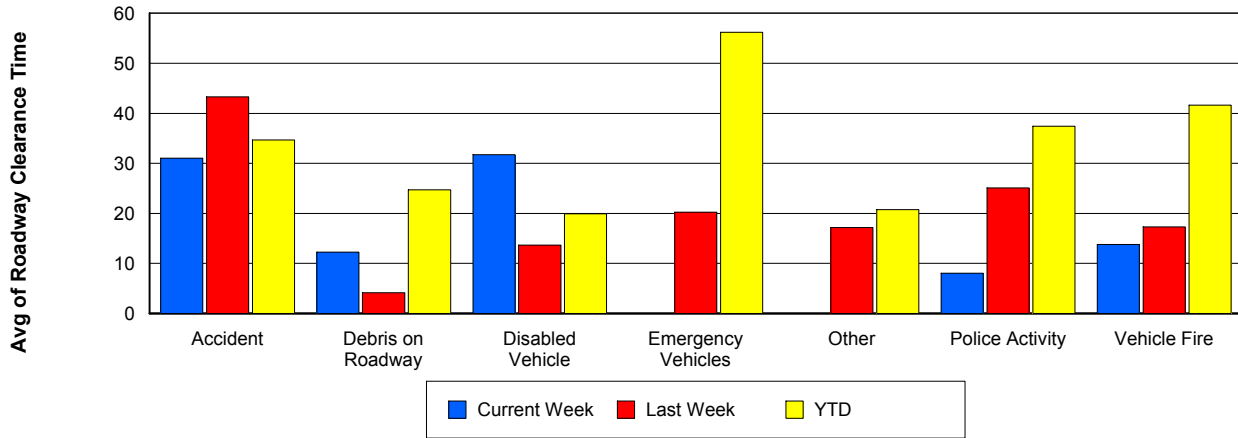
Road Ranger / SIRV Dispatch Time



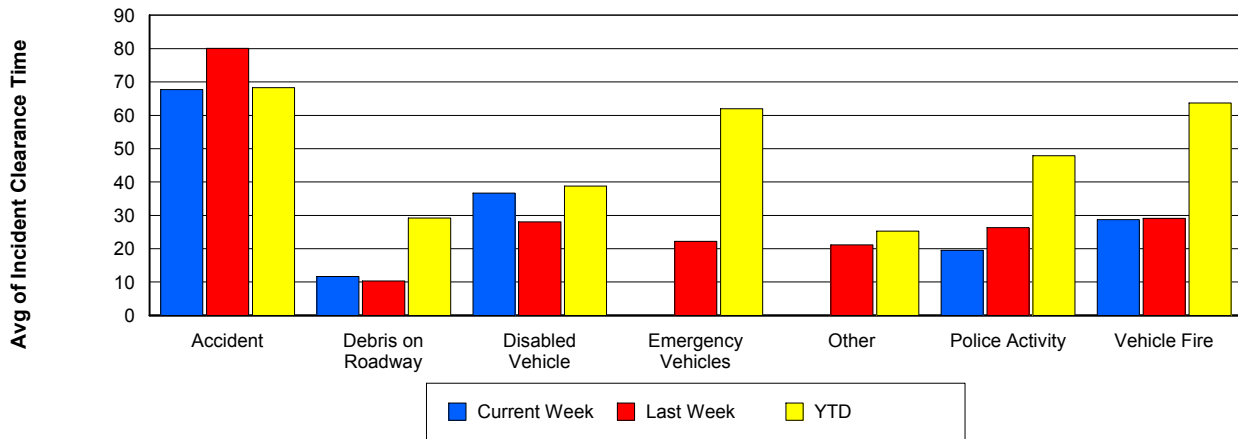
Road Ranger / SIRV Response Time



Roadway Clearance Time (2A)



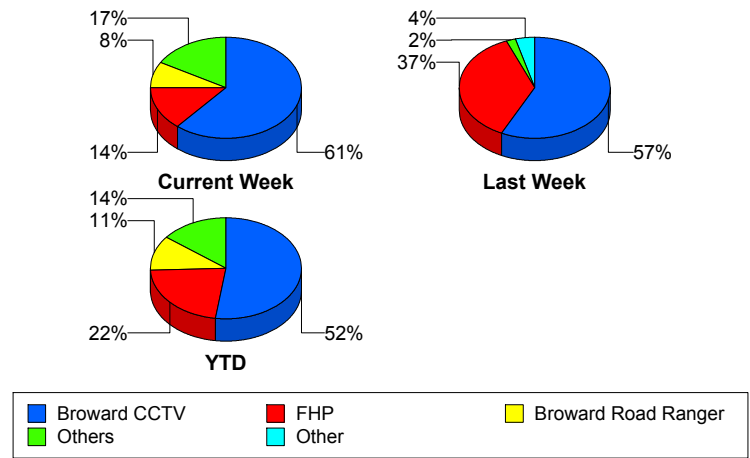
Incident Clearance Time (3B)



Incident Detection Methods

	Current Week	Last Week	YTD
Broward CCTV	22	28	601
Broward Road Ranger	3	0	130
Broward VideoWall	1	0	44
BSO	1	1	26
District 4	0	0	34
District 6	0	0	1
FDOT Maintenance	0	0	3
FHP	5	18	256
Fire	0	0	1
Florida's Turnpike	0	0	6
ITMS	0	0	1
Motorist	0	0	4
Other	0	2	3
Palm Beach Road Ran	0	0	2
Road Watcher	0	0	11
SIRV	1	0	5
SmarTraveler (511)	0	0	6
VisioPaD Detection	3	0	18
Total	36	49	1,152

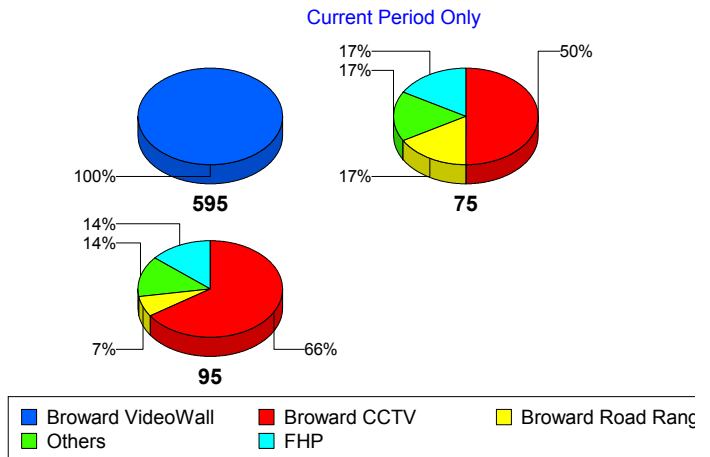
Total Incidents by Detection Method



Incident Detection Methods by Roadway

		Current Week	Last Week	YTD
595	Broward CCTV	0	3	96
	Broward Road Ranger	0	0	33
	Broward VideoWall	1	0	8
	BSO	0	0	2
	District 4	0	0	11
	FDOT Maintenance	0	0	2
	FHP	0	3	41
	Florida's Turnpike	0	0	6
	Motorist	0	0	2
	Road Watcher	0	0	3
	VisioPaD Detection	0	0	4
	Total	1	6	208
	75	Broward CCTV	3	3
Broward Road Ranger		1	0	9
BSO		0	1	22
District 4		0	0	3
FHP		1	0	21
Other		0	0	1
Road Watcher		0	0	2
VisioPaD Detection		1	0	1
Total		6	4	98
95	Broward CCTV	19	22	466
	Broward Road Ranger	2	0	88
	Broward VideoWall	0	0	36
	BSO	1	0	2
	District 4	0	0	20
	District 6	0	0	1
	FDOT Maintenance	0	0	1
	FHP	4	15	194
	Fire	0	0	1
	ITMS	0	0	1

Total Events by Roadway and Detection Method

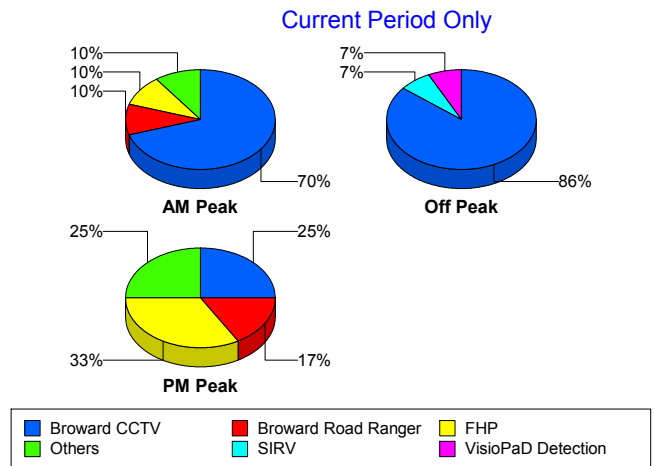


		Current Week	Last Week	YTD
95	Motorist	0	0	2
	Other	0	2	2
	Palm Beach Road Ran	0	0	2
	Road Watcher	0	0	6
	SIRV	1	0	5
	SmarTraveler (511)	0	0	6
	VisioPaD Detection	2	0	13
	Total	29	39	846
Total	36	49	1,152	

Incident Detection Methods by Peak Period

		Current Week	Last Week	YTD
AM Peak	Broward CCTV	7	2	114
	Broward Road Ranger	1	0	39
	Broward VideoWall	0	0	14
	BSO	0	0	5
	District 4	0	0	12
	FHP	1	5	65
	Florida's Turnpike	0	0	2
	Motorist	0	0	3
	Palm Beach Road Ran	0	0	1
	Road Watcher	0	0	4
	SIRV	0	0	1
	SmarTraveler (511)	0	0	1
	VisioPaD Detection	1	0	1
	Total	10	7	262
	Off Peak	Broward CCTV	12	22
Broward Road Ranger		0	0	39
Broward VideoWall		0	0	25
BSO		0	0	18
District 4		0	0	10
FDOT Maintenance		0	0	2

Total Events by Peak Period and Detection Method

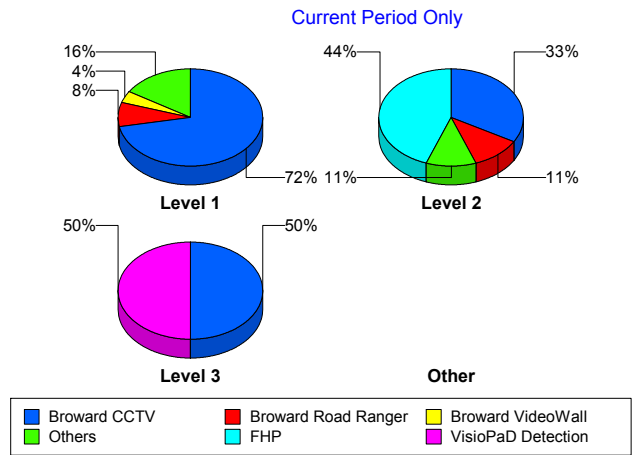


		Current Week	Last Week	YTD
Off Peak	FHP	0	9	122
	Florida's Turnpike	0	0	3
	ITMS	0	0	1
	Motorist	0	0	1
	Other	0	2	2
	Road Watcher	0	0	4
	SIRV	1	0	1
	SmarTraveler (511)	0	0	3
	VisioPaD Detection	1	0	14
	Total	14	33	568
PM Peak	Broward CCTV	3	4	164
	Broward Road Ranger	2	0	52
	Broward VideoWall	1	0	5
	BSO	1	1	3
	District 4	0	0	12
	District 6	0	0	1
	FDOT Maintenance	0	0	1
	FHP	4	4	69
	Fire	0	0	1
	Florida's Turnpike	0	0	1
	Other	0	0	1
	Palm Beach Road Ran	0	0	1
	Road Watcher	0	0	3
	SIRV	0	0	3
	SmarTraveler (511)	0	0	2
	VisioPaD Detection	1	0	3
	Total	12	9	322
Total		36	49	1,152

Incident Detection Methods by Severity

		Current Week	Last Week	YTD
Level 1	Broward CCTV	18	18	377
	Broward Road Ranger	2	0	95
	Broward VideoWall	1	0	25
	BSO	1	0	3
	District 4	0	0	26
	FDOT Maintenance	0	0	2
	FHP	1	14	150
	Motorist	0	0	4
	Other	0	2	2
	Palm Beach Road Ran	0	0	2
	Road Watcher	0	0	8
	SIRV	1	0	5
	SmarTraveler (511)	0	0	4
	VisioPaD Detection	1	0	9
	Total	25	34	712
Level 2	Broward CCTV	3	8	156
	Broward Road Ranger	1	0	25
	Broward VideoWall	0	0	16
	BSO	0	1	7
	District 4	0	0	5
	FDOT Maintenance	0	0	1
	FHP	4	3	73
	Florida's Turnpike	0	0	4
	ITMS	0	0	1
	Other	0	0	1
	Road Watcher	0	0	1
	SmarTraveler (511)	0	0	2
	VisioPaD Detection	1	0	7
	Total	9	12	299
Level 3	Broward CCTV	1	2	68
	Broward Road Ranger	0	0	10

Total Events by Severity and Detection Method



		Current Week	Last Week	YTD
Level 3	Broward VideoWall	0	0	3
	BSO	0	0	16
	District 4	0	0	3
	District 6	0	0	1
	FHP	0	1	33
	Fire	0	0	1
	Florida's Turnpike	0	0	2
	Road Watcher	0	0	2
	VisioPaD Detection	1	0	2
	Total	2	3	141
Total		36	49	1,152

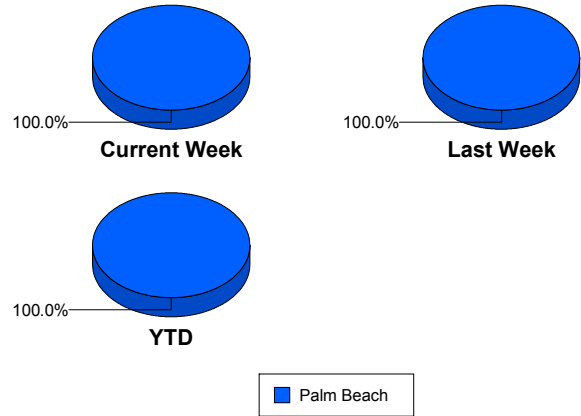
Road Ranger / SIRV Performance Measures

Road Ranger / SIRV Performance By County

Values presented are:
 - Total Events with a RR/SIRV Response
 - Total RR/SIRV Responses,
 - Total Activities Performed

	Current We	Last Week	YTD
Palm Beach	353	330	7,954
	367	335	8,212
	387	359	8,762

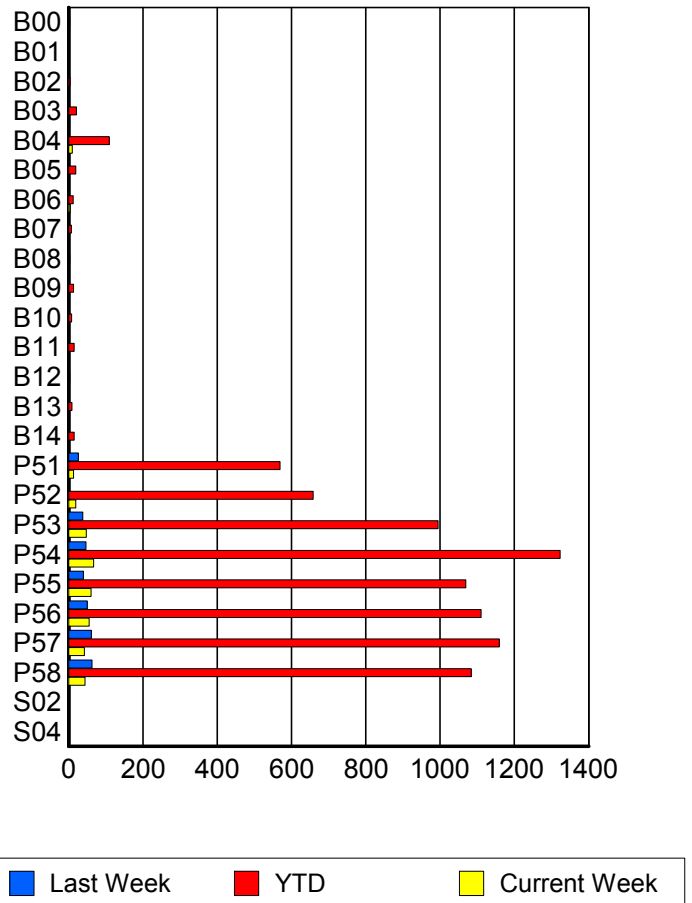
RR/SIRV Responses per County



Road Ranger / SIRV Performance By Truck

	Current We	Last Week	YTD
B00	0	1	3
	0	1	3
	0	1	3
B01	0	0	1
	0	0	1
	0	0	1
B02	0	1	4
	0	1	4
	0	1	4
B03	2	2	21
	2	2	21
	2	2	22
B04	10	2	108
	10	2	109
	11	2	125
B05	0	0	18
	0	0	19
	0	0	20
B06	4	2	12
	4	2	12
	4	2	12
B07	0	0	7
	0	0	7
	0	0	7
B08	0	0	3
	0	0	3
	0	0	3

RR/SIRV Responses per Truck



	Current We	Last Week	YTD
B09	1 1 1	2 2 2	13 13 13
B10	0 0 0	0 0 0	8 8 8
B11	1 1 1	0 0 0	15 15 16
B12	0 0 0	0 0 0	3 3 3
B13	1 1 1	0 0 0	9 9 10
B14	0 0 0	0 0 0	15 15 16
P51	13 13 14	26 26 27	564 569 596
P52	19 19 20	0 0 0	654 658 699
P53	48 48 49	37 38 41	983 995 1,060
P54	63 67 71	47 47 51	1,309 1,323 1,416
P55	60 60 67	40 40 41	1,060 1,069 1,140
P56	54 55 56	50 50 56	1,097 1,110 1,195
P57	42 42 44	61 61 66	1,152 1,159 1,245
P58	43 44 46	62 63 67	1,070 1,084 1,145
S02	0 0 0	0 0 0	1 1 1

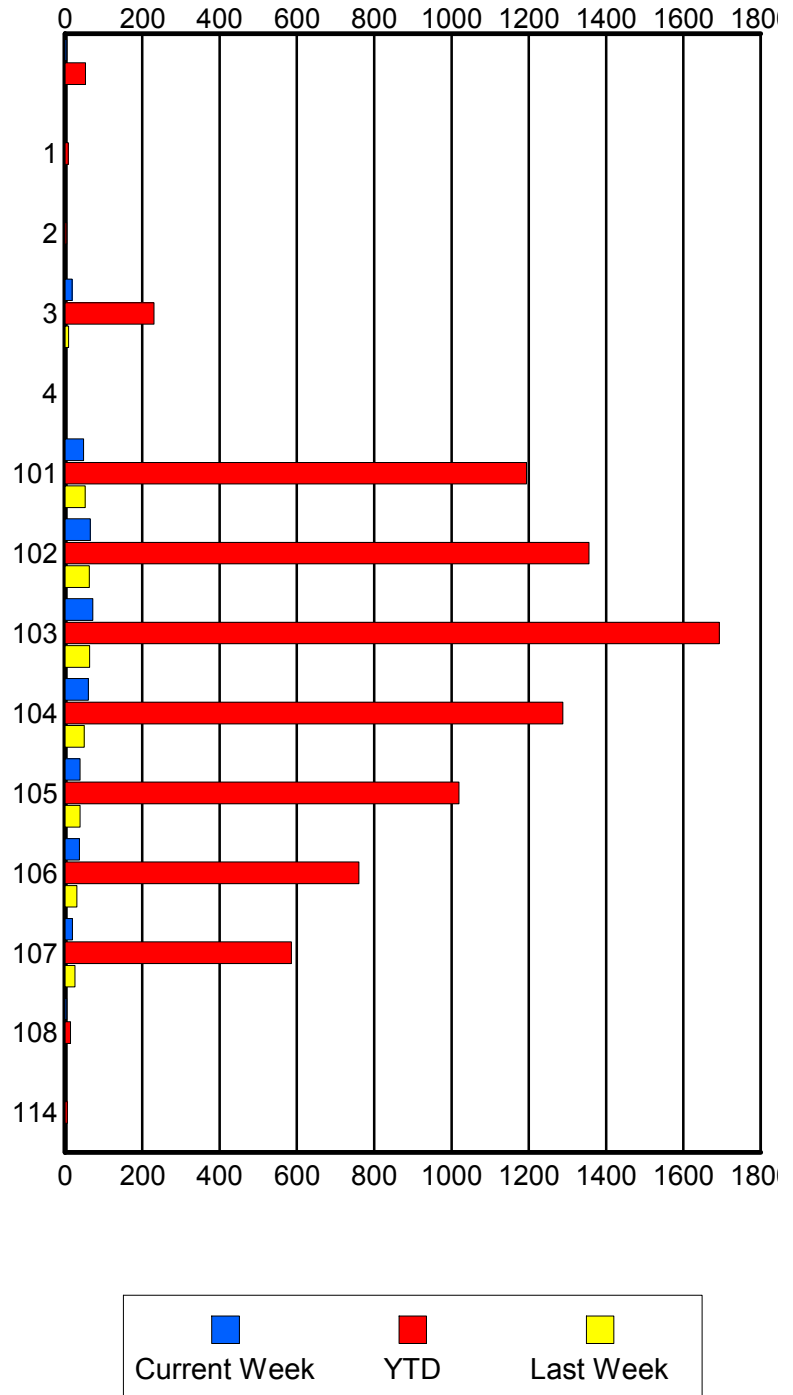
	Current We	Last Week	YTD
S04	0	0	2
	0	0	2
	0	0	2

Road Ranger / SIRV Performance By Beat

	Current We	Last Week	YTD
	4	0	53
	4	0	53
	4	0	53
1	0	1	8
	0	1	8
	0	1	9
2	1	0	4
	1	0	4
	1	0	5
3	17	9	227
	18	9	230
	19	9	249
4	0	0	1
	0	0	1
	0	0	1
101	48	51	1,180
	48	52	1,194
	50	57	1,284
102	64	62	1,341
	65	63	1,356
	71	67	1,439
103	71	64	1,673
	72	64	1,693
	76	71	1,820
104	56	50	1,276
	60	50	1,288
	63	51	1,380
105	39	39	1,011
	39	39	1,019
	42	40	1,082
106	37	31	752
	37	31	760
	37	36	810
107	19	26	581
	19	26	586
	20	27	610
108	4	0	13
	4	0	14
	4	0	14
114	0	0	6
	0	0	6
	0	0	6

Values presented are:
 - Total Events with a RR/SIRV Response
 - Total RR/SIRV Responses,
 - Total Activities Performed

RR/SIRV Responses per Beat

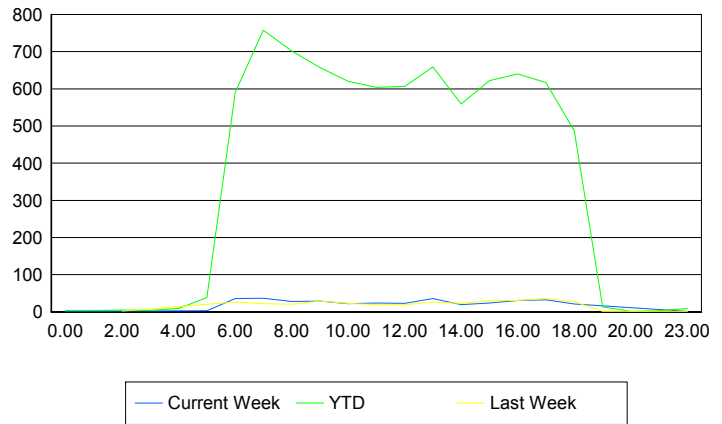


Road Ranger / SIRV Performance By Time of Day

Values presented are:
 - Total Events with a RR/SIRV Response
 - Total RR/SIRV Responses,
 - Total Activities Performed

	Current We	Last Week	YTD
12AM-1AM	1	0	4
	1	0	4
	1	0	4
1AM-2AM	0	0	4
	0	0	4
	0	0	4
2AM-3AM	0	2	5
	0	2	5
	0	3	6
3AM-4AM	0	0	4
	0	0	4
	0	0	4
4AM-5AM	0	0	6
	0	0	9
	0	0	10
5AM-6AM	3	0	36
	3	0	38
	4	0	39
6AM-7AM	35	26	566
	36	26	590
	38	28	621
7AM-8AM	35	20	727
	37	22	758
	40	24	811
8AM-9AM	27	20	677
	28	20	702
	30	21	756
9AM-10AM	28	27	636
	29	29	657
	32	30	718
10AM-11AM	21	23	601
	22	23	620
	23	24	653
11AM-12PM	23	19	586
	24	19	604
	24	20	654
12PM-1PM	21	19	587
	23	19	607
	23	22	647

Number of Responses / Hour of the Day



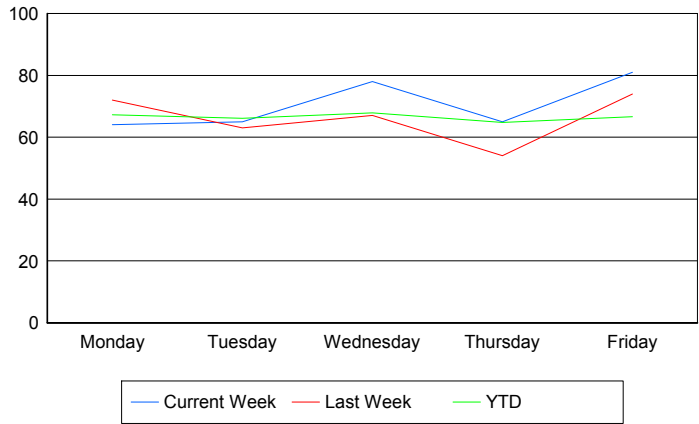
	Current We	Last Week	YTD
1PM-2PM	35	26	645
	36	26	659
	39	30	716
2PM-3PM	17	23	538
	19	23	559
	19	25	591
3PM-4PM	23	30	602
	24	30	622
	26	33	666
4PM-5PM	31	31	622
	31	31	640
	33	32	670
5PM-6PM	31	35	600
	32	36	617
	33	36	649
6PM-7PM	21	27	483
	21	27	487
	21	29	516
7PM-8PM	0	1	13
	0	1	13
	0	1	14
8PM-9PM	0	0	1
	0	0	1
	0	0	1
10PM-11PM	0	0	3
	0	0	3
	0	0	3
11PM-12AM	1	1	8
	1	1	9
	1	1	9

Road Ranger / SIRV Performance By Day of Week

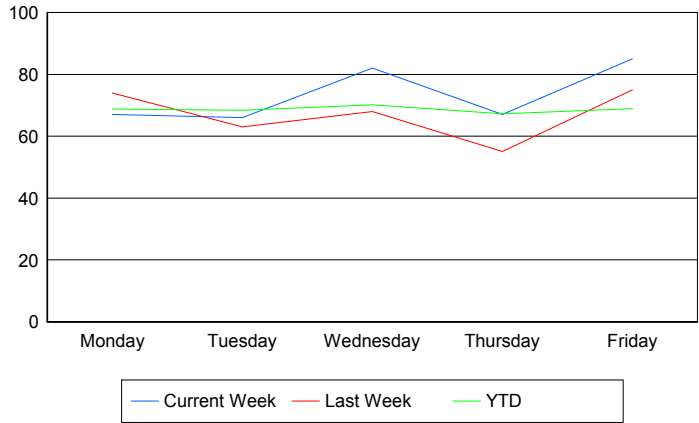
Values presented are:
 - Total Events with a RR/SIRV Response
 - Total RR/SIRV Responses,
 - Total Activities Performed

	Current We	Last Week	YTD
Monday	64	72	1,574
	67	74	1,609
	71	75	1,702
Tuesday	65	63	1,561
	66	63	1,612
	67	65	1,712
Wednesday	78	67	1,608
	82	68	1,660
	86	76	1,785
Thursday	65	54	1,583
	67	55	1,645
	72	61	1,764
Friday	81	74	1,630
	85	75	1,686
	91	82	1,799

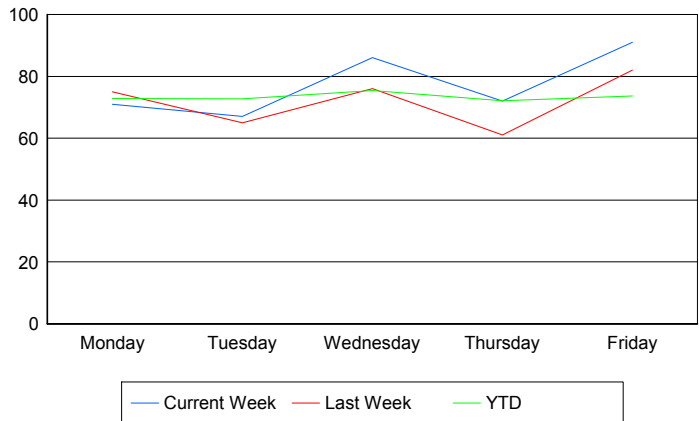
Avg # of events with a RR/SIRV Response per Day of the Week



Avg # of RR/SIRV Responses per Day of the Week



Avg # of RR/SIRV Activities Performed per Day of the Week



Road Ranger / SIRV Responses per Time of Day and Day of Week

