



Weekly Performance Measures Report Broward County



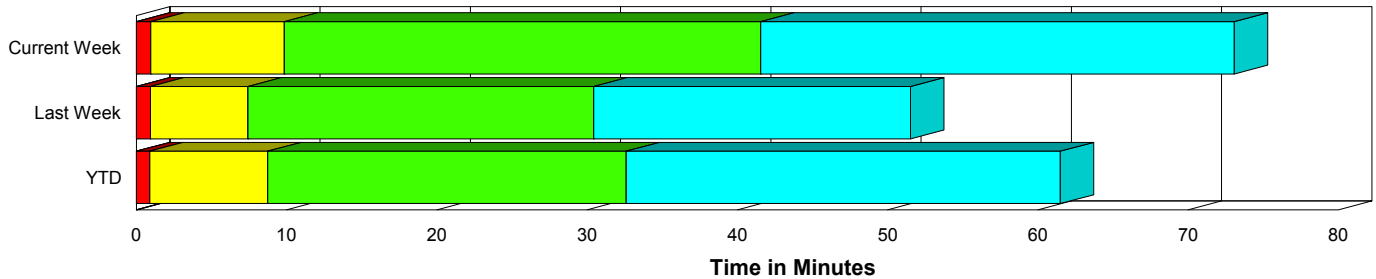
Created on:
March 29, 2010
8:56 am

Period From Mar 21, 2010 to Mar 27, 2010

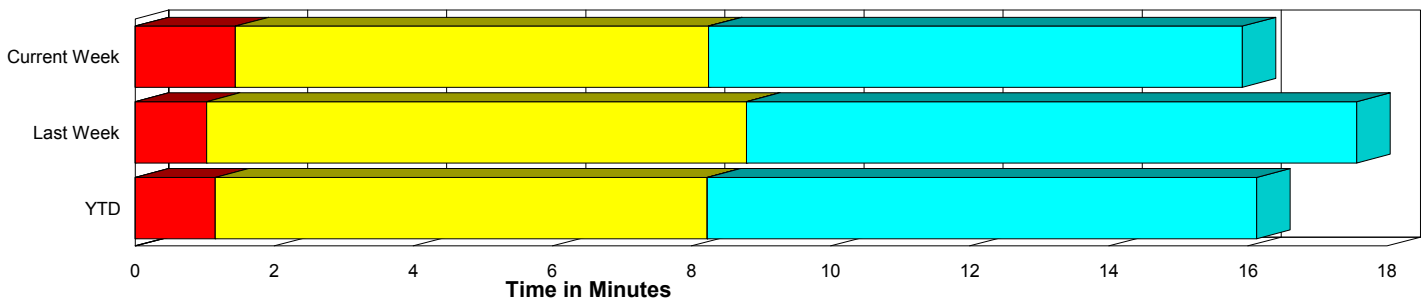
Performance Measures Summary

	Traffic Events (No Lanes Blocked)			Incidents (Lanes Blocked)		
	<u>This Week</u>	<u>Last Week</u>	<u>YTD</u>	<u>This Week</u>	<u>Last Week</u>	<u>YTD</u>
Number of Events	1,181	1,117	15,032	57	60	610
TMC Detection (min.)	0.00	0.00	0.00	0.00	0.00	0.00
TMC Verification (min.)	1.44	1.03	1.15	0.97	0.94	0.89
TMC Response (min.)	9.12	9.60	9.07	9.84	7.47	8.80
RR Dispatch Time (min.)	1.68	1.71	1.40	1.42	1.29	1.65
RR Response Time (min.)	7.47	8.06	7.78	8.43	6.17	7.16
Roadway Clearance (min.)				41.13	30.27	31.80
Event Clearance (min.)	16.80	18.37	16.97	72.63	50.93	60.37
# of Events w/ RR/SIRV	994	876	12,037	56	59	596
RR/SIRV Responses	994	876	12,037	56	59	596
RR/SIRV Activities	776	656	9,035	122	116	1,139

Incident Clearance Time-Line



Traffic Event (Non-Lane Blockage) Time-Line



■ Avg. TMC Detection Time	■ Avg. Time from TMC Response to Roadway Clearance*
■ Avg. Time from TMC Detection to TMC Verification	■ Avg. Time from Roadway Clearance to Incident/Event Clearance**
■ Avg. Time from TMC Verification to TMC Response	

* Roadway clearance equals all travel lanes open

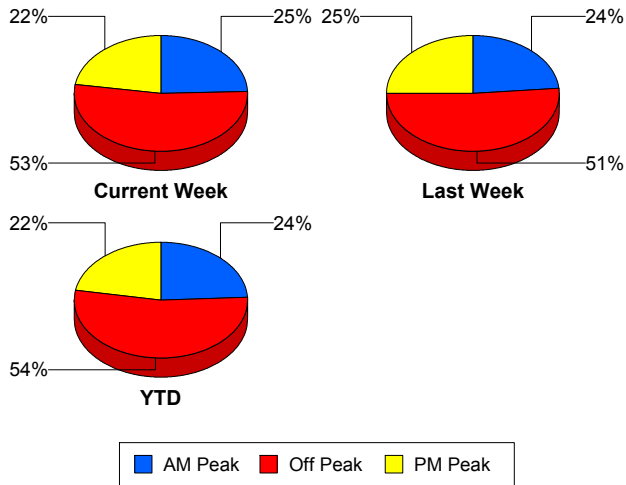
** Incident clearance equals time when last responder has left the scene

Performance Measures by Peak Period

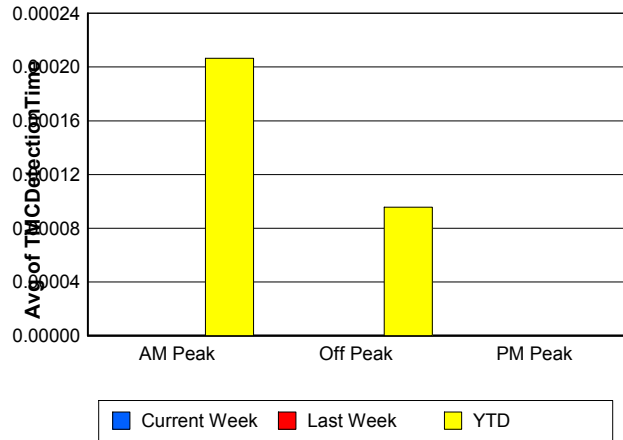
Note: AM peak period is defined as 6am to 10am and PM peak period is defined as 3pm to 7pm.

	AM Peak			Off Peak			PM Peak		
	<u>Current Week</u>	<u>Last Week</u>	<u>YTD</u>	<u>Current Week</u>	<u>Last Week</u>	<u>YTD</u>	<u>Current Week</u>	<u>Last Week</u>	<u>YTD</u>
Number of Events	304	278	3,793	657	604	8,369	277	295	3,480
Number of Incidents	10	14	108	31	33	320	16	13	182
TMC Detection (min.)	0.00	0.00	0.00	0.00	0.00	0.00	0.00	0.00	0.00
TMC Verification (min.)	1.06	0.40	0.72	1.64	1.25	1.22	1.28	1.14	1.43
TMC Response (min.)	9.85	9.12	8.65	9.90	10.18	9.39	6.83	8.29	8.74
RR Dispatch Time (min.)	1.03	1.50	1.04	2.19	1.97	1.53	1.11	1.31	1.54
RR Response Time (min.)	8.95	7.46	7.68	7.59	8.43	7.96	5.93	7.31	7.33
Event Clearance (min.)	18.74	17.88	16.79	20.53	20.76	18.89	17.30	20.58	20.17
Roadway Clearance (min.)	22.68	28.48	28.47	51.51	32.72	36.66	32.55	25.98	25.25
Incident Clearance (min.)	72.73	42.57	55.04	81.28	57.33	64.89	55.80	43.70	55.58
# of Events w/ RR/SIRV	264	226	3,171	559	465	6,592	227	244	2,870
RR/SIRV Responses	264	226	3,171	559	465	6,592	227	244	2,870
RR/SIRV Activities	224	194	2,475	466	387	5,241	208	191	2,458

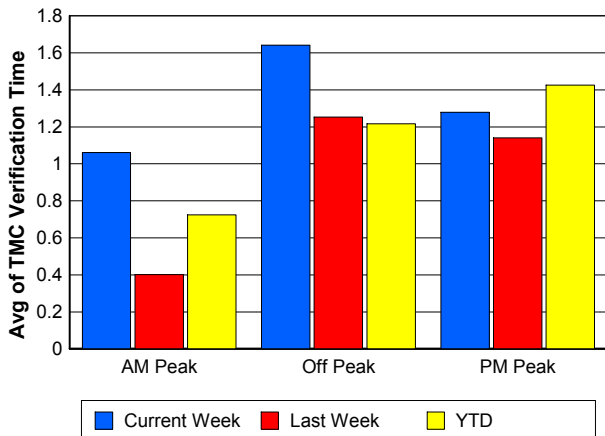
Number of Events / Peak Period



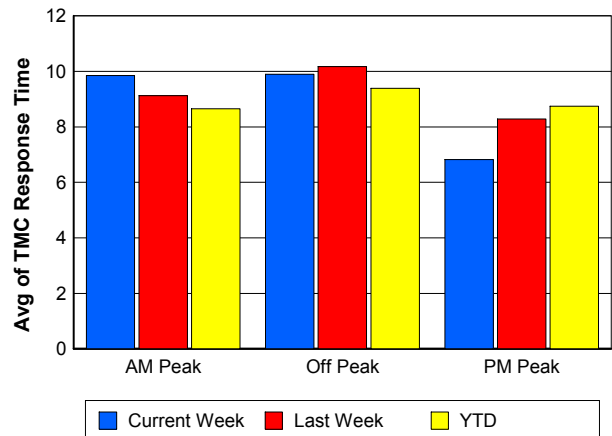
TMC Detection Time



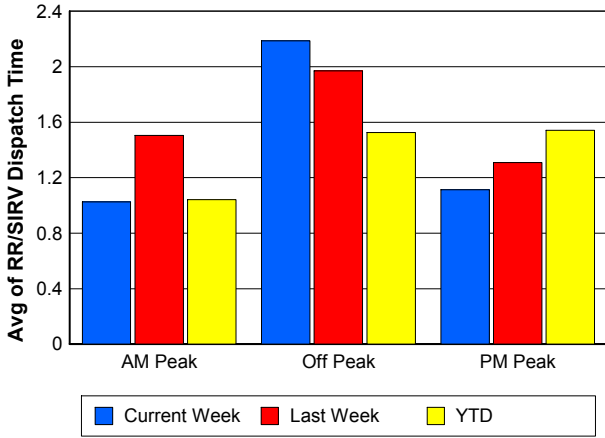
TMC Verification Time



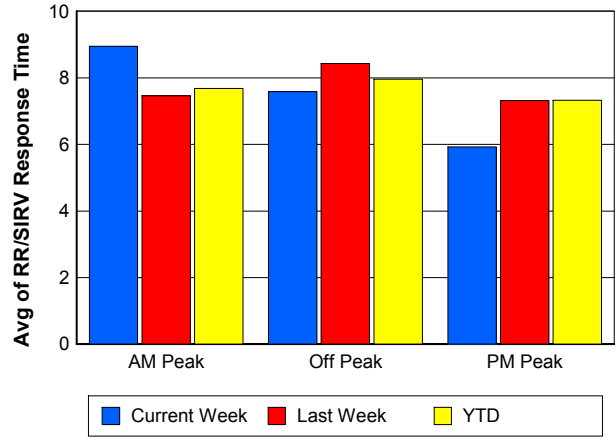
TMC Response Time



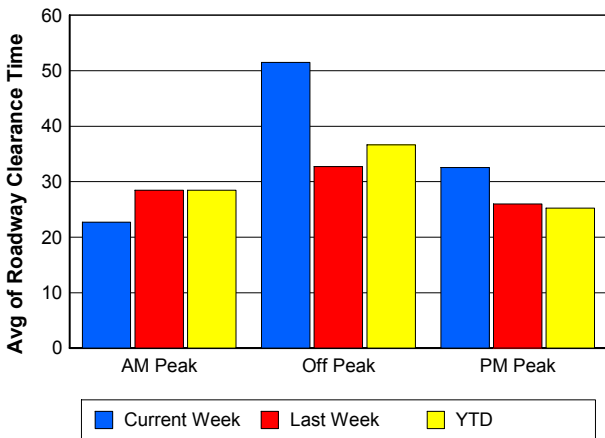
Road Ranger / SIRV Dispatch Time



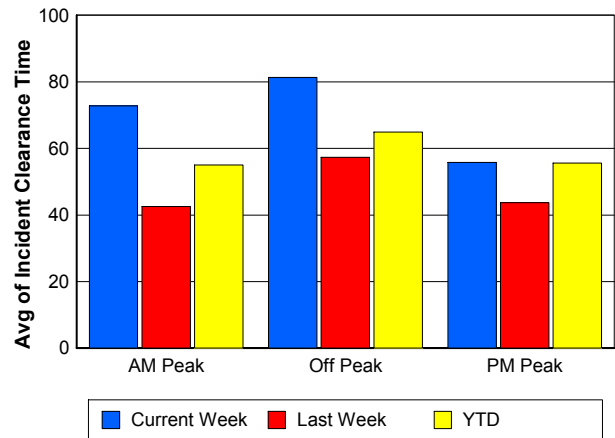
Road Ranger / SIRV Response Time



Roadway Clearance Time (2A)



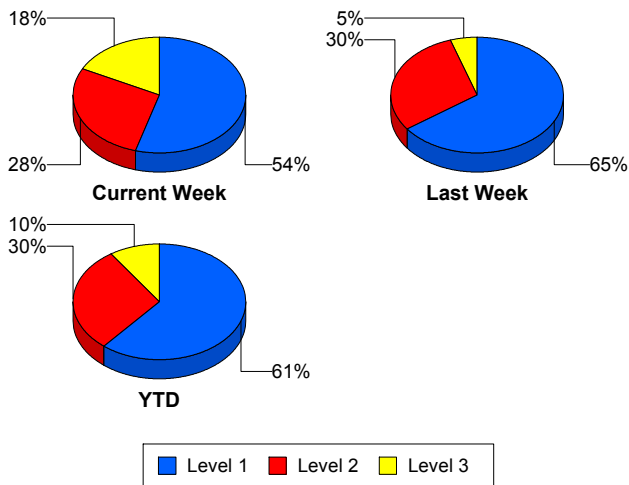
Incident Clearance Time (3B)



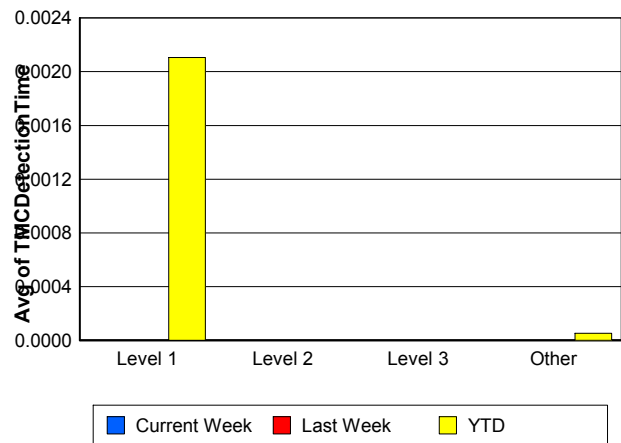
Performance Measures by Severity

	Level 1			Level 2			Level 3			Other		
	<u>This Week</u>	<u>Last Week</u>	<u>YTD</u>	<u>This Week</u>	<u>Last Week</u>	<u>YTD</u>	<u>This Week</u>	<u>Last Week</u>	<u>YTD</u>	<u>This Week</u>	<u>Last Week</u>	<u>YTD</u>
Number of Events	31	39	372	16	18	180	10	3	58	1,181	1,117	15,032
Number of Incidents	31	39	372	16	18	180	10	3	58	0	0	0
TMC Detection (min.)	0.00	0.00	0.00	0.00	0.00	0.00	0.00	0.00	0.00	0.00	0.00	0.00
TMC Verification (min.)	0.75	0.64	0.57	0.96	1.24	1.35	1.75	3.01	1.51	1.44	1.03	1.15
TMC Response (min.)	8.89	6.64	7.55	8.67	8.93	10.61	15.24	9.62	10.97	9.12	9.60	9.07
RR Dispatch Time (min.)	1.27	1.04	1.43	1.54	1.79	2.12	1.71	1.77	1.64	1.68	1.71	1.40
RR Resp. Time (min.)	7.61	5.61	6.16	7.13	7.15	8.47	13.53	7.85	9.33	7.47	8.06	7.78
Event Clearance (min.)	44.27	40.61	46.04	82.47	59.84	76.08	144.81	131.64	103.47	16.80	18.37	16.97
Roadway Clear. (min.)	14.99	16.03	14.66	49.12	45.76	50.20	109.37	122.49	84.66			
Incident Clearance (min.)	44.27	40.61	46.04	82.47	59.84	76.08	144.81	131.64	103.47			
# of Events w/ RR/SIRV	31	39	364	16	17	177	9	3	55	994	876	12,037
RR/SIRV Responses	31	39	364	16	17	177	9	3	55	994	876	12,037
RR/SIRV Activities	54	67	579	41	36	401	27	13	159	776	656	9,035

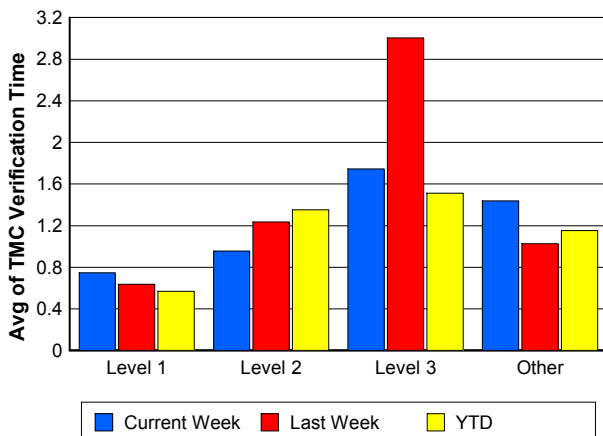
Number of Events / Severity



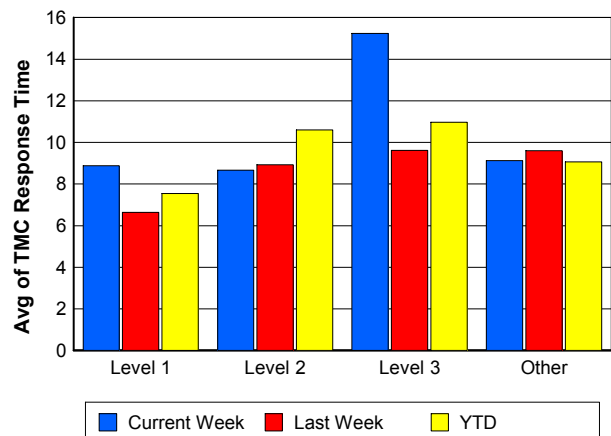
TMC Detection Time



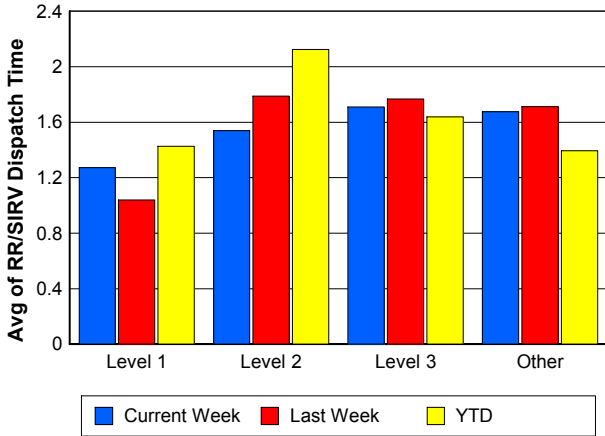
TMC Verification Time



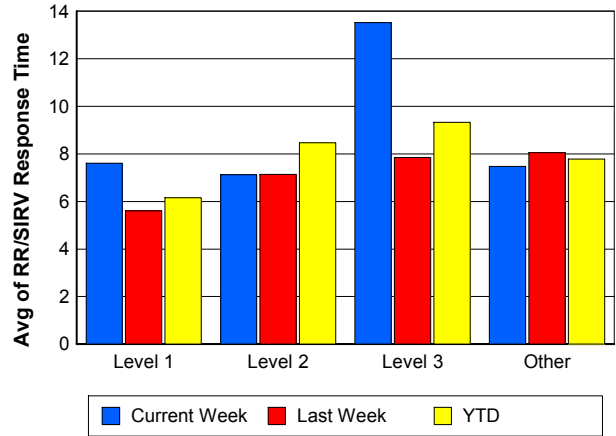
TMC Response Time



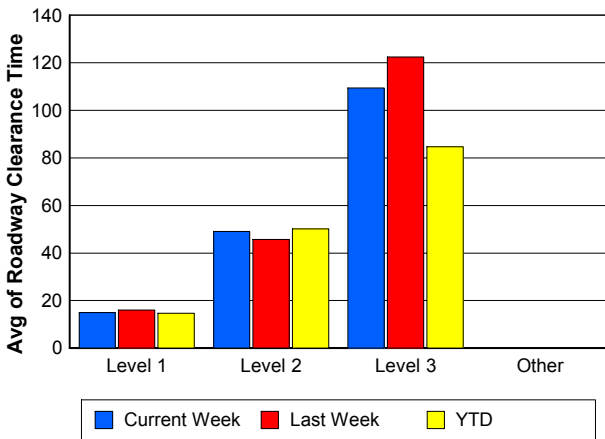
Road Ranger / SIRV Dispatch Time



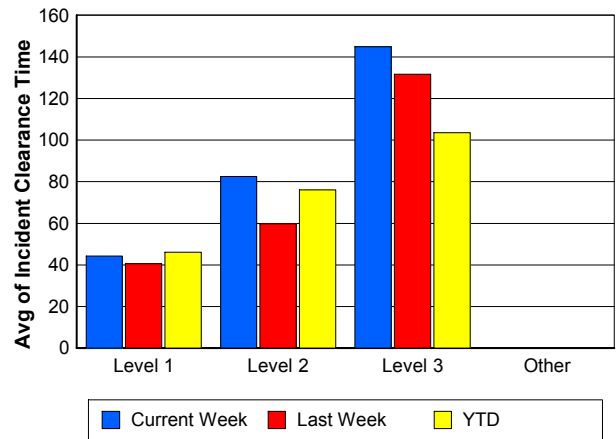
Road Ranger / SIRV Response Time



Roadway Clearance Time (2A)



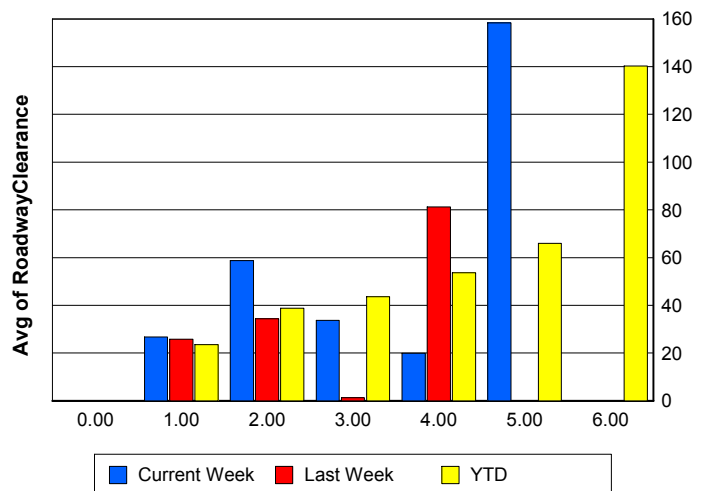
Incident Clearance Time (3B)



Roadway Clearance by Maximum Number of Lanes Blocked

	Current Week	Last Week	YTD
0			
1	26.72	25.75	23.58
2	58.73	34.37	38.73
3	33.65	1.35	43.61
4	19.87	81.29	53.60
5	158.32	0.00	65.99
6	0.00	0.00	140.28

Roadway Clearance Time (2A)



Performance Measures by Roadway

595

	<u>Current Week</u>	<u>Last Week</u>	<u>YTD</u>
Number of Events	57	42	578
Number of Incidents	3	7	33
TMC Detection (min.)	0.00	0.00	0.00
TMC Verification (min.)	1.81	0.77	1.71
TMC Response (min.)	14.98	19.95	14.62
RR Dispatch Time (min.)	1.73	1.72	2.13
RR Resp. Time (min.)	13.82	18.09	12.52
Event Clearance (min.)	20.71	28.59	20.45
Roadway Clear. (min.)	92.04	32.42	52.32
Incident Clearance (min.)	99.52	53.72	71.92
# of Events w/ RR/SIRV	41	33	411
RR/SIRV Responses	41	33	411
RR/SIRV Activities	25	29	296

75

	<u>Current Week</u>	<u>Last Week</u>	<u>YTD</u>
Number of Events	245	238	3,454
Number of Incidents	5	6	58
TMC Detection (min.)	0.00	0.00	0.00
TMC Verification (min.)	2.08	2.48	1.84
TMC Response (min.)	8.90	10.27	9.96
RR Dispatch Time (min.)	1.25	1.87	1.52
RR Resp. Time (min.)	7.73	8.57	8.58
Event Clearance (min.)	19.67	21.47	18.96
Roadway Clear. (min.)	32.76	50.31	39.48
Incident Clearance (min.)	79.78	68.51	76.88
# of Events w/ RR/SIRV	199	190	2,671
RR/SIRV Responses	199	190	2,671
RR/SIRV Activities	175	162	2,167

95

	<u>Current Week</u>	<u>Last Week</u>	<u>YTD</u>
Number of Events	920	879	11,421
Number of Incidents	42	45	487
TMC Detection (min.)	0.00	0.00	0.00
TMC Verification (min.)	1.22	0.66	0.90
TMC Response (min.)	9.18	8.83	8.62
RR Dispatch Time (min.)	1.77	1.65	1.35
RR Resp. Time (min.)	7.38	7.35	7.34
Event Clearance (min.)	19.15	19.48	18.51
Roadway Clear. (min.)	41.78	27.66	30.12
Incident Clearance (min.)	75.47	49.47	59.85
# of Events w/ RR/SIRV	796	699	9,398
RR/SIRV Responses	796	699	9,398
RR/SIRV Activities	683	571	7,562

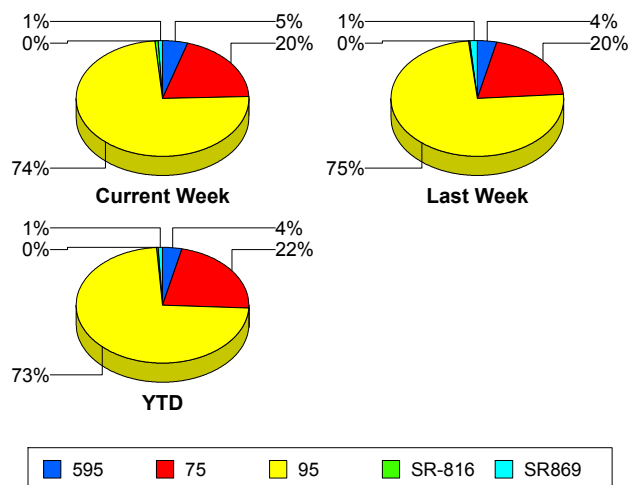
SR-816

	<u>Current Week</u>	<u>Last Week</u>	<u>YTD</u>
Number of Events	6	3	38
Number of Incidents	5	2	28
TMC Detection (min.)	0.00	0.00	0.00
TMC Verification (min.)	2.31	0.00	0.69
TMC Response (min.)	2.30	0.00	1.32
RR Dispatch Time (min.)	0.12	0.00	0.10
RR Resp. Time (min.)	2.18	0.00	1.22
Event Clearance (min.)	23.20	14.81	17.90
Roadway Clear. (min.)	18.16	21.46	18.81
Incident Clearance (min.)	21.93	21.27	18.93
# of Events w/ RR/SIRV	6	3	37
RR/SIRV Responses	6	3	37
RR/SIRV Activities	6	3	41

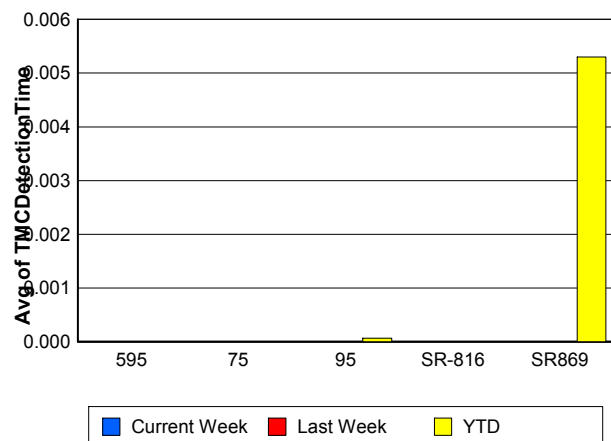
SR869

	<u>Current Week</u>	<u>Last Week</u>	<u>YTD</u>
Number of Events	10	15	151
Number of Incidents	2	0	4
TMC Detection (min.)	0.00	0.00	0.01
TMC Verification (min.)	0.37	0.00	1.49
TMC Response (min.)	3.81	6.18	9.35
RR Dispatch Time (min.)	2.18	1.04	1.09
RR Resp. Time (min.)	3.35	5.69	8.57
Event Clearance (min.)	22.20	6.68	16.84
Roadway Clear. (min.)	29.43		47.03
Incident Clearance (min.)	81.57		78.04
# of Events w/ RR/SIRV	8	10	116
RR/SIRV Responses	8	10	116
RR/SIRV Activities	9	7	108

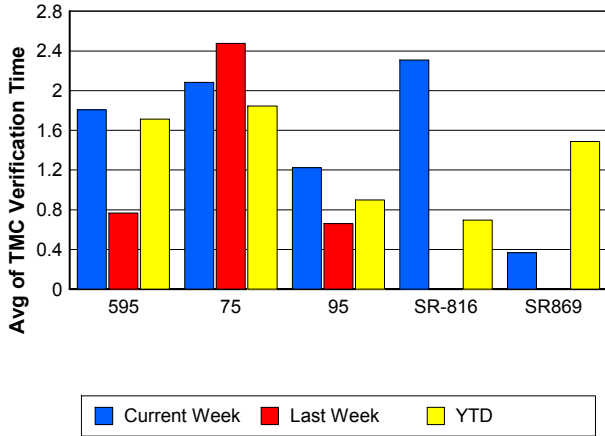
Number of Events / Roadway



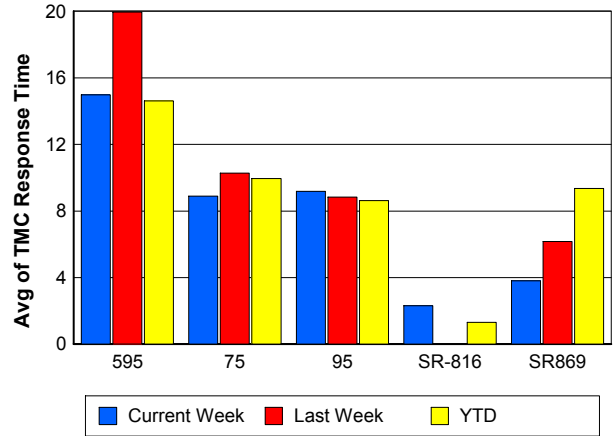
TMC Detection Time



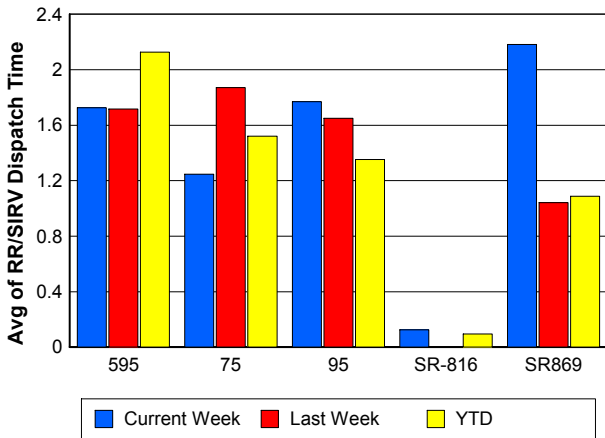
TMC Verification Time



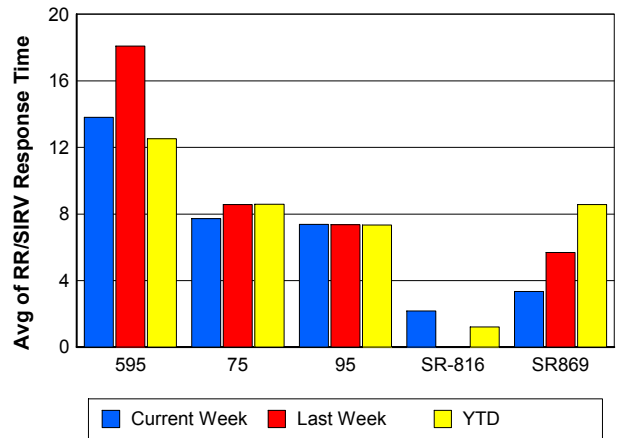
TMC Response Time



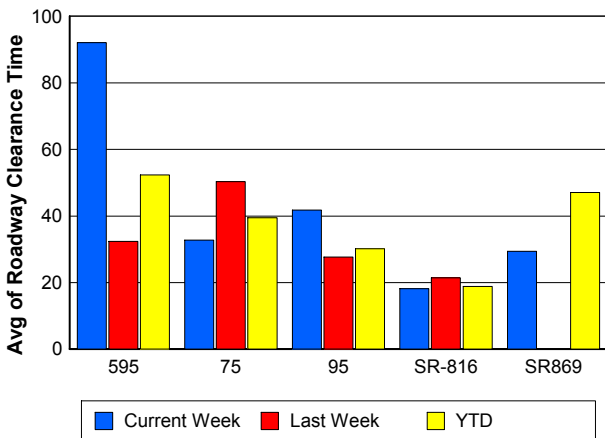
Road Ranger / SIRV Dispatch Time



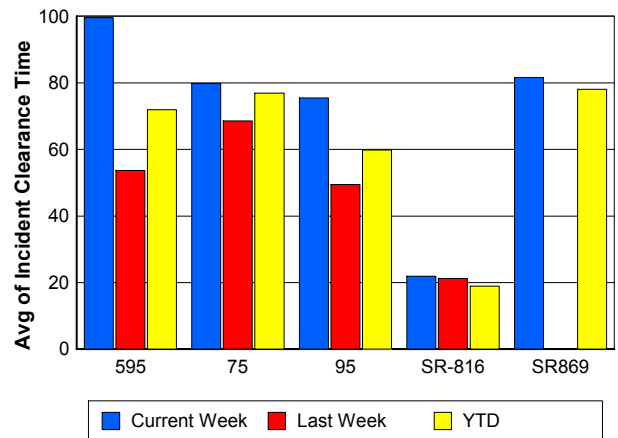
Road Ranger / SIRV Response Time



Roadway Clearance Time (2A)



Incident Clearance Time (3B)



Performance Measures by Event Type

Accident

	<u>Current Week</u>	<u>Last Week</u>	<u>YTD</u>
Number of Events	81	79	933
Number of Incidents	42	46	436
TMC Detection (min.)	0.00	0.00	0.00
TMC Verification (min.)	2.87	0.73	1.39
TMC Response (min.)	10.77	8.52	9.56
RR Dispatch Time (min.)	1.16	1.61	1.62
RR Response Time (min.)	9.66	6.91	7.95
Event Clearance (min.)	60.63	49.12	55.19
Roadway Clearance (min.)	49.51	32.57	34.39
Incident Clearance (min.)	88.10	55.32	70.37
# of Events w/ RR/SIRV	80	78	924
RR/SIRV Assists	80	78	924
RR/SIRV Activities	134	138	1,422

Debris on Roadway

	<u>Current Week</u>	<u>Last Week</u>	<u>YTD</u>
Number of Events	44	29	466
Number of Incidents	0	0	8
TMC Detection (min.)	0.00	0.00	0.00
TMC Verification (min.)	5.61	6.76	6.32
TMC Response (min.)	8.52	11.75	9.61
RR Dispatch Time (min.)	0.88	2.59	1.47
RR Response Time (min.)	7.65	8.99	8.11
Event Clearance (min.)	13.87	13.88	12.99
Roadway Clearance (min.)			42.89
Incident Clearance (min.)			40.06
# of Events w/ RR/SIRV	43	25	442
RR/SIRV Assists	43	25	442
RR/SIRV Activities	44	24	443

Disabled Vehicle

	<u>Current Week</u>	<u>Last Week</u>	<u>YTD</u>
Number of Events	731	628	8,373
Number of Incidents	8	6	106
TMC Detection (min.)	0.00	0.00	0.00
TMC Verification (min.)	1.74	1.41	1.57
TMC Response (min.)	8.88	9.14	8.93
RR Dispatch Time (min.)	1.76	1.61	1.34
RR Response Time (min.)	7.09	7.65	7.65
Event Clearance (min.)	19.48	22.81	20.98
Roadway Clearance (min.)	15.32	22.82	17.04
Incident Clearance (min.)	25.68	34.81	26.41
# of Events w/ RR/SIRV	703	591	8,071
RR/SIRV Assists	703	591	8,071
RR/SIRV Activities	673	560	7,757

Emergency Vehicles

	<u>Current Week</u>	<u>Last Week</u>	<u>YTD</u>
Number of Events	1	1	15
Number of Incidents	1	1	13
TMC Detection (min.)	0.00	0.00	0.00
TMC Verification (min.)	0.00	0.00	0.00
TMC Response (min.)	0.00	3.82	10.34
RR Dispatch Time (min.)	0.00	3.77	1.21
RR Response Time (min.)	0.00	0.05	9.05
Event Clearance (min.)	19.93	21.55	29.20
Roadway Clearance (min.)	17.05	18.68	23.50
Incident Clearance (min.)	19.93	21.55	27.07
# of Events w/ RR/SIRV	1	1	12
RR/SIRV Assists	1	1	12
RR/SIRV Activities	2	1	12

Other

	<u>Current Week</u>	<u>Last Week</u>	<u>YTD</u>
Number of Events	371	424	5,747
Number of Incidents	1	2	14
TMC Detection (min.)	0.00	0.00	0.00
TMC Verification (min.)	0.01	0.05	0.05
TMC Response (min.)	10.75	15.32	9.39
RR Dispatch Time (min.)	1.69	1.85	1.50
RR Response Time (min.)	9.90	14.33	8.25
Event Clearance (min.)	10.40	10.52	9.54
Roadway Clearance (min.)	21.78	1.72	46.15
Incident Clearance (min.)	25.03	5.32	53.65
# of Events w/ RR/SIRV	213	224	3,085
RR/SIRV Assists	213	224	3,085
RR/SIRV Activities	32	28	421

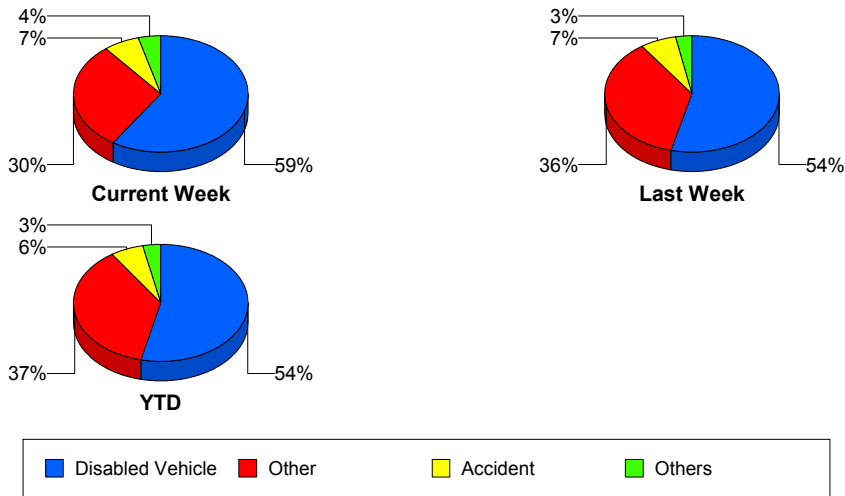
Police Activity

	<u>Current Week</u>	<u>Last Week</u>	<u>YTD</u>
Number of Events	2	1	21
Number of Incidents	2	1	12
TMC Detection (min.)	0.00	0.00	0.00
TMC Verification (min.)	0.23	0.00	2.27
TMC Response (min.)	5.06	13.30	8.20
RR Dispatch Time (min.)	4.00	4.43	1.61
RR Response Time (min.)	1.06	8.87	6.62
Event Clearance (min.)	20.23	24.82	38.46
Roadway Clearance (min.)	17.08	22.78	32.75
Incident Clearance (min.)	20.23	24.82	46.94
# of Events w/ RR/SIRV	2	1	16
RR/SIRV Assists	2	1	16
RR/SIRV Activities	5	2	21

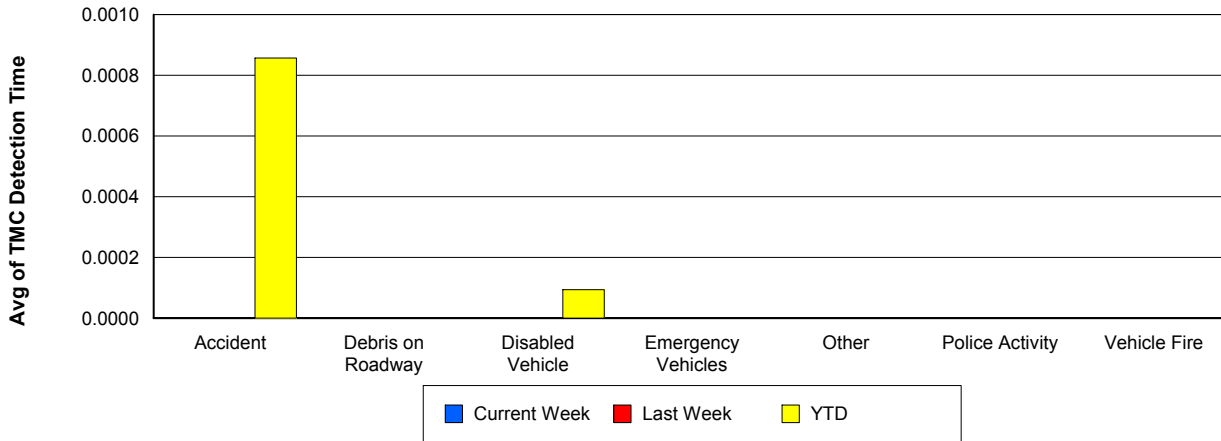
Vehicle Fire

	<u>Current Week</u>	<u>Last Week</u>	<u>YTD</u>
Number of Events	4	5	31
Number of Incidents	3	4	21
TMC Detection (min.)	0.00	0.00	0.00
TMC Verification (min.)	1.46	3.12	3.06
TMC Response (min.)	26.10	11.90	13.89
RR Dispatch Time (min.)	1.45	1.78	1.77
RR Response Time (min.)	24.65	10.12	12.03
Event Clearance (min.)	59.00	52.04	57.19
Roadway Clearance (min.)	23.09	34.12	43.49
Incident Clearance (min.)	49.59	61.30	64.61
# of Events w/ RR/SIRV	4	5	31
RR/SIRV Assists	4	5	31
RR/SIRV Activities	6	9	53

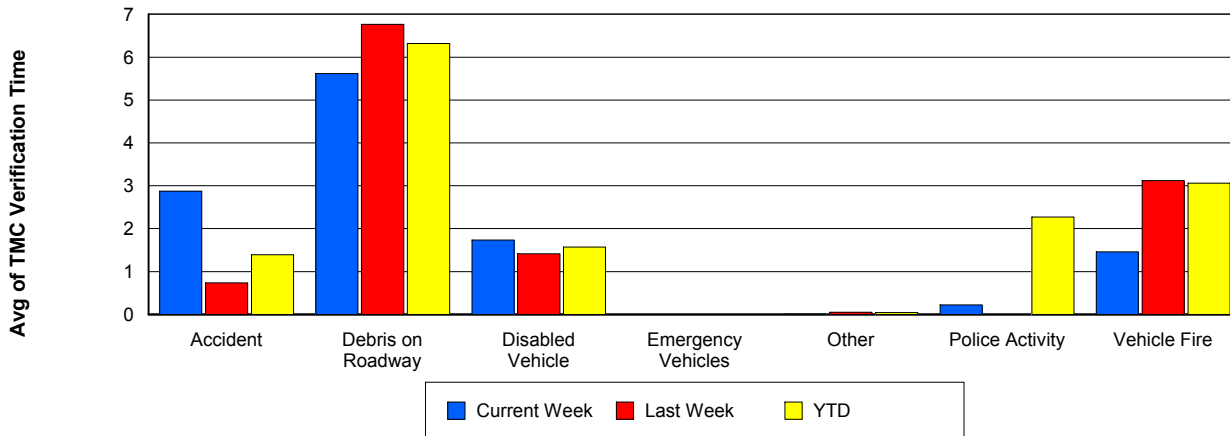
Number of Events / Event Type



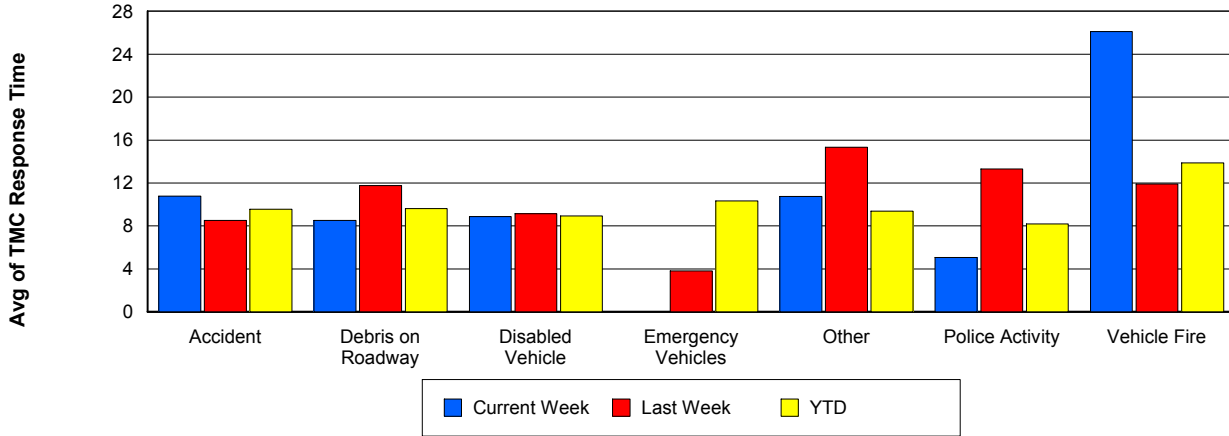
TMC Detection Time



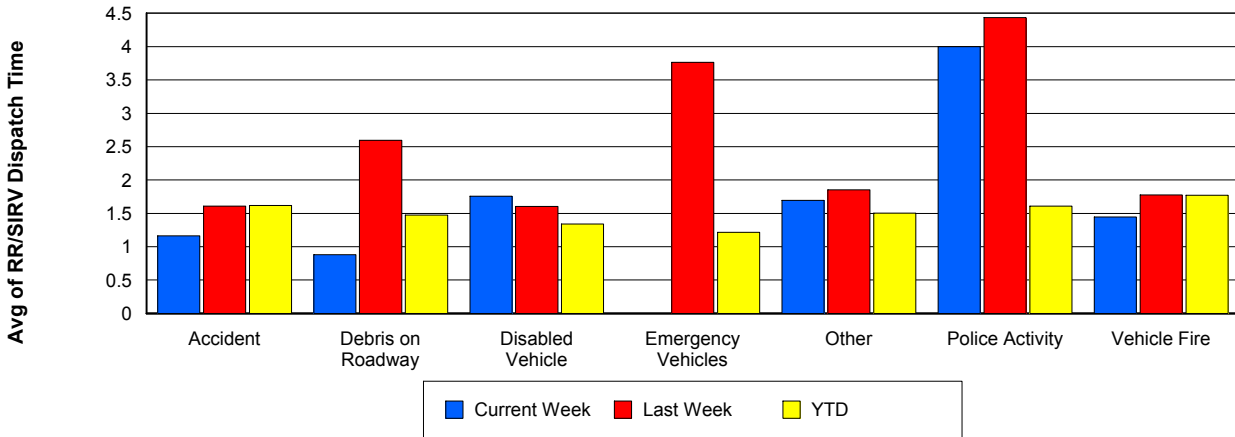
TMC Verification Time



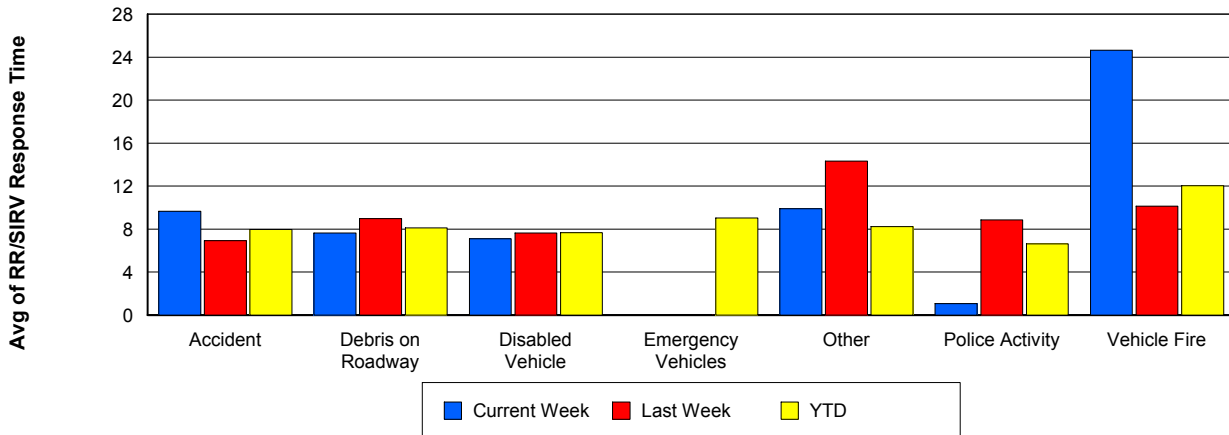
TMC Response Time



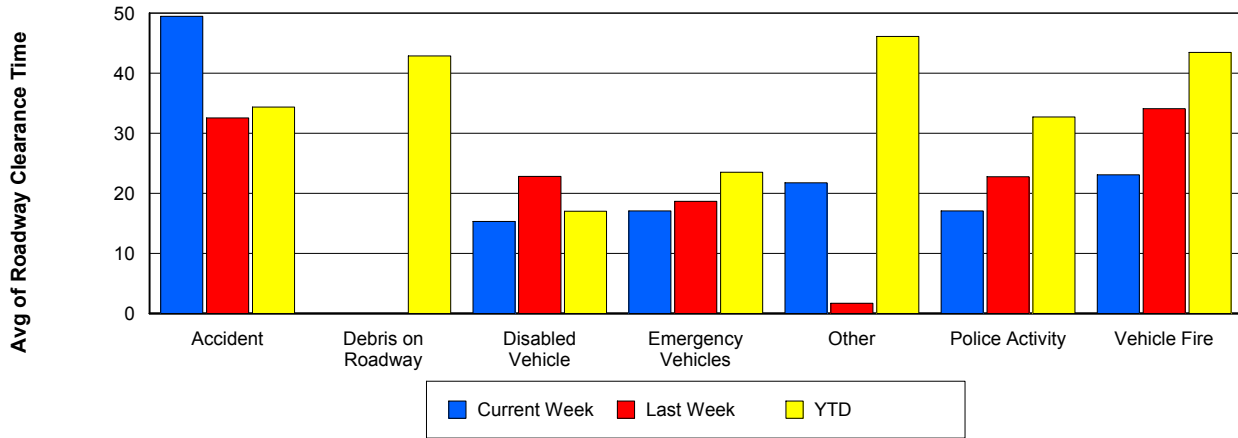
Road Ranger / SIRV Dispatch Time



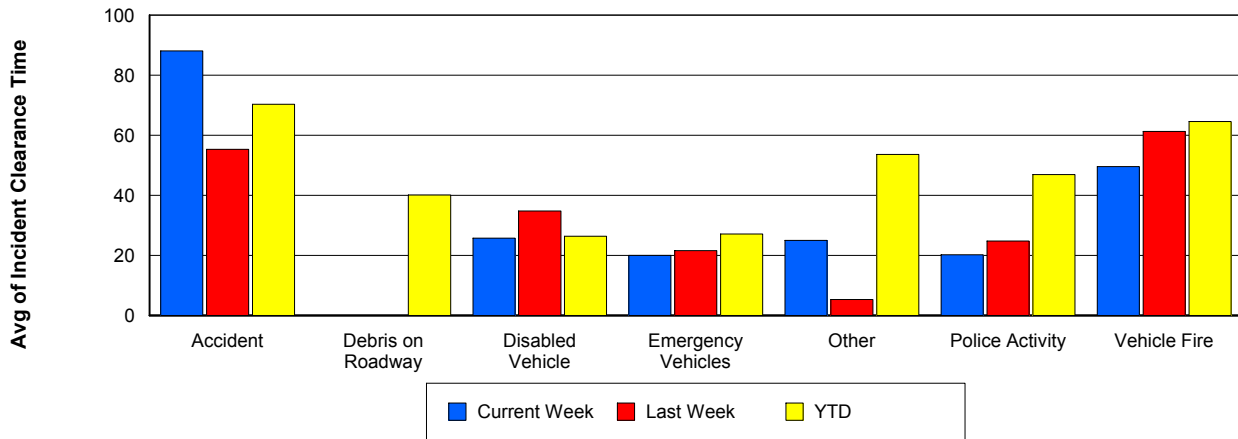
Road Ranger / SIRV Response Time



Roadway Clearance Time (2A)



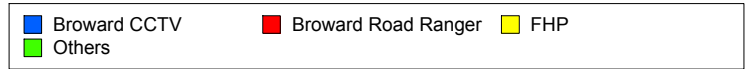
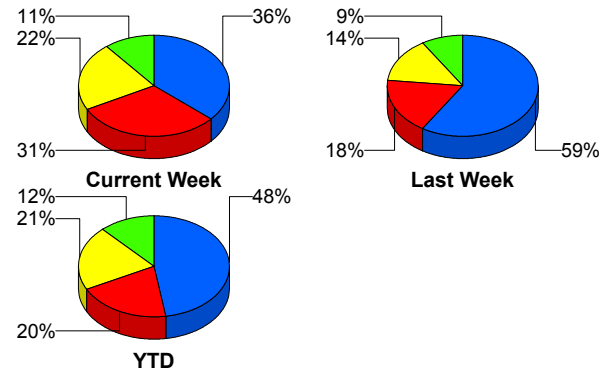
Incident Clearance Time (3B)



Incident Detection Methods

	Current Week	Last Week	YTD
Broward CCTV	20	33	283
Broward Road Ranger	17	10	119
Broward TMC	0	0	3
Broward VideoWall	0	1	16
BSO	2	1	12
County Police	0	0	1
District 4	2	2	14
FHP	12	8	122
Fire	0	0	1
Local Police	0	0	1
Media	1	0	1
Motorist	0	1	4
Other	1	0	1
Road Watcher	0	0	5
SIRV	0	0	1
VisioPaD Detection	0	0	11
Total	55	56	595

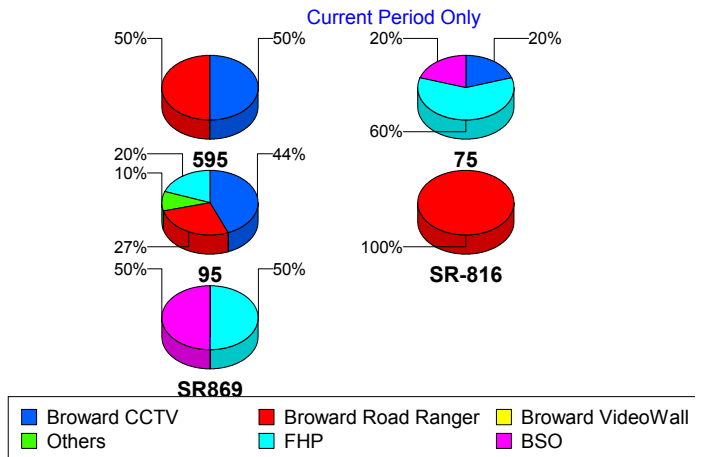
Total Incidents by Detection Method



Incident Detection Methods by Roadway

		Current Week	Last Week	YTD
595	Broward CCTV	1	2	7
	Broward Road Ranger	1	1	5
	BSO	0	0	3
	County Police	0	0	1
	FHP	0	0	5
	Total	2	3	21
75	Broward CCTV	1	2	20
	Broward Road Ranger	0	2	10
	BSO	1	1	5
	District 4	0	0	1
	FHP	3	1	14
	Fire	0	0	1
	Road Watcher	0	0	1
	VisioPaD Detection	0	0	6
	Total	5	6	58
95	Broward CCTV	18	29	256
	Broward Road Ranger	11	5	77
	Broward TMC	0	0	3
	Broward VideoWall	0	1	16
	BSO	0	0	2
	District 4	2	2	13
	FHP	8	7	102
	Local Police	0	0	1
	Media	1	0	1
	Motorist	0	1	4
	Other	1	0	1
	Road Watcher	0	0	3
	SIRV	0	0	1
	VisioPaD Detection	0	0	5
Total	41	45	485	
SR-816	Broward Road Ranger	5	2	26

Total Events by Roadway and Detection Method

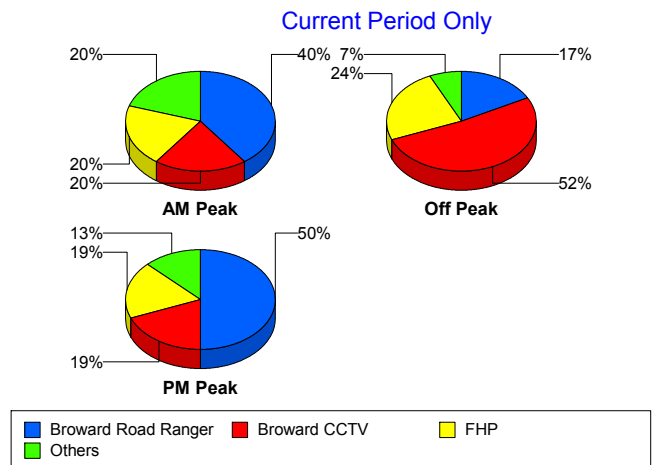


		Current Week	Last Week	YTD
SR-816	BSO	0	0	1
	Road Watcher	0	0	1
	Total	5	2	28
SR869	Broward Road Ranger	0	0	1
	BSO	1	0	1
	FHP	1	0	1
	Total	2	0	3
Total	55	56	595	

Incident Detection Methods by Peak Period

		Current Week	Last Week	YTD
AM Peak	Broward CCTV	2	11	44
	Broward Road Ranger	4	2	25
	Broward VideoWall	0	1	10
	BSO	1	0	2
	District 4	1	0	4
	FHP	2	0	18
	Local Police	0	0	1
	Road Watcher	0	0	1
	SIRV	0	0	1
	VisioPaD Detection	0	0	1
	Total	10	14	107
	Off Peak	Broward CCTV	15	17
Broward Road Ranger		5	5	49
Broward TMC		0	0	3
Broward VideoWall		0	0	5
BSO		0	1	6
County Police		0	0	1
District 4		1	2	8
FHP		7	5	65
Motorist		0	1	3
Other		1	0	1

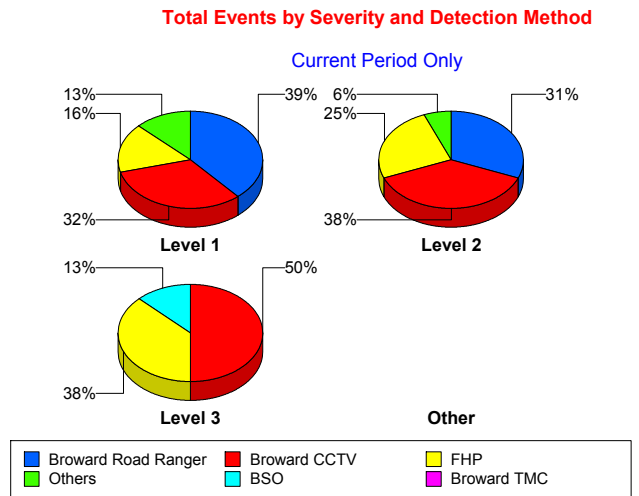
Total Events by Peak Period and Detection Method



		Current Week	Last Week	YTD
Off Peak	Road Watcher	0	0	3
	VisioPaD Detection	0	0	6
	Total	29	31	308
PM Peak	Broward CCTV	3	5	81
	Broward Road Ranger	8	3	45
	Broward VideoWall	0	0	1
	BSO	1	0	4
	District 4	0	0	2
	FHP	3	3	39
	Fire	0	0	1
	Media	1	0	1
	Motorist	0	0	1
	Road Watcher	0	0	1
	VisioPaD Detection	0	0	4
	Total	16	11	180
Total	55	56	595	

Incident Detection Methods by Severity

		Current Week	Last Week	YTD
Level 1	Broward CCTV	10	22	178
	Broward Road Ranger	12	7	83
	Broward TMC	0	0	2
	Broward VideoWall	0	1	10
	BSO	1	0	4
	District 4	1	1	8
	FHP	5	4	65
	Media	1	0	1
	Motorist	0	1	4
	Other	1	0	1
	Road Watcher	0	0	5
	VisioPaD Detection	0	0	6
	Total	31	36	367



		Current Week	Last Week	YTD
Level 2	Broward CCTV	6	10	84
	Broward Road Ranger	5	3	29
	Broward TMC	0	0	1
	Broward VideoWall	0	0	6
	BSO	0	0	1
	District 4	1	1	5
	FHP	4	3	40
	Fire	0	0	1
	Local Police	0	0	1
	SIRV	0	0	1
	VisioPaD Detection	0	0	4
	Total	16	17	173
Level 3	Broward CCTV	4	1	21
	Broward Road Ranger	0	0	7
	BSO	1	1	7
	County Police	0	0	1
	District 4	0	0	1
	FHP	3	1	17
	VisioPaD Detection	0	0	1
	Total	8	3	55
Total		55	56	595

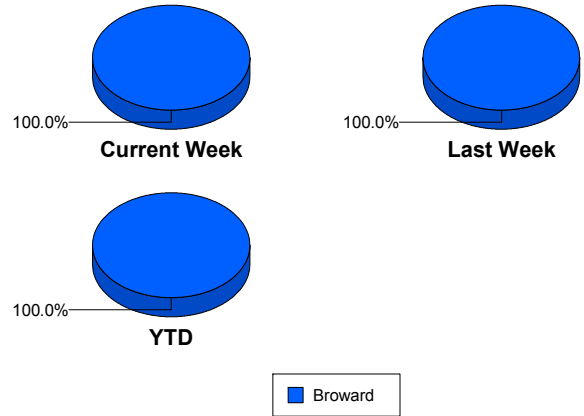
Road Ranger / SIRV Performance Measures

Road Ranger / SIRV Performance By County

RR/SIRV Responses per County

Values presented are:
 - Total Events with a RR/SIRV Response
 - Total RR/SIRV Responses,
 - Total Activities Performed

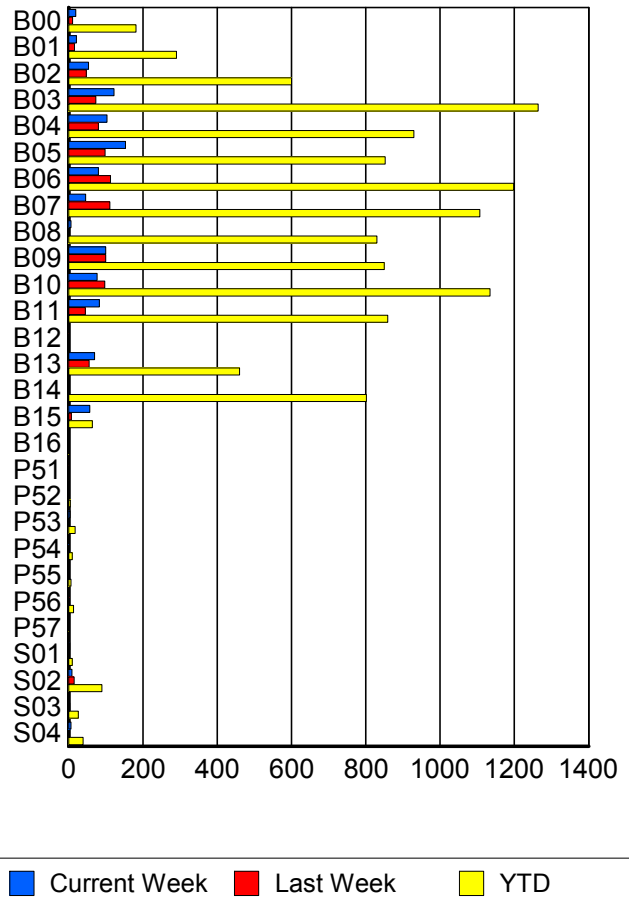
	Current We	Last Week	YTD
Broward	935	806	10,873
	1,018	878	11,642
	1,054	908	12,056



Road Ranger / SIRV Performance By Truck

	Current We	Last Week	YTD
B00	18	11	177
	19	11	181
	19	11	191
B01	21	15	283
	21	16	290
	21	16	293
B02	53	46	590
	54	48	600
	55	51	611
B03	119	72	1,254
	122	73	1,264
	129	73	1,319
B04	103	79	918
	103	80	929
	108	85	962
B05	153	96	845
	153	98	852
	161	101	883
B06	79	111	1,182
	80	113	1,198
	81	117	1,240
B07	46	110	1,089
	46	111	1,107
	47	117	1,152
B08	5	0	816
	6	0	830
	6	0	862

**RR/SIRV
Responses per
Truck**



	Current We	Last Week	YTD
B09	98 100 107	99 100 103	838 850 891
B10	74 77 78	96 97 101	1,120 1,134 1,166
B11	80 83 85	45 45 46	851 859 884
B12	0 0 0	1 1 1	2 2 2
B13	68 70 71	55 55 56	454 460 468
B14	0 0 0	0 0 0	791 802 833
B15	57 57 58	7 7 7	64 64 65
B16	0 0 0	0 0 0	1 1 1
P51	0 0 0	1 1 1	1 1 1
P52	2 2 2	0 0 0	5 5 5
P53	3 4 4	0 0 0	17 18 18
P54	1 1 1	0 0 0	10 10 10
P55	0 0 0	0 0 0	6 6 6
P56	0 0 0	2 2 2	13 13 15
P57	0 0 0	0 0 0	1 1 1

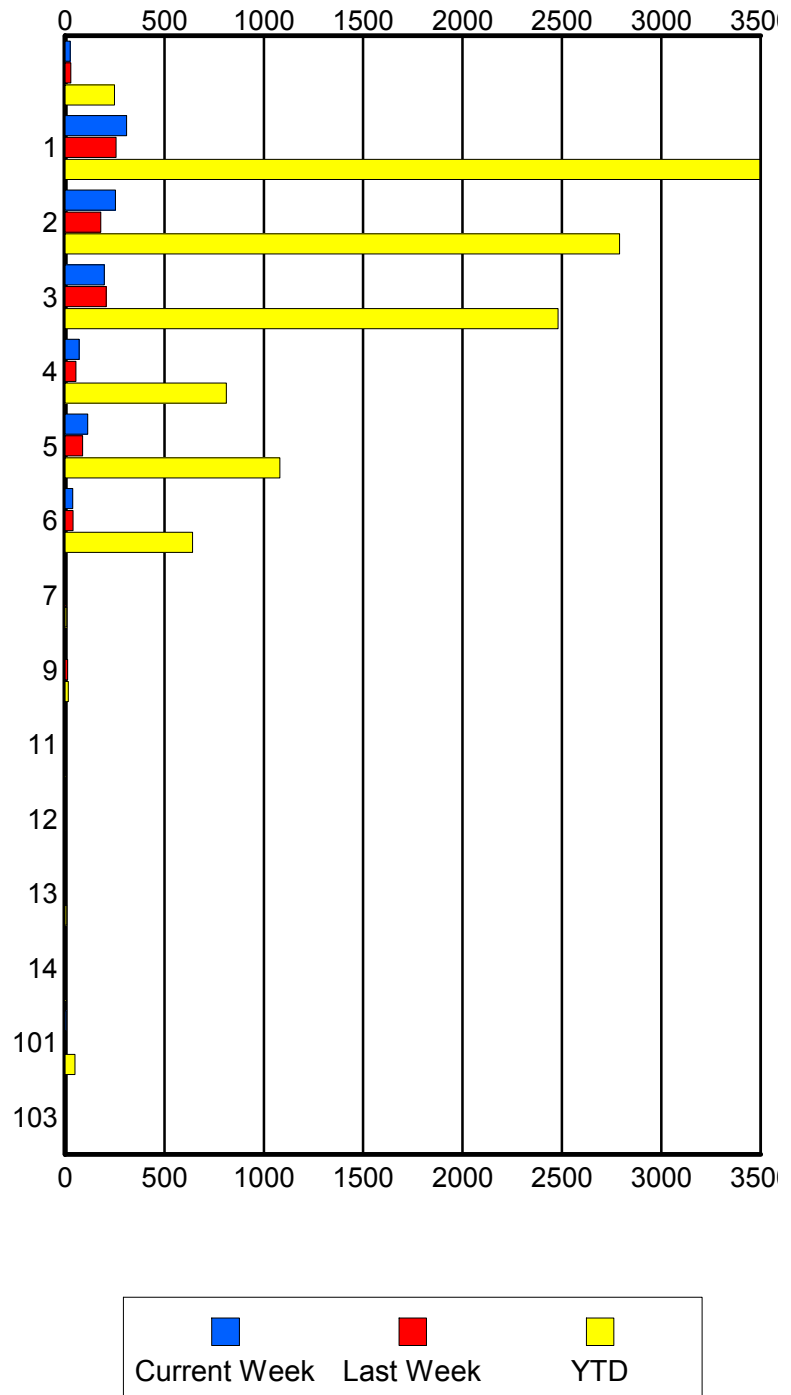
	Current We	Last Week	YTD
S01	3	2	10
	3	2	10
	3	2	11
S02	9	13	87
	9	15	90
	10	15	97
S03	2	3	23
	2	3	26
	2	3	27
S04	6	0	39
	6	0	39
	6	0	42

Road Ranger / SIRV Performance By Beat

	Current We	Last Week	YTD
	24	27	237
	26	29	248
	27	29	260
1	284	243	3,327
	310	257	3,496
	319	271	3,632
2	249	173	2,710
	254	180	2,790
	268	186	2,894
3	192	199	2,419
	197	207	2,480
	205	213	2,571
4	70	53	798
	71	54	812
	72	54	839
5	113	88	1,072
	114	89	1,081
	115	92	1,108
6	38	40	630
	39	41	642
	41	42	657
7	0	4	8
	0	5	9
	0	5	9
9	0	13	17
	0	13	17
	0	13	17
11	0	0	2
	0	0	2
	0	0	2
12	0	0	2
	0	0	2
	0	0	2
13	0	0	8
	0	0	8
	0	0	8
14	0	0	4
	0	0	4
	0	0	4
101	6	2	49
	7	2	50
	7	2	52
103	0	1	1
	0	1	1
	0	1	1

Values presented are:
 - Total Events with a RR/SIRV Response
 - Total RR/SIRV Responses,
 - Total Activities Performed

RR/SIRV Responses per Beat

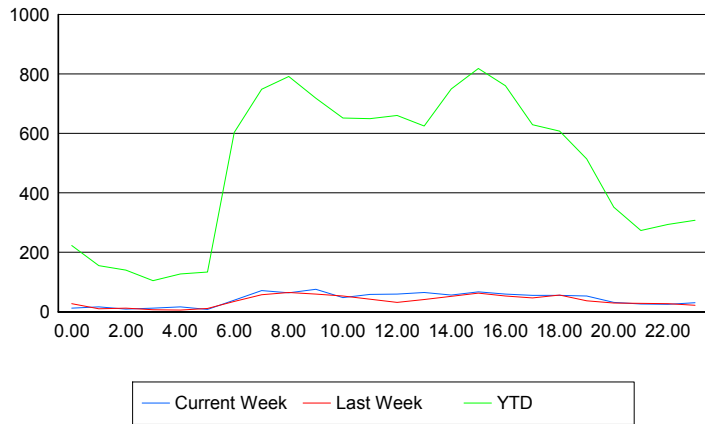


Road Ranger / SIRV Performance By Time of Day

Values presented are:
 - Total Events with a RR/SIRV Response
 - Total RR/SIRV Responses,
 - Total Activities Performed

	Current We	Last Week	YTD
12AM-1AM	12	25	212
	12	27	223
	12	27	230
1AM-2AM	17	9	148
	17	10	155
	18	10	161
2AM-3AM	9	11	131
	9	12	140
	9	13	146
3AM-4AM	12	7	99
	12	7	105
	13	8	117
4AM-5AM	11	5	113
	17	6	127
	17	7	134
5AM-6AM	7	10	110
	8	11	134
	8	11	138
6AM-7AM	34	30	566
	39	35	604
	40	35	618
7AM-8AM	60	56	704
	72	58	749
	75	59	778
8AM-9AM	61	55	736
	64	65	792
	64	67	813
9AM-10AM	72	54	679
	76	60	719
	79	63	742
10AM-11AM	46	50	615
	48	53	652
	49	55	679
11AM-12PM	59	40	614
	59	43	650
	63	43	671
12PM-1PM	54	30	612
	60	32	660
	63	34	681

Number of Responses / Hour of the Day



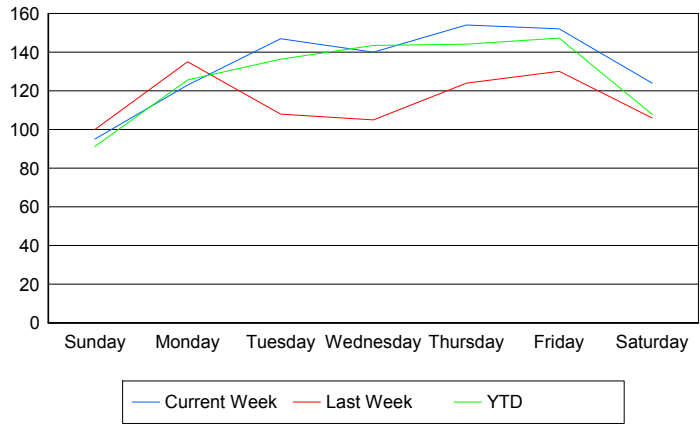
	Current We	Last Week	YTD
1PM-2PM	56	35	576
	65	42	625
	66	44	643
2PM-3PM	54	40	683
	56	52	750
	56	56	785
3PM-4PM	63	60	769
	67	63	818
	68	65	839
4PM-5PM	54	51	700
	60	53	760
	61	53	786
5PM-6PM	51	45	588
	55	47	629
	58	47	647
6PM-7PM	49	55	574
	55	57	608
	56	58	626
7PM-8PM	50	35	490
	53	37	514
	55	37	529
8PM-9PM	28	27	324
	32	30	352
	34	32	362
9PM-10PM	25	28	259
	26	29	274
	28	29	287
10PM-11PM	24	26	278
	25	27	294
	25	32	313
11PM-12AM	27	22	293
	31	22	308
	37	23	331

Road Ranger / SIRV Performance By Day of Week

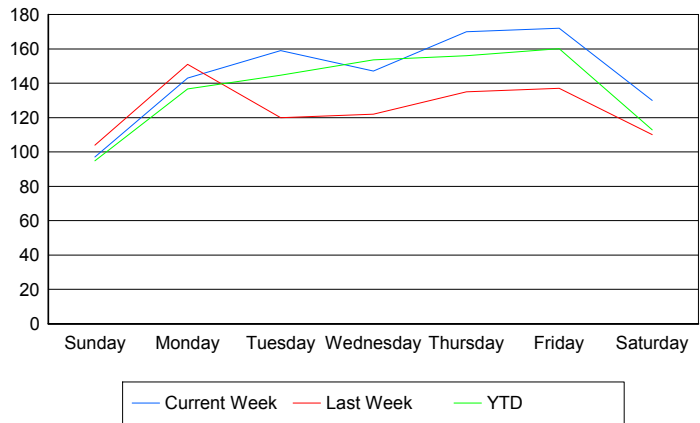
Values presented are:
 - Total Events with a RR/SIRV Response
 - Total RR/SIRV Responses,
 - Total Activities Performed

	Current We	Last Week	YTD
Sunday	95	99	1,073
	97	103	1,116
	100	107	1,160
Monday	123	135	1,499
	143	151	1,629
	149	155	1,675
Tuesday	147	108	1,624
	159	120	1,725
	165	121	1,772
Wednesday	140	105	1,704
	147	122	1,825
	152	127	1,887
Thursday	154	124	1,722
	170	135	1,863
	174	140	1,932
Friday	152	130	1,877
	172	137	2,037
	176	144	2,108
Saturday	124	106	1,383
	130	110	1,447
	138	114	1,522

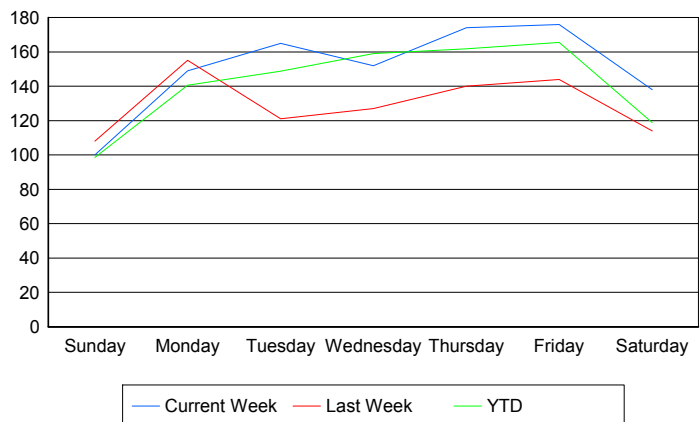
Avg # of events with a RR/SIRV Response per Day of the Week



Avg # of RR/SIRV Responses per Day of the Week



Avg # of RR/SIRV Activities Performed per Day of the Week



Road Ranger / SIRV Responses per Time of Day and Day of Week

