



# Weekly Performance Measures Report Broward County



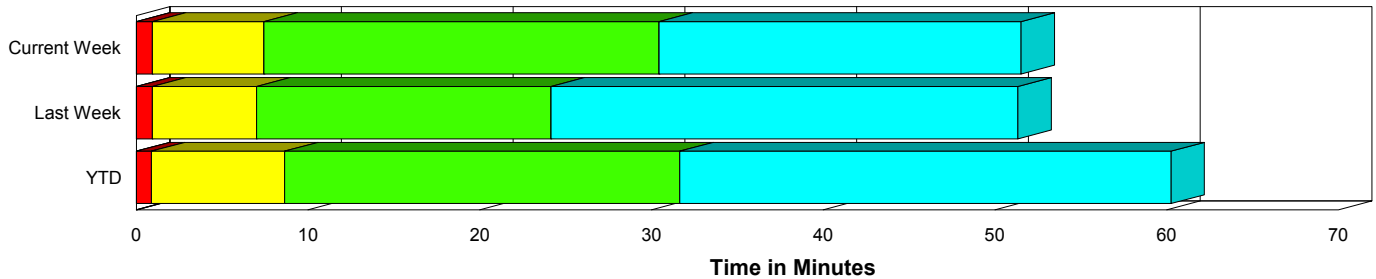
Created on:  
March 22, 2010  
8:45 am

Period From Mar 14, 2010 to Mar 20, 2010

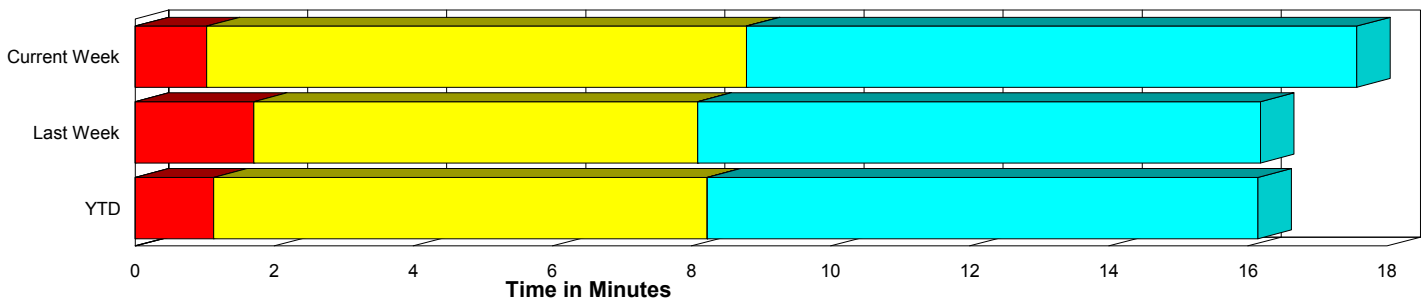
## Performance Measures Summary

	Traffic Events (No Lanes Blocked)			Incidents (Lanes Blocked)		
	<u>This Week</u>	<u>Last Week</u>	<u>YTD</u>	<u>This Week</u>	<u>Last Week</u>	<u>YTD</u>
Number of Events	1,117	1,272	13,851	60	51	553
TMC Detection (min.)	0.00	0.00	0.00	0.00	0.00	0.00
TMC Verification (min.)	1.03	1.71	1.13	0.94	0.95	0.88
TMC Response (min.)	9.60	9.33	9.07	7.47	7.02	8.69
RR Dispatch Time (min.)	1.71	1.35	1.37	1.29	1.22	1.68
RR Response Time (min.)	8.06	8.05	7.81	6.17	5.80	7.03
Roadway Clearance (min.)				30.27	23.75	30.84
Event Clearance (min.)	18.37	17.42	16.99	50.93	50.92	59.10
# of Events w/ RR/SIRV	876	1,022	11,043	59	50	540
RR/SIRV Responses	876	1,022	11,043	59	50	540
RR/SIRV Activities	656	772	8,259	116	88	1,017

### Incident Clearance Time-Line



### Traffic Event (Non-Lane Blockage) Time-Line



<span style="color: blue;">■</span> Avg. TMC Detection Time	<span style="color: green;">■</span> Avg. Time from TMC Response to Roadway Clearance*
<span style="color: red;">■</span> Avg. Time from TMC Detection to TMC Verification	<span style="color: cyan;">■</span> Avg. Time from Roadway Clearance to Incident/Event Clearance**
<span style="color: yellow;">■</span> Avg. Time from TMC Verification to TMC Response	

\* Roadway clearance equals all travel lanes open

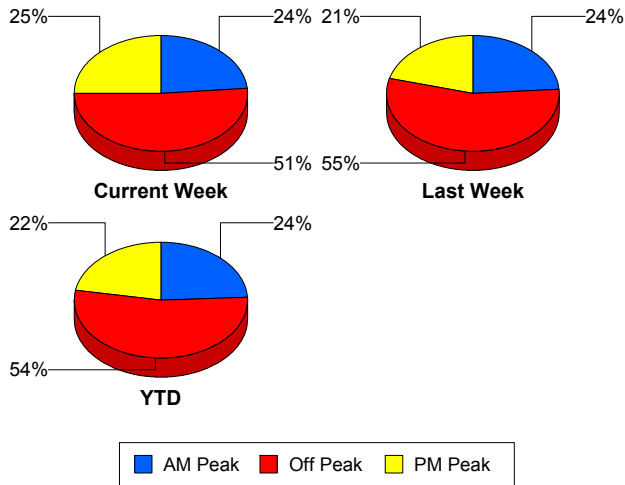
\*\* Incident clearance equals time when last responder has left the scene

## Performance Measures by Peak Period

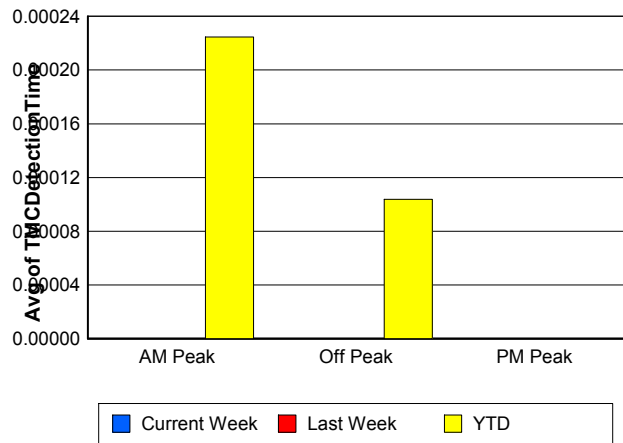
Note: AM peak period is defined as 6am to 10am and PM peak period is defined as 3pm to 7pm.

	AM Peak			Off Peak			PM Peak		
	<u>Current Week</u>	<u>Last Week</u>	<u>YTD</u>	<u>Current Week</u>	<u>Last Week</u>	<u>YTD</u>	<u>Current Week</u>	<u>Last Week</u>	<u>YTD</u>
Number of Events	278	316	3,489	604	731	7,712	295	276	3,203
Number of Incidents	14	14	98	33	23	289	13	14	166
TMC Detection (min.)	0.00	0.00	0.00	0.00	0.00	0.00	0.00	0.00	0.00
TMC Verification (min.)	0.40	1.26	0.69	1.25	1.81	1.18	1.14	1.80	1.44
TMC Response (min.)	9.12	9.33	8.54	10.18	9.37	9.35	8.29	8.61	8.92
RR Dispatch Time (min.)	1.50	0.97	1.04	1.97	1.41	1.46	1.31	1.63	1.58
RR Response Time (min.)	7.46	8.42	7.56	8.43	8.10	8.00	7.31	6.92	7.45
Event Clearance (min.)	17.88	18.32	16.62	20.76	18.41	18.75	20.58	19.96	20.42
Roadway Clearance (min.)	28.48	22.23	29.06	32.72	25.65	35.06	25.98	22.13	24.55
Incident Clearance (min.)	42.57	50.58	53.23	57.33	55.15	63.13	43.70	44.31	55.55
# of Events w/ RR/SIRV	226	261	2,907	465	585	6,033	244	226	2,643
RR/SIRV Responses	226	261	2,907	465	585	6,033	244	226	2,643
RR/SIRV Activities	194	202	2,251	387	455	4,775	191	203	2,250

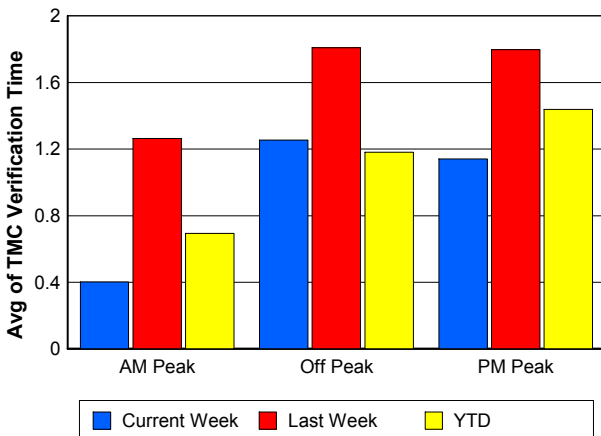
### Number of Events / Peak Period



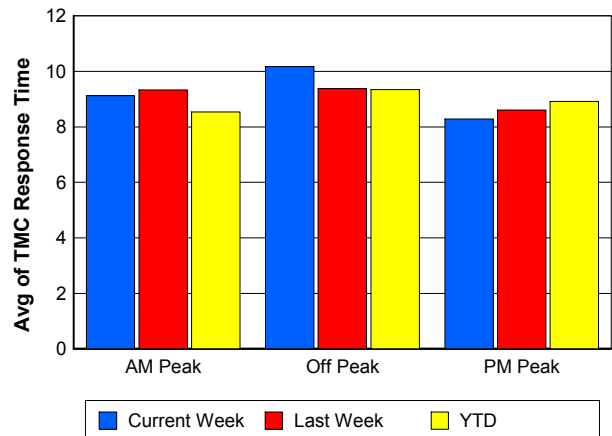
### TMC Detection Time



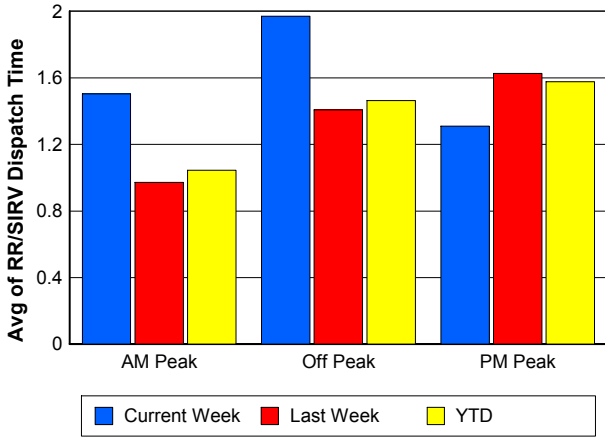
### TMC Verification Time



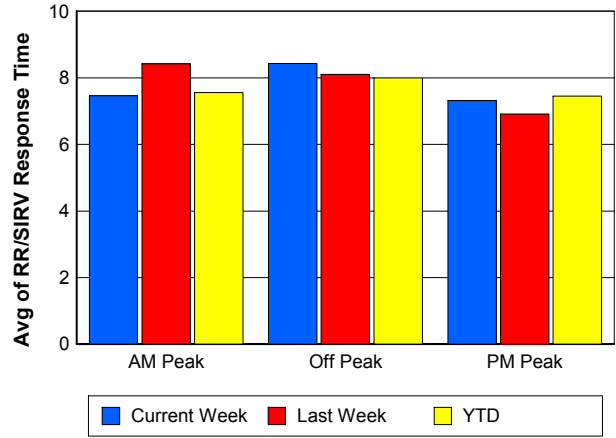
### TMC Response Time



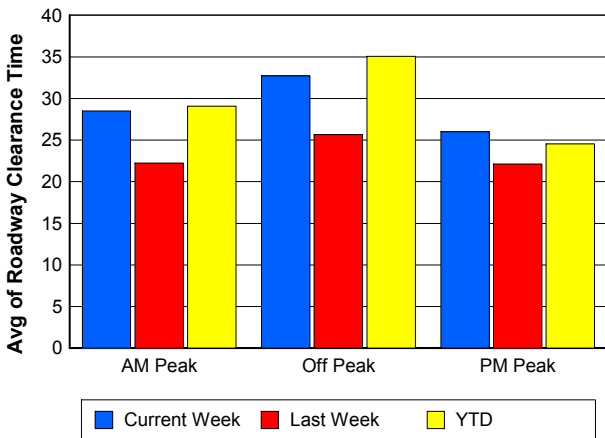
## Road Ranger / SIRV Dispatch Time



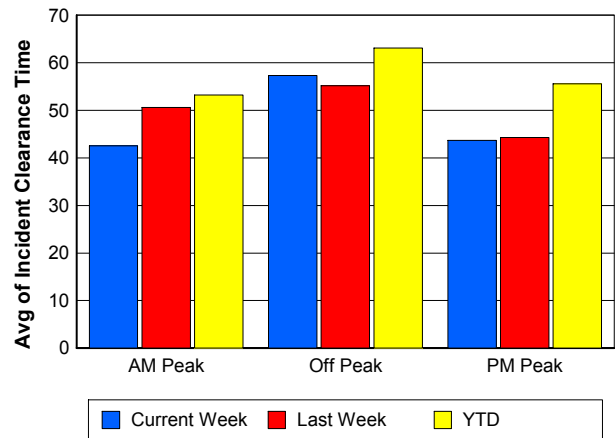
## Road Ranger / SIRV Response Time



## Roadway Clearance Time (2A)



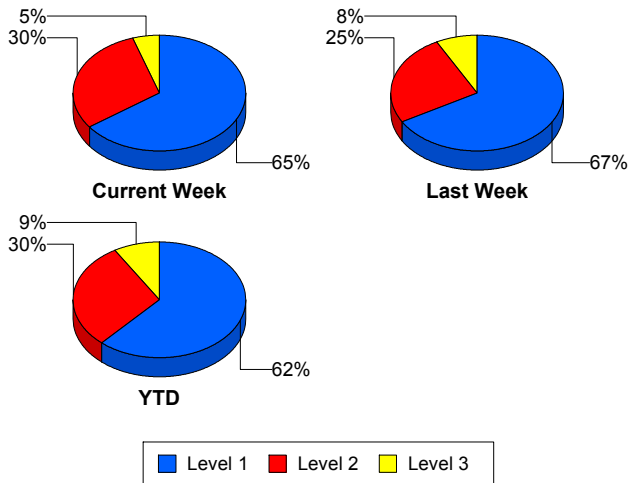
## Incident Clearance Time (3B)



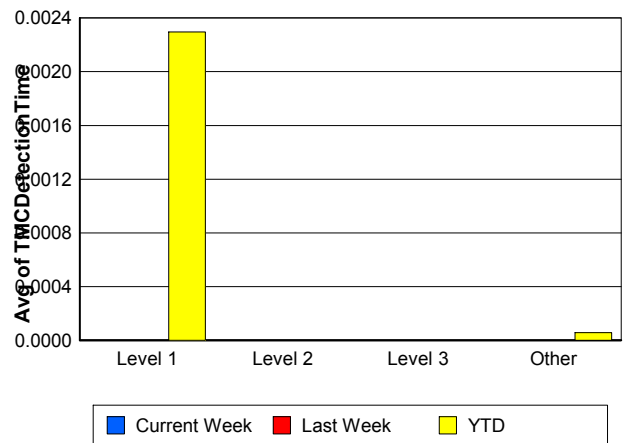
## Performance Measures by Severity

	Level 1			Level 2			Level 3			Other		
	<u>This Week</u>	<u>Last Week</u>	<u>YTD</u>	<u>This Week</u>	<u>Last Week</u>	<u>YTD</u>	<u>This Week</u>	<u>Last Week</u>	<u>YTD</u>	<u>This Week</u>	<u>Last Week</u>	<u>YTD</u>
Number of Events	39	34	341	18	13	164	3	4	48	1,117	1,272	13,851
Number of Incidents	39	34	341	18	13	164	3	4	48	0	0	0
TMC Detection (min.)	0.00	0.00	0.00	0.00	0.00	0.00	0.00	0.00	0.00	0.00	0.00	0.00
TMC Verification (min.)	0.64	1.01	0.55	1.24	0.75	1.39	3.01	1.01	1.47	1.03	1.71	1.13
TMC Response (min.)	6.64	6.79	7.42	8.93	7.30	10.80	9.62	8.08	10.13	9.60	9.33	9.07
RR Dispatch Time (min.)	1.04	1.11	1.44	1.79	1.57	2.18	1.77	0.98	1.62	1.71	1.35	1.37
RR Resp. Time (min.)	5.61	5.68	6.01	7.15	5.72	8.61	7.85	7.10	8.51	8.06	8.05	7.81
Event Clearance (min.)	40.61	37.81	46.20	59.84	79.42	75.46	131.64	69.74	94.86	18.37	17.42	16.99
Roadway Clear. (min.)	16.03	11.98	14.63	45.76	46.82	50.31	122.49	48.81	79.51			
Incident Clearance (min.)	40.61	37.81	46.20	59.84	79.42	75.46	131.64	69.74	94.86			
# of Events w/ RR/SIRV	39	33	333	17	13	161	3	4	46	876	1,022	11,043
RR/SIRV Responses	39	33	333	17	13	161	3	4	46	876	1,022	11,043
RR/SIRV Activities	67	50	525	36	29	360	13	9	132	656	772	8,259

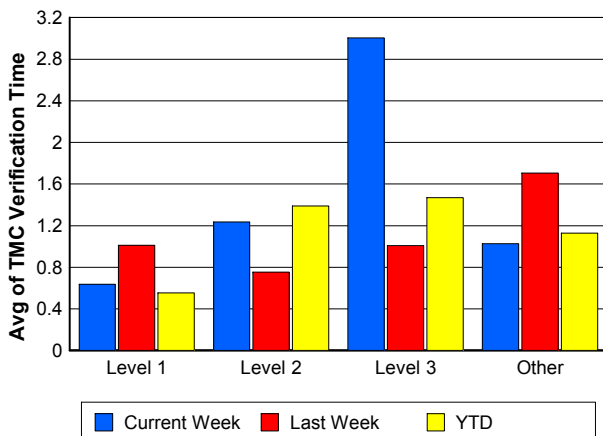
### Number of Events / Severity



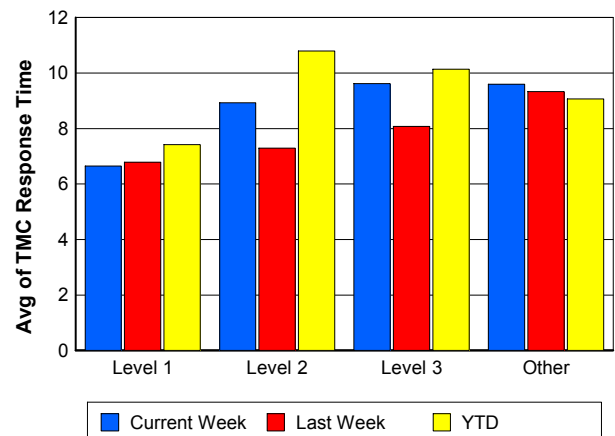
### TMC Detection Time



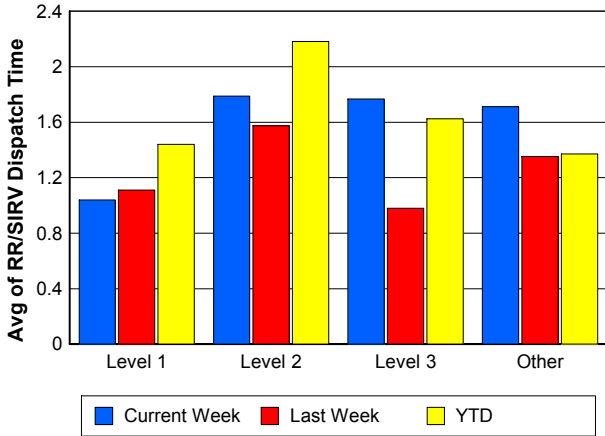
### TMC Verification Time



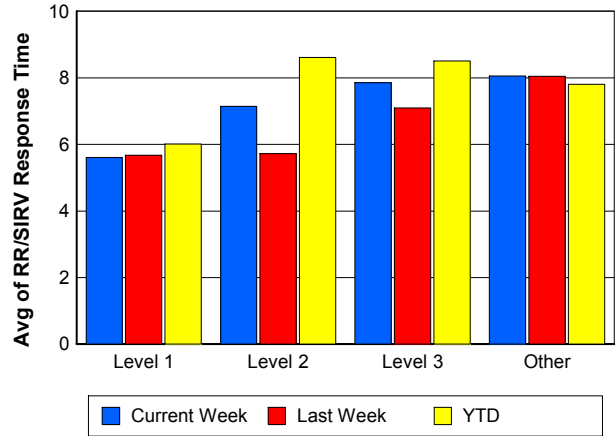
### TMC Response Time



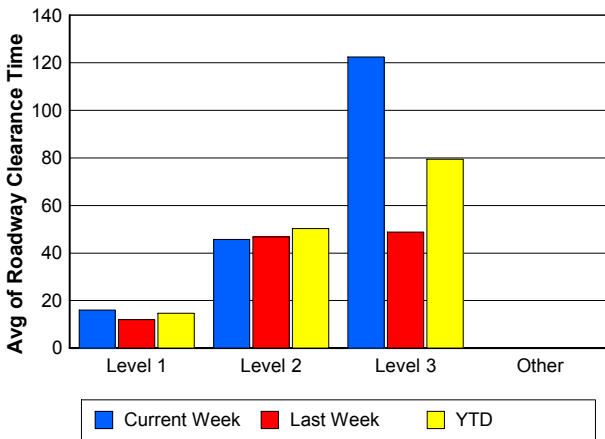
## Road Ranger / SIRV Dispatch Time



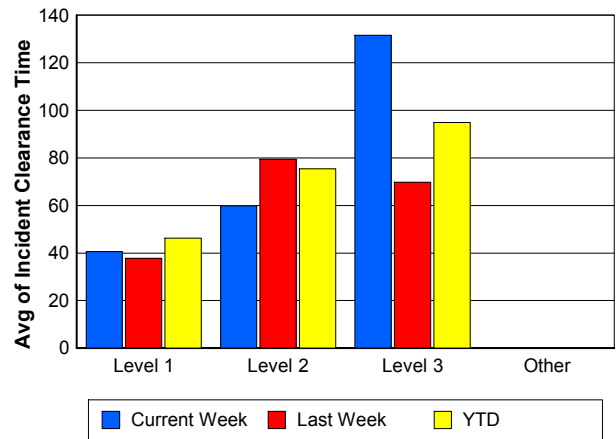
## Road Ranger / SIRV Response Time



## Roadway Clearance Time (2A)



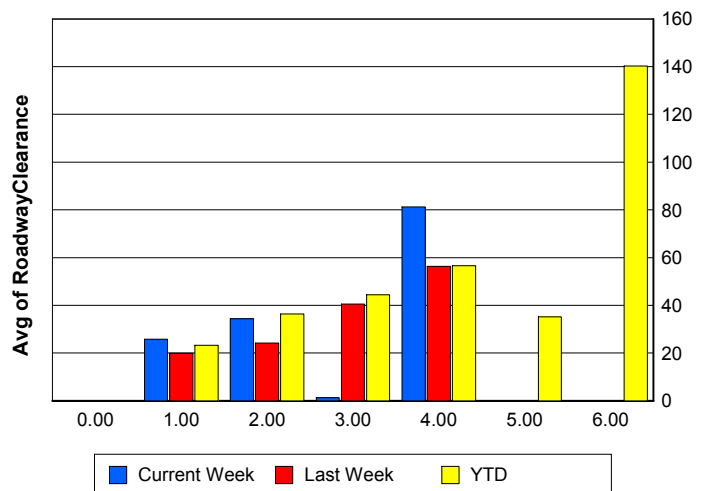
## Incident Clearance Time (3B)



## Roadway Clearance by Maximum Number of Lanes Blocked

	Current Week	Last Week	YTD
0			
1	25.75	19.94	23.27
2	34.37	24.16	36.39
3	1.35	40.51	44.38
4	81.29	56.28	56.54
5	0.00	0.00	35.22
6	0.00	0.00	140.28

## Roadway Clearance Time (2A)



## Performance Measures by Roadway

**595**

	<u>Current Week</u>	<u>Last Week</u>	<u>YTD</u>
Number of Events	42	46	521
Number of Incidents	7	2	30
TMC Detection (min.)	0.00	0.00	0.00
TMC Verification (min.)	0.77	0.22	1.70
TMC Response (min.)	19.95	9.82	14.59
RR Dispatch Time (min.)	1.72	1.16	2.17
RR Resp. Time (min.)	18.09	8.94	12.41
Event Clearance (min.)	28.59	19.13	20.42
Roadway Clear. (min.)	32.42	31.75	48.34
Incident Clearance (min.)	53.72	86.45	69.16
# of Events w/ RR/SIRV	33	34	370
RR/SIRV Responses	33	34	370
RR/SIRV Activities	29	20	271

**75**

	<u>Current Week</u>	<u>Last Week</u>	<u>YTD</u>
Number of Events	238	302	3,209
Number of Incidents	6	4	53
TMC Detection (min.)	0.00	0.00	0.00
TMC Verification (min.)	2.48	2.77	1.83
TMC Response (min.)	10.27	12.04	10.05
RR Dispatch Time (min.)	1.87	1.86	1.54
RR Resp. Time (min.)	8.57	10.29	8.66
Event Clearance (min.)	21.47	18.95	18.91
Roadway Clear. (min.)	50.31	39.78	40.11
Incident Clearance (min.)	68.51	70.92	76.61
# of Events w/ RR/SIRV	190	237	2,472
RR/SIRV Responses	190	237	2,472
RR/SIRV Activities	162	185	1,992

**95**

	<u>Current Week</u>	<u>Last Week</u>	<u>YTD</u>
Number of Events	879	954	10,501
Number of Incidents	45	42	445
TMC Detection (min.)	0.00	0.00	0.00
TMC Verification (min.)	0.66	1.41	0.87
TMC Response (min.)	8.83	8.30	8.57
RR Dispatch Time (min.)	1.65	1.20	1.31
RR Resp. Time (min.)	7.35	7.16	7.34
Event Clearance (min.)	19.48	18.65	18.45
Roadway Clear. (min.)	27.66	21.67	29.02
Incident Clearance (min.)	49.47	49.04	58.38
# of Events w/ RR/SIRV	699	786	8,602
RR/SIRV Responses	699	786	8,602
RR/SIRV Activities	571	636	6,879

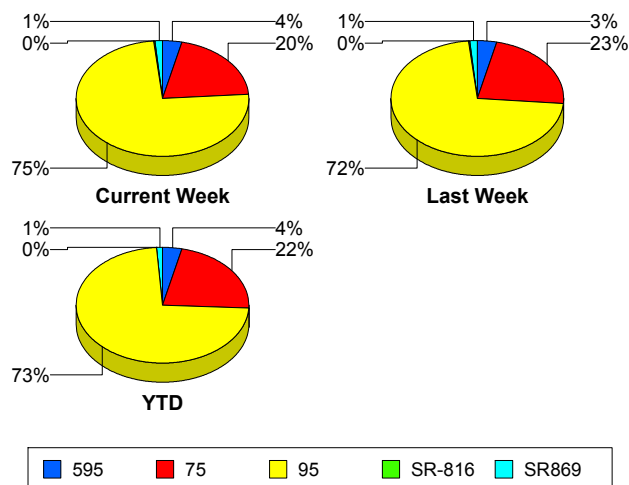
## SR-816

	<u>Current Week</u>	<u>Last Week</u>	<u>YTD</u>
Number of Events	3	2	32
Number of Incidents	2	2	23
TMC Detection (min.)	0.00	0.00	0.00
TMC Verification (min.)	0.00	5.66	0.39
TMC Response (min.)	0.00	5.64	1.12
RR Dispatch Time (min.)	0.00	0.25	0.09
RR Resp. Time (min.)	0.00	5.39	1.03
Event Clearance (min.)	14.81	13.32	16.91
Roadway Clear. (min.)	21.46	13.35	18.95
Incident Clearance (min.)	21.27	13.32	18.27
# of Events w/ RR/SIRV	3	2	31
RR/SIRV Responses	3	2	31
RR/SIRV Activities	3	3	35

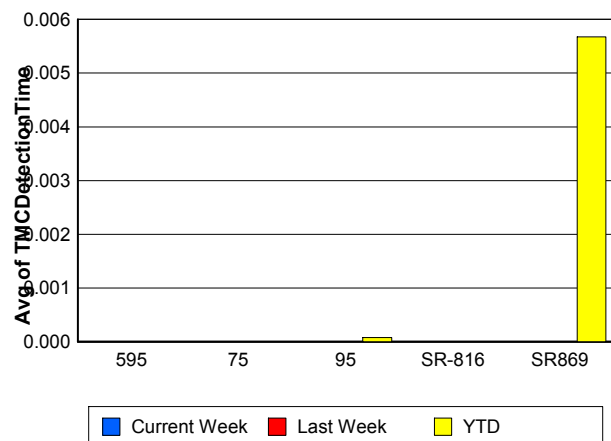
## SR869

	<u>Current Week</u>	<u>Last Week</u>	<u>YTD</u>
Number of Events	15	19	141
Number of Incidents	0	1	2
TMC Detection (min.)	0.00	0.00	0.01
TMC Verification (min.)	0.00	0.57	1.57
TMC Response (min.)	6.18	9.73	9.74
RR Dispatch Time (min.)	1.04	1.82	1.01
RR Resp. Time (min.)	5.69	7.80	8.93
Event Clearance (min.)	6.68	17.49	16.46
Roadway Clear. (min.)		51.38	64.63
Incident Clearance (min.)		53.88	74.51
# of Events w/ RR/SIRV	10	13	108
RR/SIRV Responses	10	13	108
RR/SIRV Activities	7	16	99

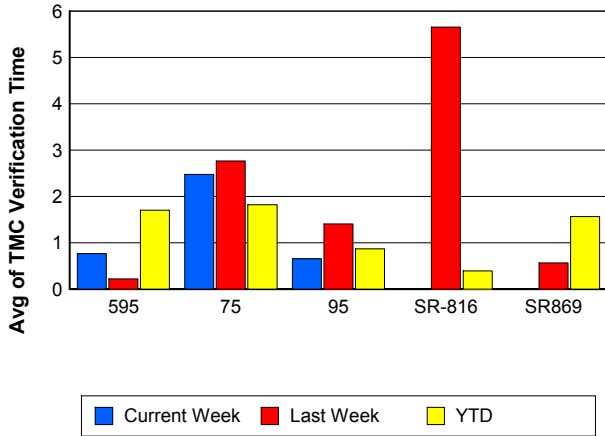
### Number of Events / Roadway



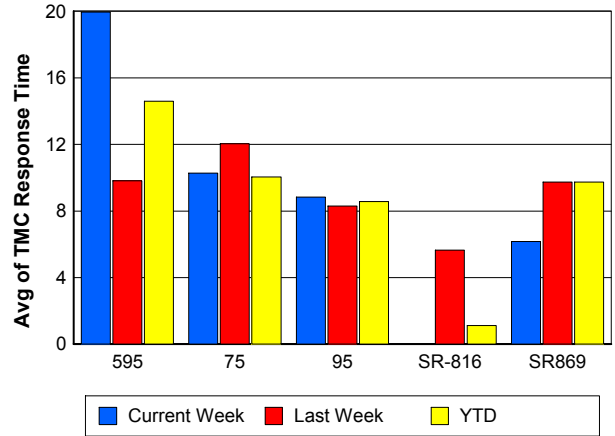
### TMC Detection Time



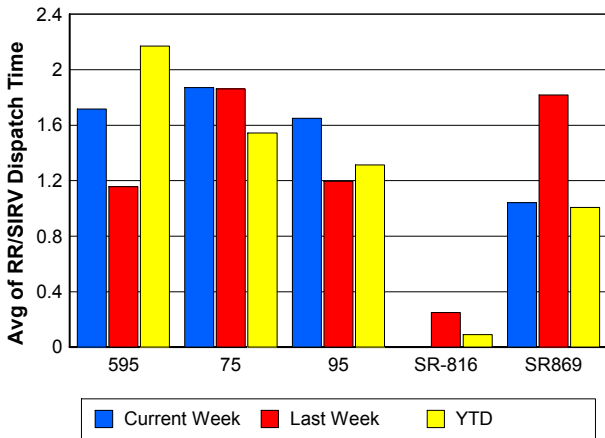
### TMC Verification Time



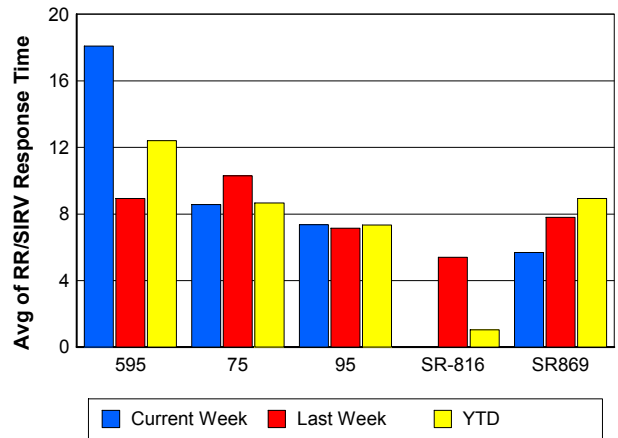
### TMC Response Time



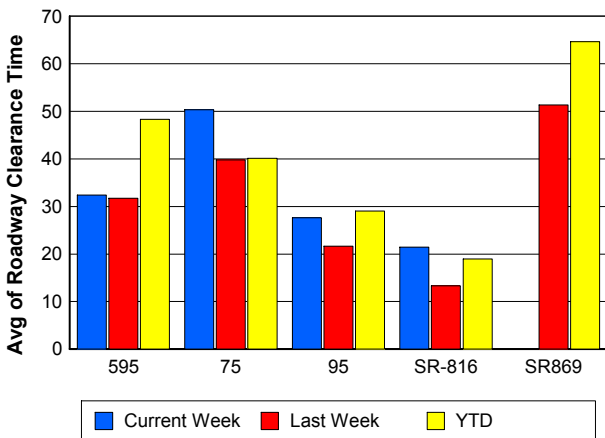
### Road Ranger / SIRV Dispatch Time



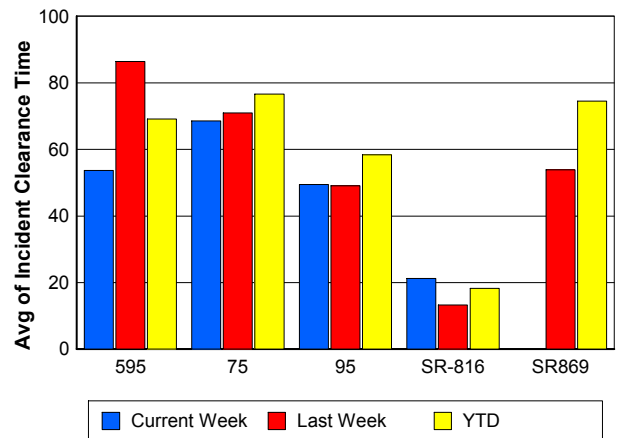
### Road Ranger / SIRV Response Time



### Roadway Clearance Time (2A)



### Incident Clearance Time (3B)



## Performance Measures by Event Type

### Accident

	<u>Current Week</u>	<u>Last Week</u>	<u>YTD</u>
Number of Events	79	87	852
Number of Incidents	46	43	394
TMC Detection (min.)	0.00	0.00	0.00
TMC Verification (min.)	0.73	0.76	1.25
TMC Response (min.)	8.52	8.59	9.45
RR Dispatch Time (min.)	1.61	1.16	1.66
RR Response Time (min.)	6.91	7.46	7.80
Event Clearance (min.)	49.12	45.46	54.67
Roadway Clearance (min.)	32.57	24.47	32.78
Incident Clearance (min.)	55.32	54.56	68.48
# of Events w/ RR/SIRV	78	86	844
RR/SIRV Assists	78	86	844
RR/SIRV Activities	138	129	1,288

### Debris on Roadway

	<u>Current Week</u>	<u>Last Week</u>	<u>YTD</u>
Number of Events	29	35	422
Number of Incidents	0	0	8
TMC Detection (min.)	0.00	0.00	0.00
TMC Verification (min.)	6.76	4.80	6.39
TMC Response (min.)	11.75	7.31	9.74
RR Dispatch Time (min.)	2.59	1.13	1.54
RR Response Time (min.)	8.99	6.19	8.16
Event Clearance (min.)	13.88	9.77	12.90
Roadway Clearance (min.)			42.89
Incident Clearance (min.)			40.06
# of Events w/ RR/SIRV	25	34	399
RR/SIRV Assists	25	34	399
RR/SIRV Activities	24	33	399

### Disabled Vehicle

	<u>Current Week</u>	<u>Last Week</u>	<u>YTD</u>
Number of Events	628	697	7,642
Number of Incidents	6	5	98
TMC Detection (min.)	0.00	0.00	0.00
TMC Verification (min.)	1.41	2.72	1.55
TMC Response (min.)	9.14	9.38	8.93
RR Dispatch Time (min.)	1.61	1.47	1.30
RR Response Time (min.)	7.65	8.03	7.71
Event Clearance (min.)	22.81	21.98	21.13
Roadway Clearance (min.)	22.82	25.02	17.18
Incident Clearance (min.)	34.81	27.45	26.47
# of Events w/ RR/SIRV	591	676	7,368
RR/SIRV Assists	591	676	7,368
RR/SIRV Activities	560	656	7,084

## Emergency Vehicles

	<u>Current Week</u>	<u>Last Week</u>	<u>YTD</u>
Number of Events	1	1	14
Number of Incidents	1	1	12
TMC Detection (min.)	0.00	0.00	0.00
TMC Verification (min.)	0.00	0.00	0.00
TMC Response (min.)	3.82	5.83	11.49
RR Dispatch Time (min.)	3.77	1.15	1.32
RR Response Time (min.)	0.05	4.68	10.06
Event Clearance (min.)	21.55	28.65	29.86
Roadway Clearance (min.)	18.68	23.73	24.03
Incident Clearance (min.)	21.55	28.65	27.67
# of Events w/ RR/SIRV	1	1	11
RR/SIRV Assists	1	1	11
RR/SIRV Activities	1	1	10

## Other

	<u>Current Week</u>	<u>Last Week</u>	<u>YTD</u>
Number of Events	424	493	5,376
Number of Incidents	2	1	13
TMC Detection (min.)	0.00	0.00	0.00
TMC Verification (min.)	0.05	0.07	0.05
TMC Response (min.)	15.32	7.55	9.27
RR Dispatch Time (min.)	1.85	1.13	1.49
RR Response Time (min.)	14.33	6.84	8.11
Event Clearance (min.)	10.52	9.76	9.49
Roadway Clearance (min.)	1.72	2.58	48.02
Incident Clearance (min.)	5.32	3.27	55.85
# of Events w/ RR/SIRV	224	266	2,872
RR/SIRV Assists	224	266	2,872
RR/SIRV Activities	28	34	389

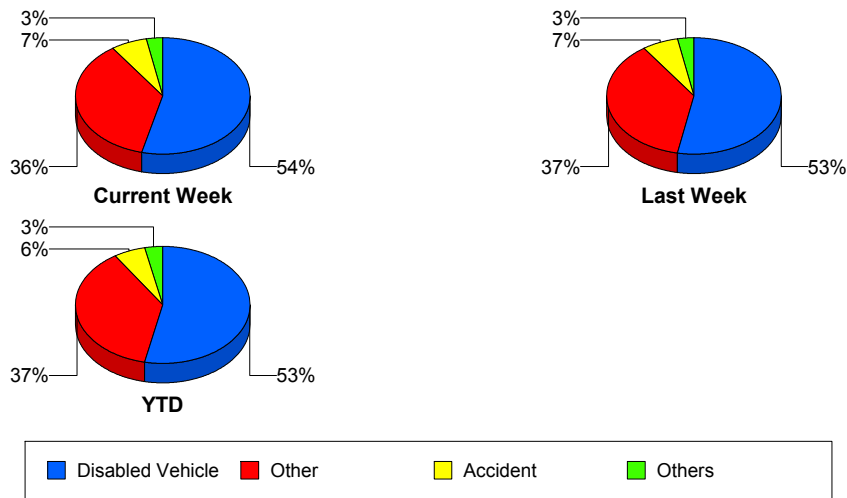
## Police Activity

	<u>Current Week</u>	<u>Last Week</u>	<u>YTD</u>
Number of Events	1	3	19
Number of Incidents	1	1	10
TMC Detection (min.)	0.00	0.00	0.00
TMC Verification (min.)	0.00	1.08	2.48
TMC Response (min.)	13.30	1.66	8.78
RR Dispatch Time (min.)	4.43	0.24	1.27
RR Response Time (min.)	8.87	1.42	7.63
Event Clearance (min.)	24.82	49.44	40.38
Roadway Clearance (min.)	22.78	7.22	35.88
Incident Clearance (min.)	24.82	81.63	52.28
# of Events w/ RR/SIRV	1	2	14
RR/SIRV Assists	1	2	14
RR/SIRV Activities	2	2	16

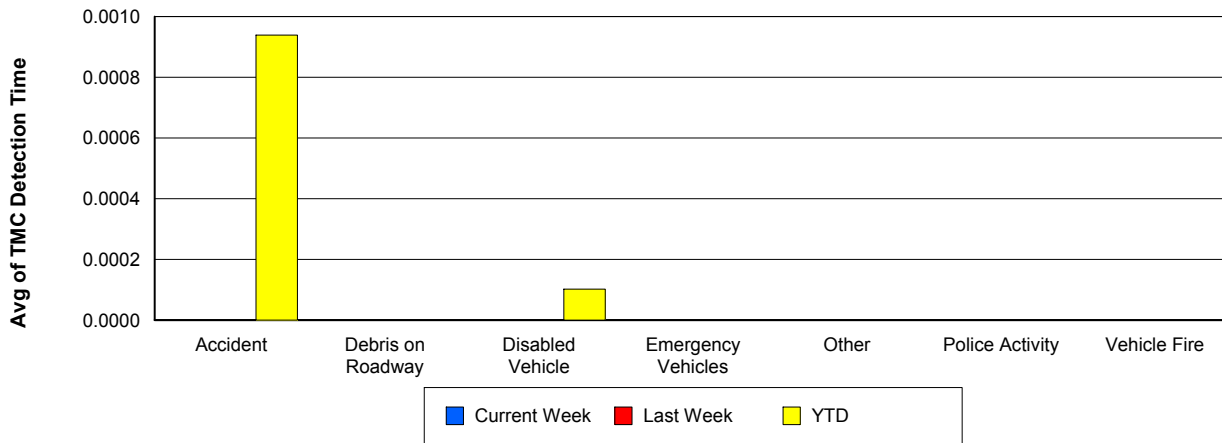
## Vehicle Fire

	<u>Current Week</u>	<u>Last Week</u>	<u>YTD</u>
Number of Events	5	1	27
Number of Incidents	4	0	18
TMC Detection (min.)	0.00	0.00	0.00
TMC Verification (min.)	3.12		3.32
TMC Response (min.)	11.90		11.94
RR Dispatch Time (min.)	1.78	0.43	1.82
RR Response Time (min.)	10.12		10.01
Event Clearance (min.)	52.04	8.58	56.92
Roadway Clearance (min.)	34.12		46.89
Incident Clearance (min.)	61.30		67.11
# of Events w/ RR/SIRV	5	1	27
RR/SIRV Assists	5	1	27
RR/SIRV Activities	9	0	47

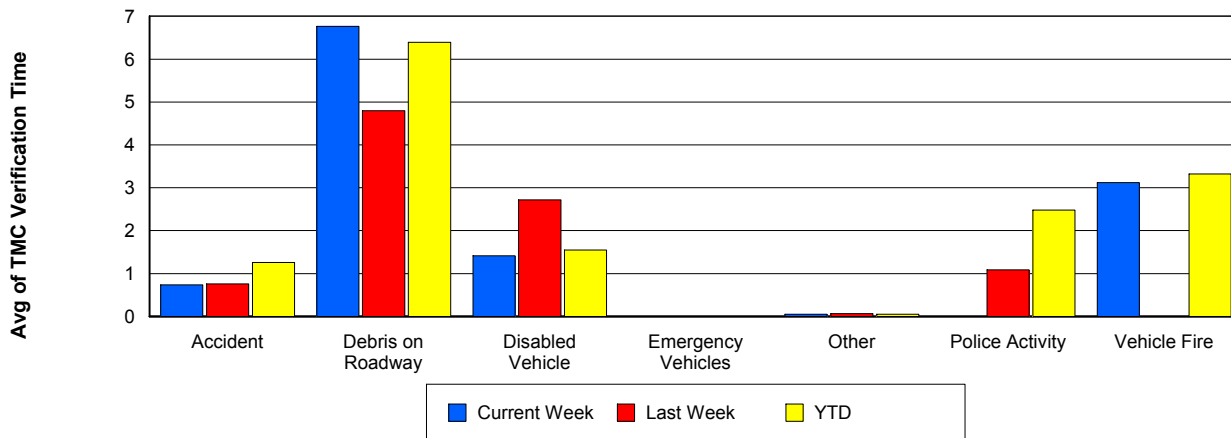
## Number of Events / Event Type



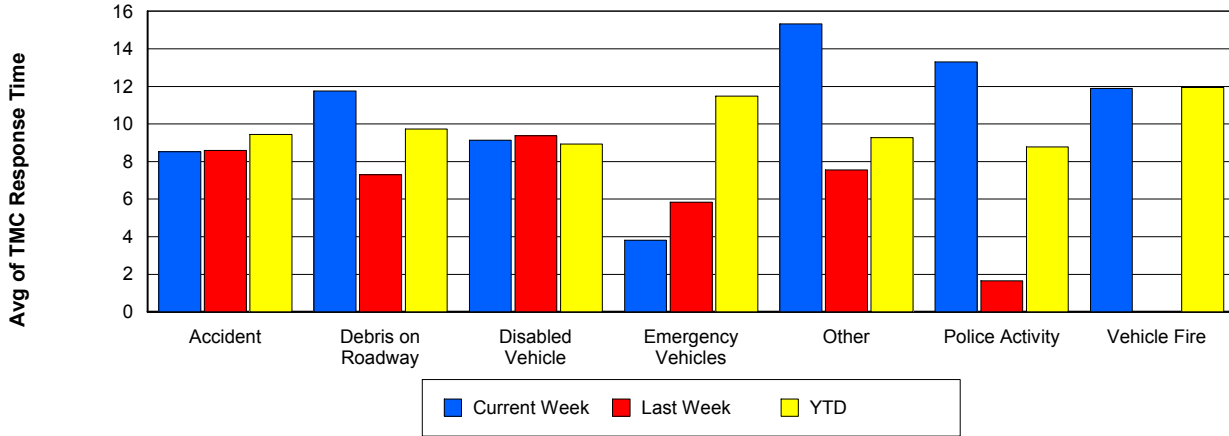
## TMC Detection Time



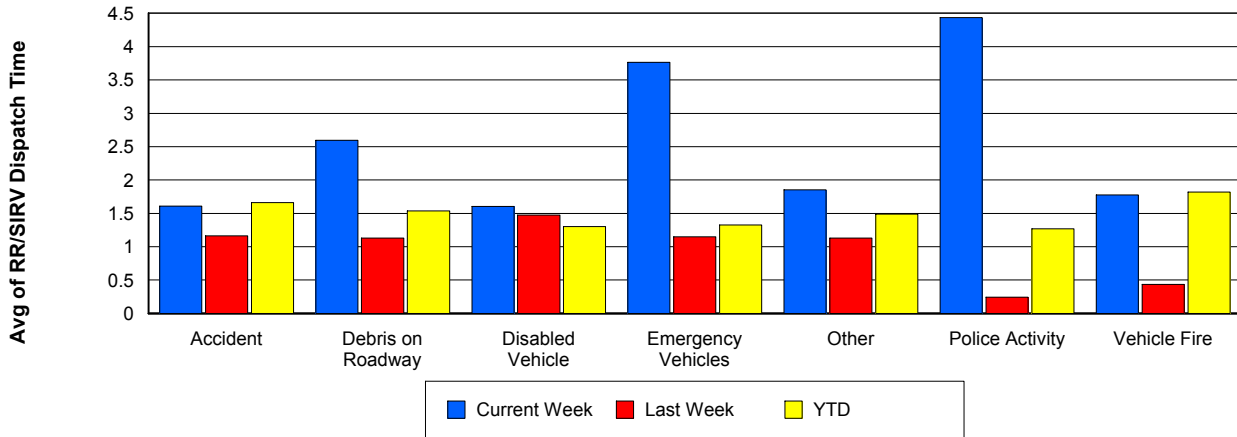
## TMC Verification Time



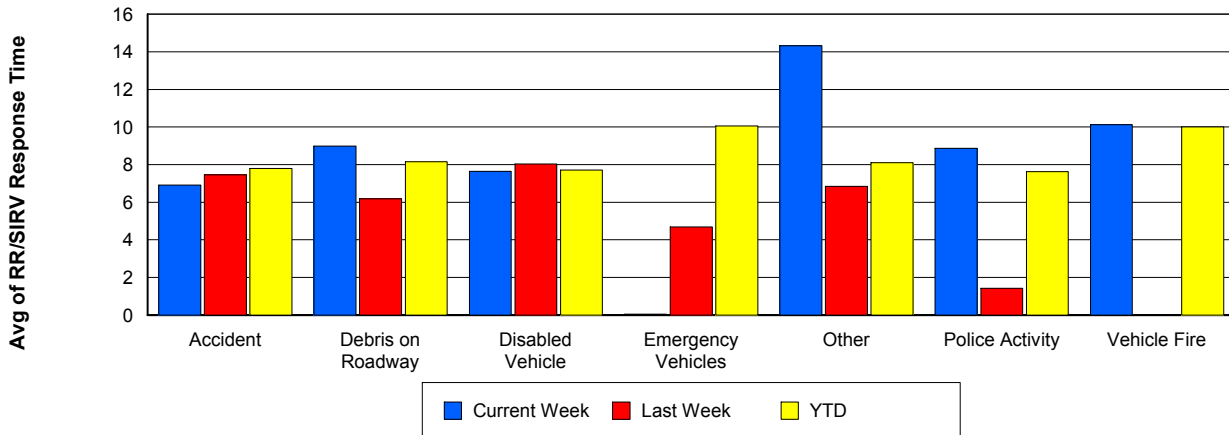
## TMC Response Time



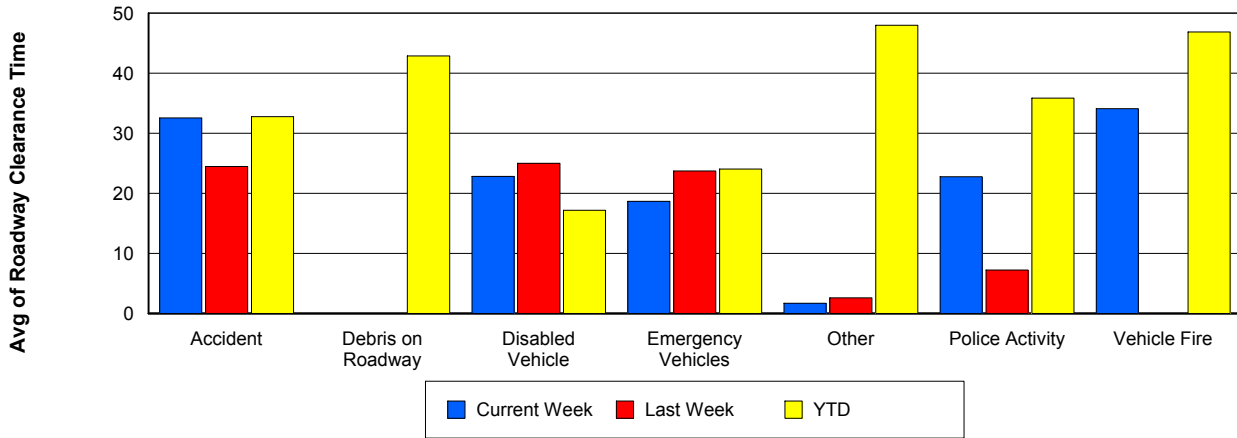
## Road Ranger / SIRV Dispatch Time



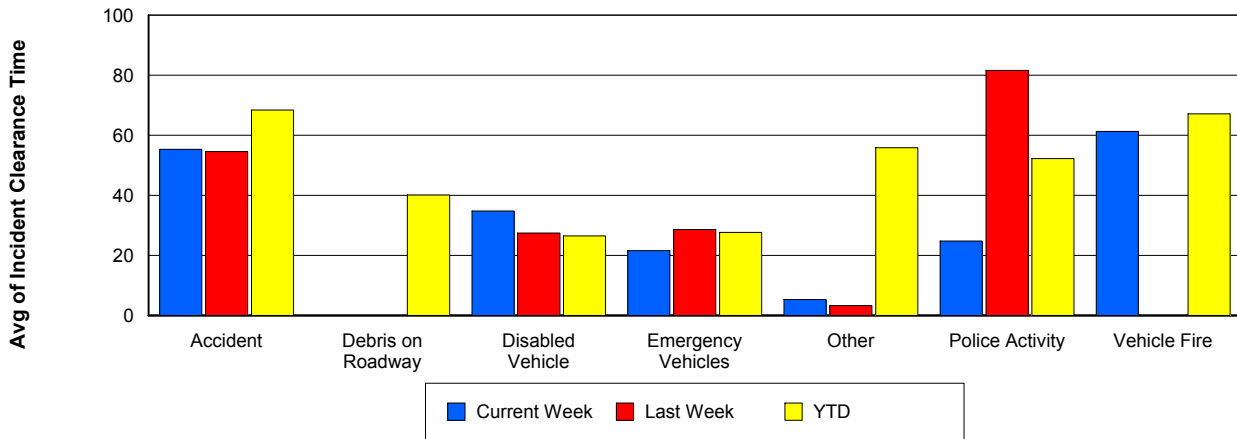
## Road Ranger / SIRV Response Time



## Roadway Clearance Time (2A)



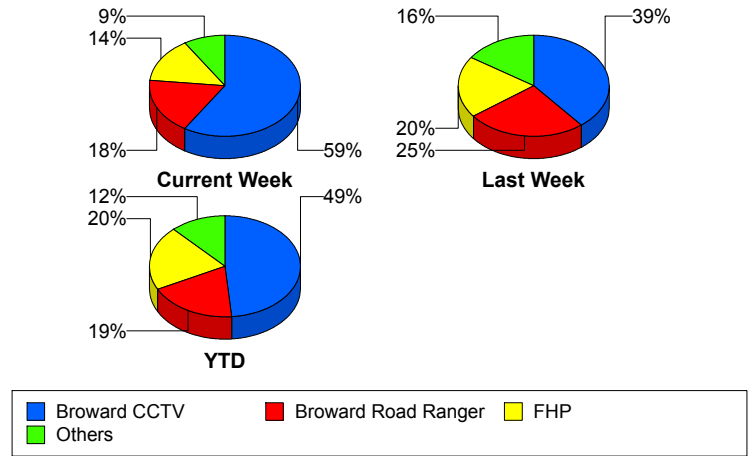
## Incident Clearance Time (3B)



## Incident Detection Methods

	Current Week	Last Week	YTD
Broward CCTV	33	20	263
Broward Road Ranger	10	13	102
Broward TMC	0	0	3
Broward VideoWall	1	1	16
BSO	1	1	10
County Police	0	0	1
District 4	2	3	12
FHP	8	10	110
Fire	0	0	1
Local Police	0	0	1
Motorist	1	0	4
Road Watcher	0	2	5
SIRV	0	0	1
VisioPaD Detection	0	1	11
<b>Total</b>	<b>56</b>	<b>51</b>	<b>540</b>

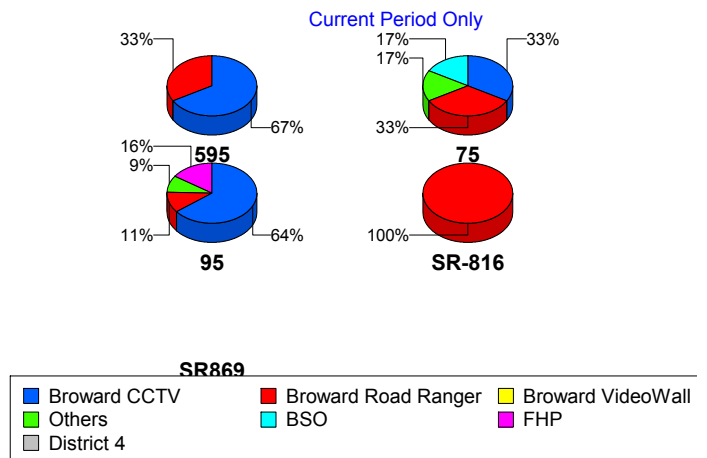
### Total Incidents by Detection Method



## Incident Detection Methods by Roadway

		Current Week	Last Week	YTD
595	Broward CCTV	2	0	6
	Broward Road Ranger	1	2	4
	BSO	0	0	3
	County Police	0	0	1
	FHP	0	0	5
	<b>Total</b>	<b>3</b>	<b>2</b>	<b>19</b>
75	Broward CCTV	2	2	19
	Broward Road Ranger	2	0	10
	BSO	1	0	4
	District 4	0	0	1
	FHP	1	1	11
	Fire	0	0	1

### Total Events by Roadway and Detection Method

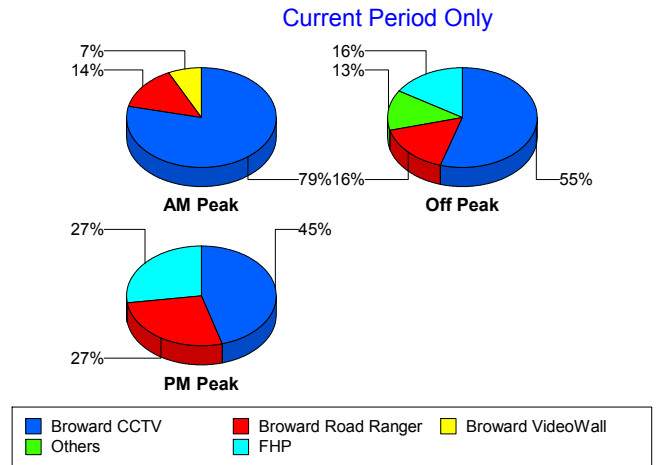


		Current Week	Last Week	YTD
75	Road Watcher	0	1	1
	VisioPaD Detection	0	0	6
	Total	6	4	53
95	Broward CCTV	29	18	238
	Broward Road Ranger	5	9	66
	Broward TMC	0	0	3
	Broward VideoWall	1	1	16
	BSO	0	1	2
	District 4	2	3	11
	FHP	7	9	94
	Local Police	0	0	1
	Motorist	1	0	4
	Road Watcher	0	0	3
	SIRV	0	0	1
	VisioPaD Detection	0	1	5
	Total	45	42	444
SR-816	Broward Road Ranger	2	1	21
	BSO	0	0	1
	Road Watcher	0	1	1
	Total	2	2	23
SR869	Broward Road Ranger	0	1	1
	Total	0	1	1
Total		56	51	540

### Incident Detection Methods by Peak Period

		Current Week	Last Week	YTD
AM Peak	Broward CCTV	11	2	42
	Broward Road Ranger	2	6	21
	Broward VideoWall	1	1	10
	BSO	0	0	1
	District 4	0	2	3
	FHP	0	2	16
	Local Police	0	0	1
	Road Watcher	0	1	1
	SIRV	0	0	1
	VisioPaD Detection	0	0	1
	<b>Total</b>	<b>14</b>	<b>14</b>	<b>97</b>
Off Peak	Broward CCTV	17	13	143
	Broward Road Ranger	5	6	44
	Broward TMC	0	0	3
	Broward VideoWall	0	0	5
	BSO	1	1	6
	County Police	0	0	1
	District 4	2	0	7
	FHP	5	3	58
	Motorist	1	0	3
	Road Watcher	0	0	3
	VisioPaD Detection	0	0	6
	<b>Total</b>	<b>31</b>	<b>23</b>	<b>279</b>
PM Peak	Broward CCTV	5	5	78
	Broward Road Ranger	3	1	37
	Broward VideoWall	0	0	1
	BSO	0	0	3
	District 4	0	1	2
	FHP	3	5	36
	Fire	0	0	1
	Motorist	0	0	1

Total Events by Peak Period and Detection Method

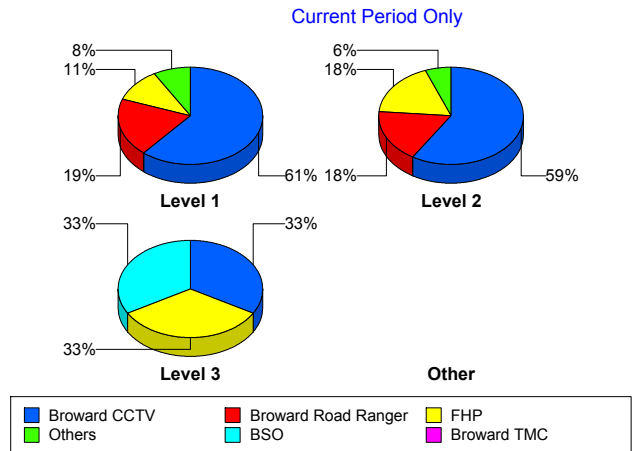


		Current Week	Last Week	YTD
PM Peak	Road Watcher	0	1	1
	VisioPaD Detection	0	1	4
	<b>Total</b>	<b>11</b>	<b>14</b>	<b>164</b>
<b>Total</b>		<b>56</b>	<b>51</b>	<b>540</b>

### Incident Detection Methods by Severity

		Current Week	Last Week	YTD
Level 1	Broward CCTV	22	14	168
	Broward Road Ranger	7	9	71
	Broward TMC	0	0	2
	Broward VideoWall	1	0	10
	BSO	0	0	3
	District 4	1	2	7
	FHP	4	6	60
	Motorist	1	0	4
	Road Watcher	0	2	5
	VisioPaD Detection	0	1	6
	<b>Total</b>	<b>36</b>	<b>34</b>	<b>336</b>
Level 2	Broward CCTV	10	4	78
	Broward Road Ranger	3	4	24
	Broward TMC	0	0	1
	Broward VideoWall	0	1	6
	BSO	0	0	1
	District 4	1	1	4
	FHP	3	3	36
	Fire	0	0	1
	Local Police	0	0	1
	SIRV	0	0	1
	VisioPaD Detection	0	0	4
	<b>Total</b>	<b>17</b>	<b>13</b>	<b>157</b>
Level 3	Broward CCTV	1	2	17
	Broward Road Ranger	0	0	7

Total Events by Severity and Detection Method



		Current Week	Last Week	YTD
Level 3	BSO	1	1	6
	County Police	0	0	1
	District 4	0	0	1
	FHP	1	1	14
	VisioPaD Detection	0	0	1
	Total	3	4	47
Total		56	51	540

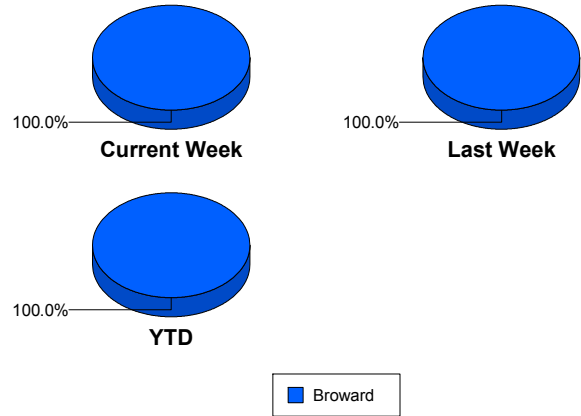
# Road Ranger / SIRV Performance Measures

## Road Ranger / SIRV Performance By County

Values presented are:  
 - Total Events with a RR/SIRV Response  
 - Total RR/SIRV Responses,  
 - Total Activities Performed

	Current We	Last Week	YTD
Broward	<b>806</b>	<b>911</b>	<b>9,938</b>
	<b>878</b>	<b>973</b>	<b>10,624</b>
	<b>908</b>	<b>1,010</b>	<b>11,002</b>

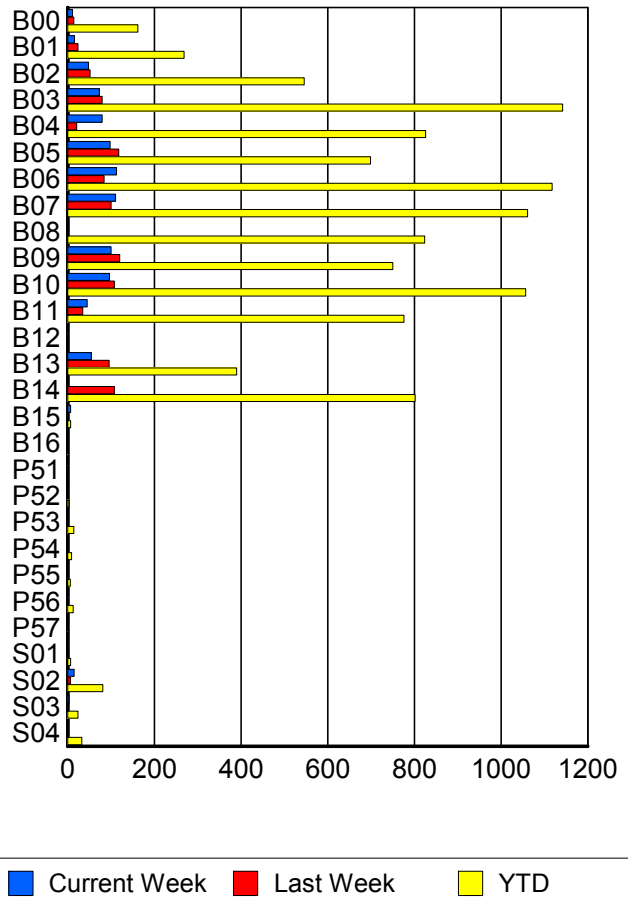
RR/SIRV Responses per County



## Road Ranger / SIRV Performance By Truck

	Current We	Last Week	YTD
B00	11	14	159
	11	14	162
	11	15	172
B01	15	22	262
	16	24	269
	16	24	272
B02	46	51	537
	48	52	546
	51	54	556
B03	72	80	1,135
	73	80	1,142
	73	82	1,190
B04	79	21	815
	80	21	826
	85	21	854
B05	96	116	692
	98	118	699
	101	121	722
B06	111	82	1,103
	113	84	1,118
	117	88	1,159
B07	110	99	1,043
	111	100	1,061
	117	102	1,105
B08	0	0	811
	0	0	824
	0	0	856

RR/SIRV Responses per Truck



	Current We	Last Week	YTD
B09	99 100 103	119 120 130	740 750 784
B10	96 97 101	104 108 109	1,046 1,057 1,088
B11	45 45 46	35 35 38	771 776 799
B12	1 1 1	0 0 0	2 2 2
B13	55 55 56	95 96 98	386 390 397
B14	0 0 0	107 108 115	791 802 833
B15	7 7 7	0 0 0	7 7 7
B16	0 0 0	0 0 0	1 1 1
P51	1 1 1	0 0 0	1 1 1
P52	0 0 0	0 0 0	3 3 3
P53	0 0 0	1 1 1	14 14 14
P54	0 0 0	1 1 1	9 9 9
P55	0 0 0	1 1 1	6 6 6
P56	2 2 2	0 0 0	13 13 15
P57	0 0 0	0 0 0	1 1 1

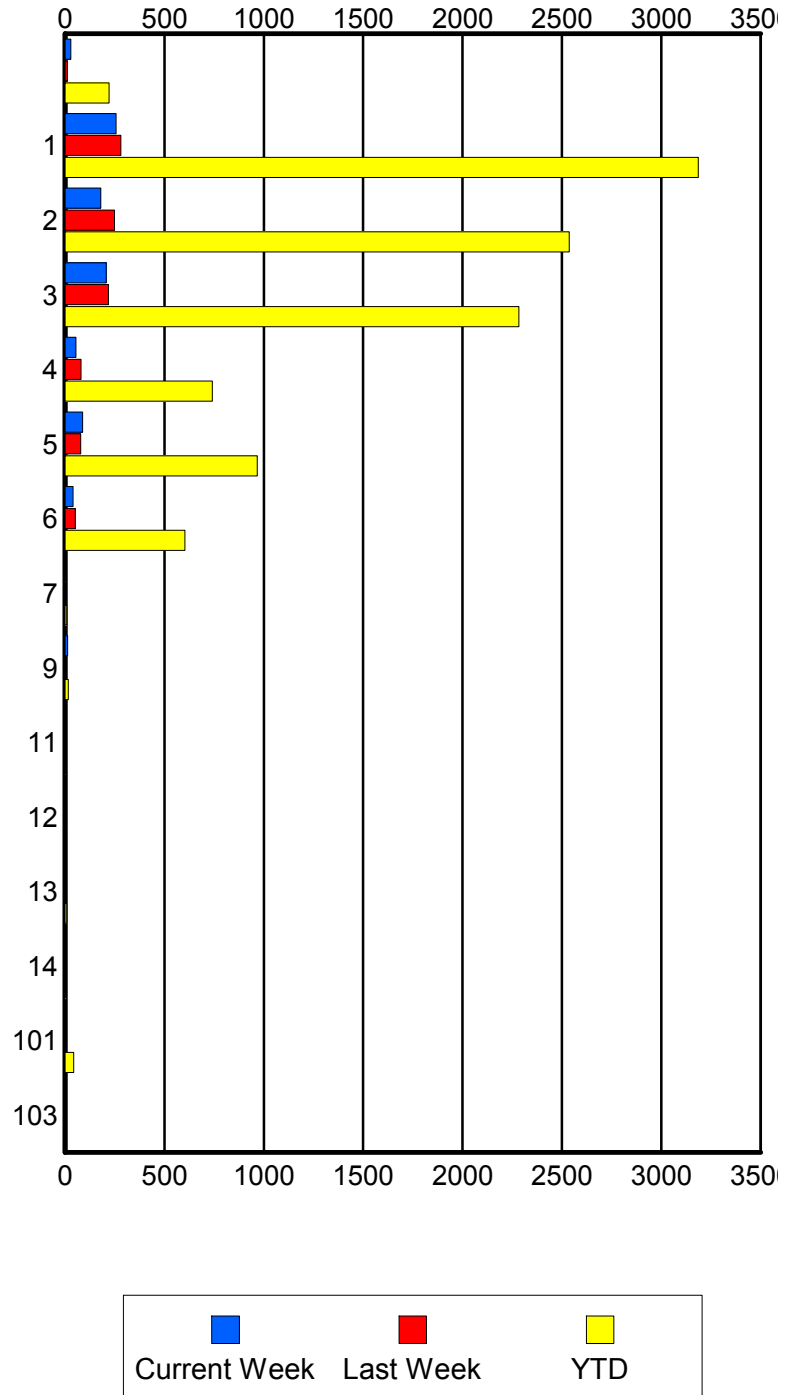
	Current We	Last Week	YTD
S01	2	0	7
	2	0	7
	2	0	8
S02	13	6	78
	15	6	81
	15	6	87
S03	3	2	21
	3	2	24
	3	2	25
S04	0	2	33
	0	2	33
	0	2	36

### Road Ranger / SIRV Performance By Beat

	Current We	Last Week	YTD
	27	11	213
	29	11	222
	29	11	233
1	243	269	3,043
	257	281	3,186
	271	291	3,313
2	173	238	2,461
	180	248	2,536
	186	256	2,626
3	199	210	2,227
	207	219	2,283
	213	229	2,366
4	53	79	728
	54	80	741
	54	81	767
5	88	77	959
	89	78	967
	92	85	993
6	40	51	592
	41	52	603
	42	53	616
7	4	0	8
	5	0	9
	5	0	9
9	13	0	17
	13	0	17
	13	0	17
11	0	0	2
	0	0	2
	0	0	2
12	0	0	2
	0	0	2
	0	0	2
13	0	0	8
	0	0	8
	0	0	8
14	0	1	4
	0	1	4
	0	1	4
101	2	3	43
	2	3	43
	2	3	45
103	1	0	1
	1	0	1
	1	0	1

Values presented are:  
 - Total Events with a RR/SIRV Response  
 - Total RR/SIRV Responses,  
 - Total Activities Performed

### RR/SIRV Responses per Beat

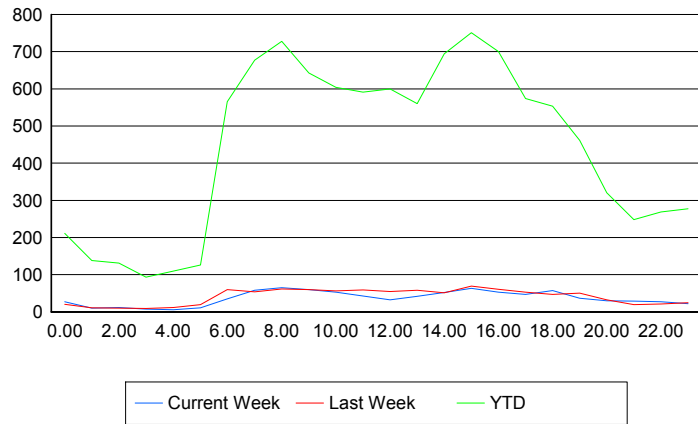


## Road Ranger / SIRV Performance By Time of Day

Values presented are:  
 - Total Events with a RR/SIRV Response  
 - Total RR/SIRV Responses,  
 - Total Activities Performed

	Current We	Last Week	YTD
12AM-1AM	25	20	200
	27	20	211
	27	20	218
1AM-2AM	9	10	131
	10	11	138
	10	11	143
2AM-3AM	11	10	122
	12	10	131
	13	10	137
3AM-4AM	7	7	87
	7	9	93
	8	11	104
4AM-5AM	5	12	102
	6	12	110
	7	13	117
5AM-6AM	10	14	103
	11	19	126
	11	19	130
6AM-7AM	30	59	532
	35	60	565
	35	60	578
7AM-8AM	56	51	644
	58	54	677
	59	58	703
8AM-9AM	55	57	675
	65	62	728
	67	63	749
9AM-10AM	54	53	607
	60	60	643
	63	60	663
10AM-11AM	50	54	569
	53	56	604
	55	59	630
11AM-12PM	40	56	555
	43	59	591
	43	62	608
12PM-1PM	30	50	558
	32	55	600
	34	59	618

## Number of Responses / Hour of the Day



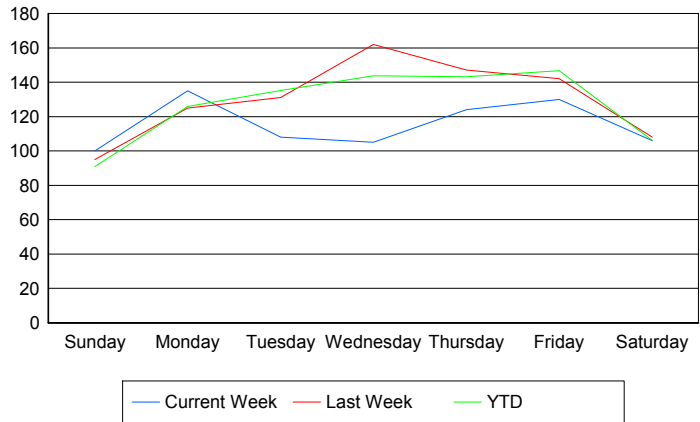
	Current We	Last Week	YTD
1PM-2PM	35	55	520
	42	58	560
	44	59	577
2PM-3PM	40	48	629
	52	51	694
	56	52	729
3PM-4PM	60	66	706
	63	69	751
	65	73	771
4PM-5PM	51	58	646
	53	61	700
	53	63	725
5PM-6PM	45	50	537
	47	53	574
	47	57	589
6PM-7PM	55	42	525
	57	47	553
	58	47	570
7PM-8PM	35	49	440
	37	50	461
	37	52	474
8PM-9PM	27	28	296
	30	32	320
	32	32	328
9PM-10PM	28	18	234
	29	19	248
	29	22	259
10PM-11PM	26	21	254
	27	21	269
	32	21	288
11PM-12AM	22	23	266
	22	25	277
	23	27	294

## Road Ranger / SIRV Performance By Day of Week

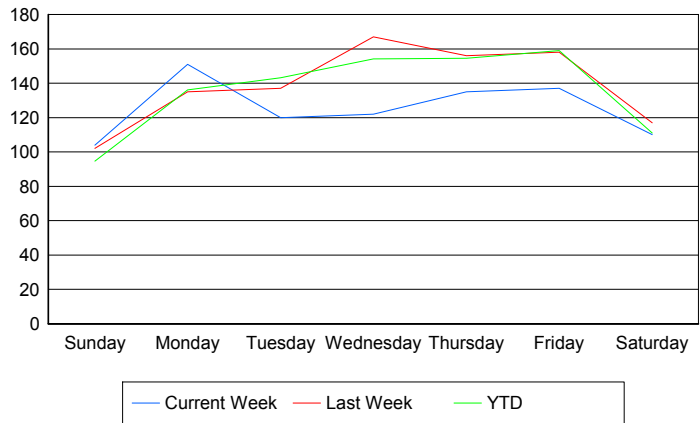
Values presented are:  
 - Total Events with a RR/SIRV Response  
 - Total RR/SIRV Responses,  
 - Total Activities Performed

	Current We	Last Week	YTD
Sunday	99 103 107	96 103 108	978 1,019 1,060
Monday	135 151 155	125 135 142	1,376 1,486 1,526
Tuesday	108 120 121	131 137 142	1,477 1,566 1,607
Wednesday	105 122 127	162 167 172	1,564 1,678 1,735
Thursday	124 135 140	147 156 158	1,568 1,693 1,758
Friday	130 137 144	142 158 162	1,725 1,865 1,932
Saturday	106 110 114	108 117 126	1,259 1,317 1,384

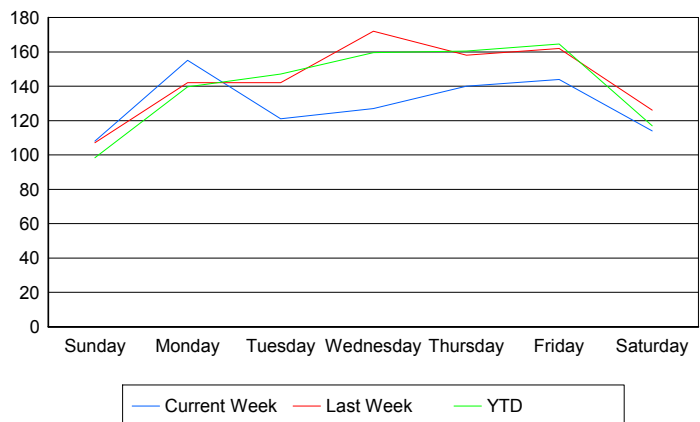
### Avg # of events with a RR/SIRV Response per Day of the Week



### Avg # of RR/SIRV Responses per Day of the Week



### Avg # of RR/SIRV Activities Performed per Day of the Week



### Road Ranger / SIRV Responses per Time of Day and Day of Week

