



Weekly Performance Measures Report Broward County



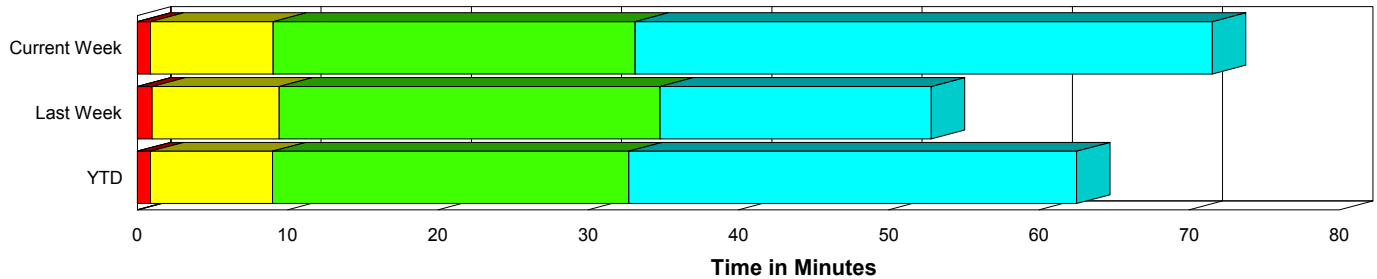
Created on:
March 08, 2010
8:39 am

Period From Feb 28, 2010 to Mar 6, 2010

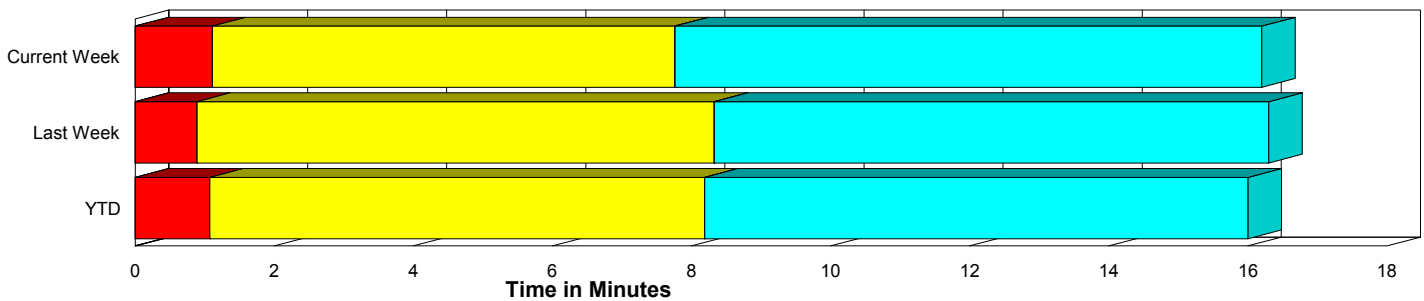
Performance Measures Summary

	Traffic Events (No Lanes Blocked)			Incidents (Lanes Blocked)		
	<u>This Week</u>	<u>Last Week</u>	<u>YTD</u>	<u>This Week</u>	<u>Last Week</u>	<u>YTD</u>
Number of Events	1,251	1,264	11,462	52	65	442
TMC Detection (min.)	0.00	0.00	0.00	0.00	0.00	0.00
TMC Verification (min.)	1.11	0.89	1.08	0.88	0.98	0.88
TMC Response (min.)	8.50	8.91	8.99	9.12	9.48	9.06
RR Dispatch Time (min.)	1.24	1.25	1.34	1.44	1.57	1.78
RR Response Time (min.)	7.34	7.66	7.76	7.66	7.88	7.29
Roadway Clearance (min.)				31.07	32.18	31.74
Event Clearance (min.)	16.94	16.88	16.80	68.28	49.92	61.16
# of Events w/ RR/SIRV	986	981	9,145	49	63	431
RR/SIRV Responses	986	981	9,145	49	63	431
RR/SIRV Activities	763	742	6,831	97	114	813

Incident Clearance Time-Line



Traffic Event (Non-Lane Blockage) Time-Line



■ Avg. TMC Detection Time	■ Avg. Time from TMC Response to Roadway Clearance*
■ Avg. Time from TMC Detection to TMC Verification	■ Avg. Time from Roadway Clearance to Incident/Event Clearance**
■ Avg. Time from TMC Verification to TMC Response	

* Roadway clearance equals all travel lanes open

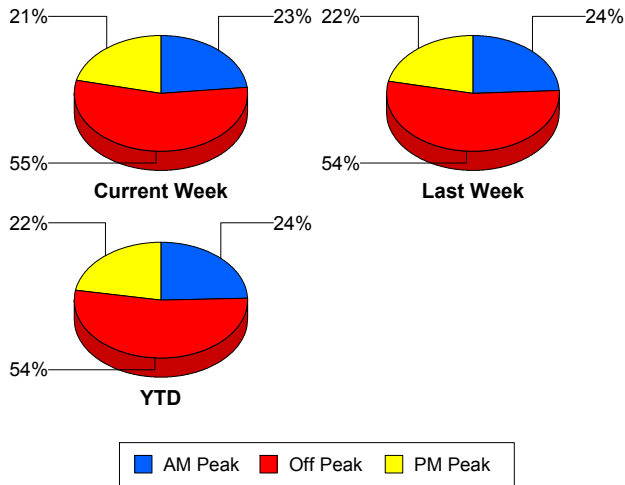
** Incident clearance equals time when last responder has left the scene

Performance Measures by Peak Period

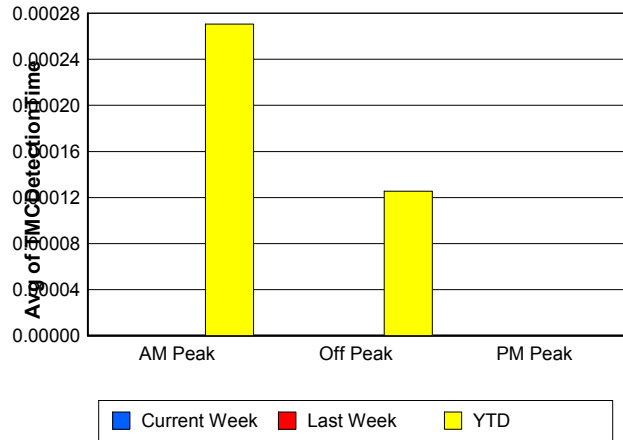
Note: AM peak period is defined as 6am to 10am and PM peak period is defined as 3pm to 7pm.

	AM Peak			Off Peak			PM Peak		
	<u>Current Week</u>	<u>Last Week</u>	<u>YTD</u>	<u>Current Week</u>	<u>Last Week</u>	<u>YTD</u>	<u>Current Week</u>	<u>Last Week</u>	<u>YTD</u>
Number of Events	303	321	2,895	720	719	6,377	280	289	2,632
Number of Incidents	9	10	70	30	32	233	13	23	139
TMC Detection (min.)	0.00	0.00	0.00	0.00	0.00	0.00	0.00	0.00	0.00
TMC Verification (min.)	1.21	0.53	0.66	1.01	0.75	1.10	1.21	1.65	1.43
TMC Response (min.)	9.32	8.48	8.40	9.11	8.92	9.27	6.49	9.50	9.02
RR Dispatch Time (min.)	1.04	1.15	1.01	1.28	1.20	1.42	1.44	1.55	1.60
RR Response Time (min.)	8.41	7.28	7.47	7.89	7.79	7.95	5.10	7.88	7.52
Event Clearance (min.)	17.25	16.42	16.31	19.65	17.94	18.60	19.17	22.18	20.45
Roadway Clearance (min.)	22.43	31.49	30.53	29.09	31.48	36.33	41.62	33.47	24.66
Incident Clearance (min.)	41.51	47.20	55.90	77.19	46.89	64.74	66.24	55.32	57.80
# of Events w/ RR/SIRV	270	258	2,420	547	549	4,983	218	237	2,173
RR/SIRV Responses	270	258	2,420	547	549	4,983	218	237	2,173
RR/SIRV Activities	215	220	1,855	432	426	3,933	213	210	1,856

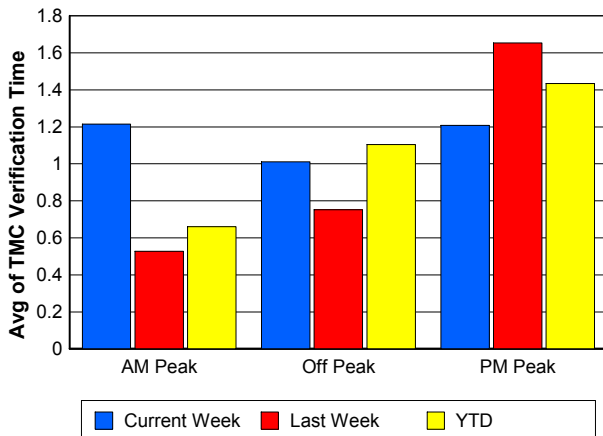
Number of Events / Peak Period



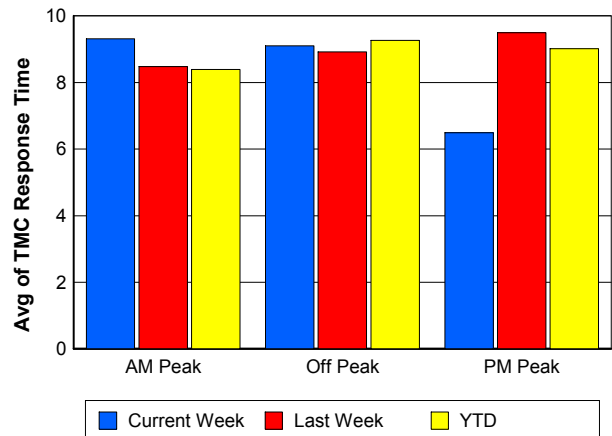
TMC Detection Time



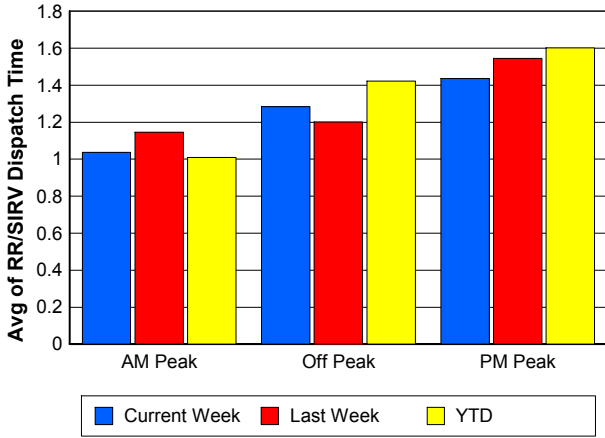
TMC Verification Time



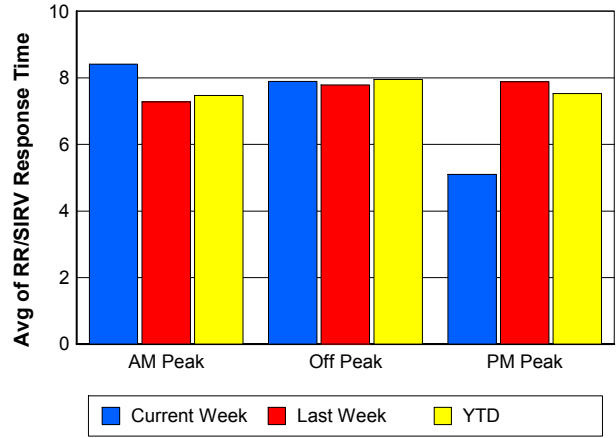
TMC Response Time



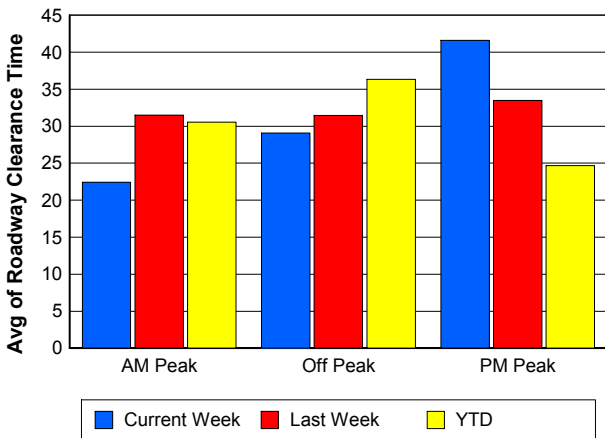
Road Ranger / SIRV Dispatch Time



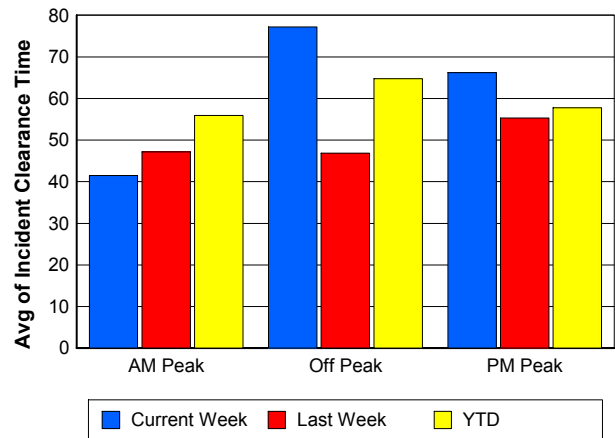
Road Ranger / SIRV Response Time



Roadway Clearance Time (2A)



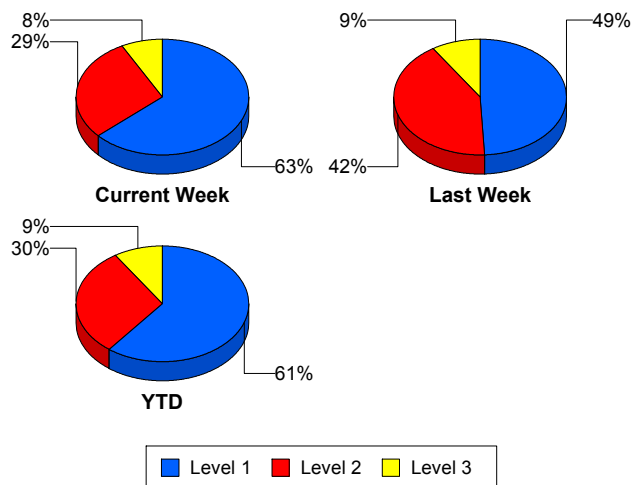
Incident Clearance Time (3B)



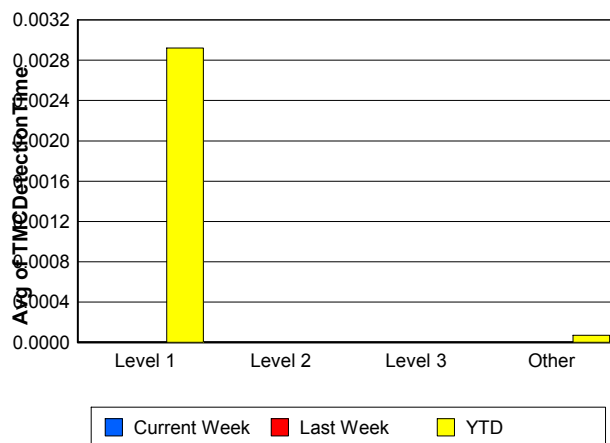
Performance Measures by Severity

	Level 1			Level 2			Level 3			Other		
	<u>This Week</u>	<u>Last Week</u>	<u>YTD</u>	<u>This Week</u>	<u>Last Week</u>	<u>YTD</u>	<u>This Week</u>	<u>Last Week</u>	<u>YTD</u>	<u>This Week</u>	<u>Last Week</u>	<u>YTD</u>
Number of Events	33	32	268	15	27	133	4	6	41	1,251	1,264	11,462
Number of Incidents	33	32	268	15	27	133	4	6	41	0	0	0
TMC Detection (min.)	0.00	0.00	0.00	0.00	0.00	0.00	0.00	0.00	0.00	0.00	0.00	0.00
TMC Verification (min.)	0.15	0.78	0.48	2.58	1.12	1.52	0.47	1.44	1.40	1.11	0.89	1.08
TMC Response (min.)	8.10	7.98	7.62	12.67	9.66	11.40	3.21	15.17	10.38	8.50	8.91	8.99
RR Dispatch Time (min.)	1.77	1.32	1.54	1.08	1.70	2.29	0.39	2.24	1.68	1.24	1.25	1.34
RR Resp. Time (min.)	6.29	6.63	6.12	11.59	7.96	9.09	2.82	12.92	8.71	7.34	7.66	7.76
Event Clearance (min.)	47.54	26.72	48.08	98.10	73.60	77.18	127.58	67.12	94.62	16.94	16.88	16.80
Roadway Clear. (min.)	14.55	11.40	14.76	51.21	50.18	51.26	91.82	62.05	79.36			
Incident Clearance (min.)	47.54	26.72	48.08	98.10	73.60	77.18	127.58	67.12	94.62			
# of Events w/ RR/SIRV	30	30	261	15	27	131	4	6	39	986	981	9,145
RR/SIRV Responses	30	30	261	15	27	131	4	6	39	986	981	9,145
RR/SIRV Activities	47	39	408	35	61	295	15	14	110	763	742	6,831

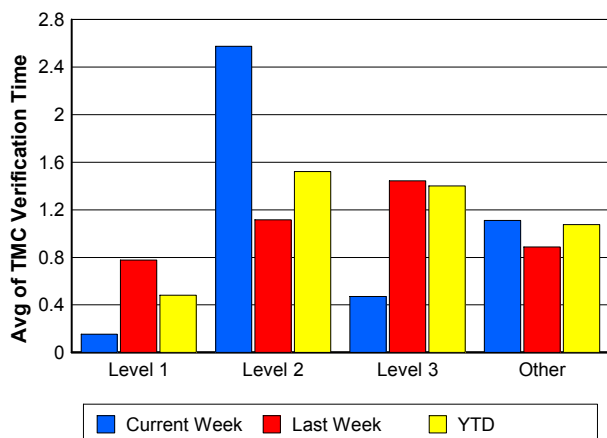
Number of Events / Severity



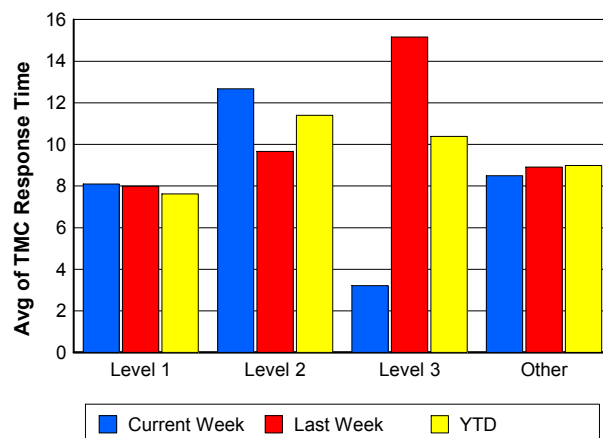
TMC Detection Time



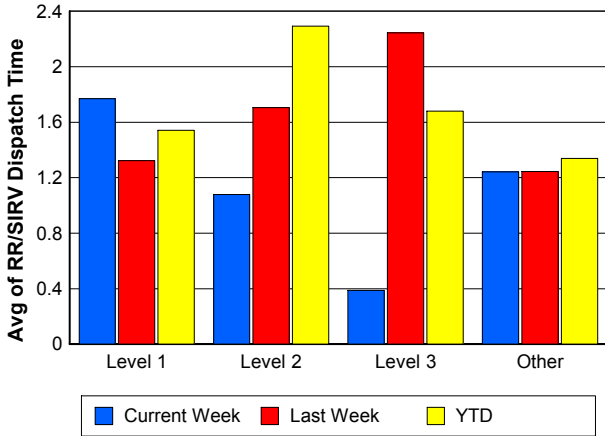
TMC Verification Time



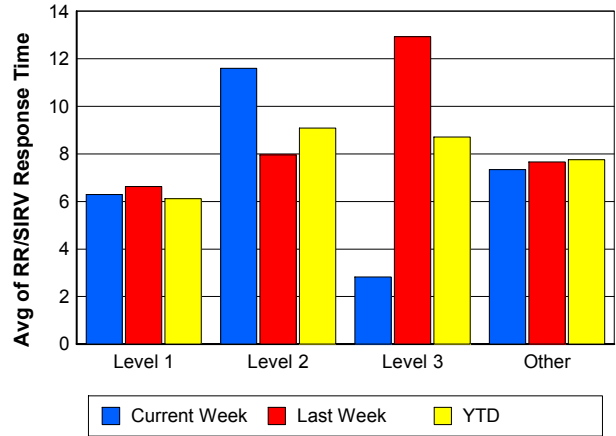
TMC Response Time



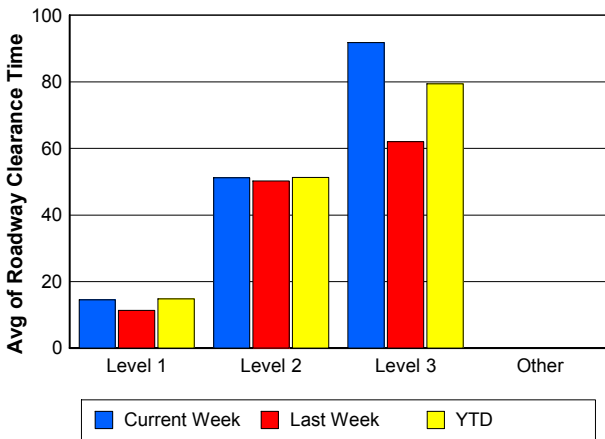
Road Ranger / SIRV Dispatch Time



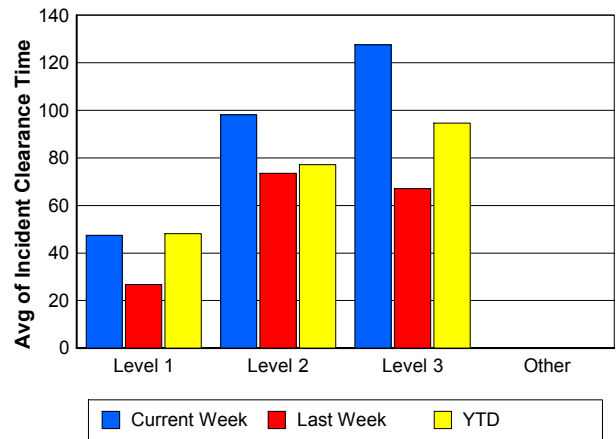
Road Ranger / SIRV Response Time



Roadway Clearance Time (2A)



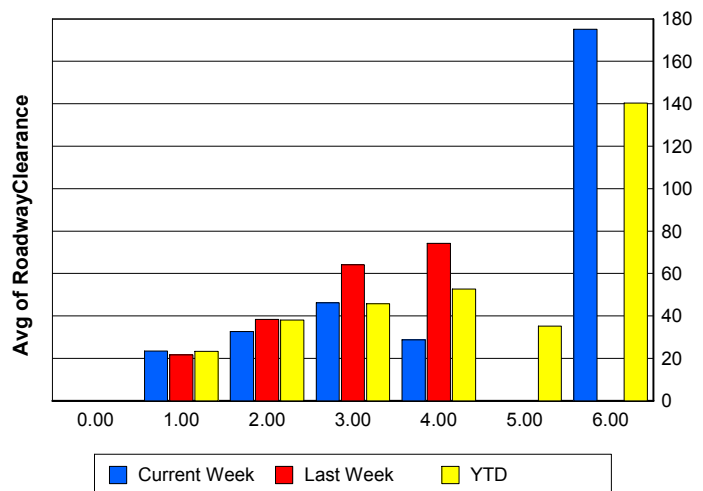
Incident Clearance Time (3B)



Roadway Clearance by Maximum Number of Lanes Blocked

	Current Week	Last Week	YTD
0			
1	23.45	21.62	23.29
2	32.65	38.40	38.00
3	46.15	64.06	45.74
4	28.72	74.23	52.64
5	0.00	0.00	35.22
6	175.20	0.00	140.28

Roadway Clearance Time (2A)



Performance Measures by Roadway

595

	<u>Current Week</u>	<u>Last Week</u>	<u>YTD</u>
Number of Events	50	56	433
Number of Incidents	0	4	21
TMC Detection (min.)	0.00	0.00	0.00
TMC Verification (min.)	2.34	0.22	1.94
TMC Response (min.)	14.34	14.35	14.44
RR Dispatch Time (min.)	2.94	2.66	2.33
RR Resp. Time (min.)	10.47	11.69	12.09
Event Clearance (min.)	19.17	17.94	19.76
Roadway Clear. (min.)		38.19	55.23
Incident Clearance (min.)		64.05	72.66
# of Events w/ RR/SIRV	36	33	303
RR/SIRV Responses	36	33	303
RR/SIRV Activities	25	22	222

75

	<u>Current Week</u>	<u>Last Week</u>	<u>YTD</u>
Number of Events	298	286	2,669
Number of Incidents	5	10	43
TMC Detection (min.)	0.00	0.00	0.00
TMC Verification (min.)	1.20	1.66	1.66
TMC Response (min.)	9.24	11.05	9.81
RR Dispatch Time (min.)	1.13	1.45	1.48
RR Resp. Time (min.)	8.19	9.57	8.48
Event Clearance (min.)	19.30	18.52	18.67
Roadway Clear. (min.)	54.56	34.94	38.72
Incident Clearance (min.)	144.45	55.48	78.27
# of Events w/ RR/SIRV	226	208	2,045
RR/SIRV Responses	226	208	2,045
RR/SIRV Activities	170	169	1,645

95

	<u>Current Week</u>	<u>Last Week</u>	<u>YTD</u>
Number of Events	937	974	8,668
Number of Incidents	46	51	358
TMC Detection (min.)	0.00	0.00	0.00
TMC Verification (min.)	0.99	0.72	0.84
TMC Response (min.)	7.97	8.30	8.57
RR Dispatch Time (min.)	1.21	1.17	1.29
RR Resp. Time (min.)	6.87	7.12	7.36
Event Clearance (min.)	18.89	18.58	18.33
Roadway Clear. (min.)	27.19	31.17	30.06
Incident Clearance (min.)	60.84	47.72	60.60
# of Events w/ RR/SIRV	759	794	7,117
RR/SIRV Responses	759	794	7,117
RR/SIRV Activities	652	657	5,672

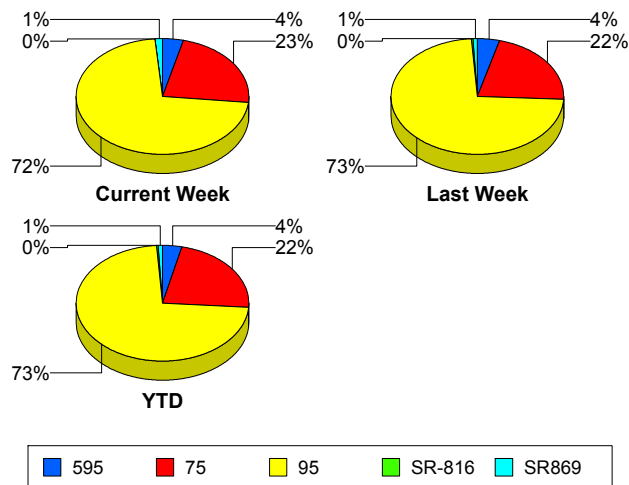
SR-816

	<u>Current Week</u>	<u>Last Week</u>	<u>YTD</u>
Number of Events	1	2	27
Number of Incidents	1	0	19
TMC Detection (min.)	0.00	0.00	0.00
TMC Verification (min.)	1.23	0.00	0.05
TMC Response (min.)	20.57	0.00	0.91
RR Dispatch Time (min.)	0.93	0.00	0.09
RR Resp. Time (min.)	19.63	0.00	0.82
Event Clearance (min.)	29.62	40.41	17.41
Roadway Clear. (min.)	91.88		19.27
Incident Clearance (min.)	29.62		18.48
# of Events w/ RR/SIRV	1	2	26
RR/SIRV Responses	1	2	26
RR/SIRV Activities	1	3	29

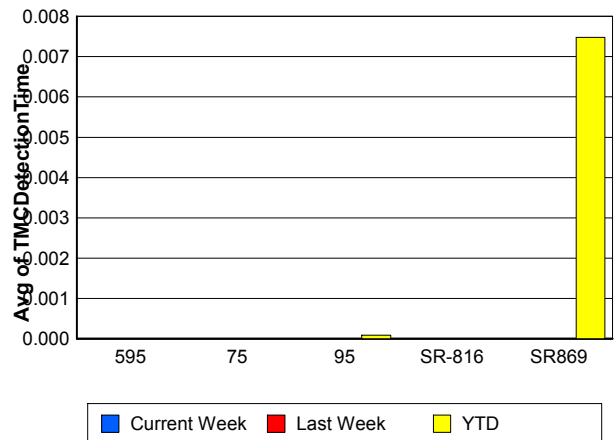
SR869

	<u>Current Week</u>	<u>Last Week</u>	<u>YTD</u>
Number of Events	17	11	107
Number of Incidents	0	0	1
TMC Detection (min.)	0.00	0.00	0.01
TMC Verification (min.)	1.56	0.00	1.95
TMC Response (min.)	14.39	3.43	10.10
RR Dispatch Time (min.)	1.10	0.58	0.88
RR Resp. Time (min.)	13.48	3.01	9.46
Event Clearance (min.)	17.76	9.60	17.64
Roadway Clear. (min.)			77.88
Incident Clearance (min.)			95.13
# of Events w/ RR/SIRV	13	7	85
RR/SIRV Responses	13	7	85
RR/SIRV Activities	12	5	76

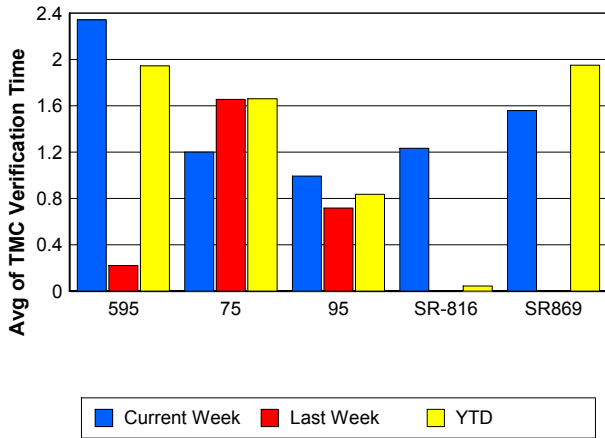
Number of Events / Roadway



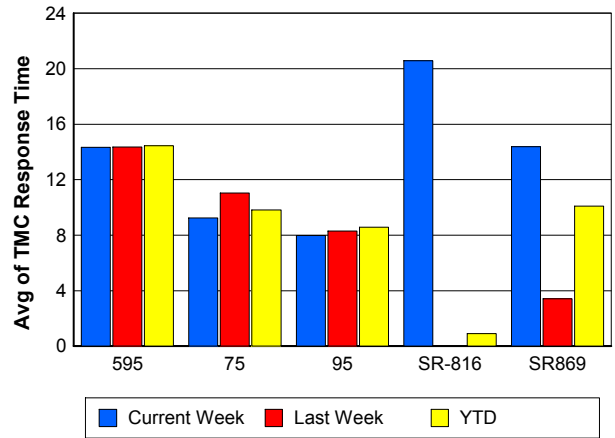
TMC Detection Time



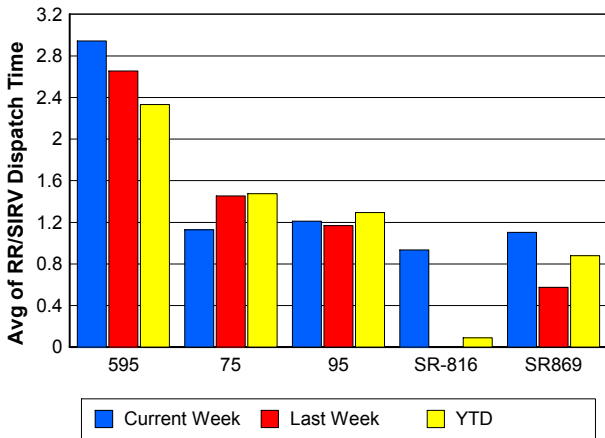
TMC Verification Time



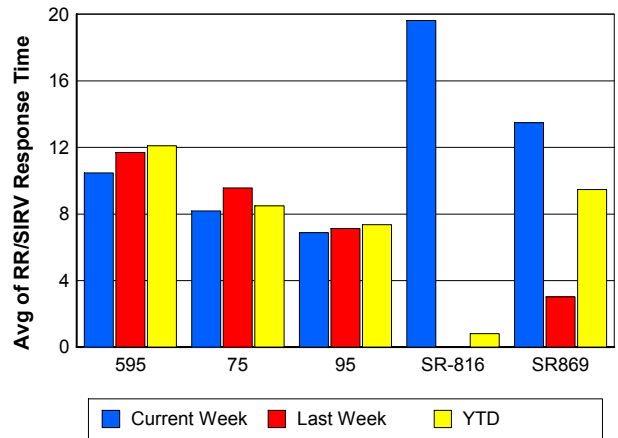
TMC Response Time



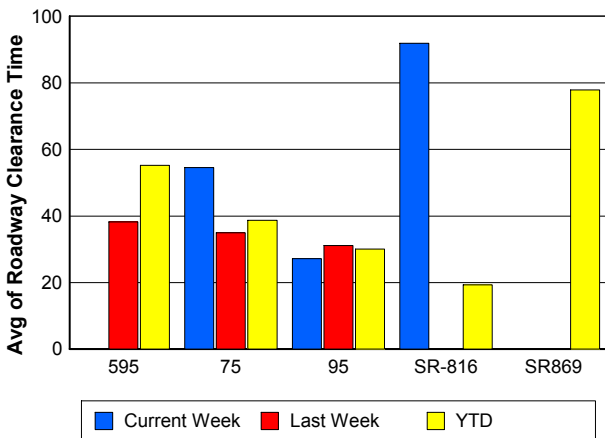
Road Ranger / SIRV Dispatch Time



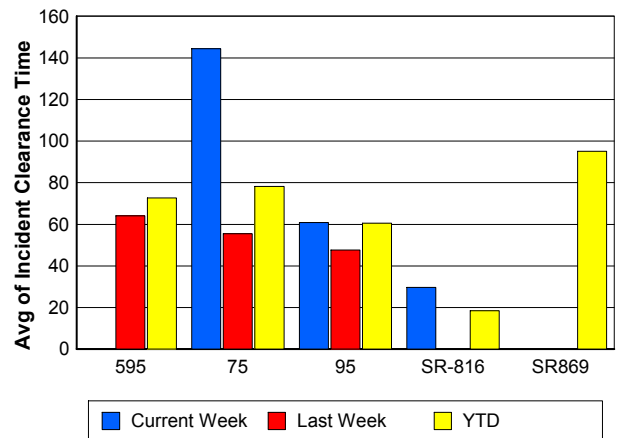
Road Ranger / SIRV Response Time



Roadway Clearance Time (2A)



Incident Clearance Time (3B)



Performance Measures by Event Type

Accident

	<u>Current Week</u>	<u>Last Week</u>	<u>YTD</u>
Number of Events	70	112	686
Number of Incidents	38	47	305
TMC Detection (min.)	0.00	0.00	0.00
TMC Verification (min.)	2.52	1.73	1.39
TMC Response (min.)	10.98	8.52	9.66
RR Dispatch Time (min.)	1.28	1.64	1.73
RR Response Time (min.)	9.69	6.87	7.94
Event Clearance (min.)	65.79	47.96	56.47
Roadway Clearance (min.)	32.51	36.85	33.98
Incident Clearance (min.)	78.77	58.30	72.42
# of Events w/ RR/SIRV	69	111	680
RR/SIRV Assists	69	111	680
RR/SIRV Activities	113	159	1,021

Debris on Roadway

	<u>Current Week</u>	<u>Last Week</u>	<u>YTD</u>
Number of Events	41	32	358
Number of Incidents	2	0	8
TMC Detection (min.)	0.00	0.00	0.00
TMC Verification (min.)	5.65	9.44	6.51
TMC Response (min.)	6.25	15.17	9.83
RR Dispatch Time (min.)	0.77	3.33	1.50
RR Response Time (min.)	5.50	11.60	8.29
Event Clearance (min.)	9.58	16.70	13.13
Roadway Clearance (min.)	24.14		42.89
Incident Clearance (min.)	26.77		40.06
# of Events w/ RR/SIRV	39	31	340
RR/SIRV Assists	39	31	340
RR/SIRV Activities	40	30	342

Disabled Vehicle

	<u>Current Week</u>	<u>Last Week</u>	<u>YTD</u>
Number of Events	726	672	6,317
Number of Incidents	7	13	87
TMC Detection (min.)	0.00	0.00	0.00
TMC Verification (min.)	1.35	0.88	1.44
TMC Response (min.)	8.60	8.42	8.86
RR Dispatch Time (min.)	1.31	1.07	1.25
RR Response Time (min.)	7.37	7.37	7.68
Event Clearance (min.)	20.92	20.44	20.87
Roadway Clearance (min.)	19.92	14.60	16.34
Incident Clearance (min.)	20.69	24.25	25.84
# of Events w/ RR/SIRV	696	644	6,101
RR/SIRV Assists	696	644	6,101
RR/SIRV Activities	662	620	5,868

Emergency Vehicles

	<u>Current Week</u>	<u>YTD</u>
Number of Events	1	12
Number of Incidents	1	10
TMC Detection (min.)	0.00	0.00
TMC Verification (min.)	0.00	0.00
TMC Response (min.)		13.40
RR Dispatch Time (min.)		1.07
RR Response Time (min.)		12.25
Event Clearance (min.)	11.33	30.65
Roadway Clearance (min.)	11.48	24.60
Incident Clearance (min.)	11.33	28.18
# of Events w/ RR/SIRV	0	9
RR/SIRV Assists	0	9
RR/SIRV Activities	0	8

Other

	<u>Current Week</u>	<u>Last Week</u>	<u>YTD</u>
Number of Events	454	501	4,459
Number of Incidents	0	1	10
TMC Detection (min.)	0.00	0.00	0.00
TMC Verification (min.)	0.09	0.05	0.05
TMC Response (min.)	6.76	13.00	8.90
RR Dispatch Time (min.)	1.20	1.26	1.50
RR Response Time (min.)	6.12	11.69	7.67
Event Clearance (min.)	9.18	9.11	9.36
Roadway Clearance (min.)		1.95	61.83
Incident Clearance (min.)		2.22	71.21
# of Events w/ RR/SIRV	221	247	2,382
RR/SIRV Assists	221	247	2,382
RR/SIRV Activities	31	36	327

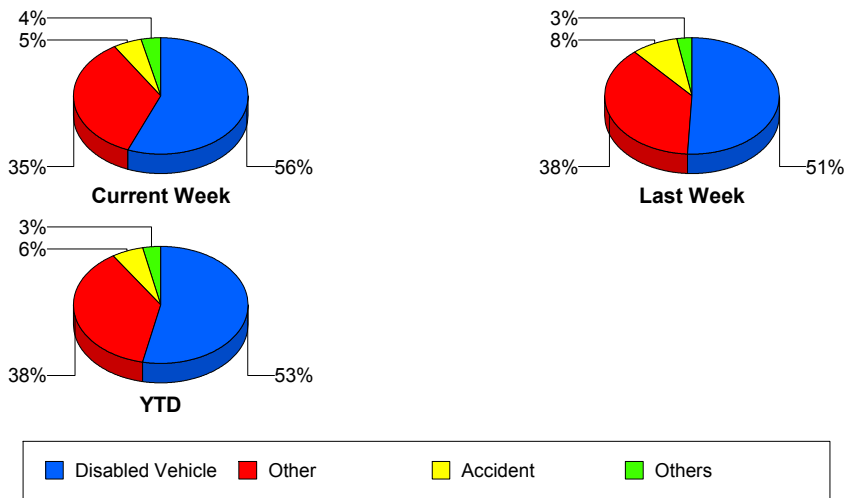
Police Activity

	<u>Current Week</u>	<u>Last Week</u>	<u>YTD</u>
Number of Events	2	2	15
Number of Incidents	2	1	8
TMC Detection (min.)	0.00	0.00	0.00
TMC Verification (min.)	0.00	0.00	2.93
TMC Response (min.)	0.82	15.75	9.99
RR Dispatch Time (min.)	0.77	1.39	1.17
RR Response Time (min.)	0.05	14.98	9.03
Event Clearance (min.)	26.38	37.02	39.61
Roadway Clearance (min.)	10.23	46.22	41.10
Incident Clearance (min.)	26.38	49.10	52.04
# of Events w/ RR/SIRV	1	2	11
RR/SIRV Assists	1	2	11
RR/SIRV Activities	1	2	12

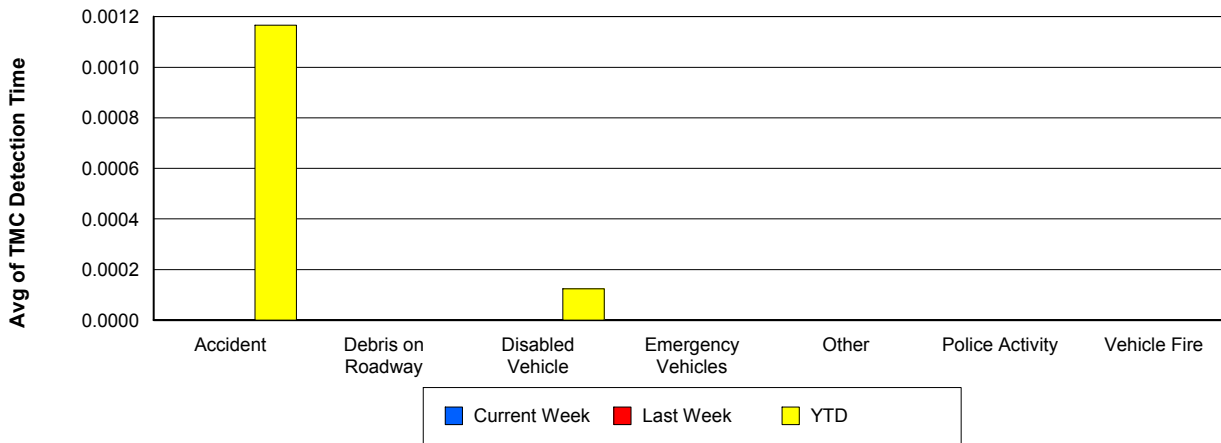
Vehicle Fire

	<u>Current Week</u>	<u>Last Week</u>	<u>YTD</u>
Number of Events	2	3	21
Number of Incidents	2	3	14
TMC Detection (min.)	0.00	0.00	0.00
TMC Verification (min.)	0.00	5.09	3.37
TMC Response (min.)	2.88	9.81	11.94
RR Dispatch Time (min.)	0.33	1.09	1.89
RR Response Time (min.)	2.54	8.72	9.98
Event Clearance (min.)	147.34	46.11	60.39
Roadway Clearance (min.)	80.36	40.68	50.54
Incident Clearance (min.)	147.34	46.11	68.77
# of Events w/ RR/SIRV	2	3	21
RR/SIRV Assists	2	3	21
RR/SIRV Activities	6	6	38

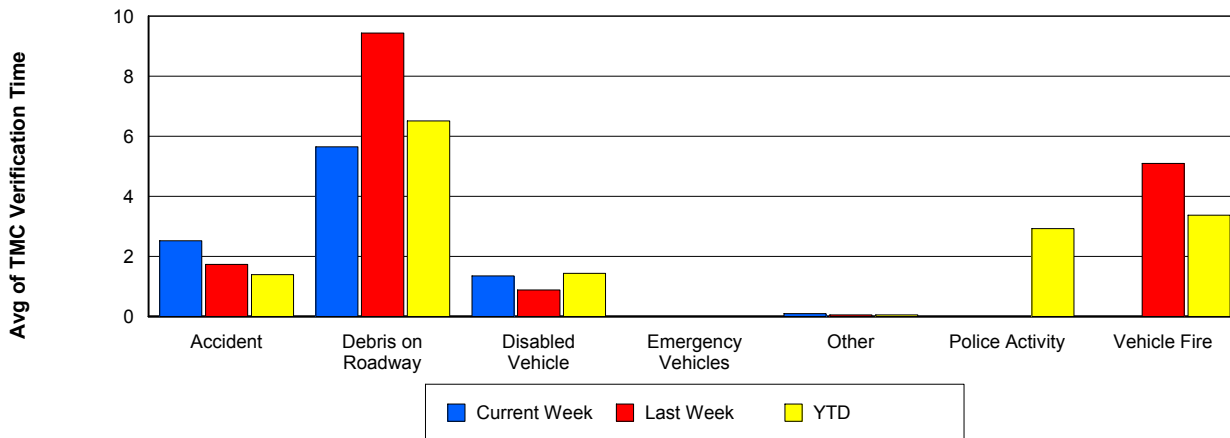
Number of Events / Event Type



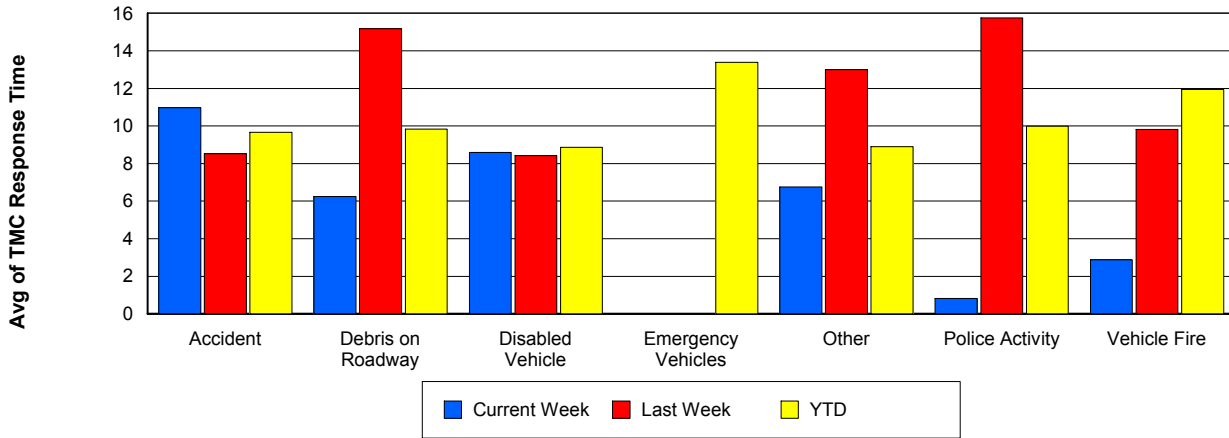
TMC Detection Time



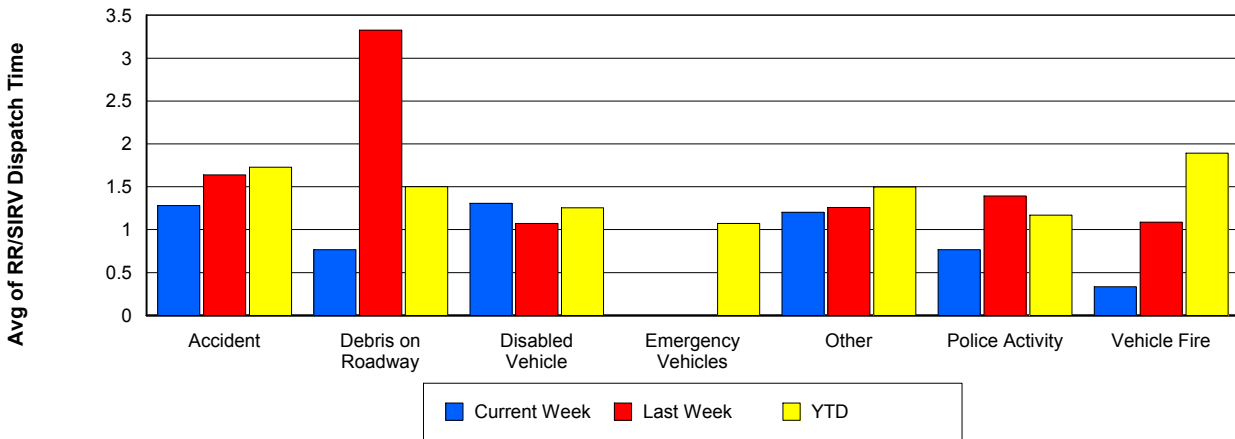
TMC Verification Time



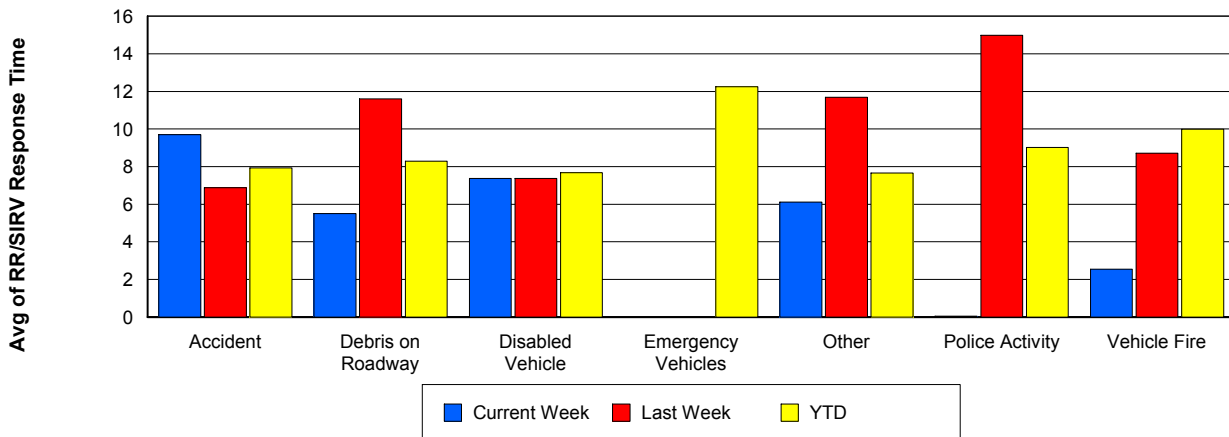
TMC Response Time



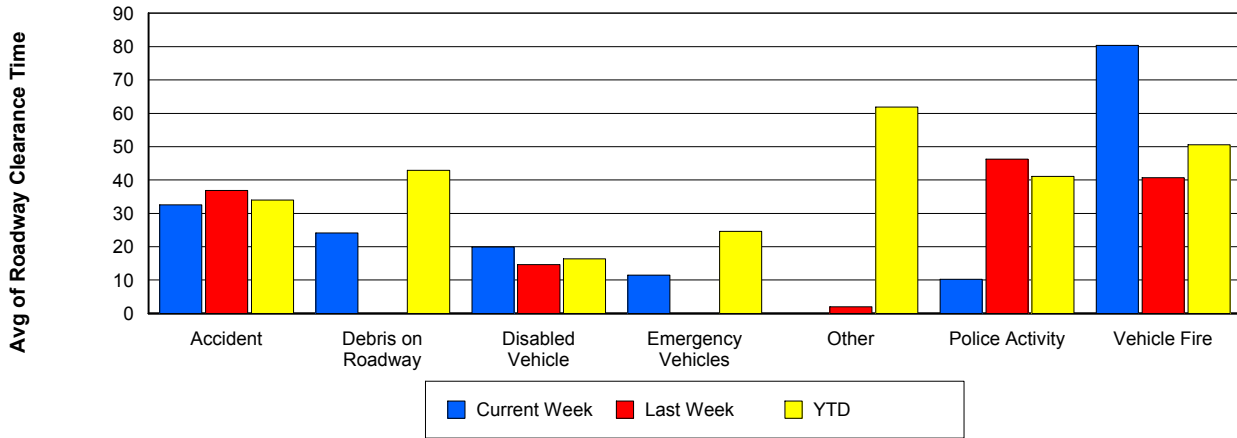
Road Ranger / SIRV Dispatch Time



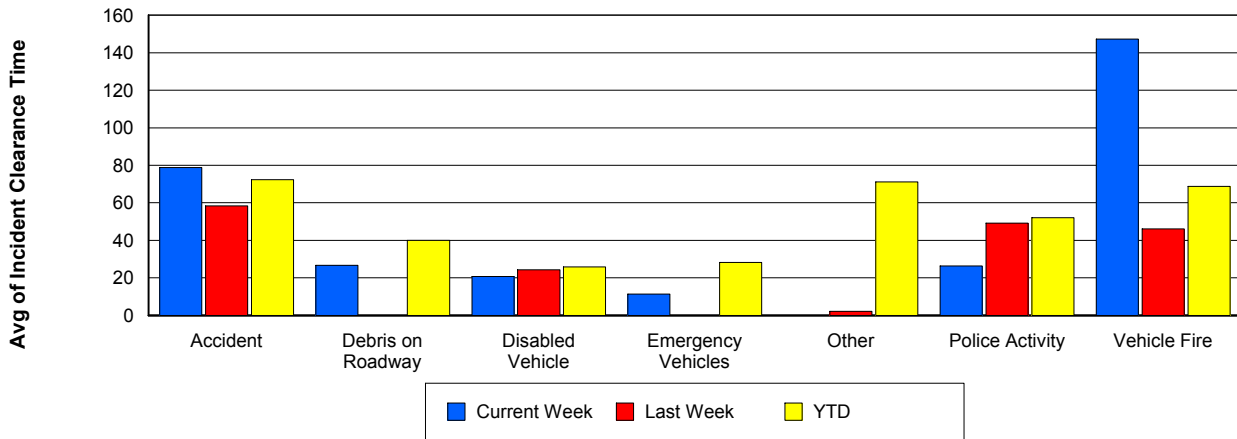
Road Ranger / SIRV Response Time



Roadway Clearance Time (2A)



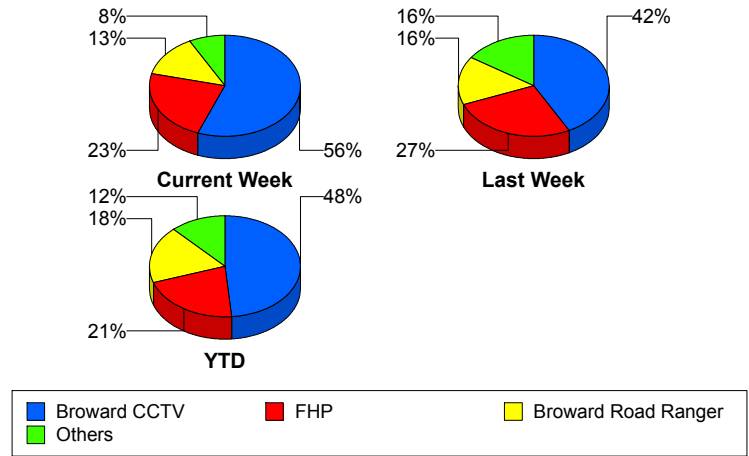
Incident Clearance Time (3B)



Incident Detection Methods

	Current Week	Last Week	YTD
Broward CCTV	29	27	210
Broward Road Ranger	7	10	79
Broward TMC	0	1	3
Broward VideoWall	1	3	14
BSO	2	0	8
County Police	0	0	1
District 4	0	0	7
FHP	12	17	92
Fire	0	1	1
Local Police	0	0	1
Motorist	0	1	3
Road Watcher	1	1	3
SIRV	0	0	1
VisioPaD Detection	0	3	10
Total	52	64	433

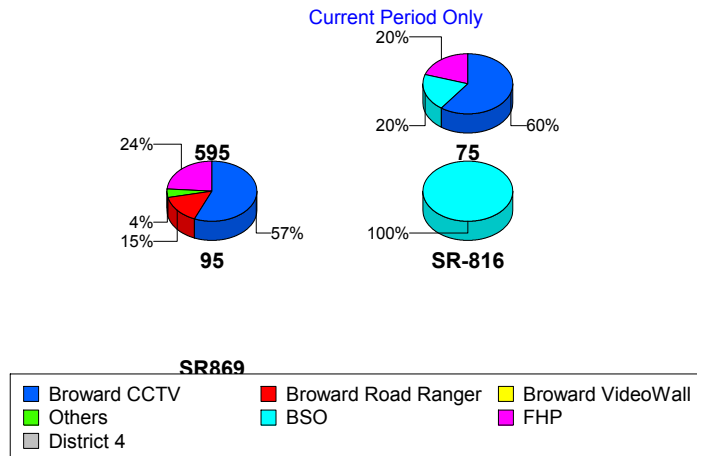
Total Incidents by Detection Method



Incident Detection Methods by Roadway

		Current Week	Last Week	YTD
595	Broward CCTV	0	1	4
	Broward Road Ranger	0	1	1
	BSO	0	0	3
	County Police	0	0	1
	FHP	0	1	5
	Total	0	3	14
75	Broward CCTV	3	1	15
	Broward Road Ranger	0	2	8
	BSO	1	0	3
	District 4	0	0	1
	FHP	1	3	9
	Fire	0	1	1

Total Events by Roadway and Detection Method

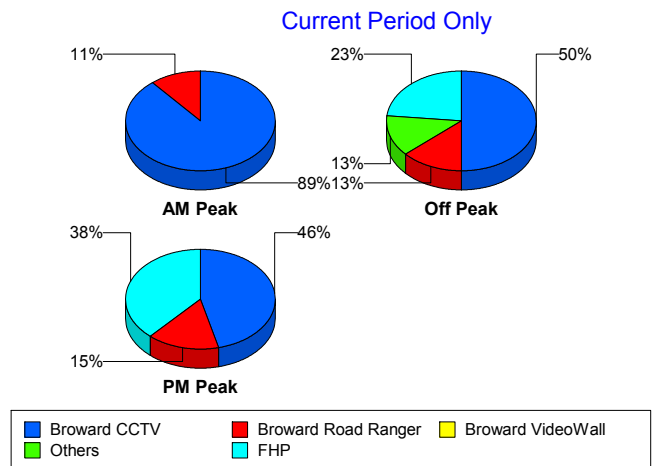


		Current Week	Last Week	YTD
75	VisioPaD Detection	0	3	6
	Total	5	10	43
95	Broward CCTV	26	25	191
	Broward Road Ranger	7	7	52
	Broward TMC	0	1	3
	Broward VideoWall	1	3	14
	BSO	0	0	1
	District 4	0	0	6
	FHP	11	13	78
	Local Police	0	0	1
	Motorist	0	1	3
	Road Watcher	1	1	3
	SIRV	0	0	1
	VisioPaD Detection	0	0	4
	Total	46	51	357
	SR-816	Broward Road Ranger	0	0
BSO		1	0	1
Total		1	0	19
Total	52	64	433	

Incident Detection Methods by Peak Period

		Current Week	Last Week	YTD
AM Peak	Broward CCTV	8	3	29
	Broward Road Ranger	1	0	13
	Broward VideoWall	0	1	8
	BSO	0	0	1
	District 4	0	0	1
	FHP	0	5	14
	Local Police	0	0	1
	SIRV	0	0	1
	VisioPaD Detection	0	1	1
	Total	9	10	69

Total Events by Peak Period and Detection Method

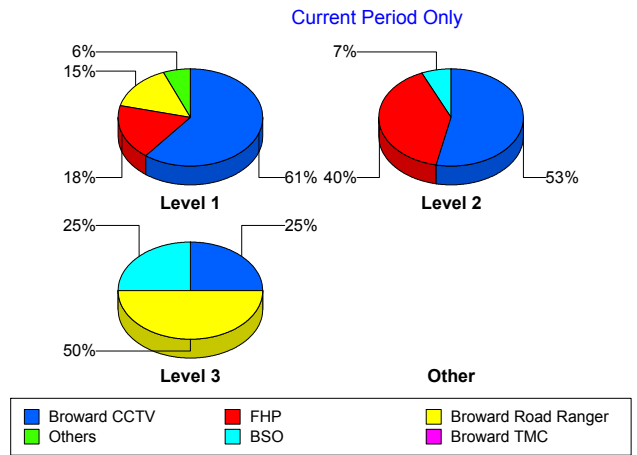


		Current Week	Last Week	YTD
Off Peak	Broward CCTV	15	13	113
	Broward Road Ranger	4	5	33
	Broward TMC	0	1	3
	Broward VideoWall	1	2	5
	BSO	2	0	4
	County Police	0	0	1
	District 4	0	0	5
	FHP	7	7	50
	Motorist	0	1	2
	Road Watcher	1	1	3
	VisioPaD Detection	0	1	6
	Total	30	31	225
	PM Peak	Broward CCTV	6	11
Broward Road Ranger		2	5	33
Broward VideoWall		0	0	1
BSO		0	0	3
District 4		0	0	1
FHP		5	5	28
Fire		0	1	1
Motorist		0	0	1
VisioPaD Detection		0	1	3
Total		13	23	139
Total		52	64	433

Incident Detection Methods by Severity

		Current Week	Last Week	YTD
Level 1	Broward CCTV	20	11	132
	Broward Road Ranger	5	5	55
	Broward TMC	0	1	2
	Broward VideoWall	1	1	9
	BSO	0	0	3
	District 4	0	0	4
	FHP	6	10	50
	Motorist	0	1	3
	Road Watcher	1	1	3
	VisioPaD Detection	0	2	5
	Total	33	32	266
Level 2	Broward CCTV	8	13	64
	Broward Road Ranger	0	4	17
	Broward TMC	0	0	1
	Broward VideoWall	0	2	5
	BSO	1	0	1
	District 4	0	0	2
	FHP	6	5	30
	Fire	0	1	1
	Local Police	0	0	1
	SIRV	0	0	1
	VisioPaD Detection	0	1	4
	Total	15	26	127
Level 3	Broward CCTV	1	3	14
	Broward Road Ranger	2	1	7
	BSO	1	0	4
	County Police	0	0	1
	District 4	0	0	1
	FHP	0	2	12
	VisioPaD Detection	0	0	1
	Total	4	6	40

Total Events by Severity and Detection Method



	Current Week	Last Week	YTD
Total	52	64	433

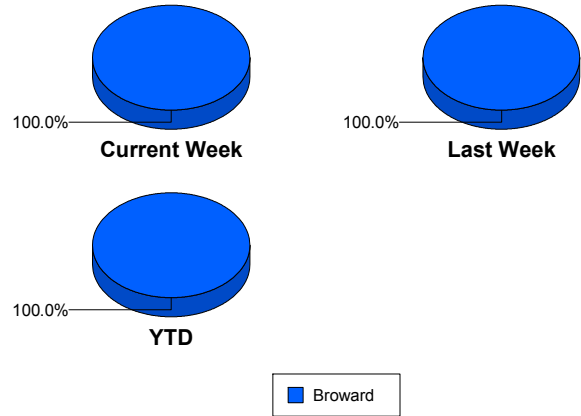
Road Ranger / SIRV Performance Measures

Road Ranger / SIRV Performance By County

Values presented are:
 - Total Events with a RR/SIRV Response
 - Total RR/SIRV Responses,
 - Total Activities Performed

	Current We	Last Week	YTD
Broward	926	903	8,221
	992	969	8,773
	1,024	999	9,084

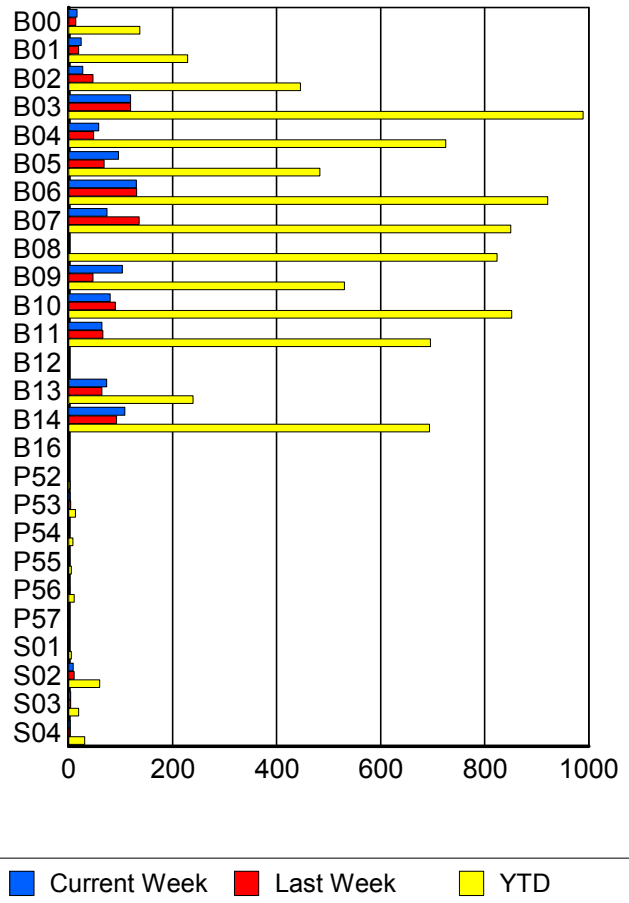
RR/SIRV Responses per County



Road Ranger / SIRV Performance By Truck

	Current We	Last Week	YTD
B00	15	14	134
	16	14	137
	16	14	146
B01	23	19	225
	24	19	229
	24	19	232
B02	26	47	440
	27	47	446
	28	47	451
B03	118	118	983
	119	119	989
	121	127	1,035
B04	57	48	715
	58	48	725
	59	49	748
B05	95	68	480
	96	68	483
	102	68	500
B06	130	130	910
	130	131	921
	133	135	954
B07	73	134	834
	74	136	850
	76	144	886
B08	0	0	811
	0	0	824
	0	0	856

RR/SIRV Responses per Truck



	Current We	Last Week	YTD
B09	100	47	522
	103	47	530
	106	49	551
B10	80	88	846
	80	90	852
	83	95	878
B11	63	65	691
	64	66	696
	65	67	715
B12	0	1	1
	0	1	1
	0	1	1
B13	72	63	236
	73	64	239
	75	64	243
B14	107	89	684
	108	92	694
	114	93	718
B16	0	1	1
	0	1	1
	0	1	1
P52	0	0	3
	0	0	3
	0	0	3
P53	3	4	13
	3	4	13
	3	4	13
P54	0	0	8
	0	0	8
	0	0	8
P55	0	2	5
	0	2	5
	0	2	5
P56	1	2	11
	1	2	11
	1	2	13
P57	0	0	1
	0	0	1
	0	0	1
S01	0	0	5
	0	0	5
	0	0	6
S02	9	10	59
	9	11	60
	11	11	66

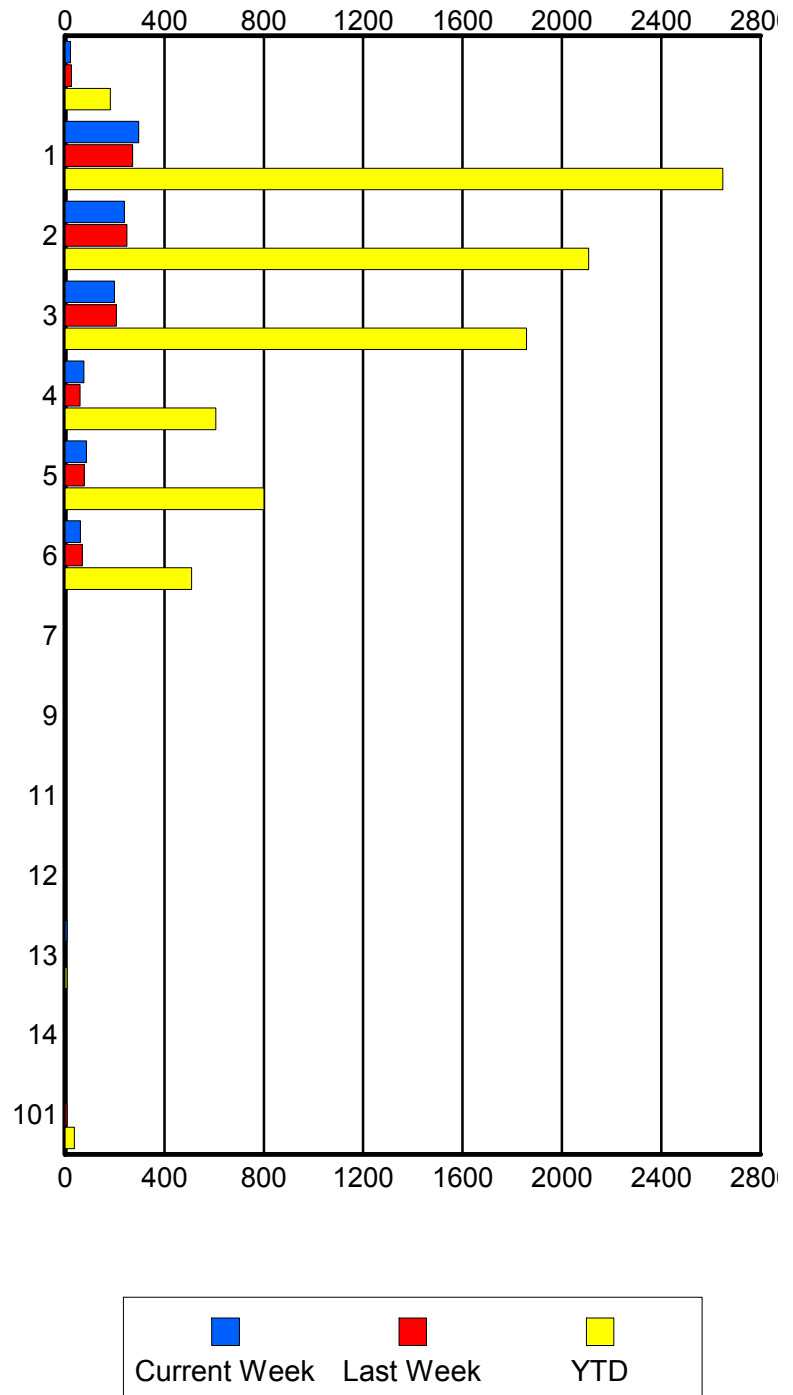
	Current We	Last Week	YTD
S03	4	4	16
	4	4	19
	4	4	20
S04	3	3	31
	3	3	31
	3	3	34

Road Ranger / SIRV Performance By Beat

	Current We	Last Week	YTD
	22	25	175
	22	26	182
	24	26	193
1	281	260	2,531
	296	272	2,648
	302	283	2,751
2	232	242	2,050
	239	249	2,108
	251	254	2,184
3	191	204	1,818
	199	207	1,857
	208	217	1,924
4	74	60	596
	76	60	607
	77	62	632
5	85	77	794
	86	77	800
	88	79	816
6	62	68	501
	62	70	510
	62	70	521
7	0	0	4
	0	0	4
	0	0	4
9	0	0	4
	0	0	4
	0	0	4
11	0	0	2
	0	0	2
	0	0	2
12	0	0	2
	0	0	2
	0	0	2
13	8	0	8
	8	0	8
	8	0	8
14	0	0	3
	0	0	3
	0	0	3
101	4	8	38
	4	8	38
	4	8	40

Values presented are:
 - Total Events with a RR/SIRV Response
 - Total RR/SIRV Responses,
 - Total Activities Performed

RR/SIRV Responses per Beat

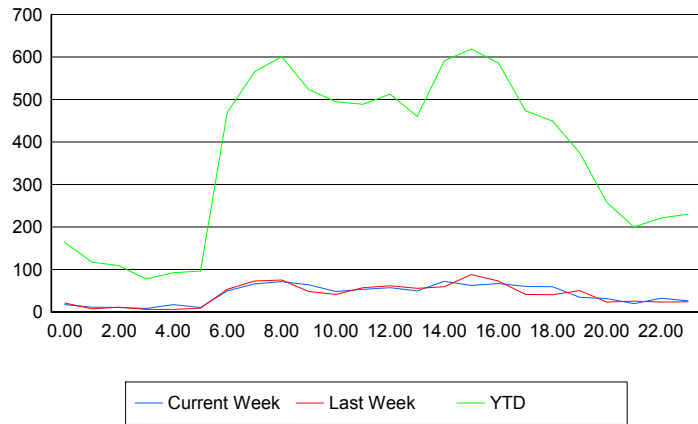


Road Ranger / SIRV Performance By Time of Day

Values presented are:
 - Total Events with a RR/SIRV Response
 - Total RR/SIRV Responses,
 - Total Activities Performed

	Current We	Last Week	YTD
12AM-1AM	16	20	155
	17	21	164
	17	22	171
1AM-2AM	11	7	112
	11	7	117
	11	7	122
2AM-3AM	10	10	101
	10	11	109
	10	11	114
3AM-4AM	8	4	73
	8	6	77
	8	7	85
4AM-5AM	13	5	85
	17	6	92
	18	8	97
5AM-6AM	10	9	79
	10	9	96
	10	9	100
6AM-7AM	46	50	443
	49	53	470
	50	56	483
7AM-8AM	62	65	537
	66	73	565
	67	76	586
8AM-9AM	65	67	563
	71	75	601
	74	77	619
9AM-10AM	59	48	500
	64	48	523
	66	48	540
10AM-11AM	46	40	465
	48	41	495
	49	43	516
11AM-12PM	52	56	459
	53	57	489
	53	58	503
12PM-1PM	49	58	478
	57	61	513
	57	63	525

Number of Responses / Hour of the Day



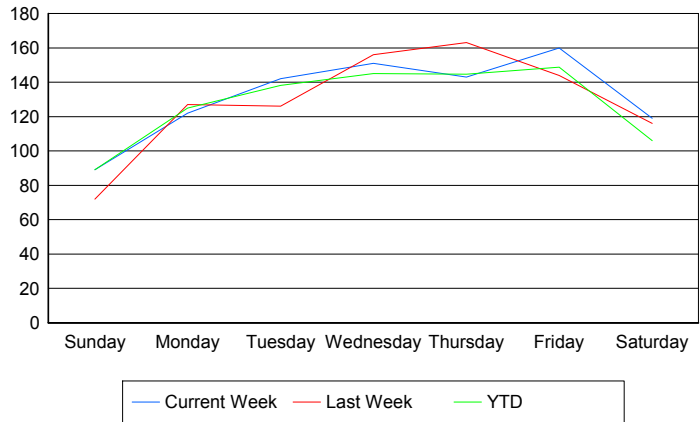
	Current We	Last Week	YTD
1PM-2PM	47	50	430
	49	55	460
	49	55	474
2PM-3PM	68	54	541
	72	59	591
	78	60	621
3PM-4PM	61	83	580
	62	88	619
	65	88	633
4PM-5PM	59	61	537
	67	73	586
	69	74	609
5PM-6PM	54	39	442
	60	41	474
	62	41	485
6PM-7PM	52	40	428
	59	40	449
	61	41	465
7PM-8PM	33	48	356
	34	50	374
	36	52	385
8PM-9PM	30	20	241
	31	23	258
	32	24	264
9PM-10PM	17	24	188
	19	25	200
	20	25	208
10PM-11PM	32	22	207
	32	23	221
	34	27	235
11PM-12AM	26	23	221
	26	24	230
	28	27	244

Road Ranger / SIRV Performance By Day of Week

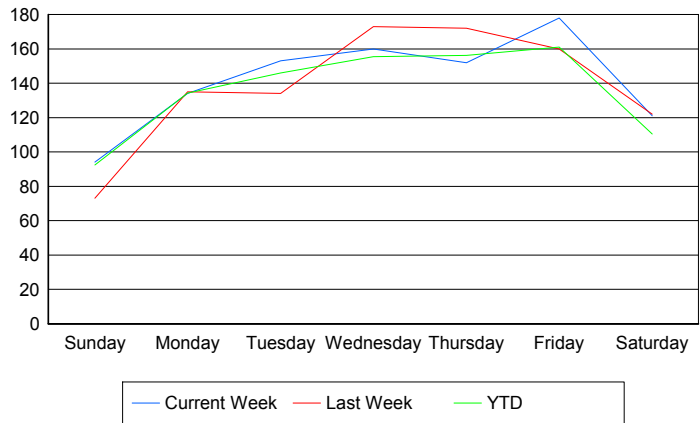
Values presented are:
 - Total Events with a RR/SIRV Response
 - Total RR/SIRV Responses,
 - Total Activities Performed

	Current We	Last Week	YTD
Sunday	89	72	783
	94	73	813
	99	76	845
Monday	122	127	1,116
	134	135	1,200
	136	138	1,229
Tuesday	142	126	1,238
	153	134	1,309
	157	137	1,344
Wednesday	151	156	1,297
	160	173	1,389
	166	177	1,436
Thursday	143	163	1,297
	152	172	1,402
	156	180	1,460
Friday	160	144	1,453
	178	160	1,570
	180	165	1,626
Saturday	119	116	1,045
	121	122	1,090
	130	126	1,144

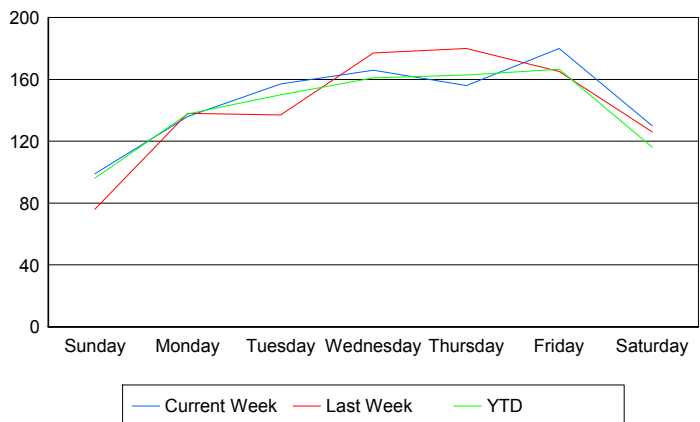
Avg # of events with a RR/SIRV Response per Day of the Week



Avg # of RR/SIRV Responses per Day of the Week



Avg # of RR/SIRV Activities Performed per Day of the Week



Road Ranger / SIRV Responses per Time of Day and Day of Week

