



# Weekly Performance Measures Report Broward County



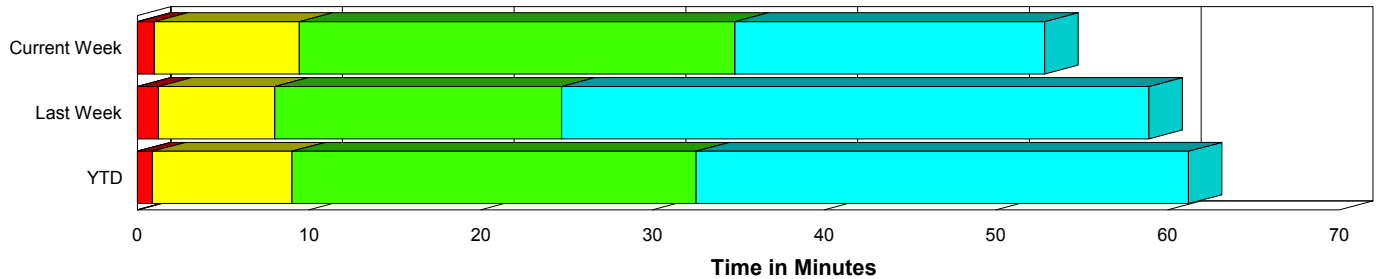
Created on:  
March 01, 2010  
8:44 am

Period From Feb 21, 2010 to Feb 27, 2010

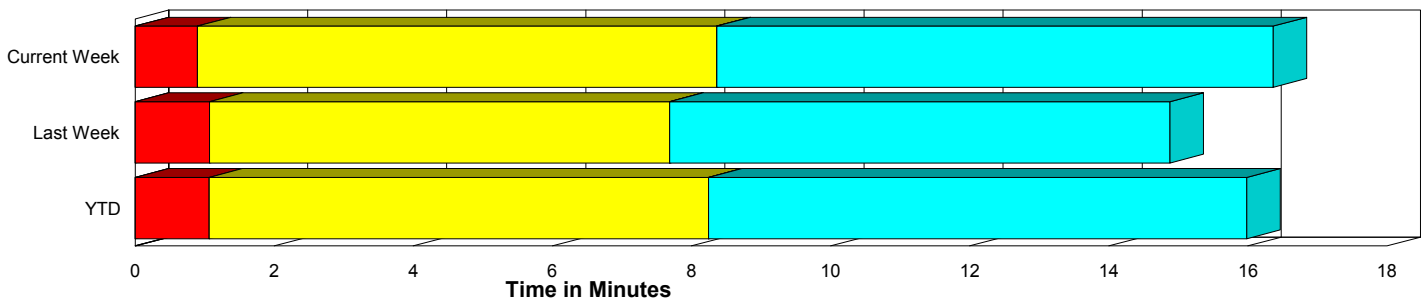
## Performance Measures Summary

	Traffic Events (No Lanes Blocked)			Incidents (Lanes Blocked)		
	<u>This Week</u>	<u>Last Week</u>	<u>YTD</u>	<u>This Week</u>	<u>Last Week</u>	<u>YTD</u>
Number of Events	1,253	1,221	10,122	65	43	389
TMC Detection (min.)	0.00	0.00	0.00	0.00	0.00	0.00
TMC Verification (min.)	0.90	1.07	1.06	0.99	1.23	0.89
TMC Response (min.)	8.94	8.57	9.04	9.48	8.04	9.07
RR Dispatch Time (min.)	1.25	1.17	1.36	1.57	1.11	1.83
RR Response Time (min.)	7.70	7.52	7.80	7.88	6.93	7.25
Roadway Clearance (min.)				32.18	26.05	31.71
Event Clearance (min.)	16.94	15.77	16.79	49.92	60.24	60.12
# of Events w/ RR/SIRV	974	950	8,088	63	42	381
RR/SIRV Responses	974	950	8,088	63	42	381
RR/SIRV Activities	737	680	6,007	114	83	713

### Incident Clearance Time-Line



### Traffic Event (Non-Lane Blockage) Time-Line



<span style="color: blue;">■</span> Avg. TMC Detection Time	<span style="color: green;">■</span> Avg. Time from TMC Response to Roadway Clearance*
<span style="color: red;">■</span> Avg. Time from TMC Detection to TMC Verification	<span style="color: cyan;">■</span> Avg. Time from Roadway Clearance to Incident/Event Clearance**
<span style="color: yellow;">■</span> Avg. Time from TMC Verification to TMC Response	

\* Roadway clearance equals all travel lanes open

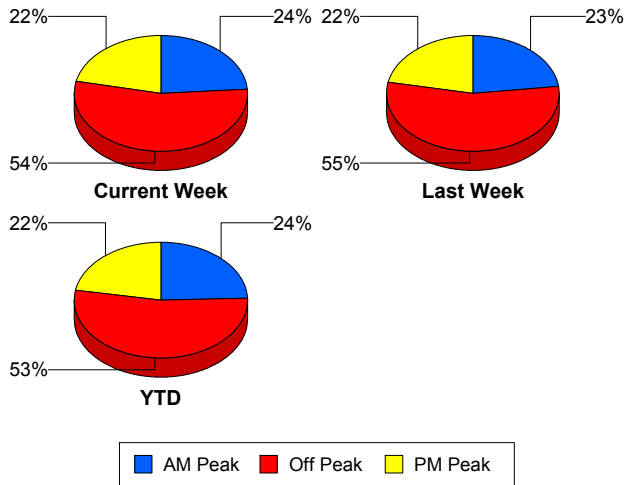
\*\* Incident clearance equals time when last responder has left the scene

## Performance Measures by Peak Period

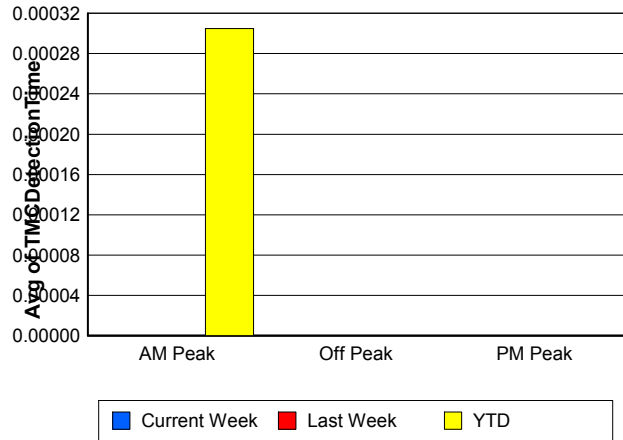
Note: AM peak period is defined as 6am to 10am and PM peak period is defined as 3pm to 7pm.

	AM Peak			Off Peak			PM Peak		
	Current Week	Last Week	YTD	Current Week	Last Week	YTD	Current Week	Last Week	YTD
Number of Events	316	293	2,569	715	693	5,612	287	278	2,330
Number of Incidents	10	6	61	32	22	202	23	15	126
TMC Detection (min.)	0.00	0.00	0.00	0.00	0.00	0.00	0.00	0.00	0.00
TMC Verification (min.)	0.54	0.77	0.60	0.76	1.15	1.10	1.67	1.20	1.46
TMC Response (min.)	8.49	7.30	8.28	8.94	9.73	9.25	9.59	7.44	9.39
RR Dispatch Time (min.)	1.15	0.90	1.01	1.20	1.38	1.44	1.55	0.98	1.63
RR Response Time (min.)	7.27	6.49	7.35	7.81	8.46	7.91	7.97	6.54	7.87
Event Clearance (min.)	16.53	14.31	16.21	18.02	17.46	18.46	22.20	19.96	20.63
Roadway Clearance (min.)	31.49	18.95	31.73	31.48	29.88	37.19	33.47	23.26	22.91
Incident Clearance (min.)	47.20	44.88	58.02	46.89	64.06	62.74	55.32	60.78	56.92
# of Events w/ RR/SIRV	255	242	2,132	547	517	4,404	235	233	1,933
RR/SIRV Responses	255	242	2,132	547	517	4,404	235	233	1,933
RR/SIRV Activities	218	173	1,627	425	386	3,472	208	204	1,621

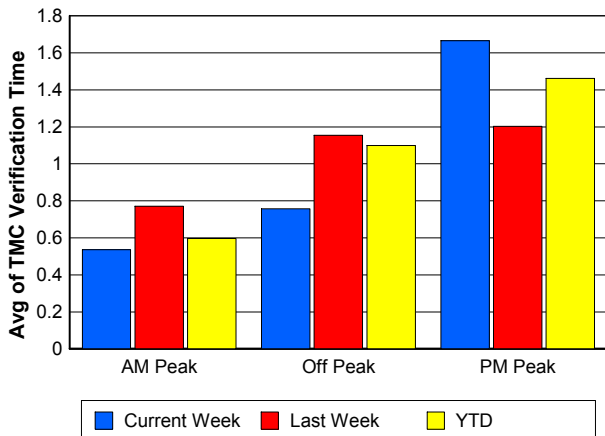
### Number of Events / Peak Period



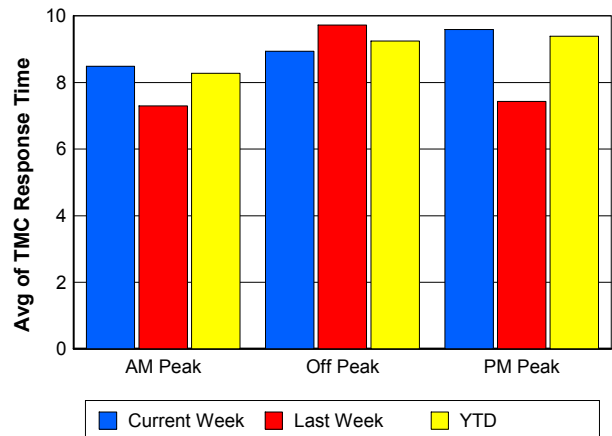
### TMC Detection Time



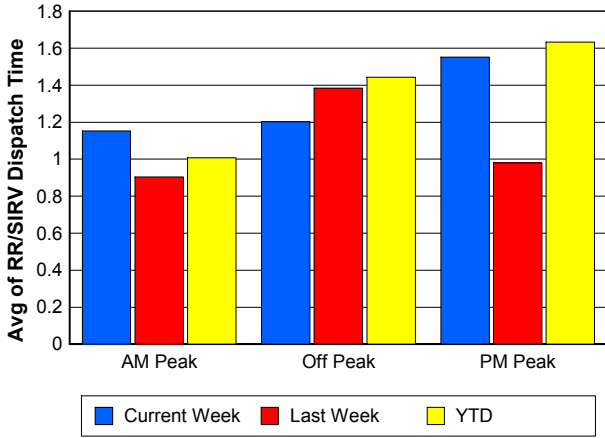
### TMC Verification Time



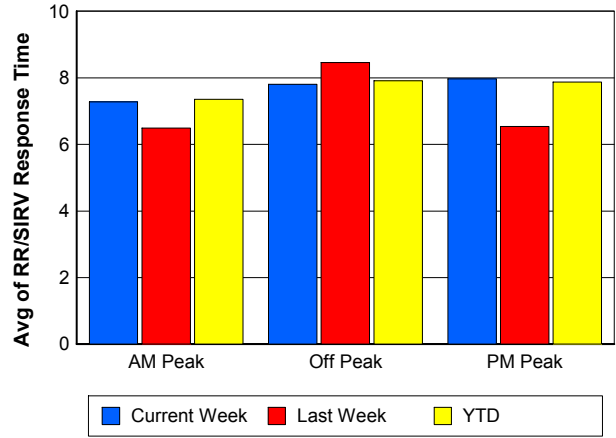
### TMC Response Time



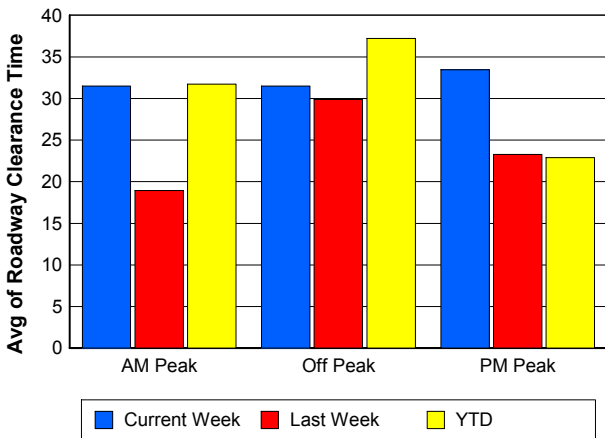
## Road Ranger / SIRV Dispatch Time



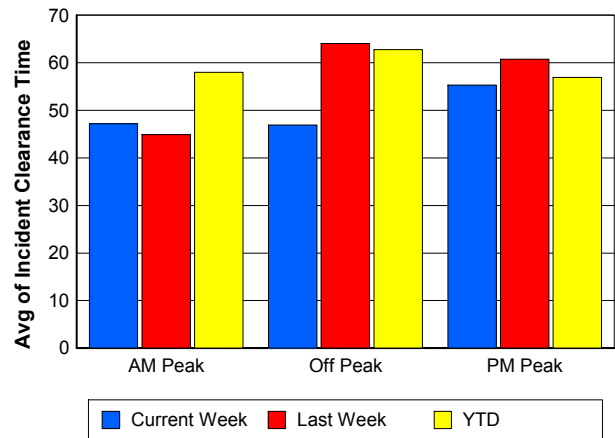
## Road Ranger / SIRV Response Time



## Roadway Clearance Time (2A)



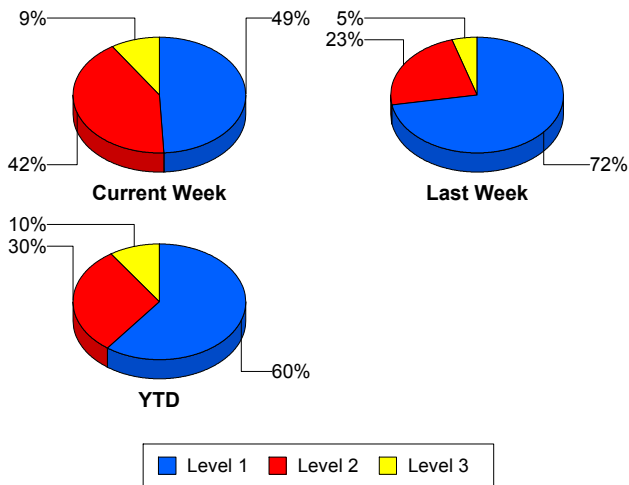
## Incident Clearance Time (3B)



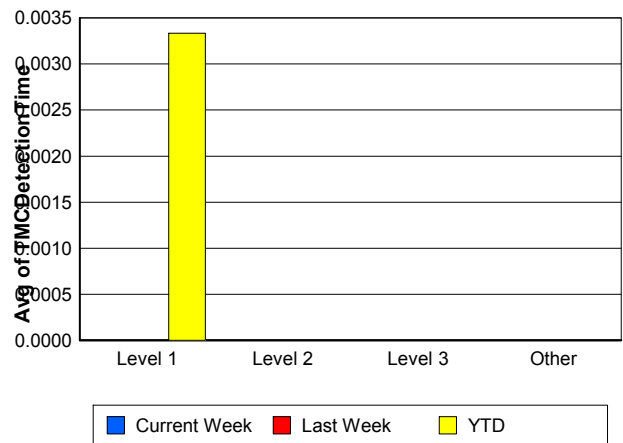
## Performance Measures by Severity

	Level 1			Level 2			Level 3			Other		
	<u>This Week</u>	<u>Last Week</u>	<u>YTD</u>	<u>This Week</u>	<u>Last Week</u>	<u>YTD</u>	<u>This Week</u>	<u>Last Week</u>	<u>YTD</u>	<u>This Week</u>	<u>Last Week</u>	<u>YTD</u>
Number of Events	32	31	235	27	10	117	6	2	37	1,253	1,221	10,122
Number of Incidents	32	31	235	27	10	117	6	2	37	0	0	0
TMC Detection (min.)	0.00	0.00	0.00	0.00	0.00	0.00	0.00	0.00	0.00	0.00	0.00	0.00
TMC Verification (min.)	0.80	0.06	0.53	1.12	2.66	1.40	1.44	12.33	1.50	0.90	1.07	1.06
TMC Response (min.)	7.98	6.60	7.56	9.66	11.96	11.29	15.17	12.72	11.20	8.94	8.57	9.04
RR Dispatch Time (min.)	1.32	1.25	1.51	1.70	0.67	2.46	2.24	0.92	1.83	1.25	1.17	1.36
RR Resp. Time (min.)	6.63	5.35	6.10	7.96	11.29	8.81	12.92	11.80	9.38	7.70	7.52	7.80
Event Clearance (min.)	26.72	53.00	48.16	73.60	74.17	74.35	67.12	102.82	91.06	16.94	15.77	16.79
Roadway Clear. (min.)	11.40	15.13	14.79	50.18	53.81	51.04	62.05	56.47	78.01			
Incident Clearance (min.)	26.72	53.00	48.16	73.60	74.17	74.35	67.12	102.82	91.06			
# of Events w/ RR/SIRV	30	31	231	27	9	115	6	2	35	974	950	8,088
RR/SIRV Responses	30	31	231	27	9	115	6	2	35	974	950	8,088
RR/SIRV Activities	39	51	361	61	24	257	14	8	95	737	680	6,007

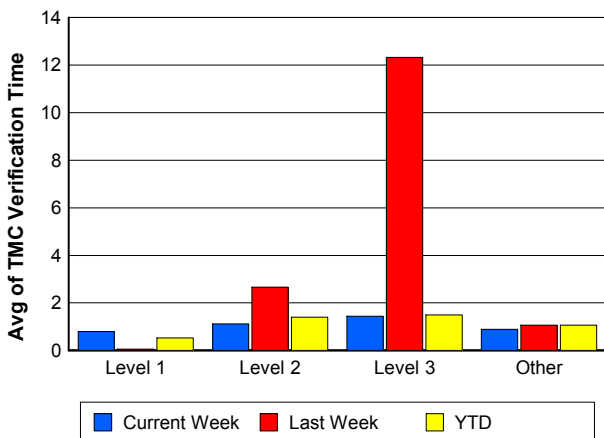
### Number of Events / Severity



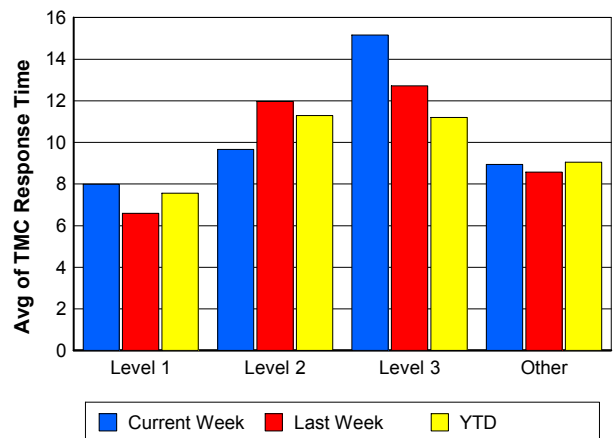
### TMC Detection Time



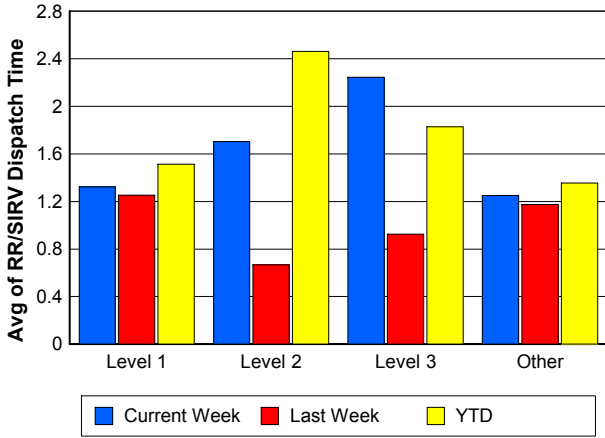
### TMC Verification Time



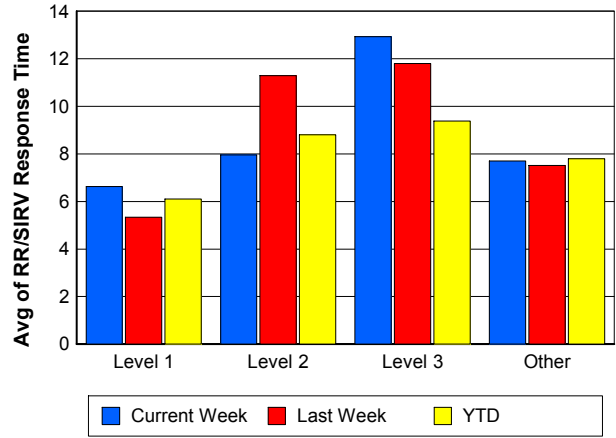
### TMC Response Time



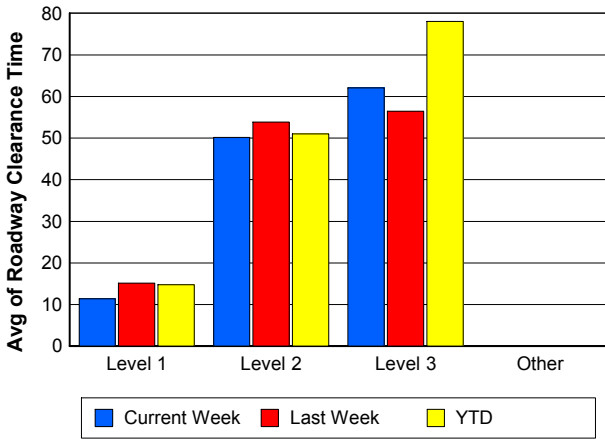
## Road Ranger / SIRV Dispatch Time



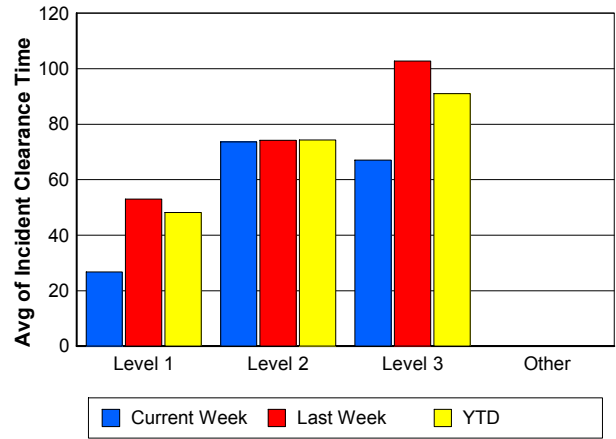
## Road Ranger / SIRV Response Time



## Roadway Clearance Time (2A)



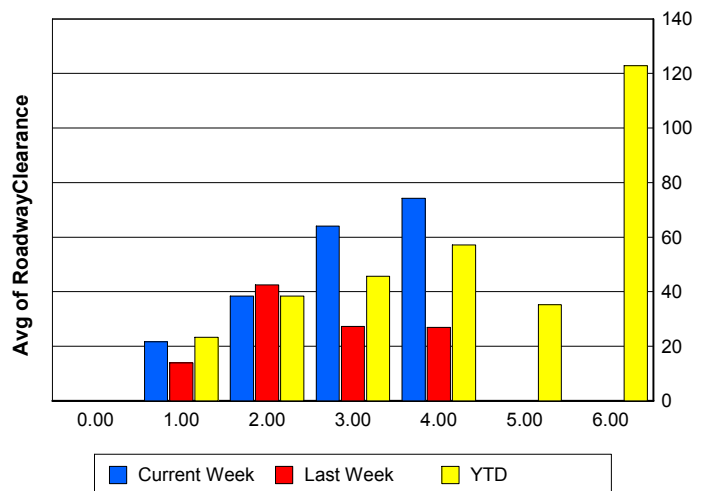
## Incident Clearance Time (3B)



## Roadway Clearance by Maximum Number of Lanes Blocked

	Current Week	Last Week	YTD
0			
1	21.62	13.92	23.27
2	38.40	42.49	38.41
3	64.06	27.28	45.70
4	74.23	26.89	57.13
5	0.00	0.00	35.22
6	0.00	0.00	122.82

## Roadway Clearance Time (2A)



## Performance Measures by Roadway

**595**

	<u>Current Week</u>	<u>Last Week</u>	<u>YTD</u>
Number of Events	56	50	383
Number of Incidents	4	2	21
TMC Detection (min.)	0.00	0.00	0.00
TMC Verification (min.)	0.22	2.30	1.89
TMC Response (min.)	14.35	17.95	14.46
RR Dispatch Time (min.)	2.66	1.64	2.25
RR Resp. Time (min.)	11.69	15.67	12.34
Event Clearance (min.)	17.94	17.22	19.84
Roadway Clear. (min.)	38.19	87.71	55.23
Incident Clearance (min.)	64.05	113.26	72.66
# of Events w/ RR/SIRV	33	34	267
RR/SIRV Responses	33	34	267
RR/SIRV Activities	22	22	197

**75**

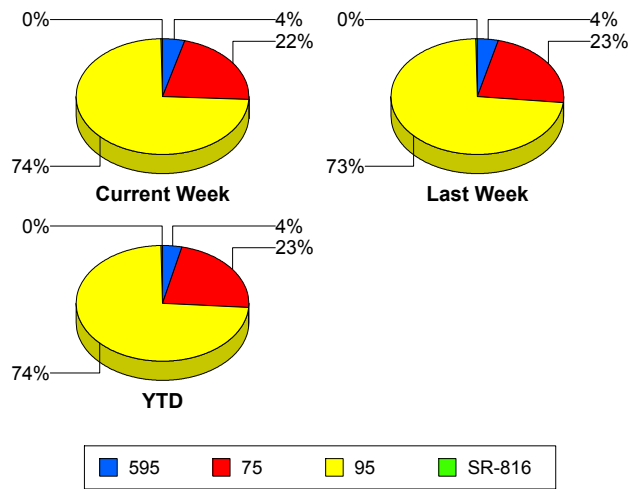
	<u>Current Week</u>	<u>Last Week</u>	<u>YTD</u>
Number of Events	286	287	2,371
Number of Incidents	10	1	38
TMC Detection (min.)	0.00	0.00	0.00
TMC Verification (min.)	1.66	1.98	1.72
TMC Response (min.)	11.05	10.05	9.88
RR Dispatch Time (min.)	1.45	1.37	1.52
RR Resp. Time (min.)	9.57	8.79	8.52
Event Clearance (min.)	18.52	17.40	18.59
Roadway Clear. (min.)	34.94	29.98	36.64
Incident Clearance (min.)	55.48	148.40	69.56
# of Events w/ RR/SIRV	208	217	1,819
RR/SIRV Responses	208	217	1,819
RR/SIRV Activities	169	178	1,475

**95**

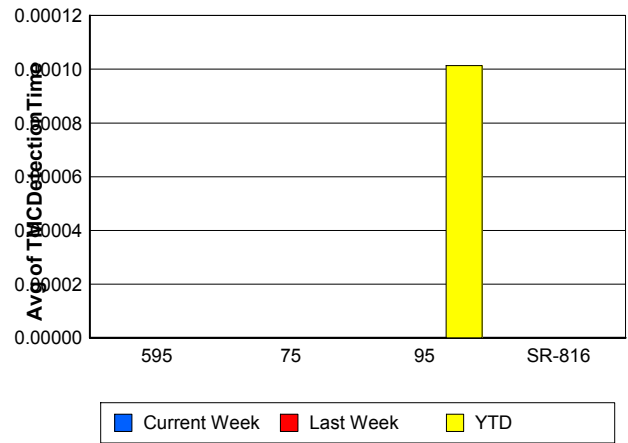
	<u>Current Week</u>	<u>Last Week</u>	<u>YTD</u>
Number of Events	974	924	7,731
Number of Incidents	51	38	312
TMC Detection (min.)	0.00	0.00	0.00
TMC Verification (min.)	0.72	0.73	0.82
TMC Response (min.)	8.30	7.79	8.65
RR Dispatch Time (min.)	1.17	1.09	1.30
RR Resp. Time (min.)	7.12	6.83	7.42
Event Clearance (min.)	18.58	17.27	18.26
Roadway Clear. (min.)	31.17	23.26	30.48
Incident Clearance (min.)	47.72	57.49	60.56
# of Events w/ RR/SIRV	794	739	6,358
RR/SIRV Responses	794	739	6,358
RR/SIRV Activities	657	561	5,020

	<u>Current Week</u>	<u>Last Week</u>	<u>YTD</u>
Number of Events	2	3	26
Number of Incidents	0	2	18
TMC Detection (min.)	0.00	0.00	0.00
TMC Verification (min.)	0.00	0.00	0.00
TMC Response (min.)	0.00	0.00	0.12
RR Dispatch Time (min.)	0.00	0.00	0.05
RR Resp. Time (min.)	0.00	0.00	0.07
Event Clearance (min.)	40.41	10.82	16.94
Roadway Clear. (min.)		15.36	15.24
Incident Clearance (min.)		15.28	17.86
# of Events w/ RR/SIRV	2	2	25
RR/SIRV Responses	2	2	25
RR/SIRV Activities	3	2	28

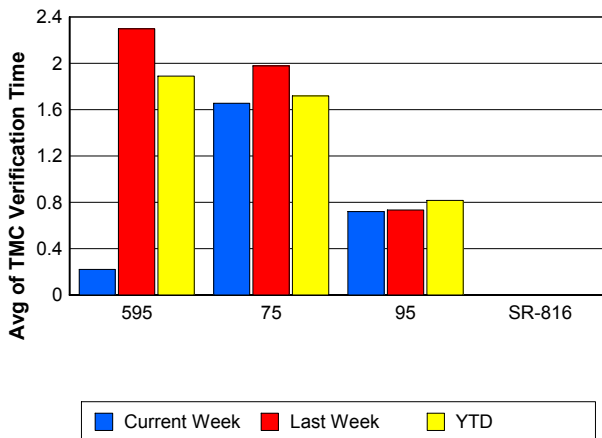
### Number of Events / Roadway



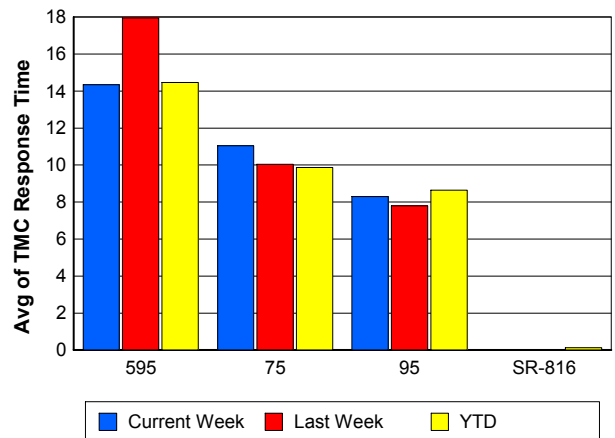
### TMC Detection Time



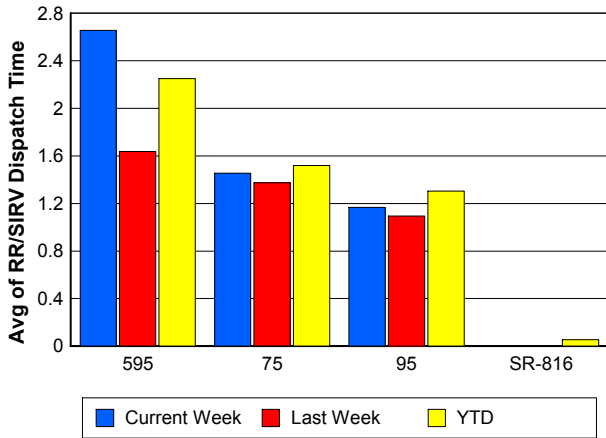
### TMC Verification Time



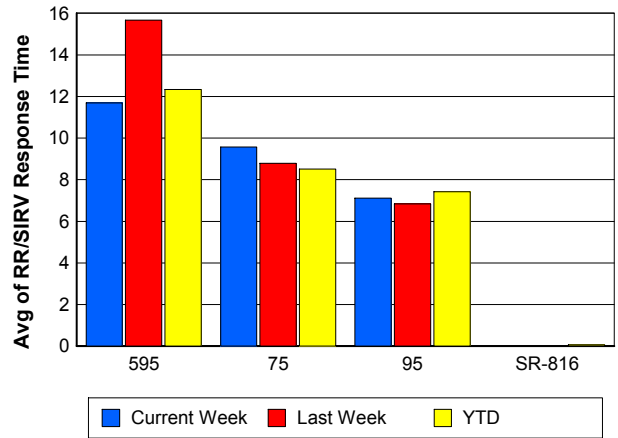
### TMC Response Time



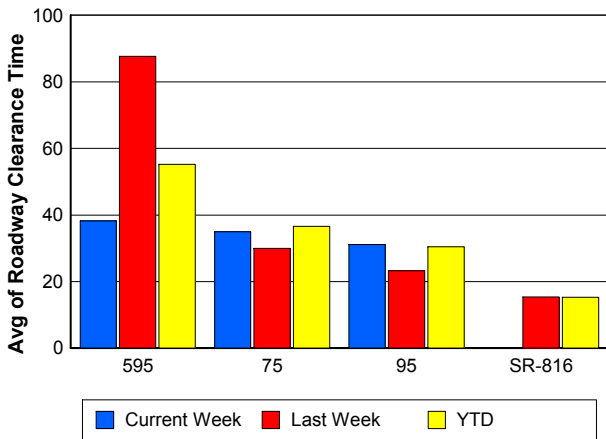
## Road Ranger / SIRV Dispatch Time



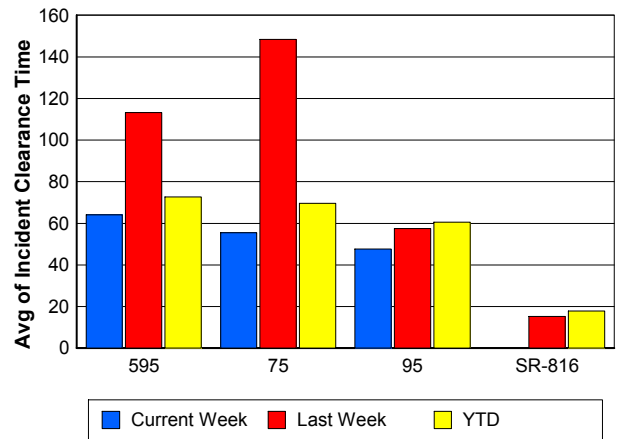
## Road Ranger / SIRV Response Time



## Roadway Clearance Time (2A)



## Incident Clearance Time (3B)



## Performance Measures by Event Type

### Accident

	<u>Current Week</u>	<u>Last Week</u>	<u>YTD</u>
Number of Events	112	68	610
Number of Incidents	47	32	266
TMC Detection (min.)	0.00	0.00	0.00
TMC Verification (min.)	1.74	0.48	1.27
TMC Response (min.)	8.52	8.60	9.58
RR Dispatch Time (min.)	1.64	1.07	1.79
RR Response Time (min.)	6.87	7.53	7.80
Event Clearance (min.)	47.96	59.85	55.54
Roadway Clearance (min.)	36.85	25.13	34.02
Incident Clearance (min.)	58.30	67.60	71.43
# of Events w/ RR/SIRV	111	67	605
RR/SIRV Assists	111	67	605
RR/SIRV Activities	159	103	898

### Debris on Roadway

	<u>Current Week</u>	<u>Last Week</u>	<u>YTD</u>
Number of Events	32	34	313
Number of Incidents	0	0	6
TMC Detection (min.)	0.00	0.00	0.00
TMC Verification (min.)	9.44	9.24	6.41
TMC Response (min.)	15.17	12.23	10.10
RR Dispatch Time (min.)	3.33	0.94	1.61
RR Response Time (min.)	11.60	11.28	8.45
Event Clearance (min.)	16.70	13.48	13.47
Roadway Clearance (min.)			49.14
Incident Clearance (min.)			44.49
# of Events w/ RR/SIRV	31	31	297
RR/SIRV Assists	31	31	297
RR/SIRV Activities	30	29	298

### Disabled Vehicle

	<u>Current Week</u>	<u>Last Week</u>	<u>YTD</u>
Number of Events	668	631	5,542
Number of Incidents	13	9	80
TMC Detection (min.)	0.00	0.00	0.00
TMC Verification (min.)	0.89	1.48	1.44
TMC Response (min.)	8.47	8.32	8.90
RR Dispatch Time (min.)	1.08	1.10	1.25
RR Response Time (min.)	7.42	7.29	7.71
Event Clearance (min.)	20.49	19.95	20.85
Roadway Clearance (min.)	14.60	15.39	16.03
Incident Clearance (min.)	24.25	21.71	26.29
# of Events w/ RR/SIRV	640	600	5,357
RR/SIRV Assists	640	600	5,357
RR/SIRV Activities	616	580	5,157

## Emergency Vehicles

	<u>YTD</u>
Number of Events	11
Number of Incidents	9
TMC Detection (min.)	0.00
TMC Verification (min.)	0.00
TMC Response (min.)	13.40
RR Dispatch Time (min.)	1.07
RR Response Time (min.)	12.25
Event Clearance (min.)	32.41
Roadway Clearance (min.)	26.06
Incident Clearance (min.)	30.05
# of Events w/ RR/SIRV	9
RR/SIRV Assists	9
RR/SIRV Activities	8

## Other

	<u>Current Week</u>	<u>Last Week</u>	<u>YTD</u>
Number of Events	494	525	3,974
Number of Incidents	1	1	10
TMC Detection (min.)	0.00	0.00	0.00
TMC Verification (min.)	0.05	0.08	0.04
TMC Response (min.)	12.93	7.36	9.10
RR Dispatch Time (min.)	1.26	1.35	1.53
RR Response Time (min.)	11.59	6.12	7.81
Event Clearance (min.)	9.13	8.65	9.41
Roadway Clearance (min.)	1.95	111.45	61.83
Incident Clearance (min.)	2.22	161.92	71.21
# of Events w/ RR/SIRV	244	289	2,147
RR/SIRV Assists	244	289	2,147
RR/SIRV Activities	35	46	295

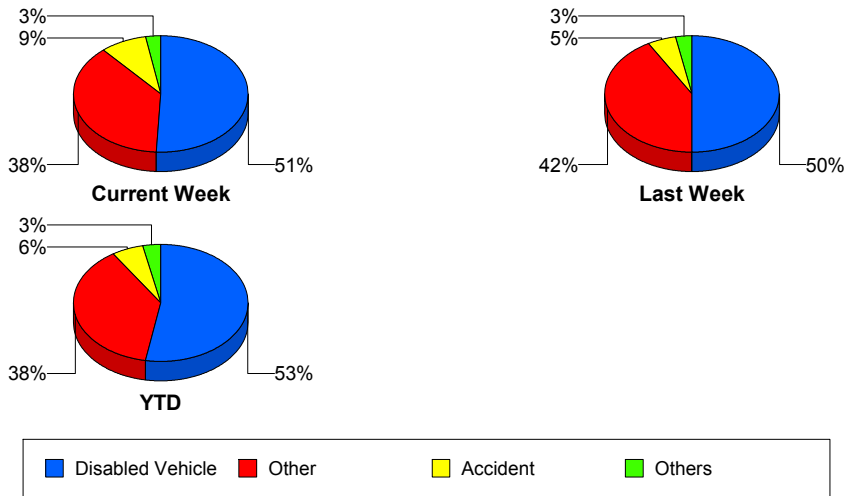
## Police Activity

	<u>Current Week</u>	<u>YTD</u>
Number of Events	2	13
Number of Incidents	1	6
TMC Detection (min.)	0.00	0.00
TMC Verification (min.)	0.00	3.38
TMC Response (min.)	15.75	11.30
RR Dispatch Time (min.)	1.39	1.21
RR Response Time (min.)	14.98	10.31
Event Clearance (min.)	37.02	41.64
Roadway Clearance (min.)	46.22	51.39
Incident Clearance (min.)	49.10	60.60
# of Events w/ RR/SIRV	2	10
RR/SIRV Assists	2	10
RR/SIRV Activities	2	11

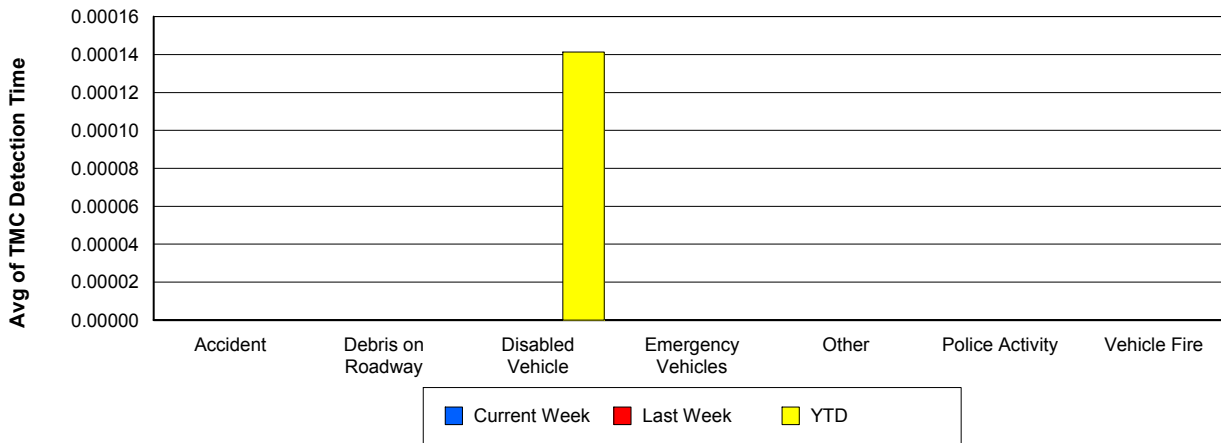
## Vehicle Fire

	<u>Current Week</u>	<u>Last Week</u>	<u>YTD</u>
Number of Events	3	3	19
Number of Incidents	3	1	12
TMC Detection (min.)	0.00	0.00	0.00
TMC Verification (min.)	5.09	13.82	3.74
TMC Response (min.)	9.81	26.79	12.95
RR Dispatch Time (min.)	1.09	3.36	2.06
RR Response Time (min.)	8.72	23.43	10.81
Event Clearance (min.)	46.11	51.98	51.24
Roadway Clearance (min.)	40.68	65.93	45.57
Incident Clearance (min.)	46.11	69.80	55.67
# of Events w/ RR/SIRV	3	3	19
RR/SIRV Assists	3	3	19
RR/SIRV Activities	6	3	32

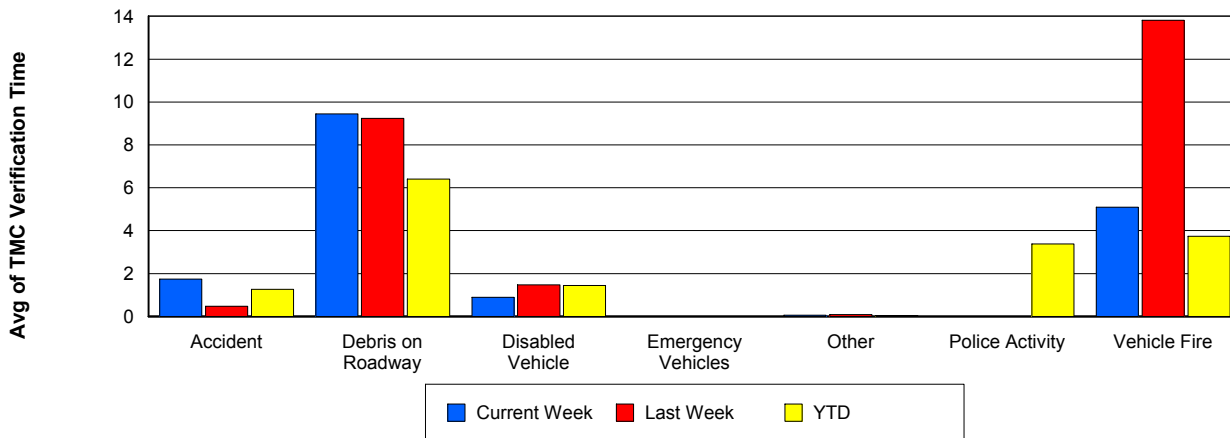
## Number of Events / Event Type



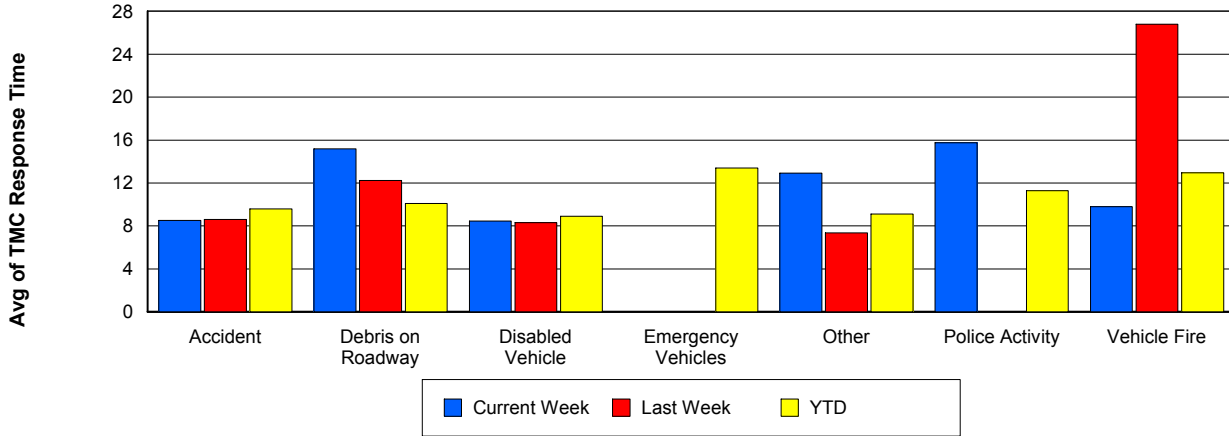
## TMC Detection Time



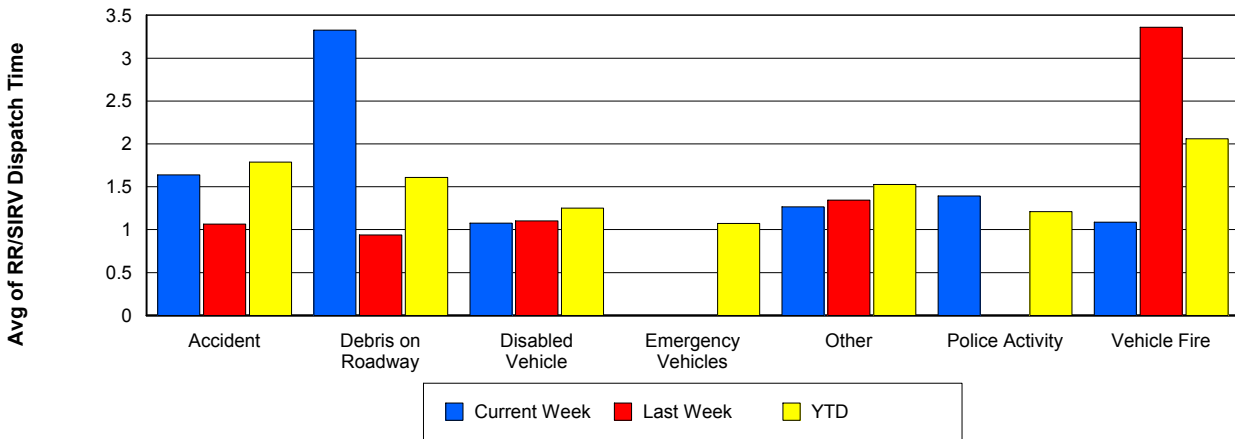
## TMC Verification Time



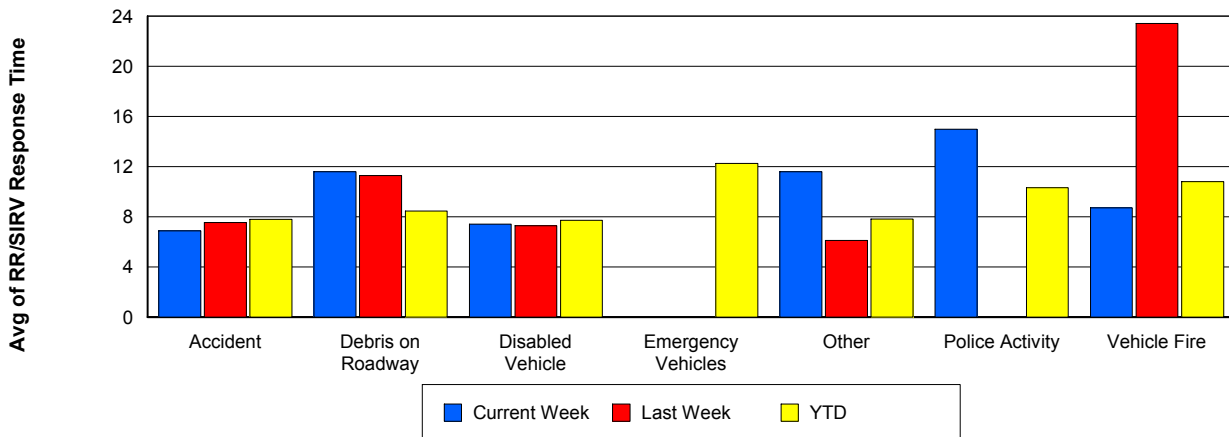
## TMC Response Time



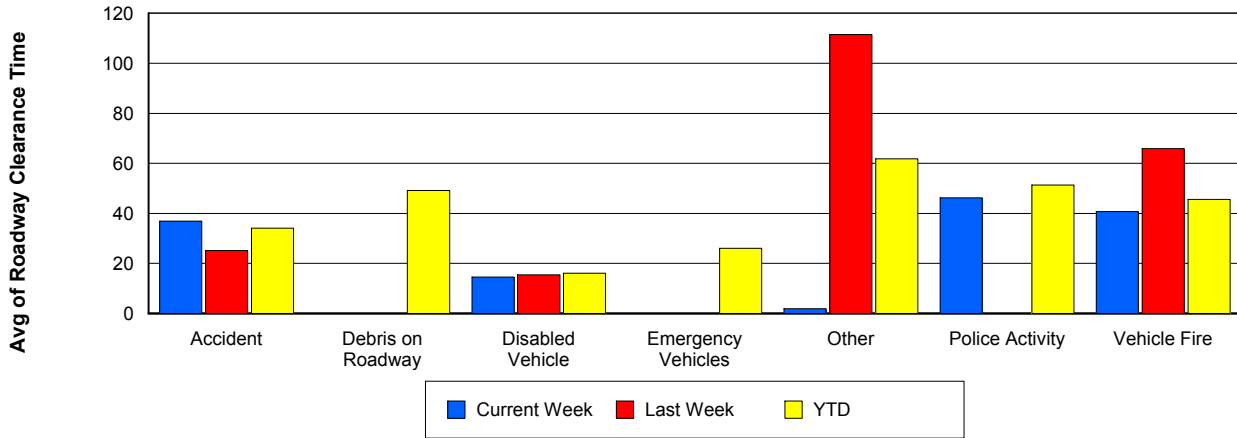
## Road Ranger / SIRV Dispatch Time



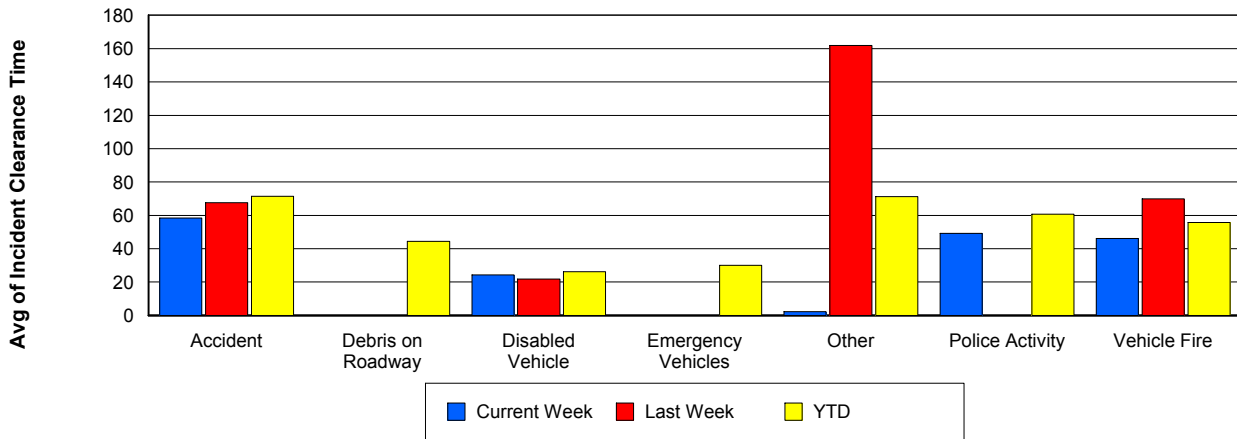
## Road Ranger / SIRV Response Time



## Roadway Clearance Time (2A)



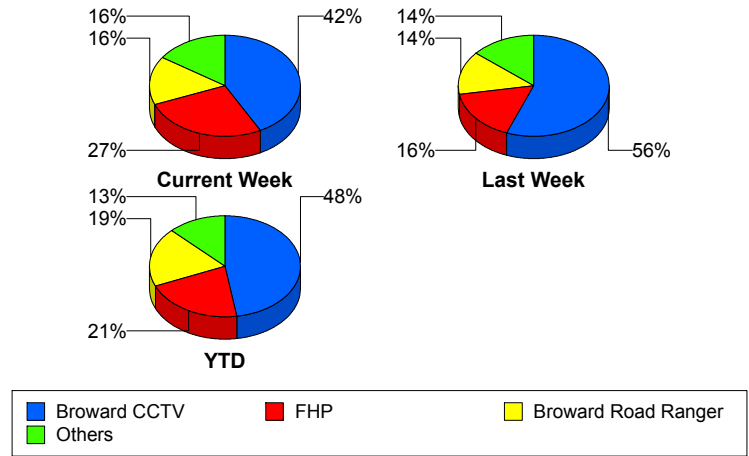
## Incident Clearance Time (3B)



## Incident Detection Methods

	Current Week	Last Week	YTD
Broward CCTV	27	24	181
Broward Road Ranger	10	6	72
Broward TMC	1	1	3
Broward VideoWall	3	3	13
BSO	0	0	6
County Police	0	1	1
District 4	0	1	7
FHP	17	7	80
Fire	1	0	1
Local Police	0	0	1
Motorist	1	0	3
Road Watcher	1	0	2
SIRV	0	0	1
VisioPaD Detection	3	0	10
<b>Total</b>	<b>64</b>	<b>43</b>	<b>381</b>

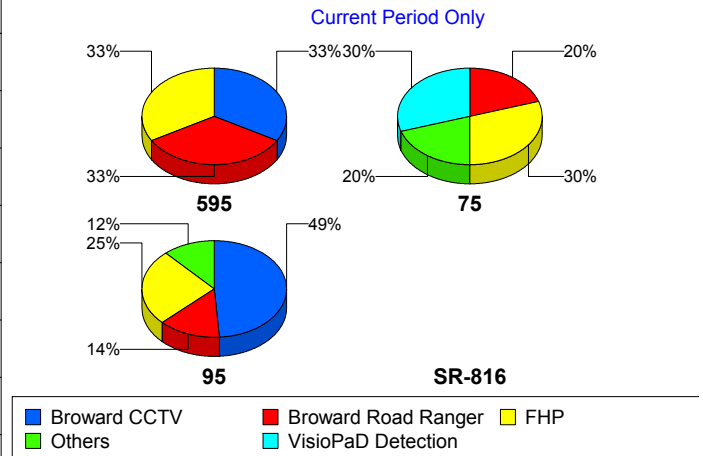
### Total Incidents by Detection Method



## Incident Detection Methods by Roadway

		Current Week	Last Week	YTD
595	Broward CCTV	1	0	4
	Broward Road Ranger	1	0	1
	BSO	0	0	3
	County Police	0	1	1
	FHP	1	1	5
	<b>Total</b>	<b>3</b>	<b>2</b>	<b>14</b>
75	Broward CCTV	1	1	12
	Broward Road Ranger	2	0	8
	BSO	0	0	2
	District 4	0	0	1
	FHP	3	0	8
	Fire	1	0	1

### Total Events by Roadway and Detection Method

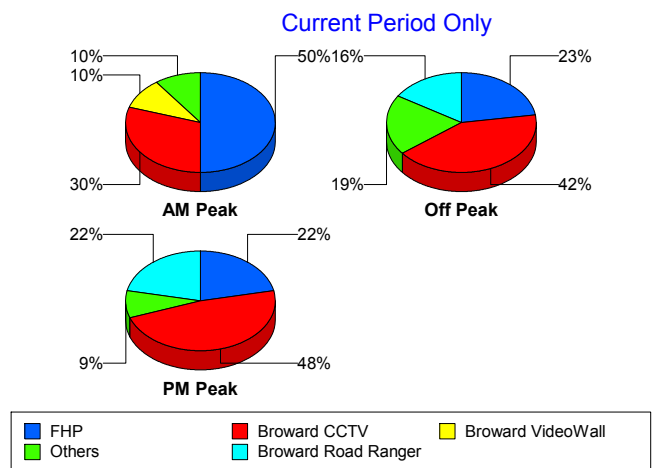


		Current Week	Last Week	YTD
75	VisioPaD Detection	3	0	6
	Total	10	1	38
95	Broward CCTV	25	23	165
	Broward Road Ranger	7	4	45
	Broward TMC	1	1	3
	Broward VideoWall	3	3	13
	BSO	0	0	1
	District 4	0	1	6
	FHP	13	6	67
	Local Police	0	0	1
	Motorist	1	0	3
	Road Watcher	1	0	2
	SIRV	0	0	1
	VisioPaD Detection	0	0	4
	Total	51	38	311
SR-816	Broward Road Ranger	0	2	18
	Total	0	2	18
Total		64	43	381

### Incident Detection Methods by Peak Period

		Current Week	Last Week	YTD
AM Peak	Broward CCTV	3	2	21
	Broward Road Ranger	0	1	12
	Broward VideoWall	1	3	8
	BSO	0	0	1
	District 4	0	0	1
	FHP	5	0	14
	Local Police	0	0	1
	SIRV	0	0	1
	VisioPaD Detection	1	0	1
	Total	10	6	60
Off Peak	Broward CCTV	13	10	98

Total Events by Peak Period and Detection Method

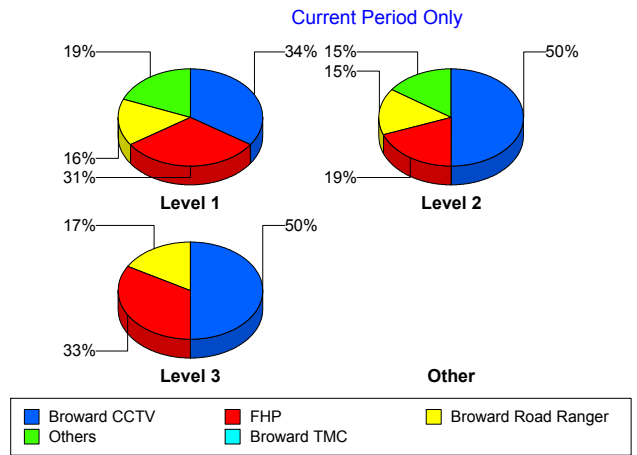


		Current Week	Last Week	YTD
Off Peak	Broward Road Ranger	5	3	29
	Broward TMC	1	1	3
	Broward VideoWall	2	0	4
	BSO	0	0	2
	County Police	0	1	1
	District 4	0	1	5
	FHP	7	6	43
	Motorist	1	0	2
	Road Watcher	1	0	2
	VisioPaD Detection	1	0	6
	Total	31	22	195
PM Peak	Broward CCTV	11	12	62
	Broward Road Ranger	5	2	31
	Broward VideoWall	0	0	1
	BSO	0	0	3
	District 4	0	0	1
	FHP	5	1	23
	Fire	1	0	1
	Motorist	0	0	1
	VisioPaD Detection	1	0	3
	Total	23	15	126
Total		64	43	381

## Incident Detection Methods by Severity

		Current Week	Last Week	YTD
Level 1	Broward CCTV	11	21	112
	Broward Road Ranger	5	6	50
	Broward TMC	1	0	2
	Broward VideoWall	1	2	8
	BSO	0	0	3
	District 4	0	1	4
	FHP	10	1	44
	Motorist	1	0	3
	Road Watcher	1	0	2
	VisioPaD Detection	2	0	5
	<b>Total</b>	<b>32</b>	<b>31</b>	<b>233</b>
Level 2	Broward CCTV	13	3	56
	Broward Road Ranger	4	0	17
	Broward TMC	0	1	1
	Broward VideoWall	2	1	5
	District 4	0	0	2
	FHP	5	5	24
	Fire	1	0	1
	Local Police	0	0	1
	SIRV	0	0	1
	VisioPaD Detection	1	0	4
	<b>Total</b>	<b>26</b>	<b>10</b>	<b>112</b>
Level 3	Broward CCTV	3	0	13
	Broward Road Ranger	1	0	5
	BSO	0	0	3
	County Police	0	1	1
	District 4	0	0	1
	FHP	2	1	12
	VisioPaD Detection	0	0	1
	<b>Total</b>	<b>6</b>	<b>2</b>	<b>36</b>
<b>Total</b>	<b>64</b>	<b>43</b>	<b>381</b>	

**Total Events by Severity and Detection Method**



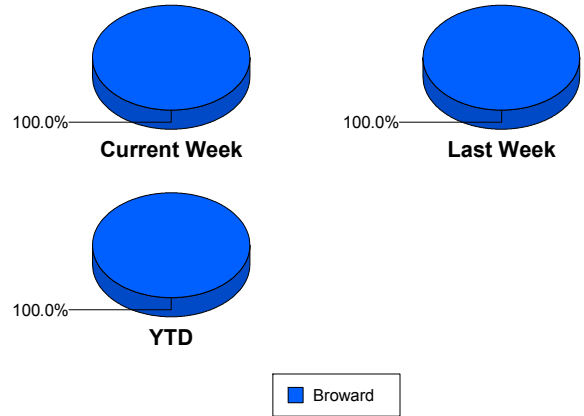
# Road Ranger / SIRV Performance Measures

## Road Ranger / SIRV Performance By County

RR/SIRV Responses per County

Values presented are: - Total Events with a RR/SIRV Response - Total RR/SIRV Responses, - Total Activities Performed
---

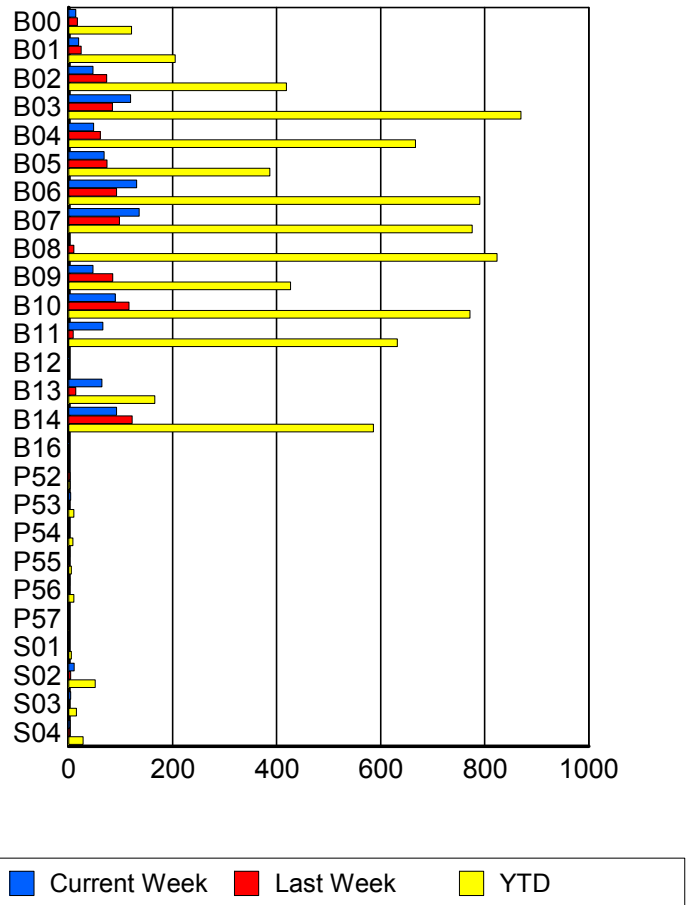
	Current We	Last Week	YTD
Broward	<b>903</b>	<b>831</b>	<b>7,295</b>
	<b>969</b>	<b>891</b>	<b>7,781</b>
	<b>999</b>	<b>917</b>	<b>8,060</b>



## Road Ranger / SIRV Performance By Truck

	Current We	Last Week	YTD
B00	<b>14</b>	<b>17</b>	<b>119</b>
	<b>14</b>	<b>17</b>	<b>121</b>
	<b>14</b>	<b>19</b>	<b>130</b>
B01	<b>19</b>	<b>24</b>	<b>202</b>
	<b>19</b>	<b>24</b>	<b>205</b>
	<b>19</b>	<b>25</b>	<b>208</b>
B02	<b>47</b>	<b>70</b>	<b>414</b>
	<b>47</b>	<b>73</b>	<b>419</b>
	<b>47</b>	<b>73</b>	<b>423</b>
B03	<b>118</b>	<b>83</b>	<b>865</b>
	<b>119</b>	<b>84</b>	<b>870</b>
	<b>127</b>	<b>87</b>	<b>914</b>
B04	<b>48</b>	<b>61</b>	<b>658</b>
	<b>48</b>	<b>61</b>	<b>667</b>
	<b>49</b>	<b>63</b>	<b>689</b>
B05	<b>68</b>	<b>74</b>	<b>385</b>
	<b>68</b>	<b>74</b>	<b>387</b>
	<b>68</b>	<b>76</b>	<b>398</b>
B06	<b>130</b>	<b>90</b>	<b>780</b>
	<b>131</b>	<b>92</b>	<b>791</b>
	<b>135</b>	<b>94</b>	<b>821</b>
B07	<b>134</b>	<b>96</b>	<b>761</b>
	<b>136</b>	<b>98</b>	<b>776</b>
	<b>144</b>	<b>99</b>	<b>810</b>
B08	<b>0</b>	<b>10</b>	<b>811</b>
	<b>0</b>	<b>10</b>	<b>824</b>
	<b>0</b>	<b>11</b>	<b>856</b>

**RR/SIRV Responses per Truck**



	Current We	Last Week	YTD
B09	47	84	422
	47	85	427
	49	88	445
B10	88	116	766
	90	116	772
	95	120	795
B11	65	9	628
	66	9	632
	67	9	650
B12	1	0	1
	1	0	1
	1	0	1
B13	63	14	164
	64	14	166
	64	15	168
B14	89	121	577
	92	122	586
	93	124	604
B16	1	0	1
	1	0	1
	1	0	1
P52	0	3	3
	0	3	3
	0	3	3
P53	4	0	10
	4	0	10
	4	0	10
P54	0	0	8
	0	0	8
	0	0	8
P55	2	1	5
	2	1	5
	2	1	5
P56	2	0	10
	2	0	10
	2	0	12
P57	0	0	1
	0	0	1
	0	0	1
S01	0	1	5
	0	1	5
	0	2	6
S02	10	4	50
	11	4	51
	11	4	55

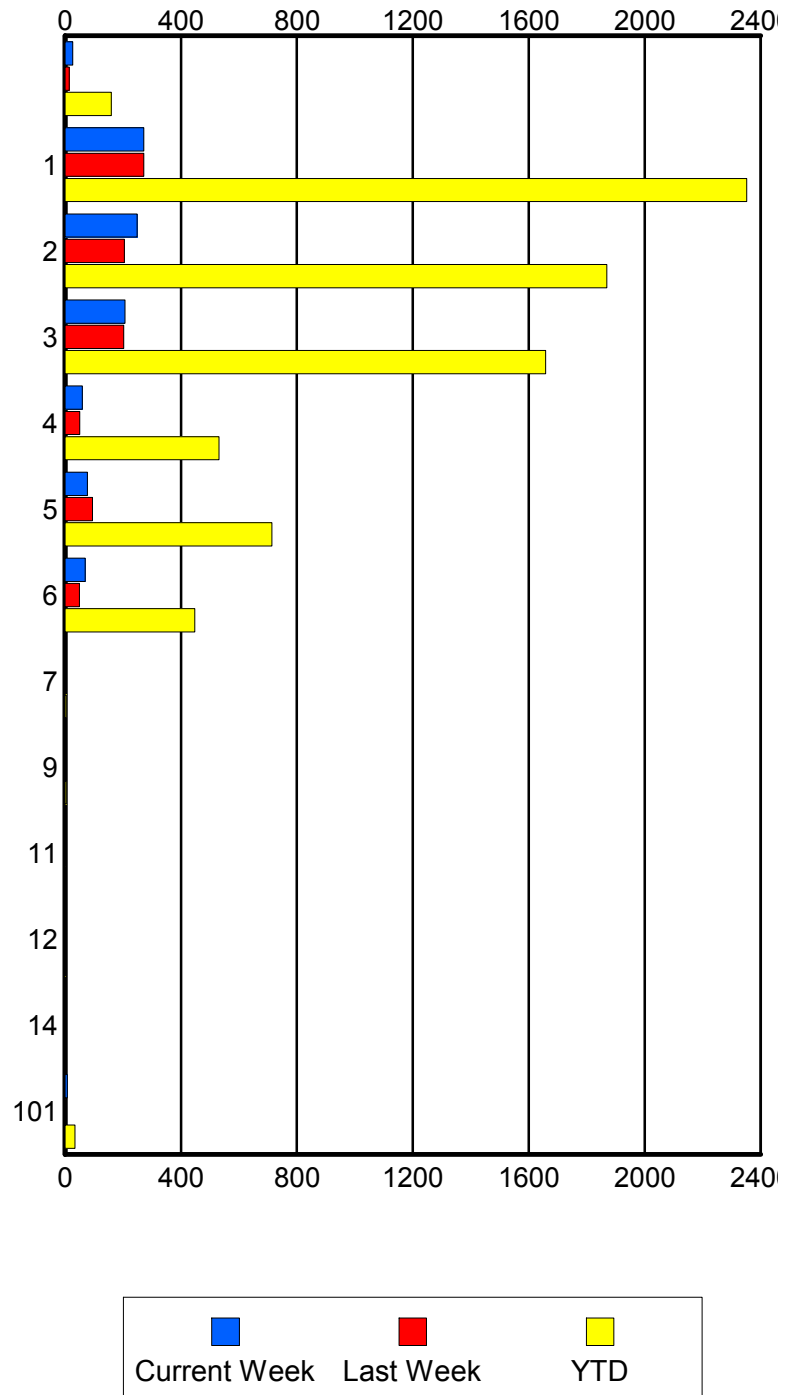
	Current We	Last Week	YTD
S03	4	0	12
	4	0	15
	4	0	16
S04	3	3	28
	3	3	28
	3	4	31

### Road Ranger / SIRV Performance By Beat

	Current We	Last Week	YTD
	25	13	153
	26	14	160
	26	16	169
1	260	258	2,250
	272	272	2,352
	283	280	2,449
2	242	194	1,818
	249	205	1,869
	254	212	1,933
3	204	201	1,627
	207	203	1,658
	217	206	1,716
4	60	50	522
	60	51	531
	62	54	555
5	77	94	709
	77	95	714
	79	95	728
6	68	48	439
	70	50	448
	70	53	459
7	0	0	4
	0	0	4
	0	0	4
9	0	0	4
	0	0	4
	0	0	4
11	0	0	2
	0	0	2
	0	0	2
12	0	0	2
	0	0	2
	0	0	2
14	0	0	3
	0	0	3
	0	0	3
101	8	1	34
	8	1	34
	8	1	36

Values presented are:  
 - Total Events with a RR/SIRV Response  
 - Total RR/SIRV Responses,  
 - Total Activities Performed

### RR/SIRV Responses per Beat

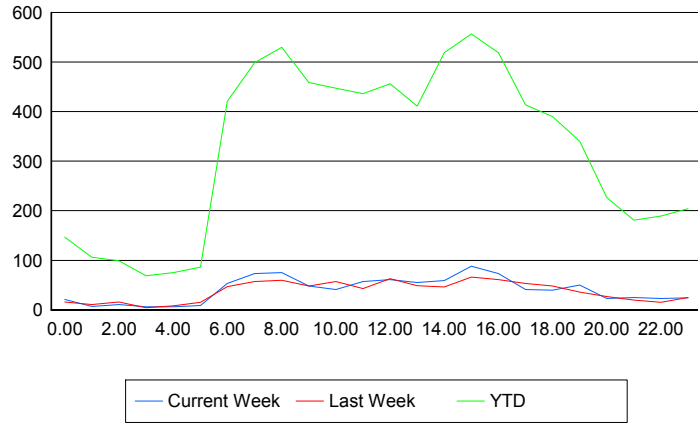


## Road Ranger / SIRV Performance By Time of Day

Values presented are:  
 - Total Events with a RR/SIRV Response  
 - Total RR/SIRV Responses,  
 - Total Activities Performed

	Current We	Last Week	YTD
12AM-1AM	20	16	139
	21	16	147
	22	16	154
1AM-2AM	7	11	101
	7	11	106
	7	12	111
2AM-3AM	10	16	91
	11	16	99
	11	16	104
3AM-4AM	4	4	65
	6	4	69
	7	4	77
4AM-5AM	5	8	72
	6	8	75
	8	8	79
5AM-6AM	9	8	69
	9	15	86
	9	15	90
6AM-7AM	50	46	397
	53	47	421
	56	47	433
7AM-8AM	65	55	475
	73	57	499
	76	58	519
8AM-9AM	67	57	498
	75	60	530
	77	61	545
9AM-10AM	48	48	441
	48	48	459
	48	48	474
10AM-11AM	40	55	419
	41	57	447
	43	60	467
11AM-12PM	56	40	407
	57	43	436
	58	44	450
12PM-1PM	58	57	429
	61	63	456
	63	66	468

## Number of Responses / Hour of the Day



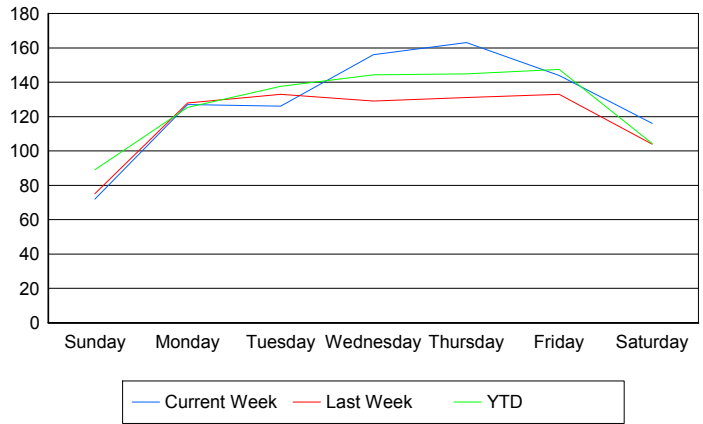
	Current We	Last Week	YTD
1PM-2PM	50	47	383
	55	49	411
	55	52	425
2PM-3PM	54	42	473
	59	46	519
	60	48	543
3PM-4PM	83	62	519
	88	66	557
	88	68	568
4PM-5PM	61	53	478
	73	61	519
	74	63	540
5PM-6PM	39	46	388
	41	53	414
	41	55	423
6PM-7PM	40	45	376
	40	48	390
	41	49	404
7PM-8PM	48	36	323
	50	36	340
	52	36	349
8PM-9PM	20	25	211
	23	27	227
	24	28	232
9PM-10PM	24	16	171
	25	20	181
	25	22	188
10PM-11PM	22	14	175
	23	15	189
	27	15	201
11PM-12AM	23	24	195
	24	25	204
	27	26	216

**Road Ranger / SIRV Performance By Day of Week**

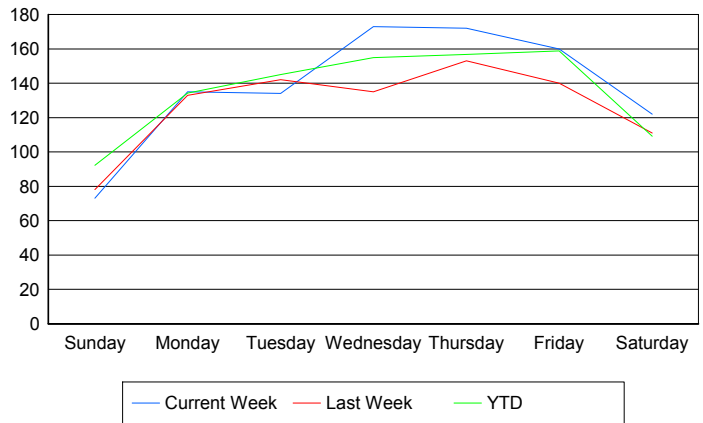
Values presented are: - Total Events with a RR/SIRV Response - Total RR/SIRV Responses, - Total Activities Performed
---

	Current We	Last Week	YTD
Sunday	72	74	694
	73	77	719
	76	79	746
Monday	127	128	994
	135	133	1,066
	138	136	1,093
Tuesday	126	133	1,096
	134	142	1,156
	137	146	1,187
Wednesday	156	129	1,146
	173	135	1,229
	177	140	1,270
Thursday	163	131	1,154
	172	153	1,250
	180	157	1,304
Friday	144	133	1,293
	160	140	1,392
	165	143	1,446
Saturday	116	104	926
	122	111	969
	126	116	1,014

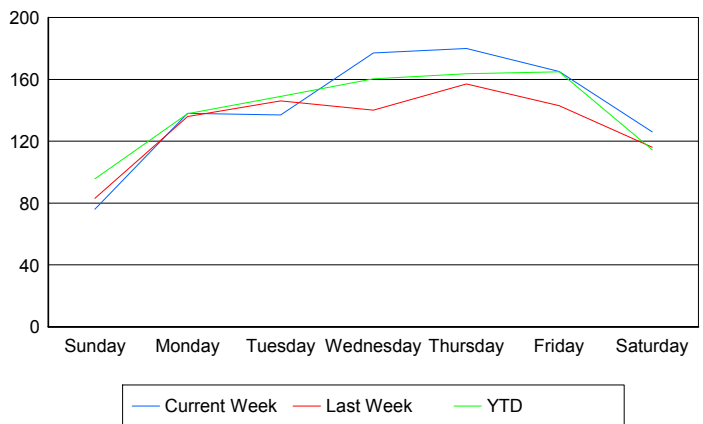
**Avg # of events with a RR/SIRV Response per Day of the Week**



**Avg # of RR/SIRV Responses per Day of the Week**



**Avg # of RR/SIRV Activities Performed per Day of the Week**



### Road Ranger / SIRV Responses per Time of Day and Day of Week

