



Weekly Performance Measures Report Broward County



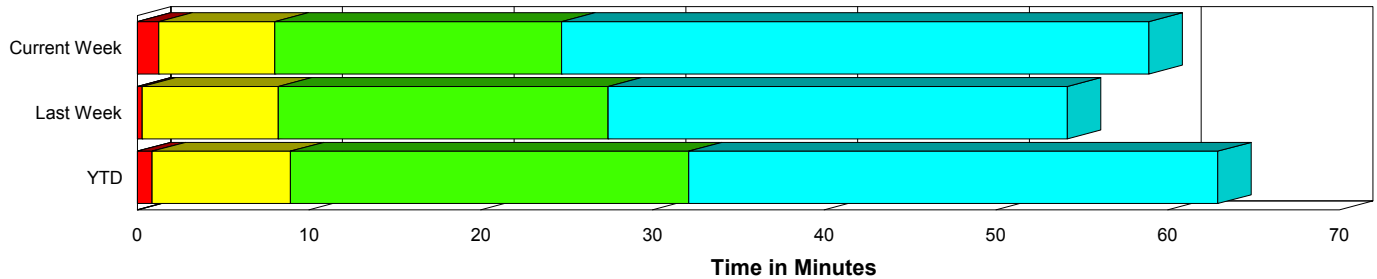
Period From Feb 14, 2010 to Feb 20, 2010

Created on:
February 22, 2010
8:48 am

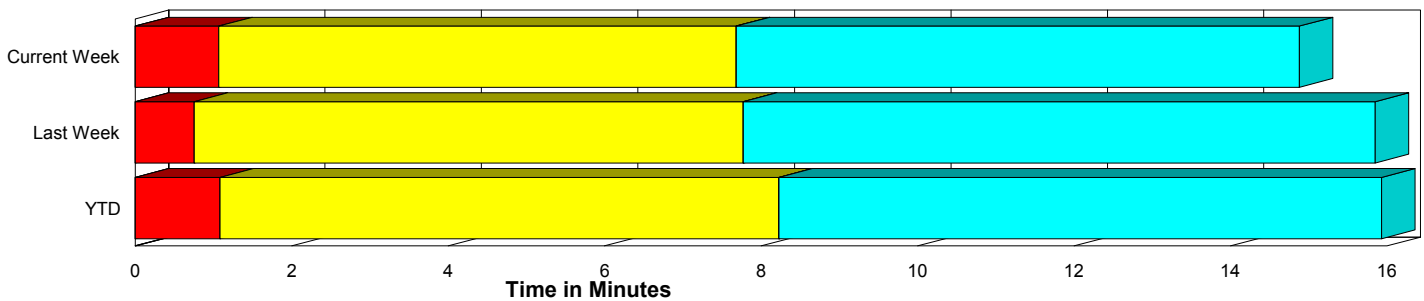
Performance Measures Summary

	Traffic Events (No Lanes Blocked)			Incidents (Lanes Blocked)		
	<u>This Week</u>	<u>Last Week</u>	<u>YTD</u>	<u>This Week</u>	<u>Last Week</u>	<u>YTD</u>
Number of Events	1,221	1,328	8,869	43	42	324
TMC Detection (min.)	0.00	0.00	0.00	0.00	0.00	0.00
TMC Verification (min.)	1.07	0.76	1.09	1.25	0.28	0.87
TMC Response (min.)	8.57	8.36	9.06	8.04	8.49	8.99
RR Dispatch Time (min.)	1.17	1.23	1.37	1.11	1.76	1.88
RR Response Time (min.)	7.52	7.26	7.81	6.93	6.72	7.13
Roadway Clearance (min.)				26.05	26.90	31.61
Event Clearance (min.)	15.77	16.44	16.76	60.24	53.63	62.16
# of Events w/ RR/SIRV	950	1,041	7,114	42	40	318
RR/SIRV Responses	950	1,041	7,114	42	40	318
RR/SIRV Activities	680	772	5,270	83	77	599

Incident Clearance Time-Line



Traffic Event (Non-Lane Blockage) Time-Line



■ Avg. TMC Detection Time	■ Avg. Time from TMC Response to Roadway Clearance*
■ Avg. Time from TMC Detection to TMC Verification	■ Avg. Time from Roadway Clearance to Incident/Event Clearance**
■ Avg. Time from TMC Verification to TMC Response	

* Roadway clearance equals all travel lanes open

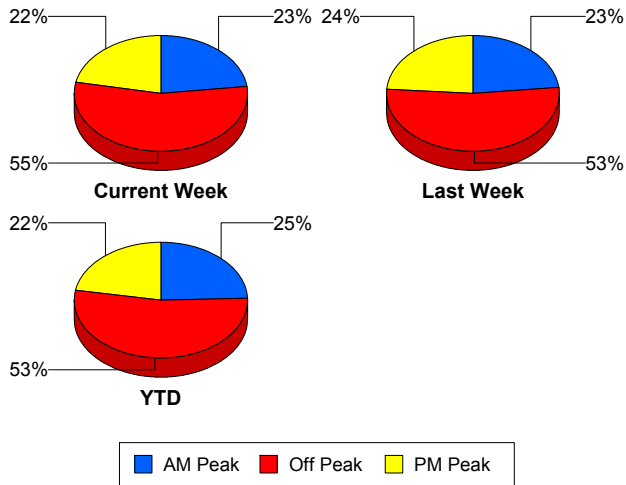
** Incident clearance equals time when last responder has left the scene

Performance Measures by Peak Period

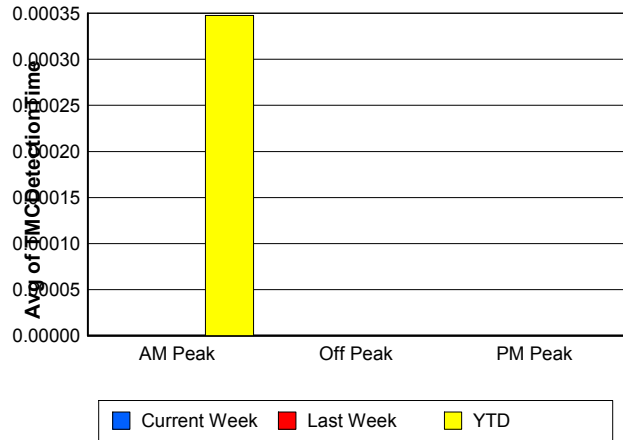
Note: AM peak period is defined as 6am to 10am and PM peak period is defined as 3pm to 7pm.

	AM Peak			Off Peak			PM Peak		
	Current Week	Last Week	YTD	Current Week	Last Week	YTD	Current Week	Last Week	YTD
Number of Events	293	320	2,253	693	722	4,897	278	328	2,043
Number of Incidents	6	3	51	22	23	170	15	16	103
TMC Detection (min.)	0.00	0.00	0.00	0.00	0.00	0.00	0.00	0.00	0.00
TMC Verification (min.)	0.77	0.54	0.61	1.15	0.81	1.15	1.20	0.80	1.43
TMC Response (min.)	7.30	7.33	8.25	9.73	8.52	9.29	7.44	8.99	9.36
RR Dispatch Time (min.)	0.90	0.75	0.99	1.38	1.41	1.48	0.98	1.41	1.64
RR Response Time (min.)	6.49	6.70	7.37	8.46	7.18	7.93	6.54	7.80	7.86
Event Clearance (min.)	14.31	15.53	16.16	17.46	18.42	18.53	19.96	17.73	20.40
Roadway Clearance (min.)	18.95	11.61	31.78	29.88	33.79	38.27	23.26	19.85	20.55
Incident Clearance (min.)	44.88	53.04	60.14	64.06	53.70	65.72	60.78	53.64	57.28
# of Events w/ RR/SIRV	242	258	1,877	517	558	3,857	233	265	1,698
RR/SIRV Responses	242	258	1,877	517	558	3,857	233	265	1,698
RR/SIRV Activities	173	188	1,409	386	444	3,047	204	217	1,413

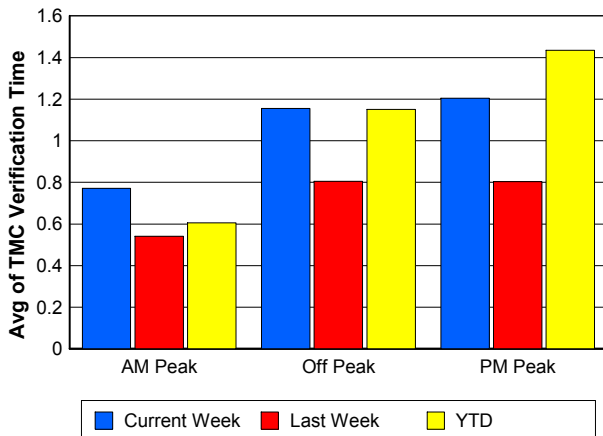
Number of Events / Peak Period



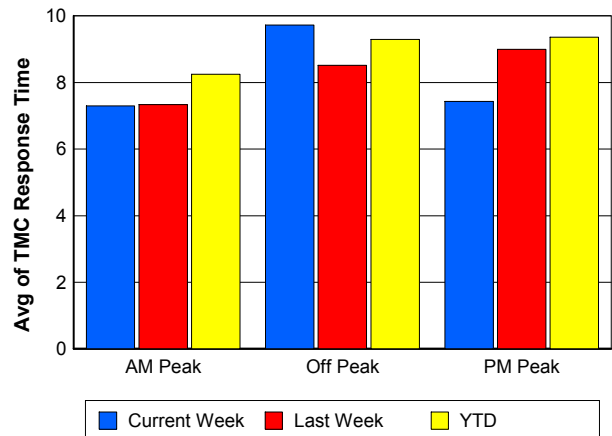
TMC Detection Time



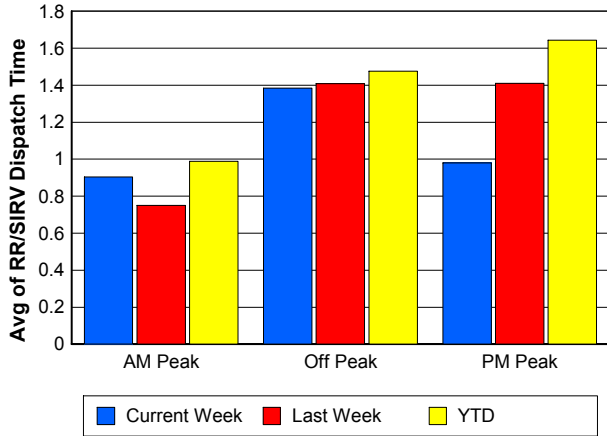
TMC Verification Time



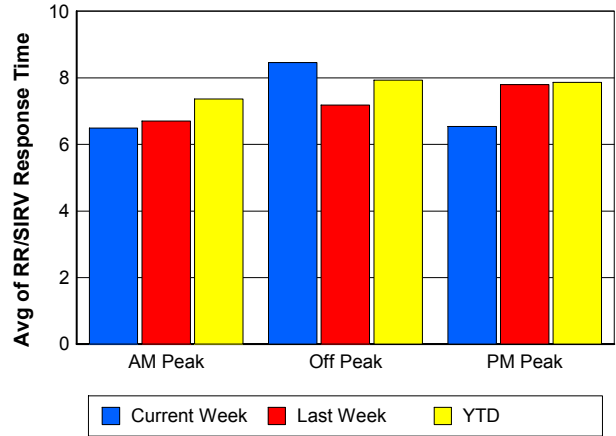
TMC Response Time



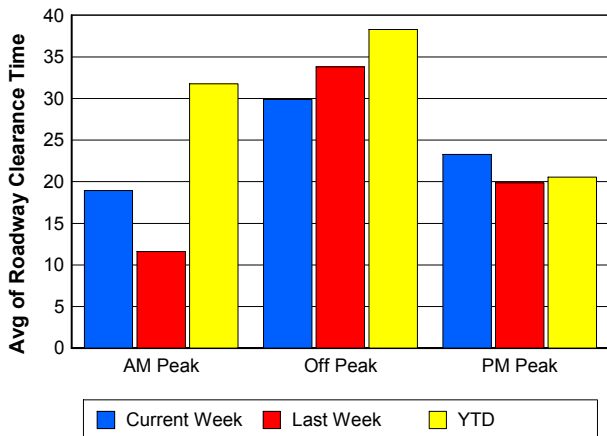
Road Ranger / SIRV Dispatch Time



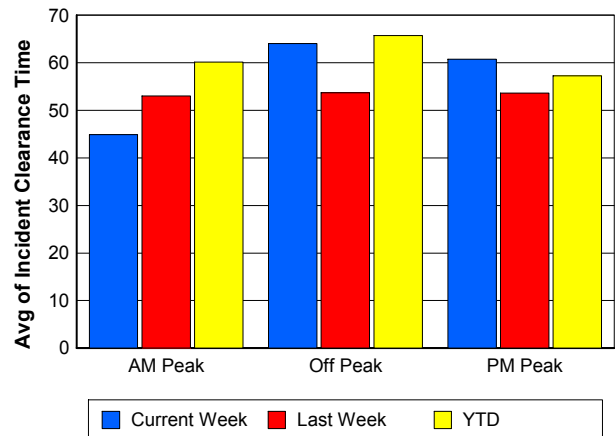
Road Ranger / SIRV Response Time



Roadway Clearance Time (2A)



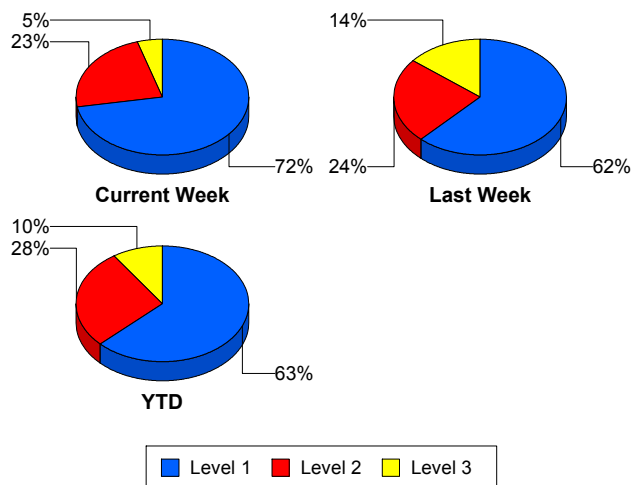
Incident Clearance Time (3B)



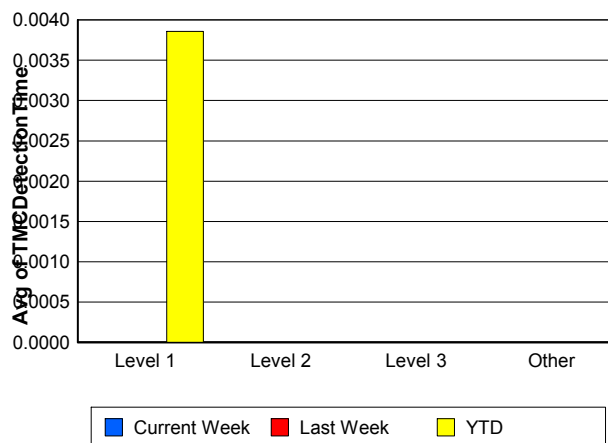
Performance Measures by Severity

	Level 1			Level 2			Level 3			Other		
	<u>This Week</u>	<u>Last Week</u>	<u>YTD</u>	<u>This Week</u>	<u>Last Week</u>	<u>YTD</u>	<u>This Week</u>	<u>Last Week</u>	<u>YTD</u>	<u>This Week</u>	<u>Last Week</u>	<u>YTD</u>
Number of Events	31	26	203	10	10	90	2	6	31	1,221	1,328	8,869
Number of Incidents	31	26	203	10	10	90	2	6	31	0	0	0
TMC Detection (min.)	0.00	0.00	0.00	0.00	0.00	0.00	0.00	0.00	0.00	0.00	0.00	0.00
TMC Verification (min.)	0.06	0.47	0.49	2.71	0.00	1.49	12.33	0.00	1.51	1.07	0.76	1.09
TMC Response (min.)	6.60	8.70	7.50	11.96	6.80	11.79	12.72	10.80	10.38	8.57	8.36	9.06
RR Dispatch Time (min.)	1.25	1.36	1.54	0.67	2.97	2.70	0.92	1.35	1.74	1.17	1.23	1.37
RR Resp. Time (min.)	5.35	7.34	6.03	11.29	3.83	9.07	11.80	9.45	8.64	7.52	7.26	7.81
Event Clearance (min.)	53.00	44.76	51.54	74.17	76.41	74.57	102.82	54.09	95.69	15.77	16.44	16.76
Roadway Clear. (min.)	15.13	13.44	15.33	53.81	55.84	51.30	56.47	36.97	81.10			
Incident Clearance (min.)	53.00	44.76	51.54	74.17	76.41	74.57	102.82	54.09	95.69			
# of Events w/ RR/SIRV	31	25	201	9	10	88	2	5	29	950	1,041	7,114
RR/SIRV Responses	31	25	201	9	10	88	2	5	29	950	1,041	7,114
RR/SIRV Activities	51	42	322	24	25	196	8	10	81	680	772	5,270

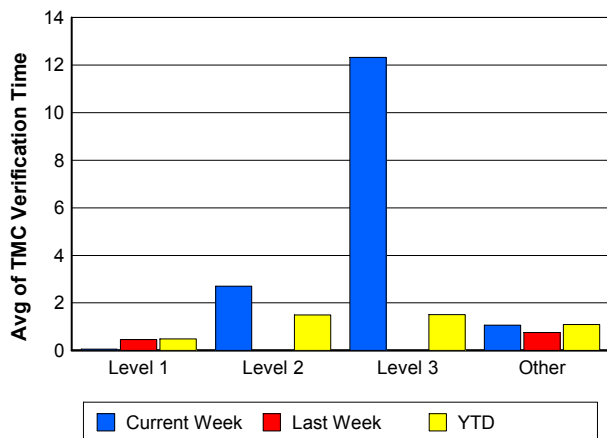
Number of Events / Severity



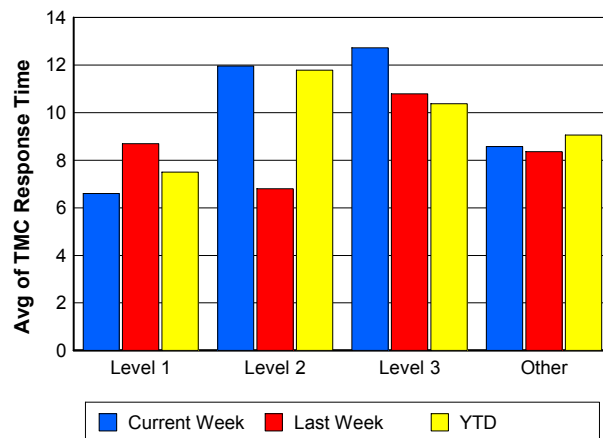
TMC Detection Time



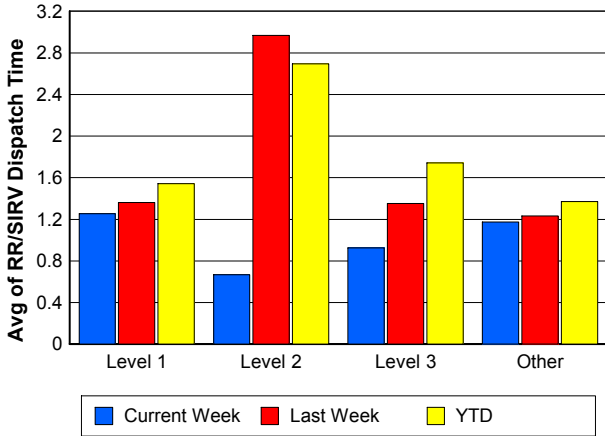
TMC Verification Time



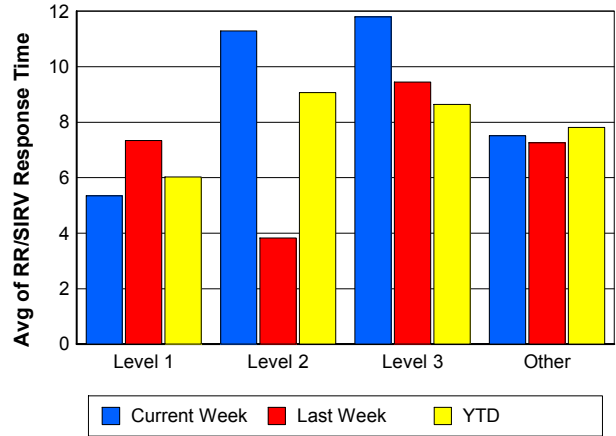
TMC Response Time



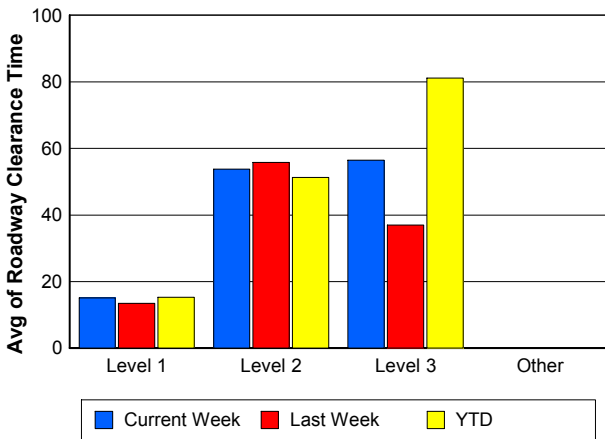
Road Ranger / SIRV Dispatch Time



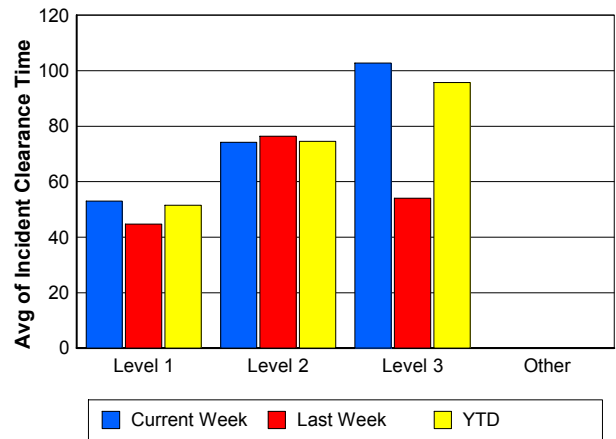
Road Ranger / SIRV Response Time



Roadway Clearance Time (2A)



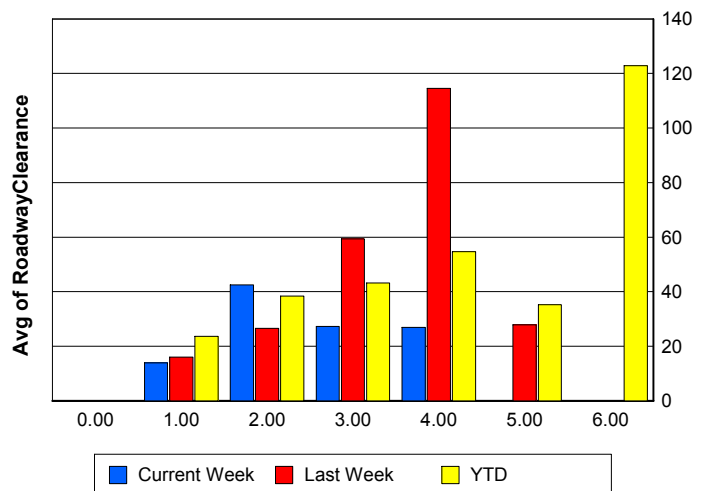
Incident Clearance Time (3B)



Roadway Clearance by Maximum Number of Lanes Blocked

	Current Week	Last Week	YTD
0			
1	13.92	16.03	23.59
2	42.49	26.60	38.41
3	27.28	59.41	43.22
4	26.89	114.58	54.69
5	0.00	27.87	35.22
6	0.00	0.00	122.82

Roadway Clearance Time (2A)



Performance Measures by Roadway

595

	<u>Current Week</u>	<u>Last Week</u>	<u>YTD</u>
Number of Events	50	48	327
Number of Incidents	2	5	17
TMC Detection (min.)	0.00	0.00	0.00
TMC Verification (min.)	2.30	2.01	2.18
TMC Response (min.)	17.95	9.15	14.47
RR Dispatch Time (min.)	1.64	2.49	2.19
RR Resp. Time (min.)	15.67	7.28	12.42
Event Clearance (min.)	17.22	21.57	20.16
Roadway Clear. (min.)	87.71	56.42	59.24
Incident Clearance (min.)	113.26	58.87	74.69
# of Events w/ RR/SIRV	34	30	234
RR/SIRV Responses	34	30	234
RR/SIRV Activities	22	31	175

75

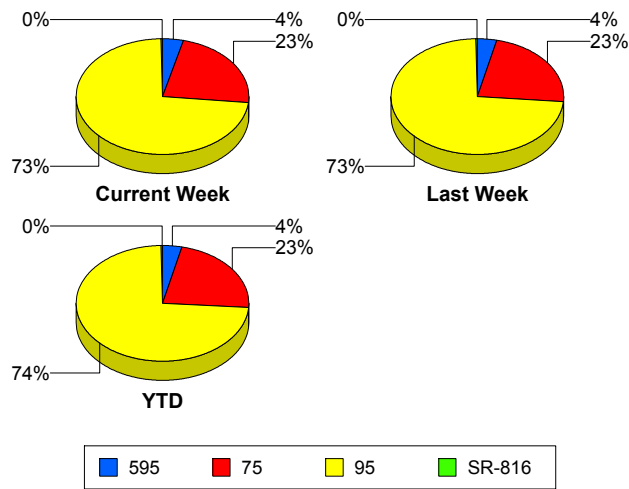
	<u>Current Week</u>	<u>Last Week</u>	<u>YTD</u>
Number of Events	287	313	2,085
Number of Incidents	1	5	28
TMC Detection (min.)	0.00	0.00	0.00
TMC Verification (min.)	1.98	0.81	1.73
TMC Response (min.)	10.05	10.13	9.72
RR Dispatch Time (min.)	1.37	1.66	1.53
RR Resp. Time (min.)	8.79	8.58	8.38
Event Clearance (min.)	17.40	18.74	18.60
Roadway Clear. (min.)	29.98	35.89	37.24
Incident Clearance (min.)	148.40	69.12	74.59
# of Events w/ RR/SIRV	217	241	1,611
RR/SIRV Responses	217	241	1,611
RR/SIRV Activities	178	202	1,306

95

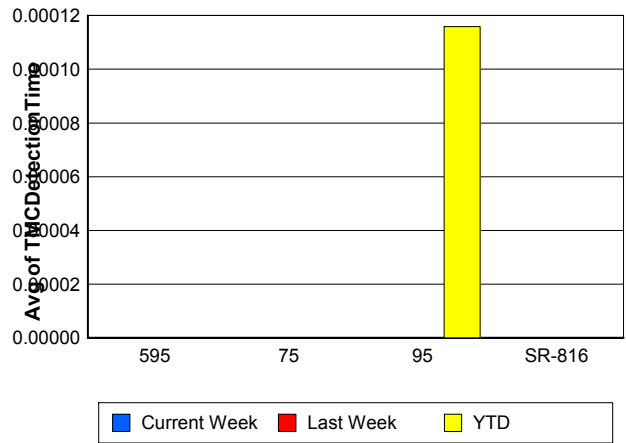
	<u>Current Week</u>	<u>Last Week</u>	<u>YTD</u>
Number of Events	924	1,006	6,757
Number of Incidents	38	29	261
TMC Detection (min.)	0.00	0.00	0.00
TMC Verification (min.)	0.73	0.67	0.83
TMC Response (min.)	7.79	7.81	8.70
RR Dispatch Time (min.)	1.09	1.09	1.32
RR Resp. Time (min.)	6.83	6.83	7.46
Event Clearance (min.)	17.27	17.03	18.22
Roadway Clear. (min.)	23.26	22.59	30.34
Incident Clearance (min.)	57.49	53.85	63.07
# of Events w/ RR/SIRV	739	807	5,564
RR/SIRV Responses	739	807	5,564
RR/SIRV Activities	561	612	4,363

	<u>Current Week</u>	<u>Last Week</u>	<u>YTD</u>
Number of Events	3	3	24
Number of Incidents	2	3	18
TMC Detection (min.)	0.00	0.00	0.00
TMC Verification (min.)	0.00	0.00	0.00
TMC Response (min.)	0.00	0.00	0.13
RR Dispatch Time (min.)	0.00	0.00	0.06
RR Resp. Time (min.)	0.00	0.00	0.07
Event Clearance (min.)	10.82	16.90	14.99
Roadway Clear. (min.)	15.36	4.36	15.24
Incident Clearance (min.)	15.28	16.90	17.86
# of Events w/ RR/SIRV	2	3	23
RR/SIRV Responses	2	3	23
RR/SIRV Activities	2	4	25

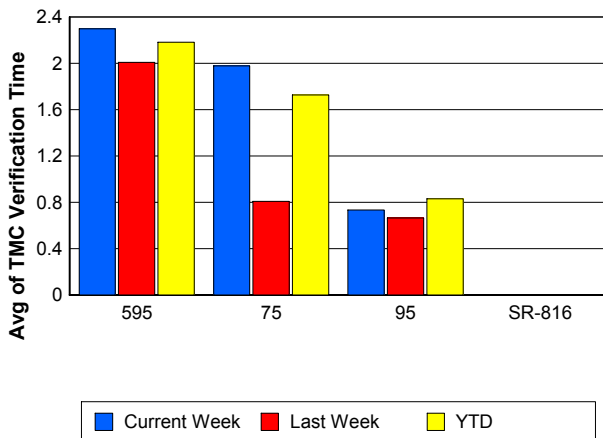
Number of Events / Roadway



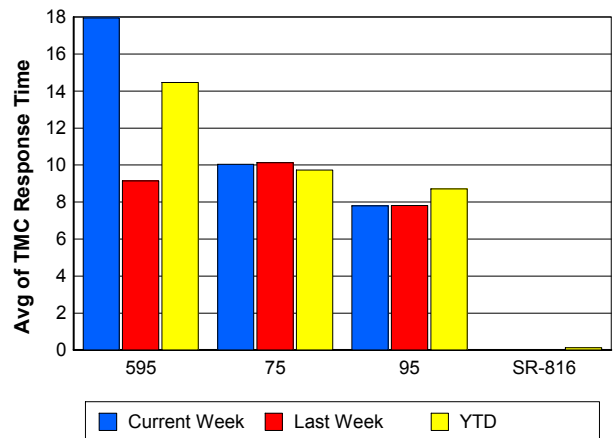
TMC Detection Time



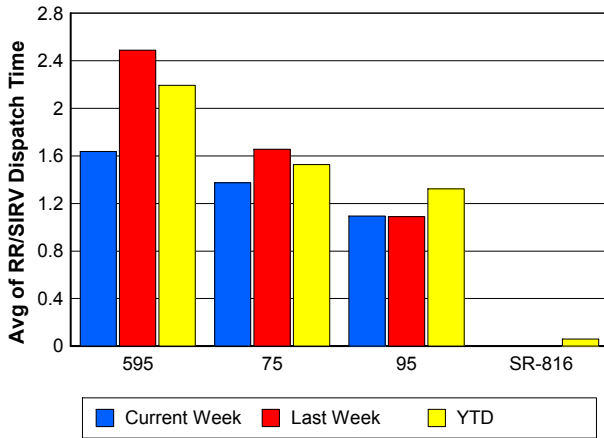
TMC Verification Time



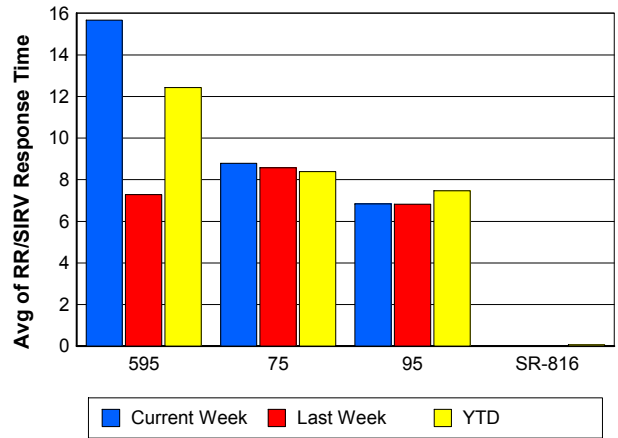
TMC Response Time



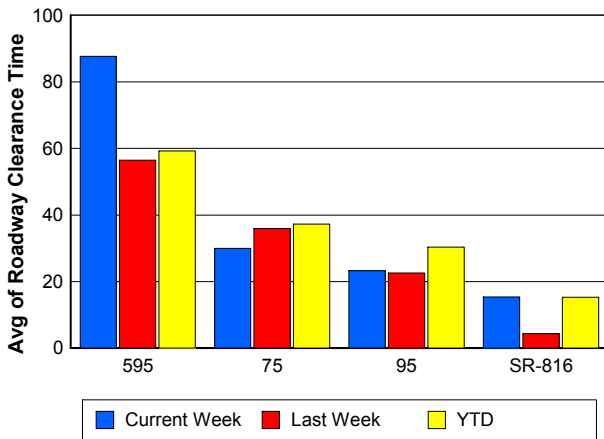
Road Ranger / SIRV Dispatch Time



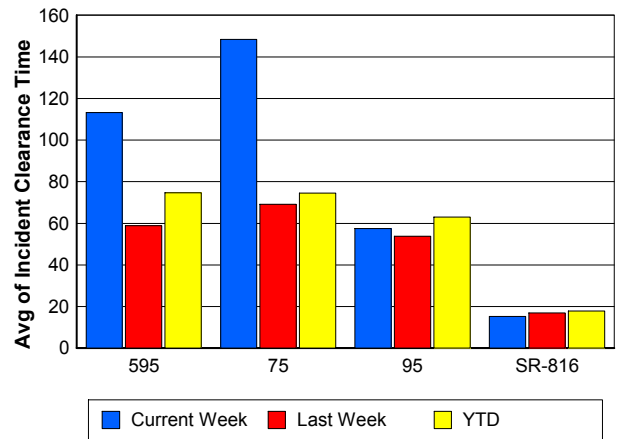
Road Ranger / SIRV Response Time



Roadway Clearance Time (2A)



Incident Clearance Time (3B)



Performance Measures by Event Type

Accident

	<u>Current Week</u>	<u>Last Week</u>	<u>YTD</u>
Number of Events	68	73	498
Number of Incidents	32	25	219
TMC Detection (min.)	0.00	0.00	0.00
TMC Verification (min.)	0.48	0.53	1.16
TMC Response (min.)	8.60	7.04	9.82
RR Dispatch Time (min.)	1.07	1.46	1.82
RR Response Time (min.)	7.53	5.57	8.01
Event Clearance (min.)	59.85	53.67	57.24
Roadway Clearance (min.)	25.13	34.38	33.42
Incident Clearance (min.)	67.60	74.71	74.25
# of Events w/ RR/SIRV	67	73	494
RR/SIRV Assists	67	73	494
RR/SIRV Activities	103	105	739

Debris on Roadway

	<u>Current Week</u>	<u>Last Week</u>	<u>YTD</u>
Number of Events	34	49	281
Number of Incidents	0	1	6
TMC Detection (min.)	0.00	0.00	0.00
TMC Verification (min.)	9.24	3.05	6.06
TMC Response (min.)	12.23	7.27	9.53
RR Dispatch Time (min.)	0.94	0.89	1.41
RR Response Time (min.)	11.28	6.38	8.10
Event Clearance (min.)	13.48	10.35	13.10
Roadway Clearance (min.)		4.38	49.14
Incident Clearance (min.)		13.12	44.49
# of Events w/ RR/SIRV	31	47	266
RR/SIRV Assists	31	47	266
RR/SIRV Activities	29	45	268

Disabled Vehicle

	<u>Current Week</u>	<u>Last Week</u>	<u>YTD</u>
Number of Events	631	714	4,874
Number of Incidents	9	10	67
TMC Detection (min.)	0.00	0.00	0.00
TMC Verification (min.)	1.48	1.14	1.52
TMC Response (min.)	8.32	8.75	8.96
RR Dispatch Time (min.)	1.10	1.17	1.28
RR Response Time (min.)	7.29	7.62	7.75
Event Clearance (min.)	19.95	20.51	20.90
Roadway Clearance (min.)	15.39	12.34	16.30
Incident Clearance (min.)	21.71	19.64	26.69
# of Events w/ RR/SIRV	600	680	4,717
RR/SIRV Assists	600	680	4,717
RR/SIRV Activities	580	659	4,541

Emergency Vehicles

	<u>Last Week</u>	<u>YTD</u>
Number of Events	2	11
Number of Incidents	2	9
TMC Detection (min.)	0.00	0.00
TMC Verification (min.)	0.00	0.00
TMC Response (min.)	20.55	13.40
RR Dispatch Time (min.)	0.83	1.07
RR Response Time (min.)	19.72	12.25
Event Clearance (min.)	24.32	32.41
Roadway Clearance (min.)	19.29	26.06
Incident Clearance (min.)	24.32	30.05
# of Events w/ RR/SIRV	1	9
RR/SIRV Assists	1	9
RR/SIRV Activities	1	8

Other

	<u>Current Week</u>	<u>Last Week</u>	<u>YTD</u>
Number of Events	525	527	3,480
Number of Incidents	1	2	9
TMC Detection (min.)	0.00	0.00	0.00
TMC Verification (min.)	0.08	0.03	0.04
TMC Response (min.)	7.36	5.36	8.55
RR Dispatch Time (min.)	1.35	1.44	1.56
RR Response Time (min.)	6.12	4.55	7.27
Event Clearance (min.)	8.65	9.22	9.45
Roadway Clearance (min.)	111.45	12.52	68.48
Incident Clearance (min.)	161.92	20.10	78.88
# of Events w/ RR/SIRV	289	275	1,903
RR/SIRV Assists	289	275	1,903
RR/SIRV Activities	46	33	260

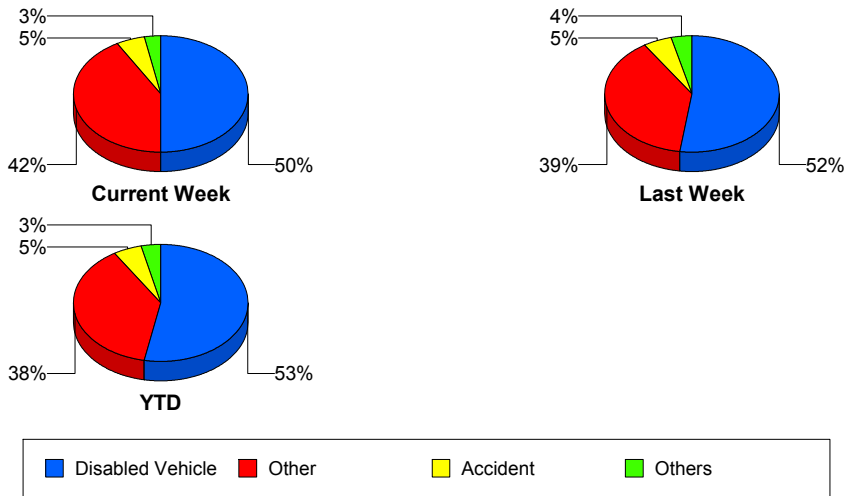
Police Activity

	<u>YTD</u>
Number of Events	11
Number of Incidents	5
TMC Detection (min.)	0.00
TMC Verification (min.)	3.99
TMC Response (min.)	10.56
RR Dispatch Time (min.)	1.16
RR Response Time (min.)	9.53
Event Clearance (min.)	42.48
Roadway Clearance (min.)	52.42
Incident Clearance (min.)	62.90
# of Events w/ RR/SIRV	8
RR/SIRV Assists	8
RR/SIRV Activities	9

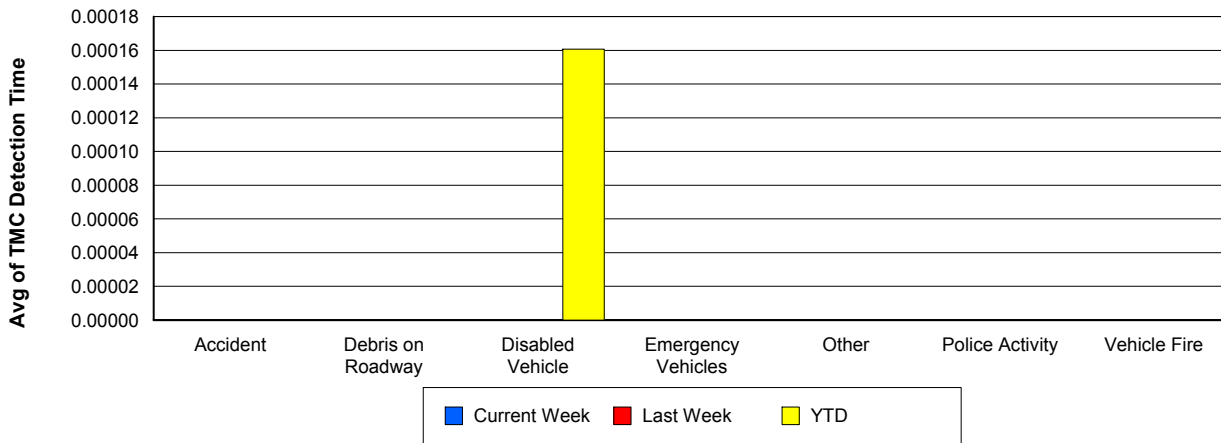
Vehicle Fire

	<u>Current Week</u>	<u>Last Week</u>	<u>YTD</u>
Number of Events	3	2	16
Number of Incidents	1	2	9
TMC Detection (min.)	0.00	0.00	0.00
TMC Verification (min.)	13.97	0.47	3.50
TMC Response (min.)	26.79	12.52	13.58
RR Dispatch Time (min.)	3.36	2.79	2.24
RR Response Time (min.)	23.43	9.72	11.23
Event Clearance (min.)	51.98	43.16	52.20
Roadway Clearance (min.)	65.93	39.39	47.20
Incident Clearance (min.)	69.80	43.16	58.86
# of Events w/ RR/SIRV	3	2	16
RR/SIRV Assists	3	2	16
RR/SIRV Activities	3	3	26

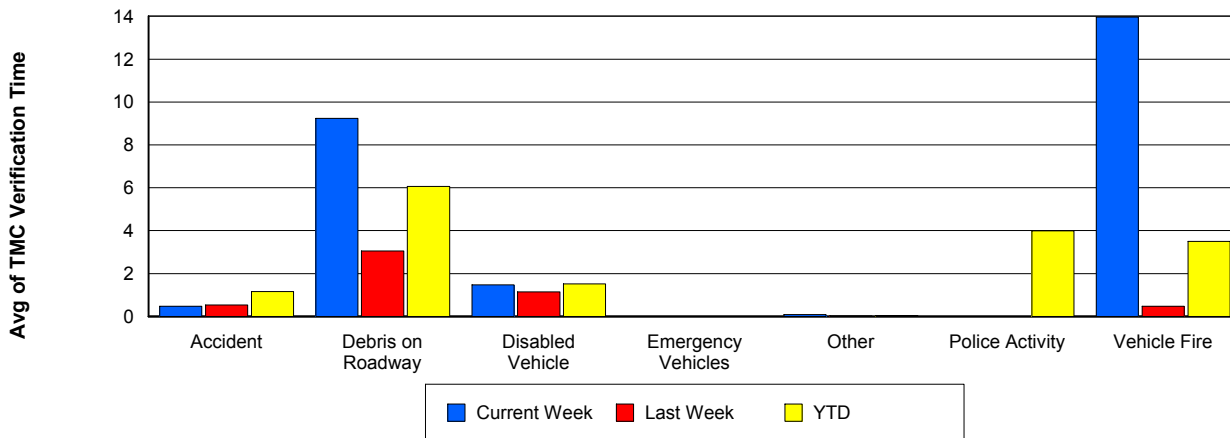
Number of Events / Event Type



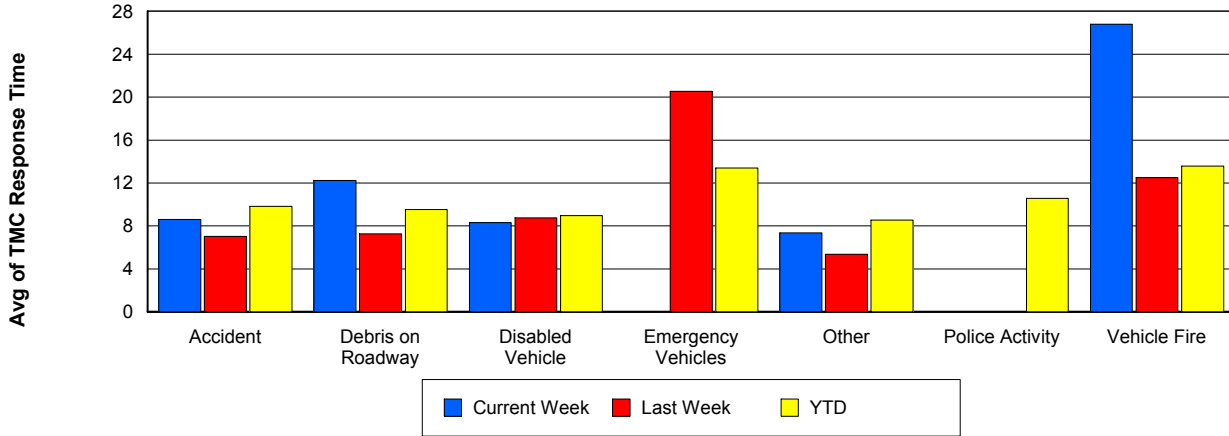
TMC Detection Time



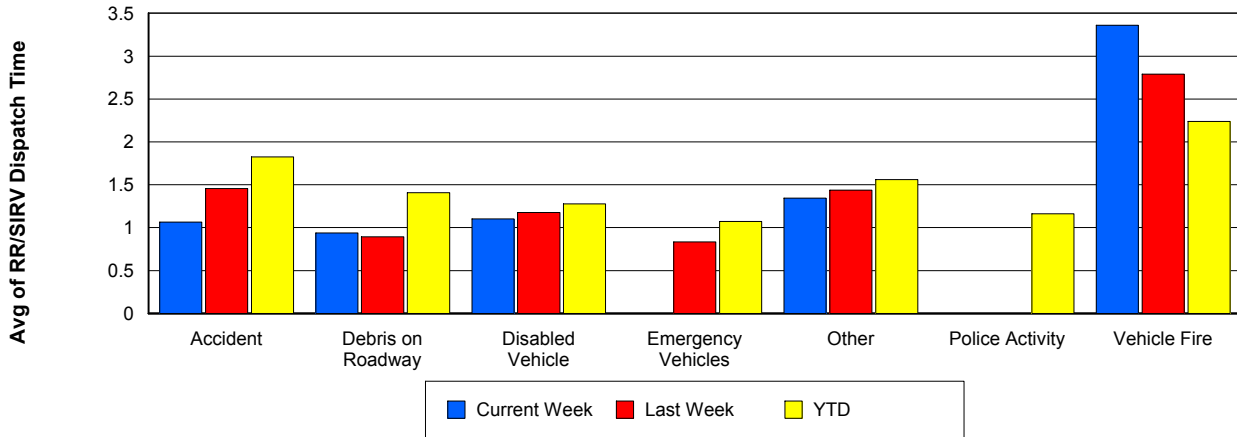
TMC Verification Time



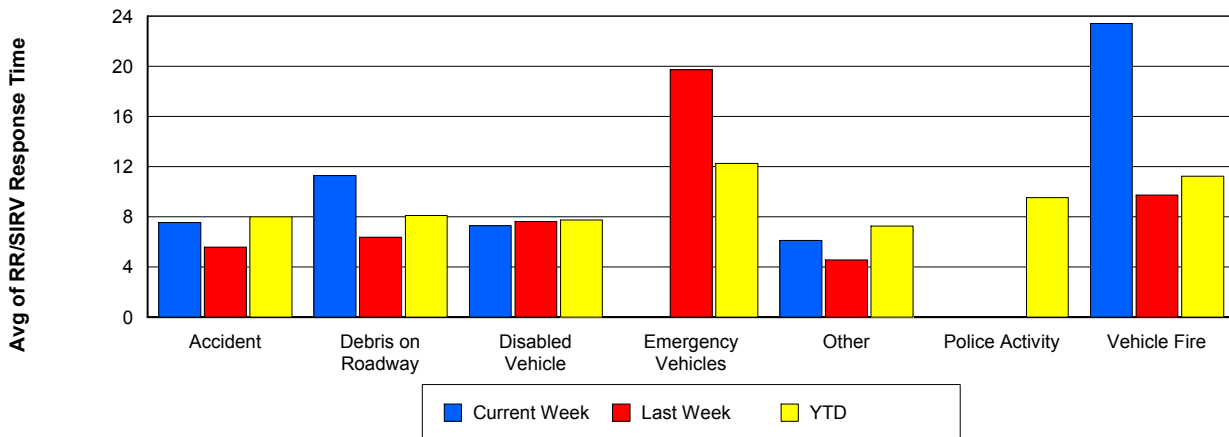
TMC Response Time



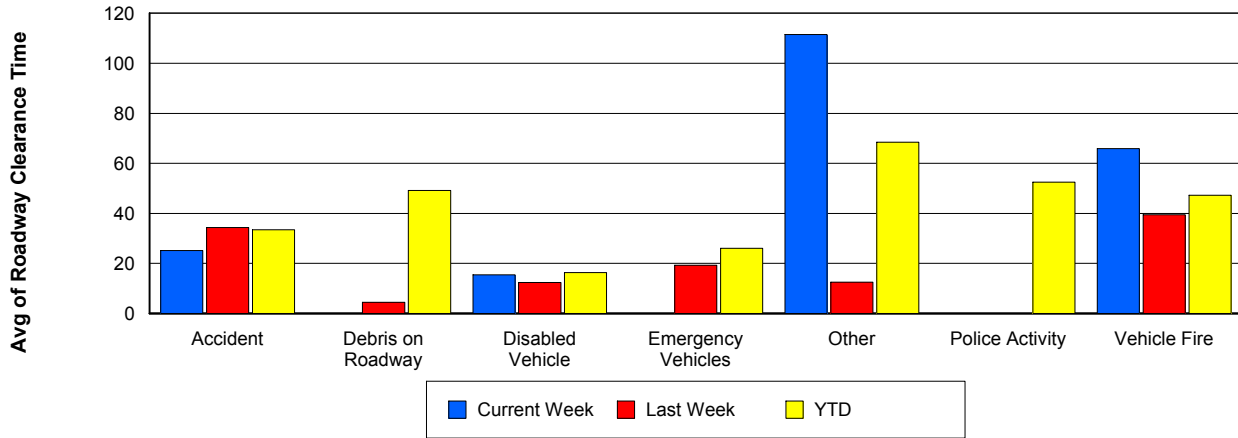
Road Ranger / SIRV Dispatch Time



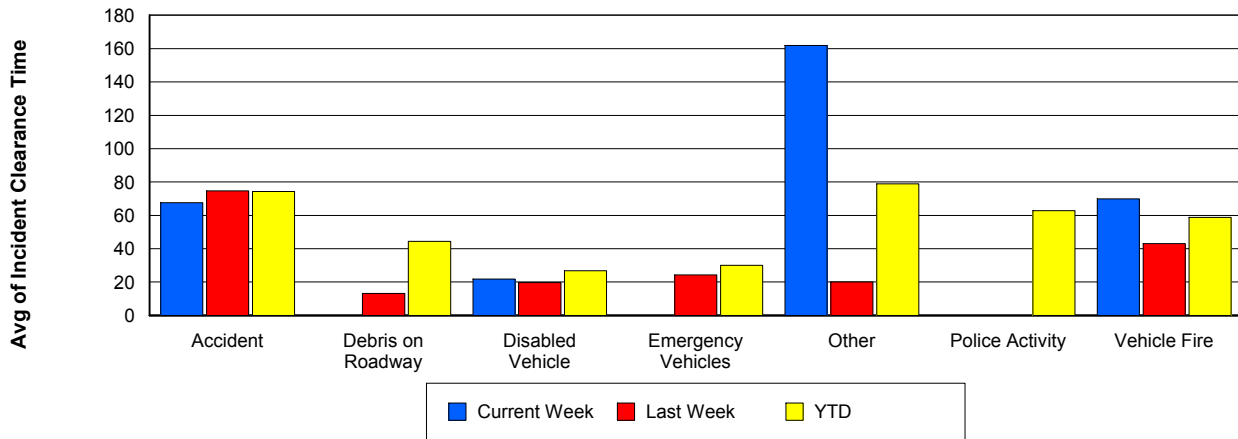
Road Ranger / SIRV Response Time



Roadway Clearance Time (2A)



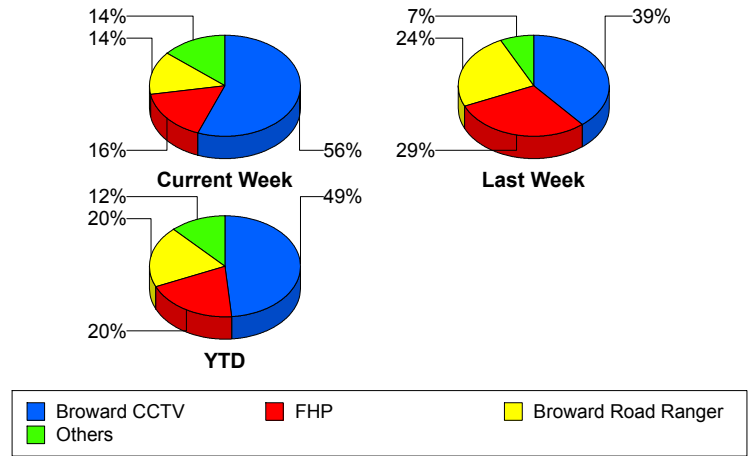
Incident Clearance Time (3B)



Incident Detection Methods

	Current Week	Last Week	YTD
Broward CCTV	24	16	154
Broward Road Ranger	6	10	62
Broward TMC	1	0	2
Broward VideoWall	3	0	10
BSO	0	2	6
County Police	1	0	1
District 4	1	1	7
FHP	7	12	63
Local Police	0	0	1
Motorist	0	0	2
Road Watcher	0	0	1
SIRV	0	0	1
VisioPaD Detection	0	0	7
Total	43	41	317

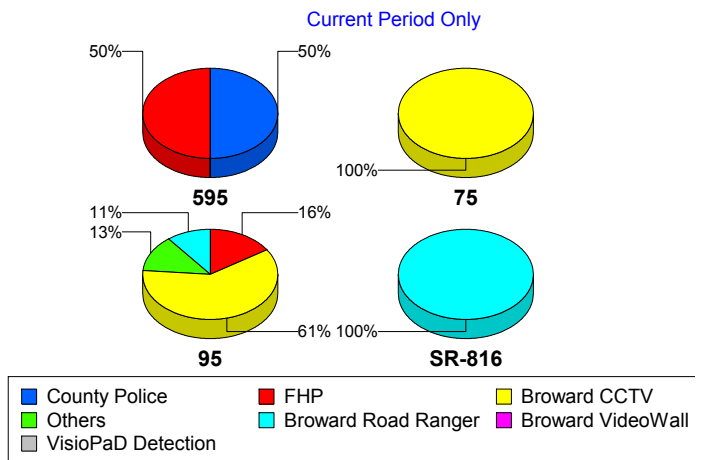
Total Incidents by Detection Method



Incident Detection Methods by Roadway

		Current Week	Last Week	YTD
595	Broward CCTV	0	2	3
	BSO	0	2	3
	County Police	1	0	1
	FHP	1	0	4
	Total	2	4	11
75	Broward CCTV	1	1	11
	Broward Road Ranger	0	3	6
	BSO	0	0	2
	District 4	0	0	1
	FHP	0	1	5
	VisioPaD Detection	0	0	3
	Total	1	5	28
95	Broward CCTV	23	13	140

Total Events by Roadway and Detection Method

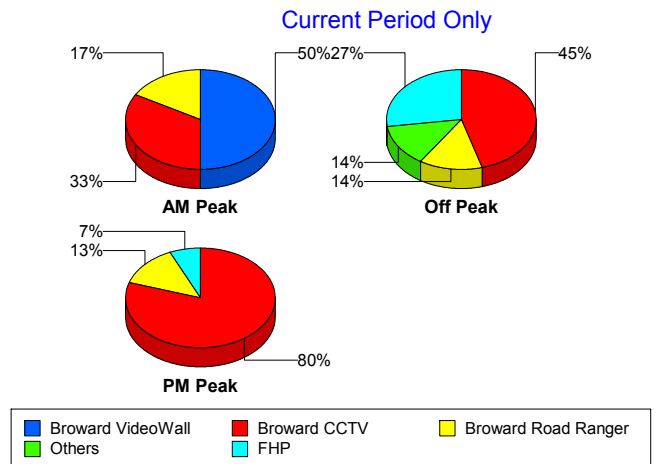


		Current Week	Last Week	YTD
95	Broward Road Ranger	4	4	38
	Broward TMC	1	0	2
	Broward VideoWall	3	0	10
	BSO	0	0	1
	District 4	1	1	6
	FHP	6	11	54
	Local Police	0	0	1
	Motorist	0	0	2
	Road Watcher	0	0	1
	SIRV	0	0	1
	VisioPaD Detection	0	0	4
	Total	38	29	260
SR-816	Broward Road Ranger	2	3	18
	Total	2	3	18
Total		43	41	317

Incident Detection Methods by Peak Period

		Current Week	Last Week	YTD
AM Peak	Broward CCTV	2	1	18
	Broward Road Ranger	1	0	12
	Broward VideoWall	3	0	7
	BSO	0	0	1
	District 4	0	0	1
	FHP	0	2	9
	Local Police	0	0	1
	SIRV	0	0	1
	Total	6	3	50
	Off Peak	Broward CCTV	10	11
Broward Road Ranger		3	5	24
Broward TMC		1	0	2
Broward VideoWall		0	0	2
BSO		0	0	2

Total Events by Peak Period and Detection Method

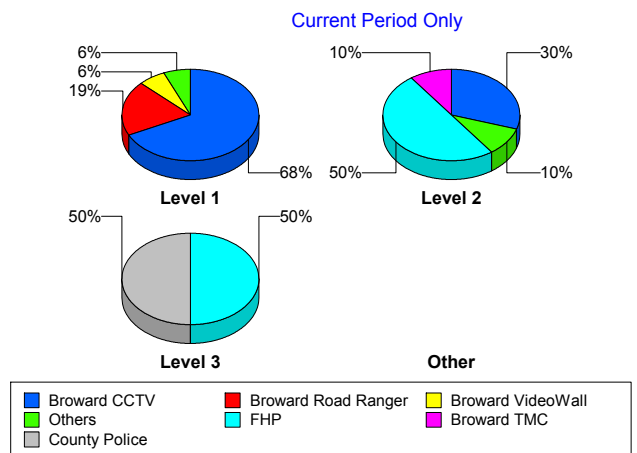


		Current Week	Last Week	YTD
Off Peak	County Police	1	0	1
	District 4	1	0	5
	FHP	6	6	36
	Motorist	0	0	1
	Road Watcher	0	0	1
	VisioPaD Detection	0	0	5
	Total	22	22	164
PM Peak	Broward CCTV	12	4	51
	Broward Road Ranger	2	5	26
	Broward VideoWall	0	0	1
	BSO	0	2	3
	District 4	0	1	1
	FHP	1	4	18
	Motorist	0	0	1
	VisioPaD Detection	0	0	2
	Total	15	16	103
Total	43	41	317	

Incident Detection Methods by Severity

		Current Week	Last Week	YTD
Level 1	Broward CCTV	21	7	101
	Broward Road Ranger	6	5	45
	Broward TMC	0	0	1
	Broward VideoWall	2	0	7
	BSO	0	2	3
	District 4	1	1	4
	FHP	1	11	34
	Motorist	0	0	2
	Road Watcher	0	0	1
	VisioPaD Detection	0	0	3
	Total	31	26	201
Level 2	Broward CCTV	3	7	43

Total Events by Severity and Detection Method



		Current Week	Last Week	YTD
Level 2	Broward Road Ranger	0	3	13
	Broward TMC	1	0	1
	Broward VideoWall	1	0	3
	District 4	0	0	2
	FHP	5	0	19
	Local Police	0	0	1
	SIRV	0	0	1
	VisioPaD Detection	0	0	3
	Total	10	10	86
Level 3	Broward CCTV	0	2	10
	Broward Road Ranger	0	2	4
	BSO	0	0	3
	County Police	1	0	1
	District 4	0	0	1
	FHP	1	1	10
	VisioPaD Detection	0	0	1
	Total	2	5	30
Total		43	41	317

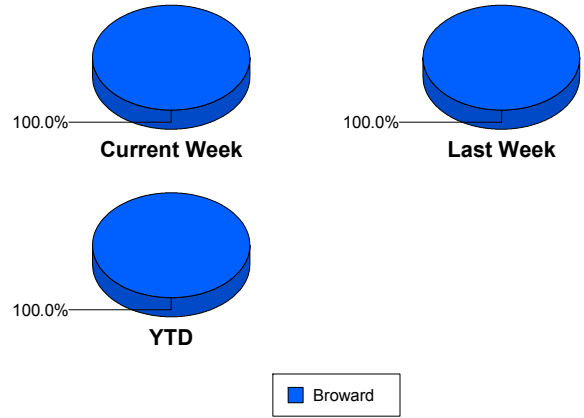
Road Ranger / SIRV Performance Measures

Road Ranger / SIRV Performance By County

RR/SIRV Responses per County

Values presented are:
 - Total Events with a RR/SIRV Response
 - Total RR/SIRV Responses,
 - Total Activities Performed

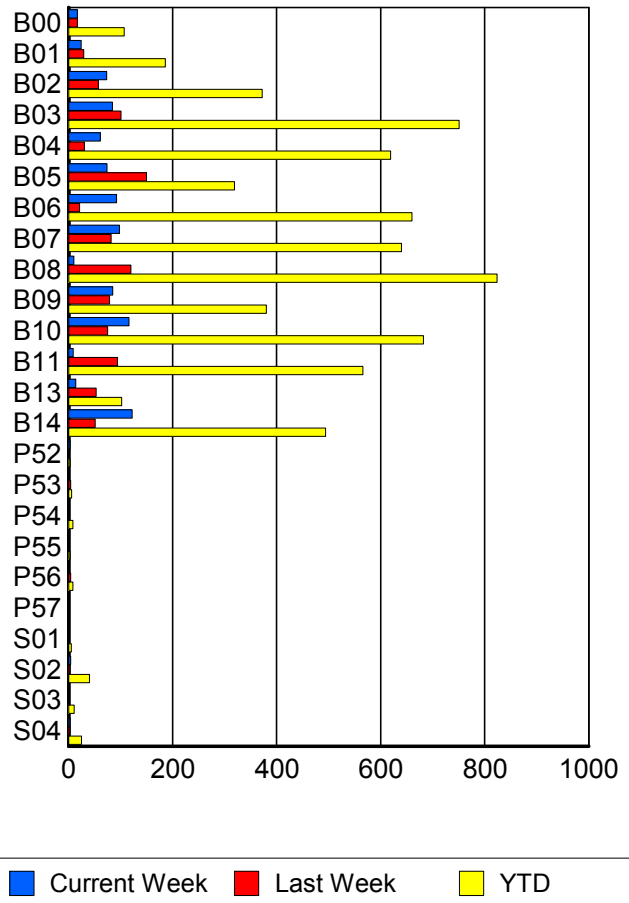
	Current We	Last Week	YTD
Broward	831	924	6,392
	891	976	6,812
	917	1,012	7,061



Road Ranger / SIRV Performance By Truck

	Current We	Last Week	YTD
B00	17	16	105
	17	17	107
	19	17	116
B01	24	27	183
	24	29	186
	25	29	189
B02	70	57	367
	73	57	372
	73	58	376
B03	83	101	747
	84	101	751
	87	104	787
B04	61	30	610
	61	30	619
	63	30	640
B05	74	149	317
	74	150	319
	76	155	330
B06	90	21	650
	92	21	660
	94	22	686
B07	96	82	627
	98	82	640
	99	88	666
B08	10	119	811
	10	120	824
	11	124	856

RR/SIRV Responses per Truck



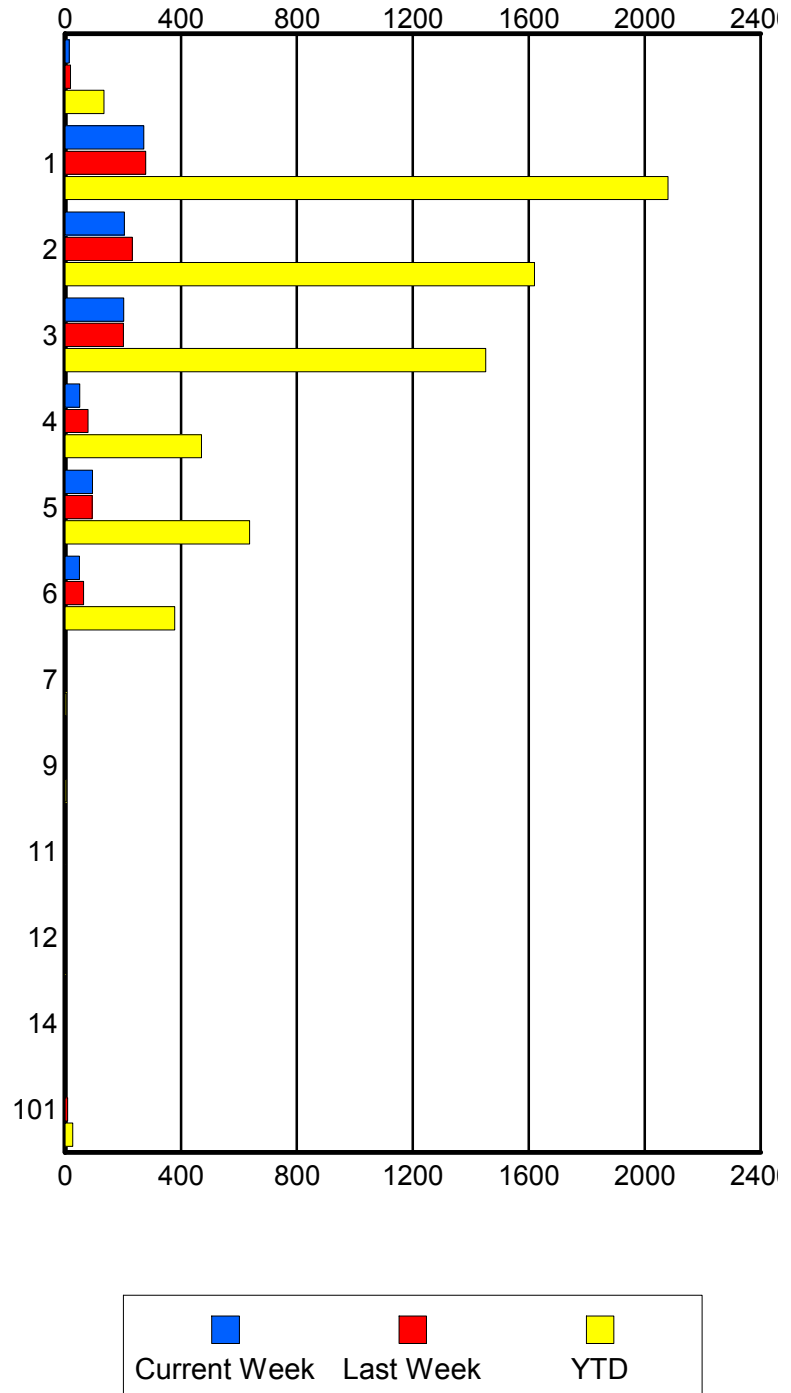
	Current We	Last Week	YTD
B09	84	79	375
	85	79	380
	88	84	396
B10	116	75	678
	116	75	682
	120	78	700
B11	9	93	563
	9	94	566
	9	96	583
B13	14	53	101
	14	53	102
	15	53	104
B14	121	50	488
	122	51	494
	124	54	511
P52	3	0	3
	3	0	3
	3	0	3
P53	0	4	6
	0	4	6
	0	4	6
P54	0	0	8
	0	0	8
	0	0	8
P55	1	0	3
	1	0	3
	1	0	3
P56	0	4	8
	0	4	8
	0	4	10
P57	0	1	1
	0	1	1
	0	1	1
S01	1	1	5
	1	1	5
	2	1	6
S02	4	3	40
	4	3	40
	4	5	44
S03	0	1	8
	0	1	11
	0	1	12
S04	3	3	25
	3	3	25
	4	4	28

Road Ranger / SIRV Performance By Beat

	Current We	Last Week	YTD
	13	19	128
	14	19	134
	16	22	143
1	258	265	1,990
	272	278	2,080
	280	287	2,166
2	194	230	1,576
	205	232	1,620
	212	242	1,679
3	201	198	1,423
	203	201	1,451
	206	205	1,499
4	50	78	462
	51	79	471
	54	86	493
5	94	93	632
	95	94	637
	95	97	649
6	48	63	371
	50	64	378
	53	64	389
7	0	0	4
	0	0	4
	0	0	4
9	0	0	4
	0	0	4
	0	0	4
11	0	0	2
	0	0	2
	0	0	2
12	0	0	2
	0	0	2
	0	0	2
14	0	0	3
	0	0	3
	0	0	3
101	1	9	26
	1	9	26
	1	9	28

Values presented are:
 - Total Events with a RR/SIRV Response
 - Total RR/SIRV Responses,
 - Total Activities Performed

RR/SIRV Responses per Beat

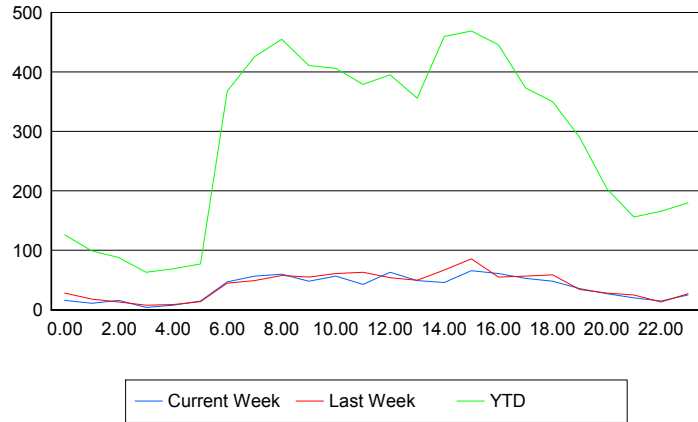


Road Ranger / SIRV Performance By Time of Day

Values presented are:
 - Total Events with a RR/SIRV Response
 - Total RR/SIRV Responses,
 - Total Activities Performed

	Current We	Last Week	YTD
12AM-1AM	16 16 16	23 28 30	119 126 132
1AM-2AM	11 11 12	16 18 19	94 99 104
2AM-3AM	16 16 16	12 13 13	81 88 93
3AM-4AM	4 4 4	8 8 10	61 63 70
4AM-5AM	8 8 8	9 9 11	67 69 71
5AM-6AM	8 15 15	11 14 14	60 77 81
6AM-7AM	46 47 47	44 45 45	347 368 377
7AM-8AM	55 57 58	49 49 52	410 426 443
8AM-9AM	57 60 61	57 58 60	431 455 468
9AM-10AM	48 48 48	54 55 58	393 411 426
10AM-11AM	55 57 60	56 61 64	379 406 424
11AM-12PM	40 43 44	60 63 63	351 379 392
12PM-1PM	57 63 66	53 54 54	371 395 405

Number of Responses / Hour of the Day



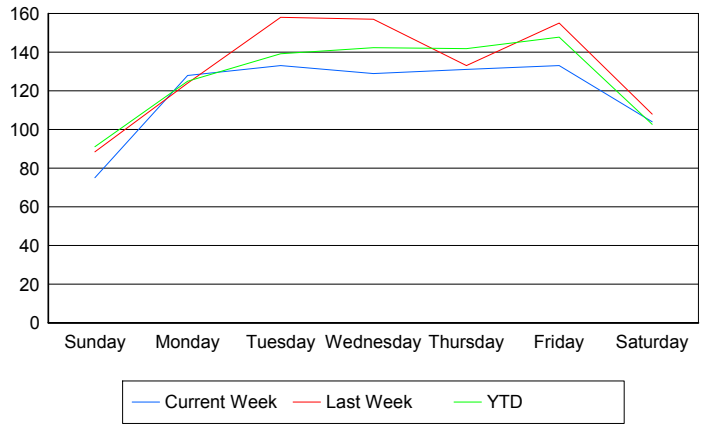
	Current We	Last Week	YTD
1PM-2PM	47	47	333
	49	50	356
	52	52	370
2PM-3PM	42	63	419
	46	67	460
	48	68	483
3PM-4PM	62	80	436
	66	86	469
	68	87	480
4PM-5PM	53	52	417
	61	55	446
	63	61	466
5PM-6PM	46	52	349
	53	57	373
	55	58	382
6PM-7PM	45	57	336
	48	59	350
	49	59	363
7PM-8PM	36	31	275
	36	34	290
	36	34	297
8PM-9PM	25	27	191
	27	28	204
	28	28	208
9PM-10PM	16	25	147
	20	25	156
	22	27	163
10PM-11PM	14	12	153
	15	13	166
	15	13	174
11PM-12AM	24	26	172
	25	27	180
	26	32	189

Road Ranger / SIRV Performance By Day of Week

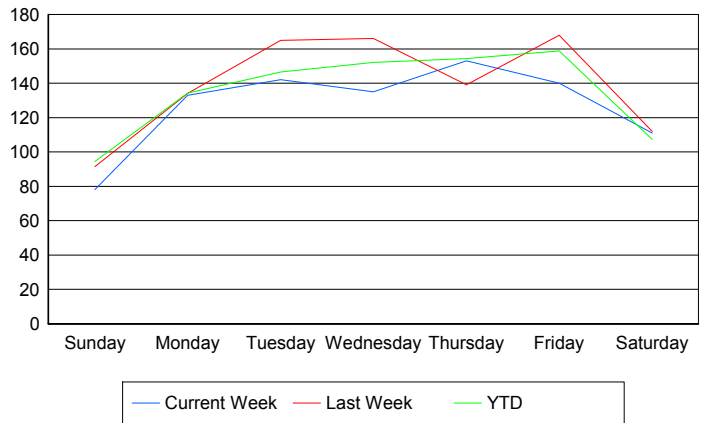
Values presented are: - Total Events with a RR/SIRV Response - Total RR/SIRV Responses, - Total Activities Performed

	Current We	Last Week	YTD
Sunday	74 77 79	89 92 99	622 646 670
Monday	128 133 136	124 134 135	867 931 955
Tuesday	133 142 146	158 165 169	970 1,022 1,050
Wednesday	129 135 140	157 166 170	990 1,056 1,093
Thursday	131 153 157	133 139 144	991 1,078 1,124
Friday	133 140 143	155 168 174	1,149 1,232 1,281
Saturday	104 111 116	108 112 121	810 847 888

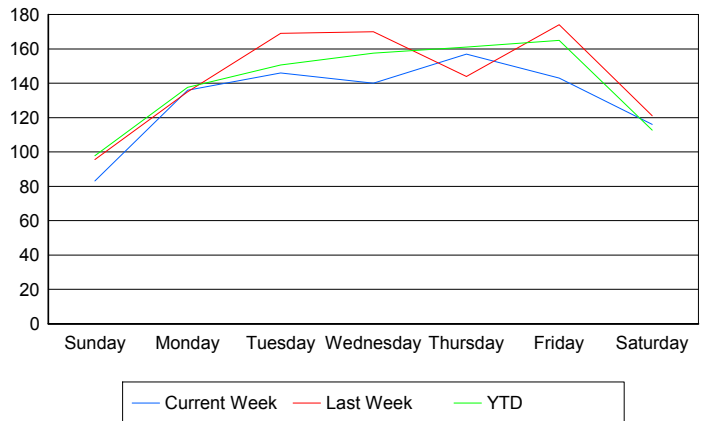
Avg # of events with a RR/SIRV Response per Day of the Week



Avg # of RR/SIRV Responses per Day of the Week



Avg # of RR/SIRV Activities Performed per Day of the Week



Road Ranger / SIRV Responses per Time of Day and Day of Week

