



# Weekly Performance Measures Report Broward County



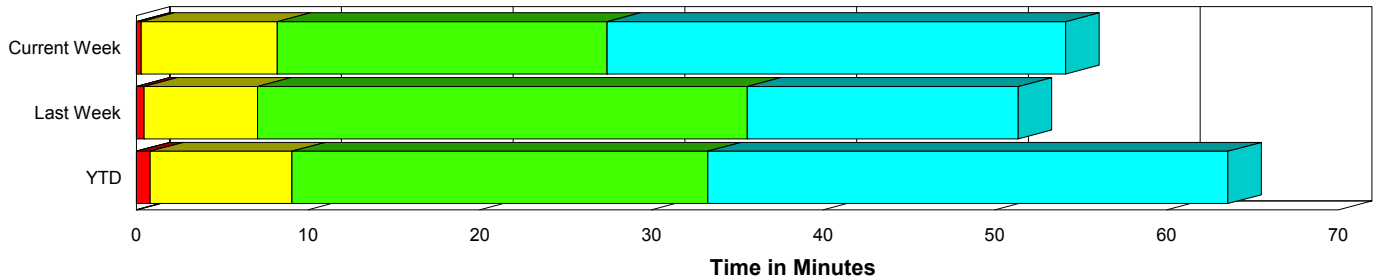
Period From Feb 7, 2010 to Feb 13, 2010

Created on:  
February 15, 2010  
8:42 am

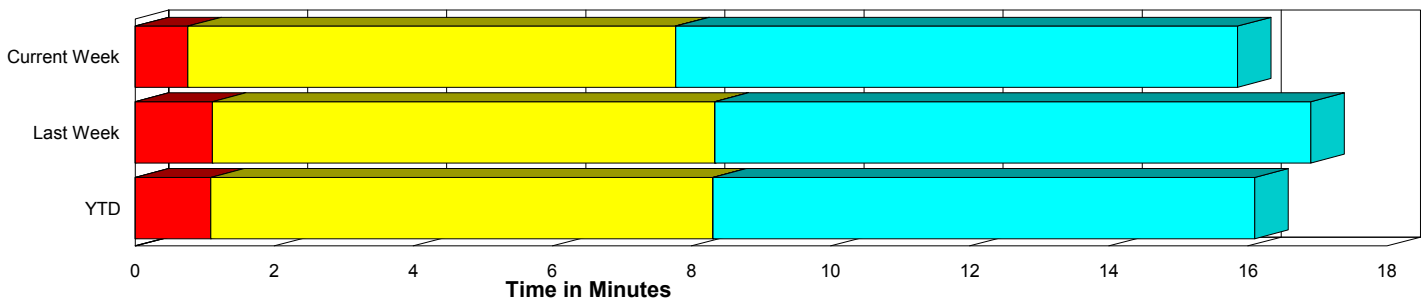
## Performance Measures Summary

	Traffic Events (No Lanes Blocked)			Incidents (Lanes Blocked)		
	<u>This Week</u>	<u>Last Week</u>	<u>YTD</u>	<u>This Week</u>	<u>Last Week</u>	<u>YTD</u>
Number of Events	1,328	1,247	7,648	42	53	281
TMC Detection (min.)	0.00	0.00	0.00	0.00	0.01	0.00
TMC Verification (min.)	0.76	1.11	1.09	0.29	0.43	0.81
TMC Response (min.)	8.36	9.18	9.13	8.49	7.05	9.14
RR Dispatch Time (min.)	1.23	1.21	1.40	1.76	1.27	2.00
RR Response Time (min.)	7.26	8.03	7.86	6.72	5.79	7.17
Roadway Clearance (min.)				26.90	35.01	32.47
Event Clearance (min.)	16.44	17.75	16.92	53.14	50.79	62.38
# of Events w/ RR/SIRV	1,041	1,012	6,164	40	53	276
RR/SIRV Responses	1,041	1,012	6,164	40	53	276
RR/SIRV Activities	772	747	4,590	77	102	516

### Incident Clearance Time-Line



### Traffic Event (Non-Lane Blockage) Time-Line



<span style="color: blue;">■</span> Avg. TMC Detection Time	<span style="color: green;">■</span> Avg. Time from TMC Response to Roadway Clearance*
<span style="color: red;">■</span> Avg. Time from TMC Detection to TMC Verification	<span style="color: cyan;">■</span> Avg. Time from Roadway Clearance to Incident/Event Clearance**
<span style="color: yellow;">■</span> Avg. Time from TMC Verification to TMC Response	

\* Roadway clearance equals all travel lanes open

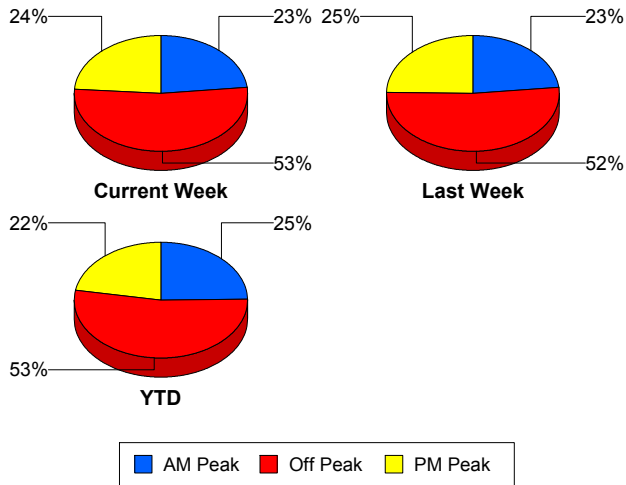
\*\* Incident clearance equals time when last responder has left the scene

## Performance Measures by Peak Period

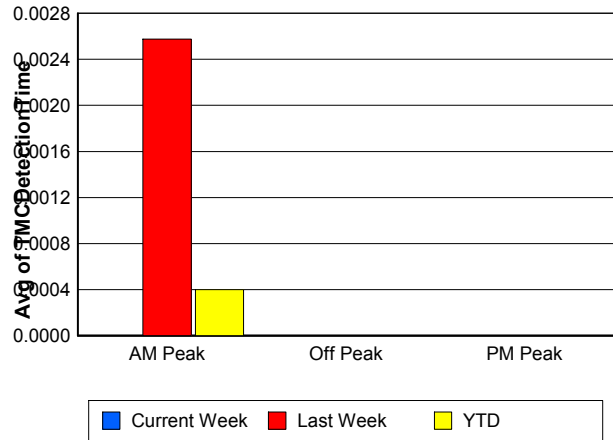
Note: AM peak period is defined as 6am to 10am and PM peak period is defined as 3pm to 7pm.

	AM Peak			Off Peak			PM Peak		
	Current Week	Last Week	YTD	Current Week	Last Week	YTD	Current Week	Last Week	YTD
Number of Events	320	304	1,960	722	675	4,204	328	321	1,765
Number of Incidents	3	11	45	23	29	148	16	13	88
TMC Detection (min.)	0.00	0.00	0.00	0.00	0.00	0.00	0.00	0.00	0.00
TMC Verification (min.)	0.54	0.46	0.58	0.81	1.19	1.15	0.80	1.44	1.47
TMC Response (min.)	7.33	8.03	8.39	8.52	9.63	9.23	8.99	8.85	9.68
RR Dispatch Time (min.)	0.75	0.94	1.00	1.41	1.32	1.49	1.41	1.28	1.75
RR Response Time (min.)	6.70	7.20	7.50	7.18	8.36	7.85	7.80	7.59	8.07
Event Clearance (min.)	15.53	17.39	16.44	18.42	20.94	18.70	17.67	16.86	20.46
Roadway Clearance (min.)	11.61	43.98	33.49	33.79	40.04	39.52	19.85	16.20	20.08
Incident Clearance (min.)	53.04	55.02	62.18	53.70	58.90	65.97	52.35	29.12	56.45
# of Events w/ RR/SIRV	258	265	1,635	558	543	3,340	265	257	1,465
RR/SIRV Responses	258	265	1,635	558	543	3,340	265	257	1,465
RR/SIRV Activities	188	216	1,236	444	433	2,661	217	200	1,209

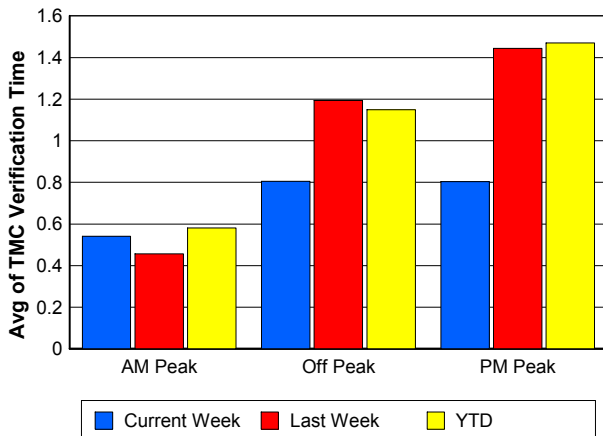
### Number of Events / Peak Period



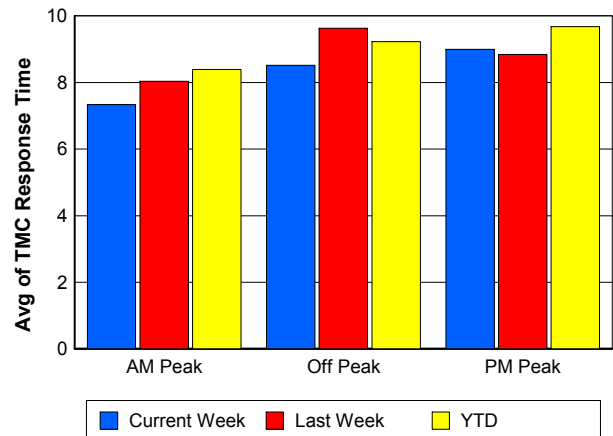
### TMC Detection Time



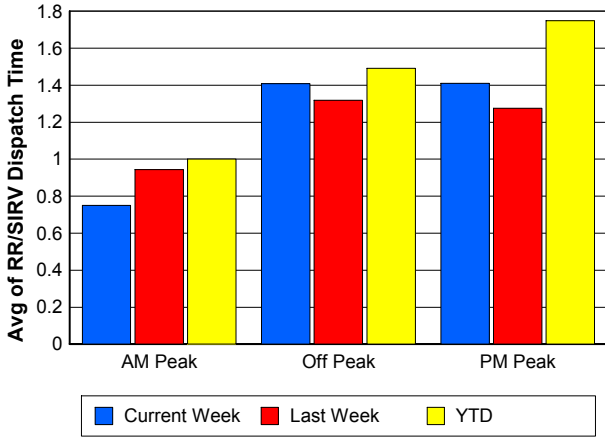
### TMC Verification Time



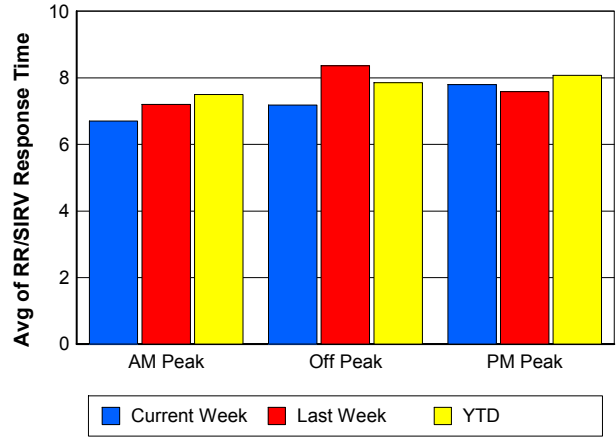
### TMC Response Time



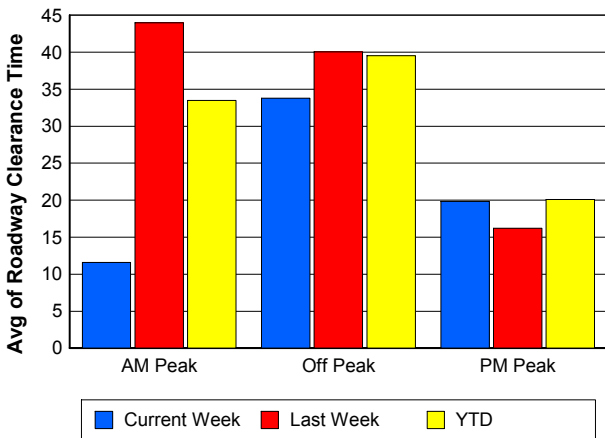
## Road Ranger / SIRV Dispatch Time



## Road Ranger / SIRV Response Time



## Roadway Clearance Time (2A)



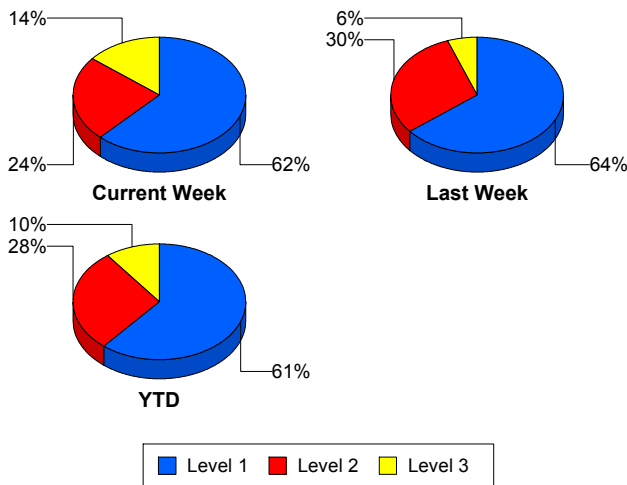
## Incident Clearance Time (3B)



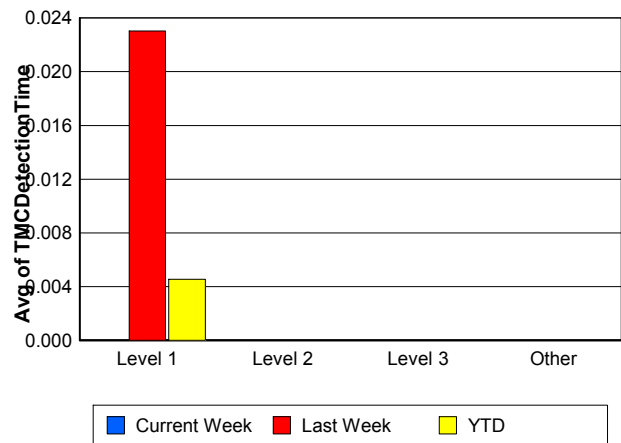
## Performance Measures by Severity

	Level 1			Level 2			Level 3			Other		
	<u>This Week</u>	<u>Last Week</u>	<u>YTD</u>	<u>This Week</u>	<u>Last Week</u>	<u>YTD</u>	<u>This Week</u>	<u>Last Week</u>	<u>YTD</u>	<u>This Week</u>	<u>Last Week</u>	<u>YTD</u>
Number of Events	26	34	172	10	16	80	6	3	29	1,328	1,247	7,648
Number of Incidents	26	34	172	10	16	80	6	3	29	0	0	0
TMC Detection (min.)	0.00	0.02	0.00	0.00	0.00	0.00	0.00	0.00	0.00	0.00	0.00	0.00
TMC Verification (min.)	0.48	0.42	0.57	0.00	0.53	1.34	0.00	0.03	0.77	0.76	1.11	1.09
TMC Response (min.)	8.70	4.70	7.68	6.80	10.65	11.77	10.80	13.66	10.21	8.36	9.18	9.13
RR Dispatch Time (min.)	1.36	0.90	1.59	2.97	1.70	2.93	1.35	3.17	1.80	1.23	1.21	1.40
RR Resp. Time (min.)	7.34	3.83	6.16	3.83	8.95	8.82	9.45	10.49	8.41	7.26	8.03	7.86
Event Clearance (min.)	43.97	32.79	51.16	76.41	65.46	74.62	54.09	176.60	95.20	16.44	17.75	16.92
Roadway Clear. (min.)	13.44	14.89	15.36	55.84	52.06	50.99	36.97	172.13	82.80			
Incident Clearance (min.)	43.97	32.79	51.16	76.41	65.46	74.62	54.09	176.60	95.20			
# of Events w/ RR/SIRV	25	34	170	10	16	79	5	3	27	1,041	1,012	6,164
RR/SIRV Responses	25	34	170	10	16	79	5	3	27	1,041	1,012	6,164
RR/SIRV Activities	42	48	271	25	42	172	10	12	73	772	747	4,590

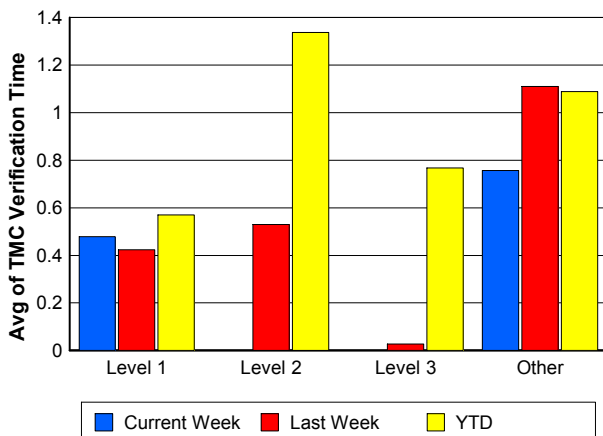
### Number of Events / Severity



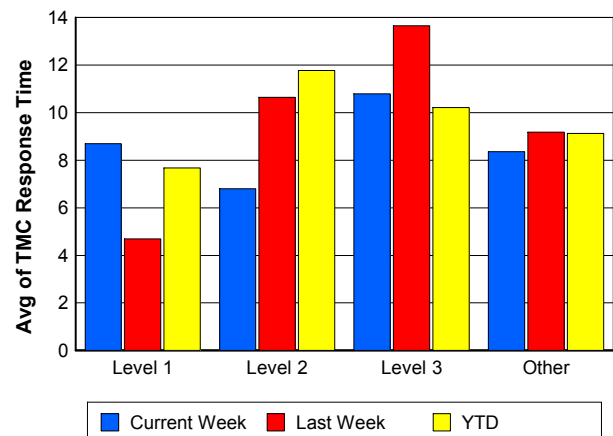
### TMC Detection Time



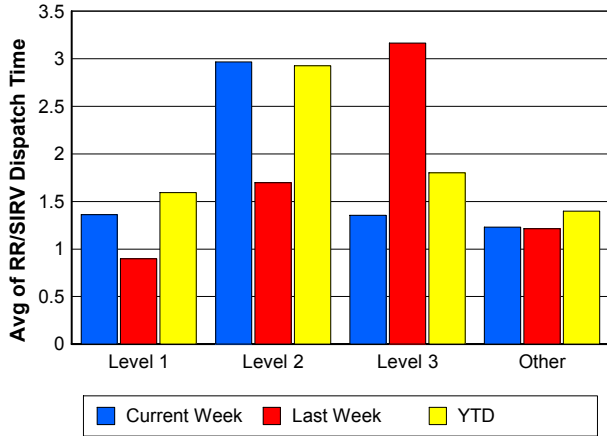
### TMC Verification Time



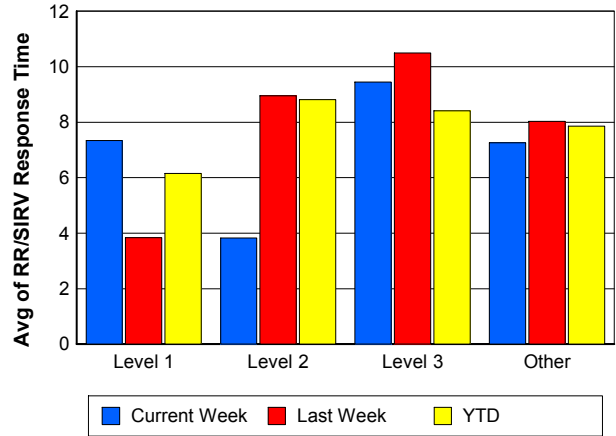
### TMC Response Time



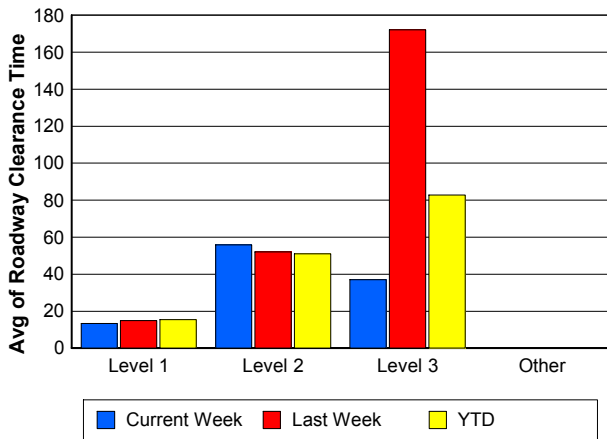
## Road Ranger / SIRV Dispatch Time



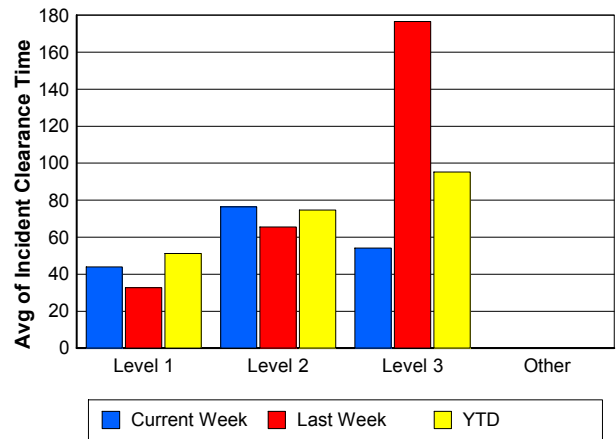
## Road Ranger / SIRV Response Time



## Roadway Clearance Time (2A)



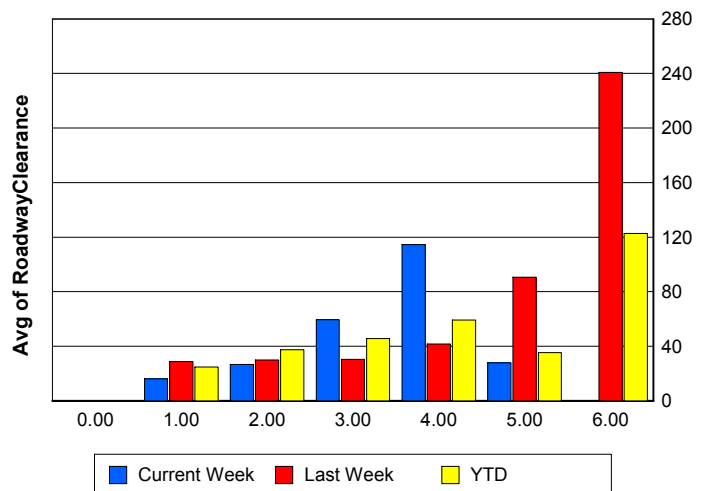
## Incident Clearance Time (3B)



## Roadway Clearance by Maximum Number of Lanes Blocked

	Current Week	Last Week	YTD
0			
1	16.03	28.82	24.82
2	26.60	29.83	37.45
3	59.41	30.47	45.71
4	114.58	41.68	59.32
5	27.87	90.55	35.22
6	0.00	240.70	122.82

## Roadway Clearance Time (2A)



## Performance Measures by Roadway

**595**

	<u>Current Week</u>	<u>Last Week</u>	<u>YTD</u>
Number of Events	48	39	277
Number of Incidents	5	3	15
TMC Detection (min.)	0.00	0.00	0.00
TMC Verification (min.)	2.01	2.87	2.16
TMC Response (min.)	9.15	16.02	14.03
RR Dispatch Time (min.)	2.49	1.21	2.29
RR Resp. Time (min.)	7.28	15.16	12.01
Event Clearance (min.)	21.15	29.46	20.62
Roadway Clear. (min.)	56.42	81.54	55.44
Incident Clearance (min.)	54.76	113.37	68.18
# of Events w/ RR/SIRV	30	29	200
RR/SIRV Responses	30	29	200
RR/SIRV Activities	31	27	153

**75**

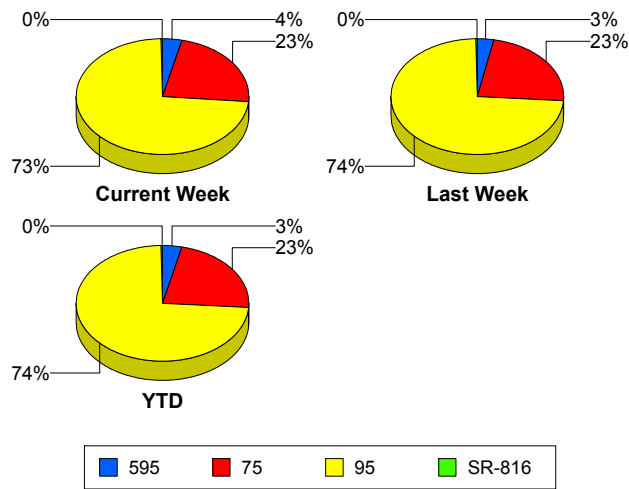
	<u>Current Week</u>	<u>Last Week</u>	<u>YTD</u>
Number of Events	313	302	1,798
Number of Incidents	5	9	27
TMC Detection (min.)	0.00	0.00	0.00
TMC Verification (min.)	0.81	1.94	1.69
TMC Response (min.)	10.13	7.38	9.67
RR Dispatch Time (min.)	1.66	1.04	1.55
RR Resp. Time (min.)	8.58	6.49	8.32
Event Clearance (min.)	18.74	19.57	18.79
Roadway Clear. (min.)	35.89	20.36	37.51
Incident Clearance (min.)	69.12	44.99	71.85
# of Events w/ RR/SIRV	241	237	1,394
RR/SIRV Responses	241	237	1,394
RR/SIRV Activities	202	203	1,128

**95**

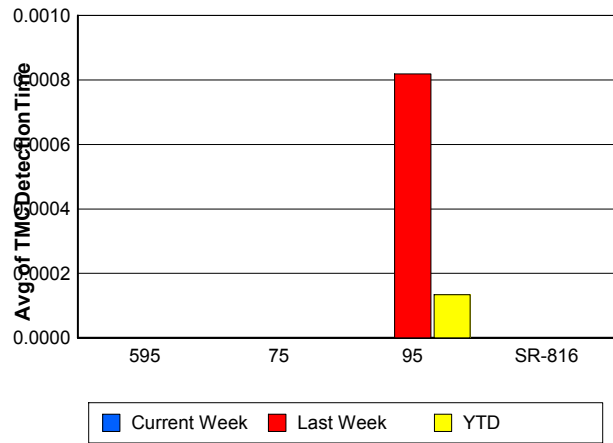
	<u>Current Week</u>	<u>Last Week</u>	<u>YTD</u>
Number of Events	1,006	957	5,833
Number of Incidents	29	39	223
TMC Detection (min.)	0.00	0.00	0.00
TMC Verification (min.)	0.67	0.74	0.85
TMC Response (min.)	7.81	9.41	8.84
RR Dispatch Time (min.)	1.09	1.27	1.36
RR Resp. Time (min.)	6.83	8.15	7.56
Event Clearance (min.)	17.03	18.55	18.37
Roadway Clear. (min.)	22.59	36.35	31.55
Incident Clearance (min.)	53.85	49.41	64.02
# of Events w/ RR/SIRV	807	797	4,825
RR/SIRV Responses	807	797	4,825
RR/SIRV Activities	612	617	3,802

	<u>Current Week</u>	<u>Last Week</u>	<u>YTD</u>
Number of Events	3	2	21
Number of Incidents	3	2	16
TMC Detection (min.)	0.00	0.00	0.00
TMC Verification (min.)	0.00	0.00	0.00
TMC Response (min.)	0.00	0.00	0.14
RR Dispatch Time (min.)	0.00	0.00	0.07
RR Resp. Time (min.)	0.00	0.00	0.08
Event Clearance (min.)	16.90	9.92	15.58
Roadway Clear. (min.)	4.36	5.03	15.23
Incident Clearance (min.)	16.90	9.92	18.18
# of Events w/ RR/SIRV	3	2	21
RR/SIRV Responses	3	2	21
RR/SIRV Activities	4	2	23

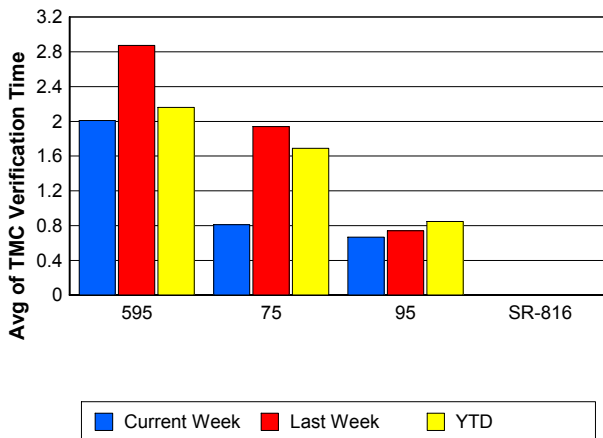
### Number of Events / Roadway



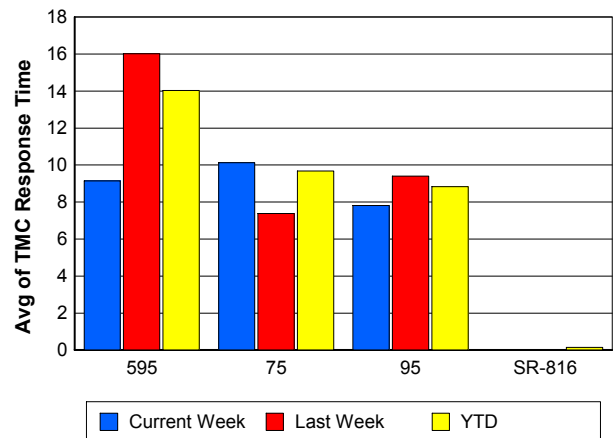
### TMC Detection Time



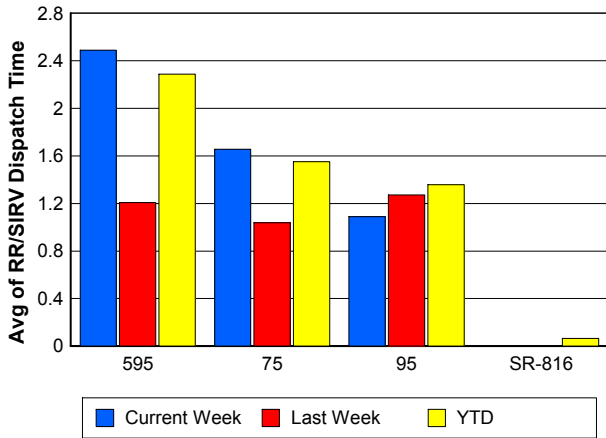
### TMC Verification Time



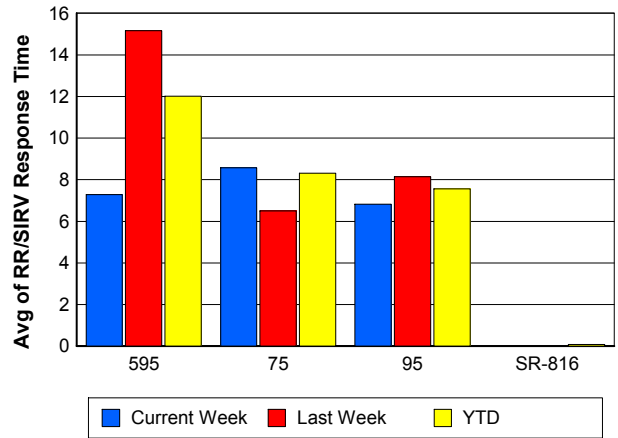
### TMC Response Time



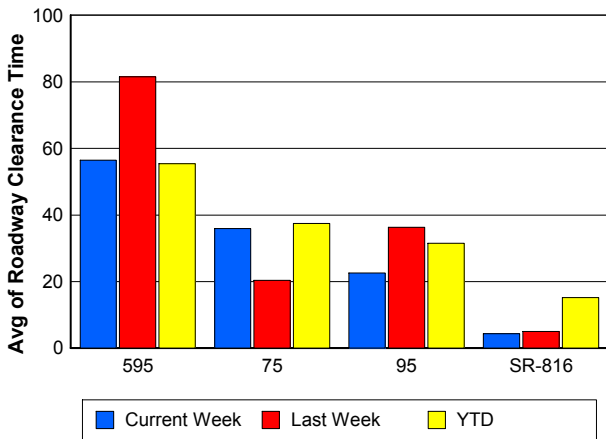
## Road Ranger / SIRV Dispatch Time



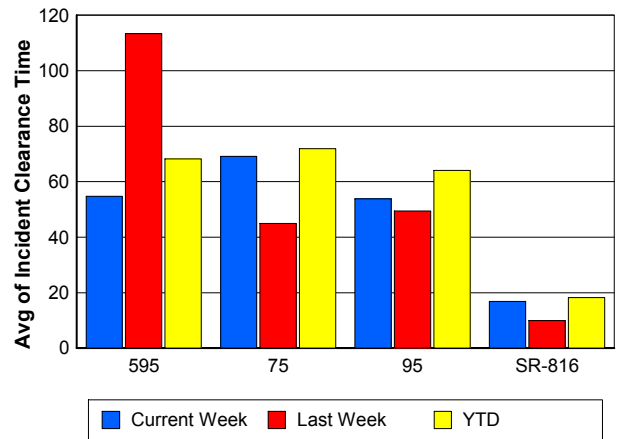
## Road Ranger / SIRV Response Time



## Roadway Clearance Time (2A)



## Incident Clearance Time (3B)



## Performance Measures by Event Type

### Accident

	<u>Current Week</u>	<u>Last Week</u>	<u>YTD</u>
Number of Events	73	74	430
Number of Incidents	25	35	187
TMC Detection (min.)	0.00	0.00	0.00
TMC Verification (min.)	0.54	0.37	1.27
TMC Response (min.)	7.04	7.60	10.01
RR Dispatch Time (min.)	1.46	0.92	1.94
RR Response Time (min.)	5.57	6.67	8.08
Event Clearance (min.)	53.67	48.86	56.83
Roadway Clearance (min.)	34.38	40.35	34.84
Incident Clearance (min.)	74.71	59.72	75.39
# of Events w/ RR/SIRV	73	72	427
RR/SIRV Assists	73	72	427
RR/SIRV Activities	105	111	636

### Debris on Roadway

	<u>Current Week</u>	<u>Last Week</u>	<u>YTD</u>
Number of Events	49	45	247
Number of Incidents	1	0	6
TMC Detection (min.)	0.00	0.00	0.00
TMC Verification (min.)	3.05	6.31	5.64
TMC Response (min.)	7.27	10.36	9.18
RR Dispatch Time (min.)	0.89	1.37	1.47
RR Response Time (min.)	6.38	8.97	7.68
Event Clearance (min.)	10.35	14.52	13.04
Roadway Clearance (min.)	4.38		49.14
Incident Clearance (min.)	13.12		44.49
# of Events w/ RR/SIRV	47	41	235
RR/SIRV Assists	47	41	235
RR/SIRV Activities	45	39	239

### Disabled Vehicle

	<u>Current Week</u>	<u>Last Week</u>	<u>YTD</u>
Number of Events	714	702	4,243
Number of Incidents	10	13	58
TMC Detection (min.)	0.00	0.00	0.00
TMC Verification (min.)	1.14	1.55	1.53
TMC Response (min.)	8.75	8.94	9.05
RR Dispatch Time (min.)	1.17	1.11	1.30
RR Response Time (min.)	7.62	7.89	7.82
Event Clearance (min.)	20.48	22.13	21.04
Roadway Clearance (min.)	12.34	18.33	16.45
Incident Clearance (min.)	17.58	27.80	27.11
# of Events w/ RR/SIRV	680	685	4,117
RR/SIRV Assists	680	685	4,117
RR/SIRV Activities	659	656	3,961

## Emergency Vehicles

	<u>Current Week</u>	<u>Last Week</u>	<u>YTD</u>
Number of Events	2	1	11
Number of Incidents	2	1	9
TMC Detection (min.)	0.00	0.00	0.00
TMC Verification (min.)	0.00	0.00	0.00
TMC Response (min.)	20.55	27.07	13.40
RR Dispatch Time (min.)	0.83	4.13	1.07
RR Response Time (min.)	19.72	22.93	12.25
Event Clearance (min.)	24.32	93.90	32.41
Roadway Clearance (min.)	19.29	90.55	26.06
Incident Clearance (min.)	24.32	93.90	30.05
# of Events w/ RR/SIRV	1	1	9
RR/SIRV Assists	1	1	9
RR/SIRV Activities	1	1	8

## Other

	<u>Current Week</u>	<u>Last Week</u>	<u>YTD</u>
Number of Events	527	470	2,955
Number of Incidents	2	1	8
TMC Detection (min.)	0.00	0.00	0.00
TMC Verification (min.)	0.03	0.01	0.03
TMC Response (min.)	5.36	13.38	8.79
RR Dispatch Time (min.)	1.44	1.54	1.60
RR Response Time (min.)	4.55	10.08	7.50
Event Clearance (min.)	9.22	10.09	9.59
Roadway Clearance (min.)	12.52	20.70	63.11
Incident Clearance (min.)	20.10	25.92	68.50
# of Events w/ RR/SIRV	275	259	1,614
RR/SIRV Assists	275	259	1,614
RR/SIRV Activities	33	31	214

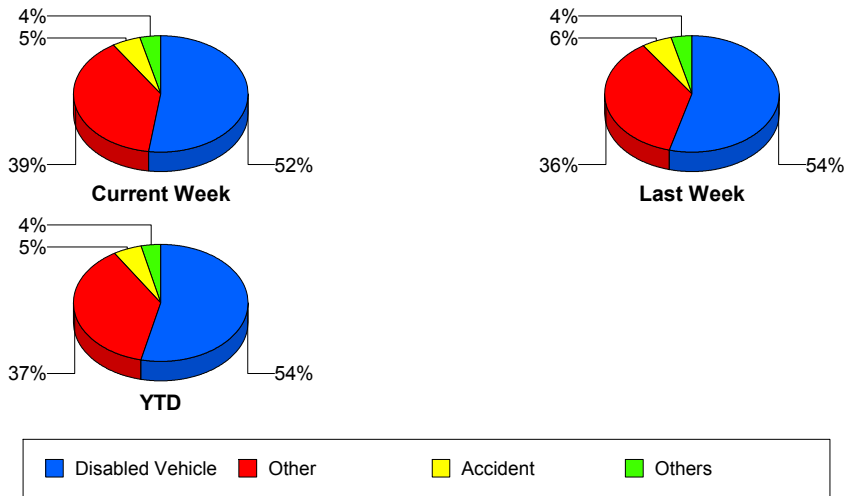
## Police Activity

	<u>Last Week</u>	<u>YTD</u>
Number of Events	1	11
Number of Incidents	1	5
TMC Detection (min.)	0.00	0.00
TMC Verification (min.)	0.00	3.99
TMC Response (min.)	0.00	10.56
RR Dispatch Time (min.)	0.00	1.16
RR Response Time (min.)	0.00	9.53
Event Clearance (min.)	8.62	42.48
Roadway Clearance (min.)	7.50	52.42
Incident Clearance (min.)	8.62	62.90
# of Events w/ RR/SIRV	1	8
RR/SIRV Assists	1	8
RR/SIRV Activities	1	9

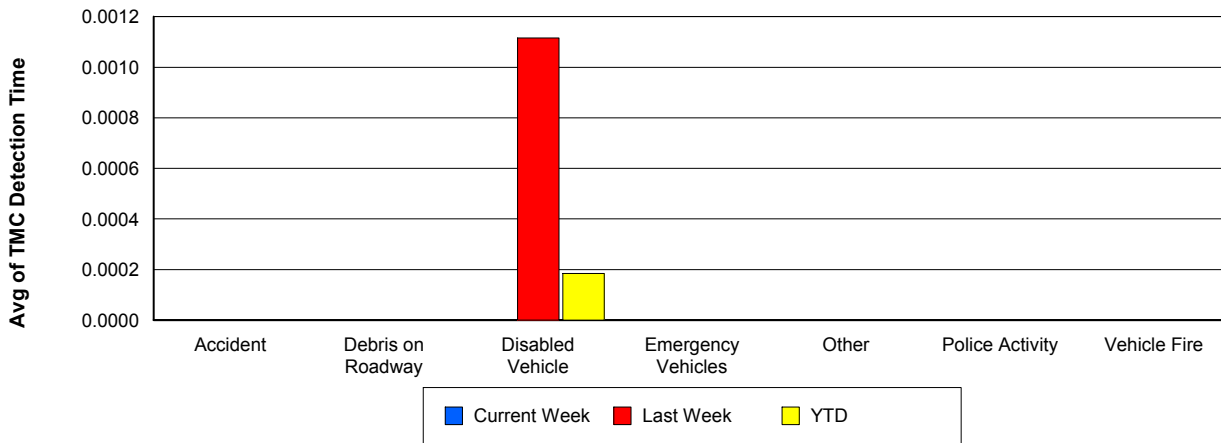
## Vehicle Fire

	<u>Current Week</u>	<u>Last Week</u>	<u>YTD</u>
Number of Events	2	3	13
Number of Incidents	2	2	8
TMC Detection (min.)	0.00	0.00	0.00
TMC Verification (min.)	0.47	0.30	0.89
TMC Response (min.)	12.52	3.17	10.28
RR Dispatch Time (min.)	2.79	0.96	1.98
RR Response Time (min.)	9.72	2.01	8.17
Event Clearance (min.)	43.16	44.33	52.25
Roadway Clearance (min.)	39.39	43.11	44.86
Incident Clearance (min.)	43.16	56.05	57.50
# of Events w/ RR/SIRV	2	3	13
RR/SIRV Assists	2	3	13
RR/SIRV Activities	3	7	23

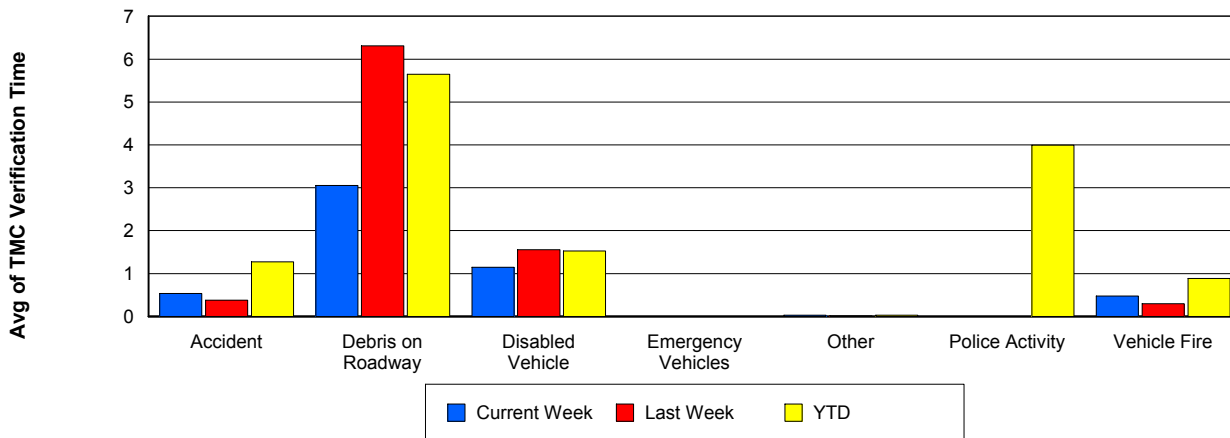
## Number of Events / Event Type



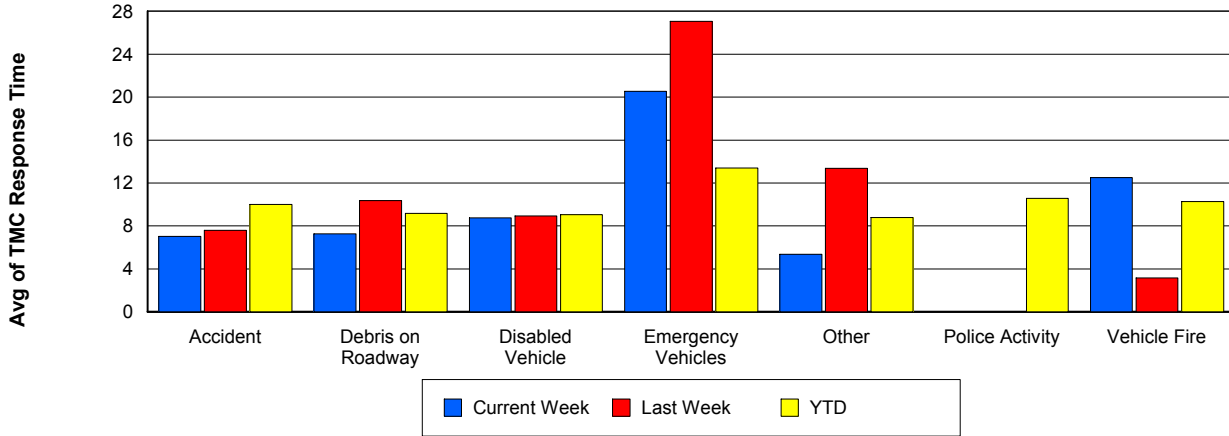
## TMC Detection Time



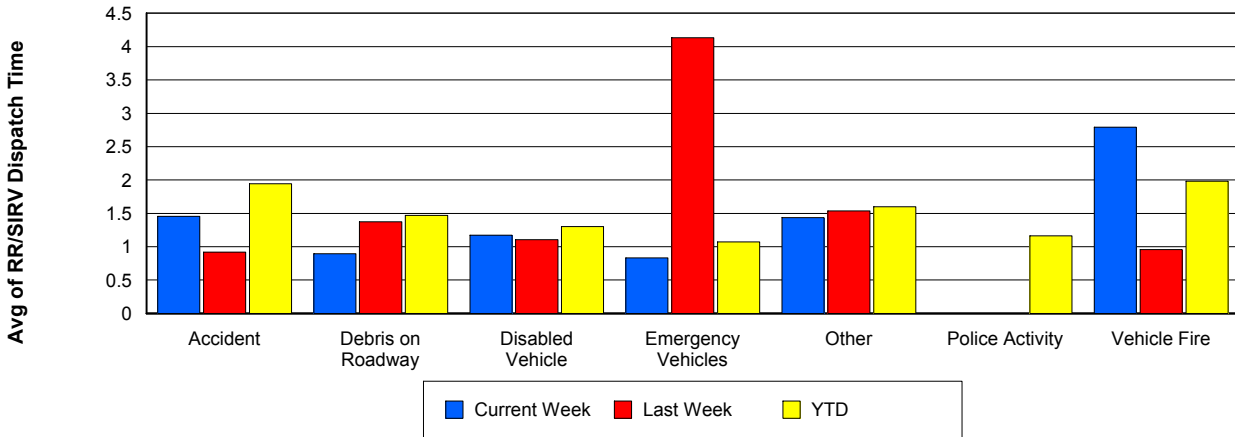
## TMC Verification Time



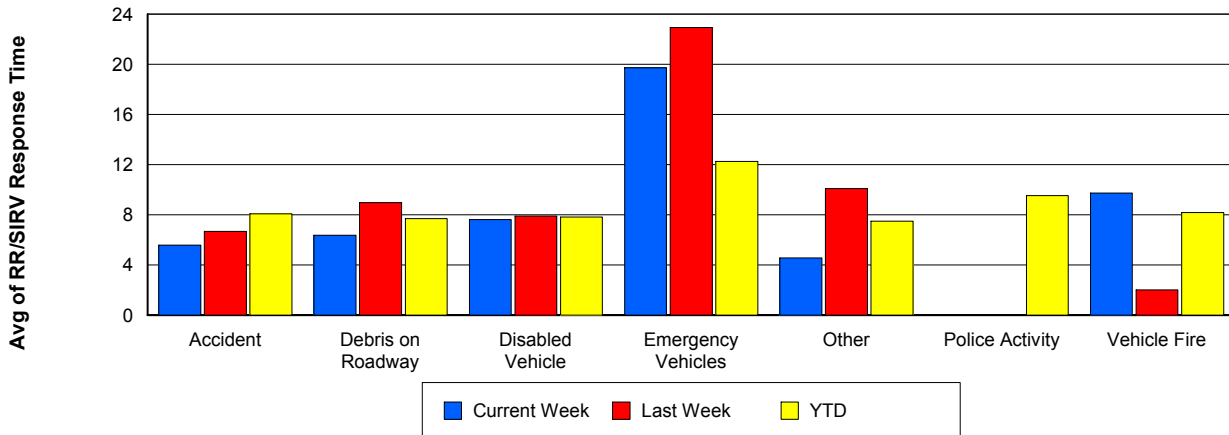
## TMC Response Time



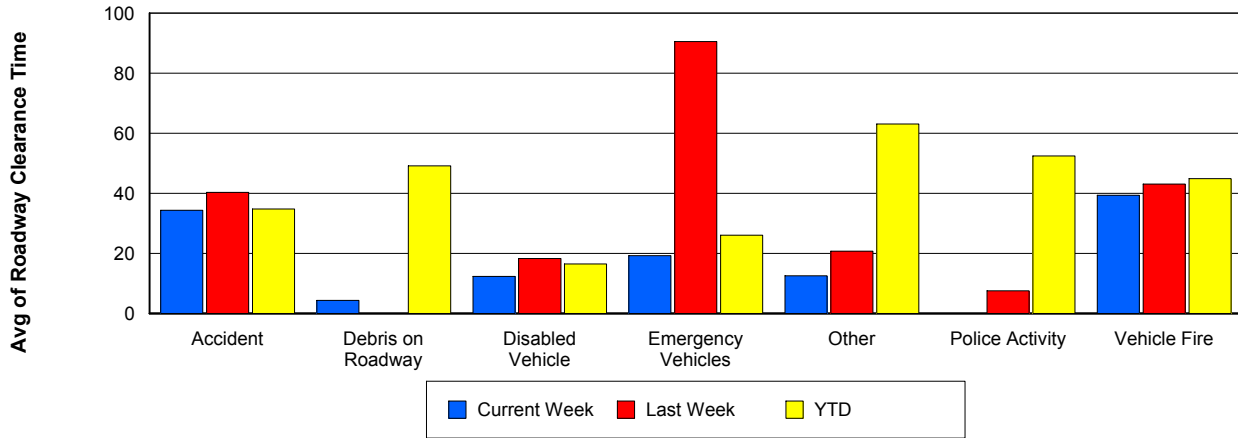
## Road Ranger / SIRV Dispatch Time



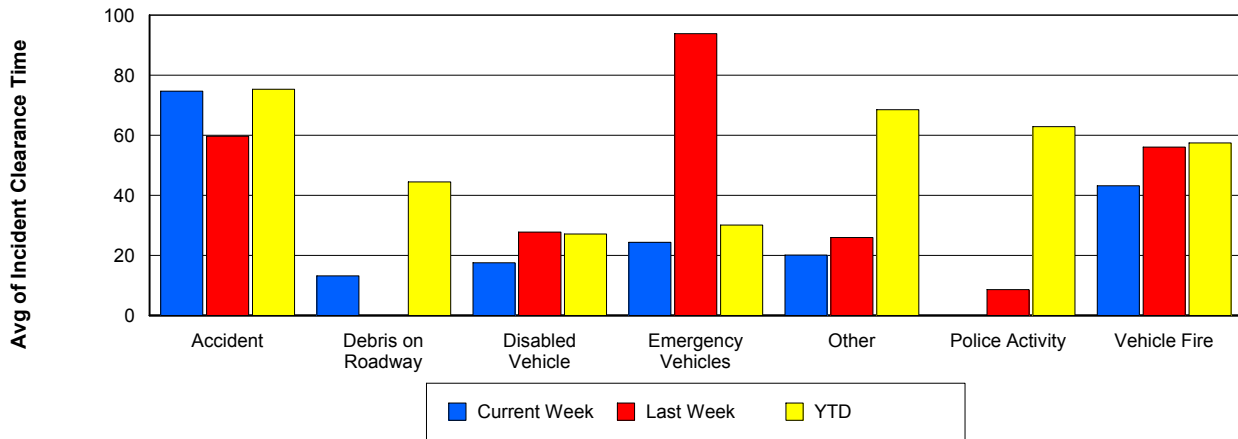
## Road Ranger / SIRV Response Time



## Roadway Clearance Time (2A)



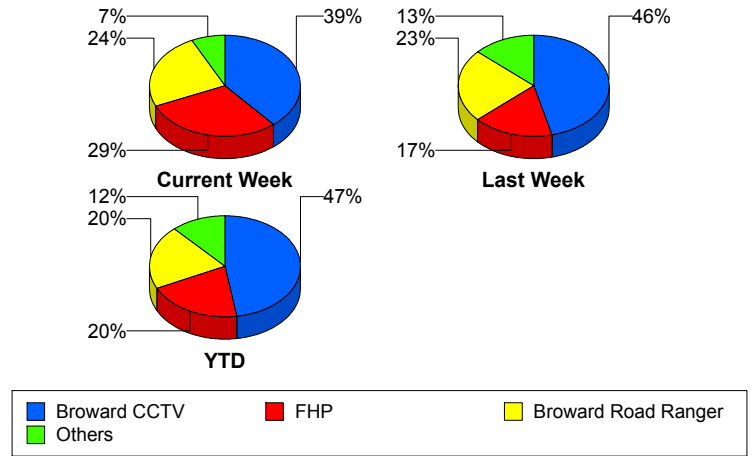
## Incident Clearance Time (3B)



## Incident Detection Methods

	Current Week	Last Week	YTD
Broward CCTV	16	24	130
Broward Road Ranger	10	12	56
Broward TMC	0	0	1
Broward VideoWall	0	2	7
BSO	2	1	6
District 4	1	1	6
FHP	12	9	56
Local Police	0	0	1
Motorist	0	0	2
Road Watcher	0	0	1
SIRV	0	1	1
VisioPaD Detection	0	2	7
<b>Total</b>	<b>41</b>	<b>52</b>	<b>274</b>

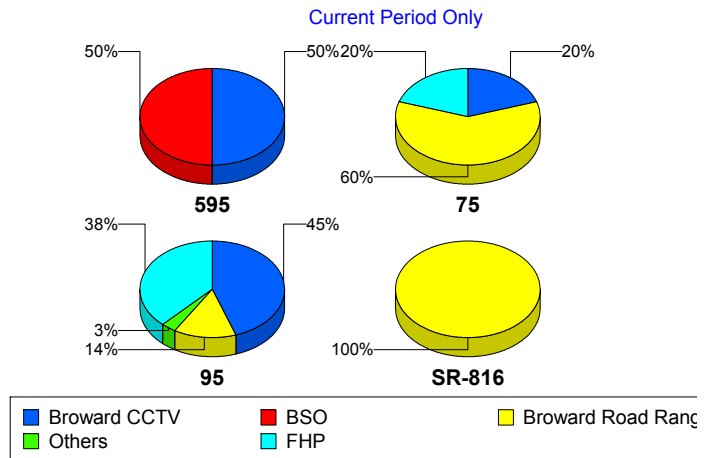
### Total Incidents by Detection Method



## Incident Detection Methods by Roadway

		Current Week	Last Week	YTD
595	Broward CCTV	2	0	3
	BSO	2	1	3
	FHP	0	1	3
	<b>Total</b>	<b>4</b>	<b>2</b>	<b>9</b>
75	Broward CCTV	1	5	10
	Broward Road Ranger	3	3	6
	BSO	0	0	2
	District 4	0	0	1
	FHP	1	0	5
	VisioPaD Detection	0	1	3
	<b>Total</b>	<b>5</b>	<b>9</b>	<b>27</b>
95	Broward CCTV	13	19	117
	Broward Road Ranger	4	7	34
	Broward TMC	0	0	1

### Total Events by Roadway and Detection Method

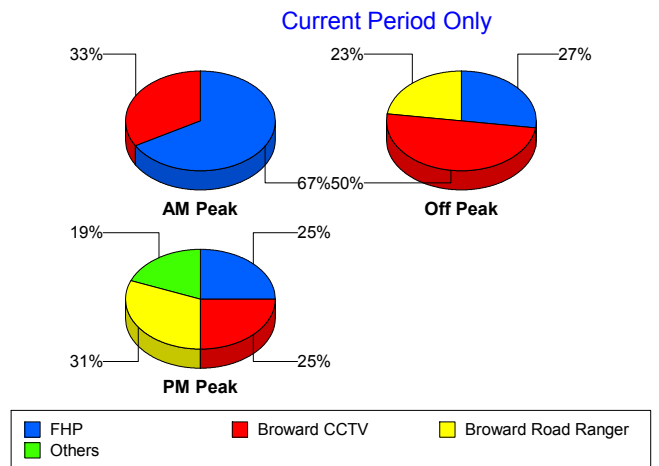


		Current Week	Last Week	YTD
95	Broward VideoWall	0	2	7
	BSO	0	0	1
	District 4	1	1	5
	FHP	11	8	48
	Local Police	0	0	1
	Motorist	0	0	2
	Road Watcher	0	0	1
	SIRV	0	1	1
	VisioPaD Detection	0	1	4
	Total	29	39	222
SR-816	Broward Road Ranger	3	2	16
	Total	3	2	16
Total		41	52	274

### Incident Detection Methods by Peak Period

		Current Week	Last Week	YTD
AM Peak	Broward CCTV	1	3	16
	Broward Road Ranger	0	3	11
	Broward VideoWall	0	1	4
	BSO	0	1	1
	District 4	0	0	1
	FHP	2	2	9
	Local Police	0	0	1
	SIRV	0	1	1
	Total	3	11	44
	Off Peak	Broward CCTV	11	15
Broward Road Ranger		5	6	21
Broward TMC		0	0	1
Broward VideoWall		0	1	2
BSO		0	0	2
District 4		0	1	4
FHP		6	3	30

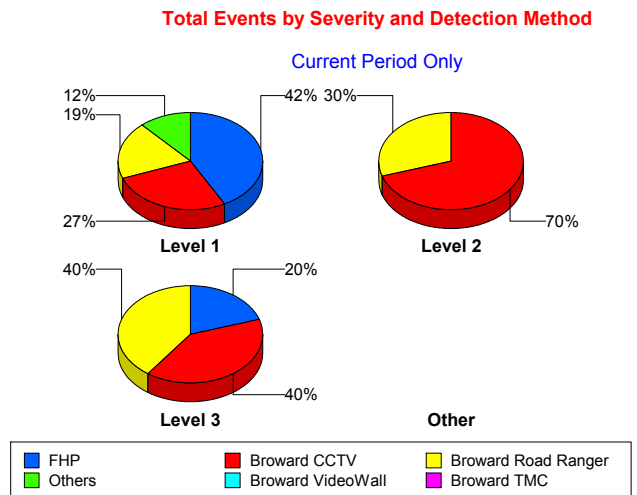
Total Events by Peak Period and Detection Method



		Current Week	Last Week	YTD
Off Peak	Motorist	0	0	1
	Road Watcher	0	0	1
	VisioPaD Detection	0	2	5
	<b>Total</b>	<b>22</b>	<b>28</b>	<b>142</b>
PM Peak	Broward CCTV	4	6	39
	Broward Road Ranger	5	3	24
	Broward VideoWall	0	0	1
	BSO	2	0	3
	District 4	1	0	1
	FHP	4	4	17
	Motorist	0	0	1
	VisioPaD Detection	0	0	2
	<b>Total</b>	<b>16</b>	<b>13</b>	<b>88</b>
<b>Total</b>	<b>41</b>	<b>52</b>	<b>274</b>	

### Incident Detection Methods by Severity

		Current Week	Last Week	YTD
Level 1	Broward CCTV	7	14	80
	Broward Road Ranger	5	11	39
	Broward TMC	0	0	1
	Broward VideoWall	0	1	5
	BSO	2	0	3
	District 4	1	0	3
	FHP	11	5	33
	Motorist	0	0	2
	Road Watcher	0	0	1
	VisioPaD Detection	0	2	3
	<b>Total</b>	<b>26</b>	<b>33</b>	<b>170</b>
	Level 2	Broward CCTV	7	8
Broward Road Ranger		3	1	13
Broward VideoWall		0	1	2
District 4		0	1	2



		Current Week	Last Week	YTD
Level 2	FHP	0	4	14
	Local Police	0	0	1
	SIRV	0	1	1
	VisioPaD Detection	0	0	3
	Total	10	16	76
Level 3	Broward CCTV	2	2	10
	Broward Road Ranger	2	0	4
	BSO	0	1	3
	District 4	0	0	1
	FHP	1	0	9
	VisioPaD Detection	0	0	1
	Total	5	3	28
Total		41	52	274

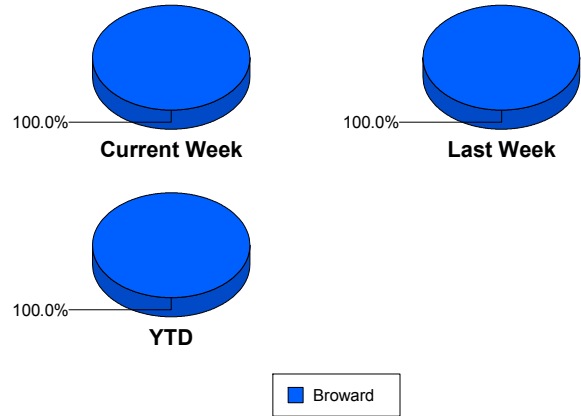
# Road Ranger / SIRV Performance Measures

## Road Ranger / SIRV Performance By County

Values presented are:  
 - Total Events with a RR/SIRV Response  
 - Total RR/SIRV Responses,  
 - Total Activities Performed

	Current We	Last Week	YTD
Broward	924	907	5,561
	976	974	5,921
	1,012	1,012	6,144

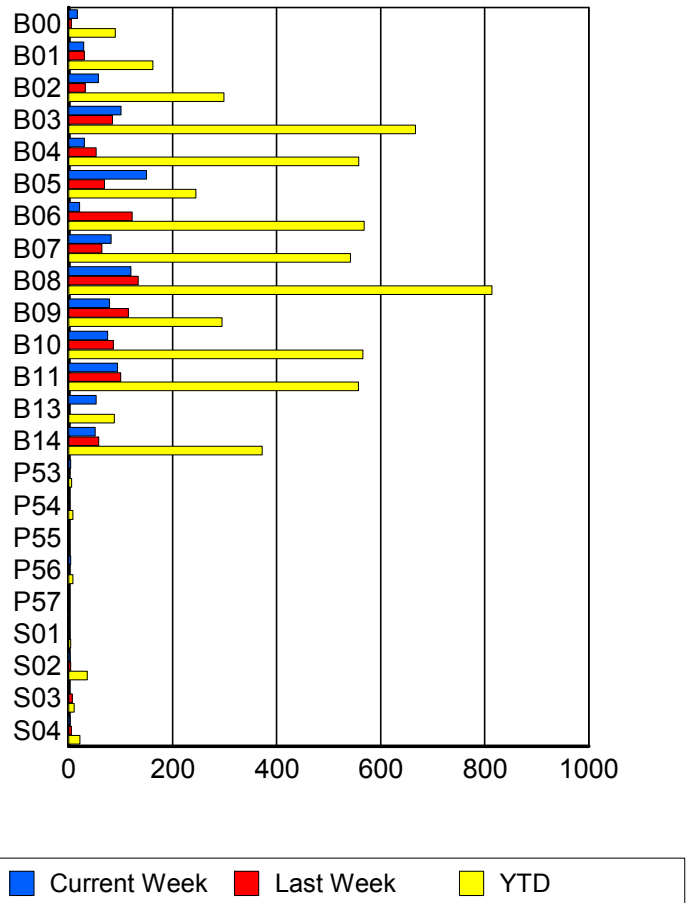
RR/SIRV Responses per County



## Road Ranger / SIRV Performance By Truck

	Current We	Last Week	YTD
B00	16	5	88
	17	5	90
	17	6	97
B01	27	30	159
	29	30	162
	29	30	164
B02	57	32	297
	57	32	299
	58	32	303
B03	101	83	664
	101	84	667
	104	88	700
B04	30	53	549
	30	53	558
	30	58	577
B05	149	68	243
	150	69	245
	155	73	254
B06	21	121	560
	21	122	568
	22	126	592
B07	82	62	531
	82	64	542
	88	67	567
B08	119	130	801
	120	134	814
	124	137	845

RR/SIRV Responses per Truck



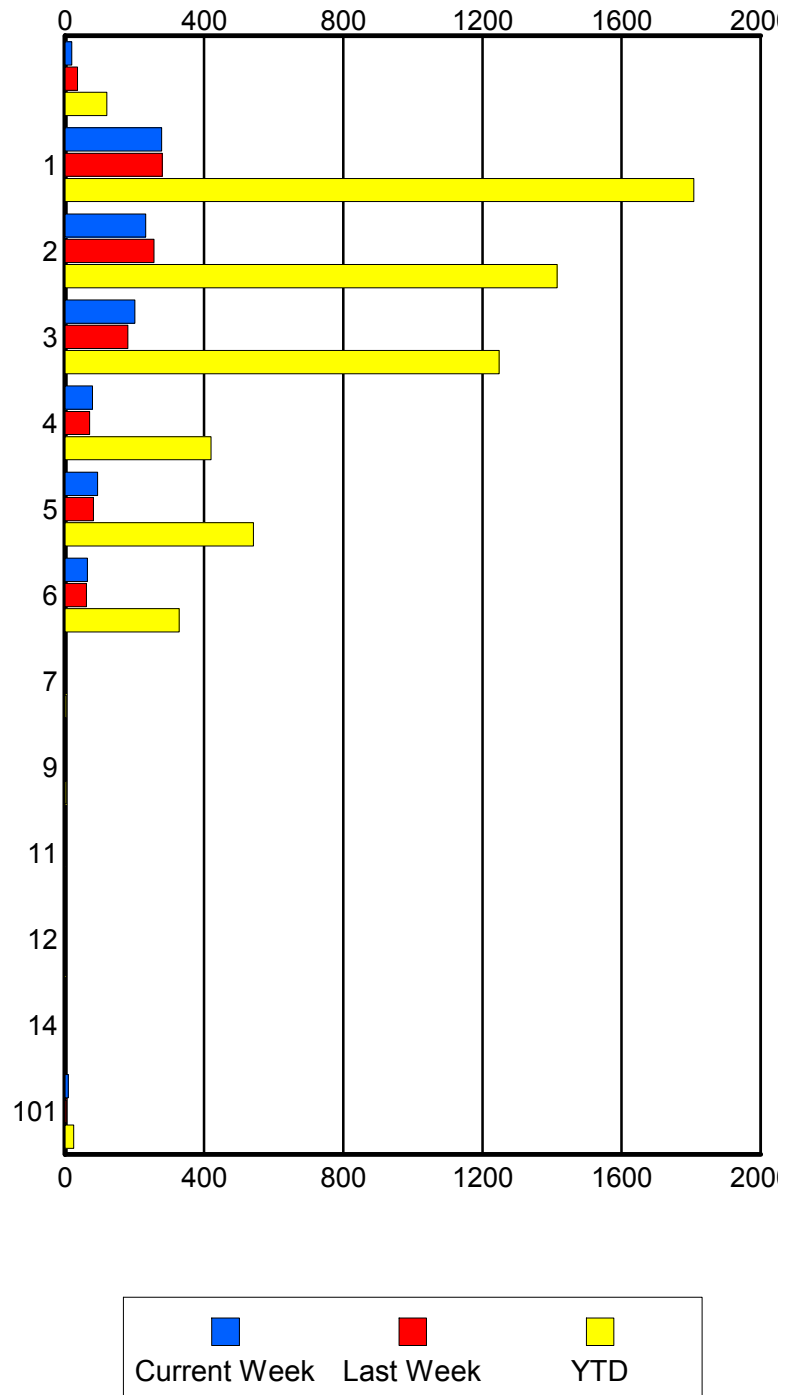
	Current We	Last Week	YTD
B09	79	113	291
	79	115	295
	84	121	308
B10	75	86	562
	75	86	566
	78	89	580
B11	93	99	554
	94	100	557
	96	103	574
B13	53	0	87
	53	0	88
	53	0	89
B14	50	58	367
	51	58	372
	54	59	387
P53	4	0	6
	4	0	6
	4	0	6
P54	0	2	8
	0	2	8
	0	2	8
P55	0	0	2
	0	0	2
	0	0	2
P56	4	2	8
	4	2	8
	4	2	10
P57	1	0	1
	1	0	1
	1	0	1
S01	1	2	4
	1	2	4
	1	2	4
S02	3	4	36
	3	4	36
	5	4	40
S03	1	4	8
	1	7	11
	1	8	12
S04	3	5	22
	3	5	22
	4	5	24

### Road Ranger / SIRV Performance By Beat

	Current We	Last Week	YTD
	19	32	115
	19	36	120
	22	38	127
1	265	270	1,732
	278	280	1,808
	287	292	1,886
2	230	248	1,382
	232	256	1,415
	242	264	1,467
3	198	175	1,222
	201	181	1,248
	205	189	1,293
4	78	70	412
	79	71	420
	86	74	439
5	93	81	538
	94	82	542
	97	83	554
6	63	60	323
	64	62	328
	64	66	336
7	0	0	4
	0	0	4
	0	0	4
9	0	0	4
	0	0	4
	0	0	4
11	0	2	2
	0	2	2
	0	2	2
12	0	0	2
	0	0	2
	0	0	2
14	0	0	3
	0	0	3
	0	0	3
101	9	4	25
	9	4	25
	9	4	27

Values presented are:  
 - Total Events with a RR/SIRV Response  
 - Total RR/SIRV Responses,  
 - Total Activities Performed

### RR/SIRV Responses per Beat

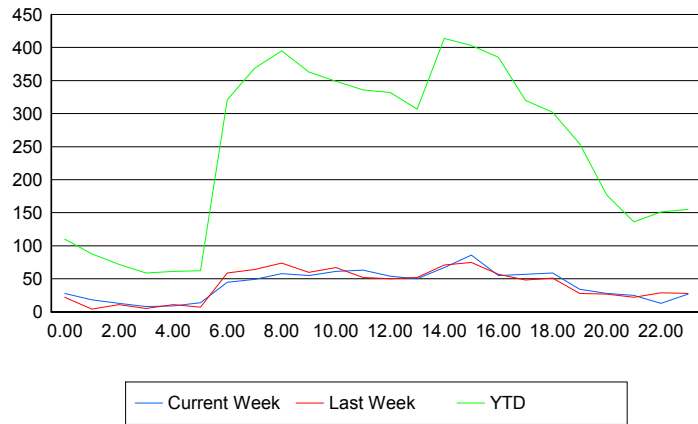


## Road Ranger / SIRV Performance By Time of Day

Values presented are:  
 - Total Events with a RR/SIRV Response  
 - Total RR/SIRV Responses,  
 - Total Activities Performed

	Current We	Last Week	YTD
12AM-1AM	23 28 30	22 22 22	103 110 116
1AM-2AM	16 18 19	3 4 4	83 88 92
2AM-3AM	12 13 13	8 11 13	65 72 77
3AM-4AM	8 8 10	5 5 6	57 59 66
4AM-5AM	9 9 11	10 11 11	59 61 63
5AM-6AM	11 14 14	7 7 7	52 62 66
6AM-7AM	44 45 45	56 59 61	301 321 330
7AM-8AM	49 49 52	62 64 66	355 369 385
8AM-9AM	57 58 60	69 74 77	374 395 407
9AM-10AM	54 55 58	53 60 62	345 363 378
10AM-11AM	56 61 64	61 67 68	324 349 364
11AM-12PM	60 63 63	46 52 55	311 336 348
12PM-1PM	53 54 54	44 50 52	314 332 339

## Number of Responses / Hour of the Day



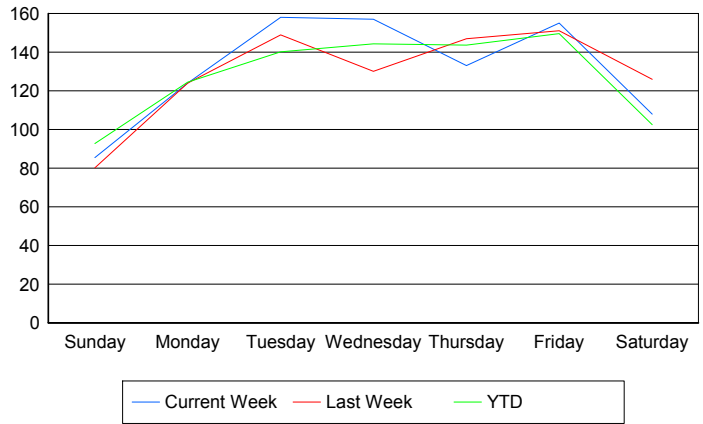
	Current We	Last Week	YTD
1PM-2PM	47	52	286
	50	52	307
	52	53	318
2PM-3PM	63	63	377
	67	71	414
	68	75	435
3PM-4PM	80	69	374
	86	75	403
	87	76	412
4PM-5PM	52	55	364
	55	57	385
	61	59	403
5PM-6PM	52	47	303
	57	48	320
	58	51	327
6PM-7PM	57	50	291
	59	51	302
	59	53	314
7PM-8PM	31	28	239
	34	28	254
	34	30	261
8PM-9PM	27	23	166
	28	27	177
	28	29	180
9PM-10PM	25	21	131
	25	22	136
	27	24	141
10PM-11PM	12	26	139
	13	29	151
	13	30	159
11PM-12AM	26	27	148
	27	28	155
	32	28	163

## Road Ranger / SIRV Performance By Day of Week

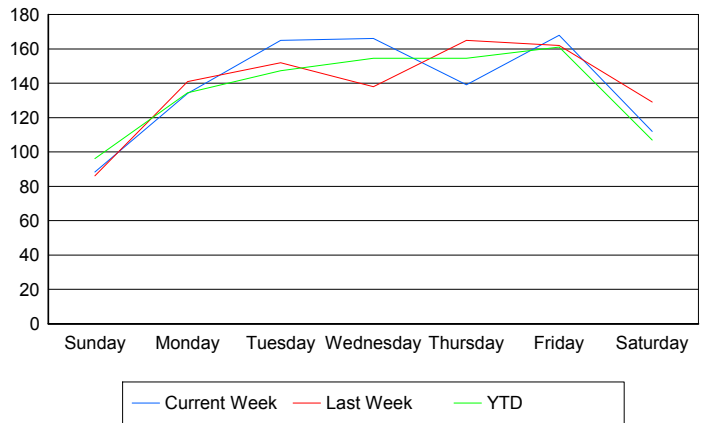
Values presented are:  
 - Total Events with a RR/SIRV Response  
 - Total RR/SIRV Responses,  
 - Total Activities Performed

	Current We	Last Week	YTD
Sunday	89	81	548
	92	87	569
	99	91	591
Monday	124	124	739
	134	141	798
	135	143	819
Tuesday	158	149	837
	165	152	880
	169	157	904
Wednesday	157	130	861
	166	138	921
	170	147	953
Thursday	133	147	860
	139	165	925
	144	170	967
Friday	155	151	1,016
	168	162	1,092
	174	167	1,138
Saturday	108	126	706
	112	129	736
	121	137	772

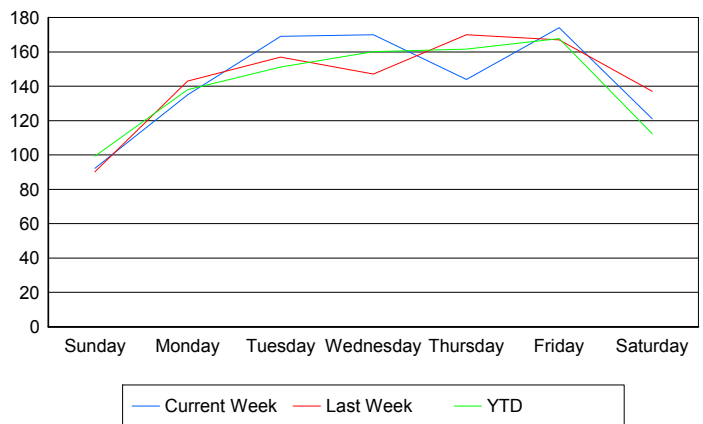
### Avg # of events with a RR/SIRV Response per Day of the Week



### Avg # of RR/SIRV Responses per Day of the Week



### Avg # of RR/SIRV Activities Performed per Day of the Week



### Road Ranger / SIRV Responses per Time of Day and Day of Week

