



Weekly Performance Measures Report Broward County



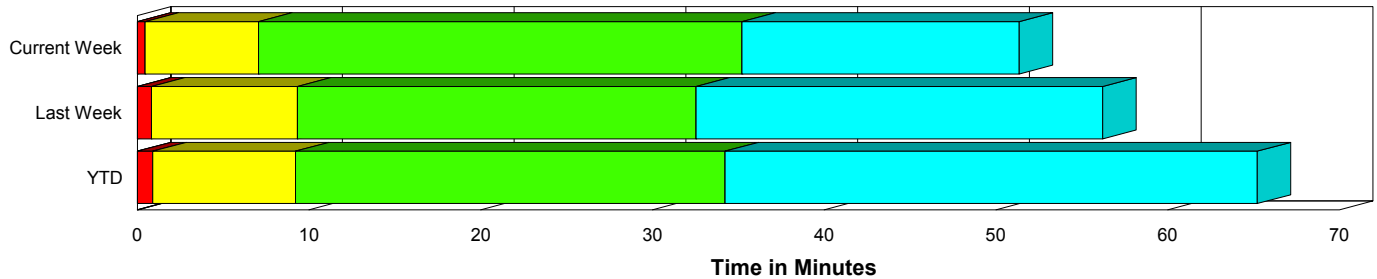
Period From Jan 31, 2010 to Feb 6, 2010

Created on:
February 08, 2010
8:48 am

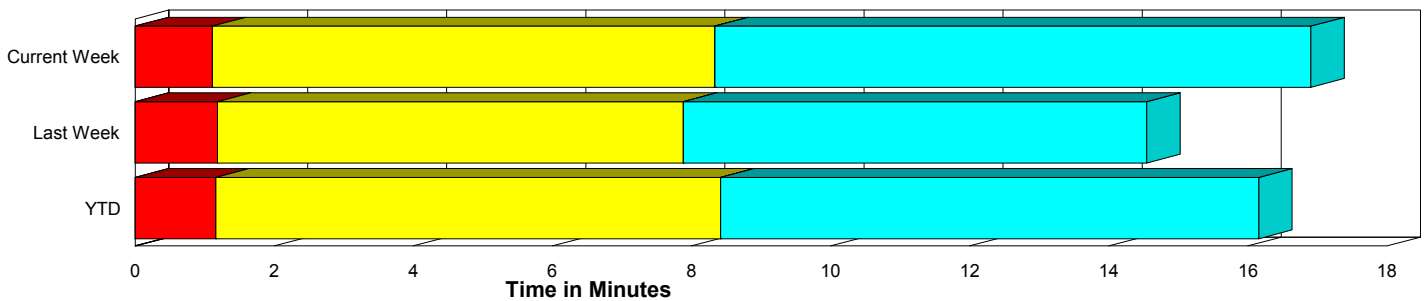
Performance Measures Summary

	Traffic Events (No Lanes Blocked)			Incidents (Lanes Blocked)		
	<u>This Week</u>	<u>Last Week</u>	<u>YTD</u>	<u>This Week</u>	<u>Last Week</u>	<u>YTD</u>
Number of Events	1,247	1,302	6,320	53	45	239
TMC Detection (min.)	0.00	0.00	0.00	0.01	0.00	0.00
TMC Verification (min.)	1.11	1.18	1.16	0.44	0.83	0.90
TMC Response (min.)	9.18	8.80	9.29	7.05	9.40	9.25
RR Dispatch Time (min.)	1.21	1.46	1.43	1.27	2.60	2.04
RR Response Time (min.)	8.03	7.26	7.98	5.79	7.08	7.24
Roadway Clearance (min.)				34.65	31.46	33.36
Event Clearance (min.)	17.75	15.46	17.03	50.79	55.10	64.01
# of Events w/ RR/SIRV	1,012	1,063	5,123	53	43	236
RR/SIRV Responses	1,012	1,063	5,123	53	43	236
RR/SIRV Activities	747	773	3,818	102	72	439

Incident Clearance Time-Line



Traffic Event (Non-Lane Blockage) Time-Line



■ Avg. TMC Detection Time	■ Avg. Time from TMC Response to Roadway Clearance*
■ Avg. Time from TMC Detection to TMC Verification	■ Avg. Time from Roadway Clearance to Incident/Event Clearance**
■ Avg. Time from TMC Verification to TMC Response	

* Roadway clearance equals all travel lanes open

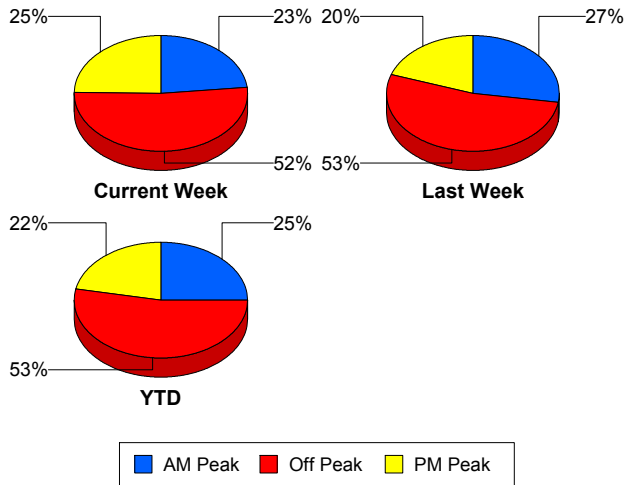
** Incident clearance equals time when last responder has left the scene

Performance Measures by Peak Period

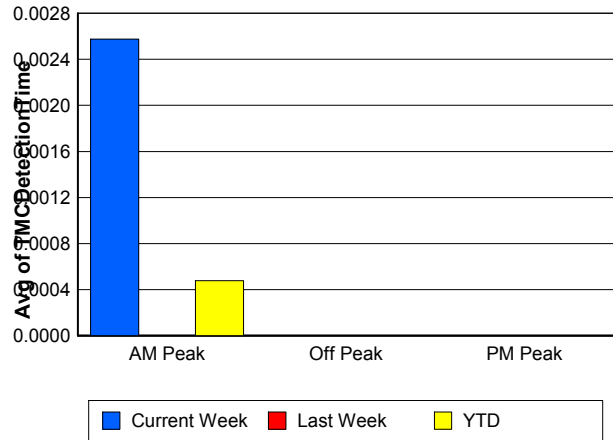
Note: AM peak period is defined as 6am to 10am and PM peak period is defined as 3pm to 7pm.

	AM Peak			Off Peak			PM Peak		
	<u>Current Week</u>	<u>Last Week</u>	<u>YTD</u>	<u>Current Week</u>	<u>Last Week</u>	<u>YTD</u>	<u>Current Week</u>	<u>Last Week</u>	<u>YTD</u>
Number of Events	304	370	1,640	675	712	3,482	321	265	1,437
Number of Incidents	11	10	42	29	24	125	13	11	72
TMC Detection (min.)	0.00	0.00	0.00	0.00	0.00	0.00	0.00	0.00	0.00
TMC Verification (min.)	0.46	0.47	0.59	1.19	1.39	1.22	1.44	1.58	1.62
TMC Response (min.)	8.03	8.20	8.59	9.63	8.03	9.37	8.85	11.20	9.83
RR Dispatch Time (min.)	0.94	0.91	1.05	1.32	1.53	1.51	1.28	2.25	1.82
RR Response Time (min.)	7.20	7.32	7.64	8.36	6.52	7.98	7.59	8.71	8.14
Event Clearance (min.)	17.39	14.92	16.62	20.94	16.09	18.76	16.86	21.24	21.10
Roadway Clearance (min.)	43.98	21.78	35.05	39.37	40.30	40.42	16.20	20.98	20.14
Incident Clearance (min.)	55.02	45.52	62.83	58.90	65.92	68.23	29.12	40.19	57.36
# of Events w/ RR/SIRV	265	310	1,377	543	561	2,782	257	235	1,200
RR/SIRV Responses	265	310	1,377	543	561	2,782	257	235	1,200
RR/SIRV Activities	216	224	1,048	433	419	2,217	200	202	992

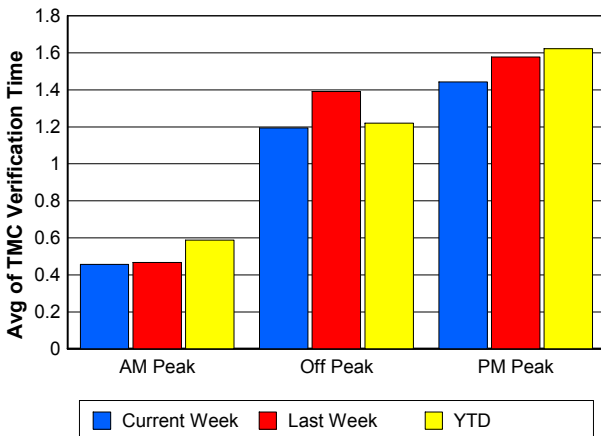
Number of Events / Peak Period



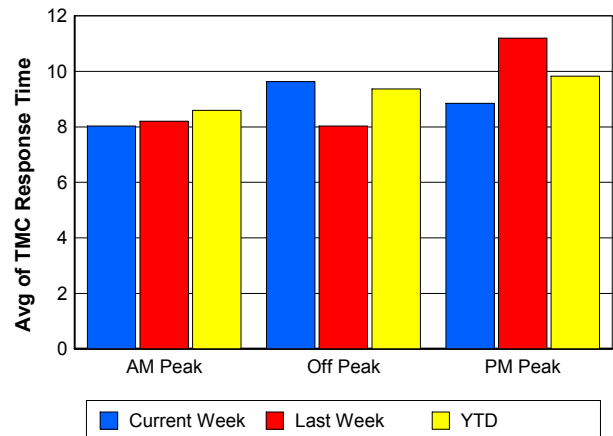
TMC Detection Time



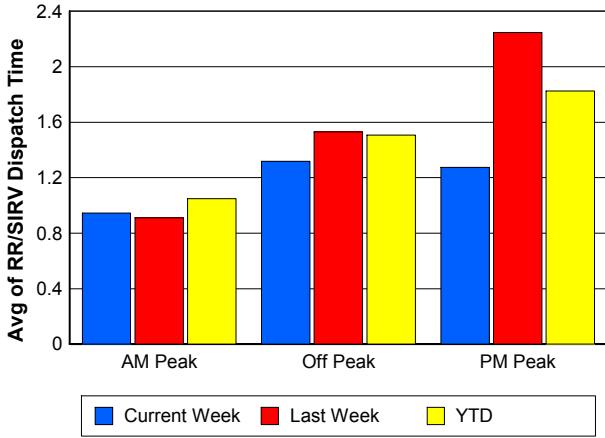
TMC Verification Time



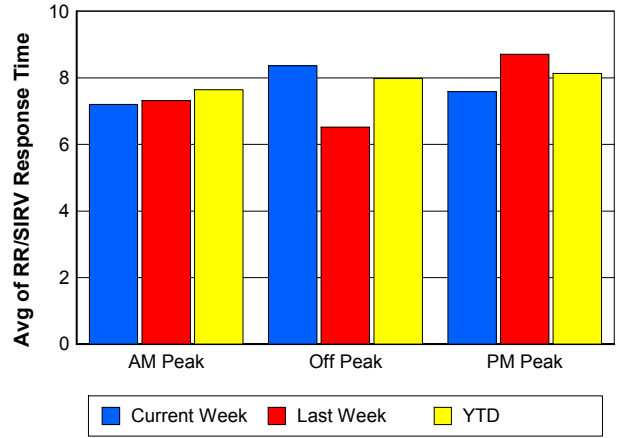
TMC Response Time



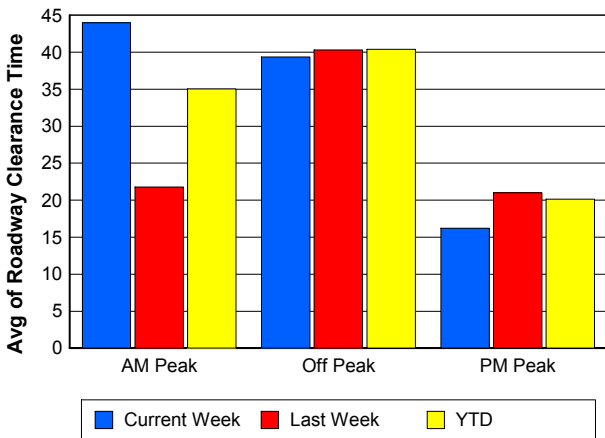
Road Ranger / SIRV Dispatch Time



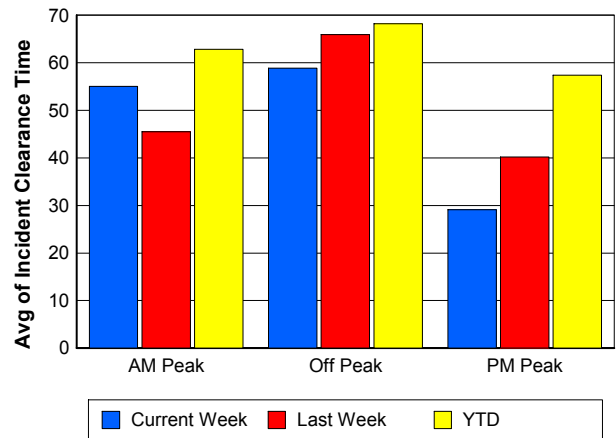
Road Ranger / SIRV Response Time



Roadway Clearance Time (2A)



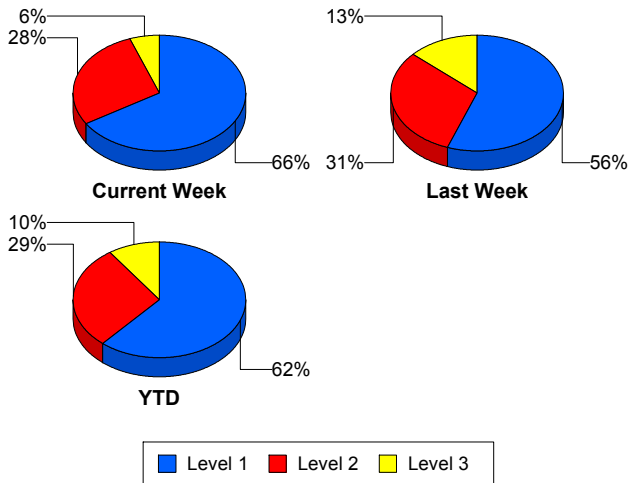
Incident Clearance Time (3B)



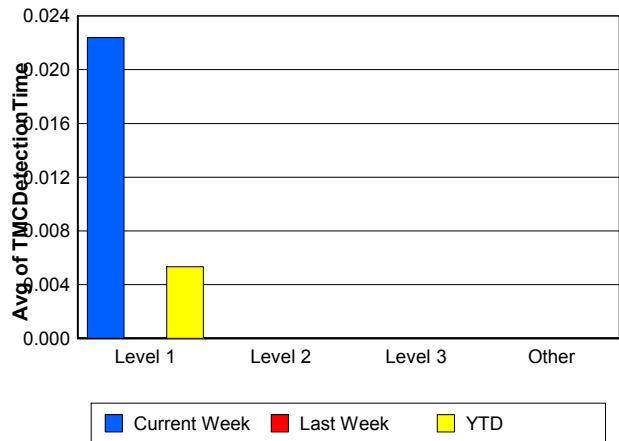
Performance Measures by Severity

	Level 1			Level 2			Level 3			Other		
	<u>This Week</u>	<u>Last Week</u>	<u>YTD</u>	<u>This Week</u>	<u>Last Week</u>	<u>YTD</u>	<u>This Week</u>	<u>Last Week</u>	<u>YTD</u>	<u>This Week</u>	<u>Last Week</u>	<u>YTD</u>
Number of Events	35	25	147	15	14	69	3	6	23	1,247	1,302	6,320
Number of Incidents	35	25	147	15	14	69	3	6	23	0	0	0
TMC Detection (min.)	0.02	0.00	0.01	0.00	0.00	0.00	0.00	0.00	0.00	0.00	0.00	0.00
TMC Verification (min.)	0.46	0.06	0.59	0.47	2.55	1.53	0.03	0.04	0.97	1.11	1.18	1.16
TMC Response (min.)	4.86	4.96	7.51	10.67	16.66	12.54	13.66	10.95	10.08	9.18	8.80	9.29
RR Dispatch Time (min.)	0.89	1.23	1.63	1.77	5.69	2.95	3.17	1.42	1.90	1.21	1.46	1.43
RR Resp. Time (min.)	4.01	4.35	5.97	8.90	10.97	9.55	10.49	9.54	8.17	8.03	7.26	7.98
Event Clearance (min.)	34.25	40.36	52.65	64.22	73.74	74.23	176.60	73.01	105.92	17.75	15.46	17.03
Roadway Clear. (min.)	15.11	14.33	15.75	52.73	52.79	50.42	172.13	53.08	94.76			
Incident Clearance (min.)	34.25	40.36	52.65	64.22	73.74	74.23	176.60	73.01	105.92			
# of Events w/ RR/SIRV	35	25	146	15	13	68	3	5	22	1,012	1,063	5,123
RR/SIRV Responses	35	25	146	15	13	68	3	5	22	1,012	1,063	5,123
RR/SIRV Activities	49	36	230	41	23	146	12	13	63	747	773	3,818

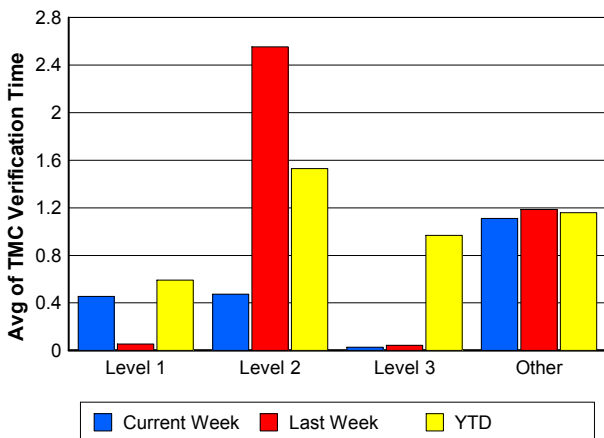
Number of Events / Severity



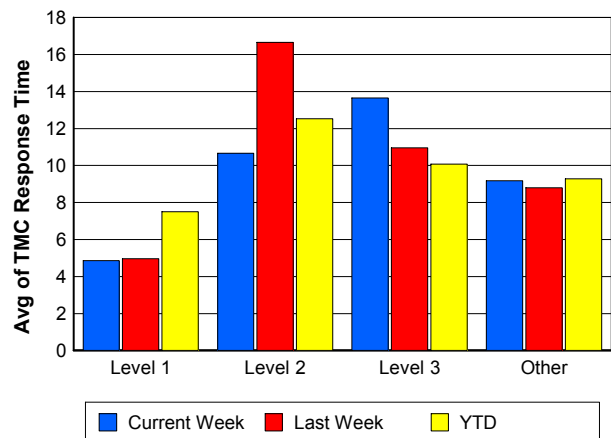
TMC Detection Time



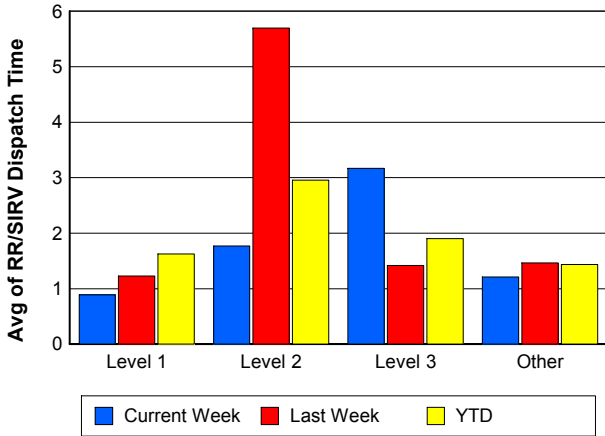
TMC Verification Time



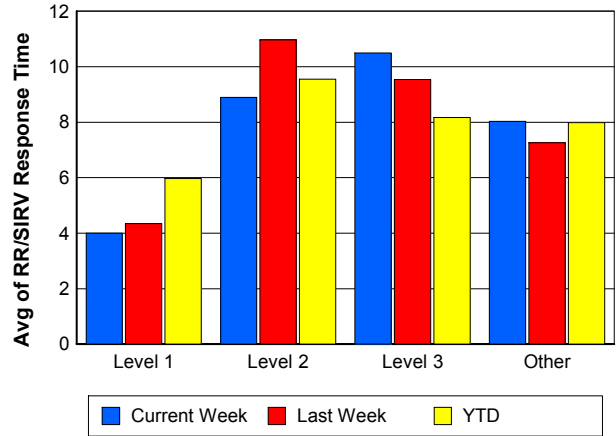
TMC Response Time



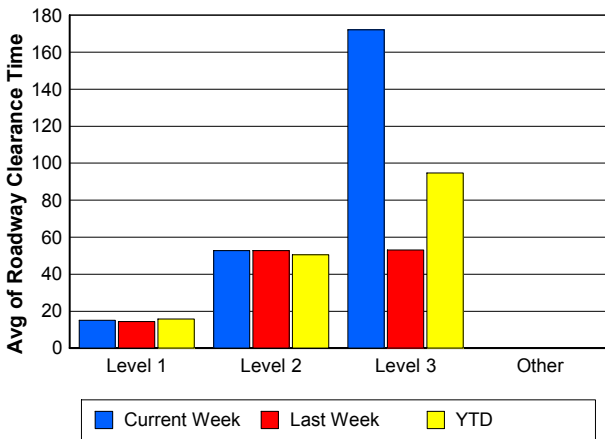
Road Ranger / SIRV Dispatch Time



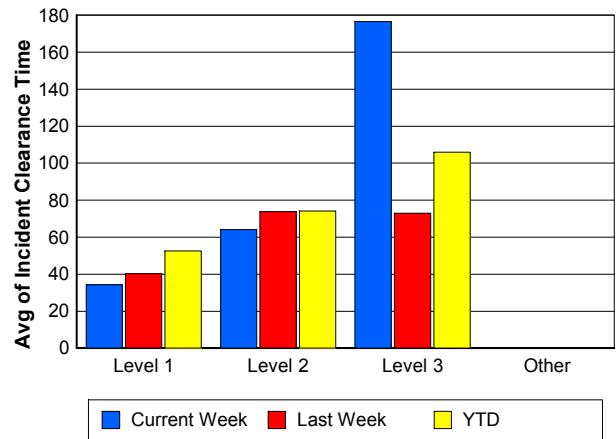
Road Ranger / SIRV Response Time



Roadway Clearance Time (2A)



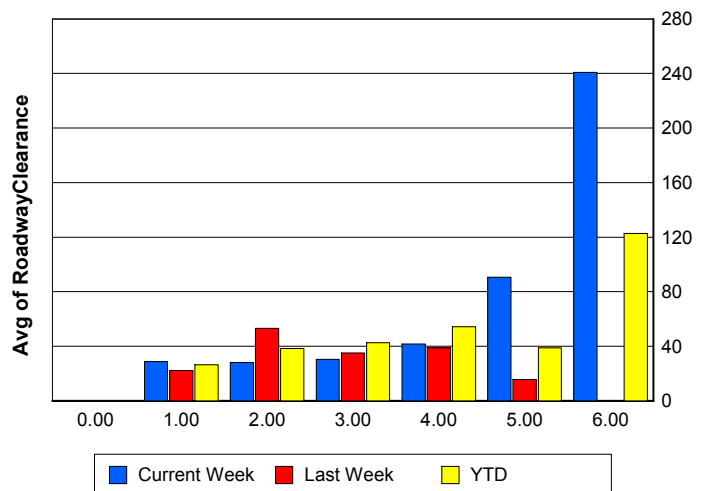
Incident Clearance Time (3B)



Roadway Clearance by Maximum Number of Lanes Blocked

	Current Week	Last Week	YTD
0			
1	28.82	22.13	26.46
2	28.06	53.06	38.44
3	30.47	35.05	42.54
4	41.68	38.75	54.29
5	90.55	15.67	38.89
6	240.70	0.00	122.82

Roadway Clearance Time (2A)



Performance Measures by Roadway

595

	<u>Current Week</u>	<u>Last Week</u>	<u>YTD</u>
Number of Events	39	45	229
Number of Incidents	3	5	10
TMC Detection (min.)	0.00	0.00	0.00
TMC Verification (min.)	2.87	1.58	2.19
TMC Response (min.)	16.02	15.02	15.02
RR Dispatch Time (min.)	1.21	2.32	2.25
RR Resp. Time (min.)	15.16	11.96	12.97
Event Clearance (min.)	29.46	21.83	20.51
Roadway Clear. (min.)	81.54	48.47	54.95
Incident Clearance (min.)	113.37	52.36	74.88
# of Events w/ RR/SIRV	29	35	170
RR/SIRV Responses	29	35	170
RR/SIRV Activities	27	27	122

75

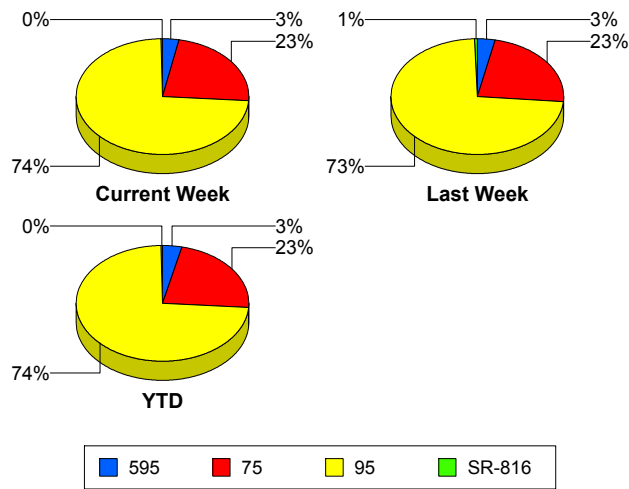
	<u>Current Week</u>	<u>Last Week</u>	<u>YTD</u>
Number of Events	302	311	1,485
Number of Incidents	9	5	22
TMC Detection (min.)	0.00	0.00	0.00
TMC Verification (min.)	1.94	2.24	1.87
TMC Response (min.)	7.38	10.36	9.58
RR Dispatch Time (min.)	1.04	1.72	1.53
RR Resp. Time (min.)	6.49	8.68	8.26
Event Clearance (min.)	19.57	17.35	18.81
Roadway Clear. (min.)	20.36	62.63	37.88
Incident Clearance (min.)	44.99	81.21	72.47
# of Events w/ RR/SIRV	237	239	1,153
RR/SIRV Responses	237	239	1,153
RR/SIRV Activities	203	184	926

95

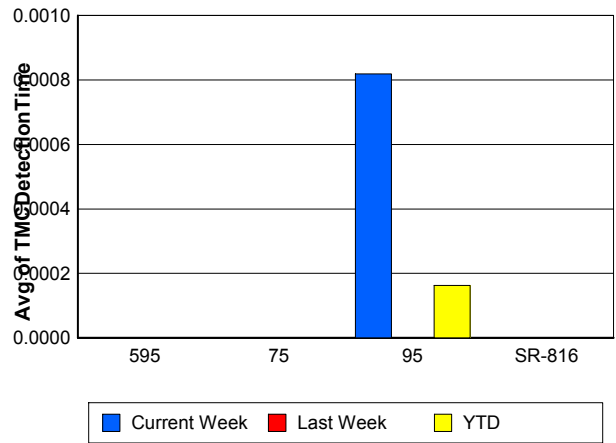
	<u>Current Week</u>	<u>Last Week</u>	<u>YTD</u>
Number of Events	957	984	4,827
Number of Incidents	39	29	194
TMC Detection (min.)	0.00	0.00	0.00
TMC Verification (min.)	0.74	0.83	0.88
TMC Response (min.)	9.41	8.23	9.05
RR Dispatch Time (min.)	1.27	1.42	1.41
RR Resp. Time (min.)	8.15	6.72	7.70
Event Clearance (min.)	18.55	16.43	18.64
Roadway Clear. (min.)	35.85	27.54	32.79
Incident Clearance (min.)	49.41	60.38	65.54
# of Events w/ RR/SIRV	797	825	4,018
RR/SIRV Responses	797	825	4,018
RR/SIRV Activities	617	626	3,190

	<u>Current Week</u>	<u>Last Week</u>	<u>YTD</u>
Number of Events	2	7	18
Number of Incidents	2	6	13
TMC Detection (min.)	0.00	0.00	0.00
TMC Verification (min.)	0.00	0.00	0.00
TMC Response (min.)	0.00	0.00	0.17
RR Dispatch Time (min.)	0.00	0.00	0.08
RR Resp. Time (min.)	0.00	0.00	0.09
Event Clearance (min.)	9.92	8.80	15.36
Roadway Clear. (min.)	5.03	10.29	17.73
Incident Clearance (min.)	9.92	10.09	18.48
# of Events w/ RR/SIRV	2	7	18
RR/SIRV Responses	2	7	18
RR/SIRV Activities	2	8	19

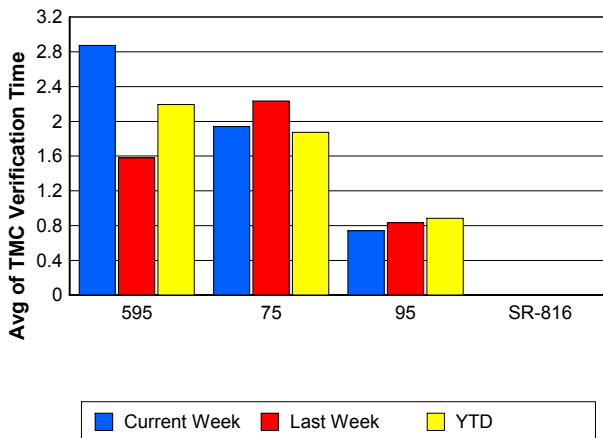
Number of Events / Roadway



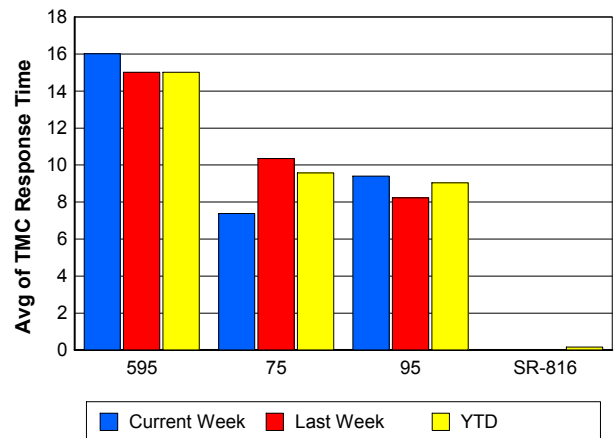
TMC Detection Time



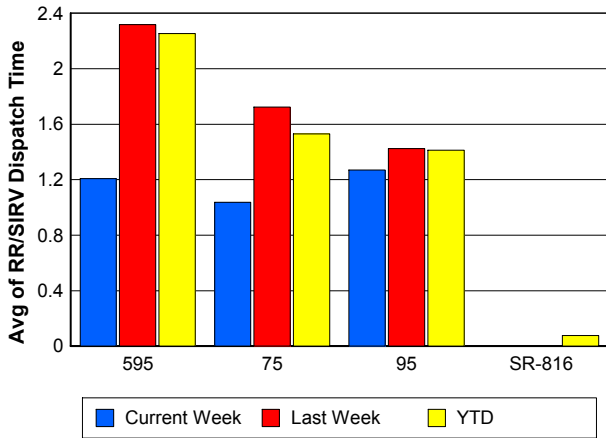
TMC Verification Time



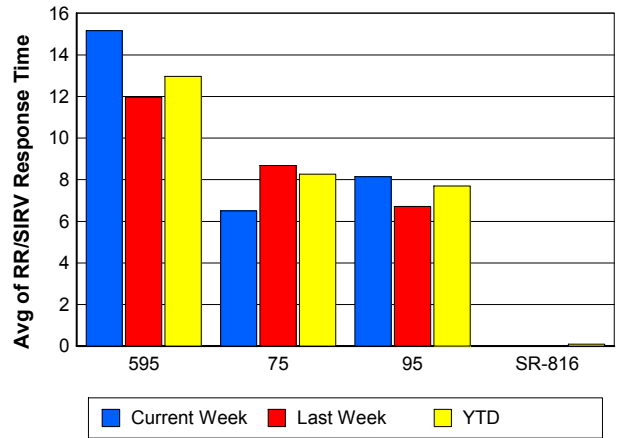
TMC Response Time



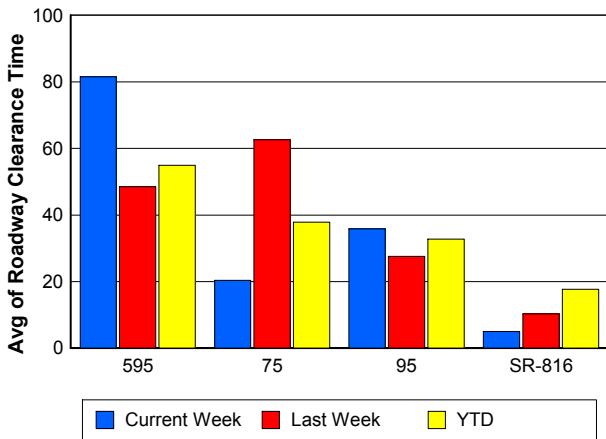
Road Ranger / SIRV Dispatch Time



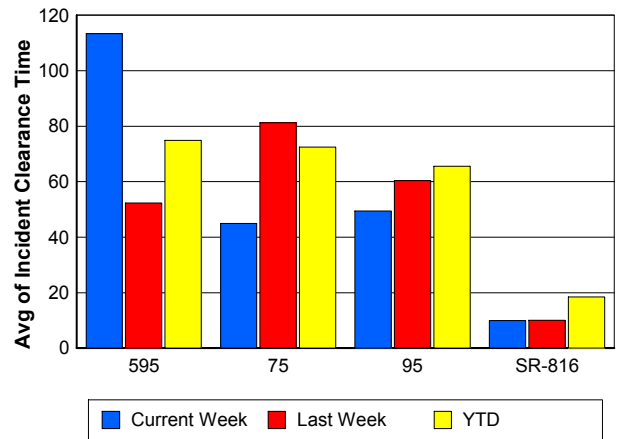
Road Ranger / SIRV Response Time



Roadway Clearance Time (2A)



Incident Clearance Time (3B)



Performance Measures by Event Type

Accident

	<u>Current Week</u>	<u>Last Week</u>	<u>YTD</u>
Number of Events	74	61	357
Number of Incidents	35	24	162
TMC Detection (min.)	0.00	0.00	0.00
TMC Verification (min.)	0.38	2.37	1.42
TMC Response (min.)	7.60	11.27	10.62
RR Dispatch Time (min.)	0.92	3.02	2.04
RR Response Time (min.)	6.67	8.36	8.59
Event Clearance (min.)	48.86	47.40	57.47
Roadway Clearance (min.)	39.80	30.86	34.79
Incident Clearance (min.)	59.72	66.72	75.49
# of Events w/ RR/SIRV	72	60	354
RR/SIRV Assists	72	60	354
RR/SIRV Activities	111	79	531

Debris on Roadway

	<u>Current Week</u>	<u>Last Week</u>	<u>YTD</u>
Number of Events	45	50	198
Number of Incidents	0	0	5
TMC Detection (min.)	0.00	0.00	0.00
TMC Verification (min.)	6.31	5.58	6.27
TMC Response (min.)	10.36	9.44	9.65
RR Dispatch Time (min.)	1.37	1.45	1.62
RR Response Time (min.)	8.97	8.02	8.00
Event Clearance (min.)	14.52	12.78	13.71
Roadway Clearance (min.)			58.09
Incident Clearance (min.)			50.76
# of Events w/ RR/SIRV	41	48	188
RR/SIRV Assists	41	48	188
RR/SIRV Activities	39	51	194

Disabled Vehicle

	<u>Current Week</u>	<u>Last Week</u>	<u>YTD</u>
Number of Events	702	687	3,529
Number of Incidents	13	12	48
TMC Detection (min.)	0.00	0.00	0.00
TMC Verification (min.)	1.55	1.60	1.60
TMC Response (min.)	8.94	8.56	9.11
RR Dispatch Time (min.)	1.11	1.55	1.33
RR Response Time (min.)	7.89	7.06	7.86
Event Clearance (min.)	22.13	20.54	21.15
Roadway Clearance (min.)	18.33	22.17	17.30
Incident Clearance (min.)	27.80	28.13	29.09
# of Events w/ RR/SIRV	685	680	3,437
RR/SIRV Assists	685	680	3,437
RR/SIRV Activities	656	650	3,302

Emergency Vehicles

	<u>Current Week</u>	<u>Last Week</u>	<u>YTD</u>
Number of Events	1	3	9
Number of Incidents	1	2	7
TMC Detection (min.)	0.00	0.00	0.00
TMC Verification (min.)	0.00	0.00	0.00
TMC Response (min.)	27.07	18.00	12.20
RR Dispatch Time (min.)	4.13	0.79	1.10
RR Response Time (min.)	22.93	16.95	11.01
Event Clearance (min.)	93.90	41.72	34.21
Roadway Clearance (min.)	90.55	24.33	27.99
Incident Clearance (min.)	93.90	30.25	31.69
# of Events w/ RR/SIRV	1	2	8
RR/SIRV Assists	1	2	8
RR/SIRV Activities	1	1	7

Other

	<u>Current Week</u>	<u>Last Week</u>	<u>YTD</u>
Number of Events	470	534	2,428
Number of Incidents	1	3	6
TMC Detection (min.)	0.00	0.00	0.00
TMC Verification (min.)	0.01	0.01	0.03
TMC Response (min.)	13.38	7.72	9.43
RR Dispatch Time (min.)	1.54	1.13	1.63
RR Response Time (min.)	10.08	6.73	8.05
Event Clearance (min.)	10.09	8.24	9.67
Roadway Clearance (min.)	20.70	78.57	79.98
Incident Clearance (min.)	25.92	95.35	84.63
# of Events w/ RR/SIRV	259	305	1,339
RR/SIRV Assists	259	305	1,339
RR/SIRV Activities	31	49	181

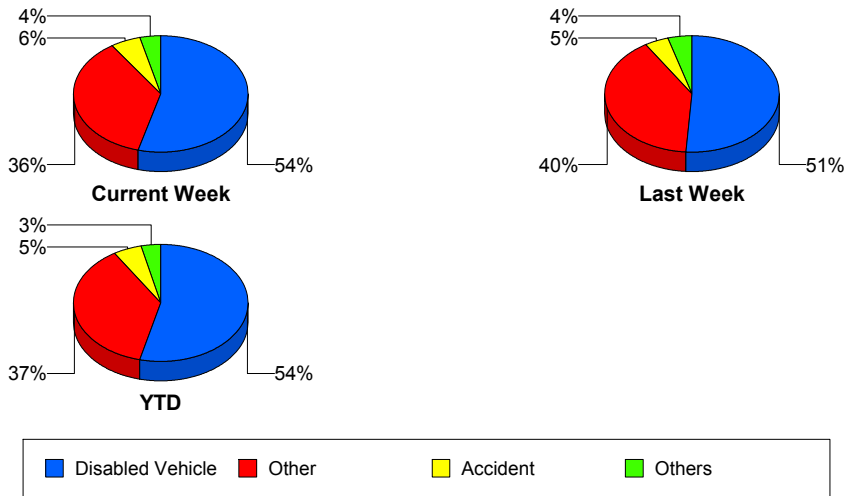
Police Activity

	<u>Current Week</u>	<u>Last Week</u>	<u>YTD</u>
Number of Events	1	2	11
Number of Incidents	1	1	5
TMC Detection (min.)	0.00	0.00	0.00
TMC Verification (min.)	0.00	18.51	3.99
TMC Response (min.)	0.00	37.88	10.56
RR Dispatch Time (min.)	0.00	0.87	1.16
RR Response Time (min.)	0.00	37.02	9.53
Event Clearance (min.)	8.62	25.21	42.48
Roadway Clearance (min.)	7.50	8.22	52.42
Incident Clearance (min.)	8.62	12.38	62.90
# of Events w/ RR/SIRV	1	1	8
RR/SIRV Assists	1	1	8
RR/SIRV Activities	1	1	9

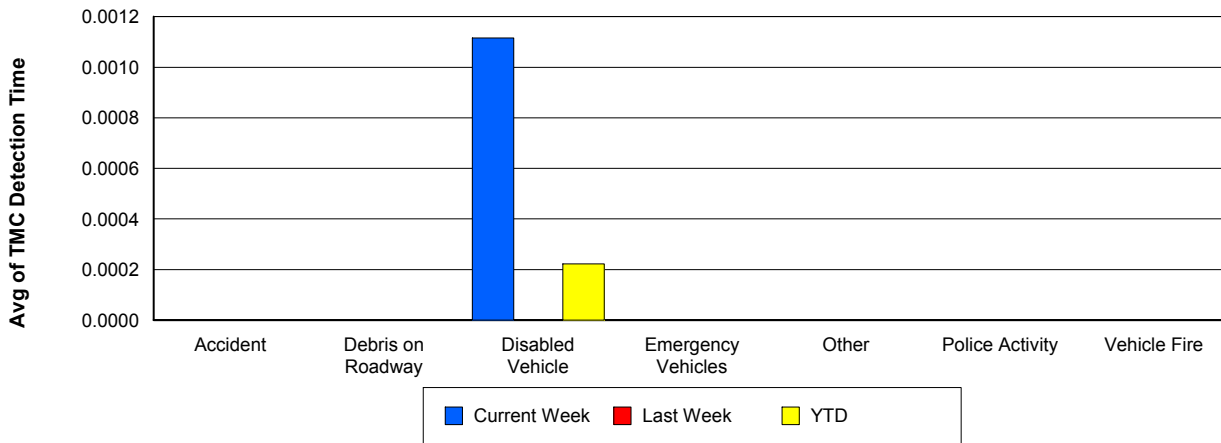
Vehicle Fire

	<u>Current Week</u>	<u>Last Week</u>	<u>YTD</u>
Number of Events	3	5	11
Number of Incidents	2	3	6
TMC Detection (min.)	0.00	0.00	0.00
TMC Verification (min.)	0.30	0.20	0.97
TMC Response (min.)	3.17	12.74	9.83
RR Dispatch Time (min.)	0.96	3.03	1.83
RR Response Time (min.)	2.01	9.71	7.86
Event Clearance (min.)	44.33	68.78	53.90
Roadway Clearance (min.)	43.11	38.86	46.68
Incident Clearance (min.)	56.05	60.49	62.27
# of Events w/ RR/SIRV	3	5	11
RR/SIRV Assists	3	5	11
RR/SIRV Activities	7	10	20

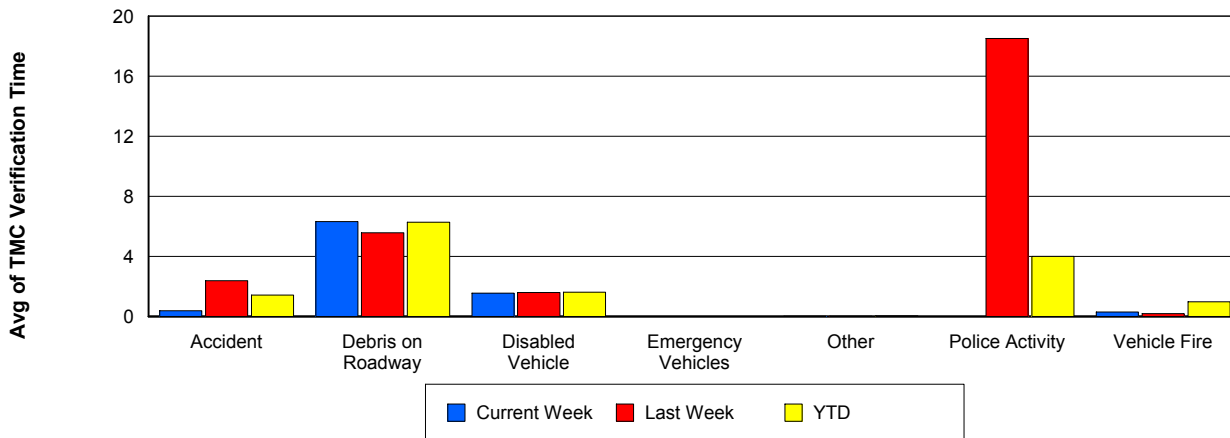
Number of Events / Event Type



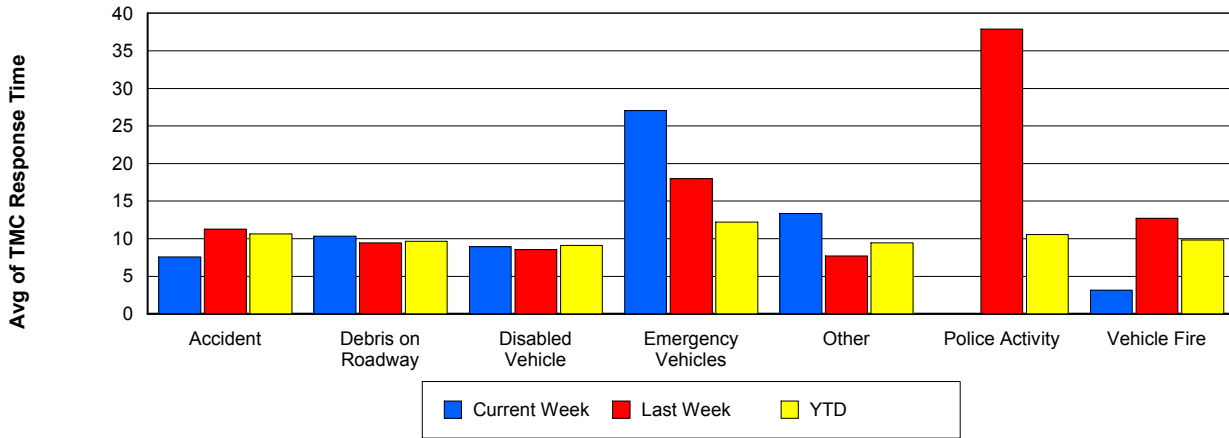
TMC Detection Time



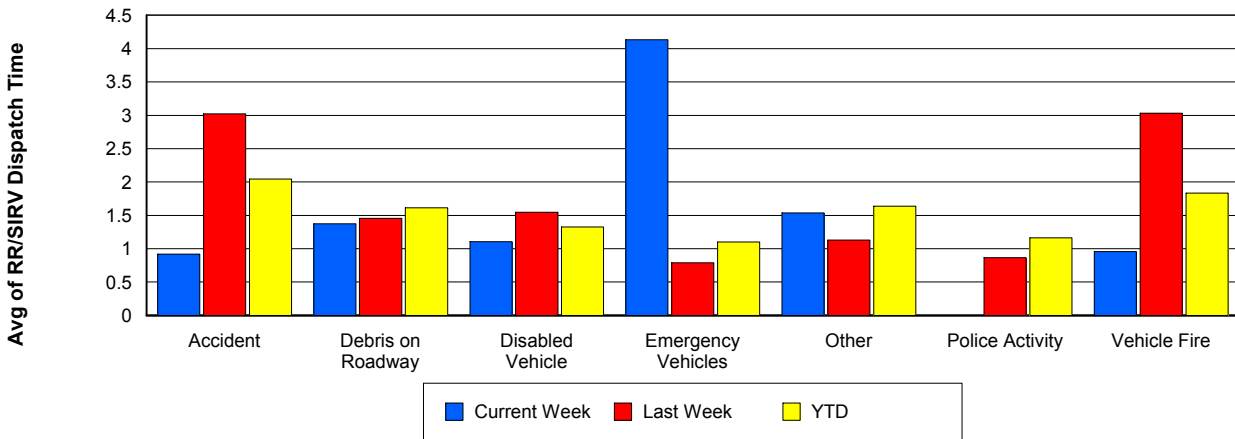
TMC Verification Time



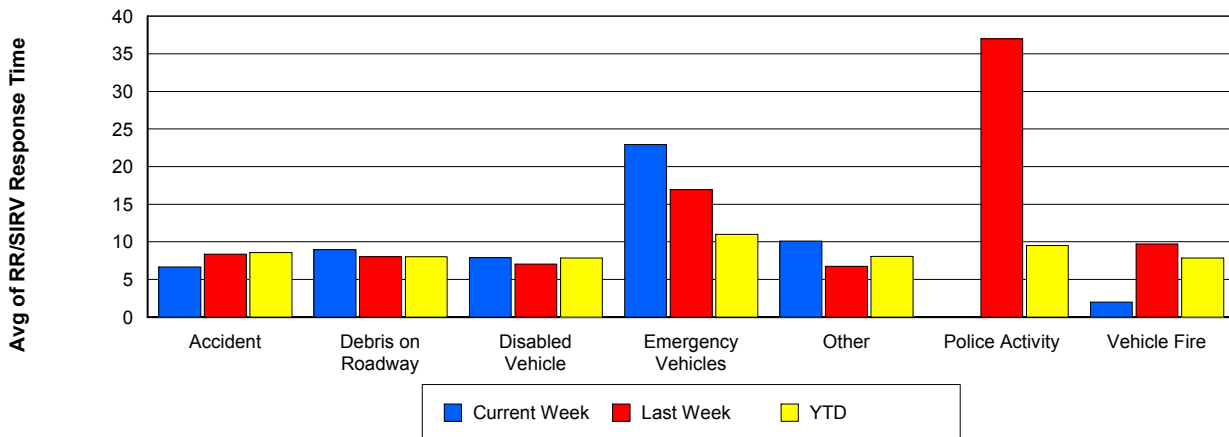
TMC Response Time



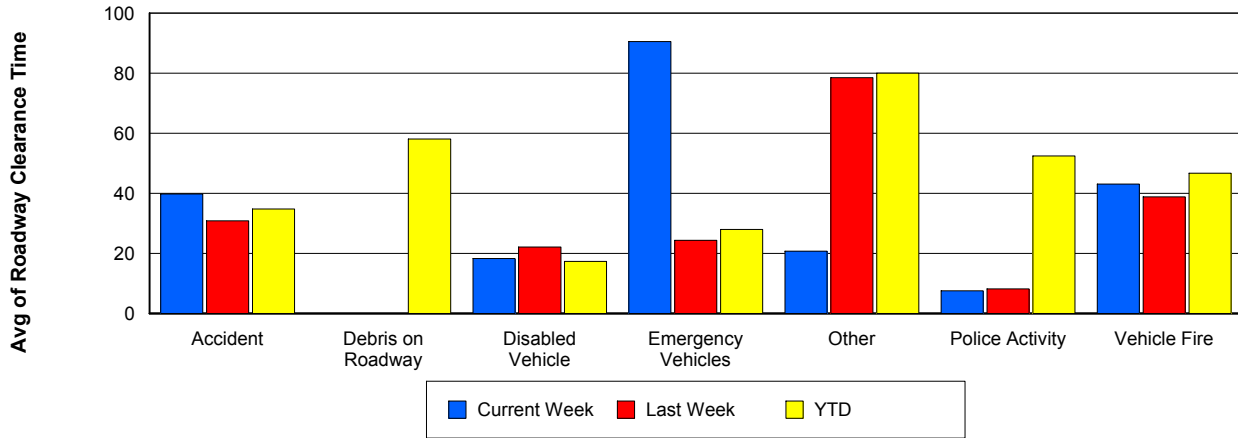
Road Ranger / SIRV Dispatch Time



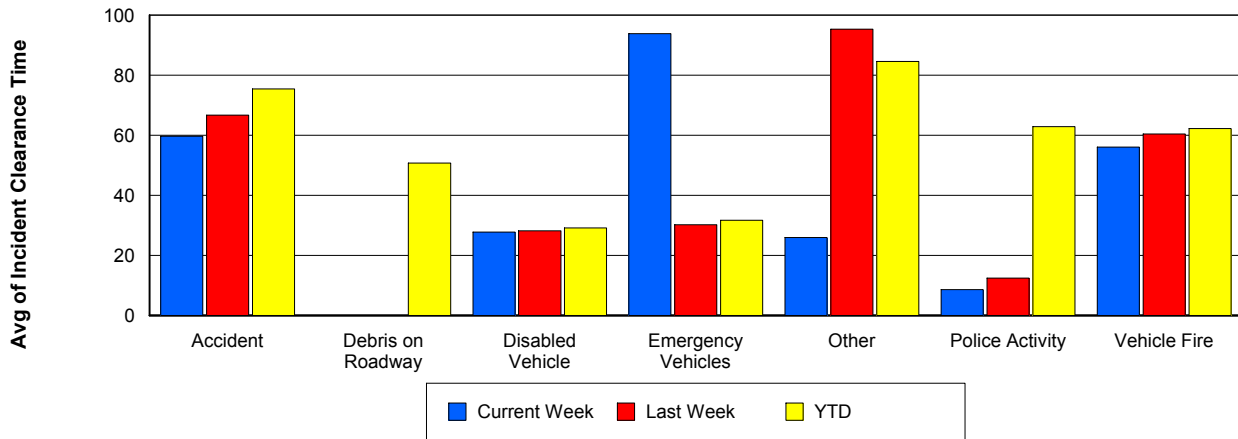
Road Ranger / SIRV Response Time



Roadway Clearance Time (2A)



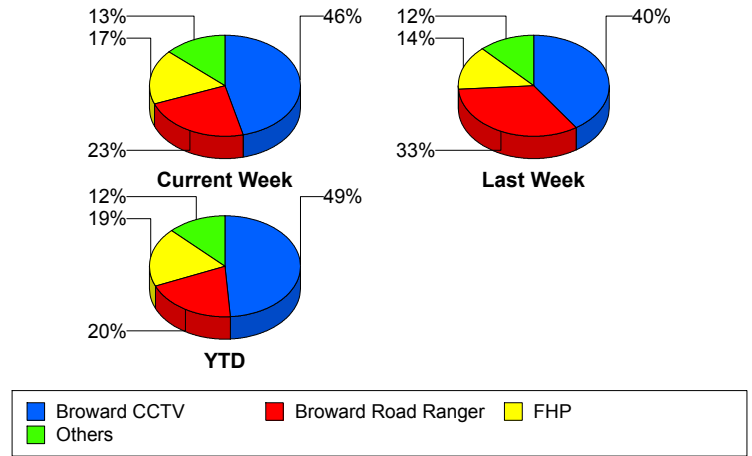
Incident Clearance Time (3B)



Incident Detection Methods

	Current Week	Last Week	YTD
Broward CCTV	24	17	114
Broward Road Ranger	12	14	46
Broward TMC	0	0	1
Broward VideoWall	2	0	7
BSO	1	2	4
District 4	1	1	5
FHP	9	6	44
Local Police	0	0	1
Motorist	0	0	2
Road Watcher	0	0	1
SIRV	1	0	1
VisioPaD Detection	2	2	7
Total	52	42	233

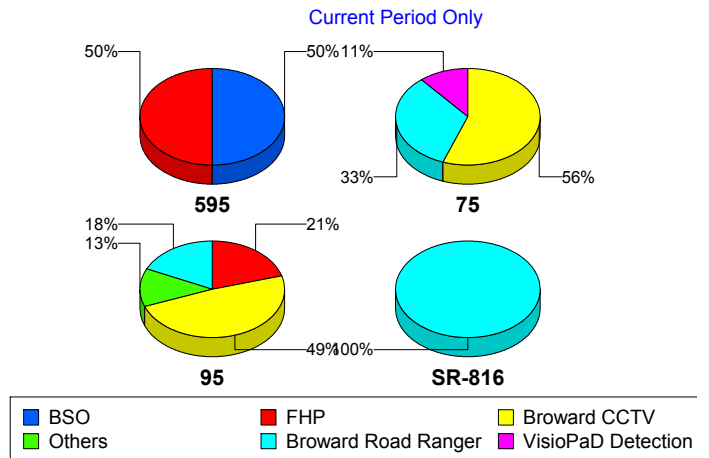
Total Incidents by Detection Method



Incident Detection Methods by Roadway

		Current Week	Last Week	YTD
595	Broward CCTV	0	1	1
	BSO	1	0	1
	FHP	1	2	3
	Total	2	3	5
75	Broward CCTV	5	1	9
	Broward Road Ranger	3	0	3
	BSO	0	2	2
	District 4	0	0	1
	FHP	0	0	4
	VisioPaD Detection	1	2	3
	Total	9	5	22
95	Broward CCTV	19	15	104
	Broward Road Ranger	7	8	30
	Broward TMC	0	0	1

Total Events by Roadway and Detection Method

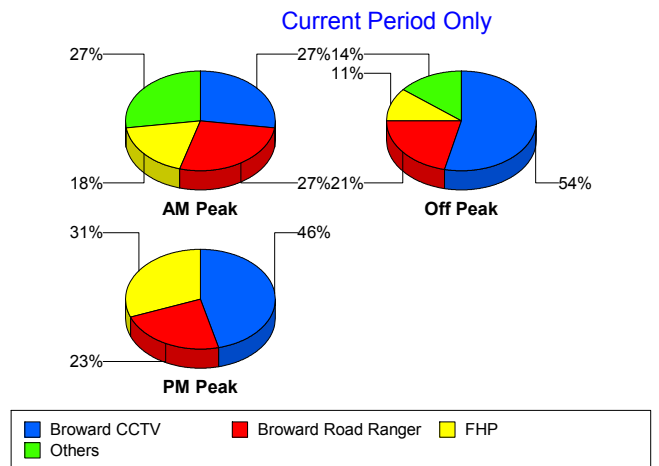


		Current Week	Last Week	YTD
95	Broward VideoWall	2	0	7
	BSO	0	0	1
	District 4	1	1	4
	FHP	8	4	37
	Local Police	0	0	1
	Motorist	0	0	2
	Road Watcher	0	0	1
	SIRV	1	0	1
	VisioPaD Detection	1	0	4
	Total	39	28	193
SR-816	Broward Road Ranger	2	6	13
	Total	2	6	13
Total		52	42	233

Incident Detection Methods by Peak Period

		Current Week	Last Week	YTD
AM Peak	Broward CCTV	3	4	15
	Broward Road Ranger	3	6	11
	Broward VideoWall	1	0	4
	BSO	1	0	1
	District 4	0	0	1
	FHP	2	0	7
	Local Police	0	0	1
	SIRV	1	0	1
	Total	11	10	41
	Off Peak	Broward CCTV	15	9
Broward Road Ranger		6	3	16
Broward TMC		0	0	1
Broward VideoWall		1	0	2
BSO		0	2	2
District 4		1	1	4
FHP		3	5	24

Total Events by Peak Period and Detection Method

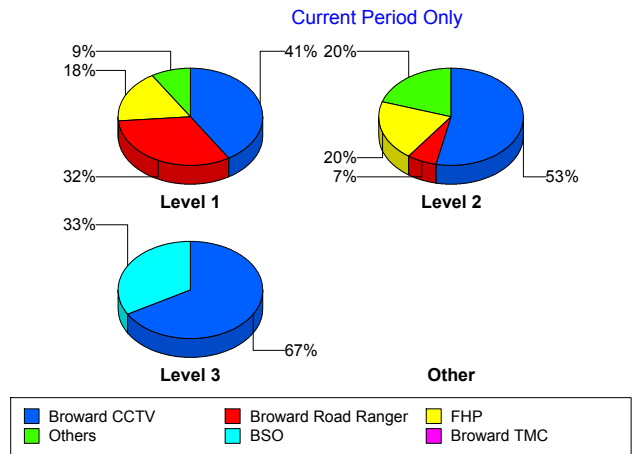


		Current Week	Last Week	YTD
Off Peak	Motorist	0	0	1
	Road Watcher	0	0	1
	VisioPaD Detection	2	1	5
	Total	28	21	120
PM Peak	Broward CCTV	6	4	35
	Broward Road Ranger	3	5	19
	Broward VideoWall	0	0	1
	BSO	0	0	1
	FHP	4	1	13
	Motorist	0	0	1
	VisioPaD Detection	0	1	2
	Total	13	11	72
Total	52	42	233	

Incident Detection Methods by Severity

		Current Week	Last Week	YTD
Level 1	Broward CCTV	14	10	73
	Broward Road Ranger	11	12	34
	Broward TMC	0	0	1
	Broward VideoWall	1	0	5
	BSO	0	0	1
	District 4	0	0	2
	FHP	6	3	23
	Motorist	0	0	2
	Road Watcher	0	0	1
	VisioPaD Detection	2	0	3
	Total	34	25	145
Level 2	Broward CCTV	8	6	33
	Broward Road Ranger	1	1	10
	Broward VideoWall	1	0	2
	District 4	1	1	2
	FHP	3	2	13

Total Events by Severity and Detection Method



		Current Week	Last Week	YTD
Level 2	Local Police	0	0	1
	SIRV	1	0	1
	VisioPaD Detection	0	1	3
	Total	15	11	65
Level 3	Broward CCTV	2	1	8
	Broward Road Ranger	0	1	2
	BSO	1	2	3
	District 4	0	0	1
	FHP	0	1	8
	VisioPaD Detection	0	1	1
	Total	3	6	23
Total		52	42	233

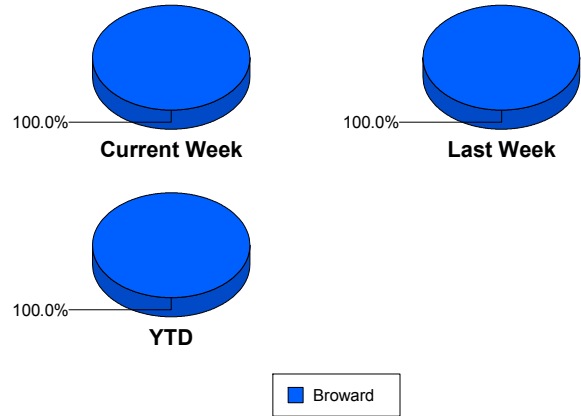
Road Ranger / SIRV Performance Measures

Road Ranger / SIRV Performance By County

Values presented are:
 - Total Events with a RR/SIRV Response
 - Total RR/SIRV Responses,
 - Total Activities Performed

	Current We	Last Week	YTD
Broward	907	935	4,637
	974	992	4,945
	1,012	1,017	5,132

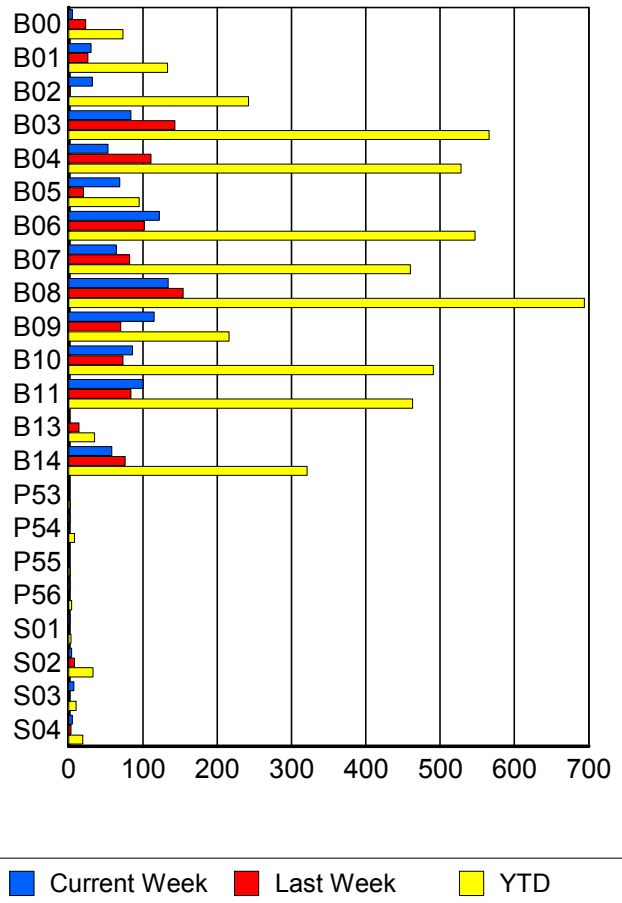
RR/SIRV Responses per County



Road Ranger / SIRV Performance By Truck

	Current We	Last Week	YTD
B00	5	22	72
	5	23	73
	6	23	80
B01	30	26	132
	30	26	133
	30	26	135
B02	32	2	240
	32	2	242
	32	2	245
B03	83	142	563
	84	143	566
	88	152	596
B04	53	108	519
	53	111	528
	58	115	547
B05	68	20	94
	69	20	95
	73	20	99
B06	121	101	539
	122	102	547
	126	104	570
B07	62	81	449
	64	82	460
	67	85	479
B08	130	152	682
	134	154	694
	137	156	721

**RR/SIRV
Responses per
Truck**



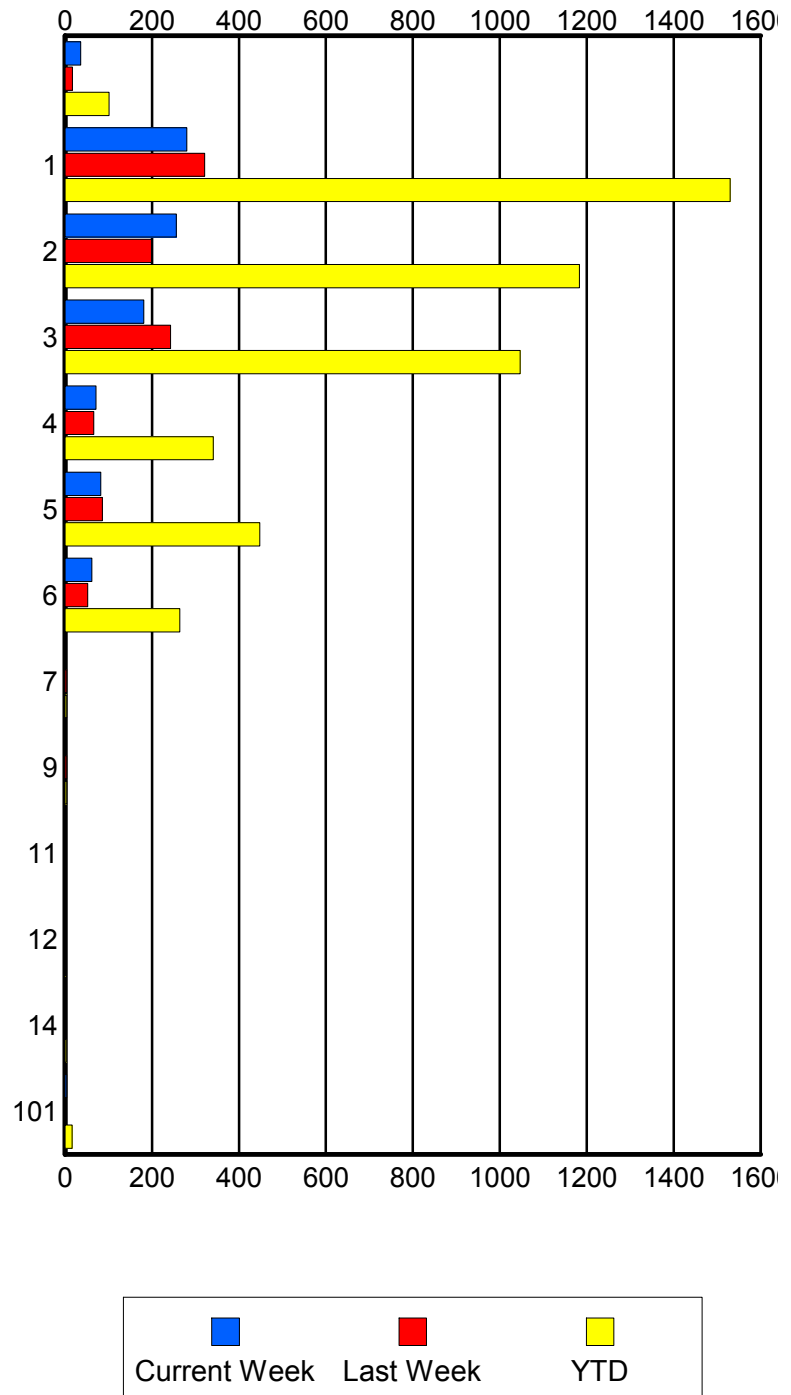
	Current We	Last Week	YTD
B09	113	68	212
	115	70	216
	121	72	224
B10	86	73	487
	86	73	491
	89	73	502
B11	99	84	461
	100	84	463
	103	84	478
B13	0	14	34
	0	14	35
	0	14	36
B14	58	76	317
	58	76	321
	59	79	333
P53	0	0	2
	0	0	2
	0	0	2
P54	2	0	8
	2	0	8
	2	0	8
P55	0	0	2
	0	0	2
	0	0	2
P56	2	0	4
	2	0	4
	2	0	6
S01	2	1	3
	2	1	3
	2	1	3
S02	4	8	33
	4	8	33
	4	8	35
S03	4	0	7
	7	0	10
	8	0	11
S04	5	3	19
	5	3	19
	5	3	20

Road Ranger / SIRV Performance By Beat

	Current We	Last Week	YTD
	32	16	96
	36	17	101
	38	17	105
1	270	306	1,467
	280	321	1,530
	292	330	1,599
2	248	197	1,152
	256	199	1,183
	264	204	1,225
3	175	238	1,024
	181	243	1,047
	189	250	1,088
4	70	65	334
	71	66	341
	74	67	353
5	81	86	445
	82	86	448
	83	88	457
6	60	52	260
	62	52	264
	66	53	272
7	0	4	4
	0	4	4
	0	4	4
9	0	4	4
	0	4	4
	0	4	4
11	2	0	2
	2	0	2
	2	0	2
12	0	0	2
	0	0	2
	0	0	2
14	0	0	3
	0	0	3
	0	0	3
101	4	0	16
	4	0	16
	4	0	18

Values presented are:
 - Total Events with a RR/SIRV Response
 - Total RR/SIRV Responses,
 - Total Activities Performed

RR/SIRV Responses per Beat

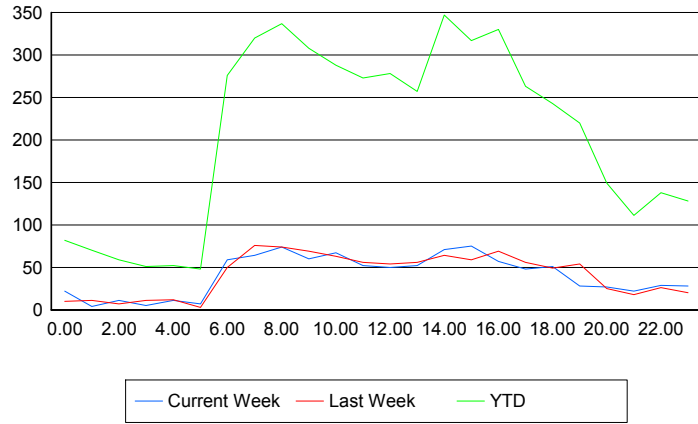


Road Ranger / SIRV Performance By Time of Day

Values presented are:
 - Total Events with a RR/SIRV Response
 - Total RR/SIRV Responses,
 - Total Activities Performed

	Current We	Last Week	YTD
12AM-1AM	22 22 22	9 10 10	80 82 86
1AM-2AM	3 4 4	10 11 11	67 70 73
2AM-3AM	8 11 13	7 7 7	53 59 64
3AM-4AM	5 5 6	11 11 11	49 51 56
4AM-5AM	10 11 11	12 12 12	50 52 52
5AM-6AM	7 7 7	3 3 4	41 48 52
6AM-7AM	56 59 61	49 50 50	257 276 285
7AM-8AM	62 64 66	70 76 77	306 320 333
8AM-9AM	69 74 77	67 74 74	317 337 347
9AM-10AM	53 60 62	68 69 71	291 308 320
10AM-11AM	61 67 68	58 63 69	268 288 300
11AM-12PM	46 52 55	52 56 58	251 273 285
12PM-1PM	44 50 52	54 54 56	261 278 285

Number of Responses / Hour of the Day



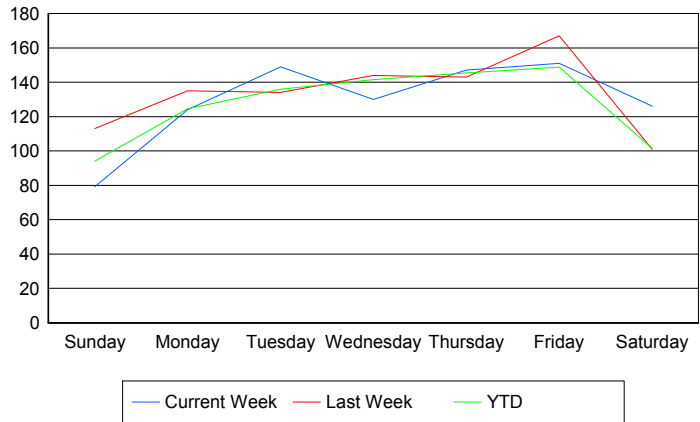
	Current We	Last Week	YTD
1PM-2PM	52	51	239
	52	56	257
	53	58	266
2PM-3PM	63	56	314
	71	64	347
	75	67	367
3PM-4PM	69	54	294
	75	59	317
	76	60	325
4PM-5PM	55	64	312
	57	69	330
	59	69	342
5PM-6PM	47	54	251
	48	56	263
	51	57	269
6PM-7PM	50	47	234
	51	49	243
	53	51	255
7PM-8PM	28	51	208
	28	54	220
	30	55	227
8PM-9PM	23	25	139
	27	25	149
	29	25	152
9PM-10PM	21	18	106
	22	18	111
	24	18	114
10PM-11PM	26	25	127
	29	26	138
	30	27	146
11PM-12AM	27	20	122
	28	20	128
	28	20	131

Road Ranger / SIRV Performance By Day of Week

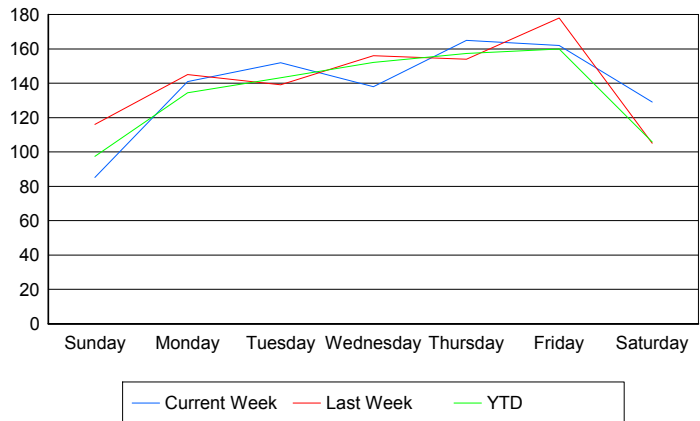
Values presented are:
 - Total Events with a RR/SIRV Response
 - Total RR/SIRV Responses,
 - Total Activities Performed

	Current We	Last Week	YTD
Sunday	81	112	459
	87	115	477
	91	120	492
Monday	124	135	615
	141	145	664
	143	148	684
Tuesday	149	134	679
	152	139	715
	157	143	735
Wednesday	130	144	704
	138	156	755
	147	159	783
Thursday	147	143	727
	165	154	786
	170	161	823
Friday	151	167	861
	162	178	924
	167	180	964
Saturday	126	101	598
	129	105	624
	137	106	651

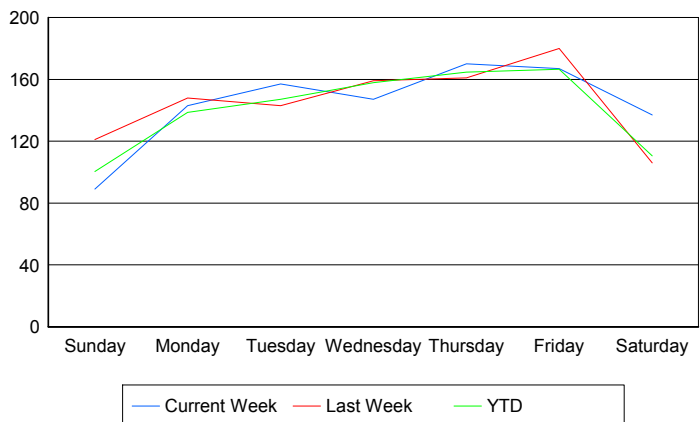
Avg # of events with a RR/SIRV Response per Day of the Week



Avg # of RR/SIRV Responses per Day of the Week



Avg # of RR/SIRV Activities Performed per Day of the Week



Road Ranger / SIRV Responses per Time of Day and Day of Week

