



Weekly Performance Measures Report Broward County



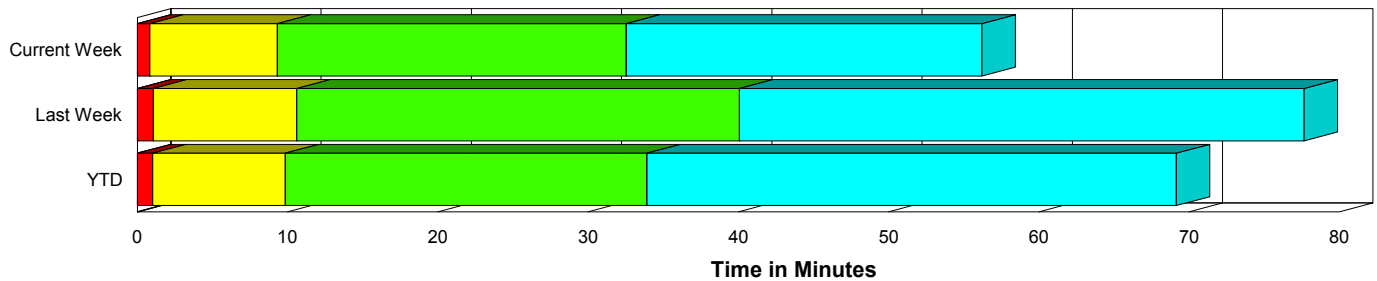
Period From Jan 24, 2010 to Jan 30, 2010

Created on:
February 01, 2010
8:47 am

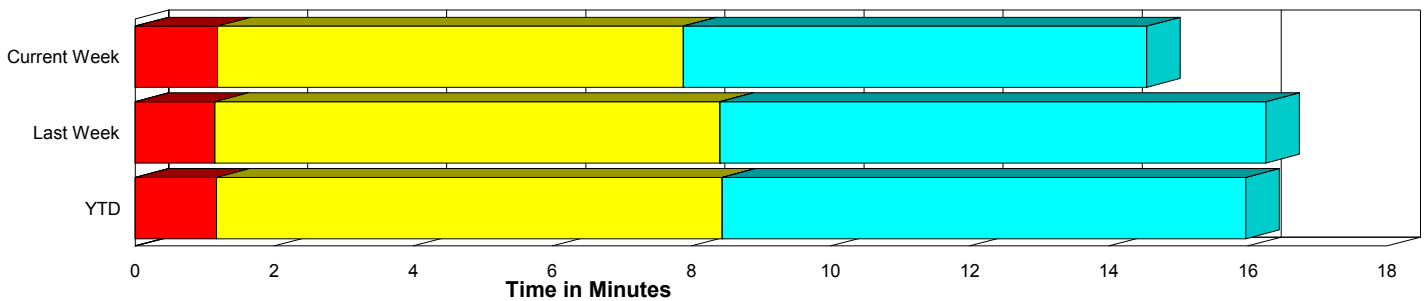
Performance Measures Summary

	Traffic Events (No Lanes Blocked)			Incidents (Lanes Blocked)		
	<u>This Week</u>	<u>Last Week</u>	<u>YTD</u>	<u>This Week</u>	<u>Last Week</u>	<u>YTD</u>
Number of Events	1,302	1,183	5,073	45	46	186
TMC Detection (min.)	0.00	0.00	0.00	0.00	0.00	0.00
TMC Verification (min.)	1.18	1.15	1.17	0.83	1.07	1.03
TMC Response (min.)	8.80	9.40	9.31	9.40	10.63	9.91
RR Dispatch Time (min.)	1.46	1.47	1.49	2.60	2.58	2.26
RR Response Time (min.)	7.26	8.11	7.97	7.08	8.01	7.68
Roadway Clearance (min.)				31.46	40.44	33.00
Event Clearance (min.)	15.46	17.25	16.85	55.10	76.89	67.77
# of Events w/ RR/SIRV	1,063	941	4,111	43	46	183
RR/SIRV Responses	1,063	941	4,111	43	46	183
RR/SIRV Activities	773	666	3,071	72	98	337

Incident Clearance Time-Line



Traffic Event (Non-Lane Blockage) Time-Line



■ Avg. TMC Detection Time	■ Avg. Time from TMC Response to Roadway Clearance*
■ Avg. Time from TMC Detection to TMC Verification	■ Avg. Time from Roadway Clearance to Incident/Event Clearance**
■ Avg. Time from TMC Verification to TMC Response	

* Roadway clearance equals all travel lanes open

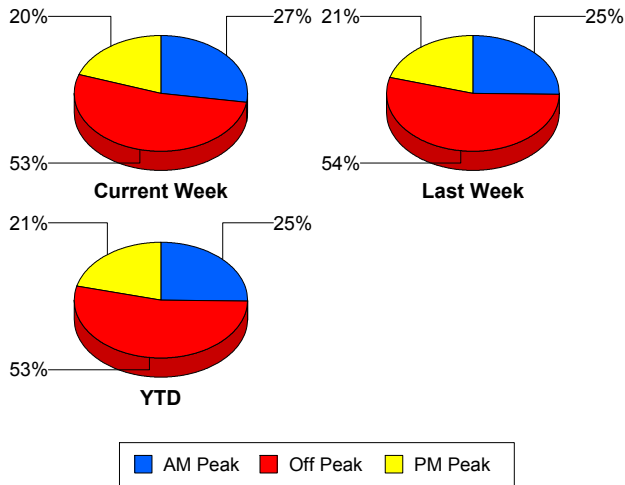
** Incident clearance equals time when last responder has left the scene

Performance Measures by Peak Period

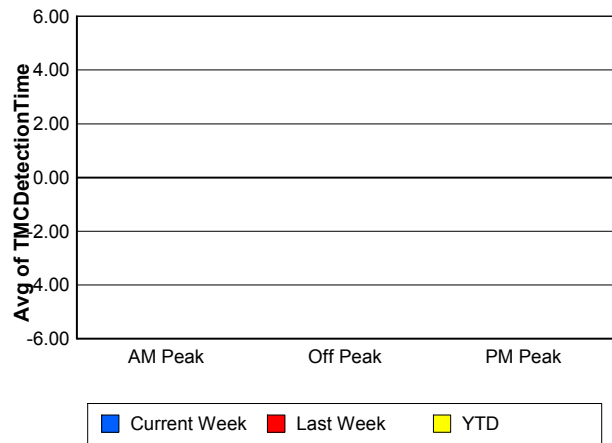
Note: AM peak period is defined as 6am to 10am and PM peak period is defined as 3pm to 7pm.

	AM Peak			Off Peak			PM Peak		
	<u>Current Week</u>	<u>Last Week</u>	<u>YTD</u>	<u>Current Week</u>	<u>Last Week</u>	<u>YTD</u>	<u>Current Week</u>	<u>Last Week</u>	<u>YTD</u>
Number of Events	370	309	1,336	712	667	2,807	265	253	1,116
Number of Incidents	10	6	31	24	26	96	11	14	59
TMC Detection (min.)	0.00	0.00	0.00	0.00	0.00	0.00	0.00	0.00	0.00
TMC Verification (min.)	0.47	0.43	0.62	1.39	1.08	1.23	1.58	2.20	1.68
TMC Response (min.)	8.20	10.92	8.73	8.03	9.10	9.31	11.20	8.97	10.08
RR Dispatch Time (min.)	0.91	1.14	1.07	1.53	1.63	1.55	2.25	1.72	1.97
RR Response Time (min.)	7.32	9.84	7.76	6.52	7.59	7.89	8.71	7.61	8.28
Event Clearance (min.)	14.92	17.84	16.44	16.09	19.13	18.24	21.24	22.44	22.32
Roadway Clearance (min.)	21.78	44.19	31.88	40.30	52.50	40.73	20.98	16.44	21.00
Incident Clearance (min.)	45.52	83.14	65.60	65.92	86.26	71.05	40.19	56.82	63.59
# of Events w/ RR/SIRV	310	257	1,112	561	522	2,239	235	208	943
RR/SIRV Responses	310	257	1,112	561	522	2,239	235	208	943
RR/SIRV Activities	224	167	832	419	425	1,784	202	172	792

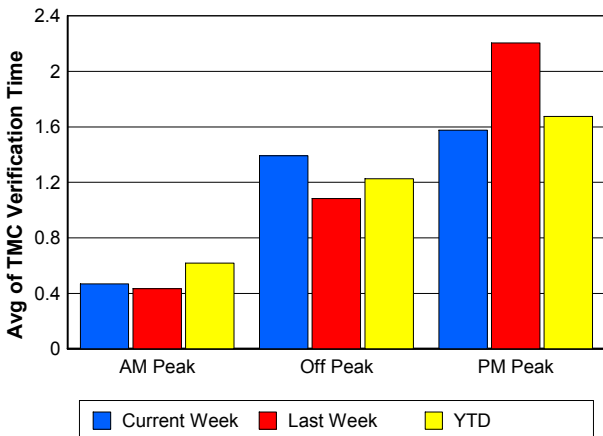
Number of Events / Peak Period



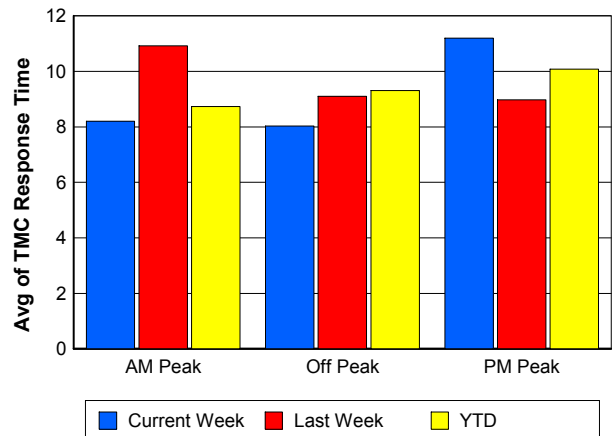
TMC Detection Time



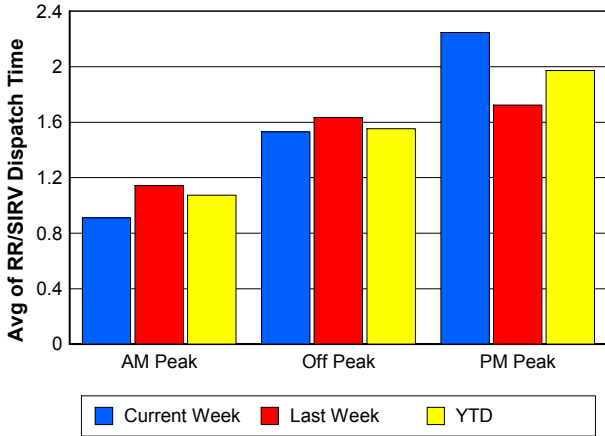
TMC Verification Time



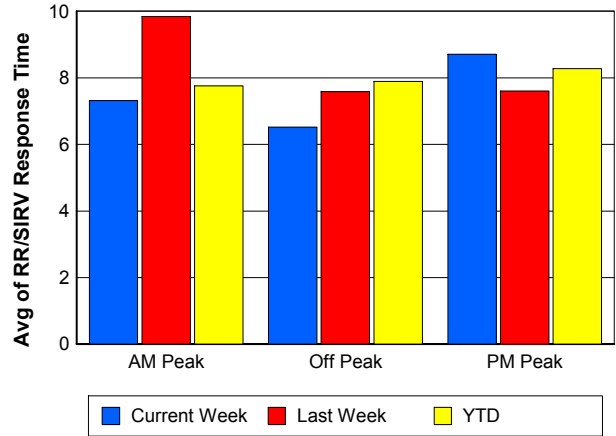
TMC Response Time



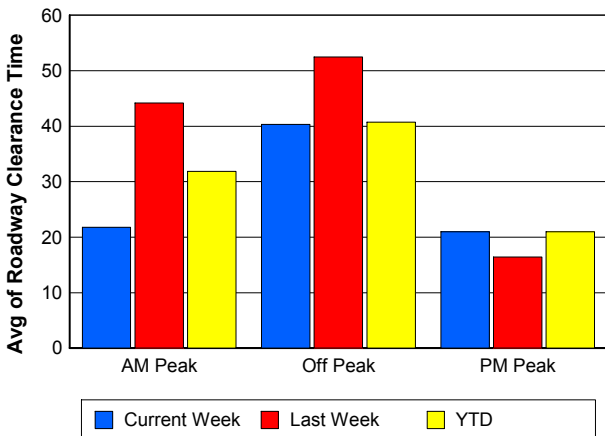
Road Ranger / SIRV Dispatch Time



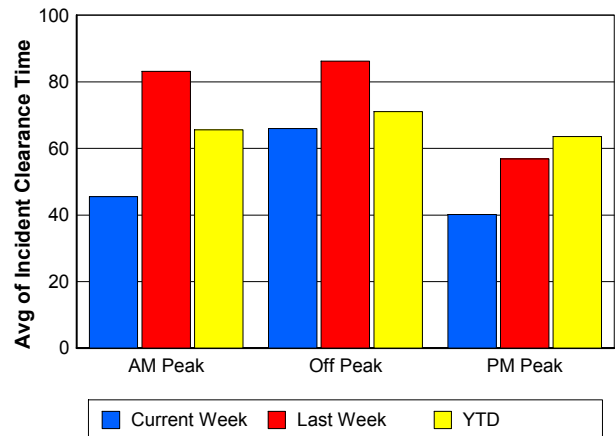
Road Ranger / SIRV Response Time



Roadway Clearance Time (2A)



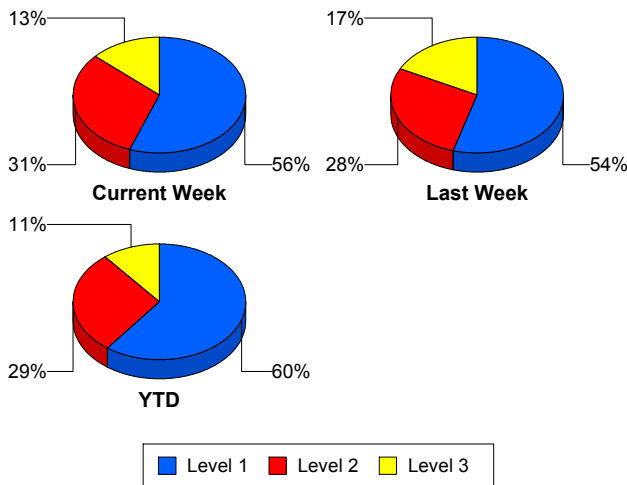
Incident Clearance Time (3B)



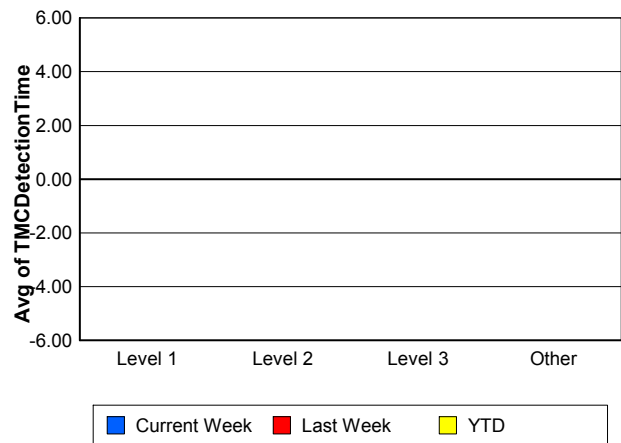
Performance Measures by Severity

	Level 1			Level 2			Level 3			Other		
	<u>This Week</u>	<u>Last Week</u>	<u>YTD</u>	<u>This Week</u>	<u>Last Week</u>	<u>YTD</u>	<u>This Week</u>	<u>Last Week</u>	<u>YTD</u>	<u>This Week</u>	<u>Last Week</u>	<u>YTD</u>
Number of Events	25	25	112	14	13	54	6	8	20	1,302	1,183	5,073
Number of Incidents	25	25	112	14	13	54	6	8	20	0	0	0
TMC Detection (min.)	0.00	0.00	0.00	0.00	0.00	0.00	0.00	0.00	0.00	0.00	0.00	0.00
TMC Verification (min.)	0.06	0.52	0.63	2.55	1.40	1.82	0.04	2.24	1.11	1.18	1.15	1.17
TMC Response (min.)	4.96	8.17	8.39	16.66	16.04	13.08	10.95	9.94	9.51	8.80	9.40	9.31
RR Dispatch Time (min.)	1.23	2.56	1.86	5.69	2.71	3.29	1.42	2.41	1.70	1.46	1.47	1.49
RR Resp. Time (min.)	4.35	5.61	6.62	10.97	13.14	9.73	9.54	7.52	7.81	7.26	8.11	7.97
Event Clearance (min.)	40.36	65.11	58.40	73.74	84.37	77.01	73.01	101.58	95.32	15.46	17.25	16.85
Roadway Clear. (min.)	14.33	17.10	15.95	52.79	52.49	49.78	53.08	93.82	83.15			
Incident Clearance (min.)	40.36	65.11	58.40	73.74	84.37	77.01	73.01	101.58	95.32			
# of Events w/ RR/SIRV	25	25	111	13	13	53	5	8	19	1,063	941	4,111
RR/SIRV Responses	25	25	111	13	13	53	5	8	19	1,063	941	4,111
RR/SIRV Activities	36	46	181	23	27	105	13	25	51	773	666	3,071

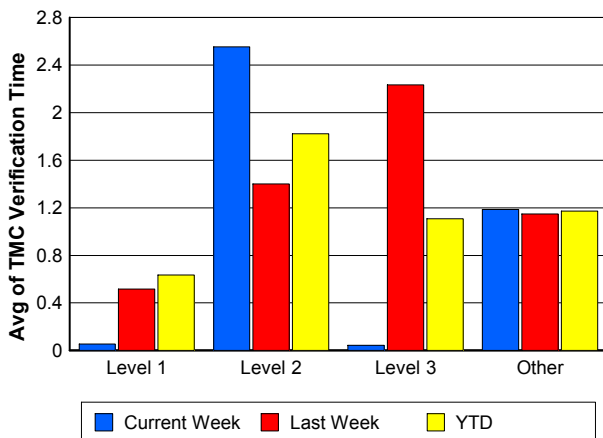
Number of Events / Severity



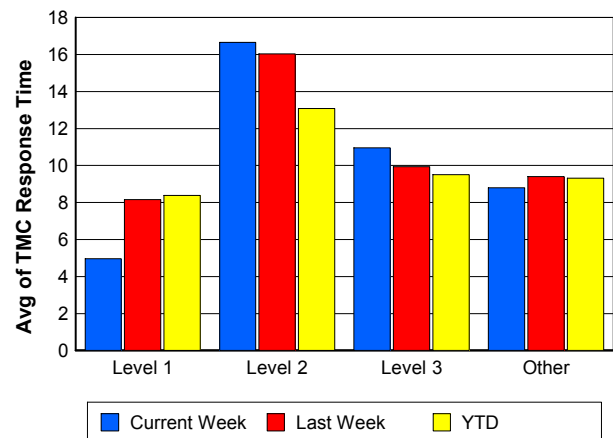
TMC Detection Time



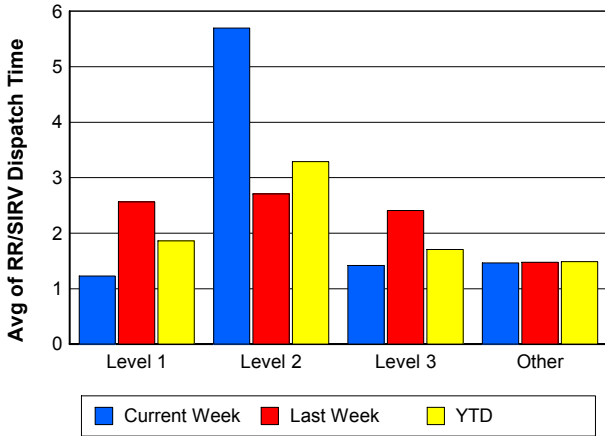
TMC Verification Time



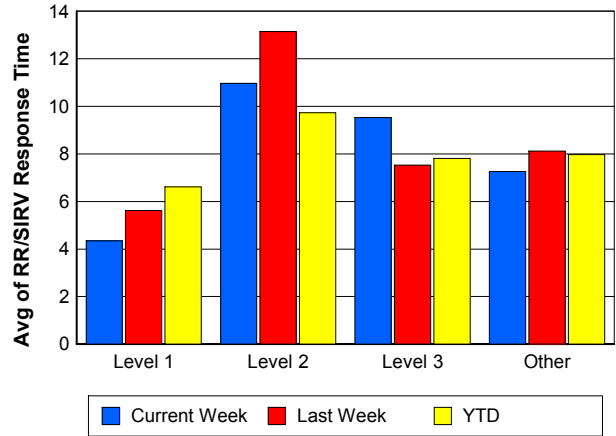
TMC Response Time



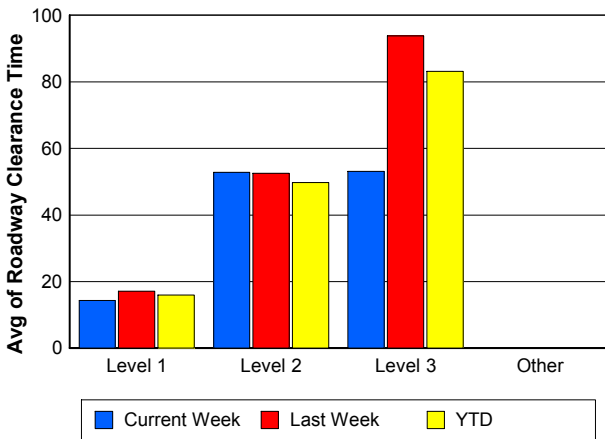
Road Ranger / SIRV Dispatch Time



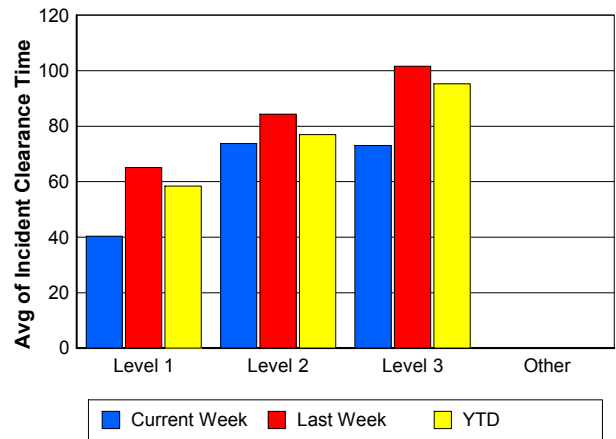
Road Ranger / SIRV Response Time



Roadway Clearance Time (2A)



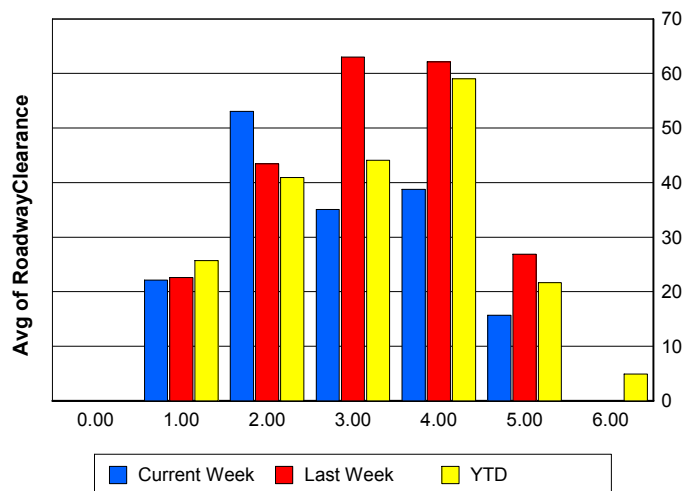
Incident Clearance Time (3B)



Roadway Clearance by Maximum Number of Lanes Blocked

	Current Week	Last Week	YTD
0			
1	22.13	22.57	25.70
2	53.06	43.47	40.92
3	35.05	63.01	44.12
4	38.75	62.13	59.02
5	15.67	26.85	21.67
6	0.00	0.00	4.93

Roadway Clearance Time (2A)



Performance Measures by Roadway

595

	<u>Current Week</u>	<u>Last Week</u>	<u>YTD</u>
Number of Events	45	47	190
Number of Incidents	5	0	7
TMC Detection (min.)	0.00	0.00	0.00
TMC Verification (min.)	1.58	1.12	2.06
TMC Response (min.)	15.02	20.09	14.81
RR Dispatch Time (min.)	2.32	2.28	2.47
RR Resp. Time (min.)	11.96	17.70	12.51
Event Clearance (min.)	21.83	14.73	18.67
Roadway Clear. (min.)	48.47		43.56
Incident Clearance (min.)	52.36		58.39
# of Events w/ RR/SIRV	35	27	141
RR/SIRV Responses	35	27	141
RR/SIRV Activities	27	12	95

75

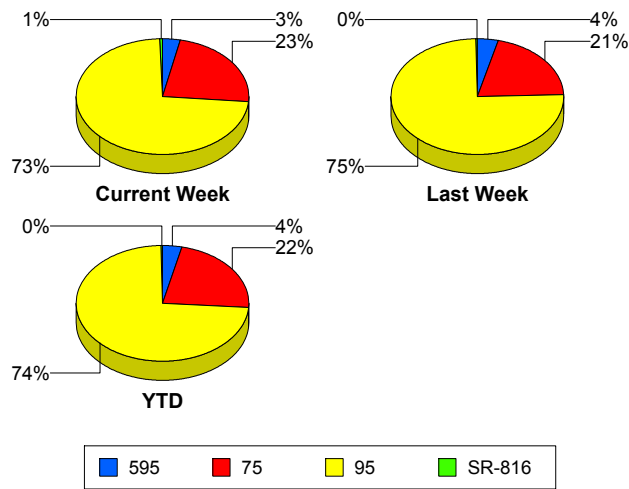
	<u>Current Week</u>	<u>Last Week</u>	<u>YTD</u>
Number of Events	311	254	1,183
Number of Incidents	5	4	13
TMC Detection (min.)	0.00	0.00	0.00
TMC Verification (min.)	2.24	2.33	1.86
TMC Response (min.)	10.36	10.06	10.19
RR Dispatch Time (min.)	1.72	1.72	1.66
RR Resp. Time (min.)	8.68	8.59	8.76
Event Clearance (min.)	17.35	19.47	18.61
Roadway Clear. (min.)	62.63	65.59	50.01
Incident Clearance (min.)	81.21	83.07	91.50
# of Events w/ RR/SIRV	239	180	916
RR/SIRV Responses	239	180	916
RR/SIRV Activities	184	154	723

95

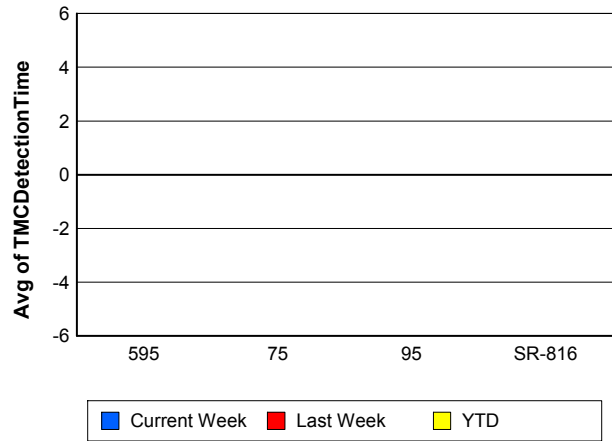
	<u>Current Week</u>	<u>Last Week</u>	<u>YTD</u>
Number of Events	984	926	3,870
Number of Incidents	29	41	155
TMC Detection (min.)	0.00	0.00	0.00
TMC Verification (min.)	0.83	0.83	0.92
TMC Response (min.)	8.23	9.12	8.96
RR Dispatch Time (min.)	1.42	1.46	1.45
RR Resp. Time (min.)	6.72	7.79	7.60
Event Clearance (min.)	16.43	19.73	18.67
Roadway Clear. (min.)	27.54	38.71	32.01
Incident Clearance (min.)	60.38	77.90	69.59
# of Events w/ RR/SIRV	825	778	3,221
RR/SIRV Responses	825	778	3,221
RR/SIRV Activities	626	596	2,573

	<u>Current Week</u>	<u>Last Week</u>	<u>YTD</u>
Number of Events	7	2	16
Number of Incidents	6	1	11
TMC Detection (min.)	0.00	0.00	0.00
TMC Verification (min.)	0.00	0.00	0.00
TMC Response (min.)	0.00	1.51	0.19
RR Dispatch Time (min.)	0.00	0.68	0.09
RR Resp. Time (min.)	0.00	0.82	0.10
Event Clearance (min.)	8.80	19.94	16.04
Roadway Clear. (min.)	10.29	10.93	20.04
Incident Clearance (min.)	10.09	10.87	20.03
# of Events w/ RR/SIRV	7	2	16
RR/SIRV Responses	7	2	16
RR/SIRV Activities	8	2	17

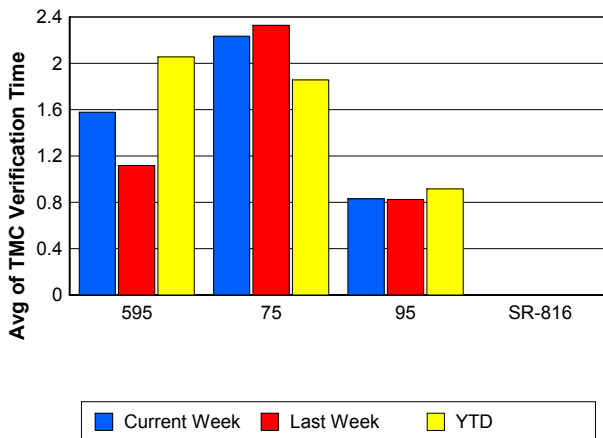
Number of Events / Roadway



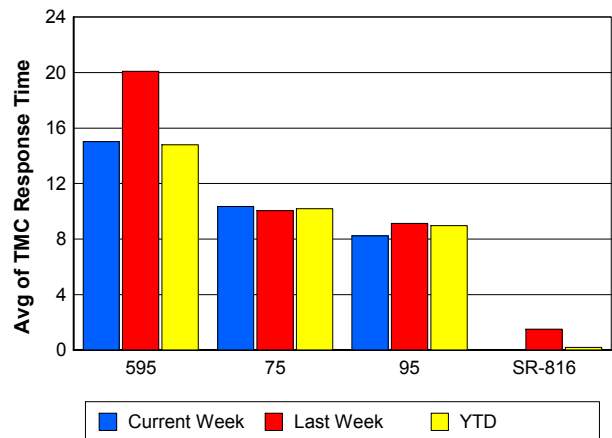
TMC Detection Time



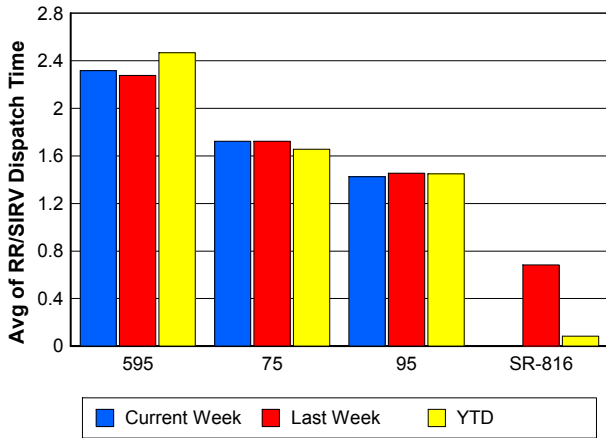
TMC Verification Time



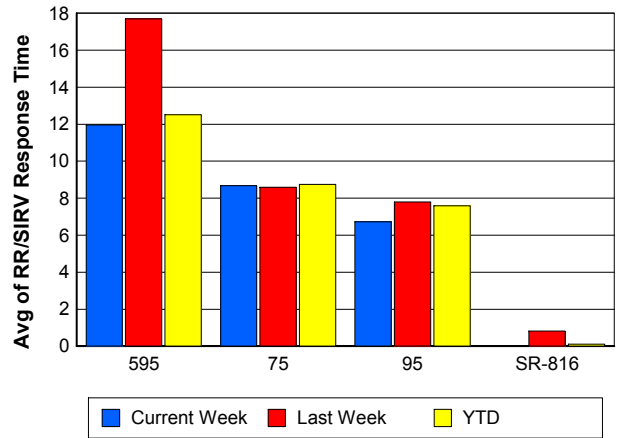
TMC Response Time



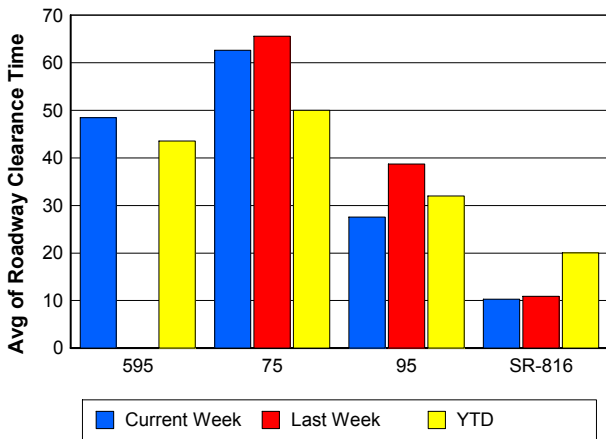
Road Ranger / SIRV Dispatch Time



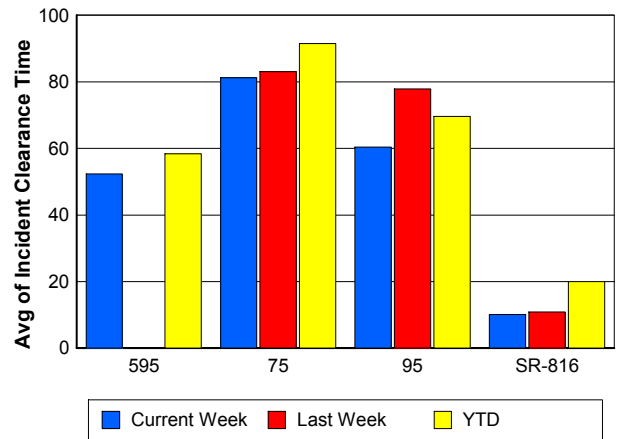
Road Ranger / SIRV Response Time



Roadway Clearance Time (2A)



Incident Clearance Time (3B)



Performance Measures by Event Type

Accident

	<u>Current Week</u>	<u>Last Week</u>	<u>YTD</u>
Number of Events	61	74	283
Number of Incidents	24	36	127
TMC Detection (min.)	0.00	0.00	0.00
TMC Verification (min.)	2.37	1.30	1.70
TMC Response (min.)	11.27	11.25	11.39
RR Dispatch Time (min.)	3.02	2.04	2.33
RR Response Time (min.)	8.36	9.21	9.08
Event Clearance (min.)	47.40	63.84	59.73
Roadway Clearance (min.)	30.86	35.05	33.40
Incident Clearance (min.)	66.72	82.28	79.84
# of Events w/ RR/SIRV	60	74	282
RR/SIRV Assists	60	74	282
RR/SIRV Activities	79	125	420

Debris on Roadway

	<u>Current Week</u>	<u>Last Week</u>	<u>YTD</u>
Number of Events	50	40	153
Number of Incidents	0	2	5
TMC Detection (min.)	0.00	0.00	0.00
TMC Verification (min.)	5.58	6.74	6.26
TMC Response (min.)	9.44	9.34	9.47
RR Dispatch Time (min.)	1.45	1.82	1.68
RR Response Time (min.)	8.02	7.49	7.75
Event Clearance (min.)	12.78	15.83	13.47
Roadway Clearance (min.)		114.50	58.09
Incident Clearance (min.)		88.50	50.76
# of Events w/ RR/SIRV	48	38	147
RR/SIRV Assists	48	38	147
RR/SIRV Activities	51	39	155

Disabled Vehicle

	<u>Current Week</u>	<u>Last Week</u>	<u>YTD</u>
Number of Events	687	649	2,827
Number of Incidents	12	3	35
TMC Detection (min.)	0.00	0.00	0.00
TMC Verification (min.)	1.60	1.58	1.61
TMC Response (min.)	8.56	9.09	9.16
RR Dispatch Time (min.)	1.55	1.32	1.38
RR Response Time (min.)	7.06	7.82	7.85
Event Clearance (min.)	20.54	20.66	20.91
Roadway Clearance (min.)	22.17	6.67	16.92
Incident Clearance (min.)	28.13	10.71	29.57
# of Events w/ RR/SIRV	680	625	2,752
RR/SIRV Assists	680	625	2,752
RR/SIRV Activities	650	557	2,646

Emergency Vehicles

	<u>Current Week</u>	<u>Last Week</u>	<u>YTD</u>
Number of Events	3	2	8
Number of Incidents	2	1	6
TMC Detection (min.)	0.00	0.00	0.00
TMC Verification (min.)	0.00	0.00	0.00
TMC Response (min.)	18.00	9.77	9.23
RR Dispatch Time (min.)	0.79	0.62	0.67
RR Response Time (min.)	16.95	9.15	8.62
Event Clearance (min.)	41.72	20.92	26.74
Roadway Clearance (min.)	24.33	18.58	17.56
Incident Clearance (min.)	30.25	20.47	21.32
# of Events w/ RR/SIRV	2	2	7
RR/SIRV Assists	2	2	7
RR/SIRV Activities	1	2	6

Other

	<u>Current Week</u>	<u>Last Week</u>	<u>YTD</u>
Number of Events	534	455	1,958
Number of Incidents	3	1	5
TMC Detection (min.)	0.00	0.00	0.00
TMC Verification (min.)	0.01	0.02	0.04
TMC Response (min.)	7.72	12.67	8.57
RR Dispatch Time (min.)	1.13	1.86	1.66
RR Response Time (min.)	6.73	11.58	7.60
Event Clearance (min.)	8.24	10.29	9.57
Roadway Clearance (min.)	78.57	30.95	91.83
Incident Clearance (min.)	95.35	34.05	96.37
# of Events w/ RR/SIRV	305	241	1,080
RR/SIRV Assists	305	241	1,080
RR/SIRV Activities	49	31	150

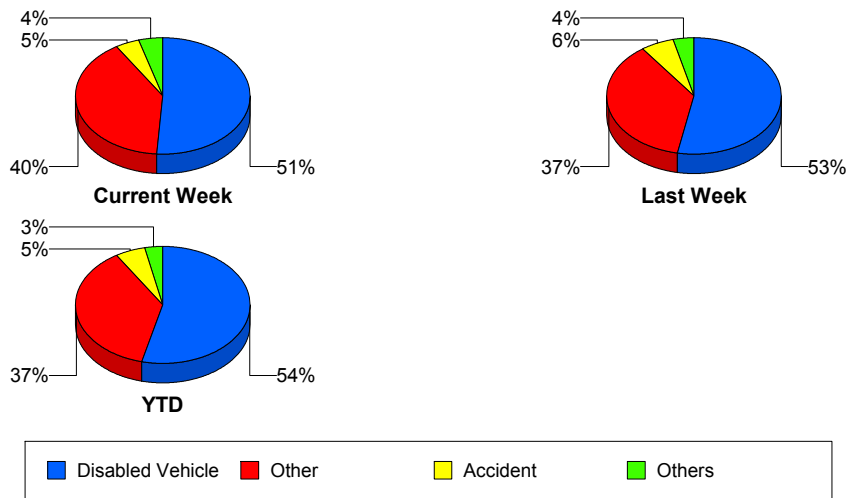
Police Activity

	<u>Current Week</u>	<u>Last Week</u>	<u>YTD</u>
Number of Events	2	4	10
Number of Incidents	1	2	4
TMC Detection (min.)	0.00	0.00	0.00
TMC Verification (min.)	18.51	1.20	4.39
TMC Response (min.)	37.88	6.90	12.67
RR Dispatch Time (min.)	0.87	2.12	1.33
RR Response Time (min.)	37.02	4.78	11.44
Event Clearance (min.)	25.21	80.64	45.87
Roadway Clearance (min.)	8.22	111.46	63.65
Incident Clearance (min.)	12.38	115.65	76.47
# of Events w/ RR/SIRV	1	2	7
RR/SIRV Assists	1	2	7
RR/SIRV Activities	1	5	8

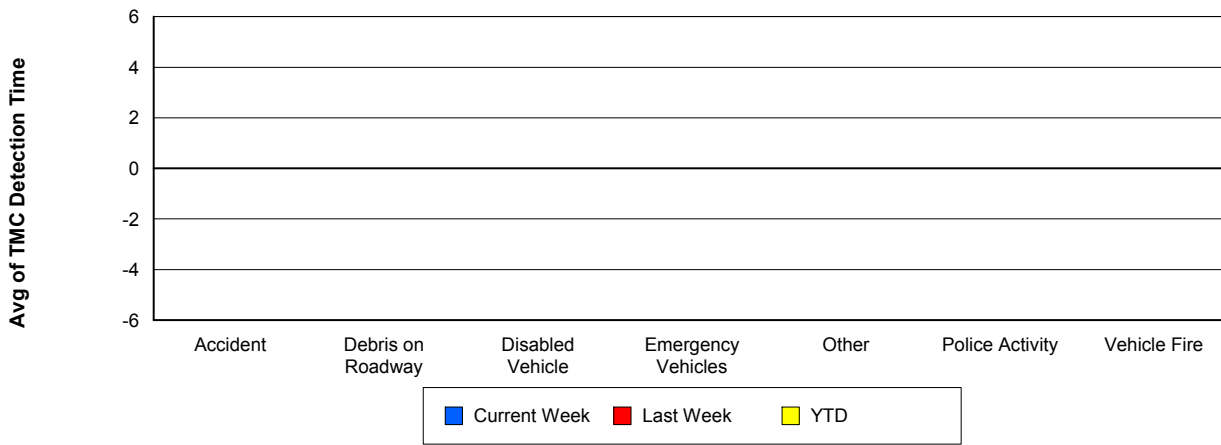
Vehicle Fire

	<u>Current Week</u>	<u>Last Week</u>	<u>YTD</u>
Number of Events	5	2	8
Number of Incidents	3	1	4
TMC Detection (min.)	0.00	0.00	0.00
TMC Verification (min.)	0.20	3.43	1.14
TMC Response (min.)	12.74	7.82	11.49
RR Dispatch Time (min.)	3.03	0.50	2.16
RR Response Time (min.)	9.71	7.32	9.33
Event Clearance (min.)	68.78	48.90	57.49
Roadway Clearance (min.)	38.86	77.27	48.46
Incident Clearance (min.)	60.49	80.08	65.39
# of Events w/ RR/SIRV	5	2	8
RR/SIRV Assists	5	2	8
RR/SIRV Activities	10	2	13

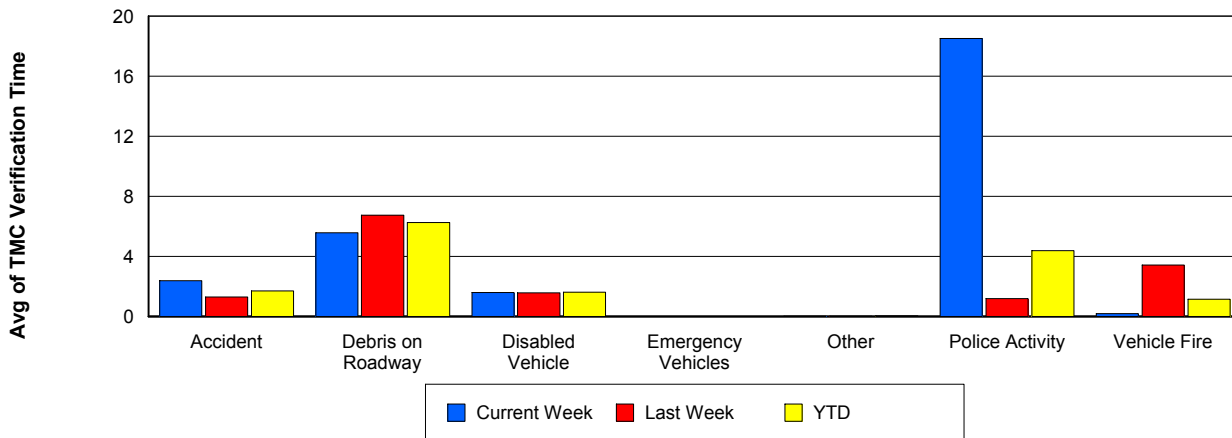
Number of Events / Event Type



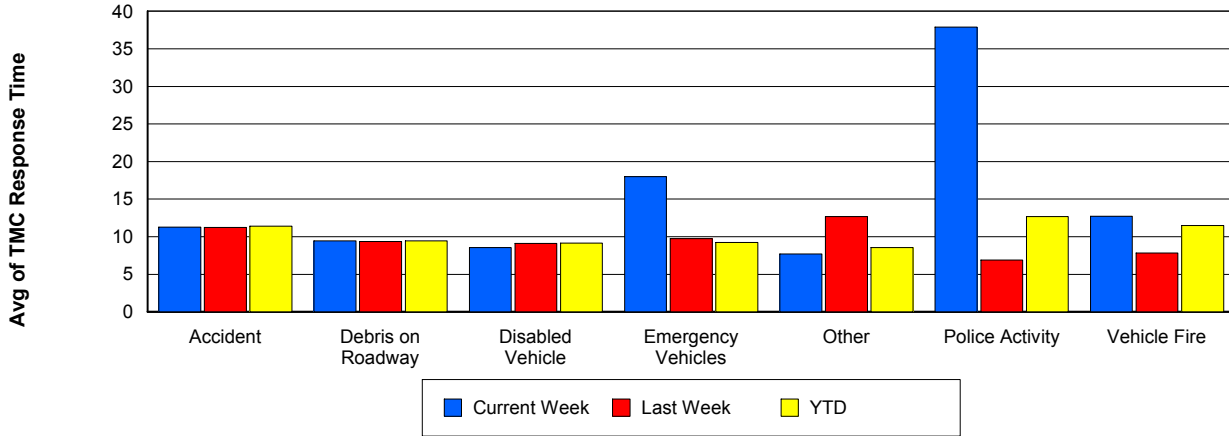
TMC Detection Time



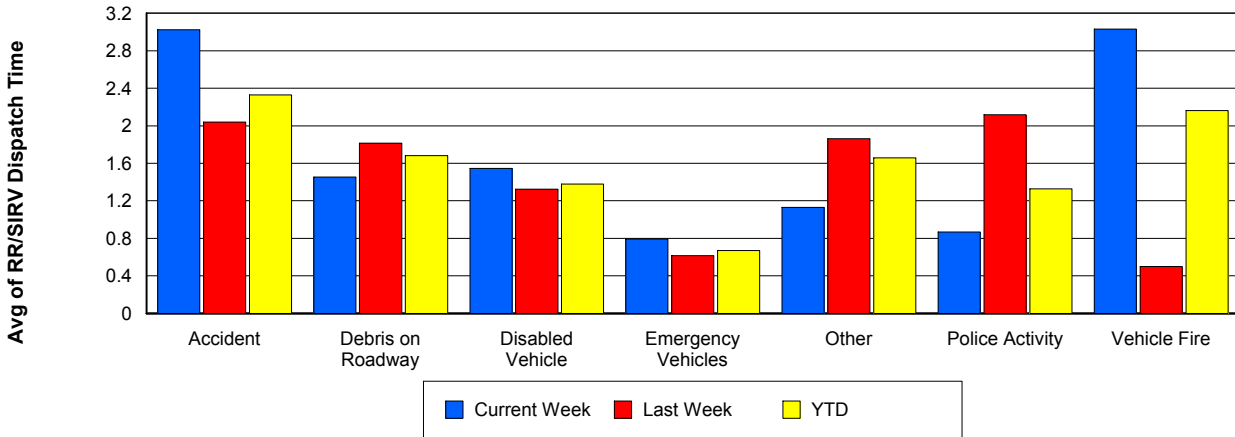
TMC Verification Time



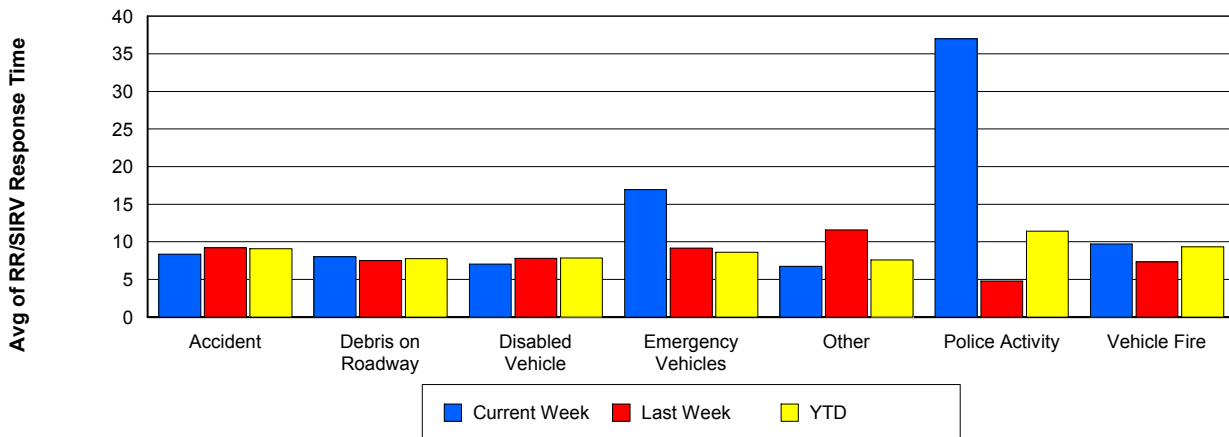
TMC Response Time



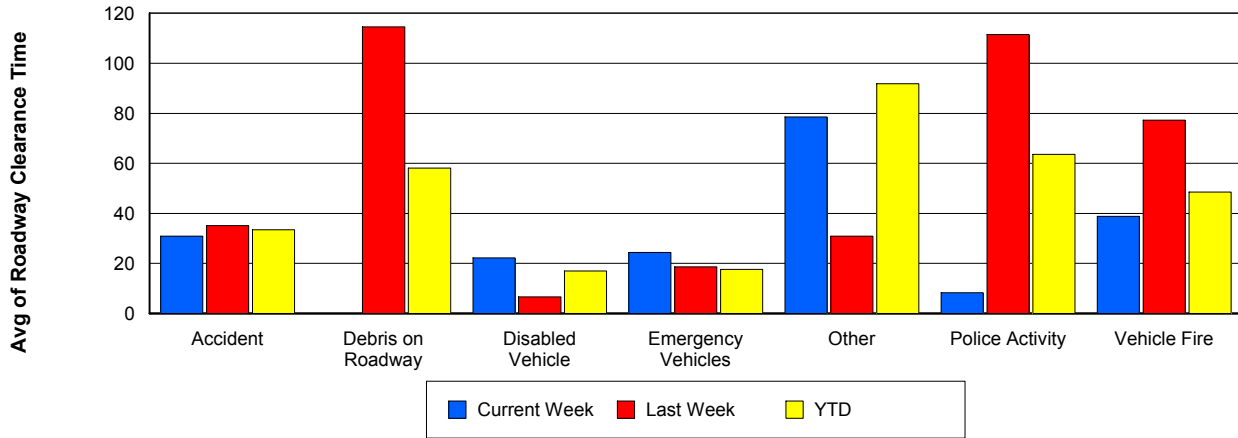
Road Ranger / SIRV Dispatch Time



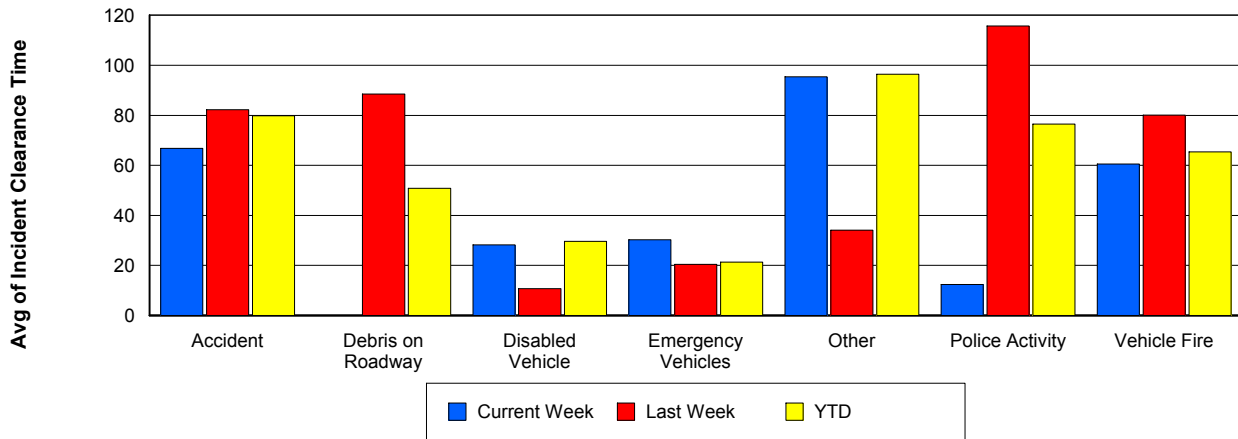
Road Ranger / SIRV Response Time



Roadway Clearance Time (2A)



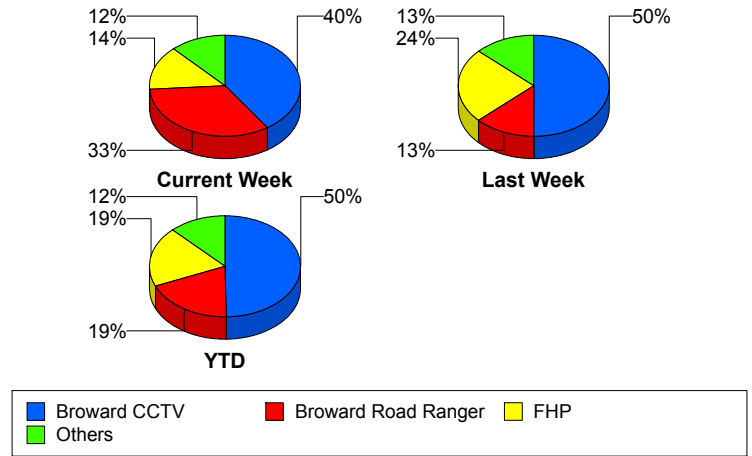
Incident Clearance Time (3B)



Incident Detection Methods

	Current Week	Last Week	YTD
Broward CCTV	17	23	90
Broward Road Ranger	14	6	34
Broward TMC	0	0	1
Broward VideoWall	0	2	5
BSO	2	0	3
District 4	1	1	4
FHP	6	11	35
Local Police	0	1	1
Motorist	0	0	2
Road Watcher	0	1	1
VisioPaD Detection	2	1	5
Total	42	46	181

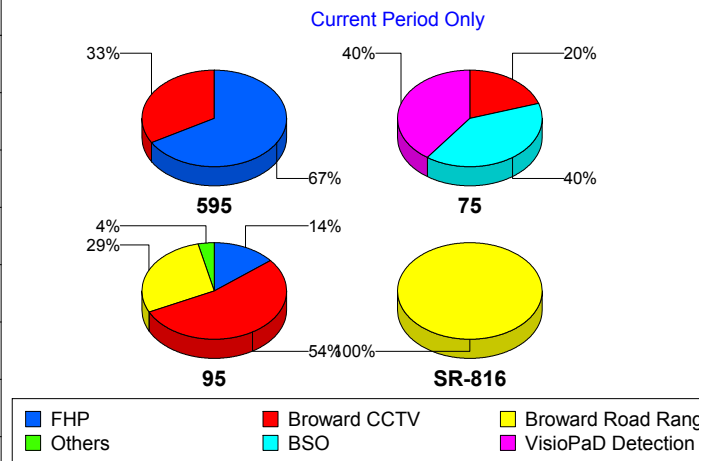
Total Incidents by Detection Method



Incident Detection Methods by Roadway

		Current Week	Last Week	YTD
595	Broward CCTV	1	0	1
	FHP	2	0	2
	Total	3	0	3
75	Broward CCTV	1	2	4
	BSO	2	0	2
	District 4	0	1	1
	FHP	0	1	4
	VisioPaD Detection	2	0	2
	Total	5	4	13
95	Broward CCTV	15	21	85
	Broward Road Ranger	8	5	23
	Broward TMC	0	0	1
	Broward VideoWall	0	2	5
	BSO	0	0	1
	District 4	1	0	3

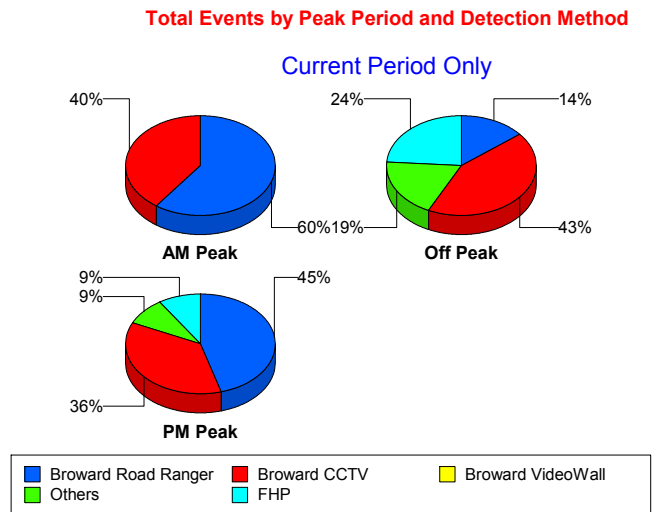
Total Events by Roadway and Detection Method



		Current Week	Last Week	YTD
95	FHP	4	10	29
	Local Police	0	1	1
	Motorist	0	0	2
	Road Watcher	0	1	1
	VisioPaD Detection	0	1	3
	Total	28	41	154
SR-816	Broward Road Ranger	6	1	11
	Total	6	1	11
Total		42	46	181

Incident Detection Methods by Peak Period

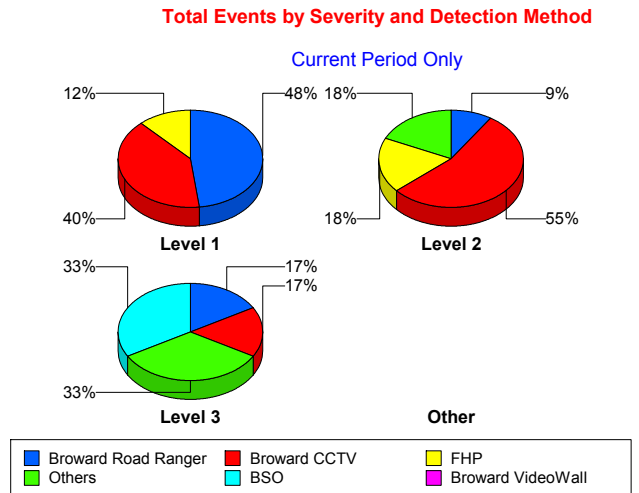
		Current Week	Last Week	YTD
AM Peak	Broward CCTV	4	2	12
	Broward Road Ranger	6	0	8
	Broward VideoWall	0	2	3
	District 4	0	0	1
	FHP	0	1	5
	Local Police	0	1	1
	Total	10	6	30
Off Peak	Broward CCTV	9	13	49
	Broward Road Ranger	3	2	10
	Broward TMC	0	0	1
	Broward VideoWall	0	0	1
	BSO	2	0	2
	District 4	1	1	3
	FHP	5	8	21
	Motorist	0	0	1
	Road Watcher	0	1	1
	VisioPaD Detection	1	1	3
	Total	21	26	92
PM Peak	Broward CCTV	4	8	29
	Broward Road Ranger	5	4	16



		Current Week	Last Week	YTD
PM Peak	Broward VideoWall	0	0	1
	BSO	0	0	1
	FHP	1	2	9
	Motorist	0	0	1
	VisioPaD Detection	1	0	2
	Total	11	14	59
Total		42	46	181

Incident Detection Methods by Severity

		Current Week	Last Week	YTD
Level 1	Broward CCTV	10	11	59
	Broward Road Ranger	12	5	23
	Broward TMC	0	0	1
	Broward VideoWall	0	2	4
	BSO	0	0	1
	District 4	0	0	2
	FHP	3	5	17
	Motorist	0	0	2
	Road Watcher	0	1	1
	VisioPaD Detection	0	1	1
	Total	25	25	111
Level 2	Broward CCTV	6	8	25
	Broward Road Ranger	1	1	9
	Broward VideoWall	0	0	1
	District 4	1	0	1
	FHP	2	3	10
	Local Police	0	1	1
	VisioPaD Detection	1	0	3
	Total	11	13	50
Level 3	Broward CCTV	1	4	6
	Broward Road Ranger	1	0	2
	BSO	2	0	2



		Current Week	Last Week	YTD
Level 3	District 4	0	1	1
	FHP	1	3	8
	VisioPaD Detection	1	0	1
	Total	6	8	20
Total		42	46	181

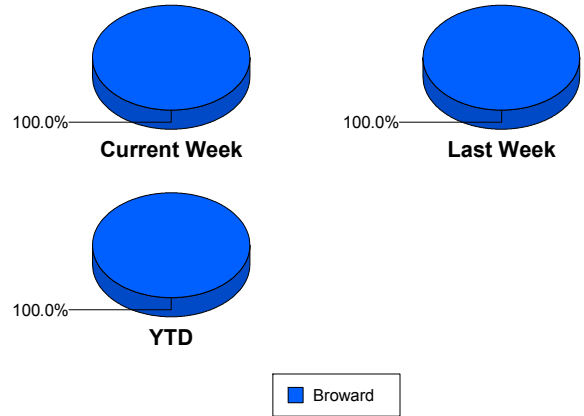
Road Ranger / SIRV Performance Measures

Road Ranger / SIRV Performance By County

Values presented are:
 - Total Events with a RR/SIRV Response
 - Total RR/SIRV Responses,
 - Total Activities Performed

	Current We	Last Week	YTD
Broward	935	820	3,730
	992	885	3,971
	1,017	915	4,120

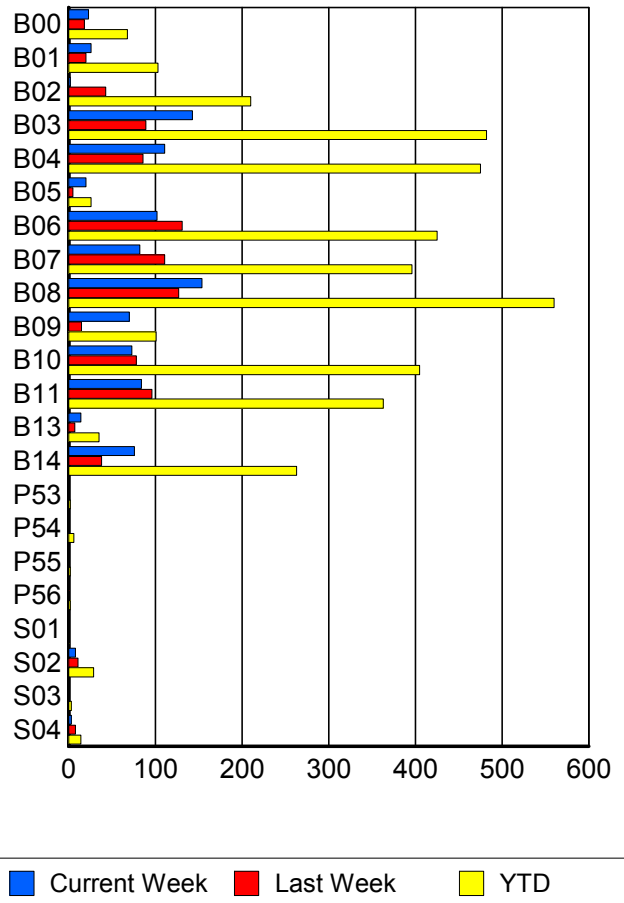
RR/SIRV Responses per County



Road Ranger / SIRV Performance By Truck

	Current We	Last Week	YTD
B00	22	18	67
	23	18	68
	23	18	74
B01	26	20	102
	26	20	103
	26	21	105
B02	2	43	208
	2	43	210
	2	43	213
B03	142	89	480
	143	89	482
	152	95	508
B04	108	85	466
	111	86	475
	115	87	489
B05	20	5	26
	20	5	26
	20	5	26
B06	101	128	418
	102	131	425
	104	133	444
B07	81	108	387
	82	111	396
	85	115	412
B08	152	125	552
	154	127	560
	156	131	584

RR/SIRV Responses per Truck



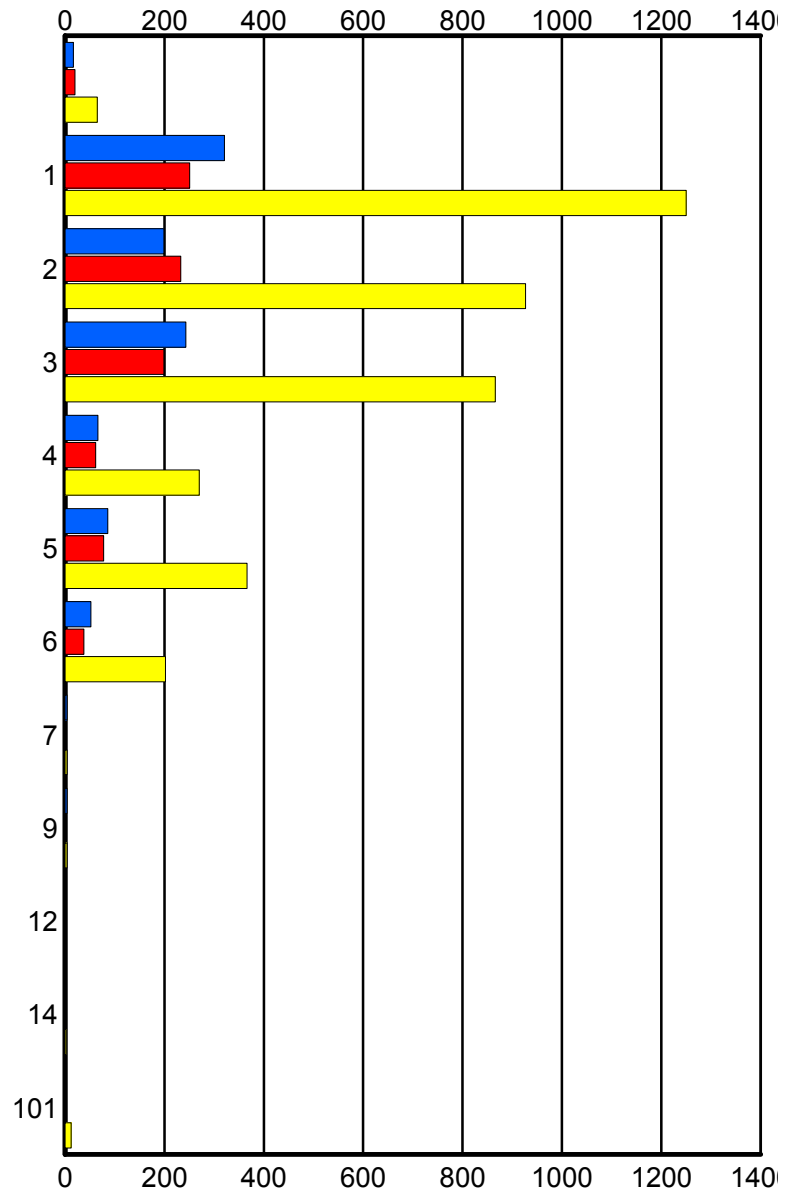
	Current We	Last Week	YTD
B09	68	15	99
	70	15	101
	72	15	103
B10	73	77	401
	73	78	405
	73	82	413
B11	84	96	362
	84	96	363
	84	97	375
B13	14	7	34
	14	7	35
	14	8	36
B14	76	38	259
	76	38	263
	79	40	274
P53	0	0	2
	0	0	2
	0	0	2
P54	0	1	6
	0	1	6
	0	1	6
P55	0	0	2
	0	0	2
	0	0	2
P56	0	1	2
	0	1	2
	0	3	4
S01	1	0	1
	1	0	1
	1	0	1
S02	8	11	29
	8	11	29
	8	12	31
S03	0	0	3
	0	0	3
	0	0	3
S04	3	8	14
	3	8	14
	3	9	15

Road Ranger / SIRV Performance By Beat

	Current We	Last Week	YTD
	16	20	64
	17	20	65
	17	21	67
1	306	243	1,197
	321	251	1,250
	330	259	1,307
2	197	224	904
	199	233	927
	204	238	961
3	238	195	849
	243	199	866
	250	206	899
4	65	60	264
	66	62	270
	67	66	279
5	86	78	364
	86	78	366
	88	80	374
6	52	37	200
	52	38	202
	53	39	206
7	4	0	4
	4	0	4
	4	0	4
9	4	0	4
	4	0	4
	4	0	4
12	0	2	2
	0	2	2
	0	2	2
14	0	0	3
	0	0	3
	0	0	3
101	0	2	12
	0	2	12
	0	4	14

Values presented are:
 - Total Events with a RR/SIRV Response
 - Total RR/SIRV Responses,
 - Total Activities Performed

RR/SIRV Responses per Beat



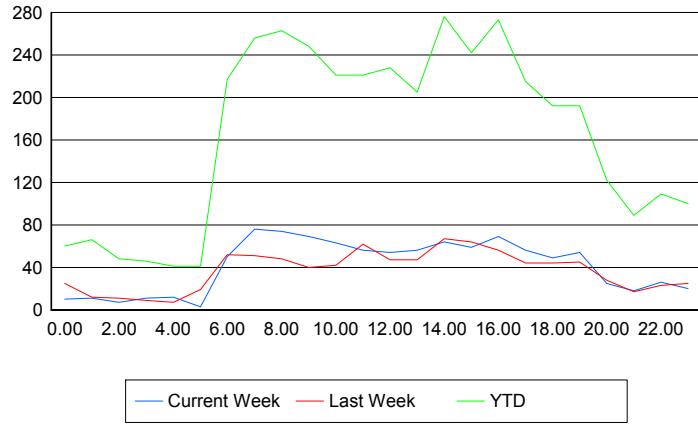
■ Current Week
 ■ Last Week
 ■ YTD

Road Ranger / SIRV Performance By Time of Day

Values presented are:
 - Total Events with a RR/SIRV Response
 - Total RR/SIRV Responses,
 - Total Activities Performed

	Current We	Last Week	YTD
12AM-1AM	9 10 10	25 25 26	58 60 64
1AM-2AM	10 11 11	12 12 12	64 66 69
2AM-3AM	7 7 7	9 11 11	45 48 51
3AM-4AM	11 11 11	9 9 9	44 46 50
4AM-5AM	12 12 12	7 7 7	40 41 41
5AM-6AM	3 3 4	16 19 20	34 41 45
6AM-7AM	49 50 50	47 52 52	201 217 224
7AM-8AM	70 76 77	51 51 53	244 256 267
8AM-9AM	67 74 74	45 48 51	248 263 270
9AM-10AM	68 69 71	39 40 40	238 248 258
10AM-11AM	58 63 69	40 42 44	207 221 232
11AM-12PM	52 56 58	57 62 63	205 221 230
12PM-1PM	54 54 56	43 47 48	217 228 233

Number of Responses / Hour of the Day



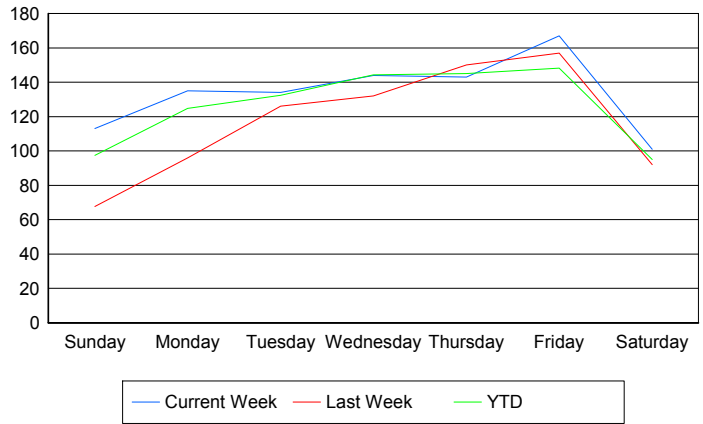
	Current We	Last Week	YTD
1PM-2PM	51	42	187
	56	47	205
	58	50	213
2PM-3PM	56	58	251
	64	67	276
	67	77	292
3PM-4PM	54	55	225
	59	64	242
	60	64	249
4PM-5PM	64	54	257
	69	56	273
	69	57	283
5PM-6PM	54	42	204
	56	44	215
	57	44	218
6PM-7PM	47	43	184
	49	44	192
	51	45	202
7PM-8PM	51	40	180
	54	45	192
	55	46	197
8PM-9PM	25	25	116
	25	28	122
	25	29	123
9PM-10PM	18	17	85
	18	17	89
	18	17	90
10PM-11PM	25	20	101
	26	23	109
	27	25	116
11PM-12AM	20	24	95
	20	25	100
	20	25	103

Road Ranger / SIRV Performance By Day of Week

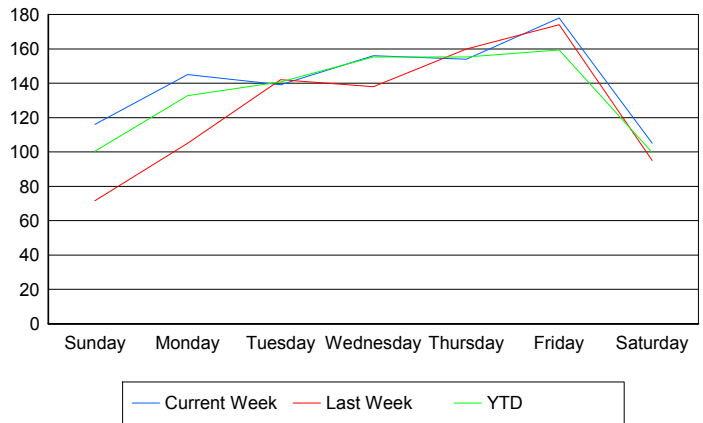
Values presented are:
 - Total Events with a RR/SIRV Response
 - Total RR/SIRV Responses,
 - Total Activities Performed

	Current We	Last Week	YTD
Sunday	112	67	378
	115	71	390
	120	74	401
Monday	135	96	491
	145	105	523
	148	108	541
Tuesday	134	126	530
	139	142	563
	143	147	578
Wednesday	144	132	574
	156	138	617
	159	138	636
Thursday	143	150	580
	154	160	621
	161	169	653
Friday	167	157	710
	178	174	762
	180	181	797
Saturday	101	92	472
	105	95	495
	106	98	514

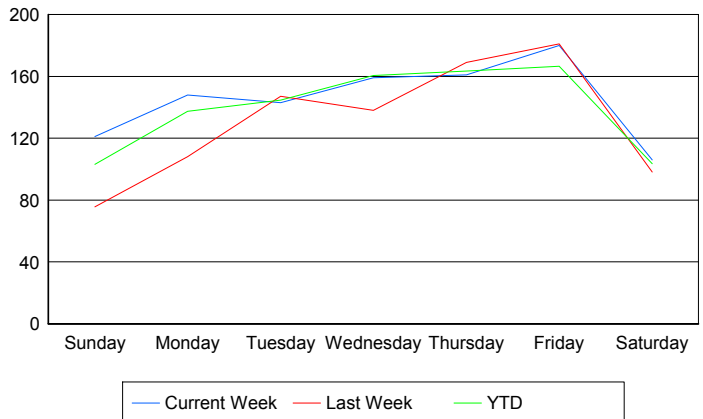
Avg # of events with a RR/SIRV Response per Day of the Week



Avg # of RR/SIRV Responses per Day of the Week



Avg # of RR/SIRV Activities Performed per Day of the Week



Road Ranger / SIRV Responses per Time of Day and Day of Week

