



Weekly Performance Measures Report Broward County



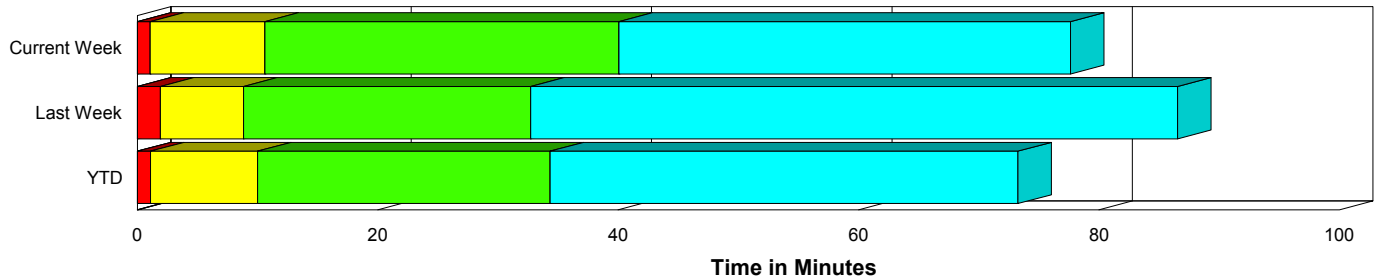
Created on:
January 26, 2010
8:51 am

Period From Jan 17, 2010 to Jan 23, 2010

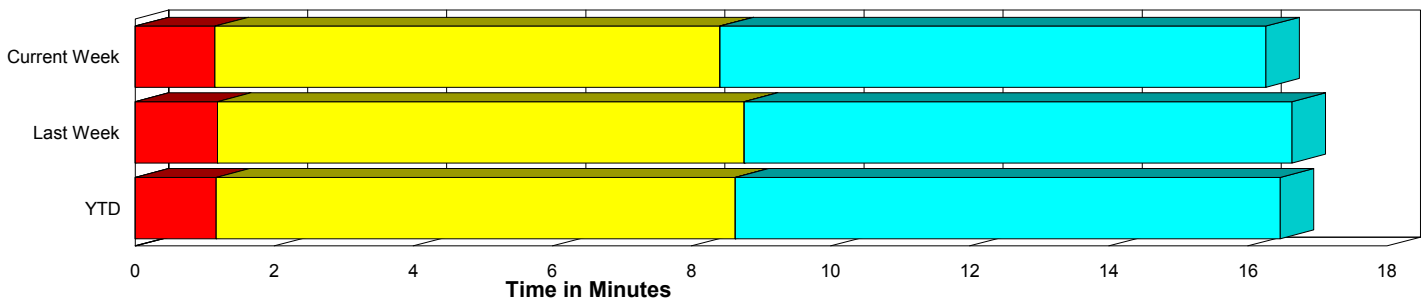
Performance Measures Summary

	Traffic Events (No Lanes Blocked)			Incidents (Lanes Blocked)		
	<u>This Week</u>	<u>Last Week</u>	<u>YTD</u>	<u>This Week</u>	<u>Last Week</u>	<u>YTD</u>
Number of Events	1,183	1,208	3,771	46	40	141
TMC Detection (min.)	0.00	0.00	0.00	0.00	0.00	0.00
TMC Verification (min.)	1.15	1.19	1.17	1.07	1.93	1.10
TMC Response (min.)	9.40	9.59	9.49	10.63	8.87	10.07
RR Dispatch Time (min.)	1.47	1.65	1.50	2.58	2.24	2.15
RR Response Time (min.)	8.11	8.18	8.20	8.01	6.60	7.86
Roadway Clearance (min.)				40.44	32.09	33.49
Event Clearance (min.)	17.25	17.47	17.32	76.89	85.91	71.82
# of Events w/ RR/SIRV	941	983	3,048	46	40	140
RR/SIRV Responses	941	983	3,048	46	40	140
RR/SIRV Activities	666	749	2,298	98	84	265

Incident Clearance Time-Line



Traffic Event (Non-Lane Blockage) Time-Line



■ Avg. TMC Detection Time	■ Avg. Time from TMC Response to Roadway Clearance*
■ Avg. Time from TMC Detection to TMC Verification	■ Avg. Time from Roadway Clearance to Incident/Event Clearance**
■ Avg. Time from TMC Verification to TMC Response	

* Roadway clearance equals all travel lanes open

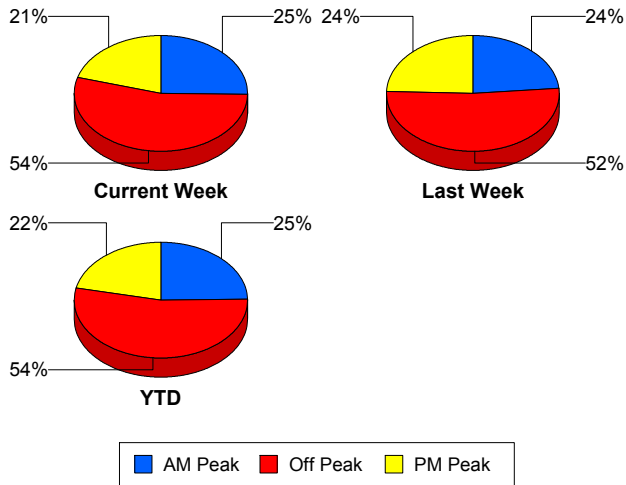
** Incident clearance equals time when last responder has left the scene

Performance Measures by Peak Period

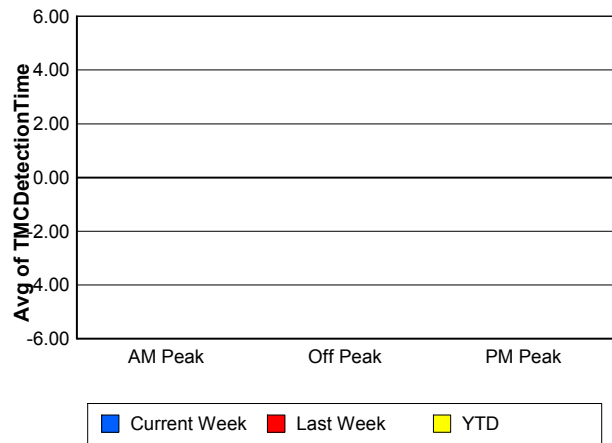
Note: AM peak period is defined as 6am to 10am and PM peak period is defined as 3pm to 7pm.

	AM Peak			Off Peak			PM Peak		
	<u>Current Week</u>	<u>Last Week</u>	<u>YTD</u>	<u>Current Week</u>	<u>Last Week</u>	<u>YTD</u>	<u>Current Week</u>	<u>Last Week</u>	<u>YTD</u>
Number of Events	309	295	966	667	649	2,095	253	304	851
Number of Incidents	6	9	21	26	19	72	14	12	48
TMC Detection (min.)	0.00	0.00	0.00	0.00	0.00	0.00	0.00	0.00	0.00
TMC Verification (min.)	0.43	0.80	0.68	1.08	1.13	1.17	2.20	1.79	1.71
TMC Response (min.)	10.92	7.57	8.94	9.10	10.37	9.71	8.97	9.83	9.69
RR Dispatch Time (min.)	1.14	1.35	1.14	1.63	1.55	1.56	1.72	2.25	1.88
RR Response Time (min.)	9.84	6.34	7.93	7.59	8.96	8.33	7.61	8.06	8.13
Event Clearance (min.)	17.84	17.95	17.03	19.13	19.19	18.96	22.44	22.32	22.66
Roadway Clearance (min.)	44.19	39.49	36.69	52.50	33.97	40.88	16.44	23.56	21.01
Incident Clearance (min.)	83.14	87.53	75.16	86.26	78.65	72.76	56.82	96.18	68.95
# of Events w/ RR/SIRV	257	245	802	522	527	1,678	208	251	708
RR/SIRV Responses	257	245	802	522	527	1,678	208	251	708
RR/SIRV Activities	167	207	608	425	425	1,365	172	201	590

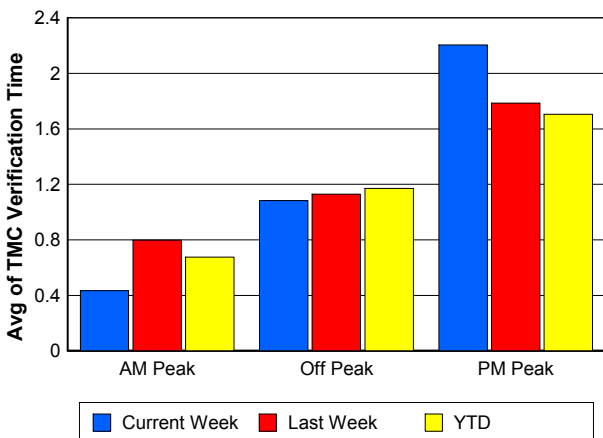
Number of Events / Peak Period



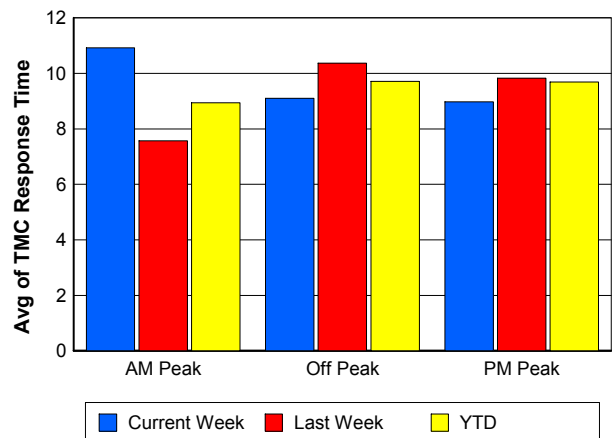
TMC Detection Time



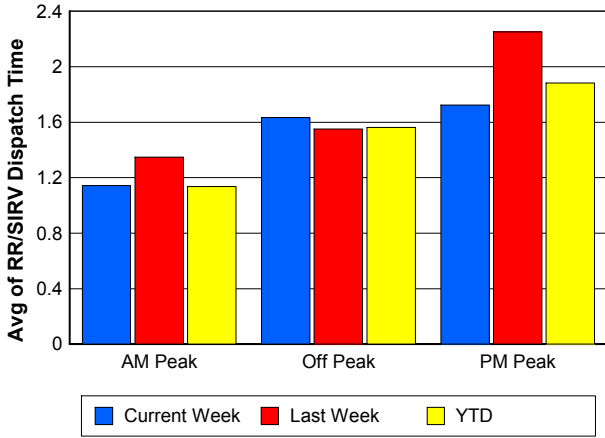
TMC Verification Time



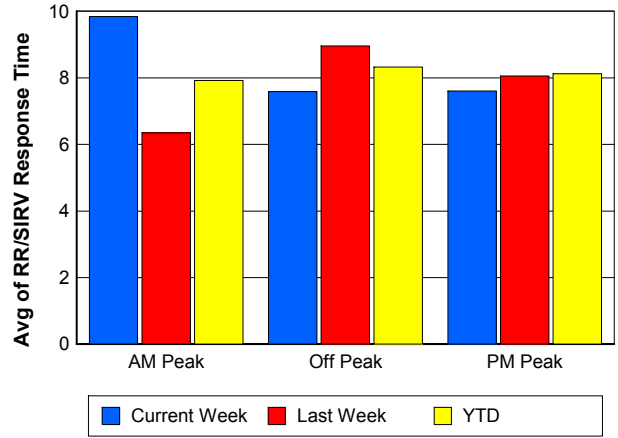
TMC Response Time



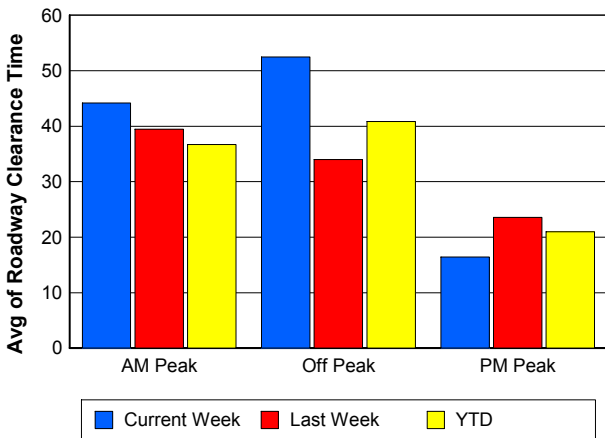
Road Ranger / SIRV Dispatch Time



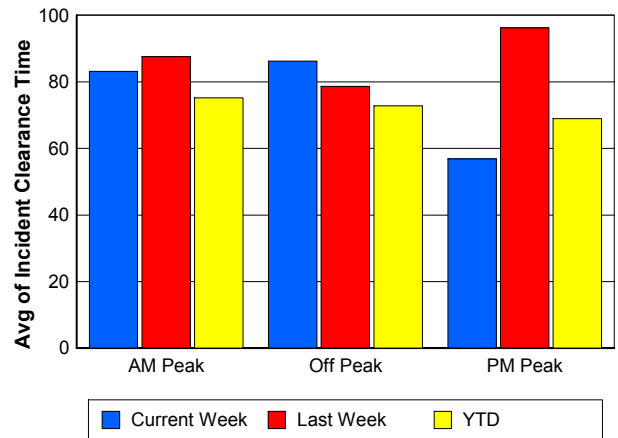
Road Ranger / SIRV Response Time



Roadway Clearance Time (2A)



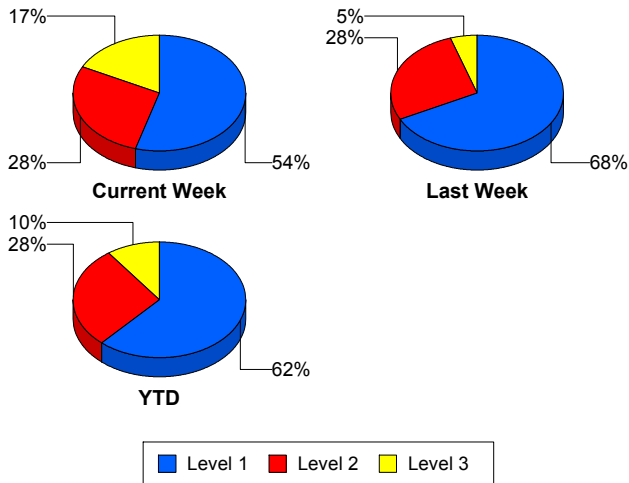
Incident Clearance Time (3B)



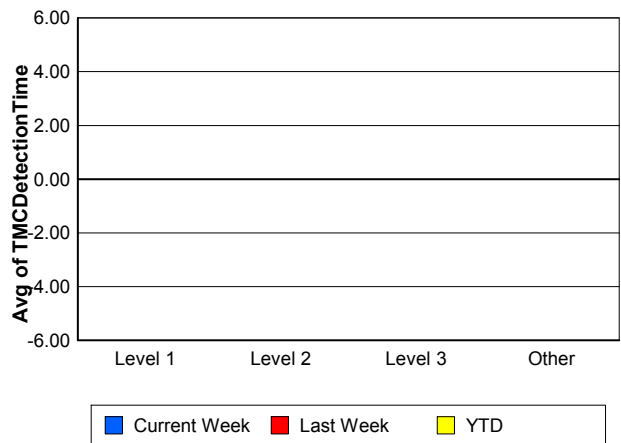
Performance Measures by Severity

	Level 1			Level 2			Level 3			Other		
	<u>This Week</u>	<u>Last Week</u>	<u>YTD</u>	<u>This Week</u>	<u>Last Week</u>	<u>YTD</u>	<u>This Week</u>	<u>Last Week</u>	<u>YTD</u>	<u>This Week</u>	<u>Last Week</u>	<u>YTD</u>
Number of Events	25	27	87	13	11	40	8	2	14	1,183	1,208	3,771
Number of Incidents	25	27	87	13	11	40	8	2	14	0	0	0
TMC Detection (min.)	0.00	0.00	0.00	0.00	0.00	0.00	0.00	0.00	0.00	0.00	0.00	0.00
TMC Verification (min.)	0.53	1.48	0.80	1.40	3.25	1.57	2.24	0.60	1.56	1.15	1.19	1.17
TMC Response (min.)	8.17	9.00	9.37	16.04	8.71	11.88	9.94	8.22	9.00	9.40	9.59	9.49
RR Dispatch Time (min.)	2.56	1.95	2.04	2.71	3.11	2.51	2.41	1.37	1.81	1.47	1.65	1.50
RR Resp. Time (min.)	5.61	7.01	7.27	13.14	5.59	9.32	7.52	6.84	7.19	8.11	8.18	8.20
Event Clearance (min.)	65.11	79.33	63.59	84.37	91.52	78.15	101.58	143.76	104.88	17.25	17.47	17.32
Roadway Clear. (min.)	17.10	19.98	16.42	52.49	49.09	48.72	93.82	102.02	96.04			
Incident Clearance (min.)	65.11	79.33	63.59	84.37	91.52	78.15	101.58	143.76	104.88			
# of Events w/ RR/SIRV	25	27	86	13	11	40	8	2	14	941	983	3,048
RR/SIRV Responses	25	27	86	13	11	40	8	2	14	941	983	3,048
RR/SIRV Activities	46	50	145	27	28	82	25	6	38	666	749	2,298

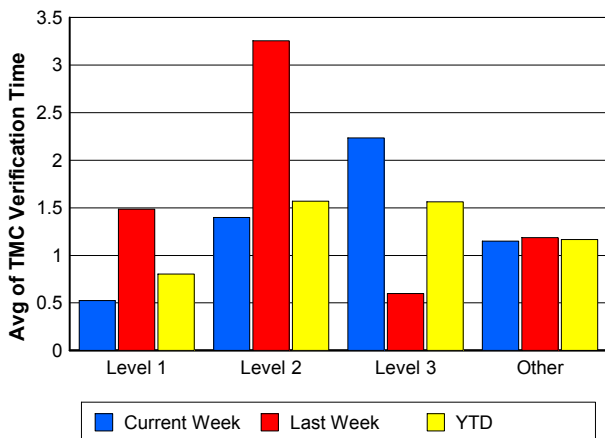
Number of Events / Severity



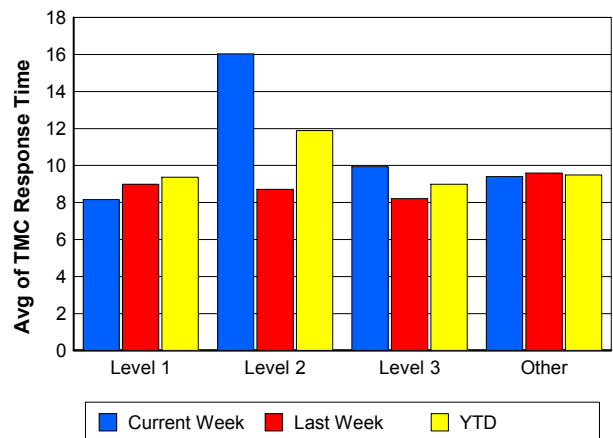
TMC Detection Time



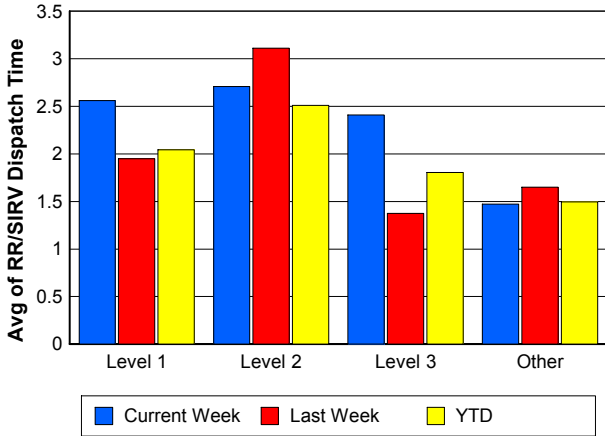
TMC Verification Time



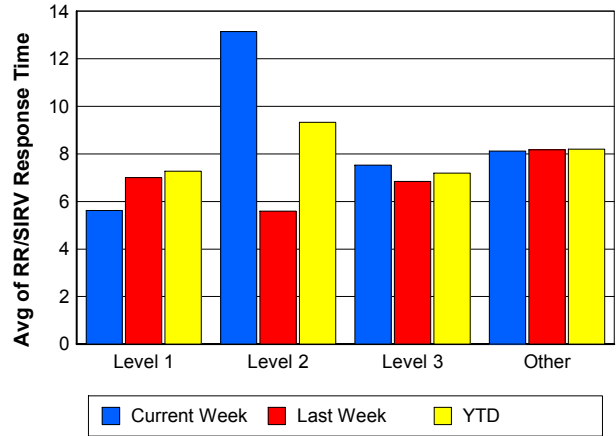
TMC Response Time



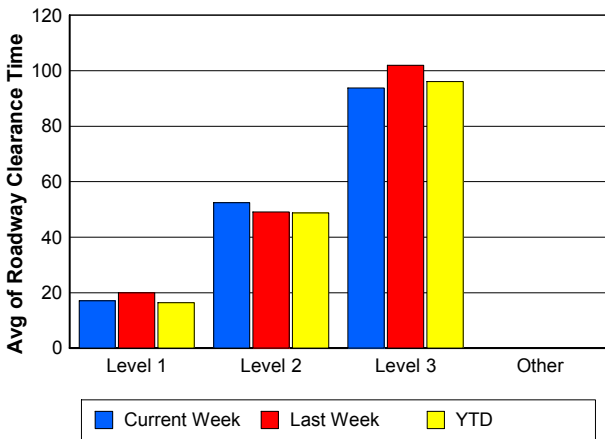
Road Ranger / SIRV Dispatch Time



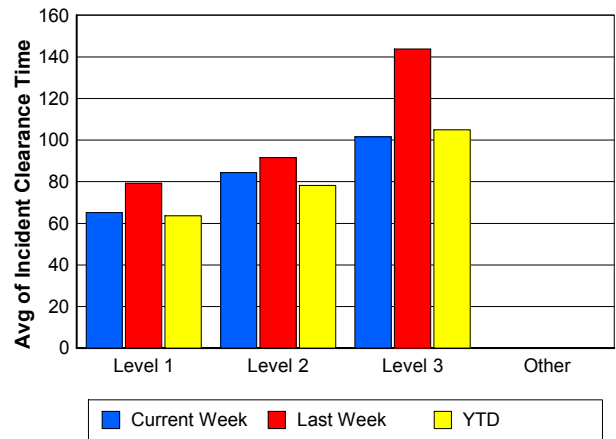
Road Ranger / SIRV Response Time



Roadway Clearance Time (2A)



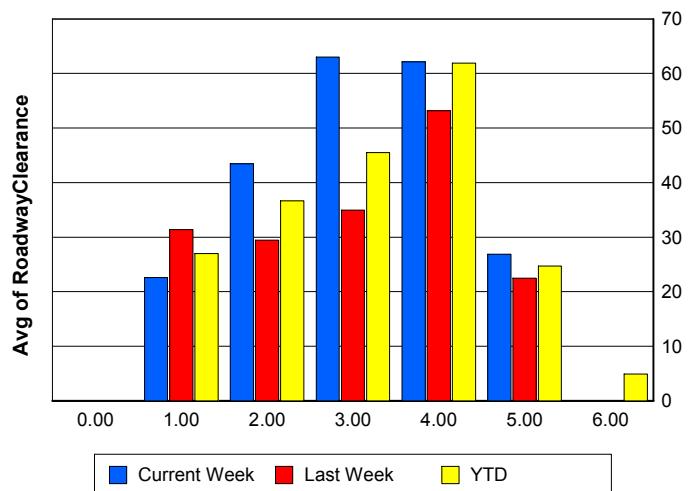
Incident Clearance Time (3B)



Roadway Clearance by Maximum Number of Lanes Blocked

	Current Week	Last Week	YTD
0			
1	22.57	31.40	27.00
2	43.47	29.47	36.64
3	63.01	34.96	45.48
4	62.13	53.17	61.92
5	26.85	22.50	24.67
6	0.00	0.00	4.93

Roadway Clearance Time (2A)



Performance Measures by Roadway

595

	<u>Current Week</u>	<u>Last Week</u>	<u>YTD</u>
Number of Events	47	37	145
Number of Incidents	0	2	2
TMC Detection (min.)	0.00	0.00	0.00
TMC Verification (min.)	1.12	4.79	2.20
TMC Response (min.)	20.09	20.58	14.73
RR Dispatch Time (min.)	2.28	2.09	2.52
RR Resp. Time (min.)	17.70	18.16	12.70
Event Clearance (min.)	14.73	22.08	17.69
Roadway Clear. (min.)		31.30	31.30
Incident Clearance (min.)		73.46	73.46
# of Events w/ RR/SIRV	27	32	106
RR/SIRV Responses	27	32	106
RR/SIRV Activities	12	22	68

75

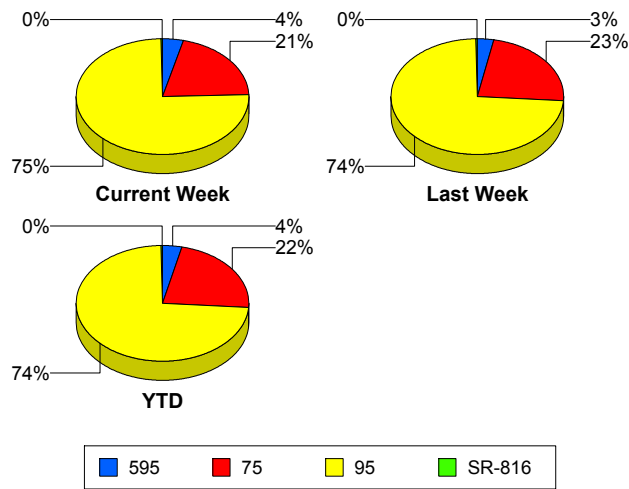
	<u>Current Week</u>	<u>Last Week</u>	<u>YTD</u>
Number of Events	254	290	872
Number of Incidents	4	3	8
TMC Detection (min.)	0.00	0.00	0.00
TMC Verification (min.)	2.33	1.22	1.72
TMC Response (min.)	10.06	10.79	10.13
RR Dispatch Time (min.)	1.72	1.70	1.63
RR Resp. Time (min.)	8.59	9.50	8.78
Event Clearance (min.)	19.47	20.14	19.06
Roadway Clear. (min.)	65.59	22.28	42.13
Incident Clearance (min.)	83.07	121.43	97.94
# of Events w/ RR/SIRV	180	230	677
RR/SIRV Responses	180	230	677
RR/SIRV Activities	154	177	539

95

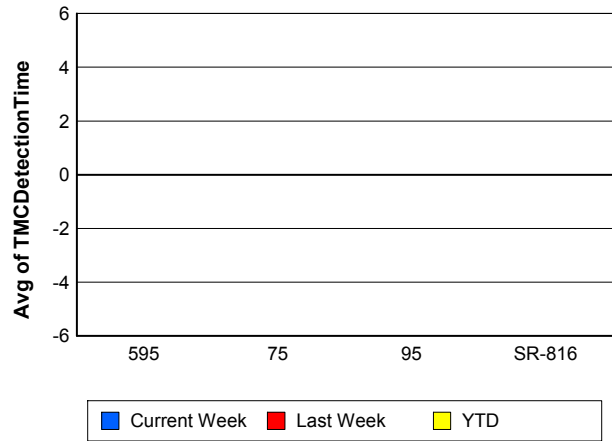
	<u>Current Week</u>	<u>Last Week</u>	<u>YTD</u>
Number of Events	926	919	2,886
Number of Incidents	41	34	126
TMC Detection (min.)	0.00	0.00	0.00
TMC Verification (min.)	0.83	1.07	0.95
TMC Response (min.)	9.12	8.81	9.20
RR Dispatch Time (min.)	1.46	1.65	1.46
RR Resp. Time (min.)	7.79	7.34	7.89
Event Clearance (min.)	19.73	19.39	19.43
Roadway Clear. (min.)	38.71	32.09	33.04
Incident Clearance (min.)	77.90	84.16	71.72
# of Events w/ RR/SIRV	778	759	2,396
RR/SIRV Responses	778	759	2,396
RR/SIRV Activities	596	632	1,947

	<u>Current Week</u>	<u>Last Week</u>	<u>YTD</u>
Number of Events	2	2	9
Number of Incidents	1	1	5
TMC Detection (min.)	0.00	0.00	0.00
TMC Verification (min.)	0.00	0.00	0.00
TMC Response (min.)	1.51	0.00	0.34
RR Dispatch Time (min.)	0.68	0.00	0.15
RR Resp. Time (min.)	0.82	0.00	0.18
Event Clearance (min.)	19.94	33.49	21.68
Roadway Clear. (min.)	10.93	63.27	31.75
Incident Clearance (min.)	10.87	63.48	31.96
# of Events w/ RR/SIRV	2	2	9
RR/SIRV Responses	2	2	9
RR/SIRV Activities	2	2	9

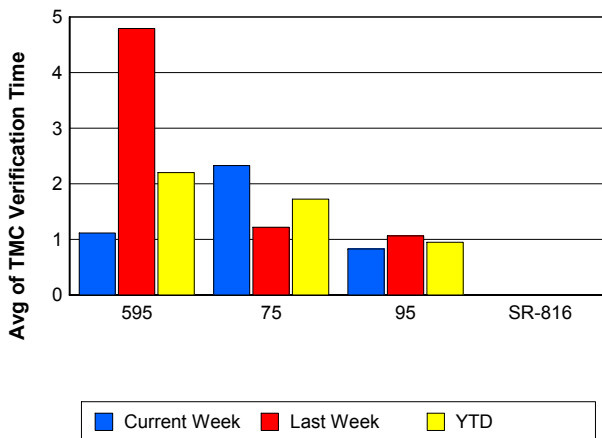
Number of Events / Roadway



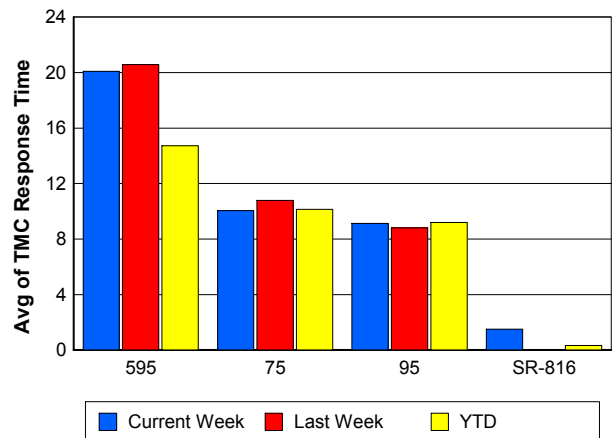
TMC Detection Time



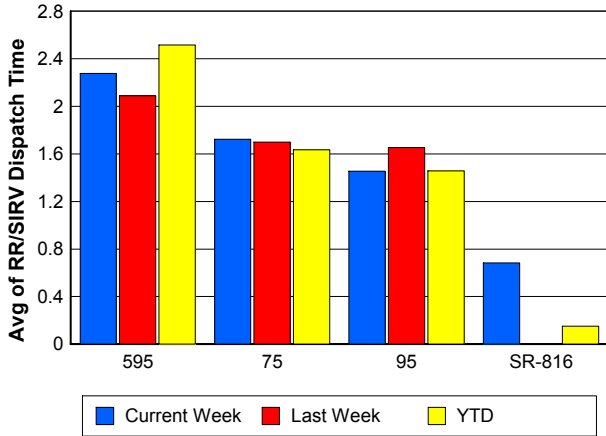
TMC Verification Time



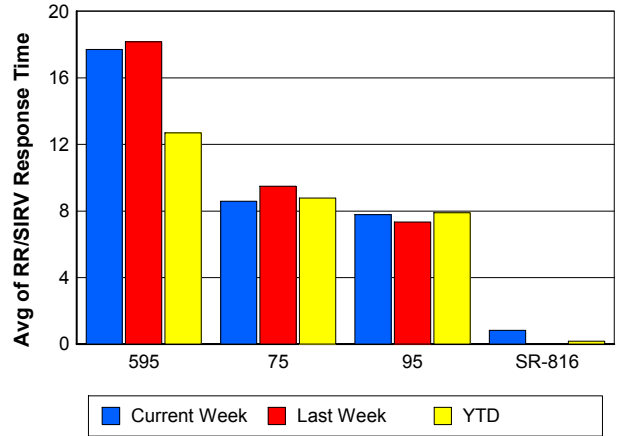
TMC Response Time



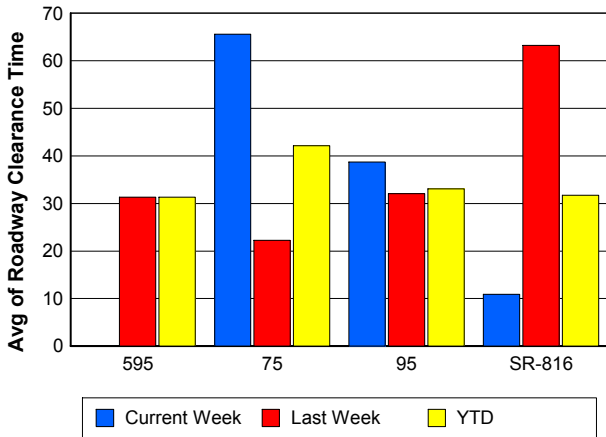
Road Ranger / SIRV Dispatch Time



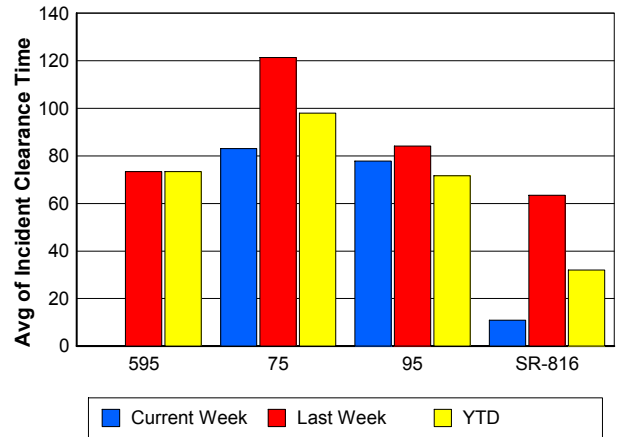
Road Ranger / SIRV Response Time



Roadway Clearance Time (2A)



Incident Clearance Time (3B)



Performance Measures by Event Type

Accident

	<u>Current Week</u>	<u>Last Week</u>	<u>YTD</u>
Number of Events	74	56	222
Number of Incidents	36	32	103
TMC Detection (min.)	0.00	0.00	0.00
TMC Verification (min.)	1.30	2.17	1.51
TMC Response (min.)	11.25	11.92	11.42
RR Dispatch Time (min.)	2.04	2.48	2.14
RR Response Time (min.)	9.21	9.45	9.27
Event Clearance (min.)	63.84	80.17	63.11
Roadway Clearance (min.)	35.05	35.42	34.00
Incident Clearance (min.)	82.28	98.80	82.90
# of Events w/ RR/SIRV	74	56	222
RR/SIRV Assists	74	56	222
RR/SIRV Activities	125	98	341

Debris on Roadway

	<u>Current Week</u>	<u>Last Week</u>	<u>YTD</u>
Number of Events	40	27	103
Number of Incidents	2	1	5
TMC Detection (min.)	0.00	0.00	0.00
TMC Verification (min.)	6.74	10.94	6.60
TMC Response (min.)	9.34	13.56	9.48
RR Dispatch Time (min.)	1.82	3.11	1.79
RR Response Time (min.)	7.49	10.45	7.62
Event Clearance (min.)	15.83	17.07	13.81
Roadway Clearance (min.)	114.50	31.92	58.09
Incident Clearance (min.)	88.50	33.42	50.76
# of Events w/ RR/SIRV	38	26	99
RR/SIRV Assists	38	26	99
RR/SIRV Activities	39	31	104

Disabled Vehicle

	<u>Current Week</u>	<u>Last Week</u>	<u>YTD</u>
Number of Events	649	713	2,140
Number of Incidents	3	7	23
TMC Detection (min.)	0.00	0.00	0.00
TMC Verification (min.)	1.58	1.54	1.62
TMC Response (min.)	9.09	9.41	9.35
RR Dispatch Time (min.)	1.32	1.40	1.33
RR Response Time (min.)	7.82	8.09	8.11
Event Clearance (min.)	20.66	21.50	21.03
Roadway Clearance (min.)	6.67	16.89	14.18
Incident Clearance (min.)	10.71	34.44	30.33
# of Events w/ RR/SIRV	625	689	2,072
RR/SIRV Assists	625	689	2,072
RR/SIRV Activities	557	678	1,996

Emergency Vehicles

	<u>Current Week</u>	<u>YTD</u>
Number of Events	2	5
Number of Incidents	1	4
TMC Detection (min.)	0.00	0.00
TMC Verification (min.)	0.00	0.00
TMC Response (min.)	9.77	7.04
RR Dispatch Time (min.)	0.62	0.62
RR Response Time (min.)	9.15	6.54
Event Clearance (min.)	20.92	17.76
Roadway Clearance (min.)	18.58	14.17
Incident Clearance (min.)	20.47	16.85
# of Events w/ RR/SIRV	2	5
RR/SIRV Assists	2	5
RR/SIRV Activities	2	5

Other

	<u>Current Week</u>	<u>Last Week</u>	<u>YTD</u>
Number of Events	455	451	1,424
Number of Incidents	1	0	2
TMC Detection (min.)	0.00	0.00	0.00
TMC Verification (min.)	0.02	0.01	0.05
TMC Response (min.)	12.67	3.44	8.98
RR Dispatch Time (min.)	1.86	2.10	1.87
RR Response Time (min.)	11.58	2.69	8.02
Event Clearance (min.)	10.29	9.42	10.06
Roadway Clearance (min.)	30.95		111.73
Incident Clearance (min.)	34.05		97.91
# of Events w/ RR/SIRV	241	251	775
RR/SIRV Assists	241	251	775
RR/SIRV Activities	31	25	101

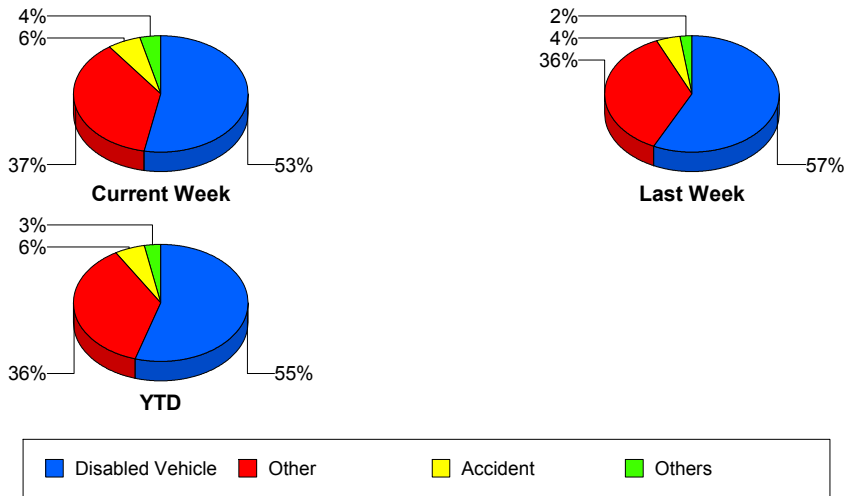
Police Activity

	<u>Current Week</u>	<u>Last Week</u>	<u>YTD</u>
Number of Events	4	1	8
Number of Incidents	2	0	3
TMC Detection (min.)	0.00	0.00	0.00
TMC Verification (min.)	1.20	0.00	0.86
TMC Response (min.)	6.90	7.00	6.37
RR Dispatch Time (min.)	2.12	0.53	1.41
RR Response Time (min.)	4.78	6.47	5.04
Event Clearance (min.)	80.64	9.55	51.03
Roadway Clearance (min.)	111.46		82.13
Incident Clearance (min.)	115.65		97.83
# of Events w/ RR/SIRV	2	1	6
RR/SIRV Assists	2	1	6
RR/SIRV Activities	5	1	7

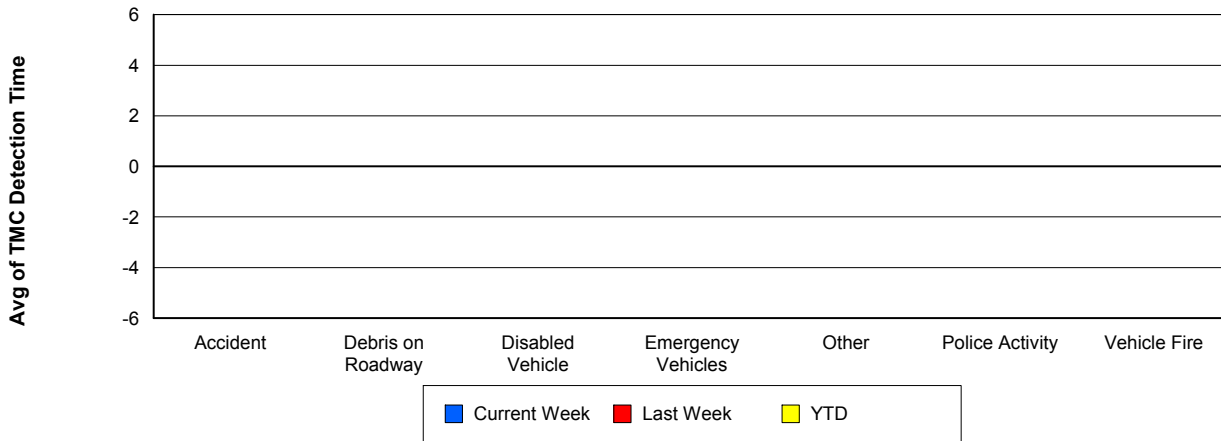
Vehicle Fire

	<u>Current Week</u>	<u>YTD</u>
Number of Events	2	3
Number of Incidents	1	1
TMC Detection (min.)	0.00	0.00
TMC Verification (min.)	3.43	2.71
TMC Response (min.)	7.82	9.42
RR Dispatch Time (min.)	0.50	0.72
RR Response Time (min.)	7.32	8.70
Event Clearance (min.)	48.90	38.68
Roadway Clearance (min.)	77.27	77.27
Incident Clearance (min.)	80.08	80.08
# of Events w/ RR/SIRV	2	3
RR/SIRV Assists	2	3
RR/SIRV Activities	2	3

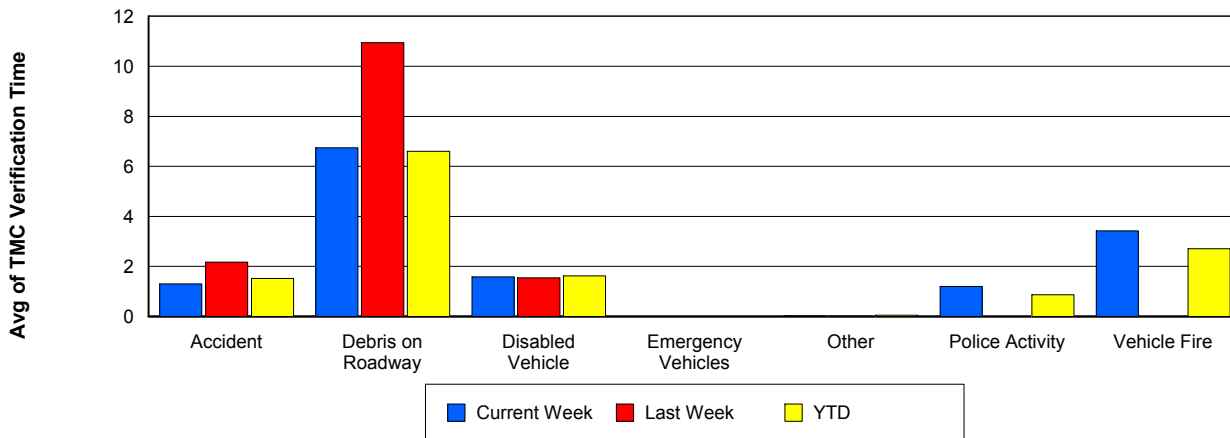
Number of Events / Event Type



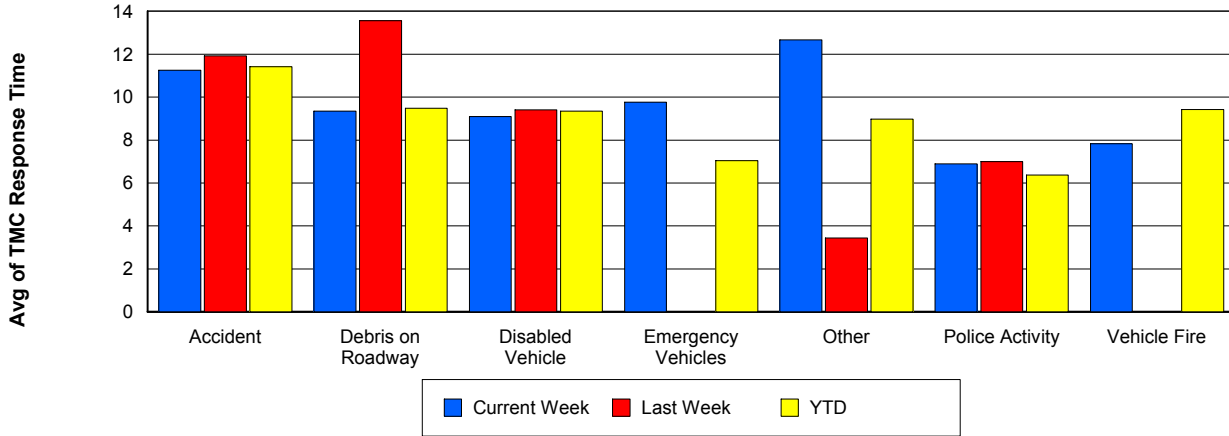
TMC Detection Time



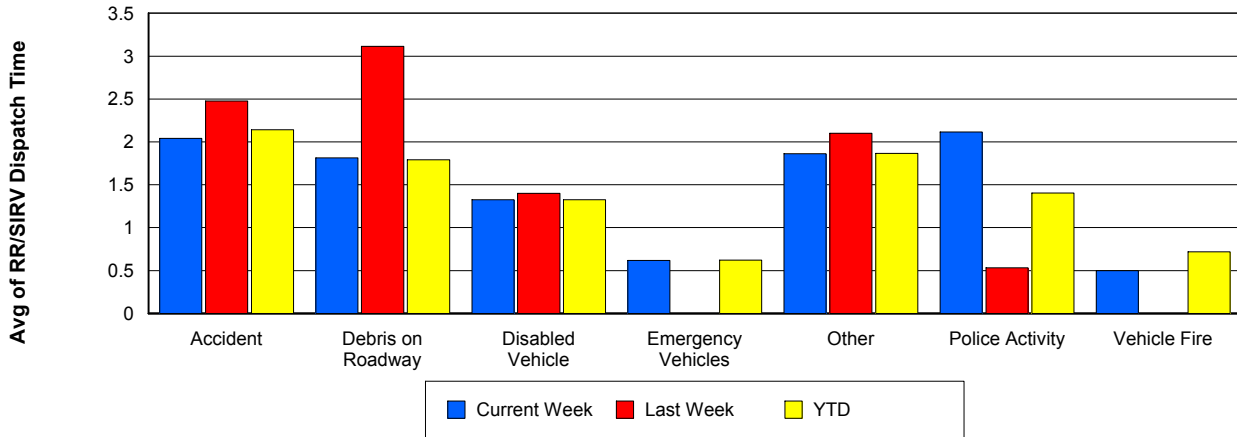
TMC Verification Time



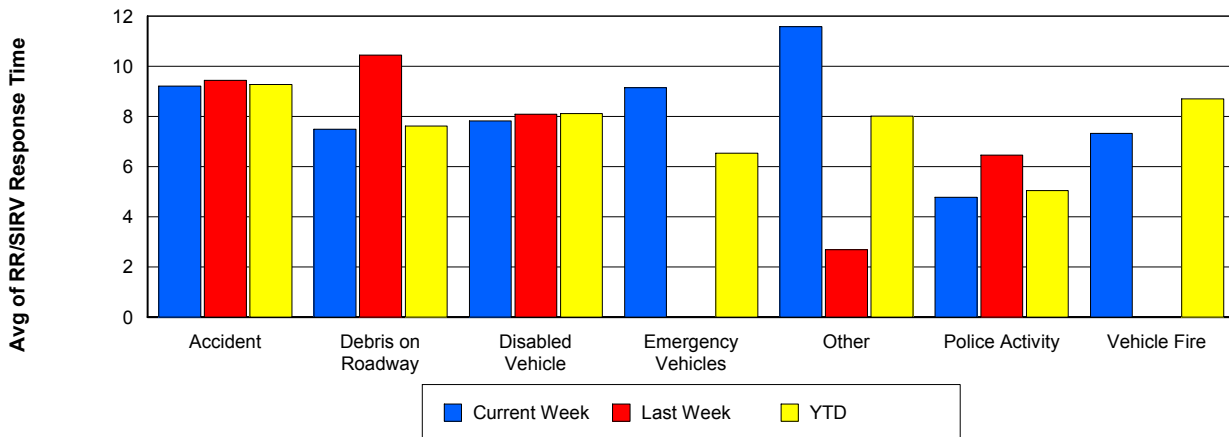
TMC Response Time



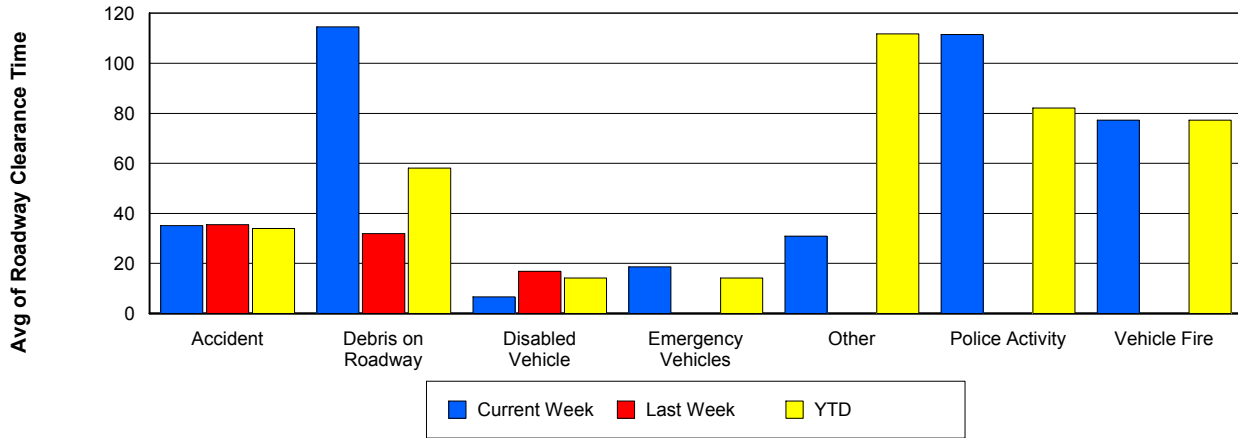
Road Ranger / SIRV Dispatch Time



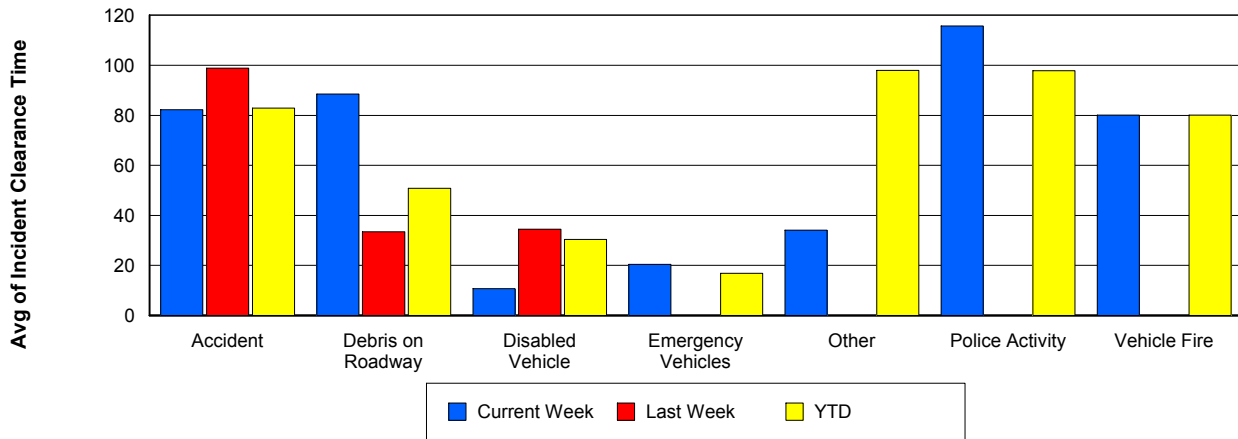
Road Ranger / SIRV Response Time



Roadway Clearance Time (2A)



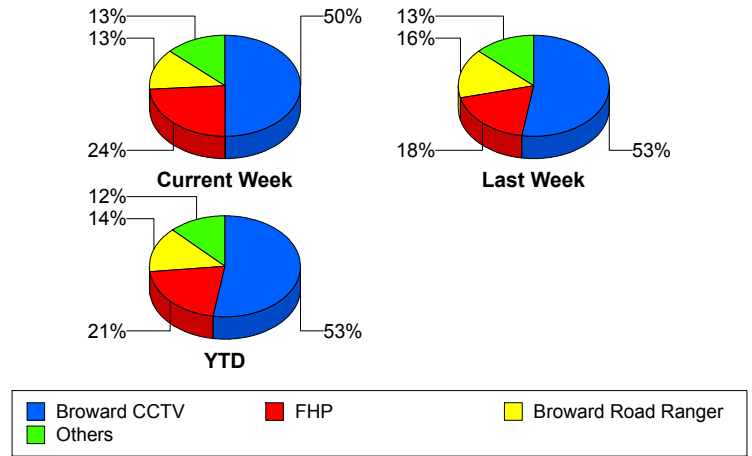
Incident Clearance Time (3B)



Incident Detection Methods

	Current Week	Last Week	YTD
Broward CCTV	23	20	73
Broward Road Ranger	6	6	20
Broward TMC	0	0	1
Broward VideoWall	2	1	5
BSO	0	1	1
District 4	1	1	3
FHP	11	7	29
Local Police	1	0	1
Motorist	0	2	2
Road Watcher	1	0	1
VisioPaD Detection	1	0	3
Total	46	38	139

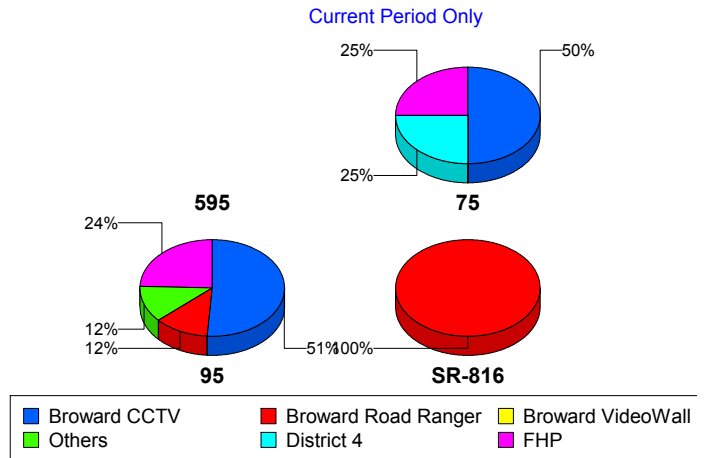
Total Incidents by Detection Method



Incident Detection Methods by Roadway

		Current Week	Last Week	YTD
75	Broward CCTV	2	1	3
	District 4	1	0	1
	FHP	1	2	4
	Total	4	3	8
95	Broward CCTV	21	19	70
	Broward Road Ranger	5	5	15
	Broward TMC	0	0	1
	Broward VideoWall	2	1	5
	BSO	0	1	1
	District 4	0	1	2
	FHP	10	5	25
	Local Police	1	0	1
	Motorist	0	2	2
	Road Watcher	1	0	1
	VisioPaD Detection	1	0	3

Total Events by Roadway and Detection Method

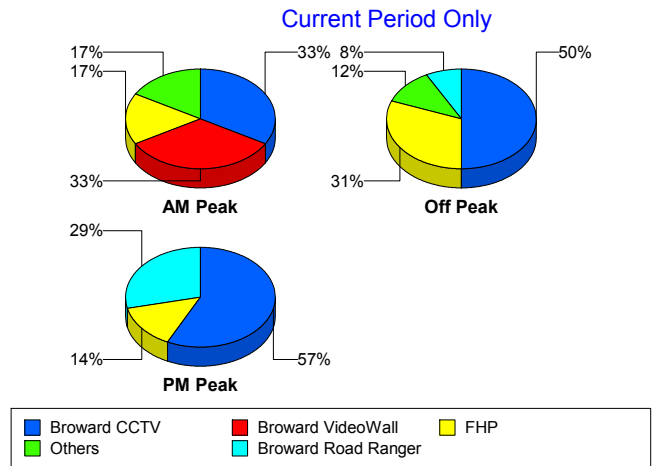


		Current Week	Last Week	YTD
95	Total	41	34	126
SR-816	Broward Road Ranger	1	1	5
	Total	1	1	5
Total		46	38	139

Incident Detection Methods by Peak Period

		Current Week	Last Week	YTD
AM Peak	Broward CCTV	2	5	8
	Broward Road Ranger	0	1	2
	Broward VideoWall	2	0	3
	District 4	0	1	1
	FHP	1	1	5
	Local Police	1	0	1
	Total	6	8	20
Off Peak	Broward CCTV	13	10	40
	Broward Road Ranger	2	2	7
	Broward TMC	0	0	1
	Broward VideoWall	0	1	1
	District 4	1	0	2
	FHP	8	4	16
	Motorist	0	1	1
	Road Watcher	1	0	1
	VisioPaD Detection	1	0	2
	Total	26	18	71
PM Peak	Broward CCTV	8	5	25
	Broward Road Ranger	4	3	11
	Broward VideoWall	0	0	1
	BSO	0	1	1
	FHP	2	2	8
	Motorist	0	1	1
	VisioPaD Detection	0	0	1
	Total	14	12	48

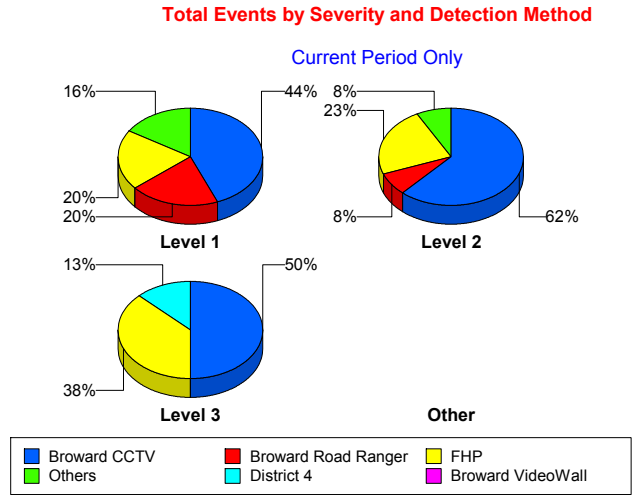
Total Events by Peak Period and Detection Method



	Current Week	Last Week	YTD
Total	46	38	139

Incident Detection Methods by Severity

		Current Week	Last Week	YTD
Level 1	Broward CCTV	11	15	49
	Broward Road Ranger	5	2	11
	Broward TMC	0	0	1
	Broward VideoWall	2	1	4
	BSO	0	1	1
	District 4	0	1	2
	FHP	5	4	14
	Motorist	0	2	2
	Road Watcher	1	0	1
	VisioPaD Detection	1	0	1
	Total	25	26	86
	Level 2	Broward CCTV	8	5
Broward Road Ranger		1	4	8
Broward VideoWall		0	0	1
FHP		3	1	8
Local Police		1	0	1
VisioPaD Detection		0	0	2
Total		13	10	39
Level 3	Broward CCTV	4	0	5
	Broward Road Ranger	0	0	1
	District 4	1	0	1
	FHP	3	2	7
	Total	8	2	14
Total		46	38	139



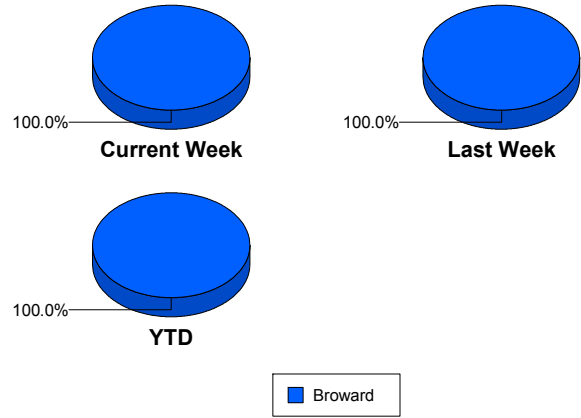
Road Ranger / SIRV Performance Measures

Road Ranger / SIRV Performance By County

Values presented are:
 - Total Events with a RR/SIRV Response
 - Total RR/SIRV Responses,
 - Total Activities Performed

	Current We	Last Week	YTD
Broward	820	902	2,795
	885	960	2,979
	915	1,005	3,103

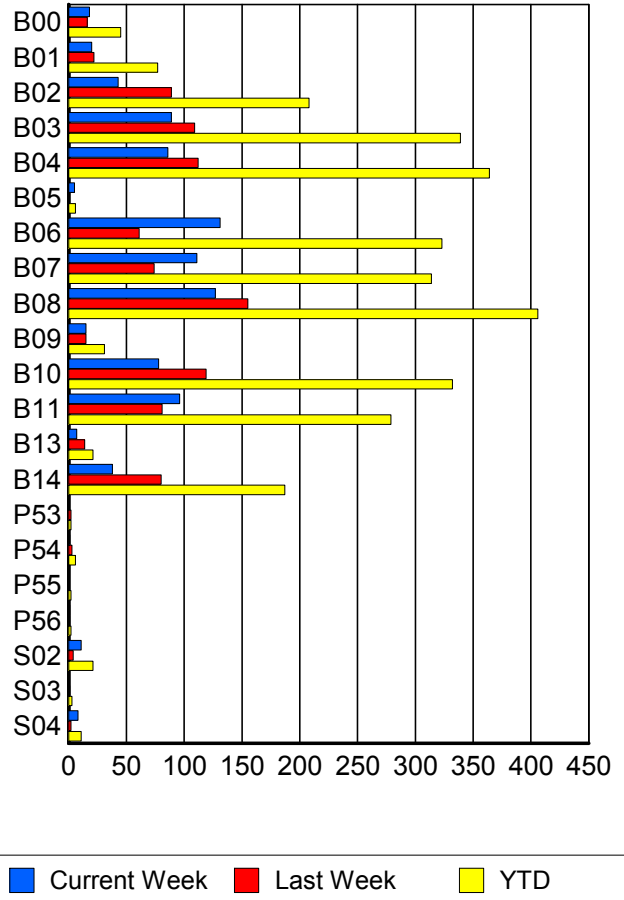
RR/SIRV Responses per County



Road Ranger / SIRV Performance By Truck

	Current We	Last Week	YTD
B00	18	16	45
	18	16	45
	18	20	51
B01	20	22	76
	20	22	77
	21	22	79
B02	43	87	206
	43	89	208
	43	91	211
B03	89	109	338
	89	109	339
	95	112	356
B04	85	111	358
	86	112	364
	87	116	374
B05	5	0	6
	5	0	6
	5	0	6
B06	128	60	317
	131	61	323
	133	68	340
B07	108	74	306
	111	74	314
	115	75	327
B08	125	151	400
	127	155	406
	131	168	428

RR/SIRV Responses per Truck



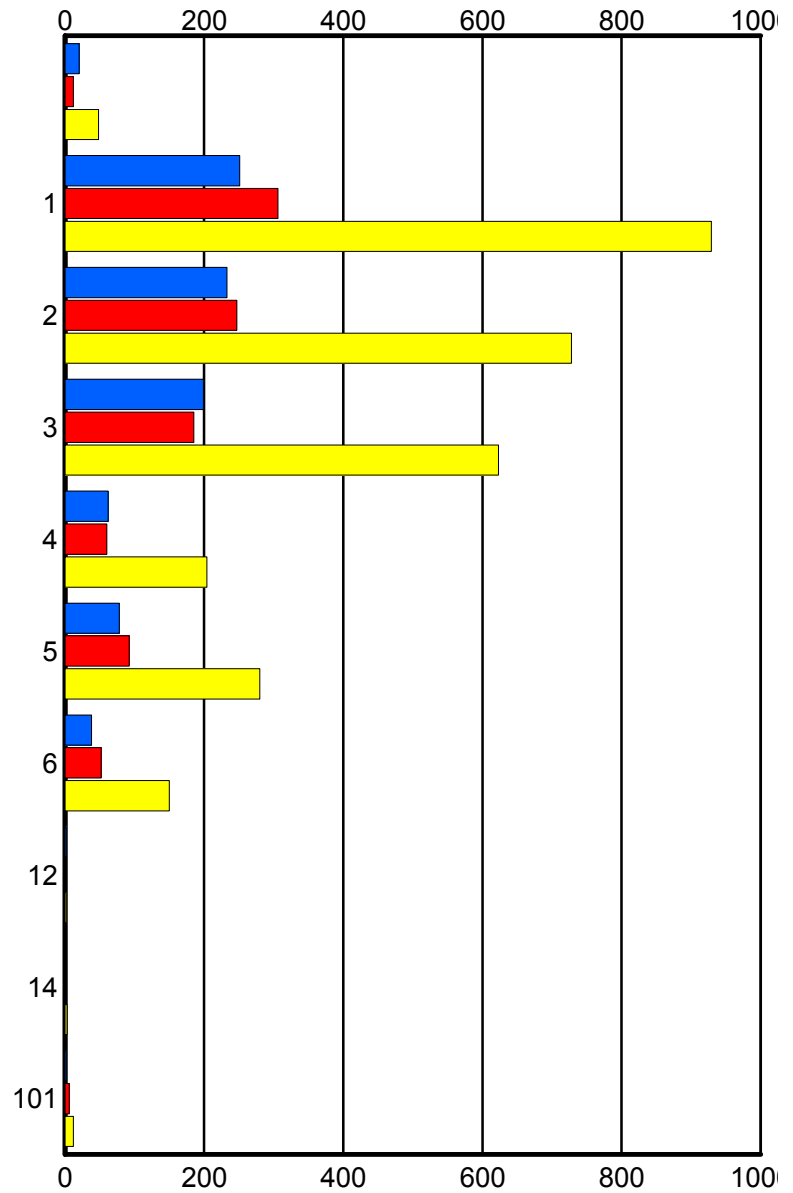
	Current We	Last Week	YTD
B09	15 15 15	15 15 15	31 31 31
B10	77 78 82	118 119 121	328 332 340
B11	96 96 97	81 81 88	278 279 291
B13	7 7 8	13 14 14	20 21 22
B14	38 38 40	78 80 82	183 187 195
P53	0 0 0	2 2 2	2 2 2
P54	1 1 1	3 3 3	6 6 6
P55	0 0 0	0 0 0	2 2 2
P56	1 1 3	1 1 1	2 2 4
S02	11 11 12	4 4 4	21 21 23
S03	0 0 0	1 1 1	3 3 3
S04	8 8 9	2 2 2	11 11 12

Road Ranger / SIRV Performance By Beat

	Current We	Last Week	YTD
	20	12	48
	20	12	48
	21	12	50
1	243	289	891
	251	306	929
	259	325	977
2	224	239	707
	233	247	728
	238	257	757
3	195	185	611
	199	185	623
	206	194	649
4	60	59	199
	62	60	204
	66	63	212
5	78	92	278
	78	92	280
	80	94	286
6	37	52	148
	38	52	150
	39	54	153
12	2	0	2
	2	0	2
	2	0	2
14	0	0	3
	0	0	3
	0	0	3
101	2	6	12
	2	6	12
	4	6	14

Values presented are:
 - Total Events with a RR/SIRV Response
 - Total RR/SIRV Responses,
 - Total Activities Performed

RR/SIRV Responses per Beat

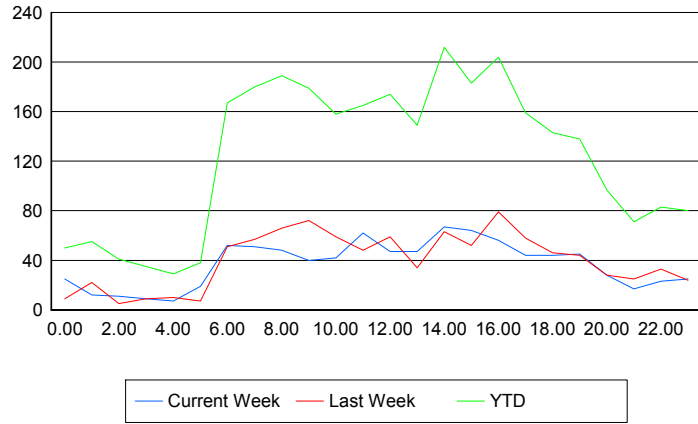


Road Ranger / SIRV Performance By Time of Day

Values presented are:
 - Total Events with a RR/SIRV Response
 - Total RR/SIRV Responses,
 - Total Activities Performed

	Current We	Last Week	YTD
12AM-1AM	25	8	49
	25	9	50
	26	12	54
1AM-2AM	12	22	54
	12	22	55
	12	23	58
2AM-3AM	9	5	38
	11	5	41
	11	5	44
3AM-4AM	9	7	33
	9	9	35
	9	12	39
4AM-5AM	7	10	28
	7	10	29
	7	10	29
5AM-6AM	16	5	31
	19	7	38
	20	9	41
6AM-7AM	47	46	152
	52	51	167
	52	53	174
7AM-8AM	51	54	174
	51	57	180
	53	58	190
8AM-9AM	45	61	181
	48	66	189
	51	68	196
9AM-10AM	39	66	170
	40	72	179
	40	78	187
10AM-11AM	40	53	149
	42	59	158
	44	62	163
11AM-12PM	57	44	153
	62	48	165
	63	51	172
12PM-1PM	43	57	163
	47	59	174
	48	59	177

Number of Responses / Hour of the Day



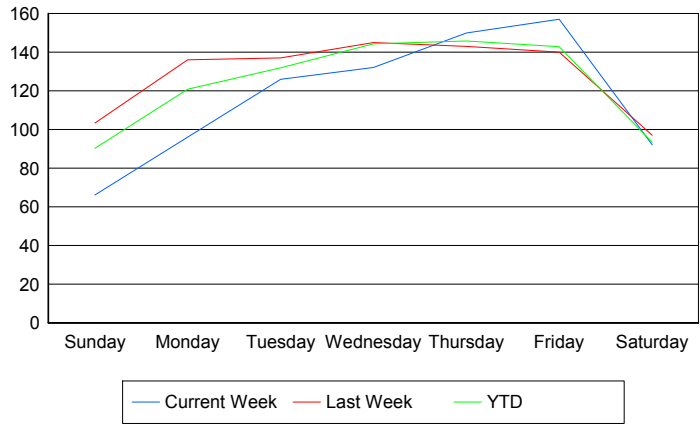
	Current We	Last Week	YTD
1PM-2PM	42	34	136
	47	34	149
	50	35	155
2PM-3PM	58	59	195
	67	63	212
	77	65	225
3PM-4PM	55	51	171
	64	52	183
	64	55	189
4PM-5PM	54	72	193
	56	79	204
	57	84	214
5PM-6PM	42	56	150
	44	58	159
	44	58	161
6PM-7PM	43	45	137
	44	46	143
	45	47	151
7PM-8PM	40	41	129
	45	44	138
	46	45	142
8PM-9PM	25	28	91
	28	28	97
	29	28	98
9PM-10PM	17	25	67
	17	25	71
	17	25	72
10PM-11PM	20	30	76
	23	33	83
	25	36	89
11PM-12AM	24	23	75
	25	24	80
	25	27	83

Road Ranger / SIRV Performance By Day of Week

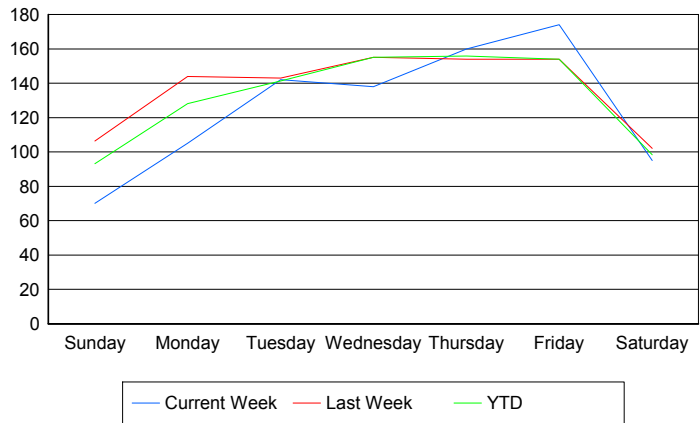
Values presented are:
 - Total Events with a RR/SIRV Response
 - Total RR/SIRV Responses,
 - Total Activities Performed

	Current We	Last Week	YTD
Sunday	67	105	266
	71	108	275
	74	109	281
Monday	96	136	356
	105	144	378
	108	150	393
Tuesday	126	137	396
	142	143	424
	147	145	435
Wednesday	132	145	430
	138	155	461
	138	158	477
Thursday	150	143	437
	160	154	467
	169	163	492
Friday	157	140	543
	174	154	584
	181	169	617
Saturday	92	97	371
	95	102	390
	98	111	408

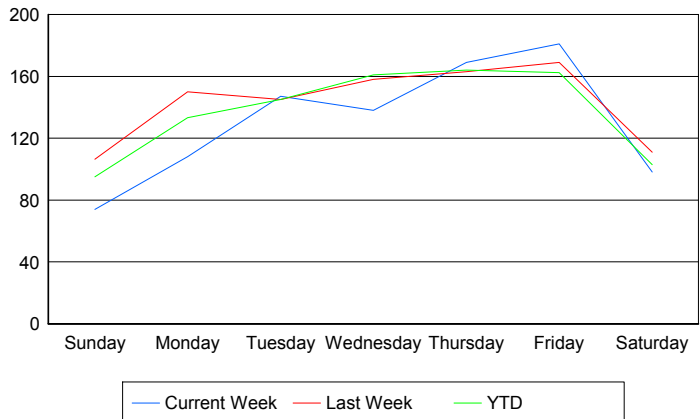
Avg # of events with a RR/SIRV Response per Day of the Week



Avg # of RR/SIRV Responses per Day of the Week



Avg # of RR/SIRV Activities Performed per Day of the Week



Road Ranger / SIRV Responses per Time of Day and Day of Week

