



Weekly Performance Measures Report Broward County



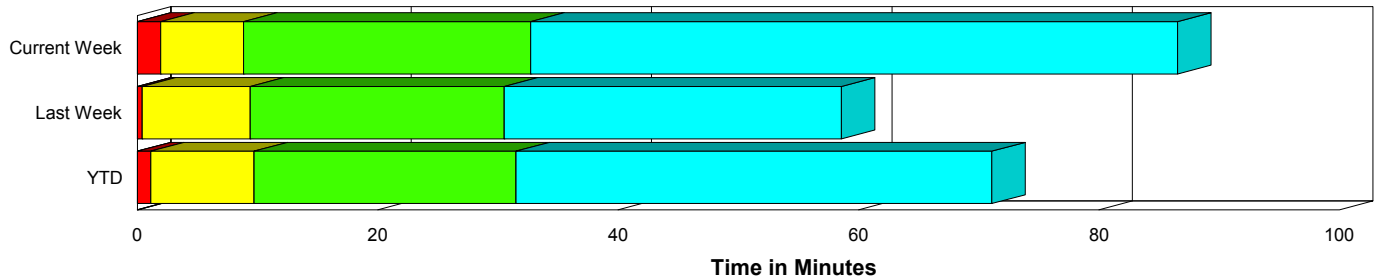
Created on:
January 18, 2010
8:39 am

Period From Jan 10, 2010 to Jan 16, 2010

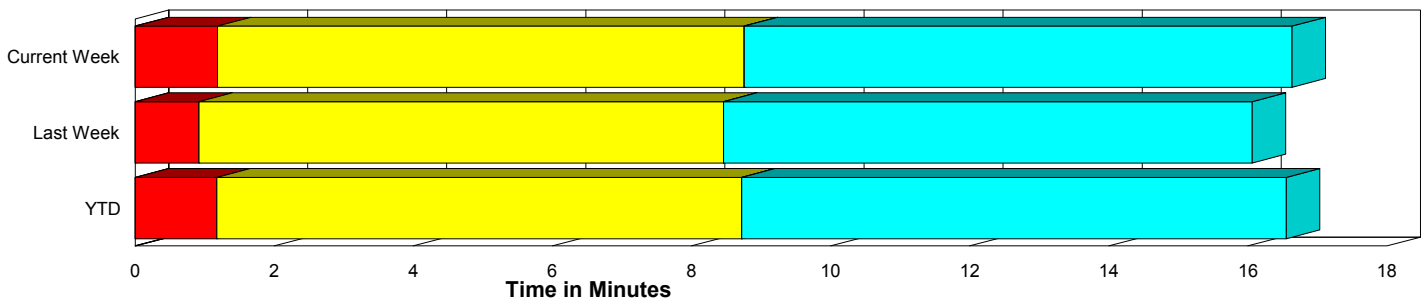
Performance Measures Summary

	Traffic Events (No Lanes Blocked)			Incidents (Lanes Blocked)		
	<u>This Week</u>	<u>Last Week</u>	<u>YTD</u>	<u>This Week</u>	<u>Last Week</u>	<u>YTD</u>
Number of Events	1,208	1,172	2,588	40	43	95
TMC Detection (min.)	0.00	0.00	0.00	0.00	0.00	0.00
TMC Verification (min.)	1.19	0.92	1.18	1.94	0.40	1.11
TMC Response (min.)	9.59	9.10	9.52	8.87	9.46	9.79
RR Dispatch Time (min.)	1.65	1.37	1.51	2.24	1.49	1.94
RR Response Time (min.)	8.18	7.95	8.24	6.60	7.92	7.79
Roadway Clearance (min.)				32.09	28.05	30.12
Event Clearance (min.)	17.47	16.70	17.36	85.91	55.38	69.36
# of Events w/ RR/SIRV	983	944	2,107	40	42	94
RR/SIRV Responses	983	944	2,107	40	42	94
RR/SIRV Activities	749	733	1,632	84	67	167

Incident Clearance Time-Line



Traffic Event (Non-Lane Blockage) Time-Line



■ Avg. TMC Detection Time	■ Avg. Time from TMC Response to Roadway Clearance*
■ Avg. Time from TMC Detection to TMC Verification	■ Avg. Time from Roadway Clearance to Incident/Event Clearance**
■ Avg. Time from TMC Verification to TMC Response	

* Roadway clearance equals all travel lanes open

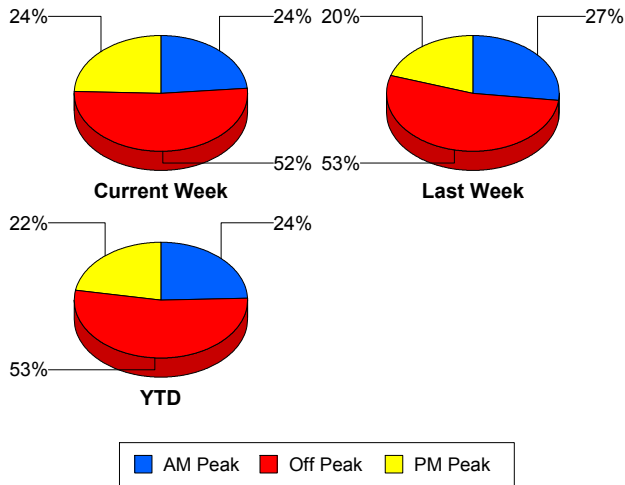
** Incident clearance equals time when last responder has left the scene

Performance Measures by Peak Period

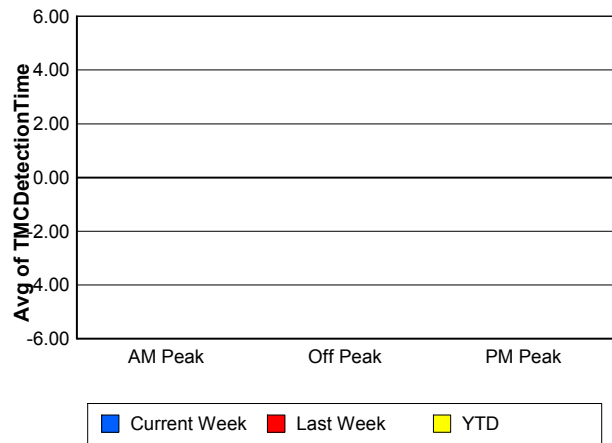
Note: AM peak period is defined as 6am to 10am and PM peak period is defined as 3pm to 7pm.

	AM Peak			Off Peak			PM Peak		
	<u>Current Week</u>	<u>Last Week</u>	<u>YTD</u>	<u>Current Week</u>	<u>Last Week</u>	<u>YTD</u>	<u>Current Week</u>	<u>Last Week</u>	<u>YTD</u>
Number of Events	295	326	657	649	646	1,428	304	243	598
Number of Incidents	9	5	15	19	20	46	12	18	34
TMC Detection (min.)	0.00	0.00	0.00	0.00	0.00	0.00	0.00	0.00	0.00
TMC Verification (min.)	0.80	0.59	0.79	1.13	1.02	1.21	1.79	0.99	1.50
TMC Response (min.)	7.57	8.84	8.15	10.37	8.95	9.98	9.83	9.85	9.99
RR Dispatch Time (min.)	1.35	0.98	1.13	1.55	1.56	1.53	2.25	1.46	1.95
RR Response Time (min.)	6.34	8.04	7.17	8.96	7.64	8.64	8.06	8.59	8.34
Event Clearance (min.)	17.95	15.65	16.64	19.19	17.17	18.89	22.32	23.72	22.75
Roadway Clearance (min.)	39.49	25.30	33.69	33.97	34.34	34.30	23.56	21.81	22.89
Incident Clearance (min.)	87.53	45.93	71.97	78.65	52.83	65.12	96.18	60.83	73.95
# of Events w/ RR/SIRV	245	271	545	527	506	1,156	251	209	500
RR/SIRV Responses	245	271	545	527	506	1,156	251	209	500
RR/SIRV Activities	207	210	441	425	412	940	201	178	418

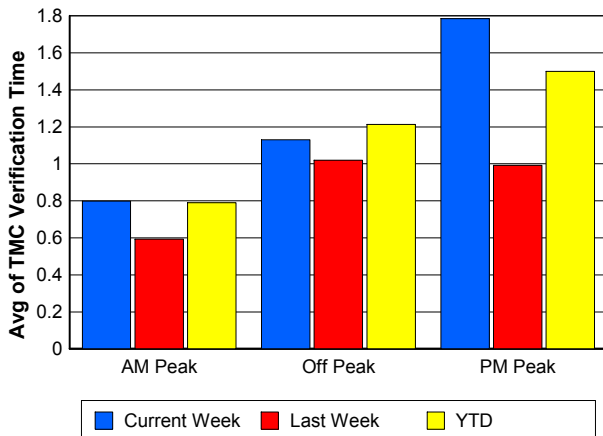
Number of Events / Peak Period



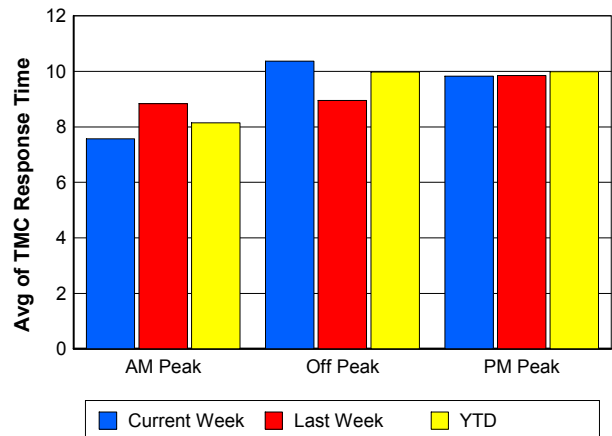
TMC Detection Time



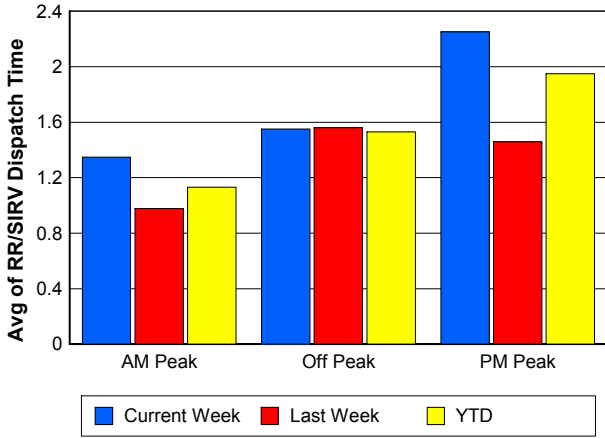
TMC Verification Time



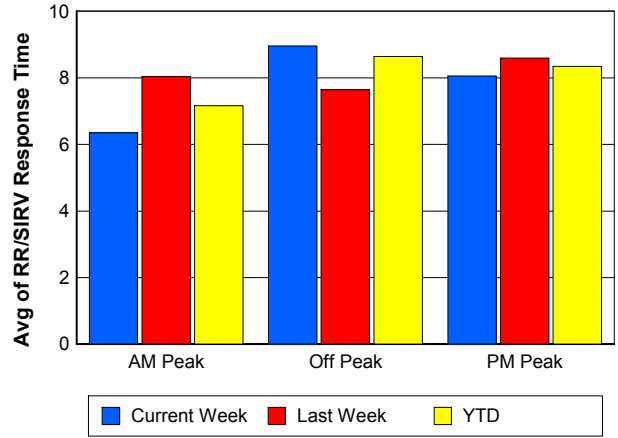
TMC Response Time



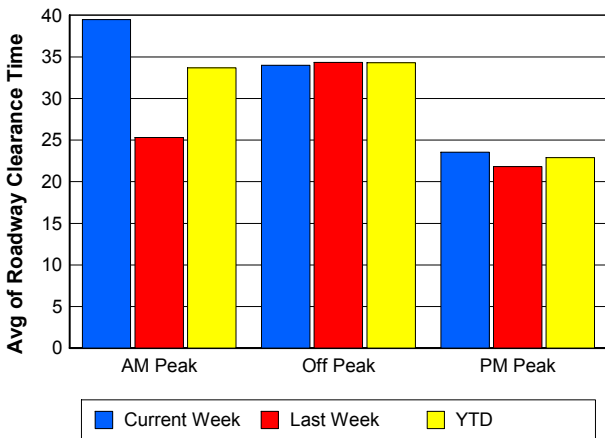
Road Ranger / SIRV Dispatch Time



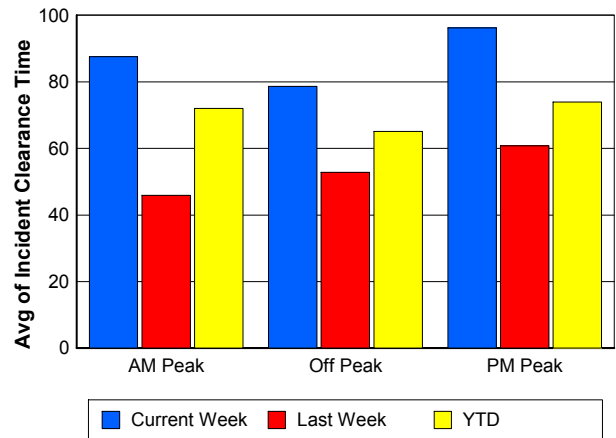
Road Ranger / SIRV Response Time



Roadway Clearance Time (2A)



Incident Clearance Time (3B)

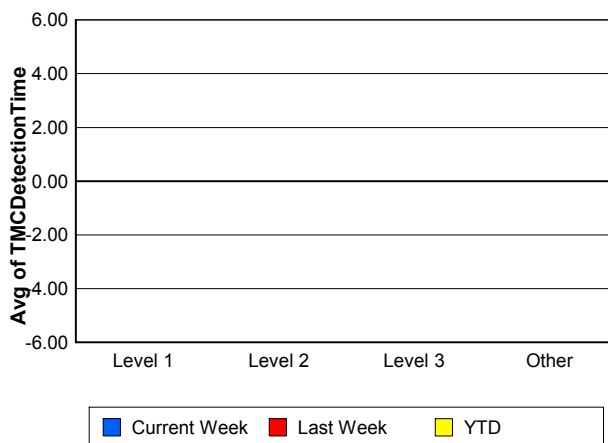
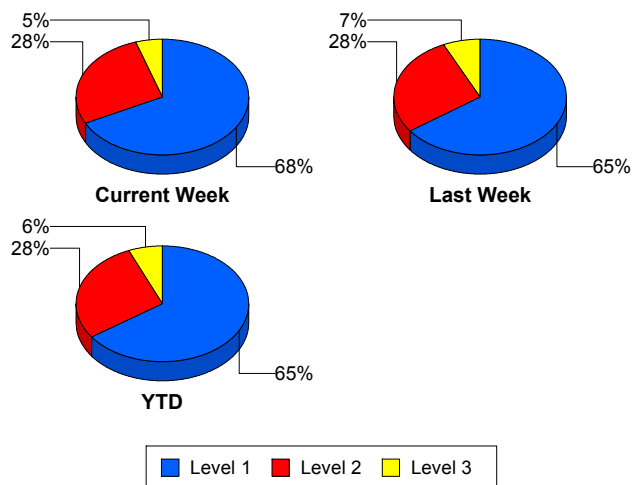


Performance Measures by Severity

	Level 1			Level 2			Level 3			Other		
	<u>This Week</u>	<u>Last Week</u>	<u>YTD</u>	<u>This Week</u>	<u>Last Week</u>	<u>YTD</u>	<u>This Week</u>	<u>Last Week</u>	<u>YTD</u>	<u>This Week</u>	<u>Last Week</u>	<u>YTD</u>
Number of Events	27	28	62	11	12	27	2	3	6	1,208	1,172	2,588
Number of Incidents	27	28	62	11	12	27	2	3	6	0	0	0
TMC Detection (min.)	0.00	0.00	0.00	0.00	0.00	0.00	0.00	0.00	0.00	0.00	0.00	0.00
TMC Verification (min.)	1.50	0.51	0.92	3.25	0.06	1.65	0.60	0.71	0.67	1.19	0.92	1.18
TMC Response (min.)	9.00	8.88	9.88	8.71	11.29	10.04	8.22	6.61	7.74	9.59	9.10	9.52
RR Dispatch Time (min.)	1.95	1.20	1.83	3.11	2.29	2.41	1.37	0.91	1.00	1.65	1.37	1.51
RR Resp. Time (min.)	7.01	7.65	7.98	5.59	9.00	7.63	6.84	5.70	6.74	8.18	7.95	8.24
Event Clearance (min.)	79.33	47.95	62.97	91.52	61.05	75.16	143.76	101.99	109.28	17.47	16.70	17.36
Roadway Clear. (min.)	19.98	12.36	16.15	49.09	44.09	46.90	102.02	110.25	99.01			
Incident Clearance (min.)	79.33	47.95	62.97	91.52	61.05	75.16	143.76	101.99	109.28			
# of Events w/ RR/SIRV	27	27	61	11	12	27	2	3	6	983	944	2,107
RR/SIRV Responses	27	27	61	11	12	27	2	3	6	983	944	2,107
RR/SIRV Activities	50	42	99	28	20	55	6	5	13	749	733	1,632

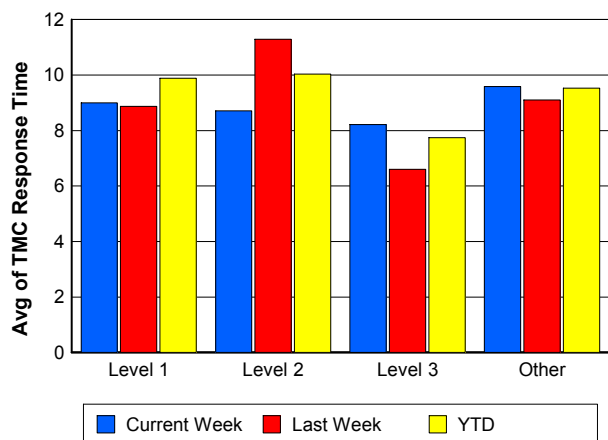
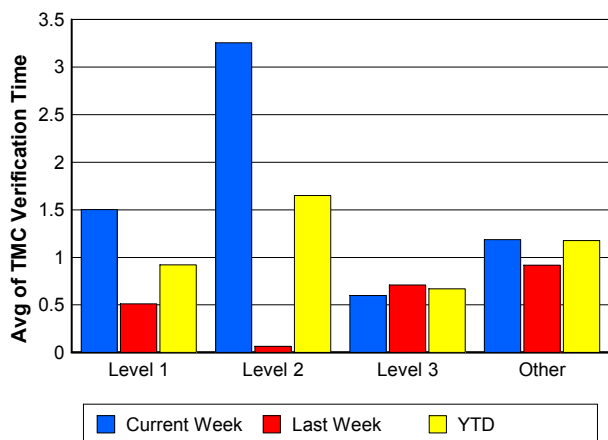
Number of Events / Severity

TMC Detection Time

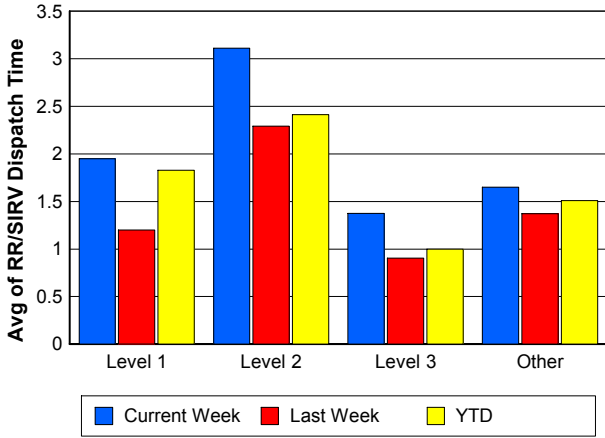


TMC Verification Time

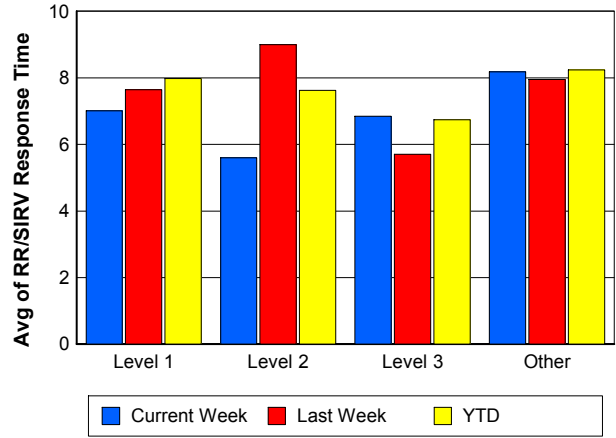
TMC Response Time



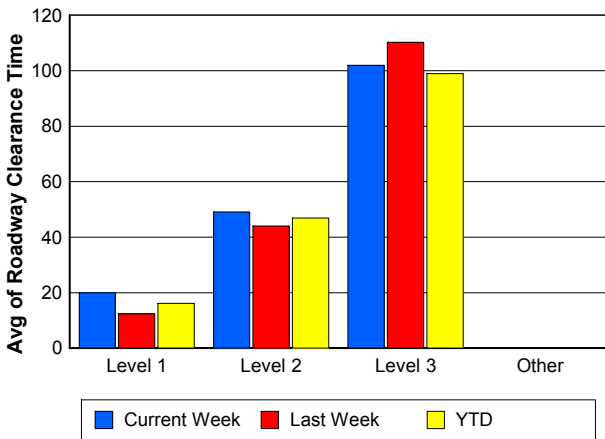
Road Ranger / SIRV Dispatch Time



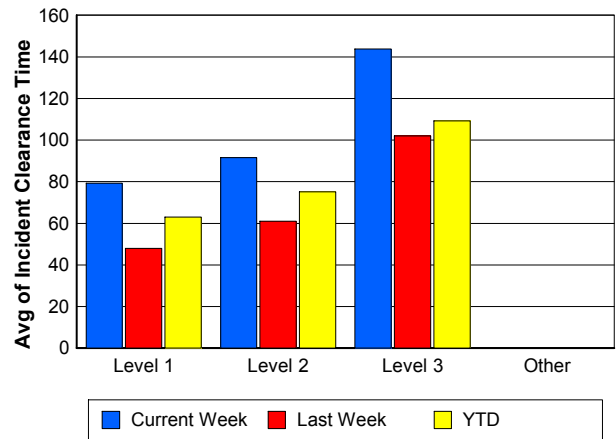
Road Ranger / SIRV Response Time



Roadway Clearance Time (2A)



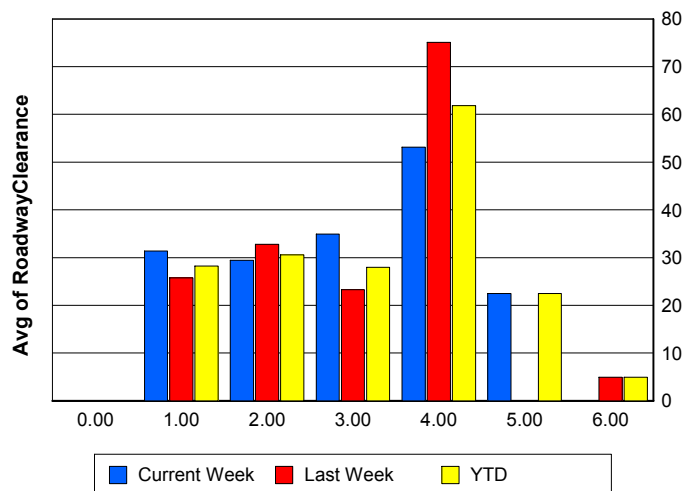
Incident Clearance Time (3B)



Roadway Clearance by Maximum Number of Lanes Blocked

	Current Week	Last Week	YTD
0			
1	31.40	25.76	28.25
2	29.47	32.81	30.56
3	34.96	23.27	27.94
4	53.17	75.12	61.84
5	22.50	0.00	22.50
6	0.00	4.93	4.93

Roadway Clearance Time (2A)



Performance Measures by Roadway

595

	<u>Current Week</u>	<u>Last Week</u>	<u>YTD</u>
Number of Events	37	53	98
Number of Incidents	2	0	2
TMC Detection (min.)	0.00	0.00	0.00
TMC Verification (min.)	4.79	1.66	2.71
TMC Response (min.)	20.58	9.51	13.47
RR Dispatch Time (min.)	2.09	3.31	2.60
RR Resp. Time (min.)	18.16	7.74	11.52
Event Clearance (min.)	22.08	17.62	19.11
Roadway Clear. (min.)	31.30		31.30
Incident Clearance (min.)	73.46		73.46
# of Events w/ RR/SIRV	32	41	79
RR/SIRV Responses	32	41	79
RR/SIRV Activities	22	31	56

75

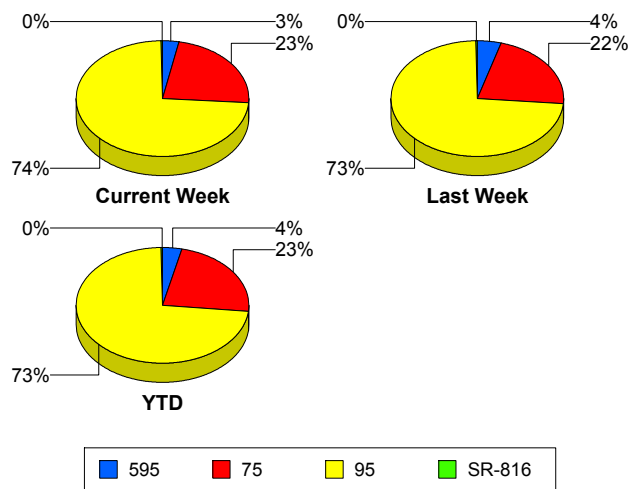
	<u>Current Week</u>	<u>Last Week</u>	<u>YTD</u>
Number of Events	290	267	618
Number of Incidents	3	0	4
TMC Detection (min.)	0.00	0.00	0.00
TMC Verification (min.)	1.22	1.02	1.48
TMC Response (min.)	10.79	8.27	10.16
RR Dispatch Time (min.)	1.70	1.26	1.60
RR Resp. Time (min.)	9.50	7.33	8.85
Event Clearance (min.)	20.14	16.46	18.89
Roadway Clear. (min.)	22.28		18.67
Incident Clearance (min.)	121.43		112.80
# of Events w/ RR/SIRV	230	213	497
RR/SIRV Responses	230	213	497
RR/SIRV Activities	177	164	385

95

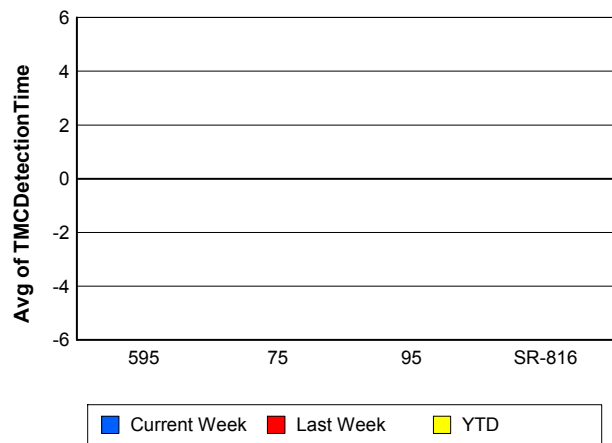
	<u>Current Week</u>	<u>Last Week</u>	<u>YTD</u>
Number of Events	919	890	1,960
Number of Incidents	34	40	85
TMC Detection (min.)	0.00	0.00	0.00
TMC Verification (min.)	1.07	0.82	1.00
TMC Response (min.)	8.81	9.44	9.24
RR Dispatch Time (min.)	1.65	1.31	1.46
RR Resp. Time (min.)	7.34	8.23	7.93
Event Clearance (min.)	19.39	18.58	19.29
Roadway Clear. (min.)	32.09	28.03	30.31
Incident Clearance (min.)	84.16	57.39	68.73
# of Events w/ RR/SIRV	759	727	1,618
RR/SIRV Responses	759	727	1,618
RR/SIRV Activities	632	600	1,351

	<u>Current Week</u>	<u>Last Week</u>	<u>YTD</u>
Number of Events	2	5	7
Number of Incidents	1	3	4
TMC Detection (min.)	0.00	0.00	0.00
TMC Verification (min.)	0.00	0.00	0.00
TMC Response (min.)	0.00	0.00	0.00
RR Dispatch Time (min.)	0.00	0.00	0.00
RR Resp. Time (min.)	0.00	0.00	0.00
Event Clearance (min.)	33.49	17.65	22.17
Roadway Clear. (min.)	63.27	28.19	36.96
Incident Clearance (min.)	63.48	28.49	37.24
# of Events w/ RR/SIRV	2	5	7
RR/SIRV Responses	2	5	7
RR/SIRV Activities	2	5	7

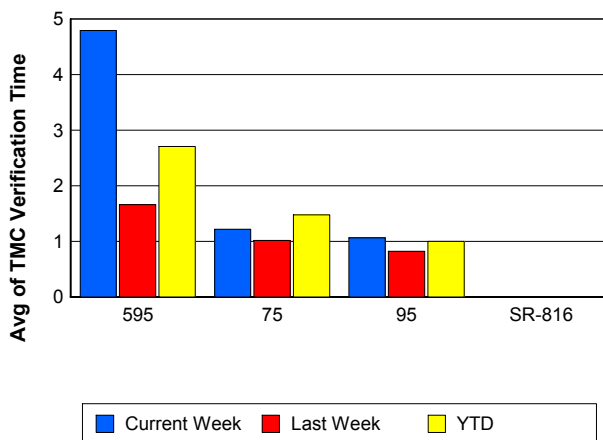
Number of Events / Roadway



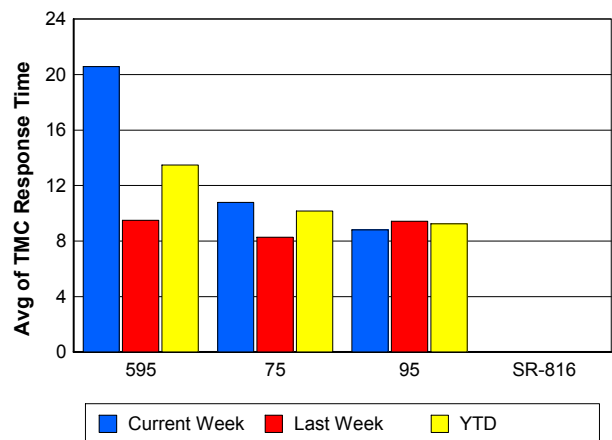
TMC Detection Time



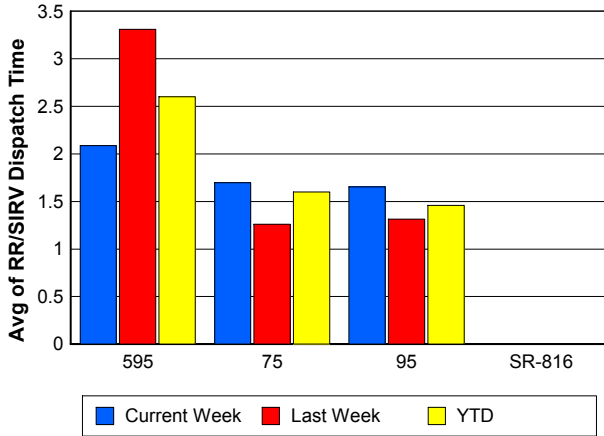
TMC Verification Time



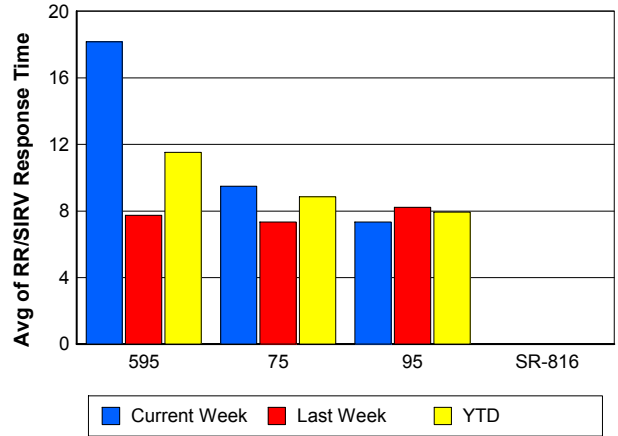
TMC Response Time



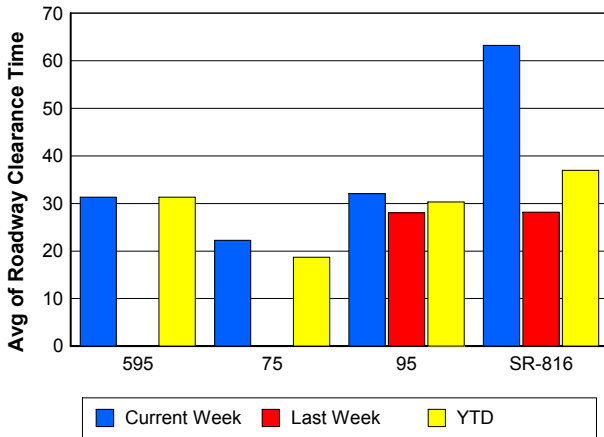
Road Ranger / SIRV Dispatch Time



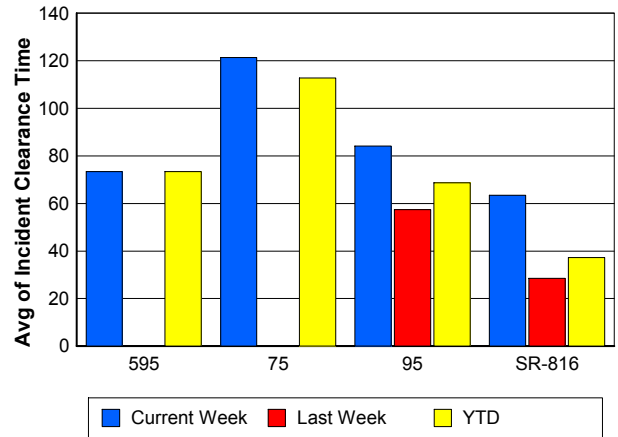
Road Ranger / SIRV Response Time



Roadway Clearance Time (2A)



Incident Clearance Time (3B)



Performance Measures by Event Type

Accident

	<u>Current Week</u>	<u>Last Week</u>	<u>YTD</u>
Number of Events	56	72	148
Number of Incidents	32	25	67
TMC Detection (min.)	0.00	0.00	0.00
TMC Verification (min.)	2.17	1.26	1.62
TMC Response (min.)	11.92	11.15	11.51
RR Dispatch Time (min.)	2.48	2.10	2.19
RR Response Time (min.)	9.45	9.01	9.30
Event Clearance (min.)	80.17	51.43	62.75
Roadway Clearance (min.)	35.42	31.20	33.43
Incident Clearance (min.)	98.80	69.44	83.23
# of Events w/ RR/SIRV	56	72	148
RR/SIRV Assists	56	72	148
RR/SIRV Activities	98	91	216

Debris on Roadway

	<u>Current Week</u>	<u>Last Week</u>	<u>YTD</u>
Number of Events	27	27	63
Number of Incidents	1	2	3
TMC Detection (min.)	0.00	0.00	0.00
TMC Verification (min.)	10.94	3.01	6.51
TMC Response (min.)	13.56	5.51	9.58
RR Dispatch Time (min.)	3.11	0.88	1.78
RR Response Time (min.)	10.45	4.56	7.70
Event Clearance (min.)	17.07	7.84	12.53
Roadway Clearance (min.)	31.92	14.77	20.48
Incident Clearance (min.)	33.42	21.70	25.61
# of Events w/ RR/SIRV	26	26	61
RR/SIRV Assists	26	26	61
RR/SIRV Activities	31	24	65

Disabled Vehicle

	<u>Current Week</u>	<u>Last Week</u>	<u>YTD</u>
Number of Events	713	651	1,491
Number of Incidents	7	12	20
TMC Detection (min.)	0.00	0.00	0.00
TMC Verification (min.)	1.54	1.38	1.64
TMC Response (min.)	9.41	9.04	9.45
RR Dispatch Time (min.)	1.40	1.21	1.33
RR Response Time (min.)	8.09	7.96	8.23
Event Clearance (min.)	21.50	20.31	21.20
Roadway Clearance (min.)	16.89	13.82	15.30
Incident Clearance (min.)	34.44	32.77	33.27
# of Events w/ RR/SIRV	689	634	1,447
RR/SIRV Assists	689	634	1,447
RR/SIRV Activities	678	641	1,439

Emergency Vehicles

	<u>Last Week</u>	<u>YTD</u>
Number of Events	3	3
Number of Incidents	3	3
TMC Detection (min.)	0.00	0.00
TMC Verification (min.)	0.00	0.00
TMC Response (min.)	4.31	4.31
RR Dispatch Time (min.)	0.62	0.62
RR Response Time (min.)	3.93	3.93
Event Clearance (min.)	15.65	15.65
Roadway Clearance (min.)	12.71	12.71
Incident Clearance (min.)	15.65	15.65
# of Events w/ RR/SIRV	3	3
RR/SIRV Assists	3	3
RR/SIRV Activities	3	3

Other

	<u>Current Week</u>	<u>Last Week</u>	<u>YTD</u>
Number of Events	451	457	969
Number of Incidents	0	1	1
TMC Detection (min.)	0.00	0.00	0.00
TMC Verification (min.)	0.01	0.04	0.06
TMC Response (min.)	3.44	9.51	7.43
RR Dispatch Time (min.)	2.10	1.65	1.87
RR Response Time (min.)	2.69	8.48	6.53
Event Clearance (min.)	9.42	10.34	9.95
Roadway Clearance (min.)		192.50	192.50
Incident Clearance (min.)		161.77	161.77
# of Events w/ RR/SIRV	251	247	534
RR/SIRV Assists	251	247	534
RR/SIRV Activities	25	39	70

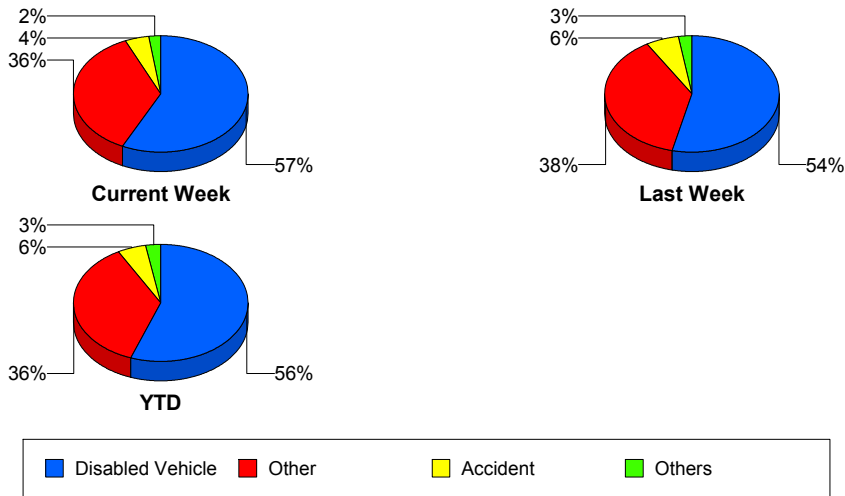
Police Activity

	<u>Current Week</u>	<u>Last Week</u>	<u>YTD</u>
Number of Events	1	2	4
Number of Incidents	0	0	1
TMC Detection (min.)	0.00	0.00	0.00
TMC Verification (min.)	0.00	0.26	0.53
TMC Response (min.)	7.00		5.83
RR Dispatch Time (min.)	0.53	1.57	1.05
RR Response Time (min.)	6.47		5.30
Event Clearance (min.)	9.55	6.98	21.42
Roadway Clearance (min.)			23.48
Incident Clearance (min.)			62.18
# of Events w/ RR/SIRV	1	2	4
RR/SIRV Assists	1	2	4
RR/SIRV Activities	1	0	2

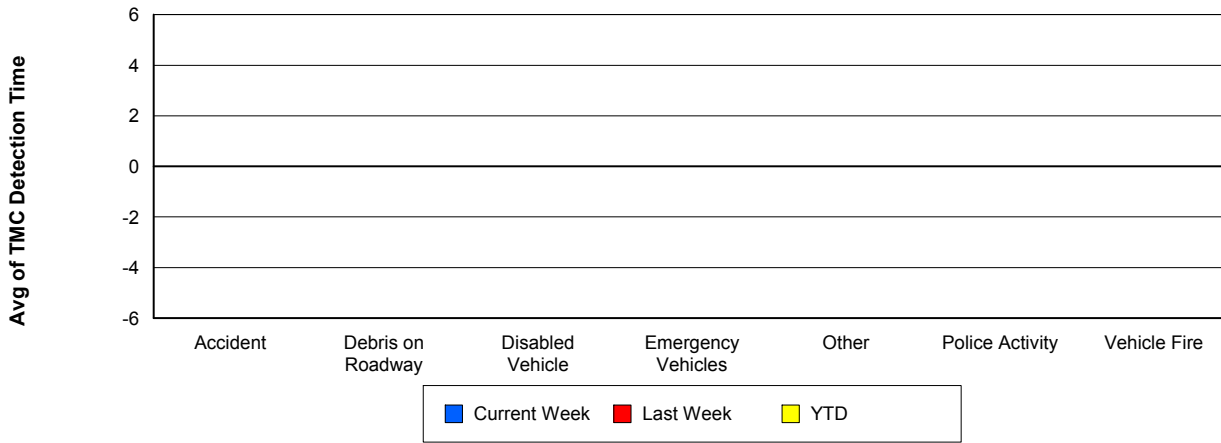
Vehicle Fire

	<u>YTD</u>
Number of Events	1
Number of Incidents	0
TMC Detection (min.)	0.00
TMC Verification (min.)	1.27
TMC Response (min.)	12.60
RR Dispatch Time (min.)	1.15
RR Response Time (min.)	11.45
Event Clearance (min.)	18.23
Roadway Clearance (min.)	
Incident Clearance (min.)	
# of Events w/ RR/SIRV	1
RR/SIRV Assists	1
RR/SIRV Activities	1

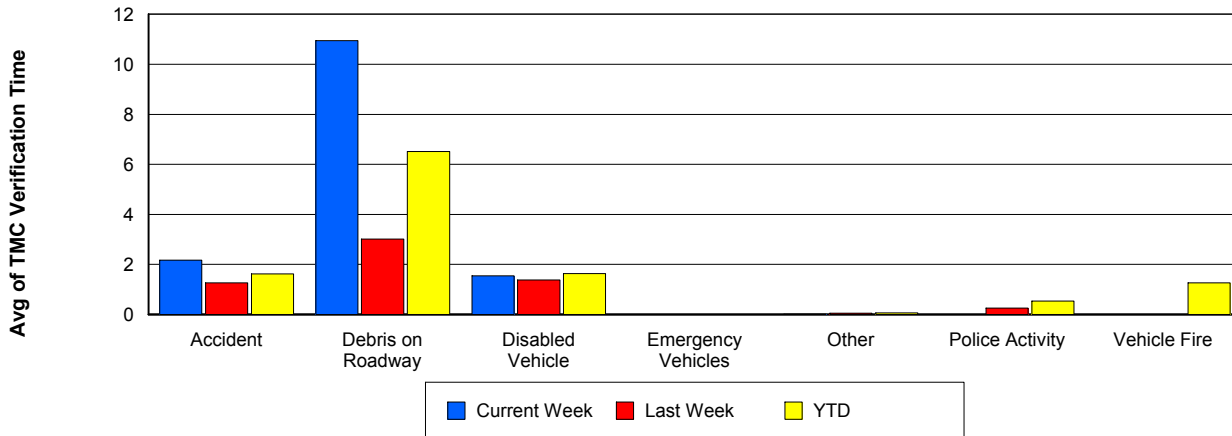
Number of Events / Event Type



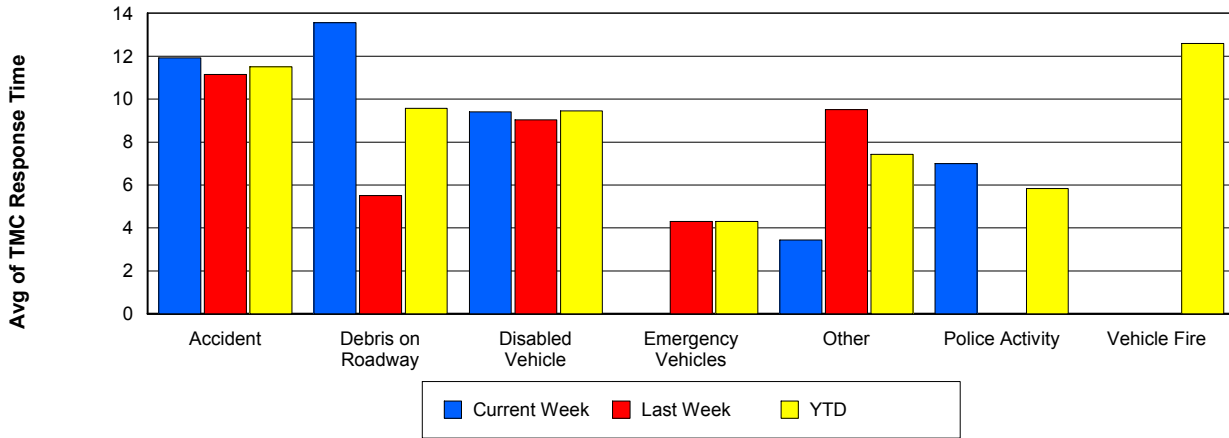
TMC Detection Time



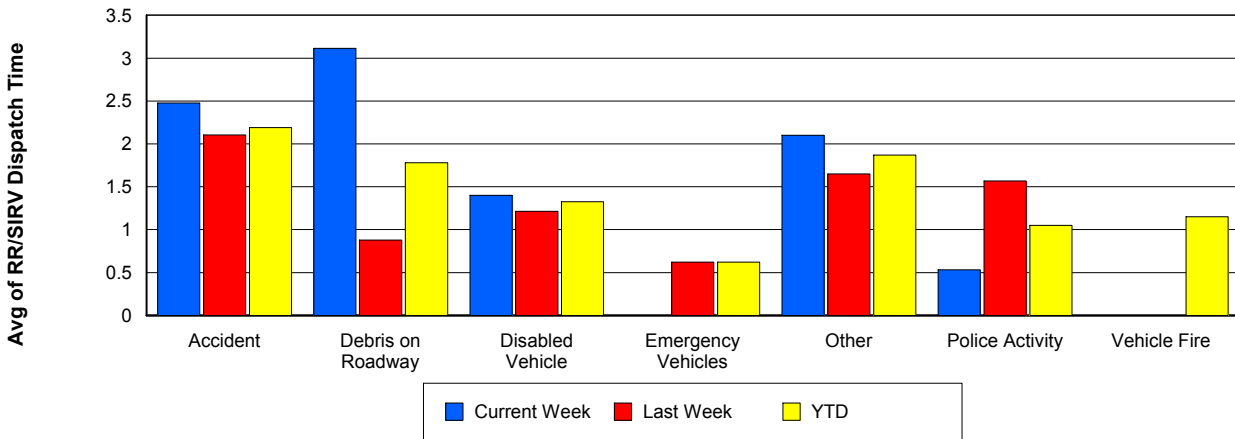
TMC Verification Time



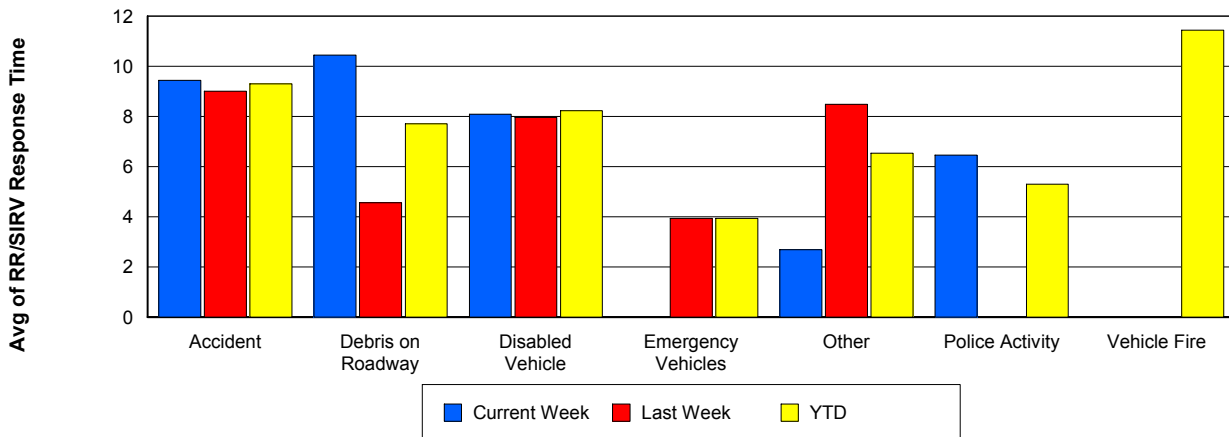
TMC Response Time



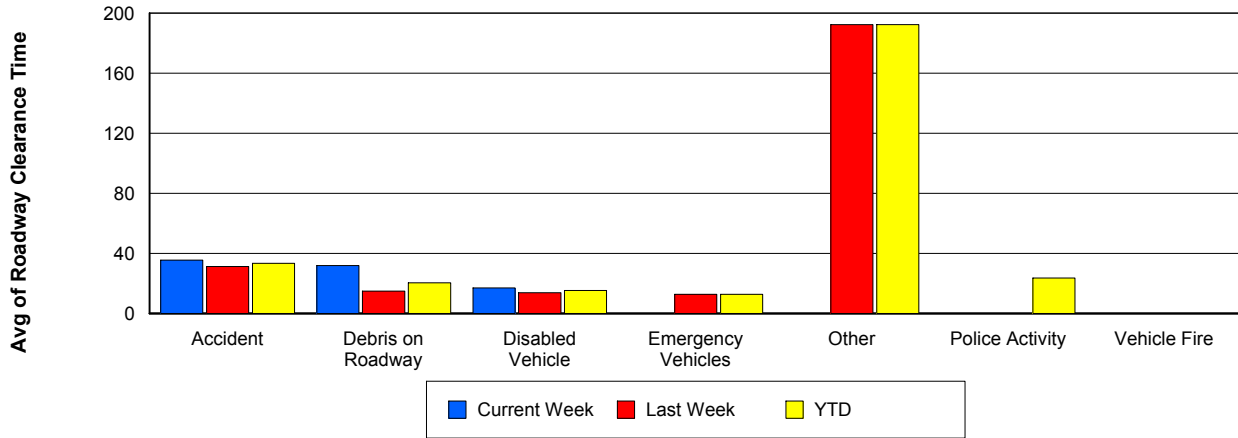
Road Ranger / SIRV Dispatch Time



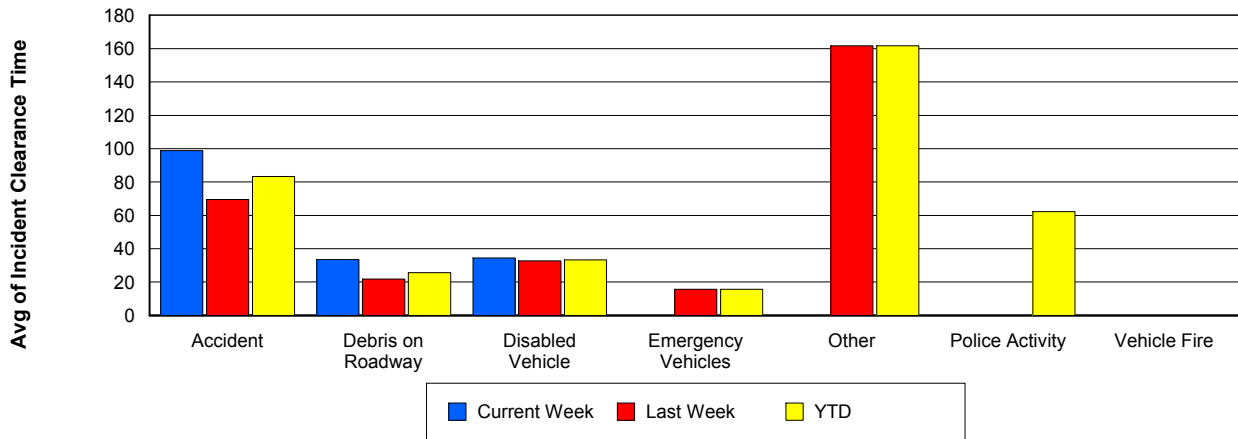
Road Ranger / SIRV Response Time



Roadway Clearance Time (2A)



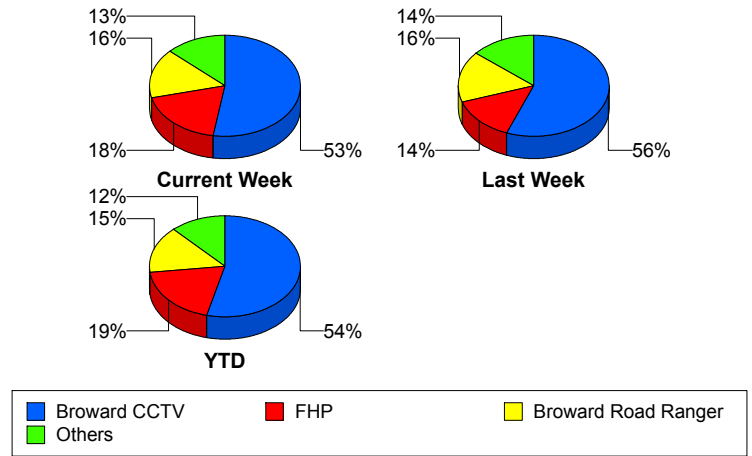
Incident Clearance Time (3B)



Incident Detection Methods

	Current Week	Last Week	YTD
Broward CCTV	20	24	50
Broward Road Ranger	6	7	14
Broward TMC	0	1	1
Broward VideoWall	1	2	3
BSO	1	0	1
District 4	1	1	2
FHP	7	6	18
Motorist	2	0	2
VisioPaD Detection	0	2	2
Total	38	43	93

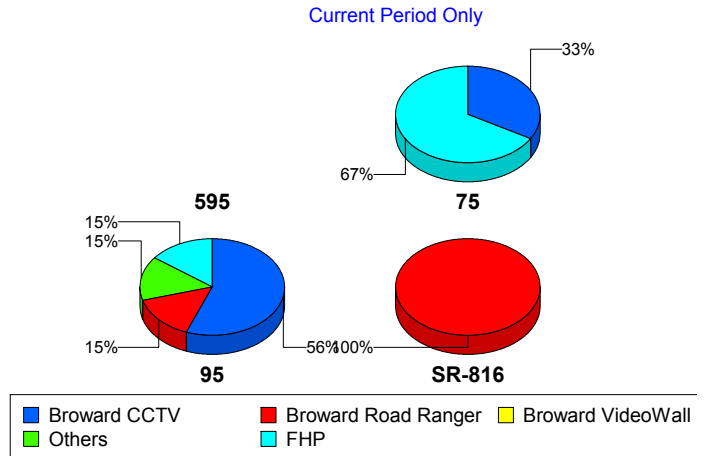
Total Incidents by Detection Method



Incident Detection Methods by Roadway

		Current Week	Last Week	YTD
75	Broward CCTV	1	0	1
	FHP	2	0	3
	Total	3	0	4
95	Broward CCTV	19	24	49
	Broward Road Ranger	5	4	10
	Broward TMC	0	1	1
	Broward VideoWall	1	2	3
	BSO	1	0	1
	District 4	1	1	2
	FHP	5	6	15
	Motorist	2	0	2
	VisioPaD Detection	0	2	2
	Total	34	40	85
SR-816	Broward Road Ranger	1	3	4
	Total	1	3	4

Total Events by Roadway and Detection Method

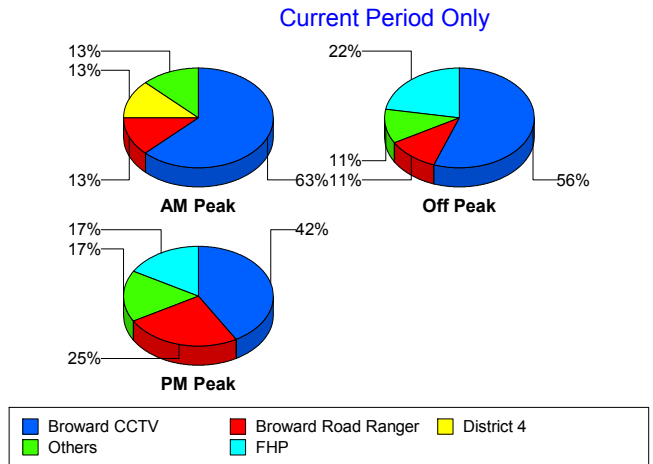


	Current Week	Last Week	YTD
Total	38	43	93

Incident Detection Methods by Peak Period

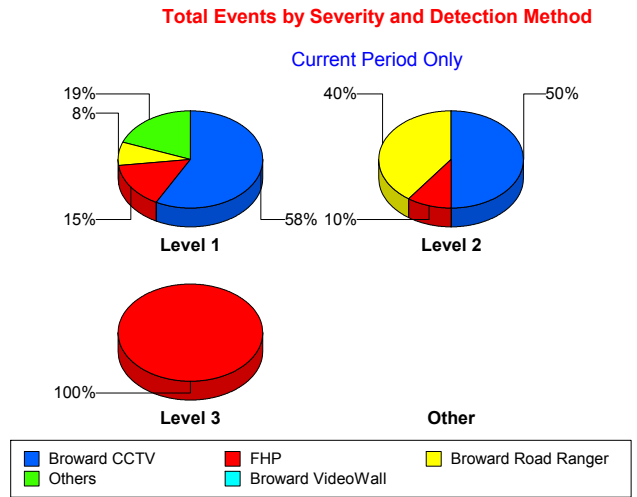
		Current Week	Last Week	YTD
AM Peak	Broward CCTV	5	1	6
	Broward Road Ranger	1	1	2
	Broward VideoWall	0	1	1
	District 4	1	0	1
	FHP	1	2	4
	Total	8	5	14
Off Peak	Broward CCTV	10	13	27
	Broward Road Ranger	2	3	5
	Broward TMC	0	1	1
	Broward VideoWall	1	0	1
	District 4	0	1	1
	FHP	4	1	8
	Motorist	1	0	1
	VisioPaD Detection	0	1	1
	Total	18	20	45
PM Peak	Broward CCTV	5	10	17
	Broward Road Ranger	3	3	7
	Broward VideoWall	0	1	1
	BSO	1	0	1
	FHP	2	3	6
	Motorist	1	0	1
	VisioPaD Detection	0	1	1
	Total	12	18	34
Total	38	43	93	

Total Events by Peak Period and Detection Method



Incident Detection Methods by Severity

		Current Week	Last Week	YTD
Level 1	Broward CCTV	15	18	38
	Broward Road Ranger	2	4	6
	Broward TMC	0	1	1
	Broward VideoWall	1	1	2
	BSO	1	0	1
	District 4	1	1	2
	FHP	4	3	9
	Motorist	2	0	2
	Total	26	28	61
Level 2	Broward CCTV	5	5	11
	Broward Road Ranger	4	2	7
	Broward VideoWall	0	1	1
	FHP	1	2	5
	VisioPaD Detection	0	2	2
	Total	10	12	26
Level 3	Broward CCTV	0	1	1
	Broward Road Ranger	0	1	1
	FHP	2	1	4
	Total	2	3	6
Total	38	43	93	



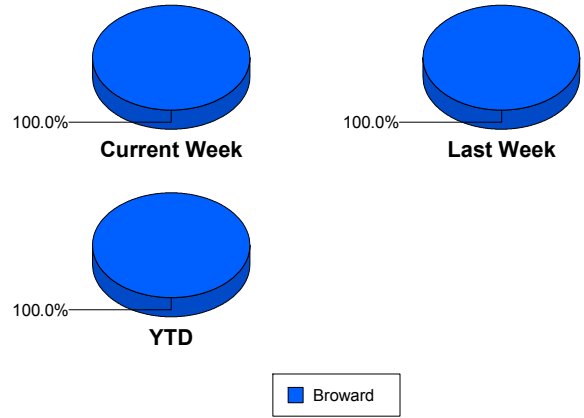
Road Ranger / SIRV Performance Measures

Road Ranger / SIRV Performance By County

Values presented are:
 - Total Events with a RR/SIRV Response
 - Total RR/SIRV Responses,
 - Total Activities Performed

	Current We	Last Week	YTD
Broward	902	890	1,975
	960	937	2,094
	1,005	977	2,188

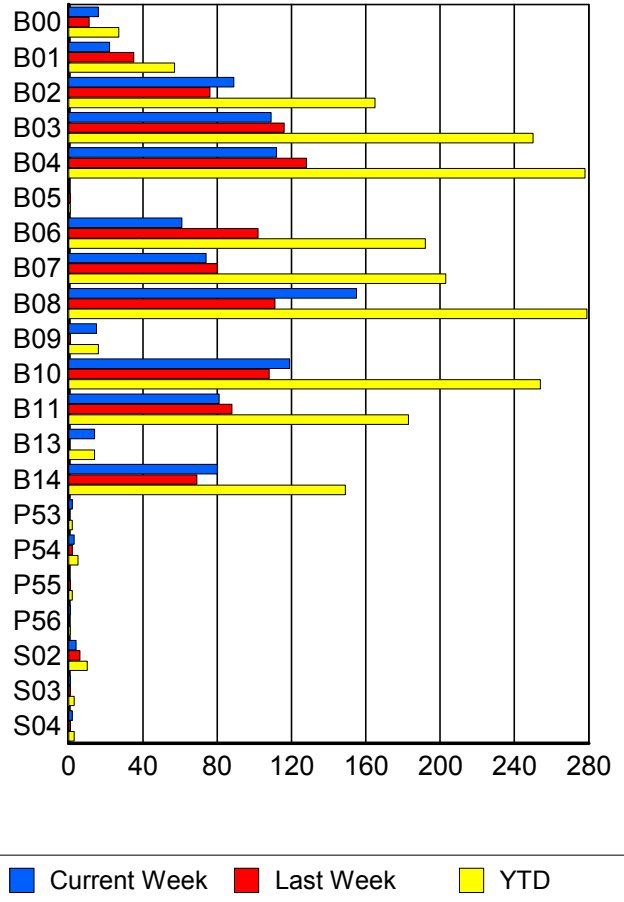
RR/SIRV Responses per County



Road Ranger / SIRV Performance By Truck

	Current We	Last Week	YTD
B00	16	11	27
	16	11	27
	20	13	33
B01	22	34	56
	22	35	57
	22	36	58
B02	87	76	163
	89	76	165
	91	77	168
B03	109	115	249
	109	116	250
	112	123	261
B04	111	125	273
	112	128	278
	116	133	287
B05	0	1	1
	0	1	1
	0	1	1
B06	60	100	189
	61	102	192
	68	107	207
B07	74	77	198
	74	80	203
	75	85	212
B08	151	111	275
	155	111	279
	168	115	297

RR/SIRV Responses per Truck



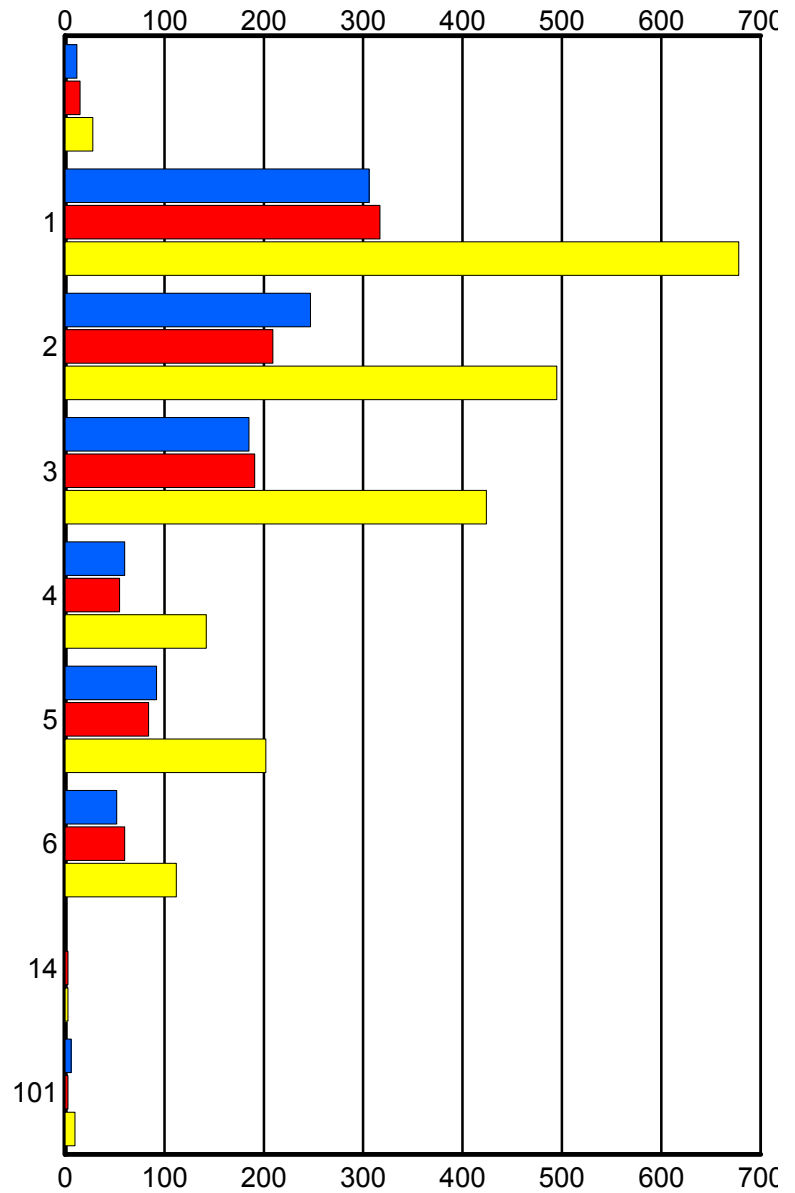
	Current We	Last Week	YTD
B09	15 15 15	1 1 1	16 16 16
B10	118 119 121	107 108 109	251 254 258
B11	81 81 88	87 88 92	182 183 194
B13	13 14 14	0 0 0	13 14 14
B14	78 80 82	67 69 73	145 149 155
P53	2 2 2	0 0 0	2 2 2
P54	3 3 3	2 2 2	5 5 5
P55	0 0 0	1 1 1	2 2 2
P56	1 1 1	0 0 0	1 1 1
S02	4 4 4	6 6 7	10 10 11
S03	1 1 1	1 1 1	3 3 3
S04	2 2 2	1 1 1	3 3 3

Road Ranger / SIRV Performance By Beat

	Current We	Last Week	YTD
	12	15	28
	12	15	28
	12	16	29
1	289	306	648
	306	317	678
	325	333	718
2	239	205	483
	247	209	495
	257	222	519
3	185	185	416
	185	191	424
	194	200	443
4	59	55	139
	60	55	142
	63	56	146
5	92	83	200
	92	84	202
	94	84	206
6	52	59	111
	52	60	112
	54	60	114
14	0	3	3
	0	3	3
	0	3	3
101	6	3	10
	6	3	10
	6	3	10

Values presented are:
 - Total Events with a RR/SIRV Response
 - Total RR/SIRV Responses,
 - Total Activities Performed

RR/SIRV Responses per Beat



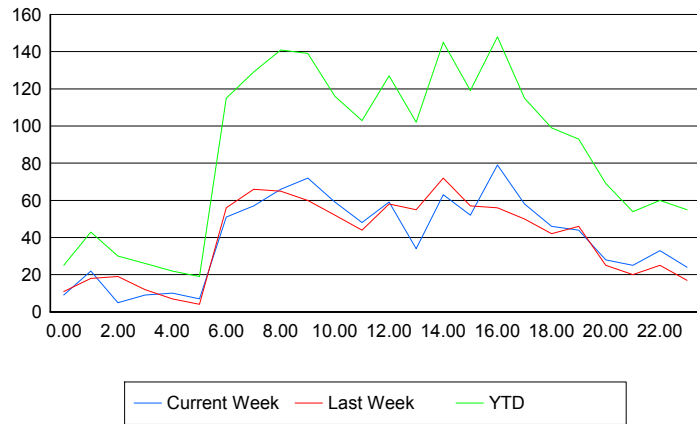
■ Current Week
 ■ Last Week
 ■ YTD

Road Ranger / SIRV Performance By Time of Day

Values presented are:
 - Total Events with a RR/SIRV Response
 - Total RR/SIRV Responses,
 - Total Activities Performed

	Current We	Last Week	YTD
12AM-1AM	8	11	24
	9	11	25
	12	11	28
1AM-2AM	22	17	42
	22	18	43
	23	18	46
2AM-3AM	5	19	29
	5	19	30
	5	22	33
3AM-4AM	7	12	24
	9	12	26
	12	12	30
4AM-5AM	10	6	21
	10	7	22
	10	7	22
5AM-6AM	5	4	15
	7	4	19
	9	4	21
6AM-7AM	46	51	105
	51	56	115
	53	61	122
7AM-8AM	54	64	123
	57	66	129
	58	73	137
8AM-9AM	61	65	136
	66	65	141
	68	67	145
9AM-10AM	66	58	131
	72	60	139
	78	62	147
10AM-11AM	53	51	109
	59	52	116
	62	52	119
11AM-12PM	44	42	96
	48	44	103
	51	47	109
12PM-1PM	57	54	120
	59	58	127
	59	60	129

Number of Responses / Hour of the Day



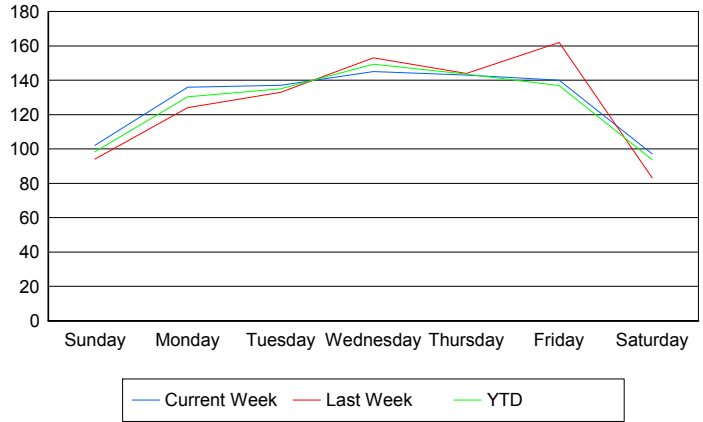
	Current We	Last Week	YTD
1PM-2PM	34	48	94
	34	55	102
	35	57	105
2PM-3PM	59	68	137
	63	72	145
	65	73	148
3PM-4PM	51	55	116
	52	57	119
	55	59	125
4PM-5PM	72	54	139
	79	56	148
	84	57	157
5PM-6PM	56	45	108
	58	50	115
	58	51	117
6PM-7PM	45	39	94
	46	42	99
	47	47	106
7PM-8PM	41	45	89
	44	46	93
	45	48	96
8PM-9PM	28	25	66
	28	25	69
	28	25	69
9PM-10PM	25	17	50
	25	20	54
	25	21	55
10PM-11PM	30	24	56
	33	25	60
	36	26	64
11PM-12AM	23	16	51
	24	17	55
	27	17	58

Road Ranger / SIRV Performance By Day of Week

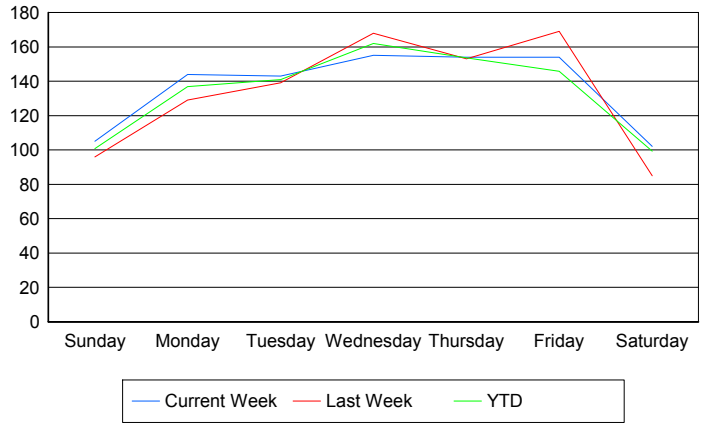
Values presented are: - Total Events with a RR/SIRV Response - Total RR/SIRV Responses, - Total Activities Performed

	Current We	Last Week	YTD
Sunday	105 108 109	92 94 96	199 204 207
Monday	136 144 150	124 129 135	260 273 285
Tuesday	137 143 145	133 139 143	270 282 288
Wednesday	145 155 158	153 168 181	298 323 339
Thursday	143 154 163	144 153 160	287 307 323
Friday	140 154 169	162 169 174	386 410 436
Saturday	97 102 111	83 85 88	279 295 310

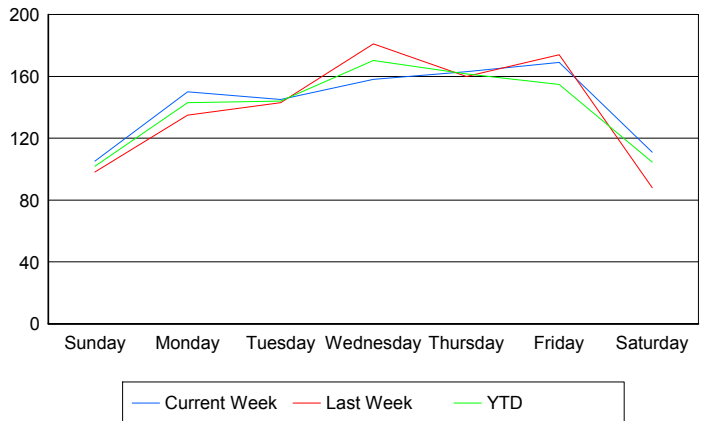
Avg # of events with a RR/SIRV Response per Day of the Week



Avg # of RR/SIRV Responses per Day of the Week



Avg # of RR/SIRV Activities Performed per Day of the Week



Road Ranger / SIRV Responses per Time of Day and Day of Week

