



Weekly Performance Measures Report Broward County



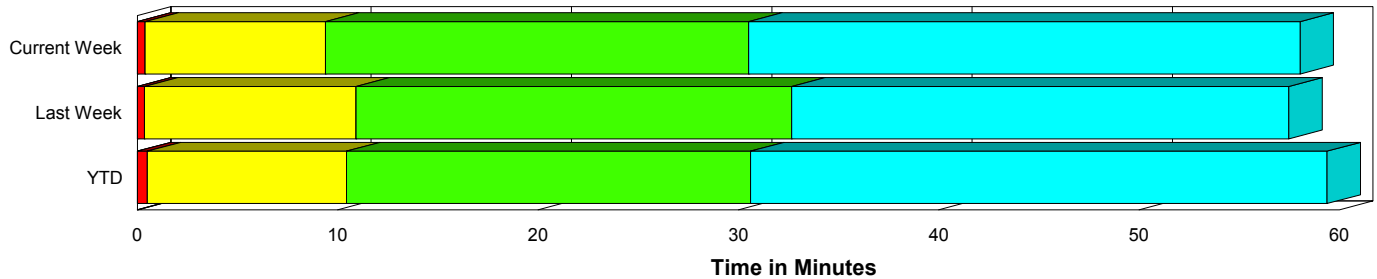
Created on:
January 11, 2010
8:44 am

Period From Jan 3, 2010 to Jan 9, 2010

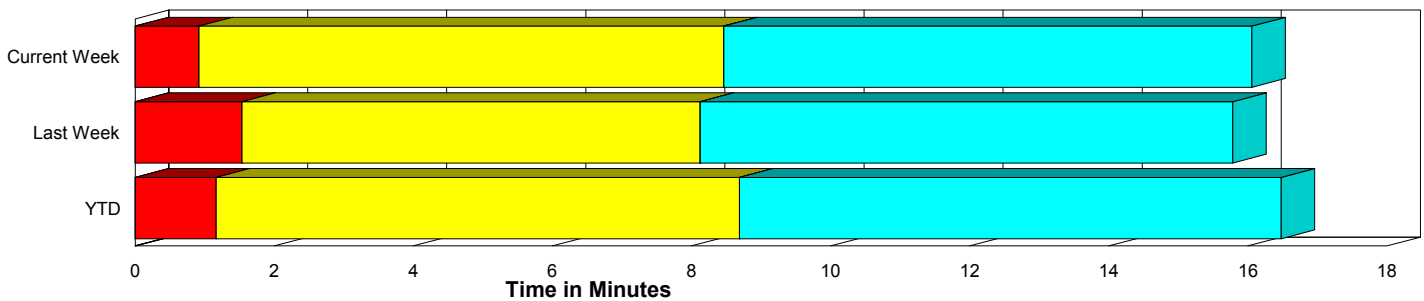
Performance Measures Summary

	Traffic Events (No Lanes Blocked)			Incidents (Lanes Blocked)		
	<u>This Week</u>	<u>Last Week</u>	<u>YTD</u>	<u>This Week</u>	<u>Last Week</u>	<u>YTD</u>
Number of Events	1,171	1,024	1,379	44	42	56
TMC Detection (min.)	0.00	0.00	0.00	0.00	0.00	0.00
TMC Verification (min.)	0.92	1.54	1.17	0.39	0.35	0.50
TMC Response (min.)	9.10	9.18	9.47	9.46	10.93	10.50
RR Dispatch Time (min.)	1.37	1.12	1.38	1.60	2.16	1.81
RR Response Time (min.)	7.95	8.23	8.29	7.92	8.77	8.72
Roadway Clearance (min.)				27.79	31.41	28.48
Event Clearance (min.)	16.70	16.84	17.25	54.62	56.22	56.70
# of Events w/ RR/SIRV	943	824	1,123	43	40	55
RR/SIRV Responses	943	824	1,123	43	40	55
RR/SIRV Activities	733	653	883	67	74	83

Incident Clearance Time-Line



Traffic Event (Non-Lane Blockage) Time-Line



■ Avg. TMC Detection Time	■ Avg. Time from TMC Response to Roadway Clearance*
■ Avg. Time from TMC Detection to TMC Verification	■ Avg. Time from Roadway Clearance to Incident/Event Clearance**
■ Avg. Time from TMC Verification to TMC Response	

* Roadway clearance equals all travel lanes open

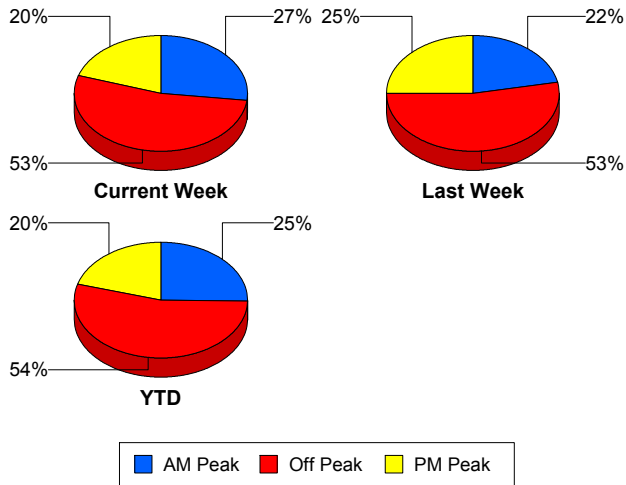
** Incident clearance equals time when last responder has left the scene

Performance Measures by Peak Period

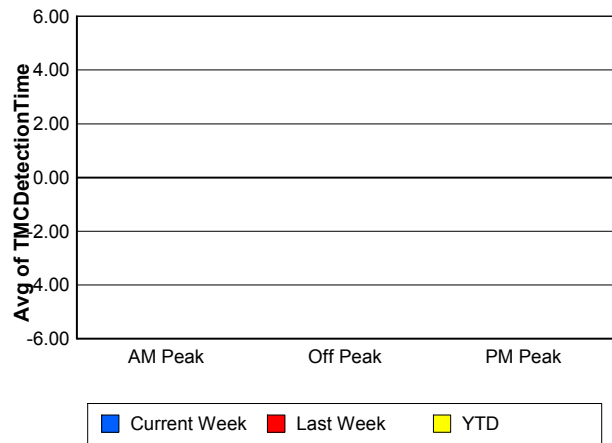
Note: AM peak period is defined as 6am to 10am and PM peak period is defined as 3pm to 7pm.

	AM Peak			Off Peak			PM Peak		
	<u>Current Week</u>	<u>Last Week</u>	<u>YTD</u>	<u>Current Week</u>	<u>Last Week</u>	<u>YTD</u>	<u>Current Week</u>	<u>Last Week</u>	<u>YTD</u>
Number of Events	326	233	362	646	567	779	243	266	294
Number of Incidents	5	7	6	21	22	28	18	13	22
TMC Detection (min.)	0.00	0.00	0.00	0.00	0.00	0.00	0.00	0.00	0.00
TMC Verification (min.)	0.59	0.73	0.78	1.02	1.69	1.28	0.99	1.75	1.21
TMC Response (min.)	8.84	6.59	8.65	8.95	10.23	9.66	9.85	9.75	10.15
RR Dispatch Time (min.)	0.98	0.80	0.96	1.56	1.27	1.51	1.46	1.29	1.64
RR Response Time (min.)	8.04	6.00	7.88	7.64	9.17	8.39	8.59	8.41	8.62
Event Clearance (min.)	15.65	13.83	15.57	17.17	19.93	18.63	23.72	19.09	23.19
Roadway Clearance (min.)	25.30	20.30	25.00	33.51	35.31	33.91	21.81	30.79	22.52
Incident Clearance (min.)	45.93	29.63	48.64	51.38	57.44	54.41	60.83	68.48	61.82
# of Events w/ RR/SIRV	271	196	300	506	459	629	209	209	249
RR/SIRV Responses	271	196	300	506	459	629	209	209	249
RR/SIRV Activities	210	161	234	412	378	515	178	188	217

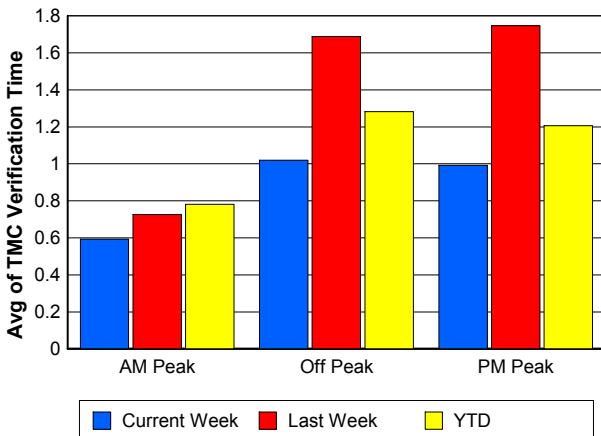
Number of Events / Peak Period



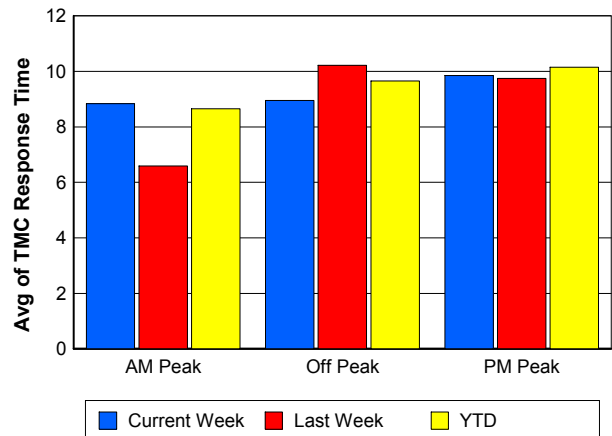
TMC Detection Time



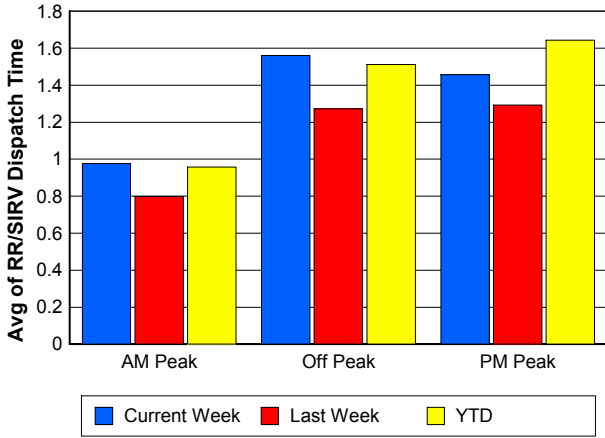
TMC Verification Time



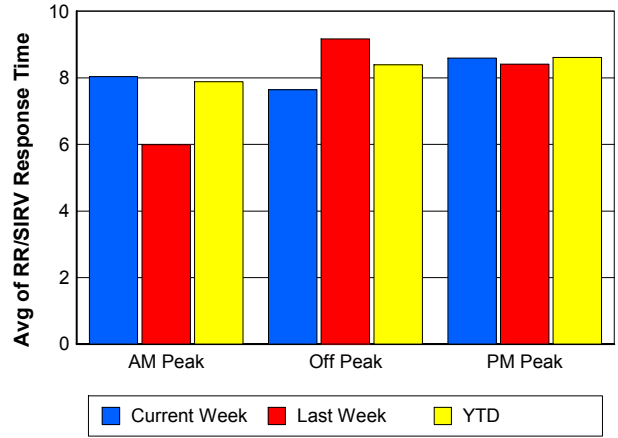
TMC Response Time



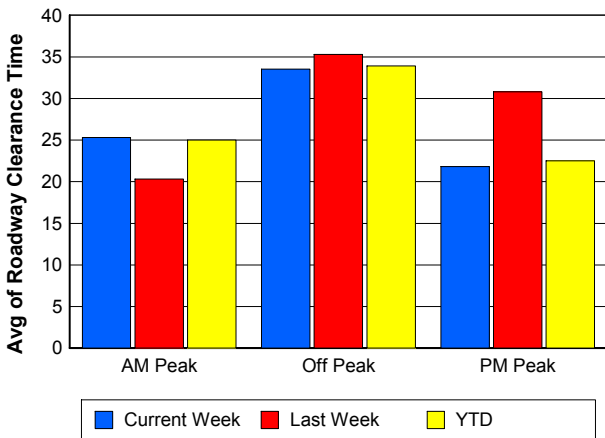
Road Ranger / SIRV Dispatch Time



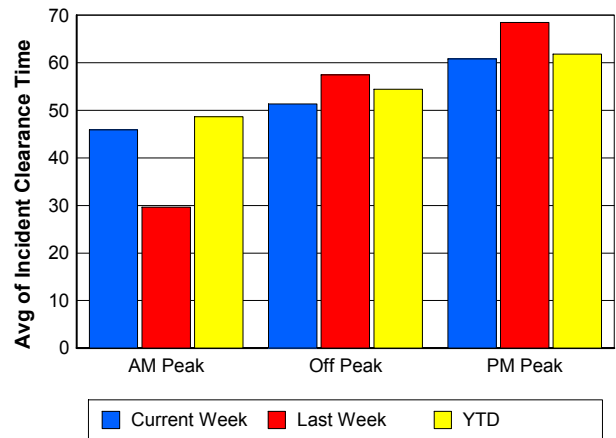
Road Ranger / SIRV Response Time



Roadway Clearance Time (2A)



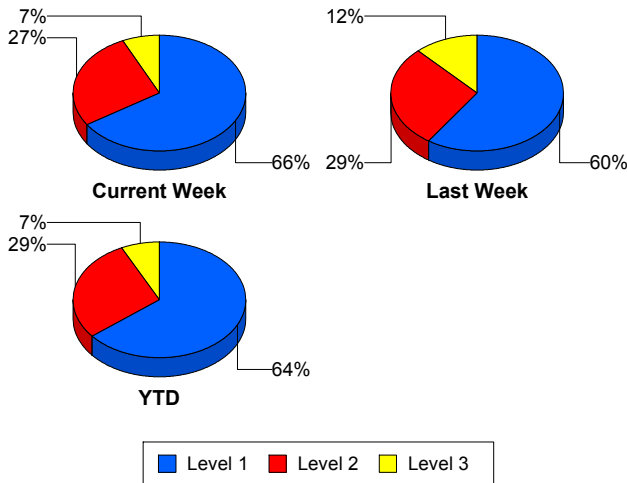
Incident Clearance Time (3B)



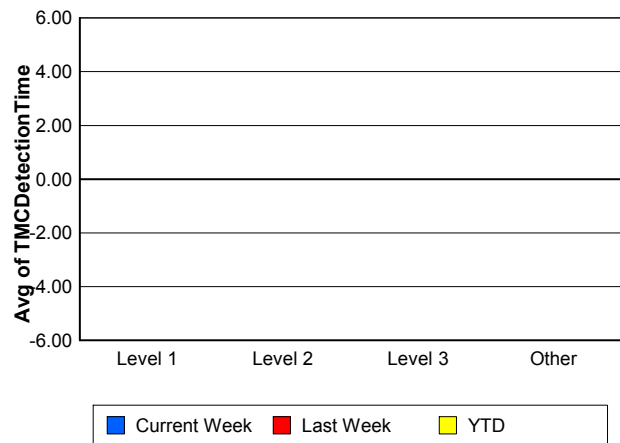
Performance Measures by Severity

	Level 1			Level 2			Level 3			Other		
	<u>This Week</u>	<u>Last Week</u>	<u>YTD</u>	<u>This Week</u>	<u>Last Week</u>	<u>YTD</u>	<u>This Week</u>	<u>Last Week</u>	<u>YTD</u>	<u>This Week</u>	<u>Last Week</u>	<u>YTD</u>
Number of Events	29	25	36	12	12	16	3	5	4	1,171	1,024	1,379
Number of Incidents	29	25	36	12	12	16	3	5	4	0	0	0
TMC Detection (min.)	0.00	0.00	0.00	0.00	0.00	0.00	0.00	0.00	0.00	0.00	0.00	0.00
TMC Verification (min.)	0.49	0.23	0.46	0.06	0.71	0.55	0.71	0.14	0.70	0.92	1.54	1.17
TMC Response (min.)	8.88	9.37	10.65	11.29	8.14	10.96	6.61	24.80	7.51	9.10	9.18	9.47
RR Dispatch Time (min.)	1.38	2.32	1.86	2.29	1.71	1.93	0.91	2.46	0.81	1.37	1.12	1.38
RR Resp. Time (min.)	7.65	7.04	8.82	9.00	6.43	9.02	5.70	22.35	6.70	7.95	8.23	8.29
Event Clearance (min.)	47.06	47.69	49.57	61.05	73.58	63.91	101.99	57.22	92.05	16.70	16.84	17.25
Roadway Clear. (min.)	12.52	14.52	13.29	44.09	58.48	45.40	110.25	50.90	97.51			
Incident Clearance (min.)	47.06	47.69	49.57	61.05	73.58	63.91	101.99	57.22	92.05			
# of Events w/ RR/SIRV	28	23	35	12	12	16	3	5	4	943	824	1,123
RR/SIRV Responses	28	23	35	12	12	16	3	5	4	943	824	1,123
RR/SIRV Activities	42	35	49	20	28	27	5	11	7	733	653	883

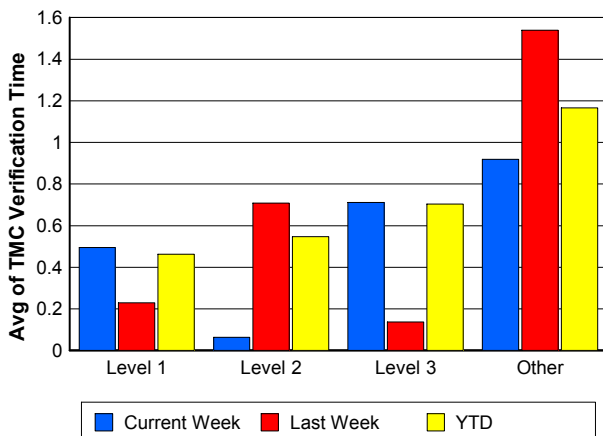
Number of Events / Severity



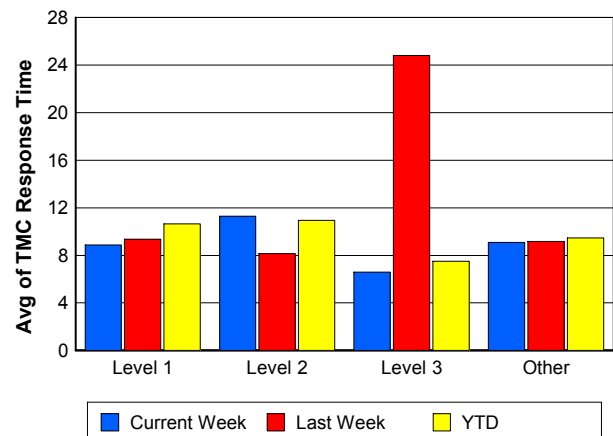
TMC Detection Time



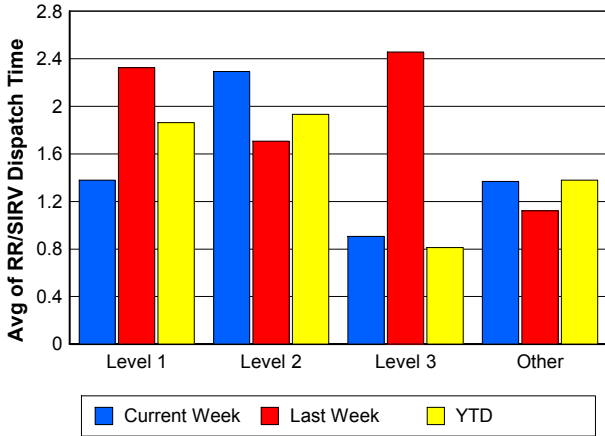
TMC Verification Time



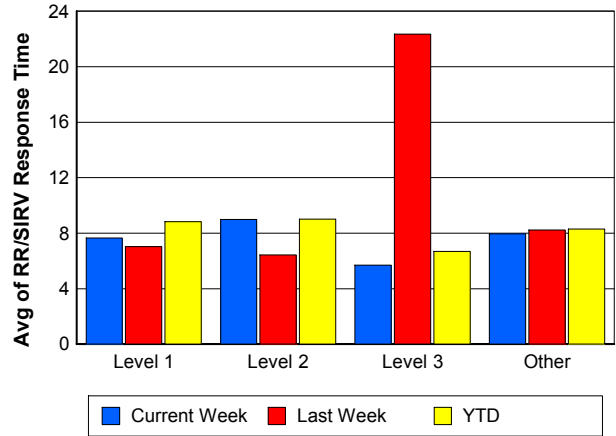
TMC Response Time



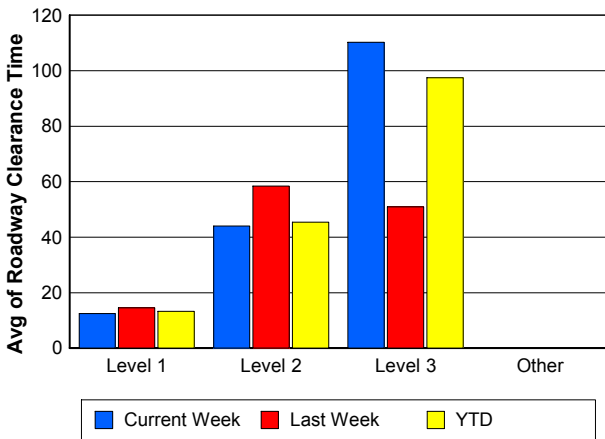
Road Ranger / SIRV Dispatch Time



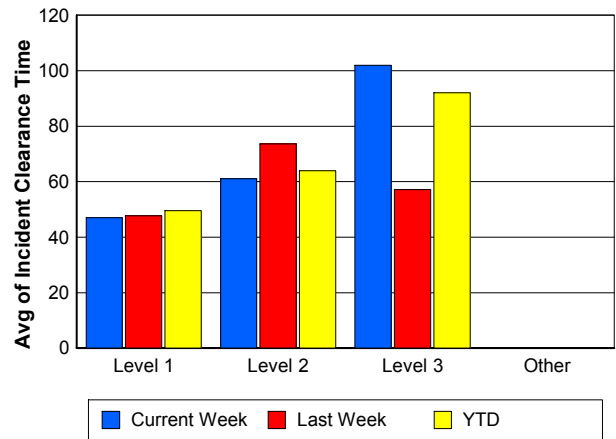
Road Ranger / SIRV Response Time



Roadway Clearance Time (2A)



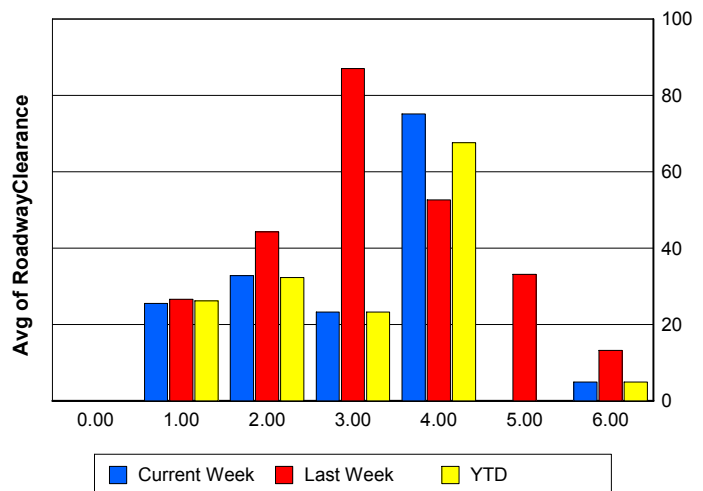
Incident Clearance Time (3B)



Roadway Clearance by Maximum Number of Lanes Blocked

	Current Week	Last Week	YTD
0			
1	25.47	26.58	26.19
2	32.81	44.21	32.29
3	23.27	86.97	23.27
4	75.12	52.62	67.62
5	0.00	33.12	0.00
6	4.93	13.20	4.93

Roadway Clearance Time (2A)



Performance Measures by Roadway

595

	<u>Current Week</u>	<u>Last Week</u>	<u>YTD</u>
Number of Events	53	48	61
Number of Incidents	0	5	0
TMC Detection (min.)	0.00	0.00	0.00
TMC Verification (min.)	1.66	1.90	1.45
TMC Response (min.)	9.51	15.04	8.89
RR Dispatch Time (min.)	3.31	2.02	2.95
RR Resp. Time (min.)	7.74	12.60	7.24
Event Clearance (min.)	17.62	21.48	17.30
Roadway Clear. (min.)		57.34	
Incident Clearance (min.)		59.98	
# of Events w/ RR/SIRV	41	38	47
RR/SIRV Responses	41	38	47
RR/SIRV Activities	31	34	34

75

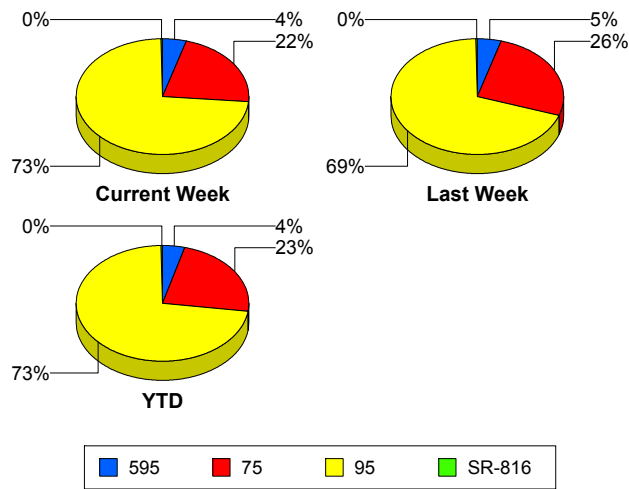
	<u>Current Week</u>	<u>Last Week</u>	<u>YTD</u>
Number of Events	267	276	328
Number of Incidents	1	5	2
TMC Detection (min.)	0.00	0.00	0.00
TMC Verification (min.)	1.02	2.92	1.71
TMC Response (min.)	8.27	13.11	9.63
RR Dispatch Time (min.)	1.26	1.52	1.52
RR Resp. Time (min.)	7.33	11.82	8.31
Event Clearance (min.)	16.46	21.67	17.79
Roadway Clear. (min.)	16.97	38.89	12.39
Incident Clearance (min.)	22.23	100.42	54.57
# of Events w/ RR/SIRV	213	220	267
RR/SIRV Responses	213	220	267
RR/SIRV Activities	164	194	208

95

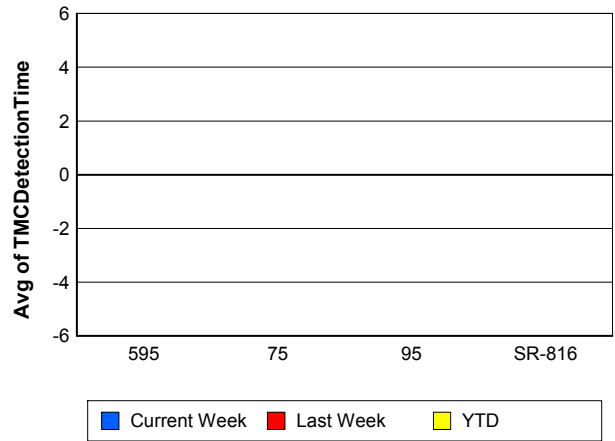
	<u>Current Week</u>	<u>Last Week</u>	<u>YTD</u>
Number of Events	890	739	1,041
Number of Incidents	40	30	51
TMC Detection (min.)	0.00	0.00	0.00
TMC Verification (min.)	0.82	0.94	0.95
TMC Response (min.)	9.44	7.61	9.60
RR Dispatch Time (min.)	1.31	0.99	1.29
RR Resp. Time (min.)	8.23	6.74	8.44
Event Clearance (min.)	18.58	16.99	19.20
Roadway Clear. (min.)	28.03	27.22	29.13
Incident Clearance (min.)	57.39	51.26	58.44
# of Events w/ RR/SIRV	727	603	859
RR/SIRV Responses	727	603	859
RR/SIRV Activities	600	495	719

	<u>Current Week</u>	<u>Last Week</u>	<u>YTD</u>
Number of Events	5	3	5
Number of Incidents	3	2	3
TMC Detection (min.)	0.00	0.00	0.00
TMC Verification (min.)	0.00	0.00	0.00
TMC Response (min.)	0.00	0.00	0.00
RR Dispatch Time (min.)	0.00	0.00	0.00
RR Resp. Time (min.)	0.00	0.00	0.00
Event Clearance (min.)	17.65	11.93	17.65
Roadway Clear. (min.)	28.19	10.72	28.19
Incident Clearance (min.)	28.49	10.65	28.49
# of Events w/ RR/SIRV	5	3	5
RR/SIRV Responses	5	3	5
RR/SIRV Activities	5	4	5

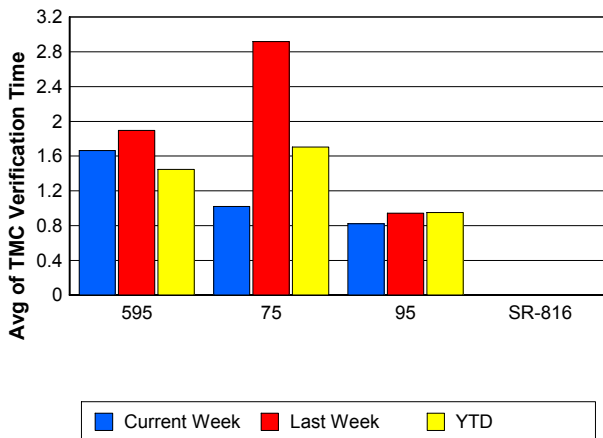
Number of Events / Roadway



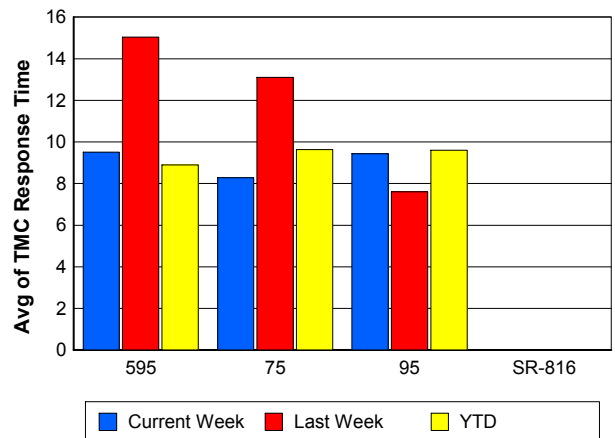
TMC Detection Time



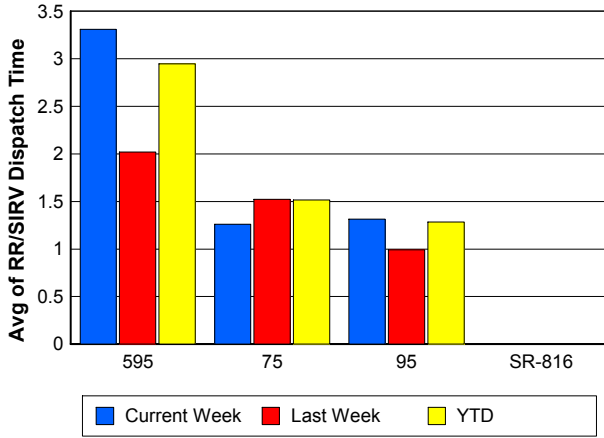
TMC Verification Time



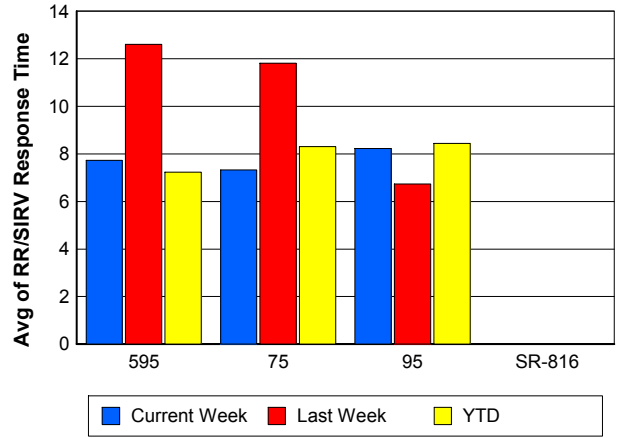
TMC Response Time



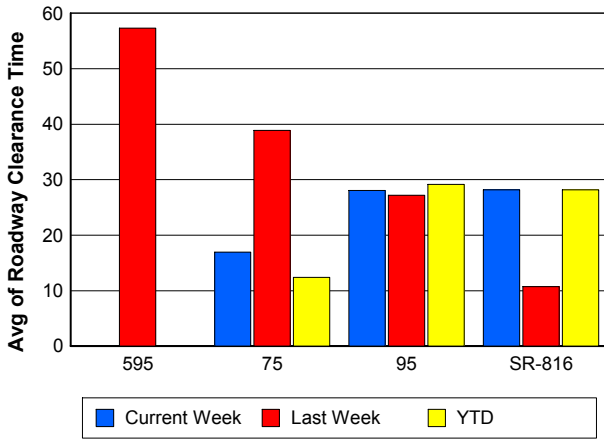
Road Ranger / SIRV Dispatch Time



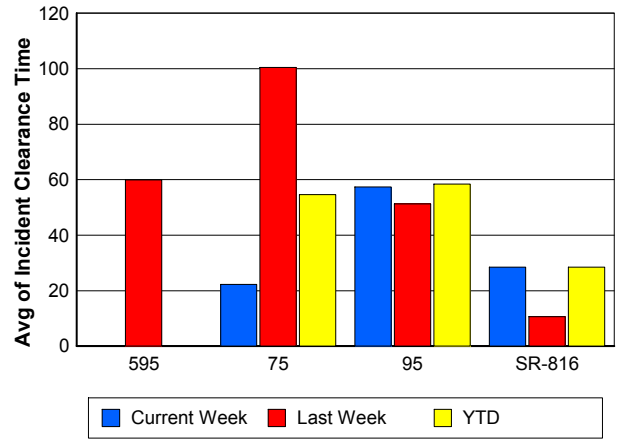
Road Ranger / SIRV Response Time



Roadway Clearance Time (2A)



Incident Clearance Time (3B)



Performance Measures by Event Type

Accident

	<u>Current Week</u>	<u>Last Week</u>	<u>YTD</u>
Number of Events	72	66	92
Number of Incidents	25	30	35
TMC Detection (min.)	0.00	0.00	0.00
TMC Verification (min.)	1.26	0.52	1.29
TMC Response (min.)	11.15	11.72	11.25
RR Dispatch Time (min.)	2.10	1.72	2.02
RR Response Time (min.)	9.01	9.98	9.21
Event Clearance (min.)	51.43	56.10	52.15
Roadway Clearance (min.)	31.20	38.75	31.61
Incident Clearance (min.)	69.44	69.32	68.99
# of Events w/ RR/SIRV	72	66	92
RR/SIRV Assists	72	66	92
RR/SIRV Activities	91	99	118

Debris on Roadway

	<u>Current Week</u>	<u>Last Week</u>	<u>YTD</u>
Number of Events	27	22	36
Number of Incidents	2	0	2
TMC Detection (min.)	0.00	0.00	0.00
TMC Verification (min.)	3.01	6.11	3.31
TMC Response (min.)	5.51	9.86	6.23
RR Dispatch Time (min.)	0.88	1.14	0.79
RR Response Time (min.)	4.56	8.70	5.41
Event Clearance (min.)	7.84	13.78	9.12
Roadway Clearance (min.)	14.77		14.77
Incident Clearance (min.)	21.70		21.70
# of Events w/ RR/SIRV	26	22	35
RR/SIRV Assists	26	22	35
RR/SIRV Activities	24	25	34

Disabled Vehicle

	<u>Current Week</u>	<u>Last Week</u>	<u>YTD</u>
Number of Events	651	602	778
Number of Incidents	13	7	14
TMC Detection (min.)	0.00	0.00	0.00
TMC Verification (min.)	1.38	2.30	1.73
TMC Response (min.)	9.04	9.09	9.49
RR Dispatch Time (min.)	1.21	1.04	1.26
RR Response Time (min.)	7.96	8.16	8.35
Event Clearance (min.)	20.31	20.64	20.91
Roadway Clearance (min.)	14.06	10.40	14.63
Incident Clearance (min.)	31.96	21.32	31.89
# of Events w/ RR/SIRV	634	588	758
RR/SIRV Assists	634	588	758
RR/SIRV Activities	641	571	761

Emergency Vehicles

	<u>Current Week</u>	<u>Last Week</u>	<u>YTD</u>
Number of Events	3	2	3
Number of Incidents	3	2	3
TMC Detection (min.)	0.00	0.00	0.00
TMC Verification (min.)	0.00	0.00	0.00
TMC Response (min.)	4.31	3.57	4.31
RR Dispatch Time (min.)	0.62	3.45	0.62
RR Response Time (min.)	3.93	0.12	3.93
Event Clearance (min.)	15.65	15.70	15.65
Roadway Clearance (min.)	12.71	12.17	12.71
Incident Clearance (min.)	15.65	15.70	15.65
# of Events w/ RR/SIRV	3	1	3
RR/SIRV Assists	3	1	3
RR/SIRV Activities	3	2	3

Other

	<u>Current Week</u>	<u>Last Week</u>	<u>YTD</u>
Number of Events	457	369	518
Number of Incidents	1	1	1
TMC Detection (min.)	0.00	0.00	0.00
TMC Verification (min.)	0.04	0.08	0.10
TMC Response (min.)	9.51	7.36	9.66
RR Dispatch Time (min.)	1.65	1.38	1.66
RR Response Time (min.)	8.48	6.48	8.68
Event Clearance (min.)	10.34	8.16	10.42
Roadway Clearance (min.)	192.50	3.07	192.50
Incident Clearance (min.)	161.77	3.27	161.77
# of Events w/ RR/SIRV	247	182	283
RR/SIRV Assists	247	182	283
RR/SIRV Activities	39	24	45

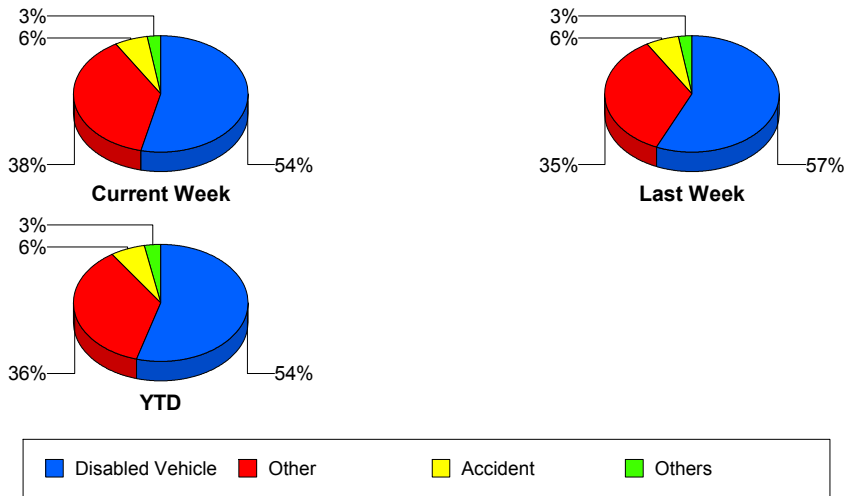
Police Activity

	<u>Current Week</u>	<u>Last Week</u>	<u>YTD</u>
Number of Events	2	1	3
Number of Incidents	0	1	1
TMC Detection (min.)	0.00	0.00	0.00
TMC Verification (min.)	0.26	1.60	0.71
TMC Response (min.)		4.67	4.67
RR Dispatch Time (min.)	1.57	0.53	1.22
RR Response Time (min.)		4.13	4.13
Event Clearance (min.)	6.98	62.18	25.38
Roadway Clearance (min.)		23.48	23.48
Incident Clearance (min.)		62.18	62.18
# of Events w/ RR/SIRV	2	1	3
RR/SIRV Assists	2	1	3
RR/SIRV Activities	0	1	1

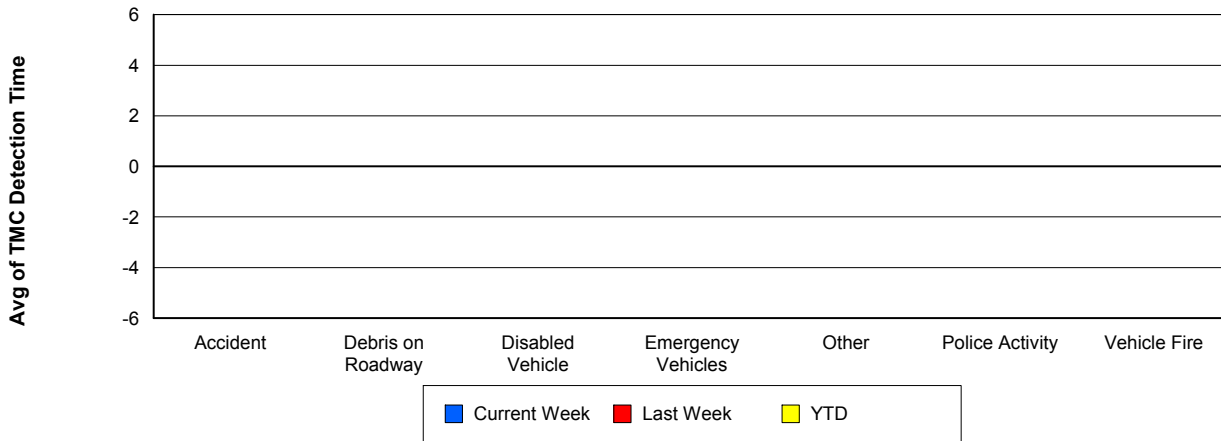
Vehicle Fire

	<u>Last Week</u>	<u>YTD</u>
Number of Events	2	1
Number of Incidents	1	0
TMC Detection (min.)	0.00	0.00
TMC Verification (min.)	0.63	1.27
TMC Response (min.)	10.29	12.60
RR Dispatch Time (min.)	3.10	1.15
RR Response Time (min.)	7.19	11.45
Event Clearance (min.)	26.88	18.23
Roadway Clearance (min.)	33.12	
Incident Clearance (min.)	35.53	
# of Events w/ RR/SIRV	2	1
RR/SIRV Assists	2	1
RR/SIRV Activities	4	1

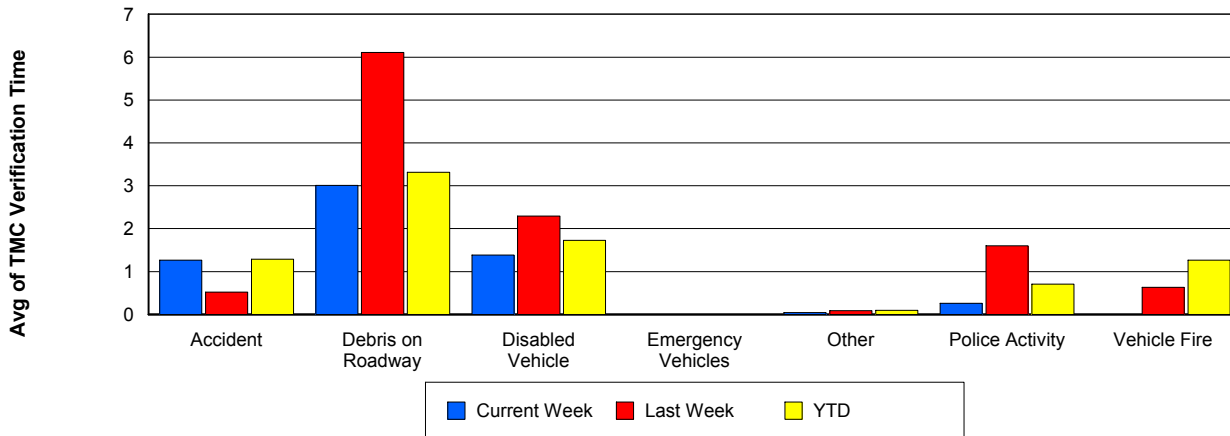
Number of Events / Event Type



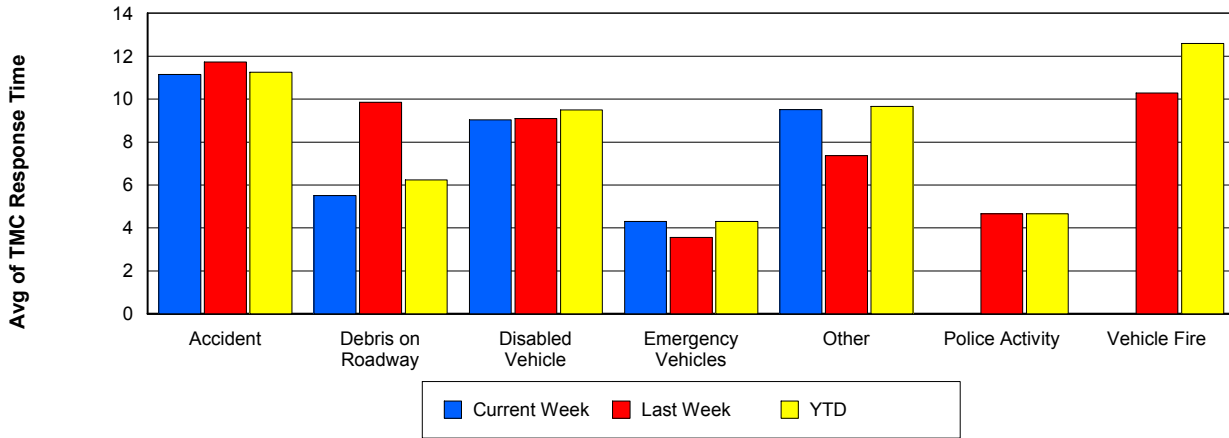
TMC Detection Time



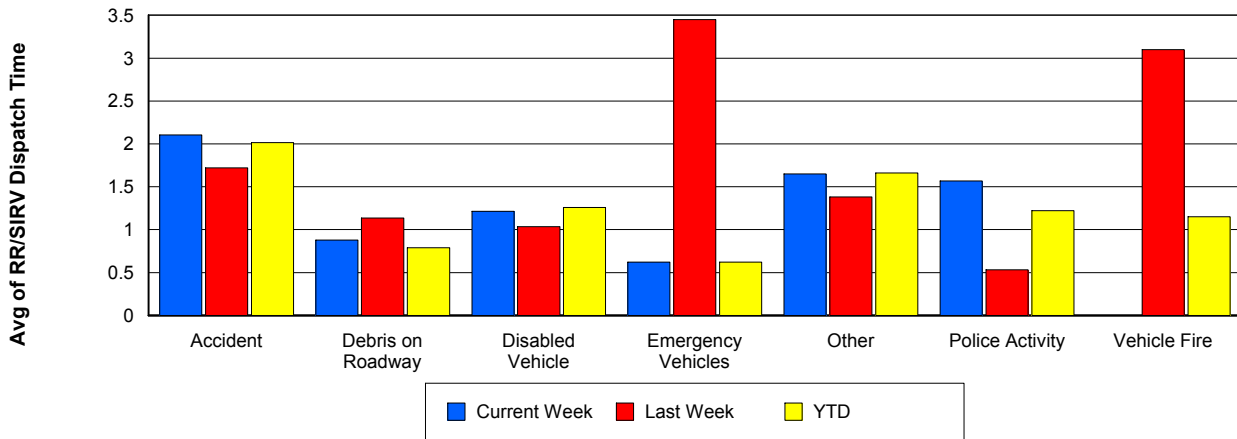
TMC Verification Time



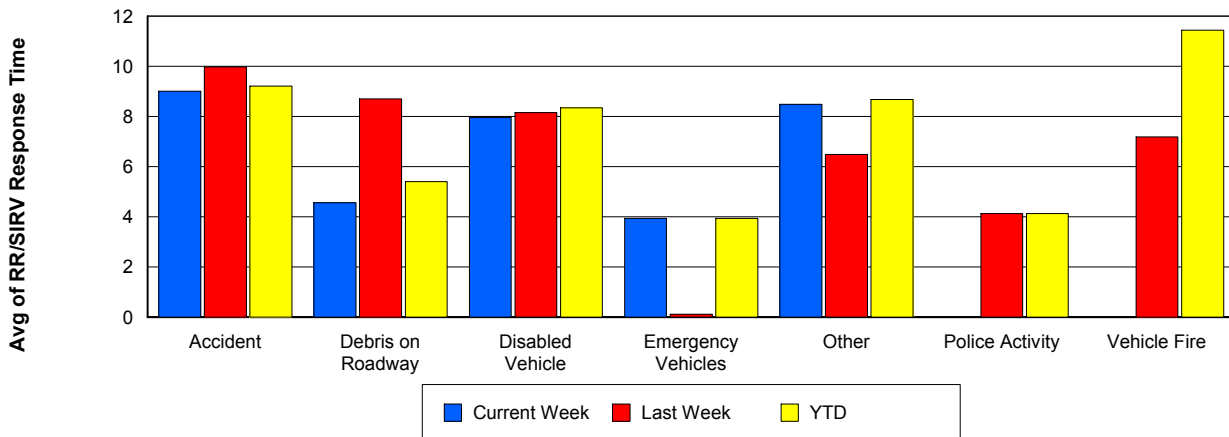
TMC Response Time



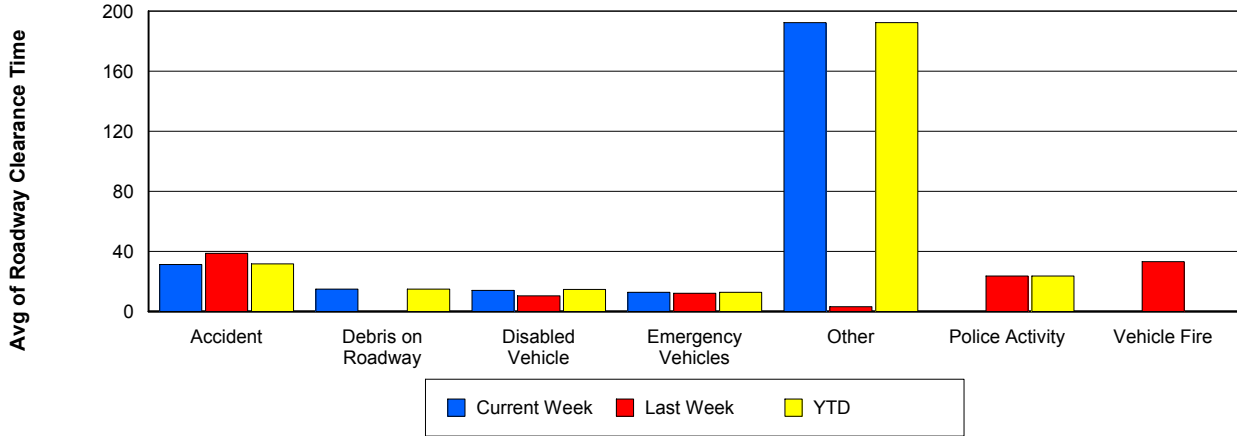
Road Ranger / SIRV Dispatch Time



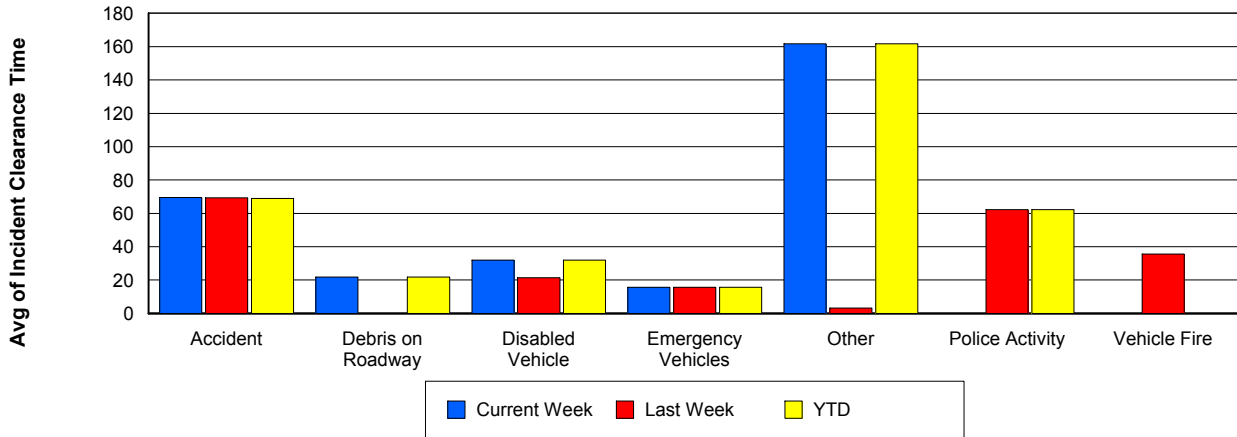
Road Ranger / SIRV Response Time



Roadway Clearance Time (2A)



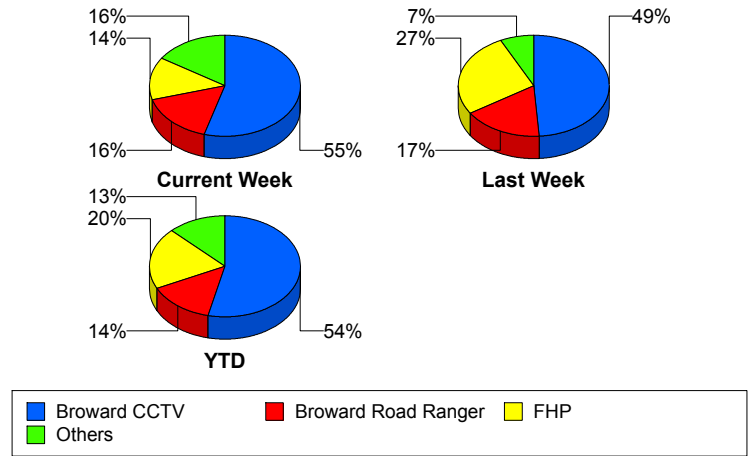
Incident Clearance Time (3B)



Incident Detection Methods

	Current Week	Last Week	YTD
Broward CCTV	24	20	30
Broward Road Ranger	7	7	8
Broward TMC	1	0	1
Broward VideoWall	2	1	2
District 4	1	1	1
FHP	6	11	11
Other	0	1	0
VisioPaD Detection	3	0	3
Total	44	41	56

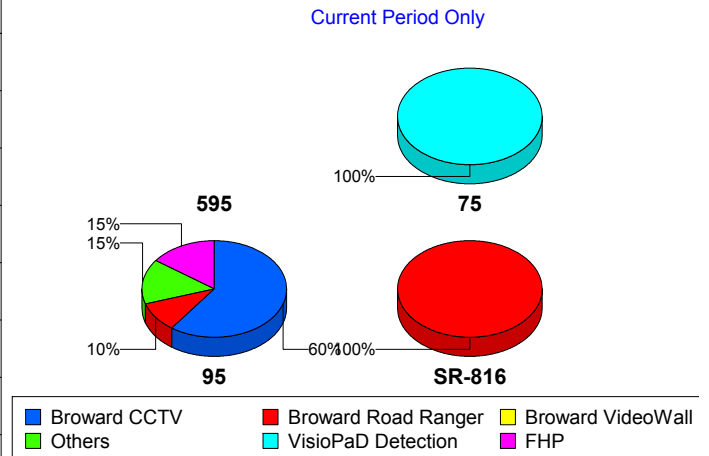
Total Incidents by Detection Method



Incident Detection Methods by Roadway

		Current Week	Last Week	YTD
595	Broward CCTV	0	1	0
	Broward Road Ranger	0	2	0
	FHP	0	1	0
	Total	0	4	0
75	Broward CCTV	0	2	0
	Broward Road Ranger	0	1	0
	FHP	0	1	1
	Other	0	1	0
	VisioPaD Detection	1	0	1
	Total	1	5	2
95	Broward CCTV	24	17	30
	Broward Road Ranger	4	2	5
	Broward TMC	1	0	1
	Broward VideoWall	2	1	2
	District 4	1	1	1

Total Events by Roadway and Detection Method

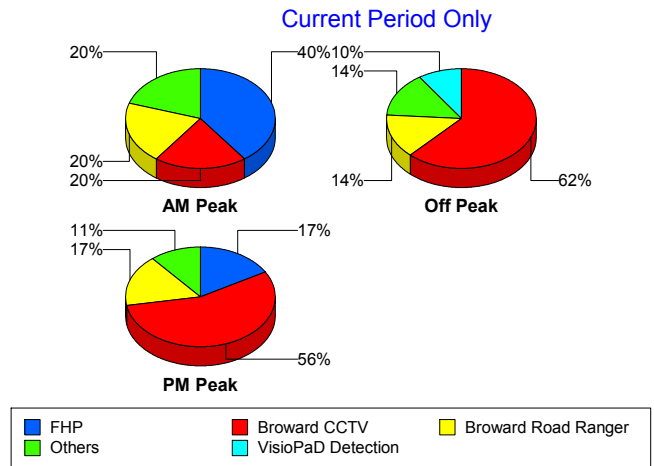


		Current Week	Last Week	YTD
95	FHP	6	9	10
	VisioPaD Detection	2	0	2
	Total	40	30	51
SR-816	Broward Road Ranger	3	2	3
	Total	3	2	3
Total		44	41	56

Incident Detection Methods by Peak Period

		Current Week	Last Week	YTD
AM Peak	Broward CCTV	1	4	1
	Broward Road Ranger	1	1	1
	Broward VideoWall	1	0	1
	FHP	2	1	3
	Total	5	6	6
Off Peak	Broward CCTV	13	12	17
	Broward Road Ranger	3	2	3
	Broward TMC	1	0	1
	District 4	1	1	1
	FHP	1	7	4
	VisioPaD Detection	2	0	2
	Total	21	22	28
PM Peak	Broward CCTV	10	4	12
	Broward Road Ranger	3	4	4
	Broward VideoWall	1	1	1
	FHP	3	3	4
	Other	0	1	0
	VisioPaD Detection	1	0	1
	Total	18	13	22
Total		44	41	56

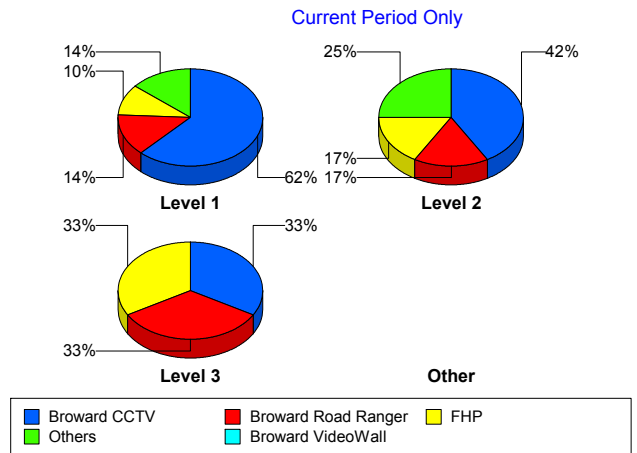
Total Events by Peak Period and Detection Method



Incident Detection Methods by Severity

		Current Week	Last Week	YTD
Level 1	Broward CCTV	18	12	23
	Broward Road Ranger	4	3	4
	Broward TMC	1	0	1
	Broward VideoWall	1	1	1
	District 4	1	1	1
	FHP	3	6	5
	Other	0	1	0
	VisioPaD Detection	1	0	1
	Total	29	24	36
Level 2	Broward CCTV	5	6	6
	Broward Road Ranger	2	3	3
	Broward VideoWall	1	0	1
	FHP	2	3	4
	VisioPaD Detection	2	0	2
	Total	12	12	16
Level 3	Broward CCTV	1	2	1
	Broward Road Ranger	1	1	1
	FHP	1	2	2
	Total	3	5	4
Total	44	41	56	

Total Events by Severity and Detection Method



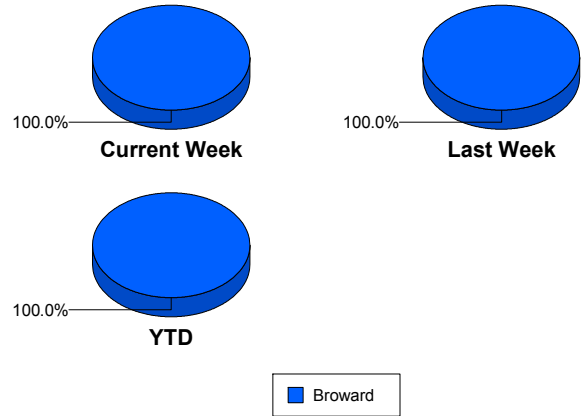
Road Ranger / SIRV Performance Measures

Road Ranger / SIRV Performance By County

Values presented are:
 - Total Events with a RR/SIRV Response
 - Total RR/SIRV Responses,
 - Total Activities Performed

	Current We	Last Week	YTD
Broward	890	791	1,073
	937	847	1,134
	977	887	1,183

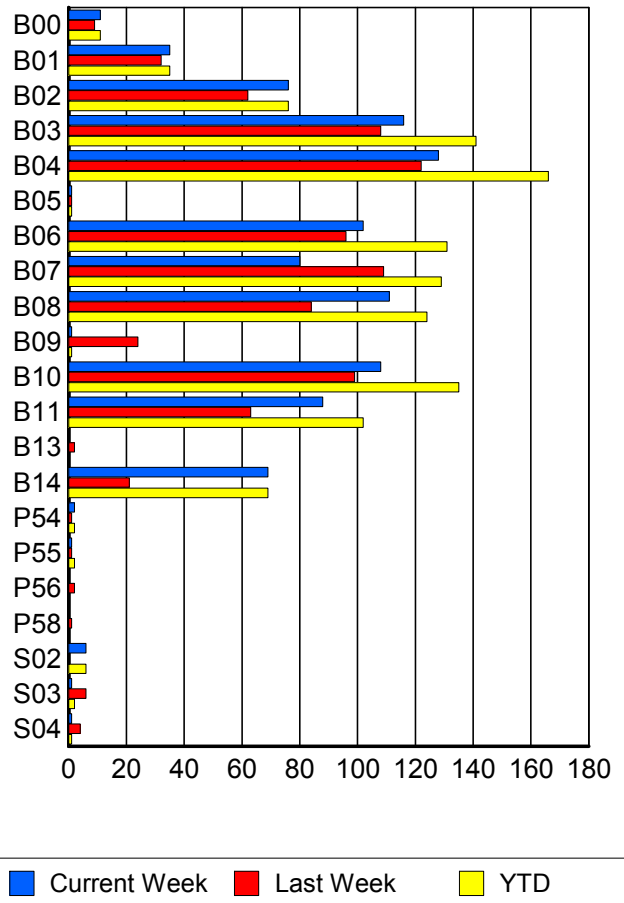
RR/SIRV Responses per County



Road Ranger / SIRV Performance By Truck

	Current We	Last Week	YTD
B00	11	9	11
	11	9	11
	13	9	13
B01	34	32	34
	35	32	35
	36	35	36
B02	76	61	76
	76	62	76
	77	65	77
B03	115	107	140
	116	108	141
	123	115	149
B04	125	121	162
	128	122	166
	133	125	171
B05	1	1	1
	1	1	1
	1	1	1
B06	100	95	129
	102	96	131
	107	100	139
B07	77	106	124
	80	109	129
	85	116	137
B08	111	83	124
	111	84	124
	115	86	129

RR/SIRV Responses per Truck



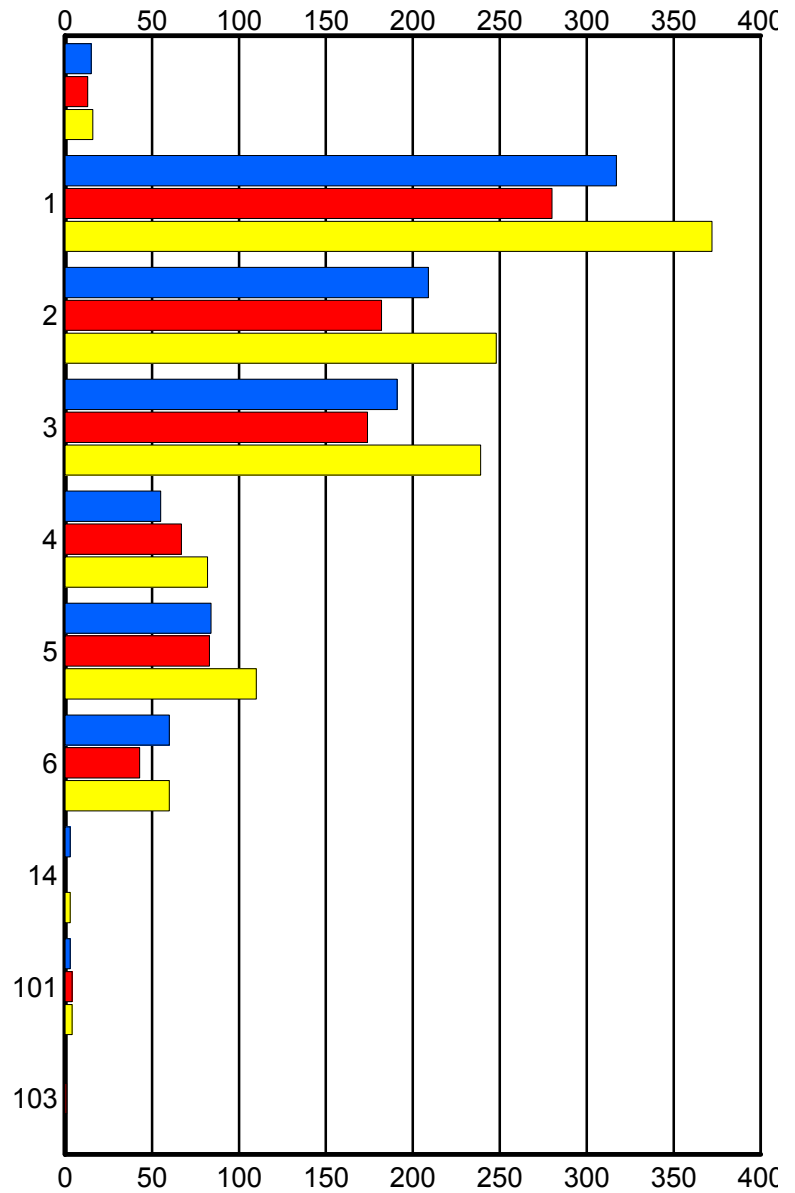
	Current We	Last Week	YTD
B09	1 1 1	23 24 24	1 1 1
B10	107 108 109	98 99 102	133 135 137
B11	87 88 92	62 63 68	101 102 106
B13	0 0 0	2 2 2	0 0 0
B14	67 69 73	21 21 22	67 69 73
P54	2 2 2	1 1 1	2 2 2
P55	1 1 1	1 1 1	2 2 2
P56	0 0 0	2 2 2	0 0 0
P58	0 0 0	1 1 1	0 0 0
S02	6 6 7	0 0 0	6 6 7
S03	1 1 1	6 6 8	2 2 2
S04	1 1 1	4 4 4	1 1 1

Road Ranger / SIRV Performance By Beat

	Current We	Last Week	YTD
	15 15 16	13 13 15	16 16 17
1	306 317 333	269 280 297	359 372 393
2	205 209 222	177 182 187	244 248 262
3	185 191 200	170 174 181	231 239 249
4	55 55 56	64 67 71	80 82 83
5	83 84 84	81 83 87	108 110 112
6	59 60 60	43 43 44	59 60 60
14	3 3 3	0 0 0	3 3 3
101	3 3 3	4 4 4	4 4 4
103	0 0 0	1 1 1	0 0 0

Values presented are:
 - Total Events with a RR/SIRV Response
 - Total RR/SIRV Responses,
 - Total Activities Performed

RR/SIRV Responses per Beat



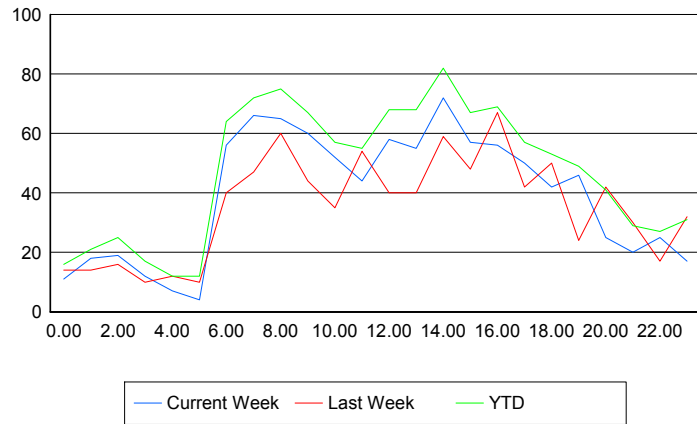
■ Current Week
 ■ Last Week
 ■ YTD

Road Ranger / SIRV Performance By Time of Day

Values presented are:
 - Total Events with a RR/SIRV Response
 - Total RR/SIRV Responses,
 - Total Activities Performed

	Current We	Last Week	YTD
12AM-1AM	11 11 11	14 14 14	16 16 16
1AM-2AM	17 18 18	14 14 17	20 21 23
2AM-3AM	19 19 22	15 16 16	24 25 28
3AM-4AM	12 12 12	10 10 11	17 17 18
4AM-5AM	6 7 7	11 12 12	11 12 12
5AM-6AM	4 4 4	8 10 10	10 12 12
6AM-7AM	51 56 61	38 40 42	59 64 69
7AM-8AM	64 66 73	45 47 51	69 72 79
8AM-9AM	65 65 67	57 60 62	75 75 77
9AM-10AM	58 60 62	42 44 45	65 67 69
10AM-11AM	51 52 52	35 35 35	56 57 57
11AM-12PM	42 44 47	45 54 59	52 55 58
12PM-1PM	54 58 60	37 40 43	63 68 70

Number of Responses / Hour of the Day



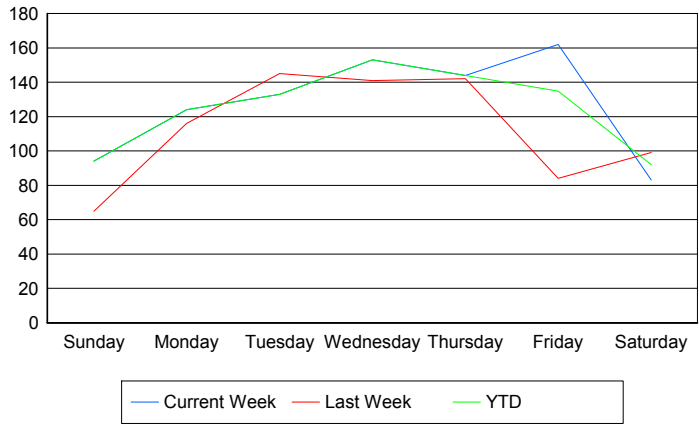
	Current We	Last Week	YTD
1PM-2PM	48	37	60
	55	40	68
	57	40	70
2PM-3PM	68	57	78
	72	59	82
	73	61	83
3PM-4PM	55	46	65
	57	48	67
	59	49	70
4PM-5PM	54	59	67
	56	67	69
	57	75	73
5PM-6PM	45	42	52
	50	42	57
	51	43	59
6PM-7PM	39	46	49
	42	50	53
	47	52	59
7PM-8PM	45	23	48
	46	24	49
	48	26	51
8PM-9PM	25	37	38
	25	42	41
	25	44	41
9PM-10PM	17	26	25
	20	30	29
	21	30	30
10PM-11PM	24	17	26
	25	17	27
	26	18	28
11PM-12AM	16	30	28
	17	32	31
	17	32	31

Road Ranger / SIRV Performance By Day of Week

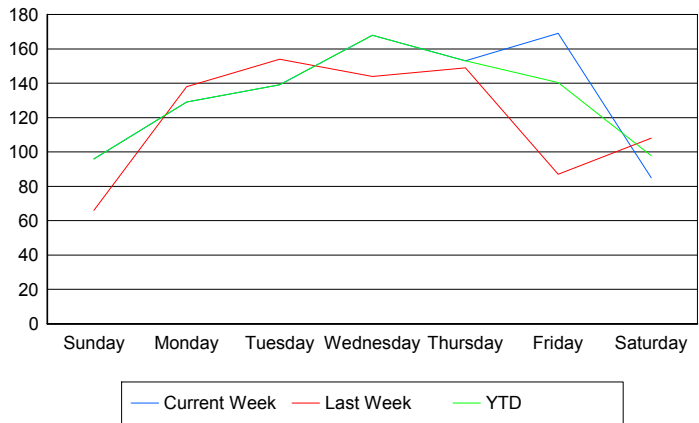
Values presented are: - Total Events with a RR/SIRV Response - Total RR/SIRV Responses, - Total Activities Performed

	Current We	Last Week	YTD
Sunday	92	66	94
	94	67	96
	96	69	98
Monday	124	116	124
	129	138	129
	135	146	135
Tuesday	133	145	133
	139	154	139
	143	163	143
Wednesday	153	141	153
	168	144	168
	181	146	181
Thursday	144	142	144
	153	149	153
	160	159	160
Friday	162	84	246
	169	87	256
	174	93	267
Saturday	83	99	182
	85	108	193
	88	111	199

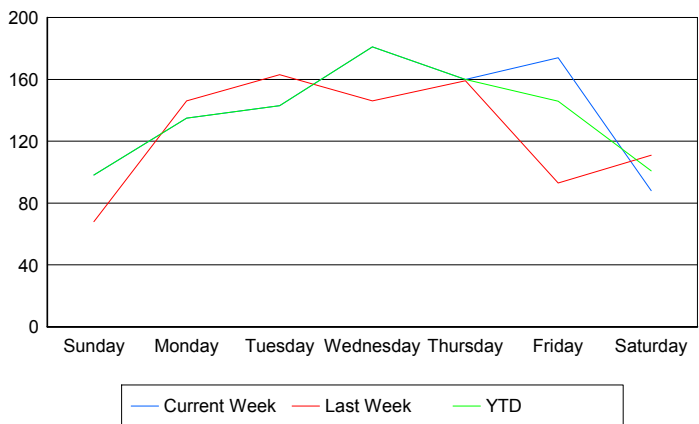
Avg # of events with a RR/SIRV Response per Day of the Week



Avg # of RR/SIRV Responses per Day of the Week



Avg # of RR/SIRV Activities Performed per Day of the Week



Road Ranger / SIRV Responses per Time of Day and Day of Week

