



Quarterly Performance Measures Report Broward County

Period From Jul 1, 2009 to Sep 30, 2009

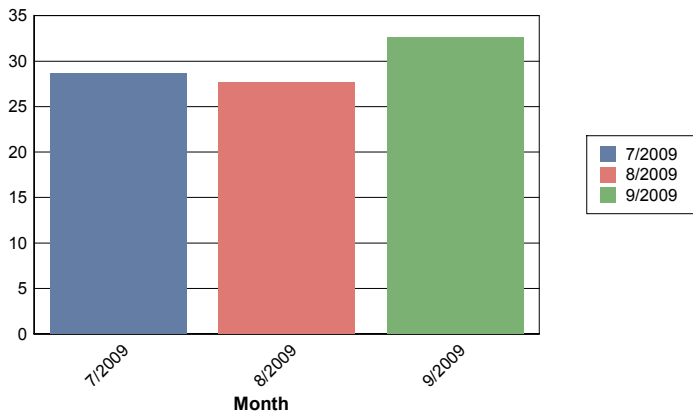


Created on:
October 07, 2009
9:48 am

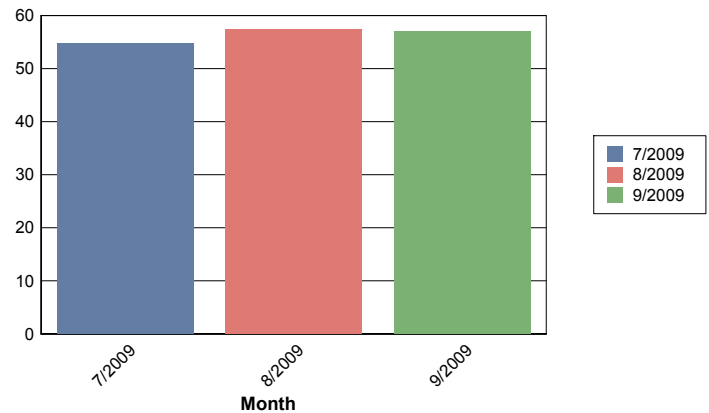
3rd Quarter

	July	August	September	Total
Total # of Events (incl. incidents)	4,241	3,718	5,093	13,052
Number of Incidents	192	183	237	612
TMC Verification (mins.)	0.69	0.60	1.07	0.81
Roadway Clearance (2A) (mins.)	28.70	27.66	32.58	29.89
Incident Clearance (3B) (mins.)	54.79	57.37	57.12	56.47
Total Road Ranger Responses (stops)	3,086	2,536	4,451	10,073

Roadway Clearance (2A)



Incident Clearance (3B)



Benefit Cost Analysis

Broward - July 1 to July 31

		<u>Costs</u>	
Emission Benefit	\$84,941.04	Total Broward Cost	\$886,065.95
Delay Benefit	\$8,540,511.46		
Safety Benefit	\$1,792,680.26		
Dms Benefit	\$320,611.13		
Fuel Benefit	\$1,403,764.98		
Road Ranger Benefit	\$361,368.88		
Total Benefit	\$12,503,877.75		
Total Cost	\$886,065.95		
Benefit Cost Ratio	14.11		
Cash Flow	\$11,617,811.80		

Broward - August 1 to August 31

		<u>Costs</u>	
Emission Benefit	\$90,448.24	Total Broward Cost	\$886,065.95
Delay Benefit	\$8,525,035.44		
Safety Benefit	\$1,700,570.83		
Dms Benefit	\$334,247.23		
Fuel Benefit	\$1,447,615.96		
Road Ranger Benefit	\$296,819.01		
Total Benefit	\$12,394,736.72		
Total Cost	\$886,065.95		
Benefit Cost Ratio	13.99		
Cash Flow	\$11,508,670.77		

Broward - September 1 to September 30

		<u>Costs</u>	
Emission Benefit	\$87,202.16	Total Broward Cost	\$857,483.18
Delay Benefit	\$8,974,014.30		
Safety Benefit	\$1,722,966.78		
Dms Benefit	\$440,151.02		
Fuel Benefit	\$1,437,665.97		
Road Ranger Benefit	\$564,779.20		
Total Benefit	\$13,226,779.43		
Total Cost	\$857,483.18		
Benefit Cost Ratio	15.43		
Cash Flow	\$12,369,296.25		

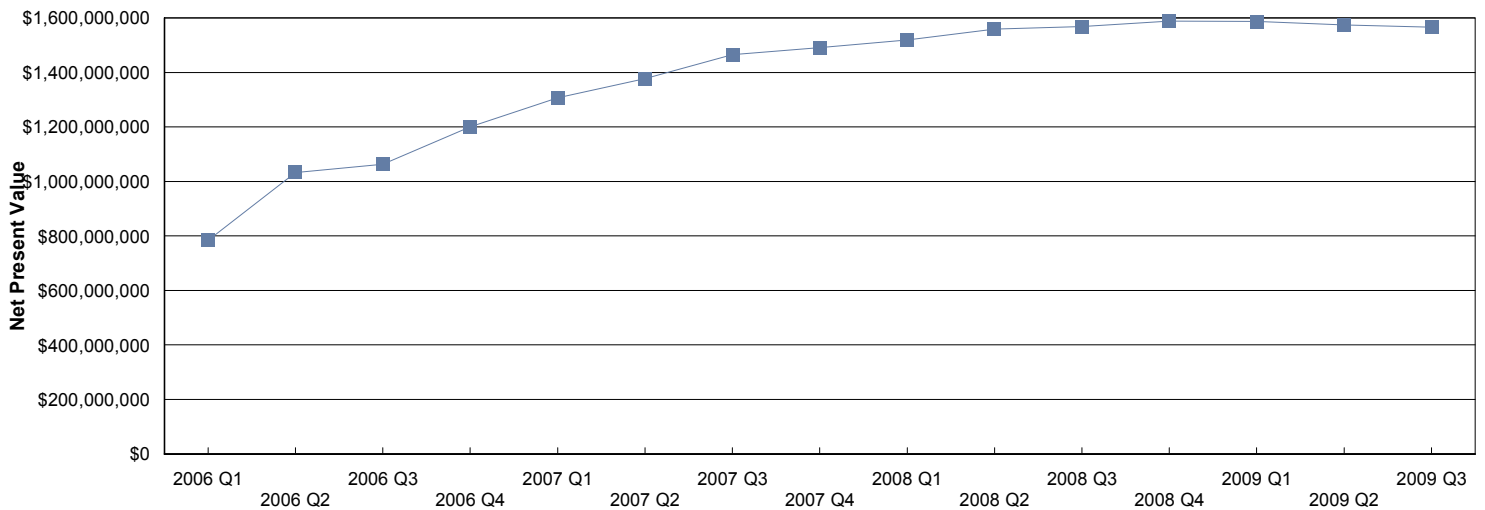
Broward - July 1 to September 30

			<u>Costs</u>
Emission Benefit	\$262,238.92	Total Broward Cost	\$2,629,615.08
Delay Benefit	\$25,998,094.42		
Safety Benefit	\$5,216,217.87		
Dms Benefit	\$1,098,170.77		
Fuel Benefit	\$4,282,529.60		
Road Ranger Benefit	\$1,222,967.09		
Total Benefit	\$38,080,218.67		
Total Cost	\$2,629,615.08		
Benefit Cost Ratio	14.48		
Cash Flow	\$35,450,603.59		

Net Present Value

<u>Quarter</u>	<u>Cash Flow</u>	<u>Net Present Value</u>
2006 Q1	\$17,678,574.53	\$783,617,333.32
2006 Q2	\$31,019,351.82	\$1,032,863,198.58
2006 Q3	\$26,777,258.75	\$1,063,082,207.72
2006 Q4	\$39,885,451.30	\$1,200,359,724.53
2007 Q1	\$43,198,571.65	\$1,307,252,729.01
2007 Q2	\$42,995,763.41	\$1,377,111,678.87
2007 Q3	\$50,234,933.82	\$1,465,210,136.14
2007 Q4	\$41,489,390.75	\$1,490,703,551.67
2008 Q1	\$43,691,163.00	\$1,519,479,976.93
2008 Q2	\$48,271,179.00	\$1,559,230,727.98
2008 Q3	\$41,101,192.13	\$1,567,796,458.86
2008 Q4	\$45,506,377.00	\$1,588,270,579.26
2009 Q1	\$38,796,158.50	\$1,586,807,916.43
2009 Q2	\$34,187,327.75	\$1,573,685,803.56
2009 Q3	\$35,450,605.00	\$1,565,393,900.90

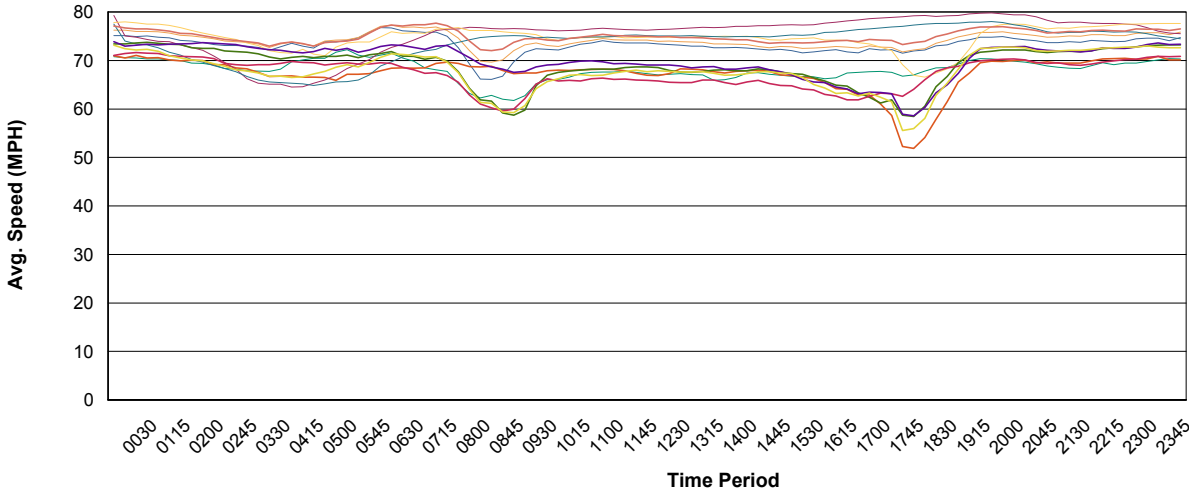
Net Present Value per Quarter



0.00

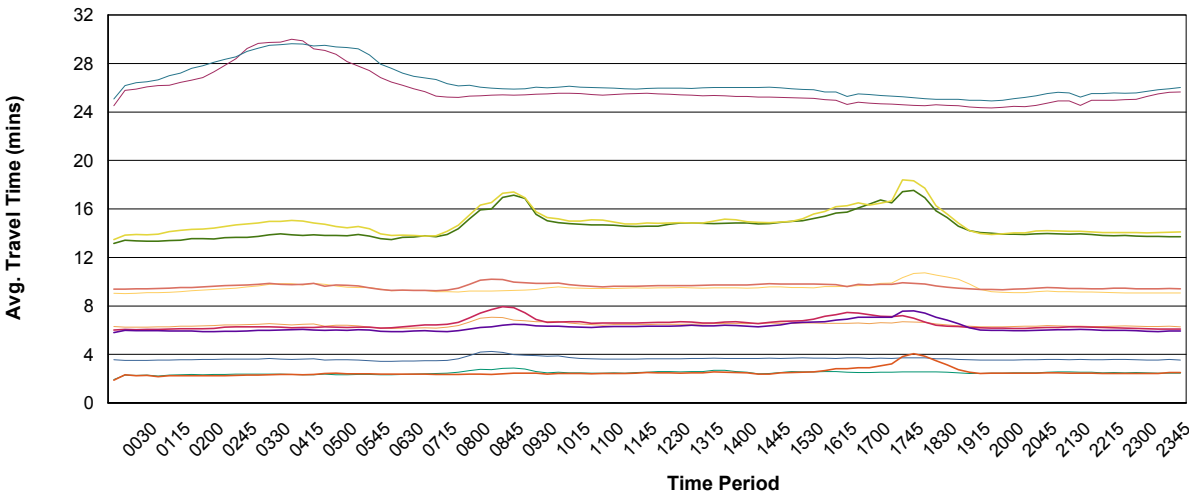
Travel Reliability Data

Average Speed by Segment on Weekdays



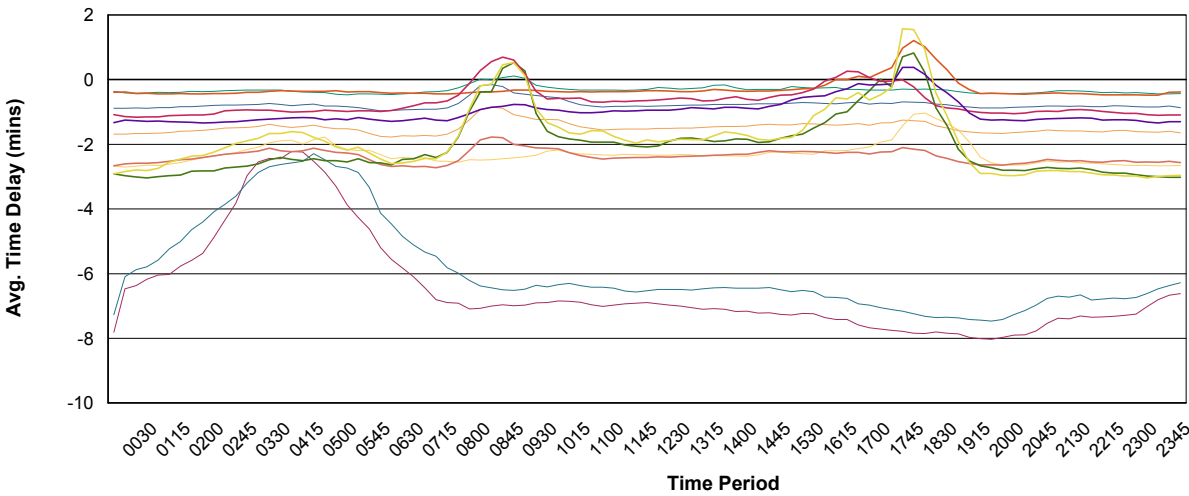
- BC 75SB10 to MDC
- DMS44
- BC 75SB14 to MDC
- DMS44
- BC I-595 EB Hiatus to I-95
- BC I-595 WB I-95 to Hiatus
- BC I-75 NB I-595 to Col Ln
- BC I-75 NB MD Ln to I-595
- BC I-75 SB Col Ln to I-595
- BC I-75 SB I-595 to MD Ln
- BC I-95 NB I-595 to PB Ln
- BC I-95 NB MD Ln to I-595
- BC I-95 SB I-595 to MD Ln
- BC I-95 SB PB Ln to I-595

Average Travel Time by Segment on Weekdays



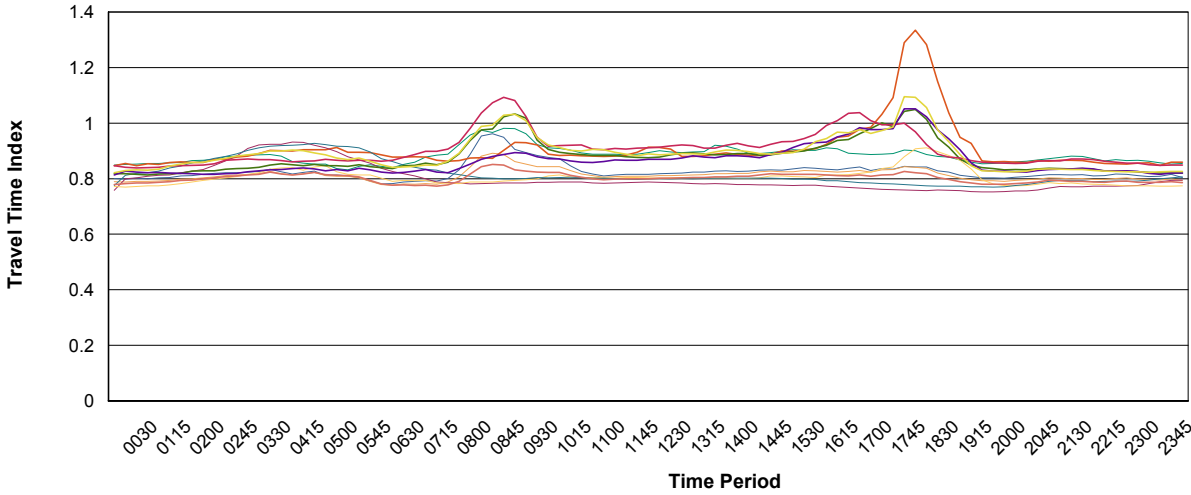
- BC 75SB10 to MDC
- DMS44
- BC 75SB14 to MDC
- DMS44
- BC I-595 EB Hiatus to I-95
- BC I-595 WB I-95 to Hiatus
- BC I-75 NB I-595 to Col Ln
- BC I-75 NB MD Ln to I-595
- BC I-75 SB Col Ln to I-595
- BC I-75 SB I-595 to MD Ln
- BC I-95 NB I-595 to PB Ln
- BC I-95 NB MD Ln to I-595
- BC I-95 SB I-595 to MD Ln
- BC I-95 SB PB Ln to I-595

Average Time Delay by Segment on Weekdays



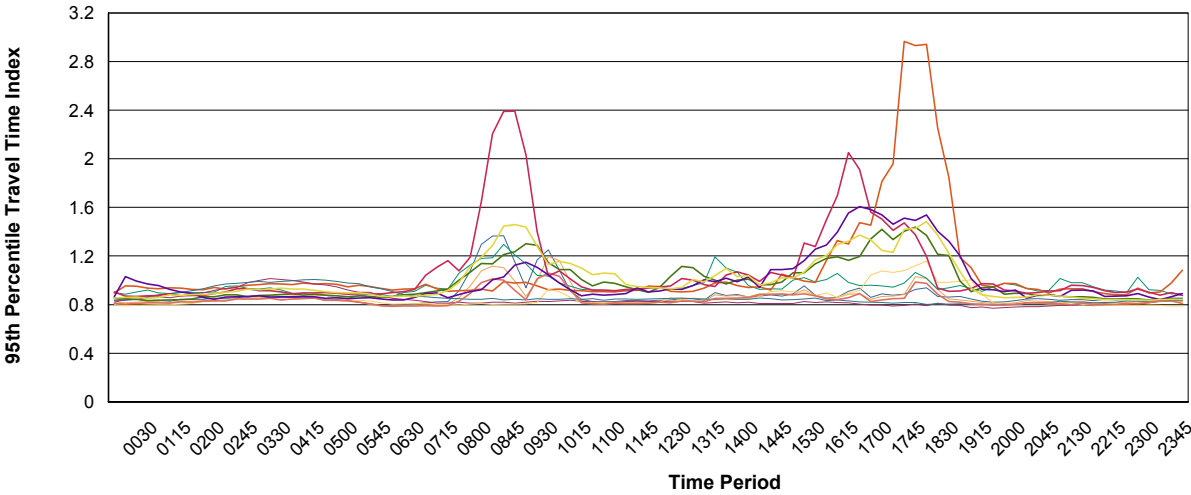
- BC 75SB10 to MDC
- DMS44
- BC 75SB14 to MDC
- DMS44
- BC I-595 EB Hiatus to I-95
- BC I-595 WB I-95 to Hiatus
- BC I-75 NB I-595 to Col Ln
- BC I-75 NB MD Ln to I-595
- BC I-75 SB Col Ln to I-595
- BC I-75 SB I-595 to MD Ln
- BC I-95 NB I-595 to PB Ln
- BC I-95 NB MD Ln to I-595
- BC I-95 SB I-595 to MD Ln
- BC I-95 SB PB Ln to I-595

Travel Time Index by Segment on Weekdays



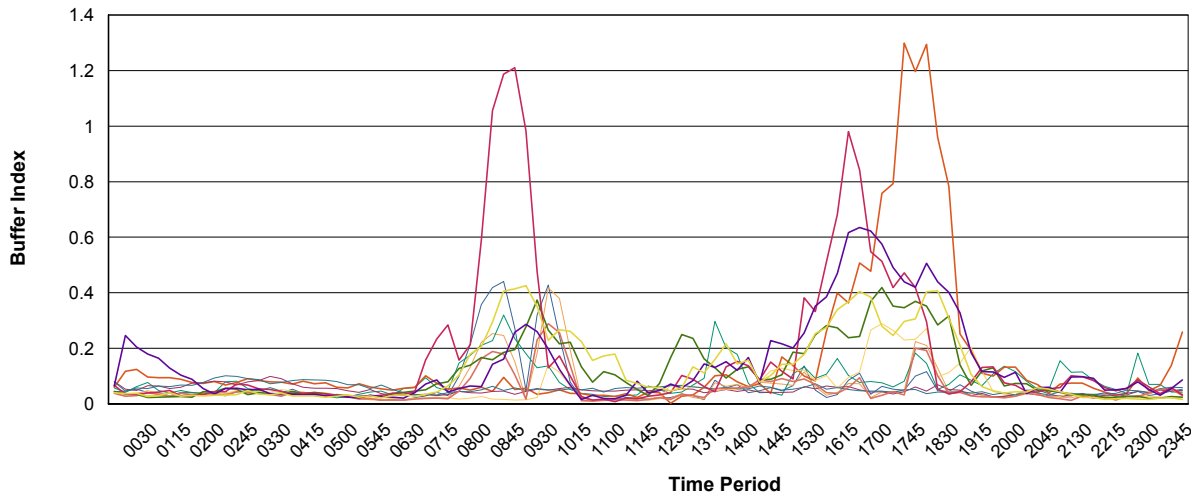
- BC 75SB10 to MDC DMS44
- BC 75SB14 to MDC DMS44
- BC I-595 EB Hiatus to I-95
- BC I-595 WB I-95 to Hiatus
- BC I-75 NB I-595 to Col Ln
- BC I-75 NB MD Ln to I-595
- BC I-75 SB Col Ln to I-595
- BC I-75 SB I-595 to MD Ln
- BC I-95 NB I-595 to PB Ln
- BC I-95 NB MD Ln to I-595
- BC I-95 SB I-595 to MD Ln
- BC I-95 SB PB Ln to I-595

95th Percentile Travel Time Index by Segment on Weekdays



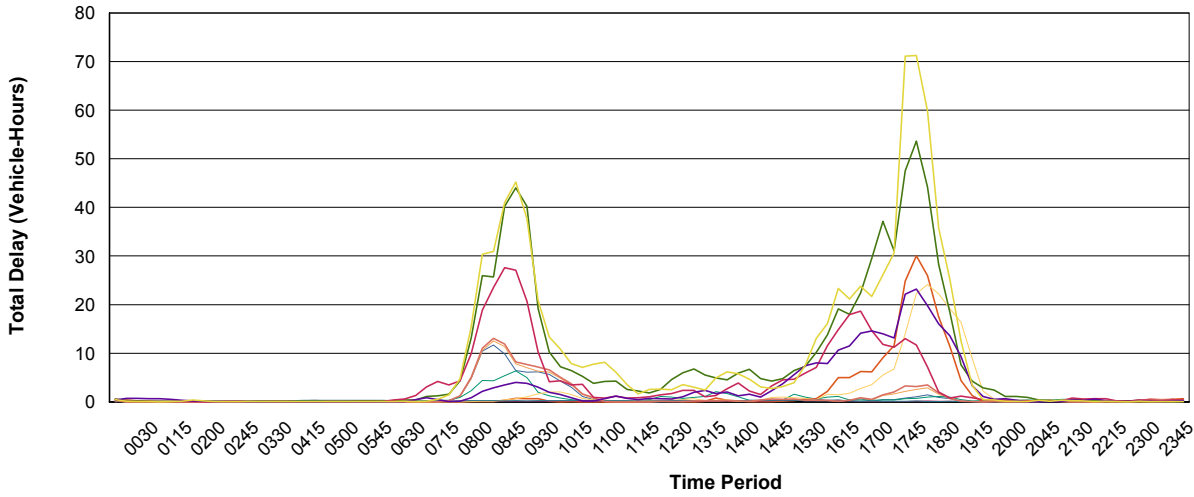
- BC 75SB10 to MDC DMS44
- BC 75SB14 to MDC DMS44
- BC I-595 EB Hiatus to I-95
- BC I-595 WB I-95 to Hiatus
- BC I-75 NB I-595 to Col Ln
- BC I-75 NB MD Ln to I-595
- BC I-75 SB Col Ln to I-595
- BC I-75 SB I-595 to MD Ln
- BC I-95 NB I-595 to PB Ln
- BC I-95 NB MD Ln to I-595
- BC I-95 SB I-595 to MD Ln
- BC I-95 SB PB Ln to I-595

Buffer Index by Segment on Weekdays



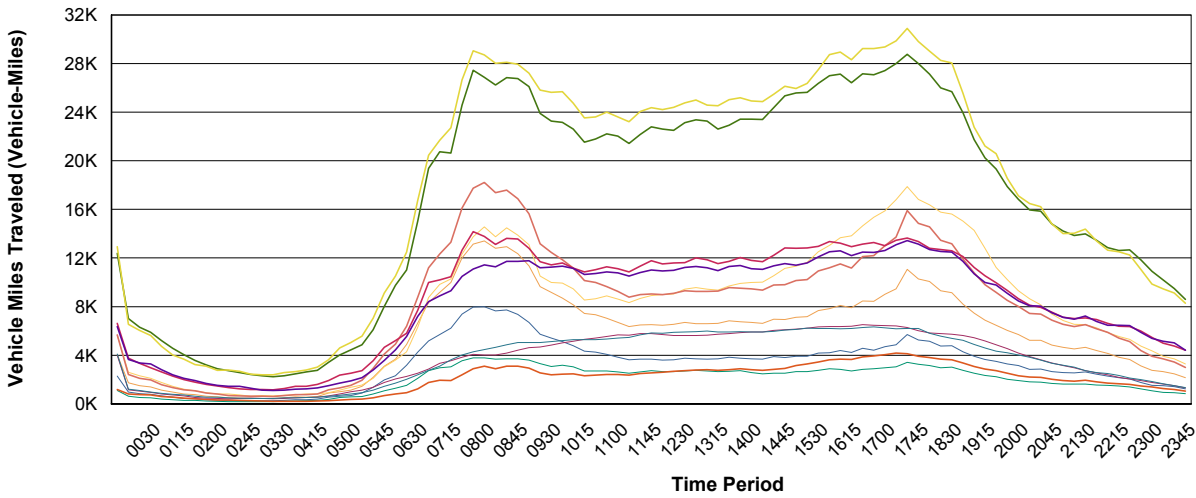
- BC 75SB10 to MDC DMS44
- BC 75SB14 to MDC DMS44
- BC I-595 EB Hiatus to I-95
- BC I-595 WB I-95 to Hiatus
- BC I-75 NB I-595 to Col Ln
- BC I-75 NB MD Ln to I-595
- BC I-75 SB Col Ln to I-595
- BC I-75 SB I-595 to MD Ln
- BC I-95 NB I-595 to PB Ln
- BC I-95 NB MD Ln to I-595
- BC I-95 SB I-595 to MD Ln
- BC I-95 SB PB Ln to I-595

Total Delay by Segment per Weekday



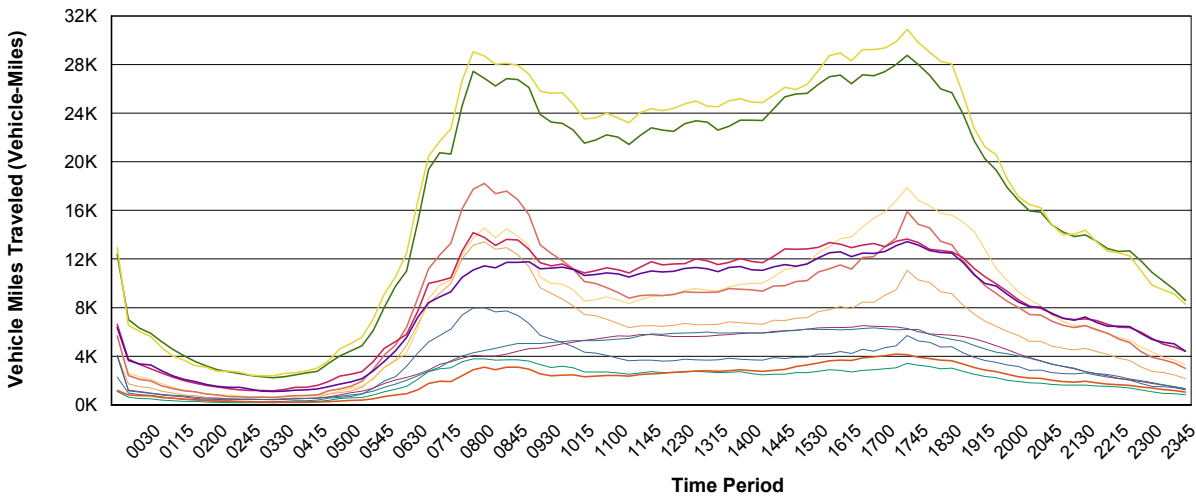
- BC 75SB10 to MDC
- DMS44
- BC 75SB14 to MDC
- DMS44
- BC I-595 EB Hiatus to I-95
- BC I-595 WB I-95 to Hiatus
- BC I-75 NB I-595 to Col Ln
- BC I-75 NB MD Ln to I-595
- BC I-75 SB Col Ln to I-595
- BC I-75 SB I-595 to MD Ln
- BC I-95 NB I-595 to PB Ln
- BC I-95 NB MD Ln to I-595
- BC I-95 SB I-595 to MD Ln
- BC I-95 SB PB Ln to I-595

Vehicle Miles Traveled by Segment per Weekday



- BC 75SB10 to MDC
- DMS44
- BC 75SB14 to MDC
- DMS44
- BC I-595 EB Hiatus to I-95
- BC I-595 WB I-95 to Hiatus
- BC I-75 NB I-595 to Col Ln
- BC I-75 NB MD Ln to I-595
- BC I-75 SB Col Ln to I-595
- BC I-75 SB I-595 to MD Ln
- BC I-95 NB I-595 to PB Ln
- BC I-95 NB MD Ln to I-595
- BC I-95 SB I-595 to MD Ln
- BC I-95 SB PB Ln to I-595

Vehicle Miles Traveled by Segment per Weekday



- BC 75SB10 to MDC
- DMS44
- BC 75SB14 to MDC
- DMS44
- BC I-595 EB Hiatus to I-95
- BC I-595 WB I-95 to Hiatus
- BC I-75 NB I-595 to Col Ln
- BC I-75 NB MD Ln to I-595
- BC I-75 SB Col Ln to I-595
- BC I-75 SB I-595 to MD Ln
- BC I-95 NB I-595 to PB Ln
- BC I-95 NB MD Ln to I-595
- BC I-95 SB I-595 to MD Ln
- BC I-95 SB PB Ln to I-595

Travel Time Index, 95th Percentile Travel Time Index, and Buffer Index by Peak Period on Weekdays

		BC 75SB10 to MDC DMS44	BC 75SB14 to MDC DMS44	BC I-595 EB Hiatus to I-95	BC I-595 WB I-95 to Hiatus	BC I-75 NB I-595 to Col Ln	BC I-75 NB MD Ln to I-595	BC I-75 SB Col Ln to I-595	BC I-75 SB I-595 to MD Ln	BC I-95 NB I-595 to PB Ln	BC I-95 NB MD Ln to I-595
AM Peak	Travel Time Index	0.89	0.85	0.96	0.86	0.78	0.79	0.81	0.82	0.95	0.98
	Peak TTI	2.36	1.32	5.49	5.29	1.92	1.03	2.02	1.11	16.58	4.45
	Planning Time Idx	1.14	0.99	1.11	0.92	0.82	0.81	0.85	0.92	1.16	1.41
	Buffer Index	0.25	0.17	0.17	0.06	0.04	0.03	0.05	0.13	0.19	0.58
	Peak Buffer Index	0.44	0.42	0.32	0.09	0.05	0.14	0.06	0.29	0.37	1.21
	Average VMT	6,741	11,224	3,443	2,630	4,208	12,197	4,535	15,224	24,715	12,423
	Peak VMT	9,741	15,614	12,527	10,649	9,251	16,319	6,452	21,031	32,479	16,588
Off Peak	Travel Time Index	0.81	0.79	0.85	0.84	0.76	0.78	0.78	0.78	0.83	0.86
	Peak TTI	4.15	7.46	2.98	2.95	6.82	9.78	6.55	9.63	14.52	2.03
	Planning Time Idx	0.84	0.83	0.91	0.94	0.92	0.84	0.93	0.83	0.87	0.90
	Buffer Index	0.04	0.04	0.07	0.08	0.06	0.04	0.07	0.03	0.05	0.07
	Peak Buffer Index	0.05	0.06	0.18	0.26	0.10	0.20	0.10	0.05	0.13	0.16
	Average VMT	1,917	3,389	1,056	1,134	2,780	4,805	2,793	4,734	10,575	5,565
	Peak VMT	6,797	10,418	9,240	10,202	12,275	16,493	15,079	13,723	25,571	13,407
PM Peak	Travel Time Index	0.83	0.83	0.90	1.09	0.76	0.85	0.78	0.81	0.95	0.95
	Peak TTI	2.06	1.25	3.03	4.72	2.75	1.16	2.83	19.21	1.18	2.21
	Planning Time Idx	0.87	0.86	0.97	1.78	0.81	0.97	0.83	0.85	1.25	1.29
	Buffer Index	0.07	0.08	0.10	0.62	0.05	0.17	0.05	0.07	0.29	0.42
	Peak Buffer Index	0.14	0.22	0.18	1.30	0.07	0.29	0.07	0.20	0.42	0.98
	Average VMT	4,573	8,699	2,916	3,707	6,179	14,759	6,036	12,502	26,714	13,014
	Peak VMT	6,458	12,596	11,218	13,300	12,809	21,323	14,912	18,044	33,891	17,121
Weekday Mid Day	Travel Time Index	0.82	0.82	0.90	0.87	0.78	0.80	0.80	0.81	0.88	0.92
	Peak TTI	1.08	0.95	5.43	5.28	0.93	0.93	0.95	0.91	1.06	2.05
	Planning Time Idx	0.84	0.84	0.93	0.92	0.82	0.84	0.84	0.83	0.97	0.95
	Buffer Index	0.04	0.05	0.07	0.05	0.05	0.05	0.06	0.04	0.12	0.07
	Peak Buffer Index	0.08	0.19	0.30	0.17	0.06	0.13	0.07	0.14	0.25	0.15
	Average VMT	3,846	6,814	2,663	2,637	5,692	9,358	5,730	9,485	22,852	11,588
	Peak VMT	5,350	8,994	10,245	9,672	13,480	13,524	12,293	12,267	29,269	15,741
Total	Travel Time Index	0.83	0.82	0.89	0.91	0.77	0.80	0.79	0.80	0.88	0.91
	Peak TTI	4.15	7.46	5.49	5.29	6.82	9.78	6.55	19.21	16.58	4.45
	Planning Time Idx	0.86	0.84	0.95	0.97	0.90	0.87	0.92	0.84	1.01	0.96
	Buffer Index	0.09	0.07	0.09	0.20	0.06	0.07	0.06	0.06	0.13	0.21
	Peak Buffer Index	0.44	0.42	0.32	1.30	0.10	0.29	0.10	0.29	0.42	1.21
	Average VMT	2,965	5,255	1,740	1,808	3,758	7,361	3,785	7,337	15,649	8,007
	Peak VMT	9,741	15,614	12,527	13,300	13,480	21,323	15,079	21,031	33,891	17,121

BC I-95 SB I-595 to MD Ln	BC I-95 SB PB Ln to I-595	Total
0.87	0.95	0.89
3.72	17.01	17.01
0.97	1.20	1.06
0.15	0.25	0.20
0.29	0.43	1.21
10,957	26,443	11,245
14,890	32,978	32,978
0.83	0.83	0.82
1.88	15.67	15.67
0.87	0.90	0.90
0.07	0.04	0.05
0.25	0.11	0.26
5,354	10,917	4,591
13,679	26,838	26,838
0.97	0.97	0.91
2.09	1.24	19.21
1.37	1.28	1.12
0.45	0.30	0.25
0.63	0.41	1.30
12,441	28,449	11,678
15,689	35,079	35,079
0.87	0.89	0.86
1.97	1.10	5.43
0.93	0.99	0.92
0.09	0.13	0.09
0.23	0.26	0.30
11,041	24,517	9,687
15,002	29,661	29,661
0.87	0.89	0.86
3.72	17.01	19.21
0.97	1.03	0.94
0.16	0.15	0.12
0.63	0.43	1.30
7,588	16,483	6,819
15,689	35,079	35,079

Travel Time Index, 95th Percentile Travel Time Index, and Buffer Index by Time of Day on Weekdays

		BC 75SB10 to MDC DMS44	BC 75SB14 to MDC DMS44	BC I-595 EB Hiatus to I-95	BC I-595 WB I-95 to Hiatus	BC I-75 NB I-595 to Col Ln	BC I-75 NB MD Ln to I-595	BC I-75 SB Col Ln to I-595	BC I-75 SB I-595 to MD Ln	BC I-95 NB I-595 to PB Ln	BC I-95 NB MD Ln to I-595	BC I-95 SB I-595 to MD Ln	BC I-95 SB PB Ln to I-595	Total
	Travel Time Idx	0.80	0.79	0.85	0.85	0.76	0.77	0.78	0.78	0.82	0.85	0.81	0.82	0.81
	Plan. Time Idx	0.83	0.82	0.90	0.90	0.82	0.80	0.84	0.81	0.85	0.90	0.87	0.85	0.87
	Buffer Index	0.04	0.04	0.06	0.06	0.08	0.04	0.08	0.04	0.04	0.07	0.06	0.04	0.05
	VMT	2,272	4,043	1,102	1,170	3,987	5,656	4,093	5,666	12,392	6,627	6,368	12,936	5,529
0000	Travel Time Idx	0.80	0.79	0.85	0.85	0.80	0.77	0.81	0.78	0.82	0.84	0.83	0.83	0.81
	Plan. Time Idx	0.83	0.82	0.89	0.95	0.84	0.79	0.85	0.80	0.85	0.87	1.03	0.86	0.87
	Buffer Index	0.05	0.04	0.04	0.12	0.05	0.03	0.05	0.03	0.04	0.04	0.25	0.04	0.06
	VMT	962	1,717	614	796	1,148	2,601	1,208	2,406	7,006	3,741	3,655	6,532	2,701
0015	Travel Time Idx	0.80	0.79	0.85	0.85	0.80	0.77	0.82	0.78	0.82	0.84	0.82	0.83	0.81
	Plan. Time Idx	0.84	0.82	0.90	0.95	0.84	0.79	0.87	0.81	0.84	0.87	0.99	0.86	0.87
	Buffer Index	0.05	0.04	0.06	0.12	0.05	0.03	0.06	0.03	0.03	0.03	0.20	0.04	0.06
	VMT	841	1,495	522	765	1,045	2,300	1,086	2,087	6,313	3,323	3,354	6,053	2,434
0030	Travel Time Idx	0.80	0.79	0.85	0.85	0.81	0.77	0.82	0.78	0.81	0.84	0.82	0.83	0.82
	Plan. Time Idx	0.83	0.83	0.92	0.94	0.86	0.80	0.87	0.82	0.83	0.87	0.97	0.85	0.87
	Buffer Index	0.04	0.05	0.08	0.10	0.07	0.03	0.05	0.04	0.02	0.04	0.18	0.03	0.06
	VMT	777	1,392	485	733	925	2,090	962	1,952	5,894	2,969	3,274	5,613	2,258
0045	Travel Time Idx	0.80	0.79	0.85	0.85	0.81	0.77	0.83	0.79	0.82	0.84	0.82	0.83	0.82
	Plan. Time Idx	0.83	0.82	0.89	0.93	0.86	0.80	0.88	0.81	0.84	0.88	0.96	0.86	0.87
	Buffer Index	0.04	0.04	0.05	0.09	0.06	0.03	0.06	0.03	0.02	0.04	0.16	0.03	0.06
	VMT	639	1,123	380	607	807	1,758	863	1,573	5,199	2,629	2,805	4,712	1,926
0100	Travel Time Idx	0.80	0.79	0.86	0.86	0.81	0.78	0.84	0.79	0.82	0.85	0.82	0.85	0.82
	Plan. Time Idx	0.83	0.82	0.89	0.94	0.86	0.80	0.89	0.81	0.84	0.89	0.93	0.88	0.88
	Buffer Index	0.03	0.03	0.04	0.09	0.05	0.03	0.06	0.03	0.03	0.05	0.13	0.04	0.05
	VMT	539	957	344	552	730	1,446	780	1,338	4,568	2,288	2,373	4,011	1,662
0115	Travel Time Idx	0.81	0.80	0.86	0.86	0.82	0.78	0.85	0.79	0.82	0.85	0.82	0.85	0.83
	Plan. Time Idx	0.84	0.83	0.90	0.94	0.87	0.80	0.90	0.82	0.84	0.87	0.90	0.88	0.88
	Buffer Index	0.04	0.04	0.05	0.09	0.06	0.03	0.07	0.04	0.03	0.03	0.10	0.03	0.05
	VMT	435	804	285	468	642	1,189	718	1,139	4,035	1,989	2,083	3,660	1,455
0130	Travel Time Idx	0.81	0.80	0.86	0.86	0.83	0.79	0.86	0.79	0.83	0.85	0.82	0.86	0.83
	Plan. Time Idx	0.84	0.83	0.90	0.92	0.89	0.81	0.91	0.82	0.85	0.87	0.89	0.88	0.89
	Buffer Index	0.04	0.03	0.04	0.08	0.07	0.03	0.07	0.03	0.02	0.03	0.09	0.03	0.05
	VMT	420	759	269	406	525	1,057	621	1,057	3,569	1,787	1,907	3,230	1,302
0145	Travel Time Idx	0.82	0.80	0.87	0.86	0.83	0.79	0.86	0.80	0.83	0.85	0.82	0.86	0.83
	Plan. Time Idx	0.84	0.83	0.90	0.92	0.90	0.82	0.93	0.83	0.86	0.88	0.86	0.88	0.89
	Buffer Index	0.04	0.04	0.04	0.07	0.08	0.04	0.08	0.04	0.04	0.03	0.05	0.03	0.05
	VMT	335	620	234	370	473	901	547	874	3,193	1,589	1,686	3,099	1,161
0200	Travel Time Idx	0.82	0.81	0.87	0.87	0.85	0.80	0.87	0.80	0.83	0.85	0.82	0.87	0.84
	Plan. Time Idx	0.85	0.84	0.90	0.94	0.92	0.83	0.95	0.83	0.86	0.89	0.84	0.89	0.91
	Buffer Index	0.04	0.04	0.04	0.08	0.08	0.03	0.09	0.04	0.04	0.04	0.03	0.03	0.05
	VMT	308	568	209	314	431	802	534	798	2,894	1,452	1,524	2,747	1,049
0215	Travel Time Idx	0.82	0.81	0.88	0.87	0.86	0.80	0.88	0.81	0.83	0.87	0.82	0.87	0.84
	Plan. Time Idx	0.85	0.84	0.95	0.93	0.93	0.83	0.97	0.83	0.88	0.90	0.86	0.90	0.92
	Buffer Index	0.04	0.03	0.08	0.07	0.08	0.04	0.10	0.03	0.06	0.04	0.05	0.03	0.05
	VMT	271	490	187	296	411	813	500	678	2,734	1,322	1,438	2,769	993

		BC 75SB10 to MDC DMS44	BC 75SB14 to MDC DMS44	BC I-595 EB Hiatus to I-95	BC I-595 WB I-95 to Hiatus	BC I-75 NB I-595 to Col Ln	BC I-75 NB MD Ln to I-595	BC I-75 SB Col Ln to I-595	BC I-75 SB I-595 to MD Ln	BC I-95 NB I-595 to PB Ln	BC I-95 NB MD Ln to I-595	BC I-95 SB I-595 to MD Ln	BC I-95 SB PB Ln to I-595	Total
0230	Travel Time Idx	0.82	0.81	0.88	0.88	0.88	0.81	0.89	0.81	0.84	0.87	0.82	0.88	0.85
	Plan. Time Idx	0.86	0.85	0.95	0.95	0.94	0.85	0.98	0.84	0.88	0.93	0.87	0.91	0.93
	Buffer Index	0.04	0.05	0.08	0.08	0.07	0.05	0.10	0.04	0.05	0.07	0.06	0.03	0.06
	VMT	244	456	174	277	440	727	461	645	2,576	1,232	1,449	2,670	947
0245	Travel Time Idx	0.82	0.81	0.88	0.88	0.91	0.82	0.90	0.81	0.84	0.87	0.82	0.89	0.85
	Plan. Time Idx	0.86	0.85	0.93	0.96	0.98	0.85	0.98	0.85	0.86	0.93	0.87	0.93	0.94
	Buffer Index	0.05	0.04	0.05	0.09	0.08	0.04	0.09	0.04	0.03	0.07	0.05	0.05	0.06
	VMT	245	453	173	246	474	625	437	631	2,415	1,183	1,275	2,448	884
0300	Travel Time Idx	0.83	0.82	0.89	0.89	0.92	0.82	0.91	0.82	0.84	0.87	0.83	0.89	0.86
	Plan. Time Idx	0.86	0.85	0.93	0.96	1.00	0.86	0.99	0.85	0.87	0.92	0.87	0.92	0.94
	Buffer Index	0.04	0.04	0.05	0.08	0.08	0.04	0.09	0.04	0.04	0.05	0.05	0.04	0.05
	VMT	242	440	170	224	439	680	434	617	2,318	1,163	1,133	2,394	855
0315	Travel Time Idx	0.83	0.83	0.89	0.90	0.92	0.83	0.92	0.82	0.85	0.87	0.83	0.90	0.87
	Plan. Time Idx	0.86	0.85	0.94	0.97	1.02	0.87	0.98	0.85	0.88	0.91	0.86	0.93	0.96
	Buffer Index	0.03	0.04	0.06	0.08	0.10	0.04	0.07	0.03	0.04	0.05	0.04	0.03	0.05
	VMT	248	433	183	207	400	647	444	595	2,227	1,159	1,088	2,385	836
0330	Travel Time Idx	0.83	0.82	0.88	0.90	0.92	0.84	0.92	0.82	0.85	0.87	0.83	0.90	0.86
	Plan. Time Idx	0.86	0.84	0.92	0.97	1.01	0.88	0.99	0.84	0.88	0.90	0.86	0.93	0.96
	Buffer Index	0.04	0.03	0.05	0.08	0.09	0.05	0.08	0.03	0.04	0.04	0.04	0.04	0.05
	VMT	284	494	201	203	433	709	483	677	2,295	1,247	1,130	2,577	895
0345	Travel Time Idx	0.82	0.81	0.86	0.90	0.93	0.84	0.92	0.81	0.85	0.86	0.84	0.90	0.86
	Plan. Time Idx	0.86	0.84	0.89	0.96	1.00	0.88	1.00	0.85	0.89	0.89	0.87	0.93	0.95
	Buffer Index	0.05	0.04	0.04	0.07	0.07	0.05	0.08	0.04	0.04	0.03	0.04	0.03	0.05
	VMT	334	557	230	209	496	716	498	760	2,475	1,441	1,209	2,651	966
0400	Travel Time Idx	0.82	0.82	0.86	0.90	0.93	0.83	0.92	0.82	0.85	0.86	0.84	0.90	0.86
	Plan. Time Idx	0.85	0.85	0.89	0.98	0.99	0.86	1.00	0.85	0.88	0.89	0.87	0.93	0.96
	Buffer Index	0.04	0.04	0.04	0.08	0.06	0.04	0.09	0.04	0.04	0.04	0.03	0.03	0.05
	VMT	330	555	240	203	516	802	520	758	2,623	1,436	1,230	2,784	1,001
0415	Travel Time Idx	0.83	0.82	0.85	0.90	0.92	0.84	0.93	0.82	0.85	0.86	0.84	0.89	0.86
	Plan. Time Idx	0.86	0.85	0.88	0.97	0.97	0.88	1.01	0.85	0.89	0.90	0.86	0.92	0.95
	Buffer Index	0.03	0.04	0.03	0.07	0.06	0.04	0.09	0.04	0.04	0.04	0.03	0.03	0.04
	VMT	375	603	289	219	554	795	535	808	2,741	1,600	1,302	3,009	1,069
0430	Travel Time Idx	0.81	0.81	0.85	0.90	0.91	0.85	0.92	0.81	0.85	0.87	0.83	0.89	0.86
	Plan. Time Idx	0.83	0.83	0.88	0.97	0.96	0.88	1.00	0.84	0.88	0.90	0.85	0.91	0.94
	Buffer Index	0.03	0.03	0.03	0.08	0.06	0.04	0.08	0.03	0.04	0.03	0.03	0.02	0.04
	VMT	550	872	369	248	656	917	634	1,162	3,417	1,920	1,486	3,627	1,323
0445	Travel Time Idx	0.81	0.81	0.84	0.91	0.90	0.83	0.92	0.81	0.85	0.87	0.83	0.87	0.85
	Plan. Time Idx	0.84	0.83	0.85	0.97	0.95	0.85	0.99	0.84	0.87	0.89	0.86	0.90	0.94
	Buffer Index	0.03	0.03	0.02	0.06	0.05	0.03	0.08	0.03	0.03	0.03	0.03	0.03	0.04
	VMT	631	981	526	304	815	1,134	709	1,298	4,016	2,356	1,703	4,601	1,591
0500	Travel Time Idx	0.81	0.81	0.83	0.89	0.88	0.82	0.92	0.81	0.84	0.86	0.83	0.87	0.85
	Plan. Time Idx	0.83	0.83	0.85	0.95	0.92	0.84	0.98	0.83	0.86	0.89	0.85	0.90	0.93
	Buffer Index	0.03	0.03	0.02	0.06	0.05	0.03	0.07	0.03	0.02	0.03	0.02	0.03	0.03
	VMT	666	1,108	575	351	978	1,353	809	1,523	4,429	2,523	1,874	5,039	1,771

		BC 75SB10 to MDC DMS44	BC 75SB14 to MDC DMS44	BC I-595 EB Hiatus to I-95	BC I-595 WB I-95 to Hiatus	BC I-75 NB I-595 to Col Ln	BC I-75 NB MD Ln to I-595	BC I-75 SB Col Ln to I-595	BC I-75 SB I-595 to MD Ln	BC I-95 NB I-595 to PB Ln	BC I-95 NB MD Ln to I-595	BC I-95 SB I-595 to MD Ln	BC I-95 SB PB Ln to I-595	Total
0515	Travel Time Idx	0.80	0.80	0.84	0.90	0.87	0.81	0.91	0.81	0.85	0.87	0.84	0.87	0.85
	Plan. Time Idx	0.82	0.82	0.87	0.96	0.90	0.83	0.97	0.82	0.87	0.89	0.85	0.89	0.93
	Buffer Index	0.02	0.02	0.03	0.07	0.04	0.02	0.07	0.02	0.03	0.03	0.02	0.02	0.03
	VMT	882	1,434	586	380	1,118	1,533	913	1,930	4,846	2,738	2,144	5,579	2,010
0530	Travel Time Idx	0.79	0.79	0.85	0.89	0.86	0.81	0.90	0.79	0.84	0.87	0.83	0.86	0.84
	Plan. Time Idx	0.81	0.80	0.89	0.95	0.90	0.83	0.95	0.81	0.87	0.89	0.86	0.89	0.91
	Buffer Index	0.02	0.02	0.04	0.06	0.05	0.02	0.05	0.02	0.03	0.03	0.03	0.03	0.03
	VMT	1,348	2,166	807	496	1,368	2,103	1,110	2,899	6,101	3,543	2,771	7,041	2,650
0545	Travel Time Idx	0.78	0.78	0.84	0.89	0.84	0.80	0.87	0.78	0.84	0.86	0.82	0.85	0.83
	Plan. Time Idx	0.79	0.79	0.88	0.93	0.87	0.81	0.93	0.79	0.86	0.89	0.84	0.87	0.90
	Buffer Index	0.01	0.01	0.05	0.05	0.04	0.02	0.07	0.01	0.02	0.03	0.03	0.02	0.03
	VMT	1,952	3,095	1,067	669	1,756	3,029	1,427	4,093	8,014	4,647	3,570	9,125	3,542
0600	Travel Time Idx	0.78	0.78	0.84	0.88	0.83	0.79	0.86	0.78	0.84	0.87	0.82	0.84	0.82
	Plan. Time Idx	0.80	0.79	0.87	0.92	0.85	0.80	0.91	0.79	0.87	0.90	0.84	0.87	0.89
	Buffer Index	0.02	0.01	0.03	0.05	0.03	0.02	0.05	0.01	0.04	0.04	0.02	0.03	0.03
	VMT	2,302	3,669	1,292	801	2,037	3,607	1,710	4,901	9,754	5,195	4,445	10,510	4,192
0615	Travel Time Idx	0.79	0.78	0.85	0.88	0.82	0.79	0.85	0.78	0.85	0.88	0.82	0.84	0.83
	Plan. Time Idx	0.80	0.79	0.90	0.93	0.84	0.81	0.88	0.79	0.88	0.91	0.84	0.87	0.89
	Buffer Index	0.01	0.01	0.05	0.06	0.03	0.01	0.04	0.01	0.04	0.03	0.02	0.03	0.03
	VMT	3,161	4,889	1,505	902	2,243	4,273	2,014	6,377	11,013	5,794	5,548	12,475	5,024
0630	Travel Time Idx	0.79	0.78	0.86	0.88	0.81	0.79	0.84	0.78	0.85	0.89	0.83	0.84	0.83
	Plan. Time Idx	0.81	0.80	0.91	0.93	0.83	0.81	0.87	0.79	0.89	0.93	0.86	0.87	0.89
	Buffer Index	0.02	0.02	0.06	0.06	0.03	0.02	0.03	0.02	0.05	0.04	0.04	0.03	0.03
	VMT	4,251	6,655	2,083	1,233	2,507	6,307	2,391	8,787	15,039	7,705	7,200	16,755	6,754
0645	Travel Time Idx	0.79	0.78	0.88	0.88	0.80	0.79	0.83	0.78	0.86	0.90	0.83	0.85	0.83
	Plan. Time Idx	0.81	0.80	0.96	0.97	0.83	0.81	0.86	0.79	0.90	1.04	0.89	0.88	0.90
	Buffer Index	0.03	0.02	0.09	0.10	0.03	0.02	0.03	0.02	0.05	0.16	0.07	0.03	0.06
	VMT	5,184	8,336	2,737	1,765	2,859	8,751	2,757	11,189	19,373	9,995	8,410	20,451	8,498
0700	Travel Time Idx	0.79	0.78	0.88	0.87	0.79	0.78	0.83	0.77	0.85	0.90	0.82	0.85	0.83
	Plan. Time Idx	0.82	0.80	0.94	0.93	0.81	0.80	0.86	0.79	0.91	1.11	0.90	0.88	0.90
	Buffer Index	0.04	0.02	0.06	0.07	0.03	0.02	0.03	0.02	0.07	0.23	0.09	0.04	0.06
	VMT	5,689	9,166	2,976	1,933	3,329	9,832	3,090	12,335	20,749	10,204	8,874	21,680	9,171
0715	Travel Time Idx	0.80	0.79	0.89	0.86	0.79	0.78	0.82	0.78	0.86	0.91	0.82	0.86	0.83
	Plan. Time Idx	0.82	0.80	0.93	0.91	0.81	0.80	0.85	0.79	0.93	1.16	0.86	0.92	0.90
	Buffer Index	0.03	0.02	0.05	0.05	0.03	0.02	0.04	0.02	0.08	0.28	0.04	0.06	0.06
	VMT	6,213	9,997	3,049	1,914	3,536	10,269	3,613	13,307	20,627	10,461	9,314	22,724	9,603
0730	Travel Time Idx	0.83	0.81	0.92	0.87	0.78	0.78	0.81	0.79	0.89	0.93	0.84	0.89	0.85
	Plan. Time Idx	0.91	0.86	1.06	0.91	0.82	0.80	0.85	0.83	1.00	1.08	0.88	0.98	0.94
	Buffer Index	0.10	0.06	0.15	0.06	0.04	0.02	0.04	0.05	0.13	0.16	0.06	0.10	0.08
	VMT	7,385	12,008	3,540	2,372	3,823	12,324	4,015	16,126	24,593	12,638	10,474	26,661	11,351
0745	Travel Time Idx	0.89	0.84	0.96	0.87	0.78	0.79	0.81	0.82	0.94	0.98	0.85	0.94	0.87
	Plan. Time Idx	1.08	0.95	1.12	0.92	0.81	0.80	0.84	0.89	1.07	1.19	0.91	1.11	1.01
	Buffer Index	0.21	0.13	0.17	0.05	0.04	0.02	0.04	0.09	0.14	0.21	0.06	0.18	0.11
	VMT	7,953	13,143	3,778	2,891	4,062	13,745	4,278	17,754	27,451	14,179	11,080	29,050	12,470

		BC 75SB10 to MDC DMS44	BC 75SB14 to MDC DMS44	BC I-95 EB Hiatus to I-95	BC I-95 WB I-95 to Hiatus	BC I-75 NB I-95 to Col Ln	BC I-75 NB MD Ln to I-95	BC I-75 SB Col Ln to I-95	BC I-75 SB I-95 to MD Ln	BC I-95 NB I-95 to PB Ln	BC I-95 NB MD Ln to I-95	BC I-95 SB I-95 to MD Ln	BC I-95 SB PB Ln to I-95	Total
0800	Travel Time Idx	0.95	0.88	0.97	0.88	0.78	0.79	0.80	0.84	0.98	1.04	0.87	0.99	0.90
	Plan. Time Idx	1.29	1.08	1.18	0.93	0.81	0.81	0.84	0.98	1.14	1.65	0.92	1.19	1.10
	Buffer Index	0.36	0.22	0.21	0.06	0.04	0.03	0.05	0.16	0.17	0.59	0.06	0.21	0.18
	VMT	7,983	13,396	3,782	3,090	4,017	14,552	4,453	18,213	26,877	13,773	11,445	28,715	12,547
0815	Travel Time Idx	0.96	0.89	0.97	0.87	0.78	0.79	0.80	0.85	0.98	1.07	0.88	0.99	0.90
	Plan. Time Idx	1.36	1.12	1.19	0.91	0.82	0.80	0.85	1.01	1.13	2.21	1.00	1.28	1.13
	Buffer Index	0.42	0.25	0.23	0.04	0.04	0.02	0.06	0.19	0.16	1.06	0.14	0.29	0.24
	VMT	7,644	12,800	3,684	2,876	4,015	13,756	4,639	17,375	26,243	13,128	11,265	28,037	12,144
0830	Travel Time Idx	0.95	0.89	0.98	0.90	0.78	0.79	0.80	0.85	1.02	1.09	0.89	1.03	0.91
	Plan. Time Idx	1.37	1.10	1.30	0.99	0.82	0.80	0.84	1.00	1.21	2.39	1.03	1.45	1.17
	Buffer Index	0.44	0.25	0.32	0.09	0.05	0.02	0.05	0.18	0.18	1.19	0.16	0.41	0.28
	VMT	7,727	12,933	3,691	3,103	4,177	14,472	4,866	17,586	26,845	13,607	11,713	28,117	12,426
0845	Travel Time Idx	0.90	0.86	0.98	0.93	0.78	0.79	0.80	0.83	1.03	1.08	0.89	1.03	0.91
	Plan. Time Idx	1.15	0.99	1.21	0.98	0.81	0.80	0.84	0.92	1.24	2.39	1.12	1.46	1.18
	Buffer Index	0.27	0.15	0.23	0.05	0.03	0.01	0.06	0.10	0.20	1.21	0.26	0.41	0.25
	VMT	7,344	12,350	3,690	3,092	4,404	13,886	5,037	16,874	26,769	13,567	11,734	27,954	12,247
0900	Travel Time Idx	0.89	0.85	0.96	0.93	0.78	0.80	0.80	0.83	1.02	1.02	0.89	1.01	0.90
	Plan. Time Idx	0.94	0.87	1.14	0.98	0.82	0.81	0.84	0.84	1.30	2.03	1.15	1.44	1.14
	Buffer Index	0.05	0.02	0.18	0.06	0.04	0.01	0.05	0.02	0.28	0.98	0.29	0.43	0.20
	VMT	6,703	11,365	3,601	2,931	4,617	13,086	5,054	15,640	26,099	12,810	11,770	27,222	11,763
0915	Travel Time Idx	0.88	0.84	0.92	0.92	0.79	0.80	0.80	0.82	0.94	0.95	0.88	0.95	0.87
	Plan. Time Idx	1.17	1.00	1.04	0.95	0.83	0.82	0.85	1.01	1.29	1.40	1.11	1.28	1.05
	Buffer Index	0.32	0.18	0.13	0.03	0.05	0.02	0.05	0.23	0.37	0.48	0.26	0.35	0.21
	VMT	5,714	9,648	3,304	2,536	4,665	10,510	5,041	13,158	23,890	11,683	11,201	25,830	10,618
0930	Travel Time Idx	0.88	0.84	0.91	0.89	0.79	0.81	0.80	0.82	0.91	0.92	0.87	0.92	0.86
	Plan. Time Idx	1.25	1.20	1.04	0.92	0.83	0.92	0.84	1.06	1.15	1.04	1.05	1.13	1.00
	Buffer Index	0.43	0.42	0.14	0.04	0.05	0.14	0.05	0.29	0.27	0.13	0.20	0.23	0.20
	VMT	5,417	9,177	3,063	2,396	4,835	9,995	5,130	12,470	23,262	11,431	11,248	25,629	10,338
0945	Travel Time Idx	0.87	0.84	0.91	0.88	0.79	0.81	0.80	0.82	0.89	0.92	0.87	0.91	0.86
	Plan. Time Idx	1.08	1.16	0.98	0.93	0.83	0.91	0.84	1.03	1.09	1.08	0.98	1.16	0.97
	Buffer Index	0.24	0.38	0.08	0.05	0.05	0.11	0.05	0.26	0.22	0.17	0.12	0.27	0.17
	VMT	5,121	8,700	3,166	2,436	5,012	9,943	5,199	11,851	23,175	11,583	11,316	25,696	10,267
1000	Travel Time Idx	0.85	0.83	0.90	0.88	0.79	0.81	0.81	0.81	0.89	0.92	0.86	0.90	0.85
	Plan. Time Idx	0.91	0.99	0.95	0.92	0.84	0.86	0.85	0.92	1.09	1.01	0.92	1.14	0.93
	Buffer Index	0.08	0.19	0.05	0.04	0.06	0.06	0.05	0.14	0.22	0.10	0.07	0.26	0.11
	VMT	4,765	8,154	3,029	2,468	5,157	9,454	5,281	11,163	22,615	11,177	11,136	24,750	9,929
1015	Travel Time Idx	0.83	0.82	0.89	0.88	0.79	0.80	0.80	0.80	0.89	0.92	0.86	0.90	0.85
	Plan. Time Idx	0.84	0.83	0.93	0.91	0.83	0.82	0.84	0.81	1.01	0.95	0.87	1.10	0.92
	Buffer Index	0.02	0.02	0.04	0.04	0.05	0.01	0.05	0.01	0.13	0.03	0.02	0.22	0.05
	VMT	4,334	7,437	2,694	2,309	5,298	8,547	5,268	10,157	21,531	10,847	10,653	23,537	9,384
1030	Travel Time Idx	0.82	0.81	0.89	0.88	0.78	0.80	0.80	0.80	0.88	0.91	0.86	0.91	0.84
	Plan. Time Idx	0.82	0.82	0.92	0.91	0.82	0.81	0.85	0.81	0.95	0.92	0.88	1.05	0.91
	Buffer Index	0.01	0.01	0.03	0.03	0.05	0.01	0.06	0.01	0.08	0.01	0.03	0.16	0.04
	VMT	4,248	7,320	2,702	2,351	5,408	8,641	5,270	9,995	21,788	11,041	10,714	23,618	9,425

		BC 75SB10 to MDC DMS44	BC 75SB14 to MDC DMS44	BC I-95 EB Hiatus to I-95	BC I-95 WB I-95 to Hiatus	BC I-75 NB I-595 to Col Ln	BC I-75 NB MD Ln to I-595	BC I-75 SB Col Ln to I-595	BC I-75 SB I-595 to MD Ln	BC I-95 NB I-595 to PB Ln	BC I-95 NB MD Ln to I-595	BC I-95 SB I-595 to MD Ln	BC I-95 SB PB Ln to I-595	Total
1045	Travel Time Idx	0.81	0.80	0.89	0.88	0.78	0.80	0.80	0.80	0.88	0.90	0.86	0.90	0.84
	Plan. Time Idx	0.82	0.82	0.91	0.91	0.82	0.82	0.84	0.81	0.99	0.92	0.88	1.06	0.91
	Buffer Index	0.01	0.02	0.03	0.03	0.05	0.02	0.04	0.01	0.12	0.02	0.02	0.17	0.04
	VMT	4,063	7,039	2,703	2,398	5,551	8,875	5,328	9,651	22,228	11,271	10,849	24,010	9,497
1100	Travel Time Idx	0.81	0.81	0.89	0.88	0.78	0.80	0.80	0.80	0.88	0.91	0.87	0.89	0.84
	Plan. Time Idx	0.83	0.82	0.91	0.90	0.82	0.81	0.84	0.81	0.98	0.92	0.88	1.05	0.91
	Buffer Index	0.01	0.02	0.03	0.03	0.05	0.01	0.05	0.02	0.10	0.01	0.02	0.18	0.04
	VMT	3,826	6,697	2,634	2,418	5,678	8,631	5,414	9,242	22,031	11,124	10,782	23,617	9,341
1115	Travel Time Idx	0.82	0.81	0.89	0.88	0.79	0.80	0.80	0.80	0.88	0.91	0.87	0.89	0.84
	Plan. Time Idx	0.83	0.82	0.91	0.92	0.82	0.82	0.84	0.81	0.95	0.93	0.89	0.96	0.91
	Buffer Index	0.02	0.02	0.03	0.04	0.05	0.01	0.06	0.01	0.08	0.02	0.03	0.09	0.04
	VMT	3,614	6,353	2,527	2,370	5,645	8,325	5,451	8,772	21,441	10,847	10,507	23,217	9,089
1130	Travel Time Idx	0.82	0.81	0.89	0.90	0.79	0.80	0.80	0.80	0.88	0.91	0.87	0.88	0.84
	Plan. Time Idx	0.83	0.82	0.92	0.92	0.83	0.82	0.84	0.81	0.92	0.93	0.94	0.95	0.91
	Buffer Index	0.02	0.01	0.03	0.02	0.05	0.02	0.06	0.01	0.05	0.02	0.08	0.07	0.04
	VMT	3,681	6,487	2,627	2,497	5,781	8,673	5,678	8,985	22,171	11,327	10,801	24,067	9,398
1145	Travel Time Idx	0.82	0.81	0.89	0.91	0.79	0.80	0.80	0.80	0.88	0.91	0.87	0.89	0.85
	Plan. Time Idx	0.83	0.82	0.95	0.95	0.82	0.81	0.85	0.81	0.90	0.94	0.90	0.94	0.92
	Buffer Index	0.02	0.02	0.06	0.04	0.05	0.01	0.06	0.02	0.03	0.03	0.04	0.06	0.04
	VMT	3,680	6,518	2,739	2,554	5,787	8,919	5,832	9,043	22,790	11,764	11,009	24,373	9,584
1200	Travel Time Idx	0.82	0.81	0.90	0.91	0.79	0.80	0.80	0.80	0.88	0.91	0.87	0.89	0.85
	Plan. Time Idx	0.84	0.83	0.95	0.95	0.83	0.82	0.85	0.82	0.94	0.94	0.91	0.94	0.92
	Buffer Index	0.02	0.02	0.05	0.04	0.05	0.02	0.06	0.02	0.07	0.03	0.05	0.06	0.04
	VMT	3,602	6,454	2,658	2,601	5,698	8,977	5,807	8,999	22,606	11,501	10,940	24,209	9,504
1215	Travel Time Idx	0.82	0.81	0.90	0.91	0.79	0.80	0.80	0.80	0.89	0.92	0.87	0.89	0.85
	Plan. Time Idx	0.84	0.83	0.93	0.91	0.82	0.86	0.85	0.81	1.03	0.95	0.93	0.93	0.92
	Buffer Index	0.02	0.02	0.04	0.00	0.05	0.07	0.07	0.02	0.17	0.04	0.07	0.05	0.05
	VMT	3,634	6,531	2,640	2,673	5,632	9,037	5,885	9,081	22,500	11,580	10,992	24,390	9,548
1230	Travel Time Idx	0.82	0.81	0.89	0.88	0.78	0.80	0.80	0.80	0.89	0.92	0.87	0.89	0.85
	Plan. Time Idx	0.85	0.84	0.93	0.90	0.83	0.84	0.85	0.83	1.11	1.01	0.92	0.94	0.92
	Buffer Index	0.03	0.04	0.04	0.03	0.05	0.05	0.07	0.03	0.25	0.10	0.06	0.06	0.07
	VMT	3,753	6,696	2,712	2,739	5,611	9,423	5,902	9,309	23,134	11,606	11,221	24,771	9,740
1245	Travel Time Idx	0.82	0.81	0.90	0.88	0.78	0.80	0.80	0.80	0.89	0.92	0.88	0.89	0.85
	Plan. Time Idx	0.85	0.83	0.96	0.91	0.82	0.85	0.85	0.83	1.10	1.00	0.96	1.01	0.92
	Buffer Index	0.03	0.02	0.07	0.03	0.05	0.06	0.06	0.03	0.24	0.09	0.08	0.13	0.07
	VMT	3,687	6,605	2,745	2,777	5,621	9,556	5,940	9,245	23,388	12,005	11,305	24,996	9,822
1300	Travel Time Idx	0.82	0.81	0.90	0.88	0.78	0.80	0.80	0.80	0.89	0.91	0.88	0.89	0.85
	Plan. Time Idx	0.84	0.83	0.98	0.93	0.81	0.85	0.85	0.82	1.03	0.97	1.00	0.99	0.93
	Buffer Index	0.01	0.02	0.09	0.06	0.04	0.06	0.06	0.02	0.16	0.06	0.14	0.11	0.07
	VMT	3,672	6,591	2,706	2,797	5,653	9,429	5,985	9,261	23,275	11,845	11,190	24,597	9,750
1315	Travel Time Idx	0.83	0.82	0.92	0.89	0.78	0.80	0.80	0.81	0.89	0.91	0.88	0.90	0.85
	Plan. Time Idx	0.90	0.88	1.19	0.98	0.82	0.84	0.84	0.85	1.00	0.95	0.99	1.04	0.94
	Buffer Index	0.08	0.08	0.30	0.10	0.04	0.05	0.05	0.05	0.13	0.04	0.13	0.16	0.10
	VMT	3,699	6,617	2,647	2,760	5,732	9,345	5,903	9,268	22,623	11,530	10,959	24,525	9,634

		BC 75SB10 to MDC DMS44	BC 75SB14 to MDC DMS44	BC I-595 EB Hiatus to I-95	BC I-595 WB I-95 to Hiatus	BC I-75 NB I-595 to Col Ln	BC I-75 NB MD Ln to I-595	BC I-75 SB Col Ln to I-595	BC I-75 SB I-595 to MD Ln	BC I-95 NB I-595 to PB Ln	BC I-95 NB MD Ln to I-595	BC I-95 SB I-595 to MD Ln	BC I-95 SB PB Ln to I-595	Total
1330	Travel Time Idx	0.83	0.82	0.92	0.89	0.78	0.80	0.80	0.81	0.89	0.92	0.88	0.90	0.85
	Plan. Time Idx	0.88	0.87	1.10	0.99	0.82	0.84	0.85	0.85	0.97	1.04	1.02	1.10	0.94
	Buffer Index	0.06	0.06	0.20	0.10	0.05	0.05	0.06	0.05	0.09	0.13	0.15	0.22	0.10
	VMT	3,827	6,824	2,682	2,817	5,791	9,709	5,904	9,569	22,924	11,730	11,294	25,039	9,842
1345	Travel Time Idx	0.83	0.82	0.91	0.89	0.78	0.80	0.80	0.81	0.89	0.93	0.88	0.90	0.85
	Plan. Time Idx	0.88	0.88	1.07	0.96	0.81	0.84	0.84	0.85	1.00	1.07	0.99	1.03	0.93
	Buffer Index	0.07	0.07	0.18	0.08	0.04	0.05	0.05	0.06	0.12	0.15	0.12	0.14	0.10
	VMT	3,760	6,746	2,717	2,884	5,853	9,920	5,931	9,517	23,422	12,028	11,392	25,200	9,947
1400	Travel Time Idx	0.83	0.82	0.89	0.89	0.78	0.80	0.80	0.81	0.89	0.92	0.88	0.90	0.85
	Plan. Time Idx	0.86	0.87	0.96	0.94	0.82	0.85	0.84	0.86	1.01	1.04	1.03	1.04	0.92
	Buffer Index	0.04	0.06	0.07	0.06	0.05	0.06	0.05	0.06	0.13	0.14	0.17	0.16	0.09
	VMT	3,703	6,697	2,574	2,808	5,910	9,976	5,904	9,463	23,438	11,792	11,116	24,917	9,858
1415	Travel Time Idx	0.83	0.82	0.89	0.88	0.78	0.80	0.80	0.81	0.88	0.91	0.88	0.89	0.85
	Plan. Time Idx	0.87	0.89	0.93	0.95	0.81	0.87	0.85	0.88	0.96	0.99	0.94	0.96	0.91
	Buffer Index	0.05	0.08	0.04	0.07	0.04	0.08	0.06	0.09	0.09	0.09	0.07	0.08	0.07
	VMT	3,670	6,626	2,476	2,761	5,919	10,015	5,900	9,364	23,409	11,687	11,065	24,870	9,832
1430	Travel Time Idx	0.83	0.83	0.89	0.89	0.78	0.81	0.80	0.82	0.89	0.92	0.89	0.89	0.85
	Plan. Time Idx	0.88	0.89	0.93	0.92	0.81	0.91	0.85	0.88	0.96	1.06	1.09	0.98	0.92
	Buffer Index	0.06	0.07	0.04	0.04	0.04	0.12	0.06	0.08	0.09	0.15	0.23	0.10	0.09
	VMT	3,878	6,955	2,527	2,836	6,029	10,549	5,961	9,780	24,366	12,223	11,354	25,483	10,181
1445	Travel Time Idx	0.83	0.82	0.90	0.90	0.78	0.81	0.80	0.82	0.89	0.93	0.89	0.89	0.86
	Plan. Time Idx	0.87	0.88	0.93	1.05	0.81	0.91	0.84	0.89	0.98	1.04	1.09	1.02	0.93
	Buffer Index	0.05	0.07	0.03	0.17	0.04	0.13	0.05	0.09	0.10	0.12	0.22	0.14	0.10
	VMT	3,813	6,926	2,507	2,914	6,090	11,153	6,057	9,815	25,347	12,837	11,528	26,143	10,427
1500	Travel Time Idx	0.84	0.83	0.90	0.90	0.78	0.81	0.80	0.82	0.90	0.93	0.91	0.89	0.86
	Plan. Time Idx	0.89	0.88	1.00	1.02	0.81	0.90	0.84	0.88	1.06	1.02	1.10	1.02	0.95
	Buffer Index	0.06	0.07	0.11	0.14	0.04	0.12	0.05	0.08	0.19	0.09	0.20	0.14	0.11
	VMT	3,902	7,114	2,657	3,151	6,148	11,335	6,128	10,131	25,589	12,804	11,399	25,947	10,525
1515	Travel Time Idx	0.84	0.83	0.90	0.90	0.78	0.81	0.80	0.82	0.90	0.94	0.93	0.91	0.86
	Plan. Time Idx	0.96	0.92	1.02	0.99	0.82	0.90	0.85	0.89	1.06	1.31	1.16	1.07	0.98
	Buffer Index	0.14	0.11	0.13	0.10	0.06	0.12	0.06	0.09	0.18	0.38	0.26	0.18	0.15
	VMT	3,911	7,176	2,643	3,268	6,220	11,633	6,227	10,219	25,631	12,833	11,592	26,373	10,644
1530	Travel Time Idx	0.84	0.83	0.90	0.91	0.78	0.80	0.80	0.81	0.91	0.96	0.93	0.93	0.87
	Plan. Time Idx	0.88	0.88	0.98	0.98	0.82	0.87	0.86	0.87	1.14	1.28	1.26	1.17	0.99
	Buffer Index	0.05	0.06	0.09	0.08	0.05	0.08	0.07	0.07	0.25	0.33	0.35	0.25	0.15
	VMT	4,167	7,676	2,762	3,441	6,332	12,506	6,204	10,928	26,368	12,969	12,085	27,500	11,078
1545	Travel Time Idx	0.83	0.83	0.91	0.92	0.77	0.81	0.79	0.81	0.92	0.99	0.93	0.94	0.87
	Plan. Time Idx	0.85	0.85	1.01	1.17	0.82	0.90	0.83	0.85	1.18	1.50	1.29	1.20	1.05
	Buffer Index	0.02	0.03	0.11	0.26	0.06	0.10	0.05	0.04	0.28	0.51	0.38	0.27	0.18
	VMT	4,188	7,817	2,879	3,619	6,352	13,026	6,205	11,184	27,012	13,350	12,505	28,735	11,406
1600	Travel Time Idx	0.83	0.82	0.91	0.95	0.77	0.81	0.79	0.81	0.94	1.01	0.95	0.97	0.88
	Plan. Time Idx	0.86	0.86	1.06	1.33	0.82	0.86	0.84	0.84	1.19	1.70	1.40	1.29	1.11
	Buffer Index	0.03	0.04	0.16	0.40	0.06	0.06	0.06	0.04	0.27	0.68	0.47	0.34	0.22
	VMT	4,387	8,082	2,824	3,685	6,364	13,663	6,174	11,517	27,139	13,226	12,581	28,948	11,549

		BC 75SB10 to MDC DMS44	BC 75SB14 to MDC DMS44	BC I-95 EB Hiatus to I-95	BC I-95 WB I-95 to Hiatus	BC I-75 NB I-95 to Col Ln	BC I-75 NB MD Ln to I-95	BC I-75 SB Col Ln to I-95	BC I-75 SB I-95 to MD Ln	BC I-95 NB I-95 to PB Ln	BC I-95 NB MD Ln to I-95	BC I-95 SB I-95 to MD Ln	BC I-95 SB PB Ln to I-95	Total
1615	Travel Time Idx	0.84	0.83	0.89	0.95	0.77	0.81	0.79	0.81	0.94	1.04	0.96	0.97	0.88
	Plan. Time Idx	0.91	0.89	0.98	1.30	0.82	0.89	0.83	0.86	1.16	2.05	1.55	1.32	1.08
	Buffer Index	0.09	0.07	0.10	0.36	0.06	0.10	0.05	0.06	0.24	0.98	0.62	0.37	0.26
	VMT	4,226	7,898	2,704	3,651	6,378	13,828	6,203	11,174	26,418	12,945	12,207	28,325	11,340
1630	Travel Time Idx	0.84	0.83	0.89	0.98	0.77	0.82	0.79	0.81	0.96	1.04	0.98	0.98	0.89
	Plan. Time Idx	0.93	0.89	0.96	1.47	0.80	0.91	0.82	0.89	1.19	1.91	1.61	1.37	1.09
	Buffer Index	0.11	0.07	0.08	0.51	0.05	0.12	0.05	0.09	0.24	0.84	0.63	0.40	0.27
	VMT	4,556	8,465	2,822	3,860	6,520	14,638	6,276	12,110	27,163	13,135	12,486	29,246	11,773
1645	Travel Time Idx	0.83	0.82	0.89	0.98	0.76	0.82	0.78	0.81	0.98	1.01	0.98	0.96	0.89
	Plan. Time Idx	0.86	0.84	0.96	1.45	0.80	1.04	0.82	0.82	1.34	1.56	1.58	1.33	1.09
	Buffer Index	0.03	0.02	0.08	0.48	0.04	0.27	0.05	0.02	0.37	0.55	0.62	0.38	0.24
	VMT	4,401	8,424	2,873	3,938	6,452	15,347	6,339	12,185	27,081	13,287	12,458	29,229	11,856
1700	Travel Time Idx	0.84	0.83	0.89	1.03	0.76	0.84	0.78	0.81	1.00	0.99	0.98	0.97	0.89
	Plan. Time Idx	0.89	0.87	0.95	1.81	0.79	1.08	0.82	0.84	1.42	1.50	1.54	1.24	1.11
	Buffer Index	0.06	0.04	0.08	0.76	0.04	0.29	0.05	0.03	0.42	0.51	0.58	0.28	0.26
	VMT	4,687	9,005	2,958	4,051	6,430	15,867	6,250	13,011	27,422	13,022	12,614	29,373	12,079
1715	Travel Time Idx	0.83	0.83	0.89	1.09	0.76	0.84	0.78	0.81	0.99	0.99	0.98	0.99	0.90
	Plan. Time Idx	0.88	0.87	0.94	1.96	0.79	1.06	0.81	0.85	1.33	1.41	1.46	1.23	1.16
	Buffer Index	0.05	0.04	0.06	0.79	0.04	0.26	0.04	0.04	0.35	0.42	0.49	0.25	0.24
	VMT	4,859	9,463	3,041	4,172	6,412	16,786	6,184	13,727	28,008	13,460	13,082	29,877	12,445
1730	Travel Time Idx	0.84	0.84	0.90	1.29	0.76	0.88	0.78	0.83	1.04	1.00	1.05	1.09	0.94
	Plan. Time Idx	0.89	0.88	0.98	2.97	0.79	1.08	0.82	0.85	1.40	1.47	1.51	1.42	1.37
	Buffer Index	0.05	0.05	0.08	1.30	0.04	0.23	0.05	0.03	0.35	0.47	0.44	0.30	0.28
	VMT	5,703	11,072	3,401	4,122	6,289	17,879	6,210	15,902	28,780	13,638	13,445	30,894	13,135
1745	Travel Time Idx	0.84	0.84	0.90	1.33	0.76	0.91	0.78	0.82	1.05	0.97	1.05	1.09	0.94
	Plan. Time Idx	0.93	1.03	1.06	2.93	0.80	1.12	0.82	0.99	1.44	1.37	1.49	1.43	1.39
	Buffer Index	0.10	0.22	0.18	1.20	0.06	0.23	0.05	0.20	0.37	0.42	0.42	0.31	0.31
	VMT	5,239	10,268	3,255	3,905	6,011	16,837	6,205	14,840	28,009	13,340	13,149	29,811	12,595
1800	Travel Time Idx	0.84	0.84	0.89	1.28	0.76	0.91	0.77	0.82	1.01	0.92	1.02	1.06	0.93
	Plan. Time Idx	0.94	1.01	1.02	2.94	0.79	1.16	0.80	0.98	1.37	1.19	1.54	1.48	1.33
	Buffer Index	0.12	0.21	0.15	1.29	0.05	0.27	0.04	0.19	0.35	0.29	0.51	0.40	0.32
	VMT	5,148	10,077	3,142	3,805	5,840	16,382	5,813	14,569	27,143	12,812	12,704	29,029	12,227
1815	Travel Time Idx	0.83	0.82	0.88	1.15	0.76	0.90	0.77	0.80	0.95	0.89	0.98	0.98	0.89
	Plan. Time Idx	0.87	0.93	0.92	2.25	0.81	0.98	0.81	0.88	1.22	0.94	1.41	1.37	1.22
	Buffer Index	0.05	0.13	0.05	0.96	0.07	0.10	0.04	0.10	0.28	0.05	0.44	0.41	0.22
	VMT	4,755	9,293	2,958	3,666	5,778	15,772	5,570	13,450	26,017	12,699	12,539	28,277	11,752
1830	Travel Time Idx	0.82	0.81	0.88	1.04	0.76	0.88	0.77	0.80	0.91	0.88	0.94	0.93	0.87
	Plan. Time Idx	0.86	0.85	0.94	1.85	0.80	0.98	0.80	0.83	1.20	0.91	1.32	1.22	1.12
	Buffer Index	0.04	0.04	0.07	0.78	0.05	0.11	0.04	0.04	0.32	0.03	0.40	0.31	0.19
	VMT	4,766	9,142	3,005	3,628	5,730	15,610	5,381	13,182	25,677	12,582	12,492	28,045	11,624
1845	Travel Time Idx	0.81	0.80	0.87	0.95	0.76	0.87	0.77	0.79	0.87	0.87	0.90	0.89	0.85
	Plan. Time Idx	0.87	0.84	0.96	1.19	0.79	0.99	0.81	0.82	0.99	0.91	1.20	1.07	0.98
	Buffer Index	0.07	0.05	0.10	0.25	0.05	0.15	0.04	0.04	0.14	0.04	0.33	0.21	0.12
	VMT	4,273	8,207	2,756	3,371	5,610	15,024	5,215	11,897	23,965	12,117	11,718	25,570	10,830

		BC 75SB10 to MDC DMS44	BC 75SB14 to MDC DMS44	BC I-95 EB Hiatus to I-95	BC I-95 WB I-95 to Hiatus	BC I-75 NB I-595 to Col Ln	BC I-75 NB MD Ln to I-595	BC I-75 SB Col Ln to I-595	BC I-75 SB I-595 to MD Ln	BC I-95 NB I-595 to PB Ln	BC I-95 NB MD Ln to I-595	BC I-95 SB I-595 to MD Ln	BC I-95 SB PB Ln to I-595	Total
1900	Travel Time Idx	0.81	0.80	0.86	0.93	0.75	0.83	0.77	0.78	0.85	0.86	0.86	0.85	0.83
	Plan. Time Idx	0.84	0.83	0.93	1.10	0.78	1.00	0.80	0.81	0.91	0.93	1.01	0.94	0.91
	Buffer Index	0.05	0.04	0.09	0.19	0.03	0.20	0.04	0.03	0.07	0.08	0.18	0.11	0.09
	VMT	3,923	7,452	2,507	3,075	5,436	14,284	4,896	10,771	21,745	11,210	10,699	22,772	9,915
1915	Travel Time Idx	0.80	0.79	0.85	0.86	0.75	0.80	0.77	0.78	0.84	0.86	0.83	0.83	0.81
	Plan. Time Idx	0.83	0.82	0.91	0.96	0.78	0.89	0.80	0.80	0.94	0.97	0.93	0.88	0.88
	Buffer Index	0.03	0.03	0.06	0.11	0.04	0.12	0.04	0.03	0.12	0.13	0.12	0.06	0.07
	VMT	3,637	6,870	2,329	2,846	5,176	12,807	4,585	9,793	20,254	10,543	9,982	21,209	9,186
1930	Travel Time Idx	0.80	0.79	0.85	0.86	0.75	0.78	0.77	0.78	0.84	0.86	0.83	0.83	0.81
	Plan. Time Idx	0.82	0.81	0.95	0.95	0.77	0.82	0.79	0.80	0.95	0.97	0.92	0.87	0.87
	Buffer Index	0.02	0.02	0.11	0.10	0.02	0.04	0.03	0.02	0.13	0.13	0.12	0.05	0.07
	VMT	3,486	6,467	2,238	2,718	4,848	11,228	4,324	9,182	19,337	9,962	9,775	20,581	8,695
1945	Travel Time Idx	0.80	0.79	0.86	0.86	0.75	0.78	0.77	0.78	0.83	0.86	0.83	0.82	0.81
	Plan. Time Idx	0.82	0.81	0.97	0.98	0.77	0.80	0.80	0.80	0.89	0.92	0.91	0.86	0.88
	Buffer Index	0.03	0.02	0.14	0.13	0.03	0.03	0.04	0.02	0.06	0.08	0.09	0.04	0.06
	VMT	3,266	6,047	2,023	2,505	4,531	10,211	4,186	8,526	17,887	9,317	9,100	18,549	8,042
2000	Travel Time Idx	0.81	0.79	0.86	0.86	0.76	0.77	0.78	0.78	0.83	0.85	0.83	0.82	0.81
	Plan. Time Idx	0.83	0.82	0.96	0.97	0.78	0.80	0.80	0.80	0.89	0.91	0.92	0.86	0.88
	Buffer Index	0.03	0.03	0.12	0.13	0.03	0.03	0.03	0.03	0.07	0.07	0.11	0.04	0.06
	VMT	3,137	5,701	1,900	2,318	4,172	9,310	4,007	8,027	16,832	8,635	8,464	17,102	7,494
2015	Travel Time Idx	0.81	0.80	0.86	0.86	0.76	0.78	0.78	0.78	0.83	0.86	0.82	0.83	0.81
	Plan. Time Idx	0.85	0.83	0.93	0.93	0.78	0.81	0.81	0.81	0.89	0.89	0.85	0.86	0.87
	Buffer Index	0.05	0.05	0.08	0.09	0.04	0.05	0.05	0.04	0.07	0.04	0.04	0.04	0.05
	VMT	2,842	5,234	1,805	2,209	3,872	8,643	3,824	7,432	15,967	8,109	8,070	16,478	7,067
2030	Travel Time Idx	0.81	0.80	0.87	0.86	0.76	0.78	0.78	0.79	0.84	0.86	0.83	0.83	0.82
	Plan. Time Idx	0.85	0.83	0.91	0.92	0.78	0.81	0.82	0.81	0.88	0.90	0.88	0.88	0.88
	Buffer Index	0.05	0.04	0.05	0.07	0.03	0.04	0.04	0.03	0.05	0.04	0.06	0.06	0.05
	VMT	2,858	5,222	1,778	2,172	3,628	8,153	3,587	7,395	15,850	7,939	8,044	16,226	6,930
2045	Travel Time Idx	0.81	0.80	0.87	0.86	0.77	0.79	0.79	0.79	0.84	0.86	0.83	0.83	0.82
	Plan. Time Idx	0.84	0.83	0.92	0.90	0.79	0.80	0.82	0.81	0.88	0.91	0.88	0.88	0.88
	Buffer Index	0.04	0.03	0.05	0.04	0.03	0.02	0.03	0.02	0.05	0.05	0.06	0.05	0.04
	VMT	2,642	4,839	1,683	2,028	3,352	7,374	3,319	6,886	14,798	7,546	7,499	14,797	6,421
2100	Travel Time Idx	0.81	0.80	0.88	0.87	0.77	0.78	0.79	0.79	0.84	0.86	0.83	0.83	0.82
	Plan. Time Idx	0.83	0.82	1.01	0.93	0.79	0.80	0.83	0.81	0.87	0.91	0.87	0.87	0.88
	Buffer Index	0.02	0.02	0.16	0.07	0.03	0.03	0.04	0.02	0.04	0.06	0.04	0.04	0.05
	VMT	2,577	4,638	1,611	1,916	3,144	6,844	3,161	6,534	14,225	7,113	7,124	14,011	6,098
2115	Travel Time Idx	0.81	0.80	0.88	0.87	0.77	0.78	0.79	0.79	0.84	0.87	0.84	0.83	0.82
	Plan. Time Idx	0.84	0.82	0.98	0.93	0.79	0.81	0.82	0.80	0.86	0.96	0.92	0.86	0.88
	Buffer Index	0.03	0.02	0.11	0.07	0.03	0.04	0.04	0.01	0.03	0.10	0.10	0.03	0.05
	VMT	2,540	4,517	1,626	1,868	2,973	6,538	3,012	6,354	13,860	7,023	6,963	14,046	5,966
2130	Travel Time Idx	0.81	0.80	0.88	0.87	0.77	0.78	0.79	0.79	0.84	0.87	0.84	0.83	0.82
	Plan. Time Idx	0.84	0.83	0.98	0.93	0.80	0.80	0.82	0.81	0.86	0.96	0.92	0.85	0.88
	Buffer Index	0.03	0.03	0.11	0.07	0.04	0.03	0.04	0.03	0.03	0.10	0.10	0.02	0.05
	VMT	2,617	4,649	1,614	1,945	2,730	6,518	2,723	6,517	13,981	7,066	7,231	14,379	6,008

		BC 75SB10 to MDC DMS44	BC 75SB14 to MDC DMS44	BC I-595 EB Hiatus to I-95	BC I-595 WB I-95 to Hiatus	BC I-75 NB I-595 to Col Ln	BC I-75 NB MD Ln to I-595	BC I-75 SB Col Ln to I-595	BC I-75 SB I-595 to MD Ln	BC I-95 NB I-595 to PB Ln	BC I-95 NB MD Ln to I-595	BC I-95 SB I-595 to MD Ln	BC I-95 SB PB Ln to I-595	Total
2145	Travel Time Idx	0.81	0.80	0.87	0.86	0.77	0.78	0.79	0.79	0.83	0.87	0.84	0.83	0.82
	Plan. Time Idx	0.83	0.82	0.95	0.91	0.79	0.80	0.82	0.80	0.86	0.94	0.91	0.85	0.88
	Buffer Index	0.03	0.02	0.08	0.06	0.03	0.02	0.03	0.02	0.03	0.08	0.09	0.02	0.04
	VMT	2,433	4,387	1,541	1,800	2,540	6,261	2,581	6,164	13,459	6,931	6,781	13,394	5,700
2200	Travel Time Idx	0.81	0.80	0.86	0.85	0.77	0.78	0.79	0.79	0.83	0.86	0.83	0.83	0.82
	Plan. Time Idx	0.84	0.82	0.92	0.89	0.80	0.80	0.82	0.81	0.85	0.91	0.87	0.84	0.87
	Buffer Index	0.04	0.03	0.06	0.04	0.03	0.02	0.04	0.02	0.02	0.06	0.05	0.02	0.04
	VMT	2,275	4,137	1,519	1,701	2,376	5,863	2,489	5,875	12,864	6,608	6,451	12,647	5,410
2215	Travel Time Idx	0.82	0.80	0.87	0.85	0.77	0.78	0.79	0.79	0.83	0.86	0.83	0.83	0.82
	Plan. Time Idx	0.84	0.81	0.91	0.88	0.80	0.79	0.82	0.80	0.85	0.90	0.87	0.84	0.87
	Buffer Index	0.03	0.02	0.05	0.03	0.03	0.02	0.04	0.01	0.02	0.05	0.05	0.02	0.03
	VMT	2,138	3,842	1,452	1,644	2,173	5,529	2,332	5,421	12,607	6,389	6,455	12,504	5,216
2230	Travel Time Idx	0.82	0.80	0.86	0.85	0.77	0.77	0.79	0.79	0.83	0.86	0.83	0.82	0.82
	Plan. Time Idx	0.84	0.82	0.90	0.88	0.80	0.80	0.83	0.81	0.85	0.90	0.87	0.84	0.87
	Buffer Index	0.03	0.03	0.04	0.04	0.04	0.03	0.05	0.03	0.03	0.06	0.05	0.02	0.04
	VMT	2,044	3,651	1,378	1,608	2,040	5,304	2,129	5,132	12,670	6,352	6,434	12,243	5,091
2245	Travel Time Idx	0.81	0.80	0.87	0.86	0.78	0.77	0.79	0.79	0.82	0.86	0.83	0.82	0.82
	Plan. Time Idx	0.85	0.82	1.02	0.94	0.81	0.79	0.83	0.81	0.85	0.93	0.89	0.84	0.87
	Buffer Index	0.04	0.03	0.18	0.09	0.04	0.02	0.05	0.02	0.03	0.09	0.08	0.02	0.06
	VMT	1,746	3,115	1,229	1,459	1,903	4,741	1,983	4,386	11,842	5,993	5,883	11,062	4,620
2300	Travel Time Idx	0.81	0.80	0.86	0.86	0.78	0.77	0.80	0.79	0.82	0.85	0.82	0.82	0.81
	Plan. Time Idx	0.83	0.82	0.92	0.90	0.81	0.79	0.83	0.82	0.84	0.90	0.86	0.83	0.87
	Buffer Index	0.03	0.03	0.07	0.05	0.04	0.03	0.04	0.04	0.02	0.06	0.05	0.02	0.04
	VMT	1,523	2,749	1,063	1,390	1,741	4,366	1,822	3,906	10,909	5,469	5,393	9,853	4,189
2315	Travel Time Idx	0.81	0.80	0.86	0.85	0.79	0.77	0.80	0.79	0.82	0.85	0.82	0.82	0.81
	Plan. Time Idx	0.84	0.83	0.92	0.90	0.83	0.79	0.84	0.83	0.84	0.88	0.84	0.84	0.86
	Buffer Index	0.04	0.05	0.07	0.07	0.05	0.02	0.05	0.05	0.02	0.04	0.03	0.02	0.04
	VMT	1,481	2,647	945	1,261	1,624	3,904	1,642	3,694	10,199	4,985	5,158	9,455	3,923
2330	Travel Time Idx	0.82	0.80	0.85	0.86	0.79	0.77	0.80	0.79	0.82	0.85	0.82	0.83	0.82
	Plan. Time Idx	0.85	0.85	0.89	0.98	0.83	0.79	0.85	0.83	0.84	0.90	0.86	0.84	0.87
	Buffer Index	0.05	0.06	0.04	0.14	0.05	0.02	0.06	0.05	0.03	0.06	0.05	0.02	0.05
	VMT	1,404	2,476	919	1,185	1,487	3,693	1,484	3,445	9,481	4,758	5,027	9,121	3,713
2345	Travel Time Idx	0.80	0.79	0.85	0.86	0.79	0.77	0.81	0.79	0.82	0.85	0.82	0.83	0.82
	Plan. Time Idx	0.85	0.82	0.89	1.08	0.83	0.79	0.85	0.81	0.84	0.88	0.89	0.84	0.87
	Buffer Index	0.05	0.04	0.04	0.26	0.05	0.02	0.06	0.03	0.02	0.03	0.09	0.02	0.06
	VMT	1,219	2,147	838	1,031	1,303	3,267	1,330	3,000	8,593	4,416	4,409	8,266	3,324
Total	Travel Time Idx	0.82	0.81	0.87	0.89	0.79	0.80	0.81	0.80	0.86	0.89	0.85	0.87	0.84
	Plan. Time Idx	0.86	0.84	0.95	0.97	0.90	0.87	0.92	0.84	1.01	0.96	0.97	1.03	0.94
	Buffer Index	0.06	0.06	0.08	0.13	0.06	0.05	0.06	0.05	0.10	0.15	0.12	0.10	0.08
	VMT	2,965	5,255	1,740	1,808	3,758	7,361	3,785	7,337	15,649	8,007	7,588	16,483	6,819

Regional Buffer Index

<u>Segment Name</u>	<u>Overall BI</u>	<u>Overall VMT</u>	<u>AM Peak BI</u>	<u>AM Peak VMT</u>	<u>PM Peak BI</u>	<u>PM Peak VMT</u>
BC 75SB10 to MDC DMS44	0.34	12,683	0.44	8,678	0.14	4,005
BC 75SB14 to MDC DMS44	0.32	21,539	0.42	10,255	0.22	11,284
BC I-595 EB Hiatus to I-95	0.26	2,097	0.32	1,177	0.18	919
BC I-595 WB I-95 to Hiatus	0.82	2,125	0.09	851	1.30	1,274
BC I-75 NB I-595 to Col Ln	0.06	8,281	0.05	4,262	0.07	4,019
BC I-75 NB MD Ln to I-595	0.23	28,308	0.14	10,994	0.29	17,314
BC I-75 SB Col Ln to I-595	0.07	9,570	0.06	4,635	0.07	4,935
BC I-75 SB I-595 to MD Ln	0.24	29,760	0.29	13,626	0.20	16,134
BC I-95 NB I-595 to PB Ln	0.40	51,472	0.37	23,036	0.42	28,437
BC I-95 NB MD Ln to I-595	1.10	28,229	1.21	14,259	0.98	13,970
BC I-95 SB I-595 to MD Ln	0.46	24,786	0.29	12,070	0.63	12,717
BC I-95 SB PB Ln to I-595	0.42	57,964	0.43	28,289	0.41	29,675

Regional Buffer Index: 0.417

RegionalBufferIndexReport

<u>QUARTER</u>	<u>BUFFERINDEX</u>
2008 Q3	0.415
2008 Q4	0.406
2009 Q1	0.468
2009 Q2	0.406
2009 Q3	0.417

RegionalBufferIndex per Quarter

