

**Quarterly  
Performance Measures Report  
Broward County**  
Period From Apr 1, 2009 to Jun 30, 2009

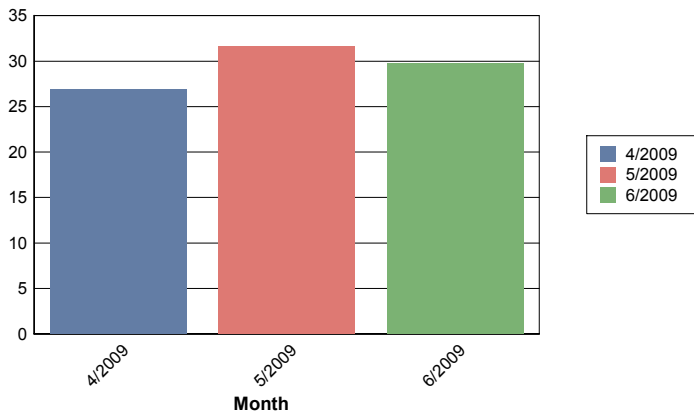


Created on:  
October 06, 2009  
5:08 pm

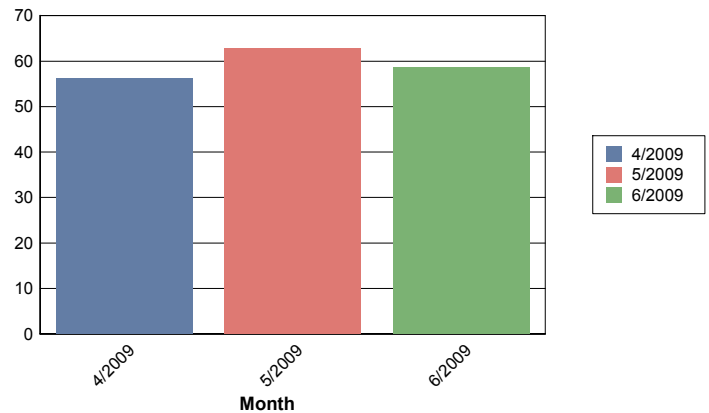
**2nd Quarter**

	April	May	June	Total
Total # of Events (incl. incidents)	<b>4,087</b>	<b>4,336</b>	<b>4,465</b>	<b>12,888</b>
Number of Incidents	<b>174</b>	<b>208</b>	<b>213</b>	<b>595</b>
TMC Verification (mins.)	<b>0.48</b>	<b>0.54</b>	<b>0.58</b>	<b>0.53</b>
Roadway Clearance (2A) (mins.)	<b>26.85</b>	<b>31.67</b>	<b>29.69</b>	<b>29.55</b>
Incident Clearance (3B) (mins.)	<b>56.35</b>	<b>62.81</b>	<b>58.54</b>	<b>59.39</b>
Total Road Ranger Responses (stops)	<b>2,856</b>	<b>2,717</b>	<b>3,042</b>	<b>8,615</b>

**Roadway Clearance (2A)**



**Incident Clearance (3B)**



## Benefit Cost Analysis

### Broward - April 1 to April 30

		<u>Costs</u>	
Emission Benefit	\$90,419.43	Total Broward Cost	\$857,483.18
Delay Benefit	\$8,141,897.18		
Safety Benefit	\$1,722,966.78		
Dms Benefit	\$275,437.12		
Fuel Benefit	\$1,444,210.32		
Road Ranger Benefit	\$320,179.82		
Total Benefit	\$11,995,110.64		
Total Cost	\$857,483.18		

**Benefit Cost Ratio** 13.99

**Cash Flow** \$11,137,627.46

### Broward - May 1 to May 31

		<u>Costs</u>	
Emission Benefit	\$85,969.09	Total Broward Cost	\$886,065.95
Delay Benefit	\$8,409,819.25		
Safety Benefit	\$1,700,570.83		
Dms Benefit	\$390,715.07		
Fuel Benefit	\$1,414,658.74		
Road Ranger Benefit	\$349,852.03		
Total Benefit	\$12,351,585.00		
Total Cost	\$886,065.95		

**Benefit Cost Ratio** 13.94

**Cash Flow** \$11,465,519.05

### Broward - June 1 to June 30

		<u>Costs</u>	
Emission Benefit	\$85,602.29	Total Broward Cost	\$857,483.18
Delay Benefit	\$8,526,001.34		
Safety Benefit	\$1,722,966.78		
Dms Benefit	\$328,942.20		
Fuel Benefit	\$1,417,734.34		
Road Ranger Benefit	\$329,951.68		
Total Benefit	\$12,411,198.64		
Total Cost	\$857,483.18		

**Benefit Cost Ratio** 14.47

**Cash Flow** \$11,553,715.46

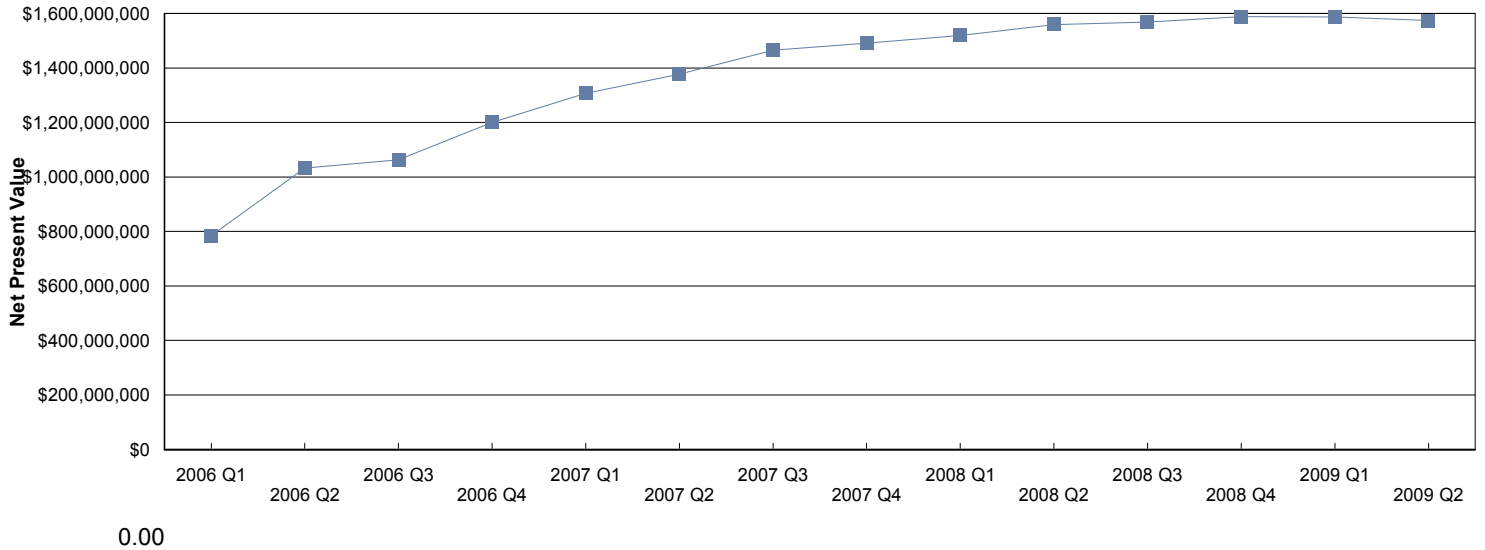
**Broward - April 1 to June 30**

		<u>Costs</u>	
Emission Benefit	\$261,840.63	Total Broward Cost	\$2,601,032.31
Delay Benefit	\$25,107,193.36		
Safety Benefit	\$5,146,504.38		
Dms Benefit	\$995,733.25		
Fuel Benefit	\$4,277,103.58		
Road Ranger Benefit	\$999,983.53		
Total Benefit	\$36,788,358.73		
Total Cost	\$2,601,032.31		
<b>Benefit Cost Ratio</b>	<b>14.14</b>		
<b>Cash Flow</b>	<b>\$34,187,326.42</b>		

## Net Present Value

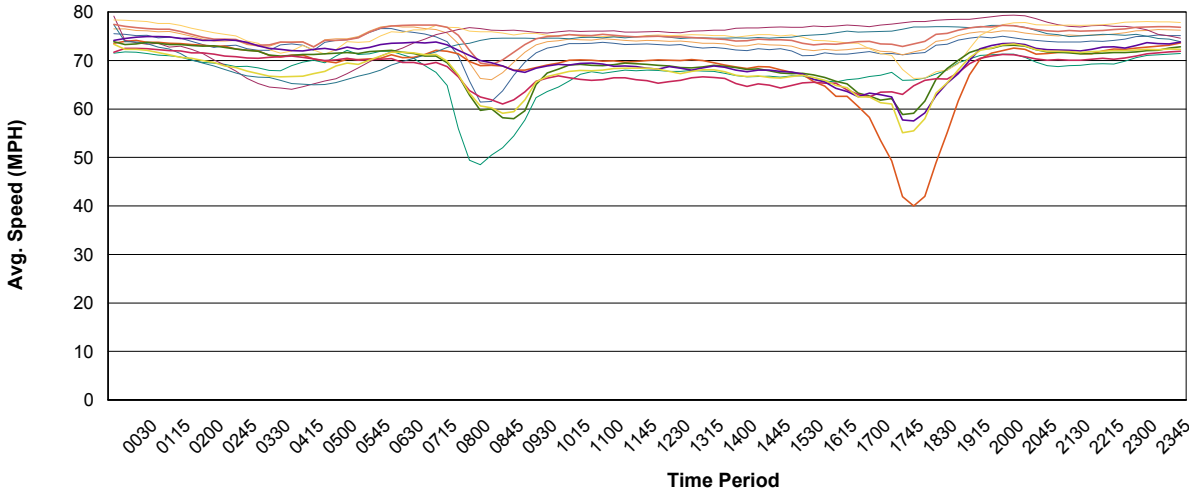
<u>Quarter</u>	<u>Cash Flow</u>	<u>Net Present Value</u>
2006 Q1	\$17,678,574.53	\$783,617,333.32
2006 Q2	\$31,019,351.82	\$1,032,863,198.58
2006 Q3	\$26,777,258.75	\$1,063,082,207.72
2006 Q4	\$39,885,451.30	\$1,200,359,724.53
2007 Q1	\$43,198,571.65	\$1,307,252,729.01
2007 Q2	\$42,995,763.41	\$1,377,111,678.87
2007 Q3	\$50,234,933.82	\$1,465,210,136.14
2007 Q4	\$41,489,390.75	\$1,490,703,551.67
2008 Q1	\$43,691,163.00	\$1,519,479,976.93
2008 Q2	\$48,271,179.00	\$1,559,230,727.98
2008 Q3	\$41,101,192.13	\$1,567,796,458.86
2008 Q4	\$45,506,377.00	\$1,588,270,579.26
2009 Q1	\$38,796,158.50	\$1,586,807,916.43
2009 Q2	\$34,187,327.75	\$1,573,685,803.56

### Net Present Value per Quarter



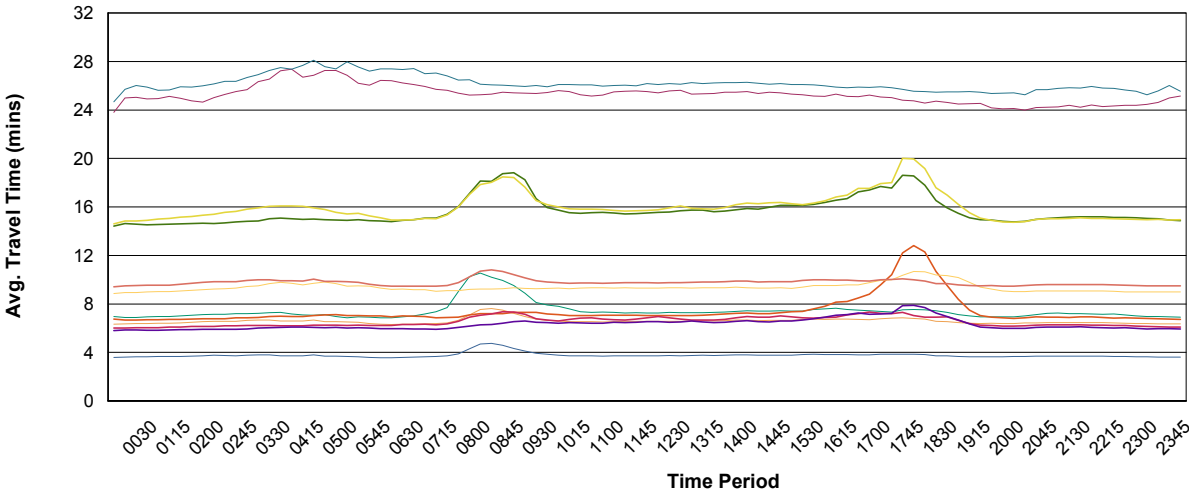
# Travel Reliability Data

## Average Speed by Segment on Weekdays



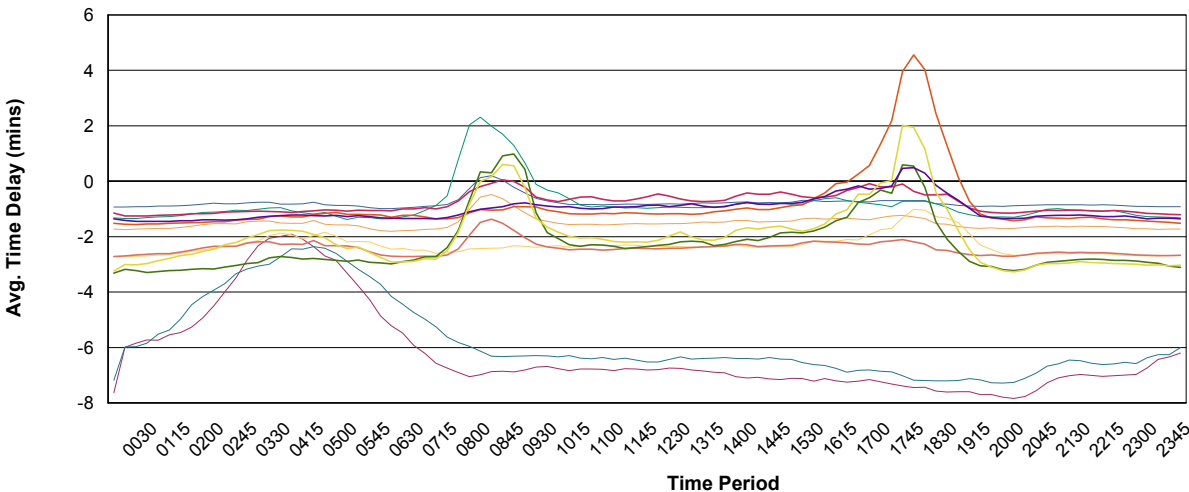
- BC 75SB10 to MDC
- DMS44
- BC 75SB14 to MDC
- DMS44
- BC I-595 EB Hiatus to I-95
- BC I-595 WB I-95 to Hiatus
- BC I-75 NB I-595 to Col Ln
- BC I-75 NB MD Ln to I-595
- BC I-75 SB Col Ln to I-595
- BC I-75 SB I-595 to MD Ln
- BC I-95 NB I-595 to PB Ln
- BC I-95 NB MD Ln to I-595
- BC I-95 SB I-595 to MD Ln
- BC I-95 SB PB Ln to I-595

## Average Travel Time by Segment on Weekdays



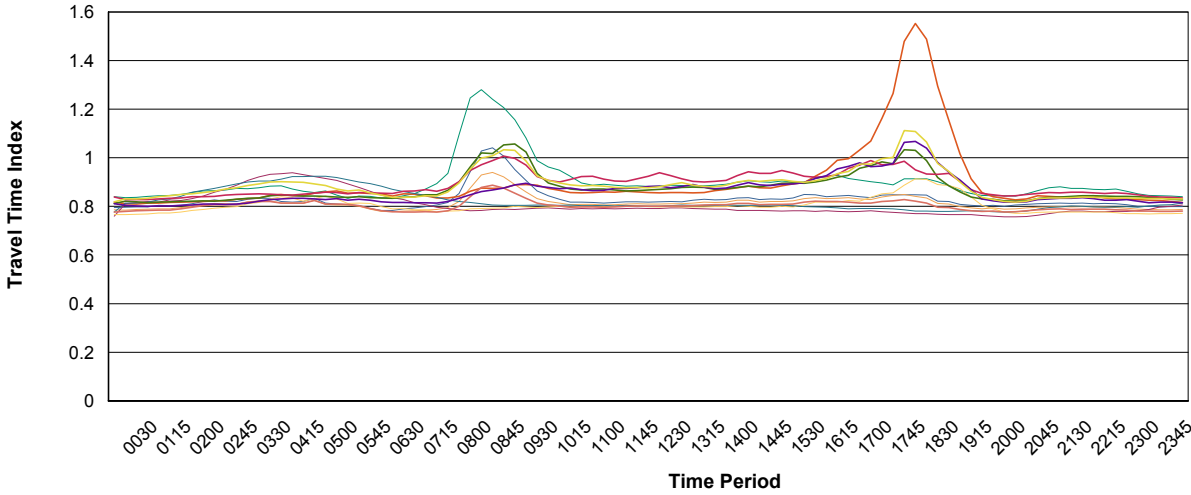
- BC 75SB10 to MDC
- DMS44
- BC 75SB14 to MDC
- DMS44
- BC I-595 EB Hiatus to I-95
- BC I-595 WB I-95 to Hiatus
- BC I-75 NB I-595 to Col Ln
- BC I-75 NB MD Ln to I-595
- BC I-75 SB Col Ln to I-595
- BC I-75 SB I-595 to MD Ln
- BC I-95 NB I-595 to PB Ln
- BC I-95 NB MD Ln to I-595
- BC I-95 SB I-595 to MD Ln
- BC I-95 SB PB Ln to I-595

## Average Time Delay by Segment on Weekdays



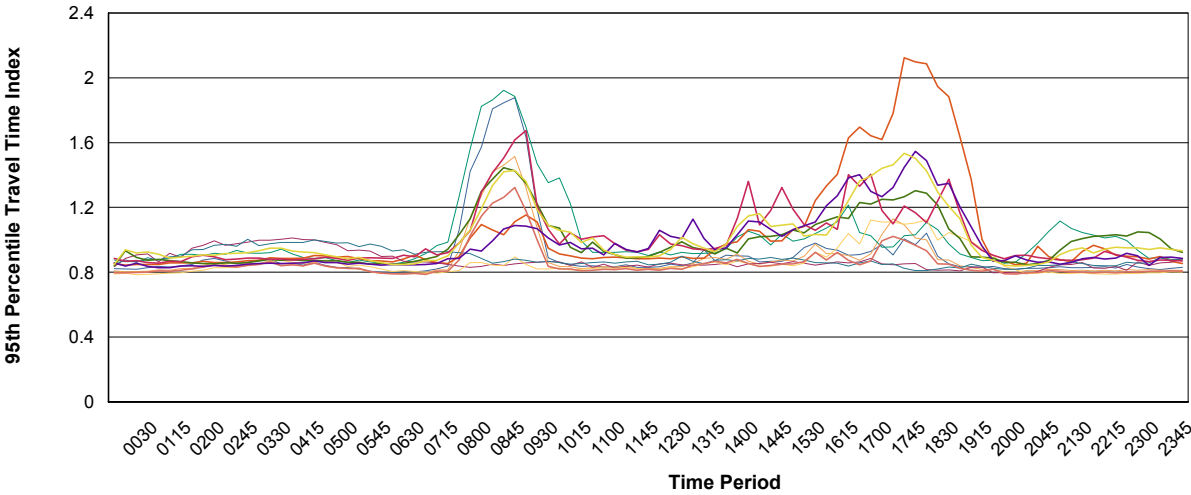
- BC 75SB10 to MDC
- DMS44
- BC 75SB14 to MDC
- DMS44
- BC I-595 EB Hiatus to I-95
- BC I-595 WB I-95 to Hiatus
- BC I-75 NB I-595 to Col Ln
- BC I-75 NB MD Ln to I-595
- BC I-75 SB Col Ln to I-595
- BC I-75 SB I-595 to MD Ln
- BC I-95 NB I-595 to PB Ln
- BC I-95 NB MD Ln to I-595
- BC I-95 SB I-595 to MD Ln
- BC I-95 SB PB Ln to I-595

## Travel Time Index by Segment on Weekdays



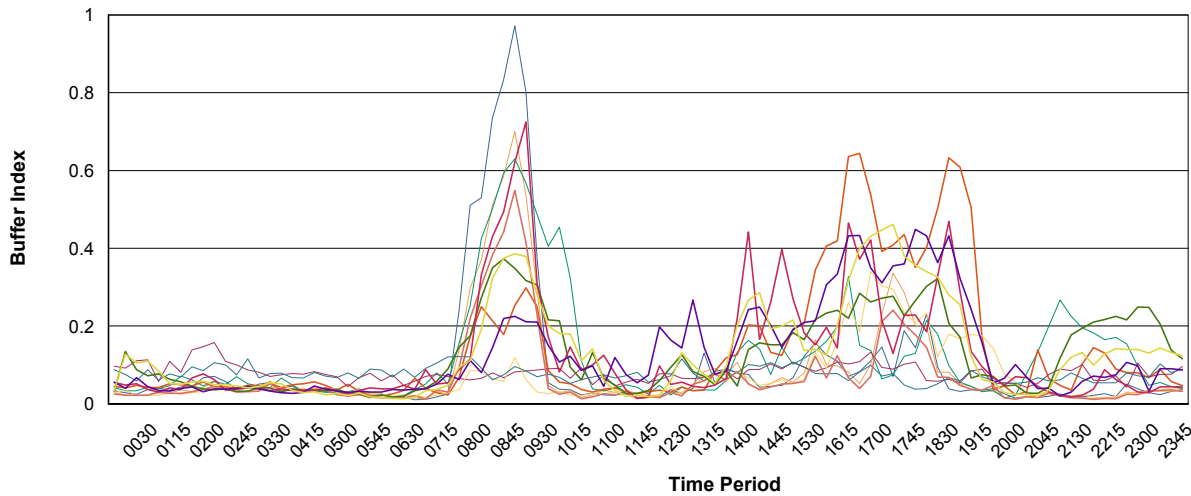
- BC 75SB10 to MDC DMS44
- BC 75SB14 to MDC DMS44
- BC I-595 EB Hiatus to I-95
- BC I-595 WB I-95 to Hiatus
- BC I-75 NB I-595 to Col Ln
- BC I-75 NB MD Ln to I-595
- BC I-75 SB Col Ln to I-595
- BC I-75 SB I-595 to MD Ln
- BC I-95 NB I-595 to PB Ln
- BC I-95 NB MD Ln to I-595
- BC I-95 SB I-595 to MD Ln
- BC I-95 SB PB Ln to I-595

## 95th Percentile Travel Time Index by Segment on Weekdays



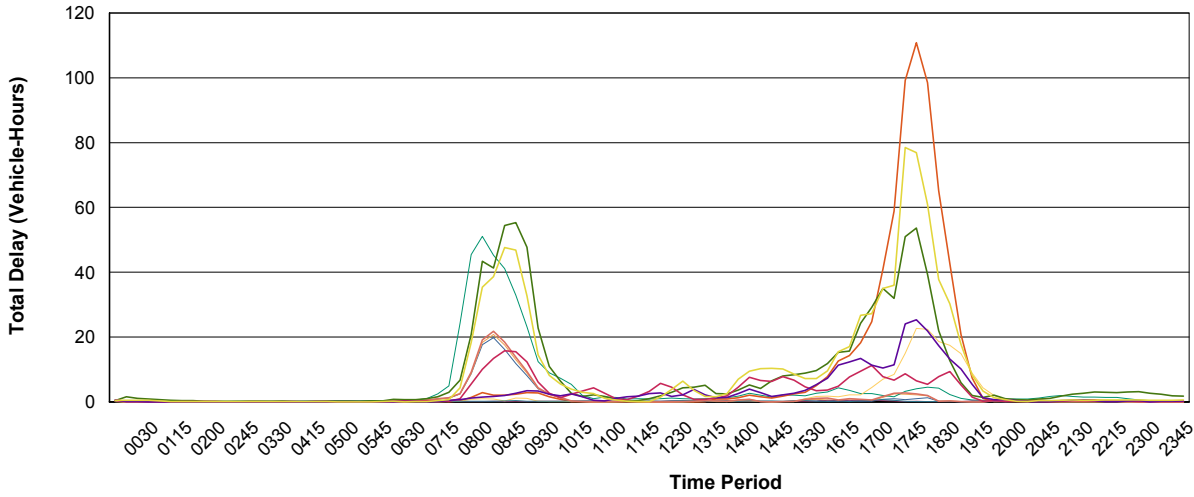
- BC 75SB10 to MDC DMS44
- BC 75SB14 to MDC DMS44
- BC I-595 EB Hiatus to I-95
- BC I-595 WB I-95 to Hiatus
- BC I-75 NB I-595 to Col Ln
- BC I-75 NB MD Ln to I-595
- BC I-75 SB Col Ln to I-595
- BC I-75 SB I-595 to MD Ln
- BC I-95 NB I-595 to PB Ln
- BC I-95 NB MD Ln to I-595
- BC I-95 SB I-595 to MD Ln
- BC I-95 SB PB Ln to I-595

## Buffer Index by Segment on Weekdays



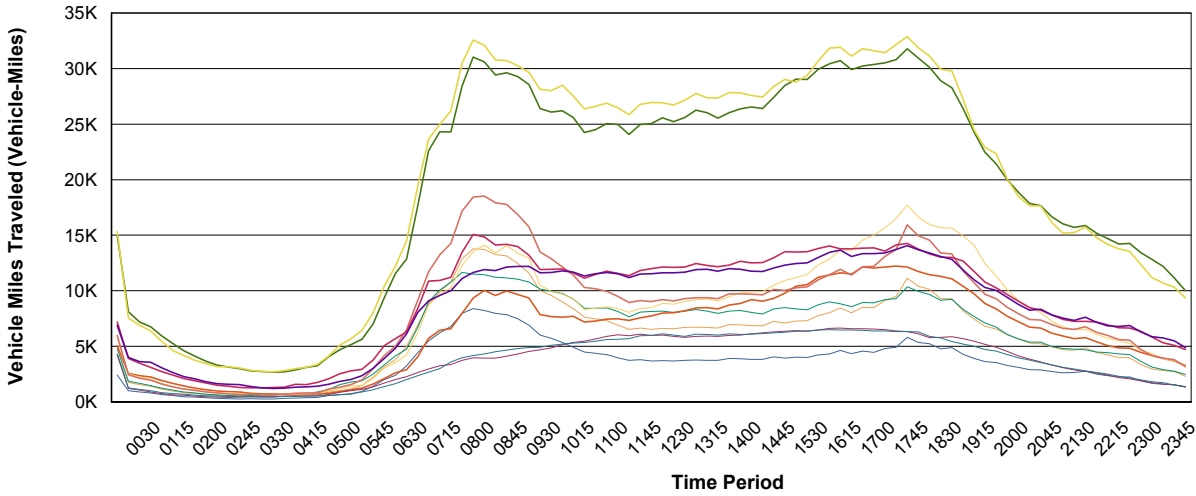
- BC 75SB10 to MDC DMS44
- BC 75SB14 to MDC DMS44
- BC I-595 EB Hiatus to I-95
- BC I-595 WB I-95 to Hiatus
- BC I-75 NB I-595 to Col Ln
- BC I-75 NB MD Ln to I-595
- BC I-75 SB Col Ln to I-595
- BC I-75 SB I-595 to MD Ln
- BC I-95 NB I-595 to PB Ln
- BC I-95 NB MD Ln to I-595
- BC I-95 SB I-595 to MD Ln
- BC I-95 SB PB Ln to I-595

### Total Delay by Segment per Weekday



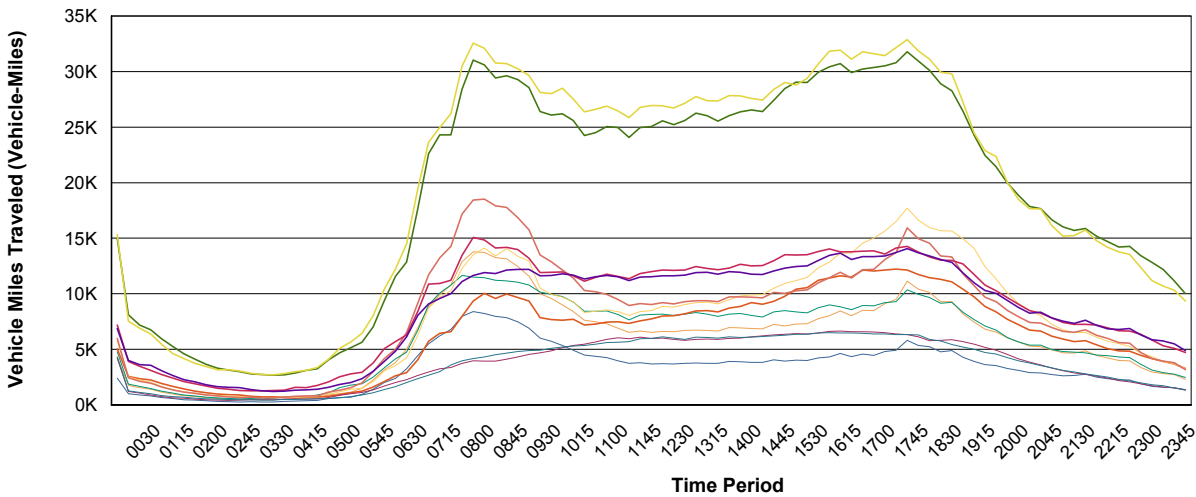
- BC 75SB10 to MDC DMS44
- BC 75SB14 to MDC DMS44
- BC I-595 EB Hiatus to I-95
- BC I-595 WB I-95 to Hiatus
- BC I-75 NB I-595 to Col Ln
- BC I-75 NB MD Ln to I-595
- BC I-75 SB Col Ln to I-595
- BC I-75 SB I-595 to MD Ln
- BC I-95 NB I-595 to PB Ln
- BC I-95 NB MD Ln to I-595
- BC I-95 SB I-595 to MD Ln
- BC I-95 SB PB Ln to I-595

### Vehicle Miles Traveled by Segment per Weekday



- BC 75SB10 to MDC DMS44
- BC 75SB14 to MDC DMS44
- BC I-595 EB Hiatus to I-95
- BC I-595 WB I-95 to Hiatus
- BC I-75 NB I-595 to Col Ln
- BC I-75 NB MD Ln to I-595
- BC I-75 SB Col Ln to I-595
- BC I-75 SB I-595 to MD Ln
- BC I-95 NB I-595 to PB Ln
- BC I-95 NB MD Ln to I-595
- BC I-95 SB I-595 to MD Ln
- BC I-95 SB PB Ln to I-595

### Vehicle Miles Traveled by Segment per Weekday



- BC 75SB10 to MDC DMS44
- BC 75SB14 to MDC DMS44
- BC I-595 EB Hiatus to I-95
- BC I-595 WB I-95 to Hiatus
- BC I-75 NB I-595 to Col Ln
- BC I-75 NB MD Ln to I-595
- BC I-75 SB Col Ln to I-595
- BC I-75 SB I-595 to MD Ln
- BC I-95 NB I-595 to PB Ln
- BC I-95 NB MD Ln to I-595
- BC I-95 SB I-595 to MD Ln
- BC I-95 SB PB Ln to I-595

**Travel Time Index, 95th Percentile Travel Time Index, and Buffer Index by Peak Period on Weekdays**

		BC 75SB10 to MDC DMS44	BC 75SB14 to MDC DMS44	BC I-595 EB Hiatus to I-95	BC I-595 WB I-95 to Hiatus	BC I-75 NB I-595 to Col Ln	BC I-75 NB MD Ln to I-595	BC I-75 SB Col Ln to I-595	BC I-75 SB I-595 to MD Ln	BC I-95 NB I-595 to PB Ln	BC I-95 NB MD Ln to I-595
<b>AM Peak</b>	Travel Time Index	0.92	0.86	1.09	0.87	0.78	0.79	0.81	0.83	0.96	0.94
	Peak TTI	1.15	0.99	1.47	1.02	2.46	0.95	1.26	0.92	1.28	1.25
	Planning Time Idx	1.32	1.16	1.56	1.00	0.84	0.82	0.88	1.05	1.23	1.15
	Buffer Index	0.46	0.32	0.38	0.17	0.08	0.06	0.09	0.25	0.24	0.30
	Peak Buffer Index	0.97	0.70	0.63	0.30	0.09	0.12	0.12	0.55	0.37	0.72
	Average VMT	7,063	11,667	10,784	8,501	4,144	11,977	4,415	15,705	27,850	13,062
	Peak VMT	9,874	15,688	12,793	10,880	7,687	16,342	7,522	20,831	34,228	16,786
<b>Off Peak</b>	Travel Time Index	0.80	0.79	0.85	0.83	0.76	0.78	0.77	0.78	0.82	0.85
	Peak TTI	0.91	0.87	1.09	1.16	5.29	1.41	5.03	0.88	1.03	1.21
	Planning Time Idx	0.84	0.83	0.89	0.88	0.94	0.84	0.93	0.83	0.86	0.88
	Buffer Index	0.03	0.03	0.06	0.07	0.09	0.04	0.08	0.02	0.06	0.05
	Peak Buffer Index	0.07	0.06	0.27	0.50	0.16	0.18	0.12	0.05	0.25	0.13
	Average VMT	2,015	3,540	3,848	4,140	2,887	4,829	2,908	4,928	12,475	5,960
	Peak VMT	6,402	10,009	9,943	11,459	13,083	16,804	15,545	13,255	27,655	15,186
<b>PM Peak</b>	Travel Time Index	0.84	0.83	0.90	1.13	0.77	0.85	0.79	0.81	0.94	0.94
	Peak TTI	1.01	0.97	1.06	1.78	1.97	1.09	1.41	0.94	1.27	1.19
	Planning Time Idx	0.91	0.91	1.01	1.78	0.84	1.03	0.84	0.89	1.18	1.15
	Buffer Index	0.11	0.14	0.14	0.45	0.09	0.20	0.07	0.12	0.24	0.27
	Peak Buffer Index	0.23	0.34	0.33	0.64	0.13	0.34	0.11	0.24	0.32	0.47
	Average VMT	4,656	8,801	9,047	11,456	6,291	14,584	6,189	12,594	29,841	13,604
	Peak VMT	6,387	12,168	11,227	13,280	13,062	20,224	17,360	17,553	34,403	16,053
<b>Weekday Mid Day</b>	Travel Time Index	0.82	0.81	0.89	0.87	0.78	0.80	0.80	0.80	0.88	0.92
	Peak TTI	0.91	0.87	1.06	1.01	2.30	0.96	1.83	0.86	1.15	1.17
	Planning Time Idx	0.85	0.84	0.93	0.91	0.84	0.83	0.86	0.83	0.94	0.98
	Buffer Index	0.04	0.04	0.08	0.08	0.07	0.04	0.08	0.04	0.09	0.13
	Peak Buffer Index	0.13	0.11	0.32	0.20	0.10	0.08	0.12	0.08	0.16	0.44
	Average VMT	3,943	6,956	8,220	8,209	5,938	9,131	5,899	9,642	25,702	12,121
	Peak VMT	5,913	9,447	10,018	11,070	12,369	13,235	13,207	12,608	31,948	14,971
<b>Total</b>	Travel Time Index	0.84	0.82	0.91	0.91	0.77	0.80	0.79	0.80	0.88	0.89
	Peak TTI	1.15	0.99	1.47	1.78	5.29	1.41	5.03	0.94	1.28	1.25
	Planning Time Idx	0.87	0.85	1.04	1.12	0.92	0.87	0.92	0.84	1.02	0.96
	Buffer Index	0.14	0.11	0.13	0.17	0.08	0.08	0.08	0.09	0.13	0.14
	Peak Buffer Index	0.97	0.70	0.63	0.64	0.16	0.34	0.12	0.55	0.37	0.72
	Average VMT	3,063	5,394	5,732	6,005	3,858	7,265	3,877	7,496	17,875	8,417
	Peak VMT	9,874	15,688	12,793	13,280	13,083	20,224	17,360	20,831	34,403	16,786

BC I-95 SB I-595 to MD Ln	BC I-95 SB PB Ln to I-595	Total
0.86	0.95	0.91
1.10	1.22	2.46
0.97	1.19	1.19
0.14	0.22	0.23
0.23	0.39	0.97
11,464	29,362	12,999
13,407	36,086	36,086
0.82	0.83	0.81
1.17	1.06	5.29
0.86	0.90	0.89
0.06	0.05	0.05
0.24	0.14	0.50
5,752	12,598	5,490
13,165	31,376	31,376
0.96	0.97	0.92
1.29	1.37	1.97
1.30	1.26	1.20
0.34	0.30	0.24
0.45	0.46	0.64
13,178	30,849	13,431
15,371	35,902	35,902
0.88	0.89	0.86
1.11	1.12	2.30
0.99	0.97	0.92
0.14	0.11	0.09
0.27	0.29	0.44
11,706	27,242	11,226
14,196	32,847	32,847
0.87	0.89	0.86
1.29	1.37	5.29
0.99	1.01	0.95
0.14	0.14	0.12
0.45	0.46	0.97
8,029	18,437	7,955
15,371	36,086	36,086

**Travel Time Index, 95th Percentile Travel Time Index, and Buffer Index by Time of Day on Weekdays**

		BC 75SB10 to MDC DMS44	BC 75SB14 to MDC DMS44	BC I-595 EB Hiatus to I-95	BC I-595 WB I-95 to Hiatus	BC I-75 NB I-595 to Col Ln	BC I-75 NB MD Ln to I-595	BC I-75 SB Col Ln to I-595	BC I-75 SB I-595 to MD Ln	BC I-95 NB I-595 to PB Ln	BC I-95 NB MD Ln to I-595	BC I-95 SB I-595 to MD Ln	BC I-95 SB PB Ln to I-595
	Travel Time Index	0.80	0.79	0.84	0.82	0.76	0.77	0.78	0.78	0.81	0.84	0.81	0.82
	Planning Time Idx	0.82	0.81	0.88	0.85	0.83	0.79	0.84	0.80	0.84	0.89	0.86	0.85
	Buffer Index	0.03	0.03	0.04	0.04	0.10	0.03	0.09	0.03	0.03	0.05	0.06	0.03
	VMT	2,411	4,265	4,778	5,033	4,187	5,736	4,304	5,960	14,977	7,176	6,877	15,325
<b>0000</b>	Travel Time Index	0.80	0.78	0.84	0.81	0.81	0.77	0.81	0.78	0.82	0.83	0.81	0.83
	Planning Time Idx	0.82	0.80	0.86	0.84	0.89	0.79	0.87	0.80	0.93	0.87	0.84	0.94
	Buffer Index	0.03	0.02	0.03	0.04	0.09	0.04	0.08	0.02	0.13	0.05	0.04	0.13
	VMT	991	1,743	1,860	2,546	1,194	2,537	1,253	2,424	8,113	3,902	3,976	7,532
<b>0015</b>	Travel Time Index	0.80	0.79	0.84	0.81	0.82	0.77	0.81	0.78	0.82	0.83	0.80	0.83
	Planning Time Idx	0.82	0.80	0.87	0.85	0.91	0.78	0.86	0.80	0.89	0.87	0.86	0.92
	Buffer Index	0.02	0.02	0.03	0.05	0.11	0.02	0.06	0.02	0.09	0.05	0.07	0.11
	VMT	880	1,531	1,648	2,345	1,043	2,236	1,118	2,126	7,180	3,467	3,611	6,898
<b>0030</b>	Travel Time Index	0.80	0.79	0.84	0.81	0.82	0.77	0.82	0.78	0.81	0.83	0.80	0.83
	Planning Time Idx	0.83	0.81	0.88	0.85	0.91	0.79	0.89	0.80	0.87	0.86	0.84	0.93
	Buffer Index	0.04	0.02	0.04	0.04	0.11	0.02	0.09	0.02	0.07	0.04	0.04	0.11
	VMT	803	1,409	1,456	2,225	877	2,046	986	1,959	6,750	3,102	3,570	6,382
<b>0045</b>	Travel Time Index	0.80	0.79	0.84	0.81	0.82	0.77	0.83	0.79	0.82	0.83	0.80	0.84
	Planning Time Idx	0.84	0.81	0.88	0.85	0.86	0.79	0.88	0.81	0.88	0.86	0.83	0.91
	Buffer Index	0.04	0.03	0.04	0.04	0.06	0.02	0.06	0.03	0.08	0.03	0.03	0.08
	VMT	657	1,151	1,232	1,905	727	1,662	825	1,605	5,947	2,725	3,071	5,443
<b>0100</b>	Travel Time Index	0.80	0.79	0.85	0.82	0.83	0.77	0.83	0.79	0.82	0.83	0.80	0.84
	Planning Time Idx	0.83	0.81	0.89	0.86	0.92	0.80	0.89	0.81	0.87	0.87	0.83	0.89
	Buffer Index	0.04	0.03	0.05	0.05	0.11	0.03	0.08	0.03	0.06	0.04	0.03	0.05
	VMT	558	968	1,052	1,665	637	1,376	747	1,351	5,256	2,399	2,626	4,629
<b>0115</b>	Travel Time Index	0.80	0.79	0.85	0.82	0.82	0.78	0.84	0.79	0.82	0.83	0.81	0.85
	Planning Time Idx	0.84	0.82	0.91	0.86	0.89	0.80	0.90	0.81	0.87	0.87	0.84	0.89
	Buffer Index	0.04	0.04	0.07	0.05	0.08	0.02	0.07	0.03	0.06	0.04	0.04	0.05
	VMT	454	820	871	1,420	585	1,162	675	1,153	4,581	2,083	2,248	4,151
<b>0130</b>	Travel Time Index	0.81	0.80	0.86	0.82	0.83	0.78	0.86	0.80	0.82	0.84	0.81	0.85
	Planning Time Idx	0.85	0.82	0.91	0.86	0.95	0.81	0.94	0.82	0.86	0.90	0.84	0.90
	Buffer Index	0.04	0.03	0.06	0.05	0.14	0.03	0.09	0.03	0.04	0.07	0.04	0.06
	VMT	411	736	786	1,231	506	1,045	604	1,026	4,111	1,891	2,051	3,720
<b>0145</b>	Travel Time Index	0.82	0.81	0.86	0.82	0.84	0.79	0.87	0.80	0.82	0.84	0.81	0.86
	Planning Time Idx	0.87	0.84	0.90	0.87	0.97	0.81	0.94	0.83	0.85	0.90	0.84	0.91
	Buffer Index	0.07	0.04	0.05	0.06	0.15	0.03	0.09	0.04	0.04	0.08	0.03	0.06
	VMT	367	645	677	1,087	451	918	527	888	3,646	1,681	1,814	3,451
<b>0200</b>	Travel Time Index	0.83	0.81	0.87	0.82	0.86	0.79	0.87	0.81	0.82	0.84	0.81	0.86
	Planning Time Idx	0.89	0.86	0.92	0.86	0.99	0.83	0.97	0.84	0.85	0.89	0.84	0.90
	Buffer Index	0.07	0.06	0.06	0.04	0.16	0.04	0.11	0.05	0.04	0.06	0.04	0.05
	VMT	319	564	615	956	417	837	504	785	3,306	1,496	1,635	3,161
<b>0215</b>	Travel Time Index	0.82	0.81	0.87	0.82	0.87	0.80	0.88	0.81	0.83	0.85	0.81	0.87
	Planning Time Idx	0.87	0.85	0.91	0.86	0.97	0.83	0.97	0.84	0.86	0.88	0.84	0.91
	Buffer Index	0.06	0.04	0.05	0.04	0.11	0.04	0.10	0.04	0.04	0.03	0.04	0.05
	VMT	290	508	566	905	382	800	490	701	3,123	1,399	1,574	3,167

<b>Total</b>
0.80 0.85 0.05 6,752
0.81 0.85 0.06 3,173
0.81 0.85 0.05 2,840
0.81 0.86 0.05 2,630
0.81 0.86 0.05 2,246
0.81 0.87 0.05 1,939
0.82 0.87 0.05 1,684
0.82 0.88 0.06 1,510
0.83 0.89 0.06 1,346
0.83 0.90 0.06 1,216
0.84 0.90 0.05 1,159

		BC 75SB10 to MDC DMS44	BC 75SB14 to MDC DMS44	BC I-595 EB Hiatus to I-95	BC I-595 WB I-95 to Hiatus	BC I-75 NB I-595 to Col Ln	BC I-75 NB MD Ln to I-595	BC I-75 SB Col Ln to I-595	BC I-75 SB I-595 to MD Ln	BC I-95 NB I-595 to PB Ln	BC I-95 NB MD Ln to I-595	BC I-95 SB I-595 to MD Ln	BC I-95 SB PB Ln to I-595
<b>0230</b>	Travel Time Index	0.82	0.81	0.87	0.83	0.89	0.80	0.89	0.81	0.83	0.85	0.81	0.88
	Planning Time Idx	0.85	0.84	0.93	0.86	0.98	0.83	0.96	0.83	0.86	0.88	0.84	0.92
	Buffer Index	0.04	0.03	0.07	0.04	0.10	0.04	0.07	0.03	0.03	0.04	0.04	0.05
	VMT	254	465	581	869	411	734	448	655	2,979	1,290	1,536	3,040
<b>0245</b>	Travel Time Index	0.83	0.82	0.87	0.83	0.91	0.81	0.90	0.82	0.83	0.85	0.81	0.89
	Planning Time Idx	0.86	0.86	0.92	0.87	0.99	0.84	1.00	0.84	0.86	0.89	0.85	0.92
	Buffer Index	0.04	0.04	0.05	0.05	0.09	0.04	0.12	0.03	0.03	0.04	0.05	0.04
	VMT	265	484	560	772	446	639	439	671	2,787	1,256	1,384	2,838
<b>0300</b>	Travel Time Index	0.83	0.82	0.88	0.83	0.92	0.82	0.90	0.82	0.84	0.85	0.82	0.89
	Planning Time Idx	0.88	0.85	0.92	0.87	1.00	0.85	0.96	0.85	0.87	0.89	0.85	0.93
	Buffer Index	0.05	0.04	0.05	0.05	0.08	0.04	0.07	0.03	0.04	0.04	0.04	0.04
	VMT	256	452	543	714	437	654	430	623	2,715	1,244	1,250	2,711
<b>0315</b>	Travel Time Index	0.83	0.82	0.88	0.85	0.93	0.83	0.90	0.82	0.84	0.85	0.83	0.90
	Planning Time Idx	0.88	0.87	0.92	0.89	1.00	0.87	0.98	0.86	0.88	0.88	0.85	0.95
	Buffer Index	0.05	0.06	0.04	0.05	0.07	0.04	0.08	0.05	0.04	0.03	0.03	0.05
	VMT	256	446	585	710	450	649	435	609	2,653	1,275	1,190	2,706
<b>0330</b>	Travel Time Index	0.82	0.81	0.88	0.85	0.93	0.84	0.91	0.81	0.85	0.85	0.83	0.90
	Planning Time Idx	0.85	0.84	0.94	0.88	1.00	0.87	0.98	0.84	0.87	0.88	0.85	0.95
	Buffer Index	0.04	0.03	0.07	0.04	0.07	0.04	0.08	0.03	0.03	0.04	0.03	0.05
	VMT	296	501	669	668	502	678	465	682	2,681	1,315	1,222	2,803
<b>0345</b>	Travel Time Index	0.82	0.81	0.87	0.84	0.94	0.83	0.92	0.81	0.85	0.85	0.83	0.90
	Planning Time Idx	0.86	0.84	0.91	0.89	1.01	0.86	0.98	0.85	0.88	0.88	0.86	0.93
	Buffer Index	0.05	0.04	0.05	0.05	0.08	0.03	0.07	0.04	0.04	0.03	0.03	0.03
	VMT	341	567	728	699	524	690	479	769	2,863	1,560	1,301	2,976
<b>0400</b>	Travel Time Index	0.82	0.81	0.86	0.84	0.93	0.82	0.92	0.81	0.84	0.85	0.83	0.90
	Planning Time Idx	0.84	0.84	0.89	0.89	1.00	0.86	0.98	0.84	0.87	0.88	0.86	0.92
	Buffer Index	0.03	0.03	0.03	0.05	0.08	0.04	0.07	0.03	0.03	0.04	0.03	0.03
	VMT	352	593	733	697	509	747	520	806	3,091	1,534	1,336	3,093
<b>0415</b>	Travel Time Index	0.83	0.83	0.86	0.85	0.92	0.83	0.92	0.82	0.84	0.85	0.83	0.89
	Planning Time Idx	0.86	0.86	0.89	0.90	1.00	0.86	1.00	0.85	0.87	0.88	0.87	0.92
	Buffer Index	0.03	0.04	0.03	0.06	0.08	0.03	0.08	0.04	0.04	0.03	0.05	0.03
	VMT	378	593	884	718	531	783	544	794	3,256	1,741	1,401	3,356
<b>0430</b>	Travel Time Index	0.81	0.81	0.86	0.86	0.91	0.84	0.92	0.81	0.84	0.86	0.83	0.89
	Planning Time Idx	0.84	0.84	0.89	0.90	0.98	0.88	0.99	0.84	0.87	0.89	0.86	0.91
	Buffer Index	0.03	0.03	0.03	0.05	0.08	0.04	0.07	0.03	0.03	0.04	0.04	0.02
	VMT	559	874	1,076	766	649	960	573	1,154	4,040	2,049	1,581	4,116
<b>0445</b>	Travel Time Index	0.81	0.81	0.85	0.86	0.91	0.83	0.92	0.81	0.84	0.86	0.83	0.87
	Planning Time Idx	0.83	0.83	0.87	0.89	0.97	0.86	0.98	0.83	0.87	0.89	0.86	0.90
	Buffer Index	0.03	0.03	0.03	0.04	0.07	0.04	0.07	0.02	0.04	0.03	0.03	0.03
	VMT	649	1,002	1,529	918	838	1,176	635	1,314	4,686	2,520	1,820	5,085
<b>0500</b>	Travel Time Index	0.81	0.81	0.83	0.85	0.89	0.81	0.91	0.81	0.84	0.85	0.83	0.86
	Planning Time Idx	0.83	0.82	0.86	0.90	0.93	0.84	0.98	0.82	0.86	0.87	0.85	0.88
	Buffer Index	0.03	0.02	0.03	0.05	0.04	0.03	0.08	0.02	0.03	0.02	0.03	0.02
	VMT	693	1,131	1,774	1,091	989	1,396	724	1,532	5,152	2,773	1,999	5,666

<b>Total</b>
0.84 0.92 0.05 1,105
0.85 0.93 0.05 1,045
0.85 0.94 0.05 1,002
0.86 0.95 0.05 997
0.86 0.95 0.05 1,040
0.86 0.96 0.04 1,125
0.85 0.95 0.04 1,168
0.86 0.95 0.05 1,248
0.85 0.94 0.04 1,533
0.85 0.93 0.04 1,848
0.84 0.92 0.03 2,077

		BC 75SB10 to MDC DMS44	BC 75SB14 to MDC DMS44	BC I-595 EB Hiatus to I-95	BC I-595 WB I-95 to Hiatus	BC I-75 NB I-595 to Col Ln	BC I-75 NB MD Ln to I-595	BC I-75 SB Col Ln to I-595	BC I-75 SB I-595 to MD Ln	BC I-95 NB I-595 to PB Ln	BC I-95 NB MD Ln to I-595	BC I-95 SB I-595 to MD Ln	BC I-95 SB PB Ln to I-595
<b>0515</b>	Travel Time Index	0.80	0.80	0.84	0.86	0.88	0.81	0.90	0.80	0.84	0.86	0.83	0.87
	Planning Time Idx	0.82	0.82	0.87	0.88	0.94	0.84	0.96	0.82	0.86	0.89	0.86	0.89
	Buffer Index	0.02	0.02	0.04	0.03	0.07	0.04	0.07	0.02	0.03	0.03	0.03	0.03
	VMT	929	1,489	1,881	1,215	1,107	1,482	883	1,988	5,639	2,920	2,352	6,422
<b>0530</b>	Travel Time Index	0.79	0.79	0.84	0.85	0.86	0.81	0.89	0.79	0.84	0.86	0.83	0.86
	Planning Time Idx	0.81	0.80	0.86	0.87	0.93	0.83	0.97	0.80	0.85	0.89	0.85	0.87
	Buffer Index	0.02	0.02	0.03	0.02	0.08	0.03	0.09	0.02	0.02	0.04	0.03	0.02
	VMT	1,399	2,233	2,501	1,611	1,342	2,103	1,096	2,977	7,001	3,761	3,002	8,010
<b>0545</b>	Travel Time Index	0.78	0.78	0.84	0.85	0.85	0.80	0.88	0.78	0.83	0.85	0.82	0.85
	Planning Time Idx	0.80	0.79	0.86	0.87	0.90	0.82	0.96	0.79	0.85	0.89	0.84	0.86
	Buffer Index	0.02	0.02	0.03	0.02	0.06	0.03	0.09	0.02	0.02	0.04	0.03	0.02
	VMT	2,017	3,164	3,314	2,087	1,681	3,041	1,357	4,160	9,365	5,052	3,896	10,408
<b>0600</b>	Travel Time Index	0.78	0.78	0.83	0.84	0.84	0.79	0.87	0.78	0.83	0.85	0.82	0.84
	Planning Time Idx	0.80	0.79	0.85	0.86	0.90	0.80	0.93	0.79	0.85	0.89	0.85	0.85
	Buffer Index	0.02	0.02	0.02	0.03	0.07	0.02	0.07	0.01	0.02	0.04	0.04	0.01
	VMT	2,391	3,778	4,120	2,609	2,014	3,515	1,633	5,009	11,550	5,681	4,819	12,226
<b>0615</b>	Travel Time Index	0.79	0.78	0.84	0.85	0.83	0.79	0.86	0.78	0.84	0.86	0.82	0.84
	Planning Time Idx	0.80	0.79	0.86	0.88	0.87	0.81	0.94	0.79	0.85	0.90	0.85	0.85
	Buffer Index	0.02	0.01	0.02	0.03	0.05	0.02	0.09	0.02	0.02	0.05	0.04	0.01
	VMT	3,246	5,006	4,743	2,891	2,259	4,209	1,996	6,506	12,844	6,278	6,114	14,500
<b>0630</b>	Travel Time Index	0.79	0.78	0.85	0.85	0.82	0.79	0.85	0.78	0.84	0.86	0.81	0.84
	Planning Time Idx	0.80	0.79	0.88	0.91	0.86	0.80	0.91	0.79	0.87	0.90	0.85	0.85
	Buffer Index	0.01	0.02	0.04	0.07	0.06	0.02	0.07	0.02	0.03	0.04	0.04	0.02
	VMT	4,432	6,915	6,684	4,037	2,629	6,224	2,338	9,127	17,635	8,377	8,053	19,409
<b>0645</b>	Travel Time Index	0.80	0.79	0.87	0.84	0.81	0.79	0.85	0.78	0.85	0.87	0.82	0.84
	Planning Time Idx	0.81	0.79	0.92	0.88	0.86	0.80	0.92	0.79	0.88	0.94	0.85	0.87
	Buffer Index	0.01	0.01	0.05	0.04	0.07	0.02	0.09	0.01	0.04	0.09	0.04	0.03
	VMT	5,489	8,784	9,002	5,708	2,966	8,697	2,674	11,706	22,594	10,870	9,081	23,644
<b>0700</b>	Travel Time Index	0.81	0.79	0.89	0.83	0.80	0.78	0.84	0.78	0.85	0.86	0.81	0.84
	Planning Time Idx	0.82	0.81	0.96	0.86	0.86	0.79	0.93	0.81	0.90	0.91	0.85	0.87
	Buffer Index	0.02	0.03	0.08	0.03	0.08	0.02	0.11	0.04	0.06	0.05	0.05	0.04
	VMT	6,206	9,922	10,066	6,439	3,226	9,693	2,991	13,224	24,304	10,929	9,563	24,973
<b>0715</b>	Travel Time Index	0.82	0.79	0.94	0.84	0.79	0.78	0.83	0.78	0.87	0.87	0.82	0.86
	Planning Time Idx	0.84	0.81	0.99	0.85	0.85	0.80	0.93	0.81	0.94	0.92	0.88	0.90
	Buffer Index	0.03	0.02	0.05	0.02	0.07	0.03	0.12	0.03	0.09	0.05	0.08	0.05
	VMT	6,767	10,791	10,772	6,578	3,369	10,247	3,579	14,266	24,294	11,200	9,990	26,213
<b>0730</b>	Travel Time Index	0.85	0.82	1.10	0.84	0.79	0.78	0.82	0.80	0.90	0.90	0.83	0.90
	Planning Time Idx	1.06	0.93	1.27	0.90	0.84	0.81	0.92	0.87	1.03	0.98	0.88	0.98
	Buffer Index	0.24	0.14	0.16	0.07	0.06	0.04	0.12	0.09	0.15	0.09	0.06	0.09
	VMT	7,948	12,871	11,631	7,946	3,717	12,266	3,958	17,166	28,410	13,464	11,089	30,478
<b>0745</b>	Travel Time Index	0.94	0.88	1.25	0.86	0.78	0.79	0.82	0.84	0.96	0.95	0.85	0.95
	Planning Time Idx	1.42	1.14	1.56	1.01	0.83	0.86	0.92	1.02	1.13	1.06	0.94	1.06
	Buffer Index	0.51	0.30	0.25	0.17	0.06	0.09	0.12	0.22	0.17	0.11	0.11	0.11
	VMT	8,398	13,778	11,499	9,354	3,947	13,516	4,150	18,444	31,025	15,073	11,650	32,571

<b>Total</b>
0.84 0.91 0.04 2,359
0.83 0.90 0.03 3,086
0.83 0.89 0.03 4,128
0.82 0.88 0.03 4,945
0.82 0.88 0.03 5,883
0.82 0.87 0.04 7,988
0.82 0.88 0.04 10,101
0.82 0.89 0.05 10,961
0.83 0.93 0.05 11,506
0.86 1.09 0.11 13,412
0.91 1.28 0.19 14,450

		BC 75SB10 to MDC DMS44	BC 75SB14 to MDC DMS44	BC I-595 EB Hiatus to I-95	BC I-595 WB I-95 to Hiatus	BC I-75 NB I-595 to Col Ln	BC I-75 NB MD Ln to I-595	BC I-75 SB Col Ln to I-595	BC I-75 SB I-595 to MD Ln	BC I-95 NB I-595 to PB Ln	BC I-95 NB MD Ln to I-595	BC I-95 SB I-595 to MD Ln	BC I-95 SB PB Ln to I-595
<b>0800</b>	Travel Time Index	1.03	0.93	1.28	0.88	0.78	0.79	0.81	0.88	1.02	0.97	0.86	1.00
	Planning Time Idx	1.57	1.27	1.83	1.09	0.84	0.86	0.88	1.14	1.30	1.29	0.93	1.19
	Buffer Index	0.53	0.37	0.43	0.25	0.07	0.08	0.09	0.30	0.27	0.33	0.08	0.19
	VMT	8,226	13,709	11,447	10,021	3,935	14,108	4,291	18,521	30,596	14,829	11,912	32,085
<b>0815</b>	Travel Time Index	1.04	0.94	1.24	0.87	0.79	0.79	0.81	0.89	1.02	0.99	0.87	1.01
	Planning Time Idx	1.81	1.42	1.86	1.06	0.85	0.84	0.86	1.23	1.37	1.41	0.99	1.34
	Buffer Index	0.74	0.51	0.50	0.21	0.08	0.07	0.06	0.38	0.35	0.43	0.14	0.32
	VMT	7,961	13,259	11,223	9,560	3,918	13,399	4,496	17,907	29,421	14,119	11,805	30,776
<b>0830</b>	Travel Time Index	1.01	0.92	1.21	0.87	0.79	0.79	0.80	0.87	1.05	1.01	0.88	1.03
	Planning Time Idx	1.85	1.46	1.92	1.03	0.84	0.84	0.87	1.26	1.45	1.50	1.07	1.42
	Buffer Index	0.83	0.59	0.59	0.18	0.07	0.06	0.07	0.44	0.37	0.49	0.22	0.37
	VMT	7,852	13,127	11,160	9,984	4,097	14,044	4,647	17,781	29,610	14,185	12,128	30,714
<b>0845</b>	Travel Time Index	0.95	0.89	1.16	0.89	0.79	0.80	0.81	0.85	1.06	1.00	0.89	1.03
	Planning Time Idx	1.88	1.51	1.89	1.11	0.85	0.90	0.88	1.32	1.43	1.62	1.09	1.43
	Buffer Index	0.97	0.70	0.63	0.25	0.08	0.12	0.10	0.55	0.35	0.62	0.23	0.39
	VMT	7,457	12,434	11,025	9,661	4,296	13,383	4,785	16,863	29,264	13,986	12,179	30,256
<b>0900</b>	Travel Time Index	0.91	0.86	1.08	0.89	0.79	0.80	0.80	0.83	1.02	0.97	0.89	0.99
	Planning Time Idx	1.63	1.32	1.70	1.15	0.86	0.85	0.87	1.18	1.35	1.67	1.08	1.36
	Buffer Index	0.80	0.54	0.57	0.30	0.08	0.06	0.08	0.41	0.32	0.72	0.21	0.38
	VMT	6,903	11,572	10,770	9,327	4,527	12,942	4,867	15,770	28,570	13,200	12,189	29,639
<b>0915</b>	Travel Time Index	0.86	0.83	0.99	0.89	0.79	0.80	0.81	0.81	0.94	0.92	0.88	0.93
	Planning Time Idx	1.19	1.07	1.47	1.11	0.86	0.82	0.86	1.00	1.22	1.21	1.07	1.18
	Buffer Index	0.37	0.29	0.49	0.25	0.09	0.03	0.07	0.23	0.31	0.31	0.21	0.28
	VMT	5,999	9,992	10,133	7,857	4,676	10,494	4,916	13,495	26,413	11,889	11,614	28,117
<b>0930</b>	Travel Time Index	0.84	0.82	0.96	0.87	0.79	0.80	0.81	0.81	0.90	0.91	0.88	0.91
	Planning Time Idx	0.89	0.86	1.35	0.95	0.87	0.82	0.87	0.84	1.09	1.06	1.01	1.09
	Buffer Index	0.05	0.05	0.41	0.08	0.09	0.03	0.08	0.04	0.22	0.17	0.15	0.20
	VMT	5,703	9,561	9,941	7,666	4,864	9,942	5,092	12,892	26,080	11,922	11,654	28,012
<b>0945</b>	Travel Time Index	0.83	0.81	0.95	0.87	0.79	0.80	0.81	0.80	0.88	0.90	0.87	0.90
	Planning Time Idx	0.86	0.84	1.38	0.91	0.86	0.83	0.86	0.82	1.07	0.97	0.97	1.06
	Buffer Index	0.04	0.03	0.45	0.06	0.09	0.03	0.07	0.02	0.21	0.08	0.11	0.18
	VMT	5,334	8,990	9,737	7,618	5,151	9,686	5,204	12,129	26,208	11,951	11,791	28,512
<b>1000</b>	Travel Time Index	0.82	0.81	0.92	0.86	0.79	0.80	0.81	0.80	0.87	0.91	0.88	0.89
	Planning Time Idx	0.85	0.83	1.22	0.90	0.84	0.81	0.85	0.82	0.95	1.04	0.98	1.05
	Buffer Index	0.04	0.03	0.32	0.05	0.07	0.02	0.05	0.03	0.09	0.15	0.12	0.18
	VMT	4,915	8,382	9,252	7,690	5,338	9,291	5,283	11,399	25,593	11,600	11,661	27,521
<b>1015</b>	Travel Time Index	0.82	0.81	0.90	0.86	0.79	0.80	0.80	0.80	0.87	0.92	0.87	0.89
	Planning Time Idx	0.84	0.82	0.99	0.89	0.86	0.82	0.85	0.81	0.92	1.00	0.94	0.98
	Buffer Index	0.02	0.02	0.11	0.04	0.09	0.02	0.06	0.01	0.06	0.09	0.09	0.11
	VMT	4,470	7,599	8,413	7,179	5,465	8,309	5,349	10,300	24,250	11,122	11,322	26,385
<b>1030</b>	Travel Time Index	0.82	0.81	0.89	0.86	0.79	0.80	0.80	0.80	0.87	0.92	0.87	0.89
	Planning Time Idx	0.84	0.83	0.92	0.88	0.83	0.82	0.86	0.81	0.99	1.02	0.95	1.01
	Buffer Index	0.03	0.02	0.04	0.03	0.05	0.03	0.07	0.02	0.13	0.10	0.10	0.14
	VMT	4,358	7,471	8,431	7,268	5,658	8,405	5,455	10,167	24,507	11,467	11,515	26,602

<b>Total</b>
0.94 1.34 0.25 14,473
0.94 1.39 0.32 13,987
0.94 1.36 0.36 14,111
0.93 1.34 0.42 13,799
0.90 1.29 0.37 13,356
0.87 1.09 0.24 12,133
0.86 1.00 0.13 11,944
0.85 0.94 0.11 11,859
0.84 0.91 0.10 11,494
0.84 0.91 0.06 10,847
0.84 0.91 0.06 10,942

		BC 75SB10 to MDC DMS44	BC 75SB14 to MDC DMS44	BC I-595 EB Hiatus to I-95	BC I-595 WB I-95 to Hiatus	BC I-75 NB I-595 to Col Ln	BC I-75 NB MD Ln to I-595	BC I-75 SB Col Ln to I-595	BC I-75 SB I-595 to MD Ln	BC I-95 NB I-595 to PB Ln	BC I-95 NB MD Ln to I-595	BC I-95 SB I-595 to MD Ln	BC I-95 SB PB Ln to I-595
<b>1045</b>	Travel Time Index	0.81	0.81	0.89	0.86	0.79	0.80	0.80	0.80	0.87	0.91	0.87	0.88
	Planning Time Idx	0.83	0.83	0.92	0.89	0.85	0.83	0.86	0.82	0.93	1.03	0.91	0.94
	Buffer Index	0.02	0.04	0.03	0.04	0.07	0.03	0.07	0.03	0.07	0.12	0.05	0.06
	VMT	4,240	7,297	8,436	7,446	5,897	8,530	5,603	9,955	25,061	11,748	11,639	26,885
<b>1100</b>	Travel Time Index	0.82	0.81	0.89	0.86	0.79	0.80	0.80	0.80	0.87	0.90	0.87	0.88
	Planning Time Idx	0.83	0.83	0.92	0.89	0.83	0.82	0.86	0.82	0.91	0.98	0.98	0.91
	Buffer Index	0.02	0.03	0.04	0.04	0.05	0.03	0.07	0.02	0.05	0.08	0.12	0.03
	VMT	3,961	6,899	8,120	7,470	6,037	8,401	5,643	9,475	24,965	11,553	11,526	26,452
<b>1115</b>	Travel Time Index	0.82	0.81	0.88	0.86	0.79	0.80	0.80	0.80	0.86	0.90	0.87	0.88
	Planning Time Idx	0.85	0.84	0.93	0.89	0.84	0.83	0.86	0.82	0.89	0.94	0.94	0.89
	Buffer Index	0.03	0.03	0.05	0.03	0.06	0.03	0.07	0.03	0.03	0.04	0.08	0.02
	VMT	3,727	6,510	7,638	7,332	5,946	8,038	5,699	8,950	24,057	11,364	11,170	25,859
<b>1130</b>	Travel Time Index	0.82	0.81	0.88	0.86	0.79	0.80	0.80	0.80	0.87	0.91	0.88	0.88
	Planning Time Idx	0.83	0.82	0.92	0.88	0.84	0.82	0.87	0.81	0.89	0.93	0.92	0.90
	Buffer Index	0.01	0.01	0.04	0.03	0.06	0.03	0.08	0.01	0.03	0.01	0.05	0.02
	VMT	3,778	6,627	8,073	7,544	6,085	8,390	5,949	9,120	24,972	11,827	11,505	26,779
<b>1145</b>	Travel Time Index	0.82	0.81	0.88	0.86	0.79	0.80	0.80	0.80	0.87	0.92	0.88	0.88
	Planning Time Idx	0.83	0.82	0.90	0.88	0.83	0.82	0.85	0.82	0.90	0.94	0.95	0.89
	Buffer Index	0.02	0.02	0.02	0.03	0.05	0.02	0.06	0.02	0.03	0.02	0.07	0.02
	VMT	3,685	6,528	8,138	7,728	5,980	8,473	5,968	9,038	25,060	11,976	11,532	26,940
<b>1200</b>	Travel Time Index	0.82	0.81	0.88	0.86	0.79	0.80	0.80	0.80	0.87	0.94	0.88	0.88
	Planning Time Idx	0.83	0.82	0.93	0.89	0.85	0.82	0.85	0.81	0.92	1.03	1.06	0.90
	Buffer Index	0.02	0.02	0.05	0.03	0.08	0.02	0.06	0.02	0.06	0.10	0.20	0.02
	VMT	3,694	6,603	8,169	7,995	5,994	8,860	6,112	9,189	25,557	12,136	11,605	26,932
<b>1215</b>	Travel Time Index	0.82	0.81	0.89	0.86	0.79	0.80	0.80	0.80	0.87	0.93	0.88	0.89
	Planning Time Idx	0.85	0.83	0.91	0.88	0.86	0.83	0.86	0.82	0.95	0.97	1.02	0.94
	Buffer Index	0.04	0.03	0.02	0.03	0.08	0.04	0.07	0.03	0.09	0.05	0.16	0.06
	VMT	3,674	6,564	8,044	8,019	5,889	8,788	6,012	9,093	25,224	12,088	11,604	26,718
<b>1230</b>	Travel Time Index	0.82	0.81	0.89	0.86	0.79	0.80	0.81	0.80	0.88	0.91	0.88	0.90
	Planning Time Idx	0.84	0.83	0.92	0.89	0.85	0.82	0.90	0.82	0.99	0.96	1.01	1.01
	Buffer Index	0.03	0.03	0.04	0.04	0.07	0.03	0.12	0.02	0.13	0.06	0.14	0.13
	VMT	3,730	6,684	8,158	8,202	5,801	9,031	5,882	9,280	25,599	12,145	11,672	27,150
<b>1245</b>	Travel Time Index	0.82	0.81	0.88	0.86	0.79	0.80	0.80	0.80	0.88	0.90	0.89	0.89
	Planning Time Idx	0.86	0.85	0.91	0.88	0.84	0.83	0.87	0.84	0.95	0.94	1.13	0.98
	Buffer Index	0.04	0.05	0.03	0.03	0.06	0.05	0.08	0.05	0.08	0.04	0.27	0.10
	VMT	3,765	6,723	8,294	8,438	5,892	9,209	6,083	9,369	26,264	12,439	11,893	27,759
<b>1300</b>	Travel Time Index	0.83	0.82	0.88	0.86	0.79	0.80	0.80	0.81	0.88	0.90	0.88	0.88
	Planning Time Idx	0.94	0.89	0.92	0.89	0.84	0.85	0.85	0.85	0.94	0.94	1.01	0.95
	Buffer Index	0.13	0.08	0.04	0.03	0.07	0.07	0.06	0.06	0.07	0.04	0.15	0.08
	VMT	3,738	6,701	8,155	8,490	5,914	9,240	6,062	9,377	26,039	12,263	11,934	27,392
<b>1315</b>	Travel Time Index	0.83	0.82	0.89	0.87	0.79	0.80	0.80	0.81	0.87	0.90	0.87	0.88
	Planning Time Idx	0.87	0.89	0.92	0.94	0.85	0.86	0.87	0.87	0.91	0.95	0.94	0.93
	Buffer Index	0.05	0.09	0.04	0.08	0.08	0.08	0.08	0.08	0.05	0.05	0.08	0.05
	VMT	3,728	6,640	7,957	8,370	5,877	9,077	5,994	9,284	25,542	12,170	11,768	27,342

<b>Total</b>
0.84 0.91 0.05 11,061
0.84 0.91 0.05 10,875
0.84 0.91 0.04 10,524
0.84 0.91 0.03 10,887
0.84 0.91 0.03 10,920
0.84 0.91 0.06 11,070
0.84 0.91 0.06 10,976
0.85 0.92 0.07 11,111
0.84 0.91 0.07 11,344
0.84 0.92 0.07 11,275
0.84 0.92 0.07 11,146

		BC 75SB10 to MDC DMS44	BC 75SB14 to MDC DMS44	BC I-595 EB Hiatus to I-95	BC I-595 WB I-95 to Hiatus	BC I-75 NB I-595 to Col Ln	BC I-75 NB MD Ln to I-595	BC I-75 SB Col Ln to I-595	BC I-75 SB I-595 to MD Ln	BC I-95 NB I-595 to PB Ln	BC I-95 NB MD Ln to I-595	BC I-95 SB I-595 to MD Ln	BC I-95 SB PB Ln to I-595
<b>1330</b>	Travel Time Index	0.83	0.82	0.89	0.87	0.79	0.80	0.81	0.81	0.87	0.91	0.88	0.89
	Planning Time Idx	0.90	0.88	0.94	0.97	0.86	0.85	0.88	0.86	0.95	0.97	0.95	0.97
	Buffer Index	0.09	0.07	0.06	0.12	0.09	0.06	0.09	0.06	0.09	0.06	0.08	0.10
	VMT	3,910	6,942	8,147	8,712	5,976	9,463	6,107	9,709	26,023	12,313	11,983	27,825
<b>1345</b>	Travel Time Index	0.83	0.83	0.90	0.88	0.78	0.80	0.80	0.81	0.88	0.93	0.89	0.90
	Planning Time Idx	0.90	0.91	1.02	0.99	0.83	0.87	0.87	0.88	0.92	1.13	1.03	1.08
	Buffer Index	0.08	0.11	0.13	0.13	0.06	0.08	0.08	0.08	0.05	0.22	0.16	0.20
	VMT	3,870	6,918	8,209	8,854	6,016	9,789	6,068	9,710	26,375	12,641	11,933	27,798
<b>1400</b>	Travel Time Index	0.84	0.83	0.91	0.88	0.78	0.80	0.80	0.81	0.88	0.94	0.90	0.91
	Planning Time Idx	0.90	0.87	1.05	1.06	0.85	0.85	0.89	0.85	1.01	1.36	1.12	1.15
	Buffer Index	0.08	0.05	0.16	0.20	0.09	0.07	0.10	0.05	0.14	0.44	0.24	0.27
	VMT	3,818	6,871	8,036	9,204	6,117	9,885	6,097	9,684	26,546	12,501	11,752	27,569
<b>1415</b>	Travel Time Index	0.83	0.82	0.90	0.88	0.78	0.80	0.80	0.81	0.88	0.94	0.89	0.90
	Planning Time Idx	0.86	0.85	1.03	1.05	0.85	0.83	0.88	0.84	1.02	1.09	1.11	1.16
	Buffer Index	0.04	0.04	0.14	0.20	0.09	0.05	0.10	0.04	0.16	0.17	0.25	0.29
	VMT	3,816	6,836	7,897	9,049	6,219	9,916	6,135	9,615	26,404	12,525	11,729	27,446
<b>1430</b>	Travel Time Index	0.83	0.82	0.90	0.88	0.78	0.80	0.81	0.81	0.89	0.94	0.89	0.91
	Planning Time Idx	0.87	0.86	0.97	0.99	0.86	0.84	0.89	0.84	1.02	1.18	1.06	1.08
	Buffer Index	0.04	0.05	0.08	0.13	0.10	0.05	0.11	0.04	0.15	0.26	0.20	0.19
	VMT	4,056	7,237	8,368	9,304	6,288	10,484	6,193	10,109	27,405	12,966	12,040	28,382
<b>1445</b>	Travel Time Index	0.83	0.82	0.90	0.88	0.78	0.80	0.80	0.81	0.90	0.95	0.89	0.91
	Planning Time Idx	0.87	0.88	1.04	0.99	0.85	0.85	0.88	0.85	1.03	1.32	1.02	1.09
	Buffer Index	0.05	0.07	0.15	0.12	0.09	0.06	0.09	0.05	0.15	0.40	0.15	0.20
	VMT	3,937	7,106	8,479	9,768	6,359	10,933	6,250	10,019	28,469	13,501	12,295	29,013
<b>1500</b>	Travel Time Index	0.83	0.82	0.90	0.89	0.78	0.80	0.80	0.81	0.90	0.94	0.89	0.90
	Planning Time Idx	0.89	0.87	0.99	1.06	0.87	0.84	0.89	0.85	1.06	1.19	1.06	1.10
	Buffer Index	0.07	0.06	0.10	0.19	0.11	0.05	0.11	0.05	0.18	0.27	0.19	0.22
	VMT	4,013	7,266	8,376	10,408	6,413	11,191	6,362	10,270	29,056	13,472	12,459	28,790
<b>1515</b>	Travel Time Index	0.85	0.83	0.90	0.90	0.78	0.81	0.80	0.82	0.90	0.92	0.90	0.90
	Planning Time Idx	0.95	0.90	1.01	1.08	0.86	0.86	0.88	0.86	1.04	1.09	1.09	1.02
	Buffer Index	0.12	0.08	0.12	0.21	0.09	0.06	0.09	0.06	0.16	0.18	0.21	0.14
	VMT	3,982	7,297	8,262	10,545	6,380	11,461	6,356	10,351	29,021	13,512	12,500	29,380
<b>1530</b>	Travel Time Index	0.85	0.84	0.92	0.92	0.78	0.82	0.80	0.82	0.90	0.92	0.91	0.91
	Planning Time Idx	0.98	0.97	1.04	1.24	0.84	0.93	0.86	0.92	1.09	1.06	1.11	1.03
	Buffer Index	0.16	0.17	0.14	0.34	0.08	0.13	0.08	0.12	0.22	0.15	0.21	0.14
	VMT	4,233	7,761	8,728	11,217	6,470	12,336	6,453	10,989	29,944	13,801	12,988	30,696
<b>1545</b>	Travel Time Index	0.84	0.83	0.92	0.95	0.78	0.82	0.80	0.82	0.91	0.92	0.93	0.91
	Planning Time Idx	0.95	0.92	1.07	1.33	0.85	0.89	0.86	0.87	1.12	1.10	1.21	1.03
	Buffer Index	0.13	0.10	0.16	0.41	0.09	0.09	0.08	0.07	0.23	0.20	0.31	0.13
	VMT	4,318	8,025	8,992	11,408	6,605	12,843	6,486	11,442	30,415	14,025	13,445	31,845
<b>1600</b>	Travel Time Index	0.84	0.83	0.93	0.99	0.78	0.82	0.79	0.82	0.92	0.93	0.95	0.93
	Planning Time Idx	0.94	0.92	1.11	1.40	0.86	0.95	0.86	0.92	1.14	1.06	1.27	1.12
	Buffer Index	0.11	0.10	0.20	0.42	0.11	0.16	0.08	0.12	0.24	0.14	0.33	0.20
	VMT	4,622	8,456	8,826	11,599	6,646	13,643	6,467	11,933	30,729	13,768	13,657	31,922

<b>Total</b>
0.85 0.92 0.08 11,426
0.85 0.95 0.12 11,515
0.86 0.98 0.16 11,507
0.85 0.96 0.13 11,466
0.85 0.96 0.12 11,903
0.86 0.97 0.13 12,177
0.86 0.96 0.13 12,340
0.86 0.99 0.13 12,421
0.86 1.02 0.16 12,968
0.87 1.04 0.16 13,321
0.88 1.05 0.18 13,522

		BC 75SB10 to MDC DMS44	BC 75SB14 to MDC DMS44	BC I-95 EB Hiatus to I-95	BC I-95 WB I-95 to Hiatus	BC I-75 NB I-95 to Col Ln	BC I-75 NB MD Ln to I-95	BC I-75 SB Col Ln to I-95	BC I-75 SB I-95 to MD Ln	BC I-95 NB I-95 to PB Ln	BC I-95 NB MD Ln to I-95	BC I-95 SB I-95 to MD Ln	BC I-95 SB PB Ln to I-95
<b>1615</b>	Travel Time Index	0.84	0.84	0.92	1.00	0.78	0.82	0.79	0.82	0.93	0.96	0.97	0.94
	Planning Time Idx	0.90	0.90	1.21	1.63	0.86	1.04	0.84	0.87	1.13	1.40	1.38	1.24
	Buffer Index	0.07	0.08	0.33	0.64	0.10	0.26	0.06	0.07	0.22	0.46	0.43	0.32
	VMT	4,320	8,009	8,575	11,506	6,583	13,642	6,455	11,418	29,903	13,759	13,081	31,130
<b>1630</b>	Travel Time Index	0.84	0.83	0.91	1.03	0.78	0.82	0.79	0.81	0.96	0.97	0.98	0.97
	Planning Time Idx	0.91	0.87	1.05	1.70	0.86	0.97	0.86	0.85	1.23	1.33	1.40	1.36
	Buffer Index	0.08	0.05	0.15	0.64	0.11	0.18	0.08	0.04	0.28	0.37	0.43	0.40
	VMT	4,570	8,513	8,943	12,122	6,574	14,541	6,442	12,156	30,238	13,819	13,340	31,768
<b>1645</b>	Travel Time Index	0.84	0.83	0.90	1.07	0.78	0.84	0.79	0.81	0.97	0.99	0.96	0.97
	Planning Time Idx	0.93	0.91	1.03	1.64	0.89	1.12	0.87	0.87	1.22	1.40	1.30	1.39
	Buffer Index	0.11	0.10	0.14	0.54	0.13	0.34	0.10	0.07	0.26	0.42	0.35	0.43
	VMT	4,452	8,477	8,912	12,055	6,542	15,004	6,371	12,201	30,366	13,855	13,346	31,594
<b>1700</b>	Travel Time Index	0.85	0.84	0.90	1.16	0.78	0.85	0.79	0.82	0.98	0.97	0.97	1.00
	Planning Time Idx	0.97	1.03	0.95	1.62	0.85	1.11	0.85	0.99	1.25	1.18	1.27	1.44
	Buffer Index	0.15	0.23	0.06	0.39	0.09	0.30	0.07	0.21	0.27	0.21	0.31	0.45
	VMT	4,794	9,122	9,197	12,145	6,504	15,641	6,365	13,095	30,508	13,559	13,403	31,448
<b>1715</b>	Travel Time Index	0.85	0.84	0.89	1.26	0.78	0.86	0.79	0.82	0.98	0.97	0.98	1.00
	Planning Time Idx	0.91	1.13	0.96	1.78	0.85	1.11	0.85	1.02	1.25	1.10	1.32	1.46
	Buffer Index	0.07	0.34	0.07	0.41	0.09	0.30	0.08	0.24	0.28	0.13	0.36	0.46
	VMT	4,906	9,495	9,288	12,205	6,378	16,508	6,329	13,700	30,796	14,120	13,704	32,158
<b>1730</b>	Travel Time Index	0.85	0.85	0.91	1.48	0.77	0.89	0.79	0.83	1.03	0.99	1.06	1.11
	Planning Time Idx	1.01	1.09	1.02	2.12	0.85	1.10	0.82	1.00	1.27	1.21	1.45	1.53
	Buffer Index	0.19	0.29	0.12	0.44	0.10	0.23	0.05	0.20	0.23	0.23	0.36	0.38
	VMT	5,790	11,131	10,354	12,130	6,311	17,702	6,334	15,929	31,792	14,266	14,063	32,868
<b>1745</b>	Travel Time Index	0.85	0.84	0.91	1.55	0.77	0.91	0.78	0.82	1.03	0.95	1.07	1.11
	Planning Time Idx	0.97	1.01	1.03	2.10	0.85	1.10	0.81	0.97	1.30	1.17	1.55	1.50
	Buffer Index	0.14	0.20	0.13	0.35	0.11	0.21	0.04	0.18	0.27	0.23	0.45	0.36
	VMT	5,344	10,400	9,953	11,735	6,118	16,619	6,289	14,954	30,950	13,731	13,695	31,860
<b>1800</b>	Travel Time Index	0.85	0.83	0.91	1.49	0.77	0.91	0.78	0.81	0.99	0.93	1.04	1.06
	Planning Time Idx	1.04	1.00	1.11	2.09	0.82	1.12	0.81	0.93	1.29	1.11	1.49	1.43
	Buffer Index	0.23	0.20	0.21	0.40	0.06	0.23	0.04	0.14	0.30	0.19	0.43	0.34
	VMT	5,219	10,121	9,649	11,448	5,781	15,961	5,889	14,557	30,119	13,305	13,386	31,134
<b>1815</b>	Travel Time Index	0.82	0.81	0.90	1.30	0.77	0.89	0.78	0.80	0.92	0.93	0.98	0.98
	Planning Time Idx	0.90	0.88	1.06	1.95	0.81	1.00	0.82	0.85	1.21	1.24	1.34	1.30
	Buffer Index	0.09	0.08	0.18	0.50	0.06	0.12	0.05	0.07	0.32	0.33	0.36	0.33
	VMT	4,770	9,278	9,145	11,284	5,795	15,683	5,743	13,398	28,907	13,015	13,093	29,952
<b>1830</b>	Travel Time Index	0.82	0.81	0.89	1.15	0.77	0.89	0.78	0.79	0.88	0.94	0.94	0.94
	Planning Time Idx	0.85	0.87	0.97	1.88	0.81	1.04	0.83	0.85	1.07	1.37	1.35	1.21
	Buffer Index	0.04	0.08	0.10	0.63	0.06	0.18	0.07	0.07	0.21	0.47	0.43	0.28
	VMT	4,878	9,283	9,221	11,072	5,846	15,648	5,437	13,322	28,283	12,987	12,811	29,790
<b>1845</b>	Travel Time Index	0.81	0.80	0.86	1.02	0.77	0.87	0.78	0.79	0.86	0.90	0.91	0.90
	Planning Time Idx	0.83	0.84	0.91	1.64	0.81	1.02	0.83	0.82	1.01	1.16	1.20	1.13
	Buffer Index	0.03	0.05	0.06	0.61	0.05	0.17	0.06	0.05	0.17	0.29	0.32	0.26
	VMT	4,288	8,189	8,334	10,411	5,678	14,955	5,206	11,792	26,436	12,664	11,881	27,252

<b>Total</b>
0.88 1.13 0.25 13,198
0.89 1.13 0.24 13,585
0.90 1.15 0.25 13,598
0.91 1.21 0.23 13,815
0.92 1.30 0.23 14,132
0.96 1.44 0.23 14,889
0.97 1.52 0.22 14,304
0.95 1.46 0.23 13,881
0.91 1.31 0.21 13,371
0.88 1.19 0.22 13,247
0.86 1.07 0.18 12,287

		BC 75SB10 to MDC DMS44	BC 75SB14 to MDC DMS44	BC I-595 EB Hiatus to I-95	BC I-595 WB I-95 to Hiatus	BC I-75 NB I-595 to Col Ln	BC I-75 NB MD Ln to I-595	BC I-75 SB Col Ln to I-595	BC I-75 SB I-595 to MD Ln	BC I-95 NB I-595 to PB Ln	BC I-95 NB MD Ln to I-595	BC I-95 SB I-595 to MD Ln	BC I-95 SB PB Ln to I-595
<b>1900</b>	Travel Time Index	0.80	0.79	0.85	0.91	0.77	0.84	0.78	0.78	0.84	0.87	0.87	0.86
	Planning Time Idx	0.83	0.83	0.89	1.37	0.83	0.99	0.85	0.81	0.89	0.99	1.08	0.97
	Buffer Index	0.04	0.04	0.04	0.50	0.08	0.18	0.09	0.04	0.07	0.13	0.24	0.12
	VMT	3,914	7,434	7,678	9,718	5,452	14,079	4,991	10,708	24,286	11,727	10,988	24,486
<b>1915</b>	Travel Time Index	0.80	0.79	0.85	0.86	0.76	0.80	0.78	0.78	0.83	0.85	0.83	0.84
	Planning Time Idx	0.83	0.82	0.87	1.00	0.83	0.95	0.83	0.81	0.89	0.93	0.96	0.89
	Buffer Index	0.03	0.03	0.03	0.17	0.09	0.18	0.07	0.03	0.07	0.10	0.16	0.06
	VMT	3,626	6,814	7,109	8,858	5,162	12,441	4,706	9,691	22,449	10,791	10,280	22,896
<b>1930</b>	Travel Time Index	0.80	0.79	0.84	0.84	0.76	0.79	0.78	0.78	0.83	0.85	0.82	0.83
	Planning Time Idx	0.84	0.82	0.87	0.87	0.80	0.90	0.82	0.82	0.89	0.90	0.87	0.87
	Buffer Index	0.04	0.03	0.03	0.04	0.05	0.14	0.06	0.05	0.07	0.07	0.05	0.06
	VMT	3,540	6,547	6,730	8,371	4,910	11,337	4,561	9,274	21,419	10,265	10,037	22,357
<b>1945</b>	Travel Time Index	0.80	0.79	0.84	0.83	0.76	0.78	0.78	0.78	0.82	0.84	0.82	0.82
	Planning Time Idx	0.82	0.80	0.86	0.87	0.80	0.84	0.82	0.79	0.86	0.88	0.87	0.84
	Buffer Index	0.03	0.02	0.02	0.05	0.05	0.08	0.05	0.02	0.05	0.05	0.07	0.03
	VMT	3,275	6,043	6,071	7,696	4,526	10,092	4,238	8,510	19,991	9,650	9,385	20,046
<b>2000</b>	Travel Time Index	0.81	0.79	0.84	0.83	0.76	0.77	0.78	0.78	0.82	0.84	0.82	0.82
	Planning Time Idx	0.82	0.80	0.86	0.85	0.80	0.82	0.82	0.79	0.86	0.90	0.90	0.84
	Buffer Index	0.01	0.01	0.02	0.02	0.05	0.06	0.05	0.01	0.05	0.07	0.10	0.02
	VMT	3,098	5,647	5,667	7,217	4,143	9,101	3,972	7,940	18,853	9,049	8,757	18,488
<b>2015</b>	Travel Time Index	0.81	0.79	0.85	0.83	0.76	0.77	0.78	0.78	0.82	0.85	0.82	0.82
	Planning Time Idx	0.82	0.81	0.92	0.86	0.79	0.79	0.82	0.80	0.85	0.91	0.88	0.84
	Buffer Index	0.02	0.02	0.08	0.03	0.04	0.02	0.06	0.02	0.03	0.07	0.07	0.02
	VMT	2,896	5,270	5,368	6,722	3,835	8,494	3,747	7,424	17,846	8,475	8,257	17,656
<b>2030</b>	Travel Time Index	0.81	0.80	0.86	0.84	0.76	0.78	0.79	0.79	0.83	0.85	0.83	0.83
	Planning Time Idx	0.82	0.81	0.98	0.96	0.80	0.80	0.84	0.80	0.85	0.89	0.86	0.85
	Buffer Index	0.02	0.02	0.13	0.14	0.05	0.03	0.07	0.02	0.03	0.04	0.04	0.02
	VMT	2,877	5,226	5,364	6,642	3,575	8,013	3,528	7,358	17,663	8,258	8,330	17,615
<b>2045</b>	Travel Time Index	0.81	0.80	0.88	0.84	0.77	0.78	0.80	0.79	0.84	0.86	0.83	0.84
	Planning Time Idx	0.83	0.82	1.05	0.90	0.83	0.80	0.84	0.81	0.87	0.88	0.86	0.86
	Buffer Index	0.02	0.03	0.20	0.07	0.08	0.03	0.06	0.03	0.04	0.03	0.04	0.04
	VMT	2,729	4,936	4,964	6,175	3,300	7,243	3,314	6,947	16,658	7,818	7,823	16,137
<b>2100</b>	Travel Time Index	0.81	0.80	0.88	0.84	0.78	0.78	0.80	0.79	0.84	0.86	0.83	0.84
	Planning Time Idx	0.83	0.82	1.12	0.88	0.85	0.79	0.85	0.81	0.94	0.88	0.85	0.91
	Buffer Index	0.03	0.02	0.27	0.05	0.09	0.02	0.06	0.02	0.12	0.02	0.02	0.09
	VMT	2,616	4,683	4,806	5,909	3,069	6,750	3,099	6,594	16,026	7,422	7,517	15,176
<b>2115</b>	Travel Time Index	0.81	0.80	0.87	0.84	0.78	0.78	0.80	0.79	0.84	0.86	0.83	0.84
	Planning Time Idx	0.83	0.81	1.07	0.87	0.85	0.79	0.87	0.80	0.99	0.87	0.86	0.94
	Buffer Index	0.02	0.02	0.22	0.03	0.09	0.02	0.08	0.01	0.18	0.02	0.03	0.12
	VMT	2,624	4,650	4,736	5,682	2,862	6,485	2,957	6,516	15,690	7,238	7,323	15,248
<b>2130</b>	Travel Time Index	0.81	0.80	0.87	0.84	0.78	0.78	0.80	0.79	0.84	0.86	0.84	0.84
	Planning Time Idx	0.83	0.81	1.04	0.93	0.86	0.80	0.85	0.80	1.01	0.88	0.88	0.95
	Buffer Index	0.02	0.02	0.20	0.10	0.10	0.02	0.07	0.01	0.19	0.02	0.06	0.13
	VMT	2,757	4,848	4,693	5,764	2,738	6,509	2,785	6,759	15,862	7,246	7,616	15,715

<b>Total</b>
0.83 0.93 0.13 11,316
0.81 0.88 0.09 10,402
0.81 0.86 0.06 9,946
0.81 0.85 0.04 9,127
0.80 0.85 0.04 8,494
0.81 0.86 0.04 7,999
0.81 0.87 0.05 7,871
0.82 0.87 0.05 7,337
0.82 0.87 0.07 6,972
0.82 0.87 0.07 6,834
0.82 0.87 0.08 6,941

		BC 75SB10 to MDC DMS44	BC 75SB14 to MDC DMS44	BC I-595 EB Hiatus to I-95	BC I-595 WB I-95 to Hiatus	BC I-75 NB I-595 to Col Ln	BC I-75 NB MD Ln to I-595	BC I-75 SB Col Ln to I-595	BC I-75 SB I-595 to MD Ln	BC I-95 NB I-595 to PB Ln	BC I-95 NB MD Ln to I-595	BC I-95 SB I-595 to MD Ln	BC I-95 SB PB Ln to I-595
<b>2145</b>	Travel Time Index	0.81	0.80	0.87	0.84	0.78	0.78	0.80	0.79	0.84	0.86	0.83	0.84
	Planning Time Idx	0.83	0.81	1.03	0.97	0.83	0.79	0.84	0.80	1.02	0.89	0.89	0.92
	Buffer Index	0.02	0.01	0.18	0.14	0.06	0.02	0.05	0.01	0.21	0.04	0.07	0.10
	VMT	2,496	4,451	4,466	5,412	2,575	6,082	2,625	6,258	15,169	7,194	7,162	14,773
<b>2200</b>	Travel Time Index	0.81	0.80	0.87	0.84	0.78	0.78	0.80	0.79	0.84	0.85	0.83	0.84
	Planning Time Idx	0.83	0.81	1.01	0.94	0.82	0.79	0.84	0.80	1.03	0.93	0.88	0.94
	Buffer Index	0.03	0.02	0.16	0.13	0.06	0.01	0.05	0.01	0.22	0.09	0.07	0.13
	VMT	2,353	4,230	4,433	5,048	2,406	5,717	2,493	5,983	14,684	6,927	6,844	14,183
<b>2215</b>	Travel Time Index	0.81	0.80	0.87	0.83	0.78	0.77	0.80	0.79	0.84	0.86	0.83	0.83
	Planning Time Idx	0.83	0.81	1.02	0.91	0.84	0.79	0.84	0.80	1.03	0.91	0.89	0.95
	Buffer Index	0.02	0.02	0.17	0.09	0.07	0.02	0.05	0.01	0.23	0.06	0.07	0.14
	VMT	2,234	3,983	4,297	4,852	2,174	5,514	2,300	5,602	14,206	6,674	6,786	13,777
<b>2230</b>	Travel Time Index	0.81	0.79	0.86	0.83	0.78	0.77	0.80	0.78	0.84	0.85	0.83	0.83
	Planning Time Idx	0.85	0.82	0.99	0.90	0.81	0.79	0.86	0.80	1.02	0.89	0.92	0.95
	Buffer Index	0.05	0.03	0.15	0.08	0.04	0.03	0.08	0.02	0.22	0.05	0.11	0.14
	VMT	2,223	3,951	4,246	4,835	2,053	5,261	2,138	5,542	14,263	6,636	6,852	13,547
<b>2245</b>	Travel Time Index	0.80	0.79	0.85	0.83	0.78	0.77	0.80	0.78	0.84	0.85	0.82	0.83
	Planning Time Idx	0.83	0.81	0.93	0.89	0.86	0.79	0.85	0.80	1.05	0.87	0.90	0.95
	Buffer Index	0.04	0.03	0.10	0.08	0.10	0.03	0.07	0.02	0.25	0.03	0.10	0.14
	VMT	1,902	3,363	3,644	4,463	1,899	4,658	1,963	4,708	13,433	6,335	6,290	12,348
<b>2300</b>	Travel Time Index	0.80	0.79	0.85	0.83	0.79	0.77	0.80	0.78	0.84	0.84	0.81	0.83
	Planning Time Idx	0.82	0.82	0.88	0.88	0.84	0.80	0.86	0.81	1.04	0.87	0.84	0.94
	Buffer Index	0.03	0.03	0.05	0.07	0.07	0.03	0.07	0.03	0.25	0.03	0.03	0.13
	VMT	1,660	2,964	3,121	4,172	1,720	4,339	1,791	4,171	12,813	5,818	5,851	11,185
<b>2315</b>	Travel Time Index	0.80	0.79	0.84	0.82	0.80	0.77	0.81	0.78	0.84	0.84	0.82	0.83
	Planning Time Idx	0.82	0.81	0.89	0.90	0.86	0.80	0.89	0.81	1.01	0.88	0.89	0.95
	Buffer Index	0.02	0.03	0.05	0.09	0.08	0.04	0.10	0.03	0.20	0.04	0.09	0.14
	VMT	1,574	2,804	2,896	3,915	1,613	3,866	1,711	3,917	12,190	5,325	5,732	10,684
<b>2330</b>	Travel Time Index	0.80	0.79	0.84	0.82	0.80	0.77	0.81	0.78	0.83	0.84	0.82	0.83
	Planning Time Idx	0.82	0.81	0.88	0.87	0.86	0.80	0.87	0.81	0.94	0.87	0.89	0.94
	Buffer Index	0.03	0.03	0.04	0.06	0.08	0.04	0.08	0.04	0.14	0.04	0.09	0.13
	VMT	1,535	2,718	2,757	3,677	1,509	3,681	1,506	3,785	11,140	5,069	5,490	10,328
<b>2345</b>	Travel Time Index	0.80	0.79	0.84	0.82	0.81	0.77	0.81	0.78	0.83	0.83	0.81	0.83
	Planning Time Idx	0.83	0.81	0.88	0.85	0.88	0.80	0.89	0.81	0.92	0.87	0.89	0.93
	Buffer Index	0.04	0.03	0.04	0.05	0.10	0.04	0.09	0.03	0.12	0.04	0.09	0.12
	VMT	1,304	2,283	2,466	3,256	1,353	3,281	1,368	3,167	9,992	4,695	4,893	9,328
<b>Total</b>	Travel Time Index	0.82	0.81	0.88	0.87	0.79	0.79	0.81	0.80	0.86	0.88	0.85	0.87
	Planning Time Idx	0.87	0.85	1.04	1.12	0.92	0.87	0.92	0.84	1.02	0.96	0.99	1.01
	Buffer Index	0.08	0.07	0.10	0.11	0.08	0.06	0.08	0.06	0.10	0.11	0.11	0.11
	VMT	3,063	5,394	5,732	6,005	3,858	7,265	3,877	7,496	17,875	8,417	8,029	18,437

<b>Total</b>
0.82 0.87 0.08 6,555
0.82 0.88 0.08 6,275
0.82 0.88 0.08 6,033
0.82 0.87 0.08 5,962
0.81 0.86 0.08 5,417
0.81 0.86 0.07 4,967
0.81 0.86 0.08 4,685
0.81 0.85 0.07 4,433
0.81 0.86 0.07 3,949
0.84 0.95 0.09 7,955

## Regional Buffer Index

<u>Segment Name</u>	<u>Overall BI</u>	<u>Overall VMT</u>	<u>AM Peak BI</u>	<u>AM Peak VMT</u>	<u>PM Peak BI</u>	<u>PM Peak VMT</u>
BC 75SB10 to MDC DMS44	0.66	11,874	0.97	6,827	0.23	5,047
BC 75SB14 to MDC DMS44	0.55	20,423	0.70	11,728	0.34	8,695
BC I-595 EB Hiatus to I-95	0.50	18,878	0.63	10,652	0.33	8,226
BC I-595 WB I-95 to Hiatus	0.49	20,360	0.30	9,136	0.64	11,224
BC I-75 NB I-595 to Col Ln	0.11	10,715	0.09	4,776	0.13	5,940
BC I-75 NB MD Ln to I-595	0.23	26,618	0.12	13,088	0.34	13,530
BC I-75 SB Col Ln to I-595	0.11	9,016	0.12	4,076	0.11	4,939
BC I-75 SB I-595 to MD Ln	0.41	28,366	0.55	15,882	0.24	12,483
BC I-95 NB I-595 to PB Ln	0.35	59,204	0.37	30,169	0.32	29,034
BC I-95 NB MD Ln to I-595	0.60	26,778	0.72	13,915	0.47	12,863
BC I-95 SB I-595 to MD Ln	0.34	27,264	0.23	13,348	0.45	13,916
BC I-95 SB PB Ln to I-595	0.42	58,370	0.39	29,365	0.46	29,005

**Regional Buffer Index: 0.406**

## RegionalBufferIndexReport

<u>QUARTER</u>	<u>BUFFERINDEX</u>
2008 Q3	0.415
2008 Q4	0.406
2009 Q1	0.468
2009 Q2	0.406
2009 Q3	0.417

### RegionalBufferIndex per Quarter

