

Quarterly Performance Measures Report

Broward County

Period From Jan 1, 2008 to Mar 31, 2008

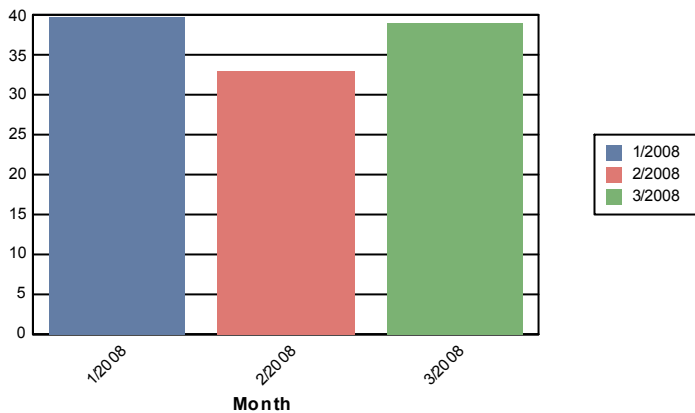


Created on:
April 08, 2008
11:44 am

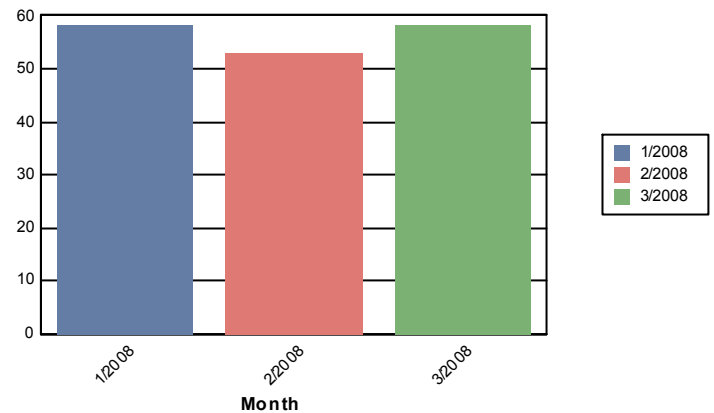
1st Quarter

	January	February	March	Total
Total # of Events (incl. incidents)	5,269	4,729	3,893	13,891
Number of Incidents	226	207	200	633
TMC Verification (mins.)	1.33	1.25	2.06	1.51
Roadway Clearance (2A) (mins.)	39.81	33.00	39.13	37.37
Incident Clearance (3B) (mins.)	58.11	53.02	58.22	56.49
Total Road Ranger Responses (stops)	3,966	3,675	3,623	11,264

Roadway Clearance(2A)



Incident Clearance (3B)



Benefit Cost Analysis

Broward - January 1 to January 31

		<u>Costs</u>	
Emission Benefit	\$106,070.39	Total Broward Cost	\$630,875.56
Delay Benefit	\$10,523,645.26		
Safety Benefit	\$1,656,400.10		
Dms Benefit	\$763,176.90		
Fuel Benefit	\$1,794,721.39		
Road Ranger Benefit	\$561,227.29		
Total Benefit	\$15,405,241.33		
Total Cost	\$630,875.56		
Benefit Cost Ratio	24.42		
Cash Flow	\$14,774,365.76		

Broward - February 1 to February 29

		<u>Costs</u>	
Emission Benefit	\$107,565.72	Total Broward Cost	\$590,173.92
Delay Benefit	\$11,252,332.49		
Safety Benefit	\$1,528,080.00		
Dms Benefit	\$533,452.10		
Fuel Benefit	\$1,852,737.35		
Road Ranger Benefit	\$549,850.46		
Total Benefit	\$15,824,018.11		
Total Cost	\$590,173.92		
Benefit Cost Ratio	26.81		
Cash Flow	\$15,233,844.20		

Broward - March 1 to March 31

		<u>Costs</u>	
Emission Benefit	\$105,772.36	Total Broward Cost	\$630,875.56
Delay Benefit	\$9,482,141.93		
Safety Benefit	\$1,573,259.73		
Dms Benefit	\$714,978.63		
Fuel Benefit	\$1,711,694.19		
Road Ranger Benefit	\$528,917.22		
Total Benefit	\$14,116,764.06		
Total Cost	\$630,875.56		
Benefit Cost Ratio	22.38		
Cash Flow	\$13,485,888.49		

Broward - January 1 to March 31

		<u>Costs</u>	
Emission Benefit	\$322,649.31	Total Broward Cost	\$1,851,925.04
Delay Benefit	\$31,413,879.16		
Safety Benefit	\$4,757,739.82		
Dms Benefit	\$2,006,385.47		
Fuel Benefit	\$5,402,437.86		
Road Ranger Benefit	\$1,639,994.97		
Total Benefit	\$45,543,086.59		
Total Cost	\$1,851,925.04		
Benefit Cost Ratio	24.59		
Cash Flow	\$43,691,161.54		

Net Present Value

<u>Quarter</u>	<u>Cash Flow</u>	<u>Net Present Value</u>
2006 Q1	\$17,678,574.53	\$783,617,333.32
2006 Q2	\$31,019,351.82	\$1,032,863,198.58
2006 Q3	\$26,777,258.75	\$1,063,082,207.72
2006 Q4	\$39,885,451.30	\$1,200,359,724.53
2007 Q1	\$43,198,571.65	\$1,307,252,729.01
2007 Q2	\$42,995,763.41	\$1,377,111,678.84
2007 Q3	\$50,234,933.82	\$1,465,210,136.13
2007 Q4	\$41,489,390.75	\$1,490,703,551.66
2008 Q1	\$43,691,163.00	\$1,519,479,976.92

Net Present Value per Quarter

