



Monthly Performance Measures Report Broward County



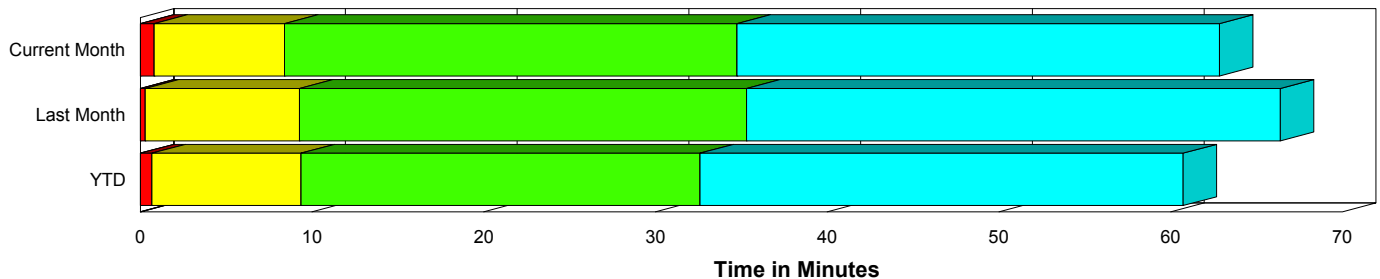
Created on:
January 04, 2010
9:12 am

Period From Dec 1, 2009 to Dec 31, 2009

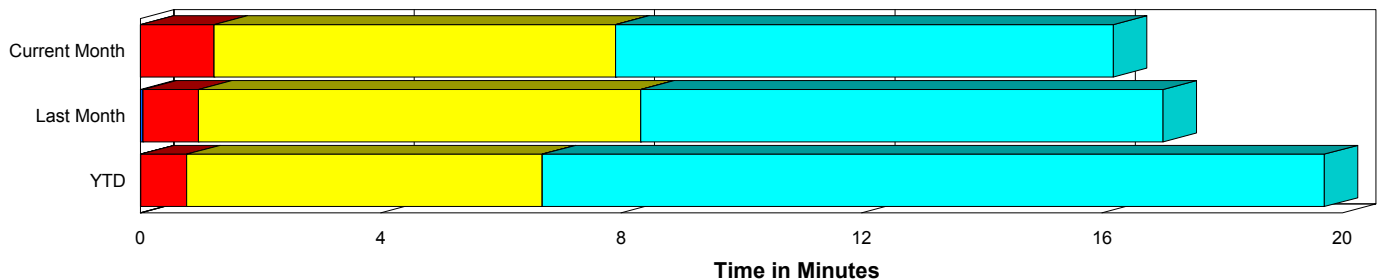
Performance Measures Summary

	Traffic Events (No Lanes Blocked)			Incidents (Lanes Blocked)		
	<u>This Month</u>	<u>Last Month</u>	<u>YTD</u>	<u>This Month</u>	<u>Last Month</u>	<u>YTD</u>
Number of Events	5,200	5,320	53,952	203	207	2,480
TMC Detection (min.)	0.00	0.04	0.01	0.02	0.00	0.01
TMC Verification (min.)	1.23	0.92	0.76	0.78	0.29	0.67
TMC Response (min.)	8.69	8.83	7.23	8.43	9.29	9.50
RR Dispatch Time (min.)	1.71	1.33	1.28	1.53	2.85	2.52
RR Response Time (min.)	7.35	7.54	6.10	6.93	7.08	7.17
Roadway Clearance (min.)				33.31	37.70	31.84
Event Clearance (min.)	16.97	17.56	20.24	60.72	68.68	59.59
# of Events w/ RR/SIRV	4,178	4,263	38,745	195	202	1,895
RR/SIRV Responses	4,178	4,263	38,745	195	202	1,895
RR/SIRV Activities	3,321	3,205	32,252	377	362	3,753

Incident Clearance Time-Line



Traffic Event (Non-Lane Blockage) Time-Line



■ Avg. TMC Detection Time	■ Avg. Time from TMC Response to Roadway Clearance*
■ Avg. Time from TMC Detection to TMC Verification	■ Avg. Time from Roadway Clearance to Incident/Event Clearance**
■ Avg. Time from TMC Verification to TMC Response	

* Roadway clearance equals all travel lanes open

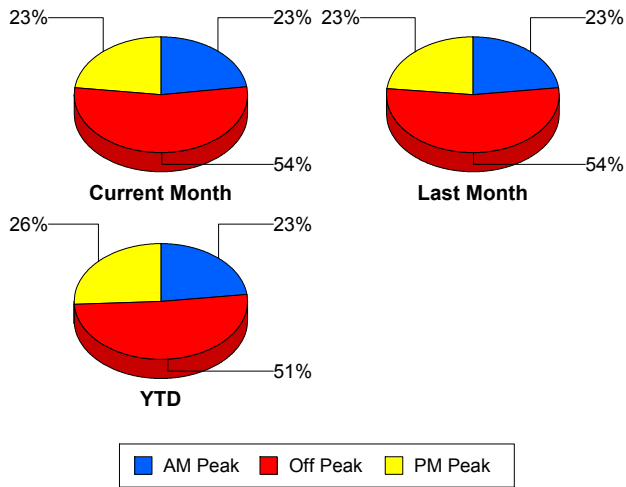
** Incident clearance equals time when last responder has left the scene

Performance Measures by Peak Period

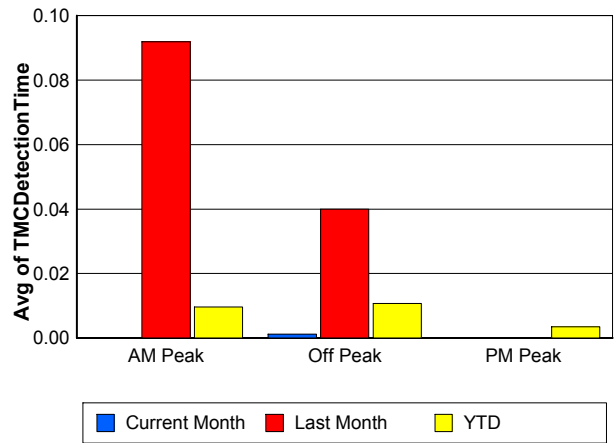
Note: AM peak period is defined as 6am to 10am and PM peak period is defined as 3pm to 7pm.

	AM Peak			Off Peak			PM Peak		
	<u>Current Month</u>	<u>Last Month</u>	<u>YTD</u>	<u>Current Month</u>	<u>Last Month</u>	<u>YTD</u>	<u>Current Month</u>	<u>Last Month</u>	<u>YTD</u>
Number of Events	1,234	1,280	13,073	2,917	2,957	28,843	1,252	1,290	14,516
Number of Incidents	39	46	572	104	96	1,210	60	65	698
TMC Detection (min.)	0.00	0.09	0.01	0.00	0.04	0.01	0.00	0.00	0.00
TMC Verification (min.)	0.71	0.53	0.56	1.23	0.92	0.75	1.65	1.21	0.95
TMC Response (min.)	8.08	7.98	6.73	8.82	9.51	8.14	8.91	8.35	6.75
RR Dispatch Time (min.)	1.10	0.79	0.96	2.11	1.67	1.75	1.42	1.40	1.03
RR Response Time (min.)	7.12	7.21	5.86	7.31	7.88	6.55	7.55	7.04	5.85
Event Clearance (min.)	16.01	17.62	20.15	18.91	19.81	23.74	20.48	20.56	20.10
Roadway Clearance (min.)	19.83	35.59	27.90	41.29	36.95	35.96	28.24	40.29	27.93
Incident Clearance (min.)	41.99	69.96	56.35	65.26	70.19	63.14	65.04	65.55	56.09
# of Events w/ RR/SIRV	1,058	1,060	10,770	2,293	2,328	18,362	1,022	1,077	11,508
RR/SIRV Responses	1,058	1,060	10,770	2,293	2,328	18,362	1,022	1,077	11,508
RR/SIRV Activities	859	854	9,793	1,930	1,816	15,775	909	897	10,437

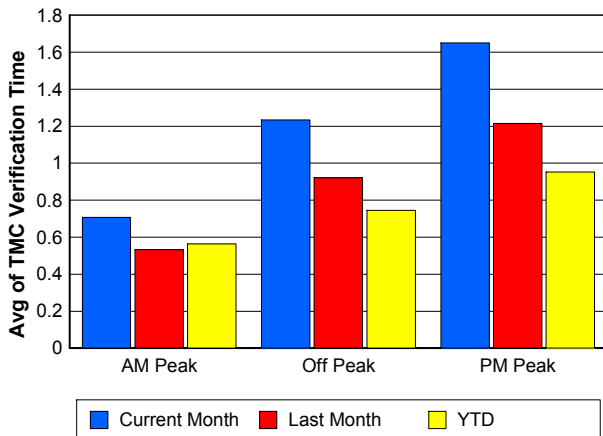
Number of Events / Peak Period



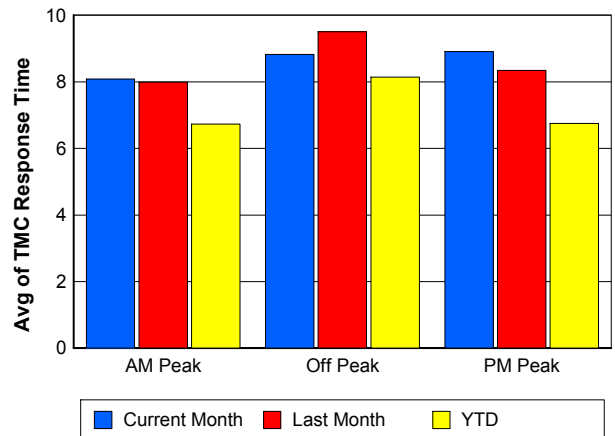
TMC Detection Time



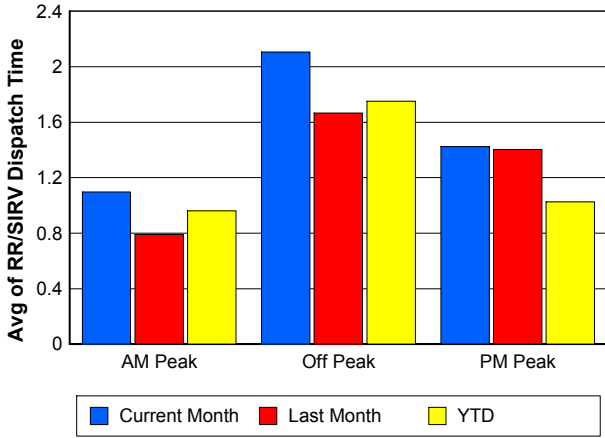
TMC Verification Time



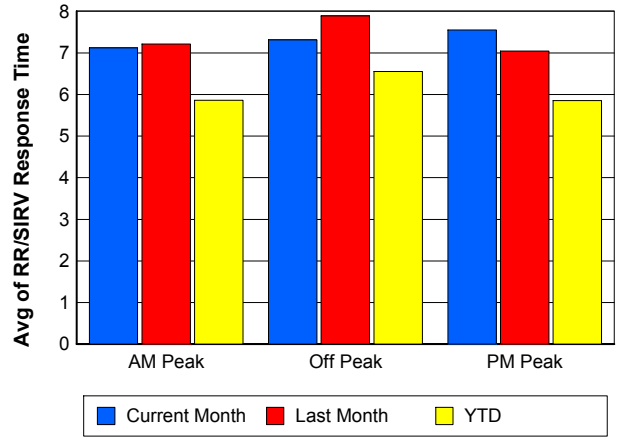
TMC Response Time



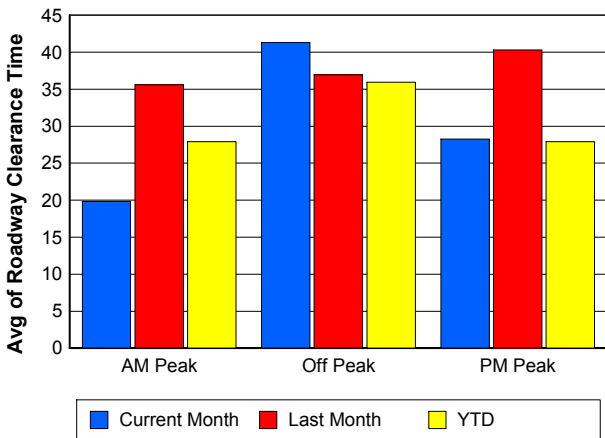
Road Ranger / SIRV Dispatch Time



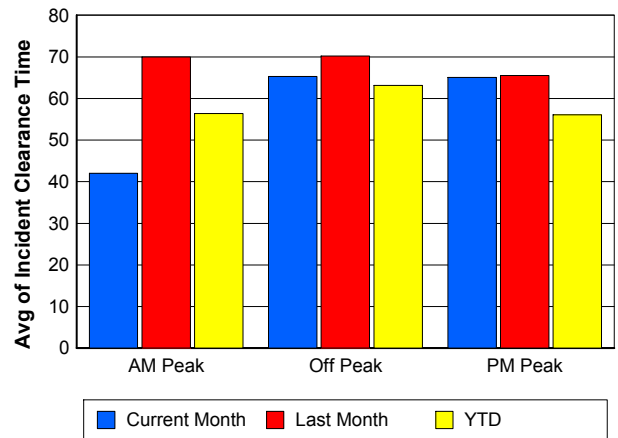
Road Ranger / SIRV Response Time



Roadway Clearance Time (2A)



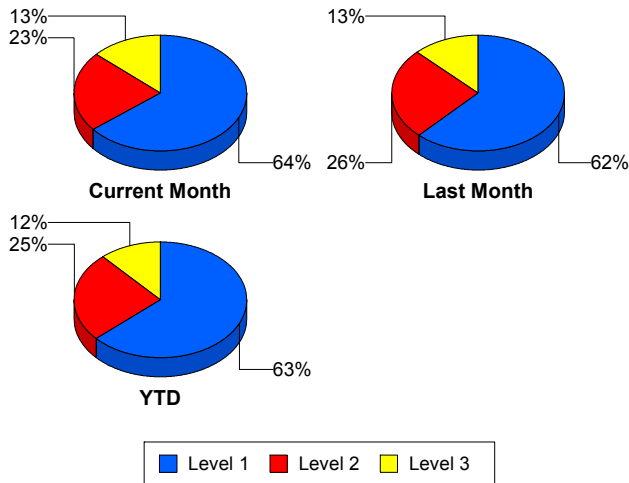
Incident Clearance Time (3B)



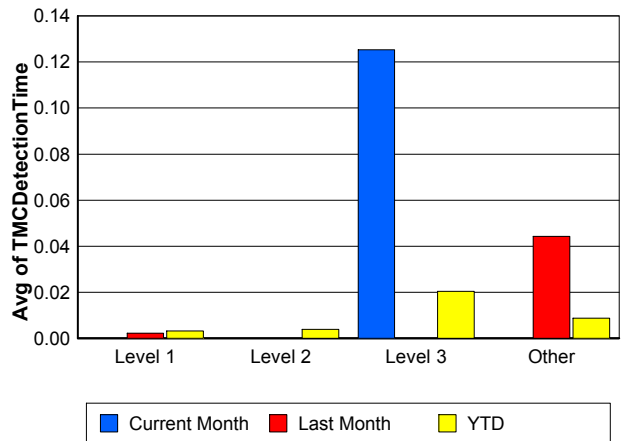
Performance Measures by Severity

	Level 1			Level 2			Level 3			Other		
	<u>This Month</u>	<u>Last Month</u>	<u>YTD</u>	<u>This Month</u>	<u>Last Month</u>	<u>YTD</u>	<u>This Month</u>	<u>Last Month</u>	<u>YTD</u>	<u>This Month</u>	<u>Last Month</u>	<u>YTD</u>
Number of Events	130	128	1,570	46	53	623	27	26	287	5,200	5,320	53,952
Number of Incidents	130	128	1,570	46	53	623	27	26	287	0	0	0
TMC Detection (min.)	0.00	0.00	0.00	0.00	0.00	0.00	0.13	0.00	0.02	0.00	0.04	0.01
TMC Verification (min.)	0.55	0.27	0.43	1.07	0.34	1.01	1.39	0.29	1.22	1.23	0.92	0.76
TMC Response (min.)	6.43	7.62	7.34	9.16	12.24	10.20	16.27	11.58	19.63	8.69	8.83	7.23
RR Dispatch Time (min.)	1.35	1.67	1.55	1.64	2.63	2.49	2.21	9.86	7.39	1.71	1.33	1.28
RR Resp. Time (min.)	5.13	5.98	5.86	7.52	9.62	7.91	14.06	7.04	12.74	7.35	7.54	6.10
Event Clearance (min.)	46.86	46.71	45.52	70.99	80.40	72.56	109.98	153.00	108.19	16.97	17.56	20.24
Roadway Clear. (min.)	13.48	14.17	14.27	52.02	46.13	49.18	96.91	136.32	90.36			
Incident Clearance (min.)	46.86	46.71	45.52	70.99	80.40	72.56	109.98	153.00	108.19			
# of Events w/ RR/SIRV	124	126	1,237	45	53	410	26	23	248	4,178	4,263	38,745
RR/SIRV Responses	124	126	1,237	45	53	410	26	23	248	4,178	4,263	38,745
RR/SIRV Activities	197	192	2,085	110	120	1,077	70	50	591	3,321	3,205	32,252

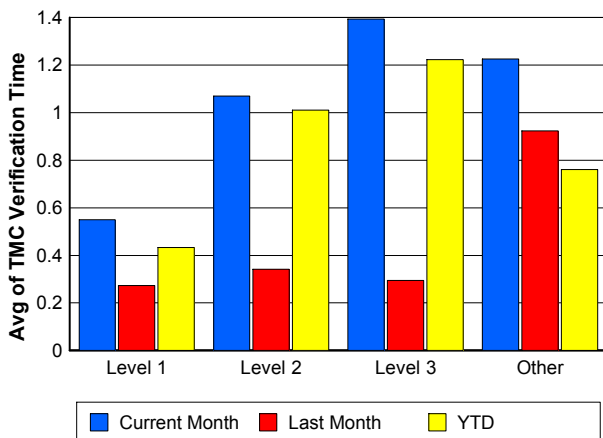
Number of Events / Severity



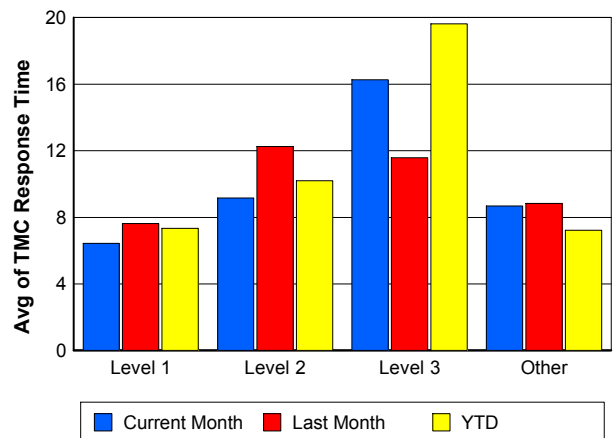
TMC Detection Time



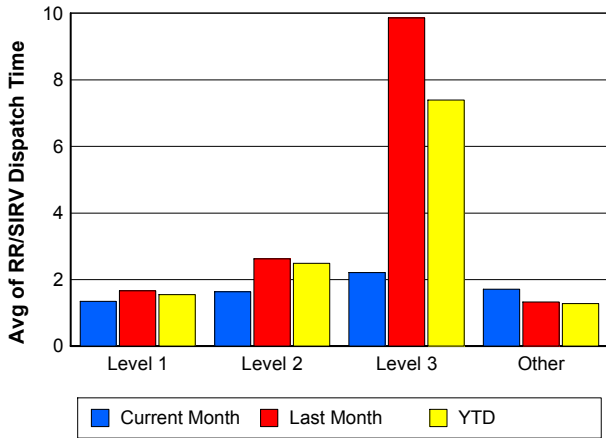
TMC Verification Time



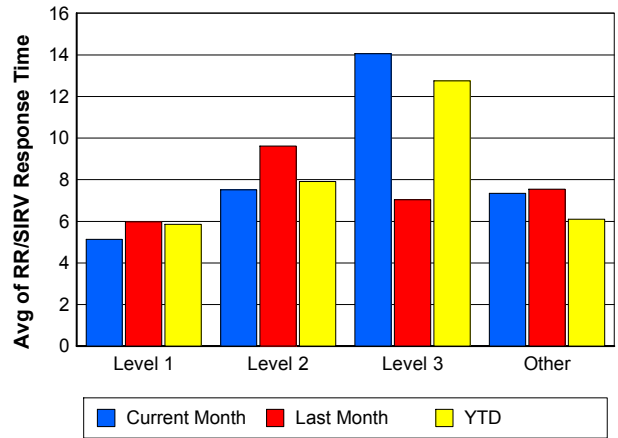
TMC Response Time



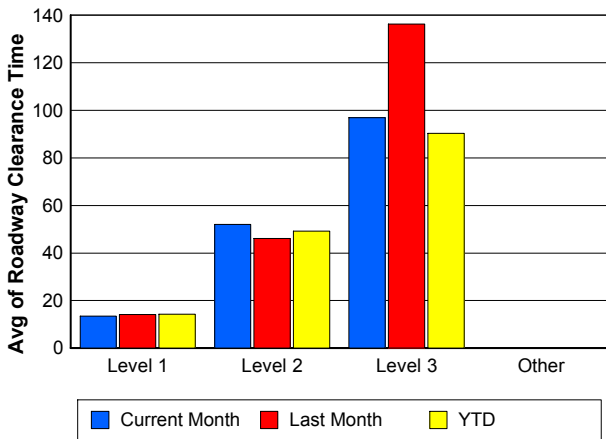
Road Ranger / SIRV Dispatch Time



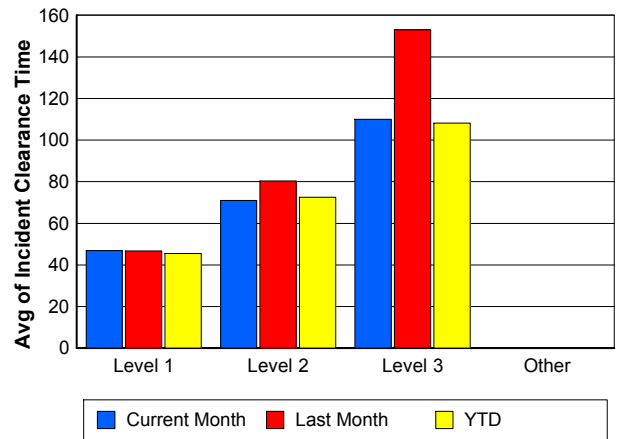
Road Ranger / SIRV Response Time



Roadway Clearance Time (2A)



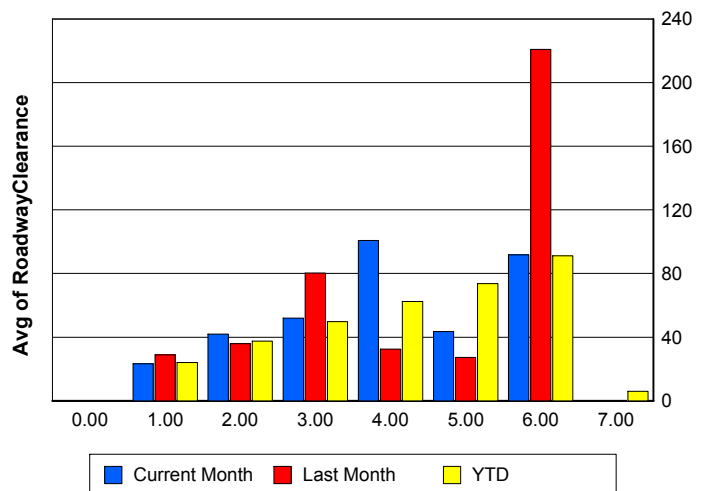
Incident Clearance Time (3B)



Roadway Clearance by Maximum Number of Lanes Blocked

	Current Month	Last Month	YTD
0			
1	23.14	28.80	24.11
2	41.99	35.95	37.54
3	52.02	80.19	49.80
4	100.81	32.42	62.43
5	43.51	27.17	73.59
6	91.80	220.89	91.08
7	0.00	0.00	5.97

Roadway Clearance Time (2A)



Performance Measures by Roadway

595

	<u>Current Month</u>	<u>Last Month</u>	<u>YTD</u>
Number of Events	222	160	4,985
Number of Incidents	12	7	300
TMC Detection (min.)	0.01	0.00	0.01
TMC Verification (min.)	1.39	0.71	0.88
TMC Response (min.)	13.59	12.91	7.31
RR Dispatch Time (min.)	4.83	1.53	1.35
RR Resp. Time (min.)	10.96	11.55	6.18
Event Clearance (min.)	21.12	17.18	21.26
Roadway Clear. (min.)	55.74	34.07	32.67
Incident Clearance (min.)	64.18	44.65	54.43
# of Events w/ RR/SIRV	168	116	3,497
RR/SIRV Responses	168	116	3,497
RR/SIRV Activities	126	84	3,135

75

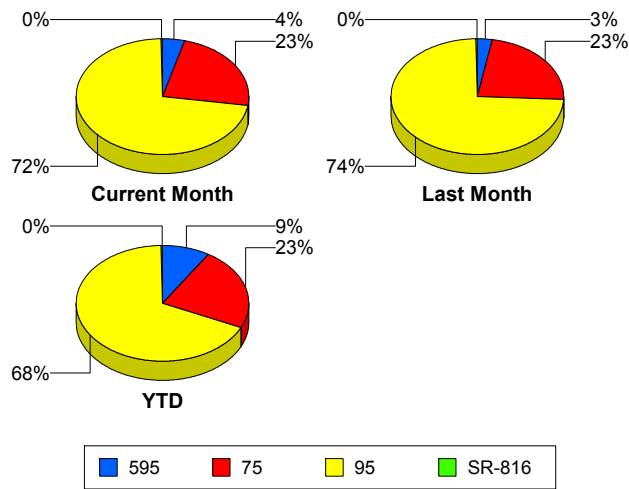
	<u>Current Month</u>	<u>Last Month</u>	<u>YTD</u>
Number of Events	1,268	1,262	12,967
Number of Incidents	24	15	233
TMC Detection (min.)	0.00	0.19	0.02
TMC Verification (min.)	1.94	1.81	1.10
TMC Response (min.)	10.36	10.47	8.73
RR Dispatch Time (min.)	2.24	1.21	1.41
RR Resp. Time (min.)	8.92	9.10	7.50
Event Clearance (min.)	19.49	20.15	23.61
Roadway Clear. (min.)	49.20	61.20	52.45
Incident Clearance (min.)	82.76	95.89	81.01
# of Events w/ RR/SIRV	973	994	9,081
RR/SIRV Responses	973	994	9,081
RR/SIRV Activities	839	802	7,756

95

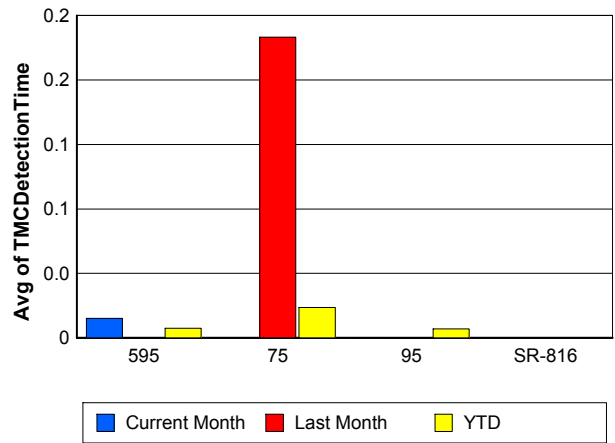
	<u>Current Month</u>	<u>Last Month</u>	<u>YTD</u>
Number of Events	3,892	4,094	38,381
Number of Incidents	152	175	1,880
TMC Detection (min.)	0.00	0.00	0.01
TMC Verification (min.)	0.97	0.63	0.63
TMC Response (min.)	8.00	8.29	6.95
RR Dispatch Time (min.)	1.38	1.45	1.32
RR Resp. Time (min.)	6.72	6.95	5.76
Event Clearance (min.)	18.19	19.36	21.53
Roadway Clear. (min.)	30.48	36.98	29.71
Incident Clearance (min.)	61.07	70.23	59.29
# of Events w/ RR/SIRV	3,217	3,344	27,972
RR/SIRV Responses	3,217	3,344	27,972
RR/SIRV Activities	2,716	2,670	25,012

	<u>Current Month</u>	<u>Last Month</u>	<u>YTD</u>
Number of Events	21	11	99
Number of Incidents	15	10	67
TMC Detection (min.)	0.00	0.00	0.00
TMC Verification (min.)	0.00	0.76	0.21
TMC Response (min.)	0.49	0.76	0.60
RR Dispatch Time (min.)	0.04	0.06	0.07
RR Resp. Time (min.)	0.45	0.69	0.55
Event Clearance (min.)	16.04	17.30	13.86
Roadway Clear. (min.)	18.57	17.47	16.38
Incident Clearance (min.)	19.16	17.65	16.45
# of Events w/ RR/SIRV	15	11	90
RR/SIRV Responses	15	11	90
RR/SIRV Activities	17	11	102

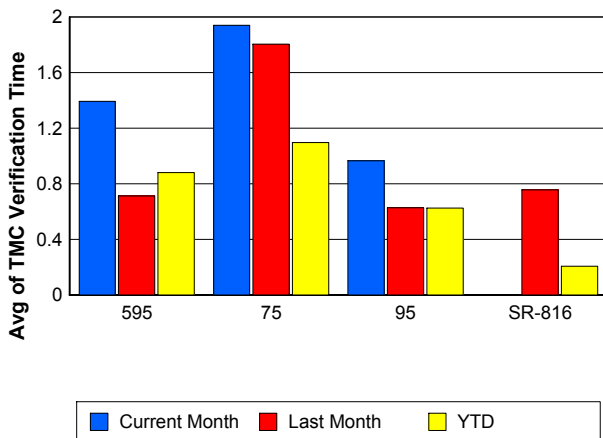
Number of Events / Roadway



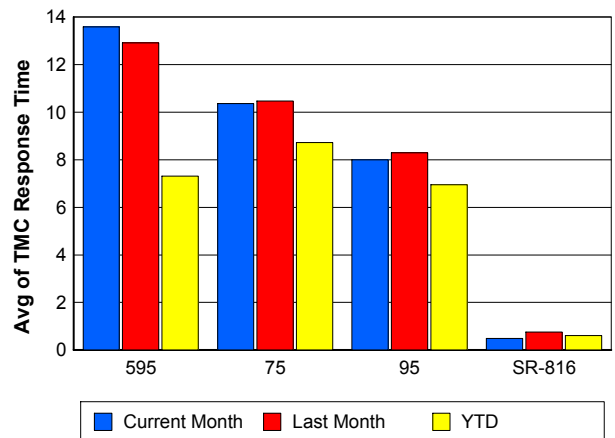
TMC Detection Time



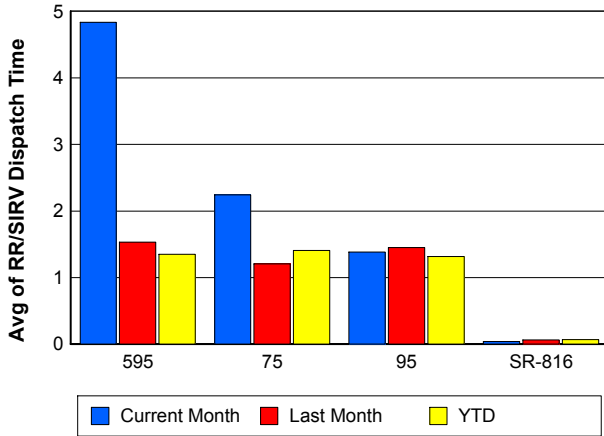
TMC Verification Time



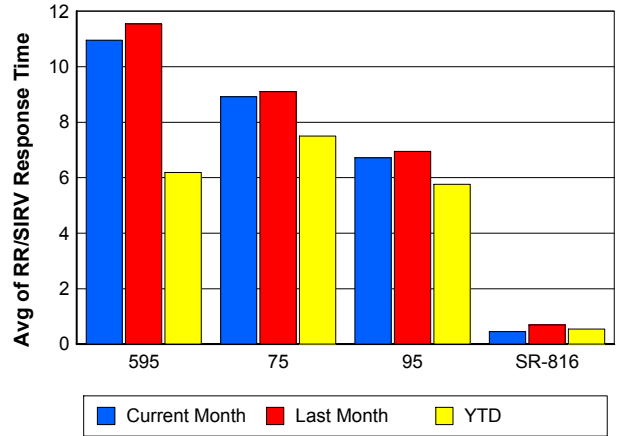
TMC Response Time



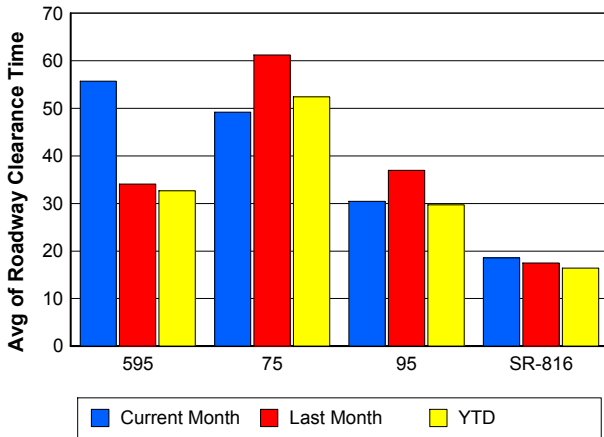
Road Ranger / SIRV Dispatch Time



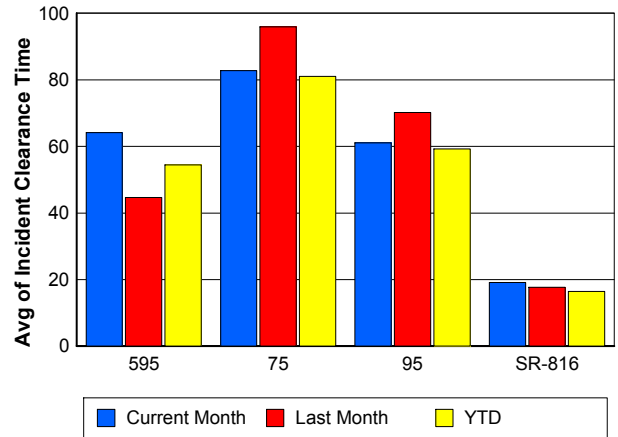
Road Ranger / SIRV Response Time



Roadway Clearance Time (2A)



Incident Clearance Time (3B)



Performance Measures by Event Type

Accident

	<u>Current Month</u>	<u>Last Month</u>	<u>YTD</u>
Number of Events	303	301	3,688
Number of Incidents	131	143	1,748
TMC Detection (min.)	0.01	0.00	0.01
TMC Verification (min.)	1.54	0.62	0.81
TMC Response (min.)	9.09	9.89	9.16
RR Dispatch Time (min.)	1.44	1.88	1.65
RR Response Time (min.)	7.71	8.00	7.57
Event Clearance (min.)	54.32	56.58	54.96
Roadway Clearance (min.)	39.42	34.31	33.46
Incident Clearance (min.)	76.08	74.82	67.64
# of Events w/ RR/SIRV	300	294	2,925
RR/SIRV Assists	300	294	2,925
RR/SIRV Activities	460	417	4,482

Debris on Roadway

	<u>Current Month</u>	<u>Last Month</u>	<u>YTD</u>
Number of Events	152	155	1,723
Number of Incidents	1	2	32
TMC Detection (min.)	0.00	0.00	0.07
TMC Verification (min.)	5.63	4.89	4.31
TMC Response (min.)	8.96	9.38	8.07
RR Dispatch Time (min.)	1.03	1.26	1.00
RR Response Time (min.)	7.96	8.16	7.10
Event Clearance (min.)	12.16	11.81	11.74
Roadway Clearance (min.)	37.63	36.86	25.98
Incident Clearance (min.)	42.73	39.73	31.88
# of Events w/ RR/SIRV	151	144	1,609
RR/SIRV Assists	151	144	1,609
RR/SIRV Activities	160	143	1,636

Disabled Vehicle

	<u>Current Month</u>	<u>Last Month</u>	<u>YTD</u>
Number of Events	3,083	2,950	32,842
Number of Incidents	50	35	431
TMC Detection (min.)	0.00	0.06	0.01
TMC Verification (min.)	1.67	1.28	0.94
TMC Response (min.)	8.61	8.61	7.03
RR Dispatch Time (min.)	1.43	1.27	1.16
RR Response Time (min.)	7.28	7.37	5.93
Event Clearance (min.)	20.58	22.09	24.59
Roadway Clearance (min.)	16.21	14.38	17.92
Incident Clearance (min.)	26.38	23.68	31.16
# of Events w/ RR/SIRV	2,990	2,878	27,792
RR/SIRV Assists	2,990	2,878	27,792
RR/SIRV Activities	2,912	2,817	28,002

Emergency Vehicles

	<u>Current Month</u>	<u>Last Month</u>	<u>YTD</u>
Number of Events	11	14	97
Number of Incidents	8	12	76
TMC Detection (min.)	0.00	0.00	0.00
TMC Verification (min.)	0.04	0.00	0.40
TMC Response (min.)	9.16	18.37	13.29
RR Dispatch Time (min.)	2.94	21.47	10.10
RR Response Time (min.)	6.22	5.57	4.62
Event Clearance (min.)	25.90	98.85	53.39
Roadway Clearance (min.)	29.82	110.15	55.74
Incident Clearance (min.)	31.85	113.09	61.31
# of Events w/ RR/SIRV	5	10	55
RR/SIRV Assists	5	10	55
RR/SIRV Activities	6	11	86

Other

	<u>Current Month</u>	<u>Last Month</u>	<u>YTD</u>
Number of Events	1,820	2,062	17,576
Number of Incidents	2	0	33
TMC Detection (min.)	0.00	0.03	0.01
TMC Verification (min.)	0.03	0.10	0.07
TMC Response (min.)	9.42	10.07	8.56
RR Dispatch Time (min.)	2.80	1.41	1.81
RR Response Time (min.)	7.31	8.29	6.56
Event Clearance (min.)	9.56	9.83	10.68
Roadway Clearance (min.)	22.29		32.87
Incident Clearance (min.)	49.77		39.24
# of Events w/ RR/SIRV	901	1,101	7,951
RR/SIRV Assists	901	1,101	7,951
RR/SIRV Activities	129	133	1,405

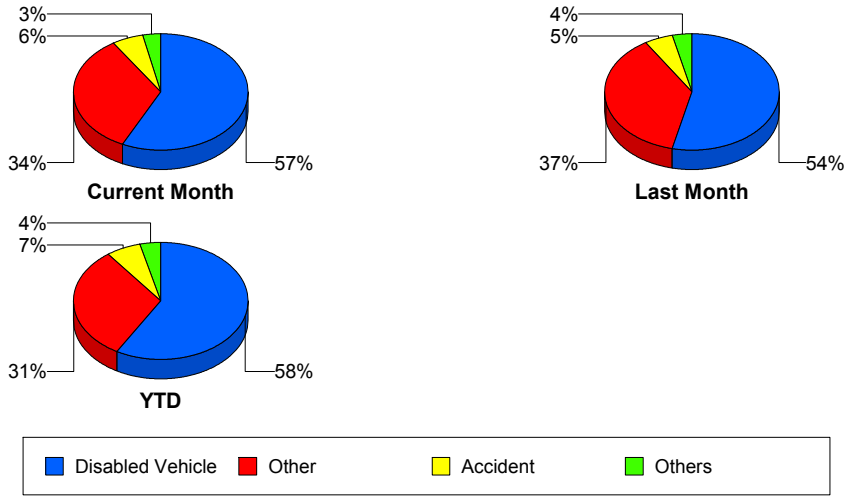
Police Activity

	<u>Current Month</u>	<u>Last Month</u>	<u>YTD</u>
Number of Events	17	20	214
Number of Incidents	7	10	75
TMC Detection (min.)	0.04	0.00	0.01
TMC Verification (min.)	0.64	0.86	0.38
TMC Response (min.)	4.82	14.95	12.23
RR Dispatch Time (min.)	0.96	2.62	3.47
RR Response Time (min.)	4.03	13.04	8.95
Event Clearance (min.)	38.03	55.22	34.67
Roadway Clearance (min.)	47.51	78.86	43.44
Incident Clearance (min.)	49.86	81.75	50.70
# of Events w/ RR/SIRV	10	15	86
RR/SIRV Assists	10	15	86
RR/SIRV Activities	14	14	102

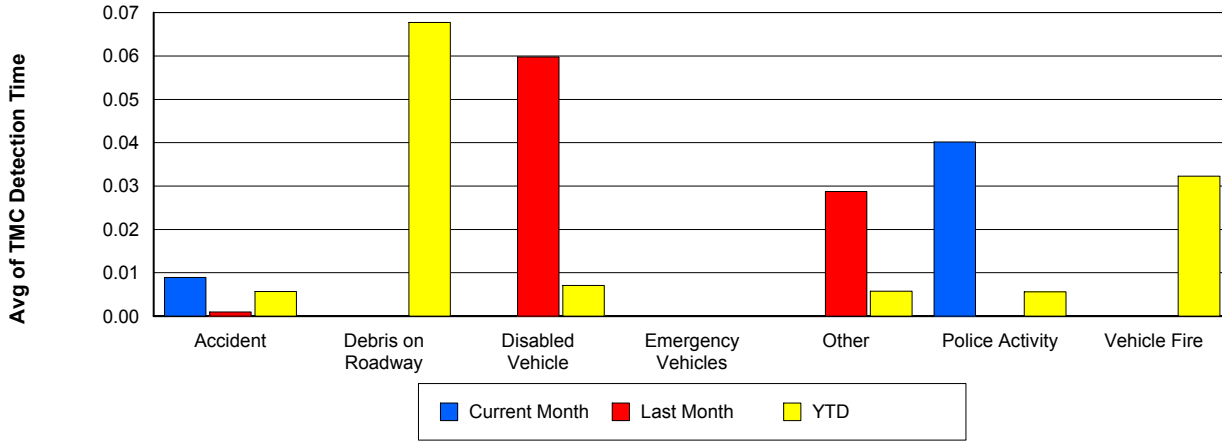
Vehicle Fire

	<u>Current Month</u>	<u>Last Month</u>	<u>YTD</u>
Number of Events	6	7	111
Number of Incidents	4	5	85
TMC Detection (min.)	0.00	0.00	0.03
TMC Verification (min.)	0.99	3.24	1.23
TMC Response (min.)	10.84	7.80	9.84
RR Dispatch Time (min.)	3.64	1.55	2.19
RR Response Time (min.)	7.20	6.25	7.98
Event Clearance (min.)	59.72	71.04	57.87
Roadway Clearance (min.)	33.34	41.75	39.50
Incident Clearance (min.)	73.89	87.08	63.02
# of Events w/ RR/SIRV	6	7	81
RR/SIRV Assists	6	7	81
RR/SIRV Activities	10	16	166

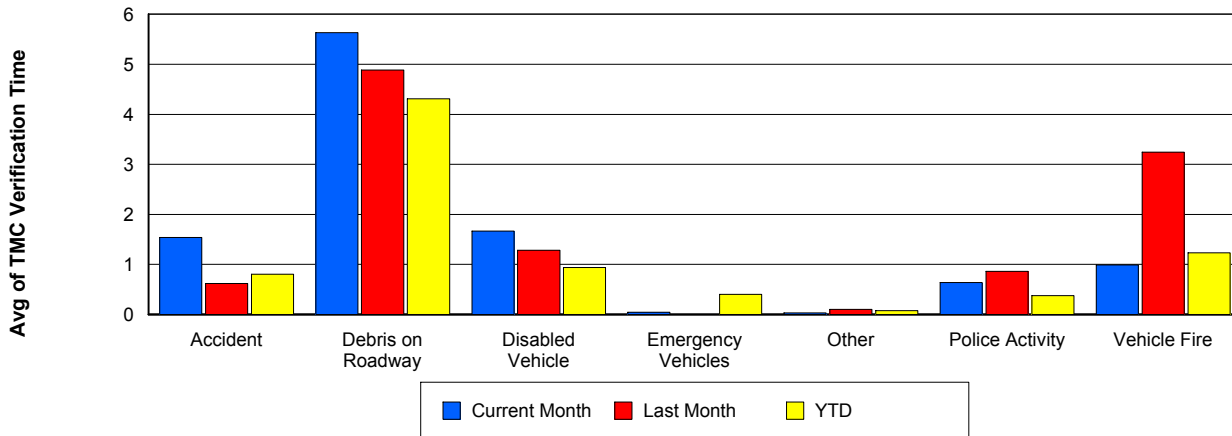
Number of Events / Event Type



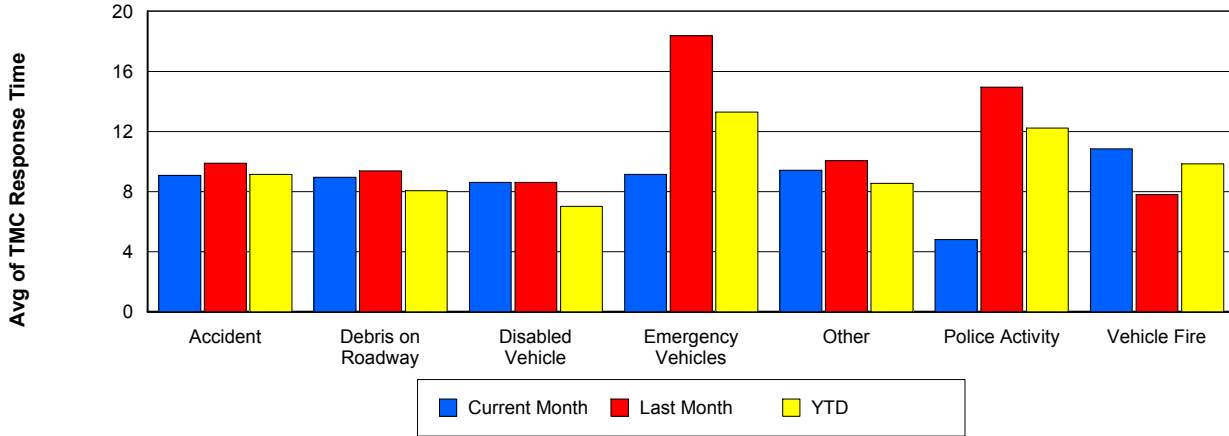
TMC Detection Time



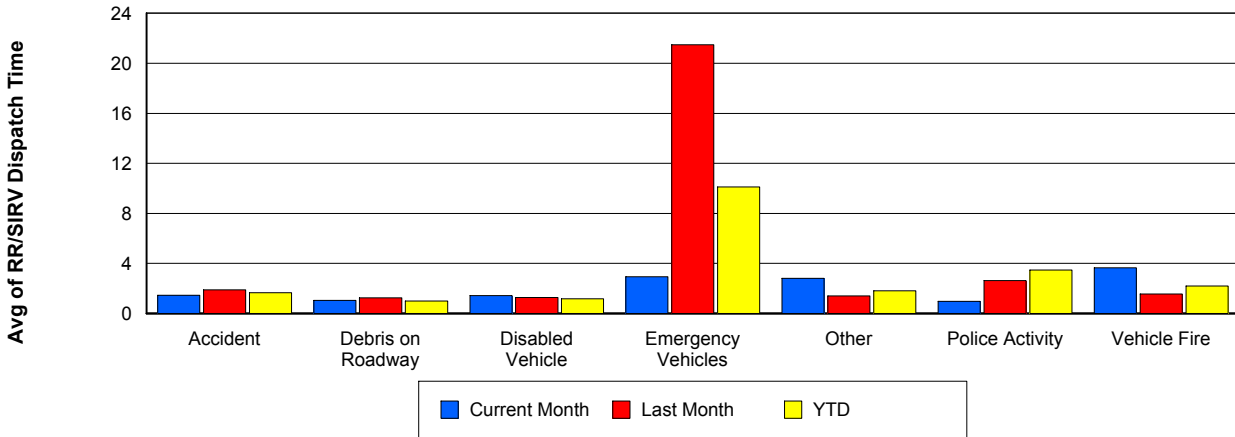
TMC Verification Time



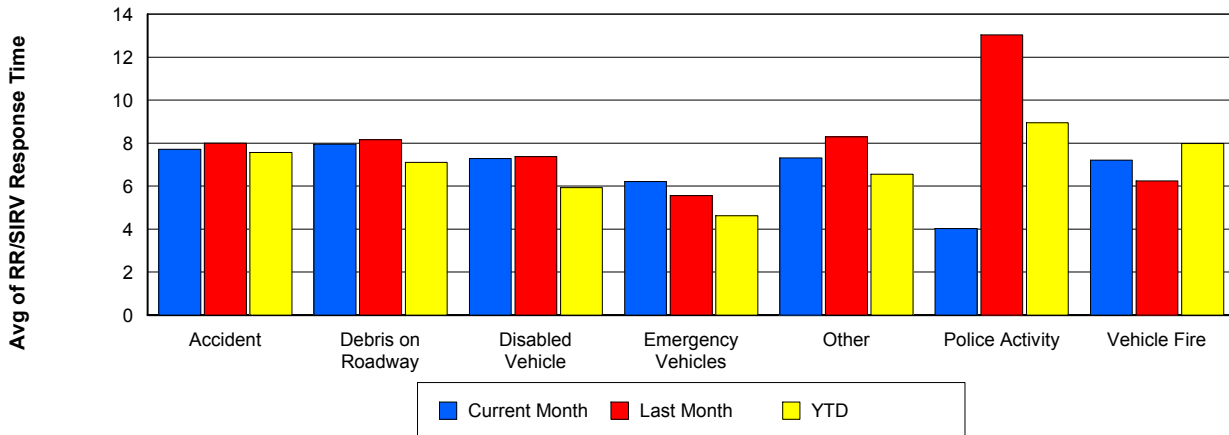
TMC Response Time



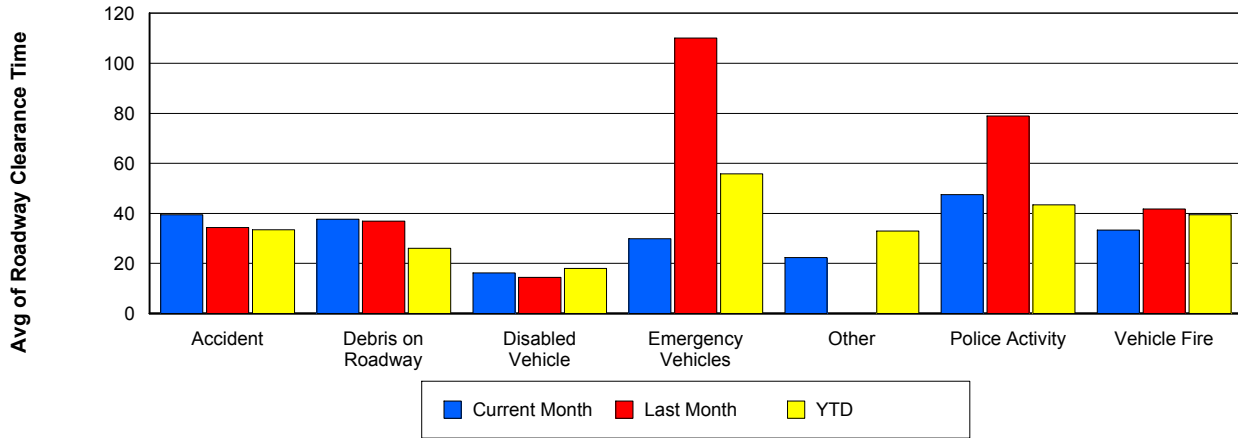
Road Ranger / SIRV Dispatch Time



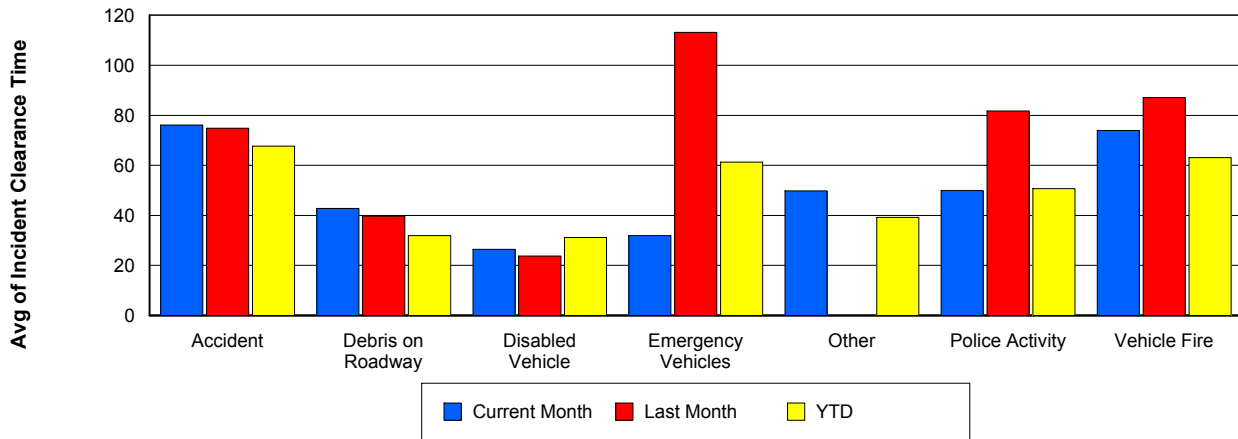
Road Ranger / SIRV Response Time



Roadway Clearance Time (2A)



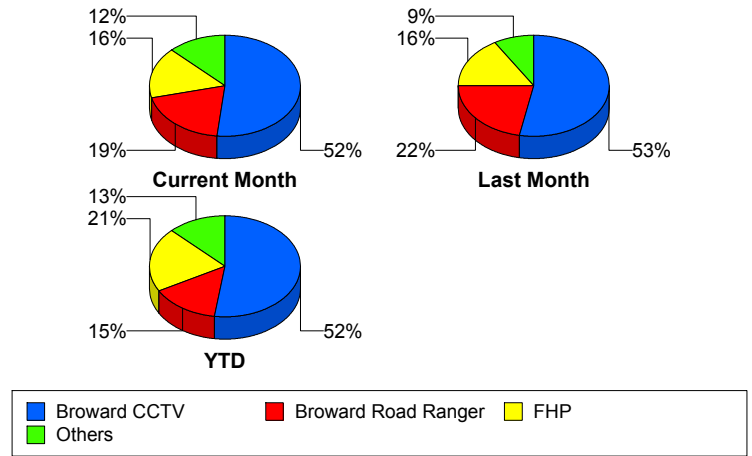
Incident Clearance Time (3B)



Incident Detection Methods

	Current Month	Last Month	YTD
Broward CCTV	104	110	1,287
Broward Road Ranger	39	45	364
Broward TMC	0	0	4
Broward VideoWall	4	5	69
BSO	5	2	54
District 4	8	1	59
District 6	0	0	3
FDOT Maintenance	0	1	7
FHP	33	34	508
Fire	0	0	4
Florida's Turnpike	0	0	6
ITMS	0	1	3
Local Police	0	1	1
Motorist	2	2	15
Other	2	0	3
Palm Beach Road Ran	0	4	9
Road Watcher	2	1	17
SIRV	1	0	13
SmarTraveler (511)	0	0	6
VisioPaD Detection	1	0	38
Total	201	207	2,470

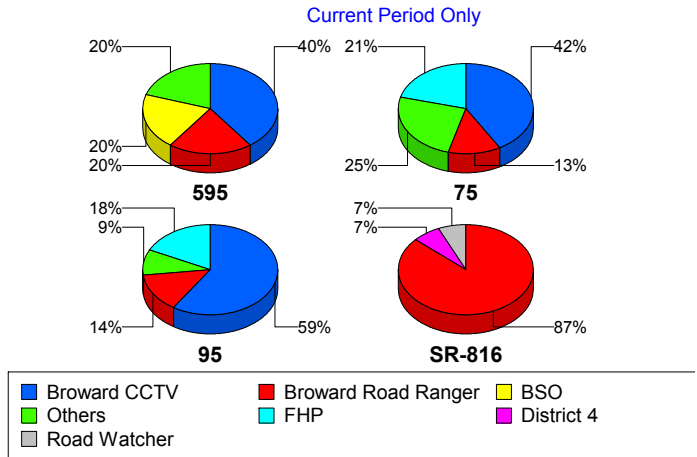
Total Incidents by Detection Method



Incident Detection Methods by Roadway

		Current Month	Last Month	YTD
595	Broward CCTV	4	3	140
	Broward Road Ranger	2	1	41
	Broward VideoWall	0	0	8
	BSO	2	0	9
	District 4	1	0	13
	FDOT Maintenance	0	0	2
	FHP	1	2	58
	Florida's Turnpike	0	0	6
	Motorist	0	0	3
	Road Watcher	0	1	4
	SIRV	0	0	1
	VisioPaD Detection	0	0	6
	Total	10	7	291
	75	Broward CCTV	10	8
Broward Road Ranger		3	4	28
Broward VideoWall		0	0	1
BSO		2	0	37
District 4		1	1	8
FHP		5	1	50
Local Police		0	1	1
Other		2	0	3
Road Watcher		0	0	3
VisioPaD Detection		1	0	6
Total		24	15	233
95	Broward CCTV	90	99	1,051
	Broward Road Ranger	21	30	231
	Broward TMC	0	0	4
	Broward VideoWall	4	5	60
	BSO	1	2	8
	District 4	5	0	36
	District 6	0	0	3

Total Events by Roadway and Detection Method

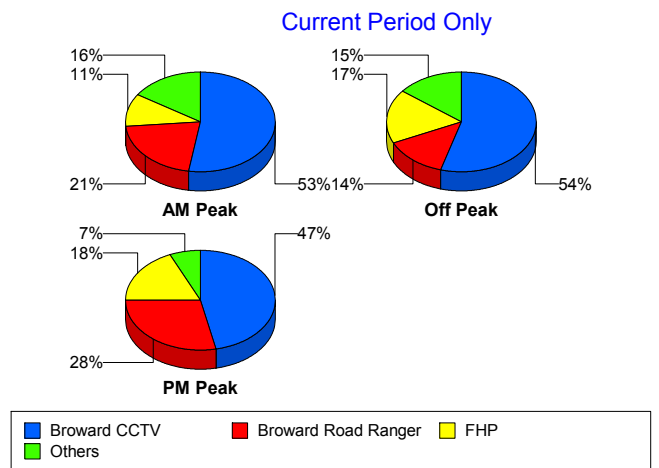


		Current Month	Last Month	YTD
95	FDOT Maintenance	0	1	5
	FHP	27	31	400
	Fire	0	0	4
	ITMS	0	1	3
	Motorist	2	2	12
	Palm Beach Road Ran	0	4	9
	Road Watcher	1	0	9
	SIRV	1	0	12
	SmarTraveler (511)	0	0	6
	VisioPaD Detection	0	0	26
	Total	152	175	1,879
SR-816	Broward Road Ranger	13	10	64
	District 4	1	0	2
	Road Watcher	1	0	1
	Total	15	10	67
Total	201	207	2,470	

Incident Detection Methods by Peak Period

		Current Month	Last Month	YTD
AM Peak	Broward CCTV	20	19	253
	Broward Road Ranger	8	12	114
	Broward TMC	0	0	1
	Broward VideoWall	3	2	25
	BSO	0	2	9
	District 4	2	1	21
	FDOT Maintenance	0	0	1
	FHP	4	10	124
	Florida's Turnpike	0	0	2
	Motorist	0	0	6
	Palm Beach Road Ran	0	0	2
	Road Watcher	1	0	6
	SIRV	0	0	1

Total Events by Peak Period and Detection Method



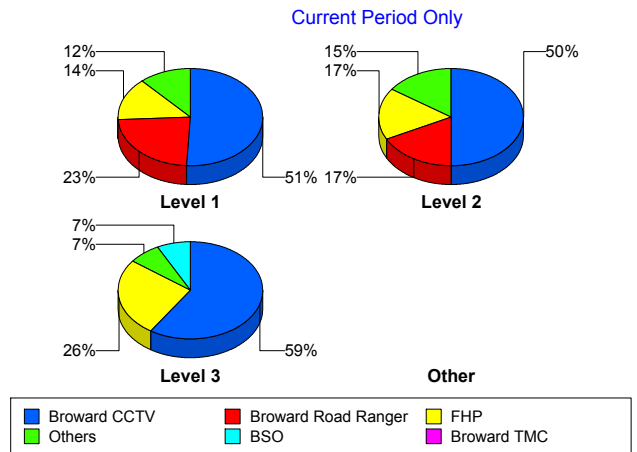
		Current Month	Last Month	YTD
AM Peak	SmarTraveler (511)	0	0	1
	VisioPaD Detection	0	0	2
	Total	38	46	568
Off Peak	Broward CCTV	56	59	691
	Broward Road Ranger	14	11	103
	Broward TMC	0	0	3
	Broward VideoWall	0	3	36
	BSO	4	0	35
	District 4	5	0	21
	District 6	0	0	2
	FDOT Maintenance	0	1	4
	FHP	18	17	244
	Fire	0	0	3
	Florida's Turnpike	0	0	3
	ITMS	0	1	3
	Local Police	0	1	1
	Motorist	2	0	6
	Other	1	0	1
	Palm Beach Road Ran	0	3	4
	Road Watcher	1	0	7
	SIRV	1	0	6
	SmarTraveler (511)	0	0	3
	VisioPaD Detection	1	0	30
Total	103	96	1,206	
PM Peak	Broward CCTV	28	32	343
	Broward Road Ranger	17	22	147
	Broward VideoWall	1	0	8
	BSO	1	0	10
	District 4	1	0	17
	District 6	0	0	1
	FDOT Maintenance	0	0	2
	FHP	11	7	140

		Current Month	Last Month	YTD
PM Peak	Fire	0	0	1
	Florida's Turnpike	0	0	1
	Motorist	0	2	3
	Other	1	0	2
	Palm Beach Road Ran	0	1	3
	Road Watcher	0	1	4
	SIRV	0	0	6
	SmarTraveler (511)	0	0	2
	VisioPaD Detection	0	0	6
	Total	60	65	696
Total	201	207	2,470	

Incident Detection Methods by Severity

		Current Month	Last Month	YTD
Level 1	Broward CCTV	65	64	816
	Broward Road Ranger	30	32	268
	Broward TMC	0	0	3
	Broward VideoWall	3	5	47
	BSO	2	0	12
	District 4	7	1	45
	District 6	0	0	2
	FDOT Maintenance	0	0	5
	FHP	18	21	295
	Fire	0	0	3
	ITMS	0	1	2
	Local Police	0	1	1
	Motorist	0	1	9
	Other	2	0	2
	Palm Beach Road Ran	0	2	6
	Road Watcher	1	0	10
	SIRV	0	0	11
	SmarTraveler (511)	0	0	4

Total Events by Severity and Detection Method



		Current Month	Last Month	YTD
Level 1	VisioPaD Detection	0	0	21
	Total	128	128	1,562
Level 2	Broward CCTV	23	35	336
	Broward Road Ranger	8	10	69
	Broward TMC	0	0	1
	Broward VideoWall	1	0	19
	BSO	1	0	12
	District 4	0	0	7
	FDOT Maintenance	0	0	1
	FHP	8	5	143
	Florida's Turnpike	0	0	4
	ITMS	0	0	1
	Motorist	2	1	6
	Other	0	0	1
	Palm Beach Road Ran	0	1	1
	Road Watcher	1	1	4
	SIRV	1	0	2
	SmarTraveler (511)	0	0	2
	VisioPaD Detection	1	0	14
	Total	46	53	623
	Level 3	Broward CCTV	16	11
Broward Road Ranger		1	3	27
Broward VideoWall		0	0	3
BSO		2	2	30
District 4		1	0	7
District 6		0	0	1
FDOT Maintenance		0	1	1
FHP		7	8	70
Fire		0	0	1
Florida's Turnpike		0	0	2
Palm Beach Road Ran		0	1	2
Road Watcher		0	0	3

		Current Month	Last Month	YTD
Level 3	VisioPaD Detection	0	0	3
	Total	27	26	285
Total		201	207	2,470

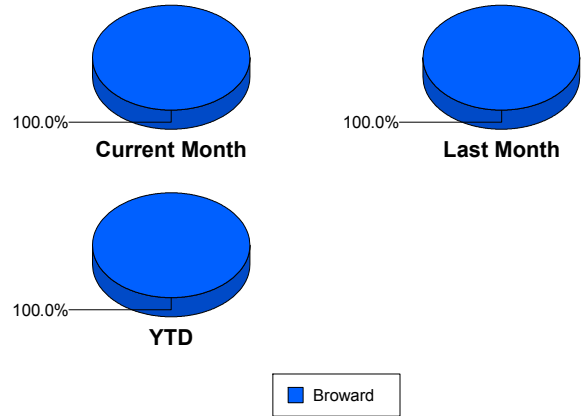
Road Ranger / SIRV Performance Measures

Road Ranger / SIRV Performance By County

Values presented are:
 - Total Events with a RR/SIRV Response
 - Total RR/SIRV Responses,
 - Total Activities Performed

	Current Mo	Last Month	YTD
Broward	4,036	3,904	38,790
	4,310	4,144	41,601
	4,465	4,318	43,300

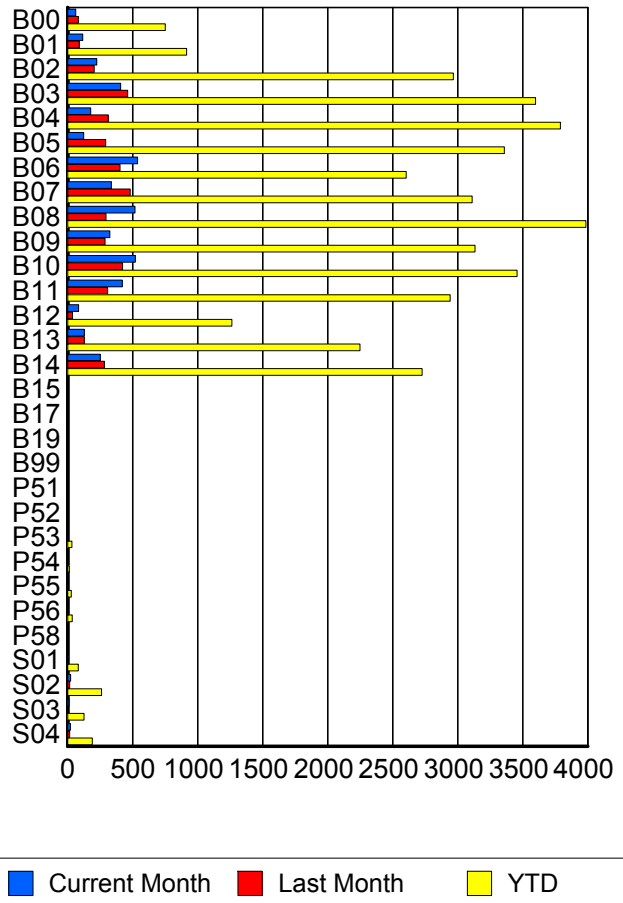
RR/SIRV Responses per County



Road Ranger / SIRV Performance By Truck

	Current Mo	Last Month	YTD
B00	60	82	734
	62	82	750
	66	87	788
B01	115	90	902
	116	90	915
	120	93	957
B02	221	204	2,935
	224	205	2,966
	230	208	3,076
B03	400	455	3,546
	409	461	3,600
	424	483	3,742
B04	177	312	3,751
	177	313	3,789
	186	326	3,949
B05	122	291	3,304
	124	292	3,360
	128	305	3,478
B06	532	398	2,568
	538	402	2,603
	566	418	2,701
B07	335	476	3,070
	338	482	3,112
	350	504	3,248
B08	508	295	3,935
	518	295	3,986
	537	307	4,133

RR/SIRV Responses per Truck



	Current Mo	Last Month	YTD
B09	317	286	3,085
	324	288	3,133
	336	299	3,253
B10	516	414	3,400
	522	422	3,458
	538	441	3,592
B11	415	304	2,900
	420	307	2,943
	429	317	3,031
B12	82	37	1,246
	84	38	1,264
	87	42	1,320
B13	127	127	2,221
	129	129	2,249
	132	134	2,328
B14	249	277	2,681
	250	283	2,726
	258	293	2,826
B15	0	0	6
	0	0	6
	0	0	6
B17	0	0	1
	0	0	1
	0	0	1
B19	0	0	1
	0	0	1
	0	0	1
B99	0	0	4
	0	0	4
	0	0	4
P51	0	0	1
	0	0	1
	0	0	1
P52	0	0	4
	0	0	4
	0	0	4
P53	3	2	33
	3	2	34
	3	3	41
P54	4	1	13
	4	1	13
	4	1	13
P55	2	3	29
	2	3	29
	2	3	33

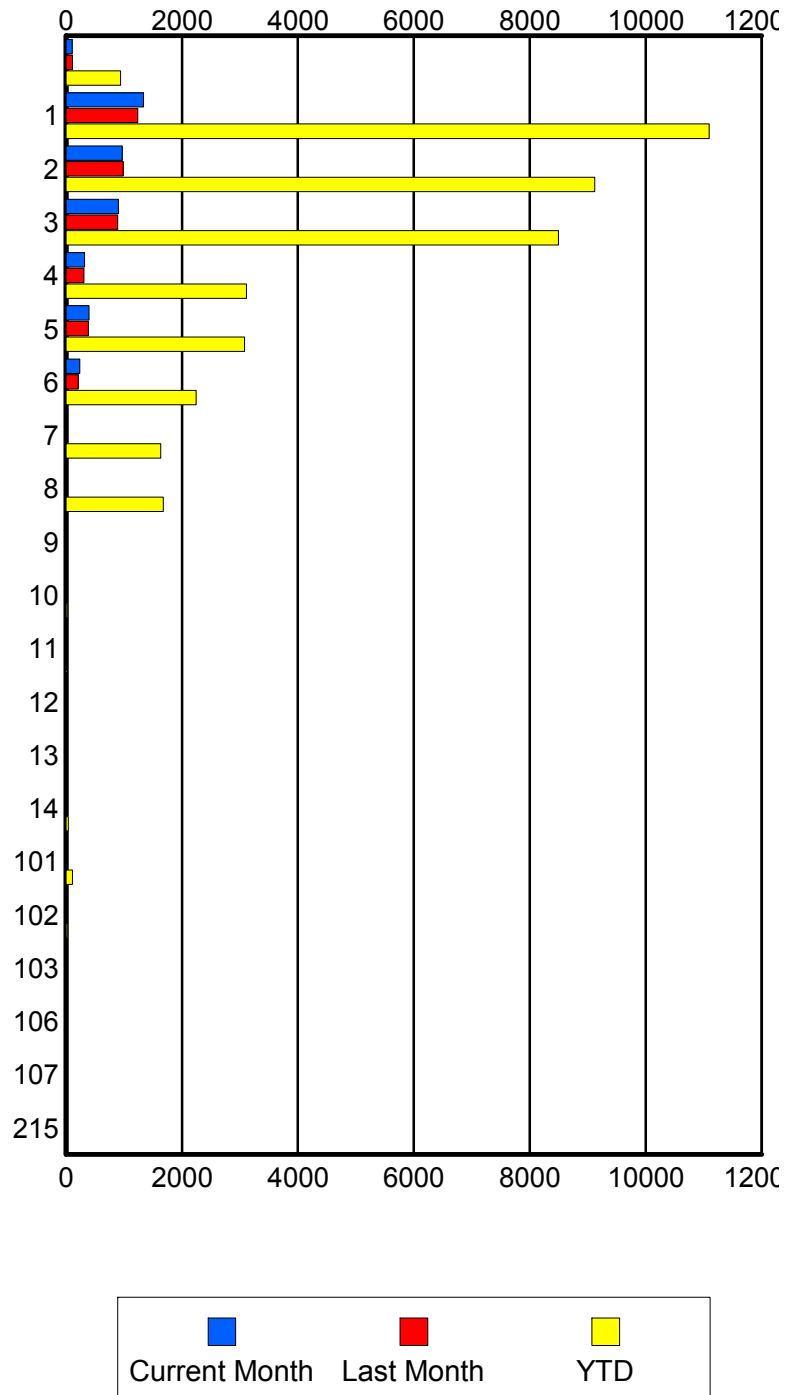
	Current Mo	Last Month	YTD
P56	5	7	35
	5	7	35
	5	7	36
P58	1	0	2
	1	0	2
	1	0	2
S01	5	4	79
	5	4	82
	5	4	94
S02	21	16	252
	23	16	261
	24	18	290
S03	12	7	125
	12	7	127
	14	8	145
S04	19	15	185
	20	15	191
	20	17	207

Road Ranger / SIRV Performance By Beat

	Current Mo	Last Month	YTD
	97	108	882
	105	111	939
	108	116	1,018
1	1,272	1,184	10,502
	1,338	1,238	11,096
	1,387	1,289	11,482
2	938	959	8,818
	968	984	9,123
	999	1,021	9,502
3	881	875	8,258
	905	892	8,493
	941	931	8,821
4	313	306	3,049
	319	310	3,112
	332	325	3,220
5	390	376	3,029
	396	384	3,080
	407	400	3,188
6	235	202	2,203
	236	207	2,246
	247	217	2,357
7	0	0	1,606
	0	0	1,631
	0	0	1,704
8	19	3	1,660
	19	3	1,680
	20	3	1,747
9	0	0	12
	0	0	14
	0	0	14
10	3	0	21
	3	0	22
	3	0	22
11	6	0	6
	6	0	6
	6	0	6
12	0	0	9
	0	0	9
	0	0	9
13	0	2	16
	0	2	16
	0	2	17
14	0	0	38
	0	0	38
	0	0	39

Values presented are:
 - Total Events with a RR/SIRV Response
 - Total RR/SIRV Responses,
 - Total Activities Performed

RR/SIRV Responses per Beat



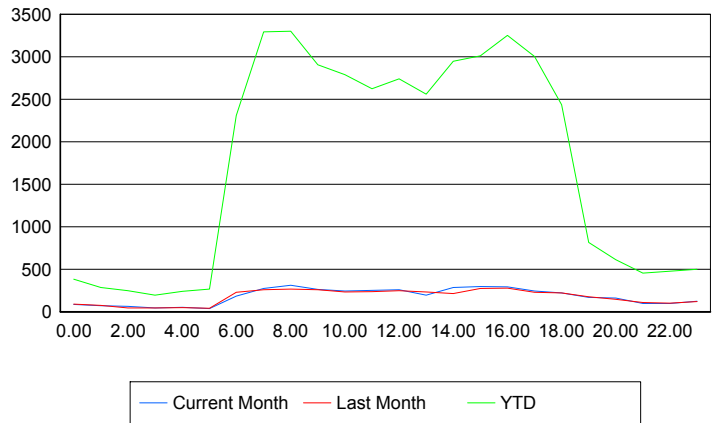
	Current Mo	Last Month	YTD
101	14	13	111
	14	13	113
	14	14	125
102	0	0	23
	0	0	23
	0	0	25
103	1	0	1
	1	0	1
	1	0	1
106	0	0	1
	0	0	1
	0	0	1
107	0	0	1
	0	0	1
	0	0	1
215	0	0	1
	0	0	1
	0	0	1

Road Ranger / SIRV Performance By Time of Day

Values presented are:
 - Total Events with a RR/SIRV Response
 - Total RR/SIRV Responses,
 - Total Activities Performed

	Current Mo	Last Month	YTD
12AM-1AM	81	83	368
	86	87	384
	88	100	411
1AM-2AM	70	69	279
	70	72	285
	71	73	297
2AM-3AM	58	42	231
	61	43	247
	66	44	259
3AM-4AM	42	42	187
	43	43	195
	43	46	204
4AM-5AM	47	47	217
	52	48	238
	55	51	249
5AM-6AM	31	40	220
	36	40	266
	37	41	282
6AM-7AM	169	207	2,114
	184	228	2,308
	190	235	2,380

Number of Responses / Hour of the Day



	Current Mo	Last Month	YTD
7AM-8AM	260	245	3,070
	273	259	3,293
	284	267	3,412
8AM-9AM	294	244	3,013
	312	264	3,301
	322	270	3,429
9AM-10AM	243	236	2,704
	261	259	2,905
	266	274	2,999
10AM-11AM	229	225	2,594
	244	233	2,791
	250	247	2,908
11AM-12PM	226	217	2,433
	252	235	2,624
	265	243	2,736
12PM-1PM	242	235	2,581
	259	245	2,742
	271	250	2,842
1PM-2PM	181	214	2,382
	195	230	2,559
	200	240	2,662
2PM-3PM	263	200	2,753
	285	212	2,947
	298	216	3,067
3PM-4PM	273	263	2,808
	296	274	3,011
	316	292	3,151
4PM-5PM	272	261	3,046
	291	275	3,253
	302	284	3,381
5PM-6PM	239	217	2,787
	244	229	3,003
	247	238	3,122
6PM-7PM	206	204	2,303
	221	221	2,435
	227	225	2,511
7PM-8PM	161	164	768
	167	175	814
	172	185	856
8PM-9PM	143	140	569
	162	145	611
	168	154	646
9PM-10PM	92	97	421
	98	109	455
	103	114	480

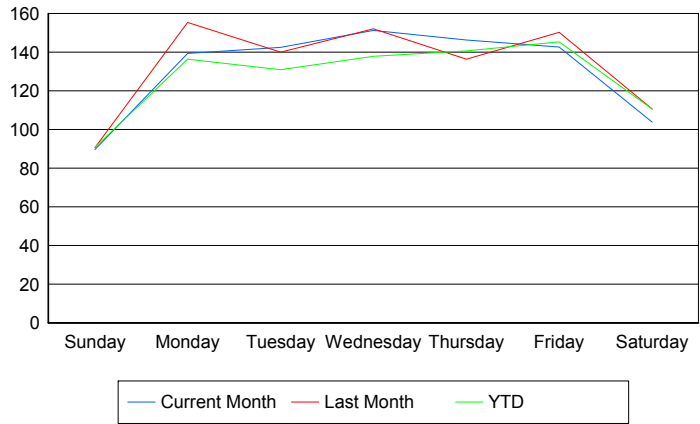
	Current Mo	Last Month	YTD
10PM-11PM	94	98	461
	97	100	478
	101	107	499
11PM-12AM	120	114	481
	121	118	498
	123	122	517

Road Ranger / SIRV Performance By Day of Week

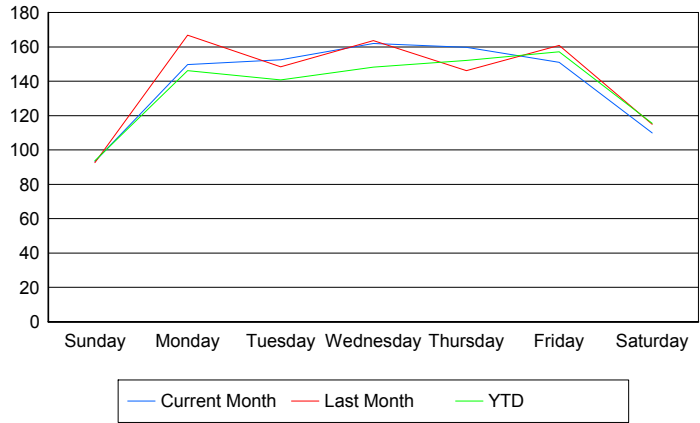
Values presented are:
 - Total Events with a RR/SIRV Response
 - Total RR/SIRV Responses,
 - Total Activities Performed

	Current Mo	Last Month	YTD
Sunday	350	435	1,543
	364	445	1,593
	375	464	1,661
Monday	556	772	6,961
	598	828	7,458
	616	859	7,689
Tuesday	711	556	6,661
	760	589	7,148
	790	610	7,400
Wednesday	751	590	6,991
	802	635	7,513
	833	668	7,845
Thursday	727	518	7,319
	790	553	7,901
	823	570	8,225
Friday	543	594	7,446
	572	635	8,048
	590	655	8,397
Saturday	401	441	1,894
	424	459	1,979
	438	492	2,083

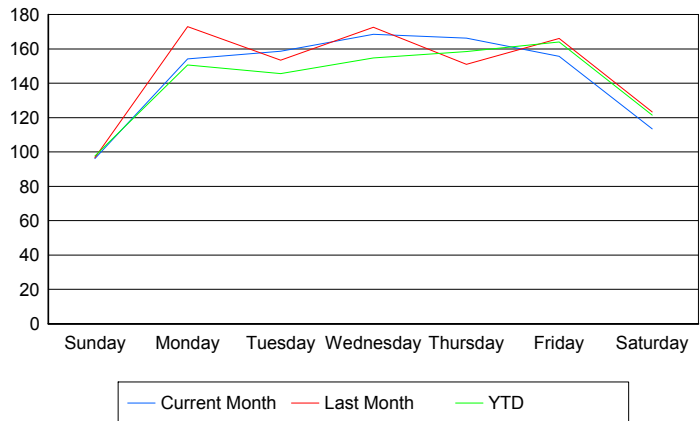
Avg # of events with a RR/SIRV Response per Day of the Week



Avg # of RR/SIRV Responses per Day of the Week



Avg # of RR/SIRV Activities Performed per Day of the Week



Road Ranger / SIRV Responses per Time of Day and Day of Week

