



# Monthly Performance Measures Report Broward County



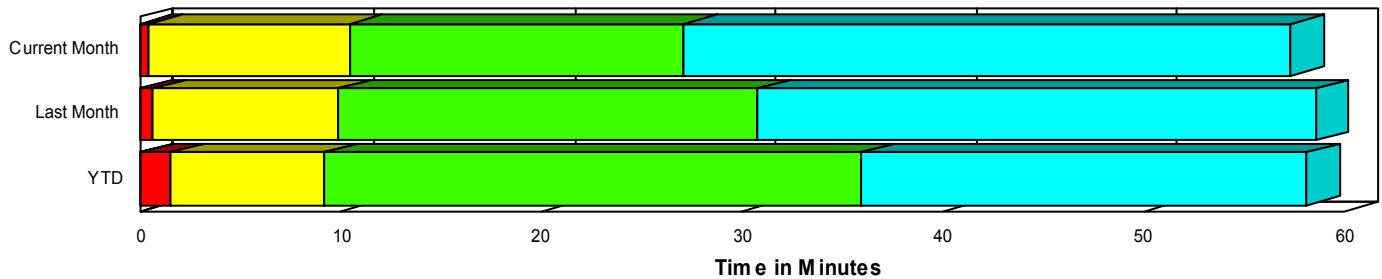
Created on:  
January 05, 2009  
9:16 am

Period From Dec 1, 2008 to Dec 31, 2008

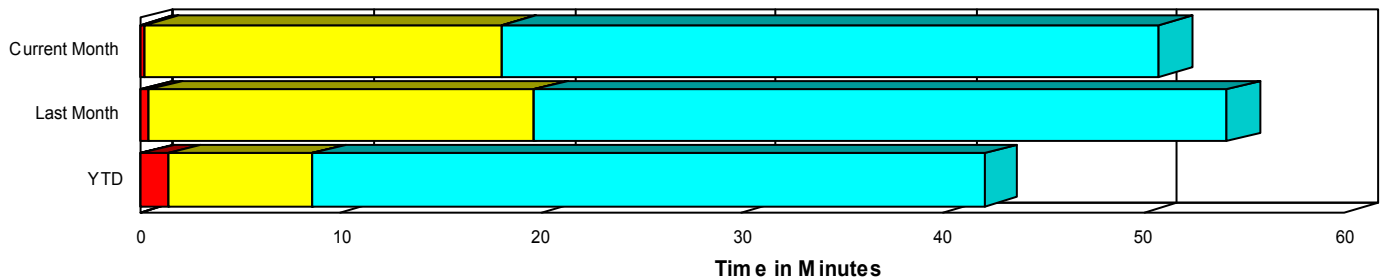
## Performance Measures Summary

	Traffic Events (No Lanes Blocked)			Incidents (Lanes Blocked)		
	<u>This Month</u>	<u>Last Month</u>	<u>YTD</u>	<u>This Month</u>	<u>Last Month</u>	<u>YTD</u>
Number of Events	5,853	4,993	55,214	189	160	2,409
TMC Detection (min.)	0.00	0.00	0.01	0.01	0.00	0.03
TMC Verification (min.)	0.27	0.45	1.39	0.46	0.68	1.48
TMC Response (min.)	18.36	20.23	9.16	10.62	10.16	9.36
RR Dispatch Time (min.)	10.47	12.59	3.40	2.87	2.74	2.46
RR Response Time (min.)	6.49	6.76	6.00	7.90	7.87	6.97
Roadway Clearance (min.)				31.09	30.90	35.27
Event Clearance (min.)	51.07	54.71	42.62	61.30	58.51	56.30
# of Events w/ RR/SIRV	3,267	2,844	43,193	122	119	2,173
RR/SIRV Responses	3,267	2,844	43,327	122	119	2,423
RR/SIRV Activities	2,617	2,317	40,737	254	232	4,238

### Incident Clearance TimeLine



### Traffic Event(Non-Lane Blockage) Time-Line



<span style="color: blue;">■</span> Avg. TMC Detection Time	<span style="color: green;">■</span> Avg. Time from TMC Response to Roadway Clearance*
<span style="color: red;">■</span> Avg. Time from TMC Detection to TMC Verification	<span style="color: cyan;">■</span> Avg. Time from Roadway Clearance to Incident/Event Clearance**
<span style="color: yellow;">■</span> Avg. Time from TMC Verification to TMC Response	

\* Roadway clearance equals all travel lanes open

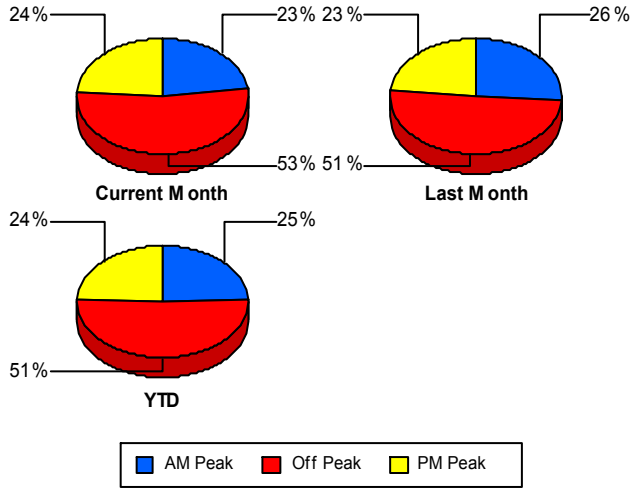
\*\* Incident clearance equals time when last responder has left the scene

## Performance Measures by Peak Period

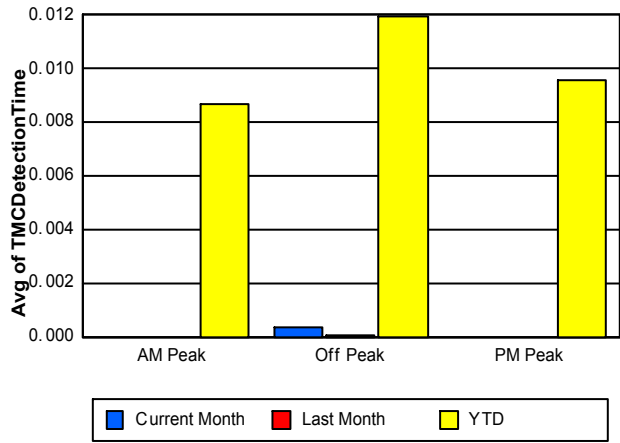
Note: AM peak period is defined as 6am to 10am and PM peak period is defined as 3pm to 7pm.

	AM Peak			Off Peak			PM Peak		
	<u>Current Month</u>	<u>Last Month</u>	<u>YTD</u>	<u>Current Month</u>	<u>Last Month</u>	<u>YTD</u>	<u>Current Month</u>	<u>Last Month</u>	<u>YTD</u>
Number of Events	1,382	1,332	14,135	3,193	2,613	29,537	1,467	1,208	13,951
Number of Incidents	38	54	569	94	70	1,255	57	36	585
TMC Detection (min.)	0.00	0.00	0.01	0.00	0.00	0.01	0.00	0.00	0.01
TMC Verification (min.)	0.33	0.56	0.81	0.21	0.41	1.67	0.40	0.44	1.37
TMC Response (min.)	11.29	15.15	8.21	27.44	30.64	10.74	13.21	11.40	7.28
RR Dispatch Time (min.)	4.60	9.28	2.70	16.37	20.10	4.41	7.35	4.64	2.03
RR Response Time (min.)	5.83	7.45	5.60	8.05	6.87	6.70	5.42	5.92	5.31
Event Clearance (min.)	43.73	54.22	36.68	58.39	59.07	48.69	43.38	46.31	38.16
Roadway Clearance (min.)	26.15	24.14	31.28	36.57	39.44	41.74	25.35	24.41	25.27
Incident Clearance (min.)	60.64	58.19	53.52	64.04	64.73	63.13	57.24	46.88	44.36
# of Events w/ RR/SIRV	1,021	995	12,031	1,378	1,150	21,842	990	818	11,493
RR/SIRV Responses	1,021	995	12,135	1,378	1,150	22,050	990	818	11,565
RR/SIRV Activities	897	915	12,043	1,082	910	21,457	892	724	11,475

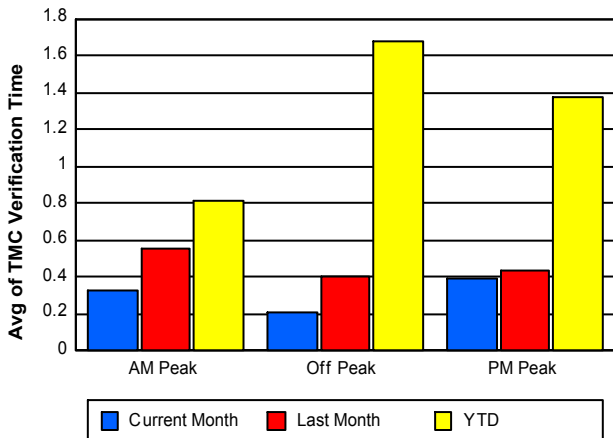
### Number of Events / Peak Period



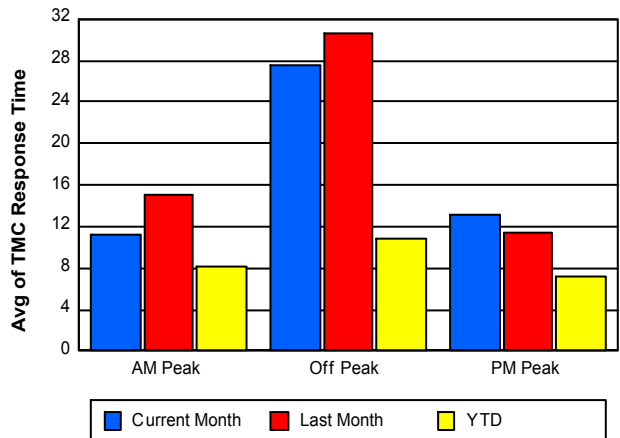
### TMC Detection Time



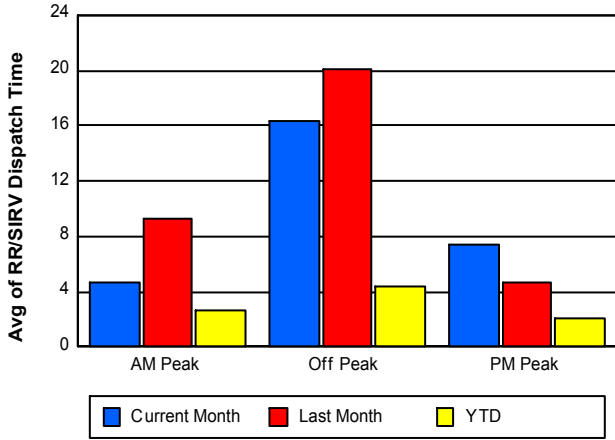
### TMC Verification Time



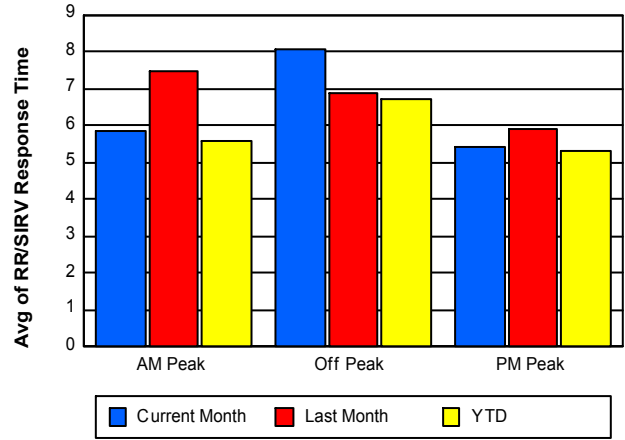
### TMC Response Time



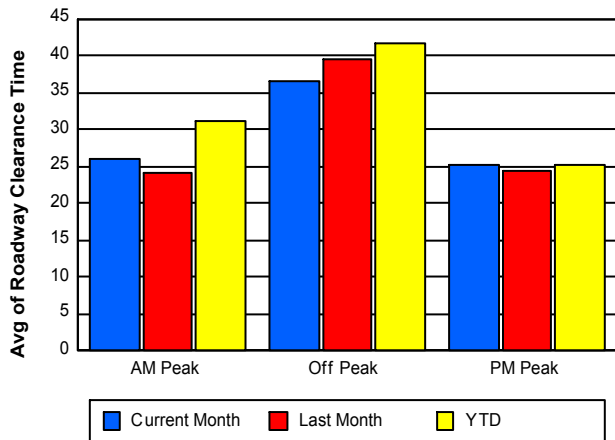
### Road Ranger / SIRV Dispatch Time



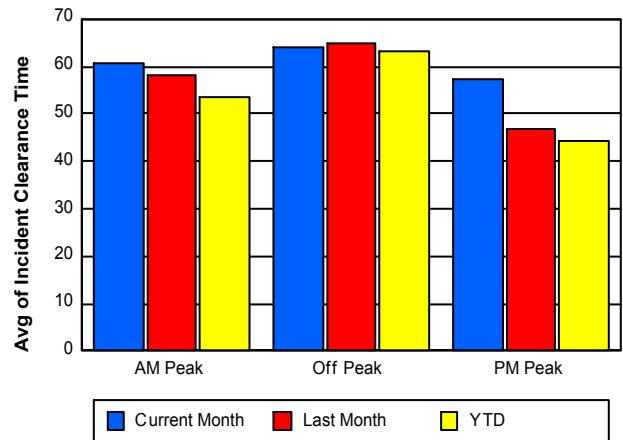
### Road Ranger / SIRV Response Time



### Roadway Clearance Time (2A)



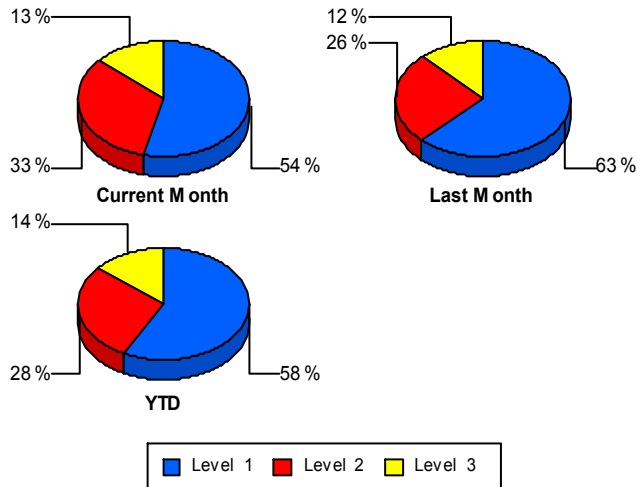
### Incident Clearance Time (3B)



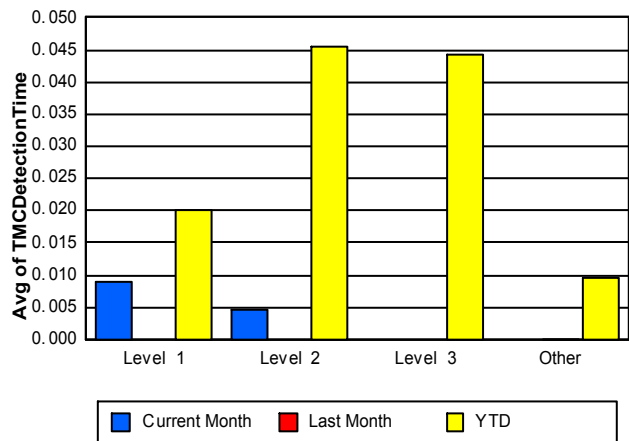
## Performance Measures by Severity

	Level 1			Level 2			Level 3			Other		
	<u>This Month</u>	<u>Last Month</u>	<u>YTD</u>	<u>This Month</u>	<u>Last Month</u>	<u>YTD</u>	<u>This Month</u>	<u>Last Month</u>	<u>YTD</u>	<u>This Month</u>	<u>Last Month</u>	<u>YTD</u>
Number of Events	102	100	1,392	62	41	680	25	19	337	5,853	4,993	55,214
Number of Incidents	102	100	1,392	62	41	680	25	19	337	0	0	0
TMC Detection (min.)	0.01	0.00	0.02	0.00	0.00	0.05	0.00	0.00	0.04	0.00	0.00	0.01
TMC Verification (min.)	0.55	0.59	0.90	0.40	0.87	2.18	0.21	0.78	2.45	0.27	0.45	1.39
TMC Response (min.)	9.21	7.56	7.90	12.12	10.34	10.92	14.13	24.85	12.32	18.36	20.23	9.16
RR Dispatch Time (min.)	2.11	1.74	2.21	3.23	2.03	2.46	4.91	8.77	3.47	10.47	12.59	3.40
RR Resp. Time (min.)	7.05	5.84	5.72	8.90	8.41	8.45	9.85	18.66	9.17	6.49	6.76	6.00
Event Clearance (min.)	51.75	49.24	41.83	79.29	62.51	67.10	55.67	98.66	94.23	51.07	54.71	42.62
Roadway Clear. (min.)	14.96	13.84	14.84	51.74	49.28	50.22	45.70	80.99	89.50			
Incident Clearance (min.)	51.75	49.24	41.83	79.29	62.51	67.10	55.67	98.66	94.23			
# of Events w/ RR/SIRV	72	78	1,263	28	25	601	22	16	309	3,267	2,844	43,193
RR/SIRV Responses	72	78	1,336	28	25	675	22	16	412	3,267	2,844	43,327
RR/SIRV Activities	129	149	2,095	84	60	1,311	41	23	832	2,617	2,317	40,737

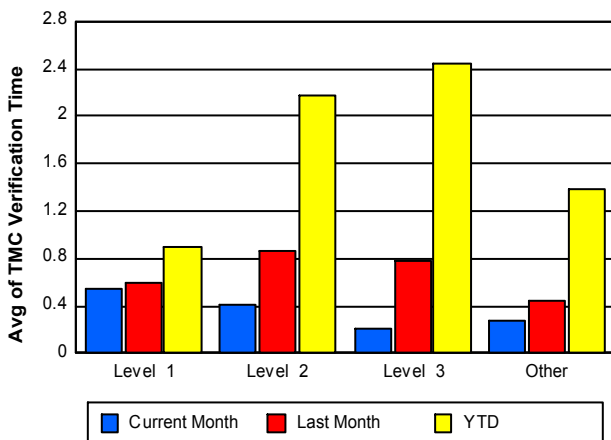
### Number of Events / Severity



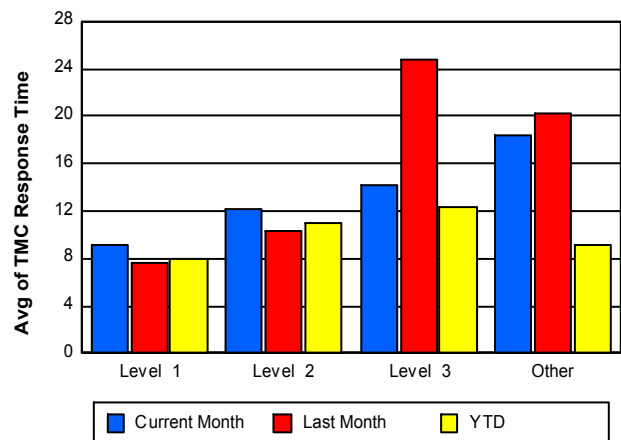
### TMC Detection Time



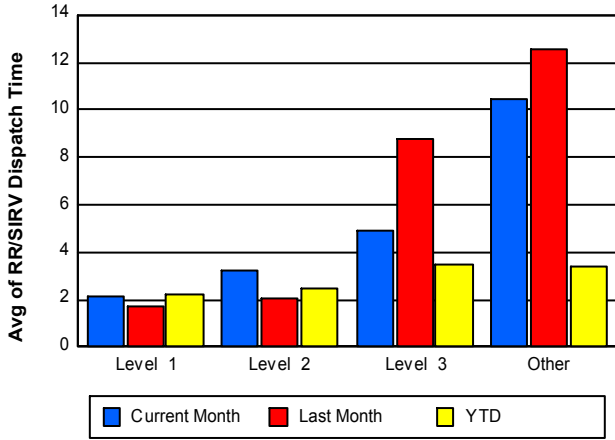
### TMC Verification Time



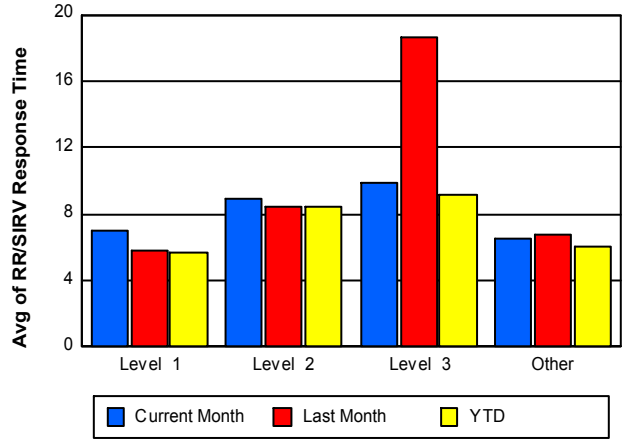
### TMC Response Time



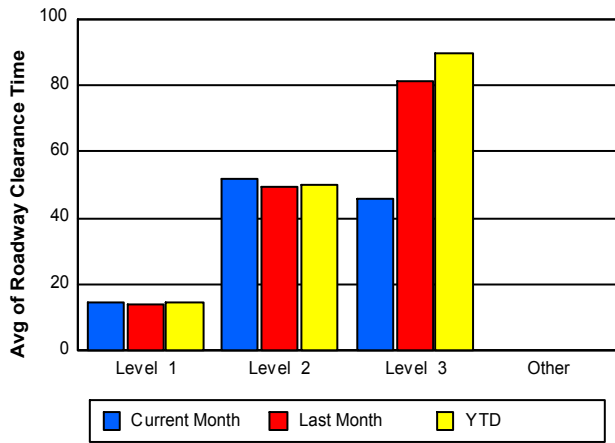
## Road Ranger / SIRV Dispatch Time



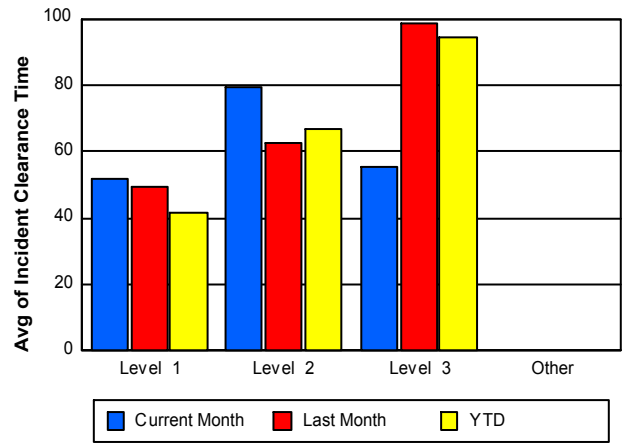
## Road Ranger / SIRV Response Time



## Roadway Clearance Time (2A)



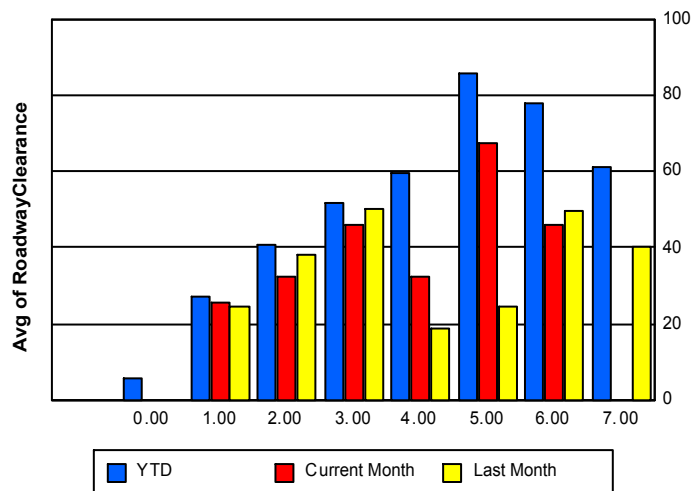
## Incident Clearance Time (3B)



## Roadway Clearance by Maximum Number of Lanes Blocked

	Current Month	Last Month	YTD
	0.00	0.00	
0			5.87
1	25.61	24.48	27.08
2	32.54	38.11	40.72
3	45.80	49.89	51.74
4	32.34	18.47	59.74
5	67.16	24.57	85.59
6	45.96	49.54	77.92

## Roadway Clearance Time(2A)



	Current Month	Last Month	YTD
7	0.00	40.03	60.95

## Performance Measures by Roadway

**595**

	<u>Current Month</u>	<u>Last Month</u>	<u>YTD</u>
Number of Events	829	701	8,638
Number of Incidents	33	25	417
TMC Detection (min.)	0.00	0.00	0.01
TMC Verification (min.)	0.43	0.94	1.60
TMC Response (min.)	18.48	32.61	9.66
RR Dispatch Time (min.)	12.60	22.03	3.76
RR Resp. Time (min.)	5.15	6.96	5.88
Event Clearance (min.)	41.82	47.15	41.45
Roadway Clear. (min.)	34.53	35.66	37.55
Incident Clearance (min.)	57.30	62.49	52.93
# of Events w/ RR/SIRV	491	419	7,011
RR/SIRV Responses	491	419	7,074
RR/SIRV Activities	436	387	7,142

**75**

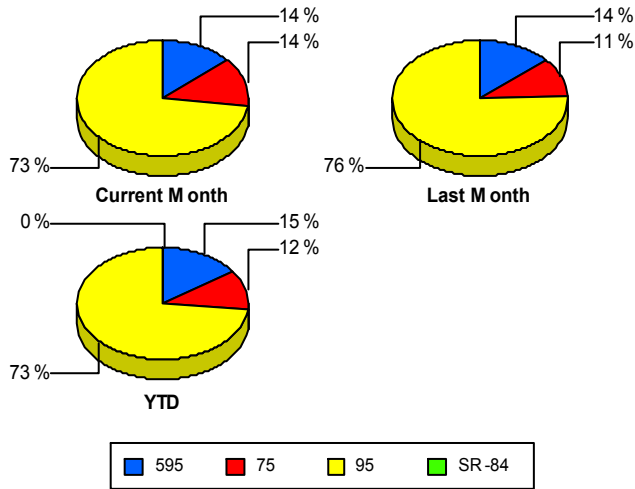
	<u>Current Month</u>	<u>Last Month</u>	<u>YTD</u>
Number of Events	820	555	6,805
Number of Incidents	12	13	147
TMC Detection (min.)	0.00	0.00	0.02
TMC Verification (min.)	0.36	1.02	4.47
TMC Response (min.)	17.78	6.15	6.74
RR Dispatch Time (min.)	9.37	0.96	2.79
RR Resp. Time (min.)	6.54	5.50	5.11
Event Clearance (min.)	56.90	65.62	47.69
Roadway Clear. (min.)	23.55	28.10	57.37
Incident Clearance (min.)	77.45	62.59	69.37
# of Events w/ RR/SIRV	569	411	6,280
RR/SIRV Responses	569	411	6,313
RR/SIRV Activities	503	399	6,678

**95**

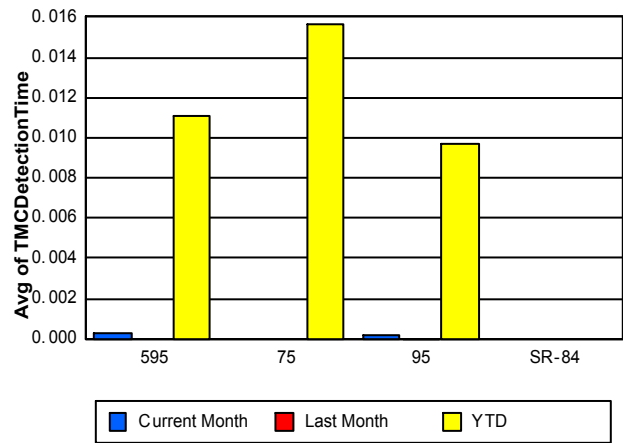
	<u>Current Month</u>	<u>Last Month</u>	<u>YTD</u>
Number of Events	4,393	3,897	42,179
Number of Incidents	144	122	1,845
TMC Detection (min.)	0.00	0.00	0.01
TMC Verification (min.)	0.24	0.29	0.85
TMC Response (min.)	17.98	20.18	9.61
RR Dispatch Time (min.)	9.89	12.43	3.37
RR Resp. Time (min.)	6.87	7.09	6.30
Event Clearance (min.)	52.17	54.67	42.83
Roadway Clear. (min.)	30.93	30.22	33.00
Incident Clearance (min.)	60.87	57.26	56.02
# of Events w/ RR/SIRV	2,329	2,133	32,075
RR/SIRV Responses	2,329	2,133	32,363
RR/SIRV Activities	1,932	1,763	31,155

	<u>YTD</u>
Number of Events	<b>1</b>
Number of Incidents	<b>0</b>
TMC Detection (min.)	<b>0.00</b>
TMC Verification (min.)	<b>0.47</b>
TMC Response (min.)	
RR Dispatch Time (min.)	
RR Resp. Time (min.)	
Event Clearance (min.)	<b>5.22</b>
Roadway Clear. (min.)	
Incident Clearance (min.)	
# of Events w/ RR/SIRV	<b>0</b>
RR/SIRV Responses	<b>0</b>
RR/SIRV Activities	<b>0</b>

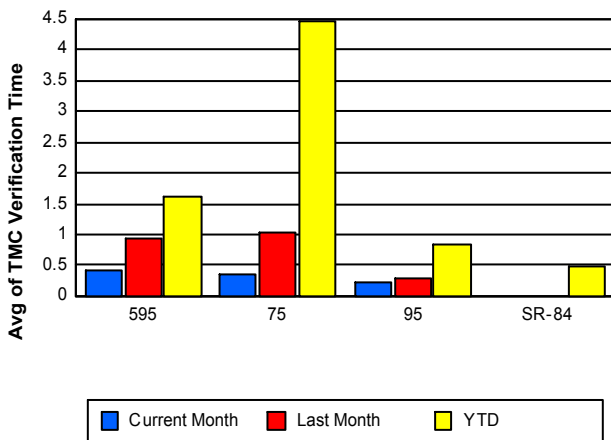
### Number of Events / Roadway



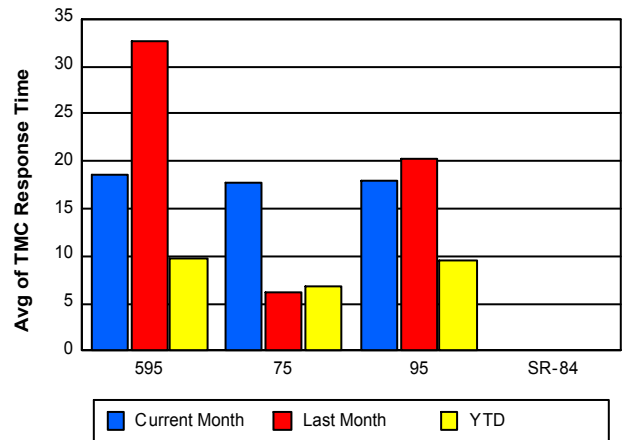
### TMC Detection Time



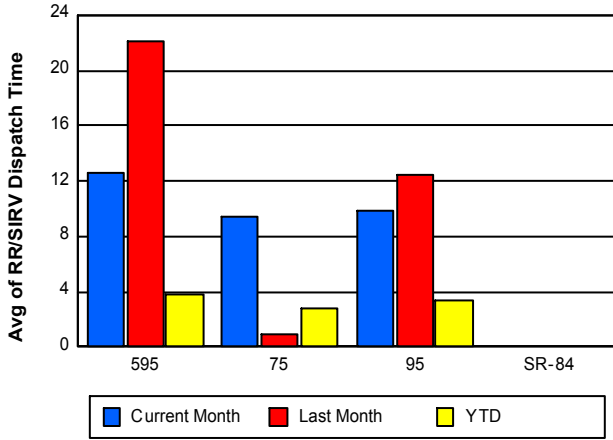
### TMC Verification Time



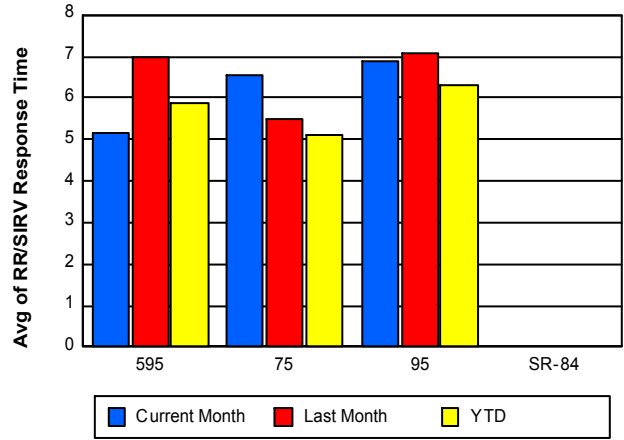
### TMC Response Time



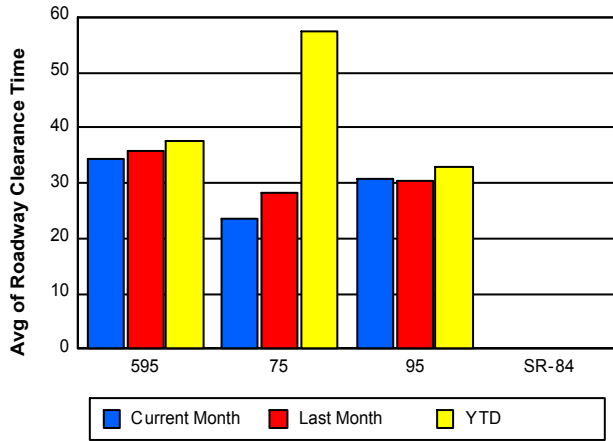
## Road Ranger / SIRV Dispatch Time



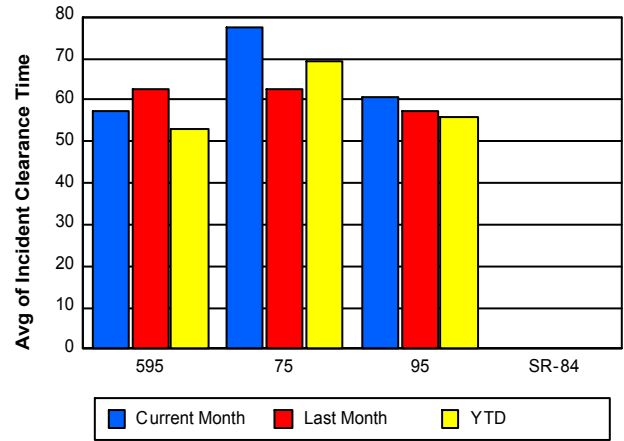
## Road Ranger / SIRV Response Time



## Roadway Clearance Time (2A)



## Incident Clearance Time (3B)



## Performance Measures by Event Type

### Abandoned Vehicle

	<u>Current Month</u>	<u>Last Month</u>	<u>YTD</u>
Number of Events	651	605	7,245
Number of Incidents	0	1	13
TMC Detection (min.)	0.00	0.00	0.02
TMC Verification (min.)	0.14	0.20	0.42
TMC Response (min.)	91.58	87.83	20.22
RR Dispatch Time (min.)	88.09	92.47	16.90
RR Response Time (min.)	11.91	9.47	6.17
Event Clearance (min.)	299.57	309.18	201.38
Roadway Clearance (min.)		1.20	39.46
Incident Clearance (min.)		22.97	236.85
# of Events w/ RR/SIRV	337	334	5,543
RR/SIRV Assists	337	334	5,550
RR/SIRV Activities	339	354	5,802

### Accident

	<u>Current Month</u>	<u>Last Month</u>	<u>YTD</u>
Number of Events	317	294	3,809
Number of Incidents	138	110	1,743
TMC Detection (min.)	0.00	0.00	0.03
TMC Verification (min.)	0.50	0.65	1.71
TMC Response (min.)	8.60	9.09	8.23
RR Dispatch Time (min.)	1.98	1.64	1.76
RR Response Time (min.)	6.75	7.75	6.53
Event Clearance (min.)	53.73	51.57	46.37
Roadway Clearance (min.)	31.43	33.61	35.79
Incident Clearance (min.)	67.27	67.98	60.21
# of Events w/ RR/SIRV	219	207	3,457
RR/SIRV Assists	219	207	3,684
RR/SIRV Activities	336	305	5,322

### Congestion

	<u>Current Month</u>	<u>Last Month</u>	<u>YTD</u>
Number of Events	1	5	26
Number of Incidents	0	0	1
TMC Detection (min.)	0.00	0.00	0.00
TMC Verification (min.)	0.00	0.00	0.00
TMC Response (min.)			
RR Dispatch Time (min.)			
RR Response Time (min.)			
Event Clearance (min.)	3.77	52.04	74.01
Roadway Clearance (min.)			8.22
Incident Clearance (min.)			98.70
# of Events w/ RR/SIRV	0	0	0
RR/SIRV Assists	0	0	0
RR/SIRV Activities	0	0	0

## Debris on Roadway

	<u>Current Month</u>	<u>Last Month</u>	<u>YTD</u>
Number of Events	101	95	1,824
Number of Incidents	0	0	31
TMC Detection (min.)	0.00	0.00	0.03
TMC Verification (min.)	3.65	5.08	5.26
TMC Response (min.)	5.65	8.26	7.74
RR Dispatch Time (min.)	0.69	0.74	1.06
RR Response Time (min.)	4.97	7.51	6.71
Event Clearance (min.)	9.47	12.43	12.08
Roadway Clearance (min.)			43.85
Incident Clearance (min.)			51.47
# of Events w/ RR/SIRV	93	85	1,756
RR/SIRV Assists	93	85	1,783
RR/SIRV Activities	93	93	1,870

## Disabled Vehicle

	<u>Current Month</u>	<u>Last Month</u>	<u>YTD</u>
Number of Events	2,848	2,267	31,799
Number of Incidents	30	28	384
TMC Detection (min.)	0.00	0.00	0.01
TMC Verification (min.)	0.34	0.64	1.82
TMC Response (min.)	6.47	7.66	7.13
RR Dispatch Time (min.)	1.13	1.78	1.42
RR Response Time (min.)	5.40	5.96	5.85
Event Clearance (min.)	26.51	25.29	21.15
Roadway Clearance (min.)	18.36	23.04	23.96
Incident Clearance (min.)	32.16	37.15	35.98
# of Events w/ RR/SIRV	1,939	1,699	29,169
RR/SIRV Assists	1,939	1,699	29,265
RR/SIRV Activities	1,943	1,666	30,431

## Emergency Vehicles

	<u>Current Month</u>	<u>Last Month</u>	<u>YTD</u>
Number of Events	4	4	67
Number of Incidents	3	4	61
TMC Detection (min.)	0.00	0.00	0.06
TMC Verification (min.)	0.00	0.00	0.32
TMC Response (min.)	1.58	2.39	6.95
RR Dispatch Time (min.)	1.56	1.96	2.37
RR Response Time (min.)	0.02	0.44	4.65
Event Clearance (min.)	41.85	18.35	39.09
Roadway Clearance (min.)	42.92	11.89	38.69
Incident Clearance (min.)	55.17	18.35	40.37
# of Events w/ RR/SIRV	3	3	52
RR/SIRV Assists	3	3	54
RR/SIRV Activities	5	7	85

## Other

	<u>Current Month</u>	<u>Last Month</u>	<u>YTD</u>
Number of Events	2,025	1,789	12,279
Number of Incidents	3	2	27
TMC Detection (min.)	0.00	0.00	0.00
TMC Verification (min.)	0.04	0.01	0.21
TMC Response (min.)	18.92	17.30	11.78
RR Dispatch Time (min.)	2.74	2.90	2.00
RR Response Time (min.)	10.34	8.50	8.76
Event Clearance (min.)	9.33	10.67	11.19
Roadway Clearance (min.)	38.31	24.24	21.46
Incident Clearance (min.)	65.31	11.67	29.90
# of Events w/ RR/SIRV	767	600	4,985
RR/SIRV Assists	767	600	4,990
RR/SIRV Activities	123	85	981

## Pedestrian

	<u>YTD</u>
Number of Events	41
Number of Incidents	0
TMC Detection (min.)	0.01
TMC Verification (min.)	1.34
TMC Response (min.)	2.56
RR Dispatch Time (min.)	0.37
RR Response Time (min.)	2.29
Event Clearance (min.)	10.68
Roadway Clearance (min.)	
Incident Clearance (min.)	
# of Events w/ RR/SIRV	37
RR/SIRV Assists	37
RR/SIRV Activities	39

## Police Activity

	<u>Current Month</u>	<u>Last Month</u>	<u>YTD</u>
Number of Events	62	52	236
Number of Incidents	10	9	101
TMC Detection (min.)	0.00	0.00	0.01
TMC Verification (min.)	0.00	0.93	0.99
TMC Response (min.)	16.80	15.32	10.94
RR Dispatch Time (min.)	3.86	5.87	3.18
RR Response Time (min.)	11.67	9.13	7.56
Event Clearance (min.)	36.04	25.73	39.26
Roadway Clearance (min.)	57.89	19.24	66.27
Incident Clearance (min.)	71.44	31.59	56.91
# of Events w/ RR/SIRV	9	9	113
RR/SIRV Assists	9	9	133
RR/SIRV Activities	9	13	173

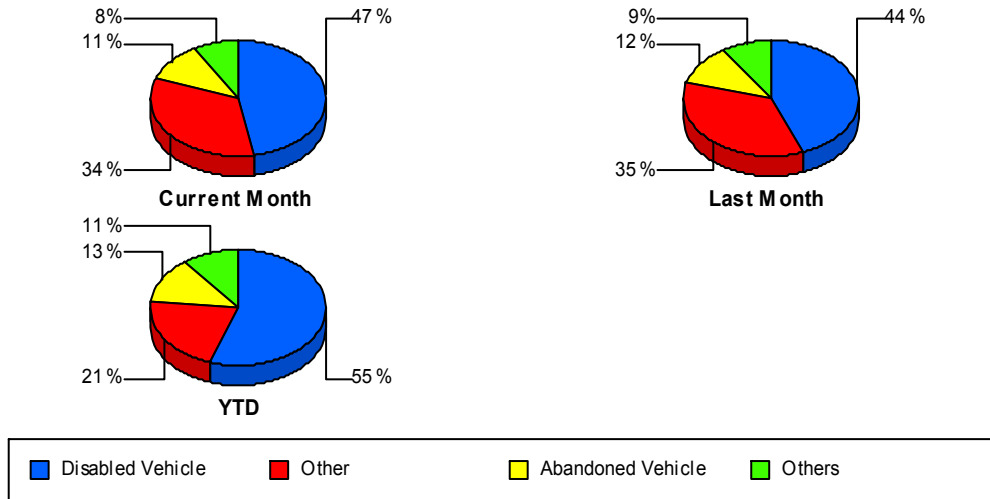
## Vehicle Fire

	<u>Current Month</u>	<u>Last Month</u>	<u>YTD</u>
Number of Events	8	12	63
Number of Incidents	5	6	47
TMC Detection (min.)	0.00	0.00	0.00
TMC Verification (min.)	0.37	1.35	0.73
TMC Response (min.)	4.20	20.99	9.10
RR Dispatch Time (min.)	0.36	2.34	2.39
RR Response Time (min.)	3.84	18.65	6.71
Event Clearance (min.)	54.16	52.66	59.47
Roadway Clearance (min.)	33.31	55.02	39.22
Incident Clearance (min.)	52.65	73.09	64.87
# of Events w/ RR/SIRV	5	7	52
RR/SIRV Assists	5	7	52
RR/SIRV Activities	8	10	91

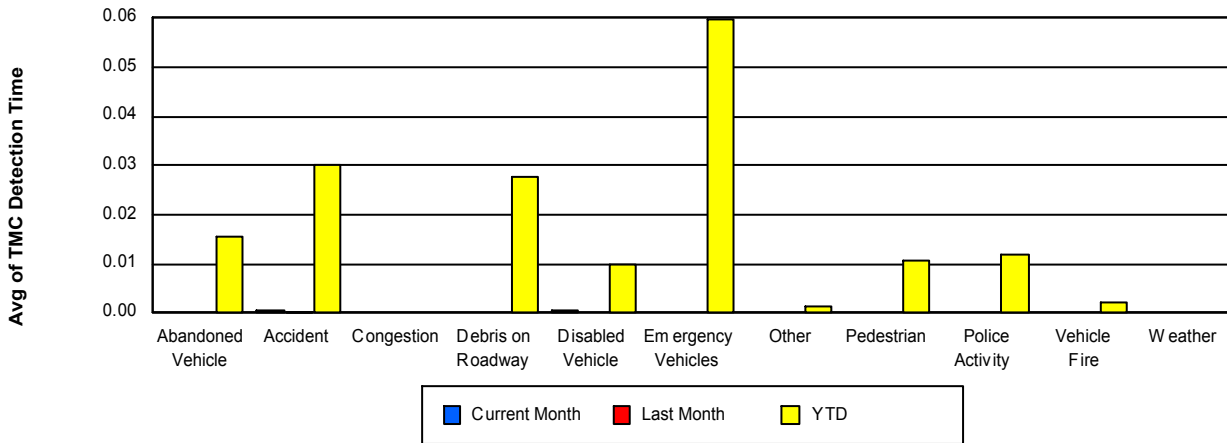
## Weather

	<u>Current Month</u>	<u>Last Month</u>	<u>YTD</u>
Number of Events	6	5	21
Number of Incidents	0	0	0
TMC Detection (min.)	0.00	0.00	0.00
TMC Verification (min.)	0.00	0.00	0.00
TMC Response (min.)			0.10
RR Dispatch Time (min.)	1.96	0.43	1.53
RR Response Time (min.)			0.00
Event Clearance (min.)	5.68	4.19	11.53
Roadway Clearance (min.)			
Incident Clearance (min.)			
# of Events w/ RR/SIRV	2	2	9
RR/SIRV Assists	2	2	9
RR/SIRV Activities	0	0	1

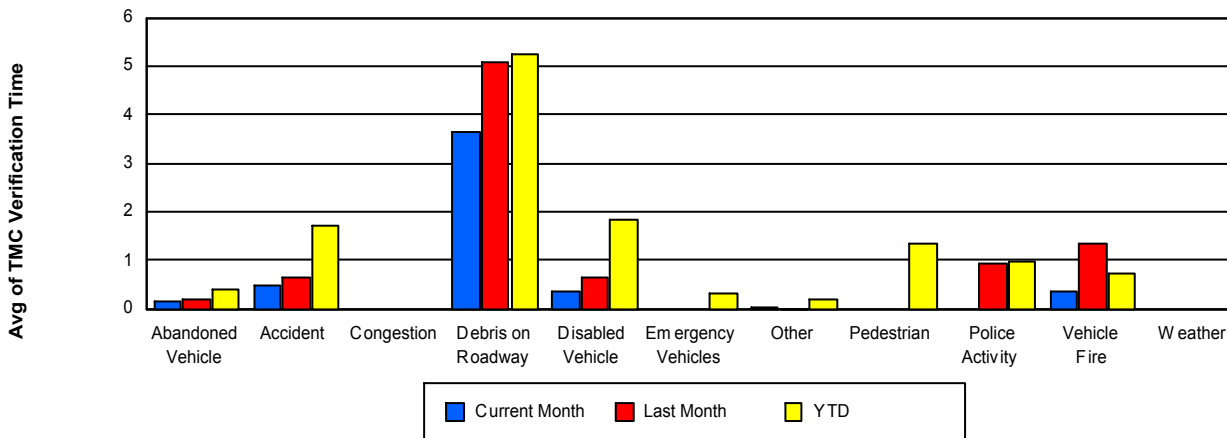
## Number of Events / Event Type



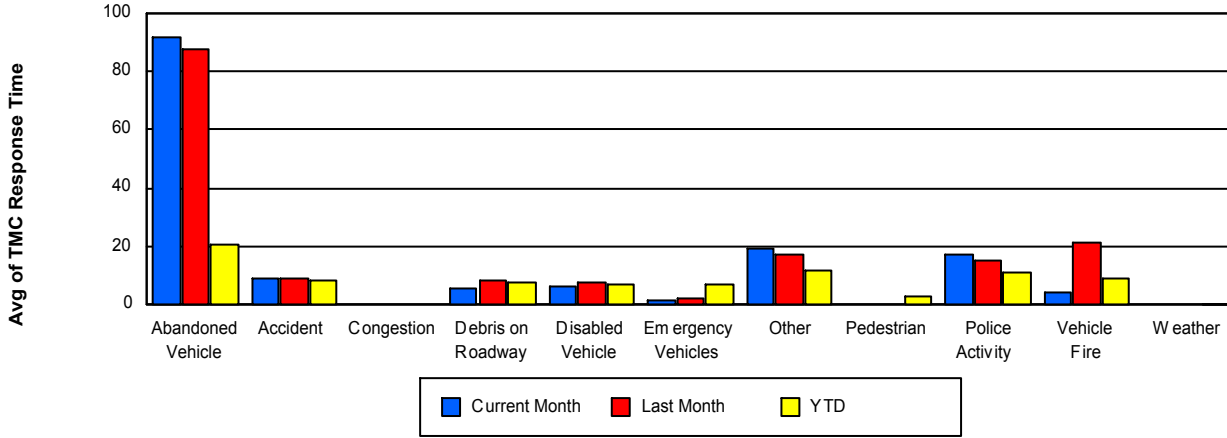
## TMC Detection Time



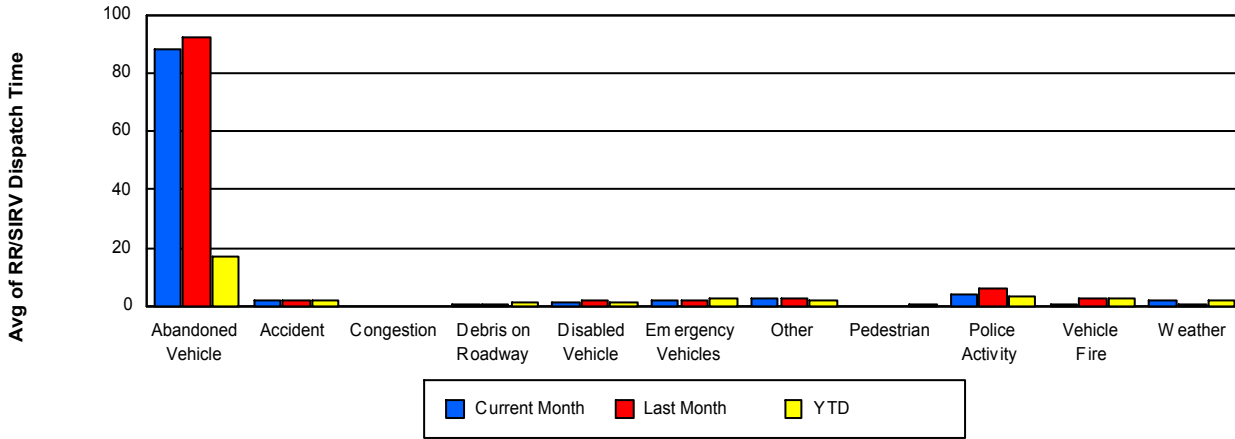
## TMC Verification Time



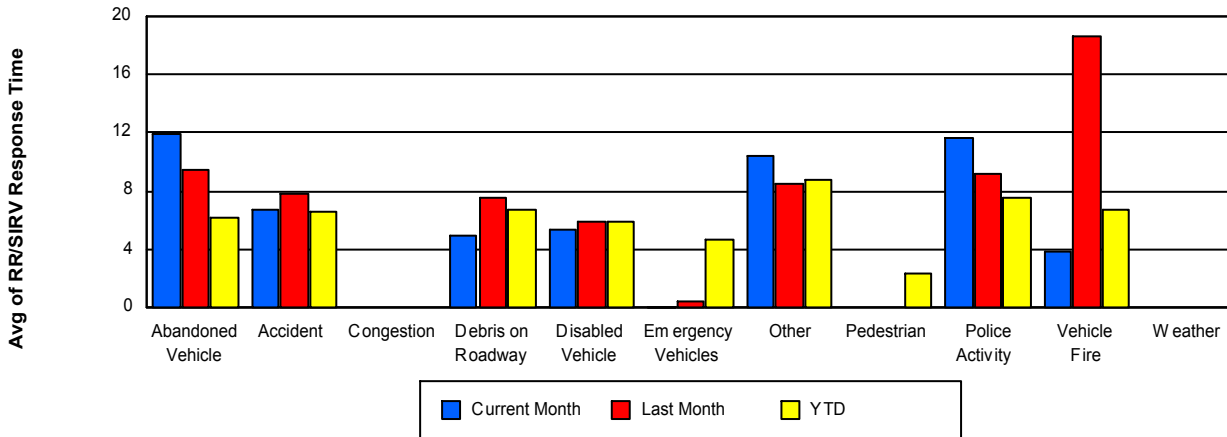
## TMC Response Time



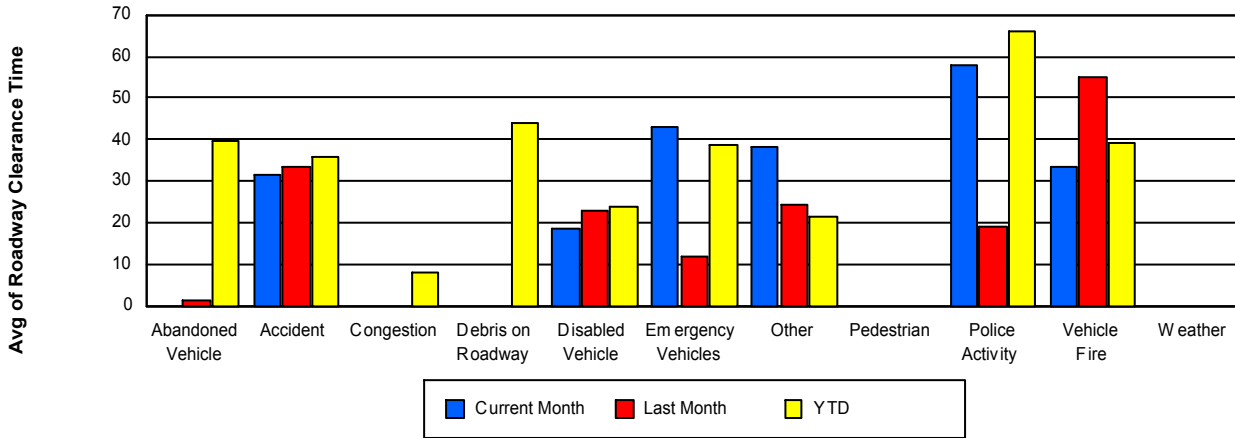
## Road Ranger / SIRV Dispatch Time



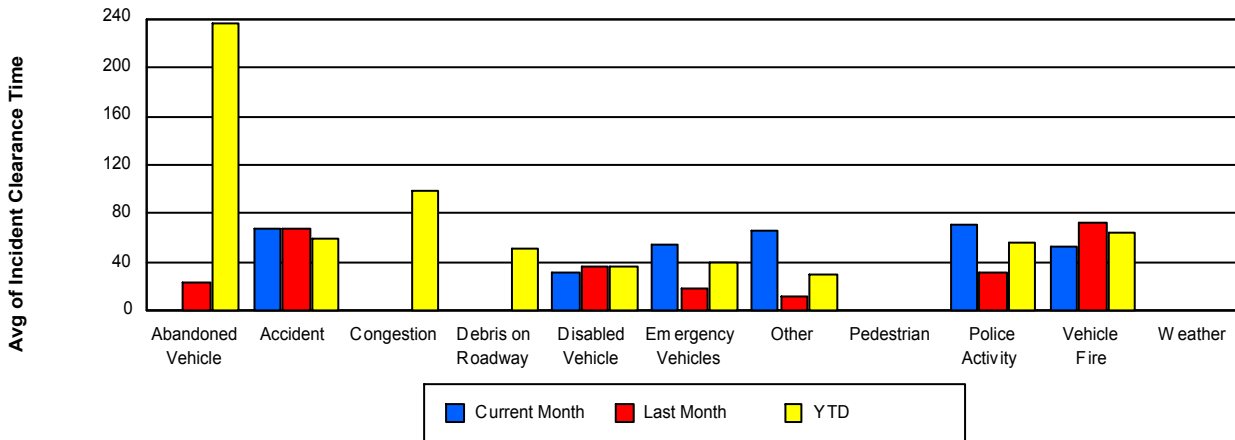
## Road Ranger / SIRV Response Time



## Roadway Clearance Time (2A)



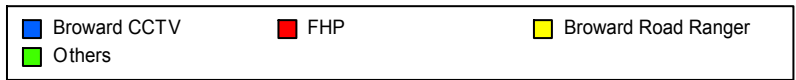
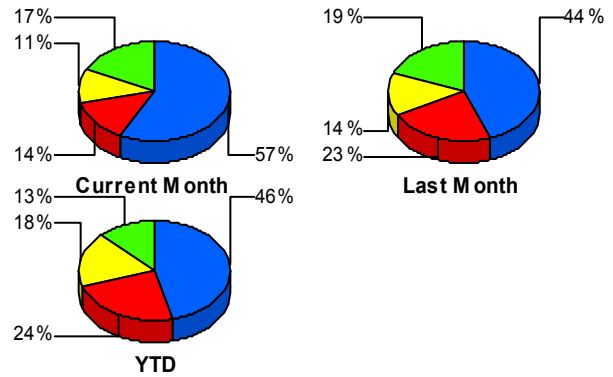
## Incident Clearance Time (3B)



## Incident Detection Methods

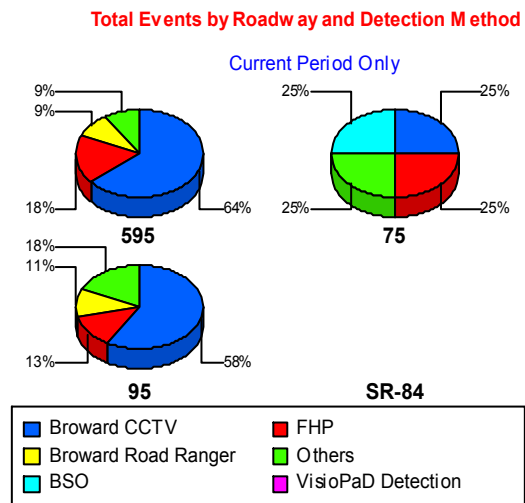
	Current Month	Last Month	YTD
Broward CCTV	108	71	1,109
Broward Road Ranger	21	23	429
Broward VideoWall	5	13	63
BSO	4	2	24
District 4	4	7	61
District 6	2	0	7
FDOT Maintenance	0	0	2
FHP	27	36	568
Fire	0	0	6
Florida's Turnpike	1	0	9
ITMS	0	0	2
Motorist	0	1	18
Other	0	0	1
Palm Beach Road Rang	0	0	8
PSAP	0	0	3
Road Watcher	3	0	17
SIRV	0	1	8
SmarTraveler (511)	1	1	12
VisioPaD Detection	13	5	62
<b>Total</b>	<b>189</b>	<b>160</b>	<b>2,409</b>

### Total Incidents by Detection Method



## Incident Detection Methods by Roadway

		Current Month	Last Month	YTD
595	Broward CCTV	21	7	162
	Broward Road Ranger	3	4	83
	Broward VideoWall	1	4	11
	BSO	0	2	10
	District 4	0	0	8
	FHP	6	7	117
	Florida's Turnpike	1	0	9
	Motorist	0	0	3
	Road Watcher	0	0	5
	SIRV	0	0	2
	SmarTraveler (511)	0	0	1
	VisioPaD Detection	1	1	6
	<b>Total</b>	<b>33</b>	<b>25</b>	<b>417</b>
75	Broward CCTV	3	3	6
	Broward Road Ranger	2	6	60
	BSO	3	0	8
	District 4	0	0	7
	District 6	1	0	3
	FHP	3	4	60
	Road Watcher	0	0	1
	SIRV	0	0	1
	SmarTraveler (511)	0	0	1
	<b>Total</b>	<b>12</b>	<b>13</b>	<b>147</b>
95	Broward CCTV	84	61	941
	Broward Road Ranger	16	13	286
	Broward VideoWall	4	9	52
	BSO	1	0	6
	District 4	4	7	46
	District 6	1	0	4
	FDOT Maintenance	0	0	2
	FHP	18	25	391

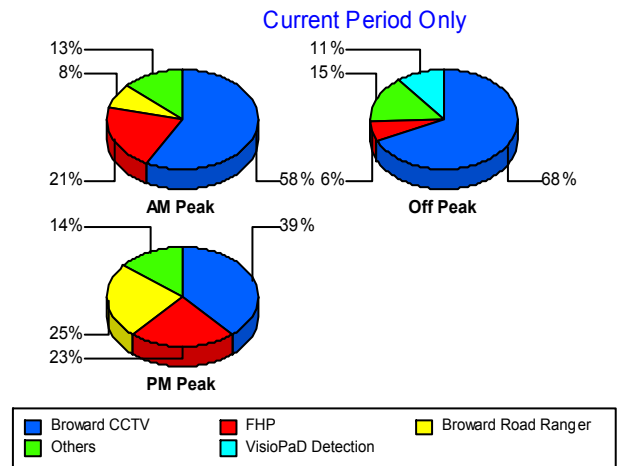


		Current Month	Last Month	YTD
95	Fire	0	0	6
	ITMS	0	0	2
	Motorist	0	1	15
	Other	0	0	1
	Palm Beach Road Rang	0	0	8
	PSAP	0	0	3
	Road Watcher	3	0	11
	SIRV	0	1	5
	SmarTraveler (511)	1	1	10
	VisioPaD Detection	12	4	56
	Total	144	122	1,845
Total	189	160	2,409	

### Incident Detection Methods by Peak Period

		Current Month	Last Month	YTD
AM Peak	Broward CCTV	22	20	258
	Broward Road Ranger	3	6	106
	Broward VideoWall	1	5	22
	BSO	1	1	7
	District 4	2	2	16
	FHP	8	19	129
	Fire	0	0	1
	Florida's Turnpike	0	0	3
	Motorist	0	0	3
	Palm Beach Road Rang	0	0	5
	PSAP	0	0	1
	Road Watcher	0	0	7
	SIRV	0	1	4
	SmarTraveler (511)	0	0	1
	VisioPaD Detection	1	0	6
	Total	38	54	569
	Off Peak	Broward CCTV	64	40

Total Events by Peak Period and Detection Method



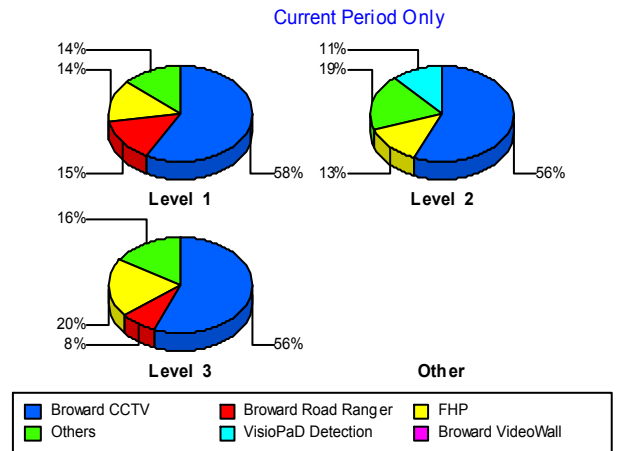
		Current Month	Last Month	YTD
Off Peak	Broward Road Ranger	4	5	195
	Broward VideoWall	2	4	27
	BSO	2	0	9
	District 4	2	5	31
	District 6	1	0	4
	FDOT Maintenance	0	0	2
	FHP	6	10	310
	Fire	0	0	4
	Florida's Turnpike	1	0	5
	ITMS	0	0	1
	Motorist	0	1	7
	Other	0	0	1
	Palm Beach Road Rang	0	0	3
	PSAP	0	0	2
	Road Watcher	1	0	4
	SIRV	0	0	2
	SmarTraveler (511)	1	0	2
	VisioPaD Detection	10	5	50
	Total	94	70	1,255
	PM Peak	Broward CCTV	22	11
Broward Road Ranger		14	12	128
Broward VideoWall		2	4	14
BSO		1	1	8
District 4		0	0	14
District 6		1	0	3
FHP		13	7	129
Fire		0	0	1
Florida's Turnpike		0	0	1
ITMS		0	0	1
Motorist		0	0	8
Road Watcher		2	0	6
SIRV		0	0	2

		Current Month	Last Month	YTD
PM Peak	SmarTraveler (511)	0	1	9
	VisioPaD Detection	2	0	6
	Total	57	36	585
Total		189	160	2,409

### Incident Detection Methods by Severity

		Current Month	Last Month	YTD	
Level 1	Broward CCTV	59	45	674	
	Broward Road Ranger	15	17	278	
	Broward VideoWall	2	6	39	
	BSO	1	0	5	
	District 4	3	3	35	
	District 6	1	0	5	
	FHP	14	24	273	
	Fire	0	0	3	
	Florida's Turnpike	0	0	2	
	ITMS	0	0	1	
	Motorist	0	0	9	
	Palm Beach Road Rang	0	0	6	
	PSAP	0	0	2	
	Road Watcher	2	0	14	
	SIRV	0	1	6	
	SmarTraveler (511)	1	1	9	
	VisioPaD Detection	4	3	31	
	Total	102	100	1,392	
	Level 2	Broward CCTV	35	19	315
		Broward Road Ranger	4	5	104
Broward VideoWall		3	5	16	
BSO		2	1	11	
District 4		1	2	13	
District 6		1	0	2	
FDOT Maintenance		0	0	1	

Total Events by Severity and Detection Method



		Current Month	Last Month	YTD
Level 2	FHP	8	7	176
	Fire	0	0	1
	ITMS	0	0	1
	Motorist	0	1	8
	Palm Beach Road Rang	0	0	1
	PSAP	0	0	1
	Road Watcher	1	0	2
	SIRV	0	0	1
	SmarTraveler (511)	0	0	2
	VisioPaD Detection	7	1	25
	Total	62	41	680
Level 3	Broward CCTV	14	7	120
	Broward Road Ranger	2	1	47
	Broward VideoWall	0	2	8
	BSO	1	1	8
	District 4	0	2	13
	FDOT Maintenance	0	0	1
	FHP	5	5	119
	Fire	0	0	2
	Florida's Turnpike	1	0	7
	Motorist	0	0	1
	Other	0	0	1
	Palm Beach Road Rang	0	0	1
	Road Watcher	0	0	1
	SIRV	0	0	1
	SmarTraveler (511)	0	0	1
	VisioPaD Detection	2	1	6
	Total	25	19	337
Total	189	160	2,409	

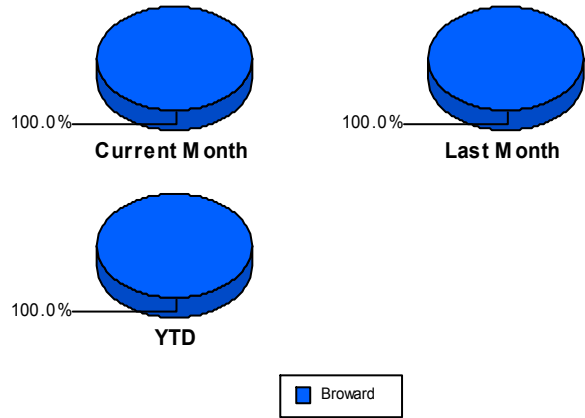
## Road Ranger / SIRV Performance Measures

### Road Ranger / SIRV Performance By County

Values presented are:  
 - Total Events with a RR/SIRV Response  
 - Total RR/SIRV Responses,  
 - Total Activities Performed

	Current Mo	Last Month	YTD
Broward	2,706	2,434	42,078
	2,906	2,615	45,051
	3,009	2,700	47,425

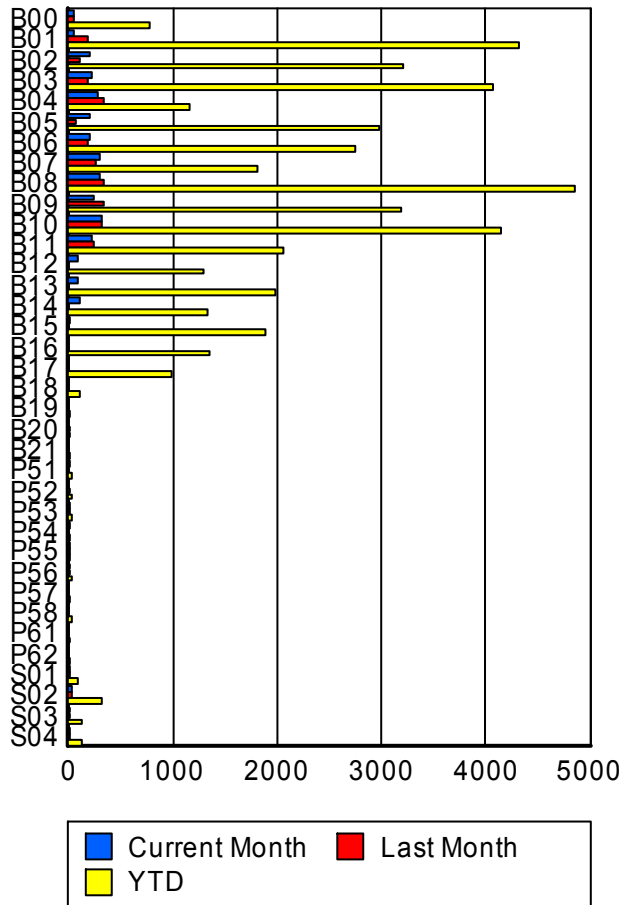
RR/SIRV Responses per County



### Road Ranger / SIRV Performance By Truck

	Current Mo	Last Month	YTD
B00	42	42	768
	43	43	782
	48	46	825
B01	42	175	4,258
	42	176	4,320
	42	182	4,552
B02	206	109	3,165
	208	111	3,211
	218	114	3,383
B03	220	183	4,013
	223	184	4,062
	229	190	4,298
B04	270	338	1,149
	272	341	1,161
	288	352	1,209
B05	202	75	2,957
	202	76	2,984
	212	78	3,178
B06	193	175	2,714
	195	178	2,745
	201	182	2,894
B07	303	250	1,787
	306	253	1,809
	313	265	1,872
B08	295	321	4,772
	297	326	4,846
	304	336	5,088

RR/SIRV Responses per Truck



	Current Mo	Last Month	YTD
B09	242	327	3,159
	246	332	3,195
	253	340	3,359
B10	308	306	4,105
	314	308	4,152
	319	317	4,370
B11	203	232	2,036
	213	234	2,061
	221	242	2,155
B12	81	0	1,271
	81	0	1,291
	84	0	1,357
B13	89	0	1,948
	91	0	1,973
	92	0	2,081
B14	113	0	1,311
	114	0	1,327
	118	0	1,368
B15	2	0	1,872
	2	0	1,883
	2	0	1,990
B16	0	0	1,332
	0	0	1,347
	0	0	1,414
B17	0	0	968
	0	0	981
	0	0	1,031
B18	0	0	97
	0	0	97
	0	0	101
B19	0	0	2
	0	0	2
	0	0	2
B20	0	1	2
	0	1	2
	0	1	2
B21	0	0	4
	0	0	4
	0	0	4
P51	1	0	36
	1	0	36
	1	0	38
P52	0	1	20
	0	1	20
	0	1	20

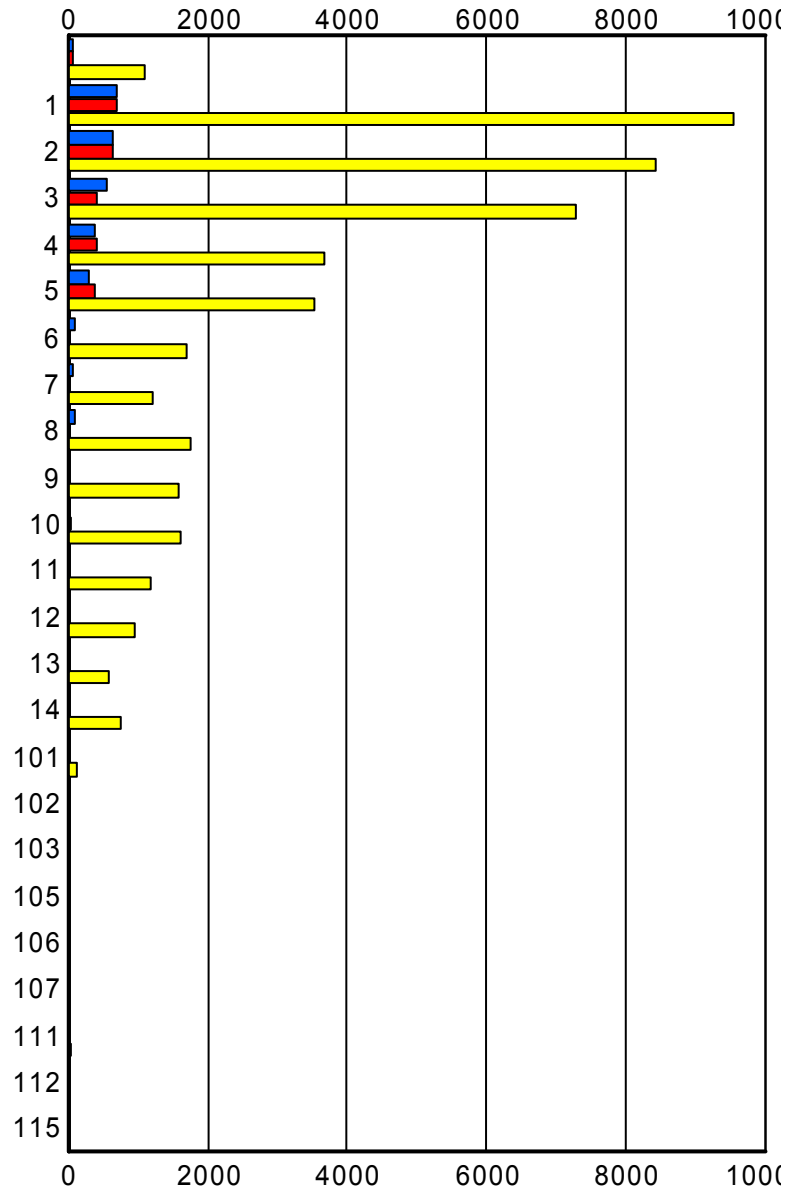
	Current Mo	Last Month	YTD
P53	2	2	24
	2	2	24
	2	2	27
P54	1	0	14
	1	0	14
	1	0	14
P55	3	2	19
	3	2	19
	3	2	20
P56	4	1	25
	4	1	26
	5	1	31
P57	0	0	11
	0	0	11
	0	0	11
P58	0	0	21
	0	0	21
	0	0	21
P61	0	0	1
	0	0	1
	0	0	1
P62	0	0	3
	0	0	3
	0	0	3
S01	2	5	78
	2	6	80
	2	6	88
S02	25	19	312
	26	20	316
	31	23	346
S03	7	7	114
	7	7	116
	9	7	129
S04	11	13	125
	11	13	129
	11	13	143

### Road Ranger / SIRV Performance By Beat

	Current Mo	Last Month	YTD
	76	57	1,027
	78	62	1,110
	86	67	1,189
1	654	647	9,127
	698	683	9,552
	715	702	10,021
2	622	607	8,204
	640	626	8,441
	657	647	8,872
3	522	409	7,065
	544	418	7,277
	572	433	7,639
4	360	396	3,606
	368	401	3,665
	379	418	3,836
5	286	362	3,454
	299	374	3,518
	310	381	3,672
6	84	0	1,673
	84	0	1,699
	92	0	1,785
7	80	12	1,187
	80	12	1,203
	82	13	1,259
8	96	0	1,736
	96	0	1,755
	96	0	1,844
9	8	0	1,548
	8	0	1,571
	8	0	1,693
10	0	32	1,588
	0	33	1,609
	0	33	1,723
11	0	0	1,185
	0	0	1,196
	0	0	1,286
12	0	0	942
	0	0	957
	0	0	1,026
13	0	0	578
	0	0	589
	0	0	622
14	0	0	735
	0	0	740
	0	0	778

Values presented are:  
 - Total Events with a RR/SIRV Response  
 - Total RR/SIRV Responses,  
 - Total Activities Performed

### RR/SIRV Responses per Beat



■ Current Month   
 ■ Last Month   
 ■ YTD

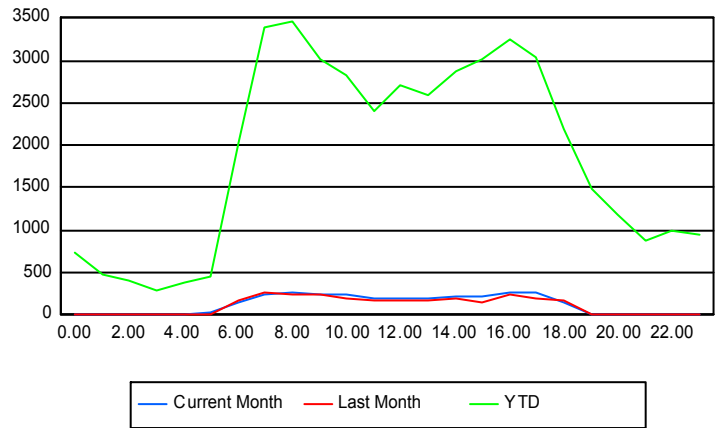
	Current Mo	Last Month	YTD
101	10	5	123
	10	5	123
	11	5	132
102	0	0	3
	0	0	4
	0	0	4
103	0	1	3
	0	1	3
	0	1	3
105	1	0	3
	1	0	3
	1	0	3
106	0	0	1
	0	0	1
	0	0	1
107	0	0	3
	0	0	3
	0	0	3
111	0	0	29
	0	0	29
	0	0	31
112	0	0	1
	0	0	1
	0	0	1
115	0	0	2
	0	0	2
	0	0	2

## Road Ranger / SIRV Performance By Time of Day

Values presented are:  
 - Total Events with a RR/SIRV Response  
 - Total RR/SIRV Responses,  
 - Total Activities Performed

	Current Mo	Last Month	YTD
12AM-1AM	6	2	704
	6	2	745
	6	2	800
1AM-2AM	6	4	457
	6	4	487
	6	4	519
2AM-3AM	1	5	357
	1	6	408
	1	7	439
3AM-4AM	3	1	256
	3	1	283
	3	1	305
4AM-5AM	6	0	332
	6	0	383
	6	0	414
5AM-6AM	19	11	370
	20	13	444
	20	15	471
6AM-7AM	134	152	1,883
	140	167	2,036
	140	173	2,108
7AM-8AM	231	247	3,181
	242	273	3,393
	250	276	3,553
8AM-9AM	253	217	3,201
	273	239	3,472
	287	251	3,657
9AM-10AM	225	236	2,834
	241	248	3,016
	254	254	3,166
10AM-11AM	229	180	2,660
	251	195	2,827
	261	201	2,971
11AM-12PM	179	157	2,246
	196	162	2,412
	198	166	2,527
12PM-1PM	180	168	2,553
	190	176	2,708
	194	178	2,832

## Number of Responses / Hour of the Day



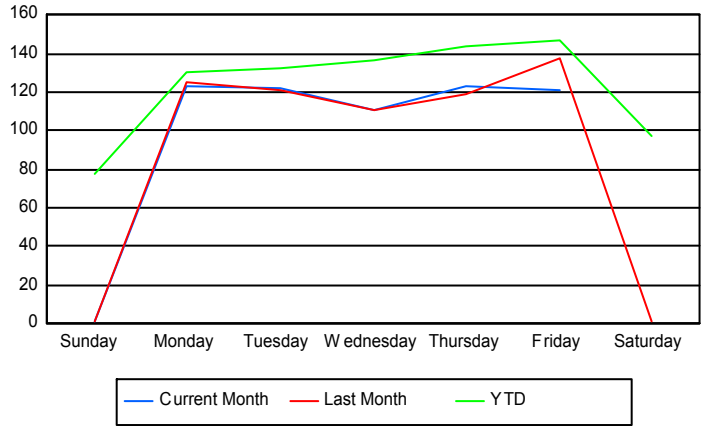
	Current Mo	Last Month	YTD
1PM-2PM	175	166	2,390
	189	175	2,586
	196	185	2,726
2PM-3PM	213	178	2,691
	225	184	2,867
	232	190	2,997
3PM-4PM	210	141	2,804
	228	152	3,016
	234	156	3,164
4PM-5PM	242	227	3,058
	257	242	3,246
	274	251	3,423
5PM-6PM	233	178	2,854
	259	192	3,050
	268	198	3,189
6PM-7PM	143	143	2,070
	155	161	2,194
	161	168	2,313
7PM-8PM	2	3	1,419
	2	3	1,482
	2	3	1,580
8PM-9PM	3	6	1,112
	3	6	1,185
	3	6	1,271
9PM-10PM	4	2	812
	4	3	873
	4	4	933
10PM-11PM	3	4	927
	3	5	985
	3	5	1,057
11PM-12AM	6	6	907
	6	6	953
	6	6	1,010

## Road Ranger / SIRV Performance By Day of Week

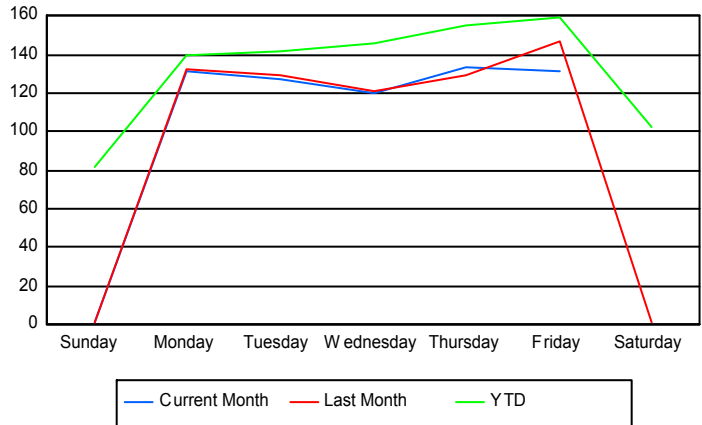
Values presented are:  
 - Total Events with a RR/SIRV Response  
 - Total RR/SIRV Responses,  
 - Total Activities Performed

	Current Mo	Last Month	YTD
Sunday	1	1	2,907
	1	1	3,036
	1	2	3,213
Monday	609	497	6,633
	653	526	7,098
	674	537	7,411
Tuesday	604	477	6,913
	633	510	7,398
	656	526	7,768
Wednesday	545	441	7,078
	591	482	7,564
	616	502	7,945
Thursday	476	471	7,332
	516	511	7,913
	526	524	8,329
Friday	474	546	7,535
	512	583	8,151
	536	607	8,611
Saturday	0	2	3,709
	0	2	3,891
	0	2	4,148

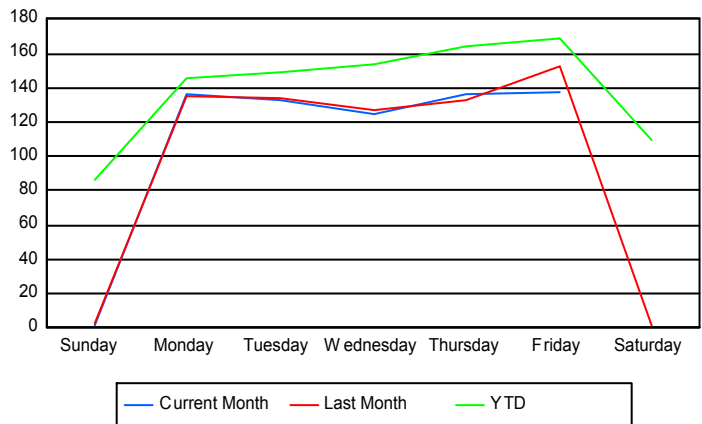
### Avg # of events with a RR/SIRV Response per Day of the Week



### Avg # of RR/SIRV Responses per Day of the Week



### Avg # of RR/SIRV Activities Performed per Day of the Week



### Road Ranger/ SIRV Responses per Time of Day and Day of Week

