



Monthly Performance Measures Report Broward County



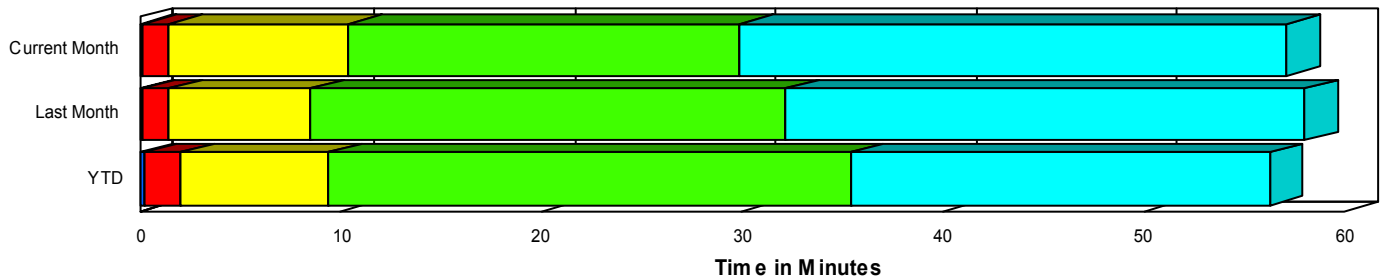
Created on:
January 04, 2008
10:26 am

Period From Dec 1, 2007 to Dec 31, 2007

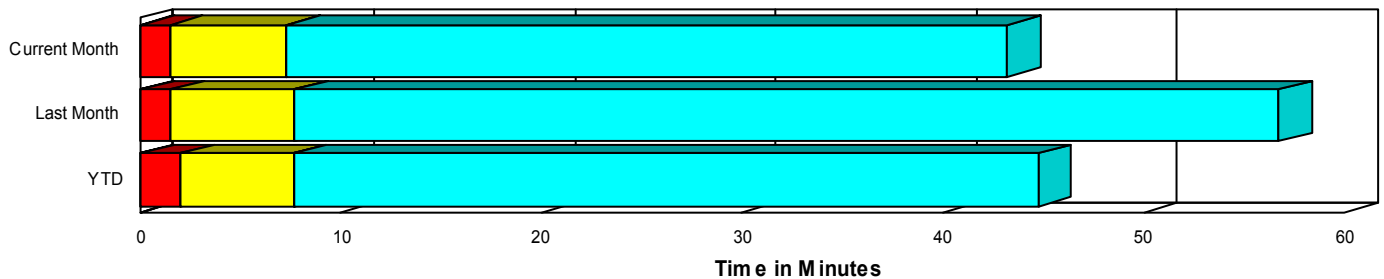
Performance Measures Summary

	Traffic Events (No Lanes Blocked)			Incidents (Lanes Blocked)		
	<u>This Month</u>	<u>Last Month</u>	<u>YTD</u>	<u>This Month</u>	<u>Last Month</u>	<u>YTD</u>
Number of Events	5,120	5,024	59,085	264	234	2,881
TMC Detection (min.)	0.02	0.02	0.04	0.12	0.09	0.20
TMC Verification (min.)	1.47	1.56	2.01	1.33	1.35	1.87
TMC Response (min.)	7.66	8.10	7.88	10.28	8.50	9.20
RR Dispatch Time (min.)	2.08	1.84	1.98	2.46	2.73	2.50
RR Response Time (min.)	5.69	6.32	6.03	7.86	5.79	6.71
Roadway Clearance (min.)				29.32	31.35	34.96
Event Clearance (min.)	43.60	57.15	45.00	56.10	57.09	55.15
# of Events w/ RR/SIRV	3,517	3,452	45,225	256	219	2,760
RR/SIRV Responses	3,611	3,540	46,642	456	393	4,822
RR/SIRV Activities	3,714	3,672	48,432	485	415	5,113

Incident Clearance TimeLine



Traffic Event(Non-Lane Blockage) Time-Line



■ Avg. TMC Detection Time	■ Avg. Time from TMC Response to Roadway Clearance*
■ Avg. Time from TMC Detection to TMC Verification	■ Avg. Time from Roadway Clearance to Incident/Event Clearance**
■ Avg. Time from TMC Verification to TMC Response	

* Roadway clearance equals all travel lanes open

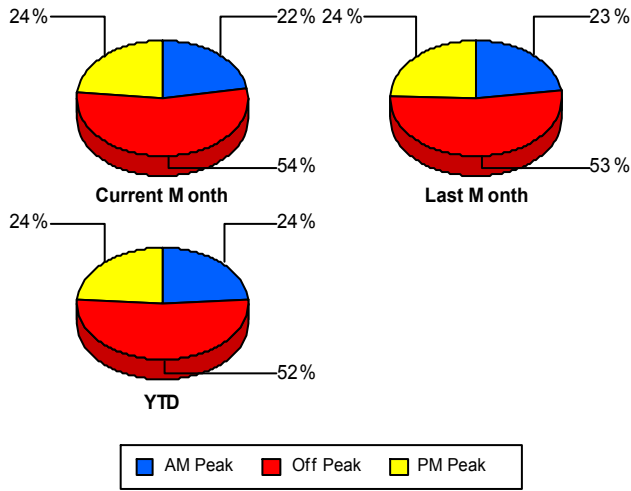
** Incident clearance equals time when last responder has left the scene

Performance Measures by Peak Period

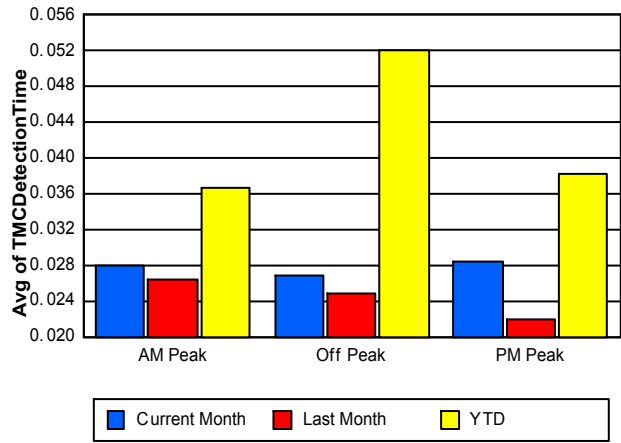
Note: AM peak period is defined as 6am to 10am and PM peak period is defined as 3pm to 7pm.

	AM Peak			Off Peak			PM Peak		
	<u>Current Month</u>	<u>Last Month</u>	<u>YTD</u>	<u>Current Month</u>	<u>Last Month</u>	<u>YTD</u>	<u>Current Month</u>	<u>Last Month</u>	<u>YTD</u>
Number of Events	1,195	1,191	14,877	2,916	2,788	32,207	1,273	1,279	14,882
Number of Incidents	65	56	634	132	119	1,523	67	59	724
TMC Detection (min.)	0.03	0.03	0.04	0.03	0.02	0.05	0.03	0.02	0.04
TMC Verification (min.)	1.17	1.12	1.38	1.44	1.72	2.32	1.80	1.57	1.94
TMC Response (min.)	6.19	6.97	6.71	8.55	8.84	8.82	8.01	7.83	7.46
RR Dispatch Time (min.)	1.69	1.53	1.57	2.46	2.24	2.28	1.72	1.50	1.89
RR Response Time (min.)	4.57	5.57	5.26	6.16	6.54	6.62	6.45	6.48	5.76
Event Clearance (min.)	31.17	44.79	35.99	48.59	65.51	52.66	46.42	50.44	39.39
Roadway Clearance (min.)	27.35	19.23	29.16	32.53	37.41	39.93	24.91	30.62	29.58
Incident Clearance (min.)	61.06	47.60	55.00	55.75	62.34	58.90	51.98	55.50	47.41
# of Events w/ RR/SIRV	937	901	12,221	1,963	1,855	24,266	873	915	11,498
RR/SIRV Responses	1,017	949	13,081	2,101	1,996	26,119	949	988	12,264
RR/SIRV Activities	1,055	983	13,616	2,163	2,074	27,193	981	1,030	12,736

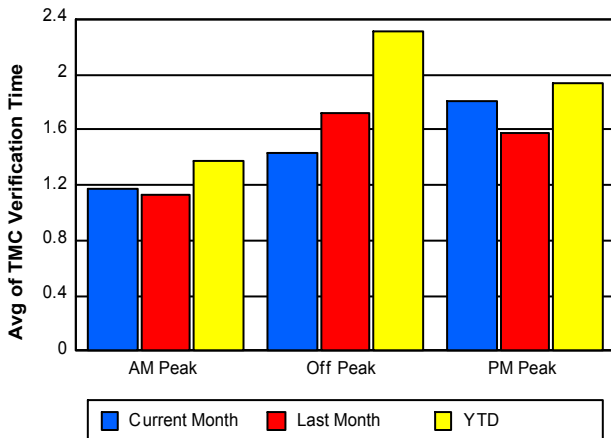
Number of Events / Peak Period



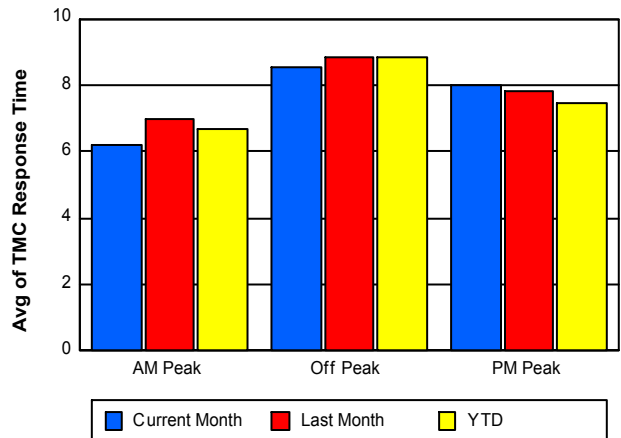
TMC Detection Time



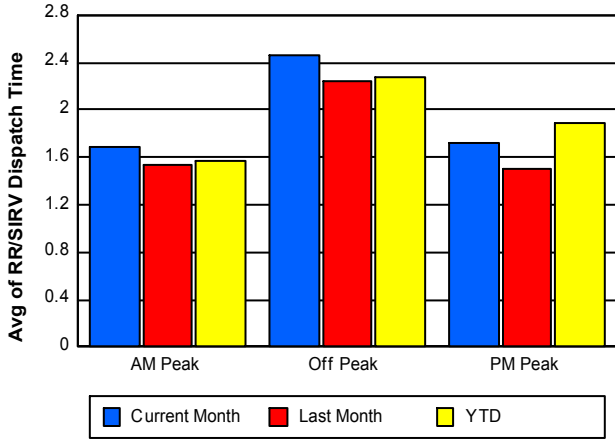
TMC Verification Time



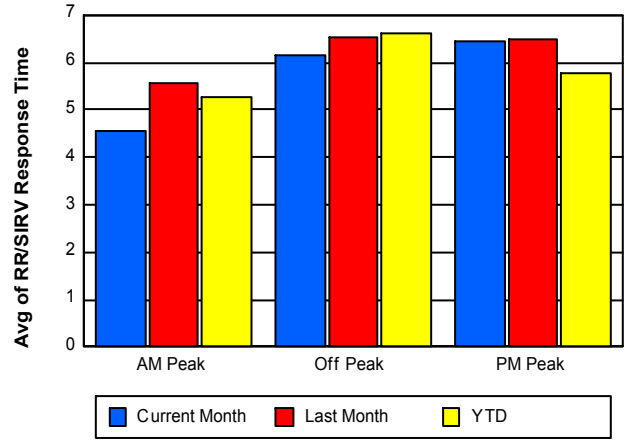
TMC Response Time



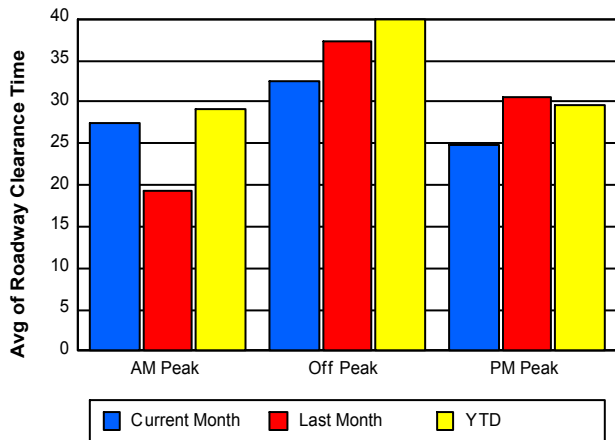
Road Ranger / SIRV Dispatch Time



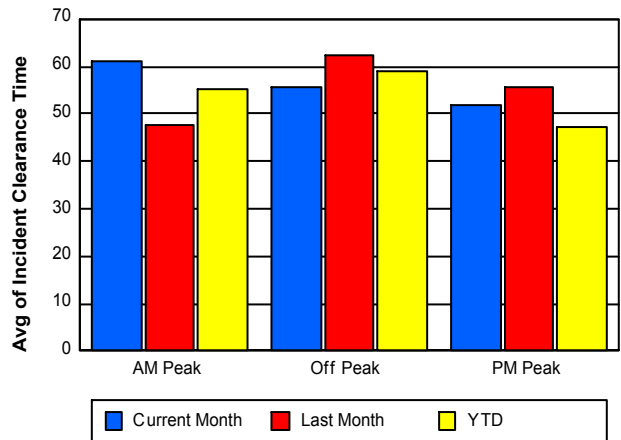
Road Ranger / SIRV Response Time



Roadway Clearance Time (2A)



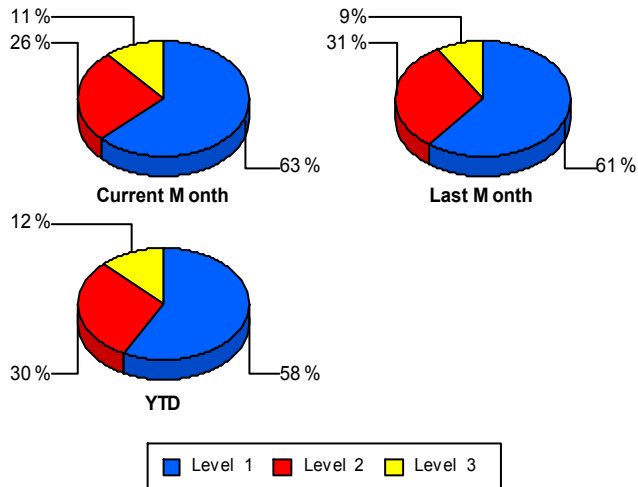
Incident Clearance Time (3B)



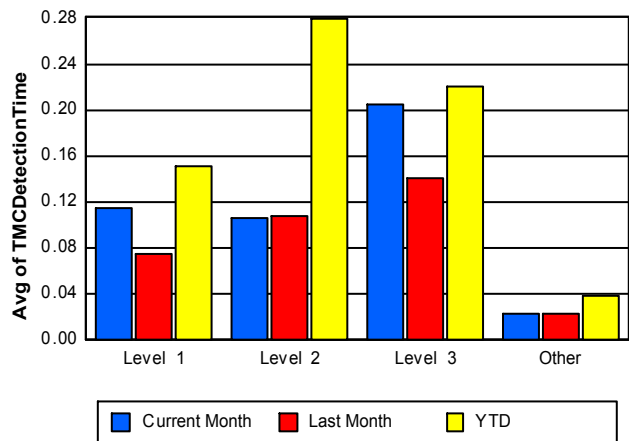
Performance Measures by Severity

	Level 1			Level 2			Level 3			Other		
	<u>This Month</u>	<u>Last Month</u>	<u>YTD</u>	<u>This Month</u>	<u>Last Month</u>	<u>YTD</u>	<u>This Month</u>	<u>Last Month</u>	<u>YTD</u>	<u>This Month</u>	<u>Last Month</u>	<u>YTD</u>
Number of Events	166	142	1,663	68	72	863	30	20	355	5,120	5,024	59,085
Number of Incidents	166	142	1,663	68	72	863	30	20	355	0	0	0
TMC Detection (min.)	0.11	0.08	0.15	0.11	0.11	0.28	0.20	0.14	0.22	0.02	0.02	0.04
TMC Verification (min.)	0.88	0.92	1.29	1.63	1.72	2.50	3.15	3.07	3.03	1.47	1.56	2.01
TMC Response (min.)	9.19	7.87	8.18	13.15	9.26	10.76	9.56	9.95	9.97	7.66	8.10	7.88
RR Dispatch Time (min.)	2.17	2.07	2.15	3.39	3.25	2.94	1.87	5.57	3.03	2.08	1.84	1.98
RR Resp. Time (min.)	7.07	5.88	6.06	9.76	6.01	7.83	7.69	4.38	6.94	5.69	6.32	6.03
Event Clearance (min.)	48.40	42.33	38.85	66.83	77.53	68.23	74.41	88.30	99.74	43.60	57.15	45.00
Roadway Clear. (min.)	15.19	14.59	14.88	49.60	52.35	51.71	61.52	74.72	88.30			
Incident Clearance (min.)	48.40	42.33	38.85	66.83	77.53	68.23	74.41	88.30	99.74			
# of Events w/ RR/SIRV	158	129	1,566	68	71	854	30	19	340	3,517	3,452	45,225
RR/SIRV Responses	253	176	2,255	135	165	1,696	68	52	871	3,611	3,540	46,642
RR/SIRV Activities	272	184	2,414	142	176	1,769	71	55	930	3,714	3,672	48,432

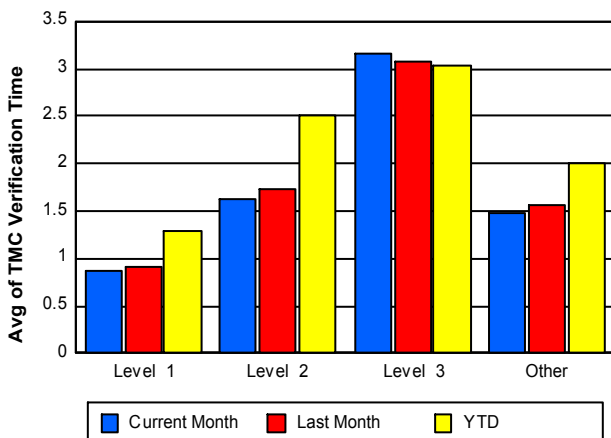
Number of Events / Severity



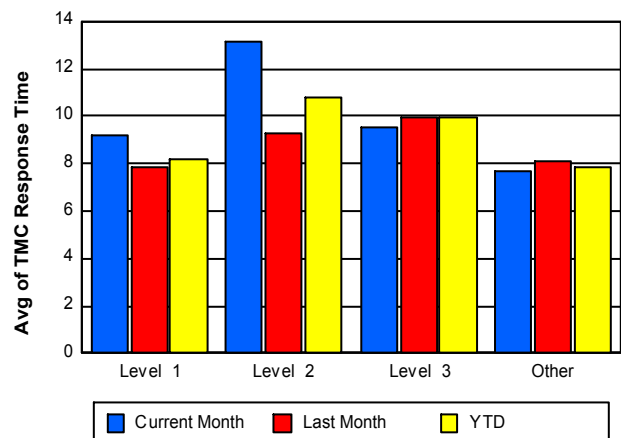
TMC Detection Time



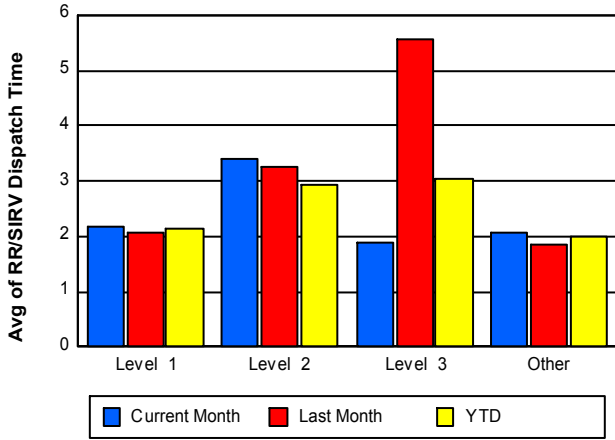
TMC Verification Time



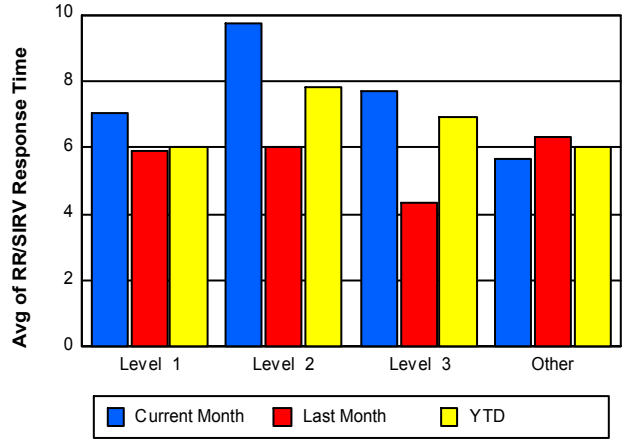
TMC Response Time



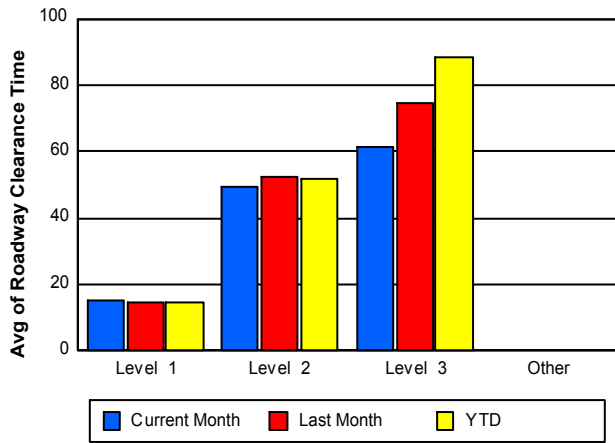
Road Ranger / SIRV Dispatch Time



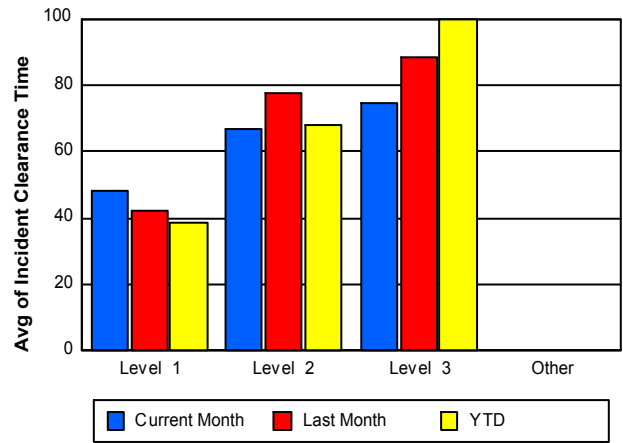
Road Ranger / SIRV Response Time



Roadway Clearance Time (2A)



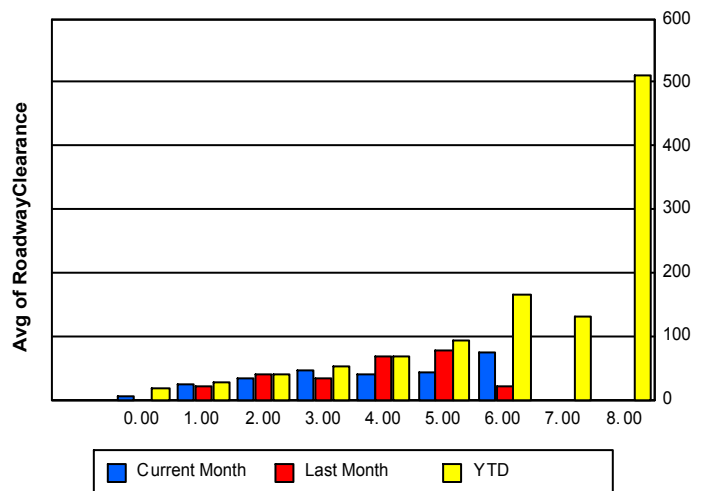
Incident Clearance Time (3B)



Roadway Clearance by Maximum Number of Lanes Blocked

	Current Month	Last Month	YTD
0	6.26		19.11
1	24.56	22.64	26.44
2	33.15	39.61	40.16
3	45.15	35.22	51.38
4	39.63	69.31	68.18
5	43.03	78.03	92.47
6	76.00	20.88	166.91

Roadway Clearance Time(2A)



	Current Month	Last Month	YTD
7	0.00	0.00	130.40
8	0.00	0.00	510.05

Performance Measures by Roadway

595

	<u>Current Month</u>	<u>Last Month</u>	<u>YTD</u>
Number of Events	826	814	9,652
Number of Incidents	50	43	503
TMC Detection (min.)	0.04	0.03	0.05
TMC Verification (min.)	2.16	2.30	2.52
TMC Response (min.)	7.15	7.74	7.57
RR Dispatch Time (min.)	1.61	1.63	2.03
RR Resp. Time (min.)	5.52	6.23	5.67
Event Clearance (min.)	37.87	36.69	42.09
Roadway Clear. (min.)	37.44	23.62	41.04
Incident Clearance (min.)	56.89	43.10	58.64
# of Events w/ RR/SIRV	618	582	7,697
RR/SIRV Responses	687	631	8,329
RR/SIRV Activities	706	660	8,653

75

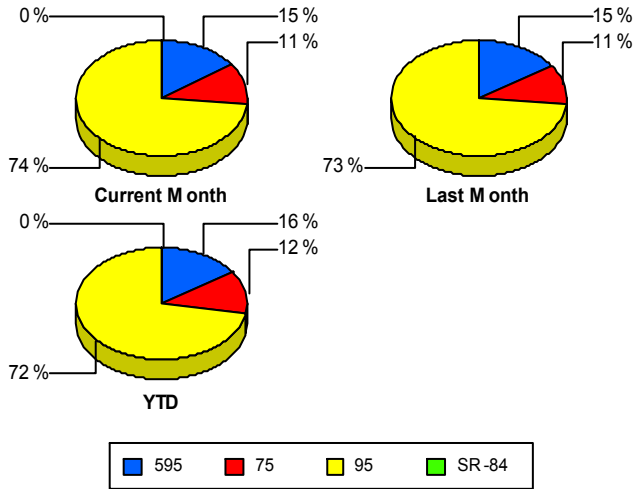
	<u>Current Month</u>	<u>Last Month</u>	<u>YTD</u>
Number of Events	591	581	7,681
Number of Incidents	12	13	167
TMC Detection (min.)	0.05	0.05	0.06
TMC Verification (min.)	3.26	3.30	3.43
TMC Response (min.)	3.96	3.53	3.86
RR Dispatch Time (min.)	1.15	0.60	1.13
RR Resp. Time (min.)	2.81	2.93	2.75
Event Clearance (min.)	71.30	67.48	53.87
Roadway Clear. (min.)	47.10	53.34	57.42
Incident Clearance (min.)	63.26	68.81	71.46
# of Events w/ RR/SIRV	567	560	7,419
RR/SIRV Responses	595	586	7,812
RR/SIRV Activities	616	615	8,156

95

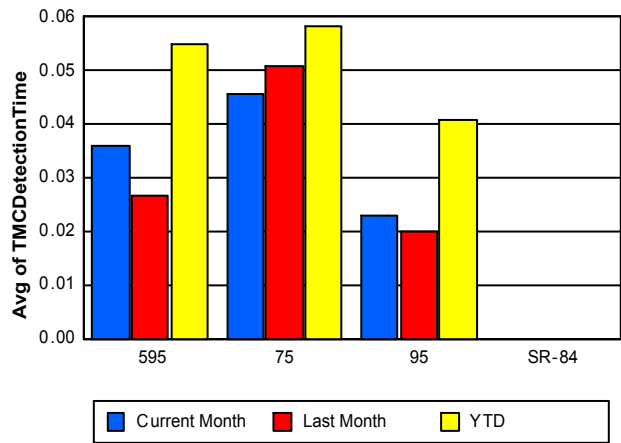
	<u>Current Month</u>	<u>Last Month</u>	<u>YTD</u>
Number of Events	3,965	3,863	44,630
Number of Incidents	202	178	2,211
TMC Detection (min.)	0.02	0.02	0.04
TMC Verification (min.)	1.06	1.13	1.64
TMC Response (min.)	8.85	9.23	8.98
RR Dispatch Time (min.)	2.38	2.17	2.18
RR Resp. Time (min.)	6.57	7.04	6.91
Event Clearance (min.)	41.50	59.91	44.76
Roadway Clear. (min.)	26.25	31.61	31.88
Incident Clearance (min.)	55.48	59.61	53.13
# of Events w/ RR/SIRV	2,588	2,529	32,869
RR/SIRV Responses	2,785	2,716	35,323
RR/SIRV Activities	2,877	2,812	36,736

	<u>Current Month</u>	<u>YTD</u>
Number of Events	2	3
Number of Incidents	0	0
TMC Detection (min.)	0.00	0.00
TMC Verification (min.)	0.22	0.51
TMC Response (min.)		
RR Dispatch Time (min.)		
RR Resp. Time (min.)		
Event Clearance (min.)	43.49	30.25
Roadway Clear. (min.)		
Incident Clearance (min.)		
# of Events w/ RR/SIRV	0	0
RR/SIRV Responses	0	0
RR/SIRV Activities	0	0

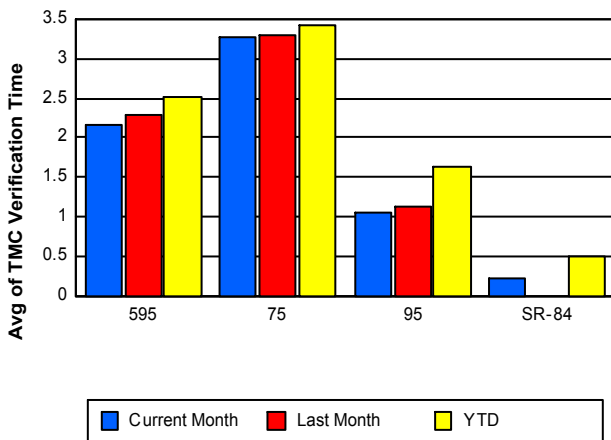
Number of Events / Roadway



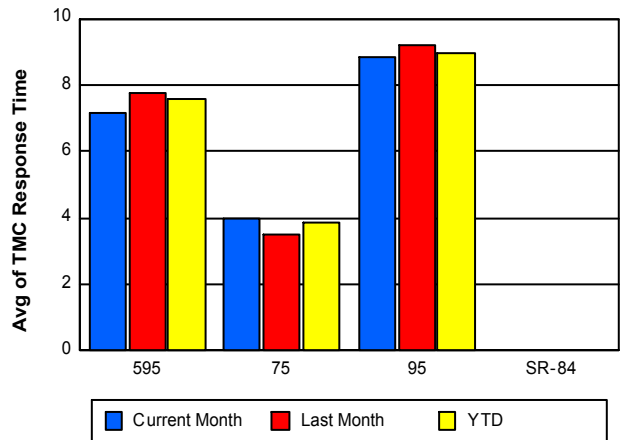
TMC Detection Time



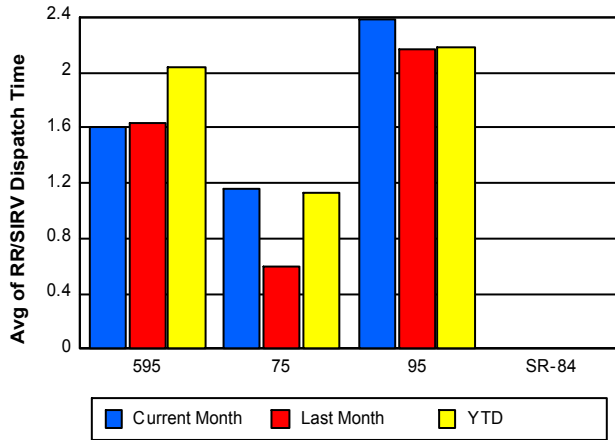
TMC Verification Time



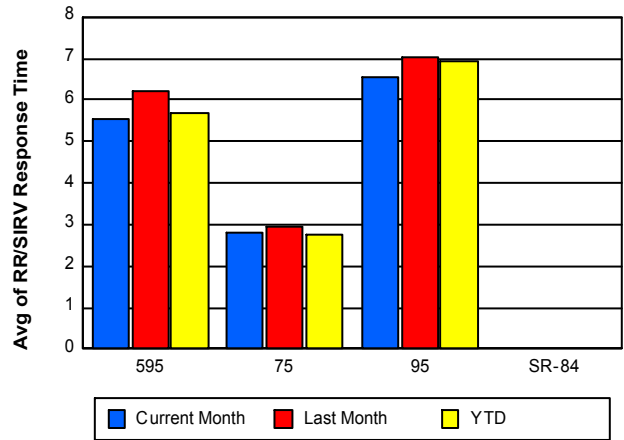
TMC Response Time



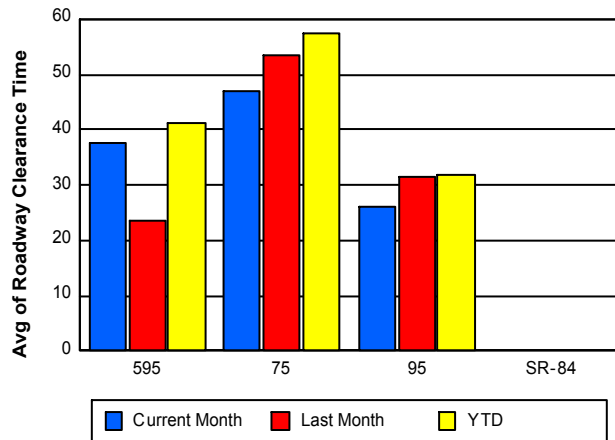
Road Ranger / SIRV Dispatch Time



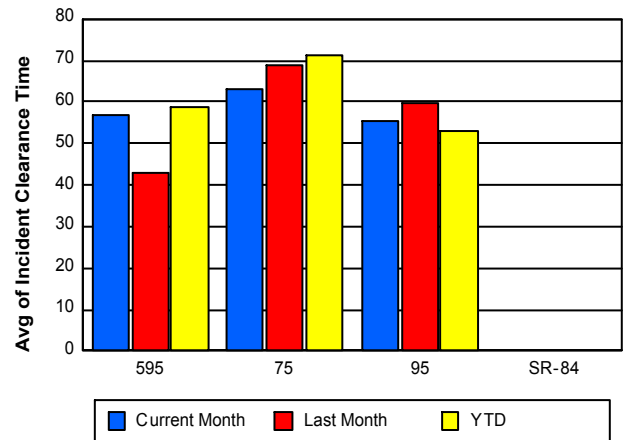
Road Ranger / SIRV Response Time



Roadway Clearance Time (2A)



Incident Clearance Time (3B)



Performance Measures by Event Type

Abandoned Vehicle

	<u>Current Month</u>	<u>Last Month</u>	<u>YTD</u>
Number of Events	631	623	7,806
Number of Incidents	1	1	13
TMC Detection (min.)	0.01	0.00	0.01
TMC Verification (min.)	0.56	0.36	0.58
TMC Response (min.)	10.36	11.01	9.08
RR Dispatch Time (min.)	4.75	5.31	3.10
RR Response Time (min.)	6.46	5.71	6.05
Event Clearance (min.)	231.92	338.79	213.25
Roadway Clearance (min.)	10.43	1.33	16.07
Incident Clearance (min.)	15.25	56.80	29.52
# of Events w/ RR/SIRV	481	478	6,270
RR/SIRV Assists	491	490	6,416
RR/SIRV Activities	499	497	6,576

Accident

	<u>Current Month</u>	<u>Last Month</u>	<u>YTD</u>
Number of Events	393	394	4,494
Number of Incidents	199	166	2,098
TMC Detection (min.)	0.11	0.10	0.18
TMC Verification (min.)	1.71	1.85	2.41
TMC Response (min.)	8.54	8.33	8.64
RR Dispatch Time (min.)	1.70	1.86	2.15
RR Response Time (min.)	6.87	6.47	6.51
Event Clearance (min.)	49.72	47.28	46.93
Roadway Clearance (min.)	30.77	31.85	35.90
Incident Clearance (min.)	61.34	64.07	60.00
# of Events w/ RR/SIRV	384	382	4,366
RR/SIRV Assists	576	531	6,304
RR/SIRV Activities	607	560	6,586

Congestion

	<u>Current Month</u>	<u>YTD</u>
Number of Events	7	10
Number of Incidents	0	0
TMC Detection (min.)	0.00	0.00
TMC Verification (min.)	0.00	0.00
TMC Response (min.)		
RR Dispatch Time (min.)		
RR Response Time (min.)		
Event Clearance (min.)	69.43	95.26
Roadway Clearance (min.)		
Incident Clearance (min.)		
# of Events w/ RR/SIRV	0	0
RR/SIRV Assists	0	0
RR/SIRV Activities	0	0

Debris on Roadway

	<u>Current Month</u>	<u>Last Month</u>	<u>YTD</u>
Number of Events	163	171	2,382
Number of Incidents	2	4	75
TMC Detection (min.)	0.17	0.13	0.18
TMC Verification (min.)	5.72	4.55	7.09
TMC Response (min.)	7.39	7.14	8.60
RR Dispatch Time (min.)	1.86	1.13	1.88
RR Response Time (min.)	5.57	6.01	6.79
Event Clearance (min.)	10.92	10.77	13.00
Roadway Clearance (min.)	5.84	29.13	23.10
Incident Clearance (min.)	17.32	31.60	28.52
# of Events w/ RR/SIRV	156	153	2,243
RR/SIRV Assists	166	159	2,402
RR/SIRV Activities	170	164	2,438

Disabled Vehicle

	<u>Current Month</u>	<u>Last Month</u>	<u>YTD</u>
Number of Events	2,972	2,884	36,219
Number of Incidents	52	47	529
TMC Detection (min.)	0.02	0.02	0.04
TMC Verification (min.)	1.82	1.95	2.25
TMC Response (min.)	7.30	7.51	7.49
RR Dispatch Time (min.)	1.77	1.34	1.74
RR Response Time (min.)	5.54	6.29	5.85
Event Clearance (min.)	19.56	19.67	20.36
Roadway Clearance (min.)	22.05	30.70	26.29
Incident Clearance (min.)	38.02	39.38	38.32
# of Events w/ RR/SIRV	2,624	2,518	33,110
RR/SIRV Assists	2,692	2,601	34,224
RR/SIRV Activities	2,779	2,712	35,799

Emergency Vehicles

	<u>Current Month</u>	<u>Last Month</u>	<u>YTD</u>
Number of Events	3	3	31
Number of Incidents	3	3	23
TMC Detection (min.)	0.00	0.00	0.02
TMC Verification (min.)	0.00	0.00	0.12
TMC Response (min.)	13.50	4.22	8.02
RR Dispatch Time (min.)	1.69	4.03	4.01
RR Response Time (min.)	11.81	0.18	3.79
Event Clearance (min.)	63.14	20.75	34.10
Roadway Clearance (min.)	31.91	14.31	24.54
Incident Clearance (min.)	63.14	20.75	42.17
# of Events w/ RR/SIRV	3	1	21
RR/SIRV Assists	4	2	26
RR/SIRV Activities	4	2	27

Off Ramp Backup

	<u>Last Month</u>	<u>YTD</u>
Number of Events	5	6
Number of Incidents	2	2
TMC Detection (min.)	0.00	0.00
TMC Verification (min.)	4.35	3.63
TMC Response (min.)	36.67	28.72
RR Dispatch Time (min.)	36.10	24.19
RR Response Time (min.)	0.57	4.53
Event Clearance (min.)	19.24	18.96
Roadway Clearance (min.)	41.77	41.77
Incident Clearance (min.)	44.51	44.51
# of Events w/ RR/SIRV	2	3
RR/SIRV Assists	2	3
RR/SIRV Activities	2	3

Other

	<u>Current Month</u>	<u>Last Month</u>	<u>YTD</u>
Number of Events	1,185	1,137	10,607
Number of Incidents	3	4	51
TMC Detection (min.)	0.01	0.00	0.01
TMC Verification (min.)	0.40	0.56	0.89
TMC Response (min.)	8.53	9.87	10.62
RR Dispatch Time (min.)	1.92	1.84	2.41
RR Response Time (min.)	7.45	8.30	8.61
Event Clearance (min.)	9.14	9.62	14.85
Roadway Clearance (min.)	12.60	18.75	32.03
Incident Clearance (min.)	17.42	35.40	32.78
# of Events w/ RR/SIRV	104	106	1,654
RR/SIRV Assists	108	111	1,696
RR/SIRV Activities	109	113	1,710

Pedestrian

	<u>Current Month</u>	<u>Last Month</u>	<u>YTD</u>
Number of Events	19	25	241
Number of Incidents	0	0	1
TMC Detection (min.)	0.01	0.04	0.18
TMC Verification (min.)	1.11	1.58	1.45
TMC Response (min.)	1.32	4.76	4.35
RR Dispatch Time (min.)	1.24	0.66	1.01
RR Response Time (min.)	0.14	4.23	3.47
Event Clearance (min.)	12.43	17.12	13.92
Roadway Clearance (min.)			13.55
Incident Clearance (min.)			13.28
# of Events w/ RR/SIRV	14	19	213
RR/SIRV Assists	15	19	223
RR/SIRV Activities	15	19	226

Police Activity

	<u>Current Month</u>	<u>Last Month</u>	<u>YTD</u>
Number of Events	11	14	144
Number of Incidents	4	7	67
TMC Detection (min.)	0.12	0.11	0.09
TMC Verification (min.)	1.89	5.12	1.79
TMC Response (min.)	7.21	15.23	10.64
RR Dispatch Time (min.)	1.30	2.47	3.05
RR Response Time (min.)	5.95	12.75	7.65
Event Clearance (min.)	45.13	49.09	55.14
Roadway Clearance (min.)	78.61	40.81	58.44
Incident Clearance (min.)	83.70	56.59	70.46
# of Events w/ RR/SIRV	7	12	88
RR/SIRV Assists	15	18	137
RR/SIRV Activities	16	18	143

Road Work - Emergency

	<u>YTD</u>
Number of Events	16
Number of Incidents	15
TMC Detection (min.)	0.15
TMC Verification (min.)	6.10
TMC Response (min.)	15.00
RR Dispatch Time (min.)	3.82
RR Response Time (min.)	11.18
Event Clearance (min.)	116.33
Roadway Clearance (min.)	116.50
Incident Clearance (min.)	119.83
# of Events w/ RR/SIRV	10
RR/SIRV Assists	15
RR/SIRV Activities	18

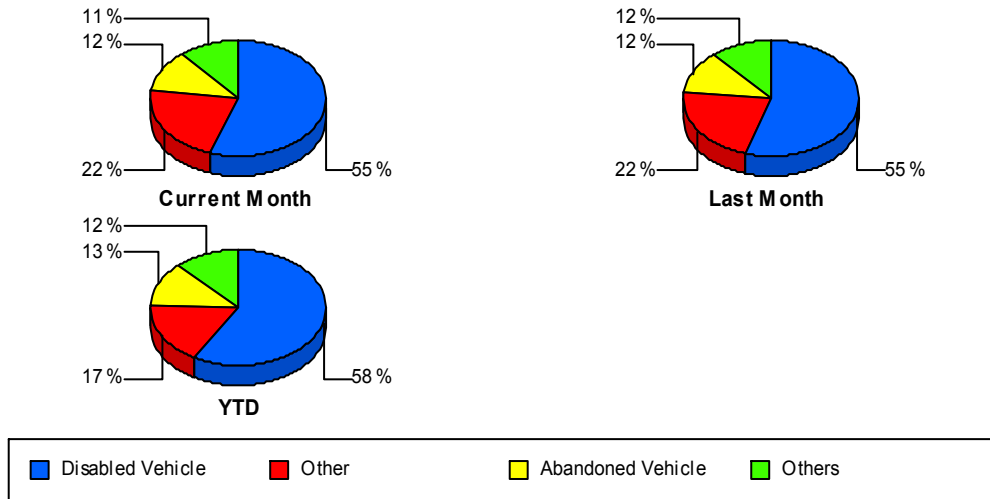
Visibility

	<u>YTD</u>
Number of Events	7
Number of Incidents	7
TMC Detection (min.)	0.53
TMC Verification (min.)	8.09
TMC Response (min.)	13.24
RR Dispatch Time (min.)	6.93
RR Response Time (min.)	6.31
Event Clearance (min.)	135.09
Roadway Clearance (min.)	228.55
Incident Clearance (min.)	135.09
# of Events w/ RR/SIRV	7
RR/SIRV Assists	18
RR/SIRV Activities	19

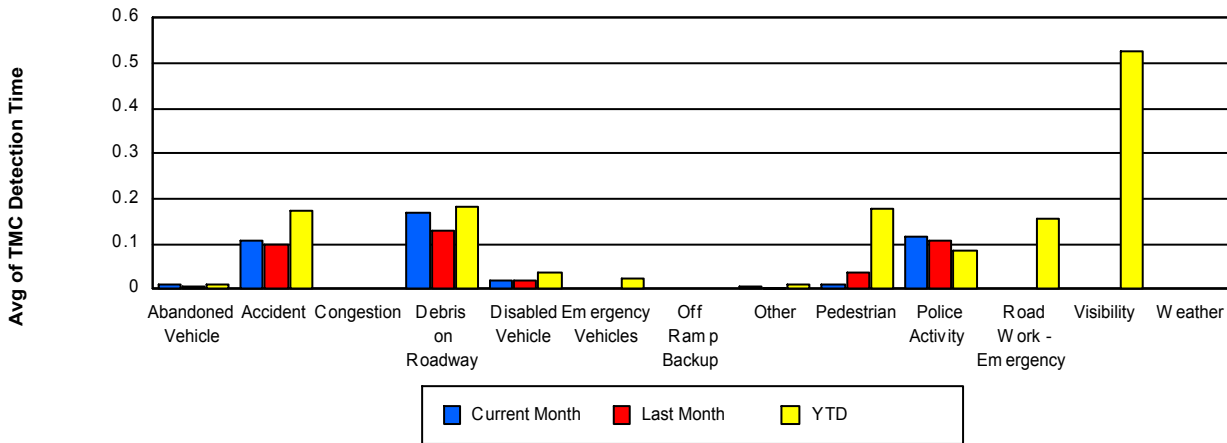
Weather

	<u>Last Month</u>	<u>YTD</u>
Number of Events	2	3
Number of Incidents	0	0
TMC Detection (min.)	0.00	0.00
TMC Verification (min.)	0.00	1.32
TMC Response (min.)		
RR Dispatch Time (min.)		
RR Response Time (min.)		
Event Clearance (min.)	3.28	4.64
Roadway Clearance (min.)		
Incident Clearance (min.)		
# of Events w/ RR/SIRV	0	0
RR/SIRV Assists	0	0
RR/SIRV Activities	0	0

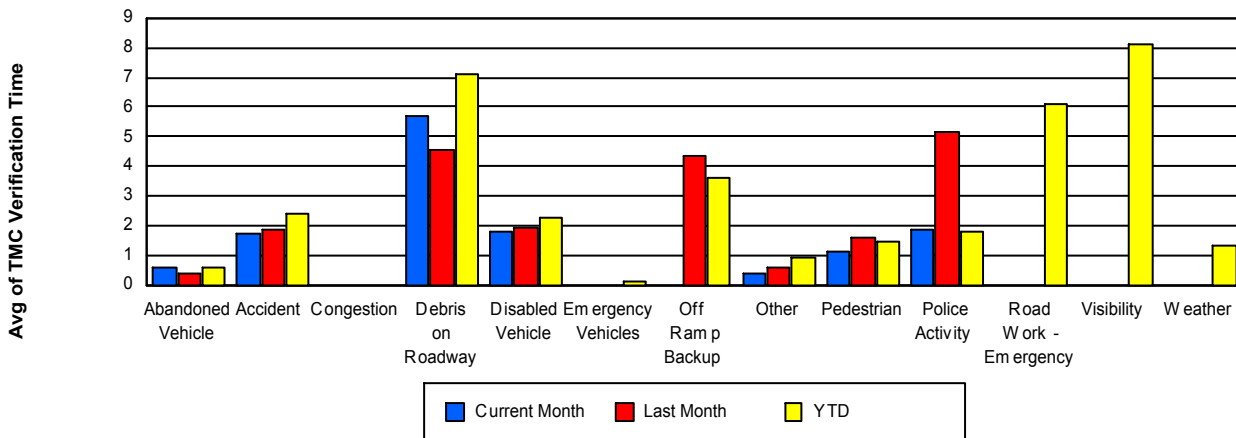
Number of Events / Event Type



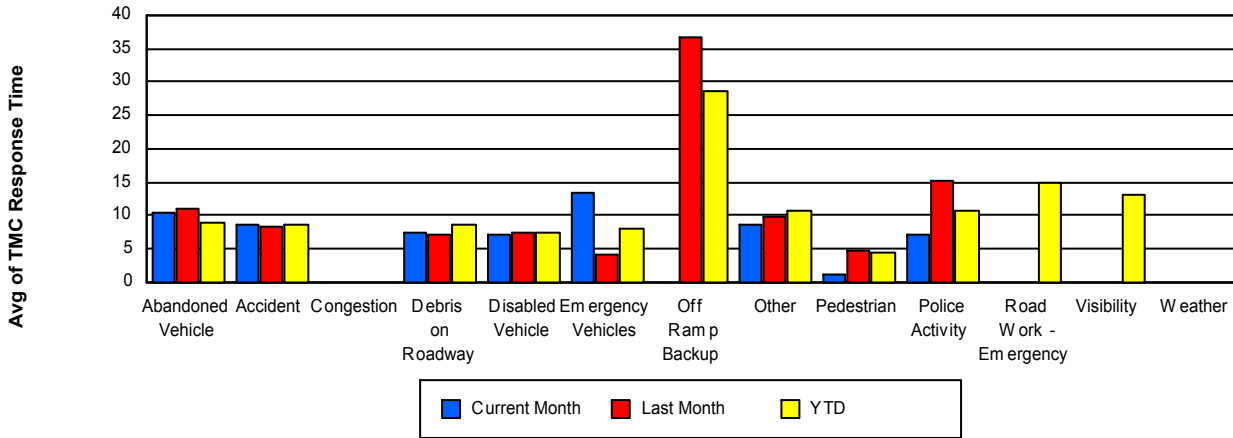
TMC Detection Time



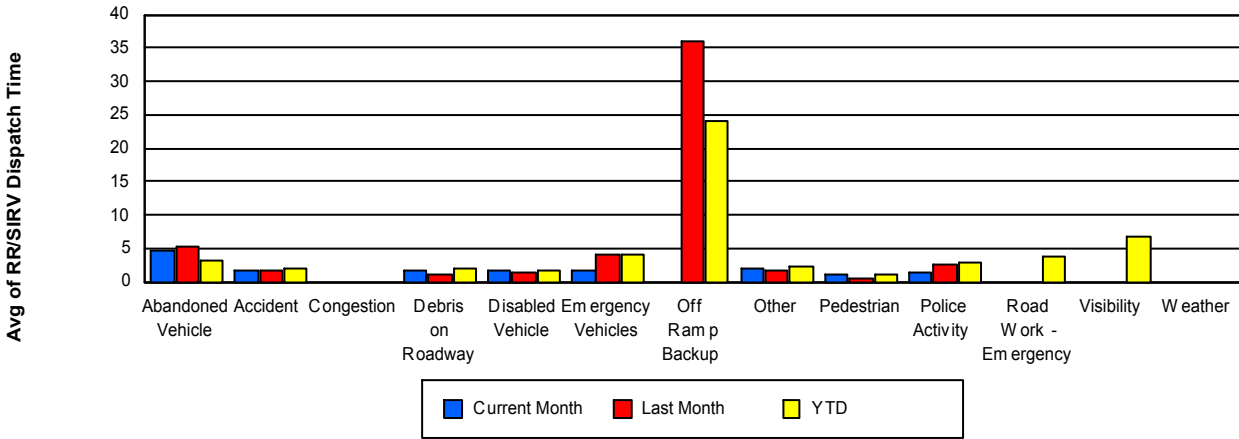
TMC Verification Time



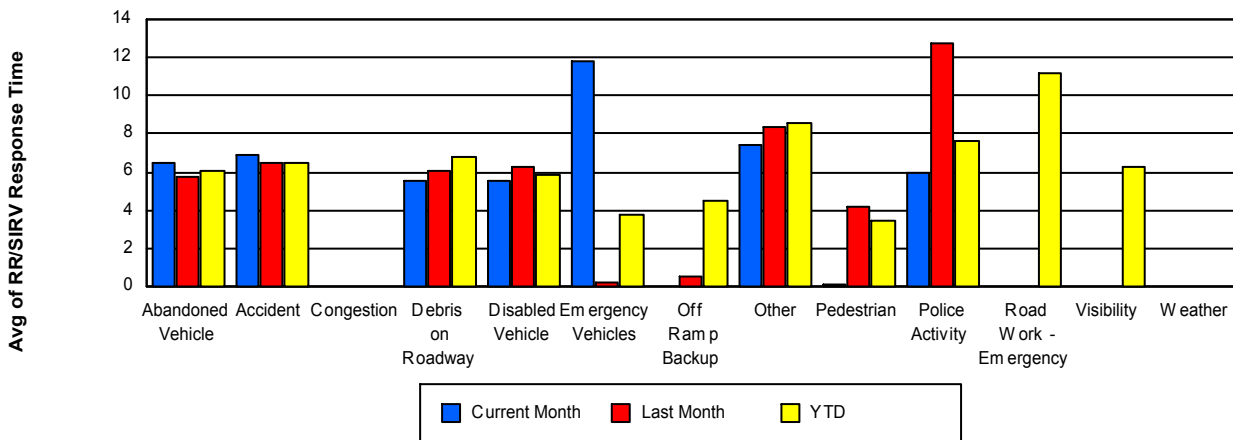
TMC Response Time



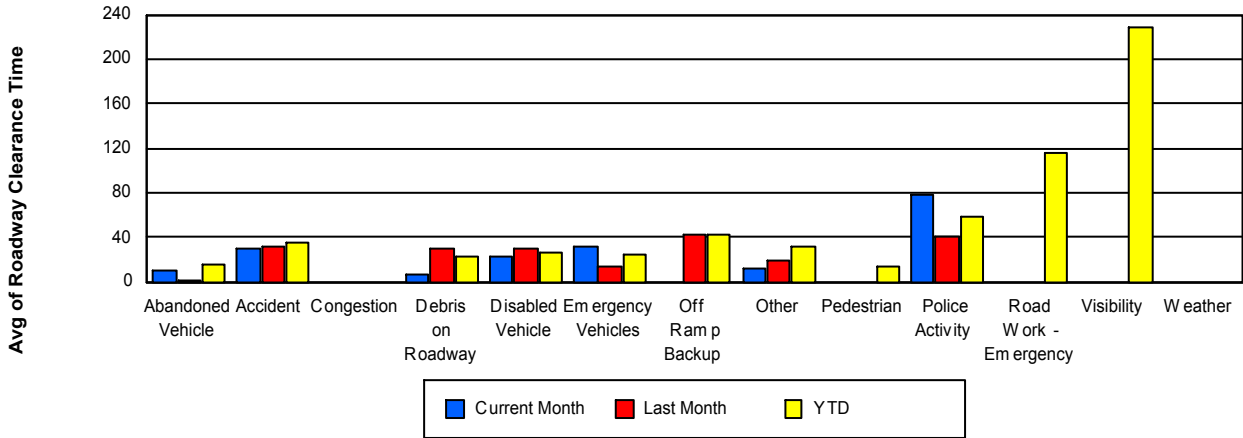
Road Ranger / SIRV Dispatch Time



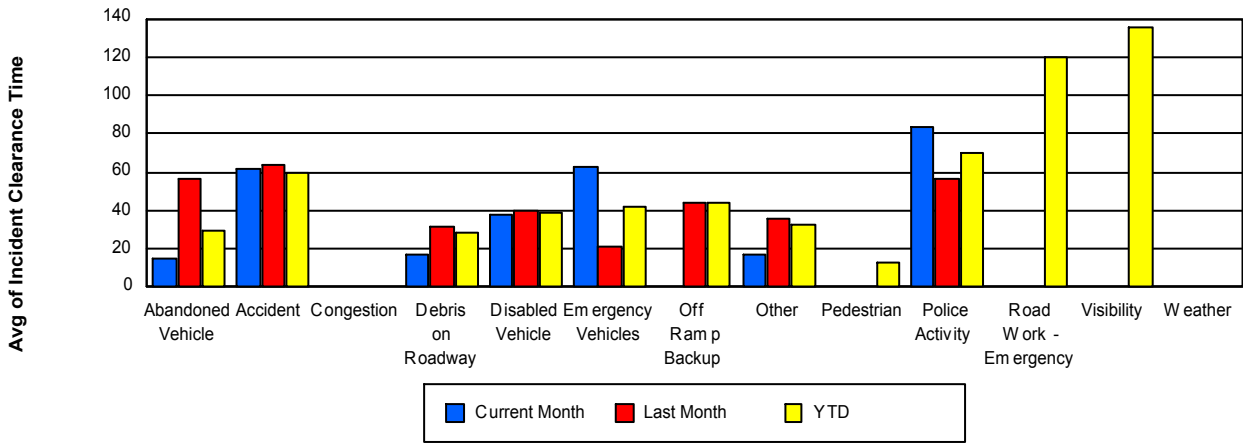
Road Ranger / SIRV Response Time



Roadway Clearance Time (2A)



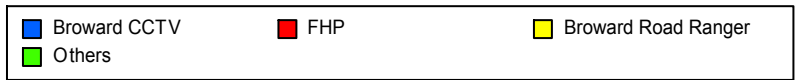
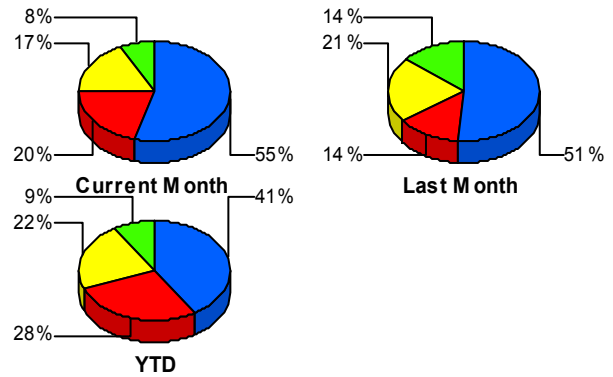
Incident Clearance Time (3B)



Incident Detection Methods

	Current Month	Last Month	YTD
Broward CCTV	144	120	1,187
Broward Road Ranger	46	50	629
Broward TMC	0	0	1
Broward VideoWall	6	3	15
BSO	1	2	17
District 4	6	10	65
District 6	0	1	5
FDOT Maintenance	0	0	6
FHP	54	32	807
Florida's Turnpike	0	0	7
FLPD	1	0	2
ITMS	0	1	1
Motorist	0	7	38
Other	0	0	1
Palm Beach Road Rang	1	1	11
PSAP	0	1	2
Road Watcher	2	1	20
SIRV	0	0	8
SmarTraveler (511)	0	1	24
VisioPaD Detection	3	4	35
Total	264	234	2,881

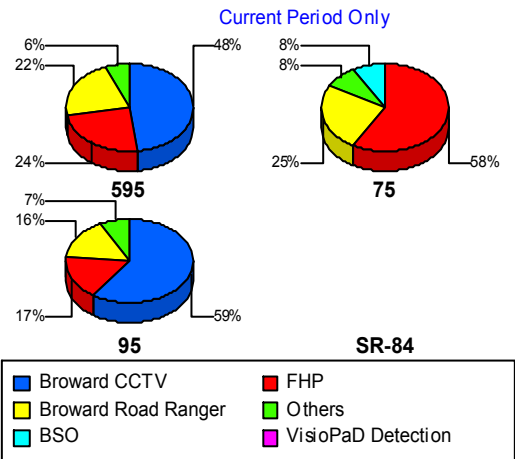
Total Incidents by Detection Method



Incident Detection Methods by Roadway

		Current Month	Last Month	YTD
595	Broward CCTV	24	13	173
	Broward Road Ranger	11	16	125
	Broward VideoWall	1	1	2
	BSO	0	2	5
	District 4	2	2	14
	FHP	12	5	149
	Florida's Turnpike	0	0	6
	FLPD	0	0	1
	Motorist	0	2	10
	Road Watcher	0	1	3
	SIRV	0	0	4
	SmarTraveler (511)	0	0	4
	VisioPaD Detection	0	1	7
	Total	50	43	503
	75	Broward Road Ranger	3	8
BSO		1	0	2
District 4		1	0	3
District 6		0	1	1
FHP		7	4	82
Road Watcher		0	0	2
Total		12	13	167
95	Broward CCTV	120	107	1,014
	Broward Road Ranger	32	26	427
	Broward TMC	0	0	1
	Broward VideoWall	5	2	13
	BSO	0	0	10
	District 4	3	8	48
	District 6	0	0	4
	FDOT Maintenance	0	0	6
	FHP	35	23	576
	Florida's Turnpike	0	0	1

Total Events by Roadway and Detection Method

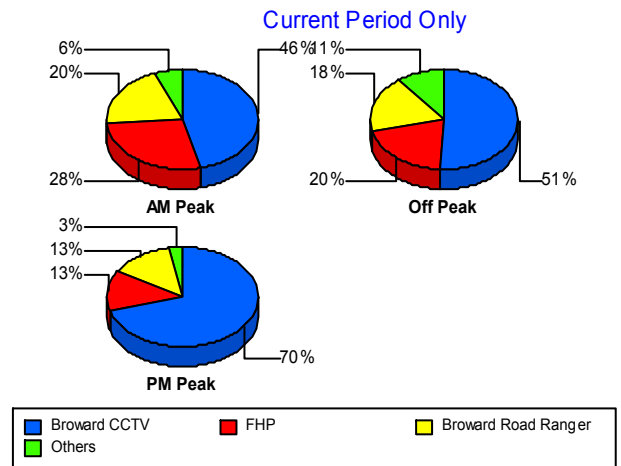


		Current Month	Last Month	YTD
95	FLPD	1	0	1
	ITMS	0	1	1
	Motorist	0	5	28
	Other	0	0	1
	Palm Beach Road Rang	1	1	11
	PSAP	0	1	2
	Road Watcher	2	0	15
	SIRV	0	0	4
	SmarTraveler (511)	0	1	20
	VisioPaD Detection	3	3	28
	Total	202	178	2,211
Total	264	234	2,881	

Incident Detection Methods by Peak Period

		Current Month	Last Month	YTD
AM Peak	Broward CCTV	30	30	251
	Broward Road Ranger	13	12	164
	Broward VideoWall	2	0	2
	BSO	0	0	1
	District 4	0	2	14
	District 6	0	0	1
	FDOT Maintenance	0	0	1
	FHP	18	8	159
	Florida's Turnpike	0	0	1
	FLPD	0	0	1
	Motorist	0	1	11
	Palm Beach Road Rang	0	1	5
	PSAP	0	1	2
	Road Watcher	2	0	7
	SIRV	0	0	2
	SmarTraveler (511)	0	0	5
	VisioPaD Detection	0	1	7

Total Events by Peak Period and Detection Method



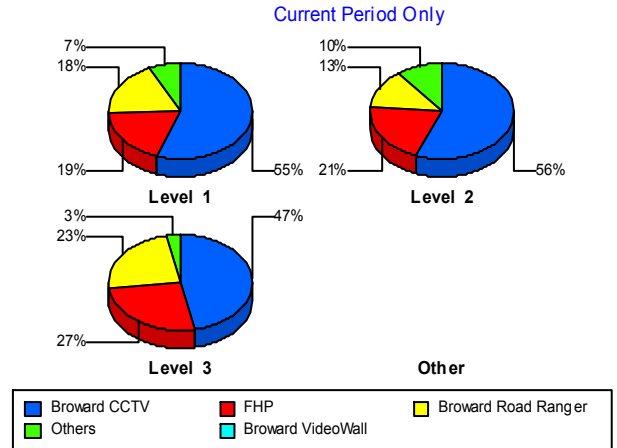
		Current Month	Last Month	YTD
AM Peak	Total	65	56	634
Off Peak	Broward CCTV	67	61	611
	Broward Road Ranger	24	25	329
	Broward TMC	0	0	1
	Broward VideoWall	4	1	11
	BSO	1	1	9
	District 4	5	6	39
	District 6	0	0	2
	FDOT Maintenance	0	0	3
	FHP	27	18	447
	Florida's Turnpike	0	0	6
	FLPD	1	0	1
	ITMS	0	1	1
	Motorist	0	4	17
	Palm Beach Road Rang	1	0	4
	Road Watcher	0	1	10
	SIRV	0	0	4
	SmarTraveler (511)	0	0	10
	VisioPaD Detection	2	1	18
	Total	132	119	1,523
	PM Peak	Broward CCTV	47	29
Broward Road Ranger		9	13	136
Broward VideoWall		0	2	2
BSO		0	1	7
District 4		1	2	12
District 6		0	1	2
FDOT Maintenance		0	0	2
FHP		9	6	201
Motorist		0	2	10
Other		0	0	1
Palm Beach Road Rang		0	0	2
Road Watcher		0	0	3

		Current Month	Last Month	YTD
PM Peak	SIRV	0	0	2
	SmarTraveler (511)	0	1	9
	VisioPaD Detection	1	2	10
	Total	67	59	724
Total		264	234	2,881

Incident Detection Methods by Severity

		Current Month	Last Month	YTD
Level 1	Broward CCTV	92	76	727
	Broward Road Ranger	30	27	385
	Broward VideoWall	3	1	8
	BSO	0	1	10
	District 4	4	5	36
	District 6	0	1	2
	FDOT Maintenance	0	0	2
	FHP	32	19	408
	FLPD	0	0	1
	ITMS	0	1	1
	Motorist	0	3	24
	Other	0	0	1
	Palm Beach Road Rang	1	1	9
	PSAP	0	1	2
	Road Watcher	2	1	12
	SIRV	0	0	4
	SmarTraveler (511)	0	1	13
	VisioPaD Detection	2	4	18
	Total	166	142	1,663
	Level 2	Broward CCTV	38	35
Broward Road Ranger		9	18	171
Broward VideoWall		3	2	5
BSO		0	1	3
District 4		2	2	22

Total Events by Severity and Detection Method



		Current Month	Last Month	YTD
Level 2	District 6	0	0	2
	FDOT Maintenance	0	0	3
	FHP	14	10	268
	Florida's Turnpike	0	0	2
	FLPD	1	0	1
	Motorist	0	4	13
	Palm Beach Road Rang	0	0	1
	Road Watcher	0	0	5
	SIRV	0	0	2
	SmarTraveler (511)	0	0	9
	VisioPaD Detection	1	0	16
	Total	68	72	863
	Level 3	Broward CCTV	14	9
Broward Road Ranger		7	5	73
Broward TMC		0	0	1
Broward VideoWall		0	0	2
BSO		1	0	4
District 4		0	3	7
District 6		0	0	1
FDOT Maintenance		0	0	1
FHP		8	3	131
Florida's Turnpike		0	0	5
Motorist		0	0	1
Palm Beach Road Rang		0	0	1
Road Watcher		0	0	3
SIRV		0	0	2
SmarTraveler (511)		0	0	2
VisioPaD Detection		0	0	1
Total		30	20	355
Total		264	234	2,881

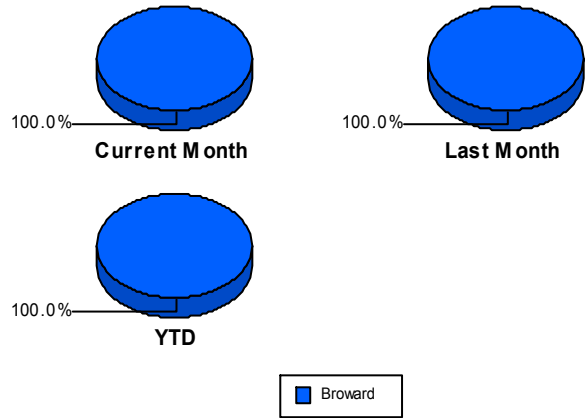
Road Ranger / SIRV Performance Measures

Road Ranger / SIRV Performance By County

Values presented are:
 - Total Events with a RR/SIRV Response
 - Total RR/SIRV Responses,
 - Total Activities Performed

	Current Mo	Last Month	YTD
Broward	3,773	3,671	47,985
	4,067	3,933	51,463
	4,199	4,087	53,542

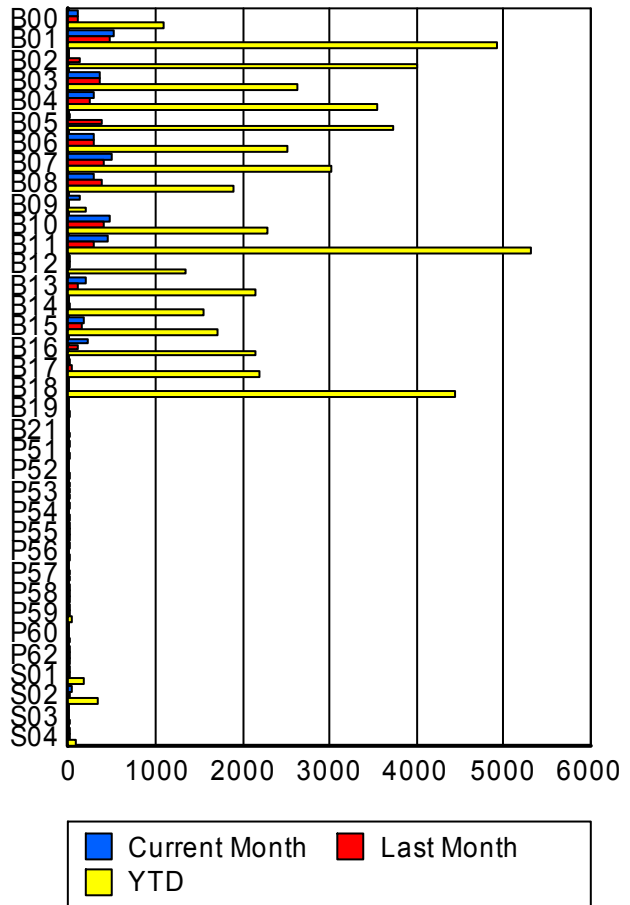
RR/SIRV Responses per County



Road Ranger / SIRV Performance By Truck

	Current Mo	Last Month	YTD
B00	99	95	1,085
	102	95	1,099
	105	98	1,133
B01	504	459	4,897
	506	462	4,934
	522	478	5,125
B02	0	123	3,977
	0	127	4,019
	0	128	4,207
B03	349	359	2,599
	350	366	2,630
	367	377	2,726
B04	295	249	3,500
	297	251	3,541
	304	263	3,688
B05	13	384	3,706
	13	387	3,742
	13	399	3,915
B06	288	296	2,500
	290	298	2,514
	301	305	2,623
B07	483	390	2,990
	490	395	3,018
	502	405	3,105
B08	281	371	1,886
	281	373	1,897
	292	394	1,966

RR/SIRV Responses per Truck



	Current Mo	Last Month	YTD
B09	120	0	207
	120	0	207
	123	0	213
B10	478	403	2,249
	481	410	2,280
	496	430	2,388
B11	447	294	5,279
	449	295	5,317
	465	312	5,532
B12	13	15	1,325
	13	15	1,336
	14	15	1,389
B13	206	97	2,139
	206	98	2,156
	213	100	2,216
B14	0	7	1,536
	0	7	1,548
	0	8	1,596
B15	174	155	1,690
	177	155	1,704
	178	163	1,770
B16	206	96	2,117
	212	98	2,150
	219	101	2,244
B17	12	43	2,186
	12	44	2,205
	13	47	2,294
B18	0	0	4,412
	0	0	4,457
	0	0	4,641
B19	0	0	2
	0	0	2
	0	0	2
B21	0	0	2
	0	0	2
	0	0	2
P51	8	0	14
	8	0	14
	8	0	14
P52	0	0	4
	0	0	4
	0	0	4
P53	2	1	10
	2	1	10
	2	1	10

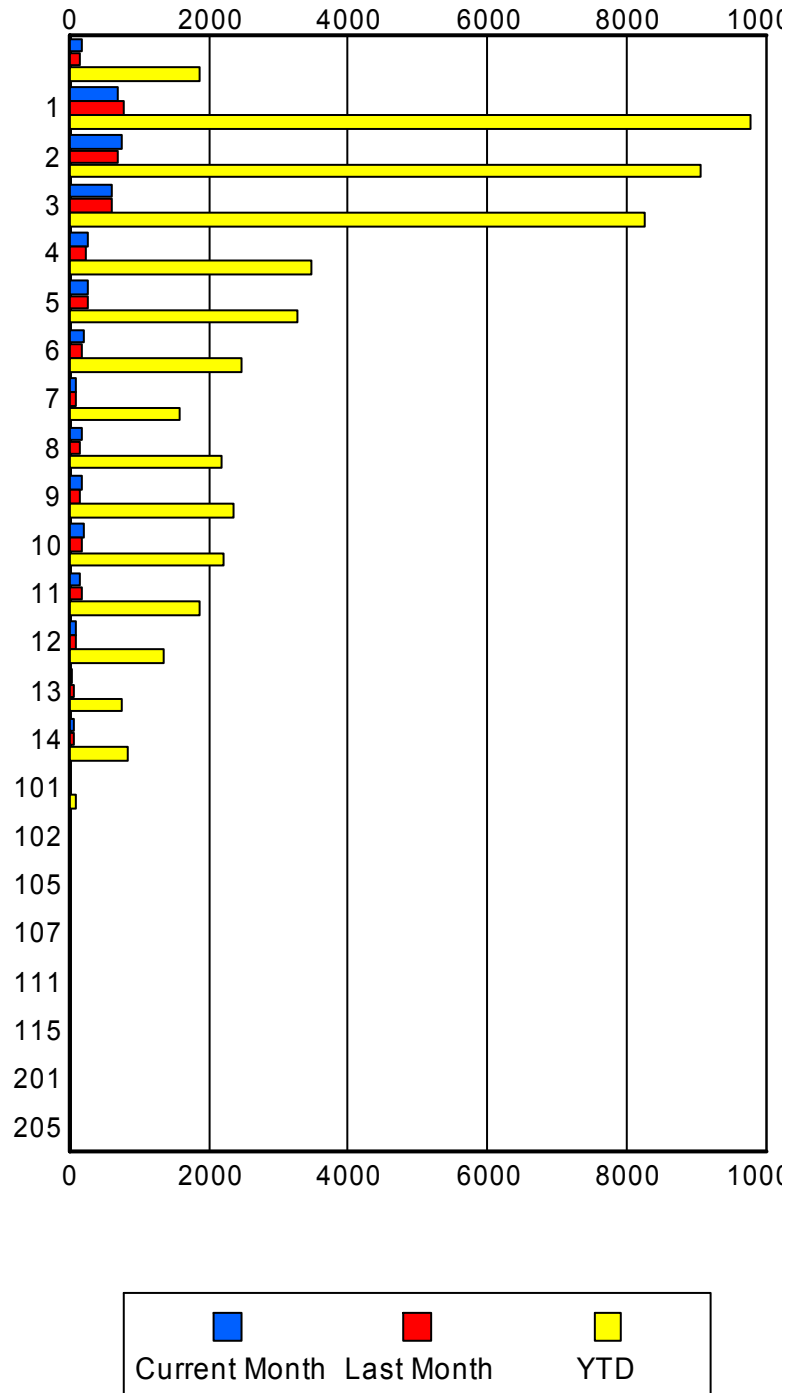
	Current Mo	Last Month	YTD
P54	2	0	6
	2	0	6
	2	0	8
P55	1	2	7
	1	2	7
	1	2	7
P56	1	0	7
	1	0	7
	1	0	7
P57	0	2	4
	0	2	4
	0	2	4
P58	1	2	21
	1	2	21
	1	2	24
P59	1	3	42
	1	3	42
	1	3	49
P60	0	0	3
	0	0	3
	0	0	3
P62	1	1	4
	1	1	4
	1	1	4
S01	9	13	172
	9	13	174
	12	18	215
S02	27	20	337
	27	20	338
	28	21	361
S03	0	0	1
	0	0	1
	0	0	1
S04	14	13	69
	15	13	70
	15	14	56

Road Ranger / SIRV Performance By Beat

	Current Mo	Last Month	YTD
	150	130	1,622
	186	157	1,867
	193	168	1,960
1	672	765	9,507
	694	780	9,782
	718	807	10,177
2	743	666	8,792
	755	684	9,048
	781	712	9,427
3	595	579	8,011
	613	602	8,255
	630	621	8,594
4	274	239	3,447
	277	241	3,482
	285	249	3,598
5	258	269	3,253
	261	273	3,280
	272	292	3,429
6	221	192	2,447
	224	193	2,466
	234	202	2,569
7	97	101	1,577
	97	101	1,594
	100	109	1,669
8	182	157	2,178
	182	158	2,191
	187	165	2,292
9	193	166	2,328
	194	166	2,345
	201	171	2,428
10	209	181	2,200
	210	182	2,218
	217	187	2,300
11	149	169	1,848
	150	172	1,867
	154	174	1,917
12	107	92	1,346
	107	93	1,358
	109	95	1,411
13	45	51	739
	45	53	750
	46	54	771
14	55	67	833
	55	67	842
	55	70	870

Values presented are:
 - Total Events with a RR/SIRV Response
 - Total RR/SIRV Responses,
 - Total Activities Performed

RR/SIRV Responses per Beat



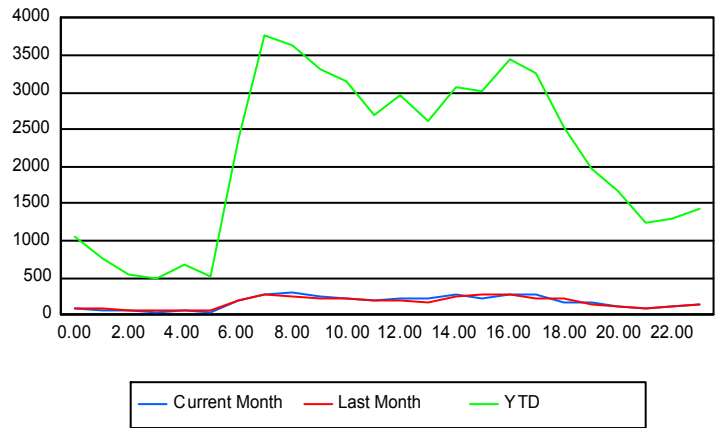
	Current Mo	Last Month	YTD
101	12	10	82
	12	10	82
	12	10	94
102	0	0	4
	0	0	4
	0	0	4
105	1	1	3
	1	1	3
	1	1	3
107	0	0	1
	0	0	1
	0	0	1
111	3	0	23
	3	0	23
	3	0	23
115	1	0	3
	1	0	3
	1	0	3
201	0	0	1
	0	0	1
	0	0	1
205	0	0	1
	0	0	1
	0	0	1

Road Ranger / SIRV Performance By Time of Day

Values presented are:
 - Total Events with a RR/SIRV Response
 - Total RR/SIRV Responses,
 - Total Activities Performed

	Current Mo	Last Month	YTD
12AM-1AM	87 92 92	79 82 84	983 1,058 1,096
1AM-2AM	57 68 73	67 80 85	673 752 790
2AM-3AM	43 48 48	52 56 59	504 543 559
3AM-4AM	28 29 29	46 53 53	430 488 506
4AM-5AM	56 66 68	42 49 50	570 667 681
5AM-6AM	38 40 40	48 54 54	475 523 538
6AM-7AM	161 192 201	184 195 206	2,173 2,368 2,476
7AM-8AM	264 279 288	252 268 274	3,538 3,770 3,911
8AM-9AM	280 303 315	245 257 269	3,397 3,626 3,789
9AM-10AM	232 243 251	220 229 234	3,113 3,316 3,437
10AM-11AM	203 218 221	217 230 241	2,946 3,139 3,281
11AM-12PM	181 200 207	179 199 206	2,503 2,703 2,815
12PM-1PM	219 228 233	190 199 205	2,772 2,964 3,099

Number of Responses / Hour of the Day



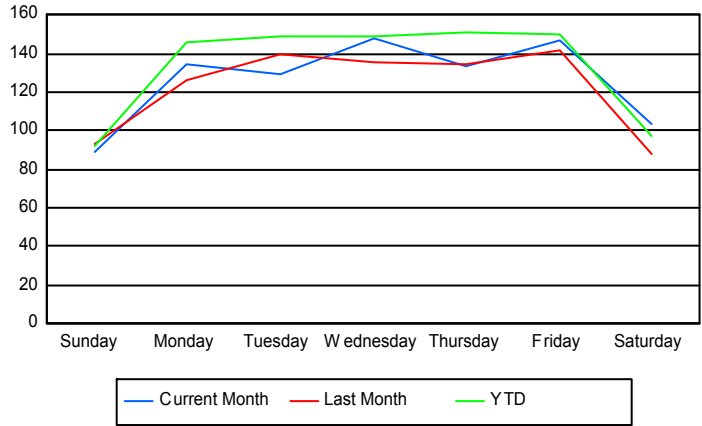
	Current Mo	Last Month	YTD
1PM-2PM	202	147	2,393
	212	167	2,612
	221	171	2,726
2PM-3PM	262	230	2,863
	277	240	3,068
	285	253	3,204
3PM-4PM	221	264	2,831
	228	287	3,005
	233	301	3,129
4PM-5PM	253	253	3,231
	278	266	3,444
	285	277	3,569
5PM-6PM	238	209	3,064
	268	222	3,270
	277	228	3,398
6PM-7PM	161	189	2,372
	175	213	2,545
	186	224	2,640
7PM-8PM	164	133	1,846
	178	147	1,960
	186	156	2,051
8PM-9PM	107	113	1,615
	112	116	1,683
	116	120	1,757
9PM-10PM	86	86	1,130
	93	88	1,230
	97	93	1,274
10PM-11PM	106	98	1,210
	110	102	1,292
	112	105	1,336
11PM-12AM	124	128	1,353
	130	134	1,437
	135	139	1,480

Road Ranger / SIRV Performance By Day of Week

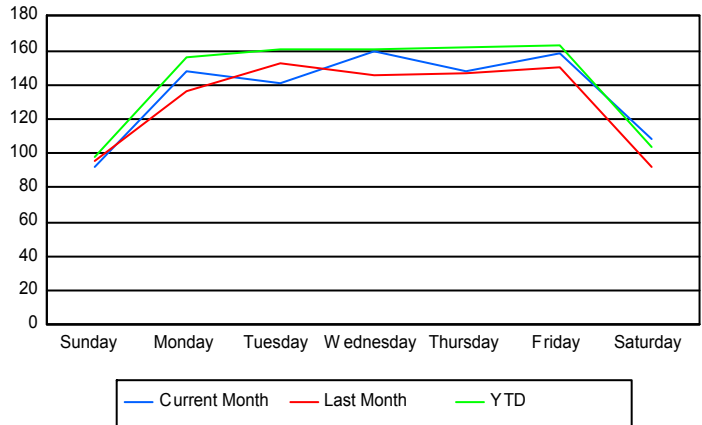
Values presented are:
 - Total Events with a RR/SIRV Response
 - Total RR/SIRV Responses,
 - Total Activities Performed

	Current Mo	Last Month	YTD
Sunday	440	370	4,702
	458	381	4,964
	472	385	5,155
Monday	660	502	7,597
	719	540	8,106
	747	560	8,405
Tuesday	480	557	7,637
	522	609	8,200
	536	634	8,543
Wednesday	589	541	7,687
	635	581	8,281
	645	607	8,623
Thursday	530	669	7,727
	588	729	8,306
	609	759	8,632
Friday	570	688	7,718
	613	730	8,336
	637	762	8,667
Saturday	508	347	4,960
	532	363	5,270
	553	380	5,517

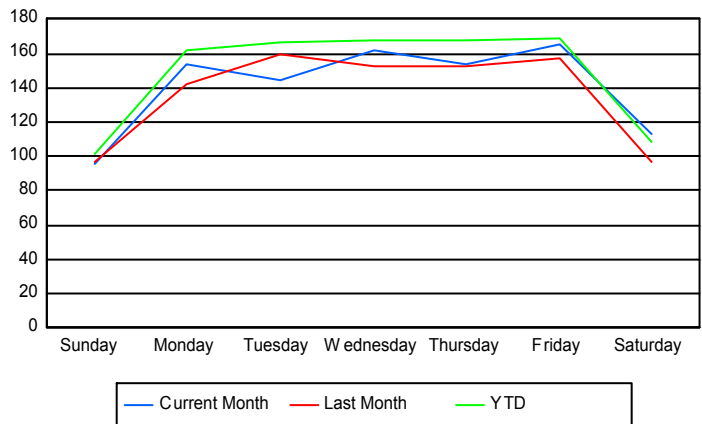
Avg # of events with a RR/SIRV Response per Day of the Week



Avg # of RR/SIRV Responses per Day of the Week



Avg # of RR/SIRV Activities Performed per Day of the Week



Road Ranger/ SIRV Responses per Time of Day and Day of Week

